

2025-09-15

Time of Issue: 13:43:00 hours IST
(Mid-Day)

ALL INDIA WEATHER SUMMARY AND FORECAST BULLETIN

Significant Weather Features

i. Weather Forecast and Warnings

Northeast India:

Light/moderate rain/thunderstorm at most/many places with isolated **heavy rainfall** likely over Arunachal Pradesh during 15th-17th & on 20th & 21st; Assam & Meghalaya, Nagaland, Manipur, Mizoram & Tripura during 15th -21st September with **very heavy falls over Arunachal Pradesh on 15th & 16th; Nagaland and Assam & Meghalaya on 15th September.**

South Peninsular India:

Light to moderate rain/thunderstorm & gusty winds (speed 30-40 kmph) at many/some places with isolated **heavy rainfall** likely over Tamil Nadu during 15th-19th; Coastal Andhra Pradesh & Yanam on 15th; Rayalaseema, Telangana & North Interior Karnataka during 15th-17th; Coastal & South Interior Karnataka on 17th September.

Strong surface winds (speed reaching 30-40 kmph) very likely over Coastal Andhra Pradesh & Yanam and Rayalaseema during next 5 days.

East & Central India:

Light to moderate rain/thunderstorm at most/many places with isolated **heavy rainfall** likely over Madhya Pradesh & Odisha on 15th; Vidarbha, Chhattisgarh, Gangetic West Bengal on 15th & 16th; Andaman & Nicobar Islands on 15th & during 17th-20th; Sub-Himalayan West Bengal & Sikkim, Jharkhand during 15th-18th; Bihar during 15th-19th September with isolated **very heavy falls over Sub-Himalayan West Bengal & Sikkim during 15th-17th; Bihar & Jharkhand on 15th & 16th September.**

West India:

Isolated **Extremely heavy rainfall (≥ 21 cm)** likely over Konkan and Madhya Maharashtra on 15th September.

Light to moderate rain/thunderstorm at many/some places with **isolated heavy rainfall** likely over Konkan & Goa, Madhya Maharashtra during 15th-18th; Marathwada during 15th-17th September with **very heavy falls over Marathwada on 15th & 16th and Konkan & Goa, Madhya Maharashtra on 16th September.**

Northwest India:

Light to moderate rain/thunderstorm at some/isolated places with **isolated heavy rainfall** likely over Himachal Pradesh & Uttarakhand on 15th & 16th; West Uttar Pradesh on 15th; East Uttar Pradesh during 15th-19th September with **very heavy falls over Uttarakhand & East Uttar Pradesh on 15th September.**

***Red color warning does not mean "Red Alert" Red color warning means "Take Action"**

Forecast and warning for any day is valid from 0830 hours IST of day till 0830 hours IST of next day

For more details kindly visit <https://mausam.imd.gov.in> or contact 011-2434-4599

(Service to the nation since 1875)



Main Weather Observations:

❖ **Rainfall distribution** (from 0830 hours IST of yesterday to 0830 hours IST of today): **at most places** over Arunachal Pradesh, Assam & Meghalaya, Nagaland, Manipur, Mizoram & Tripura, Sub Himalayan West Bengal & Sikkim, Jharkhand, Bihar, Konkan & Goa, Madhya Maharashtra, Marathwada and Vidarbha; **at many places** over Gangetic West Bengal, Uttarakhand, Himachal Pradesh, Telangana, Coastal Karnataka, North Interior Karnataka and Lakshadweep; **at a few places** over Andaman & Nicobar Islands, Odisha, East Uttar Pradesh, Chhattisgarh, Coastal Andhra Pradesh & Yanam and Kerala & Mahe; **at isolated places** over West Uttar Pradesh, Haryana-Chandigarh-Delhi, Punjab, Jammu-Kashmir-Ladakh-Gilgit-Baltistan-Muzaffarabad, East Rajasthan, West Madhya Pradesh, East Madhya Pradesh, Gujarat Region, Saurashtra & Kutch, Rayalaseema, Tamil Nadu, Puducherry & Karaikal and South Interior Karnataka; **Dry** over rest of the country.

❖ **Significant rainfall recorded(in cm)** (from 0830 hours IST of yesterday to 0830 hours IST of today): **Sub Himalayan West Bengal & Sikkim**: Toorsa Tea Garden (dist Alipurduar) 28; Jiti T.e. (dist Jalpaiguri) 16; Jhallong (dist Kalimpong) 12; Ghatia T.e. (dist Jalpaiguri) 11; Hilla T.e. (dist Jalpaiguri), Kurti T.e. (dist Jalpaiguri) 9 Each; Ghughumari (dist Cooch Behar) 8; Chengmari/Diana (dist Jalpaiguri), Chalouni Tea Estate (dist Jalpaiguri) 7 Each; Chel (dist Jalpaiguri), Diana Tea Estate (dist Jalpaiguri), Indong T.e. (dist Jalpaiguri) 6 Each; Buxaduar (dist Alipurduar), Bhagatpur Tea Estate (dist Jalpaiguri), Gandrapara Tea Garden (dist Jalpaiguri), Tra Nagrakata (dist Jalpaiguri), Zurrantee T.e (dist Jalpaiguri), Beech Tea Garden (dist Alipurduar) 5 Each; Kalimpong (dist Kalimpong), Amfu Majhian (dist South Dinajpur), Amfu Kalimpong (dist Kalimpong), Aibheel Tea Estate (dist Jalpaiguri), Good Hope Tea Estate (dist Jalpaiguri), Soongachi T.e. (dist Jalpaiguri), Washabari Tea Estate (dist Jalpaiguri), Nagarkata (dist Jalpaiguri) 4 Each; **Konkan & Goa**: Matheran (dist Raigad) 27; Panvel ARG (dist Raigad), Poladpur (dist Raigad) 16 Each; Karjat ARG (dist Raigad), Mahad (dist Raigad) 15 Each; Colaba (dist Mumbai City) 13; Mangaon (dist Raigad) 9; Tbia IMD Part Time (dist Thane) 8; Santacruz (dist Mumbai Suburban), Roha (dist Raigad), Mhasla (dist Raigad), Uran (dist Raigad) 7 Each; Ratnagiri (dist Ratnagiri), Mandangad (dist Ratnagiri), Tala (dist Raigad) 6 Each; Sangameshwar Devrukh (dist Ratnagiri) 5; Harnai IMD (dist Ratnagiri), Murud (dist Raigad), Alibag - IMD Part Time (dist Raigad), Pen (dist Raigad), Vasai (dist Palghar) 4 Each; **Gangetic West Bengal**: Digha (dist East Midnapore) 20; Asansol(CWC) (dist Paschim Bardhaman) 9; Asansol (dist Paschim Bardhaman) 7; Contai (dist East Midnapore), Manteswar (dist Purba Bardhaman), Debagram (dist Nadia), Burnpur (dist Paschim Bardhaman) 4 Each; **Uttarakhand**: Deoprayag (dist Garhwal Tehri) 19; Didihat (dist Pithoragarh) 10; Landsdown (dist Garhwal Pauri), Khatima (dist Udham Singh Nagar), Kapkot (dist Bageshwar) 5 Each; Ukhimath (dist Rudrapur) 4; **Jharkhand**: Zrs Dumka (dist Dumka) 15; Chakradharpur (dist West Singhbhum) 13; Sadar Chaibasa (dist West Singhbhum) 10; Daltonganj (dist Palamu), Mandu Dvc (dist Ramgarh) 9 Each; Rajdhanwar (dist Giridih), Chainpur (dist Palamu) 8 Each; Chaibasa (dist West Singhbhum), Mandar (dist Ranchi) 7 Each; Koderma Dvc (dist Koderma), Gudri (dist West Singhbhum), Rania (dist Khunti) 6 Each; Messenjar (dist Dumka), Maharo (dist Dumka), Tilaiya Dvc (dist Koderma), Sonua (dist West Singhbhum), Patratu (dist Ramgarh) 5 Each; Ramgarh (dist Ramgarh), Barkisuriya (dist Giridih), Ranchi AP (dist Ranchi), Sikatia (dist Deoghar), Bhurkunda (dist Ramgarh), Icar Namkum (dist Ranchi), Gobindpur Dvc (dist Dhanbad), Panchet Dvc (dist Dhanbad), Fatehpur (dist Jamtara), Gola (dist Ramgarh) 4 Each; **Telangana**: Hakimpet IAF (dist M. Malkajgiri) 13; Kotgiri (dist Nizamabad), Madnur (dist Kamareddy), Himayatnagar (dist Hyderabad) 9 Each; Cgwb Nagole AP (dist M. Malkajgiri) 8; Golkonda(ARG) (dist Hyderabad), Gambhirapet (dist Rajanna Sircilla), Mustabad (dist Rajanna Sircilla), Gajwel (dist Siddipet), Shankarapatnam (dist Karimnagar), Chigurumamidy (dist Karimnagar), Govindaraopet (dist Mulugu) 6 Each; Tadwai (dist Kamareddy), Medchal (dist M. Malkajgiri), Banswada (dist Kamareddy), Talamadugu (dist Adilabad), Dullapally AP (dist Rangareddy), Varni (dist Nizamabad) 5 Each; Sirsilla (dist Rajanna Sircilla), Bejjanki (dist Siddipet), Dindigul (dist M. Malkajgiri), Mirdoddi (dist Siddipet), Yellareddypeta (dist Rajanna Sircilla), Amberpet (dist Hyderabad), Sangem (dist Warangal) 4 Each; **East Uttar Pradesh**: Nautanwa (dist Maharajganj) 13; Shoharatgarh (dist Siddharth Nagar), Kheri Lakhimpur (dist Kheri), Shardanagar (dist Kheri) 6 Each; Nichlaul (dist Maharajganj), Bahraich (dist Bahraich), Ballia (dist Ballia) 5 Each; Uska Bazar Fmo (dist Siddharth Nagar), Pharenda (dist Maharajganj), Bhinga (dist Shrawasti), Kakardharighat (dist Shrawasti) 4 Each; **Coastal Andhra Pradesh & Yanam**: Guntur (dist Guntur) 12; Veligandla (dist Prakasam) 7; Mangalagiri (dist Guntur) 4; **North Interior Karnataka**: Kakkeri (dist Yadgir) 11; Lingasugur (dist Raichur), Ilkal (dist Bagalkote) 9 Each; Hunsagi (dist Yadgir) 7; Aland (dist Kalaburgi) 6; Mudgal (dist Raichur) 5; Maski (dist Raichur), Hungund (dist Bagalkote), Shorapur (dist Yadgir), Yelburga (dist Koppal) 4 Each; **Assam & Meghalaya**: Mawsynram (dist East Khasi Hills), Bhaghmara (dist South Garo Hills), Sualkuchi ARG (dist Kamrup (rural)), Chouldhuwaghat ARG (dist Lakhimpur) 11 Each; Karimganj (dist Sribhumi) 10; Dhemaaji (dist Dhemaaji) 9; B P Ghat (dist Sribhumi) 8; Golaghat CWC (dist Golaghat), Nahar Katia (dist Dibrugarh), N.lakhimpur/Lilabari (dist Lakhimpur), Nongstein (dist West Khasi Hills), Lakhimpur ARG (dist Lakhimpur) 7 Each; Shella (dist East Khasi Hills), Cherrapunji (dist East Khasi Hills), Chauldhowaghat (dist Lakhimpur), Tinsukia AWS (dist

*Red color warning does not mean "Red Alert" Red color warning means "Take Action"

Forecast and warning for any day is valid from 0830 hours IST of day till 0830 hours IST of next day

For more details kindly visit <https://mausam.imd.gov.in> or contact 011-2434-4599

(Service to the nation since 1875)



Tinsukia), Tura AWS (dist West Garo Hills), Ranganadi Nt Xing (dist Lakhimpur), Bhumuraguri (dist Sonitpur), Mawkyrat (dist South West Khasi Hills), Tezpur (dist Sonitpur) 6 Each; A P Ghat (dist Cachar), Dholla Bazar (dist Tinsukia), Dudhnoi ARG (dist Goalpara), Raha ARG (dist Nagaon) 4 Each; **Marathwada:** Deoni (dist Latur) 11; Degloor - Fmo (dist Nanded) 10; Dharur (dist Beed), Kaij (dist Beed), Shirur Kasar (dist Beed) 8 Each; Beed (dist Beed) 7; Patoda (dist Beed) 6; Udgir - IMD Parttime (dist Latur), Parbhani (dist Parbhani), Tuljapur (dist Dharashiv), Purna (dist Parbhani), Sonpeth (dist Parbhani), Jalkot (dist Latur), Parli Vajinath (dist Beed), Tondapur- ARG (dist Hingoli) 4 Each; **Punjab:** Ranjit Sagar Dam Site (dist Pathankot) 9; Shahpur Kandi (dist Pathankot) 7; Malikpur (dist Pathankot) 5; **Bihar:** Jainagar (dist Madhubani), Parsa (dist Saran), Khizirsarai (dist Gaya), Bidupur (dist Vaishali), Raghupur (dist Vaishali) 9 Each; Ghanshyampur (dist Darbhanga), Alinagar (dist Darbhanga), Neem Chak Bathani (dist Gaya), Sahdei Buzurg (dist Vaishali) 8 Each; Jhanjharpur (dist Madhubani), Salakhua (dist Saharsa), Madhepur (dist Madhubani), Mahanar (dist Vaishali), Manpur (dist Gaya), Khusrupur (dist Patna), Sarairanjan (dist Samastipur), Mairwa (dist Siwan), Desri (dist Vaishali) 7 Each; Jandhaha (dist Vaishali), Hajipur (dist Vaishali), Benipatti (dist Madhubani), Daniawan (dist Patna), Tajpur (dist Samastipur) 6 Each; Saraiya (dist Muzaffarpur), Darbhanga (dist Darbhanga), Bausi (dist Banka), Kako (dist Jahanabad), Wazirganj (dist Gaya), Patori (dist Samastipur), Agiaon (dist Bhojpur), Garhani (dist Bhojpur), Dobhi (dist Gaya), Pothia (dist Kishanganj) 5 Each; Barh (dist Patna), Tribeni/Balmikinagar (dist West Champaran), Sheikhpura (dist Sheikhpura), Sherghati (dist Gaya), Tekari (dist Gaya), Gaunaha (dist West Champaran), Benibad (dist Darbhanga), Pandaul (dist Madhubani), Fatuha (dist Patna), Tardih (dist Darbhanga), Guraru (dist Gaya), Pandarak (dist Patna), Bakhtiarpur (dist Patna), Athmalgola (dist Patna), Mohanpur (dist Samastipur), Chehara Kala (dist Vaishali), Kamtaul (dist Darbhanga) 4 Each; **Odisha:** Nawana (dist Mayurbhanj), Rajnagar (dist Kendrapara) 9 Each; Chilika (dist Khurda) 8; Paradeep Cwr (dist Jagatsinghpur), Harichandanpur (dist Keonjhar), Bhograi (dist Balasore) 5 Each; Soro (dist Balasore), Raghunathpur (dist Jagatsinghpur), Jujumura (dist Sambalpur), Bandhugaon (dist Koraput), Nandapur (dist Koraput), Bahanga (dist Balasore) 4 Each; **Arunachal Pradesh:** Roing (dist Lower Dibang Valley) 9; Deomali AWS (dist Tirap), Namsai (dist Lohit) 8 Each; Naharlagun AWS (dist Papumpara) 6; Bhalukpong (dist West Kameng) 4; **Nagaland, Manipur, Mizoram & Tripura:** Mokochang (dist Mokochung) 9; Ongpangkong Nsdma AWS (dist Mokochung) 8; Zunheboto (dist Zunheboto) 7; Lengpui (dist Aizawl), Amarpur (dist Gomati), Tamenglong (dist Tamenglong) 5 Each; Kohima (dist Kohima), Tuli Nsdma AWS (dist Mokochung), Wokha Sadar Nsdma AWS (dist Wokha) 4 Each; **East Madhya Pradesh:** Bijuri (dist Anuppur) 8; Kotma (dist Anuppur) 5; **Madhya Maharashtra:** Chinchwad - ARG (dist Pune), Padegaon ARG (dist Satara), Khutbav Daund AWS (dist Pune) 8 Each; Mahabaleshwar (dist Satara) 7; Mohol (dist Sholapur), Indapur (dist Pune), Pune (dist Pune) 6 Each; Pathardi (dist Ahilyanagar), Baramati (dist Pune), Jeur - IMD Parttime (dist Sholapur) 5 Each; Girnadam - Fmo (dist Nashik), Sangola (dist Sholapur), Jamkhed (dist Ahilyanagar), Bhore (dist Pune), Shirur Ghodnadi (dist Pune), Velhe (dist Pune) 4 Each; **Chhattisgarh:** Rajnandgaon (dist Rajnandgaon), Pratappur (dist Surajpur) 6 Each; Ramanujganj (dist Balrampur), Balrampur (dist Balrampur), Doura Kochali (dist Balrampur) 5 Each; **Himachal Pradesh:** Jogindarnagar (dist Mandi) 6; Palampur (dist Kangra) 5; Pandoh (dist Mandi) 4; **Vidarbha:** Bhandara (dist Bhandara) 5; Kurkheda (dist Gadchiroli), Armori (dist Gadchiroli) 4 Each; **Kerala & Mahe:** Ayyankunnu AWS (dist Cannur) 5; **Jammu-Kashmir-Ladakh-Gilgit-Baltistan-Muzaffarabad:** Reasi ARG (dist Reasi), Reasi Kvk AWS (dist Reasi) 5 Each; **South Interior Karnataka:** Gowribidanur (dist Chikaballapura) 4; **West Madhya Pradesh:** Thikri (dist Barwani) 4; **Saurashtra & Kutch:** Amreli (dist Amreli), Jafrabad (dist Amreli) 4 Each; **Gujarat Region:** Subir (dist Dangs) 4.

❖ **Heavy Rainfall observed** (from 0830 hours IST of yesterday to 0830 hours IST of today): **Extremely heavy rain** at isolated places over Sub Himalayan West Bengal & Sikkim and Konkan & Goa. **Heavy to very heavy rain** at isolated places over Sub Himalayan West Bengal & Sikkim, Gangetic West Bengal, Jharkhand, East Uttar Pradesh, Uttarakhand, Konkan & Goa, Coastal Andhra Pradesh & Yanam and Telangana. **Heavy rain** at isolated places over Arunachal Pradesh, Assam & Meghalaya, Nagaland, Manipur, Mizoram & Tripura, Odisha, Bihar, Punjab, East Madhya Pradesh, Madhya Maharashtra, Marathwada and North Interior Karnataka.

❖ **Minimum Temperature Departures (as on 15-09-2025): markedly above normal(> 5.1°C)** at few places over Himachal Pradesh, Jammu-Kashmir-Ladakh-Gilgit-Baltistan-Muzaffarabad, West Madhya Pradesh and East Madhya Pradesh; at isolated places over Assam & Meghalaya, Bihar, East Uttar Pradesh and West Uttar Pradesh. **appreciably above normal(3.1°C to 5.0°C)** at isolated places over Sub Himalayan West Bengal & Sikkim, Odisha, West Rajasthan, Gujarat Region and Saurashtra & Kutch. **above normal(1.6°C to 3.0°C)** at many places over Uttarakhand and Chhattisgarh; at few places over Haryana-Chandigarh-Delhi, Madhya Maharashtra, Vidarbha and Tamil Nadu, Puducherry & Karaikal; at isolated places over Andaman & Nicobar Islands, Gangetic West Bengal, Punjab, East Rajasthan, Marathwada and Coastal Andhra Pradesh & Yanam. **near normal(-1.5°C to 1.5°C)** at many places over Nagaland, Manipur, Mizoram & Tripura and Jharkhand; at most places over Konkan & Goa, Telangana, Rayalaseema, Coastal Karnataka, North Interior Karnataka, South Interior Karnataka, Kerala & Mahe and Lakshadweep. **The lowest minimum temperature** of 18.8°C is reported at MYSORE (KARNATAKA) over the Plains of India.

*Red color warning does not mean "Red Alert" Red color warning means "Take Action"

Forecast and warning for any day is valid from 0830 hours IST of day till 0830 hours IST of next day

For more details kindly visit <https://mausam.imd.gov.in> or contact 011-2434-4599

(Service to the nation since 1875)

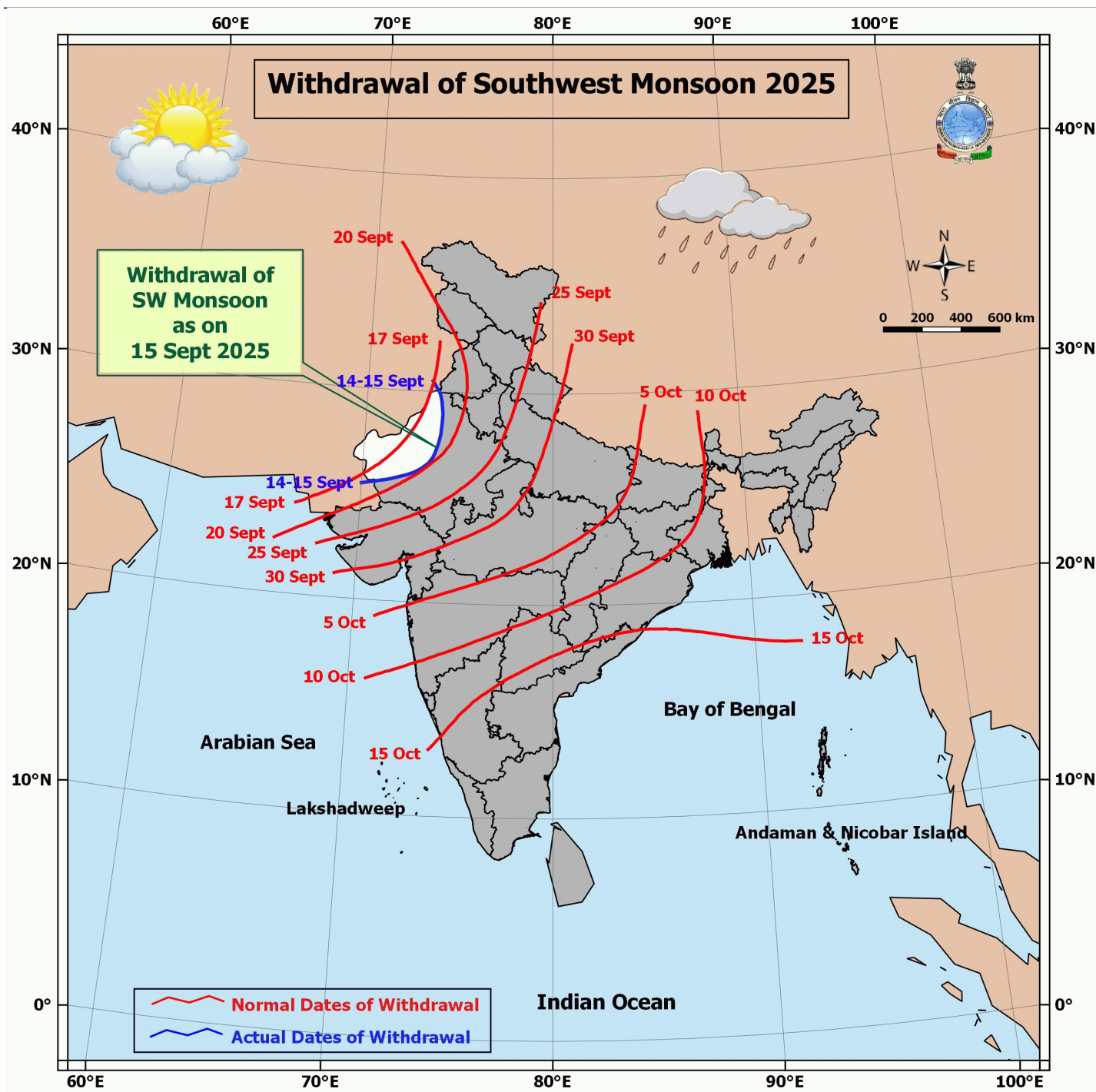
❖ **Maximum Temperature Departures (as on 14-09-2025):** **markedly above normal(> 5.1°C)** at isolated places over Odisha and Jammu-Kashmir-Ladakh-Gilgit-Baltistan-Muzaffarabad. **appreciably above normal(3.1°C to 5.0°C)** at isolated places over Assam & Meghalaya, West Madhya Pradesh, East Madhya Pradesh, Vidarbha, Chhattisgarh and Kerala & Mahe. **above normal(1.6°C to 3.0°C)** at few places over Arunachal Pradesh, East Uttar Pradesh, West Uttar Pradesh, Punjab, East Rajasthan and Lakshadweep; at isolated places over Andaman & Nicobar Islands, Uttarakhand, Haryana-Chandigarh-Delhi, Himachal Pradesh, Gujarat Region, Madhya Maharashtra, Coastal Andhra Pradesh & Yanam, Rayalaseema, Tamil Nadu, Puducherry & Karaikal and South Interior Karnataka. **near normal(-1.5°C to 1.5°C)** at many places over Sub Himalayan West Bengal & Sikkim, Gangetic West Bengal, Jharkhand, Saurashtra & Kutch and Konkan & Goa; at most places over West Rajasthan, Telangana and Coastal Karnataka; at few places over North Interior Karnataka; at isolated places over Bihar. **The highest maximum temperature** of 38.5°C is reported at PALAYAMKOTTAI (TAMIL NADU).

Meteorological Analysis (Based on 0830 hours IST)

- The **line of withdrawal of southwest monsoon** passes through 30.5°N /73.5°E, Sri Ganganagar, Nagaur, Jodhpur, Barmer and 25.5°N /70°E. Conditions are favourable for further withdrawal of Southwest Monsoon from some more parts of Rajasthan and some parts of Punjab and Gujarat during next 2 days.
- The **upper air cyclonic circulation** over North Telangana & neighbourhood is now seen over East Vidarbha & neighbourhood and now extends up to 3.1 km above mean sea level tilting southwestwards with height.
- An **upper air cyclonic circulation** lies over East Bihar & neighbourhood between 3.1 & 5.8 km above mean sea level.
- The **upper air cyclonic circulation** over central Assam persists and now seen at 1.5 km above mean sea level.
- The **upper air cyclonic circulation** over northeast Bangladesh is now seen over Meghalaya & neighbourhood between 3.1 & 4.5 km above mean sea level.
- The **upper air cyclonic circulation** over southeast Bay of Bengal persists and now extends upto 3.1 km above mean sea level.
- The **cyclonic circulation** over westcentral Arabian sea & northwest Arabian Sea between 1.5 & 5.8 km above mean sea level tilting southwards with heights has become less marked.
- The **trough** from **cyclonic circulation** associated with **low pressure area** over north Telangana & adjoining Vidarbha to south Maharashtra coast across North Interior Karnataka between 3.1 and 4.5 km above mean sea level has become less marked.
- The **trough** in westerlies at 1.5 km above mean sea level roughly along at Long. 84°E to the north of Lat. 23°N has moved away.

Weather Outlook for subsequent 3 days

- Scattered to fairly widespread rainfall likely over Western India.
- Isolated to scattered rainfall likely over the rest parts of the country.

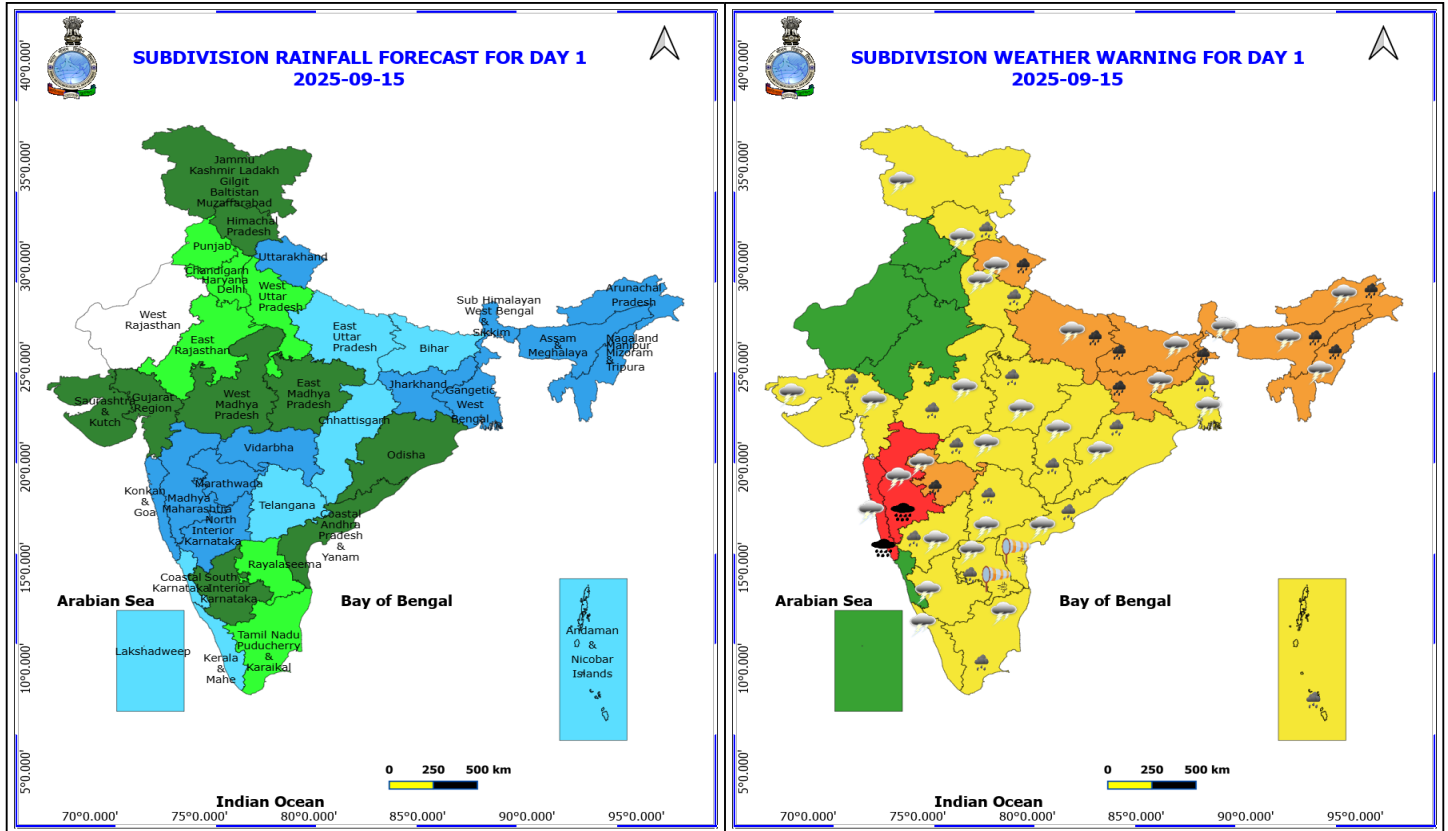


*Red color warning does not mean "Red Alert" Red color warning means "Take Action"

Forecast and warning for any day is valid from 0830 hours IST of day till 0830 hours IST of next day

For more details kindly visit <https://mausam.imd.gov.in> or contact 011-2434-4599

(Service to the nation since 1875)



15 September (Day 1)

- ❖ **Heavy to Very Heavy Rainfall with isolated Extremely Heavy Rainfall** very likely at isolated places over Konkan & Goa and Madhya Maharashtra.
- ❖ **Heavy to Very Heavy Rainfall** very likely at isolated places over Arunachal Pradesh, Assam & Meghalaya, Bihar, East Uttar Pradesh, Jharkhand, Marathwada, Nagaland, Manipur, Mizoram and Tripura, Sub Himalayan West Bengal & Sikkim and Uttarakhand.
- ❖ **Heavy Rainfall** very likely at isolated places over Andaman & Nicobar Islands, Andhra Pradesh, Chhattisgarh, Gangetic West Bengal, Gujarat Region, Himachal Pradesh, Madhya Pradesh, North Interior Karnataka, Odisha, Tamil Nadu Puducherry & Karaikal, Telangana, Vidarbha and West Uttar Pradesh.
- ❖ **Thunderstorm accompanied with lightning & gusty winds(30-40kmph)** very likely at isolated places over Bihar, Jammu-Kashmir-Ladakh-Gilgit-Baltistan-Muzaffarabad, Jharkhand, Odisha and West Bengal & Sikkim.
- ❖ **Thunderstorm accompanied with Lightning** very likely at isolated places over Andhra Pradesh, Arunachal Pradesh, Assam & Meghalaya, Chhattisgarh, Gujarat State, Himachal Pradesh, Interior Karnataka, Kerala & Mahe, Konkan & Goa, Madhya Pradesh, Maharashtra, Nagaland, Manipur, Mizoram and Tripura, Tamil Nadu Puducherry & Karaikal, Telangana, Uttar Pradesh, Uttarakhand and West Bengal & Sikkim.
- ❖ **Strong Surface Winds** very likely at isolated places over Andhra Pradesh.

Squally wind with speed reaching 45 kmph to 55 kmph gusting to 65 kmph is likely to prevail over some parts of southwest & few parts of westcentral Arabian Sea and along and off Somalia coast.

Squally weather with wind speed reaching 40 - 50 kmph gusting to 60 kmph likely to prevail over Gulf of Mannar & adjoining Comorin area and over some parts of southwest Bay of Bengal & along and off Sri Lanka coast, along & off

***Red color warning does not mean "Red Alert" Red color warning means "Take Action"**

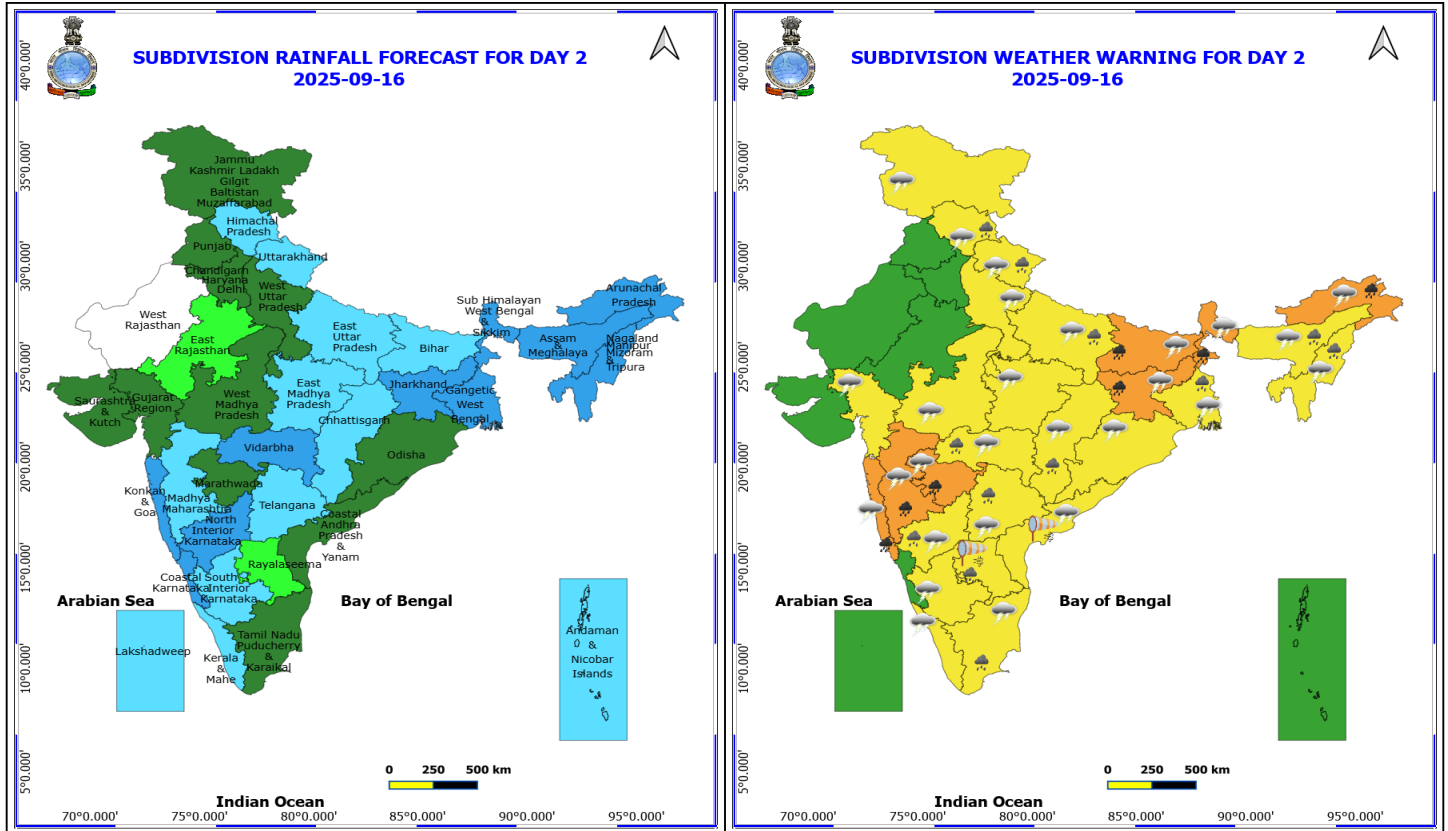
Forecast and warning for any day is valid from 0830 hours IST of day till 0830 hours IST of next day

For more details kindly visit <https://mausam.imd.gov.in> or contact 011-2434-4599

(Service to the nation since 1875)



Konkan-Goa coasts & adjoining sea areas, many parts of southeast Bay of Bengal, along and off West Bengal & adjoining north Odisha coasts.



16 September (Day 2)

- ❖ **Heavy to Very Heavy Rainfall** very likely at isolated places over Arunachal Pradesh, Bihar, Jharkhand, Konkan & Goa, Madhya Maharashtra, Marathwada and Sub Himalayan West Bengal & Sikkim.
- ❖ **Heavy Rainfall** very likely at isolated places over Assam & Meghalaya, Chhattisgarh, East Uttar Pradesh, Gangetic West Bengal, Himachal Pradesh, Nagaland, Manipur, Mizoram and Tripura, North Interior Karnataka, Rayalaseema, Tamil Nadu Puducherry & Karaikal, Telangana, Uttarakhand and Vidarbha.
- ❖ **Thunderstorm accompanied with lightning & gusty winds(30-40kmph)** very likely at isolated places over Bihar, Jammu-Kashmir-Ladakh-Gilgit-Baltistan-Muzaffarabad, Jharkhand, Odisha and West Bengal & Sikkim.
- ❖ **Thunderstorm accompanied with Lightning** very likely at isolated places over Arunachal Pradesh, Assam & Meghalaya, Chhattisgarh, Coastal Andhra Pradesh, Gangetic West Bengal, Gujarat Region, Himachal Pradesh, Interior Karnataka, Kerala & Mahe, Konkan & Goa, Madhya Pradesh, Maharashtra, Nagaland, Manipur, Mizoram and Tripura, Odisha, Tamil Nadu Puducherry & Karaikal, Telangana, Uttar Pradesh and Uttarakhand.
- ❖ **Strong Surface Winds** very likely at isolated places over Andhra Pradesh.

Squally wind with speed reaching 45 kmph to 55 kmph gusting to 65 kmph is likely to prevail over some parts of southwest & westcentral Arabian Sea and along and off Somalia, south Oman coasts.

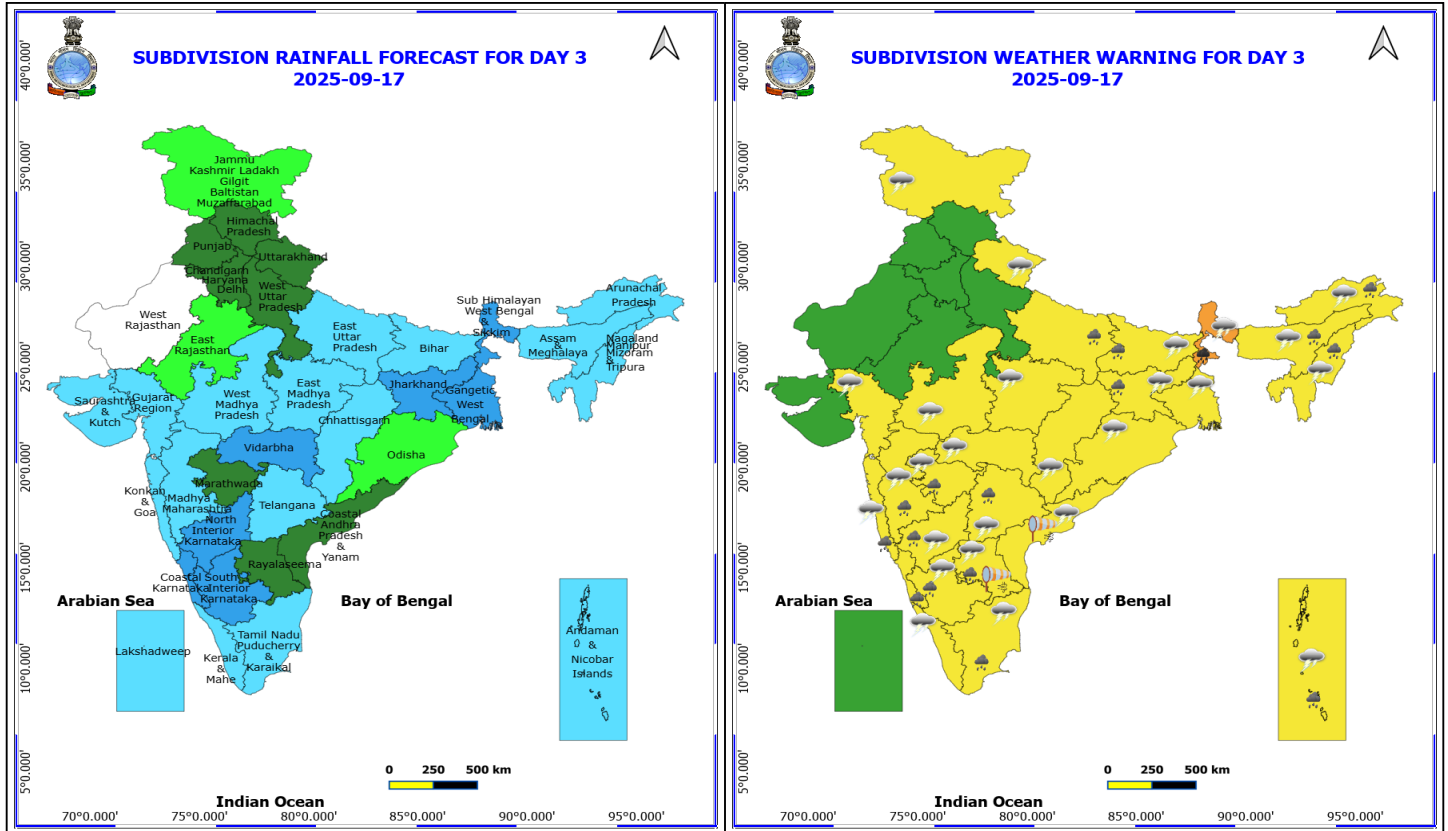
Squally weather with wind speed reaching 40 - 50 kmph gusting to 60 kmph likely to prevail over some parts of northwest, adjoining & some parts of westcentral Arabian Sea and along & off Oman coast; along and off south Konkan, Goa coasts, over Gulf of Mannar & adjoining Comorin area and over few parts of southwest Bay of Bengal & along and off south Sri Lanka coast.

***Red color warning does not mean "Red Alert" Red color warning means "Take Action"**

Forecast and warning for any day is valid from 0830 hours IST of day till 0830 hours IST of next day

For more details kindly visit <https://mausam.imd.gov.in> or contact 011-2434-4599

(Service to the nation since 1875)



17 September (Day 3)

- ❖ **Heavy to Very Heavy Rainfall** very likely at isolated places over Sub Himalayan West Bengal & Sikkim.
- ❖ **Heavy Rainfall** very likely at isolated places over Andaman & Nicobar Islands, Arunachal Pradesh, Assam & Meghalaya, Bihar, East Uttar Pradesh, Jharkhand, Karnataka, Konkan & Goa, Madhya Maharashtra, Marathwada, Nagaland, Manipur, Mizoram and Tripura, Rayalaseema, Tamil Nadu Puducherry & Karaikal and Telangana.
- ❖ **Thunderstorm accompanied with lightning & gusty winds(30-40kmph)** very likely at isolated places over Andaman & Nicobar Islands, Bihar, Jammu-Kashmir-Ladakh-Gilgit-Baltistan-Muzaffarabad, Jharkhand, Odisha and West Bengal & Sikkim.
- ❖ **Thunderstorm accompanied with Lightning** very likely at isolated places over Andaman & Nicobar Islands, Andhra Pradesh, Arunachal Pradesh, Assam & Meghalaya, Bihar, Chhattisgarh, Gangetic West Bengal, Gujarat Region, Interior Karnataka, Kerala & Mahe, Konkan & Goa, Madhya Pradesh, Maharashtra, Nagaland, Manipur, Mizoram and Tripura, Tamil Nadu Puducherry & Karaikal, Telangana and Uttarakhand.
- ❖ **Strong Surface Winds** very likely at isolated places over Andhra Pradesh.

Squally wind with speed reaching 45 kmph to 55 kmph gusting to 65 kmph is likely to prevail over some parts of southwest & westcentral Arabian Sea and along and off Somalia, south Oman coasts.

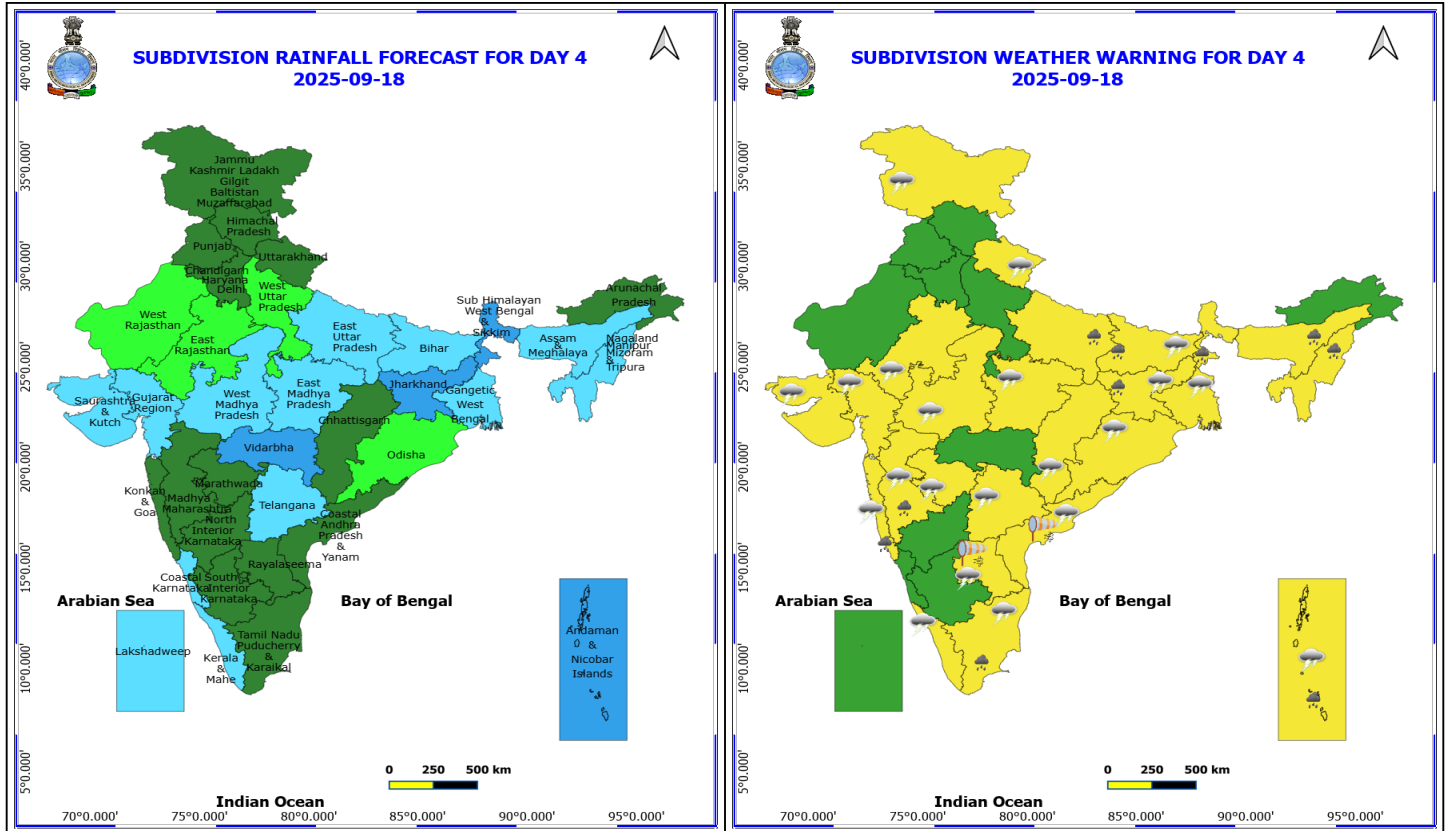
Squally weather with wind speed reaching 40 - 50 kmph gusting to 60 kmph likely to prevail over Gulf of Mannar & adjoining Comorin area and over few parts of southwest Bay of Bengal & along and off south Sri Lanka coast.

***Red color warning does not mean "Red Alert" Red color warning means "Take Action"**

Forecast and warning for any day is valid from 0830 hours IST of day till 0830 hours IST of next day

For more details kindly visit <https://mausam.imd.gov.in> or contact 011-2434-4599

(Service to the nation since 1875)



18 September (Day 4)

- ❖ **Heavy Rainfall** likely at isolated places over Andaman & Nicobar Islands, Assam & Meghalaya, Bihar, East Uttar Pradesh, Jharkhand, Konkan & Goa, Madhya Maharashtra, Nagaland, Manipur, Mizoram and Tripura, Sub Himalayan West Bengal & Sikkim and Tamil Nadu Puducherry & Karaikal.
- ❖ **Thunderstorm accompanied with lightning & gusty winds(30-40kmph)** likely at isolated places over Andaman & Nicobar Islands, Bihar, Gangetic West Bengal, Jammu-Kashmir-Ladakh-Gilgit-Baltistan-Muzaffarabad, Jharkhand and Odisha.
- ❖ **Thunderstorm accompanied with Lightning** likely at isolated places over Andaman & Nicobar Islands, Andhra Pradesh, Bihar, Chhattisgarh, East Rajasthan, Gujarat State, Jammu-Kashmir-Ladakh-Gilgit-Baltistan-Muzaffarabad, Kerala & Mahe, Konkan & Goa, Madhya Maharashtra, Madhya Pradesh, Marathwada, Tamil Nadu Puducherry & Karaikal, Telangana and Uttarakhand.
- ❖ **Strong Surface Winds** likely at isolated places over Andhra Pradesh.

Squally wind with speed reaching 45 kmph to 55 kmph gusting to 65 kmph is likely to prevail over some parts of southwest & few parts of westcentral Arabian Sea and along and off Somalia coast.

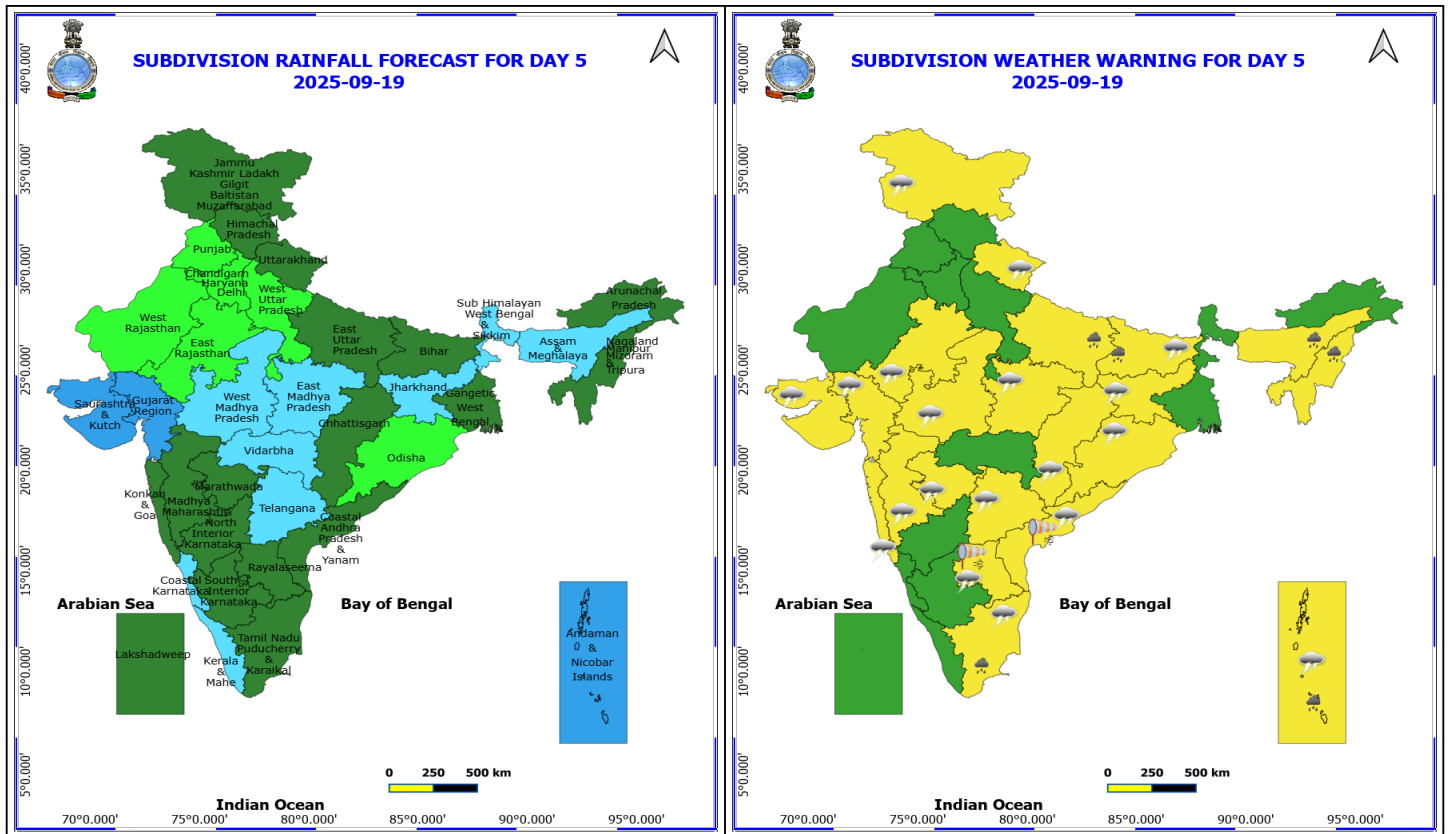
Squally weather with wind speed reaching 40 - 50 kmph gusting to 60 kmph likely to prevail over Gulf of Mannar & adjoining Comorin area and over some parts of southwest & adjoining southeast Bay of Bengal, along and off south Sri Lanka coast, over Andaman Sea, over some parts of westcentral & adjoining northwest Arabian sea.

***Red color warning does not mean "Red Alert" Red color warning means "Take Action"**

Forecast and warning for any day is valid from 0830 hours IST of day till 0830 hours IST of next day

For more details kindly visit <https://mausam.imd.gov.in> or contact 011-2434-4599

(Service to the nation since 1875)



19 September (Day 5)

- ❖ **Heavy Rainfall** likely at isolated places over Andaman & Nicobar Islands, Assam & Meghalaya, Bihar, East Uttar Pradesh, Nagaland, Manipur, Mizoram and Tripura and Tamil Nadu Puducherry & Karaikal.
- ❖ **Thunderstorm accompanied with lightning & gusty winds(40-50kmph)** likely at isolated places over Andaman & Nicobar Islands.
- ❖ **Thunderstorm accompanied with lightning & gusty winds(30-40kmph)** likely at isolated places over Bihar, Jammu-Kashmir-Ladakh-Gilgit-Baltistan-Muzaffarabad, Jharkhand and Odisha.
- ❖ **Thunderstorm accompanied with Lightning** likely at isolated places over Andhra Pradesh, Chhattisgarh, East Rajasthan, Gujarat State, Jammu-Kashmir-Ladakh-Gilgit-Baltistan-Muzaffarabad, Konkan & Goa, Madhya Maharashtra, Madhya Pradesh, Marathwada, Tamil Nadu Puducherry & Karaikal, Telangana and Uttarakhand.
- ❖ **Strong Surface Winds** likely at isolated places over Andhra Pradesh.

Squally wind with speed reaching 45 kmph to 55 kmph gusting to 65 kmph is likely to prevail over some parts of southwest & few parts of westcentral Arabian Sea and along and off Somalia coast.

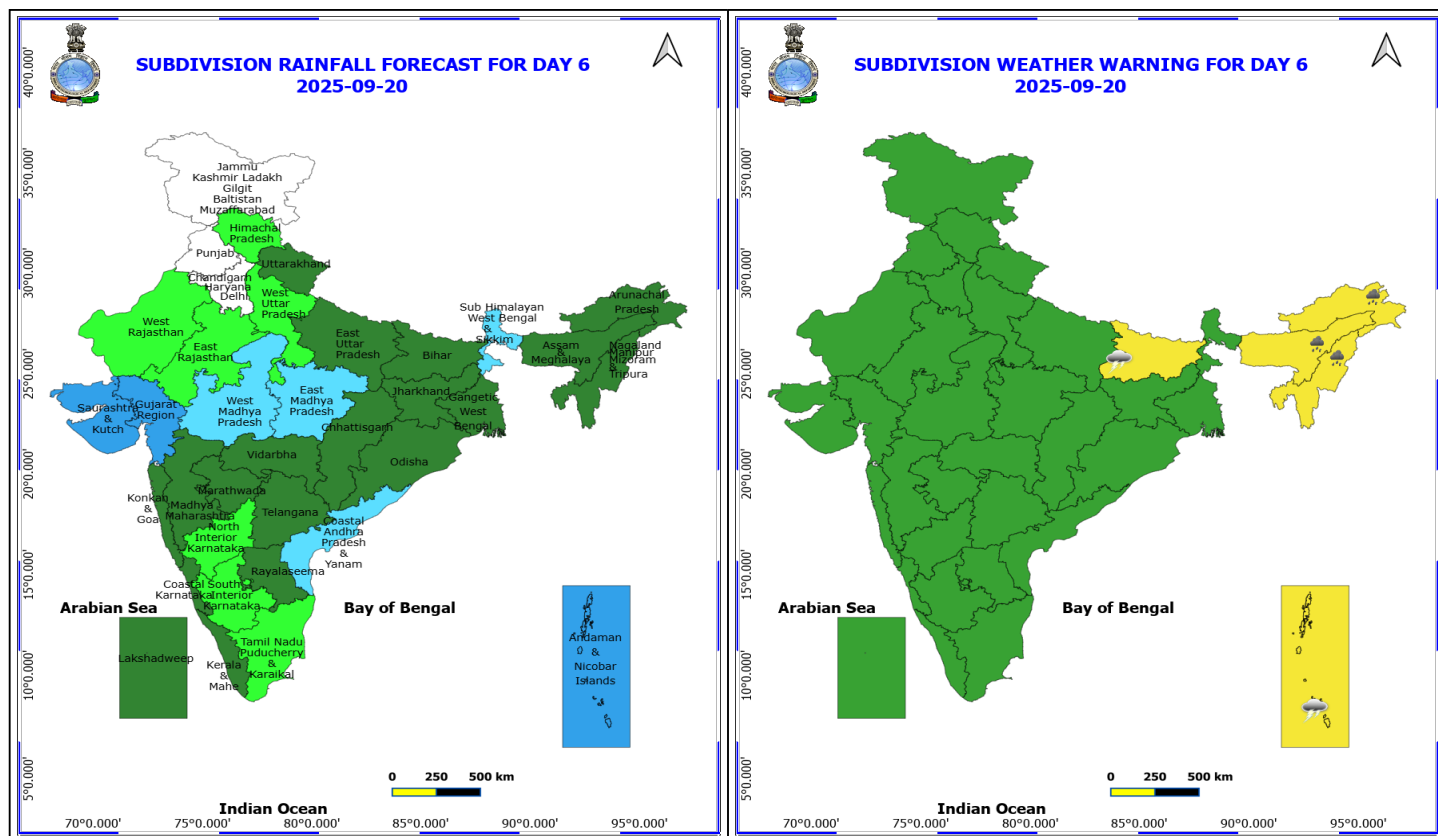
Squally weather with wind speed reaching 40 - 50 kmph gusting to 60 kmph likely to prevail over Gulf of Mannar & adjoining Comorin area and over many parts of southwest & southeast Bay of Bengal, along and off south Sri Lanka coast, over Andaman Sea, over few parts of westcentral Arabian sea.

***Red color warning does not mean "Red Alert" Red color warning means "Take Action"**

Forecast and warning for any day is valid from 0830 hours IST of day till 0830 hours IST of next day

For more details kindly visit <https://mausam.imd.gov.in> or contact 011-2434-4599

(Service to the nation since 1875)



20 September (Day 6)

- ❖ **Heavy Rainfall** likely at isolated places over Arunachal Pradesh, Assam & Meghalaya and Nagaland, Manipur, Mizoram and Tripura.
- ❖ **Thunderstorm accompanied with lightning & gusty winds(40-50kmph)** likely at isolated places over Andaman & Nicobar Islands.
- ❖ **Thunderstorm accompanied with lightning & gusty winds(30-40kmph)** likely at isolated places over Bihar.

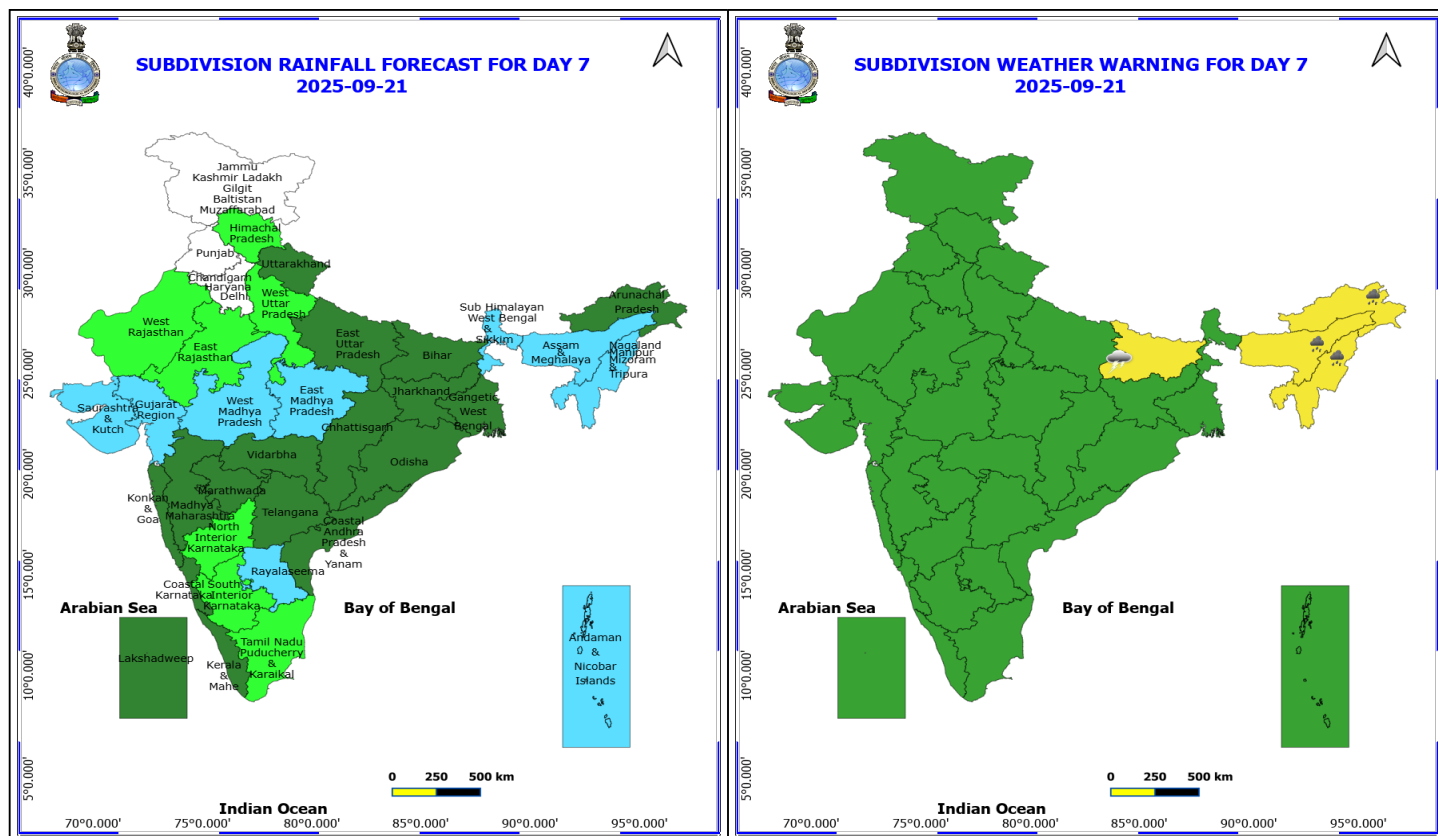
No Fishermen Warning

***Red color warning does not mean "Red Alert" Red color warning means "Take Action"**

Forecast and warning for any day is valid from 0830 hours IST of day till 0830 hours IST of next day

For more details kindly visit <https://mausam.imd.gov.in> or contact 011-2434-4599

(Service to the nation since 1875)



21 September (Day 7)

❖ **Heavy Rainfall** likely at isolated places over Arunachal Pradesh, Assam & Meghalaya and Nagaland, Manipur, Mizoram and Tripura.

❖ **Thunderstorm accompanied with lightning & gusty winds(30-40kmph)** likely at isolated places over Bihar.

No Fishermen Warning

***Red color warning does not mean "Red Alert" Red color warning means "Take Action"**

Forecast and warning for any day is valid from 0830 hours IST of day till 0830 hours IST of next day

For more details kindly visit <https://mausam.imd.gov.in> or contact 011-2434-4599

(Service to the nation since 1875)

Flash Flood Warnings

24 hours Outlook for the Flash Flood Risk (FFR) till 1130 IST of 16-09-2025 :

Moderate flash flood risk likely over few watersheds & neighbourhoods of following Met Sub-divisions during next 24 hours.

Assam & Meghalaya - Baksa, Barpeta, Bongaigaon, Cachar, Chirang, Dhemaji, Dibrugarh, Goalpara, Kokrajhar, Lakhimpur, Morigaon, N.C Hills, Nagaon, Nalbari, Sibsagar, Sonitpur, Tinsukia, East Khasi Hills, Ri Bhoi, South Garo Hills, West Khasi Hills and Jaintia Hills districts.

Nagaland Mizoram Manipur Tripura (NMMT) –

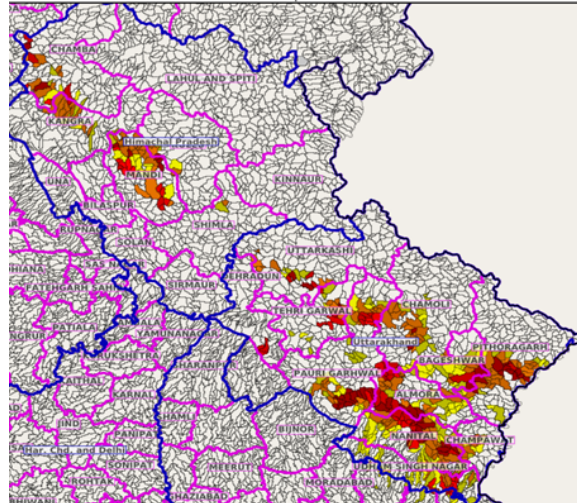
Manipur- Chandel, Churachandpur, Senapati, Ukhrul,

Nagaland- Kiphire, Kohima, Longleng, Mokokchung, Mon, Phek, Tuensang, Wokha and Zunheboto districts.

Sub-Himalayan West Bengal & Sikkim - East Sikkim, North Sikkim, Jalpaiguri and Kochbihar districts.

Surface runoff/ Inundation may occur at some fully saturated soils & low-lying areas over Area of Concern (AoC) as shown in map due to expected rainfall occurrence in next 24 hours.

Product: NCUM FFR | Timescale: 24-hr | Region: "INDIA"
Product Date: 2025-09-15 00:00 UTC | Valid Date: 2025-09-16 00:00 UTC



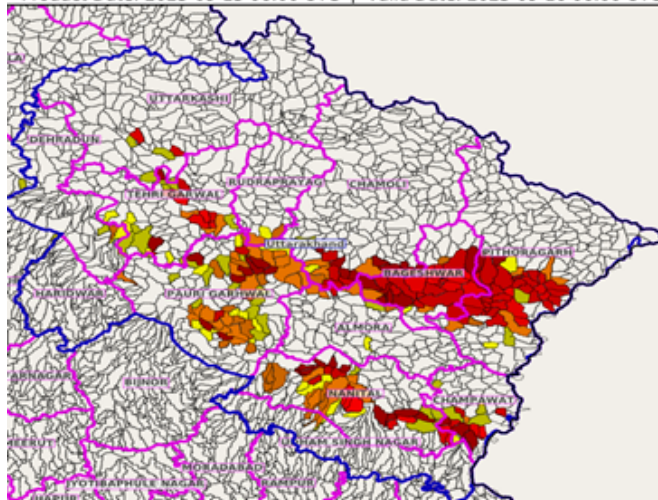
24 hours Outlook for the Flash Flood Risk (FFR) till 1130 IST of 16-09-2025 :

Moderate to High flash flood risk likely over few watersheds & neighbourhoods of following Met Sub-divisions during next 24 hours.

Uttarakhand - Almora, Bageshwar, Chamoli, Champawat, Dehradun, Nanital, Pauri Garhwal, Pithoragarh, Rudraprayag, Tehri Garwal and Uttarkashi districts.

Surface runoff/ Inundation may occur at some fully saturated soils & low-lying areas over Area of Concern (AoC) as shown in map due to expected rainfall occurrence in next 24 hours.

Product: WRF FFR | Timescale: 24-hr | Region: "INDIA"
Product Date: 2025-09-15 06:00 UTC | Valid Date: 2025-09-16 06:00 UTC



24 hours Outlook for the Flash Flood Risk (FFR) till 1130 IST of 16-09-2025 :

***Red color warning does not mean "Red Alert" Red color warning means "Take Action"**

Forecast and warning for any day is valid from 0830 hours IST of day till 0830 hours IST of next day

For more details kindly visit <https://mausam.imd.gov.in> or contact 011-2434-4599

(Service to the nation since 1875)

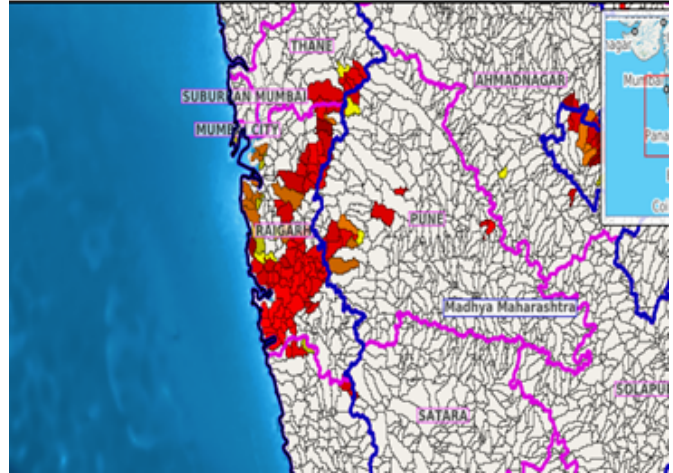
Low to Moderate flash flood risk likely over few watersheds & neighbourhoods of following Met Sub-divisions during next 24 hours.

Konkan & Goa - Mumbai City, Raigarh, Suburban Mumbai and Thane districts.

Madhya Maharashtra - Pune district.

Surface runoff/ Inundation may occur at some fully saturated soils & low-lying areas over Area of Concern (AoC) as shown in map due to expected rainfall occurrence in next 24 hours.

Product: NCUM FFR | Timescale: 24-hr | Region: "INDIA"
Product Date: 2025-09-15 06:00 UTC | Valid Date: 2025-09-16 06:00 UTC



***Red color warning does not mean "Red Alert" Red color warning means "Take Action"**

Forecast and warning for any day is valid from 0830 hours IST of day till 0830 hours IST of next day

For more details kindly visit <https://mausam.imd.gov.in> or contact 011-2434-4599

(Service to the nation since 1875)



Table-1

7 Days Rainfall Forecast

S.No.	Subdivision	15-Sep	16-Sep	17-Sep	18-Sep	19-Sep	20-Sep	21-Sep
		Day 1	Day 2	Day 3	Day 4	Day 5	Day 6	Day 7
1	ANDAMAN & NICOBAR ISLANDS	FWS	FWS	FWS	WS	WS	WS	FWS
2	ARUNACHAL PRADESH	WS	WS	FWS	SCT	SCT	SCT	SCT
3	ASSAM & MEHGHALAYA	WS	WS	FWS	FWS	FWS	SCT	FWS
4	N. M. M. & T.	WS	WS	FWS	FWS	SCT	SCT	FWS
5	S.H. WEST BENGAL & SIKKIM	WS	WS	WS	WS	FWS	FWS	FWS
6	GANGETIC WEST BENGAL	WS	WS	WS	FWS	SCT	SCT	SCT
7	ODISHA	SCT	SCT	ISOL	ISOL	ISOL	SCT	SCT
8	JHARKHAND	WS	WS	WS	WS	FWS	SCT	SCT
9	BIHAR	FWS	FWS	FWS	FWS	SCT	SCT	SCT
10	EAST UTTAR PRADESH	FWS	FWS	FWS	FWS	SCT	SCT	SCT
11	WEST UTTAR PRADESH	ISOL	SCT	SCT	ISOL	ISOL	ISOL	ISOL
12	UTTARAKHAND	WS	FWS	SCT	SCT	SCT	SCT	SCT
13	HARYANA, CHD & DELHI	ISOL	SCT	SCT	SCT	ISOL	DRY	DRY
14	PUNJAB	ISOL	SCT	SCT	SCT	ISOL	DRY	DRY
15	HIMACHAL PRADESH	SCT	FWS	SCT	SCT	SCT	ISOL	ISOL
16	JAMMU AND KASHMIR AND LADAKH	SCT	SCT	ISOL	SCT	SCT	DRY	DRY
17	WEST RAJASTHAN	DRY	DRY	DRY	ISOL	ISOL	ISOL	ISOL
18	EAST RAJASTHAN	ISOL	ISOL	ISOL	ISOL	ISOL	ISOL	ISOL
19	WEST MADHYA PRADESH	SCT	SCT	FWS	FWS	FWS	FWS	FWS
20	EAST MADHYA PRADESH	SCT	FWS	FWS	FWS	FWS	FWS	FWS
21	GUJRAT REGION	SCT	SCT	FWS	FWS	WS	WS	FWS
22	SAURASHTRA & KUTCH	SCT	SCT	FWS	FWS	WS	WS	FWS
23	KONKAN & GOA	WS	WS	FWS	SCT	SCT	SCT	SCT
24	MADHYA MAHARASHTRA	WS	FWS	FWS	SCT	SCT	SCT	SCT
25	MARATHWADA	WS	SCT	SCT	SCT	SCT	SCT	SCT
26	VIDARBHA	WS	WS	WS	WS	FWS	SCT	SCT
27	CHATTISGARH	FWS	FWS	FWS	SCT	SCT	SCT	SCT
28	COASTAL ANDHRA PRADESH	SCT	SCT	SCT	SCT	SCT	FWS	SCT
29	TELANGANA	FWS	FWS	FWS	FWS	FWS	SCT	SCT
30	RAYALASEEMA	ISOL	ISOL	SCT	SCT	SCT	SCT	FWS
31	TAMILNADU & PUDUCHERRY	ISOL	SCT	FWS	SCT	SCT	ISOL	ISOL
32	COSTAL KARNATAKA	FWS	WS	WS	FWS	FWS	SCT	SCT
33	NORTH INTERIOR KARNATAKA	WS	WS	WS	SCT	SCT	ISOL	ISOL
34	SOUTH INTERIOR KARNATAKA	SCT	FWS	WS	SCT	SCT	ISOL	ISOL
35	KERALA	FWS	FWS	FWS	FWS	FWS	SCT	SCT
36	LAKSHDWEEP	FWS	FWS	FWS	FWS	SCT	SCT	SCT

Legend	Category	%Stations
WS	Widespread/Most Places	76-100
FWS	Fairly Widespread/Many Places	51-75
SCT	Scattered/ A Few Places	26-50
ISOL	Isolated Places	1-25
DRY	No Rain	0

*Red color warning does not mean "Red Alert" Red color warning means "Take Action"

Forecast and warning for any day is valid from 0830 hours IST of day till 0830 hours IST of next day

For more details kindly visit <https://mausam.imd.gov.in> or contact 011-2434-4599

(Service to the nation since 1875)

Fig. 1: Maximum Temperatures Dated 2025-09-15

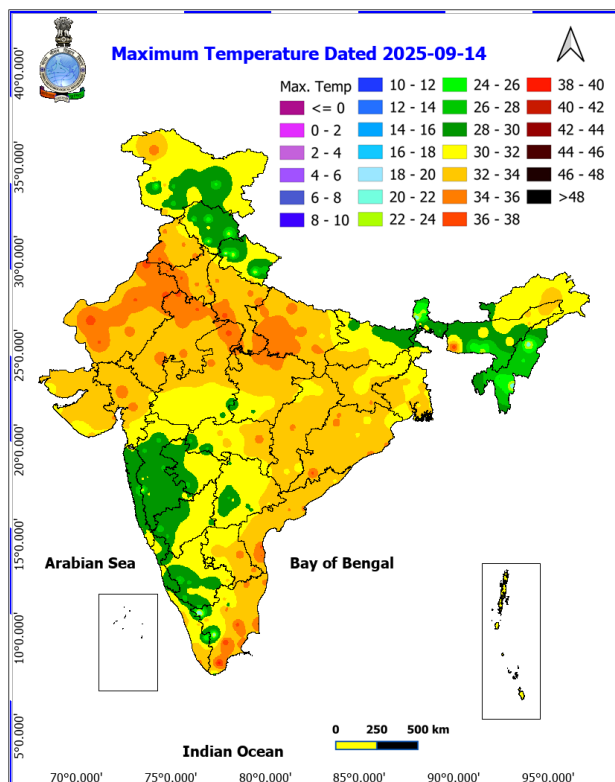


Fig. 2: Departure of Maximum Temp. Dated 2025-09-15

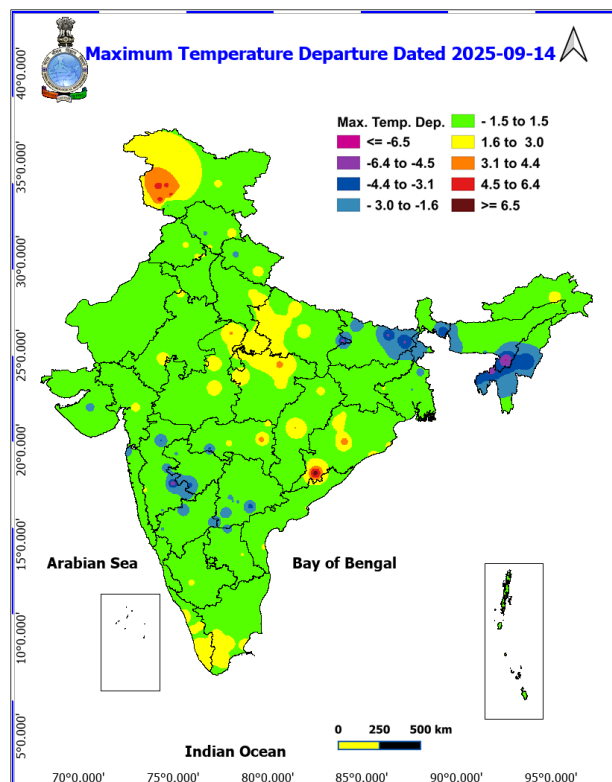


Fig. 3: Minimum Temperatures Dated 2025-09-15

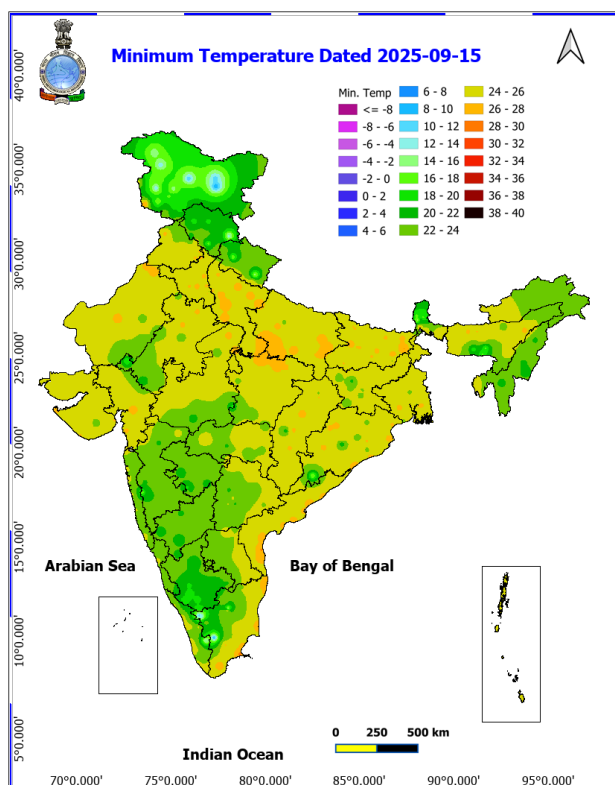
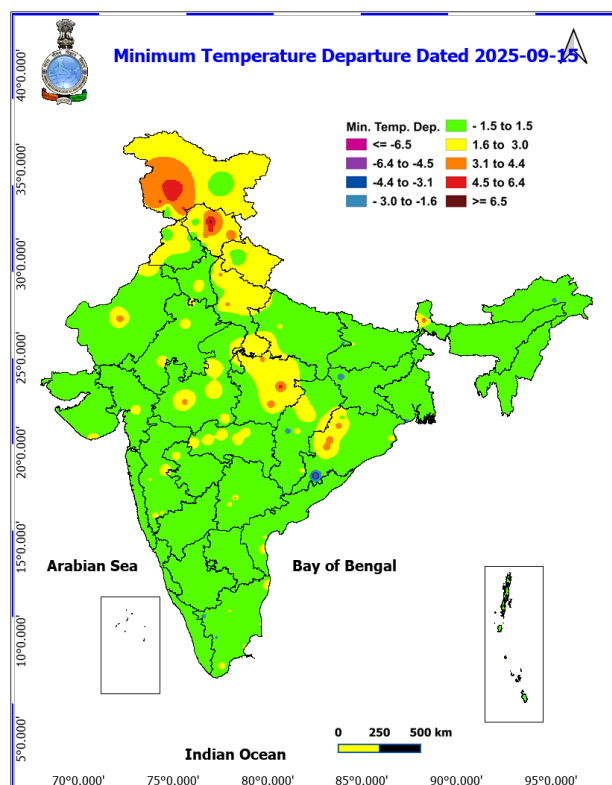
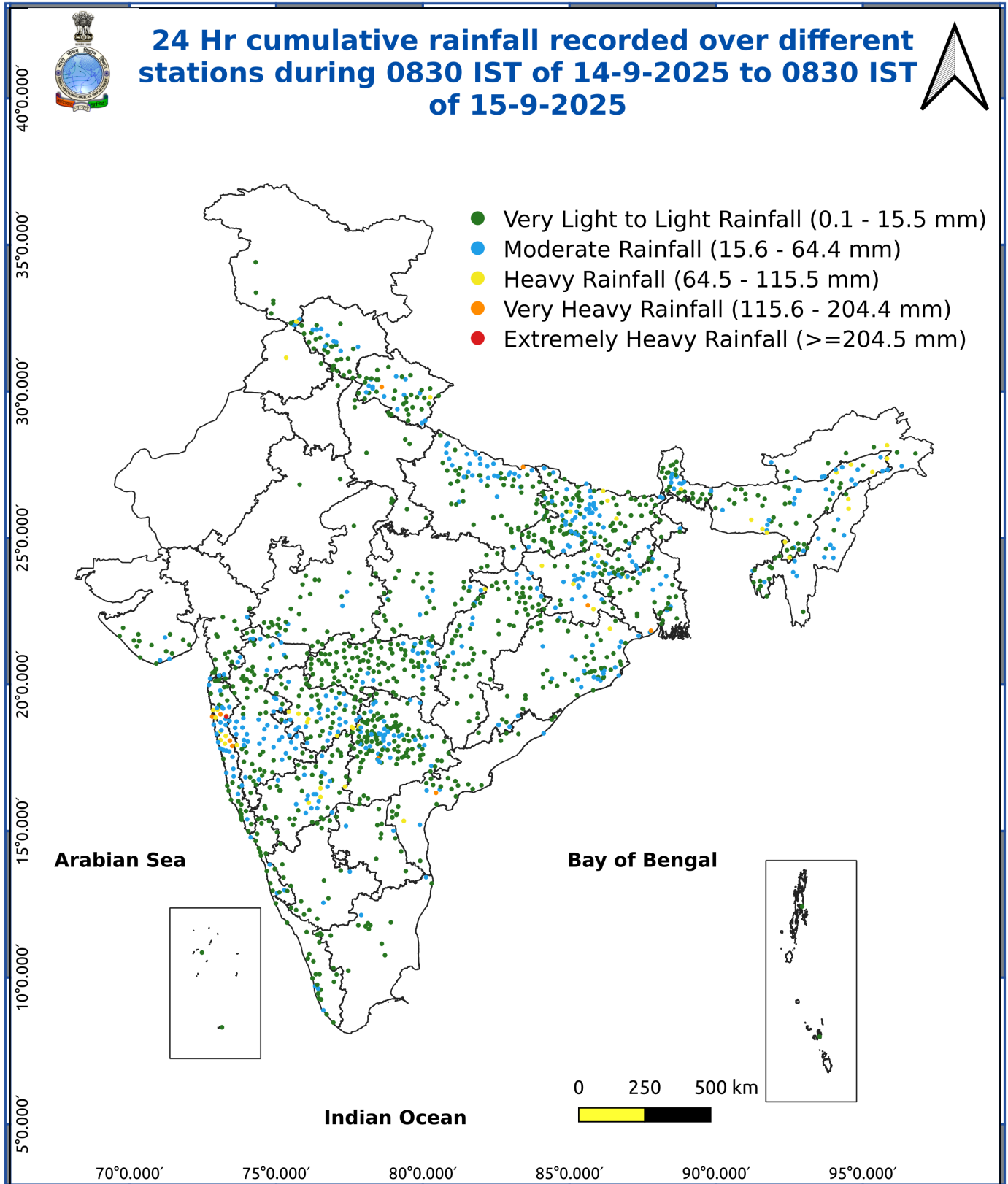


Fig. 4: Departure of Minimum Temp. Dated 2025-09-15





*Red color warning does not mean "Red Alert" Red color warning means "Take Action"

Forecast and warning for any day is valid from 0830 hours IST of day till 0830 hours IST of next day

For more details kindly visit <https://mausam.imd.gov.in> or contact 011-2434-4599

(Service to the nation since 1875)

Impact & Action Suggested due to

- **Extremely heavy rainfall (≥ 21 cm)** likely over Konkan and Madhya Maharashtra on 15th September.
- **Heavy to very heavy rainfall (12-20 cm)** at isolated places over Uttarakhand, East Uttar Pradesh, Nagaland, Assam & Meghalaya on 15th; Arunachal Pradesh, Bihar, Jharkhand, Marathwada on 15th & 16th; Sub-Himalayan West Bengal & Sikkim during 15th-17th and Konkan & Goa, Madhya Maharashtra on 16th September.

Impact Expected

- Localized Flooding of roads, water logging in low lying areas and closure of underpasses mainly in urban areas of the above region.
- Occasional reduction in visibility due to heavy rainfall.
- Disruption of traffic in major cities due to water logging in roads leading to increased travel time.
- Minor damage to kutcha roads.
- Possibilities of damage to vulnerable structure.
- Localized Landslides/Mudslides/landslips/mudslips/landsinks/mudsinks.
- Damage to horticulture and standing crops in some areas due to inundation.
- It may lead to riverine flooding in some river catchments (for riverine flooding please visit Web page of CWC)

Action Suggested

- Check for traffic congestion on your route before leaving for your destination.
- Follow any traffic advisories that are issued in this regard.
- Avoid going to areas that face the water logging problems often.
- Avoid staying in vulnerable structure.

Agromet advisories for various parts of the country

Inputs for Press Release

Agromet advisories for likely impact of Heavy / Heavy to Very Heavy/ Extremely Heavy Rainfall

(Based on the IBF and advisories issued by different AMFUs)

- In **Maharashtra**, keep the harvested produce of green gram and black gram at safer places in **Madhya Maharashtra** and **Vidarbha**, if storage is not possible cover the harvested produce with plastic or tarpaulin sheets. In **Marathwada**, immediately harvest the matured fruits of sapota and custard apple and keep the harvested produce at safer places. Drain out excess water from fields of vegetables and fruit orchards in **Konkan**; rice, sugarcane, pigeon pea, soybean, maize, vegetables and fruit orchards in **Madhya Maharashtra**; sugarcane, sorghum, soybean, turmeric, vegetables and fruit orchards in **Marathwada**; pigeon pea, cotton, soybean, maize, vegetables and fruit orchards in **Vidarbha**.
- In **Arunachal Pradesh**, immediately harvest matured crops of *Jhum* rice, soybean, finger millet, foxtail millet, vegetables, matured bunches of banana and matured fruits of apple and kiwi and shift the harvested produce to properly covered shelter. Maintain proper drainage in standing crops such as rice, soybean, finger millet, vegetables and fruit orchards to avoid water stagnation. Avoid fresh sowing of French bean during heavy rainfall and ensure proper drainage in already sown crop.
- In **Assam**, ensure proper drainage in fields of rice, sugarcane, black gram and sesame in **Hill Zone**. In **Lower Brahmaputra Valley Zone**, ensure proper drainage system in *Sali* rice fields and nursery bed of vegetables. Cover the nursery bed with thin polythene to avoid the damages due to heavy rainfall. In **Upper Brahmaputra Valley Zone**, harvest the matured vegetables and fruits and transfer it to a safer location and make arrangements to drain out excess water from the standing crop fields. In **North Bank Plain Zone**, ensure proper drainage in rice, sesame and vegetables and keep the harvested produce of jute at safer place.
- In **Meghalaya**, maintain proper drainage in ginger and vegetable fields and fruit orchards. Provide support to tall and fragile crops like banana, papaya, pumpkin, etc. to prevent lodging.

*Red color warning does not mean "Red Alert" Red color warning means "Take Action"

Forecast and warning for any day is valid from 0830 hours IST of day till 0830 hours IST of next day

For more details kindly visit <https://mausam.imd.gov.in> or contact 011-2434-4599

(Service to the nation since 1875)

- In **Nagaland**, undertake harvesting of matured Jhum rice, pods of sesame and Naga King chilli and store the harvested produce in safe places. Maintain 3-5cm stagnate water in rice fields.
- In **Sub-Himalayan West Bengal**, drain out excess water from *aman* paddy and vegetable fields (chilli, bitter gourd, pointed gourd, okra, brinjal etc.) in **Terai Zone** and black gram, finger millet, ginger, dalley khorsani, vegetables and fruit orchards in **Hill Zone**.
- In **Jharkhand**, keep the harvested produce of green gram in safer places. Make necessary arrangements to drain out excess water from already sown cabbage, cauliflower, radish and early potato in **Western Plateau Zone**.
- In **Bihar**, ensure proper drainage of excess rainwater from standing crops such as maize and vegetables in **North West Alluvial Plain Zone** and maize, finger millet and vegetables in **North East Alluvial Zone**.
- In **Uttarakhand**, ensure proper drainage in the fields of green gram, black gram, soybean, barnyard millet and finger millet in **Sub Humid Sub Tropic Zone**. In **Bhabar and Tarai Zone**, maintain proper drainage in fields of rice, pigeon pea, black gram, green gram, finger millet, maize and soybean. Avoid sowing of potato and radish under heavy rainfall conditions and ensure proper drainage in already sown crop. In **Hill Zone**, undertake harvesting of matured crops of barnyard millet, ginger and rainfed rice and keep the harvested produce in safe place. Ensure proper drainage in pigeon pea and vegetable crops.
- In **Uttar Pradesh**, make proper arrangements for drainage of excess rain water from the fields of rice, green gram, black gram, pigeon pea and vegetables in **Bundelkhand Zone**.
- In **Telangana**, ensure adequate drainage facilities to drain out excess rain water in fields of rice, maize, cotton, soybean, pigeon pea, turmeric and vegetables.

Livestock / Fishery

- Keep the animals inside the shed during heavy rainfall and provide them balanced feed.
- Store feed and fodder in a safe place to prevent spoilage.
- Construct an outlet with proper netting around the ponds to drain out excess water, thereby preventing fish from escaping in case of overflow.

Agromet advisories for likely impact of Thunderstorm / Gusty Winds / Squally Winds

(Based on the IBF and advisories issued by different AMFUs)

- Provide mechanical support to horticultural crops and staking or support to vegetables and young fruit plants / fruit-bearing plants to avoid lodging due to strong winds.

Legends & abbreviations:

Region wise classification of meteorological Sub-Divisions:

- **Northwest India:** Western Himalayan Region (Jammu-Kashmir-Ladakh-Gilgit-Baltistan-Muzaffarabad, Himachal Pradesh and Uttarakhand); Punjab, Haryana-Chandigarh-Delhi; West Uttar Pradesh, East Uttar Pradesh, West Rajasthan and East Rajasthan.
- **Central India:** West Madhya Pradesh, East Madhya Pradesh, Vidarbha and Chhattisgarh.
- **East India:** Bihar, Jharkhand, Sub-Himalayan West Bengal & Sikkim; Gangetic West Bengal, Odisha and Andaman & Nicobar Islands.
- **Northeast India:** Arunachal Pradesh, Assam & Meghalaya and Nagaland, Manipur, Mizoram & Tripura.
- **West India:** Gujarat Region, Saurashtra & Kutch, Konkan & Goa, Madhya Maharashtra and Marathawada.
- **South India:** Coastal Andhra Pradesh & Yanam, Telangana, Rayalaseema, Coastal Karnataka, North Interior Karnataka, South Interior Karnataka, Kerala & Mahe, Tamil Nadu, Puducherry & Karaikal and Lakshadweep.

*Red color warning does not mean "Red Alert" Red color warning means "Take Action"

Forecast and warning for any day is valid from 0830 hours IST of day till 0830 hours IST of next day

For more details kindly visit <https://mausam.imd.gov.in> or contact 011-2434-4599

(Service to the nation since 1875)

LEGENDS

- 1 अंडमान और निकोबार द्वीप समुह
- 2 अरुणाचल प्रदेश
- 3 असम और मेघालय
- 4 नागालैंड मनीपुर मीजोरम और त्रिपुरा
- 5 उप हिमालय पश्चिम बंगाल एवं सिक्किम
- 6 पश्चिम बंगाल
- 7 ओडिसा
- 8 झारखंड
- 9 बिहार
- 10 पूर्वी उत्तर प्रदेश
- 11 पश्चिम उत्तर प्रदेश
- 12 उत्तराखंड
- 13 हरियाणा चंडीगढ़ एवं दिल्ली
- 14 पंजाब
- 15 हिमाचल प्रदेश
- 16 जम्मू एवं कश्मीर एवं लद्दाख
- 17 पश्चिम राजस्थान
- 18 पूर्वी राजस्थान
- 19 पश्चिम मध्य प्रदेश
- 20 पूर्वी मध्य प्रदेश
- 21 गुजरात क्षेत्र
- 22 सौराष्ट्र एवं कच्छ
- 23 कोंकण एवं गोवा
- 24 मध्य महाराष्ट्र
- 25 मराठावाड़ा
- 26 विदर्भ
- 27 छत्तीसगढ़
- 28 तटीय आंध्र प्रदेश एवं यनम
- 29 तेलंगाना
- 30 रायलसीमा
- 31 तमिलनाडु, पुदुचेरी एवं कराईकल
- 32 तटिय कर्नाटक
- 33 आंतरिक उत्तरी कर्नाटक
- 34 आंतरिक दक्षिणी कर्नाटक
- 35 केरल एवं माहे
- 36 लक्षद्वीप



1. Andaman & Nicobar Islands
2. Arunachal Pradesh
3. Assam & Meghalaya
4. Nagaland, Manipur, Mizoram & Tripura
5. Sub-Himalayan West Bengal & Sikkim
6. Gangetic West Bengal
7. Orissa
8. Jharkhand
9. Bihar
10. East Uttar Pradesh
11. West Uttar Pradesh
12. Uttarakhand
13. Haryana, Chd & Delhi
14. Punjab
15. Himachal Pradesh
16. Jammu & Kashmir and Ladakh
17. West Rajasthan
18. East Rajasthan
19. West Madhya Pradesh
20. East Madhya Pradesh
21. Gujarat
22. Saurashtra
23. Konkan & Goa
24. Madhya Maharashtra
25. Marathawada
26. Vidharbha
27. Chhattisgarh
28. Coastal Andhra Pradesh & Yanam
29. Telangana
30. Rayalaseema
31. Tamilnadu, Puducherry & Karaikal
32. Coastal Karnataka
33. North Interior Karnataka
34. South Interior Karnataka
35. Kerala & Mahe
36. Lakshadweep

SPATIAL DISTRIBUTION (% of Stations reporting)




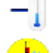













% Stations	Category	% Stations	Category
76-100	Widespread (WS/Most Places)	26-50	Scattered (SCT/ A Few Places)
51-75	Fairly Widespread (FWS/ Many Places)	1-25	Isolated (ISOL)

Subdivision Colour

- NO WARNING
- WATCH (BE UPDATED)
- ALERT (BE PREPARED TO TAKE ACTION)
- WARNING (TAKE ACTION)

Probabilistic Forecast

Terms	Probability of Occurrence (%)
Unlikely	< 25
Likely	25 - 50
Very Likely	50 - 75
Most Likely	> 75

-  Heavy Rain
-  Very Heavy Rain
-  Extremely Heavy Rain
-  Heavy Snow
-  Thunderstorm & Lightning
-  Hailstorm
-  Dust Storm
-  Dust Raising Winds
-  Strong surface winds
-  Heat Wave
-  Hot Day
-  Warm Night
-  Cold Wave
-  Cold Day
-  Ground Frost
-  FOG Fog
-  Hot & Humid

*Red color warning does not mean "Red Alert" Red color warning means "Take Action"

Forecast and warning for any day is valid from 0830 hours IST of day till 0830 hours IST of next day

For more details kindly visit <https://mausam.imd.gov.in> or contact 011-2434-4599

(Service to the nation since 1875)

LEGENDS

WARNING

WARNING (TAKE ACTION)
ALERT (BE PREPARED)
WATCH (BE UPDATED)
NO WARNING (NO ACTION)

Probabilistic Forecast

Terms	Probability of Occurrence (%)
Unlikely	< 25
Likely	25 - 50
Very Likely	50 - 75
Most Likely	> 75



Heavy: 64.5 to 115.5 mm/cm *
Very Heavy: 115.6 to 204.4 mm/cm *
Extremely Heavy: > 204.4 mm/cm *



When maximum temperature of a station reaches $\geq 40^{\circ}\text{C}$ for plains and $\geq 30^{\circ}\text{C}$ for hilly regions
(a) Based on Departure from normal

Heat Wave: Maximum Temperature Departure from normal 4.5°C to 6.4°C .
Severe Heat Wave: Maximum Temperature Departure from normal $\geq 6.5^{\circ}\text{C}$

(b). Based on Actual maximum temperature

Heat Wave: When actual maximum temperature $\geq 45^{\circ}\text{C}$.
Severe Heat Wave: When actual maximum temperature $\geq 47^{\circ}\text{C}$

(c). Criteria for heat wave for coastal stations

When maximum temperature departure is $> 4.5^{\circ}\text{C}$ from normal. Heat Wave may be described provided maximum temperature $\geq 37^{\circ}\text{C}$



When maximum temperature remains 40°C

Warm Night: When minimum temperature departure 4.5°C to 6.4°C .
Severe Warm Night: When minimum temperature departure $> 6.4^{\circ}\text{C}$.



When minimum temperature of a station $\leq 10^{\circ}\text{C}$ for plains and $\leq 0^{\circ}\text{C}$ for hilly regions.

(a). Based on departure

Cold Wave: Minimum Temperature Departure from normal -4.5°C to -6.4°C .
Severe Cold Wave: Minimum Temperature Departure from normal $\leq -6.5^{\circ}\text{C}$

(b) Based on actual Minimum Temperature (for Plains only)

Cold Wave: When Minimum Temperature is $\leq 4.0^{\circ}\text{C}$
Severe Cold Wave: When Minimum Temperature is $\leq 2.0^{\circ}\text{C}$

(c) For Coastal Stations

When Minimum Temperature departure is $\leq -4.5^{\circ}\text{C}$ & actual Minimum Temperature is $\leq 15^{\circ}\text{C}$



When minimum temperature of a station $\leq 10^{\circ}\text{C}$ for plains and $\leq 0^{\circ}\text{C}$ for hilly regions
Based on departure

Cold Day: Maximum Temperature Departure from normal -4.5°C to -6.4°C .
Severe Cold Day: Maximum Temperature Departure from normal $\leq -6.5^{\circ}\text{C}$



Phenomenon of small droplets suspended in air and the horizontal visibility $< 1\text{km}$

Moderate Fog: When the visibility between 500-200 metres
Dense Fog: when the visibility between 50-200 metres
Very Dense Fog: when the visibility < 50 metres



Sudden electrical discharges manifested by a flash of light (Lightning) and a sharp rumbling sound (thunder)



An ensemble of particles of dust or sand energetically lifted to great heights by a strong and turbulent wind.



Ice deposits on ground

Air temperature $\leq 4^{\circ}\text{C}$ (over Plains)



A strong wind that rises suddenly, lasts for at least 1 minute.

Moderate: Wind speed 52-61 kmph
Severe: Wind speed 62-87 kmph
Very Severe: Wind speed > 87 kmph



Effect of various waves in the sea over specific area

Rough to very rough: Wind speed 41-62 kmph (22-33 knots) & Wave height 2.5-6 metre
High to very high: Wind speed 63-117 kmph (34-63 knots) & Wave height 6-14 metre
Phenomenal: Wind speed > 117 kmph (> 63 knots) & Wave height > 14 metre



Cyclonic Storm: Wind speed 62-87 kmph (34-47 knots)

Severe Cyclonic Storm: Wind speed 88-117 kmph (48-63 knots)
Very Severe Cyclonic Storm: Wind speed 118-165 kmph (64-89 knots)
Extremely Severe Cyclonic Storm: Wind speed 166-220 kmph (90-119 knots)
Super Cyclone Storm: Wind speed > 220 kmph (> 119 knots)

*Red color warning does not mean "Red Alert" Red color warning means "Take Action"

Forecast and warning for any day is valid from 0830 hours IST of day till 0830 hours IST of next day

For more details kindly visit <https://mausam.imd.gov.in> or contact 011-2434-4599

(Service to the nation since 1875)