

2025-09-17

Time of Issue: 19:18:00 hours IST
(Night)

ALL INDIA WEATHER SUMMARY AND FORECAST BULLETIN

Significant Weather Features

East & Central India:

Light to moderate rain/thunderstorm at most/many places with isolated **heavy rainfall** likely over Jharkhand, Vidarbha & Chhattisgarh on 17th; Sub-Himalayan West Bengal & Sikkim during 17th-19th; Bihar during 17th-20th; Andaman & Nicobar Islands during 18th-21st September with isolated **very heavy falls over Bihar, Sub-Himalayan West Bengal & Sikkim on 17th September.**

Thunderstorm & gusty winds (speed reaching 30-40 kmph) very likely over East India during next 5-6 days.

Northeast India:

Light/moderate rain/thunderstorm at many/some places with isolated **heavy rainfall** likely over Arunachal Pradesh during 17th-19th; Assam & Meghalaya during 17th-23rd and Nagaland, Manipur, Mizoram & Tripura during 19th-23rd September with isolated **very heavy falls over Arunachal Pradesh on 17th September.**

Northwest India:

Light to moderate rain/thunderstorm at some/isolated places with **isolated heavy rainfall** likely over Uttarakhand & East Uttar Pradesh on 17th & 18th and tarai region of Northwest Uttar Pradesh on 17th September.

South Peninsular India:

Light to moderate rain/thunderstorm at many/some places with isolated **heavy rainfall** likely over Tamil Nadu during 17th-19th; Kerala & Mahe, Coastal Andhra Pradesh & Yanam, Rayalaseema, Coastal & South Interior Karnataka on 17th & 18th; Telangana, North Interior Karnataka on 17th September.

Strong surface winds (speed reaching 30-40 kmph) very likely over Telangana, Coastal Andhra Pradesh & Yanam and Rayalaseema during next 5 days.

West India:

Light to moderate rain/thunderstorm at many/some places likely over the region during next 4 days with **isolated heavy rainfall** likely over Marathwada on 17th; Konkan & Goa and Madhya Maharashtra on 17th & 18th September.

Main Weather Observations:

❖ **Rainfall distribution** (from 0830 hours IST to 1730 hours IST of today): **at most places** over East Uttar Pradesh and Vidarbha; **at many places** over Odisha, West Uttar Pradesh, Madhya Maharashtra, Uttarakhand, Sub-himalayan West Bengal & Sikkim, Assam & Meghalaya, Tamilnadu Puducherry & Karaikal, Himachal Pradesh, Bihar, Konkan & Goa, Jharkhand, Gangetic West Bengal, Jammu & Kashmir and Ladakh, Arunachal Pradesh, Nagaland, Manipur, Mizoram & Tripura, Gujarat Region, Chhattisgarh, West Madhya Pradesh, Andaman & Nicobar Islands, Telangana, Rayalaseema, Coastal Karnataka, Marathwada, Saurashtra & Kutch, North Interior Karnataka, Haryana Chandigarh & Delhi, Coastal Andhra Pradesh & Yanam, Kerala & Mahe, East Madhya Pradesh and Lakshadweep; **Dry** over rest of the country.

❖ **Significant rainfall recorded(in cm)** (from 0830 hours IST to 1730 hours IST of today): Tamilnadu puducherry & karaikal: Karaikal (dist Karaikal) 6, Karur Paramathi (dist Karur) 4; East Uttar Pradesh: Fursatganj (dist Amethi) 5, Barabanki (dist Barabanki) 4, Gazipur (dist Ghazipur) 3, Lucknow (amausi) AP (dist Lucknow), Varanasi (babatpur) AP (dist Varanasi) 2 Each; East Madhya Pradesh: Rewa (dist Rewa), Seoni (dist Seoni) 4 Each, Tikamgarh-obs (dist Tikamgarh) 3, Satna (dist Satna), Chhindwara-obs (dist Chhindwara) 2 Each; Kerala & Mahe: Punalur (dist Kollam) 4, Kochi (dist Ernakulam) 2; Coastal Andhra Pradesh & Yanam: Ongole (dist Prakasam) 4, Kakinada (dist Kakinada) 2; Himachal Pradesh: Nahan (dist Sirmour) 4; Haryana Chandigarh & Delhi: New Delhi (safdarjung) (dist South West Delhi) 4; Madhya Maharashtra: Mahabaleshwar (dist Satara) 3; Sub-himalayan West Bengal & Sikkim: Malda (dist Malda) 3, Balurghat (dist Dakshin Dinajpur) 2; North Interior Karnataka: Bijapur-obs (dist Bijapur) 2; Saurashtra & Kutch: Daman (dist Daman) 2; **Odisha**: Angul (dist Angul) 2; Marathwada: Udgir (dist Latur) 2; Assam & Meghalaya: Dhubri (dist Dhubri) 2.

❖ **Minimum Temperature Departures (as on 17-09-2025): markedly above normal(> 5.1°C)** at few places over West Madhya Pradesh; at isolated places over Assam & Meghalaya, Bihar, West Uttar Pradesh and Himachal Pradesh. **appreciably above normal(3.1°C to 5.0°C)** at many places over East Madhya Pradesh; at few places over West Rajasthan; at isolated places over Sub Himalayan West Bengal & Sikkim, Gujarat Region and Saurashtra & Kutch. **above normal(1.6°C to 3.0°C)** at many places over Jammu-Kashmir-Ladakh-Gilgit-Baltistan-Muzaffarabad; at few places over East Rajasthan; at isolated places over Gangetic West Bengal, Odisha, Uttarakhand, Haryana-Chandigarh-Delhi, Punjab, Madhya Maharashtra, Vidarbha, Tamil Nadu, Puducherry & Karaikal, South Interior Karnataka and Kerala & Mahe. **near normal(-1.5°C to 1.5°C)** at many places over Jharkhand and Chhattisgarh; at most places over Andaman & Nicobar Islands, Nagaland, Manipur, Mizoram & Tripura, East Uttar Pradesh, Konkan & Goa, Marathwada, Coastal Andhra Pradesh & Yanam, Telangana, Rayalaseema, Coastal Karnataka, North Interior Karnataka and Lakshadweep; at few places over Arunachal Pradesh. **The lowest minimum temperature** of 14.5°C is reported at HALFLONG (ASSAM) over the Plains of India.

❖ **Maximum Temperature Departures (as on 17-09-2025): markedly above normal(> 5.1°C)** at isolated places over Odisha and Jammu-Kashmir-Ladakh-Gilgit-Baltistan-Muzaffarabad. **appreciably above normal(3.1°C to 5.0°C)** at isolated places over Chhattisgarh. **above normal(1.6°C to 3.0°C)** at few places over Punjab and Himachal Pradesh; at isolated places over Assam & Meghalaya, Jharkhand, West Uttar Pradesh, Haryana-Chandigarh-Delhi, East Rajasthan, West Madhya Pradesh, East Madhya Pradesh, Gujarat Region, Madhya Maharashtra, Coastal Andhra Pradesh & Yanam, Tamil Nadu, Puducherry & Karaikal and Kerala & Mahe. **near normal(-1.5°C to 1.5°C)** at many places over Gangetic West Bengal, Konkan & Goa, Vidarbha and Coastal Karnataka; at most places over Nagaland, Manipur, Mizoram & Tripura, Uttarakhand, West Rajasthan, Saurashtra & Kutch, Telangana and Lakshadweep; at few places over Andaman & Nicobar Islands, Sub Himalayan West Bengal & Sikkim, Marathwada, Rayalaseema, North Interior Karnataka and South Interior Karnataka; at isolated places over Bihar and East Uttar Pradesh. **The highest maximum temperature** of 38.8°C is reported at PALAYAMKOTTAI (TAMIL NADU).



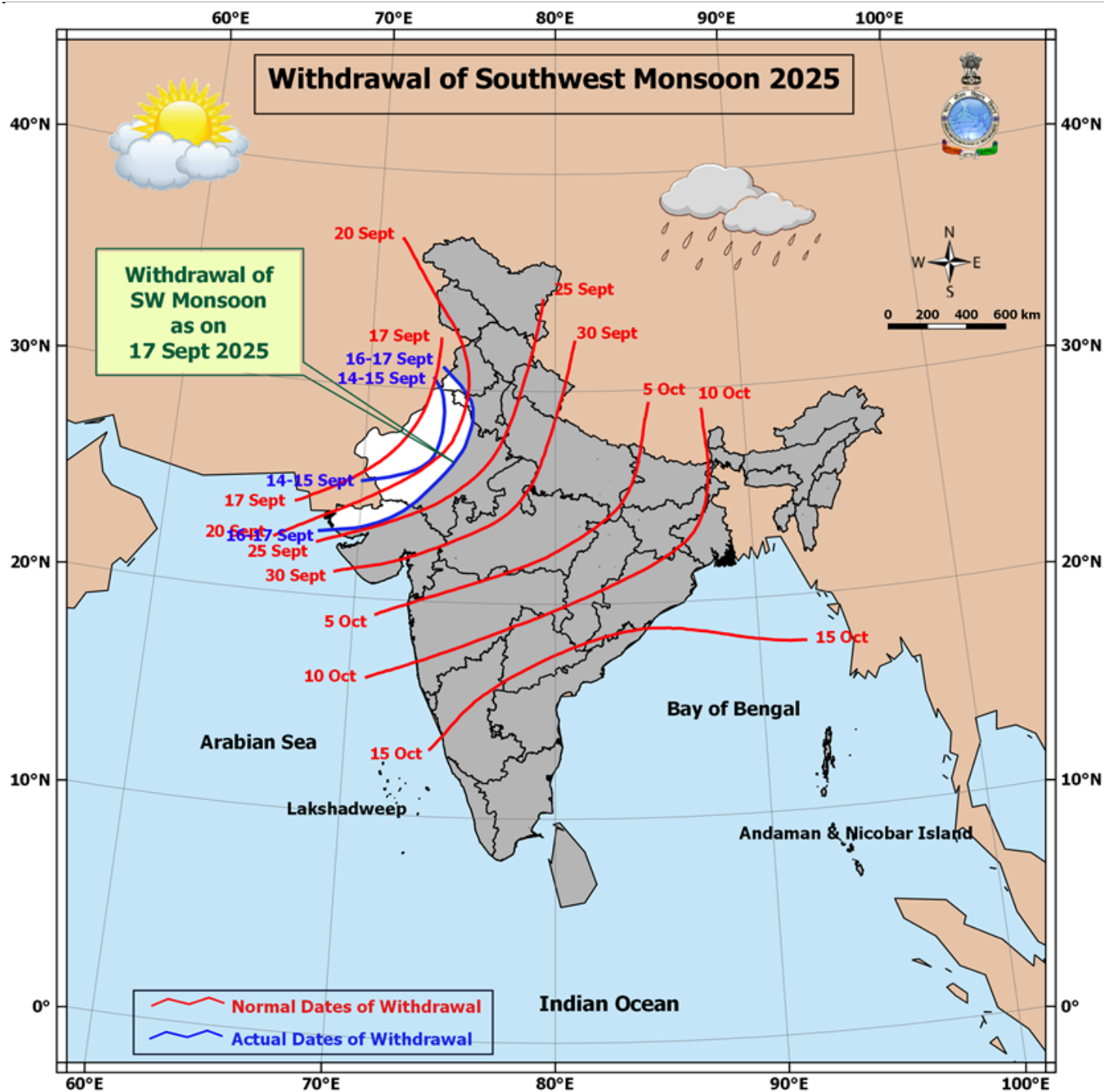
Meteorological Analysis (Based on 1730 hours IST)

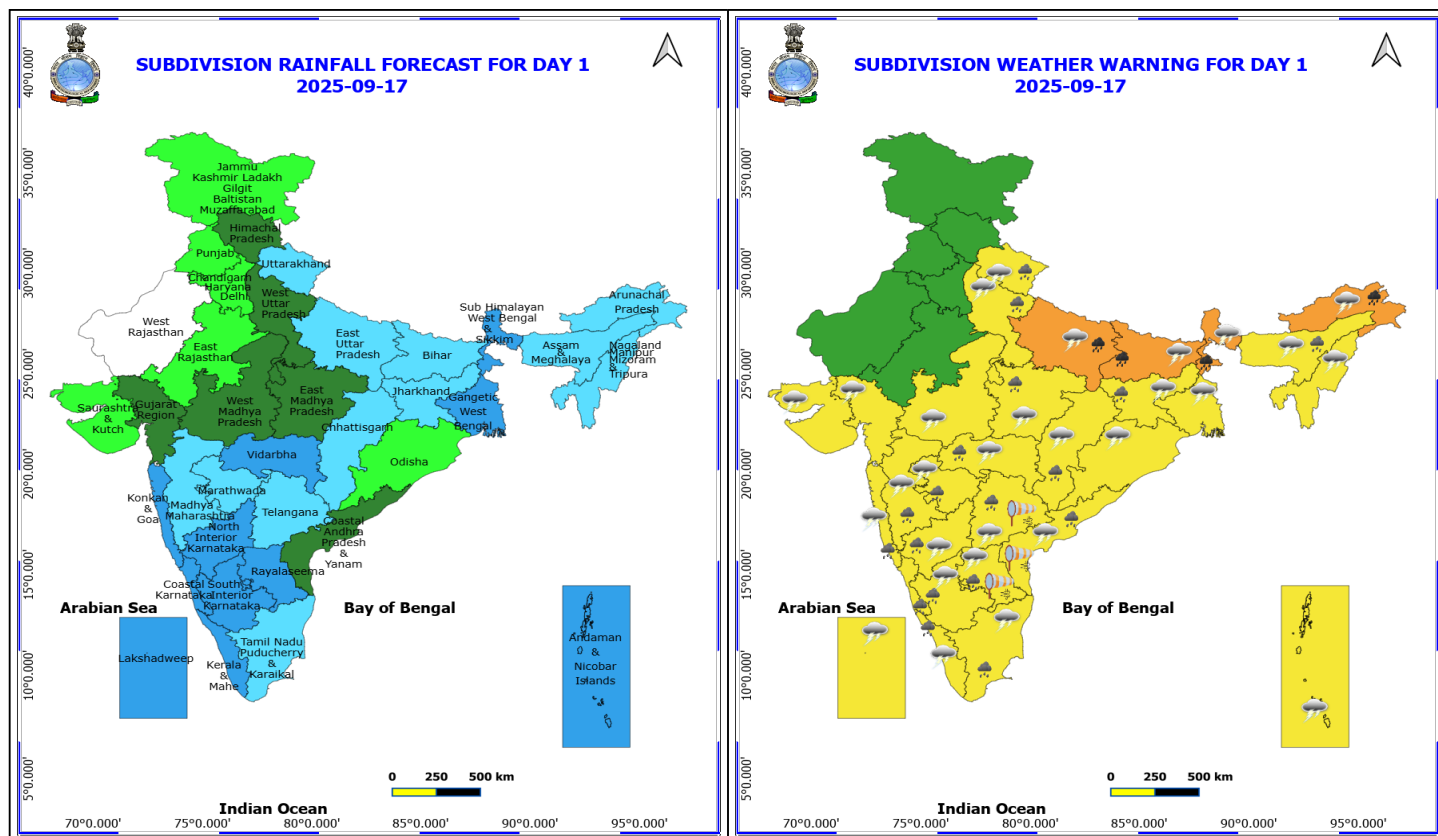
- The **line of withdrawal of southwest monsoon** continues to pass through 31°N/74°E, Bhatinda, Fatehabad, Pilani, Ajmer, Deesa, Bhuj and 23°N/68°E.
- The **upper air cyclonic circulation** over east Uttar Pradesh and adjoining Bihar extending upto 3.1 km above mean sea level persists.
- The **upper air cyclonic circulation** over Marathwada between 3.1 & 5.8 km above mean sea level persists.
- The **north-south trough** now runs from North Interior Karnataka to Comorin area across Tamil Nadu at 0.9 km above mean sea level.
- The upper **air cyclonic circulation** over central Assam at 0.9 km above mean sea level persists.
- The **trough** from central parts of Madhya Pradesh to west central & adjoining southwest Bay of Bengal across east Vidarbha, Telangana & south Coastal Andhra Pradesh at 0.9 km above mean sea level persists.

Weather Outlook for subsequent 3 days

Fairly widespread to widespread rainfall likely over Islands, Northeast, East, West and Central India.

Isolated to scattered rainfall likely over the South penninsular India and Isolated rainfall over the Western Himalayan region.





17 September (Day 1)

- ❖ **Heavy to Very Heavy Rainfall** very likely at isolated places over Arunachal Pradesh, Bihar, East Uttar Pradesh and Sub Himalayan West Bengal & Sikkim.
- ❖ **Heavy Rainfall** very likely at isolated places over Andhra Pradesh, Assam & Meghalaya, Chhattisgarh, East Madhya Pradesh, Jharkhand, Karnataka, Kerala & Mahe, Konkan & Goa, Maharashtra, Tamil Nadu Puducherry & Karaikal, Telangana, Uttarakhand and West Uttar Pradesh.
- ❖ **Thunderstorm accompanied with lightning & gusty winds(30-40kmph)** very likely at isolated places over Andaman & Nicobar Islands, Bihar, Jharkhand, Odisha, Rayalaseema, Tamil Nadu Puducherry & Karaikal and West Bengal & Sikkim.
- ❖ **Thunderstorm accompanied with Lightning** very likely at isolated places over Arunachal Pradesh, Assam & Meghalaya, Chhattisgarh, Coastal Andhra Pradesh, Gujarat State, Interior Karnataka, Kerala & Mahe, Konkan & Goa, Lakshadweep, Madhya Pradesh, Maharashtra, Nagaland, Manipur, Mizoram and Tripura, Telangana, Uttar Pradesh and Uttarakhand.
- ❖ **Strong Surface Winds** very likely at isolated places over Andhra Pradesh and Telangana.

Squally wind with speed reaching 45 kmph to 55 kmph gusting to 65 kmph is likely to prevail over some parts of southwest & westcentral Arabian Sea, along and off Somalia, Oman & adjoining Yemen coasts.

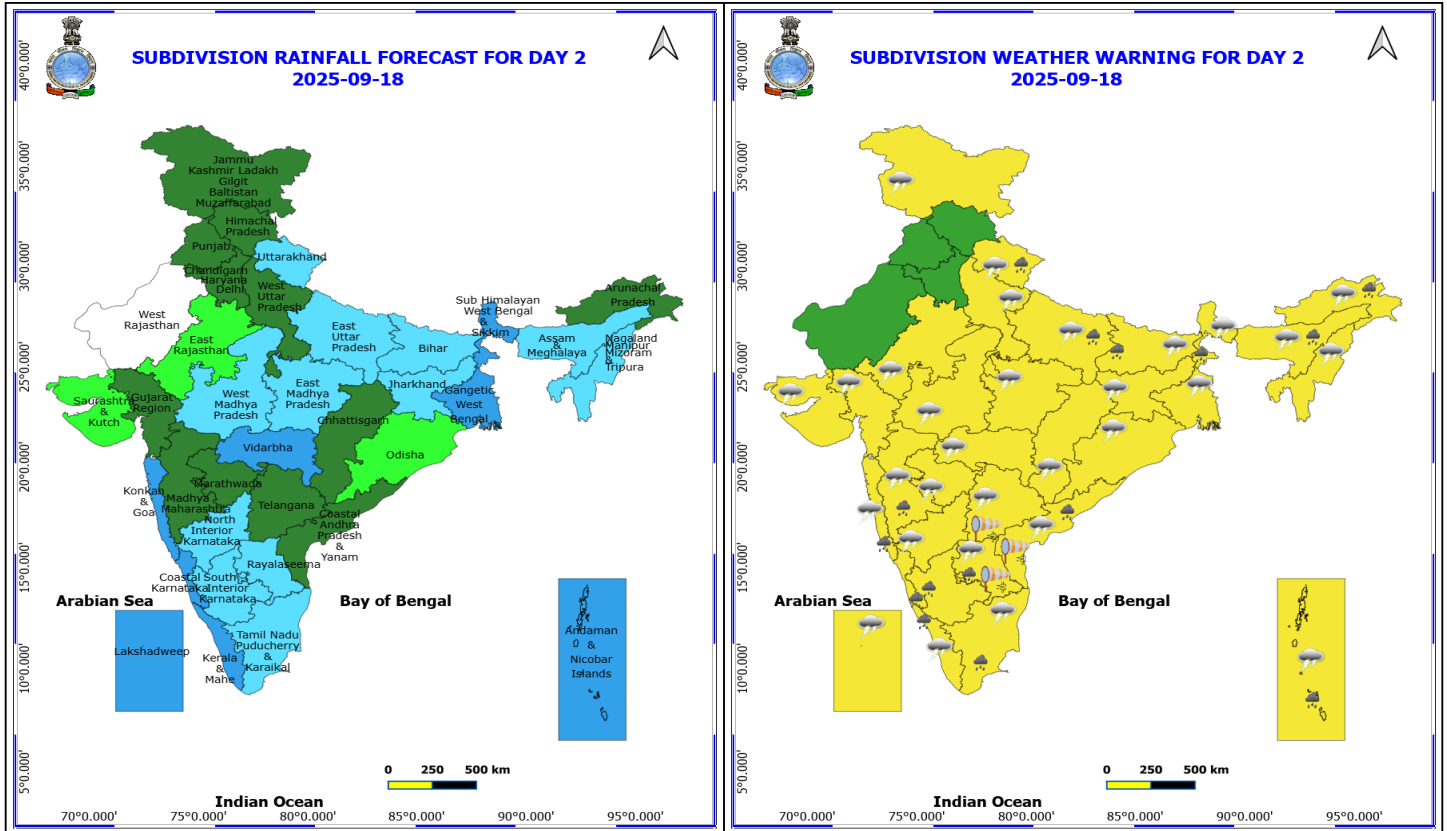
Squally weather with wind speed reaching 40 - 50 kmph gusting to 60 kmph likely to prevail along and off south Konkan, Goa coasts, over Gulf of Mannar & adjoining Comorin area, over few parts of southwest Bay of Bengal & along and off south Sri Lanka coast, and over Andaman Sea..

***Red color warning does not mean "Red Alert" Red color warning means "Take Action"**

Forecast and warning for any day is valid from 0830 hours IST of day till 0830 hours IST of next day

For more details kindly visit <https://mausam.imd.gov.in> or contact 011-2434-4599

(Service to the nation since 1875)



18 September (Day 2)

- ❖ **Heavy Rainfall** very likely at isolated places over Andaman & Nicobar Islands, Andhra Pradesh, Arunachal Pradesh, Assam & Meghalaya, Bihar, Coastal Karnataka, East Uttar Pradesh, Kerala & Mahe, Konkan & Goa, Madhya Maharashtra, South Interior Karnataka, Sub Himalayan West Bengal & Sikkim, Tamil Nadu Puducherry & Karaikal and Uttarakhand.
- ❖ **Thunderstorm accompanied with lightning & gusty winds(40-50kmph)** very likely at isolated places over Andaman & Nicobar Islands.
- ❖ **Thunderstorm accompanied with lightning & gusty winds(30-40kmph)** very likely at isolated places over Bihar, Jammu-Kashmir-Ladakh-Gilgit-Baltistan-Muzaffarabad, Jharkhand, Odisha, Rayalaseema, Tamil Nadu Puducherry & Karaikal and West Bengal & Sikkim.
- ❖ **Thunderstorm accompanied with Lightning** very likely at isolated places over Arunachal Pradesh, Assam & Meghalaya, Chhattisgarh, Coastal Andhra Pradesh, East Rajasthan, Gujarat State, Kerala & Mahe, Konkan & Goa, Lakshadweep, Madhya Pradesh, Maharashtra, Nagaland, Manipur, Mizoram and Tripura, North Interior Karnataka, Telangana, Uttar Pradesh and Uttarakhand.
- ❖ **Strong Surface Winds** very likely at isolated places over Andhra Pradesh and Telangana.

Squally wind with speed reaching 45 kmph to 55 kmph gusting to 65 kmph is likely to prevail over some parts of southwest & few parts of westcentral Arabian Sea, along and off Somalia coast, along and off north Oman coast & adjoining sea area.

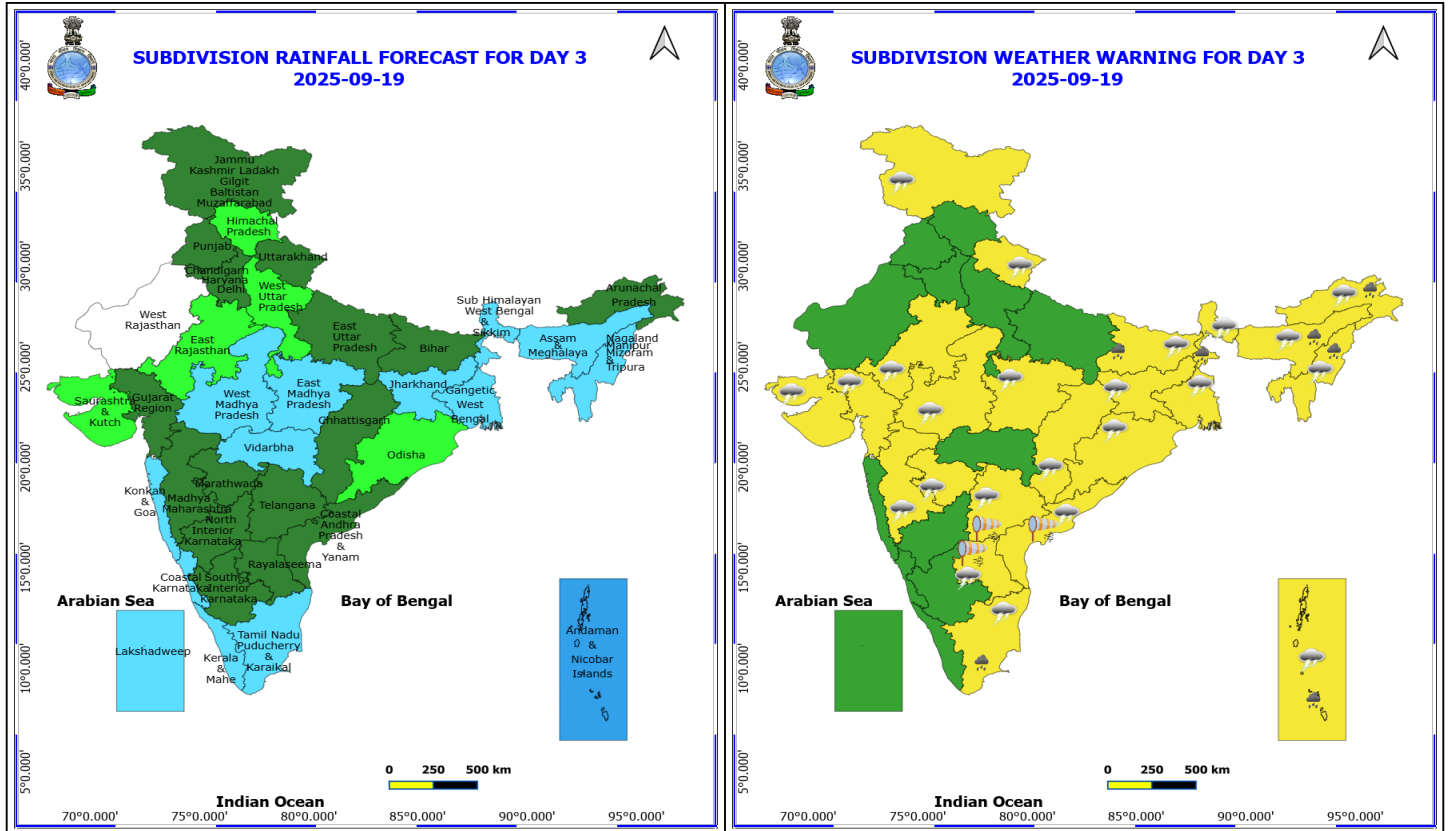
Squally weather with wind speed reaching 40 - 50 kmph gusting to 60 kmph likely to prevail over Gulf of Mannar & adjoining Comorin area and over some parts of southwest & adjoining southeast Bay of Bengal, along and off south Sri Lanka coast and over Andaman Sea.

***Red color warning does not mean "Red Alert" Red color warning means "Take Action"**

Forecast and warning for any day is valid from 0830 hours IST of day till 0830 hours IST of next day

For more details kindly visit <https://mausam.imd.gov.in> or contact 011-2434-4599

(Service to the nation since 1875)



19 September (Day 3)

- ❖ **Heavy Rainfall** very likely at isolated places over Andaman & Nicobar Islands, Arunachal Pradesh, Assam & Meghalaya, Bihar, Nagaland, Manipur, Mizoram and Tripura, Sub Himalayan West Bengal & Sikkim and Tamil Nadu Puducherry & Karaikal.
- ❖ **Thunderstorm accompanied with lightning & gusty winds(40-50kmph)** very likely at isolated places over Andaman & Nicobar Islands.
- ❖ **Thunderstorm accompanied with lightning & gusty winds(30-40kmph)** very likely at isolated places over Bihar, Jammu-Kashmir-Ladakh-Gilgit-Baltistan-Muzaffarabad, Jharkhand, Odisha, Rayalaseema, Tamil Nadu Puducherry & Karaikal and West Bengal & Sikkim.
- ❖ **Thunderstorm accompanied with Lightning** very likely at isolated places over Arunachal Pradesh, Assam & Meghalaya, Chhattisgarh, Coastal Andhra Pradesh, East Rajasthan, Gujarat State, Madhya Maharashtra, Madhya Pradesh, Marathwada, Nagaland, Manipur, Mizoram and Tripura, Telangana and Uttarakhand.
- ❖ **Strong Surface Winds** very likely at isolated places over Andhra Pradesh and Telangana.

Squally wind with speed reaching 45 kmph to 55 kmph gusting to 65 kmph is likely to prevail over some parts of southwest & few parts of westcentral Arabian Sea, along and off Somalia coast, along and off north Oman coast & adjoining sea area.

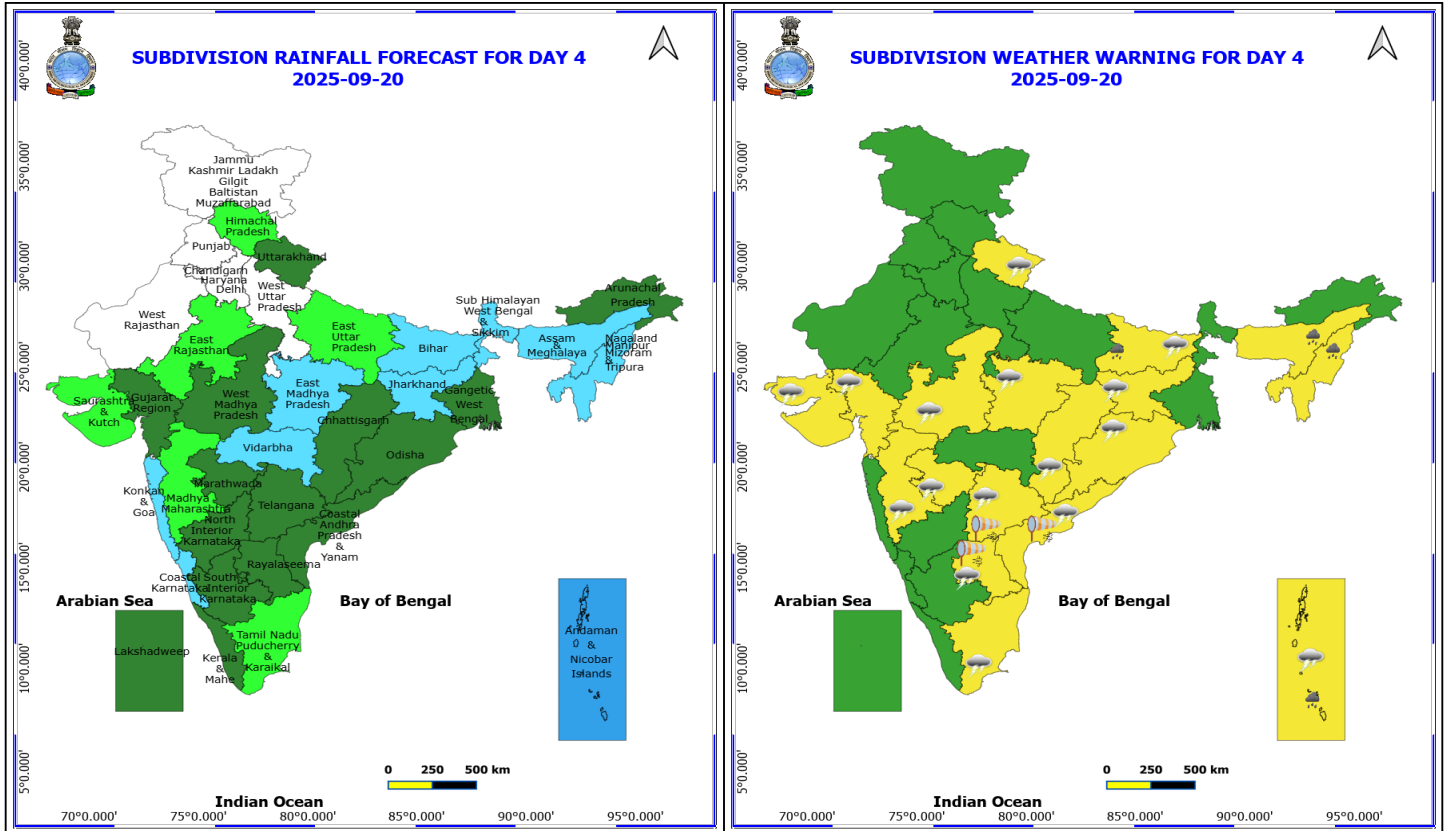
Squally weather with wind speed reaching 40 - 50 kmph gusting to 60 kmph likely to prevail over Gulf of Mannar & adjoining Comorin area, over many parts of south Bay of Bengal, along and off south Sri Lanka coast and over Andaman Sea.

***Red color warning does not mean "Red Alert" Red color warning means "Take Action"**

Forecast and warning for any day is valid from 0830 hours IST of day till 0830 hours IST of next day

For more details kindly visit <https://mausam.imd.gov.in> or contact 011-2434-4599

(Service to the nation since 1875)



20 September (Day 4)

- ❖ **Heavy Rainfall** likely at isolated places over Andaman & Nicobar Islands, Assam & Meghalaya, Bihar and Nagaland, Manipur, Mizoram and Tripura.
- ❖ **Thunderstorm accompanied with lightning & gusty winds(40-50kmph)** likely at isolated places over Andaman & Nicobar Islands.
- ❖ **Thunderstorm accompanied with lightning & gusty winds(30-40kmph)** likely at isolated places over Bihar, Jharkhand, Odisha, Rayalaseema and Tamil Nadu Puducherry & Karaikal.
- ❖ **Thunderstorm accompanied with Lightning** likely at isolated places over Chhattisgarh, Coastal Andhra Pradesh, Gujarat State, Madhya Maharashtra, Madhya Pradesh, Marathwada, Telangana and Uttarakhand.
- ❖ **Strong Surface Winds** likely at isolated places over Andhra Pradesh and Telangana.

Squally wind with speed reaching 45 kmph to 55 kmph gusting to 65 kmph is likely to prevail over some parts of southwest & few parts of westcentral Arabian Sea, along and off Somalia coast, along and off north Oman coast & adjoining sea area.

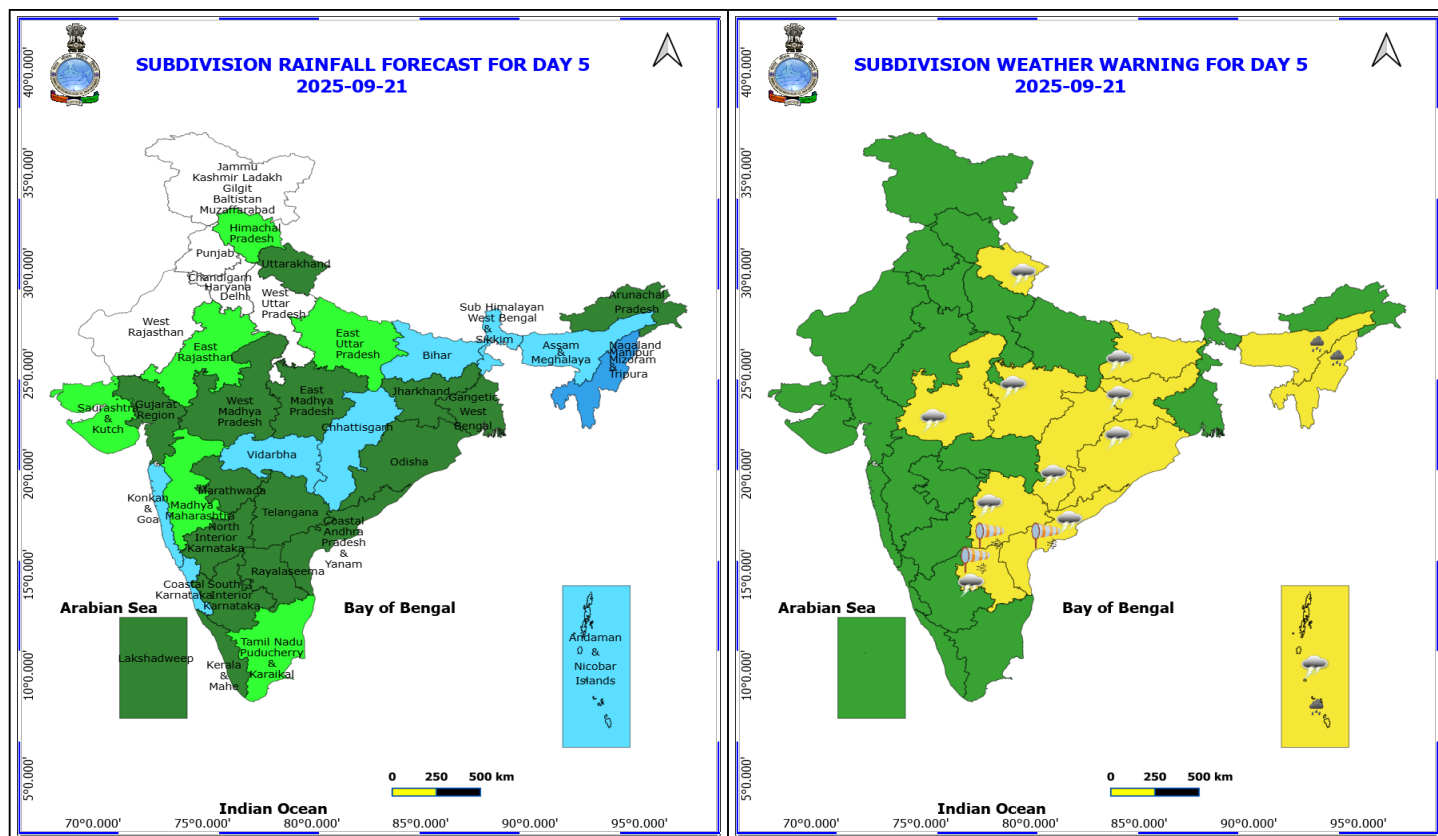
Squally weather with wind speed reaching 40 - 50 kmph gusting to 60 kmph likely to prevail over Gulf of Mannar & adjoining Comorin area, over many parts of south Bay of Bengal, along and off Sri Lanka coast and over Andaman Sea.

***Red color warning does not mean "Red Alert" Red color warning means "Take Action"**

Forecast and warning for any day is valid from 0830 hours IST of day till 0830 hours IST of next day

For more details kindly visit <https://mausam.imd.gov.in> or contact 011-2434-4599

(Service to the nation since 1875)



21 September (Day 5)

- ❖ **Heavy Rainfall** likely at isolated places over Andaman & Nicobar Islands, Assam & Meghalaya and Nagaland, Manipur, Mizoram and Tripura.
- ❖ **Thunderstorm accompanied with lightning & gusty winds(40-50kmph)** likely at isolated places over Andaman & Nicobar Islands.
- ❖ **Thunderstorm accompanied with lightning & gusty winds(30-40kmph)** likely at isolated places over Bihar, Jharkhand, Odisha and Rayalaseema.
- ❖ **Thunderstorm accompanied with Lightning** likely at isolated places over Chhattisgarh, Coastal Andhra Pradesh, Madhya Pradesh, Telangana and Uttarakhand.
- ❖ **Strong Surface Winds** likely at isolated places over Andhra Pradesh and Telangana.

Squally wind with speed reaching 45 kmph to 55 kmph gusting to 65 kmph is likely to prevail over some parts of southwest & few parts of westcentral Arabian Sea, along and off Somalia coast.

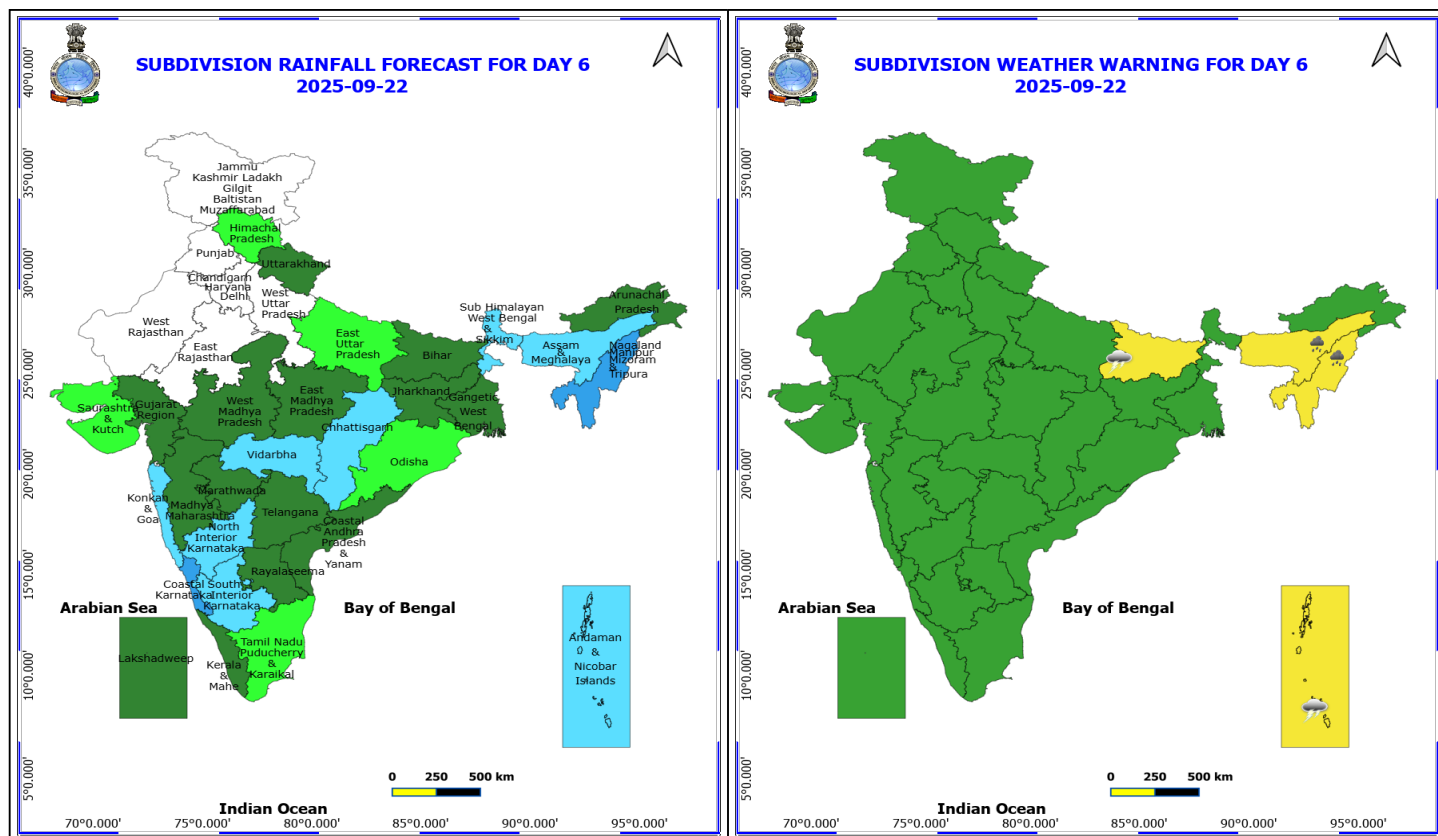
Squally weather with wind speed reaching 40 - 50 kmph gusting to 60 kmph likely to prevail over Gulf of Mannar & adjoining Comorin area, over many parts of south Bay of Bengal, along and off Sri Lanka coast and over Andaman Sea.

***Red color warning does not mean "Red Alert" Red color warning means "Take Action"**

Forecast and warning for any day is valid from 0830 hours IST of day till 0830 hours IST of next day

For more details kindly visit <https://mausam.imd.gov.in> or contact 011-2434-4599

(Service to the nation since 1875)



22 September (Day 6)

- ❖ **Heavy Rainfall** likely at isolated places over Assam & Meghalaya and Nagaland, Manipur, Mizoram and Tripura.
- ❖ **Thunderstorm accompanied with lightning & gusty winds(40-50kmph)** likely at isolated places over Andaman & Nicobar Islands.
- ❖ **Thunderstorm accompanied with lightning & gusty winds(30-40kmph)** likely at isolated places over Bihar.

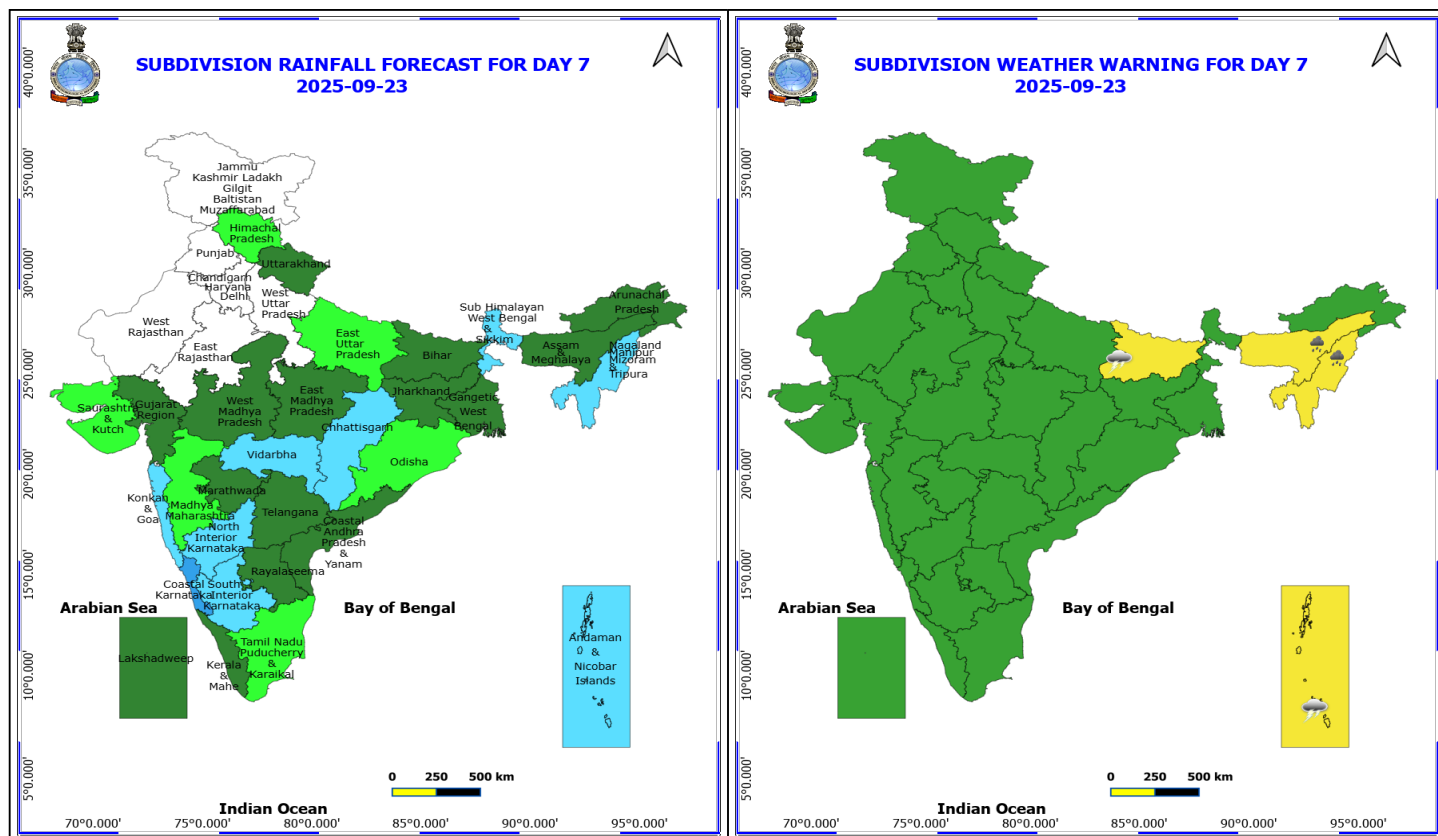
No Fishermen Warning

***Red color warning does not mean "Red Alert" Red color warning means "Take Action"**

Forecast and warning for any day is valid from 0830 hours IST of day till 0830 hours IST of next day

For more details kindly visit <https://mausam.imd.gov.in> or contact 011-2434-4599

(Service to the nation since 1875)



23 September (Day 7)

- ❖ **Heavy Rainfall** likely at isolated places over Assam & Meghalaya and Nagaland, Manipur, Mizoram and Tripura.
- ❖ **Thunderstorm accompanied with lightning & gusty winds(30-40kmph)** likely at isolated places over Andaman & Nicobar Islands and Bihar.

No Fishermen Warning

***Red color warning does not mean "Red Alert" Red color warning means "Take Action"**

Forecast and warning for any day is valid from 0830 hours IST of day till 0830 hours IST of next day

For more details kindly visit <https://mausam.imd.gov.in> or contact 011-2434-4599

(Service to the nation since 1875)



Table-1

7 Days Rainfall Forecast

S.No.	Subdivision	17-Sep	18-Sep	19-Sep	20-Sep	21-Sep	22-Sep	23-Sep
		Day 1	Day 2	Day 3	Day 4	Day 5	Day 6	Day 7
1	ANDAMAN & NICOBAR ISLANDS	WS	WS	WS	WS	FWS	FWS	FWS
2	ARUNACHAL PRADESH	FWS	SCT	SCT	SCT	SCT	SCT	SCT
3	ASSAM & MEHGHALAYA	FWS	FWS	FWS	FWS	FWS	FWS	SCT
4	N. M. M. & T.	FWS	FWS	FWS	FWS	WS	WS	FWS
5	S.H. WEST BENGAL & SIKKIM	WS	WS	FWS	FWS	FWS	FWS	FWS
6	GANGETIC WEST BENGAL	WS	WS	FWS	SCT	SCT	SCT	SCT
7	ODISHA	ISOL	ISOL	ISOL	SCT	SCT	ISOL	ISOL
8	JHARKHAND	FWS	FWS	FWS	FWS	SCT	SCT	SCT
9	BIHAR	FWS	FWS	SCT	FWS	FWS	SCT	SCT
10	EAST UTTAR PRADESH	FWS	FWS	SCT	ISOL	ISOL	ISOL	ISOL
11	WEST UTTAR PRADESH	SCT	SCT	ISOL	DRY	DRY	DRY	DRY
12	UTTARAKHAND	FWS	FWS	SCT	SCT	SCT	SCT	SCT
13	HARYANA, CHD & DELHI	ISOL	SCT	SCT	DRY	DRY	DRY	DRY
14	PUNJAB	ISOL	SCT	SCT	DRY	DRY	DRY	DRY
15	HIMACHAL PRADESH	SCT	SCT	ISOL	ISOL	ISOL	ISOL	ISOL
16	JAMMU AND KASHMIR AND LADAKH	ISOL	SCT	SCT	DRY	DRY	DRY	DRY
17	WEST RAJASTHAN	DRY	DRY	DRY	DRY	DRY	DRY	DRY
18	EAST RAJASTHAN	ISOL	ISOL	ISOL	ISOL	ISOL	DRY	DRY
19	WEST MADHYA PRADESH	SCT	FWS	FWS	SCT	SCT	SCT	SCT
20	EAST MADHYA PRADESH	SCT	FWS	FWS	FWS	SCT	SCT	SCT
21	GUJRAT REGION	SCT	SCT	SCT	SCT	SCT	SCT	SCT
22	SAURASHTRA & KUTCH	ISOL	ISOL	ISOL	ISOL	ISOL	ISOL	ISOL
23	KONKAN & GOA	WS	WS	FWS	FWS	FWS	FWS	FWS
24	MADHYA MAHARASHTRA	FWS	SCT	SCT	ISOL	ISOL	SCT	ISOL
25	MARATHWADA	FWS	SCT	SCT	SCT	SCT	SCT	SCT
26	VIDARBHA	WS	WS	FWS	FWS	FWS	FWS	FWS
27	CHATTISGARH	FWS	SCT	SCT	SCT	FWS	FWS	FWS
28	COASTAL ANDHRA PRADESH	SCT	SCT	SCT	SCT	SCT	SCT	SCT
29	TELANGANA	FWS	SCT	SCT	SCT	SCT	SCT	SCT
30	RAYALASEEMA	WS	FWS	SCT	SCT	SCT	SCT	SCT
31	TAMILNADU & PUDUCHERRY	FWS	FWS	FWS	ISOL	ISOL	ISOL	ISOL
32	COSTAL KARNATAKA	WS	WS	FWS	FWS	FWS	WS	WS
33	NORTH INTERIOR KARNATAKA	WS	FWS	SCT	SCT	SCT	FWS	FWS
34	SOUTH INTERIOR KARNATAKA	WS	FWS	SCT	SCT	SCT	FWS	FWS
35	KERALA	WS	WS	FWS	SCT	SCT	SCT	SCT
36	LAKSHDWEEP	WS	WS	FWS	SCT	SCT	SCT	SCT

Legend	Category	%Stations
WS	Widespread/Most Places	76-100
FWS	Fairly Widespread/Many Places	51-75
SCT	Scattered/ A Few Places	26-50
ISOL	Isolated Places	1-25
DRY	No Rain	0

*Red color warning does not mean "Red Alert" Red color warning means "Take Action"

Forecast and warning for any day is valid from 0830 hours IST of day till 0830 hours IST of next day

For more details kindly visit <https://mausam.imd.gov.in> or contact 011-2434-4599

(Service to the nation since 1875)

Fig. 1: Maximum Temperatures Dated 2025-09-17

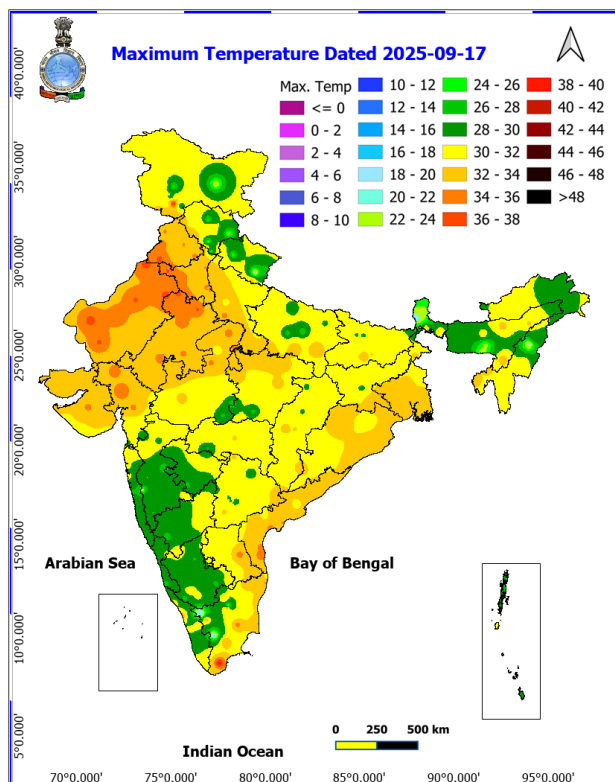


Fig. 2: Departure of Maximum Temp. Dated 2025-09-17

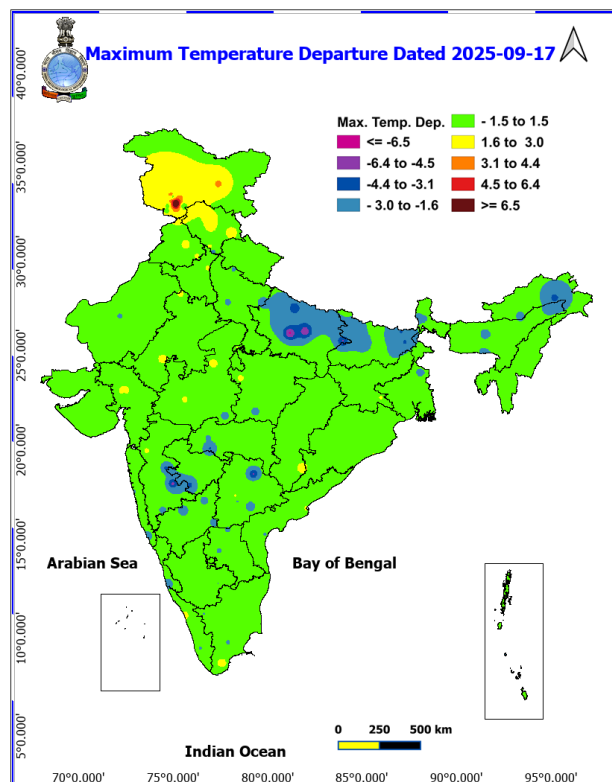


Fig. 3: Minimum Temperatures Dated 2025-09-17

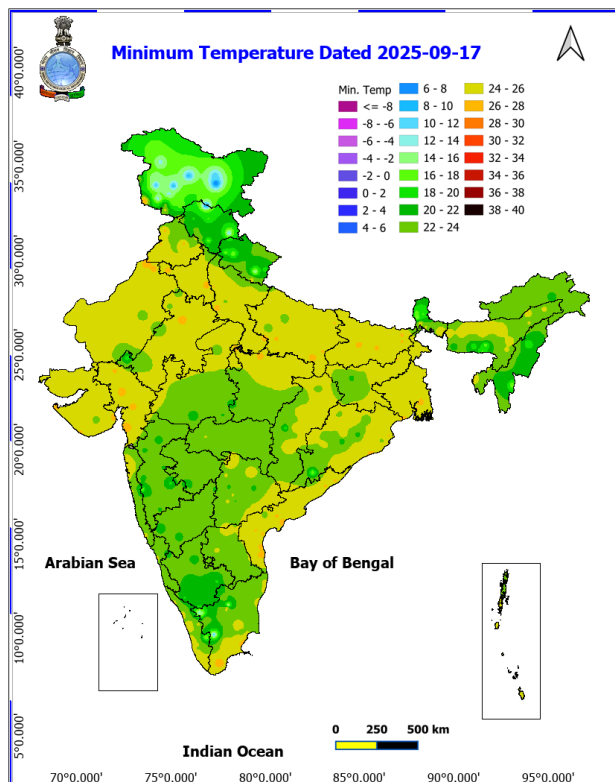
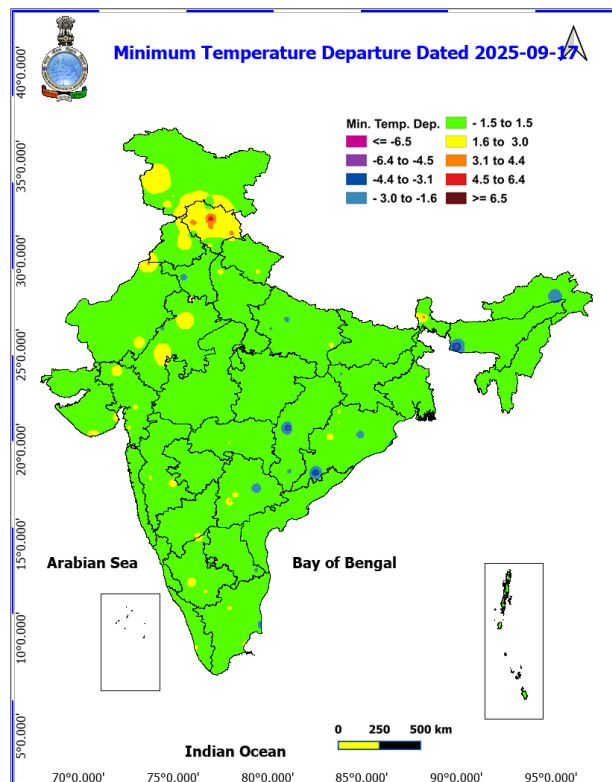
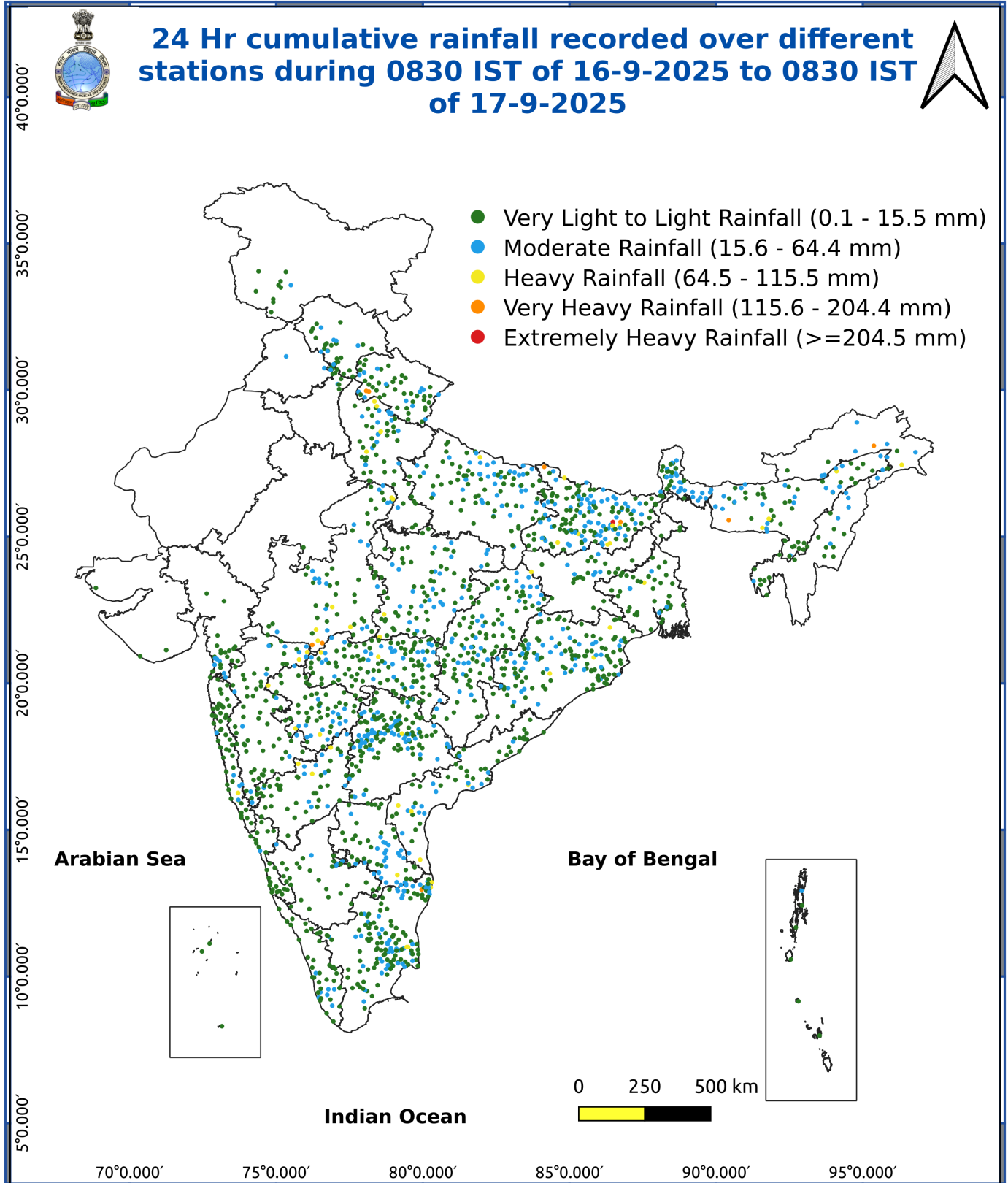


Fig. 4: Departure of Minimum Temp. Dated 2025-09-17





*Red color warning does not mean "Red Alert" Red color warning means "Take Action"

Forecast and warning for any day is valid from 0830 hours IST of day till 0830 hours IST of next day

For more details kindly visit <https://mausam.imd.gov.in> or contact 011-2434-4599

(Service to the nation since 1875)

Impact & Action Suggested due to

Heavy to very heavy rainfall (12-20 cm) at isolated places over Bihar, Sub-Himalayan West Bengal & Sikkim and Arunachal Pradesh on 17th September.

Impact Expected

- Localized Flooding of roads, water logging in low lying areas and closure of underpasses mainly in urban areas of the above region.
- Occasional reduction in visibility due to heavy rainfall.
- Disruption of traffic in major cities due to water logging in roads leading to increased travel time.
- Minor damage to kutcha roads.
- Possibilities of damage to vulnerable structure.
- Localized Landslides/Mudslides/landslips/mudslips/landsinks/mudsinks.
- Damage to horticulture and standing crops in some areas due to inundation.
- It may lead to riverine flooding in some river catchments (for riverine flooding please visit Web page of CWC)

Action Suggested

- Check for traffic congestion on your route before leaving for your destination.
- Follow any traffic advisories that are issued in this regard.
- Avoid going to areas that face the water logging problems often.
- Avoid staying in vulnerable structure.

Agromet advisories for various parts of the country

Agromet advisories for likely impact of Heavy / Heavy to Very Heavy Rainfall

In **Maharashtra**, drain out excess water from fields of rice, vegetables and fruit orchards in **Konkan**; rice, sugarcane, pigeon pea, soybean, maize, vegetables and fruit orchards in **Madhya Maharashtra**; sugarcane, sorghum, soybean, turmeric, vegetables and fruit orchards in **Marathwada** and pigeon pea, cotton, soybean, maize, vegetables and fruit orchards in **Vidarbha**.

In **Sub-Himalayan West Bengal**, drain out excess water from the fields of *rice* and vegetable in **Terai Zone** and green gram, black gram, finger millet, dalley khorsani, vegetables and fruit orchards in **Hill Zone**.

In **Bihar**, ensure proper drainage of excess rainwater from the fields of rice and vegetables in **North West Alluvial Plain Zone**.

In **Arunachal Pradesh**, maintain proper drainage in standing crops such as rice, soybean, finger millet, vegetables and fruit orchards to avoid water stagnation. Keep the harvested produce of upland paddy, maize, chillies and banana at safer places.

In **Assam**, ensure proper drainage to drain out excess water from the fields of rice, sugarcane, black gram and sesame in **Hill Zone**; rice and already sown black gram in **Barak Valley Zone** and rice, sesame and vegetables in **North Bank Plain Zone**. In **Lower Brahmaputra Valley Zone**, ensure proper drainage system in *Sali* rice fields and nursery bed of vegetables. Cover the nursery bed with thin polythene to avoid the damages due to heavy rainfall. In **Upper Brahmaputra Valley Zone**, harvest the matured vegetables and fruits and transfer it to a safer location and make arrangements to drain out excess water from the standing crop fields.

In **Meghalaya**, drain out excess water from rice, vegetable nurseries and ginger. Provide support to tall and fragile crops like banana, papaya, pumpkin, etc. to prevent lodging.

In **Uttarakhand**, ensure proper drainage in the fields of green gram, black gram, soybean, barnyard millet and finger

***Red color warning does not mean "Red Alert" Red color warning means "Take Action"**

Forecast and warning for any day is valid from 0830 hours IST of day till 0830 hours IST of next day

For more details kindly visit <https://mausam.imd.gov.in> or contact 011-2434-4599

(Service to the nation since 1875)

millet in **Sub Humid Sub Tropic Zone**; and rice, pigeon pea, black gram, green gram, finger millet, maize, soybean and already sown crop of potato and radish in **Bhabar and Tarai Zone**. In **Hill Zone**, ensure proper drainage in pigeon pea and vegetable crops and keep the harvestewd produce of barnyard millet, ginger and rainfed rice at safer places.

In **Telangana**, ensure adequate drainage facilities to drain out excess rain water in fields of rice, maize, cotton, soybean, pigeon pea, turmeric and vegetables.

Livestock / Fishery

Keep the animals inside the shed during heavy rainfall and provide them balanced feed.

Store feed and fodder in a safe place to prevent spoilage.

Construct an outlet with proper netting around the ponds to drain out excess water, thereby preventing fish from escaping in case of overflow.

Agromet advisories for likely impact of Thunderstorm / Gusty Winds / Squally Winds

Provide mechanical support to horticultural crops and staking or support to vegetables and young fruit plants / fruit-bearing plants to avoid lodging due to strong winds.

Legends & abbreviations:

Region wise classification of meteorological Sub-Divisions:

Northwest India: Western Himalayan Region (Jammu-Kashmir-Ladakh-Gilgit-Baltistan-Muzaffarabad, Himachal Pradesh and Uttarakhand); Punjab, Haryana-Chandigarh-Delhi; West Uttar Pradesh, East Uttar Pradesh, West Rajasthan and East Rajasthan.

Central India: West Madhya Pradesh, East Madhya Pradesh, Vidarbha and Chhattisgarh.

East India: Bihar, Jharkhand, Sub-Himalayan West Bengal & Sikkim; Gangetic West Bengal, Odisha and Andaman & Nicobar Islands.

Northeast India: Arunachal Pradesh, Assam & Meghalaya and Nagaland, Manipur, Mizoram & Tripura.

West India: Gujarat Region, Saurashtra & Kutch, Konkan & Goa, Madhya Maharashtra and Marathawada.

South India: Coastal Andhra Pradesh & Yanam, Telangana, Rayalaseema, Coastal Karnataka, North Interior Karnataka, South Interior Karnataka, Kerala & Mahe, Tamil Nadu, Puducherry & Karaikal and Lakshadweep.

LEGENDS

- 1 अंडमान और निकोबार द्वीप समुह
- 2 अरुणाचल प्रदेश
- 3 असम और मेघालय
- 4 नागालैंड मनीपुर मीजोरम और त्रिपुरा
- 5 उप हिमालय पश्चिम बंगाल एवं सिक्किम
- 6 पश्चिम बंगाल
- 7 ओडिसा
- 8 झारखंड
- 9 बिहार
- 10 पूर्वी उत्तर प्रदेश
- 11 पश्चिम उत्तर प्रदेश
- 12 उत्तराखंड
- 13 हरियाणा चंडीगढ़ एवं दिल्ली
- 14 पंजाब
- 15 हिमाचल प्रदेश
- 16 जम्मू एवं कश्मीर एवं लद्दाख
- 17 पश्चिम राजस्थान
- 18 पूर्वी राजस्थान
- 19 पश्चिम मध्य प्रदेश
- 20 पूर्वी मध्य प्रदेश
- 21 गुजरात क्षेत्र
- 22 सौराष्ट्र एवं कच्छ
- 23 कोंकण एवं गोवा
- 24 मध्य महाराष्ट्र
- 25 मराठावाड़ा
- 26 विदर्भ
- 27 छत्तीसगढ़
- 28 तटीय आंध्र प्रदेश एवं यनम
- 29 तेलंगाना
- 30 रायलसीमा
- 31 तमिलनाडु, पुदुचेरी एवं कराईकल
- 32 तटिय कर्नाटक
- 33 आंतरिक उत्तरी कर्नाटक
- 34 आंतरिक दक्षिणी कर्नाटक
- 35 केरल एवं माहे
- 36 लक्षद्वीप



1. Andaman & Nicobar Islands
2. Arunachal Pradesh
3. Assam & Meghalaya
4. Nagaland, Manipur, Mizoram & Tripura
5. Sub-Himalayan West Bengal & Sikkim
6. Gangetic West Bengal
7. Orissa
8. Jharkhand
9. Bihar
10. East Uttar Pradesh
11. West Uttar Pradesh
12. Uttarakhand
13. Haryana, Chd & Delhi
14. Punjab
15. Himachal Pradesh
16. Jammu & Kashmir and Ladakh
17. West Rajasthan
18. East Rajasthan
19. West Madhya Pradesh
20. East Madhya Pradesh
21. Gujarat
22. Saurashtra
23. Konkan & Goa
24. Madhya Maharashtra
25. Marathwada
26. Vidharbha
27. Chhattisgarh
28. Coastal Andhra Pradesh & Yanam
29. Telangana
30. Rayalaseema
31. Tamilnadu, Puducherry & Karaikal
32. Coastal Karnataka
33. North Interior Karnataka
34. South Interior Karnataka
35. Kerala & Mahe
36. Lakshadweep

SPATIAL DISTRIBUTION (% of Stations reporting)













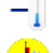




% Stations	Category	% Stations	Category
76-100	Widespread (WS/Most Places)	26-50	Scattered (SCT/ A Few Places)
51-75	Fairly Widespread (FWS/ Many Places)	1-25	Isolated (ISOL)

Subdivision Colour

- NO WARNING
- WATCH (BE UPDATED)
- ALERT (BE PREPARED TO TAKE ACTION)
- WARNING (TAKE ACTION)

Probabilistic Forecast

Terms	Probability of Occurrence (%)
Unlikely	< 25
Likely	25 - 50
Very Likely	50 - 75
Most Likely	> 75

-  Heavy Rain
-  Very Heavy Rain
-  Extremely Heavy Rain
-  Heavy Snow
-  Thunderstorm & Lightning
-  Hailstorm
-  Dust Storm
-  Dust Raising Winds
-  Strong surface winds
-  Heat Wave
-  Hot Day
-  Warm Night
-  Cold Wave
-  Cold Day
-  Ground Frost
-  FOG Fog
-  Hot & Humid

*Red color warning does not mean "Red Alert" Red color warning means "Take Action"

Forecast and warning for any day is valid from 0830 hours IST of day till 0830 hours IST of next day

For more details kindly visit <https://mausam.imd.gov.in> or contact 011-2434-4599

(Service to the nation since 1875)

LEGENDS

WARNING

WARNING (TAKE ACTION)
ALERT (BE PREPARED)
WATCH (BE UPDATED)
NO WARNING (NO ACTION)

Probabilistic Forecast

Terms	Probability of Occurrence (%)
Unlikely	< 25
Likely	25 - 50
Very Likely	50 - 75
Most Likely	> 75



Heavy: 64.5 to 115.5 mm/cm *
Very Heavy: 115.6 to 204.4 mm/cm *
Extremely Heavy: > 204.4 mm/cm *



When maximum temperature of a station reaches $\geq 40^{\circ}\text{C}$ for plains and $\geq 30^{\circ}\text{C}$ for hilly regions
(a) Based on Departure from normal

Heat Wave: Maximum Temperature Departure from normal 4.5°C to 6.4°C .
Severe Heat Wave: Maximum Temperature Departure from normal $\geq 6.5^{\circ}\text{C}$

(b). Based on Actual maximum temperature

Heat Wave: When actual maximum temperature $\geq 45^{\circ}\text{C}$.
Severe Heat Wave: When actual maximum temperature $\geq 47^{\circ}\text{C}$

(c). Criteria for heat wave for coastal stations

When maximum temperature departure is $> 4.5^{\circ}\text{C}$ from normal. Heat Wave may be described provided maximum temperature $\geq 37^{\circ}\text{C}$



When maximum temperature remains 40°C

Warm Night: When minimum temperature departure 4.5°C to 6.4°C .
Severe Warm Night: When minimum temperature departure $> 6.4^{\circ}\text{C}$.



When minimum temperature of a station $\leq 10^{\circ}\text{C}$ for plains and $\leq 0^{\circ}\text{C}$ for hilly regions.

(a). Based on departure

Cold Wave: Minimum Temperature Departure from normal -4.5°C to -6.4°C .
Severe Cold Wave: Minimum Temperature Departure from normal $\leq -6.5^{\circ}\text{C}$

(b) Based on actual Minimum Temperature (for Plains only)

Cold Wave: When Minimum Temperature is $\leq 4.0^{\circ}\text{C}$
Severe Cold Wave: When Minimum Temperature is $\leq 2.0^{\circ}\text{C}$

(c) For Coastal Stations

When Minimum Temperature departure is $\leq -4.5^{\circ}\text{C}$ & actual Minimum Temperature is $\leq 15^{\circ}\text{C}$



When minimum temperature of a station $\leq 10^{\circ}\text{C}$ for plains and $\leq 0^{\circ}\text{C}$ for hilly regions
Based on departure

Cold Day: Maximum Temperature Departure from normal -4.5°C to -6.4°C .
Severe Cold Day: Maximum Temperature Departure from normal $\leq -6.5^{\circ}\text{C}$



Phenomenon of small droplets suspended in air and the horizontal visibility $< 1\text{km}$

Moderate Fog: When the visibility between 500-200 metres
Dense Fog: when the visibility between 50-200 metres
Very Dense Fog: when the visibility < 50 metres



Sudden electrical discharges manifested by a flash of light (Lightning) and a sharp rumbling sound (thunder)



An ensemble of particles of dust or sand energetically lifted to great heights by a strong and turbulent wind.



Ice deposits on ground

Air temperature $\leq 4^{\circ}\text{C}$ (over Plains)



A strong wind that rises suddenly, lasts for at least 1 minute.

Moderate: Wind speed 52-61 kmph
Severe: Wind speed 62-87 kmph
Very Severe: Wind speed > 87 kmph



Effect of various waves in the sea over specific area

Rough to very rough: Wind speed 41-62 kmph (22-33 knots) & Wave height 2.5-6 metre
High to very high: Wind speed 63-117 kmph (34-63 knots) & Wave height 6-14 metre
Phenomenal: Wind speed > 117 kmph (> 63 knots) & Wave height > 14 metre



Cyclonic Storm: Wind speed 62-87 kmph (34-47 knots)

Severe Cyclonic Storm: Wind speed 88-117 kmph (48-63 knots)
Very Severe Cyclonic Storm: Wind speed 118-165 kmph (64-89 knots)
Extremely Severe Cyclonic Storm: Wind speed 166-220 kmph (90-119 knots)
Super Cyclone Storm: Wind speed > 220 kmph (> 119 knots)

*Red color warning does not mean "Red Alert" Red color warning means "Take Action"

Forecast and warning for any day is valid from 0830 hours IST of day till 0830 hours IST of next day

For more details kindly visit <https://mausam.imd.gov.in> or contact 011-2434-4599

(Service to the nation since 1875)