

2025-08-27

Time of Issue: 13:36:00 hours IST  
(Mid-Day)

## ALL INDIA WEATHER SUMMARY AND FORECAST BULLETIN

### Significant Weather Features

#### Weather Forecast and Warnings:

##### East & Central India:

Isolated **heavy rainfall** likely over Chhattisgarh, Odisha, Vidarbha, Madhya Pradesh, Sub-Himalayan West Bengal & Sikkim during 27<sup>th</sup>-30<sup>th</sup>; Bihar during 30<sup>th</sup> August-01<sup>st</sup> September; Jharkhand on 29<sup>th</sup> & 30<sup>th</sup> August with isolated **very heavy rainfall over Chhattisgarh on 27<sup>th</sup> & 28<sup>th</sup>; Odisha on 27<sup>th</sup> August.**

Light to moderate rainfall at most/many places accompanied with thunderstorm & lightning likely over the region during next 7 days.

##### South Peninsular India:

**Extremely heavy rainfall** likely over Coastal Karnataka and Telangana on 27<sup>th</sup> August.

Isolated **heavy rainfall** likely over Coastal Andhra Pradesh & Yanam, Telangana, Kerala & Mahe, Tamil Nadu during 27<sup>th</sup>-29<sup>th</sup>; Interior Karnataka on 27<sup>th</sup> & 28<sup>th</sup>; Rayalaseema on 27<sup>th</sup> and Coastal Karnataka during 27<sup>th</sup> August-02<sup>nd</sup> September with **very heavy rainfall** over Coastal Karnataka on 27<sup>th</sup> & 28<sup>th</sup>; Coastal Andhra Pradesh & Yanam, Telangana, Kerala on 27<sup>th</sup> August.

Light to moderate rainfall at some places accompanied with thunderstorm & lightning likely over the region during next 2-3 days.

##### West India:

**Isolated heavy rainfall** is very likely over Gujarat region, Konkan & Goa, Madhya Maharashtra during next 7 days and Marathwada on 28<sup>th</sup> August with **very heavy rainfall** over Konkan on 27<sup>th</sup>; ghat areas of Madhya Maharashtra on 27<sup>th</sup> & 28<sup>th</sup> August.

Light to moderate rainfall at most/many places very likely over the region during next 7 days.

##### Northwest India:

Isolated **heavy rainfall** likely to continue over Uttarakhand, Himachal Pradesh, East Rajasthan, Haryana during next 7 days; Jammu & Kashmir, Punjab on 27<sup>th</sup>, during 30<sup>th</sup> August-01<sup>st</sup> September; West Rajasthan during 29<sup>th</sup> -31<sup>st</sup> August; Uttar Pradesh on 01<sup>st</sup> & 02<sup>nd</sup> September with **isolated very heavy rainfall over Uttarakhand on 28<sup>th</sup> & 29<sup>th</sup> August, 01<sup>st</sup> & 02<sup>nd</sup> September.**

Light/moderate rainfall at most/many places over Northwest India and accompanied with thunderstorm & lightning likely over the Jammu-Kashmir-Ladakh-Gilgit-Baltistan-Muzaffarabad, West Rajasthan on 27<sup>th</sup> & 28<sup>th</sup> August; Uttarakhand during next 7 days.

##### Northeast India:

**\*Red color warning does not mean "Red Alert" Red color warning means "Take Action"**

Forecast and warning for any day is valid from 0830 hours IST of day till 0830 hours IST of next day

For more details kindly visit <https://mausam.imd.gov.in> or contact 011-2434-4599

(Service to the nation since 1875)

Isolated **heavy rainfall** likely to continue over Arunachal Pradesh during 28<sup>th</sup>-30<sup>th</sup> August;

Assam & Meghalaya, Nagaland, Manipur, Mizoram & Tripura during next 7 days.

Light/moderate rainfall at many places accompanied with thunderstorm & lightning likely during next 5 days.

### Main Weather Observations:

❖ **Rainfall distribution** (from 0830 hours IST of yesterday to 0830 hours IST of today): **at most places** over Andaman & Nicobar Islands, Haryana-Chandigarh-Delhi, Punjab, Himachal Pradesh, Konkan & Goa, Vidarbha, Coastal Andhra Pradesh & Yanam, Telangana, Coastal Karnataka, North Interior Karnataka and Kerala & Mahe; **at many places** over Assam & Meghalaya, Nagaland, Manipur, Mizoram & Tripura, Sub Himalayan West Bengal & Sikkim, Odisha, Uttarakhand, East Rajasthan, Madhya Maharashtra, Marathwada, Chhattisgarh, South Interior Karnataka and Lakshadweep; **at a few places** over Arunachal Pradesh, Gangetic West Bengal, West Rajasthan, West Madhya Pradesh, East Madhya Pradesh, Gujarat Region and Rayalaseema; **at isolated places** over Jharkhand, Bihar, Saurashtra & Kutch and Tamil Nadu, Puducherry & Karaikal; **Dry** over rest of the country.

❖ **Significant rainfall recorded(in cm)** (from 0830 hours IST of yesterday to 0830 hours IST of today): **Jammu-Kashmir-Ladakh-Gilgit-Baltistan-Muzaffarabad:** Udhampur IAF 63, Jammu 38, Sambha 17, Kathua 12; **Telangana:** Yellareddy (dist Kamareddy), Naga Reddipet (dist Kamareddy) 25 Each; Bhiknur (dist Kamareddy) 22; Nizam Sagar (dist Kamareddy) 21; Bhuvanagiri (dist Y. Bhuvanagiri) 19; Domakonda (dist Kamareddy), Papannapet (dist Medak) 18 Each; Ramayampet (dist Medak) 17; Pitlam (dist Kamareddy), Medak (dist Medak) 15 Each; Alladurg (dist Medak) 14; Yadagirigutta (dist Y. Bhuvanagiri) 13; Lingampet (dist Kamareddy) 12; Regode (dist Medak), Yadagirigutta(AR) (dist Y. Bhuvanagiri) 11 Each; Chegunta (dist Medak), Narsapur (dist Medak), Tekmal (dist Medak) 10 Each; Jagadevpur (dist Siddipet), Nagireddypet AP (dist Kamareddy), Ars Basanthpur AP (dist Medak) 9 Each; Narayankhed (dist Sangareddy), Banswada (dist Kamareddy), Doultabad (dist Siddipet) 8 Each; Ramannapeta (dist Y. Bhuvanagiri), Gandhari (dist Kamareddy), Mominpet (dist Vikarabad), Mahbubnagar (dist Mahabubnagar), Nawabpet (dist Vikarabad), Kamareddy (dist Kamareddy), Kowdipalle (dist Medak), Hathanoora (dist Sangareddy), Munipalli (dist Sangareddy), Chilkur (dist Suryapet), Koilkonda (dist Mahabubnagar), Bhoothpur (dist Mahabubnagar) 7 Each; **East Rajasthan:** Bhungra SR (dist Banswara) 22; Kathumer (dist Alwar) 9; Dhariabad (dist Pratapgarh) 7; **Chhattisgarh:** Sukma (dist Sukma) 21; Bastanar (dist Bastar) 20; Lohandiguda (dist Bastar) 19; Darbha (dist Bastar) 17; Konta (dist Sukma), Gidam (dist Dantewada) 16 Each; Katekalyan (dist Dantewada), Nangur (dist Bastar), Bade Bacheli (dist Dantewada) 15 Each; Gadiras (dist Sukma) 14; Tokapal (dist Bastar), Chhotedongar (dist Narayanpur) 12 Each; Dantewara (dist Dantewada), Kuakonda (dist Dantewada), Patan (dist Durg) 10 Each; Jagdalpur (dist Bastar), Dornapal (dist Sukma), Jagargunda (dist Sukma) 8 Each; Durg (dist Durg), Gundardehi (dist Balod), Bastar (dist Bastar), Bakavand (dist Bastar), Orcha (dist Narayanpur), Chhindigarh (dist Sukma), Gangalur (dist Bijapur), Bhanpuri (dist Bastar), Karpawand (dist Bastar) 7 Each; **Coastal Karnataka:** Kadra (dist Uttara Kannada) 19; Siddapura (dist Udupi), Gersoppa (dist Uttara Kannada) 10 Each; Bantwal (dist Dakshina Kannada), Karkala (dist Udupi), Shirali PTO (dist Uttara Kannada) 8 Each; Joida (dist Uttara Kannada), Karwar (dist Uttara Kannada), Ankola (dist Uttara Kannada), Uppinangadi (dist Dakshina Kannada) 7 Each; **Odisha:** Jeypore (dist Koraput) 19; Kotpad (dist Koraput) 16; Borigumma (dist Koraput) 15; Koraput (dist Koraput), Lamataput (dist Koraput), Nandapur (dist Koraput), Nandahandi (dist Nawarangpur) 12 Each; Similiguda (dist Koraput) 11; Malkangiri (dist Malkangiri) 9; Rajkishorenagar (dist Angul), Korukunda (dist Malkangiri) 7 Each; **Konkan & Goa:** Quepem (dist South Goa) 13; Kankavli (dist Sindhudurg) 11; Canacona (dist South Goa) 10; Ponda (dist North Goa), Pernem (dist North Goa), Margao (dist South Goa), Rajapur (dist Ratnagiri) 8 Each; Sawantwadi (dist Sindhudurg) 7; **Vidarbha:** Sindewahi (dist Chandrapur) 11; Chimur (dist Chandrapur) 8; **Kerala & Mahe:** Kudulu (dist Kasargod) 10; Muliya AWS (dist Kasargod) 9; Madikkai AWS (dist Kasargod) 8; Kodungallur (dist Thrissur) 7; **Madhya Maharashtra:** Gaganbawada (dist Kolhapur) 10; Mahabaleshwar (dist Satara) 7; **West Madhya Pradesh:** Sanjeet (dist Mandsaur) 10; Suvasara (dist Mandsaur) 8; Sailana (dist Ratlam), Khalwa (dist Khandwa) 7 Each; **Punjab:** Gurdaspur AMFU (dist Gurdaspur) 10; Dhariwal Irr (dist Gurdaspur) 9; Tibri (dist Gurdaspur), Aliwal (dist Gurdaspur) 8 Each; **Haryana-Chandigarh-Delhi:** Guhla (dist Kaithal) 10; Sampla (dist Rohtak), Jhirka (dist Nuh), Barwala REV (dist Hisar), Palhawas REV (dist Rewari), Jakhal Mandi Hmo (dist Fatehabad), Bawal AWS (dist Rewari) 7 Each; **Sub Himalayan West Bengal & Sikkim:** Barobhisha (dist Alipurduar) 10; Raidak Tea Estate (dist Alipurduar) 7; **North Interior Karnataka:** Bhalki (dist Bidar) 8; Bidar (dist Bidar), Bidar PTO (dist Bidar) 7 Each; **Assam & Meghalaya:** Lanka ARG (dist Nagaon) 8; Jiagaon (dist Tinsukia) 7; **Nagaland, Manipur, Mizoram & Tripura:** Kolasib AWS (dist Kolasib), Khowai (dist Khowai) 7 Each.

❖ **Heavy Rainfall observed** (from 0830 hours IST of yesterday to 0830 hours IST of today): **Exceptionally Heavy Rainfall** at isolated places over Jammu; **Extremely heavy rain** at isolated places over East Rajasthan, Chhattisgarh and Telangana. **Heavy to very heavy rain** at isolated places over Odisha, Konkan & Goa, Chhattisgarh, Telangana and Coastal Karnataka. **Heavy rain** at a few places over Coastal Karnataka and at isolated places over Assam & Meghalaya, Nagaland, Manipur, Mizoram & Tripura, Sub Himalayan West Bengal & Sikkim, Haryana-Chandigarh-Delhi, Punjab, East Rajasthan, West Madhya Pradesh, Madhya Maharashtra, Vidarbha, North Interior Karnataka, South Interior Karnataka and Kerala & Mahe.

\*Red color warning does not mean "Red Alert" Red color warning means "Take Action"

Forecast and warning for any day is valid from 0830 hours IST of day till 0830 hours IST of next day

For more details kindly visit <https://mausam.imd.gov.in> or contact 011-2434-4599

(Service to the nation since 1875)

❖ **Minimum Temperature Departures (as on 27-08-2025):** markedly above normal(> 5.1°C) at most places over Himachal Pradesh; at few places over West Madhya Pradesh and East Madhya Pradesh; at isolated places over Assam & Meghalaya, Bihar, East Uttar Pradesh, West Uttar Pradesh and West Rajasthan. **appreciably above normal(3.1°C to 5.0°C)** at isolated places over Sub Himalayan West Bengal & Sikkim, Odisha, Gujarat Region and Saurashtra & Kutch. **above normal(1.6°C to 3.0°C)** at few places over Nagaland, Manipur, Mizoram & Tripura, Tamil Nadu, Puducherry & Karaikal and Lakshadweep; at isolated places over Gangetic West Bengal, Uttarakhand, Haryana-Chandigarh-Delhi, Madhya Maharashtra, Vidarbha and Rayalaseema. **near normal(-1.5°C to 1.5°C)** at many places over Chhattisgarh, Coastal Andhra Pradesh & Yanam, Telangana and Kerala & Mahe; at most places over Andaman & Nicobar Islands, Arunachal Pradesh, Jharkhand, Punjab, East Rajasthan, Konkan & Goa, Marathwada, Coastal Karnataka, North Interior Karnataka and South Interior Karnataka; at few places over Jammu-Kashmir-Ladakh-Gilgit-Baltistan-Muzaffarabad. **The lowest minimum temperature** of 17.6°C is reported at UNA (HIMACHAL PRADESH) over the Plains of India.

❖ **Maximum Temperature Departures (as on 26-08-2025):** appreciably above normal(3.1°C to 5.0°C) at few places over Arunachal Pradesh; at isolated places over Assam & Meghalaya, Odisha, Chhattisgarh, Tamil Nadu, Puducherry & Karaikal and Kerala & Mahe. **above normal(1.6°C to 3.0°C)** at many places over Nagaland, Manipur, Mizoram & Tripura; at few places over Sub Himalayan West Bengal & Sikkim and Lakshadweep; at isolated places over Gangetic West Bengal, Bihar, East Uttar Pradesh, West Uttar Pradesh, Himachal Pradesh, East Madhya Pradesh, Madhya Maharashtra, Coastal Andhra Pradesh & Yanam and Rayalaseema. **near normal(-1.5°C to 1.5°C)** at many places over Uttarakhand, East Rajasthan, Saurashtra & Kutch, Marathwada and Coastal Karnataka; at most places over Andaman & Nicobar Islands, Jharkhand, West Madhya Pradesh, Gujarat Region, Vidarbha and South Interior Karnataka; at few places over West Rajasthan, Konkan & Goa, Telangana and North Interior Karnataka; at isolated places over Haryana-Chandigarh-Delhi. **The highest maximum temperature** of 39.5°C is reported at MADURAI (A) (TAMIL NADU).

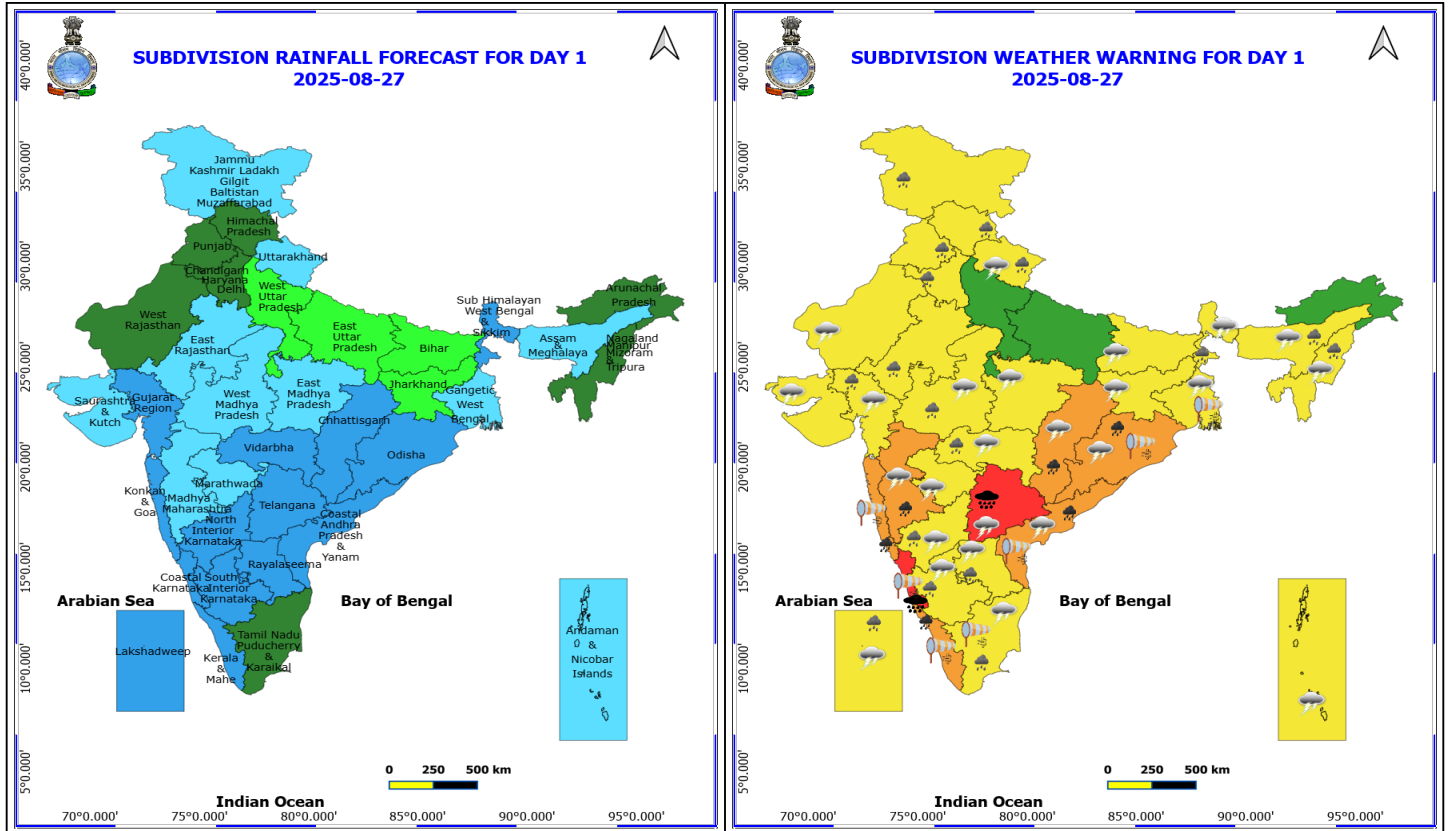
#### Meteorological Analysis (Based on 0830 hours IST)

- The **Well Marked Low Pressure area** over the northwest Bay of Bengal off Odisha coast persisted at 0830 hrs IST of today, the 27<sup>th</sup> August 2025. The associated cyclonic circulation extended upto 7.6 km above mean sea level tilting southwestwards with height. It is likely to move slowly west-northwestwards across Odisha during next 24 hrs.
- The **upper air cyclonic circulation** over south Haryana and adjoining northeast Rajasthan now lies over south Punjab and extends upto 1.5 km above mean sea level.
- The **monsoon trough** now passes through Bikaner, Banasthali, Damoh, Pendra road, to the centre of **Well Marked low-pressure area** over northwest Bay of Bengal off Odisha coast and thence to southeastward to east central Bay of Bengal.
- The **Western Disturbance** now seen as a **cyclonic circulation** over north Pakistan between 3.1 & 5.8 km above mean sea level.
- A **trough** runs from central Madhya Pradesh to the **upper air cyclonic circulation** over south Punjab across East Rajasthan, south Haryana and extends upto 1.5 km above mean sea level.

#### Weather Outlook for subsequent 3 days

- Scattered to Fairly widespread rainfall likely over northern, western India, western peninsular and eastern India.





## 27 August (Day 1)

- ❖ **Heavy to Very Heavy Rainfall with isolated Extremely Heavy Rainfall** very likely at isolated places over Coastal Karnataka and Telangana.
- ❖ **Heavy to Very Heavy Rainfall** very likely at isolated places over Chhattisgarh, Coastal Andhra Pradesh, Kerala & Mahe, Konkan & Goa, Madhya Maharashtra and Odisha.
- ❖ **Heavy Rainfall** very likely at isolated places over Assam & Meghalaya, East Rajasthan, Gujarat Region, Haryana, Chandigarh & Delhi, Himachal Pradesh, Interior Karnataka, Jammu-Kashmir-Ladakh-Gilgit-Baltistan-Muzaffarabad, Lakshadweep, Nagaland, Manipur, Mizoram and Tripura, Punjab, Rayalaseema, Sub Himalayan West Bengal & Sikkim, Tamil Nadu Puducherry & Karaikal, Uttarakhand, Vidarbha and West Madhya Pradesh.
- ❖ **Thunderstorm accompanied with lightning & gusty winds(40-50kmph)** very likely at isolated places over Interior Karnataka and Lakshadweep.
- ❖ **Thunderstorm accompanied with lightning & gusty winds(30-40kmph)** very likely at isolated places over Andaman & Nicobar Islands, Bihar, Gujarat State, Jharkhand and Telangana.
- ❖ **Thunderstorm accompanied with Lightning** very likely at isolated places over Andhra Pradesh, Assam & Meghalaya, Chhattisgarh, Madhya Pradesh, Maharashtra, Nagaland, Manipur, Mizoram and Tripura, Odisha, Tamil Nadu Puducherry & Karaikal, Uttarakhand, West Bengal & Sikkim and West Rajasthan.
- ❖ **Strong Surface Winds** very likely at isolated places over Coastal Andhra Pradesh, Coastal Karnataka, Gangetic West Bengal, Kerala & Mahe, Konkan & Goa, Odisha and Tamil Nadu Puducherry & Karaikal.
- Squally wind with speed reaching 45 kmph to 55 kmph gusting to 65 kmph is likely to prevail along and off Somalia, Oman coasts, most parts of westcentral Arabian sea, adjoining & some parts of southwest,

**\*Red color warning does not mean "Red Alert" Red color warning means "Take Action"**

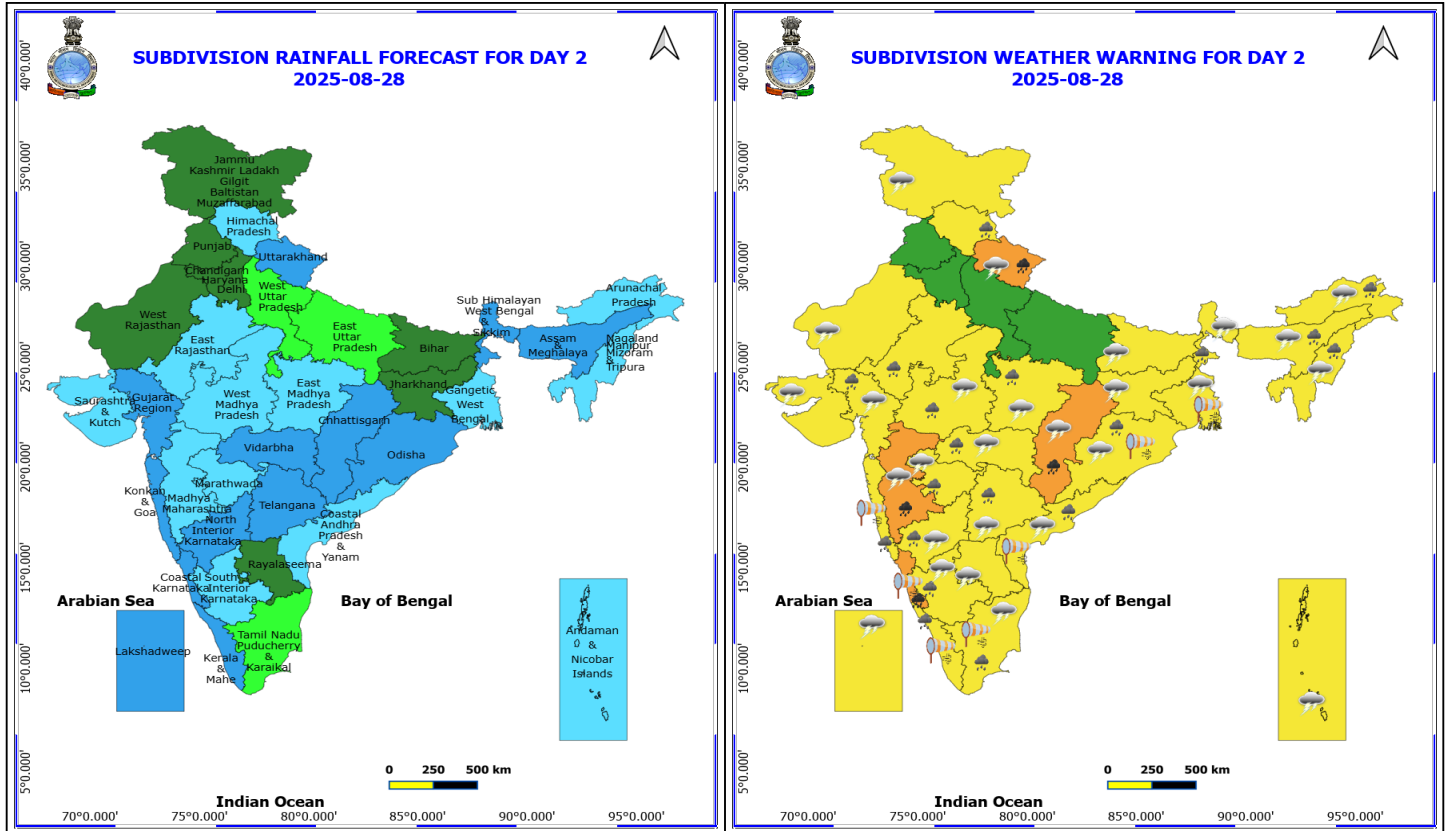
**Forecast and warning for any day is valid from 0830 hours IST of day till 0830 hours IST of next day**

**For more details kindly visit <https://mausam.imd.gov.in> or contact 011-2434-4599**

**(Service to the nation since 1875)**

eastcentral Arabian Sea, adjoining parts of northwest Arabian Sea.

- Squally weather with wind speed reaching 40 - 50 kmph gusting to 60 kmph likely to prevail along and off south Gujarat, Konkan, Goa, Karnataka, Kerala coasts, Lakshadweep, Comorin areas, and most parts of eastcentral Arabian Sea; along and off Andhra Pradesh, Odisha, West Bengal, Bangladesh coasts, over north Bay of Bengal & most parts of central Bay of Bengal, over many parts of southwest Bay of Bengal off south Sri Lanka coast, over Gulf of Mannar.



## 28 August (Day 2)

- ❖ **Heavy to Very Heavy Rainfall** very likely at isolated places over Chhattisgarh, Coastal Karnataka, Madhya Maharashtra and Uttarakhand.
- ❖ **Heavy Rainfall** very likely at isolated places over Arunachal Pradesh, Assam & Meghalaya, Coastal Andhra Pradesh, East Rajasthan, Gujarat Region, Himachal Pradesh, Interior Karnataka, Kerala & Mahe, Konkan & Goa, Madhya Pradesh, Marathwada, Nagaland, Manipur, Mizoram and Tripura, Odisha, Sub Himalayan West Bengal & Sikkim, Tamil Nadu Puducherry & Karaikal, Telangana and Vidarbha.
- ❖ **Thunderstorm accompanied with lightning & gusty winds(30-40kmph)** very likely at isolated places over Andaman & Nicobar Islands, Bihar, Gujarat State, Interior Karnataka, Jammu-Kashmir-Ladakh-Gilgit-Baltistan-Muzaffarabad, Jharkhand, Lakshadweep and Telangana.
- ❖ **Thunderstorm accompanied with Lightning** very likely at isolated places over Andhra Pradesh, Arunachal Pradesh, Assam & Meghalaya, Chhattisgarh, Madhya Pradesh, Maharashtra, Nagaland, Manipur, Mizoram and Tripura, Odisha, Tamil Nadu Puducherry & Karaikal, Uttarakhand, West Bengal & Sikkim and West Rajasthan.
- ❖ **Strong Surface Winds** very likely at isolated places over Coastal Andhra Pradesh, Coastal Karnataka, Gangetic West Bengal, Kerala & Mahe, Konkan & Goa, Odisha and Tamil Nadu Puducherry & Karaikal.
- Squally wind with speed reaching 45 kmph to 55 kmph gusting to 65 kmph is likely to prevail along and off Somalia, Oman coasts, most parts of westcentral Arabian sea, adjoining & some parts of southwest, eastcentral Arabian Sea.
- Squally weather with wind speed reaching 40 - 50 kmph gusting to 60 kmph likely to prevail along and off south Gujarat, Konkan, Goa, Karnataka, Kerala coasts, Lakshadweep, Comorin areas, and most parts of eastcentral Arabian Sea; along and off Andhra Pradesh, Odisha, West Bengal, Bangladesh coasts, over north Bay of Bengal & most parts of central Bay of Bengal, over most parts of southwest Bay of Bengal and

**\*Red color warning does not mean "Red Alert" Red color warning means "Take Action"**

**Forecast and warning for any day is valid from 0830 hours IST of day till 0830 hours IST of next day**

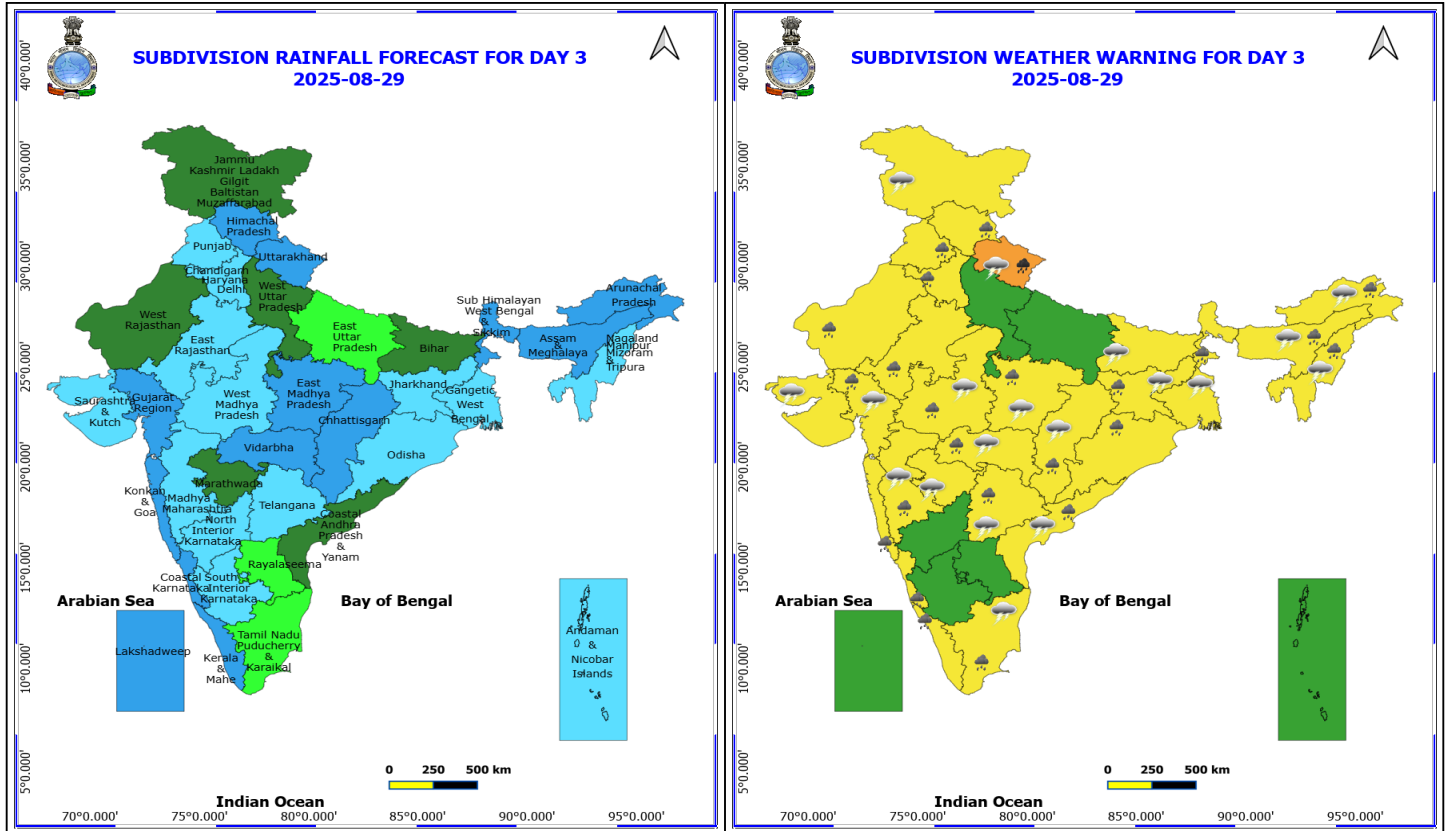
**For more details kindly visit <https://mausam.imd.gov.in> or contact 011-2434-4599**

**(Service to the nation since 1875)**





adjoining southeast Bay of Bengal, off Sri Lanka coast, over Gulf of Mannar.



## 29 August (Day 3)

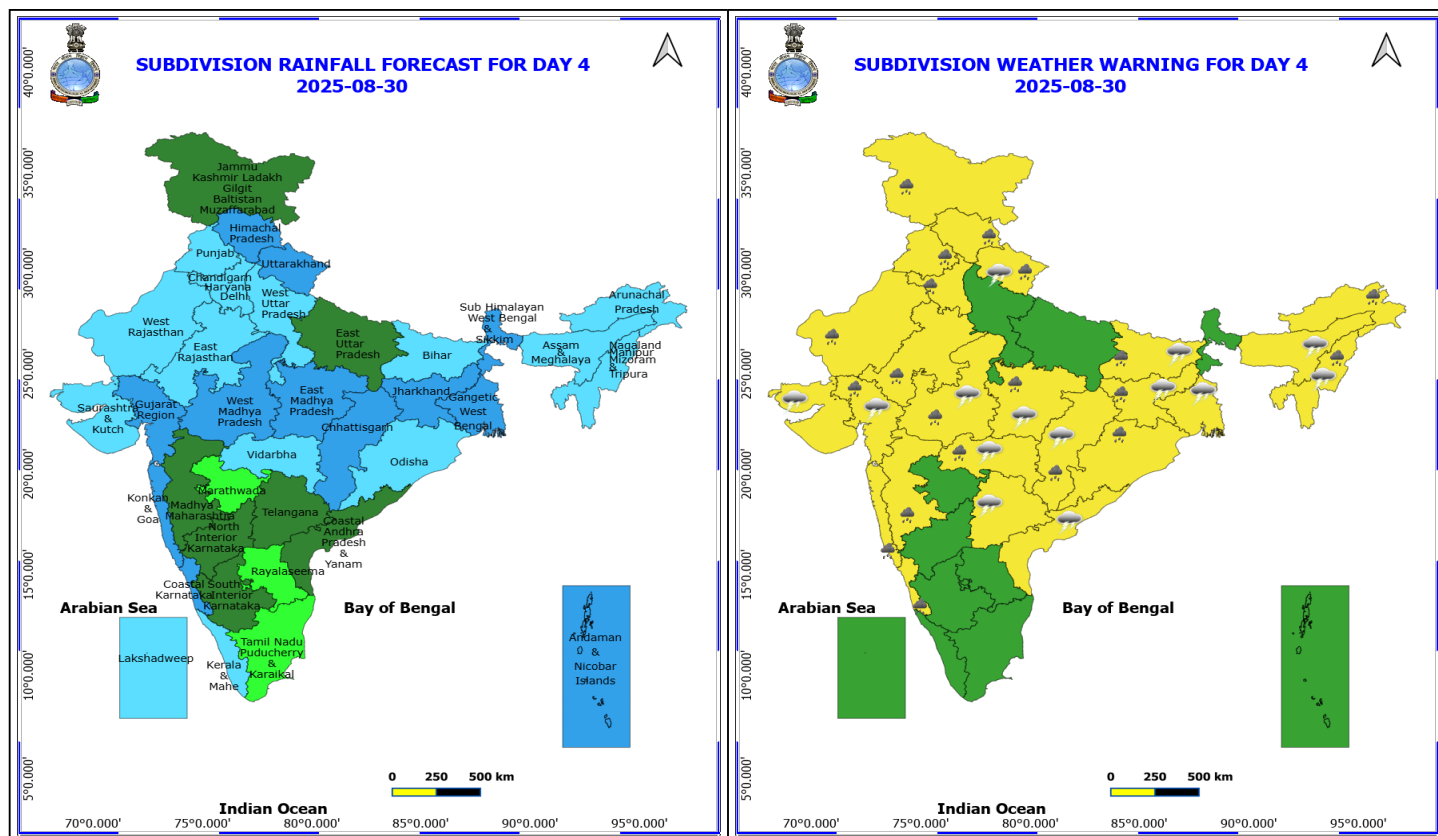
- ❖ **Heavy to Very Heavy Rainfall** very likely at isolated places over Uttarakhand.
- ❖ **Heavy Rainfall** very likely at isolated places over Arunachal Pradesh, Assam & Meghalaya, Chhattisgarh, Coastal Andhra Pradesh, Coastal Karnataka, Gujarat Region, Haryana, Chandigarh & Delhi, Himachal Pradesh, Jharkhand, Kerala & Mahe, Konkan & Goa, Madhya Maharashtra, Madhya Pradesh, Nagaland, Manipur, Mizoram and Tripura, Odisha, Punjab, Rajasthan, Sub Himalayan West Bengal & Sikkim, Tamil Nadu Puducherry & Karaikal, Telangana and Vidarbha.
- ❖ **Thunderstorm accompanied with lightning & gusty winds(30-40kmph)** very likely at isolated places over Bihar, Gujarat State, Jammu-Kashmir-Ladakh-Gilgit-Baltistan-Muzaffarabad, Jharkhand and Telangana.
- ❖ **Thunderstorm accompanied with Lightning** very likely at isolated places over Arunachal Pradesh, Assam & Meghalaya, Chhattisgarh, Coastal Andhra Pradesh, Gangetic West Bengal, Madhya Pradesh, Maharashtra, Nagaland, Manipur, Mizoram and Tripura, Tamil Nadu Puducherry & Karaikal and Uttarakhand.
- Squally wind with speed reaching 45 kmph to 55 kmph gusting to 65 kmph is likely to prevail along and off Somalia, Oman coasts, most parts of westcentral Arabian sea, adjoining & some parts of southwest, eastcentral Arabian Sea.
- Squally weather with wind speed reaching 40 - 50 kmph gusting to 60 kmph likely to prevail along and off Konkan, Goa coasts, and most parts of eastcentral Arabian Sea & adjoining parts of southeast Arabian Sea & Lakshadweep area; along and off north Andhra Pradesh, off Odisha, coast, over most parts of, central adjoining north Bay of Bengal, over most parts of southwest Bay of Bengal and adjoining southeast Bay of Bengal.
- Squally wind with speed reaching 45 - 55 kmph gusting to 65 kmph likely to prevail Gulf of Mannar adjoining Comorin area.

**\*Red color warning does not mean "Red Alert" Red color warning means "Take Action"**

**Forecast and warning for any day is valid from 0830 hours IST of day till 0830 hours IST of next day**

**For more details kindly visit <https://mausam.imd.gov.in> or contact 011-2434-4599**

**(Service to the nation since 1875)**



### 30 August (Day 4)

❖ **Heavy Rainfall** likely at isolated places over Arunachal Pradesh, Bihar, Chhattisgarh, Coastal Karnataka, Gujarat Region, Haryana, Chandigarh & Delhi, Himachal Pradesh, Jammu-Kashmir-Ladakh-Gilgit-Baltistan-Muzaffarabad, Jharkhand, Konkan & Goa, Madhya Maharashtra, Madhya Pradesh, Nagaland, Manipur, Mizoram and Tripura, Odisha, Punjab, Rajasthan, Uttarakhand and Vidarbha.

❖ **Thunderstorm accompanied with lightning & gusty winds(30-40kmph)** likely at isolated places over Bihar, Gujarat State, Jharkhand and Telangana.

❖ **Thunderstorm accompanied with Lightning** likely at isolated places over Assam & Meghalaya, Chhattisgarh, Coastal Andhra Pradesh, Gangetic West Bengal, Madhya Pradesh, Nagaland, Manipur, Mizoram and Tripura, Uttarakhand and Vidarbha.

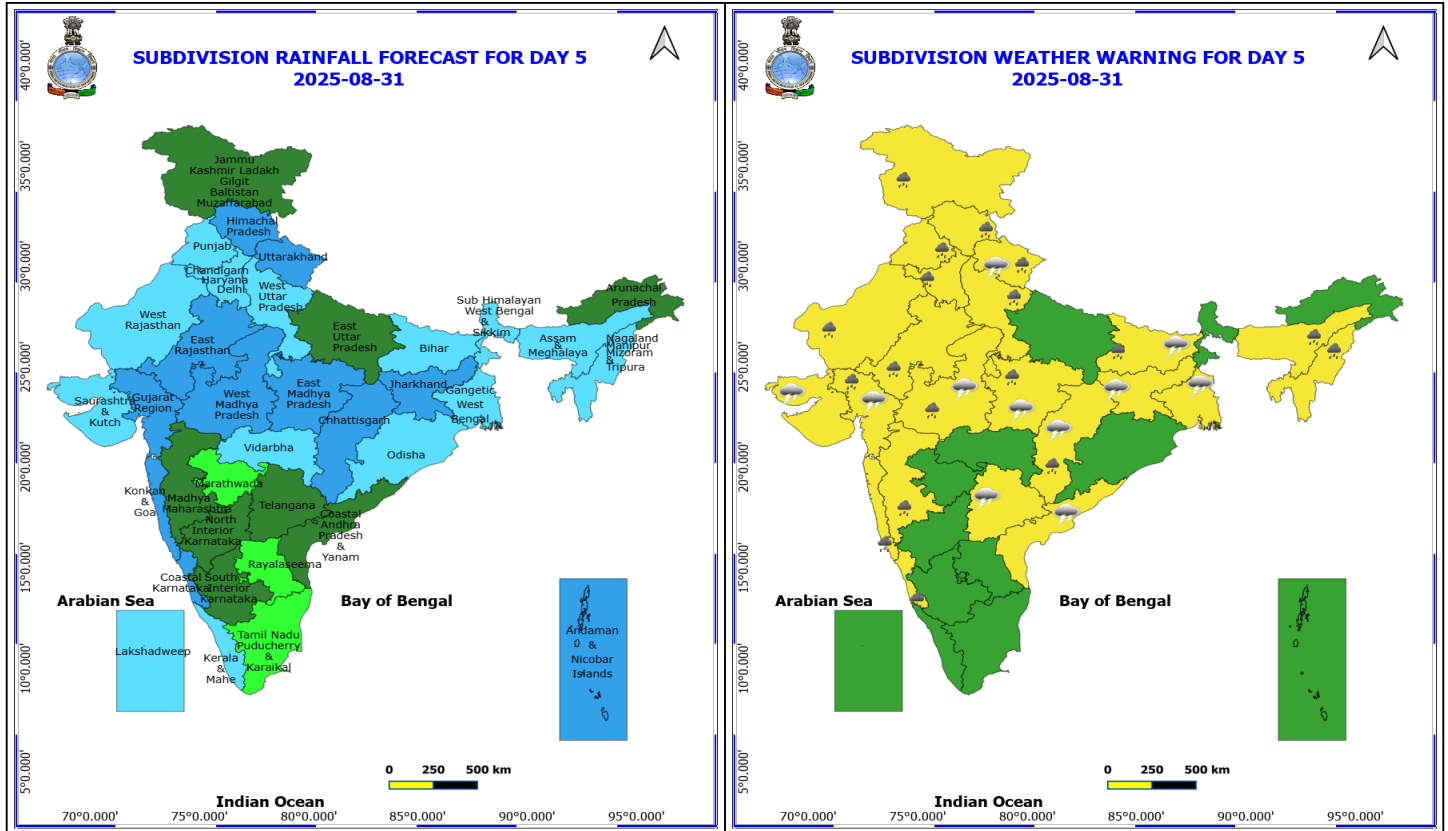
- Squally wind with speed reaching 45 kmph to 55 kmph gusting to 65 kmph is likely to prevail along and off Somalia, Oman coasts, most parts of westcentral Arabian sea, adjoining & some parts of southwest, eastcentral Arabian Sea.
- Squally weather with wind speed reaching 40 - 50 kmph gusting to 60 kmph likely to prevail over some parts of eastcentral Arabian Sea, off north Andhra Pradesh coast & Odisha coast, over few parts of northwest, many parts of westcentral, southwest Bay of Bengal, off Sri Lanka coast.

**\*Red color warning does not mean "Red Alert" Red color warning means "Take Action"**

Forecast and warning for any day is valid from 0830 hours IST of day till 0830 hours IST of next day

For more details kindly visit <https://mausam.imd.gov.in> or contact 011-2434-4599

(Service to the nation since 1875)



### 31 August (Day 5)

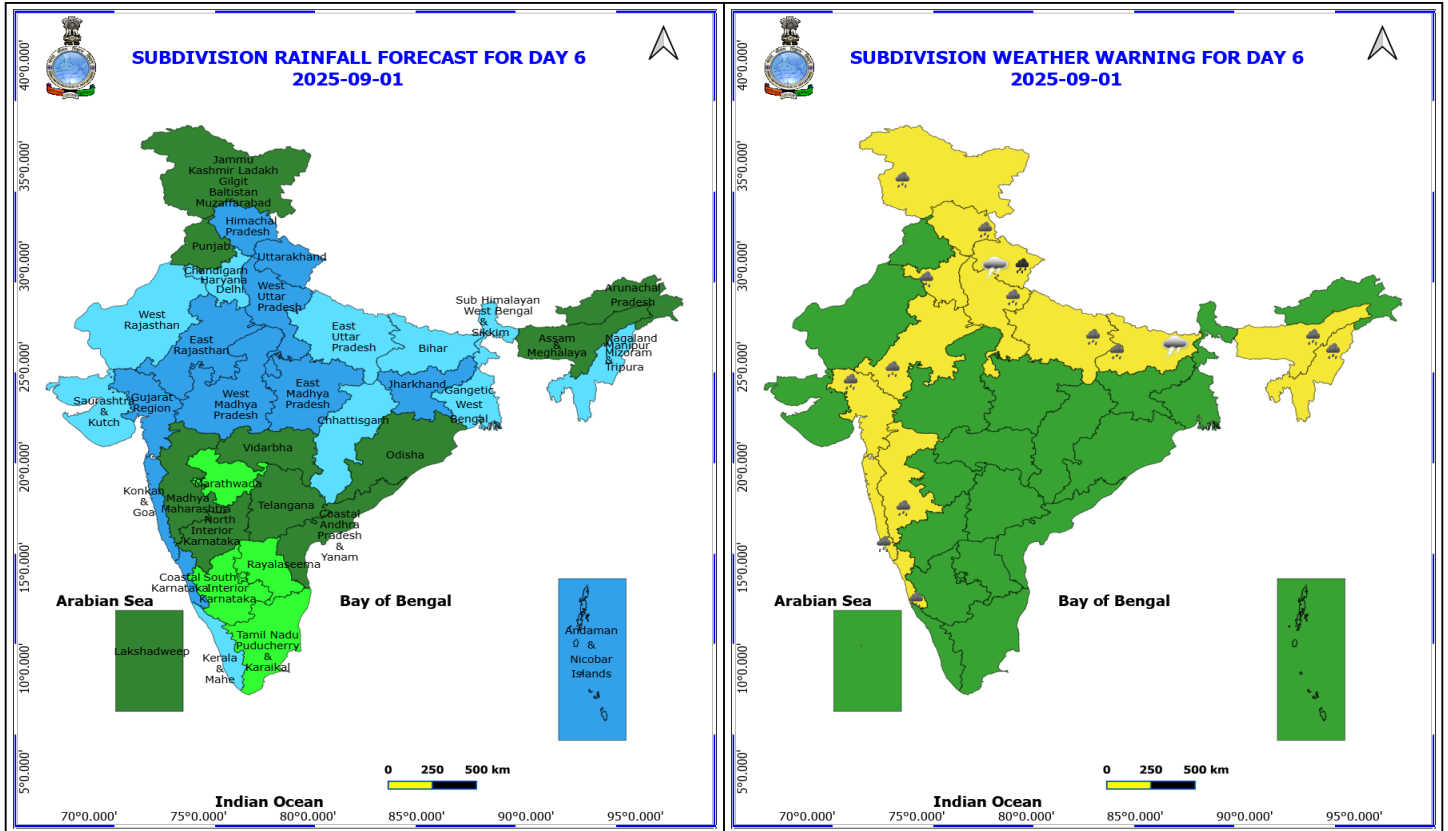
- ❖ **Heavy Rainfall** likely at isolated places over Assam & Meghalaya, Bihar, Chhattisgarh, Coastal Karnataka, Gujarat Region, Haryana, Chandigarh & Delhi, Himachal Pradesh, Jammu-Kashmir-Ladakh-Gilgit-Baltistan-Muzaffarabad, Konkan & Goa, Madhya Maharashtra, Madhya Pradesh, Nagaland, Manipur, Mizoram and Tripura, Punjab, Rajasthan, Uttarakhand and West Uttar Pradesh.
- ❖ **Thunderstorm accompanied with lightning & gusty winds(30-40kmph)** likely at isolated places over Bihar, Gujarat State, Jharkhand and Telangana.
- ❖ **Thunderstorm accompanied with Lightning** likely at isolated places over Chhattisgarh, Coastal Andhra Pradesh, Gangetic West Bengal, Madhya Pradesh and Uttarakhand.
- Squally wind with speed reaching 45 kmph to 55 kmph gusting to 65 kmph is likely to prevail along and off Somalia, Oman coasts, most parts of westcentral Arabian sea, adjoining & some parts of southwest, eastcentral Arabian Sea.
- Squally weather with wind speed reaching 40 - 50 kmph gusting to 60 kmph likely to prevail off north Andhra Pradesh coast, many parts of westcentral & southwest Bay of Bengal, off Sri Lanka coast.

**\*Red color warning does not mean "Red Alert" Red color warning means "Take Action"**

Forecast and warning for any day is valid from 0830 hours IST of day till 0830 hours IST of next day

For more details kindly visit <https://mausam.imd.gov.in> or contact 011-2434-4599

(Service to the nation since 1875)



## 1 September (Day 6)

- ❖ **Heavy to Very Heavy Rainfall** likely at isolated places over Uttarakhand.
- ❖ **Heavy Rainfall** likely at isolated places over Assam & Meghalaya, Bihar, Coastal Karnataka, East Rajasthan, Gujarat Region, Haryana, Chandigarh & Delhi, Himachal Pradesh, Jammu-Kashmir-Ladakh-Gilgit-Baltistan-Muzaffarabad, Konkan & Goa, Madhya Maharashtra, Nagaland, Manipur, Mizoram and Tripura and Uttar Pradesh.
- ❖ **Thunderstorm accompanied with lightning & gusty winds(30-40kmph)** likely at isolated places over Bihar.
- ❖ **Thunderstorm accompanied with Lightning** likely at isolated places over Uttarakhand.

**No Fishermen Warning**

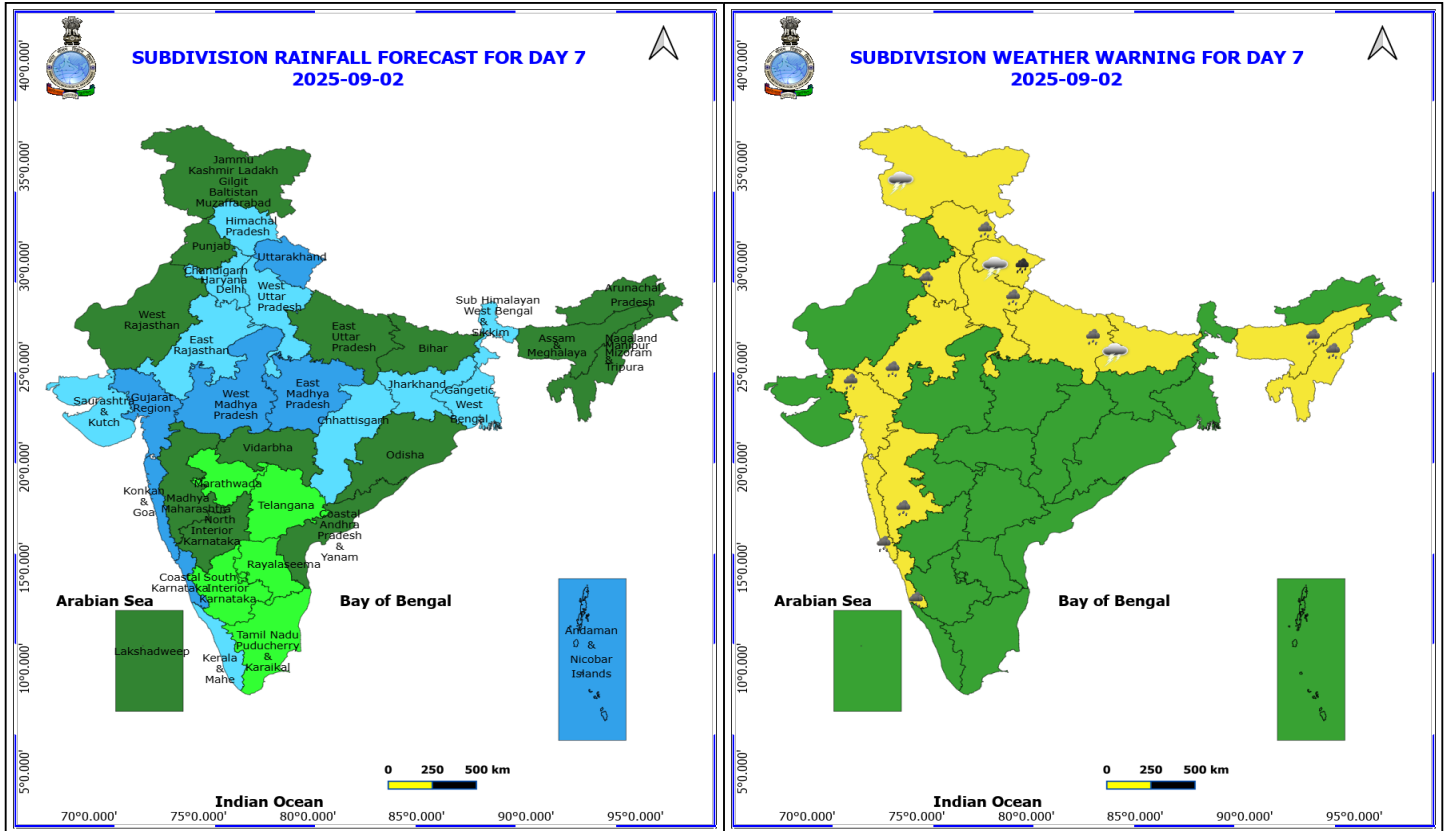
**\*Red color warning does not mean "Red Alert" Red color warning means "Take Action"**

Forecast and warning for any day is valid from 0830 hours IST of day till 0830 hours IST of next day

For more details kindly visit <https://mausam.imd.gov.in> or contact 011-2434-4599

(Service to the nation since 1875)





## 2 September (Day 7)

- ❖ **Heavy Rainfall** likely at isolated places over Assam & Meghalaya, Bihar, Chhattisgarh, Coastal Karnataka, Gujarat Region, Haryana, Chandigarh & Delhi, Himachal Pradesh, Jammu-Kashmir-Ladakh-Gilgit-Baltistan-Muzaffarabad, Konkan & Goa, Madhya Maharashtra, Madhya Pradesh, Nagaland, Manipur, Mizoram and Tripura, Punjab, Rajasthan, Uttarakhand and West Uttar Pradesh.
- ❖ **Thunderstorm accompanied with lightning & gusty winds(30-40kmph)** likely at isolated places over Bihar, Gujarat State, Jharkhand and Telangana.
- ❖ **Thunderstorm accompanied with Lightning** likely at isolated places over Chhattisgarh, Coastal Andhra Pradesh, Gangetic West Bengal, Madhya Pradesh and Uttarakhand.

**No Fishermen Warning**

\*Red color warning does not mean "Red Alert" Red color warning means "Take Action"

Forecast and warning for any day is valid from 0830 hours IST of day till 0830 hours IST of next day

For more details kindly visit <https://mausam.imd.gov.in> or contact 011-2434-4599

(Service to the nation since 1875)

## Flash Flood Warnings

### 24 hours Outlook for the Flash Flood Risk (FFR) till 1130 IST of 28-08-2025:

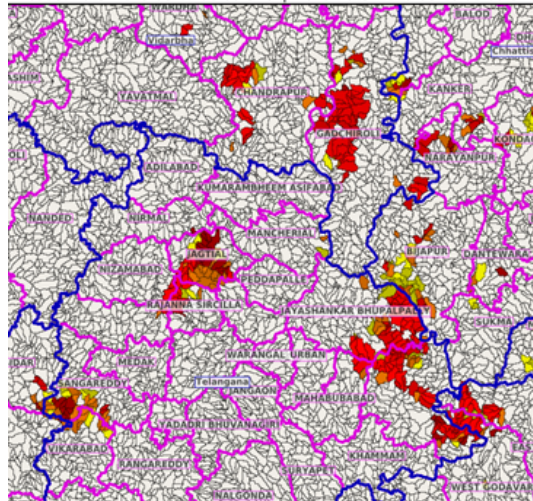
**Low to Moderate flash flood risk** likely over few watersheds & neighbourhoods of following Met Sub-divisions during next 24 hours.

**Telangana** - B. Kothagudem, J. Bhupalpally, Jagtial, Kamareddy, Karimnagar, Mahabubabad, Mancherial, Nirmal, Nizamabad, Rajanna Sircilla, Sangareddy and Vikarabad districts.

**Vidarbha** - Chandrapur, Gadchiroli and Wardha districts.

Surface runoff/ Inundation may occur at some fully saturated soils & low-lying areas over Area of Concern (AoC) as shown in map due to expected rainfall occurrence in next 24 hours

Product: NCUM FFR | Timescale: 24-hr | Region: "INDIA"  
Product Date: 2025-08-27 06:00 UTC | Valid Date: 2025-08-28 06:00 UTC



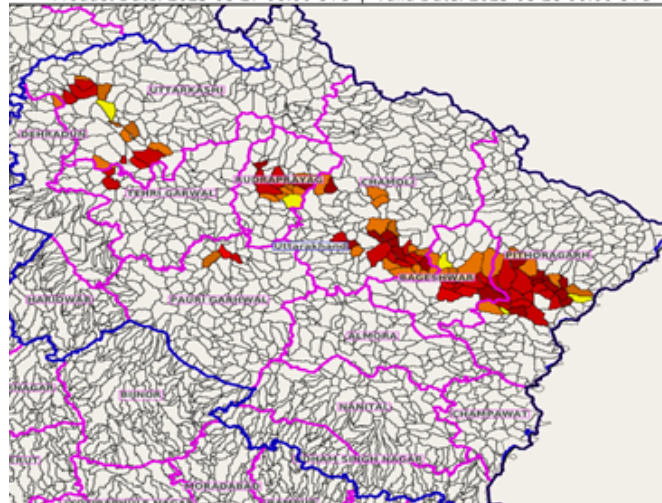
### 24 hours Outlook for the Flash Flood Risk (FFR) till 1130 IST of 28-08-2025 :

**Low to Moderate flash flood risk** likely over few watersheds & neighbourhoods of following Met Sub-divisions during next 24 hours.

**Uttarakhand** - Bageshwar, Chamoli, Pauri Garhwal, Pithoragarh, Rudraprayag, Tehri Garwal and Uttarkashi districts.

Surface runoff/ Inundation may occur at some fully saturated soils & low-lying areas over Area of Concern (AoC) as shown in map due to expected rainfall occurrence in next 24 hours.

Product: NCUM FFR | Timescale: 24-hr | Region: "INDIA"  
Product Date: 2025-08-27 06:00 UTC | Valid Date: 2025-08-28 06:00 UTC



\*Red color warning does not mean "Red Alert" Red color warning means "Take Action"

Forecast and warning for any day is valid from 0830 hours IST of day till 0830 hours IST of next day

For more details kindly visit <https://mausam.imd.gov.in> or contact 011-2434-4599

(Service to the nation since 1875)



# Table-1

## 7 Days Rainfall Forecast

S.No.	Subdivision	27- Aug	28- Aug	29- Aug	30- Aug	31- Aug	1- Sep	2- Sep
		Day 1	Day 2	Day 3	Day 4	Day 5	Day 6	Day 7
1	ANDAMAN & NICOBAR ISLANDS	FWS	FWS	FWS	WS	WS	WS	WS
2	ARUNACHAL PRADESH	SCT	FWS	WS	FWS	SCT	SCT	SCT
3	ASSAM & MEHGHALAYA	FWS	WS	WS	FWS	FWS	SCT	SCT
4	N. M. M. & T.	SCT	FWS	FWS	FWS	FWS	FWS	SCT
5	S.H. WEST BENGAL & SIKKIM	WS	WS	WS	WS	FWS	FWS	FWS
6	GANGETIC WEST BENGAL	FWS	FWS	FWS	WS	FWS	FWS	FWS
7	ODISHA	WS	WS	FWS	FWS	FWS	SCT	SCT
8	JHARKHAND	ISOL	SCT	FWS	WS	WS	WS	FWS
9	BIHAR	ISOL	SCT	SCT	FWS	FWS	FWS	SCT
10	EAST UTTAR PRADESH	ISOL	ISOL	ISOL	SCT	SCT	FWS	SCT
11	WEST UTTAR PRADESH	ISOL	ISOL	SCT	FWS	FWS	WS	FWS
12	UTTARAKHAND	FWS	WS	WS	WS	WS	WS	WS
13	HARYANA, CHD & DELHI	SCT	SCT	FWS	FWS	FWS	FWS	FWS
14	PUNJAB	SCT	SCT	FWS	FWS	FWS	SCT	SCT
15	HIMACHAL PRADESH	SCT	FWS	WS	WS	WS	WS	FWS
16	JAMMU AND KASHMIR AND LADAKH	FWS	SCT	SCT	SCT	SCT	SCT	SCT
17	WEST RAJASTHAN	SCT	SCT	SCT	FWS	FWS	FWS	SCT
18	EAST RAJASTHAN	FWS	FWS	FWS	FWS	WS	WS	FWS
19	WEST MADHYA PRADESH	FWS	FWS	FWS	WS	WS	WS	WS
20	EAST MADHYA PRADESH	FWS	FWS	WS	WS	WS	WS	WS
21	GUJRAT REGION	WS	WS	WS	WS	WS	WS	WS
22	SAURASHTRA & KUTCH	SCT	SCT	FWS	FWS	FWS	FWS	SCT
23	KONKAN & GOA	WS	WS	WS	WS	WS	WS	WS
24	MADHYA MAHARASHTRA	FWS	FWS	FWS	SCT	SCT	SCT	SCT
25	MARATHWADA	FWS	FWS	SCT	ISOL	ISOL	ISOL	ISOL
26	VIDARBHA	WS	WS	WS	FWS	FWS	SCT	SCT
27	CHATTISGARH	WS	WS	WS	WS	WS	FWS	FWS
28	COASTAL ANDHRA PRADESH	WS	FWS	SCT	SCT	SCT	SCT	SCT
29	TELANGANA	WS	WS	FWS	SCT	SCT	SCT	ISOL
30	RAYALASEEMA	WS	SCT	ISOL	ISOL	ISOL	ISOL	ISOL
31	TAMILNADU & PUDUCHERRY	SCT	ISOL	ISOL	ISOL	ISOL	ISOL	ISOL
32	COSTAL KARNATAKA	WS	WS	WS	WS	WS	WS	WS
33	NORTH INTERIOR KARNATAKA	WS	WS	FWS	SCT	SCT	SCT	SCT
34	SOUTH INTERIOR KARNATAKA	WS	FWS	FWS	SCT	SCT	ISOL	ISOL
35	KERALA	WS	WS	WS	FWS	FWS	FWS	FWS
36	LAKSHDWEEP	WS	WS	WS	FWS	FWS	SCT	SCT

Legend	Category	%Stations
WS	Widespread/Most Places	76-100
FWS	Fairly Widespread/Many Places	51-75
SCT	Scattered/ A Few Places	26-50
ISOL	Isolated Places	1-25
DRY	No Rain	0

\*Red color warning does not mean "Red Alert" Red color warning means "Take Action"

Forecast and warning for any day is valid from 0830 hours IST of day till 0830 hours IST of next day

For more details kindly visit <https://mausam.imd.gov.in> or contact 011-2434-4599

(Service to the nation since 1875)



Fig. 1: Maximum Temperatures Dated 2025-08-27

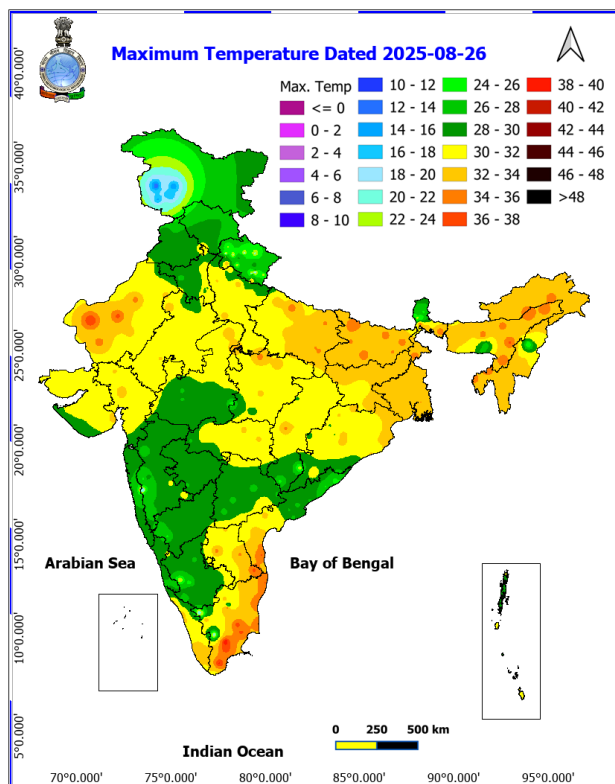


Fig. 2: Departure of Maximum Temp. Dated 2025-08-27

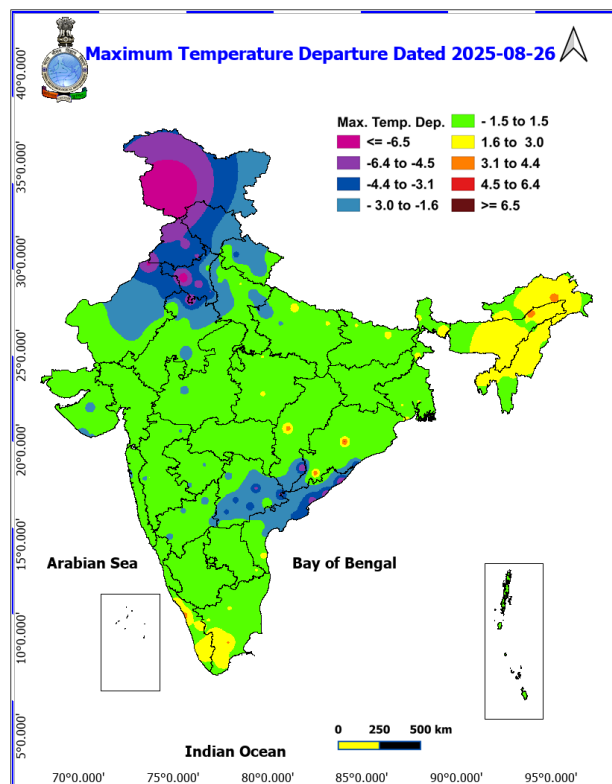


Fig. 3: Minimum Temperatures Dated 2025-08-27

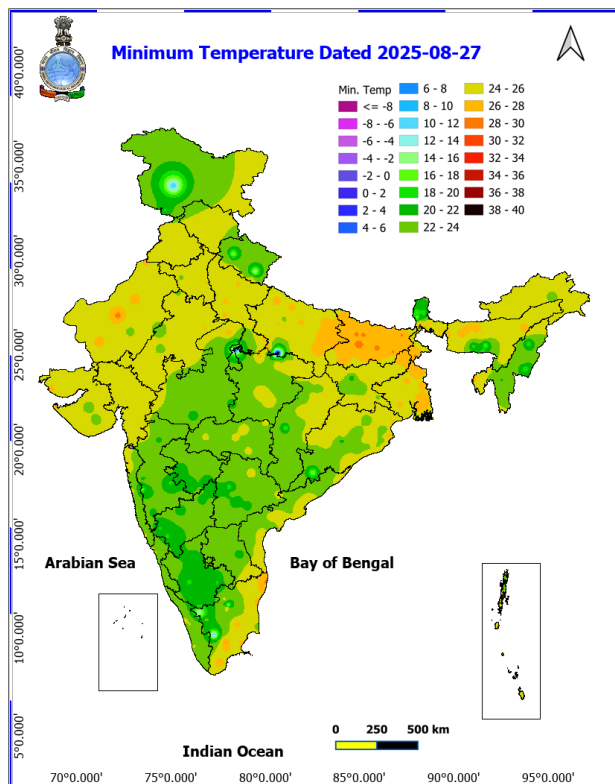
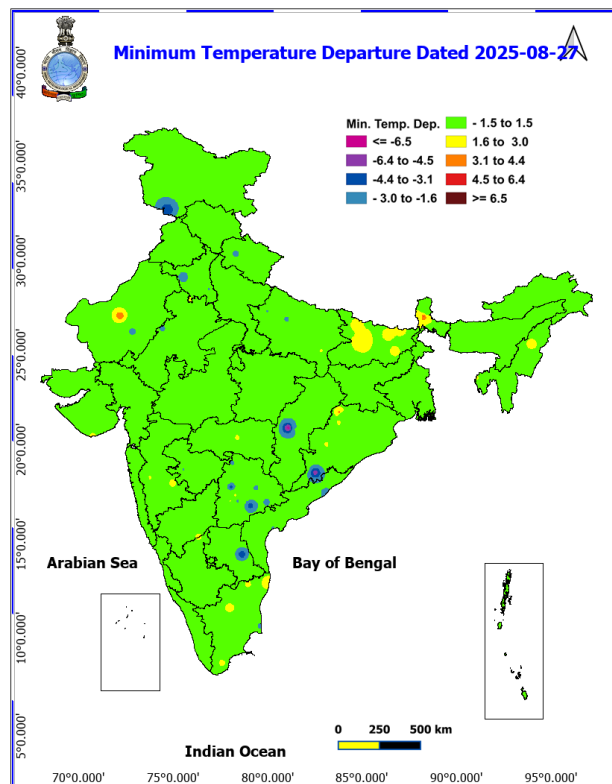
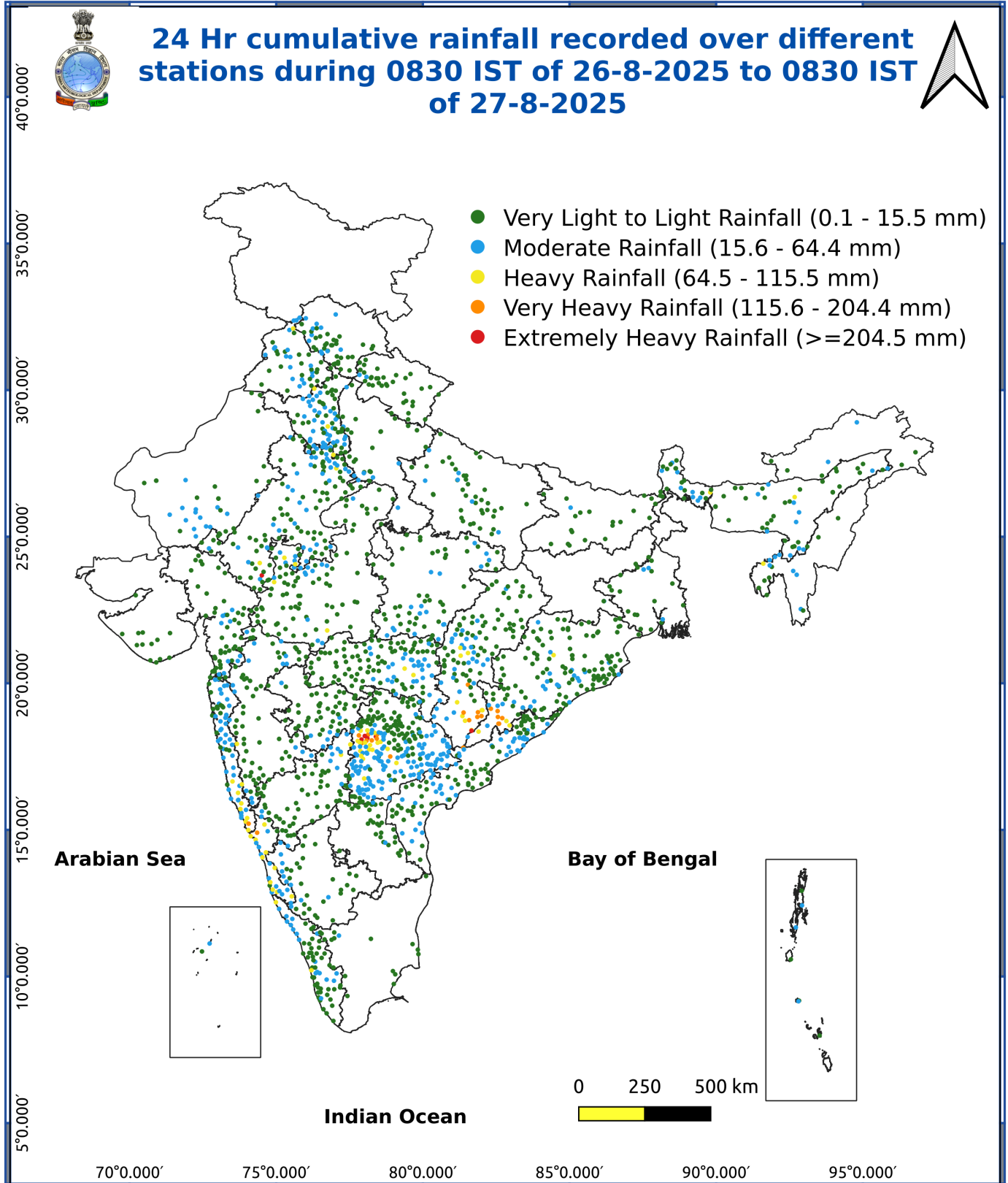


Fig. 4: Departure of Minimum Temp. Dated 2025-08-27





\*Red color warning does not mean "Red Alert" Red color warning means "Take Action"

Forecast and warning for any day is valid from 0830 hours IST of day till 0830 hours IST of next day

For more details kindly visit <https://mausam.imd.gov.in> or contact 011-2434-4599

(Service to the nation since 1875)



### Impact & Action Suggested due to

**Isolated Extremely heavy rainfall** likely over Coastal Karnataka and Telangana on 27<sup>th</sup> August.

Isolated **very heavy rainfall** over Chhattisgarh, Coastal Karnataka, ghat areas of Madhya Maharashtra on 27<sup>th</sup> & 28<sup>th</sup>; Odisha, Coastal Andhra Pradesh & Yanam, Telangana, Kerala, Konkan on 27<sup>th</sup>, Uttarakhand on 28<sup>th</sup> & 29<sup>th</sup> August, 01<sup>st</sup> & 02<sup>nd</sup> September.

### Impact Expected

Localized Flooding of roads, water logging in low lying areas and closure of underpasses mainly in urban areas of the above region.

Occasional reduction in visibility due to heavy rainfall.

Disruption of traffic in major cities due to water logging in roads leading to increased travel time.

Minor damage to kutcha roads.

Possibilities of damage to vulnerable structure.

Localized Landslides/Mudslides/landslips/mudslips/landsinks/mudsinks.

Damage to horticulture and standing crops in some areas due to inundation.

It may lead to riverine flooding in some river catchments (for riverine flooding please visit Web page of CWC)

### Action Suggested

Check for traffic congestion on your route before leaving for your destination.

Follow any traffic advisories that are issued in this regard.

Avoid going to areas that face the water logging problems often.

Avoid staying in vulnerable structure.

### Agromet advisories for various parts of the country

#### Agromet advisories for likely impact of Heavy / Heavy to Very Heavy / Extremely Heavy Rainfall

(Based on the IBF and advisories issued by different AMFUs)

In **Jammu and Kashmir**, drain out excess rain water from fields of rice, maize, pulses and vegetables in **Sub Tropical Zone** and maize, *kharif* pulses, rice and vegetables in **Intermediate Zone**. In **Valley Temperate Zone**, ensure proper drainage in fields of maize, kidney beans and vegetables and maintain a thin layer of water in rice fields.

In **Himachal Pradesh**, maintain proper drainage channels in ginger, turmeric and maize fields in **Mid Hills Sub Humid**

**\*Red color warning does not mean "Red Alert" Red color warning means "Take Action"**

Forecast and warning for any day is valid from 0830 hours IST of day till 0830 hours IST of next day

For more details kindly visit <https://mausam.imd.gov.in> or contact 011-2434-4599

(Service to the nation since 1875)

**Zone** and rice, maize and vegetable fields in **Sub Montane and Low Hills Sub Tropical Zone**. In **High Hills Sub Temperate Wet Zone**, postpone transplanting of cauliflower, cabbage and broccoli seedlings and make proper drainage channels in fields of maize, finger millet and vegetables to avoid water stagnation.

In **Uttarakhand**, maintain proper drainage channels in fields of barnyard millet, finger millet and green gram in **Sub Humid Sub Tropic Zone** and rice, green gram, black gram, sugarcane, maize, groundnut, finger millet and vegetables in **Bhabar and Tarai Zone**. In **Hill Zone**, postpone sowing of vegetable pea and radish and provide proper drainage in fields of finger millet and kidney beans.

In **Punjab**, drain out excess water from fields of sugarcane and green gram and maintain proper drainage in chilli fields and remove stagnant rainwater immediately after rainfall in **Undulating Plain Zone**.

In **Haryana**, to prevent waterlogging make arrangements to drain out excess water from fields of cotton, pearl millet, green gram and cluster bean in **Western Zone** and sugarcane, cotton, maize, pearl millet and vegetables in **Eastern Zone**.

In **Odisha**, make provision for draining out excess rain water from fields of rice, black gram, green gram, pigeon pea, maize, groundnut and vegetables in **Eastern Ghat High Land Zone and South Eastern Ghat Zone** and rice, maize, pigeon pea, and vegetables in **North Eastern Ghat Zone**.

In **Chhattisgarh**, ensure proper drainage in fields of rice, minor millets, maize, pulses and oilseeds in **Bastar Plateau Zone** and groundnut, black gram, soybean, pigeon pea and vegetables in **Chattisgarh Plain Zone**.

In **Kerala**, ensure adequate drainage facilities in rice nursery and standing crop fields. Provide support to banana plants.

In **Karnataka**, provide adequate drainage facilities in rice fields and plantations of arecanut and banana in **Coastal Zone** and fields of rice, maize, cotton, ginger and plantations of arecanut in **Hill Zone**.

In **Coastal Andhra Pradesh**, make arrangements for draining excess water from fields of maize, green gram, groundnut, mesta and cotton in **North Coastal Zone** and maize, groundnut, finger millet, ginger, turmeric and vegetables in **High Altitude Tribal Zone**.

In **Telangana**, drain out excess water from fields of rice, cotton, maize, soybean, pigeon pea, turmeric and vegetables in **Northern Telangana Zone** and rice, cotton, soybean, maize and pigeon pea in **Southern Telangana Zone**.

In **Maharashtra**, make arrangements to drain out excess water from fields of rice, finger millet, turmeric, groundnut, vegetables and fruit orchards in **Konkan**; rice, maize, groundnut, soybean, vegetable fields and fruit orchards in *ghat* areas of Madhya Maharashtra and rice, cotton, pigeon pea, soybean, vegetables and fruit orchards in **East Vidarbha**.

### Livestock / Fishery

Keep the animals inside the shed during heavy rainfall and provide them balanced feed.

Store feed and fodder in a safe place to prevent spoilage.

Construct an outlet with proper netting around the ponds to drain out excess water, thereby preventing fish from escaping in case of overflow.

**Agromet advisories for likely impact of Thunderstorm / Gusty Winds / Squally Winds**

**\*Red color warning does not mean "Red Alert" Red color warning means "Take Action"**

**Forecast and warning for any day is valid from 0830 hours IST of day till 0830 hours IST of next day**

**For more details kindly visit <https://mausam.imd.gov.in> or contact 011-2434-4599**

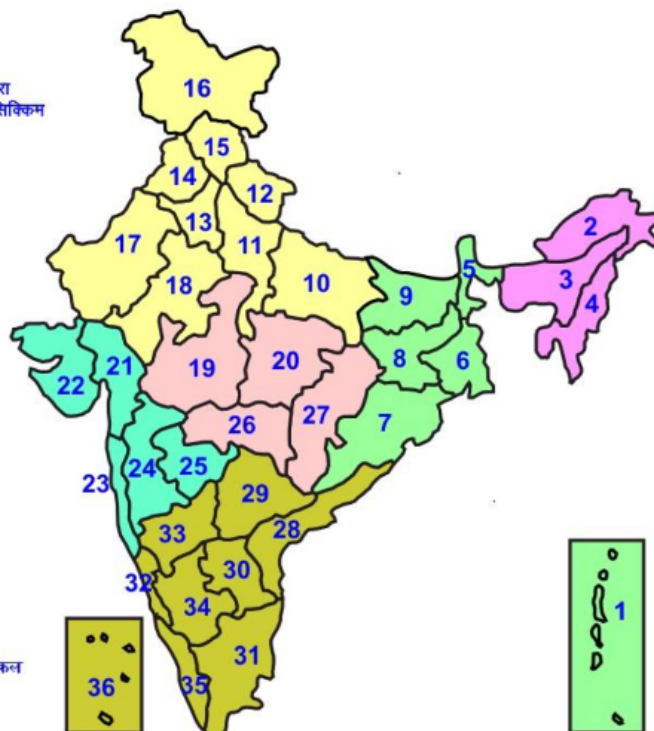
**(Service to the nation since 1875)**

**(Based on the IBF and advisories issued by different AMFUs)**

Provide mechanical support to horticultural crops and staking or support to vegetables and young fruit plants / fruit-bearing plants to avoid lodging due to strong winds.

## LEGENDS

- 1 अंडमान और निकोबार द्वीप समुह
- 2 अरुणाचल प्रदेश
- 3 असम और मेघालय
- 4 नागालैंड मनीपुर मीजोरम और त्रिपुरा
- 5 उप हिमालय पश्चिम बंगाल एवं सिक्किम
- 6 पश्चिम बंगाल
- 7 ओडिसा
- 8 झारखंड
- 9 बिहार
- 10 पूर्वी उत्तर प्रदेश
- 11 पश्चिम उत्तर प्रदेश
- 12 उत्तराखंड
- 13 हरियाणा चंडीगढ़ एवं दिल्ली
- 14 पंजाब
- 15 हिमाचल प्रदेश
- 16 जम्मू एवं कश्मीर एवं लद्दाख
- 17 पश्चिम राजस्थान
- 18 पूर्वी राजस्थान
- 19 पश्चिम मध्य प्रदेश
- 20 पूर्वी मध्य प्रदेश
- 21 गुजरात क्षेत्र
- 22 सौराष्ट्र एवं कच्छ
- 23 कोंकण एवं गोवा
- 24 मध्य महाराष्ट्र
- 25 मराठावाड़ा
- 26 विदर्भ
- 27 छत्तीसगढ़
- 28 तटीय आंध्र प्रदेश एवं यनम
- 29 तेलंगाना
- 30 रायलसीमा
- 31 तमिलनाडु, पुदुचेरी एवं कराईकल
- 32 तटिय कर्नाटक
- 33 आंतरिक उत्तरी कर्नाटक
- 34 आंतरिक दक्षिणी कर्नाटक
- 35 केरल एवं माहे
- 36 लक्षद्वीप



1. Andaman & Nicobar Islands
2. Arunachal Pradesh
3. Assam & Meghalaya
4. Nagaland, Manipur, Mizoram & Tripura
5. Sub-Himalayan West Bengal & Sikkim
6. Gangetic West Bengal
7. Orissa
8. Jharkhand
9. Bihar
10. East Uttar Pradesh
11. West Uttar Pradesh
12. Uttarakhand
13. Haryana, Chd & Delhi
14. Punjab
15. Himachal Pradesh
16. Jammu & Kashmir and Ladakh
17. West Rajasthan
18. East Rajasthan
19. West Madhya Pradesh
20. East Madhya Pradesh
21. Gujarat
22. Saurashtra
23. Konkan & Goa
24. Madhya Maharashtra
25. Marathwada
26. Vidharbha
27. Chhattisgarh
28. Coastal Andhra Pradesh & Yanam
29. Telangana
30. Rayalaseema
31. Tamilnadu, Puducherry & Karaikal
32. Coastal Karnataka
33. North Interior Karnataka
34. South Interior Karnataka
35. Kerala & Mahe
36. Lakshadweep

## SPATIAL DISTRIBUTION (% of Stations reporting)


% Stations	Category	% Stations	Category
76-100	Widespread (WS/Most Places)	26-50	Scattered (SCT/ A Few Places)
51-75	Fairly Widespread (FWS/ Many Places)	1-25	Isolated (ISOL)


## Subdivision Colour


- NO WARNING
- WATCH (BE UPDATED)
- ALERT (BE PREPARED TO TAKE ACTION)
- WARNING (TAKE ACTION)


## Probabilistic Forecast


Terms	Probability of Occurrence (%)
Unlikely	< 25
Likely	25 - 50
Very Likely	50 - 75
Most Likely	> 75


-  Heavy Rain


 Thunderstorm & Lightning


 Strong surface winds


 Cold Wave


 Hot & Humid


 Very Heavy Rain


 Hailstorm

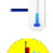
 Heat Wave


 Cold Day


 Extremely Heavy Rain


 Dust Storm


 Hot Day

 Ground Frost

 Heavy Snow

 Dust Raising Winds

 Warm Night

 Fog

\*Red color warning does not mean "Red Alert" Red color warning means "Take Action"

Forecast and warning for any day is valid from 0830 hours IST of day till 0830 hours IST of next day

For more details kindly visit <https://mausam.imd.gov.in> or contact 011-2434-4599

(Service to the nation since 1875)



## LEGENDS

### WARNING

<b>WARNING (TAKE ACTION)</b>
<b>ALERT (BE PREPARED)</b>
<b>WATCH (BE UPDATED)</b>
<b>NO WARNING (NO ACTION)</b>

### Probabilistic Forecast

Terms	Probability of Occurrence (%)
Unlikely	< 25
Likely	25 - 50
Very Likely	50 - 75
Most Likely	> 75



Heavy: 64.5 to 115.5 mm/cm \*  
Very Heavy: 115.6 to 204.4 mm/cm \*  
Extremely Heavy: > 204.4 mm/cm \*



When maximum temperature of a station reaches  $\geq 40^{\circ}\text{C}$  for plains and  $\geq 30^{\circ}\text{C}$  for hilly regions  
(a) Based on Departure from normal

Heat Wave: Maximum Temperature Departure from normal  $4.5^{\circ}\text{C}$  to  $6.4^{\circ}\text{C}$ .  
Severe Heat Wave: Maximum Temperature Departure from normal  $\geq 6.5^{\circ}\text{C}$

(b). Based on Actual maximum temperature

Heat Wave: When actual maximum temperature  $\geq 45^{\circ}\text{C}$ .  
Severe Heat Wave: When actual maximum temperature  $\geq 47^{\circ}\text{C}$

(c). Criteria for heat wave for coastal stations

When maximum temperature departure is  $> 4.5^{\circ}\text{C}$  from normal. Heat Wave may be described provided maximum temperature  $\geq 37^{\circ}\text{C}$



When maximum temperature remains  $40^{\circ}\text{C}$

Warm Night: When minimum temperature departure  $4.5^{\circ}\text{C}$  to  $6.4^{\circ}\text{C}$ .  
Severe Warm Night: When minimum temperature departure  $> 6.4^{\circ}\text{C}$ .



When minimum temperature of a station  $\leq 10^{\circ}\text{C}$  for plains and  $\leq 0^{\circ}\text{C}$  for hilly regions.

(a). Based on departure

Cold Wave: Minimum Temperature Departure from normal  $-4.5^{\circ}\text{C}$  to  $-6.4^{\circ}\text{C}$ .  
Severe Cold Wave: Minimum Temperature Departure from normal  $\leq -6.5^{\circ}\text{C}$

(b) Based on actual Minimum Temperature (for Plains only)

Cold Wave: When Minimum Temperature is  $\leq 4.0^{\circ}\text{C}$   
Severe Cold Wave: When Minimum Temperature is  $\leq 2.0^{\circ}\text{C}$

(c) For Coastal Stations

When Minimum Temperature departure is  $\leq -4.5^{\circ}\text{C}$  & actual Minimum Temperature is  $\leq 15^{\circ}\text{C}$



When minimum temperature of a station  $\leq 10^{\circ}\text{C}$  for plains and  $\leq 0^{\circ}\text{C}$  for hilly regions  
Based on departure

Cold Day: Maximum Temperature Departure from normal  $-4.5^{\circ}\text{C}$  to  $-6.4^{\circ}\text{C}$ .  
Severe Cold Day: Maximum Temperature Departure from normal  $\leq -6.5^{\circ}\text{C}$



Phenomenon of small droplets suspended in air and the horizontal visibility  $< 1\text{km}$

Moderate Fog: When the visibility between 500-200 metres  
Dense Fog: when the visibility between 50-200 metres  
Very Dense Fog: when the visibility  $< 50$  metres



Sudden electrical discharges manifested by a flash of light (Lightning) and a sharp rumbling sound (thunder)



An ensemble of particles of dust or sand energetically lifted to great heights by a strong and turbulent wind.



Ice deposits on ground

Air temperature  $\leq 4^{\circ}\text{C}$  (over Plains)



A strong wind that rises suddenly, lasts for at least 1 minute.

Moderate: Wind speed 52-61 kmph  
Severe: Wind speed 62-87 kmph  
Very Severe: Wind speed  $> 87$  kmph



Effect of various waves in the sea over specific area

Rough to very rough: Wind speed 41-62 kmph (22-33 knots) & Wave height 2.5-6 metre  
High to very high: Wind speed 63-117 kmph (34-63 knots) & Wave height 6-14 metre  
Phenomenal: Wind speed  $> 117$  kmph ( $> 63$  knots) & Wave height  $> 14$  metre



Cyclonic Storm: Wind speed 62-87 kmph (34-47 knots)

Severe Cyclonic Storm: Wind speed 88-117 kmph (48-63 knots)  
Very Severe Cyclonic Storm: Wind speed 118-165 kmph (64-89 knots)  
Extremely Severe Cyclonic Storm: Wind speed 166-220 kmph (90-119 knots)  
Super Cyclone Storm: Wind speed  $> 220$  kmph ( $> 119$  knots)

\*Red color warning does not mean "Red Alert" Red color warning means "Take Action"

Forecast and warning for any day is valid from 0830 hours IST of day till 0830 hours IST of next day

For more details kindly visit <https://mausam.imd.gov.in> or contact 011-2434-4599

(Service to the nation since 1875)