

2026-05-31

Time of Issue: 13:52:00 hours IST
(Mid-Day)

ALL INDIA WEATHER SUMMARY AND FORECAST BULLETIN

Significant Weather Features

Advance of Southwest Monsoon 2026:

- The **Northern Limit of Monsoon** continues to pass through 10°N/60°E, 9°/65°E, 8.5°N/70°E, 8°N/75°E, 7.8°N/78°E, 8°N/80°E, 10°N/80°E, 13°N/87°E, 16°N/90°E, 19°N/93°E and 22°N/97°E .
- **Conditions are favourable for further advance of southwest monsoon** into some more parts of southwest & southeast Arabian Sea, Lakshadweep Islands, some parts of Kerala & Tamil Nadu, some more parts of southwest, westcentral, eastcentral & northeast Bay of Bengal, and remaining parts of southeast Bay of Bengal during next 4-5 days.

Weather Forecast and Warnings:

Northeast India:

- **Scattered to fairly widespread** light to moderate rainfall likely over the region during the week.
- **Isolated to scattered** light to moderate rainfall with **thunderstorm, lightning & gusty winds (speed reaching 40-50 kmph)** likely over Assam & Meghalaya during 3rd- 6th June.
- **Isolated heavy rainfall** likely over Arunachal Pradesh, on 31st May and during 2nd-6th June; Assam & Meghalaya during 3rd -6th June; Nagaland, Manipur, Mizoram & Tripura on 31st May & 1st June and during 5th - 6th June.

South Peninsular India:

- **Isolated to scattered** light to moderate rainfall with **thunderstorm, lightning & gusty winds (speed reaching 40-50 kmph)** likely over Tamil Nadu, Puducherry & Karaikal during 31st May - 4th June; Kerala & Mahe, Lakshadweep during 31st May - 2nd June; Telangana during 31st May - 6th June; North Interior Karnataka during 31st May - 4th June; South Interior Karnataka on 31st May & 1st June.
- **Thundersquall (wind speed reaching 50-60 kmph gusting to 70 kmph)** likely over Rayalaseema, Coastal Andhra Pradesh & Yanam, Coastal Karnataka during 31st May - 4th June
- **Isolated heavy rainfall** likely over Tamil Nadu, Puducherry & Karaikal during 31st May - 4th June; Kerala & Mahe during 31st May - 2nd June; Lakshadweep during 31st May - 6th June; Coastal Karnataka during 3rd - 6th June; South Interior Karnataka on 31st May & 1st June; with **very heavy rainfall** likely over Kerala & Mahe during 3rd - 6th June

East India:

- **Widespread** light to moderate rainfall with **thunderstorm, lightning & gusty winds (speed reaching 40-50 kmph)** likely over Andaman & Nicobar Islands during 31st May-06th June.
- **Isolated to scattered** light to moderate rainfall with **thunderstorm, lightning & gusty winds (speed reaching 40-50 kmph)** likely over Sub-Himalayan West Bengal & Sikkim on during 01st -06th June; Gangetic West Bengal on 31st May; Bihar on 31st May, 01st & 6th June; Jharkhand during 31st May-06th June, Odisha during 2nd - 6th June.
- **Thundersquall (wind speed reaching 60-70 kmph gusting to 80 kmph)** likely over Odisha on 31st May & 1st June.
- **Thundersquall (wind speed reaching 50-60 kmph gusting to 70 kmph)** likely over Jharkhand on 31st May
- **Isolated heavy rainfall** likely over Bihar, Sub-Himalayan West Bengal & Sikkim during 4th - 6th June; Odisha on 31st May & 01st June
- **Isolated Hailstorm activity** likely over Odisha on 31st May & 1st June.

Northwest India:

*Red color warning does not mean "Red Alert" Red color warning means "Take Action"

Forecast and warning for any day is valid from 0830 hours IST of day till 0830 hours IST of next day

For more details kindly visit <https://mausam.imd.gov.in> or contact 011-2434-4599

(Service to the nation since 1875)

- **Scattered to fairly widespread** light to moderate rainfall with **thunderstorm, lightning & gusty winds (speed reaching 40-50 kmph)** likely over Uttarakhand on 31st May and on 1st, 5th, 6th June
- **Scattered to fairly widespread** light to moderate rainfall with **thunderstorm, lightning & gusty winds (speed reaching 40-50 kmph)** likely over Punjab during 31st May-05th June; Haryana Chandigarh & Delhi during 1st – 4th June; Uttar Pradesh on 1st June; and Rajasthan during next 7 days.
- **Thundersquall (wind speed reaching 70-80 kmph gusting to 90 kmph)** likely over Rajasthan on 31st May.
- **Thundersquall (wind speed reaching 60-70 kmph gusting to 80 kmph)** likely over East Rajasthan on 2nd June.
- **Thundersquall (wind speed reaching 50-60 kmph gusting to 70 kmph)** likely over Jammu-Kashmir on 31st May and during 3rd – 6th June; Himachal Pradesh during 4th – 6th June; Haryana Chandigarh & Delhi on 31st May & 4th June; Uttar Pradesh on 31st May; West Rajasthan on 2nd June; East Rajasthan on 1st June
- **Isolated heavy rainfall** likely over Uttarakhand and adjoining north west Uttar Pradesh on 31st May.
- **Isolated Hailstorm activity** likely over Himachal Pradesh, Uttarakhand, Uttar Pradesh Rajasthan on 31st May
- **Duststorm** very likely at isolated places over Rajasthan on 31st May.

Central India:

- **Isolated to scattered** light to moderate rainfall with **thunderstorm, lightning & gusty winds (speed reaching 40-50 kmph)** likely over East Madhya Pradesh, Vidarbha & Chhattisgarh 2nd – 4th June.
- **Thundersquall (wind speed reaching 70-80 kmph gusting to 90 kmph)** likely over West Madhya Pradesh on 31st May.
- **Thundersquall (wind speed reaching 60-70 kmph gusting to 80 kmph)** likely over East Madhya Pradesh on 31st May.
- **Thundersquall (wind speed reaching 50-60 kmph gusting to 70 kmph)** likely over West Madhya Pradesh during 1st – 4th June; East Madhya Pradesh on 1st June; Vidarbha, Chhattisgarh on 31st May & 1st June
- **Isolated heavy rainfall** likely over West Madhya Pradesh on 01st June.
- **Isolated Hailstorm activity** likely over West Madhya Pradesh 31st May & 1st June; East Madhya Pradesh, Vidarbha, Chhattisgarh on 31st May.

West India:

- **Isolated to scattered** light to moderate rainfall with **thunderstorm, lightning & gusty winds (speed reaching 40-50 kmph)** likely over Konkan & Goa, Saurashtra & Kutch during 31st May- 4th June; Madhya Maharashtra on 1st, 3rd & 4th June; Marathwada during 1st – 3rd June; Gujarat Region during 4th – 6th June
- **Thundersquall (wind speed reaching 50-60 kmph gusting to 70 kmph)** likely over Madhya Maharashtra on 31st May & 3rd June; Marathwada on 31st; Gujarat Region during 31st May – 02nd June.
- **Isolated heavy rainfall** likely over Gujarat Region during 31st May – 02nd June.
- **Isolated Hailstorm activity** likely over Gujarat Region, Marathwada on 31st May and Madhya Maharashtra 31st May & 1st June.

Forecast of maximum/day temperatures:

- Gradual rise by 6-8°C in maximum temperatures likely over many parts of Northwest India during the week.
- Gradual fall in maximum temperatures by 2-4°C likely over Central India till 01st June and gradual rise by 2-4°C during 02nd-06th June.
- Gradual rise in maximum temperatures by 2-4°C likely over East India till 3rd June and no significant change during 4th- 6th June.
- No significant change in maximum temperatures likely over Northeast India till 2nd June and gradual fall by 4-5°C during 3rd – 6th June
- Gradual fall in maximum temperatures by 2-4°C likely over Interior Maharashtra till 4th June and no significant

***Red color warning does not mean "Red Alert" Red color warning means "Take Action"**

Forecast and warning for any day is valid from 0830 hours IST of day till 0830 hours IST of next day

For more details kindly visit <https://mausam.imd.gov.in> or contact 011-2434-4599

(Service to the nation since 1875)

change on 05th & 06th June.

- No significant change in maximum temperatures likely over Gujarat State till 02nd June and gradual fall by 3-4°C during 3rd – 6th June
- No significant change in maximum temperatures likely over south peninsular India till 31st May and gradual fall by 2-4°C during next 4 to 5 days.
- No significant change in maximum temperatures likely over the rest parts of country till 06th June 2026.

Heat Wave, Hot & Humid weather conditions warning:

- **Hot and humid** weather conditions likely to prevail over Hoh: Konkan & Goa on 31st May.

Fisherman Warning:

- Fishermen are advised not to venture into the following areas during 30th May to 04th June, 2026:
- Bay of Bengal: Over Gulf of Mannar, Comorin & Maldives area, along and off Tamil Nadu & Sri Lanka coasts, many parts of south & adjoining central Bay of Bengal and over south & adjoining north Andaman Sea during 30th May to 4th June, 2026 and along & off entire Andhra Pradesh coast on 30th & 31st May and off South Andhra Pradesh coast during 1st to 4th June.
- Arabian Sea: North Arabian Sea and along & off entire Gujarat coast during 30th May to 1st June; along & off Pakistan & Iran coasts till 31st May and along & off Oman coast and adjoining parts of northwest Arabian sea on 30th & 31st May and over westcentral & adjoining northwest Arabian Sea and along & off Oman coast on 2nd & 3rd June.
- Along and off Somalia coast and adjoining parts of southwest Arabian Sea on 30th & 31st May.

Main Weather Observations:

❖ **Rainfall distribution** (from 0830 hours IST of yesterday to 0830 hours IST of today): **at most places** over Andaman & Nicobar Islands, Uttarakhand, Punjab, Himachal Pradesh and Lakshadweep; **at many places** over Odisha, Haryana-Chandigarh-Delhi, East Rajasthan and South Interior Karnataka; **at a few places** over Nagaland, Manipur, Mizoram & Tripura, West Uttar Pradesh, Jammu-KashmirLadakh-Gilgit-Baltistan-Muzaffarabad, West Rajasthan, West Madhya Pradesh, Gujarat Region, Chhattisgarh, Coastal Andhra Pradesh & Yanam, Rayalaseema and Kerala & Mahe; **at isolated places** over Arunachal Pradesh, Assam & Meghalaya, Gangetic West Bengal, Jharkhand, Bihar, East Uttar Pradesh, East Madhya Pradesh, Saurashtra & Kutch, Konkan & Goa, Madhya Maharashtra, Marathwada, Vidarbha, Tamil Nadu, Puducherry & Karaikal, Coastal Karnataka and North Interior Karnataka; **Dry** over rest of the country.

❖ **Significant rainfall recorded(in cm)** (from 0830 hours IST of yesterday to 0830 hours IST of today): **Odisha:** Joda (dist Keonjhar) 8 Each; Tihidi (dist Bhadrak) 8 Each; Atabira (dist Bargarh), Karanjia (dist Mayurbhanj), Jharbandh (dist Bargarh) 7 Each; **Tamil Nadu, Puducherry & Karaikal:** Oothu (dist Tirunelveli) 7; **Chhattisgarh:** Pendra Road (dist Gaurela Pendra Marwahi) 7; **East Madhya Pradesh:** Amarkantak (dist Anuppur) 7.

❖ **Heavy Rainfall observed** (from 0830 hours IST of yesterday to 0830 hours IST of today):**Heavy rain** at isolated places over Odisha, East Madhya Pradesh, Chhattisgarh and Tamil Nadu, Puducherry & Karaikal.

❖ **Minimum Temperature Departures (as on 31-05-2026):**) were **appreciably above normal (3.1°C to 5.0°C)** over Arunachal Pradesh, Madhya Maharashtra; **above normal (1.6°C to 3.0°C)** over Bihar, Coastal Karnataka, Kerala & Mahe, Lakshadweep, Marathwada, North Interior Karnataka, Sub-Himalayan West Bengal & Sikkim, Telangana; **markedly below normal (-5.1°C or less)** over East Rajasthan, Haryana-Chandigarh-Delhi, Chhattisgarh, Gujarat Region, Uttarakhand, West Madhya Pradesh, West Rajasthan; **appreciably below normal (-3.1°C to -5.0°C)** over Punjab, Gangetic West Bengal and below normal or near normal over rest parts of the country. **The lowest minimum temperature** of 18.0°C was reported at AMBALA (HARYANA), and BHATINDA (PUNJAB) over the Plains of India.

❖ **Maximum Temperature Departures (as on 30-05-2026):** **markedly above normal(> 5.1°C)** at isolated places over Assam & Meghalaya. **appreciably above normal(3.1°C to 5.0°C)** at few places over Arunachal Pradesh, Sub Himalayan West Bengal & Sikkim and East Madhya Pradesh; at isolated places over Jammu-KashmirLadakh-Gilgit-Baltistan-Muzaffarabad, West Madhya Pradesh, Konkan & Goa and Tamil Nadu, Puducherry & Karaikal. **above normal(1.6°C to 3.0°C)** at few places over Nagaland, Manipur, Mizoram & Tripura and Coastal Karnataka; at isolated places over Gangetic West Bengal, Odisha, Bihar, Saurashtra & Kutch, Madhya Maharashtra, Marathwada, Vidarbha, Coastal Andhra Pradesh & Yanam and Telangana. **near normal(-1.5°C to 1.5°C)** at many places over Gujarat Region, Chhattisgarh, Rayalaseema and Kerala & Mahe; at most places over Andaman & Nicobar Islands, North Interior Karnataka, South Interior Karnataka and Lakshadweep; at isolated places over East Uttar Pradesh, West Uttar Pradesh, Himachal Pradesh and West Rajasthan. **The highest maximum temperature** of 44.8°C was reported at CHANDRAPUR (CHANDA) (MAHARASHTRA).

***Red color warning does not mean "Red Alert" Red color warning means "Take Action"**

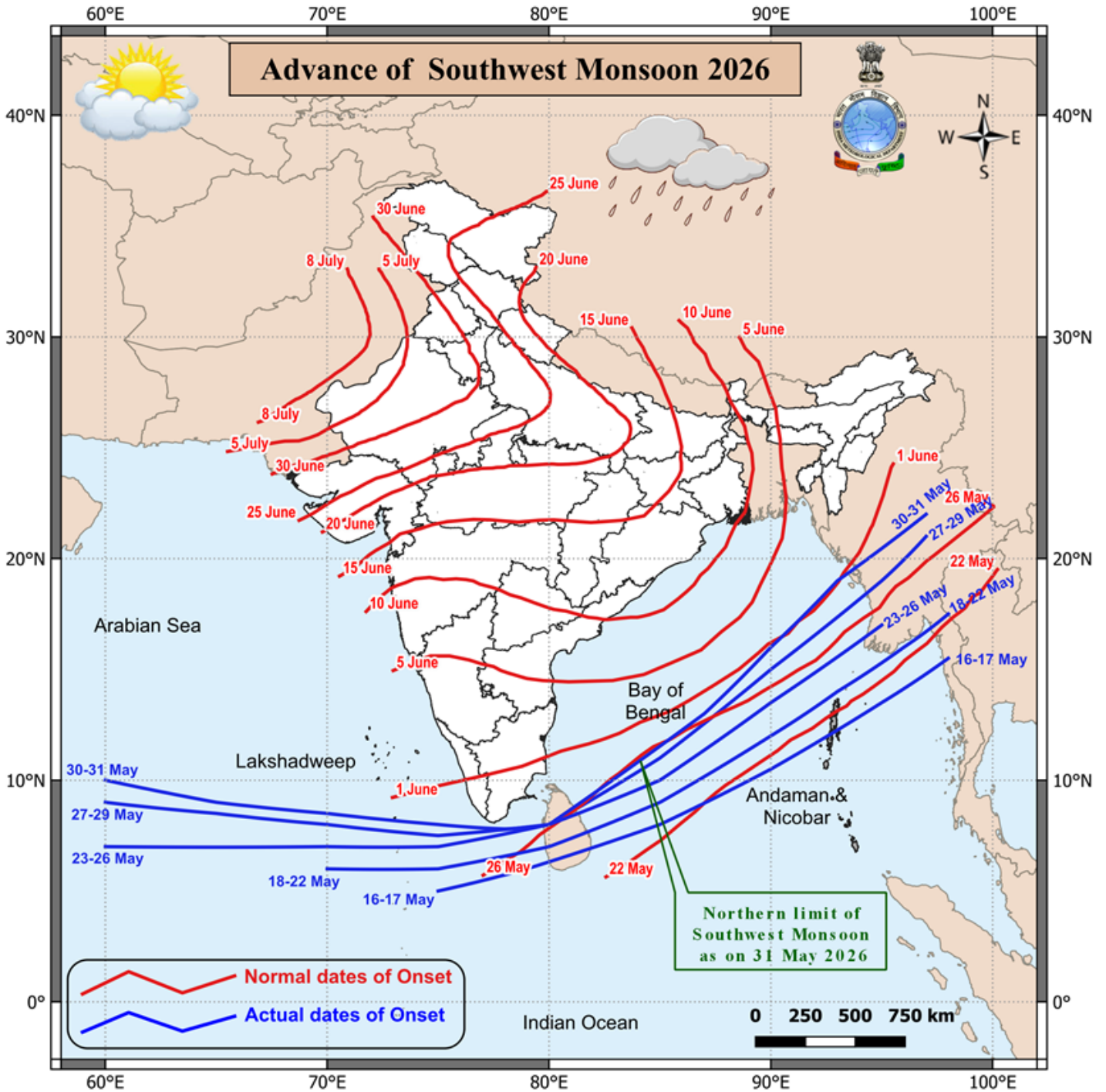
Forecast and warning for any day is valid from 0830 hours IST of day till 0830 hours IST of next day

For more details kindly visit <https://mausam.imd.gov.in> or contact 011-2434-4599

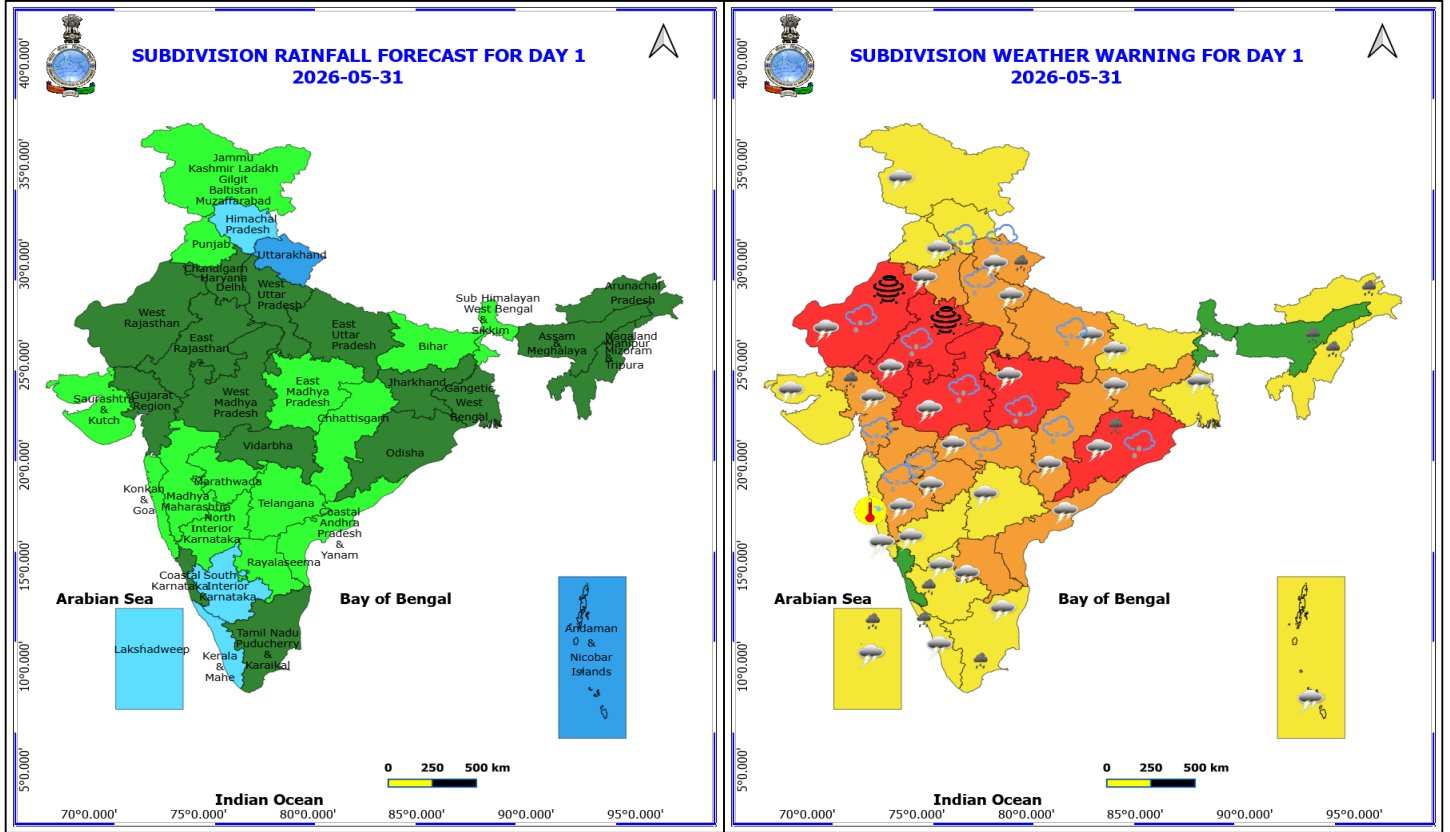
(Service to the nation since 1875)

Meteorological Analysis (Based on 0830 hours IST)

- The **Northern Limit of Monsoon** continues to pass through 10°N/60°E, 9°/65°E, 8.5°N/70°E, 8°N/75°E, 7.8°N/78°E, 8°N/80°E, 10°N/80°E, 13°N/87°E, 16°N/90°E, 19°N/93°E and 22°N/97°E.
- **Conditions are favourable for further advance of southwest monsoon** into some more parts of southwest & southeast Arabian Sea, Lakshadweep Islands, some parts of Kerala & Tamil Nadu, some more parts of southwest, westcentral, eastcentral & northeast Bay of Bengal, and remaining parts of southeast Bay of Bengal during next 3-4 days.
- The **Western Disturbance** now seen as a cyclonic circulation over northwest Uttar Pradesh & neighbourhood between 3.1 & 7.6 km above mean sea level with a trough aloft in middle & upper tropospheric westerlies with its axis at 5.8 km above mean sea level runs roughly along Long 77°E to the north of Lat 20°N.
- The **upper air cyclonic circulation** over Haryana at 3.1 km above mean sea level has merged with the above system.
- The **upper air cyclonic circulation** over Central Pakistan & neighbourhood extending upto 1.5 km above mean sea level persists.
- A **trough runs from** the above **cyclonic circulation** over central Pakistan to north Arabian sea upto 1.5 km above mean sea level.
- The **upper air cyclonic circulation** over northeast Bangladesh & neighbourhood at 1.5 km above mean sea level persists.
- The **upper air cyclonic circulation** over Vidarbha & adjoining north Telangana at 0.9 km above mean sea level persists.
- The **upper air cyclonic circulation** over Eastcentral adjoining northeast Bay of Bengal extending upto 5.8 km above mean sea level persists.
- A **trough runs from** the above cyclonic circulation over Vidarbha to the cyclonic circulation over Eastcentral Bay of Bengal across south Chhattisgarh, south Odisha, north Coastal Andhra Pradesh & westcentral adjoining northwest Bay of Bengal at 0.9 km above mean sea level.
- The **upper air cyclonic circulation** over northwest Bay of Bengal off south Odisha coast at 0.9 km above mean sea level has merged with the above trough.
- The **trough** now runs from the above cyclonic circulation over Eastcentral adjoining northeast Bay of Bengal to southwest Bay of Bengal adjoining Sri Lanka coast across Westcentral Bay of Bengal between 4.5 & 5.8 km above mean sea level.
- The **trough** in westerlies with its axis at 5.8 km above mean sea level roughly along Long. 90°E to the north of Lat. 23°N persists.
- The **upper air cyclonic circulation** over Southeast Arabian Sea & neighbourhood now lies over Southeast Arabian Sea adjoining south Kerala between 3.1 & 5.8 km above mean sea level.
- The **upper air cyclonic circulation** over Southwest Arabian Sea & neighbourhood persists and now seen between 3.1 & 7.6 km above mean sea level.



*Red color warning does not mean "Red Alert" Red color warning means "Take Action"
Forecast and warning for any day is valid from 0830 hours IST of day till 0830 hours IST of next day
For more details kindly visit <https://mausam.imd.gov.in> or contact 011-2434-4599
(Service to the nation since 1875)



31 May (Day 1)

- ❖ **Heavy Rainfall** very likely at isolated places over Arunachal Pradesh, Assam & Meghalaya, Gujarat Region, Kerala & Mahe, Lakshadweep, Nagaland, Manipur, Mizoram and Tripura, Odisha, South Interior Karnataka, Tamil Nadu Puducherry & Karaikal and Uttarakhand.
- ❖ **Thunderstorm accompanied with Hailstorm** very likely at isolated places over Chhattisgarh, Gujarat Region, Himachal Pradesh, Madhya Pradesh, Maharashtra, Odisha, Rajasthan, Uttar Pradesh and Uttarakhand.
- ❖ **Thundersquall with wind speed reaching(60-70kmph) gusting to 80 kmph** very likely at isolated places over Madhya Pradesh, Odisha and Rajasthan.
- ❖ **Thundersquall with wind speed reaching(50-60kmph)** very likely at isolated places over Andhra Pradesh, Chhattisgarh, Gujarat Region, Haryana, Chandigarh & Delhi, Jammu-Kashmir-Ladakh-Gilgit-Baltistan-Muzaffarabad, Jharkhand, Maharashtra and Uttar Pradesh.
- ❖ **Thunderstorm accompanied with lightning & gusty winds(40-50kmph)** very likely at isolated places over Andaman & Nicobar Islands, Bihar, Gangetic West Bengal, Interior Karnataka, Kerala & Mahe, Konkan & Goa, Lakshadweep, Punjab, Saurashtra & Kutch, Tamil Nadu Puducherry & Karaikal, Telangana and Uttarakhand.
- ❖ **Thunderstorm accompanied with lightning & gusty winds(30-40kmph)** very likely at isolated places over Assam & Meghalaya, Himachal Pradesh and Sub Himalayan West Bengal & Sikkim.
- ❖ **Thunderstorm accompanied with Lightning** very likely at isolated places over Coastal Karnataka and Nagaland, Manipur, Mizoram and Tripura.
- ❖ **Dust Storm** very likely at isolated places over Rajasthan.

***Red color warning does not mean "Red Alert" Red color warning means "Take Action"**

Forecast and warning for any day is valid from 0830 hours IST of day till 0830 hours IST of next day

For more details kindly visit <https://mausam.imd.gov.in> or contact 011-2434-4599

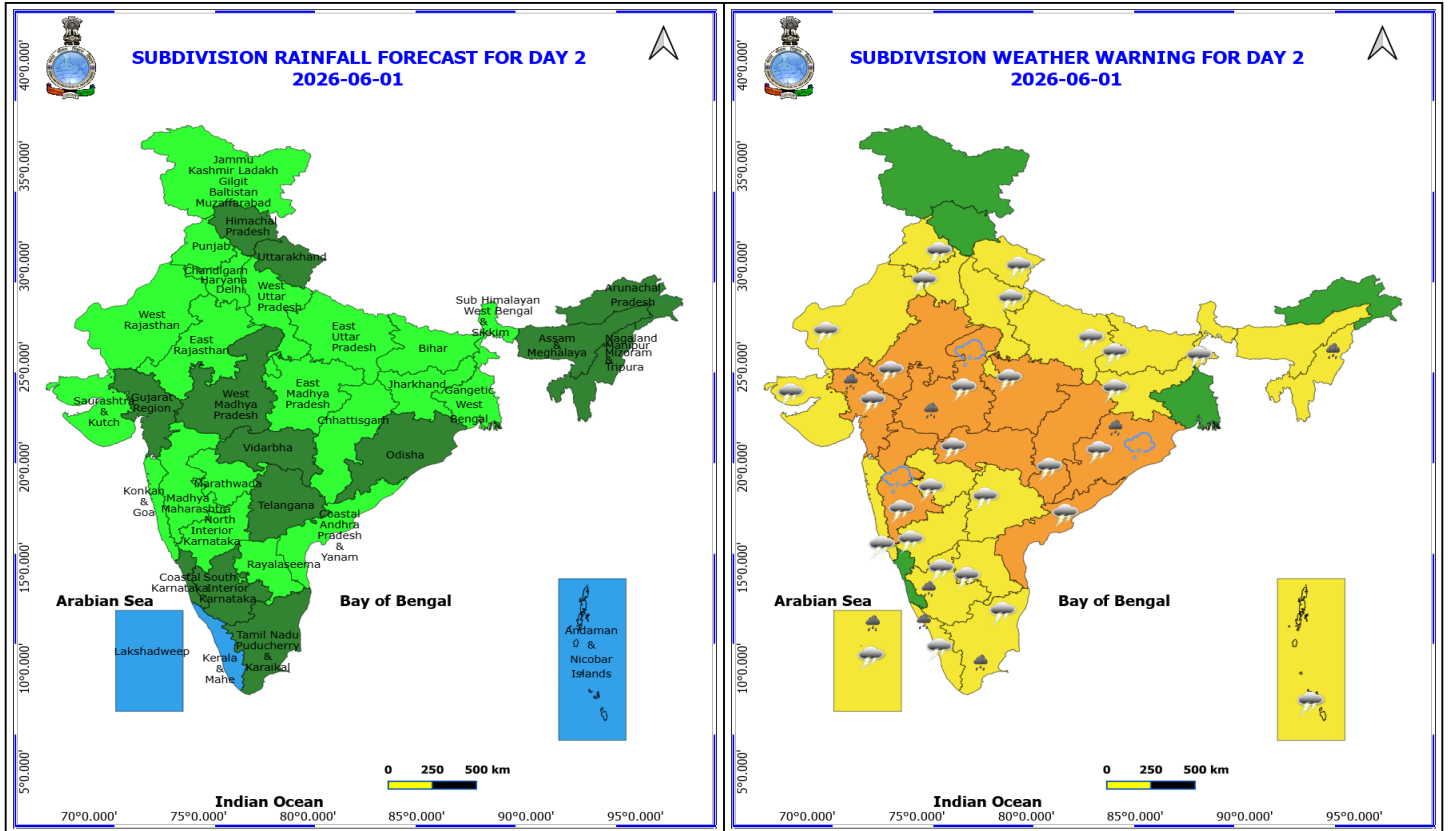
(Service to the nation since 1875)



❖ **Hot and Humid weather** very likely at isolated places over Konkan & Goa.

❖ **Arabian Sea: Squally wind with speed 45-55 kmph gusting to 65 kmph** is likely to prevail over north Arabian Sea and along & off Gujarat & Oman coasts and southwest Arabian Sea & along & off Somalia coast. Squally weather with wind speed 35-45 gusting to 55 kmph is likely over southeast Arabian Sea, Lakshadweep & adjoining Maldives and along & off Kerala coast.

❖ **Bay of Bengal: Squally Weather with wind speed 40-50 kmph gusting to 60 kmph** is likely to prevail over Gulf of Mannar & adjoining Comorin area, along & off Tamil Nadu, Sri Lanka & Andhra Pradesh coasts; most parts of south Bay of Bengal westcentral Bay of Bengal and south & adjoining north Andaman Sea.



1 June (Day 2)

- ❖ **Heavy Rainfall** very likely at isolated places over Gujarat Region, Kerala & Mahe, Lakshadweep, Nagaland, Manipur, Mizoram and Tripura, Odisha, South Interior Karnataka, Tamil Nadu Puducherry & Karaikal and West Madhya Pradesh.
- ❖ **Thunderstorm accompanied with Hailstorm** very likely at isolated places over Madhya Maharashtra, Odisha and West Madhya Pradesh.
- ❖ **Thundersquall with wind speed reaching(60-70kmph) gusting to 80 kmph** very likely at isolated places over Odisha.
- ❖ **Thundersquall with wind speed reaching(50-60kmph)** very likely at isolated places over Chhattisgarh, Coastal Andhra Pradesh, East Rajasthan, Gujarat Region, Madhya Pradesh and Vidarbha.
- ❖ **Thunderstorm accompanied with lightning & gusty winds(40-50kmph)** very likely at isolated places over Andaman & Nicobar Islands, Bihar, Haryana, Chandigarh & Delhi, Interior Karnataka, Jharkhand, Kerala & Mahe, Konkan & Goa, Lakshadweep, Madhya Maharashtra, Marathwada, Punjab, Rayalaseema, Saurashtra & Kutch, Sub Himalayan West Bengal & Sikkim, Tamil Nadu Puducherry & Karaikal, Telangana, Uttar Pradesh, Uttarakhand and West Rajasthan.
- ❖ **Thunderstorm accompanied with lightning & gusty winds(30-40kmph)** very likely at isolated places over Assam & Meghalaya.
- ❖ **Thunderstorm accompanied with Lightning** very likely at isolated places over Coastal Karnataka, Himachal Pradesh and Nagaland, Manipur, Mizoram and Tripura.
- ❖ **Arabian Sea: Squally wind with speed 45-55 kmph gusting to 65 kmph** is likely to prevail over northeast

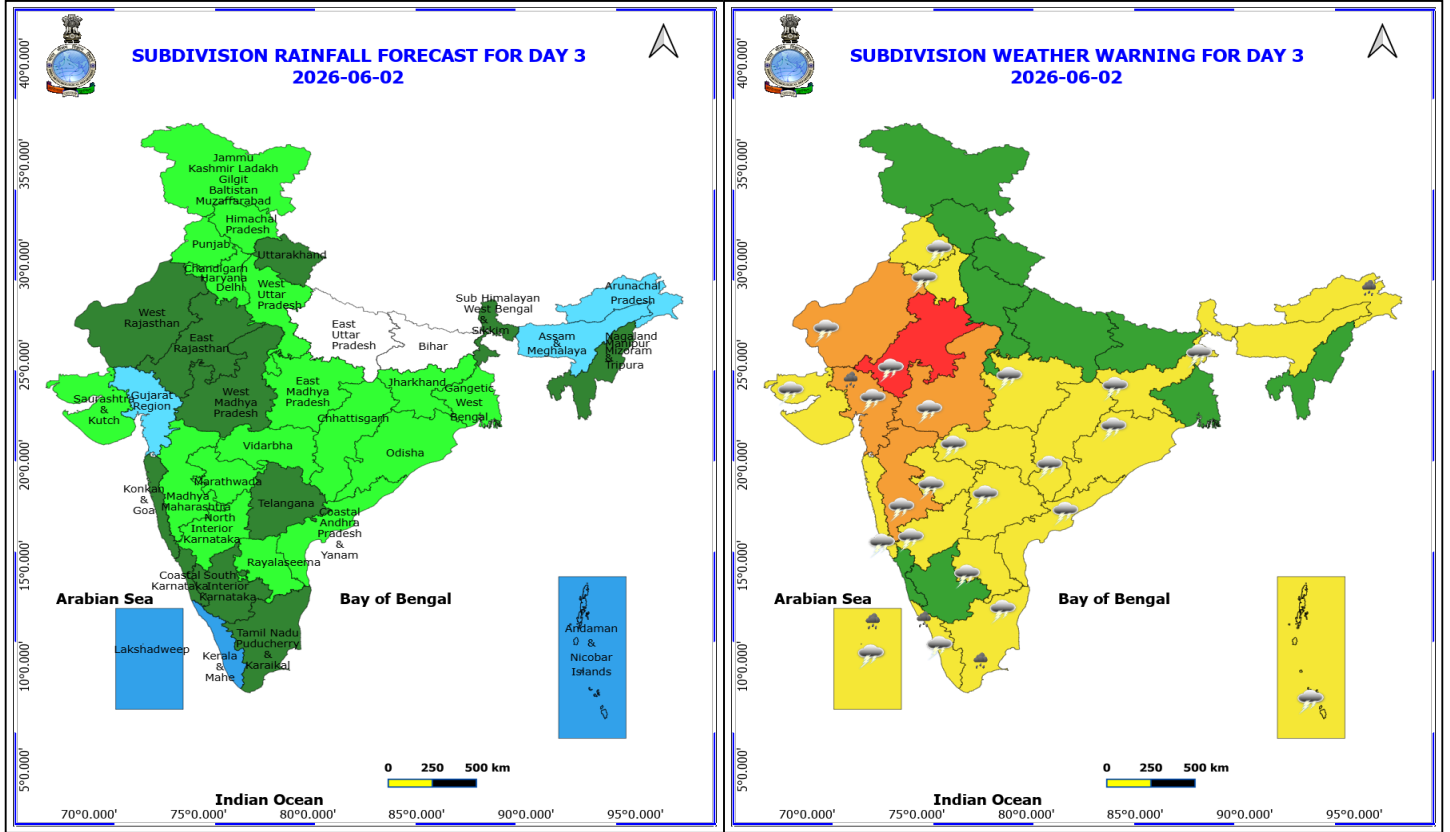
***Red color warning does not mean "Red Alert" Red color warning means "Take Action"**
Forecast and warning for any day is valid from 0830 hours IST of day till 0830 hours IST of next day
For more details kindly visit <https://mausam.imd.gov.in> or contact 011-2434-4599

(Service to the nation since 1875)



Arabian Sea and along & off Gujarat coast and westcentral & adjoining northwest Arabian Sea & along & off Oman coast. Squally weather with wind speed 35-45 gusting to 55 kmph is likely over southeast Arabian Sea, Lakshadweep & adjoining Maldives and along & off Kerala coasts.

❖ **Bay of Bengal: Squally Weather with wind speed 40-50 kmph gusting to 60 kmph** is likely to prevail over Gulf of Mannar & adjoining Comorin area, along & off Tamil Nadu, Sri Lanka & South Andhra Pradesh coasts; most parts of south Bay of Bengal westcentral Bay of Bengal and south & adjoining north Andaman Sea.



2 June (Day 3)

- ❖ **Heavy Rainfall** very likely at isolated places over Arunachal Pradesh, Gujarat Region, Kerala & Mahe, Lakshadweep and Tamil Nadu Puducherry & Karaikal.
- ❖ **Thundersquall with wind speed reaching(60-70kmph) gusting to 80 kmph** very likely at isolated places over East Rajasthan.
- ❖ **Thundersquall with wind speed reaching(50-60kmph)** very likely at isolated places over Gujarat Region, Madhya Maharashtra, West Madhya Pradesh and West Rajasthan.
- ❖ **Thunderstorm accompanied with lightning & gusty winds(40-50kmph)** very likely at isolated places over Andaman & Nicobar Islands, Andhra Pradesh, Chhattisgarh, East Madhya Pradesh, Haryana, Chandigarh & Delhi, Jharkhand, Kerala & Mahe, Konkan & Goa, Lakshadweep, Marathwada, North Interior Karnataka, Odisha, Punjab, Saurashtra & Kutch, Sub Himalayan West Bengal & Sikkim, Tamil Nadu Puducherry & Karaikal, Telangana and Vidarbha.
- ❖ **Thunderstorm accompanied with lightning & gusty winds(30-40kmph)** very likely at isolated places over Assam & Meghalaya, South Interior Karnataka and Uttarakhand.
- ❖ **Thunderstorm accompanied with Lightning** very likely at isolated places over Coastal Karnataka, Himachal Pradesh and Nagaland, Manipur, Mizoram and Tripura.
- ❖ **Arabian Sea: Squally wind with speed 45-55 kmph gusting to 65 kmph** is likely to prevail over westcentral & adjoining northwest Arabian Sea & along & off Oman coast. Squally weather with wind speed 40-50 gusting to 60 kmph is likely over southeast Arabian Sea, Lakshadweep & adjoining Maldives and along & off Kerala coasts.
- ❖ **Bay of Bengal: Squally Weather with wind speed 40-50 kmph gusting to 60 kmph** is likely to prevail over Gulf

*Red color warning does not mean "Red Alert" Red color warning means "Take Action"

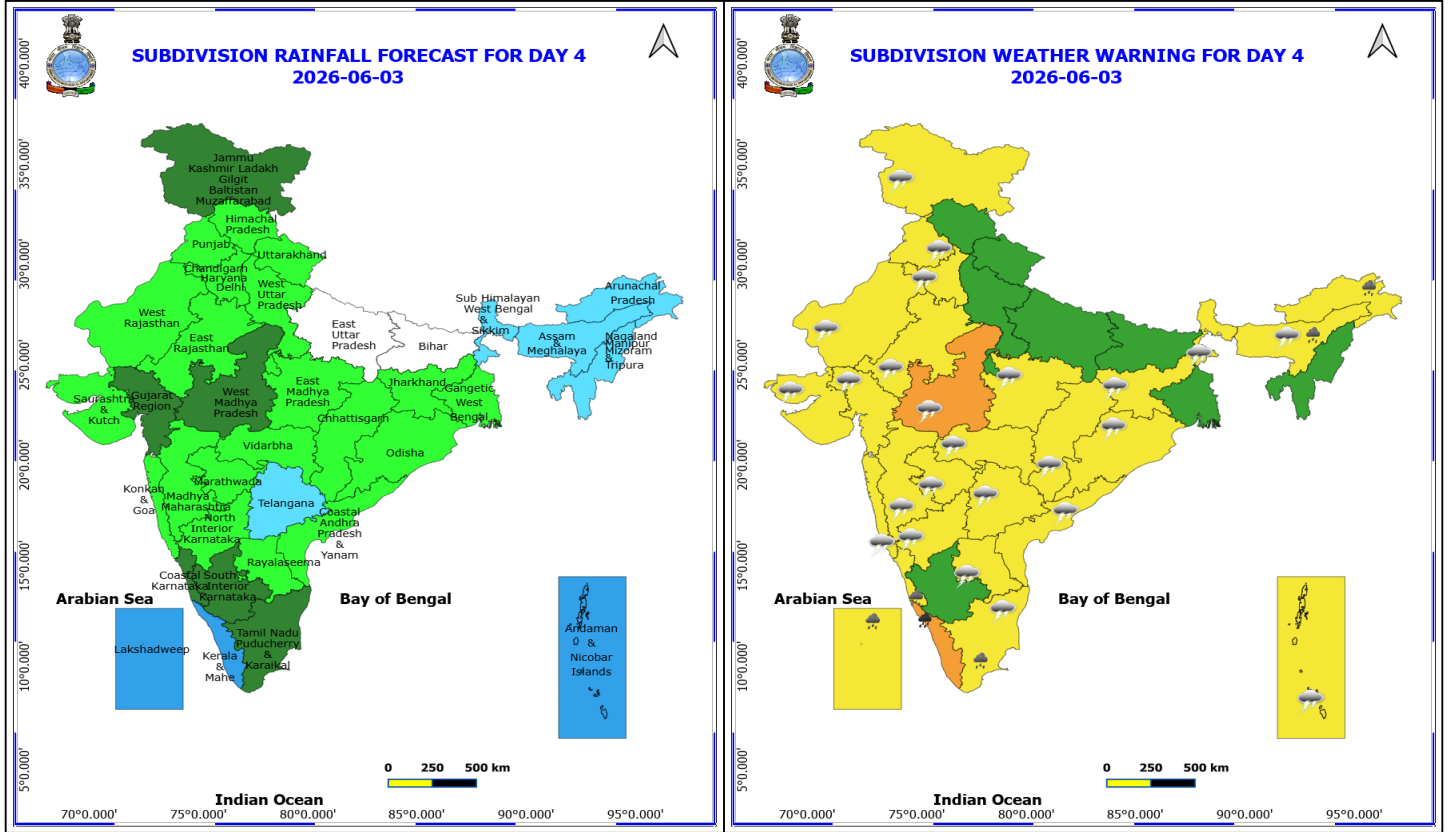
Forecast and warning for any day is valid from 0830 hours IST of day till 0830 hours IST of next day

For more details kindly visit <https://mausam.imd.gov.in> or contact 011-2434-4599

(Service to the nation since 1875)



of Mannar & adjoining Comorin area, along & off Tamil Nadu, Sri Lanka & South Andhra Pradesh coasts; most parts of south & westcentral Bay of Bengal and south & adjoining north Andaman Sea.



3 June (Day 4)

- ❖ **Heavy to Very Heavy Rainfall** likely at isolated places over Kerala & Mahe.
- ❖ **Heavy Rainfall** likely at isolated places over Arunachal Pradesh, Assam & Meghalaya, Coastal Karnataka, Lakshadweep and Tamil Nadu Puducherry & Karaikal.
- ❖ **Thundersquall with wind speed reaching(50-60kmph)** likely at isolated places over Jammu-Kashmir-Ladakh-Gilgit-Baltistan-Muzaffarabad and West Madhya Pradesh.
- ❖ **Thunderstorm accompanied with lightning & gusty winds(40-50kmph)** likely at isolated places over Andaman & Nicobar Islands, Andhra Pradesh, Assam & Meghalaya, Chhattisgarh, East Madhya Pradesh, Gujarat State, Haryana, Chandigarh & Delhi, Jharkhand, Konkan & Goa, Maharashtra, North Interior Karnataka, Odisha, Punjab, Rajasthan, Sub Himalayan West Bengal & Sikkim, Tamil Nadu Puducherry & Karaikal and Telangana.
- ❖ **Thunderstorm accompanied with lightning & gusty winds(30-40kmph)** likely at isolated places over Kerala & Mahe, Lakshadweep, South Interior Karnataka and Uttarakhand.
- ❖ **Thunderstorm accompanied with Lightning** likely at isolated places over Arunachal Pradesh, Coastal Karnataka, Himachal Pradesh and Nagaland, Manipur, Mizoram and Tripura.
- ❖ **Arabian Sea: Squally wind with speed 45-55 kmph gusting to 65 kmph** is likely to prevail over westcentral & adjoining northwest Arabian Sea & along & off Oman coast. Squally weather with wind speed 40-50 gusting to 60 kmph is likely over most parts of southeast Arabian Sea, Lakshadweep & adjoining Maldives and along & off Kerala coasts.
- ❖ **Bay of Bengal: Squally Weather with wind speed 40-50 kmph gusting to 60 kmph** is likely to prevail over Gulf of Mannar, Comorin, along & off Tamil Nadu, Sri Lanka & South Andhra Pradesh coasts; most parts of south &

***Red color warning does not mean "Red Alert" Red color warning means "Take Action"**

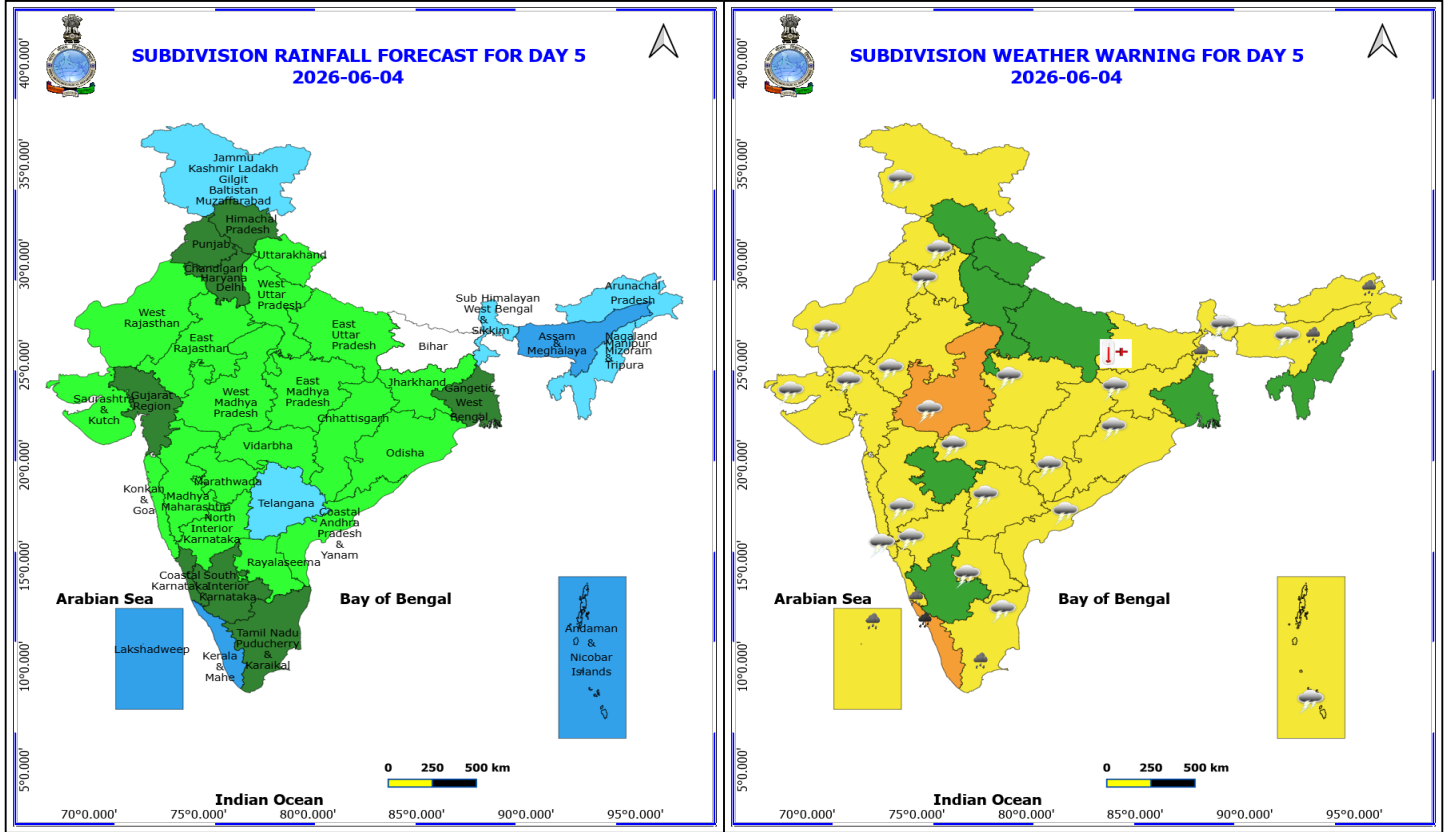
Forecast and warning for any day is valid from 0830 hours IST of day till 0830 hours IST of next day

For more details kindly visit <https://mausam.imd.gov.in> or contact 011-2434-4599

(Service to the nation since 1875)



westcentral Bay of Bengal and south & adjoining north Andaman Sea.



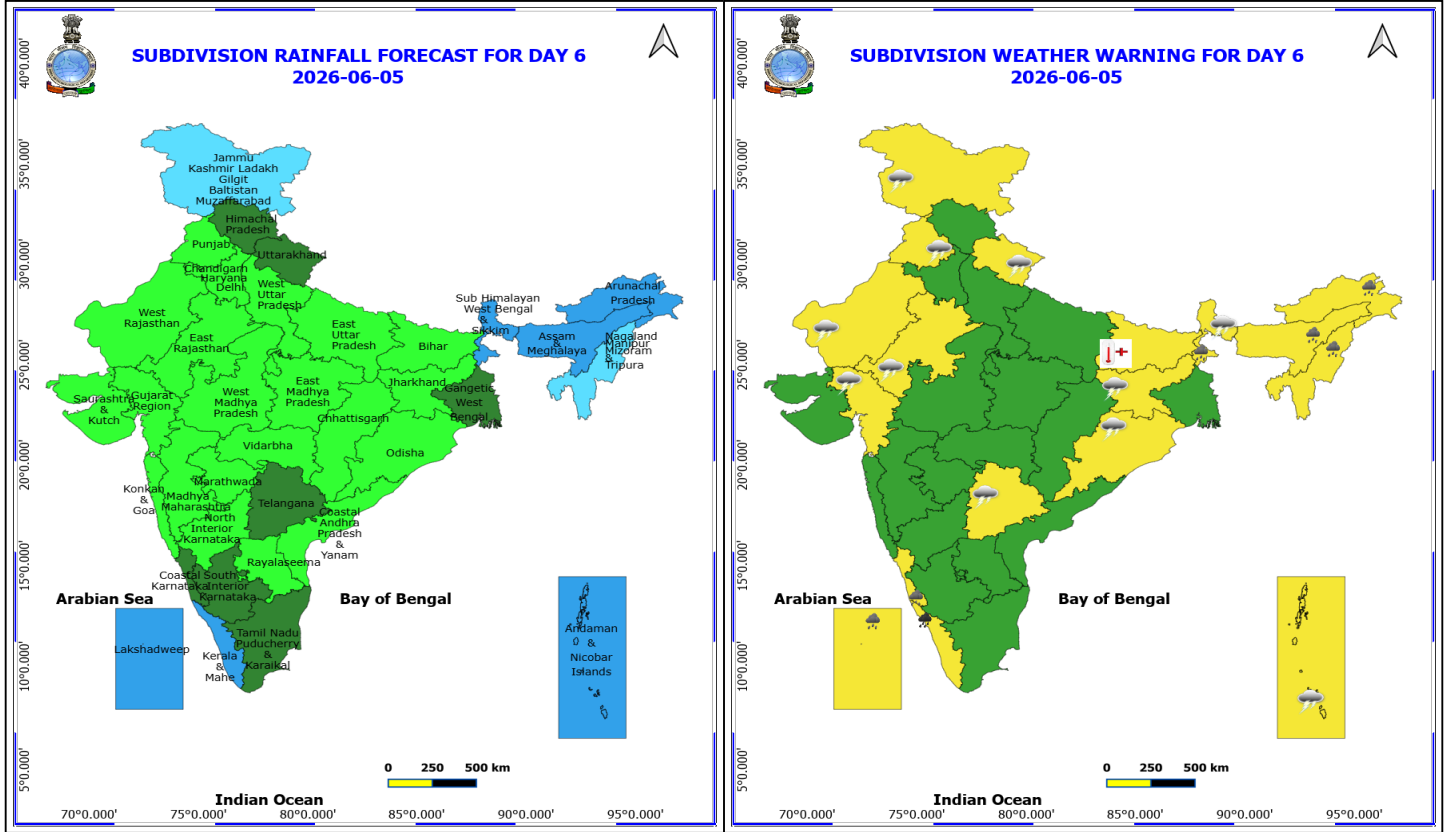
4 June (Day 5)

- ❖ **Heavy to Very Heavy Rainfall** likely at isolated places over Kerala & Mahe.
- ❖ **Heavy Rainfall** likely at isolated places over Arunachal Pradesh, Assam & Meghalaya, Coastal Karnataka, Lakshadweep, Sub Himalayan West Bengal & Sikkim and Tamil Nadu Puducherry & Karaikal.
- ❖ **Thundersquall with wind speed reaching(50-60kmph)** likely at isolated places over Jammu-Kashmir-Ladakh-Gilgit-Baltistan-Muzaffarabad and West Madhya Pradesh.
- ❖ **Thunderstorm accompanied with lightning & gusty winds(40-50kmph)** likely at isolated places over Andaman & Nicobar Islands, Andhra Pradesh, Assam & Meghalaya, Chhattisgarh, East Madhya Pradesh, Gujarat State, Haryana, Chandigarh & Delhi, Jharkhand, Konkan & Goa, Madhya Maharashtra, North Interior Karnataka, Odisha, Punjab, Rajasthan, Sub Himalayan West Bengal & Sikkim, Tamil Nadu Puducherry & Karaikal, Telangana and Vidarbha.
- ❖ **Thunderstorm accompanied with lightning & gusty winds(30-40kmph)** likely at isolated places over Kerala & Mahe, Lakshadweep, South Interior Karnataka and Uttarakhand.
- ❖ **Thunderstorm accompanied with Lightning** likely at isolated places over Arunachal Pradesh and Coastal Karnataka.
- ❖ **Heat Wave conditions** likely at isolated places over Bihar.

No Fishermen Warning

***Red color warning does not mean "Red Alert" Red color warning means "Take Action"**
Forecast and warning for any day is valid from 0830 hours IST of day till 0830 hours IST of next day
For more details kindly visit <https://mausam.imd.gov.in> or contact 011-2434-4599

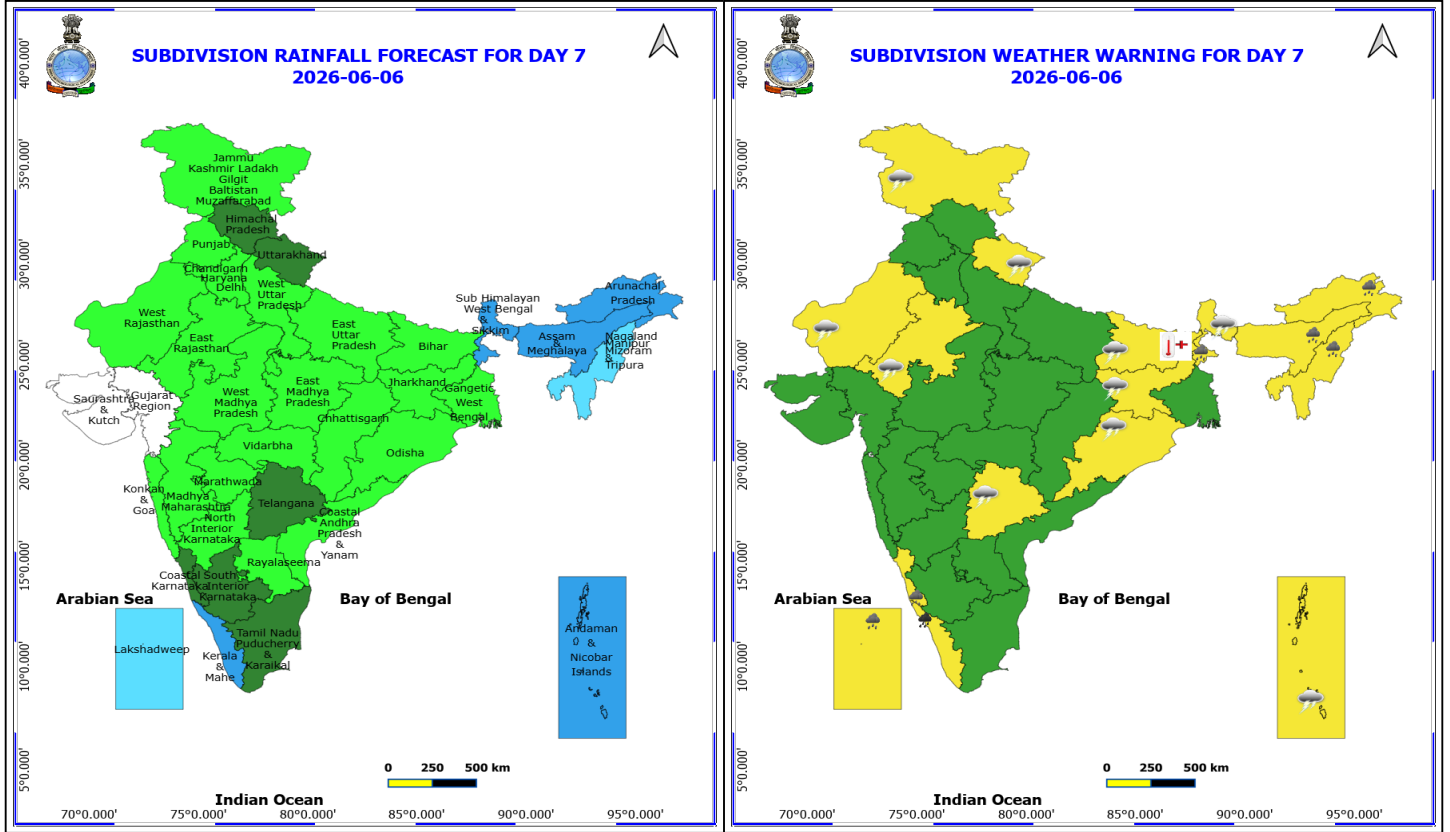
(Service to the nation since 1875)



5 June (Day 6)

- ❖ **Heavy to Very Heavy Rainfall** likely at isolated places over Kerala & Mahe.
- ❖ **Heavy Rainfall** likely at isolated places over Arunachal Pradesh, Assam & Meghalaya, Coastal Karnataka, Lakshadweep, Nagaland, Manipur, Mizoram and Tripura and Sub Himalayan West Bengal & Sikkim.
- ❖ **Thundersquall with wind speed reaching(50-60kmph)** likely at isolated places over Jammu-Kashmir-Ladakh-Gilgit-Baltistan-Muzaffarabad.
- ❖ **Thunderstorm accompanied with lightning & gusty winds(40-50kmph)** likely at isolated places over Andaman & Nicobar Islands, Gujarat Region, Jharkhand, Odisha, Punjab, Rajasthan, Sub Himalayan West Bengal & Sikkim, Telangana and Uttarakhand.
- ❖ **Heat Wave conditions** likely at isolated places over Bihar.

No Fishermen Warning



6 June (Day 7)

- ❖ **Heavy to Very Heavy Rainfall** likely at isolated places over Kerala & Mahe.
- ❖ **Heavy Rainfall** likely at isolated places over Arunachal Pradesh, Assam & Meghalaya, Coastal Karnataka, Lakshadweep, Nagaland, Manipur, Mizoram and Tripura and Sub Himalayan West Bengal & Sikkim.
- ❖ **Thundersquall with wind speed reaching(50-60kmph)** likely at isolated places over Jammu-Kashmir-Ladakh-Gilgit-Baltistan-Muzaffarabad.
- ❖ **Thunderstorm accompanied with lightning & gusty winds(40-50kmph)** likely at isolated places over Andaman & Nicobar Islands, Bihar, Jharkhand, Odisha, Rajasthan, Sub Himalayan West Bengal & Sikkim, Telangana and Uttarakhand.
- ❖ **Heat Wave conditions** likely at isolated places over Bihar.

No Fishermen Warning



Table-1

7 Days Rainfall Forecast

S.No.	Subdivision	31- May	1- Jun	2- Jun	3- Jun	4- Jun	5- Jun	6- Jun
		Day 1	Day 2	Day 3	Day 4	Day 5	Day 6	Day 7
1	ANDAMAN & NICOBAR ISLANDS	WS	WS	WS	WS	WS	WS	WS
2	ARUNACHAL PRADESH	SCT	SCT	FWS	FWS	FWS	WS	WS
3	ASSAM & MEHGHALAYA	SCT	SCT	FWS	FWS	WS	WS	WS
4	N. M. M. & T.	SCT	SCT	SCT	FWS	FWS	FWS	FWS
5	S.H. WEST BENGAL & SIKKIM	ISOL	ISOL	SCT	FWS	FWS	WS	WS
6	GANGETIC WEST BENGAL	SCT	ISOL	ISOL	ISOL	SCT	SCT	ISOL
7	ODISHA	SCT	SCT	ISOL	ISOL	ISOL	ISOL	ISOL
8	JHARKHAND	SCT	ISOL	ISOL	ISOL	ISOL	ISOL	ISOL
9	BIHAR	ISOL	ISOL	DRY	DRY	DRY	ISOL	ISOL
10	EAST UTTAR PRADESH	SCT	ISOL	DRY	DRY	ISOL	ISOL	ISOL
11	WEST UTTAR PRADESH	SCT	ISOL	ISOL	ISOL	ISOL	ISOL	ISOL
12	UTTARAKHAND	WS	SCT	SCT	ISOL	ISOL	SCT	SCT
13	HARYANA, CHD & DELHI	SCT	ISOL	ISOL	ISOL	SCT	ISOL	ISOL
14	PUNJAB	ISOL	ISOL	ISOL	ISOL	SCT	ISOL	ISOL
15	HIMACHAL PRADESH	FWS	SCT	ISOL	ISOL	SCT	SCT	SCT
16	JAMMU AND KASHMIR AND LADAKH	ISOL	ISOL	ISOL	SCT	FWS	FWS	ISOL
17	WEST RAJASTHAN	SCT	ISOL	SCT	ISOL	ISOL	ISOL	ISOL
18	EAST RAJASTHAN	SCT	ISOL	SCT	ISOL	ISOL	ISOL	ISOL
19	WEST MADHYA PRADESH	SCT	SCT	SCT	SCT	ISOL	ISOL	ISOL
20	EAST MADHYA PRADESH	ISOL	ISOL	ISOL	ISOL	ISOL	ISOL	ISOL
21	GUJRAT REGION	SCT	SCT	FWS	SCT	SCT	ISOL	DRY
22	SAURASHTRA & KUTCH	ISOL	ISOL	ISOL	ISOL	ISOL	ISOL	DRY
23	KONKAN & GOA	ISOL	ISOL	SCT	ISOL	ISOL	ISOL	ISOL
24	MADHYA MAHARASHTRA	ISOL	ISOL	ISOL	ISOL	ISOL	ISOL	ISOL
25	MARATHWADA	ISOL	ISOL	ISOL	ISOL	ISOL	ISOL	ISOL
26	VIDARBHA	SCT	SCT	ISOL	ISOL	ISOL	ISOL	ISOL
27	CHATTISGARH	ISOL	ISOL	ISOL	ISOL	ISOL	ISOL	ISOL
28	COASTAL ANDHRA PRADESH	ISOL	ISOL	ISOL	ISOL	ISOL	ISOL	ISOL
29	TELANGANA	ISOL	SCT	SCT	FWS	FWS	SCT	SCT
30	RAYALASEEMA	ISOL	ISOL	ISOL	ISOL	ISOL	ISOL	ISOL
31	TAMILNADU & PUDUCHERRY	SCT	SCT	SCT	SCT	SCT	SCT	SCT
32	COSTAL KARNATAKA	SCT	SCT	SCT	SCT	SCT	SCT	SCT
33	NORTH INTERIOR KARNATAKA	ISOL	ISOL	ISOL	ISOL	ISOL	ISOL	ISOL
34	SOUTH INTERIOR KARNATAKA	FWS	SCT	SCT	SCT	SCT	SCT	SCT
35	KERALA	FWS	WS	WS	WS	WS	WS	WS
36	LAKSHDWEEP	FWS	WS	WS	WS	WS	WS	FWS

Legend	Category	%Stations
WS	Widespread/Most Places	76-100
FWS	Fairly Widespread/Many Places	51-75
SCT	Scattered/ A Few Places	26-50
ISOL	Isolated Places	1-25
DRY	No Rain	0

*Red color warning does not mean "Red Alert" Red color warning means "Take Action"
Forecast and warning for any day is valid from 0830 hours IST of day till 0830 hours IST of next day
For more details kindly visit <https://mausam.imd.gov.in> or contact 011-2434-4599

(Service to the nation since 1875)

Fig. 1: Maximum Temperatures Dated 2026-05-30

Fig. 2: Departure of Maximum Temp. Dated 2026-05-30

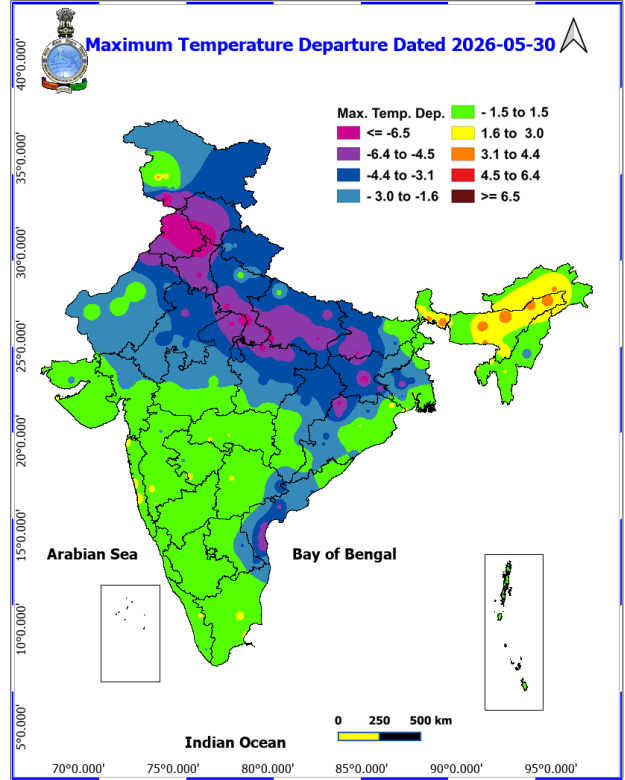
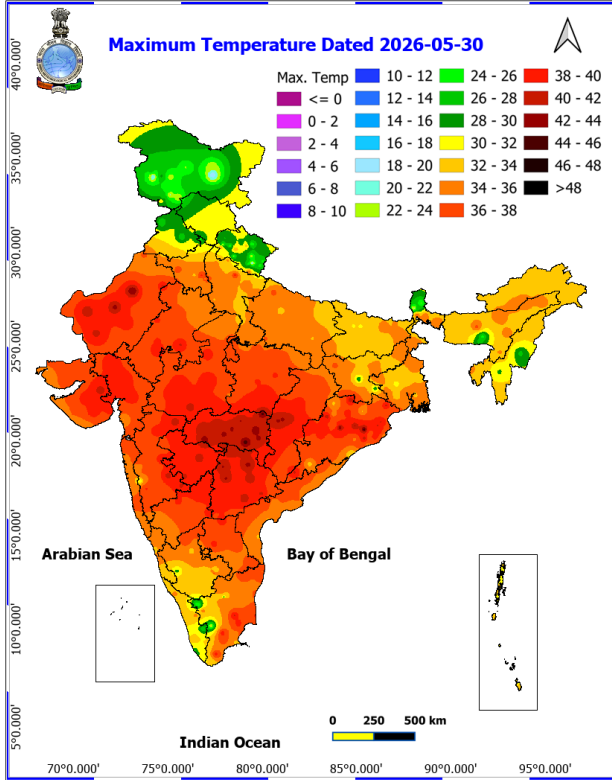
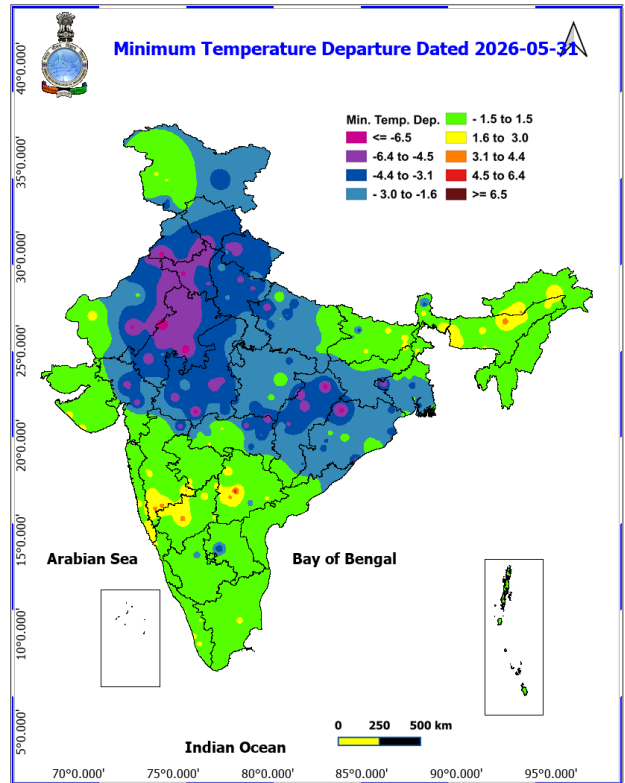
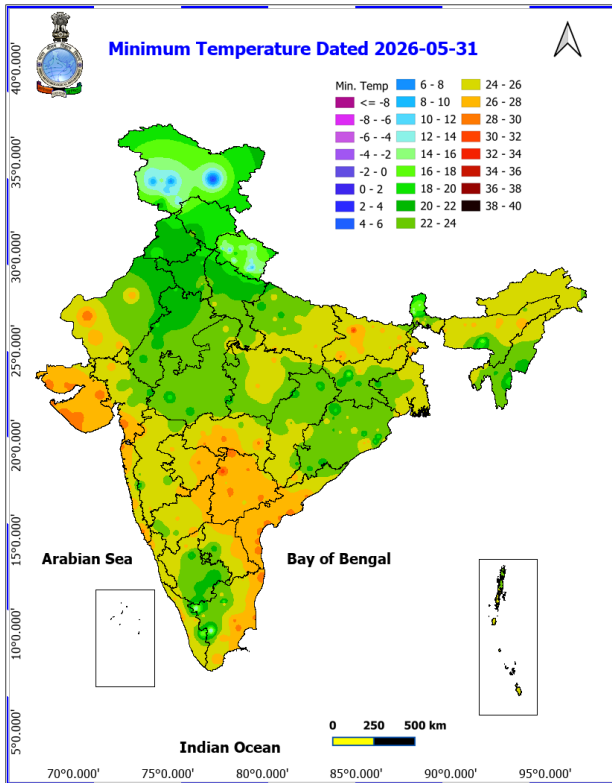
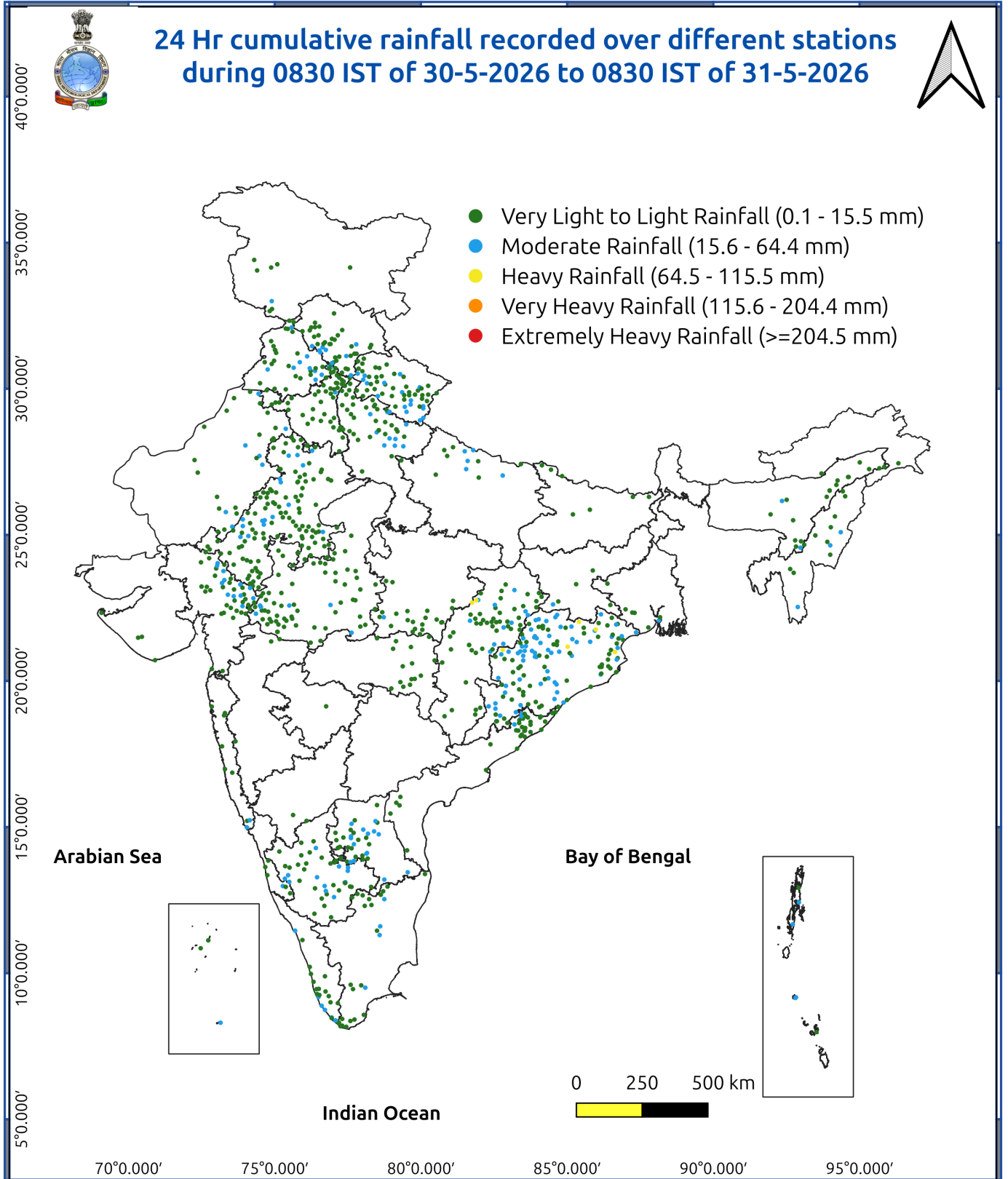


Fig. 3: Minimum Temperatures Dated 2026-05-31

Fig. 4: Departure of Minimum Temp. Dated 2026-05-31





Impact expected and action suggested due to isolated thunderstorm with lightning/squally winds over

- Moderate to Severe Thunderstorm activity with squally wind speed upto 90kmph and isolated hailstorm likely over Northwest, Central & adjoining East India on 31st May.

Impact expected:

- Breaking of tree branches, uprooting of large avenue trees. Large dead limbs blown from trees. Damage to Standing crops.
- Minor to Major damage to banana and papaya trees.
- Minor to major damage to power and communication lines due to breaking of branches.
- Strong wind/hail may damage plantation, horticulture and standing crops.
- Hail may injure people and cattle at open places.
- Partial damage to vulnerable structures due to strong winds.
- Minor damage to kutcha houses/walls and huts.
- Loose objects may fly.

Action suggested:

- People are advised to keep a watch on the weather for worsening conditions and be ready to move to safer places accordingly.
- Stay indoors, close windows & doors and avoid travel if possible.
- Take safe shelters; do not take shelter under trees.
- Do not lie on concrete floors and do not lean against concrete walls.
- Unplug electrical/ electronic appliances.
- Immediately get out of water bodies.
- Keep away from all the objects that conduct electricity.

Agromet advisories for various parts of the country

Agromet advisories for likely impact of Hailstorms

- In **Jammu & Kashmir, Himachal Pradesh, Uttarakhand, Punjab, Haryana, West Uttar Pradesh, Rajasthan, Gujarat, Coastal Andhra Pradesh, Madhya Pradesh, Vidarbha, Chhattisgarh and Odisha** use hail nets or hail caps in fruit orchards and vegetable plants to protect them from mechanical damage.
- Ensure effective field drainage to prevent waterlogging. Undertake picking of matured fruits at the earliest. Keep the harvested produce in safe places.

Agromet advisories for likely impact of Heavy Rainfall

In **Andaman & Nicobar**, postpone irrigation, intercultural operations and application of plant protection measures & fertilizers to the standing crops. Provide adequate drainage in standing-crop fields to prevent waterlogging.

In **Nagaland**, delay transplanting of brinjal in main field. For already transplanted seedlings, maintain proper drainage in and around the fields of maize, vegetables and orchard.

In **Manipur**, ensure that ridges and bunds around rice fields are well constructed to maintain the required water level; provide adequate drainage to remove excess rain water from chilli, ginger, turmeric, banana and other crops.

In **Mizoram**, create drainage channels surrounding the rice fields and utilize grass mulch to cover the seeds. Provide support to fruit-bearing or partially lodge plants/trees. Propping should be done to prevent maize plants from lodging.

In **Tripura** – undertake harvesting of mature Boro rice immediately and shift the harvested produce to a safe and dry place for storage.

***Red color warning does not mean "Red Alert" Red color warning means "Take Action"**

Forecast and warning for any day is valid from 0830 hours IST of day till 0830 hours IST of next day

For more details kindly visit <https://mausam.imd.gov.in> or contact 011-2434-4599

(Service to the nation since 1875)

In **Bihar**, withhold irrigation in standing crops. Prepare paddy nursery fields with proper drainage arrangements.

In **Tamil Nadu**, maintain proper drainage to prevent water stagnation in cotton, rise nurseries, recently sown cumbu and vegetables,

In **Keralam**, provide adequate drainage for banana, coconut, and other vegetables. Provide support to banana plants.

In **Lakshadweep**, provide adequate drainage in standing crop fields to prevent waterlogging.

In **South Interior Karnataka**, undertake harvesting of matured rice after current spells of rain, ensure proper drainage in paddy fields, arecanut and mango orchards. Provide staking to tomato plants.

In **Andhra Pradesh** -Provide light irrigation to maintain adequate moisture in standing crops such as paddy, *rabi* maize, sorghum, chickpea, groundnut, sesame, sugarcane, vegetables, and fruit orchards.

In the regions expecting heavy rainfall, including **Uttarkhand, Punjab, Haryana, West Uttar Pradesh, Jharkhand, West Madhya Pradesh, Gujarat and Odisha**, withhold irrigation in standing crops, make necessary arrangements to remove excess rainwater from the crop fields.

Agromet advisories for likely impact of High temperatures/ Heat Waves

In **Chhattisgarh** - Apply light irrigation after weeding and hoeing in *rabi* maize, banana, and papaya plantations. Complete harvesting of wheat and chickpea, and ensure safe storage.

In **Maharashtra - Vidarbha**, provide light and frequent irrigation to vegetables and orchards during morning or evening hours, with increased frequency during critical growth stages. Irrigate sugarcane, summer groundnut, vegetables, and orchards as required; use organic or straw mulch in vegetables and orchards; cover banana bunches with leaves; and use shade nets in newly planted banana plantations.

In **Telangana**, provide irrigation to mango orchards and vegetable crops, as required.

Agromet advisories for likely impact of Thunderstorm / Gusty Winds

- Shift the harvested produce in safer places or cover the produce with tarpaulin sheets in the fields. Tie the harvested crops securely and cover them to minimize the risk of displacement from strong surface winds.
- Provide mechanical support to horticultural crops and staking or support to vegetables and young fruit plants / fruit-bearing plants to avoid lodging due to strong winds.

Livestock / Poultry / Fisheries

Keep the animals inside the shed during hailstorms/ heavy rainfall and provide them with balanced feed.

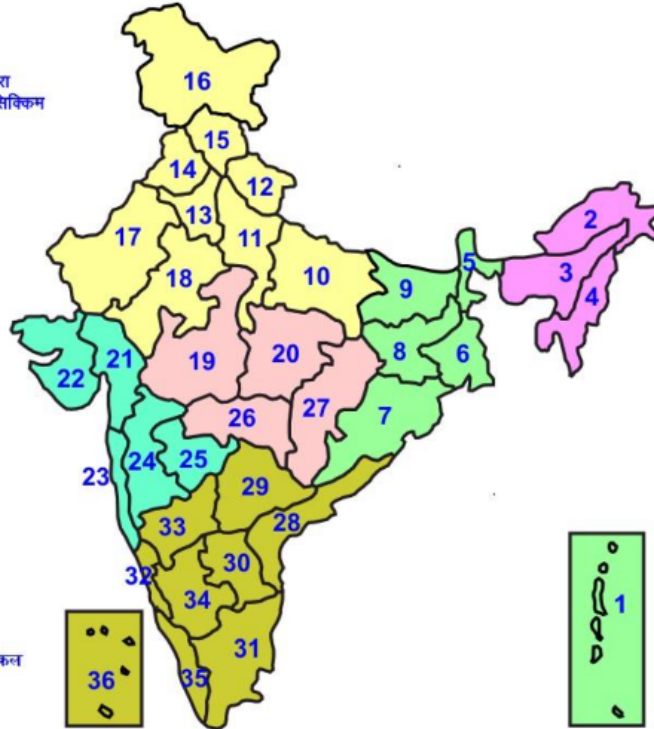
Store feed and fodder in a safe place to prevent spoilage.

Construct an outlet with proper netting around the ponds to drain excess water, thereby preventing fish from escaping in the event of overflow.

In regions with high temperatures and heat waves, provide clean, hygienic, and ample drinking water for animals, and cover the roofs of poultry sheds with grass to reduce the adverse effects.

LEGENDS

- 1 अंडमान और निकोबार द्वीप समुह
- 2 अरुणाचल प्रदेश
- 3 असम और मेघालय
- 4 नागालैंड मनीपुर मीजोरम और त्रिपुरा
- 5 उप हिमालय पश्चिम बंगाल एवं सिक्किम
- 6 पश्चिम बंगाल
- 7 ओडिसा
- 8 झारखंड
- 9 बिहार
- 10 पूर्वी उत्तर प्रदेश
- 11 पश्चिम उत्तर प्रदेश
- 12 उत्तराखंड
- 13 हरियाणा चंडिगढ़ एवं दिल्ली
- 14 पंजाब
- 15 हिमाचल प्रदेश
- 16 जम्मू एवं कश्मीर एवं लद्दाख
- 17 पश्चिम राजस्थान
- 18 पूर्वी राजस्थान
- 19 पश्चिम मध्य प्रदेश
- 20 पूर्वी मध्य प्रदेश
- 21 गुजरात क्षेत्र
- 22 सौराष्ट्र एवं कच्छ
- 23 कोंकण एवं गोवा
- 24 मध्य महाराष्ट्र
- 25 मराठावाडा
- 26 विदर्भ
- 27 छत्तीसगढ़
- 28 तटीय आंध्र प्रदेश एवं यनम
- 29 तेलंगाना
- 30 रायलसीमा
- 31 तमिलनाडु, पुदुचेरी एवं कराईकल
- 32 तटिय कर्नाटक
- 33 आंतरिक उत्तरी कर्नाटक
- 34 आंतरिक दक्षिणी कर्नाटक
- 35 केरल एवं माहे
- 36 लक्षद्वीप



1. Andaman & Nicobar Islands
2. Arunachal Pradesh
3. Assam & Meghalaya
4. Nagaland, Manipur, Mizoram & Tripura
5. Sub-Himalayan West Bengal & Sikkim
6. Gangetic West Bengal
7. Orissa
8. Jharkhand
9. Bihar
10. East Uttar Pradesh
11. West Uttar Pradesh
12. Uttarakhand
13. Haryana, Chd & Delhi
14. Punjab
15. Himachal Pradesh
16. Jammu & Kashmir and Ladakh
17. West Rajasthan
18. East Rajasthan
19. West Madhya Pradesh
20. East Madhya Pradesh
21. Gujarat
22. Saurashtra
23. Konkan & Goa
24. Madhya Maharashtra
25. Marathawada
26. Vidharbha
27. Chhattisgarh
28. Coastal Andhra Pradesh & Yanam
29. Telangana
30. Rayalaseema
31. Tamilnadu, Puducherry & Karaikal
32. Coastal Karnataka
33. North Interior Karnataka
34. South Interior Karnataka
35. Kerala & Mahe
36. Lakshadweep

SPATIAL DISTRIBUTION (% of Stations reporting)

% Stations	Category	% Stations	Category
76-100	Widespread (WS/ Most Places)	26-50	Scattered (SCT/ A Few Places)
51-75	Fairly Widespread (FWS/ Many Places)	1-25	Isolated (ISOL)

Subdivision Colour

- NO WARNING
- WATCH (BE UPDATED)
- ALERT (BE PREPARED TO TAKE ACTION)
- WARNING (TAKE ACTION)

Probabilistic Forecast

Terms	Probability of Occurrence (%)
Unlikely	< 25
Likely	25 - 50
Very Likely	50 - 75
Most Likely	> 75

- | | | | |
|--------------------------|-----------------|----------------------|--------------------|
| Heavy Rain | Very Heavy Rain | Extremely Heavy Rain | Heavy Snow |
| Thunderstorm & Lightning | Hailstorm | Dust Storm | Dust Raising Winds |
| Strong surface winds | Heat Wave | Hot Day | Warm Night |
| Cold Wave | Cold Day | Ground Frost | Fog |
| Hot & Humid | | | |

*Red color warning does not mean "Red Alert" Red color warning means "Take Action"

Forecast and warning for any day is valid from 0830 hours IST of day till 0830 hours IST of next day

For more details kindly visit <https://mausam.imd.gov.in> or contact 011-2434-4599

(Service to the nation since 1875)

LEGENDS

WARNING

WARNING (TAKE ACTION)
ALERT (BE PREPARED)
WATCH (BE UPDATED)
NO WARNING (NO ACTION)

Probabilistic Forecast

Terms	Probability of Occurrence (%)
Unlikely	< 25
Likely	25 - 50
Very Likely	50 - 75
Most Likely	> 75



Heavy: 64.5 to 115.5 mm/cm *
Very Heavy: 115.6 to 204.4 mm/cm*
Extremely Heavy: > 204.4 mm/cm *



When maximum temperature of a station reaches $\geq 40^{\circ}\text{C}$ for plains and $\geq 30^{\circ}\text{C}$ for hilly regions
(a) Based on Departure from normal

Heat Wave: Maximum Temperature Departure from normal 4.5°C to 6.4°C .
Severe Heat Wave: Maximum Temperature Departure from normal $\geq 6.5^{\circ}\text{C}$

(b). Based on Actual maximum temperature

Heat Wave: When actual maximum temperature $\geq 45^{\circ}\text{C}$.
Severe Heat Wave: When actual maximum temperature $\geq 47^{\circ}\text{C}$

(c). Criteria for heat wave for coastal stations

When maximum temperature departure is $> 4.5^{\circ}\text{C}$ from normal. Heat Wave may be described provided maximum temperature $\geq 37^{\circ}\text{C}$



When maximum temperature remains 40°C

Warm Night: When minimum temperature departure 4.5°C to 6.4°C .
Severe Warm Night: When minimum temperature departure $> 6.4^{\circ}\text{C}$.



When minimum temperature of a station $\leq 10^{\circ}\text{C}$ for plains and $\leq 0^{\circ}\text{C}$ for hilly regions.

(a). Based on departure

Cold Wave: Minimum Temperature Departure from normal -4.5°C to -6.4°C .
Severe Cold Wave: Minimum Temperature Departure from normal $\leq -6.5^{\circ}\text{C}$

(b) Based on actual Minimum Temperature (for Plains only)

Cold Wave : When Minimum Temperature is $\leq 4.0^{\circ}\text{C}$
Severe Cold Wave: When Minimum Temperature is $\leq 2.0^{\circ}\text{C}$

(c) For Coastal Stations

When Minimum Temperature departure is $\leq -4.5^{\circ}\text{C}$ & actual Minimum Temperature is $\leq 15^{\circ}\text{C}$



When minimum temperature of a station $\leq 10^{\circ}\text{C}$ for plains and $\leq 0^{\circ}\text{C}$ for hilly regions
Based on departure

Cold Day: Maximum Temperature Departure from normal -4.5°C to -6.4°C .
Severe Cold Day: Maximum Temperature Departure from normal $\leq -6.5^{\circ}\text{C}$



Phenomenon of small droplets suspended in air and the horizontal visibility $< 1\text{km}$

Moderate Fog: When the visibility between 500-200 metres
Dense Fog: when the visibility between 50- 200 metres
Very Dense Fog: when the visibility < 50 metres



Sudden electrical discharges manifested by a flash of light (Lightning) and a sharp rumbling sound (thunder)



An ensemble of particles of dust or sand energetically lifted to great heights by a strong and turbulent wind.



Ice deposits on ground

Air temperature $\leq 4^{\circ}\text{C}$ (over Plains)



A strong wind that rises suddenly, lasts for atleast 1 minute.

Moderate: Wind speed 52-61 kmph
Severe: Wind speed 62-87 kmph
Very Severe: Wind speed > 87 kmph



Effect of various waves in the sea over specific area

Rough to very rough: Wind speed 41-62 kmph (22-33 knots) & Wave height 2.5-6 metre
High to very high: Wind speed 63-117 kmph (34-63 knots) & Wave height 6-14 metre
Phenomenal: Wind speed > 117 kmph (> 63 knots) & Wave height > 14 metre



Cyclonic Storm: Wind speed 62-87 kmph (34-47 knots)
Severe Cyclonic Storm: Wind speed 88-117 kmph (48-63 knots)
Very Severe Cyclonic Storm: Wind speed 118-165 kmph (64 - 89 knots)
Extremely Severe Cyclonic Storm: Wind speed 166-220 kmph (90 -119 knots)
Super Cyclone Storm: Wind speed > 220 kmph (> 119 knots)

*Red color warning does not mean "Red Alert" Red color warning means "Take Action"

Forecast and warning for any day is valid from 0830 hours IST of day till 0830 hours IST of next day

For more details kindly visit <https://mausam.imd.gov.in> or contact 011-2434-4599

(Service to the nation since 1875)