

2025-07-10

Time of Issue: 20:09:00 hours IST
(Night)

ALL INDIA WEATHER SUMMARY AND FORECAST BULLETIN

Significant Weather Features

Weather Forecast and Warnings

Northwest India:

- Isolated **heavy rainfall** likely over East Rajasthan, Uttarakhand, Himachal Pradesh, Uttarakhand during 10th-16th; Punjab, Haryana Chandigarh on 10th, 11th & 16th; Jammu-Kashmir on 10th and during 14th-16th; West Uttar Pradesh during 10th-13th; East Uttar Pradesh during 10th-12th; West Rajasthan on 10th and during 12th-16th July with **very heavy rainfall** over Himachal Pradesh, Jammu, Punjab, Haryana, West Uttar Pradesh on 10th; Uttarakhand on 13th; West Rajasthan on 14th; East Rajasthan during 11th-14th July.
- Light/moderate rainfall at most/many places accompanied with thunderstorm, lightning likely over western Himalayan region and some/many places over the plains during next 7 days.

East & Central India:

- Isolated **heavy rainfall** very likely to continue over Madhya Pradesh during 10th-16th; Vidarbha during 10th-13th; Chhattisgarh, Jharkhand during 10th-14th; Sub-Himalayan West Bengal & Sikkim during 13th-16th; Gangetic West Bengal on 14th; Odisha on 10th and during 13th-15th July with **very heavy rainfall** over East Madhya Pradesh during 10th-12th; West Madhya Pradesh during 11th-14th July.
- Light/moderate rainfall at most/many places accompanied with thunderstorm, lightning & gusty winds speed reaching 30-40 kmph likely over the region during next 7 days.

West India:

- Heavy rainfall** likely at isolated places over Konkan & Goa on 13th & 14th; Gujarat Region during 12th-16th; Ghat areas of Madhya Maharashtra on 10th, 13th & 14th; Saurashtra & Kutch on 13th July.
- Light/moderate rainfall at many/some places very likely over the region during next 7 days.

Northeast India:

- Light/moderate rainfall at most places accompanied with **thunderstorm, lightning** likely to continue over Northeast India during next 7 days.
- Isolated **heavy rainfall** very likely over Mizoram & Tripura on 10th; during 13th-16th; Arunachal Pradesh during 11th-16th and Assam & Meghalaya during 12th-16th July.

South Peninsular India:

- Isolated **heavy rainfall** likely over Coastal Karnataka and Kerala & Mahe on 10th and Kerala during 12th-16th July.
- Strong surface winds** (speed reaching 40-50 kmph) very likely over South Peninsular India during next 3 days.
- Light/moderate rainfall at many/some places over Kerala & Mahe, Lakshadweep, Karnataka, Rayalaseema; isolated to scattered rainfall over Coastal Andhra Pradesh & Yanam, Telangana during next 7 days.

*Red color warning does not mean "Red Alert" Red color warning means "Take Action"

Forecast and warning for any day is valid from 0830 hours IST of day till 0830 hours IST of next day

For more details kindly visit <https://mausam.imd.gov.in> or contact 011-2434-4599

(Service to the nation since 1875)

Main Weather Observations:

❖ **Significant rainfall recorded(in cm)** (from 0830 hours IST to 1730 hours IST of today): **West Madhya Pradesh:** Gwalior (dist Gwalior) 7, Datia-obs (dist Datia) 2; **Chhattisgarh:** Raipur-mana (dist Raipur) 6, Bilaspur (dist Bilaspur) 3; **East Madhya Pradesh:** Rewa (dist Rewa) 6; **West Rajasthan:** Churu (dist Churu) 4; **East Uttar Pradesh:** Hamirpur (dist Hamirpur) 4, Bahraich (dist Bahraich), Kanpur Airforce (dist Kanpur Nagar) 2 Each; **Kerala & Mahe:** Thrissur (dist Thrissur) 3; **Odisha:** Sambalpur (dist Sambalpur) 3, Dhenkanal (dist Dhenkanal) 2; **Bihar:** Gaya (dist Gaya) 3; **West Uttar Pradesh:** Jhansi (dist Jhansi), Agra (dist Agra) 3 Each, Shahajahanpur (dist Shahjahanpur) 2; **Uttarakhand:** Mukteswar (kumaun) (dist Nainital) 3; **Jammu & Kashmir and Ladakh:** Gulmarg (dist Baramulla) 2; **East Rajasthan:** Jaipur (dist Jaipur) 2; **Andaman & Nicobar Islands:** Long Island (dist North And Middle Andaman) 2; **Punjab:** Amritsar (rajasansi) AP (dist Amritsar) 2; **Haryana Chandigarh & Delhi:** New Delhi (safdarjung), New Delhi (palam) AP (dist South West Delhi) 2 Each; **Gangetic West Bengal:** Kolkata-alipur (dist Kolkata) 2.

❖ **Heavy Rainfall observed** (from 0830 hours IST to 1730 hours IST of today): **Heavy rain** at isolated places over West Madhya Pradesh.

❖ **Minimum Temperature Departures (as on 10-07-2025):** **markedly above normal(> 5.1°C)** at isolated places over Assam & Meghalaya, Bihar, West Uttar Pradesh, Himachal Pradesh, West Madhya Pradesh and Saurashtra & Kutch. **appreciably above normal(3.1°C to 5.0°C)** at few places over Lakshadweep; at isolated places over Sub Himalayan West Bengal & Sikkim, East Uttar Pradesh, Jammu-KashmirLadakh-Gilgit-Baltistan-Muzaffarabad, West Rajasthan, East Madhya Pradesh and Gujarat Region. **above normal(1.6°C to 3.0°C)** at many places over Andaman & Nicobar Islands; at few places over Rayalaseema and Tamil Nadu, Puducherry & Karaikal; at isolated places over Odisha, Konkan & Goa, Coastal Andhra Pradesh & Yanam, South Interior Karnataka and Kerala & Mahe. **near normal(-1.5°C to 1.5°C)** at many places over Nagaland, Manipur, Mizoram & Tripura, Gangetic West Bengal, Jharkhand, Uttarakhand, East Rajasthan, Chhattisgarh and Telangana; at most places over Arunachal Pradesh, Madhya Maharashtra, Marathwada, Vidarbha, Coastal Karnataka and North Interior Karnataka; at few places over Punjab; at isolated places over Haryana-Chandigarh-Delhi. **The lowest minimum temperature** of 18.0°C is reported at KHANDWA (MADHYA PRADESH) over the Plains of India.

❖ **Maximum Temperature Departures (as on 10-07-2025):** **markedly above normal(> 5.1°C)** at few places over Arunachal Pradesh; at isolated places over Assam & Meghalaya. **appreciably above normal(3.1°C to 5.0°C)** at few places over Tamil Nadu, Puducherry & Karaikal; at isolated places over Coastal Andhra Pradesh & Yanam, Rayalaseema and Kerala & Mahe. **above normal(1.6°C to 3.0°C)** at many places over Coastal Karnataka and Lakshadweep; at few places over Konkan & Goa; at isolated places over Nagaland, Manipur, Mizoram & Tripura, Sub Himalayan West Bengal & Sikkim, Gangetic West Bengal, Odisha, Saurashtra & Kutch, Madhya Maharashtra, Telangana and North Interior Karnataka. **near normal(-1.5°C to 1.5°C)** at many places over Andaman & Nicobar Islands, East Uttar Pradesh and Chhattisgarh; at most places over Marathwada and South Interior Karnataka; at few places over Bihar, Uttarakhand, Himachal Pradesh, Jammu-KashmirLadakh-Gilgit-Baltistan-Muzaffarabad, West Rajasthan, West Madhya Pradesh and Gujarat Region; at isolated places over East Rajasthan, East Madhya Pradesh and Vidarbha. **The highest maximum temperature** of 40.2°C is reported at MADURAI (A) (TAMIL NADU).

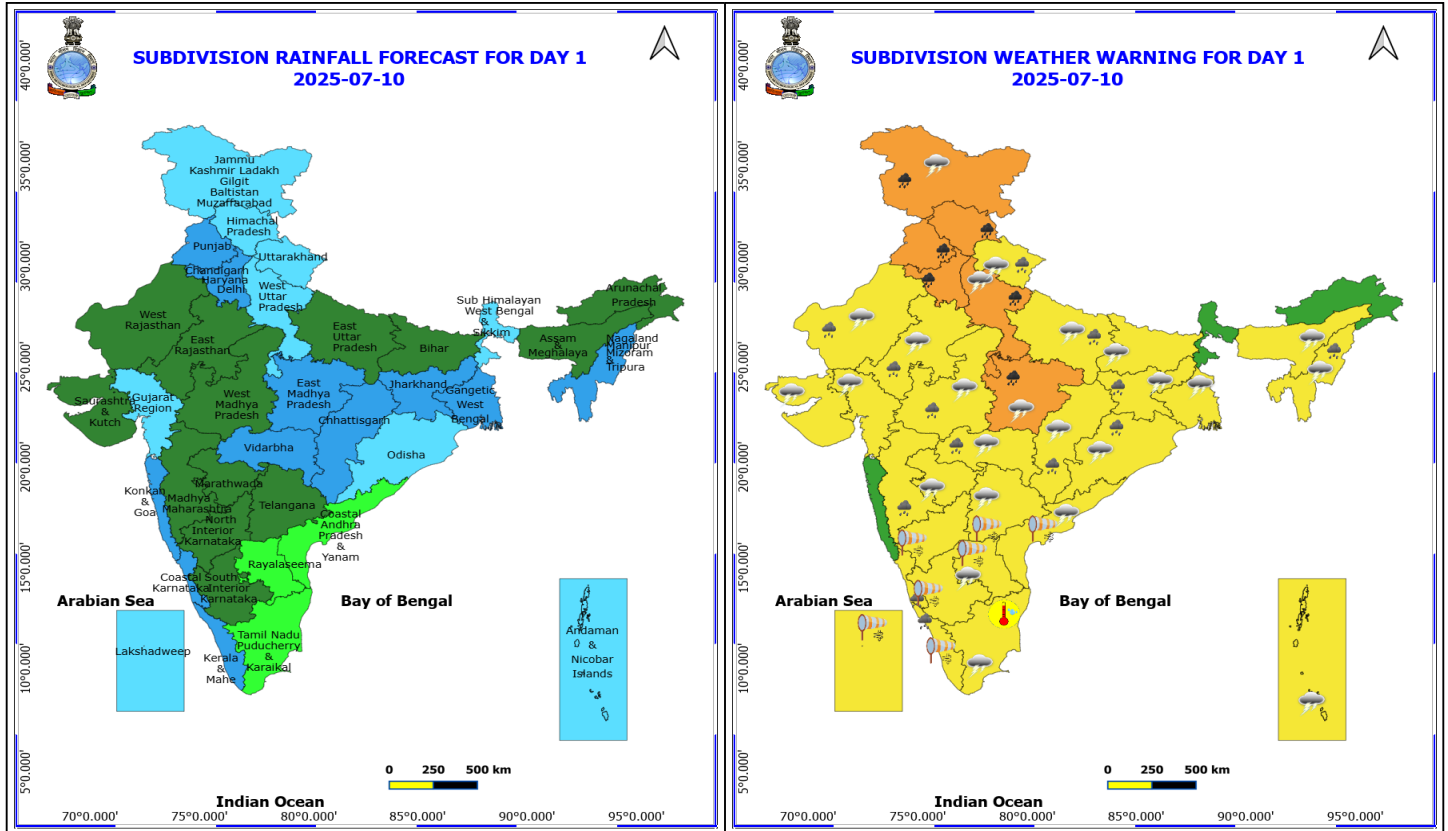


Meteorological Analysis (Based on 1730 hours IST)

- The **Low Pressure area** over south Jharkhand & neighbourhood with the associated **cyclonic circulation** extending upto 5.8 km above mean sea level persisted at 1730 hrs IST of today, the 10th July 2025.
- The **monsoon trough** at mean sea level now passes through Sri Ganganagar, Delhi-Ridge, Banda, Churk, centre of the **Low Pressure** area over south Jharkhand & neighbourhood, Digha and thence southeastwards to northeast Bay of Bengal.
- The **upper air cyclonic circulation** over Punjab & neighbourhood between 1.5 & 5.8 km above mean sea level persists.
- The **trough** from southwest Uttar Pradesh to cyclonic circulation associated with Low Pressure area over south Jharkhand & neighbourhood across north Madhya Pradesh & north Chhattisgarh between 0.9 & 1.5 km above mean sea level persists.
- The **trough** from northeast Arabian Sea to the cyclonic circulation associated with Low Pressure area over south Jharkhand & neighbourhood across south Gujarat Region, north Madhya Maharashtra, south Madhya Pradesh, north Chhattisgarh between 4.5 & 7.6 km above mean sea level persists.
- The **trough** from west Assam to Vidarbha across Gangetic West Bengal, cyclonic circulation associated with Low-Pressure area over south Jharkhand, north Chhattisgarh at 3.1 km above mean sea level persists.
- The **upper air cyclonic circulation** over Saurashtra & neighbourhood at 3.1 km above mean sea level persists.
- The **upper air cyclonic circulation** over northeast Assam at 0.9 km above mean sea level persists.

Weather Outlook for subsequent 3 days

- Fairly widespread to widespread rainfall very likely over Central India, along west Coast, Islands, East India, Northeast India & Northwest India.
- Scattered rainfall very likely over rest parts of the country.



10 July (Day 1)

- ❖ **Heavy to Very Heavy Rainfall** very likely at isolated places over East Madhya Pradesh, Haryana, Chandigarh & Delhi, Himachal Pradesh, Jammu-Kashmir-Ladakh-Gilgit-Baltistan-Muzaffarabad, Punjab and West Uttar Pradesh.
- ❖ **Heavy Rainfall** very likely at isolated places over Chhattisgarh, Coastal Karnataka, East Uttar Pradesh, Jharkhand, Kerala & Mahe, Madhya Maharashtra, Nagaland, Manipur, Mizoram and Tripura, Odisha, Rajasthan, Uttarakhand, Vidarbha and West Madhya Pradesh.
- ❖ **Thunderstorm accompanied with lightning & gusty winds(30-40kmph)** very likely at isolated places over Andaman & Nicobar Islands, Bihar, Jammu-Kashmir-Ladakh-Gilgit-Baltistan-Muzaffarabad, Jharkhand, Odisha, West Madhya Pradesh and West Rajasthan.
- ❖ **Thunderstorm accompanied with Lightning** very likely at isolated places over Andhra Pradesh, Assam & Meghalaya, Chhattisgarh, East Madhya Pradesh, East Rajasthan, Gangetic West Bengal, Gujarat State, Marathwada, Nagaland, Manipur, Mizoram and Tripura, Tamil Nadu Puducherry & Karaikal, Telangana, Uttar Pradesh, Uttarakhand and Vidarbha.
- ❖ **Strong Surface Winds** very likely at isolated places over Andhra Pradesh, Interior Karnataka, Kerala & Mahe, Lakshadweep and Telangana.
- ❖ **Hot and Humid weather** very likely at isolated places over Tamil Nadu Puducherry & Karaikal.
- ❖ **Squally wind speed reaching 45 kmph to 55 kmph gusting to 65 kmph** is likely to prevail along and off Somalia, Oman & adjoining Yemen coasts, most parts of westcentral Arabian Sea & adjoining, some parts of eastcentral Arabian Sea, northern parts of southwest Arabian Sea, southern parts of northwest Arabian Sea, Gulf of Mannar; Squally weather with wind speed 40 - 50 kmph gusting to 60 kmph likely to prevail over some parts of eastcentral, southeast & southwest Arabian Sea, over many parts of westcentral Bay of Bengal & adjoining parts of

***Red color warning does not mean "Red Alert" Red color warning means "Take Action"**

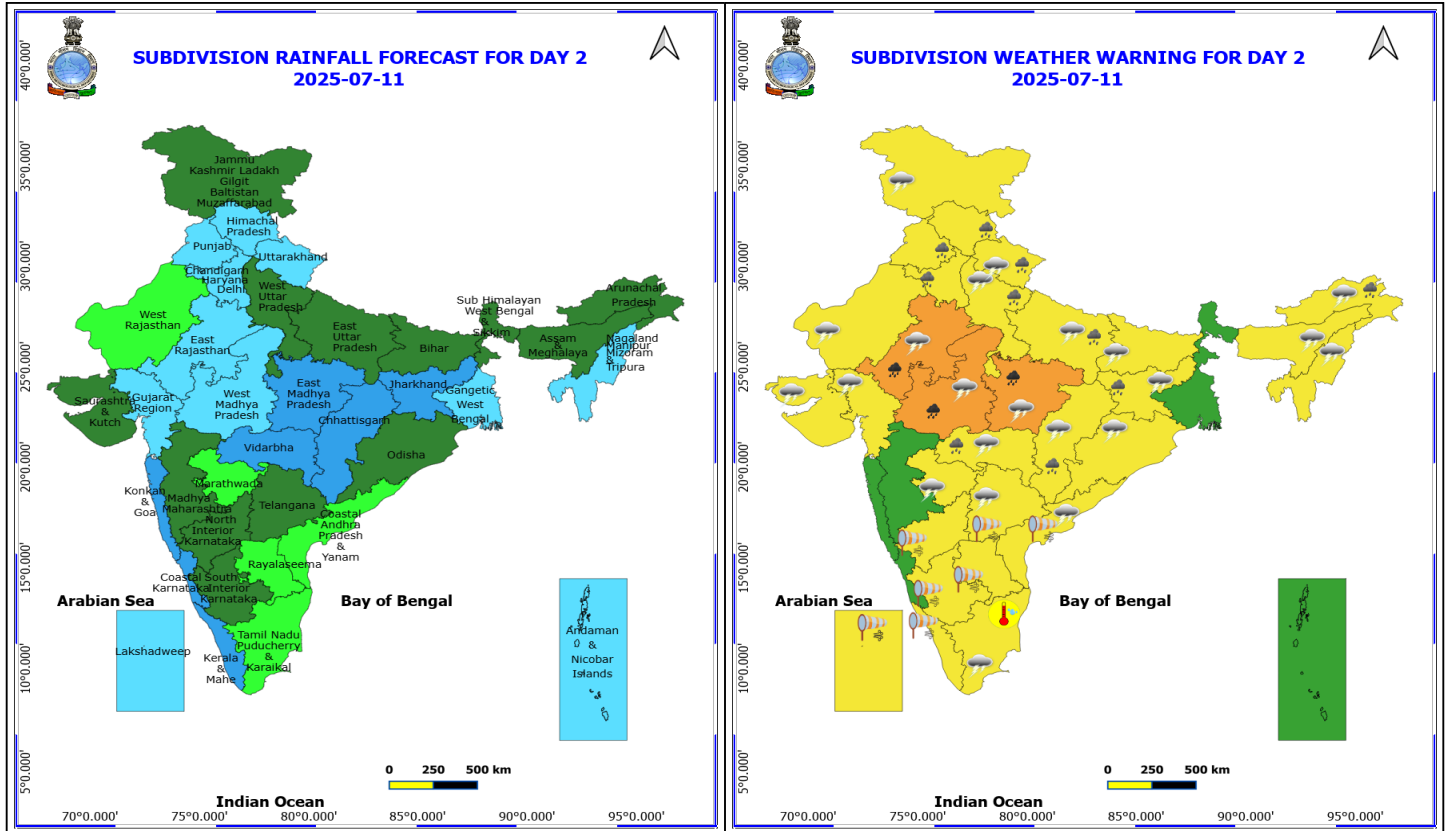
Forecast and warning for any day is valid from 0830 hours IST of day till 0830 hours IST of next day

For more details kindly visit <https://mausam.imd.gov.in> or contact 011-2434-4599

(Service to the nation since 1875)



eastcentral, southwest and northwest Bay of Bengal.



11 July (Day 2)

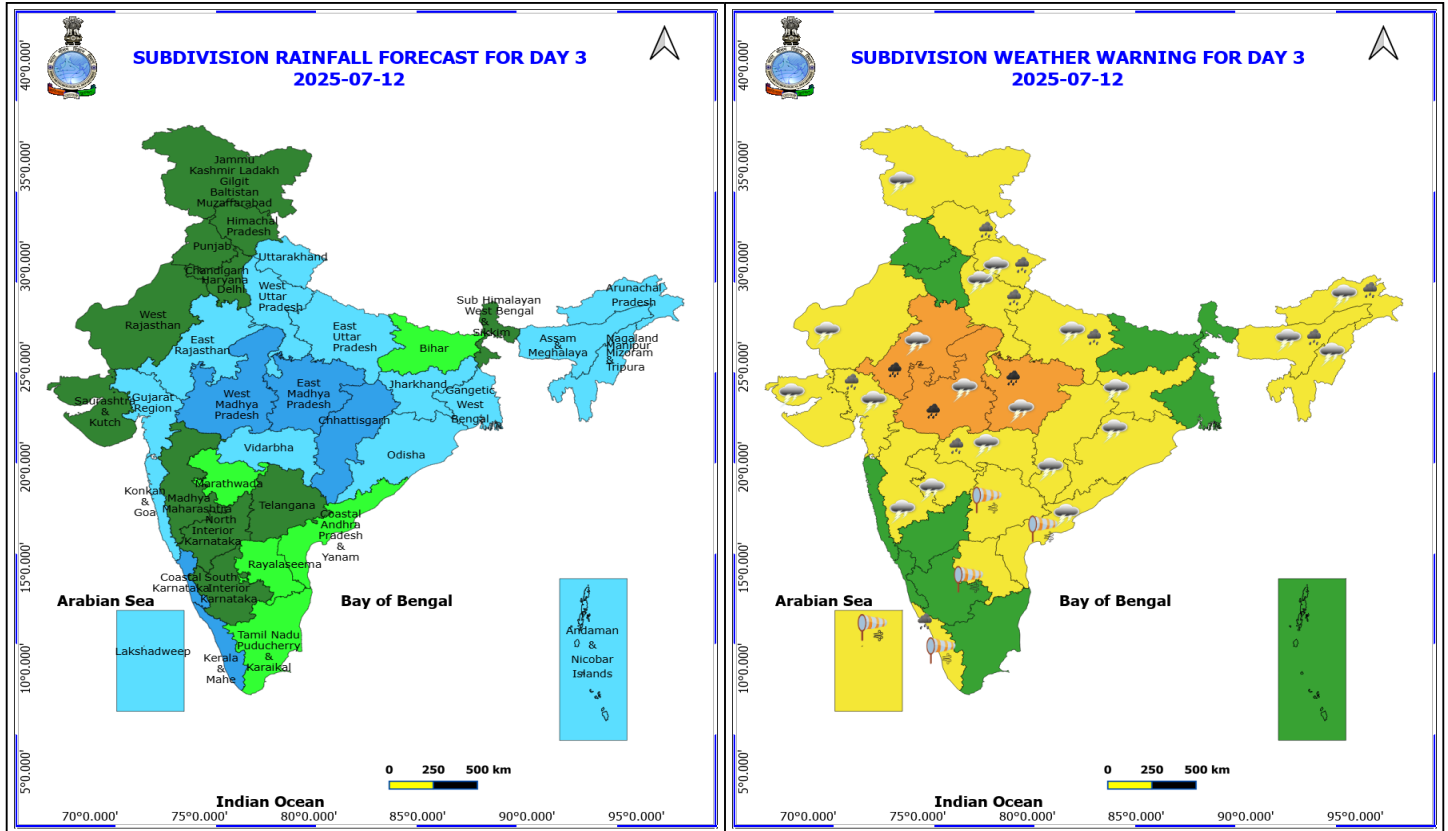
- ❖ **Heavy to Very Heavy Rainfall** very likely at isolated places over East Rajasthan and Madhya Pradesh.
- ❖ **Heavy Rainfall** very likely at isolated places over Arunachal Pradesh, Chhattisgarh, Haryana, Chandigarh & Delhi, Himachal Pradesh, Jharkhand, Punjab, Uttar Pradesh, Uttarakhand and Vidarbha.
- ❖ **Thunderstorm accompanied with lightning & gusty winds(30-40kmph)** very likely at isolated places over Bihar, Jammu-Kashmir-Ladakh-Gilgit-Baltistan-Muzaffarabad, Jharkhand, Odisha, West Madhya Pradesh and West Rajasthan.
- ❖ **Thunderstorm accompanied with Lightning** very likely at isolated places over Arunachal Pradesh, Assam & Meghalaya, Chhattisgarh, Coastal Andhra Pradesh, East Madhya Pradesh, East Rajasthan, Gujarat State, Marathwada, Nagaland, Manipur, Mizoram and Tripura, Tamil Nadu Puducherry & Karaikal, Telangana, Uttar Pradesh, Uttarakhand and Vidarbha.
- ❖ **Strong Surface Winds** very likely at isolated places over Andhra Pradesh, Interior Karnataka, Kerala & Mahe, Lakshadweep and Telangana.
- ❖ **Hot and Humid weather** very likely at isolated places over Tamil Nadu Puducherry & Karaikal.
- ❖ **Squally wind speed reaching 45 kmph to 55 kmph gusting to 65 kmph** is likely to prevail along and off Somalia, Oman & adjoining Yemen coasts, most parts of westcentral Arabian Sea & adjoining, some parts of eastcentral Arabian Sea, northern parts of southwest Arabian Sea, southern parts of northwest Arabian Sea, Gulf of Mannar; Squally weather with wind speed 40 - 50 kmph gusting to 60 kmph likely to prevail over some parts of eastcentral, southeast & southwest Arabian Sea, over many parts of westcentral Bay of Bengal & adjoining parts of southwest Bay of Bengal, some southern parts of south Bay of Bengal.

***Red color warning does not mean "Red Alert" Red color warning means "Take Action"**

Forecast and warning for any day is valid from 0830 hours IST of day till 0830 hours IST of next day

For more details kindly visit <https://mausam.imd.gov.in> or contact 011-2434-4599

(Service to the nation since 1875)



12 July (Day 3)

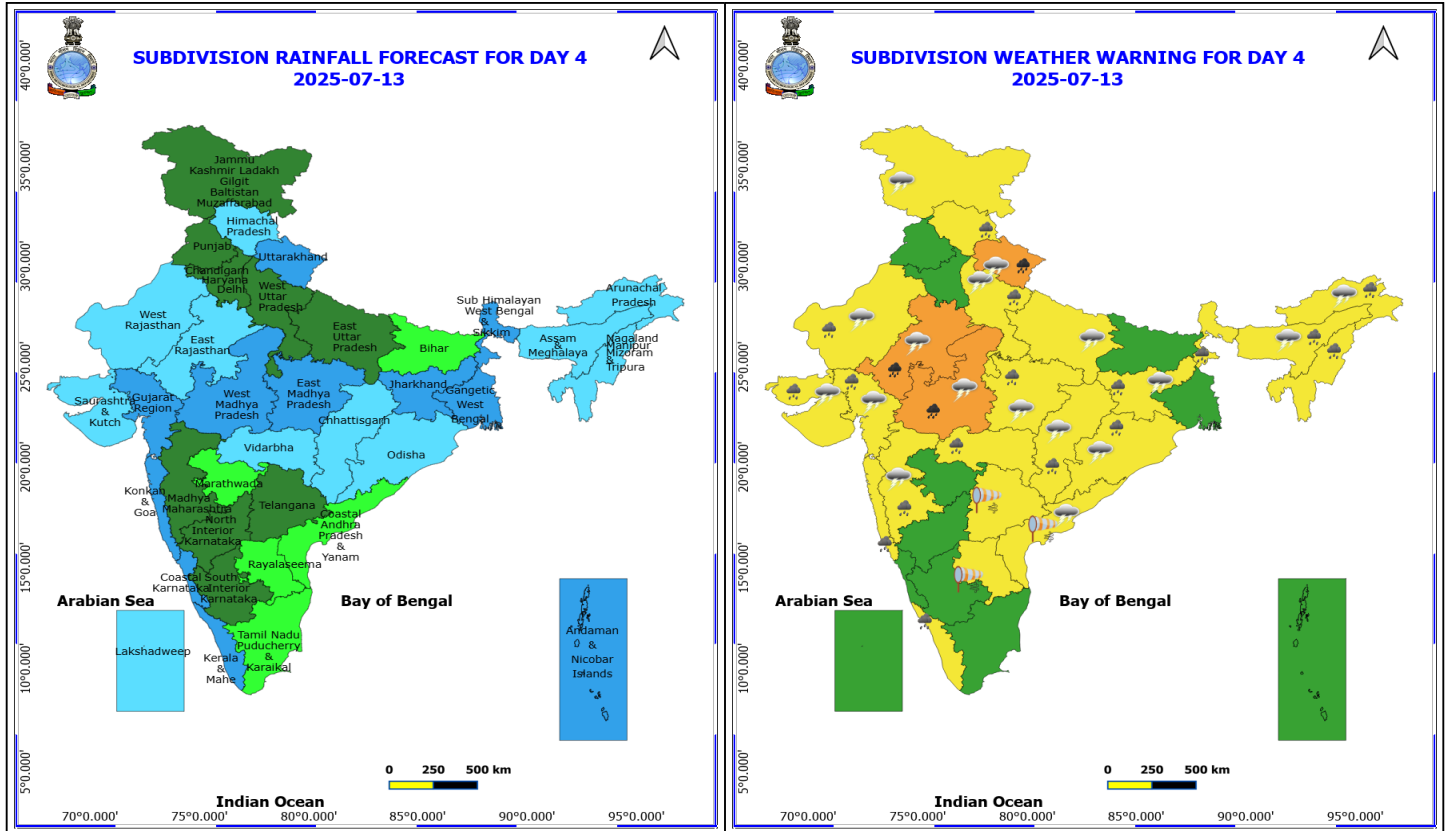
- ❖ **Heavy to Very Heavy Rainfall** very likely at isolated places over East Rajasthan and Madhya Pradesh.
- ❖ **Heavy Rainfall** very likely at isolated places over Arunachal Pradesh, Assam & Meghalaya, Gujarat Region, Himachal Pradesh, Kerala & Mahe, Uttar Pradesh, Uttarakhand and Vidarbha.
- ❖ **Thunderstorm accompanied with lightning & gusty winds(30-40kmph)** very likely at isolated places over Jammu-Kashmir-Ladakh-Gilgit-Baltistan-Muzaffarabad, Odisha and West Rajasthan.
- ❖ **Thunderstorm accompanied with Lightning** very likely at isolated places over Arunachal Pradesh, Assam & Meghalaya, Chhattisgarh, Coastal Andhra Pradesh, East Rajasthan, Gujarat State, Jharkhand, Madhya Pradesh, Maharashtra, Nagaland, Manipur, Mizoram and Tripura, Uttar Pradesh and Uttarakhand.
- ❖ **Strong Surface Winds** very likely at isolated places over Andhra Pradesh, Kerala & Mahe, Lakshadweep and Telangana.
- ❖ **Squally wind speed reaching 45 kmph to 55 kmph gusting to 65 kmph** is likely to prevail along and off Somalia, Oman & adjoining Yemen coasts, most parts of westcentral Arabian Sea & adjoining parts of eastcentral Arabian Sea, northern parts of southwest Arabian Sea, Gulf of Mannar; Squally weather with wind speed 40 - 50 kmph gusting to 60 kmph likely to prevail over many parts of eastcentral Arabian Sea and few southern parts of north Arabian Sea, over some parts of westcentral and southwest Bay of Bengal & adjoining parts of southwest Bay of Bengal, some southern parts of south Bay of Bengal.

*Red color warning does not mean "Red Alert" Red color warning means "Take Action"

Forecast and warning for any day is valid from 0830 hours IST of day till 0830 hours IST of next day

For more details kindly visit <https://mausam.imd.gov.in> or contact 011-2434-4599

(Service to the nation since 1875)



13 July (Day 4)

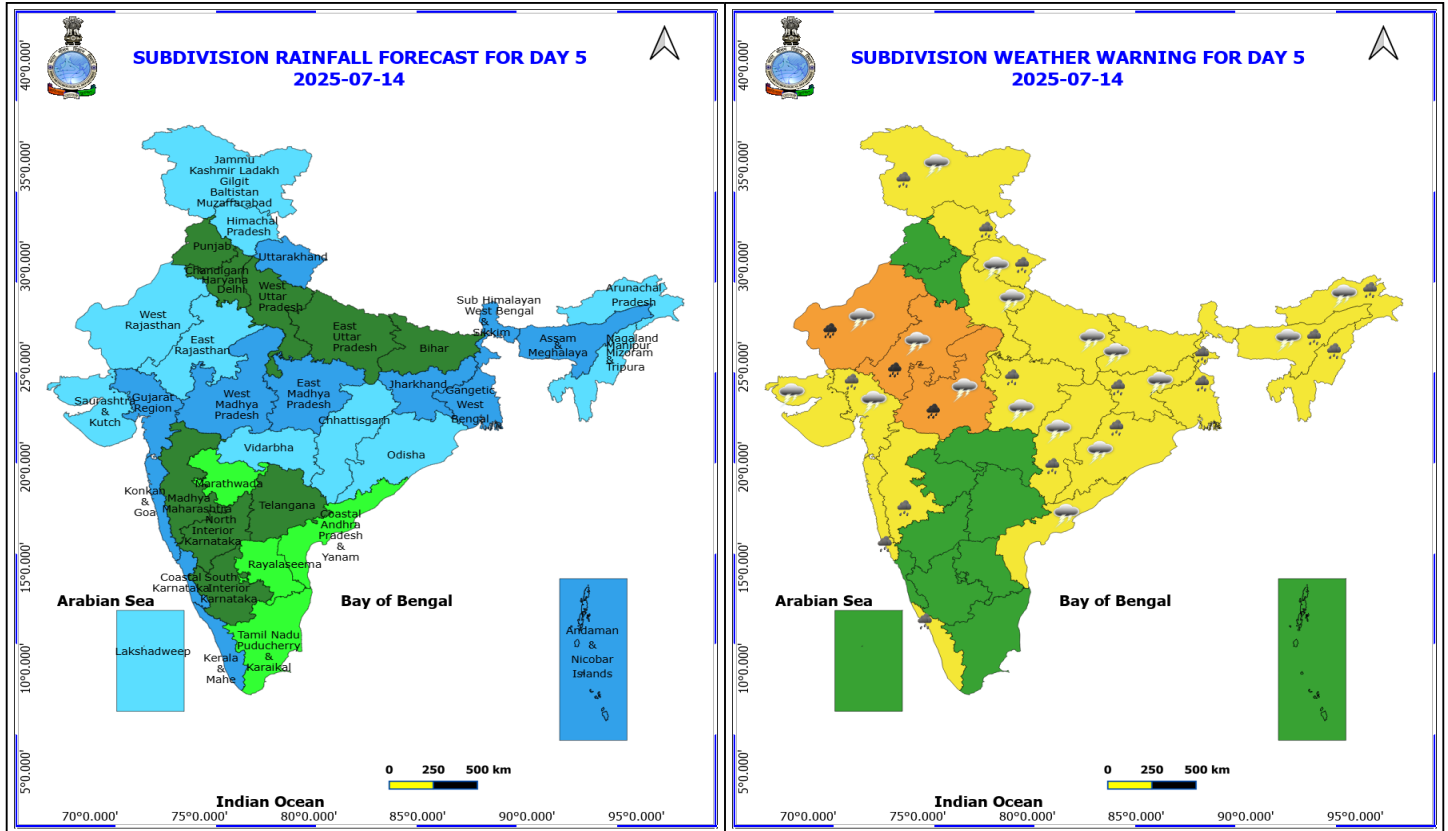
- ❖ **Heavy to Very Heavy Rainfall** likely at isolated places over East Rajasthan, Uttarakhand and West Madhya Pradesh.
- ❖ **Heavy Rainfall** likely at isolated places over Arunachal Pradesh, Assam & Meghalaya, Chhattisgarh, East Madhya Pradesh, Gujarat State, Himachal Pradesh, Jharkhand, Kerala & Mahe, Konkarn & Goa, Madhya Maharashtra, Nagaland, Manipur, Mizoram and Tripura, Odisha, Sub Himalayan West Bengal & Sikkim, Vidarbha, West Rajasthan and West Uttar Pradesh.
- ❖ **Thunderstorm accompanied with lightning & gusty winds(30-40kmph)** likely at isolated places over Jammu-Kashmir-Ladakh-Gilgit-Baltistan-Muzaffarabad, Odisha and West Rajasthan.
- ❖ **Thunderstorm accompanied with Lightning** likely at isolated places over Arunachal Pradesh, Assam & Meghalaya, Chhattisgarh, Coastal Andhra Pradesh, East Rajasthan, Gujarat State, Jharkhand, Madhya Maharashtra, Madhya Pradesh, Uttar Pradesh and Uttarakhand.
- ❖ **Strong Surface Winds** likely at isolated places over Andhra Pradesh and Telangana.
- ❖ **Squally wind speed reaching 45 kmph to 55 kmph gusting to 65 kmph** is likely to prevail along and off Somalia, Oman & adjoining Yemen coasts, most parts of westcentral Arabian Sea & adjoining parts of eastcentral Arabian Sea, northern parts of southwest Arabian Sea, Gulf of Mannar; Squally weather with wind speed 40 - 50 kmph gusting to 60 kmph likely to prevail over many parts of eastcentral Arabian Sea and few southern parts of north Arabian Sea, along and off Konkarn coast, over some parts of westcentral Bay of Bengal, some southern parts of south Bay of Bengal.

*Red color warning does not mean "Red Alert" Red color warning means "Take Action"

Forecast and warning for any day is valid from 0830 hours IST of day till 0830 hours IST of next day

For more details kindly visit <https://mausam.imd.gov.in> or contact 011-2434-4599

(Service to the nation since 1875)



14 July (Day 5)

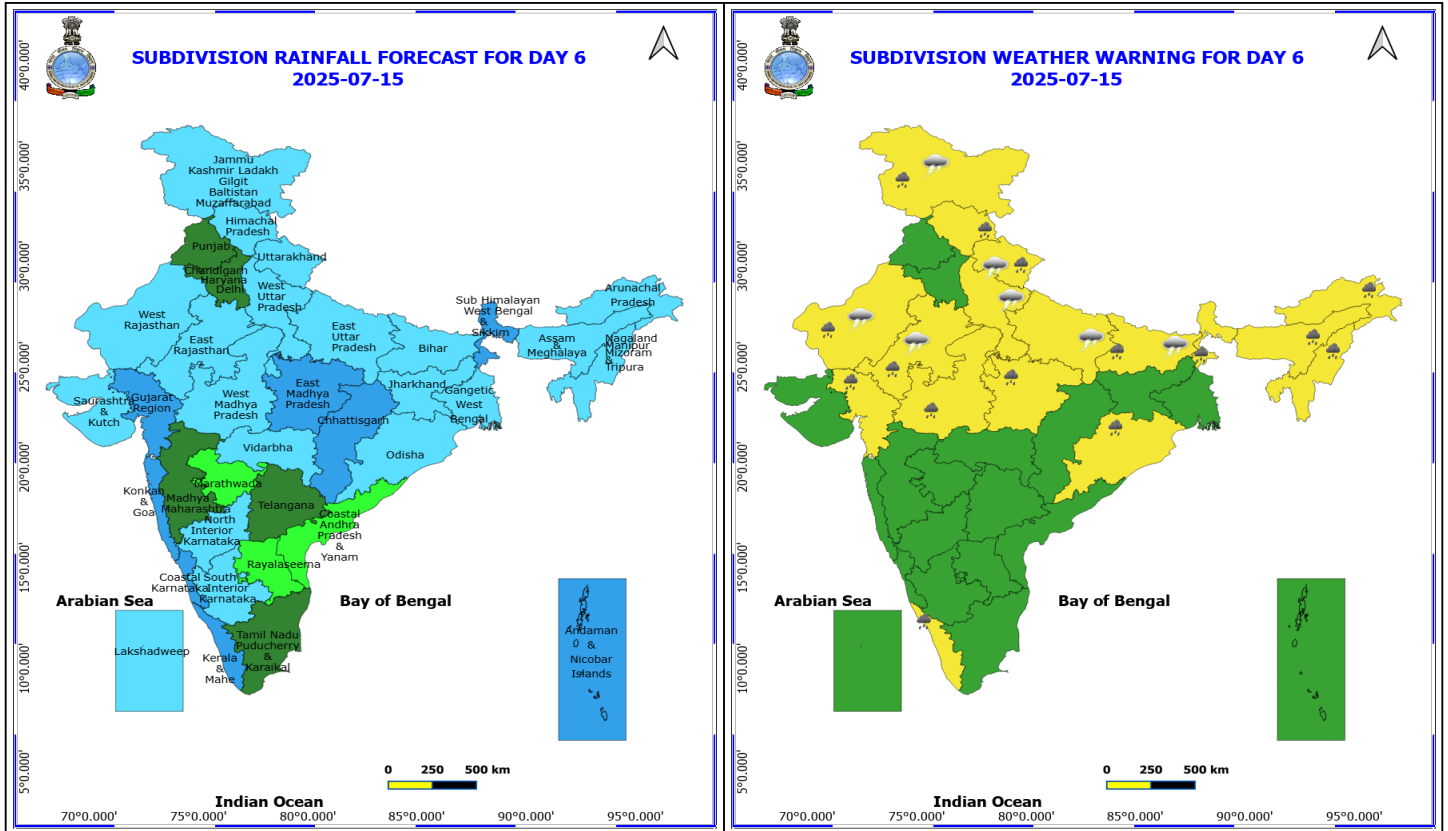
- ❖ **Heavy to Very Heavy Rainfall** likely at isolated places over Rajasthan and West Madhya Pradesh.
- ❖ **Heavy Rainfall** likely at isolated places over Arunachal Pradesh, Assam & Meghalaya, Chhattisgarh, East Madhya Pradesh, Gujarat Region, Himachal Pradesh, Jammu-Kashmir-Ladakh-Gilgit-Baltistan-Muzaffarabad, Jharkhand, Kerala & Mahe, Konkan & Goa, Madhya Maharashtra, Nagaland, Manipur, Mizoram and Tripura, Odisha, Uttarakhand and West Bengal & Sikkim.
- ❖ **Thunderstorm accompanied with lightning & gusty winds(30-40kmph)** likely at isolated places over Bihar, Jammu-Kashmir-Ladakh-Gilgit-Baltistan-Muzaffarabad, Odisha and West Rajasthan.
- ❖ **Thunderstorm accompanied with Lightning** likely at isolated places over Arunachal Pradesh, Assam & Meghalaya, Chhattisgarh, Coastal Andhra Pradesh, East Rajasthan, Gujarat State, Jharkhand, Madhya Pradesh, Uttar Pradesh and Uttarakhand.
- ❖ **Squally wind speed reaching 45 kmph to 55 kmph gusting to 65 kmph** is likely to prevail along and off Somalia, Oman & adjoining Yemen coasts, most parts of westcentral Arabian Sea & adjoining parts of eastcentral Arabian Sea, northern parts of southwest Arabian Sea, Gulf of Mannar; Squally weather with wind speed 40 - 50 kmph gusting to 60 kmph likely to prevail over many parts of eastcentral Arabian Sea and few southern parts of north Arabian Sea, along and off south Konkan, Goa coasts, over some parts of southeast Arabian Sea, Lakshadweep area, over some parts of southwest Bay of Bengal and few parts of southeast Bay of Bengal.

***Red color warning does not mean "Red Alert" Red color warning means "Take Action"**

Forecast and warning for any day is valid from 0830 hours IST of day till 0830 hours IST of next day

For more details kindly visit <https://mausam.imd.gov.in> or contact 011-2434-4599

(Service to the nation since 1875)



15 July (Day 6)

- ❖ **Heavy Rainfall** likely at isolated places over Arunachal Pradesh, Assam & Meghalaya, Bihar, Gujarat Region, Himachal Pradesh, Jammu-Kashmir-Ladakh-Gilgit-Baltistan-Muzaffarabad, Kerala & Mahe, Madhya Pradesh, Nagaland, Manipur, Mizoram and Tripura, Odisha, Rajasthan, Sub Himalayan West Bengal & Sikkim and Uttarakhand.
- ❖ **Thunderstorm accompanied with lightning & gusty winds(30-40kmph)** likely at isolated places over Bihar, Jammu-Kashmir-Ladakh-Gilgit-Baltistan-Muzaffarabad and West Rajasthan.
- ❖ **Thunderstorm accompanied with Lightning** likely at isolated places over East Rajasthan, Uttar Pradesh and Uttarakhand.

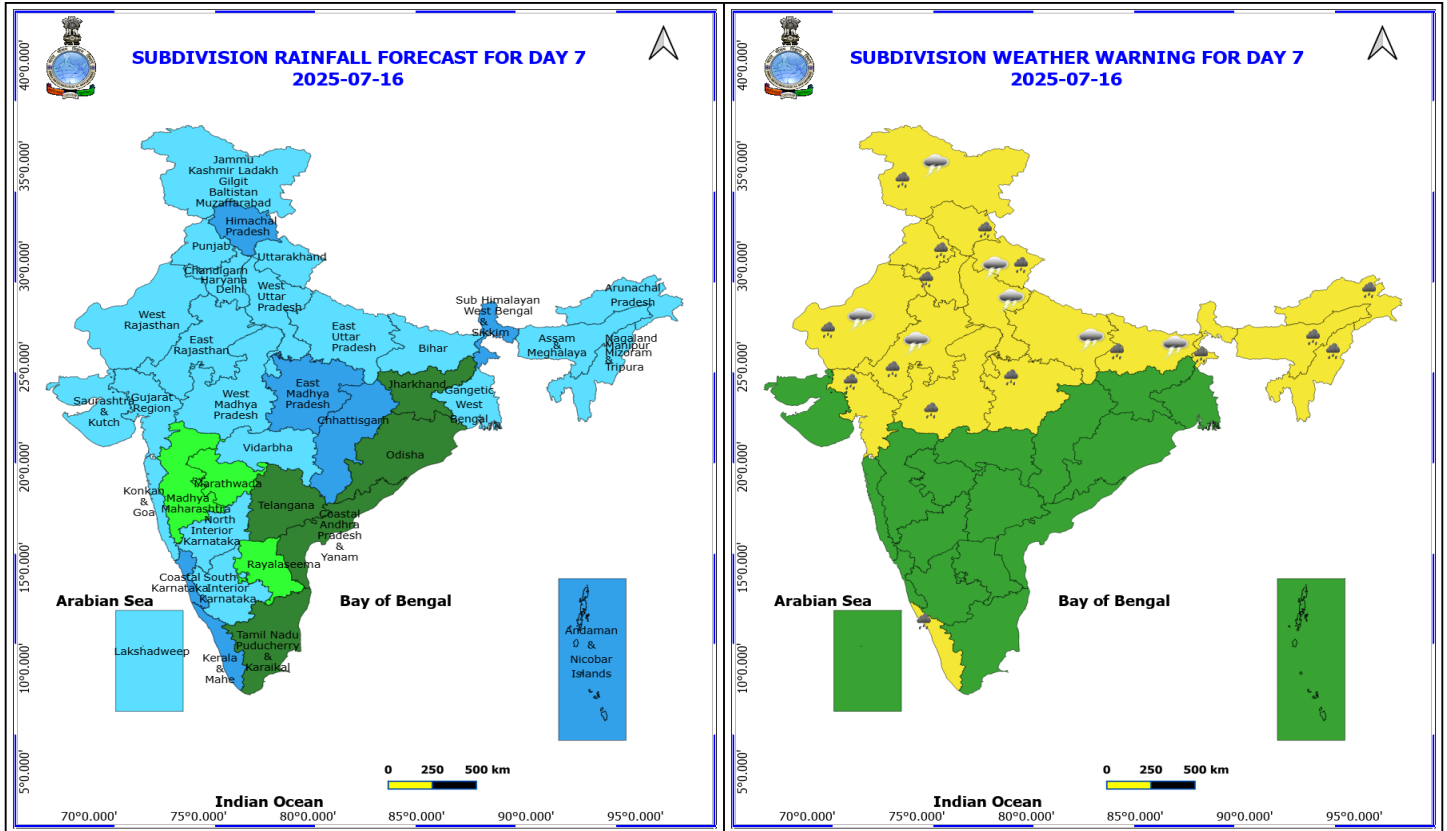
No Fishermen Warning

*Red color warning does not mean "Red Alert" Red color warning means "Take Action"

Forecast and warning for any day is valid from 0830 hours IST of day till 0830 hours IST of next day

For more details kindly visit <https://mausam.imd.gov.in> or contact 011-2434-4599

(Service to the nation since 1875)



16 July (Day 7)

- ❖ **Heavy to Very Heavy Rainfall** likely at isolated places over Rajasthan and West Madhya Pradesh.
- ❖ **Heavy Rainfall** likely at isolated places over Arunachal Pradesh, Assam & Meghalaya, Chhattisgarh, East Madhya Pradesh, Gujarat Region, Himachal Pradesh, Jammu-Kashmir-Ladakh-Gilgit-Baltistan-Muzaffarabad, Jharkhand, Kerala & Mahe, Konkan & Goa, Madhya Maharashtra, Nagaland, Manipur, Mizoram and Tripura, Odisha, Uttarakhand and West Bengal & Sikkim.
- ❖ **Thunderstorm accompanied with lightning & gusty winds(30-40kmph)** likely at isolated places over Bihar, Jammu-Kashmir-Ladakh-Gilgit-Baltistan-Muzaffarabad, Odisha and West Rajasthan.
- ❖ **Thunderstorm accompanied with Lightning** likely at isolated places over Arunachal Pradesh, Assam & Meghalaya, Chhattisgarh, Coastal Andhra Pradesh, East Rajasthan, Gujarat State, Jharkhand, Madhya Pradesh, Uttar Pradesh and Uttarakhand.

No Fishermen Warning

Flash Flood Warnings

24 hours Outlook for the Flash Flood Risk (FFR) till 1730 IST of 11-07-2025 :

Moderate flash flood risk likely over few watersheds & neighbourhoods of following Met Sub-divisions during next 24 hours.

East Madhya Pradesh - Anuppur, Balaghat, Chhatarpur, Damoh, Dindori, Jabalpur, Katni, Narshimapura, Panna, Sagar, Seoni, Shahdol and Umaria districts.

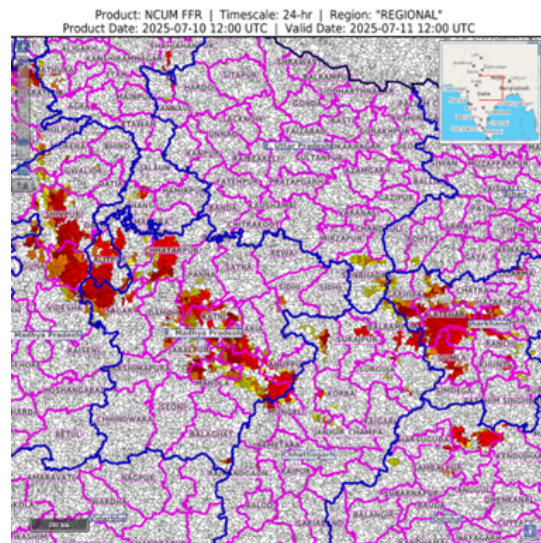
West Madhya Pradesh –Ashoknagar, Shivpuri, Sheopur, Morena districts

Chhattisgarh - Balarampur, Bilaspur, Durg, Jashpur, Korba, Korea, Kawardha, Mungeli, Rajnandgaon, Surajpur and Surguja districts.

Odisha - Baragarh, Deogarh, Kendujhar, Mayurbhanj, Subarnapur and Sundargarh districts.

Jharkhand - Dhanbad, East Singhbhum, Garhwa, Giridih, Gumla, Khunti, Latehar, Lohardaga, Palamu, Ranchi, Simdega, East Singhbhum districts.

Surface runoff/ Inundation may occur at some fully saturated soils & low-lying areas over Area of Concern (AoC) as shown in map due to expected rainfall occurrence in next 24 hours.



24 hours Outlook for the Flash Flood Risk (FFR) till 1730 IST of 11-07-2025 :

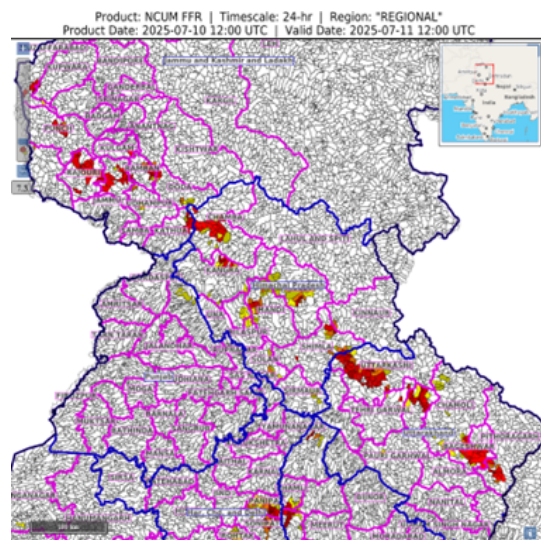
Low to Moderate flash flood risk likely over few watersheds & neighbourhoods of following Met Sub-divisions during next 24 hours.

Himachal Pradesh – Chamba, Kangra, Kinnaur, Kullu, Mandi, Shimla and Sirmaur districts.

Jammu & Kashmir & Ladakh - Punch, Rajouri, Ramban, Kathua, Doda and Udhampur districts.

Uttarakhand - Almora, Bageshwar, Chamoli, Nanital, Pithoragarh, Tehri Garwal and Uttarkashi districts.

Surface runoff/ Inundation may occur at some fully saturated soils & low-lying areas over Area of Concern (AoC) as shown in map due to expected rainfall occurrence in next 24 hours.



*Red color warning does not mean "Red Alert" Red color warning means "Take Action"

Forecast and warning for any day is valid from 0830 hours IST of day till 0830 hours IST of next day

For more details kindly visit <https://mausam.imd.gov.in> or contact 011-2434-4599

(Service to the nation since 1875)



Table-1

7 Days Rainfall Forecast

S.No.	Subdivision	10- Jul	11- Jul	12- Jul	13- Jul	14- Jul	15- Jul	16- Jul
		Day 1	Day 2	Day 3	Day 4	Day 5	Day 6	Day 7
1	ANDAMAN & NICOBAR ISLANDS	FWS	FWS	FWS	WS	WS	WS	WS
2	ARUNACHAL PRADESH	SCT	SCT	FWS	FWS	FWS	FWS	FWS
3	ASSAM & MEHGHALAYA	SCT	SCT	FWS	FWS	WS	FWS	FWS
4	N. M. M. & T.	WS	FWS	FWS	FWS	FWS	FWS	FWS
5	S.H. WEST BENGAL & SIKKIM	FWS	SCT	SCT	WS	WS	WS	WS
6	GANGETIC WEST BENGAL	WS	FWS	FWS	WS	WS	FWS	FWS
7	ODISHA	FWS	SCT	FWS	FWS	FWS	FWS	SCT
8	JHARKHAND	WS	WS	FWS	WS	WS	FWS	SCT
9	BIHAR	SCT	SCT	ISOL	ISOL	SCT	FWS	FWS
10	EAST UTTAR PRADESH	SCT	SCT	FWS	SCT	SCT	FWS	FWS
11	WEST UTTAR PRADESH	FWS	SCT	FWS	SCT	SCT	FWS	FWS
12	UTTARAKHAND	FWS	FWS	FWS	WS	WS	FWS	FWS
13	HARYANA, CHD & DELHI	WS	FWS	SCT	SCT	SCT	SCT	FWS
14	PUNJAB	WS	FWS	SCT	SCT	SCT	SCT	FWS
15	HIMACHAL PRADESH	FWS	FWS	SCT	FWS	FWS	FWS	WS
16	JAMMU AND KASHMIR AND LADAKH	FWS	SCT	SCT	SCT	FWS	FWS	FWS
17	WEST RAJASTHAN	SCT	ISOL	SCT	FWS	FWS	FWS	FWS
18	EAST RAJASTHAN	SCT	FWS	FWS	FWS	FWS	FWS	FWS
19	WEST MADHYA PRADESH	SCT	FWS	WS	WS	WS	FWS	FWS
20	EAST MADHYA PRADESH	WS	WS	WS	WS	WS	WS	WS
21	GUJRAT REGION	FWS	FWS	FWS	WS	WS	WS	FWS
22	SAURASHTRA & KUTCH	SCT	SCT	SCT	FWS	FWS	FWS	FWS
23	KONKAN & GOA	WS	WS	FWS	WS	WS	WS	FWS
24	MADHYA MAHARASHTRA	SCT	SCT	SCT	SCT	SCT	SCT	ISOL
25	MARATHWADA	SCT	ISOL	ISOL	ISOL	ISOL	ISOL	ISOL
26	VIDARBHA	WS	WS	FWS	FWS	FWS	FWS	FWS
27	CHATTISGARH	WS	WS	WS	FWS	FWS	WS	WS
28	COASTAL ANDHRA PRADESH	ISOL	ISOL	ISOL	ISOL	ISOL	ISOL	SCT
29	TELANGANA	SCT	SCT	SCT	SCT	SCT	SCT	SCT
30	RAYALASEEMA	ISOL	ISOL	ISOL	ISOL	ISOL	ISOL	ISOL
31	TAMILNADU & PUDUCHERRY	ISOL	ISOL	ISOL	ISOL	ISOL	SCT	SCT
32	COSTAL KARNATAKA	WS	WS	WS	WS	WS	WS	WS
33	NORTH INTERIOR KARNATAKA	SCT	SCT	SCT	SCT	SCT	FWS	FWS
34	SOUTH INTERIOR KARNATAKA	SCT	SCT	SCT	SCT	SCT	FWS	FWS
35	KERALA	WS	WS	WS	WS	WS	WS	WS
36	LAKSHDWEEP	FWS	FWS	FWS	FWS	FWS	FWS	FWS

Legend	Category	%Stations
WS	Widespread/Most Places	76-100
FWS	Fairly Widespread/Many Places	51-75
SCT	Scattered/ A Few Places	26-50
ISOL	Isolated Places	1-25
DRY	No Rain	0

*Red color warning does not mean "Red Alert" Red color warning means "Take Action"

Forecast and warning for any day is valid from 0830 hours IST of day till 0830 hours IST of next day

For more details kindly visit <https://mausam.imd.gov.in> or contact 011-2434-4599

(Service to the nation since 1875)

Fig. 1: Maximum Temperatures Dated 2025-07-10

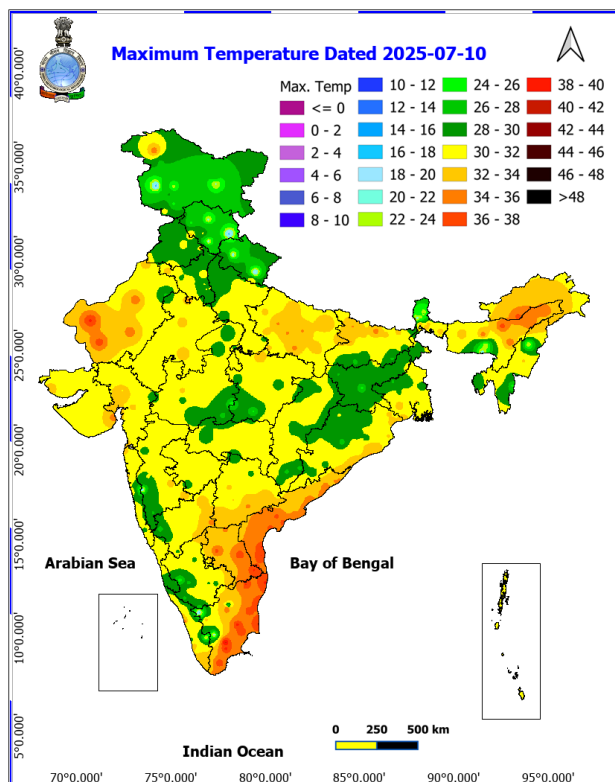


Fig. 2: Departure of Maximum Temp. Dated 2025-07-10

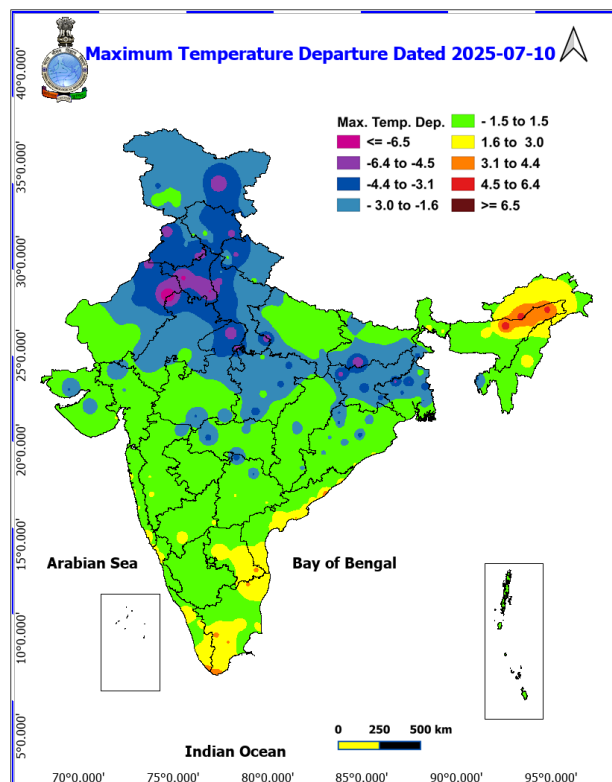


Fig. 3: Minimum Temperatures Dated 2025-07-10

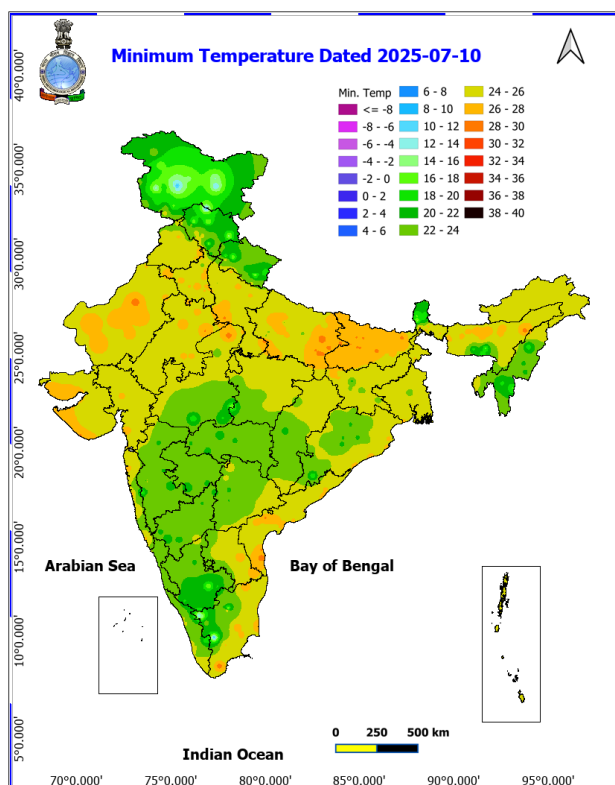
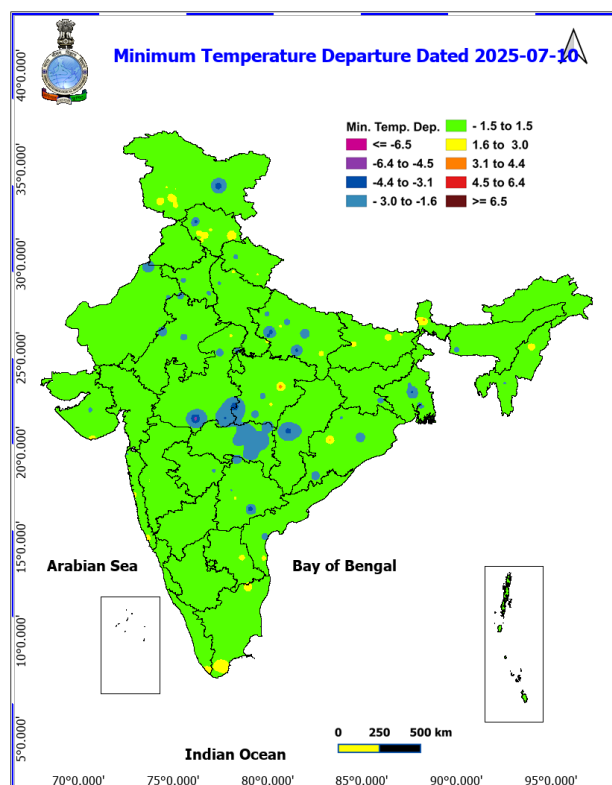
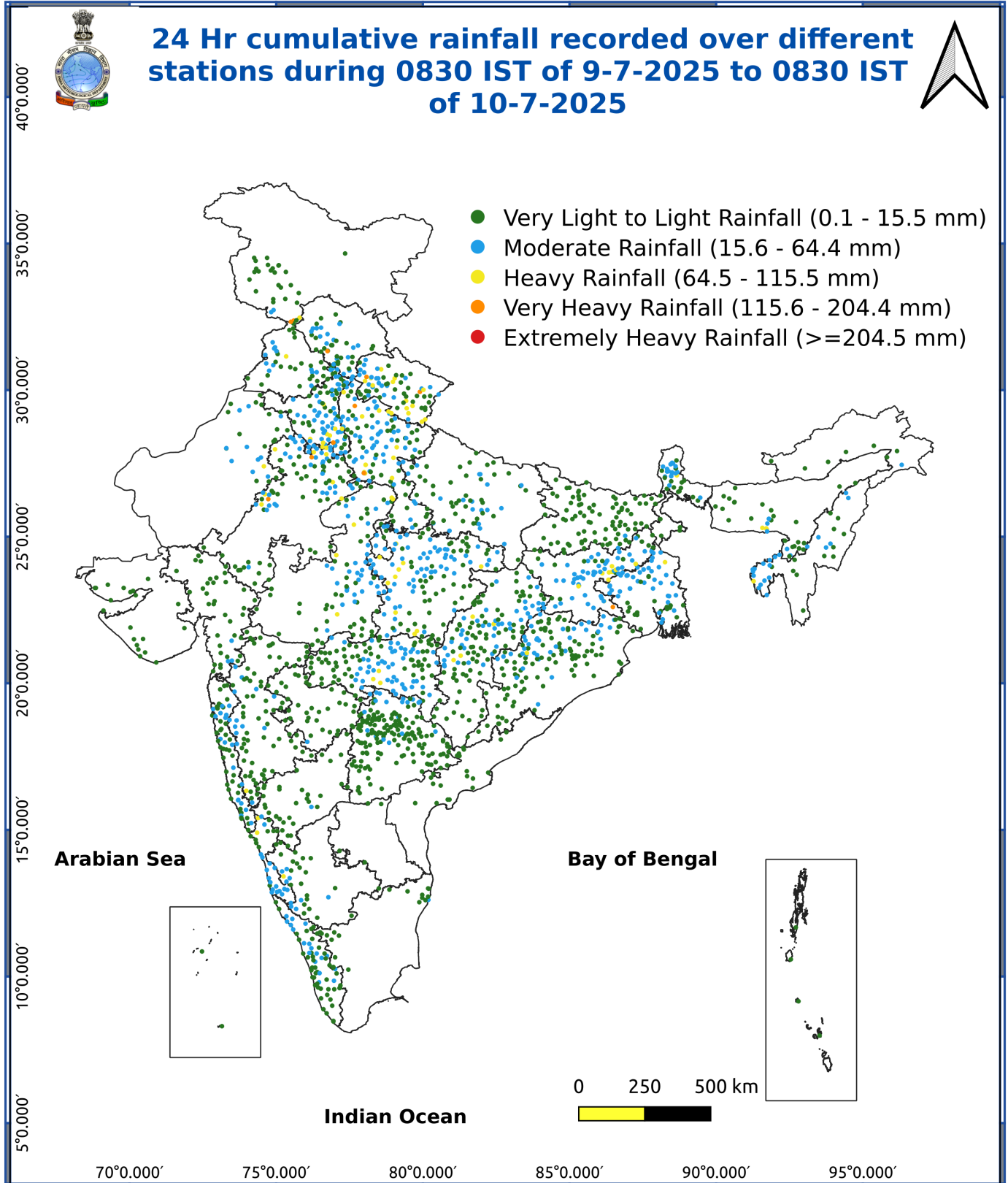


Fig. 4: Departure of Minimum Temp. Dated 2025-07-10





*Red color warning does not mean "Red Alert" Red color warning means "Take Action"

Forecast and warning for any day is valid from 0830 hours IST of day till 0830 hours IST of next day

For more details kindly visit <https://mausam.imd.gov.in> or contact 011-2434-4599

(Service to the nation since 1875)

Impact & Action Suggested

- **Very heavy rainfall** over Himachal Pradesh, Jammu, Punjab, Haryana, West Uttar Pradesh on 10th; Uttarakhand on 13th; West Rajasthan on 14th; East Rajasthan, West Madhya Pradesh during 11th-14th July. East Madhya Pradesh during 10th-12th July.

Impact Expected

- Localized Flooding of roads, water logging in low lying areas and closure of underpasses mainly in urban areas of the above region.
- Occasional reduction in visibility due to heavy rainfall.
- Disruption of traffic in major cities due to water logging in roads leading to increased travel time.
- Minor damage to kutcha roads.
- Possibilities of damage to vulnerable structure.
- Localized Landslides/Mudslides/landslips/mudslips/landsinks/mudsinks.
- Damage to horticulture and standing crops in some areas due to inundation.
- It may lead to riverine flooding in some river catchments (for riverine flooding please visit Web page of CWC).

Action Suggested

- Check for traffic congestion on your route before leaving for your destination.
- Follow any traffic advisories that are issued in this regard.
- Avoid going to areas that face the water logging problems often.
- Avoid staying in vulnerable structure.

Agromet advisories for various parts of the country

Agromet advisories for likely impact of Heavy / Heavy to Very Heavy Rainfall

- In **Gird Zone of Madhya Pradesh**, postpone sowing of soybean and pearl millet and drain out excess water from already sown fields. In **Satpura Plateau zone**, make arrangements for proper drainage in the fields of maize, soybean and vegetables. Protect vegetable nursery with green net or any other medium. In **Kymore Plateau and Satpura Hill Zone**, drain out excess water from vegetables.
- In **Chhattisgarh**, ensure proper drainage in rice nurseries and fields of rice, maize, pigeon pea, minor millets and vegetables. In **Plain Zone**, postpone line sowing / transplanting of rice and sowing of pigeon pea, maize and soybean.
- In **Sub Tropical Zone of Jammu & Kashmir**, drain out excess rain water from fields of maize and transplanted rice to avoid water stagnation. In **Intermediate Zone**, provide drainage in maize fields. Provide mechanical support to cucurbits and tomato plants to prevent lodging. Postpone sowing of *kharif* pulses till cessation of heavy rains.
- In **Mid Hills Sub Humid Zone of Himachal Pradesh**, provide support to the cucumber vines and maintain proper drainage in vegetable and maize fields. In **Sub Montane and Low Hills Sub Tropical Zone**, ensure proper drainage in maize fields to avoid water logging.
- In **Uttarakhand**, ensure proper drainage facilities in soybean, maize, barnyard millet, finger millet, pigeon pea, kidney beans, vegetables and orchards. Harvest matured vegetables and fruits and store in safe place.
- In **Undulating Plain Zone of Punjab**, maintain proper drainage in the fields of rice, sugarcane, *kharif* maize and green gram.
- In **Eastern Zone of Haryana**, maintain proper drainage in rice fields.
- In **South Western Semi-Arid Zone of West Uttar Pradesh**, make proper arrangement to drain out excess water from the fields of paddy, spring sugarcane, pigeon pea, maize and vegetables.
- In **Southeastern Humid Plain Zone of East Rajasthan**, make provision to drain out excess water from rice

*Red color warning does not mean "Red Alert" Red color warning means "Take Action"

Forecast and warning for any day is valid from 0830 hours IST of day till 0830 hours IST of next day

For more details kindly visit <https://mausam.imd.gov.in> or contact 011-2434-4599

(Service to the nation since 1875)



nurseries and fields of maize, soybean and black gram. In **Flood Prone Eastern Plain Zone**, postpone sowing / re- sowing of sesame, green gram and pearl millet during heavy rains.

- In **Konkan**, make arrangement to drain out excess water from rice and finger millet nurseries, groundnut, vegetables and orchards. In **Vidarbha**, make arrangements to drain out excess water *kharif* crops, vegetable nurseries and orchards.
- In **Jharkhand**, make necessary arrangements to drain out excess water from maize fields, rice and vegetable nurseries. Cover the vegetable nurseries with polythene sheets.
- In **Tripura**, maintain good drainage in the fields of *Aus* rice and maize.

Livestock / Fishery

- Keep the animals inside the shed during heavy rainfall and provide them balanced feed.
- Store feed and fodder in a safe place to prevent spoilage.
- Construct an outlet with proper netting around the ponds to drain out excess water, thereby preventing fish from escaping in case of overflow.

Agromet advisories for likely impact of Thunderstorm / Gusty Winds / Squally Winds

- Provide mechanical support to horticultural crops and staking or support to vegetables and young fruit plants / fruit-bearing plants to avoid lodging due to strong winds.

LEGENDS

- 1 अंडमान और निकोबार द्वीप समुह
- 2 अरुणाचल प्रदेश
- 3 असम और मेघालय
- 4 नागालैंड मनीपुर मीजोरम और त्रिपुरा
- 5 उप हिमालय पश्चिम बंगाल एवं सिक्किम
- 6 पश्चिम बंगाल
- 7 ओडिसा
- 8 झारखंड
- 9 बिहार
- 10 पूर्वी उत्तर प्रदेश
- 11 पश्चिम उत्तर प्रदेश
- 12 उत्तराखंड
- 13 हरियाणा चंडीगढ़ एवं दिल्ली
- 14 पंजाब
- 15 हिमाचल प्रदेश
- 16 जम्मू एवं कश्मीर एवं लद्दाख
- 17 पश्चिम राजस्थान
- 18 पूर्वी राजस्थान
- 19 पश्चिम मध्य प्रदेश
- 20 पूर्वी मध्य प्रदेश
- 21 गुजरात क्षेत्र
- 22 सौराष्ट्र एवं कच्छ
- 23 कोंकण एवं गोवा
- 24 मध्य महाराष्ट्र
- 25 मराठावाड़ा
- 26 विदर्भ
- 27 छत्तीसगढ़
- 28 तटीय आंध्र प्रदेश एवं यनम
- 29 तेलंगाना
- 30 रायलसीमा
- 31 तमिलनाडु, पुदुचेरी एवं कराईकल
- 32 तटिय कर्नाटक
- 33 आंतरिक उत्तरी कर्नाटक
- 34 आंतरिक दक्षिणी कर्नाटक
- 35 केरल एवं माहे
- 36 लक्षद्वीप



1. Andaman & Nicobar Islands
2. Arunachal Pradesh
3. Assam & Meghalaya
4. Nagaland, Manipur, Mizoram & Tripura
5. Sub-Himalayan West Bengal & Sikkim
6. Gangetic West Bengal
7. Orissa
8. Jharkhand
9. Bihar
10. East Uttar Pradesh
11. West Uttar Pradesh
12. Uttarakhand
13. Haryana, Chd & Delhi
14. Punjab
15. Himachal Pradesh
16. Jammu & Kashmir and Ladakh
17. West Rajasthan
18. East Rajasthan
19. West Madhya Pradesh
20. East Madhya Pradesh
21. Gujarat
22. Saurashtra
23. Konkan & Goa
24. Madhya Maharashtra
25. Marathwada
26. Vidharbha
27. Chhattisgarh
28. Coastal Andhra Pradesh & Yanam
29. Telangana
30. Rayalaseema
31. Tamilnadu, Puducherry & Karaikal
32. Coastal Karnataka
33. North Interior Karnataka
34. South Interior Karnataka
35. Kerala & Mahe
36. Lakshadweep

SPATIAL DISTRIBUTION (% of Stations reporting)

% Stations	Category	% Stations	Category
76-100	Widespread (WS/Most Places)	26-50	Scattered (SCT/ A Few Places)
51-75	Fairly Widespread (FWS/ Many Places)	1-25	Isolated (ISOL)

Subdivision Colour

- NO WARNING
- WATCH (BE UPDATED)
- ALERT (BE PREPARED TO TAKE ACTION)
- WARNING (TAKE ACTION)

Probabilistic Forecast

Terms	Probability of Occurrence (%)
Unlikely	< 25
Likely	25 - 50
Very Likely	50 - 75
Most Likely	> 75

-  Heavy Rain

 Thunderstorm & Lightning

 Strong surface winds

 Cold Wave

 Hot & Humid

 Very Heavy Rain

 Hailstorm

 Heat Wave

 Cold Day

 Extremely Heavy Rain

 Dust Storm

 Hot Day

 Ground Frost

 Heavy Snow

 Dust Raising Winds

 Warm Night

 Fog

*Red color warning does not mean "Red Alert" Red color warning means "Take Action"

Forecast and warning for any day is valid from 0830 hours IST of day till 0830 hours IST of next day

For more details kindly visit <https://mausam.imd.gov.in> or contact 011-2434-4599

(Service to the nation since 1875)

LEGENDS

WARNING

WARNING (TAKE ACTION)
ALERT (BE PREPARED)
WATCH (BE UPDATED)
NO WARNING (NO ACTION)

Probabilistic Forecast

Terms	Probability of Occurrence (%)
Unlikely	< 25
Likely	25 - 50
Very Likely	50 - 75
Most Likely	> 75



Heavy: 64.5 to 115.5 mm/cm *
Very Heavy: 115.6 to 204.4 mm/cm *
Extremely Heavy: > 204.4 mm/cm *



When maximum temperature of a station reaches $\geq 40^{\circ}\text{C}$ for plains and $\geq 30^{\circ}\text{C}$ for hilly regions
(a) Based on Departure from normal

Heat Wave: Maximum Temperature Departure from normal 4.5°C to 6.4°C .
Severe Heat Wave: Maximum Temperature Departure from normal $\geq 6.5^{\circ}\text{C}$

(b). Based on Actual maximum temperature

Heat Wave: When actual maximum temperature $\geq 45^{\circ}\text{C}$.
Severe Heat Wave: When actual maximum temperature $\geq 47^{\circ}\text{C}$

(c). Criteria for heat wave for coastal stations

When maximum temperature departure is $> 4.5^{\circ}\text{C}$ from normal. Heat Wave may be described provided maximum temperature $\geq 37^{\circ}\text{C}$



When maximum temperature remains 40°C

Warm Night: When minimum temperature departure 4.5°C to 6.4°C .
Severe Warm Night: When minimum temperature departure $> 6.4^{\circ}\text{C}$.



When minimum temperature of a station $\leq 10^{\circ}\text{C}$ for plains and $\leq 0^{\circ}\text{C}$ for hilly regions.

(a). Based on departure

Cold Wave: Minimum Temperature Departure from normal -4.5°C to -6.4°C .
Severe Cold Wave: Minimum Temperature Departure from normal $\leq -6.5^{\circ}\text{C}$

(b) Based on actual Minimum Temperature (for Plains only)

Cold Wave: When Minimum Temperature is $\leq 4.0^{\circ}\text{C}$
Severe Cold Wave: When Minimum Temperature is $\leq 2.0^{\circ}\text{C}$

(c) For Coastal Stations

When Minimum Temperature departure is $\leq -4.5^{\circ}\text{C}$ & actual Minimum Temperature is $\leq 15^{\circ}\text{C}$



When minimum temperature of a station $\leq 10^{\circ}\text{C}$ for plains and $\leq 0^{\circ}\text{C}$ for hilly regions
Based on departure

Cold Day: Maximum Temperature Departure from normal -4.5°C to -6.4°C .
Severe Cold Day: Maximum Temperature Departure from normal $\leq -6.5^{\circ}\text{C}$



Phenomenon of small droplets suspended in air and the horizontal visibility $< 1\text{km}$

Moderate Fog: When the visibility between 500-200 metres
Dense Fog: when the visibility between 50-200 metres
Very Dense Fog: when the visibility < 50 metres



Sudden electrical discharges manifested by a flash of light (Lightning) and a sharp rumbling sound (thunder)



An ensemble of particles of dust or sand energetically lifted to great heights by a strong and turbulent wind.



Ice deposits on ground

Air temperature $\leq 4^{\circ}\text{C}$ (over Plains)



A strong wind that rises suddenly, lasts for at least 1 minute.

Moderate: Wind speed 52-61 kmph
Severe: Wind speed 62-87 kmph
Very Severe: Wind speed > 87 kmph



Effect of various waves in the sea over specific area

Rough to very rough: Wind speed 41-62 kmph (22-33 knots) & Wave height 2.5-6 metre
High to very high: Wind speed 63-117 kmph (34-63 knots) & Wave height 6-14 metre
Phenomenal: Wind speed > 117 kmph (> 63 knots) & Wave height > 14 metre



Cyclonic Storm: Wind speed 62-87 kmph (34-47 knots)

Severe Cyclonic Storm: Wind speed 88-117 kmph (48-63 knots)
Very Severe Cyclonic Storm: Wind speed 118-165 kmph (64-89 knots)
Extremely Severe Cyclonic Storm: Wind speed 166-220 kmph (90-119 knots)
Super Cyclone Storm: Wind speed > 220 kmph (> 119 knots)

*Red color warning does not mean "Red Alert" Red color warning means "Take Action"

Forecast and warning for any day is valid from 0830 hours IST of day till 0830 hours IST of next day

For more details kindly visit <https://mausam.imd.gov.in> or contact 011-2434-4599

(Service to the nation since 1875)