



2025-09-11

Time of Issue: 13:22:00 hours IST
(Mid-Day)

ALL INDIA WEATHER SUMMARY AND FORECAST BULLETIN

Significant Weather Features

Weather forecast and warning:

Northeast India:

Light/moderate rain/thunderstorm at most/many places with isolated **heavy rainfall** likely over Arunachal Pradesh, Assam & Meghalaya during 11th-17th and Nagaland, Manipur, Mizoram & Tripura during 11th-16th September with **very heavy falls over Nagaland, Manipur, Mizoram & Tripura during 12th-15th; Arunachal Pradesh on 13th & 14th; Assam & Meghalaya during 13th-15th September.**

East & Central India:

Light to moderate rain/thunderstorm at many/some places with isolated **heavy rainfall** likely over Andaman on 11th; Odisha on 11th & 12th; Chhattisgarh during 11th-13th; Sub-Himalayan West Bengal & Sikkim during 11th-17th; Bihar during 11th-15th; Jharkhand on 11th, 15th & 16th; Vidarbha during 12th-14th; Nicobar Islands on 13th; East Madhya Pradesh on 14th & 15th; West Madhya Pradesh during 15th-17th September with isolated **very heavy falls over Bihar on 11th and Sub-Himalayan West Bengal & Sikkim on 13th September.**

West India:

Light to moderate rain/thunderstorm at some/isolated places with **isolated heavy rainfall** likely over Madhya Maharashtra during 11th-17th; Marathwada during 11th-14th; Konkan & Goa during 13th-17th; Gujarat Region during 14th-16th September with **very heavy falls over Marathwada on 12th & 13th; Konkan & Goa and Madhya Maharashtra on 13th & 14th September.**

Northwest India:

Light to moderate rain/thunderstorm at some/isolated places with **isolated heavy rainfall** likely over East Uttar Pradesh on 11th, 15th & 16th; West Uttar Pradesh on 12th; Himachal Pradesh on 13th & 14th; Uttarakhand during 12th-16th September.

South Peninsular India:

Light to moderate rain/thunderstorm & gusty winds (speed 30-40 kmph) at many/some places with isolated **heavy rainfall** likely over Tamil Nadu on 11th & 12th; Coastal Andhra Pradesh & Yanam, Rayalaseema, South Interior Karnataka during 11th-13th; North Interior Karnataka during 11th-14th; Telangana during 11th-15th September.

Strong surface winds (speed reaching 30-40 kmph) very likely over Coastal Andhra Pradesh & Yanam and Rayalaseema during next 5 days.

***Red color warning does not mean "Red Alert" Red color warning means "Take Action"**

Forecast and warning for any day is valid from 0830 hours IST of day till 0830 hours IST of next day

For more details kindly visit <https://mausam.imd.gov.in> or contact 011-2434-4599

(Service to the nation since 1875)

Main Weather Observations:

❖ **Rainfall distribution** (from 0830 hours IST of yesterday to 0830 hours IST of today): **at most places** over Andaman & Nicobar Islands, Sub Himalayan West Bengal & Sikkim, Telangana and Rayalaseema; **at many places** over Assam & Meghalaya, Nagaland, Manipur, Mizoram & Tripura, Jharkhand, Bihar, Vidarbha, Chhattisgarh, North Interior Karnataka and Lakshadweep; **at a few places** over Arunachal Pradesh, Gangetic West Bengal, Himachal Pradesh, Marathwada, Coastal Andhra Pradesh & Yanam, Tamil Nadu, Puducherry & Karaikal and South Interior Karnataka; **at isolated places** over Odisha, East Uttar Pradesh, West Uttar Pradesh, Uttarakhand, Haryana-Chandigarh-Delhi, Punjab, Jammu-Kashmir-Ladakh-Gilgit-Baltistan-Muzaffarabad, West Madhya Pradesh, East Madhya Pradesh, Gujarat Region, Saurashtra & Kutch, Konkan & Goa, Madhya Maharashtra, Coastal Karnataka and Kerala & Mahe; **Dry** over rest of the country.

❖ **Significant rainfall recorded(in cm)** (from 0830 hours IST of yesterday to 0830 hours IST of today): **North Interior Karnataka**: Kamalapur (dist Kalaburgi) 18; Saidapur (dist Yadgir) 12; Kalaburgi (dist Kalaburgi) 8; **Bihar**: Chanpatia (dist West Champaran) 16; Sikta (dist West Champaran) 15; Tribeni/Balmikinagar (dist West Champaran) 12; Gopalganj (dist Gopalganj) 10; Piprahi (dist Sheohar), Mahedi/Mehshi (dist East Champaran), Thawe (dist Gopalganj) 8 Each; **Marathwada**: Kinwat (dist Nanded) 13; **Tamil Nadu, Puducherry & Karaikal**: Panchapatti (dist Karur), Madurai South (dist Madurai), Tallakulam (dist Madurai) 12 Each; Pullambadi (dist Trichy), Pulipatti (dist Madurai), Ponmalai (dist Trichy), Periyapatti (dist Madurai), Kadavur AWS (dist Karur) 8 Each; **Madhya Maharashtra**: Sholapur (dist Sholapur) 12; **Coastal Andhra Pradesh & Yanam**: Guntur (dist Guntur) 10; Tiruvuru (dist Ntr District) 8; Yelamanchili (dist Anakapalli) 7; **Rayalaseema**: Gudur (dist Kurnool) 10; Kanekal (dist Anantapuramu), Gooty (dist Anantapuramu), Pamidi (dist Anantapuramu), Uravakonda (dist Anantapuramu), Manthralayam (dist Kurnool) 9 Each; Rajampet (dist Annamayya District), Gudur (dist Tirupati), Raptadu (dist Anantapuramu) 8 Each; Nandyal (dist Nandyal), Owk (dist Nandyal), Sullurpeta (dist Tirupati), Guntakal (dist Anantapuramu), Peapally (dist Nandyal), Dharmavaram (dist Sri Sathyasai District) 7 Each; **South Interior Karnataka**: M M Hills (dist Chamarajanagar) 9; **Sub Himalayan West Bengal & Sikkim**: Amfu Pundibari (dist Cooch Behar) 9; **Telangana**: Ghattu (dist Jogulamba Gadwal) 9; Mudhole (dist Nirmal), Tadwai Mlg (dist Mulugu) 8 Each; Chandrugonda (dist B. Kothagudem), Gundala (dist B. Kothagudem), Utnur (dist Adilabad), Bhiknur (dist Kamareddy), Sathupalle (dist Khammam), Perur (dist Mulugu) 7 Each; **Chhattisgarh**: Bijapur (dist Bijapur) 8; Katekalyan (dist Dantewada) 7; **Assam & Meghalaya**: Bahalpur (dist Dhubri) 8; Tikrikilla (dist West Garo Hills) 7; **East Uttar Pradesh**: Nichlaul (dist Maharajganj) 7; **Nagaland, Manipur, Mizoram & Tripura**: Saiha AWS (dist Saiha) 7.

❖ **Heavy Rainfall observed** (from 0830 hours IST of yesterday to 0830 hours IST of today): **Heavy to very heavy rain** at isolated places over Bihar, Madhya Maharashtra, Marathwada, Tamil Nadu, Puducherry & Karaikal and North Interior Karnataka. **Heavy rain** at isolated places over Assam & Meghalaya, Nagaland, Manipur, Mizoram & Tripura, Sub Himalayan West Bengal & Sikkim, East Uttar Pradesh, Chhattisgarh, Coastal Andhra Pradesh & Yanam, Telangana, Rayalaseema and South Interior Karnataka.

❖ **Minimum Temperature Departures (as on 11-09-2025)**: **markedly above normal(> 5.1°C)** at isolated places over Assam & Meghalaya, Bihar, East Uttar Pradesh, West Uttar Pradesh, Himachal Pradesh, West Madhya Pradesh and East Madhya Pradesh. **appreciably above normal(3.1°C to 5.0°C)** at few places over Sub Himalayan West Bengal & Sikkim; at isolated places over Gangetic West Bengal, Odisha, Uttarakhand and Haryana-Chandigarh-Delhi. **above normal(1.6°C to 3.0°C)** at few places over Nagaland, Manipur, Mizoram & Tripura, Jammu-Kashmir-Ladakh-Gilgit-Baltistan-Muzaffarabad, Coastal Karnataka and Lakshadweep; at isolated places over Jharkhand, Gujarat Region, Saurashtra & Kutch, Konkan & Goa, Madhya Maharashtra, Vidarbha, South Interior Karnataka and Kerala & Mahe. **near normal(-1.5°C to 1.5°C)** at many places over Telangana and Rayalaseema; at most places over Andaman & Nicobar Islands, Arunachal Pradesh, Punjab, West Rajasthan, East Rajasthan, Marathwada, Chhattisgarh, Coastal Andhra Pradesh & Yanam, Tamil Nadu, Puducherry & Karaikal and North Interior Karnataka. **The lowest minimum temperature** of 18.6°C is reported at DHARWAD (KARNATAKA) over the Plains of India.

❖ **Maximum Temperature Departures (as on 10-09-2025)**: **markedly above normal(> 5.1°C)** at many places over Jammu-Kashmir-Ladakh-Gilgit-Baltistan-Muzaffarabad; at isolated places over Assam & Meghalaya and Odisha. **appreciably above normal(3.1°C to 5.0°C)** at few places over Arunachal Pradesh, Nagaland, Manipur, Mizoram & Tripura, Jharkhand, Uttarakhand, Marathwada and Coastal Andhra Pradesh & Yanam; at isolated places over Gangetic West Bengal, Himachal Pradesh, Madhya Maharashtra, Vidarbha, Rayalaseema and North Interior Karnataka. **above normal(1.6°C to 3.0°C)** at many places over South Interior Karnataka; at most places over Chhattisgarh; at few places over East Uttar Pradesh, West Uttar Pradesh, East Madhya Pradesh, Konkan & Goa, Telangana, Coastal Karnataka and Kerala & Mahe; at isolated places over Sub Himalayan West Bengal & Sikkim, Bihar, West Madhya Pradesh and Tamil Nadu, Puducherry & Karaikal. **near normal(-1.5°C to 1.5°C)** at many places

*Red color warning does not mean "Red Alert" Red color warning means "Take Action"

Forecast and warning for any day is valid from 0830 hours IST of day till 0830 hours IST of next day

For more details kindly visit <https://mausam.imd.gov.in> or contact 011-2434-4599

(Service to the nation since 1875)



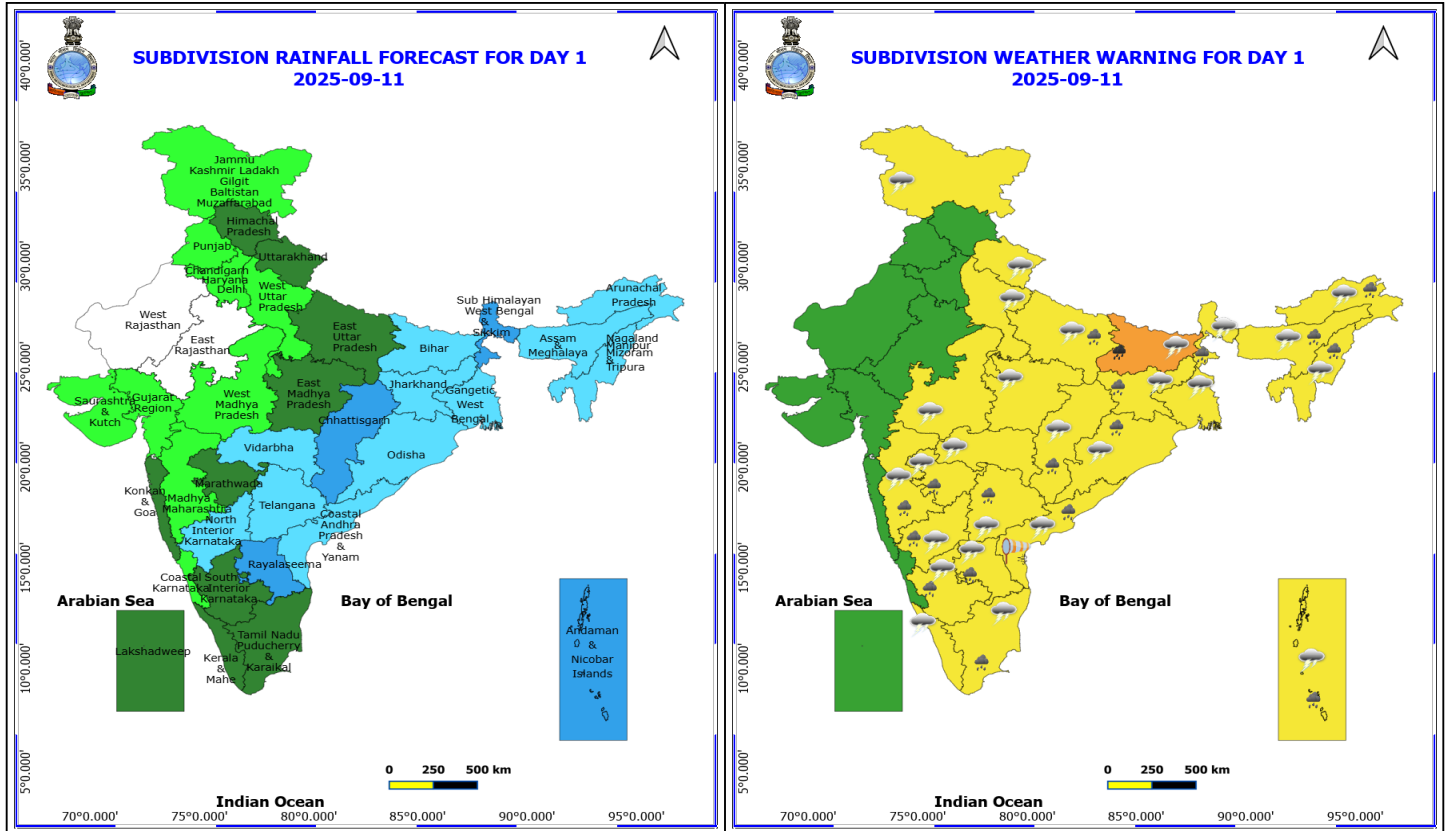
over Gujarat Region and Saurashtra & Kutch; at most places over Haryana-Chandigarh-Delhi, Punjab, East Rajasthan and Lakshadweep; at few places over West Rajasthan; at isolated places over Andaman & Nicobar Islands. **The highest maximum temperature** of 39.5°C is reported at NELLORE (ANDHRA PRADESH).

Meteorological Analysis (Based on 0830 hours IST)

- The **well marked low pressure area** over northwest Arabian Sea and adjoining southwest Pakistan persisted over the same region at 0830 hours IST of today, the 11th September, 2025. The associated **cyclonic circulation** extended upto 5.8 km above mean sea level. It is very likely to move nearly westwards and weaken gradually into a **low pressure area** over the same region during next 12 hours.
- The **monsoon trough** at mean sea level now passes through Sri Ganganagar, Bareilly, Barabanki, Dehri, Purulia, Digha and thence southeastwards to northeast Bay of Bengal.
- The **upper air cyclonic circulation** over South Odisha adjoining north Coastal Andhra Pradesh extending upto 4.5 km above mean sea level tilting southwards with height persists.
- The **upper air cyclonic circulation** over Sikkim & neighbourhood at 3.1 km above mean sea level persists.
- A **trough** runs from Sub-Himalayan West Bengal & Sikkim to west central Bay of Bengal across Jharkhand, cyclonic circulation over South Odisha adjoining north Coastal Andhra Pradesh at 0.9 km above mean sea level.
- An **upper air cyclonic circulation** lay over central Assam at 0.9 km above mean sea level.
- A **western disturbance** seen as a **cyclonic circulation** over Himachal Pradesh & neighbourhood at 5.8 km above mean sea level.
- The **trough** from South Interior Karnataka to Gulf of Mannar across Tamil Nadu extended upto 1.5 km above mean sea level has become less marked.
- The **trough** in westerlies at 0.9 km above mean sea level roughly along at Long. 86°E to the north of Lat. 22°N has become less marked.

Weather Outlook for subsequent 3 days

- Scattered to fairly widespread rainfall likely over Western India.
- Isolated to scattered rainfall likely over the rest parts of the country.



11 September (Day 1)

- ❖ **Heavy to Very Heavy Rainfall** very likely at isolated places over Bihar.
- ❖ **Heavy Rainfall** very likely at isolated places over Andaman & Nicobar Islands, Andhra Pradesh, Arunachal Pradesh, Assam & Meghalaya, Chhattisgarh, East Uttar Pradesh, Interior Karnataka, Jharkhand, Madhya Maharashtra, Marathwada, Nagaland, Manipur, Mizoram and Tripura, Odisha, Sub Himalayan West Bengal & Sikkim, Tamil Nadu Puducherry & Karaikal and Telangana.
- ❖ **Thunderstorm accompanied with lightning & gusty winds(40-50kmph)** very likely at isolated places over Coastal Andhra Pradesh.
- ❖ **Thunderstorm accompanied with lightning & gusty winds(30-40kmph)** very likely at isolated places over Gangetic West Bengal, Interior Karnataka, Jammu-Kashmir-Ladakh-Gilgit-Baltistan-Muzaffarabad, Odisha, Rayalaseema and Tamil Nadu Puducherry & Karaikal.
- ❖ **Thunderstorm accompanied with Lightning** very likely at isolated places over Andaman & Nicobar Islands, Arunachal Pradesh, Assam & Meghalaya, Bihar, Chhattisgarh, Jharkhand, Kerala & Mahe, Madhya Pradesh, Maharashtra, Nagaland, Manipur, Mizoram and Tripura, Sub Himalayan West Bengal & Sikkim, Tamil Nadu Puducherry & Karaikal, Telangana, Uttar Pradesh and Uttarakhand.
- ❖ **Strong Surface Winds** very likely at isolated places over Coastal Andhra Pradesh.

Squally wind with speed reaching 45 kmph to 55 kmph gusting to 65 kmph is likely to prevail along and off Somalia coast, some parts of southwest & westcentral Arabian Sea.

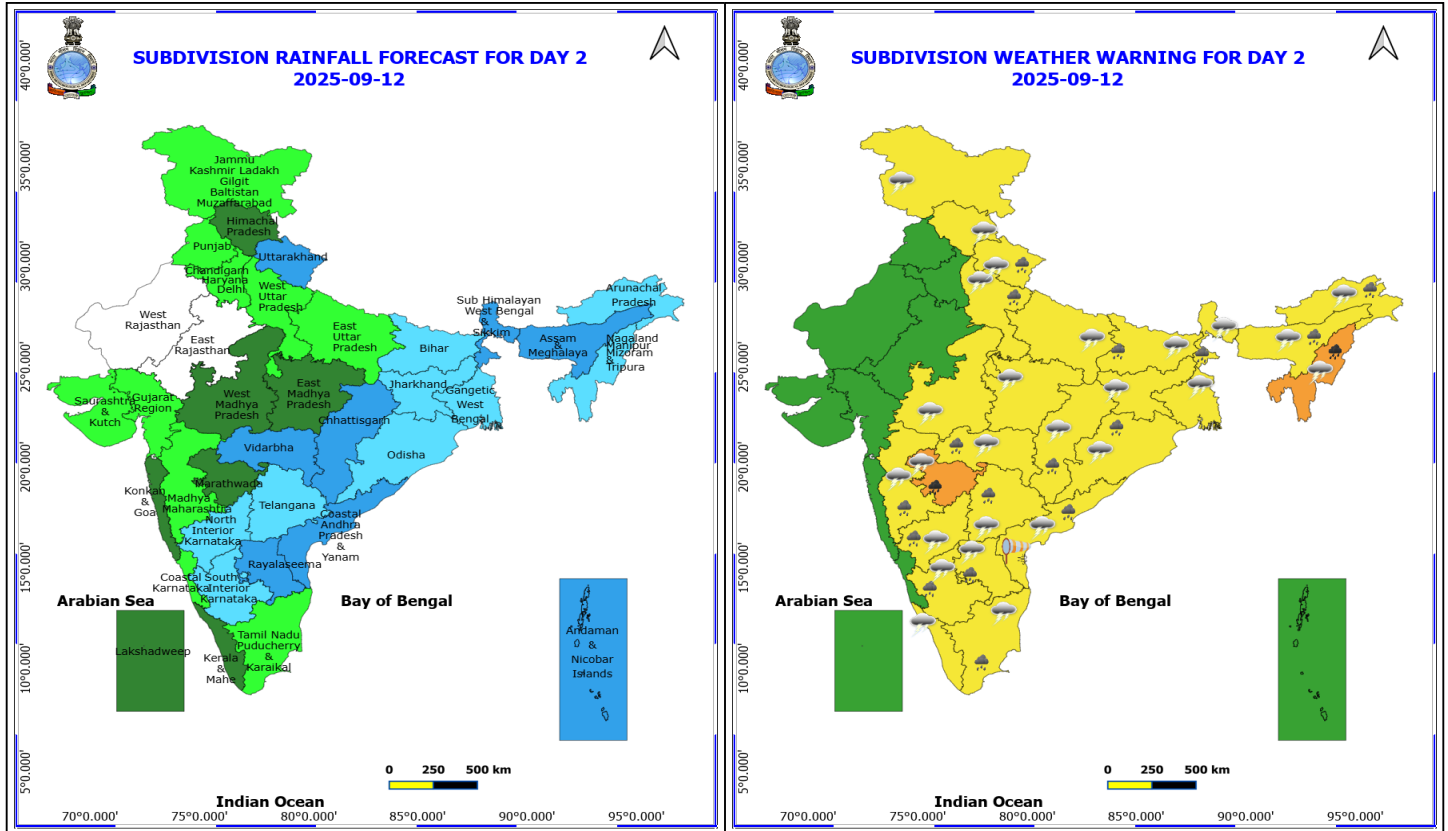
Squally weather with wind speed reaching 40 - 50 kmph gusting to 60 kmph likely to prevail over Gulf of Mannar & adjoining Comorin area; along and off south Sri Lanka coast, over some parts of southwest Bay of Bengal.

***Red color warning does not mean "Red Alert" Red color warning means "Take Action"**

Forecast and warning for any day is valid from 0830 hours IST of day till 0830 hours IST of next day

For more details kindly visit <https://mausam.imd.gov.in> or contact 011-2434-4599

(Service to the nation since 1875)



12 September (Day 2)

- ❖ **Heavy to Very Heavy Rainfall** very likely at isolated places over Marathwada and Nagaland, Manipur, Mizoram and Tripura.
- ❖ **Heavy Rainfall** very likely at isolated places over Andhra Pradesh, Arunachal Pradesh, Assam & Meghalaya, Bihar, Chhattisgarh, Interior Karnataka, Madhya Maharashtra, Odisha, Sub Himalayan West Bengal & Sikkim, Tamil Nadu Puducherry & Karaikal, Telangana, Uttarakhand, Vidarbha and West Uttar Pradesh.
- ❖ **Thunderstorm accompanied with lightning & gusty winds(40-50kmph)** very likely at isolated places over Coastal Andhra Pradesh.
- ❖ **Thunderstorm accompanied with lightning & gusty winds(30-40kmph)** very likely at isolated places over Gangetic West Bengal, Interior Karnataka, Jammu-Kashmir-Ladakh-Gilgit-Baltistan-Muzaffarabad, Odisha, Rayalaseema and Tamil Nadu Puducherry & Karaikal.
- ❖ **Thunderstorm accompanied with Lightning** very likely at isolated places over Arunachal Pradesh, Assam & Meghalaya, Bihar, Chhattisgarh, Himachal Pradesh, Jharkhand, Kerala & Mahe, Madhya Pradesh, Maharashtra, Nagaland, Manipur, Mizoram and Tripura, Sub Himalayan West Bengal & Sikkim, Telangana, Uttar Pradesh and Uttarakhand.
- ❖ **Strong Surface Winds** very likely at isolated places over Coastal Andhra Pradesh.

Squally wind with speed reaching 45 kmph to 55 kmph gusting to 65 kmph is likely to prevail along and off Somalia coast, some parts of southwest & westcentral Arabian Sea.

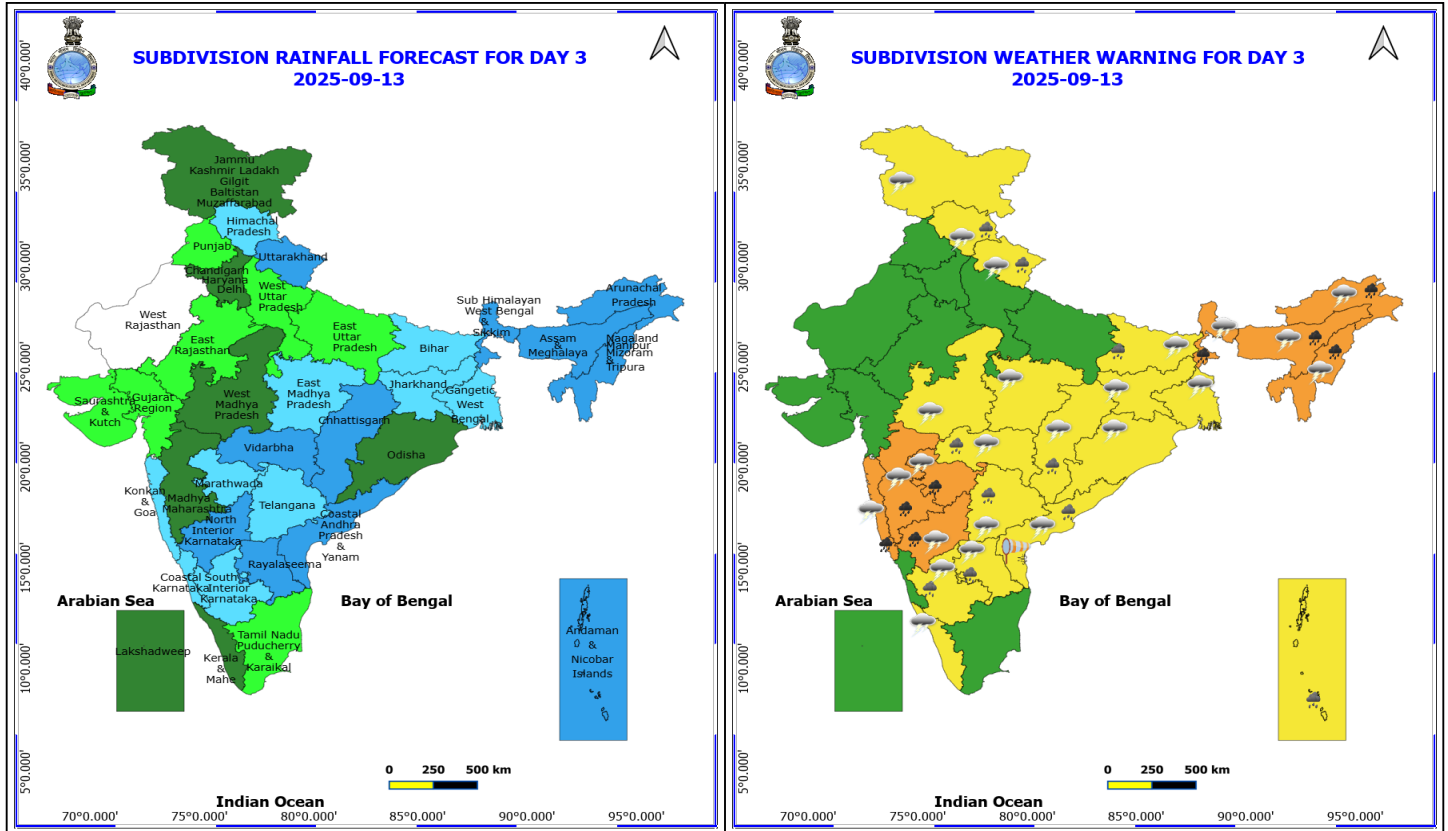
Squally weather with wind speed reaching 40 - 50 kmph gusting to 60 kmph likely to prevail over Gulf of Mannar & adjoining Comorin area; along and off south Sri Lanka coast, over some parts of southwest Bay of Bengal.

***Red color warning does not mean "Red Alert" Red color warning means "Take Action"**

Forecast and warning for any day is valid from 0830 hours IST of day till 0830 hours IST of next day

For more details kindly visit <https://mausam.imd.gov.in> or contact 011-2434-4599

(Service to the nation since 1875)



13 September (Day 3)

- ❖ **Heavy to Very Heavy Rainfall** very likely at isolated places over Arunachal Pradesh, Assam & Meghalaya, Konkan & Goa, Madhya Maharashtra, Marathwada, Nagaland, Manipur, Mizoram and Tripura, North Interior Karnataka and Sub Himalayan West Bengal & Sikkim.
- ❖ **Heavy Rainfall** very likely at isolated places over Andaman & Nicobar Islands, Andhra Pradesh, Bihar, Chhattisgarh, Himachal Pradesh, South Interior Karnataka, Telangana, Uttarakhand and Vidarbha.
- ❖ **Thunderstorm accompanied with lightning & gusty winds(30-40kmph)** very likely at isolated places over Andhra Pradesh, Gangetic West Bengal, Interior Karnataka, Jammu-Kashmir-Ladakh-Gilgit-Baltistan-Muzaffarabad and Odisha.
- ❖ **Thunderstorm accompanied with Lightning** very likely at isolated places over Arunachal Pradesh, Assam & Meghalaya, Bihar, Chhattisgarh, Himachal Pradesh, Jharkhand, Kerala & Mahe, Konkan & Goa, Madhya Pradesh, Maharashtra, Nagaland, Manipur, Mizoram and Tripura, Sub Himalayan West Bengal & Sikkim, Telangana and Uttarakhand.
- ❖ **Strong Surface Winds** very likely at isolated places over Coastal Andhra Pradesh.

Squally wind with speed reaching 45 kmph to 55 kmph gusting to 65 kmph is likely to prevail along and off Somalia coast, some parts of southwest & westcentral Arabian Sea.

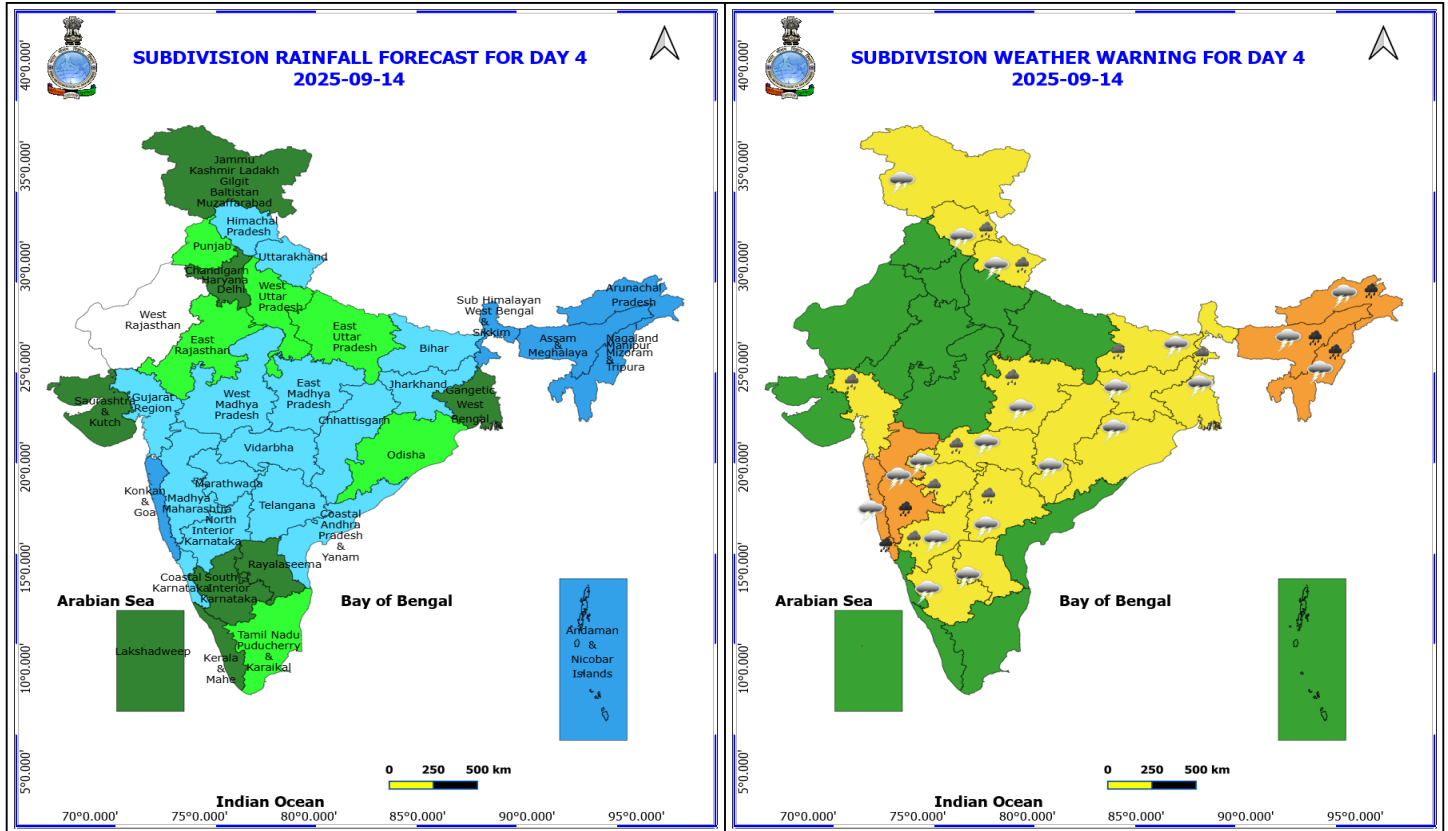
Squally weather with wind speed reaching 40 - 50 kmph gusting to 60 kmph likely to prevail over Gulf of Mannar & adjoining Comorin area; along and off south Sri Lanka coast & adjoining some parts of southwest Bay of Bengal.

***Red color warning does not mean "Red Alert" Red color warning means "Take Action"**

Forecast and warning for any day is valid from 0830 hours IST of day till 0830 hours IST of next day

For more details kindly visit <https://mausam.imd.gov.in> or contact 011-2434-4599

(Service to the nation since 1875)



14 September (Day 4)

- ❖ **Heavy to Very Heavy Rainfall** likely at isolated places over Arunachal Pradesh, Assam & Meghalaya, Konkan & Goa, Madhya Maharashtra and Nagaland, Manipur, Mizoram and Tripura.
- ❖ **Heavy Rainfall** likely at isolated places over Bihar, East Madhya Pradesh, Gujarat Region, Himachal Pradesh, Marathwada, North Interior Karnataka, Sub Himalayan West Bengal & Sikkim, Telangana, Uttarakhand and Vidarbha.
- ❖ **Thunderstorm accompanied with lightning & gusty winds(30-40kmph)** likely at isolated places over Gangetic West Bengal, Interior Karnataka, Jammu-Kashmir-Ladakh-Gilgit-Baltistan-Muzaffarabad, Odisha and Rayalaseema.
- ❖ **Thunderstorm accompanied with Lightning** likely at isolated places over Arunachal Pradesh, Assam & Meghalaya, Bihar, Chhattisgarh, East Madhya Pradesh, Himachal Pradesh, Jharkhand, Konkan & Goa, Maharashtra, Nagaland, Manipur, Mizoram and Tripura, Telangana and Uttarakhand.

Squally wind with speed reaching 45 kmph to 55 kmph gusting to 65 kmph is likely to prevail along and off Somalia coast, some parts of southwest & westcentral Arabian Sea.

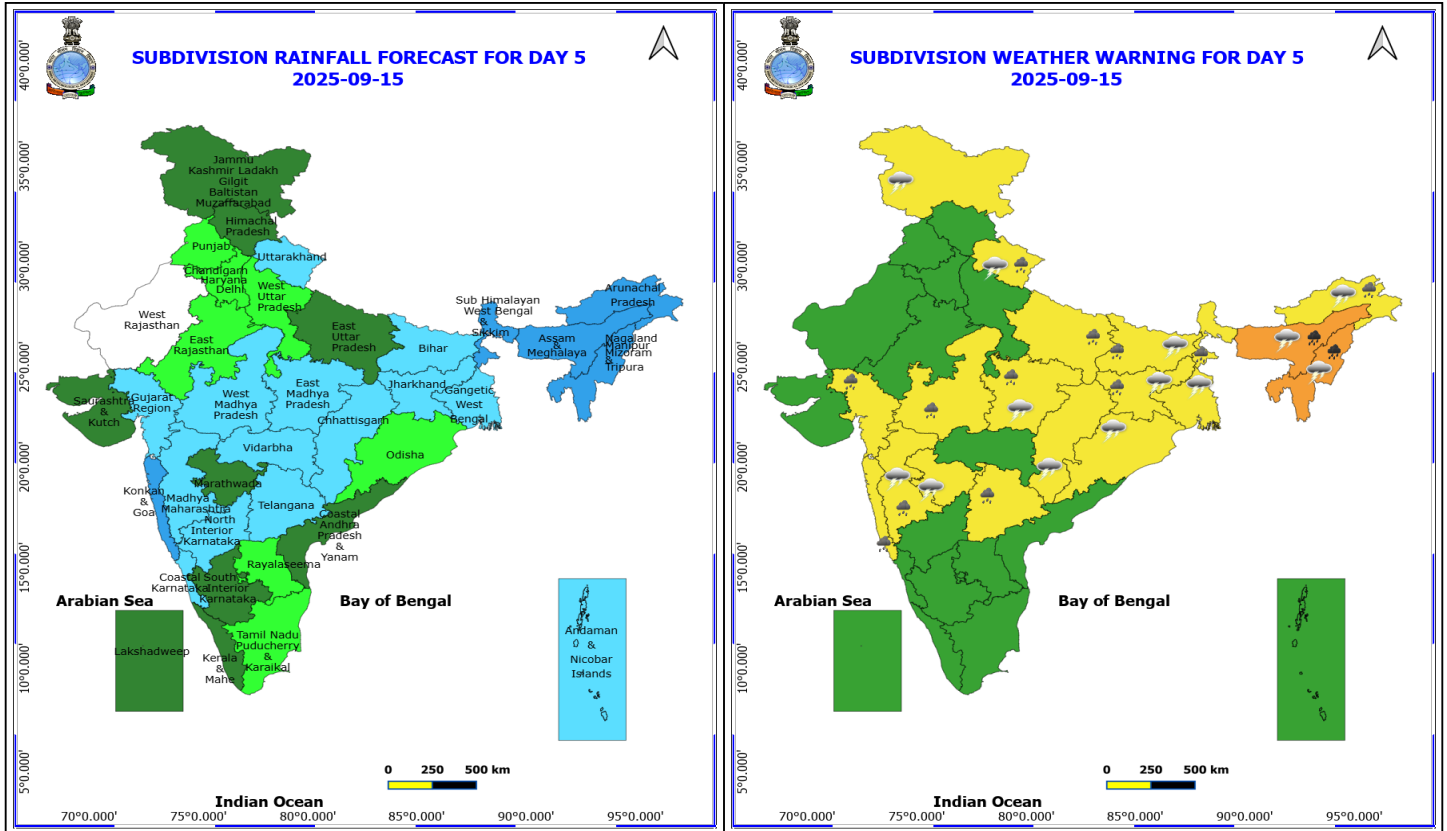
Squally weather with wind speed reaching 40 - 50 kmph gusting to 60 kmph likely to prevail over Gulf of Mannar & adjoining Comorin area; along and off south Sri Lanka coast & adjoining some parts of southwest Bay of Bengal, along and off Tamil Nadu, south Andhra Pradesh coasts.

***Red color warning does not mean "Red Alert" Red color warning means "Take Action"**

Forecast and warning for any day is valid from 0830 hours IST of day till 0830 hours IST of next day

For more details kindly visit <https://mausam.imd.gov.in> or contact 011-2434-4599

(Service to the nation since 1875)



15 September (Day 5)

- ❖ **Heavy to Very Heavy Rainfall** likely at isolated places over Assam & Meghalaya and Nagaland, Manipur, Mizoram and Tripura.
- ❖ **Heavy Rainfall** likely at isolated places over Arunachal Pradesh, Bihar, East Uttar Pradesh, Gujarat Region, Jharkhand, Konkan & Goa, Madhya Maharashtra, Madhya Pradesh, Sub Himalayan West Bengal & Sikkim, Telangana and Uttarakhand.
- ❖ **Thunderstorm accompanied with lightning & gusty winds(30-40kmph)** likely at isolated places over Gangetic West Bengal, Jammu-Kashmir-Ladakh-Gilgit-Baltistan-Muzaffarabad and Odisha.
- ❖ **Thunderstorm accompanied with Lightning** likely at isolated places over Arunachal Pradesh, Assam & Meghalaya, Bihar, Chhattisgarh, East Madhya Pradesh, Jharkhand, Madhya Maharashtra, Marathwada, Nagaland, Manipur, Mizoram and Tripura and Uttarakhand.

Squally wind with speed reaching 45 kmph to 55 kmph gusting to 65 kmph is likely to prevail along and off Somalia coast, some parts of southwest & westcentral Arabian Sea.

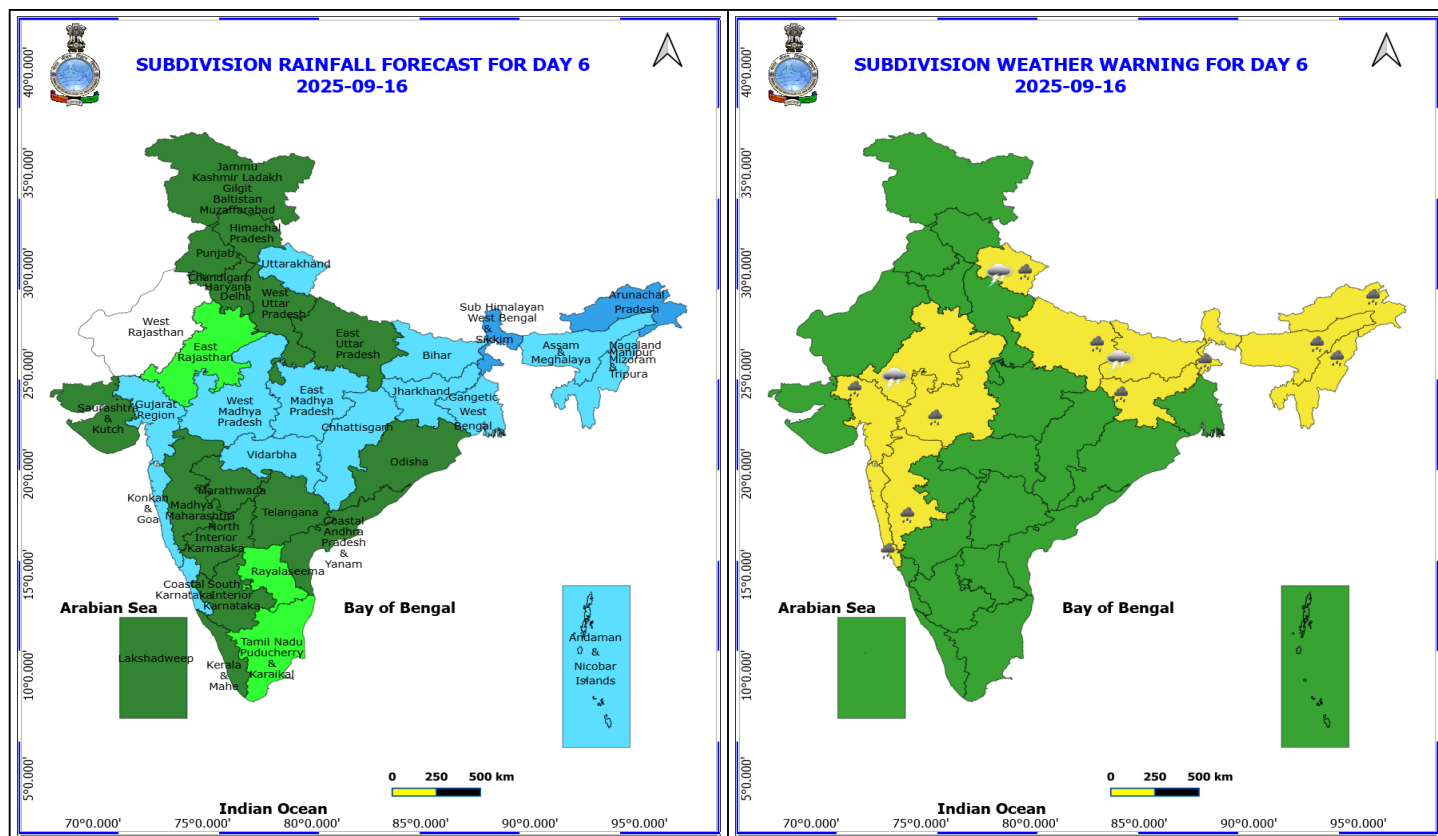
Squally weather with wind speed reaching 45 - 55 kmph gusting to 65 kmph likely to prevail over few parts of east central Arabian sea along and off Konkan coast.

***Red color warning does not mean "Red Alert" Red color warning means "Take Action"**

Forecast and warning for any day is valid from 0830 hours IST of day till 0830 hours IST of next day

For more details kindly visit <https://mausam.imd.gov.in> or contact 011-2434-4599

(Service to the nation since 1875)



16 September (Day 6)

❖ **Heavy Rainfall** likely at isolated places over Arunachal Pradesh, Assam & Meghalaya, East Uttar Pradesh, Gujarat Region, Jharkhand, Konkan & Goa, Madhya Maharashtra, Nagaland, Manipur, Mizoram and Tripura, Sub Himalayan West Bengal & Sikkim, Uttarakhand and West Madhya Pradesh.

❖ **Thunderstorm accompanied with Lightning** likely at isolated places over Bihar, East Rajasthan and Uttarakhand.

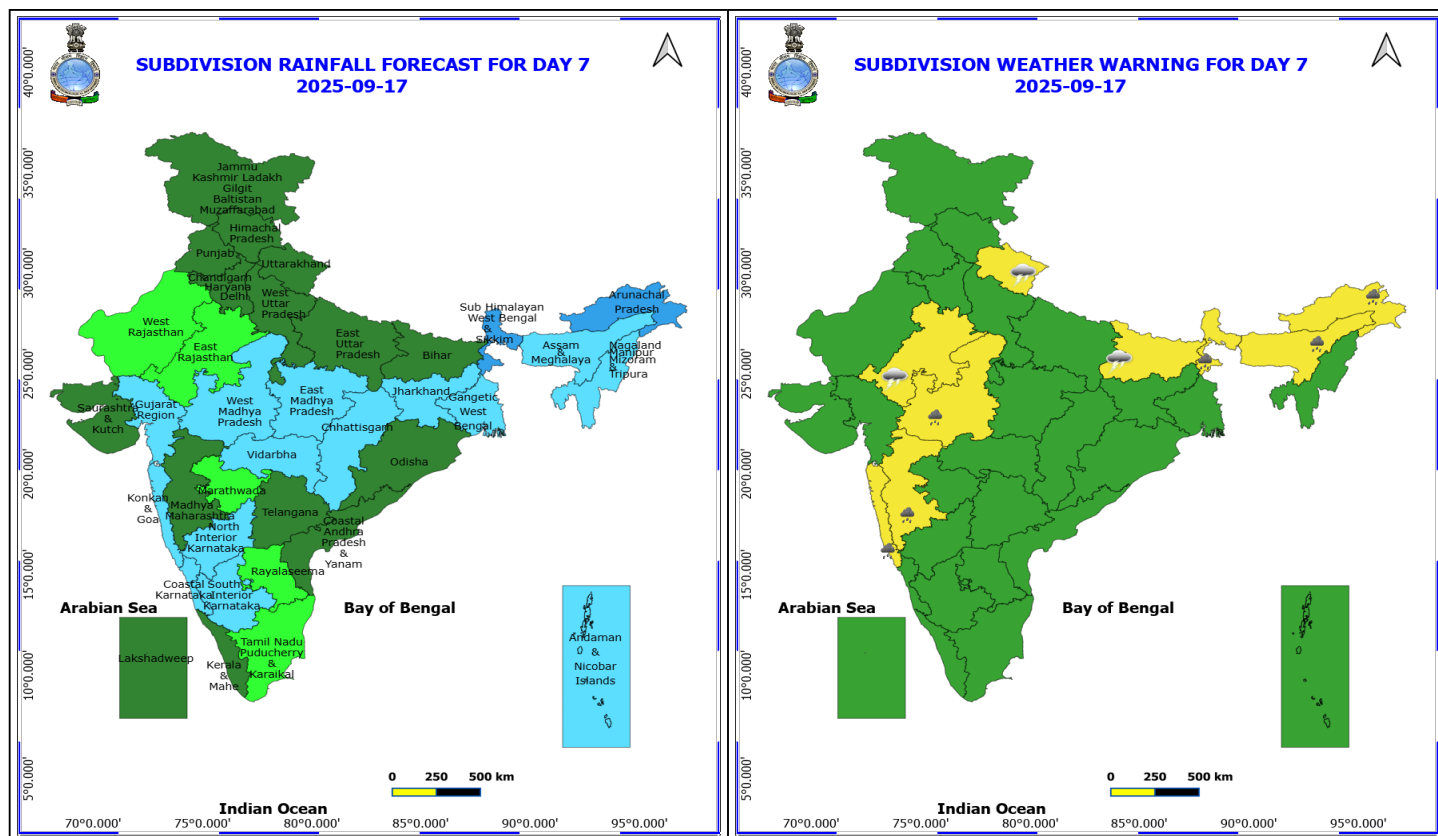
No Fishermen Warning

*Red color warning does not mean "Red Alert" Red color warning means "Take Action"

Forecast and warning for any day is valid from 0830 hours IST of day till 0830 hours IST of next day

For more details kindly visit <https://mausam.imd.gov.in> or contact 011-2434-4599

(Service to the nation since 1875)



17 September (Day 7)

❖ **Heavy Rainfall** likely at isolated places over Arunachal Pradesh, Assam & Meghalaya, Konkan & Goa, Madhya Maharashtra, Sub Himalayan West Bengal & Sikkim and West Madhya Pradesh.

❖ **Thunderstorm accompanied with Lightning** likely at isolated places over Bihar, East Rajasthan and Uttarakhand.

No Fishermen Warning

*Red color warning does not mean "Red Alert" Red color warning means "Take Action"

Forecast and warning for any day is valid from 0830 hours IST of day till 0830 hours IST of next day

For more details kindly visit <https://mausam.imd.gov.in> or contact 011-2434-4599

(Service to the nation since 1875)



Table-1

7 Days Rainfall Forecast

S.No.	Subdivision	11-Sep	12-Sep	13-Sep	14-Sep	15-Sep	16-Sep	17-Sep
		Day 1	Day 2	Day 3	Day 4	Day 5	Day 6	Day 7
1	ANDAMAN & NICOBAR ISLANDS	WS	WS	WS	WS	FWS	FWS	FWS
2	ARUNACHAL PRADESH	FWS	FWS	WS	WS	WS	WS	WS
3	ASSAM & MEHGHALAYA	FWS	WS	WS	WS	WS	FWS	FWS
4	N. M. M. & T.	FWS	FWS	WS	WS	WS	FWS	FWS
5	S.H. WEST BENGAL & SIKKIM	WS	WS	WS	WS	WS	WS	WS
6	GANGETIC WEST BENGAL	FWS	FWS	FWS	SCT	FWS	FWS	FWS
7	ODISHA	FWS	FWS	SCT	ISOL	ISOL	SCT	SCT
8	JHARKHAND	FWS	FWS	FWS	FWS	FWS	FWS	FWS
9	BIHAR	FWS	FWS	FWS	FWS	FWS	FWS	SCT
10	EAST UTTAR PRADESH	SCT	ISOL	ISOL	ISOL	SCT	SCT	SCT
11	WEST UTTAR PRADESH	ISOL	ISOL	ISOL	ISOL	ISOL	SCT	SCT
12	UTTARAKHAND	SCT	WS	WS	FWS	FWS	FWS	SCT
13	HARYANA, CHD & DELHI	ISOL	ISOL	SCT	SCT	ISOL	SCT	SCT
14	PUNJAB	ISOL	ISOL	ISOL	ISOL	ISOL	SCT	SCT
15	HIMACHAL PRADESH	SCT	SCT	FWS	FWS	SCT	SCT	SCT
16	JAMMU AND KASHMIR AND LADAKH	ISOL	ISOL	SCT	SCT	SCT	SCT	SCT
17	WEST RAJASTHAN	DRY	DRY	DRY	DRY	DRY	DRY	ISOL
18	EAST RAJASTHAN	DRY	DRY	ISOL	ISOL	ISOL	ISOL	ISOL
19	WEST MADHYA PRADESH	ISOL	SCT	SCT	FWS	FWS	FWS	FWS
20	EAST MADHYA PRADESH	SCT	SCT	FWS	FWS	FWS	FWS	FWS
21	GUJRAT REGION	ISOL	ISOL	ISOL	FWS	FWS	FWS	FWS
22	SAURASHTRA & KUTCH	ISOL	ISOL	ISOL	SCT	SCT	SCT	SCT
23	KONKAN & GOA	SCT	SCT	FWS	WS	WS	FWS	FWS
24	MADHYA MAHARASHTRA	ISOL	ISOL	SCT	FWS	FWS	SCT	SCT
25	MARATHWADA	SCT	SCT	FWS	FWS	SCT	SCT	ISOL
26	VIDARBHA	FWS	WS	WS	FWS	FWS	FWS	FWS
27	CHATTISGARH	WS	WS	WS	FWS	FWS	FWS	FWS
28	COASTAL ANDHRA PRADESH	FWS	WS	WS	FWS	SCT	SCT	SCT
29	TELANGANA	FWS	FWS	FWS	FWS	FWS	SCT	SCT
30	RAYALASEEMA	WS	WS	WS	SCT	ISOL	ISOL	ISOL
31	TAMILNADU & PUDUCHERRY	SCT	ISOL	ISOL	ISOL	ISOL	ISOL	ISOL
32	COSTAL KARNATAKA	ISOL	ISOL	FWS	FWS	FWS	FWS	FWS
33	NORTH INTERIOR KARNATAKA	FWS	FWS	WS	FWS	FWS	SCT	FWS
34	SOUTH INTERIOR KARNATAKA	SCT	FWS	FWS	SCT	SCT	SCT	FWS
35	KERALA	SCT	SCT	SCT	SCT	SCT	SCT	SCT
36	LAKSHDWEEP	SCT	SCT	SCT	SCT	SCT	SCT	SCT

Legend	Category	%Stations
WS	Widespread/Most Places	76-100
FWS	Fairly Widespread/Many Places	51-75
SCT	Scattered/ A Few Places	26-50
ISOL	Isolated Places	1-25
DRY	No Rain	0

*Red color warning does not mean "Red Alert" Red color warning means "Take Action"

Forecast and warning for any day is valid from 0830 hours IST of day till 0830 hours IST of next day

For more details kindly visit <https://mausam.imd.gov.in> or contact 011-2434-4599

(Service to the nation since 1875)

Fig. 1: Maximum Temperatures Dated 2025-09-11

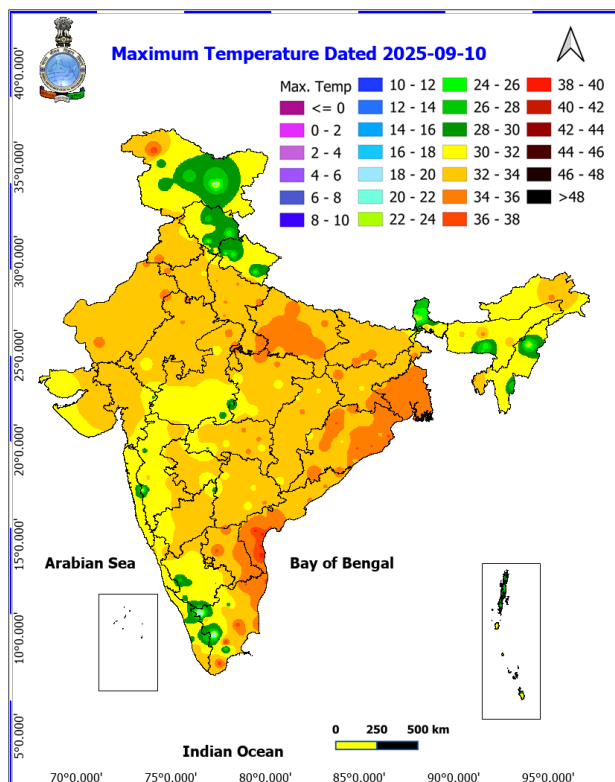


Fig. 2: Departure of Maximum Temp. Dated 2025-09-11

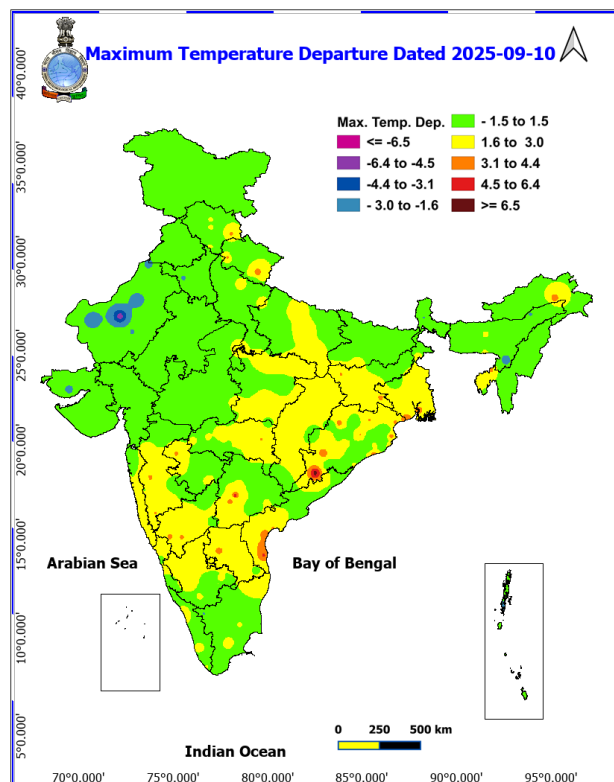


Fig. 3: Minimum Temperatures Dated 2025-09-11

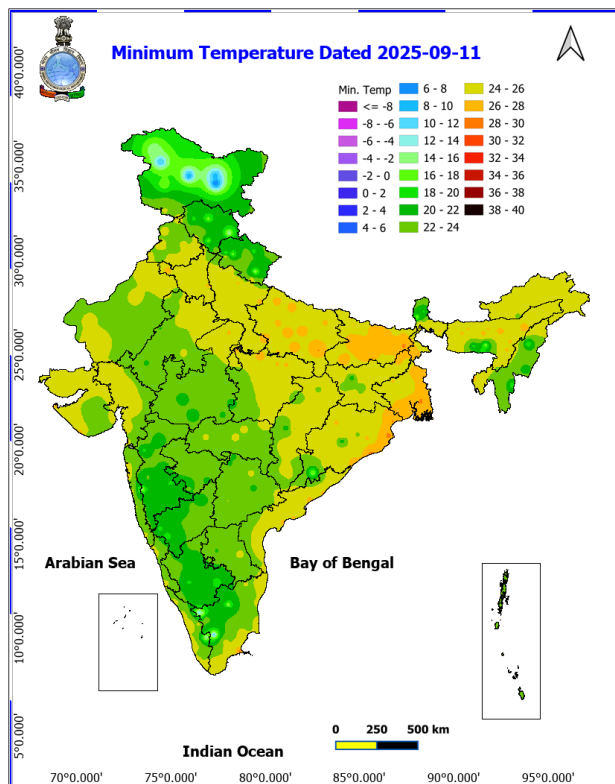
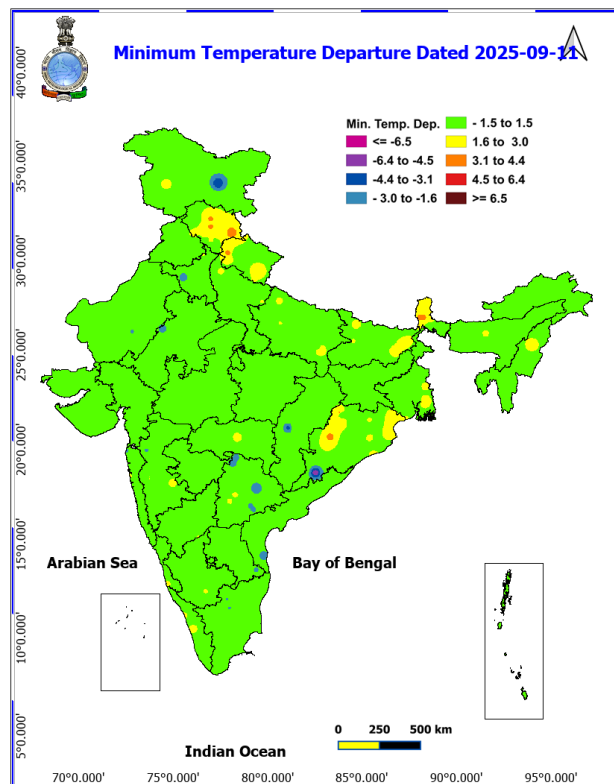
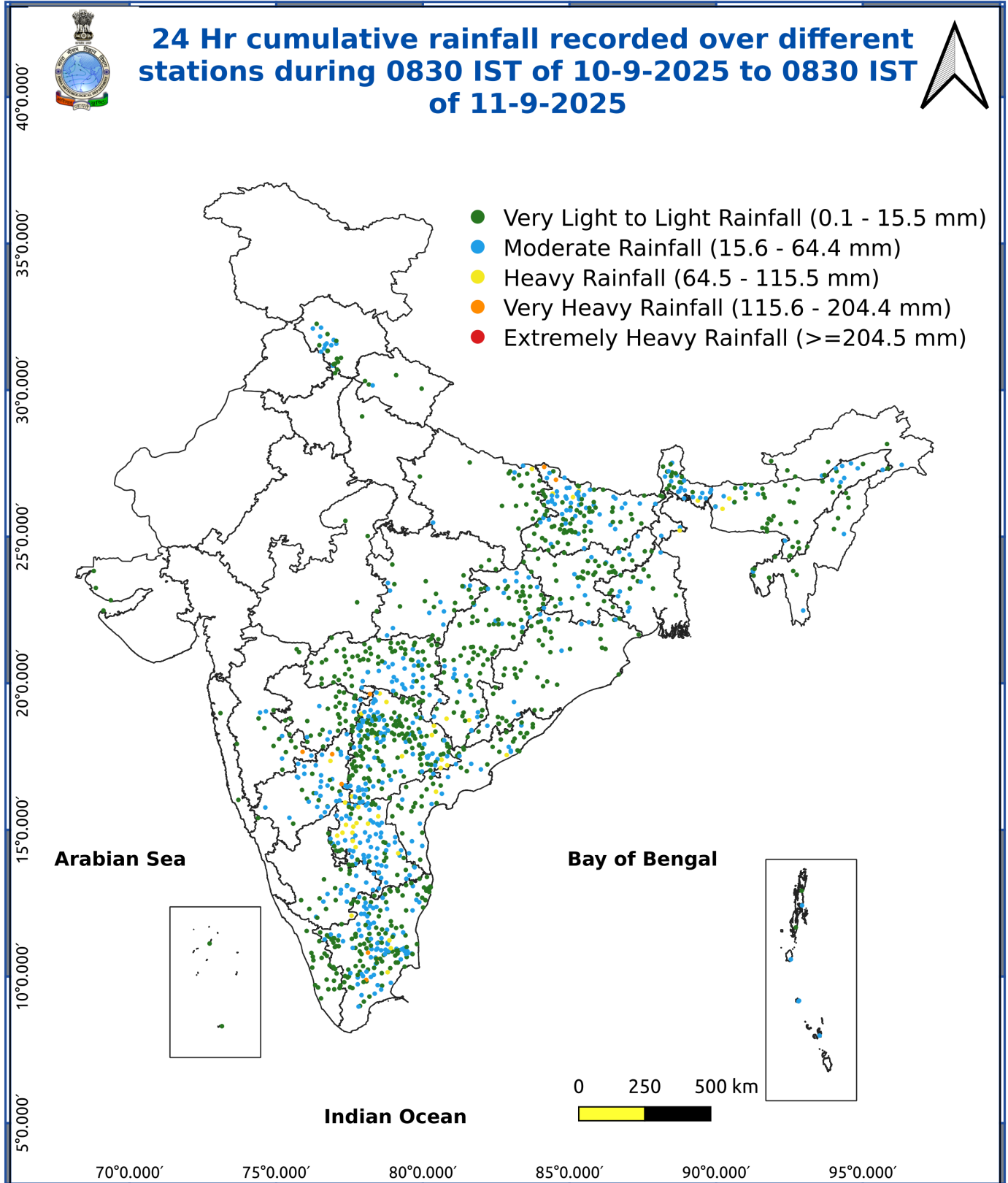


Fig. 4: Departure of Minimum Temp. Dated 2025-09-11





*Red color warning does not mean "Red Alert" Red color warning means "Take Action"

Forecast and warning for any day is valid from 0830 hours IST of day till 0830 hours IST of next day

For more details kindly visit <https://mausam.imd.gov.in> or contact 011-2434-4599

(Service to the nation since 1875)

Impact & Action Suggested due to

- **Heavy to very heavy rainfall (12-20 cm)** at isolated places over Bihar on 11th; Marathawada on 12th & 13th; Nagaland, Manipur, Mizoram & Tripura during 12th-15th; Sub-Himalayan West Bengal & Sikkim on 13th; Arunachal Pradesh, Konkan & Goa, Madhya Maharashtra on 13th & 14th; Assam & Meghalaya during 13th-15th September.

Impact Expected

Localized Flooding of roads, water logging in low lying areas and closure of underpasses mainly in urban areas of the above region.

Occasional reduction in visibility due to heavy rainfall.

Disruption of traffic in major cities due to water logging in roads leading to increased travel time.

Minor damage to kutcha roads.

Possibilities of damage to vulnerable structure.

Localized Landslides/Mudslides/landslips/mudslips/landsinks/mudsinks.

Damage to horticulture and standing crops in some areas due to inundation.

It may lead to riverine flooding in some river catchments (for riverine flooding please visit Web page of CWC)

Action Suggested

Check for traffic congestion on your route before leaving for your destination.

Follow any traffic advisories that are issued in this regard.

Avoid going to areas that face the water logging problems often.

Avoid staying in vulnerable structure.

Agromet advisories for various parts of the country

Agromet advisories for likely impact of Heavy / Heavy to Very Heavy Rainfall

(Based on the IBF and advisories issued by different AMFUs)

In **Arunachal Pradesh**, immediately harvest matured crops of *Jhum* rice, finger millet, soybean and matured bunches of banana and shift to properly covered shelter. Maintain proper drainage in standing crops like rice, soybean, finger millet and vegetables to avoid water stagnation.

In **Assam**, ensure proper drainage in fields of rice, sugarcane, black gram and sesame in **Hill Zone**. In **Lower Brahmaputra Valley Zone**, ensure proper drainage system in *Sali* rice fields and nursery bed of vegetables. Cover the nursery bed with thin polythin to avoid the damages due to heavy rainfall. In **Barak Valley Zone**, postpone the sowing of green gram and black gram and provide adequate drainage facilities in fields of rice, vegetables and already sown green gram and black gram.

*Red color warning does not mean "Red Alert" Red color warning means "Take Action"

Forecast and warning for any day is valid from 0830 hours IST of day till 0830 hours IST of next day

For more details kindly visit <https://mausam.imd.gov.in> or contact 011-2434-4599

(Service to the nation since 1875)

In **Meghalaya**, maintain proper drainage in ginger and vegetable fields and fruit orchards. Provide support to banana plants to prevent lodging. Maintain a thin layer of 2-3 cm stagnant water in rice fields after transplanting.

In **Nagaland**, undertake harvesting of matured Jhum rice, pods of sesame and Naga King chilli and store the harvested produce in safe places. Maintain 3-5cm stagnate water in rice fields.

In **Mizoram**, undertake harvesting of matured cobs of maize.

In **Manipur**, harvest matured cobs of maize, matured pods of soybean and groundnut and matured grains of finger millet.

In **Sub-Himalayan West Bengal**, make provision to drain out excess water from *aman* paddy and vegetable fields (chilli, bitter gourd, pointed gourd, okra, brinjal etc.) in **Terai Zone**.

In **Bihar**, ensure proper drainage of excess rainwater from standing crops such as maize, pigeon pea and vegetables in **North West Alluvial Plain Zone** and maize, pearl millet and vegetables in **North East Alluvial Zone**.

In **North Interior Karnataka**, make provision to drain out excess water from fields of cotton, pigeon pea, groundnut, sunflower, green gram and vegetables in **North East Dry Zone**.

In **Maharashtra**, immediately harvest matured green gram and black gram in **Madhya Maharashtra** and **Marathwada** and matured green gram in **West Vidarbha** and keep the harvested produce at safer places. Make arrangements to drain out excess water from fields of rice, soybean, cotton, vegetables and fruit orchards in **Madhya Maharashtra** and cotton, pigeon pea, soybean, sugarcane, vegetables and fruit orchards in **Marathwada**.

Livestock / Fishery

Keep the animals inside the shed during heavy rainfall and provide them balanced feed.

Store feed and fodder in a safe place to prevent spoilage.

Construct an outlet with proper netting around the ponds to drain out excess water, thereby preventing fish from escaping in case of overflow.

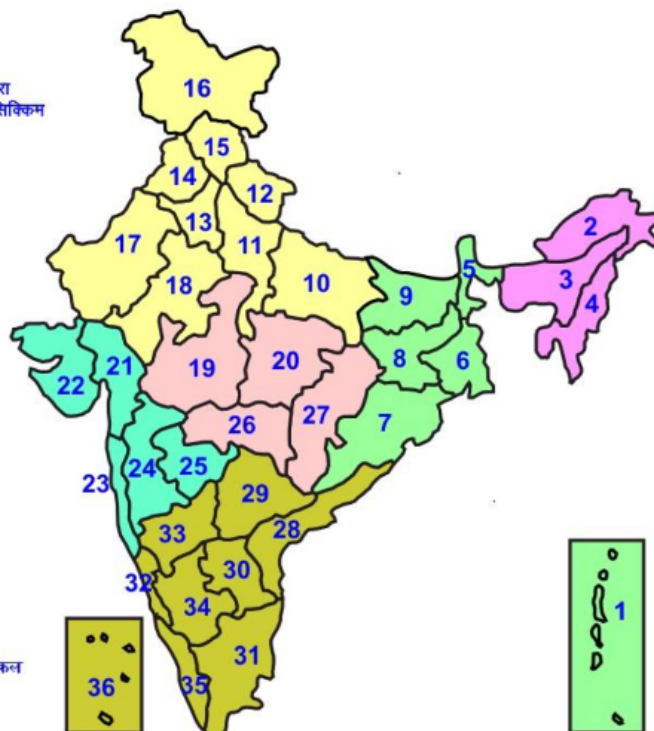
Agromet advisories for likely impact of Thunderstorm / Gusty Winds / Squally Winds

(Based on the IBF and advisories issued by different AMFUs)

Provide mechanical support to horticultural crops and staking or support to vegetables and young fruit plants / fruit-bearing plants to avoid lodging due to strong winds.

LEGENDS

- 1 अंडमान और निकोबार द्वीप समुह
- 2 अरुणाचल प्रदेश
- 3 असम और मेघालय
- 4 नागालैंड मनीपुर मीजोरम और त्रिपुरा
- 5 उप हिमालय पश्चिम बंगाल एवं सिक्किम
- 6 पश्चिम बंगाल
- 7 ओडिसा
- 8 झारखंड
- 9 बिहार
- 10 पूर्वी उत्तर प्रदेश
- 11 पश्चिम उत्तर प्रदेश
- 12 उत्तराखंड
- 13 हरियाणा चंडीगढ़ एवं दिल्ली
- 14 पंजाब
- 15 हिमाचल प्रदेश
- 16 जम्मू एवं कश्मीर एवं लद्दाख
- 17 पश्चिम राजस्थान
- 18 पूर्वी राजस्थान
- 19 पश्चिम मध्य प्रदेश
- 20 पूर्वी मध्य प्रदेश
- 21 गुजरात क्षेत्र
- 22 सौराष्ट्र एवं कच्छ
- 23 कोंकण एवं गोवा
- 24 मध्य महाराष्ट्र
- 25 मराठावाड़ा
- 26 विदर्भ
- 27 छत्तीसगढ़
- 28 तटीय आंध्र प्रदेश एवं यनम
- 29 तेलंगाना
- 30 रायलसीमा
- 31 तमिलनाडु, पुदुचेरी एवं कराईकल
- 32 तटिय कर्नाटक
- 33 आंतरिक उत्तरी कर्नाटक
- 34 आंतरिक दक्षिणी कर्नाटक
- 35 केरल एवं माहे
- 36 लक्षद्वीप



1. Andaman & Nicobar Islands
2. Arunachal Pradesh
3. Assam & Meghalaya
4. Nagaland, Manipur, Mizoram & Tripura
5. Sub-Himalayan West Bengal & Sikkim
6. Gangetic West Bengal
7. Orissa
8. Jharkhand
9. Bihar
10. East Uttar Pradesh
11. West Uttar Pradesh
12. Uttarakhand
13. Haryana, Chd & Delhi
14. Punjab
15. Himachal Pradesh
16. Jammu & Kashmir and Ladakh
17. West Rajasthan
18. East Rajasthan
19. West Madhya Pradesh
20. East Madhya Pradesh
21. Gujarat
22. Saurashtra
23. Konkan & Goa
24. Madhya Maharashtra
25. Marathwada
26. Vidharbha
27. Chhattisgarh
28. Coastal Andhra Pradesh & Yanam
29. Telangana
30. Rayalaseema
31. Tamilnadu, Puducherry & Karaikal
32. Coastal Karnataka
33. North Interior Karnataka
34. South Interior Karnataka
35. Kerala & Mahe
36. Lakshadweep

SPATIAL DISTRIBUTION (% of Stations reporting)













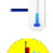




% Stations	Category	% Stations	Category
76-100	Widespread (WS/Most Places)	26-50	Scattered (SCT/ A Few Places)
51-75	Fairly Widespread (FWS/ Many Places)	1-25	Isolated (ISOL)

Subdivision Colour

- NO WARNING
- WATCH (BE UPDATED)
- ALERT (BE PREPARED TO TAKE ACTION)
- WARNING (TAKE ACTION)

Probabilistic Forecast

Terms	Probability of Occurrence (%)
Unlikely	< 25
Likely	25 - 50
Very Likely	50 - 75
Most Likely	> 75

-  Heavy Rain
-  Very Heavy Rain
-  Extremely Heavy Rain
-  Heavy Snow
-  Thunderstorm & Lightning
-  Hailstorm
-  Dust Storm
-  Dust Raising Winds
-  Strong surface winds
-  Heat Wave
-  Hot Day
-  Warm Night
-  Cold Wave
-  Cold Day
-  Ground Frost
-  FOG Fog
-  Hot & Humid

*Red color warning does not mean "Red Alert" Red color warning means "Take Action"

Forecast and warning for any day is valid from 0830 hours IST of day till 0830 hours IST of next day

For more details kindly visit <https://mausam.imd.gov.in> or contact 011-2434-4599

(Service to the nation since 1875)

LEGENDS

WARNING

WARNING (TAKE ACTION)
ALERT (BE PREPARED)
WATCH (BE UPDATED)
NO WARNING (NO ACTION)

Probabilistic Forecast

Terms	Probability of Occurrence (%)
Unlikely	< 25
Likely	25 - 50
Very Likely	50 - 75
Most Likely	> 75



Heavy: 64.5 to 115.5 mm/cm *
Very Heavy: 115.6 to 204.4 mm/cm *
Extremely Heavy: > 204.4 mm/cm *



When maximum temperature of a station reaches $\geq 40^{\circ}\text{C}$ for plains and $\geq 30^{\circ}\text{C}$ for hilly regions
(a) Based on Departure from normal

Heat Wave: Maximum Temperature Departure from normal 4.5°C to 6.4°C .
Severe Heat Wave: Maximum Temperature Departure from normal $\geq 6.5^{\circ}\text{C}$

(b). Based on Actual maximum temperature

Heat Wave: When actual maximum temperature $\geq 45^{\circ}\text{C}$.
Severe Heat Wave: When actual maximum temperature $\geq 47^{\circ}\text{C}$

(c). Criteria for heat wave for coastal stations

When maximum temperature departure is $> 4.5^{\circ}\text{C}$ from normal. Heat Wave may be described provided maximum temperature $\geq 37^{\circ}\text{C}$



When maximum temperature remains 40°C

Warm Night: When minimum temperature departure 4.5°C to 6.4°C .
Severe Warm Night: When minimum temperature departure $> 6.4^{\circ}\text{C}$.



When minimum temperature of a station $\leq 10^{\circ}\text{C}$ for plains and $\leq 0^{\circ}\text{C}$ for hilly regions.

(a). Based on departure

Cold Wave: Minimum Temperature Departure from normal -4.5°C to -6.4°C .
Severe Cold Wave: Minimum Temperature Departure from normal $\leq -6.5^{\circ}\text{C}$

(b) Based on actual Minimum Temperature (for Plains only)

Cold Wave: When Minimum Temperature is $\leq 4.0^{\circ}\text{C}$
Severe Cold Wave: When Minimum Temperature is $\leq 2.0^{\circ}\text{C}$

(c) For Coastal Stations

When Minimum Temperature departure is $\leq -4.5^{\circ}\text{C}$ & actual Minimum Temperature is $\leq 15^{\circ}\text{C}$



When minimum temperature of a station $\leq 10^{\circ}\text{C}$ for plains and $\leq 0^{\circ}\text{C}$ for hilly regions
Based on departure

Cold Day: Maximum Temperature Departure from normal -4.5°C to -6.4°C .
Severe Cold Day: Maximum Temperature Departure from normal $\leq -6.5^{\circ}\text{C}$



Phenomenon of small droplets suspended in air and the horizontal visibility $< 1\text{km}$

Moderate Fog: When the visibility between 500-200 metres
Dense Fog: when the visibility between 50-200 metres
Very Dense Fog: when the visibility < 50 metres



Sudden electrical discharges manifested by a flash of light (Lightning) and a sharp rumbling sound (thunder)



An ensemble of particles of dust or sand energetically lifted to great heights by a strong and turbulent wind.



Ice deposits on ground

Air temperature $\leq 4^{\circ}\text{C}$ (over Plains)



A strong wind that rises suddenly, lasts for at least 1 minute.

Moderate: Wind speed 52-61 kmph
Severe: Wind speed 62-87 kmph
Very Severe: Wind speed > 87 kmph



Effect of various waves in the sea over specific area

Rough to very rough: Wind speed 41-62 kmph (22-33 knots) & Wave height 2.5-6 metre
High to very high: Wind speed 63-117 kmph (34-63 knots) & Wave height 6-14 metre
Phenomenal: Wind speed > 117 kmph (> 63 knots) & Wave height > 14 metre



Cyclonic Storm: Wind speed 62-87 kmph (34-47 knots)

Severe Cyclonic Storm: Wind speed 88-117 kmph (48-63 knots)
Very Severe Cyclonic Storm: Wind speed 118-165 kmph (64-89 knots)
Extremely Severe Cyclonic Storm: Wind speed 166-220 kmph (90-119 knots)
Super Cyclone Storm: Wind speed > 220 kmph (> 119 knots)

*Red color warning does not mean "Red Alert" Red color warning means "Take Action"

Forecast and warning for any day is valid from 0830 hours IST of day till 0830 hours IST of next day

For more details kindly visit <https://mausam.imd.gov.in> or contact 011-2434-4599

(Service to the nation since 1875)