

Monday, June 29, 2026  
Time of Issue: 1430 hours IST  
(MID-DAY)

## ALL INDIA WEATHER SUMMARY AND FORECAST BULLETIN

### Significant Weather Features:

#### Northwest India:

- ❖ **Isolated to Scattered** rainfall likely over Himachal Pradesh and Jammu-Kashmir-Ladakh-Gilgit-Baltistan-Muzaffarabad during 29th-30th June.
- ❖ **Isolated to Scattered** rainfall likely over Haryana Chandigarh & Delhi and Punjab during 29th June-1st July and on 5th July; West Uttar Pradesh during 29th-30th June and on 5th July; East Uttar Pradesh on 29th June and during 4th-5th July; West Rajasthan during 29th June-5th July; East Rajasthan during 29th June-1st July.
- ❖ **Fairly Widespread to Widespread** rainfall likely over Himachal Pradesh and Jammu-Kashmir-Ladakh-Gilgit-Baltistan-Muzaffarabad during 1st-5th July; Uttarakhand during 29th June-5th July.
- ❖ **Fairly Widespread to Widespread** rainfall likely over Haryana Chandigarh & Delhi and Punjab during 2nd-4th July; West Uttar Pradesh during 1st-4th July; East Uttar Pradesh during 30th June-3rd July; East Rajasthan during 2nd-5th July.
- ❖ **Isolated thunderstorm, lightning & gusty winds (speed reaching 40-50 kmph gusting to 60 kmph)** likely over Himachal Pradesh and Jammu-Kashmir-Ladakh-Gilgit-Baltistan-Muzaffarabad during 29th June-5th July, with gusty winds (speed reaching 30-40 kmph gusting to 50 kmph) likely over Uttarakhand during 29th June-1st July.
- ❖ **Isolated thunderstorm, lightning & gusty winds (speed reaching 40-50 kmph gusting to 60 kmph)** likely over Haryana Chandigarh & Delhi and Punjab during 1st-5th July; East Uttar Pradesh and West Uttar Pradesh during 29th June-5th July; West Rajasthan during 2nd-5th July; East Rajasthan on 30th June and during 3rd-5th July, with gusty winds (speed reaching 30-40 kmph gusting to 50 kmph) likely over West Rajasthan during 29th June-1st July.
- ❖ **Isolated thunderstorm & lightning** likely over Uttarakhand during 2nd-5th July.
- ❖ **Isolated heavy rainfall** likely over Jammu-Kashmir-Ladakh-Gilgit-Baltistan-Muzaffarabad and Punjab during 2nd-4th July; Himachal Pradesh on 1st July and during 4th-5th July; Uttarakhand during 29th-30th June and during 4th-5th July; Haryana Chandigarh & Delhi during 1st-3rd July; West Uttar Pradesh during 30th June-2nd July; East Uttar Pradesh during 29th June-2nd July; East Rajasthan on 29th June and during 2nd-5th July with isolated **very heavy rainfall** also likely over Himachal Pradesh during 2nd-3rd July; Uttarakhand during 1st-2nd July.
- ❖ **Thundersquall (wind speed reaching 50-60 kmph gusting to 70 kmph)** likely over East Rajasthan on 29th June and during 1st-2nd July.
- ❖ **Duststorm** activity likely over West Rajasthan during 2nd-5th July.

#### Central India:

- ❖ **Isolated to Scattered** rainfall likely over East Madhya Pradesh and West Madhya Pradesh during 29th-30th June.
- ❖ **Fairly Widespread to Widespread** rainfall likely over East Madhya Pradesh and West Madhya Pradesh during 1st-5th July; Chhattisgarh and Vidarbha during 29th June-5th July.
- ❖ **Isolated thunderstorm, lightning & gusty winds (speed reaching 40-50 kmph gusting to 60 kmph)** likely over East Madhya Pradesh and West Madhya Pradesh during 29th June-3rd July; Vidarbha during 29th June-2nd July.
- ❖ **Isolated thunderstorm & lightning** likely over Chhattisgarh during 29th June-3rd July.
- ❖ **Isolated heavy rainfall** likely over East Madhya Pradesh and West Madhya Pradesh during 29th June-1st July and on 5th July; Vidarbha during 29th June-2nd July; Chhattisgarh during 29th June-5th July with isolated **very heavy rainfall** also likely over East Madhya Pradesh and West Madhya Pradesh during 2nd-4th July; Vidarbha during 3rd-4th July.

#### East India:

- ❖ **Fairly Widespread to Widespread** rainfall likely over Andaman & Nicobar Islands, Gangetic West Bengal and Sub-Himalayan West Bengal & Sikkim during 29th June-5th July; Jharkhand during 30th June-4th July; Bihar during 29th June-1st July; Odisha during 30th June-5th July.
- ❖ **Isolated to Scattered** rainfall likely over Jharkhand on 29th June and on 5th July; Bihar during 2nd-5th July; Odisha on 29th June.
- ❖ **Isolated thunderstorm, lightning & gusty winds (speed reaching 40-50 kmph gusting to 60 kmph)** likely over Andaman & Nicobar Islands, Jharkhand and Odisha during 29th June-5th July; Gangetic West Bengal during 29th June-3rd July; Bihar during 29th June-1st July, with gusty winds (speed reaching 30-40 kmph gusting to 50 kmph) likely over Sub-Himalayan West Bengal & Sikkim during 29th June-3rd July; Bihar during 2nd-5th July.
- ❖ **Isolated heavy rainfall** likely over Sub-Himalayan West Bengal & Sikkim on 29th June and on 1st July; Gangetic West Bengal on 1st July and on 4th July; Jharkhand during 30th June-1st July; Odisha during 29th-30th June and on 5th July with isolated **very heavy rainfall** also likely over Sub-Himalayan West Bengal & Sikkim on 30th June; Gangetic West Bengal on 5th July; Bihar during 29th June-1st July; Odisha during 1st-4th July.

#### Northeast India:

- ❖ **Fairly Widespread to Widespread** rainfall likely over Arunachal Pradesh during 29th June-2nd July; Assam & Meghalaya during 29th June-3rd July; Nagaland, Manipur, Mizoram & Tripura during 29th June-5th July.
- ❖ **Isolated to Scattered** rainfall likely over Arunachal Pradesh during 3rd-5th July; Assam & Meghalaya during 4th-5th July.
- ❖ **Isolated thunderstorm & lightning** likely over Arunachal Pradesh, Assam & Meghalaya and Nagaland, Manipur, Mizoram & Tripura during 29th June-2nd July.
- ❖ **Isolated heavy rainfall** likely over Arunachal Pradesh during 30th June-2nd July; Assam & Meghalaya during 1st-2nd July; Nagaland, Manipur, Mizoram & Tripura during 29th June-2nd July with isolated **very heavy rainfall** also likely over Arunachal Pradesh on 29th June; Assam & Meghalaya during 29th-30th June.

#### West India:

- ❖ **Fairly Widespread to Widespread** rainfall likely over Konkan & Goa during 29th June-5th July; Gujarat Region and Madhya Maharashtra during 3rd-5th July.
- ❖ **Isolated to Scattered** rainfall likely over Gujarat Region and Madhya Maharashtra during 29th June-2nd July; Marathawada and Saurashtra & Kutch during 29th June-5th July.
- ❖ Isolated **thunderstorm, lightning & gusty winds (speed reaching 40-50 kmph gusting to 60 kmph)** likely over Gujarat Region, Konkan & Goa, Madhya Maharashtra, Marathawada and Saurashtra & Kutch during 29th June-3rd July.
- ❖ Isolated **heavy rainfall** likely over Konkan & Goa on 29th June and during 2nd-3rd July; Madhya Maharashtra and Marathawada during 2nd-3rd July; Gujarat Region on 29th June and on 2nd July; Saurashtra & Kutch during 3rd-5th July with isolated **very heavy rainfall** also likely over Konkan & Goa during 30th June-1st July and during 4th-5th July; Madhya Maharashtra during 29th June-1st July and during 4th-5th July; Gujarat Region during 3rd-5th July.

#### South Peninsular India:

- ❖ **Isolated to Scattered** rainfall likely over Rayalaseema, South Interior Karnataka and Tamil Nadu, Puducherry & Karaikal during 29th June-5th July; North Interior Karnataka during 29th-30th June and on 3rd July; Coastal Andhra Pradesh & Yanam during 29th June-3rd July; Telangana on 30th June.
- ❖ **Fairly Widespread to Widespread** rainfall likely over Coastal Karnataka, Kerala & Mahe and Lakshadweep during 29th June-5th July; North Interior Karnataka during 1st-2nd July and during 4th-5th July; Coastal Andhra Pradesh & Yanam during 4th-5th July; Telangana on 29th June and during 1st-5th July.
- ❖ Isolated **thunderstorm, lightning & gusty winds (speed reaching 40-50 kmph gusting to 60 kmph)** likely over Coastal Andhra Pradesh & Yanam, Kerala & Mahe and Tamil Nadu, Puducherry & Karaikal during 29th June-3rd July; Lakshadweep during 29th June-2nd July; North Interior Karnataka during 29th-30th June; Rayalaseema during 1st-3rd July, with gusty winds (speed reaching 30-40 kmph gusting to 50 kmph) likely over Coastal Karnataka during 29th June-5th July; Rayalaseema during 29th-30th June; Telangana during 29th June-1st July.
- ❖ Isolated **heavy rainfall** likely over Tamil Nadu, Puducherry & Karaikal during 29th-30th June and during 3rd-5th July; Kerala & Mahe and North Interior Karnataka during 1st-5th July; Coastal Karnataka and Lakshadweep on 29th June; South Interior Karnataka during 30th June-2nd July; Coastal Andhra Pradesh & Yanam on 29th June and during 2nd-3rd July; Telangana during 29th June-5th July with isolated **very heavy rainfall** also likely over Kerala & Mahe during 29th-30th June; Coastal Karnataka during 30th June-5th July; South Interior Karnataka during 3rd-5th July.

#### Forecast of maximum/day temperatures:

- ❖ Gradual fall in maximum temperatures likely over Northwest India by 4-5°C till 04<sup>th</sup> July and no significant change thereafter.
- ❖ Gradual fall in maximum temperatures likely over Maharashtra by 3-4°C till 3<sup>rd</sup> July and no significant change thereafter.
- ❖ No significant change in maximum temperatures likely over Gujarat till 01<sup>st</sup> July and gradual fall by 3-4°C thereafter.
- ❖ No significant change in maximum temperatures likely over Madhya Pradesh till 02<sup>nd</sup> July and gradual fall by 2-4°C thereafter.
- ❖ No significant change in maximum temperatures likely over the rest parts of country till 05<sup>th</sup> July, 2026.

#### Heat Wave, Hot & Humid weather and Warm Night conditions warning:

- ❖ **Heat wave** conditions very likely in isolated pockets over East Uttar Pradesh on 29th June; Haryana Chandigarh & Delhi during 29th-30th June.

#### Fisherman Warning:

Fishermen are advised not to venture into the following areas:

- ❖ **Bay of Bengal:** over westcentral BoB and along & off north Andhra Pradesh coasts during 1<sup>st</sup> to 03<sup>rd</sup> July; over south Sri Lanka coasts adjoining southwest & southeast BoB and Andaman Sea during 28<sup>th</sup> June to 03<sup>rd</sup> July; over Andaman Sea during 30<sup>th</sup> June to 03<sup>rd</sup> July.  
**Arabian Sea:** along and off Somalia coasts and parts of southwest and westcentral Arabian Sea during 28<sup>th</sup> June to 03<sup>rd</sup> July; Along and off South Oman Coasts and adjoining westcentral Arabian Sea during 30<sup>th</sup> June to 03<sup>rd</sup> July; along & off south Konkan, Goa & Karnataka coast, Lakshadweep area and adjoining eastcentral Arabian Sea on 28<sup>th</sup> June; along & off Konkan & Goa, Karnataka & Kerala coasts, Lakshadweep area and adjoining eastcentral & southeast Arabian Sea during 29<sup>th</sup> June to 03<sup>rd</sup> July; Along & off south Gujarat coast during 01<sup>st</sup> to 2<sup>nd</sup> July; Gulf of Mannar & adjoining Comorin area till 2<sup>nd</sup> July.

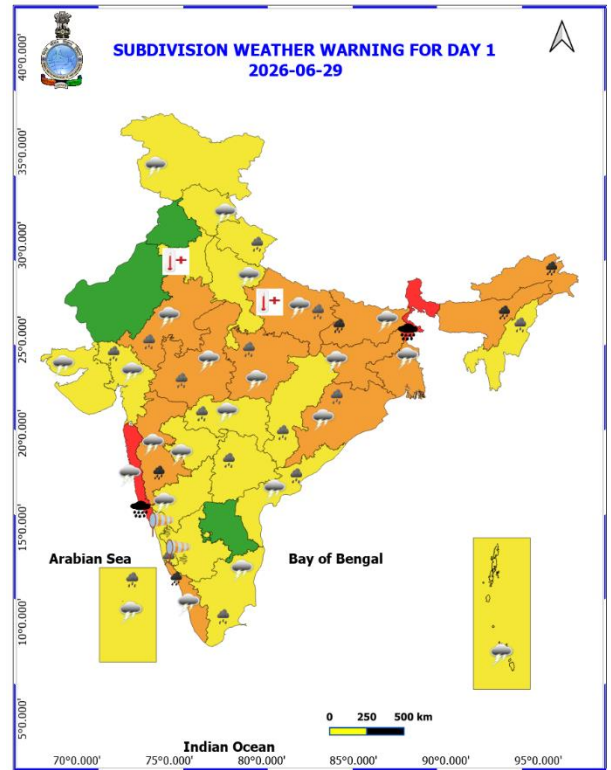
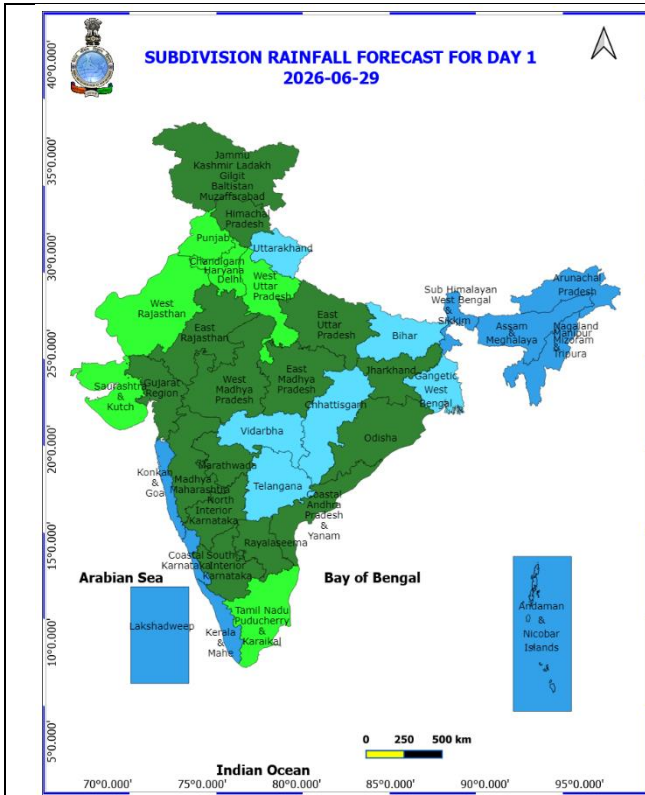
## Main Weather Observations:

- ❖ **Rainfall observed** (from 0830 hours IST of yesterday to 0830 hours IST of today): **at most places** over Arunachal Pradesh, Andaman & Nicobar Islands, Sub-Himalayan West Bengal & Sikkim, Konkan & Goa, Vidarbha, Kerala & Mahe, Lakshadweep, Coastal Karnataka; **at many places** over Assam & Meghalaya, Nagaland, Manipur, Mizoram & Tripura, Himachal Pradesh, Uttarakhand, Madhya Maharashtra, Marathwada, Telangana, North Interior Karnataka; **at a few places** over Gangetic West Bengal, Odisha, Bihar, Jammu-Kashmir-Ladakh-Gilgit-Baltistan-Muzaffarabad, East Uttar Pradesh, East Rajasthan, West Madhya Pradesh, Chhattisgarh, South Interior Karnataka; **at isolated places** over Jharkhand, Punjab, Haryana-Chandigarh-Delhi, West Uttar Pradesh, West Rajasthan, Gujarat state, Tamil Nadu, Puducherry & Karaikal.
- ❖ **Heavy to Very Heavy Rainfall with isolated Extremely Heavy Rainfall** has been recorded at isolated places over Arunachal Pradesh, Assam & Meghalaya, Sub-Himalayan West Bengal & Sikkim, Konkan & Goa; **Heavy to very heavy rainfall** over Bihar, Madhya Maharashtra, Coastal Karnataka; **Heavy rainfall** at isolated places over Odisha, Andaman & Nicobar Islands, Uttarakhand, East Uttar Pradesh, East Rajasthan, West Madhya Pradesh, Kerala & Mahe, Coastal Andhra Pradesh & Yanam, Telangana.
- ❖ **Significant amount of rainfall recorded** (from 0830 hours IST of yesterday to 0830 hours IST of today) (in cm): **Arunachal Pradesh** : M.O. Pasighat (obs) 23; **Assam & Meghalaya** : RKM Sohra 22; **Andaman & Nicobar islands**: Mayabunder 7; **Sub-Himalayan west Bengal & Sikkim**: Sankosh 21; **Odisha**: Raighat( dist.-Balasore) 9; **Bihar**: Saraigarh Bhaptiyahi( Supaul) 20; **Uttarakhand**: Berinag 10, Nainital 9; **East Uttar Pradesh**: Katarniaghat (Bahraich) 10; **East Rajasthan**: Arond(prg) 9; **West Madhya Pradesh**: Mandsaur 8; **Konkan & Goa**: Mhasala (Raigad) 24; **Madhya Maharashtra** : Lonawala(Pune) 12; **Tamil Nadu, Puducherry & Karaikal**: Chinnakalar (dist coimbatore) 9, Vennavalkudi (dist pudukkottai) 7, **Kerala & Mahe**: Kochi c.i.a.l. (dist ernakulam) 9, Vaikkom (dist kottayam) 9, Perumpavur (dist ernakulam) 8, kudulu (dist kasargod) 8, Urumi (dist kozhikode) 7; **Coastal Karnataka**: Honavar obsy (dist utara kannada) 13, Manki (dist Uttara Kannada) 10, Kumta (dist utara kannada) 9, Karwar obsy (dist utara kannada) 8, Ankola (dist utara kannada) 8, Gokarna (dist utara kannada) 7; **Coastal Andhra Pradesh & Yanam**: Macherla (dist palnadu) 8; **Telangana**: Bonakal (dist khammam) 11, Navipet (dist nizamabad) 8, Mallial (dist Jagtial) 7, Mallapur (dist jagtial) 7, Chandurthi (dist rajanna sircilla) 7, Dhar palle (dist Nizamabad) 7, Zaffergadh (dist jangaon) 7.
- ❖ **Minimum Temperature Departures (as on 29-05-2025)**: Minimum Temperature are **appreciably above normal (3.1°C to 5.0°C)** at isolated places over Punjab, Haryana-Chandigarh-Delhi, Madhya Pradesh, Odisha Bihar, West Rajasthan, Assam & Meghalaya; **above normal (1.6°C to 3.0°C)** at many places over **Jammu-Kashmir, Saurashtra & Kutch**, at a few places over East Rajasthan, Madhya Pradesh, Chhattisgarh; at isolated places over Telangana, Coastal Andhra Pradesh & Yanam, Vidarbha, Madhya Maharashtra, Marathwada and near normal over rest parts of the country. **The lowest minimum temperature** of 19.8°C is reported at **Koraput (Odisha)** over the Plains of country (**Fig. 4**).
- ❖ **Maximum Temperature Departures (as on 28-06-2026)**: markedly above normal (> 5.1°C) at few places over Chhattisgarh; at isolated places over Odisha, East Uttar Pradesh, West Uttar Pradesh, Haryana-Chandigarh-Delhi, Himachal Pradesh, East Madhya Pradesh, Saurashtra & Kutch and Vidarbha. appreciably above normal (3.1°C to 5.0°C) at many places over Punjab; at few places over Uttarakhand, Jammu-Kashmir-Ladakh-Gilgit-Baltistan Muzaffarabad, West Rajasthan, Gujarat Region and Madhya Maharashtra; at isolated places over Assam & Meghalaya, Nagaland, Manipur, Mizoram & Tripura, Gangetic West Bengal, Jharkhand, Bihar, West Madhya Pradesh, Konkan & Goa, Telangana and Tamil Nadu, Puducherry & Karaikal. above normal (1.6°C to 3.0°C) at many places over East Rajasthan and Rayalaseema; at few places over Sub Himalayan West Bengal & Sikkim and North Interior Karnataka; at isolated places over Coastal Andhra Pradesh & Yanam. near normal (-1.5°C to 1.5°C) at many places over Andaman & Nicobar Islands, South Interior Karnataka and Kerala & Mahe; at most places over Lakshadweep; at few places over Arunachal Pradesh and Coastal Karnataka. **The highest maximum temperature of 44.4°C was reported at SRIGANGANAGAR (Rajasthan).**

## Meteorological Analysis (Based on 0830 hours IST)

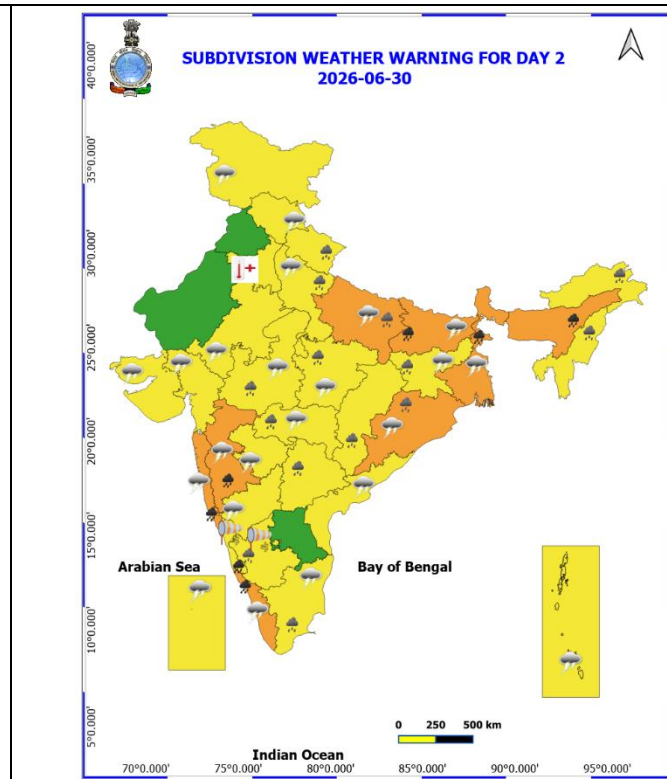
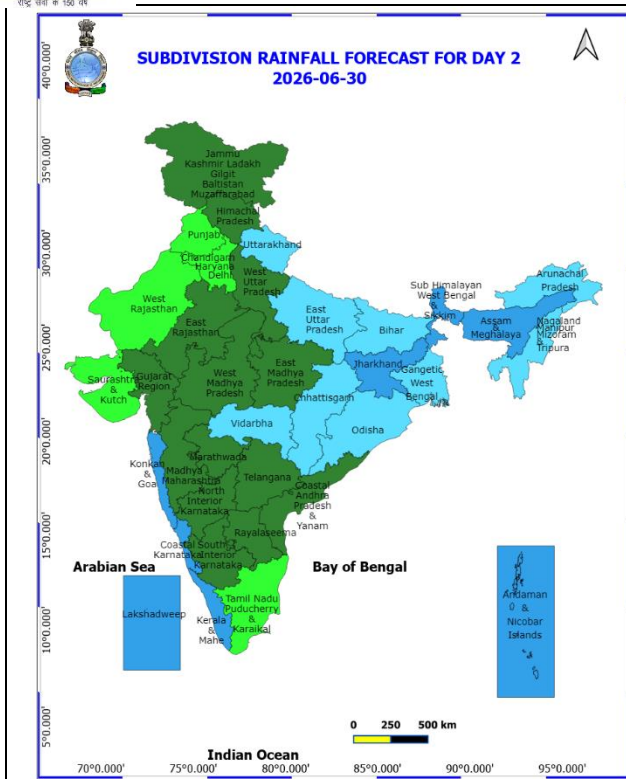
- ❖ The **Northern Limit of Monsoon** continues to pass through 20°N/60°E, 20°N/65°E, 20°N/70°E, Surat, Indore, Mandla, Daltonganj, Motihari and 28.3°N/83°E as on 29<sup>th</sup> June.
- ❖ **Conditions are favourable** for further advance of southwest monsoon into some more parts of North Arabian Sea, Gujarat, Madhya Pradesh, remaining parts of Chhattisgarh, Jharkhand & Bihar, some parts of Uttar Pradesh & Uttarakhand during next 2 days and over some more parts of Madhya Pradesh, Uttar Pradesh, Uttarakhand, some parts of Himachal Pradesh, Jammu & Kashmir, Ladakh, southeast Rajasthan and remaining parts of Gujarat during subsequent 2-3 days.
- ❖ The **seasonal trough** at mean sea level now runs from Punjab to Bihar across Haryana and Uttar Pradesh.
- ❖ A **trough** in middle tropospheric westerlies with its axis at 5.8 km above mean sea level now roughly along Long 80°E to the north of Lat 27°N.
- ❖ The **upper air cyclonic circulation** over northeast Assam & neighbourhood at 1.5 km above mean sea level persists.
- ❖ The **upper air cyclonic circulation** over Eastcentral Arabian sea off Maharashtra coast persists and now seen at 5.8 km above mean sea level.
- ❖ The **upper air cyclonic circulation** over north Telangana & neighbourhood persists and now seen at 5.8 km above mean sea level.
- ❖ A fresh **Western Disturbance** is likely to affect Northwest India from 02nd July, 2026.
- ❖ An east-west **trough** runs from East Uttar Pradesh to Manipur across Bihar, Sub-Himalayan West Bengal & Sikkim & Assam at 0.9 km above mean sea level.
- ❖ A **trough** in upper tropospheric westerlies with its axis at 3.1 km above mean sea level runs roughly along Long. 90°E to the north of Lat. 21°N.
- ❖ An **upper air cyclonic circulation** lies over Northwest Uttar Pradesh & neighbourhood at 1.5 km above mean sea level.
- ❖ A **trough** runs from north central Madhya Pradesh to Eastcentral Arabian Sea across Saurashtra & Kutch, North Marathwada between 3.1 & 4.5 km above mean sea level.
- ❖ The **trough** from northern parts of Coastal Andhra Pradesh to Madhya Maharashtra across Chhattisgarh and Marathwada at 4.5 km above mean sea level has become less marked.
- ❖ The **trough** from North Interior Karnataka to Comorin area across Rayalaseema, South Interior Karnataka and Tamil Nadu extending upto 1.5km above mean sea level has become less marked.
- ❖ The **trough** from northeast Madhya Pradesh to Telangana across Vidarbha at 0.9 km above mean sea level has become less marked.
- ❖ The **upper air cyclonic circulation** over Madhya Pradesh and neighbourhood between 3.1 & 5.8 km above mean sea level has become less marked.

Weather Forecast & Warnings for next 7 days (Upto 0830 hours IST of 05<sup>th</sup> July, 2026)



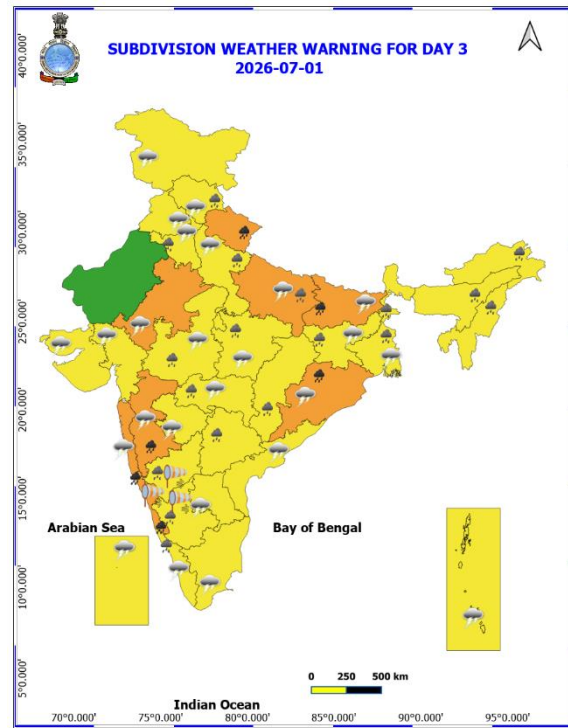
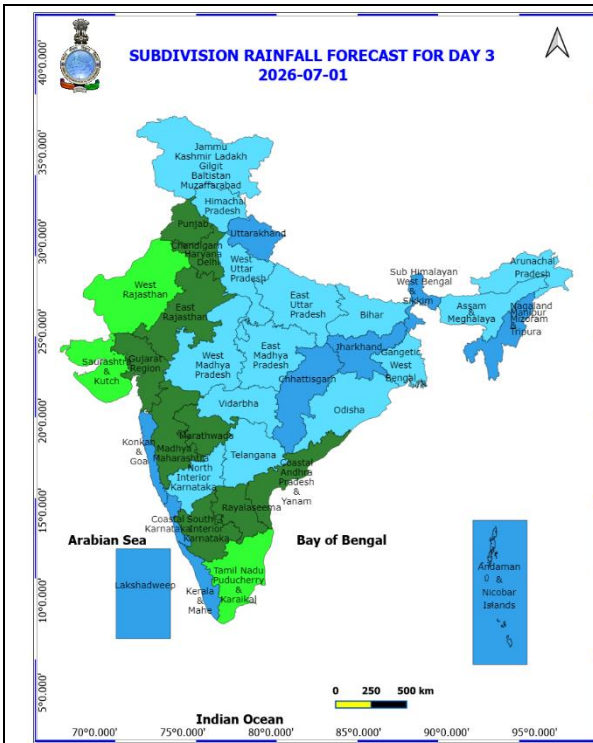
29<sup>th</sup> June (Day 1)

- ❖ **Heavy to Very Heavy Rainfall with isolated Extremely Heavy Rainfall** very likely at isolated places over Sub-Himalayan West Bengal & Sikkim, Konkan & Goa.
- ❖ **Heavy to Very Heavy Rainfall** very likely at isolated places over Arunachal Pradesh, Assam & Meghalaya, Bihar, Madhya Maharashtra, Kerala & Mahe.
- ❖ **Heavy Rainfall** very likely at isolated places over Odisha, Gujarat Region, Telangana, Tamil Nadu, Puducherry & Karaikal, Lakshadweep.
- ❖ **Thundersquall with wind speed reaching(50-60kmph)** very likely at isolated places over East Rajasthan.
- ❖ **Thunderstorm accompanied with lightning & gusty winds(40-50kmph)** very likely at isolated places over Andaman & Nicobar Islands, Gangetic West Bengal, Jharkhand, Bihar, Uttar Pradesh, Himachal Pradesh, Jammu-Kashmir-Ladakh-Gilgit-Baltistan-Muzaffarabad, Madhya Pradesh, Gujarat state, Konkan & Goa, Madhya Maharashtra, Marathwada, Vidarbha, Coastal Andhra Pradesh & Yanam, Tamil Nadu, Puducherry & Karaikal, North Interior Karnataka, Kerala & Mahe.
- ❖ **Thunderstorm accompanied with lightning & gusty winds(30-40kmph)** very likely at isolated places over Sub-Himalayan West Bengal & Sikkim, Uttarakhand, Rayalaseema.
- ❖ **Thunderstorm accompanied with Lightning** very likely at isolated places over Arunachal Pradesh, Assam & Meghalaya, Nagaland, Manipur, Mizoram & Tripura.
- ❖ **Strong Surface Winds** very likely at isolated places over Coastal Karnataka, South Interior Karnataka.
- ❖ **Heat Wave conditions** very likely at isolated places over Haryana, Chandigarh & Delhi, East Uttar Pradesh
- ❖ Arabian Sea: Squally wind with speed 45-55 kmph gusting to 65 kmph is likely to prevail along and off Somalia coasts, some parts of southwest and westcentral Arabian Sea.
- ❖ Squally weather with wind speed 40-50 gusting to 60 kmph is likely to prevail along & off Konkan & Goa, Karnataka & Kerala coasts, Lakshadweep area and adjoining eastcentral Arabian Sea.
- ❖ Bay of Bengal: Squally wind with speed 45-55 kmph gusting to 65 kmph is likely to prevail along and off south Sri Lanka adjoining some parts of southwest Bay of Bengal.
- ❖ Squally Weather with wind speed 40-50 kmph gusting to 60 kmph is likely to prevail over Gulf of Mannar & adjoining Comorin area; along and off north Andhra Pradesh coasts adjoining westcentral Arabian Sea.



### 30th June (Day 2)

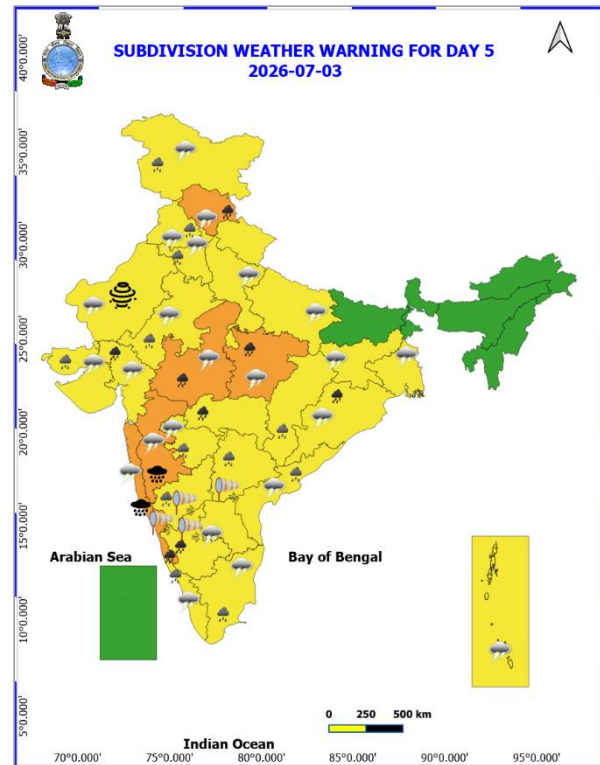
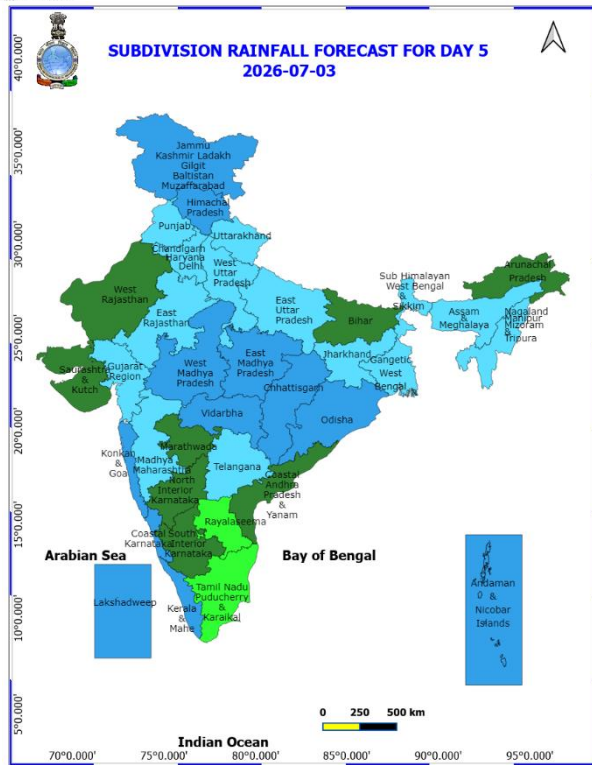
- ❖ **Heavy to Very Heavy Rainfall** very likely at isolated places over Assam & Meghalaya, Sub-Himalayan West Bengal & Sikkim, Bihar, Konkan & Goa, Madhya Maharashtra, Coastal Karnataka, Kerala & Mahe.
- ❖ **Heavy Rainfall** very likely at isolated places over Arunachal Pradesh, Nagaland, Manipur, Mizoram & Tripura, Odisha, Jharkhand, Uttar Pradesh, Uttarakhand. Madhya Pradesh. Vidarbha, Chhattisgarh. Telangana, Tamil Nadu, Puducherry & Karaikal, South Interior Karnataka.
- ❖ **Thunderstorm accompanied with lightning & gusty winds(40-50kmph)** very likely at isolated places over Gangetic West Bengal, Odisha, Jharkhand, Bihar, Uttar Pradesh, Himachal Pradesh, Jammu-Kashmir-Ladakh-Gilgit-Baltistan-Muzaffarabad, East Rajasthan, Madhya Pradesh, Gujarat state, Konkan & Goa, Madhya Maharashtra, Marathwada, Vidarbha, Coastal Andhra Pradesh & Yanam, Tamil Nadu, Puducherry & Karaikal, North Interior Karnataka, Kerala & Mahe, Lakshadweep.
- ❖ **Thunderstorm accompanied with lightning & gusty winds(30-40kmph)** very likely at isolated places over Sub-Himalayan West Bengal & Sikkim, Uttarakhand, West Rajasthan, Rayalaseema.
- ❖ **Thunderstorm accompanied with Lightning** very likely at isolated places over Arunachal Pradesh, Assam & Meghalaya, Nagaland, Manipur, Mizoram & Tripura.
- ❖ **Strong Surface Winds** very likely at isolated places over Coastal Karnataka, South Interior Karnataka.
- ❖ **Heat Wave conditions** very likely at isolated places over Haryana, Chandigarh & Delhi.
- ❖ **Arabian Sea:** Squally wind with speed 45-55 kmph gusting to 65 kmph is likely to prevail along and off Somalia coasts, some parts of southwest and most parts of westcentral Arabian Sea.
- ❖ Squally weather with wind speed 40-50 gusting to 60 kmph is likely to prevail along & off Konkan & Goa, Karnataka & Kerala coasts, Lakshadweep area and adjoining eastcentral Arabian Sea.
- ❖ **Bay of Bengal:** Squally wind with speed 45-55 kmph gusting to 65 kmph is likely to prevail along and off south Sri Lanka adjoining some parts of southwest Bay of Bengal.
- ❖ Squally Weather with wind speed 40-50 kmph gusting to 60 kmph is likely to prevail over Gulf of Mannar & adjoining Comorin area and over Andaman Sea.



### 01<sup>st</sup> July (Day 3)

- ❖ **Heavy to Very Heavy Rainfall** very likely at isolated places over Odisha, Bihar, Uttarakhand, Konkan & Goa, Madhya Maharashtra, Coastal Karnataka.
- ❖ **Heavy Rainfall** very likely at isolated places over Arunachal Pradesh, Assam & Meghalaya, Nagaland, Manipur, Mizoram & Tripura, Sub-Himalayan West Bengal & Sikkim, Gangetic West Bengal, Jharkhand, Uttar Pradesh, Himachal Pradesh, Madhya Pradesh, Vidarbha, Chhattisgarh, Telangana, Interior Karnataka, Kerala & Mahe
- ❖ **Thundersquall with wind speed reaching(50-60kmph)** very likely at isolated places over East Rajasthan.
- ❖ **Thunderstorm accompanied with lightning & gusty winds(40-50kmph)** very likely at isolated places over Gangetic West Bengal, Odisha, Jharkhand, Bihar, Uttar Pradesh, Haryana-Chandigarh-Delhi, Punjab, Himachal Pradesh, Jammu-Kashmir-Ladakh-Gilgit-Baltistan-Muzaffarabad, Madhya Pradesh, Gujarat state, Konkan & Goa, Madhya Maharashtra, Marathwada, Vidarbha, Coastal Andhra Pradesh & Yanam, Rayalaseema, Tamil Nadu, Puducherry & Karaikal, Kerala & Mahe, Lakshadweep.
- ❖ **Thunderstorm accompanied with lightning & gusty winds(30-40kmph)** very likely at isolated places over Uttarakhand, West Rajasthan, Telangana.
- ❖ **Strong Surface Winds** very likely at isolated places over Karnataka.
- ❖ **Arabian Sea:** Squally wind with speed 45-55 kmph gusting to 65 kmph is likely to prevail along and off Somalia coasts, some parts of southwest and many parts of westcentral Arabian Sea adjoining south Oman coast.
- ❖ Squally weather with wind speed 40-50 gusting to 60 kmph is likely to prevail along & off Gujarat, Konkan & Goa, Karnataka, Kerala coasts, Lakshadweep area and adjoining eastcentral Arabian Sea.
- ❖ **Bay of Bengal:** Squally wind with speed 45-55 kmph gusting to 65 kmph is likely to prevail along and off south Sri Lanka adjoining some parts of southwest Bay of Bengal.
- ❖ Squally Weather with wind speed 40-50 kmph gusting to 60 kmph is likely to prevail over Gulf of Mannar & adjoining Comorin area, along and off north Andhra Pradesh coasts adjoining westcentral Bay of Bengal; most parts of south BoB and Andaman Sea.

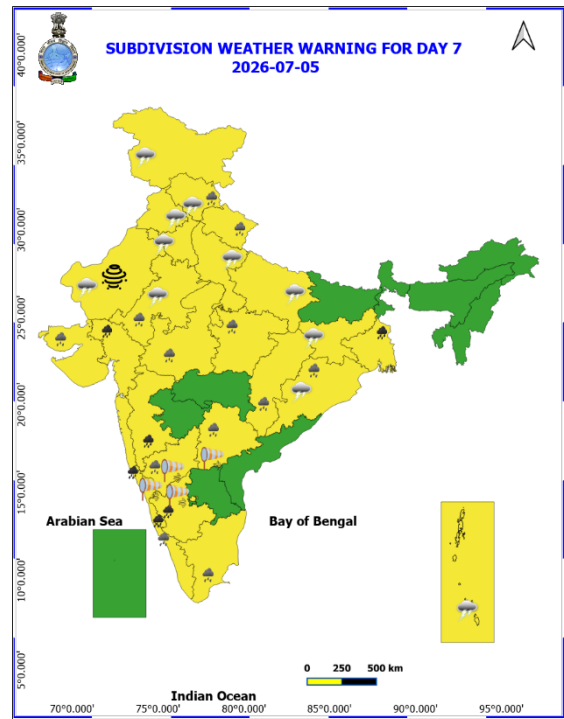
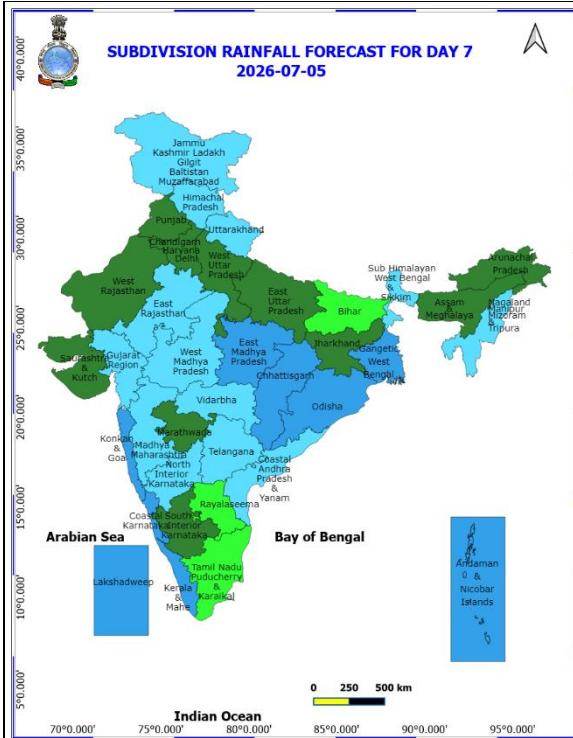




### 03rd July (Day 5)

- ❖ **Heavy to Very Heavy Rainfall with isolated Extremely Heavy Rainfall** likely at isolated places over Konkan & Goa, Madhya Maharashtra.
- ❖ **Heavy to Very Heavy Rainfall** likely at isolated places over Odisha, Himachal Pradesh, Madhya Pradesh, Gujarat Region, Coastal Karnataka, South Interior Karnataka.
- ❖ **Heavy Rainfall** likely at isolated places over Uttarakhand, Haryana-Chandigarh-Delhi, Jammu-Kashmir-Ladakh-Gilgit-Baltistan-Muzaffarabad, East Rajasthan, Saurashtra & Kutch, Marathwada, Chhattisgarh, Coastal Andhra Pradesh & Yanam, Telangana, Tamil Nadu, Puducherry & Karaikal, North Interior Karnataka, Kerala & Mahe.
- ❖ **Thunderstorm accompanied with lightning & gusty winds(40-50kmph)** likely at isolated places over Gangetic West Bengal, Odisha, Jharkhand, Uttar Pradesh, Himachal Pradesh, Jammu-Kashmir-Ladakh-Gilgit-Baltistan-Muzaffarabad, Rajasthan, Madhya Pradesh, Gujarat state, Konkan & Goa, Madhya Maharashtra, Marathwada, Coastal Andhra Pradesh & Yanam, Rayalaseema, Tamil Nadu, Puducherry & Karaikal.
- ❖ **Thunderstorm accompanied with lightning & gusty winds(30-40kmph)** likely at isolated places over Bihar.
- ❖ **Thunderstorm accompanied with Lightning** likely at isolated places over Chhattisgarh.
- ❖ **Dust Storm** likely at isolated places over West Rajasthan.
- ❖ **Strong Surface Winds** likely at isolated places over Karnataka, Telangana.
- ❖ **Arabian Sea:** Squally wind with speed 45-55 kmph gusting to 65 kmph is likely to prevail along and off Somalia coasts, some parts of southwest and many parts of westcentral Arabian Sea adjoining south Oman coast.
- ❖ Squally weather with wind speed 40-50 gusting to 60 kmph is likely to prevail along & off Gujarat, Konkan & Goa, Karnataka coasts and adjoining eastcentral Arabian Sea.
- ❖ **Bay of Bengal:** Squally wind with speed 45-55 kmph gusting to 65 kmph is likely to prevail along and off south Sri Lanka adjoining some parts of southwest Bay of Bengal.
- ❖ Squally Weather with wind speed 40-50 kmph gusting to 60 kmph is likely to prevail over Gulf of Mannar & adjoining Comorin area, along and off north Andhra Pradesh coasts adjoining westcentral Bay of Bengal; most parts of south BoB.





### 05th July (Day 7)

- ❖ **Heavy to Very Heavy Rainfall** likely at isolated places over Odisha, Gangetic West Bengal, Gujarat Region, Konkan & Goa, Madhya Maharashtra, Coastal Karnataka, South Interior Karnataka.
- ❖ **Heavy Rainfall** likely at isolated places over Uttarakhand, Himachal Pradesh, East Rajasthan, West Madhya Pradesh, Saurashtra & Kutch, Chhattisgarh, Telangana, North Interior Karnataka, Kerala & Mahe.
- ❖ **Thunderstorm accompanied with lightning & gusty winds(40-50kmph)** likely at isolated places over Odisha, Jharkhand, Uttar Pradesh, Haryana-Chandigarh-Delhi, Punjab, Himachal Pradesh, Jammu-Kashmir-Ladakh-Gilgit-Baltistan-Muzaffarabad, Rajasthan.
- ❖ **Thunderstorm accompanied with lightning & gusty winds(30-40kmph)** likely at isolated places over Bihar.
- ❖ **Dust Storm** likely at isolated places over West Rajasthan.
- ❖ **Strong Surface Winds** likely at isolated places over Karnataka, Telangana.

Action may be taken based on **ORANGE AND RED COLOUR** warnings.

- Vulnerable regions likely urban and hilly areas action may be initiated for heavy rainfall warning.
- As the lead period increases forecast accuracy decreases.

Fig. 1: Maximum Temperatures

Fig. 2: Departure of Maximum Temperatures

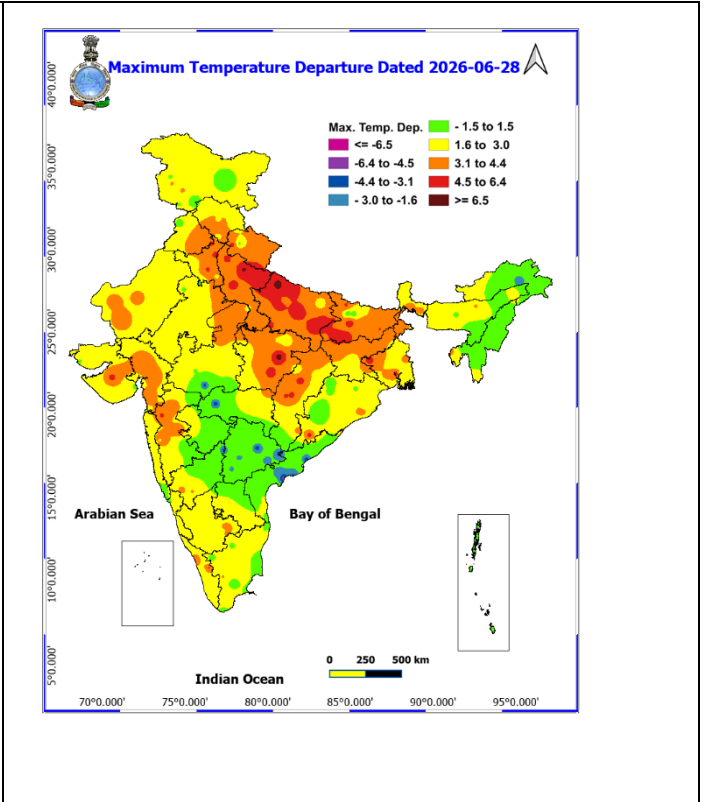
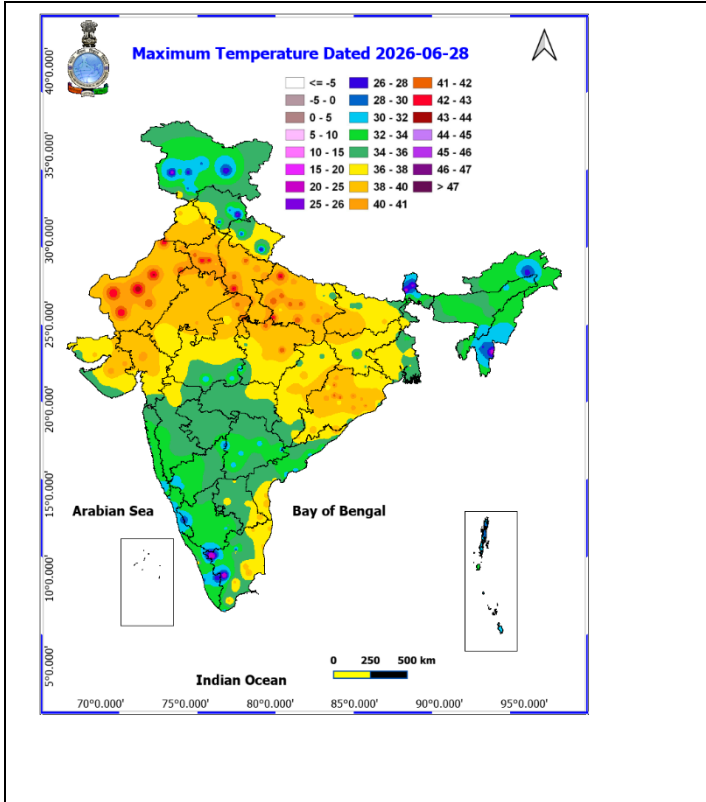


Fig. 3: Minimum Temperatures

Fig. 4: Departure of Minimum Temperatures

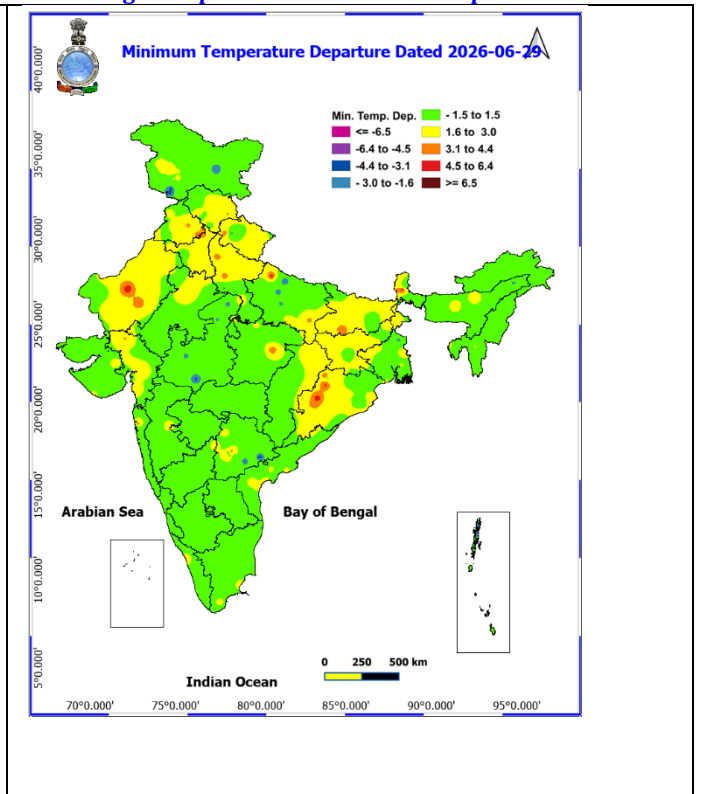
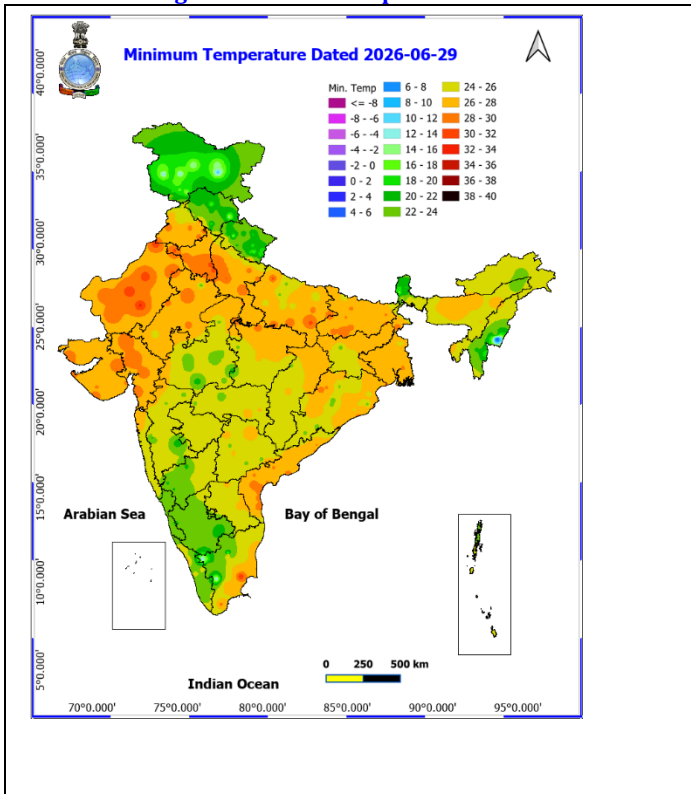
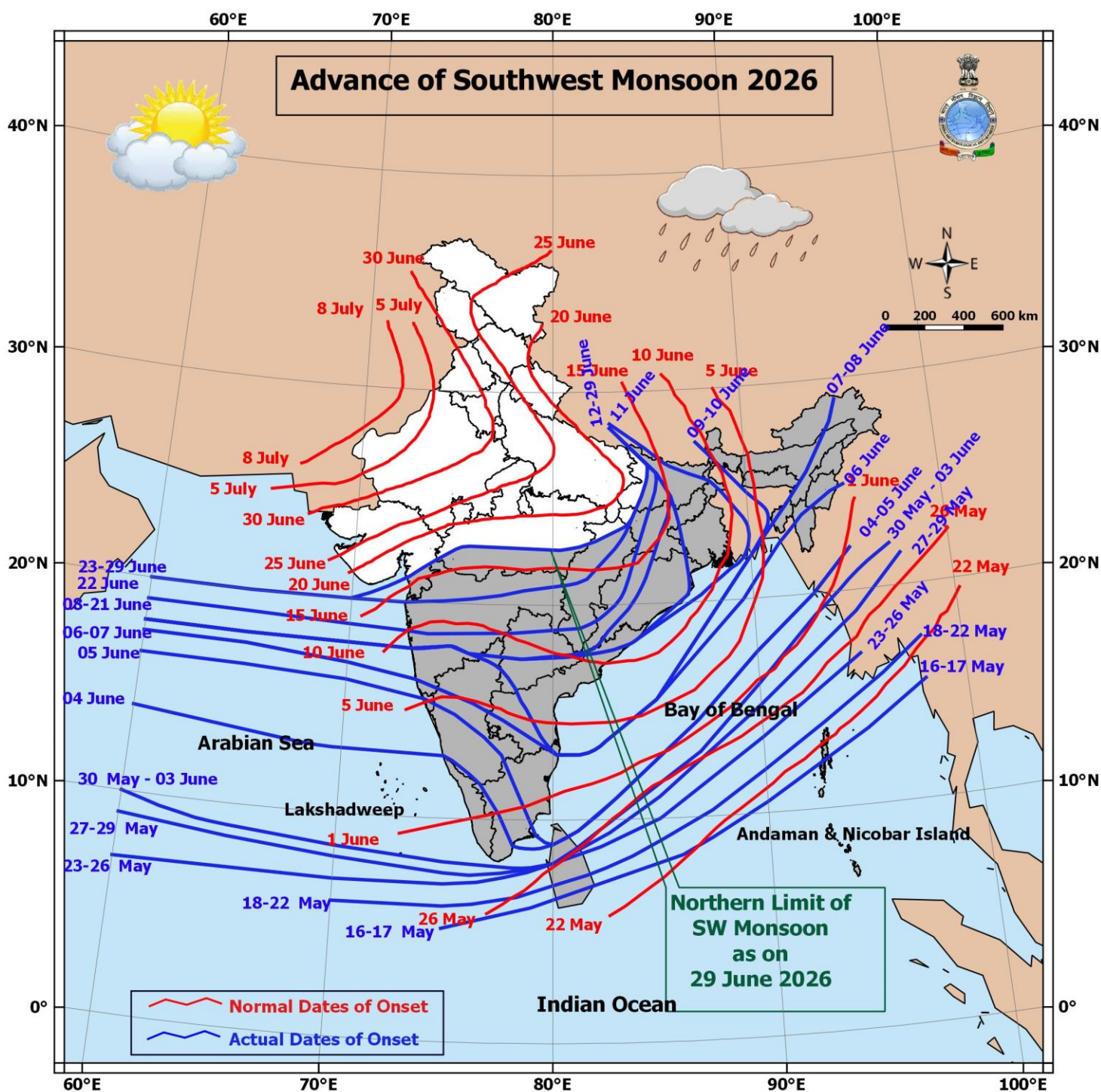


Table-1

7 Days Rainfall Forecast

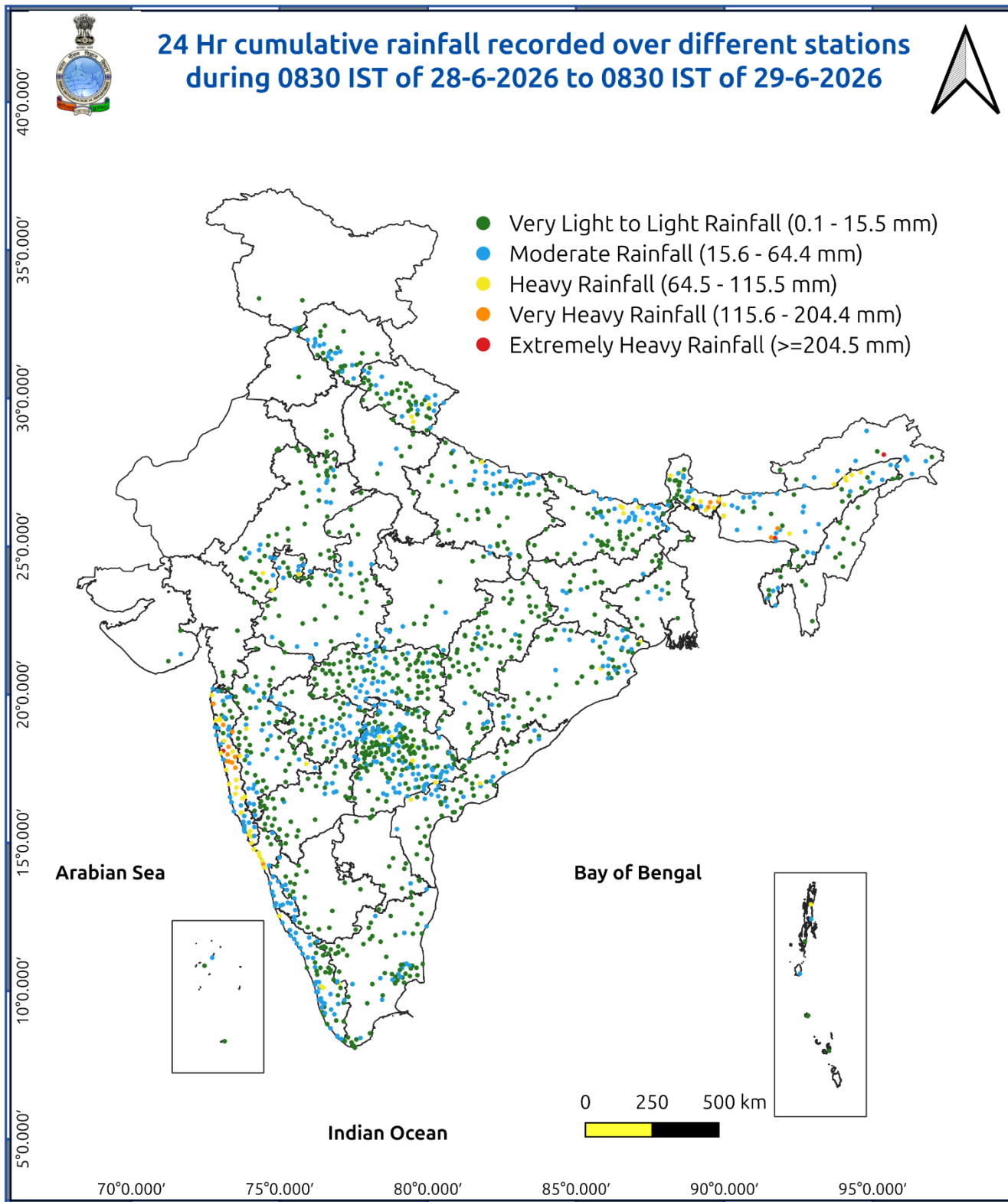
S.No.	Subdivision	29- Jun	30- Jun	1- Jul	2- Jul	3- Jul	4- Jul	5- Jul
		Day 1	Day 2	Day 3	Day 4	Day 5	Day 6	Day 7
1	ANDAMAN & NICOBAR ISLANDS	WS	WS	WS	WS	WS	WS	WS
2	ARUNACHAL PRADESH	WS	FWS	FWS	FWS	SCT	SCT	SCT
3	ASSAM & MEHGHALAYA	WS	WS	FWS	FWS	FWS	SCT	SCT
4	NAGALAND, MANIPUR, MIZORAM AND TRIPURA	WS	FWS	WS	FWS	FWS	FWS	FWS
5	SUB HIMALAYAN WEST BENGAL & SIKKIM	WS	WS	WS	FWS	FWS	FWS	FWS
6	GANGETIC WEST BENGAL	FWS	FWS	FWS	FWS	FWS	WS	WS
7	ODISHA	SCT	FWS	FWS	WS	WS	WS	WS
8	JHARKHAND	SCT	WS	WS	FWS	FWS	FWS	SCT
9	BIHAR	FWS	FWS	FWS	SCT	SCT	ISOL	ISOL
10	EAST UTTAR PRADESH	SCT	FWS	FWS	FWS	FWS	SCT	SCT
11	WEST UTTAR PRADESH	ISOL	SCT	FWS	FWS	FWS	FWS	SCT
12	UTTARAKHAND	FWS	FWS	WS	WS	FWS	FWS	FWS
13	HARYANA, CHANDIGARH & DELHI	ISOL	ISOL	SCT	FWS	FWS	FWS	SCT
14	PUNJAB	ISOL	ISOL	SCT	FWS	FWS	FWS	SCT
15	HIMACHAL PRADESH	SCT	SCT	FWS	WS	WS	FWS	FWS
16	JAMMU AND KASHMIR AND LADAKH	SCT	SCT	FWS	WS	WS	WS	FWS
17	WEST RAJASTHAN	ISOL	ISOL	ISOL	ISOL	SCT	SCT	SCT
18	EAST RAJASTHAN	SCT	SCT	SCT	FWS	FWS	FWS	FWS
19	WEST MADHYA PRADESH	SCT	SCT	FWS	FWS	WS	WS	FWS
20	EAST MADHYA PRADESH	SCT	SCT	FWS	FWS	WS	WS	WS
21	GUJRAT REGION	SCT	SCT	SCT	SCT	FWS	FWS	FWS
22	SAURASHTRA & KUTCH	ISOL	ISOL	ISOL	ISOL	SCT	SCT	SCT
23	KONKAN & GOA	WS	WS	WS	WS	WS	WS	WS
24	MADHYA MAHARASHTRA	SCT	SCT	SCT	SCT	FWS	FWS	FWS
25	MARATHWADA	SCT	SCT	SCT	SCT	SCT	SCT	SCT
26	VIDARBHA	FWS	FWS	FWS	WS	WS	WS	FWS
27	CHHATTISGARH	FWS	FWS	WS	WS	WS	WS	WS
28	COASTAL ANDHRA PRADESH	SCT	SCT	SCT	SCT	SCT	FWS	FWS
29	TELANGANA	FWS	SCT	FWS	FWS	FWS	FWS	FWS
30	RAYALASEEMA	SCT	SCT	SCT	SCT	ISOL	ISOL	ISOL
31	TAMILNADU & PUDUCHERRY	ISOL	ISOL	ISOL	ISOL	ISOL	ISOL	ISOL
32	COSTAL KARNATAKA	WS	WS	WS	WS	WS	WS	WS
33	NORTH INTERIOR KARNATAKA	SCT	SCT	FWS	FWS	SCT	FWS	FWS
34	SOUTH INTERIOR KARNATAKA	SCT	SCT	SCT	SCT	SCT	SCT	SCT
35	KERALA AND MAHE	WS	WS	WS	WS	WS	WS	WS
36	LAKSHADWEEP	WS	WS	WS	WS	WS	WS	WS

Fig. 5: Advance of Southwest Monsoon 2026



\* Red colour warning does not mean "Red Alert", Red colour warning means "Take Action".  
 Forecast and Warning for any day is valid from 0830 hours IST of day till 0830 hours IST of next day.  
 For more details, kindly visit <https://mausam.imd.gov.in> or contact: 011-2434-4599  
 (Service to the Nation since 1875)

Fig. 6: Accumulated Rainfall (mm) during past 24 hours



## 24 hours Outlook for the Flash Flood Risk (FFR) till 1130 IST of 30-06-2026 :

Moderate flash flood risk likely over few watersheds & neighbourhoods of following Met Sub-divisions during next 24 hours.

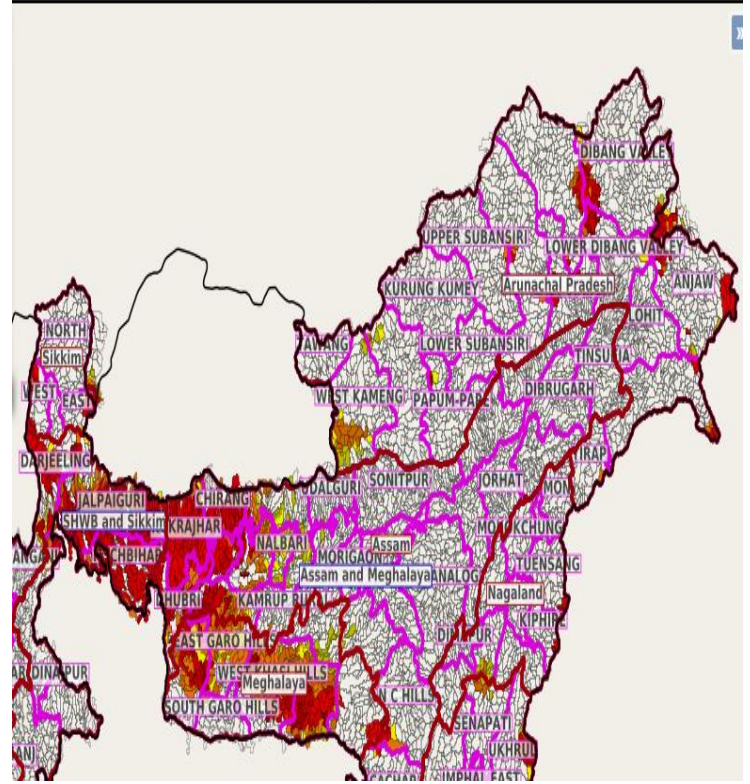
**Arunachal Pradesh** - Changlang, Dibang Valley, East Siang, Lower Dibang Valley, West Siang, Anjaw and Upper Siang districts.

**Assam & Meghalaya** - Baksa, Barpeta, Bongaigaon, Chirang, Goalpara, Kamrup Rural, Kokrajhar, N.C Hills, Nalbari, East Garo Hills, East Khasi Hills, West Garo Hills, West Khasi Hills, Dhubri and Jaintia Hills districts.

**Sub-Himalayan West Bengal & Sikkim** - East Sikkim, North Sikkim, West Sikkim, Darjeeling, Jalpaiguri, Kochbihar and Uttar\_Dinajpur districts.

Surface runoff/ Inundation may occur at some fully saturated soils & low-lying areas over Area of Concern (AoC) as shown in map due to expected rainfall occurrence in next 24 hours.

Product: GFS FFR | Timescale: 24-hr | Region: "INDIA"  
Product Date: 2026-06-29 06:00 UTC | Valid Date: 2026-06-30 06:00 UTC



### Impact & Action Suggested due to very heavy rainfall over

- ❖ ❖ Heavy to very heavy rainfall at many places with extremely heavy rainfall likely at isolated places over Sub-Himalayan West Bengal & Sikkim on 29<sup>th</sup> June and over Konkan & Goa on 29<sup>th</sup> and on 02<sup>nd</sup> & 03<sup>rd</sup> July; Madhya Maharashtra on 02<sup>nd</sup> & 03<sup>rd</sup> July.

### Impact Expected

- ❖ Localized Flooding of roads, water logging in low lying areas and closure of underpasses mainly in urban areas of the above region.
- ❖ Occasional reduction in visibility due to heavy rainfall.
- ❖ Disruption of traffic in major cities due to water logging in roads leading to increased travel time.
- ❖ Minor damage to kutchha roads.
- ❖ Possibilities of damage to vulnerable structure.
- ❖ Localized Landslides/Mudslides
- ❖ Damage to horticulture and standing crops in some areas due to inundation.
- ❖ It may lead to riverine flooding in some river catchments (for riverine flooding please visit Web page of CWC).

### Action Suggested

- ❖ Check for traffic congestion on your route before leaving for your destination.
- ❖ Follow any traffic advisories that are issued in this regard.
- ❖ Avoid going to areas that face the water logging problems often.
- ❖ Avoid staying in vulnerable structure.

**Impact expected and action suggested due to isolated thunderstorm with lightning/gusty & Squally winds & Hailstorm over**

❖ **Thundersquall (wind speed reaching 50-60 kmph gusting to 70 kmph) likely over East Rajasthan on 29th June and during 1st-2nd July.**

**Impact expected:**

- Breaking of tree branches, uprooting of large avenue trees. Large dead limbs blown from trees. Damage to Standing crops.
- Minor to Major damage to banana and papaya trees.
- Minor to major damage to power and communication lines due to breaking of branches.
- Strong wind/hail may damage plantation, horticulture and standing crops.
- Hail may injure people and cattle at open places.
- Partial damage to vulnerable structures due to strong winds.
- Minor damage to kutcha houses/walls and huts.
- Loose objects may fly.

**Action suggested:**

- People are advised to keep a watch on the weather for worsening conditions and be ready to move to safer places accordingly.
- Stay indoors, close windows & doors and avoid travel if possible.
- Take safe shelters; do not take shelter under trees.
- Do not lie on concrete floors and do not lean against concrete walls.
- Unplug electrical/ electronic appliances.
- Immediately get out of water bodies.
- Keep away from all the objects that conduct electricity.

**Impact expected and action suggested due to Heat wave conditions at** isolated pockets over East Uttar Pradesh on 29th June; Haryana Chandigarh & Delhi during 29th-30th June.

#### Yellow alert Areas

- Moderate temperature & heat is tolerable for general public but moderate health concern likely for vulnerable people e.g. infants, elderly, people with chronic diseases.
- Avoid heat exposure.
- Wear lightweight, light colour, loose, cotton clothes.
- Cover your head, use a cloth, hat or umbrella.

#### Agromet advisories for likely impact of Heavy Rainfall

- In In **Arunachal Pradesh**, ensure proper drainage in vegetables, maize, rice nursery and other crop fields to prevent waterlogging. Harvest mature vegetables and fruits to avoid crop losses.
- In **Assam**, drain out excess water from rice nurseries, jute, ginger, turmeric, vegetables, banana, citrus and papaya. Avoid nursery sowing of *Sali* rice and sowing of jute, maize and vegetables during heavy rainfall. Cover the already seeded area with natural mulching materials like straw, farm residues etc. Provide mechanical support to the sugarcane crop to prevent lodging.
- In **Meghalaya**, ensure proper drainage channels in rice nurseries, maize, ginger, cowpea, vegetable fields and banana plantations. Protect young seedlings from direct exposure to heavy rainfall. Use propping (bamboo or wooden poles) to support heavily laden plants.
- In **Manipur**, undertake harvesting of pre-*kharif* rice and store the produce in safe place. Avoid transplanting of rice during heavy rainfall. Ensure proper drainage in soybean, chilli, ginger, turmeric, banana and other crop fields and newly transplanted seedlings and nursery crops to avoid water stagnation.
- In **Tripura**, ensure adequate drainage arrangements to remove excess water from rice and vegetable fields during heavy rainfall.
- In **Sub Himalayan West Bengal**, avoid nursery sowing of rice during heavy rainfall; protect already sown rice nursery beds with straw mulch, dry grass, or temporary polythene / agro-net covers to prevent seed washing, poor germination and seedling loss. Drain out excess water from jute, ginger, chilli, tomato and dalley khorsani fields and nurseries of *kharif* rice, finger millet and vegetables.
- In **Odisha**, make provision to drain out excess rain water from fields of maize, millets and pulse crops.
- In **Bihar**, harvest the mature pods of summer green gram and keep harvested produce in safer places. Provide adequate drainage facilities in rice nurseries and maize fields.
- In **Madhya Pradesh**, harvest mature green gram, vegetables and fruits and store the produce in safe place.
- In **Chhattisgarh**, ensure proper drainage in nurseries of rice and vegetables.
- In **Konkan** and *ghat* areas of **Madhya Maharashtra**, make arrangement to drain out excess water from nurseries of rice, finger millet and vegetables.
- In **Keralam**, drain out excess water from banana, coconut, cardamom, ginger, black pepper and vegetables. Provide staking support in banana plants and strengthen the pandals of vegetable crops. Avoid transplanting of rice during heavy rain.
- In **Tamil Nadu**, undertake harvesting of matured pearl millet and picking of cotton during clear weather and store the harvested produce at safer places.
- In **Coastal Karnataka**, ensure proper drainage in rice seedbeds and fruit orchards to prevent water stagnation.

- In **Coastal Andhra Pradesh**, maintain adequate drainage in rice nursery, maize fields and horticultural crops (mango, banana etc.) to avoid water stagnation.

#### **Agromet advisories for likely impact of High temperatures / Heat Waves**

- In **Haryana and East Uttar Pradesh**, apply light irrigation as per requirement in vegetable crops and fruit orchards. Carry out mulching with crop residue, straw or polythene to conserve soil moisture. Use temporary shade nets to protect the fruit plants from high temperatures.

#### **Agromet advisories for likely impact of Thunderstorm / Gusty Winds**

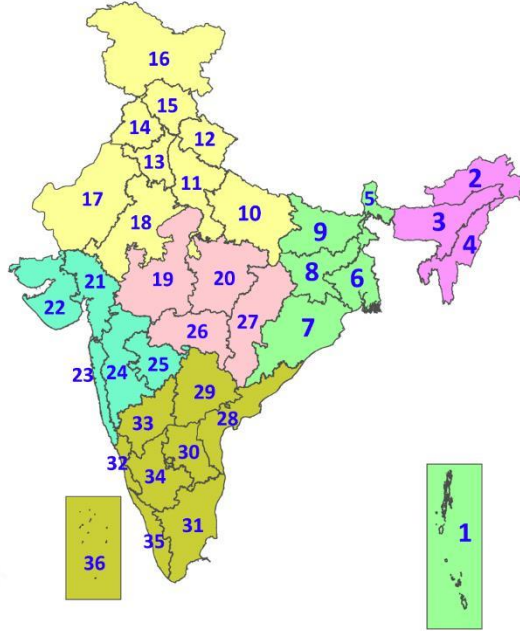
- Shift the harvested produce in safer places or cover the produce with tarpaulin sheets in the fields. Tie the harvested crops securely and cover them to minimize the risk of displacement from strong surface winds.
- Provide mechanical support to horticultural crops and staking or support to vegetables and young fruit plants / fruit-bearing plants to avoid lodging due to strong winds.

#### **Livestock / Poultry / Fisheries**

- Keep the animals inside the shed during heavy rainfall and provide them balanced feed.
- Store the feed and fodder in a safe place to prevent spoilage.
- In regions with high temperatures and heat wave conditions, provide clean, cool drinking water to animals, and cover the roofs of poultry sheds with grass to reduce the adverse effects of heat. Construct an outlet with proper netting around the ponds to drain excess water, thereby preventing fish from escaping in the event of overflow.

## LEGENDS

1. अंडमान और निकोबार द्वीपसमूह
2. अरुणाचल प्रदेश
3. असम और मेघालय
4. नागालैंड, मणिपुर, मिजोरम और त्रिपुरा
5. उप-हिमालयी पश्चिम बंगाल और सिक्किम
6. गंगीय पश्चिम बंगाल
7. ओडिशा
8. झारखंड
9. बिहार
10. पूर्वी उत्तर प्रदेश
11. पश्चिम उत्तर प्रदेश
12. उत्तराखंड
13. हरियाणा, चंडीगढ़ और दिल्ली
14. पंजाब
15. हिमाचल प्रदेश
16. जम्मू और कश्मीर और लद्दाख
17. पश्चिम राजस्थान
18. पूर्वी राजस्थान
19. पश्चिम मध्य प्रदेश
20. पूर्वी मध्य प्रदेश
21. गुजरात
22. सौराष्ट्र
23. कोंकण और गोवा
24. मध्य महाराष्ट्र
25. मराठवाड़ा
26. विदर्भ
27. छत्तीसगढ़
28. तटीय आंध्र प्रदेश और यनम
29. तेलंगाना
30. रायलसीमा
31. तमिलनाडु, पुडुचेरी और कराईकल
32. तटीय कर्नाटक
33. आंतरिक उत्तरी कर्नाटक
34. आंतरिक दक्षिणी कर्नाटक
35. केरल और माहे
36. लक्षद्वीप



1. Andaman & Nicobar Islands
2. Arunachal Pradesh
3. Assam & Meghalaya
4. Nagaland, Manipur, Mizoram & Tripura
5. Sub-Himalayan West Bengal & Sikkim
6. Gangetic West Bengal
7. Odisha
8. Jharkhand
9. Bihar
10. East Uttar Pradesh
11. West Uttar Pradesh
12. Uttarakhand
13. Haryana, Chandigarh & Delhi
14. Punjab
15. Himachal Pradesh
16. Jammu & Kashmir and Ladakh
17. West Rajasthan
18. East Rajasthan
19. West Madhya Pradesh
20. East Madhya Pradesh
21. Gujarat
22. Saurashtra
23. Konkan & Goa
24. Madhya Maharashtra
25. Marathwada
26. Vidarbha
27. Chhattisgarh
28. Coastal Andhra Pradesh & Yanam
29. Telangana
30. Rayalaseema
31. Tamilnadu, Puducherry & Karaikal
32. Coastal Karnataka
33. North Interior Karnataka
34. South Interior Karnataka
35. Kerala & Mahe
36. Lakshadweep

## SPATIAL DISTRIBUTION (% of Stations reporting)

% Stations	Category	% Stations	Category
76-100	Widespread (WS/Most Places)	26-50	Scattered (SCT/A Few Places)
51-75	Fairly Widespread (FWS/Many Places)	1-25	Isolated (ISOL)



Fog



Heavy Snow



Cold Wave

### COLOUR CODED WARNING

No Warning (No Action)

Watch (Be Aware)

Alert (Be Prepared To Take Action)

Warning (Take Action)



Heavy Rain



Dust Storm



Cold Day



Very Heavy Rain



Heat Wave



Ground Frost



Extremely Heavy Rain



Warm Night



Thunder & Lightning



Hot Day



Hailstorm



Hot & Humid



Dust Raising Winds



Strong Surface Winds

### Probabilistic Forecast

Terms	Probability of Occurrence (%)
Unlikely	< 25
Likely	25 - 50
Very Likely	50 - 75
Most Likely	> 75

## DEFINITION/CRITERIA

### Rain/ Snow \*

Heavy: 64.5 to 115.5 mm/cm \*  
Very Heavy: 115.6 to 204.4 mm/cm\*  
Extremely Heavy: > 204.4 mm/cm \*

### Heat Wave

When maximum temperature of a station reaches  $\geq 40^\circ\text{C}$  for plains and  $\geq 30^\circ\text{C}$  for hilly regions  
(a) Based on Departure from normal

Heat Wave: Maximum Temperature Departure from normal  $4.5^\circ\text{C}$  to  $6.4^\circ\text{C}$ .  
Severe Heat Wave: Maximum Temperature Departure from normal  $\geq 6.5^\circ\text{C}$

(b). Based on Actual maximum temperature

Heat Wave: When actual maximum temperature  $\geq 45^\circ\text{C}$ .  
Severe Heat Wave: When actual maximum temperature  $\geq 47^\circ\text{C}$

(c). Criteria for heat wave for coastal stations

When maximum temperature departure is  $> 4.5^\circ\text{C}$  from normal. Heat Wave may be described provided maximum temperature  $\geq 37^\circ\text{C}$

### Warm Night

When maximum temperature remains  $40^\circ\text{C}$

Warm Night: When minimum temperature departure  $4.5^\circ\text{C}$  to  $6.4^\circ\text{C}$ .  
Severe Warm Night: When minimum temperature departure  $> 6.4^\circ\text{C}$ .

### Cold Wave

When minimum temperature of a station  $\leq 10^\circ\text{C}$  for plains and  $\leq 0^\circ\text{C}$  for hilly regions.  
(a). Based on departure

Cold Wave: Minimum Temperature Departure from normal  $-4.5^\circ\text{C}$  to  $-6.4^\circ\text{C}$ .  
Severe Cold Wave: Minimum Temperature Departure from normal  $\leq -6.5^\circ\text{C}$

(b) Based on actual Minimum Temperature (for Plains only)

Cold Wave : When Minimum Temperature is  $\leq 4.0^\circ\text{C}$   
Severe Cold Wave: When Minimum Temperature is  $\leq 2.0^\circ\text{C}$

(c) For Coastal Stations

When Minimum Temperature departure is  $\leq -4.5^\circ\text{C}$  & actual Minimum Temperature is  $\leq 15^\circ\text{C}$

### Cold Day

When minimum temperature of a station  $\leq 10^\circ\text{C}$  for plains and  $\leq 0^\circ\text{C}$  for hilly regions  
Based on departure

Cold Day: Maximum Temperature Departure from normal  $-4.5^\circ\text{C}$  to  $-6.4^\circ\text{C}$ .  
Severe Cold Day: Maximum Temperature Departure from normal  $\leq -6.5^\circ\text{C}$

### Fog

Phenomenon of small droplets suspended in air and the horizontal visibility  $< 1\text{km}$

Moderate Fog: When the visibility between 500-200 metres  
Dense Fog: when the visibility between 50- 200 metres  
Very Dense Fog: when the visibility  $< 50$  metres

### Thunderstorm

Sudden electrical discharges manifested by a flash of light (Lightning) and a sharp rumbling sound (thunder)

### Dust/Sand Storm

An ensemble of particles of dust or sand energetically lifted to great heights by a strong and turbulent wind.

### Frost

Ice deposits on ground

Air temperature  $\leq 4^\circ\text{C}$  ( over Plains)

### Squall

A strong wind that rises suddenly, lasts for atleast 1 minute.

Moderate: Wind speed 52-61 kmph  
Severe: Wind speed 62-87 kmph  
Very Severe: Wind speed  $> 87$  kmph

### Sea State

Effect of various waves in the sea over specific area

Rough to very rough: Wind speed 41-62 kmph (22-33 knots) & Wave height 2.5-6 metre  
High to very high: Wind speed 63-117 kmph ( 34-63 knots) & Wave height 6-14 metre  
Phenomenal: Wind speed  $> 117$  kmph ( $> 63$  knots) & Wave height  $> 14$  metre

### Cyclone

Cyclonic Storm: Wind speed 62-87 kmph (34-47 knots)  
Severe Cyclonic Storm: Wind speed 88-117 kmph (48-63 knots)  
Very Severe Cyclonic Storm: Wind speed 118-165 kmph (64 - 89 knots)  
Extremely Severe Cyclonic Storm: Wind speed 166-220 kmph (90 -119 knots)  
Super Cyclone Strom: Wind speed  $> 220$  kmph ( $> 119$  knots)