

Saturday, October 12, 2024
Time of Issue: 1315 hours IST
(MID-DAY)

ALL INDIA WEATHER SUMMARY AND FORECAST BULLETIN

Significant Weather Features:

On further Withdrawal of Southwest Monsoon

- ✓ The **line of withdrawal of Southwest Monsoon** continues to pass through 29°N/86°E, Darbhanga, Hazaribagh, Pendra Road, Narsinghpur, Khargone, Nandurbar, Navsari and 20°N/70°E.
- ✓ Conditions are favourable for further **withdrawal of Southwest Monsoon** from remaining parts of Gujarat, Madhya Pradesh, Jharkhand, Bihar, some more parts of Maharashtra, Chhattisgarh and some parts of Odisha, West Bengal & Sikkim during next 2 days.

Weather Systems:

- ✓ Yesterday's **Well Marked Low pressure area** over eastcentral Arabian Sea off Maharashtra coast lay over eastcentral Arabian Sea at 0830 hours IST of today, the 12th October 2024. It is likely to move west-northwestwards and intensify into a **Depression** over central Arabian Sea by morning of 13th October.
- ✓ A **cyclonic circulation** lay over southeast Bay of Bengal & adjoining equatorial Indian Ocean extended up to middle tropospheric levels. Under its influence, a **low pressure area** is likely to form over southwest Bay of Bengal around 14th October.
- ✓ An upper air **cyclonic circulation** over central parts of south Bay of Bengal lay over southwest Bay of Bengal in lower tropospheric levels.

Forecast & Warnings (upto 7 days):

South Peninsular India

- ✓ Fairly widespread to widespread light to moderate rainfall very likely over Tamil Nadu, Puducherry & Karaikal, Kerala & Mahe, Lakshadweep, South Interior Karnataka; Scattered to Fairly widespread light to moderate rainfall over Coastal & North Interior Karnataka, Coastal Andhra Pradesh & Yanam, Rayalaseema; Isolated to Scattered light to moderate rainfall very likely over Telangana during the week.
- ✓ **Isolated very heavy rainfall** very likely over Tamil Nadu, Puducherry & Karaikal during 14th-16th October.
- ✓ **Isolated heavy rainfall** very likely over Kerala & Mahe during the week; Tamil Nadu, Puducherry & Karaikal on 12th, 13th & 17th; Coastal Andhra Pradesh & Yanam, Rayalaseema during 14th-17th; South Interior Karnataka during 12th-16th October.

Northeast & East India

- ✓ Fairly widespread to widespread light to moderate rainfall very likely over Andaman & Nicobar Islands; Fairly widespread to widespread light to moderate rainfall very likely over Arunachal Pradesh during next 2 days & Scattered to Fairly widespread light to moderate rainfall over Assam & Meghalaya & Nagaland, Manipur, Mizoram & Tripura during 2 days; Isolated to Scattered light to moderate rainfall very likely over same region during subsequent 5 days.
- ✓ **Isolated heavy rainfall** very likely over Arunachal Pradesh, Assam & Andaman & Nicobar Islands on 12th October.

West & Central India

- ✓ Scattered to Fairly widespread light to moderate rainfall over Gujarat State during 3 days; Isolated to Scattered light to moderate rainfall very likely over Konkan & Goa, Madhya Maharashtra, Marathwada, East Madhya Pradesh, Vidarbha, Chhattisgarh during the week; West Madhya Pradesh during next 5 days.
- ✓ **Isolated heavy rainfall** very likely over Madhya Maharashtra on 12th; Gujarat State on 12th & 13th; West Madhya Pradesh, Vidarbha on 12th October.

Northwest India:

- ✓ No significant rainfall likely over these regions during the week.

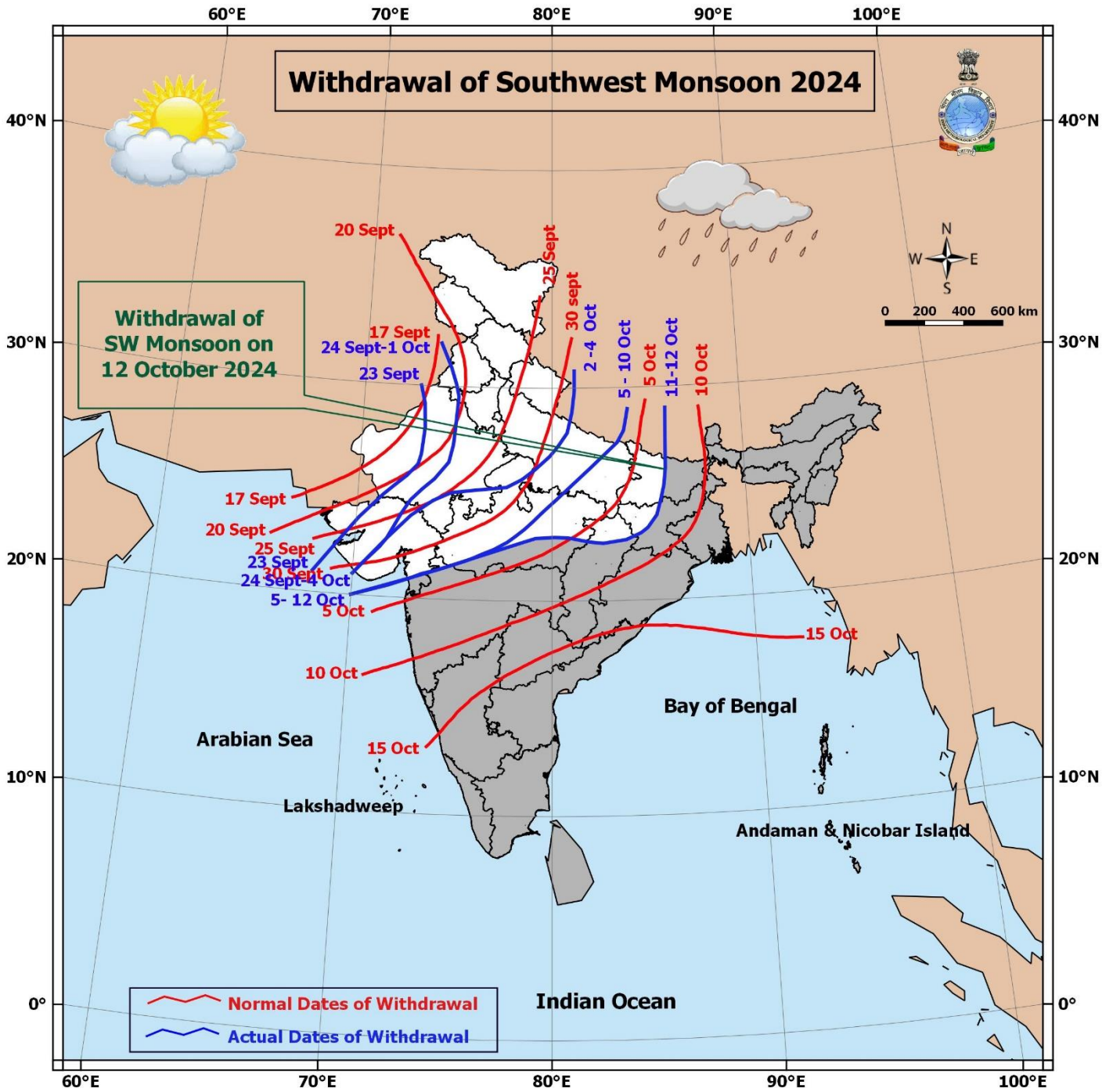
Main Weather Observations:

- ❖ **Rainfall distribution** (from 0830 hours IST of yesterday to 0830 hours IST today): **at most places** over Arunachal Pradesh and Kerala & Mahe; **at many places** over Vidarbha, Andaman & Nicobar Islands, Konkan & Goa, Madhya Maharashtra, Tamil Nadu, Puducherry & Karaikal, Lakshadweep, Coastal Andhra Pradesh & Yanam and South Interior Karnataka; **at a few places** over West Madhya Pradesh, Assam & Meghalaya, Nagaland, Manipur, Mizoram & Tripura, Marathwada, Gujarat Region, Telangana and Coastal & South Interior Karnataka; **at isolated places** over West Uttar Pradesh, East Rajasthan, East Madhya Pradesh, Chhattisgarh, West Bengal & Sikkim, Bihar, Jharkhand, Odisha and Saurashtra & Kutch .
- ❖ **Heavy rainfall recorded** (from 0830 hours IST of yesterday to 0830 hours IST today): **Heavy to very Heavy rainfall** at isolated places over Kerala & Mahe, Tamil Nadu, Puducherry & Karaikal, North Interior Karnataka; **Heavy rainfall** at isolated places over Nagaland, Manipur, Mizoram & Tripura, East Madhya Pradesh, Assam & Meghalaya, West Madhya Pradesh, Madhya Maharashtra, Marathwada, Arunachal Pradesh, South Interior Karnataka.
- ❖ **Significant amount of rainfall** (from 0830 hours IST of yesterday to 0830 hours IST today) (in cm): **Kerala & Mahe:** Vadakara (dist Kozhikode) 18, Alapuzha (dist Alapuzha) 16, Poonjar(dist Kottayam) 11, Trivandrum (dist Thiruvananthapuram) 11, Airport Chakka(dist Thiruvananthapuram) 11, Mancompu (dist Alapuzha) 11, Mahe (dist Mahe) 10, Peringalkuthu(dist Thrissur) 10, Neyyattinkara (dist Thiruvananthapuram) 10, Varkala (dist Thiruvananthapuram) 9, Kanjirapuzha(dist Palakkad) 9, Perumkadavila (dist Thiruvananthapuram) 8; **North Interior Karnataka:** Haveri Pto (dist Haveri) 17, Ilkal (dist Bagalkote) 7, Kudalasangama (dist Bagalkote) 7; **Tamil Nadu, Puducherry & Karaikal:** Karaikudi (dist Sivagangai) 15, Tiruchirappalli Airport (dist Tiruchirappalli) 13, Kurunthancode (dist Kanniyakumari) 10, Colachel (dist Kanniyakumari) 9, Neyyoor AWS (dist Kanniyakumari) 9, Erode (dist Erode) 8, Varattupallam (dist Erode) 7; **South Interior Karnataka:** Shivamogga Pto (dist Shivamogga) 10; **Nagaland, Manipur, Mizoram & Tripura:** Kadamtala CWC (dist North Tripura) 9, Kailashahar Aero (dist Unakoti) 8; **East Madhya Pradesh:** Lakhnadon (dist Seoni) 8; **Assam & Meghalaya:** Silchar (dist Cachar) 8, Beki Mathungari (dist Barpeta) 8; **West Madhya Pradesh:** Pandhana (dist Khandwa) 7, Bhagwanpura (dist Khargone) 7; **Madhya Maharashtra:** Bhusawal (dist Jalgaon) 7; **Marathwada:** Soegaon (dist Chh. Sambhajinagar) 7; **Arunachal Pradesh:** Roing (dist Lower Dibang Valley) 7.
- ❖ **Minimum Temperature Departures (as on 12-10-2024):** Minimum temperatures are **appreciably above normal (3.1°C to 5.0°C)** at isolated places over East Rajasthan; **above normal (1.6°C to 3.0°C)** at many places over Saurashtra & Kutch, Sub-Himalayan West Bengal & Sikkim; at a few places over Gangetic West Bengal, Bihar, Odisha , Jharkhand and Madhya Maharashtra; at isolated places over West Rajasthan, East Uttar Pradesh, Konkan & Goa, Marathwada, Vidarbha, Chhattisgarh, Telangana, and North Interior Karnataka. These are **below normal (-1.6°C to -3.0°C)** at isolated places over Haryana-Chandigarh-Delhi, Assam & Meghalaya, Arunachal Pradesh. Today, **the lowest minimum temperature of 16.0°C** is reported at **Delhi Ridge (New Delhi)** over the plains of the country. (Fig.4)
- ❖ **Maximum Temperature Departures (as on 11-10-2024):** Maximum temperatures were **appreciably above normal (3.1°C to 5.0°C)** at isolated places over Odisha; **above normal (1.6°C to 3.0°C)** at many places over Gangetic West Bengal; at isolated places over Jammu-Kashmir-Ladakh-Gilgit-Baltistan-Muzaffarabad, Himachal Pradesh, Uttar Pradesh and Rayalaseema. These were **markedly below normal (-5.1°C or less)** at a few places over Saurashtra & Kutch; **appreciably below normal (-3.1°C to -5.0°C)** at isolated places over Gujarat Region, East Rajasthan, Madhya Pradesh and Telangana; **below normal (-1.6°C to -3.0°C)** at isolated places over Haryana-Chandigarh-Delhi, and Tamil Nadu, Puducherry & Karaikal. Yesterday, **the highest Maximum Temperature of 37.6°C** was reported at **Sri Ganganagar & Jaisalmer (West Rajasthan)** over the country. (Fig. 2)

Meteorological Analysis (Based on 0830 hours IST)

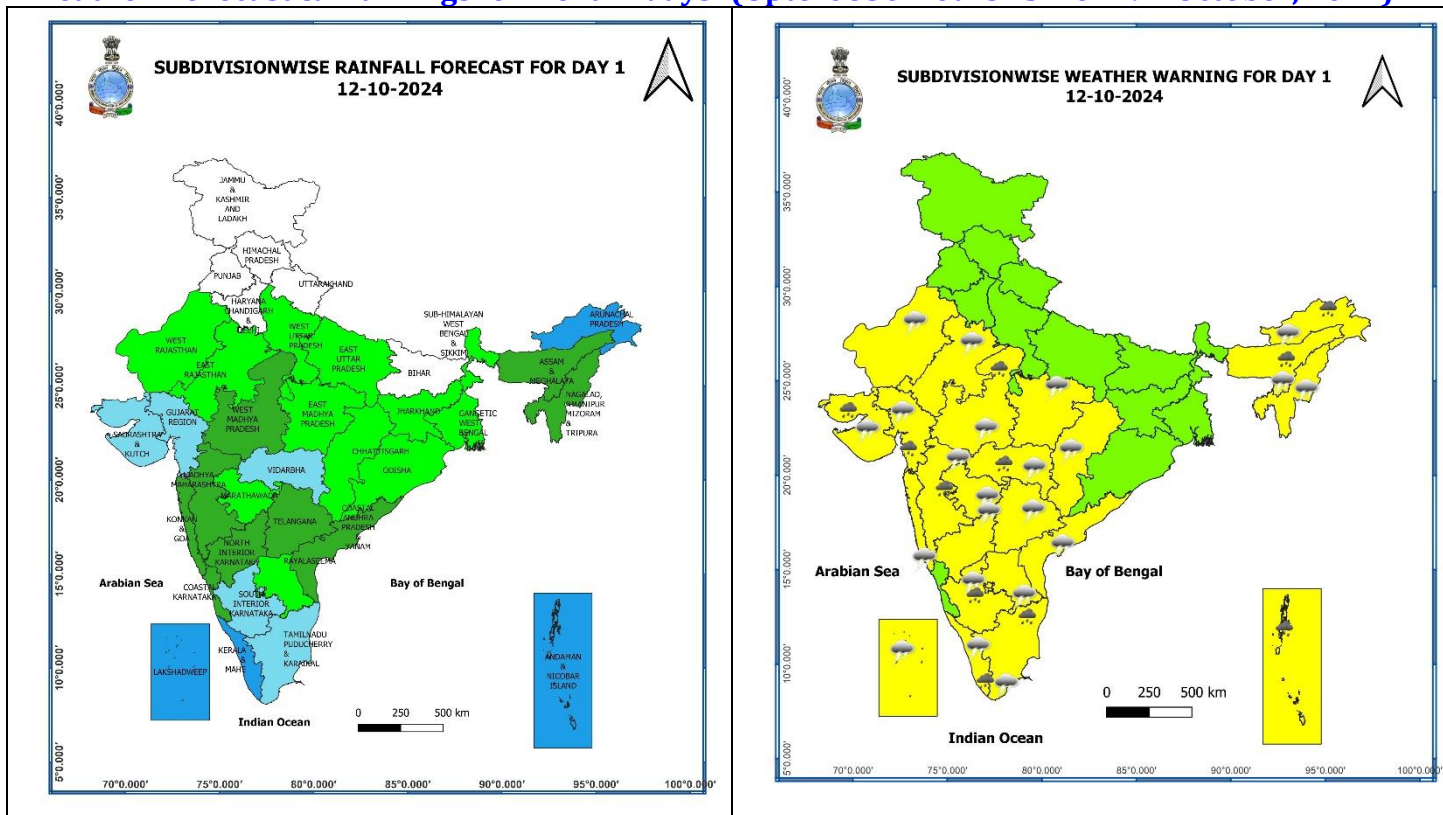
- ❖ The **line of withdrawal of Southwest Monsoon** continues to pass through 29°N/86°E, Darbhanga, Hazaribagh, Pendra Road, Narsinghpur, Khargone, Nandurbar, Navsari and 20°N/70°E.
- ❖ Conditions are favourable for further **withdrawal of Southwest Monsoon** from remaining parts of Gujarat, Madhya Pradesh, Jharkhand, Bihar, some more parts of Maharashtra, Chhattisgarh and some parts of Odisha, West Bengal & Sikkim during next 2 days.
- ❖ The **Well Marked Low pressure area** over eastcentral Arabian Sea with the associated cyclonic circulation extending upto 5.8 km above mean sea level persists over the same region at 0830 hours IST of today, the 12th October 2024. It is likely to move west-northwestwards and intensify into a **Depression** over central Arabian Sea by morning of 13th October.
- ❖ The **trough** ran from centre of the Well Marked Low pressure area over eastcentral Arabian sea to north Sri Lanka across Coastal Karnataka, Tamil Nadu and extended upto 1.5 km above mean sea level.
- ❖ The upper air **cyclonic circulation** over south Tamil Nadu coast extending upto 1.5 km above mean sea level merged with the above trough.
- ❖ A **cyclonic circulation** lay over southeast Bay of Bengal & adjoining equatorial Indian Ocean and extended upto 5.8 km above mean sea level. Under its influence, a **low pressure area** is likely to form over southwest Bay of Bengal around 14th October.
- ❖ The upper air **cyclonic circulation** over central parts of south Bay of Bengal lay over southwest Bay of Bengal and extended upto 3.1 km above mean sea level.
- ❖ The upper air **cyclonic circulation** over east Assam & neighbourhood at 0.9 km above mean sea level persists.

Withdrawal of Southwest Monsoon 2024



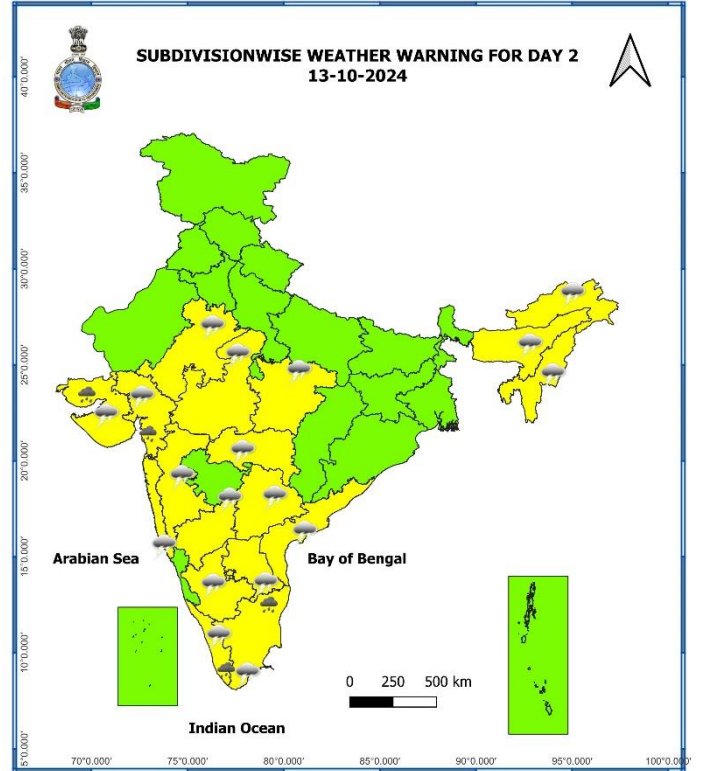
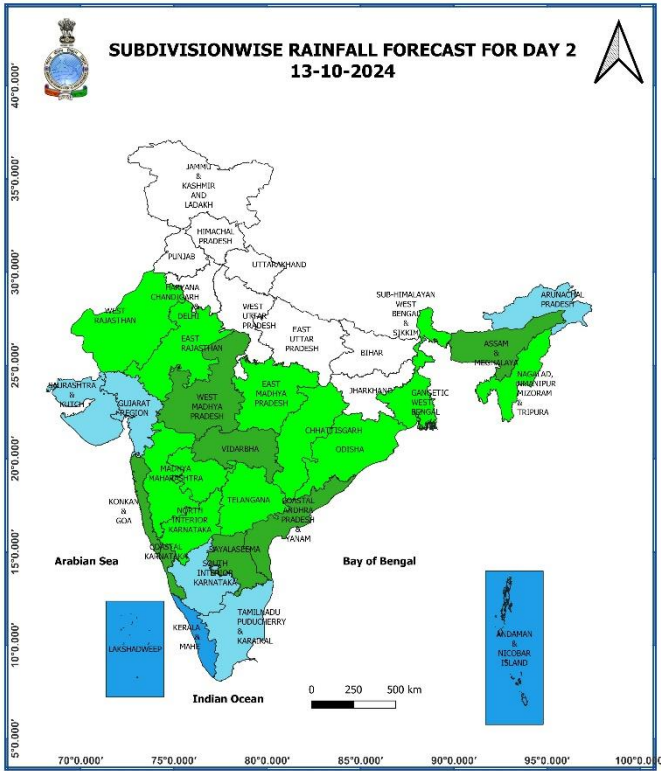
* Red colour warning does not mean "Red Alert", Red colour warning means "Take Action".
 Forecast and Warning for any day is valid from 0830 hours IST of day till 0830 hours IST of next day.
 For more details, kindly visit <https://mausam.imd.gov.in> or contact: 011-2434-4599
 (Service to the Nation since 1875)

Weather Forecast & Warnings for next 7 days (Upto 0830 hours IST of 19th October, 2024)



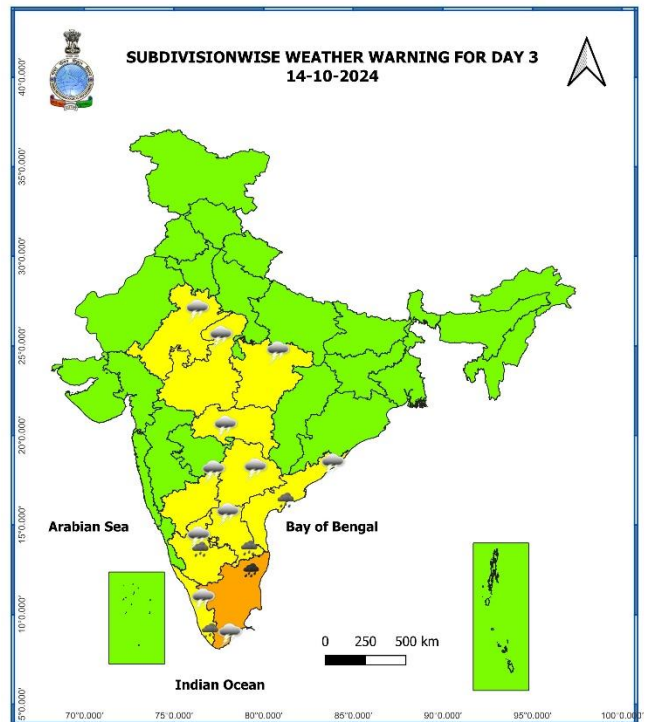
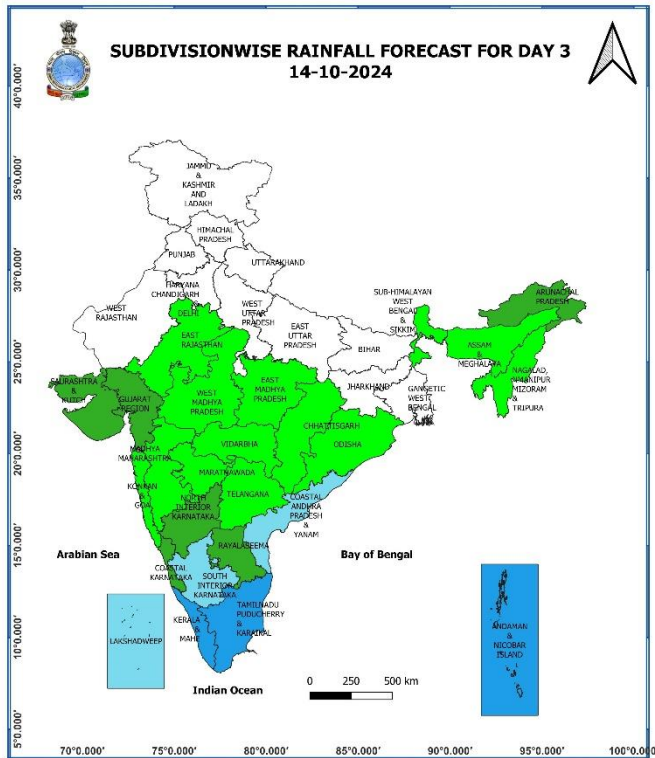
12 October (Day 1):

- ❖ **Heavy rainfall ($\geq 7\text{cm}$)** very likely at isolated places over West Madhya Pradesh, Vidarbha, Andaman & Nicobar Islands, Arunachal Pradesh, Assam & Meghalaya, Madhya Maharashtra, Gujarat state, Tamil Nadu, Puducherry & Karaikal, Kerala & Mahe and South Interior Karnataka.
- ❖ **Thunderstorm accompanied gusty winds (speed reaching 30-40 kmph)** very likely at isolated places over West Madhya Pradesh and Telangana; **with lightning** very likely at isolated places over Rajasthan, East Madhya Pradesh, Vidarbha, Chhattisgarh, Arunachal Pradesh, Assam & Meghalaya, Nagaland, Manipur, Mizoram & Tripura, Konkan & Goa, Madhya Maharashtra, Marathwada, Gujarat state, Tamil Nadu, Puducherry & Karaikal, Kerala & Mahe, Lakshadweep, Coastal Andhra Pradesh & Yanam, Rayalaseema and Interior Karnataka.
- ❖ **Squally weather with wind speed 35 kmph to 45 kmph gusting to 55 kmph** very likely to prevail over Maldives, Lakshadweep Comorin areas, southeast Arabian sea and many parts of southwest Arabian sea, along and off Somalia coast, parts of westcentral Arabian sea, most parts of eastcentral Arabian sea, along and off Kerala, Karnataka, north Gujarat coasts, gulf of Mannar, along and off south Sri Lanka coast, most parts of southwest Bay of Bengal and adjoining parts of southeast Bay of Bengal. Fishermen are advised not to venture into these areas.



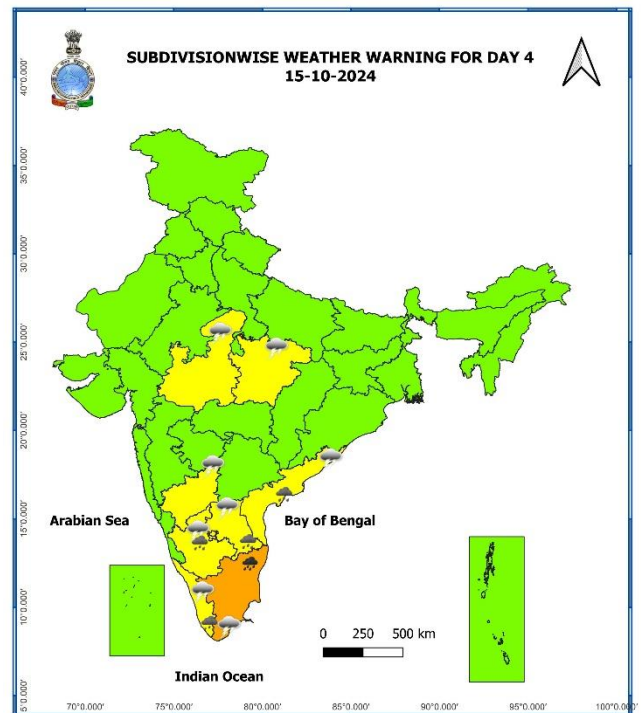
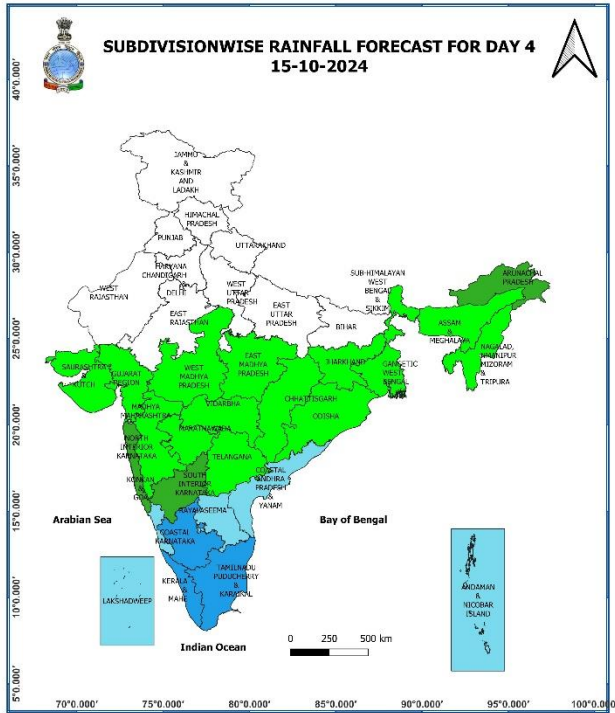
13 October (Day 2):

- ❖ **Heavy rainfall ($\geq 7\text{cm}$)** very likely at isolated places over Gujarat state, Tamil Nadu, Puducherry & Karaikal and Kerala & Mahe.
- ❖ **Thunderstorm accompanied gusty winds (speed reaching 30-40 kmph)** very likely at isolated places over West Madhya Pradesh and Telangana; **with lightning** very likely at isolated places over East Rajasthan, East Madhya Pradesh, Vidarbha, Arunachal Pradesh, Assam & Meghalaya, Nagaland, Manipur, Mizoram & Tripura, Konkan & Goa, Madhya Maharashtra, Gujarat state, Tamil Nadu, Puducherry & Karaikal, Kerala & Mahe, Coastal Andhra Pradesh & Yanam, Rayalaseema and Interior Karnataka.
- ❖ **Squally weather with wind speed 35 kmph to 45 kmph gusting to 55 kmph** very likely to prevail over many parts of west central Arabian sea and adjoining parts of east central and north Arabian sea, many parts of southwest Arabian sea and adjoining parts of southeast Arabian sea, along and off south Kerala coast and adjoining Lakshadweep area, over Comorin area, gulf of Mannar, along and off Sri Lanka coast, Tamil Nadu coast, most parts of southwest Bay of Bengal adjoining parts of southeast and westcentral Bay of Bengal. Fishermen are advised not to venture into these areas.



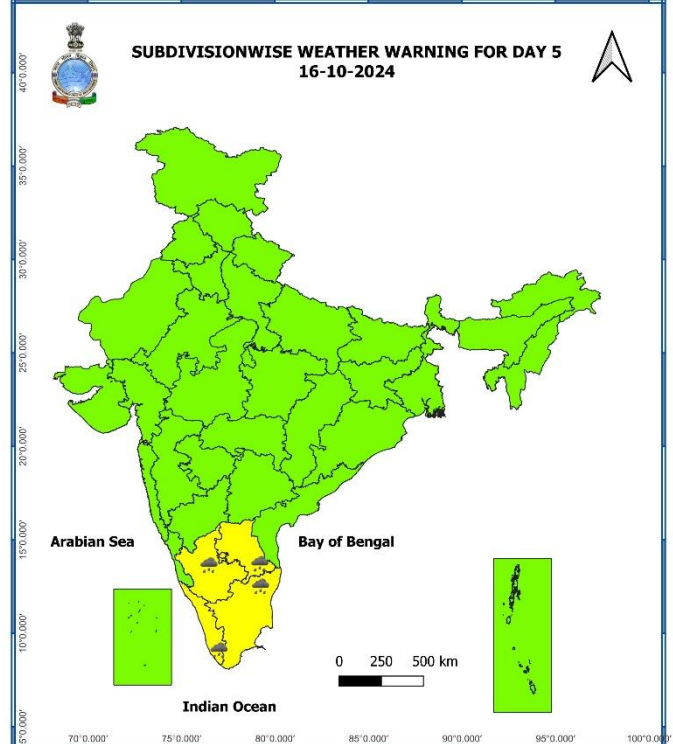
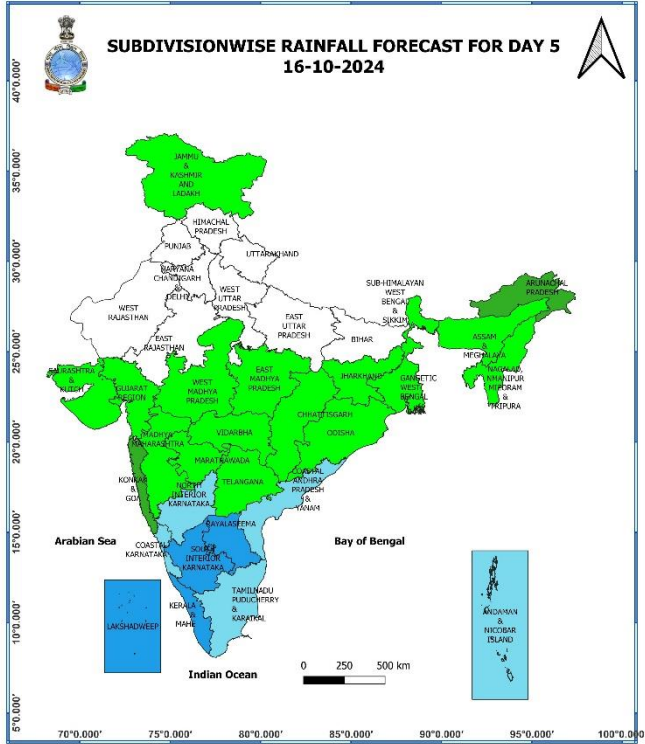
14 October (Day 3):

- ❖ **Heavy to very Heavy rainfall (≥ 12 cm)** very likely at isolated places over Tamil Nadu, Puducherry; **Heavy rainfall (≥ 7 cm)** likely at isolated places over Kerala & Mahe, Coastal Andhra Pradesh & Yanam, South Interior Karnataka and Rayalaseema.
- ❖ **Thunderstorm accompanied gusty winds (speed reaching 30-40 kmph)** very likely at isolated places over Telangana; **with lightning** very likely at isolated places over East Rajasthan, Madhya Pradesh, Vidarbha, Tamil Nadu, Puducherry & Karaikal, Kerala & Mahe, Coastal Andhra Pradesh & Yanam, Rayalaseema and Interior Karnataka.
- ❖ **Squally weather with wind speed 35 kmph to 45 kmph gusting to 55 kmph** very likely to prevail over most parts of west central Arabian sea and adjoining parts of east central, many parts of north Arabian sea, many parts of southwest Arabian sea and adjoining parts of southeast Arabian sea, along and off south Kerala coast and adjoining Lakshadweep area, over Comorin area, gulf of Mannar, along and off Sri Lanka coast, along and off Tamil Nadu, south Andhra Pradesh coasts, southwest Bay of Bengal and many parts of southeast Bay of Bengal, southern parts of westcentral Bay of Bengal. **Squally weather with wind speed 45 kmph to 55 kmph gusting to 65 kmph** is likely to prevail over parts of northwest Arabian sea and adjoining parts of westcentral Arabian sea. Fishermen are advised not to venture into these areas.



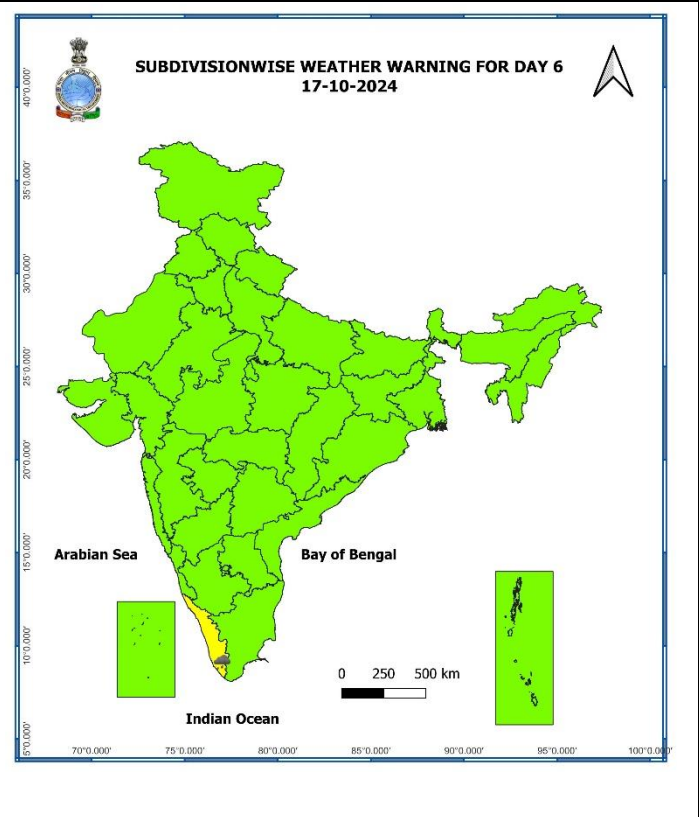
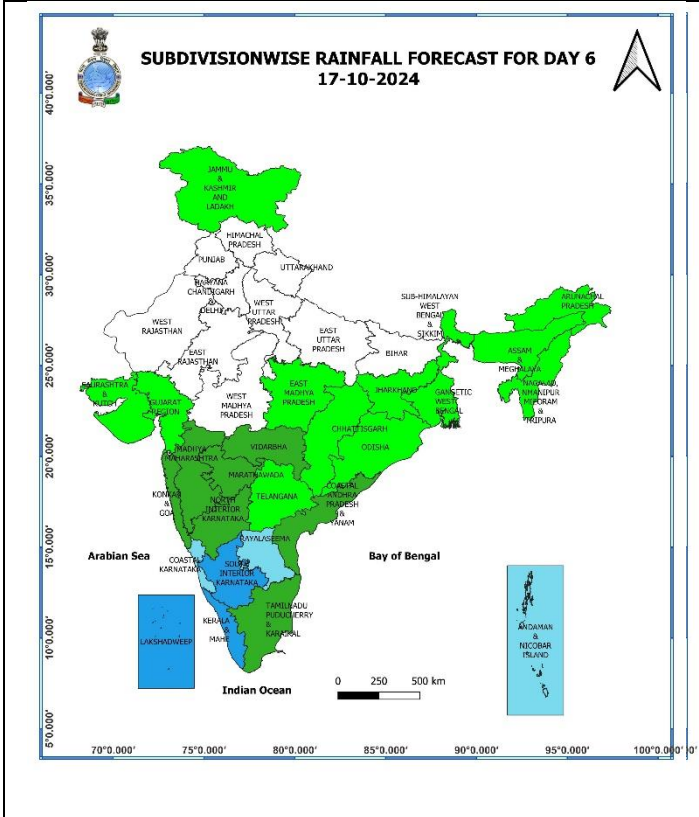
15 October (Day 4):

- ❖ **Heavy to very Heavy rainfall (≥ 12 cm)** likely at isolated places over Tamil Nadu, Puducherry; **Heavy rainfall (≥ 7 cm)** likely at isolated places over Kerala & Mahe, Coastal Andhra Pradesh & Yanam, South Interior Karnataka and Rayalaseema.
- ❖ **Thunderstorm accompanied with lightning** likely at isolated places over Madhya Pradesh, Tamil Nadu, Puducherry & Karaikal, Kerala & Mahe, Coastal Andhra Pradesh & Yanam, Rayalaseema and Interior Karnataka.
- ❖ **Squally weather with wind speed 35 kmph to 45 kmph gusting to 55 kmph** likely to prevail over gulf of Mannar, along and off Sri Lanka coast, along and off Tamil Nadu, Andhra Pradesh coasts, southwest Bay of Bengal and many parts of southeast Bay of Bengal, many parts of westcentral Bay of Bengal and some parts of eastcentral Bay of Bengal. Fishermen are advised not to venture into these areas.



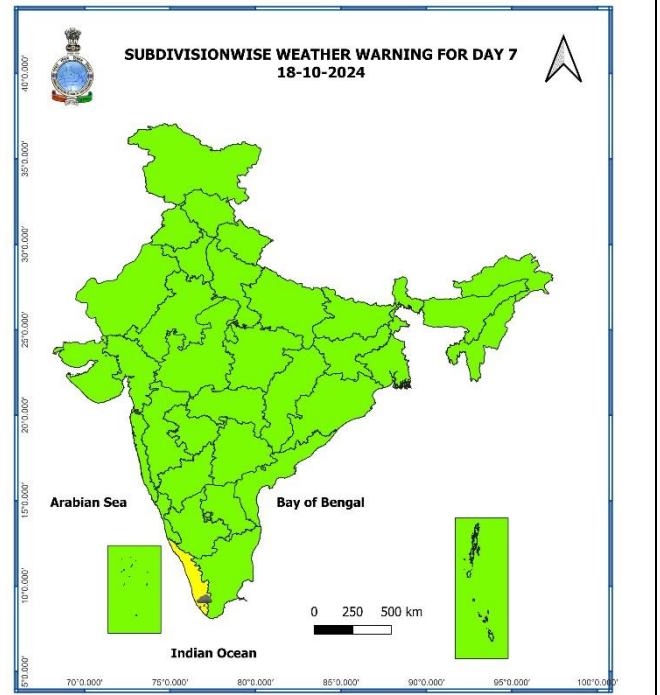
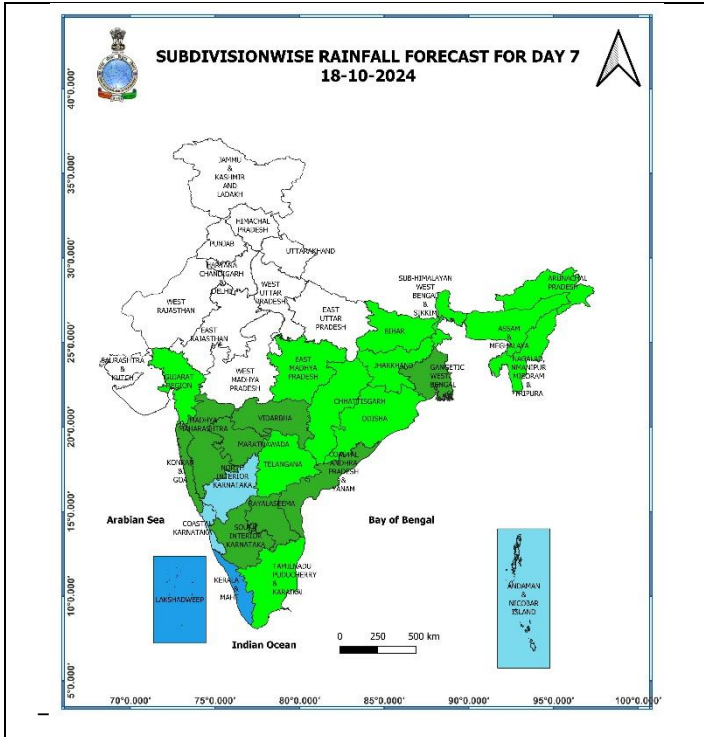
16 October (Day 5):

- ❖ **Heavy to very Heavy rainfall (≥ 12 cm)** likely at isolated places over Tamil Nadu, Puducherry; **Heavy rainfall (≥ 7 cm)** likely at isolated places over Kerala & Mahe, Coastal Andhra Pradesh & Yanam, South Interior Karnataka and Rayalaseema.
- ❖ **Thunderstorm accompanied with lightning** likely at isolated places over Jammu-Kashmir-Ladakh-Gilgit-Baltistan-Muzaffarabad, Tamil Nadu, Puducherry & Karaikal, Kerala & Mahe, Coastal Andhra Pradesh & Yanam, Rayalaseema and Interior Karnataka.
- ❖ **Squally weather with wind speed 35 kmph to 45 kmph gusting to 55 kmph** likely to prevail over gulf of Mannar, along and off Sri Lanka coast, along and off Tamil Nadu, Andhra Pradesh coasts, southwest Bay of Bengal adjoining southeast Bay of Bengal, many parts of westcentral Bay of Bengal. Fishermen are advised not to venture into these areas.



17 October (Day 6):

- ❖ **Heavy rainfall ($\geq 7\text{cm}$)** likely at isolated places over Tamil Nadu, Puducherry & Karaikal, Kerala & Mahe and Rayalaseema.



18 October (Day 7):

- ❖ Heavy rainfall ($\geq 7\text{cm}$) likely at isolated places over Kerala & Mahe.

Weather Outlook for subsequent 3 days (During 19th October- 21st October, 2024)

- ❖ Fairly widespread to widespread rainfall likely over Peninsular and adjoining Central India and Islands.
- ❖ Isolated to Scattered rainfall likely over some parts of East and Northeast India.
- ❖ Mainly dry weather will prevail over rest parts of country.

- Action may be taken based on **ORANGE AND RED COLOUR** warnings.
- Vulnerable regions likely urban and hilly areas action may be initiated for heavy rainfall warning.
- As the lead period increases forecast accuracy decreases.

Impact due to

- ✓ **Isolated heavy to very heavy rainfall** very likely over Tamil Nadu, Puducherry & Karaikal during 14th-16th October.

Impact Expected

- ✓ Localized Flooding of roads, water logging in low lying areas and closure of underpasses mainly in urban areas of the above region.
- ✓ Occasional reduction in visibility due to heavy rainfall.
- ✓ Disruption of traffic in major cities and roadways due to water logging in roads leading to increased travel time.
- ✓ Minor damage to kutchra roads.
- ✓ Possibilities of damage to vulnerable structure.
- ✓ Localized Landslides/Mudslides/landslips/mud slips/land sinks/mud sinks.
- ✓ Damage to horticulture and standing crops in some areas due to inundation and wind.
- ✓ It may lead to riverine flooding in some river catchments (for riverine flooding please visit Web page of CWC)

Action Suggested

- ✓ Judicious regulation of surface transports including railways and roadways.
- ✓ Check for traffic congestion on your route before leaving for your destination.
- ✓ Follow any traffic advisories that are issued in this regard.
- ✓ Avoid going to areas that face the water logging problems often.
- ✓ Avoid staying in vulnerable structure

Agromet advisories for Heavy Rainfall likely over various parts of the country

- ✓ In **Tamil Nadu**, drain out excess water from rice nurseries and fields of rice, maize, pepper and newly planted turmeric. Provide support to banana plantations.
- ✓ Make necessary arrangements for draining out excess water from standing crop fields and fruit orchards to avoid water stagnation in West Madhya Pradesh, Vidarbha, Madhya Maharashtra, Gujarat region, Kerala, South Interior Karnataka, Arunachal Pradesh and Assam.
- ✓ Keep the harvested produce at safer places.
- ✓ Provide mechanical support to horticultural crops & staking to vegetables.

Fig. 1: Maximum Temperatures

Fig. 2: Departure of Maximum Temperatures

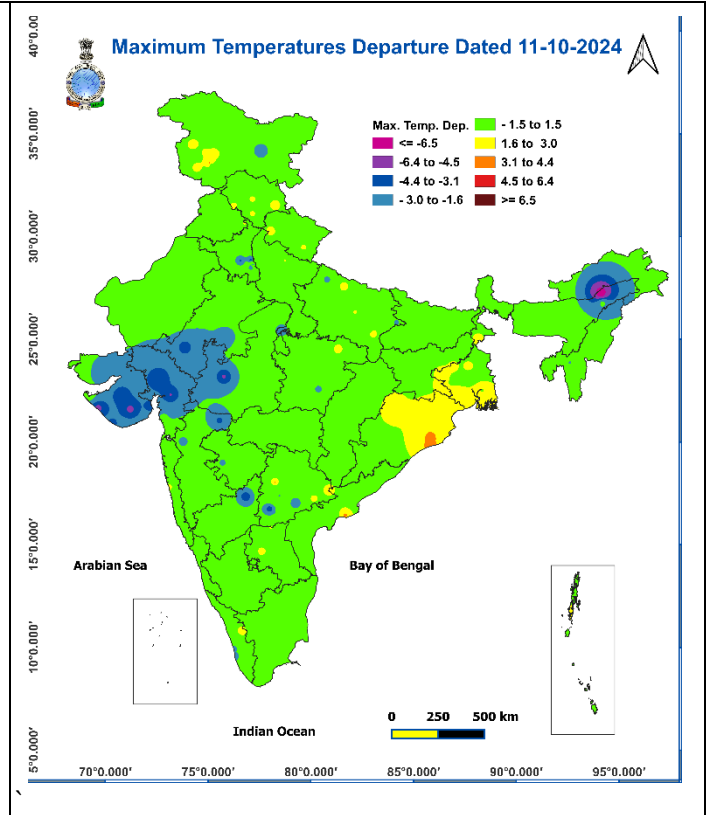
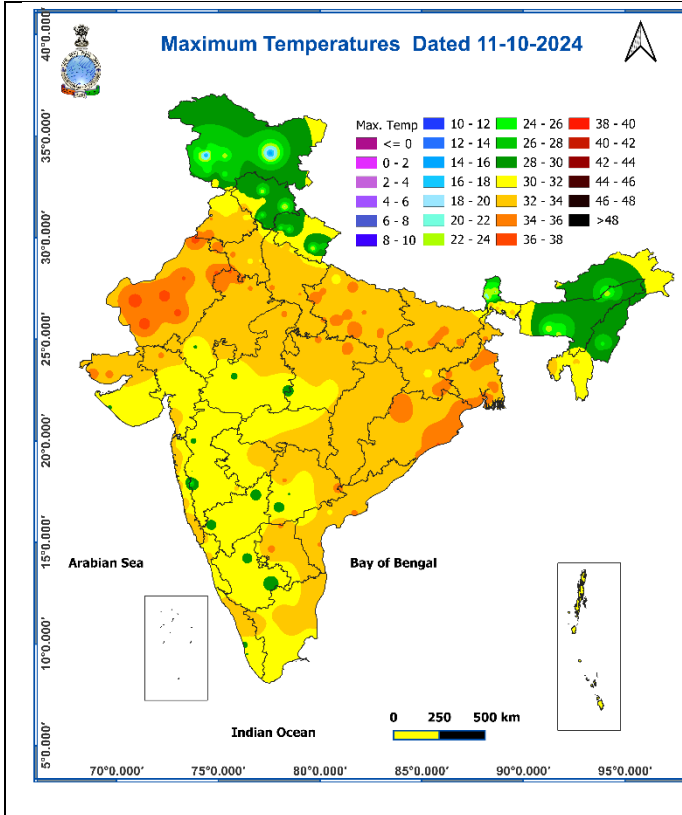


Fig. 3: Minimum Temperatures

Fig. 4: Departure of Minimum Temperatures

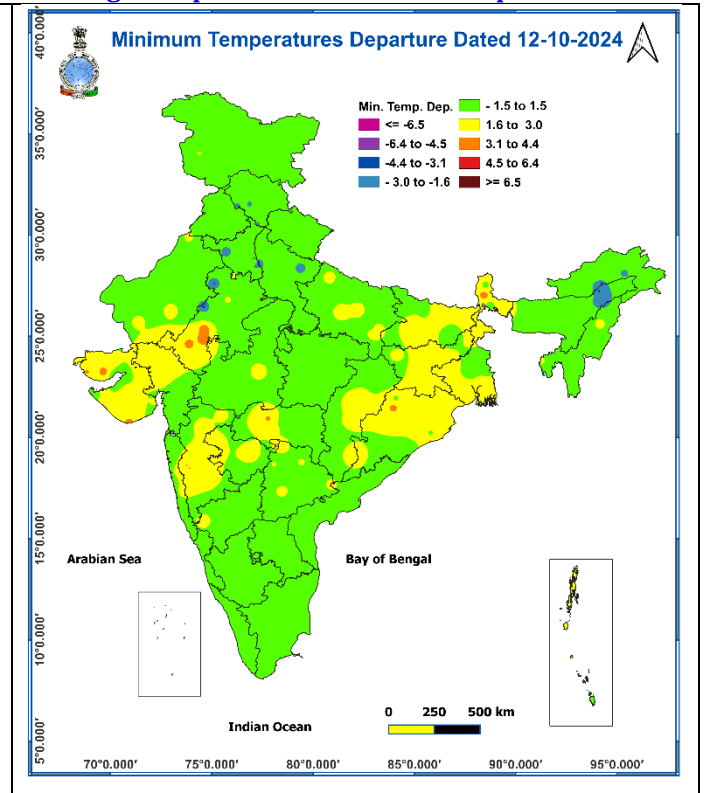
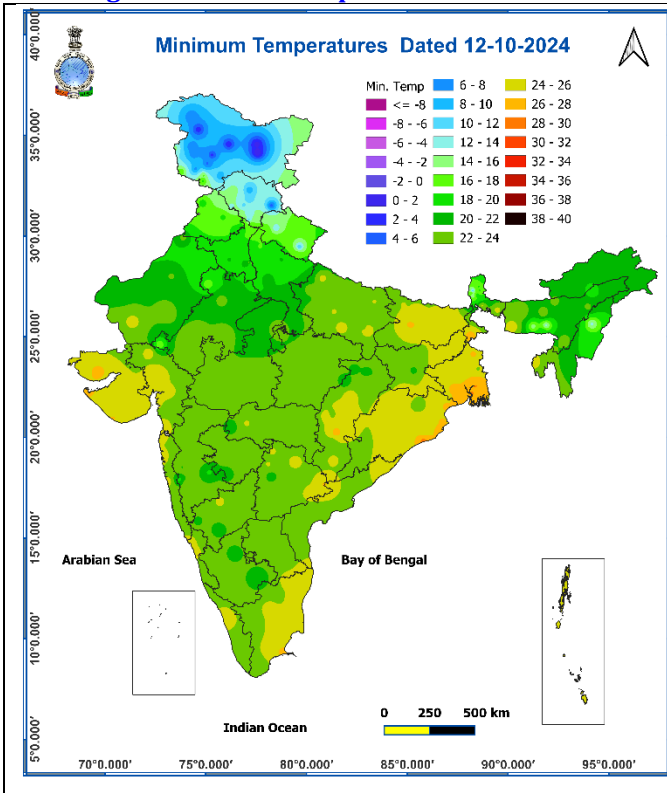
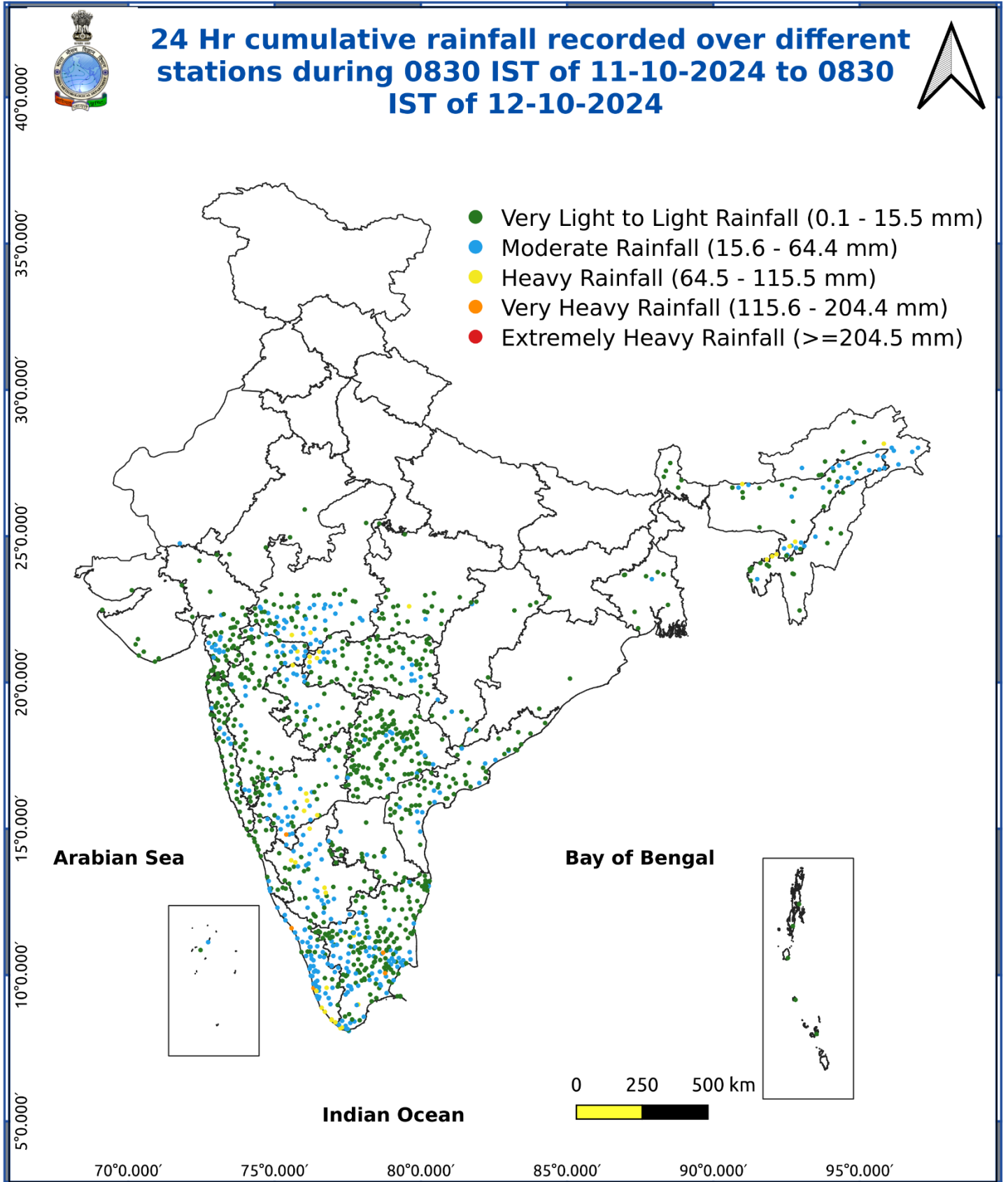


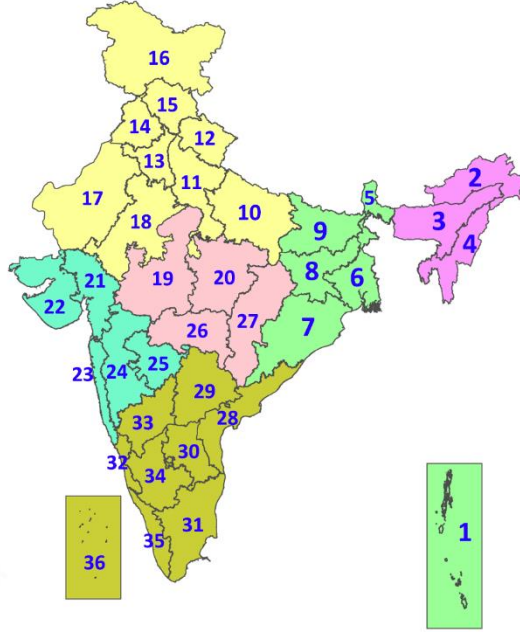
Fig. 5: Accumulated Rainfall (mm) during past 24 hours



* Red colour warning does not mean "Red Alert", Red colour warning means "Take Action".
Forecast and Warning for any day is valid from 0830 hours IST of day till 0830 hours IST of next day.
For more details, kindly visit <https://mausam.imd.gov.in> or contact: 011-2434-4599
(Service to the Nation since 1875)

LEGENDS

1. अंडमान और निकोबार द्वीपसमूह
2. अरुणाचल प्रदेश
3. असम और मेघालय
4. नागालैंड, मणिपुर, मिजोरम और त्रिपुरा
5. उप-हिमालयी पश्चिम बंगाल और सिक्किम
6. गंगीय पश्चिम बंगाल
7. ओडिशा
8. झारखंड
9. बिहार
10. पूर्वी उत्तर प्रदेश
11. पश्चिम उत्तर प्रदेश
12. उत्तराखंड
13. हरियाणा, चंडीगढ़ और दिल्ली
14. पंजाब
15. हिमाचल प्रदेश
16. जम्मू और कश्मीर और लद्दाख
17. पश्चिम राजस्थान
18. पूर्वी राजस्थान
19. पश्चिम मध्य प्रदेश
20. पूर्वी मध्य प्रदेश
21. गुजरात
22. सौराष्ट्र
23. कोंकण और गोवा
24. मध्य महाराष्ट्र
25. मराठवाड़ा
26. विदर्भ
27. छत्तीसगढ़
28. तटीय आंध्र प्रदेश और यनम
29. तेलंगाना
30. रायलसीमा
31. तमिलनाडु, पुडुचेरी और कराईकल
32. तटीय कर्नाटक
33. आंतरिक उत्तरी कर्नाटक
34. आंतरिक दक्षिणी कर्नाटक
35. केरल और माहे
36. लक्षद्वीप



1. Andaman & Nicobar Islands
2. Arunachal Pradesh
3. Assam & Meghalaya
4. Nagaland, Manipur, Mizoram & Tripura
5. Sub-Himalayan West Bengal & Sikkim
6. Gangetic West Bengal
7. Odisha
8. Jharkhand
9. Bihar
10. East Uttar Pradesh
11. West Uttar Pradesh
12. Uttarakhand
13. Haryana, Chandigarh & Delhi
14. Punjab
15. Himachal Pradesh
16. Jammu & Kashmir and Ladakh
17. West Rajasthan
18. East Rajasthan
19. West Madhya Pradesh
20. East Madhya Pradesh
21. Gujarat
22. Saurashtra
23. Konkan & Goa
24. Madhya Maharashtra
25. Marathwada
26. Vidarbha
27. Chhattisgarh
28. Coastal Andhra Pradesh & Yanam
29. Telangana
30. Rayalaseema
31. Tamilnadu, Puducherry & Karaikal
32. Coastal Karnataka
33. North Interior Karnataka
34. South Interior Karnataka
35. Kerala & Mahe
36. Lakshadweep

SPATIAL DISTRIBUTION (% of Stations reporting)

% Stations	Category	% Stations	Category
76-100	Widespread (WS/Most Places)	26-50	Scattered (SCT/A Few Places)
51-75	Fairly Widespread (FWS/Many Places)	1-25	Isolated (ISOL)

- | | | |
|----------------------|----------------------|--------------|
| Fog | Heavy Snow | Cold Wave |
| Heavy Rain | Dust Storm | Cold Day |
| Very Heavy Rain | Heat Wave | Ground Frost |
| Extremely Heavy Rain | Warm Night | |
| Thunder & Lightning | Hot Day | |
| Hailstorm | Hot & Humid | |
| Dust Raising Winds | Strong Surface Winds | |

COLOUR CODED WARNING

No Warning (No Action)
Watch (Be Aware)
Alert (Be Prepared To Take Action)
Warning (Take Action)

Probabilistic Forecast

Terms	Probability of Occurrence (%)
Unlikely	< 25
Likely	25 - 50
Very Likely	50 - 75
Most Likely	> 75

DEFINITION/CRITERIA

Rain/ Snow *	<p>Heavy: 64.5 to 115.5 mm/cm *</p> <p>Very Heavy: 115.6 to 204.4 mm/cm*</p> <p>Extremely Heavy: > 204.4 mm/cm *</p>
Heat Wave	<p>When maximum temperature of a station reaches $\geq 40^\circ\text{C}$ for plains and $\geq 30^\circ\text{C}$ for hilly regions</p> <p>(a) Based on Departure from normal</p> <p>Heat Wave: Maximum Temperature Departure from normal 4.5°C to 6.4°C.</p> <p>Severe Heat Wave: Maximum Temperature Departure from normal $\geq 6.5^\circ\text{C}$</p> <p>(b). Based on Actual maximum temperature</p> <p>Heat Wave: When actual maximum temperature $\geq 45^\circ\text{C}$.</p> <p>Severe Heat Wave: When actual maximum temperature $\geq 47^\circ\text{C}$</p> <p>(c). Criteria for heat wave for coastal stations</p> <p>When maximum temperature departure is $>4.5^\circ\text{C}$ from normal. Heat Wave may be described provided maximum temperature $\geq 37^\circ\text{C}$</p>
Warm Night	<p>When maximum temperature remains 40°C</p> <p>Warm Night: When minimum temperature departure 4.5°C to 6.4°C.</p> <p>Severe Warm Night: When minimum temperature departure $>6.4^\circ\text{C}$.</p>
Cold Wave	<p>When minimum temperature of a station $\leq 10^\circ\text{C}$ for plains and $\leq 0^\circ\text{C}$ for hilly regions.</p> <p>(a). Based on departure</p> <p>Cold Wave: Minimum Temperature Departure from normal -4.5°C to -6.4°C.</p> <p>Severe Cold Wave: Minimum Temperature Departure from normal $\leq -6.5^\circ\text{C}$</p> <p>(b) Based on actual Minimum Temperature (for Plains only)</p> <p>Cold Wave : When Minimum Temperature is $\leq 4.0^\circ\text{C}$</p> <p>Severe Cold Wave: When Minimum Temperature is $\leq 2.0^\circ\text{C}$</p> <p>(c) For Coastal Stations</p> <p>When Minimum Temperature departure is $\leq -4.5^\circ\text{C}$ & actual Minimum Temperature is $\leq 15^\circ\text{C}$</p>
Cold Day	<p>When minimum temperature of a station $\leq 10^\circ\text{C}$ for plains and $\leq 0^\circ\text{C}$ for hilly regions</p> <p>Based on departure</p> <p>Cold Day: Maximum Temperature Departure from normal -4.5°C to -6.4°C.</p> <p>Severe Cold Day: Maximum Temperature Departure from normal $\leq -6.5^\circ\text{C}$</p>
Fog	<p>Phenomenon of small droplets suspended in air and the horizontal visibility $< 1\text{km}$</p> <p>Moderate Fog: When the visibility between 500-200 metres</p> <p>Dense Fog: when the visibility between 50- 200 metres</p> <p>Very Dense Fog: when the visibility < 50 metres</p>
Thunderstorm	<p>Sudden electrical discharges manifested by a flash of light (Lightning) and a sharp rumbling sound (thunder)</p>
Dust/Sand Storm	<p>An ensemble of particles of dust or sand energetically lifted to great heights by a strong and turbulent wind.</p>
Frost	<p>Ice deposits on ground</p> <p>Air temperature $\leq 4^\circ\text{C}$ (over Plains)</p>
Squall	<p>A strong wind that rises suddenly, lasts for atleast 1 minute.</p> <p>Moderate: Wind speed 52-61 kmph</p> <p>Severe: Wind speed 62-87 kmph</p> <p>Very Severe: Wind speed >87 kmph</p>
Sea State	<p>Effect of various waves in the sea over specific area</p> <p>Rough to very rough: Wind speed 41-62 kmph (22-33 knots) & Wave height 2.5-6 metre</p> <p>High to very high: Wind speed 63-117 kmph (34-63 knots) & Wave height 6-14 metre</p> <p>Phenomenal: Wind speed >117 kmph (>63 knots) & Wave height >14 metre</p>
Cyclone	<p>Cyclonic Storm: Wind speed 62-87 kmph (34-47 knots)</p> <p>Severe Cyclonic Storm: Wind speed 88-117 kmph (48-63 knots)</p> <p>Very Severe Cyclonic Storm: Wind speed 118-165 kmph (64 - 89 knots)</p> <p>Extremely Severe Cyclonic Storm: Wind speed 166-220 kmph (90 -119 knots)</p> <p>Super Cyclone Strom: Wind speed >220 kmph (>119 knots)</p>