

2026-03-25

Time of Issue: 12:56:00 hours IST
(Mid-Day)

ALL INDIA WEATHER SUMMARY AND FORECAST BULLETIN

Significant Weather Features

WEATHER FORECAST AND WARNING:

Northwest India:

Isolated to scattered light to moderate rainfall/snowfall with isolated thunderstorm, lightning & gusty winds speed reaching (30-50 kmph) likely over Jammu-Kashmir-Ladakh-Gilgit-Baltistan-Muzaffarabad, Himachal Pradesh on 26th; Uttarakhand on 27th March.

Isolated light to moderate rainfall with thunderstorm, lightning & gusty winds speed reaching (30-40 kmph) likely over Punjab and Haryana, Chandigarh & Delhi on 26th & 27th; West Rajasthan on 26th and Uttar Pradesh on 27th March.

Another fresh wet spell with **fairly widespread to widespread** light to moderate rainfall/snowfall with isolated thunderstorm, lightning & gusty winds speed reaching (40-50 kmph) likely over Jammu-Kashmir and Himachal Pradesh during 28th-30th; **isolated to scattered** light to moderate rainfall/snowfall with isolated thunderstorm, lightning & gusty winds speed reaching (40-50 kmph) over Uttarakhand on 29th & 30th; with **isolated to scattered** light to moderate rainfall with isolated thunderstorm, lightning & gusty winds speed reaching (30-50 kmph) likely over West Uttar Pradesh on 29th and Rajasthan during 28th-30th March.

Thundersquall (wind speed reaching 50-60 kmph gusting to 70 kmph) at isolated places likely over Punjab, Haryana, Chandigarh & Delhi on 29th & 30th March.

Northeast India:

Scattered to fairly widespread light to moderate rainfall with **thunderstorm, lightninggusty winds speed reaching (30-50 kmph)** likely over Arunachal Pradesh, Assam & Meghalaya and Nagaland, Manipur, Mizoram & Tripura during 25th-29th March.

Isolated heavy rainfall likely over Assam & Meghalaya and Arunachal Pradesh during 27th-29th and Nagaland on 28th March.

East India:

Isolated to Scattered light to moderate rainfall with **thunderstorm, lightning & gusty winds speed reaching (30-50 kmph)** likely over West Bengal & Sikkim during 25th -29th; Bihar on 28th; Jharkhand & Odisha on 27th & 28th March.

Thundersquall (wind speed reaching 50-60 kmph gusting to 70 kmph) with Hailstorm at isolated places likely over Bihar and Sub-Himalayan West Bengal & Sikkim on 27th March.

Isolated **heavy rainfall** likely over Sub-Himalayan West Bengal & Sikkim on 26th & 27th March.

Central India:

Isolated light rainfall **with thunderstorm, lightning & gusty winds speed reaching (30-50 kmph)** likely over Chhattisgarh during 25th-29th; Vidarbha during 26th-29th; East Madhya Pradesh on 28th & 29th; West Madhya Pradesh during 29th-31st March.

West India:

Isolated light rainfall **with thunderstorm & lightning** likelyover Coastal Maharashtra, Madhya Maharashtraand Marathawada on 25th & 26th March.

***Red color warning does not mean "Red Alert" Red color warning means "Take Action"**

Forecast and warning for any day is valid from 0830 hours IST of day till 0830 hours IST of next day

For more details kindly visit <https://mausam.imd.gov.in> or contact 011-2434-4599

(Service to the nation since 1875)

South Peninsular India:

Isolated light rainfall **with thunderstorm, lightning& gusty winds speed reaching (30-40 kmph)**likely over Coastal Andhra Pradesh & Yanam, Rayalaseema, Telangana and Karnataka during next 5 days; with **lightning** over Kerala & Mahe during 27th-29th March.

Isolated hailstorm activity likely over Interior Karnataka on 25th March.

Hot & Humid weather Warnings:

Hot & humid conditions very likely to prevail in isolated pockets over Coastal Maharashtra and Kerala during 25th-27th March.

Forecast of maximum/day temperatures:

Gradual rise in maximum temperatures by 2-3°Clikely over Northwest India during next 2 days; no significant change during subsequent 2 days and gradual fall by 2-4°Cduring subsequent 3 days.

Gradual rise in maximum temperatures by 2-3°Clikely over Central India during next 2 days and no significant change during subsequent 5 days.

Gradual rise in maximum temperatures by 2-3°Clikely over East India during next 2 days; gradual fall by 2-3°C during subsequent 2 days and no significant change thereafter.

No significant change in maximum temperatures likely over Gujarat State during next 2 days and gradual fall by 2-3°Cduring subsequent 5 days.

No significant change in maximum temperatures likely over rest parts of the country.

Main Weather Observations:

❖ **Rainfall distribution** (from 0830 hours IST of yesterday to 0830 hours IST of today): **at most places** over Arunachal Pradesh, Assam & Meghalaya, Sub Himalayan West Bengal & Sikkim; **at a few places** over Nagaland, Manipur, Mizoram & Tripura; **at isolated places** over Odisha, Jharkhand, Bihar, Uttarakhand, Punjab, Himachal Pradesh, Chhattisgarh Konkan & Goa, Madhya Maharashtra, Coastal Andhra Pradesh & Yanam, Telangana, Rayalaseema and Kerala & Mahe; **Dry** over rest of the country.

❖ **Significant rainfall recorded(in cm)** (from 0830 hours IST of yesterday to 0830 hours IST of today): **Sub Himalayan West Bengal & Sikkim:** Jiti T.e. (dist Jalpaiguri) 8; Damthang (dist Namchi) 7; Rongli (dist Pakyong) 6; Buxaduar (dist Alipurduar), Washabari Tea Estate (dist Jalpaiguri), Toorsa Tea Garden (dist Alipurduar) 4 Each; Majitar (dist Pakyong), Khanitar (dist Pakyong), Chungthang (dist Mangan), Gangtok (dist Gangtok), Chepan (dist Alipurduar), Pakyong (dist Pakyong), Chalouni Tea Estate (dist Jalpaiguri), Jhallong (dist Kalimpong), Bhutanghat (dist Alipurduar), Newlands Tea Garden (dist Alipurduar), Kumargram (dist Alipurduar) 3 Each; **Odisha:** Tihidi (dist Bhadrak) 4; **Telangana:** Dindigul (dist M. Malkajgiri), Esci Gachibowli AP (dist Rangareddy) 4 Each; Golkonda (dist Hyderabad) 3; **Rayalaseema:** Devanakonda (dist Kurnool) 3.

❖ **Heavy Rainfall observed** (from 0830 hours IST of yesterday to 0830 hours IST of today): **Heavy rain** at isolated places over Sub Himalayan West Bengal & Sikkim.

Hailstorm activity reported at isolated places over Telangana and Interior Karnataka.

❖ **Minimum Temperature Departures (as on 25-03-2026):** **appreciably above normal (3.1? to 5.0?)** at most places over Gujarat Region; at many places over West Rajasthan; at isolated places over Andaman & Nicobar Islands, Jharkhand, Odisha, Saurashtra & Kutch; **above normal (1.6? to 3.0?)** at many places over Madhya Maharashtra, Punjab; at a few places over Bihar, East Madhya Pradesh, Konkan & Goa, West Madhya Pradesh, West Uttar Pradesh; at isolated places over Assam & Meghalaya, Chhattisgarh, East Rajasthan, Haryana-Chandigarh-Delhi, Himachal Pradesh, Jammu & Kashmir, Kerala & Mahe, Rayalaseema, Tamil Nadu, Puducherry & Karaikal, Vidarbha; **markedly below normal (-5.1? or less)** at isolated places over Haryana-Chandigarh-Delhi, Himachal Pradesh, Tamil Nadu, Puducherry & Karaikal; **appreciably below normal (-3.1? to -5.0?)** at isolated places over Uttarakhand, Vidarbha; **below normal (-3.0? to -1.6?)** at a few places over Sub-Himalayan West Bengal & Sikkim, Telangana; at isolated places over Assam & Meghalaya, Bihar, East Rajasthan, Jammu & Kashmir, Nagaland, Manipur, Mizoram & Tripura, North Interior Karnataka, South Interior Karnataka, West Madhya Pradesh. **The lowest minimum temperature** of 12.5°C is reported at Bhitanda(Punjab) over the Plains of India.

❖ **Maximum Temperature Departures (as on 24-03-2026):** **appreciably above normal(3.1°C to 5.0°C)** at few places over Jammu-KashmirLadakh-Gilgit-Baltistan-Muzaffarabad; at isolated places over West Rajasthan and Konkan & Goa. **above normal(1.6°C to 3.0°C)** at few places over Coastal Karnataka and Kerala & Mahe; at isolated places over Himachal Pradesh, Saurashtra & Kutch, Madhya Maharashtra, Coastal Andhra Pradesh & Yanam and Tamil Nadu, Puducherry & Karaikal. **near normal(-1.5°C to 1.5°C)** at many places over East Uttar Pradesh, West Uttar Pradesh, East Rajasthan, East Madhya Pradesh, Gujarat Region and South Interior Karnataka; at most places over Andaman & Nicobar Islands, Odisha, Uttarakhand, Haryana-Chandigarh-Delhi, Punjab, West Madhya Pradesh, Marathwada, Vidarbha, Chhattisgarh and Lakshadweep; at few places over Assam & Meghalaya, Gangetic West Bengal, Bihar, Telangana, Rayalaseema and North Interior Karnataka; at isolated places over Nagaland, Manipur, Mizoram & Tripura, Sub Himalayan West Bengal & Sikkim and Jharkhand. **The highest maximum temperature** of 40.0°C was reported at AMRAVATI (MAHARASHTRA).

*Red color warning does not mean "Red Alert" Red color warning means "Take Action"

Forecast and warning for any day is valid from 0830 hours IST of day till 0830 hours IST of next day

For more details kindly visit <https://mausam.imd.gov.in> or contact 011-2434-4599

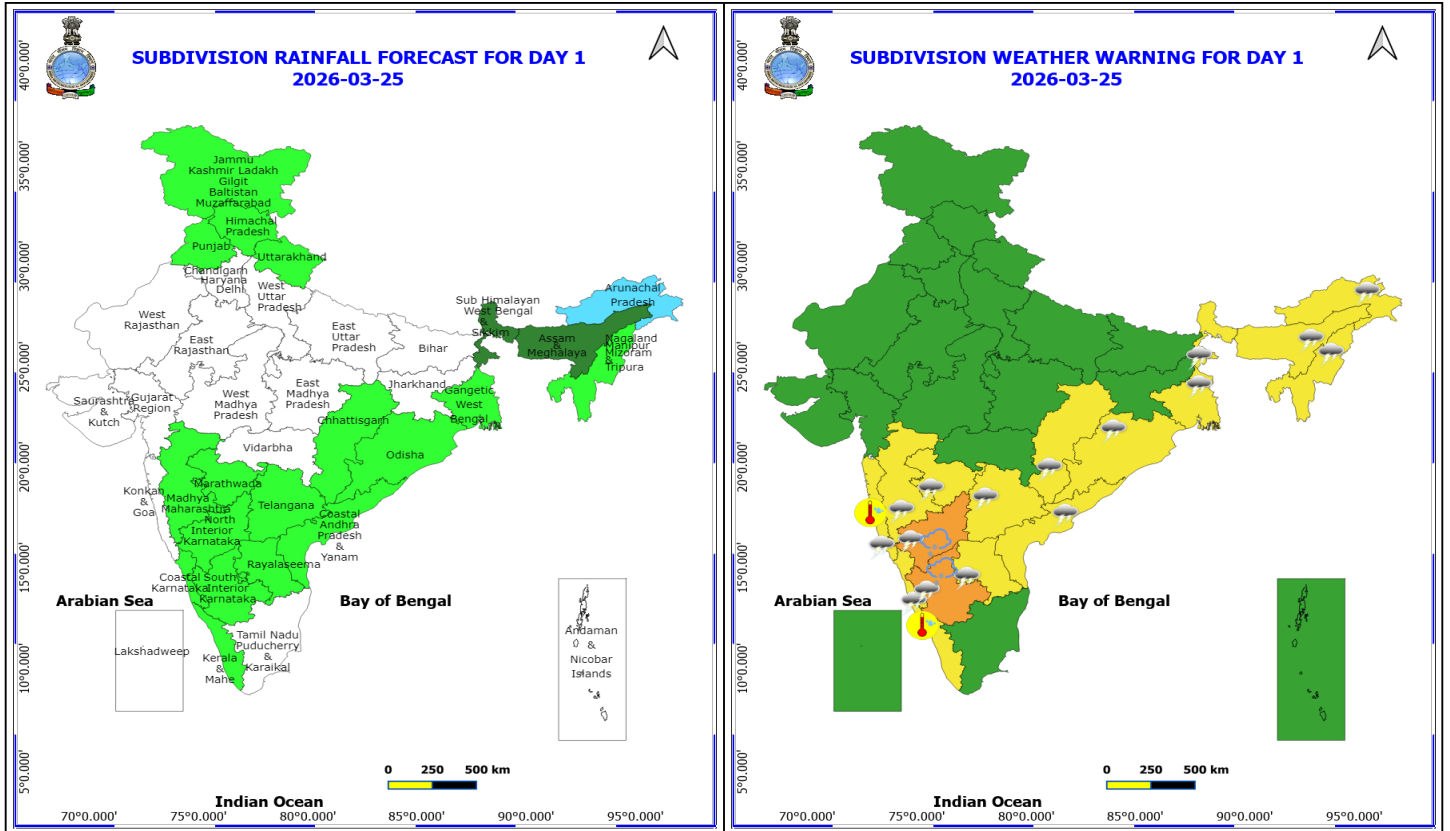
(Service to the nation since 1875)

Meteorological Analysis (Based on 0830 hours IST)

- A fresh **Western Disturbance** as a **cyclonic circulation** lies over north Pakistan & adjoining Afghanistan between 3.1 & 5.8 km above mean sea level
- The **upper air cyclonic circulation** over northeast Assam & neighbourhood extending upto 1.5 km above mean sea level persists.
- A **trough** runs from Marathwada to south Coastal Karnataka across North Interior Karnataka at 0.9 km above mean sea level.
- Another **trough** runs from Gangetic West Bengal to south Chhattisgarh across Odisha at 1.5 km above mean sea level.
- The **upper air cyclonic circulation** over South Interior Karnataka & neighbourhood at 1.5 km above mean sea level persists.
- **Subtropical westerly Jet Stream** with core winds of the order of 85 knots at 12.6 km above mean sea level prevails over northeast India.
- Another Western **Disturbance** likely to affect northwest India from night of 28th March 2026.
- The **upper air cyclonic circulation** over central Pakistan & neighbourhood at 1.5 km above mean sea level has become less marked.
- The **upper air cyclonic circulation** over central parts of Madhya Pradesh at 0.9 km above mean sea level as become less marked.
- The **trough** from above cyclonic circulation over central parts of Madhya Pradesh to north Madhya Maharashtra has become less marked.
- The **trough** in lower level westerlies with its axis at 3.1 km above mean sea level has moved away eastwards.
- The **upper air cyclonic circulation** over Lakshadweep & neighbourhood at 0.9 km above mean sea level has become less marked.

Weather Outlook for subsequent 3 days

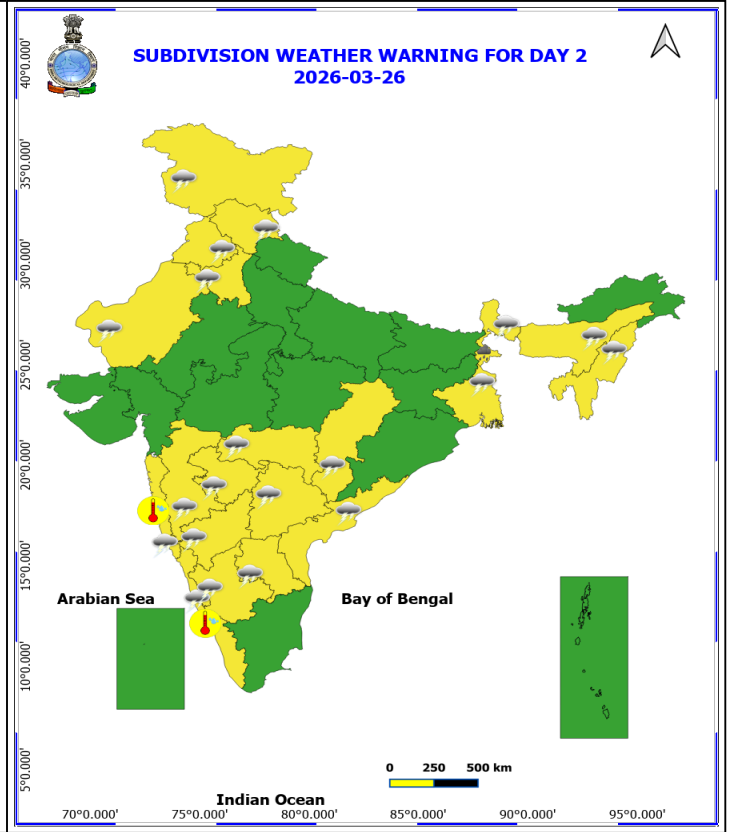
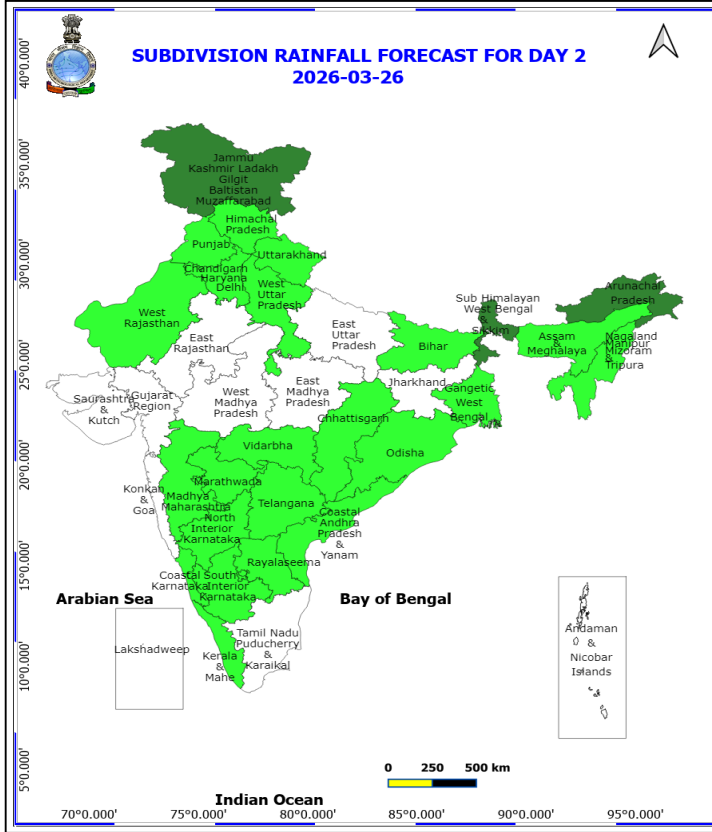
- Widespread rainfall activity likely over Northeast India and Isolated to Scattered rainfall activity over remaining parts of the country except Gujarat and South Rajasthan.



25 March (Day 1)

- ❖ **Thunderstorm accompanied with Hailstorm** very likely at isolated places over Interior Karnataka.
- ❖ **Thunderstorm accompanied with lightning & gusty winds(40-50kmph)** very likely at isolated places over Odisha.
- ❖ **Thunderstorm accompanied with lightning & gusty winds(30-40kmph)** very likely at isolated places over Andhra Pradesh, Assam & Meghalaya, Chhattisgarh, Gangetic West Bengal, Interior Karnataka and Telangana.
- ❖ **Thunderstorm accompanied with Lightning** very likely at isolated places over Arunachal Pradesh, Coastal Karnataka, Konkan & Goa, Madhya Maharashtra, Marathwada, Nagaland, Manipur, Mizoram and Tripura and Sub Himalayan West Bengal & Sikkim.
- ❖ **Hot and Humid weather** very likely at isolated places over Kerala & Mahe and Konkan & Goa.

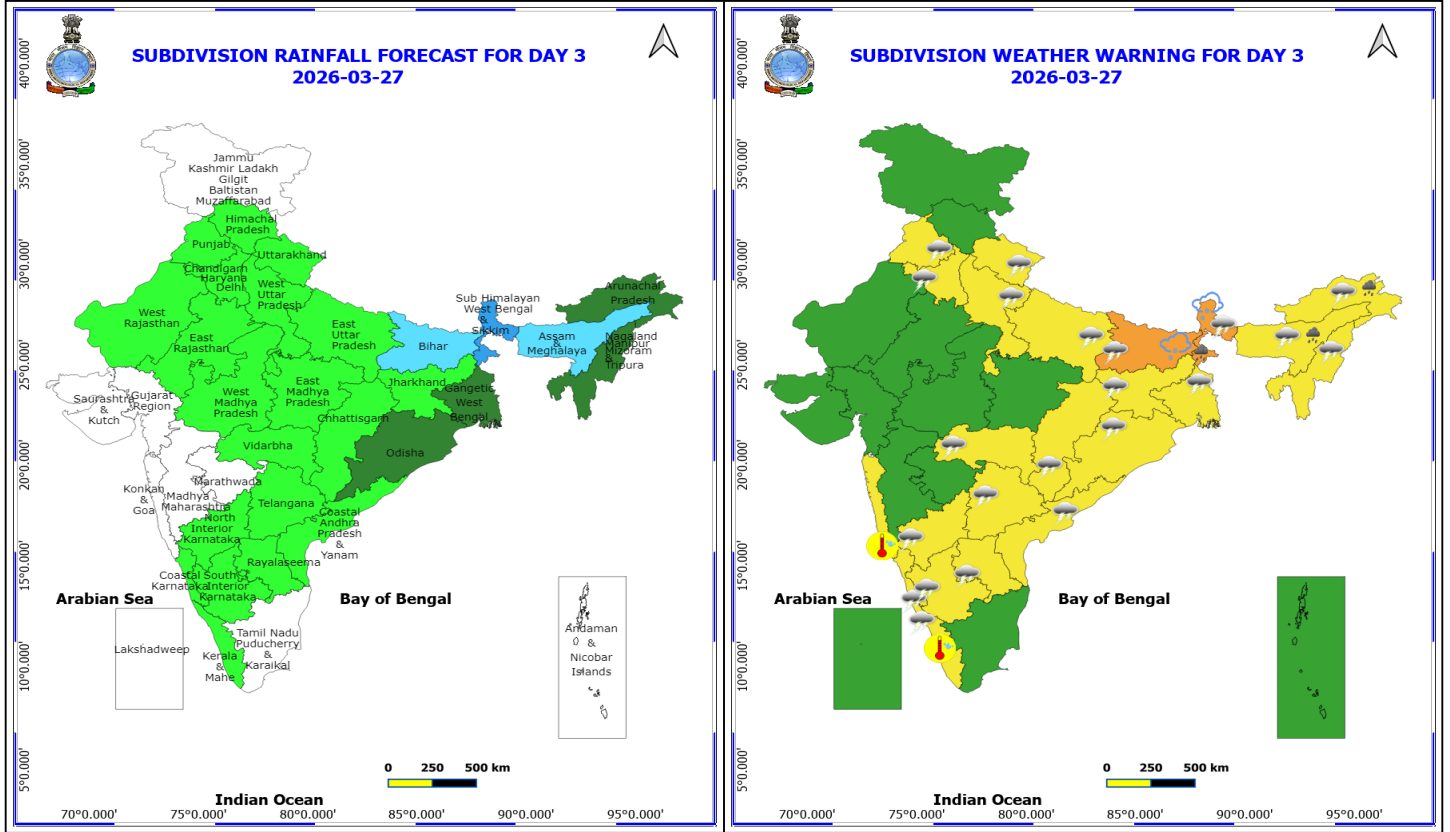
No Fishermen Warning



26 March (Day 2)

- ❖ **Heavy Rainfall** very likely at isolated places over Sub Himalayan West Bengal & Sikkim.
- ❖ **Thunderstorm accompanied with lightning & gusty winds(40-50kmph)** very likely at isolated places over Chhattisgarh, Himachal Pradesh and Jammu-Kashmir-Ladakh-Gilgit-Baltistan-Muzaffargarh.
- ❖ **Thunderstorm accompanied with lightning & gusty winds(30-40kmph)** very likely at isolated places over Andhra Pradesh, Haryana, Chandigarh & Delhi, Interior Karnataka, Punjab, Telangana, Vidarbha, West Bengal & Sikkim and West Rajasthan.
- ❖ **Thunderstorm accompanied with Lightning** very likely at isolated places over Assam & Meghalaya, Coastal Karnataka, Konkan & Goa, Madhya Maharashtra, Marathwada and Nagaland, Manipur, Mizoram and Tripura.
- ❖ **Hot and Humid weather** very likely at isolated places over Kerala & Mahe and Konkan & Goa.

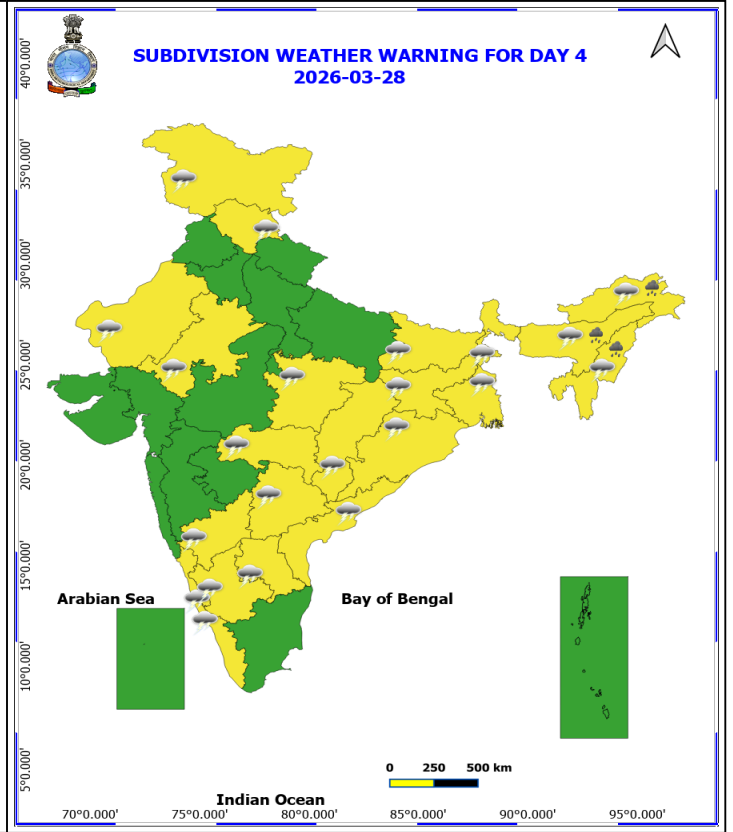
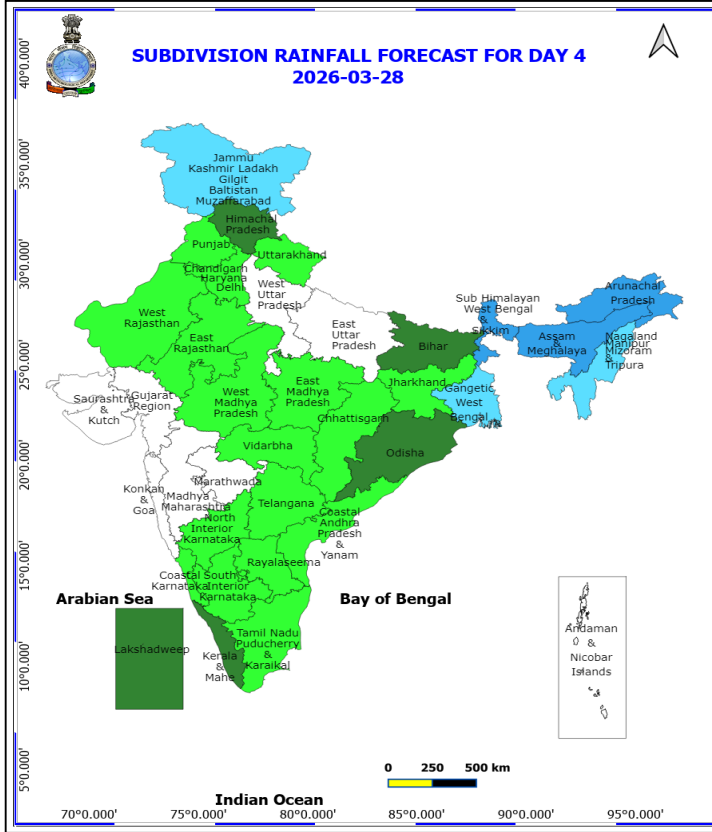
No Fishermen Warning



27 March (Day 3)

- ❖ **Heavy Rainfall** very likely at isolated places over Arunachal Pradesh, Assam & Meghalaya and Sub Himalayan West Bengal & Sikkim.
- ❖ **Thunderstorm accompanied with Hailstorm** very likely at isolated places over Bihar and Sub Himalayan West Bengal & Sikkim.
- ❖ **Thundersquall with wind speed reaching(50-60kmph)** very likely at isolated places over Bihar and West Bengal & Sikkim.
- ❖ **Thunderstorm accompanied with lightning & gusty winds(40-50kmph)** very likely at isolated places over Assam & Meghalaya, Chhattisgarh, Odisha, Telangana, Uttarakhand and Vidarbha.
- ❖ **Thunderstorm accompanied with lightning & gusty winds(30-40kmph)** very likely at isolated places over Andhra Pradesh, Arunachal Pradesh, East Uttar Pradesh, Haryana, Chandigarh & Delhi, Interior Karnataka, Jharkhand, Nagaland, Manipur, Mizoram and Tripura and Punjab.
- ❖ **Thunderstorm accompanied with Lightning** very likely at isolated places over Coastal Karnataka, Kerala & Mahe and West Uttar Pradesh.
- ❖ **Hot and Humid weather** very likely at isolated places over Kerala & Mahe and Konkan & Goa.

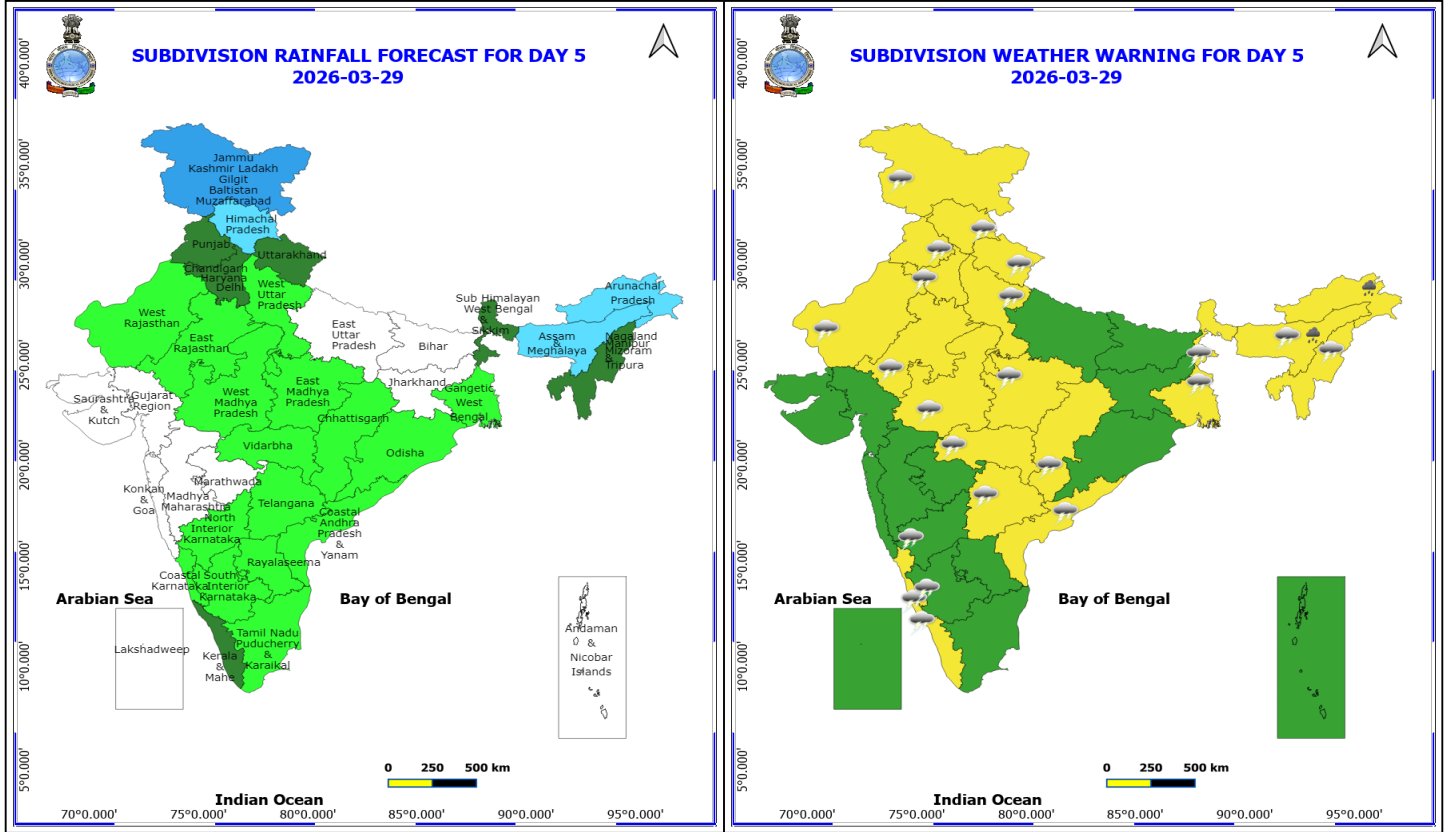
No Fishermen Warning



28 March (Day 4)

- ❖ **Heavy Rainfall** likely at isolated places over Arunachal Pradesh, Assam & Meghalaya and Nagaland, Manipur, Mizoram and Tripura.
- ❖ **Thunderstorm accompanied with lightning & gusty winds(40-50kmph)** likely at isolated places over Assam & Meghalaya, Bihar, Chhattisgarh, Himachal Pradesh, Jammu-Kashmir-Ladakh-Gilgit-Baltistan-Muzaffarabad, Telangana, Vidarbha and West Bengal & Sikkim.
- ❖ **Thunderstorm accompanied with lightning & gusty winds(30-40kmph)** likely at isolated places over Andhra Pradesh, Arunachal Pradesh, East Madhya Pradesh, Interior Karnataka, Jharkhand, Nagaland, Manipur, Mizoram and Tripura, Odisha and Rajasthan.
- ❖ **Thunderstorm accompanied with Lightning** likely at isolated places over Coastal Karnataka and Kerala & Mahe.

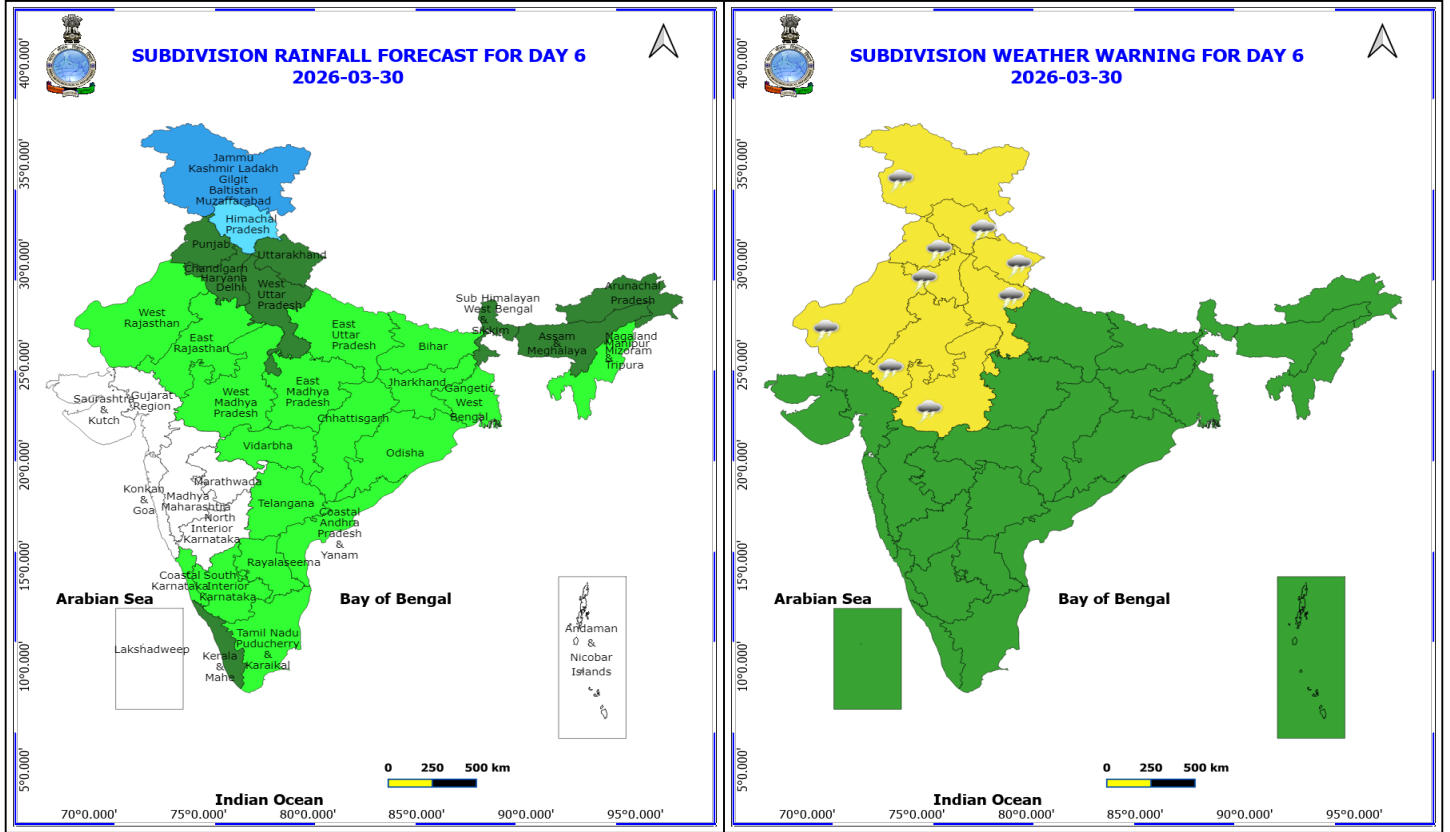
No Fishermen Warning



29 March (Day 5)

- ❖ **Heavy Rainfall** likely at isolated places over Arunachal Pradesh and Assam & Meghalaya.
- ❖ **Thundersquall with wind speed reaching(50-60kmph)** likely at isolated places over Haryana, Chandigarh & Delhi and Punjab.
- ❖ **Thunderstorm accompanied with lightning & gusty winds(40-50kmph)** likely at isolated places over Chhattisgarh, Himachal Pradesh, Jammu-Kashmir-Ladakh-Gilgit-Baltistan-Muzaffarabad, Telangana, Uttarakhand and Vidarbha.
- ❖ **Thunderstorm accompanied with lightning & gusty winds(30-40kmph)** likely at isolated places over Coastal Andhra Pradesh, Interior Karnataka, Madhya Pradesh, Nagaland, Manipur, Mizoram and Tripura, Rajasthan, West Bengal & Sikkim and West Uttar Pradesh.
- ❖ **Thunderstorm accompanied with Lightning** likely at isolated places over Assam & Meghalaya, Coastal Karnataka and Kerala & Mahe.

No Fishermen Warning

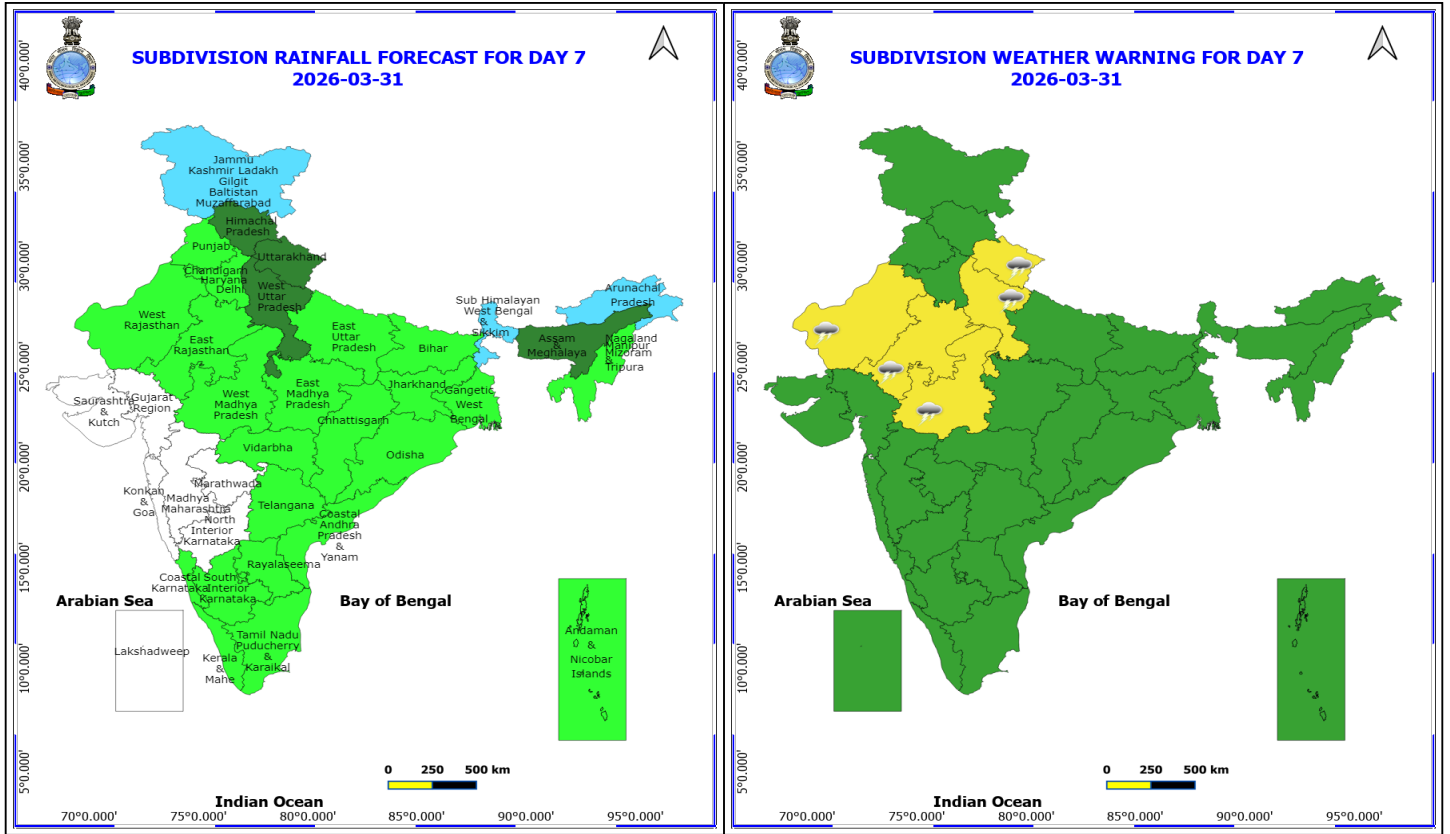


30 March (Day 6)

- ❖ **Thundersquall with wind speed reaching(50-60kmph)** likely at isolated places over Haryana, Chandigarh & Delhi and Punjab.
- ❖ **Thunderstorm accompanied with lightning & gusty winds(40-50kmph)** likely at isolated places over Himachal Pradesh, Jammu-Kashmir-Ladakh-Gilgit-Baltistan-Muzaffarabad, Uttarakhand and West Uttar Pradesh.
- ❖ **Thunderstorm accompanied with lightning & gusty winds(30-40kmph)** likely at isolated places over Rajasthan and West Madhya Pradesh.

No Fishermen Warning

***Red color warning does not mean "Red Alert" Red color warning means "Take Action"**
Forecast and warning for any day is valid from 0830 hours IST of day till 0830 hours IST of next day
For more details kindly visit <https://mausam.imd.gov.in> or contact 011-2434-4599
(Service to the nation since 1875)



31 March (Day 7)

- ❖ **Thunderstorm accompanied with lightning & gusty winds(40-50kmph)** likely at isolated places over Uttarakhand and West Uttar Pradesh.
- ❖ **Thunderstorm accompanied with lightning & gusty winds(30-40kmph)** likely at isolated places over West Madhya Pradesh.
- ❖ **Thunderstorm accompanied with Lightning** likely at isolated places over Rajasthan.

No Fishermen Warning



Table-1

7 Days Rainfall Forecast

S.No.	Subdivision	25- Mar	26- Mar	27- Mar	28- Mar	29- Mar	30- Mar	31- Mar
		Day 1	Day 2	Day 3	Day 4	Day 5	Day 6	Day 7
1	ANDAMAN & NICOBAR ISLANDS	DRY	DRY	DRY	DRY	DRY	DRY	ISOL
2	ARUNACHAL PRADESH	FWS	SCT	SCT	WS	FWS	SCT	FWS
3	ASSAM & MEHGHALAYA	SCT	ISOL	FWS	WS	FWS	SCT	SCT
4	N. M. M. & T.	ISOL	ISOL	SCT	FWS	SCT	ISOL	ISOL
5	S.H. WEST BENGAL & SIKKIM	SCT	SCT	WS	WS	SCT	SCT	FWS
6	GANGETIC WEST BENGAL	ISOL	ISOL	SCT	FWS	ISOL	ISOL	ISOL
7	ODISHA	ISOL	ISOL	SCT	SCT	ISOL	ISOL	ISOL
8	JHARKHAND	DRY	DRY	ISOL	ISOL	DRY	ISOL	ISOL
9	BIHAR	DRY	ISOL	FWS	SCT	DRY	ISOL	ISOL
10	EAST UTTAR PRADESH	DRY	DRY	ISOL	DRY	DRY	ISOL	ISOL
11	WEST UTTAR PRADESH	DRY	ISOL	ISOL	DRY	ISOL	SCT	SCT
12	UTTARAKHAND	ISOL	ISOL	ISOL	ISOL	SCT	SCT	SCT
13	HARYANA, CHD & DELHI	DRY	ISOL	ISOL	ISOL	SCT	SCT	ISOL
14	PUNJAB	ISOL	ISOL	ISOL	ISOL	SCT	SCT	ISOL
15	HIMACHAL PRADESH	ISOL	ISOL	ISOL	SCT	FWS	FWS	SCT
16	JAMMU AND KASHMIR AND LADAKH	ISOL	SCT	DRY	FWS	WS	WS	FWS
17	WEST RAJASTHAN	DRY	ISOL	ISOL	ISOL	ISOL	ISOL	ISOL
18	EAST RAJASTHAN	DRY	DRY	ISOL	ISOL	ISOL	ISOL	ISOL
19	WEST MADHYA PRADESH	DRY	DRY	ISOL	ISOL	ISOL	ISOL	ISOL
20	EAST MADHYA PRADESH	DRY	DRY	ISOL	ISOL	ISOL	ISOL	ISOL
21	GUJRAT REGION	DRY	DRY	DRY	DRY	DRY	DRY	DRY
22	SAURASHTRA & KUTCH	DRY	DRY	DRY	DRY	DRY	DRY	DRY
23	KONKAN & GOA	DRY	DRY	DRY	DRY	DRY	DRY	DRY
24	MADHYA MAHARASHTRA	ISOL	ISOL	DRY	DRY	DRY	DRY	DRY
25	MARATHWADA	ISOL	ISOL	DRY	DRY	DRY	DRY	DRY
26	VIDARBHA	DRY	ISOL	ISOL	ISOL	ISOL	ISOL	ISOL
27	CHATTISGARH	ISOL	ISOL	ISOL	ISOL	ISOL	ISOL	ISOL
28	COASTAL ANDHRA PRADESH	ISOL	ISOL	ISOL	ISOL	ISOL	ISOL	ISOL
29	TELANGANA	ISOL	ISOL	ISOL	ISOL	ISOL	ISOL	ISOL
30	RAYALASEEMA	ISOL	ISOL	ISOL	ISOL	ISOL	ISOL	ISOL
31	TAMILNADU & PUDUCHERRY	DRY	DRY	DRY	ISOL	ISOL	ISOL	ISOL
32	COSTAL KARNATAKA	ISOL	ISOL	ISOL	ISOL	ISOL	ISOL	ISOL
33	NORTH INTERIOR KARNATAKA	ISOL	ISOL	ISOL	ISOL	ISOL	DRY	DRY
34	SOUTH INTERIOR KARNATAKA	ISOL	ISOL	ISOL	ISOL	ISOL	ISOL	ISOL
35	KERALA	ISOL	ISOL	ISOL	SCT	SCT	SCT	ISOL
36	LAKSHDWEEP	DRY	DRY	DRY	SCT	DRY	DRY	DRY

Legend	Category	%Stations
WS	Widespread/Most Places	76-100
FWS	Fairly Widespread/Many Places	51-75
SCT	Scattered/ A Few Places	26-50
ISOL	Isolated Places	1-25
DRY	No Rain	0

*Red color warning does not mean "Red Alert" Red color warning means "Take Action"
Forecast and warning for any day is valid from 0830 hours IST of day till 0830 hours IST of next day
For more details kindly visit <https://mausam.imd.gov.in> or contact 011-2434-4599

(Service to the nation since 1875)

Fig. 1: Maximum Temperatures Dated 2026-03-24

Fig. 2: Departure of Maximum Temp. Dated 2026-03-24

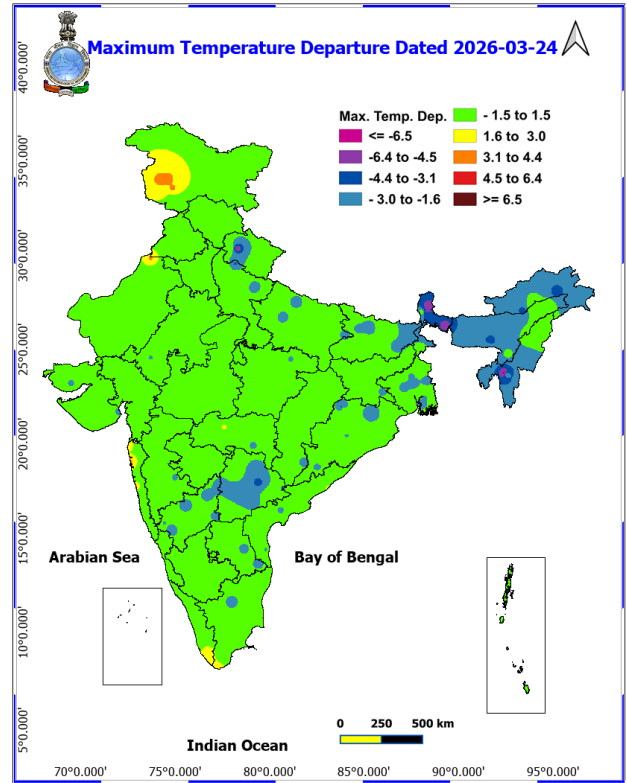
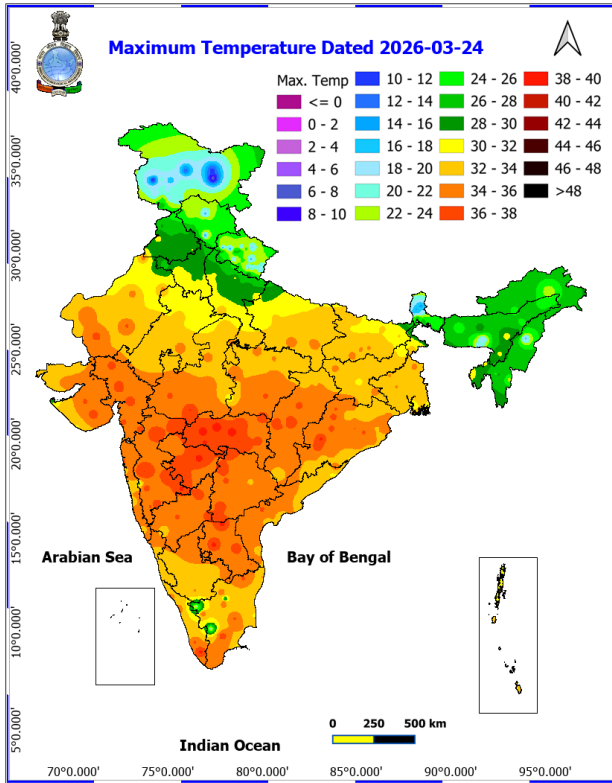
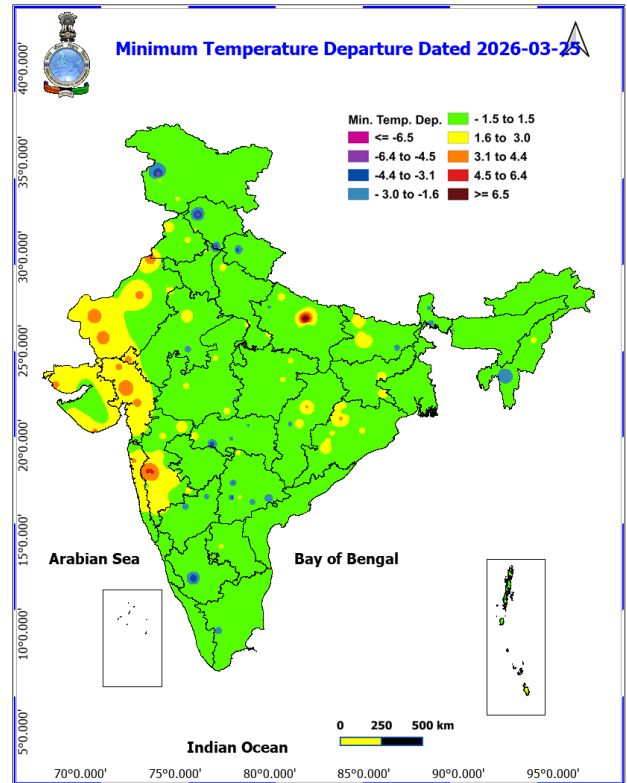
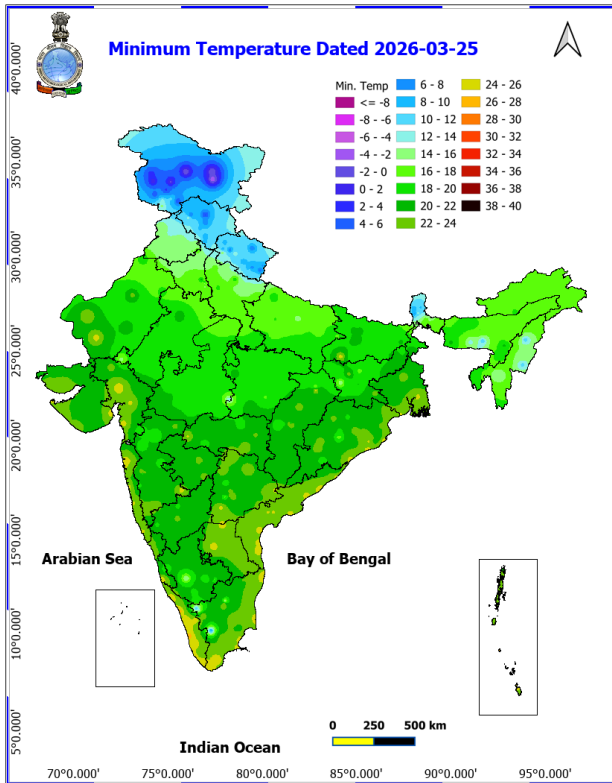


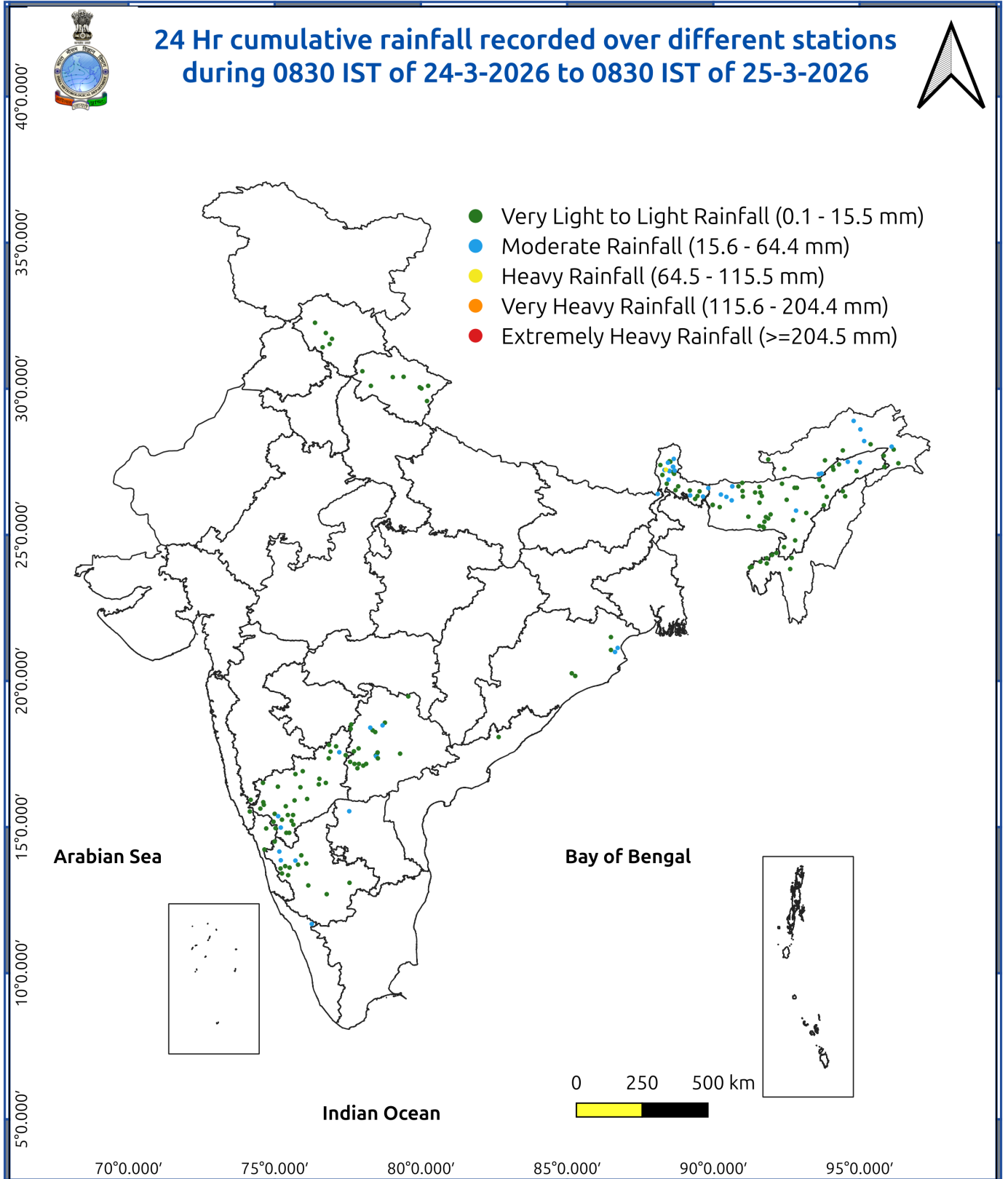
Fig. 3: Minimum Temperatures Dated 2026-03-25

Fig. 4: Departure of Minimum Temp. Dated 2026-03-25



***Red color warning does not mean "Red Alert" Red color warning means "Take Action"**
Forecast and warning for any day is valid from 0830 hours IST of day till 0830 hours IST of next day
For more details kindly visit <https://mausam.imd.gov.in> or contact 011-2434-4599

(Service to the nation since 1875)



Impact and Actions

Impact & Action Suggested due to heavy/very heavy rainfall:

- Isolated **heavy rainfall** likely over Sub-Himalayan West Bengal & Sikkim on 26th & 27th; Assam & Meghalaya and Arunachal Pradesh during 27th-29th and Nagaland on 28th March.

Impact Expected

- Localized Flooding of roads, water logging in low lying areas and closure of underpasses mainly in urban areas of the above region.
- Occasional reduction in visibility due to heavy rainfall.
- Disruption of traffic in major cities due to water logging in roads leading to increased travel time.
- Minor damage to kutchha roads.
- Possibilities of damage to vulnerable structure.
- Localized Landslides/Mudslides
- Damage to horticulture and standing crops in some areas due to inundation.
- It may lead to riverine flooding in some river catchments (for riverine flooding please visit Web page of CWC).

Action Suggested

- Check for traffic congestion on your route before leaving for your destination.
- Follow any traffic advisories that are issued in this regard.
- Avoid going to areas that face the water logging problems often.
- Avoid staying in vulnerable structure.

Impact expected and action suggested due to

Thundersquall (wind speed reaching 50-60 kmph gusting to 70 kmph) at isolated places likely over Bihar and Sub-Himalayan West Bengal & Sikkim on 27th; Punjab, Haryana, Chandigarh & Delhi on 29th & 30th March.

Isolated hailstorm activity likely over Interior Karnataka on 25th; Bihar and Sub-Himalayan West Bengal & Sikkim on 27th March.

Impact expected:

- Breaking of tree branches, uprooting of large avenue trees. Large dead limbs blown from trees. Damage to Standing crops.
- Minor to Major damage to banana and papaya trees.
- Minor to major damage to power and communication lines due to breaking of branches.
- Strong wind/hail may damage plantation, horticulture and standing crops.
- Hail may injure people and cattle at open places.
- Partial damage to vulnerable structures due to strong winds.
- Minor damage to kutchha houses/walls and huts.
- Loose objects may fly.

Action suggested:

- People are advised to keep a watch on the weather for worsening conditions and be ready to move to safer places accordingly.
- Stay indoors, close windows & doors and avoid travel if possible.
- Take safe shelters; do not take shelter under trees.
- Do not lie on concrete floors and do not lean against concrete walls.
- Unplug electrical/ electronic appliances.

***Red color warning does not mean "Red Alert" Red color warning means "Take Action"**

Forecast and warning for any day is valid from 0830 hours IST of day till 0830 hours IST of next day

For more details kindly visit <https://mausam.imd.gov.in> or contact 011-2434-4599

(Service to the nation since 1875)

- Immediately get out of water bodies.
- Keep away from all the objects that conduct electricity.

Agromet advisories for various parts of the country

Agromet advisories for likely impact of Hailstorms

Use hail nets or hail caps in fruit orchards and vegetable plants to protect them from mechanical damage in **Interior Karnataka, Sub-Himalayan West Bengal** and **Bihar**.

Undertake harvesting of mature crops immediately and shift them to safer places.

Agromet advisories for likely impact of Heavy Rainfall

In **Arunachal Pradesh**, undertake harvesting of cabbage, pea, mustard and late-maturing paddy varieties and digging of potatoes. Shift the harvested produce to safe places. Maintain proper drainage channels in the fields of rice, maize, other standing crops, vegetables and orchards.

In **Assam**, drain out excess rainwater from the standing crop fields.

In **Meghalaya**, ensure proper drainage in summer vegetable crops. Carry out staking and propping of plantation crops and protect young seedlings from heavy rainfall. Keep the harvested pods of garden peas in safer place immediately.

In **Sub Himalayan West Bengal**, ensure proper drainage channel, and drain out excess water from fields of rice, maize, other standing crops, vegetables and orchard. Cover the nursery of cucurbits and Dalle khorsani with polyethylene sheets or agro-nets.

Agromet advisories for likely impact of Thunderstorm / Gusty Winds

Shift the harvested produce in safer places or cover the produce with tarpaulin sheets in the fields. Tie the harvested crops properly and cover them to minimise the risk of displacement due to strong surface winds.

Provide mechanical support to horticultural crops and staking or support to vegetables and young fruit plants / fruit-bearing plants to avoid lodging due to strong winds.

Agromet advisories for likely impact of Hot and Humid Weather

In Konkan Region of **Maharashtra**, provide 100 litre water/tree at weekly or 150 to 200 litre water/ tree at 15 days interval to minimize pre-mature fruit drop and sun scorching in mango and poor fruit set and reduced nut size in cashew orchards. Use straw mulch to prevent moisture loss from the soil. Undertake pre-harvest bagging of fruits with newspaper bags to protect the mango fruits from sunscald

Livestock / Poultry

Keep the animals inside the shed during Heavy Rainfall/Hailstorm period and provide them balanced feed. Store feed and fodder in a safe place to prevent spoilage.

LEGENDS

- 1 अंडमान और निकोबार द्वीप समुह
- 2 अरुणाचल प्रदेश
- 3 असम और मेघालय
- 4 नागालैंड मनीपुर मीजोरम और त्रिपुरा
- 5 उप हिमालय पश्चिम बंगाल एवं सिक्किम
- 6 पश्चिम बंगाल
- 7 ओडिसा
- 8 झारखंड
- 9 बिहार
- 10 पूर्वी उत्तर प्रदेश
- 11 पश्चिम उत्तर प्रदेश
- 12 उत्तराखंड
- 13 हरियाणा चंडिगढ़ एवं दिल्ली
- 14 पंजाब
- 15 हिमाचल प्रदेश
- 16 जम्मू एवं कश्मीर एवं लद्दाख
- 17 पश्चिम राजस्थान
- 18 पूर्वी राजस्थान
- 19 पश्चिम मध्य प्रदेश
- 20 पूर्वी मध्य प्रदेश
- 21 गुजरात क्षेत्र
- 22 सौराष्ट्र एवं कच्छ
- 23 कोंकण एवं गोवा
- 24 मध्य महाराष्ट्र
- 25 मराठावाडा
- 26 विदर्भ
- 27 छत्तीसगढ़
- 28 तटीय आंध्र प्रदेश एवं यनम
- 29 तेलंगाना
- 30 रायलसीमा
- 31 तमिलनाडु, पुदुचेरी एवं कराईकल
- 32 तटिय कर्नाटक
- 33 आंतरिक उत्तरी कर्नाटक
- 34 आंतरिक दक्षिणी कर्नाटक
- 35 केरल एवं माहे
- 36 लक्षद्वीप



1. Andaman & Nicobar Islands
2. Arunachal Pradesh
3. Assam & Meghalaya
4. Nagaland, Manipur, Mizoram & Tripura
5. Sub-Himalayan West Bengal & Sikkim
6. Gangetic West Bengal
7. Orissa
8. Jharkhand
9. Bihar
10. East Uttar Pradesh
11. West Uttar Pradesh
12. Uttarakhand
13. Haryana, Chd & Delhi
14. Punjab
15. Himachal Pradesh
16. Jammu & Kashmir and Ladakh
17. West Rajasthan
18. East Rajasthan
19. West Madhya Pradesh
20. East Madhya Pradesh
21. Gujarat
22. Saurashtra
23. Konkan & Goa
24. Madhya Maharashtra
25. Marathawada
26. Vidharbha
27. Chhattisgarh
28. Coastal Andhra Pradesh & Yanam
29. Telangana
30. Rayalaseema
31. Tamilnadu, Puducherry & Karaikal
32. Coastal Karnataka
33. North Interior Karnataka
34. South Interior Karnataka
35. Kerala & Mahe
36. Lakshadweep

SPATIAL DISTRIBUTION (% of Stations reporting)

% Stations	Category	% Stations	Category
76-100	Widespread (WS/ Most Places)	26-50	Scattered (SCT/ A Few Places)
51-75	Fairly Widespread (FWS/ Many Places)	1-25	Isolated (ISOL)

Subdivision Colour

- NO WARNING
- WATCH (BE UPDATED)
- ALERT (BE PREPARED TO TAKE ACTION)
- WARNING (TAKE ACTION)

Probabilistic Forecast

Terms	Probability of Occurrence (%)
Unlikely	< 25
Likely	25 - 50
Very Likely	50 - 75
Most Likely	> 75

- | | | | |
|--------------------------|-----------------|----------------------|--------------------|
| Heavy Rain | Very Heavy Rain | Extremely Heavy Rain | Heavy Snow |
| Thunderstorm & Lightning | Hailstorm | Dust Storm | Dust Raising Winds |
| Strong surface winds | Heat Wave | Hot Day | Warm Night |
| Cold Wave | Cold Day | Ground Frost | Fog |
| Hot & Humid | | | |

*Red color warning does not mean "Red Alert" Red color warning means "Take Action"

Forecast and warning for any day is valid from 0830 hours IST of day till 0830 hours IST of next day

For more details kindly visit <https://mausam.imd.gov.in> or contact 011-2434-4599

(Service to the nation since 1875)

LEGENDS

WARNING

WARNING (TAKE ACTION)
ALERT (BE PREPARED)
WATCH (BE UPDATED)
NO WARNING (NO ACTION)

Probabilistic Forecast

Terms	Probability of Occurrence (%)
Unlikely	< 25
Likely	25 - 50
Very Likely	50 - 75
Most Likely	> 75



Heavy: 64.5 to 115.5 mm/cm *
Very Heavy: 115.6 to 204.4 mm/cm*
Extremely Heavy: > 204.4 mm/cm *



When maximum temperature of a station reaches $\geq 40^{\circ}\text{C}$ for plains and $\geq 30^{\circ}\text{C}$ for hilly regions
(a) Based on Departure from normal

Heat Wave: Maximum Temperature Departure from normal 4.5°C to 6.4°C .
Severe Heat Wave: Maximum Temperature Departure from normal $\geq 6.5^{\circ}\text{C}$

(b). Based on Actual maximum temperature

Heat Wave: When actual maximum temperature $\geq 45^{\circ}\text{C}$.
Severe Heat Wave: When actual maximum temperature $\geq 47^{\circ}\text{C}$

(c). Criteria for heat wave for coastal stations

When maximum temperature departure is $> 4.5^{\circ}\text{C}$ from normal. Heat Wave may be described provided maximum temperature $\geq 37^{\circ}\text{C}$



When maximum temperature remains 40°C

Warm Night: When minimum temperature departure 4.5°C to 6.4°C .
Severe Warm Night: When minimum temperature departure $> 6.4^{\circ}\text{C}$.



When minimum temperature of a station $\leq 10^{\circ}\text{C}$ for plains and $\leq 0^{\circ}\text{C}$ for hilly regions.

(a). Based on departure

Cold Wave: Minimum Temperature Departure from normal -4.5°C to -6.4°C .
Severe Cold Wave: Minimum Temperature Departure from normal $\leq -6.5^{\circ}\text{C}$

(b) Based on actual Minimum Temperature (for Plains only)

Cold Wave : When Minimum Temperature is $\leq 4.0^{\circ}\text{C}$
Severe Cold Wave: When Minimum Temperature is $\leq 2.0^{\circ}\text{C}$

(c) For Coastal Stations

When Minimum Temperature departure is $\leq -4.5^{\circ}\text{C}$ & actual Minimum Temperature is $\leq 15^{\circ}\text{C}$



When minimum temperature of a station $\leq 10^{\circ}\text{C}$ for plains and $\leq 0^{\circ}\text{C}$ for hilly regions
Based on departure

Cold Day: Maximum Temperature Departure from normal -4.5°C to -6.4°C .
Severe Cold Day: Maximum Temperature Departure from normal $\leq -6.5^{\circ}\text{C}$



Phenomenon of small droplets suspended in air and the horizontal visibility $< 1\text{km}$

Moderate Fog: When the visibility between 500-200 metres
Dense Fog: when the visibility between 50- 200 metres
Very Dense Fog: when the visibility < 50 metres



Sudden electrical discharges manifested by a flash of light (Lightning) and a sharp rumbling sound (thunder)



An ensemble of particles of dust or sand energetically lifted to great heights by a strong and turbulent wind.



Ice deposits on ground

Air temperature $\leq 4^{\circ}\text{C}$ (over Plains)



A strong wind that rises suddenly, lasts for atleast 1 minute.

Moderate: Wind speed 52-61 kmph
Severe: Wind speed 62-87 kmph
Very Severe: Wind speed > 87 kmph



Effect of various waves in the sea over specific area

Rough to very rough: Wind speed 41-62 kmph (22-33 knots) & Wave height 2.5-6 metre
High to very high: Wind speed 63-117 kmph (34-63 knots) & Wave height 6-14 metre
Phenomenal: Wind speed > 117 kmph (> 63 knots) & Wave height > 14 metre



Cyclonic Storm: Wind speed 62-87 kmph (34-47 knots)
Severe Cyclonic Storm: Wind speed 88-117 kmph (48-63 knots)
Very Severe Cyclonic Storm: Wind speed 118-165 kmph (64 - 89 knots)
Extremely Severe Cyclonic Storm: Wind speed 166-220 kmph (90 -119 knots)
Super Cyclone Storm: Wind speed > 220 kmph (> 119 knots)

*Red color warning does not mean "Red Alert" Red color warning means "Take Action"

Forecast and warning for any day is valid from 0830 hours IST of day till 0830 hours IST of next day

For more details kindly visit <https://mausam.imd.gov.in> or contact 011-2434-4599

(Service to the nation since 1875)