

ALL INDIA WEATHER SUMMARY AND FORECAST BULLETIN

Significant Weather Features

Weather forecast and warnings:

Northwest India:

- Scattered to Fairly widespread to widespread light to moderate rainfall/snowfall accompanied with isolated thunderstorm, lightning & gusty winds speed reaching (40-50 kmph) likely to continue over Western Himalayan region on 16th & 17th March. Another fresh wet spell with Fairly widespread to widespread light to moderate rainfall/snowfall likely with isolated thunderstorm, lightning & gusty winds speed reaching (40-50 kmph) during 18th-20th March and reduction in intensity thereafter. **Isolated heavyrainfall/snowfall very likely over Jammu-Kashmir-Ladakh-Gilgit-Baltistan-Muzaffarabad & Himachal Pradesh on 19th and Uttarakhand on 20th March.**
- Isolated to Scattered light to moderate rainfall accompanied with isolated thunderstorm, lightning & gusty winds speed reaching (40-50 kmph) likely to continue over the plains of Northwest India on 16th March. Another fresh wet spell with Isolated to Scattered light to moderate rainfall accompanied with isolated thunderstorm, lightning & gusty winds speed reaching (40-50 kmph) likely during 19th-21st March.
- **Thundersquall (wind speed reaching 50-60 kmph gusting to 70 kmph)** very likely at isolated places over Uttarakhand on 19th & 20th March.
- Isolated **Hailstorm** activity likely over Himachal Pradesh on 16th, 18th & 19th; Uttarakhand on 16th, 19th & 20th; Punjab on 16th; Jammu-Kashmir-Ladakh-Gilgit-Baltistan-Muzaffarabad on 18th March.

Northeast India:

- **Fairly widespread to widespread** light to moderate rainfall with **thunderstorm & lightning** likely over Northeast India during next 7 days; with **gusty winds speed reaching (30-50 kmph)** over Arunachal Pradesh and Assam & Meghalaya on 16th & 17th; Nagaland, Manipur, Mizoram & Tripura during 16th-18th March.
- Isolated **heavyrainfall** very likely over Arunachal Pradesh & Assam & Meghalaya on 16th & 17th March and Nagaland, Manipur, Mizoram & Tripura on 16th March.
- Isolated **Hailstorm** activity likely over Assam & Meghalaya and Nagaland, Manipur, Mizoram & Tripura on 16th March.

East & Central India:

- **Scattered to fairly widespread** light to moderate rainfall with **thunderstorm, lightning & gusty winds speed reaching (30-50 kmph)** likely over West Bengal & Sikkim 16th -21st March. Isolated **heavyrainfall** very likely over Sub-Himalayan West Bengal & Sikkim on 16th March.
- **Isolated to Scattered** light to moderate rainfall with **thunderstorm, lightning & gusty winds speed reaching (30-50 kmph)** likely over Madhya Pradesh during 18th -20th; Vidarbha, Odisha, Jharkhand & Chhattisgarh during 16th -20th; Bihar on 16th, 17th and during 20th -22nd March. **Thunderstorm, lightning & squally winds speed reaching (50-60 gusting to 70 kmph) with hailstorm** likely over Sub-Himalayan West Bengal & Sikkim on 20th, Gangetic West Bengal on 16th & 20th; Odisha & Jharkhand on 16th March.
- Isolated **Hailstorm** activity likely over East Madhya Pradesh on 19th; Vidarbha on 18th; Chhattisgarh on 18th & 19th; West Bengal & Sikkim, Odisha, Jharkhand and Bihar on 16th March.

South Peninsular India:

- **Isolated to Scattered** light to moderate rainfall with **thunderstorm, lightning & gusty winds speed reaching (30-50 kmph)** likely over Coastal Andhra Pradesh & Yanam, Telangana, Rayalaseema and Karnataka during 16th-20th; Kerala & Mahe during 16th -18th; Tamil Nadu, Puducherry & Karaikal during 17th -19th March.

West India:

- **Isolated** light/moderate rainfall with **thunderstorm & lightning & gusty winds speed reaching (30-50**

***Red color warning does not mean "Red Alert" Red color warning means "Take Action"**

Forecast and warning for any day is valid from 0830 hours IST of day till 0830 hours IST of next day

For more details kindly visit <https://mausam.imd.gov.in> or contact 011-2434-4599

(Service to the nation since 1875)

kmph) likely over Madhya Maharashtra, Marathwada during 16th -19th Gujarat State on 18th & 19th and with thunderstorm & lightning over Konkan & Goa on 18th & 19th March.

Forecast of maximum/day temperatures:

- Gradual rise in maximum temperatures by 3-5°C likely over Northwest India during next 3 days; gradual fall by 4-7°C during subsequent 2 days & no significant change thereafter.
- No significant change in maximum temperatures likely over Madhya Pradesh during next 2 days; gradual fall by 3-5°C during subsequent 2 days & no significant change thereafter.
- Gradual fall in maximum temperature by 3-5°C likely over Vidarbha & Chhattisgarh during next 5 days and no significant change during subsequent 2 days.
- Gradual fall in maximum temperature by 2-3°C likely over Gujarat during next 3 days and no significant change during subsequent 4 days.
- Gradual fall by 2-3°C in maximum temperatures likely over Maharashtra during next 4 days and no significant change during subsequent 3 days.
- No significant change in maximum temperatures likely over South Peninsular India during next 2 days and gradual fall by 2-3°C during subsequent 5 days.

Main Weather Observations:

❖ **Rainfall distribution** (from 0830 hours IST of yesterday to 0830 hours IST of today): **at most places** over Arunachal Pradesh, Assam & Meghalaya, Sub Himalayan West Bengal & Sikkim, Uttarakhand, Himachal Pradesh and Jammu-Kashmir-Ladakh-Gilgit-Baltistan-Muzaffarabad; **at many places** over Nagaland, Manipur, Mizoram & Tripura, Gangetic West Bengal and Punjab; **at a few places** over Odisha, West Uttar Pradesh and Haryana-Chandigarh-Delhi; **at isolated places** over Jharkhand, Bihar, East Uttar Pradesh, West Rajasthan, East Rajasthan, Marathwada, Vidarbha, Coastal Andhra Pradesh & Yanam, Telangana, Coastal Karnataka, North Interior Karnataka, South Interior Karnataka and Kerala & Mahe; **Dry** over rest of the country.

❖ **Significant rainfall recorded(in cm)** (from 0830 hours IST of yesterday to 0830 hours IST of today): **Sub Himalayan West Bengal & Sikkim:** Sankos Tea Estate (dist Alipurduar) 16; Kumargram Tea Estate (dist Alipurduar) 13; Bhutanghat (dist Alipurduar), Newlands Tea Garden (dist Alipurduar) 12 Each; Chengmari/Diana (dist Jalpaiguri), Patkapara Tea Estate (dist Alipurduar) 5 Each; Falakata (dist Alipurduar), Bhatkawa Tea Estate (dist Jalpaiguri), Majherdabri Tea Garden (dist Alipurduar), Raidak Tea Estate (dist Alipurduar) 4 Each; **Assam & Meghalaya:** Resubelpara (dist North Garo Hills), Lakhipur ARG (dist Cachar) 13 Each; Cherrapunji (dist East Khasi Hills), Cherrapunji(rkm) (dist East Khasi Hills) 12 Each; Manash Nh Xing (dist Barpeta), Silchar (dist Cachar) 11 Each; Aie Nh Xing (dist Bongaigaon) 10; Williamnagar (dist East Garo Hills) 8; Barpeta (dist Barpeta) 7; Beky Rly.bridge (dist Barpeta) 6; Mirza Circle Office ARG (dist Kamrup (rural)), Panbari (dist Chirang) 5 Each; Bahalpur (dist Dhubri), Dhemaji (dist Dhemaji) 4 Each; **Nagaland, Manipur, Mizoram & Tripura:** Kolasib ARG (dist Kolasib) 8; Imphal AP (dist Imphal East) 6; Ukhrul (dist Ukhrul) 5; Kolasib AWS (dist Kolasib), Chandel (dist Chandel) 4 Each; **Arunachal Pradesh:** Tezu (dist Lohit) 7; Miao (dist Changlang) 5; **Uttarakhand:** Tehri (CWC) (dist Garhwal Tehri) 6; Deoprayag (dist Garhwal Tehri) 4; **Jharkhand:** Nandadih (dist Giridih) 6; **Odisha:** Betanati (dist Mayurbhanj), Muruda (dist Mayurbhanj) 5 Each; Joshipur (dist Mayurbhanj), Balimundali (dist Mayurbhanj), G B Nagar (dist Mayurbhanj) 4 Each; **North Interior Karnataka:** Bidar (dist Bidar), Bidar PTO (dist Bidar) 4 Each; **Coastal Andhra Pradesh & Yanam:** Vararamachandrapur (dist Alluri Sitharamaraju) 4.

❖ **Heavy Rainfall observed** (from 0830 hours IST of yesterday to 0830 hours IST of today): **Heavy to very heavy rain** at isolated places over Assam & Meghalaya and Sub Himalayan West Bengal & Sikkim. **Heavy rain** at isolated places over Arunachal Pradesh and Nagaland, Manipur, Mizoram & Tripura.

❖ **Hailstorm** reported at isolated places over Assam & Meghalaya, Nagaland, Manipur, Mizoram & Tripura, Himachal Pradesh, West Bengal, Odisha, Jharkhand, Uttarakhand, Punjab, Haryana and West Uttar Pradesh.

❖ **Thundersquall** speed reaching 50-65 kmph occurred at isolated places over West Bengal (Kolkata, Malda).

❖ **Minimum Temperature Departures (as on 16-03-2026):** **markedly above normal(> 5.1°C)** at isolated places over Odisha, Bihar, West Rajasthan, East Rajasthan and Saurashtra & Kutch. **appreciably above normal(3.1°C to 5.0°C)** at many places over Bihar, Gujarat Region and Chhattisgarh; at few places over Andaman & Nicobar Islands; at isolated places over Nagaland, Manipur, Mizoram & Tripura, Gangetic West Bengal, Odisha, East Uttar Pradesh, West Uttar Pradesh, East Rajasthan, East Madhya Pradesh, Saurashtra & Kutch, Konkan & Goa, Madhya Maharashtra, Marathwada and Vidarbha. **above normal(1.6°C to 3.0°C)** at many places over Jharkhand, East Rajasthan, Vidarbha and Lakshadweep; at few places over East Uttar Pradesh, West Uttar Pradesh, Haryana-Chandigarh-Delhi, West Rajasthan, West Madhya Pradesh, Saurashtra & Kutch, Madhya Maharashtra, Chhattisgarh, Telangana and Coastal Karnataka; at isolated places over Andaman & Nicobar Islands, Nagaland, Manipur, Mizoram & Tripura, Sub Himalayan West Bengal & Sikkim, Gangetic West Bengal, Odisha, Uttarakhand, Punjab, Himachal Pradesh, Jammu-Kashmir-Ladakh-Gilgit-Baltistan-Muzaffarabad, East Madhya Pradesh, Konkan & Goa, Marathwada, Coastal Andhra Pradesh & Yanam, Tamil Nadu, Puducherry & Karaikal, North Interior Karnataka, South Interior Karnataka and Kerala & Mahe. **near normal** over rest parts of the country. **The lowest minimum temperature of 10.0°C** is observed at **Gurdaspur (Punjab)** over the Plains of India.

❖ **Maximum Temperature Departures (as on 15-03-2026):** **markedly above normal(> 5.1°C)** at few places over East Rajasthan; at isolated places over Jharkhand, East Uttar Pradesh, Jammu-Kashmir-Ladakh-Gilgit-Baltistan-Muzaffarabad, West Rajasthan, Gujarat Region, Vidarbha and Chhattisgarh. **appreciably above normal(3.1°C to 5.0°C)** at few places over East Madhya Pradesh and Konkan & Goa; at isolated places over Bihar, West Uttar Pradesh,

***Red color warning does not mean "Red Alert" Red color warning means "Take Action"**

Forecast and warning for any day is valid from 0830 hours IST of day till 0830 hours IST of next day

For more details kindly visit <https://mausam.imd.gov.in> or contact 011-2434-4599

(Service to the nation since 1875)



Himachal Pradesh, West Madhya Pradesh, Saurashtra & Kutch and Madhya Maharashtra. **above normal(1.6°C to 3.0°C)** at most places over Marathwada; at few places over Gangetic West Bengal and Coastal Karnataka; at isolated places over Odisha, Uttarakhand, Telangana and Tamil Nadu, Puducherry & Karaikal. **near normal** over rest parts of the country. **The highest maximum temperature** of 40.6°C was reported at AMRAVATI (MAHARASHTRA).

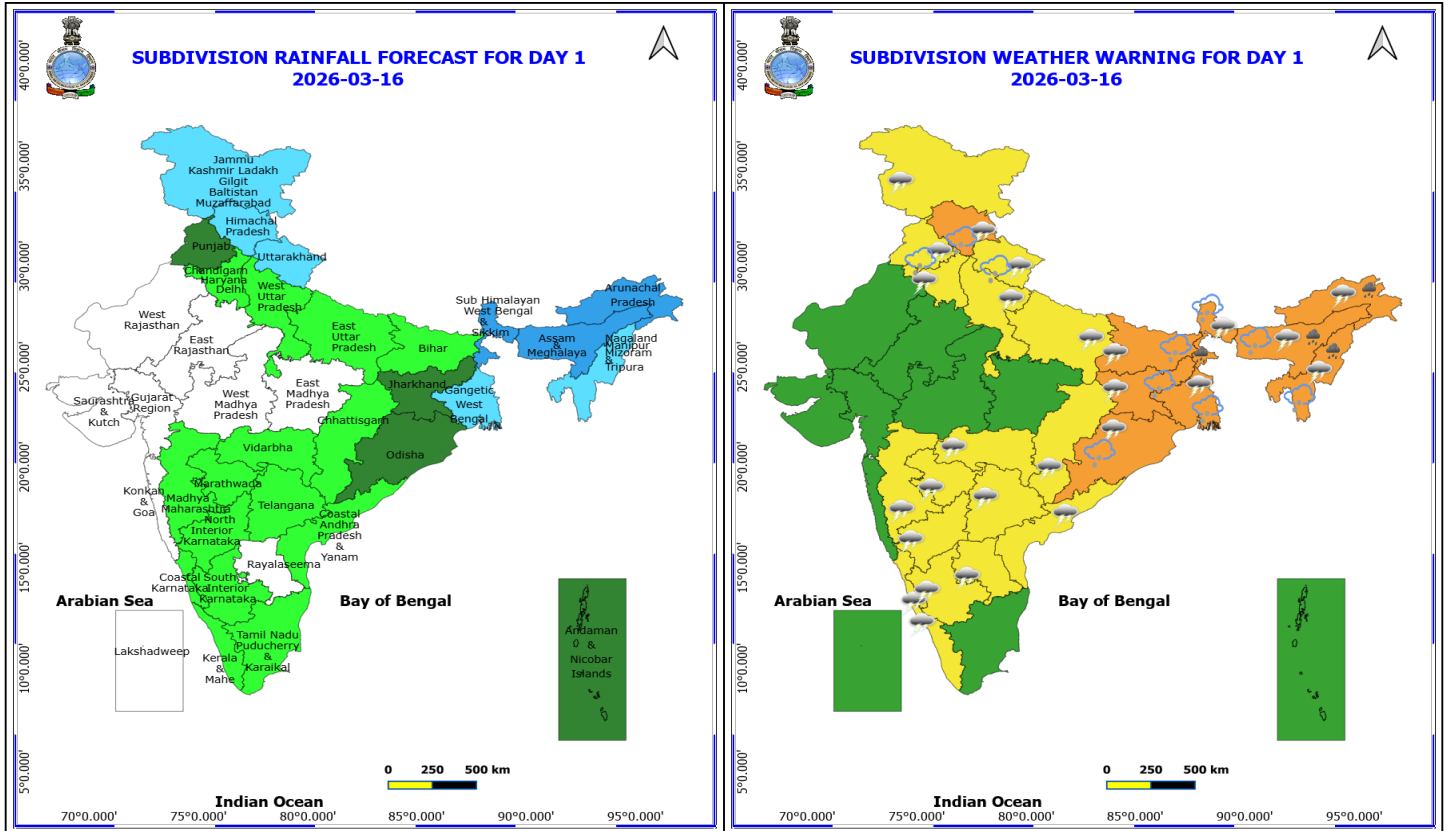
Meteorological Analysis (Based on 0830 hours IST)

- The **Western Disturbance** as an upper air **cyclonic circulation** over Punjab between 3.1 & 5.8 km above mean sea level with the trough aloft in upper level westerlies with its axis at 7.6 km above mean sea level roughly along Long. 71°E to the north of Lat. 30°N persists.
- The **upper air cyclonic circulation** over Haryana & neighbourhood at 1.5 km above mean sea level persists.
- The **upper air cyclonic circulation** over northwest Rajasthan & neighbourhood at 0.9 km above mean sea level persists.
- The east-west **trough** from above cyclonic circulation to southwest Uttar Pradesh across northeast Rajasthan at 0.9 km above mean sea level persists.
- The **upper air cyclonic circulation** over Northeast Assam & adjoining Arunachal Pradesh extending upto 4.5 km above mean sea level persists.
- The **trough** from Marathwada to North Interior Tamilnadu now runs from North Interior Karnataka to Comorin Area across South Interior Karnataka, Tamil Nadu at 0.9 km above mean sea level.
- An **upper air cyclonic circulation** lies over North coastal Tamil Nadu at 1.5 km above mean sea level.
- The **upper air cyclonic circulation** over southeast Arabian sea along & off Lakshadweep area persists and now seen at 3.1 km above mean sea level.
- The **trough** from Southwest Bay of Bengal off North Sri Lanka coast to Comorin area across Gulf of Mannar persists and now seen at 3.1 km above mean sea level.
- **Subtropical westerly Jet Stream** with core winds of the order of 105 knots at 12.6 km above mean sea level continues to prevail over East India.
- A **fresh Western Disturbance** is likely to affect northwest India from night of 17th March 2026.
- The **trough** in lower level westerlies with its axis roughly along Long. 93°E to the north of Lat. 22°N at 5.8 km above mean sea level has moved away.

Weather Outlook for subsequent 3 days

fairly widespread rainfall activity is likely over the Northeast India.

Isolated rainfall activity is likely over the Northwest India and Kerala.



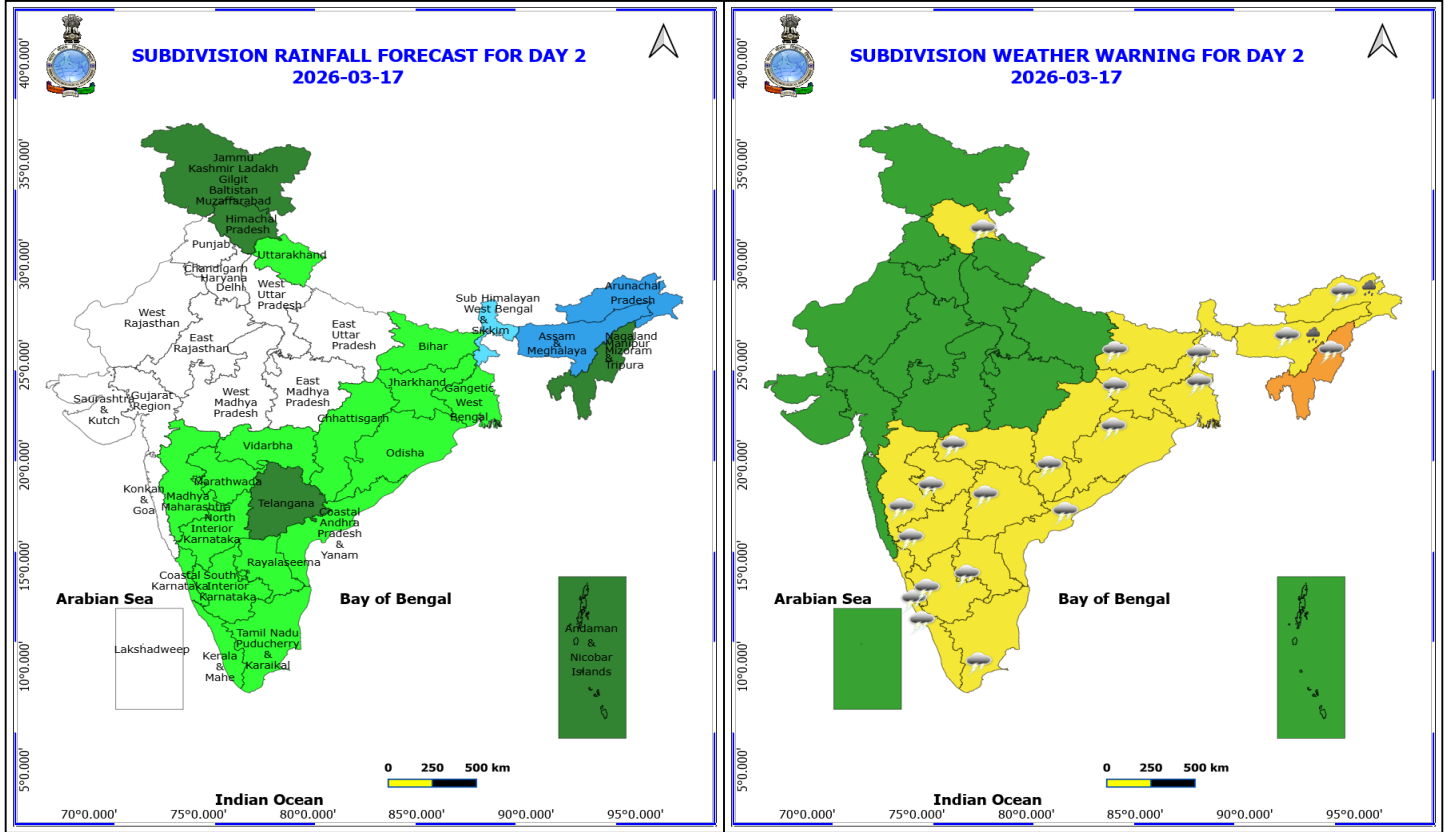
16 March (Day 1)

- ❖ **Heavy Rainfall** very likely at isolated places over Arunachal Pradesh, Assam & Meghalaya, Nagaland, Manipur, Mizoram and Tripura and Sub Himalayan West Bengal & Sikkim.
- ❖ **Thunderstorm accompanied with Hailstorm** very likely at isolated places over Assam & Meghalaya, Bihar, Himachal Pradesh, Jharkhand, Nagaland, Manipur, Mizoram and Tripura, Odisha, Punjab, Uttarakhand and West Bengal & Sikkim.
- ❖ **Thundersquall with wind speed reaching(50-60kmph)** very likely at isolated places over Gangetic West Bengal, Jharkhand, Odisha and Uttarakhand.
- ❖ **Thunderstorm accompanied with lightning & gusty winds(40-50kmph)** very likely at isolated places over Assam & Meghalaya, Bihar, Haryana, Chandigarh & Delhi, Himachal Pradesh, Jammu-Kashmir-Ladakh-Gilgit-Baltistan-Muzaffarabad, Nagaland, Manipur, Mizoram and Tripura, Punjab and Sub Himalayan West Bengal & Sikkim.
- ❖ **Thunderstorm accompanied with lightning & gusty winds(30-40kmph)** very likely at isolated places over Andhra Pradesh, Arunachal Pradesh, Chhattisgarh, Maharashtra and Telangana.
- ❖ **Thunderstorm accompanied with Lightning** very likely at isolated places over Karnataka, Kerala & Mahe and Uttar Pradesh.

Squally weather with wind speeds reaching 35 kmph to 45 kmph gusting to 55 kmph is likely to prevail along and off North Odisha and West Bengal coasts and adjoining sea area.

***Red color warning does not mean "Red Alert" Red color warning means "Take Action"**
Forecast and warning for any day is valid from 0830 hours IST of day till 0830 hours IST of next day
For more details kindly visit <https://mausam.imd.gov.in> or contact 011-2434-4599

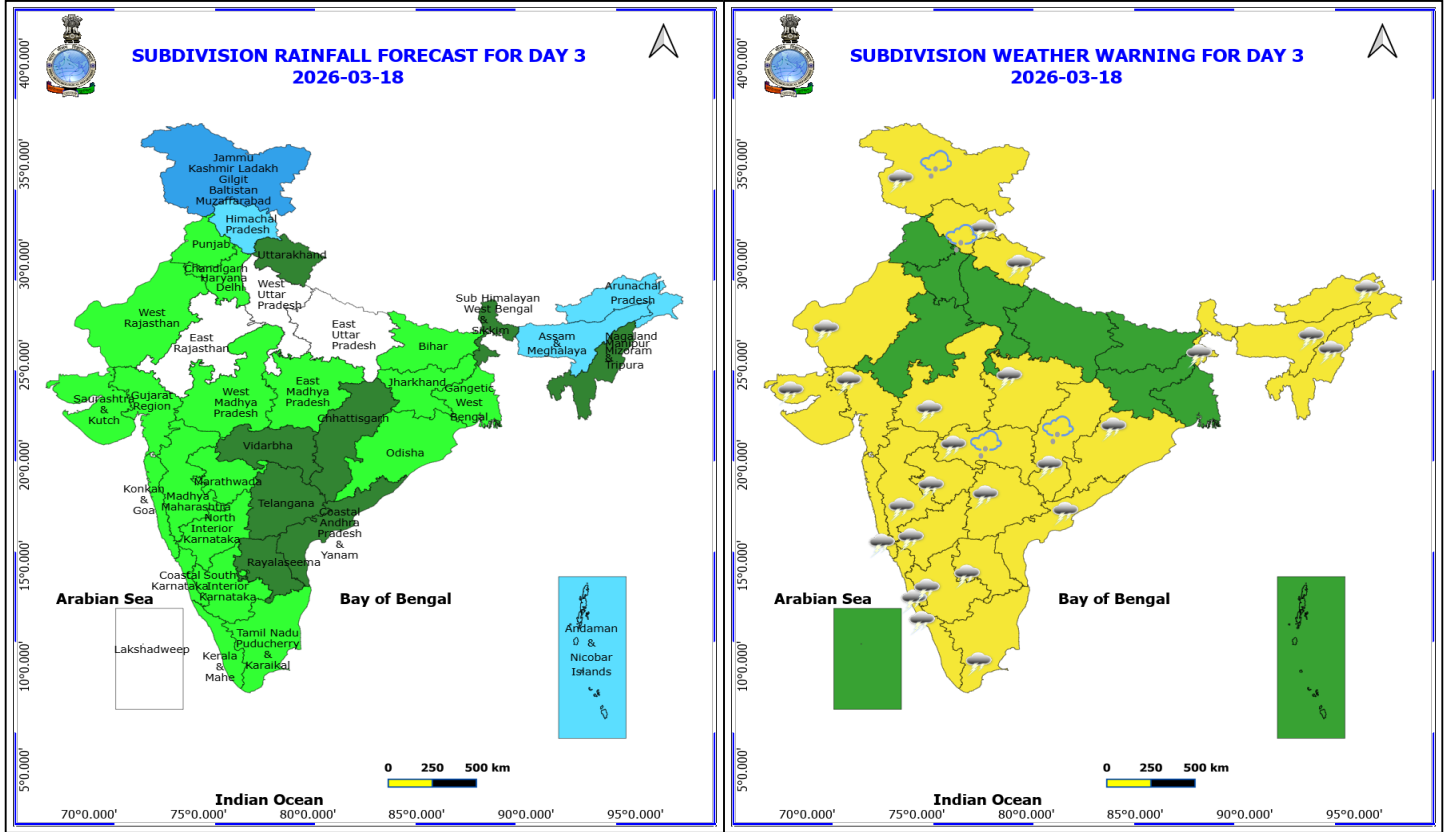
(Service to the nation since 1875)



17 March (Day 2)

- ❖ **Heavy Rainfall** very likely at isolated places over Arunachal Pradesh and Assam & Meghalaya.
- ❖ **Thunderstorm accompanied with lightning & gusty winds(40-50kmph)** very likely at isolated places over Jharkhand and Nagaland, Manipur, Mizoram and Tripura.
- ❖ **Thunderstorm accompanied with lightning & gusty winds(30-40kmph)** very likely at isolated places over Andhra Pradesh, Arunachal Pradesh, Assam & Meghalaya, Bihar, Chhattisgarh, Himachal Pradesh, Maharashtra, Odisha, Telangana and West Bengal & Sikkim.
- ❖ **Thunderstorm accompanied with Lightning** very likely at isolated places over Karnataka, Kerala & Mahe and Tamil Nadu Puducherry & Karaikal.

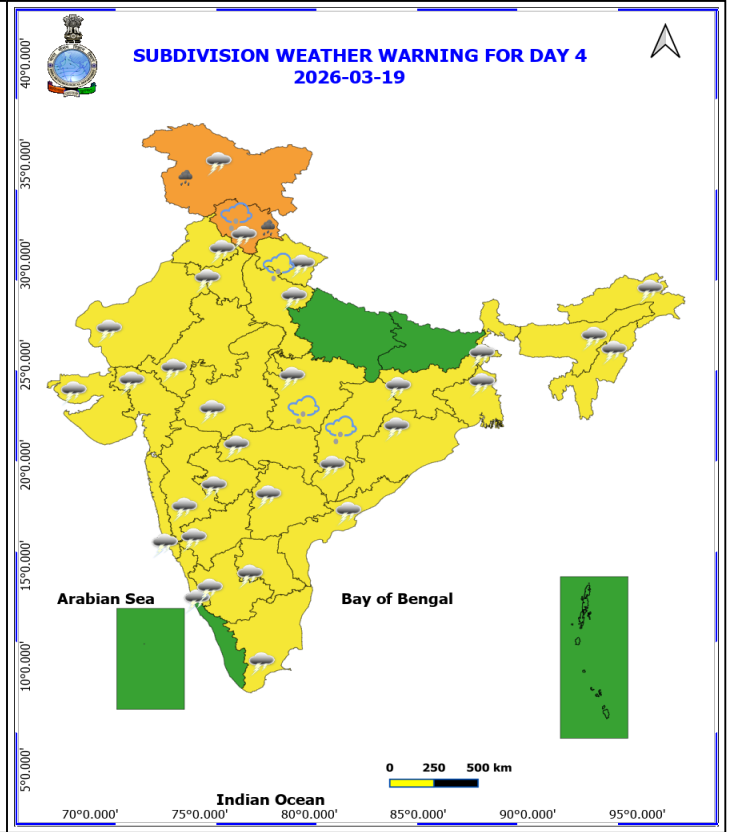
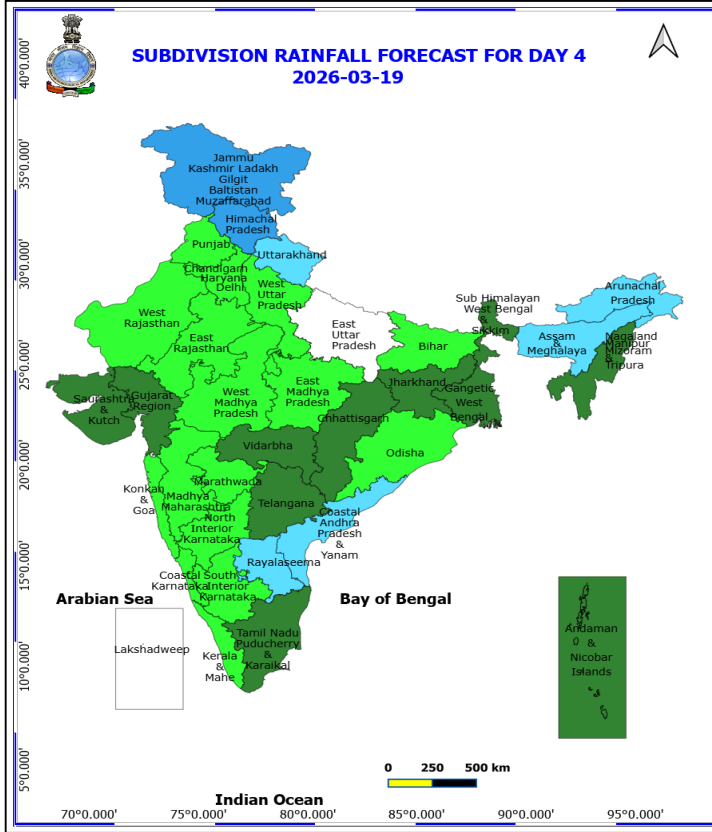
No Fishermen Warning



18 March (Day 3)

- ❖ **Thunderstorm accompanied with Hailstorm** very likely at isolated places over Chhattisgarh, Himachal Pradesh, Jammu-Kashmir-Ladakh-Gilgit-Baltistan-Muzaffarabad and Vidarbha.
- ❖ **Thunderstorm accompanied with lightning & gusty winds(40-50kmph)** very likely at isolated places over Andhra Pradesh, Chhattisgarh, Gujarat State, Himachal Pradesh, Jammu-Kashmir-Ladakh-Gilgit-Baltistan-Muzaffarabad, Madhya Pradesh, Maharashtra, Telangana and Uttarakhand.
- ❖ **Thunderstorm accompanied with lightning & gusty winds(30-40kmph)** very likely at isolated places over Nagaland, Manipur, Mizoram and Tripura, Odisha, South Interior Karnataka, Sub Himalayan West Bengal & Sikkim and West Rajasthan.
- ❖ **Thunderstorm accompanied with Lightning** very likely at isolated places over Arunachal Pradesh, Assam & Meghalaya, Karnataka, Kerala & Mahe, Konkan & Goa and Tamil Nadu Puducherry & Karaikal.

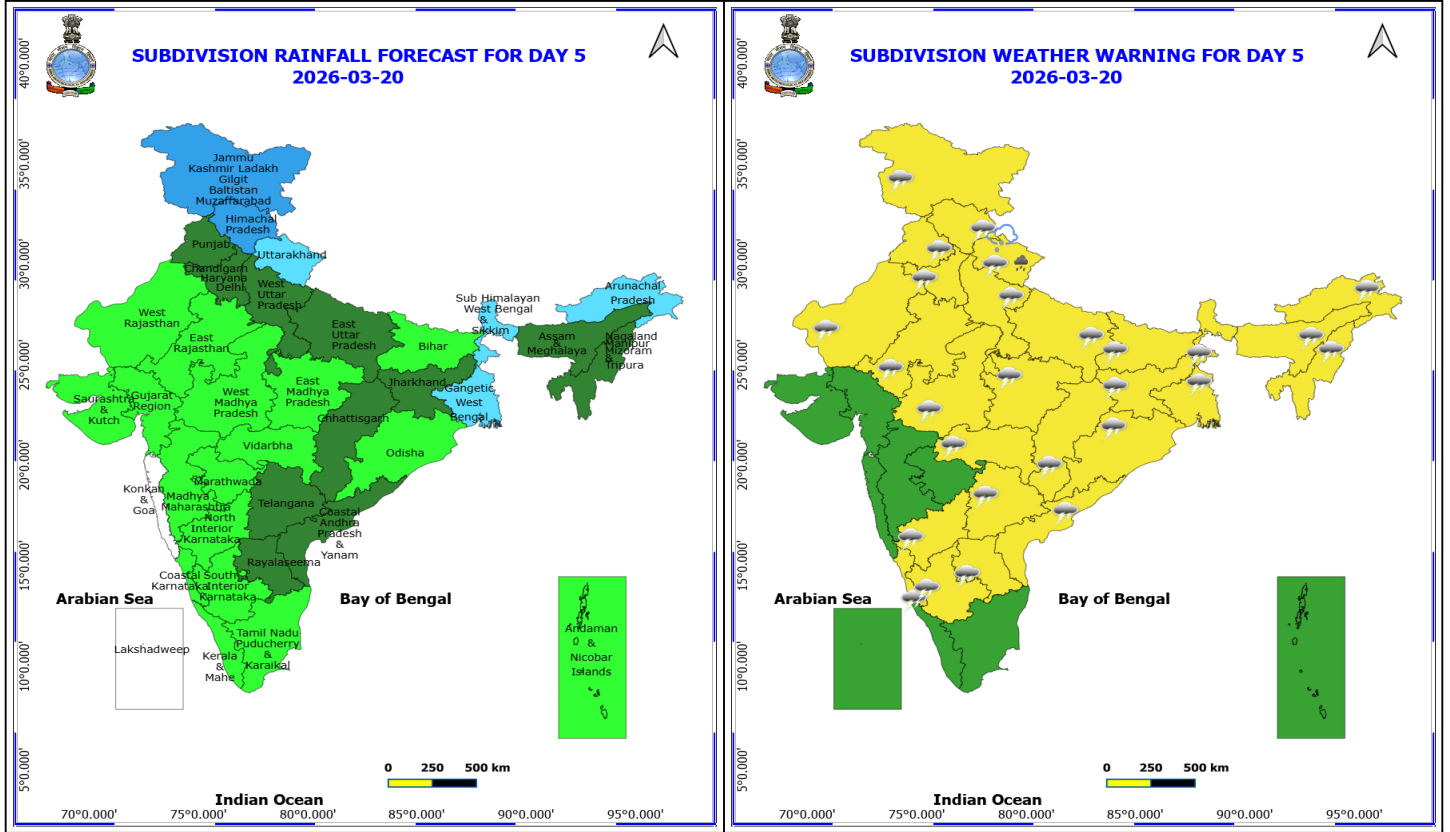
No Fishermen Warning



19 March (Day 4)

- ❖ **Heavy Rainfall** likely at isolated places over Himachal Pradesh and Jammu-Kashmir-Ladakh-Gilgit-Baltistan-Muzaffarabad.
- ❖ **Thunderstorm accompanied with Hailstorm** likely at isolated places over Chhattisgarh, East Madhya Pradesh, Himachal Pradesh and Uttarakhand.
- ❖ **Thundersquall with wind speed reaching(50-60kmph)** likely at isolated places over Uttarakhand.
- ❖ **Thunderstorm accompanied with lightning & gusty winds(40-50kmph)** likely at isolated places over Andhra Pradesh, Chhattisgarh, Gujarat State, Haryana, Chandigarh & Delhi, Himachal Pradesh, Jammu-Kashmir-Ladakh-Gilgit-Baltistan-Muzaffarabad, Jharkhand, Madhya Pradesh, Maharashtra, Punjab, Rajasthan, Telangana and West Uttar Pradesh.
- ❖ **Thunderstorm accompanied with lightning & gusty winds(30-40kmph)** likely at isolated places over Odisha, South Interior Karnataka and West Bengal & Sikkim.
- ❖ **Thunderstorm accompanied with Lightning** likely at isolated places over Arunachal Pradesh, Assam & Meghalaya, Karnataka, Konkan & Goa, Nagaland, Manipur, Mizoram and Tripura and Tamil Nadu Puducherry & Karaikal.

No Fishermen Warning



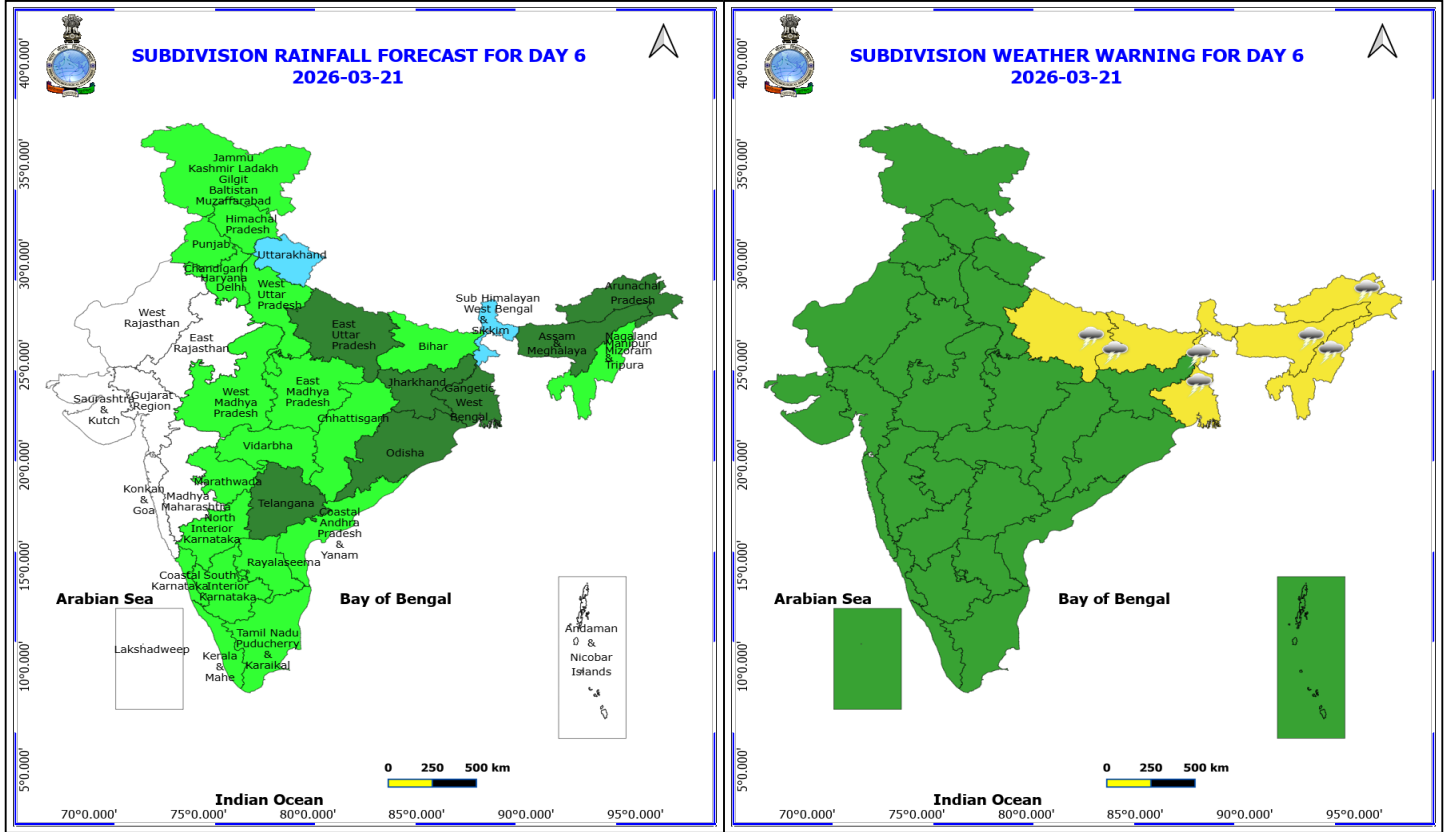
20 March (Day 5)

- ❖ **Heavy Rainfall** likely at isolated places over Uttarakhand.
- ❖ **Thunderstorm accompanied with Hailstorm** likely at isolated places over Uttarakhand.
- ❖ **Thundersquall with wind speed reaching(50-60kmph)** likely at isolated places over Uttarakhand and West Bengal & Sikkim.
- ❖ **Thunderstorm accompanied with lightning & gusty winds(40-50kmph)** likely at isolated places over Chhattisgarh, Coastal Andhra Pradesh, Haryana, Chandigarh & Delhi, Jharkhand, Madhya Pradesh, Punjab, Rajasthan, Telangana, Uttar Pradesh and Vidarbha.
- ❖ **Thunderstorm accompanied with lightning & gusty winds(30-40kmph)** likely at isolated places over Bihar, Himachal Pradesh, Odisha and Rayalaseema.
- ❖ **Thunderstorm accompanied with Lightning** likely at isolated places over Arunachal Pradesh, Assam & Meghalaya, Jammu-Kashmir-Ladakh-Gilgit-Baltistan-Muzaffarabad, Karnataka and Nagaland, Manipur, Mizoram and Tripura.

No Fishermen Warning

***Red color warning does not mean "Red Alert" Red color warning means "Take Action"**
Forecast and warning for any day is valid from 0830 hours IST of day till 0830 hours IST of next day
For more details kindly visit <https://mausam.imd.gov.in> or contact 011-2434-4599

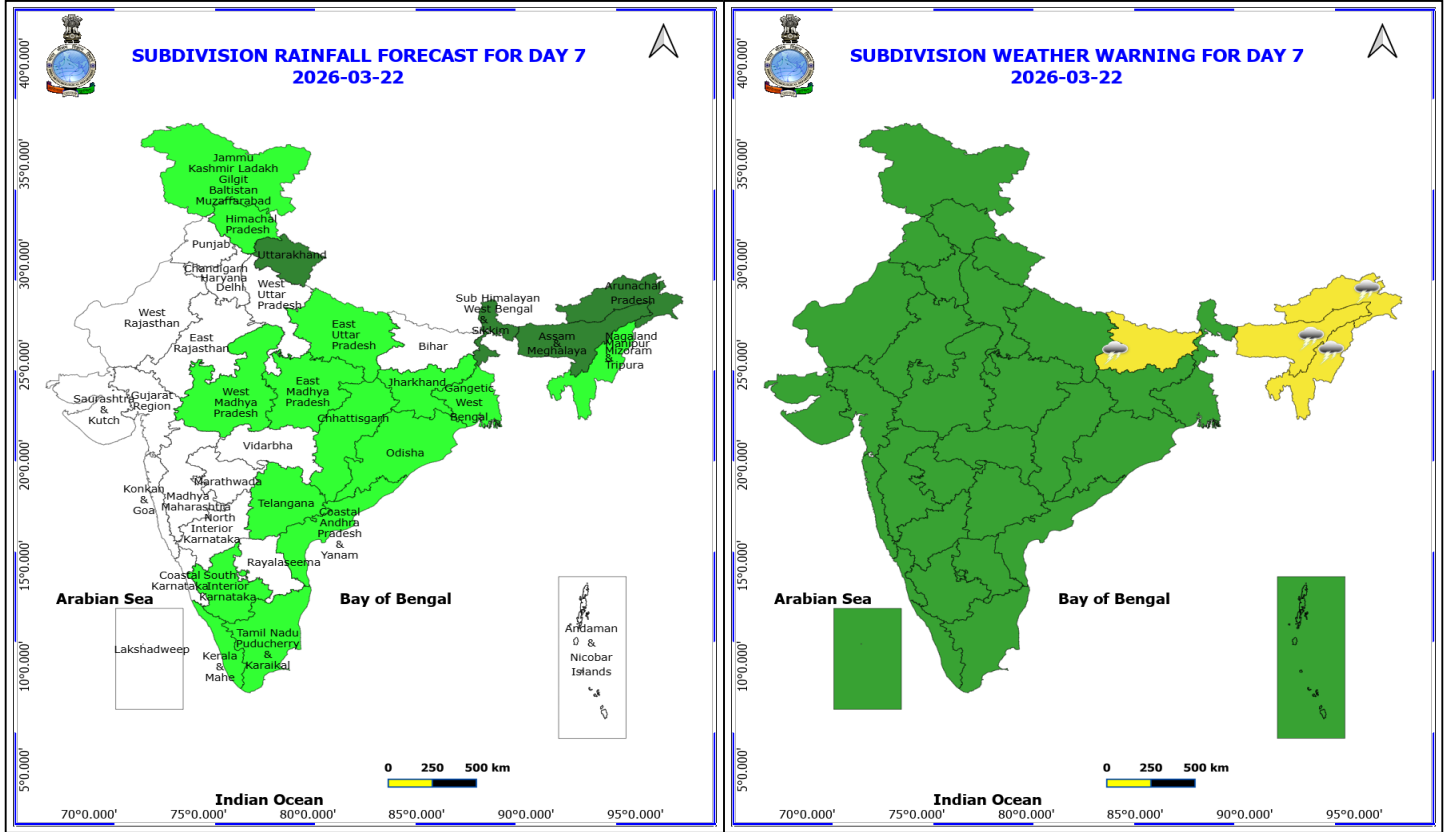
(Service to the nation since 1875)



21 March (Day 6)

- ❖ **Thunderstorm accompanied with lightning & gusty winds(40-50kmph)** likely at isolated places over East Uttar Pradesh and West Bengal & Sikkim.
- ❖ **Thunderstorm accompanied with lightning & gusty winds(30-40kmph)** likely at isolated places over Bihar.
- ❖ **Thunderstorm accompanied with Lightning** likely at isolated places over Arunachal Pradesh, Assam & Meghalaya and Nagaland, Manipur, Mizoram and Tripura.

No Fishermen Warning



22 March (Day 7)

- ❖ **Thunderstorm accompanied with lightning & gusty winds(30-40kmph)** likely at isolated places over Bihar.
- ❖ **Thunderstorm accompanied with Lightning** likely at isolated places over Arunachal Pradesh, Assam & Meghalaya and Nagaland, Manipur, Mizoram and Tripura.

No Fishermen Warning

*Red color warning does not mean "Red Alert" Red color warning means "Take Action"
Forecast and warning for any day is valid from 0830 hours IST of day till 0830 hours IST of next day
For more details kindly visit <https://mausam.imd.gov.in> or contact 011-2434-4599
(Service to the nation since 1875)



Table-1

7 Days Rainfall Forecast

S.No.	Subdivision	16-Mar	17-Mar	18-Mar	19-Mar	20-Mar	21-Mar	22-Mar
		Day 1	Day 2	Day 3	Day 4	Day 5	Day 6	Day 7
1	ANDAMAN & NICOBAR ISLANDS	SCT	SCT	FWS	SCT	ISOL	DRY	DRY
2	ARUNACHAL PRADESH	WS	WS	FWS	FWS	FWS	SCT	SCT
3	ASSAM & MEHGHALAYA	WS	WS	FWS	FWS	SCT	SCT	SCT
4	N. M. M. & T.	FWS	SCT	SCT	SCT	SCT	ISOL	ISOL
5	S.H. WEST BENGAL & SIKKIM	WS	FWS	SCT	SCT	FWS	FWS	SCT
6	GANGETIC WEST BENGAL	FWS	ISOL	ISOL	SCT	FWS	SCT	ISOL
7	ODISHA	SCT	ISOL	ISOL	ISOL	ISOL	SCT	ISOL
8	JHARKHAND	SCT	ISOL	ISOL	SCT	SCT	SCT	ISOL
9	BIHAR	ISOL	ISOL	ISOL	ISOL	ISOL	ISOL	DRY
10	EAST UTTAR PRADESH	ISOL	DRY	DRY	DRY	SCT	SCT	ISOL
11	WEST UTTAR PRADESH	ISOL	DRY	DRY	ISOL	SCT	ISOL	DRY
12	UTTARAKHAND	FWS	ISOL	SCT	FWS	FWS	FWS	SCT
13	HARYANA, CHD & DELHI	ISOL	DRY	ISOL	ISOL	SCT	ISOL	DRY
14	PUNJAB	SCT	DRY	ISOL	ISOL	SCT	ISOL	DRY
15	HIMACHAL PRADESH	FWS	SCT	FWS	WS	WS	ISOL	ISOL
16	JAMMU AND KASHMIR AND LADAKH	FWS	SCT	WS	WS	WS	ISOL	ISOL
17	WEST RAJASTHAN	DRY	DRY	ISOL	ISOL	ISOL	DRY	DRY
18	EAST RAJASTHAN	DRY	DRY	DRY	ISOL	ISOL	DRY	DRY
19	WEST MADHYA PRADESH	DRY	DRY	ISOL	ISOL	ISOL	ISOL	ISOL
20	EAST MADHYA PRADESH	DRY	DRY	ISOL	ISOL	ISOL	ISOL	ISOL
21	GUJRAT REGION	DRY	DRY	ISOL	SCT	ISOL	DRY	DRY
22	SAURASHTRA & KUTCH	DRY	DRY	ISOL	SCT	ISOL	DRY	DRY
23	KONKAN & GOA	DRY	DRY	ISOL	ISOL	DRY	DRY	DRY
24	MADHYA MAHARASHTRA	ISOL	ISOL	ISOL	ISOL	ISOL	DRY	DRY
25	MARATHWADA	ISOL	ISOL	ISOL	ISOL	ISOL	ISOL	DRY
26	VIDARBHA	ISOL	ISOL	SCT	SCT	ISOL	ISOL	DRY
27	CHATTISGARH	ISOL	ISOL	SCT	SCT	SCT	ISOL	ISOL
28	COASTAL ANDHRA PRADESH	ISOL	ISOL	SCT	FWS	SCT	ISOL	ISOL
29	TELANGANA	ISOL	SCT	SCT	SCT	SCT	SCT	ISOL
30	RAYALASEEMA	DRY	ISOL	SCT	FWS	SCT	ISOL	DRY
31	TAMILNADU & PUDUCHERRY	ISOL	ISOL	ISOL	SCT	ISOL	ISOL	ISOL
32	COSTAL KARNATAKA	ISOL	ISOL	ISOL	ISOL	ISOL	ISOL	DRY
33	NORTH INTERIOR KARNATAKA	ISOL	ISOL	ISOL	ISOL	ISOL	ISOL	DRY
34	SOUTH INTERIOR KARNATAKA	ISOL	ISOL	ISOL	ISOL	ISOL	ISOL	ISOL
35	KERALA	ISOL	ISOL	ISOL	ISOL	ISOL	ISOL	ISOL
36	LAKSHDWEEP	DRY	DRY	DRY	DRY	DRY	DRY	DRY

Legend	Category	%Stations
WS	Widespread/Most Places	76-100
FWS	Fairly Widespread/Many Places	51-75
SCT	Scattered/ A Few Places	26-50
ISOL	Isolated Places	1-25
DRY	No Rain	0

*Red color warning does not mean "Red Alert" Red color warning means "Take Action"
Forecast and warning for any day is valid from 0830 hours IST of day till 0830 hours IST of next day
For more details kindly visit <https://mausam.imd.gov.in> or contact 011-2434-4599

(Service to the nation since 1875)

Fig. 1: Maximum Temperatures Dated 2026-03-15

Fig. 2: Departure of Maximum Temp. Dated 2026-03-15

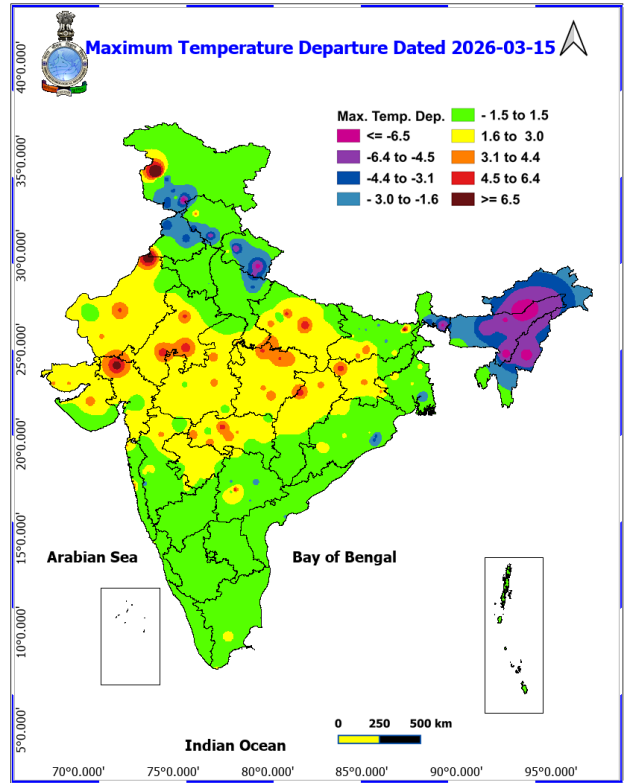
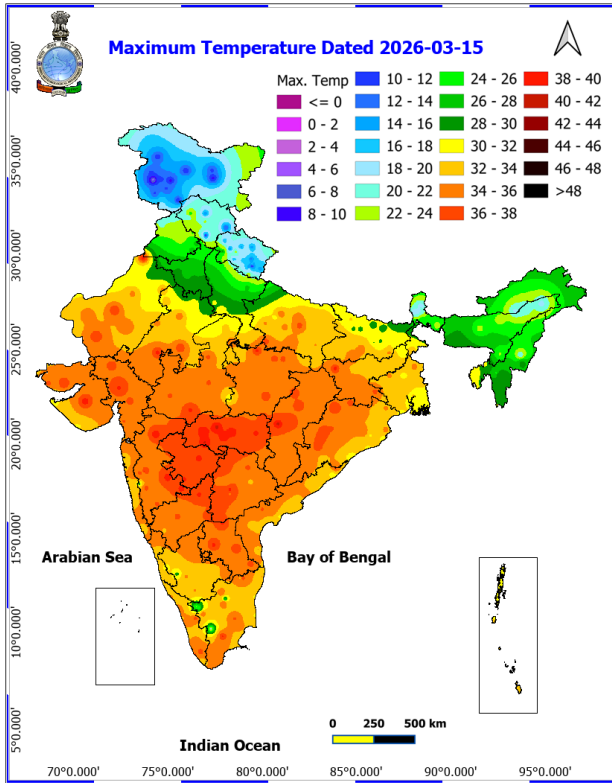
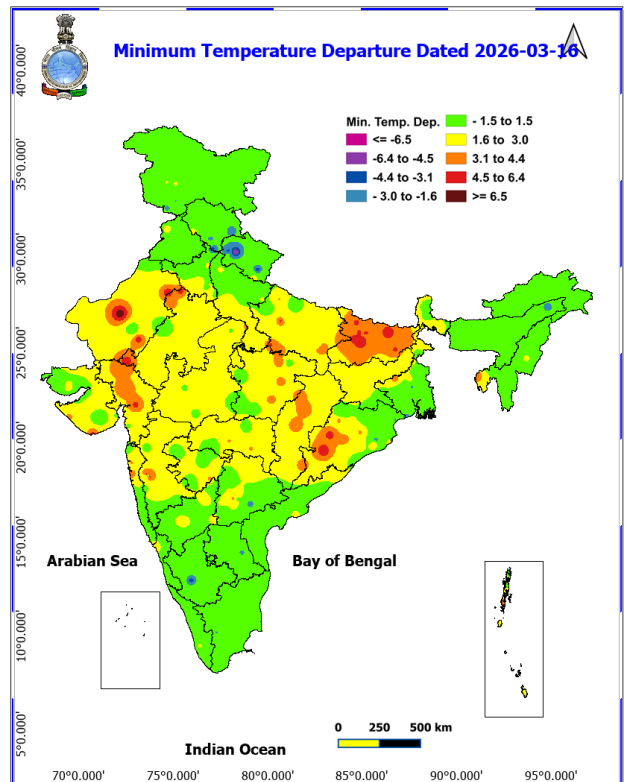
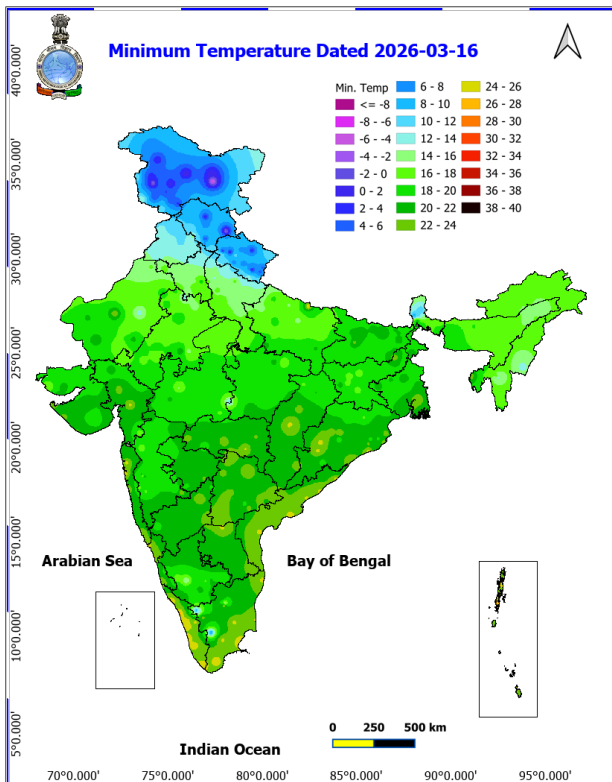
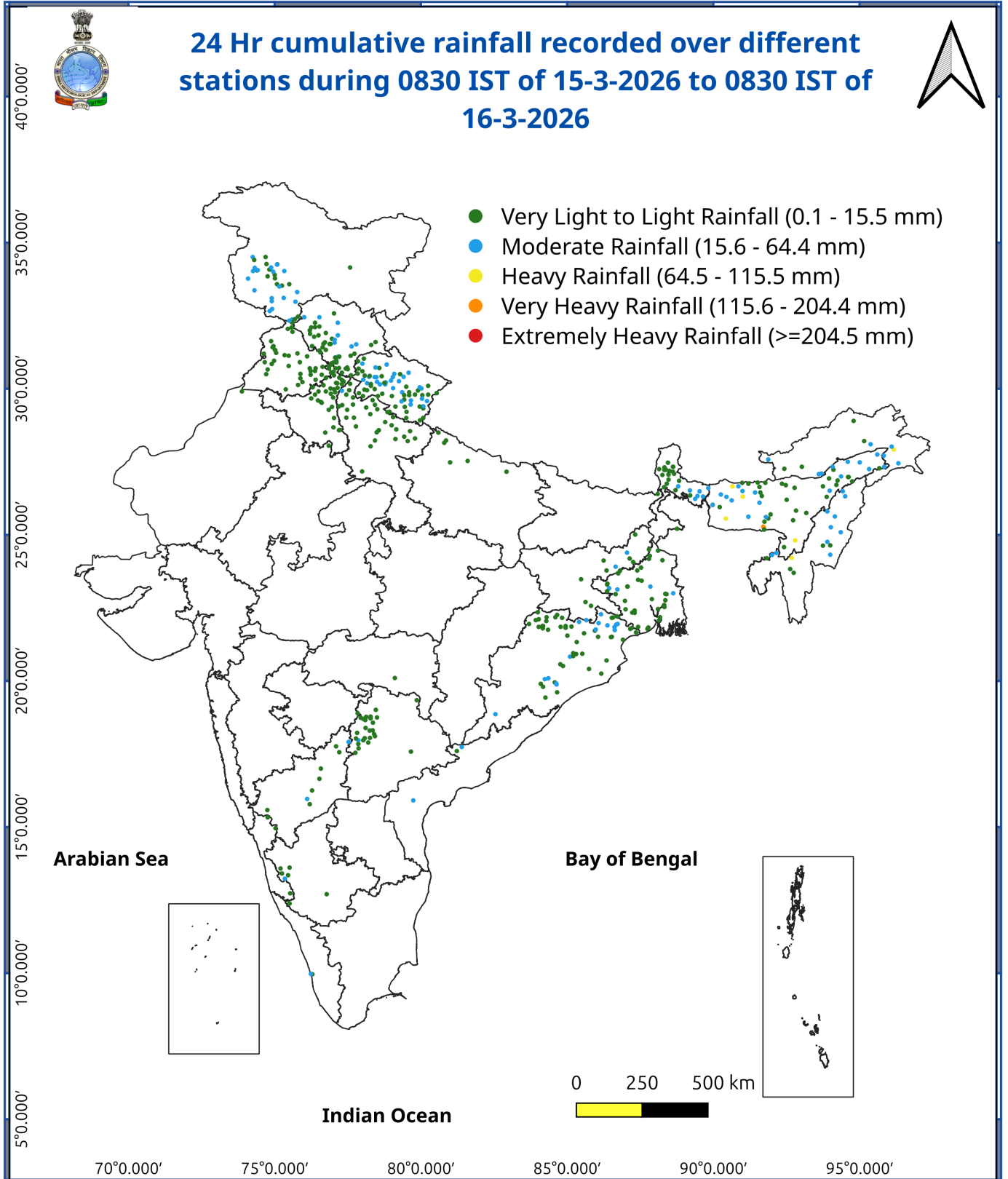


Fig. 3: Minimum Temperatures Dated 2026-03-16

Fig. 4: Departure of Minimum Temp. Dated 2026-03-16





Impact expected and action suggested due to isolated thunderstorm with lightning/squally winds & Hailstorm over

- Isolated **Hailstorm** activity likely over Himachal Pradesh on 16th, 18th & 19th; Uttarakhand on 16th, 19th & 20th; Punjab on 16th; Jammu-Kashmir-Ladakh-Gilgit-Baltistan-Muzaffarabad on 18th; Assam & Meghalaya and Nagaland, Manipur, Mizoram & Tripura on 16th; East Madhya Pradesh on 19th; Vidarbha on 18th; Chhattisgarh on 18th & 19th; West Bengal & Sikkim, Odisha, Jharkhand and Bihar on 16th March.
- **Thundersquall** (wind speed reaching 50-60 kmph gusting to 70 kmph) very likely at isolated places over Uttarakhand on 19th & 20th; Sub-Himalayan West Bengal & Sikkim on 20th, Gangetic West Bengal on 16th & 20th; Odisha & Jharkhand on 16th March.

Impact expected:

- Breaking of tree branches, uprooting of large avenue trees. Large dead limbs blown from trees. Damage to Standing crops.
- Minor to Major damage to banana and papaya trees.
- Minor to major damage to power and communication lines due to breaking of branches.
- Strong wind/hail may damage plantation, horticulture and standing crops.
- Hail may injure people and cattle at open places.
- Partial damage to vulnerable structures due to strong winds.
- Minor damage to kutcha houses/walls and huts.
- Loose objects may fly.

Action suggested:

- People are advised to keep a watch on the weather for worsening conditions and be ready to move to safer places accordingly.
- Stay indoors, close windows & doors and avoid travel if possible.
- Take safe shelters; do not take shelter under trees.
- Do not lie on concrete floors and do not lean against concrete walls.
- Unplug electrical/ electronic appliances.
- Immediately get out of water bodies.
- Keep away from all the objects that conduct electricity.

Agromet advisories for various parts of the country

Agromet advisories for likely impact of Hailstorms

Use hail nets or hail caps in fruit orchards and vegetable plants to protect them from mechanical damage in Himachal Pradesh, Uttarakhand, Punjab, Odisha, West Bengal, Bihar, Jharkhand, Assam, Meghalaya, Manipur and Mizoram.

Agromet advisories for likely impact of Heavy Rainfall

In **Arunachal Pradesh**, postpone harvesting of cabbage, pea, mustard and late-maturing paddy varieties and digging of potatoes. Shift the harvested produce to safe places. Drain out excess rainwater from the standing crop fields. Nursery for chilli, tomato, and other vegetables may be prepared under covered shelters or poly houses to protect seedlings from rain. Open nurseries should be immediately covered with polythene sheets or sack cloths to protect seedlings from rain.

In **Assam**, drain out excess rainwater from the standing crop fields.

In **Meghalaya**, ensure proper drainage in summer vegetable crops. Carry out staking and propping of plantation crops and protect young seedlings from heavy rainfall. Keep the harvested pods of garden peas in safer place immediately.

***Red color warning does not mean "Red Alert" Red color warning means "Take Action"**

Forecast and warning for any day is valid from 0830 hours IST of day till 0830 hours IST of next day

For more details kindly visit <https://mausam.imd.gov.in> or contact 011-2434-4599

(Service to the nation since 1875)

In **Manipur**, harvest mature rapeseed, mustard, lentil during clear weather. Avoid water stagnation in the crop field due to rains.

In **Sub-Himalayan West Bengal**, drain out excess rainwater from the standing crop fields. Cover the nursery of cucurbits and Dalle Korsani with polyethylene sheets or agro-net to protect the seedlings from adverse weather conditions.

Agromet advisories for likely impact of Thunderstorm / Gusty Winds

Provide mechanical support to horticultural crops and staking or support to vegetables and young fruit plants / fruit-bearing plants to avoid lodging due to strong winds.

Shift the harvested produce in safer places or cover the produce with tarpaulin sheets in the fields. Tie the harvested crops properly and cover them to minimise the risk of displacement due to strong surface winds.

Livestock / Poultry

Keep the animals inside the shed during Heavy Rainfall/Hailstorm period and provide them balanced feed. Store feed and fodder in a safe place to prevent spoilage.

Provide clean, hygienic and plenty of drinking water to animals.

LEGENDS

- 1 अंडमान और निकोबार द्वीप समुह
- 2 अरुणाचल प्रदेश
- 3 असम और मेघालय
- 4 नागालैंड मनीपुर मीजोरम और त्रिपुरा
- 5 उप हिमालय पश्चिम बंगाल एवं सिक्किम
- 6 पश्चिम बंगाल
- 7 ओडिसा
- 8 झारखंड
- 9 बिहार
- 10 पूर्वी उत्तर प्रदेश
- 11 पश्चिम उत्तर प्रदेश
- 12 उत्तराखंड
- 13 हरियाणा चंडिगढ़ एवं दिल्ली
- 14 पंजाब
- 15 हिमाचल प्रदेश
- 16 जम्मू एवं कश्मीर एवं लद्दाख
- 17 पश्चिम राजस्थान
- 18 पूर्वी राजस्थान
- 19 पश्चिम मध्य प्रदेश
- 20 पूर्वी मध्य प्रदेश
- 21 गुजरात क्षेत्र
- 22 सौराष्ट्र एवं कच्छ
- 23 कोंकण एवं गोवा
- 24 मध्य महाराष्ट्र
- 25 मराठावाडा
- 26 विदर्भ
- 27 छत्तीसगढ़
- 28 तटीय आंध्र प्रदेश एवं यनम
- 29 तेलंगाना
- 30 रायलसीमा
- 31 तमिलनाडु, पुदुचेरी एवं कराईकल
- 32 तटिय कर्नाटक
- 33 आंतरिक उत्तरी कर्नाटक
- 34 आंतरिक दक्षिणी कर्नाटक
- 35 केरल एवं माहे
- 36 लक्षद्वीप



1. Andaman & Nicobar Islands
2. Arunachal Pradesh
3. Assam & Meghalaya
4. Nagaland, Manipur, Mizoram & Tripura
5. Sub-Himalayan West Bengal & Sikkim
6. Gangetic West Bengal
7. Orissa
8. Jharkhand
9. Bihar
10. East Uttar Pradesh
11. West Uttar Pradesh
12. Uttarakhand
13. Haryana, Chd & Delhi
14. Punjab
15. Himachal Pradesh
16. Jammu & Kashmir and Ladakh
17. West Rajasthan
18. East Rajasthan
19. West Madhya Pradesh
20. East Madhya Pradesh
21. Gujarat
22. Saurashtra
23. Konkan & Goa
24. Madhya Maharashtra
25. Marathawada
26. Vidharbha
27. Chhattisgarh
28. Coastal Andhra Pradesh & Yanam
29. Telangana
30. Rayalaseema
31. Tamilnadu, Puducherry & Karaikal
32. Coastal Karnataka
33. North Interior Karnataka
34. South Interior Karnataka
35. Kerala & Mahe
36. Lakshadweep

SPATIAL DISTRIBUTION (% of Stations reporting)

% Stations	Category	% Stations	Category
76-100	Widespread (WS/ Most Places)	26-50	Scattered (SCT/ A Few Places)
51-75	Fairly Widespread (FWS/ Many Places)	1-25	Isolated (ISOL)

Subdivision Colour

- NO WARNING
- WATCH (BE UPDATED)
- ALERT (BE PREPARED TO TAKE ACTION)
- WARNING (TAKE ACTION)

Probabilistic Forecast

Terms	Probability of Occurrence (%)
Unlikely	< 25
Likely	25 - 50
Very Likely	50 - 75
Most Likely	> 75

- | | | | |
|--------------------------|-----------------|----------------------|--------------------|
| Heavy Rain | Very Heavy Rain | Extremely Heavy Rain | Heavy Snow |
| Thunderstorm & Lightning | Hailstorm | Dust Storm | Dust Raising Winds |
| Strong surface winds | Heat Wave | Hot Day | Warm Night |
| Cold Wave | Cold Day | Ground Frost | Fog |
| Hot & Humid | | | |

*Red color warning does not mean "Red Alert" Red color warning means "Take Action"

Forecast and warning for any day is valid from 0830 hours IST of day till 0830 hours IST of next day

For more details kindly visit <https://mausam.imd.gov.in> or contact 011-2434-4599

(Service to the nation since 1875)

LEGENDS

WARNING

WARNING (TAKE ACTION)
ALERT (BE PREPARED)
WATCH (BE UPDATED)
NO WARNING (NO ACTION)

Probabilistic Forecast

Terms	Probability of Occurrence (%)
Unlikely	< 25
Likely	25 - 50
Very Likely	50 - 75
Most Likely	> 75



Heavy: 64.5 to 115.5 mm/cm *
Very Heavy: 115.6 to 204.4 mm/cm*
Extremely Heavy: > 204.4 mm/cm *



When maximum temperature of a station reaches $\geq 40^{\circ}\text{C}$ for plains and $\geq 30^{\circ}\text{C}$ for hilly regions
(a) Based on Departure from normal

Heat Wave: Maximum Temperature Departure from normal 4.5°C to 6.4°C .
Severe Heat Wave: Maximum Temperature Departure from normal $\geq 6.5^{\circ}\text{C}$

(b). Based on Actual maximum temperature

Heat Wave: When actual maximum temperature $\geq 45^{\circ}\text{C}$.
Severe Heat Wave: When actual maximum temperature $\geq 47^{\circ}\text{C}$

(c). Criteria for heat wave for coastal stations

When maximum temperature departure is $> 4.5^{\circ}\text{C}$ from normal. Heat Wave may be described provided maximum temperature $\geq 37^{\circ}\text{C}$



When maximum temperature remains 40°C

Warm Night: When minimum temperature departure 4.5°C to 6.4°C .
Severe Warm Night: When minimum temperature departure $> 6.4^{\circ}\text{C}$.



When minimum temperature of a station $\leq 10^{\circ}\text{C}$ for plains and $\leq 0^{\circ}\text{C}$ for hilly regions.

(a). Based on departure

Cold Wave: Minimum Temperature Departure from normal -4.5°C to -6.4°C .
Severe Cold Wave: Minimum Temperature Departure from normal $\leq -6.5^{\circ}\text{C}$

(b) Based on actual Minimum Temperature (for Plains only)

Cold Wave : When Minimum Temperature is $\leq 4.0^{\circ}\text{C}$
Severe Cold Wave: When Minimum Temperature is $\leq 2.0^{\circ}\text{C}$

(c) For Coastal Stations

When Minimum Temperature departure is $\leq -4.5^{\circ}\text{C}$ & actual Minimum Temperature is $\leq 15^{\circ}\text{C}$



When minimum temperature of a station $\leq 10^{\circ}\text{C}$ for plains and $\leq 0^{\circ}\text{C}$ for hilly regions
Based on departure

Cold Day: Maximum Temperature Departure from normal -4.5°C to -6.4°C .
Severe Cold Day: Maximum Temperature Departure from normal $\leq -6.5^{\circ}\text{C}$



Phenomenon of small droplets suspended in air and the horizontal visibility $< 1\text{km}$

Moderate Fog: When the visibility between 500-200 metres
Dense Fog: when the visibility between 50- 200 metres
Very Dense Fog: when the visibility < 50 metres



Sudden electrical discharges manifested by a flash of light (Lightning) and a sharp rumbling sound (thunder)



An ensemble of particles of dust or sand energetically lifted to great heights by a strong and turbulent wind.



Ice deposits on ground

Air temperature $\leq 4^{\circ}\text{C}$ (over Plains)



A strong wind that rises suddenly, lasts for atleast 1 minute.

Moderate: Wind speed 52-61 kmph
Severe: Wind speed 62-87 kmph
Very Severe: Wind speed > 87 kmph



Effect of various waves in the sea over specific area

Rough to very rough: Wind speed 41-62 kmph (22-33 knots) & Wave height 2.5-6 metre
High to very high: Wind speed 63-117 kmph (34-63 knots) & Wave height 6-14 metre
Phenomenal: Wind speed > 117 kmph (> 63 knots) & Wave height > 14 metre



Cyclonic Storm: Wind speed 62-87 kmph (34-47 knots)
Severe Cyclonic Storm: Wind speed 88-117 kmph (48-63 knots)
Very Severe Cyclonic Storm: Wind speed 118-165 kmph (64 - 89 knots)
Extremely Severe Cyclonic Storm: Wind speed 166-220 kmph (90 -119 knots)
Super Cyclone Storm: Wind speed > 220 kmph (> 119 knots)

*Red color warning does not mean "Red Alert" Red color warning means "Take Action"

Forecast and warning for any day is valid from 0830 hours IST of day till 0830 hours IST of next day

For more details kindly visit <https://mausam.imd.gov.in> or contact 011-2434-4599

(Service to the nation since 1875)