

2026-03-18

Time of Issue: 13:59:00 hours IST
(Mid-Day)

ALL INDIA WEATHER SUMMARY AND FORECAST BULLETIN

Significant Weather Features

Weather Systems, Forecast and Warnings:

Northwest India:

- **Fairly widespread to widespread** light to moderate rainfall/snowfall with isolated thunderstorm, lightning & gusty winds speed reaching (40-50 kmph) likely over Western Himalayan region during 18th-20th March and reduction in intensity thereafter. **Isolated heavyrainfall/snowfall very likely over Jammu-Kashmir-Ladakh, Himachal Pradesh and Uttarakhand on 19th & 20th March.**
- Isolated to Scattered light to moderate rainfall accompanied with isolated thunderstorm, lightning & gusty winds speed reaching (40-50 kmph) likely over Punjab, Rajasthan during 18th-20th; Haryana Chandigarh & Delhi, West Uttar Pradesh on 19th & 20th and East Uttar Pradesh on 20th & 21st March.
- **Thundersquall (wind speed reaching 50-60 kmph gusting to 70 kmph)** very likely at isolated places over Uttarakhand on 19th & 20th; Uttar Pradesh on 20th March.
- Isolated **Hailstorm** activity likely over Jammu-Kashmir-Ladakh, Himachal Pradesh on 18th & 19th; Uttarakhand, Punjab, Haryana, Chandigarh, West Uttar Pradesh, East Rajasthan on 19th & 20th; West Rajasthan on 19th; East Uttar Pradesh on 20th March.

Northeast India:

- **Scattered to fairly widespread** light to moderate rainfall with **thunderstorm & lightning** likely over Northeast India during next 5 days.
- Isolated **heavyrainfall** very likely over Assam & Meghalaya on 20th & 21st March.
- **East & Central India:**
- **Fairly widespread to widespread** light to moderate rainfall with **thunderstorm, lightning & gusty winds speed reaching (30-50 kmph)** likely over Sub-Himalayan West Bengal & Sikkim during 18th-22nd March. Isolated **heavyrainfall** very likely over Sub-Himalayan West Bengal & Sikkim on 20th & 21st March.
- **Isolated to Scattered** light to moderate rainfall with **thunderstorm, lightning & gusty winds speed reaching (30-50 kmph)** likely over Central & East India during next 4-5 days.
- **Thundersquall (wind speed reaching 60-70 kmph gusting to 80 kmph)** very likely at isolated places over Jharkhand on 20th; Gangetic West Bengal on 21st March.
- **Thundersquall (wind speed reaching 50-60 kmph gusting to 70 kmph)** at isolated places over Sub-Himalayan West Bengal & Sikkim and Odisha on 20th & 21st; Gangetic West Bengal on 20th March.
- Isolated **Hailstorm** activity likely over Vidarbha on 18th; Chhattisgarh on 18th & 19th; East Madhya Pradesh on 19th & 20th; West Madhya Pradesh, Jharkhand on 20th; West Bengal & Sikkim on 20th & 21st; Odisha during 19th-21st March.

South Peninsular India:

- **Isolated to Scattered** light to moderate rainfall with **thunderstorm, lightning & gusty winds speed reaching (30-50 kmph)** likely over Kerala & Mahe on 18th & 19th; Coastal Andhra Pradesh & Yanam, Rayalaseema during 18th-22nd; Telangana, North Interior Karnataka during 18th-21st; South Interior Karnataka on 18th; **with lightning** over Tamil Nadu, Puducherry & Karaikal during 18th-21st and Coastal Karnataka during 18th -20th March.
- **Thundersquall (wind speed reaching 50-60 kmph gusting to 70 kmph)** very likely at isolated places over North Interior Karnataka on 18th March.
- Isolated **Hailstorm** activity likely over Telangana and Interior Karnataka on 18th March.

West India:

- **Isolated to scattered** light/moderate rainfall with **thunderstorm & lightning & gusty winds speed reaching (40-50 kmph)** likely over Konkan & Goa and Gujarat State on 18th & 19th; Madhya Maharashtra, Marathwada on 20th March.

*Red color warning does not mean "Red Alert" Red color warning means "Take Action"

Forecast and warning for any day is valid from 0830 hours IST of day till 0830 hours IST of next day

For more details kindly visit <https://mausam.imd.gov.in> or contact 011-2434-4599

(Service to the nation since 1875)

- **Thundersquall (wind speed reaching 50-60 kmph gusting to 70 kmph)** very likely at isolated places over Madhya Maharashtra and Marathwada on 18th & 19th March.
- **Isolated Hailstorm activity likely over Konkan & Goa on 18th and Madhya Maharashtra & Marathwada on 18th & 19th March.**

Forecast of maximum/day temperatures:

- No significant change in maximum temperatures likely over Northwest India during next 24 hours; gradual fall by 5-7°C during subsequent 2 days and gradual rise by 4-6°C during subsequent 4 days.
- Gradual fall in maximum temperatures by 3-5°C likely over Central India during next 5 days and gradual rise by 2-4°C during subsequent 2 days.
- No significant change in maximum temperatures likely over East India during next 3 days; gradual fall by 3-4°C during subsequent 2 days and no significant change thereafter.
- Gradual rise in maximum temperature by 3-4°C likely over Northeast India during next 2 days and no significant change during subsequent 5 days.
- **Gradual fall in maximum temperature by 2-4°C likely over interior Maharashtra and Gujarat during next 3 days and gradual rise by 2-3°C during subsequent 4 days.**

Main Weather Observations:

❖ **Rainfall distribution** (from 0830 hours IST of yesterday to 0830 hours IST of today): **at many places** over Arunachal Pradesh, Sub Himalayan West Bengal & Sikkim, Jammu-KashmirLadakh-Gilgit-Baltistan-Muzaffarabad and North Interior Karnataka; **at a few places** over Assam & Meghalaya, Telangana, South Interior Karnataka and Kerala & Mahe; **at isolated places** over Nagaland, Manipur, Mizoram & Tripura, Gangetic West Bengal, Odisha, Jharkhand, Himachal Pradesh, East Madhya Pradesh, Madhya Maharashtra, Marathwada, Vidarbha, Chhattisgarh, Coastal Andhra Pradesh & Yanam, Rayalaseema, Tamil Nadu, Puducherry & Karaikal and Coastal Karnataka; **Dry** over rest of the country.

❖ **Significant rainfall recorded(in cm)** (from 0830 hours IST of yesterday to 0830 hours IST of today): **Tamil Nadu, Puducherry & Karaikal:** Varattupallam (dist Erode) 9; Kalugumalai (dist Toothukudi) 8; Nagapattinam (dist Nagapattinam), Vattamalai Reservoir (dist Tiruppur) 5 Each; Usilampatti (dist Madurai), Karaikal (dist Karaikal) 4 Each; **Telangana:** Dahegaon (dist Kumaram Bheem) 8; Bejjur (dist Kumaram Bheem) 5; Mandhamarri (dist Mancherial) 4; **North Interior Karnataka:** Humnabad (dist Bidar) 7; Bidar (dist Bidar), Bidar PTO (dist Bidar) 5 Each; **Kerala & Mahe:** Mavelikara (dist Alapuzha), Thrithla (dist Palakkad) 6 Each; **Chhattisgarh:** Deobhog (dist Gariaband) 5; Karpawand (dist Bastar) 4; **Arunachal Pradesh:** Kibithu (dist Anjaw) 5; Tezu (dist Lohit) 4; **Odisha:** Papadahandi (dist Nawarangpur) 5; **Sub Himalayan West Bengal & Sikkim:** Chengmari/Diana (dist Jalpaiguri), Gandrapara Tea Garden (dist Jalpaiguri) 4 Each.

❖ **Heavy Rainfall observed** (from 0830 hours IST of yesterday to 0830 hours IST of today):**Heavy rain** at isolated places over Telangana, Tamil Nadu, Puducherry & Karaikal and North Interior Karnataka.

- **Hailstorm** reported at isolated places over Odisha, Jharkhand, Chhattisgarh, Madhya Maharashtra and Marathawada.
- **Thunderstorm accompanied with Squally/Gusty winds** with speed 50-70 kmph prevailed at isolated places over Assam & Meghalaya, Jharkhand, Odisha, Nagaland, Manipur, Mizoram & Tripura, Marathawada, Madhya Maharashtra, Chhattisgarh, Arunachal Pradesh and 30-50 kmph at isolated places over Vidarbha, Gujarat State, Konkan, Sub-Himalayan West Bengal & Sikkim, Madhya Pradesh, Jammu-Kashmir, Gangetic West Bengal.

❖ **Minimum Temperature Departures (as on 18-03-2026):** **markedly above normal(> 5.1°C)** at isolated places over Andaman & Nicobar Islands, Bihar, West Uttar Pradesh, West Rajasthan and East Madhya Pradesh. **appreciably above normal(3.1°C to 5.0°C)** at few places over Nagaland, Manipur, Mizoram & Tripura; at isolated places over Gangetic West Bengal, Odisha, Jharkhand, East Uttar Pradesh, East Rajasthan, Konkan & Goa, Madhya Maharashtra and Chhattisgarh. **above normal(1.6°C to 3.0°C)** at many places over Punjab; at few places over Haryana-Chandigarh-Delhi, Gujarat Region, Saurashtra & Kutch and Vidarbha; at isolated places over Assam & Meghalaya, Sub Himalayan West Bengal & Sikkim, Uttarakhand, West Madhya Pradesh, Coastal Andhra Pradesh & Yanam and Tamil Nadu, Puducherry & Karaikal. **near normal(-1.5°C to 1.5°C)** at most places over Arunachal Pradesh, Coastal Karnataka, Kerala & Mahe and Lakshadweep; at few places over Himachal Pradesh, Jammu-KashmirLadakh-Gilgit-Baltistan-Muzaffarabad, Marathwada, Telangana, Rayalaseema and South Interior Karnataka. **The lowest minimum temperature of 12.5°C** was reported atFARIDKOT(PUNJAB) over the Plains of India.

❖ **Maximum Temperature Departures (as on 17-03-2026):** **Maximum Temperatures/day temperatures are appreciably above normal (3.1°C to 5.0°C)** at isolated places over East Uttar Pradesh; **above normal (1.6°C to 3.0°C)** at a few places over East Madhya Pradesh, Konkan & Goa, Vidarbha,; at isolated places over Bihar, Jharkhand, Marathwada, West Uttar Pradesh, **Near normal (-1.5°C to 1.5°C)** at many places over Madhya Maharashtra, Kerala & Mahe, Saurashtra & Kutch, Gangetic West Bengal, North Interior Karnataka, Lakshadweep, Andaman & Nicobar Islands, West Madhya Pradesh; at a few places over , Rajasthan, Punjab, Haryana-Chandigarh-Delhi, Jammu-Kashmir-Ladakh-Gilgit-Baltistan-Muzaffarabad, Gujarat Region, Coastal Andhra Pradesh & Yanam, Rayalaseema, Odisha, Tamil Nadu, Puducherry & Karaikal. **The highest maximum temperature of 39.8°C** was reported at **Banda (Uttar Pradesh)**.

*Red color warning does not mean "Red Alert" Red color warning means "Take Action"

Forecast and warning for any day is valid from 0830 hours IST of day till 0830 hours IST of next day

For more details kindly visit <https://mausam.imd.gov.in> or contact 011-2434-4599

(Service to the nation since 1875)

Meteorological Analysis (Based on 0830 hours IST)

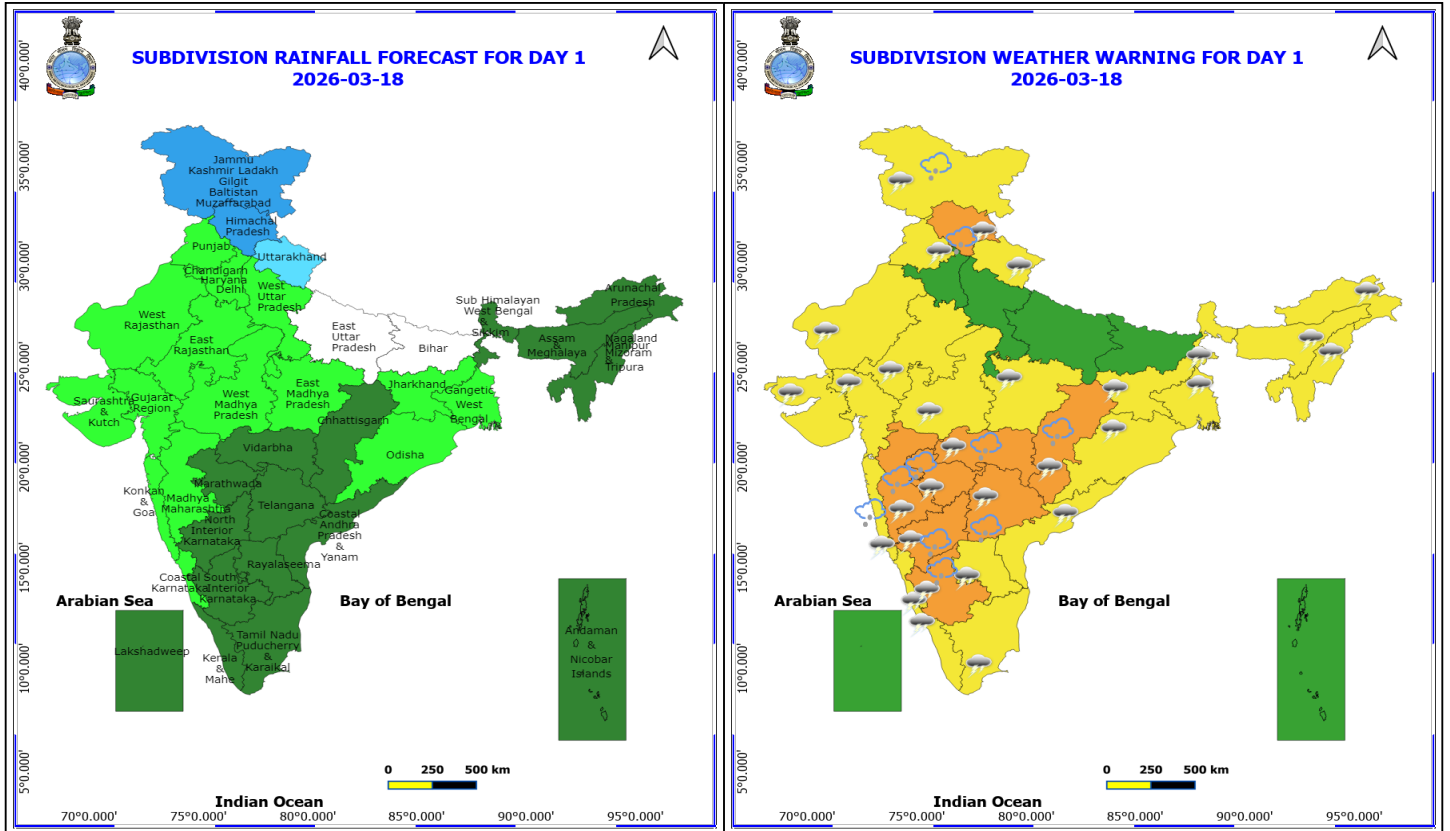
- The **upper air cyclonic circulation** over central parts of Madhya Pradesh at 0.9 km above mean sea level persists.
- The **trough** from south East Rajasthan to north Chhattisgarh across the above **cyclonic circulation** over central parts of Madhya Pradesh at 0.9 km above mean sea level persists.
- The **upper air cyclonic circulation** over East Uttar Pradesh & neighbourhood at 0.9 km above mean sea level persists.
- The **upper air cyclonic circulation** over southwest Rajasthan & neighbourhood now lies over west Rajasthan at 1.5 km above mean sea level.
- The **upper air cyclonic circulation** over Northeast Assam & adjoining Arunachal Pradesh at 1.5 km above mean sea level persists.
- The **trough** from Marathwada to Gulf of Mannar now runs from above **cyclonic circulation** over central parts of Madhya Pradesh to North Interior Karnatak across Marathawada and Vidarbha at 0.9 km above mean sea level.
- **Subtropical westerly Jet Stream** with core winds of the order of 90 knots at 12.6 km above mean sea level prevails over northeast India.
- The **Western Disturbance** as a trough in middle & upper level westerlies with its axis at 5.8 km above mean sea level now runs roughly along Long. 60°E to the north of Lat. 32°N.
- A **trough** runs from Gulf of Mannar to South Interior Karnataka across Tamil Nadu at 0.9 km above mean sea level.
- The **upper air cyclonic circulation** over Haryana & neighbourhood now lies over south Haryana at 0.9 km above mean sea level has become less marked.
- The **trough** in easterlies roughly along Long. 82°E to the north of Lat. 9°N at 1.5 km above mean sea level has become less marked.
- The **upper air cyclonic circulation** over West Uttar Pradesh & neighbourhood at 0.9 km above mean sea level has become less marked.

*Red color warning does not mean "Red Alert" Red color warning means "Take Action"

Forecast and warning for any day is valid from 0830 hours IST of day till 0830 hours IST of next day

For more details kindly visit <https://mausam.imd.gov.in> or contact 011-2434-4599

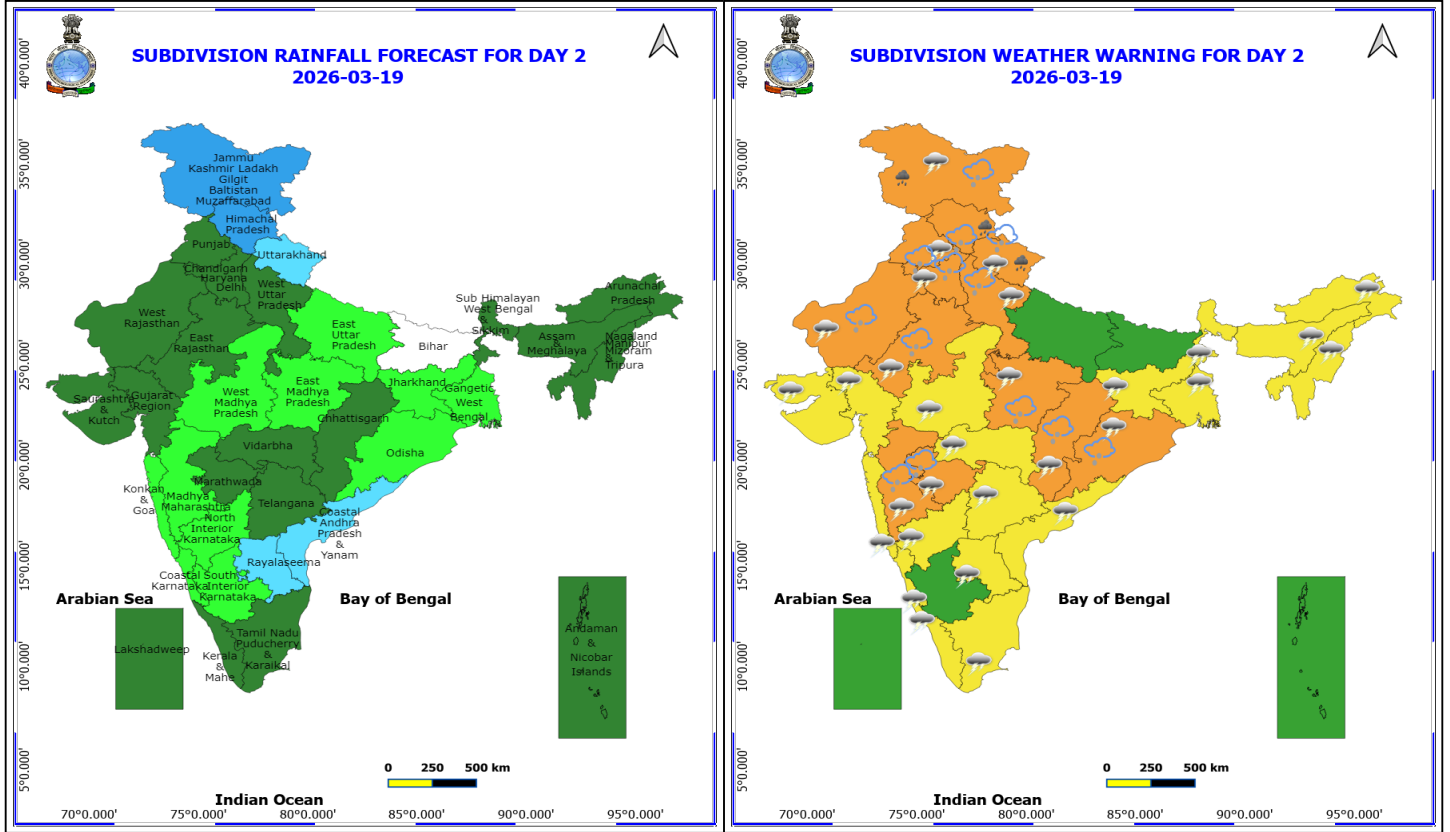
(Service to the nation since 1875)



18 March (Day 1)

- ❖ **Thunderstorm accompanied with Hailstorm** very likely at isolated places over Chhattisgarh, Himachal Pradesh, Interior Karnataka, Jammu-Kashmir-Ladakh-Gilgit-Baltistan-Muzaffarabad, Konkan & Goa, Maharashtra and Telangana.
- ❖ **Thundersquall with wind speed reaching(50-60kmph)** very likely at isolated places over Madhya Maharashtra, Marathwada and North Interior Karnataka.
- ❖ **Thunderstorm accompanied with lightning & gusty winds(40-50kmph)** very likely at isolated places over Chhattisgarh, Gujarat State, Himachal Pradesh, Jammu-Kashmir-Ladakh-Gilgit-Baltistan-Muzaffarabad, Madhya Pradesh, South Interior Karnataka, Telangana, Uttarakhand, Vidarbha and West Rajasthan.
- ❖ **Thunderstorm accompanied with lightning & gusty winds(30-40kmph)** very likely at isolated places over Andhra Pradesh, East Rajasthan, Kerala & Mahe, Odisha, Punjab and West Bengal & Sikkim.
- ❖ **Thunderstorm accompanied with Lightning** very likely at isolated places over Arunachal Pradesh, Assam & Meghalaya, Coastal Karnataka, Gujarat State, Jharkhand, Konkan & Goa, Nagaland, Manipur, Mizoram and Tripura and Tamil Nadu Puducherry & Karaikal.

No Fishermen Warning



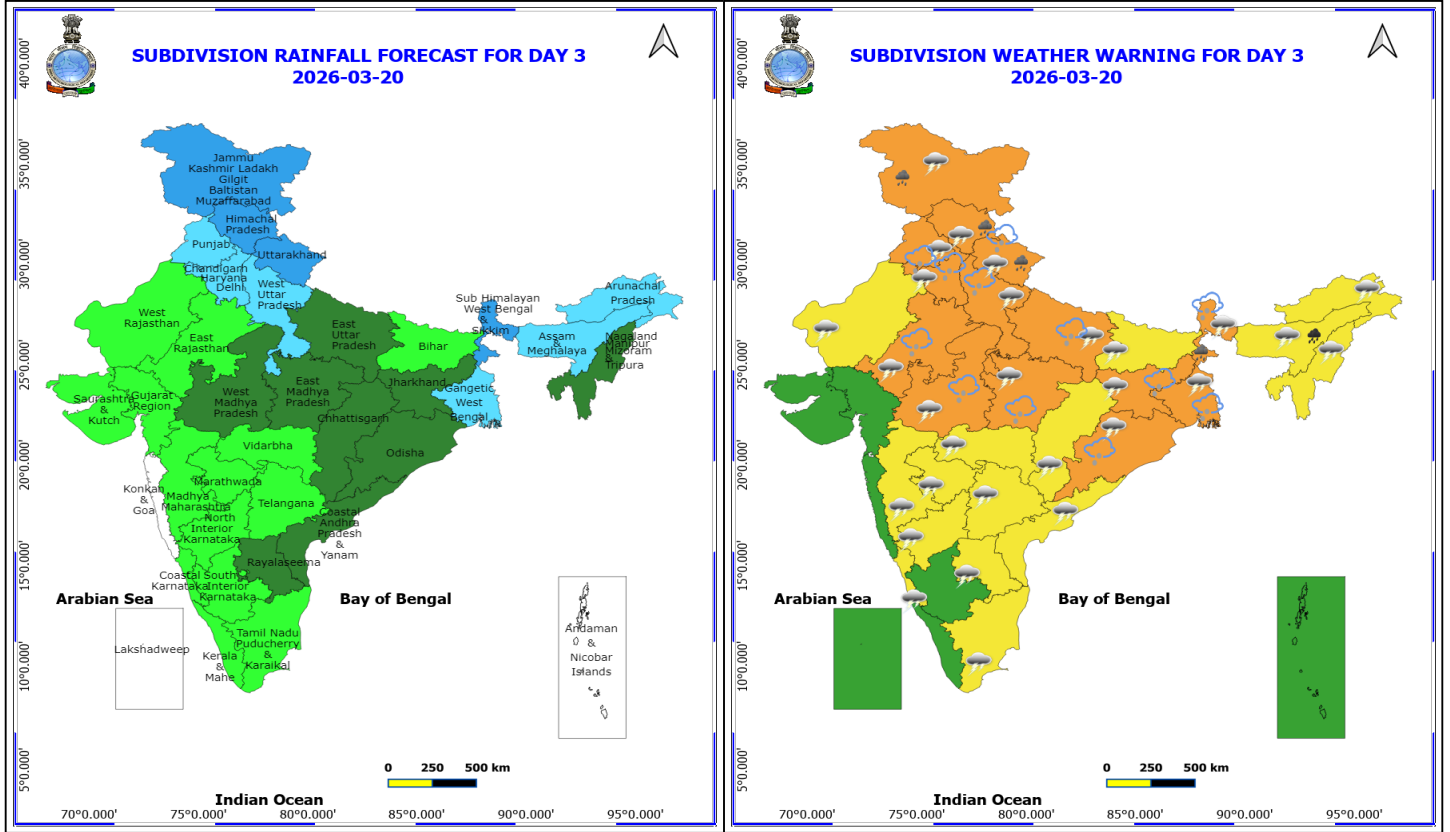
19 March (Day 2)

- ❖ **Heavy Rainfall** very likely at isolated places over Himachal Pradesh, Jammu-Kashmir-Ladakh-Gilgit-Baltistan-Muzaffarabad and Uttarakhand.
- ❖ **Thunderstorm accompanied with Hailstorm** very likely at isolated places over Chhattisgarh, East Madhya Pradesh, Haryana, Chandigarh & Delhi, Himachal Pradesh, Jammu-Kashmir-Ladakh-Gilgit-Baltistan-Muzaffarabad, Madhya Maharashtra, Marathwada, Odisha, Punjab, Rajasthan, Uttarakhand and West Uttar Pradesh.
- ❖ **Thundersquall with wind speed reaching(50-60kmph)** very likely at isolated places over Madhya Maharashtra, Marathwada and Uttarakhand.
- ❖ **Thunderstorm accompanied with lightning & gusty winds(40-50kmph)** very likely at isolated places over Andhra Pradesh, Chhattisgarh, Gujarat State, Haryana, Chandigarh & Delhi, Jammu-Kashmir-Ladakh-Gilgit-Baltistan-Muzaffarabad, Madhya Pradesh, North Interior Karnataka, Odisha, Punjab, Rajasthan, Telangana, Vidarbha and West Uttar Pradesh.
- ❖ **Thunderstorm accompanied with lightning & gusty winds(30-40kmph)** very likely at isolated places over Jharkhand, Kerala & Mahe and West Bengal & Sikkim.
- ❖ **Thunderstorm accompanied with Lightning** very likely at isolated places over Arunachal Pradesh, Assam & Meghalaya, Coastal Karnataka, Gujarat State, Konkan & Goa, Nagaland, Manipur, Mizoram and Tripura and Tamil Nadu Puducherry & Karaikal.

No Fishermen Warning

*Red color warning does not mean "Red Alert" Red color warning means "Take Action"
Forecast and warning for any day is valid from 0830 hours IST of day till 0830 hours IST of next day
For more details kindly visit <https://mausam.imd.gov.in> or contact 011-2434-4599

(Service to the nation since 1875)



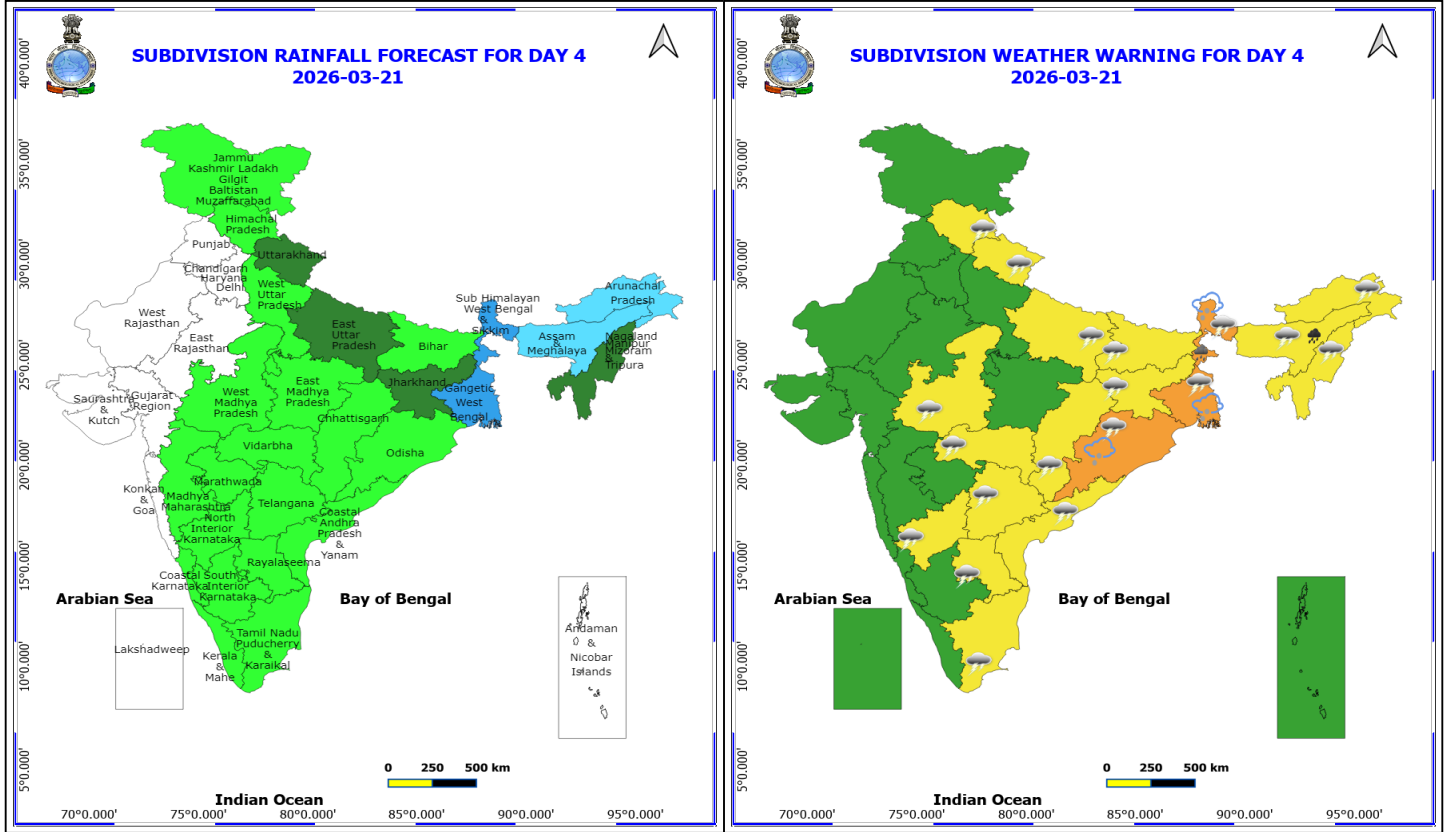
20 March (Day 3)

- ❖ **Heavy to Very Heavy Rainfall** very likely at isolated places over Assam & Meghalaya.
- ❖ **Heavy Rainfall** very likely at isolated places over Himachal Pradesh, Jammu-Kashmir-Ladakh-Gilgit-Baltistan-Muzaffarabad, Sub Himalayan West Bengal & Sikkim and Uttarakhand.
- ❖ **Thunderstorm accompanied with Hailstorm** very likely at isolated places over East Rajasthan, Haryana, Chandigarh & Delhi, Jharkhand, Madhya Pradesh, Odisha, Punjab, Uttar Pradesh, Uttarakhand and West Bengal & Sikkim.
- ❖ **Thundersquall with wind speed reaching(60-70kmph) gusting to 80 kmph** very likely at isolated places over Jharkhand.
- ❖ **Thundersquall with wind speed reaching(50-60kmph)** very likely at isolated places over Odisha, Uttar Pradesh, Uttarakhand and West Bengal & Sikkim.
- ❖ **Thunderstorm accompanied with lightning & gusty winds(40-50kmph)** very likely at isolated places over Chhattisgarh, Haryana, Chandigarh & Delhi, Himachal Pradesh, Jammu-Kashmir-Ladakh-Gilgit-Baltistan-Muzaffarabad, Madhya Pradesh, Maharashtra, Punjab and Rajasthan.
- ❖ **Thunderstorm accompanied with lightning & gusty winds(30-40kmph)** very likely at isolated places over Andhra Pradesh, Bihar, North Interior Karnataka and Telangana.
- ❖ **Thunderstorm accompanied with Lightning** very likely at isolated places over Arunachal Pradesh, Assam & Meghalaya, Coastal Karnataka, Nagaland, Manipur, Mizoram and Tripura and Tamil Nadu Puducherry & Karaikal.

No Fishermen Warning

***Red color warning does not mean "Red Alert" Red color warning means "Take Action"**
Forecast and warning for any day is valid from 0830 hours IST of day till 0830 hours IST of next day
For more details kindly visit <https://mausam.imd.gov.in> or contact 011-2434-4599

(Service to the nation since 1875)



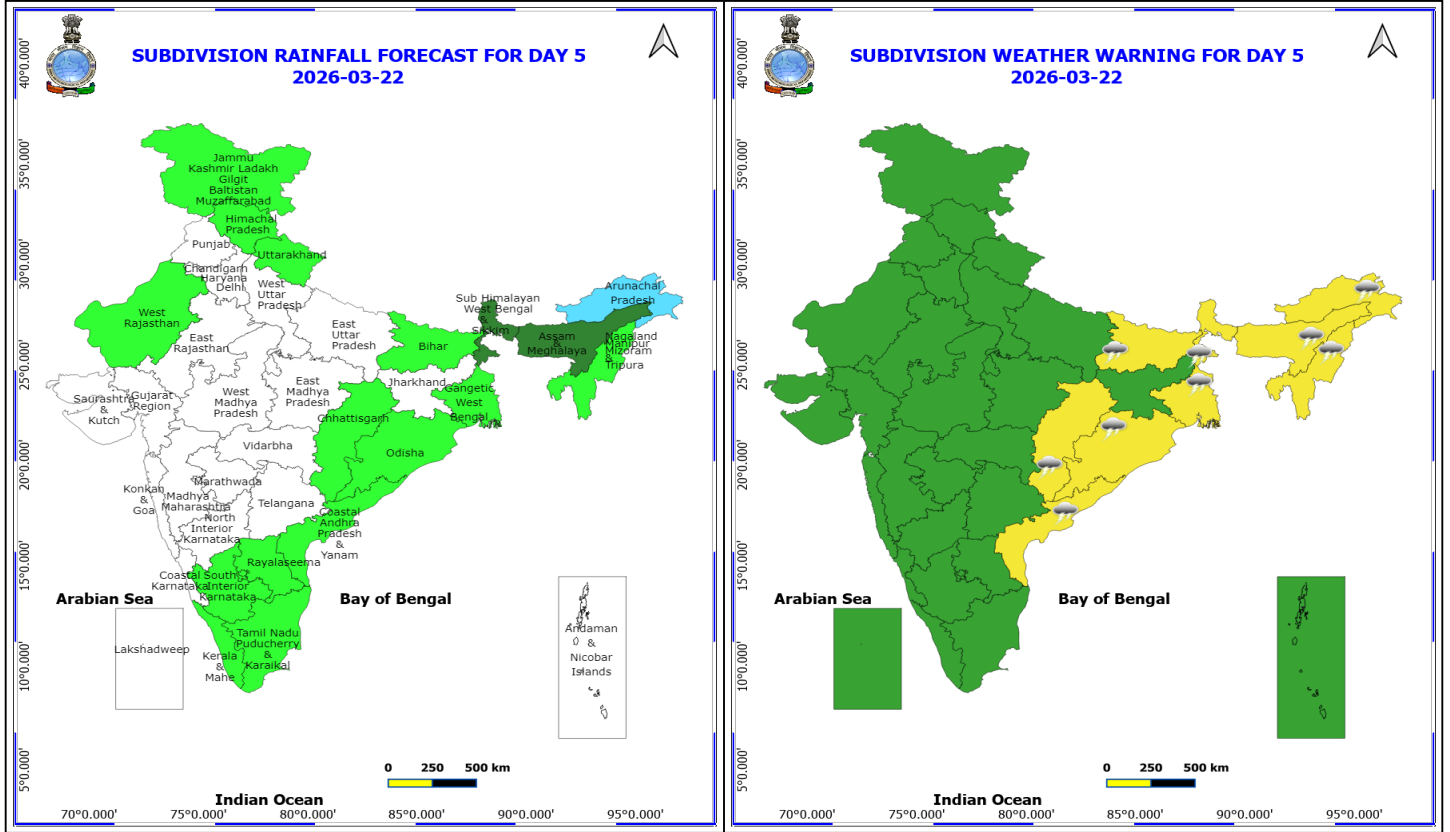
21 March (Day 4)

- ❖ **Heavy to Very Heavy Rainfall** likely at isolated places over Assam & Meghalaya.
- ❖ **Heavy Rainfall** likely at isolated places over Sub Himalayan West Bengal & Sikkim.
- ❖ **Thunderstorm accompanied with Hailstorm** likely at isolated places over Odisha and West Bengal & Sikkim.
- ❖ **Thundersquall with wind speed reaching(60-70kmph) gusting to 80 kmph** likely at isolated places over Gangetic West Bengal.
- ❖ **Thundersquall with wind speed reaching(50-60kmph)** likely at isolated places over Odisha and Sub Himalayan West Bengal & Sikkim.
- ❖ **Thunderstorm accompanied with lightning & gusty winds(40-50kmph)** likely at isolated places over Bihar, East Uttar Pradesh and Jharkhand.
- ❖ **Thunderstorm accompanied with lightning & gusty winds(30-40kmph)** likely at isolated places over Andhra Pradesh, Chhattisgarh, Himachal Pradesh, North Interior Karnataka, Telangana and West Madhya Pradesh.
- ❖ **Thunderstorm accompanied with Lightning** likely at isolated places over Arunachal Pradesh, Assam & Meghalaya, Nagaland, Manipur, Mizoram and Tripura, Tamil Nadu Puducherry & Karaikal, Uttarakhand and Vidarbha.

No Fishermen Warning

***Red color warning does not mean "Red Alert" Red color warning means "Take Action"**
Forecast and warning for any day is valid from 0830 hours IST of day till 0830 hours IST of next day
For more details kindly visit <https://mausam.imd.gov.in> or contact 011-2434-4599

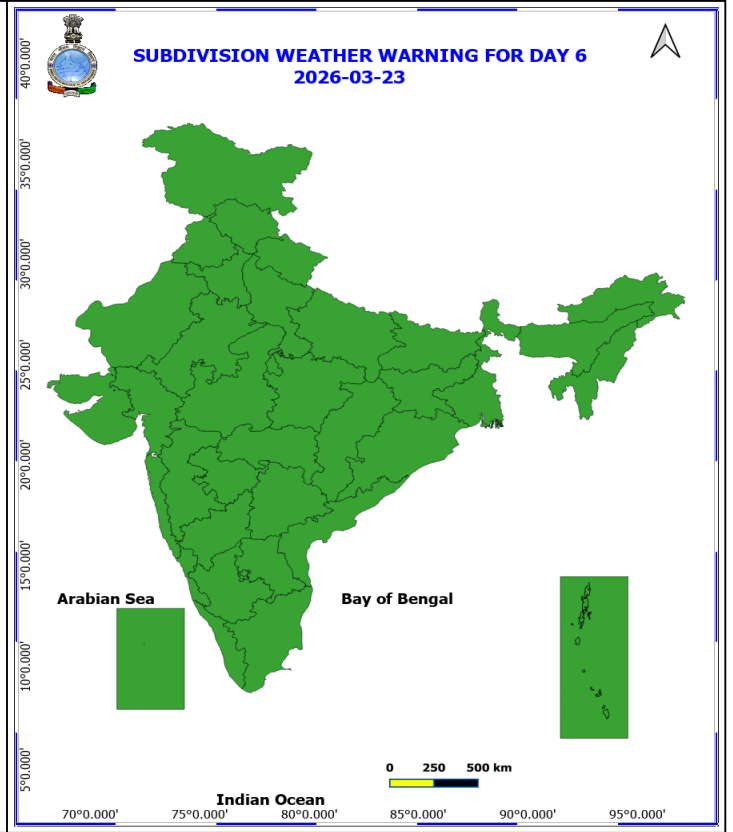
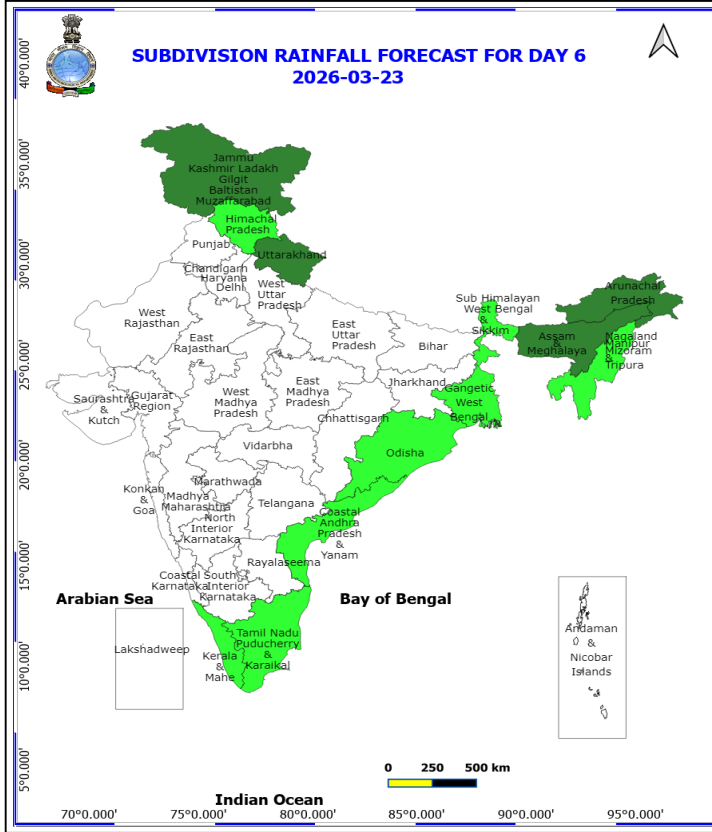
(Service to the nation since 1875)



22 March (Day 5)

- ❖ **Thunderstorm accompanied with lightning & gusty winds(40-50kmph)** likely at isolated places over Bihar.
- ❖ **Thunderstorm accompanied with lightning & gusty winds(30-40kmph)** likely at isolated places over Chhattisgarh, Coastal Andhra Pradesh, Odisha and West Bengal & Sikkim.
- ❖ **Thunderstorm accompanied with Lightning** likely at isolated places over Arunachal Pradesh, Assam & Meghalaya and Nagaland, Manipur, Mizoram and Tripura.

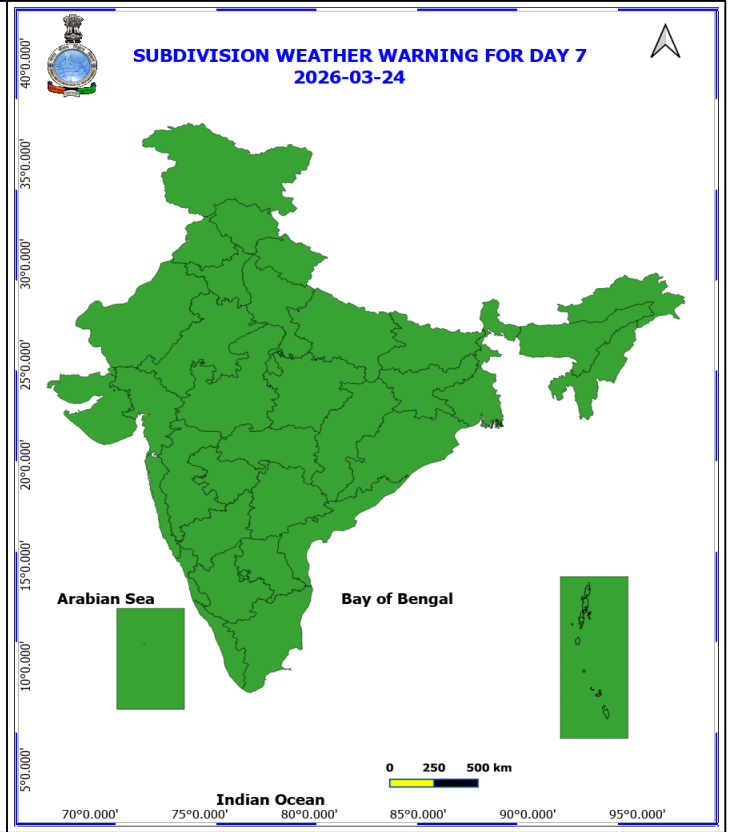
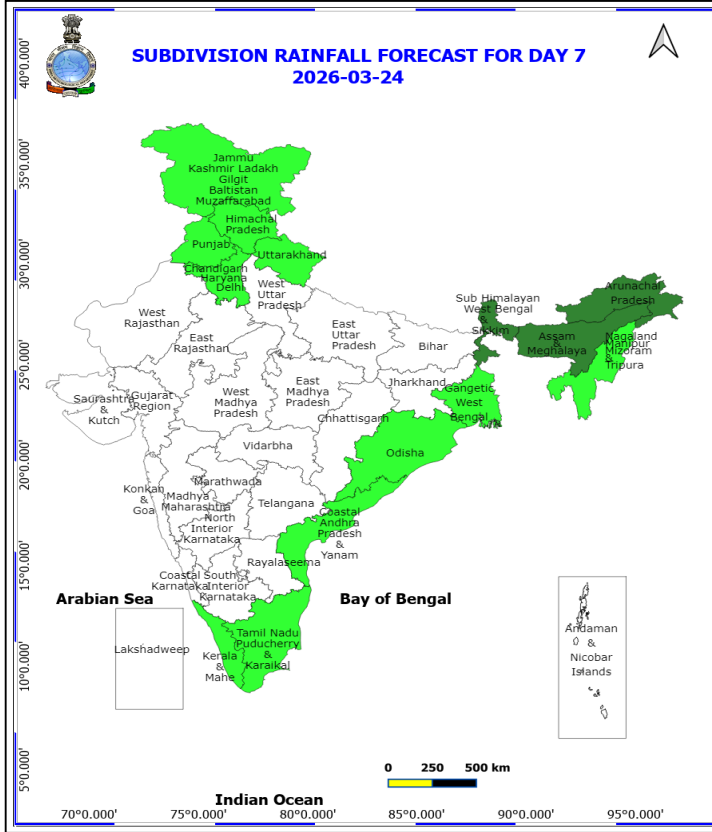
No Fishermen Warning



23 March (Day 6)

No Warning

No Fishermen Warning



24 March (Day 7)

No Warning

No Fishermen Warning

*Red color warning does not mean "Red Alert" Red color warning means "Take Action"
Forecast and warning for any day is valid from 0830 hours IST of day till 0830 hours IST of next day
For more details kindly visit <https://mausam.imd.gov.in> or contact 011-2434-4599
(Service to the nation since 1875)



Table-1

7 Days Rainfall Forecast

S.No.	Subdivision	18-Mar	19-Mar	20-Mar	21-Mar	22-Mar	23-Mar	24-Mar
		Day 1	Day 2	Day 3	Day 4	Day 5	Day 6	Day 7
1	ANDAMAN & NICOBAR ISLANDS	SCT	SCT	DRY	DRY	DRY	DRY	DRY
2	ARUNACHAL PRADESH	SCT	SCT	FWS	FWS	FWS	SCT	SCT
3	ASSAM & MEHGHALAYA	SCT	SCT	FWS	FWS	SCT	SCT	SCT
4	N. M. M. & T.	SCT	SCT	SCT	SCT	ISOL	ISOL	ISOL
5	S.H. WEST BENGAL & SIKKIM	SCT	SCT	WS	WS	SCT	ISOL	SCT
6	GANGETIC WEST BENGAL	ISOL	ISOL	FWS	WS	ISOL	ISOL	ISOL
7	ODISHA	ISOL	ISOL	SCT	ISOL	ISOL	ISOL	ISOL
8	JHARKHAND	ISOL	ISOL	SCT	SCT	DRY	DRY	DRY
9	BIHAR	DRY	DRY	ISOL	ISOL	ISOL	DRY	DRY
10	EAST UTTAR PRADESH	DRY	ISOL	SCT	SCT	DRY	DRY	DRY
11	WEST UTTAR PRADESH	ISOL	SCT	FWS	ISOL	DRY	DRY	DRY
12	UTTARAKHAND	FWS	FWS	WS	SCT	ISOL	SCT	ISOL
13	HARYANA, CHD & DELHI	ISOL	SCT	FWS	DRY	DRY	DRY	ISOL
14	PUNJAB	ISOL	SCT	FWS	DRY	DRY	DRY	ISOL
15	HIMACHAL PRADESH	WS	WS	WS	ISOL	ISOL	ISOL	ISOL
16	JAMMU AND KASHMIR AND LADAKH	WS	WS	WS	ISOL	ISOL	SCT	ISOL
17	WEST RAJASTHAN	ISOL	SCT	ISOL	DRY	ISOL	DRY	DRY
18	EAST RAJASTHAN	ISOL	SCT	ISOL	DRY	DRY	DRY	DRY
19	WEST MADHYA PRADESH	ISOL	ISOL	SCT	ISOL	DRY	DRY	DRY
20	EAST MADHYA PRADESH	ISOL	ISOL	SCT	ISOL	DRY	DRY	DRY
21	GUJRAT REGION	ISOL	SCT	ISOL	DRY	DRY	DRY	DRY
22	SAURASHTRA & KUTCH	ISOL	SCT	ISOL	DRY	DRY	DRY	DRY
23	KONKAN & GOA	ISOL	ISOL	DRY	DRY	DRY	DRY	DRY
24	MADHYA MAHARASHTRA	ISOL	ISOL	ISOL	ISOL	DRY	DRY	DRY
25	MARATHWADA	SCT	SCT	ISOL	ISOL	DRY	DRY	DRY
26	VIDARBHA	SCT	SCT	ISOL	ISOL	DRY	DRY	DRY
27	CHATTISGARH	SCT	SCT	SCT	ISOL	ISOL	DRY	DRY
28	COASTAL ANDHRA PRADESH	SCT	FWS	SCT	ISOL	ISOL	ISOL	ISOL
29	TELANGANA	SCT	SCT	ISOL	ISOL	DRY	DRY	DRY
30	RAYALASEEMA	SCT	FWS	SCT	ISOL	ISOL	DRY	DRY
31	TAMILNADU & PUDUCHERRY	SCT	SCT	ISOL	ISOL	ISOL	ISOL	ISOL
32	COSTAL KARNATAKA	ISOL	ISOL	ISOL	ISOL	DRY	DRY	DRY
33	NORTH INTERIOR KARNATAKA	SCT	ISOL	ISOL	ISOL	DRY	DRY	DRY
34	SOUTH INTERIOR KARNATAKA	SCT	ISOL	ISOL	ISOL	ISOL	DRY	DRY
35	KERALA	SCT	SCT	ISOL	ISOL	ISOL	ISOL	ISOL
36	LAKSHDWEEP	SCT	SCT	DRY	DRY	DRY	DRY	DRY

Legend	Category	%Stations
WS	Widespread/Most Places	76-100
FWS	Fairly Widespread/Many Places	51-75
SCT	Scattered/ A Few Places	26-50
ISOL	Isolated Places	1-25
DRY	No Rain	0

*Red color warning does not mean "Red Alert" Red color warning means "Take Action"
Forecast and warning for any day is valid from 0830 hours IST of day till 0830 hours IST of next day
For more details kindly visit <https://mausam.imd.gov.in> or contact 011-2434-4599

(Service to the nation since 1875)

Fig. 1: Maximum Temperatures Dated 2026-03-17

Fig. 2: Departure of Maximum Temp. Dated 2026-03-17

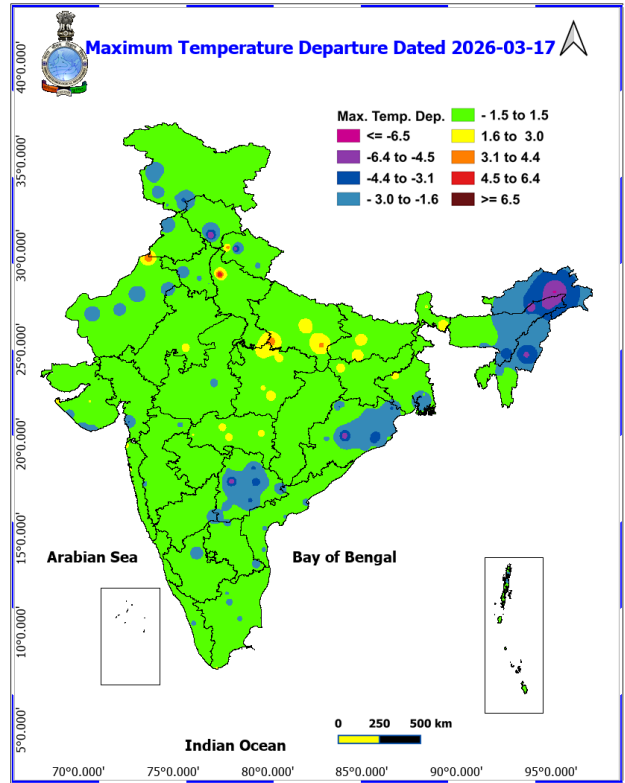
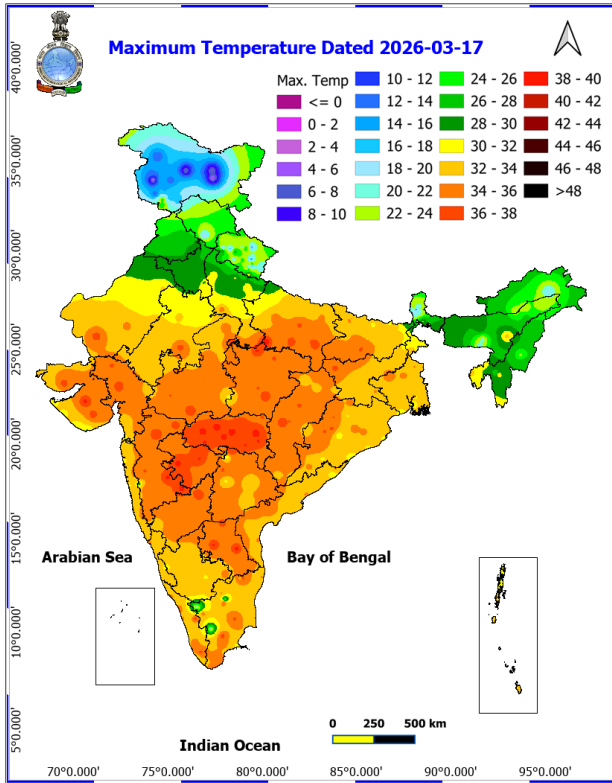
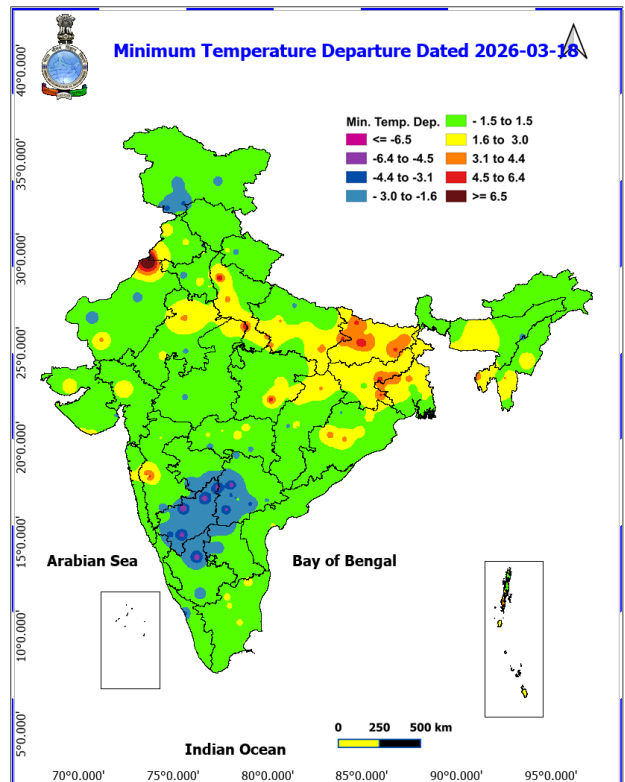
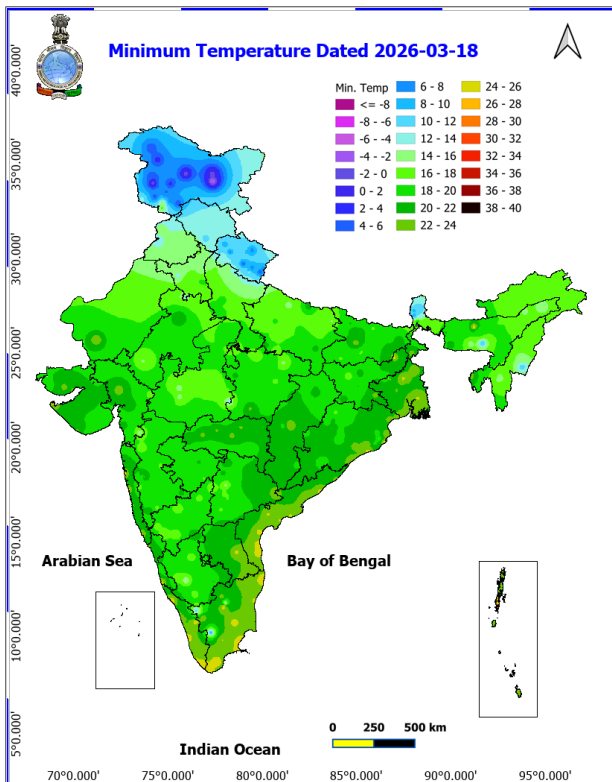


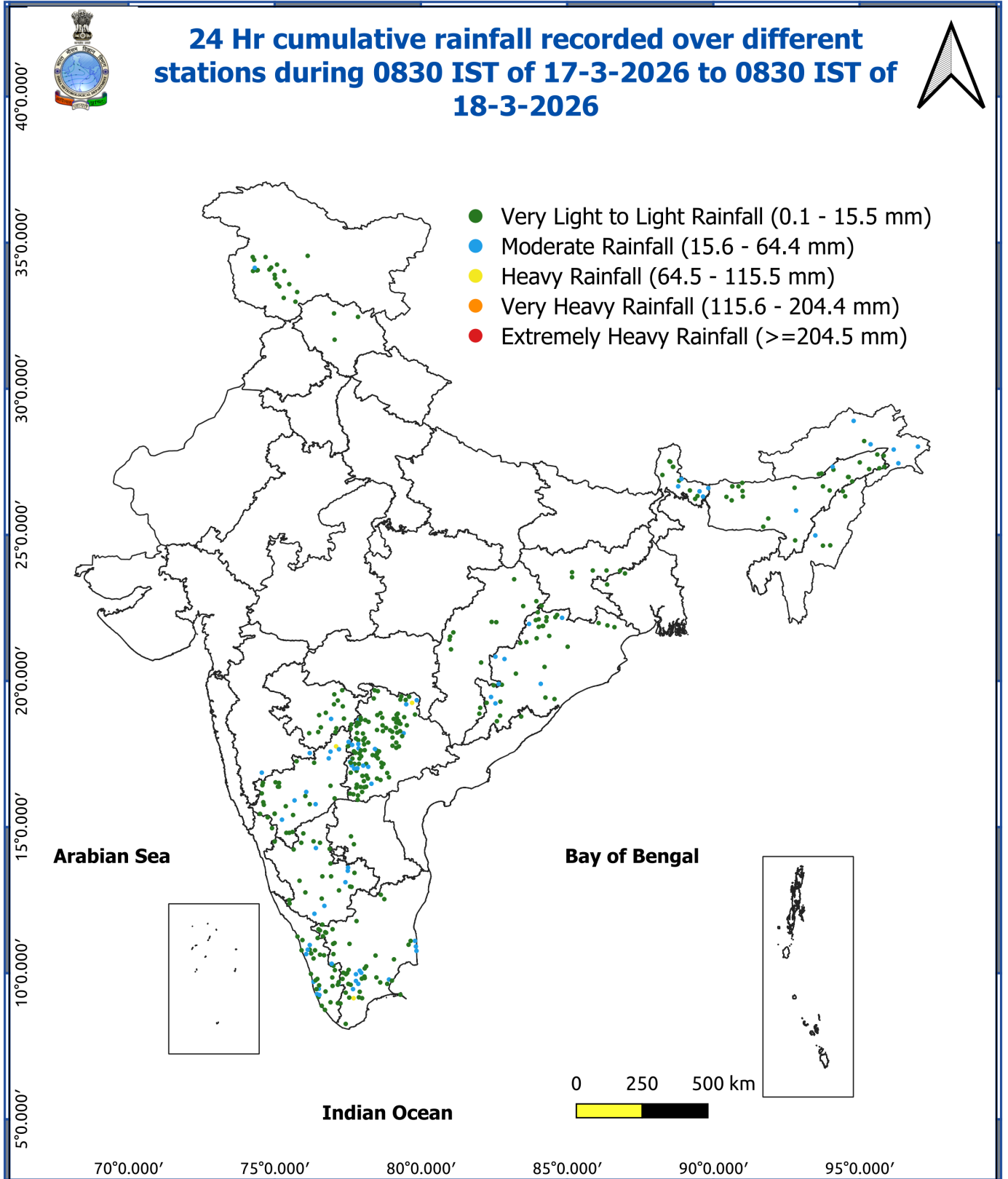
Fig. 3: Minimum Temperatures Dated 2026-03-18

Fig. 4: Departure of Minimum Temp. Dated 2026-03-18



*Red color warning does not mean "Red Alert" Red color warning means "Take Action"
Forecast and warning for any day is valid from 0830 hours IST of day till 0830 hours IST of next day
For more details kindly visit <https://mausam.imd.gov.in> or contact 011-2434-4599

(Service to the nation since 1875)



Impact and Actions

Impact & suggested due to Extremely and heavy to very heavy rainfall over

Impact Expected

- ❖ Localized Flooding of roads, water logging in low lying areas and closure of underpasses mainly in urban areas of the above region.
- ❖ Occasional reduction in visibility due to heavy rainfall.
- ❖ Disruption of traffic in major cities due to water logging in roads leading to increased travel time.
- ❖ Minor damage to kutcha roads.
- ❖ Possibilities of damage to vulnerable structure.
- ❖ Localized Landslides/Mudslides.
- ❖ Damage to horticulture and standing crops in some areas due to inundation.
- ❖ It may lead to riverine flooding in some river catchments (for riverine flooding please visit Web page of CWC).

Action Suggested

- ❖ Check for traffic congestion on your route before leaving for your destination.
- ❖ Follow any traffic advisories that are issued in this regard.
- ❖ Avoid going to areas that face the water logging problems often.
- ❖ Avoid staying in vulnerable structure.

Impact & suggested expected due to isolated thunderstorm with lightning/gusty & Squally winds & Hailstorm over

- Isolated **Hailstorm** activity likely over Jammu-Kashmir-Ladakh, Himachal Pradesh, Chhattisgarh, Madhya Maharashtra & Marathwada on 18th & 19th; Vidarbha, Telangana, Interior Karnataka, Konkan & Goa on 18th; Uttarakhand, Punjab, Haryana, Chandigarh, West Uttar Pradesh, East Rajasthan, East Madhya Pradesh on 19th & 20th; West Rajasthan on 19th; Odisha during 19th-21st; East Uttar Pradesh, West Madhya Pradesh, Jharkhand on 20th; West Bengal & Sikkim on 20th & 21st March.
- **Thundersquall (wind speed reaching 60-70 kmph gusting to 80 kmph)** very likely at isolated places over Jharkhand on 20th; Gangetic West Bengal on 21st March.
- **Thundersquall (wind speed reaching 50-60 kmph gusting to 70 kmph)** very likely at isolated places over Uttarakhand on 19th & 20th; Uttar Pradesh on 20th; Sub-Himalayan West Bengal & Sikkim and Odisha on 20th & 21st; Gangetic West Bengal on 20th; North Interior Karnataka on 18th; Madhya Maharashtra and Marathwada on 18th & 19th March.

Impact expected:

- Breaking of tree branches, uprooting of large avenue trees. Large dead limbs blown from trees. Damage to Standing crops.
- Minor to Major damage to banana and papaya trees.
- Minor to major damage to power and communication lines due to breaking of branches.
- Strong wind/hail may damage plantation, horticulture and standing crops.
- Hail may injure people and cattle at open places.
- Partial damage to vulnerable structures due to strong winds.
- Minor damage to kutcha houses/walls and huts.
- Loose objects may fly.

Action suggested:

- People are advised to keep a watch on the weather for worsening conditions and be ready to move to safer places accordingly.
- Stay indoors, close windows & doors and avoid travel if possible.
- Take safe shelters; do not take shelter under trees.
- Do not lie on concrete floors and do not lean against concrete walls.
- Unplug electrical/ electronic appliances.

***Red color warning does not mean "Red Alert" Red color warning means "Take Action"**

Forecast and warning for any day is valid from 0830 hours IST of day till 0830 hours IST of next day

For more details kindly visit <https://mausam.imd.gov.in> or contact 011-2434-4599

(Service to the nation since 1875)

Immediately get out of water bodies.

Keep away from all the objects that conduct electricity.

Agromet advisories for various parts of the country

Agromet advisories for likely impact of Hailstorms

- Use hail nets or hail caps in fruit orchards and vegetable plants to protect them from mechanical damage in Jammu and Kashmir, Himachal Pradesh, Uttarakhand, Punjab, Haryana, West Uttar Pradesh, Rajasthan, East Madhya Pradesh, Chhattisgarh, Odisha, Maharashtra and Interior Karnataka.

Agromet advisories for likely impact of Heavy Rainfall

- In **Assam**, make arrangement for draining out excess rainwater from the standing crop fields.
- In **Meghalaya**, prepare proper drainage in summer vegetable crops. Carry out staking and propping of plantation crops and protect young seedlings from heavy rainfall. Keep the harvested pods of garden peas in safer place immediately.
- In **Jammu & Kashmir**, provide proper drainage channels to avoid water stagnation in standing crops.
- In **Himachal Pradesh**, undertake harvesting of matured vegetables at the earliest.
- In **Uttarakhand**, undertake harvesting of matured rapeseed, mustard & vegetable pea at the earliest and keep the harvested produce in safe place. Make arrangements to drain out excess water.
- In **Sub Himalayan West Bengal**, undertake harvesting of potato. Cover the nursery of cucurbits and Dalle khorsani with polyethylene sheets or agro-nets.

Agromet advisories for likely impact of Thunderstorm / Gusty Winds

- Shift the harvested produce in safer places or cover the produce with tarpaulin sheets in the fields. Tie the harvested crops properly and cover them to minimise the risk of displacement due to strong surface winds.
- Provide mechanical support to horticultural crops and staking or support to vegetables and young fruit plants / fruit-bearing plants to avoid lodging due to strong winds.

Livestock / Poultry

- Keep the animals inside the shed during Heavy Rainfall/Hailstorm period and provide them balanced feed. Store feed and fodder in a safe place to prevent spoilage.
- Provide clean, hygienic and plenty of drinking water to animals.

Legends & abbreviations:

- **Heavy Rain:**64.5-115.5mm; **Very Heavy Rain:**115.6-204.4mm; **Extremely Heavy Rain:** >204.4mm.
- **Obsy:** Observatory; Automatic Weather Station; **ARG:** Automatic Rain Gauge; **dist:** District; **NH:** National Highway; **KVK:** Krishi Vigyan Kendra; **DVC:** Damodar Valley Corporation; **PTO:** Part Time Office, **Aero:** Aerodrome, **IAF:** Indian Air Force.
- **Region wise classification of meteorological Sub-Divisions:**
- **Northwest India:** Western Himalayan Region (Jammu-Kashmir-Ladakh-Gilgit-Baltistan-Muzaffarabad, Himachal Pradesh and Uttarakhand); Punjab, Haryana-Chandigarh-Delhi; West Uttar Pradesh, East Uttar

*Red color warning does not mean "Red Alert" Red color warning means "Take Action"

Forecast and warning for any day is valid from 0830 hours IST of day till 0830 hours IST of next day

For more details kindly visit <https://mausam.imd.gov.in> or contact 011-2434-4599

(Service to the nation since 1875)



Pradesh, West Rajasthan and East Rajasthan.

- **Central India:** West Madhya Pradesh, East Madhya Pradesh, Vidarbha and Chhattisgarh.
- **East India:** Bihar, Jharkhand, Sub-Himalayan West Bengal & Sikkim; Gangetic West Bengal, Odisha and Andaman & Nicobar Islands.
- **Northeast India:** Arunachal Pradesh, Assam & Meghalaya and Nagaland, Manipur, Mizoram & Tripura.
- **West India:** Gujarat Region, Saurashtra & Kutch, Konkan & Goa, Madhya Maharashtra and Marathawada.
- **South India:** Coastal Andhra Pradesh & Yanam, Telangana, Rayalaseema, Coastal Karnataka, North Interior Karnataka, South Interior Karnataka, Kerala & Mahe, Tamil Nadu, Puducherry & Karaikal and Lakshadweep.

LEGENDS

- 1 अंडमान और निकोबार द्वीप समुह
- 2 अरुणाचल प्रदेश
- 3 असम और मेघालय
- 4 नागालैंड मनीपुर मीजोरम और त्रिपुरा
- 5 उप हिमालय पश्चिम बंगाल एवं सिक्किम
- 6 पश्चिम बंगाल
- 7 ओडिसा
- 8 झारखंड
- 9 बिहार
- 10 पूर्वी उत्तर प्रदेश
- 11 पश्चिम उत्तर प्रदेश
- 12 उत्तराखंड
- 13 हरियाणा चंडिगढ़ एवं दिल्ली
- 14 पंजाब
- 15 हिमाचल प्रदेश
- 16 जम्मू एवं कश्मीर एवं लद्दाख
- 17 पश्चिम राजस्थान
- 18 पूर्वी राजस्थान
- 19 पश्चिम मध्य प्रदेश
- 20 पूर्वी मध्य प्रदेश
- 21 गुजरात क्षेत्र
- 22 सौराष्ट्र एवं कच्छ
- 23 कोंकण एवं गोवा
- 24 मध्य महाराष्ट्र
- 25 मराठावाडा
- 26 विदर्भ
- 27 छत्तीसगढ़
- 28 तटीय आंध्र प्रदेश एवं यनम
- 29 तेलंगाना
- 30 रायलसीमा
- 31 तमिलनाडु, पुदुचेरी एवं कराईकल
- 32 तटिय कर्नाटक
- 33 आंतरिक उत्तरी कर्नाटक
- 34 आंतरिक दक्षिणी कर्नाटक
- 35 केरल एवं माहे
- 36 लक्षद्वीप



1. Andaman & Nicobar Islands
2. Arunachal Pradesh
3. Assam & Meghalaya
4. Nagaland, Manipur, Mizoram & Tripura
5. Sub-Himalayan West Bengal & Sikkim
6. Gangetic West Bengal
7. Orissa
8. Jharkhand
9. Bihar
10. East Uttar Pradesh
11. West Uttar Pradesh
12. Uttarakhand
13. Haryana, Chd & Delhi
14. Punjab
15. Himachal Pradesh
16. Jammu & Kashmir and Ladakh
17. West Rajasthan
18. East Rajasthan
19. West Madhya Pradesh
20. East Madhya Pradesh
21. Gujarat
22. Saurashtra
23. Konkan & Goa
24. Madhya Maharashtra
25. Marathawada
26. Vidharbha
27. Chhattisgarh
28. Coastal Andhra Pradesh & Yanam
29. Telangana
30. Rayalaseema
31. Tamilnadu, Puducherry & Karaikal
32. Coastal Karnataka
33. North Interior Karnataka
34. South Interior Karnataka
35. Kerala & Mahe
36. Lakshadweep

SPATIAL DISTRIBUTION (% of Stations reporting)

% Stations	Category	% Stations	Category
76-100	Widespread (WS/ Most Places)	26-50	Scattered (SCT/ A Few Places)
51-75	Fairly Widespread (FWS/ Many Places)	1-25	Isolated (ISOL)

Subdivision Colour

- NO WARNING
- WATCH (BE UPDATED)
- ALERT (BE PREPARED TO TAKE ACTION)
- WARNING (TAKE ACTION)

Probabilistic Forecast

Terms	Probability of Occurrence (%)
Unlikely	< 25
Likely	25 - 50
Very Likely	50 - 75
Most Likely	> 75

- | | | | |
|--------------------------|-----------------|----------------------|--------------------|
| Heavy Rain | Very Heavy Rain | Extremely Heavy Rain | Heavy Snow |
| Thunderstorm & Lightning | Hailstorm | Dust Storm | Dust Raising Winds |
| Strong surface winds | Heat Wave | Hot Day | Warm Night |
| Cold Wave | Cold Day | Ground Frost | Fog |
| Hot & Humid | | | |

*Red color warning does not mean "Red Alert" Red color warning means "Take Action"

Forecast and warning for any day is valid from 0830 hours IST of day till 0830 hours IST of next day

For more details kindly visit <https://mausam.imd.gov.in> or contact 011-2434-4599

(Service to the nation since 1875)

LEGENDS

WARNING

WARNING (TAKE ACTION)
ALERT (BE PREPARED)
WATCH (BE UPDATED)
NO WARNING (NO ACTION)

Probabilistic Forecast

Terms	Probability of Occurrence (%)
Unlikely	< 25
Likely	25 - 50
Very Likely	50 - 75
Most Likely	> 75



Heavy: 64.5 to 115.5 mm/cm *
Very Heavy: 115.6 to 204.4 mm/cm*
Extremely Heavy: > 204.4 mm/cm *



When maximum temperature of a station reaches $\geq 40^{\circ}\text{C}$ for plains and $\geq 30^{\circ}\text{C}$ for hilly regions
(a) Based on Departure from normal

Heat Wave: Maximum Temperature Departure from normal 4.5°C to 6.4°C .
Severe Heat Wave: Maximum Temperature Departure from normal $\geq 6.5^{\circ}\text{C}$

(b). Based on Actual maximum temperature

Heat Wave: When actual maximum temperature $\geq 45^{\circ}\text{C}$.
Severe Heat Wave: When actual maximum temperature $\geq 47^{\circ}\text{C}$

(c). Criteria for heat wave for coastal stations

When maximum temperature departure is $> 4.5^{\circ}\text{C}$ from normal. Heat Wave may be described provided maximum temperature $\geq 37^{\circ}\text{C}$



When maximum temperature remains 40°C

Warm Night: When minimum temperature departure 4.5°C to 6.4°C .
Severe Warm Night: When minimum temperature departure $> 6.4^{\circ}\text{C}$.



When minimum temperature of a station $\leq 10^{\circ}\text{C}$ for plains and $\leq 0^{\circ}\text{C}$ for hilly regions.

(a). Based on departure

Cold Wave: Minimum Temperature Departure from normal -4.5°C to -6.4°C .
Severe Cold Wave: Minimum Temperature Departure from normal $\leq -6.5^{\circ}\text{C}$

(b) Based on actual Minimum Temperature (for Plains only)

Cold Wave : When Minimum Temperature is $\leq 4.0^{\circ}\text{C}$
Severe Cold Wave: When Minimum Temperature is $\leq 2.0^{\circ}\text{C}$

(c) For Coastal Stations

When Minimum Temperature departure is $\leq -4.5^{\circ}\text{C}$ & actual Minimum Temperature is $\leq 15^{\circ}\text{C}$



When minimum temperature of a station $\leq 10^{\circ}\text{C}$ for plains and $\leq 0^{\circ}\text{C}$ for hilly regions
Based on departure

Cold Day: Maximum Temperature Departure from normal -4.5°C to -6.4°C .
Severe Cold Day: Maximum Temperature Departure from normal $\leq -6.5^{\circ}\text{C}$



Phenomenon of small droplets suspended in air and the horizontal visibility $< 1\text{km}$

Moderate Fog: When the visibility between 500-200 metres
Dense Fog: when the visibility between 50- 200 metres
Very Dense Fog: when the visibility < 50 metres



Sudden electrical discharges manifested by a flash of light (Lightning) and a sharp rumbling sound (thunder)



An ensemble of particles of dust or sand energetically lifted to great heights by a strong and turbulent wind.



Ice deposits on ground

Air temperature $\leq 4^{\circ}\text{C}$ (over Plains)



A strong wind that rises suddenly, lasts for atleast 1 minute.

Moderate: Wind speed 52-61 kmph
Severe: Wind speed 62-87 kmph
Very Severe: Wind speed > 87 kmph



Effect of various waves in the sea over specific area

Rough to very rough: Wind speed 41-62 kmph (22-33 knots) & Wave height 2.5-6 metre
High to very high: Wind speed 63-117 kmph (34-63 knots) & Wave height 6-14 metre
Phenomenal: Wind speed > 117 kmph (> 63 knots) & Wave height > 14 metre



Cyclonic Storm: Wind speed 62-87 kmph (34-47 knots)
Severe Cyclonic Storm: Wind speed 88-117 kmph (48-63 knots)
Very Severe Cyclonic Storm: Wind speed 118-165 kmph (64 - 89 knots)
Extremely Severe Cyclonic Storm: Wind speed 166-220 kmph (90 -119 knots)
Super Cyclone Storm: Wind speed > 220 kmph (> 119 knots)

*Red color warning does not mean "Red Alert" Red color warning means "Take Action"

Forecast and warning for any day is valid from 0830 hours IST of day till 0830 hours IST of next day

For more details kindly visit <https://mausam.imd.gov.in> or contact 011-2434-4599

(Service to the nation since 1875)