

2026-03-27

Time of Issue: 13:30:00 hours IST
(Mid-Day)

ALL INDIA WEATHER SUMMARY AND FORECAST BULLETIN

Significant Weather Features

WEATHER FORECAST AND WARNING:

Northwest India:

- **Isolated to Scattered** light to moderate rainfall/snowfall likely over Jammu-Kashmir-Ladakh-Gilgit-Baltistan-Muzaffarabad, Himachal Pradesh on 27th; with isolated thunderstorm, lightning & gusty winds speed reaching (40-50 gusting to 60 kmph) over Uttarakhand on 27th March and increase thereafter with fairly widespread to widespread light to moderate rainfall/snowfall with isolated thunderstorm, lightning & gusty winds speed reaching (40-50 gusting to 60 kmph) likely over Jammu-Kashmir-Ladakh-Gilgit-Baltistan-Muzaffarabad & Himachal Pradesh during 28th-30th; Uttarakhand during 29th-31st March.
- **Isolated to Scattered** light to moderate rainfall with thunderstorm, lightning & gusty winds speed reaching (30-50 kmph gusting to 60 kmph) likely over Punjab during 28th-30th; Haryana, Chandigarh & Delhi on 29th & 30th; West Uttar Pradesh on 27th & during 29th-31st; West Rajasthan during 28th-31st; East Rajasthan during 29th-31st; with lightning over East Uttar Pradesh on 27th March.
- **Isolated heavy rainfall/snowfall** likely over Jammu-Kashmir-Ladakh-Gilgit-Baltistan-Muzaffarabad on 30th March.

Northeast India:

- **Scattered to fairly widespread** light to moderate rainfall with **thunderstorm, lightninggusty winds speed reaching (30-50 gusting to 60 kmph)** likely over Arunachal Pradesh during 27th-29th; Assam & Meghalaya and Nagaland, Manipur, Mizoram & Tripura during 27th-31st March.
- **Isolated hailstorm activity with Thundersquall (wind speed reaching 60-70 kmph gusting to 80 kmph)** likely over Assam & Meghalaya on 27th March.
- **Isolated heavy rainfall** likely over Nagaland, Manipur, Mizoram & Tripura on 29th March; Arunachal Pradesh on 28th, 29th March & on 01st, 02nd April; Assam & Meghalaya during 28th-30th March & on 01st, 02nd April.

East India:

- **Fairly widespread to widespread** light to moderate rainfall with **thunderstorm, lightning & gusty winds speed reaching (30-50 gusting to 60 kmph)** likely over Sub-Himalayan West Bengal & Sikkim during 27th-31st March.
- **Isolated to Scattered** light to moderate rainfall with **thunderstorm, lightning & gusty winds speed reaching (30-50 gusting to 60 kmph)** likely over Bihar during 28th & 29th March; Jharkhand on 28th, 31st March & 01st April and Odisha during 30th March-02nd April.
- **Isolated hailstorm activity with Thundersquall (wind speed reaching 50-60 kmph gusting to 70 kmph)** likely over West Bengal & Sikkim, Bihar on 27th & 28th and Jharkhand, Odisha on 27th March.
- **Isolated heavy rainfall** likely over Sub-Himalayan West Bengal & Sikkim on 27th & 28th March.

Central India:

- **Isolated** light to moderate rainfall **with thunderstorm, lightning & gusty winds speed reaching (30-50 gusting to 60 kmph)** likely over Madhya Pradesh on 27th and during 29th-31st March; Vidarbha & Chhattisgarh during next 7 days.
- **Isolated hailstorm activity** likely over Madhya Pradesh, Vidarbha and Chhattisgarh on 29th March.

West India:

- **Isolated** light to moderate rainfall **with thunderstorm, lightning& gusty winds speed reaching (40-50 gusting to 60 kmph)** with **hailstorm** likely over Madhya Maharashtraand Marathawada on 30th & 31st March; with **lightning** over Madhya Maharashtra,Marathawada on 27th & 29th; Gujarat State on 29th & 30th; Coastal

*Red color warning does not mean "Red Alert" Red color warning means "Take Action"

Forecast and warning for any day is valid from 0830 hours IST of day till 0830 hours IST of next day

For more details kindly visit <https://mausam.imd.gov.in> or contact 011-2434-4599

(Service to the nation since 1875)

Maharashtra on 30th March.

South Peninsular India:

- **Isolated** light to moderate rainfall **with thunderstorm, lightning & gusty winds speed reaching (30-50 gusting to 60 kmph)** likely over Kerala & Mahe during 27th-31st; North Interior Karnataka on 27th & during 30th March-02nd April; South Interior Karnataka during 28th March-02nd April; Coastal Andhra Pradesh & Yanam, Rayalaseema during 27th-31st March; Telangana during 27th March-01st April; with **lightning** over Tamil Nadu on 29th March; Coastal Karnataka during 27th March-02nd April.

Hot & Humid weather Warnings:

- **Hot & humid conditions** very likely to prevail in isolated pockets over Coastal Maharashtra, Kerala on 27th; Coastal Karnataka during 27th-29th March.

Forecast of maximum/day temperatures:

- Gradual fall in maximum temperatures by 2-4°C likely over Northwest India during next 24 hours; gradual rise by 2-4°C during 29th-30th; gradual fall by 3-5°C during 31st March-01st April and then again gradual rise by 2-4°C during subsequent 2 days.
- No significant change in maximum temperatures likely over Central India till 30th March and gradual fall by 2-4°C during subsequent 3 days.
- No significant change in maximum temperatures likely over East India during next 24 hours; gradual fall by 2-4°C during 29th-30th March and then gradual rise by 3-5°C during subsequent 4 days.
- No significant change in maximum temperatures likely over Gujarat State during next 24 hours; gradual fall by 2-3°C during 29th-30th March and no significant change during subsequent 4 days.
- No significant change in maximum temperatures likely over rest parts of the country.

***Red color warning does not mean "Red Alert" Red color warning means "Take Action"**

Forecast and warning for any day is valid from 0830 hours IST of day till 0830 hours IST of next day

For more details kindly visit <https://mausam.imd.gov.in> or contact 011-2434-4599

(Service to the nation since 1875)

Main Weather Observations:

❖ **Rainfall distribution** (from 0830 hours IST of yesterday to 0830 hours IST of today): **at many places** over Sub Himalayan West Bengal & Sikkim; **at a few places** over Arunachal Pradesh; **at isolated places** over Assam & Meghalaya, Nagaland, Manipur, Mizoram & Tripura, Gangetic West Bengal, Odisha, East Uttar Pradesh, Uttarakhand, Haryana-Chandigarh-Delhi, Punjab, Jammu-Kashmir-Ladakh-Gilgit-Baltistan-Muzaffarabad, West Rajasthan, East Rajasthan, Konkan & Goa, Madhya Maharashtra, Chhattisgarh, Coastal Andhra Pradesh & Yanam, Telangana, North Interior Karnataka and Kerala & Mahe; **Dry** over rest of the country.

❖ **Significant rainfall recorded (in cm)** (from 0830 hours IST of yesterday to 0830 hours IST of today): **Sub Himalayan West Bengal & Sikkim:** Chungthang (dist Mangan) 9; Mangan (dist Mangan) 4; Singhik (dist Mangan) 3; Falakata (dist Alipurduar), Moraghat Tea Estate (dist Jalpaiguri) 2 Each; Tadong (dist Gangtok), Soreng ARG (dist Soreng), Dentam (dist Gyalshing), Baradighi T.e. (dist Jalpaiguri), Chalouni Tea Estate (dist Jalpaiguri), Diana Tea Estate (dist Jalpaiguri), Gurbongjhora Tea Estate (dist Jalpaiguri), Karballa Tea Estate (dist Jalpaiguri), Palashbari Tea Estate (dist Jalpaiguri), Algarah (dist Kalimpong), Lava (dist Kalimpong) 1 Each; **Assam & Meghalaya:** Raha ARG (dist Nagaon) 6; D/Mohanbari AP (dist Dibrugarh), Mohanbari AWS (dist Dibrugarh), Nongstein (dist West Khasi Hills) 1 Each; **Gangetic West Bengal:** Dum Dum (dist North 24 Parganas) 3; Mo Saltlake (dist North 24 Parganas) 1; **Konkan & Goa:** Vaibhavwadi (dist Sindhudurg) 2; **Odisha:** Bhubaneswar AP (dist Khurda), Harichandanpur (dist Keonjhar), Sukinda (dist Jajpur) 2 Each; Ghatagaon (dist Keonjhar), Raghunathpur (dist Jagatsinghpur), Biridi (dist Jagatsinghpur), Chakapad (dist Kandhamal) 1 Each; **Arunachal Pradesh:** Jung ARG (dist Tawang) 2; Tuting (dist Upper Siang), Tawang (dist Tawang), Namsai (dist Lohit), Tawang AWS (dist Tawang) 1 Each; **Coastal Andhra Pradesh & Yanam:** Mandasa (dist Srikakulam), Tekkali (dist Srikakulam) 1 Each; **Telangana:** Wankdi (dist Kumaram Bheem) 1; **North Interior Karnataka:** Athni (dist Belagavi) 1; **Kerala & Mahe:** Alwaye PWD (dist Ernakulam) 1; **East Rajasthan:** Pilani (dist Jhunjhunu) 1; **Jammu-Kashmir-Ladakh-Gilgit-Baltistan-Muzaffarabad:** Gulmarg AWS (dist Baramula), Gulmarg RS (dist Baramula) 1 Each; **Uttarakhand:** Munsiyari (dist Pithoragarh), Ganganagar (dist Rudrapur) 1 Each; **Nagaland, Manipur, Mizoram & Tripura:** Kolasib AWS (dist Kolasib) 1.

❖ **Heavy Rainfall observed** (from 0830 hours IST of yesterday to 0830 hours IST of today): **Heavy rain** at isolated places over Sub Himalayan West Bengal & Sikkim.

- **Hailstorm activity** reported at isolated places over Uttarakhand, Gangetic West Bengal, Odisha, Coastal Maharashtra and North Interior Karnataka.
- **Thunderstorm accompanied with Squally/Gusty winds** with speed 30-80 kmph at isolated places over Odisha, Jammu-Kashmir, Bihar, Madhya Pradesh, Maharashtra, Saurashtra & Kutch, Jharkhand, Uttarakhand, Haryana, Himachal Pradesh, Gangetic West Bengal, North Interior Karnataka, Coastal Andhra Pradesh and Tamil Nadu.

❖ **Minimum Temperature Departures (as on 27-03-2026):** were **appreciably above normal (3.1°C to 5.0°C)** over Haryana, East Rajasthan, Uttar Pradesh, Madhya Maharashtra; **above normal (1.6°C to 3.0°C)** over Jammu-Kashmir, Himachal Pradesh, Punjab, Delhi, West Rajasthan, Gujarat State, Madhya Pradesh, remaining parts of Maharashtra, Chhattisgarh, Odisha, Bihar, Coastal Karnataka; **below normal (-3.0°C to -1.6°C)** over Gangetic West Bengal, Interior Karnataka, Telangana, Rayalaseema, Tamil Nadu and near normal over rest parts of the country. **The lowest minimum temperature of 15.4 °C was observed at Muzaffarnagar (West Uttar Pradesh) over the Plains of India.**

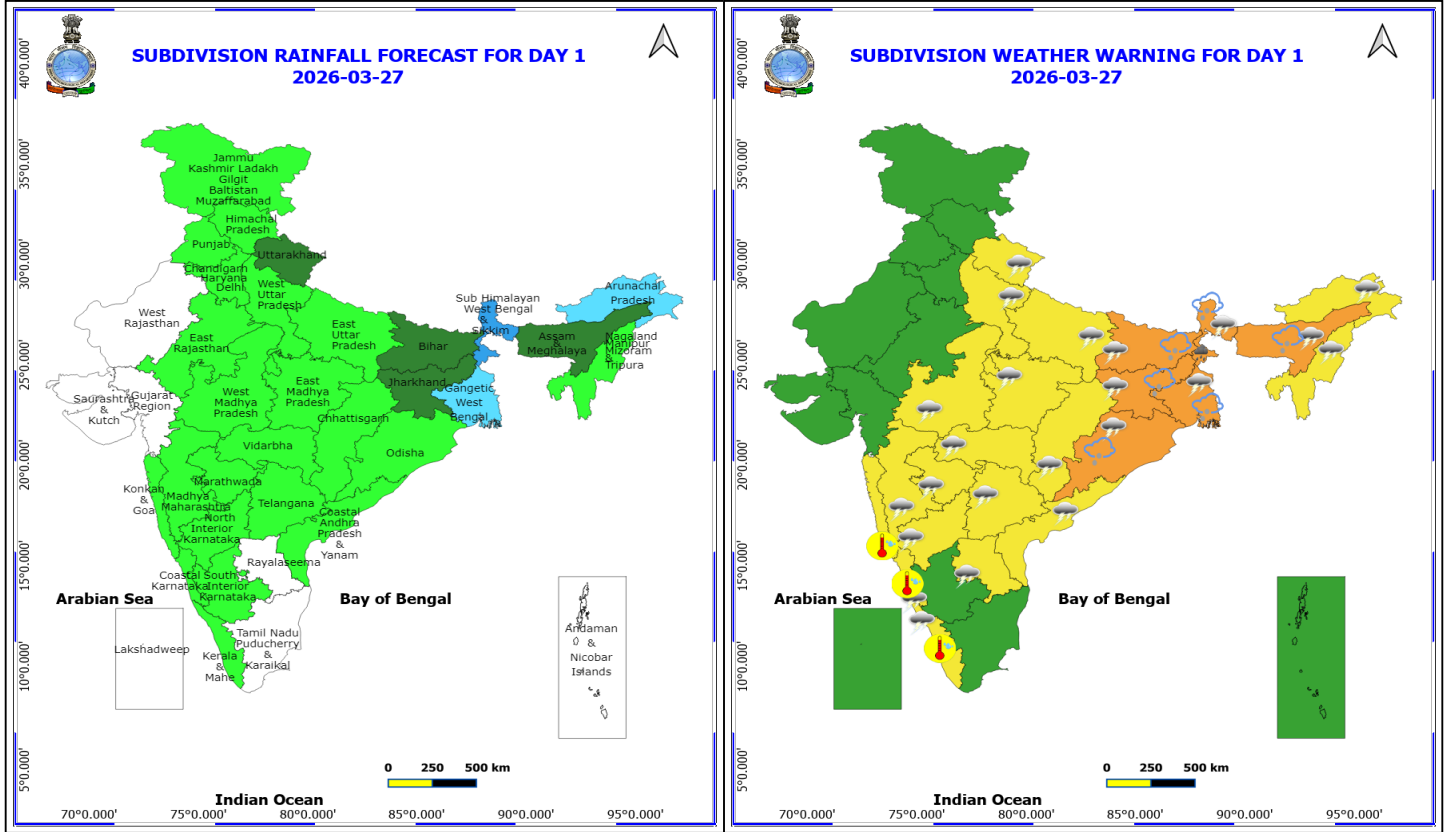
❖ **Maximum Temperature Departures (as on 26-03-2026):** were **appreciably above normal (3.1°C to 5.0°C)** over Jammu-Kashmir, Himachal Pradesh, East Rajasthan, West Madhya Pradesh; **above normal (1.6°C to 3.0°C)** over Haryana, Chandigarh & Delhi, Uttar Pradesh, Madhya Pradesh, Saurashtra & Kutch, Vidarbha, Coastal Maharashtra, Kerala & Mahe; **below normal (- 3.0°C to -1.6°C)** over north Bihar, Odisha and Telangana. **The highest maximum temperature of 41.8°C was reported at AKOLA (MAHARASHTRA).**

Meteorological Analysis (Based on 0830 hours IST)

- The **Western Disturbance** now seen as a trough in middle tropospheric westerlies with its axis at 5.8 km above mean sea level roughly along Long. 76°E to the north of Lat. 32°N.
- A fresh **Western Disturbance** seen as an **upper air cyclonic circulation** over west Iran & neighbourhood between 5.8 & 7.6 km above mean sea level.
- A **trough** runs from northwest Rajasthan to southwest Madhya Pradesh at 1.5 km above mean sea level. The **upper air cyclonic circulation** over West Rajasthan adjoining central Pakistan has merged into the trough.
- An **upper air cyclonic circulation** lies over central Rajasthan & neighbourhood at 0.9 km above mean sea level.
- The **upper air cyclonic circulation** over Gangetic West Bengal & adjoining Bangladesh at 0.9 km above mean sea level persists.
- A **trough** runs from northwest Bihar to Manipur across above the above cyclonic circulation over Gangetic West Bengal adjoining Bangladesh, Assam at 0.9 km above mean sea level.
- The **upper air cyclonic circulation** over Odisha & neighbourhood at 0.9 km above mean sea level persists.
- The **upper air cyclonic circulation** over northeast Assam & neighbourhood at 1.5 km above mean sea level persists.
- The **trough** now runs from Marathwada to Coastal Karnataka across North Interior Karnataka at 0.9 km above mean sea level.
- **Subtropical westerly Jet Stream** with core winds of the order of 100 knots at 12.6 km above mean sea level continues to prevail over east India.

Weather Outlook for subsequent 3 days

- Widespread rainfall activity likely over Northeast India and Isolated to Scattered rainfall activity over remaining parts of the country except Gujarat, Maharashtra and South Rajasthan.



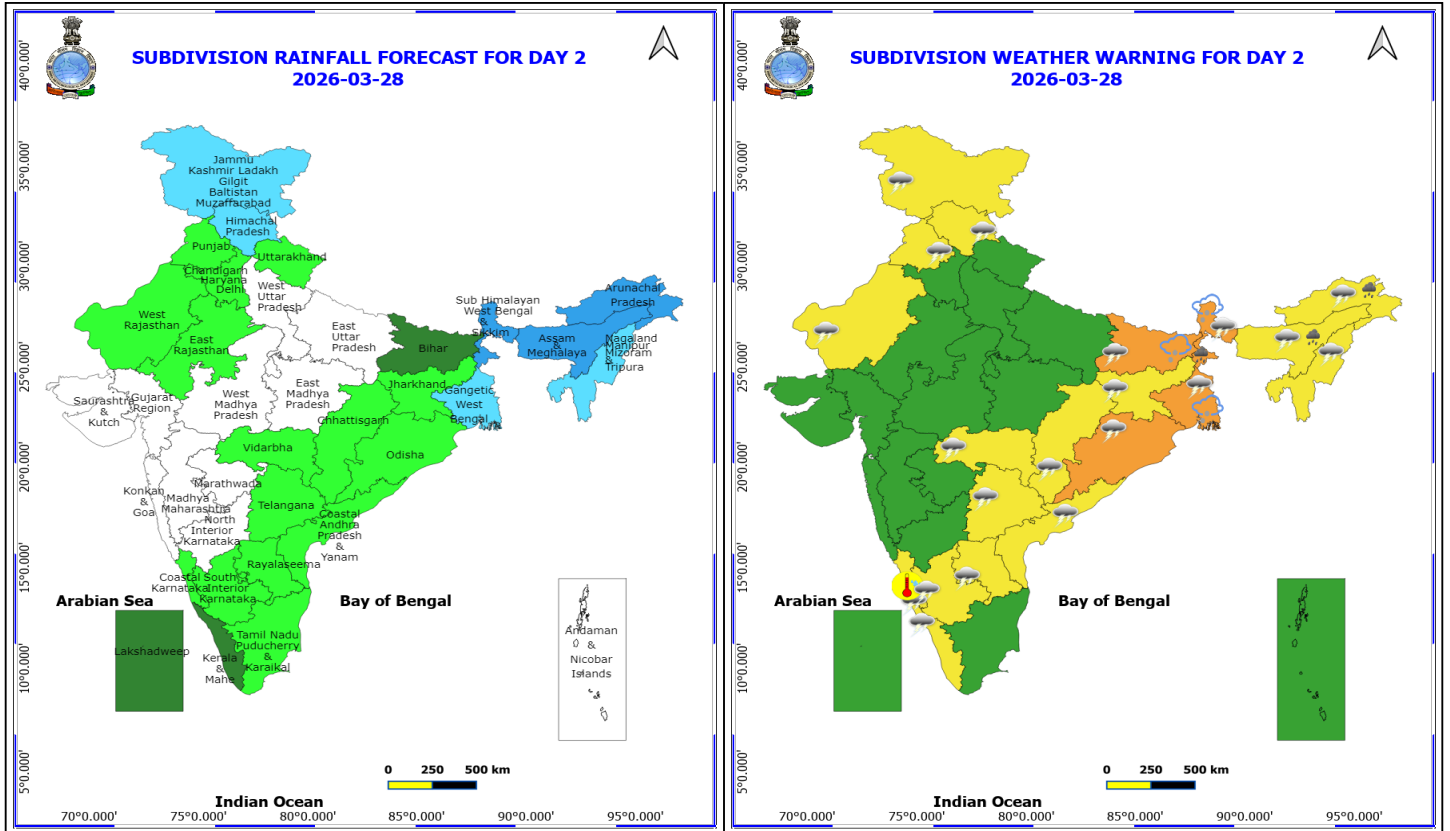
27 March (Day 1)

- ❖ **Heavy Rainfall** very likely at isolated places over Sub Himalayan West Bengal & Sikkim.
- ❖ **Thunderstorm accompanied with Hailstorm** very likely at isolated places over Assam & Meghalaya, Bihar, Jharkhand, Odisha and West Bengal & Sikkim.
- ❖ **Thundersquall with wind speed reaching(60-70kmph) gusting to 80 kmph** very likely at isolated places over Assam & Meghalaya.
- ❖ **Thundersquall with wind speed reaching(50-60kmph)** very likely at isolated places over Bihar, Jharkhand, Odisha and West Bengal & Sikkim.
- ❖ **Thunderstorm accompanied with lightning & gusty winds(40-50kmph)** very likely at isolated places over Telangana and Uttarakhand.
- ❖ **Thunderstorm accompanied with lightning & gusty winds(30-40kmph)** very likely at isolated places over Andhra Pradesh, Chhattisgarh, Madhya Pradesh, North Interior Karnataka and Vidarbha.
- ❖ **Thunderstorm accompanied with Lightning** very likely at isolated places over Arunachal Pradesh, Coastal Karnataka, Kerala & Mahe, Madhya Maharashtra, Marathwada, Nagaland, Manipur, Mizoram and Tripura and Uttar Pradesh.
- ❖ **Hot and Humid weather** very likely at isolated places over Coastal Karnataka, Kerala & Mahe and Konkan & Goa.

No Fishermen Warning

***Red color warning does not mean "Red Alert" Red color warning means "Take Action"**
Forecast and warning for any day is valid from 0830 hours IST of day till 0830 hours IST of next day
For more details kindly visit <https://mausam.imd.gov.in> or contact 011-2434-4599

(Service to the nation since 1875)

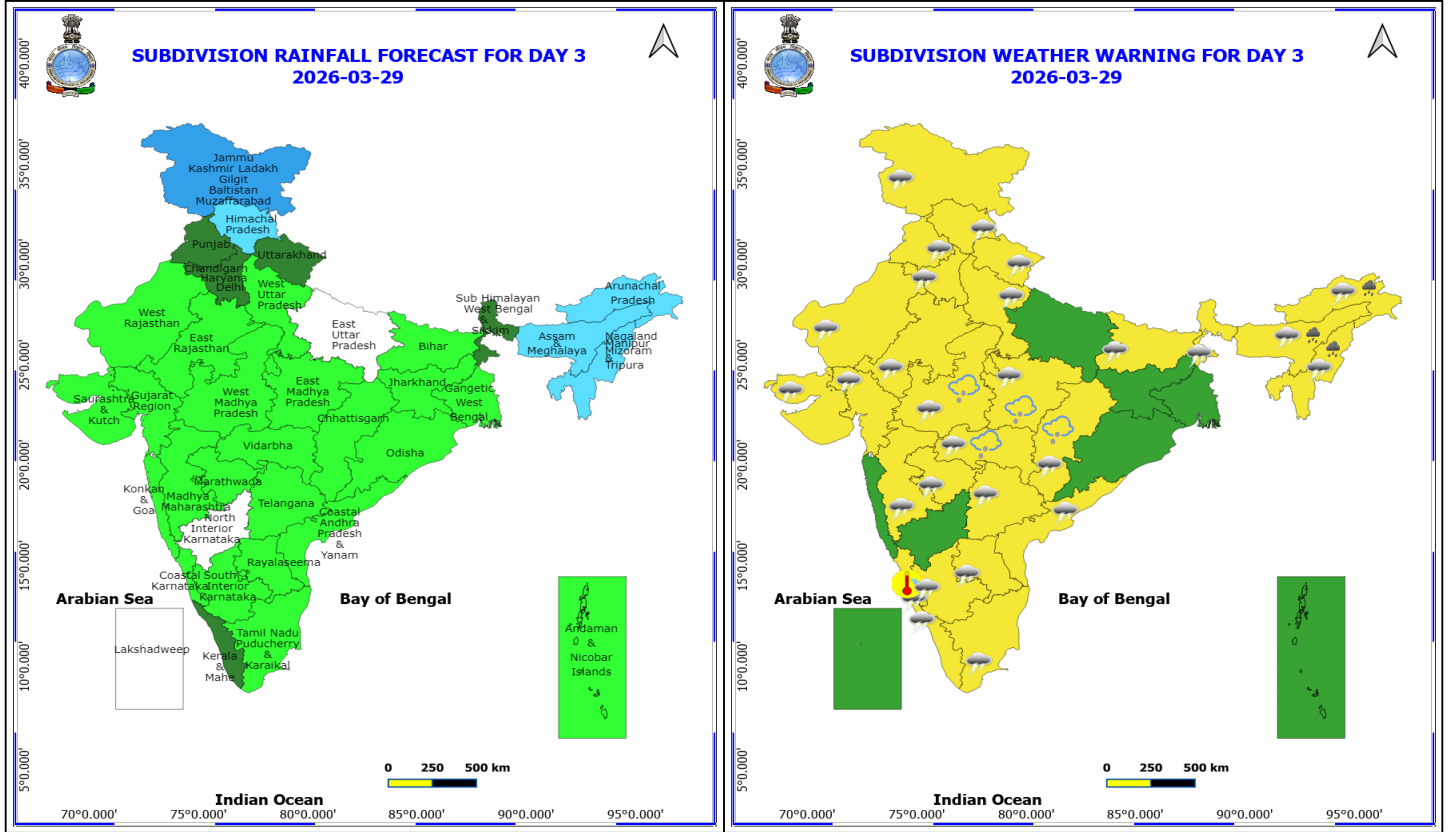


28 March (Day 2)

- ❖ **Heavy Rainfall** very likely at isolated places over Arunachal Pradesh, Assam & Meghalaya and Sub Himalayan West Bengal & Sikkim.
 - ❖ **Thunderstorm accompanied with Hailstorm** very likely at isolated places over Bihar and West Bengal & Sikkim.
 - ❖ **Thundersquall with wind speed reaching(50-60kmph)** very likely at isolated places over Gangetic West Bengal, Himachal Pradesh and Odisha.
 - ❖ **Thunderstorm accompanied with lightning & gusty winds(40-50kmph)** very likely at isolated places over Assam & Meghalaya, Bihar, Jammu-Kashmir-Ladakh-Gilgit-Baltistan-Muzaffarabad, Sub Himalayan West Bengal & Sikkim, Telangana and West Rajasthan.
 - ❖ **Thunderstorm accompanied with lightning & gusty winds(30-40kmph)** very likely at isolated places over Andhra Pradesh, Arunachal Pradesh, Chhattisgarh, Jharkhand, Kerala & Mahe, Nagaland, Manipur, Mizoram and Tripura, Punjab, South Interior Karnataka and Vidarbha.
 - ❖ **Thunderstorm accompanied with Lightning** very likely at isolated places over Coastal Karnataka.
 - ❖ **Hot and Humid weather** very likely at isolated places over Coastal Karnataka.
-
- ❖ **Squally weather with wind speed 40 to 50 kmph gusting to 60 kmph** is likely to prevail along and off north Odisha and West Bengal coasts.
 - ❖ **Squally wind with speed 45 to 55 kmph gusting to 65 kmph** is likely to prevail along and off the Oman coast, Gulf of Oman & parts of northwest Arabian Sea.

***Red color warning does not mean "Red Alert" Red color warning means "Take Action"**
Forecast and warning for any day is valid from 0830 hours IST of day till 0830 hours IST of next day
For more details kindly visit <https://mausam.imd.gov.in> or contact 011-2434-4599

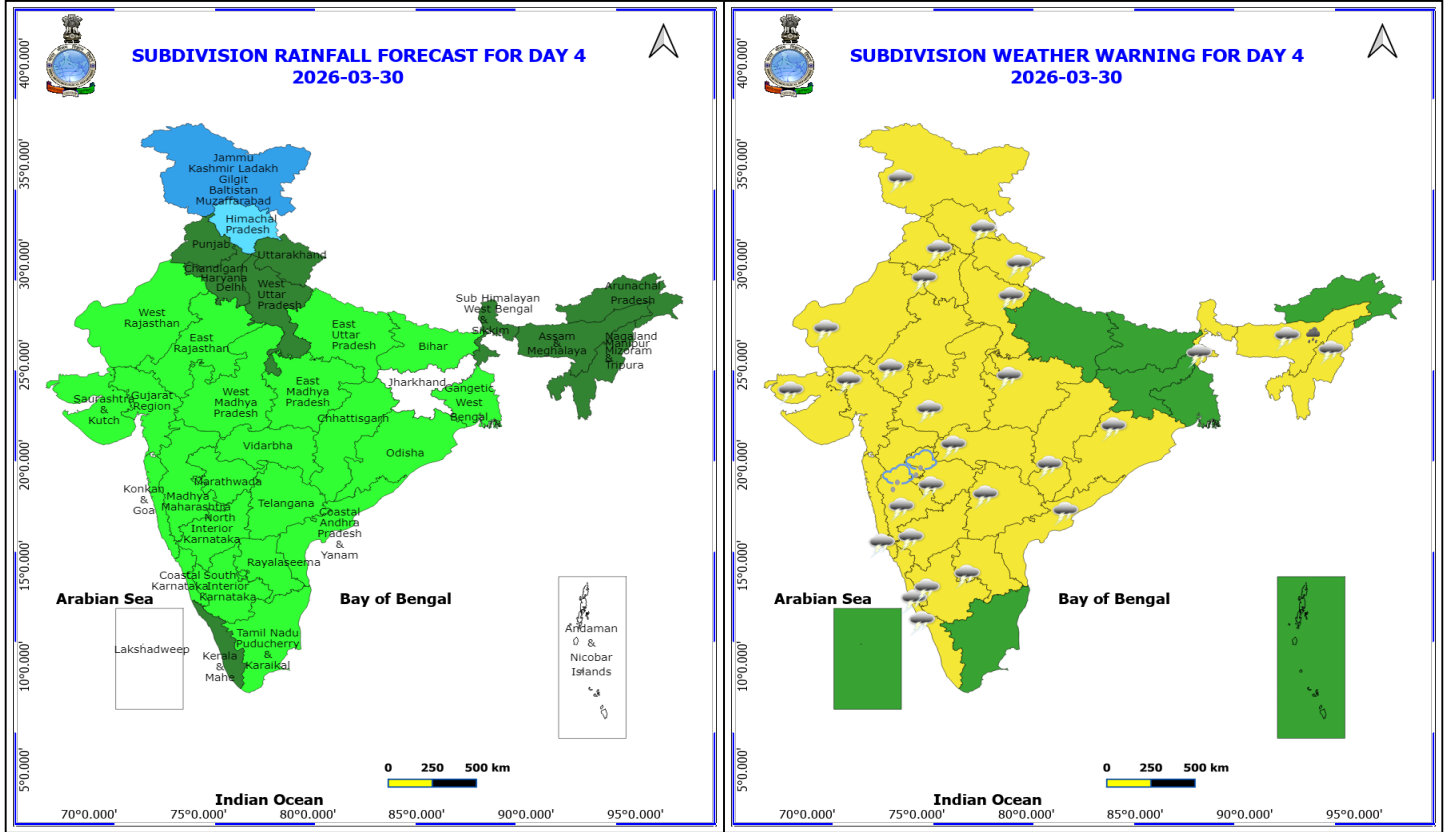
(Service to the nation since 1875)



29 March (Day 3)

- ❖ **Heavy Rainfall** very likely at isolated places over Arunachal Pradesh, Assam & Meghalaya and Nagaland, Manipur, Mizoram and Tripura.
- ❖ **Thunderstorm accompanied with Hailstorm** very likely at isolated places over Chhattisgarh, Madhya Pradesh and Vidarbha.
- ❖ **Thundersquall with wind speed reaching(50-60kmph)** very likely at isolated places over Himachal Pradesh.
- ❖ **Thunderstorm accompanied with lightning & gusty winds(40-50kmph)** very likely at isolated places over Bihar, Haryana, Chandigarh & Delhi, Jammu-Kashmir-Ladakh-Gilgit-Baltistan-Muzaffarabad, Madhya Pradesh, Punjab, Rajasthan, Telangana, Uttarakhand and Vidarbha.
- ❖ **Thunderstorm accompanied with lightning & gusty winds(30-40kmph)** very likely at isolated places over Andhra Pradesh, Arunachal Pradesh, Assam & Meghalaya, Chhattisgarh, Kerala & Mahe, Nagaland, Manipur, Mizoram and Tripura, South Interior Karnataka, Sub Himalayan West Bengal & Sikkim and West Uttar Pradesh.
- ❖ **Thunderstorm accompanied with Lightning** very likely at isolated places over Coastal Karnataka, Gujarat State, Madhya Maharashtra, Marathwada and Tamil Nadu Puducherry & Karaikal.
- ❖ **Hot and Humid weather** very likely at isolated places over Coastal Karnataka.
- ❖ **Squally wind with speed 45 to 55 kmph gusting to 65 kmph** is likely to prevail along and off the Oman coast, Gulf of Oman & parts of northwest Arabian Sea.

***Red color warning does not mean "Red Alert" Red color warning means "Take Action"**
Forecast and warning for any day is valid from 0830 hours IST of day till 0830 hours IST of next day
For more details kindly visit <https://mausam.imd.gov.in> or contact 011-2434-4599
(Service to the nation since 1875)



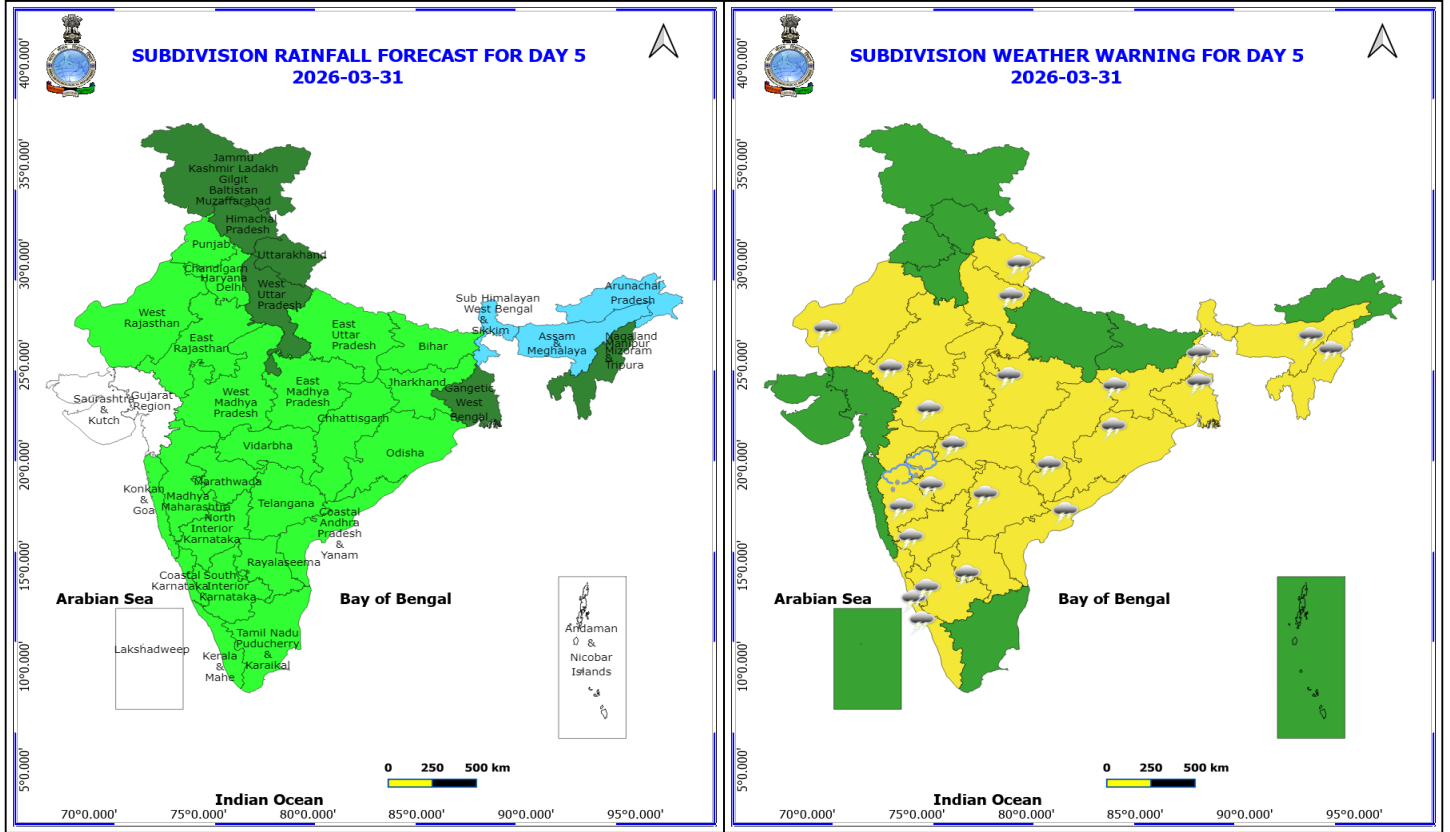
30 March (Day 4)

- ❖ **Heavy Rainfall** likely at isolated places over Assam & Meghalaya.
- ❖ **Thunderstorm accompanied with Hailstorm** likely at isolated places over Madhya Maharashtra and Marathwada.
- ❖ **Thundersquall with wind speed reaching(50-60kmph)** likely at isolated places over Himachal Pradesh.
- ❖ **Thunderstorm accompanied with lightning & gusty winds(40-50kmph)** likely at isolated places over Chhattisgarh, Haryana, Chandigarh & Delhi, Jammu-Kashmir-Ladakh-Gilgit-Baltistan-Muzaffarabad, Madhya Pradesh, Maharashtra, Punjab, Rajasthan, Telangana, Uttarakhand and West Uttar Pradesh.
- ❖ **Thunderstorm accompanied with lightning & gusty winds(30-40kmph)** likely at isolated places over Andhra Pradesh, Interior Karnataka, Odisha and Sub Himalayan West Bengal & Sikkim.
- ❖ **Thunderstorm accompanied with Lightning** likely at isolated places over Assam & Meghalaya, Coastal Karnataka, Gujarat State, Kerala & Mahe, Konkan & Goa and Nagaland, Manipur, Mizoram and Tripura.

No Fishermen Warning

***Red color warning does not mean "Red Alert" Red color warning means "Take Action"**
Forecast and warning for any day is valid from 0830 hours IST of day till 0830 hours IST of next day
For more details kindly visit <https://mausam.imd.gov.in> or contact 011-2434-4599

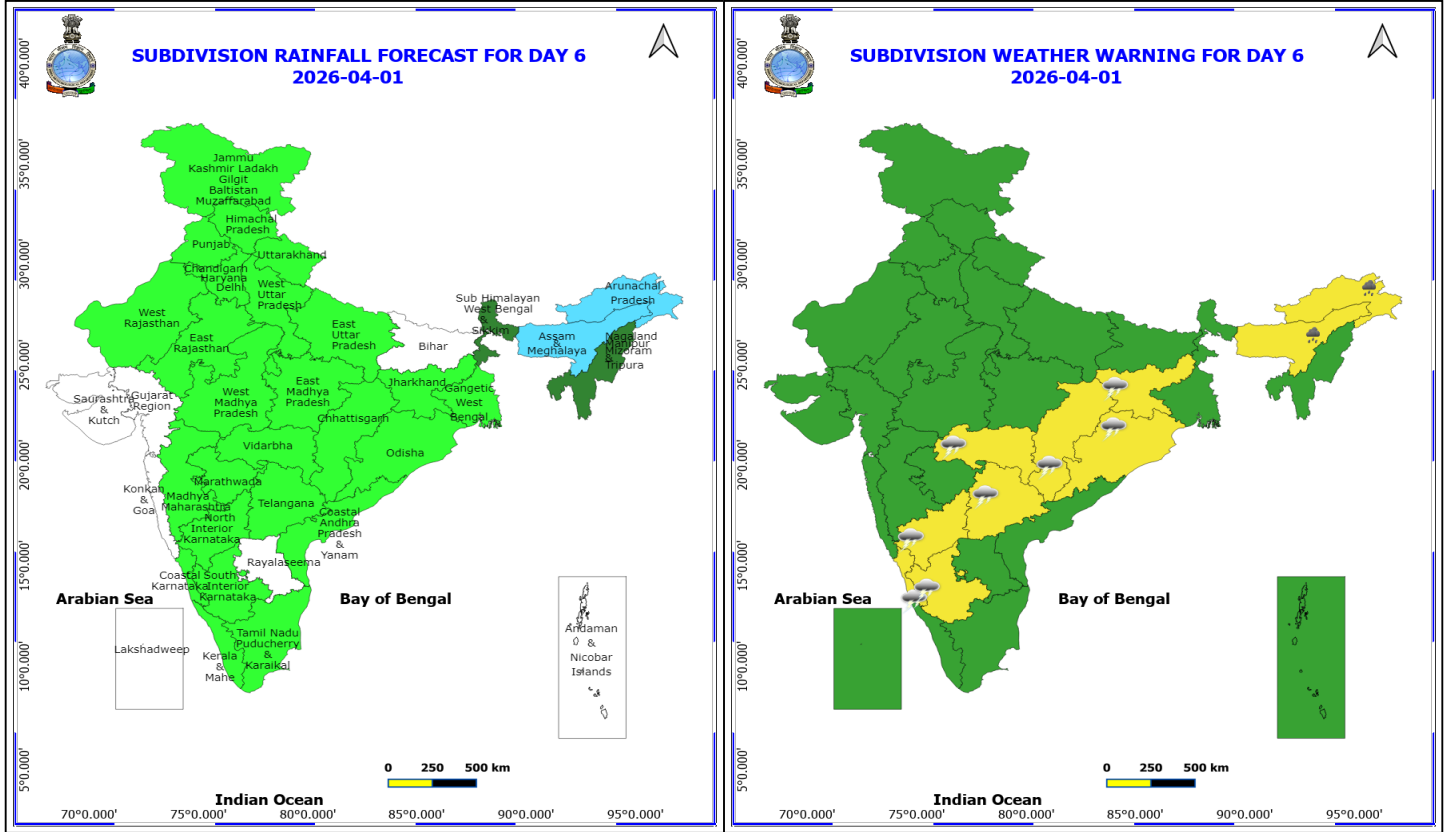
(Service to the nation since 1875)



31 March (Day 5)

- ❖ **Thunderstorm accompanied with Hailstorm** likely at isolated places over Madhya Maharashtra and Marathwada.
- ❖ **Thunderstorm accompanied with lightning & gusty winds(40-50kmph)** likely at isolated places over Chhattisgarh, Madhya Pradesh, Maharashtra, Telangana, Uttarakhand and West Bengal & Sikkim.
- ❖ **Thunderstorm accompanied with lightning & gusty winds(30-40kmph)** likely at isolated places over Andhra Pradesh, Interior Karnataka, Jharkhand, Odisha and Rajasthan.
- ❖ **Thunderstorm accompanied with Lightning** likely at isolated places over Assam & Meghalaya, Coastal Karnataka, Kerala & Mahe, Nagaland, Manipur, Mizoram and Tripura and West Uttar Pradesh.

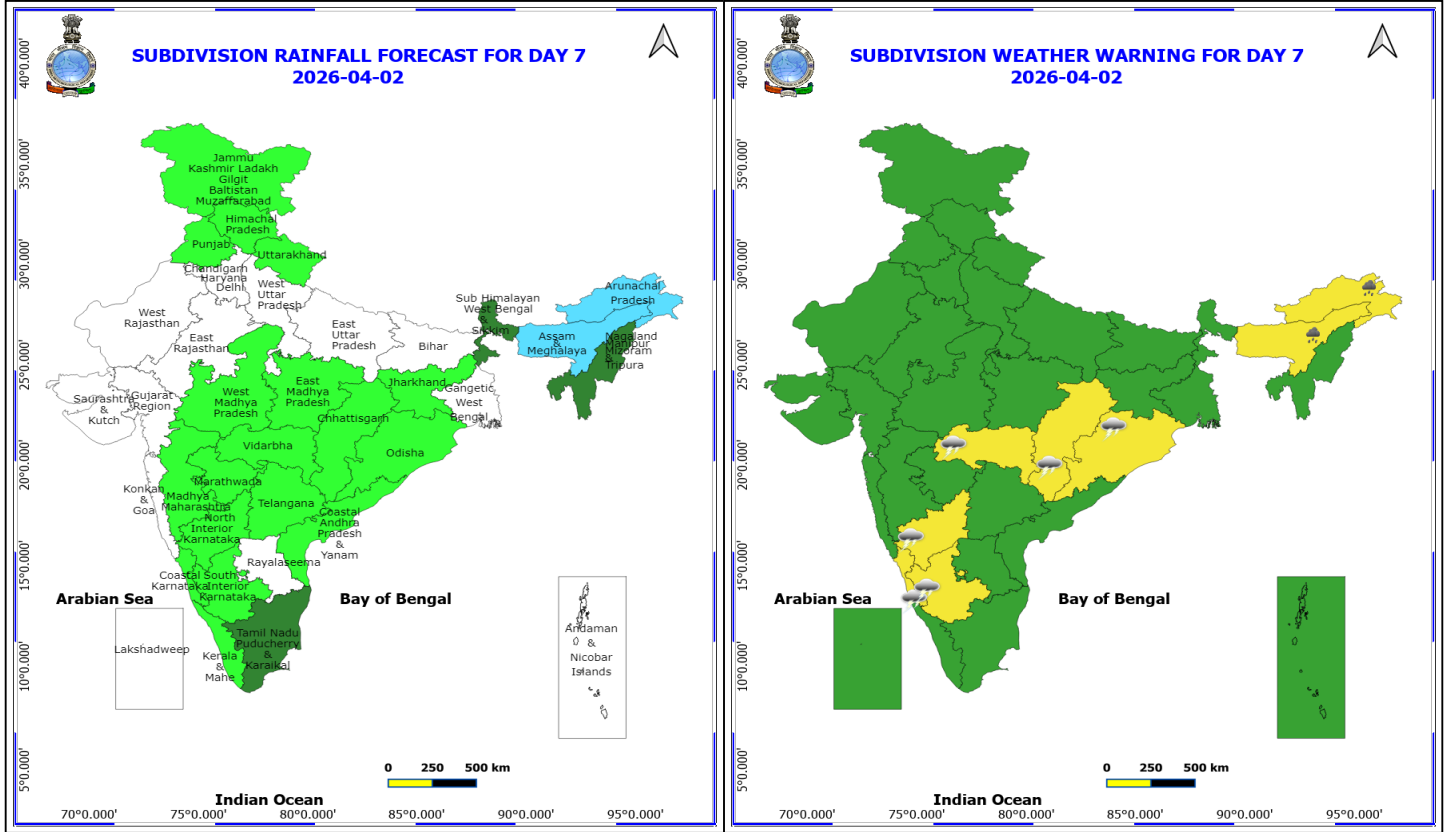
No Fishermen Warning



1 April (Day 6)

- ❖ **Heavy Rainfall** likely at isolated places over Arunachal Pradesh and Assam & Meghalaya.
- ❖ **Thunderstorm accompanied with lightning & gusty winds(40-50kmph)** likely at isolated places over Chhattisgarh, Telangana and Vidarbha.
- ❖ **Thunderstorm accompanied with lightning & gusty winds(30-40kmph)** likely at isolated places over Interior Karnataka, Jharkhand and Odisha.
- ❖ **Thunderstorm accompanied with Lightning** likely at isolated places over Coastal Karnataka.

No Fishermen Warning



2 April (Day 7)

- ❖ **Heavy Rainfall** likely at isolated places over Arunachal Pradesh and Assam & Meghalaya.
- ❖ **Thunderstorm accompanied with lightning & gusty winds(40-50kmph)** likely at isolated places over Chhattisgarh and Vidarbha.
- ❖ **Thunderstorm accompanied with lightning & gusty winds(30-40kmph)** likely at isolated places over Interior Karnataka and Odisha.
- ❖ **Thunderstorm accompanied with Lightning** likely at isolated places over Coastal Karnataka.

No Fishermen Warning



Table-1

7 Days Rainfall Forecast

S.No.	Subdivision	27- Mar	28- Mar	29- Mar	30- Mar	31- Mar	1- Apr	2- Apr
		Day 1	Day 2	Day 3	Day 4	Day 5	Day 6	Day 7
1	ANDAMAN & NICOBAR ISLANDS	DRY	DRY	ISOL	DRY	DRY	DRY	DRY
2	ARUNACHAL PRADESH	FWS	WS	FWS	SCT	FWS	FWS	FWS
3	ASSAM & MEHGHALAYA	SCT	WS	FWS	SCT	FWS	FWS	FWS
4	N. M. M. & T.	ISOL	FWS	FWS	SCT	SCT	SCT	SCT
5	S.H. WEST BENGAL & SIKKIM	WS	WS	SCT	SCT	FWS	SCT	SCT
6	GANGETIC WEST BENGAL	FWS	FWS	ISOL	ISOL	SCT	ISOL	DRY
7	ODISHA	ISOL	ISOL	ISOL	ISOL	ISOL	ISOL	ISOL
8	JHARKHAND	SCT	ISOL	ISOL	DRY	ISOL	ISOL	ISOL
9	BIHAR	SCT	SCT	ISOL	ISOL	ISOL	DRY	DRY
10	EAST UTTAR PRADESH	ISOL	DRY	DRY	ISOL	ISOL	ISOL	DRY
11	WEST UTTAR PRADESH	ISOL	DRY	ISOL	SCT	SCT	ISOL	DRY
12	UTTARAKHAND	SCT	ISOL	SCT	SCT	SCT	ISOL	ISOL
13	HARYANA, CHD & DELHI	ISOL	ISOL	SCT	SCT	ISOL	ISOL	DRY
14	PUNJAB	ISOL	ISOL	SCT	SCT	ISOL	ISOL	ISOL
15	HIMACHAL PRADESH	ISOL	FWS	FWS	FWS	SCT	ISOL	ISOL
16	JAMMU AND KASHMIR AND LADAKH	ISOL	FWS	WS	WS	SCT	ISOL	ISOL
17	WEST RAJASTHAN	DRY	ISOL	ISOL	ISOL	ISOL	ISOL	DRY
18	EAST RAJASTHAN	ISOL	ISOL	ISOL	ISOL	ISOL	ISOL	DRY
19	WEST MADHYA PRADESH	ISOL	DRY	ISOL	ISOL	ISOL	ISOL	ISOL
20	EAST MADHYA PRADESH	ISOL	DRY	ISOL	ISOL	ISOL	ISOL	ISOL
21	GUJRAT REGION	DRY	DRY	ISOL	ISOL	DRY	DRY	DRY
22	SAURASHTRA & KUTCH	DRY	DRY	ISOL	ISOL	DRY	DRY	DRY
23	KONKAN & GOA	ISOL	DRY	ISOL	ISOL	ISOL	DRY	DRY
24	MADHYA MAHARASHTRA	ISOL	DRY	ISOL	ISOL	ISOL	ISOL	ISOL
25	MARATHWADA	ISOL	DRY	ISOL	ISOL	ISOL	ISOL	ISOL
26	VIDARBHA	ISOL	ISOL	ISOL	ISOL	ISOL	ISOL	ISOL
27	CHATTISGARH	ISOL	ISOL	ISOL	ISOL	ISOL	ISOL	ISOL
28	COASTAL ANDHRA PRADESH	ISOL	ISOL	ISOL	ISOL	ISOL	ISOL	ISOL
29	TELANGANA	ISOL	ISOL	ISOL	ISOL	ISOL	ISOL	ISOL
30	RAYALASEEMA	DRY	ISOL	ISOL	ISOL	ISOL	DRY	DRY
31	TAMILNADU & PUDUCHERRY	DRY	ISOL	ISOL	ISOL	ISOL	ISOL	SCT
32	COSTAL KARNATAKA	ISOL	ISOL	ISOL	ISOL	ISOL	ISOL	ISOL
33	NORTH INTERIOR KARNATAKA	ISOL	DRY	DRY	ISOL	ISOL	ISOL	ISOL
34	SOUTH INTERIOR KARNATAKA	ISOL	ISOL	ISOL	ISOL	ISOL	ISOL	ISOL
35	KERALA	ISOL	SCT	SCT	SCT	ISOL	ISOL	ISOL
36	LAKSHDWEEP	DRY	SCT	DRY	DRY	DRY	DRY	DRY

Legend	Category	%Stations
WS	Widespread/Most Places	76-100
FWS	Fairly Widespread/Many Places	51-75
SCT	Scattered/ A Few Places	26-50
ISOL	Isolated Places	1-25
DRY	No Rain	0

*Red color warning does not mean "Red Alert" Red color warning means "Take Action"
Forecast and warning for any day is valid from 0830 hours IST of day till 0830 hours IST of next day
For more details kindly visit <https://mausam.imd.gov.in> or contact 011-2434-4599

(Service to the nation since 1875)

Fig. 1: Maximum Temperatures Dated 2026-03-26

Fig. 2: Departure of Maximum Temp. Dated 2026-03-26

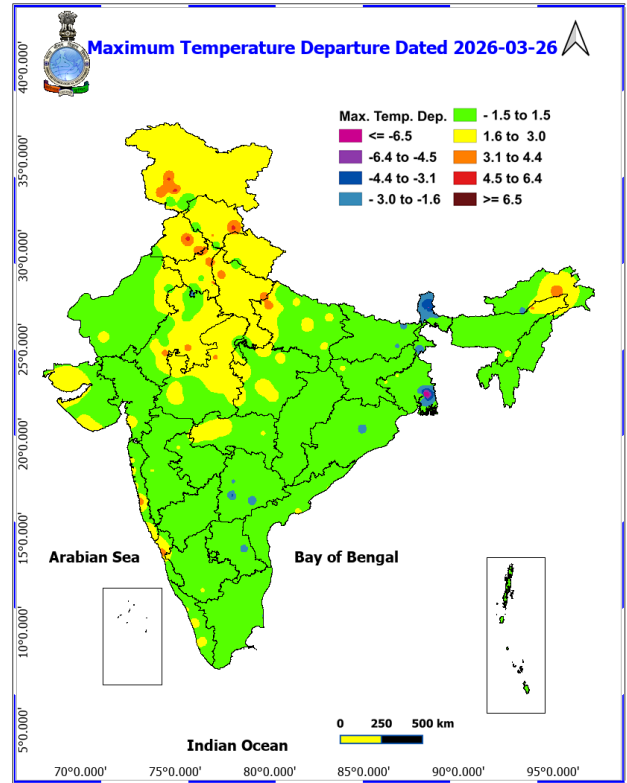
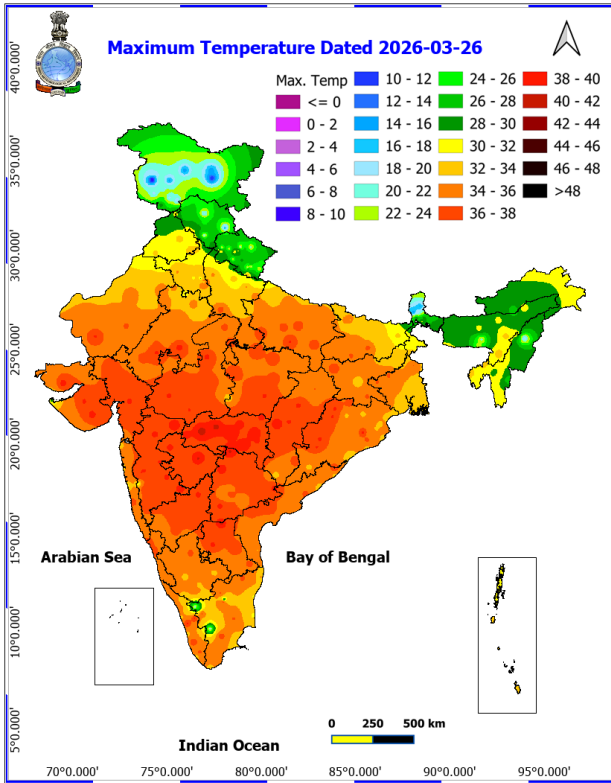
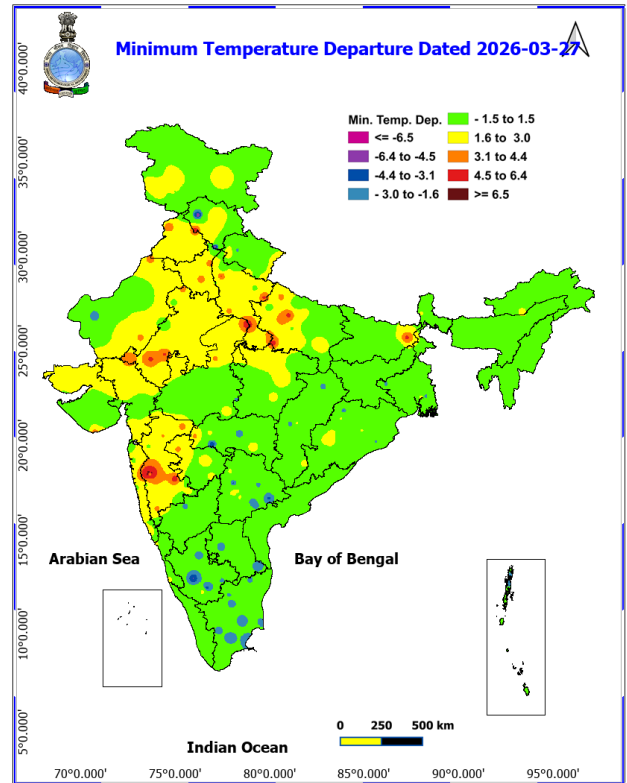
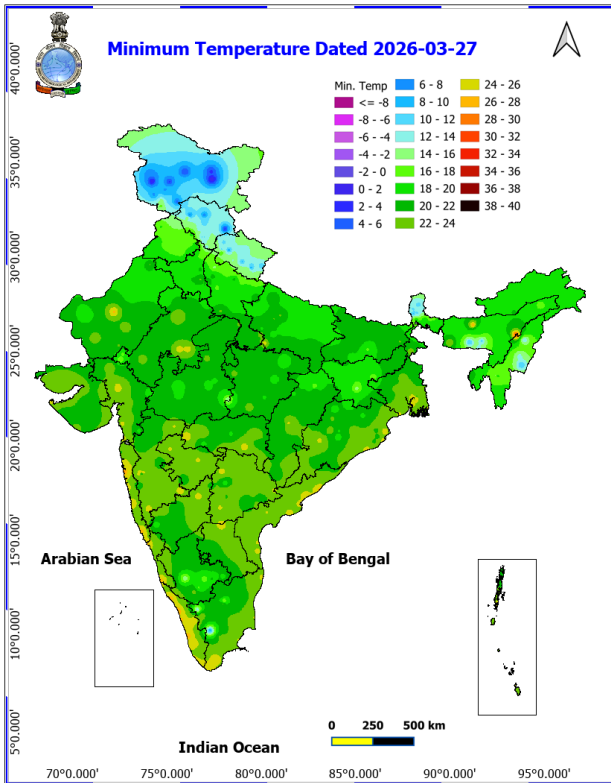


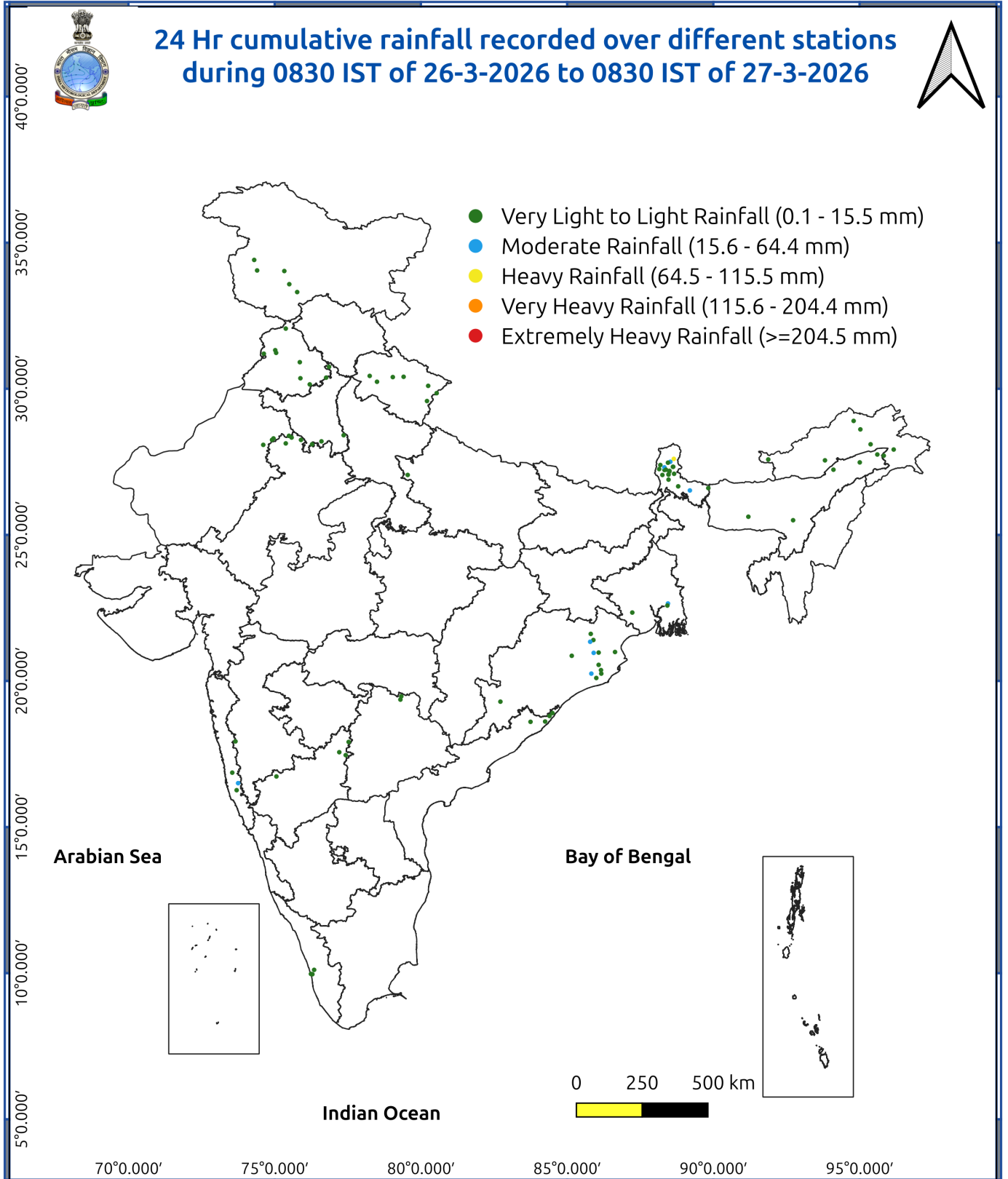
Fig. 3: Minimum Temperatures Dated 2026-03-27

Fig. 4: Departure of Minimum Temp. Dated 2026-03-27



*Red color warning does not mean "Red Alert" Red color warning means "Take Action"
Forecast and warning for any day is valid from 0830 hours IST of day till 0830 hours IST of next day
For more details kindly visit <https://mausam.imd.gov.in> or contact 011-2434-4599

(Service to the nation since 1875)



Impact and Actions

Impact & Action Suggested due to heavy/very heavy rainfall:

- **Isolated heavy rainfall/snowfall** likely over Jammu-Kashmir-Ladakh-Gilgit-Baltistan-Muzaffarabad on 30th March.
- **Isolated heavy rainfall** likely over Sub-Himalayan West Bengal & Sikkim on 27th & 28th; Nagaland, Manipur, Mizoram & Tripura on 29th March; Arunachal Pradesh on 28th, 29th March & on 01st, 02nd April; Assam & Meghalaya during 28th-30th March & on 01st, 02nd April.

Impact Expected

- Localized Flooding of roads, water logging in low lying areas and closure of underpasses mainly in urban areas of the above region.
- Occasional reduction in visibility due to heavy rainfall.
- Disruption of traffic in major cities due to water logging in roads leading to increased travel time.
- Minor damage to kutcha roads.
- Possibilities of damage to vulnerable structure.
- Localized Landslides/Mudslides
- Damage to horticulture and standing crops in some areas due to inundation.
- It may lead to riverine flooding in some river catchments (for riverine flooding please visit Web page of CWC).

Action Suggested

- Check for traffic congestion on your route before leaving for your destination.
- Follow any traffic advisories that are issued in this regard.
- Avoid going to areas that face the water logging problems often.
- Avoid staying in vulnerable structure.

Impact expected and action suggested due to

- **Isolated hailstorm activity** likely over Assam & Meghalaya, Jharkhand, Odisha on 27th; West Bengal & Sikkim, Bihar on 27th & 28th; Madhya Pradesh, Vidarbha, Chhattisgarh on 29th; Madhya Maharashtra and Marathawada on 30th & 31st March.
- **Thundersquall (wind speed reaching 60-70 kmph gusting to 80 kmph)** likely over Assam & Meghalaya on 27th March.
- **Thundersquall (wind speed reaching 50-60 kmph gusting to 70 kmph)** likely over West Bengal & Sikkim, Bihar on 27th & 28th and Jharkhand, Odisha on 27th March.

Impact expected:

- Breaking of tree branches, uprooting of large avenue trees. Large dead limbs blown from trees. Damage to Standing crops.
- Minor to Major damage to banana and papaya trees.
- Minor to major damage to power and communication lines due to breaking of branches.
- Strong wind/hail may damage plantation, horticulture and standing crops.
- Hail may injure people and cattle at open places.
- Partial damage to vulnerable structures due to strong winds.
- Minor damage to kutcha houses/walls and huts.
- Loose objects may fly.

Action suggested:

- People are advised to keep a watch on the weather for worsening conditions and be ready to move to safer

***Red color warning does not mean "Red Alert" Red color warning means "Take Action"**

Forecast and warning for any day is valid from 0830 hours IST of day till 0830 hours IST of next day

For more details kindly visit <https://mausam.imd.gov.in> or contact 011-2434-4599

(Service to the nation since 1875)

places accordingly.

- Stay indoors, close windows & doors and avoid travel if possible.
- Take safe shelters; do not take shelter under trees.
- Do not lie on concrete floors and do not lean against concrete walls.
- Unplug electrical/ electronic appliances.
- Immediately get out of water bodies.
- Keep away from all the objects that conduct electricity.

Agromet advisories for various parts of the country

Agromet advisories for likely impact of Hailstorms

- Use hail nets or hail caps in fruit orchards and vegetable plants to protect them from mechanical damage in **Assam & Meghalaya, West Bengal, Bihar, Odisha and Jharkhand**. Undertake harvesting of mature crops immediately and shift them to safer places.
- In **Madhya Maharashtra, Marathwada and Vidarbha**, harvest mature wheat, sorghum, safflower, chickpea, maize, linseed, fruits and vegetables and keep the harvested produce in safe places.
- In **Chhattisgarh**, harvest mature mustard, gram & wheat and shift the harvested produce to safe places.

Agromet advisories for likely impact of Heavy Rainfall

- In **Sub Himalayan West Bengal**, ensure proper drainage channel, and drain out excess water from fields of rice, maize, other standing crops, vegetables and orchard. Cover the nursery of cucurbits and Dalle khorsani with polyethylene sheets or agro-nets.
- In **Arunachal Pradesh**, undertake harvesting of cabbage, pea, mustard and late-maturing paddy varieties and digging of potatoes. Shift the harvested produce to safe places. Maintain proper drainage channels in the fields of rice, maize, other standing crops, vegetables and orchards.
- In **Assam**, drain out excess rainwater from the standing crop fields.
- In **Meghalaya**, ensure proper drainage in summer vegetable crops. Carry out staking and propping of plantation crops and protect young seedlings from heavy rainfall. Keep the harvested pods of garden peas in safer place immediately.
- In **Jammu & Kashmir**, make necessary arrangements to drain out excess rain water from wheat, gram, mustard and vegetable fields.

Agromet advisories for likely impact of Thunderstorm / Gusty Winds

- Shift the harvested produce in safer places or cover the produce with tarpaulin sheets in the fields. Tie the harvested crops properly and cover them to minimise the risk of displacement due to strong surface winds.
- Provide mechanical support to horticultural crops and staking or support to vegetables and young fruit plants / fruit-bearing plants to avoid lodging due to strong winds.

Agromet advisories for likely impact of Hot and Humid Weather

- In **Konkan Region of Maharashtra**, provide 100 litre water/tree at weekly or 150 to 200 litre water/ tree at 15 days interval to minimize pre-mature fruit drop and sun scorching in mango and poor fruit set and reduced nut size in cashew orchards. Use straw mulch to prevent moisture loss from the soil. Undertake pre-harvest bagging of fruits with newspaper bags to protect the mango fruits from sunscald

Livestock / Poultry

- Keep the animals inside the shed during Heavy Rainfall/Hailstorm period and provide them balanced feed. Store feed and fodder in a safe place to prevent spoilage.

***Red color warning does not mean "Red Alert" Red color warning means "Take Action"**

Forecast and warning for any day is valid from 0830 hours IST of day till 0830 hours IST of next day

For more details kindly visit <https://mausam.imd.gov.in> or contact 011-2434-4599

(Service to the nation since 1875)

LEGENDS

- 1 अंडमान और निकोबार द्वीप समुह
- 2 अरुणाचल प्रदेश
- 3 असम और मेघालय
- 4 नागालैंड मनीपुर मीजोरम और त्रिपुरा
- 5 उप हिमालय पश्चिम बंगाल एवं सिक्किम
- 6 पश्चिम बंगाल
- 7 ओडिसा
- 8 झारखंड
- 9 बिहार
- 10 पूर्वी उत्तर प्रदेश
- 11 पश्चिम उत्तर प्रदेश
- 12 उत्तराखंड
- 13 हरियाणा चंडिगढ़ एवं दिल्ली
- 14 पंजाब
- 15 हिमाचल प्रदेश
- 16 जम्मू एवं कश्मीर एवं लद्दाख
- 17 पश्चिम राजस्थान
- 18 पूर्वी राजस्थान
- 19 पश्चिम मध्य प्रदेश
- 20 पूर्वी मध्य प्रदेश
- 21 गुजरात क्षेत्र
- 22 सौराष्ट्र एवं कच्छ
- 23 कोंकण एवं गोवा
- 24 मध्य महाराष्ट्र
- 25 मराठावाडा
- 26 विदर्भ
- 27 छत्तीसगढ़
- 28 तटीय आंध्र प्रदेश एवं यनम
- 29 तेलंगाना
- 30 रायलसीमा
- 31 तमिलनाडु, पुदुचेरी एवं कराईकल
- 32 तटिय कर्नाटक
- 33 आंतरिक उत्तरी कर्नाटक
- 34 आंतरिक दक्षिणी कर्नाटक
- 35 केरल एवं माहे
- 36 लक्षद्वीप



1. Andaman & Nicobar Islands
2. Arunachal Pradesh
3. Assam & Meghalaya
4. Nagaland, Manipur, Mizoram & Tripura
5. Sub-Himalayan West Bengal & Sikkim
6. Gangetic West Bengal
7. Orissa
8. Jharkhand
9. Bihar
10. East Uttar Pradesh
11. West Uttar Pradesh
12. Uttarakhand
13. Haryana, Chd & Delhi
14. Punjab
15. Himachal Pradesh
16. Jammu & Kashmir and Ladakh
17. West Rajasthan
18. East Rajasthan
19. West Madhya Pradesh
20. East Madhya Pradesh
21. Gujarat
22. Saurashtra
23. Konkan & Goa
24. Madhya Maharashtra
25. Marathawada
26. Vidharbha
27. Chhattisgarh
28. Coastal Andhra Pradesh & Yanam
29. Telangana
30. Rayalaseema
31. Tamilnadu, Puducherry & Karaikal
32. Coastal Karnataka
33. North Interior Karnataka
34. South Interior Karnataka
35. Kerala & Mahe
36. Lakshadweep

SPATIAL DISTRIBUTION (% of Stations reporting)

% Stations	Category	% Stations	Category
76-100	Widespread (WS/ Most Places)	26-50	Scattered (SCT/ A Few Places)
51-75	Fairly Widespread (FWS/ Many Places)	1-25	Isolated (ISOL)

Subdivision Colour

- NO WARNING
- WATCH (BE UPDATED)
- ALERT (BE PREPARED TO TAKE ACTION)
- WARNING (TAKE ACTION)

Probabilistic Forecast

Terms	Probability of Occurrence (%)
Unlikely	< 25
Likely	25 - 50
Very Likely	50 - 75
Most Likely	> 75

- | | | | |
|--------------------------|-----------------|----------------------|--------------------|
| Heavy Rain | Very Heavy Rain | Extremely Heavy Rain | Heavy Snow |
| Thunderstorm & Lightning | Hailstorm | Dust Storm | Dust Raising Winds |
| Strong surface winds | Heat Wave | Hot Day | Warm Night |
| Cold Wave | Cold Day | Ground Frost | Fog |
| Hot & Humid | | | |

*Red color warning does not mean "Red Alert" Red color warning means "Take Action"

Forecast and warning for any day is valid from 0830 hours IST of day till 0830 hours IST of next day

For more details kindly visit <https://mausam.imd.gov.in> or contact 011-2434-4599

(Service to the nation since 1875)

LEGENDS

WARNING

WARNING (TAKE ACTION)
ALERT (BE PREPARED)
WATCH (BE UPDATED)
NO WARNING (NO ACTION)

Probabilistic Forecast

Terms	Probability of Occurrence (%)
Unlikely	< 25
Likely	25 - 50
Very Likely	50 - 75
Most Likely	> 75



Rain/ Snow *

Heavy: 64.5 to 115.5 mm/cm *
Very Heavy: 115.6 to 204.4 mm/cm*
Extremely Heavy: > 204.4 mm/cm *



Heat Wave

When maximum temperature of a station reaches $\geq 40^{\circ}\text{C}$ for plains and $\geq 30^{\circ}\text{C}$ for hilly regions
(a) Based on Departure from normal

Heat Wave: Maximum Temperature Departure from normal 4.5°C to 6.4°C .
Severe Heat Wave: Maximum Temperature Departure from normal $\geq 6.5^{\circ}\text{C}$

(b). Based on Actual maximum temperature

Heat Wave: When actual maximum temperature $\geq 45^{\circ}\text{C}$.
Severe Heat Wave: When actual maximum temperature $\geq 47^{\circ}\text{C}$

(c). Criteria for heat wave for coastal stations

When maximum temperature departure is $> 4.5^{\circ}\text{C}$ from normal. Heat Wave may be described provided maximum temperature $\geq 37^{\circ}\text{C}$



Warm Night

When maximum temperature remains 40°C

Warm Night: When minimum temperature departure 4.5°C to 6.4°C .
Severe Warm Night: When minimum temperature departure $> 6.4^{\circ}\text{C}$.



Cold Wave

When minimum temperature of a station $\leq 10^{\circ}\text{C}$ for plains and $\leq 0^{\circ}\text{C}$ for hilly regions.

(a). Based on departure

Cold Wave: Minimum Temperature Departure from normal -4.5°C to -6.4°C .
Severe Cold Wave: Minimum Temperature Departure from normal $\leq -6.5^{\circ}\text{C}$

(b) Based on actual Minimum Temperature (for Plains only)

Cold Wave : When Minimum Temperature is $\leq 4.0^{\circ}\text{C}$
Severe Cold Wave: When Minimum Temperature is $\leq 2.0^{\circ}\text{C}$

(c) For Coastal Stations

When Minimum Temperature departure is $\leq -4.5^{\circ}\text{C}$ & actual Minimum Temperature is $\leq 15^{\circ}\text{C}$



Cold Day

When minimum temperature of a station $\leq 10^{\circ}\text{C}$ for plains and $\leq 0^{\circ}\text{C}$ for hilly regions
Based on departure

Cold Day: Maximum Temperature Departure from normal -4.5°C to -6.4°C .
Severe Cold Day: Maximum Temperature Departure from normal $\leq -6.5^{\circ}\text{C}$



Fog

Phenomenon of small droplets suspended in air and the horizontal visibility $< 1\text{km}$

Moderate Fog: When the visibility between 500-200 metres
Dense Fog: when the visibility between 50- 200 metres
Very Dense Fog: when the visibility < 50 metres



Thunderstorm

Sudden electrical discharges manifested by a flash of light (Lightning) and a sharp rumbling sound (thunder)



Dust/Sand Storm

An ensemble of particles of dust or sand energetically lifted to great heights by a strong and turbulent wind.



Frost

Ice deposits on ground

Air temperature $\leq 4^{\circ}\text{C}$ (over Plains)



Squall

A strong wind that rises suddenly, lasts for atleast 1 minute.

Moderate: Wind speed 52-61 kmph
Severe: Wind speed 62-87 kmph
Very Severe: Wind speed > 87 kmph



Sea State

Effect of various waves in the sea over specific area

Rough to very rough: Wind speed 41-62 kmph (22-33 knots) & Wave height 2.5-6 metre
High to very high: Wind speed 63-117 kmph (34-63 knots) & Wave height 6-14 metre
Phenomenal: Wind speed > 117 kmph (> 63 knots) & Wave height > 14 metre



Cyclone

Cyclonic Storm: Wind speed 62-87 kmph (34-47 knots)
Severe Cyclonic Storm: Wind speed 88-117 kmph (48-63 knots)
Very Severe Cyclonic Storm: Wind speed 118-165 kmph (64 - 89 knots)
Extremely Severe Cyclonic Storm: Wind speed 166-220 kmph (90 -119 knots)
Super Cyclone Storm: Wind speed > 220 kmph (> 119 knots)

*Red color warning does not mean "Red Alert" Red color warning means "Take Action"

Forecast and warning for any day is valid from 0830 hours IST of day till 0830 hours IST of next day

For more details kindly visit <https://mausam.imd.gov.in> or contact 011-2434-4599

(Service to the nation since 1875)