

2025-08-14

Time of Issue: 14:09:00 hours IST
(Mid-Day)

ALL INDIA WEATHER SUMMARY AND FORECAST BULLETIN

Significant Weather Features

Weather, Forecast and Warnings :

East & Central India:

Isolated **heavy rainfall** likely over Madhya Pradesh, Vidarbha & Chhattisgarh during 14th-20th; Sub-Himalayan West Bengal & Sikkim on 14th & during 17th-19th; Gangetic West Bengal on 14th; Bihar on 14th, 17th & 18th; Odisha during 15th-18th August **with isolated very heavy rainfall over West Madhya Pradesh on 14th & 15th; Vidarbha on 14th & 17th; Chhattisgarh on 14th & during 18th-20th and Odisha on 14th August.**

Light to moderate rainfall at most/many places accompanied with thunderstorm & lightning likely over the region during next 7 days.

South Peninsular India:

Isolated **heavy rainfall** likely over Tamil Nadu & Rayalaseema on 14th; Kerala & Mahe during 14th-18th; Coastal Andhra Pradesh & Yanam, Telangana, Interior Karnataka during 14th-19th; Coastal Karnataka during 14th-20th August with isolated **very heavy rainfall over Coastal Andhra Pradesh & Yanam on 14th; Telangana during 14th-16th; Coastal Karnataka on 14th & during 17th-19th; South Interior Karnataka on 19th August.**

Strong surface winds (speed reaching 40-50 kmph) very likely over South Peninsular India on 14th August.

Light to moderate rainfall at most/many places accompanied with thunderstorm & lightning likely over Rayalaseema, Coastal Andhra Pradesh & Yanam and Telangana during next 5 days.

Northwest India:

Isolated **heavy rainfall** likely over Jammu-Kashmir on 15th, 17th & 18th; Himachal Pradesh, Uttarakhand during 14th-20th; Punjab, Haryana, Chandigarh on 15th & 16th; West Uttar Pradesh on 16th; East Uttar Pradesh on 14th; West Rajasthan on 16th & 17th; East Rajasthan during 14th-18th & on 20th August **with very heavy rainfall over Jammu- Kashmir, Himachal Pradesh, Punjab, Haryana, Chandigarh, West Uttar Pradesh on 14th; Uttarakhand on 14th, 16th & 17th; East Rajasthan on 15th & 16th August.**

Light/moderate rainfall at most/many places accompanied with thunderstorm & lightning likely over Jammu-Kashmir-Ladakh-Gilgit-Baltistan-Muzaffarabad, Uttarakhand & Rajasthan during next 7 days.

Northeast India:

Isolated **heavy rainfall** likely to continue over Arunachal Pradesh, Assam & Meghalaya on 14th, 16th, 17th, 20th; Nagaland, Manipur, Mizoram & Tripura during 14th-18th August **with very heavy rainfall over Assam & Meghalaya on 16th August.**

Light/moderate rainfall at many places accompanied with thunderstorm & lightning likely during next 3 days.

West India:

Extremely heavy rainfall very likely at isolated places over Konkan & Goa on 17th; Madhya Maharashtra on 17th & 18th August.

Isolated **heavy rainfall** likely over Madhya Maharashtra on 14th; Konkan & Goa on 15th & 20th; Marathwada on 14th, 15th & 18th; Gujarat Region during 14th-17th; Saurashtra & Kutch on 17th August **with isolated very heavy rainfall over Konkan & Goa on 14th, 16th, 18th & 19th; Ghat areas of Madhya Maharashtra during 15th-20th; Gujarat**

***Red color warning does not mean "Red Alert" Red color warning means "Take Action"**

Forecast and warning for any day is valid from 0830 hours IST of day till 0830 hours IST of next day

For more details kindly visit <https://mausam.imd.gov.in> or contact 011-2434-4599

(Service to the nation since 1875)



State during 18th-20th August.

Light to moderate rainfall at many/some places very likely over the region during next 5 days.



Main Weather Observations:

❖ **Rainfall distribution** (from 0830 hours IST of yesterday to 0830 hours IST of today): **at most places** over Arunachal Pradesh, Assam & Meghalaya, Nagaland, Manipur, Mizoram & Tripura, Sub Himalayan West Bengal & Sikkim, Odisha, Bihar, East Uttar Pradesh, West Uttar Pradesh, Uttarakhand, Himachal Pradesh, Konkan & Goa, Vidarbha, Chhattisgarh, Coastal Andhra Pradesh & Yanam, Rayalaseema and Kerala & Mahe; **at many places** over Andaman & Nicobar Islands, Gangetic West Bengal, Jharkhand, Haryana-Chandigarh-Delhi, Punjab, West Madhya Pradesh, East Madhya Pradesh, Madhya Maharashtra, Marathwada, Telangana and Lakshadweep; **at a few places** over East Rajasthan and Saurashtra & Kutch; **at isolated places** over Jammu-Kashmir-Ladakh-Gilgit-Baltistan-Muzaffarabad, Gujarat Region and Tamil Nadu, Puducherry & Karaikal; **Dry** over rest of the country.

❖ **Significant rainfall recorded(in cm)** (from 0830 hours IST of yesterday to 0830 hours IST of today): **Coastal Andhra Pradesh & Yanam:** Tanuku (dist West Godavari) 24; Nandigama (dist Ntr District) 19; Tadepalligudem (dist West Godavari) 16; Amalapuram (dist B R Ambedkar Konaseema), Denkada (dist Vizianagaram), Vijayawada AP (dist Ntr District) 13 Each; Paleru Bridge (dist Ntr District) 12; Bhimadole (dist Eluru) 10; Pusapatirega (dist Vizianagaram) 9; Palakoderu (dist West Godavari), Tuni (dist Kakinada), Vizianagaram (dist Vizianagaram), Eluru (dist Eluru) 8 Each; Prathipadu (dist Kakinada) 7; Chintalapudi (dist Eluru), Prakasam Barrage (dist Ntr District), Merakamudidam (dist Vizianagaram), Piduguralla (dist Palnadu), Tiruvuru (dist Ntr District) 6 Each; **Bihar:** Athmalgola (dist Patna) 23; Barh (dist Patna) 20; Noorsarai (dist Nalanda), Meskaur (dist Nawada) 15 Each; Bind (dist Nalanda), Bakhtiarpur (dist Patna) 14 Each; Mohra (dist Gaya), Atri (dist Gaya), Rahui (dist Nalanda), Khusrupur (dist Patna) 13 Each; Neem Chak Bathani (dist Gaya), Mohiuddinnagar (dist Samastipur), Raghupur (dist Vaishali) 12 Each; Khagadia (dist Khagaria), Barbiga (dist Sheikhpura), Hilsa (dist Nalanda), Tharthari (dist Nalanda) 11 Each; **Bihar Shrif** (dist Nalanda) 10; Sarmera (dist Nalanda), Karai Parsurai (dist Nalanda), Asthawan (dist Nalanda), Parbalpur (dist Nalanda), Nardiganj (dist Nawada), Mohanpur (dist Samastipur), Bidupur (dist Vaishali) 9 Each; Mahua (dist Vaishali), Salakhua (dist Saharsa), Harnaut (dist Nalanda), Patori (dist Samastipur), Silao (dist Nalanda), Ben (dist Nalanda) 8 Each; Jhanjharpur (dist Madhubani), Pandarak (dist Patna), Balchhi (dist Patna), Sahdei Buzurg (dist Vaishali), Chehara Kala (dist Vaishali) 7 Each; Barauni (dist Begusarai), Rajgir (dist Nalanda), Wazirganj (dist Gaya), Fatehpur (dist Gaya), Fatuha (dist Patna), Dalsinghsarai (dist Samastipur), Mahanar (dist Vaishali), Nangar Nausa (dist Nalanda), Bhagwanpur (dist Vaishali) 6 Each; **Konkan & Goa:** Rameshwar ARG (dist Sindhudurg) 21; Vaibhavwadi (dist Sindhudurg) 13; Devgad (dist Sindhudurg) 11; Ratnagiri (dist Ratnagiri) 10; Pernem (dist North Goa), Mhasla (dist Raigad), Mapusa (dist North Goa) 9 Each; Malvan (dist Sindhudurg), Rajapur (dist Ratnagiri), Panjim (dist North Goa), Quepem (dist South Goa) 8 Each; Harnai IMD (dist Ratnagiri), Shriwardhan (dist Raigad), Murud (dist Raigad), Kudal (dist Sindhudurg), Dabolim N.a.s.- Navy (dist South Goa) 7 Each; Mormugao - Pmo IMD (dist South Goa), Sanguem (dist South Goa), Margao (dist South Goa), Dapoli ARG (dist Ratnagiri) 6 Each; **Telangana:** Kalwakurthy (dist Nagarkurnool) 20; Pargi (dist Vikarabad) 15; Doma (dist Vikarabad), Chandrugonda (dist B. Kothagudem), Jadcherla (dist Mahabubnagar), Madhira (dist Khammam) 12 Each; Dummugudem (dist B. Kothagudem), Aswaraopeta (dist B. Kothagudem), Sathupalle (dist Khammam), Kodada (dist Suryapet), Khila Ghanpur (dist Wanaparthy) 11 Each; Kosgi (dist Narayanpet), Wanaparthy (dist Wanaparthy), Thimmajipeta (dist Nagarkurnool), Burgampadu (dist B. Kothagudem), Kondurg (dist Rangareddy), Peddamandadi (dist Wanaparthy), Gopalpet (dist Wanaparthy), Kothakota (dist Wanaparthy) 10 Each; Bhadrachalam (dist B. Kothagudem), Vicarabad (dist Vikarabad), Kusumanchi (dist Khammam), Gandeed (dist Mahabubnagar), Mahbubnagar (dist Mahabubnagar), Nawabpet (dist Vikarabad), Shamshabad(ARG) (dist Rangareddy), Pedda Adiserlapalle (dist Nalgonda), Chilkur (dist Suryapet), Mothey (dist Suryapet), Bhoothpur (dist Mahabubnagar), Addakal (dist Mahabubnagar), Bala Nagar (dist Mahabubnagar), Hanwada (dist Mahabubnagar), Horti Univ Mojerla AP (dist Wanaparthy) 9 Each; Nalgonda (dist Nalgonda), Bonakal (dist Khammam), Vangoor (dist Nagarkurnool), Huzur Nagar (dist Suryapet), Atmakur Wnp (dist Wanaparthy), Miryalaguda (dist Nalgonda), Narva (dist Narayanpet) 8 Each; Palawancha (dist B. Kothagudem), Suryapet (dist Suryapet), Tandur (dist Vikarabad), Kothagudem (dist B. Kothagudem), Narayanpet (dist Narayanpet), Chinna Chinta Kunt (dist Mahabubnagar), Devarakonda (dist Nalgonda), Julurpad (dist B. Kothagudem), Mulakalapalle (dist B. Kothagudem), Kodangal (dist Vikarabad), Chinthakam (dist Khammam), Kodangal(ARG) (dist Vikarabad), Dummagudem(ARG) (dist B. Kothagudem), Mattampally (dist Suryapet), Utkoor (dist Narayanpet), Midjil (dist Mahabubnagar), Enkuru (dist Khammam) 7 Each; Shadnagar(ARG) (dist Rangareddy), Shadnagar (dist Rangareddy), Maheswaram (dist Rangareddy), Palem AP (dist Nagarkurnool), Nagarjunsagar (dist Nalgonda), Achampeta (dist Nagarkurnool), Aswapuram (dist B. Kothagudem), Nawabpetmbn (dist Mahabubnagar) 6 Each; **Uttarakhand:** Hardwar (dist Hardwar) 20; Pantnagar (dist Udham Singh Nagar) 18; Haldwani (dist Nainital) 16; Nainital (dist Nainital) 13; Kotdwara (dist Garhwal Pauri) 12; Mukteshwar (dist Nainital), Chaukhutia (dist Almora) 9 Each; Lohaghat (dist Champawat), Rishikesh (dist Dehradun), Bageshwar (thmo) (dist Bageshwar) 8 Each; Kashipur (dist Udham Singh Nagar), Roshnabad (dist Hardwar) 7 Each; Khatima (dist Udham Singh Nagar), Pithoragarh (dist Pithoragarh), Champawat

*Red color warning does not mean "Red Alert" Red color warning means "Take Action"

Forecast and warning for any day is valid from 0830 hours IST of day till 0830 hours IST of next day

For more details kindly visit <https://mausam.imd.gov.in> or contact 011-2434-4599

(Service to the nation since 1875)



(dist Champawat) 6 Each; **East Uttar Pradesh:** Hasanganj (dist Unnao) 15; Lucknow (hs) (dist Lucknow), Lucknow (Cr) (dist Lucknow), Nawabganj Tehsil (dist Barabanki), Hardoi (dist Hardoi), Lucknow (Ap) (dist Lucknow) 12 Each; Sandila (dist Hardoi), Bhatpurwaghat (dist Sitapur) 10 Each; Hardoi Teh (dist Hardoi), Neemsar (dist Sitapur) 9 Each; Sidhauri (dist Sitapur) 8; Shahabad (dist Hardoi), Malihabad (dist Lucknow) 7 Each; Bani (dist Lucknow), Fatehpur Tehsil (dist Barabanki), Ghazipur CWC (dist Ghazipur), Kanpur IAF (dist Kanpur City), Maharajganj (dist Maharajganj) 6 Each; **West Uttar Pradesh:** Baheri (dist Bareilly) 14; Shahjahanpur (dist Shahjahanpur) 12; Khairagarh (dist Agra), Shahjahanpur (t) (dist Shahjahanpur) 11 Each; Agra (CWC) (dist Agra) 9; Bareilly PBO (dist Bareilly) 8; Mant (dist Mathura), Bareilly CWC (dist Bareilly), Puwayan (dist Shahjahanpur) 7 Each; Auraiya (CWC) (dist Auraiya) 6; **Sub Himalayan West Bengal & Sikkim:** Rongo (dist Kalimpong) 13; Fagu Tea Estate (dist Jalpaiguri), Kumargram (dist Alipurduar) 12 Each; Kalimpong (dist Kalimpong), Amfu Kalimpong (dist Kalimpong), Chalouni Tea Estate (dist Jalpaiguri), Lava (dist Kalimpong) 10 Each; Sevoke (dist Darjeeling), Singimari (dist Cooch Behar), Algarah (dist Kalimpong) 9 Each; Barobhisha (dist Alipurduar), Chepan (dist Alipurduar), Gurjongjhora Tea Estate (dist Jalpaiguri), Zurrantee T.e (dist Jalpaiguri), Jhallong (dist Kalimpong), Raidak Tea Estate (dist Alipurduar) 8 Each; Tadong (dist Gangtok), Rongli (dist Pakyong), Aibheel Tea Estate (dist Jalpaiguri), Chel (dist Jalpaiguri), Ghish (dist Jalpaiguri), Washabari Tea Estate (dist Jalpaiguri) 7 Each; Gangtok (dist Gangtok), Damthang (dist Namchi), Gyalasing PTO (dist Gyalshing), Amfu Pundibari (dist Cooch Behar), Pakyong (dist Pakyong), Indong T.e. (dist Jalpaiguri), Jiti T.e. (dist Jalpaiguri), Oodlabari Tea Estate (dist Jalpaiguri), Kumargram Tea Estate (dist Alipurduar) 6 Each; **Haryana-Chandigarh-Delhi:** Green Field Ps (dist North East Delhi) 12; Jind (dist Jind) 7; Aya Nagar (dist South Delhi) 6; **East Rajasthan:** Sapau SR (dist Dholpur) 12; Dholpur Tehsil SR (dist Dholpur) 10; Bayana (dist Bharatpur) 8; **Vidarbha:** Dhamangaon Rlwy (dist Amraoti), Chandur Rlwy (dist Amraoti), Arvi (dist Wardha) 11 Each; Maregaon (dist Yeotmal), Deoli (dist Wardha), Selu (dist Wardha), Wardha (dist Wardha), Ralegaon (dist Yeotmal) 8 Each; Babulgaon (dist Yeotmal), Kalamb (dist Yeotmal), Bhandara (dist Bhandara), Amraoti (dist Amraoti) 7 Each; Tiwsa (dist Amraoti), Batkuli (dist Amraoti), Hinganghat (dist Wardha) 6 Each; **West Madhya Pradesh:** Karera (dist Shivpuri) 11; Alipur(jaura) (dist Morena) 9; Narwar (dist Shivpuri) 7; Pipariya (dist Narmadapuram) 6; **Punjab:** Nangal (dist Rupnagar) 10; Jalandhar (dist Jalandhar), Garhshankar (dist Hoshiarpur), Ganguwal (dist Rupnagar) 7 Each; Kotla (dist Rupnagar) 6; **Himachal Pradesh:** Rajgarh (dist Sirmaur), Kandaghat (dist Solan) 10 Each; Jatton Barrage (dist Sirmaur) 9; Kotkhali (dist Shimla), Solan (dist Solan), Una (dist Una) 8 Each; Simla (dist Shimla), Kufri AWS (dist Shimla), HMO Shillaro (dist Shimla) 7 Each; Kasauli (dist Solan), Renuka/dadhau (dist Sirmaur), Shimla AP (dist Shimla), R L Bbmb (dist Bilaspur), Kothi (dist Kullu) 6 Each; **Madhya Maharashtra:** Gaganbawada (dist Kolhapur) 8; **Chhattisgarh:** Konta (dist Sukma), Sukma (dist Sukma), Chhindigarh (dist Sukma), Karpawand (dist Bastar) 8 Each; Narayanpur (dist Narayanpur), Kukrel (dist Dhamtari) 7 Each; Kohkameta (dist Narayanpur) 6; **Odisha:** Dabugan (dist Nawarangpur) 8; Bari (dist Jajpur), Krishnaprasad (dist Puri) 6 Each; **Gangetic West Bengal:** Bankura(CWC) (dist Bankura) 7; Burnpur (dist Paschim Bardhaman) 6; **Assam & Meghalaya:** Gossaigaon AWS (dist Kokrajhar) 6; **East Madhya Pradesh:** Bilhari (dist Katni), Kirnapur (dist Balaghat) 6 Each; **Jharkhand:** Rajmahal (dist Sahibganj) 6; **Marathwada:** Washi (dist Dharashiv) 6.

❖ **Heavy Rainfall observed** (from 0830 hours IST of yesterday to 0830 hours IST of today): **Extremely heavy rain** at isolated places over Bihar, Konkan & Goa and Coastal Andhra Pradesh & Yanam. **Heavy to very heavy rain** at isolated places over Sub Himalayan West Bengal & Sikkim, Bihar, East Uttar Pradesh, West Uttar Pradesh, Uttarakhand, Haryana-Chandigarh-Delhi, East Rajasthan, Konkan & Goa, Coastal Andhra Pradesh & Yanam and Telangana. **Heavy rain** at isolated places over Gangetic West Bengal, Odisha, Punjab, Himachal Pradesh, West Madhya Pradesh, East Madhya Pradesh, Madhya Maharashtra, Vidarbha and Chhattisgarh.

❖ **Minimum Temperature Departures (as on 14-08-2025): markedly above normal(> 5.1°C)** at few places over Jammu-KashmirLadakh-Gilgit-Baltistan-Muzaffarabad and West Madhya Pradesh; at isolated places over Assam & Meghalaya, East Uttar Pradesh, West Uttar Pradesh, Himachal Pradesh, West Rajasthan, East Madhya Pradesh and Saurashtra & Kutch. **appreciably above normal(3.1°C to 5.0°C)** at isolated places over Sub Himalayan West Bengal & Sikkim, Odisha, Bihar, Gujarat Region and Madhya Maharashtra. **above normal(1.6°C to 3.0°C)** at few places over Gangetic West Bengal and East Rajasthan; at isolated places over Chhattisgarh and Tamil Nadu, Puducherry & Karaikal. **near normal(-1.5°C to 1.5°C)** at many places over Uttarakhand, Coastal Andhra Pradesh & Yanam, Telangana, Rayalaseema, Coastal Karnataka and Kerala & Mahe; at most places over Andaman & Nicobar Islands, Nagaland, Manipur, Mizoram & Tripura, Jharkhand, Haryana-Chandigarh-Delhi, Punjab, Konkan & Goa, Marathwada, Vidarbha, North Interior Karnataka, South Interior Karnataka and Lakshadweep. **The lowest minimum temperature of 18.0°C** is reported at MATHERAN (MAHARASHTRA) over the Plains of India.

❖ **Maximum Temperature Departures (as on 13-08-2025): markedly above normal(> 5.1°C)** at isolated places over Odisha and Jammu-KashmirLadakh-Gilgit-Baltistan-Muzaffarabad. **appreciably above normal(3.1°C to 5.0°C)** at isolated places over Gangetic West Bengal, East Rajasthan, Madhya Maharashtra and Chhattisgarh. **above normal(1.6°C to 3.0°C)** at few places over Gujarat Region; at isolated places over West Uttar Pradesh, Uttarakhand,

*Red color warning does not mean "Red Alert" Red color warning means "Take Action"

Forecast and warning for any day is valid from 0830 hours IST of day till 0830 hours IST of next day

For more details kindly visit <https://mausam.imd.gov.in> or contact 011-2434-4599

(Service to the nation since 1875)



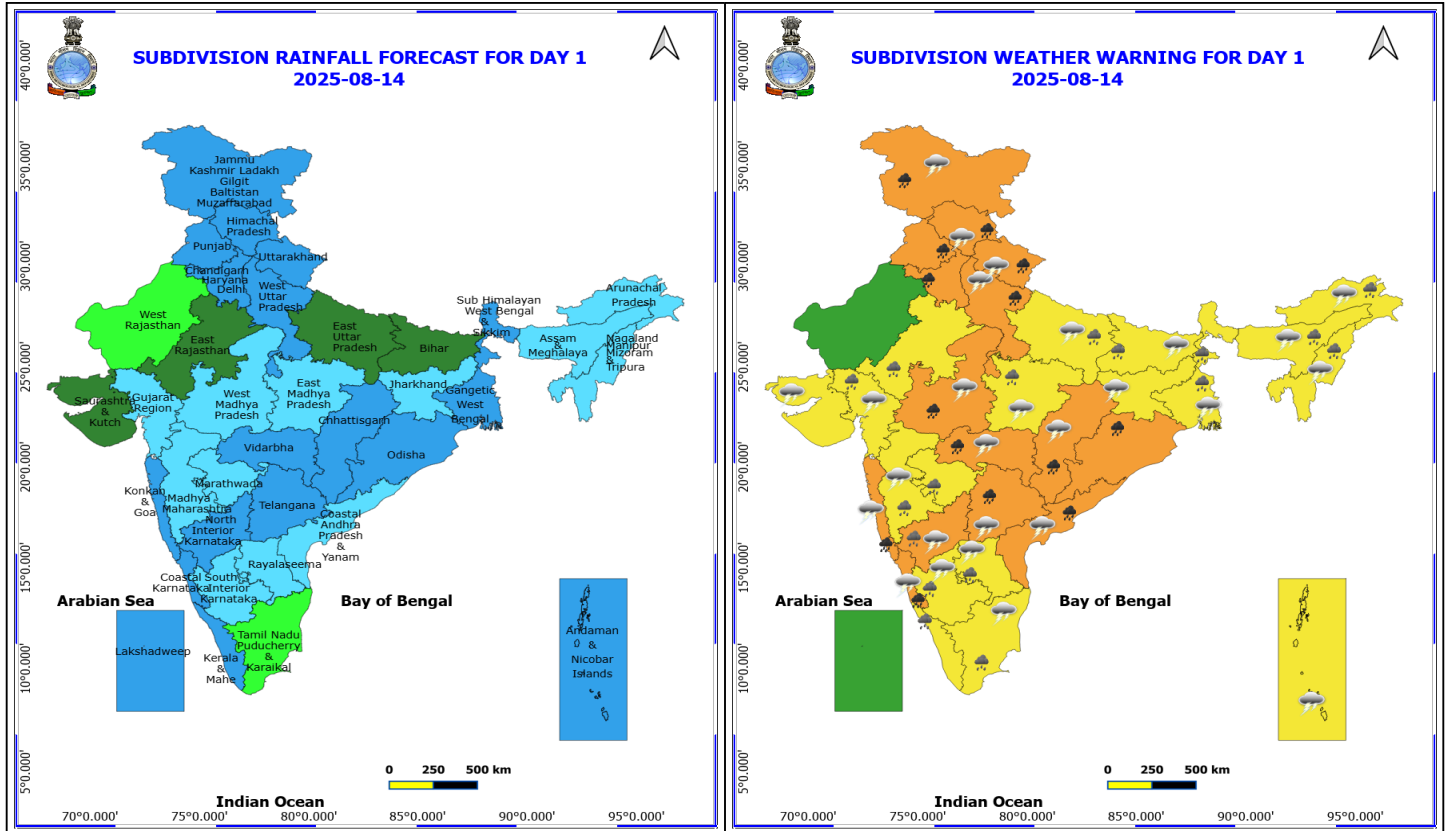
Haryana-Chandigarh-Delhi, Punjab, Himachal Pradesh, West Madhya Pradesh, Saurashtra & Kutch, Vidarbha and Coastal Andhra Pradesh & Yanam. **near normal(-1.5°C to 1.5°C)** at most places over West Rajasthan and Lakshadweep; at few places over Andaman & Nicobar Islands, Sub Himalayan West Bengal & Sikkim, Jharkhand, East Uttar Pradesh, East Madhya Pradesh, Konkan & Goa, Marathwada, Telangana, North Interior Karnataka, South Interior Karnataka and Kerala & Mahe; at isolated places over Assam & Meghalaya, Nagaland, Manipur, Mizoram & Tripura and Tamil Nadu, Puducherry & Karaikal. **The highest maximum temperature** of 37.6°C is reported at BIKANER (RAJASTHAN).

Meteorological Analysis (Based on 0830 hours IST)

- The **low-pressure area** over Westcentral & adjoining Northwest Bay of Bengal off North Andhra Pradesh and South Odisha coasts lay over northwest and adjoining areas of Westcentral Bay of Bengal and South Odisha-North Andhra Pradesh Coasts at 0830 hrs IST of today, the 14th August 2025. The associated upper air cyclonic circulation extends upto 7.6 km above mean sea level tilting southwards with height. It is likely to move west-northwestwards across south Odisha-North Coastal Andhra Pradesh during next 24 hours.
- The **monsoon trough** at mean sea level now passes through Bikaner, Banasthali, Guna, Damoh, Bilaspur, Kalingapatnam and thence centre of low-pressure area over northwest and adjoining areas of Westcentral Bay of Bengal and South Odisha-North Andhra Pradesh Coasts.
- An **upper air cyclonic circulation** lies over Punjab & neighbourhood and extends upto 1.5 above mean sea level.
- An **upper air cyclonic circulation** lies over West Uttar Pradesh at 0.9 km above mean sea level.
- The **upper air cyclonic circulation** over Northeast Arabian Sea & adjoining Kutch persists and now seen between 1.5 & 3.1 km above mean sea level.
- The **east-west trough** runs from central parts of Bay of Bengal to northeast Arabian sea adjoining Kutch across the upper air cyclonic circulation associated with the low-pressure area over northwest and adjoining areas of Westcentral Bay of Bengal and South Odisha-North Andhra Pradesh Coasts, across Telangana, North Maharashtra and South Gujarat region persisted and seen between 1.5 & 3.1 km above mean sea level tilting southward with height.
- The **upper air cyclonic circulation** over northeast Assam now lies over central Assam at 1.5 km above mean sea level.
- The **upper air cyclonic circulation** over south Haryana Adjoining north Rajasthan extended upto 0.9 km above mean sea level has become less marked.
- The **upper air cyclonic circulation** over Himachal Pradesh and adjoining Jammu between 1.5 and 3.1 km above mean sea level has become less marked.

Weather Outlook for subsequent 3 days

Fairly widespread to widespread rainfall likely over the most parts of the country.



14 August (Day 1)

- ❖ **Heavy to Very Heavy Rainfall** very likely at isolated places over Chhattisgarh, Coastal Andhra Pradesh, Coastal Karnataka, Haryana, Chandigarh & Delhi, Himachal Pradesh, Jammu-Kashmir-Ladakh-Gilgit-Baltistan-Muzaffarabad, Konkan & Goa, Odisha, Punjab, Telangana, Uttarakhand, Vidarbha, West Madhya Pradesh and West Uttar Pradesh.
- ❖ **Heavy Rainfall** very likely at isolated places over Arunachal Pradesh, Assam & Meghalaya, Bihar, East Madhya Pradesh, East Rajasthan, East Uttar Pradesh, Gujarat Region, Interior Karnataka, Kerala & Mahe, Madhya Maharashtra, Marathwada, Nagaland, Manipur, Mizoram and Tripura, Rayalaseema, Tamil Nadu Puducherry & Karaikal and West Bengal & Sikkim.
- ❖ **Thundersquall with wind speed reaching(50-60kmph)** very likely at isolated places over Coastal Andhra Pradesh and North Interior Karnataka.
- ❖ **Thunderstorm accompanied with lightning & gusty winds(40-50kmph)** very likely at isolated places over Andaman & Nicobar Islands, Rayalaseema and Telangana.
- ❖ **Thunderstorm accompanied with lightning & gusty winds(30-40kmph)** very likely at isolated places over Bihar, Coastal Karnataka, Jammu-Kashmir-Ladakh-Gilgit-Baltistan-Muzaffarabad, Jharkhand and South Interior Karnataka.
- ❖ **Thunderstorm accompanied with Lightning** very likely at isolated places over Arunachal Pradesh, Assam & Meghalaya, Chhattisgarh, Gangetic West Bengal, Gujarat State, Himachal Pradesh, Konkan & Goa, Madhya Maharashtra, Madhya Pradesh, Nagaland, Manipur, Mizoram and Tripura, Tamil Nadu Puducherry & Karaikal, Uttar Pradesh, Uttarakhand and Vidarbha.

Squally wind with speed reaching 45 kmph to 55 kmph gusting to 65 kmph is likely to prevail along and off Somalia, Yemen, Oman coasts, most parts of westcentral Arabian sea and adjoining areas southwest, eastcentral Arabian

***Red color warning does not mean "Red Alert" Red color warning means "Take Action"**

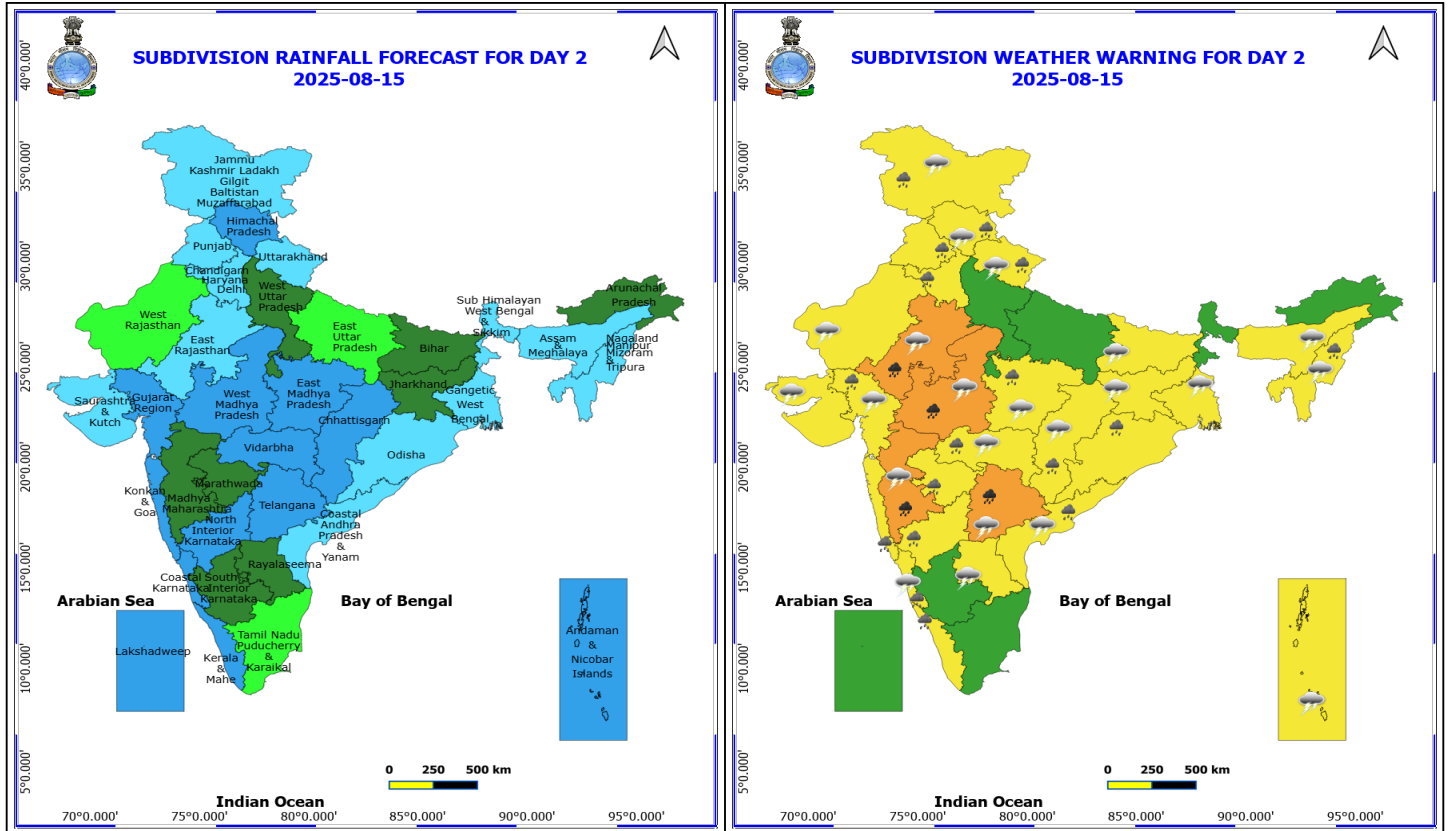
Forecast and warning for any day is valid from 0830 hours IST of day till 0830 hours IST of next day

For more details kindly visit <https://mausam.imd.gov.in> or contact 011-2434-4599

(Service to the nation since 1875)

Sea, southern parts of north Arabian Sea.

Squally weather with wind speed reaching 40 - 50 kmph gusting to 60 kmph likely to prevail along and off Konkan, Goa, Karnataka, Kerala coasts, over Lakshadweep, Comorin areas, Gulf of Mannar, along and off Sri-Lanka coast, over most parts of south, central Bay of Bengal & adjoining, some parts of north Bay of Bengal, over Andaman Sea, along and off Andhra Pradesh, south Odisha coasts & adjoining sea areas.



15 August (Day 2)

- ❖ **Heavy to Very Heavy Rainfall** very likely at isolated places over East Rajasthan, Madhya Maharashtra, Telangana and West Madhya Pradesh.
- ❖ **Heavy Rainfall** very likely at isolated places over Chhattisgarh, Coastal Andhra Pradesh, Coastal Karnataka, East Madhya Pradesh, Gujarat Region, Haryana, Chandigarh & Delhi, Himachal Pradesh, Jammu-Kashmir-Ladakh-Gilgit-Baltistan-Muzaffarabad, Kerala & Mahe, Konkan & Goa, Marathwada, Nagaland, Manipur, Mizoram and Tripura, North Interior Karnataka, Odisha, Punjab, Uttarakhand and Vidarbha.
- ❖ **Thundersquall with wind speed reaching(50-60kmph)** very likely at isolated places over Coastal Andhra Pradesh.
- ❖ **Thunderstorm accompanied with lightning & gusty winds(40-50kmph)** very likely at isolated places over Rayalaseema.
- ❖ **Thunderstorm accompanied with lightning & gusty winds(30-40kmph)** very likely at isolated places over Andaman & Nicobar Islands, Bihar, Coastal Karnataka, Jammu-Kashmir-Ladakh-Gilgit-Baltistan-Muzaffarabad, Jharkhand and Telangana.
- ❖ **Thunderstorm accompanied with Lightning** very likely at isolated places over Assam & Meghalaya, Chhattisgarh, Gangetic West Bengal, Gujarat State, Himachal Pradesh, Madhya Maharashtra, Madhya Pradesh, Nagaland, Manipur, Mizoram and Tripura, Rajasthan, Uttarakhand and Vidarbha.

Squally wind with speed reaching 45 kmph to 55 kmph gusting to 65 kmph is likely to prevail along and off Somalia, Yemen, Oman coasts, most parts of westcentral Arabian sea and adjoining areas southwest, eastcentral Arabian Sea.

***Red color warning does not mean "Red Alert" Red color warning means "Take Action"**

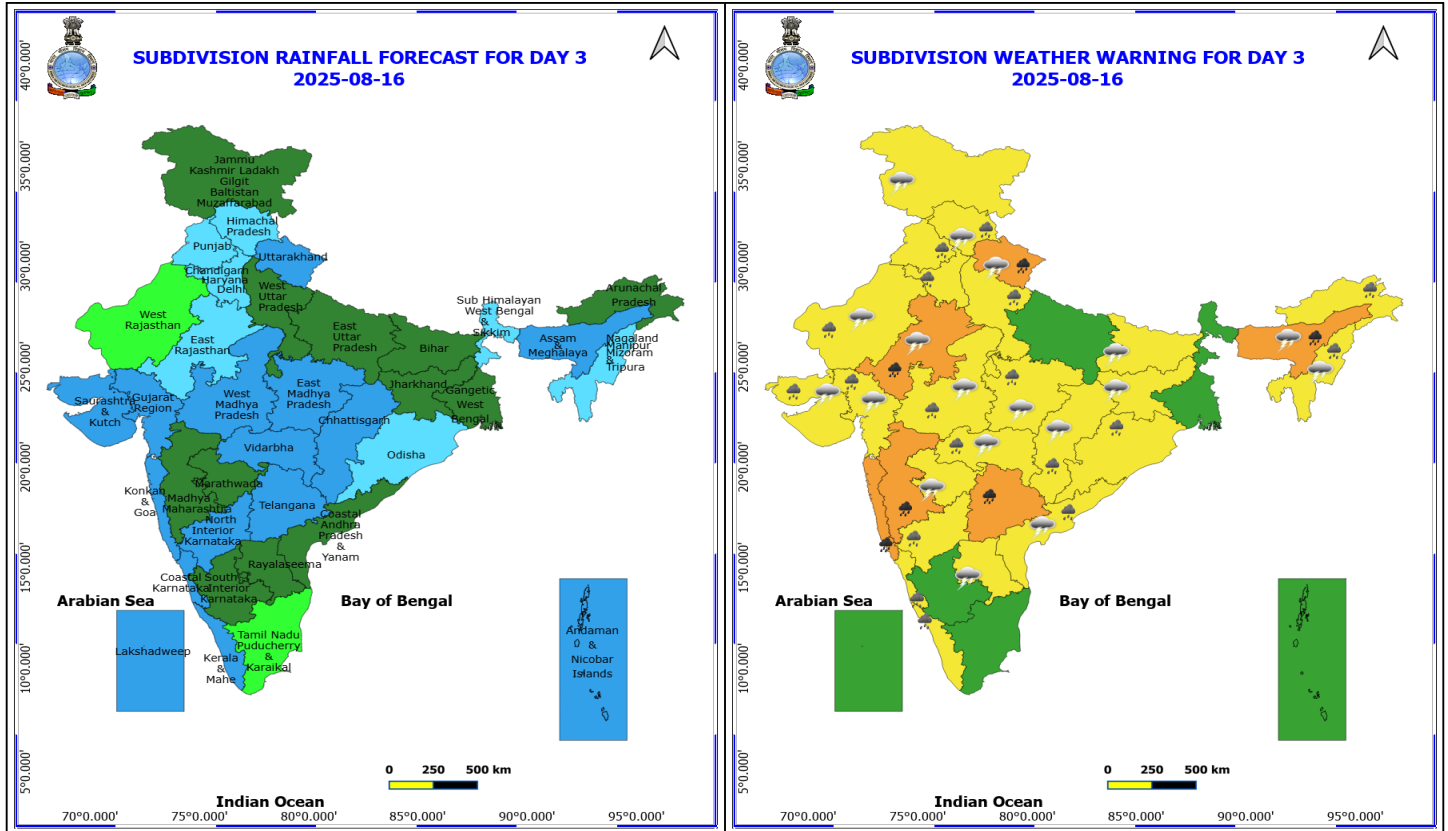
Forecast and warning for any day is valid from 0830 hours IST of day till 0830 hours IST of next day

For more details kindly visit <https://mausam.imd.gov.in> or contact 011-2434-4599

(Service to the nation since 1875)



Squally weather with wind speed reaching 40 - 50 kmph gusting to 60 kmph likely to prevail along and off Konkan, Goa, Karnataka, Kerala coasts, over Lakshadweep, Comorin areas, Gulf of Mannar, along and off Sri-Lanka coast, over most parts of south, central Bay of Bengal & adjoining, some parts of north Bay of Bengal, over Andaman Sea, along and off Andhra Pradesh, south Odisha coasts & adjoining sea areas.



16 August (Day 3)

- ❖ **Heavy to Very Heavy Rainfall** very likely at isolated places over Assam & Meghalaya, East Rajasthan, Konkan & Goa, Madhya Maharashtra, Telangana and Uttarakhand.
- ❖ **Heavy Rainfall** very likely at isolated places over Arunachal Pradesh, Chhattisgarh, Coastal Andhra Pradesh, Coastal Karnataka, Gujarat State, Haryana, Chandigarh & Delhi, Himachal Pradesh, Kerala & Mahe, Madhya Pradesh, Nagaland, Manipur, Mizoram and Tripura, North Interior Karnataka, Odisha, Punjab, Vidarbha, West Rajasthan and West Uttar Pradesh.
- ❖ **Thundersquall with wind speed reaching(50-60kmph)** very likely at isolated places over Coastal Andhra Pradesh.
- ❖ **Thunderstorm accompanied with lightning & gusty winds(40-50kmph)** very likely at isolated places over Rayalaseema.
- ❖ **Thunderstorm accompanied with lightning & gusty winds(30-40kmph)** very likely at isolated places over Bihar, Jammu-Kashmir-Ladakh-Gilgit-Baltistan-Muzaffarabad and Jharkhand.
- ❖ **Thunderstorm accompanied with Lightning** very likely at isolated places over Assam & Meghalaya, Chhattisgarh, Gujarat State, Himachal Pradesh, Madhya Pradesh, Marathwada, Nagaland, Manipur, Mizoram and Tripura, Rajasthan, Uttarakhand and Vidarbha.

Squally wind with speed reaching 45 kmph to 55 kmph gusting to 65 kmph is likely to prevail along and off Somalia, Yemen, Oman coasts, most parts of westcentral Arabian sea and adjoining and some parts of southwest, eastcentral Arabian Sea.

Squally weather with wind speed reaching 40 - 50 kmph gusting to 60 kmph likely to prevail along and off Konkan,

***Red color warning does not mean "Red Alert" Red color warning means "Take Action"**

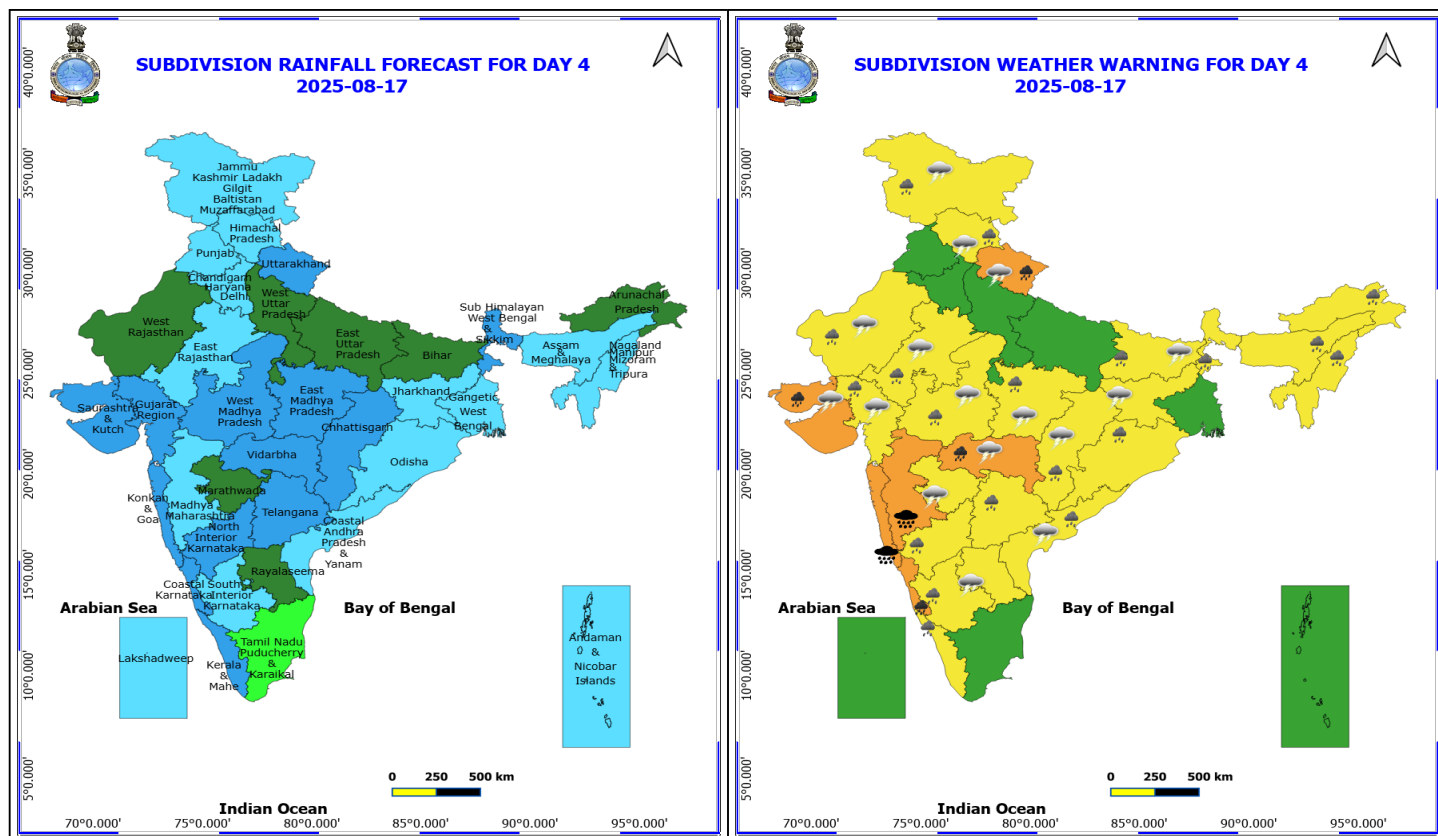
Forecast and warning for any day is valid from 0830 hours IST of day till 0830 hours IST of next day

For more details kindly visit <https://mausam.imd.gov.in> or contact 011-2434-4599

(Service to the nation since 1875)



Goa, Karnataka, Kerala coasts, over Lakshadweep, Comorin areas, Gulf of Mannar, over most parts of westcentral Bay of Bengal & adjoining parts of eastcentral Bay of Bengal, some parts of southwest and adjoining parts of southeast Bay of Bengal, along and off north Andhra Pradesh coast & adjoining sea areas.



17 August (Day 4)

- ❖ **Heavy to Very Heavy Rainfall with isolated Extremely Heavy Rainfall** likely at isolated places over Konkan & Goa and Madhya Maharashtra.
- ❖ **Heavy to Very Heavy Rainfall** likely at isolated places over Coastal Karnataka, Saurashtra & Kutch, Uttarakhand and Vidarbha.
- ❖ **Heavy Rainfall** likely at isolated places over Arunachal Pradesh, Assam & Meghalaya, Bihar, Chhattisgarh, Coastal Andhra Pradesh, Gujarat Region, Himachal Pradesh, Interior Karnataka, Jammu-Kashmir-Ladakh-Gilgit-Baltistan-Muzaffarabad, Kerala & Mahe, Madhya Pradesh, Nagaland, Manipur, Mizoram and Tripura, Odisha, Rajasthan, Sub Himalayan West Bengal & Sikkim and Telangana.
- ❖ **Thundersquall with wind speed reaching(50-60kmph)** likely at isolated places over Coastal Andhra Pradesh.
- ❖ **Thunderstorm accompanied with lightning & gusty winds(40-50kmph)** likely at isolated places over Rayalaseema.
- ❖ **Thunderstorm accompanied with lightning & gusty winds(30-40kmph)** likely at isolated places over Bihar, Jammu-Kashmir-Ladakh-Gilgit-Baltistan-Muzaffarabad and Jharkhand.
- ❖ **Thunderstorm accompanied with Lightning** likely at isolated places over Chhattisgarh, Gujarat State, Himachal Pradesh, Madhya Pradesh, Marathwada, Rajasthan, Uttarakhand and Vidarbha.

Squally wind with speed reaching 45 kmph to 55 kmph gusting to 65 kmph is likely to prevail along and off Somalia, Yemen, Oman coasts, most parts of westcentral Arabian sea and adjoining and some parts of southwest, eastcentral Arabian Sea.

***Red color warning does not mean "Red Alert" Red color warning means "Take Action"**

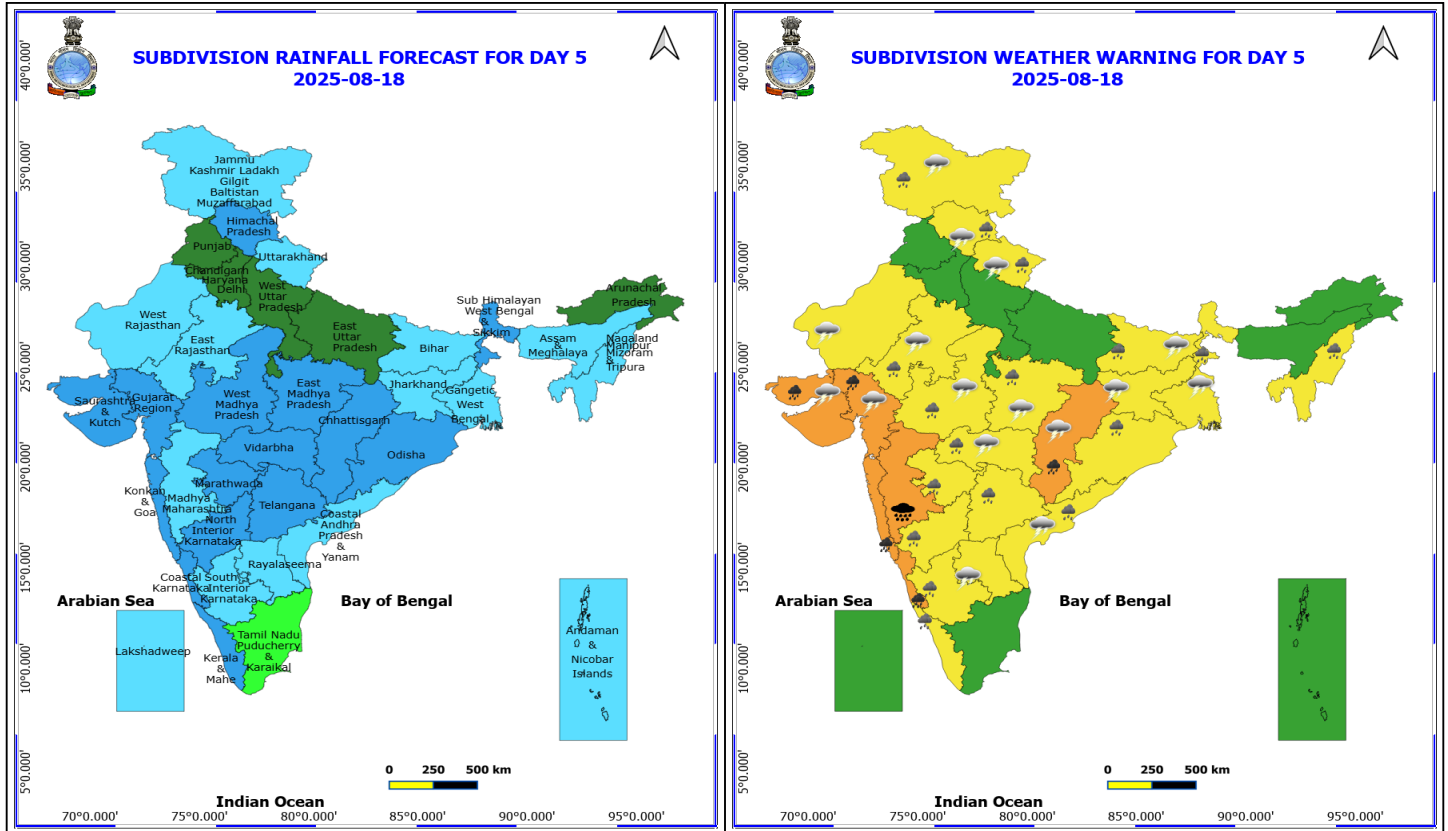
Forecast and warning for any day is valid from 0830 hours IST of day till 0830 hours IST of next day

For more details kindly visit <https://mausam.imd.gov.in> or contact 011-2434-4599

(Service to the nation since 1875)

Squally weather with wind speed reaching 40 - 50 kmph gusting to 60 kmph likely to prevail along and off Karnataka coast and adjoining sea area, over Gulf of Mannar, some parts of southwest, southeast Bay of Bengal, many parts of central Bay of Bengal.

Squally weather with wind speed reaching 45 - 55 kmph gusting to 65 kmph likely to prevail along and off Konkan, Goa coasts and adjoining sea areas.



18 August (Day 5)

- ❖ **Heavy to Very Heavy Rainfall with isolated Extremely Heavy Rainfall** likely at isolated places over Madhya Maharashtra.
- ❖ **Heavy to Very Heavy Rainfall** likely at isolated places over Chhattisgarh, Coastal Karnataka, Gujarat State and Konkan & Goa.
- ❖ **Heavy Rainfall** likely at isolated places over Bihar, Coastal Andhra Pradesh, East Rajasthan, Himachal Pradesh, Interior Karnataka, Jammu-Kashmir-Ladakh-Gilgit-Baltistan-Muzaffarabad, Kerala & Mahe, Madhya Pradesh, Marathwada, Nagaland, Manipur, Mizoram and Tripura, Odisha, Sub Himalayan West Bengal & Sikkim, Telangana, Uttarakhand and Vidarbha.
- ❖ **Thundersquall with wind speed reaching(50-60kmph)** likely at isolated places over Coastal Andhra Pradesh.
- ❖ **Thunderstorm accompanied with lightning & gusty winds(40-50kmph)** likely at isolated places over Rayalaseema.
- ❖ **Thunderstorm accompanied with lightning & gusty winds(30-40kmph)** likely at isolated places over Bihar, Jammu-Kashmir-Ladakh-Gilgit-Baltistan-Muzaffarabad and Jharkhand.
- ❖ **Thunderstorm accompanied with Lightning** likely at isolated places over Chhattisgarh, Gangetic West Bengal, Gujarat State, Himachal Pradesh, Madhya Pradesh, Rajasthan, Uttarakhand and Vidarbha.

Squally wind with speed reaching 45 kmph to 55 kmph gusting to 65 kmph is likely to prevail along and off Somalia, Yemen, Oman coasts, most parts of westcentral Arabian sea and adjoining and some parts of southwest, eastcentral Arabian Sea.

***Red color warning does not mean "Red Alert" Red color warning means "Take Action"**

Forecast and warning for any day is valid from 0830 hours IST of day till 0830 hours IST of next day

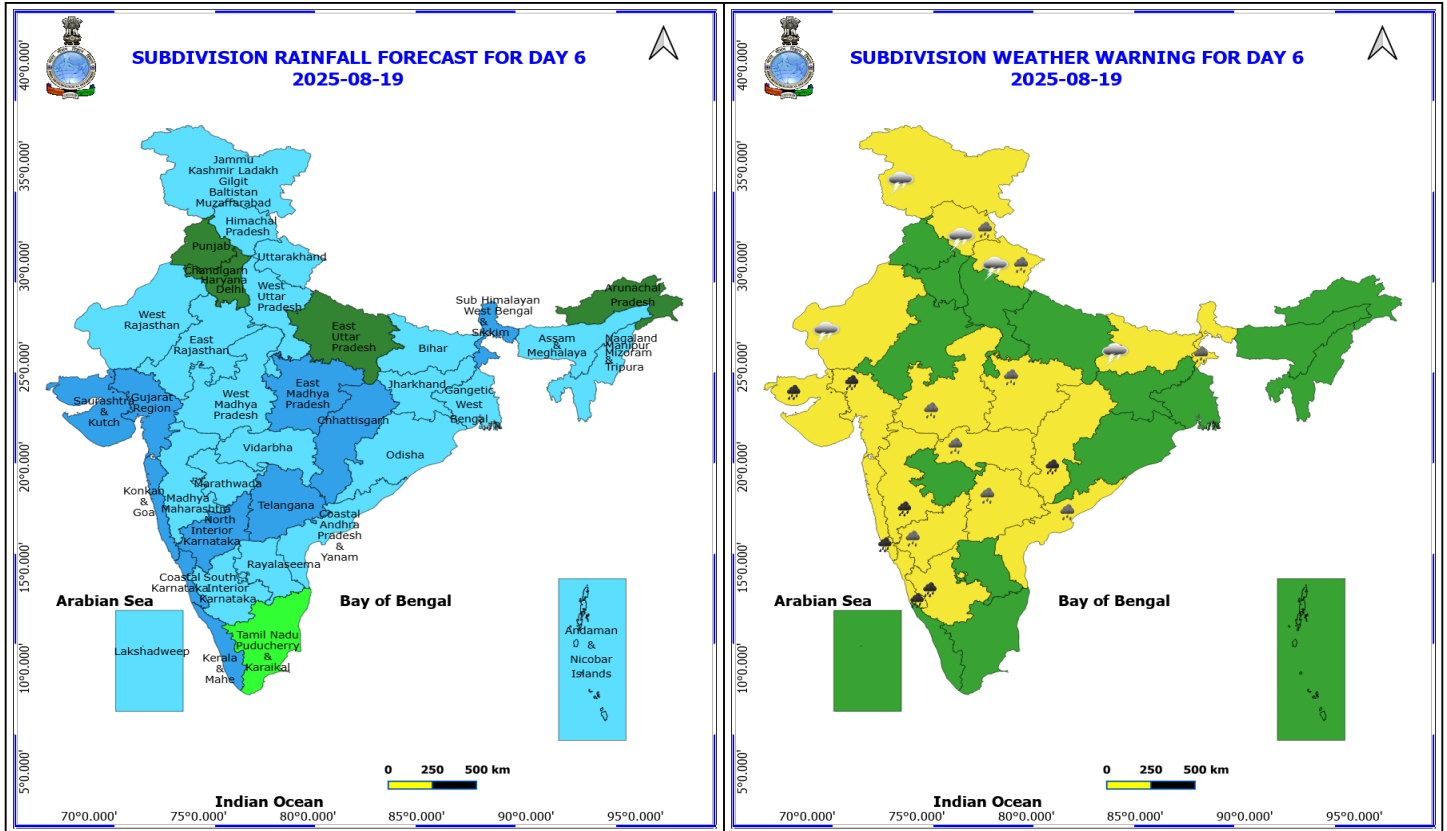
For more details kindly visit <https://mausam.imd.gov.in> or contact 011-2434-4599

(Service to the nation since 1875)



Squally weather with wind speed reaching 40 - 50 kmph gusting to 60 kmph likely to prevail along and off Karnataka coast and adjoining sea area, over Gulf of Mannar, many parts of south Bay of Bengal, most parts of central Bay of Bengal, off Tamil Nadu, Andhra Pradesh coasts.

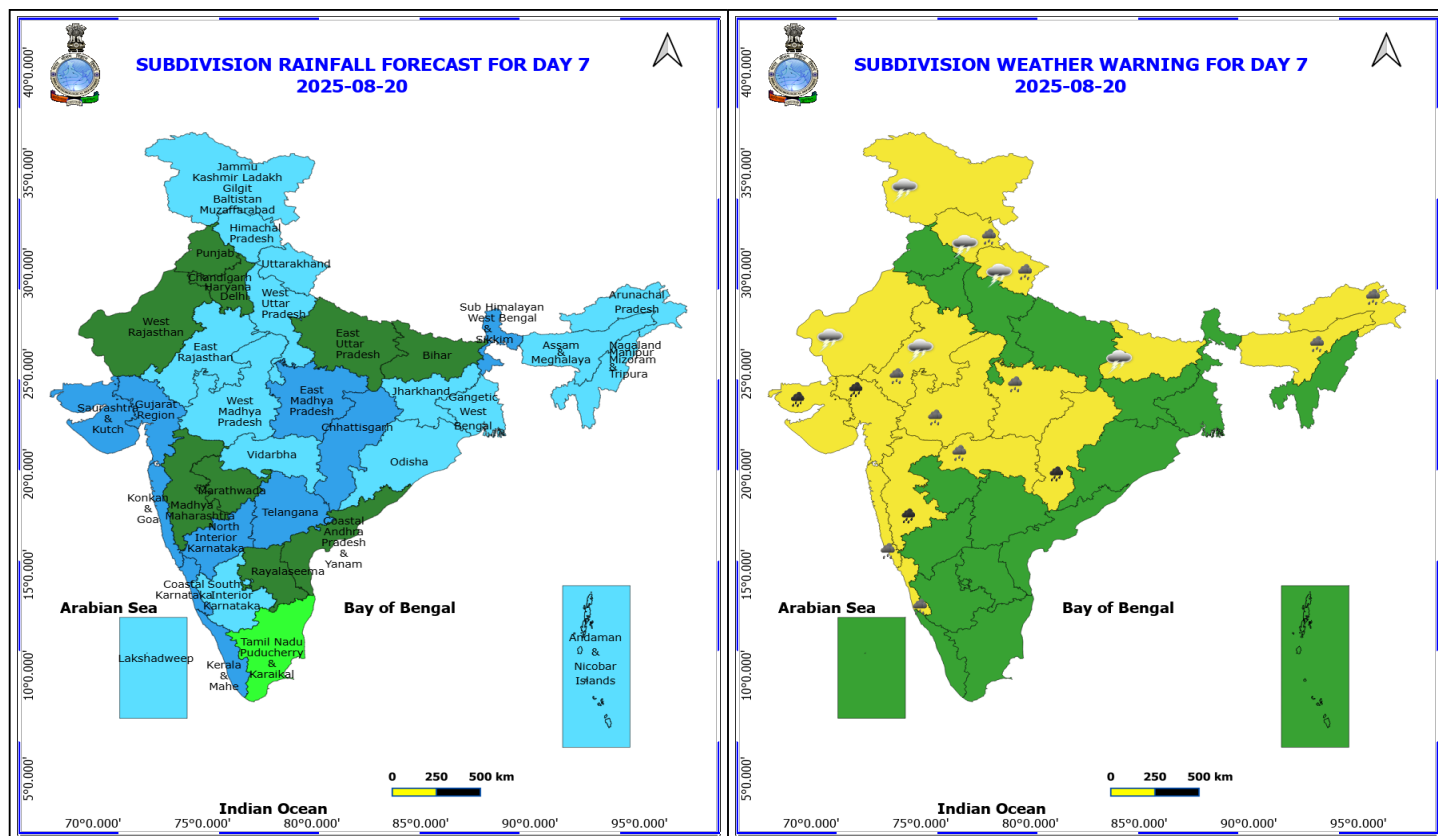
Squally weather with wind speed reaching 45 - 55 kmph gusting to 65 kmph likely to prevail along and off Konkan, Goa coasts and adjoining sea areas.



19 August (Day 6)

- ❖ **Heavy to Very Heavy Rainfall** likely at isolated places over Chhattisgarh, Coastal Karnataka, Gujarat State, Konkan & Goa, Madhya Maharashtra and South Interior Karnataka.
- ❖ **Heavy Rainfall** likely at isolated places over Coastal Andhra Pradesh, Himachal Pradesh, Madhya Pradesh, North Interior Karnataka, Sub Himalayan West Bengal & Sikkim, Telangana, Uttarakhand and Vidarbha.
- ❖ **Thunderstorm accompanied with lightning & gusty winds(30-40kmph)** likely at isolated places over Bihar and Jammu-Kashmir-Ladakh-Gilgit-Baltistan-Muzaffarabad.
- ❖ **Thunderstorm accompanied with Lightning** likely at isolated places over Himachal Pradesh, Uttarakhand and West Rajasthan.

No Fishermen Warning



20 August (Day 7)

- ❖ **Heavy to Very Heavy Rainfall with isolated Extremely Heavy Rainfall** likely at isolated places over Madhya Maharashtra.
- ❖ **Heavy to Very Heavy Rainfall** likely at isolated places over Chhattisgarh, Coastal Karnataka, Gujarat State and Konkan & Goa.
- ❖ **Heavy Rainfall** likely at isolated places over Bihar, Coastal Andhra Pradesh, East Rajasthan, Himachal Pradesh, Interior Karnataka, Jammu-Kashmir-Ladakh-Gilgit-Baltistan-Muzaffarabad, Kerala & Mahe, Madhya Pradesh, Marathwada, Nagaland, Manipur, Mizoram and Tripura, Odisha, Sub Himalayan West Bengal & Sikkim, Telangana, Uttarakhand and Vidarbha.
- ❖ **Thundersquall with wind speed reaching(50-60kmph)** likely at isolated places over Coastal Andhra Pradesh.
- ❖ **Thunderstorm accompanied with lightning & gusty winds(40-50kmph)** likely at isolated places over Rayalaseema.
- ❖ **Thunderstorm accompanied with lightning & gusty winds(30-40kmph)** likely at isolated places over Bihar, Jammu-Kashmir-Ladakh-Gilgit-Baltistan-Muzaffarabad and Jharkhand.
- ❖ **Thunderstorm accompanied with Lightning** likely at isolated places over Chhattisgarh, Gangetic West Bengal, Gujarat State, Himachal Pradesh, Madhya Pradesh, Rajasthan, Uttarakhand and Vidarbha.

No Fishermen Warning

***Red color warning does not mean "Red Alert" Red color warning means "Take Action"**

Forecast and warning for any day is valid from 0830 hours IST of day till 0830 hours IST of next day

For more details kindly visit <https://mausam.imd.gov.in> or contact 011-2434-4599

(Service to the nation since 1875)

Flash Flood Warnings

24 hours Outlook for the Flash Flood Risk (FFR) till 1130 IST of 15-08-2025 :

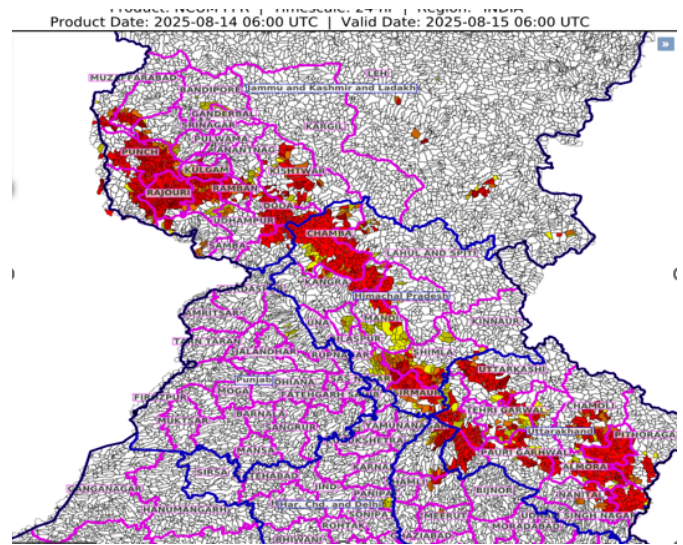
Moderate to High flash flood risk likely over few watersheds & neighbourhoods of following Met Sub-divisions during next 24 hours.

Himachal Pradesh - Chamba, Kangra, Kullu, Lahul&Spiti, Mandi, Shimla, Sirmaur and Solan districts.

Jammu & Kashmir & Ladakh - Anantnag, Bandipore, Baramula, Doda, Ganderwal, Jammu, Kathua, Kistwar, Kulgam, Kupwara, Punch, Rajouri, Ramban, Riasi, Shopian, Udhampur, Leh And Ladakh, Mirpur and Muzaffarabad districts.

Uttarakhand - Almora, Bageshwar, Chamoli, Champawat, Dehradun, Haridwar, Nanital, Pauri Garhwal, Pithoragarh, Rudraprayag, Tehri Garwal and Uttarkashi districts.

Surface runoff/ Inundation may occur at some fully saturated soils & low-lying areas over Area of Concern



24 hours Outlook for the Flash Flood Risk (FFR) till 1130 IST of 15-08-2025 :

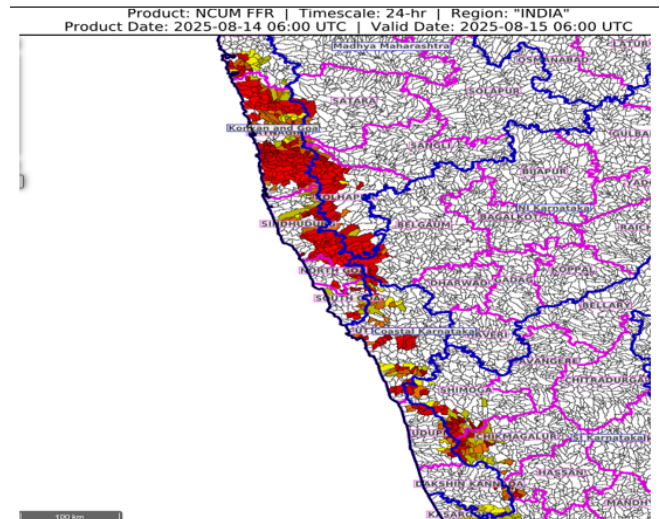
Low to Moderate flash flood risk likely over few watersheds & neighbourhoods of following Met Sub-divisions during next 24 hours.

Coastal Karnataka - Dakshin Kannada, Udupi and Uttar Kannada districts.

Adjoining South Interior Karnataka - Chikmagalur, Hassan, Kodagu and Shimoga district and Konkan & Goa Met Sub-divisions during next 24 hours.

Adjoining Madhya Maharashtra – Kolhapur and Satara districts.

Surface runoff/ Inundation may occur at some fully saturated soils & low-lying areas over Area of Concern (AoC) as shown in map due to expected rainfall occurrence in next 24 hours.



24 hours Outlook for the Flash Flood Risk (FFR) till 1130 IST of 15-08-2025 :

Low to Moderate flash flood risk likely over few watersheds & neighbourhoods of following Met Sub-divisions during next 24 hours.

***Red color warning does not mean "Red Alert" Red color warning means "Take Action"**

Forecast and warning for any day is valid from 0830 hours IST of day till 0830 hours IST of next day

For more details kindly visit <https://mausam.imd.gov.in> or contact 011-2434-4599

(Service to the nation since 1875)

Coastal Andhra Pradesh & Yanam - East Godavari, Guntur, Krishna, West Godavari and Yanam districts.

Telangana - B. Kothagudem, J. Bhupalpally, Kumaram Bheem, Mancherla and Peddapalle districts.

Vidarbha - Amaravati, Bhandara, Chandrapur, Gadchiroli, Gondiya, Nagpur and Yavatmal districts.

Surface runoff/ Inundation may occur at some fully saturated soils & low-lying areas over Area of Concern (AoC) as shown in map due to expected rainfall occurrence in next 24 hours.

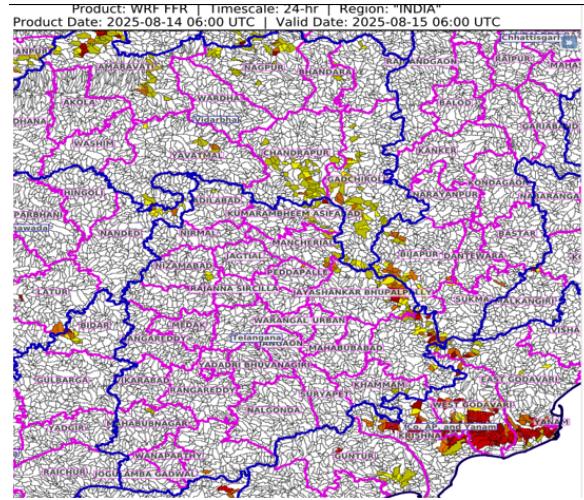




Table-1

7 Days Rainfall Forecast

S.No.	Subdivision	14-Aug	15-Aug	16-Aug	17-Aug	18-Aug	19-Aug	20-Aug
		Day 1	Day 2	Day 3	Day 4	Day 5	Day 6	Day 7
1	ANDAMAN & NICOBAR ISLANDS	WS	WS	WS	FWS	FWS	FWS	FWS
2	ARUNACHAL PRADESH	FWS	SCT	SCT	SCT	SCT	SCT	FWS
3	ASSAM & MEHGHALAYA	FWS	FWS	WS	FWS	FWS	FWS	FWS
4	N. M. M. & T.	FWS	FWS	FWS	FWS	FWS	FWS	FWS
5	S.H. WEST BENGAL & SIKKIM	WS	FWS	FWS	WS	WS	WS	WS
6	GANGETIC WEST BENGAL	WS	FWS	SCT	FWS	FWS	FWS	FWS
7	ODISHA	WS	FWS	FWS	FWS	WS	FWS	FWS
8	JHARKHAND	FWS	SCT	SCT	FWS	FWS	FWS	FWS
9	BIHAR	SCT	SCT	SCT	SCT	FWS	FWS	SCT
10	EAST UTTAR PRADESH	SCT	ISOL	SCT	SCT	SCT	SCT	SCT
11	WEST UTTAR PRADESH	WS	SCT	SCT	SCT	SCT	FWS	FWS
12	UTTARAKHAND	WS	FWS	WS	WS	FWS	FWS	FWS
13	HARYANA, CHD & DELHI	WS	FWS	FWS	FWS	SCT	SCT	SCT
14	PUNJAB	WS	FWS	FWS	FWS	SCT	SCT	SCT
15	HIMACHAL PRADESH	WS	WS	FWS	FWS	WS	FWS	FWS
16	JAMMU AND KASHMIR AND LADAKH	WS	FWS	SCT	FWS	FWS	FWS	FWS
17	WEST RAJASTHAN	ISOL	ISOL	ISOL	SCT	FWS	FWS	SCT
18	EAST RAJASTHAN	SCT	FWS	FWS	FWS	FWS	FWS	FWS
19	WEST MADHYA PRADESH	FWS	WS	WS	WS	WS	FWS	FWS
20	EAST MADHYA PRADESH	FWS	WS	WS	WS	WS	WS	WS
21	GUJRAT REGION	FWS	WS	WS	WS	WS	WS	WS
22	SAURASHTRA & KUTCH	SCT	FWS	WS	WS	WS	WS	WS
23	KONKAN & GOA	WS	WS	WS	WS	WS	WS	WS
24	MADHYA MAHARASHTRA	FWS	SCT	SCT	FWS	FWS	FWS	SCT
25	MARATHWADA	FWS	SCT	SCT	SCT	WS	FWS	SCT
26	VIDARBHA	WS	WS	WS	WS	WS	FWS	FWS
27	CHATTISGARH	WS	WS	WS	WS	WS	WS	WS
28	COASTAL ANDHRA PRADESH	FWS	FWS	SCT	FWS	FWS	FWS	SCT
29	TELANGANA	WS	WS	WS	WS	WS	WS	WS
30	RAYALASEEMA	FWS	SCT	SCT	SCT	FWS	FWS	SCT
31	TAMILNADU & PUDUCHERRY	ISOL	ISOL	ISOL	ISOL	ISOL	ISOL	ISOL
32	COSTAL KARNATAKA	WS	WS	WS	WS	WS	WS	WS
33	NORTH INTERIOR KARNATAKA	WS	WS	WS	WS	WS	WS	WS
34	SOUTH INTERIOR KARNATAKA	FWS	SCT	SCT	FWS	FWS	FWS	FWS
35	KERALA	WS	WS	WS	WS	WS	WS	WS
36	LAKSHDWEAP	WS	WS	WS	FWS	FWS	FWS	FWS

Legend	Category	%Stations
WS	Widespread/Most Places	76-100
FWS	Fairly Widespread/Many Places	51-75
SCT	Scattered/ A Few Places	26-50
ISOL	Isolated Places	1-25
DRY	No Rain	0

*Red color warning does not mean "Red Alert" Red color warning means "Take Action"

Forecast and warning for any day is valid from 0830 hours IST of day till 0830 hours IST of next day

For more details kindly visit <https://mausam.imd.gov.in> or contact 011-2434-4599

(Service to the nation since 1875)

Fig. 1: Maximum Temperatures Dated 2025-08-14

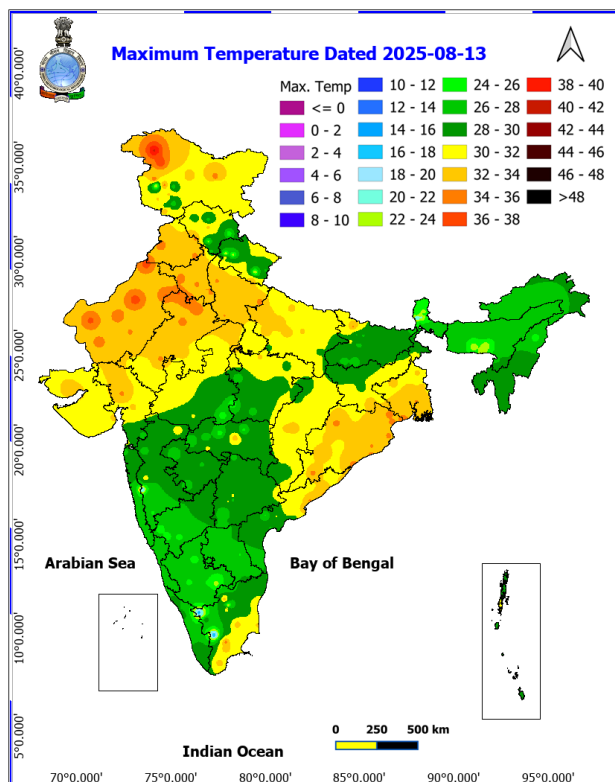


Fig. 2: Departure of Maximum Temp. Dated 2025-08-14

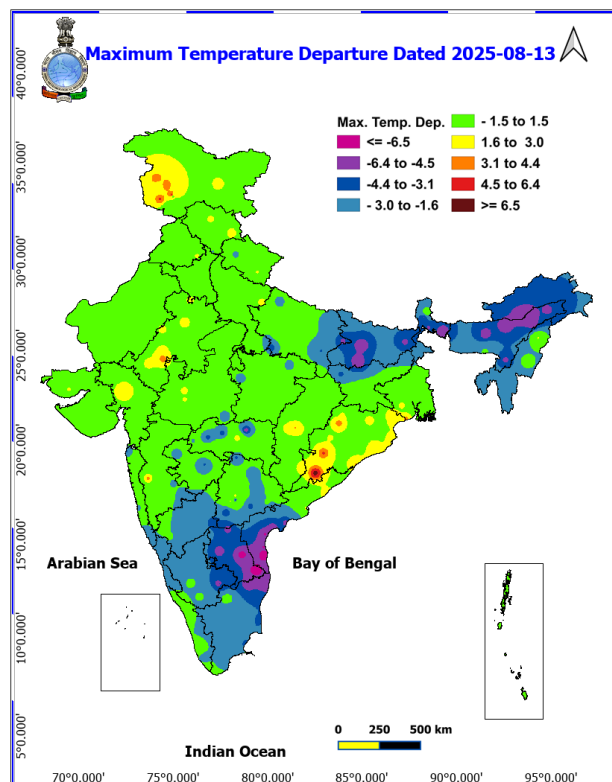


Fig. 3: Minimum Temperatures Dated 2025-08-14

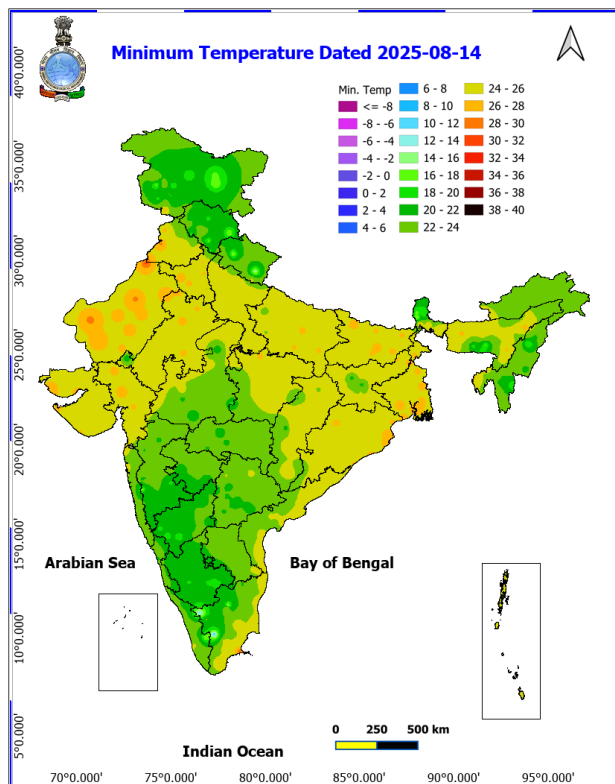
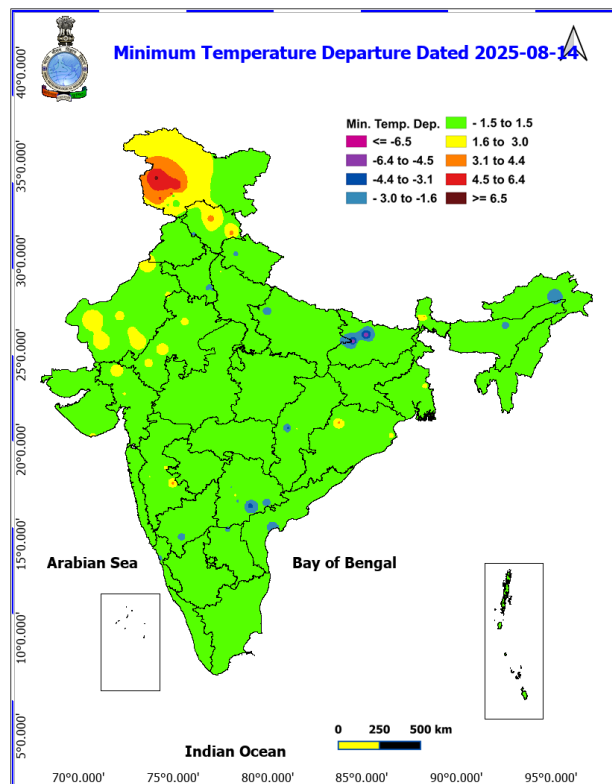
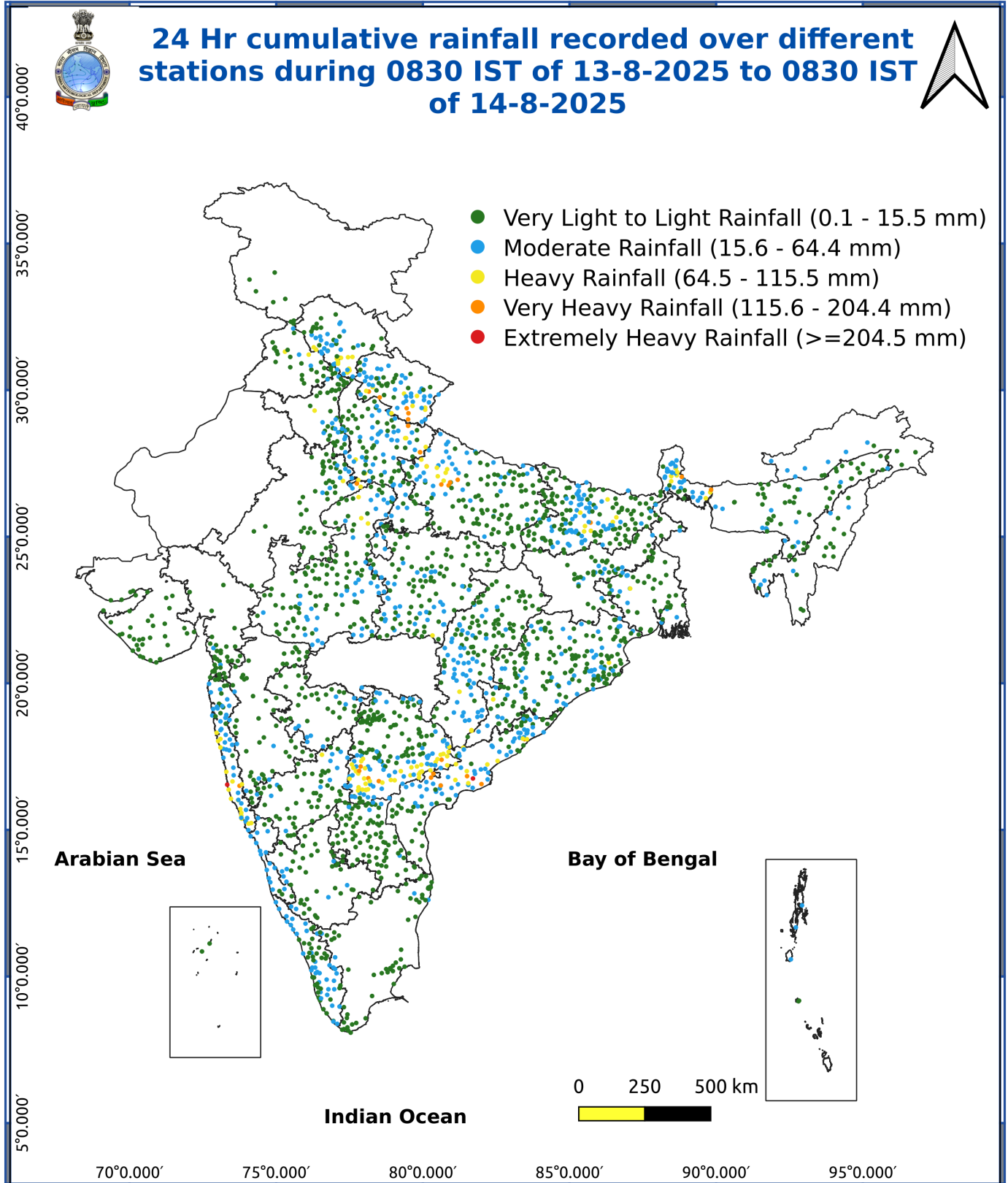


Fig. 4: Departure of Minimum Temp. Dated 2025-08-14





*Red color warning does not mean "Red Alert" Red color warning means "Take Action"

Forecast and warning for any day is valid from 0830 hours IST of day till 0830 hours IST of next day

For more details kindly visit <https://mausam.imd.gov.in> or contact 011-2434-4599

(Service to the nation since 1875)

Impact & Action Suggested due to

Extremely heavy rainfall at isolated places over Konkan & Goa on 17th; Madhya Maharashtra on 17th & 18th August.

Very heavy rainfall over Jammu- Kashmir, Himachal Pradesh, Punjab, Haryana, Chandigarh, West Uttar Pradesh, Odisha, Coastal Andhra Pradesh & Yanam on 14th; West Madhya Pradesh on 14th & 15th; Vidarbha on 14th & 17th; Chhattisgarh on 14th & during 18th-20th; Telangana during 14th-16th; Coastal Karnataka on 14th & during 17th-19th; South Interior Karnataka on 19th; Uttarakhand on 14th, 16th & 17th; East Rajasthan on 15th & 16th; Assam & Meghalaya on 16th; Konkan & Goa on 14th, 16th, 18th & 19th; Ghat areas of Madhya Maharashtra during 15th-20th; Gujarat State during 18th-20th August.

Impact Expected

Localized Flooding of roads, water logging in low lying areas and closure of underpasses mainly in urban areas of the above region.

Occasional reduction in visibility due to heavy rainfall.

Disruption of traffic in major cities due to water logging in roads leading to increased travel time.

Minor damage to kutcha roads.

Possibilities of damage to vulnerable structure.

Localized Landslides/Mudslides/landslips/mudslips/landsinks/mudsinks.

Damage to horticulture and standing crops in some areas due to inundation.

It may lead to riverine flooding in some river catchments (for riverine flooding please visit Web page of CWC)

Action Suggested

Check for traffic congestion on your route before leaving for your destination.

Follow any traffic advisories that are issued in this regard.

Avoid going to areas that face the water logging problems often.

Avoid staying in vulnerable structure.

Agromet advisories for various parts of the country

Agromet advisories for likely impact of Heavy / Heavy to Very Heavy Rainfall

(Based on the IBF and advisories issued by different AMFUs)

- In **Andhra Pradesh**, provide adequate drainage in the fields of rice, maize, groundnut, cotton, black gram, green gram, pigeon pea and sesame in **Krishna Godavari Zone**; from maize, cotton, sugarcane, paddy, *mesta*, red gram, green gram, black gram and groundnut fields in **North Coastal Zone**; from standing crop and vegetable fields in **High Altitude Tribal Zone**.

*Red color warning does not mean "Red Alert" Red color warning means "Take Action"

Forecast and warning for any day is valid from 0830 hours IST of day till 0830 hours IST of next day

For more details kindly visit <https://mausam.imd.gov.in> or contact 011-2434-4599

(Service to the nation since 1875)



- In **Telangana**, drain out excess water from fields of rice, cotton, maize, soybean, pigeon pea, turmeric and vegetables in **Northern Telangana Zone** and rice, cotton, maize, red gram, soybean, sugarcane and vegetables in **Southern Telangana Zone**.
- In **Odisha**, ensure proper drainage in fields of rice (especially in lowland and medium land), maize and vegetables to avoid water stagnation in **Eastern Ghat High Land Zone** and **South Eastern Ghat Zone**.
- In **Madhya Pradesh**, provide adequate drainage in the fields of maize, soybean, black gram, cotton, and pigeon pea in **Vindhyan Plateau Zone**; maize, soybean, cotton, sugarcane and vegetables in **Satpura Plateau Zone**; rice, soybean, maize, sugarcane and vegetables in **Central Narmada Valley Zone** and soybean, pigeon pea, cotton and vegetables in **Nimar Valley Zone**.
- In **Chhattisgarh**, make arrangements to drain out excess water from fields of *kharif* maize, rice, minor millets, pulses and vegetables in **Bastar Plateau Zone** and rice, soybean, pigeon pea, green gram, black gram, groundnut, maize, sugarcane and vegetables in **Plain Zone**; and from fields of rice, maize, vegetables and orchards in **Northern Hills Zone**.
- In **Maharashtra**, make arrangements to drain out excess water from rice, finger millet, turmeric, groundnut, vegetables and orchards in **Konkan**; from rice fields in *ghat* areas of **Madhya Maharashtra**; and from soybean and cotton crop in **Vidarbha**.
- In **Jammu and Kashmir**, do not allow water to stagnate in fields of maize, pulses, cowpea, bajra, fodder crops and vegetables in **Sub Tropical Zone**. Maintain proper drainage facility in maize, pulses and vegetable fields to avoid waterlogging in **Intermediate Zone**. In **Valley Temperate Zone**, provide proper staking to bottle gourd, cucumber, bitter gourd etc. vines and indeterminate tomatoes. Make proper drainage channels in fields of maize for removal of excess rain water.
- In **Himachal Pradesh**, maintain proper drainage channels in ginger, turmeric and maize fields in **Mid Hills Sub Humid Zone** and rice, maize and vegetable fields in **Sub Montane and Low Hills Sub Tropical Zone**. Undertake harvesting of matured tomato, capsicum and brinjal fruits in **Mid Hills Sub Humid Zone** and ripened tomatoes in **High Hills Sub Temperate Wet Zone**.
- In **Uttarakhand**, maintain 5-7 cm water level in rice fields by removing excess water and maintain proper drainage channels in fields of sugarcane, maize, green gram and black gram in **Bhabar and Tarai Zone**. In **Hill Zone**, keep the bunds of the rice fields clean by removing weeds. Maintain proper drainage in soybean, maize, pulses, finger millet, ginger and vegetable fields and fruit orchards. In **Sub Humid Sub Tropic Zone**, ensure proper drainage in fields of barnyard millet, finger millet, green gram and black gram.
- In **Uttar Pradesh**, make necessary arrangements for drainage of excess water from the fields of pigeon pea, chilli and onion in **Bundelkhand Zone**. In **Western Plain Zone**, postpone sowing of pigeon pea, maize, green gram and black gram till cessation of heavy rains. Ensure proper drainage in all pulses, vegetables and other crops. Make scaffolding in bottle gourd vegetables.
- In **Sub-Himalayan West Bengal**, drain out excess water from rice, chilli and gourds fields and cover the chilli seedlings with plastic to protect them from heavy rains in **Terai Zone**.

Livestock / Fishery

- Keep the animals inside the shed during heavy rainfall and provide them balanced feed.
- Store feed and fodder in a safe place to prevent spoilage.
- Construct an outlet with proper netting around the ponds to drain out excess water, thereby preventing fish from escaping in case of overflow.

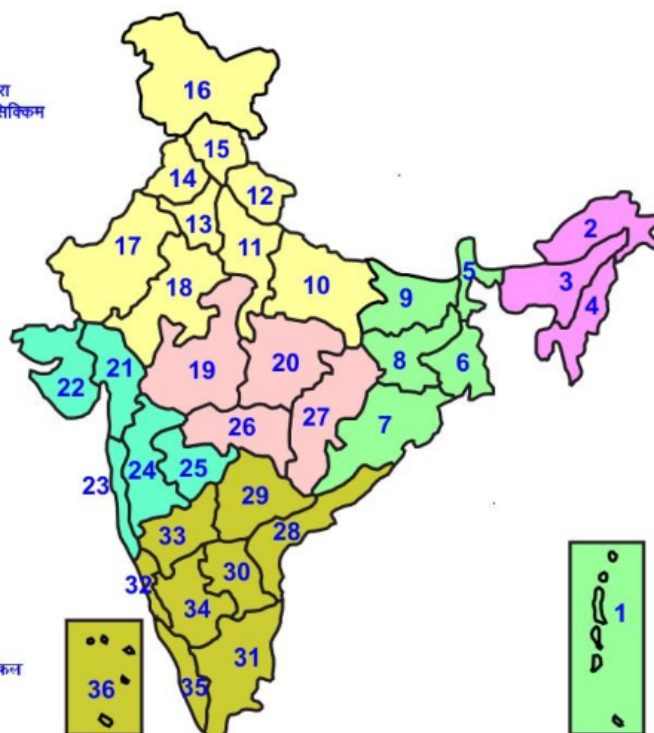
Agromet advisories for likely impact of Thunderstorm / Gusty Winds / Squally Winds

(Based on the IBF and advisories issued by different AMFUs)

Provide mechanical support to horticultural crops and staking or support to vegetables and young fruit plants / fruit-bearing plants to avoid lodging due to strong winds.

LEGENDS

- 1 अंडमान और निकोबार द्वीप समुह
- 2 अरुणाचल प्रदेश
- 3 असम और मेघालय
- 4 नागालैंड मनीपुर मीजोरम और त्रिपुरा
- 5 उप हिमालय पश्चिम बंगाल एवं सिक्किम
- 6 पश्चिम बंगाल
- 7 ओडिसा
- 8 झारखंड
- 9 बिहार
- 10 पूर्वी उत्तर प्रदेश
- 11 पश्चिम उत्तर प्रदेश
- 12 उत्तराखंड
- 13 हरियाणा चंडीगढ़ एवं दिल्ली
- 14 पंजाब
- 15 हिमाचल प्रदेश
- 16 जम्मू एवं कश्मीर एवं लद्दाख
- 17 पश्चिम राजस्थान
- 18 पूर्वी राजस्थान
- 19 पश्चिम मध्य प्रदेश
- 20 पूर्वी मध्य प्रदेश
- 21 गुजरात क्षेत्र
- 22 सौराष्ट्र एवं कच्छ
- 23 कोंकण एवं गोवा
- 24 मध्य महाराष्ट्र
- 25 मराठावाड़ा
- 26 विदर्भ
- 27 छत्तीसगढ़
- 28 तटीय आंध्र प्रदेश एवं यनम
- 29 तेलंगाना
- 30 रायलसीमा
- 31 तमिलनाडु, पुदुचेरी एवं कराईकल
- 32 तटिय कर्नाटक
- 33 आंतरिक उत्तरी कर्नाटक
- 34 आंतरिक दक्षिणी कर्नाटक
- 35 केरल एवं माहे
- 36 लक्षद्वीप



1. Andaman & Nicobar Islands
2. Arunachal Pradesh
3. Assam & Meghalaya
4. Nagaland, Manipur, Mizoram & Tripura
5. Sub-Himalayan West Bengal & Sikkim
6. Gangetic West Bengal
7. Orissa
8. Jharkhand
9. Bihar
10. East Uttar Pradesh
11. West Uttar Pradesh
12. Uttarakhand
13. Haryana, Chd & Delhi
14. Punjab
15. Himachal Pradesh
16. Jammu & Kashmir and Ladakh
17. West Rajasthan
18. East Rajasthan
19. West Madhya Pradesh
20. East Madhya Pradesh
21. Gujarat
22. Saurashtra
23. Konkan & Goa
24. Madhya Maharashtra
25. Marathawada
26. Vidharbha
27. Chhattisgarh
28. Coastal Andhra Pradesh & Yanam
29. Telangana
30. Rayalaseema
31. Tamilnadu, Puducherry & Karaikal
32. Coastal Karnataka
33. North Interior Karnataka
34. South Interior Karnataka
35. Kerala & Mahe
36. Lakshadweep

SPATIAL DISTRIBUTION (% of Stations reporting)













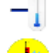




% Stations	Category	% Stations	Category
76-100	Widespread (WS/Most Places)	26-50	Scattered (SCT/ A Few Places)
51-75	Fairly Widespread (FWS/ Many Places)	1-25	Isolated (ISOL)

Subdivision Colour

- NO WARNING
- WATCH (BE UPDATED)
- ALERT (BE PREPARED TO TAKE ACTION)
- WARNING (TAKE ACTION)

Probabilistic Forecast

Terms	Probability of Occurrence (%)
Unlikely	< 25
Likely	25 - 50
Very Likely	50 - 75
Most Likely	> 75

-  Heavy Rain
-  Very Heavy Rain
-  Extremely Heavy Rain
-  Heavy Snow
-  Thunderstorm & Lightning
-  Hailstorm
-  Dust Storm
-  Dust Raising Winds
-  Strong surface winds
-  Heat Wave
-  Hot Day
-  Warm Night
-  Cold Wave
-  Cold Day
-  Ground Frost
-  FOG Fog
-  Hot & Humid

*Red color warning does not mean "Red Alert" Red color warning means "Take Action"

Forecast and warning for any day is valid from 0830 hours IST of day till 0830 hours IST of next day

For more details kindly visit <https://mausam.imd.gov.in> or contact 011-2434-4599

(Service to the nation since 1875)

LEGENDS

WARNING

WARNING (TAKE ACTION)
ALERT (BE PREPARED)
WATCH (BE UPDATED)
NO WARNING (NO ACTION)

Probabilistic Forecast

Terms	Probability of Occurrence (%)
Unlikely	< 25
Likely	25 - 50
Very Likely	50 - 75
Most Likely	> 75



Heavy: 64.5 to 115.5 mm/cm *
Very Heavy: 115.6 to 204.4 mm/cm *
Extremely Heavy: > 204.4 mm/cm *



When maximum temperature of a station reaches $\geq 40^{\circ}\text{C}$ for plains and $\geq 30^{\circ}\text{C}$ for hilly regions
(a) Based on Departure from normal

Heat Wave: Maximum Temperature Departure from normal 4.5°C to 6.4°C .
Severe Heat Wave: Maximum Temperature Departure from normal $\geq 6.5^{\circ}\text{C}$

(b). Based on Actual maximum temperature

Heat Wave: When actual maximum temperature $\geq 45^{\circ}\text{C}$.
Severe Heat Wave: When actual maximum temperature $\geq 47^{\circ}\text{C}$

(c). Criteria for heat wave for coastal stations

When maximum temperature departure is $> 4.5^{\circ}\text{C}$ from normal. Heat Wave may be described provided maximum temperature $\geq 37^{\circ}\text{C}$



When maximum temperature remains 40°C

Warm Night: When minimum temperature departure 4.5°C to 6.4°C .
Severe Warm Night: When minimum temperature departure $> 6.4^{\circ}\text{C}$.



When minimum temperature of a station $\leq 10^{\circ}\text{C}$ for plains and $\leq 0^{\circ}\text{C}$ for hilly regions.

(a). Based on departure

Cold Wave: Minimum Temperature Departure from normal -4.5°C to -6.4°C .
Severe Cold Wave: Minimum Temperature Departure from normal $\leq -6.5^{\circ}\text{C}$

(b) Based on actual Minimum Temperature (for Plains only)

Cold Wave: When Minimum Temperature is $\leq 4.0^{\circ}\text{C}$
Severe Cold Wave: When Minimum Temperature is $\leq 2.0^{\circ}\text{C}$

(c) For Coastal Stations

When Minimum Temperature departure is $\leq -4.5^{\circ}\text{C}$ & actual Minimum Temperature is $\leq 15^{\circ}\text{C}$



When minimum temperature of a station $\leq 10^{\circ}\text{C}$ for plains and $\leq 0^{\circ}\text{C}$ for hilly regions
Based on departure

Cold Day: Maximum Temperature Departure from normal -4.5°C to -6.4°C .
Severe Cold Day: Maximum Temperature Departure from normal $\leq -6.5^{\circ}\text{C}$



Phenomenon of small droplets suspended in air and the horizontal visibility $< 1\text{km}$

Moderate Fog: When the visibility between 500-200 metres
Dense Fog: when the visibility between 50-200 metres
Very Dense Fog: when the visibility < 50 metres



Sudden electrical discharges manifested by a flash of light (Lightning) and a sharp rumbling sound (thunder)



An ensemble of particles of dust or sand energetically lifted to great heights by a strong and turbulent wind.



Ice deposits on ground

Air temperature $\leq 4^{\circ}\text{C}$ (over Plains)



A strong wind that rises suddenly, lasts for at least 1 minute.

Moderate: Wind speed 52-61 kmph
Severe: Wind speed 62-87 kmph
Very Severe: Wind speed > 87 kmph



Effect of various waves in the sea over specific area

Rough to very rough: Wind speed 41-62 kmph (22-33 knots) & Wave height 2.5-6 metre
High to very high: Wind speed 63-117 kmph (34-63 knots) & Wave height 6-14 metre
Phenomenal: Wind speed > 117 kmph (> 63 knots) & Wave height > 14 metre



Cyclonic Storm: Wind speed 62-87 kmph (34-47 knots)

Severe Cyclonic Storm: Wind speed 88-117 kmph (48-63 knots)
Very Severe Cyclonic Storm: Wind speed 118-165 kmph (64-89 knots)
Extremely Severe Cyclonic Storm: Wind speed 166-220 kmph (90-119 knots)
Super Cyclone Storm: Wind speed > 220 kmph (> 119 knots)

*Red color warning does not mean "Red Alert" Red color warning means "Take Action"

Forecast and warning for any day is valid from 0830 hours IST of day till 0830 hours IST of next day

For more details kindly visit <https://mausam.imd.gov.in> or contact 011-2434-4599

(Service to the nation since 1875)