

2025-08-02

Time of Issue: 13:38:00 hours IST  
(Mid-Day)

## ALL INDIA WEATHER SUMMARY AND FORECAST BULLETIN

### Significant Weather Features

#### Weather Forecast and Warnings:

##### Northeast India:

- **Extremely heavy rainfall** very likely at isolated places over Meghalaya on 02<sup>nd</sup> & 03<sup>rd</sup>; Arunachal Pradesh on 03<sup>rd</sup> August.
- Light/moderate rainfall at many places accompanied with thunderstorm, lightning and isolated **heavy rainfall** likely to continue over Arunachal Pradesh, Assam & Meghalaya and Nagaland, Manipur, Mizoram & Tripura during 02<sup>nd</sup>-08<sup>th</sup> August with isolated; **very heavy rainfall** over Arunachal Pradesh during 02<sup>nd</sup>-08<sup>th</sup> August; Assam & Meghalaya during 02<sup>nd</sup>-04<sup>th</sup> and 07<sup>th</sup> & 08<sup>th</sup> August.

##### East & Central India:

- **Extremely heavy rainfall** very likely at isolated places over Sub-Himalayan West Bengal & Sikkim on 02<sup>nd</sup> & 03<sup>rd</sup> and north Bihar on 02<sup>nd</sup> August.
- Isolated **heavy rainfall** likely over Sub-Himalayan West Bengal & Sikkim during 02<sup>nd</sup>-08<sup>th</sup>; Gangetic West Bengal on 07<sup>th</sup>; Jharkhand on 02<sup>nd</sup> & 03<sup>rd</sup>; Bihar during 02<sup>nd</sup>-04<sup>th</sup>, 07<sup>th</sup> & 08<sup>th</sup>; Chhattisgarh on 02<sup>nd</sup> August; Madhya Pradesh on 03<sup>rd</sup> & 04<sup>th</sup> August with isolated **very heavy rainfall** over Sub-Himalayan West Bengal & Sikkim on 04<sup>th</sup>; Bihar on 03<sup>rd</sup> August.
- Light to moderate rainfall at most/many places accompanied with thunderstorm & lightning likely over the region during next 5 days.

##### Northwest India:

- Isolated **heavy rainfall** likely over Jammu-Kashmir during 04<sup>th</sup>-06<sup>th</sup> August; Himachal Pradesh, Haryana, West Uttar Pradesh during 02<sup>nd</sup>-06<sup>th</sup>; Uttarakhand during 02<sup>nd</sup>-08<sup>th</sup>; Punjab on 02<sup>nd</sup>, during 04<sup>th</sup>-06<sup>th</sup>; East Uttar Pradesh during 02<sup>nd</sup>-05<sup>th</sup>; northeast Rajasthan during 03<sup>rd</sup>-05<sup>th</sup> and 08<sup>th</sup> August with **very heavy rainfall** over Himachal Pradesh on 02<sup>nd</sup>, 04<sup>th</sup> & 05<sup>th</sup>; Uttarakhand during 03<sup>rd</sup>-05<sup>th</sup>; West Uttar Pradesh on 04<sup>th</sup>; East Uttar Pradesh on 03<sup>rd</sup> & 04<sup>th</sup> August.
- Light/moderate rainfall at many places accompanied with thunderstorm & lightning likely over Western Himalayan region and many/some places over the plains during next 7 days.

##### South Peninsular India:

- **Extremely heavy rainfall** very likely at isolated places over Kerala and ghat areas of Tamil Nadu on 05<sup>th</sup> August.
- Isolated **heavy rainfall** likely over Tamil Nadu, Kerala & Mahe during 02<sup>nd</sup>-08<sup>th</sup>; Coastal & North Interior Karnataka during 05<sup>th</sup>-08<sup>th</sup>; Coastal Andhra Pradesh on 04<sup>th</sup> & 05<sup>th</sup>; Rayalaseema during 03<sup>rd</sup>-06<sup>th</sup> August with **very heavy rainfall** over Tamil Nadu during 03<sup>rd</sup>-05<sup>th</sup> and Kerala & Mahe during 03<sup>rd</sup>-08<sup>th</sup> August.
- Strong surface winds (speed reaching 40-50 kmph) very likely over South Peninsular India during next 5 days.
- Light to moderate rainfall at some/many places over Kerala & Mahe, Lakshadweep, Karnataka, Rayalaseema, Coastal Andhra Pradesh & Yanam and Telangana during next 7 days.

##### West India:

- Light to moderate rainfall at many/some places very likely over the region during next 6-7 days.

##### Fishermen warning:

- **Fishermen are advised to avoid venturing into the following from 02<sup>nd</sup> August to 07<sup>th</sup> August 2025 to the following Areas:**

\*Red color warning does not mean "Red Alert" Red color warning means "Take Action"

Forecast and warning for any day is valid from 0830 hours IST of day till 0830 hours IST of next day

For more details kindly visit <https://mausam.imd.gov.in> or contact 011-2434-4599

(Service to the nation since 1875)



- **Arabian Sea:** many parts of southeast Arabian Sea; Along and off Gujarat coast and adjoining sea areas; Kerala & Karnataka coast and adjoining sea areas during 04<sup>th</sup> August to 07<sup>th</sup> August; some parts of southeast Arabian Sea for 02<sup>nd</sup>, 03<sup>rd</sup> August; many parts of southwest Arabian Sea during 02<sup>nd</sup> to 07<sup>th</sup> August; most parts of central Arabian Sea; southern parts of north Arabian Sea; along and off the Somalia coast and adjoining sea areas, south Oman and adjoining Yemen coast & adjoining sea areas during 02<sup>nd</sup> to 07<sup>th</sup> August.
- **Bay of Bengal:** Many parts of southwest Bay of Bengal & few parts of southeast Bay of Bengal, Gulf of Mannar & Comorin area during 02<sup>nd</sup> to 07<sup>th</sup> August; Over Lakshadweep area during 02<sup>nd</sup> August.

### Main Weather Observations:

❖ **Rainfall distribution** (from 0830 hours IST of yesterday to 0830 hours IST of today): **at most places** over Arunachal Pradesh, Gangetic West Bengal, Bihar, Uttarakhand, Punjab, Himachal Pradesh, Konkan & Goa, Coastal Karnataka, Kerala & Mahe and Lakshadweep; **at many places** over Assam & Meghalaya, Nagaland, Manipur, Mizoram & Tripura, Sub Himalayan West Bengal & Sikkim, Jharkhand, Haryana-Chandigarh-Delhi, East Madhya Pradesh and Vidarbha; **at a few places** over Odisha, East Uttar Pradesh, West Uttar Pradesh, West Rajasthan, East Rajasthan, Gujarat Region, Madhya Maharashtra, Chhattisgarh, Tamil Nadu, Puducherry & Karaikal and South Interior Karnataka; **at isolated places** over Andaman & Nicobar Islands, Jammu-Kashmir-Ladakh-Gilgit-Baltistan-Muzaffarabad, West Madhya Pradesh, Saurashtra & Kutch, Marathwada, Coastal Andhra Pradesh & Yanam, Telangana, Rayalaseema and North Interior Karnataka;

❖ **Significant rainfall recorded(in cm)** (from 0830 hours IST of yesterday to 0830 hours IST of today): **Himachal Pradesh:** Una (dist Una) 22; Bilaspur Sadar (dist Bilaspur) 12; Chuari (dist Chamba) 10; Nadaun (dist Hamirpur), Chamba AWS (dist Chamba), Dehra Gopipur (dist Kangra), Barthin (dist Bilaspur), Sujampur Tira (dist Hamirpur) 7 Each; Ghamroor (dist Kangra), Nahan (dist Sirmaur), Dharmsala (dist Kangra) 6 Each; **Assam & Meghalaya:** Mawsynram (dist East Khasi Hills) 21; Cherrapunji(rkm) (dist East Khasi Hills) 15; Mawkyrwat (dist South West Khasi Hills) 14; Cherrapunji (dist East Khasi Hills) 12; Jorhat (dist Jorhat) 8; N.lakhimpur/Lilabari (dist Lakhimpur), Khliehriat (dist East Jaintia Hills) 7 Each; Shella (dist East Khasi Hills), Jorhat AWS (dist Jorhat), Tezpur (dist Sonitpur) 6 Each; **Bihar:** Jhajha (dist Jamui), Gidhaur (dist Jamui) 18 Each; Chanan (dist Lakhisarai), Barhat (dist Jamui) 17 Each; Ghat Kushumba (dist Sheikhpura) 16; Laxmipur (dist Jamui), Hoswari (dist Patna), Barhiya (dist Lakhisarai) 13 Each; Jamui (dist Jamui) 12; Sarmera (dist Nalanda) 11; Sonhaura (dist Bhagalpur), Pipariya (dist Lakhisarai) 10 Each; Hayaghat (dist Darbhanga), Bind (dist Nalanda), Warisnagar (dist Samastipur) 9 Each; Pusa (dist Samastipur), Halsi (dist Lakhisarai) 8 Each; Samastipur (dist Samastipur), Amarpur (dist Banka), Aryari (dist Sheikhpura), Shambhuganj (dist Banka), Sultanganj (dist Bhagalpur), Ujiarpur (dist Samastipur) 7 Each; Suryagadha (dist Lakhisarai), Morwa/Tajpur (dist Samastipur), Chandan (dist Banka), Cherwa (dist Sheikhpura), Barauni (dist Begusarai), Asarganj (dist Monghyr), Patepur (dist Vaishali), Fullidumar (dist Banka), Rajoun (dist Banka), Khaira (dist Jamui), Hilsa (dist Nalanda), Sarairanjan (dist Samastipur), Chehara Kala (dist Vaishali) 6 Each; **Jharkhand:** Pathargama (dist Godda) 17; Mehgawan (dist Godda) 10; Godda (dist Godda) 9; Kharsema (dist Seraikela-kharsawan), Nala (dist Jamtara) 6 Each; **West Rajasthan:** Sriganganagar Tehsil SR (dist Sri Ganganagar) 16; Ganganagar (dist Sri Ganganagar) 11; Pilibanga SR (dist Hanumangarh), Garsana SR (dist Sri Ganganagar), Suratgarh (dist Sri Ganganagar) 8 Each; **Punjab:** Nangal (dist Rupnagar) 14; Hoshiarpur AWS (dist Hoshiarpur), Gurdaspur AMFU (dist Gurdaspur) 11 Each; Tibri (dist Gurdaspur) 10; Dhariwal Irr (dist Gurdaspur) 9; Salern AWS (dist Hoshiarpur), Pathankot IAF (dist Pathankot) 8 Each; Madhopur (dist Pathankot), Phangota (dist Pathankot) 7 Each; Jalandhar (dist Jalandhar), Garhshankar (dist Hoshiarpur) 6 Each; **West Uttar Pradesh:** Sahawar (dist Kasganj) 13; **East Uttar Pradesh:** Chhibramau (dist Kannauj) 13; Ankinghat (dist Kanpur City) 11; Koraon (dist Prayagraj), Prayagraj Sadar (dist Prayagraj), Meja (dist Prayagraj), Kanpur IAF (dist Kanpur City) 6 Each; **Tamil Nadu, Puducherry & Karaikal:** Vanamadevi (dist Cuddalore), Lower Anaicut (dist Thanjavur) 11 Each; Sembanarkoil PWD (dist Mayiladuthurai) 10; Jayamkondam (dist Ariyalur), Ulundurpet (dist Kallakurichi) 9 Each; Tirupuvanam (dist Sivaganga), Sendurai (dist Ariyalur), Lalpet (dist Cuddalore), Src Kudithangi (dist Cuddalore), Rscl-2 Kedar (dist Villupuram) 8 Each; Cuddalore (dist Cuddalore), Karaikudi (dist Sivaganga), Vilupuram (dist Villupuram), Panruti (dist Cuddalore), Kuringipadi (dist Cuddalore), Collectorate (dist Cuddalore), Dscl Eriayur (dist Kallakurichi), Rscl-2 Soorapattu (dist Villupuram) 7 Each; K.m.koil (dist Cuddalore), Pelandurai (dist Cuddalore), Manalmedu (dist Mayiladuthurai), Dscl Thiyagadurgam (dist Kallakurichi), Basl Vengur (dist Kallakurichi), Rscl-2 Mundiampakkam (dist Villupuram), Rscl-2 Koliyanur (dist Villupuram) 6 Each; **Kerala & Mahe:** Udumbannoor AWS (dist Idukki) 10; **Arunachal Pradesh:** Itanagar (dist Papumpara) 10; Naharlagun (dist Papumpara), Naharlagun AWS (dist Papumpara) 9 Each; **Sub Himalayan West Bengal & Sikkim:** Rongli (dist Pakyong) 9; Pedong (dist Kalimpong), Munsong (dist Darjeeling) 7 Each; Khanitar (dist Pakyong) 6; **East Madhya Pradesh:** Mauganj (dist Rewa) 8; Majholi (dist Jabalpur), Naigarhi (dist Rewa) 7 Each; Shahpura (dist Dindori) 6; **Odisha:** Tensa (dist Sundargarh) 7; Tiring (dist Mayurbhanj) 6; **Chhattisgarh:** Odagi (dist Surajpur) 7; **Gangetic West Bengal:** Rajnagar (dist Birbhum), Mangalkote (dist Purba Bardhaman) 6 Each; **Nagaland, Manipur, Mizoram & Tripura:** Sabroom (dist South Tripura), Sabroom AWS (dist South Tripura) 6 Each.

❖ **Heavy Rainfall observed** (from 0830 hours IST of yesterday to 0830 hours IST of today): **Extremely heavy rain** at isolated places over Assam & Meghalaya and Himachal Pradesh. **Heavy to very heavy rain** at isolated places over

\*Red color warning does not mean "Red Alert" Red color warning means "Take Action"

Forecast and warning for any day is valid from 0830 hours IST of day till 0830 hours IST of next day

For more details kindly visit <https://mausam.imd.gov.in> or contact 011-2434-4599

(Service to the nation since 1875)

Assam & Meghalaya, Jharkhand, Bihar, East Uttar Pradesh, West Uttar Pradesh, Punjab, Himachal Pradesh and West Rajasthan. **Heavy rain** at isolated places over Arunachal Pradesh, Sub Himalayan West Bengal & Sikkim, Odisha, East Madhya Pradesh, Chhattisgarh, Tamil Nadu, Puducherry & Karaikal and Kerala & Mahe.

❖ **Minimum Temperature Departures (as on 02-08-2025): markedly above normal(> 5.1°C)** at few places over Assam & Meghalaya; at isolated places over Bihar, East Uttar Pradesh, West Uttar Pradesh, Himachal Pradesh, West Madhya Pradesh and Saurashtra & Kutch. **appreciably above normal(3.1°C to 5.0°C)** at few places over Sub Himalayan West Bengal & Sikkim and East Madhya Pradesh; at isolated places over Odisha, Jammu-KashmirLadakh-Gilgit-Baltistan-Muzaffarabad, West Rajasthan and Gujarat Region. **above normal(1.6°C to 3.0°C)** at many places over Andaman & Nicobar Islands and Coastal Andhra Pradesh & Yanam; at few places over Gangetic West Bengal; at isolated places over Nagaland, Manipur, Mizoram & Tripura, Uttarakhand, Madhya Maharashtra, Rayalaseema and Tamil Nadu, Puducherry & Karaikal. **near normal(-1.5°C to 1.5°C)** at many places over East Rajasthan; at most places over Arunachal Pradesh, Jharkhand, Haryana-Chandigarh-Delhi, Punjab, Konkan & Goa, Marathwada, Vidarbha, Chhattisgarh, Telangana, Coastal Karnataka, North Interior Karnataka, South Interior Karnataka and Kerala & Mahe; at few places over Lakshadweep. **The lowest minimum temperature** of 19.0°C is reported at MATHERAN (MAHARASHTRA), and JEUR (MAHARASHTRA) over the Plains of India.

❖ **Maximum Temperature Departures (as on 01-08-2025): markedly above normal(> 5.1°C)** at isolated places over Odisha. **appreciably above normal(3.1°C to 5.0°C)** at few places over Coastal Andhra Pradesh & Yanam; at isolated places over Gangetic West Bengal, Madhya Maharashtra, Chhattisgarh and Tamil Nadu, Puducherry & Karaikal. **above normal(1.6°C to 3.0°C)** at many places over Marathwada and Coastal Karnataka; at most places over Vidarbha; at few places over Andaman & Nicobar Islands, Assam & Meghalaya, Sub Himalayan West Bengal & Sikkim, Saurashtra & Kutch, Konkan & Goa, Telangana and Rayalaseema; at isolated places over East Uttar Pradesh, Uttarakhand, Jammu-KashmirLadakh-Gilgit-Baltistan-Muzaffarabad and Gujarat Region. **near normal(-1.5°C to 1.5°C)** at many places over Nagaland, Manipur, Mizoram & Tripura, Bihar, West Uttar Pradesh and South Interior Karnataka; at most places over Arunachal Pradesh, Jharkhand, West Madhya Pradesh and North Interior Karnataka; at few places over Himachal Pradesh, West Rajasthan, East Rajasthan, East Madhya Pradesh and Lakshadweep; at isolated places over Haryana-Chandigarh-Delhi. **The highest maximum temperature** of 40.5°C was reported at MADURAI (A) (TAMIL NADU).

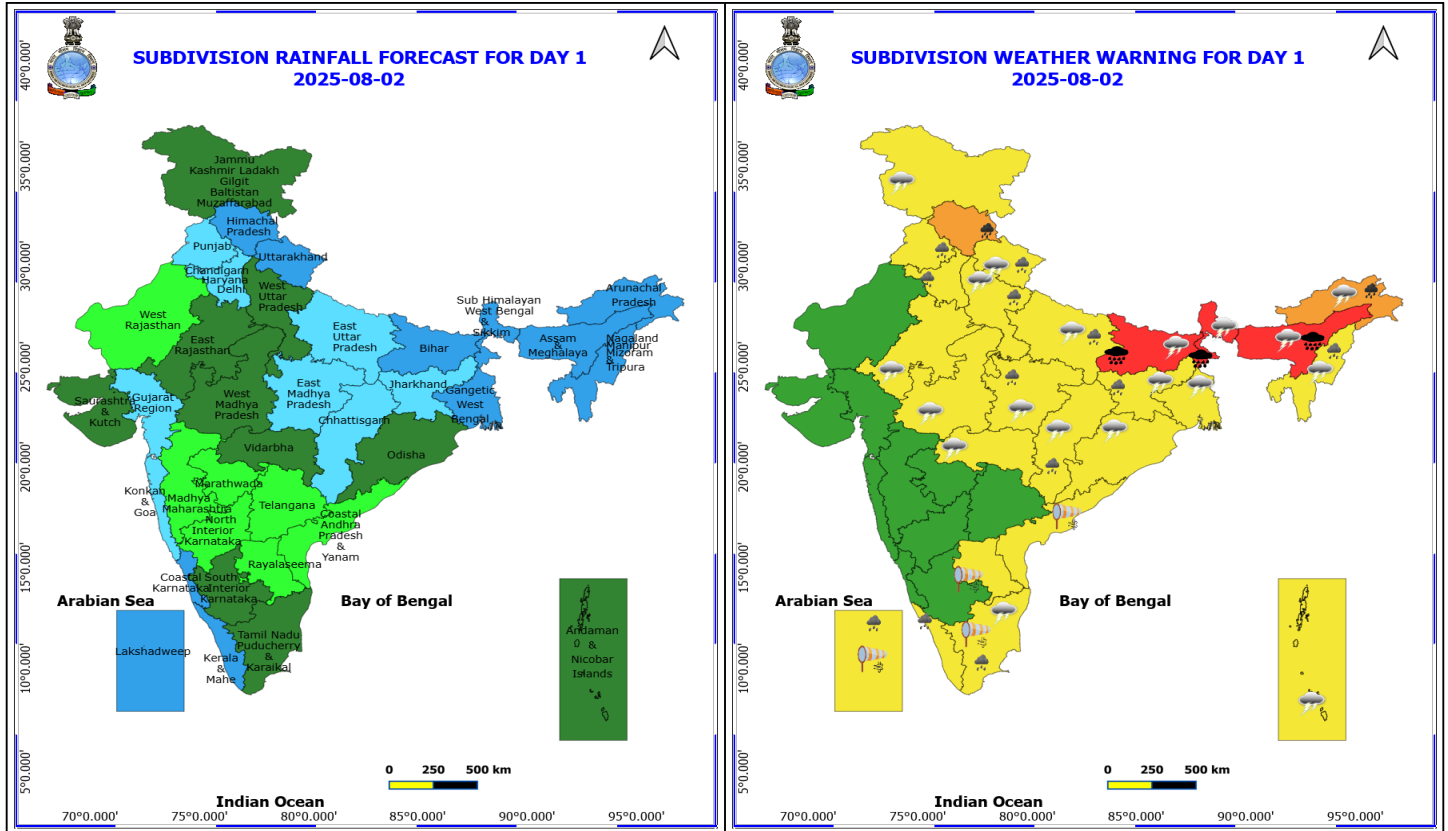
**Meteorological Analysis (Based on 0830 hours IST)**

- The **monsoon trough** at mean sea level now passes through Ferozpur, Ambala, Najibabad, Shahjahanpur, Barabanki, Gorakhpur, Muzaffarpur, Purnea, Berhampore and thence southeastwards to the northeast Bay of Bengal.
- The **upper air cyclonic circulation** over Sub-Himalayan West Bengal & Sikkim & neighbourhood now lies over east Bihar & adjoining Sub-Himalayan West Bengal & Sikkim and extends upto 5.8 km above mean sea level tilting southwestwards with height.
- The **upper air cyclonic circulation** over Punjab & neighbourhood extending upto 3.1 km above mean sea level persisted.
- The **upper air cyclonic circulation** over East Uttar Pradesh & neighbourhood extending upto 1.5 km above mean sea level persisted.
- The **Western Disturbance** as a trough in middle & upper tropospheric levels with its axis at 5.8 km above mean sea level roughly along Long. 72°E to the north of Lat. 32°N persisted.
- An **upper air cyclonic circulation** lies over Gulf of Mannar & adjoining south Tamil Nadu at 5.8 km above mean sea level.

**Weather Outlook for subsequent 3 days**

- Fairly widespread to widespread rainfall likely over the most parts of the country except Madhya Maharashtra and Marathwada where Isolated rainfall is likely.





## 2 August (Day 1)

- ❖ **Heavy to Very Heavy Rainfall with isolated Extremely Heavy Rainfall** very likely at isolated places over Assam & Meghalaya, Bihar and Sub Himalayan West Bengal & Sikkim.
- ❖ **Heavy to Very Heavy Rainfall** very likely at isolated places over Arunachal Pradesh and Himachal Pradesh.
- ❖ **Heavy Rainfall** very likely at isolated places over Chhattisgarh, East Madhya Pradesh, Haryana, Chandigarh & Delhi, Jharkhand, Kerala & Mahe, Lakshadweep, Nagaland, Manipur, Mizoram and Tripura, Punjab, Tamil Nadu Puducherry & Karaikal, Uttar Pradesh and Uttarakhand.
- ❖ **Thunderstorm accompanied with lightning & gusty winds(30-40kmph)** very likely at isolated places over Andaman & Nicobar Islands, Bihar, Jharkhand, West Bengal & Sikkim and West Madhya Pradesh.
- ❖ **Thunderstorm accompanied with Lightning** very likely at isolated places over Arunachal Pradesh, Assam & Meghalaya, Chhattisgarh, East Madhya Pradesh, East Rajasthan, Jammu-Kashmir-Ladakh-Gilgit-Baltistan-Muzaffarabad, Nagaland, Manipur, Mizoram and Tripura, Odisha, Tamil Nadu Puducherry & Karaikal, Uttar Pradesh, Uttarakhand and Vidarbha.
- ❖ **Strong Surface Winds** very likely at isolated places over Andhra Pradesh, Lakshadweep and Tamil Nadu Puducherry & Karaikal.
- ❖ Squally wind with speed reaching 45 kmph to 55 kmph gusting to 65 kmph is likely to prevail along and off Somalia, Yemen & south Oman coasts, most parts of westcentral Arabian Sea, many parts of southwest Arabian Sea.
- ❖ Squally weather with wind speed reaching 40 - 50 kmph gusting to 60 kmph likely to prevail over many parts of eastcentral Arabian Sea, some parts of southeast Arabian Sea, over Comorin area, over Gulf of Mannar, many parts of southwest Bay of Bengal.

**\*Red color warning does not mean "Red Alert" Red color warning means "Take Action"**

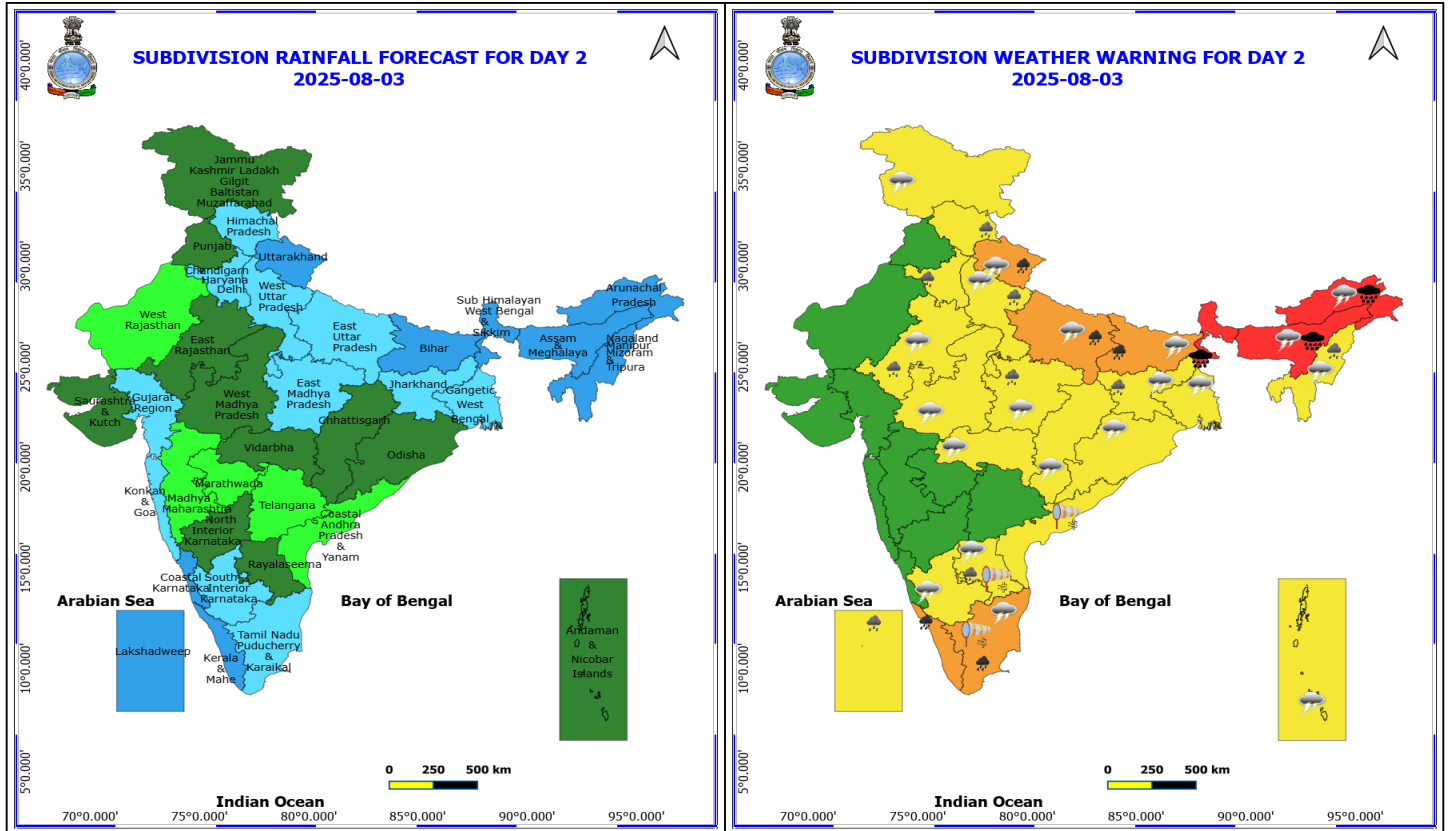
**Forecast and warning for any day is valid from 0830 hours IST of day till 0830 hours IST of next day**

**For more details kindly visit <https://mausam.imd.gov.in> or contact 011-2434-4599**

**(Service to the nation since 1875)**



❖ Squally weather with wind speed reaching 45 - 55 kmph gusting to 65 kmph likely to prevail over Lakshadweep area.



### 3 August (Day 2)

- ❖ **Heavy to Very Heavy Rainfall with isolated Extremely Heavy Rainfall** very likely at isolated places over Arunachal Pradesh, Assam & Meghalaya and Sub Himalayan West Bengal & Sikkim.
- ❖ **Heavy to Very Heavy Rainfall** very likely at isolated places over Bihar, East Uttar Pradesh, Kerala & Mahe, Tamil Nadu Puducherry & Karaikal and Uttarakhand.
- ❖ **Heavy Rainfall** very likely at isolated places over East Madhya Pradesh, East Rajasthan, Haryana, Chandigarh & Delhi, Himachal Pradesh, Jharkhand, Lakshadweep, Nagaland, Manipur, Mizoram and Tripura, Rayalaseema and West Uttar Pradesh.
- ❖ **Thunderstorm accompanied with lightning & gusty winds(30-40kmph)** very likely at isolated places over Andaman & Nicobar Islands, Bihar, Gangetic West Bengal, Jharkhand and West Madhya Pradesh.
- ❖ **Thunderstorm accompanied with Lightning** very likely at isolated places over Arunachal Pradesh, Assam & Meghalaya, Chhattisgarh, East Madhya Pradesh, East Rajasthan, Jammu-Kashmir-Ladakh-Gilgit-Baltistan-Muzaffarabad, Nagaland, Manipur, Mizoram and Tripura, Odisha, Rayalaseema, South Interior Karnataka, Tamil Nadu Puducherry & Karaikal, Uttar Pradesh, Uttarakhand and Vidarbha.
- ❖ **Strong Surface Winds** very likely at isolated places over Andhra Pradesh and Tamil Nadu Puducherry & Karaikal.
- ❖ Squally wind with speed reaching 45 kmph to 55 kmph gusting to 65 kmph is likely to prevail along and off Somalia, Yemen & south Oman coasts, most parts of westcentral Arabian Sea, many parts of southwest Arabian Sea.
- ❖ Squally weather with wind speed reaching 40 - 50 kmph gusting to 60 kmph likely to prevail over many parts of eastcentral Arabian Sea, some parts of southeast & southwest Arabian Sea, southern parts of north Arabian Sea, over Gulf of Mannar & adjoining Comorin area, many parts of southwest Bay of Bengal, few southern parts of

**\*Red color warning does not mean "Red Alert" Red color warning means "Take Action"**

Forecast and warning for any day is valid from 0830 hours IST of day till 0830 hours IST of next day

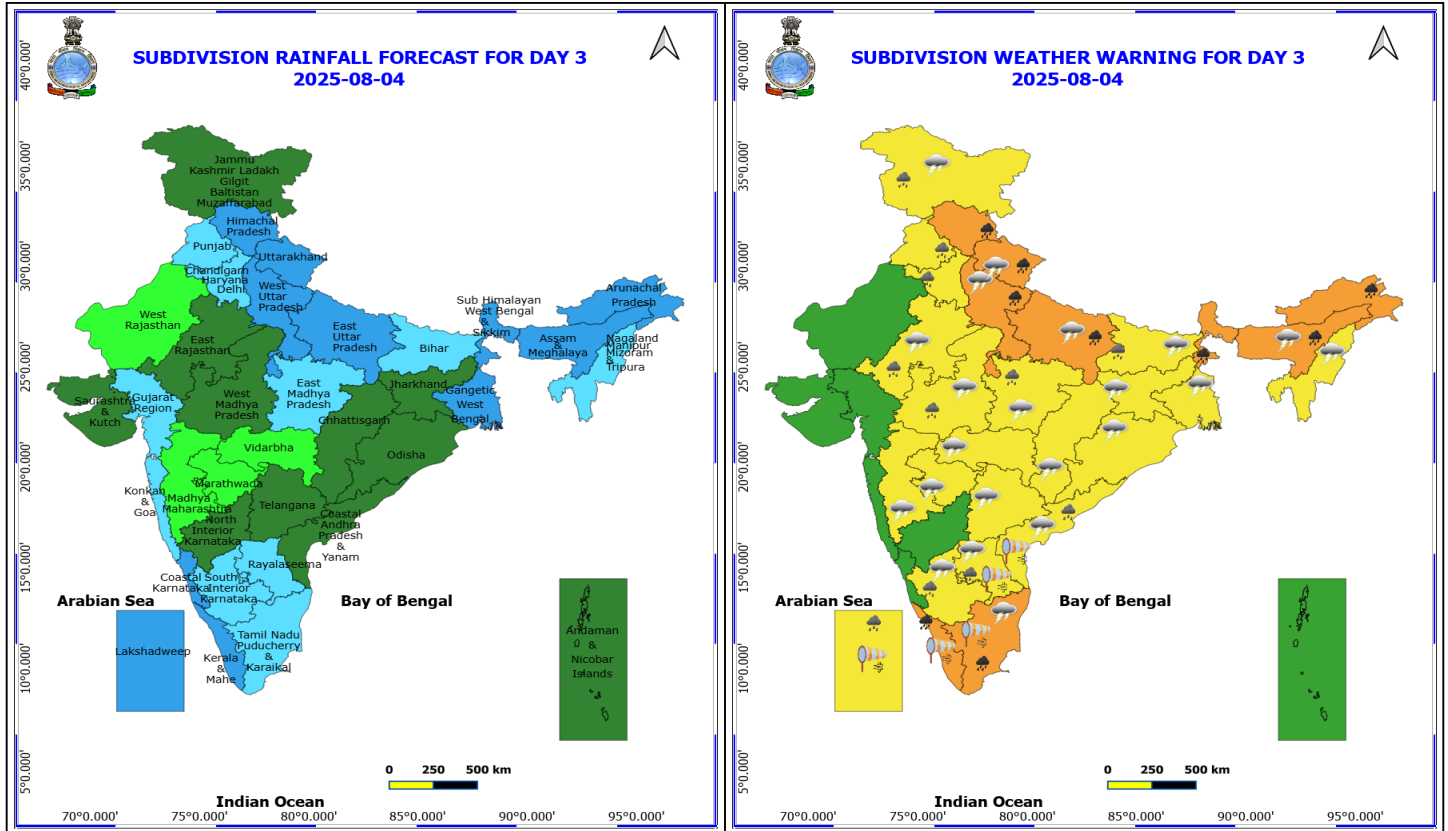
For more details kindly visit <https://mausam.imd.gov.in> or contact 011-2434-4599

(Service to the nation since 1875)





southeast Bay of Bengal & adjoining few parts of south Andaman Sea.



#### 4 August (Day 3)

- ❖ **Heavy to Very Heavy Rainfall** very likely at isolated places over Arunachal Pradesh, Assam & Meghalaya, Himachal Pradesh, Kerala & Mahe, Sub Himalayan West Bengal & Sikkim, Tamil Nadu Puducherry & Karaikal, Uttar Pradesh and Uttarakhand.
- ❖ **Heavy Rainfall** very likely at isolated places over Andhra Pradesh, Bihar, East Rajasthan, Haryana, Chandigarh & Delhi, Jammu-Kashmir-Ladakh-Gilgit-Baltistan-Muzaffarabad, Lakshadweep, Madhya Pradesh, Punjab and South Interior Karnataka.
- ❖ **Thunderstorm accompanied with lightning & gusty winds(30-40kmph)** very likely at isolated places over Bihar, Gangetic West Bengal, Jammu-Kashmir-Ladakh-Gilgit-Baltistan-Muzaffarabad, Jharkhand and West Madhya Pradesh.
- ❖ **Thunderstorm accompanied with Lightning** very likely at isolated places over Andhra Pradesh, Assam & Meghalaya, Chhattisgarh, East Madhya Pradesh, East Rajasthan, Maharashtra, Nagaland, Manipur, Mizoram and Tripura, Odisha, South Interior Karnataka, Tamil Nadu Puducherry & Karaikal, Telangana, Uttar Pradesh and Uttarakhand.
- ❖ **Strong Surface Winds** very likely at isolated places over Andhra Pradesh, Kerala & Mahe, Lakshadweep and Tamil Nadu Puducherry & Karaikal.
- ❖ Squally wind with speed reaching 45 kmph to 55 kmph gusting to 65 kmph is likely to prevail along and off Somalia, Yemen & Oman coasts, most parts of westcentral Arabian Sea & adjoining parts of eastcentral Arabian Sea, many parts of southwest Arabian Sea.
- ❖ Squally weather with wind speed reaching 40 - 50 kmph gusting to 60 kmph likely to prevail over many parts of eastcentral Arabian Sea, many parts of southeast and southwest Arabian Sea, over northeast & adjoining northwest

**\*Red color warning does not mean "Red Alert" Red color warning means "Take Action"**

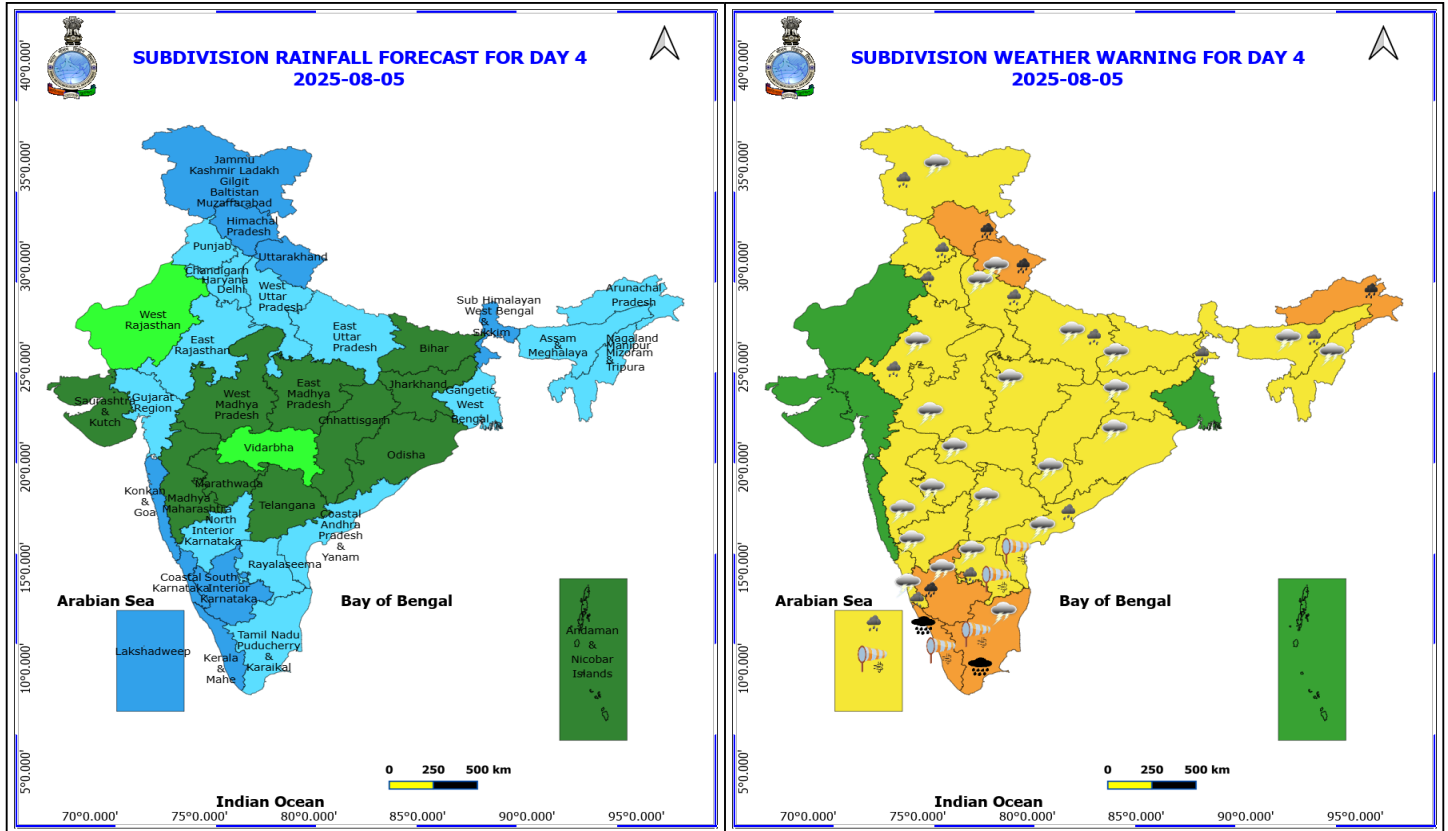
**Forecast and warning for any day is valid from 0830 hours IST of day till 0830 hours IST of next day**

**For more details kindly visit <https://mausam.imd.gov.in> or contact 011-2434-4599**

**(Service to the nation since 1875)**



Arabian Sea, along and off north Gujarat, Kerala, Karnataka coasts, over Lakshadweep, Maldives, Comorin areas, over Gulf of Mannar, many parts of southwest Bay of Bengal, few parts of southeast Bay of Bengal.



## 5 August (Day 4)

- ❖ **Heavy to Very Heavy Rainfall with isolated Extremely Heavy Rainfall** likely at isolated places over Kerala & Mahe and Tamil Nadu Puducherry & Karaikal.
- ❖ **Heavy to Very Heavy Rainfall** likely at isolated places over Arunachal Pradesh, Himachal Pradesh, South Interior Karnataka and Uttarakhand.
- ❖ **Heavy Rainfall** likely at isolated places over Andhra Pradesh, Assam & Meghalaya, Coastal Karnataka, East Rajasthan, Haryana, Chandigarh & Delhi, Jammu-Kashmir-Ladakh-Gilgit-Baltistan-Muzaffarabad, Lakshadweep, Punjab, Sub Himalayan West Bengal & Sikkim and Uttar Pradesh.
- ❖ **Thunderstorm accompanied with lightning & gusty winds(30-40kmph)** likely at isolated places over Bihar, Jammu-Kashmir-Ladakh-Gilgit-Baltistan-Muzaffarabad, Jharkhand and West Madhya Pradesh.
- ❖ **Thunderstorm accompanied with Lightning** likely at isolated places over Andhra Pradesh, Assam & Meghalaya, Chhattisgarh, East Madhya Pradesh, East Rajasthan, Karnataka, Maharashtra, Nagaland, Manipur, Mizoram and Tripura, Odisha, Tamil Nadu Puducherry & Karaikal, Telangana, Uttar Pradesh and Uttarakhand.
- ❖ **Strong Surface Winds** likely at isolated places over Andhra Pradesh, Kerala & Mahe, Lakshadweep and Tamil Nadu Puducherry & Karaikal.
- ❖ Squally wind with speed reaching 45 kmph to 55 kmph gusting to 65 kmph is likely to prevail along and off Somalia, Yemen & Oman coasts, most parts of westcentral Arabian Sea & adjoining eastcentral Arabian Sea, southern parts of northwest Arabian Sea, many parts of southwest & southeast Arabian Sea.
- ❖ Squally weather with wind speed reaching 40 - 50 kmph gusting to 60 kmph likely to prevail over many parts of eastcentral Arabian Sea, many parts of southeast and southwest Arabian Sea, over northeast & adjoining northwest

**\*Red color warning does not mean "Red Alert" Red color warning means "Take Action"**

**Forecast and warning for any day is valid from 0830 hours IST of day till 0830 hours IST of next day**

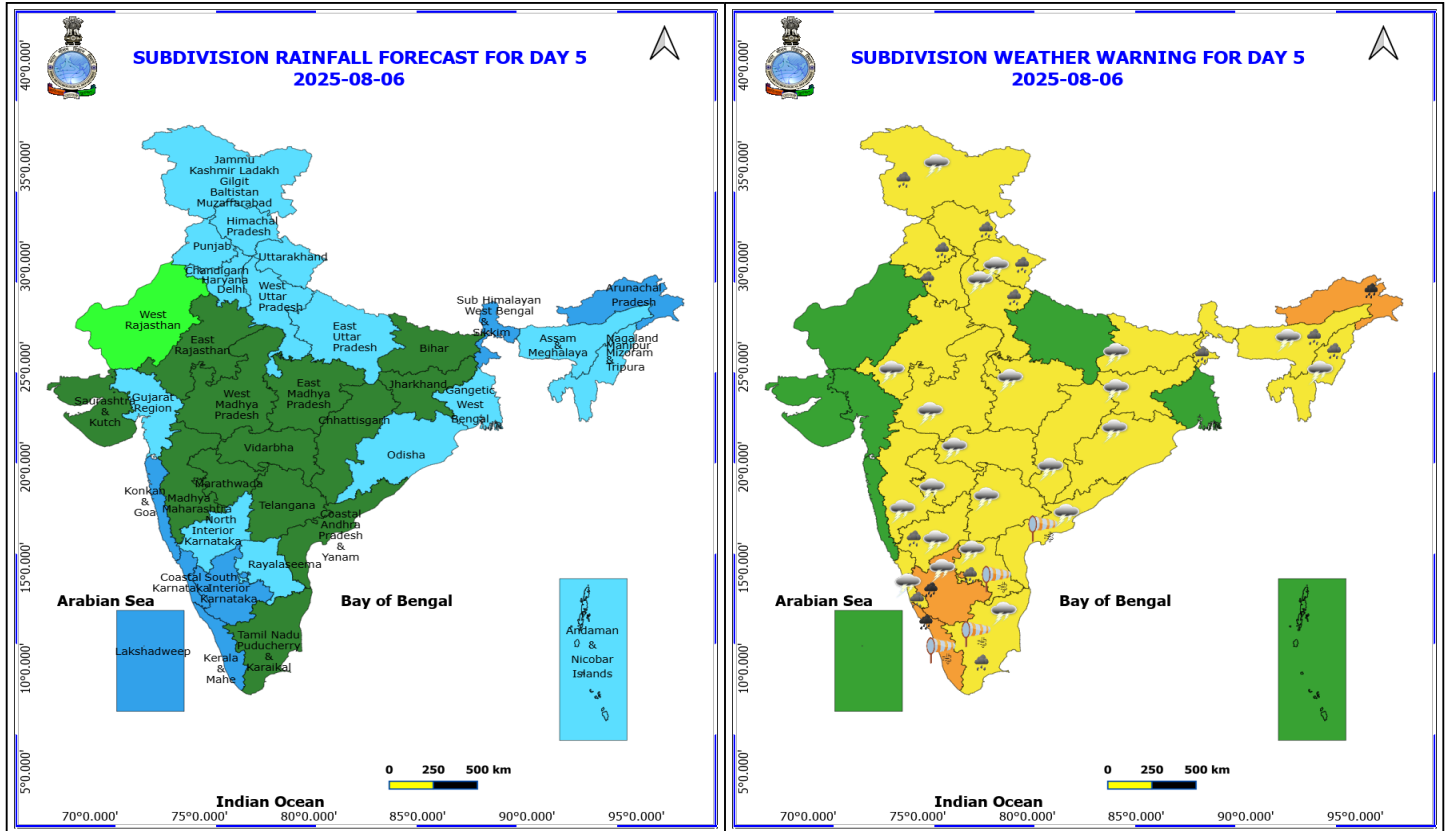
**For more details kindly visit <https://mausam.imd.gov.in> or contact 011-2434-4599**

**(Service to the nation since 1875)**



Arabian Sea, along and off north Gujarat, Kerala, Karnataka coasts, over Lakshadweep, Maldives, Comorin areas, over Gulf of Mannar, many parts of southwest and adjoining southeast Bay of Bengal.





## 6 August (Day 5)

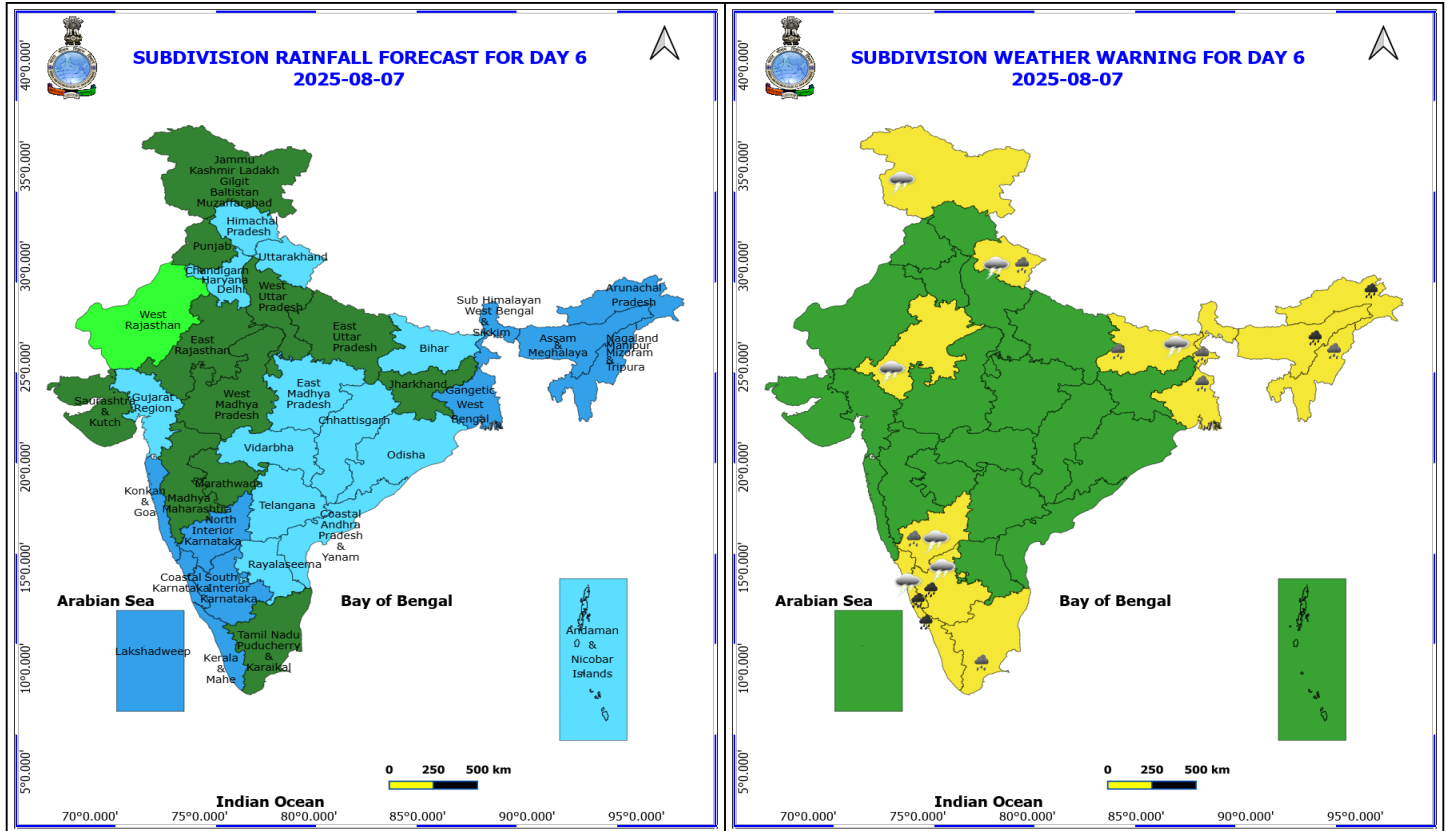
- ❖ **Heavy to Very Heavy Rainfall** likely at isolated places over Arunachal Pradesh, Kerala & Mahe and South Interior Karnataka.
- ❖ **Heavy Rainfall** likely at isolated places over Assam & Meghalaya, Coastal Karnataka, Haryana, Chandigarh & Delhi, Himachal Pradesh, Jammu-Kashmir-Ladakh-Gilgit-Baltistan-Muzaffarabad, Nagaland, Manipur, Mizoram and Tripura, North Interior Karnataka, Punjab, Rayalaseema, Sub Himalayan West Bengal & Sikkim, Tamil Nadu Puducherry & Karaikal, Uttarakhand and West Uttar Pradesh.
- ❖ **Thunderstorm accompanied with lightning & gusty winds(30-40kmph)** likely at isolated places over Bihar, Jammu-Kashmir-Ladakh-Gilgit-Baltistan-Muzaffarabad, Jharkhand and West Madhya Pradesh.
- ❖ **Thunderstorm accompanied with Lightning** likely at isolated places over Andhra Pradesh, Assam & Meghalaya, Chhattisgarh, East Madhya Pradesh, East Rajasthan, Karnataka, Maharashtra, Nagaland, Manipur, Mizoram and Tripura, Odisha, Tamil Nadu Puducherry & Karaikal, Telangana, Uttarakhand and West Uttar Pradesh.
- ❖ **Strong Surface Winds** likely at isolated places over Andhra Pradesh, Kerala & Mahe and Tamil Nadu Puducherry & Karaikal.
- ❖ Squally wind with speed reaching 45 kmph to 55 kmph gusting to 65 kmph is likely to prevail along and off Somalia, Yemen coasts, many parts of westcentral Arabian Sea, southern parts of northwest Arabian Sea, many parts of southwest & southeast Arabian Sea.
- ❖ Squally weather with wind speed reaching 40 - 50 kmph gusting to 60 kmph likely to prevail over many parts of eastcentral Arabian Sea, many parts of southeast and southwest Arabian Sea, over northeast & adjoining northwest Arabian Sea, along and off north Gujarat, Kerala, Karnataka coasts, over Lakshadweep, Maldives, Comorin areas, over Gulf of Mannar, many parts of southwest and adjoining southeast Bay of Bengal.

**\*Red color warning does not mean "Red Alert" Red color warning means "Take Action"**

**Forecast and warning for any day is valid from 0830 hours IST of day till 0830 hours IST of next day**

**For more details kindly visit <https://mausam.imd.gov.in> or contact 011-2434-4599**

**(Service to the nation since 1875)**



## 7 August (Day 6)

- ❖ **Heavy to Very Heavy Rainfall** likely at isolated places over Arunachal Pradesh, Assam & Meghalaya, Coastal Karnataka, Kerala & Mahe and South Interior Karnataka.
- ❖ **Heavy Rainfall** likely at isolated places over Bihar, Nagaland, Manipur, Mizoram and Tripura, North Interior Karnataka, Tamil Nadu Puducherry & Karaikal, Uttarakhand and West Bengal & Sikkim.
- ❖ **Thunderstorm accompanied with lightning & gusty winds(30-40kmph)** likely at isolated places over Bihar.
- ❖ **Thunderstorm accompanied with Lightning** likely at isolated places over East Rajasthan, Jammu-Kashmir-Ladakh-Gilgit-Baltistan-Muzaffarabad, Karnataka and Uttarakhand.

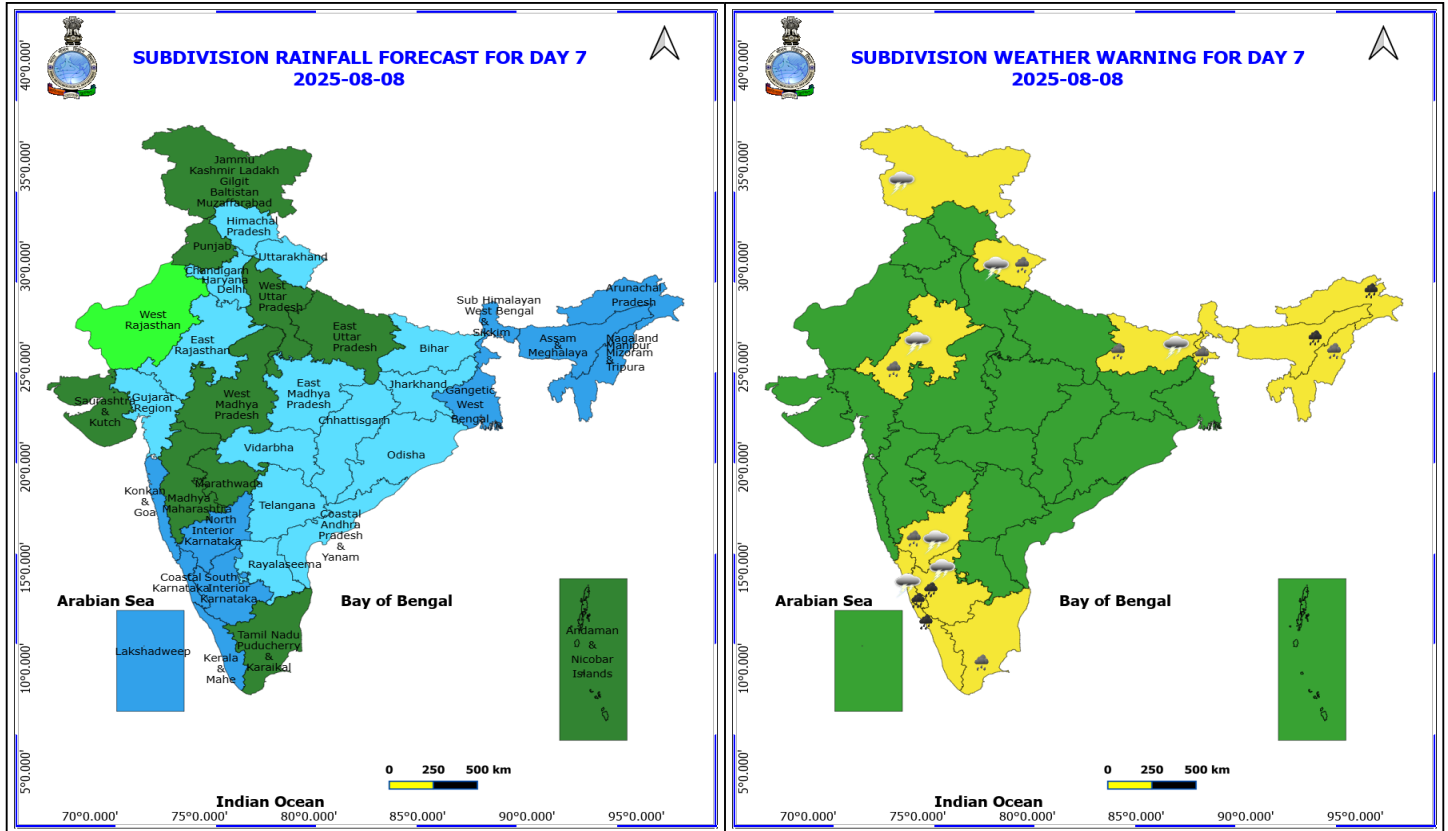
## No Fishermen Warning

\*Red color warning does not mean "Red Alert" Red color warning means "Take Action"

Forecast and warning for any day is valid from 0830 hours IST of day till 0830 hours IST of next day

For more details kindly visit <https://mausam.imd.gov.in> or contact 011-2434-4599

(Service to the nation since 1875)



## 8 August (Day 7)

- ❖ **Heavy to Very Heavy Rainfall** likely at isolated places over Arunachal Pradesh, Assam & Meghalaya, Coastal Karnataka, Kerala & Mahe and South Interior Karnataka.
- ❖ **Heavy Rainfall** likely at isolated places over Bihar, East Rajasthan, Nagaland, Manipur, Mizoram and Tripura, North Interior Karnataka, Sub Himalayan West Bengal & Sikkim, Tamil Nadu Puducherry & Karaikal and Uttarakhand.
- ❖ **Thunderstorm accompanied with lightning & gusty winds(30-40kmph)** likely at isolated places over Bihar.
- ❖ **Thunderstorm accompanied with Lightning** likely at isolated places over East Rajasthan, Jammu-Kashmir-Ladakh-Gilgit-Baltistan-Muzaffarabad, Karnataka and Uttarakhand.

**No Fishermen Warning**

## Flash Flood Warnings

24 hours Outlook for the Flash Flood Risk (FFR) till 1130 IST of 03-08-2025 :

Low to Moderate flash flood risk likely over few watersheds & neighbourhoods of following Met Sub-divisions during next 24 hours.

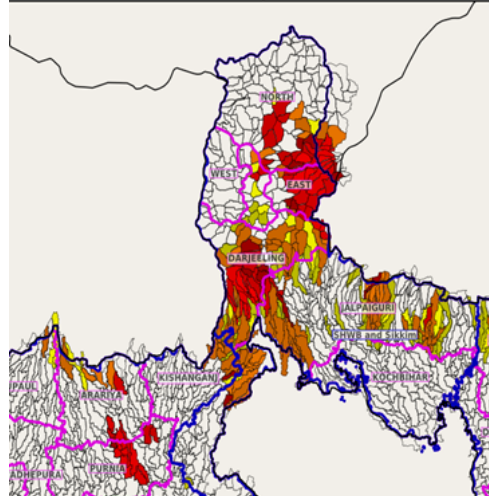
Bihar - Arariya, Kishanganj and Purnia districts.

Moderate flash flood risk likely over few watersheds & neighbourhoods of following Met Sub-divisions during next 24 hours.

**Sub-Himalayan West Bengal & Sikkim** - East Sikkim, North Sikkim, South Sikkim, West Sikkim, Darjeeling, Jalpaiguri and Uttar\_Dinajpur districts.

Surface runoff/ Inundation may occur at some fully saturated soils & low-lying areas over Area of Concern (AoC) as shown in map due to expected rainfall occurrence in next 24 hours.

Product: NCUM FFR | Timescale: 24-hr | Region: "INDIA"  
Product Date: 2025-08-02 06:00 UTC | Valid Date: 2025-08-03 06:00 UTC



24 hours Outlook for the Flash Flood Risk (FFR) till 1130 IST of 03-08-2025 :

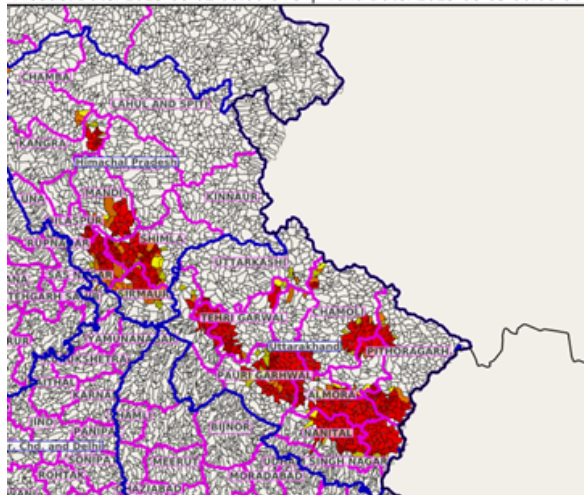
**Low to Moderate flash flood risk** likely over few watersheds & neighbourhoods of following Met Sub-divisions during next 24 hours.

**Himachal Pradesh** - Bilaspur, Chamba, Kangra, Kullu, Mandi, Shimla, Sirmour and Solan districts.

**Uttarakhand** - Almora, Bageshwar, Chamoli, Champawat, Dehradun, Nanital, Pauri Garhwal, Pithoragarh, Rudraprayag, Tehri Garwal and Uttarkashi districts.

Surface runoff/ Inundation may occur at some fully saturated soils & low-lying areas over Area of Concern (AoC) as shown in map due to expected rainfall occurrence in next 24 hours.

Product: GFS FFR | Timescale: 24-hr | Region: "INDIA"  
Product Date: 2025-08-02 06:00 UTC | Valid Date: 2025-08-03 06:00 UTC



\*Red color warning does not mean "Red Alert" Red color warning means "Take Action"

Forecast and warning for any day is valid from 0830 hours IST of day till 0830 hours IST of next day

For more details kindly visit <https://mausam.imd.gov.in> or contact 011-2434-4599

(Service to the nation since 1875)





# Table-1

## 7 Days Rainfall Forecast

S.No.	Subdivision	2- Aug	3- Aug	4- Aug	5- Aug	6- Aug	7- Aug	8- Aug
		Day 1	Day 2	Day 3	Day 4	Day 5	Day 6	Day 7
1	ANDAMAN & NICOBAR ISLANDS	SCT	SCT	SCT	SCT	FWS	FWS	SCT
2	ARUNACHAL PRADESH	WS	WS	WS	FWS	WS	WS	WS
3	ASSAM & MEHGHALAYA	WS	WS	WS	FWS	FWS	WS	WS
4	N. M. M. & T.	WS	WS	FWS	FWS	FWS	WS	WS
5	S.H. WEST BENGAL & SIKKIM	WS	WS	WS	WS	WS	WS	WS
6	GANGETIC WEST BENGAL	WS	FWS	WS	FWS	FWS	WS	WS
7	ODISHA	SCT	SCT	SCT	SCT	FWS	FWS	FWS
8	JHARKHAND	FWS	FWS	SCT	SCT	SCT	SCT	FWS
9	BIHAR	WS	WS	FWS	SCT	SCT	FWS	FWS
10	EAST UTTAR PRADESH	FWS	FWS	WS	FWS	FWS	SCT	SCT
11	WEST UTTAR PRADESH	SCT	FWS	WS	FWS	FWS	SCT	SCT
12	UTTARAKHAND	WS	WS	WS	WS	FWS	FWS	FWS
13	HARYANA, CHD & DELHI	FWS	FWS	FWS	FWS	FWS	FWS	FWS
14	PUNJAB	FWS	SCT	FWS	FWS	FWS	SCT	SCT
15	HIMACHAL PRADESH	WS	FWS	WS	WS	FWS	FWS	FWS
16	JAMMU AND KASHMIR AND LADAKH	SCT	SCT	SCT	WS	FWS	SCT	SCT
17	WEST RAJASTHAN	ISOL	ISOL	ISOL	ISOL	ISOL	ISOL	ISOL
18	EAST RAJASTHAN	SCT	SCT	SCT	FWS	SCT	SCT	FWS
19	WEST MADHYA PRADESH	SCT	SCT	SCT	SCT	SCT	SCT	SCT
20	EAST MADHYA PRADESH	FWS	FWS	FWS	SCT	SCT	FWS	FWS
21	GUJRAT REGION	FWS	FWS	FWS	FWS	FWS	FWS	FWS
22	SAURASHTRA & KUTCH	SCT	SCT	SCT	SCT	SCT	SCT	SCT
23	KONKAN & GOA	FWS	FWS	FWS	WS	WS	WS	WS
24	MADHYA MAHARASHTRA	ISOL	ISOL	ISOL	SCT	SCT	SCT	SCT
25	MARATHWADA	ISOL	ISOL	ISOL	SCT	SCT	SCT	SCT
26	VIDARBHA	SCT	SCT	ISOL	ISOL	SCT	FWS	FWS
27	CHATTISGARH	FWS	SCT	SCT	SCT	SCT	FWS	FWS
28	COASTAL ANDHRA PRADESH	ISOL	ISOL	SCT	FWS	SCT	FWS	FWS
29	TELANGANA	ISOL	ISOL	SCT	SCT	SCT	FWS	FWS
30	RAYALASEEMA	ISOL	SCT	FWS	FWS	FWS	FWS	FWS
31	TAMILNADU & PUDUCHERRY	SCT	FWS	FWS	FWS	SCT	SCT	SCT
32	COSTAL KARNATAKA	WS	WS	WS	WS	WS	WS	WS
33	NORTH INTERIOR KARNATAKA	ISOL	SCT	SCT	FWS	FWS	WS	WS
34	SOUTH INTERIOR KARNATAKA	SCT	FWS	FWS	WS	WS	WS	WS
35	KERALA	WS	WS	WS	WS	WS	WS	WS
36	LAKSHDWEEP	WS	WS	WS	WS	WS	WS	WS

Legend	Category	%Stations
WS	Widespread/Most Places	76-100
FWS	Fairly Widespread/Many Places	51-75
SCT	Scattered/ A Few Places	26-50
ISOL	Isolated Places	1-25
DRY	No Rain	0

\*Red color warning does not mean "Red Alert" Red color warning means "Take Action"

Forecast and warning for any day is valid from 0830 hours IST of day till 0830 hours IST of next day

For more details kindly visit <https://mausam.imd.gov.in> or contact 011-2434-4599

(Service to the nation since 1875)



Fig. 1: Maximum Temperatures Dated 2025-08-02

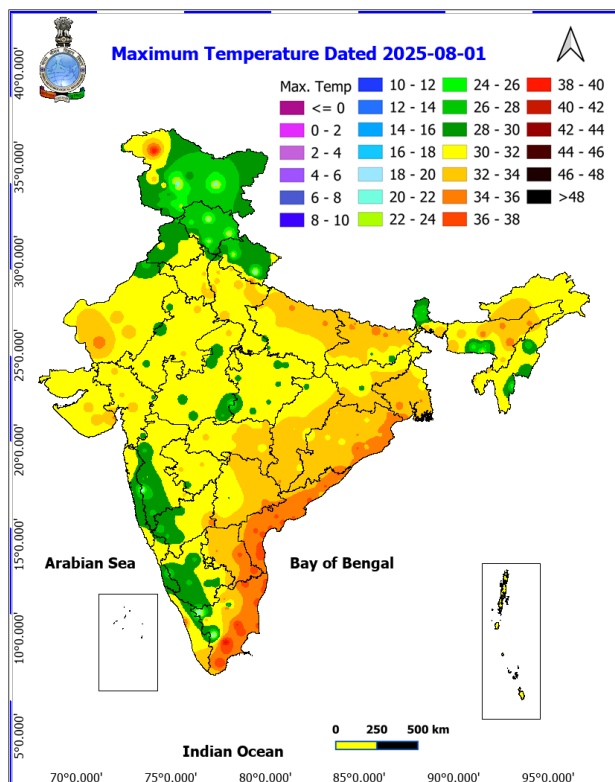


Fig. 2: Departure of Maximum Temp. Dated 2025-08-02

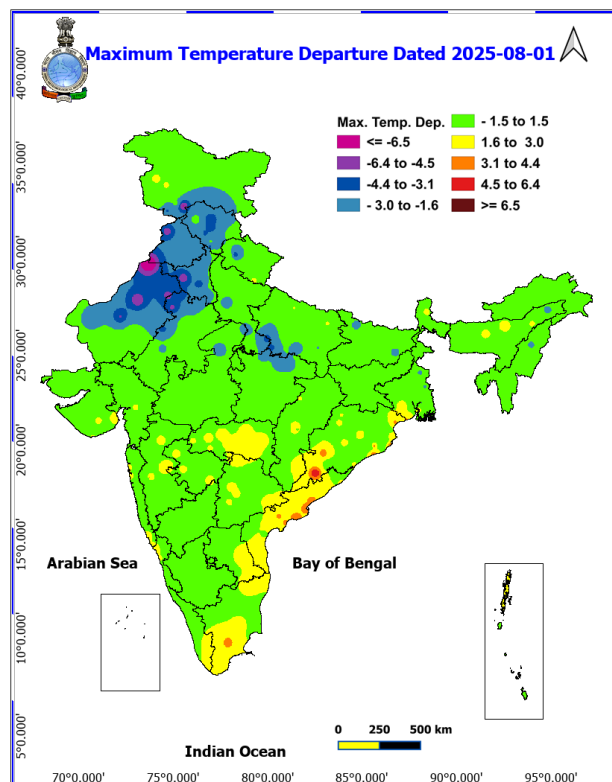


Fig. 3: Minimum Temperatures Dated 2025-08-02

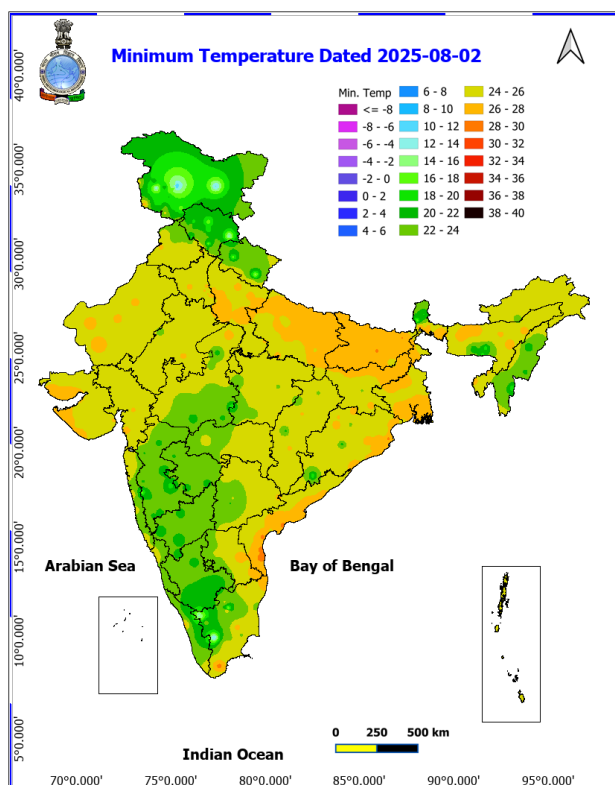
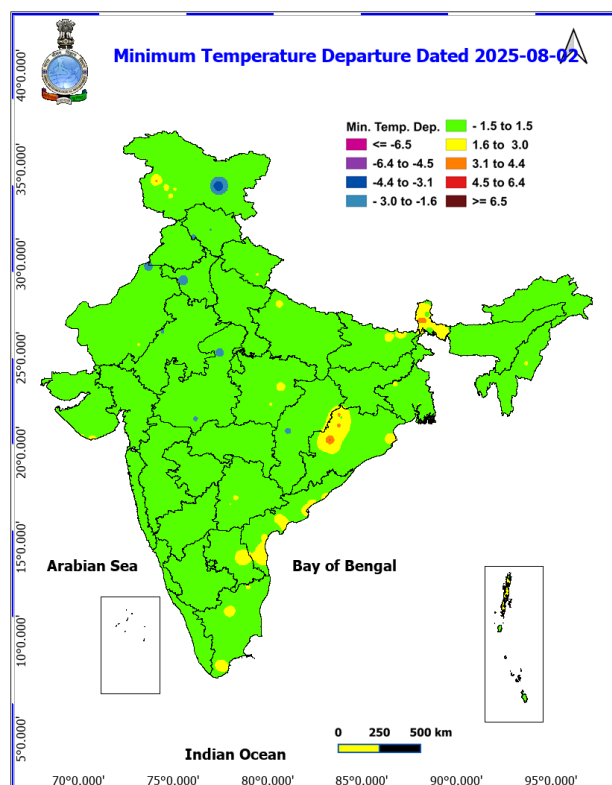
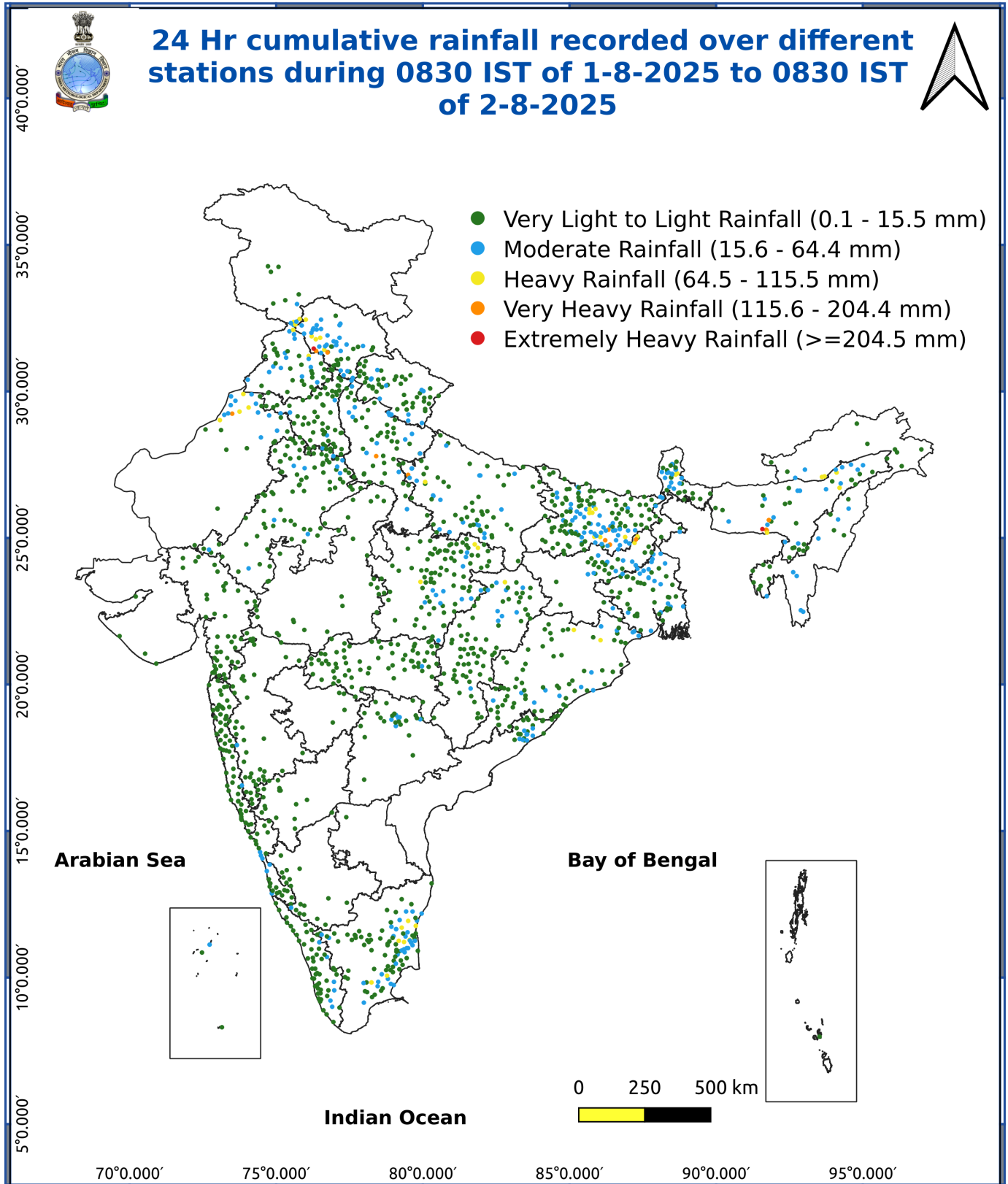


Fig. 4: Departure of Minimum Temp. Dated 2025-08-02





\*Red color warning does not mean "Red Alert" Red color warning means "Take Action"

Forecast and warning for any day is valid from 0830 hours IST of day till 0830 hours IST of next day

For more details kindly visit <https://mausam.imd.gov.in> or contact 011-2434-4599

(Service to the nation since 1875)

#### Impact & Action Suggested due to

- **Extremely heavy rainfall** very likely at isolated places over Meghalaya, Sub-Himalayan West Bengal & Sikkim on 02<sup>nd</sup> & 03<sup>rd</sup>; Arunachal Pradesh on 03<sup>rd</sup>, north Bihar on 02<sup>nd</sup>, Kerala and Tamil Nadu on 05<sup>th</sup> August.
- **Very heavy rainfall** over Arunachal Pradesh during 02<sup>nd</sup>-08<sup>th</sup> August; Assam & Meghalaya during 02<sup>nd</sup>-04<sup>th</sup> and 07<sup>th</sup> & 08<sup>th</sup>, Sub-Himalayan West Bengal & Sikkim on 04<sup>th</sup>; Bihar on 03<sup>rd</sup> Himachal Pradesh on 02<sup>nd</sup>, 04<sup>th</sup> & 05<sup>th</sup>; Uttarakhand during 03<sup>rd</sup>-05<sup>th</sup>; West Uttar Pradesh on 04<sup>th</sup>; East Uttar Pradesh on 03<sup>rd</sup> & 04<sup>th</sup>, Tamil Nadu during 03<sup>rd</sup>-05<sup>th</sup> and Kerala during 03<sup>rd</sup>-08<sup>th</sup> August.

#### Impact Expected

- Localized Flooding of roads, water logging in low lying areas and closure of underpasses mainly in urban areas of the above region.
- Occasional reduction in visibility due to heavy rainfall.
- Disruption of traffic in major cities due to water logging in roads leading to increased travel time.
- Minor damage to kutcha roads.
- Possibilities of damage to vulnerable structure.
- Localized Landslides/Mudslides/landslips/mudslips/landsinks/mudsinks.
- Damage to horticulture and standing crops in some areas due to inundation.
- It may lead to riverine flooding in some river catchments (for riverine flooding please visit Web page of CWC)

#### Action Suggested

- Check for traffic congestion on your route before leaving for your destination.
- Follow any traffic advisories that are issued in this regard.
- Avoid going to areas that face the water logging problems often.
- Avoid staying in vulnerable structure.

#### Agromet advisories for various parts of the country

##### Inputs for Press Release

##### **Agromet advisories for likely impact of Heavy / Heavy to Very Heavy / Extremely Heavy Rainfall**

- In **Arunachal Pradesh**, postpone all fresh sowing operations till cessation of heavy rains. Avoid fresh transplanting of rice in lowlands during heavy rainfall. Cover rice fields with natural mulches like dry leaves or straw to avert the adverse impact of rain. Ensure proper drainage in rice, maize, finger millet, soybean and vegetables and fruit orchards to avoid waterlogging. Provide strong support to fruit-bearing plants to prevent them from bending or breaking during heavy rains.
- In **Assam**, postpone the sowing of sesame, green gram and pigeon pea till cessation of heavy rains in **Kokrajhar** and **Bongaigaon** districts. In **Central Brahmaputra Valley Zone**, harvest matured jute immediately and keep the bundles of harvested produce in high land or shed to avoid retting in contaminated water. Avoid sowing of sesame during heavy rainfall. To prevent waterlogging, ensure proper drainage in *Sali* rice, green gram and pigeon pea fields in **Lower Brahmaputra Valley Zone**; *Sali* rice, turmeric and already sown sesame fields in **Central Brahmaputra Valley Zone**; rice and sesame fields in **Hill Zone** and *Sali* rice fields in **North Bank Plain Zone**, **Upper Brahmaputra Valley Zone** and **Barak Valley Zone**.
- In **Meghalaya**, avoid transplanting of rice during heavy rainfall. Ensure proper drainage in rice, maize, turmeric, chilli, okra and bitter gourd fields to prevent waterlogging. Provide staking / support to tall and fragile crops like banana, papaya, bottle gourd etc. to prevent lodging.
- In **Sub-Himalayan West Bengal**, make provision to drain out excess water from rice, ginger, vegetable fields and fruit orchards in **Hill Zone** and *aman* paddy and vegetable fields in **Terai Zone**. Cover the chilli seedlings with plastic to protect them from heavy rains in **Terai Zone**.
- In **Bihar**, ensure proper drainage in maize, vegetables, ragi, kodo, sava, etc. in low-lying areas and strengthen field bunds in **South Bihar Alluvial Zone**. Maintain proper drainage in maize fields and do not allow rain water

\*Red color warning does not mean "Red Alert" Red color warning means "Take Action"

Forecast and warning for any day is valid from 0830 hours IST of day till 0830 hours IST of next day

For more details kindly visit <https://mausam.imd.gov.in> or contact 011-2434-4599

(Service to the nation since 1875)

to accumulate in the fields of ragi, kodo, sava, china etc. in **North East Alluvial Zone**.

- In **Uttarakhand**, to avoid waterlogging, maintain proper drainage channels in fields of rice, sugarcane, maize, black gram, green gram, soybean, and vegetables in **Bhabar and Tarai Zone** and barnyard millet, finger millet, green gram and black gram in **Sub Humid Sub Tropic Zone**. Postpone sowing of green gram and soybean in **Nainital** district. In **Hill Zone**, strengthen the bunds to prevent surface runoff of water. Postpone sowing of vegetable pea in case of excessive wet soil conditions. Maintain proper drainage channels in the crop fields.
- In **Himachal Pradesh**, cover the cauliflower nursery with plastic sheets to prevent damage from heavy rainfall in **High Hills Sub Temperate Wet Zone**. Make proper drainage channels in vegetable fields in **Mid Hills Sub Humid Zone**; rice, maize and vegetable fields in **Sub Montane and Low Hills Sub Tropical Zone** and kidney beans, finger millet, cucurbits and vegetables in **High Hills Sub Temperate Wet Zone**.
- In **Kerala**, provide adequate drainage in fields of rice, coconut, banana and ginger. Provide support to banana plantations. Make the vegetable pandals stronger.
- In **Tamil Nadu**, provide support to sugarcane and banana plants to prevent lodging. Provide proper drainage facility in rice nursery in **North Eastern Zone** and standing crop fields in **Cauvery Delta Zone**.

### Livestock / Fishery

- Keep the animals inside the shed during heavy rainfall and provide them balanced feed.
- Store feed and fodder in a safe place to prevent spoilage.
- Construct an outlet with proper netting around the ponds to drain out excess water, thereby preventing fish from escaping in case of overflow.

### Agromet advisories for likely impact of Thunderstorm / Gusty Winds / Squally Winds

- Provide mechanical support to horticultural crops and staking or support to vegetables and young fruit plants / fruit-bearing plants to avoid lodging due to strong winds.

### Legends & abbreviations:

#### Region wise classification of meteorological Sub-Divisions:

**Northwest India:** Western Himalayan Region (Jammu-Kashmir-Ladakh-Gilgit-Baltistan-Muzaffarabad, Himachal Pradesh and Uttarakhand); Punjab, Haryana-Chandigarh-Delhi; West Uttar Pradesh, East Uttar Pradesh, West Rajasthan and East Rajasthan.

**Central India:** West Madhya Pradesh, East Madhya Pradesh, Vidarbha and Chhattisgarh.

**East India:** Bihar, Jharkhand, Sub-Himalayan West Bengal & Sikkim; Gangetic West Bengal, Odisha and Andaman & Nicobar Islands.

**Northeast India:** Arunachal Pradesh, Assam & Meghalaya and Nagaland, Manipur, Mizoram & Tripura.

**West India:** Gujarat Region, Saurashtra & Kutch, Konkan & Goa, Madhya Maharashtra and Marathawada.

**South India:** Coastal Andhra Pradesh & Yanam, Telangana, Rayalaseema, Coastal Karnataka, North Interior Karnataka, South Interior Karnataka, Kerala & Mahe, Tamil Nadu, Puducherry & Karaikal and Lakshadweep.



## LEGENDS

- 1 अंडमान और निकोबार द्वीप समुह
- 2 अरुणाचल प्रदेश
- 3 असम और मेघालय
- 4 नागालैंड मनीपुर मीजोरम और त्रिपुरा
- 5 उप हिमालय पश्चिम बंगाल एवं सिक्किम
- 6 पश्चिम बंगाल
- 7 ओडिसा
- 8 झारखंड
- 9 बिहार
- 10 पूर्वी उत्तर प्रदेश
- 11 पश्चिम उत्तर प्रदेश
- 12 उत्तराखंड
- 13 हरियाणा चंडीगढ़ एवं दिल्ली
- 14 पंजाब
- 15 हिमाचल प्रदेश
- 16 जम्मू एवं कश्मीर एवं लद्दाख
- 17 पश्चिम राजस्थान
- 18 पूर्वी राजस्थान
- 19 पश्चिम मध्य प्रदेश
- 20 पूर्वी मध्य प्रदेश
- 21 गुजरात क्षेत्र
- 22 सौराष्ट्र एवं कच्छ
- 23 कोंकण एवं गोवा
- 24 मध्य महाराष्ट्र
- 25 मराठावाड़ा
- 26 विदर्भ
- 27 छत्तीसगढ़
- 28 तटीय आंध्र प्रदेश एवं यनम
- 29 तेलंगाना
- 30 रायलसीमा
- 31 तमिलनाडु, पुदुचेरी एवं कराईकल
- 32 तटिय कर्नाटक
- 33 आंतरिक उत्तरी कर्नाटक
- 34 आंतरिक दक्षिणी कर्नाटक
- 35 केरल एवं माहे
- 36 लक्षद्वीप



1. Andaman & Nicobar Islands
2. Arunachal Pradesh
3. Assam & Meghalaya
4. Nagaland, Manipur, Mizoram & Tripura
5. Sub-Himalayan West Bengal & Sikkim
6. Gangetic West Bengal
7. Orissa
8. Jharkhand
9. Bihar
10. East Uttar Pradesh
11. West Uttar Pradesh
12. Uttarakhand
13. Haryana, Chd & Delhi
14. Punjab
15. Himachal Pradesh
16. Jammu & Kashmir and Ladakh
17. West Rajasthan
18. East Rajasthan
19. West Madhya Pradesh
20. East Madhya Pradesh
21. Gujarat
22. Saurashtra
23. Konkan & Goa
24. Madhya Maharashtra
25. Marathawada
26. Vidharbha
27. Chhattisgarh
28. Coastal Andhra Pradesh & Yanam
29. Telangana
30. Rayalaseema
31. Tamilnadu, Puducherry & Karaikal
32. Coastal Karnataka
33. North Interior Karnataka
34. South Interior Karnataka
35. Kerala & Mahe
36. Lakshadweep

## SPATIAL DISTRIBUTION (% of Stations reporting)

% Stations	Category	% Stations	Category
76-100	Widespread (WS/Most Places)	26-50	Scattered (SCT/ A Few Places)
51-75	Fairly Widespread (FWS/ Many Places)	1-25	Isolated (ISOL)

## Subdivision Colour

- NO WARNING
- WATCH (BE UPDATED)
- ALERT (BE PREPARED TO TAKE ACTION)
- WARNING (TAKE ACTION)

## Probabilistic Forecast

Terms	Probability of Occurrence (%)
Unlikely	< 25
Likely	25 - 50
Very Likely	50 - 75
Most Likely	> 75

- |                                                                                                              |                                                                                                     |                                                                                                          |                                                                                                          |
|--------------------------------------------------------------------------------------------------------------|-----------------------------------------------------------------------------------------------------|----------------------------------------------------------------------------------------------------------|----------------------------------------------------------------------------------------------------------|
|  Heavy Rain               |  Very Heavy Rain |  Extremely Heavy Rain |  Heavy Snow         |
|  Thunderstorm & Lightning |  Hailstorm       |  Dust Storm           |  Dust Raising Winds |
|  Strong surface winds     |  Heat Wave       |  Hot Day              |  Warm Night         |
|  Cold Wave                |  Cold Day        |  Ground Frost         |  Fog                |
|  Hot & Humid              |                                                                                                     |                                                                                                          |                                                                                                          |

\*Red color warning does not mean "Red Alert" Red color warning means "Take Action"

Forecast and warning for any day is valid from 0830 hours IST of day till 0830 hours IST of next day

For more details kindly visit <https://mausam.imd.gov.in> or contact 011-2434-4599

(Service to the nation since 1875)



## LEGENDS

### WARNING

<b>WARNING (TAKE ACTION)</b>
<b>ALERT (BE PREPARED)</b>
<b>WATCH (BE UPDATED)</b>
<b>NO WARNING (NO ACTION)</b>

### Probabilistic Forecast

Terms	Probability of Occurrence (%)
Unlikely	< 25
Likely	25 - 50
Very Likely	50 - 75
Most Likely	> 75



Heavy: 64.5 to 115.5 mm/cm \*  
Very Heavy: 115.6 to 204.4 mm/cm \*  
Extremely Heavy: > 204.4 mm/cm \*



When maximum temperature of a station reaches  $\geq 40^{\circ}\text{C}$  for plains and  $\geq 30^{\circ}\text{C}$  for hilly regions  
(a) Based on Departure from normal

Heat Wave: Maximum Temperature Departure from normal  $4.5^{\circ}\text{C}$  to  $6.4^{\circ}\text{C}$ .  
Severe Heat Wave: Maximum Temperature Departure from normal  $\geq 6.5^{\circ}\text{C}$

(b). Based on Actual maximum temperature

Heat Wave: When actual maximum temperature  $\geq 45^{\circ}\text{C}$ .  
Severe Heat Wave: When actual maximum temperature  $\geq 47^{\circ}\text{C}$

(c). Criteria for heat wave for coastal stations

When maximum temperature departure is  $> 4.5^{\circ}\text{C}$  from normal. Heat Wave may be described provided maximum temperature  $\geq 37^{\circ}\text{C}$



When maximum temperature remains  $40^{\circ}\text{C}$

Warm Night: When minimum temperature departure  $4.5^{\circ}\text{C}$  to  $6.4^{\circ}\text{C}$ .  
Severe Warm Night: When minimum temperature departure  $> 6.4^{\circ}\text{C}$ .



When minimum temperature of a station  $\leq 10^{\circ}\text{C}$  for plains and  $\leq 0^{\circ}\text{C}$  for hilly regions.

(a). Based on departure

Cold Wave: Minimum Temperature Departure from normal  $-4.5^{\circ}\text{C}$  to  $-6.4^{\circ}\text{C}$ .  
Severe Cold Wave: Minimum Temperature Departure from normal  $\leq -6.5^{\circ}\text{C}$

(b) Based on actual Minimum Temperature (for Plains only)

Cold Wave: When Minimum Temperature is  $\leq 4.0^{\circ}\text{C}$   
Severe Cold Wave: When Minimum Temperature is  $\leq 2.0^{\circ}\text{C}$

(c) For Coastal Stations

When Minimum Temperature departure is  $\leq -4.5^{\circ}\text{C}$  & actual Minimum Temperature is  $\leq 15^{\circ}\text{C}$



When minimum temperature of a station  $\leq 10^{\circ}\text{C}$  for plains and  $\leq 0^{\circ}\text{C}$  for hilly regions  
Based on departure

Cold Day: Maximum Temperature Departure from normal  $-4.5^{\circ}\text{C}$  to  $-6.4^{\circ}\text{C}$ .  
Severe Cold Day: Maximum Temperature Departure from normal  $\leq -6.5^{\circ}\text{C}$



Phenomenon of small droplets suspended in air and the horizontal visibility  $< 1\text{km}$

Moderate Fog: When the visibility between 500-200 metres  
Dense Fog: when the visibility between 50-200 metres  
Very Dense Fog: when the visibility  $< 50$  metres



Sudden electrical discharges manifested by a flash of light (Lightning) and a sharp rumbling sound (thunder)



An ensemble of particles of dust or sand energetically lifted to great heights by a strong and turbulent wind.



Ice deposits on ground

Air temperature  $\leq 4^{\circ}\text{C}$  (over Plains)



A strong wind that rises suddenly, lasts for at least 1 minute.

Moderate: Wind speed 52-61 kmph  
Severe: Wind speed 62-87 kmph  
Very Severe: Wind speed  $> 87$  kmph



Effect of various waves in the sea over specific area

Rough to very rough: Wind speed 41-62 kmph (22-33 knots) & Wave height 2.5-6 metre  
High to very high: Wind speed 63-117 kmph (34-63 knots) & Wave height 6-14 metre  
Phenomenal: Wind speed  $> 117$  kmph ( $> 63$  knots) & Wave height  $> 14$  metre



Cyclonic Storm: Wind speed 62-87 kmph (34-47 knots)

Severe Cyclonic Storm: Wind speed 88-117 kmph (48-63 knots)  
Very Severe Cyclonic Storm: Wind speed 118-165 kmph (64-89 knots)  
Extremely Severe Cyclonic Storm: Wind speed 166-220 kmph (90-119 knots)  
Super Cyclone Storm: Wind speed  $> 220$  kmph ( $> 119$  knots)

\*Red color warning does not mean "Red Alert" Red color warning means "Take Action"

Forecast and warning for any day is valid from 0830 hours IST of day till 0830 hours IST of next day

For more details kindly visit <https://mausam.imd.gov.in> or contact 011-2434-4599

(Service to the nation since 1875)