



2025-06-16

Time of Issue: 1945 hours IST  
(Night)

## ALL INDIA WEATHER SUMMARY AND FORECAST BULLETIN

### Significant Weather Features

#### South Peninsular India:

- Light/moderate rainfall at many/some places accompanied with isolated **thunderstorm, lightning & gusty winds speed reaching 40-50 kmph** over Tamil Nadu, Puducherry & Karaikal, Kerala & Mahe, Lakshadweep, Karnataka during 16<sup>th</sup>-18<sup>th</sup>; Coastal Andhra Pradesh & Yanam, Rayalaseema, Telangana during 16<sup>th</sup>-20<sup>th</sup> June.
- Isolated **heavy rainfall** likely over Tamil Nadu, Puducherry & Karaikal, Kerala & Mahe, Karnataka during 16<sup>th</sup>-18<sup>th</sup> with **very heavy rainfall** likely at isolated places over Tamil Nadu, Puducherry & Karaikal on 16<sup>th</sup>. Kerala & Mahe, Tamil Nadu, Puducherry & Karaikal, North Interior Karnataka on 16<sup>th</sup>; Coastal Karnataka on 17<sup>th</sup> June.
- **Extremely heavy rainfall (>20 cm/24 hours) likely at isolated places over Coastal Karnataka, South Interior Karnataka on 16<sup>th</sup> June.**
- **Strong surface winds** (speed reaching 40-60 kmph) very likely over Kerala & Mahe, Lakshadweep, Karnataka on 16<sup>th</sup> & 17<sup>th</sup>, Rayalaseema, Telangana and Coastal Andhra Pradesh & Yanam during 16<sup>th</sup>-20<sup>th</sup> June.

#### West India:

- Light/moderate rainfall at most/many places accompanied with **thunderstorm, lightning & gusty winds speed reaching 30-40 kmph** likely over Gujarat State, Konkan & Goa, Madhya Maharashtra, Marathwada during 16<sup>th</sup> -20<sup>th</sup> June.
- Isolated **heavy to very heavy rainfall** likely over Konkan & Goa, Madhya Maharashtra, Gujarat Region during 16<sup>th</sup>-22<sup>nd</sup>; Saurashtra & Kutch during 16<sup>th</sup>-19<sup>th</sup> with **Extremely heavy rainfall (>20 cm/24 hours) likely at isolated places over Konkan & Goa, Madhya Maharashtra, Gujarat Region on 16<sup>th</sup> and Saurashtra & Kutch on 16<sup>th</sup> & 17<sup>th</sup> June.**

#### East & Central India:

- Light/moderate rainfall at most/many places accompanied with **thunderstorm, lightning & gusty winds speed reaching 40-50 kmph** likely over Andaman & Nicobar Islands on 16<sup>th</sup> & 17<sup>th</sup>; Madhya Pradesh, Vidarbha, Chhattisgarh, Gangetic West Bengal, Bihar, Jharkhand, Odisha during 16<sup>th</sup>-20<sup>th</sup> with
- **Thundersquall (wind speed reaching 50-60 kmph gusting to 70 kmph)** very likely at isolated places over Madhya Pradesh, Jharkhand, Bihar on 16<sup>th</sup> & 17<sup>th</sup>; Chhattisgarh on 16<sup>th</sup> June.
- Isolated **heavy rainfall** also likely over West Bengal & Sikkim, Bihar, Jharkhand, Odisha, Chhattisgarh during 16<sup>th</sup>-20<sup>th</sup>; Vidarbha on 16<sup>th</sup> & 17<sup>th</sup>, Madhya Pradesh on 19<sup>th</sup> & 20<sup>th</sup> June with **very heavy rainfall** over East Madhya Pradesh on 19<sup>th</sup> & 20<sup>th</sup>; Chhattisgarh, Gangetic West Bengal on 17<sup>th</sup> & 18<sup>th</sup>; Bihar, Sub-Himalayan West Bengal & Sikkim, Jharkhand on 18<sup>th</sup> & 19<sup>th</sup>; Odisha during 16<sup>th</sup>-18<sup>th</sup> June.

#### Northwest India:

- Light/moderate rainfall at some/isolated places accompanied with **thunderstorm, lightning & gusty winds speed reaching 40-50 kmph** likely over Northwest India during 16<sup>th</sup>-22<sup>nd</sup> June with **Thundersquall (wind speed reaching 50-60 kmph gusting to 70 kmph)** over Rajasthan on 16<sup>th</sup> & 17<sup>th</sup> June.
- Isolated **heavy rainfall** likely over Uttarakhand, East Uttar Pradesh during 16<sup>th</sup>-22<sup>nd</sup>; Jammu-Kashmir-Ladakh-Gilgit-Baltistan-Muzaffarabad, Himachal Pradesh on 21<sup>st</sup> & 22<sup>nd</sup>; Punjab, Haryana, East Rajasthan on 16<sup>th</sup>, 21<sup>st</sup> & 22<sup>nd</sup>; West Uttar Pradesh 16<sup>th</sup> and during 19<sup>th</sup>-22<sup>nd</sup>, West Rajasthan on 16<sup>th</sup> with **very heavy rainfall** on East Uttar Pradesh during 19<sup>th</sup>-21<sup>st</sup> June.
- **Dust storm (wind speed reaching 50-60 kmph gusting to 70 kmph)** very likely at isolated places over West Rajasthan on 16<sup>th</sup> June.

#### Northeast India:

**\*Red color warning does not mean "Red Alert" Red color warning means "Take Action"**

Forecast and warning for any day is valid from 0830 hours IST of day till 0830 hours IST of next day

For more details kindly visit <https://mausam.imd.gov.in> or contact 011-2434-4599

(Service to the nation since 1875)



- ♦ Light/moderate rainfall at many/most places accompanied with **thunderstorm, lightning and isolated heavy to very heavy rainfall** likely to continue over Northeast India during next 7 days.

**Maximum Temperature Forecast:**

- ♦ Maximum Temperatures likely to fall by 2-4°C over Central India during next 4-5 days and no significant change thereafter.
- ♦ No significant change in maximum temperatures likely over rest parts of the country.

#### Main Weather Observations:

❖ **Significant rainfall recorded(in cm)** (from 0830 hours IST to 1730 hours IST of today): Assam & Meghalaya: Jorhat (dist Jorhat) 7; Konkan & Goa : Mumbai (Santacruz) AP (dist ), T.b.i.a (dist Thane) 7 Each, Dahanu (dist Palghar), Mumbai (Colaba) (dist ) 4 Each, Harnai (dist Ratnagiri) 3; Nagaland, Manipur, Mizoram & Tripura: Kohima (dist Kohima) 6; **Bihar**: Bhagalpur (dist Bhagalpur) 5; Gangetic West Bengal: Sagar Island (dist South 24 Parganas) 5, Digha (dist North 24 Parganas) 4; **Odisha**: Chandbali (dist Bhadrak) 5, Rourkela (dist Sundargarh) 4, Jharsuguda (dist Jharsuguda) 3; Coastal Karnataka: Mangalore (Bajpe) AP (dist Dakshina Kannada), Honavar (dist Uttara Kannada) 4 Each; East Madhya Pradesh: Nowgong-obs (dist Chhatarpur), Rewa (dist Rewa) 3 Each; Saurashtra & Kutch: Porbandar AP (dist Porbandar), Diu (dist Diu) 3 Each; Sub-Himalayan West Bengal & Sikkim: Cooch Behar (dist Cooch Behar) 3; Kerala & Mahe: Palakkad (Palghat) (dist Palakkad) 3.

❖ **Heavy Rainfall observed** (from 0830 hours IST to 1730 hours IST of today): **Heavy rain** at a few places over Konkan & Goa, at isolated places over Assam & Meghalaya and Nagaland, Manipur, Mizoram & Tripura

❖ **Minimum Temperature Departures (as on 16-06-2025): markedly above normal(> 5.1°C)** at isolated places over Assam & Meghalaya, Sub Himalayan West Bengal & Sikkim, Bihar, Himachal Pradesh, Jammu-Kashmir, Ladakh-Gilgit-Baltistan-Muzaffarabad, East Madhya Pradesh and Saurashtra & Kutch. **appreciably above normal(3.1°C to 5.0°C)** at isolated places over Jharkhand, Haryana-Chandigarh-Delhi, Punjab, West Madhya Pradesh and Vidarbha. **above normal(1.6°C to 3.0°C)** at many places over Andaman & Nicobar Islands; at a few places over Gangetic West Bengal; at isolated places over Nagaland, Manipur, Mizoram & Tripura, Odisha, East Uttar Pradesh, Gujarat Region, Madhya Maharashtra, Coastal Andhra Pradesh & Yanam, Rayalaseema and Tamil Nadu, Puducherry & Karaikal. **near normal(-1.5°C to 1.5°C)** at many places over West Uttar Pradesh, East Rajasthan, Chhattisgarh, Telangana, Coastal Karnataka and South Interior Karnataka; at most places over Arunachal Pradesh, Uttarakhand, Konkan & Goa, Marathwada and North Interior Karnataka; at a few places over West Rajasthan, Kerala & Mahe and Lakshadweep. **The lowest minimum temperature** of 18.4°C is reported at MATHERAN (MAHARASHTRA) over the Plains of India.

❖ **Maximum Temperature Departures (as on 16-06-2025): markedly above normal(> 5.1°C)** at isolated places over Odisha, Bihar and Konkan & Goa. **appreciably above normal(3.1°C to 5.0°C)** at isolated places over Assam & Meghalaya, Sub Himalayan West Bengal & Sikkim, Himachal Pradesh and Jammu-Kashmir, Ladakh-Gilgit-Baltistan-Muzaffarabad. **above normal(1.6°C to 3.0°C)** at a few places over Arunachal Pradesh; at isolated places over Nagaland, Manipur, Mizoram & Tripura, Gangetic West Bengal, East Uttar Pradesh, East Rajasthan, East Madhya Pradesh and Chhattisgarh. **near normal(-1.5°C to 1.5°C)** at many places over Andaman & Nicobar Islands, Uttarakhand, Punjab, West Madhya Pradesh, Gujarat Region, Coastal Andhra Pradesh & Yanam and Lakshadweep; at most places over Jharkhand and Vidarbha; at a few places over Saurashtra & Kutch, Marathwada, Tamil Nadu, Puducherry & Karaikal, Coastal Karnataka and Kerala & Mahe; at isolated places over Haryana-Chandigarh-Delhi, West Rajasthan, Madhya Maharashtra, Telangana, Rayalaseema and North Interior Karnataka. **The highest maximum temperature** of 41.1°C is reported at CHAPRA (BIHAR).



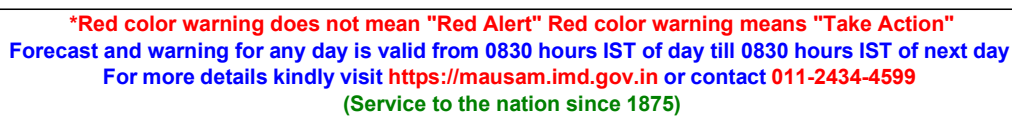
#### Meteorological Analysis (Based on 1730 hours IST)

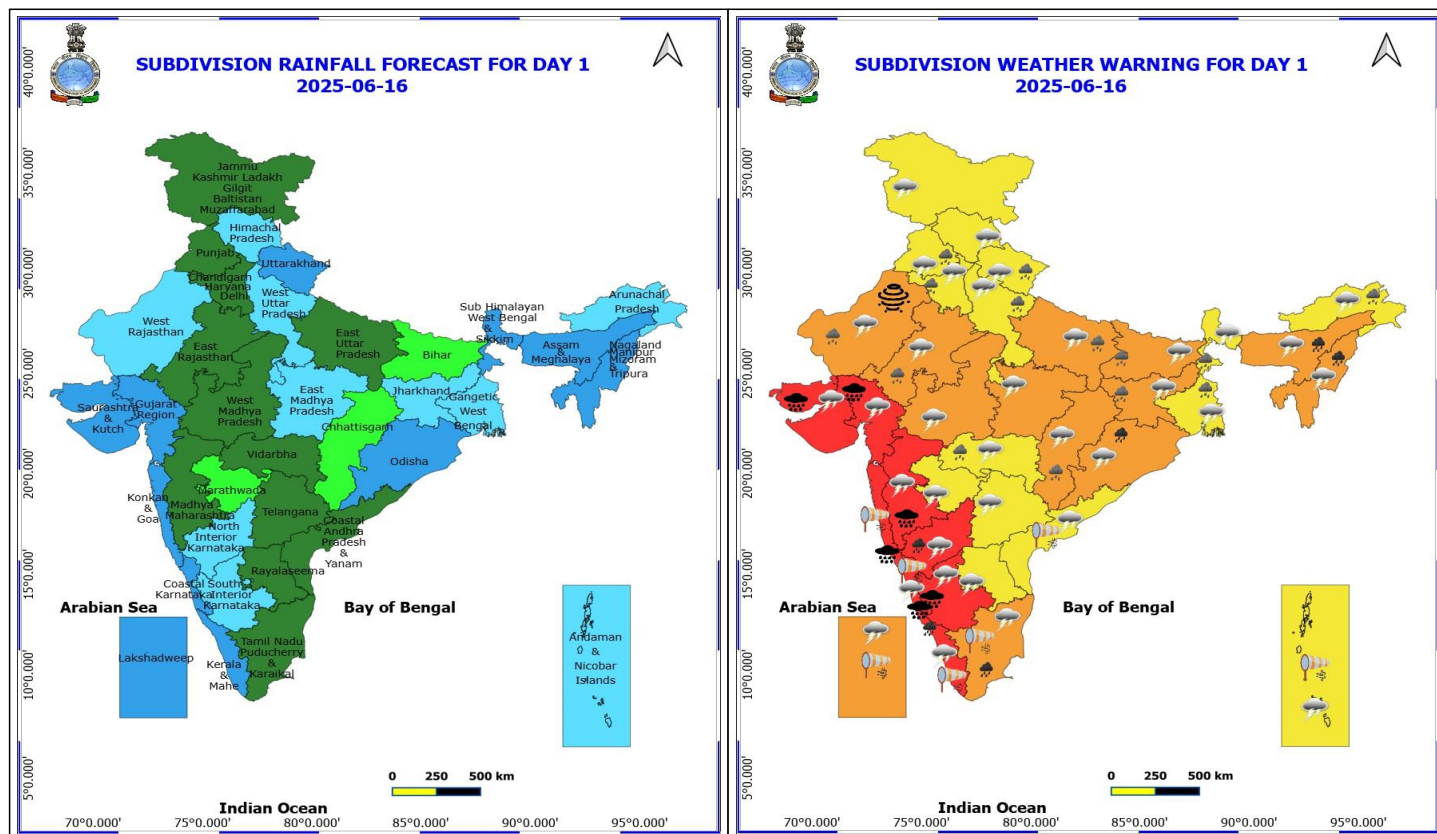
- ♦ Southwest monsoon has further advanced into remaining parts of central Arabian Sea; some parts of north Arabian Sea and Gujarat; remaining parts of Konkan, Madhya Maharashtra and Telangana; some parts of Madhya Pradesh; some more parts of Vidarbha, Chhattisgarh, and Odisha.
- ♦ The Northern Limit of Monsoon passes through 20.0°N/60°E, 20.5°N/65°E, Veraval, Bhavnagar, Vadodara, Khargone, Amravati, Durg, Bargarh, Chandbali, Sandhead Island, 23.5°N/89.5°E, Balurghat and 30°N/85°E.
- ♦ Conditions are favourable for further advance of Southwest monsoon over remaining parts of North Arabian Sea; some more parts of Gujarat & Madhya Pradesh; remaining parts of Vidarbha, Chhattisgarh & Odisha; some parts of Gangetic West Bengal, Jharkhand; remaining parts of Northwest Bay of Bengal, Sub-Himalayan West Bengal; some parts of Bihar and East Uttar Pradesh during next 2-3 days.
- ♦ The **cyclonic circulation** over Northwest Bay of Bengal & neighbourhood between 1.5 & 5.8 km above mean sea level tilting Southwestwards with height persists.
- ♦ The **upper air cyclonic circulation** over south Gujarat & neighbourhood extending upto 7.6 km above mean sea level persists. Under its influence, a **Low Pressure area** is likely to form over the same region during next 24 hours and it is likely to become more marked and move north-northwestwards during subsequent 24 hours.
- ♦ The **upper air cyclonic circulation** over south Punjab & neighbourhood at 0.9 km above mean sea level persists.
- ♦ The **upper air cyclonic circulation** over northeast Punjab & neighbourhood at 3.1 km above mean sea level persists.
- ♦ The **Western Disturbance** as a trough in middle tropospheric westerlies with its axis at 5.8 km above mean sea level roughly along Long. 70°E to the north of Lat. 26°N persists.
- ♦ An **upper air cyclonic circulation** over northeast Assam & neighbourhood and extends upto 1.5 km above mean sea level persists.

#### Weather Outlook for subsequent 3 days

- ♦ Fairly widespread to widespread rainfall activity likely over West, Northwest, East, Northeast India, Chhattisgarh, Madhya Pradesh, Coastal Karnataka, North Coastal Andhra Pradesh and Lakshadweep; Isolated to scattered rainfall likely over Remaining parts of the country.







## 16 June (Day 1)

- ❖ **Heavy to Very Heavy Rainfall with isolated Extremely Heavy Rainfall** very likely at isolated places over Costal Karnataka, Gujarat State, Konkan & Goa (including Mumbai), Madhya Maharashtra and South Interior Karnataka.
- ❖ **Heavy to Very Heavy Rainfall** very likely at isolated places over Assam & Meghalaya, Kerala & Mahe, Nagaland, Manipur, Mizoram and Tripura, North Interior Karnataka, Odisha and Tamil Nadu Puducherry & Karaikal.
- ❖ **Heavy Rainfall** very likely at isolated places over Arunachal Pradesh, Bihar, Chhattisgarh, Haryana, Chandigarh & Delhi, Jharkhand, Punjab, Rajasthan, Uttar Pradesh, Uttarakhand, Vidarbha and West Bengal & Sikkim.
- ❖ **Thundersquall with wind speed reaching(50-60kmph)** very likely at isolated places over Bihar, Chhattisgarh, Costal Karnataka, Interior Karnataka, Jharkhand, Kerala & Mahe, Lakshadweep, Madhya Pradesh and Rajasthan.
- ❖ **Thunderstorm accompanied with lightning & gusty winds(40-50kmph)** very likely at isolated places over Andaman & Nicobar Islands, Andhra Pradesh, Haryana, Chandigarh & Delhi, Himachal Pradesh, Jammu-Kashmir-Ladakh-Gilgit-Baltistan-Muzaffarabad, Punjab, Tamil Nadu Puducherry & Karaikal, Uttar Pradesh, Uttarakhand and Vidarbha.
- ❖ **Thunderstorm accompanied with lightning & gusty winds(30-40kmph)** very likely at isolated places over Nagaland, Manipur, Mizoram and Tripura, Odisha, Telangana and West Bengal & Sikkim.
- ❖ **Thunderstorm accompanied with Lightning** very likely at isolated places over Arunachal Pradesh, Assam & Meghalaya, Gujarat State, Madhya Maharashtra and Marathwada.
- ❖ **Dust Storm** very likely at isolated places over West Rajasthan.
- ❖ **Strong Surface Winds** very likely at isolated places over Andaman & Nicobar Islands, Coastal Andhra Pradesh,

\*Red color warning does not mean "Red Alert" Red color warning means "Take Action"

Forecast and warning for any day is valid from 0830 hours IST of day till 0830 hours IST of next day

For more details kindly visit <https://mausam.imd.gov.in> or contact 011-2434-4599

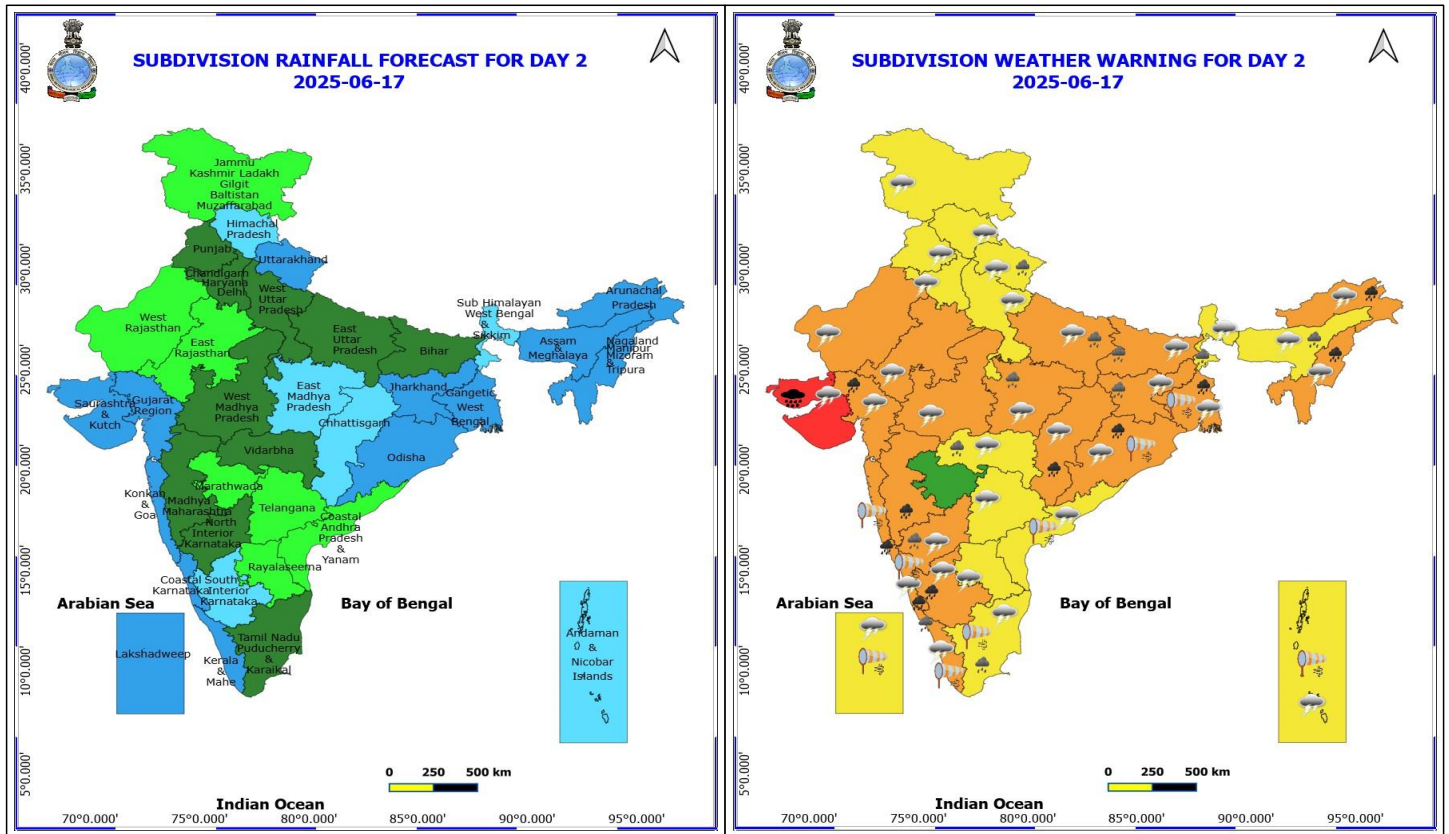
(Service to the nation since 1875)



Costal Karnataka, Kerala & Mahe, Konkan & Goa, Lakshadweep and Tamil Nadu Puducherry & Karaikal.

❖ **Squally wind with speed 45 kmph to 55 kmph gusting to 65 kmph** likely to prevail along and off Somalia, Oman & adjoining Yemen coasts, along and off Konkan, Goa coasts, most parts of central Arabian Sea. **Squally weather with wind speed 40 - 50 kmph gusting to 60 kmph** likely to prevail along and off Gujarat, Karnataka, Kerala, Sri Lanka, Tamil Nadu, Andhra Pradesh coasts, over southeast Arabian Sea, most parts of southwest Arabian sea, over many parts of northeast Arabian Sea, over Lakshadweep, Maldives, Comorin areas, over many parts of south Bay of Bengal, over central Bay of Bengal, and over north Andaman Sea. **Squally weather with wind speed 45 - 55 kmph gusting to 65 kmph** likely to prevail along and off Konkan, Goa coasts, many parts of eastcentral & westcentral Arabian Sea, many parts of westcentral Bay of Bengal & adjoining parts of southwest & eastcentral Bay of Bengal, over Gulf of Mannar. Fishermen are advised not to venture these areas.





## 17 June (Day 2)

- ❖ **Heavy to Very Heavy Rainfall with isolated Extremely Heavy Rainfall** very likely at isolated places over Saurashtra & Kutch.
- ❖ **Heavy to Very Heavy Rainfall** very likely at isolated places over Arunachal Pradesh, Chhattisgarh, Coastal Karnataka, Gangetic West Bengal, Gujarat Region, Konkan & Goa, Madhya Maharashtra, Nagaland, Manipur, Mizoram and Tripura, Odisha and South Interior Karnataka.
- ❖ **Heavy Rainfall** very likely at isolated places over Assam & Meghalaya, Bihar, East Madhya Pradesh, East Uttar Pradesh, Jharkhand, Kerala & Mahe, North Interior Karnataka, Sub Himalayan West Bengal & Sikkim, Tamil Nadu Puducherry & Karaikal, Uttarakhand and Vidarbha.
- ❖ **Thundersquall with wind speed reaching(50-60kmph)** very likely at isolated places over Bihar, Jharkhand, Madhya Pradesh and Rajasthan.
- ❖ **Thunderstorm accompanied with lightning & gusty winds(40-50kmph)** very likely at isolated places over Andaman & Nicobar Islands, Chhattisgarh, Coastal Karnataka, Haryana, Chandigarh & Delhi, Himachal Pradesh, Interior Karnataka, Kerala & Mahe, Lakshadweep, Nagaland, Manipur, Mizoram and Tripura, Punjab, Rayalaseema, Tamil Nadu Puducherry & Karaikal, Uttar Pradesh and Uttarakhand.
- ❖ **Thunderstorm accompanied with lightning & gusty winds(30-40kmph)** very likely at isolated places over Coastal Andhra Pradesh, Gangetic West Bengal, Jammu-Kashmir-Ladakh-Gilgit-Baltistan-Muzaffarabad, Odisha, Telangana and Vidarbha.
- ❖ **Thunderstorm accompanied with Lightning** very likely at isolated places over Arunachal Pradesh, Assam & Meghalaya, Gujarat State and Sub Himalayan West Bengal & Sikkim.

**\*Red color warning does not mean "Red Alert" Red color warning means "Take Action"**

Forecast and warning for any day is valid from 0830 hours IST of day till 0830 hours IST of next day

For more details kindly visit <https://mausam.imd.gov.in> or contact 011-2434-4599

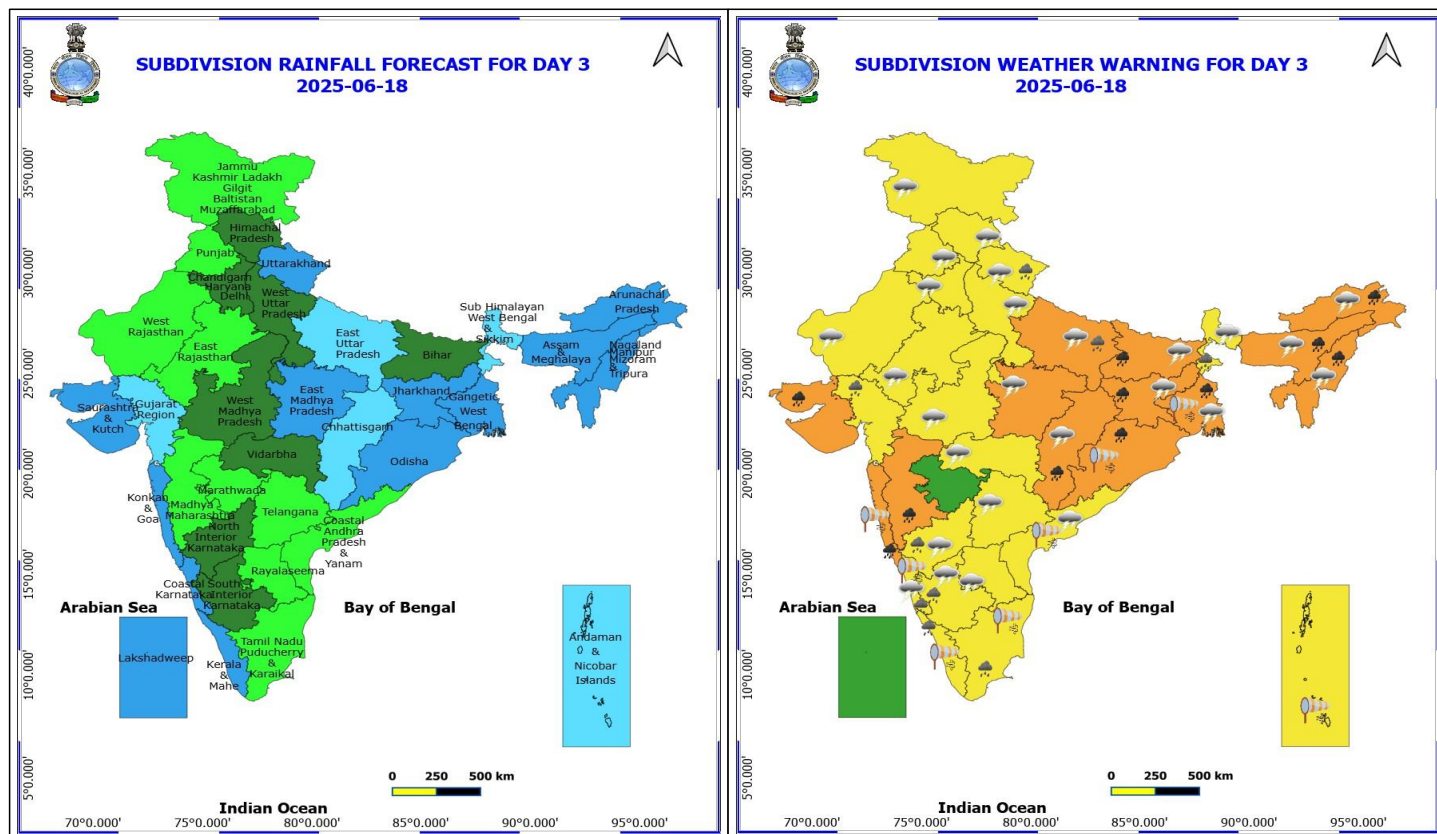
(Service to the nation since 1875)





❖ **Strong Surface Winds** very likely at isolated places over Andaman & Nicobar Islands, Coastal Andhra Pradesh, Coastal Karnataka, Gangetic West Bengal, Kerala & Mahe, Konkan & Goa, Lakshadweep, Odisha and Tamil Nadu Puducherry & Karaikal.

❖ **Squally wind with speed 45 kmph to 55 kmph gusting to 65 kmph** likely to prevail along and off Somalia, Oman & adjoining Yemen coasts, along and off Gujarat, Konkan, coasts, most parts of central Arabian Sea & adjoining south Arabian Sea. **Squally weather with wind speed 40 - 50 kmph gusting to 60 kmph** likely to prevail along and off Goa, Karnataka, Kerala, Sri Lanka, Tamil Nadu, Andhra Pradesh, Odisha, West Bengal coasts, over southeast Arabian Sea, most parts of southwest Arabian sea, over many parts of northeast Arabian Sea, over Lakshadweep, Maldives, Comorin areas, over many parts of southwest & adjoining southeast Bay of Bengal, over central Bay of Bengal, over many parts of north Bay of Bengal, and over north Andaman Sea. **Squally weather with wind speed 45 - 55 kmph gusting to 65 kmph** likely to prevail along and off south Gujarat, north Konkan coasts, many parts of eastcentral & westcentral Arabian Sea, many parts of westcentral Bay of Bengal & adjoining parts of southwest Bay of Bengal, Gulf of Mannar. Fishermen are advised not to venture these areas.



### 18 June (Day 3)

- ❖ **Heavy to Very Heavy Rainfall** very likely at isolated places over Arunachal Pradesh, Assam & Meghalaya, Bihar, Chhattisgarh, Gangetic West Bengal, Jharkhand, Konkan & Goa, Madhya Maharashtra, Nagaland, Manipur, Mizoram and Tripura, Odisha and Saurashtra & Kutch.
- ❖ **Heavy Rainfall** very likely at isolated places over Coastal Karnataka, East Uttar Pradesh, Gujarat Region, Interior Karnataka, Kerala & Mahe, Sub Himalayan West Bengal & Sikkim, Tamil Nadu Puducherry & Karaikal and Uttarakhand.
- ❖ **Thundersquall with wind speed reaching(50-60kmph)** very likely at isolated places over East Madhya Pradesh and Jharkhand.
- ❖ **Thunderstorm accompanied with lightning & gusty winds(40-50kmph)** very likely at isolated places over Coastal Karnataka, Haryana, Chandigarh & Delhi, Himachal Pradesh, Interior Karnataka, Nagaland, Manipur, Mizoram and Tripura, Punjab, Rajasthan, Rayalaseema, Uttar Pradesh, Uttarakhand and West Madhya Pradesh.
- ❖ **Thunderstorm accompanied with lightning & gusty winds(30-40kmph)** very likely at isolated places over Bihar, Chhattisgarh, Coastal Andhra Pradesh, Gangetic West Bengal, Jammu-Kashmir-Ladakh-Gilgit-Baltistan-Muzaffarabad and Telangana.
- ❖ **Thunderstorm accompanied with Lightning** very likely at isolated places over Arunachal Pradesh, Assam & Meghalaya, Sub Himalayan West Bengal & Sikkim and Vidarbha.
- ❖ **Strong Surface Winds** very likely at isolated places over Andaman & Nicobar Islands, Coastal Andhra Pradesh, Coastal Karnataka, Gangetic West Bengal, Kerala & Mahe, Konkan & Goa, Odisha and Tamil Nadu Puducherry & Karaikal.

**\*Red color warning does not mean "Red Alert" Red color warning means "Take Action"**

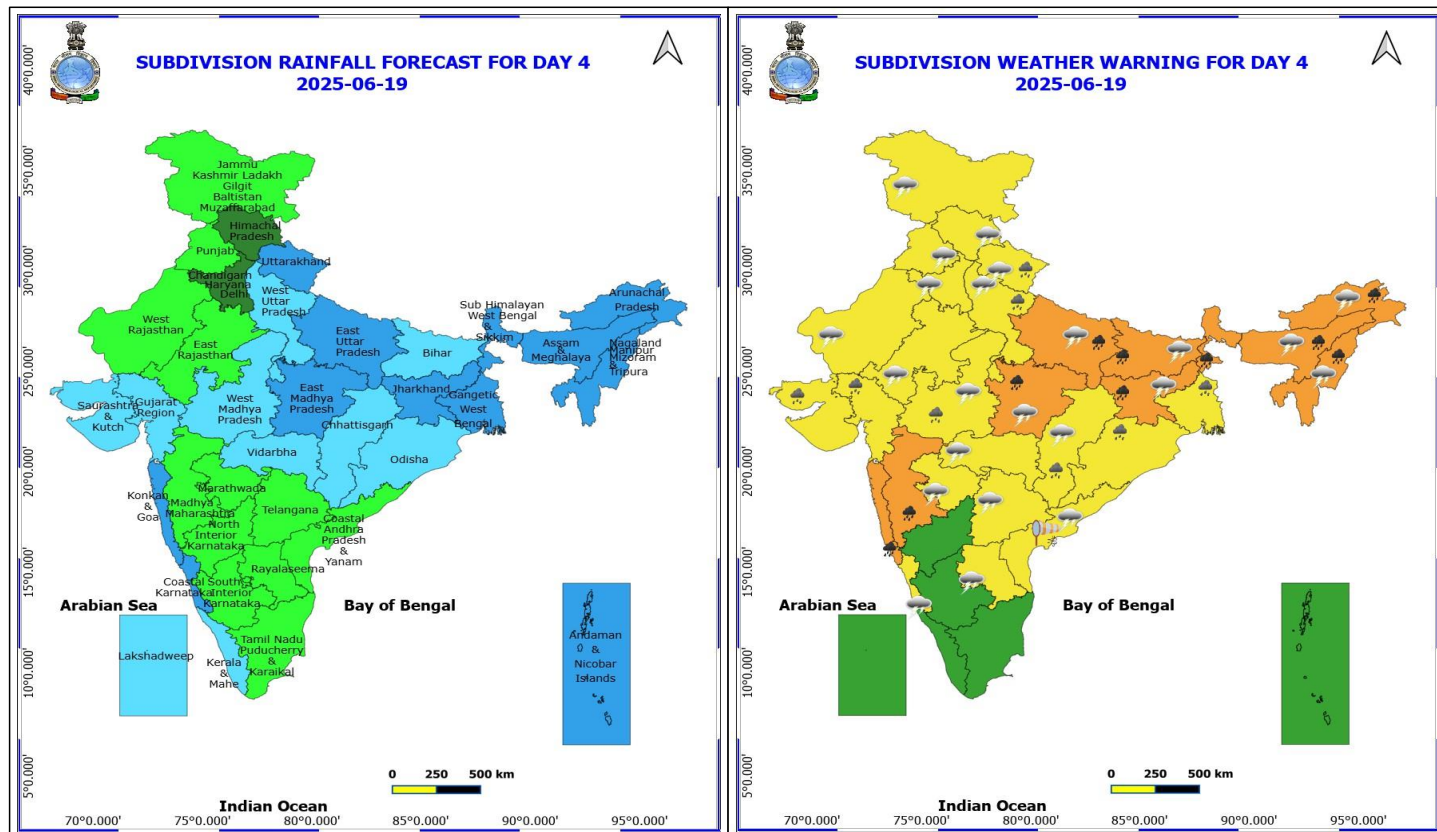
Forecast and warning for any day is valid from 0830 hours IST of day till 0830 hours IST of next day

For more details kindly visit <https://mausam.imd.gov.in> or contact 011-2434-4599

(Service to the nation since 1875)



❖ **Squally wind with speed 45 kmph to 55 kmph gusting to 65 kmph** likely to prevail along and off Somalia, Oman & adjoining Yemen coasts, along and off Gujarat coast, most parts of central Arabian Sea & adjoining south Arabian Sea. **Squally weather with wind speed 40 - 50 kmph gusting to 60 kmph** likely to prevail along and off Konkan, Goa, Karnataka, Kerala, Sri Lanka, Tamil Nadu, Andhra Pradesh, Odisha, West Bengal coasts, over northern parts of northeast Arabian Sea, over southeast Arabian Sea, most parts of southwest Arabian sea, over many parts of northeast Arabian Sea, over Lakshadweep, Maldives, Comorin areas, over many parts of southwest & adjoining southeast Bay of Bengal, over central Bay of Bengal, over many parts of north bay of Bengal, and over north Andaman Sea. **Squally weather with wind speed 45 - 55 kmph gusting to 65 kmph** likely to prevail along and off Gujarat coast, many parts of southern parts of northeast Arabian Sea, eastcentral & westcentral Arabian Sea, many parts of westcentral Bay of Bengal & adjoining parts of southwest Bay of Bengal, Gulf of Mannar. Fishermen are advised not to venture these areas.



## 19 June (Day 4)

- ❖ **Heavy to Very Heavy Rainfall** likely at isolated places over Arunachal Pradesh, Assam & Meghalaya, Bihar, East Madhya Pradesh, East Uttar Pradesh, Jharkhand, Konkan & Goa, Madhya Maharashtra, Nagaland, Manipur, Mizoram and Tripura and Sub Himalayan West Bengal & Sikkim.
- ❖ **Heavy Rainfall** likely at isolated places over Chhattisgarh, Gangetic West Bengal, Gujarat State, Odisha, Uttarakhand, West Madhya Pradesh and West Uttar Pradesh.
- ❖ **Thunderstorm accompanied with lightning & gusty winds(40-50kmph)** likely at isolated places over Haryana, Chandigarh & Delhi, Himachal Pradesh, Jammu-Kashmir-Ladakh-Gilgit-Baltistan-Muzaffarabad, Madhya Pradesh, Punjab, Rajasthan, Rayalaseema, Uttar Pradesh and Uttarakhand.
- ❖ **Thunderstorm accompanied with lightning & gusty winds(30-40kmph)** likely at isolated places over Bihar, Chhattisgarh, Coastal Andhra Pradesh, Coastal Karnataka, Jharkhand, Marathwada and Telangana.
- ❖ **Thunderstorm accompanied with Lightning** likely at isolated places over Arunachal Pradesh, Assam & Meghalaya, Nagaland, Manipur, Mizoram and Tripura and Vidarbha.
- ❖ **Strong Surface Winds** likely at isolated places over Coastal Andhra Pradesh.
- ❖ **Squally wind with speed 45 kmph to 55 kmph gusting to 65 kmph** likely to prevail along and off Somalia coast, most parts of westcentral Arabian Sea & adjoining, some parts of eastcentral Arabian Sea, northern parts of southwest Arabian Sea, along and off Oman & adjoining Yemen coasts. **Squally weather with wind speed 40 - 50 kmph gusting to 60 kmph** likely to prevail along and off Gujarat, Konkan, Goa, Andhra Pradesh, Odisha, West Bengal coasts, over northern parts of southwest Arabian Sea and adjoining parts of southeast Arabian Sea, most parts of central and northeast Arabian Sea, over most parts of northeast Arabian Sea, over most parts of central and north Bay of Bengal, and over north Andaman Sea. **Squally weather with wind speed 45 - 55 kmph gusting to 65**

\*Red color warning does not mean "Red Alert" Red color warning means "Take Action"

Forecast and warning for any day is valid from 0830 hours IST of day till 0830 hours IST of next day

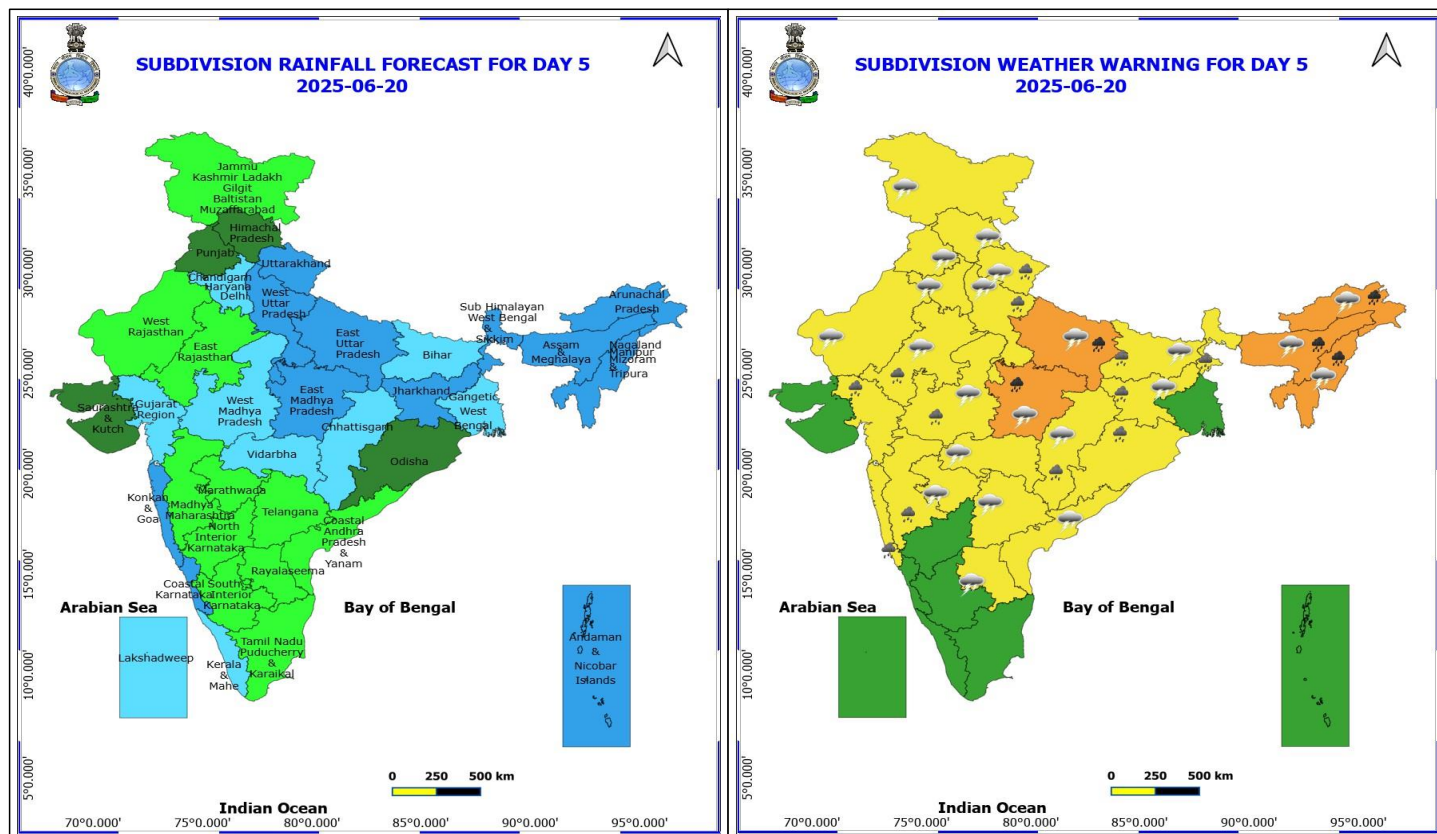
For more details kindly visit <https://mausam.imd.gov.in> or contact 011-2434-4599

(Service to the nation since 1875)





**kmph** likely to prevail over western parts of eastcentral Arabian Sea & adjoining westcentral Arabian Sea, some parts of central Bay of Bengal. Fishermen are advised not to venture these areas.



## 20 June (Day 5)

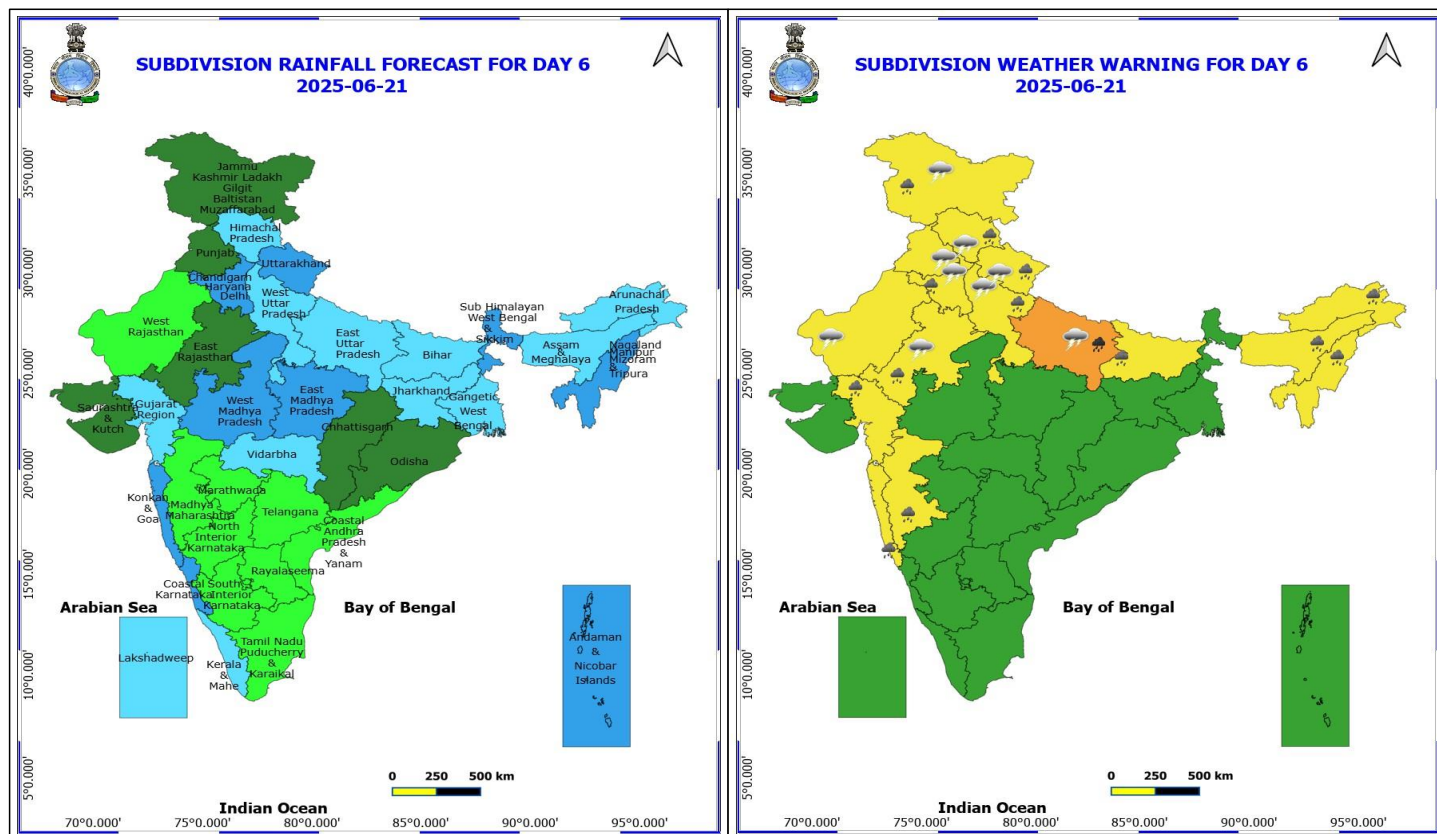
- ❖ **Heavy to Very Heavy Rainfall** likely at isolated places over Arunachal Pradesh, Assam & Meghalaya, East Madhya Pradesh, East Uttar Pradesh and Nagaland, Manipur, Mizoram and Tripura.
- ❖ **Heavy Rainfall** likely at isolated places over Bihar, Chhattisgarh, East Rajasthan, Gujarat Region, Jharkhand, Konkan & Goa, Madhya Maharashtra, Odisha, Sub Himalayan West Bengal & Sikkim, Uttarakhand, West Madhya Pradesh and West Uttar Pradesh.
- ❖ **Thunderstorm accompanied with lightning & gusty winds(40-50kmph)** likely at isolated places over Haryana, Chandigarh & Delhi, Himachal Pradesh, Jammu-Kashmir-Ladakh-Gilgit-Baltistan-Muzaffarabad, Madhya Pradesh, Punjab, Rajasthan, Rayalaseema, Uttar Pradesh, Uttarakhand and Vidarbha.
- ❖ **Thunderstorm accompanied with lightning & gusty winds(30-40kmph)** likely at isolated places over Bihar, Chhattisgarh, Coastal Andhra Pradesh, Jharkhand, Marathwada and Telangana.
- ❖ **Thunderstorm accompanied with Lightning** likely at isolated places over Arunachal Pradesh, Assam & Meghalaya and Nagaland, Manipur, Mizoram and Tripura.
- ❖ **Squally wind with speed 45 kmph to 55 kmph gusting to 65 kmph** likely to prevail along and off Somalia coast, most parts of westcentral Arabian Sea & adjoining, some parts of eastcentral Arabian Sea, northern parts of southwest Arabian Sea, along and off Oman & adjoining Yemen coasts. **Squally weather with wind speed 40 - 50 kmph gusting to 60 kmph** likely to prevail along and off Gujarat, Konkan coasts, over most parts of central Arabian Sea and adjoining parts of southwest Arabian Sea, over most parts of northeast Arabian Sea, over many parts of central Bay of Bengal. **Squally weather with wind speed 45 - 55 kmph gusting to 65 kmph** likely to prevail over western parts of eastcentral Arabian Sea & adjoining westcentral Arabian Sea, some parts of central Bay of Bengal. Fishermen are advised not to venture these areas.

**\*Red color warning does not mean "Red Alert" Red color warning means "Take Action"**

Forecast and warning for any day is valid from 0830 hours IST of day till 0830 hours IST of next day

For more details kindly visit <https://mausam.imd.gov.in> or contact 011-2434-4599

(Service to the nation since 1875)



## 21 June (Day 6)

- ❖ **Heavy to Very Heavy Rainfall** likely at isolated places over East Uttar Pradesh.
- ❖ **Heavy Rainfall** likely at isolated places over Arunachal Pradesh, Assam & Meghalaya, Bihar, East Rajasthan, Gujarat Region, Haryana, Chandigarh & Delhi, Himachal Pradesh, Jammu-Kashmir-Ladakh-Gilgit-Baltistan-Muzaffarabad, Konkarn & Goa, Madhya Maharashtra, Nagaland, Manipur, Mizoram and Tripura, Uttarakhand and West Uttar Pradesh.
- ❖ **Thunderstorm accompanied with lightning & gusty winds(40-50kmph)** likely at isolated places over Haryana, Chandigarh & Delhi, Himachal Pradesh, Jammu-Kashmir-Ladakh-Gilgit-Baltistan-Muzaffarabad, Punjab, Rajasthan, Uttar Pradesh and Uttarakhand.

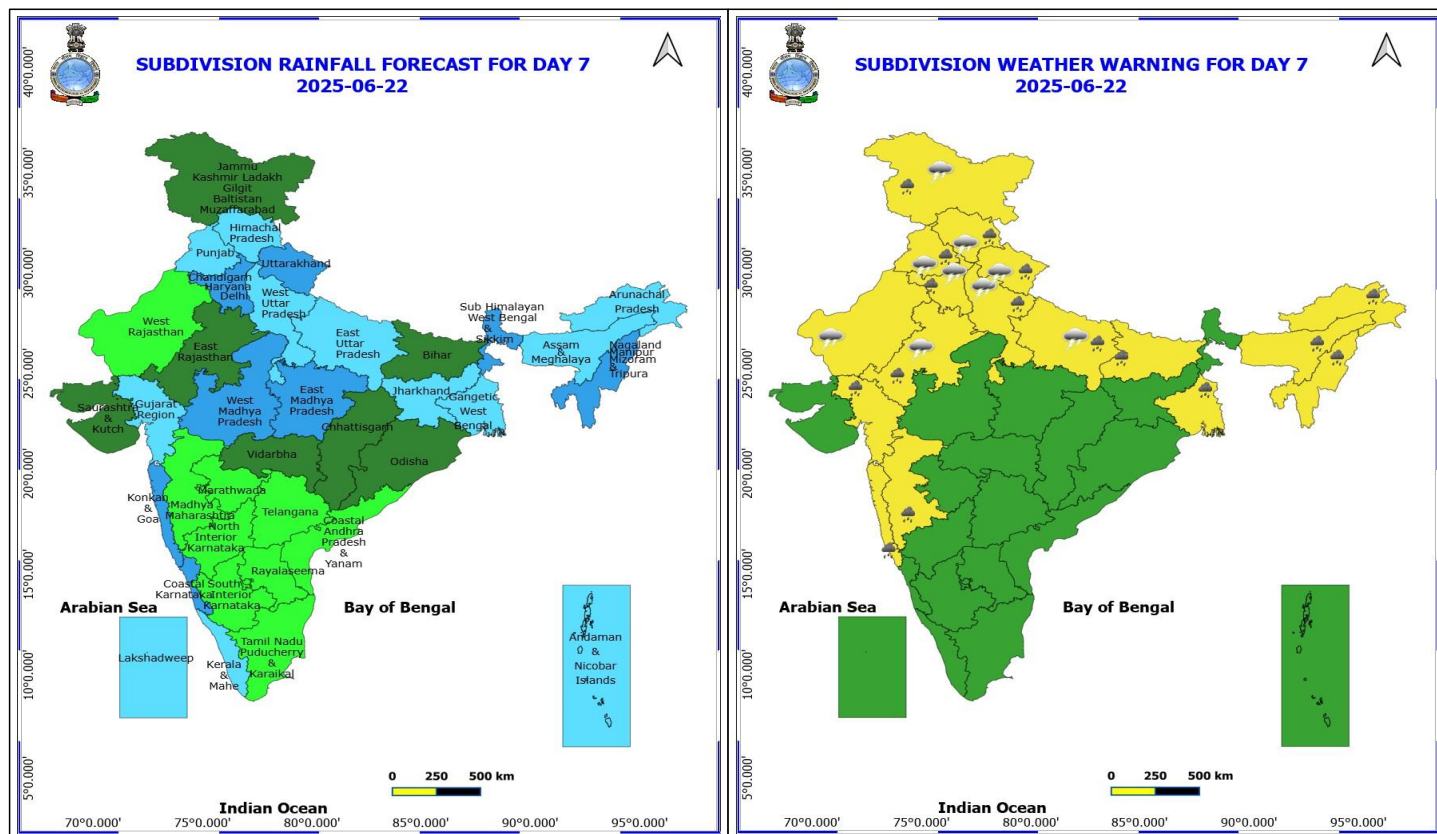
**No Fishermen Warning**

**\*Red color warning does not mean "Red Alert" Red color warning means "Take Action"**

Forecast and warning for any day is valid from 0830 hours IST of day till 0830 hours IST of next day

For more details kindly visit <https://mausam.imd.gov.in> or contact 011-2434-4599

(Service to the nation since 1875)



## 22 June (Day 7)

- ❖ **Heavy to Very Heavy Rainfall** likely at isolated places over Arunachal Pradesh, Assam & Meghalaya, East Madhya Pradesh, East Uttar Pradesh and Nagaland, Manipur, Mizoram and Tripura.
- ❖ **Heavy Rainfall** likely at isolated places over Bihar, Chhattisgarh, East Rajasthan, Gujarat Region, Jharkhand, Konkan & Goa, Madhya Maharashtra, Odisha, Sub Himalayan West Bengal & Sikkim, Uttarakhand, West Madhya Pradesh and West Uttar Pradesh.
- ❖ **Thunderstorm accompanied with lightning & gusty winds(40-50kmph)** likely at isolated places over Haryana, Chandigarh & Delhi, Himachal Pradesh, Jammu-Kashmir-Ladakh-Gilgit-Baltistan-Muzaffarabad, Madhya Pradesh, Punjab, Rajasthan, Rayalaseema, Uttar Pradesh, Uttarakhand and Vidarbha.
- ❖ **Thunderstorm accompanied with lightning & gusty winds(30-40kmph)** likely at isolated places over Bihar, Chhattisgarh, Coastal Andhra Pradesh, Jharkhand, Marathwada and Telangana.
- ❖ **Thunderstorm accompanied with Lightning** likely at isolated places over Arunachal Pradesh, Assam & Meghalaya and Nagaland, Manipur, Mizoram and Tripura.

**No Fishermen Warning**





**Table-1**

## 7 Days Rainfall Forecast

S.No.	Subdivision	16- Jun	17- Jun	18- Jun	19- Jun	20- Jun	21- Jun	22- Jun
		Day 1	Day 2	Day 3	Day 4	Day 5	Day 6	Day 7
1	ANDAMAN & NICOBAR ISLANDS	FWS	FWS	FWS	WS	WS	WS	FWS
2	ARUNACHAL PRADESH	FWS	WS	WS	WS	WS	FWS	FWS
3	ASSAM & MEHGHALAYA	WS	WS	WS	WS	WS	FWS	FWS
4	N. M. M. & T.	WS	WS	WS	WS	WS	WS	WS
5	S.H. WEST BENGAL & SIKKIM	WS	FWS	FWS	WS	WS	WS	WS
6	GANGETIC WEST BENGAL	FWS	WS	WS	WS	FWS	FWS	FWS
7	ODISHA	WS	WS	WS	FWS	SCT	SCT	SCT
8	JHARKHAND	FWS	WS	WS	WS	WS	FWS	FWS
9	BIHAR	ISOL	SCT	SCT	FWS	FWS	FWS	SCT
10	EAST UTTAR PRADESH	SCT	SCT	FWS	WS	WS	FWS	FWS
11	WEST UTTAR PRADESH	FWS	SCT	SCT	FWS	WS	FWS	FWS
12	UTTARAKHAND	WS	WS	WS	WS	WS	WS	WS
13	HARYANA, CHD & DELHI	SCT	SCT	SCT	SCT	FWS	WS	WS
14	PUNJAB	SCT	SCT	ISOL	ISOL	SCT	SCT	FWS
15	HIMACHAL PRADESH	FWS	FWS	SCT	SCT	SCT	FWS	FWS
16	JAMMU AND KASHMIR AND LADAKH	SCT	ISOL	ISOL	ISOL	ISOL	SCT	SCT
17	WEST RAJASTHAN	FWS	ISOL	ISOL	ISOL	ISOL	ISOL	ISOL
18	EAST RAJASTHAN	SCT	ISOL	ISOL	ISOL	ISOL	SCT	SCT
19	WEST MADHYA PRADESH	SCT	SCT	SCT	FWS	FWS	WS	WS
20	EAST MADHYA PRADESH	FWS	FWS	WS	WS	WS	WS	WS
21	GUJRAT REGION	WS	WS	FWS	FWS	FWS	FWS	FWS
22	SAURASHTRA & KUTCH	WS	WS	WS	FWS	SCT	SCT	SCT
23	KONKAN & GOA	WS	WS	WS	WS	WS	WS	WS
24	MADHYA MAHARASHTRA	SCT	SCT	ISOL	ISOL	ISOL	ISOL	ISOL
25	MARATHWADA	ISOL	ISOL	ISOL	ISOL	ISOL	ISOL	ISOL
26	VIDARBHA	SCT	SCT	SCT	FWS	FWS	FWS	SCT
27	CHATTISGARH	ISOL	FWS	FWS	FWS	FWS	SCT	SCT
28	COASTAL ANDHRA PRADESH	SCT	ISOL	ISOL	ISOL	ISOL	ISOL	ISOL
29	TELANGANA	SCT	ISOL	ISOL	ISOL	ISOL	ISOL	ISOL
30	RAYALASEEMA	SCT	ISOL	ISOL	ISOL	ISOL	ISOL	ISOL
31	TAMILNADU & PUDUCHERRY	SCT	SCT	ISOL	ISOL	ISOL	ISOL	ISOL
32	COSTAL KARNATAKA	WS	WS	WS	WS	WS	WS	WS
33	NORTH INTERIOR KARNATAKA	FWS	SCT	SCT	ISOL	ISOL	ISOL	ISOL
34	SOUTH INTERIOR KARNATAKA	FWS	FWS	SCT	ISOL	ISOL	ISOL	ISOL
35	KERALA	WS	WS	WS	FWS	FWS	FWS	FWS
36	LAKSHDWEAP	WS	WS	WS	FWS	FWS	FWS	FWS

Legend	Category	%Stations
WS	Widespread/Most Places	76-100
FWS	Fairly Widespread/Many Places	51-75
SCT	Scattered/ A Few Places	26-50
ISOL	Isolated Places	1-25
DRY	No Rain	0

\*Red color warning does not mean "Red Alert" Red color warning means "Take Action"

Forecast and warning for any day is valid from 0830 hours IST of day till 0830 hours IST of next day

For more details kindly visit <https://mausam.imd.gov.in> or contact 011-2434-4599

(Service to the nation since 1875)

Fig. 1: Maximum Temperatures Dated 2025-06-16

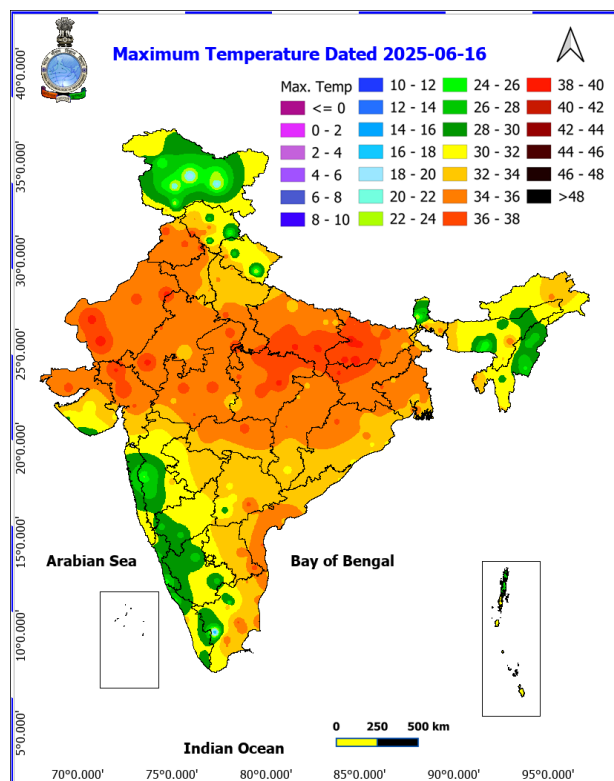


Fig. 2: Departure of Maximum Temp. Dated 2025-06-16

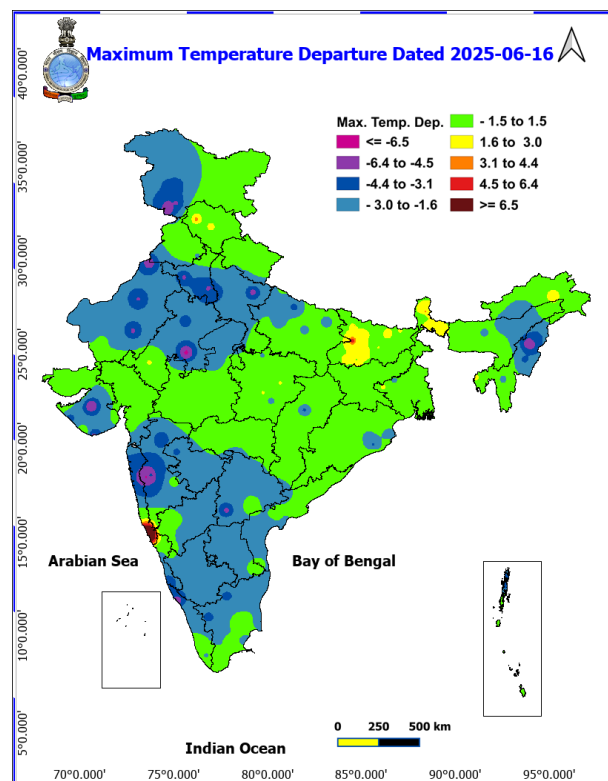


Fig. 3: Minimum Temperatures Dated 2025-06-16

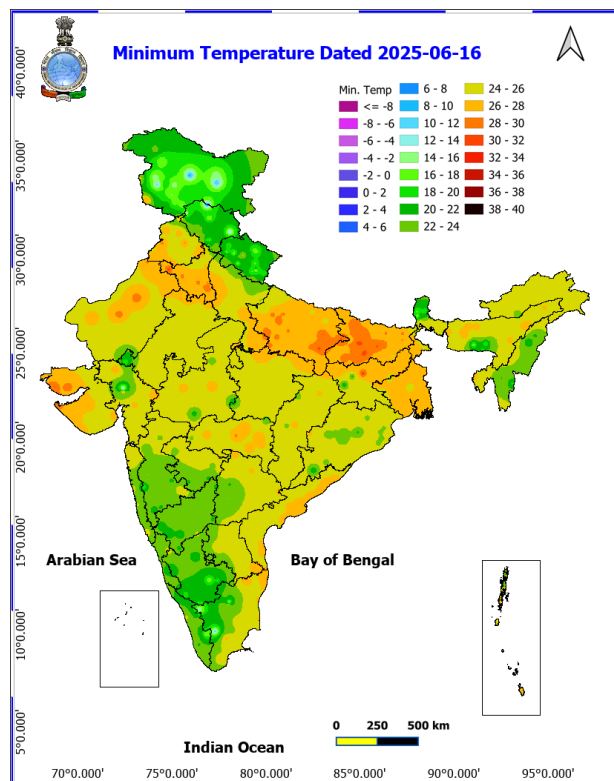
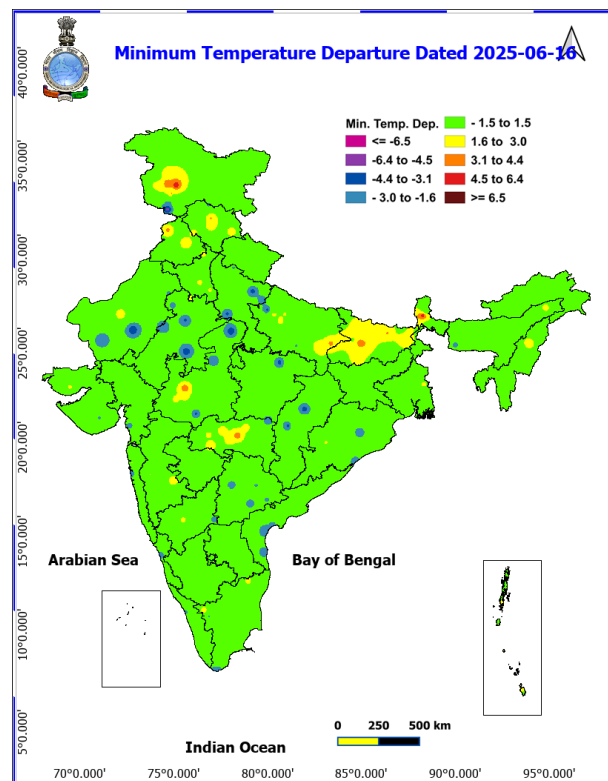
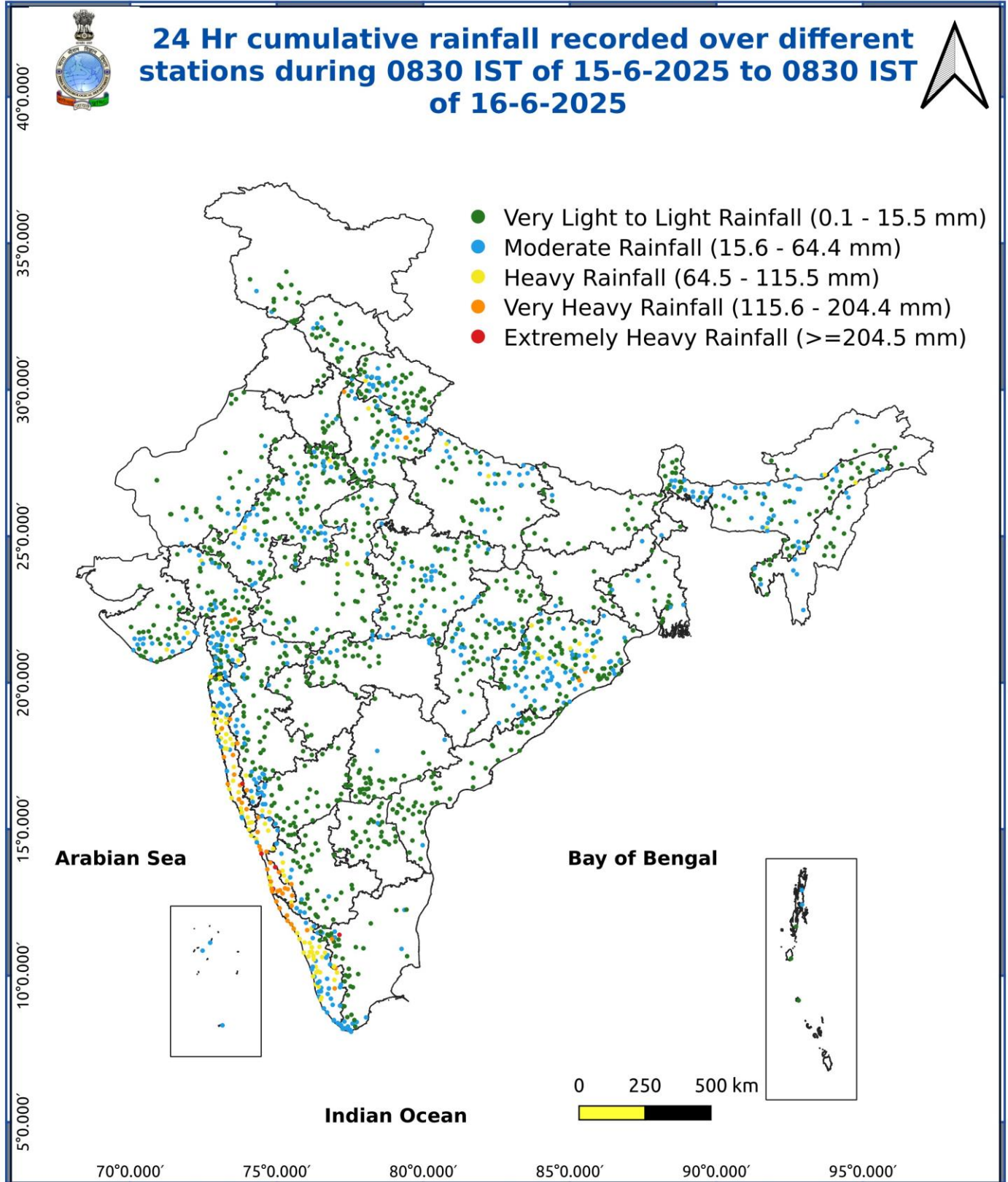


Fig. 4: Departure of Minimum Temp. Dated 2025-06-16





\*Red color warning does not mean "Red Alert" Red color warning means "Take Action"

Forecast and warning for any day is valid from 0830 hours IST of day till 0830 hours IST of next day

For more details kindly visit <https://mausam.imd.gov.in> or contact 011-2434-4599

(Service to the nation since 1875)

Impact & suggested due to Extremely and heavy to very heavy rainfall over

**Extremely heavy rainfall (>20 cm/24 hours) likely at isolated places over Konkan & Goa, Madhya Maharashtra, Gujarat Region, Coastal Karnataka, South Interior Karnataka on 16<sup>th</sup> and Saurashtra & Kutch on 16<sup>th</sup> & 17<sup>th</sup> June.**

Isolated **very heavy rainfall** over East Madhya Pradesh on 19<sup>th</sup> & 20<sup>th</sup>; Chhattisgarh, Gangetic West Bengal on 17<sup>th</sup> & 18<sup>th</sup>; Bihar, Sub-Himalayan West Bengal & Sikkim, Jharkhand on 18<sup>th</sup> & 19<sup>th</sup>; Odisha during 16<sup>th</sup>-18<sup>th</sup>; Arunachal Pradesh, Assam & Meghalaya, Nagaland, Manipur, Mizoram & Tripura during 16<sup>th</sup>-20<sup>th</sup>; East Uttar Pradesh during 19<sup>th</sup>-21<sup>st</sup> June.

#### Impact Expected

- ♦ Localized Flooding of roads, water logging in low lying areas and closure of underpasses mainly in urban areas of the above region.
- ♦ Occasional reduction in visibility due to heavy rainfall.
- ♦ Disruption of traffic in major cities due to water logging in roads leading to increased travel time.
- ♦ Minor damage to kutcha roads.
- ♦ Possibilities of damage to vulnerable structure.
- ♦ Localized Landslides/Mudslides/landslips/mudslips/landsinks/mudsinks.
- ♦ Damage to horticulture and standing crops in some areas due to inundation.
- ♦ It may lead to riverine flooding in some river catchments (for riverine flooding please visit Web page of CWC)

#### Action Suggested

- ♦ Check for traffic congestion on your route before leaving for your destination.
- ♦ Follow any traffic advisories that are issued in this regard.
- ♦ Avoid going to areas that face the water logging problems often.
- ♦ Avoid staying in vulnerable structure.

Impact & suggested expected due to isolated thunderstorm with lightning/gusty & Squally winds & Hailstorm over

**Thundersquall (wind speed reaching 50-60 kmph gusting to 70 kmph) at isolated places over Madhya Pradesh, Jharkhand, Bihar, Rajasthan on 16<sup>th</sup> & 17<sup>th</sup>; Chhattisgarh, Kerala & Mahe, Lakshadweep, Tamil Nadu on 16<sup>th</sup> June.**

#### Impact expected:

- ♦ Breaking of tree branches, uprooting of large avenue trees. Large dead limbs blown from trees. Damage to Standing crops.
- ♦ Minor to Major damage to banana and papaya trees.
- ♦ Minor to major damage to power and communication lines due to breaking of branches.
- ♦ Strong wind/hail may damage plantation, horticulture and standing crops.
- ♦ Partial damage to vulnerable structures due to strong winds.
- ♦ Minor damage to kutcha houses/walls and huts.
- ♦ Loose objects may fly.

#### Action suggested:

- ♦ People are advised to keep a watch on the weather for worsening conditions and be ready to move to safer places accordingly.
- ♦ Stay indoors, close windows & doors and avoid travel if possible.

**\*Red color warning does not mean "Red Alert" Red color warning means "Take Action"**

**Forecast and warning for any day is valid from 0830 hours IST of day till 0830 hours IST of next day**

**For more details kindly visit <https://mausam.imd.gov.in> or contact 011-2434-4599**

**(Service to the nation since 1875)**





- ♦ Take safe shelters; do not take shelter under trees.
- ♦ Do not lie on concrete floors and do not lean against concrete walls.
- ♦ Unplug electrical/ electronic appliances.
- ♦ Immediately get out of water bodies.
- ♦ Keep away from all the objects that conduct electricity.

#### Agromet advisories for various parts of the country

- ♦ In **Kerala**, ensure proper drainage facilities in rice nurseries, transplanted rice fields, coconut and banana plantations to prevent water logging. Undertake propping in banana to protect the plants from heavy rains.
- ♦ In **Tamil Nadu**, postpone nursery sowing / transplanting of rice and sowing of sorghum and cumbu. Ensure proper drainage facilities in rice nurseries, cotton, sugarcane, groundnut and transplanted rice fields, coconut and banana plantations to prevent water logging. Provide staking or support to tender plants of cotton, young plants of sugarcane and fruit-bearing plants of banana to avoid lodging.
- ♦ In **Coastal Karnataka**, postpone nursery sowing of rice. Ensure proper drainage facilities in rice nurseries, banana, coconut and arecanut plantations to prevent water logging. In **South Interior Karnataka**, postpone nursery sowing of rice and sowing of pigeon pea, maize and onion. Cover young seedlings of rice with plastic sheets or agro-shade nets to protect them from heavy rains. Provide adequate drainage to remove excess water from rice nurseries, coffee, cardamom, coconut and arecanut plantations to prevent water logging. Provide support to sugarcane and banana to prevent lodging. In **North Interior Karnataka**, postpone sowing of green gram, cotton, maize, groundnut, rice, pigeon pea, soybean and onion. Drain out excess water from the crops which are at seedling stage to prevent water logging.
- ♦ In **Konkan & Goa**, postpone nursery sowing of rice. In **Konkan & Goa** and **ghat areas of Madhya Maharashtra**, make arrangement to drain out excess water from rice nurseries to prevent water logging.
- ♦ In **South Gujrat**, postpone sowing of soybean and rice nursery. Ensure proper drainage facilities in already sown rice nurseries, soybean and also in banana plantations to prevent water logging. Provide support to sugarcane and banana to prevent lodging.
- ♦ In **North Odisha**, ensure proper drainage to drain out excess water from rice nurseries, maize and vegetables to prevent water logging. Postpone sowing of millets, maize, pulses and vegetables during heavy rain. Cover rice and vegetable nursery with plastic sheets to prevent washing away seeds.
- ♦ In **Sub-Himalayan West Bengal**, maintain proper drainage channels in rice nurseries and fields of jute and ginger to avoid water stagnation. Avoid sowing of rice in low lands to avoid losses due to heavy rainfall.
- ♦ In **Bhabar and Tarai Zone of Uttarakhand**, ensure proper drainage in already sown crops of pigeon pea, millets and soybean.
- ♦ In **Assam**, keep the harvested produce of sesame, foxtail millet, *Boro* rice, banana and citrus at safer places. Ensure proper drainage in *Sali* rice nursery, maize and sugarcane fields, arecanut and coconut plantations to prevent water logging.
- ♦ In **Meghalaya**, ensure proper drainage in the fields of maize, ginger, French bean, cowpea, vegetables and around rice nurseries to prevent water logging. Provide strong bamboo stakes or trellis support to cow pea, cucumber and bottle gourd to prevent vines from trailing on wet ground. Provide support to banana plant to prevent lodging.
- ♦ In **Mizoram**, ensure proper drainage facilities in maize and low land *pre-kharif* rice to avoid water stagnation. Undertake propping in five-month-old sugarcane crop to avoid lodging.
- ♦ In **Arunachal Pradesh**, carry out harvesting of soybean and vegetables such as chilli and okra and keep the produce at a safer place. Ensure proper drainage in rice nurseries, kiwi and apple orchards to avoid water logging.
- ♦ **Livestock / Fishery**
  - ♦ Keep the animals inside the shed during heavy rainfall and provide them balanced feed.
  - ♦ Store feed and fodder in a safe place to prevent spoilage.
  - ♦ Construct an outlet with proper netting around the ponds to drain out excess water, thereby preventing fish from escaping in case of overflow.

\*Red color warning does not mean "Red Alert" Red color warning means "Take Action"

Forecast and warning for any day is valid from 0830 hours IST of day till 0830 hours IST of next day

For more details kindly visit <https://mausam.imd.gov.in> or contact 011-2434-4599

(Service to the nation since 1875)

**24 hours Outlook for the Flash Flood Risk (FFR) till 1730 IST of 17-06-2025 :**

**Moderate to High flash flood risk** likely over few watersheds & neighbourhoods of following Met Sub-divisions during next 24 hours.

**Saurashtra & Kutch** - Amreli, Bhavnagar, Botad, Devbhoomi Dwarka, Diu, Gir Somnath, Jamnagar, Junagarh, Porbandar, Rajkot, Surendranagar and Morbi districts.

Surface runoff/ Inundation may occur at some fully saturated soils & low-lying areas over Area of Concern (AoC) as shown in map due to expected rainfall occurrence in next 24 hours.

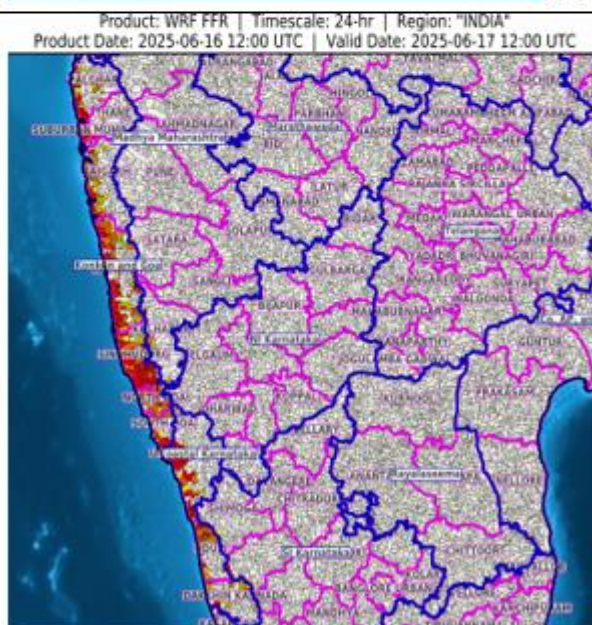
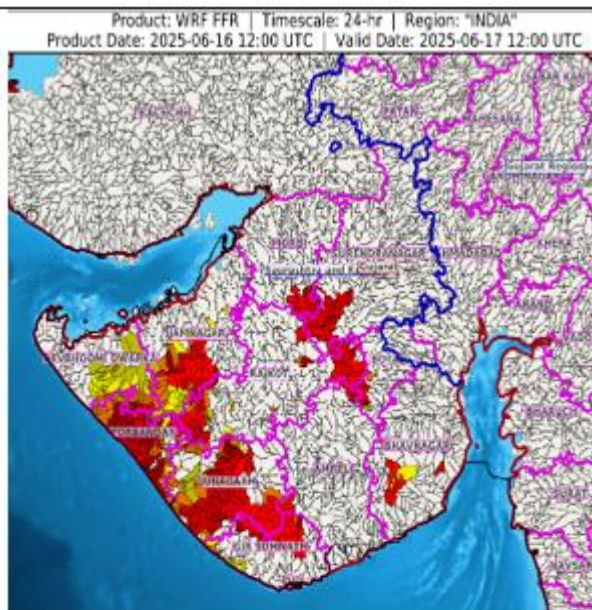
**24 hours Outlook for the Flash Flood Risk (FFR) till 1730 IST of 17-06-2025 :**

**Moderate to High flash flood risk** likely over few watersheds & neighbourhoods of following Met Sub-divisions during next 24 hours.

**Coastal Karnataka** - Dakshin Kannada, Udupi and Uttar Kannada districts.

**Konkan & Goa** - North Goa, South Goa, Mumbai City, Palghar, Raigarh, Ratnagiri, Sindhudurg, Suburban Mumbai and Thane districts.

Surface runoff/ Inundation may occur at some fully saturated soils & low-lying areas over Area of Concern (AoC) as shown in map due to expected rainfall occurrence in next 24 hours.



**\*Red color warning does not mean "Red Alert" Red color warning means "Take Action"**

Forecast and warning for any day is valid from 0830 hours IST of day till 0830 hours IST of next day

For more details kindly visit <https://mausam.imd.gov.in> or contact 011-2434-4599

(Service to the nation since 1875)



**24 hours Outlook for the Flash Flood Risk (FFR) till 1730 IST of 17-06-2025 :**

**Low to Moderate flash flood risk likely over few watersheds & neighbourhoods of following Met Sub-divisions during next 24 hours.**

**Assam & Meghalaya** - Cachar, Goalpara, Golaghat, Jorhat, Kamrup Rural, N.C Hills, Nalbari, Sibsagar, Karimganj, East Garo Hills, Jaintia Hills, East Khasi Hills, West Garo Hills, West Khasi Hills and Jaintia Hills districts.

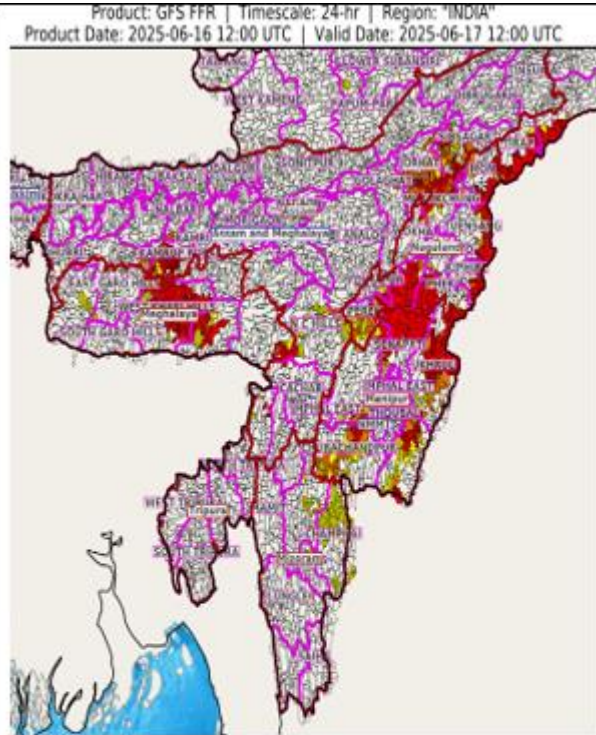
**Nagaland Mizoram Manipur Tripura (NMMT)**

**Manipur** – Bishnupur, Chandel, Churachandpur, Imphal East, Senapati, Tamenglong, Thoubal, Ukhrul.

**Mizoram** – Aizawl, Champhai, Lawngtlai, Lunglei, Serchhip.

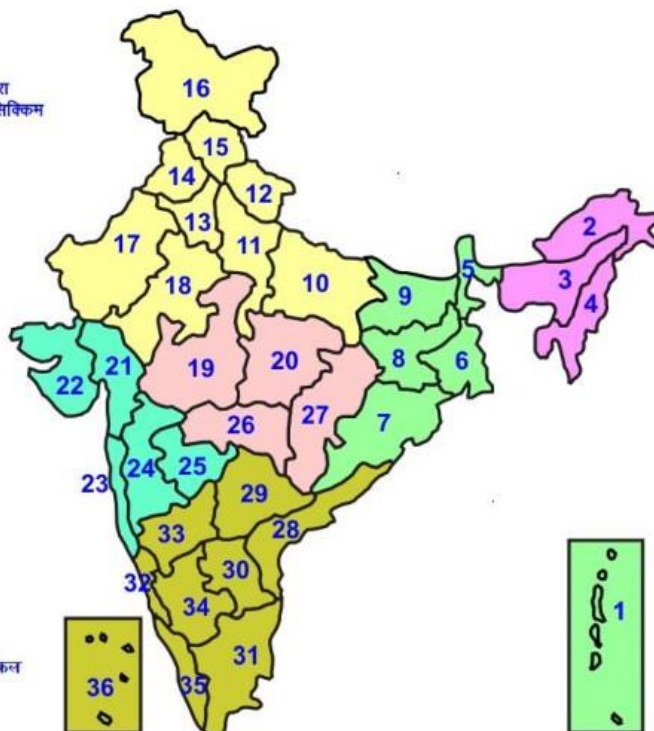
**Nagaland** – Dimapur, Kiphire, Kohima, Longleng, Mokokchung, Mon, Peren, Phek, Tuensang, Wokha and Zunheboto district

Surface runoff/ Inundation may occur at some fully saturated soils & low-lying areas over Area of Concern (AoC) as shown in map due to expected rainfall occurrence in next 24 hours.



## LEGENDS

- 1 अंडमान और निकोबार द्वीप समुह
- 2 अरुणाचल प्रदेश
- 3 असम और मेघालय
- 4 नागालैंड मनीपुर मीजोरम और त्रिपुरा
- 5 उप हिमालय पश्चिम बंगाल एवं सिक्किम
- 6 पश्चिम बंगाल
- 7 ओडिसा
- 8 झारखंड
- 9 बिहार
- 10 पूर्वी उत्तर प्रदेश
- 11 पश्चिम उत्तर प्रदेश
- 12 उत्तराखंड
- 13 हरियाणा चंडीगढ़ एवं दिल्ली
- 14 पंजाब
- 15 हिमाचल प्रदेश
- 16 जम्मू एवं कश्मीर एवं लद्दाख
- 17 पश्चिम राजस्थान
- 18 पूर्वी राजस्थान
- 19 पश्चिम मध्य प्रदेश
- 20 पूर्वी मध्य प्रदेश
- 21 गुजरात क्षेत्र
- 22 सौराष्ट्र एवं कच्छ
- 23 कोंकण एवं गोवा
- 24 मध्य महाराष्ट्र
- 25 मराठावाड़ा
- 26 विदर्भ
- 27 छत्तीसगढ़
- 28 तटीय आंध्र प्रदेश एवं यनम
- 29 तेलंगाना
- 30 रायलसेमा
- 31 तमिलनाडु, पुदुचेरी एवं कराईकल
- 32 तटिय कर्नाटक
- 33 आंतरिक उत्तरी कर्नाटक
- 34 आंतरिक दक्षिणी कर्नाटक
- 35 केरल एवं माहे
- 36 लक्षद्वीप



1. Andaman & Nicobar Islands
2. Arunachal Pradesh
3. Assam & Meghalaya
4. Nagaland, Manipur, Mizoram & Tripura
5. Sub-Himalayan West Bengal & Sikkim
6. Gangetic West Bengal
7. Orissa
8. Jharkhand
9. Bihar
10. East Uttar Pradesh
11. West Uttar Pradesh
12. Uttarakhand
13. Haryana, Chd & Delhi
14. Punjab
15. Himachal Pradesh
16. Jammu & Kashmir and Ladakh
17. West Rajasthan
18. East Rajasthan
19. West Madhya Pradesh
20. East Madhya Pradesh
21. Gujarat
22. Saurashtra
23. Konkan & Goa
24. Madhya Maharashtra
25. Marathwada
26. Vidharbha
27. Chhattisgarh
28. Coastal Andhra Pradesh & Yanam
29. Telangana
30. Rayalaseema
31. Tamilnadu, Puducherry & Karaikal
32. Coastal Karnataka
33. North Interior Karnataka
34. South Interior Karnataka
35. Kerala & Mahe
36. Lakshadweep

## SPATIAL DISTRIBUTION (% of Stations reporting)

% Stations	Category	% Stations	Category
76-100	Widespread (WS/Most Places)	26-50	Scattered (SCT/ A Few Places)
51-75	Fairly Widespread (FWS/ Many Places)	1-25	Isolated (ISOL)

### Subdivision Colour

- NO WARNING
- WATCH (BE UPDATED)
- ALERT (BE PREPARED TO TAKE ACTION)
- WARNING (TAKE ACTION)

### Probabilistic Forecast

Terms	Probability of Occurrence (%)
Unlikely	< 25
Likely	25 - 50
Very Likely	50 - 75
Most Likely	> 75

-  Heavy Rain

 Thunderstorm & Lightning


 Strong surface winds

 Cold Wave

 Hot & Humid

 Very Heavy Rain

 Hailstorm


 Heat Wave

 Cold Day

 Extremely Heavy Rain

 Dust Storm

 Hot Day

 Ground Frost

 Heavy Snow

 Dust Raising Winds

 Warm Night

 FOG Fog

\*Red color warning does not mean "Red Alert" Red color warning means "Take Action"

Forecast and warning for any day is valid from 0830 hours IST of day till 0830 hours IST of next day

For more details kindly visit <https://mausam.imd.gov.in> or contact 011-2434-4599

(Service to the nation since 1875)



## LEGENDS

### WARNING

<b>WARNING (TAKE ACTION)</b>
<b>ALERT ( BE PREPARED)</b>
<b>WATCH (BE UPDATED)</b>
<b>NO WARNING ( NO ACTION)</b>

### Probabilistic Forecast

Terms	Probability of Occurrence (%)
Unlikely	< 25
Likely	25 - 50
Very Likely	50 - 75
Most Likely	> 75



Rain/ Snow \*

Heavy: 64.5 to 115.5 mm/cm \*

Very Heavy: 115.6 to 204.4 mm/cm \*

Extremely Heavy: > 204.4 mm/cm \*



Heat Wave

When maximum temperature of a station reaches  $\geq 40^{\circ}\text{C}$  for plains and  $\geq 30^{\circ}\text{C}$  for hilly regions  
(a) Based on Departure from normal

Heat Wave: Maximum Temperature Departure from normal  $4.5^{\circ}\text{C}$  to  $6.4^{\circ}\text{C}$ .

Severe Heat Wave: Maximum Temperature Departure from normal  $\geq 6.5^{\circ}\text{C}$

(b). Based on Actual maximum temperature

Heat Wave: When actual maximum temperature  $\geq 45^{\circ}\text{C}$ .

Severe Heat Wave: When actual maximum temperature  $\geq 47^{\circ}\text{C}$

(c). Criteria for heat wave for coastal stations

When maximum temperature departure is  $> 4.5^{\circ}\text{C}$  from normal. Heat Wave may be described provided maximum temperature  $\geq 37^{\circ}\text{C}$



Warm Night

When maximum temperature remains  $40^{\circ}\text{C}$

Warm Night: When minimum temperature departure  $4.5^{\circ}\text{C}$  to  $6.4^{\circ}\text{C}$ .

Severe Warm Night: When minimum temperature departure  $> 6.4^{\circ}\text{C}$ .



Cold Wave

When minimum temperature of a station  $\leq 10^{\circ}\text{C}$  for plains and  $\leq 0^{\circ}\text{C}$  for hilly regions.

(a). Based on departure

Cold Wave: Minimum Temperature Departure from normal  $-4.5^{\circ}\text{C}$  to  $-6.4^{\circ}\text{C}$ .

Severe Cold Wave: Minimum Temperature Departure from normal  $\leq -6.5^{\circ}\text{C}$

(b) Based on actual Minimum Temperature (for Plains only)

Cold Wave : When Minimum Temperature is  $\leq 4.0^{\circ}\text{C}$

Severe Cold Wave: When Minimum Temperature is  $\leq 2.0^{\circ}\text{C}$

(c) For Coastal Stations

When Minimum Temperature departure is  $\leq -4.5^{\circ}\text{C}$  & actual Minimum Temperature is  $\leq 15^{\circ}\text{C}$



Cold Day

When minimum temperature of a station  $\leq 10^{\circ}\text{C}$  for plains and  $\leq 0^{\circ}\text{C}$  for hilly regions

Based on departure

Cold Day: Maximum Temperature Departure from normal  $-4.5^{\circ}\text{C}$  to  $-6.4^{\circ}\text{C}$ .

Severe Cold Day: Maximum Temperature Departure from normal  $\leq -6.5^{\circ}\text{C}$



Fog

Phenomenon of small droplets suspended in air and the horizontal visibility  $< 1\text{km}$

Moderate Fog: When the visibility between 500-200 metres

Dense Fog: when the visibility between 50- 200 metres

Very Dense Fog: when the visibility  $< 50$  metres



Thunderstorm

Sudden electrical discharges manifested by a flash of light (Lightning) and a sharp rumbling sound (thunder)



Dust/Sand Storm

An ensemble of particles of dust or sand energetically lifted to great heights by a strong and turbulent wind.



Frost

Ice deposits on ground

Air temperature  $\leq 4^{\circ}\text{C}$  ( over Plains)



Squall

A strong wind that rises suddenly, lasts for atleast 1 minute.

Moderate: Wind speed 52-61 kmph

Severe: Wind speed 62-87 kmph

Very Severe: Wind speed  $> 87$  kmph



Sea State

Effect of various waves in the sea over specific area

Rough to very rough: Wind speed 41-62 kmph (22-33 knots) & Wave height 2.5-6 metre

High to very high: Wind speed 63-117 kmph ( 34-63 knots) & Wave height 6-14 metre

Phenomenal: Wind speed  $> 117$  kmph ( $> 63$  knots) & Wave height  $> 14$  metre



Cyclone

Cyclonic Storm: Wind speed 62-87 kmph (34-47 knots)

Severe Cyclonic Storm: Wind speed 88-117 kmph (48-63 knots)

Very Severe Cyclonic Storm: Wind speed 118-165 kmph (64 - 89 knots)

Extremely Severe Cyclonic Storm: Wind speed 166-220 kmph (90 -119 knots)

Super Cyclone Storm: Wind speed  $> 220$  kmph ( $> 119$  knots)

\*Red color warning does not mean "Red Alert" Red color warning means "Take Action"

Forecast and warning for any day is valid from 0830 hours IST of day till 0830 hours IST of next day

For more details kindly visit <https://mausam.imd.gov.in> or contact 011-2434-4599

(Service to the nation since 1875)