

2025-09-12

Time of Issue: 13:35:00 hours IST  
(Mid-Day)

## ALL INDIA WEATHER SUMMARY AND FORECAST BULLETIN

### Significant Weather Features

#### Weather forecast and warning:

##### Northeast India:

Light/moderate rain/thunderstorm at most/many places with isolated **heavy rainfall** likely over Arunachal Pradesh during 12<sup>th</sup>-18<sup>th</sup>; Assam & Meghalaya on 17<sup>th</sup> and Nagaland, Manipur, Mizoram & Tripura during 12<sup>th</sup>-17<sup>th</sup> September with **very heavy falls over Assam & Meghalaya during 12<sup>th</sup>-16<sup>th</sup> and Nagaland, Manipur, Mizoram & Tripura during 12<sup>th</sup>-15<sup>th</sup>; Arunachal Pradesh during 13<sup>th</sup> -15<sup>th</sup> September.**

##### South Peninsular India:

Light to moderate rain/thunderstorm & gusty winds (speed 30-40 kmph) at many/some places with isolated **heavy rainfall** likely over Tamil Nadu on 12<sup>th</sup>, 16<sup>th</sup> & 17<sup>th</sup>; Coastal Karnataka on 13<sup>th</sup> & during 15<sup>th</sup>-18<sup>th</sup>; North Interior Karnataka during 12<sup>th</sup>-14<sup>th</sup>; South Interior Karnataka on 12<sup>th</sup>, 15<sup>th</sup> & 16<sup>th</sup>; Coastal Andhra Pradesh & Yanam, Rayalaseema on 12<sup>th</sup> & 13<sup>th</sup>; Telangana during 12<sup>th</sup>-15<sup>th</sup> September with **very heavy falls over Coastal Andhra Pradesh & Yanam on 12<sup>th</sup> and Telangana on 12<sup>th</sup> & 13<sup>th</sup> September.**

Strong surface winds (speed reaching 30-50 kmph) very likely over Coastal Andhra Pradesh & Yanam and Rayalaseema during next 5 days.

##### East & Central India:

Light to moderate rain/thunderstorm at most/many places with isolated **heavy rainfall** likely over East Madhya Pradesh, Vidarbha & Chhattisgarh during 12<sup>th</sup>-14<sup>th</sup>; West Madhya Pradesh on 14<sup>th</sup> & 15<sup>th</sup>; Andaman & Nicobar Islands on 16<sup>th</sup> & 17<sup>th</sup>; Sub-Himalayan West Bengal & Sikkim during 12<sup>th</sup>-18<sup>th</sup>; Bihar during 12<sup>th</sup>-16<sup>th</sup>; Jharkhand on 15<sup>th</sup> & 16<sup>th</sup>; Odisha on 12<sup>th</sup> & 13<sup>th</sup> September with isolated **very heavy falls over Odisha on 12<sup>th</sup>; Bihar on 13<sup>th</sup> and Sub-Himalayan West Bengal & Sikkim on 13<sup>th</sup> & 14<sup>th</sup> September.**

##### West India:

Light to moderate rain/thunderstorm at some/isolated places with **isolated heavy rainfall** likely over Madhya Maharashtra & Marathwada during 12<sup>th</sup>-15<sup>th</sup>; Konkan & Goa during 12<sup>th</sup>-18<sup>th</sup>; Gujarat Region during 14<sup>th</sup>-16<sup>th</sup> September with **very heavy falls over Marathwada on 13<sup>th</sup>; Konkan & Goa and Madhya Maharashtra on 14<sup>th</sup> & 15<sup>th</sup> September.**

##### Northwest India:

Light to moderate rain/thunderstorm at some/isolated places with **isolated heavy rainfall** likely over Himachal Pradesh on 13<sup>th</sup> & 14<sup>th</sup>; Uttarakhand during 12<sup>th</sup>-16<sup>th</sup>; Haryana, Chandigarh on 13<sup>th</sup>; West Uttar Pradesh on 12<sup>th</sup>; East Uttar Pradesh during 15<sup>th</sup>-17<sup>th</sup> and Punjab on 17<sup>th</sup> & 18<sup>th</sup> September with **very heavy falls over Uttarakhand on 12<sup>th</sup> & 13<sup>th</sup> September.**

**\*Red color warning does not mean "Red Alert" Red color warning means "Take Action"**

Forecast and warning for any day is valid from 0830 hours IST of day till 0830 hours IST of next day

For more details kindly visit <https://mausam.imd.gov.in> or contact 011-2434-4599

(Service to the nation since 1875)

### Main Weather Observations:

❖ **Rainfall distribution** (from 0830 hours IST of yesterday to 0830 hours IST of today): **at most places** over Andaman & Nicobar Islands, Nagaland, Manipur, Mizoram & Tripura, Vidarbha, Chhattisgarh and Telangana; **at many places** over Sub Himalayan West Bengal & Sikkim, Gangetic West Bengal and East Madhya Pradesh; **at a few places** over Arunachal Pradesh, Assam & Meghalaya, Bihar, Uttarakhand, Himachal Pradesh, Marathwada, Coastal Andhra Pradesh & Yanam, Rayalaseema, Tamil Nadu, Puducherry & Karaikal, North Interior Karnataka and Lakshadweep; **at isolated places** over East Uttar Pradesh, Haryana-Chandigarh-Delhi, Punjab, Jammu-Kashmir-Ladakh-Gilgit-Baltistan-Muzaffarabad, West Madhya Pradesh, Gujarat Region, Saurashtra & Kutch, Konkan & Goa, Madhya Maharashtra, Coastal Karnataka, South Interior Karnataka and Kerala & Mahe; **Dry** over rest of the country.

❖ **Significant rainfall recorded(in cm)** (from 0830 hours IST of yesterday to 0830 hours IST of today): **Telangana**: Huzurabad (dist Karimnagar) 24; Chigurumamidy (dist Karimnagar) 22; Medak (dist Medak) 20; Medak(ARG) (dist Medak) 19; Bachhanpet (dist Jangaon), Shankarapatnam (dist Karimnagar) 12 Each; Cgwb Nagole AP (dist M. Malkajgiri) 11; Hayathnagar (dist Rangareddy), Nanganur (dist Siddipet) 10 Each; Bhuvanagiri (dist Y. Bhuvanagiri), Parkal (dist Hanumakonda), Kalwakurthy (dist Nagarkurnool), Raghunathpalle (dist Jangaon) 9 Each; Hanamkonda (dist Hanumakonda), Yellareddy (dist Kamareddy), Banswada (dist Kamareddy), Jammikunta (dist Karimnagar) 8 Each; Thimmapur (dist Karimnagar), Vangoor (dist Nagarkurnool), Jangaon (dist Jangaon), Navipet (dist Nizamabad), Yacharam (dist Rangareddy), Ghanpur (dist Jangaon), Nizam Sagar (dist Kamareddy), Ramayampet (dist Medak) 7 Each; **Sub Himalayan West Bengal & Sikkim**: Amfu Pundibari (dist Cooch Behar) 22; Mathabhanga (dist Cooch Behar) 9; Dentam (dist Gyalshing) 7; **Tamil Nadu, Puducherry & Karaikal**: Srimushnam (dist Cuddalore) 11; Tirupuvanam (dist Sivaganga) 9; Kollidam (dist Mayiladuthurai), Dscl Virugavoor (dist Kallakurichi) 7 Each; **Assam & Meghalaya**: Matijuri (dist Hailakandi) 11; A P Ghat (dist Cachar) 8; Dhekiajuli (dist Sonitpur) 7; **Nagaland, Manipur, Mizoram & Tripura**: Kailashahar AP (dist Unakoti) 10; Kanchanpur (dist North Tripura), Kailashahar AWS (dist Unakoti) 8 Each; Dharmanagar/panisagar (dist North Tripura), Sonamura (dist Sipahijala), Sonamura ARG (dist Sipahijala) 7 Each; **Rayalaseema**: Atmakur (dist Nandyal) 9; **East Madhya Pradesh**: Jaitpur (dist Shahdol) 9; **Chhattisgarh**: Charama (dist Kanker) 8; Patharia (dist Mungeli) 7; **Vidarbha**: Perseoni (dist Nagpur) 8; Wardha (dist Wardha) 7; **Marathwada**: Kinwat (dist Nanded) 8; **East Uttar Pradesh**: Bansi Tehsil (dist Siddharth Nagar), Bansi CWC (dist Siddharth Nagar) 8 Each; Uska Bazar Fmo (dist Siddharth Nagar) 7; **Bihar**: Taibpur (dist Kishanganj) 7; **Jharkhand**: Godda (dist Godda) 9, Fatehpur (dist Jamtara) 8, Jamtara (dist Jamtara) 8, Tilaiya (dist Koderma) 7, Godda Kvk Aws (dist Godda) 7; **Odisha**: Bhograi (dist Balasore) 8, Purushottampur (dist Ganjam) 8, Berhampur (dist Ganjam) 7, Raruana (dist Mayurbhanj) 7;

❖ **Heavy Rainfall observed** (from 0830 hours IST of yesterday to 0830 hours IST of today): **Extremely heavy rain** at isolated places over Sub Himalayan West Bengal & Sikkim and Telangana. **Heavy to very heavy rain** at isolated places over Telangana. **Heavy rain** at isolated places over Assam & Meghalaya, Nagaland, Manipur, Mizoram & Tripura, Sub Himalayan West Bengal & Sikkim, Bihar, East Uttar Pradesh, East Madhya Pradesh, Odisha, Jharkhand, Marathwada, Vidarbha, Chhattisgarh, Rayalaseema and Tamil Nadu, Puducherry & Karaikal.

❖ **Minimum Temperature Departures (as on 12-09-2025): markedly above normal(> 5.1°C)** at isolated places over Assam & Meghalaya, Bihar, East Uttar Pradesh, West Uttar Pradesh, Himachal Pradesh and West Madhya Pradesh. **appreciably above normal(3.1°C to 5.0°C)** at many places over East Madhya Pradesh; at few places over Sub Himalayan West Bengal & Sikkim and Jammu-Kashmir-Ladakh-Gilgit-Baltistan-Muzaffarabad; at isolated places over Gangetic West Bengal, Uttarakhand and Saurashtra & Kutch. **above normal(1.6°C to 3.0°C)** at many places over Nagaland, Manipur, Mizoram & Tripura; at few places over Lakshadweep; at isolated places over Odisha, Haryana-Chandigarh-Delhi, Punjab, Gujarat Region, Konkan & Goa, Madhya Maharashtra, Coastal Andhra Pradesh & Yanam, Tamil Nadu, Puducherry & Karaikal and South Interior Karnataka. **near normal(-1.5°C to 1.5°C)** at many places over Chhattisgarh; at most places over Andaman & Nicobar Islands, Arunachal Pradesh, Jharkhand, West Rajasthan, East Rajasthan, Marathwada, Vidarbha, Rayalaseema, Coastal Karnataka, North Interior Karnataka and Kerala & Mahe; at few places over Telangana. **The lowest minimum temperature** of 18.0°C is reported at HALFLONG (ASSAM) over the Plains of India.

❖ **Maximum Temperature Departures (as on 11-09-2025): markedly above normal(> 5.1°C)** at isolated places over Gangetic West Bengal, Himachal Pradesh and Chhattisgarh. **appreciably above normal(3.1°C to 5.0°C)** at few places over Arunachal Pradesh, Odisha and Lakshadweep; at isolated places over Sub Himalayan West Bengal & Sikkim, Uttarakhand, Jammu-Kashmir-Ladakh-Gilgit-Baltistan-Muzaffarabad and East Madhya Pradesh. **above normal(1.6°C to 3.0°C)** at many places over Jharkhand; at few places over West Uttar Pradesh and Kerala & Mahe; at isolated places over Assam & Meghalaya, East Uttar Pradesh, West Madhya Pradesh, Saurashtra & Kutch, Konkan &

\*Red color warning does not mean "Red Alert" Red color warning means "Take Action"

Forecast and warning for any day is valid from 0830 hours IST of day till 0830 hours IST of next day

For more details kindly visit <https://mausam.imd.gov.in> or contact 011-2434-4599

(Service to the nation since 1875)



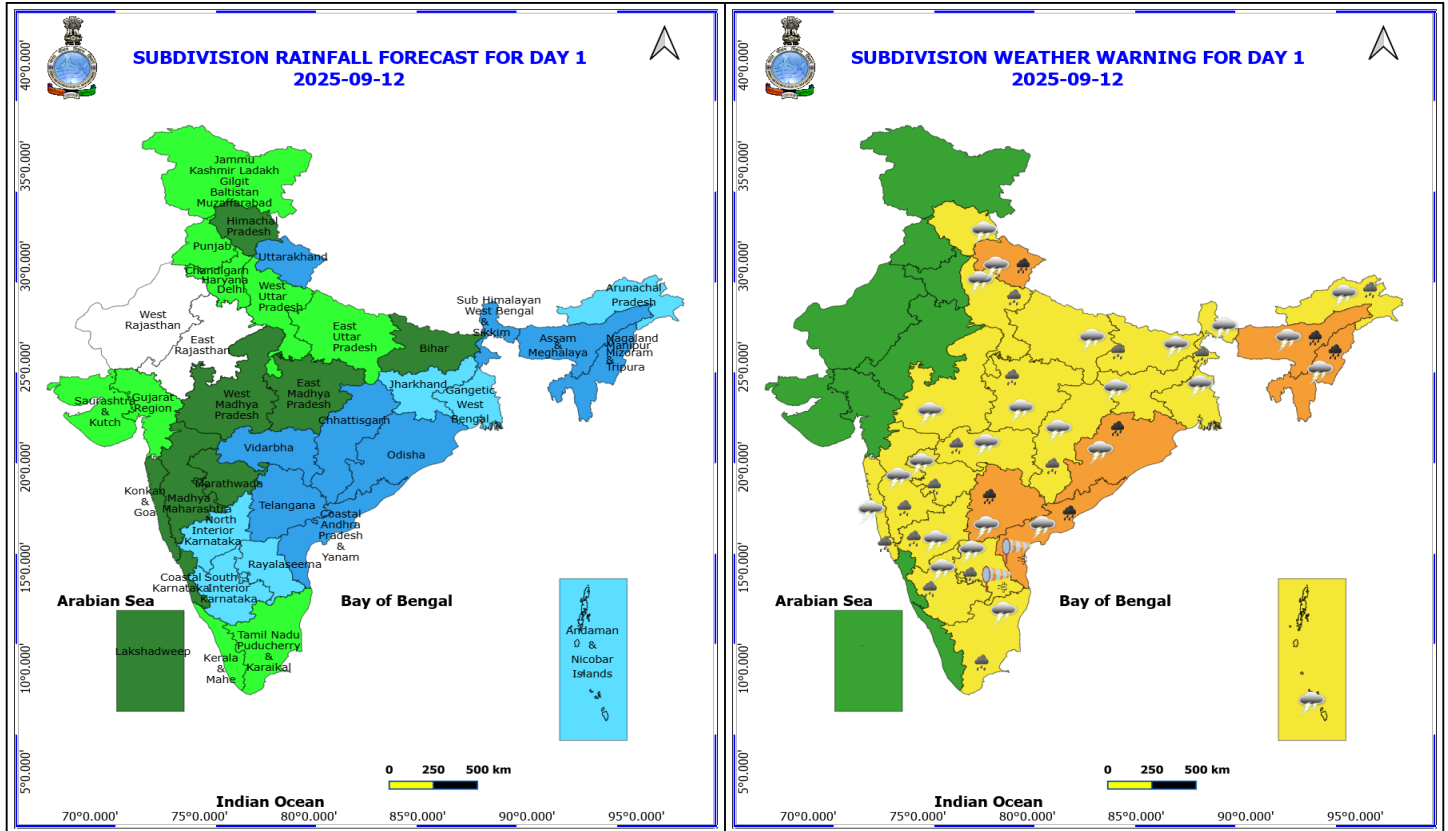
Goa, Madhya Maharashtra, Vidarbha, Coastal Andhra Pradesh & Yanam, Telangana, Rayalaseema and Tamil Nadu, Puducherry & Karaikal. **near normal(-1.5°C to 1.5°C)** at many places over Andaman & Nicobar Islands; at most places over Nagaland, Manipur, Mizoram & Tripura, Haryana-Chandigarh-Delhi, Punjab, East Rajasthan, Gujarat Region and Coastal Karnataka; at few places over Bihar, North Interior Karnataka and South Interior Karnataka; at isolated places over West Rajasthan and Marathwada. **The highest maximum temperature** of 37.3°C is reported at DIGHA (WEST BENGAL).

#### Meteorological Analysis (Based on 0830 hours IST)

- Conditions are becoming favourable for withdrawal of Southwest Monsoon from some parts of West Rajasthan around from 15<sup>th</sup> September.
- Under the influence of the **upper air cyclonic circulation** over west central & adjoining northwest Bay of Bengal off north Andhra Pradesh and south Odisha coast, a **low pressure area** has formed over the same region at 0830 hrs IST of today, the 12<sup>th</sup> September, 2025. The associated **upper air cyclonic circulation** extended up to 5.8 km above mean sea level tilting southward with height. It is likely to move west-northwestwards across south Odisha and adjoining north Andhra Pradesh and south Chhattisgarh during next 2 days.
- The **monsoon trough** at mean sea level now passes through Amritsar, Muzaffarnagar, Hardoi, Daltonganj and centre of **low pressure area** over west central & adjoining northwest Bay of Bengal off north Andhra Pradesh and south Odisha.
- A **trough** runs from **upper air cyclonic circulation** associated with **low pressure area** over west central & adjoining northwest Bay of Bengal off north Andhra Pradesh and south Odisha coast to south Maharashtra across Chhattisgarh, Vidarbha between 3.1 & 5.8 km above mean sea level.
- The **cyclonic circulation** over northwest Arabian Sea extending upto 5.8 km above mean sea level persists.
- The **western disturbance** as a **cyclonic circulation** over Himachal Pradesh & neighbourhood at 5.8 km above mean sea level persists.
- An **upper air cyclonic circulation** lies over north Haryana & neighbourhood at 0.9 km above mean sea level.
- An **upper air cyclonic circulation** lies over northeast Jharkhand & neighbourhood at 0.9 km above mean sea level.
- The **upper air cyclonic circulation** over Tripura & neighbourhood at 1.5 km above mean sea level persists.
- The **trough** from Sub-Himalayan West Bengal & Sikkim to west central Bay of Bengal across Jharkhand, cyclonic circulation over South Odisha adjoining north Coastal Andhra Pradesh at 0.9 km above mean sea level has become less marked.

#### Weather Outlook for subsequent 3 days

- Scattered to fairly widespread rainfall likely over Western India.
- Isolated to scattered rainfall likely over the rest parts of the country.



## 12 September (Day 1)

- ❖ **Heavy to Very Heavy Rainfall** very likely at isolated places over Assam & Meghalaya, Coastal Andhra Pradesh, Nagaland, Manipur, Mizoram and Tripura, Odisha, Telangana and Uttarakhand.
- ❖ **Heavy Rainfall** very likely at isolated places over Arunachal Pradesh, Bihar, Chhattisgarh, East Madhya Pradesh, Interior Karnataka, Konkan & Goa, Maharashtra, Rayalaseema, Sub Himalayan West Bengal & Sikkim, Tamil Nadu Puducherry & Karaikal and West Uttar Pradesh.
- ❖ **Thunderstorm accompanied with lightning & gusty winds(40-50kmph)** very likely at isolated places over Andhra Pradesh.
- ❖ **Thunderstorm accompanied with lightning & gusty winds(30-40kmph)** very likely at isolated places over Andaman & Nicobar Islands, Bihar, Interior Karnataka, Jharkhand, Odisha, Tamil Nadu Puducherry & Karaikal, Telangana and West Bengal & Sikkim.
- ❖ **Thunderstorm accompanied with Lightning** very likely at isolated places over Arunachal Pradesh, Assam & Meghalaya, Chhattisgarh, Himachal Pradesh, Konkan & Goa, Madhya Pradesh, Maharashtra, Nagaland, Manipur, Mizoram and Tripura, Uttar Pradesh and Uttarakhand.
- ❖ **Strong Surface Winds** very likely at isolated places over Andhra Pradesh.

Squally wind with speed reaching 45 kmph to 55 kmph gusting to 65 kmph is likely to prevail along and off Somalia and Oman coast, some parts of southwest & westcentral Arabian Sea.

Squally weather with wind speed reaching 40 - 50 kmph gusting to 60 kmph likely to prevail over along & off south Odisha, Andhra Pradesh coasts, westcentral adjoining northwest Bay of Bengal, Gulf of Mannar & adjoining Comorin area; along and off south Sri Lanka coast, over some parts of southwest Bay of Bengal.

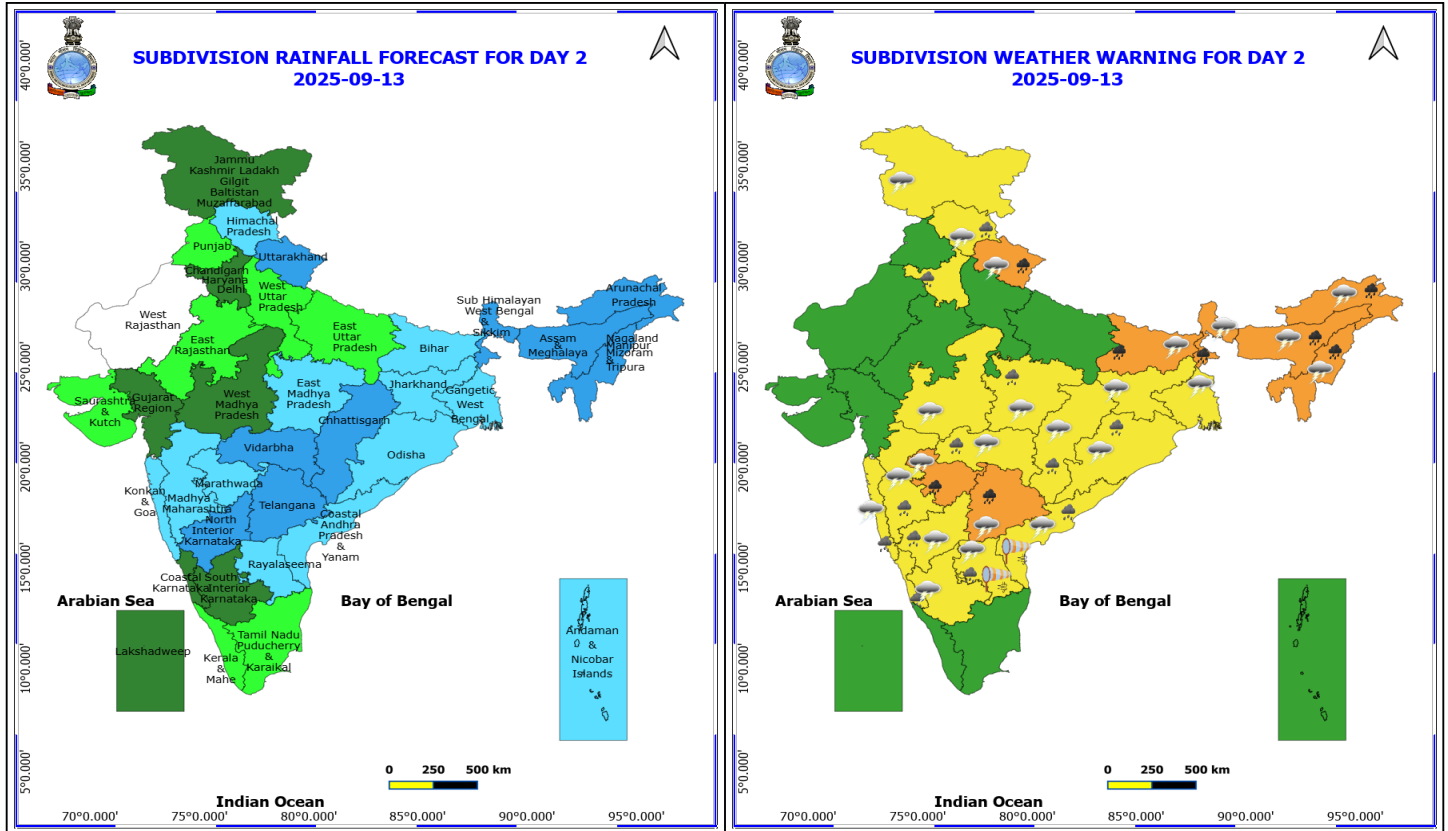
**\*Red color warning does not mean "Red Alert" Red color warning means "Take Action"**

Forecast and warning for any day is valid from 0830 hours IST of day till 0830 hours IST of next day

For more details kindly visit <https://mausam.imd.gov.in> or contact 011-2434-4599

(Service to the nation since 1875)





### 13 September (Day 2)

- ❖ **Heavy to Very Heavy Rainfall** very likely at isolated places over Arunachal Pradesh, Assam & Meghalaya, Bihar, Marathwada, Nagaland, Manipur, Mizoram and Tripura, Sub Himalayan West Bengal & Sikkim, Telangana and Uttarakhand.
- ❖ **Heavy Rainfall** very likely at isolated places over Andhra Pradesh, Chhattisgarh, Coastal Karnataka, East Madhya Pradesh, Haryana, Chandigarh & Delhi, Himachal Pradesh, Konkan & Goa, Madhya Maharashtra, North Interior Karnataka, Odisha and Vidarbha.
- ❖ **Thunderstorm accompanied with lightning & gusty winds(40-50kmph)** very likely at isolated places over Andhra Pradesh.
- ❖ **Thunderstorm accompanied with lightning & gusty winds(30-40kmph)** very likely at isolated places over Bihar, Interior Karnataka, Jammu-Kashmir-Ladakh-Gilgit-Baltistan-Muzaffarabad, Jharkhand, Odisha, Telangana and West Bengal & Sikkim.
- ❖ **Thunderstorm accompanied with Lightning** very likely at isolated places over Arunachal Pradesh, Assam & Meghalaya, Chhattisgarh, Himachal Pradesh, Konkan & Goa, Madhya Pradesh, Maharashtra, Nagaland, Manipur, Mizoram and Tripura and Uttarakhand.
- ❖ **Strong Surface Winds** very likely at isolated places over Andhra Pradesh.

Squally wind with speed reaching 45 kmph to 55 kmph gusting to 65 kmph is likely to prevail along and off Somalia coast, some parts of southwest & westcentral Arabian Sea.

Squally weather with wind speed reaching 40 - 50 kmph gusting to 60 kmph likely to prevail over along & off Andhra Pradesh off north Tamil Nadu coast, westcentral adjoining northwest Bay of Bengal, Gulf of Mannar & adjoining

**\*Red color warning does not mean "Red Alert" Red color warning means "Take Action"**

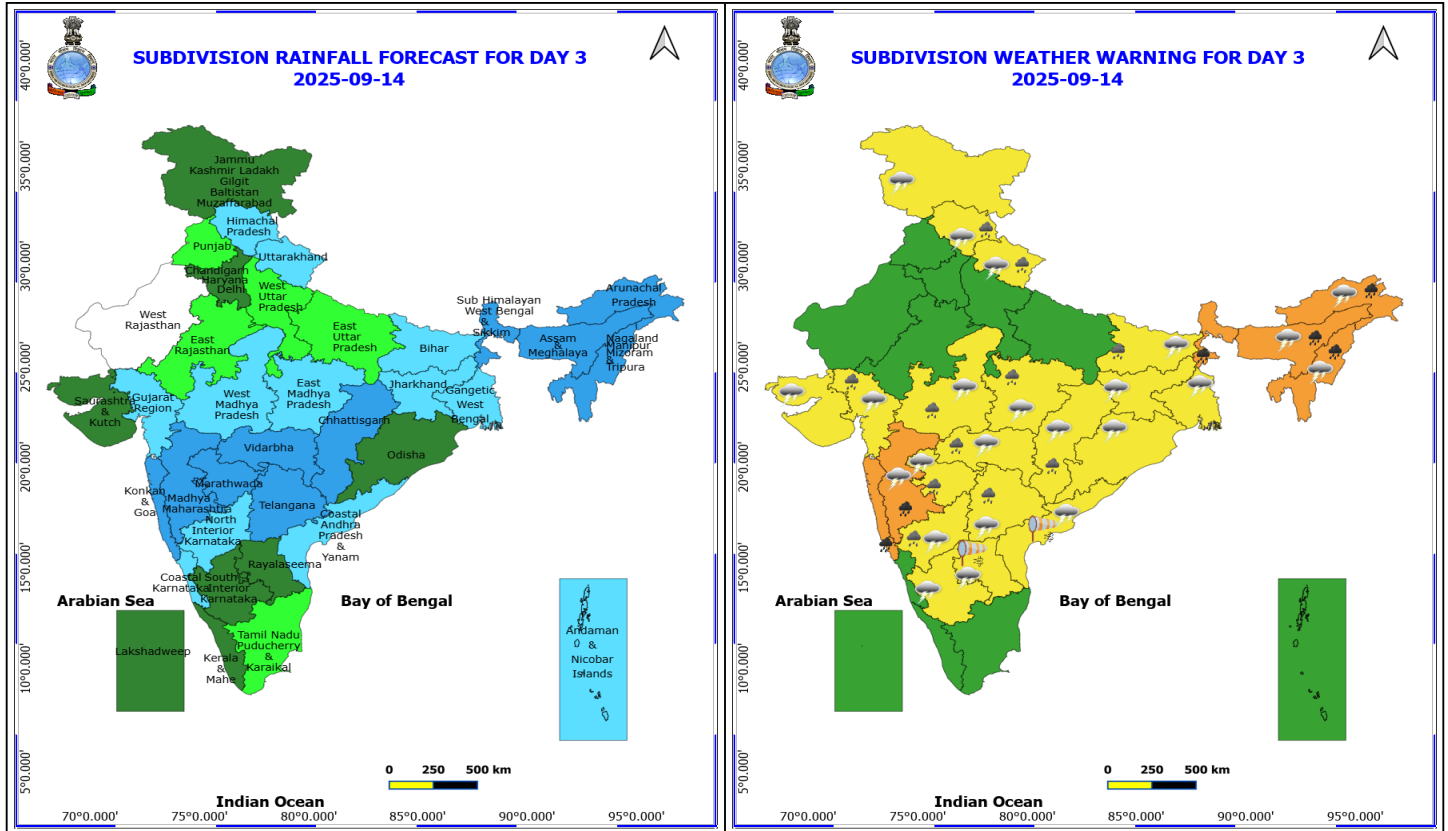
**Forecast and warning for any day is valid from 0830 hours IST of day till 0830 hours IST of next day**

**For more details kindly visit <https://mausam.imd.gov.in> or contact 011-2434-4599**

**(Service to the nation since 1875)**



Comorin area; along and off south Sri Lanka coast, over some parts of southwest Bay of Bengal.



#### 14 September (Day 3)

- ❖ **Heavy to Very Heavy Rainfall** very likely at isolated places over Arunachal Pradesh, Assam & Meghalaya, Konkan & Goa, Madhya Maharashtra, Nagaland, Manipur, Mizoram and Tripura and Sub Himalayan West Bengal & Sikkim.
- ❖ **Heavy Rainfall** very likely at isolated places over Bihar, Chhattisgarh, Gujarat Region, Himachal Pradesh, Madhya Pradesh, Marathwada, North Interior Karnataka, Telangana, Uttarakhand and Vidarbha.
- ❖ **Thunderstorm accompanied with lightning & gusty winds(30-40kmph)** very likely at isolated places over Andhra Pradesh, Bihar, Gangetic West Bengal, Gujarat Region, Interior Karnataka, Jammu-Kashmir-Ladakh-Gilgit-Baltistan-Muzaffarabad, Jharkhand, Odisha and Telangana.
- ❖ **Thunderstorm accompanied with Lightning** very likely at isolated places over Arunachal Pradesh, Assam & Meghalaya, Chhattisgarh, Himachal Pradesh, Madhya Pradesh, Maharashtra, Nagaland, Manipur, Mizoram and Tripura, Saurashtra & Kutch and Uttarakhand.
- ❖ **Strong Surface Winds** very likely at isolated places over Andhra Pradesh.

Squally wind with speed reaching 45 kmph to 55 kmph gusting to 65 kmph is likely to prevail along and off Somalia & Oman coast, some parts of southwest & westcentral Arabian Sea.

Squally weather with wind speed reaching 40 - 50 kmph gusting to 60 kmph likely to prevail over along & off Konkan & Goa coasts, Gulf of Mannar & adjoining Comorin area; along and off south Sri Lanka coast & adjoining some parts of southwest Bay of Bengal.

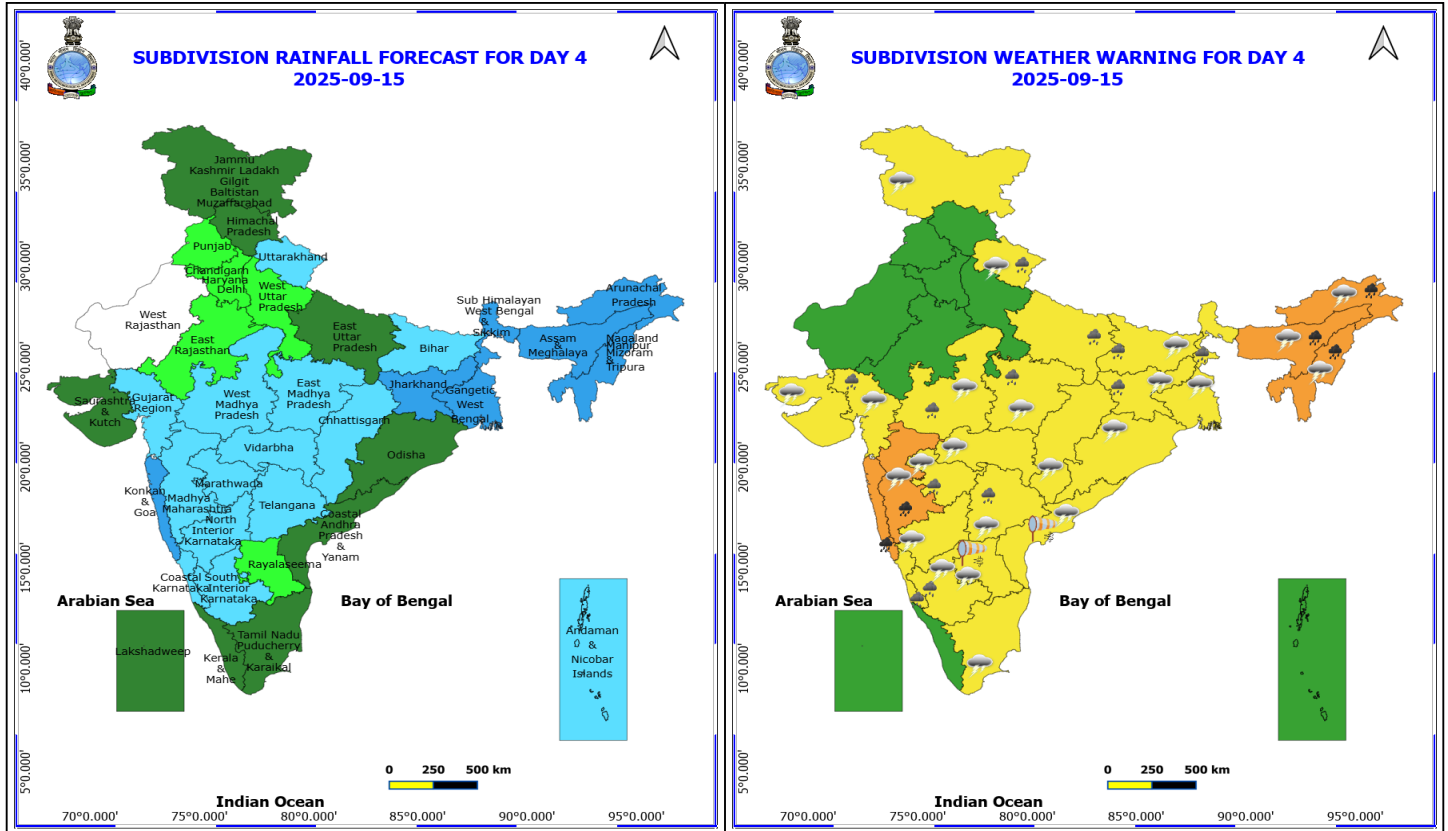
**\*Red color warning does not mean "Red Alert" Red color warning means "Take Action"**

Forecast and warning for any day is valid from 0830 hours IST of day till 0830 hours IST of next day

For more details kindly visit <https://mausam.imd.gov.in> or contact 011-2434-4599

(Service to the nation since 1875)





#### 15 September (Day 4)

- ❖ **Heavy to Very Heavy Rainfall** likely at isolated places over Arunachal Pradesh, Assam & Meghalaya, Konkan & Goa, Madhya Maharashtra and Nagaland, Manipur, Mizoram and Tripura.
- ❖ **Heavy Rainfall** likely at isolated places over Bihar, Coastal Karnataka, East Uttar Pradesh, Gujarat Region, Jharkhand, Madhya Pradesh, Marathwada, South Interior Karnataka, Sub Himalayan West Bengal & Sikkim, Telangana and Uttarakhand.
- ❖ **Thunderstorm accompanied with lightning & gusty winds(30-40kmph)** likely at isolated places over Andhra Pradesh, Bihar, Gangetic West Bengal, Gujarat Region, Interior Karnataka, Jammu-Kashmir-Ladakh-Gilgit-Baltistan-Muzaffarabad, Jharkhand, Odisha, Tamil Nadu Puducherry & Karaikal and Telangana.
- ❖ **Thunderstorm accompanied with Lightning** likely at isolated places over Arunachal Pradesh, Assam & Meghalaya, Chhattisgarh, Madhya Pradesh, Maharashtra, Nagaland, Manipur, Mizoram and Tripura, Saurashtra & Kutch and Uttarakhand.
- ❖ **Strong Surface Winds** likely at isolated places over Andhra Pradesh.

Squally wind with speed reaching 45 kmph to 55 kmph gusting to 65 kmph is likely to prevail along and off Somalia coast, some parts of southwest adjoining westcentral Arabian Sea.

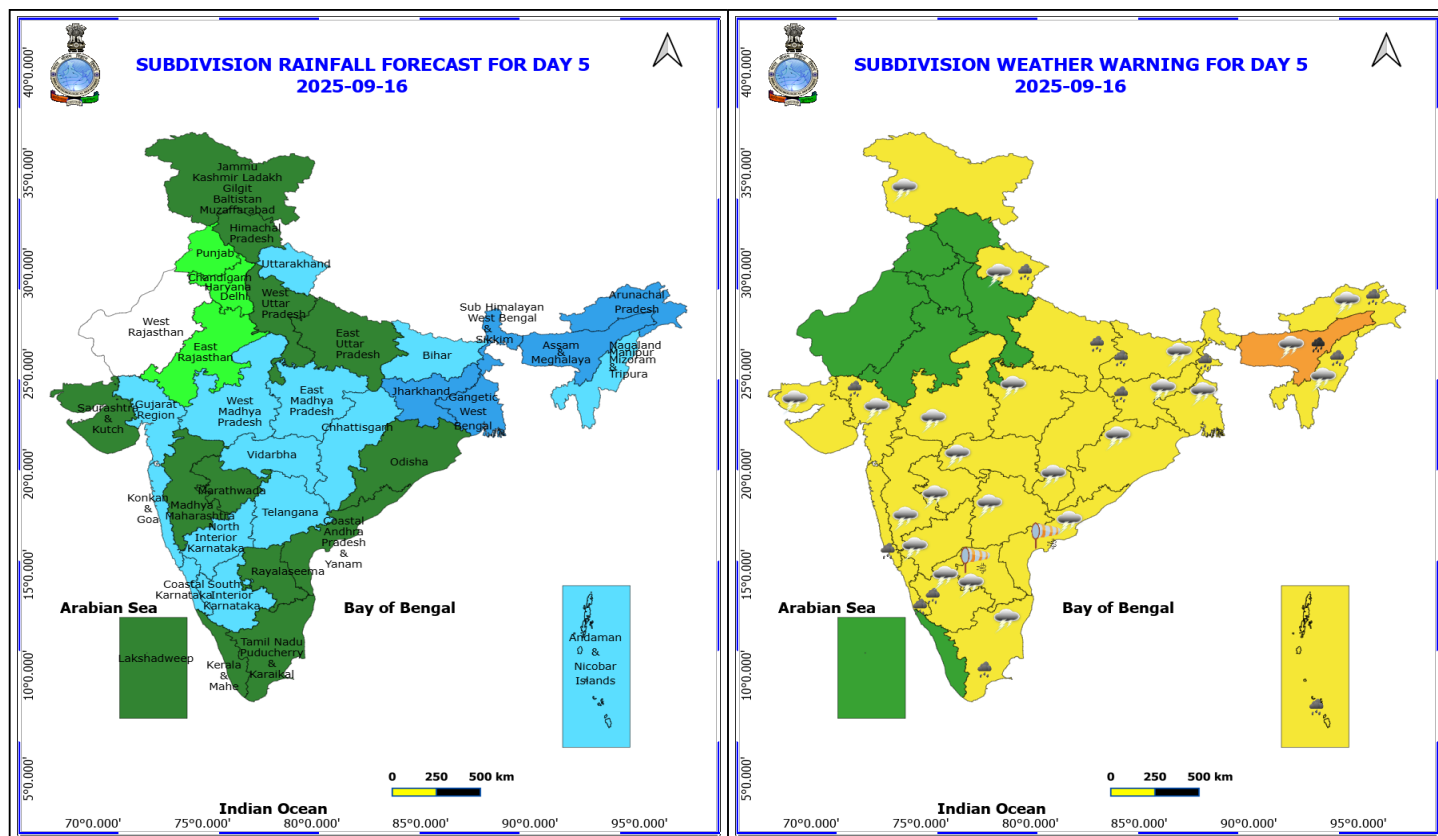
Squally weather with wind speed reaching 45 - 55 kmph gusting to 65 kmph likely to prevail along & off Konkan & Goa coasts, over few parts of east central Arabian sea.

**\*Red color warning does not mean "Red Alert" Red color warning means "Take Action"**

Forecast and warning for any day is valid from 0830 hours IST of day till 0830 hours IST of next day

For more details kindly visit <https://mausam.imd.gov.in> or contact 011-2434-4599

(Service to the nation since 1875)



## 16 September (Day 5)

- ❖ **Heavy to Very Heavy Rainfall** likely at isolated places over Assam & Meghalaya.
- ❖ **Heavy Rainfall** likely at isolated places over Andaman & Nicobar Islands, Arunachal Pradesh, Bihar, Coastal Karnataka, East Uttar Pradesh, Gujarat Region, Jharkhand, Konkan & Goa, Nagaland, Manipur, Mizoram and Tripura, South Interior Karnataka, Sub Himalayan West Bengal & Sikkim, Tamil Nadu Puducherry & Karaikal and Uttarakhand.
- ❖ **Thunderstorm accompanied with lightning & gusty winds(30-40kmph)** likely at isolated places over Andhra Pradesh, Bihar, Gangetic West Bengal, Gujarat Region, Interior Karnataka, Jammu-Kashmir-Ladakh-Gilgit-Baltistan-Muzaffarabad, Jharkhand, Odisha, Tamil Nadu Puducherry & Karaikal and Telangana.
- ❖ **Thunderstorm accompanied with Lightning** likely at isolated places over Arunachal Pradesh, Assam & Meghalaya, Chhattisgarh, Madhya Pradesh, Maharashtra, Nagaland, Manipur, Mizoram and Tripura, Saurashtra & Kutch and Uttarakhand.
- ❖ **Strong Surface Winds** likely at isolated places over Andhra Pradesh.

Squally wind with speed reaching 45 kmph to 55 kmph gusting to 65 kmph is likely to prevail along and off Somalia coast, some parts of southwest adjoining westcentral Arabian Sea.

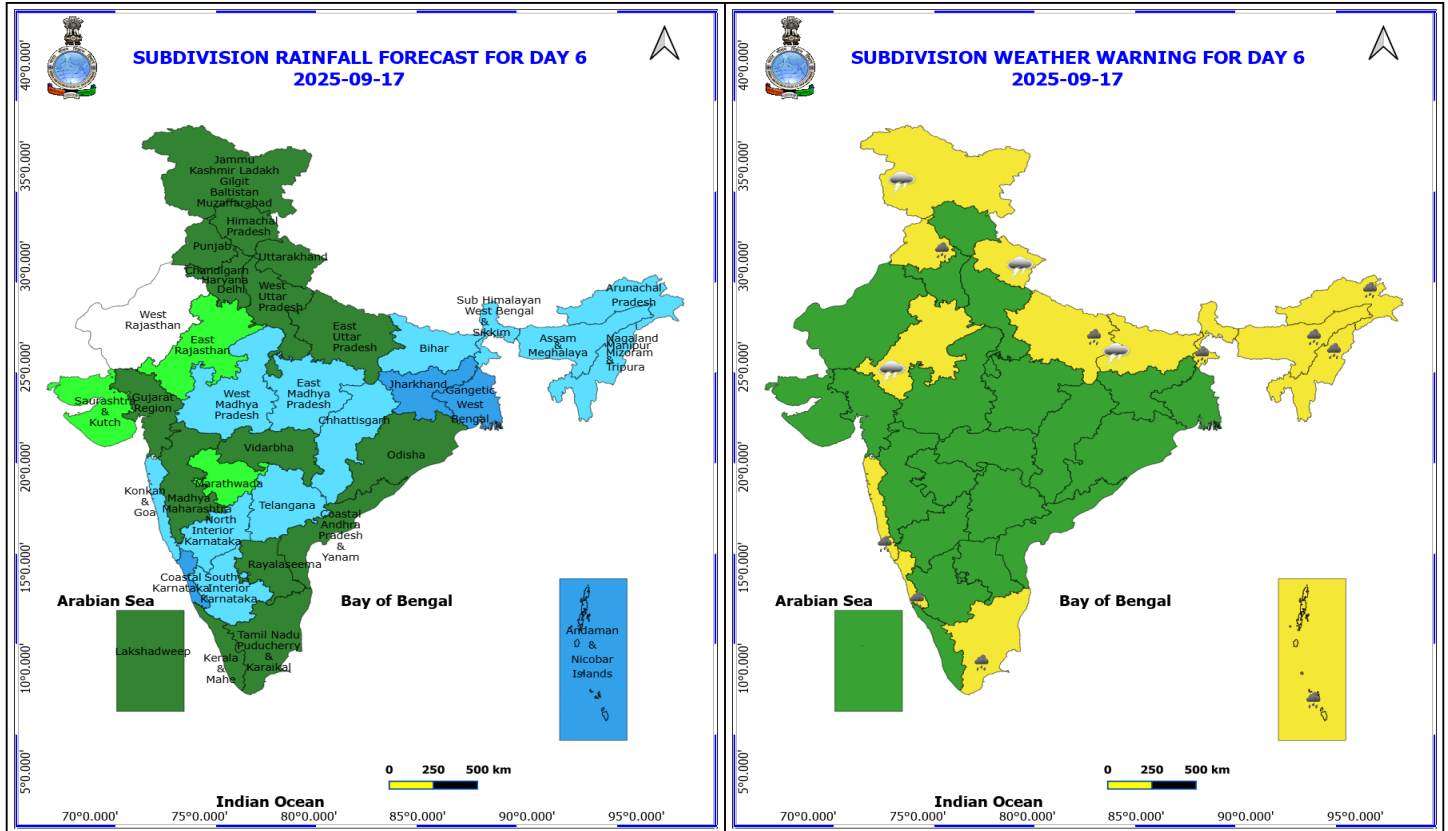
Squally weather with wind speed reaching 45 - 55 kmph gusting to 65 kmph likely to prevail over Gulf of Mannar adjoining Commorin area and along & off south Sri Lanka, adjoining few parts of southwest Bay of Bengal.

**\*Red color warning does not mean "Red Alert" Red color warning means "Take Action"**

Forecast and warning for any day is valid from 0830 hours IST of day till 0830 hours IST of next day

For more details kindly visit <https://mausam.imd.gov.in> or contact 011-2434-4599

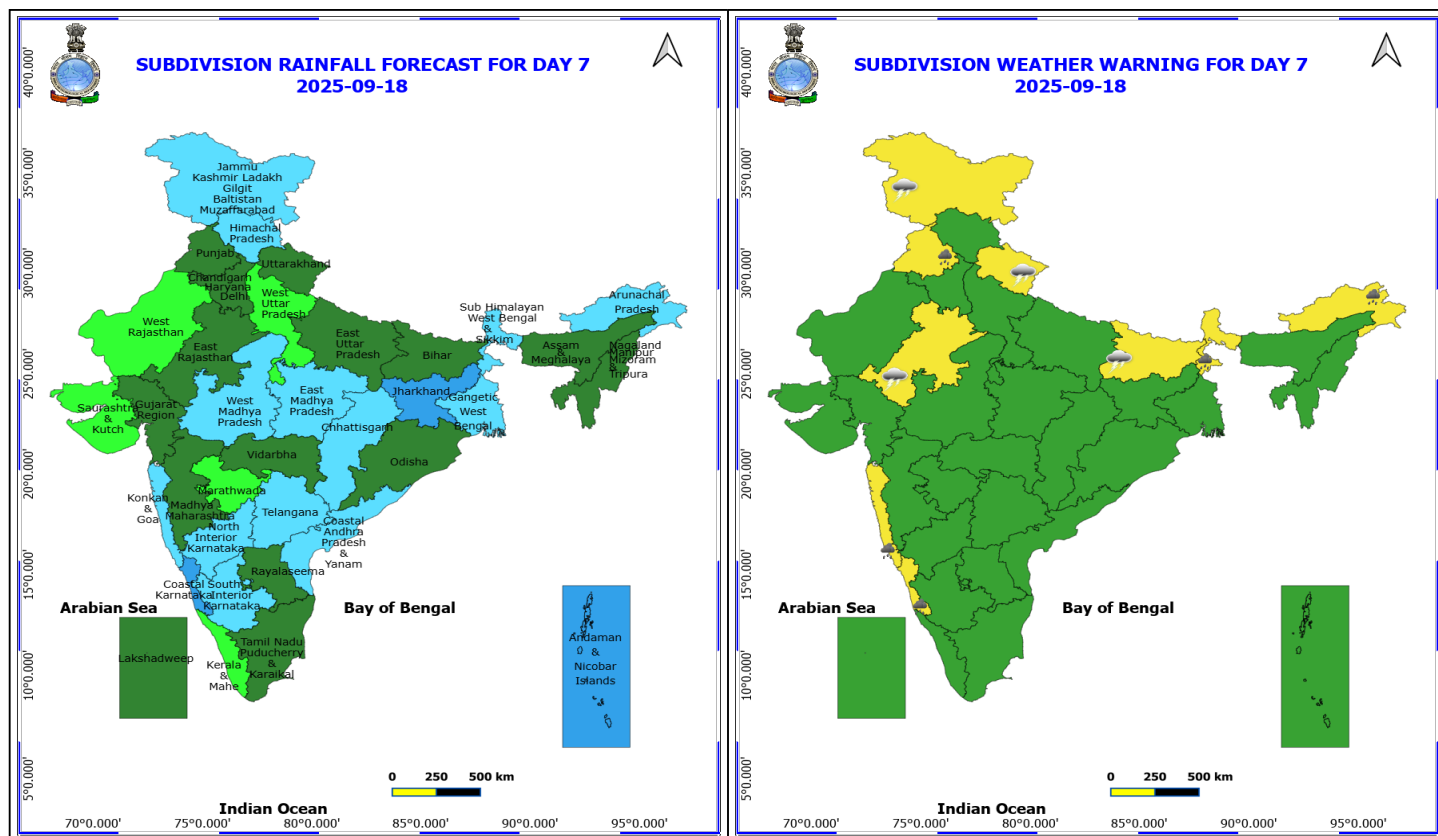
(Service to the nation since 1875)



### 17 September (Day 6)

- ❖ **Heavy Rainfall** likely at isolated places over Andaman & Nicobar Islands, Arunachal Pradesh, Assam & Meghalaya, Coastal Karnataka, East Uttar Pradesh, Konkan & Goa, Nagaland, Manipur, Mizoram and Tripura, Punjab, Sub Himalayan West Bengal & Sikkim and Tamil Nadu Puducherry & Karaikal.
- ❖ **Thunderstorm accompanied with lightning & gusty winds(30-40kmph)** likely at isolated places over Bihar and Jammu-Kashmir-Ladakh-Gilgit-Baltistan-Muzaffarabad.
- ❖ **Thunderstorm accompanied with Lightning** likely at isolated places over East Rajasthan and Uttarakhand.

**No Fishermen Warning**



## 18 September (Day 7)

- ❖ **Heavy Rainfall** likely at isolated places over Arunachal Pradesh, Coastal Karnataka, Konkan & Goa, Punjab and Sub Himalayan West Bengal & Sikkim.
- ❖ **Thunderstorm accompanied with lightning & gusty winds(30-40kmph)** likely at isolated places over Bihar and Jammu-Kashmir-Ladakh-Gilgit-Baltistan-Muzaffarabad.
- ❖ **Thunderstorm accompanied with Lightning** likely at isolated places over East Rajasthan and Uttarakhand.

**No Fishermen Warning**

**\*Red color warning does not mean "Red Alert" Red color warning means "Take Action"**

Forecast and warning for any day is valid from 0830 hours IST of day till 0830 hours IST of next day

For more details kindly visit <https://mausam.imd.gov.in> or contact 011-2434-4599

(Service to the nation since 1875)



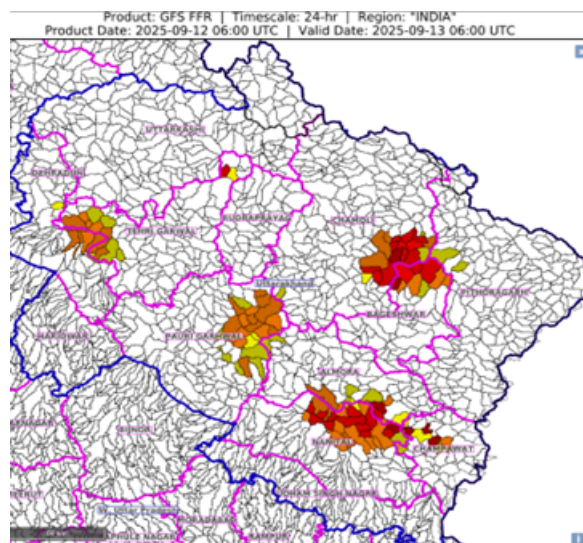
## Flash Flood Warnings

### 24 hours Outlook for the Flash Flood Risk (FFR) till 1130 IST of 13-09-2025:

**Low to Moderate flash flood risk** likely over few watersheds & neighbourhoods of following Met Sub-divisions during next 24 hours.

**Uttarakhand** - Almora, Bageshwar, Chamoli, Champawat, Dehradun, Nanital, Pauri Garhwal, Pithoragarh and Tehri Garwal districts.

Surface runoff/ Inundation may occur at some fully saturated soils & low-lying areas over Area of Concern (AoC) as shown in map due to expected rainfall occurrence in next 24 hours.



### 24 hours Outlook for the Flash Flood Risk (FFR) till 1130 IST of 13-09-2025:

Low to Moderate flash flood risk likely over few watersheds & neighbourhoods of following Met Sub-divisions during next 24 hours.

**Assam & Meghalaya** - Cachar, Karbi Analog, N.C Hills, East Khasi Hills, Ri Bhoi, West Khasi Hills and Jaintia Hills districts.

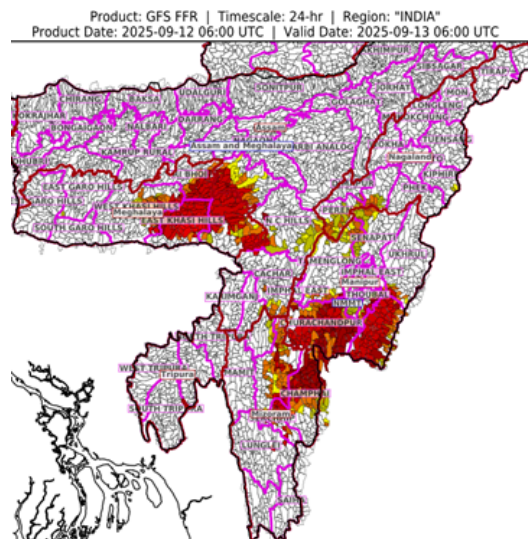
**Nagaland Mizoram Manipur Tripura (NMMT) –**

**Manipur:** Bishnupur, Chandel, Churachandpur, Senapati, Tamenglong, Thoubal and Ukhrul districts

**Mizoram:** Aizawl, Champhai, Kolasib and Lunglei districts

**Nagaland:** Dimapur, Kohima and Peren districts

Surface runoff/ Inundation may occur at some fully saturated soils & low-lying areas over Area of Concern (AoC) as shown in map due



\*Red color warning does not mean "Red Alert" Red color warning means "Take Action"

Forecast and warning for any day is valid from 0830 hours IST of day till 0830 hours IST of next day

For more details kindly visit <https://mausam.imd.gov.in> or contact 011-2434-4599

(Service to the nation since 1875)





# Table-1

## 7 Days Rainfall Forecast

S.No.	Subdivision	12-Sep	13-Sep	14-Sep	15-Sep	16-Sep	17-Sep	18-Sep
		Day 1	Day 2	Day 3	Day 4	Day 5	Day 6	Day 7
1	ANDAMAN & NICOBAR ISLANDS	FWS	FWS	FWS	FWS	FWS	WS	WS
2	ARUNACHAL PRADESH	FWS	WS	WS	WS	WS	FWS	FWS
3	ASSAM & MEHGHALAYA	WS	WS	WS	WS	WS	FWS	SCT
4	N. M. M. & T.	WS	WS	WS	WS	FWS	FWS	SCT
5	S.H. WEST BENGAL & SIKKIM	WS	WS	WS	WS	WS	FWS	FWS
6	GANGETIC WEST BENGAL	FWS	FWS	FWS	WS	WS	WS	FWS
7	ODISHA	WS	FWS	SCT	SCT	SCT	SCT	SCT
8	JHARKHAND	FWS	FWS	FWS	WS	WS	WS	WS
9	BIHAR	SCT	FWS	FWS	FWS	FWS	FWS	SCT
10	EAST UTTAR PRADESH	ISOL	ISOL	ISOL	SCT	SCT	SCT	SCT
11	WEST UTTAR PRADESH	ISOL	ISOL	ISOL	ISOL	SCT	SCT	ISOL
12	UTTARAKHAND	WS	WS	FWS	FWS	FWS	SCT	SCT
13	HARYANA, CHD & DELHI	ISOL	SCT	SCT	ISOL	ISOL	SCT	SCT
14	PUNJAB	ISOL	ISOL	ISOL	ISOL	ISOL	SCT	SCT
15	HIMACHAL PRADESH	SCT	FWS	FWS	SCT	SCT	SCT	FWS
16	JAMMU AND KASHMIR AND LADAKH	ISOL	SCT	SCT	SCT	SCT	SCT	FWS
17	WEST RAJASTHAN	DRY	DRY	DRY	DRY	DRY	DRY	ISOL
18	EAST RAJASTHAN	DRY	ISOL	ISOL	ISOL	ISOL	ISOL	SCT
19	WEST MADHYA PRADESH	SCT	SCT	FWS	FWS	FWS	FWS	FWS
20	EAST MADHYA PRADESH	SCT	FWS	FWS	FWS	FWS	FWS	FWS
21	GUJRAT REGION	ISOL	SCT	FWS	FWS	FWS	SCT	SCT
22	SAURASHTRA & KUTCH	ISOL	ISOL	SCT	SCT	SCT	ISOL	ISOL
23	KONKAN & GOA	SCT	FWS	WS	WS	FWS	FWS	FWS
24	MADHYA MAHARASHTRA	SCT	FWS	WS	FWS	SCT	SCT	SCT
25	MARATHWADA	SCT	FWS	WS	FWS	SCT	ISOL	ISOL
26	VIDARBHA	WS	WS	WS	FWS	FWS	SCT	SCT
27	CHATTISGARH	WS	WS	WS	FWS	FWS	FWS	FWS
28	COASTAL ANDHRA PRADESH	WS	FWS	FWS	SCT	SCT	SCT	FWS
29	TELANGANA	WS	WS	WS	FWS	FWS	FWS	FWS
30	RAYALASEEMA	FWS	FWS	SCT	ISOL	SCT	SCT	SCT
31	TAMILNADU & PUDUCHERRY	ISOL	ISOL	ISOL	SCT	SCT	SCT	SCT
32	COSTAL KARNATAKA	SCT	SCT	FWS	FWS	FWS	WS	WS
33	NORTH INTERIOR KARNATAKA	FWS	WS	FWS	FWS	FWS	FWS	FWS
34	SOUTH INTERIOR KARNATAKA	FWS	SCT	SCT	FWS	FWS	FWS	FWS
35	KERALA	ISOL	ISOL	SCT	SCT	SCT	SCT	ISOL
36	LAKSHDWEEP	SCT	SCT	SCT	SCT	SCT	SCT	SCT

Legend	Category	%Stations
WS	Widespread/Most Places	76-100
FWS	Fairly Widespread/Many Places	51-75
SCT	Scattered/ A Few Places	26-50
ISOL	Isolated Places	1-25
DRY	No Rain	0

\*Red color warning does not mean "Red Alert" Red color warning means "Take Action"

Forecast and warning for any day is valid from 0830 hours IST of day till 0830 hours IST of next day

For more details kindly visit <https://mausam.imd.gov.in> or contact 011-2434-4599

(Service to the nation since 1875)

Fig. 1: Maximum Temperatures Dated 2025-09-12

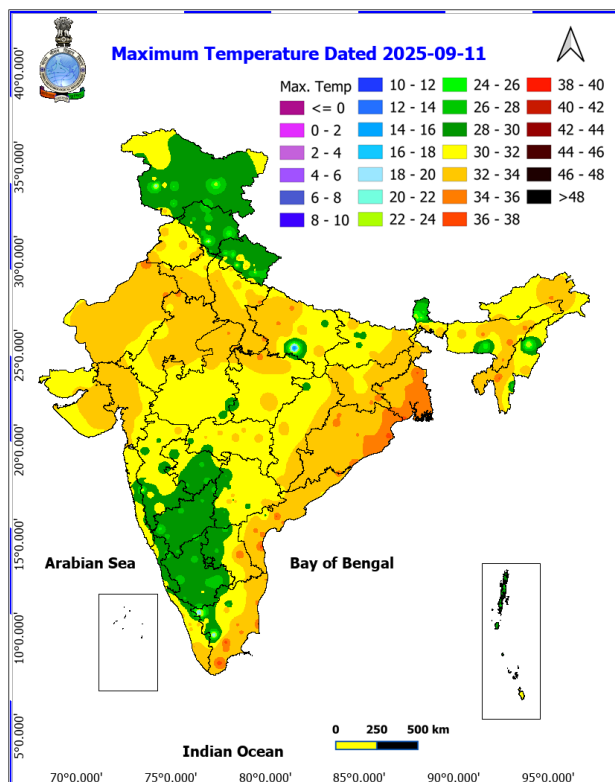


Fig. 2: Departure of Maximum Temp. Dated 2025-09-12

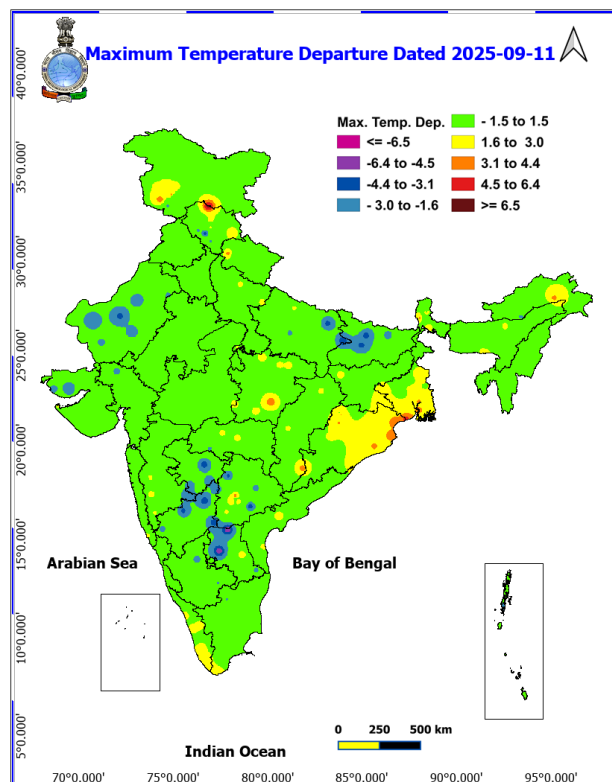


Fig. 3: Minimum Temperatures Dated 2025-09-12

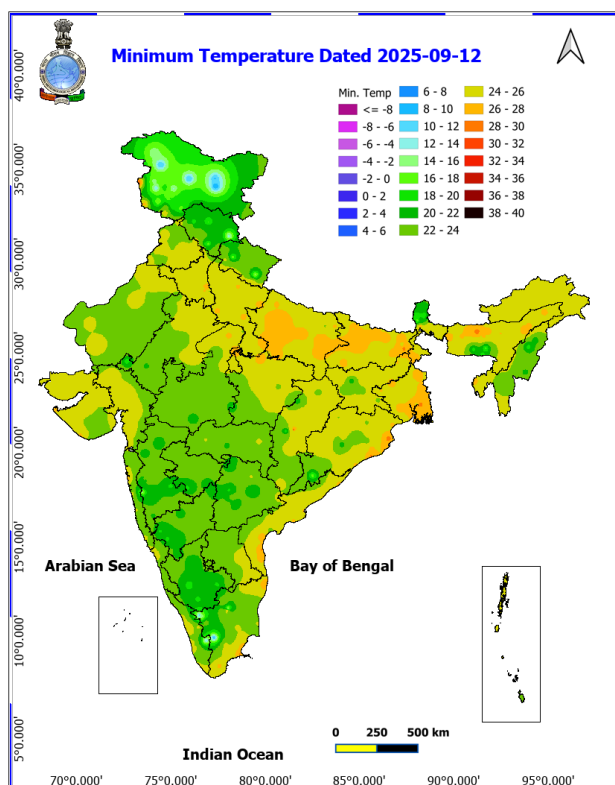
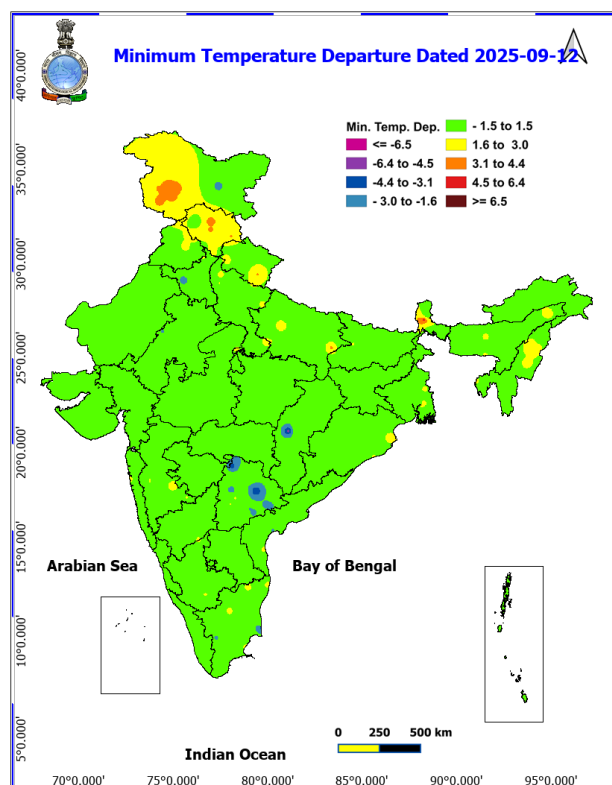
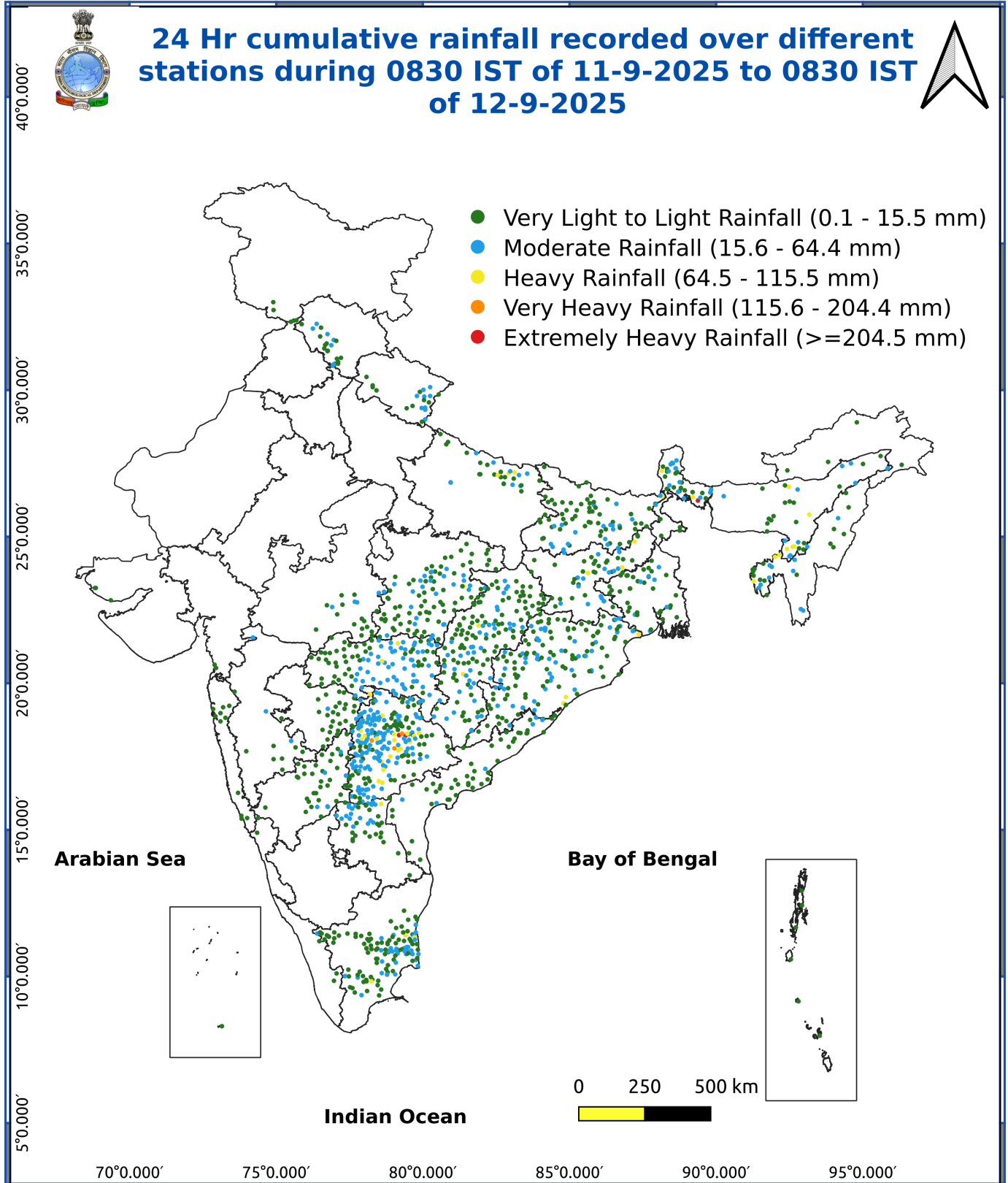


Fig. 4: Departure of Minimum Temp. Dated 2025-09-12





\*Red color warning does not mean "Red Alert" Red color warning means "Take Action"

Forecast and warning for any day is valid from 0830 hours IST of day till 0830 hours IST of next day

For more details kindly visit <https://mausam.imd.gov.in> or contact 011-2434-4599

(Service to the nation since 1875)

### Impact & Action Suggested due to

**Heavy to very heavy rainfall (12-20 cm)** at isolated places over Odisha, Coastal Andhra Pradesh & Yanam on 12<sup>th</sup>; Uttarakhand, Telangana on 12<sup>th</sup> & 13<sup>th</sup>; Assam & Meghalaya during 12<sup>th</sup>-16<sup>th</sup>; Nagaland, Manipur, Mizoram & Tripura during 12<sup>th</sup>-15<sup>th</sup>; Arunachal Pradesh during 13<sup>th</sup> -15<sup>th</sup>; Bihar, Marathwada on 13<sup>th</sup>; Sub-Himalayan West Bengal & Sikkim on 13<sup>th</sup> & 14<sup>th</sup>; Konkan & Goa and Madhya Maharashtra on 14<sup>th</sup> & 15<sup>th</sup> September.

### Impact Expected

Localized Flooding of roads, water logging in low lying areas and closure of underpasses mainly in urban areas of the above region.

Occasional reduction in visibility due to heavy rainfall.

Disruption of traffic in major cities due to water logging in roads leading to increased travel time.

Minor damage to kutcha roads.

Possibilities of damage to vulnerable structure.

Localized Landslides/Mudslides/landslips/mudslips/landsinks/mudsinks.

Damage to horticulture and standing crops in some areas due to inundation.

It may lead to riverine flooding in some river catchments (for riverine flooding please visit Web page of CWC)

### Action Suggested

Check for traffic congestion on your route before leaving for your destination.

Follow any traffic advisories that are issued in this regard.

Avoid going to areas that face the water logging problems often.

Avoid staying in vulnerable structure.

### Agromet advisories for various parts of the country

#### Agromet advisories for likely impact of Heavy / Heavy to Very Heavy Rainfall

(Based on the IBF and advisories issued by different AMFUs)

In **Uttarakhand**, maintain proper drainage channels in sugarcane, black gram, green gram, soybean and maize fields in **Bhabar and Tarai Zone**; green gram, barnyard millet and finger millet in **Sub Humid Sub Tropic Zone**. In **Hill zone**, ensure proper drainage in finger millets, horse gram, and red gram in **Hill Zone** and Keep the harvested produce of crops and vegetables at safer places.

\*Red color warning does not mean "Red Alert" Red color warning means "Take Action"

Forecast and warning for any day is valid from 0830 hours IST of day till 0830 hours IST of next day

For more details kindly visit <https://mausam.imd.gov.in> or contact 011-2434-4599

(Service to the nation since 1875)

In **Arunachal Pradesh**, immediately harvest matured crops of *Jhum* rice, finger millet, soybean and matured bunches of banana and shift to properly covered shelter. Maintain proper drainage in standing crops like rice, soybean, finger millet and vegetables to avoid water stagnation.

In **Assam**: In **Lower Brahmaputra Valley Zone**, ensure proper drainage system in *Sali* rice fields and nursery bed of vegetables. Cover the nursery bed with thin polythin to avoid the damages due to heavy rainfall. In **Barak Valley Zone**, postpone the sowing of green gram and black gram and provide adequate drainage facilities in fields of rice, vegetables and already sown green gram and black gram.

In **Meghalaya**, maintain proper drainage in ginger and vegetable fields and fruit orchards. Provide support to banana plants to prevent lodging. Maintain a thin layer of 2-3 cm stagnant water in rice fields after transplanting.

In **Nagaland**, undertake harvesting of matured *Jhum* rice, pods of sesame and Naga King chilli and store the harvested produce in safe places. Maintain 3-5cm stagnate water in rice fields.

In **Mizoram**, undertake harvesting of matured cobs of maize.

In **Manipur**, harvest matured cobs of maize, matured pods of soybean and groundnut and matured grains of finger millet.

In **Sub-Himalayan West Bengal**, make provision to drain out excess water from *aman* paddy and vegetable fields (chilli, bitter gourd, pointed gourd, okra, brinjal etc.) in **Terai Zone** and in the fields of black gram, finger millet, ginger, dalley khorsani, vegetables and fruit orchards in **Hill Zone**.

In **Bihar**, ensure proper drainage to remove excess rainwater from standing crops such as maize, pearl millet and vegetables in **North East Alluvial Zone**.

In **Odisha**, make arrangements for draining out excess water from the field of pulses (pigeon pea, black gram, green gram), maize, groundnut, vegetables (tomato, brinjal, okra, chilli) and banana in **Koraput** and **Malkangiri districts**.

In **Chhattisgarh**, make arrangements to drain out excess water from the fields of rice, minor millets, kharif maize, pulses and oilseed crops in **Bastar Plateau Zone**.

In **Maharashtra**, immediately harvest matured green gram and black gram in **Madhya Maharashtra** and **Marathwada** and matured green gram in **West Vidarbha** and keep the harvested produce at safer places. Make arrangements to drain out excess water from fields of rice, soybean, cotton, vegetables and fruit orchards in **Madhya Maharashtra** and cotton, pigeon pea, soybean, sugarcane, vegetables and fruit orchards in **Marathwada**.

In **Andhra Pradesh**, make arrangements to drain out excess water from fields of rice, finger millet, pigeon pea, sugarcane, coconut and vegetables in **North Coastal Zone** and rice, cotton, groundnut, green gram, black gram, maize and vegetable fields in **High Altitude Tribal Zone**.

In **Telangana**, drain out excess water from fields of rice, cotton, maize, soybean, pigeon pea, turmeric and vegetables in **Northern Telangana Zone** and rice, cotton, soybean, maize and pigeon pea in **Southern Telangana Zone**.

### Livestock / Fishery

Keep the animals inside the shed during heavy rainfall and provide them balanced feed.

Store feed and fodder in a safe place to prevent spoilage.

Construct an outlet with proper netting around the ponds to drain out excess water, thereby preventing fish from escaping in case of overflow.





**Agromet advisories for likely impact of Thunderstorm / Gusty Winds / Squally Winds**

**(Based on the IBF and advisories issued by different AMFUs)**

Provide mechanical support to horticultural crops and staking or support to vegetables and young fruit plants / fruit-bearing plants to avoid lodging due to strong winds.

## LEGENDS

- 1 अंडमान और निकोबार द्वीप समुह
- 2 अरुणाचल प्रदेश
- 3 असम और मेघालय
- 4 नागालैंड मनीपुर मीजोरम और त्रिपुरा
- 5 उप हिमालय पश्चिम बंगाल एवं सिक्किम
- 6 पश्चिम बंगाल
- 7 ओडिसा
- 8 झारखंड
- 9 बिहार
- 10 पूर्वी उत्तर प्रदेश
- 11 पश्चिम उत्तर प्रदेश
- 12 उत्तराखंड
- 13 हरियाणा चंडीगढ़ एवं दिल्ली
- 14 पंजाब
- 15 हिमाचल प्रदेश
- 16 जम्मू एवं कश्मीर एवं लद्दाख
- 17 पश्चिम राजस्थान
- 18 पूर्वी राजस्थान
- 19 पश्चिम मध्य प्रदेश
- 20 पूर्वी मध्य प्रदेश
- 21 गुजरात क्षेत्र
- 22 सौराष्ट्र एवं कच्छ
- 23 कोंकण एवं गोवा
- 24 मध्य महाराष्ट्र
- 25 मराठावाड़ा
- 26 विदर्भ
- 27 छत्तीसगढ़
- 28 तटीय आंध्र प्रदेश एवं यनम
- 29 तेलंगाना
- 30 रायलसीमा
- 31 तमिलनाडु, पुदुचेरी एवं कराईकल
- 32 तटिय कर्नाटक
- 33 आंतरिक उत्तरी कर्नाटक
- 34 आंतरिक दक्षिणी कर्नाटक
- 35 केरल एवं माहे
- 36 लक्षद्वीप



1. Andaman & Nicobar Islands
2. Arunachal Pradesh
3. Assam & Meghalaya
4. Nagaland, Manipur, Mizoram & Tripura
5. Sub-Himalayan West Bengal & Sikkim
6. Gangetic West Bengal
7. Orissa
8. Jharkhand
9. Bihar
10. East Uttar Pradesh
11. West Uttar Pradesh
12. Uttarakhand
13. Haryana, Chd & Delhi
14. Punjab
15. Himachal Pradesh
16. Jammu & Kashmir and Ladakh
17. West Rajasthan
18. East Rajasthan
19. West Madhya Pradesh
20. East Madhya Pradesh
21. Gujarat
22. Saurashtra
23. Konkan & Goa
24. Madhya Maharashtra
25. Marathwada
26. Vidharbha
27. Chhattisgarh
28. Coastal Andhra Pradesh & Yanam
29. Telangana
30. Rayalaseema
31. Tamilnadu, Puducherry & Karaikal
32. Coastal Karnataka
33. North Interior Karnataka
34. South Interior Karnataka
35. Kerala & Mahe
36. Lakshadweep

## SPATIAL DISTRIBUTION (% of Stations reporting)


% Stations	Category	% Stations	Category
76-100	Widespread (WS/Most Places)	26-50	Scattered (SCT/ A Few Places)
51-75	Fairly Widespread (FWS/ Many Places)	1-25	Isolated (ISOL)


### Subdivision Colour


- NO WARNING
- WATCH (BE UPDATED)
- ALERT (BE PREPARED TO TAKE ACTION)
- WARNING (TAKE ACTION)

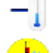
### Probabilistic Forecast


Terms	Probability of Occurrence (%)
Unlikely	< 25
Likely	25 - 50
Very Likely	50 - 75
Most Likely	> 75


-  Heavy Rain


 Thunderstorm & Lightning


 Strong surface winds


 Cold Wave


 Hot & Humid


 Very Heavy Rain


 Hailstorm


 Heat Wave


 Cold Day


 Extremely Heavy Rain


 Dust Storm


 Hot Day

 Ground Frost

 Heavy Snow

 Dust Raising Winds

 Warm Night

 Fog

\*Red color warning does not mean "Red Alert" Red color warning means "Take Action"

Forecast and warning for any day is valid from 0830 hours IST of day till 0830 hours IST of next day

For more details kindly visit <https://mausam.imd.gov.in> or contact 011-2434-4599

(Service to the nation since 1875)

## LEGENDS

### WARNING

<b>WARNING (TAKE ACTION)</b>
<b>ALERT (BE PREPARED)</b>
<b>WATCH (BE UPDATED)</b>
<b>NO WARNING (NO ACTION)</b>

### Probabilistic Forecast

Terms	Probability of Occurrence (%)
Unlikely	< 25
Likely	25 - 50
Very Likely	50 - 75
Most Likely	> 75



Heavy: 64.5 to 115.5 mm/cm \*  
Very Heavy: 115.6 to 204.4 mm/cm \*  
Extremely Heavy: > 204.4 mm/cm \*



When maximum temperature of a station reaches  $\geq 40^{\circ}\text{C}$  for plains and  $\geq 30^{\circ}\text{C}$  for hilly regions  
(a) Based on Departure from normal

Heat Wave: Maximum Temperature Departure from normal  $4.5^{\circ}\text{C}$  to  $6.4^{\circ}\text{C}$ .  
Severe Heat Wave: Maximum Temperature Departure from normal  $\geq 6.5^{\circ}\text{C}$

(b). Based on Actual maximum temperature

Heat Wave: When actual maximum temperature  $\geq 45^{\circ}\text{C}$ .  
Severe Heat Wave: When actual maximum temperature  $\geq 47^{\circ}\text{C}$

(c). Criteria for heat wave for coastal stations

When maximum temperature departure is  $> 4.5^{\circ}\text{C}$  from normal. Heat Wave may be described provided maximum temperature  $\geq 37^{\circ}\text{C}$



When maximum temperature remains  $40^{\circ}\text{C}$

Warm Night: When minimum temperature departure  $4.5^{\circ}\text{C}$  to  $6.4^{\circ}\text{C}$ .  
Severe Warm Night: When minimum temperature departure  $> 6.4^{\circ}\text{C}$ .



When minimum temperature of a station  $\leq 10^{\circ}\text{C}$  for plains and  $\leq 0^{\circ}\text{C}$  for hilly regions.

(a). Based on departure

Cold Wave: Minimum Temperature Departure from normal  $-4.5^{\circ}\text{C}$  to  $-6.4^{\circ}\text{C}$ .  
Severe Cold Wave: Minimum Temperature Departure from normal  $\leq -6.5^{\circ}\text{C}$

(b) Based on actual Minimum Temperature (for Plains only)

Cold Wave: When Minimum Temperature is  $\leq 4.0^{\circ}\text{C}$   
Severe Cold Wave: When Minimum Temperature is  $\leq 2.0^{\circ}\text{C}$

(c) For Coastal Stations

When Minimum Temperature departure is  $\leq -4.5^{\circ}\text{C}$  & actual Minimum Temperature is  $\leq 15^{\circ}\text{C}$



When minimum temperature of a station  $\leq 10^{\circ}\text{C}$  for plains and  $\leq 0^{\circ}\text{C}$  for hilly regions  
Based on departure

Cold Day: Maximum Temperature Departure from normal  $-4.5^{\circ}\text{C}$  to  $-6.4^{\circ}\text{C}$ .  
Severe Cold Day: Maximum Temperature Departure from normal  $\leq -6.5^{\circ}\text{C}$



Phenomenon of small droplets suspended in air and the horizontal visibility  $< 1\text{km}$

Moderate Fog: When the visibility between 500-200 metres  
Dense Fog: when the visibility between 50-200 metres  
Very Dense Fog: when the visibility  $< 50$  metres



Sudden electrical discharges manifested by a flash of light (Lightning) and a sharp rumbling sound (thunder)



An ensemble of particles of dust or sand energetically lifted to great heights by a strong and turbulent wind.



Ice deposits on ground

Air temperature  $\leq 4^{\circ}\text{C}$  (over Plains)



A strong wind that rises suddenly, lasts for at least 1 minute.

Moderate: Wind speed 52-61 kmph  
Severe: Wind speed 62-87 kmph  
Very Severe: Wind speed  $> 87$  kmph



Effect of various waves in the sea over specific area

Rough to very rough: Wind speed 41-62 kmph (22-33 knots) & Wave height 2.5-6 metre  
High to very high: Wind speed 63-117 kmph (34-63 knots) & Wave height 6-14 metre  
Phenomenal: Wind speed  $> 117$  kmph ( $> 63$  knots) & Wave height  $> 14$  metre



Cyclonic Storm: Wind speed 62-87 kmph (34-47 knots)

Severe Cyclonic Storm: Wind speed 88-117 kmph (48-63 knots)

Very Severe Cyclonic Storm: Wind speed 118-165 kmph (64-89 knots)

Extremely Severe Cyclonic Storm: Wind speed 166-220 kmph (90-119 knots)

Super Cyclone Storm: Wind speed  $> 220$  kmph ( $> 119$  knots)

\*Red color warning does not mean "Red Alert" Red color warning means "Take Action"

Forecast and warning for any day is valid from 0830 hours IST of day till 0830 hours IST of next day

For more details kindly visit <https://mausam.imd.gov.in> or contact 011-2434-4599

(Service to the nation since 1875)