

2025-09-01

Time of Issue: 13:36:00 hours IST  
(Mid-Day)

## ALL INDIA WEATHER SUMMARY AND FORECAST BULLETIN

### Significant Weather Features

#### Northwest India:

- **Extremely heavy rainfall** very likely at isolated places over Himachal Pradesh, Uttarakhand & West Uttar Pradesh on 01<sup>st</sup> September.
- Isolated **heavy rainfall** likely to continue over Jammu-Kashmir, Himachal Pradesh, Punjab, Haryana, Chandigarh during 01<sup>st</sup>-03<sup>rd</sup>; Uttarakhand & East Rajasthan during 01<sup>st</sup>-07<sup>th</sup>; Uttar Pradesh on 01<sup>st</sup> & 02<sup>nd</sup>; West Rajasthan on 01<sup>st</sup>, 02<sup>nd</sup> & during 05<sup>th</sup>-07<sup>th</sup> September with **isolated very heavy rainfall very likely over Jammu-Kashmir-Ladakh on 02<sup>nd</sup> & 03<sup>rd</sup>; Himachal Pradesh, Uttarakhand, Punjab, Haryana, Chandigarh & Delhi, West Uttar Pradesh on 01<sup>st</sup> & 02<sup>nd</sup>; East Uttar Pradesh & West Rajasthan on 01<sup>st</sup>; East Rajasthan on 01<sup>st</sup>, 02<sup>nd</sup>, 05<sup>th</sup> & 06<sup>th</sup> September.**
- Light/moderate rainfall at most/many places over the region during next 7 days.

#### West India:

- **Extremely heavy rainfall** very likely at isolated places over Gujarat Region on 04<sup>th</sup> & 05<sup>th</sup> September.
- **Isolated heavy rainfall** is very likely over Gujarat region, Madhya Maharashtra during next 7 days; Konkan & Goa during 01<sup>st</sup>-06<sup>th</sup>; Marathwada on 02<sup>nd</sup> & 03<sup>rd</sup>; Saurashtra & Kutch during 04<sup>th</sup> -07<sup>th</sup> September with **very heavy rainfall over Konkan & Goa, Madhya Maharashtra, Gujarat Region during 03<sup>rd</sup> -06<sup>th</sup>; Saurashtra & Kutch on 05<sup>th</sup> & 06<sup>th</sup> September.**
- Light to moderate rainfall accompanied with thunderstorm & lightning at a few/many places very likely over the region during next 7 days.

#### East & Central India:

- Isolated **heavy rainfall** likely over West Madhya Pradesh, Chhattisgarh during next 5 days; East Madhya Pradesh during 01<sup>st</sup>-06<sup>th</sup>; Vidarbha during 01<sup>st</sup>-04<sup>th</sup>; Andaman & Nicobar Islands on 01<sup>st</sup>; West Bengal & Sikkim on 02<sup>nd</sup> & 03<sup>rd</sup>; Jharkhand on 02<sup>nd</sup>; Odisha during 02<sup>nd</sup>-05<sup>th</sup> September with **isolated very heavy rainfall over Vidarbha, Chhattisgarh & Odisha on 02<sup>nd</sup> & 03<sup>rd</sup>; Gangetic West Bengal on 02<sup>nd</sup>; East Madhya Pradesh on 03<sup>rd</sup>; West Madhya Pradesh on 04<sup>th</sup> & 05<sup>th</sup> September.**
- Light to moderate rainfall at most/many places accompanied with thunderstorm & lightning likely over the region during next 7 days.

#### Northeast India:

- Isolated **heavy rainfall** likely to continue over Assam & Meghalaya during 01<sup>st</sup>-06<sup>th</sup>; Nagaland, Manipur, Mizoram & Tripura during 01<sup>st</sup>-05<sup>th</sup> and Arunachal Pradesh on 06<sup>th</sup> & 07<sup>th</sup> September.
- Light/moderate rainfall at many places accompanied with thunderstorm & lightning likely during next 7 days.

#### South Peninsular India:

- Isolated **heavy rainfall** likely over Kerala & Mahe during 03<sup>rd</sup>-06<sup>th</sup>; Coastal Andhra Pradesh & Yanam during 01<sup>st</sup>-03<sup>rd</sup>; Coastal Karnataka during 01<sup>st</sup>-07<sup>th</sup>; South Interior Karnataka on 03<sup>rd</sup> September with **isolated very heavy rainfall over Coastal Andhra Pradesh & Yanam on 02<sup>nd</sup> and Telangana during 01<sup>st</sup>-03<sup>rd</sup> September.**
- Light to moderate rainfall accompanied with thunderstorm & lightning at a few places likely over the region during next 7 days.

\*Red color warning does not mean "Red Alert" Red color warning means "Take Action"

Forecast and warning for any day is valid from 0830 hours IST of day till 0830 hours IST of next day

For more details kindly visit <https://mausam.imd.gov.in> or contact 011-2434-4599

(Service to the nation since 1875)

### Main Weather Observations:

❖ **Rainfall distribution** (from 0830 hours IST of yesterday to 0830 hours IST of today): **at most places** over Andaman & Nicobar Islands, West Uttar Pradesh, Uttarakhand, Haryana-Chandigarh-Delhi, Punjab, Himachal Pradesh, Jammu-Kashmir-Ladakh-Gilgit-Baltistan-Muzaffarabad, East Rajasthan, West Madhya Pradesh, East Madhya Pradesh, Gujarat Region, Konkan & Goa, Vidarbha, Coastal Karnataka and Kerala & Mahe; **at many places** over East Uttar Pradesh, West Rajasthan, Chhattisgarh, Telangana, North Interior Karnataka, South Interior Karnataka and Lakshadweep; **at a few places** over Arunachal Pradesh, Nagaland, Manipur, Mizoram & Tripura, Odisha, Madhya Maharashtra, Marathwada, Coastal Andhra Pradesh & Yanam and Rayalaseema; **at isolated places** over Assam & Meghalaya, Sub Himalayan West Bengal & Sikkim, Gangetic West Bengal, Jharkhand, Bihar, Saurashtra & Kutch and Tamil Nadu, Puducherry & Karaikal.

❖ **Significant rainfall recorded(in cm)** (from 0830 hours IST of yesterday to 0830 hours IST of today): **Uttarakhand:** Banbasa (dist Champawat) 26; Khatima (dist Udham Singh Nagar) 18; Chakrata (dist Dehradun) 13; Purola (dist Uttarkashi) 12; Keertinagar (dist Garhwal Tehri), Haripur (dist Dehradun) 9 Each; Mussoorie (dist Dehradun), Champawat (dist Champawat) 8 Each; Mukteshwar (dist Nainital), Barkot (dist Uttarkashi), Jollygrant (dist Dehradun) 7 Each; **Telangana:** Khammam Urban (dist Khammam) 23; Kothagudem (dist B. Kothagudem) 19; Yellandu (dist B. Kothagudem) 15; Palawancha (dist B. Kothagudem), Mallapur (dist Jagtial) 12 Each; Aswaraopeta (dist B. Kothagudem), Vemanapalle (dist Mancherial) 11 Each; Bayyaram (dist Mahabubabad) 10; Sarangapur (dist Jagtial), Kaleswaram (dist J. Bhupalpally), Mulakalapalle (dist B. Kothagudem), Sathupalle (dist Khammam), Khammam(ARG) (dist Khammam), Jainoor (dist Kumaram Bheem) 9 Each; Gudurwrgl (dist Mahabubabad), Chennaraopet (dist Warangal), Dornakal (dist Mahabubabad), Kotapalle (dist Mancherial) 8 Each; Chandrugonda (dist B. Kothagudem), Thollada (dist Khammam), Julurpad (dist B. Kothagudem), Konijerla (dist Khammam), Eturnagaram (dist Mulugu), Madhira (dist Khammam), Kagaznagar (dist Kumaram Bheem), Sirpur (dist Kumaram Bheem), Bheemini (dist Mancherial), Belampalle (dist Mancherial), Nallabelly (dist Warangal), Tekulapalle (dist B. Kothagudem) 7 Each; **Punjab:** Nangal (dist Rupnagar) 22; Jalandhar (dist Jalandhar) 20; Ropar (dist Rupnagar) 18; Khanna (dist Ludhiana), Ganguwal (dist Rupnagar), Kotla (dist Rupnagar) 17 Each; Lohand (dist Rupnagar) 14; Ludhiana (dist Ludhiana), Ludhiana Irr (dist Ludhiana) 12 Each; Mallaout (dist Muktsar), Ballowal Saunkri (dist Sbs Nagar), Bhadson Irr (dist Patiala) 11 Each; Balachaur AWS (dist Sbs Nagar), Fatehgarh Sahib ARG (dist Fatehgarh Sahib), Fatehgarh Sahib AWS (dist Fatehgarh Sahib), Bharatgarh (dist Rupnagar) 10 Each; Nawanshahr (dist Sbs Nagar) 9; Patiala AWS (dist Patiala), Patiala (dist Patiala), Anandpur Sahib (dist Rupnagar), Amloh (dist Fatehgarh Sahib), Samana ARG (dist Patiala), Garhshankar (dist Hoshiarpur), Sirhind (dist Fatehgarh Sahib), Nakodar (dist Jalandhar), Adampur ARG (dist Fatehgarh Sahib), Bhakra Dam Nangal AWS (dist Rupnagar) 8 Each; Pau Ludhiana (dist Ludhiana), Nabha (dist Patiala), Adampur IAF (dist Jalandhar) 7 Each; **Himachal Pradesh:** R L Bmb (dist Bilaspur) 22; Pachhad (dist Sirmaur) 20; Solan (dist Solan), Naina Davi (dist Bilaspur) 19 Each; Nahan (dist Sirmaur) 18; Jatton Barrage (dist Sirmaur) 17; Kasauli (dist Solan), Renuka/dadhau (dist Sirmaur), Sangraha (dist Sirmaur), Rohru (dist Shimla) 13 Each; Dharampur (dist Solan), Una (dist Una) 12 Each; Paonta (dist Sirmaur), Shimla AP (dist Shimla), Kandaghat (dist Solan), Simla (dist Shimla) 11 Each; Barthin (dist Bilaspur) 10; Kufri AWS (dist Shimla) 9; Karsog (dist Mandi), Bilaspur Sadar (dist Bilaspur) 8 Each; Kotkhai (dist Shimla), Kahu (dist Bilaspur), Narkanda AWS (dist Shimla), Aghar (dist Hamirpur), HMO Shillaro (dist Shimla) 7 Each; **East Uttar Pradesh:** Fursatganj (dist Amethi) 17; Rae Bareilly CWC (dist Rae Bareilly) 13; Dabri Fmo (dist Farrukhabad) 9; Banda (dist Banda), Beberu (dist Banda), Manikpur (dist Chitrakoot) 8 Each; Ram Sanahi Ghat Tehsil (dist Barabanki) 7; **East Rajasthan:** Asnawar SR (dist Jhalawar) 16; Chhotisadri (dist Pratapgarh) 14; Jhalarapatan SR (dist Jhalawar) 13; Malsisar SR (dist Jhunjhunu), Todabhim (dist Karauli), Bhuwana SR (dist Jhunjhunu) 10 Each; Thanagazi (dist Alwar), Bhim (dist Rajsamand), Ajmer (dist Ajmer), Sagwara (dist Dungarpur) 9 Each; Banera SR (dist Bhilwara), Karauli (dist Karauli) 8 Each; Srimadhpor (dist Sikar), Shergarh SR (dist Banswara), Tatgarh SR (dist Ajmer), Jhunjhunu (dist Jhunjhunu), Jawaja (dist Ajmer), Sarmathura SR (dist Dholpur), Sikrai (dist Dausa), Arnod SR (dist Pratapgarh), Sikar Tehsil SR (dist Sikar), Malerainadunger SR (dist Sawai Madhopur) 7 Each; **West Rajasthan:** Dungargarh (dist Bikaner) 15; Jalore (dist Jalore) 13; Jodhpur Tehsil SR (dist Jodhpur) 10; Sojat (dist Pali) 8; Lunkaransar (dist Bikaner), Jodhpur (dist Jodhpur), Nohar SR (dist Hanumangarh) 7 Each; **West Uttar Pradesh:** Aligarh (dist Aligarh), Sambhal (dist Sambhal) 15 Each; Sahawar (dist Kasganj) 13; Bareilly PBO (dist Bareilly) 12; Sardhana (dist Meerut) 11; Aliganj (dist Etah) 10; Patiiali (dist Kasganj), Aonla (dist Bareilly) 9 Each; Chandausi (dist Sambhal), Sahaswan (dist Badaun), Nawabganj (dist Bareilly), Jasrana (dist Firozabad), Shikohabad (dist Firozabad), Maudaha (dist Hamirpur), Meerut (dist Meerut) 8 Each; Gunnaur (dist Sambhal), Kurawali (dist Mainpuri), Kasganj (dist Kasganj), Budhana (dist Muzaffarnagar) 7 Each; **Haryana-Chandigarh-Delhi:** Morni (dist Panchkula) 12; Sirsa AWS (dist Sirsa), Sirsa (dist Sirsa), Barwala REV (dist Hisar), Jakhal Mandi Hmo (dist Fatehabad) 9 Each; Sonapat (dist Sonapat), Rajaund (dist Kaithal), Chandigarh IAF (dist

\*Red color warning does not mean "Red Alert" Red color warning means "Take Action"

Forecast and warning for any day is valid from 0830 hours IST of day till 0830 hours IST of next day

For more details kindly visit <https://mausam.imd.gov.in> or contact 011-2434-4599

(Service to the nation since 1875)



Chandigarh), Tohana (dist Fatehabad), Uklana REV (dist Hisar), Chandigarh (dist Chandigarh), Fatehabad (dist Fatehabad) 8 Each; Narnaul (dist Mahendragarh), Kalka (dist Panchkula), Chandigarh AWS (dist Chandigarh) 7 Each; **West Madhya Pradesh:** Neemuch-aws (dist Neemuch) 11; Sailana (dist Ratlam), Barod (dist Agar-malwa) 9 Each; Narmadapuram (dist Narmadapuram), Kolaras (dist Shivpuri) 8 Each; Jawad (dist Neemuch), Budhni (dist Sehore), Dolariya (dist Narmadapuram), Raoti (dist Ratlam), Dhundhadaka (dist Mandsaur) 7 Each; **East Madhya Pradesh:** Narsinghpur-aws (dist Narsinghpur), Satna (raghurajnagar) (dist Satna) 10 Each; Ghansore (dist Seoni), Barghat (dist Seoni) 9 Each; Nagode (dist Satna) 8; **Odisha:** Bandhugaon (dist Koraput) 10; Banki (dist Cuttack) 9; Naraj (dist Cuttack) 8; Mundali (dist Cuttack) 7; **Gujarat Region:** Kadana (dist Mahisagar) 9; Fatepura (dist Dahod) 7; **Madhya Maharashtra:** Gaganbawada (dist Kolhapur) 8; Mahabaleshwar (dist Satara) 7; **Jammu-KashmirLadakh-Gilgit-Baltistan-Muzaffarabad:** Jammu AWS (dist Jammu), Jammu (dist Jammu), Jammu AP (dist Jammu) 7 Each; **Chhattisgarh:** Konta (dist Sukma) 7; **Andaman & Nicobar Islands:** Long Island (dist North & Middle Andaman) 7.

❖ **Heavy Rainfall observed** (from 0830 hours IST of yesterday to 0830 hours IST of today): **Extremely heavy rain** at isolated places over Uttarakhand, Punjab, Himachal Pradesh and Telangana. **Heavy to very heavy rain** at isolated places over East Uttar Pradesh, West Uttar Pradesh, Uttarakhand, Haryana-Chandigarh-Delhi, Punjab, Himachal Pradesh, West Rajasthan, East Rajasthan and Telangana. **Heavy rain** at isolated places over Andaman & Nicobar Islands, Odisha, Jammu-KashmirLadakh-Gilgit-Baltistan-Muzaffarabad, West Madhya Pradesh, East Madhya Pradesh, Gujarat Region, Madhya Maharashtra and Chhattisgarh.

❖ **Minimum Temperature Departures (as on 01-09-2025):** **markedly above normal(> 5.1°C)** at isolated places over Assam & Meghalaya, East Uttar Pradesh, West Uttar Pradesh, Himachal Pradesh, West Madhya Pradesh, East Madhya Pradesh and Saurashtra & Kutch. **appreciably above normal(3.1°C to 5.0°C)** at few places over East Rajasthan; at isolated places over Sub Himalayan West Bengal & Sikkim, Gangetic West Bengal, Odisha, Bihar, West Rajasthan, Gujarat Region, Vidarbha and Tamil Nadu, Puducherry & Karaikal. **above normal(1.6°C to 3.0°C)** at many places over Nagaland, Manipur, Mizoram & Tripura; at few places over Lakshadweep; at isolated places over Jharkhand, Haryana-Chandigarh-Delhi, Jammu-KashmirLadakh-Gilgit-Baltistan-Muzaffarabad, Madhya Maharashtra, Coastal Andhra Pradesh & Yanam, Rayalaseema and South Interior Karnataka. **near normal(-1.5°C to 1.5°C)** at many places over Uttarakhand and Telangana; at most places over Andaman & Nicobar Islands, Arunachal Pradesh, Punjab, Konkan & Goa, Marathwada, Chhattisgarh, Coastal Karnataka, North Interior Karnataka and Kerala & Mahe. **The lowest minimum temperature** of 17.2°C is reported at UNA (HIMACHAL PRADESH) over the Plains of India.

❖ **Maximum Temperature Departures (as on 31-08-2025):** **markedly above normal(> 5.1°C)** at isolated places over Assam & Meghalaya and Odisha. **appreciably above normal(3.1°C to 5.0°C)** at isolated places over Gangetic West Bengal, East Madhya Pradesh, Chhattisgarh and Coastal Andhra Pradesh & Yanam. **above normal(1.6°C to 3.0°C)** at many places over Nagaland, Manipur, Mizoram & Tripura; at isolated places over Sub Himalayan West Bengal & Sikkim, Jharkhand, Bihar, West Madhya Pradesh, Saurashtra & Kutch, Madhya Maharashtra, Vidarbha, Tamil Nadu, Puducherry & Karaikal and Kerala & Mahe. **near normal(-1.5°C to 1.5°C)** at many places over East Uttar Pradesh, Rayalaseema and North Interior Karnataka; at most places over Arunachal Pradesh, Konkan & Goa, Marathwada, Telangana, Coastal Karnataka, South Interior Karnataka and Lakshadweep; at few places over Andaman & Nicobar Islands, West Uttar Pradesh, Jammu-KashmirLadakh-Gilgit-Baltistan-Muzaffarabad and Gujarat Region; at isolated places over Uttarakhand, Himachal Pradesh and East Rajasthan. **The highest maximum temperature** of 39.0°C is reported at MADURAI (A) (TAMIL NADU).

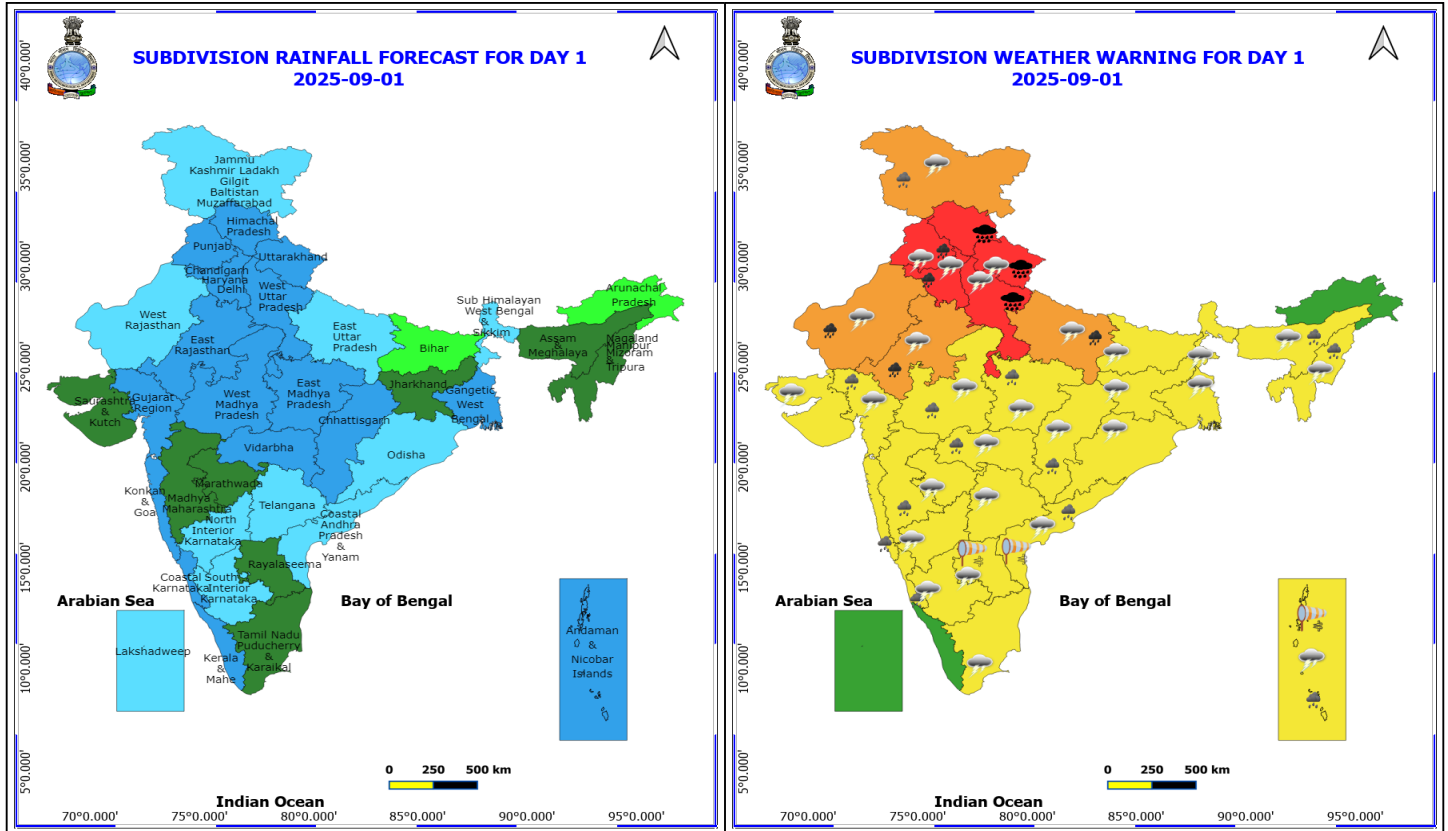
**Meteorological Analysis (Based on 0830 hours IST)**

- The **monsoon trough** at mean sea level now passes through Ganganagar, Pilani, Datia, Satna, Daltonganj, Digha and thence to east-southeastwards to northeast Bay of Bengal.
- The **upper air cyclonic circulation** over Myanmar coasts and adjoining northeast Bay of Bengal lay over northeast Bay of Bengal & adjoining Myanmar coast and extended upto 5.8 km above mean sea level tilting southwestwards with height. Under its influence a **low pressure area** is likely to form over north Bay of Bengal during next 24 hours.
- A **trough** runs from above cyclonic circulation over northeast Bay of Bengal & adjoining Myanmar coast to north coastal Odisha extended upto 1.5 km above mean sea level.
- The **upper air cyclonic circulation** over northwest Bay of Bengal off north Odisha coasts & neighbourhood extended upto 1.5 km above mean sea level has merged with the above trough.
- The **upper air cyclonic circulation** over northeast Rajasthan & neighbourhood lay over northwest Rajasthan & neighbourhood and extended upto 5.8 km above mean sea level.
- A trough runs from above cyclonic circulation over northwest Rajasthan & neighbourhood to Jharkhand across north Madhya Pradesh, south Uttar Pradesh and extended up to 3.1 km above mean sea level.
- The **upper air cyclonic circulation** over northwest Madhya Pradesh & neighbourhood at 0.9 km above mean sea level has merged with the above trough.
- The **Western Disturbance** seen as a trough in middle level westerlies with its axis at 5.8 km above mean sea level roughly along Long. 72°E & Lat. 32°N .

**Weather Outlook for subsequent 3 days**

- Fairly widespread to widespread rainfall likely over Northeast & East India, Gujarat State, Western Ghats Region, Northwest India except Jammu-Kashmir-Ladakh where isolated rainfall likley.
- Isolated to Scattered rainfall likely over Central and South Peninsular India.





## 1 September (Day 1)

- ❖ **Heavy to Very Heavy Rainfall at a few places with isolated Extremely Heavy Rainfall** very likely over Himachal Pradesh, Uttarakhand, West Uttar Pradesh.
- ❖ **Heavy to Very Heavy Rainfall** very likely at isolated places over East Uttar Pradesh, Haryana, Chandigarh & Delhi, Punjab and Rajasthan.
- ❖ **Heavy Rainfall** very likely at isolated places over Andaman & Nicobar Islands, Assam & Meghalaya, Chhattisgarh, Coastal Andhra Pradesh, Coastal Karnataka, Gujarat Region, Jammu-Kashmir-Ladakh-Gilgit-Baltistan-Muzaffarabad, Konkan & Goa, Madhya Maharashtra, Madhya Pradesh, Nagaland, Manipur, Mizoram and Tripura and Vidarbha.
- ❖ **Thunderstorm accompanied with lightning & gusty winds(40-50kmph)** very likely at isolated places over Andaman & Nicobar Islands.
- ❖ **Thunderstorm accompanied with lightning & gusty winds(30-40kmph)** very likely at isolated places over Andhra Pradesh, Bihar, Gangetic West Bengal, Interior Karnataka, Jammu-Kashmir-Ladakh-Gilgit-Baltistan-Muzaffarabad, Jharkhand, Odisha, Tamil Nadu Puducherry & Karaikal and Telangana.
- ❖ **Thunderstorm accompanied with Lightning** very likely at isolated places over Assam & Meghalaya, Chhattisgarh, Gujarat State, Haryana, Chandigarh & Delhi, Madhya Pradesh, Marathwada, Nagaland, Manipur, Mizoram and Tripura, Punjab, Rajasthan, Sub Himalayan West Bengal & Sikkim, Uttar Pradesh, Uttarakhand and Vidarbha.
- ❖ **Strong Surface Winds** very likely at isolated places over Andaman & Nicobar Islands and Andhra Pradesh.

Squally wind with speed reaching 45 kmph to 55 kmph gusting to 65 kmph is likely to prevail along and off Somalia,

**\*Red color warning does not mean "Red Alert" Red color warning means "Take Action"**

**Forecast and warning for any day is valid from 0830 hours IST of day till 0830 hours IST of next day**

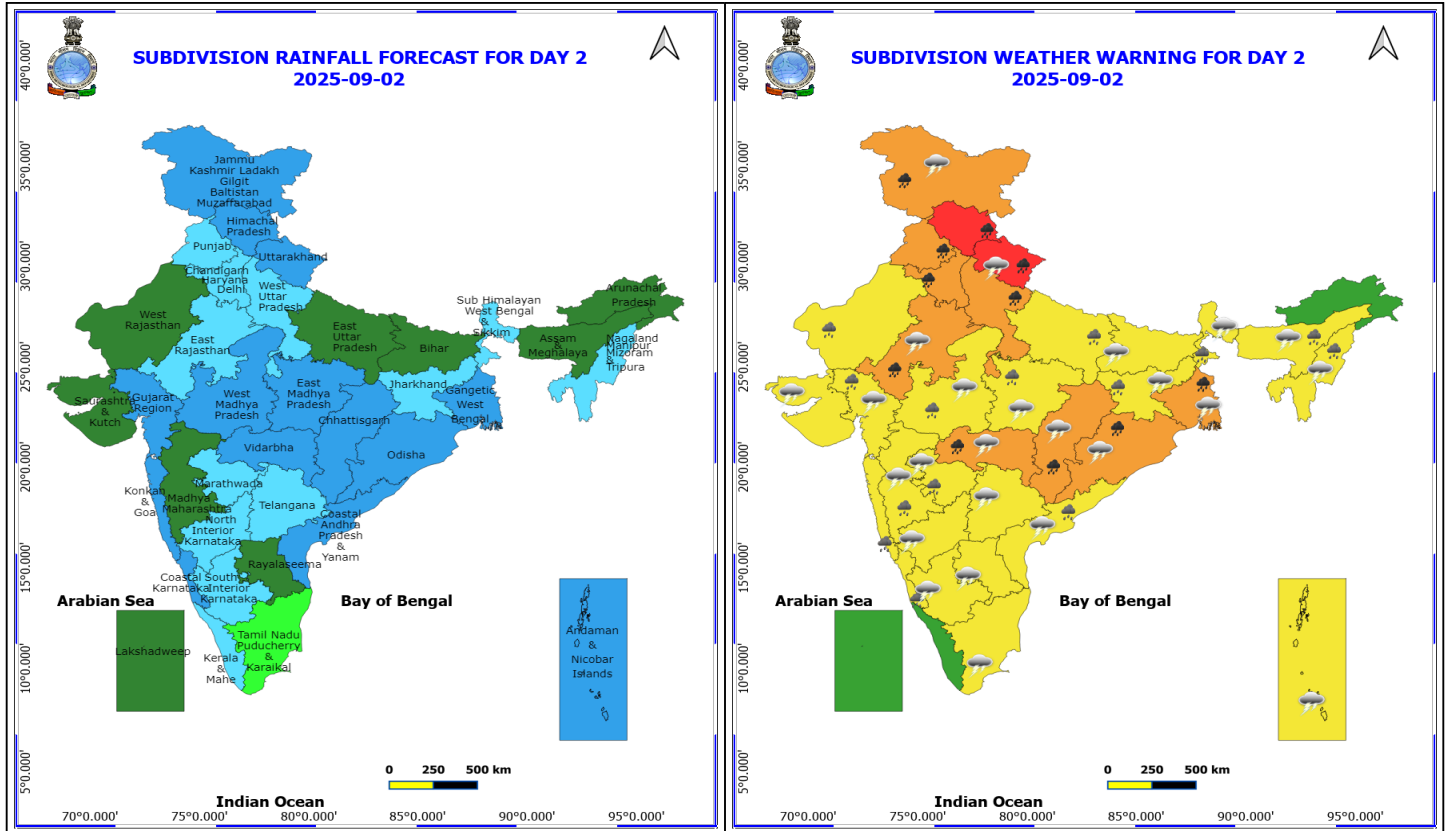
**For more details kindly visit <https://mausam.imd.gov.in> or contact 011-2434-4599**

**(Service to the nation since 1875)**

Oman coasts, most parts of westcentral Arabian sea, adjoining & many parts of southwest, eastcentral Arabian Sea.

Squally weather with wind speed reaching 40 - 50 kmph gusting to 60 kmph likely to prevail along and off Andhra Pradesh coast, off Tamil Nadu coast, over most parts of Bay of Bengal, Andhra Pradesh, Odisha, West Bengal, Bangladesh, Myanmar coasts, over Gulf of Mannar, Andaman Sea.

Squally weather with wind speed reaching 45 kmph to 55 kmph gusting to 65 kmph along band off south Gujarat, Konkan, Goa coasts & adjoining sea areas.



## 2 September (Day 2)

❖ **Heavy to Very Heavy Rainfall** very likely at isolated places over Chhattisgarh, East Rajasthan, Gangetic West Bengal, Haryana, Chandigarh & Delhi, Himachal Pradesh, Jammu-Kashmir-Ladakh-Gilgit-Baltistan-Muzaffarabad, Odisha, Punjab, Uttarakhand, Vidarbha and West Uttar Pradesh.

❖ **Heavy Rainfall** very likely at isolated places over Assam & Meghalaya, Coastal Andhra Pradesh, Coastal Karnataka, East Uttar Pradesh, Gujarat Region, Jharkhand, Konkan & Goa, Madhya Maharashtra, Madhya Pradesh, Marathwada, Nagaland, Manipur, Mizoram and Tripura, Sub Himalayan West Bengal & Sikkim and West Rajasthan.

❖ **Thunderstorm accompanied with lightning & gusty winds(40-50kmph)** very likely at isolated places over Andaman & Nicobar Islands and North Interior Karnataka.

❖ **Thunderstorm accompanied with lightning & gusty winds(30-40kmph)** very likely at isolated places over Andhra Pradesh, Bihar, Gangetic West Bengal, Jammu-Kashmir-Ladakh-Gilgit-Baltistan-Muzaffarabad, Jharkhand, Odisha, South Interior Karnataka, Tamil Nadu Puducherry & Karaikal and Telangana.

❖ **Thunderstorm accompanied with Lightning** very likely at isolated places over Assam & Meghalaya, Chhattisgarh, East Rajasthan, Gujarat State, Madhya Pradesh, Maharashtra, Nagaland, Manipur, Mizoram and Tripura, Sub Himalayan West Bengal & Sikkim and Uttarakhand.

Squally wind with speed reaching 45 kmph to 55 kmph gusting to 65 kmph is likely to prevail along and off Somalia, Oman coasts, most parts of westcentral Arabian sea, adjoining & many parts of southwest, eastcentral Arabian Sea.

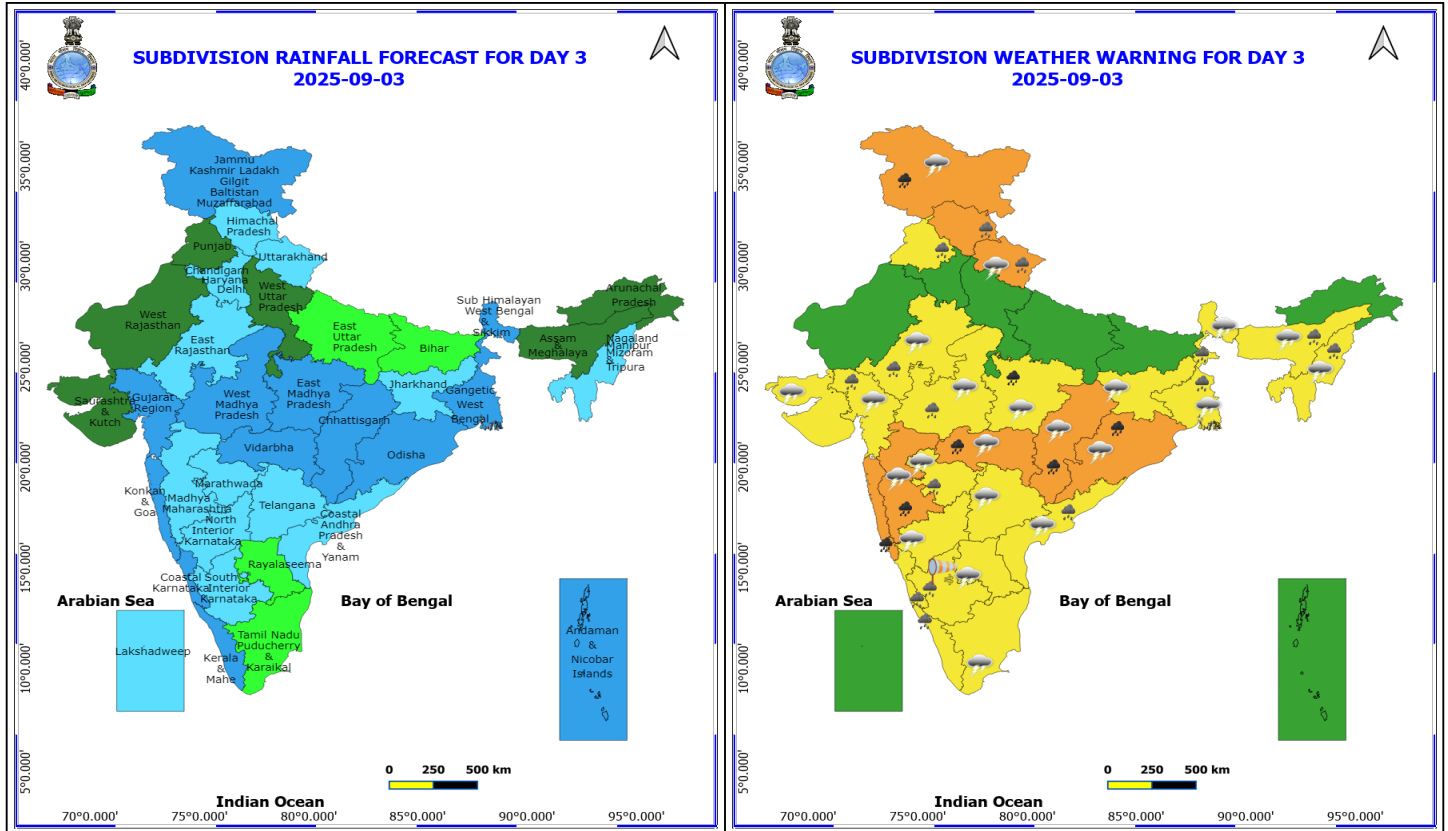
Squally weather with wind speed reaching 40 - 50 kmph gusting to 60 kmph likely to prevail along and off Konkan, Goa, Karnataka coasts, some parts of eastcentral, southeast Bay of Bengal, over Lakshadweep, Comorin areas, few parts of Maldives, over most parts of Bay of Bengal, Andhra Pradesh, Odisha, West Bengal, Bangladesh, Myanmar coasts, off Sri Lanka coast, over Gulf of Mannar, Andaman Sea.

**\*Red color warning does not mean "Red Alert" Red color warning means "Take Action"**

**Forecast and warning for any day is valid from 0830 hours IST of day till 0830 hours IST of next day**

**For more details kindly visit <https://mausam.imd.gov.in> or contact 011-2434-4599**

**(Service to the nation since 1875)**



### 3 September (Day 3)

- ❖ **Heavy to Very Heavy Rainfall** very likely at isolated places over Chhattisgarh, East Madhya Pradesh, Jammu-Kashmir-Ladakh-Gilgit-Baltistan-Muzaffarabad, Konkan & Goa, Madhya Maharashtra, Odisha and Vidarbha.
- ❖ **Heavy Rainfall** very likely at isolated places over Assam & Meghalaya, Coastal Andhra Pradesh, Coastal Karnataka, East Rajasthan, Gujarat Region, Himachal Pradesh, Kerala & Mahe, Marathwada, Nagaland, Manipur, Mizoram and Tripura, Punjab, South Interior Karnataka, Uttarakhand, West Bengal & Sikkim and West Madhya Pradesh.
- ❖ **Thunderstorm accompanied with lightning & gusty winds(40-50kmph)** very likely at isolated places over North Interior Karnataka.
- ❖ **Thunderstorm accompanied with lightning & gusty winds(30-40kmph)** very likely at isolated places over Andhra Pradesh, Gangetic West Bengal, Jammu-Kashmir-Ladakh-Gilgit-Baltistan-Muzaffarabad, Jharkhand, Odisha, Tamil Nadu Puducherry & Karaikal and Telangana.
- ❖ **Thunderstorm accompanied with Lightning** very likely at isolated places over Assam & Meghalaya, Chhattisgarh, East Rajasthan, Gujarat State, Madhya Pradesh, Maharashtra, Nagaland, Manipur, Mizoram and Tripura, Sub Himalayan West Bengal & Sikkim and Uttarakhand.
- ❖ **Strong Surface Winds** very likely at isolated places over South Interior Karnataka.

Squally wind with speed reaching 45 kmph to 55 kmph gusting to 65 kmph is likely to prevail along and off Somalia, Oman coasts, most parts of westcentral Arabian sea, adjoining & many parts of southwest, eastcentral Arabian Sea.

Squally weather with wind speed reaching 40 - 50 kmph gusting to 60 kmph likely to prevail along and off Konkan, Goa, Karnataka, Kerala coasts, many parts of eastcentral, some parts of southeast Bay of Bengal, over

**\*Red color warning does not mean "Red Alert" Red color warning means "Take Action"**

**Forecast and warning for any day is valid from 0830 hours IST of day till 0830 hours IST of next day**

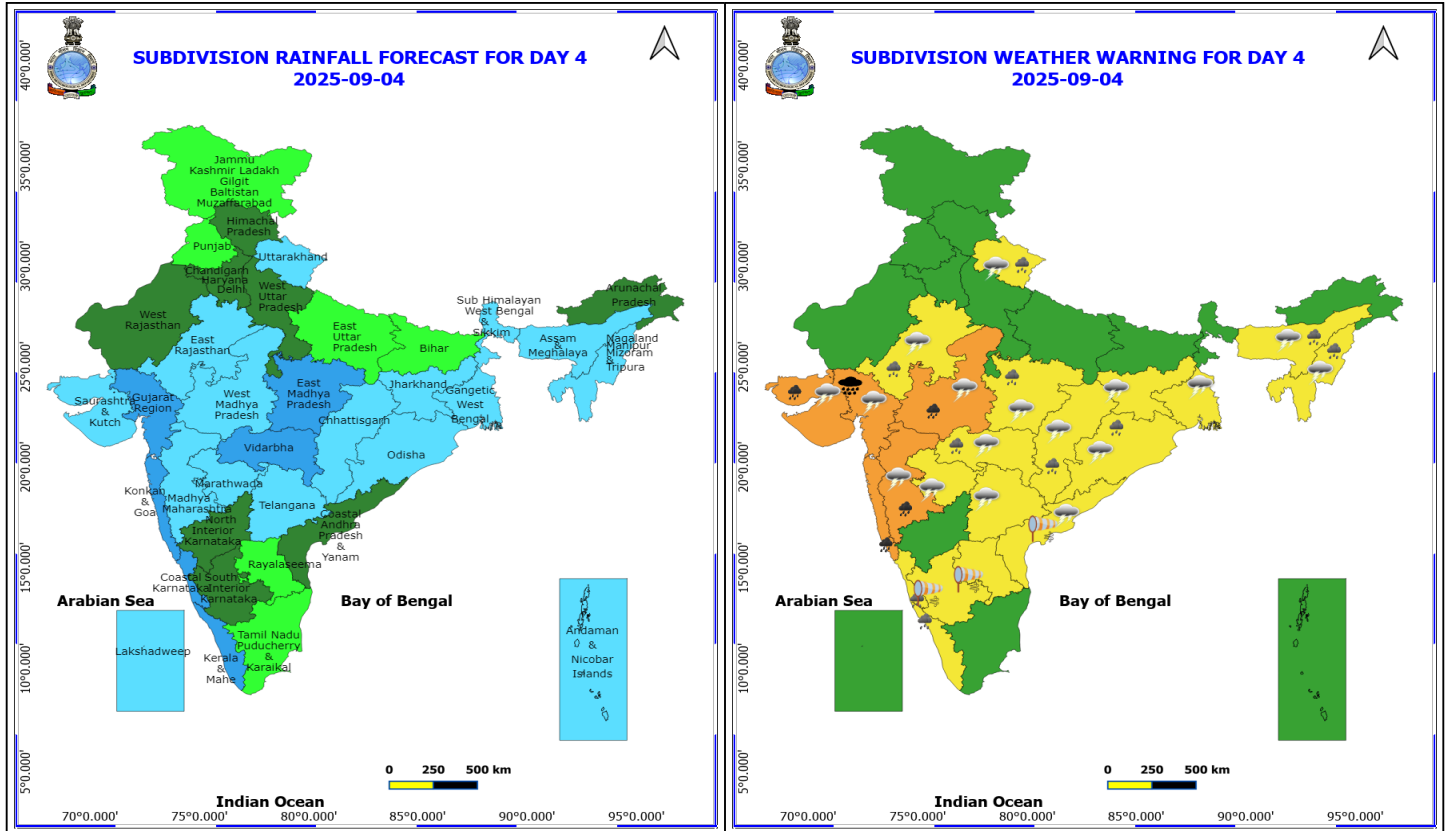
**For more details kindly visit <https://mausam.imd.gov.in> or contact 011-2434-4599**

**(Service to the nation since 1875)**





Lakshadweep, Comorin areas, some parts of Maldives, over most parts of south, central, northwest Bay of Bengal, along and off Andhra Pradesh, Odisha, West Bengal coasts, off Sri Lanka coast, over Gulf of Mannar, Andaman Sea.



#### 4 September (Day 4)

- ❖ **Heavy to Very Heavy Rainfall with isolated Extremely Heavy Rainfall** likely at isolated places over Gujarat Region.
- ❖ **Heavy to Very Heavy Rainfall** likely at isolated places over Konkan & Goa, Madhya Maharashtra, Saurashtra & Kutch and West Madhya Pradesh.
- ❖ **Heavy Rainfall** likely at isolated places over Assam & Meghalaya, Chhattisgarh, Coastal Karnataka, East Madhya Pradesh, East Rajasthan, Kerala & Mahe, Nagaland, Manipur, Mizoram and Tripura, Odisha, Uttarakhand and Vidarbha.
- ❖ **Thunderstorm accompanied with lightning & gusty winds(30-40kmph)** likely at isolated places over Coastal Andhra Pradesh, Gangetic West Bengal, Jharkhand, Odisha and Telangana.
- ❖ **Thunderstorm accompanied with Lightning** likely at isolated places over Assam & Meghalaya, Chhattisgarh, East Rajasthan, Gujarat State, Madhya Pradesh, Maharashtra, Nagaland, Manipur, Mizoram and Tripura and Uttarakhand.
- ❖ **Strong Surface Winds** likely at isolated places over Andhra Pradesh and South Interior Karnataka.

Squally wind with speed reaching 45 kmph to 55 kmph gusting to 65 kmph is likely to prevail along and off Somalia, Oman coasts, most parts of westcentral Arabian sea, adjoining & many parts of southwest, eastcentral Arabian Sea.

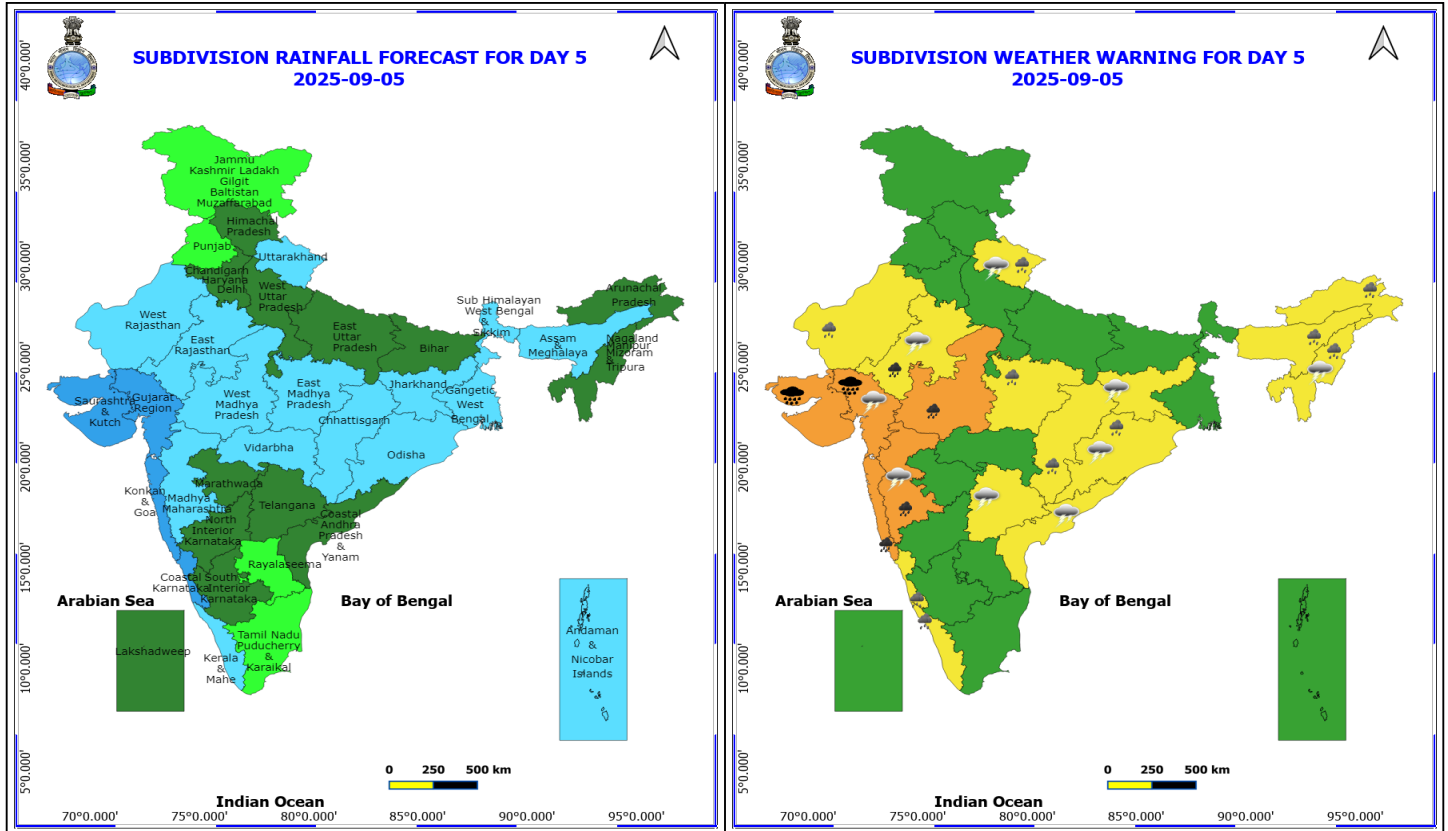
Squally weather with wind speed reaching 40 - 50 kmph gusting to 60 kmph likely to prevail along and off Gujarat, Konkan, Goa, Karnataka, Kerala coasts, many parts of eastcentral, some parts of southeast Bay of Bengal, over Lakshadweep, Comorin areas, along and off Andhra Pradesh coast, over most parts of central, south Bay of Bengal, off Sri Lanka coast, over Gulf of Mannar.

**\*Red color warning does not mean "Red Alert" Red color warning means "Take Action"**

Forecast and warning for any day is valid from 0830 hours IST of day till 0830 hours IST of next day

For more details kindly visit <https://mausam.imd.gov.in> or contact 011-2434-4599

(Service to the nation since 1875)



## 5 September (Day 5)

- ❖ **Heavy to Very Heavy Rainfall with isolated Extremely Heavy Rainfall** likely at isolated places over Gujarat State.
- ❖ **Heavy to Very Heavy Rainfall** likely at isolated places over East Rajasthan, Konkan & Goa, Madhya Maharashtra and West Madhya Pradesh.
- ❖ **Heavy Rainfall** likely at isolated places over Arunachal Pradesh, Assam & Meghalaya, Chhattisgarh, Coastal Karnataka, East Madhya Pradesh, Kerala & Mahe, Nagaland, Manipur, Mizoram and Tripura, Odisha, Uttarakhand and West Rajasthan.
- ❖ **Thunderstorm accompanied with lightning & gusty winds(30-40kmph)** likely at isolated places over Coastal Andhra Pradesh, Jharkhand, Odisha and Telangana.
- ❖ **Thunderstorm accompanied with Lightning** likely at isolated places over East Rajasthan, Gujarat Region, Madhya Maharashtra, Nagaland, Manipur, Mizoram and Tripura and Uttarakhand.

Squally wind with speed reaching 45 kmph to 55 kmph gusting to 65 kmph is likely to prevail along and off Somalia, Oman coasts, most parts of westcentral Arabian sea, adjoining & many parts of southwest, eastcentral Arabian Sea.

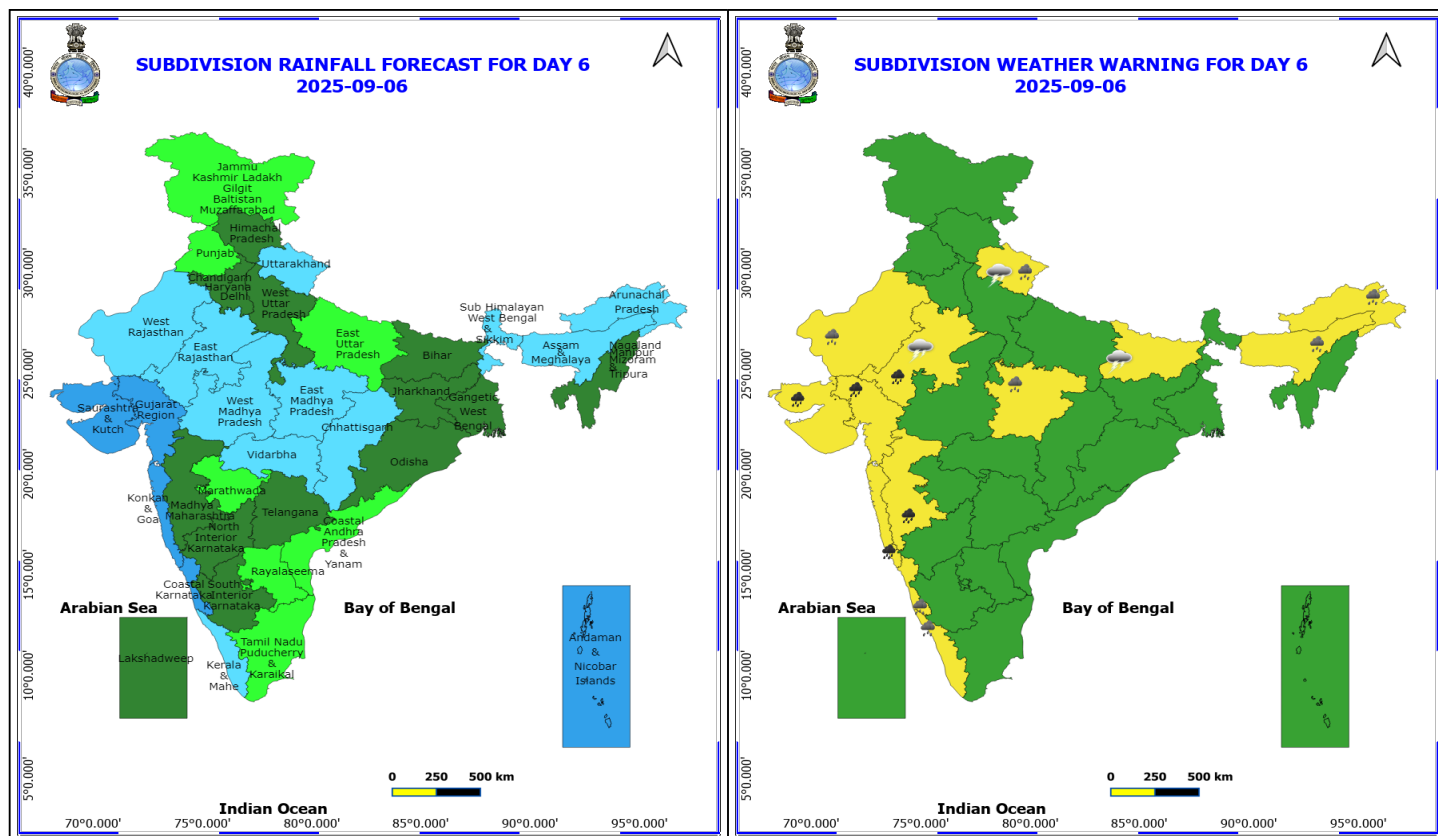
Squally weather with wind speed reaching 40 - 50 kmph gusting to 60 kmph likely to prevail along and off Gujarat, north Konkan coasts and adjoining sea areas, some parts of eastcentral Bay of Bengal, along and off Andhra Pradesh coast, over most parts of central, south Bay of Bengal, off Sri Lanka coast, over Gulf of Mannar.

**\*Red color warning does not mean "Red Alert" Red color warning means "Take Action"**

Forecast and warning for any day is valid from 0830 hours IST of day till 0830 hours IST of next day

For more details kindly visit <https://mausam.imd.gov.in> or contact 011-2434-4599

(Service to the nation since 1875)



## 6 September (Day 6)

- ❖ **Heavy to Very Heavy Rainfall** likely at isolated places over East Rajasthan, Gujarat State, Konkan & Goa and Madhya Maharashtra.
- ❖ **Heavy Rainfall** likely at isolated places over Arunachal Pradesh, Assam & Meghalaya, Coastal Karnataka, East Madhya Pradesh, Kerala & Mahe, Uttarakhand and West Rajasthan.
- ❖ **Thunderstorm accompanied with lightning & gusty winds(30-40kmph)** likely at isolated places over Bihar.
- ❖ **Thunderstorm accompanied with Lightning** likely at isolated places over East Rajasthan and Uttarakhand.

**No Fishermen Warning**

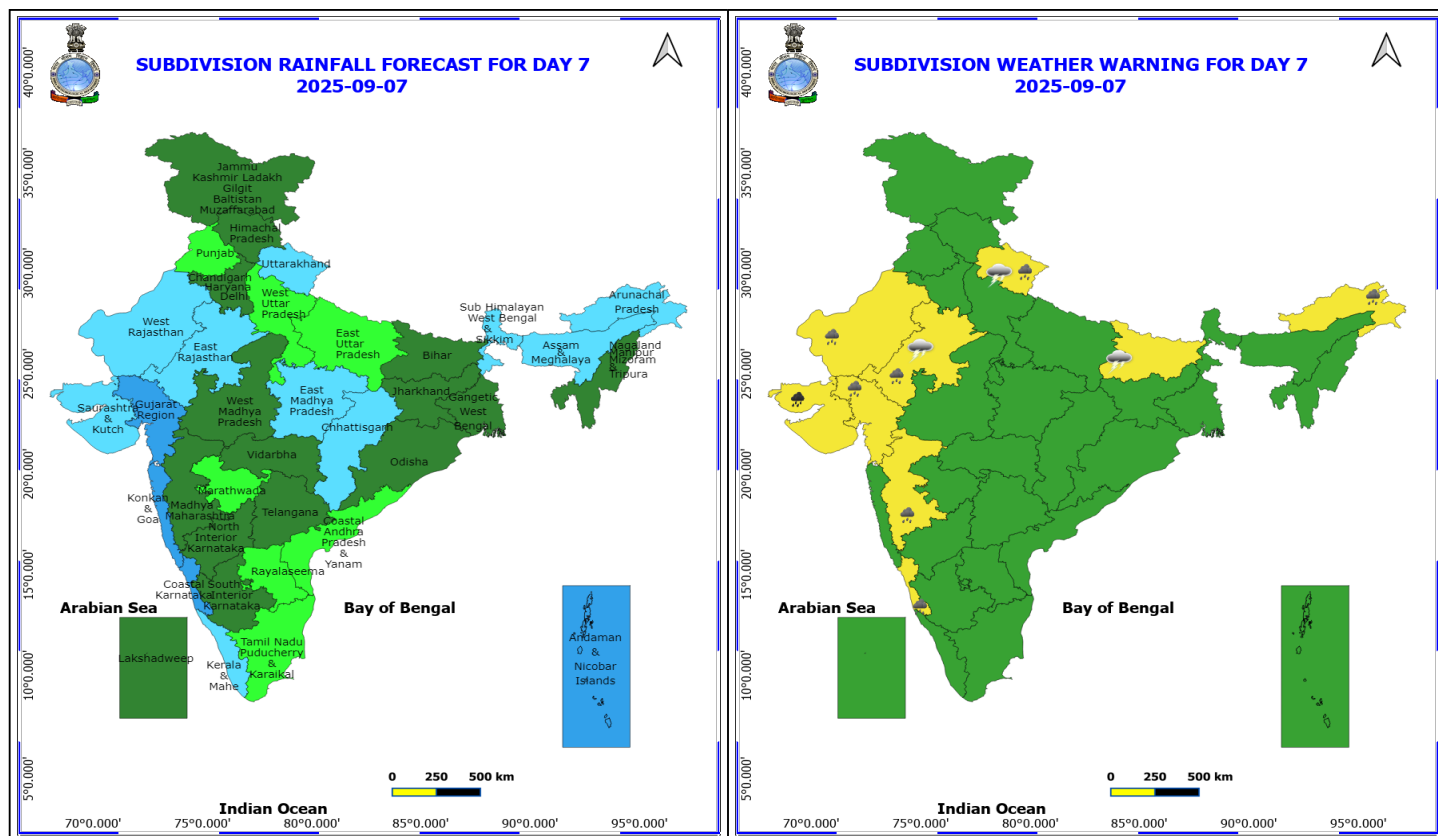
**\*Red color warning does not mean "Red Alert" Red color warning means "Take Action"**

Forecast and warning for any day is valid from 0830 hours IST of day till 0830 hours IST of next day

For more details kindly visit <https://mausam.imd.gov.in> or contact 011-2434-4599

(Service to the nation since 1875)





## 7 September (Day 7)

- ❖ **Heavy to Very Heavy Rainfall** likely at isolated places over Saurashtra & Kutch.
- ❖ **Heavy Rainfall** likely at isolated places over Arunachal Pradesh, Coastal Karnataka, Gujarat Region, Madhya Maharashtra, Rajasthan and Uttarakhand.
- ❖ **Thunderstorm accompanied with lightning & gusty winds(30-40kmph)** likely at isolated places over Bihar.
- ❖ **Thunderstorm accompanied with Lightning** likely at isolated places over East Rajasthan and Uttarakhand.

**No Fishermen Warning**

**\*Red color warning does not mean "Red Alert" Red color warning means "Take Action"**

Forecast and warning for any day is valid from 0830 hours IST of day till 0830 hours IST of next day

For more details kindly visit <https://mausam.imd.gov.in> or contact 011-2434-4599

(Service to the nation since 1875)

## Flash Flood Warnings

### 24 hours Outlook for the Flash Flood Risk (FFR) till 1130 IST of 02-09-2025 :

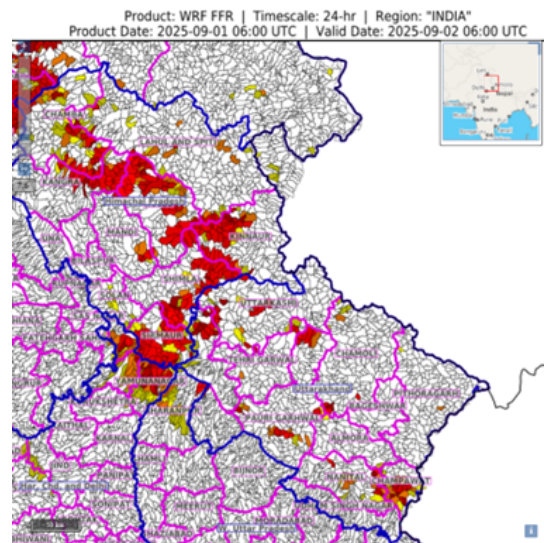
Low to Moderate flash flood risk likely over few watersheds & neighbourhoods of following Met Sub-divisions during next 24 hours.

**Himachal Pradesh** – Chamba, Kangra, Kinnaur, Kullu, Mandi, Shimla, Sirmaur Solan districts.

**Uttarakhand** - Chamoli, Champawat, Dehradun, Nanital, Pauri Garhwal, Pithoragarh, Rudraprayag, Tehri Garwal and Uttarkashi districts.

**Haryana, Chandigarh and Delhi** – Ambala, Panchkula and Yamunanagar districts

Surface runoff/ Inundation may occur at some fully saturated soils & low-lying areas over Area of Concern (AoC) as shown in map due to expected rainfall occurrence in next 24 hours.





# Table-1

## 7 Days Rainfall Forecast

S.No.	Subdivision	1- Sep	2- Sep	3- Sep	4- Sep	5- Sep	6- Sep	7- Sep
		Day 1	Day 2	Day 3	Day 4	Day 5	Day 6	Day 7
1	ANDAMAN & NICOBAR ISLANDS	WS	WS	WS	FWS	FWS	WS	WS
2	ARUNACHAL PRADESH	ISOL	SCT	SCT	SCT	SCT	FWS	FWS
3	ASSAM & MEHGHALAYA	SCT	SCT	SCT	FWS	FWS	FWS	FWS
4	N. M. M. & T.	SCT	FWS	FWS	FWS	SCT	SCT	SCT
5	S.H. WEST BENGAL & SIKKIM	FWS	FWS	WS	FWS	FWS	FWS	FWS
6	GANGETIC WEST BENGAL	WS	WS	WS	FWS	FWS	SCT	SCT
7	ODISHA	FWS	WS	WS	FWS	FWS	SCT	SCT
8	JHARKHAND	SCT	FWS	FWS	FWS	FWS	SCT	SCT
9	BIHAR	ISOL	SCT	ISOL	ISOL	SCT	SCT	SCT
10	EAST UTTAR PRADESH	FWS	SCT	ISOL	ISOL	SCT	ISOL	ISOL
11	WEST UTTAR PRADESH	WS	FWS	SCT	SCT	SCT	SCT	ISOL
12	UTTARAKHAND	WS	WS	FWS	FWS	FWS	FWS	FWS
13	HARYANA, CHD & DELHI	WS	FWS	FWS	SCT	SCT	SCT	SCT
14	PUNJAB	WS	FWS	SCT	ISOL	ISOL	ISOL	ISOL
15	HIMACHAL PRADESH	WS	WS	FWS	SCT	SCT	SCT	SCT
16	JAMMU AND KASHMIR AND LADAKH	FWS	WS	WS	ISOL	ISOL	ISOL	SCT
17	WEST RAJASTHAN	FWS	SCT	SCT	SCT	FWS	FWS	FWS
18	EAST RAJASTHAN	WS	FWS	FWS	FWS	FWS	FWS	FWS
19	WEST MADHYA PRADESH	WS	WS	WS	FWS	FWS	FWS	SCT
20	EAST MADHYA PRADESH	WS	WS	WS	WS	FWS	FWS	FWS
21	GUJRAT REGION	WS	WS	WS	WS	WS	WS	WS
22	SAURASHTRA & KUTCH	SCT	SCT	SCT	FWS	WS	WS	FWS
23	KONKAN & GOA	WS	WS	WS	WS	WS	WS	WS
24	MADHYA MAHARASHTRA	SCT	SCT	FWS	FWS	FWS	SCT	SCT
25	MARATHWADA	SCT	FWS	FWS	FWS	SCT	ISOL	ISOL
26	VIDARBHA	WS	WS	WS	WS	FWS	FWS	SCT
27	CHATTISGARH	WS	WS	WS	FWS	FWS	FWS	FWS
28	COASTAL ANDHRA PRADESH	FWS	WS	FWS	SCT	SCT	ISOL	ISOL
29	TELANGANA	FWS	FWS	FWS	FWS	SCT	SCT	SCT
30	RAYALASEEMA	SCT	SCT	ISOL	ISOL	ISOL	ISOL	ISOL
31	TAMILNADU & PUDUCHERRY	SCT	ISOL	ISOL	ISOL	ISOL	ISOL	ISOL
32	COSTAL KARNATAKA	WS	WS	WS	WS	WS	WS	WS
33	NORTH INTERIOR KARNATAKA	FWS	FWS	FWS	SCT	SCT	SCT	SCT
34	SOUTH INTERIOR KARNATAKA	FWS	FWS	FWS	SCT	SCT	SCT	SCT
35	KERALA	WS	FWS	WS	WS	FWS	FWS	FWS
36	LAKSHDWEEP	FWS	SCT	FWS	FWS	SCT	SCT	SCT

Legend	Category	%Stations
WS	Widespread/Most Places	76-100
FWS	Fairly Widespread/Many Places	51-75
SCT	Scattered/ A Few Places	26-50
ISOL	Isolated Places	1-25
DRY	No Rain	0

\*Red color warning does not mean "Red Alert" Red color warning means "Take Action"

Forecast and warning for any day is valid from 0830 hours IST of day till 0830 hours IST of next day

For more details kindly visit <https://mausam.imd.gov.in> or contact 011-2434-4599

(Service to the nation since 1875)

Fig. 1: Maximum Temperatures Dated 2025-09-01

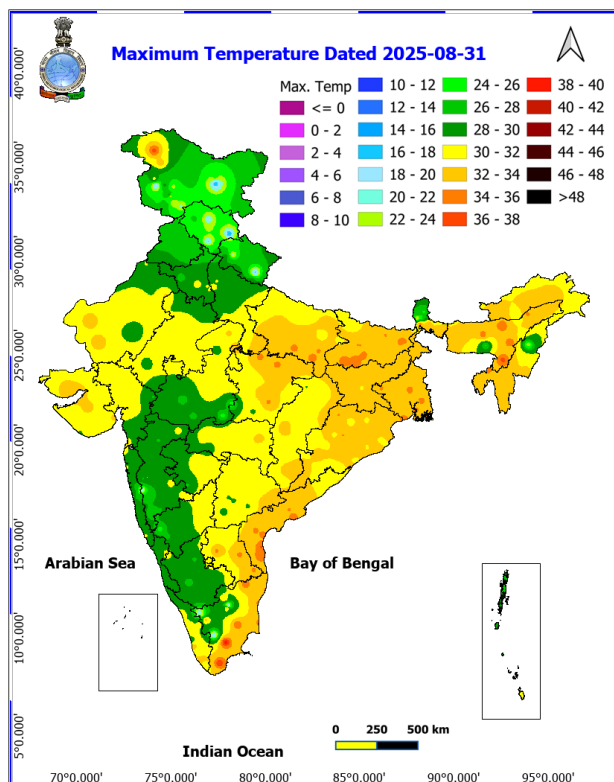


Fig. 2: Departure of Maximum Temp. Dated 2025-09-01

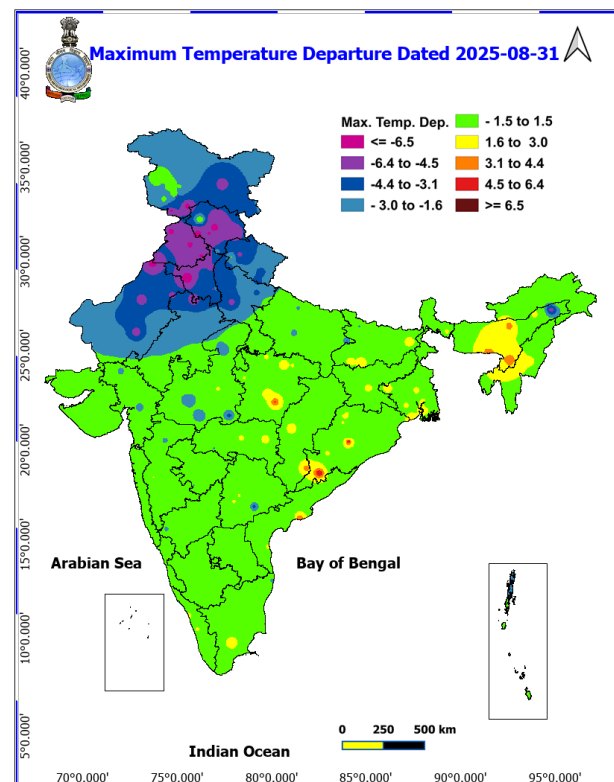


Fig. 3: Minimum Temperatures Dated 2025-09-01

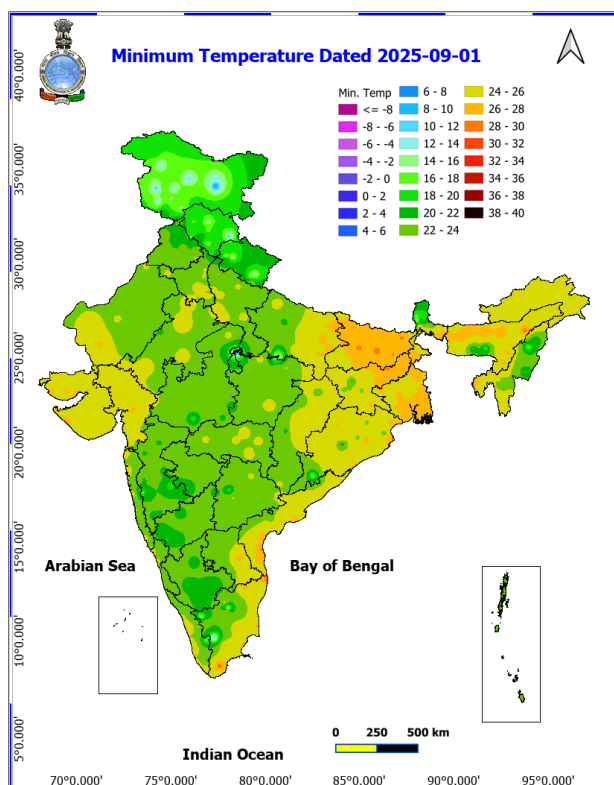
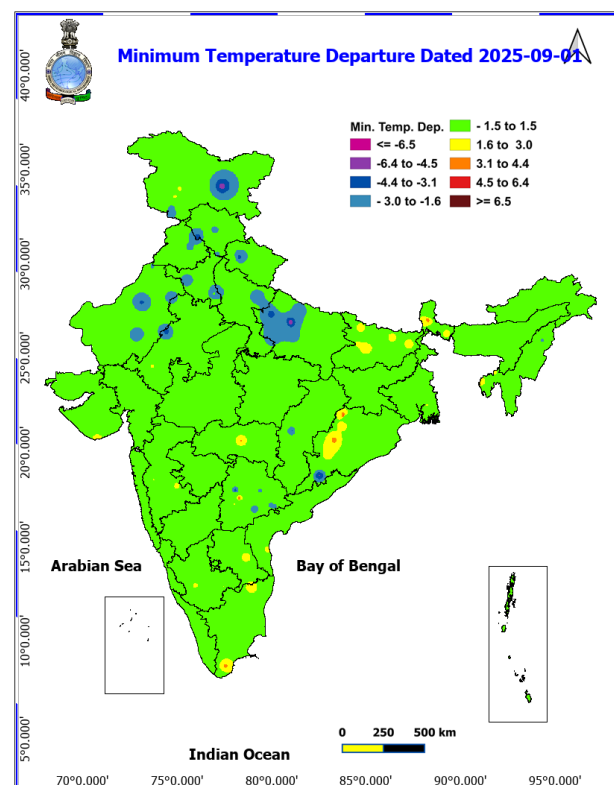
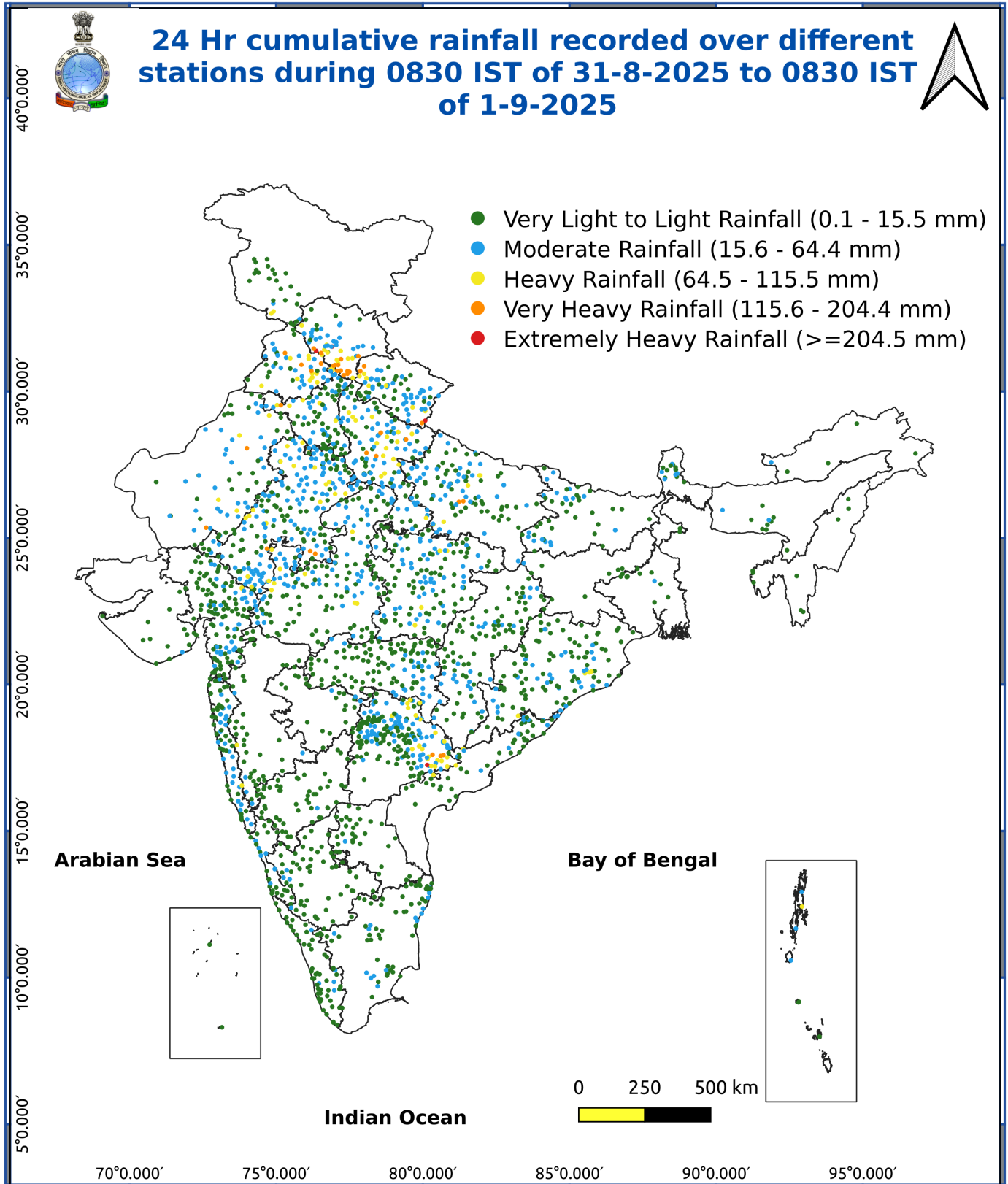


Fig. 4: Departure of Minimum Temp. Dated 2025-09-01







\*Red color warning does not mean "Red Alert" Red color warning means "Take Action"

Forecast and warning for any day is valid from 0830 hours IST of day till 0830 hours IST of next day

For more details kindly visit <https://mausam.imd.gov.in> or contact 011-2434-4599

(Service to the nation since 1875)

### Impact & Action Suggested due to

- **Extremely heavy rainfall** at isolated places over Himachal Pradesh, Uttarakhand & West Uttar Pradesh on 01<sup>st</sup>; Gujarat Region on 04<sup>th</sup> & 05<sup>th</sup> September.
- **Very heavy rainfall** over East Uttar Pradesh & West Rajasthan on 01<sup>st</sup>; Himachal Pradesh, Uttarakhand, Punjab, Haryana, Chandigarh, West Uttar Pradesh on 01<sup>st</sup> & 02<sup>nd</sup>; East Rajasthan on 01<sup>st</sup>, 02<sup>nd</sup>, 05<sup>th</sup> & 06<sup>th</sup>; Telangana during 01<sup>st</sup>-03<sup>rd</sup>; Jammu-Kashmir-Ladakh, Vidarbha, Chhattisgarh & Odisha on 02<sup>nd</sup> & 03<sup>rd</sup>; Gangetic West Bengal, Coastal Andhra Pradesh & Yanam on 02<sup>nd</sup>; East Madhya Pradesh on 03<sup>rd</sup>; Konkan & Goa, Madhya Maharashtra, Gujarat Region during 03<sup>rd</sup>-06<sup>th</sup>; West Madhya Pradesh on 04<sup>th</sup> & 05<sup>th</sup>; Saurashtra & Kutch on 05<sup>th</sup> & 06<sup>th</sup> September.

### Impact Expected

- Localized Flooding of roads, water logging in low lying areas and closure of underpasses mainly in urban areas of the above region.
- Occasional reduction in visibility due to heavy rainfall.
- Disruption of traffic in major cities due to water logging in roads leading to increased travel time.
- Minor damage to kutcha roads.
- Possibilities of damage to vulnerable structure.
- Localized Landslides/Mudslides/landslides/mudslips/landsinks/mudsinks.
- Damage to horticulture and standing crops in some areas due to inundation.
- It may lead to riverine flooding in some river catchments (for riverine flooding please visit Web page of CWC)

### Action Suggested

- Check for traffic congestion on your route before leaving for your destination.
- Follow any traffic advisories that are issued in this regard.
- Avoid going to areas that face the water logging problems often.
- Avoid staying in vulnerable structure.

### Agromet advisories for various parts of the country

#### Agromet advisories for likely impact of Heavy / Heavy to Very Heavy / Extremely Heavy Rainfall

(Based on the IBF and advisories issued by different AMFUs)

- In **Uttarakhand**, maintain proper drainage channels in fields of green gram, black gram, barnyard millet and finger millet in **Sub Humid Sub Tropic Zone** and rice, green gram, black gram, sugarcane, maize, groundnut, soybean, finger millet and vegetables in **Bhabar and Tarai Zone**. In **Hill Zone**, postpone sowing of vegetable pea and radish and provide proper drainage in fields of finger millet, kidney beans and vegetables.
- In **Himachal Pradesh**, maintain proper drainage channels in ginger, turmeric and maize fields in **Mid Hills Sub Humid Zone**; rice, maize and vegetable fields in **Sub Montane and Low Hills Sub Tropical Zone** and rajmash, potato, barley and vegetable fields in **High Hill Temperate Dry Zone**. In **High Hills Sub Temperate Wet Zone**, postpone transplanting of cabbage and cauliflower. Cover the vegetable nursery and crop with ploy sheet and ensure adequate drainage in fields of maize, finger millet and vegetables to avoid water stagnation.
- In **Jammu and Kashmir**, make arrangements to drain out excess rain water from fields of rice, maize, green gram and black gram in **Sub Tropical Zone** and maize, *khari* pulses, rice and vegetables in **Intermediate Zone**.
- In **Punjab**, make arrangements to drain out excess water from fields of sugarcane, green gram and chilli in **Undulating Plain Zone**; green gram and soybean in **Sub Montane Undulating Zone**; cotton, maize and vegetables in **Central Plain Zone**; cotton and maize in **Western Zone** and cotton and sugarcane in **Western Plain Zone**.
- In **Haryana**, make arrangements to drain out excess water from fields of sugarcane, cotton, maize, pearl millet and vegetables in **Eastern Zone** and cotton, pearl millet, green gram and cluster bean in **Western Zone**.

\*Red color warning does not mean "Red Alert" Red color warning means "Take Action"

Forecast and warning for any day is valid from 0830 hours IST of day till 0830 hours IST of next day

For more details kindly visit <https://mausam.imd.gov.in> or contact 011-2434-4599

(Service to the nation since 1875)

- In **Uttar Pradesh**, make proper arrangements for drainage of excess rain water in pigeon pea and vegetables fields in **Western Plain Zone** and maize, pulses and oilseed crops in **South Western Semi Arid Zone**.
- In **Rajasthan**, make proper drainage arrangements in vegetable nurseries and fields of cotton, maize, soybean and pulses in **Sub Humid Southern Plain and Aravali Hill Zone**; vegetable nurseries and fields of standing crops such as pearl millet, black gram and sesame in **Flood Prone Eastern Plain Zone** and pearl millet, green gram, sesame and moth bean in **Arid Western Plain Zone**.
- In **Madhya Pradesh**, provide adequate drainage in fields of soybean, maize and vegetables in **Malwa Plateau Zone**; maize, soybean, green gram, black gram, pigeon pea and vegetables in **Gird Zone**; soybean and vegetables in **Vindhyan Plateau Zone** and soybean, maize, sugarcane and vegetables in **Central Narmada Valley Zone**.
- In **Gujarat**, make arrangements to drain out excess rain water from fields of rice, sugarcane, okra, tuber crops and vegetables in **South Gujarat Heavy Rainfall Zone**; rice, cotton, sugarcane, pigeon pea and fruit orchards (banana and mango) in **South Gujarat Zone** and rice, pearl millet, pigeon pea, cotton, soybean, maize and castor in **Middle Gujarat Zone**.
- In **Maharashtra**, make arrangements to drain out excess water from fields of rice, finger millet, turmeric, groundnut, vegetables and fruit orchards in **Konkan**; rice, maize, groundnut, soybean, vegetable fields and fruit orchards in **ghat areas** of **Madhya Maharashtra** and cotton, pigeon pea, soybean, vegetables and fruit orchards in **Vidarbha**.
- In **Chhattisgarh**, ensure proper drainage in fields of rice, minor millets, maize, pulses and oilseeds in **Bastar Plateau Zone**.
- In **Odisha**, make provision for draining out excess rain water from fields of rice, black gram, green gram, pigeon pea, maize, groundnut and vegetables in **Eastern Ghat High Land Zone** and **South Eastern Ghat Zone** and rice, maize, pigeon pea, and vegetables in **North Eastern Ghat Zone** and rice, cotton, pigeon pea and maize in **Western Undulating Zone**.
- In **Telangana**, drain out excess water from fields of rice, cotton, maize, soybean, pigeon pea, turmeric and vegetables in **Northern Telangana Zone** and rice, cotton, soybean, maize and pigeon pea in **Southern Telangana Zone**.

### Livestock / Fishery

- Keep the animals inside the shed during heavy rainfall and provide them balanced feed.
- Store feed and fodder in a safe place to prevent spoilage.
- Construct an outlet with proper netting around the ponds to drain out excess water, thereby preventing fish from escaping in case of overflow.

### Agromet advisories for likely impact of Thunderstorm / Gusty Winds / Squally Winds

Provide mechanical support to horticultural crops and staking or support to vegetables and young fruit plants / fruit-bearing plants to avoid lodging due to strong winds.

### Legends & abbreviations:

#### Region wise classification of meteorological Sub-Divisions:

- **Northwest India:** Western Himalayan Region (Jammu-Kashmir-Ladakh-Gilgit-Baltistan-Muzaffarabad, Himachal Pradesh and Uttarakhand); Punjab, Haryana-Chandigarh-Delhi; West Uttar Pradesh, East Uttar Pradesh, West Rajasthan and East Rajasthan.
- **Central India:** West Madhya Pradesh, East Madhya Pradesh, Vidarbha and Chhattisgarh.
- **East India:** Bihar, Jharkhand, Sub-Himalayan West Bengal & Sikkim; Gangetic West Bengal, Odisha and Andaman & Nicobar Islands.
- **Northeast India:** Arunachal Pradesh, Assam & Meghalaya and Nagaland, Manipur, Mizoram & Tripura.
- **West India:** Gujarat Region, Saurashtra & Kutch, Konkan & Goa, Madhya Maharashtra and Marathawada.
- **South India:** Coastal Andhra Pradesh & Yanam, Telangana, Rayalaseema, Coastal Karnataka, North Interior Karnataka, South Interior Karnataka, Kerala & Mahe, Tamil Nadu, Puducherry & Karaikal and Lakshadweep.

**\*Red color warning does not mean "Red Alert" Red color warning means "Take Action"**

Forecast and warning for any day is valid from 0830 hours IST of day till 0830 hours IST of next day

For more details kindly visit <https://mausam.imd.gov.in> or contact 011-2434-4599

(Service to the nation since 1875)



## LEGENDS

- 1 अंडमान और निकोबार द्वीप समुह
- 2 अरुणाचल प्रदेश
- 3 असम और मेघालय
- 4 नागालैंड मनीपुर मीजोरम और त्रिपुरा
- 5 उप हिमालय पश्चिम बंगाल एवं सिक्किम
- 6 पश्चिम बंगाल
- 7 ओडिसा
- 8 झारखंड
- 9 बिहार
- 10 पूर्वी उत्तर प्रदेश
- 11 पश्चिम उत्तर प्रदेश
- 12 उत्तराखंड
- 13 हरियाणा चंडीगढ़ एवं दिल्ली
- 14 पंजाब
- 15 हिमाचल प्रदेश
- 16 जम्मू एवं कश्मीर एवं लद्दाख
- 17 पश्चिम राजस्थान
- 18 पूर्वी राजस्थान
- 19 पश्चिम मध्य प्रदेश
- 20 पूर्वी मध्य प्रदेश
- 21 गुजरात क्षेत्र
- 22 सौराष्ट्र एवं कच्छ
- 23 कोंकण एवं गोवा
- 24 मध्य महाराष्ट्र
- 25 मराठावाड़ा
- 26 विदर्भ
- 27 छत्तीसगढ़
- 28 तटीय आंध्र प्रदेश एवं यनम
- 29 तेलंगाना
- 30 रायलसीमा
- 31 तमिलनाडु, पुदुचेरी एवं कराईकल
- 32 तटिय कर्नाटक
- 33 आंतरिक उत्तरी कर्नाटक
- 34 आंतरिक दक्षिणी कर्नाटक
- 35 केरल एवं माहे
- 36 लक्षद्वीप



1. Andaman & Nicobar Islands
2. Arunachal Pradesh
3. Assam & Meghalaya
4. Nagaland, Manipur, Mizoram & Tripura
5. Sub-Himalayan West Bengal & Sikkim
6. Gangetic West Bengal
7. Orissa
8. Jharkhand
9. Bihar
10. East Uttar Pradesh
11. West Uttar Pradesh
12. Uttarakhand
13. Haryana, Chd & Delhi
14. Punjab
15. Himachal Pradesh
16. Jammu & Kashmir and Ladakh
17. West Rajasthan
18. East Rajasthan
19. West Madhya Pradesh
20. East Madhya Pradesh
21. Gujarat
22. Saurashtra
23. Konkan & Goa
24. Madhya Maharashtra
25. Marathwada
26. Vidharbha
27. Chhattisgarh
28. Coastal Andhra Pradesh & Yanam
29. Telangana
30. Rayalaseema
31. Tamilnadu, Puducherry & Karaikal
32. Coastal Karnataka
33. North Interior Karnataka
34. South Interior Karnataka
35. Kerala & Mahe
36. Lakshadweep

## SPATIAL DISTRIBUTION (% of Stations reporting)

% Stations	Category	% Stations	Category
76-100	Widespread (WS/Most Places)	26-50	Scattered (SCT/ A Few Places)
51-75	Fairly Widespread (FWS/ Many Places)	1-25	Isolated (ISOL)

## Subdivision Colour

- NO WARNING
- WATCH (BE UPDATED)
- ALERT (BE PREPARED TO TAKE ACTION)
- WARNING (TAKE ACTION)

## Probabilistic Forecast

Terms	Probability of Occurrence (%)
Unlikely	< 25
Likely	25 - 50
Very Likely	50 - 75
Most Likely	> 75

-  Heavy Rain
-  Very Heavy Rain
-  Extremely Heavy Rain
-  Heavy Snow
-  Thunderstorm & Lightning
-  Hailstorm
-  Dust Storm
-  Dust Raising Winds
-  Strong surface winds
-  Heat Wave
-  Hot Day
-  Warm Night
-  Cold Wave
-  Cold Day
-  Ground Frost
-  FOG Fog
-  Hot & Humid

\*Red color warning does not mean "Red Alert" Red color warning means "Take Action"

Forecast and warning for any day is valid from 0830 hours IST of day till 0830 hours IST of next day

For more details kindly visit <https://mausam.imd.gov.in> or contact 011-2434-4599

(Service to the nation since 1875)



## LEGENDS

### WARNING

<b>WARNING (TAKE ACTION)</b>
<b>ALERT (BE PREPARED)</b>
<b>WATCH (BE UPDATED)</b>
<b>NO WARNING (NO ACTION)</b>

### Probabilistic Forecast

Terms	Probability of Occurrence (%)
Unlikely	< 25
Likely	25 - 50
Very Likely	50 - 75
Most Likely	> 75



Heavy: 64.5 to 115.5 mm/cm \*  
Very Heavy: 115.6 to 204.4 mm/cm \*  
Extremely Heavy: > 204.4 mm/cm \*



When maximum temperature of a station reaches  $\geq 40^{\circ}\text{C}$  for plains and  $\geq 30^{\circ}\text{C}$  for hilly regions  
(a) Based on Departure from normal

Heat Wave: Maximum Temperature Departure from normal  $4.5^{\circ}\text{C}$  to  $6.4^{\circ}\text{C}$ .  
Severe Heat Wave: Maximum Temperature Departure from normal  $\geq 6.5^{\circ}\text{C}$

(b). Based on Actual maximum temperature

Heat Wave: When actual maximum temperature  $\geq 45^{\circ}\text{C}$ .  
Severe Heat Wave: When actual maximum temperature  $\geq 47^{\circ}\text{C}$

(c). Criteria for heat wave for coastal stations

When maximum temperature departure is  $> 4.5^{\circ}\text{C}$  from normal. Heat Wave may be described provided maximum temperature  $\geq 37^{\circ}\text{C}$



When maximum temperature remains  $40^{\circ}\text{C}$

Warm Night: When minimum temperature departure  $4.5^{\circ}\text{C}$  to  $6.4^{\circ}\text{C}$ .  
Severe Warm Night: When minimum temperature departure  $> 6.4^{\circ}\text{C}$ .



When minimum temperature of a station  $\leq 10^{\circ}\text{C}$  for plains and  $\leq 0^{\circ}\text{C}$  for hilly regions.

(a). Based on departure

Cold Wave: Minimum Temperature Departure from normal  $-4.5^{\circ}\text{C}$  to  $-6.4^{\circ}\text{C}$ .  
Severe Cold Wave: Minimum Temperature Departure from normal  $\leq -6.5^{\circ}\text{C}$

(b) Based on actual Minimum Temperature (for Plains only)

Cold Wave: When Minimum Temperature is  $\leq 4.0^{\circ}\text{C}$   
Severe Cold Wave: When Minimum Temperature is  $\leq 2.0^{\circ}\text{C}$

(c) For Coastal Stations

When Minimum Temperature departure is  $\leq -4.5^{\circ}\text{C}$  & actual Minimum Temperature is  $\leq 15^{\circ}\text{C}$



When minimum temperature of a station  $\leq 10^{\circ}\text{C}$  for plains and  $\leq 0^{\circ}\text{C}$  for hilly regions  
Based on departure

Cold Day: Maximum Temperature Departure from normal  $-4.5^{\circ}\text{C}$  to  $-6.4^{\circ}\text{C}$ .  
Severe Cold Day: Maximum Temperature Departure from normal  $\leq -6.5^{\circ}\text{C}$



Phenomenon of small droplets suspended in air and the horizontal visibility  $< 1\text{km}$

Moderate Fog: When the visibility between 500-200 metres  
Dense Fog: when the visibility between 50-200 metres  
Very Dense Fog: when the visibility  $< 50$  metres



Sudden electrical discharges manifested by a flash of light (Lightning) and a sharp rumbling sound (thunder)



An ensemble of particles of dust or sand energetically lifted to great heights by a strong and turbulent wind.



Ice deposits on ground

Air temperature  $\leq 4^{\circ}\text{C}$  (over Plains)



A strong wind that rises suddenly, lasts for at least 1 minute.

Moderate: Wind speed 52-61 kmph  
Severe: Wind speed 62-87 kmph  
Very Severe: Wind speed  $> 87$  kmph



Effect of various waves in the sea over specific area

Rough to very rough: Wind speed 41-62 kmph (22-33 knots) & Wave height 2.5-6 metre  
High to very high: Wind speed 63-117 kmph (34-63 knots) & Wave height 6-14 metre  
Phenomenal: Wind speed  $> 117$  kmph ( $> 63$  knots) & Wave height  $> 14$  metre



Cyclonic Storm: Wind speed 62-87 kmph (34-47 knots)

Severe Cyclonic Storm: Wind speed 88-117 kmph (48-63 knots)  
Very Severe Cyclonic Storm: Wind speed 118-165 kmph (64-89 knots)  
Extremely Severe Cyclonic Storm: Wind speed 166-220 kmph (90-119 knots)  
Super Cyclone Storm: Wind speed  $> 220$  kmph ( $> 119$  knots)

\*Red color warning does not mean "Red Alert" Red color warning means "Take Action"

Forecast and warning for any day is valid from 0830 hours IST of day till 0830 hours IST of next day

For more details kindly visit <https://mausam.imd.gov.in> or contact 011-2434-4599

(Service to the nation since 1875)