

2026-06-02

Time of Issue: 13:55:00 hours IST
(Mid-Day)

ALL INDIA WEATHER SUMMARY AND FORECAST BULLETIN

Significant Weather Features

Advance of Southwest Monsoon 2026:

- The **Northern Limit of Monsoon** continues to pass through 10°N/60°E, 9°/65°E, 8.5°N/70°E, 8°N/75°E, 7.8°N/78°E, 8°N/80°E, 10°N/80°E, 13°N/87°E, 16°N/90°E, 19°N/93°E and 22°N/97°E.
- **Conditions are favourable for further advance of southwest monsoon** into some more parts of southwest & southeast Arabian Sea, Lakshadweep Islands, some parts of Kerala & Tamil Nadu, some more parts of southwest, westcentral, eastcentral & northeast Bay of Bengal, and remaining parts of southeast Bay of Bengal around 4th June.

Weather Forecast and Warnings:

Northeast India:

- **Fairly widespread to widespread** light to moderate rainfall with **thunderstorm, lightning & gusty winds (speed reaching 40-50 kmph)** likely over northeast India during next 5 days.
- **Isolated heavy rainfall** likely over Arunachal Pradesh during 3rd -8th June; Assam & Meghalaya during 5th -8th June.

South Peninsular India:

- **Fairly widespread to widespread** light to moderate rainfall with **thunderstorm, lightning & gusty winds (speed reaching 40-50 kmph)** likely over Kerala & Mahe, Lakshadweep during 2nd - 6th June.
- **Isolated to scattered** light to moderate rainfall with **thunderstorm, lightning & gusty winds (speed reaching 40-50 kmph)** likely over Tamil Nadu, Puducherry & Karaikal, Coastal Andhra Pradesh & Yanam, Rayalaseema, North Interior Karnataka during 2nd -6th, Telangana during 1st - 5th June; South Interior Karnataka on 2nd June.
- **Thundersquall (wind speed reaching 50-60 kmph gusting to 70 kmph)** likely over Coastal Andhra Pradesh & Yanam and Telangana during 2nd -4th; Rayalaseema on 2nd & 3rd June
- **Isolated heavy rainfall** likely over Tamil Nadu, Puducherry & Karaikal during 2nd -8th; Lakshadweep, South Interior Karnataka and Coastal Karnataka during 2nd -7th; North Interior Karnataka during 2nd -6th June; with **veryheavy rainfall** likely over Kerala & Mahe during 2nd - 8th June.

East India:

- **Widespread** light to moderate rainfall with **thunderstorm, lightning & gusty winds (speed reaching 40-50 kmph)** likely over Andaman & Nicobar Islands during 2nd -8th June.
- **Isolated to scattered** light to moderate rainfall with **thunderstorm, lightning & gusty winds (speed reaching 40-50 kmph)** likely over Sub-Himalayan West Bengal & Sikkim, Jharkhand during 2nd -8th, Gangetic West Bengal on 2nd & during 4th -8th; Bihar on 2nd, 7th & 8th; Odisha during 2nd -6th June.
- **Thunder squall (wind speed reaching 50-60 kmph gusting to 70 kmph)** likely over Odisha on 2nd & 3rd June.
- **Isolated heavy rainfall** likely over Sub-Himalayan West Bengal & Sikkim during 4th - 6th June

Northwest India:

- **Scattered to fairly widespread** light to moderate rainfall with **thunderstorm, lightning & gusty winds (speed reaching 40-50 kmph)** likely over Jammu-Kashmir & Uttarakhand during 2nd -6th; Himachal Pradesh during 3rd -5th June.
- **Isolated to Scattered** light to moderate rainfall with **thunderstorm, lightning & gusty winds (speed**

*Red color warning does not mean "Red Alert" Red color warning means "Take Action"

Forecast and warning for any day is valid from 0830 hours IST of day till 0830 hours IST of next day

For more details kindly visit <https://mausam.imd.gov.in> or contact 011-2434-4599

(Service to the nation since 1875)

reaching **40-50 kmph**) likely over Haryana Chandigarh & Delhi, West Uttar Pradesh during 2nd -6th; Punjab during 3rd -6th; West Rajasthan during 2nd -4th; East Rajasthan during 2nd -5th June.

- **Thunder squall (wind speed reaching 50-60 kmph gusting to 70 kmph)** likely over Jammu-Kashmir, Punjab Haryana Chandigarh & Delhi on 3rd & 4th June; West Rajasthan on 2nd & 3rd; East Rajasthan during 2nd -4th June
- **Isolated Hailstorm activity** likely over Jammu-Kashmir and Rajasthan on 3rd & 4th June.
- **Dust storm** very likely at isolated places over West Rajasthan on 3rd June.

Central India:

- **Isolated to scattered** light to moderate rainfall with **thunderstorm, lightning & gusty winds (speed reaching 40-50 kmph)** likely over the region during next 5 days.
- **Thundersquall (wind speed reaching 50-60 kmph gusting to 70 kmph)** likely over Madhya Pradesh during 2nd - 4th; Vidarbha, Chhattisgarh on 2nd and during 4th -6th June.
- **Isolated Hailstorm activity** likely over Madhya Pradesh on 2nd & 4th June.

West India:

- **Isolated to scattered** light to moderate rainfall with **thunderstorm, lightning & gusty winds (speed reaching 40-50 kmph)** likely over Konkan & Goa and Madhya Maharashtra during 2nd - 6th; Marathwada during 2nd -4th; Gujarat State during 2nd -5th June
- **Thundersquall (wind speed reaching 50-60 kmph gusting to 70 kmph)** likely over Madhya Maharashtra, Marathwada on 2nd; Gujarat State 02nd & 3rd June.
- **Isolated Hailstorm activity** likely over Madhya Maharashtra 2nd June.

Forecast of maximum/day temperatures:

- Gradual rise by 2-4°C in maximum temperatures likely over many parts of Northwest India till 3rd. Gradual fall by 2-4°C during 4th -6th and gradual rise by 2-4°C on 7th & 8th June.
- Gradual rise in maximum temperatures by 2-3°C likely over East India till 3rd June and no significant change during 4th - 8th June.
- Gradual fall in maximum temperatures by 2-3°C likely over Maharashtra till 3th June and no significant change during 4th -8th June.
- No significant change in maximum temperatures likely over the rest parts of country till 07th June 2026.

Heat Wave, Hot & Humid weather conditions warning:

- **Heat wave condition** likely to prevail over Bihar during 4th - 6th June.
- **Hot and humid:** Sub-Himalayan West Bengal & Sikkim, Assam & Meghalaya, Konkan & Goa on 2nd & 3rd; Odisha during 2nd -6th; Arunachal Pradesh on 2nd; Nagaland, Manipur, Mizoram & Tripura during 2nd -4th June .

Main Weather Observations:

❖ **Rainfall distribution** (from 0830 hours IST of yesterday to 0830 hours IST of today): **at most places** over Gujarat Region and Lakshadweep; **at many places** over Andaman & Nicobar Islands, East Rajasthan and Kerala & Mahe; **at a few places** over Arunachal Pradesh, Assam & Meghalaya, Nagaland, Manipur, Mizoram & Tripura, Sub Himalayan West Bengal & Sikkim, Uttarakhand, West Rajasthan, West Madhya Pradesh, Marathwada, Vidarbha, Coastal Karnataka and South Interior Karnataka; **at isolated places** over Odisha, Jharkhand, Bihar, East Uttar Pradesh, West Uttar Pradesh, Haryana-Chandigarh-Delhi, Himachal Pradesh, Jammu-Kashmir-Ladakh-Gilgit-Baltistan-Muzaffarabad, East Madhya Pradesh, Saurashtra & Kutch, Konkan & Goa, Madhya Maharashtra, Chhattisgarh, Coastal Andhra Pradesh & Yanam, Telangana, Rayalaseema, Tamil Nadu, Puducherry & Karaikal and North Interior Karnataka; **Dry** over rest of the country.

❖ **Significant rainfall recorded(in cm)** (from 0830 hours IST of yesterday to 0830 hours IST of today): **North Interior Karnataka:** Shorapur (dist Yadgir) 12; **Gujarat Region:** Dhandhuka (dist Ahmedabad) 9; Umerpada (dist Surat) 7; **West Madhya Pradesh:** Malhargarh (dist Mandsaur) 8; Neemuch-aws (dist Neemuch) 7; **East Rajasthan:** Malpura (dist Tonk), Rajgarh (dist Alwar) 7 Each; Chittorgarh (dist Chittorgarh), Kapasan SR (dist Chittorgarh), Gangrar (dist Chittorgarh), Badesar SR (dist Chittorgarh), Chhotisadri (dist Pratargarh), Nimbahera (dist Chittorgarh) 6 Each; **Assam & Meghalaya:** Amraghat (dist Cachar) 7; **Nagaland, Manipur, Mizoram & Tripura:** Sainik School ARG (dist Imphal East) 6; **Tamil Nadu, Puducherry & Karaikal:** Pallipattu (dist Tiruvallur), Srivilliputhur (dist Virudhunagar), Servalar Dam (dist Tirunelveli) 6 Each; **West Uttar Pradesh:** Agra (dist Agra) 6.

- **Very heavy rainfall (12-20cm) has been recorded at isolated places of Lakshadweep. Heavy rainfall (7-11 cm)** has been recorded at isolated places over East Rajasthan, West Madhya Pradesh and Gujarat Region
- **Thunderstorm accompanied with Squally/Gusty winds with speed reaching 70-95kmph** prevailed at isolated places over Odisha, Uttar Pradesh, West Madhya Pradesh, West Rajasthan, Gujarat Region; **with speed reaching 50-70 kmph** over Uttarakhand, Marathawada; **with speed reaching 40-50 kmph** over Andaman & Nicobar Islands, Sub-Himalayan West Bengal & Sikkim, Himachal Pradesh, Tamil Nadu, Puducherry & Karaikal.
- **Hailstorm** occurred at isolated places over Rajasthan, Himachal Pradesh, West Madhya Pradesh, Marathawada.
- **Duststorm** occurred at isolated places over West Rajasthan, Madhya Pradesh.

❖ **Minimum Temperature Departures (as on 02-06-2026): markedly above normal(> 5.1°C)** at many places over Himachal Pradesh; at few places over Assam & Meghalaya and Jammu-Kashmir-Ladakh-Gilgit-Baltistan-Muzaffarabad; at isolated places over Nagaland, Manipur, Mizoram & Tripura, Bihar, West Uttar Pradesh, West Madhya Pradesh, East Madhya Pradesh and Saurashtra & Kutch. **appreciably above normal(3.1°C to 5.0°C)** at few places over Sub Himalayan West Bengal & Sikkim and Coastal Andhra Pradesh & Yanam; at isolated places over Gangetic West Bengal, Odisha, Jharkhand, East Uttar Pradesh, Konkan & Goa and Tamil Nadu, Puducherry & Karaikal. **above normal(1.6°C to 3.0°C)** at most places over Arunachal Pradesh; at few places over Andaman & Nicobar Islands, Rayalaseema and South Interior Karnataka; at isolated places over Punjab, West Rajasthan, Madhya Maharashtra, Chhattisgarh and Kerala & Mahe. **near normal(-1.5°C to 1.5°C)** at many places over Marathwada and Telangana; at most places over Uttarakhand, Coastal Karnataka and North Interior Karnataka; at few places over Haryana-Chandigarh-Delhi, Gujarat Region, Vidarbha and Lakshadweep; at isolated places over East Rajasthan. **The lowest minimum temperature** of 15.4°C was reported at SHEOPUR (MADHYA PRADESH) over the Plains of India.

❖ **Maximum Temperature Departures (as on 01-06-2026):** Maximum Temperature Departures (as on 01-06-2026): Yesterday, Maximum temperatures were markedly above normal (> 5.1°C) at few places over Arunachal Pradesh; at isolated places over Assam & Meghalaya; appreciably above normal (3.1°C to 5.0°C) at many places over Sub Himalayan West Bengal & Sikkim; at few places over Coastal Karnataka; at isolated places over Gangetic West Bengal, Bihar, Konkan & Goa, Madhya Maharashtra and Tamil Nadu, Puducherry & Karaikal; above normal (1.6°C to 3.0°C) at few places over Kerala & Mahe; at isolated places over Saurashtra & Kutch, Vidarbha, Telangana and North Interior Karnataka and below normal & near normal over rest parts of the country. **The highest maximum temperature of 44.8°C was reported at ADILABAD (TELANGANA).**

***Red color warning does not mean "Red Alert" Red color warning means "Take Action"**

Forecast and warning for any day is valid from 0830 hours IST of day till 0830 hours IST of next day

For more details kindly visit <https://mausam.imd.gov.in> or contact 011-2434-4599

(Service to the nation since 1875)

Meteorological Analysis (Based on 0830 hours IST)

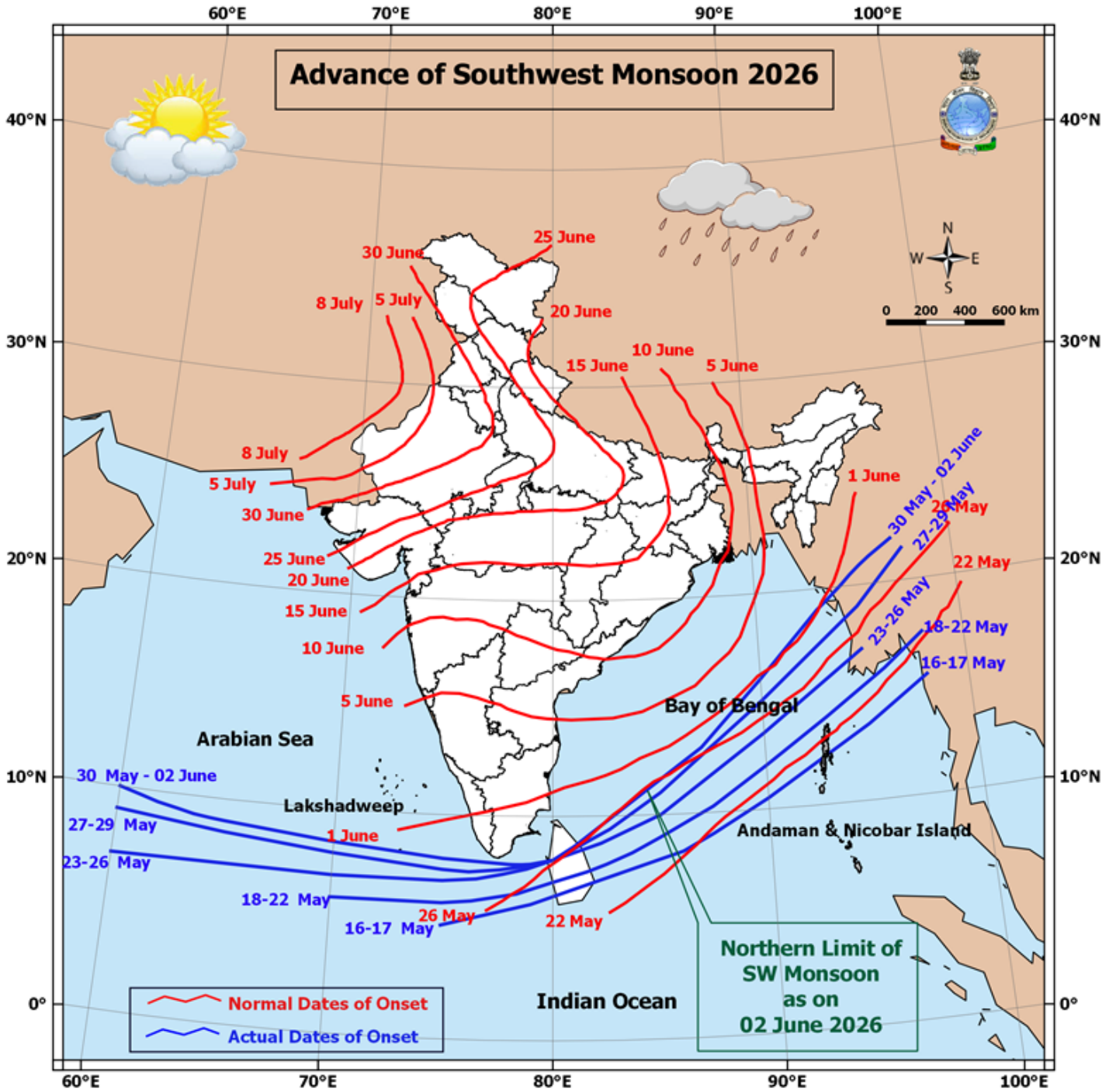
- The **Northern Limit of Monsoon** continues to pass through 10°N/60°E, 9°/65°E, 8.5°N/70°E, 8°N/75°E, 7.8°N/78°E, 8°N/80°E, 10°N/80°E, 13°N/87°E, 16°N/90°E, 19°N/93°E and 22°N/97°E.
- **Conditions are favourable for further advance of southwest monsoon** into some more parts of southwest & southeast Arabian Sea, Lakshadweep Islands, some parts of Kerala & Tamil Nadu, some more parts of southwest, westcentral, eastcentral & northeast Bay of Bengal, and remaining parts of southeast Bay of Bengal around 4th June.
- The **upper air cyclonic circulation** over southeast Arabian sea off south Kerala coast extending upto 5.8 km above mean sea level tilting southwestward with height persists.
- The **upper air cyclonic circulation** over south Kerala & adjoining Tamil Nadu extending upto 1.5 km above mean sea level merged with the above cyclonic circulation.
- The **upper air cyclonic circulation** over northeast & adjoining eastcentral Bay of Bengal & extending upto 4.5 km above mean sea level persists.
- The **upper air cyclonic circulation** over Central Parts of Assam at 3.1 km above mean sea level persists.
- The **upper air cyclonic circulation** over southeast Madhya Pradesh & neighbourhood lay over east Madhya Pradesh and adjoining Chhattisgarh extending upto 1.5 km above mean sea level.
- A **trough** runs from above **cyclonic circulation** over East Madhya Pradesh & adjoining Chhattisgarh to northeast Tamil Nadu across Vidarbha, Telangana and Rayalaseema at 0.9 km above mean sea level.
- A **trough** runs from Central Pakistan to West Bengal coast across **cyclonic circulation** over Northeast Rajasthan, cyclonic circulation over east Madhya Pradesh and adjoining Chhattisgarh, & Jharkhand and extends upto 1.5 km above mean sea level.
- The **Western Disturbance** as a cyclonic circulation over northwest Uttar Pradesh & neighbourhood persists and now seen between 3.1 & 9.4 km above mean sea level.
- The **upper air cyclonic circulation** over Central Pakistan & neighbourhood lay over Central Pakistan and adjoining northwest Rajasthan at 0.9 km above mean sea level.
- The **upper air cyclonic circulation** over Northeast Rajasthan & neighbourhood at 1.5 km above mean sea level persists.
- A fresh **western Disturbance** is likely to affect northwest India from 3rd June.
- The **upper air cyclonic circulation** over southwest Arabian sea and neighbourhood between 3.1 & 5.8 km above mean sea level has become less marked.
- The **upper air cyclonic circulation** over southwest Rajasthan and neighbourhood at 1.5 km above mean sea level has become less marked.
- The **upper air cyclonic circulation** over south Gangetic West Bengal & adjoining parts of Jharkhand & Odisha between 1.5 & 3.1 km above mean sea level has become less marked.

*Red color warning does not mean "Red Alert" Red color warning means "Take Action"

Forecast and warning for any day is valid from 0830 hours IST of day till 0830 hours IST of next day

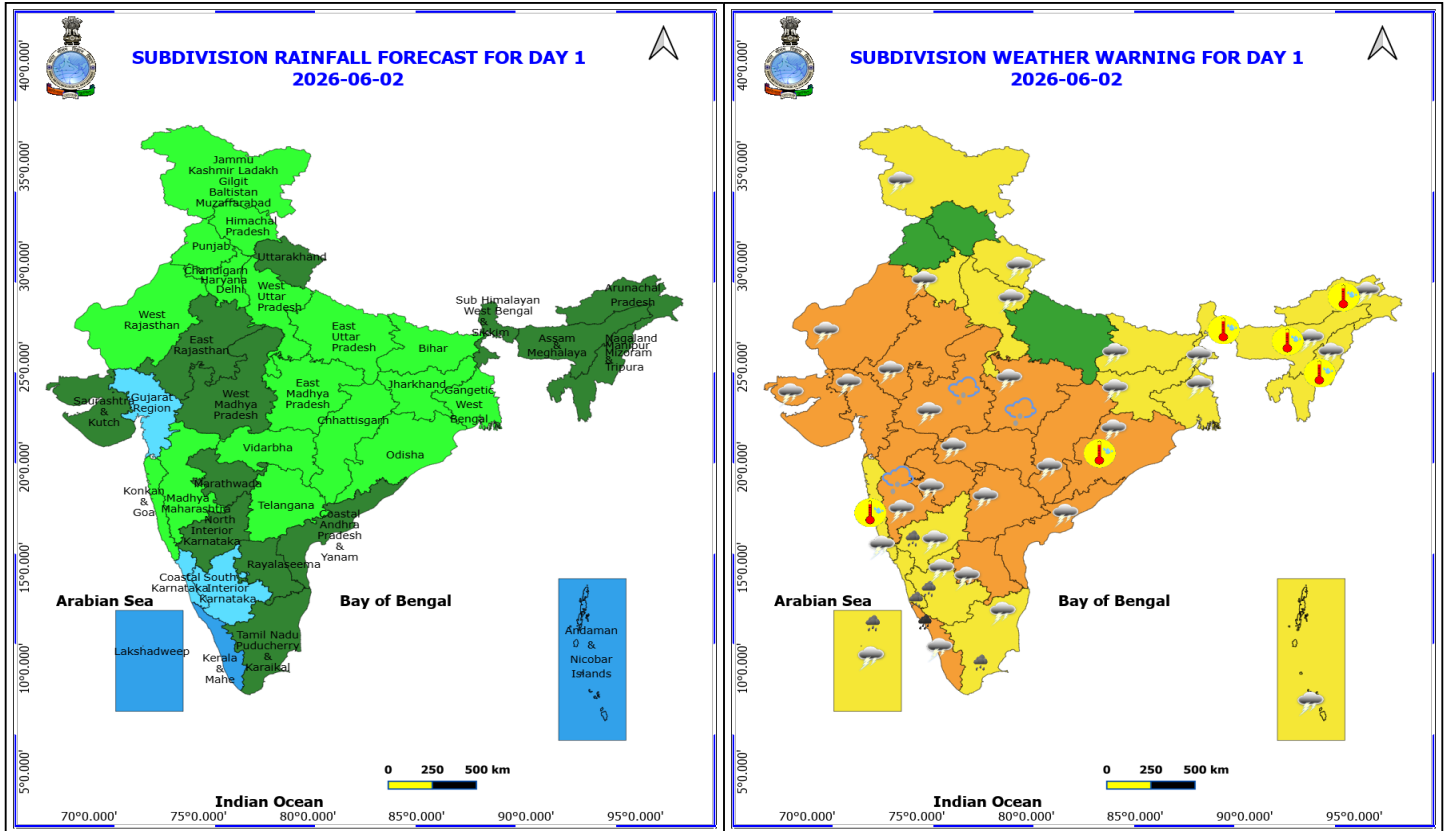
For more details kindly visit <https://mausam.imd.gov.in> or contact 011-2434-4599

(Service to the nation since 1875)



*Red color warning does not mean "Red Alert" Red color warning means "Take Action"
Forecast and warning for any day is valid from 0830 hours IST of day till 0830 hours IST of next day
For more details kindly visit <https://mausam.imd.gov.in> or contact 011-2434-4599

(Service to the nation since 1875)



2 June (Day 1)

- ❖ **Heavy to Very Heavy Rainfall** very likely at isolated places over Kerala & Mahe.
- ❖ **Heavy Rainfall** very likely at isolated places over Karnataka, Lakshadweep and Tamil Nadu Puducherry & Karaikal.
- ❖ **Thunderstorm accompanied with Hailstorm** very likely at isolated places over Madhya Maharashtra and Madhya Pradesh.
- ❖ **Thundersquall with wind speed reaching(50-60kmph)** very likely at isolated places over Andhra Pradesh, Chhattisgarh, Gujarat State, Madhya Pradesh, Maharashtra, Odisha, Rajasthan and Telangana.
- ❖ **Thunderstorm accompanied with lightning & gusty winds(40-50kmph)** very likely at isolated places over Andaman & Nicobar Islands, Arunachal Pradesh, Assam & Meghalaya, Bihar, Haryana, Chandigarh & Delhi, Interior Karnataka, Jammu-Kashmir-Ladakh-Gilgit-Baltistan-Muzaffarabad, Jharkhand, Kerala & Mahe, Konkan & Goa, Lakshadweep, Nagaland, Manipur, Mizoram and Tripura, Tamil Nadu Puducherry & Karaikal, Uttarakhand, West Bengal & Sikkim and West Uttar Pradesh.
- ❖ **Thunderstorm accompanied with lightning & gusty winds(30-40kmph)** very likely at isolated places over Coastal Karnataka.
- ❖ **Hot and Humid weather** very likely at isolated places over Arunachal Pradesh, Assam & Meghalaya, Konkan & Goa, Nagaland, Manipur, Mizoram and Tripura, Odisha and Sub Himalayan West Bengal & Sikkim.
- ❖ **Arabian Sea:** Squally weather with wind speed 40-50 gusting to 60 kmph is likely along and off Kerala, Karnataka, Lakshadweep & adjoining Maldives.

***Red color warning does not mean "Red Alert" Red color warning means "Take Action"**

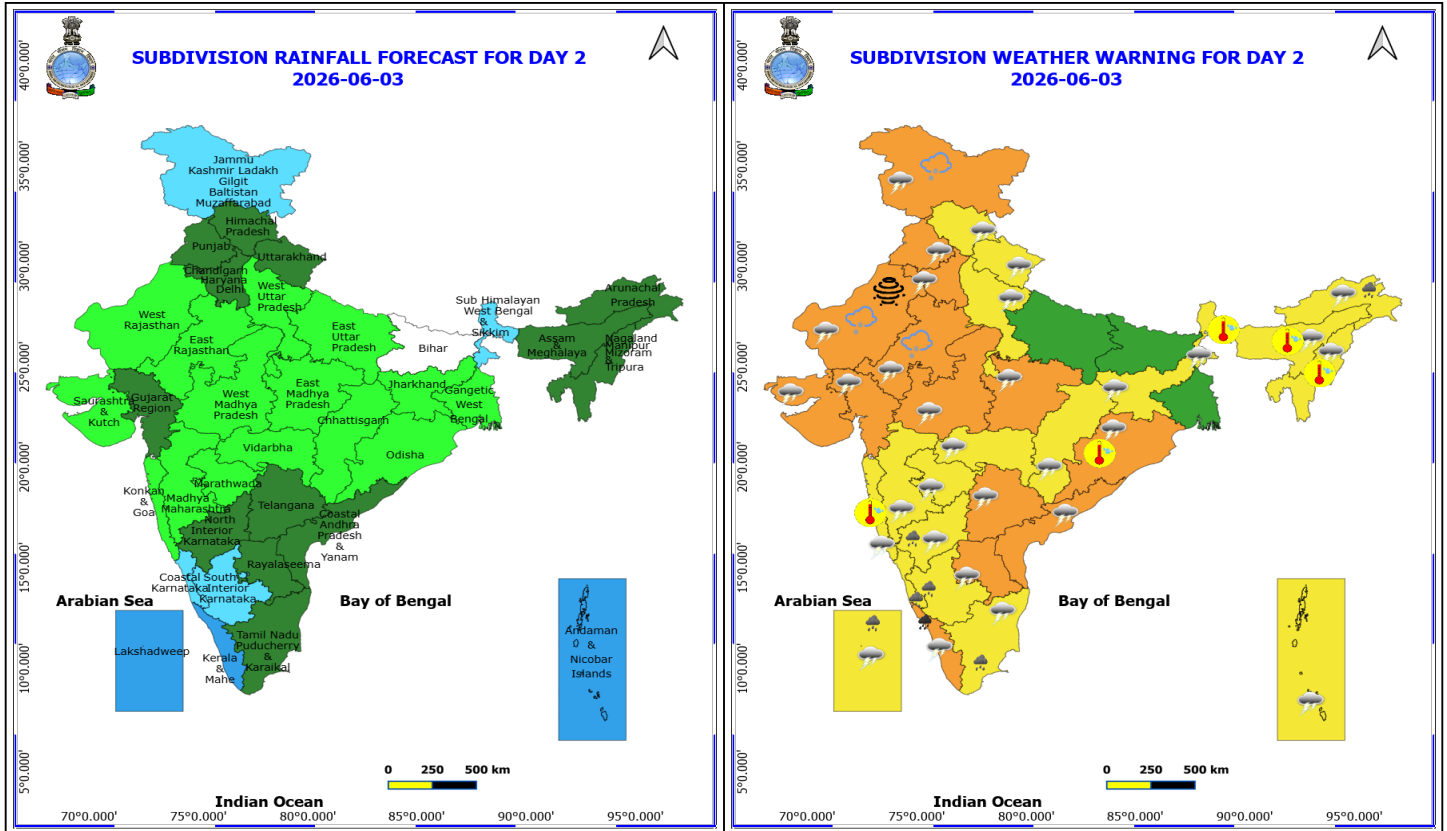
Forecast and warning for any day is valid from 0830 hours IST of day till 0830 hours IST of next day

For more details kindly visit <https://mausam.imd.gov.in> or contact 011-2434-4599

(Service to the nation since 1875)



❖ Bay of Bengal: Squally Weather with wind speed 40-50 kmph gusting to 60 kmph is likely to prevail over Gulf of Mannar & adjoining Comorin area, along and off Sri Lanka coasts and most parts of south Bay of Bengal, Andaman Sea.



3 June (Day 2)

- ❖ **Heavy to Very Heavy Rainfall** very likely at isolated places over Kerala & Mahe.
- ❖ **Heavy Rainfall** very likely at isolated places over Arunachal Pradesh, Karnataka, Lakshadweep and Tamil Nadu Puducherry & Karaikal.
- ❖ **Thunderstorm accompanied with Hailstorm** very likely at isolated places over Jammu-Kashmir-Ladakh-Gilgit-Baltistan-Muzaffarabad and Rajasthan.
- ❖ **Thundersquall with wind speed reaching(50-60kmph)** very likely at isolated places over Andhra Pradesh, Gujarat State, Haryana, Chandigarh & Delhi, Jammu-Kashmir-Ladakh-Gilgit-Baltistan-Muzaffarabad, Madhya Pradesh, Odisha, Punjab, Rajasthan and Telangana.
- ❖ **Thunderstorm accompanied with lightning & gusty winds(40-50kmph)** very likely at isolated places over Andaman & Nicobar Islands, Arunachal Pradesh, Assam & Meghalaya, Chhattisgarh, Himachal Pradesh, Jharkhand, Kerala & Mahe, Konkan & Goa, Lakshadweep, Maharashtra, Nagaland, Manipur, Mizoram and Tripura, North Interior Karnataka, Sub Himalayan West Bengal & Sikkim, Tamil Nadu Puducherry & Karaikal, Uttarakhand and West Uttar Pradesh.
- ❖ **Thunderstorm accompanied with lightning & gusty winds(30-40kmph)** very likely at isolated places over Coastal Karnataka and South Interior Karnataka.
- ❖ **Dust Storm** very likely at isolated places over West Rajasthan.
- ❖ **Hot and Humid weather** very likely at isolated places over Assam & Meghalaya, Konkan & Goa, Nagaland, Manipur, Mizoram and Tripura, Odisha and Sub Himalayan West Bengal & Sikkim.

***Red color warning does not mean "Red Alert" Red color warning means "Take Action"**

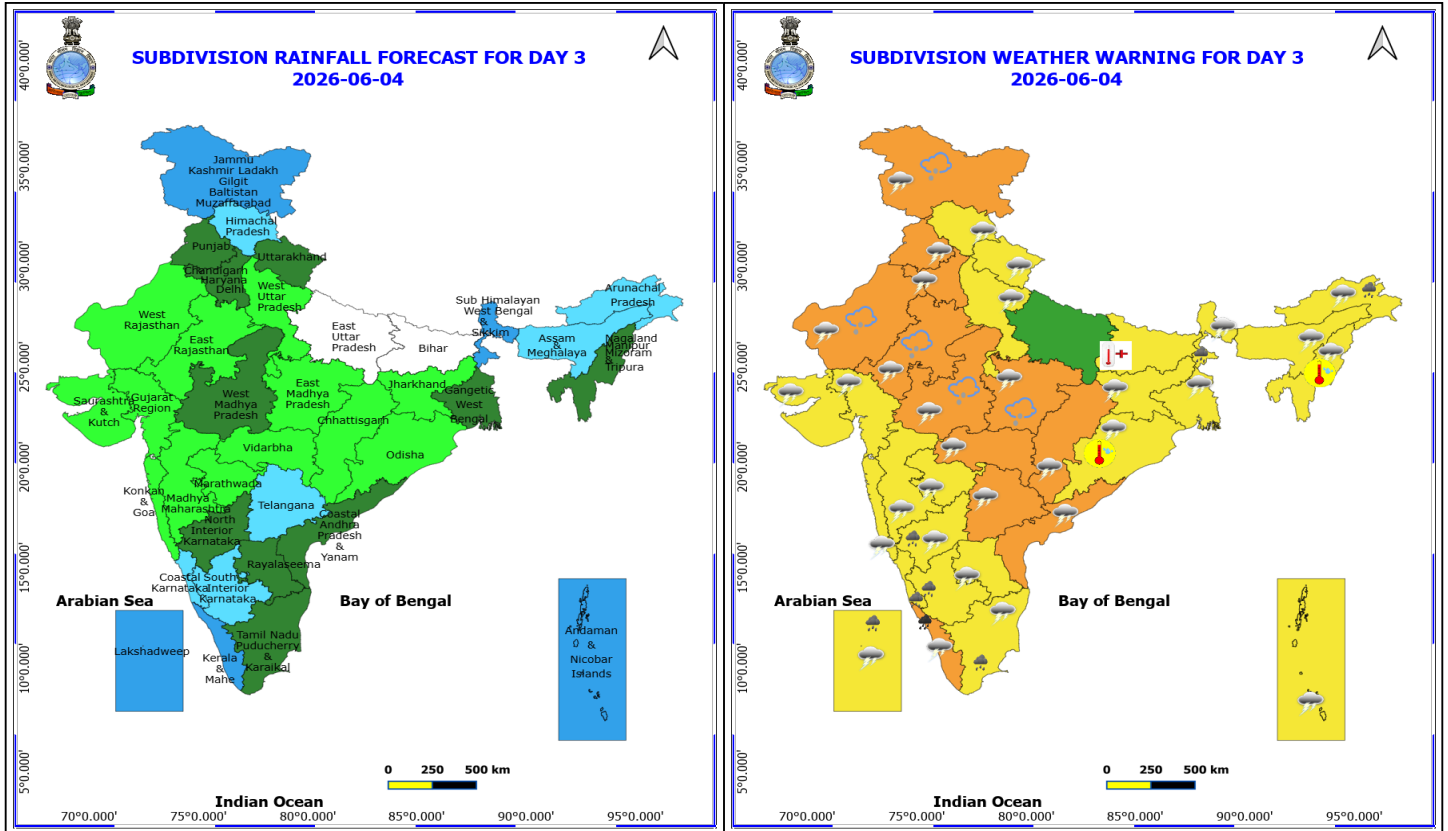
Forecast and warning for any day is valid from 0830 hours IST of day till 0830 hours IST of next day

For more details kindly visit <https://mausam.imd.gov.in> or contact 011-2434-4599

(Service to the nation since 1875)



- ❖ **Arabian Sea: Squally wind with wind speed 45-55 gusting to 65 kmph** is likely to prevail over Somalia Coast adjoining southwest Arabian Sea.
- ❖ **Squally weather with wind speed 40-50 gusting to 60 kmph** is likely along and off Kerala, Karnataka, Lakshadweep & adjoining Maldives.
- ❖ **Bay of Bengal: Squally Weather with wind speed 40-50 kmph gusting to 60 kmph** is likely to prevail over Gulf of Mannar & adjoining Comorin area, along and off Sri Lanka coasts and most parts of south Bay of Bengal, Andaman Sea.



4 June (Day 3)

- ❖ **Heavy to Very Heavy Rainfall** very likely at isolated places over Kerala & Mahe.
- ❖ **Heavy Rainfall** very likely at isolated places over Arunachal Pradesh, Karnataka, Lakshadweep, Sub Himalayan West Bengal & Sikkim and Tamil Nadu Puducherry & Karaikal.
- ❖ **Thunderstorm accompanied with Hailstorm** very likely at isolated places over Jammu-Kashmir-Ladakh-Gilgit-Baltistan-Muzaffarabad, Madhya Pradesh and Rajasthan.
- ❖ **Thundersquall with wind speed reaching(50-60kmph)** very likely at isolated places over Chhattisgarh, Coastal Andhra Pradesh, East Rajasthan, Haryana, Chandigarh & Delhi, Jammu-Kashmir-Ladakh-Gilgit-Baltistan-Muzaffarabad, Madhya Pradesh, Punjab, Telangana and Vidarbha.
- ❖ **Thunderstorm accompanied with lightning & gusty winds(40-50kmph)** very likely at isolated places over Andaman & Nicobar Islands, Arunachal Pradesh, Assam & Meghalaya, Gujarat State, Himachal Pradesh, Jharkhand, Kerala & Mahe, Konkan & Goa, Lakshadweep, Madhya Maharashtra, Marathwada, Nagaland, Manipur, Mizoram and Tripura, North Interior Karnataka, Odisha, Rayalaseema, Tamil Nadu Puducherry & Karaikal, Uttarakhand, West Bengal & Sikkim, West Rajasthan and West Uttar Pradesh.
- ❖ **Thunderstorm accompanied with lightning & gusty winds(30-40kmph)** very likely at isolated places over South Interior Karnataka.
- ❖ **Heat Wave conditions** very likely at isolated places over Bihar.
- ❖ **Hot and Humid weather** very likely at isolated places over Nagaland, Manipur, Mizoram and Tripura and Odisha.
- ❖ **Arabian Sea: Squally wind with speed 45-55 kmph gusting to 65 kmph** is likely to prevail along & off Somalia

***Red color warning does not mean "Red Alert" Red color warning means "Take Action"**

Forecast and warning for any day is valid from 0830 hours IST of day till 0830 hours IST of next day

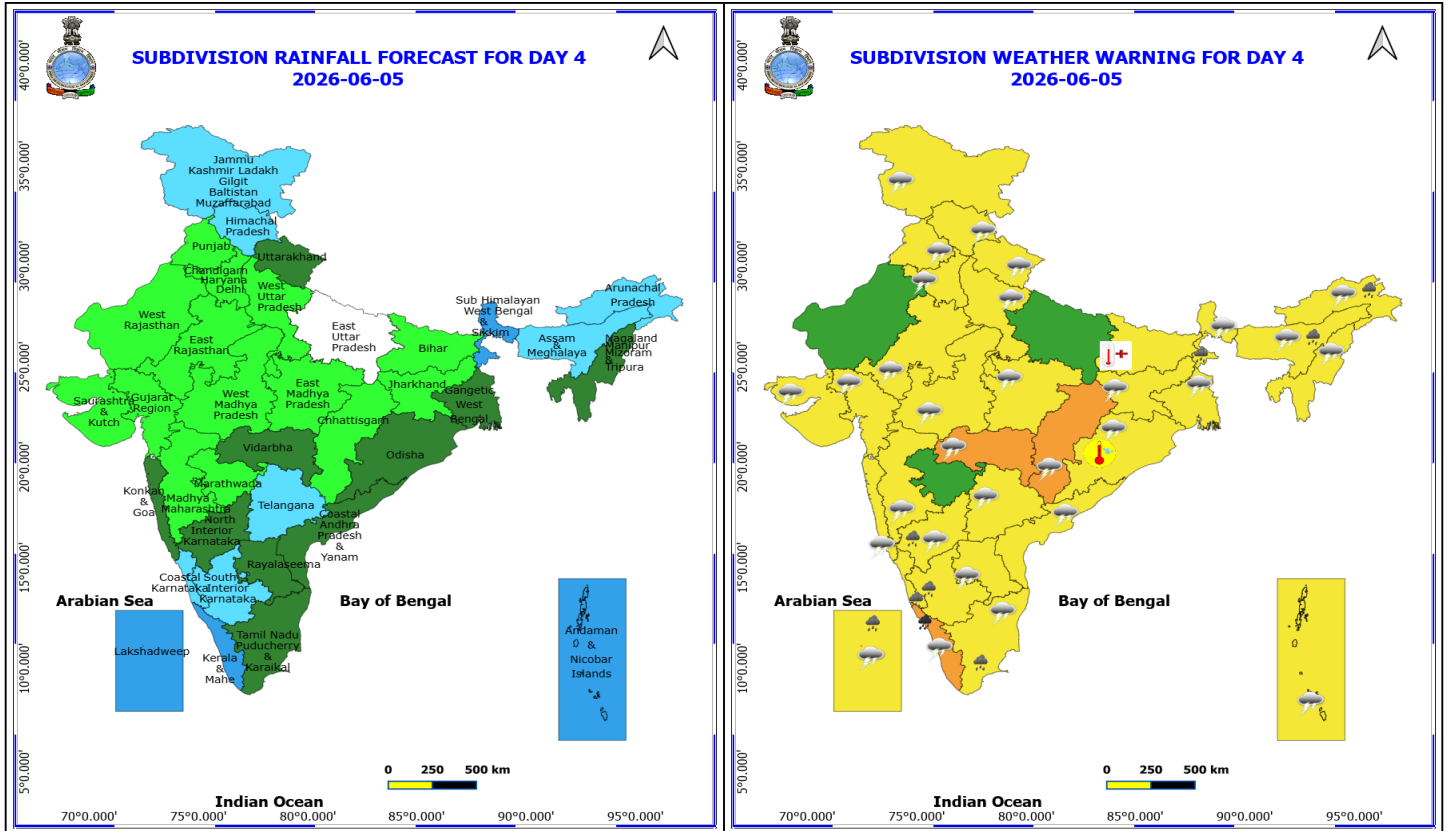
For more details kindly visit <https://mausam.imd.gov.in> or contact 011-2434-4599

(Service to the nation since 1875)

coast adjoining southwest Arabian sea and adjoining parts of westcentral Arabian Sea.

❖ **Squally weather with wind speed 40-50 gusting to 60 kmph** is likely along and off Kerala, Karnataka, Lakshadweep & adjoining Maldives.

❖ **Bay of Bengal: Squally Weather with wind speed 40-50 kmph gusting to 60 kmph** is likely to prevail over Gulf of Mannar & adjoining Comorin area, off north Tamil Nadu coast, along and off Sri Lanka coasts, south Bay of Bengal adjoining central Bay of Bengal and Andaman Sea.



5 June (Day 4)

- ❖ **Heavy to Very Heavy Rainfall** likely at isolated places over Kerala & Mahe.
 - ❖ **Heavy Rainfall** likely at isolated places over Arunachal Pradesh, Assam & Meghalaya, Karnataka, Lakshadweep, Sub Himalayan West Bengal & Sikkim and Tamil Nadu Puducherry & Karaikal.
 - ❖ **Thundersquall with wind speed reaching(50-60kmph)** likely at isolated places over Chhattisgarh and Vidarbha.
 - ❖ **Thunderstorm accompanied with lightning & gusty winds(40-50kmph)** likely at isolated places over Andaman & Nicobar Islands, Andhra Pradesh, Arunachal Pradesh, Assam & Meghalaya, East Rajasthan, Gujarat State, Haryana, Chandigarh & Delhi, Himachal Pradesh, Jammu-Kashmir-Ladakh-Gilgit-Baltistan-Muzaffarabad, Jharkhand, Kerala & Mahe, Konkan & Goa, Lakshadweep, Madhya Maharashtra, Madhya Pradesh, Nagaland, Manipur, Mizoram and Tripura, North Interior Karnataka, Odisha, Punjab, Tamil Nadu Puducherry & Karaikal, Telangana, Uttarakhand, West Bengal & Sikkim and West Uttar Pradesh.
 - ❖ **Thunderstorm accompanied with lightning & gusty winds(30-40kmph)** likely at isolated places over South Interior Karnataka and West Rajasthan.
 - ❖ **Heat Wave conditions** likely at isolated places over Bihar.
 - ❖ **Hot and Humid weather** likely at isolated places over Odisha.
-
- ❖ **Arabian Sea: Squally wind with speed 45-55 kmph gusting to 65 kmph** is likely to prevail along & off Somalia coast adjoining southwest Arabian sea and adjoining parts of westcentral Arabian Sea.
 - ❖ **Squally weather with wind speed 40-50 gusting to 60 kmph** is likely along and off Kerala, Karnataka, Lakshadweep & adjoining Maldives.

***Red color warning does not mean "Red Alert" Red color warning means "Take Action"**

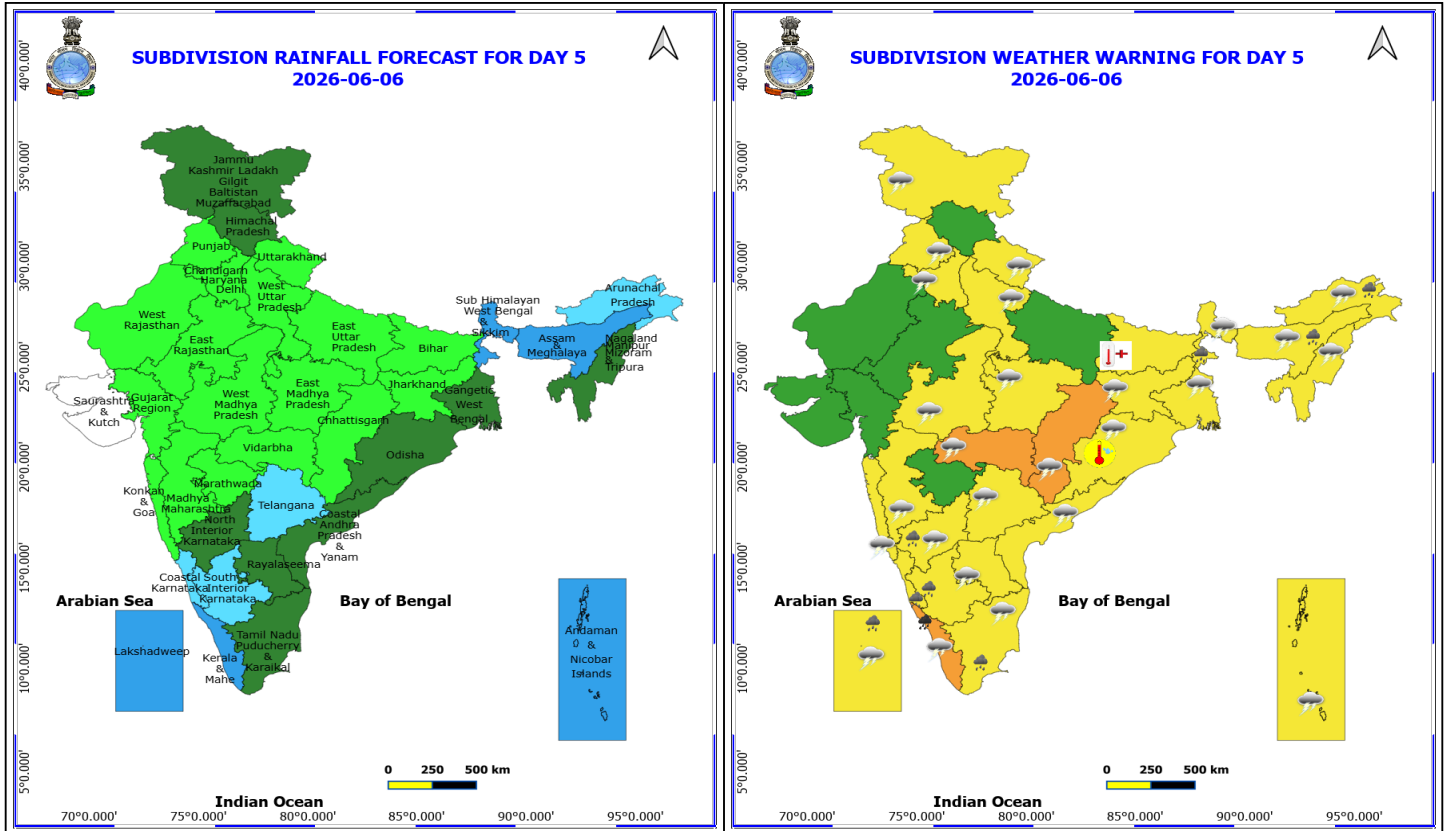
Forecast and warning for any day is valid from 0830 hours IST of day till 0830 hours IST of next day

For more details kindly visit <https://mausam.imd.gov.in> or contact 011-2434-4599

(Service to the nation since 1875)



❖ **Bay of Bengal: Squally Weather with wind speed 40-50 kmph gusting to 60 kmph** is likely to prevail over Gulf of Mannar & adjoining Comorin area, off north Tamil Nadu coast, along and off Sri Lanka coasts, south Bay of Bengal adjoining central Bay of Bengal and Andaman Sea.



6 June (Day 5)

- ❖ **Heavy to Very Heavy Rainfall** likely at isolated places over Kerala & Mahe.
 - ❖ **Heavy Rainfall** likely at isolated places over Arunachal Pradesh, Assam & Meghalaya, Karnataka, Lakshadweep, Sub Himalayan West Bengal & Sikkim and Tamil Nadu Puducherry & Karaikal.
 - ❖ **Thundersquall with wind speed reaching(50-60kmph)** likely at isolated places over Chhattisgarh and Vidarbha.
 - ❖ **Thunderstorm accompanied with lightning & gusty winds(40-50kmph)** likely at isolated places over Andaman & Nicobar Islands, Andhra Pradesh, Arunachal Pradesh, Assam & Meghalaya, Haryana, Chandigarh & Delhi, Jammu-Kashmir-Ladakh-Gilgit-Baltistan-Muzaffarabad, Jharkhand, Kerala & Mahe, Konkan & Goa, Lakshadweep, Madhya Maharashtra, Madhya Pradesh, Nagaland, Manipur, Mizoram and Tripura, North Interior Karnataka, Odisha, Punjab, Tamil Nadu Puducherry & Karaikal, Telangana, Uttarakhand, West Bengal & Sikkim and West Uttar Pradesh.
 - ❖ **Thunderstorm accompanied with lightning & gusty winds(30-40kmph)** likely at isolated places over East Rajasthan and South Interior Karnataka.
 - ❖ **Heat Wave conditions** likely at isolated places over Bihar.
 - ❖ **Hot and Humid weather** likely at isolated places over Odisha.
-
- ❖ **Arabian Sea: Squally wind with speed 45-55 kmph gusting to 65 kmph** is likely to prevail along & off Somalia coast adjoining southwest Arabian sea and adjoining parts of westcentral Arabian Sea.
 - ❖ **Squally weather with wind speed 40-50 gusting to 60 kmph** is likely along and off Kerala, Karnataka, Lakshadweep & adjoining Maldives.

***Red color warning does not mean "Red Alert" Red color warning means "Take Action"**

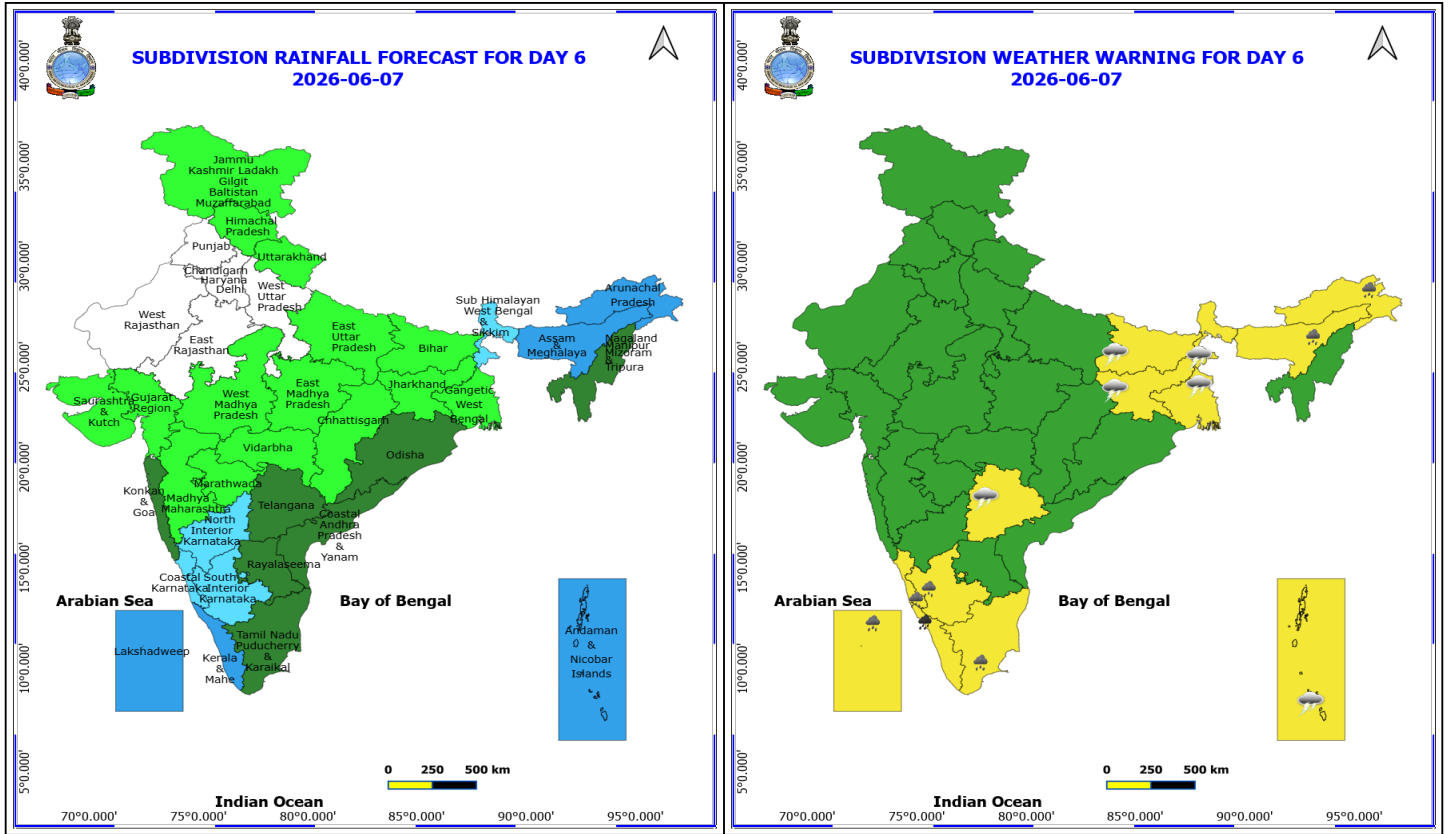
Forecast and warning for any day is valid from 0830 hours IST of day till 0830 hours IST of next day

For more details kindly visit <https://mausam.imd.gov.in> or contact 011-2434-4599

(Service to the nation since 1875)



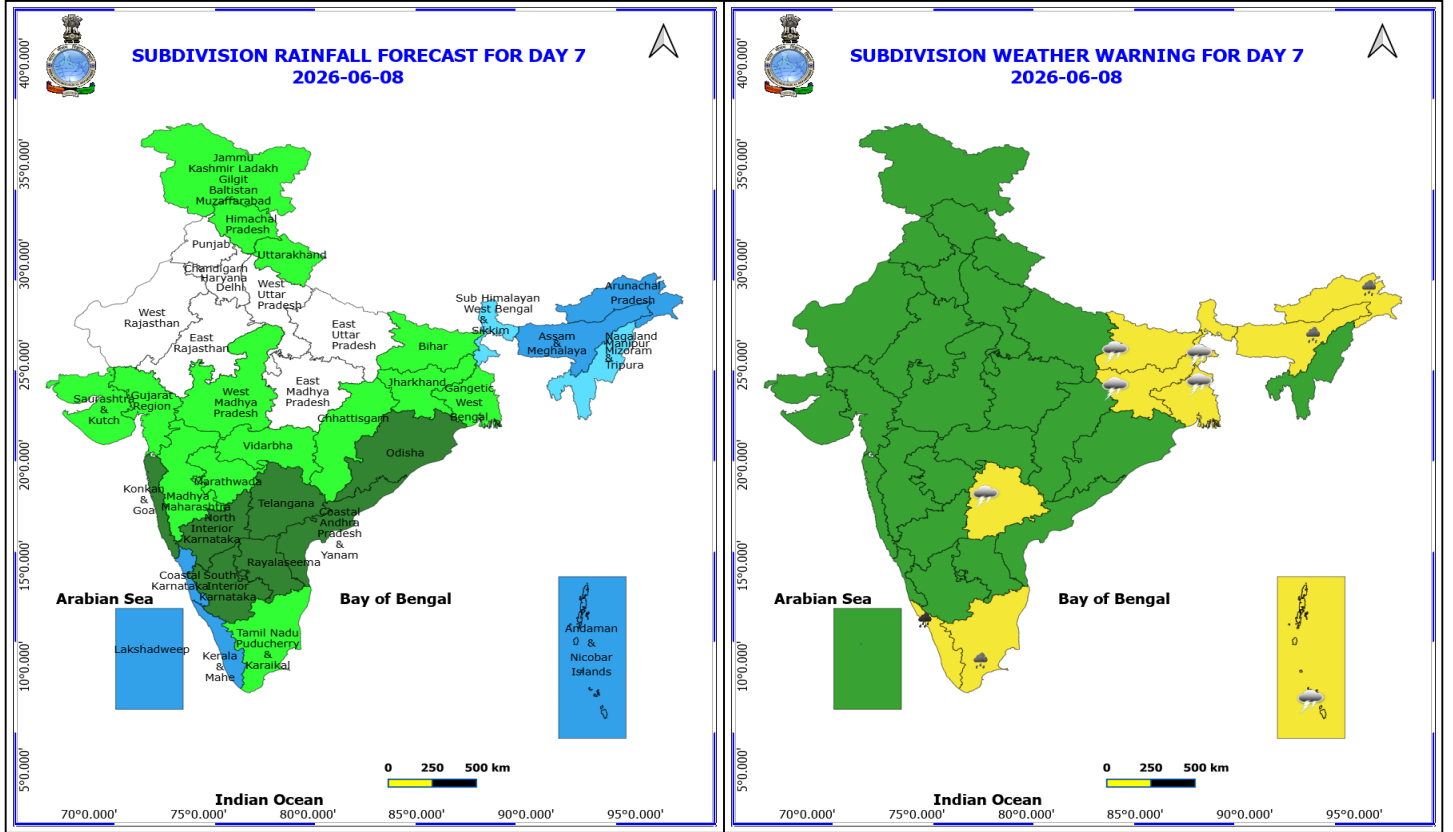
❖ **Bay of Bengal: Squally Weather with wind speed 40-50 kmph gusting to 60 kmph** is likely to prevail over Gulf of Mannar & adjoining Comorin area, off north Tamil Nadu coast, along and off Sri Lanka coasts, south Bay of Bengal adjoining central Bay of Bengal and Andaman Sea.



7 June (Day 6)

- ❖ **Heavy to Very Heavy Rainfall** likely at isolated places over Kerala & Mahe.
- ❖ **Heavy Rainfall** likely at isolated places over Arunachal Pradesh, Assam & Meghalaya, Coastal Karnataka, Lakshadweep, South Interior Karnataka and Tamil Nadu Puducherry & Karaikal.
- ❖ **Thunderstorm accompanied with lightning & gusty winds(40-50kmph)** likely at isolated places over Andaman & Nicobar Islands, Bihar, Jharkhand, Telangana and West Bengal & Sikkim.

No Fishermen Warning



8 June (Day 7)

- ❖ **Heavy to Very Heavy Rainfall** likely at isolated places over Kerala & Mahe.
- ❖ **Heavy Rainfall** likely at isolated places over Arunachal Pradesh, Assam & Meghalaya and Tamil Nadu Puducherry & Karaikal.
- ❖ **Thunderstorm accompanied with lightning & gusty winds(40-50kmph)** likely at isolated places over Andaman & Nicobar Islands, Bihar, Jharkhand, Telangana and West Bengal & Sikkim.

No Fishermen Warning



Table-1

7 Days Rainfall Forecast

S.No.	Subdivision	2- Jun	3- Jun	4- Jun	5- Jun	6- Jun	7- Jun	8- Jun
		Day 1	Day 2	Day 3	Day 4	Day 5	Day 6	Day 7
1	ANDAMAN & NICOBAR ISLANDS	WS	WS	WS	WS	WS	WS	WS
2	ARUNACHAL PRADESH	SCT	SCT	FWS	FWS	FWS	WS	WS
3	ASSAM & MEHGHALAYA	SCT	SCT	FWS	FWS	WS	WS	WS
4	N. M. M. & T.	SCT	SCT	SCT	SCT	SCT	SCT	FWS
5	S.H. WEST BENGAL & SIKKIM	SCT	FWS	WS	WS	WS	FWS	FWS
6	GANGETIC WEST BENGAL	ISOL	ISOL	SCT	SCT	SCT	ISOL	ISOL
7	ODISHA	ISOL	ISOL	ISOL	SCT	SCT	SCT	SCT
8	JHARKHAND	ISOL	ISOL	ISOL	ISOL	ISOL	ISOL	ISOL
9	BIHAR	ISOL	DRY	DRY	ISOL	ISOL	ISOL	ISOL
10	EAST UTTAR PRADESH	ISOL	ISOL	DRY	DRY	ISOL	ISOL	DRY
11	WEST UTTAR PRADESH	ISOL	ISOL	ISOL	ISOL	ISOL	DRY	DRY
12	UTTARAKHAND	SCT	SCT	SCT	SCT	ISOL	ISOL	ISOL
13	HARYANA, CHD & DELHI	ISOL	SCT	SCT	ISOL	ISOL	DRY	DRY
14	PUNJAB	ISOL	SCT	SCT	ISOL	ISOL	DRY	DRY
15	HIMACHAL PRADESH	ISOL	SCT	FWS	FWS	SCT	ISOL	ISOL
16	JAMMU AND KASHMIR AND LADAKH	ISOL	FWS	WS	FWS	SCT	ISOL	ISOL
17	WEST RAJASTHAN	ISOL	ISOL	ISOL	ISOL	ISOL	DRY	DRY
18	EAST RAJASTHAN	SCT	ISOL	ISOL	ISOL	ISOL	DRY	DRY
19	WEST MADHYA PRADESH	SCT	ISOL	SCT	ISOL	ISOL	ISOL	ISOL
20	EAST MADHYA PRADESH	ISOL	ISOL	ISOL	ISOL	ISOL	ISOL	DRY
21	GUJRAT REGION	FWS	SCT	ISOL	ISOL	ISOL	ISOL	ISOL
22	SAURASHTRA & KUTCH	SCT	ISOL	ISOL	ISOL	DRY	ISOL	ISOL
23	KONKAN & GOA	ISOL	ISOL	ISOL	SCT	ISOL	SCT	SCT
24	MADHYA MAHARASHTRA	ISOL	ISOL	ISOL	ISOL	ISOL	ISOL	ISOL
25	MARATHWADA	SCT	ISOL	ISOL	ISOL	ISOL	ISOL	ISOL
26	VIDARBHA	ISOL	ISOL	ISOL	SCT	ISOL	ISOL	ISOL
27	CHATTISGARH	ISOL	ISOL	ISOL	ISOL	ISOL	ISOL	ISOL
28	COASTAL ANDHRA PRADESH	SCT	SCT	SCT	SCT	SCT	SCT	SCT
29	TELANGANA	ISOL	SCT	FWS	FWS	FWS	SCT	SCT
30	RAYALASEEMA	SCT	SCT	SCT	SCT	SCT	SCT	SCT
31	TAMILNADU & PUDUCHERRY	SCT	SCT	SCT	SCT	SCT	SCT	ISOL
32	COSTAL KARNATAKA	FWS	FWS	FWS	FWS	FWS	FWS	WS
33	NORTH INTERIOR KARNATAKA	SCT	SCT	SCT	SCT	SCT	FWS	SCT
34	SOUTH INTERIOR KARNATAKA	FWS	FWS	FWS	FWS	FWS	FWS	SCT
35	KERALA	WS	WS	WS	WS	WS	WS	WS
36	LAKSHDWEEP	WS	WS	WS	WS	WS	WS	WS

Legend	Category	%Stations
WS	Widespread/Most Places	76-100
FWS	Fairly Widespread/Many Places	51-75
SCT	Scattered/ A Few Places	26-50
ISOL	Isolated Places	1-25
DRY	No Rain	0

***Red color warning does not mean "Red Alert" Red color warning means "Take Action"**
Forecast and warning for any day is valid from 0830 hours IST of day till 0830 hours IST of next day
For more details kindly visit <https://mausam.imd.gov.in> or contact 011-2434-4599

(Service to the nation since 1875)

Fig. 1: Maximum Temperatures Dated 2026-06-01

Fig. 2: Departure of Maximum Temp. Dated 2026-06-01

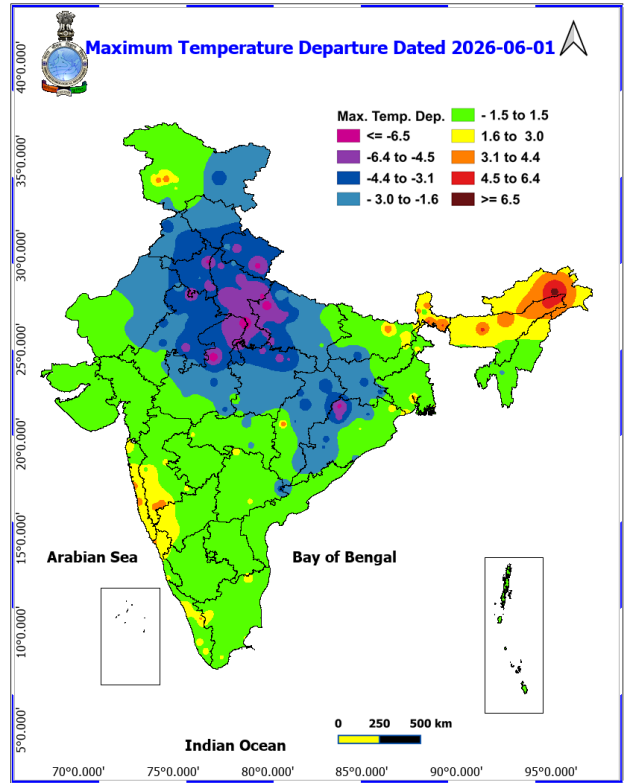
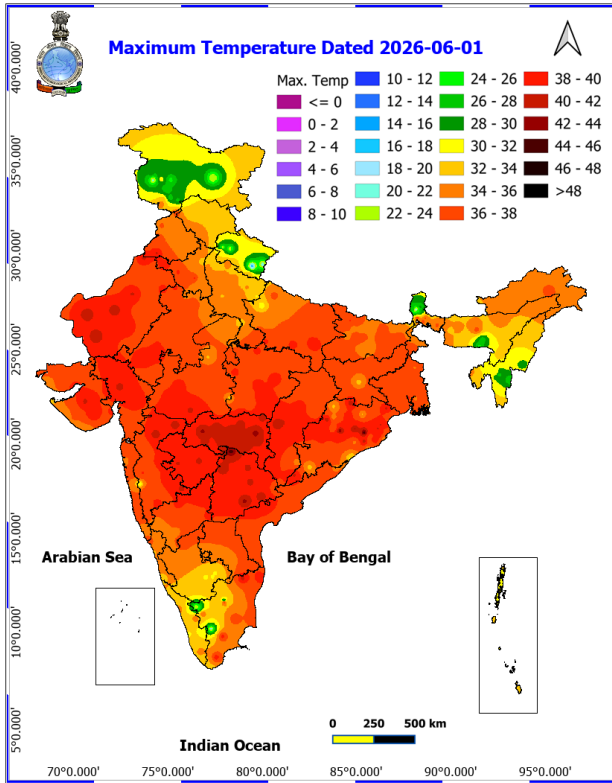
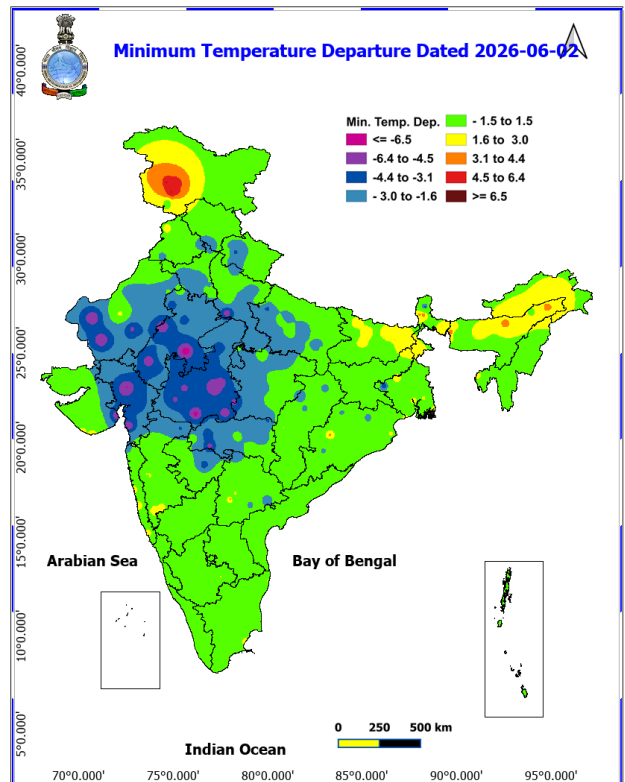
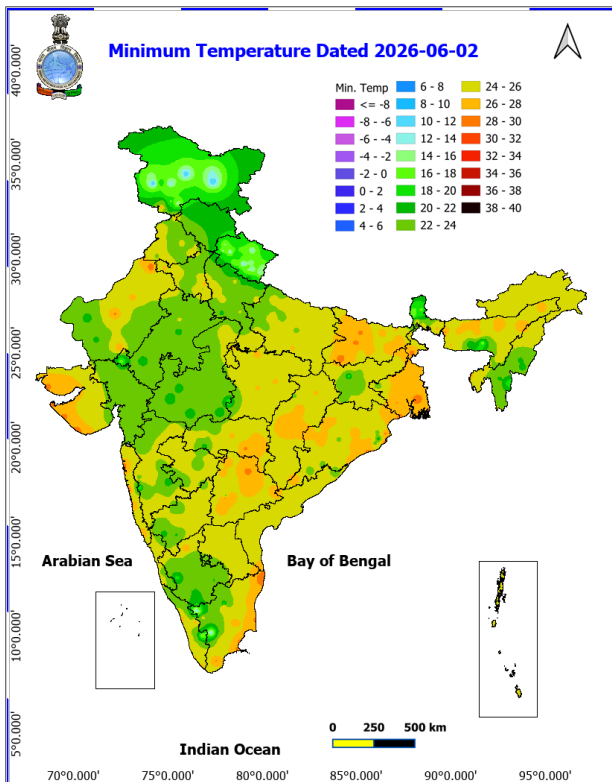
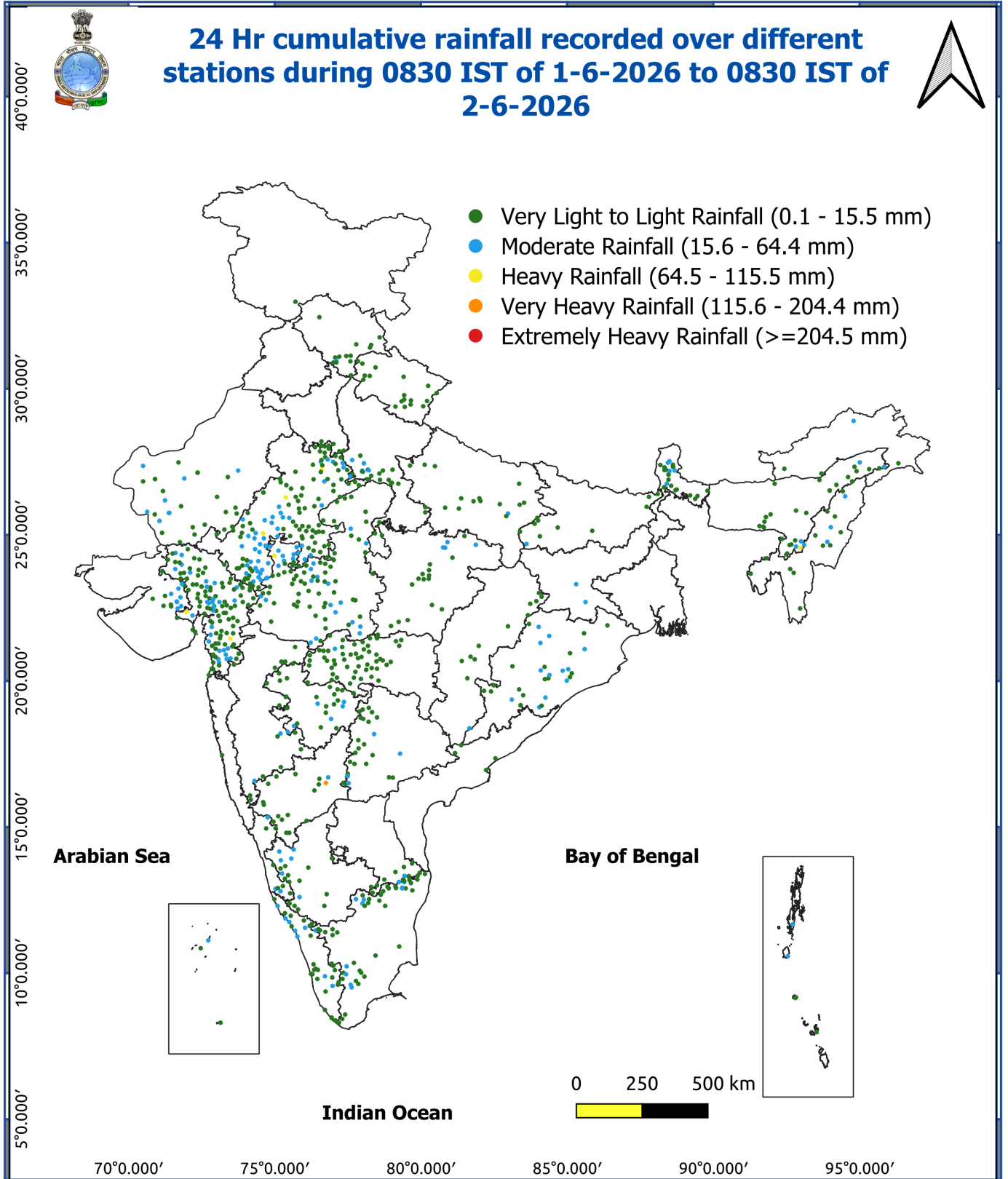


Fig. 3: Minimum Temperatures Dated 2026-06-02

Fig. 4: Departure of Minimum Temp. Dated 2026-06-02





Impact and Actions

Impact Expected & Action Suggested due to heavy/very heavy rainfall over

- **Isolated heavy rainfall** likely over Arunachal Pradesh during 3rd -8th June; Assam & Meghalaya during 5th -8th June. **Isolated heavy rainfall** likely over Tamil Nadu, Puducherry & Karaikal during 2nd -8th; Lakshadweep, South Interior Karnataka and Coastal Karnataka during 2nd -7th; North Interior Karnataka during 2nd -6th June; with **very heavy rainfall** likely over Kerala & Mahe during 2nd - 8th June. **Isolated heavy rainfall** likely over Sub-Himalayan West Bengal & Sikkim during 4th - 6th June

Impact Expected

- Localized Flooding of roads, water logging in low lying areas and closure of underpasses mainly in urban areas.
- Occasional reduction in visibility due to heavy rainfall.
- Disruption of traffic in major cities due to water logging in roads leading to increased travel time.
- Minor damage to kutchha roads.
- Possibilities of damage to vulnerable structure.
- Localized Landslides/Mudslides/landslips/mudslips/landsinks/mudsinks.
- Damage to horticulture and standing crops in some areas due to inundation.
- It may lead to riverine flooding in some river catchments (for riverine flooding please visit Web page of CWC)

Action Suggested

- Check for traffic congestion on your route before leaving for your destination.
- Follow any traffic advisories that are issued in this regard.
- Avoid going to areas that face the water logging problems often.
- Avoid staying in vulnerable structure.

Impact expected and action suggested due to isolated thunderstorm with lightning, gusty/squally winds & hailstorm:

- Thundersquall (wind speed reaching 50-60 kmph gusting to 70 kmph) likely over Coastal Andhra Pradesh & Yanam and Telangana during 2nd -4th; Rayalaseema on 2nd & 3rd; Odisha on 2nd & 3rd; Jammu-Kashmir, Punjab Haryana Chandigarh & Delhi on 3rd & 4th June; West Rajasthan on 2nd & 3rd; East Rajasthan during 2nd -4th June.

Impact expected:

- Breaking of tree branches, uprooting of large avenue trees. Large dead limbs blown from trees. Damage to Standing crops.
- Minor to Major damage to banana and papaya trees.
- Minor to major damage to power and communication lines due to breaking of branches.
- Strong wind/hail may damage plantation, horticulture and standing crops.
- Partial damage to vulnerable structures due to strong winds.
- Minor damage to kutchha houses/walls and huts.
- Loose objects may fly.

Action suggested:

- People are advised to keep a watch on the weather for worsening conditions and be ready to move to safer places accordingly.
- Stay indoors, close windows & doors and avoid travel if possible.
- Take safe shelters; do not take shelter under trees.
- Do not lie on concrete floors and do not lean against concrete walls.

***Red color warning does not mean "Red Alert" Red color warning means "Take Action"**

Forecast and warning for any day is valid from 0830 hours IST of day till 0830 hours IST of next day

For more details kindly visit <https://mausam.imd.gov.in> or contact 011-2434-4599

(Service to the nation since 1875)

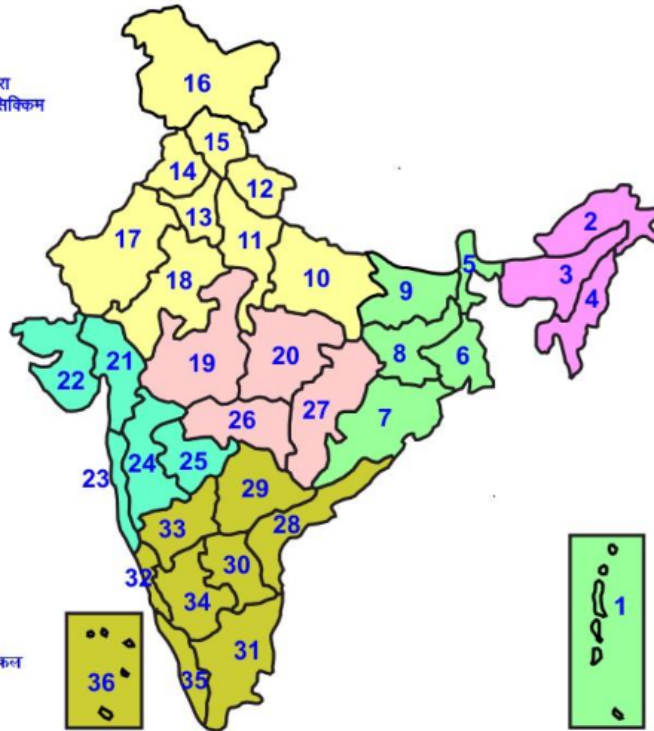


- Unplug electrical/ electronic appliances.
- Immediately get out of water bodies.
- Keep away from all the objects that conduct electricity.

Agromet advisories for various parts of the country

LEGENDS

- 1 अंडमान और निकोबार द्वीप समुह
- 2 अरुणाचल प्रदेश
- 3 असम और मेघालय
- 4 नागालैंड मनीपुर मीजोरम और त्रिपुरा
- 5 उप हिमालय पश्चिम बंगाल एवं सिक्किम
- 6 पश्चिम बंगाल
- 7 ओडिसा
- 8 झारखंड
- 9 बिहार
- 10 पूर्वी उत्तर प्रदेश
- 11 पश्चिम उत्तर प्रदेश
- 12 उत्तराखंड
- 13 हरियाणा चंडिगढ़ एवं दिल्ली
- 14 पंजाब
- 15 हिमाचल प्रदेश
- 16 जम्मू एवं कश्मीर एवं लद्दाख
- 17 पश्चिम राजस्थान
- 18 पूर्वी राजस्थान
- 19 पश्चिम मध्य प्रदेश
- 20 पूर्वी मध्य प्रदेश
- 21 गुजरात क्षेत्र
- 22 सौराष्ट्र एवं कच्छ
- 23 कोंकण एवं गोवा
- 24 मध्य महाराष्ट्र
- 25 मराठावाडा
- 26 विदर्भ
- 27 छत्तीसगढ़
- 28 तटीय आंध्र प्रदेश एवं यनम
- 29 तेलंगाना
- 30 रायलसीमा
- 31 तमिलनाडु, पुदुचेरी एवं कराईकल
- 32 तटिय कर्नाटक
- 33 आंतरिक उत्तरी कर्नाटक
- 34 आंतरिक दक्षिणी कर्नाटक
- 35 केरल एवं माहे
- 36 लक्षद्वीप



1. Andaman & Nicobar Islands
2. Arunachal Pradesh
3. Assam & Meghalaya
4. Nagaland, Manipur, Mizoram & Tripura
5. Sub-Himalayan West Bengal & Sikkim
6. Gangetic West Bengal
7. Orissa
8. Jharkhand
9. Bihar
10. East Uttar Pradesh
11. West Uttar Pradesh
12. Uttarakhand
13. Haryana, Chd & Delhi
14. Punjab
15. Himachal Pradesh
16. Jammu & Kashmir and Ladakh
17. West Rajasthan
18. East Rajasthan
19. West Madhya Pradesh
20. East Madhya Pradesh
21. Gujarat
22. Saurashtra
23. Konkan & Goa
24. Madhya Maharashtra
25. Marathawada
26. Vidharbha
27. Chhattisgarh
28. Coastal Andhra Pradesh & Yanam
29. Telangana
30. Rayalaseema
31. Tamilnadu, Puducherry & Karaikal
32. Coastal Karnataka
33. North Interior Karnataka
34. South Interior Karnataka
35. Kerala & Mahe
36. Lakshadweep

SPATIAL DISTRIBUTION (% of Stations reporting)

% Stations	Category	% Stations	Category
76-100	Widespread (WS/ Most Places)	26-50	Scattered (SCT/ A Few Places)
51-75	Fairly Widespread (FWS/ Many Places)	1-25	Isolated (ISOL)

Subdivision Colour

- NO WARNING
- WATCH (BE UPDATED)
- ALERT (BE PREPARED TO TAKE ACTION)
- WARNING (TAKE ACTION)

Probabilistic Forecast

Terms	Probability of Occurrence (%)
Unlikely	< 25
Likely	25 - 50
Very Likely	50 - 75
Most Likely	> 75

- | | | | |
|--------------------------|-----------------|----------------------|--------------------|
| Heavy Rain | Very Heavy Rain | Extremely Heavy Rain | Heavy Snow |
| Thunderstorm & Lightning | Hailstorm | Dust Storm | Dust Raising Winds |
| Strong surface winds | Heat Wave | Hot Day | Warm Night |
| Cold Wave | Cold Day | Ground Frost | Fog |
| Hot & Humid | | | |

*Red color warning does not mean "Red Alert" Red color warning means "Take Action"

Forecast and warning for any day is valid from 0830 hours IST of day till 0830 hours IST of next day

For more details kindly visit <https://mausam.imd.gov.in> or contact 011-2434-4599

(Service to the nation since 1875)

LEGENDS

WARNING

WARNING (TAKE ACTION)
ALERT (BE PREPARED)
WATCH (BE UPDATED)
NO WARNING (NO ACTION)

Probabilistic Forecast

Terms	Probability of Occurrence (%)
Unlikely	< 25
Likely	25 - 50
Very Likely	50 - 75
Most Likely	> 75



Rain/ Snow *

Heavy: 64.5 to 115.5 mm/cm *
Very Heavy: 115.6 to 204.4 mm/cm*
Extremely Heavy: > 204.4 mm/cm *



Heat Wave

When maximum temperature of a station reaches $\geq 40^{\circ}\text{C}$ for plains and $\geq 30^{\circ}\text{C}$ for hilly regions
(a) Based on Departure from normal

Heat Wave: Maximum Temperature Departure from normal 4.5°C to 6.4°C .
Severe Heat Wave: Maximum Temperature Departure from normal $\geq 6.5^{\circ}\text{C}$

(b). Based on Actual maximum temperature

Heat Wave: When actual maximum temperature $\geq 45^{\circ}\text{C}$.
Severe Heat Wave: When actual maximum temperature $\geq 47^{\circ}\text{C}$

(c). Criteria for heat wave for coastal stations

When maximum temperature departure is $> 4.5^{\circ}\text{C}$ from normal. Heat Wave may be described provided maximum temperature $\geq 37^{\circ}\text{C}$



Warm Night

When maximum temperature remains 40°C

Warm Night: When minimum temperature departure 4.5°C to 6.4°C .
Severe Warm Night: When minimum temperature departure $> 6.4^{\circ}\text{C}$.



Cold Wave

When minimum temperature of a station $\leq 10^{\circ}\text{C}$ for plains and $\leq 0^{\circ}\text{C}$ for hilly regions.

(a). Based on departure

Cold Wave: Minimum Temperature Departure from normal -4.5°C to -6.4°C .
Severe Cold Wave: Minimum Temperature Departure from normal $\leq -6.5^{\circ}\text{C}$

(b) Based on actual Minimum Temperature (for Plains only)

Cold Wave : When Minimum Temperature is $\leq 4.0^{\circ}\text{C}$
Severe Cold Wave: When Minimum Temperature is $\leq 2.0^{\circ}\text{C}$

(c) For Coastal Stations

When Minimum Temperature departure is $\leq -4.5^{\circ}\text{C}$ & actual Minimum Temperature is $\leq 15^{\circ}\text{C}$



Cold Day

When minimum temperature of a station $\leq 10^{\circ}\text{C}$ for plains and $\leq 0^{\circ}\text{C}$ for hilly regions
Based on departure

Cold Day: Maximum Temperature Departure from normal -4.5°C to -6.4°C .
Severe Cold Day: Maximum Temperature Departure from normal $\leq -6.5^{\circ}\text{C}$



Fog

Phenomenon of small droplets suspended in air and the horizontal visibility $< 1\text{km}$

Moderate Fog: When the visibility between 500-200 metres
Dense Fog: when the visibility between 50- 200 metres
Very Dense Fog: when the visibility < 50 metres



Thunderstorm

Sudden electrical discharges manifested by a flash of light (Lightning) and a sharp rumbling sound (thunder)



Dust/Sand Storm

An ensemble of particles of dust or sand energetically lifted to great heights by a strong and turbulent wind.



Frost

Ice deposits on ground

Air temperature $\leq 4^{\circ}\text{C}$ (over Plains)



Squall

A strong wind that rises suddenly, lasts for atleast 1 minute.

Moderate: Wind speed 52-61 kmph
Severe: Wind speed 62-87 kmph
Very Severe: Wind speed > 87 kmph



Sea State

Effect of various waves in the sea over specific area

Rough to very rough: Wind speed 41-62 kmph (22-33 knots) & Wave height 2.5-6 metre
High to very high: Wind speed 63-117 kmph (34-63 knots) & Wave height 6-14 metre
Phenomenal: Wind speed > 117 kmph (> 63 knots) & Wave height > 14 metre



Cyclone

Cyclonic Storm: Wind speed 62-87 kmph (34-47 knots)
Severe Cyclonic Storm: Wind speed 88-117 kmph (48-63 knots)
Very Severe Cyclonic Storm: Wind speed 118-165 kmph (64 - 89 knots)
Extremely Severe Cyclonic Storm: Wind speed 166-220 kmph (90 -119 knots)
Super Cyclone Strom: Wind speed > 220 kmph (> 119 knots)

*Red color warning does not mean "Red Alert" Red color warning means "Take Action"

Forecast and warning for any day is valid from 0830 hours IST of day till 0830 hours IST of next day

For more details kindly visit <https://mausam.imd.gov.in> or contact 011-2434-4599

(Service to the nation since 1875)