

2025-08-25

Time of Issue: 11:48:00 hours IST
(Mid-Day)

ALL INDIA WEATHER SUMMARY AND FORECAST BULLETIN

Significant Weather Features

Northwest India:

Isolated **heavy rainfall** likely over Uttarakhand, Himachal Pradesh, East Rajasthan during next 7 days; Jammu & Kashmir on 25th & 26th; Haryana, Punjab during 25th-27th & on 29th, 30th; Uttar Pradesh on 25th, during 29th-31st August with **isolated very heavy rainfall over Jammu & Kashmir, Himachal Pradesh, Punjab, Haryana, Chandigarh, West Rajasthan on 25th & 26th; East Rajasthan during 25th-27th and Uttarakhand on 29th & 30th August.**

Light/moderate rainfall at most/many places accompanied with thunderstorm & lightning likely over the western Himalayan region during next 7 days and adjoining plains during next 3 days and scattered rainfall during subsequent 4 days.

East & Central India:

Isolated **heavy rainfall** likely over Chhattisgarh, Odisha during next 5 days; Sub-Himalayan West Bengal & Sikkim on 27th, 29th; Bihar, Madhya Pradesh on 25th, during 29th-31st; Jharkhand on 30th & 31st; Vidarbha during 28th-30th August with **isolated very heavy rainfall over Odisha on 26th & 27th August.**

Light to moderate rainfall at most/many places accompanied with thunderstorm & lightning likely over the region during next 7 days.

West India:

Spell of heavy rainfall is very likely to continue over Gujarat state during next 7 days with very heavy rainfall over the region during 25th-27th August.

Heavy rainfall is very likely over Konkan & Goa, Madhya Maharashtra during next 7 days.

Light to moderate rainfall at most/many places very likely over the region during next 7 days.

Northeast India:

Isolated **heavy rainfall** likely to continue over Assam & Meghalaya, Arunachal Pradesh during next 6-7 days; Nagaland, Manipur, Mizoram & Tripura during 27th-30th August.

Light/moderate rainfall at many places accompanied with thunderstorm & lightning likely during next 3 days.

South Peninsular India:

Isolated **heavy rainfall** likely over Kerala & Mahe during 26th-29th; Coastal Karnataka during 26th-30th; Interior Karnataka, Tamil Nadu, Telangana on 27th & 28th; Coastal Andhra Pradesh & Yanam during 25th-27th August with **very heavy rainfall over Coastal Andhra Pradesh on 26th August.**

Light to moderate rainfall at some places accompanied with thunderstorm & lightning likely over the region during next 3 days and many places during subsequent 4 days.

***Red color warning does not mean "Red Alert" Red color warning means "Take Action"**

Forecast and warning for any day is valid from 0830 hours IST of day till 0830 hours IST of next day

For more details kindly visit <https://mausam.imd.gov.in> or contact 011-2434-4599

(Service to the nation since 1875)

Main Weather Observations:

❖ Significant rainfall recorded(in cm) (from 0830 hours IST of yesterday to 0830 hours IST of today): Punjab: Sangrur (dist Sangrur) 22, Sangrur Aws (dist Sangrur) 17, Phangota (dist Pathankot) 16, Ranjit Sagar Dam Site (dist Pathankot) 15, Ganguwal (dist Rupnagar) 12, Bul Irr (dist Ludhiana) 10, Kotla (dist Rupnagar) 10, Haryana: Jakhal Mandi Hmo (dist Fatehabad) 21, Tohana (dist Fatehabad) 15, Fatehabad (dist Fatehabad) 9, Himachal Pradesh: Kahu (dist Bilaspur) 19, Barthin (dist Bilaspur) 16, Naina Davi (dist Bilaspur) 15, Bilaspur Sadar (dist Bilaspur) 14, Chuari (dist Chamba) 14, Mehre (barsar) (dist Hamirpur) 13, Amb (dist Una) 11, Aghar (dist Hamirpur) 11, Bangana_r (dist Una) 10, Ghamroor (dist Kangra) 10, Bharwain (dist Una) 9, Nadaun (dist Hamirpur) 9, Hamirpur (dist Hamirpur) 9, Dharmsala (dist Kangra) 9, Bharari (dist Hamirpur) 9, Kasauli (dist Solan) 9, Sundarnagar (dist Mandi) 8, Baldwara (dist Mandi) 8, Saloni (dist Chamba) 8, Una (dist Una) 8, Sujampur Tira (dist Hamirpur) 8, Dharampur (dist Solan) 7, Dehra Gopipur (dist Kangra) 7, Chamba (dist Chamba) 7, R L Bbmb (dist Bilaspur) 7, Palampur (dist Kangra) 7, West Rajasthan: Nagaur Tehsil Sr (dist Nagaur) 17, Sujangarh (dist Churu) 16, Jalore (dist Jalore) 12, Jayal Sr (dist Nagaur) 11, Ahore Sr (dist Jalore) 11, Sangaria Sr (dist Hanumangarh) 10, Khivensar Sr (dist Nagaur) 10, Lunkaransar (dist Bikaner) 9, Degana (dist Nagaur) 9, Balotra Sr (dist Barmer) 8, Bilara (dist Jodhpur) 8, Pilibanga Sr (dist Hanumangarh) 7, East Rajasthan: Kherwara (dist Udaipur) 16, Mounntabu Tehsil Sr (dist Sirohi) 12, Sikar Tehsil Sr (dist Sikar) 11, Deogarh (dist Rajsamand) 10, Kanva Sr (dist Dungarpur) 9, Sirohi (dist Sirohi) 8, Jhadol Sr (dist Udaipur) 8, Sheoganj (dist Sirohi) 8, Sarara (dist Udaipur) 7, Devel Sr (dist Dungarpur) 7, Dholpur Tehsil Sr (dist Dholpur) 7, Pindwara (dist Sirohi) 7, Sapau Sr (dist Dholpur) 7, East Uttar Pradesh: Banda (dist Banda) 11, Bindki (dist Fatehpur) 10, Beberu (dist Banda) 10, Manikpur (dist Chitrakoot) 9, Chhibramau (dist Kannauj) 8, Prayagraj Pbo (dist Prayagraj) 8, Naraini (dist Banda) 8, Pratapgarh (t) (dist Pratapgarh) 7, Karwi (dist Chitrakoot) 7, Chillaghat (dist Banda) 7, Patti (dist Pratapgarh) 7, Gujarat Region: Umerpada (dist Surat) 11, Khedbrahma (dist Sabarkantha) 10, Sankheda (dist Chhota Udepur) 10, Idar (dist Sabarkantha) 10, Vyara (dist Tapi) 10, Valod (dist Tapi) 8, Vadali (dist abarkantha) 8, Dabhoi (dist Vadodara) 8, Vijaynagar (dist Sabarkantha) 8, Bhiloda (dist Aravalli) 8, Ukai (dist Surat) 7, Radhanpur (dist Patan) 7, Danta (dist Banaskantha) 7, Mandvi (dist Surat) 7, Jammu & Kashmir: Kathua (dist Kathua) 9, Arunachal Pradesh: Itanagar (dist Papumpara) 7, Assam & Meghalaya: Sonari AEGCL AWS (dist Charaideo) 10, Bihar: Khizirsarai (dist Gaya) 7, Odisha: Th Rampur (dist Kalahandi) 7, Tiring (dist Mayurbhanj) 7, Andaman & Nicobar Iland : Car Nicobar (dist Nicobar) 7,

❖ **Minimum Temperature Departures (as on 25-08-2025): markedly above normal(> 5.1°C)** at isolated places over Assam & Meghalaya, East Uttar Pradesh, West Uttar Pradesh, Himachal Pradesh and West Madhya Pradesh. **appreciably above normal(3.1°C to 5.0°C)** at many places over East Madhya Pradesh; at isolated places over Sub Himalayan West Bengal & Sikkim, Odisha, Bihar, West Rajasthan and Saurashtra & Kutch. **above normal(1.6°C to 3.0°C)** at few places over Uttarakhand and Coastal Andhra Pradesh & Yanam; at isolated places over Nagaland, Manipur, Mizoram & Tripura, Gangetic West Bengal, Gujarat Region, Konkan & Goa, Madhya Maharashtra, Telangana and Tamil Nadu, Puducherry & Karaikal. **near normal(-1.5°C to 1.5°C)** at many places over Haryana-Chandigarh-Delhi, East Rajasthan, Chhattisgarh and South Interior Karnataka; at most places over Andaman & Nicobar Islands, Arunachal Pradesh, Jharkhand, Marathwada, Vidarbha, Rayalaseema, Coastal Karnataka, North Interior Karnataka, Kerala & Mahe and Lakshadweep; at few places over Jammu-KashmirLadakh-Gilgit-Baltistan-Muzaffarabad; at isolated places over Punjab. **The lowest minimum temperature** of 18.0°C is reported at MYSORE (KARNATAKA) over the Plains of India.

❖ **Maximum Temperature Departures (as on 24-08-2025): appreciably above normal(3.1°C to 5.0°C)** at isolated places over Uttarakhand, Coastal Andhra Pradesh & Yanam, Tamil Nadu, Puducherry & Karaikal and Kerala & Mahe. **above normal(1.6°C to 3.0°C)** at few places over Arunachal Pradesh and Lakshadweep; at isolated places over Andaman & Nicobar Islands, Assam & Meghalaya, Madhya Maharashtra and Telangana. **near normal(-1.5°C to 1.5°C)** at many places over Nagaland, Manipur, Mizoram & Tripura, Sub Himalayan West Bengal & Sikkim, Marathwada, Vidarbha and Rayalaseema; at most places over Bihar, Konkan & Goa, Coastal Karnataka and North Interior Karnataka; at few places over Odisha, East Uttar Pradesh, West Uttar Pradesh, Haryana-Chandigarh-Delhi, Punjab, Himachal Pradesh, West Rajasthan, East Rajasthan, Gujarat Region, Chhattisgarh and South Interior Karnataka; at isolated places over West Madhya Pradesh and Saurashtra & Kutch. **The highest maximum temperature** of 38.5°C is reported at MADURAI (A) (TAMIL NADU).

***Red color warning does not mean "Red Alert" Red color warning means "Take Action"**

Forecast and warning for any day is valid from 0830 hours IST of day till 0830 hours IST of next day

For more details kindly visit <https://mausam.imd.gov.in> or contact 011-2434-4599

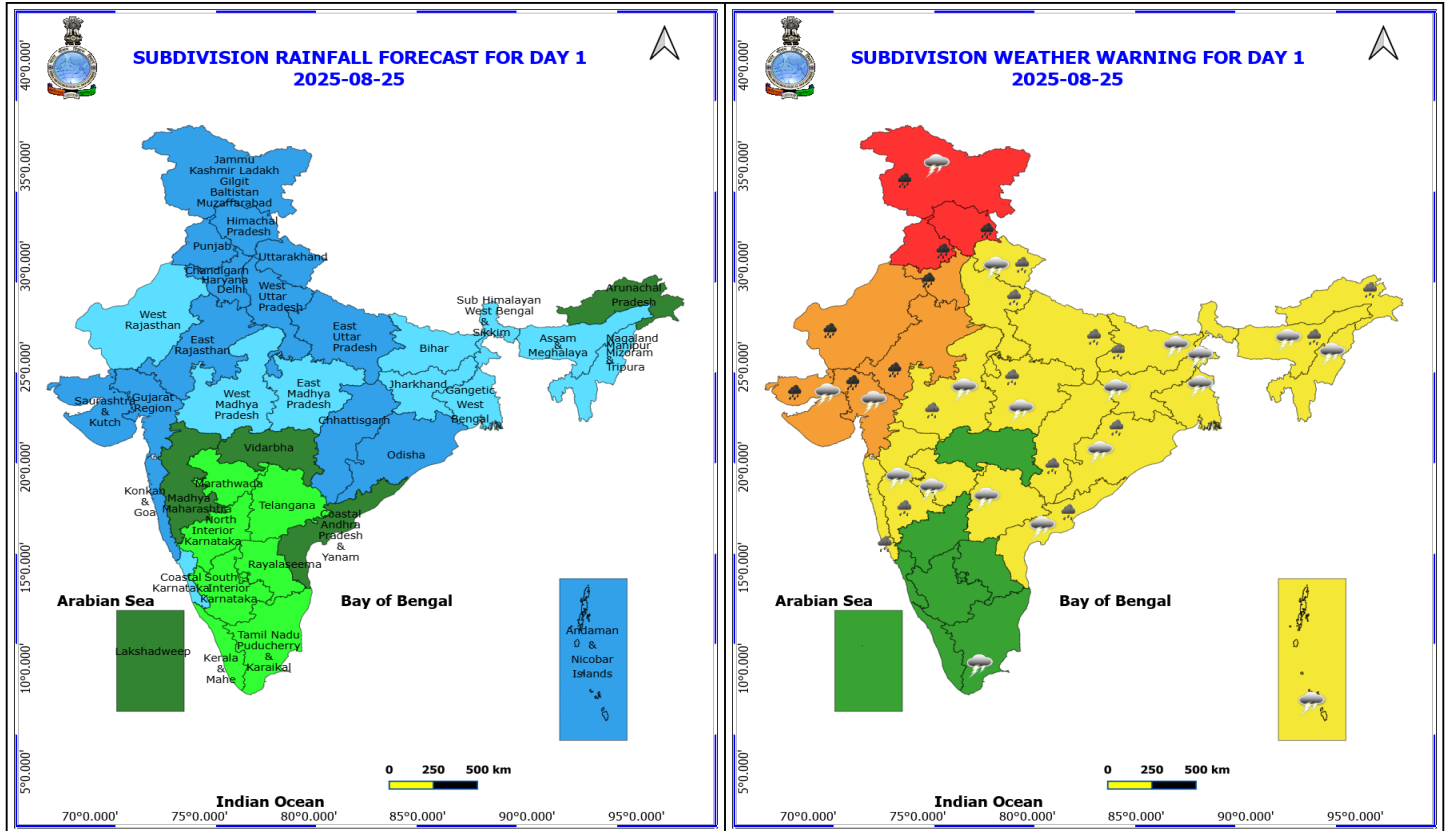
(Service to the nation since 1875)

Meteorological Analysis (Based on 0830 hours IST)

- The **upper air cyclonic circulation** over northwest Bay of Bengal off Odisha-West Bengal coasts persists between 1.5 & 5.8 km above mean sea level tilting southwards with height. Under its influence, a **Low Pressure** area is likely to form over the same region during next 48 hours.
- The **upper air cyclonic circulation** over south Haryana and adjoining northeast Rajasthan and extending upto 5.8 km above mean sea level persists and tilting southwards with height.
- The **Low Pressure area** over central parts of south Uttar Pradesh & adjoining north Madhya Pradesh has become less marked. However, the associated **upper air cyclonic circulation** merged with the above cyclonic circulation.
- The **monsoon trough** at mean sea level now passes through Bikaner, Jaipur, Agra, Prayagraj, Daltonganj, Jamshedpur, Digha and thence southeastwards to northeast Bay of Bengal.
- The **trough** now runs from upper air cyclonic circulation over south Haryana and adjoining northeast Rajasthan to the **cyclonic circulation** over northwest Bay of Bengal off Odisha-West Bengal coasts across south Uttar Pradesh, northeast Madhya Pradesh, north Chhattisgarh, Jharkhand, southern parts of Gangetic West Bengal between 1.5 & 3.1 km above mean sea level.
- The **Western Disturbance** as a trough between 3.1 & 9.6 km above mean sea level with its axis at 3.1 km above mean sea level roughly along Long. 70°E to north of Lat. 28°N persists.

Weather Forecast for next 7 days (Upto 0830 hours IST of 31 August)

- Scattered to Fairly widespread rainfall likely over northern, western India, western peninsular and eastern India.



25 August (Day 1)

❖ **Heavy to Very Heavy Rainfall** very likely at isolated places over Gujarat State, Haryana, Chandigarh & Delhi, Himachal Pradesh, Jammu-Kashmir-Ladakh-Gilgit-Baltistan-Muzaffarabad, Punjab and Rajasthan.

❖ **Heavy Rainfall** very likely at isolated places over Arunachal Pradesh, Assam & Meghalaya, Bihar, Chhattisgarh, Coastal Andhra Pradesh, Konkan & Goa, Madhya Maharashtra, Madhya Pradesh, Odisha, Uttar Pradesh and Uttarakhand.

❖ **Thunderstorm accompanied with lightning & gusty winds(30-40kmph)** very likely at isolated places over Andaman & Nicobar Islands, Bihar, Gujarat State, Jammu-Kashmir-Ladakh-Gilgit-Baltistan-Muzaffarabad, Jharkhand, Nagaland, Manipur, Mizoram and Tripura and Telangana.

❖ **Thunderstorm accompanied with Lightning** very likely at isolated places over Assam & Meghalaya, Coastal Andhra Pradesh, Madhya Maharashtra, Madhya Pradesh, Marathwada, Odisha, Tamil Nadu Puducherry & Karaikal, Uttarakhand and West Bengal & Sikkim.

Squally wind with speed reaching 45 kmph to 55 kmph gusting to 65 kmph is likely to prevail along and off Somalia, Oman coasts, most parts of westcentral Arabian sea, adjoining & some parts of southwest, eastcentral Arabian Sea, adjoining parts of northwest, northeast Arabian Sea.

Squally weather with wind speed reaching 40 - 50 kmph gusting to 60 kmph likely to prevail over Gulf of Mannar and adjoining Comorin area, few parts of southwest Bay of Bengal.

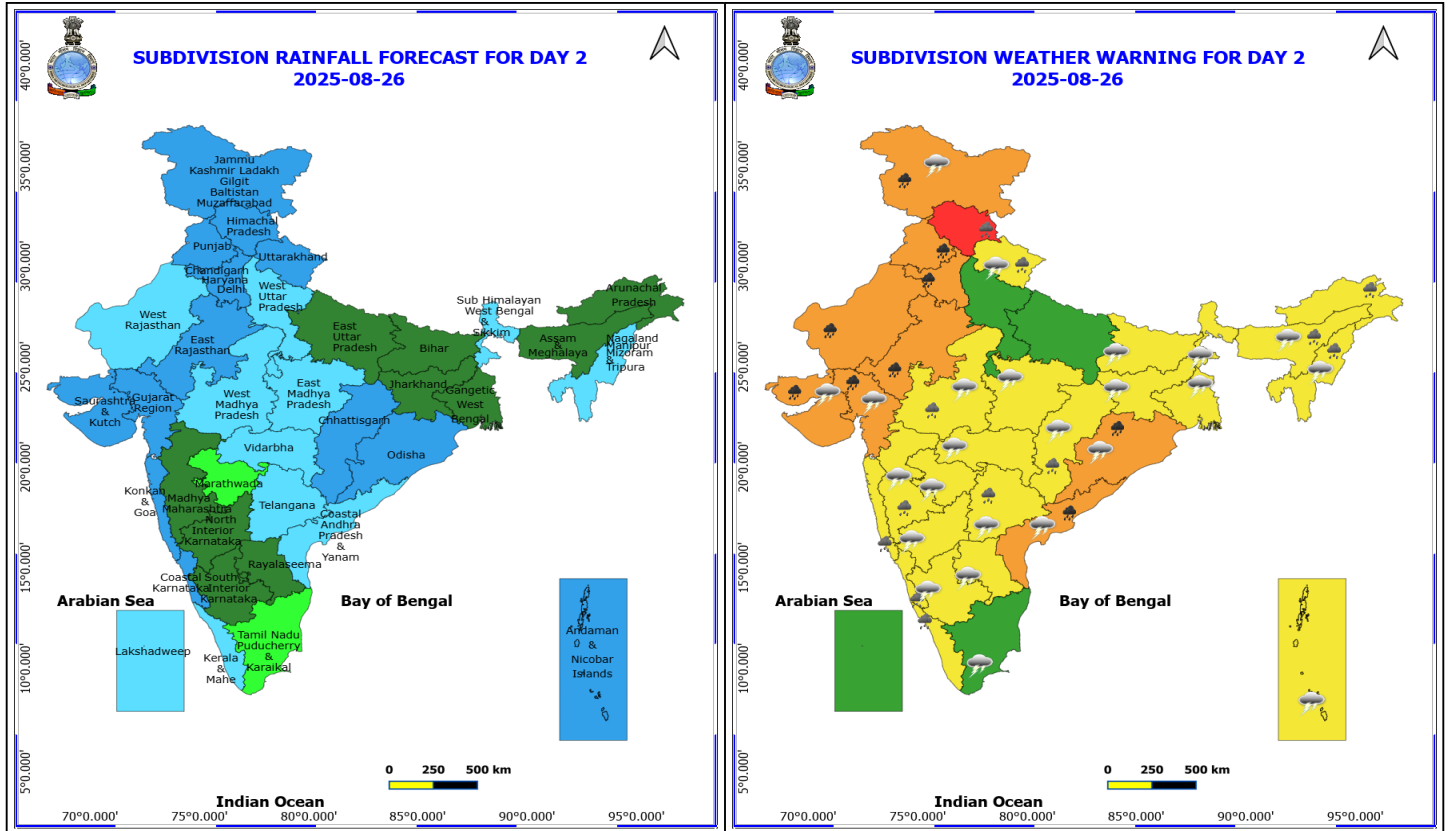
Squally weather with wind speed reaching 45 - 55 kmph gusting to 65 kmph likely to prevail along and off Gujarat, north Konkan coasts and adjoining sea areas, some parts of eastcentral, northeast Arabian Sea.

***Red color warning does not mean "Red Alert" Red color warning means "Take Action"**

Forecast and warning for any day is valid from 0830 hours IST of day till 0830 hours IST of next day

For more details kindly visit <https://mausam.imd.gov.in> or contact 011-2434-4599

(Service to the nation since 1875)



26 August (Day 2)

- ❖ **Heavy to Very Heavy Rainfall** very likely at isolated places over Coastal Andhra Pradesh, Gujarat State, Haryana, Chandigarh & Delhi, Jammu-Kashmir-Ladakh-Gilgit-Baltistan-Muzaffarabad, Odisha, Punjab and Rajasthan.
- ❖ **Heavy Rainfall** very likely at isolated places over Arunachal Pradesh, Assam & Meghalaya, Chhattisgarh, Coastal Karnataka, Himachal Pradesh, Kerala & Mahe, Konkan & Goa, Madhya Maharashtra, Nagaland, Manipur, Mizoram and Tripura, Telangana, Uttarakhand and West Madhya Pradesh.
- ❖ **Thunderstorm accompanied with lightning & gusty winds(30-40kmph)** very likely at isolated places over Andaman & Nicobar Islands, Bihar, Gujarat State, Interior Karnataka, Jammu-Kashmir-Ladakh-Gilgit-Baltistan-Muzaffarabad, Jharkhand, Nagaland, Manipur, Mizoram and Tripura and Telangana.
- ❖ **Thunderstorm accompanied with Lightning** very likely at isolated places over Andhra Pradesh, Assam & Meghalaya, Chhattisgarh, Madhya Pradesh, Maharashtra, Odisha, Tamil Nadu Puducherry & Karaikal, Uttarakhand and West Bengal & Sikkim.

Squally wind with speed reaching 45 kmph to 55 kmph gusting to 65 kmph is likely to prevail along and off Somalia, Oman coasts, most parts of westcentral Arabian sea, adjoining & some parts of southwest, eastcentral Arabian Sea, adjoining parts of northwest Arabian Sea.

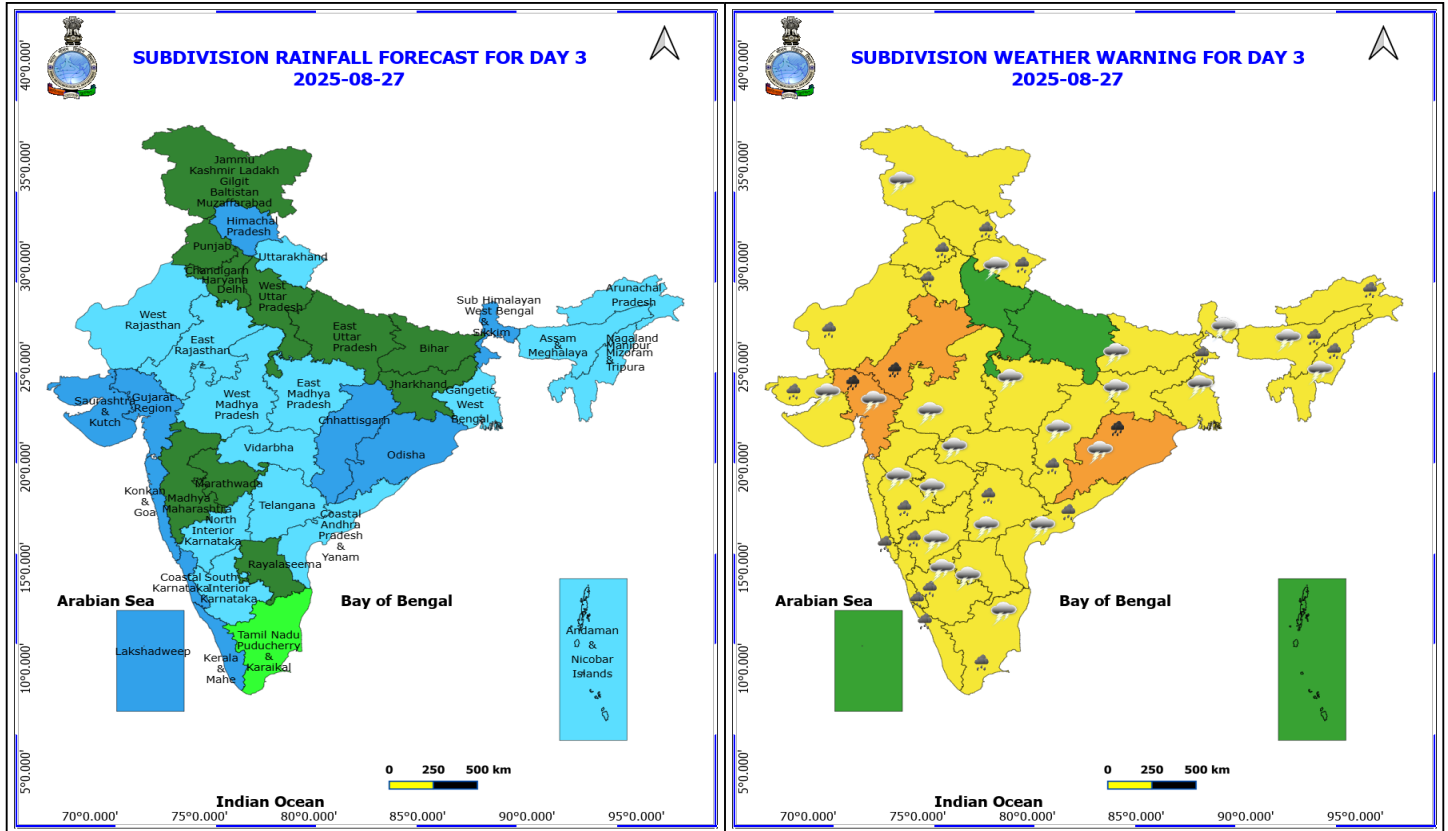
Squally weather with wind speed reaching 40 - 50 kmph gusting to 60 kmph likely to prevail along and off south Gujarat, Konkan, Goa, Karnataka, Kerala coasts, Lakshadweep area, and many parts of eastcentral Arabian Sea; along and off Odisha, West Bengal coasts, over many parts of north Bay of Bengal & adjoining central Bay of Bengal, over few parts of south west Bay of Bengal off south Sri Lanka coast.

***Red color warning does not mean "Red Alert" Red color warning means "Take Action"**

Forecast and warning for any day is valid from 0830 hours IST of day till 0830 hours IST of next day

For more details kindly visit <https://mausam.imd.gov.in> or contact 011-2434-4599

(Service to the nation since 1875)



27 August (Day 3)

- ❖ **Heavy to Very Heavy Rainfall** very likely at isolated places over East Rajasthan, Gujarat Region and Odisha.
- ❖ **Heavy Rainfall** very likely at isolated places over Arunachal Pradesh, Assam & Meghalaya, Chhattisgarh, Coastal Andhra Pradesh, Haryana, Chandigarh & Delhi, Himachal Pradesh, Karnataka, Kerala & Mahe, Konkan & Goa, Madhya Maharashtra, Nagaland, Manipur, Mizoram and Tripura, Punjab, Saurashtra & Kutch, Sub Himalayan West Bengal & Sikkim, Tamil Nadu Puducherry & Karaikal, Telangana, Uttarakhand and West Rajasthan.
- ❖ **Thunderstorm accompanied with lightning & gusty winds(30-40kmph)** very likely at isolated places over Bihar, Gujarat State, Interior Karnataka, Jammu-Kashmir-Ladakh-Gilgit-Baltistan-Muzaffarabad, Jharkhand, Nagaland, Manipur, Mizoram and Tripura and Telangana.
- ❖ **Thunderstorm accompanied with Lightning** very likely at isolated places over Andhra Pradesh, Assam & Meghalaya, Chhattisgarh, Madhya Pradesh, Maharashtra, Odisha, Tamil Nadu Puducherry & Karaikal, Uttarakhand and West Bengal & Sikkim.

Squally wind with speed reaching 45 kmph to 55 kmph gusting to 65 kmph is likely to prevail along and off Somalia, Oman coasts, most parts of westcentral Arabian sea, adjoining & some parts of southwest, eastcentral Arabian Sea, adjoining parts of northwest Arabian Sea.

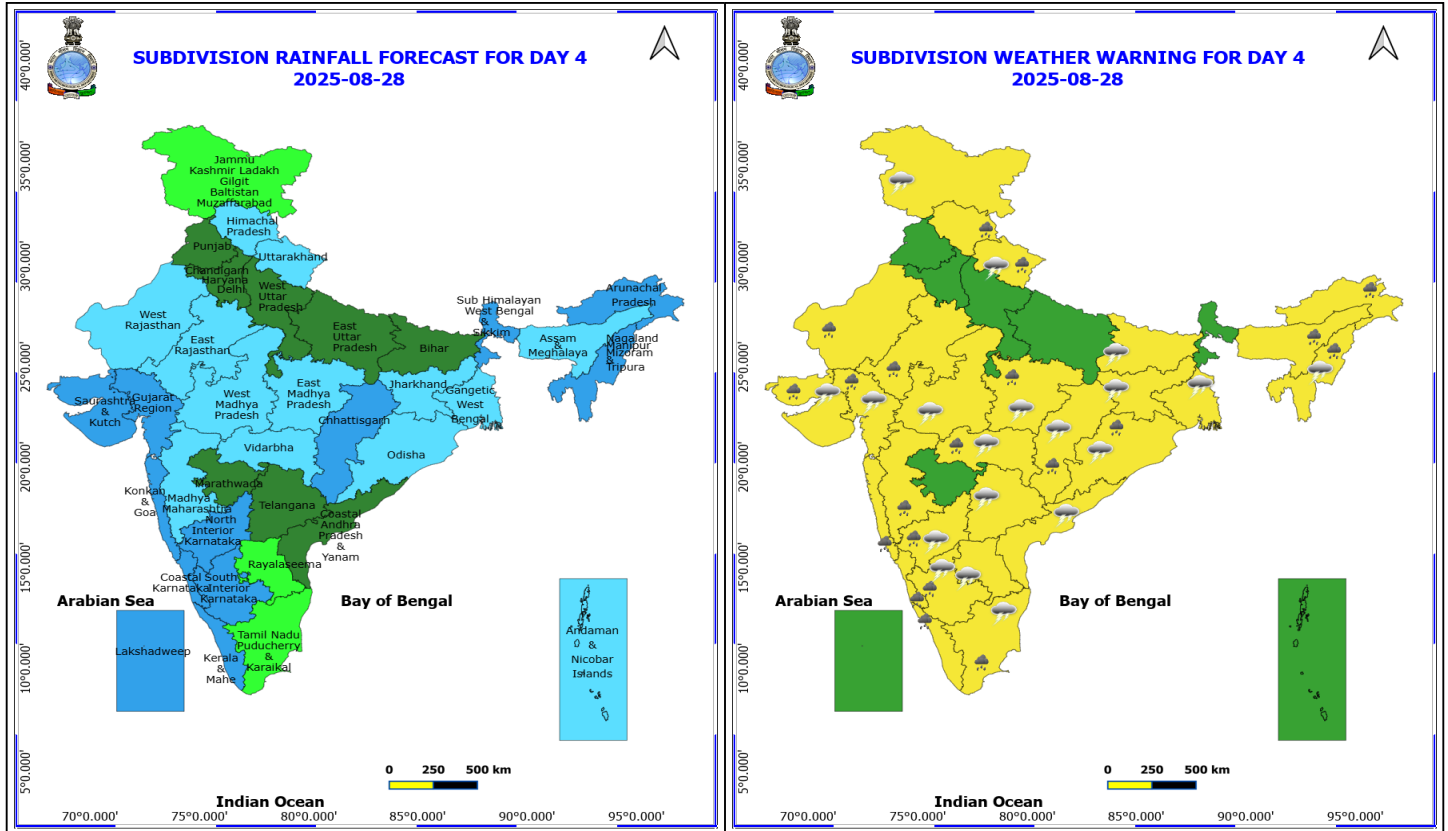
Squally weather with wind speed reaching 40 - 50 kmph gusting to 60 kmph likely to prevail along and off south Gujarat, Konkan, Goa, Karnataka, Kerala coasts, Lakshadweep, Comorin areas, and most parts of eastcentral Arabian Sea; along and off Andhra Pradesh, Odisha, West Bengal, Bangladesh coasts, over entire north Bay of Bengal & most parts of central Bay of Bengal, over many parts of southwest Bay of Bengal off south Sri Lanka coast, over Gulf of Mannar.

***Red color warning does not mean "Red Alert" Red color warning means "Take Action"**

Forecast and warning for any day is valid from 0830 hours IST of day till 0830 hours IST of next day

For more details kindly visit <https://mausam.imd.gov.in> or contact 011-2434-4599

(Service to the nation since 1875)



28 August (Day 4)

❖ **Heavy Rainfall** likely at isolated places over Arunachal Pradesh, Assam & Meghalaya, Chhattisgarh, East Madhya Pradesh, Gujarat State, Himachal Pradesh, Karnataka, Kerala & Mahe, Konkan & Goa, Madhya Maharashtra, Nagaland, Manipur, Mizoram and Tripura, Odisha, Rajasthan, Tamil Nadu Puducherry & Karaikal, Uttarakhand and Vidarbha.

❖ **Thunderstorm accompanied with lightning & gusty winds(30-40kmph)** likely at isolated places over Bihar, Gujarat State, Interior Karnataka, Jammu-Kashmir-Ladakh-Gilgit-Baltistan-Muzaffarabad, Jharkhand, Nagaland, Manipur, Mizoram and Tripura and Telangana.

❖ **Thunderstorm accompanied with Lightning** likely at isolated places over Andhra Pradesh, Chhattisgarh, Gangetic West Bengal, Madhya Pradesh, Odisha, Tamil Nadu Puducherry & Karaikal, Uttarakhand and Vidarbha.

Squally wind with speed reaching 45 kmph to 55 kmph gusting to 65 kmph is likely to prevail along and off Somalia, Oman coasts, most parts of westcentral Arabian sea, adjoining & some parts of southwest, eastcentral Arabian Sea.

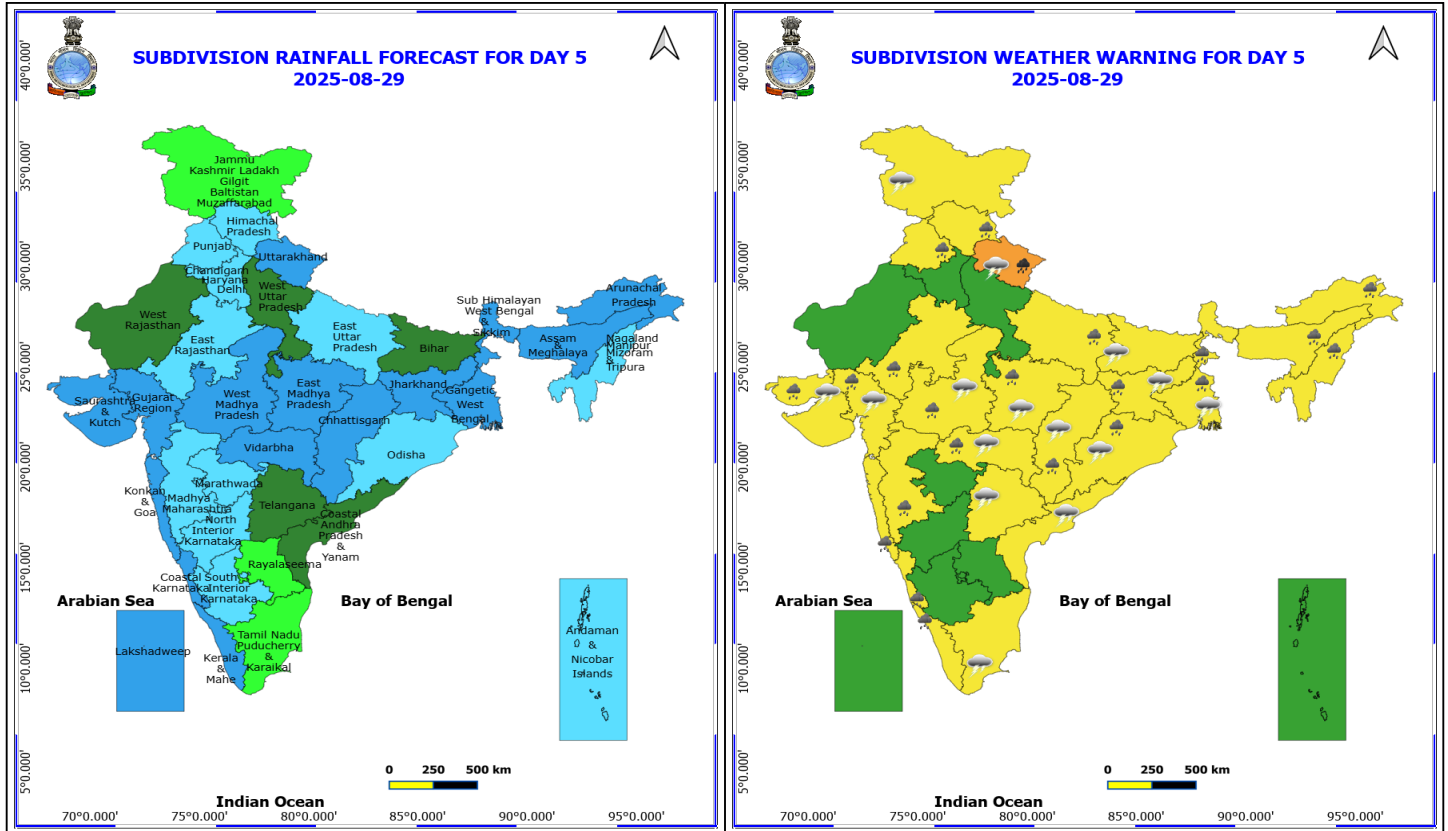
Squally weather with wind speed reaching 40 - 50 kmph gusting to 60 kmph likely to prevail along and off south Gujarat, Konkan, Goa, Karnataka, Kerala coasts, Lakshadweep, Comorin areas, and most parts of eastcentral Arabian Sea; along and off Andhra Pradesh, Odisha, West Bengal, Bangladesh coasts, over entire north Bay of Bengal & most parts of central Bay of Bengal, over most parts of southwest Bay of Bengal and adjoining southeast Bay of Bengal, off Sri Lanka coast, over Gulf of Mannar.

***Red color warning does not mean "Red Alert" Red color warning means "Take Action"**

Forecast and warning for any day is valid from 0830 hours IST of day till 0830 hours IST of next day

For more details kindly visit <https://mausam.imd.gov.in> or contact 011-2434-4599

(Service to the nation since 1875)



29 August (Day 5)

- ❖ **Heavy to Very Heavy Rainfall** likely at isolated places over Uttarakhand.
- ❖ **Heavy Rainfall** likely at isolated places over Arunachal Pradesh, Assam & Meghalaya, Chhattisgarh, Coastal Karnataka, East Rajasthan, East Uttar Pradesh, Gujarat State, Himachal Pradesh, Jharkhand, Kerala & Mahe, Konkan & Goa, Madhya Maharashtra, Madhya Pradesh, Nagaland, Manipur, Mizoram and Tripura, Odisha, Punjab, Vidarbha and West Bengal & Sikkim.
- ❖ **Thunderstorm accompanied with lightning & gusty winds(30-40kmph)** likely at isolated places over Bihar, Gujarat State, Jammu-Kashmir-Ladakh-Gilgit-Baltistan-Muzaffarabad, Jharkhand and Telangana.
- ❖ **Thunderstorm accompanied with Lightning** likely at isolated places over Chhattisgarh, Coastal Andhra Pradesh, Gangetic West Bengal, Madhya Pradesh, Odisha, Tamil Nadu Puducherry & Karaikal, Uttarakhand and Vidarbha.

Squally wind with speed reaching 45 kmph to 55 kmph gusting to 65 kmph is likely to prevail along and off Somalia, Oman coasts, most parts of westcentral Arabian sea, adjoining & some parts of southwest, eastcentral Arabian Sea.

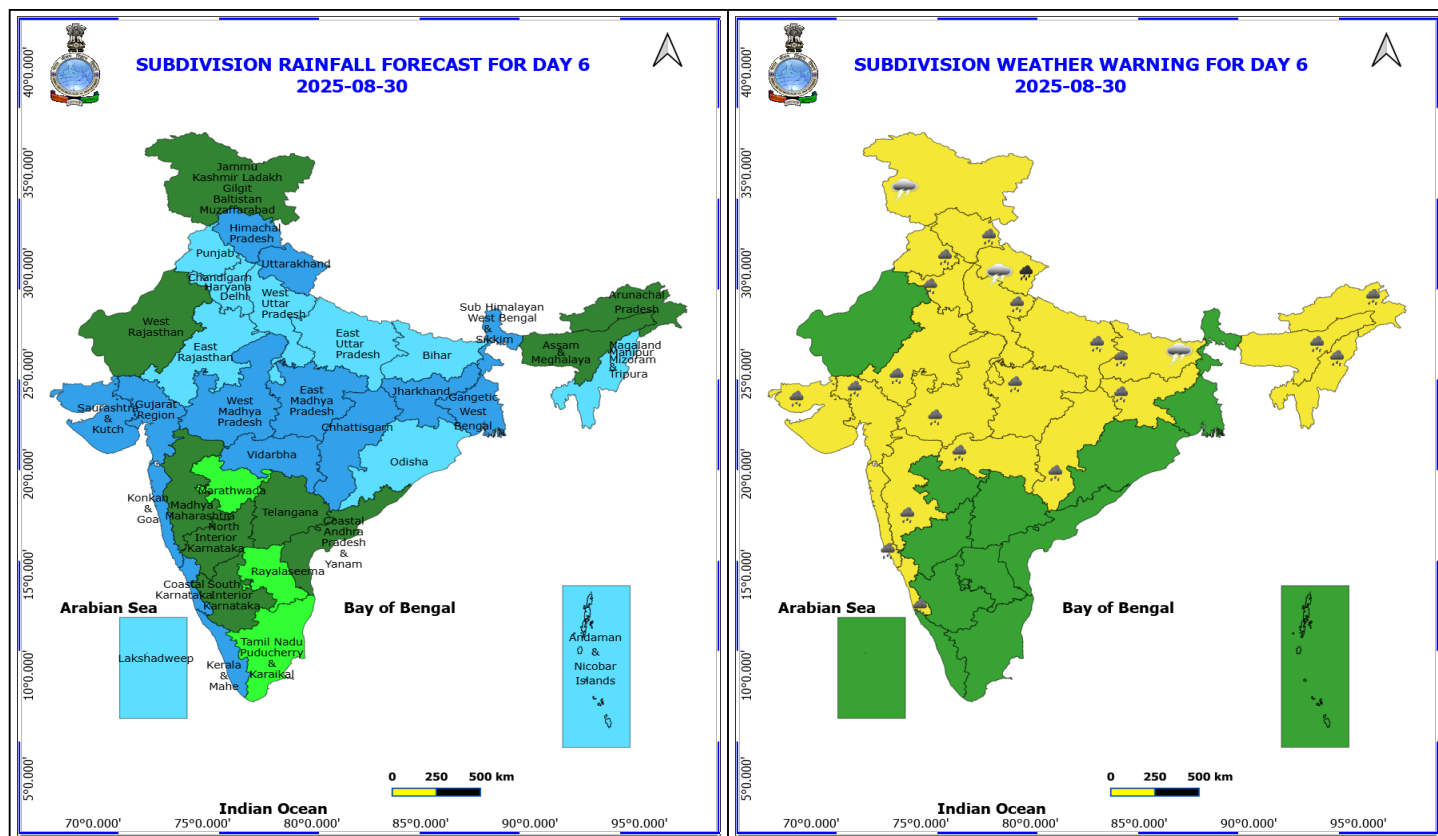
Squally weather with wind speed reaching 40 - 50 kmph gusting to 60 kmph likely to prevail along and off Konkan, Goa, Karnataka coasts, and most parts of eastcentral Arabian Sea & adjoining parts of southeast Arabian Sea & Lakshadweep area; along and off north Andhra Pradesh, Odisha, West Bengal, Bangladesh coasts, over entire north Bay of Bengal & most parts of central Bay of Bengal, over most parts of southwest Bay of Bengal and adjoining southeast Bay of Bengal, off Sri Lanka coast.

***Red color warning does not mean "Red Alert" Red color warning means "Take Action"**

Forecast and warning for any day is valid from 0830 hours IST of day till 0830 hours IST of next day

For more details kindly visit <https://mausam.imd.gov.in> or contact 011-2434-4599

(Service to the nation since 1875)



30 August (Day 6)

- ❖ **Heavy to Very Heavy Rainfall** likely at isolated places over Gujarat Region.
- ❖ **Heavy Rainfall** likely at isolated places over Arunachal Pradesh, Assam & Meghalaya, Bihar, Chhattisgarh, Coastal Karnataka, East Rajasthan, Himachal Pradesh, Konkan & Goa, Madhya Maharashtra, Madhya Pradesh, Punjab, Saurashtra & Kutch, Sub Himalayan West Bengal & Sikkim, Uttar Pradesh, Uttarakhand and Vidarbha.
- ❖ **Thunderstorm accompanied with lightning & gusty winds(30-40kmph)** likely at isolated places over Bihar, Interior Karnataka and Jammu-Kashmir-Ladakh-Gilgit-Baltistan-Muzaffarabad.
- ❖ **Thunderstorm accompanied with Lightning** likely at isolated places over East Rajasthan and Uttarakhand.

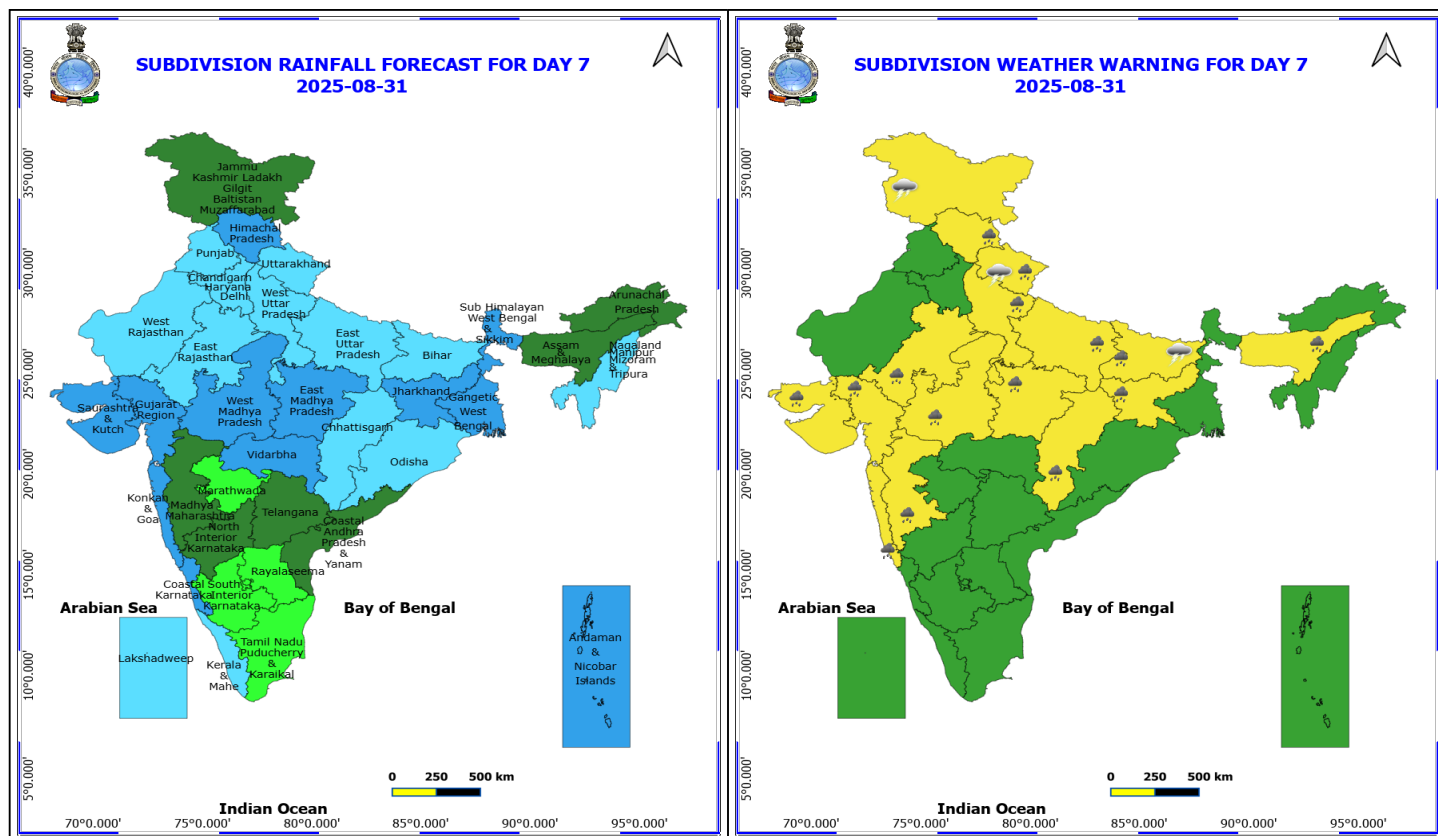
No Fishermen Warning

***Red color warning does not mean "Red Alert" Red color warning means "Take Action"**

Forecast and warning for any day is valid from 0830 hours IST of day till 0830 hours IST of next day

For more details kindly visit <https://mausam.imd.gov.in> or contact 011-2434-4599

(Service to the nation since 1875)



31 August (Day 7)

- ❖ **Heavy Rainfall** likely at isolated places over Assam & Meghalaya, Bihar, Chhattisgarh, East Rajasthan, Gujarat State, Himachal Pradesh, Jharkhand, Konkan & Goa, Madhya Maharashtra, Madhya Pradesh, Uttar Pradesh and Uttarakhand.
- ❖ **Thunderstorm accompanied with lightning & gusty winds(30-40kmph)** likely at isolated places over Bihar and Jammu-Kashmir-Ladakh-Gilgit-Baltistan-Muzaffarabad.
- ❖ **Thunderstorm accompanied with Lightning** likely at isolated places over Uttarakhand.

No Fishermen Warning

***Red color warning does not mean "Red Alert" Red color warning means "Take Action"**

Forecast and warning for any day is valid from 0830 hours IST of day till 0830 hours IST of next day

For more details kindly visit <https://mausam.imd.gov.in> or contact 011-2434-4599

(Service to the nation since 1875)

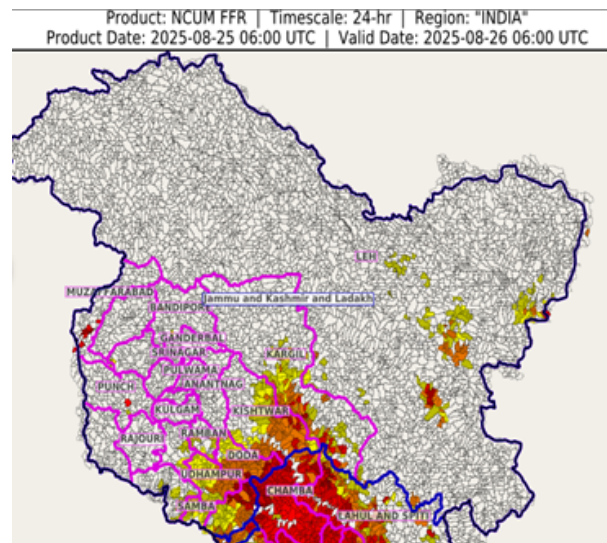
Flash Flood Warnings

24 hours Outlook for the Flash Flood Risk (FFR) till 1130 IST of 26-08-2025 :

Moderate flash flood risk likely over few watersheds & neighbourhoods of following Met Sub-divisions during next 24 hours.

Jammu & Kashmir & Ladakh - Bandipore, Baramula, Doda, Jammu, Kathua, Kistwar, Punch, Ramban, Riasi, Samba, Udhampur, Leh And Ladakh and Muzaffarabad districts.

Surface runoff/ Inundation may occur at some fully saturated soils & low-lying areas over Area of Concern (AoC) as shown in map due to expected rainfall occurrence in next 24 hours.



24 hours Outlook for the Flash Flood Risk (FFR) till 1130 IST of 26-08-2025 :

Moderate flash flood risk likely over few watersheds & neighbourhoods of following Met Sub-divisions during next 24 hours.

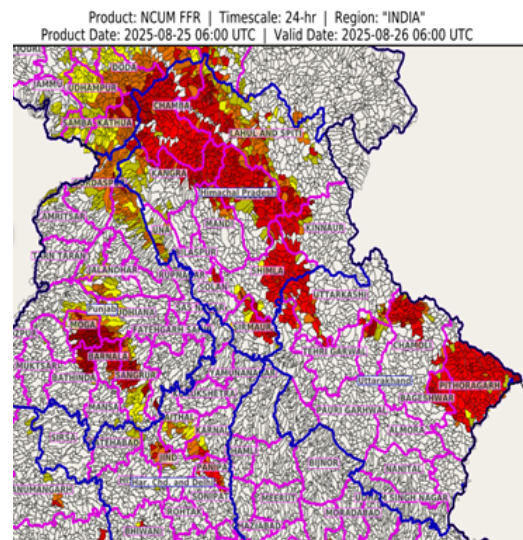
Haryana - Chandigarh & Delhi - Bhiwani, Fatehabad, Hisar, Jind, Kaithal, Karnal and Panipat districts.

Himachal Pradesh - Chamba, Kangra, Kinnaur, Kullu, Lahul&Spiti, Mandi, Shimla, Sirmaur, Solan and Una districts.

Punjab - Amritsar, Barnala, Bathinda, Faridkot, Firozpur, Gurdaspur, Hoshiarpur, Jalandhar, Kapurthala, Ludhiana, Mansa, Moga, Patiala and Sangrur districts.

Uttarakhand - Bageshwar, Chamoli, Dehradun, Pithoragarh, Rudraprayag, Tehri Garwal and Uttarkashi districts.

Surface runoff/ Inundation may occur at some fully saturated soils & low-lying areas over Area of Concern (AoC) as shown in map due to expected rainfall occurrence in next 24 hours.



*Red color warning does not mean "Red Alert" Red color warning means "Take Action"

Forecast and warning for any day is valid from 0830 hours IST of day till 0830 hours IST of next day

For more details kindly visit <https://mausam.imd.gov.in> or contact 011-2434-4599

(Service to the nation since 1875)



Table-1

7 Days Rainfall Forecast

| S.No. | Subdivision | 25- Aug | 26- Aug | 27- Aug | 28- Aug | 29- Aug | 30- Aug | 31- Aug |
|-------|------------------------------|------------|------------|------------|------------|------------|------------|------------|
| | | Day 1 | Day 2 | Day 3 | Day 4 | Day 5 | Day 6 | Day 7 |
| 1 | ANDAMAN & NICOBAR ISLANDS | WS | WS | FWS | FWS | FWS | FWS | WS |
| 2 | ARUNACHAL PRADESH | SCT | SCT | FWS | WS | WS | SCT | SCT |
| 3 | ASSAM & MEHGHALAYA | FWS | SCT | FWS | FWS | WS | SCT | SCT |
| 4 | N. M. M. & T. | FWS | FWS | FWS | WS | FWS | FWS | FWS |
| 5 | S.H. WEST BENGAL & SIKKIM | FWS | FWS | WS | WS | WS | WS | WS |
| 6 | GANGETIC WEST BENGAL | FWS | SCT | FWS | FWS | WS | WS | WS |
| 7 | ODISHA | WS | WS | WS | FWS | FWS | FWS | FWS |
| 8 | JHARKHAND | FWS | SCT | SCT | FWS | WS | WS | WS |
| 9 | BIHAR | FWS | SCT | SCT | SCT | SCT | FWS | FWS |
| 10 | EAST UTTAR PRADESH | WS | SCT | SCT | SCT | FWS | FWS | FWS |
| 11 | WEST UTTAR PRADESH | WS | FWS | SCT | SCT | SCT | FWS | FWS |
| 12 | UTTARAKHAND | WS | WS | FWS | FWS | WS | WS | FWS |
| 13 | HARYANA, CHD & DELHI | WS | WS | SCT | SCT | FWS | FWS | FWS |
| 14 | PUNJAB | WS | WS | SCT | SCT | FWS | FWS | FWS |
| 15 | HIMACHAL PRADESH | WS | WS | WS | FWS | FWS | WS | WS |
| 16 | JAMMU AND KASHMIR AND LADAKH | WS | WS | SCT | ISOL | ISOL | SCT | SCT |
| 17 | WEST RAJASTHAN | FWS | FWS | FWS | FWS | SCT | SCT | FWS |
| 18 | EAST RAJASTHAN | WS | WS | FWS | FWS | FWS | FWS | FWS |
| 19 | WEST MADHYA PRADESH | FWS | FWS | FWS | FWS | WS | WS | WS |
| 20 | EAST MADHYA PRADESH | FWS | FWS | FWS | FWS | WS | WS | WS |
| 21 | GUJRAT REGION | WS | WS | WS | WS | WS | WS | WS |
| 22 | SAURASHTRA & KUTCH | WS | WS | WS | WS | WS | WS | WS |
| 23 | KONKAN & GOA | WS | WS | WS | WS | WS | WS | WS |
| 24 | MADHYA MAHARASHTRA | SCT | SCT | SCT | FWS | FWS | SCT | SCT |
| 25 | MARATHWADA | ISOL | ISOL | SCT | SCT | FWS | ISOL | ISOL |
| 26 | VIDARBHA | SCT | FWS | FWS | FWS | WS | WS | WS |
| 27 | CHATTISGARH | WS | WS | WS | WS | WS | WS | FWS |
| 28 | COASTAL ANDHRA PRADESH | SCT | FWS | FWS | SCT | SCT | SCT | SCT |
| 29 | TELANGANA | ISOL | FWS | FWS | SCT | SCT | SCT | SCT |
| 30 | RAYALASEEMA | ISOL | SCT | SCT | ISOL | ISOL | ISOL | ISOL |
| 31 | TAMILNADU & PUDUCHERRY | ISOL | ISOL | ISOL | ISOL | ISOL | ISOL | ISOL |
| 32 | COSTAL KARNATAKA | FWS | WS | WS | WS | WS | WS | WS |
| 33 | NORTH INTERIOR KARNATAKA | ISOL | SCT | FWS | WS | FWS | SCT | SCT |
| 34 | SOUTH INTERIOR KARNATAKA | ISOL | SCT | FWS | WS | FWS | SCT | ISOL |
| 35 | KERALA | ISOL | FWS | WS | WS | WS | WS | FWS |
| 36 | LAKSHDWEAP | SCT | FWS | WS | WS | WS | FWS | FWS |

| Legend | Category | %Stations |
|--------|-------------------------------|-----------|
| WS | Widespread/Most Places | 76-100 |
| FWS | Fairly Widespread/Many Places | 51-75 |
| SCT | Scattered/ A Few Places | 26-50 |
| ISOL | Isolated Places | 1-25 |
| DRY | No Rain | 0 |

*Red color warning does not mean "Red Alert" Red color warning means "Take Action"

Forecast and warning for any day is valid from 0830 hours IST of day till 0830 hours IST of next day

For more details kindly visit <https://mausam.imd.gov.in> or contact 011-2434-4599

(Service to the nation since 1875)

Fig. 1: Maximum Temperatures Dated 2025-08-25

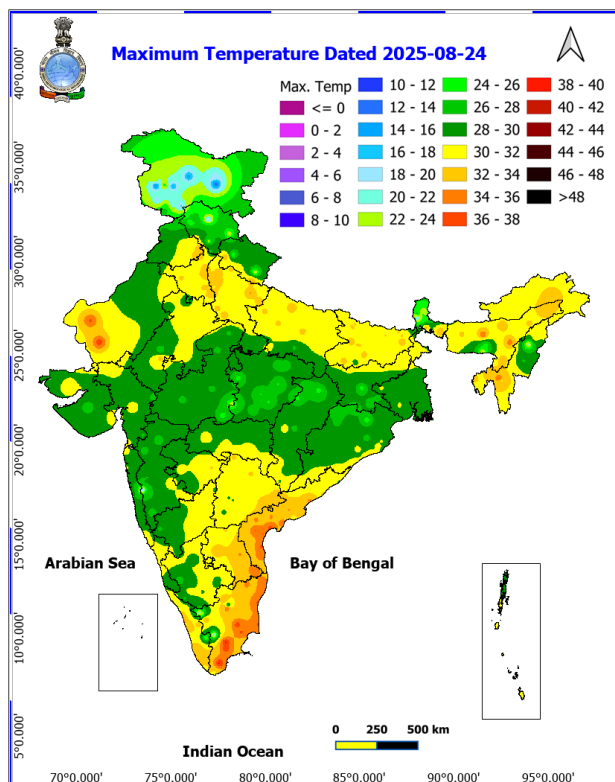


Fig. 2: Departure of Maximum Temp. Dated 2025-08-25

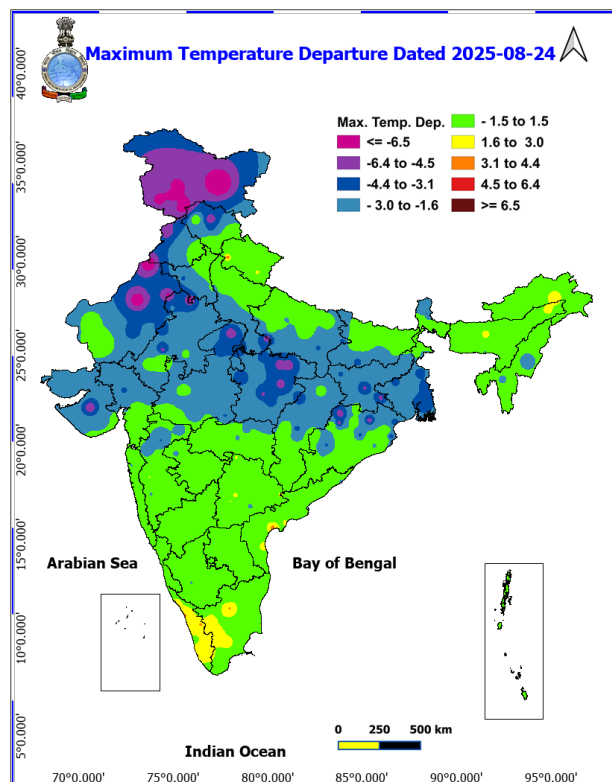


Fig. 3: Minimum Temperatures Dated 2025-08-25

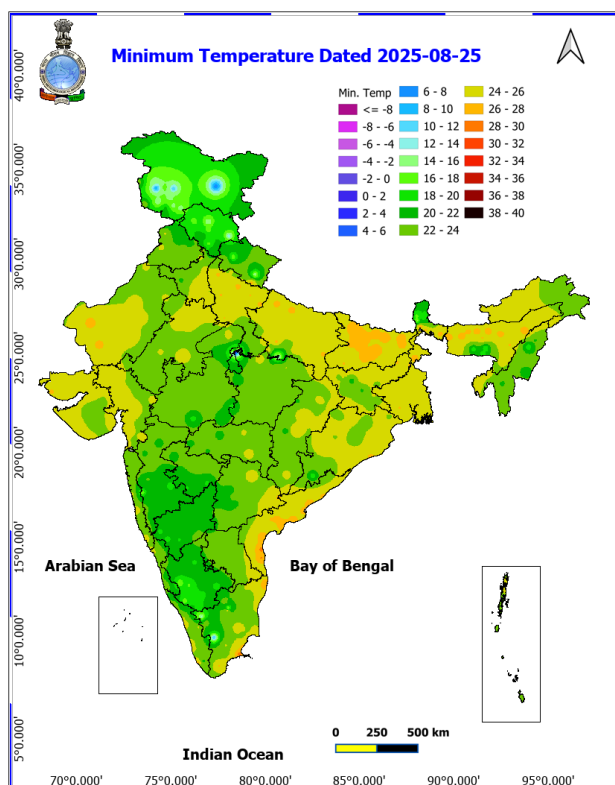
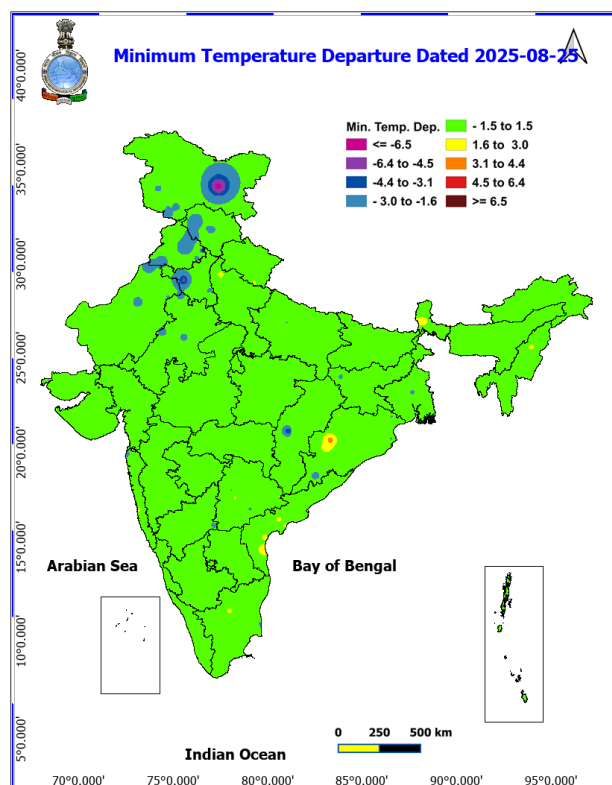
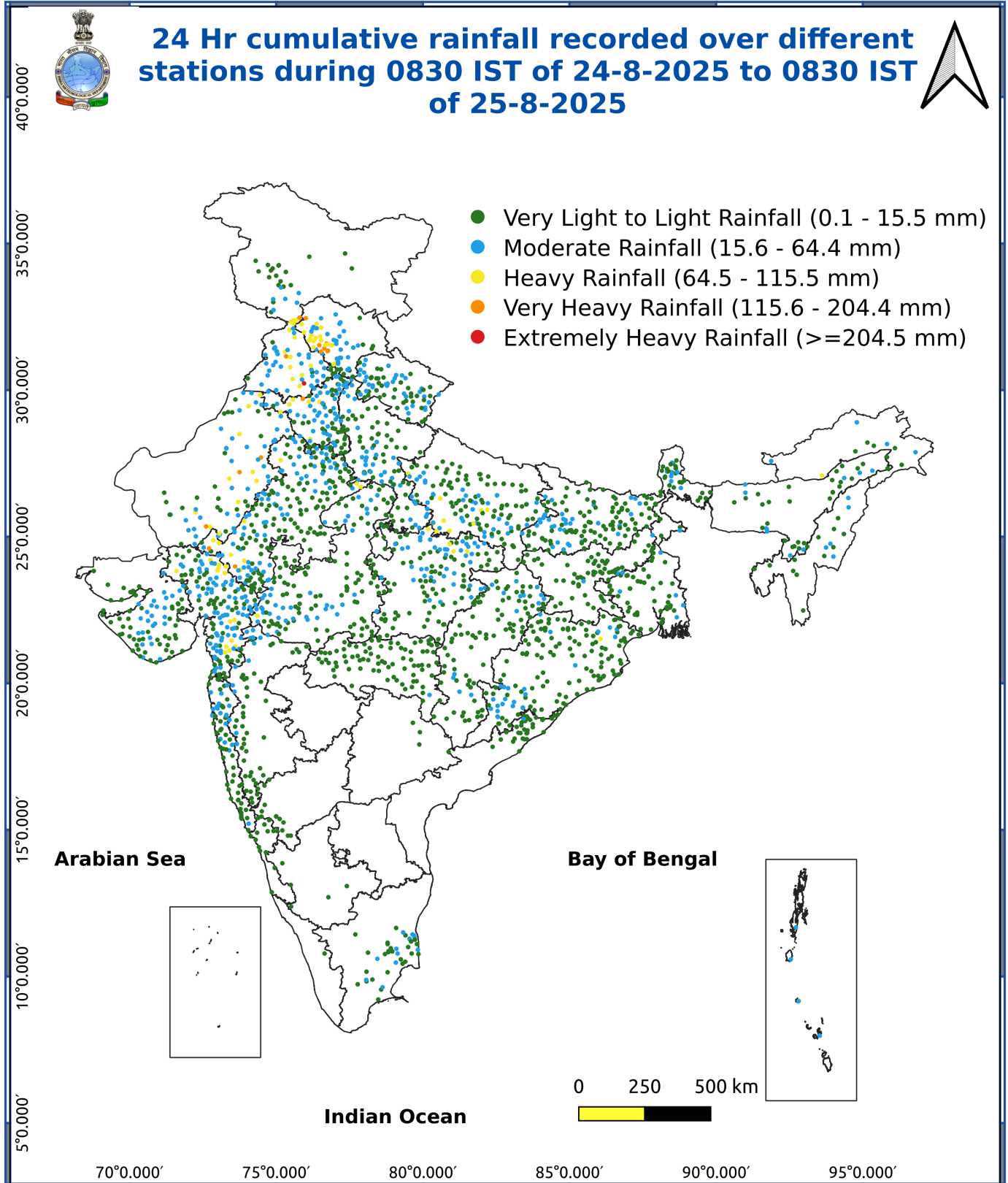


Fig. 4: Departure of Minimum Temp. Dated 2025-08-25





*Red color warning does not mean "Red Alert" Red color warning means "Take Action"

Forecast and warning for any day is valid from 0830 hours IST of day till 0830 hours IST of next day

For more details kindly visit <https://mausam.imd.gov.in> or contact 011-2434-4599

(Service to the nation since 1875)

Impact & Action Suggested due to

Very heavy rainfall over Uttarakhand on 25th; Rajasthan on 25th & 26th; Odisha on 25th & 26th, Gujarat state during 25th-30th, Coastal Karnataka during 27th-29th August.

Impact Expected

Localized Flooding of roads, water logging in low lying areas and closure of underpasses mainly in urban areas of the above region.

Occasional reduction in visibility due to heavy rainfall.

Disruption of traffic in major cities due to water logging in roads leading to increased travel time.

Minor damage to kutcha roads.

Possibilities of damage to vulnerable structure.

Localized Landslides/Mudslides/landslips/mudslips/landsinks/mudsinks.

Damage to horticulture and standing crops in some areas due to inundation.

It may lead to riverine flooding in some river catchments (for riverine flooding please visit Web page of CWC)

Action Suggested

Check for traffic congestion on your route before leaving for your destination.

Follow any traffic advisories that are issued in this regard.

Avoid going to areas that face the water logging problems often.

Avoid staying in vulnerable structure.

Agromet advisories for various parts of the country

Agromet advisories for likely impact of Heavy / Heavy to Very Heavy Rainfall

(Based on the IBF and advisories issued by different AMFUs)

In **Jammu and Kashmir**, do not allow water to stagnate in fields of maize, pulses, cowpea, bajra and vegetables in **Sub Tropical Zone**. Proper drainage should be ensured in the fields of paddy, maize, Pulses, horticultural and vegetable crops in **Intermediate Zone**.

In **Himachal Pradesh**, maintain proper drainage channels in ginger, turmeric and maize fields in **Mid Hills Sub Humid Zone** and rice, maize and vegetable fields in **Sub Montane and Low Hills Sub Tropical Zone**. In **High Hills Sub**

***Red color warning does not mean "Red Alert" Red color warning means "Take Action"**

Forecast and warning for any day is valid from 0830 hours IST of day till 0830 hours IST of next day

For more details kindly visit <https://mausam.imd.gov.in> or contact 011-2434-4599

(Service to the nation since 1875)

Temperate Wet Zone, harvest ripened tomatoes and ensure proper drainage in maize, kidney bean, vegetable fields and fruit orchards.

In **Uttarakhand**, maintain proper drainage channels in fields of soybean, maize, pulses, finger millet, ginger, vegetable and fruit orchards in **Hill Zone**; barnyard millet, finger millet and green gram in **Sub Humid Sub Tropic Zone** and rice, green gram, black gram, sugarcane, maize, soybean, groundnut and vegetables in **Bhabar and Tarai Zone**.

In **Punjab**, ensure proper drainage in fields of cotton and maize in **Western Zone**; sugarcane, maize and cotton in **Central Plain Zone**; cotton in **Western Plain Zone** and sugarcane, maize, soybean and green gram in **Sub-Montane Undulating Zone**. Maintain proper drainage in chilli fields and remove stagnant rainwater immediately after rainfall in **Undulating Plain Zone**.

In **Haryana**, to prevent waterlogging make arrangements to drain out excess water from fields of sugarcane, cotton, maize, pearl millet and vegetables in **Eastern Zone** and cotton, pearl millet, green gram and cluster bean in **Western Zone**.

In **West Rajasthan**, make provision to drain out excess rain water from fields of pearl millet, green gram and cluster bean in **Arid Western Plain Zone**; cotton, green gram and cluster bean in **Irrigated North Western Plain Zone** and vegetable nurseries, groundnut and pulses in **Transitional Plain Zone of Inland Drainage**. In **East Rajasthan**, make arrangements to drain out excess water from fields of maize, soybean, groundnut and vegetable nurseries in **Sub Humid Southern Plain and Aravali Hill Zone**; pearl millet, sorghum, maize, green gram, black gram, moth bean, sesame and cluster bean in **Flood Prone Eastern Plain Zone**; groundnut, green gram, moth bean, cowpea, pearl millet, maize, sorghum and vegetables in **Semi-Arid Eastern Plain Zone** and soybean, maize and cotton in **Southern Humid Plain Zone**.

In **Gujarat**, make arrangements to drain out excess water from fields of castor, cotton, groundnut, pearl millet and sesame in **North Gujarat Zone**; rice, pearl millet, pigeon pea, green gram, black gram, cotton, soybean, maize, castor and vegetables in **Middle Gujarat Zone**; groundnut, cotton, sesame, black gram, green gram, pigeon pea and castor in **North Saurashtra Zone**; rice, cotton, green gram, black gram, pigeon pea, pearl millet and vegetables in **Bhal and Coastal Zone**; rice, sugarcane, vegetables and tuber crops in **South Gujarat Heavy Rainfall Zone**; groundnut, cotton, soybean, black gram, green gram, sesame and pigeon pea in **South Saurashtra Zone** and rice, cotton, sugarcane and pigeon pea in **South Gujarat Zone**.

In **Odisha**, make provision for draining out excess rain water from fields of green gram, black gram, sugarcane, vegetables and fruit orchards in **East and South Eastern Coastal Plain Zone**; pulses, maize, pigeon pea, groundnut and vegetables in **North Eastern Ghat Zone**; rice, vegetables and fruit orchards in **North Eastern Coastal Plain Zone** and rice, maize, black gram and vegetables in **North Central Plateau Zone**.

In **Madhya Pradesh**, provide adequate drainage in fields of soybean, maize and vegetables in **Kymore Plateau and Satpura Hill Zone** and soybean, green gram, black gram and maize in **Bundelkhand Zone**.

In **Chhattisgarh**, ensure proper drainage in fields of rice and vegetables in **North Hill Zone** and maize, groundnut, soybean, pigeon pea and vegetables in **Chattisgarh Plain Zone**. Postpone fresh transplanting of rice in low land areas in **North Hill Zone**.

Livestock / Fishery

Keep the animals inside the shed during heavy rainfall and provide them balanced feed.

Store feed and fodder in a safe place to prevent spoilage.

Construct an outlet with proper netting around the ponds to drain out excess water, thereby preventing fish from escaping in case of overflow.

***Red color warning does not mean "Red Alert" Red color warning means "Take Action"**

Forecast and warning for any day is valid from 0830 hours IST of day till 0830 hours IST of next day

For more details kindly visit <https://mausam.imd.gov.in> or contact 011-2434-4599

(Service to the nation since 1875)



Agromet advisories for likely impact of Thunderstorm / Gusty Winds / Squally Winds

(Based on the IBF and advisories issued by different AMFUs)

Provide mechanical support to horticultural crops and staking or support to vegetables and young fruit plants / fruit-bearing plants to avoid lodging due to strong winds.

LEGENDS

- 1 अंडमान और निकोबार द्वीप समुह
- 2 अरुणाचल प्रदेश
- 3 असम और मेघालय
- 4 नागालैंड मनीपुर मीजोरम और त्रिपुरा
- 5 उप हिमालय पश्चिम बंगाल एवं सिक्किम
- 6 पश्चिम बंगाल
- 7 ओडिसा
- 8 झारखंड
- 9 बिहार
- 10 पूर्वी उत्तर प्रदेश
- 11 पश्चिम उत्तर प्रदेश
- 12 उत्तराखंड
- 13 हरियाणा चंडीगढ़ एवं दिल्ली
- 14 पंजाब
- 15 हिमाचल प्रदेश
- 16 जम्मू एवं कश्मीर एवं लद्दाख
- 17 पश्चिम राजस्थान
- 18 पूर्वी राजस्थान
- 19 पश्चिम मध्य प्रदेश
- 20 पूर्वी मध्य प्रदेश
- 21 गुजरात क्षेत्र
- 22 सौराष्ट्र एवं कच्छ
- 23 कोकण एवं गोवा
- 24 मध्य महाराष्ट्र
- 25 मराठावाड़ा
- 26 विदर्भ
- 27 छत्तीसगढ़
- 28 तटीय आंध्र प्रदेश एवं यनम
- 29 तेलंगाना
- 30 रायलसीमा
- 31 तमिलनाडु, पुदुचेरी एवं कराईकल
- 32 तटिय कर्नाटक
- 33 आंतरिक उत्तरी कर्नाटक
- 34 आंतरिक दक्षिणी कर्नाटक
- 35 केरल एवं माहे
- 36 लक्षद्वीप



1. Andaman & Nicobar Islands
2. Arunachal Pradesh
3. Assam & Meghalaya
4. Nagaland, Manipur, Mizoram & Tripura
5. Sub-Himalayan West Bengal & Sikkim
6. Gangetic West Bengal
7. Orissa
8. Jharkhand
9. Bihar
10. East Uttar Pradesh
11. West Uttar Pradesh
12. Uttarakhand
13. Haryana, Chd & Delhi
14. Punjab
15. Himachal Pradesh
16. Jammu & Kashmir and Ladakh
17. West Rajasthan
18. East Rajasthan
19. West Madhya Pradesh
20. East Madhya Pradesh
21. Gujarat
22. Saurashtra
23. Konkan & Goa
24. Madhya Maharashtra
25. Marathawada
26. Vidharbha
27. Chhattisgarh
28. Coastal Andhra Pradesh & Yanam
29. Telangana
30. Rayalaseema
31. Tamilnadu, Puducherry & Karaikal
32. Coastal Karnataka
33. North Interior Karnataka
34. South Interior Karnataka
35. Kerala & Mahe
36. Lakshadweep

SPATIAL DISTRIBUTION (% of Stations reporting)


| % Stations | Category | % Stations | Category |
|------------|--------------------------------------|------------|-------------------------------|
| 76-100 | Widespread (WS/Most Places) | 26-50 | Scattered (SCT/ A Few Places) |
| 51-75 | Fairly Widespread (FWS/ Many Places) | 1-25 | Isolated (ISOL) |


Subdivision Colour


- NO WARNING
- WATCH (BE UPDATED)
- ALERT (BE PREPARED TO TAKE ACTION)
- WARNING (TAKE ACTION)


Probabilistic Forecast


| Terms | Probability of Occurrence (%) |
|-------------|-------------------------------|
| Unlikely | < 25 |
| Likely | 25 - 50 |
| Very Likely | 50 - 75 |
| Most Likely | > 75 |


-  Heavy Rain


 Thunderstorm & Lightning


 Strong surface winds


 Cold Wave


 Hot & Humid


 Very Heavy Rain


 Hailstorm

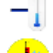
 Heat Wave


 Cold Day


 Extremely Heavy Rain


 Dust Storm


 Hot Day

 Ground Frost

 Heavy Snow

 Dust Raising Winds

 Warm Night

 Fog

*Red color warning does not mean "Red Alert" Red color warning means "Take Action"

Forecast and warning for any day is valid from 0830 hours IST of day till 0830 hours IST of next day

For more details kindly visit <https://mausam.imd.gov.in> or contact 011-2434-4599

(Service to the nation since 1875)

LEGENDS

WARNING

| |
|-------------------------------|
| WARNING (TAKE ACTION) |
| ALERT (BE PREPARED) |
| WATCH (BE UPDATED) |
| NO WARNING (NO ACTION) |

Probabilistic Forecast

| Terms | Probability of Occurrence (%) |
|-------------|-------------------------------|
| Unlikely | < 25 |
| Likely | 25 - 50 |
| Very Likely | 50 - 75 |
| Most Likely | > 75 |



Heavy: 64.5 to 115.5 mm/cm *
Very Heavy: 115.6 to 204.4 mm/cm *
Extremely Heavy: > 204.4 mm/cm *



When maximum temperature of a station reaches $\geq 40^{\circ}\text{C}$ for plains and $\geq 30^{\circ}\text{C}$ for hilly regions
(a) Based on Departure from normal

Heat Wave: Maximum Temperature Departure from normal 4.5°C to 6.4°C .
Severe Heat Wave: Maximum Temperature Departure from normal $\geq 6.5^{\circ}\text{C}$

(b). Based on Actual maximum temperature

Heat Wave: When actual maximum temperature $\geq 45^{\circ}\text{C}$.
Severe Heat Wave: When actual maximum temperature $\geq 47^{\circ}\text{C}$

(c). Criteria for heat wave for coastal stations

When maximum temperature departure is $> 4.5^{\circ}\text{C}$ from normal. Heat Wave may be described provided maximum temperature $\geq 37^{\circ}\text{C}$



When maximum temperature remains 40°C

Warm Night: When minimum temperature departure 4.5°C to 6.4°C .
Severe Warm Night: When minimum temperature departure $> 6.4^{\circ}\text{C}$.



When minimum temperature of a station $\leq 10^{\circ}\text{C}$ for plains and $\leq 0^{\circ}\text{C}$ for hilly regions.

(a). Based on departure

Cold Wave: Minimum Temperature Departure from normal -4.5°C to -6.4°C .
Severe Cold Wave: Minimum Temperature Departure from normal $\leq -6.5^{\circ}\text{C}$

(b) Based on actual Minimum Temperature (for Plains only)

Cold Wave: When Minimum Temperature is $\leq 4.0^{\circ}\text{C}$
Severe Cold Wave: When Minimum Temperature is $\leq 2.0^{\circ}\text{C}$

(c) For Coastal Stations

When Minimum Temperature departure is $\leq -4.5^{\circ}\text{C}$ & actual Minimum Temperature is $\leq 15^{\circ}\text{C}$



When minimum temperature of a station $\leq 10^{\circ}\text{C}$ for plains and $\leq 0^{\circ}\text{C}$ for hilly regions
Based on departure

Cold Day: Maximum Temperature Departure from normal -4.5°C to -6.4°C .
Severe Cold Day: Maximum Temperature Departure from normal $\leq -6.5^{\circ}\text{C}$



Phenomenon of small droplets suspended in air and the horizontal visibility $< 1\text{km}$

Moderate Fog: When the visibility between 500-200 metres
Dense Fog: when the visibility between 50-200 metres
Very Dense Fog: when the visibility < 50 metres



Sudden electrical discharges manifested by a flash of light (Lightning) and a sharp rumbling sound (thunder)



An ensemble of particles of dust or sand energetically lifted to great heights by a strong and turbulent wind.



Ice deposits on ground

Air temperature $\leq 4^{\circ}\text{C}$ (over Plains)



A strong wind that rises suddenly, lasts for at least 1 minute.

Moderate: Wind speed 52-61 kmph
Severe: Wind speed 62-87 kmph
Very Severe: Wind speed > 87 kmph



Effect of various waves in the sea over specific area

Rough to very rough: Wind speed 41-62 kmph (22-33 knots) & Wave height 2.5-6 metre
High to very high: Wind speed 63-117 kmph (34-63 knots) & Wave height 6-14 metre
Phenomenal: Wind speed > 117 kmph (> 63 knots) & Wave height > 14 metre



Cyclonic Storm: Wind speed 62-87 kmph (34-47 knots)

Severe Cyclonic Storm: Wind speed 88-117 kmph (48-63 knots)
Very Severe Cyclonic Storm: Wind speed 118-165 kmph (64-89 knots)
Extremely Severe Cyclonic Storm: Wind speed 166-220 kmph (90-119 knots)
Super Cyclone Storm: Wind speed > 220 kmph (> 119 knots)

*Red color warning does not mean "Red Alert" Red color warning means "Take Action"

Forecast and warning for any day is valid from 0830 hours IST of day till 0830 hours IST of next day

For more details kindly visit <https://mausam.imd.gov.in> or contact 011-2434-4599

(Service to the nation since 1875)