

2026-05-30

Time of Issue: 14:01:00 hours IST
(Mid-Day)

ALL INDIA WEATHER SUMMARY AND FORECAST BULLETIN

Significant Weather Features

Advance of Southwest Monsoon 2026:

- **Southwest monsoon** has further advanced into some more parts of southwest & southeast Arabian Sea, Lakshadweep Islands, Comorin area, southwest, southeast, westcentral and eastcentral Bay of Bengal, and some parts of northeast Bay of Bengal today, the 30th May 2026.
- The **Northern Limit of Monsoon** passes through 10°N/60°E, 9°/65°E, 8.5°N/70°E, 8°N/75°E, 7.8°N/78°E, 8°N/80°E, 10°N/80°E, 13°N/87°E, 16°N/90°E, 19°N/93°E and 22°N/97°E as on 30th May 2026.
- **Conditions are favourable for further advance of southwest monsoon** into some more parts of southwest & southeast Arabian Sea, Lakshadweep Islands, some parts of Kerala & Tamil Nadu, some more parts of southwest, westcentral, eastcentral & northeast Bay of Bengal, and remaining parts of southeast Bay of Bengal during next 4-5 days.

Weather Forecast and Warnings:

Northeast India:

- **Scattered to fairly widespread** light to moderate rainfall likely over the region during the week.
- **Isolated heavy rainfall** likely over Nagaland, Manipur, Mizoram & Tripura during 30th May-01st June & on 04th, 05th June; Assam & Meghalaya during 01st-05th June and Arunachal Pradesh during 02nd-05th June.

South Peninsular India:

- **Isolated to scattered** light to moderate rainfall with **thunderstorm, lightning & gusty winds (speed reaching 40-50 kmph)** likely over South Interior Karnataka on 30th & 31st May; Coastal Andhra Pradesh & Yanam, Rayalaseema, Telangana, Tamil Nadu, Puducherry & Karaikal, North Interior Karnataka during 30th May-03rd June.
- **Thundersquall (wind speed reaching 50-60 kmph gusting to 70 kmph)** likely over Rayalaseema on 30th May and Coastal Andhra Pradesh & Yanam during 30th May-01st June.
- **Isolated heavy rainfall** likely over Rayalaseema on 30th May; South Interior Karnataka, Coastal Andhra Pradesh & Yanam on 30th & 31st May; Tamil Nadu, Puducherry & Karaikal during 30th May-03rd June; Kerala & Mahe during 30th May-05th June; Lakshadweep during 30th May-01st June & on 04th, 05th June.
- **Isolated Hailstorm activity** likely over Coastal Andhra Pradesh & Yanam on 30th May.

East India:

- **Widespread** light to moderate rainfall with **thunderstorm, lightning & gusty winds (speed reaching 40-50 kmph)** likely over Andaman & Nicobar Islands during 30th May-05th June.
- **Isolated to scattered** light to moderate rainfall with **thunderstorm, lightning & gusty winds (speed reaching 40-50 kmph)** likely over Gangetic West Bengal on 30th & 31st May; Bihar during 30th May-01st June; Sub-Himalayan West Bengal & Sikkim on 30th May & during 02nd-05th June; Jharkhand and Odisha during 30th May-05th June.
- **Thundersquall (wind speed reaching 60-70 kmph gusting to 80 kmph)** likely over Odisha and Jharkhand on 30th May.
- **Thundersquall (wind speed reaching 50-60 kmph gusting to 70 kmph)** likely over Gangetic West Bengal, Bihar on 30th May; Jharkhand on 30th & 31st May and Odisha on 31st & 01st June.
- **Isolated heavy rainfall** likely over Andaman & Nicobar Islands, Bihar on 30th May; Odisha during 30th May-01st June and Sub-Himalayan West Bengal & Sikkim on 04th & 05th June.
- **Isolated Hailstorm activity** likely over Odisha on 30th May.

Northwest India:

*Red color warning does not mean "Red Alert" Red color warning means "Take Action"

Forecast and warning for any day is valid from 0830 hours IST of day till 0830 hours IST of next day

For more details kindly visit <https://mausam.imd.gov.in> or contact 011-2434-4599

(Service to the nation since 1875)

- **Scattered to fairly widespread** light to moderate rainfall with **thunderstorm, lightning & gusty winds (speed reaching 40-50 kmph)** likely over Jammu-Kashmir on 04th & 05th June and Uttarakhand on 30th & 31st May.
- **Scattered to fairly widespread** light to moderate rainfall with **thunderstorm, lightning & gusty winds (speed reaching 40-50 kmph)** likely over Punjab, Haryana, Chandigarh & Delhi, Uttar Pradesh during 30th May-01st June and Rajasthan during next 7 days.
- **Thundersquall (wind speed reaching 60-70 kmph gusting to 80 kmph)** likely over Himachal Pradesh, Uttarakhand, Punjab, Haryana Chandigarh & Delhi, Uttar Pradesh on 30th May and Rajasthan on 30th & 31st May.
- **Thundersquall (wind speed reaching 50-60 kmph gusting to 70 kmph)** likely over Jammu-Kashmir on 30th May; East Uttar Pradesh on 30th May and West Rajasthan on 01st June.
- **Isolated heavy rainfall** likely over Uttarakhand, Punjab, Haryana, Chandigarh and West Uttar Pradesh on 30th May.
- **Isolated Hailstorm activity** likely over Himachal Pradesh, Uttarakhand & East Rajasthan on 30th & 31st May; Punjab, Haryana, Chandigarh, West Uttar Pradesh & West Rajasthan on 30th May.
- **Dust storm** very likely at isolated places over East Rajasthan on 30th & 31st May and West Rajasthan during 30th May-01st June.

Central India:

- **Isolated to scattered** light to moderate rainfall with **thunderstorm, lightning & gusty winds (speed reaching 40-50 kmph)** likely over East Madhya Pradesh, Vidarbha & Chhattisgarh during 30th May-03rd June.
- **Thundersquall (wind speed reaching 50-60 kmph gusting to 70 kmph)** likely over Vidarbha on 30th & 31st May; West Madhya Pradesh during 30th May-03rd June; East Madhya Pradesh & Chhattisgarh during 30th May-01st June.
- **Isolated heavy rainfall** likely over West Madhya Pradesh during 30th May- 01st June.
- **Isolated Hailstorm activity** likely over Madhya Pradesh & Vidarbha on 30th & 31st May and Chhattisgarh on 30th May.

West India:

- **Isolated to scattered** light to moderate rainfall with **thunderstorm, lightning & gusty winds (speed reaching 40-50 kmph)** likely over Konkan & Goa during 31st May-04th June; Madhya Maharashtra during 30th May – 04th June; Marathawada during 31st May – 03rd June; Gujarat state during 30th May – 05th June.
- **Thundersquall (wind speed reaching 50-60 kmph gusting to 70 kmph)** likely over Gujarat Region during 30th May-02nd June.
- **Isolated heavy rainfall** likely over Gujarat Region during 31st May – 02nd June.
- **Isolated Hailstorm activity** likely over Gujarat Region on 31st May and Madhya Maharashtra on 02nd June.

Forecast of maximum/day temperatures:

- No significant change in maximum temperatures likely over Northwest India till 30th May and gradual rise by 6-8°C during 31st May-05th June.
- Gradual fall in maximum temperatures by 2-4°C likely over Central India till 01st June and no significant change during 02nd-05th June.
- No significant change in maximum temperatures likely over East India till 30th May and gradual rise by 2-3°C during 31st May-05th June.
- Gradual rise in maximum temperatures by 2-3°C likely over Northeast India till 30th May and no significant change during 31st May-05th June.
- No significant change in maximum temperatures likely over Maharashtra till 31st May; gradual fall by 2-3°C during 01st-03rd June and no significant change on 04th & 05th June.
- Gradual fall in maximum temperatures by 3-5°C likely over Gujarat State till 03rd June and no significant change on 04th & 05th June.
- No significant change in maximum temperatures likely over the rest parts of country till 05th June 2026.

Heat Wave, Hot & Humid weather conditions warning:

***Red color warning does not mean "Red Alert" Red color warning means "Take Action"**
Forecast and warning for any day is valid from 0830 hours IST of day till 0830 hours IST of next day
For more details kindly visit <https://mausam.imd.gov.in> or contact 011-2434-4599

(Service to the nation since 1875)



- **Heat wave conditions** very likely in isolated pockets over Vidarbha, Chhattisgarh and Telangana on 30th May.
- **Hot and humid** weather conditions likely to prevail over Konkan on 30th & 31st May.

Main Weather Observations:

❖ **Rainfall distribution** (from 0830 hours IST of yesterday to 0830 hours IST of today): **at most places** over Gangetic West Bengal, Bihar and Kerala & Mahe; **at many places** over Andaman & Nicobar Islands, Uttarakhand and Himachal Pradesh; **at a few places** over Odisha, Jharkhand, West Uttar Pradesh, Punjab, Jammu-Kashmir-Ladakh-Gilgit-Baltistan-Muzaffarabad, East Rajasthan, West Madhya Pradesh, East Madhya Pradesh, Coastal Karnataka, South Interior Karnataka and Lakshadweep; **at isolated places** over Assam & Meghalaya, Nagaland, Manipur, Mizoram & Tripura, Sub Himalayan West Bengal & Sikkim, East Uttar Pradesh, Haryana-Chandigarh-Delhi, West Rajasthan, Gujarat Region, Konkan & Goa, Chhattisgarh, Coastal Andhra Pradesh & Yanam, Telangana, Rayalaseema, Tamil Nadu, Puducherry & Karaikal and North Interior Karnataka; **Dry** over rest of the country.

❖ **Significant rainfall recorded(in cm)** (from 0830 hours IST of yesterday to 0830 hours IST of today): **Bihar**: Balan (dist Madhubani) 100; Motihari (dist East Champaran) 12; Silao (dist Nalanda), Kasba (dist Purnea) 8 Each; Kashichak (dist Nawada), Piprakothi (dist East Champaran) 7 Each; **Kerala & Mahe**: Urumi AWS (dist Kozhikode), Ernakulam South (dist Ernakulam) 10 Each; Kochi IAF (dist Ernakulam), Palluruthy ARG (dist Ernakulam), Mattanchery AWS (dist Ernakulam) 9 Each; Cherthala (dist Alapuzha) 8; Vaikom (dist Kottayam), Choondy AWS (dist Ernakulam) 7 Each; **Tamil Nadu, Puducherry & Karaikal**: Krishnagiri (dist Krishnagiri) 8; Ammapettai (dist Erode), Nalumukku (dist Tirunelveli), Oothu (dist Tirunelveli) 7 Each; **Punjab**: Bharatgarh (dist Rupnagar), Kotla (dist Rupnagar) 8 Each; **Assam & Meghalaya**: Nongstain AWS (dist West Khasi Hills) 8; **West Madhya Pradesh**: Gormi (dist Bhind) 7; **Uttarakhand**: Dehra Dun (dist Dehradun) 7; **Odisha**: Garadapur (dist Kendrapara) 7; **Gangetic West Bengal**: Phulberia (dist Purulia), Asansol(CWC) (dist Paschim Bardhaman) 7 Each.

❖ **Heavy Rainfall observed** (from 0830 hours IST of yesterday to 0830 hours IST of today): **Heavy to very heavy rain** at isolated places over Bihar. **Heavy rain** at isolated places over Assam & Meghalaya, Gangetic West Bengal, Odisha, Uttarakhand, Punjab, West Madhya Pradesh, Tamil Nadu, Puducherry & Karaikal and Kerala & Mahe.

❖ **Thunderstorm accompanied with Squally/Gusty winds with speed reaching 80-100 kmph** prevailed at isolated places over Gangetic West Bengal, West Uttar Pradesh; **with speed reaching 60-80 kmph** over Bihar, Gujarat Region, East Uttar Pradesh, Himachal Pradesh, Kutch, Jammu-Kashmir, Coastal Andhra Pradesh, West Madhya Pradesh, Odisha; **with speed reaching 40-60 kmph** over Haryana, Andaman & Nicobar Islands, Punjab, East Madhya Pradesh, Sub-Himalayan West Bengal, Jharkhand, Telangana, Chhattisgarh, Uttarakhand, Madhya Maharashtra and Tamil Nadu.

❖ **Hailstorm** occurred at isolated places over Himachal Pradesh, Uttarakhand, Punjab, Haryana, West Rajasthan, Odisha, Madhya Pradesh.

❖ **Duststorm** occurred at isolated places over Rajasthan.

❖ **Heat wave conditions** prevailed in isolated pockets over West Rajasthan, Chhattisgarh and Vidarbha.

❖ **Minimum Temperature Departures (as on 30-05-2026)**: **markedly above normal(> 5.1°C)** at few places over Saurashtra & Kutch; at isolated places over Assam & Meghalaya, West Uttar Pradesh, West Madhya Pradesh, East Madhya Pradesh, Gujarat Region and Coastal Andhra Pradesh & Yanam. **appreciably above normal(3.1°C to 5.0°C)** at isolated places over Assam & Meghalaya, Sub Himalayan West Bengal & Sikkim, Odisha, East Uttar Pradesh, Himachal Pradesh, East Rajasthan, West Madhya Pradesh, Saurashtra & Kutch, Konkan & Goa, Coastal Andhra Pradesh & Yanam, Telangana and Rayalaseema. **above normal(1.6°C to 3.0°C)** at many places over Madhya Maharashtra; at most places over Arunachal Pradesh; at few places over Andaman & Nicobar Islands, Nagaland, Manipur, Mizoram & Tripura, Konkan & Goa, Coastal Andhra Pradesh & Yanam, Telangana and Lakshadweep; at isolated places over Assam & Meghalaya, Sub Himalayan West Bengal & Sikkim, Odisha, East Uttar Pradesh, West Uttar Pradesh, Uttarakhand, Haryana-Chandigarh-Delhi, West Madhya Pradesh, East Madhya Pradesh, Gujarat Region, Saurashtra & Kutch, Vidarbha, Tamil Nadu, Puducherry & Karaikal and North Interior Karnataka. **near normal(-1.5°C to 1.5°C)** at many places over Andaman & Nicobar Islands, Assam & Meghalaya, Nagaland, Manipur, Mizoram & Tripura, Himachal Pradesh, Jammu-Kashmir-Ladakh-Gilgit-Baltistan-Muzaffarabad, West Rajasthan, Gujarat Region, North Interior Karnataka, South Interior Karnataka, Kerala & Mahe and Lakshadweep; at most places over Punjab, Marathwada, Vidarbha, Chhattisgarh, Rayalaseema, Tamil Nadu, Puducherry & Karaikal and Coastal

*Red color warning does not mean "Red Alert" Red color warning means "Take Action"

Forecast and warning for any day is valid from 0830 hours IST of day till 0830 hours IST of next day

For more details kindly visit <https://mausam.imd.gov.in> or contact 011-2434-4599

(Service to the nation since 1875)

Karnataka; at few places over Sub Himalayan West Bengal & Sikkim, Gangetic West Bengal, Odisha, East Uttar Pradesh, West Uttar Pradesh, West Madhya Pradesh, Saurashtra & Kutch, Konkan & Goa, Madhya Maharashtra, Coastal Andhra Pradesh & Yanam and Telangana; at isolated places over Jharkhand, Bihar, Haryana-Chandigarh-Delhi and East Madhya Pradesh. **The lowest minimum temperature of 18.0°C was reported at Chandigarh over the Plains of India.**

❖ **Maximum Temperature Departures (as on 29-05-2026): markedly above normal(> 5.1°C)** at most places over Arunachal Pradesh, Himachal Pradesh and Jammu-Kashmir-Ladakh-Gilgit-Baltistan-Muzaffarabad; at few places over Assam & Meghalaya, West Rajasthan, Chhattisgarh and Coastal Andhra Pradesh & Yanam; at isolated places over West Uttar Pradesh, Punjab, East Rajasthan, West Madhya Pradesh, East Madhya Pradesh, Saurashtra & Kutch, Vidarbha and Telangana. **appreciably above normal(3.1°C to 5.0°C)** at few places over Gujarat Region, Konkan & Goa and Marathwada; at isolated places over Nagaland, Manipur, Mizoram & Tripura, Gangetic West Bengal, Odisha, East Uttar Pradesh, Tamil Nadu, Puducherry & Karaikal and North Interior Karnataka. **above normal(1.6°C to 3.0°C)** at many places over Haryana-Chandigarh-Delhi; at few places over Sub Himalayan West Bengal & Sikkim and Madhya Maharashtra; at isolated places over Uttarakhand and Rayalaseema. **near normal(-1.5°C to 1.5°C)** at many places over South Interior Karnataka; at most places over Coastal Karnataka and Lakshadweep; at few places over Kerala & Mahe; at isolated places over Andaman & Nicobar Islands and Bihar. **The highest maximum temperature of 46.0°C was reported at RAJNANDGAON (CHHATTISGARH).**

Meteorological Analysis (Based on 0830 hours IST)

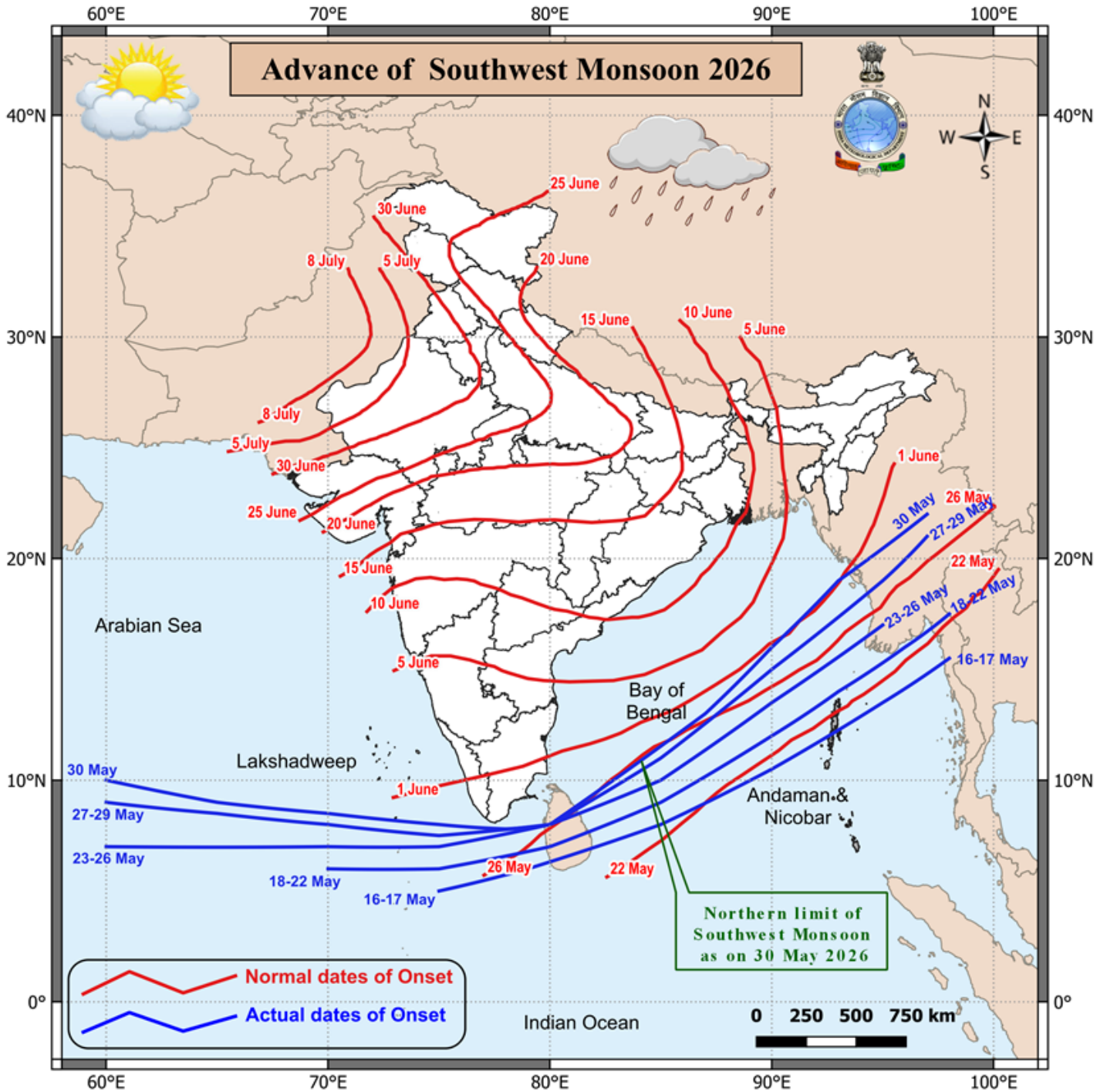
- **Southwest monsoon** has further advanced into some more parts of southwest & southeast Arabian Sea, Lakshadweep Islands, Comorin area, southwest, southeast, westcentral and eastcentral Bay of Bengal, and some parts of northeast Bay of Bengal today, the 30th May 2026.
- The **Northern Limit of Monsoon** passes through 10°N/60°E, 9°/65°E, 8.5°N/70°E, 8°N/75°E, 7.8°N/78°E, 8°N/80°E, 10°N/80°E, 13°N/87°E, 16°N/90°E, 19°N/93°E and 22°N/97°E as on 30th May 2026.
- **Conditions are favourable for further advance of southwest monsoon** into some more parts of southwest & southeast Arabian Sea, Lakshadweep Islands, some parts of Kerala & Tamil Nadu, some more parts of southwest, westcentral, eastcentral & northeast Bay of Bengal, and remaining parts of southeast Bay of Bengal during next 4-5 days.
- The **Western Disturbance** now seen as a **cyclonic circulation** over Northwest Uttar Pradesh between 3.1 & 5.8 km above mean sea level tilting northwestwards with height with a **trough aloft** in middle & upper tropospheric westerlies with its axis at 5.8 km above mean sea level roughly along Long 78°E to the north of Lat 25°N.
- The **upper air cyclonic circulation** over Central Pakistan & neighbourhood extending upto 1.5 km above mean sea level persists.
- The **trough** from the cyclonic circulation over Central Pakistan to northeast Arabian sea across West Rajasthan, Saurashtra & Kutch at 0.9 km above mean sea level persists.
- The **trough** now runs from the cyclonic circulation over Central Pakistan to north Coastal Andhra Pradesh across Rajasthan, Madhya Pradesh, Chhattisgarh and south Odisha at 0.9 km above mean sea level.
- The **trough** in westerlies with its axis at 5.8 km above mean sea level roughly along Long. 90°E to the north of Lat. 21°N persists.
- An **upper air cyclonic circulation** lies over central Bangladesh & neighbourhood and extends upto 1.5 km above mean sea level.
- A **trough** runs from the cyclonic circulation over Eastcentral Bay of Bengal to Lakshadweep area across Westcentral Bay of Bengal, Southwest Bay of Bengal and Comorin area at 5.8 km above mean sea level.
- The **upper air cyclonic circulation** over Southwest Bay of Bengal and adjoining Tamil Nadu coast merged with the above trough.
- The **upper air cyclonic circulation** over Eastcentral & Southeast Bay of Bengal between 1.5 & 7.6 km above mean sea level persists.
- The **upper air cyclonic circulation** over Southeast Arabian Sea & neighbourhood persists at 3.1 km above mean sea level.
- An **upper air cyclonic circulation** lies over southwest Arabian sea & neighbourhood between 3.1 & 5.8 km above mean sea level.

*Red color warning does not mean "Red Alert" Red color warning means "Take Action"

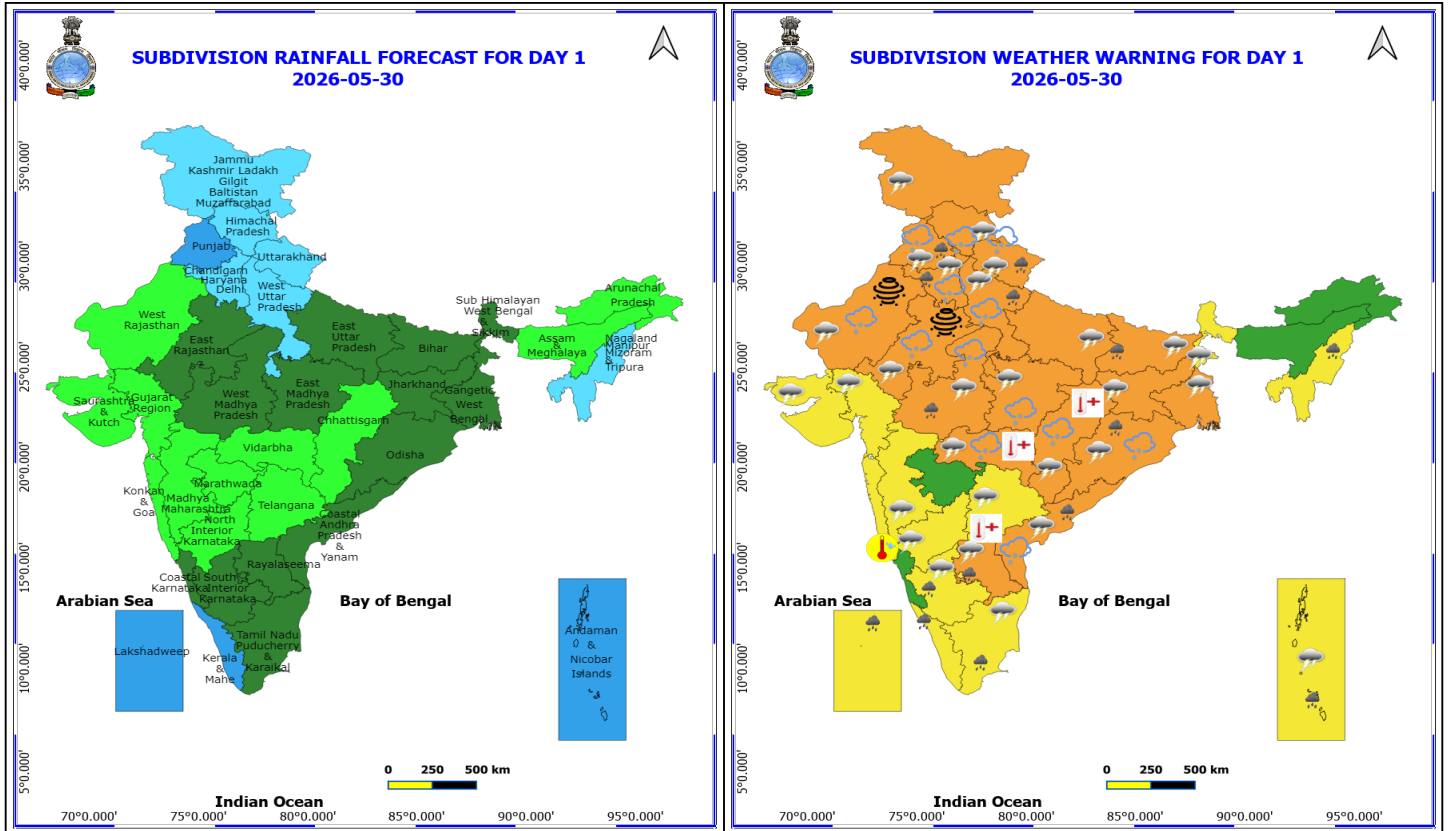
Forecast and warning for any day is valid from 0830 hours IST of day till 0830 hours IST of next day

For more details kindly visit <https://mausam.imd.gov.in> or contact 011-2434-4599

(Service to the nation since 1875)



*Red color warning does not mean "Red Alert" Red color warning means "Take Action"
 Forecast and warning for any day is valid from 0830 hours IST of day till 0830 hours IST of next day
 For more details kindly visit <https://mausam.imd.gov.in> or contact 011-2434-4599
 (Service to the nation since 1875)



30 May (Day 1)

- ❖ **Heavy Rainfall** very likely at isolated places over Andaman & Nicobar Islands, Andhra Pradesh, Bihar, Haryana, Chandigarh & Delhi, Kerala & Mahe, Lakshadweep, Nagaland, Manipur, Mizoram and Tripura, Odisha, Punjab, South Interior Karnataka, Tamil Nadu Puducherry & Karaikal, Uttarakhand, West Madhya Pradesh and West Uttar Pradesh.
- ❖ **Thunderstorm accompanied with Hailstorm** very likely at isolated places over Chhattisgarh, Coastal Andhra Pradesh, Haryana, Chandigarh & Delhi, Himachal Pradesh, Madhya Pradesh, Odisha, Punjab, Rajasthan, Uttarakhand, Vidarbha and West Uttar Pradesh.
- ❖ **Thundersquall with wind speed reaching(60-70kmph) gusting to 80 kmph** very likely at isolated places over Haryana, Chandigarh & Delhi, Himachal Pradesh, Jharkhand, Odisha, Punjab, Rajasthan, Uttar Pradesh and Uttarakhand.
- ❖ **Thundersquall with wind speed reaching(50-60kmph)** very likely at isolated places over Andhra Pradesh, Bihar, Chhattisgarh, Gangetic West Bengal, Gujarat Region, Jammu-Kashmir-Ladakh-Gilgit-Baltistan-Muzaffarabad, Madhya Pradesh and Vidarbha.
- ❖ **Thunderstorm accompanied with lightning & gusty winds(40-50kmph)** very likely at isolated places over Andaman & Nicobar Islands, Interior Karnataka, Madhya Maharashtra, Saurashtra & Kutch, Sub Himalayan West Bengal & Sikkim, Tamil Nadu Puducherry & Karaikal and Telangana.
- ❖ **Thunderstorm accompanied with lightning & gusty winds(30-40kmph)** very likely at isolated places over Coastal Karnataka, Kerala & Mahe and Lakshadweep.
- ❖ **Thunderstorm accompanied with Lightning** very likely at isolated places over Arunachal Pradesh, Assam & Meghalaya and Nagaland, Manipur, Mizoram and Tripura.

***Red color warning does not mean "Red Alert" Red color warning means "Take Action"**

Forecast and warning for any day is valid from 0830 hours IST of day till 0830 hours IST of next day

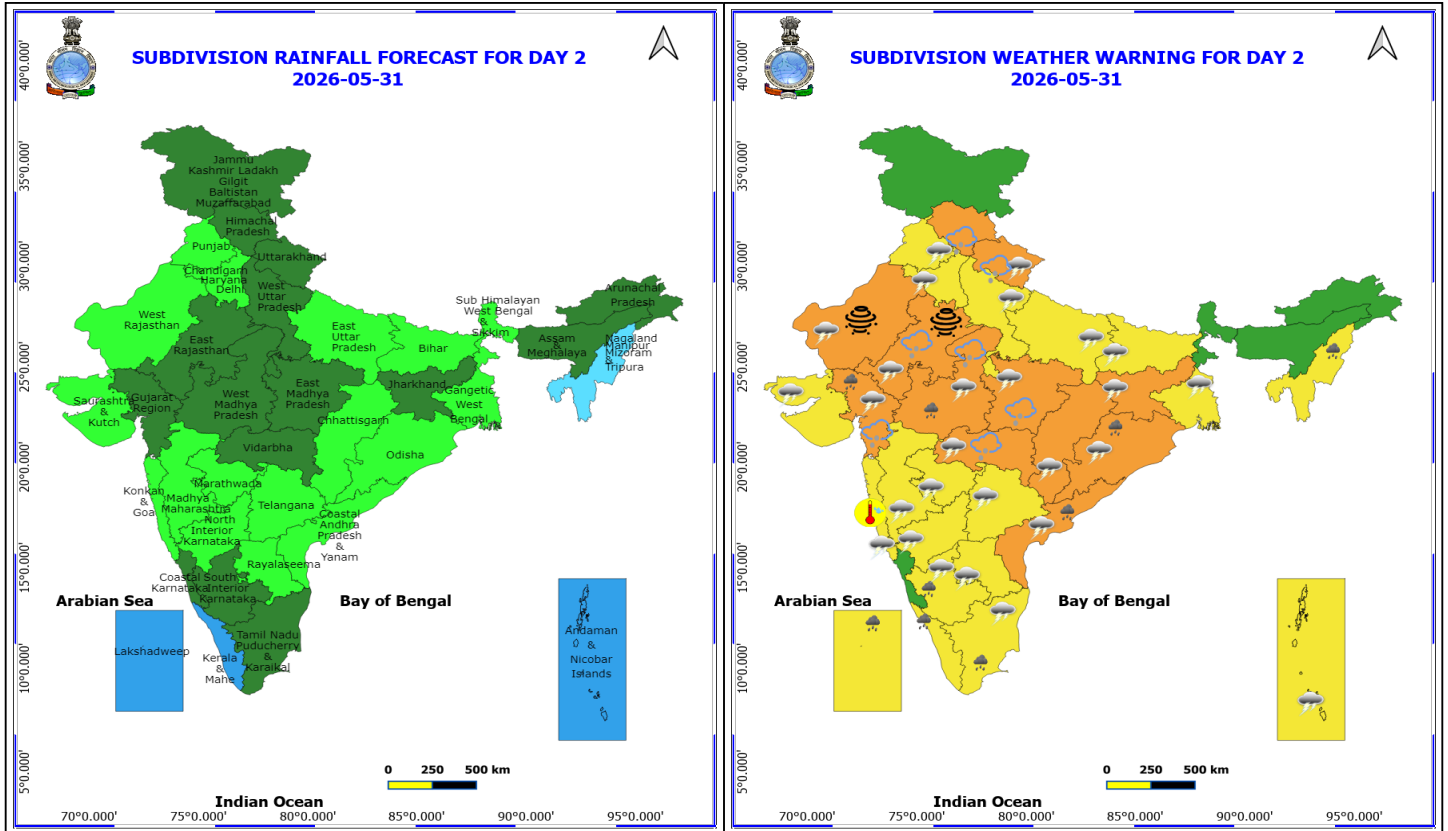
For more details kindly visit <https://mausam.imd.gov.in> or contact 011-2434-4599

(Service to the nation since 1875)

- ❖ **Dust Storm** very likely at isolated places over Rajasthan.
- ❖ **Heat Wave conditions** very likely at isolated places over Chhattisgarh, Telangana and Vidarbha.
- ❖ **Hot and Humid weather** very likely at isolated places over Konkan & Goa.

❖ **Arabian Sea: Squally wind with speed 45-55 kmph gusting to 65 kmph** is likely to prevail over north Arabian Sea and along & off Gujarat, Pakistan & Iran coasts and southwest Arabian Sea & along & off Somalia coast. Squally weather with wind speed 40-50 gusting to 60 kmph is likely over central parts of south & adjoining central Arabian Sea and 35-45 gusting to 55 kmph is likely over southeast Arabian Sea, Lakshadweep & adjoining Maldives and along & off Kerala coast.

❖ **Bay of Bengal: Squally Weather with wind speed 40-50 kmph gusting to 60 kmph** is likely to prevail over Gulf of Mannar & adjoining Comorin area, along & off Tamil Nadu, Sri Lanka & Andhra Pradesh coasts; most parts of south Bay of Bengal & adjoining central Bay of Bengal and south & adjoining north Andaman Sea.



31 May (Day 2)

- ❖ **Heavy Rainfall** very likely at isolated places over Coastal Andhra Pradesh, Gujarat Region, Kerala & Mahe, Lakshadweep, Nagaland, Manipur, Mizoram and Tripura, Odisha, South Interior Karnataka, Tamil Nadu Puducherry & Karaikal and West Madhya Pradesh.
- ❖ **Thunderstorm accompanied with Hailstorm** very likely at isolated places over East Rajasthan, Gujarat Region, Himachal Pradesh, Madhya Pradesh, Uttarakhand and Vidarbha.
- ❖ **Thundersquall with wind speed reaching(60-70kmph) gusting to 80 kmph** very likely at isolated places over Rajasthan.
- ❖ **Thundersquall with wind speed reaching(50-60kmph)** very likely at isolated places over Chhattisgarh, Coastal Andhra Pradesh, Gujarat Region, Jharkhand, Madhya Pradesh, Odisha and Vidarbha.
- ❖ **Thunderstorm accompanied with lightning & gusty winds(40-50kmph)** very likely at isolated places over Andaman & Nicobar Islands, Bihar, Gangetic West Bengal, Haryana, Chandigarh & Delhi, Interior Karnataka, Konkan & Goa, Madhya Maharashtra, Marathwada, Punjab, Rayalaseema, Saurashtra & Kutch, Tamil Nadu Puducherry & Karaikal, Telangana, Uttar Pradesh and Uttarakhand.
- ❖ **Thunderstorm accompanied with lightning & gusty winds(30-40kmph)** very likely at isolated places over Coastal Karnataka, Himachal Pradesh, Kerala & Mahe and Lakshadweep.
- ❖ **Thunderstorm accompanied with Lightning** very likely at isolated places over Arunachal Pradesh, Assam & Meghalaya and Nagaland, Manipur, Mizoram and Tripura.
- ❖ **Dust Storm** very likely at isolated places over Rajasthan.

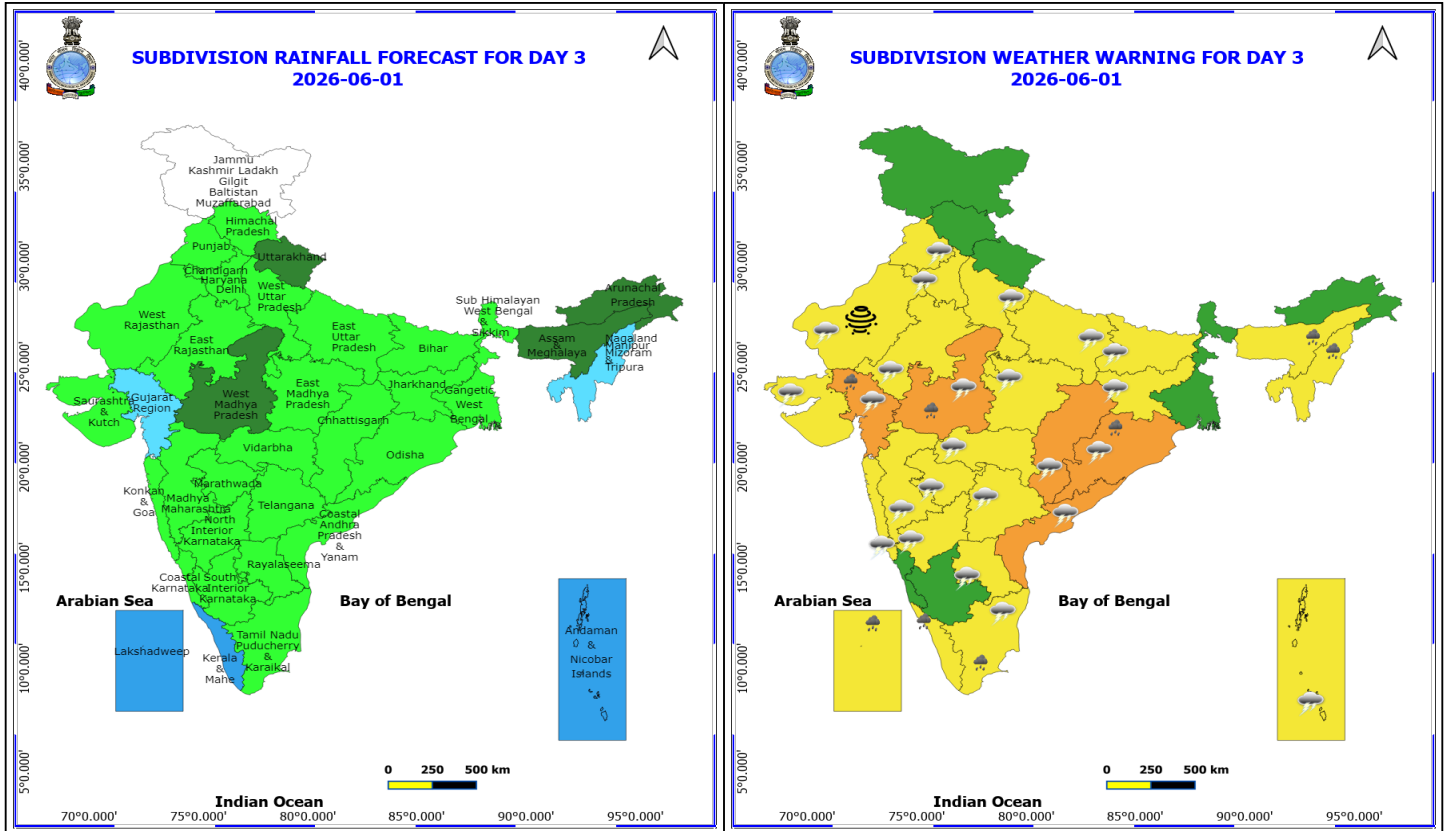
***Red color warning does not mean "Red Alert" Red color warning means "Take Action"**
Forecast and warning for any day is valid from 0830 hours IST of day till 0830 hours IST of next day
For more details kindly visit <https://mausam.imd.gov.in> or contact 011-2434-4599

(Service to the nation since 1875)

❖ **Hot and Humid weather** very likely at isolated places over Konkan & Goa.

❖ **Arabian Sea: Squally wind with speed 45-55 kmph gusting to 65 kmph** is likely to prevail over north Arabian Sea and along & off Gujarat & Oman coasts and southwest Arabian Sea & along & off Somalia coast. Squally weather with wind speed 35-45 gusting to 55 kmph is likely over southeast Arabian Sea, Lakshadweep & adjoining Maldives and along & off Kerala coast.

❖ **Bay of Bengal: Squally Weather with wind speed 40-50 kmph gusting to 60 kmph** is likely to prevail over Gulf of Mannar & adjoining Comorin area, along & off Tamil Nadu, Sri Lanka & Andhra Pradesh coasts; most parts of south Bay of Bengal westcentral Bay of Bengal and south & adjoining north Andaman Sea.



1 June (Day 3)

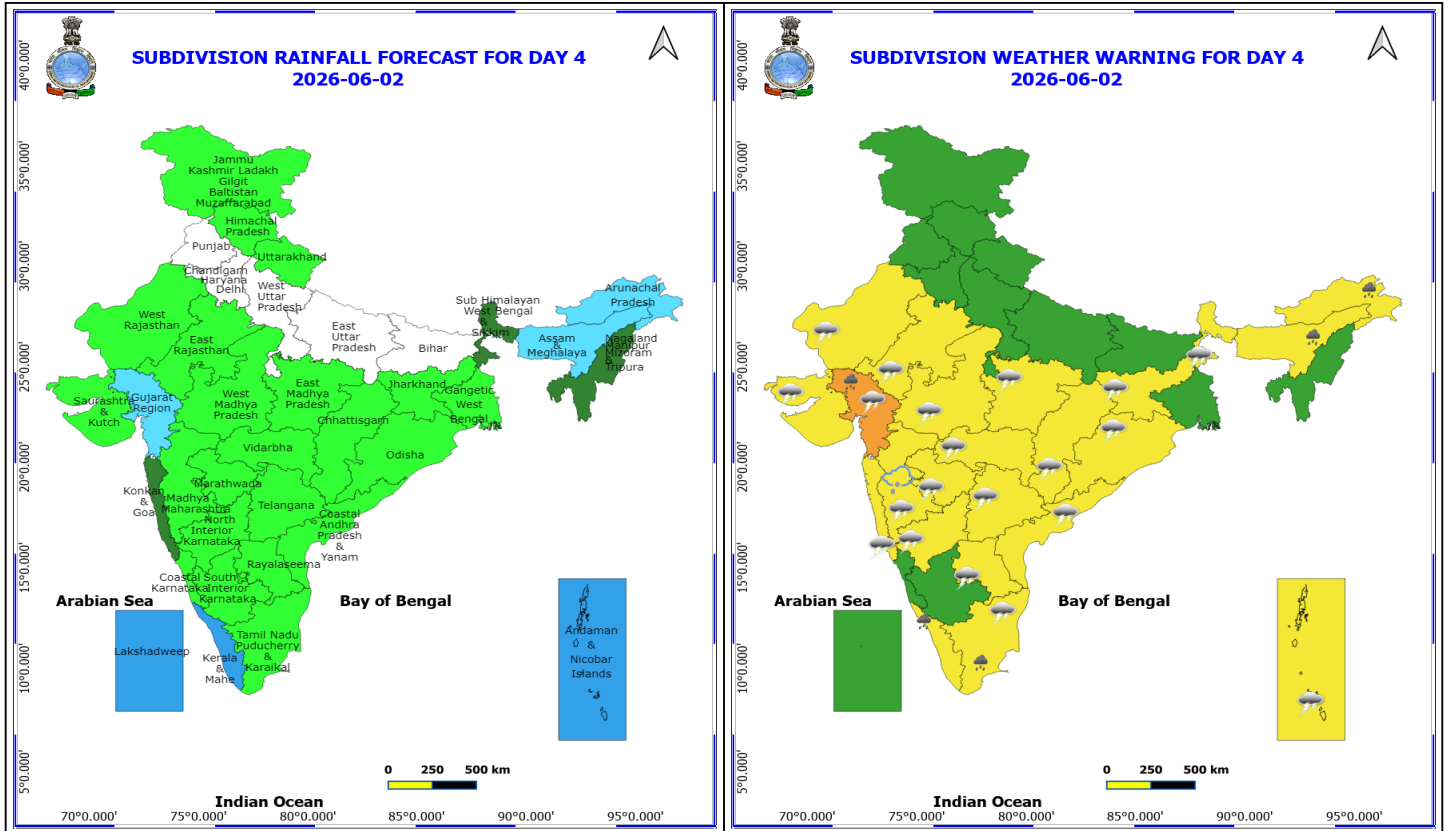
- ❖ **Heavy Rainfall** very likely at isolated places over Assam & Meghalaya, Gujarat Region, Kerala & Mahe, Lakshadweep, Nagaland, Manipur, Mizoram and Tripura, Odisha, Tamil Nadu Puducherry & Karaikal and West Madhya Pradesh.
 - ❖ **Thundersquall with wind speed reaching(50-60kmph)** very likely at isolated places over Chhattisgarh, Coastal Andhra Pradesh, Gujarat Region, Madhya Pradesh, Odisha and West Rajasthan.
 - ❖ **Thunderstorm accompanied with lightning & gusty winds(40-50kmph)** very likely at isolated places over Andaman & Nicobar Islands, Bihar, East Rajasthan, Haryana, Chandigarh & Delhi, Jharkhand, Konkan & Goa, Maharashtra, North Interior Karnataka, Punjab, Rayalaseema, Saurashtra & Kutch, Tamil Nadu Puducherry & Karaikal, Telangana and Uttar Pradesh.
 - ❖ **Thunderstorm accompanied with lightning & gusty winds(30-40kmph)** very likely at isolated places over Kerala & Mahe, Lakshadweep, South Interior Karnataka and Uttarakhand.
 - ❖ **Thunderstorm accompanied with Lightning** very likely at isolated places over Arunachal Pradesh, Assam & Meghalaya, Coastal Karnataka and Nagaland, Manipur, Mizoram and Tripura.
 - ❖ **Dust Storm** very likely at isolated places over West Rajasthan.
-
- ❖ **Arabian Sea: Squally wind with speed 45-55 kmph gusting to 65 kmph** is likely to prevail over northeast Arabian Sea and along & off Gujarat coast and westcentral & adjoining northwest Arabian Sea & along & off Oman coast. Squally weather with wind speed 35-45 gusting to 55 kmph is likely over southeast Arabian Sea, Lakshadweep & adjoining Maldives and along & off Kerala coasts.
 - ❖ **Bay of Bengal: Squally Weather with wind speed 40-50 kmph gusting to 60 kmph** is likely to prevail over Gulf

***Red color warning does not mean "Red Alert" Red color warning means "Take Action"**
Forecast and warning for any day is valid from 0830 hours IST of day till 0830 hours IST of next day
For more details kindly visit <https://mausam.imd.gov.in> or contact 011-2434-4599

(Service to the nation since 1875)



of Mannar & adjoining Comorin area, along & off Tamil Nadu, Sri Lanka & South Andhra Pradesh coasts; most parts of south Bay of Bengal westcentral Bay of Bengal and south & adjoining north Andaman Sea.



2 June (Day 4)

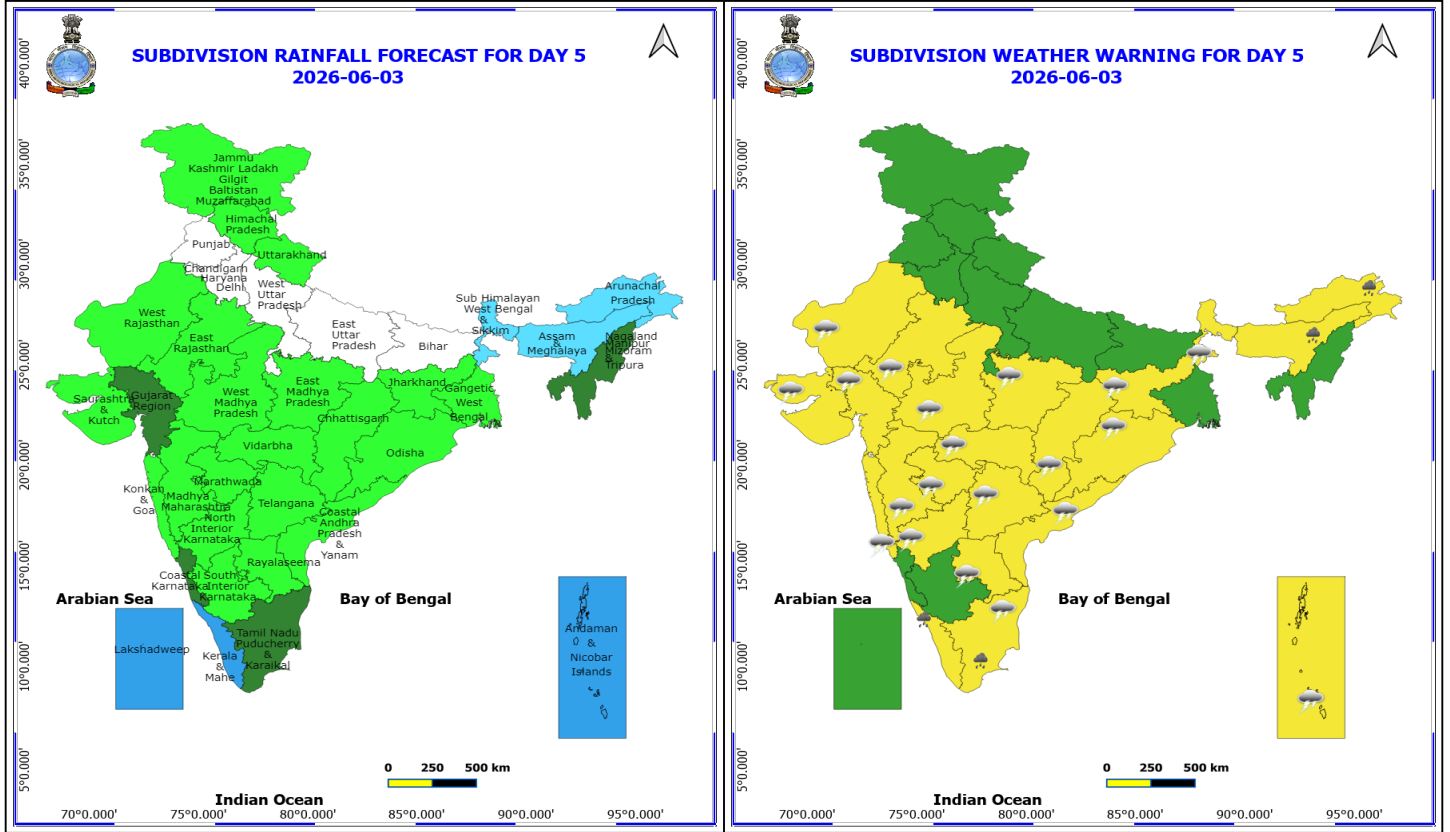
- ❖ **Heavy Rainfall** likely at isolated places over Arunachal Pradesh, Assam & Meghalaya, Gujarat Region, Kerala & Mahe and Tamil Nadu Puducherry & Karaikal.
- ❖ **Thunderstorm accompanied with Hailstorm** likely at isolated places over Madhya Maharashtra.
- ❖ **Thundersquall with wind speed reaching(50-60kmph)** likely at isolated places over Gujarat Region and West Madhya Pradesh.
- ❖ **Thunderstorm accompanied with lightning & gusty winds(40-50kmph)** likely at isolated places over Andaman & Nicobar Islands, Andhra Pradesh, Chhattisgarh, East Madhya Pradesh, Jharkhand, Konkan & Goa, Maharashtra, North Interior Karnataka, Odisha, Rajasthan, Saurashtra & Kutch, Sub Himalayan West Bengal & Sikkim, Tamil Nadu Puducherry & Karaikal and Telangana.
- ❖ **Thunderstorm accompanied with lightning & gusty winds(30-40kmph)** likely at isolated places over Kerala & Mahe, Lakshadweep, South Interior Karnataka and Uttarakhand.
- ❖ **Thunderstorm accompanied with Lightning** likely at isolated places over Arunachal Pradesh, Assam & Meghalaya, Coastal Karnataka and Nagaland, Manipur, Mizoram and Tripura.
- ❖ **Arabian Sea: Squally wind with speed 45-55 kmph gusting to 65 kmph** is likely to prevail over westcentral & adjoining northwest Arabian Sea & along & off Oman coast. Squally weather with wind speed 40-50 gusting to 60 kmph is likely over southeast Arabian Sea, Lakshadweep & adjoining Maldives and along & off Kerala coasts.
- ❖ **Bay of Bengal: Squally Weather with wind speed 40-50 kmph gusting to 60 kmph** is likely to prevail over Gulf of Mannar & adjoining Comorin area, along & off Tamil Nadu, Sri Lanka & South Andhra Pradesh coasts; most parts of south & westcentral Bay of Bengal and south & adjoining north Andaman Sea.

***Red color warning does not mean "Red Alert" Red color warning means "Take Action"**

Forecast and warning for any day is valid from 0830 hours IST of day till 0830 hours IST of next day

For more details kindly visit <https://mausam.imd.gov.in> or contact 011-2434-4599

(Service to the nation since 1875)

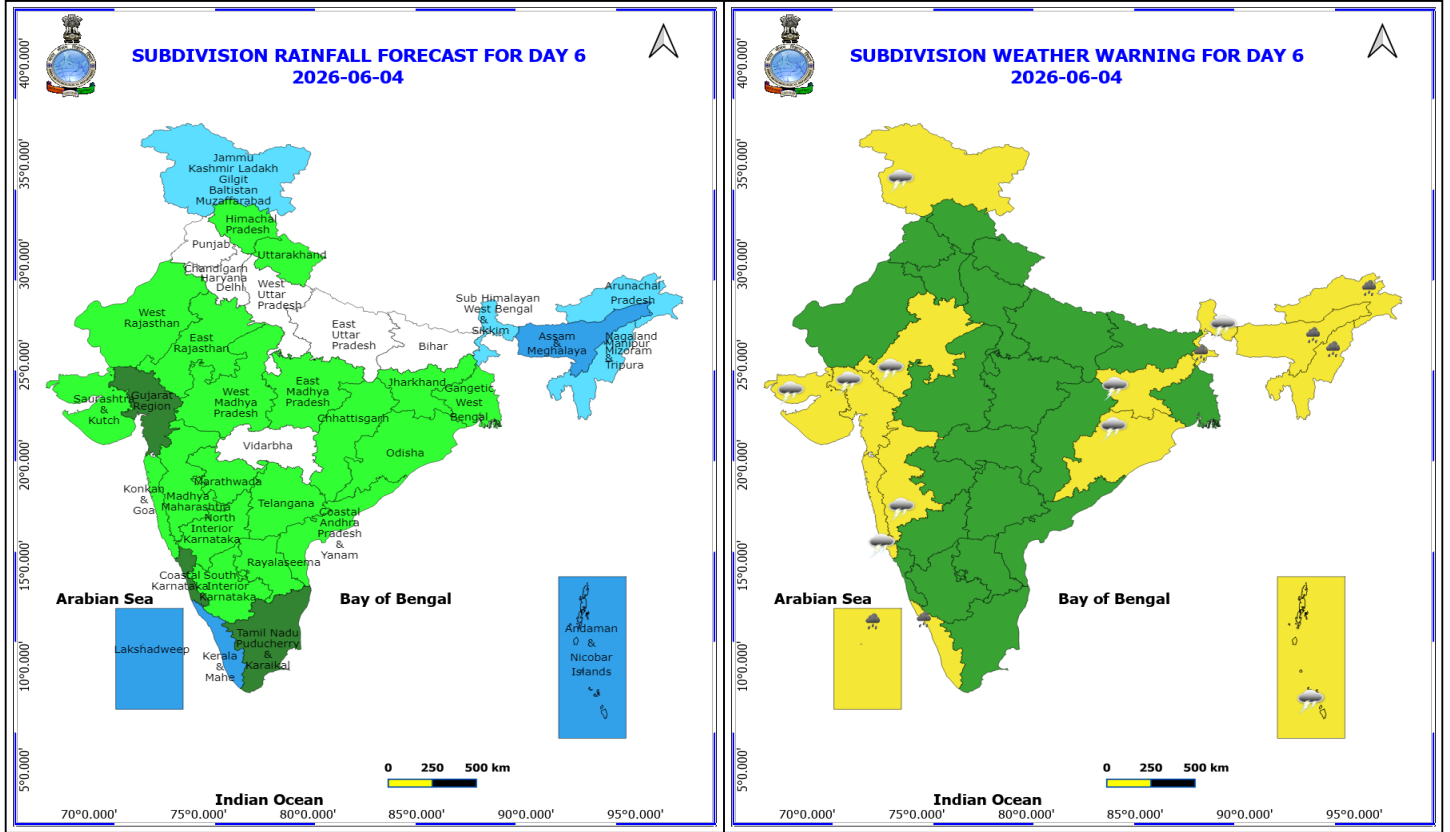


3 June (Day 5)

- ❖ **Heavy Rainfall** likely at isolated places over Arunachal Pradesh, Assam & Meghalaya, Kerala & Mahe and Tamil Nadu Puducherry & Karaikal.
 - ❖ **Thundersquall with wind speed reaching(50-60kmph)** likely at isolated places over West Madhya Pradesh.
 - ❖ **Thunderstorm accompanied with lightning & gusty winds(40-50kmph)** likely at isolated places over Andaman & Nicobar Islands, Andhra Pradesh, Chhattisgarh, East Madhya Pradesh, Gujarat State, Jharkhand, Konkan & Goa, Maharashtra, North Interior Karnataka, Odisha, Rajasthan, Sub Himalayan West Bengal & Sikkim, Tamil Nadu Puducherry & Karaikal and Telangana.
 - ❖ **Thunderstorm accompanied with lightning & gusty winds(30-40kmph)** likely at isolated places over Kerala & Mahe, Lakshadweep and South Interior Karnataka.
 - ❖ **Thunderstorm accompanied with Lightning** likely at isolated places over Arunachal Pradesh, Assam & Meghalaya, Coastal Karnataka and Nagaland, Manipur, Mizoram and Tripura.
-
- ❖ **Arabian Sea: Squally wind with speed 45-55 kmph gusting to 65 kmph** is likely to prevail over westcentral & adjoining northwest Arabian Sea & along & off Oman coast. Squally weather with wind speed 40-50 gusting to 60 kmph is likely over most parts of southeast Arabian Sea, Lakshadweep & adjoining Maldives and along & off Kerala coasts.
 - ❖ **Bay of Bengal: Squally Weather with wind speed 40-50 kmph gusting to 60 kmph** is likely to prevail over Gulf of Mannar, Comorin, along & off Tamil Nadu, Sri Lanka & South Andhra Pradesh coasts; most parts of south & westcentral Bay of Bengal and south & adjoining north Andaman Sea.

***Red color warning does not mean "Red Alert" Red color warning means "Take Action"**
Forecast and warning for any day is valid from 0830 hours IST of day till 0830 hours IST of next day
For more details kindly visit <https://mausam.imd.gov.in> or contact 011-2434-4599

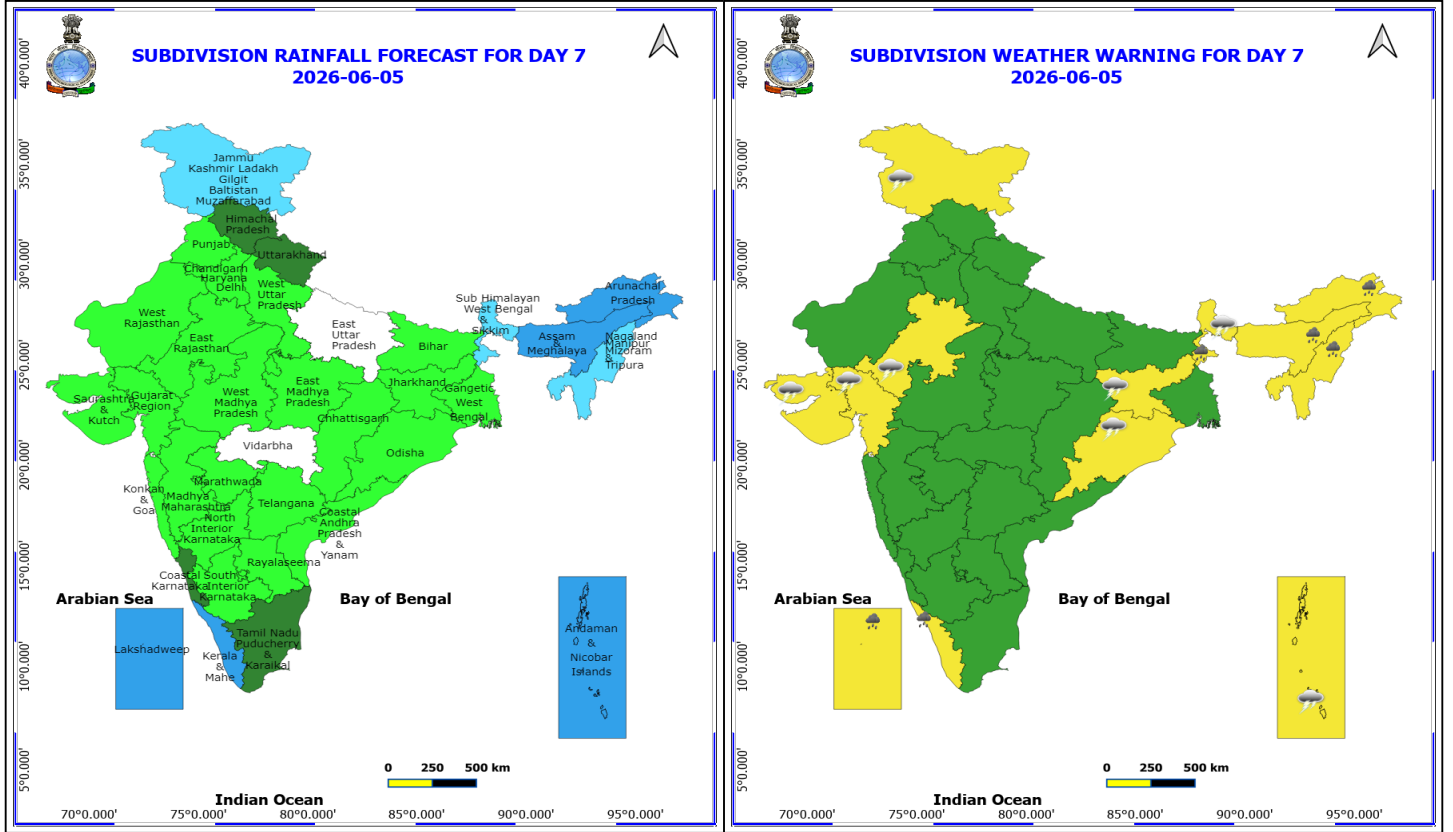
(Service to the nation since 1875)



4 June (Day 6)

- ❖ **Heavy Rainfall** likely at isolated places over Arunachal Pradesh, Assam & Meghalaya, Kerala & Mahe, Lakshadweep, Nagaland, Manipur, Mizoram and Tripura and Sub Himalayan West Bengal & Sikkim.
- ❖ **Thunderstorm accompanied with lightning & gusty winds(40-50kmph)** likely at isolated places over Andaman & Nicobar Islands, East Rajasthan, Gujarat State, Jammu-Kashmir-Ladakh-Gilgit-Baltistan-Muzaffarabad, Jharkhand, Konkan & Goa, Madhya Maharashtra, Odisha and Sub Himalayan West Bengal & Sikkim.
- ❖ **Thunderstorm accompanied with lightning & gusty winds(30-40kmph)** likely at isolated places over West Rajasthan.

No Fishermen Warning



5 June (Day 7)

- ❖ **Heavy Rainfall** likely at isolated places over Arunachal Pradesh, Assam & Meghalaya, Kerala & Mahe, Lakshadweep, Nagaland, Manipur, Mizoram and Tripura and Sub Himalayan West Bengal & Sikkim.
- ❖ **Thunderstorm accompanied with lightning & gusty winds(40-50kmph)** likely at isolated places over Andaman & Nicobar Islands, East Rajasthan, Gujarat State, Jammu-Kashmir-Ladakh-Gilgit-Baltistan-Muzaffarabad, Jharkhand, Odisha and Sub Himalayan West Bengal & Sikkim.
- ❖ **Thunderstorm accompanied with lightning & gusty winds(30-40kmph)** likely at isolated places over West Rajasthan.

No Fishermen Warning



Table-1

7 Days Rainfall Forecast

S.No.	Subdivision	30- May	31- May	1- Jun	2- Jun	3- Jun	4- Jun	5- Jun
		Day 1	Day 2	Day 3	Day 4	Day 5	Day 6	Day 7
1	ANDAMAN & NICOBAR ISLANDS	WS	WS	WS	WS	WS	WS	WS
2	ARUNACHAL PRADESH	ISOL	SCT	SCT	FWS	FWS	FWS	WS
3	ASSAM & MEHGHALAYA	ISOL	SCT	SCT	FWS	FWS	WS	WS
4	N. M. M. & T.	FWS	FWS	FWS	SCT	SCT	FWS	FWS
5	S.H. WEST BENGAL & SIKKIM	SCT	ISOL	ISOL	SCT	FWS	FWS	FWS
6	GANGETIC WEST BENGAL	SCT	ISOL	ISOL	ISOL	ISOL	ISOL	ISOL
7	ODISHA	SCT	ISOL	ISOL	ISOL	ISOL	ISOL	ISOL
8	JHARKHAND	SCT	SCT	ISOL	ISOL	ISOL	ISOL	ISOL
9	BIHAR	SCT	ISOL	ISOL	DRY	DRY	DRY	ISOL
10	EAST UTTAR PRADESH	SCT	ISOL	ISOL	DRY	DRY	DRY	DRY
11	WEST UTTAR PRADESH	FWS	SCT	ISOL	DRY	DRY	DRY	ISOL
12	UTTARAKHAND	FWS	SCT	SCT	ISOL	ISOL	ISOL	SCT
13	HARYANA, CHD & DELHI	FWS	ISOL	ISOL	DRY	DRY	DRY	ISOL
14	PUNJAB	WS	ISOL	ISOL	DRY	DRY	DRY	ISOL
15	HIMACHAL PRADESH	FWS	SCT	ISOL	ISOL	ISOL	ISOL	SCT
16	JAMMU AND KASHMIR AND LADAKH	FWS	SCT	DRY	ISOL	ISOL	FWS	FWS
17	WEST RAJASTHAN	ISOL	ISOL	ISOL	ISOL	ISOL	ISOL	ISOL
18	EAST RAJASTHAN	SCT	SCT	ISOL	ISOL	ISOL	ISOL	ISOL
19	WEST MADHYA PRADESH	SCT	SCT	SCT	ISOL	ISOL	ISOL	ISOL
20	EAST MADHYA PRADESH	SCT	SCT	ISOL	ISOL	ISOL	ISOL	ISOL
21	GUJRAT REGION	ISOL	SCT	FWS	FWS	SCT	SCT	ISOL
22	SAURASHTRA & KUTCH	ISOL	ISOL	ISOL	ISOL	ISOL	ISOL	ISOL
23	KONKAN & GOA	ISOL	ISOL	ISOL	SCT	ISOL	ISOL	ISOL
24	MADHYA MAHARASHTRA	ISOL	ISOL	ISOL	ISOL	ISOL	ISOL	ISOL
25	MARATHWADA	ISOL	ISOL	ISOL	ISOL	ISOL	ISOL	ISOL
26	VIDARBHA	ISOL	SCT	ISOL	ISOL	ISOL	DRY	DRY
27	CHATTISGARH	ISOL	ISOL	ISOL	ISOL	ISOL	ISOL	ISOL
28	COASTAL ANDHRA PRADESH	SCT	ISOL	ISOL	ISOL	ISOL	ISOL	ISOL
29	TELANGANA	ISOL	ISOL	ISOL	ISOL	ISOL	ISOL	ISOL
30	RAYALASEEMA	SCT	ISOL	ISOL	ISOL	ISOL	ISOL	ISOL
31	TAMILNADU & PUDUCHERRY	SCT	SCT	ISOL	ISOL	SCT	SCT	SCT
32	COSTAL KARNATAKA	SCT	SCT	ISOL	ISOL	SCT	SCT	SCT
33	NORTH INTERIOR KARNATAKA	ISOL	ISOL	ISOL	ISOL	ISOL	ISOL	ISOL
34	SOUTH INTERIOR KARNATAKA	SCT	SCT	ISOL	ISOL	ISOL	ISOL	ISOL
35	KERALA	WS	WS	WS	WS	WS	WS	WS
36	LAKSHDWEEP	WS	WS	WS	WS	WS	WS	WS

Legend	Category	%Stations
WS	Widespread/Most Places	76-100
FWS	Fairly Widespread/Many Places	51-75
SCT	Scattered/ A Few Places	26-50
ISOL	Isolated Places	1-25
DRY	No Rain	0

***Red color warning does not mean "Red Alert" Red color warning means "Take Action"**
Forecast and warning for any day is valid from 0830 hours IST of day till 0830 hours IST of next day
For more details kindly visit <https://mausam.imd.gov.in> or contact 011-2434-4599

(Service to the nation since 1875)

Fig. 1: Maximum Temperatures Dated 2026-05-29

Fig. 2: Departure of Maximum Temp. Dated 2026-05-29

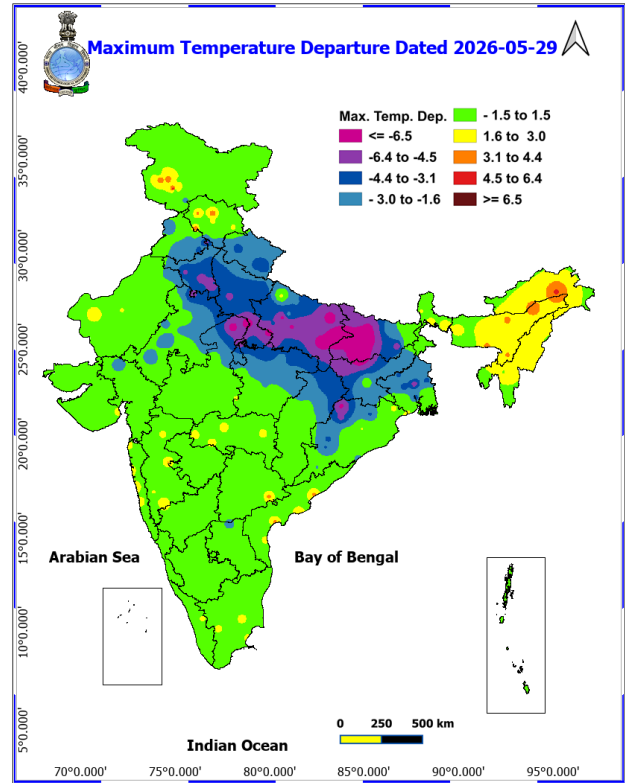
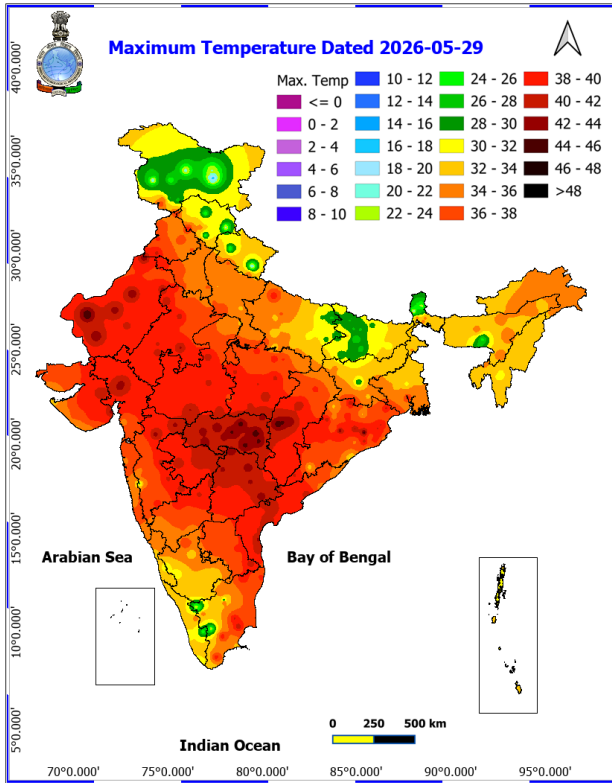
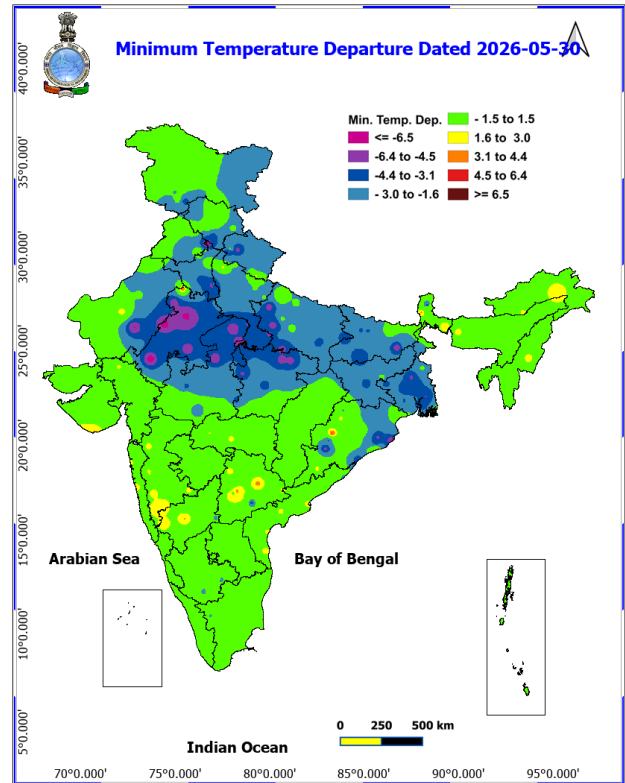
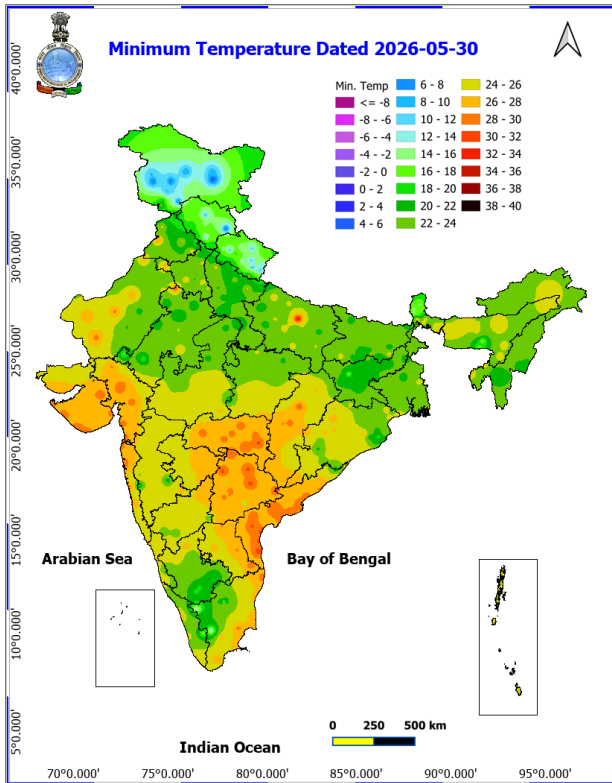
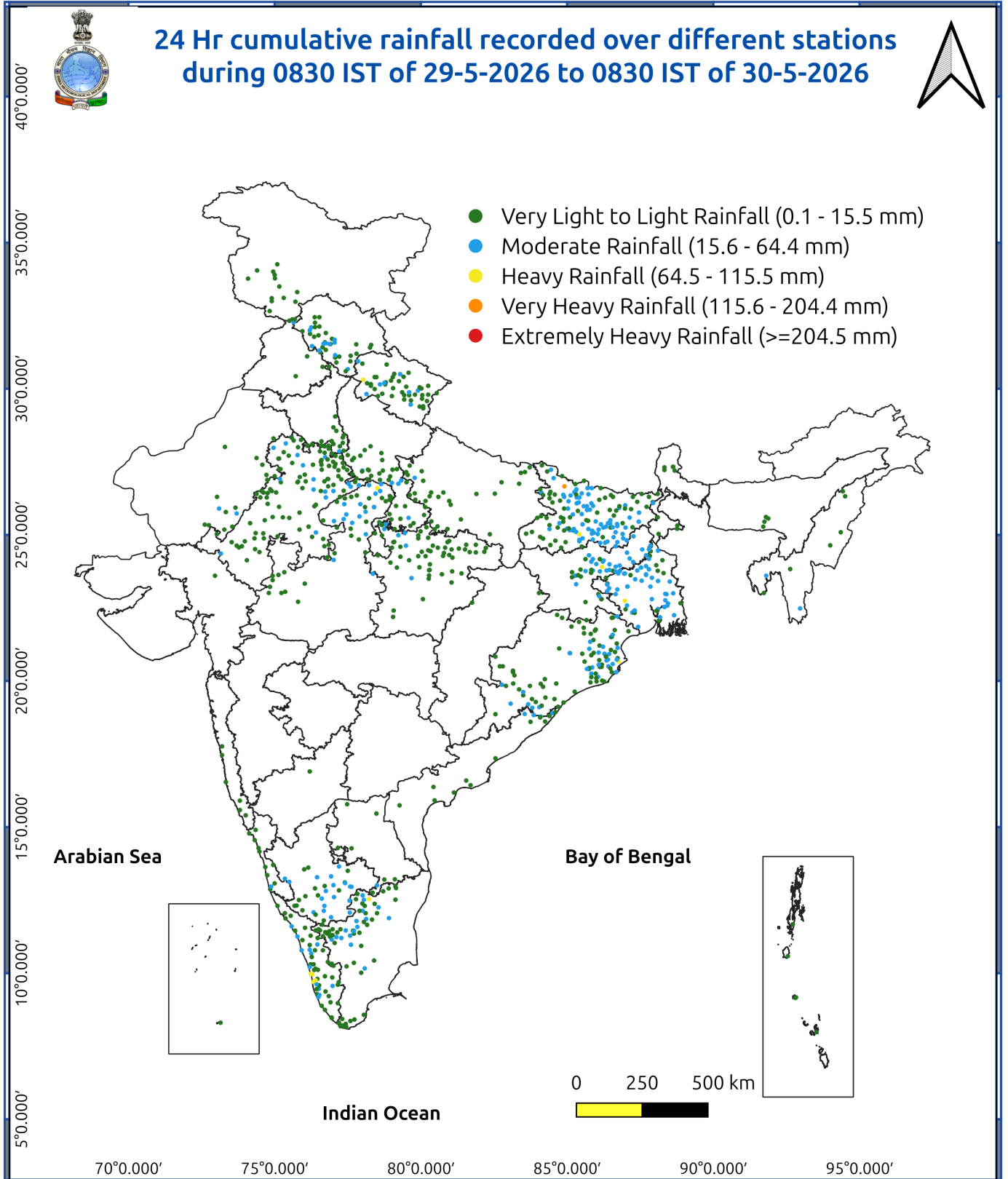


Fig. 3: Minimum Temperatures Dated 2026-05-30

Fig. 4: Departure of Minimum Temp. Dated 2026-05-30





Impact and Actions

Impact Expected & Action Suggested due to heavy/very heavy rainfall over

- **Isolated heavy rainfall** likely over Uttarakhand, Punjab, Haryana, Chandigarh and West Uttar Pradesh, Andaman & Nicobar Islands, Bihar, Rayalaseema on 30th May; South Interior Karnataka, Coastal Andhra Pradesh & Yanam on 30th & 31st May; Tamil Nadu, Puducherry & Karaikal during 30th May-03rd June; Kerala & Mahe during 30th May-05th June; Lakshadweep during 30th May-01st June & on 04th, 05th June; Odisha during 30th May-01st June; West Madhya Pradesh during 30th May- 01st June; Gujarat Region during 31st May – 02nd June; Sub-Himalayan West Bengal & Sikkim on 04th & 05th June.

Impact Expected

- Localized Flooding of roads, water logging in low lying areas and closure of underpasses mainly in urban areas.
- Occasional reduction in visibility due to heavy rainfall.
- Disruption of traffic in major cities due to water logging in roads leading to increased travel time.
- Minor damage to kutcha roads.
- Possibilities of damage to vulnerable structure.
- Localized Landslides/Mudslides/landslips/mudslips/landsinks/mudsinks.
- Damage to horticulture and standing crops in some areas due to inundation.
- It may lead to riverine flooding in some river catchments (for riverine flooding please visit Web page of CWC)

Action Suggested

- Check for traffic congestion on your route before leaving for your destination.
- Follow any traffic advisories that are issued in this regard.
- Avoid going to areas that face the water logging problems often.
- Avoid staying in vulnerable structure.

Impact expected and action suggested due to isolated thunderstorm with lightning/squally winds over

- **Thundersquall (wind speed reaching 60-70 kmph gusting to 80 kmph)** likely over Himachal Pradesh, Uttarakhand, Jharkhand, Odisha, Punjab, Haryana, Chandigarh & Delhi, Uttar Pradesh on 30th May and Rajasthan on 30th & 31st May.
- **Thundersquall (wind speed reaching 50-60 kmph gusting to 70 kmph)** likely over Jammu-Kashmir, East Uttar Pradesh, Gangetic West Bengal, Bihar, Rayalaseema on 30th May; East Madhya Pradesh & Chhattisgarh, Coastal Andhra Pradesh & Yanam during 30th May-01st June; Vidarbha, Jharkhand on 30th & 31st May; Odisha on 31st & 01st June; West Rajasthan on 01st June; West Madhya Pradesh during 30th May-03rd June; Gujarat Region during 30th May-02nd June.
- **Isolated Hailstorm activity** likely over Punjab, Haryana, Chandigarh, West Uttar Pradesh, West Rajasthan, Odisha, Chhattisgarh, Coastal Andhra Pradesh & Yanam on 30th May; Himachal Pradesh, Uttarakhand, East Rajasthan, Madhya Pradesh & Vidarbha on 30th & 31st May; Gujarat Region on 31st May and Madhya Maharashtra on 02nd June.

Impact expected:

- Breaking of tree branches, uprooting of large avenue trees. Large dead limbs blown from trees. Damage to Standing crops.
- Minor to Major damage to banana and papaya trees.
- Minor to major damage to power and communication lines due to breaking of branches.
- Strong wind/hail may damage plantation, horticulture and standing crops.
- Hail may injure people and cattle at open places.
- Partial damage to vulnerable structures due to strong winds.
- Minor damage to kutcha houses/walls and huts.

***Red color warning does not mean "Red Alert" Red color warning means "Take Action"**

Forecast and warning for any day is valid from 0830 hours IST of day till 0830 hours IST of next day

For more details kindly visit <https://mausam.imd.gov.in> or contact 011-2434-4599

(Service to the nation since 1875)

- Loose objects may fly.

Action suggested:

- People are advised to keep a watch on the weather for worsening conditions and be ready to move to safer places accordingly.
- Stay indoors, close windows & doors and avoid travel if possible.
- Take safe shelters; do not take shelter under trees.
- Do not lie on concrete floors and do not lean against concrete walls.
- Unplug electrical/ electronic appliances.
- Immediately get out of water bodies.
- Keep away from all the objects that conduct electricity.

Impact expected and action suggested due to Heat wave conditions:

- **Heat wave conditions** very likely in isolated pockets over Vidarbha, Chhattisgarh and Telangana on 30th May.

Red alert Areas

- Very high likelihood of developing heat illness and heat stroke in all ages.
- Extreme care needed for vulnerable people.

Orange alert Areas

- People who are either exposed to sun for a prolonged period or doing heavy work.
- High health concern for vulnerable people e.g. infants, elderly, people with chronic diseases.
- Avoid heat exposure— keep cool. Avoid dehydration.
- Drink sufficient water- even if not thirsty.
- Use ORS, homemade drinks like lassi, torani (rice water), lemon water, buttermilk, etc. to keep yourself hydrated.

Yellow alert Areas

- Moderate temperature & heat is tolerable for general public but moderate health concern likely for vulnerable people e.g. infants, elderly, people with chronic diseases.
- Avoid heat exposure.
- Wear lightweight, light colour, loose, cotton clothes.
- Cover your head, use a cloth, hat or umbrella.

Agromet advisories for various parts of the country

Agromet advisories for likely impact of Hailstorms

- In **Jammu & Kashmir, Himachal Pradesh, Uttarakhand, Punjab, Haryana, West Uttar Pradesh, Rajasthan, Gujarat, Coastal Andhra Pradesh, Madhya Pradesh, Vidarbha, Chhattisgarh and Odish** use hail nets or hail caps in fruit orchards and vegetable plants to protect them from mechanical damage.
- Ensure effective field drainage to prevent waterlogging. Undertake picking of matured fruits at the earliest. Keep the harvested produce in safe places.

Agromet advisories for likely impact of Heavy Rainfall

***Red color warning does not mean "Red Alert" Red color warning means "Take Action"**
Forecast and warning for any day is valid from 0830 hours IST of day till 0830 hours IST of next day
For more details kindly visit <https://mausam.imd.gov.in> or contact 011-2434-4599

(Service to the nation since 1875)

- In **Andaman & Nicobar**, postpone irrigation, intercultural operations and application of plant protection measures & fertilizers to the standing crops. Provide adequate drainage in standing-crop fields to prevent waterlogging.
- In **Nagaland**, delay transplanting of brinjal in main field. For already transplanted seedlings, maintain proper drainage in and around the fields of maize, vegetables and orchard.
- In **Manipur**, ensure that ridges and bunds around rice fields are well constructed to maintain the required water level; provide adequate drainage to remove excess rain water from chilli, ginger, turmeric, banana and other crops.
- In **Mizoram**, create drainage channels surrounding the rice fields and utilize grass mulch to cover the seeds. Provide support to fruit-bearing or partially lodge plants/trees. Propping should be done to prevent maize plants from lodging.
- In **Tripura** – undertake harvesting of mature Boro rice immediately and shift the harvested produce to a safe and dry place for storage.
- In **Bihar**, withhold irrigation in standing crops. Prepare paddy nursery fields with proper drainage arrangements.
- In **Tamil Nadu**, maintain proper drainage to prevent water stagnation in cotton, rise nurseries, recently sown cumbu and vegetables,
- In **Keralam**, provide adequate drainage for banana, coconut, and other vegetables. Provide support to banana plants.
- In **Lakshadweep**, provide adequate drainage in standing crop fields to prevent waterlogging.
- In **South Interior Karnataka**, undertake harvesting of matured rice after current spells of rain, ensure proper drainage in paddy fields, arecanut and mango orchards. Provide staking to tomato plants.
- In **Andhra Pradesh** -Provide light irrigation to maintain adequate moisture in standing crops such as paddy, *rabi* maize, sorghum, chickpea, groundnut, sesame, sugarcane, vegetables, and fruit orchards.
- In the regions expecting heavy rainfall, including **Uttarkhand, Punjab, Haryana, West Uttar Pradesh, Jharkhand, West Madhya Pradesh, Gujarat and Odisha**, withhold irrigation in standing crops, make necessary arrangements to remove excess rainwater from the crop fields.

Agromet advisories for likely impact of High temperatures/ Heat Waves

- In **Chhattisgarh** - Apply light irrigation after weeding and hoeing in *rabi* maize, banana, and papaya plantations. Complete harvesting of wheat and chickpea, and ensure safe storage.
- In **Maharashtra - Vidarbha**, provide light and frequent irrigation to vegetables and orchards during morning or evening hours, with increased frequency during critical growth stages. Irrigate sugarcane, summer groundnut, vegetables, and orchards as required; use organic or straw mulch in vegetables and orchards; cover banana bunches with leaves; and use shade nets in newly planted banana plantations.
- In **Telangana**, provide irrigation to mango orchards and vegetable crops, as required.

Agromet advisories for likely impact of Thunderstorm / Gusty Winds

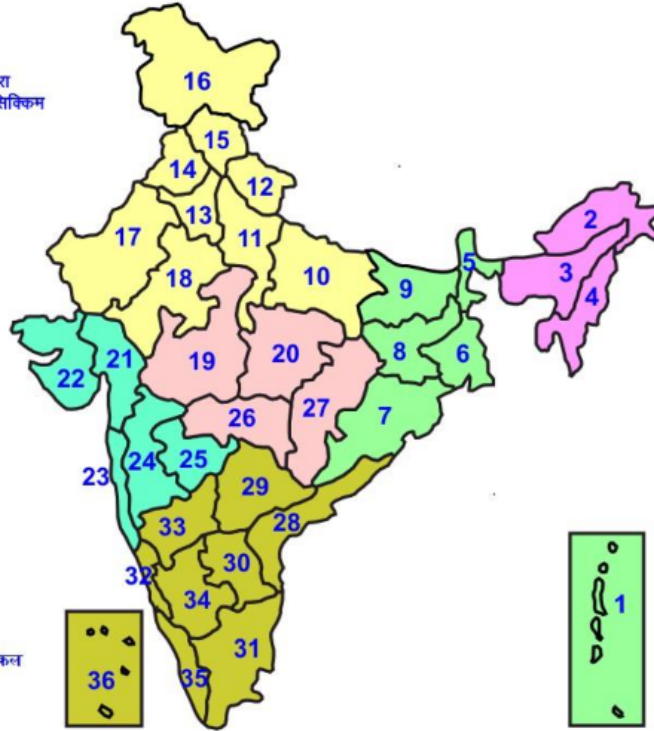
- Shift the harvested produce in safer places or cover the produce with tarpaulin sheets in the fields. Tie the harvested crops securely and cover them to minimize the risk of displacement from strong surface winds.
- Provide mechanical support to horticultural crops and staking or support to vegetables and young fruit plants / fruit-bearing plants to avoid lodging due to strong winds.

Livestock / Poultry / Fisheries

- Keep the animals inside the shed during hailstorms/ heavy rainfall and provide them with balanced feed.
- Store feed and fodder in a safe place to prevent spoilage.
- Construct an outlet with proper netting around the ponds to drain excess water, thereby preventing fish from escaping in the event of overflow.
- In regions with high temperatures and heat waves, provide clean, hygienic, and ample drinking water for animals, and cover the roofs of poultry sheds with grass to reduce the adverse effects.

LEGENDS

- 1 अंडमान और निकोबार द्वीप समुह
- 2 अरुणाचल प्रदेश
- 3 असम और मेघालय
- 4 नागालैंड मनीपुर मीजोरम और त्रिपुरा
- 5 उप हिमालय पश्चिम बंगाल एवं सिक्किम
- 6 पश्चिम बंगाल
- 7 ओडिसा
- 8 झारखंड
- 9 बिहार
- 10 पूर्वी उत्तर प्रदेश
- 11 पश्चिम उत्तर प्रदेश
- 12 उत्तराखंड
- 13 हरियाणा चंडिगढ़ एवं दिल्ली
- 14 पंजाब
- 15 हिमाचल प्रदेश
- 16 जम्मू एवं कश्मीर एवं लद्दाख
- 17 पश्चिम राजस्थान
- 18 पूर्वी राजस्थान
- 19 पश्चिम मध्य प्रदेश
- 20 पूर्वी मध्य प्रदेश
- 21 गुजरात क्षेत्र
- 22 सौराष्ट्र एवं कच्छ
- 23 कोंकण एवं गोवा
- 24 मध्य महाराष्ट्र
- 25 मराठावाडा
- 26 विदर्भ
- 27 छत्तीसगढ़
- 28 तटीय आंध्र प्रदेश एवं यनम
- 29 तेलंगाना
- 30 रायलसीमा
- 31 तमिलनाडु, पुदुचेरी एवं कराईकल
- 32 तटिय कर्नाटक
- 33 आंतरिक उत्तरी कर्नाटक
- 34 आंतरिक दक्षिणी कर्नाटक
- 35 केरल एवं माहे
- 36 लक्षद्वीप



1. Andaman & Nicobar Islands
2. Arunachal Pradesh
3. Assam & Meghalaya
4. Nagaland, Manipur, Mizoram & Tripura
5. Sub-Himalayan West Bengal & Sikkim
6. Gangetic West Bengal
7. Orissa
8. Jharkhand
9. Bihar
10. East Uttar Pradesh
11. West Uttar Pradesh
12. Uttarakhand
13. Haryana, Chd & Delhi
14. Punjab
15. Himachal Pradesh
16. Jammu & Kashmir and Ladakh
17. West Rajasthan
18. East Rajasthan
19. West Madhya Pradesh
20. East Madhya Pradesh
21. Gujarat
22. Saurashtra
23. Konkan & Goa
24. Madhya Maharashtra
25. Marathawada
26. Vidharbha
27. Chhattisgarh
28. Coastal Andhra Pradesh & Yanam
29. Telangana
30. Rayalaseema
31. Tamilnadu, Puducherry & Karaikal
32. Coastal Karnataka
33. North Interior Karnataka
34. South Interior Karnataka
35. Kerala & Mahe
36. Lakshadweep

SPATIAL DISTRIBUTION (% of Stations reporting)

% Stations	Category	% Stations	Category
76-100	Widespread (WS/ Most Places)	26-50	Scattered (SCT/ A Few Places)
51-75	Fairly Widespread (FWS/ Many Places)	1-25	Isolated (ISOL)

Subdivision Colour

- NO WARNING
- WATCH (BE UPDATED)
- ALERT (BE PREPARED TO TAKE ACTION)
- WARNING (TAKE ACTION)

Probabilistic Forecast

Terms	Probability of Occurrence (%)
Unlikely	< 25
Likely	25 - 50
Very Likely	50 - 75
Most Likely	> 75

- | | | | |
|--------------------------|-----------------|----------------------|--------------------|
| Heavy Rain | Very Heavy Rain | Extremely Heavy Rain | Heavy Snow |
| Thunderstorm & Lightning | Hailstorm | Dust Storm | Dust Raising Winds |
| Strong surface winds | Heat Wave | Hot Day | Warm Night |
| Cold Wave | Cold Day | Ground Frost | Fog |
| Hot & Humid | | | |

*Red color warning does not mean "Red Alert" Red color warning means "Take Action"

Forecast and warning for any day is valid from 0830 hours IST of day till 0830 hours IST of next day

For more details kindly visit <https://mausam.imd.gov.in> or contact 011-2434-4599

(Service to the nation since 1875)

LEGENDS

WARNING

WARNING (TAKE ACTION)
ALERT (BE PREPARED)
WATCH (BE UPDATED)
NO WARNING (NO ACTION)

Probabilistic Forecast

Terms	Probability of Occurrence (%)
Unlikely	< 25
Likely	25 - 50
Very Likely	50 - 75
Most Likely	> 75



Heavy: 64.5 to 115.5 mm/cm *
Very Heavy: 115.6 to 204.4 mm/cm*
Extremely Heavy: > 204.4 mm/cm *



When maximum temperature of a station reaches $\geq 40^{\circ}\text{C}$ for plains and $\geq 30^{\circ}\text{C}$ for hilly regions
(a) Based on Departure from normal

Heat Wave: Maximum Temperature Departure from normal 4.5°C to 6.4°C .
Severe Heat Wave: Maximum Temperature Departure from normal $\geq 6.5^{\circ}\text{C}$

(b). Based on Actual maximum temperature

Heat Wave: When actual maximum temperature $\geq 45^{\circ}\text{C}$.
Severe Heat Wave: When actual maximum temperature $\geq 47^{\circ}\text{C}$

(c). Criteria for heat wave for coastal stations

When maximum temperature departure is $> 4.5^{\circ}\text{C}$ from normal. Heat Wave may be described provided maximum temperature $\geq 37^{\circ}\text{C}$



When maximum temperature remains 40°C

Warm Night: When minimum temperature departure 4.5°C to 6.4°C .
Severe Warm Night: When minimum temperature departure $> 6.4^{\circ}\text{C}$.



When minimum temperature of a station $\leq 10^{\circ}\text{C}$ for plains and $\leq 0^{\circ}\text{C}$ for hilly regions.

(a). Based on departure

Cold Wave: Minimum Temperature Departure from normal -4.5°C to -6.4°C .
Severe Cold Wave: Minimum Temperature Departure from normal $\leq -6.5^{\circ}\text{C}$

(b) Based on actual Minimum Temperature (for Plains only)

Cold Wave : When Minimum Temperature is $\leq 4.0^{\circ}\text{C}$
Severe Cold Wave: When Minimum Temperature is $\leq 2.0^{\circ}\text{C}$

(c) For Coastal Stations

When Minimum Temperature departure is $\leq -4.5^{\circ}\text{C}$ & actual Minimum Temperature is $\leq 15^{\circ}\text{C}$



When minimum temperature of a station $\leq 10^{\circ}\text{C}$ for plains and $\leq 0^{\circ}\text{C}$ for hilly regions
Based on departure

Cold Day: Maximum Temperature Departure from normal -4.5°C to -6.4°C .
Severe Cold Day: Maximum Temperature Departure from normal $\leq -6.5^{\circ}\text{C}$



Phenomenon of small droplets suspended in air and the horizontal visibility $< 1\text{km}$

Moderate Fog: When the visibility between 500-200 metres
Dense Fog: when the visibility between 50- 200 metres
Very Dense Fog: when the visibility < 50 metres



Sudden electrical discharges manifested by a flash of light (Lightning) and a sharp rumbling sound (thunder)



An ensemble of particles of dust or sand energetically lifted to great heights by a strong and turbulent wind.



Ice deposits on ground

Air temperature $\leq 4^{\circ}\text{C}$ (over Plains)



A strong wind that rises suddenly, lasts for atleast 1 minute.

Moderate: Wind speed 52-61 kmph
Severe: Wind speed 62-87 kmph
Very Severe: Wind speed > 87 kmph



Effect of various waves in the sea over specific area

Rough to very rough: Wind speed 41-62 kmph (22-33 knots) & Wave height 2.5-6 metre
High to very high: Wind speed 63-117 kmph (34-63 knots) & Wave height 6-14 metre
Phenomenal: Wind speed > 117 kmph (> 63 knots) & Wave height > 14 metre



Cyclonic Storm: Wind speed 62-87 kmph (34-47 knots)
Severe Cyclonic Storm: Wind speed 88-117 kmph (48-63 knots)
Very Severe Cyclonic Storm: Wind speed 118-165 kmph (64 - 89 knots)
Extremely Severe Cyclonic Storm: Wind speed 166-220 kmph (90 -119 knots)
Super Cyclone Storm: Wind speed > 220 kmph (> 119 knots)

*Red color warning does not mean "Red Alert" Red color warning means "Take Action"

Forecast and warning for any day is valid from 0830 hours IST of day till 0830 hours IST of next day

For more details kindly visit <https://mausam.imd.gov.in> or contact 011-2434-4599

(Service to the nation since 1875)