

2025-07-30

Time of Issue: 13:30:00 hours IST  
(Mid-Day)

## ALL INDIA WEATHER SUMMARY AND FORECAST BULLETIN

### Significant Weather Features

#### Northwest India:

- ✓ **Extremely heavy rainfall** very likely at isolated places over East Rajasthan on 30<sup>th</sup> July.
- ✓ Isolated **heavy rainfall** likely over Jammu-Kashmir on 31<sup>st</sup> July; Himachal Pradesh, Uttarakhand during 30<sup>th</sup> July-05<sup>th</sup> August; Punjab during 03<sup>rd</sup>-05<sup>th</sup> August; Haryana, Chandigarh & East Uttar Pradesh on 30<sup>th</sup> July & during 02<sup>nd</sup>-05<sup>th</sup> August; West Uttar Pradesh on 30<sup>th</sup> July & during 03<sup>rd</sup>-05<sup>th</sup> August; West Rajasthan during 30<sup>th</sup> July-01<sup>st</sup> August; East Rajasthan during 30<sup>th</sup> July-01<sup>st</sup> August and 04<sup>th</sup> & 05<sup>th</sup> August with isolated **very heavy rainfall** over Jammu-Kashmir, Himachal Pradesh on 30<sup>th</sup>; West Rajasthan on 30<sup>th</sup> & 31<sup>st</sup>; East Rajasthan on 31<sup>st</sup> July.
- ✓ Light/moderate rainfall at many places accompanied with thunderstorm, lightning likely over Western Himalayan region and some places over the plains during next 7 days.

#### West India:

- ✓ Isolated **heavy rainfall** likely over Konkan and Ghat areas of Madhya Maharashtra on 30<sup>th</sup> July.
- ✓ Light to moderate rainfall at many places very likely over the region during next 6-7 days.

#### Northeast India:

- ✓ Light/moderate rainfall at many places accompanied with **thunderstorm, lightning and isolated heavy rainfall** likely to continue over Arunachal Pradesh on 30<sup>th</sup> & 31<sup>st</sup> July; Assam & Meghalaya on 30<sup>th</sup> and Nagaland, Manipur, Mizoram & Tripura during 30<sup>th</sup> July-05<sup>th</sup> August with isolated **very heavy rainfall** over Arunachal Pradesh during 01<sup>st</sup>-05<sup>th</sup> August; Assam & Meghalaya during 31<sup>st</sup> July-05<sup>th</sup> August.

#### East & Central India:

- ✓ **Extremely heavy rainfall** very likely at isolated places over West Madhya Pradesh on 30<sup>th</sup> July.
- ✓ Isolated **heavy rainfall** likely over Sub-Himalayan West Bengal & Sikkim during 30<sup>th</sup> July-01<sup>st</sup> August & 05<sup>th</sup> August; Gangetic West Bengal, Odisha on 31<sup>st</sup> July; Bihar during 30<sup>th</sup> July-02<sup>nd</sup> August & 05<sup>th</sup> August; Jharkhand during 30<sup>th</sup> July-01<sup>st</sup> August; Chhattisgarh on 30<sup>th</sup> & 31<sup>st</sup> July; Madhya Pradesh on 31<sup>st</sup> July & 01<sup>st</sup> August with isolated **very heavy rainfall** over East Madhya Pradesh, Odisha & Gangetic West Bengal on 30<sup>th</sup> July; Sub-Himalayan West Bengal & Sikkim during 02<sup>nd</sup>-04<sup>th</sup>; Bihar on 03<sup>rd</sup> & 04<sup>th</sup> August.
- ✓ Light to moderate rainfall at most/many places accompanied with thunderstorm & lightning likely over the region during next 5 days.

#### South Peninsular India:

- ✓ Isolated **heavy rainfall** likely over South Interior Karnataka on 30<sup>th</sup> July; Tamil Nadu during 02<sup>nd</sup>-05<sup>th</sup>; Kerala & Mahe during 03<sup>rd</sup>-05<sup>th</sup> August.
- ✓ **Strong surface winds** (speed reaching 40-50 kmph) very likely over South Peninsular India during next 5 days.
- ✓ Light to moderate rainfall at some/many places over Kerala & Mahe, Lakshadweep, Karnataka, Rayalaseema, Coastal Andhra Pradesh & Yanam and Telangana during next 7 days.

#### Hot & Humid Weather warning:

- ✓ **Hot & humid weather** is likely to prevail over Tamil Nadu, Puducherry & Karaikal on 30<sup>th</sup> & 31<sup>st</sup> July.

\*Red color warning does not mean "Red Alert" Red color warning means "Take Action"

Forecast and warning for any day is valid from 0830 hours IST of day till 0830 hours IST of next day

For more details kindly visit <https://mausam.imd.gov.in> or contact 011-2434-4599

(Service to the nation since 1875)

#### Main Weather Observations:

❖ **Rainfall distribution** (from 0830 hours IST of yesterday to 0830 hours IST of today): **at most places** over Sub Himalayan West Bengal & Sikkim, Gangetic West Bengal, Uttarakhand, Haryana-Chandigarh-Delhi, Himachal Pradesh, Jammu-KashmirLadakh-Gilgit-Baltistan-Muzaffarabad, Konkan & Goa, Chhattisgarh and Kerala & Mahe; **at many places** over Andaman & Nicobar Islands, East Rajasthan, Madhya Maharashtra and Lakshadweep; **at a few places** over Gujarat Region, Marathwada, Coastal Andhra Pradesh & Yanam and Telangana; **at isolated places** over West Rajasthan, Saurashtra & Kutch, Rayalaseema and Tamil Nadu, Puducherry & Karaikal; **Dry** over rest of the country.

❖ **Significant rainfall recorded(in cm)** (from 0830 hours IST of yesterday to 0830 hours IST of today): **East Rajasthan:** Khandar SR (dist Sawai Madhopur) 23; Malerainadunger SR (dist Sawai Madhopur) 22; Sawaimadhopur Tesil SR (dist Sawai Madhopur) 21; Chothkabarwara SR (dist Sawai Madhopur) 18; Niwai (dist Tonk) 17; Shahabad (dist Baran) 16; Chabra (dist Baran) 15; Chipabarod SR (dist Baran) 14; Atru SR (dist Baran) 13; Kishanganj (dist Baran) 12; Pipalda SR (dist Kota) 11; Bonli (dist Sawai Madhopur), Tonk Vanasthali (dist Tonk), Uniara/aligarh (dist Tonk), Manohar Thana (dist Jhalawar), Dausa (dist Dausa) 10 Each; Lalsot (dist Dausa), Baran (dist Baran), Behror (dist Alwar) 9 Each; Aklera (dist Jhalawar), Indergarh SR (dist Bundi) 8 Each; Mangrol (dist Baran), Malsisar SR (dist Jhunjhunu) 7 Each; **Jammu-KashmirLadakh-Gilgit-Baltistan-Muzaffarabad:** Udhampur(IAF) (dist Udhampur) 20; Reasi ARG (dist Reasi) 11; **Himachal Pradesh:** Chuari (dist Chamba) 18; Palampur (dist Kangra) 16; Kangra AP (dist Kangra) 11; Nadaun (dist Hamirpur) 8; **Haryana-Chandigarh-Delhi:** Delhi Ridge (dist Central Delhi) 13; Lodi Road (dist South East Delhi), Delhi University Obs (dist Central Delhi), Safdarjung (dist South East Delhi) 7 Each; **Sub Himalayan West Bengal & Sikkim:** Jhallong (dist Kalimpong) 11; **Chhattisgarh:** Bhanupratappur (dist Kanker) 8; Mainpur (dist Gariaband) 7; **Gangetic West Bengal:** Canning (dist South 24 Parganas) 8; **Madhya Maharashtra:** Radhanagari (dist Kolhapur), Surgana (dist Nashik) 7 Each.

❖ **Heavy Rainfall observed** (from 0830 hours IST of yesterday to 0830 hours IST of today): **Extremely heavy rain** at isolated places over East Rajasthan. **Heavy to very heavy rain** at isolated places over Haryana-Chandigarh-Delhi, Himachal Pradesh, Jammu-KashmirLadakh-Gilgit-Baltistan-Muzaffarabad and East Rajasthan. **Heavy rain** at isolated places over Sub Himalayan West Bengal & Sikkim, Gangetic West Bengal, Madhya Maharashtra and Chhattisgarh.

❖ **Minimum Temperature Departures (as on 30-07-2025): markedly above normal(> 5.1°C)** at few places over Assam & Meghalaya; at isolated places over Bihar, East Uttar Pradesh, West Uttar Pradesh, Jammu-KashmirLadakh-Gilgit-Baltistan-Muzaffarabad, East Rajasthan, West Madhya Pradesh and Saurashtra & Kutch. **appreciably above normal(3.1°C to 5.0°C)** at few places over East Madhya Pradesh; at isolated places over Sub Himalayan West Bengal & Sikkim, Odisha, West Rajasthan and Madhya Maharashtra. **above normal(1.6°C to 3.0°C)** at most places over Andaman & Nicobar Islands; at few places over Gujarat Region, Coastal Andhra Pradesh & Yanam, Coastal Karnataka and Lakshadweep; at isolated places over Gangetic West Bengal, Jharkhand, Uttarakhand, Himachal Pradesh, Konkan & Goa, Marathwada, Rayalaseema and Tamil Nadu, Puducherry & Karaikal. **near normal(-1.5°C to 1.5°C)** at many places over Chhattisgarh and Kerala & Mahe; at most places over Arunachal Pradesh, Nagaland, Manipur, Mizoram & Tripura, Haryana-Chandigarh-Delhi, Punjab, Vidarbha, Telangana, North Interior Karnataka and South Interior Karnataka. **The lowest minimum temperature** of 17.0°C is reported at KHANDWA (MADHYA PRADESH) over the Plains of India.

❖ **Maximum Temperature Departures (as on 29-07-2025): markedly above normal(> 5.1°C)** at few places over Jammu-KashmirLadakh-Gilgit-Baltistan-Muzaffarabad; at isolated places over Assam & Meghalaya and Tamil Nadu, Puducherry & Karaikal. **appreciably above normal(3.1°C to 5.0°C)** at isolated places over Coastal Andhra Pradesh & Yanam and Kerala & Mahe. **above normal(1.6°C to 3.0°C)** at most places over Arunachal Pradesh; at isolated places over Nagaland, Manipur, Mizoram & Tripura, Sub Himalayan West Bengal & Sikkim, Konkan & Goa, Madhya Maharashtra and Telangana. **near normal(-1.5°C to 1.5°C)** at many places over Andaman & Nicobar Islands, Odisha, East Uttar Pradesh and North Interior Karnataka; at most places over West Rajasthan, East Rajasthan, Coastal Karnataka, South Interior Karnataka and Lakshadweep; at few places over Gangetic West Bengal, Himachal Pradesh, Saurashtra & Kutch, Marathwada and Rayalaseema; at isolated places over Jharkhand, Bihar, West Uttar Pradesh, Uttarakhand, Haryana-Chandigarh-Delhi, West Madhya Pradesh, East Madhya Pradesh, Gujarat Region and Chhattisgarh. **The highest maximum temperature** of 41.2°C is reported at MADURAI (A) (TAMIL NADU).

❖ **Maximum Temperature Changes (as on 29-07-2025): Markedly fall at** at many places over Haryana-Chandigarh-Delhi; at isolated places over Odisha, West Uttar Pradesh, Punjab, Himachal Pradesh, West Rajasthan, West Madhya Pradesh, Saurashtra & Kutch, Chhattisgarh and Telangana. **Appreciable fall at** at many places over Vidarbha; at few places over Uttarakhand and Jammu-KashmirLadakh-Gilgit-Baltistan-Muzaffarabad; at isolated places over Gangetic West Bengal and East Uttar Pradesh. **Appreciable rise at** at most places over Andaman & Nicobar Islands, Arunachal

\*Red color warning does not mean "Red Alert" Red color warning means "Take Action"

Forecast and warning for any day is valid from 0830 hours IST of day till 0830 hours IST of next day

For more details kindly visit <https://mausam.imd.gov.in> or contact 011-2434-4599

(Service to the nation since 1875)



Pradesh, Sub Himalayan West Bengal & Sikkim, Jharkhand, Bihar, East Rajasthan, East Madhya Pradesh, Gujarat Region, Konkan & Goa, Madhya Maharashtra, Marathwada, Coastal Andhra Pradesh & Yanam, Rayalaseema, Tamil Nadu, Puducherry & Karaikal, Coastal Karnataka, North Interior Karnataka, South Interior Karnataka, Kerala & Mahe and Lakshadweep; at few places over Assam & Meghalaya and Nagaland, Manipur, Mizoram & Tripura.

❖ **Minimum Temperature Changes (as on 30-07-2025): markedly fall at** at isolated places over Punjab.

**Appreciable fall at** at few places over Nagaland, Manipur, Mizoram & Tripura and Lakshadweep; at isolated places over Andaman & Nicobar Islands, Assam & Meghalaya, Odisha, West Uttar Pradesh, Haryana-Chandigarh-Delhi, East Madhya Pradesh, Coastal Andhra Pradesh & Yanam and Kerala & Mahe. **Appreciable rise at** at most places over Arunachal Pradesh, Sub Himalayan West Bengal & Sikkim, Gangetic West Bengal, Jharkhand, Bihar, East Uttar Pradesh, Uttarakhand, Himachal Pradesh, Jammu-Kashmir-Ladakh-Gilgit-Baltistan-Muzaffarabad, West Rajasthan, East Rajasthan, West Madhya Pradesh, Gujarat Region, Saurashtra & Kutch, Konkan & Goa, Madhya Maharashtra, Marathwada, Vidarbha, Chhattisgarh, Telangana, Rayalaseema, Tamil Nadu, Puducherry & Karaikal, Coastal Karnataka, North Interior Karnataka and South Interior Karnataka.



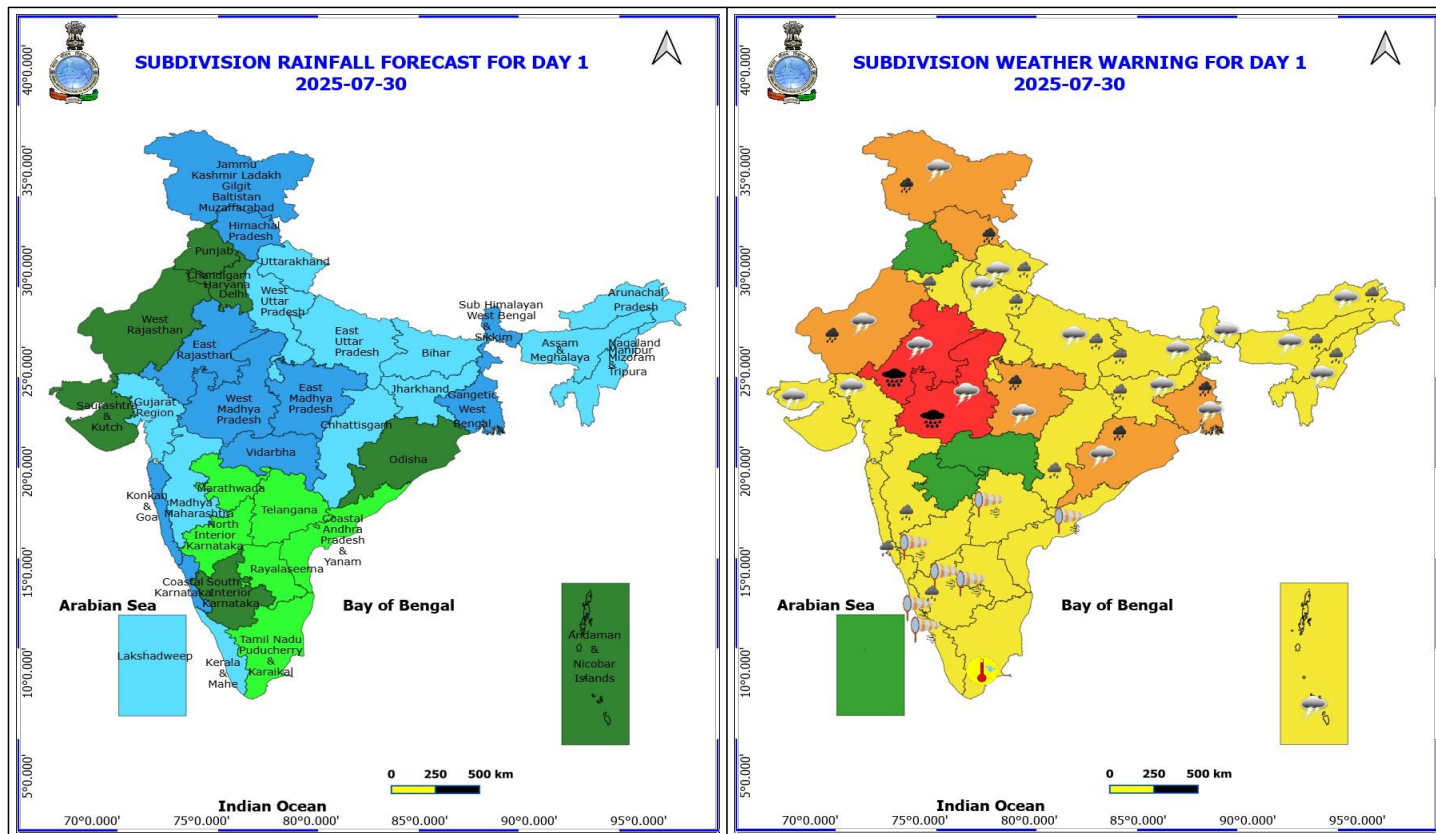
#### Meteorological Analysis (Based on 0830 hours IST)

- ♦ The **monsoon trough** at mean sea level now passes through Bikaner, Sikar, Datia, Sidhi, Ranchi, Digha and thence east-southeastwards to the northeast Bay of Bengal.
- ♦ The **upper air cyclonic circulation** over northwest Madhya Pradesh & neighbourhood persists and now extends upto 7.6 km above mean sea level tilting southwestwards with height.
- ♦ The **upper air cyclonic circulation** over Gangetic West Bengal & adjoining Bangladesh lay over northwest Bay of Bengal & adjoining Gangetic West Bengal and Odisha coast between 1.5 & 5.8 km above mean sea level.
- ♦ The **upper air cyclonic circulation** over southwest Rajasthan & neighbourhood at 1.5 km above mean sea level persists.
- ♦ The **Western Disturbance** now seen as a **cyclonic circulation** over Punjab & adjoining Pakistan between 3.1 & 5.8 km above mean sea level.
- ♦ A **trough** runs from northwest Madhya Pradesh to northeast Bay of Bengal across Jharkhand, Gangetic West Bengal, Bangladesh at 0.9 km above mean sea level.
- ♦ The **trough** from the upper air cyclonic circulation over northwest Madhya Pradesh & neighbourhood to cyclonic circulation over Gangetic West Bengal & adjoining Bangladesh across northeast Madhya Pradesh, north Chhattisgarh, Jharkhand at 3.1 km above mean sea level has become less marked.
- ♦ The **upper air cyclonic circulation** over south Punjab & adjoining Pakistan extending upto 3.1 km above mean sea level has become less marked.
- ♦ The **upper air cyclonic circulation** over northwest Uttar Pradesh & neighbourhood at 1.5 km above mean sea level has become less marked.

#### Weather Outlook for subsequent 3 days

- ♦ Fairly widespread to widespread rainfall likely over northwest, northeast, eastern India.  
Scattered to fairly widespread rainfall likely over central and peninsular India.





### 30 July (Day 1)

- ❖ **Heavy to Very Heavy Rainfall with isolated Extremely Heavy Rainfall** very likely at isolated places over East Rajasthan and West Madhya Pradesh.
- ❖ **Heavy to Very Heavy Rainfall** very likely at isolated places over East Madhya Pradesh, Gangetic West Bengal, Himachal Pradesh, Jammu-Kashmir-Ladakh-Gilgit-Baltistan-Muzaffarabad, Odisha and West Rajasthan.
- ❖ **Heavy Rainfall** very likely at isolated places over Arunachal Pradesh, Assam & Meghalaya, Bihar, Chhattisgarh, Haryana, Chandigarh & Delhi, Jharkhand, Konkan & Goa, Madhya Maharashtra, Nagaland, Manipur, Mizoram and Tripura, South Interior Karnataka, Sub Himalayan West Bengal & Sikkim, Uttar Pradesh and Uttarakhand.
- ❖ **Thunderstorm accompanied with lightning & gusty winds(30-40kmph)** very likely at isolated places over Bihar, Gangetic West Bengal, Jammu-Kashmir-Ladakh-Gilgit-Baltistan-Muzaffarabad and Jharkhand.
- ❖ **Thunderstorm accompanied with Lightning** very likely at isolated places over Andaman & Nicobar Islands, Arunachal Pradesh, Assam & Meghalaya, Gujarat State, Madhya Pradesh, Nagaland, Manipur, Mizoram and Tripura, Odisha, Rajasthan, Sub Himalayan West Bengal & Sikkim, Uttar Pradesh and Uttarakhand.
- ❖ **Strong Surface Winds** very likely at isolated places over Andhra Pradesh, Karnataka, Kerala & Mahe and Telangana.
- ❖ **Hot and Humid weather** very likely at isolated places over Tamil Nadu Puducherry & Karaikal.
- **Squally wind with speed reaching 45 kmph to 55 kmph gusting to 65 kmph** is likely to prevail along and off Somalia, Yemen & Oman coasts, most parts of westcentral Arabian Sea & adjoining, some parts of eastcentral Arabian Sea, many parts of southwest Arabian Sea, southern parts of north Arabian Sea.
- **Squally weather with wind speed reaching 40 - 50 kmph gusting to 60 kmph** likely to prevail along and

\*Red color warning does not mean "Red Alert" Red color warning means "Take Action"

Forecast and warning for any day is valid from 0830 hours IST of day till 0830 hours IST of next day

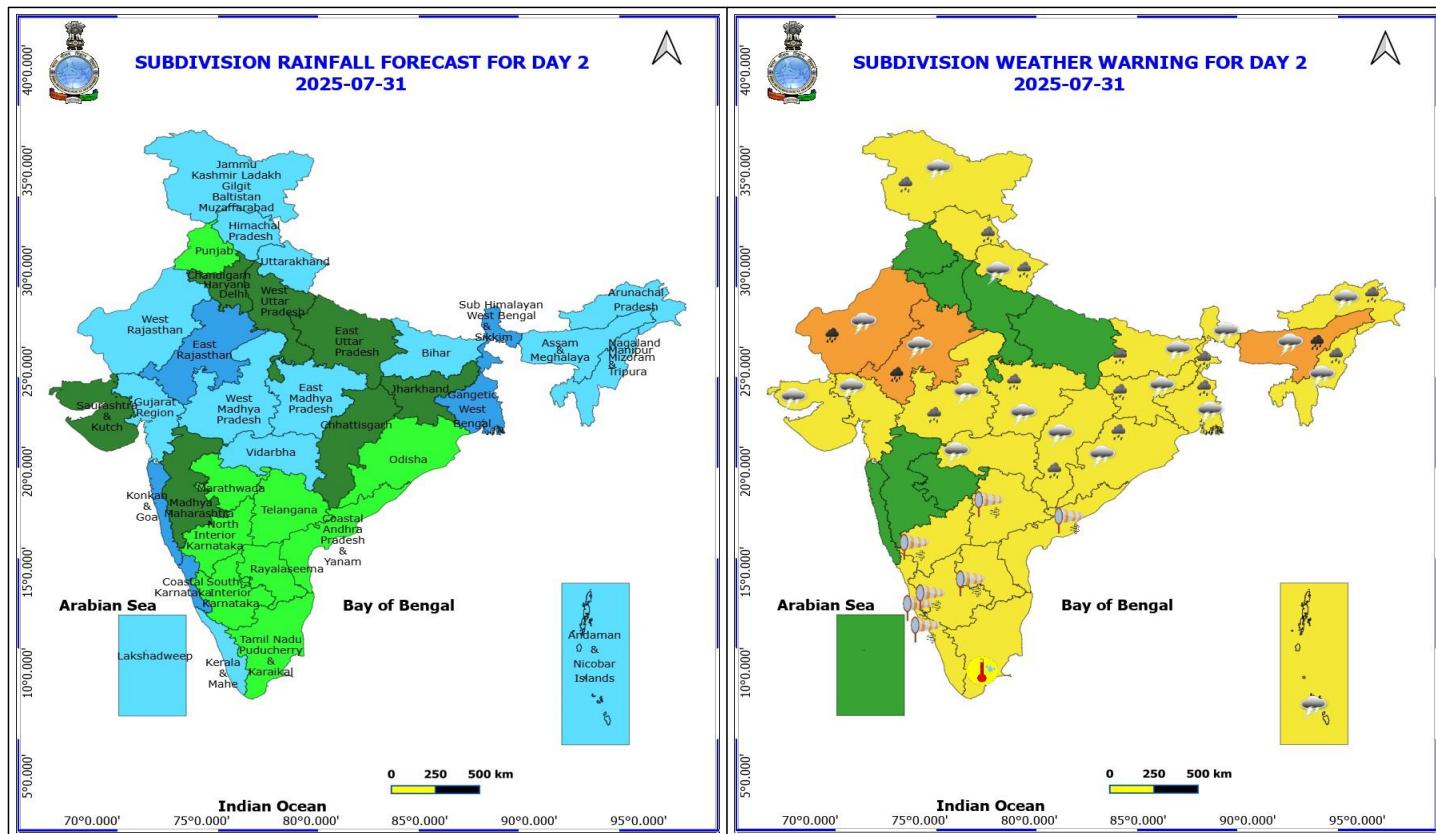
For more details kindly visit <https://mausam.imd.gov.in> or contact 011-2434-4599

(Service to the nation since 1875)



off Kerala, Karnataka, Goa, Konkan coasts, over many parts of eastcentral Arabian Sea, some parts of southeast Arabian Sea and adjoining, some parts of southwest Arabian Sea, over Comorin, Lakshadweep areas, over, over Gulf of Mannar, over some parts of southwest Bay of Bengal, few parts of westcentral Bay of Bengal.

- ♦ **Squally weather with wind speed 45 - 55 kmph gusting to 65 kmph** likely to prevail over many parts of northeast Arabian Sea, along and off Gujarat coast and adjoining sea areas.



### 31 July (Day 2)

- ❖ **Heavy to Very Heavy Rainfall** very likely at isolated places over Assam & Meghalaya and Rajasthan.
- ❖ **Heavy Rainfall** very likely at isolated places over Arunachal Pradesh, Bihar, Chhattisgarh, Himachal Pradesh, Jammu-Kashmir-Ladakh-Gilgit-Baltistan-Muzaffarabad, Jharkhand, Madhya Pradesh, Nagaland, Manipur, Mizoram and Tripura, Odisha, Uttarakhand and West Bengal & Sikkim.
- ❖ **Thunderstorm accompanied with lightning & gusty winds(30-40kmph)** very likely at isolated places over Bihar, Gangetic West Bengal, Jammu-Kashmir-Ladakh-Gilgit-Baltistan-Muzaffarabad and Jharkhand.
- ❖ **Thunderstorm accompanied with Lightning** very likely at isolated places over Andaman & Nicobar Islands, Arunachal Pradesh, Assam & Meghalaya, Chhattisgarh, Gujarat State, Madhya Pradesh, Nagaland, Manipur, Mizoram and Tripura, Odisha, Rajasthan, Sub Himalayan West Bengal & Sikkim, Uttarakhand and Vidarbha.
- ❖ **Strong Surface Winds** very likely at isolated places over Andhra Pradesh, Karnataka, Kerala & Mahe and Telangana.
- ❖ **Hot and Humid weather** very likely at isolated places over Tamil Nadu Puducherry & Karaikal.
- **Squally wind with speed reaching 45 kmph to 55 kmph gusting to 65 kmph** is likely to prevail along and off Somalia, Yemen & Oman coasts, most parts of westcentral Arabian Sea & adjoining, some parts of eastcentral Arabian Sea, many parts of southwest Arabian Sea, southern parts of north Arabian Sea.
- **Squally weather with wind speed reaching 40 - 50 kmph gusting to 60 kmph** likely to prevail along and off Kerala, Karnataka, Goa, Konkan, Gujarat coasts, over many parts of eastcentral Arabian Sea, some parts of southeast Arabian Sea and adjoining, some parts of southwest Arabian Sea, over some parts of Maldives, Comorin areas, over over Gulf of Mannar, over most parts of eastcentral, many parts of westcentral Bay of Bengal & adjoining north Bay of Bengal, some parts of southwest Bay of Bengal.

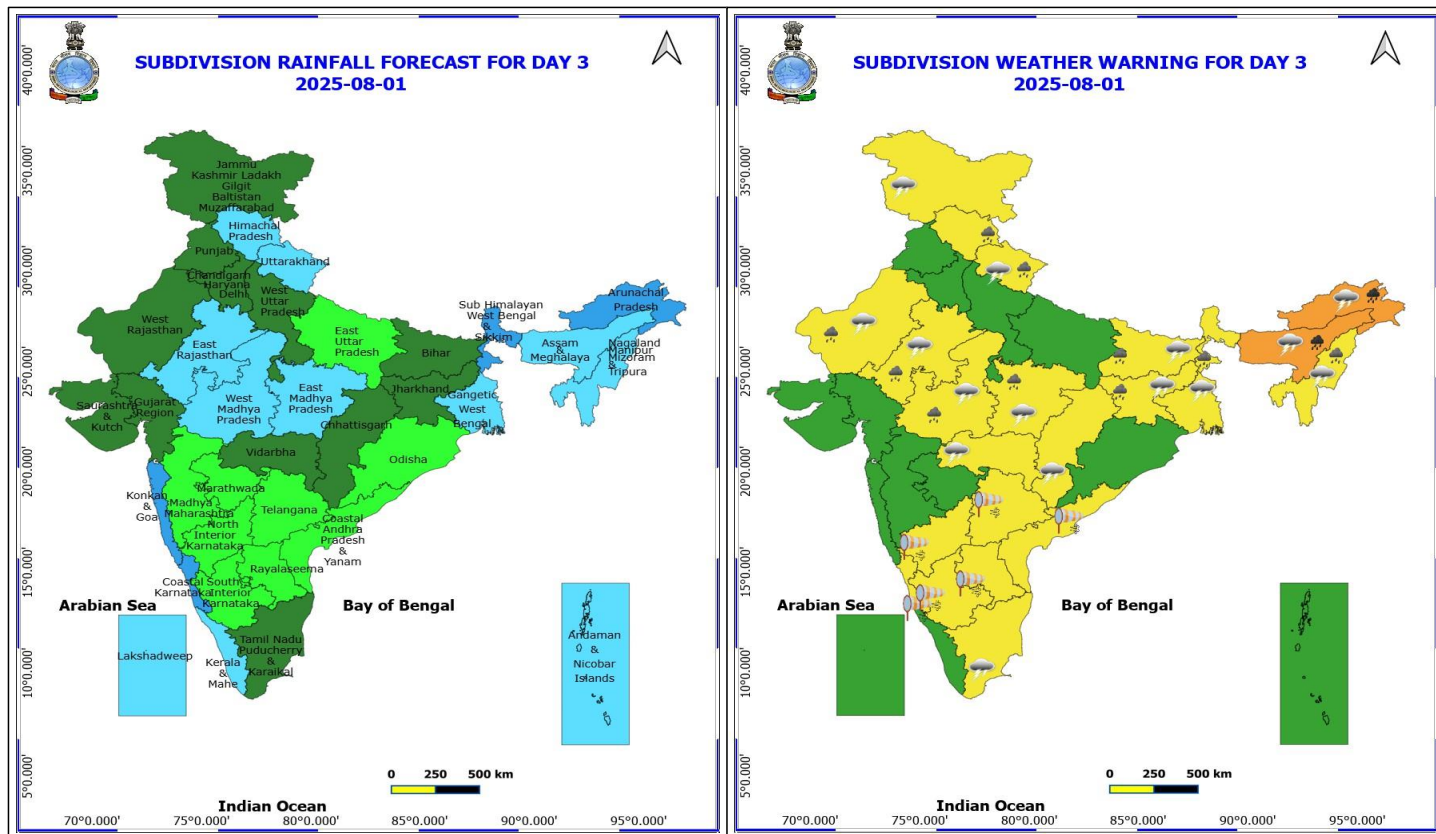
\*Red color warning does not mean "Red Alert" Red color warning means "Take Action"

Forecast and warning for any day is valid from 0830 hours IST of day till 0830 hours IST of next day

For more details kindly visit <https://mausam.imd.gov.in> or contact 011-2434-4599

(Service to the nation since 1875)





## 1 August (Day 3)

- ❖ **Heavy to Very Heavy Rainfall** very likely at isolated places over Arunachal Pradesh and Assam & Meghalaya.
- ❖ **Heavy Rainfall** very likely at isolated places over Bihar, Himachal Pradesh, Jharkhand, Madhya Pradesh, Nagaland, Manipur, Mizoram and Tripura, Rajasthan, Sub Himalayan West Bengal & Sikkim and Uttarakhand.
- ❖ **Thunderstorm accompanied with lightning & gusty winds(30-40kmph)** very likely at isolated places over Bihar, Gangetic West Bengal, Jammu-Kashmir-Ladakh-Gilgit-Baltistan-Muzaffarabad and Jharkhand.
- ❖ **Thunderstorm accompanied with Lightning** very likely at isolated places over Arunachal Pradesh, Assam & Meghalaya, Chhattisgarh, Madhya Pradesh, Nagaland, Manipur, Mizoram and Tripura, Rajasthan, Tamil Nadu Puducherry & Karaikal, Uttarakhand and Vidarbha.
- ❖ **Strong Surface Winds** very likely at isolated places over Andhra Pradesh, Karnataka and Telangana.
  - **Squally wind with speed reaching 45 kmph to 55 kmph gusting to 65 kmph** is likely to prevail along and off Somalia, Yemen & south Oman coasts, most parts of westcentral Arabian Sea & adjoining, some parts of eastcentral Arabian Sea, many parts of southwest Arabian Sea, southern parts of north Arabian Sea.
  - **Squally weather with wind speed reaching 40 - 50 kmph gusting to 60 kmph** likely to prevail along and off Goa, Konkan, Gujarat coasts, over many parts of eastcentral Arabian Sea, some parts of southeast Arabian Sea and adjoining Lakshadweep area, some parts of southwest Arabian Sea, over some parts of Comorin area, over Gulf of Mannar, over some northern parts of eastcentral, adjoining westcentral Bay of Bengal & adjoining north Bay of Bengal, few parts of southwest Bay of Bengal.

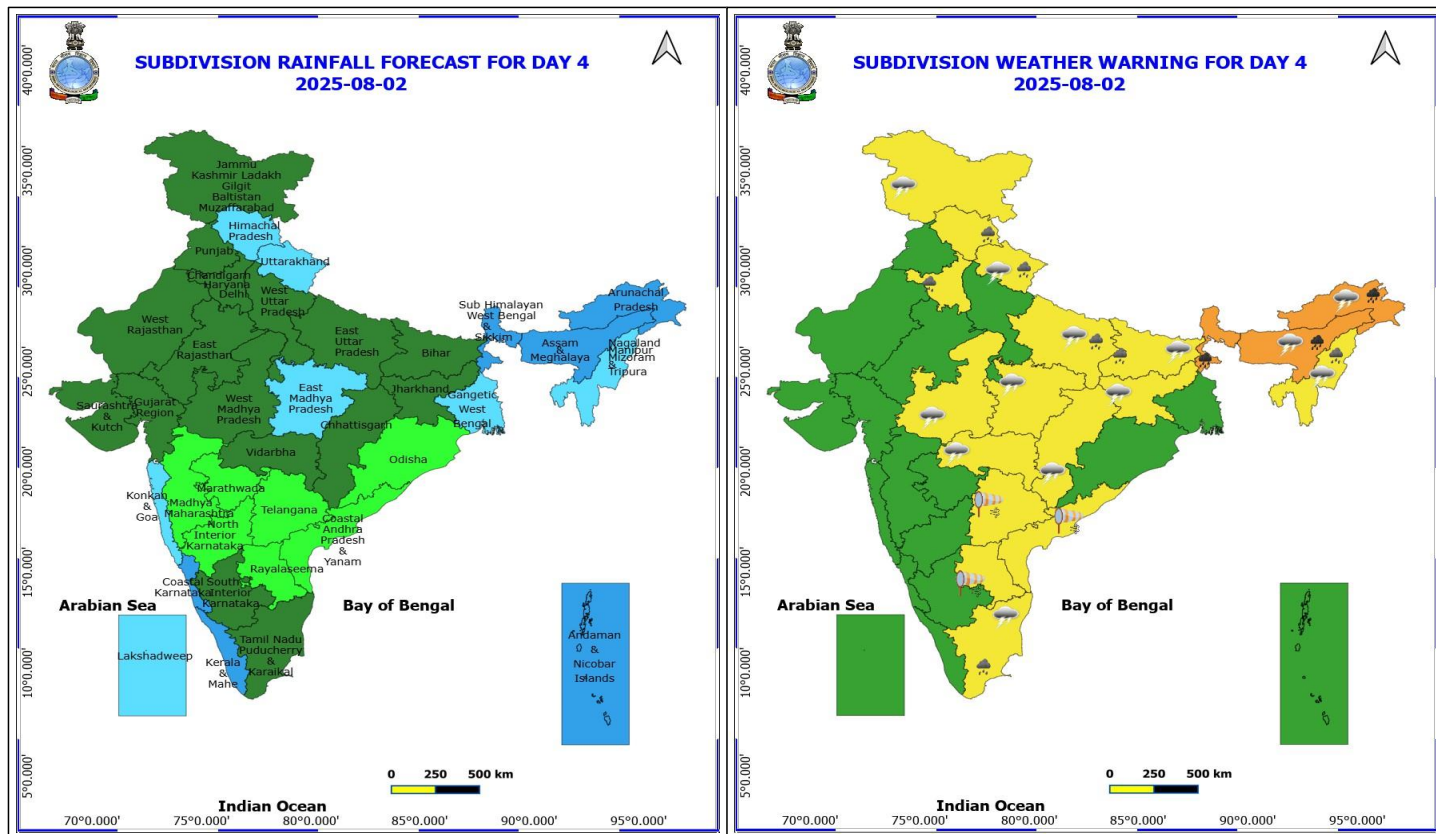
**\*Red color warning does not mean "Red Alert" Red color warning means "Take Action"**

Forecast and warning for any day is valid from 0830 hours IST of day till 0830 hours IST of next day

For more details kindly visit <https://mausam.imd.gov.in> or contact 011-2434-4599

(Service to the nation since 1875)





## 2 August (Day 4)

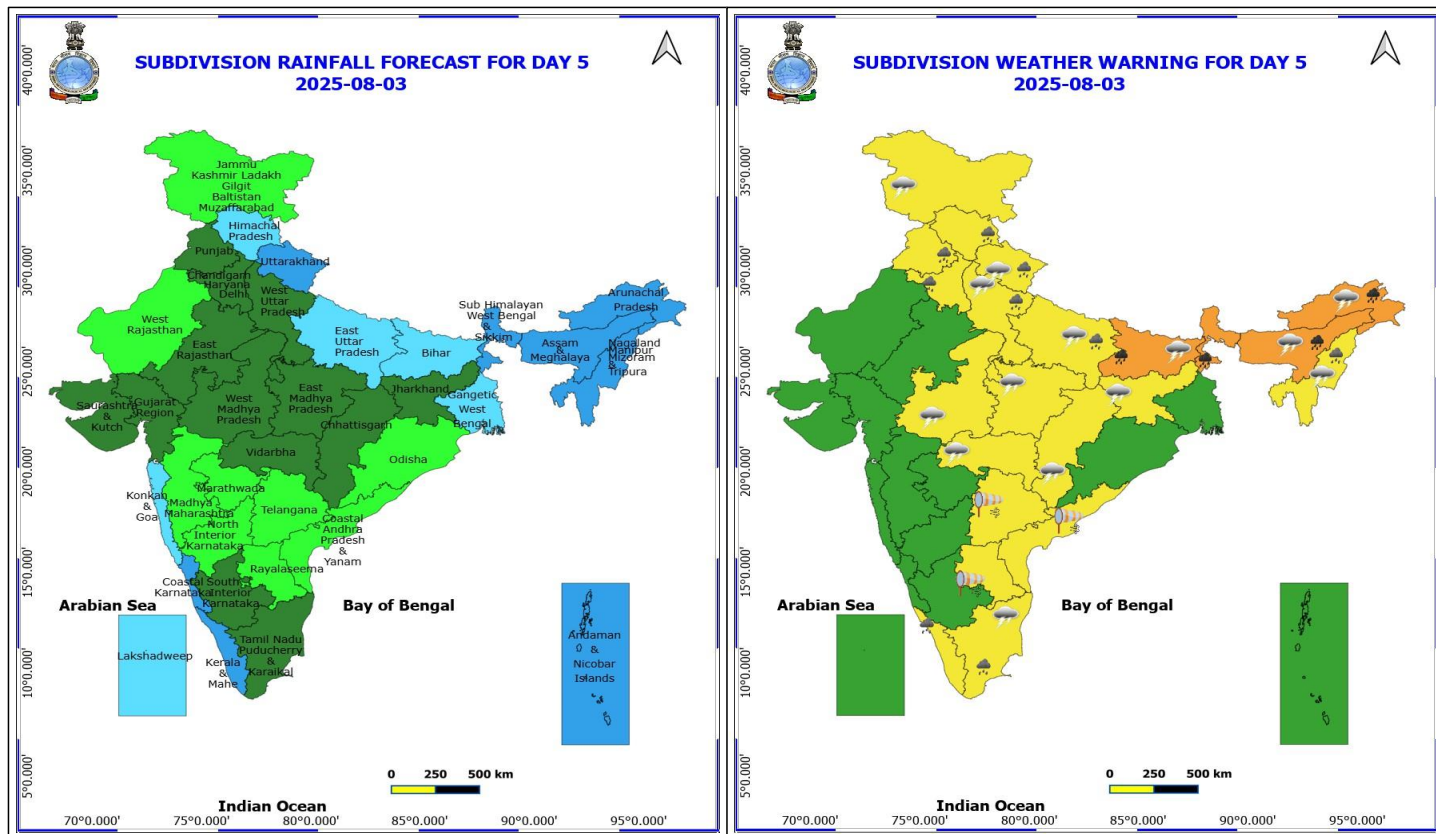
- ❖ **Heavy to Very Heavy Rainfall** likely at isolated places over Arunachal Pradesh, Assam & Meghalaya and Sub Himalayan West Bengal & Sikkim.
- ❖ **Heavy Rainfall** likely at isolated places over Bihar, East Uttar Pradesh, Haryana, Chandigarh & Delhi, Himachal Pradesh, Nagaland, Manipur, Mizoram and Tripura, Tamil Nadu Puducherry & Karaikal and Uttarakhand.
- ❖ **Thunderstorm accompanied with lightning & gusty winds(30-40kmph)** likely at isolated places over Bihar, Jammu-Kashmir-Ladakh-Gilgit-Baltistan-Muzaffarabad and Jharkhand.
- ❖ **Thunderstorm accompanied with Lightning** likely at isolated places over Arunachal Pradesh, Assam & Meghalaya, Chhattisgarh, East Uttar Pradesh, Madhya Pradesh, Nagaland, Manipur, Mizoram and Tripura, Tamil Nadu Puducherry & Karaikal, Uttarakhand and Vidarbha.
- ❖ **Strong Surface Winds** likely at isolated places over Andhra Pradesh and Telangana.
  - **Squally wind with speed reaching 45 kmph to 55 kmph gusting to 65 kmph** is likely to prevail along and off Somalia, Yemen & south Oman coasts, most parts of westcentral Arabian Sea & adjoining, some parts of eastcentral Arabian Sea, many parts of southwest Arabian Sea, southern parts of north Arabian Sea.
  - **Squally weather with wind speed reaching 40 - 50 kmph gusting to 60 kmph** likely to prevail along and off south Gujarat coast, over many parts of eastcentral Arabian Sea, some parts of southeast Arabian Sea, some parts of southwest Arabian Sea, over some parts of Comorin area, over Gulf of Mannar, over few parts of southwest Bay of Bengal.

\*Red color warning does not mean "Red Alert" Red color warning means "Take Action"

Forecast and warning for any day is valid from 0830 hours IST of day till 0830 hours IST of next day

For more details kindly visit <https://mausam.imd.gov.in> or contact 011-2434-4599

(Service to the nation since 1875)



### 3 August (Day 5)

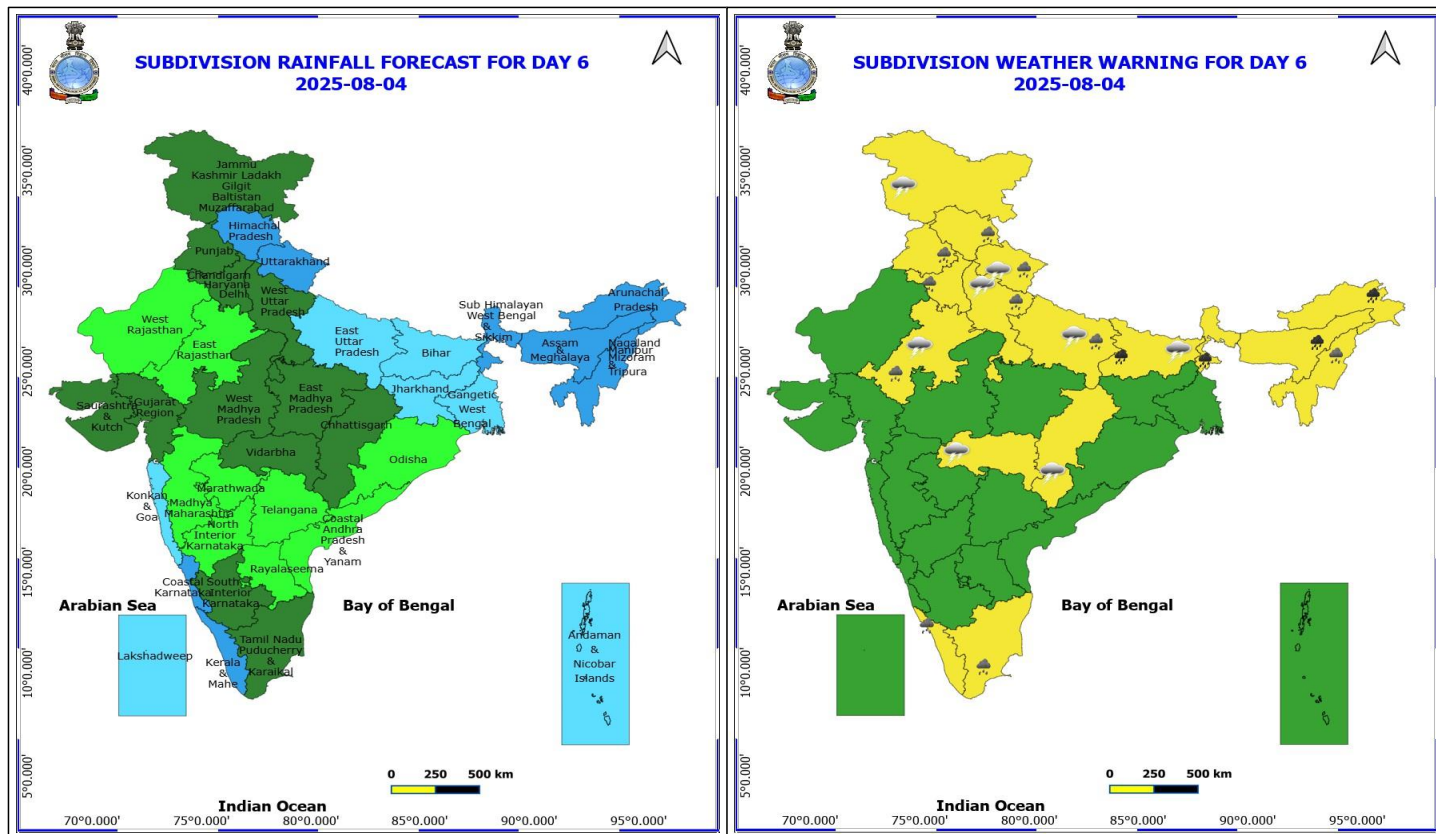
- ❖ **Heavy to Very Heavy Rainfall** likely at isolated places over Arunachal Pradesh, Assam & Meghalaya, Bihar and Sub Himalayan West Bengal & Sikkim.
- ❖ **Heavy Rainfall** likely at isolated places over Haryana, Chandigarh & Delhi, Himachal Pradesh, Kerala & Mahe, Nagaland, Manipur, Mizoram and Tripura, Punjab, Tamil Nadu Puducherry & Karaikal, Uttar Pradesh and Uttarakhand.
- ❖ **Thunderstorm accompanied with lightning & gusty winds(30-40kmph)** likely at isolated places over Bihar, Jammu-Kashmir-Ladakh-Gilgit-Baltistan-Muzaffarabad and Jharkhand.
- ❖ **Thunderstorm accompanied with Lightning** likely at isolated places over Arunachal Pradesh, Assam & Meghalaya, Chhattisgarh, Madhya Pradesh, Nagaland, Manipur, Mizoram and Tripura, Tamil Nadu Puducherry & Karaikal, Uttar Pradesh, Uttarakhand and Vidarbha.
- ❖ **Strong Surface Winds** likely at isolated places over Andhra Pradesh and Telangana.
- **Squally wind with speed reaching 45 kmph to 55 kmph gusting to 65 kmph** is likely to prevail along and off Somalia, Yemen & south Oman coasts, most parts of westcentral Arabian Sea & adjoining, some parts of eastcentral Arabian Sea, many parts of southwest Arabian Sea, some northern parts of southeast Arabian Sea.
- **Squally weather with wind speed reaching 40 - 50 kmph gusting to 60 kmph** likely to prevail off Karnataka coast, over many parts of eastcentral Arabian Sea, many parts of southeast Arabian Sea, some parts of southwest Arabian Sea, over some parts of Lakshadweep, Maldives areas, over Comorin area, over Gulf of Mannar, over some parts of southwest Bay of Bengal.

**\*Red color warning does not mean "Red Alert" Red color warning means "Take Action"**

Forecast and warning for any day is valid from 0830 hours IST of day till 0830 hours IST of next day

For more details kindly visit <https://mausam.imd.gov.in> or contact 011-2434-4599

(Service to the nation since 1875)



#### 4 August (Day 6)

- ❖ **Heavy to Very Heavy Rainfall** likely at isolated places over Arunachal Pradesh, Assam & Meghalaya, Bihar and Sub Himalayan West Bengal & Sikkim.
- ❖ **Heavy Rainfall** likely at isolated places over East Rajasthan, Haryana, Chandigarh & Delhi, Himachal Pradesh, Kerala & Mahe, Nagaland, Manipur, Mizoram and Tripura, Punjab, Tamil Nadu Puducherry & Karaikal, Uttar Pradesh and Uttarakhand.
- ❖ **Thunderstorm accompanied with lightning & gusty winds(30-40kmph)** likely at isolated places over Bihar and Jammu-Kashmir-Ladakh-Gilgit-Baltistan-Muzaffarabad.
- ❖ **Thunderstorm accompanied with Lightning** likely at isolated places over Chhattisgarh, East Rajasthan, Uttar Pradesh, Uttarakhand and Vidarbha.

**No Fishermen Warning**

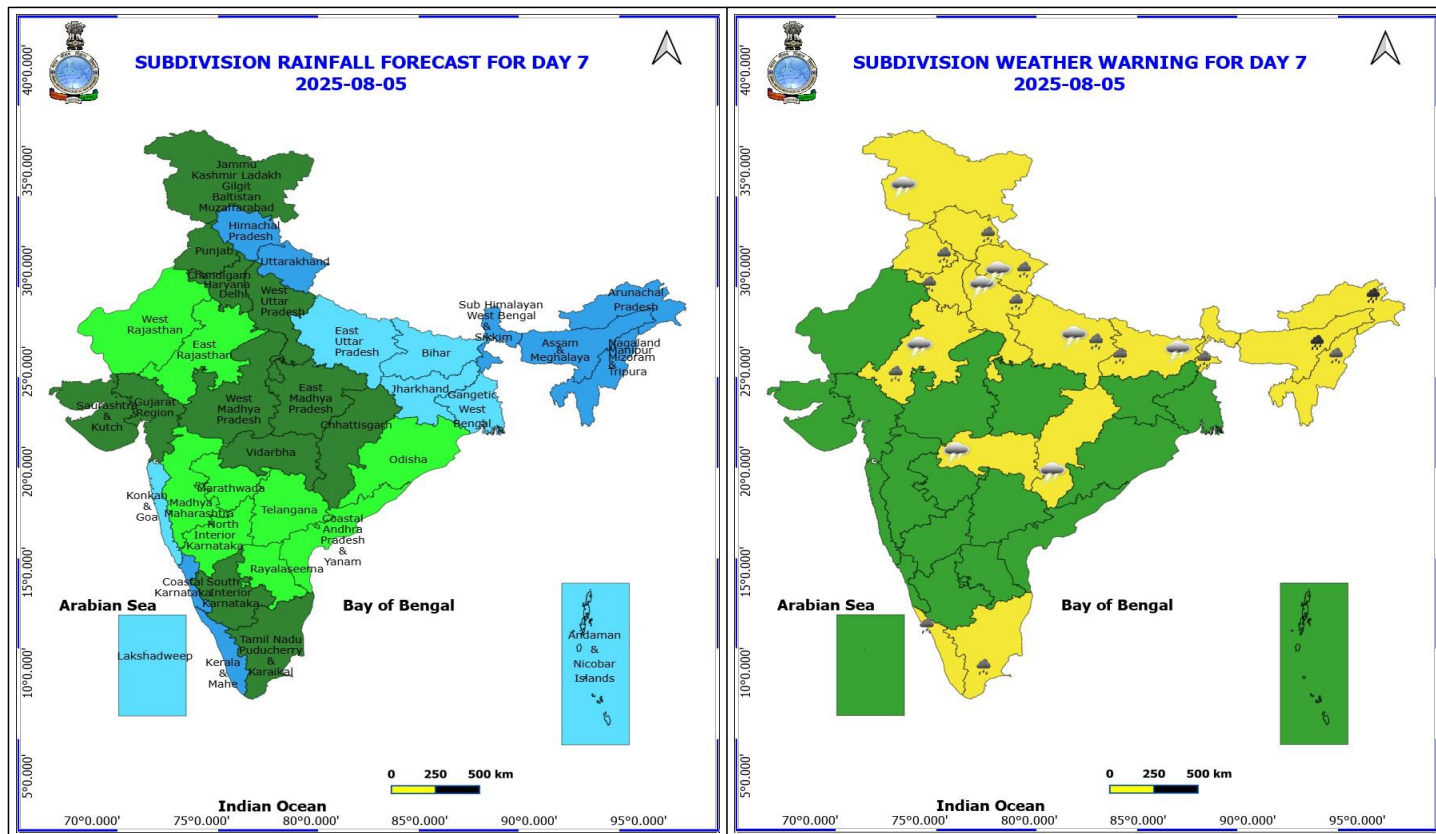
**\*Red color warning does not mean "Red Alert" Red color warning means "Take Action"**

Forecast and warning for any day is valid from 0830 hours IST of day till 0830 hours IST of next day

For more details kindly visit <https://mausam.imd.gov.in> or contact 011-2434-4599

(Service to the nation since 1875)





## 5 August (Day 7)

- ❖ **Heavy to Very Heavy Rainfall** likely at isolated places over Arunachal Pradesh, Assam & Meghalaya, Bihar and Sub Himalayan West Bengal & Sikkim.
- ❖ **Heavy Rainfall** likely at isolated places over Haryana, Chandigarh & Delhi, Himachal Pradesh, Kerala & Mahe, Nagaland, Manipur, Mizoram and Tripura, Punjab, Tamil Nadu Puducherry & Karaikal, Uttar Pradesh and Uttarakhand.
- ❖ **Thunderstorm accompanied with lightning & gusty winds(30-40kmph)** likely at isolated places over Bihar, Jammu-Kashmir-Ladakh-Gilgit-Baltistan-Muzaffarabad and Jharkhand.
- ❖ **Thunderstorm accompanied with Lightning** likely at isolated places over Arunachal Pradesh, Assam & Meghalaya, Chhattisgarh, Madhya Pradesh, Nagaland, Manipur, Mizoram and Tripura, Tamil Nadu Puducherry & Karaikal, Uttar Pradesh, Uttarakhand and Vidarbha.
- ❖ **Strong Surface Winds** likely at isolated places over Andhra Pradesh and Telangana.

**No Fishermen Warning**

**\*Red color warning does not mean "Red Alert" Red color warning means "Take Action"**

Forecast and warning for any day is valid from 0830 hours IST of day till 0830 hours IST of next day

For more details kindly visit <https://mausam.imd.gov.in> or contact 011-2434-4599

(Service to the nation since 1875)



## Flash Flood Warning:

### 24 hours Outlook for the Flash Flood Risk (FFR) till 1130 IST of 31-07-2025

**Low to Moderate flash flood risk** likely over few watersheds & neighbourhoods of following Met Sub- divisions during next 24 hours.

**Himachal Pradesh** - Chamba, Kangra, Kullu, Mandi, Sirmaur and Solan districts.  
**Jammu & Kashmir & Ladakh** - Anantnag, Badgam, Bandipore, Baramula, Doda, Ganderwal, Kathua, Kistwar, Kulgam, Kupwara, Punch, Riasi, Udhampur, Kargil, Leh And Ladakh, Mirpur and Muzaffarabad districts.

**Uttarakhand** - Almora, Champawat and Pithoragarh districts.

Surface runoff/ Inundation may occur at some fullysaturated soils & low-lying areas over Area of Concern(AoC) as shown in map due to expected rainfall occurrence in next 24 hours.

### 24 hours Outlook for the Flash Flood Risk (FFR) till 1130 IST of 31-07-2025

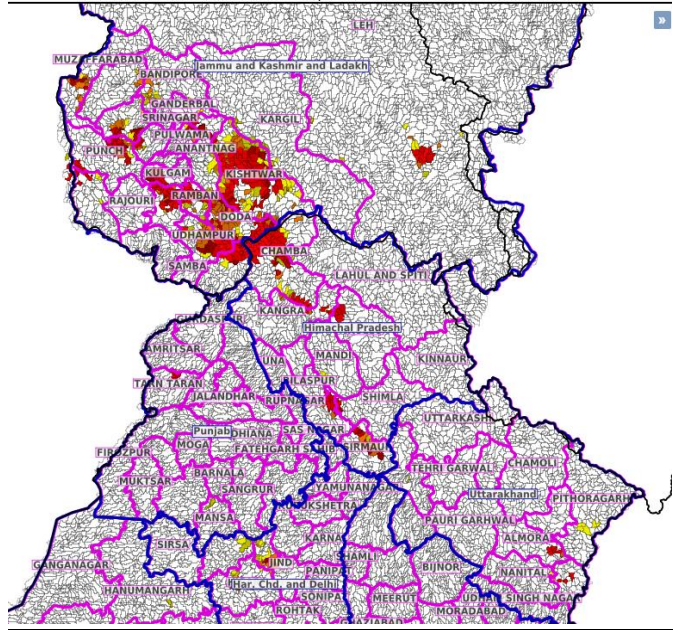
**Low to Moderate flash flood risk** likely over few watersheds & neighbourhoods of following Met Sub- divisions during next 24 hours.  
**Assam & Meghalaya** - East Khasi Hills, West Khasi Hills and Jaintia Hills districts.  
**Nagaland Mizoram Manipur Tripura (NMMT)**

**Manipur:** Chandel, Senapati, Tamenglong and Ukhrul districts

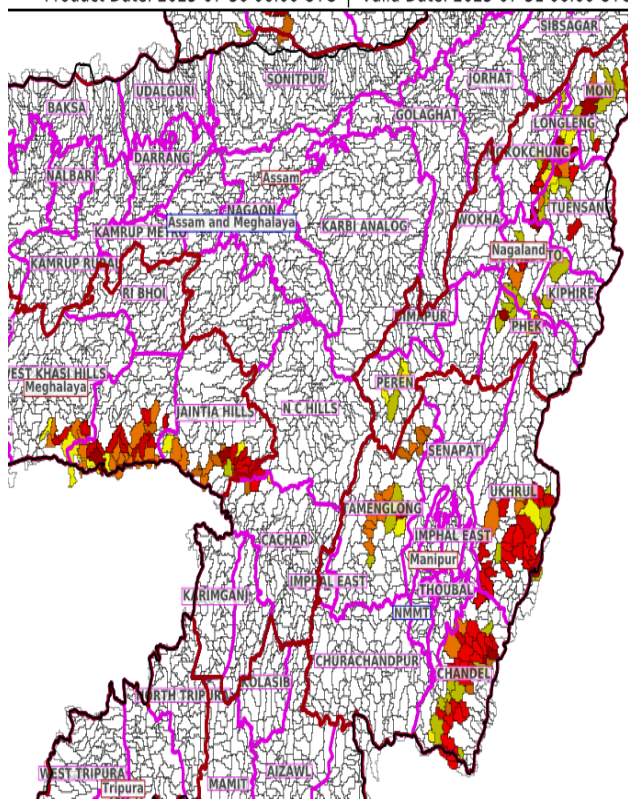
**Nagaland:** Kiphire, Longleng, Mokokchung, Mon, Peren, Phek, Tuensang, and Zunhebhot districts

Surface runoff/ Inundation may occur at some fullysaturated soils & low-lying areas over Area of Concern(AoC) as shown in map due to expected rainfall occurrence in next 24 hours

Product: NCUM FFR | Timescale: 24-hr | Region: "INDIA"  
Product Date: 2025-07-30 06:00 UTC | Valid Date: 2025-07-31 06:00 UTC



Product: WRF FFR | Timescale: 24-hr | Region: "INDIA"  
Product Date: 2025-07-30 06:00 UTC | Valid Date: 2025-07-31 06:00 UTC



\*Red color warning does not mean "Red Alert" Red color warning means "Take Action"

Forecast and warning for any day is valid from 0830 hours IST of day till 0830 hours IST of next day

For more details kindly visit <https://mausam.imd.gov.in> or contact 011-2434-4599

(Service to the nation since 1875)



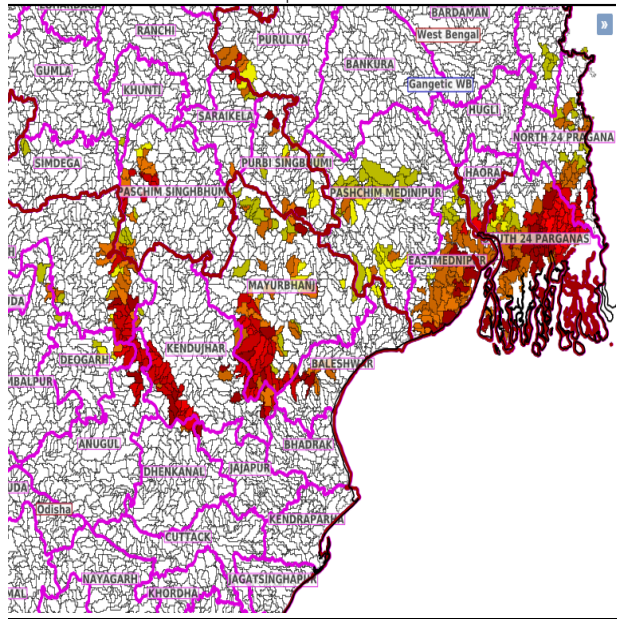
## **24 hours Outlook for the Flash Flood Risk (FFR) till 1130 IST of 31-07-2025**

**Low to Moderate flash flood risk** likely over few watersheds & neighbourhoods of following Met Sub- divisions during next 24 hours.  
**Odisha** - Anugul, Baleshwar, Deogarh, Kendujhar, Mayurbhanj and Sundargarh districts.

**Gangetic West Bengal** - Eastmednipur, Haora, North 24 Pragana, Pashchim Medinipur, Puruliya and South 24 Parganas districts.

Surface runoff/ Inundation may occur at some fullysaturated soils & low-lying areas over Area of Concern(AoC) as shown in map due to expected rainfall occurrence in next 24 hours

Product: WRF FFR | Timescale: 24-hr | Region: "INDIA"  
Product Date: 2025-07-30 06:00 UTC | Valid Date: 2025-07-31 06:00 UTC



## **24 hours Outlook for the Flash Flood Risk (FFR) till 1130 IST of 31-07-2025**

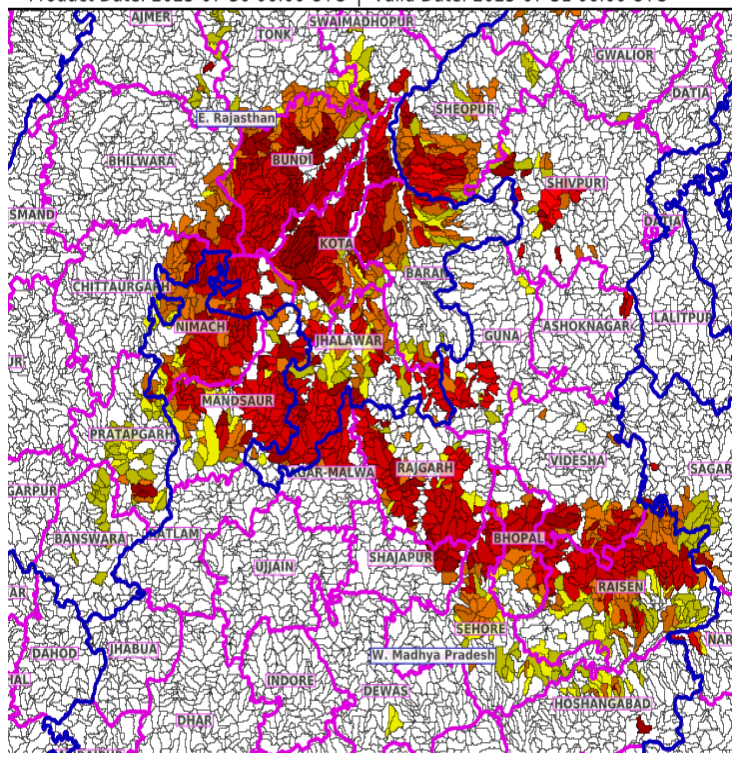
**Moderate flash flood risk** likely over few watersheds & neighbourhoods of following Met Sub- divisions during next 24 hours.

**East Rajasthan** - Banswara, Baran, Bhilwara, Bundi, Jhalawar, Kota, Pratapgarh, Swaimadhupur and Tonk districts.

**West Madhya Pradesh** - Agar-Malwa, Bhopal, Guna, Morena, Narmadapuram, Raisen, Rajgarh, Sehore, Shajapur, Sheopur, Shivpuri and Videsha districts.

Surface runoff/ Inundation may occur at some fullysaturated soils & low-lying areas over Area of Concern(AoC) as shown in map due to expected rainfall occurrence in next 24 hours

Product: WRF FFR | Timescale: 24-hr | Region: "REGIONAL"  
Product Date: 2025-07-30 06:00 UTC | Valid Date: 2025-07-31 06:00 UTC



\*Red color warning does not mean "Red Alert" Red color warning means "Take Action"

Forecast and warning for any day is valid from 0830 hours IST of day till 0830 hours IST of next day

For more details kindly visit <https://mausam.imd.gov.in> or contact 011-2434-4599

(Service to the nation since 1875)



**Table-1**

## 7 Days Rainfall Forecast

S.No.	Subdivision	30- Jul	31- Jul	1- Aug	2- Aug	3- Aug	4- Aug	5- Aug
		Day 1	Day 2	Day 3	Day 4	Day 5	Day 6	Day 7
1	ANDAMAN & NICOBAR ISLANDS	FWS	FWS	FWS	WS	WS	FWS	FWS
2	ARUNACHAL PRADESH	FWS	FWS	WS	WS	WS	WS	WS
3	ASSAM & MEHGHALAYA	FWS	FWS	FWS	WS	WS	WS	WS
4	N. M. M. & T.	FWS	FWS	FWS	WS	WS	WS	WS
5	S.H. WEST BENGAL & SIKKIM	WS	WS	WS	WS	WS	WS	WS
6	GANGETIC WEST BENGAL	WS	WS	WS	FWS	FWS	FWS	FWS
7	ODISHA	FWS	SCT	SCT	SCT	ISOL	ISOL	ISOL
8	JHARKHAND	FWS	FWS	SCT	SCT	SCT	FWS	FWS
9	BIHAR	FWS	SCT	FWS	FWS	FWS	FWS	SCT
10	EAST UTTAR PRADESH	FWS	SCT	ISOL	SCT	FWS	FWS	FWS
11	WEST UTTAR PRADESH	FWS	FWS	SCT	SCT	SCT	FWS	FWS
12	UTTARAKHAND	FWS	FWS	FWS	FWS	FWS	WS	WS
13	HARYANA, CHD & DELHI	FWS	SCT	SCT	FWS	FWS	FWS	FWS
14	PUNJAB	SCT	SCT	SCT	SCT	FWS	FWS	FWS
15	HIMACHAL PRADESH	WS	WS	FWS	FWS	FWS	WS	WS
16	JAMMU AND KASHMIR AND LADAKH	WS	FWS	SCT	SCT	ISOL	SCT	FWS
17	WEST RAJASTHAN	FWS	WS	FWS	ISOL	ISOL	ISOL	ISOL
18	EAST RAJASTHAN	WS	WS	FWS	SCT	SCT	ISOL	ISOL
19	WEST MADHYA PRADESH	WS	FWS	FWS	SCT	SCT	SCT	SCT
20	EAST MADHYA PRADESH	FWS	FWS	FWS	FWS	SCT	SCT	SCT
21	GUJRAT REGION	FWS	FWS	SCT	SCT	SCT	SCT	SCT
22	SAURASHTRA & KUTCH	SCT	SCT	SCT	SCT	SCT	SCT	SCT
23	KONKAN & GOA	WS	WS	WS	FWS	WS	FWS	FWS
24	MADHYA MAHARASHTRA	SCT	SCT	ISOL	ISOL	ISOL	ISOL	ISOL
25	MARATHWADA	ISOL	ISOL	ISOL	ISOL	ISOL	ISOL	ISOL
26	VIDARBHA	WS	FWS	FWS	SCT	SCT	SCT	SCT
27	CHATTISGARH	FWS	FWS	SCT	SCT	SCT	SCT	SCT
28	COASTAL ANDHRA PRADESH	ISOL	ISOL	ISOL	ISOL	ISOL	ISOL	ISOL
29	TELANGANA	ISOL	ISOL	ISOL	ISOL	ISOL	ISOL	ISOL
30	RAYALASEEMA	ISOL	ISOL	ISOL	ISOL	ISOL	ISOL	ISOL
31	TAMILNADU & PUDUCHERRY	ISOL	ISOL	SCT	SCT	SCT	SCT	SCT
32	COSTAL KARNATAKA	WS	WS	WS	WS	FWS	FWS	FWS
33	NORTH INTERIOR KARNATAKA	ISOL	ISOL	ISOL	SCT	SCT	ISOL	ISOL
34	SOUTH INTERIOR KARNATAKA	SCT	SCT	SCT	SCT	SCT	SCT	SCT
35	KERALA	FWS	FWS	FWS	WS	WS	WS	WS
36	LAKSHDWEEP	FWS	FWS	FWS	WS	WS	WS	WS

Legend	Category	%Stations
WS	Widespread/Most Places	76-100
FWS	Fairly Widespread/Many Places	51-75
SCT	Scattered/ A Few Places	26-50
ISOL	Isolated Places	1-25
DRY	No Rain	0

\*Red color warning does not mean "Red Alert" Red color warning means "Take Action"

Forecast and warning for any day is valid from 0830 hours IST of day till 0830 hours IST of next day

For more details kindly visit <https://mausam.imd.gov.in> or contact 011-2434-4599

(Service to the nation since 1875)

Fig. 1: Maximum Temperatures Dated 2025-07-30

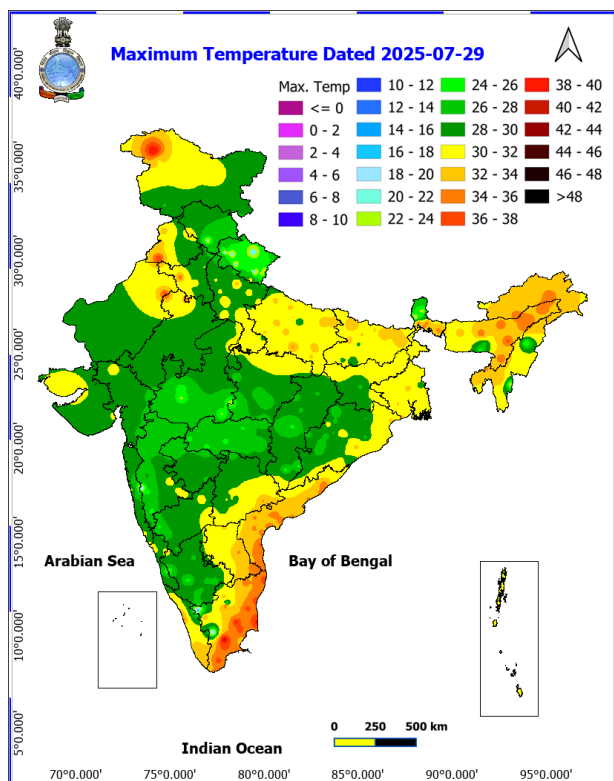


Fig. 2: Departure of Maximum Temp. Dated 2025-07-30

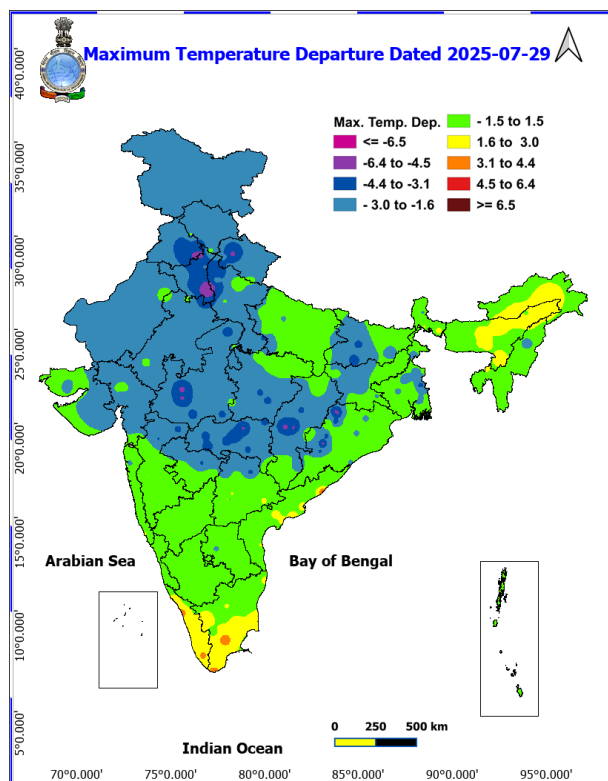


Fig. 3: Minimum Temperatures Dated 2025-07-30

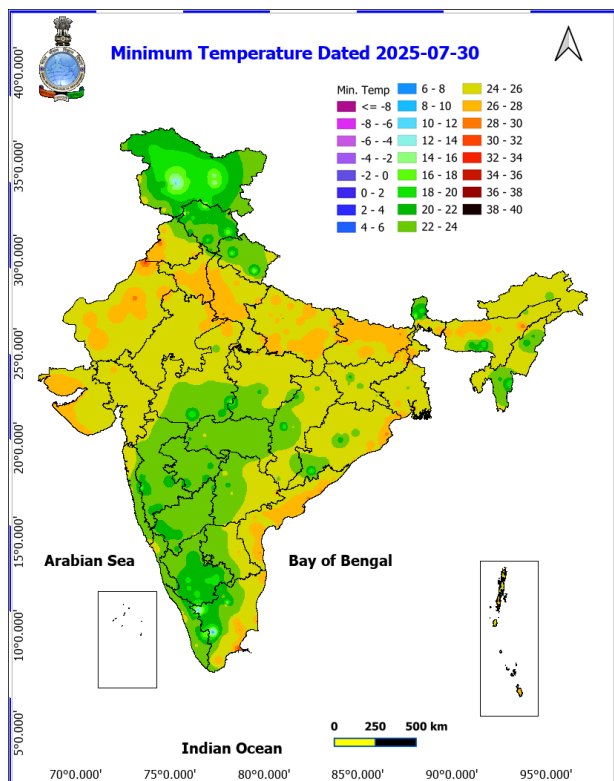
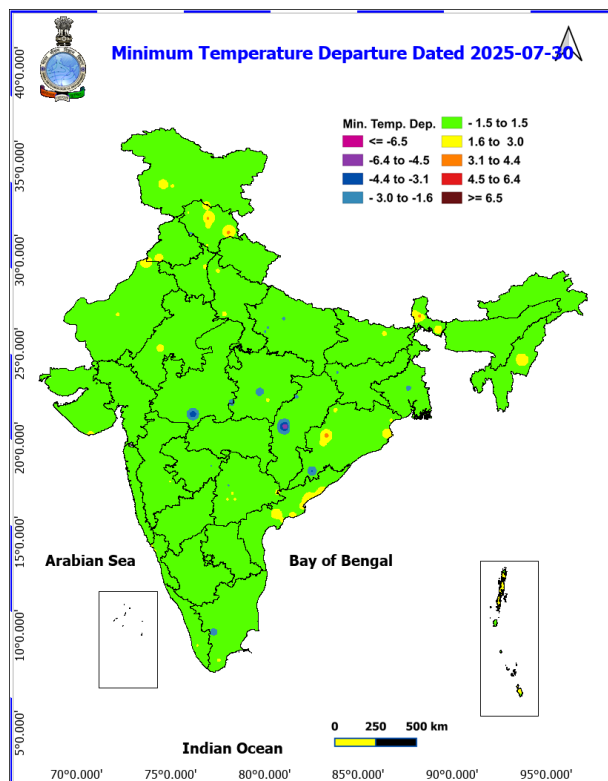
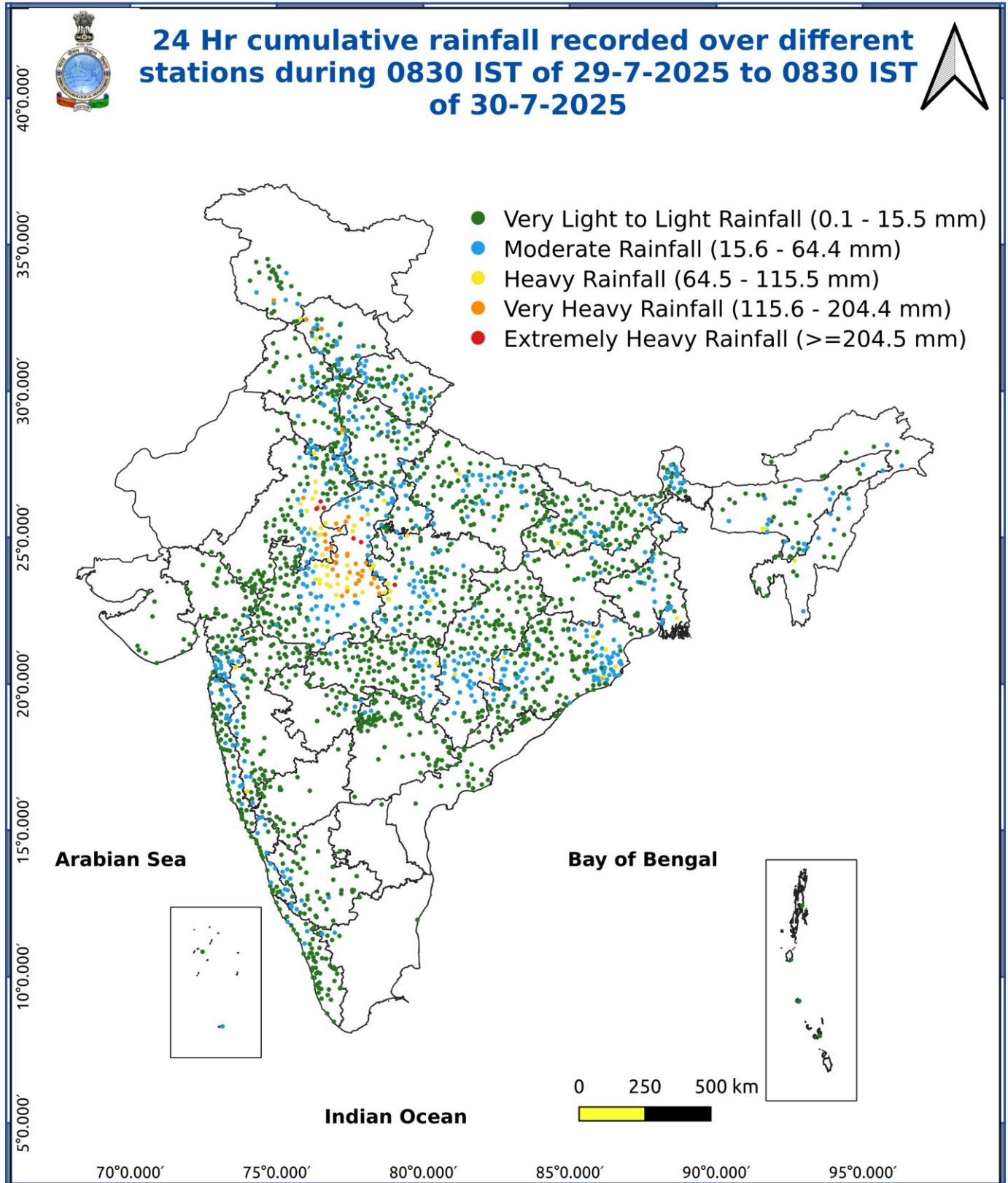


Fig. 4: Departure of Minimum Temp. Dated 2025-07-30







\*Red color warning does not mean "Red Alert" Red color warning means "Take Action"

Forecast and warning for any day is valid from 0830 hours IST of day till 0830 hours IST of next day

For more details kindly visit <https://mausam.imd.gov.in> or contact 011-2434-4599

(Service to the nation since 1875)

### Impact & Action Suggested due to

- ✓ **Extremely heavy rainfall** at isolated places over East Rajasthan and West Madhya Pradesh on 30<sup>th</sup> July.
- ✓ **Very heavy rainfall** over Jammu-Kashmir, Himachal Pradesh, East Madhya Pradesh, Odisha & Gangetic West Bengal on 30<sup>th</sup>; West Rajasthan on 30<sup>th</sup> & 31<sup>st</sup>; East Rajasthan on 31<sup>st</sup>; Arunachal Pradesh during 01<sup>st</sup>-05<sup>th</sup> August; Assam & Meghalaya during 31<sup>st</sup> July-05<sup>th</sup> August; Sub-Himalayan West Bengal & Sikkim during 02<sup>nd</sup>-04<sup>th</sup>; Bihar on 03<sup>rd</sup> & 04<sup>th</sup> August.

### Impact Expected

- Localized Flooding of roads, water logging in low lying areas and closure of underpasses mainly in urban areas of the above region.
- Occasional reduction in visibility due to heavy rainfall.
- Disruption of traffic in major cities due to water logging in roads leading to increased travel time.
- Minor damage to kutcha roads.
- Possibilities of damage to vulnerable structure.
- Localized Landslides/Mudslides/landslides/mudslips/landsinks/mudsinks.
- Damage to horticulture and standing crops in some areas due to inundation.
- It may lead to riverine flooding in some river catchments (for riverine flooding please visit Web page of CWC)

### Action Suggested

- Check for traffic congestion on your route before leaving for your destination.
- Follow any traffic advisories that are issued in this regard.
- Avoid going to areas that face the water logging problems often.
- Avoid staying in vulnerable structure.

### Agromet advisories for likely impact of Heavy / Heavy to Very Heavy / Extremely Heavy Rainfall

- In **East Rajasthan**, postpone sowing of rice nurseries, maize, soybean and black gram and make arrangement for removal of excess water from already sown fields in **Southeastern Humid Plain Zone**. Make provision to drain out excess water from green gram, pearl millet, cluster bean and sesame in **Sub Humid Southern Plain** and **Aravali Hill Zone** and **Flood Prone Eastern Plain Zone**; from soybean, cotton, black gram and maize in **Southern Humid Plain Zone**; from pearl millet, maize, groundnut and vegetables in **Semi Arid Eastern Plain Zone**.
- In **Madhya Pradesh**, postpone sowing of pearl millet and vegetables and arrange for proper drainage from already sown black gram, green gram, soybean, pearl millet and vegetables fields in **Gird Zone** till cessation of heavy rains. Arrange proper drainage facilities in the fields of rice, soybean, maize, sugarcane and vegetables in **Central Narmada Valley Zone**; soybean, groundnut, black gram and cotton in **Malwa Plateau Zone**; soybean, rice, maize and pigeon pea in **Vindhyan Plateau Zone**.
- In **Madhya Maharashtra**, make arrangement to drain out excess water from rice and finger millet fields in *ghat* areas.
- In **Uttarakhand**, maintain proper drainage channels in fields of rice in **Bhabar and Tarai Zone**, black gram in **Hill Zone** and rice, barnyard millet, finger millet and cucumber in **Sub Humid SubTropic Zone**.
- In **Himachal Pradesh**, provide drainage channels in low-lying areas in rice, maize, pulses and vegetables to prevent water stagnation in **Sub-Montane & Low Hills Sub-Tropical Zone**. Strengthen plant supports for creepers and tall vegetable crops (e.g., tomato, capsicum). In **High Hills Sub Temperate Wet Zone**, provide proper drainage channels in vegetables, maize, finger millets and kidney beans.
- In **Bihar**, provide adequate drainage in the fields of paddy, Pigeon pea, kharif maize, Okra and plantations in **South Bihar Alluvial Zone**.
- In **West Bengal**, make proper arrangements for drainage in vegetable beds, standing vegetable crops and betel gardens in **Coastal Saline Zone**.
- In **Odisha**, ensure proper drainage in all crop fields (especially maize and vegetables) in high rainfall areas of **Eastern and South-Eastern Ghat Zones** to prevent waterlogging. In **North Eastern Coastal Plain Zone**, drain out excess water from rice nurseries, jute and vegetable fields.

\*Red color warning does not mean "Red Alert" Red color warning means "Take Action"

Forecast and warning for any day is valid from 0830 hours IST of day till 0830 hours IST of next day

For more details kindly visit <https://mausam.imd.gov.in> or contact 011-2434-4599

(Service to the nation since 1875)



- In **Jammu & Kashmir**, postpone irrigation in transplanted rice and vegetables. Do not allow excess rainwater stagnation in maize, pulses and vegetable fields in **Sub Tropical Zone**. In **Intermediate Zone**, postpone intercultural operations in maize and vegetables. Ensure proper drainage in *kharif* pulses. In **Valley Temperate Zone**, maintain proper drainage channels in pulses and beans to remove excess water.
- In **Arunachal Pradesh**, postpone sowing of finger millet and fresh transplanting of rice (in low land). Provide drainage in WRC rice, finger millet and maize.
- In **Meghalaya**, maintain proper drainage channels around the nursery beds. Make provision for draining out excess water from vegetable fields and repair bunds in lowland paddy fields.
- In **Mizoram**, harvest matured cobs of maize. Create strong bunds around rice fields to retain rainwater and reduce runoff.

#### **Livestock / Fishery**

- Keep the animals inside the shed during heavy rainfall and provide them balanced feed.
- Store feed and fodder in a safe place to prevent spoilage.
- Construct an outlet with proper netting around the ponds to drain out excess water, thereby preventing fish from escaping in case of overflow.

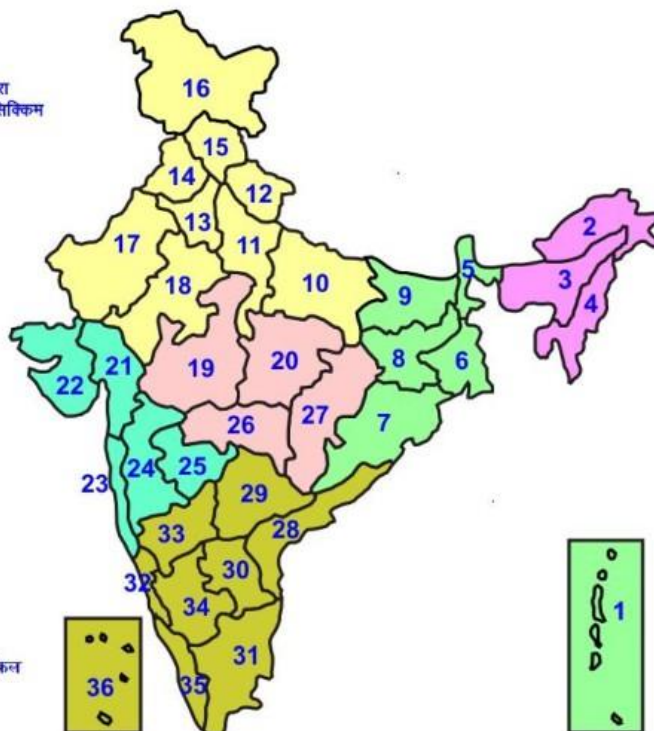
#### **Agromet advisories for likely impact of Thunderstorm / Gusty Winds / Squally Winds**

- Provide mechanical support to horticultural crops and staking or support to vegetables and young fruit plants / fruit-bearing plants to avoid lodging due to strong winds.



## LEGENDS

- 1 अंडमान और निकोबार द्वीप समुह
- 2 अरुणाचल प्रदेश
- 3 असम और मेघालय
- 4 नागालैंड मनीपुर मीजोरम और त्रिपुरा
- 5 उप हिमालय पश्चिम बंगाल एवं सिक्किम
- 6 पश्चिम बंगाल
- 7 ओडिसा
- 8 झारखंड
- 9 बिहार
- 10 पूर्वी उत्तर प्रदेश
- 11 पश्चिम उत्तर प्रदेश
- 12 उत्तराखंड
- 13 हरियाणा चंडीगढ़ एवं दिल्ली
- 14 पंजाब
- 15 हिमाचल प्रदेश
- 16 जम्मू एवं कश्मीर एवं लद्दाख
- 17 पश्चिम राजस्थान
- 18 पूर्वी राजस्थान
- 19 पश्चिम मध्य प्रदेश
- 20 पूर्वी मध्य प्रदेश
- 21 गुजरात क्षेत्र
- 22 सौराष्ट्र एवं कच्छ
- 23 कोंकण एवं गोवा
- 24 मध्य महाराष्ट्र
- 25 मराठावाड़ा
- 26 विदर्भ
- 27 छत्तीसगढ़
- 28 तटीय आंध्र प्रदेश एवं यनम
- 29 तेलंगाना
- 30 रायलसेमा
- 31 तमिलनाडु, पुदुचेरी एवं कराईकल
- 32 तटिय कर्नाटक
- 33 आंतरिक उत्तरी कर्नाटक
- 34 आंतरिक दक्षिणी कर्नाटक
- 35 केरल एवं माहे
- 36 लक्षद्वीप



1. Andaman & Nicobar Islands
2. Arunachal Pradesh
3. Assam & Meghalaya
4. Nagaland, Manipur, Mizoram & Tripura
5. Sub-Himalayan West Bengal & Sikkim
6. Gangetic West Bengal
7. Orissa
8. Jharkhand
9. Bihar
10. East Uttar Pradesh
11. West Uttar Pradesh
12. Uttarakhand
13. Haryana, Chd & Delhi
14. Punjab
15. Himachal Pradesh
16. Jammu & Kashmir and Ladakh
17. West Rajasthan
18. East Rajasthan
19. West Madhya Pradesh
20. East Madhya Pradesh
21. Gujarat
22. Saurashtra
23. Konkan & Goa
24. Madhya Maharashtra
25. Marathwada
26. Vidharbha
27. Chhattisgarh
28. Coastal Andhra Pradesh & Yanam
29. Telangana
30. Rayalaseema
31. Tamilnadu, Puducherry & Karaikal
32. Coastal Karnataka
33. North Interior Karnataka
34. South Interior Karnataka
35. Kerala & Mahe
36. Lakshadweep

## SPATIAL DISTRIBUTION (% of Stations reporting)


% Stations	Category	% Stations	Category
76-100	Widespread (WS/Most Places)	26-50	Scattered (SCT/ A Few Places)
51-75	Fairly Widespread (FWS/ Many Places)	1-25	Isolated (ISOL)


### Subdivision Colour

- NO WARNING
- WATCH (BE UPDATED)
- ALERT (BE PREPARED TO TAKE ACTION)
- WARNING (TAKE ACTION)

### Probabilistic Forecast


Terms	Probability of Occurrence (%)
Unlikely	< 25
Likely	25 - 50
Very Likely	50 - 75
Most Likely	> 75


-  Heavy Rain


 Thunderstorm & Lightning


 Strong surface winds


 Cold Wave


 Hot & Humid


 Very Heavy Rain

 Hailstorm

 Heat Wave

 Cold Day

 Extremely Heavy Rain


 Dust Storm

 Hot Day

 Ground Frost

 Heavy Snow

 Dust Raising Winds

 Warm Night

 Fog

\*Red color warning does not mean "Red Alert" Red color warning means "Take Action"

Forecast and warning for any day is valid from 0830 hours IST of day till 0830 hours IST of next day

For more details kindly visit <https://mausam.imd.gov.in> or contact 011-2434-4599

(Service to the nation since 1875)



## LEGENDS

### WARNING

<b>WARNING (TAKE ACTION)</b>
<b>ALERT (BE PREPARED)</b>
<b>WATCH (BE UPDATED)</b>
<b>NO WARNING (NO ACTION)</b>

### Probabilistic Forecast

Terms	Probability of Occurrence (%)
Unlikely	< 25
Likely	25 - 50
Very Likely	50 - 75
Most Likely	> 75



Heavy: 64.5 to 115.5 mm/cm \*  
Very Heavy: 115.6 to 204.4 mm/cm \*  
Extremely Heavy: > 204.4 mm/cm \*



When maximum temperature of a station reaches  $\geq 40^{\circ}\text{C}$  for plains and  $\geq 30^{\circ}\text{C}$  for hilly regions  
(a) Based on Departure from normal

Heat Wave: Maximum Temperature Departure from normal  $4.5^{\circ}\text{C}$  to  $6.4^{\circ}\text{C}$ .  
Severe Heat Wave: Maximum Temperature Departure from normal  $\geq 6.5^{\circ}\text{C}$

(b). Based on Actual maximum temperature

Heat Wave: When actual maximum temperature  $\geq 45^{\circ}\text{C}$ .  
Severe Heat Wave: When actual maximum temperature  $\geq 47^{\circ}\text{C}$

(c). Criteria for heat wave for coastal stations

When maximum temperature departure is  $> 4.5^{\circ}\text{C}$  from normal. Heat Wave may be described provided maximum temperature  $\geq 37^{\circ}\text{C}$



When maximum temperature remains  $40^{\circ}\text{C}$

Warm Night: When minimum temperature departure  $4.5^{\circ}\text{C}$  to  $6.4^{\circ}\text{C}$ .  
Severe Warm Night: When minimum temperature departure  $> 6.4^{\circ}\text{C}$ .



When minimum temperature of a station  $\leq 10^{\circ}\text{C}$  for plains and  $\leq 0^{\circ}\text{C}$  for hilly regions.

(a). Based on departure

Cold Wave: Minimum Temperature Departure from normal  $-4.5^{\circ}\text{C}$  to  $-6.4^{\circ}\text{C}$ .  
Severe Cold Wave: Minimum Temperature Departure from normal  $\leq -6.5^{\circ}\text{C}$

(b) Based on actual Minimum Temperature (for Plains only)

Cold Wave: When Minimum Temperature is  $\leq 4.0^{\circ}\text{C}$   
Severe Cold Wave: When Minimum Temperature is  $\leq 2.0^{\circ}\text{C}$

(c) For Coastal Stations

When Minimum Temperature departure is  $\leq -4.5^{\circ}\text{C}$  & actual Minimum Temperature is  $\leq 15^{\circ}\text{C}$



When minimum temperature of a station  $\leq 10^{\circ}\text{C}$  for plains and  $\leq 0^{\circ}\text{C}$  for hilly regions  
Based on departure

Cold Day: Maximum Temperature Departure from normal  $-4.5^{\circ}\text{C}$  to  $-6.4^{\circ}\text{C}$ .  
Severe Cold Day: Maximum Temperature Departure from normal  $\leq -6.5^{\circ}\text{C}$



Phenomenon of small droplets suspended in air and the horizontal visibility  $< 1\text{km}$

Moderate Fog: When the visibility between 500-200 metres  
Dense Fog: when the visibility between 50-200 metres  
Very Dense Fog: when the visibility  $< 50$  metres



Sudden electrical discharges manifested by a flash of light (Lightning) and a sharp rumbling sound (thunder)



An ensemble of particles of dust or sand energetically lifted to great heights by a strong and turbulent wind.



Ice deposits on ground

Air temperature  $\leq 4^{\circ}\text{C}$  (over Plains)



A strong wind that rises suddenly, lasts for at least 1 minute.

Moderate: Wind speed 52-61 kmph  
Severe: Wind speed 62-87 kmph  
Very Severe: Wind speed  $> 87$  kmph



Effect of various waves in the sea over specific area

Rough to very rough: Wind speed 41-62 kmph (22-33 knots) & Wave height 2.5-6 metre  
High to very high: Wind speed 63-117 kmph (34-63 knots) & Wave height 6-14 metre  
Phenomenal: Wind speed  $> 117$  kmph ( $> 63$  knots) & Wave height  $> 14$  metre



Cyclonic Storm: Wind speed 62-87 kmph (34-47 knots)

Severe Cyclonic Storm: Wind speed 88-117 kmph (48-63 knots)

Very Severe Cyclonic Storm: Wind speed 118-165 kmph (64-89 knots)

Extremely Severe Cyclonic Storm: Wind speed 166-220 kmph (90-119 knots)

Super Cyclone Storm: Wind speed  $> 220$  kmph ( $> 119$  knots)

\*Red color warning does not mean "Red Alert" Red color warning means "Take Action"

Forecast and warning for any day is valid from 0830 hours IST of day till 0830 hours IST of next day

For more details kindly visit <https://mausam.imd.gov.in> or contact 011-2434-4599

(Service to the nation since 1875)