

2025-12-05

Time of Issue: 13:40:00 hours IST
(Mid-Day)

ALL INDIA WEATHER SUMMARY AND FORECAST BULLETIN

Significant Weather Features

Weather Forecast and Warnings:

- **Light/moderate isolated rainfall/snowfall** very likely over Jammu-Kashmir-Ladakh-Gilgit-Baltistan-Muzaffarabad on 05th & 08th; Himachal Pradesh on 05th & 07th; Uttarakhand on 07th & 08th December.
- Light to moderate rainfall accompanied with thunderstorm, lightning with **heavy rainfall** very likely at isolated places over south Tamil Nadu on 05th December.
- Light to moderate rainfall at a few places **accompanied with thunderstorm, lightning** over Tamil Nadu, Puducherry & Karaikal on 05th & 06th; Kerala & Mahe, Coastal Andhra Pradesh & Yanam, Rayalaseema on 05th December.
- **Thunderstorm, lightning with Gusty Wind speed (30-40 gusting upto 50 kmph)** likely to prevail over Andaman & Nicobar Islands during 05th -07th December.

Forecast of minimum temperatures:

- Gradual rise in minimum temperature by 2-3⁰C over northwest India during next 3 days and thereafter no significant change.
- No significant change in minimum temperature likely for next 4 days and fall by 2-3⁰C thereafter over Maharashtra and no significant change in minimum temperature is likely over Gujrat region during next 7 days.
- No significant change in minimum temperature likely for the next 7 days over the central, east and northeastern parts of the country.

Dense Fog & Cold wave warning Warnings:

- **Cold wave conditions** very likely to prevail in isolated pockets over Punjab, Haryana Chandigarh & Delhi, northwest Jharkhand & north interior Odisha during 06th & 07th; Uttar Pradesh, East Rajasthan on 06th December.
- **Dense fog conditions** very likely to prevail during early morning hours in isolated pockets of Assam & Meghalaya, Nagaland, Manipur, Mizoram & Tripura during 06th-10th; Himachal Pradesh during 06th-08th and over Odisha on 06th & 07th December.

Fisherman Warning:

Fishermen are advised not to venture into the following areas during 05th December to 10th December:

- **Arabian Sea:**

Over southeast Arabian sea, Lakshadweep islands and along & off Kerala, Karnataka coasts on 05th December.

*Red color warning does not mean "Red Alert" Red color warning means "Take Action"

Forecast and warning for any day is valid from 0830 hours IST of day till 0830 hours IST of next day

For more details kindly visit <https://mausam.imd.gov.in> or contact 011-2434-4599

(Service to the nation since 1875)

Main Weather Observations:

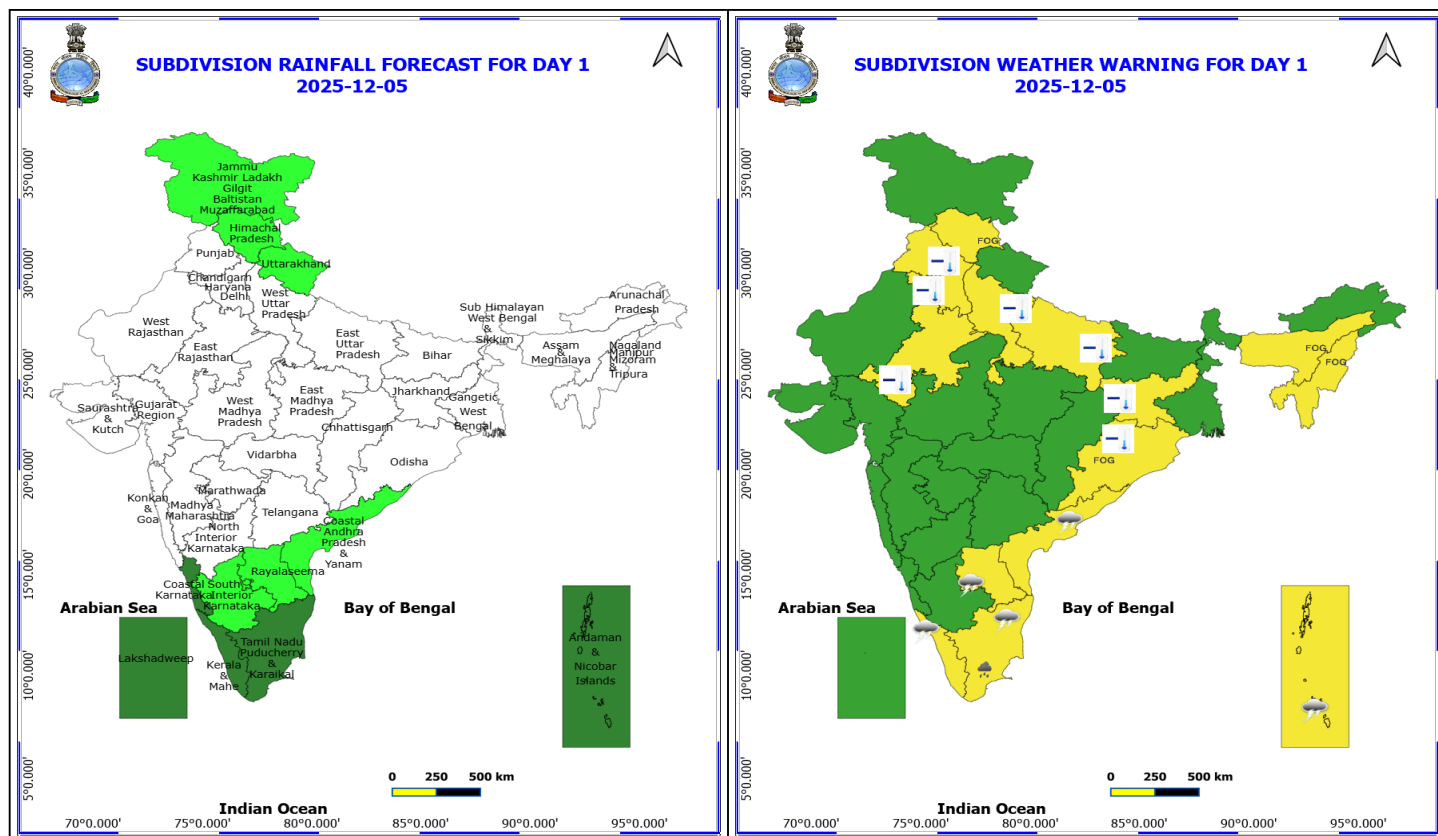
- **Rainfall distribution** (from 0830 hours IST of yesterday to 0830 hours IST of today): **Heavy rainfall** at isolated places over Coastal Andhra Pradesh, Tamil Nadu, Coastal Karnataka, and Rayalaseema; **Dry** over rest of the country.
- **Significant rainfall recorded (in cm) (from 0830 hours IST of yesterday to 0830 hours IST of today):** Coastal Andhra Pradesh & Yanam: Nellore (dist Spsr Nellore) 10; Coastal Karnataka: Dakshina Kannada_Bantwal_Kadeshwalya 9, Dakshina Kannada_Belthangadi_ Madanthiyaru 8; **Tamil Nadu, Puducherry & Karaikal:** Uthukottai (dist Tiruvallur) 9, Zone 15 Okkiyam Thoraipakkam (dist Chennai), VIT_Chennai AWS (dist Chengalpattu) 7 each; **Rayalaseema:** Kodur (dist Ysr District) 7.
- **Fog Condition Observed (at 0830 hours of today): Dense fog conditions:** at isolated places over Himachal Pradesh, Odisha, Assam & Meghalaya, Manipur.
- **Cold wave conditions** at isolated places over Punjab & Haryana, Chandigarh & Delhi.
- **Cold Day conditions** at isolated places over Haryana.
- **Ground frost** reported at isolated places over Uttarakhand.
- **Visibility reported (at 0830 hours of today):** Odisha: Rourkela 50m; Assam & Meghalaya: Barapani 50m, Jorhat 100m. Manipur: Imphal 100m. Himachal Pradesh: Bilaspur 100m.
- **Minimum Temperature Departures (as on 05-12-2025):** Minimum temperatures are in the range of **less than 5°C** at most places over Jammu-Kashmir-Ladakh-Gilgit-Baltistan-Muzaffarabad; at many places over Himachal Pradesh; at isolated places over Uttarakhand, East Rajasthan; in the **range of 5°-10°C** at many places over Uttar Pradesh, Haryana Chandigarh & Delhi and Punjab; at few places of Madhya Pradesh, West Rajasthan; at isolated places over Chhattisgarh, Odisha, Bihar & Jharkhand. **The lowest minimum temperature of 2.0 °C is reported at Adampur (Punjab) over the plains of India.**
- **Minimum Temperature were** below normal (-1.6°C to -3.0°C) at many places over Punjab, East Rajasthan; at few places over West Madhya Pradesh, Vidarbha; at isolated places over Himachal Pradesh, East Madhya Pradesh, Chhattisgarh, Gangetic West Bengal; at appreciably below normal (-3.1°C to -5.0°C) at isolated places over Uttar Pradesh & Bihar; markedly below normal (-5.1°C or smaller) at isolated places over Delhi, Haryana.
- **Maximum Temperature Departures (as on 04-12-2025):** below normal (-1.6°C to -3.0°C) at many places over Haryana-Chandigarh-Delhi and East Rajasthan. **The highest maximum temperature** of 35.5°C is reported at HONAVAR (KARNATAKA).

Meteorological Analysis (Based on 0830 hours IST)

- The **upper air cyclonic circulation** over east Bangladesh adjoining Assam & Meghalaya persists and now seen at 1.5 km above mean sea level.
- A **trough** runs from southeast Arabian sea to southwest Bay of Bengal & adjoining equatorial Indian ocean across Comorin area at 0.9 km above mean sea level.
- The **Western disturbance** as an **upper air cyclonic circulation** over north Punjab & neighbourhood persists and now seen at 3.1 km above mean sea level.
- The **induced cyclonic circulation** over northwest Uttar Pradesh & neighbourhood persists and now seen at 1.5 km above mean sea level.
- Another **Western Disturbance** as a trough in middle tropospheric westerlies with its axis at 5.8 km above mean sea level now runs roughly along Long. 60°E to the north of Lat. 36°N.
- The **upper air cyclonic circulation** over Southeast Arabian sea and adjoining Lakshadweep extending upto 1.5 km above mean sea level has become less marked.

Weather Outlook for subsequent 3 days

- Isolated to Scattered rainfall activity over Jammu-Kashmir-Ladakh-Gilgit-Baltistan-Muzaffarabad, South Kerala, South Tamil Nadu and Islands.



5 December (Day 1)

- **Heavy Rainfall** very likely at isolated places over Tamil Nadu Puducherry & Karaikal.
- **Thunderstorm accompanied with lightning & gusty winds(30-40kmph)** very likely at isolated places over Andaman & Nicobar Islands.
- **Thunderstorm accompanied with Lightning** very likely at isolated places over Andhra Pradesh, Kerala & Mahe and Tamil Nadu Puducherry & Karaikal.
- **Cold wave conditions** very likely at isolated places over East Rajasthan, Haryana, Chandigarh & Delhi, Jharkhand, Odisha, Punjab and Uttar Pradesh.
- **Dense Fog** very likely at isolated pockets over Assam & Meghalaya, Himachal Pradesh, Nagaland, Manipur, Mizoram and Tripura and Odisha.

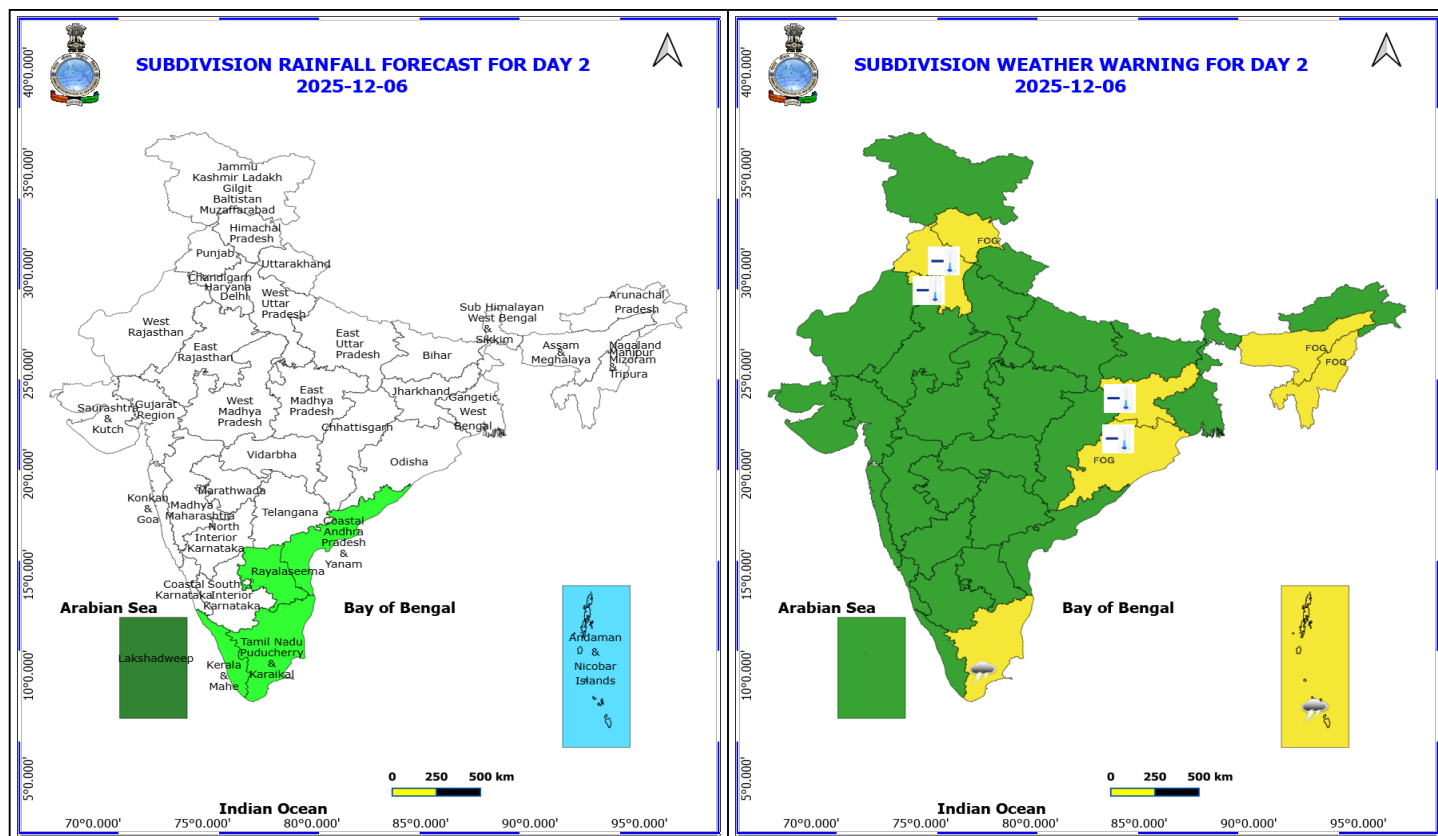
Squally weather with wind speeds reaching 35 kmph to 45 kmph gusting to 55 kmph is likely to prevail over southeast Arabian sea, Lakshadweep islands and along & off Kerala, Karnataka coasts.

*Red color warning does not mean "Red Alert" Red color warning means "Take Action"

Forecast and warning for any day is valid from 0830 hours IST of day till 0830 hours IST of next day

For more details kindly visit <https://mausam.imd.gov.in> or contact 011-2434-4599

(Service to the nation since 1875)



6 December (Day 2)

- ❖ **Thunderstorm accompanied with lightning & gusty winds(30-40kmph)** very likely at isolated places over Andaman & Nicobar Islands.
- ❖ **Thunderstorm accompanied with Lightning** very likely at isolated places over Tamil Nadu Puducherry & Karaikal.
- ❖ **Cold wave conditions** very likely at isolated places over Haryana, Chandigarh & Delhi, Jharkhand, Odisha and Punjab.
- ❖ **Dense Fog** very likely at isolated pockets over Assam & Meghalaya, Himachal Pradesh, Nagaland, Manipur, Mizoram and Tripura and Odisha.

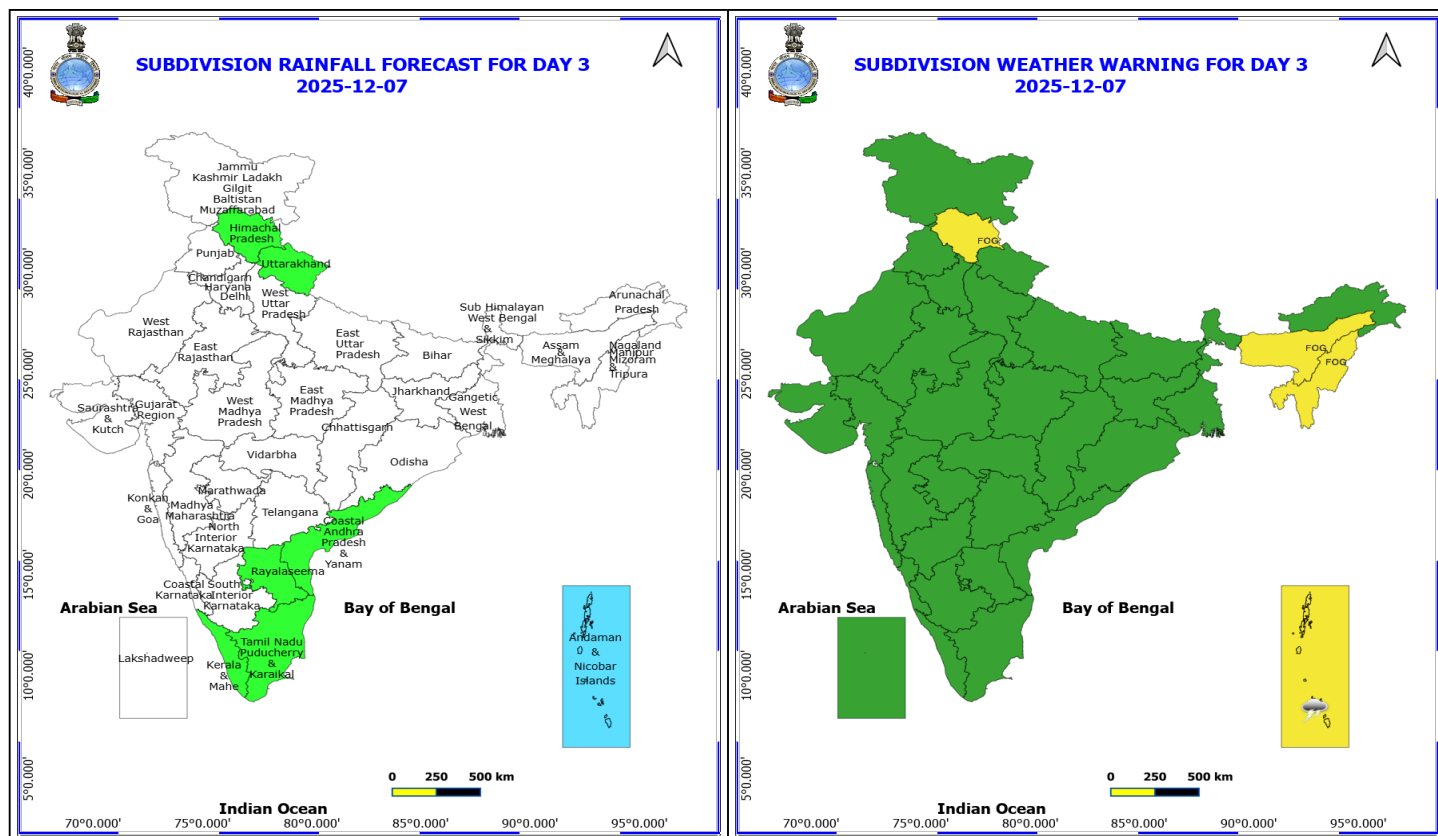
No warning

***Red color warning does not mean "Red Alert" Red color warning means "Take Action"**

Forecast and warning for any day is valid from 0830 hours IST of day till 0830 hours IST of next day

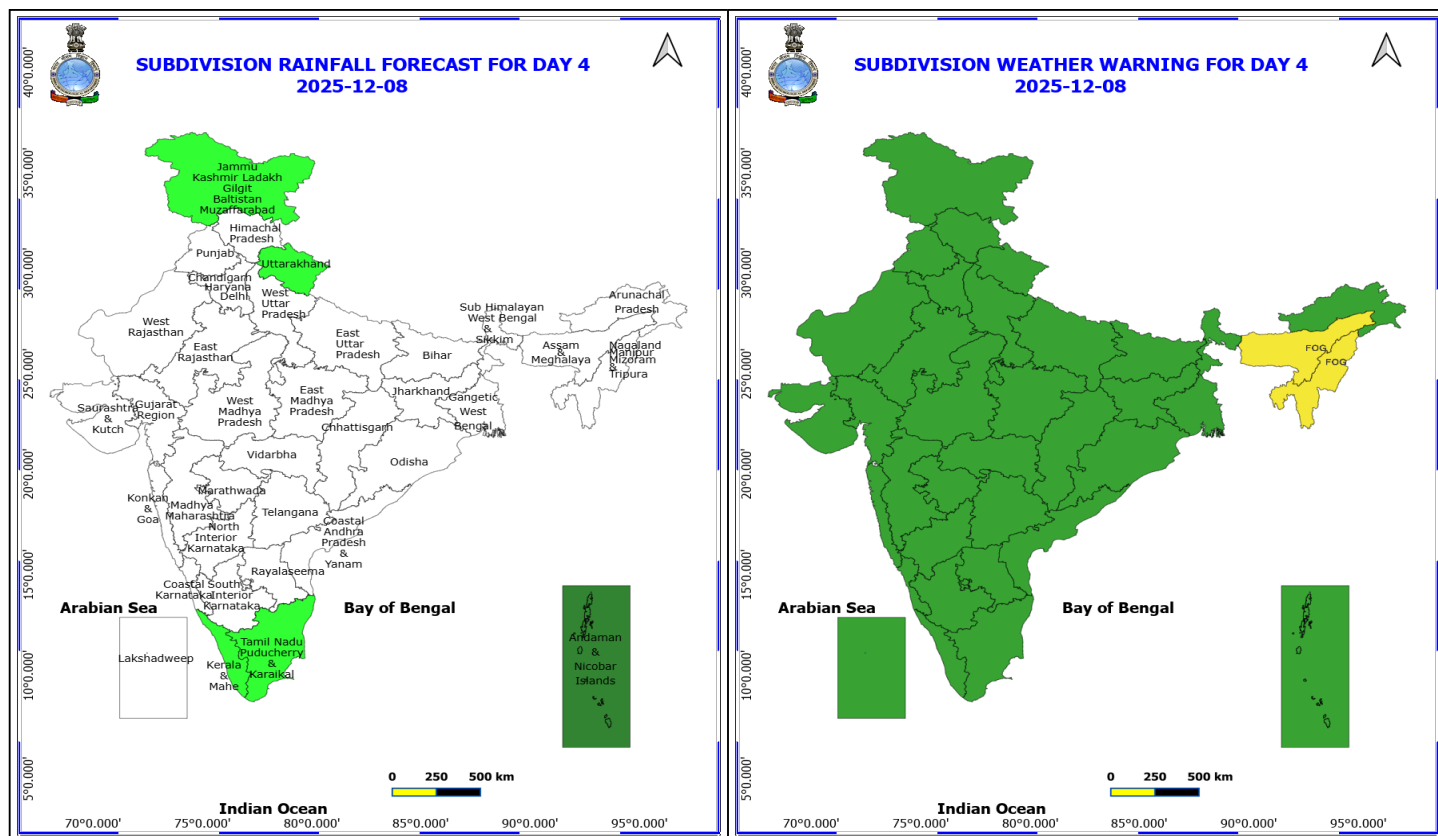
For more details kindly visit <https://mausam.imd.gov.in> or contact 011-2434-4599

(Service to the nation since 1875)



7 December (Day 3)

- ❖ **Thunderstorm accompanied with lightning & gusty winds(30-40kmph)** very likely at isolated places over Andaman & Nicobar Islands.
 - ❖ **Fog** very likely at isolated pockets over Assam & Meghalaya, Himachal Pradesh and Nagaland, Manipur, Mizoram and Tripura.
- No warning



8 December (Day 4)

❖ **Dense Fog** likely at isolated pockets over Assam & Meghalaya and Nagaland, Manipur, Mizoram and Tripura.

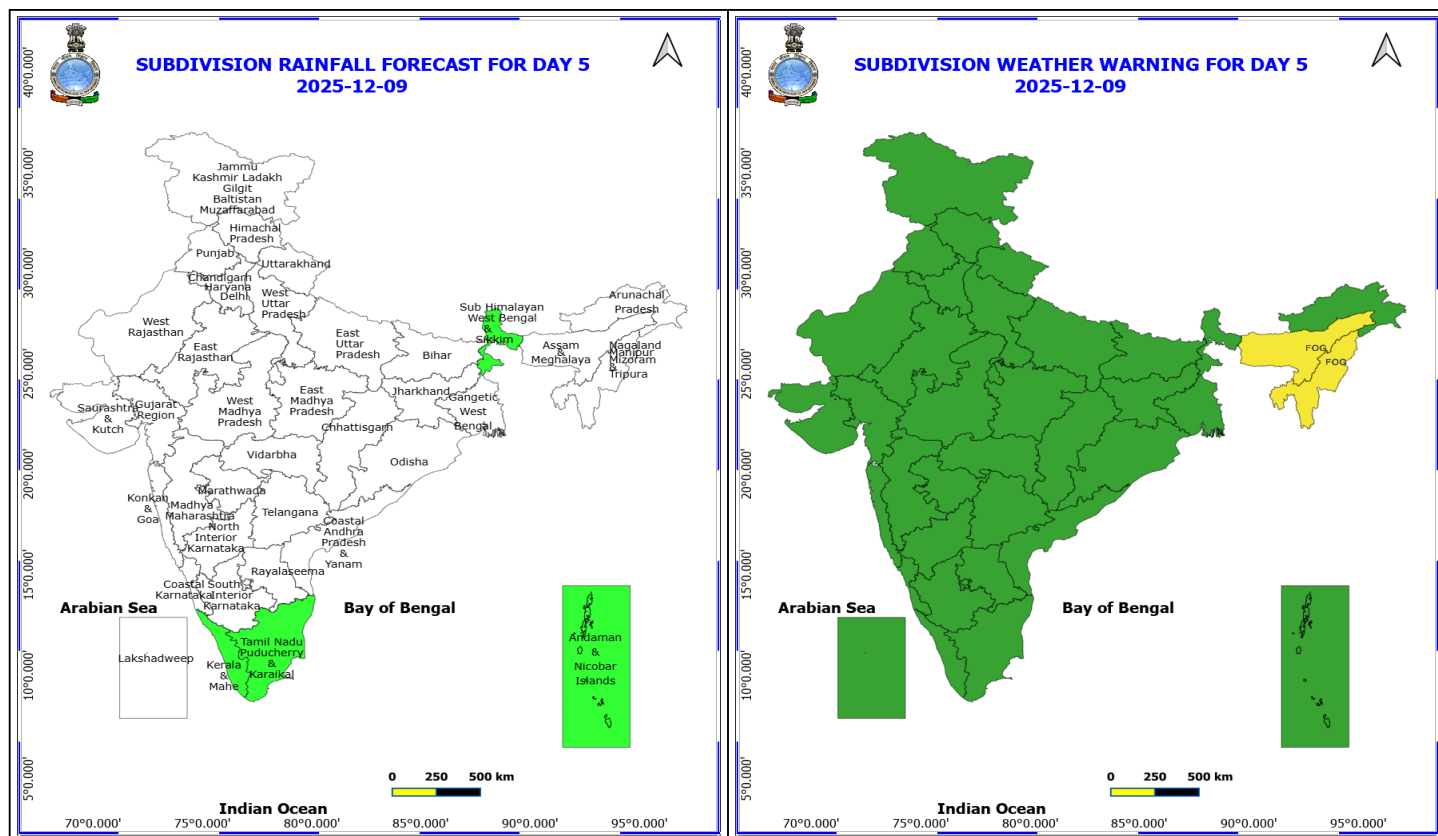
No warning

*Red color warning does not mean "Red Alert" Red color warning means "Take Action"

Forecast and warning for any day is valid from 0830 hours IST of day till 0830 hours IST of next day

For more details kindly visit <https://mausam.imd.gov.in> or contact 011-2434-4599

(Service to the nation since 1875)



9 December (Day 5)

❖ **Dense Fog** likely at isolated pockets over Assam & Meghalaya and Nagaland, Manipur, Mizoram and Tripura.

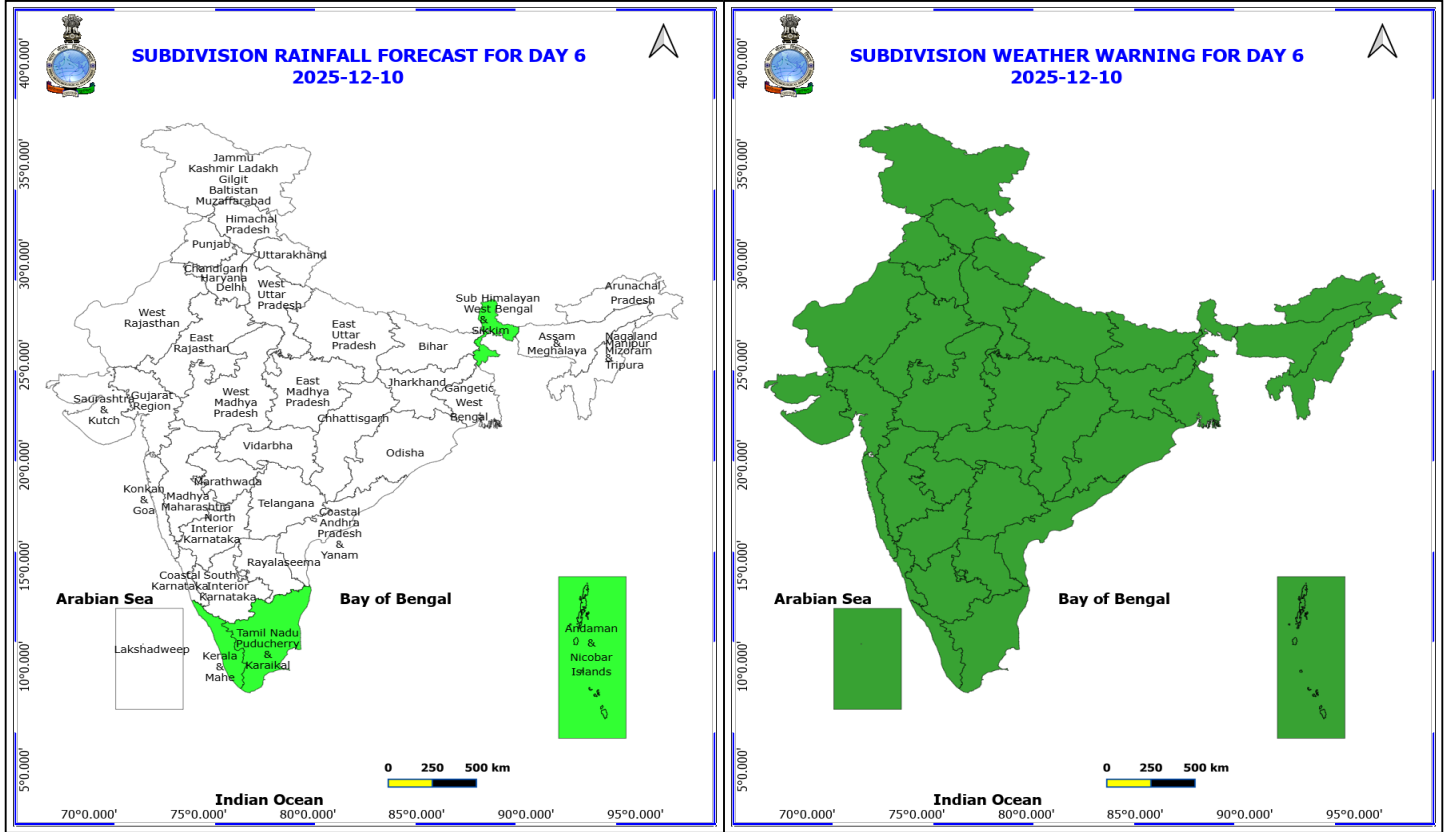
No warning

*Red color warning does not mean "Red Alert" Red color warning means "Take Action"

Forecast and warning for any day is valid from 0830 hours IST of day till 0830 hours IST of next day

For more details kindly visit <https://mausam.imd.gov.in> or contact 011-2434-4599

(Service to the nation since 1875)



10 December (Day 6)

No Warning

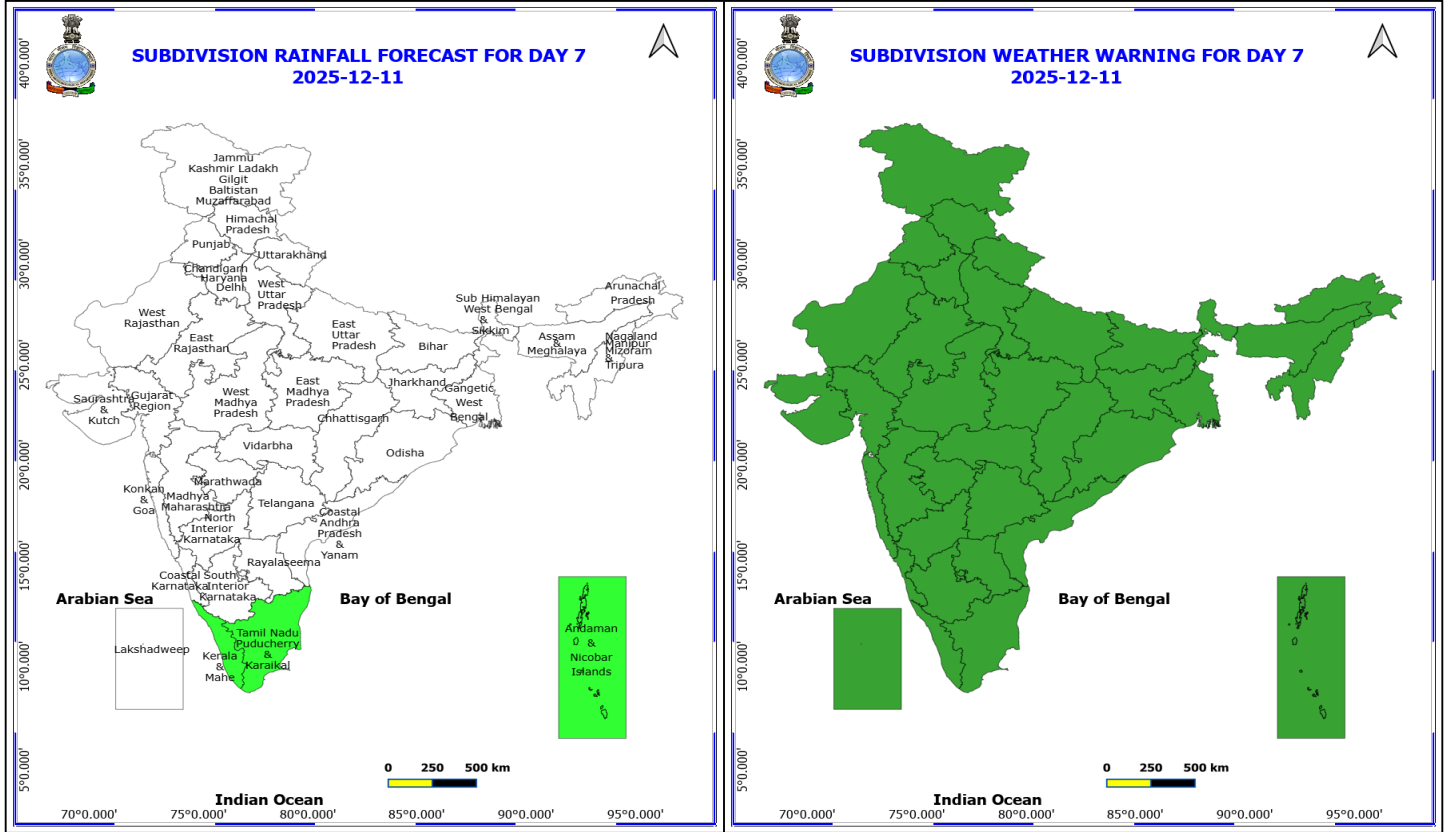
No Fishermen Warning

*Red color warning does not mean "Red Alert" Red color warning means "Take Action"

Forecast and warning for any day is valid from 0830 hours IST of day till 0830 hours IST of next day

For more details kindly visit <https://mausam.imd.gov.in> or contact 011-2434-4599

(Service to the nation since 1875)



11 December (Day 7)

No Warning

No Fishermen Warning

*Red color warning does not mean "Red Alert" Red color warning means "Take Action"

Forecast and warning for any day is valid from 0830 hours IST of day till 0830 hours IST of next day

For more details kindly visit <https://mausam.imd.gov.in> or contact 011-2434-4599

(Service to the nation since 1875)



Table-1

7 Days Rainfall Forecast

S.No.	Subdivision	5- Dec	6- Dec	7- Dec	8- Dec	9- Dec	10- Dec	11- Dec
		Day 1	Day 2	Day 3	Day 4	Day 5	Day 6	Day 7
1	ANDAMAN & NICOBAR ISLANDS	SCT	FWS	FWS	SCT	ISOL	ISOL	ISOL
2	ARUNACHAL PRADESH	DRY	DRY	DRY	DRY	DRY	DRY	DRY
3	ASSAM & MEHGHALAYA	DRY	DRY	DRY	DRY	DRY	DRY	DRY
4	N. M. M. & T.	DRY	DRY	DRY	DRY	DRY	DRY	DRY
5	S.H. WEST BENGAL & SIKKIM	DRY	DRY	DRY	DRY	ISOL	ISOL	DRY
6	GANGETIC WEST BENGAL	DRY	DRY	DRY	DRY	DRY	DRY	DRY
7	ODISHA	DRY	DRY	DRY	DRY	DRY	DRY	DRY
8	JHARKHAND	DRY	DRY	DRY	DRY	DRY	DRY	DRY
9	BIHAR	DRY	DRY	DRY	DRY	DRY	DRY	DRY
10	EAST UTTAR PRADESH	DRY	DRY	DRY	DRY	DRY	DRY	DRY
11	WEST UTTAR PRADESH	DRY	DRY	DRY	DRY	DRY	DRY	DRY
12	UTTARAKHAND	ISOL	DRY	ISOL	ISOL	DRY	DRY	DRY
13	HARYANA, CHD & DELHI	DRY	DRY	DRY	DRY	DRY	DRY	DRY
14	PUNJAB	DRY	DRY	DRY	DRY	DRY	DRY	DRY
15	HIMACHAL PRADESH	ISOL	DRY	ISOL	DRY	DRY	DRY	DRY
16	JAMMU AND KASHMIR AND LADAKH	ISOL	DRY	DRY	ISOL	DRY	DRY	DRY
17	WEST RAJASTHAN	DRY	DRY	DRY	DRY	DRY	DRY	DRY
18	EAST RAJASTHAN	DRY	DRY	DRY	DRY	DRY	DRY	DRY
19	WEST MADHYA PRADESH	DRY	DRY	DRY	DRY	DRY	DRY	DRY
20	EAST MADHYA PRADESH	DRY	DRY	DRY	DRY	DRY	DRY	DRY
21	GUJRAT REGION	DRY	DRY	DRY	DRY	DRY	DRY	DRY
22	SAURASHTRA & KUTCH	DRY	DRY	DRY	DRY	DRY	DRY	DRY
23	KONKAN & GOA	DRY	DRY	DRY	DRY	DRY	DRY	DRY
24	MADHYA MAHARASHTRA	DRY	DRY	DRY	DRY	DRY	DRY	DRY
25	MARATHWADA	DRY	DRY	DRY	DRY	DRY	DRY	DRY
26	VIDARBHA	DRY	DRY	DRY	DRY	DRY	DRY	DRY
27	CHATTISGARH	DRY	DRY	DRY	DRY	DRY	DRY	DRY
28	COASTAL ANDHRA PRADESH	ISOL	ISOL	ISOL	DRY	DRY	DRY	DRY
29	TELANGANA	DRY	DRY	DRY	DRY	DRY	DRY	DRY
30	RAYALASEEMA	ISOL	ISOL	ISOL	DRY	DRY	DRY	DRY
31	TAMILNADU & PUDUCHERRY	SCT	ISOL	ISOL	ISOL	ISOL	ISOL	ISOL
32	COSTAL KARNATAKA	SCT	DRY	DRY	DRY	DRY	DRY	DRY
33	NORTH INTERIOR KARNATAKA	DRY	DRY	DRY	DRY	DRY	DRY	DRY
34	SOUTH INTERIOR KARNATAKA	ISOL	DRY	DRY	DRY	DRY	DRY	DRY
35	KERALA	SCT	ISOL	ISOL	ISOL	ISOL	ISOL	ISOL
36	LAKSHDWEAP	SCT	SCT	DRY	DRY	DRY	DRY	DRY

Legend	Category	%Stations
WS	Widespread/Most Places	76-100
FWS	Fairly Widespread/Many Places	51-75
SCT	Scattered/ A Few Places	26-50
ISOL	Isolated Places	1-25
DRY	No Rain	0

*Red color warning does not mean "Red Alert" Red color warning means "Take Action"

Forecast and warning for any day is valid from 0830 hours IST of day till 0830 hours IST of next day

For more details kindly visit <https://mausam.imd.gov.in> or contact 011-2434-4599

(Service to the nation since 1875)

Fig. 1: Maximum Temperatures Dated 2025-12-04

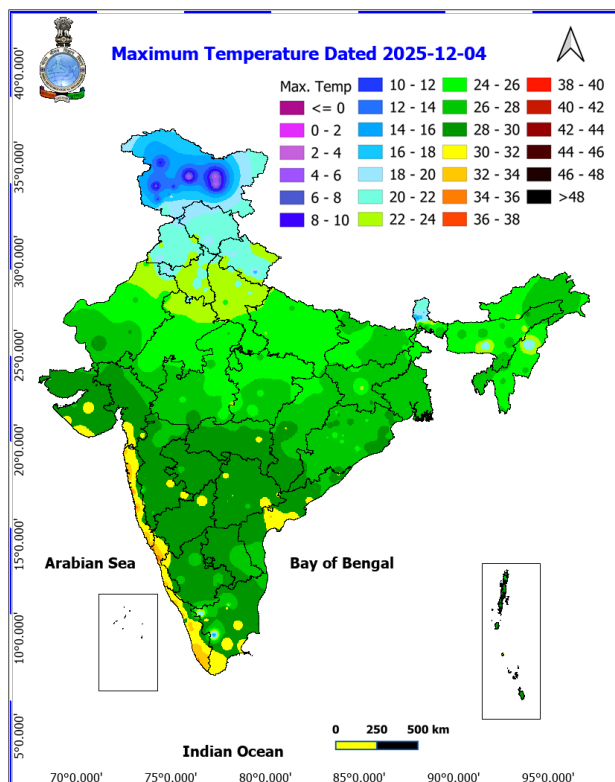


Fig. 2: Departure of Maximum Temp. Dated 2025-12-04

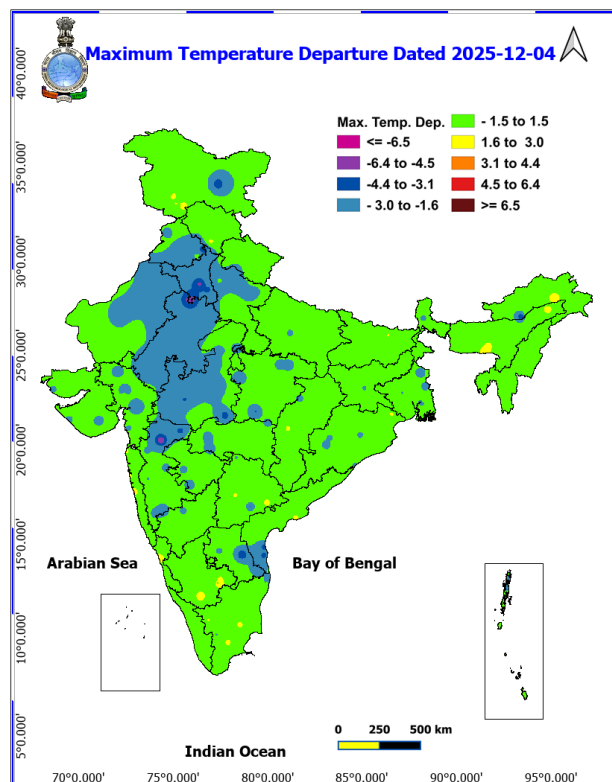


Fig. 3: Minimum Temperatures Dated 2025-12-05

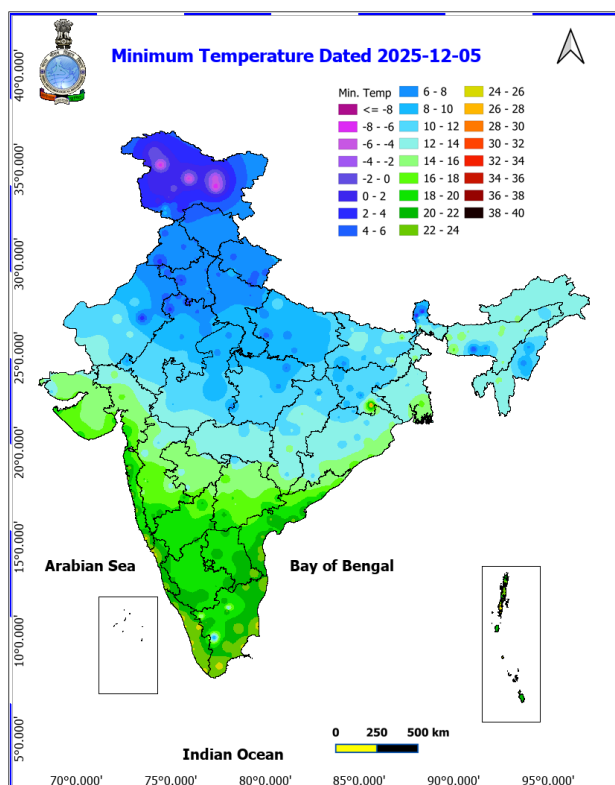
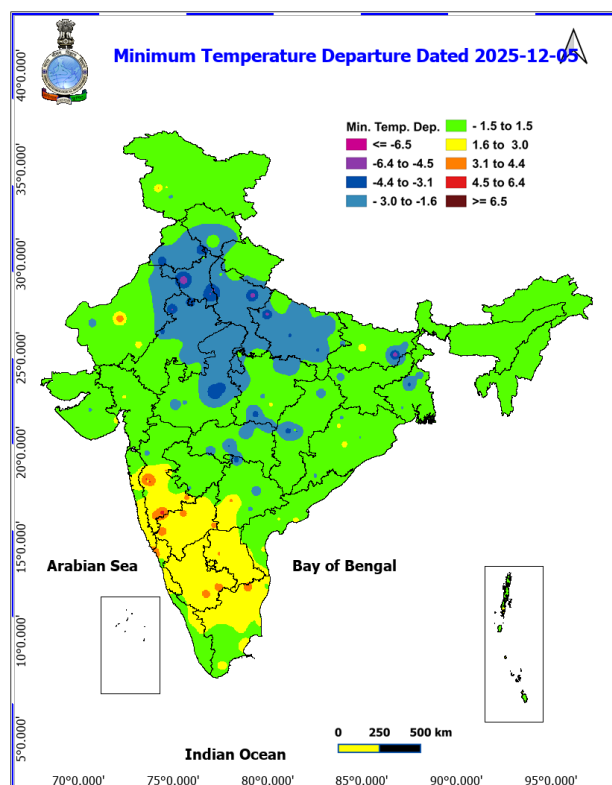
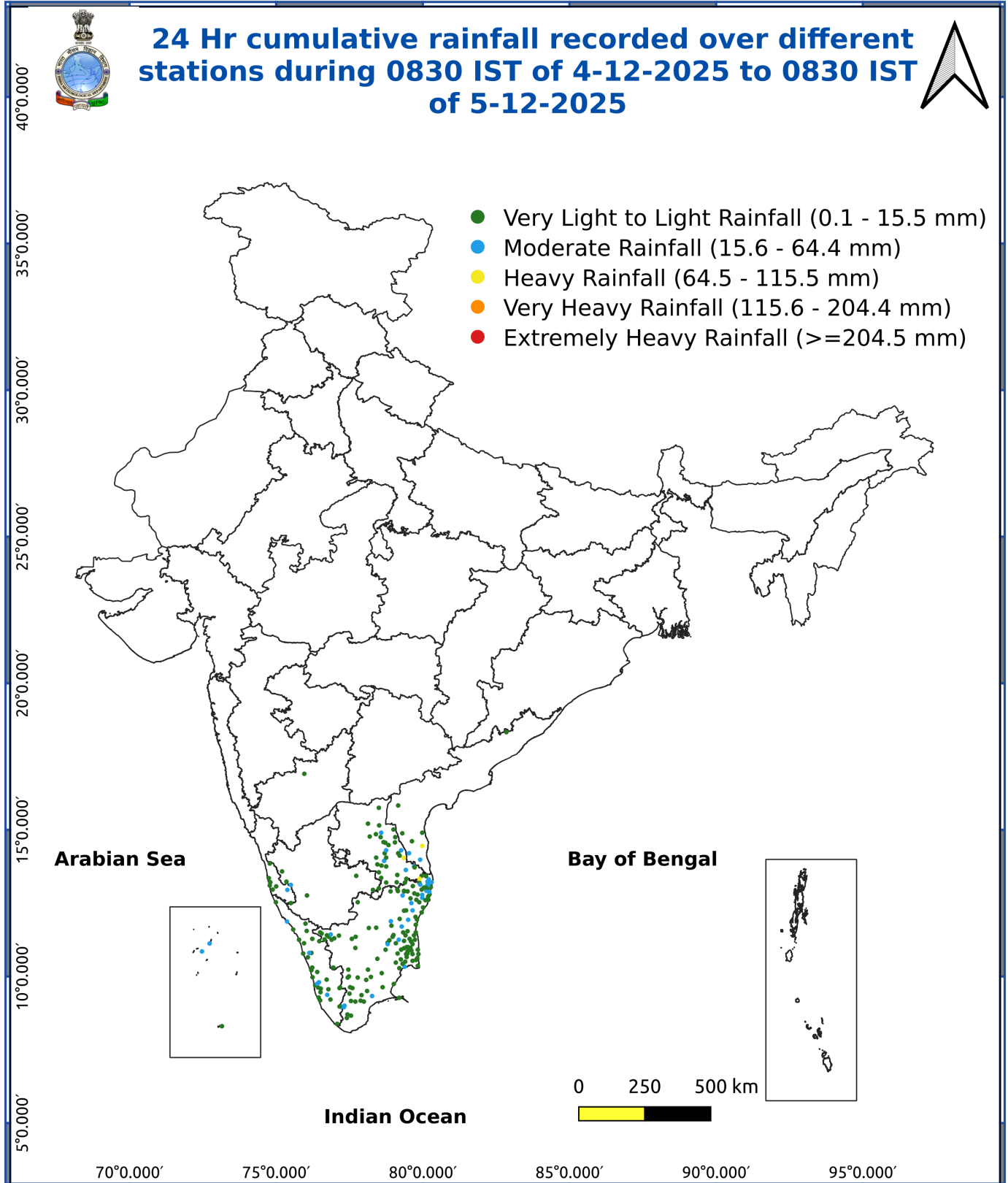


Fig. 4: Departure of Minimum Temp. Dated 2025-12-05





*Red color warning does not mean "Red Alert" Red color warning means "Take Action"

Forecast and warning for any day is valid from 0830 hours IST of day till 0830 hours IST of next day

For more details kindly visit <https://mausam.imd.gov.in> or contact 011-2434-4599

(Service to the nation since 1875)

Impact expected due to Cold Wave conditions over Punjab, Haryana Chandigarh & Delhi, Jharkhand & Odisha during 06th & 07th; Uttar Pradesh & East Rajasthan on 06th December.

Impact expected:

- An increased likelihood of various illnesses like flu, running/ stuffy nose or nosebleed, which usually set in or get aggravated due to prolonged exposure to cold.
- Do not ignore shivering. It is the first sign that the body is losing heat. Get Indoors.
- Frostbite can occur due to prolonged exposure to cold. The skin turns pale, hard and numb and eventually black blisters appear on exposed body parts such as fingers, toes, nose and or earlobes. Severe frostbite needs immediate medical attention and treatment.
- Impact on agriculture, crop, livestock, water supply, transport and power sector at some places.

Action suggested:

- Wear several layers of loose fitting, light weight; warm woollen clothing.
- Cover your head, neck, hands and toes adequately as majority of heat loss occurs through these body parts. Wear several layers of loose fitting, light weight; warm woollen clothing rather than one layer of heavy cloth.
- Eat vitamin-C rich fruits & vegetable and drink sufficient fluids preferably warm fluids to maintain adequate immunity.
- Avoid or limit outdoor activities.
- Keep dry, if wet, change cloths immediately to prevent loss of body heat. Wear insulated/waterproof shoes.
- Warm the affected area of the body slowly with lukewarm water; do not rub the skin vigorously.
- If the affected skin area turns black, immediately consult a doctor.
- Maintain ventilation while using Heaters to avoid inhaling toxic fumes.
- Take safety measures while using electrical and gas heating devices.
- Extreme care needed for vulnerable people.
- Seek medical attention as soon as possible for someone suffering from frostbite/ Hypothermia.
- Protect livestock from cold weather.

Agromet advisories for various parts of the country

Agromet advisories for likely impact of Heavy Rainfall

- In **Tamil Nadu**, postpone sowing of groundnut. Drain out excess rain water from the fields of rice, groundnut, sugarcane, cotton, black gram, maize and vegetables and plantations of coconut, banana, arecanut, mango, rubber, cinnamon and black pepper. Strengthen irrigation channels and field bunds in rice to avoid crop lodging. Provide support to banana plants with wooden poles to prevent them from falling.
- In **Royalaseema**, drain out excess water from rice nurseries, sugarcane, and already sown chickpea and black gram. Maintain optimum water level in already transplanted rice fields.

Livestock / Fishery

- Keep the animals inside the shed during heavy rainfall and provide them balanced feed.
- Store feed and fodder in a safe place to prevent spoilage.
- Construct an outlet with proper netting around the ponds to drain out excess water, thereby preventing fish from escaping in case of overflow.

Agromet advisories for likely impact of Thunderstorm / Gusty Winds

- Provide mechanical support to horticultural crops and staking or support to vegetables and young fruit plants / fruit-bearing plants to avoid lodging due to strong winds.

Agromet advisories for likely impact of Cold Waves / Low Temperatures

***Red color warning does not mean "Red Alert" Red color warning means "Take Action"**
Forecast and warning for any day is valid from 0830 hours IST of day till 0830 hours IST of next day
For more details kindly visit <https://mausam.imd.gov.in> or contact 011-2434-4599
(Service to the nation since 1875)

- In **Punjab, Haryana, Uttar Pradesh, East Rajasthan, North Interior Odisha** and **Jharkhand**, apply light and frequent irrigation to the standing crops in the evening to protect the crops from low temperature stress. Use mulching and cover vegetable nurseries and young fruit plants with straw / polythene sheets to maintain optimum soil temperature.

Livestock / Poultry

- Keep cattle inside the sheds during night and provide dry bedding to protect them from cold.
- Keep the chicks warm by providing artificial light in the poultry sheds.

Legends & abbreviations:

Region wise classification of meteorological Sub-Divisions:

- **Northwest India:** Western Himalayan Region (Jammu-Kashmir-Ladakh-Gilgit-Baltistan-Muzaffarabad, Himachal Pradesh and Uttarakhand); Punjab, Haryana-Chandigarh-Delhi; West Uttar Pradesh, East Uttar Pradesh, West Rajasthan and East Rajasthan.
- **Central India:** West Madhya Pradesh, East Madhya Pradesh, Vidarbha and Chhattisgarh.
- **East India:** Bihar, Jharkhand, Sub-Himalayan West Bengal & Sikkim; Gangetic West Bengal, Odisha and Andaman & Nicobar Islands.
- **Northeast India:** Arunachal Pradesh, Assam & Meghalaya and Nagaland, Manipur, Mizoram & Tripura.
- **West India:** Gujarat Region, Saurashtra & Kutch, Konkan & Goa, Madhya Maharashtra and Marathawada.
- **South India:** Coastal Andhra Pradesh & Yanam, Telangana, Rayalaseema, Coastal Karnataka, North Interior Karnataka, South Interior Karnataka, Kerala & Mahe, Tamil Nadu, Puducherry & Karaikal and Lakshadweep.

LEGENDS

- 1 अंडमान और निकोबार द्वीप समुह
- 2 अरुणाचल प्रदेश
- 3 असम और मेघालय
- 4 नागालैंड मनीपुर मीजोरम और त्रिपुरा
- 5 उप हिमालय पश्चिम बंगाल एवं सिक्किम
- 6 पश्चिम बंगाल
- 7 ओडिसा
- 8 झारखंड
- 9 बिहार
- 10 पूर्वी उत्तर प्रदेश
- 11 पश्चिम उत्तर प्रदेश
- 12 उत्तराखंड
- 13 हरियाणा चंडीगढ़ एवं दिल्ली
- 14 पंजाब
- 15 हिमाचल प्रदेश
- 16 जम्मू एवं कश्मीर एवं लद्दाख
- 17 पश्चिम राजस्थान
- 18 पूर्वी राजस्थान
- 19 पश्चिम मध्य प्रदेश
- 20 पूर्वी मध्य प्रदेश
- 21 गुजरात क्षेत्र
- 22 सौराष्ट्र एवं कच्छ
- 23 कोकण एवं गोवा
- 24 मध्य महाराष्ट्र
- 25 मराठावाड़ा
- 26 विदर्भ
- 27 छत्तीसगढ़
- 28 तटीय आंध्र प्रदेश एवं यनम
- 29 तेलंगाना
- 30 रायलसीमा
- 31 तमिलनाडु, पुदुचेरी एवं कराईकल
- 32 तटिय कर्नाटक
- 33 आंतरिक उत्तरी कर्नाटक
- 34 आंतरिक दक्षिणी कर्नाटक
- 35 केरल एवं माहे
- 36 लक्षद्वीप



1. Andaman & Nicobar Islands
2. Arunachal Pradesh
3. Assam & Meghalaya
4. Nagaland, Manipur, Mizoram & Tripura
5. Sub-Himalayan West Bengal & Sikkim
6. Gangetic West Bengal
7. Orissa
8. Jharkhand
9. Bihar
10. East Uttar Pradesh
11. West Uttar Pradesh
12. Uttarakhand
13. Haryana, Chd & Delhi
14. Punjab
15. Himachal Pradesh
16. Jammu & Kashmir and Ladakh
17. West Rajasthan
18. East Rajasthan
19. West Madhya Pradesh
20. East Madhya Pradesh
21. Gujarat
22. Saurashtra
23. Konkan & Goa
24. Madhya Maharashtra
25. Marathwada
26. Vidharbha
27. Chhattisgarh
28. Coastal Andhra Pradesh & Yanam
29. Telangana
30. Rayalaseema
31. Tamilnadu, Puducherry & Karaikal
32. Coastal Karnataka
33. North Interior Karnataka
34. South Interior Karnataka
35. Kerala & Mahe
36. Lakshadweep

SPATIAL DISTRIBUTION (% of Stations reporting)


% Stations	Category	% Stations	Category
76-100	Widespread (WS/Most Places)	26-50	Scattered (SCT/ A Few Places)
51-75	Fairly Widespread (FWS/ Many Places)	1-25	Isolated (ISOL)


Subdivision Colour


- NO WARNING
- WATCH (BE UPDATED)
- ALERT (BE PREPARED TO TAKE ACTION)
- WARNING (TAKE ACTION)

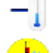
Probabilistic Forecast


Terms	Probability of Occurrence (%)
Unlikely	< 25
Likely	25 - 50
Very Likely	50 - 75
Most Likely	> 75


-  Heavy Rain


 Thunderstorm & Lightning


 Strong surface winds


 Cold Wave


 Hot & Humid


 Very Heavy Rain


 Hailstorm


 Heat Wave


 Cold Day


 Extremely Heavy Rain


 Dust Storm


 Hot Day

 Ground Frost

 Heavy Snow

 Dust Raising Winds

 Warm Night

 Fog

*Red color warning does not mean "Red Alert" Red color warning means "Take Action"

Forecast and warning for any day is valid from 0830 hours IST of day till 0830 hours IST of next day

For more details kindly visit <https://mausam.imd.gov.in> or contact 011-2434-4599

(Service to the nation since 1875)

LEGENDS

WARNING

WARNING (TAKE ACTION)
ALERT (BE PREPARED)
WATCH (BE UPDATED)
NO WARNING (NO ACTION)

Probabilistic Forecast

Terms	Probability of Occurrence (%)
Unlikely	< 25
Likely	25 - 50
Very Likely	50 - 75
Most Likely	> 75



Heavy: 64.5 to 115.5 mm/cm *
Very Heavy: 115.6 to 204.4 mm/cm *
Extremely Heavy: > 204.4 mm/cm *



When maximum temperature of a station reaches $\geq 40^{\circ}\text{C}$ for plains and $\geq 30^{\circ}\text{C}$ for hilly regions
(a) Based on Departure from normal

Heat Wave: Maximum Temperature Departure from normal 4.5°C to 6.4°C .
Severe Heat Wave: Maximum Temperature Departure from normal $\geq 6.5^{\circ}\text{C}$

(b). Based on Actual maximum temperature

Heat Wave: When actual maximum temperature $\geq 45^{\circ}\text{C}$.
Severe Heat Wave: When actual maximum temperature $\geq 47^{\circ}\text{C}$

(c). Criteria for heat wave for coastal stations

When maximum temperature departure is $> 4.5^{\circ}\text{C}$ from normal. Heat Wave may be described provided maximum temperature $\geq 37^{\circ}\text{C}$



When maximum temperature remains 40°C

Warm Night: When minimum temperature departure 4.5°C to 6.4°C .
Severe Warm Night: When minimum temperature departure $> 6.4^{\circ}\text{C}$.



When minimum temperature of a station $\leq 10^{\circ}\text{C}$ for plains and $\leq 0^{\circ}\text{C}$ for hilly regions.

(a). Based on departure

Cold Wave: Minimum Temperature Departure from normal -4.5°C to -6.4°C .
Severe Cold Wave: Minimum Temperature Departure from normal $\leq -6.5^{\circ}\text{C}$

(b) Based on actual Minimum Temperature (for Plains only)

Cold Wave: When Minimum Temperature is $\leq 4.0^{\circ}\text{C}$
Severe Cold Wave: When Minimum Temperature is $\leq 2.0^{\circ}\text{C}$

(c) For Coastal Stations

When Minimum Temperature departure is $\leq -4.5^{\circ}\text{C}$ & actual Minimum Temperature is $\leq 15^{\circ}\text{C}$



When minimum temperature of a station $\leq 10^{\circ}\text{C}$ for plains and $\leq 0^{\circ}\text{C}$ for hilly regions
Based on departure

Cold Day: Maximum Temperature Departure from normal -4.5°C to -6.4°C .
Severe Cold Day: Maximum Temperature Departure from normal $\leq -6.5^{\circ}\text{C}$



Phenomenon of small droplets suspended in air and the horizontal visibility $< 1\text{km}$

Moderate Fog: When the visibility between 500-200 metres
Dense Fog: when the visibility between 50-200 metres
Very Dense Fog: when the visibility < 50 metres



Sudden electrical discharges manifested by a flash of light (Lightning) and a sharp rumbling sound (thunder)



An ensemble of particles of dust or sand energetically lifted to great heights by a strong and turbulent wind.



Ice deposits on ground

Air temperature $\leq 4^{\circ}\text{C}$ (over Plains)



A strong wind that rises suddenly, lasts for at least 1 minute.

Moderate: Wind speed 52-61 kmph
Severe: Wind speed 62-87 kmph
Very Severe: Wind speed > 87 kmph



Effect of various waves in the sea over specific area

Rough to very rough: Wind speed 41-62 kmph (22-33 knots) & Wave height 2.5-6 metre
High to very high: Wind speed 63-117 kmph (34-63 knots) & Wave height 6-14 metre
Phenomenal: Wind speed > 117 kmph (> 63 knots) & Wave height > 14 metre



Cyclonic Storm: Wind speed 62-87 kmph (34-47 knots)

Severe Cyclonic Storm: Wind speed 88-117 kmph (48-63 knots)
Very Severe Cyclonic Storm: Wind speed 118-165 kmph (64-89 knots)
Extremely Severe Cyclonic Storm: Wind speed 166-220 kmph (90-119 knots)
Super Cyclone Storm: Wind speed > 220 kmph (> 119 knots)

*Red color warning does not mean "Red Alert" Red color warning means "Take Action"

Forecast and warning for any day is valid from 0830 hours IST of day till 0830 hours IST of next day

For more details kindly visit <https://mausam.imd.gov.in> or contact 011-2434-4599

(Service to the nation since 1875)