

2025-08-08

Time of Issue: 16:50:00 hours IST  
(Evening)

## ALL INDIA WEATHER SUMMARY AND FORECAST BULLETIN

### Significant Weather Features

#### Weather Forecast and Warnings:

##### Northwest India:

**Extremely heavy rainfall ( $\geq 21$  cm) very likely at isolated places over East Uttar Pradesh on 08<sup>th</sup> August.**

Isolated **heavy rainfall** likely over Himachal Pradesh & Uttarakhand during 08<sup>th</sup>-14<sup>th</sup>; Jammu-Kashmir during 09<sup>th</sup>-14<sup>th</sup>; Punjab on 10<sup>th</sup>; Haryana, Chandigarh on 11<sup>th</sup> & 13<sup>th</sup>; Uttar Pradesh on 08<sup>th</sup>, 09<sup>th</sup> & during 12<sup>th</sup>-14<sup>th</sup> August with **very heavy rainfall** over Jammu-Kashmir on 13<sup>th</sup> & 14<sup>th</sup>; Himachal Pradesh during 11<sup>th</sup>-14<sup>th</sup>; Uttarakhand on 08<sup>th</sup>, 10<sup>th</sup>, 11<sup>th</sup>, 13<sup>th</sup> & 14<sup>th</sup>; West Uttar Pradesh on 08<sup>th</sup>, 13<sup>th</sup> & 14<sup>th</sup>; East Uttar Pradesh on 12<sup>th</sup> & 13<sup>th</sup> August.

##### Northeast India:

Light/moderate rainfall at many places accompanied with thunderstorm, lightning and isolated **heavy rainfall** likely to continue over Arunachal Pradesh, Assam & Meghalaya during 08<sup>th</sup>-14<sup>th</sup>; Nagaland, Manipur, Mizoram & Tripura on 08<sup>th</sup>, 09<sup>th</sup> & during 12<sup>th</sup>-14<sup>th</sup> August with isolated **very heavy rainfall over Arunachal Pradesh during 08<sup>th</sup>-10<sup>th</sup> and Assam & Meghalaya on 08<sup>th</sup>, 11<sup>th</sup> & 12<sup>th</sup> August.**

Light/moderate rainfall at many places accompanied with thunderstorm & lightning likely over Western Himalayan region and many/some places over the plains during next 7 days.

##### South Peninsular India:

Isolated **heavy rainfall** likely over Kerala & Mahe on 08<sup>th</sup>; Tamil Nadu, Rayalaseema on 08<sup>th</sup> & 09<sup>th</sup>; Coastal Karnataka on 14<sup>th</sup>; Interior Karnataka on 08<sup>th</sup> & 14<sup>th</sup>; Coastal Andhra Pradesh & Yanam on 08<sup>th</sup>, 09<sup>th</sup> & during 12<sup>th</sup>-14<sup>th</sup>; Telangana during 08<sup>th</sup>-14<sup>th</sup> August.

Strong surface winds (speed reaching 40-50 kmph) very likely over South Peninsular India during next 2 days.

Light to moderate rainfall at some places accompanied with thunderstorm & lightning likely over Tamil Nadu, Kerala & Mahe, Lakshadweep, Karnataka, Rayalaseema, Coastal Andhra Pradesh & Yanam and Telangana during next 5 days.

##### East & Central India:

Isolated **heavy rainfall** likely over West Madhya Pradesh on 08<sup>th</sup> & 09<sup>th</sup>; East Madhya Pradesh on 08<sup>th</sup>, 09<sup>th</sup>, 13<sup>th</sup> & 14<sup>th</sup>; Vidarbha & Chhattisgarh on 08<sup>th</sup> & during 12<sup>th</sup>-14<sup>th</sup>; Sub-Himalayan West Bengal & Sikkim during 08<sup>th</sup>-14<sup>th</sup>; Bihar during 08<sup>th</sup>-13<sup>th</sup>; Odisha on 09<sup>th</sup> & during 12<sup>th</sup>-14<sup>th</sup>; Andaman & Nicobar Islands on 11<sup>th</sup>; Jharkhand on 12<sup>th</sup> August with isolated **very heavy rainfall over Sub-Himalayan West Bengal & Sikkim on 08<sup>th</sup>, 11<sup>th</sup> & 12<sup>th</sup>; Bihar, Jharkhand & Odisha on 08<sup>th</sup> August.**

Light to moderate rainfall at most/many places accompanied with thunderstorm & lightning likely over the region during next 5 days.

##### West India:

Isolated **heavy rainfall** likely over Madhya Maharashtra & Marathwada on 08<sup>th</sup>; Konkan & Goa during 12<sup>th</sup>-14<sup>th</sup> August.

Light to moderate rainfall at many/some places very likely over the region during next 5-6 days.

##### Fishermen warning:

**\*Red color warning does not mean "Red Alert" Red color warning means "Take Action"**

Forecast and warning for any day is valid from 0830 hours IST of day till 0830 hours IST of next day

For more details kindly visit <https://mausam.imd.gov.in> or contact 011-2434-4599

(Service to the nation since 1875)

**Fishermen are advised to avoid venturing into the following from 08<sup>th</sup> August to 13<sup>th</sup> August 2025 to the following Areas:**

**Arabian Sea** Some parts of Northwest Arabian Sea adjoining Oman coasts during 09<sup>th</sup> to 13<sup>th</sup> August, some parts of southwest and westcentral Arabian Sea during 08<sup>th</sup> to 13<sup>th</sup> August.

Along and off the Somalia coast and adjoining sea areas during 08<sup>th</sup> to 13<sup>th</sup> August, along and off Oman coast during 09<sup>th</sup> to 13<sup>th</sup> of August.

**Bay of Bengal:**

Along and off north Odisha & west Bengal coast, northwest & adjoining northeast Bay of Bengal on 8<sup>th</sup> August and over some parts of Gulf of Mannar adjoining Comorin area and over Sri Lanka coasts, few parts of southwest Bay of Bengal during 08<sup>th</sup> to 13<sup>th</sup>; Over Andaman Sea during 11<sup>th</sup> to 13<sup>th</sup> August.

**Main Weather Observations:**

❖ **Rainfall distribution** (from 0830 hours IST of yesterday to 0830 hours IST of today): **at most places** over Andaman & Nicobar Islands, Assam & Meghalaya, Nagaland, Manipur, Mizoram & Tripura, Sub Himalayan West Bengal & Sikkim, Gangetic West Bengal, Jharkhand, East Uttar Pradesh and Telangana; **at many places** over Arunachal Pradesh, Odisha, Bihar, Chhattisgarh, Rayalaseema, Coastal Karnataka, North Interior Karnataka and Lakshadweep; **at a few places** over Uttarakhand, East Madhya Pradesh, Coastal Andhra Pradesh & Yanam, South Interior Karnataka and Kerala & Mahe; **at isolated places** over West Uttar Pradesh, Haryana-Chandigarh-Delhi, Punjab, Himachal Pradesh, Jammu-Kashmir-Ladakh-Gilgit-Baltistan-Muzaffarabad, East Rajasthan, West Madhya Pradesh, Gujarat Region, Saurashtra & Kutch and Tamil Nadu, Puducherry & Karaikal; **Dry** over rest of the country.

❖ **Significant rainfall recorded(in cm)** (from 0830 hours IST of yesterday to 0830 hours IST of today): **East Uttar Pradesh:** Colonganj (dist Gonda) 21; Lambhuaa (dist Sultanpur), Kaiserganj (dist Bahraich), Ayodhya (ag) (dist Ayodhya) 16 Each; Ram Sanehi Ghat Tehsil (dist Barabanki), Jaunpur CWC (dist Jaunpur) 14 Each; Elgin Bridge (dist Barabanki) 13; Ramnagar (dist Barabanki), Gonda Sadar (dist Gonda), Jalalpur Fmo (dist Ambedkar Nagar), Gonda CWC (dist Gonda) 11 Each; **Sub Himalayan West Bengal & Sikkim:** Buxaduar (dist Alipurduar) 15; Siliguri PTO (dist Darjeeling) 14; Banarhat High School (dist Jalpaiguri), Palashbari Tea Estate (dist Jalpaiguri), Toorsa Tea Garden (dist Alipurduar) 11 Each; **Telangana:** Atmakur M (dist Y. Bhuvanagiri) 14; Jadcherla (dist Mahabubnagar), Kodada (dist Suryapet), Shekpet (dist Hyderabad), Amberpet (dist Hyderabad) 13 Each; Sarooranagar (dist Rangareddy), Alladurg (dist Medak) 12 Each; Mudhole (dist Nirmal), Devaruppal (dist Jangaon) 10 Each; **Chhattisgarh:** Orcha (dist Narayanpur) 12; **Bihar:** Madanpur (dist Aurangabad) 12; Bokhara (dist Sitamarhi) 11; Araria (dist Araria) 10; **Rayalaseema:** Kodur (dist Ysr District) 11; **Jharkhand:** Barkisuriya (dist Giridih) 11; Ghatsila (dist East Singhbhum), Simdega (dist Simdega) 10 Each; **Coastal Andhra Pradesh & Yanam:** Paleru Bridge (dist Ntr District), Udayagiri (dist Spsr Nellore) 10 Each; **East Madhya Pradesh:** Rewa-aws (dist Rewa) 10; **Odisha:** Aska (dist Ganjam) 10; **Gangetic West Bengal:** Contai (dist East Midnapore) 10; **Nagaland, Manipur, Mizoram & Tripura:** Chandel (dist Chandel) 10.

❖ **Heavy Rainfall observed** (from 0830 hours IST of yesterday to 0830 hours IST of today): **Extremely heavy rain** at isolated places over East Uttar Pradesh. **Heavy to very heavy rain** at isolated places over Sub Himalayan West Bengal & Sikkim, Bihar, East Uttar Pradesh, Chhattisgarh and Telangana. **Heavy rain** at isolated places over Andaman & Nicobar Islands, Assam & Meghalaya, Nagaland, Manipur, Mizoram & Tripura, Gangetic West Bengal, Odisha, Jharkhand, Uttarakhand, East Madhya Pradesh, Coastal Andhra Pradesh & Yanam, Rayalaseema, Tamil Nadu, Puducherry & Karaikal and North Interior Karnataka.

❖ **Minimum Temperature Departures (as on 08-08-2025): markedly above normal(> 5.1°C)** at most places over Himachal Pradesh; at isolated places over Assam & Meghalaya, East Uttar Pradesh, West Uttar Pradesh, West Rajasthan and West Madhya Pradesh.

\*Red color warning does not mean "Red Alert" Red color warning means "Take Action"

Forecast and warning for any day is valid from 0830 hours IST of day till 0830 hours IST of next day

For more details kindly visit <https://mausam.imd.gov.in> or contact 011-2434-4599

(Service to the nation since 1875)

**appreciably above normal(3.1°C to 5.0°C)** at few places over East Madhya Pradesh; at isolated places over Sub Himalayan West Bengal & Sikkim, Gujarat Region and Saurashtra & Kutch. **above normal(1.6°C to 3.0°C)** at many places over Uttarakhand and South Interior Karnataka; at few places over Andaman & Nicobar Islands, Odisha, Punjab, Madhya Maharashtra and Vidarbha; at isolated places over Nagaland, Manipur, Mizoram & Tripura, Bihar, Haryana-Chandigarh-Delhi, East Rajasthan, Coastal Andhra Pradesh & Yanam, Tamil Nadu, Puducherry & Karaikal and Kerala & Mahe. **near normal(-1.5°C to 1.5°C)** at many places over Gangetic West Bengal, Jharkhand, Jammu-KashmirLadakh-Gilgit-Baltistan-Muzaffarabad, Chhattisgarh and Rayalaseema; at most places over Arunachal Pradesh, Konkan & Goa, Marathwada, Coastal Karnataka, North Interior Karnataka and Lakshadweep; at few places over Telangana. **The lowest minimum temperature** of 18.6°C is reported at MATHERAN (MAHARASHTRA) over the Plains of India.

❖ **Maximum Temperature Departures (as on 07-08-2025): markedly above normal(> 5.1°C)** at isolated places over Odisha, Himachal Pradesh, Madhya Maharashtra, Vidarbha and Chhattisgarh. **appreciably above normal(3.1°C to 5.0°C)** at many places over Gujarat Region; at few places over West Madhya Pradesh, East Madhya Pradesh, Marathwada, Coastal Andhra Pradesh & Yanam, Telangana and North Interior Karnataka; at isolated places over Uttarakhand, Haryana-Chandigarh-Delhi, East Rajasthan and Saurashtra & Kutch. **above normal(1.6°C to 3.0°C)** at few places over Jharkhand, West Uttar Pradesh, Punjab and Rayalaseema; at isolated places over Andaman & Nicobar Islands, Bihar, West Rajasthan, Tamil Nadu, Puducherry & Karaikal, South Interior Karnataka and Kerala & Mahe. **near normal(-1.5°C to 1.5°C)** at many places over Gangetic West Bengal; at most places over Sub Himalayan West Bengal & Sikkim, East Uttar Pradesh, Jammu-KashmirLadakh-Gilgit-Baltistan-Muzaffarabad, Konkan & Goa, Coastal Karnataka and Lakshadweep; at few places over Assam & Meghalaya; at isolated places over Nagaland, Manipur, Mizoram & Tripura. **The highest maximum temperature** of 40.0°C is reported at MADURAI (A) (TAMIL NADU).



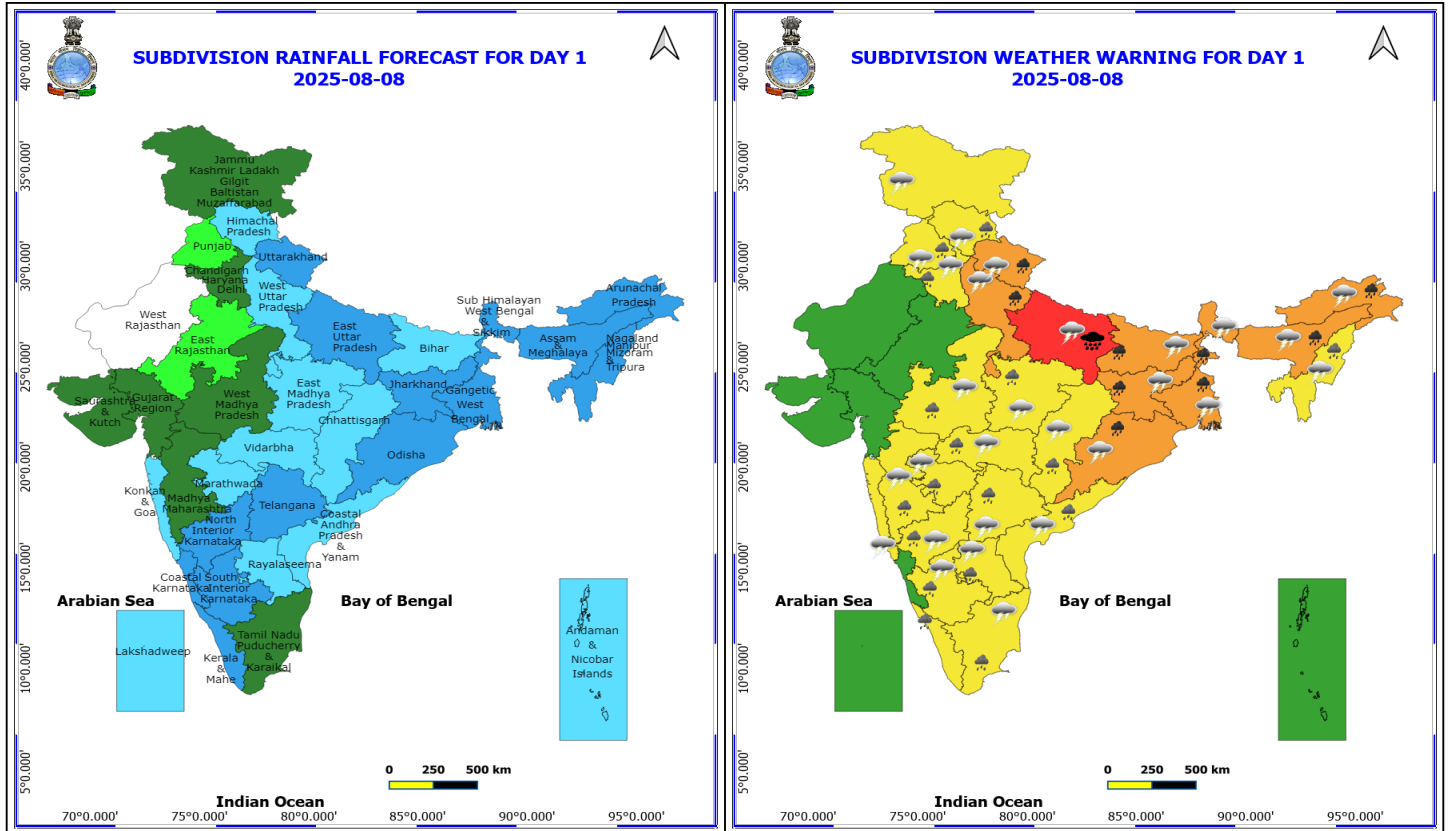
**Meteorological Analysis (Based on 1430 hours IST)**

- The **monsoon trough** at mean sea level pass through Ferozpur, Chandigarh, Dehradun, Kheri, Patna, Bankura, Digha and thence east-southeastwards to northeast Bay of Bengal.
- The **Western Disturbance** as a cyclonic circulation over north Punjab & neighbourhood at 5.8 km above mean sea level and the trough aloft in middle tropospheric level with its axis at 7.6 km above mean sea level roughly along Long. 76°E to north of Lat. 32°N persists.
- The **upper air cyclonic circulation** over Bangladesh & west Bengal coasts and adjoining areas of northwest Bay of Bengal between 3.1 & 5.8 km above mean sea level tilting southwestwards with height persists.
- The **trough** from northeast Uttar Pradesh to south Bangladesh across Bihar, Jharkhand, northern parts of Gangetic West Bengal persisted extending upto 3.1 km above mean sea level persists.
- The **upper air cyclonic circulation** over north interior Karnataka and neighbourhood at 5.8 km above mean sea level persists.
- The **upper air cyclonic circulation** over south coastal Andhra Pradesh between 1.5 & 3.1 km above mean sea level persists.
- The north-south **trough** runs from south Coastal Andhra Pradesh to north Sri Lanka across coastal Tamil Nadu extending upto 1.5 km above sea level persists.
- A low pressure area is likely to form northwest & adjoining westcentral Bay of Bengal around 13<sup>th</sup> August, 2025.

**Weather Forecast for next 7 days (Upto 1430 hours IST of 14 August)**

- Fairly widespread to widespread rainfall likely over the most parts of the country except Madhya Maharashtra and Marathwada where Isolated rainfall is likely.





## 8 August (Day 1)

- ❖ **Heavy to Very Heavy Rainfall with isolated Extremely Heavy Rainfall** very likely at isolated places over East Uttar Pradesh.
- ❖ **Heavy to Very Heavy Rainfall** very likely at isolated places over Arunachal Pradesh, Assam & Meghalaya, Bihar, Jharkhand, Odisha, south Uttarakhand, West Bengal & Sikkim and West Uttar Pradesh.
- ❖ **Heavy Rainfall** very likely at isolated places over Andhra Pradesh, Chhattisgarh, Himachal Pradesh, Punjab, Haryana, Interior Karnataka, Kerala & Mahe, Madhya Pradesh, Maharashtra, Nagaland, Manipur, Mizoram and Tripura, Tamil Nadu Puducherry & Karaikal and Telangana.
- ❖ **Thunderstorm accompanied with lightning & gusty winds(30-40kmph)** very likely at isolated places over Bihar and West Bengal & Sikkim.
- ❖ **Thunderstorm accompanied with Lightning** very likely at isolated places over Andhra Pradesh, Arunachal Pradesh, Assam & Meghalaya, Chhattisgarh, Himachal Pradesh, Interior Karnataka, Jammu-Kashmir-Ladakh-Gilgit-Baltistan-Muzaffarabad, Jharkhand, Konkan & Goa, Madhya Pradesh, Maharashtra, Nagaland, Manipur, Mizoram and Tripura, Odisha, Tamil Nadu Puducherry & Karaikal, Telangana, Uttar Pradesh and Uttarakhand.

Squally wind with speed reaching 45 kmph to 55 kmph gusting to 65 kmph is likely to prevail along and off Somalia, some parts of southwest adjoining westcentral Arabian Sea.

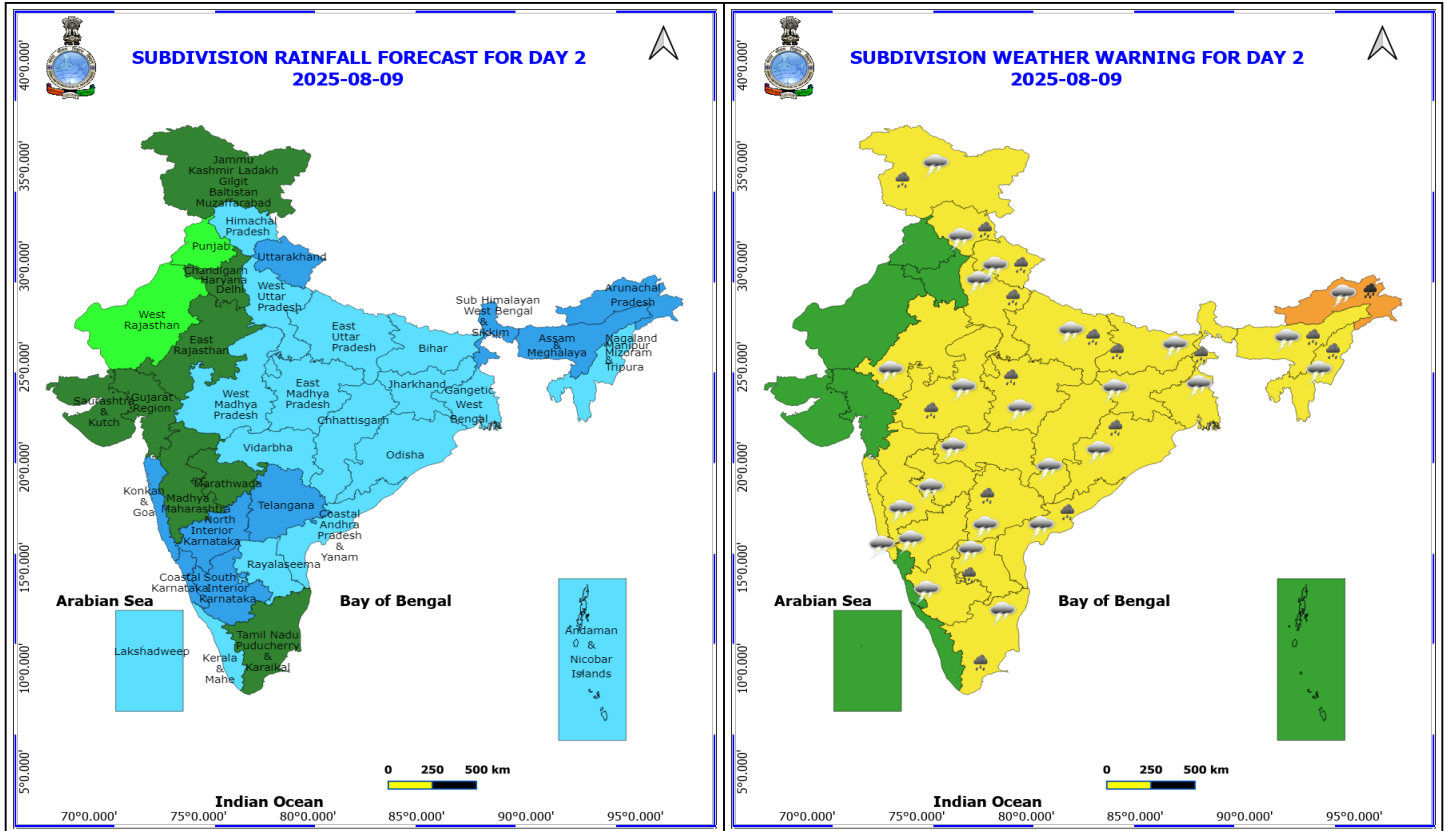
Squally weather with wind speed reaching 35 - 45 kmph gusting to 55 kmph likely to prevail along and off Odisha, West Bengal coasts, many parts of northwest Bay of Bengal & adjoining northeast Bay of Bengal, south Sri Lanka coast, few parts of southwest Bay of Bengal, few parts of Comorin area adjoining Gulf of Mannar.

**\*Red color warning does not mean "Red Alert" Red color warning means "Take Action"**

Forecast and warning for any day is valid from 0830 hours IST of day till 0830 hours IST of next day

For more details kindly visit <https://mausam.imd.gov.in> or contact 011-2434-4599

(Service to the nation since 1875)



## 9 August (Day 2)

- ❖ **Heavy to Very Heavy Rainfall** very likely at isolated places over Arunachal Pradesh.
- ❖ **Heavy Rainfall** very likely at isolated places over Andhra Pradesh, Assam & Meghalaya, Bihar, Himachal Pradesh, Jammu-Kashmir-Ladakh-Gilgit-Baltistan-Muzaffarabad, Madhya Pradesh, Nagaland, Manipur, Mizoram and Tripura, Odisha, Sub Himalayan West Bengal & Sikkim, Tamil Nadu Puducherry & Karaikal, Telangana, Uttar Pradesh and Uttarakhand.
- ❖ **Thunderstorm accompanied with lightning & gusty winds(30-40kmph)** very likely at isolated places over Bihar, Gangetic West Bengal and Jammu-Kashmir-Ladakh-Gilgit-Baltistan-Muzaffarabad.
- ❖ **Thunderstorm accompanied with Lightning** very likely at isolated places over Andhra Pradesh, Arunachal Pradesh, Assam & Meghalaya, Chhattisgarh, East Rajasthan, Himachal Pradesh, Interior Karnataka, Jharkhand, Konkan & Goa, Madhya Pradesh, Maharashtra, Nagaland, Manipur, Mizoram and Tripura, Odisha, Tamil Nadu Puducherry & Karaikal, Telangana, Uttar Pradesh and Uttarakhand.

Squally wind with speed reaching 45 kmph to 55 kmph gusting to 65 kmph is likely to prevail along and off Somalia, few parts of westcentral Arabian Sea, some parts of southwest Arabian Sea, some parts of northwest Arabian sea.

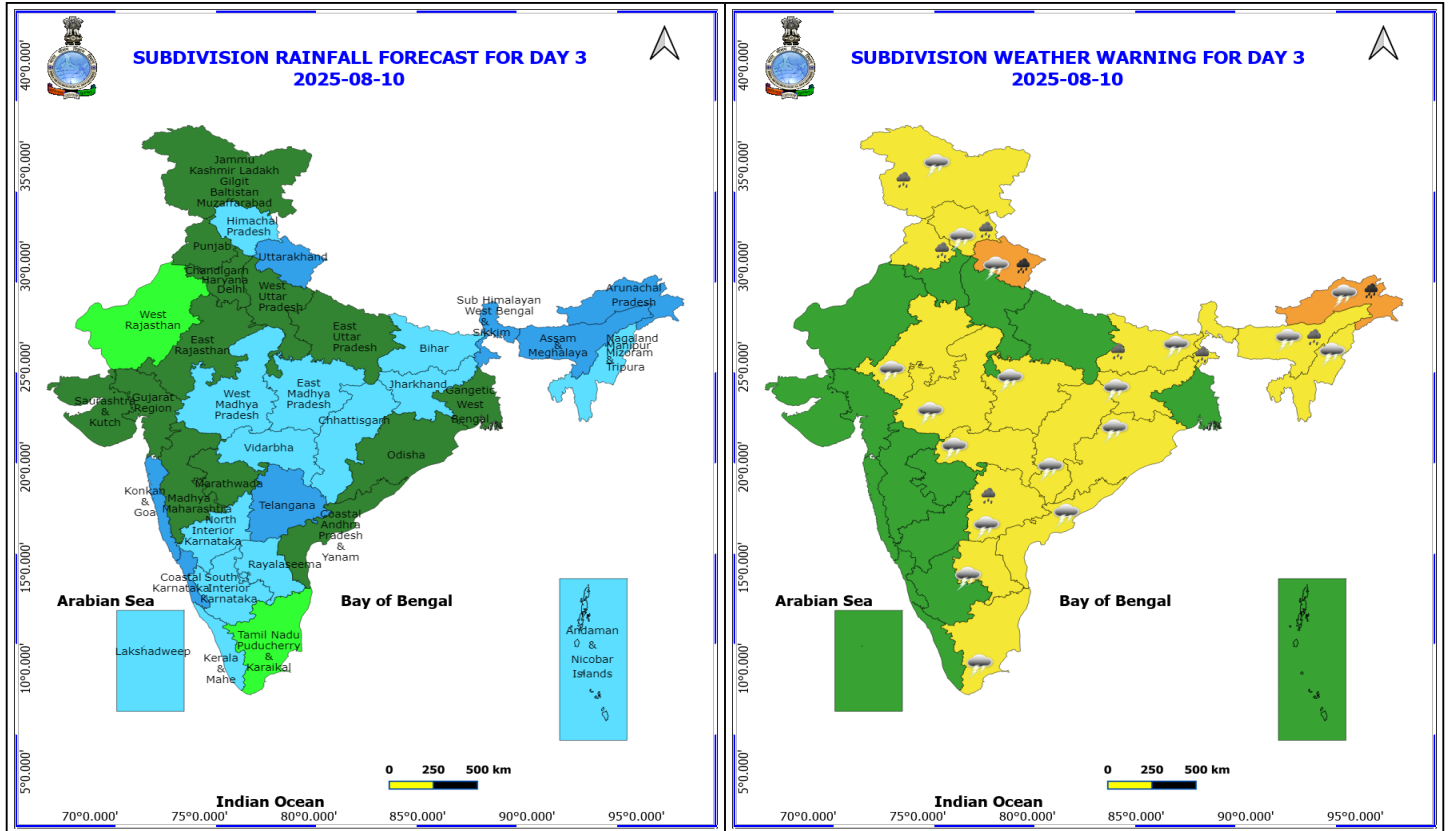
Squally weather with wind speed reaching 35 - 45 kmph gusting to 55 kmph likely to prevail over south Sri Lanka coast, some parts of southwest Bay of Bengal, Gulf of Mannar adjoining Comorin area.

**\*Red color warning does not mean "Red Alert" Red color warning means "Take Action"**

Forecast and warning for any day is valid from 0830 hours IST of day till 0830 hours IST of next day

For more details kindly visit <https://mausam.imd.gov.in> or contact 011-2434-4599

(Service to the nation since 1875)



### 10 August (Day 3)

- ❖ **Heavy to Very Heavy Rainfall** very likely at isolated places over Arunachal Pradesh and Uttarakhand.
- ❖ **Heavy Rainfall** very likely at isolated places over Assam & Meghalaya, Bihar, Himachal Pradesh, Jammu-Kashmir-Ladakh-Gilgit-Baltistan-Muzaffarabad, Punjab, Sub Himalayan West Bengal & Sikkim and Telangana.
- ❖ **Thunderstorm accompanied with lightning & gusty winds(30-40kmph)** very likely at isolated places over Bihar and Jammu-Kashmir-Ladakh-Gilgit-Baltistan-Muzaffarabad.
- ❖ **Thunderstorm accompanied with Lightning** very likely at isolated places over Andhra Pradesh, Arunachal Pradesh, Assam & Meghalaya, Chhattisgarh, East Rajasthan, Himachal Pradesh, Jharkhand, Madhya Pradesh, Nagaland, Manipur, Mizoram and Tripura, Odisha, Tamil Nadu Puducherry & Karaikal, Telangana, Uttarakhand and Vidarbha.

Squally wind with speed reaching 45 kmph to 55 kmph gusting to 65 kmph is likely to prevail along and off Somalia & Oman coasts, some parts of westcentral Arabian Sea, some parts of southwest Arabian Sea & northwest Arabian sea.

Squally weather with wind speed reaching 35 - 45 kmph gusting to 55 kmph likely to prevail over some parts of southwest Bay of Bengal, south Sri Lanka coast, Gulf of Mannar adjoining Comorin area.

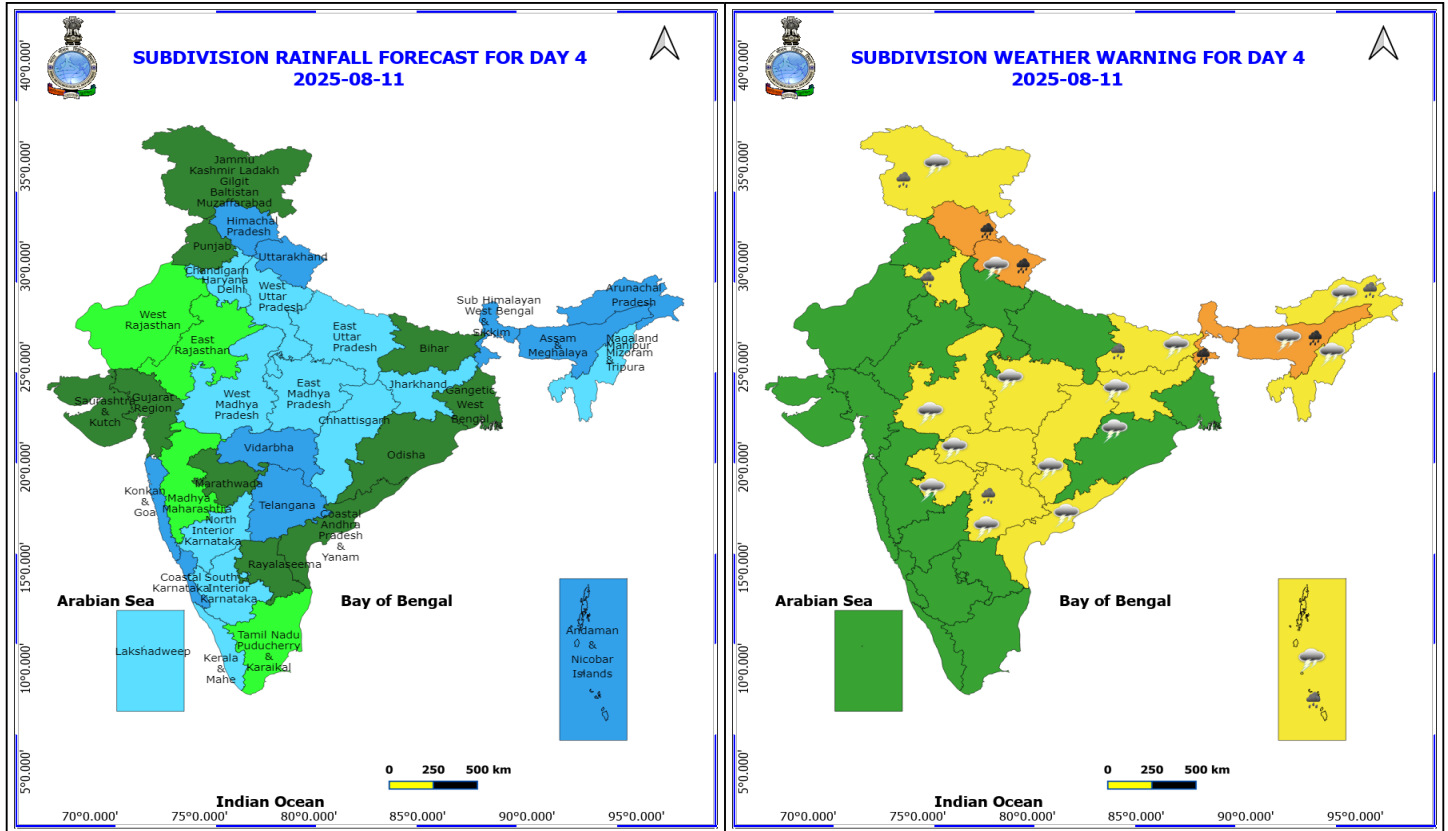
**\*Red color warning does not mean "Red Alert" Red color warning means "Take Action"**

Forecast and warning for any day is valid from 0830 hours IST of day till 0830 hours IST of next day

For more details kindly visit <https://mausam.imd.gov.in> or contact 011-2434-4599

(Service to the nation since 1875)





## 11 August (Day 4)

- ❖ **Heavy to Very Heavy Rainfall** likely at isolated places over Assam & Meghalaya, Himachal Pradesh, Sub Himalayan West Bengal & Sikkim and Uttarakhand.
- ❖ **Heavy Rainfall** likely at isolated places over Andaman & Nicobar Islands, Arunachal Pradesh, Bihar, Haryana, Chandigarh & Delhi, Jammu-Kashmir-Ladakh-Gilgit-Baltistan-Muzaffarabad and Telangana.
- ❖ **Thunderstorm accompanied with lightning & gusty winds(30-40kmph)** likely at isolated places over Andaman & Nicobar Islands, Bihar and Jammu-Kashmir-Ladakh-Gilgit-Baltistan-Muzaffarabad.
- ❖ **Thunderstorm accompanied with Lightning** likely at isolated places over Arunachal Pradesh, Assam & Meghalaya, Chhattisgarh, Coastal Andhra Pradesh, Jharkhand, Madhya Pradesh, Marathwada, Nagaland, Manipur, Mizoram and Tripura, Odisha, Telangana, Uttarakhand and Vidarbha.

Squally wind with speed reaching 45 kmph to 55 kmph gusting to 65 kmph is likely to prevail along and off Somalia & Oman coasts, some parts of southwest Arabian Sea and northwest Arabian sea.

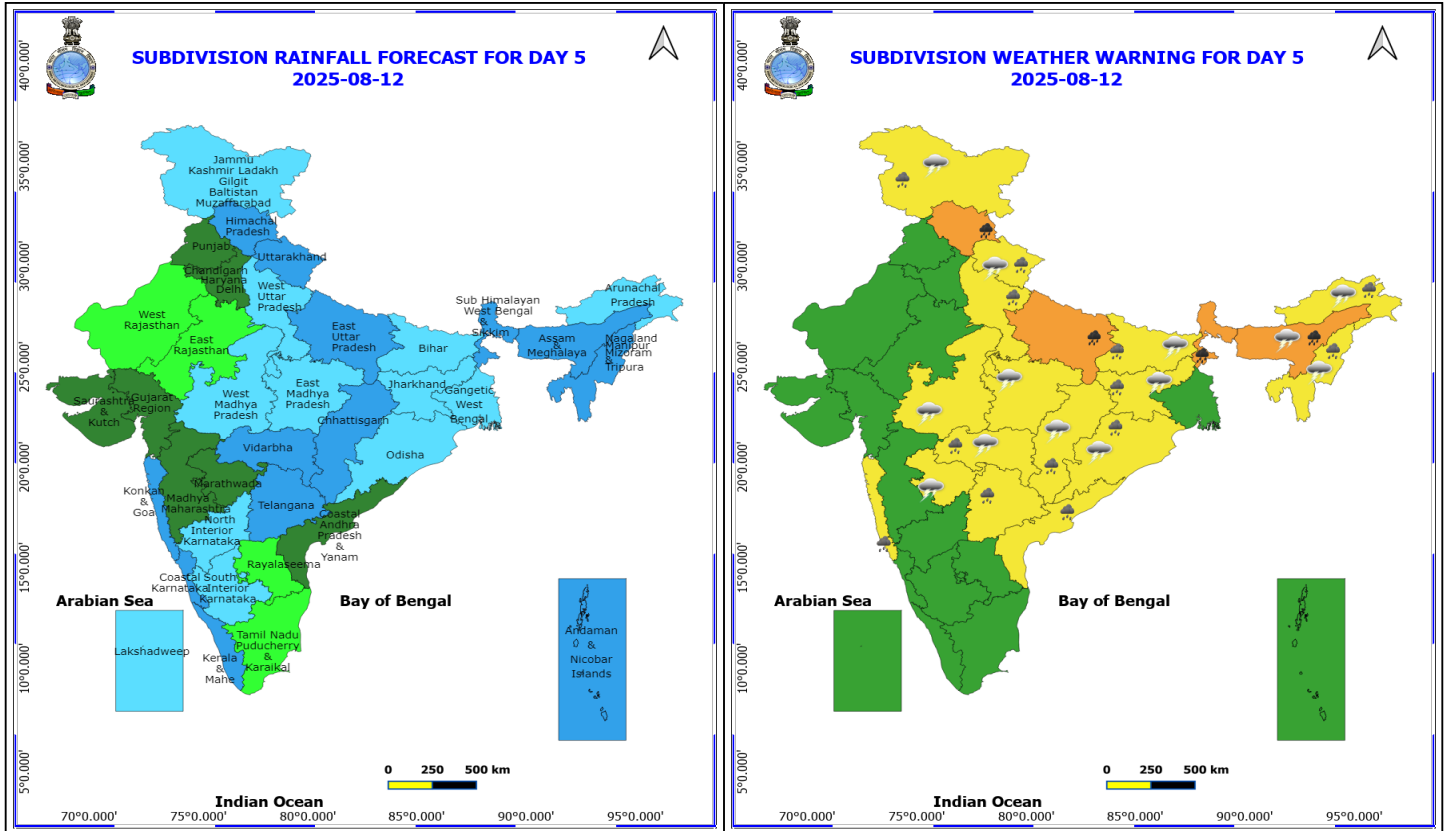
Squally weather with wind speed reaching 35 - 45 kmph gusting to 55 kmph likely to prevail over some parts of southwest Bay of Bengal, south Sri Lanka coast, Gulf of Mannar adjoining Comorin area, over Andaman sea.

**\*Red color warning does not mean "Red Alert" Red color warning means "Take Action"**

Forecast and warning for any day is valid from 0830 hours IST of day till 0830 hours IST of next day

For more details kindly visit <https://mausam.imd.gov.in> or contact 011-2434-4599

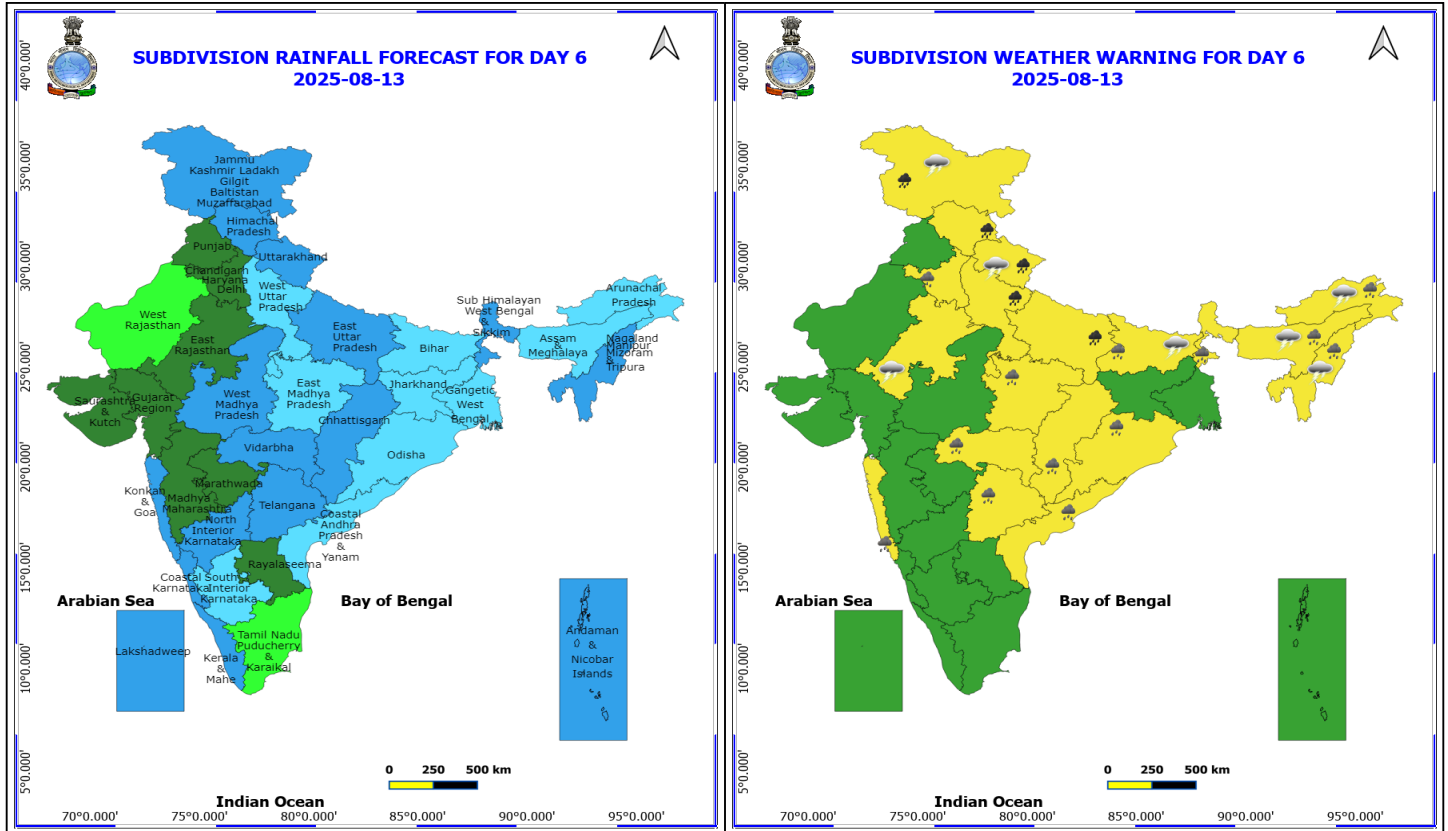
(Service to the nation since 1875)



## 12 August (Day 5)

- ❖ **Heavy to Very Heavy Rainfall** likely at isolated places over Assam & Meghalaya, East Uttar Pradesh, Himachal Pradesh and Sub Himalayan West Bengal & Sikkim.
- ❖ **Heavy Rainfall** likely at isolated places over Arunachal Pradesh, Bihar, Chhattisgarh, Coastal Andhra Pradesh, Jammu-Kashmir-Ladakh-Gilgit-Baltistan-Muzaffarabad, Jharkhand, Konkarn & Goa, Nagaland, Manipur, Mizoram and Tripura, Odisha, Telangana, Uttarakhand, Vidarbha and West Uttar Pradesh.
- ❖ **Thunderstorm accompanied with lightning & gusty winds(30-40kmph)** likely at isolated places over Bihar and Jammu-Kashmir-Ladakh-Gilgit-Baltistan-Muzaffarabad.
- ❖ **Thunderstorm accompanied with Lightning** likely at isolated places over Arunachal Pradesh, Assam & Meghalaya, Chhattisgarh, Jharkhand, Madhya Pradesh, Marathwada, Nagaland, Manipur, Mizoram and Tripura, Odisha, Uttarakhand and Vidarbha.

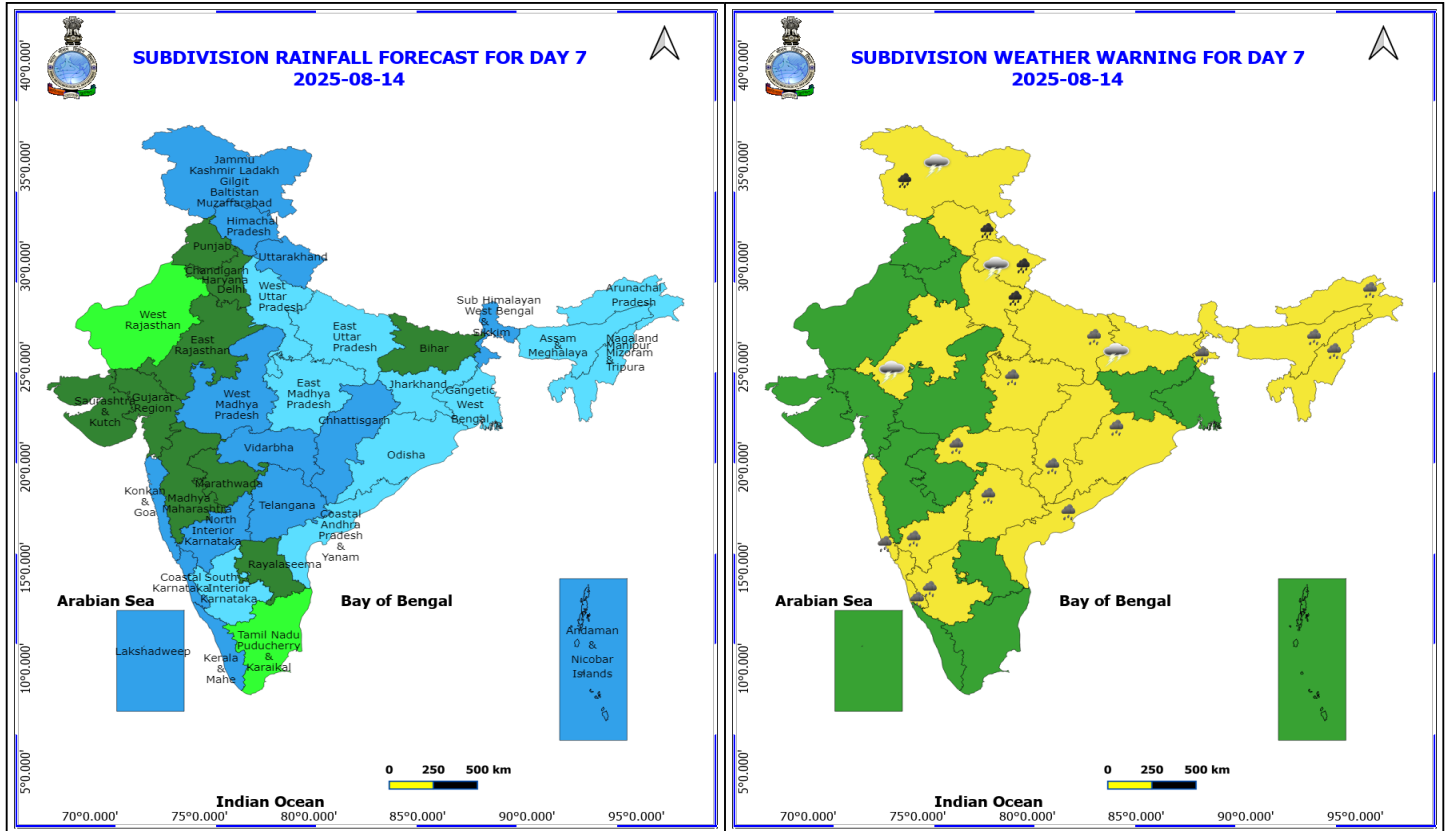
**No Fishermen Warning**



### 13 August (Day 6)

- ❖ **Heavy to Very Heavy Rainfall** likely at isolated places over Himachal Pradesh, Jammu-Kashmir-Ladakh-Gilgit-Baltistan-Muzaffarabad, Uttar Pradesh and Uttarakhand.
- ❖ **Heavy Rainfall** likely at isolated places over Arunachal Pradesh, Assam & Meghalaya, Bihar, Chhattisgarh, Coastal Andhra Pradesh, East Madhya Pradesh, Haryana, Chandigarh & Delhi, Konkan & Goa, Nagaland, Manipur, Mizoram and Tripura, Odisha, Sub Himalayan West Bengal & Sikkim, Telangana and Vidarbha.
- ❖ **Thunderstorm accompanied with lightning & gusty winds(30-40kmph)** likely at isolated places over Bihar and Jammu-Kashmir-Ladakh-Gilgit-Baltistan-Muzaffarabad.
- ❖ **Thunderstorm accompanied with Lightning** likely at isolated places over Arunachal Pradesh, Assam & Meghalaya, East Rajasthan, Nagaland, Manipur, Mizoram and Tripura and Uttarakhand.

**No Fishermen Warning**



#### 14 August (Day 7)

- ❖ **Heavy to Very Heavy Rainfall** likely at isolated places over Assam & Meghalaya, East Uttar Pradesh, Himachal Pradesh and Sub Himalayan West Bengal & Sikkim.
- ❖ **Heavy Rainfall** likely at isolated places over Arunachal Pradesh, Bihar, Chhattisgarh, Coastal Andhra Pradesh, Jammu-Kashmir-Ladakh-Gilgit-Baltistan-Muzaffarabad, Jharkhand, Konkarn & Goa, Nagaland, Manipur, Mizoram and Tripura, Odisha, Telangana, Uttarakhand, Vidarbha and West Uttar Pradesh.
- ❖ **Thunderstorm accompanied with lightning & gusty winds(30-40kmph)** likely at isolated places over Bihar and Jammu-Kashmir-Ladakh-Gilgit-Baltistan-Muzaffarabad.
- ❖ **Thunderstorm accompanied with Lightning** likely at isolated places over Arunachal Pradesh, Assam & Meghalaya, Chhattisgarh, Jharkhand, Madhya Pradesh, Marathwada, Nagaland, Manipur, Mizoram and Tripura, Odisha, Uttarakhand and Vidarbha.

**No Fishermen Warning**



## Flash Flood Warnings

24 hours Outlook for the Flash Flood Risk (FFR) till 1130 IST of 08-08-2025 :

Low to Moderate flash flood risk likely over few watersheds & neighbourhoods of following Met Sub-divisions during next 24 hours.

Arunachal Pradesh - Changlang, Dibang Valley, Lohit, Lower Dibang Valley and Anjaw districts.

Assam & Meghalaya - Dibrugarh, Jorhat, Sibsagar and Tinsukia districts.

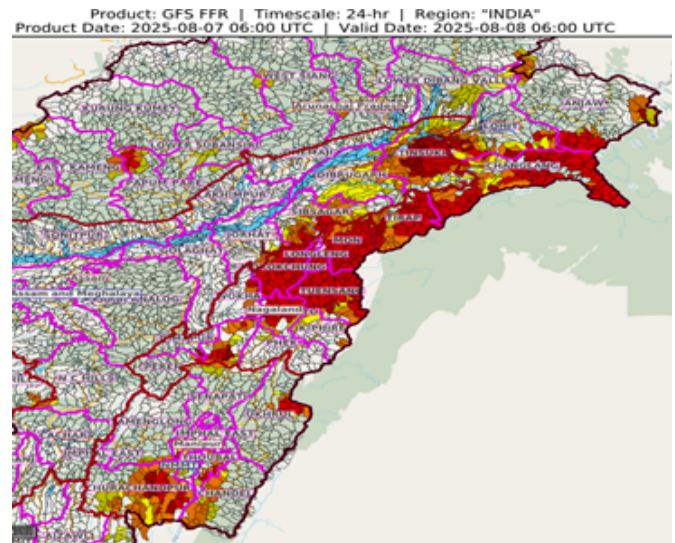
NMMT –

Manipur - Bishnupur, Chandel, Churachandpur, Senapati, Thoubal and Ukhrul districts.

Mizoram – Aizawl and Champhai districts.

Nagaland - Dimapur, Kiphire, Kohima, Longleng, Mokokchung, Mon, Peren, Phek, Tuensang, Wokha and Zunheboto districts.

Surface runoff/ Inundation may occur at some fully saturated soils & low-lying areas over Area of Concern (AoC) as shown in map due to expected rainfall occurrence in next 24 hours.

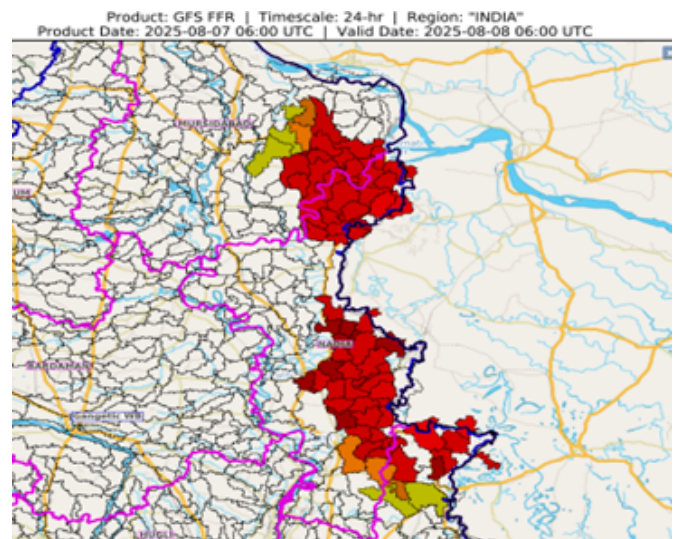


24 hours Outlook for the Flash Flood Risk (FFR) till 1130 IST of 08-08-2025 :

Low to Moderate flash flood risk likely over few watersheds & neighbourhoods of following Met Sub-divisions during next 24 hours.

Gangetic West Bengal - Mursidabad, Nadia and North 24 Pragana districts.

Surface runoff/ Inundation may occur at some fully saturated soils & low-lying areas over Area of Concern (AoC) as shown in map due to expected rainfall occurrence in next 24 hours.



24 hours Outlook for the Flash Flood Risk (FFR) till 1130 IST of 08-08-2025 :

Low to Moderate flash flood risk likely over few

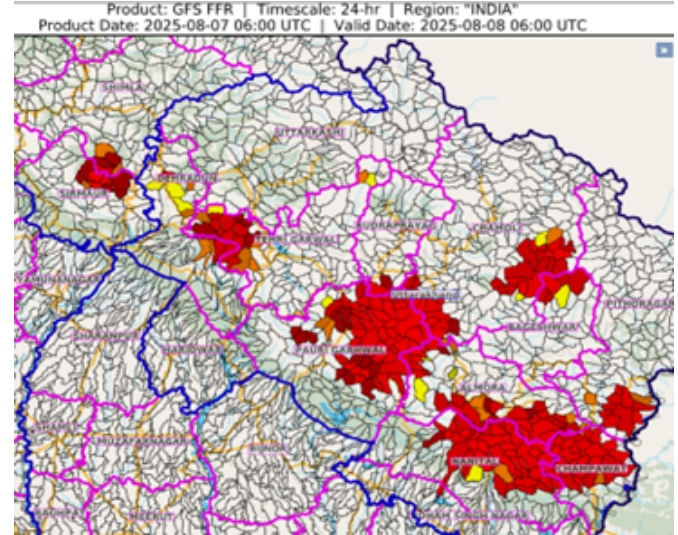


watersheds & neighbourhoods of following Met Sub-divisions during next 24 hours.

Himachal Pradesh - Shimla and Sirmaur districts.

Uttarakhand - Almora, Bageshwar, Chamoli, Champawat, Dehradun, Nanital, Pauri Garhwal, Pithoragarh, Rudraprayag and Tehri Garwal districts.

Surface runoff/ Inundation may occur at some fully saturated soils & low-lying areas over Area of Concern (AoC) as shown in map due to expected rainfall occurrence in next 24 hours.





# Table-1

## 7 Days Rainfall Forecast

S.No.	Subdivision	8- Aug	9- Aug	10- Aug	11- Aug	12- Aug	13- Aug	14- Aug
		Day 1	Day 2	Day 3	Day 4	Day 5	Day 6	Day 7
1	ANDAMAN & NICOBAR ISLANDS	FWS	FWS	FWS	WS	WS	WS	WS
2	ARUNACHAL PRADESH	WS	WS	WS	WS	FWS	FWS	FWS
3	ASSAM & MEHGHALAYA	WS	WS	WS	WS	WS	FWS	FWS
4	N. M. M. & T.	WS	FWS	FWS	FWS	WS	WS	FWS
5	S.H. WEST BENGAL & SIKKIM	WS	WS	WS	WS	WS	WS	WS
6	GANGETIC WEST BENGAL	WS	FWS	SCT	SCT	FWS	FWS	FWS
7	ODISHA	WS	FWS	SCT	SCT	FWS	FWS	FWS
8	JHARKHAND	WS	FWS	FWS	FWS	FWS	FWS	FWS
9	BIHAR	FWS	FWS	FWS	SCT	FWS	FWS	SCT
10	EAST UTTAR PRADESH	WS	FWS	SCT	FWS	WS	WS	FWS
11	WEST UTTAR PRADESH	FWS	FWS	SCT	FWS	FWS	FWS	FWS
12	UTTARAKHAND	WS	WS	WS	WS	WS	WS	WS
13	HARYANA, CHD & DELHI	SCT	SCT	SCT	FWS	SCT	SCT	SCT
14	PUNJAB	ISOL	ISOL	SCT	SCT	SCT	SCT	SCT
15	HIMACHAL PRADESH	FWS	FWS	FWS	WS	WS	WS	WS
16	JAMMU AND KASHMIR AND LADAKH	SCT	SCT	SCT	SCT	FWS	WS	WS
17	WEST RAJASTHAN	DRY	ISOL	ISOL	ISOL	ISOL	ISOL	ISOL
18	EAST RAJASTHAN	ISOL	SCT	SCT	ISOL	ISOL	SCT	SCT
19	WEST MADHYA PRADESH	SCT	FWS	FWS	FWS	FWS	WS	WS
20	EAST MADHYA PRADESH	FWS	FWS	FWS	FWS	FWS	FWS	FWS
21	GUJRAT REGION	SCT	SCT	SCT	SCT	SCT	SCT	SCT
22	SAURASHTRA & KUTCH	SCT	SCT	SCT	SCT	SCT	SCT	SCT
23	KONKAN & GOA	FWS	WS	WS	WS	WS	WS	WS
24	MADHYA MAHARASHTRA	SCT	SCT	SCT	ISOL	SCT	SCT	SCT
25	MARATHWADA	FWS	SCT	SCT	SCT	SCT	SCT	SCT
26	VIDARBHA	FWS	FWS	FWS	WS	WS	WS	WS
27	CHATTISGARH	FWS	FWS	FWS	FWS	WS	WS	WS
28	COASTAL ANDHRA PRADESH	FWS	FWS	SCT	SCT	SCT	FWS	FWS
29	TELANGANA	WS	WS	WS	WS	WS	WS	WS
30	RAYALASEEMA	FWS	FWS	FWS	SCT	ISOL	SCT	SCT
31	TAMILNADU & PUDUCHERRY	SCT	SCT	ISOL	ISOL	ISOL	ISOL	ISOL
32	COSTAL KARNATAKA	WS	WS	WS	WS	WS	WS	WS
33	NORTH INTERIOR KARNATAKA	WS	WS	FWS	FWS	FWS	WS	WS
34	SOUTH INTERIOR KARNATAKA	WS	WS	FWS	FWS	FWS	FWS	FWS
35	KERALA	WS	FWS	FWS	FWS	WS	WS	WS
36	LAKSHDWEAP	FWS	FWS	FWS	FWS	FWS	WS	WS

Legend	Category	%Stations
WS	Widespread/Most Places	76-100
FWS	Fairly Widespread/Many Places	51-75
SCT	Scattered/ A Few Places	26-50
ISOL	Isolated Places	1-25
DRY	No Rain	0

\*Red color warning does not mean "Red Alert" Red color warning means "Take Action"

Forecast and warning for any day is valid from 0830 hours IST of day till 0830 hours IST of next day

For more details kindly visit <https://mausam.imd.gov.in> or contact 011-2434-4599

(Service to the nation since 1875)

Fig. 1: Maximum Temperatures Dated 2025-08-08

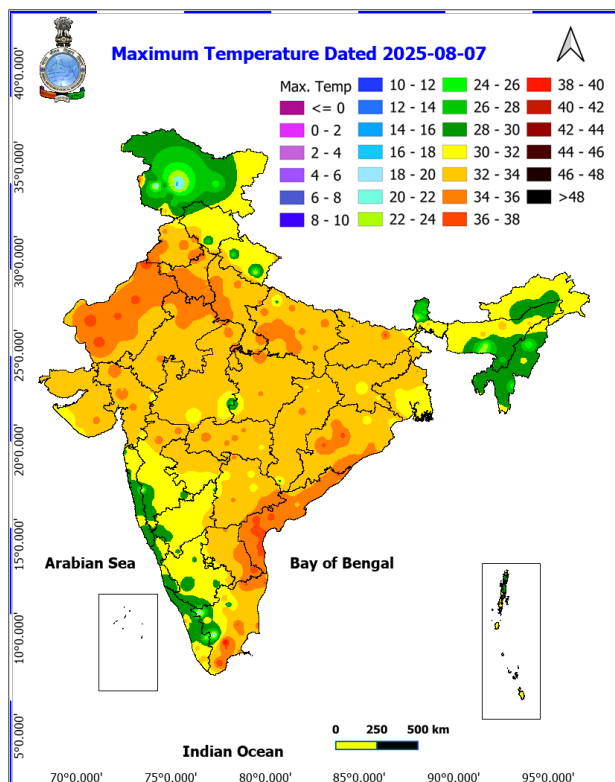


Fig. 2: Departure of Maximum Temp. Dated 2025-08-08

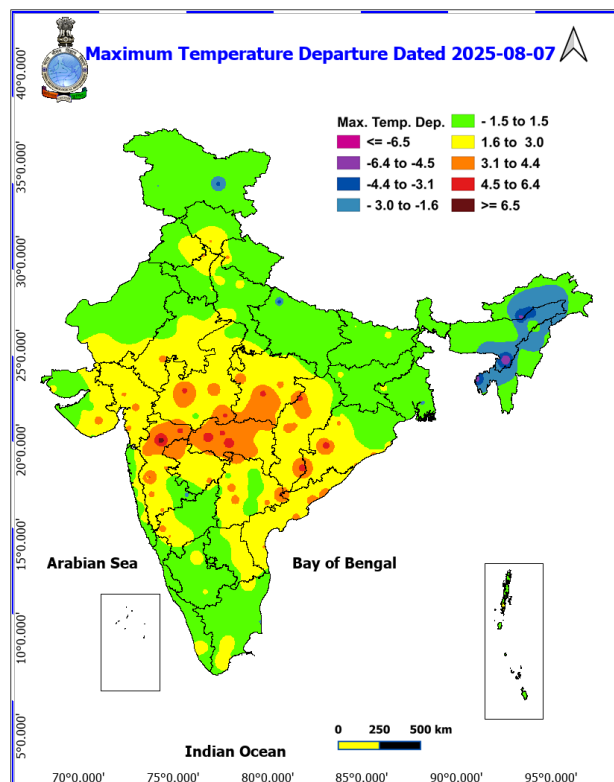


Fig. 3: Minimum Temperatures Dated 2025-08-08

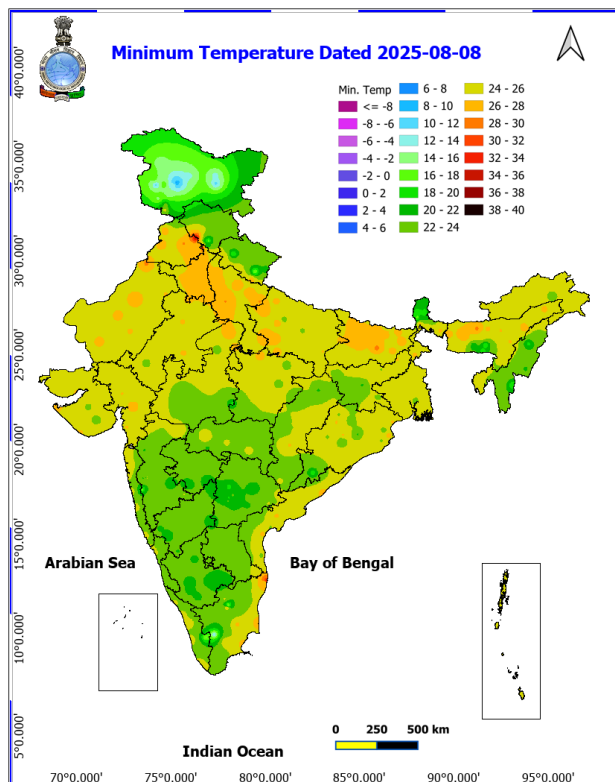
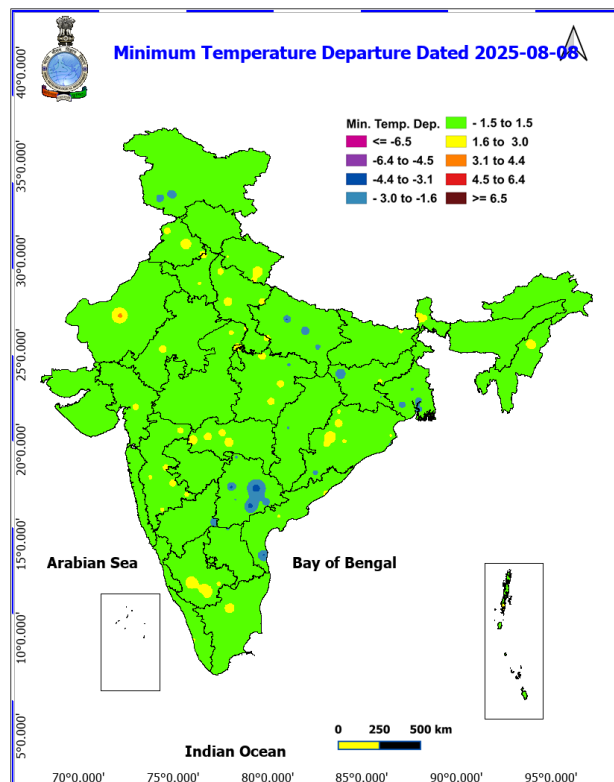
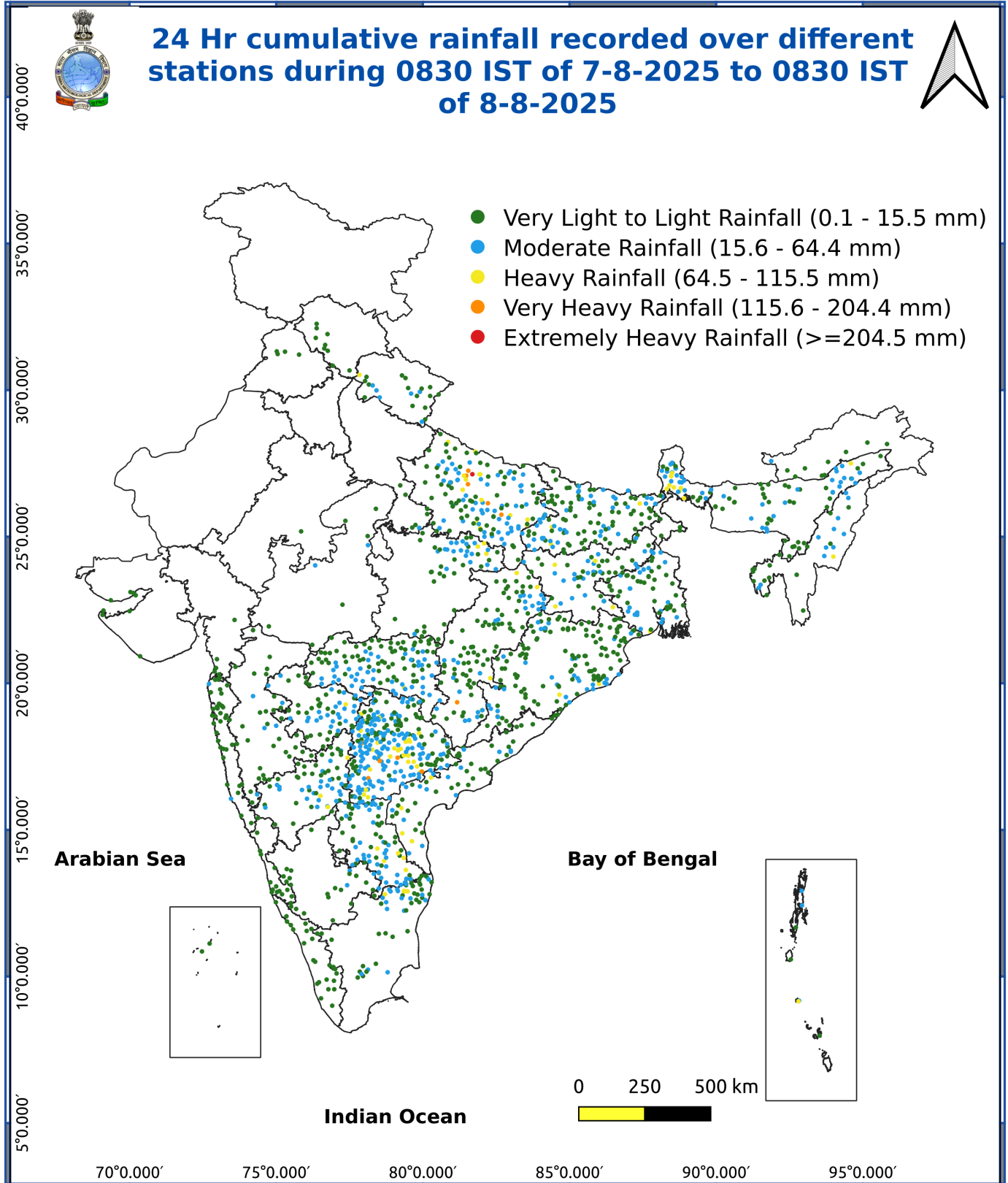


Fig. 4: Departure of Minimum Temp. Dated 2025-08-08





\*Red color warning does not mean "Red Alert" Red color warning means "Take Action"

Forecast and warning for any day is valid from 0830 hours IST of day till 0830 hours IST of next day

For more details kindly visit <https://mausam.imd.gov.in> or contact 011-2434-4599

(Service to the nation since 1875)



### Impact & Action Suggested due to

#### Extremely heavy rainfall ( $\geq 21$ cm) at isolated places over East Uttar Pradesh on 08<sup>th</sup> August.

**Very heavy rainfall** over Bihar, Jharkhand & Odisha on 08<sup>th</sup>; Uttarakhand on 08<sup>th</sup>, 10<sup>th</sup>, 11<sup>th</sup>, 13<sup>th</sup> & 14<sup>th</sup>; West Uttar Pradesh on 08<sup>th</sup>, 13<sup>th</sup> & 14<sup>th</sup>; Himachal Pradesh during 11<sup>th</sup>-14<sup>th</sup>; Arunachal Pradesh during 08<sup>th</sup>-10<sup>th</sup>; Assam & Meghalaya, Sub-Himalayan West Bengal & Sikkim on 08<sup>th</sup>, 11<sup>th</sup> & 12<sup>th</sup>; East Uttar Pradesh on 12<sup>th</sup> & 13<sup>th</sup>; Jammu-Kashmir on 13<sup>th</sup> & 14<sup>th</sup> August.

### Impact Expected

Localized Flooding of roads, water logging in low lying areas and closure of underpasses mainly in urban areas of the above region.

Occasional reduction in visibility due to heavy rainfall.

Disruption of traffic in major cities due to water logging in roads leading to increased travel time.

Minor damage to kutcha roads.

Possibilities of damage to vulnerable structure.

Localized Landslides/Mudslides/landslips/mudslips/landsinks/mudsinks.

Damage to horticulture and standing crops in some areas due to inundation.

It may lead to riverine flooding in some river catchments (for riverine flooding please visit Web page of CWC)

### Action Suggested

Check for traffic congestion on your route before leaving for your destination.

Follow any traffic advisories that are issued in this regard.

Avoid going to areas that face the water logging problems often.

Avoid staying in vulnerable structure.

### Agromet advisories for various parts of the country

#### Agromet advisories for likely impact of Heavy / Heavy to Very Heavy / Extremely Heavy Rainfall

In **Arunachal Pradesh**, postpone all fresh sowing and transplanting operations till cessation of heavy rains. Harvest nearly mature banana bunches and keep them in a dry and safe place for ripening. Ensure proper drainage in rice, maize, finger millet, soybean and vegetables and fruit orchards to avoid waterlogging. In rice fields, strengthen bunds to prevent field erosion and seedling washout. Provide strong support to fruit-bearing plants to prevent them from

**\*Red color warning does not mean "Red Alert" Red color warning means "Take Action"**

Forecast and warning for any day is valid from 0830 hours IST of day till 0830 hours IST of next day

For more details kindly visit <https://mausam.imd.gov.in> or contact 011-2434-4599

(Service to the nation since 1875)



bending or breaking during heavy rains.

In **Assam**, to prevent waterlogging, ensure proper drainage in *Sali* rice, green gram and pigeon pea fields and banana orchards in **Lower Brahmaputra Valley Zone**; *Sali* rice and sugarcane fields in **North Bank Plain Zone** and *Sali* rice fields in **Upper Brahmaputra Valley Zone**

In **Meghalaya**, ensure proper drainage in rice, maize, turmeric, chilli, okra and bitter gourd fields to prevent waterlogging. Provide staking / support to tall and fragile crops like banana, papaya, bottle gourd etc. to prevent lodging.

In **Nagaland**, provide proper drainage channels in maize fields to manage surface water runoff. Clean the drainage channels in rice fields to drain out excess water.

In **Tripura**, maintain proper drainage in rice, chilli and ginger fields.

In **Uttarakhand**, make necessary arrangements to drain out excess water from the fields of already sown / transplanted rice, sugarcane, maize, black gram, green gram, groundnut, pigeon pea, finger millet, soybean and vegetables in **Bhabar and Tarai Zone**; and barnyard millet, finger millet, green gram and black gram in **Sub Humid Sub Tropic Zone**. In **Hill Zone**, strengthen the bunds to prevent surface runoff of water. Postpone sowing of vegetable pea in case of excessive wet soil conditions. Maintain proper drainage channels in the crop fields.

In **Himachal Pradesh**, provide proper drainage channels in maize, ginger and vegetable fields in **Mid Hills Sub Humid Zone**.

In **Sub-Himalayan West Bengal**, make provision to drain out excess water from rice, ginger, vegetable fields and fruit orchards in **Hill Zone** and *aman* paddy and vegetable fields in **Terai Zone**. Cover the chilli seedlings with plastic to protect them from heavy rains in **Terai Zone**.

In **Bihar**, make provisions to drain out excess water from standing crops such as maize, nurseries of onion, chilli, and cauliflower in **North West Alluvial Plain Zone**; maize, finger millet, ragi, kodo, sava, china etc. in **North East Alluvial Zone**; and maize, vegetables, ragi, kodo, sava, in low-lying areas and strengthen field bunds in **South Bihar Alluvial Zone**.

In **Kerala**, provide adequate drainage in fields of rice, coconut, banana and ginger. Provide support to banana plantations. Make the vegetable pandals stronger.

In **Tamil Nadu**, ensure proper drainage in the fields of sorghum to prevent waterlogging, especially in heavy soils and low-lying areas. Ensure proper drainage around the coconut plants to avoid root rot.

In **Karnataka**, ensure proper drainage facilities in arecanut and banana plantations in **Coastal Zone**; fields of maize, cotton, ginger and plantations of arecanut in **Hill Zone**; ginger, maize, finger millet, transplanted rice fields and arecanut and coconut plantations in **Southern Transition Zone**.

#### Livestock / Fishery

Keep the animals inside the shed during heavy rainfall and provide them balanced feed.

Store feed and fodder in a safe place to prevent spoilage.

Construct an outlet with proper netting around the ponds to drain out excess water, thereby preventing fish from escaping in case of overflow.

**\*Red color warning does not mean "Red Alert" Red color warning means "Take Action"**

**Forecast and warning for any day is valid from 0830 hours IST of day till 0830 hours IST of next day**

**For more details kindly visit <https://mausam.imd.gov.in> or contact 011-2434-4599**

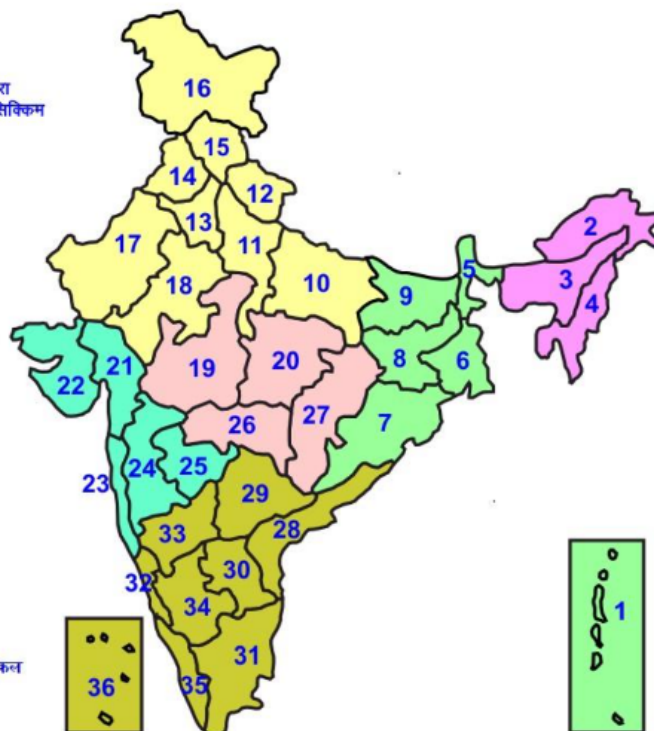
**(Service to the nation since 1875)**

**Agromet advisories for likely impact of Thunderstorm / Gusty Winds / Squally Winds**

Provide mechanical support to horticultural crops and staking or support to vegetables and young fruit plants / fruit-bearing plants to avoid lodging due to strong winds.

## LEGENDS

- 1 अंडमान और निकोबार द्वीप समुह
- 2 अरुणाचल प्रदेश
- 3 असम और मेघालय
- 4 नागालैंड मनीपुर मीजोरम और त्रिपुरा
- 5 उप हिमालय पश्चिम बंगाल एवं सिक्किम
- 6 पश्चिम बंगाल
- 7 ओडिसा
- 8 झारखंड
- 9 बिहार
- 10 पूर्वी उत्तर प्रदेश
- 11 पश्चिम उत्तर प्रदेश
- 12 उत्तराखंड
- 13 हरियाणा चंडीगढ़ एवं दिल्ली
- 14 पंजाब
- 15 हिमाचल प्रदेश
- 16 जम्मू एवं कश्मीर एवं लद्दाख
- 17 पश्चिम राजस्थान
- 18 पूर्वी राजस्थान
- 19 पश्चिम मध्य प्रदेश
- 20 पूर्वी मध्य प्रदेश
- 21 गुजरात क्षेत्र
- 22 सौराष्ट्र एवं कच्छ
- 23 कोंकण एवं गोवा
- 24 मध्य महाराष्ट्र
- 25 मराठावाड़ा
- 26 विदर्भ
- 27 छत्तीसगढ़
- 28 तटीय आंध्र प्रदेश एवं यनम
- 29 तेलंगाना
- 30 रायलसीमा
- 31 तमिलनाडु, पुदुचेरी एवं कराईकल
- 32 तटिय कर्नाटक
- 33 आंतरिक उत्तरी कर्नाटक
- 34 आंतरिक दक्षिणी कर्नाटक
- 35 केरल एवं माहे
- 36 लक्षद्वीप



1. Andaman & Nicobar Islands
2. Arunachal Pradesh
3. Assam & Meghalaya
4. Nagaland, Manipur, Mizoram & Tripura
5. Sub-Himalayan West Bengal & Sikkim
6. Gangetic West Bengal
7. Orissa
8. Jharkhand
9. Bihar
10. East Uttar Pradesh
11. West Uttar Pradesh
12. Uttarakhand
13. Haryana, Chd & Delhi
14. Punjab
15. Himachal Pradesh
16. Jammu & Kashmir and Ladakh
17. West Rajasthan
18. East Rajasthan
19. West Madhya Pradesh
20. East Madhya Pradesh
21. Gujarat
22. Saurashtra
23. Konkan & Goa
24. Madhya Maharashtra
25. Marathawada
26. Vidharbha
27. Chhattisgarh
28. Coastal Andhra Pradesh & Yanam
29. Telangana
30. Rayalaseema
31. Tamilnadu, Puducherry & Karaikal
32. Coastal Karnataka
33. North Interior Karnataka
34. South Interior Karnataka
35. Kerala & Mahe
36. Lakshadweep

## SPATIAL DISTRIBUTION (% of Stations reporting)

















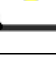
% Stations	Category	% Stations	Category
76-100	Widespread (WS/Most Places)	26-50	Scattered (SCT/ A Few Places)
51-75	Fairly Widespread (FWS/ Many Places)	1-25	Isolated (ISOL)

## Subdivision Colour

- NO WARNING
- WATCH (BE UPDATED)
- ALERT (BE PREPARED TO TAKE ACTION)
- WARNING (TAKE ACTION)

## Probabilistic Forecast

Terms	Probability of Occurrence (%)
Unlikely	< 25
Likely	25 - 50
Very Likely	50 - 75
Most Likely	> 75

- |  |   |  |  |
|--|---|--|--|
|  Heavy Rain               |  Very Heavy Rain |  Extremely Heavy Rain |  Heavy Snow         |
|  Thunderstorm & Lightning |  Hailstorm       |  Dust Storm           |  Dust Raising Winds |
|  Strong surface winds     |  Heat Wave       |  Hot Day              |  Warm Night         |
|  Cold Wave                |  Cold Day        |  Ground Frost         |  FOG Fog            |
|  Hot & Humid              |   |  |  |

\*Red color warning does not mean "Red Alert" Red color warning means "Take Action"

Forecast and warning for any day is valid from 0830 hours IST of day till 0830 hours IST of next day

For more details kindly visit <https://mausam.imd.gov.in> or contact 011-2434-4599

(Service to the nation since 1875)



## LEGENDS

### WARNING

<b>WARNING (TAKE ACTION)</b>
<b>ALERT (BE PREPARED)</b>
<b>WATCH (BE UPDATED)</b>
<b>NO WARNING (NO ACTION)</b>

### Probabilistic Forecast

Terms	Probability of Occurrence (%)
Unlikely	< 25
Likely	25 - 50
Very Likely	50 - 75
Most Likely	> 75



Heavy: 64.5 to 115.5 mm/cm \*  
Very Heavy: 115.6 to 204.4 mm/cm \*  
Extremely Heavy: > 204.4 mm/cm \*



When maximum temperature of a station reaches  $\geq 40^{\circ}\text{C}$  for plains and  $\geq 30^{\circ}\text{C}$  for hilly regions  
(a) Based on Departure from normal

Heat Wave: Maximum Temperature Departure from normal  $4.5^{\circ}\text{C}$  to  $6.4^{\circ}\text{C}$ .  
Severe Heat Wave: Maximum Temperature Departure from normal  $\geq 6.5^{\circ}\text{C}$

(b). Based on Actual maximum temperature

Heat Wave: When actual maximum temperature  $\geq 45^{\circ}\text{C}$ .  
Severe Heat Wave: When actual maximum temperature  $\geq 47^{\circ}\text{C}$

(c). Criteria for heat wave for coastal stations

When maximum temperature departure is  $> 4.5^{\circ}\text{C}$  from normal. Heat Wave may be described provided maximum temperature  $\geq 37^{\circ}\text{C}$



When maximum temperature remains  $40^{\circ}\text{C}$

Warm Night: When minimum temperature departure  $4.5^{\circ}\text{C}$  to  $6.4^{\circ}\text{C}$ .  
Severe Warm Night: When minimum temperature departure  $> 6.4^{\circ}\text{C}$ .



When minimum temperature of a station  $\leq 10^{\circ}\text{C}$  for plains and  $\leq 0^{\circ}\text{C}$  for hilly regions.

(a). Based on departure

Cold Wave: Minimum Temperature Departure from normal  $-4.5^{\circ}\text{C}$  to  $-6.4^{\circ}\text{C}$ .  
Severe Cold Wave: Minimum Temperature Departure from normal  $\leq -6.5^{\circ}\text{C}$

(b) Based on actual Minimum Temperature (for Plains only)

Cold Wave: When Minimum Temperature is  $\leq 4.0^{\circ}\text{C}$   
Severe Cold Wave: When Minimum Temperature is  $\leq 2.0^{\circ}\text{C}$

(c) For Coastal Stations

When Minimum Temperature departure is  $\leq -4.5^{\circ}\text{C}$  & actual Minimum Temperature is  $\leq 15^{\circ}\text{C}$



When minimum temperature of a station  $\leq 10^{\circ}\text{C}$  for plains and  $\leq 0^{\circ}\text{C}$  for hilly regions  
Based on departure

Cold Day: Maximum Temperature Departure from normal  $-4.5^{\circ}\text{C}$  to  $-6.4^{\circ}\text{C}$ .  
Severe Cold Day: Maximum Temperature Departure from normal  $\leq -6.5^{\circ}\text{C}$



Phenomenon of small droplets suspended in air and the horizontal visibility  $< 1\text{km}$

Moderate Fog: When the visibility between 500-200 metres  
Dense Fog: when the visibility between 50-200 metres  
Very Dense Fog: when the visibility  $< 50$  metres



Sudden electrical discharges manifested by a flash of light (Lightning) and a sharp rumbling sound (thunder)



An ensemble of particles of dust or sand energetically lifted to great heights by a strong and turbulent wind.



Ice deposits on ground

Air temperature  $\leq 4^{\circ}\text{C}$  (over Plains)



A strong wind that rises suddenly, lasts for at least 1 minute.

Moderate: Wind speed 52-61 kmph  
Severe: Wind speed 62-87 kmph  
Very Severe: Wind speed  $> 87$  kmph



Effect of various waves in the sea over specific area

Rough to very rough: Wind speed 41-62 kmph (22-33 knots) & Wave height 2.5-6 metre  
High to very high: Wind speed 63-117 kmph (34-63 knots) & Wave height 6-14 metre  
Phenomenal: Wind speed  $> 117$  kmph ( $> 63$  knots) & Wave height  $> 14$  metre



Cyclonic Storm: Wind speed 62-87 kmph (34-47 knots)

Severe Cyclonic Storm: Wind speed 88-117 kmph (48-63 knots)  
Very Severe Cyclonic Storm: Wind speed 118-165 kmph (64-89 knots)  
Extremely Severe Cyclonic Storm: Wind speed 166-220 kmph (90-119 knots)  
Super Cyclone Storm: Wind speed  $> 220$  kmph ( $> 119$  knots)

\*Red color warning does not mean "Red Alert" Red color warning means "Take Action"

Forecast and warning for any day is valid from 0830 hours IST of day till 0830 hours IST of next day

For more details kindly visit <https://mausam.imd.gov.in> or contact 011-2434-4599

(Service to the nation since 1875)