

2025-09-09

Time of Issue: 13:16:00 hours IST  
(Mid-Day)

## ALL INDIA WEATHER SUMMARY AND FORECAST BULLETIN

### Significant Weather Features

#### Northeast India:

Light/moderate rain/thunderstorm at many/some places with isolated **heavy rainfall** likely over Assam & Meghalaya and Nagaland, Manipur, Mizoram & Tripura during 09<sup>th</sup>-11<sup>th</sup>; Arunachal Pradesh on 09<sup>th</sup> & 11<sup>th</sup> September and **heavy to very heavy falls over Arunachal Pradesh, Assam & Meghalaya and Nagaland, Manipur, Mizoram & Tripura during 12<sup>th</sup>-15<sup>th</sup> September.**

#### East & Central India:

Light to moderate rain/thunderstorm at many/some places with isolated **heavy rainfall** likely over East Madhya Pradesh on 09<sup>th</sup> & 10<sup>th</sup>; Chhattisgarh during 09<sup>th</sup>-13<sup>th</sup>; Andaman & Nicobar Islands during 09<sup>th</sup>-11<sup>th</sup>; Sub-Himalayan West Bengal & Sikkim during 09<sup>th</sup>-14<sup>th</sup>; Bihar during 09<sup>th</sup>-12<sup>th</sup>; Odisha during 10<sup>th</sup>-12<sup>th</sup>; Vidarbha during 11<sup>th</sup>-13<sup>th</sup> September and **heavy to very heavy falls over Sub-Himalayan West Bengal & Sikkim on 09<sup>th</sup> & 10<sup>th</sup> and Odisha on 11<sup>th</sup> September.**

#### Northwest India

Light to moderate rain/thunderstorm at some/isolated places with **isolated heavy rainfall** likely over East Uttar Pradesh on 11<sup>th</sup>, 12<sup>th</sup> & 15<sup>th</sup>; West Uttar Pradesh on 12<sup>th</sup>; Jammu-Kashmir & Himachal Pradesh on 13<sup>th</sup>; Uttarakhand during 12<sup>th</sup>-14<sup>th</sup> September.

Thunderstorm with lightning & gusty winds (speed 30-40 kmph) likely over Jammu-Kashmir during 12<sup>th</sup>-15<sup>th</sup> and Himachal Pradesh on 12<sup>th</sup> & 13<sup>th</sup> September.

#### West India:

Light to moderate rain/thunderstorm at some/isolated places with **isolated heavy rainfall** likely over Kutch on 09<sup>th</sup>; Madhya Maharashtra & Marathwada during 13<sup>th</sup>-15<sup>th</sup>; Konkan & Goa on 14<sup>th</sup> & 15<sup>th</sup> September.

#### South Peninsular India

Light to moderate rain/thunderstorm & gusty winds (speed 30-40 kmph) at many/some places with isolated **heavy rainfall** likely over Tamil Nadu during 09<sup>th</sup> -11<sup>th</sup>; Kerala & Mahe, South Interior Karnataka on 09<sup>th</sup> & 10<sup>th</sup>; Coastal Andhra Pradesh & Yanam during 09<sup>th</sup>-13<sup>th</sup>; Telangana during 09<sup>th</sup>-14<sup>th</sup>; North Interior Karnataka during 10<sup>th</sup>-15<sup>th</sup> September.

Strong surface winds (speed reaching 30-40 kmph) very likely over Coastal Andhra Pradesh & Yanam and Rayalaseema during next 5 days.

**\*Red color warning does not mean "Red Alert" Red color warning means "Take Action"**

Forecast and warning for any day is valid from 0830 hours IST of day till 0830 hours IST of next day

For more details kindly visit <https://mausam.imd.gov.in> or contact 011-2434-4599

(Service to the nation since 1875)

### Main Weather Observations:

❖ **Rainfall distribution** (from 0830 hours IST of yesterday to 0830 hours IST of today): **at most places** over Andaman & Nicobar Islands, Jammu-KashmirLadakh-Gilgit-Baltistan-Muzaffarabad and Konkan & Goa; **at many places** over Arunachal Pradesh, Sub Himalayan West Bengal & Sikkim, Himachal Pradesh, Vidarbha, Chhattisgarh and Coastal Karnataka; **at a few places** over Assam & Meghalaya, Nagaland, Manipur, Mizoram & Tripura, Odisha, Bihar, Uttarakhand, East Uttar Pradesh, Punjab, West Rajasthan, East Madhya Pradesh, Gujarat Region, Saurashtra & Kutch, Madhya Maharashtra, Coastal Andhra Pradesh & Yanam and Lakshadweep; **at isolated places** over Gangetic West Bengal, Jharkhand, West Uttar Pradesh, Haryana-Chandigarh-Delhi, East Rajasthan, West Madhya Pradesh, Marathwada, Telangana, Tamil Nadu, Puducherry & Karaikal, North Interior Karnataka, South Interior Karnataka and Kerala & Mahe; **Dry** over rest of the country.

❖ **Significant rainfall recorded(in cm)** (from 0830 hours IST of yesterday to 0830 hours IST of today): **Saurashtra & Kutch**: Lakhpat (dist Kutch) 15; Nakhatrana (dist Kutch) 11; Bhachau (dist Kutch) 10; Bhuj (dist Kutch), Gandhidham (dist Kutch), Rapar (dist Kutch) 8 Each; Anjar (dist Kutch), Bachau AWS (dist Kutch) 7 Each; **Bihar**: Taibpur (dist Kishanganj) 12; Araria (dist Araria) 9; Hasanpur (dist Samastipur), Beldaur (dist Khagaria) 8 Each; Kodawanpur/C.b li (dist Begusarai), Chhaurahi (dist Begusarai) 7 Each; **Gujarat Region**: Bhabhar (dist Banaskantha) 11; **Nagaland, Manipur, Mizoram & Tripura**: Chandel AWS (dist Chandel) 10; Belonia ARG (dist South Tripura) 9; Belonia (dist South Tripura) 7; **East Madhya Pradesh**: Sihora (dist Jabalpur), Banda (dist Sagar) 9 Each; Buxwaha (dist Chhatarpur), Tirodi (dist Balaghat) 8 Each; Pawai (dist Panna) 7; **East Uttar Pradesh**: Ram Sanehi Ghat Tehsil (dist Barabanki) 9; Katarniaghat (dist Bahraich), Kheri Lakhimpur (dist Kheri) 8 Each; **Telangana**: Tamsi (dist Adilabad) 7; **Coastal Andhra Pradesh & Yanam**: Pathapatnam (dist Srikakulam) 7; **Chhattisgarh**: Patna (dist Koriya) 7; **Himachal Pradesh**: Kasauli (dist Solan) 7; **Assam & Meghalaya**: Barapani (dist Ri Bhoi) 7.

❖ **Heavy Rainfall observed** (from 0830 hours IST of yesterday to 0830 hours IST of today):**Heavy to very heavy rain** at isolated places over Bihar and Saurashtra & Kutch. **Heavy rain** at isolated places over Assam & Meghalaya, Nagaland, Manipur, Mizoram & Tripura, East Uttar Pradesh, Himachal Pradesh, East Rajasthan, East Madhya Pradesh, Gujarat Region, Chhattisgarh, Coastal Andhra Pradesh & Yanam, Telangana and Tamil Nadu, Puducherry & Karaikal.

❖ **Minimum Temperature Departures (as on 09-09-2025)**: **markedly above normal(> 5.1°C)** at many places over Jammu-KashmirLadakh-Gilgit-Baltistan-Muzaffarabad; at isolated places over Assam & Meghalaya, Bihar, East Uttar Pradesh, West Uttar Pradesh, Himachal Pradesh and West Madhya Pradesh. **appreciably above normal(3.1°C to 5.0°C)** at few places over East Madhya Pradesh; at isolated places over Sub Himalayan West Bengal & Sikkim, Odisha, Saurashtra & Kutch, Coastal Andhra Pradesh & Yanam and Tamil Nadu, Puducherry & Karaikal. **above normal(1.6°C to 3.0°C)** at many places over Gangetic West Bengal; at few places over Jharkhand, West Rajasthan and Lakshadweep; at isolated places over Nagaland, Manipur, Mizoram & Tripura, Haryana-Chandigarh-Delhi, Gujarat Region, Konkan & Goa, Vidarbha, Chhattisgarh and Rayalaseema. **near normal(-1.5°C to 1.5°C)** at many places over East Rajasthan and Madhya Maharashtra; at most places over Andaman & Nicobar Islands, Arunachal Pradesh, Uttarakhand, Punjab, Marathwada, Telangana, Coastal Karnataka, North Interior Karnataka, South Interior Karnataka and Kerala & Mahe. **The lowest minimum temperature** of 17.6°C is reported at NASHIK (MAHARASHTRA) over the Plains of India.

❖ **Maximum Temperature Departures (as on 08-09-2025)**: **markedly above normal(> 5.1°C)** at isolated places over Odisha, Chhattisgarh and Coastal Andhra Pradesh & Yanam. **appreciably above normal(3.1°C to 5.0°C)** at few places over Jharkhand; at isolated places over Assam & Meghalaya, Sub Himalayan West Bengal & Sikkim, Gangetic West Bengal, East Uttar Pradesh, East Madhya Pradesh and Vidarbha. **above normal(1.6°C to 3.0°C)** at most places over Uttarakhand; at few places over Bihar, Telangana, Rayalaseema and Kerala & Mahe; at isolated places over Andaman & Nicobar Islands, West Uttar Pradesh, Haryana-Chandigarh-Delhi, Madhya Maharashtra, Marathwada, Tamil Nadu, Puducherry & Karaikal, North Interior Karnataka and South Interior Karnataka. **near normal(-1.5°C to 1.5°C)** at many places over Jammu-KashmirLadakh-Gilgit-Baltistan-Muzaffarabad and West Madhya Pradesh; at most places over Arunachal Pradesh, Nagaland, Manipur, Mizoram & Tripura, Punjab, Himachal Pradesh, Gujarat Region, Konkan & Goa, Coastal Karnataka and Lakshadweep; at isolated places over East Rajasthan and Saurashtra & Kutch. **The highest maximum temperature** of 38.8°C is reported at KAVALI (ANDHRA PRADESH).

**\*Red color warning does not mean "Red Alert" Red color warning means "Take Action"**

**Forecast and warning for any day is valid from 0830 hours IST of day till 0830 hours IST of next day**

**For more details kindly visit <https://mausam.imd.gov.in> or contact 011-2434-4599**

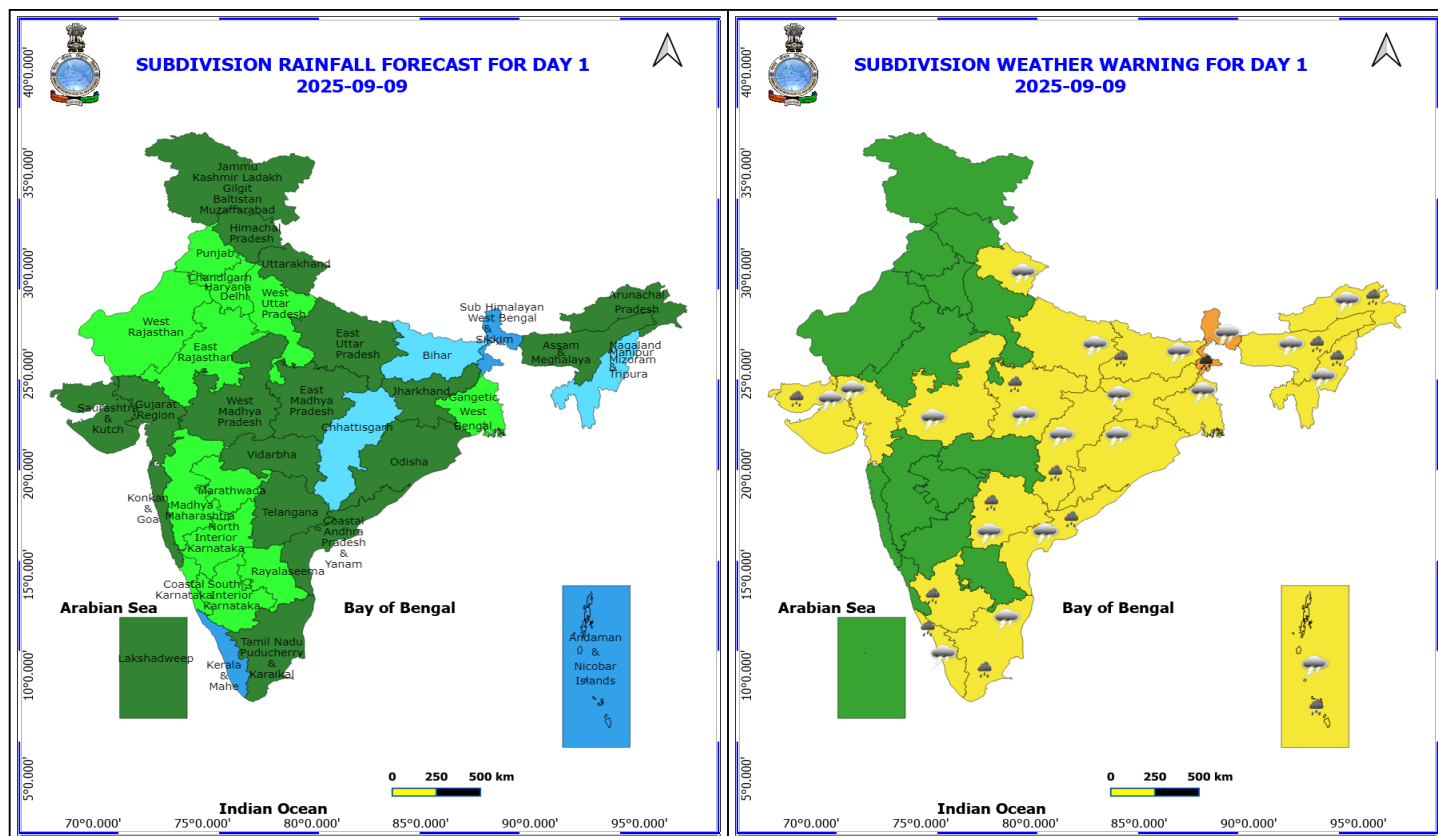
**(Service to the nation since 1875)**

#### Meteorological Analysis (Based on 0830 hours IST)

- The **depression** over southeast Pakistan moved south-southwestwards with the speed of 13 kmph during past 6 hours, lay centred at 0830 hrs IST of today, the 09<sup>th</sup> September, 2025, over the same region near latitude 25.3°N and longitude 68.4°E, close to south of Hyderabad (Pakistan), 20 km northeast of Sakrand (Pakistan), 90 km northwest of Badin (Pakistan) and 270 km north-northwest of Bhuj-Rudramata (Gujarat). It is very likely to move southwestwards across south Pakistan and weaken gradually into a Well-marked low-pressure area during next 12 hours. Thereafter, it is likely to emerge into the northeast Arabian Sea and move nearly westwards during subsequent 24 hours.
- The **monsoon trough** at mean sea level now passes through centre of depression over the Southeast Pakistan, Jodhpur, Deomali, Barabanki, Chapra, Purulia, Digha and thence eastwards to northeast Bay of Bengal.
- The **trough** from cyclonic circulation associated with **depression** over the Southeast Pakistan to northwest Rajasthan extending upto 3.1 km above mean sea level persists.
- The **upper air cyclonic circulation** over South Odisha and north Coastal Andhra Pradesh extending upto 4.5 km above mean sea level tilting southwards with height persists.
- An **upper air cyclonic circulation** over northeast Assam & neighbourhood at 0.9 km above mean sea level.
- An **upper air cyclonic circulation** over East Bihar & neighbourhood at 3.1 km above mean sea level.
- An **upper air cyclonic circulation** over Gulf of Mannar & neighbourhood at 1.5 km above mean sea level.
- A **trough** runs from South Interior Karnataka to Gulf of Mannar across Tamil Nadu at 0.9 km above mean sea level.
- A **trough** in westerlies at 1.5 km above mean sea level runs roughly along at Long. 87°E to the north of Lat. 22°N.

#### Weather Outlook for subsequent 3 days

- Fairly widespread to widespread rainfall likely over Northeast India, East India and Central India.
- Isolated to scattered rainfall likely over the Northwest India, west India and South peninsular India.



## 9 September (Day 1)

- ❖ **Heavy to Very Heavy Rainfall** very likely at isolated places over Sub Himalayan West Bengal & Sikkim.
- ❖ **Heavy Rainfall** very likely at isolated places over Andaman & Nicobar Islands, Arunachal Pradesh, Assam & Meghalaya, Bihar, Chhattisgarh, Coastal Andhra Pradesh, East Madhya Pradesh, Kerala & Mahe, Nagaland, Manipur, Mizoram and Tripura, Kutch, South Interior Karnataka, Tamil Nadu Puducherry & Karaikal and Telangana.
- ❖ **Thunderstorm accompanied with lightning & gusty winds(30-40kmph)** very likely at isolated places over Andaman & Nicobar Islands, Bihar, Jharkhand, Kerala & Mahe, Odisha, Tamil Nadu Puducherry & Karaikal, Telangana and West Bengal & Sikkim.
- ❖ **Thunderstorm accompanied with Lightning** very likely at isolated places over Arunachal Pradesh, Assam & Meghalaya, Chhattisgarh, Coastal Andhra Pradesh, East Uttar Pradesh, Gujarat State, Madhya Pradesh, Nagaland, Manipur, Mizoram and Tripura and Uttarakhand.

Squally wind with speed reaching 45 kmph to 55 kmph gusting to 65 kmph is likely to prevail along and off Somalia and Oman coasts, some parts of westcentral & southwest Arabian sea.

Squally weather with wind speed reaching 45 - 55 kmph gusting to 65 kmph likely to prevail along and off Pakistan & adjoining north Gujarat coasts; some parts of northeast Arabian sea, over Gulf of Mannar and adjoining Comorin area.

Squally weather with wind speed reaching 40 - 50 kmph gusting to 60 kmph likely to prevail along and off southern Pakistan & adjoining north Gujarat coast.

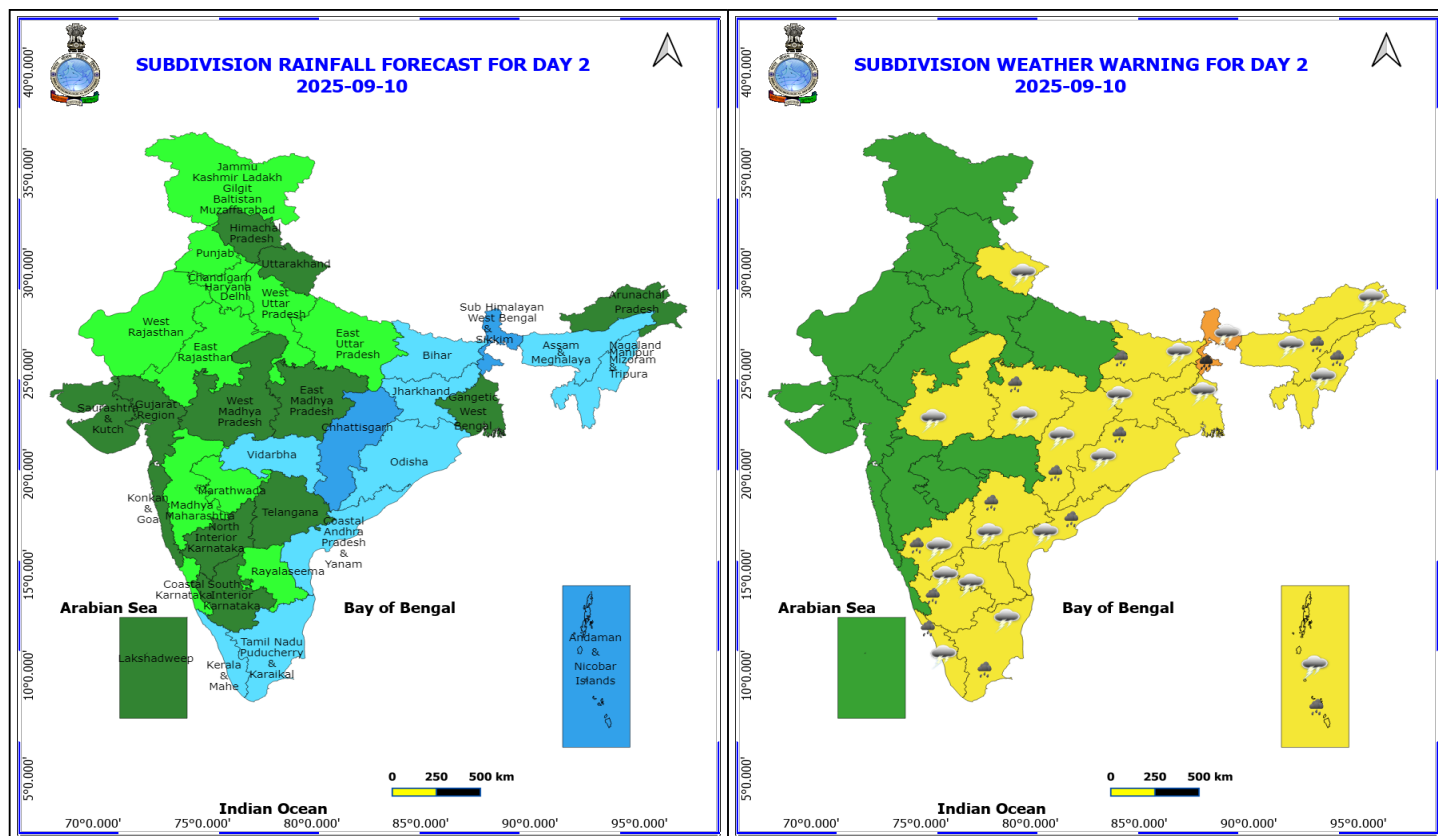
**\*Red color warning does not mean "Red Alert" Red color warning means "Take Action"**

Forecast and warning for any day is valid from 0830 hours IST of day till 0830 hours IST of next day

For more details kindly visit <https://mausam.imd.gov.in> or contact 011-2434-4599

(Service to the nation since 1875)





## 10 September (Day 2)

- ❖ **Heavy to Very Heavy Rainfall** very likely at isolated places over Sub Himalayan West Bengal & Sikkim.
- ❖ **Heavy Rainfall** very likely at isolated places over Andaman & Nicobar Islands, Assam & Meghalaya, Bihar, Chhattisgarh, Coastal Andhra Pradesh, East Madhya Pradesh, Interior Karnataka, Kerala & Mahe, Nagaland, Manipur, Mizoram and Tripura, Odisha, Tamil Nadu Puducherry & Karaikal and Telangana.
- ❖ **Thunderstorm accompanied with lightning & gusty winds(30-40kmph)** very likely at isolated places over Andaman & Nicobar Islands, Bihar, Interior Karnataka, Jharkhand, Kerala & Mahe, Odisha, Tamil Nadu Puducherry & Karaikal, Telangana and West Bengal & Sikkim.
- ❖ **Thunderstorm accompanied with Lightning** very likely at isolated places over Andhra Pradesh, Arunachal Pradesh, Assam & Meghalaya, Chhattisgarh, Madhya Pradesh, Nagaland, Manipur, Mizoram and Tripura and Uttarakhand.

Squally wind with speed reaching 45 kmph to 55 kmph gusting to 65 kmph is likely to prevail along and off Somalia and Oman coasts, some parts of westcentral & southwest Arabian sea.

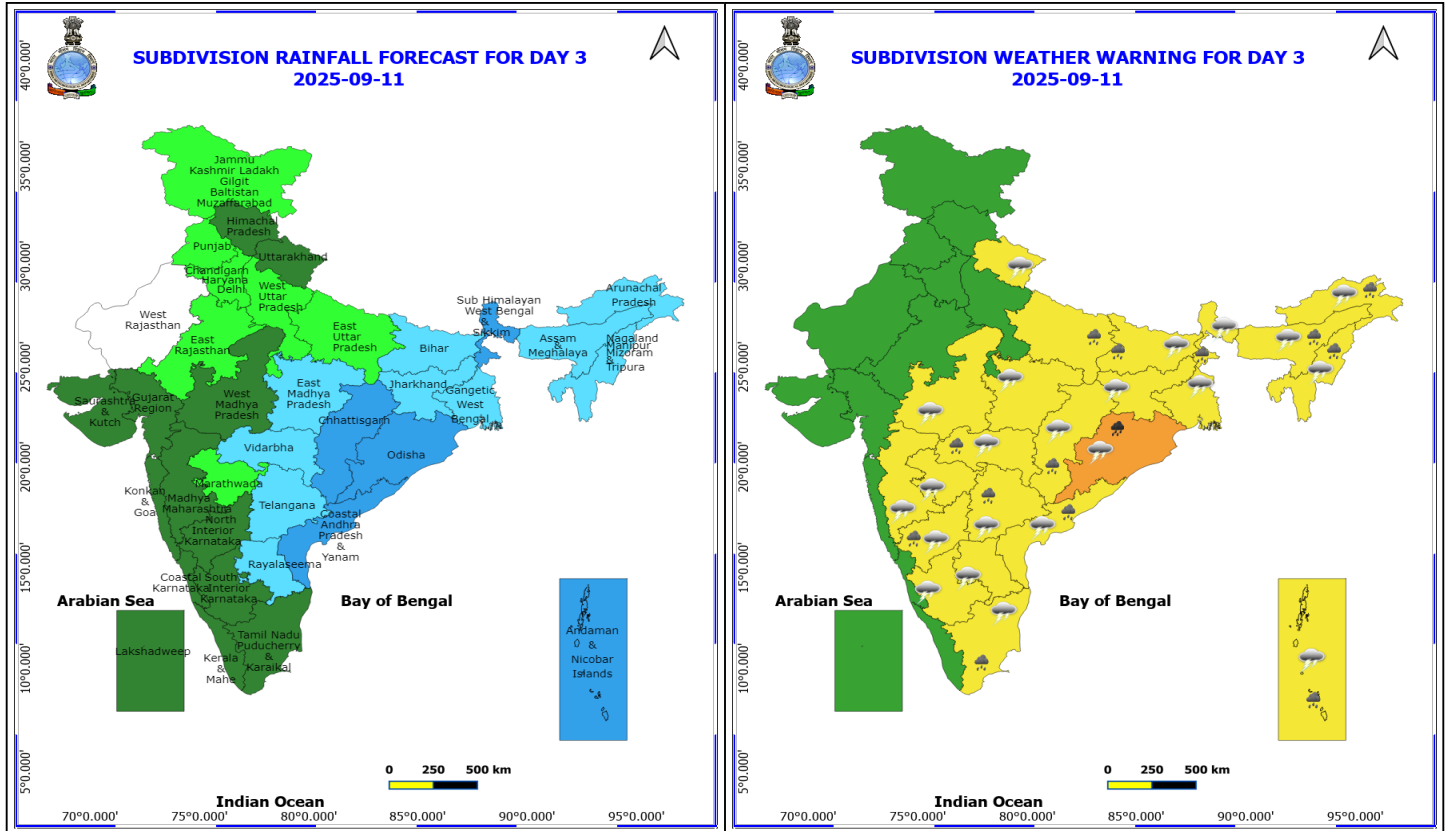
Squally weather with wind speed reaching 40 - 50 kmph gusting to 60 kmph likely to prevail along and off south Sri Lanka coast & adjoining southwest Bay of Bengal, over Gulf of Mannar & adjoining Comorin area.

**\*Red color warning does not mean "Red Alert" Red color warning means "Take Action"**

Forecast and warning for any day is valid from 0830 hours IST of day till 0830 hours IST of next day

For more details kindly visit <https://mausam.imd.gov.in> or contact 011-2434-4599

(Service to the nation since 1875)



## 11 September (Day 3)

- ❖ **Heavy to Very Heavy Rainfall** very likely at isolated places over Odisha.
- ❖ **Heavy Rainfall** very likely at isolated places over Andaman & Nicobar Islands, Arunachal Pradesh, Assam & Meghalaya, Bihar, Chhattisgarh, Coastal Andhra Pradesh, East Uttar Pradesh, Nagaland, Manipur, Mizoram and Tripura, North Interior Karnataka, Sub Himalayan West Bengal & Sikkim, Tamil Nadu Puducherry & Karaikal, Telangana and Vidarbha.
- ❖ **Thunderstorm accompanied with lightning & gusty winds(30-40kmph)** very likely at isolated places over Andaman & Nicobar Islands, Bihar, Interior Karnataka, Jharkhand, Odisha, Tamil Nadu Puducherry & Karaikal, Telangana and West Bengal & Sikkim.
- ❖ **Thunderstorm accompanied with Lightning** very likely at isolated places over Andhra Pradesh, Arunachal Pradesh, Assam & Meghalaya, Chhattisgarh, Madhya Pradesh, Maharashtra, Nagaland, Manipur, Mizoram and Tripura and Uttarakhand.

Squally wind with speed reaching 45 kmph to 55 kmph gusting to 65 kmph is likely to prevail along and off Somalia coasts, some parts of southwest & westcentral Arabian Sea.

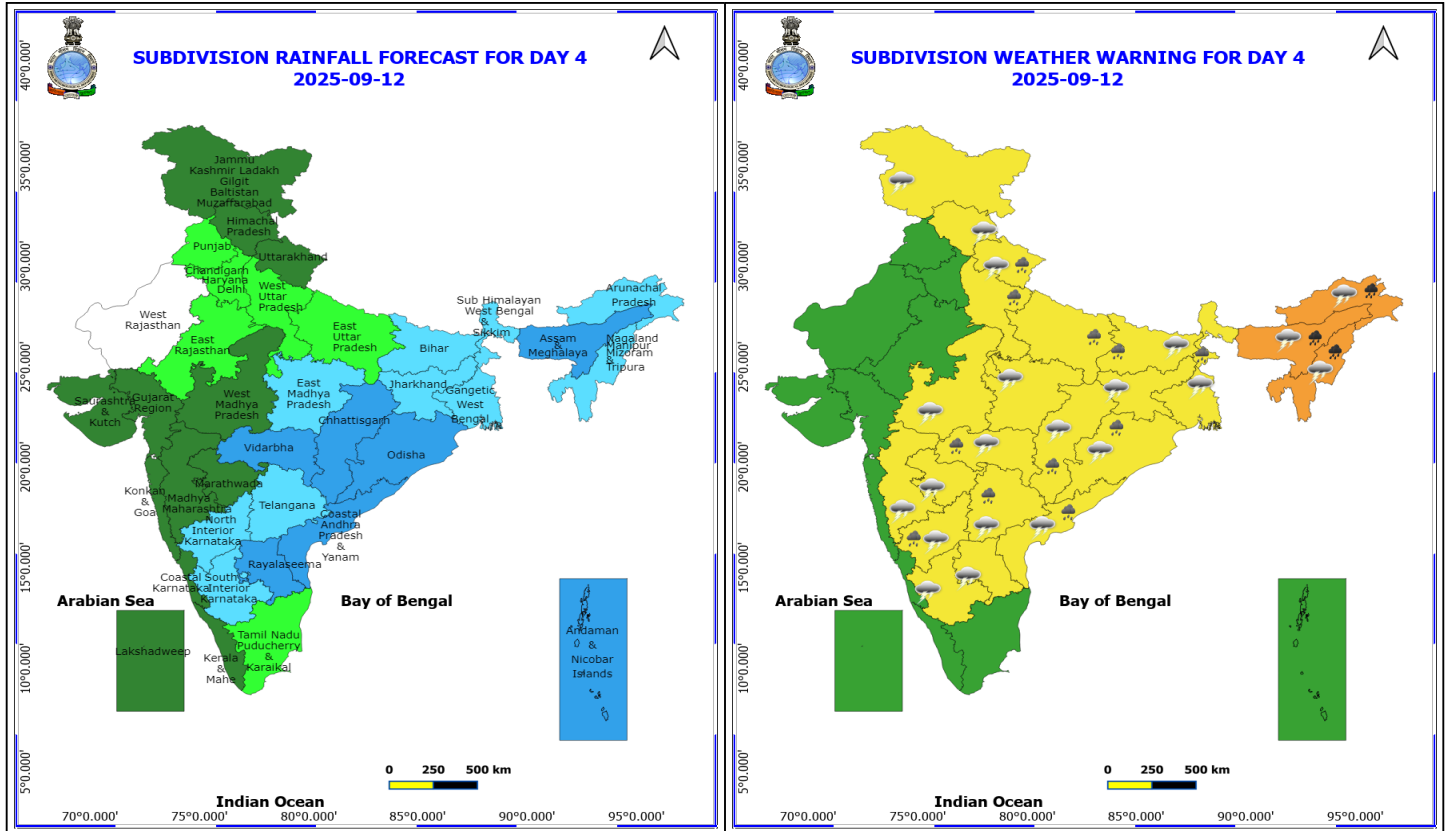
Squally weather with wind speed reaching 40 - 50 kmph gusting to 60 kmph likely to prevail over Gulf of Mannar & adjoining Comorin area; along and off Sri Lanka, Tamil Nadu, south Andhra Pradesh coasts and many parts of southwest; adjoining some parts of westcentral & southeast Bay of Bengal.

**\*Red color warning does not mean "Red Alert" Red color warning means "Take Action"**

Forecast and warning for any day is valid from 0830 hours IST of day till 0830 hours IST of next day

For more details kindly visit <https://mausam.imd.gov.in> or contact 011-2434-4599

(Service to the nation since 1875)



## 12 September (Day 4)

- ❖ **Heavy to Very Heavy Rainfall** likely at isolated places over Arunachal Pradesh, Assam & Meghalaya and Nagaland, Manipur, Mizoram and Tripura.
- ❖ **Heavy Rainfall** likely at isolated places over Bihar, Chhattisgarh, Coastal Andhra Pradesh, North Interior Karnataka, Odisha, Sub Himalayan West Bengal & Sikkim, Telangana, Uttar Pradesh, Uttarakhand and Vidarbha.
- ❖ **Thunderstorm accompanied with lightning & gusty winds(30-40kmph)** likely at isolated places over Bihar, Gangetic West Bengal, Himachal Pradesh, Interior Karnataka, Jammu-Kashmir-Ladakh-Gilgit-Baltistan-Muzaffarabad, Jharkhand, Odisha and Telangana.
- ❖ **Thunderstorm accompanied with Lightning** likely at isolated places over Andhra Pradesh, Arunachal Pradesh, Assam & Meghalaya, Chhattisgarh, Madhya Pradesh, Maharashtra, Nagaland, Manipur, Mizoram and Tripura and Uttarakhand.

Squally wind with speed reaching 45 kmph to 55 kmph gusting to 65 kmph is likely to prevail along and off Somalia and Oman coasts, some parts of southwest & westcentral Arabian Sea.

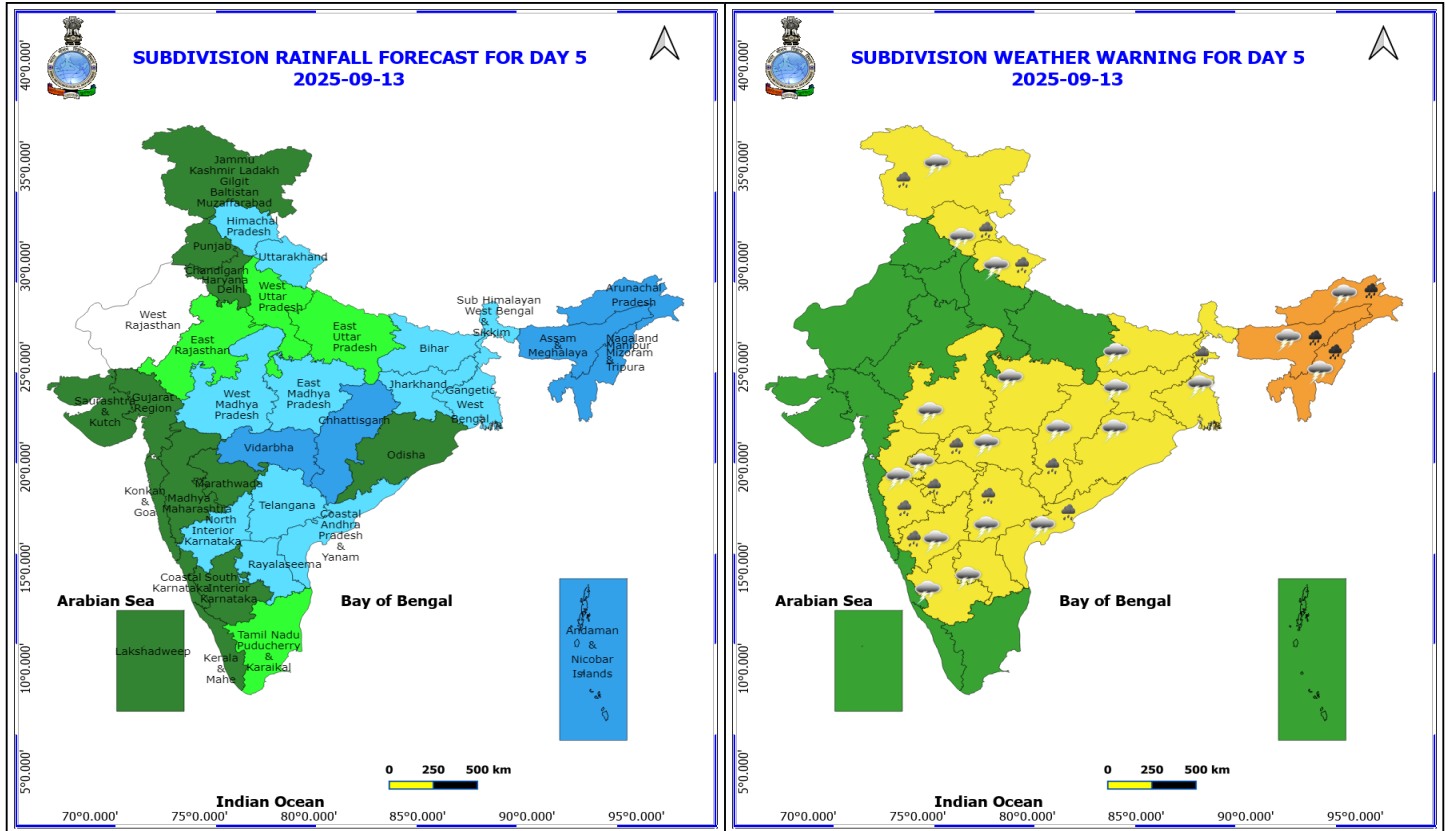
Squally weather with wind speed reaching 40 - 50 kmph gusting to 60 kmph likely to prevail over Gulf of Mannar & adjoining Comorin area; along and off Tamil Nadu, Sri Lanka coasts, many parts of southwest Bay of Bengal.

**\*Red color warning does not mean "Red Alert" Red color warning means "Take Action"**

Forecast and warning for any day is valid from 0830 hours IST of day till 0830 hours IST of next day

For more details kindly visit <https://mausam.imd.gov.in> or contact 011-2434-4599

(Service to the nation since 1875)



### 13 September (Day 5)

- ❖ **Heavy to Very Heavy Rainfall** likely at isolated places over Arunachal Pradesh, Assam & Meghalaya and Nagaland, Manipur, Mizoram and Tripura.
- ❖ **Heavy Rainfall** likely at isolated places over Chhattisgarh, Coastal Andhra Pradesh, Himachal Pradesh, Jammu-Kashmir-Ladakh-Gilgit-Baltistan-Muzaffarabad, Maharashtra, North Interior Karnataka, Sub Himalayan West Bengal & Sikkim, Telangana and Uttarakhand.
- ❖ **Thunderstorm accompanied with lightning & gusty winds(30-40kmph)** likely at isolated places over Bihar, Gangetic West Bengal, Himachal Pradesh, Interior Karnataka, Jammu-Kashmir-Ladakh-Gilgit-Baltistan-Muzaffarabad, Jharkhand, Odisha and Telangana.
- ❖ **Thunderstorm accompanied with Lightning** likely at isolated places over Andhra Pradesh, Arunachal Pradesh, Assam & Meghalaya, Chhattisgarh, Madhya Pradesh, Maharashtra, Nagaland, Manipur, Mizoram and Tripura and Uttarakhand.

Squally wind with speed reaching 45 kmph to 55 kmph gusting to 65 kmph is likely to prevail along and off Somalia and Oman coasts, some parts of southwest & westcentral Arabian Sea.

Squally weather with wind speed reaching 40 - 50 kmph gusting to 60 kmph likely to prevail over Gulf of Mannar & adjoining Comorin area; along and off south Sri Lanka coast & adjoining some parts of southwest Bay of Bengal.

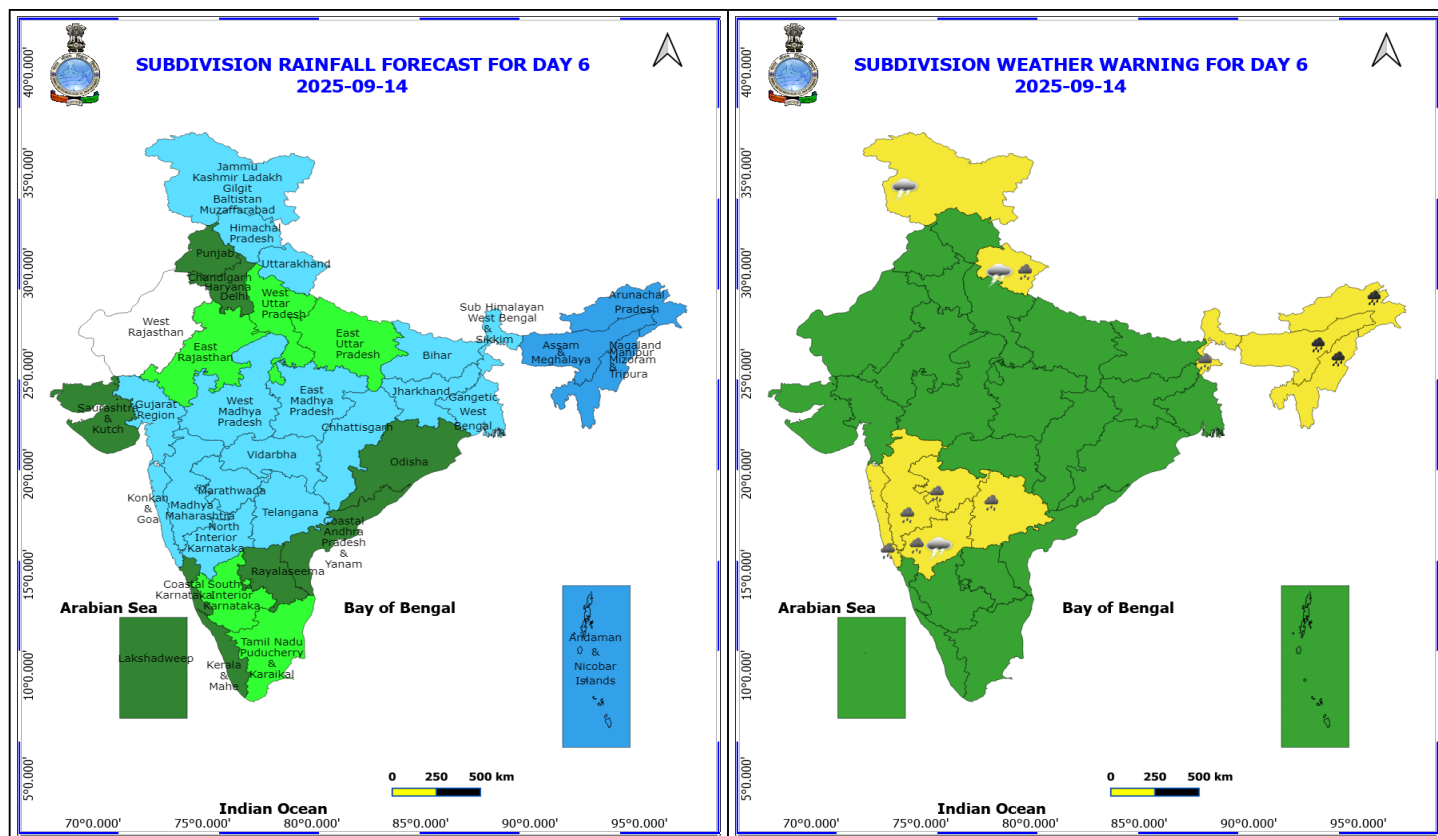
**\*Red color warning does not mean "Red Alert" Red color warning means "Take Action"**

Forecast and warning for any day is valid from 0830 hours IST of day till 0830 hours IST of next day

For more details kindly visit <https://mausam.imd.gov.in> or contact 011-2434-4599

(Service to the nation since 1875)





#### 14 September (Day 6)

- ❖ **Heavy to Very Heavy Rainfall** likely at isolated places over Arunachal Pradesh, Assam & Meghalaya and Nagaland, Manipur, Mizoram and Tripura.
- ❖ **Heavy Rainfall** likely at isolated places over Konkan & Goa, Madhya Maharashtra, Marathwada, North Interior Karnataka, Sub Himalayan West Bengal & Sikkim, Telangana and Uttarakhand.
- ❖ **Thunderstorm accompanied with lightning & gusty winds(30-40kmph)** likely at isolated places over Jammu-Kashmir-Ladakh-Gilgit-Baltistan-Muzaffarabad and North Interior Karnataka.
- ❖ **Thunderstorm accompanied with Lightning** likely at isolated places over Uttarakhand.

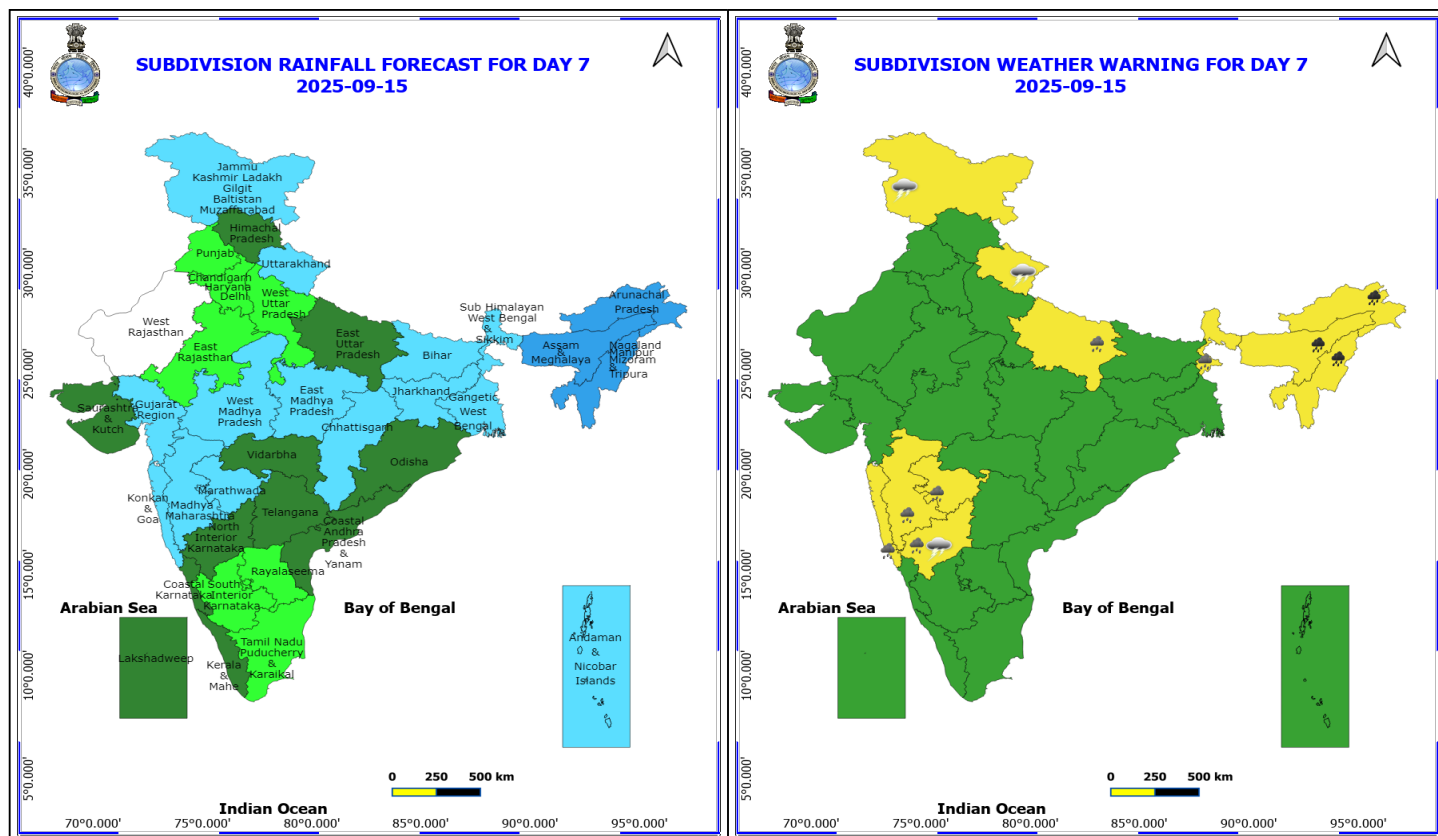
**No Fishermen Warning**

**\*Red color warning does not mean "Red Alert" Red color warning means "Take Action"**

Forecast and warning for any day is valid from 0830 hours IST of day till 0830 hours IST of next day

For more details kindly visit <https://mausam.imd.gov.in> or contact 011-2434-4599

(Service to the nation since 1875)



## 15 September (Day 7)

- ❖ **Heavy to Very Heavy Rainfall** likely at isolated places over Arunachal Pradesh, Assam & Meghalaya and Nagaland, Manipur, Mizoram and Tripura.
- ❖ **Heavy Rainfall** likely at isolated places over East Uttar Pradesh, Konkan & Goa, Madhya Maharashtra, Marathwada, North Interior Karnataka and Sub Himalayan West Bengal & Sikkim.
- ❖ **Thunderstorm accompanied with lightning & gusty winds(30-40kmph)** likely at isolated places over Jammu-Kashmir-Ladakh-Gilgit-Baltistan-Muzaffarabad and North Interior Karnataka.
- ❖ **Thunderstorm accompanied with Lightning** likely at isolated places over Uttarakhand.

**No Fishermen Warning**

**\*Red color warning does not mean "Red Alert" Red color warning means "Take Action"**

Forecast and warning for any day is valid from 0830 hours IST of day till 0830 hours IST of next day

For more details kindly visit <https://mausam.imd.gov.in> or contact 011-2434-4599

(Service to the nation since 1875)



# Table-1

## 7 Days Rainfall Forecast

S.No.	Subdivision	9- Sep	10- Sep	11- Sep	12- Sep	13- Sep	14- Sep	15- Sep
		Day 1	Day 2	Day 3	Day 4	Day 5	Day 6	Day 7
1	ANDAMAN & NICOBAR ISLANDS	WS	WS	WS	WS	WS	WS	FWS
2	ARUNACHAL PRADESH	SCT	SCT	FWS	FWS	WS	WS	WS
3	ASSAM & MEHGHALAYA	SCT	FWS	FWS	WS	WS	WS	WS
4	N. M. M. & T.	FWS	FWS	FWS	FWS	WS	WS	WS
5	S.H. WEST BENGAL & SIKKIM	WS	WS	WS	FWS	FWS	FWS	FWS
6	GANGETIC WEST BENGAL	ISOL	SCT	FWS	FWS	FWS	FWS	FWS
7	ODISHA	SCT	FWS	WS	WS	SCT	SCT	SCT
8	JHARKHAND	SCT	FWS	FWS	FWS	FWS	FWS	FWS
9	BIHAR	FWS	FWS	FWS	FWS	FWS	FWS	FWS
10	EAST UTTAR PRADESH	SCT	ISOL	ISOL	ISOL	ISOL	ISOL	SCT
11	WEST UTTAR PRADESH	ISOL	ISOL	ISOL	ISOL	ISOL	ISOL	ISOL
12	UTTARAKHAND	SCT	SCT	SCT	SCT	FWS	FWS	FWS
13	HARYANA, CHD & DELHI	ISOL	ISOL	ISOL	ISOL	SCT	SCT	ISOL
14	PUNJAB	ISOL	ISOL	ISOL	ISOL	SCT	SCT	ISOL
15	HIMACHAL PRADESH	SCT	SCT	SCT	SCT	FWS	FWS	SCT
16	JAMMU AND KASHMIR AND LADAKH	SCT	ISOL	ISOL	SCT	SCT	FWS	FWS
17	WEST RAJASTHAN	ISOL	ISOL	DRY	DRY	DRY	DRY	DRY
18	EAST RAJASTHAN	ISOL	ISOL	ISOL	ISOL	ISOL	ISOL	ISOL
19	WEST MADHYA PRADESH	SCT	SCT	SCT	SCT	FWS	FWS	FWS
20	EAST MADHYA PRADESH	SCT	SCT	FWS	FWS	FWS	FWS	FWS
21	GUJRAT REGION	SCT	SCT	SCT	SCT	SCT	FWS	FWS
22	SAURASHTRA & KUTCH	SCT	SCT	SCT	SCT	SCT	SCT	SCT
23	KONKAN & GOA	SCT	SCT	SCT	SCT	SCT	FWS	FWS
24	MADHYA MAHARASHTRA	ISOL	ISOL	SCT	SCT	SCT	FWS	FWS
25	MARATHWADA	ISOL	ISOL	ISOL	SCT	SCT	FWS	FWS
26	VIDARBHA	SCT	FWS	FWS	WS	WS	FWS	SCT
27	CHATTISGARH	FWS	WS	WS	WS	WS	FWS	FWS
28	COASTAL ANDHRA PRADESH	SCT	FWS	WS	WS	FWS	SCT	SCT
29	TELANGANA	SCT	SCT	FWS	FWS	FWS	FWS	SCT
30	RAYALASEEMA	ISOL	ISOL	FWS	WS	FWS	SCT	ISOL
31	TAMILNADU & PUDUCHERRY	SCT	FWS	SCT	ISOL	ISOL	ISOL	ISOL
32	COSTAL KARNATAKA	ISOL	ISOL	SCT	SCT	SCT	SCT	SCT
33	NORTH INTERIOR KARNATAKA	ISOL	SCT	SCT	FWS	FWS	FWS	SCT
34	SOUTH INTERIOR KARNATAKA	ISOL	SCT	SCT	FWS	SCT	ISOL	ISOL
35	KERALA	WS	FWS	SCT	SCT	SCT	SCT	SCT
36	LAKSHDWEEP	SCT	SCT	SCT	SCT	SCT	SCT	SCT

Legend	Category	%Stations
WS	Widespread/Most Places	76-100
FWS	Fairly Widespread/Many Places	51-75
SCT	Scattered/ A Few Places	26-50
ISOL	Isolated Places	1-25
DRY	No Rain	0

\*Red color warning does not mean "Red Alert" Red color warning means "Take Action"

Forecast and warning for any day is valid from 0830 hours IST of day till 0830 hours IST of next day

For more details kindly visit <https://mausam.imd.gov.in> or contact 011-2434-4599

(Service to the nation since 1875)

Fig. 1: Maximum Temperatures Dated 2025-09-09

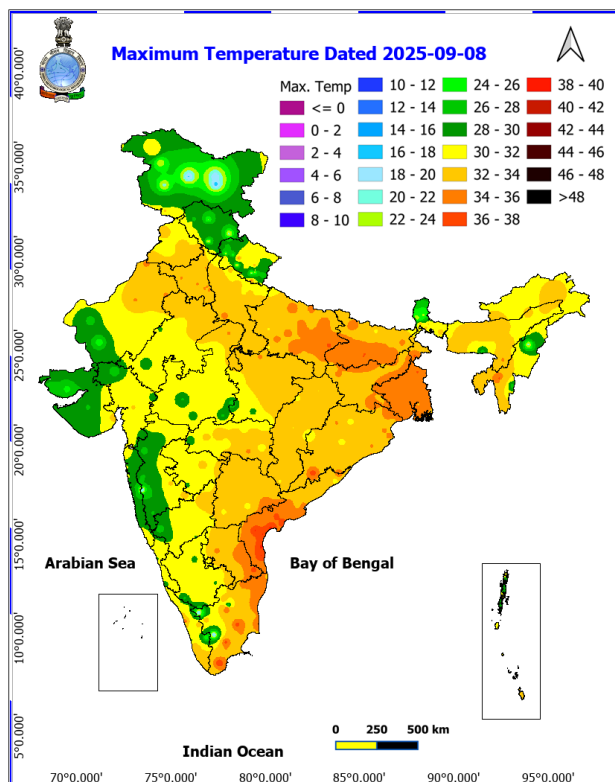


Fig. 2: Departure of Maximum Temp. Dated 2025-09-09

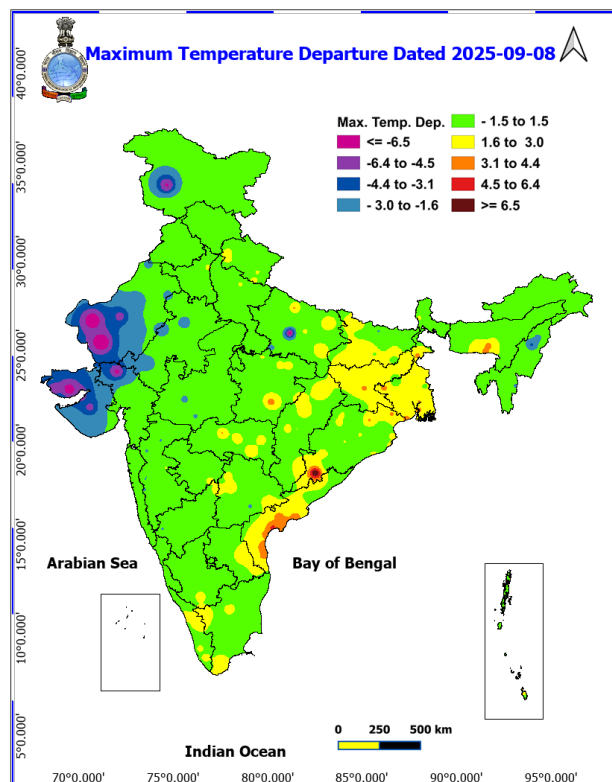


Fig. 3: Minimum Temperatures Dated 2025-09-09

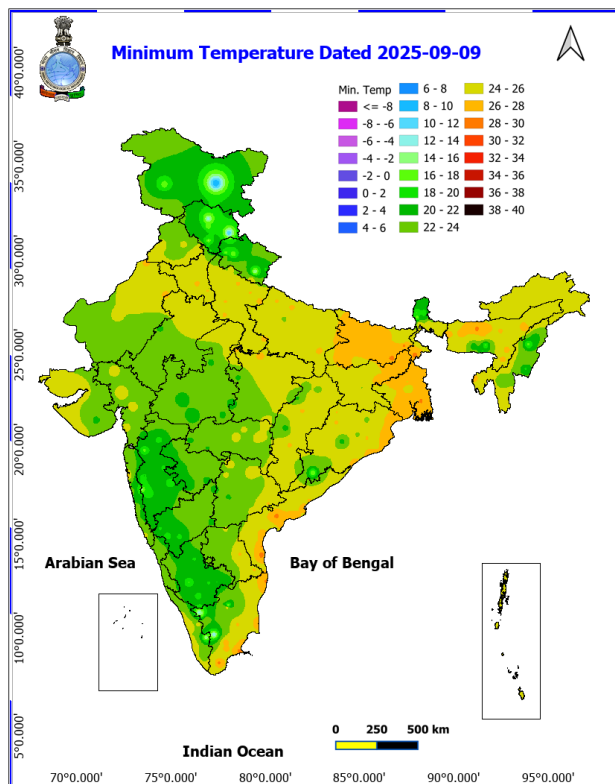
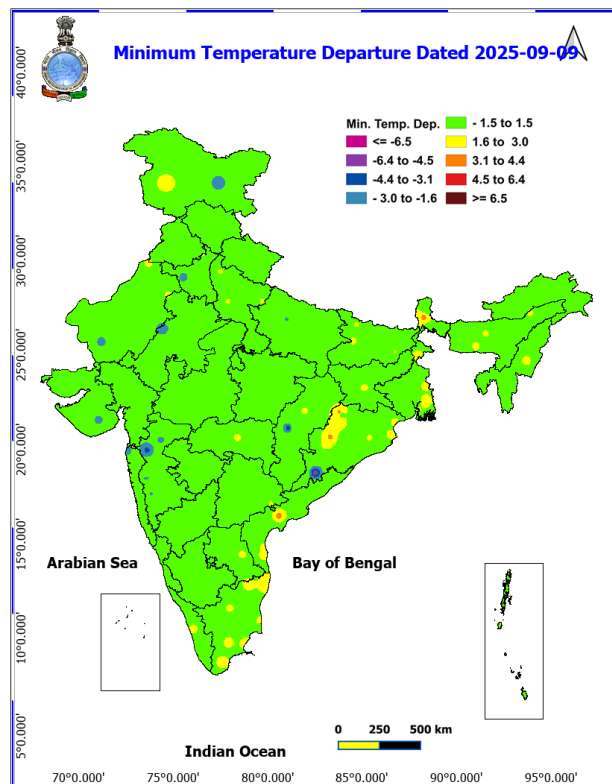
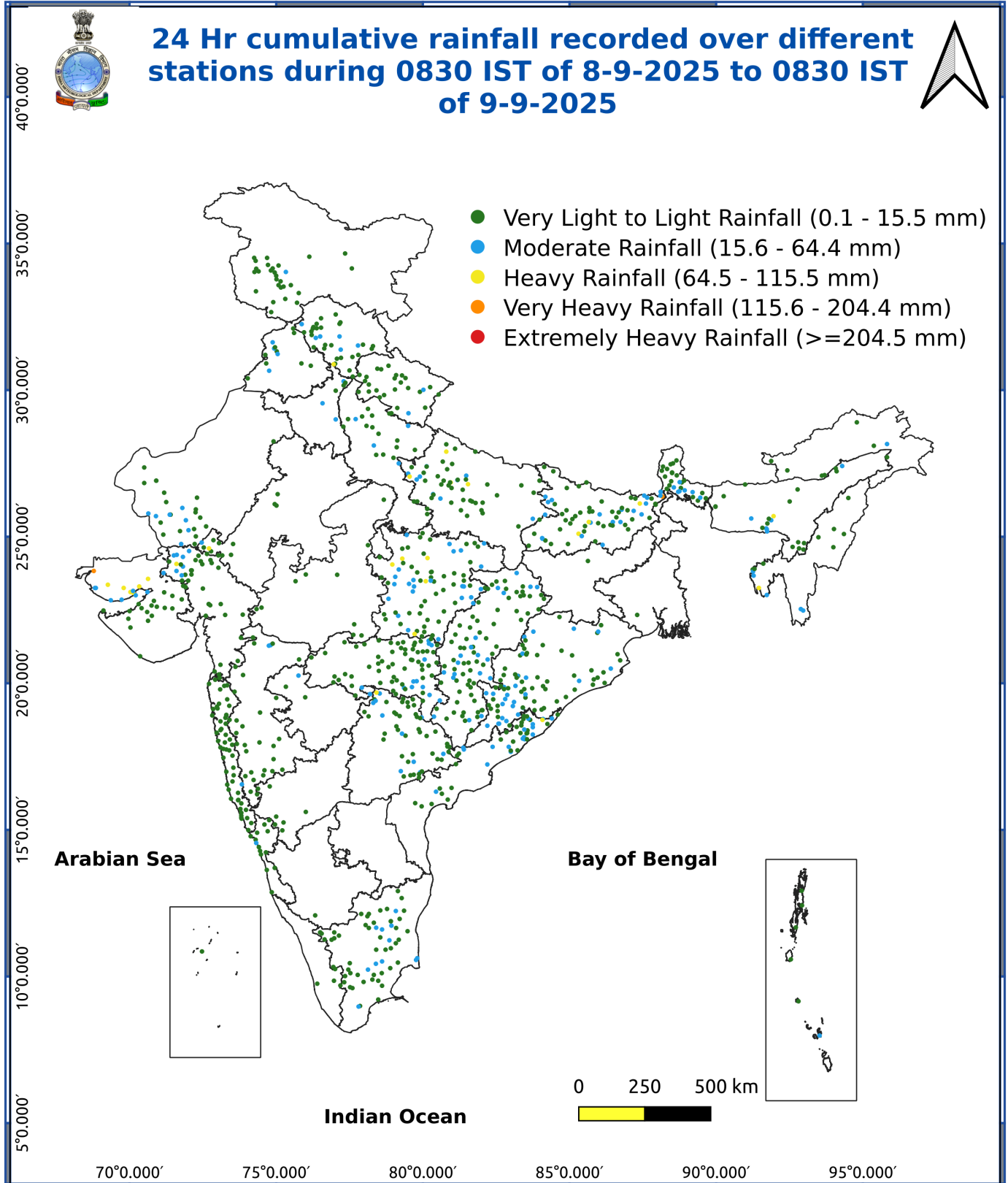


Fig. 4: Departure of Minimum Temp. Dated 2025-09-09







\*Red color warning does not mean "Red Alert" Red color warning means "Take Action"

Forecast and warning for any day is valid from 0830 hours IST of day till 0830 hours IST of next day

For more details kindly visit <https://mausam.imd.gov.in> or contact 011-2434-4599

(Service to the nation since 1875)

#### Impact & Action Suggested due to

- **Heavy to very heavy rainfall (12-20 cm)** at isolated places over Sub-Himalayan West Bengal & Sikkim on 09<sup>th</sup> & 10<sup>th</sup>; Odisha on 11<sup>th</sup>; Arunachal Pradesh, Assam & Meghalaya and Nagaland, Manipur, Mizoram & Tripura during 12<sup>th</sup>-15<sup>th</sup> Septemberr.

#### Impact Expected

- Localized Flooding of roads, water logging in low lying areas and closure of underpasses mainly in urban areas of the above region.
- Occasional reduction in visibility due to heavy rainfall.
- Disruption of traffic in major cities due to water logging in roads leading to increased travel time.
- Minor damage to kutcha roads.
- Possibilities of damage to vulnerable structure.
- Localized Landslides/Mudslides/landslips/mudslips/landsinks/mudsinks.
- Damage to horticulture and standing crops in some areas due to inundation.
- It may lead to riverine flooding in some river catchments (for riverine flooding please visit Web page of CWC)

#### Action Suggested

- Check for traffic congestion on your route before leaving for your destination.
- Follow any traffic advisories that are issued in this regard.
- Avoid going to areas that face the water logging problems often.
- Avoid staying in vulnerable structure.

#### Agromet advisories for various parts of the country

##### Agromet advisories for likely impact of Heavy / Heavy to Very Heavy / Extremely Heavy Rainfall

(Based on the IBF and advisories issued by different AMFUs)

In **Saurashtra & Kutch**, drain out excess rain water from fields of *kharif* groundnut, cotton, soybean, black gram and sesame in **North West Zone**.

In **Arunachal Pradesh**, immediately harvest the matured *jhum* rice and soybean crop and shift to a proper covered shelter. Ensure proper drainage in fields of rice, soybean, finger millet and vegetables.

In **Assam**, ensure proper drainage in fields of *Sali* rice, black gram and sesame in **Hill Zone** and *Sali* rice fields in **Lower Brahmaputra Valley Zone** and **Upper Brahmaputra Valley Zone**. In **Barak Valley Zone**, postpone the sowing of green gram and black gram and provide adequate drainage facilities in fields of rice and vegetables.

In **Meghalaya**, maintain proper drainage in ginger and vegetable fields and fruit orchards. Provide support to banana plants to prevent lodging. Maintain a thin 2-3 cm layer of stagnant water in rice fields after transplanting.

In **Nagaland**, undertake harvesting of matured *Jhum* rice, pods of sesame and Naga King chilli and store the harvested produce in safe places.

In **Sub-Himalayan West Bengal**, make provision to drain out excess water from *aman* paddy and vegetable fields (chilli, bitter gourd, pointed gourd, okra, brinjal etc.) in **Terai Zone**.

#### Livestock / Fishery

Keep the animals inside the shed during heavy rainfall and provide them balanced feed.

**\*Red color warning does not mean "Red Alert" Red color warning means "Take Action"**

Forecast and warning for any day is valid from 0830 hours IST of day till 0830 hours IST of next day

For more details kindly visit <https://mausam.imd.gov.in> or contact 011-2434-4599

(Service to the nation since 1875)

Store feed and fodder in a safe place to prevent spoilage.

Construct an outlet with proper netting around the ponds to drain out excess water, thereby preventing fish from escaping in case of overflow.

#### **Agromet advisories for likely impact of Thunderstorm / Gusty Winds / Squally Winds**

Provide mechanical support to horticultural crops and staking or support to vegetables and young fruit plants / fruit-bearing plants to avoid lodging due to strong winds.

---

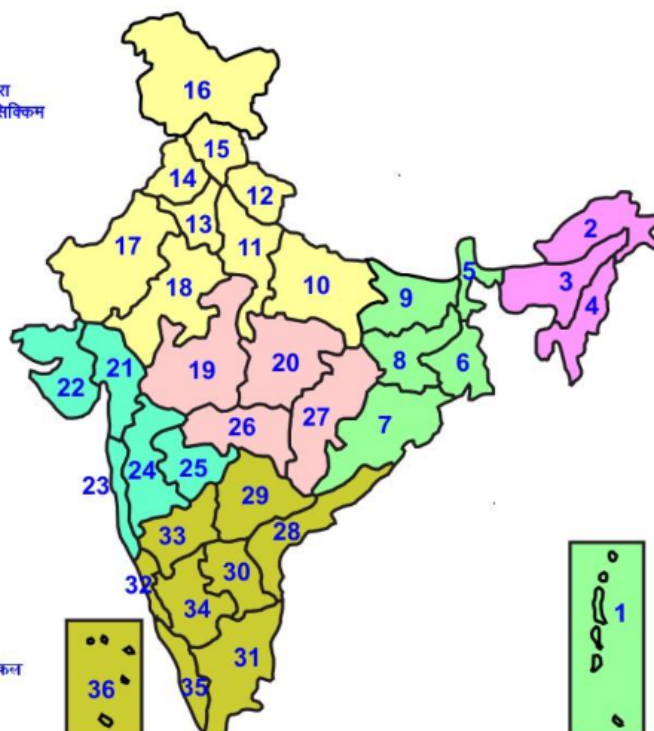
#### **Legends & abbreviations:**

#### **Region wise classification of meteorological Sub-Divisions:**

- **Northwest India:** Western Himalayan Region (Jammu-Kashmir-Ladakh-Gilgit-Baltistan-Muzaffarabad, Himachal Pradesh and Uttarakhand); Punjab, Haryana-Chandigarh-Delhi; West Uttar Pradesh, East Uttar Pradesh, West Rajasthan and East Rajasthan.
- **Central India:** West Madhya Pradesh, East Madhya Pradesh, Vidarbha and Chhattisgarh.
- **East India:** Bihar, Jharkhand, Sub-Himalayan West Bengal & Sikkim; Gangetic West Bengal, Odisha and Andaman & Nicobar Islands.
- **Northeast India:** Arunachal Pradesh, Assam & Meghalaya and Nagaland, Manipur, Mizoram & Tripura.
- **West India:** Gujarat Region, Saurashtra & Kutch, Konkan & Goa, Madhya Maharashtra and Marathawada.
- **South India:** Coastal Andhra Pradesh & Yanam, Telangana, Rayalaseema, Coastal Karnataka, North Interior Karnataka, South Interior Karnataka, Kerala & Mahe, Tamil Nadu, Puducherry & Karaikal and Lakshadweep.

## LEGENDS

- 1 अंडमान और निकोबार द्वीप समुह
- 2 अरुणाचल प्रदेश
- 3 असम और मेघालय
- 4 नागालैंड मनीपुर मीजोरम और त्रिपुरा
- 5 उप हिमालय पश्चिम बंगाल एवं सिक्किम
- 6 पश्चिम बंगाल
- 7 ओडिसा
- 8 झारखंड
- 9 बिहार
- 10 पूर्वी उत्तर प्रदेश
- 11 पश्चिम उत्तर प्रदेश
- 12 उत्तराखंड
- 13 हरियाणा चंडीगढ़ एवं दिल्ली
- 14 पंजाब
- 15 हिमाचल प्रदेश
- 16 जम्मू एवं कश्मीर एवं लद्दाख
- 17 पश्चिम राजस्थान
- 18 पूर्वी राजस्थान
- 19 पश्चिम मध्य प्रदेश
- 20 पूर्वी मध्य प्रदेश
- 21 गुजरात क्षेत्र
- 22 सौराष्ट्र एवं कच्छ
- 23 कोंकण एवं गोवा
- 24 मध्य महाराष्ट्र
- 25 मराठावाड़ा
- 26 विदर्भ
- 27 छत्तीसगढ़
- 28 तटीय आंध्र प्रदेश एवं यनम
- 29 तेलंगाना
- 30 रायलसीमा
- 31 तमिलनाडु, पुदुचेरी एवं कराईकल
- 32 तटिय कर्नाटक
- 33 आंतरिक उत्तरी कर्नाटक
- 34 आंतरिक दक्षिणी कर्नाटक
- 35 केरल एवं माहे
- 36 लक्षद्वीप



1. Andaman & Nicobar Islands
2. Arunachal Pradesh
3. Assam & Meghalaya
4. Nagaland, Manipur, Mizoram & Tripura
5. Sub-Himalayan West Bengal & Sikkim
6. Gangetic West Bengal
7. Orissa
8. Jharkhand
9. Bihar
10. East Uttar Pradesh
11. West Uttar Pradesh
12. Uttarakhand
13. Haryana, Chd & Delhi
14. Punjab
15. Himachal Pradesh
16. Jammu & Kashmir and Ladakh
17. West Rajasthan
18. East Rajasthan
19. West Madhya Pradesh
20. East Madhya Pradesh
21. Gujarat
22. Saurashtra
23. Konkan & Goa
24. Madhya Maharashtra
25. Marathawada
26. Vidharbha
27. Chhattisgarh
28. Coastal Andhra Pradesh & Yanam
29. Telangana
30. Rayalaseema
31. Tamilnadu, Puducherry & Karaikal
32. Coastal Karnataka
33. North Interior Karnataka
34. South Interior Karnataka
35. Kerala & Mahe
36. Lakshadweep

## SPATIAL DISTRIBUTION (% of Stations reporting)


% Stations	Category	% Stations	Category
76-100	Widespread (WS/Most Places)	26-50	Scattered (SCT/ A Few Places)
51-75	Fairly Widespread (FWS/ Many Places)	1-25	Isolated (ISOL)


## Subdivision Colour


- NO WARNING
- WATCH (BE UPDATED)
- ALERT (BE PREPARED TO TAKE ACTION)
- WARNING (TAKE ACTION)


## Probabilistic Forecast


Terms	Probability of Occurrence (%)
Unlikely	< 25
Likely	25 - 50
Very Likely	50 - 75
Most Likely	> 75


-  Heavy Rain


 Thunderstorm & Lightning


 Strong surface winds


 Cold Wave


 Hot & Humid


 Very Heavy Rain


 Hailstorm


 Heat Wave


 Cold Day


 Extremely Heavy Rain


 Dust Storm


 Hot Day

 Ground Frost

 Heavy Snow

 Dust Raising Winds

 Warm Night

 Fog

\*Red color warning does not mean "Red Alert" Red color warning means "Take Action"

Forecast and warning for any day is valid from 0830 hours IST of day till 0830 hours IST of next day

For more details kindly visit <https://mausam.imd.gov.in> or contact 011-2434-4599

(Service to the nation since 1875)



## LEGENDS

### WARNING

<b>WARNING (TAKE ACTION)</b>
<b>ALERT (BE PREPARED)</b>
<b>WATCH (BE UPDATED)</b>
<b>NO WARNING (NO ACTION)</b>

### Probabilistic Forecast

Terms	Probability of Occurrence (%)
Unlikely	< 25
Likely	25 - 50
Very Likely	50 - 75
Most Likely	> 75



Heavy: 64.5 to 115.5 mm/cm \*  
Very Heavy: 115.6 to 204.4 mm/cm \*  
Extremely Heavy: > 204.4 mm/cm \*



When maximum temperature of a station reaches  $\geq 40^{\circ}\text{C}$  for plains and  $\geq 30^{\circ}\text{C}$  for hilly regions  
(a) Based on Departure from normal

Heat Wave: Maximum Temperature Departure from normal  $4.5^{\circ}\text{C}$  to  $6.4^{\circ}\text{C}$ .  
Severe Heat Wave: Maximum Temperature Departure from normal  $\geq 6.5^{\circ}\text{C}$

(b). Based on Actual maximum temperature

Heat Wave: When actual maximum temperature  $\geq 45^{\circ}\text{C}$ .  
Severe Heat Wave: When actual maximum temperature  $\geq 47^{\circ}\text{C}$

(c). Criteria for heat wave for coastal stations

When maximum temperature departure is  $> 4.5^{\circ}\text{C}$  from normal. Heat Wave may be described provided maximum temperature  $\geq 37^{\circ}\text{C}$



When maximum temperature remains  $40^{\circ}\text{C}$

Warm Night: When minimum temperature departure  $4.5^{\circ}\text{C}$  to  $6.4^{\circ}\text{C}$ .  
Severe Warm Night: When minimum temperature departure  $> 6.4^{\circ}\text{C}$ .



When minimum temperature of a station  $\leq 10^{\circ}\text{C}$  for plains and  $\leq 0^{\circ}\text{C}$  for hilly regions.

(a). Based on departure

Cold Wave: Minimum Temperature Departure from normal  $-4.5^{\circ}\text{C}$  to  $-6.4^{\circ}\text{C}$ .  
Severe Cold Wave: Minimum Temperature Departure from normal  $\leq -6.5^{\circ}\text{C}$

(b) Based on actual Minimum Temperature (for Plains only)

Cold Wave: When Minimum Temperature is  $\leq 4.0^{\circ}\text{C}$   
Severe Cold Wave: When Minimum Temperature is  $\leq 2.0^{\circ}\text{C}$

(c) For Coastal Stations

When Minimum Temperature departure is  $\leq -4.5^{\circ}\text{C}$  & actual Minimum Temperature is  $\leq 15^{\circ}\text{C}$



When minimum temperature of a station  $\leq 10^{\circ}\text{C}$  for plains and  $\leq 0^{\circ}\text{C}$  for hilly regions  
Based on departure

Cold Day: Maximum Temperature Departure from normal  $-4.5^{\circ}\text{C}$  to  $-6.4^{\circ}\text{C}$ .  
Severe Cold Day: Maximum Temperature Departure from normal  $\leq -6.5^{\circ}\text{C}$



Phenomenon of small droplets suspended in air and the horizontal visibility  $< 1\text{km}$

Moderate Fog: When the visibility between 500-200 metres  
Dense Fog: when the visibility between 50-200 metres  
Very Dense Fog: when the visibility  $< 50$  metres



Sudden electrical discharges manifested by a flash of light (Lightning) and a sharp rumbling sound (thunder)



An ensemble of particles of dust or sand energetically lifted to great heights by a strong and turbulent wind.



Ice deposits on ground

Air temperature  $\leq 4^{\circ}\text{C}$  (over Plains)



A strong wind that rises suddenly, lasts for at least 1 minute.

Moderate: Wind speed 52-61 kmph  
Severe: Wind speed 62-87 kmph  
Very Severe: Wind speed  $> 87$  kmph



Effect of various waves in the sea over specific area

Rough to very rough: Wind speed 41-62 kmph (22-33 knots) & Wave height 2.5-6 metre  
High to very high: Wind speed 63-117 kmph (34-63 knots) & Wave height 6-14 metre  
Phenomenal: Wind speed  $> 117$  kmph ( $> 63$  knots) & Wave height  $> 14$  metre



Cyclonic Storm: Wind speed 62-87 kmph (34-47 knots)

Severe Cyclonic Storm: Wind speed 88-117 kmph (48-63 knots)  
Very Severe Cyclonic Storm: Wind speed 118-165 kmph (64-89 knots)  
Extremely Severe Cyclonic Storm: Wind speed 166-220 kmph (90-119 knots)  
Super Cyclone Storm: Wind speed  $> 220$  kmph ( $> 119$  knots)

\*Red color warning does not mean "Red Alert" Red color warning means "Take Action"

Forecast and warning for any day is valid from 0830 hours IST of day till 0830 hours IST of next day

For more details kindly visit <https://mausam.imd.gov.in> or contact 011-2434-4599

(Service to the nation since 1875)