



2025-07-01

Time of Issue: 14:07:00 hours IST  
(Mid-Day)

## ALL INDIA WEATHER SUMMARY AND FORECAST BULLETIN

### Significant Weather Features

#### East & Central India:

- ♦ **Extremely heavy rainfall ( $\geq 20$  cm)** very likely at isolated places over Madhya Pradesh on 01<sup>st</sup> July.
- ♦ Isolated **heavy rainfall** over Madhya Pradesh, Vidarbha, Chhattisgarh during 01<sup>st</sup>-07<sup>th</sup> July; Bihar, West Bengal & Sikkim, Jharkhand, Odisha during 01<sup>st</sup>-05<sup>th</sup> July with **very heavy rainfall** over Madhya Pradesh on 02<sup>nd</sup> and during 05<sup>th</sup>-07<sup>th</sup>; Jharkhand on 01<sup>st</sup>; Odisha during 01<sup>st</sup>-03<sup>rd</sup> July.
- ♦ Light/moderate rainfall at most/many places accompanied with **thunderstorm, lightning** likely over the region during next 7 days.

#### Northwest India:

- ♦ **Extremely heavy rainfall ( $\geq 20$  cm)** very likely at isolated places over West Uttar Pradesh, East Rajasthan on 01<sup>st</sup> July.
- ♦ Isolated **heavy rainfall** likely over Himachal Pradesh, Uttarakhand, East Rajasthan during 01<sup>st</sup>-07<sup>th</sup> July; Uttar Pradesh during 01<sup>st</sup>-05<sup>th</sup> July; Punjab, Haryana & Chandigarh on 01<sup>st</sup> and during 05<sup>th</sup>-07<sup>th</sup> July; West Rajasthan during 01<sup>st</sup>-04<sup>th</sup> July with **very heavy rainfall over Himachal Pradesh on 01<sup>st</sup>, 02<sup>nd</sup> and during 05<sup>th</sup>-07<sup>th</sup>; Uttarakhand on 02<sup>nd</sup>; Punjab on 06<sup>th</sup> & 07<sup>th</sup>; Haryana on 01<sup>st</sup>, 06<sup>th</sup> & 07<sup>th</sup>; Uttar Pradesh on 01<sup>st</sup> & 02<sup>nd</sup> July and East Rajasthan during 01<sup>st</sup>-04<sup>th</sup> July.**
- ♦ Light/moderate rainfall at most/many places accompanied with **thunderstorm, lightning**
- ♦ **& gusty winds speed reaching 30-40 kmph** likely over Northwest India during next 7 days.

#### West India:

- ♦ **Heavy to very heavy rainfall** at isolated places likely over Konkan & Goa, Ghat areas of Madhya Maharashtra, Gujarat region and heavy rainfall over Saurashtra & Kutch during next 7 days.

#### Northeast India:

- ♦ Light/moderate rainfall at most places accompanied with **thunderstorm, lightning and isolated heavy to very heavy rainfall** likely to continue over Northeast India during next 7 days.

#### South Peninsular India:

- ♦ Isolated **heavy rainfall** likely over Coastal Andhra Pradesh on 01<sup>st</sup>; Telangana on 01<sup>st</sup> & 02<sup>nd</sup> July; Kerala & Mahe during 02<sup>nd</sup>-05<sup>th</sup> July, Coastal & North Interior Karnataka during 02<sup>nd</sup>-07<sup>th</sup> July; South Interior Karnataka during 03<sup>rd</sup>-07<sup>th</sup> July.
- ♦ **Strong surface winds** (speed reaching 40-50 kmph) very likely over South Peninsular India during next 7 days.
- ♦ Light/moderate rainfall at many/some places over Kerala & Mahe, Lakshadweep, Coastal Karnataka; isolated to scattered rainfall accompanied with isolated **thunderstorm, lightning** over Coastal Andhra Pradesh & Yanam,
- ♦ Telangana, Rayalaseema during next 7 days.

**\*Red color warning does not mean "Red Alert" Red color warning means "Take Action"**

**Forecast and warning for any day is valid from 0830 hours IST of day till 0830 hours IST of next day**

**For more details kindly visit <https://mausam.imd.gov.in> or contact 011-2434-4599**

**(Service to the nation since 1875)**



### Main Weather Observations:

❖ **Rainfall distribution** (from 0830 hours IST of yesterday to 0830 hours IST of today): **at most places** over Arunachal Pradesh, Gangetic West Bengal, Jharkhand, East Uttar Pradesh, West Uttar Pradesh, Uttarakhand, Himachal Pradesh, East Madhya Pradesh, Gujarat Region, Konkan & Goa, Chhattisgarh, Telangana and Coastal Karnataka; **at many places** over Andaman & Nicobar Islands, Assam & Meghalaya, Nagaland, Manipur, Mizoram & Tripura, Sub Himalayan West Bengal & Sikkim, Odisha, Bihar, Haryana-Chandigarh-Delhi, Punjab, West Madhya Pradesh, Saurashtra & Kutch, Madhya Maharashtra, Marathwada, Coastal Andhra Pradesh & Yanam and North Interior Karnataka; **at a few places** over East Rajasthan and South Interior Karnataka; **at isolated places** over Jammu-Kashmir-Ladakh-Gilgit-Baltistan-Muzaffarabad, West Rajasthan, Rayalaseema and Tamil Nadu, Puducherry & Karaikal; **Dry** over rest of the country.

❖ **Significant rainfall recorded(in cm)** (from 0830 hours IST of yesterday to 0830 hours IST of today): **Himachal Pradesh**: Mandi (dist Mandi) 22; Pandoh (dist Mandi) 21; Bijahi (dist Mandi) 20; Karsog (dist Mandi) 16; Palampur (dist Kangra), Chaupal (dist Shimla) 14 Each; Gohar (dist Mandi) 12; Kotkhai (dist Shimla) 8; Nadaun (dist Hamirpur), Narkanda AWS (dist Shimla), Kangra AP (dist Kangra), Sujanpur Tira (dist Hamirpur) 7 Each; **East Uttar Pradesh**: Palliakalan (dist Kheri) 21; Fatehpur Tehsil (dist Barabanki) 16; Ayodhya (dist Ayodhya), Kakardharighat (dist Shrawasti) 10 Each; Varanasi BHU (dist Varanasi) 9; Chhibramau (dist Kannauj) 8; Fursatganj (dist Amethi), Sirauli Gauspur Tehsil (dist Barabanki), Bahraich (dist Bahraich), Bindki (dist Fatehpur) 7 Each; **West Madhya Pradesh**: Morena-aws (dist Morena) 20; Gwalior (dist Gwalior) 10; Bankhedi (dist Narmadapuram), Ghatigaon (dist Gwalior) 8 Each; Alipur(jaura) (dist Morena), Ambah (dist Morena), Bairad (dist Shivpuri) 7 Each; **Odisha**: Bamra (dist Sambalpur) 18; Balisankara (dist Sundargarh) 11; Kotpad (dist Koraput) 10; Tensa (dist Sundargarh), Jeypore (dist Koraput), Mathili (dist Malkangiri) 9 Each; Th Rampur (dist Kalahandi), Kutra (dist Sundargarh) 8 Each; Koraput (dist Koraput), Daitari (dist Keonjhar), Lamataput (dist Koraput), Nandapur (dist Koraput), Bijatala (dist Mayurbhanj), Nawarangpur PTO (dist Nawarangpur) 7 Each; **Chhattisgarh**: Shankargarh (dist Balrampur) 16; Aundhi (dist Mohala Manpur Chowki) 12; Antagarh (dist Kanker) 9; Khadgaon (dist Mohala Manpur Chowki) 8; Ramanujganj (dist Balrampur), Durgkondal (dist Kanker), Pakhanjur (dist Kanker), Manpur (dist Mohala Manpur Chowki) 7 Each; **East Madhya Pradesh**: Badamalhera (dist Chhatarpur) 16; Orchha (dist Niwari), Bijawar (dist Chhatarpur) 15 Each; Harrai (dist Chhindwara) 10; Palera (dist Tikamgarh) 9; Chahtarpur-aws (dist Chhatarpur) 8; Gadarwara (dist Narsinghpur), Hanumana (dist Rewa), Baldevgarh (dist Tikamgarh), Prithvipur (dist Niwari), Mohangarh (dist Tikamgarh) 7 Each; **East Rajasthan**: Bari (dist Dholpur) 16; Dholpur Tehsil SR (dist Dholpur) 14; Sapau SR (dist Dholpur), Alwar Obs (dist Alwar) 11 Each; Sarmathura SR (dist Dholpur) 10; Baseri SR (dist Dholpur), Bharatpur Tehsil SR (dist Bharatpur) 9 Each; Bayana (dist Bharatpur), Alwar SR (dist Alwar) 8 Each; Rajakhara (dist Dholpur) 7; **Madhya Maharashtra**: Radhanagari (dist Kolhapur) 14; Shahuwadi (dist Kolhapur), Gaganbawada (dist Kolhapur) 9 Each; Mahabaleshwar (dist Satara), Lonavala ARG (dist Pune) 8 Each; Trimbakshwar (dist Nashik) 7; **Gujarat Region**: Kaprada (dist Valsad) 11; Vyara (dist Tapi) 10; Kalol (dist Panchmahal) 8; Bardoli (dist Surat), Songadh (dist Tapi) 7 Each; **Jharkhand**: Bau Kanke (dist Ranchi), Herhanj (dist Latehar) 11 Each; Panki (dist Palamu), Kurdeg (dist Simdega), Bhurkunda (dist Ramgarh) 9 Each; Dhalbhumgarh (dist East Singbhum) 8; Goikera (dist West Singbhum) 7; **Assam & Meghalaya**: Majbat (dist Udalguri), Mazbat ARG (dist Udalguri), Tezpur (dist Shonitpur) 11 Each; Sonari ARG (dist Charaideo) 9; Mawsynram (dist East Khasi Hills) 7; **West Uttar Pradesh**: Rath (dist Hamirpur), Muzaffarnagar (dist Muzaffarnagar) 10 Each; Khairagarh (dist Agra), Orai (dist Jalaun) 9 Each; Jhansi (dist Jhansi) 7; **Bihar**: Indrapuri (dist Rohtas) 9; **Telangana**: Jagadevpur (dist Siddipet) 8; **Saurashtra & Kutch**: Ranavav (dist Porbandar), Kalavad (dist Jamnagar) 8 Each; Manavadar (dist Junagadh), Junagadh (dist Junagadh) 7 Each; **Haryana-Chandigarh-Delhi**: Jagadhari (dist Yamuna Nagar), Revenue Office AWS (dist Charkhi Dadri), Jhajjar AWS (dist Jhajjar) 8 Each; Dadri (dist Charkhi Dadri), Nagina REV (dist Nuh) 7 Each; **Konkan & Goa**: Poladpur (dist Raigad) 7; **Vidarbha**: Chamorshi (dist Gadchiroli) 8; Mul (dist Chandrapur) 7.

❖ **Heavy Rainfall observed** (from 0830 hours IST of yesterday to 0830 hours IST of today): **Extremely heavy rain** at isolated places over East Uttar Pradesh, Himachal Pradesh and West Madhya Pradesh. **Heavy to very heavy rain** at isolated places over Odisha, East Uttar Pradesh, Himachal Pradesh, East Rajasthan, East Madhya Pradesh, Madhya Maharashtra and Chhattisgarh. **Heavy rain** at isolated places over Assam, Jharkhand, Bihar, West Uttar Pradesh, Haryana-Chandigarh-Delhi, West Madhya Pradesh, Gujarat Region, Saurashtra & Kutch, Vidarbha, Konkan and Telangana.

❖ **Minimum Temperature Departures (as on 01-07-2025):** **markedly above normal(> 5.1°C)** at few places over Assam & Meghalaya; at isolated places over East Uttar Pradesh, West Uttar Pradesh, Himachal Pradesh, West Madhya Pradesh and Saurashtra & Kutch; **appreciably above normal(3.1°C to 5.0°C)** at many places over Jammu-Kashmir-Ladakh-Gilgit-Baltistan-Muzaffarabad; at few places over East Madhya Pradesh; at isolated places over Sub

**\*Red color warning does not mean "Red Alert" Red color warning means "Take Action"**

**Forecast and warning for any day is valid from 0830 hours IST of day till 0830 hours IST of next day**

**For more details kindly visit <https://mausam.imd.gov.in> or contact 011-2434-4599**

**(Service to the nation since 1875)**



Himalayan West Bengal & Sikkim, Odisha and Gujarat Region; **above normal(1.6°C to 3.0°C)** at few places over Bihar and Rayalaseema; at isolated places over West Rajasthan, Madhya Maharashtra, Coastal Andhra Pradesh & Yanam and Tamil Nadu, Puducherry & Karaikal and **near normal(-1.5°C to 1.5°C)** at many places over Uttarakhand and Kerala & Mahe; at most places over Andaman & Nicobar Islands, Arunachal Pradesh, Nagaland, Manipur, Mizoram & Tripura, Gangetic West Bengal, Jharkhand, East Rajasthan, Konkan & Goa, Marathwada, Vidarbha, Chhattisgarh, Coastal Karnataka, North Interior Karnataka, South Interior Karnataka and Lakshadweep; at few places over Haryana-Chandigarh-Delhi and Punjab; at isolated places over Telangana. **The lowest minimum temperature** of 17.8°C is reported at NARSINGHPUR (MADHYA PRADESH) over the Plains of India.

❖ **Maximum Temperature Departures (as on 30-06-2025): markedly above normal(> 5.1°C)** at few places over Arunachal Pradesh and Jammu-KashmirLadakh-Gilgit-Baltistan-Muzaffarabad; at isolated places over Assam & Meghalaya and Odisha; **above normal(1.6°C to 3.0°C)** at many places over Nagaland, Manipur, Mizoram & Tripura and Coastal Karnataka; at isolated places over Sub Himalayan West Bengal & Sikkim, Bihar, Konkan & Goa, Tamil Nadu, Puducherry & Karaikal, South Interior Karnataka and Kerala & Mahe and **near normal(-1.5°C to 1.5°C)** at many places over Andaman & Nicobar Islands, Gangetic West Bengal and North Interior Karnataka; at most places over Madhya Maharashtra and Lakshadweep; at few places over East Uttar Pradesh, Gujarat Region, Saurashtra & Kutch, Marathwada, Telangana and Rayalaseema; at isolated places over Jharkhand, West Uttar Pradesh, Haryana-Chandigarh-Delhi, Himachal Pradesh, West Rajasthan, Chhattisgarh and Coastal Andhra Pradesh & Yanam. **The highest maximum temperature** of 40.3°C was reported at SRIGANGANAGAR (RAJASTHAN).



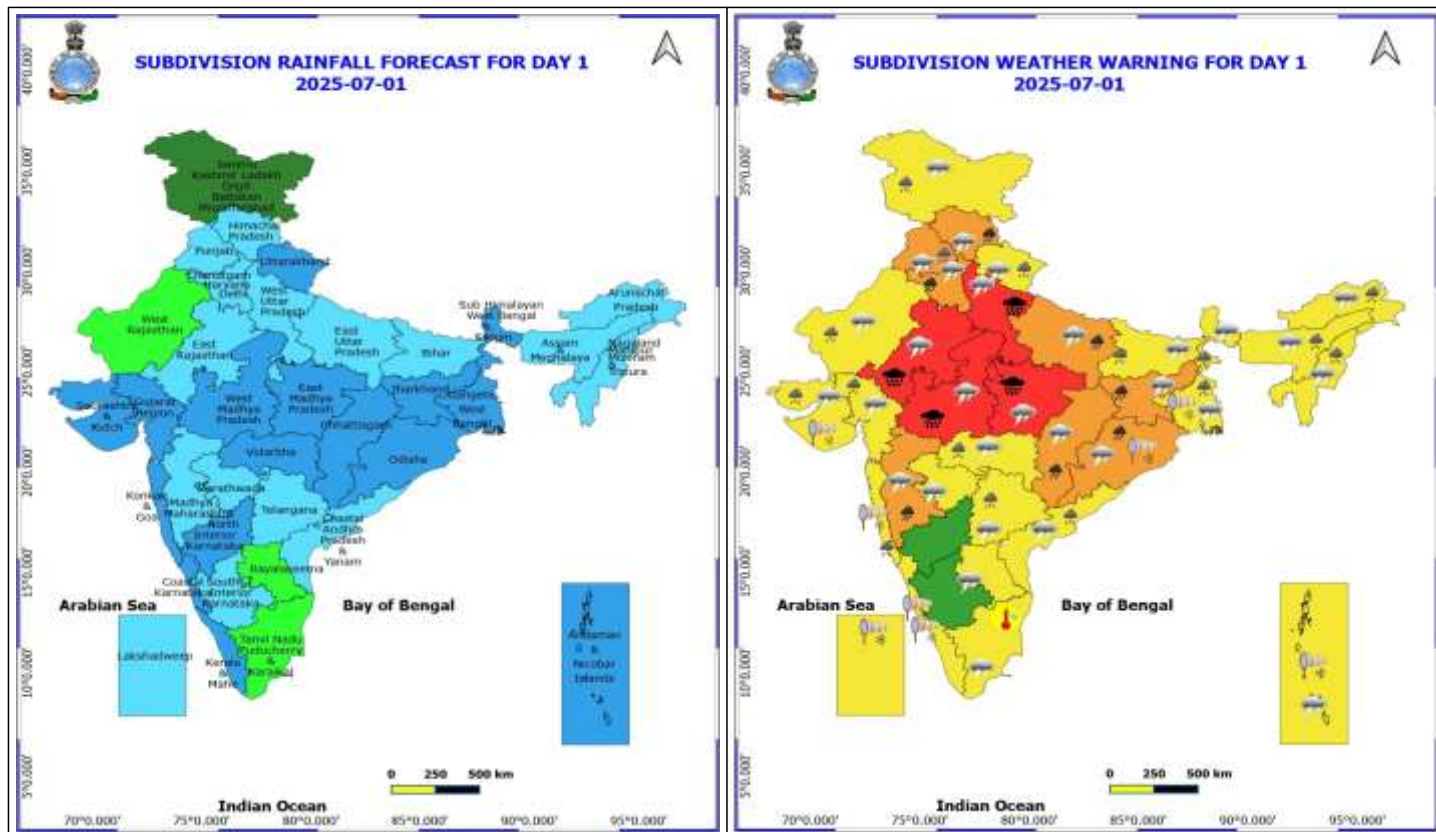
#### Meteorological Analysis (Based on 0830 hours IST)

- ♦ The **low-pressure area** over Gangetic West Bengal & adjoining north Odisha lay over Jharkhand and neighbourhood at 0830 hrs IST of today, the 01<sup>st</sup> July 2025. The associated cyclonic circulation extending upto 5.8 km above mean sea level. It is likely to move slowly west-northwestwards across Jharkhand during next 24 hours.
- ♦ The **monsoon trough** at mean sea level now passes through Sri Ganganagar, Rohtak, Kanpur, Varanasi, centre of the low pressure area over Jharkhand & neighbourhood, Digha and thence southeastwards to eastcentral Bay of Bengal and extends upto 0.9 km above mean sea level.
- ♦ A **trough** runs from northwest Uttar Pradesh to cyclonic circulation associated with the low-pressure area over Jharkhand and neighbourhood across southeast Uttar Pradesh between 1.5 & 3.1 km above mean sea level.
- ♦ An upper air **cyclonic circulation** lies over central Assam at 0.9 km above mean sea level.
- ♦ The east-west trough from southwest Rajasthan to central parts of Bay of Bengal at 3.1 km above mean sea level has become less marked.

#### Weather Outlook for subsequent 3 days

- ♦ Scattered to fairly widespread rainfall very likely over central India, ghat area of western coast, eastern India & northwest India.
- ♦ Isolated to scattered rainfall very likely over the south peninsula India & western India.





## 1 July (Day 1)

- ❖ **Heavy to Very Heavy Rainfall with isolated Extremely Heavy Rainfall** very likely at isolated places over East Rajasthan, Madhya Pradesh and West Uttar Pradesh.
- ❖ **Heavy to Very Heavy Rainfall** very likely at isolated places over Chhattisgarh, East Uttar Pradesh, Haryana, Chandigarh & Delhi, Himachal Pradesh, Jharkhand, Madhya Maharashtra and Odisha.
- ❖ **Heavy Rainfall** very likely at isolated places over Arunachal Pradesh, Assam & Meghalaya, Bihar, Coastal Andhra Pradesh, Gujarat State, Jammu-Kashmir-Ladakh-Gilgit-Baltistan-Muzaffarabad, Konkan & Goa, Nagaland, Manipur, Mizoram and Tripura, Punjab, Telangana, Uttarakhand, Vidarbha, West Bengal & Sikkim and West Rajasthan.
- ❖ **Thunderstorm accompanied with lightning & gusty winds(40-50kmph)** very likely at isolated places over Andaman & Nicobar Islands, Coastal Andhra Pradesh and Jammu-Kashmir-Ladakh-Gilgit-Baltistan-Muzaffarabad.
- ❖ **Thunderstorm accompanied with lightning & gusty winds(30-40kmph)** very likely at isolated places over Bihar, Gangetic West Bengal, Madhya Maharashtra, Marathwada, Odisha, Rajasthan and West Madhya Pradesh.
- ❖ **Thunderstorm accompanied with Lightning** very likely at isolated places over Arunachal Pradesh, Assam & Meghalaya, Chhattisgarh, East Madhya Pradesh, Gujarat State, Haryana, Chandigarh & Delhi, Himachal Pradesh, Jharkhand, Nagaland, Manipur, Mizoram and Tripura, Punjab, Rayalaseema, Sub Himalayan West Bengal & Sikkim, Tamil Nadu Puducherry & Karaikal, Telangana, Uttar Pradesh, Uttarakhand and Vidarbha.
- ❖ **Strong Surface Winds** very likely at isolated places over Andaman & Nicobar Islands, Coastal Karnataka, Gangetic West Bengal, Kerala & Mahe, Konkan & Goa, Lakshadweep, Odisha and Saurashtra & Kutch.
- ❖ **Hot and Humid weather** very likely at isolated places over Tamil Nadu Puducherry & Karaikal.

\*Red color warning does not mean "Red Alert" Red color warning means "Take Action"

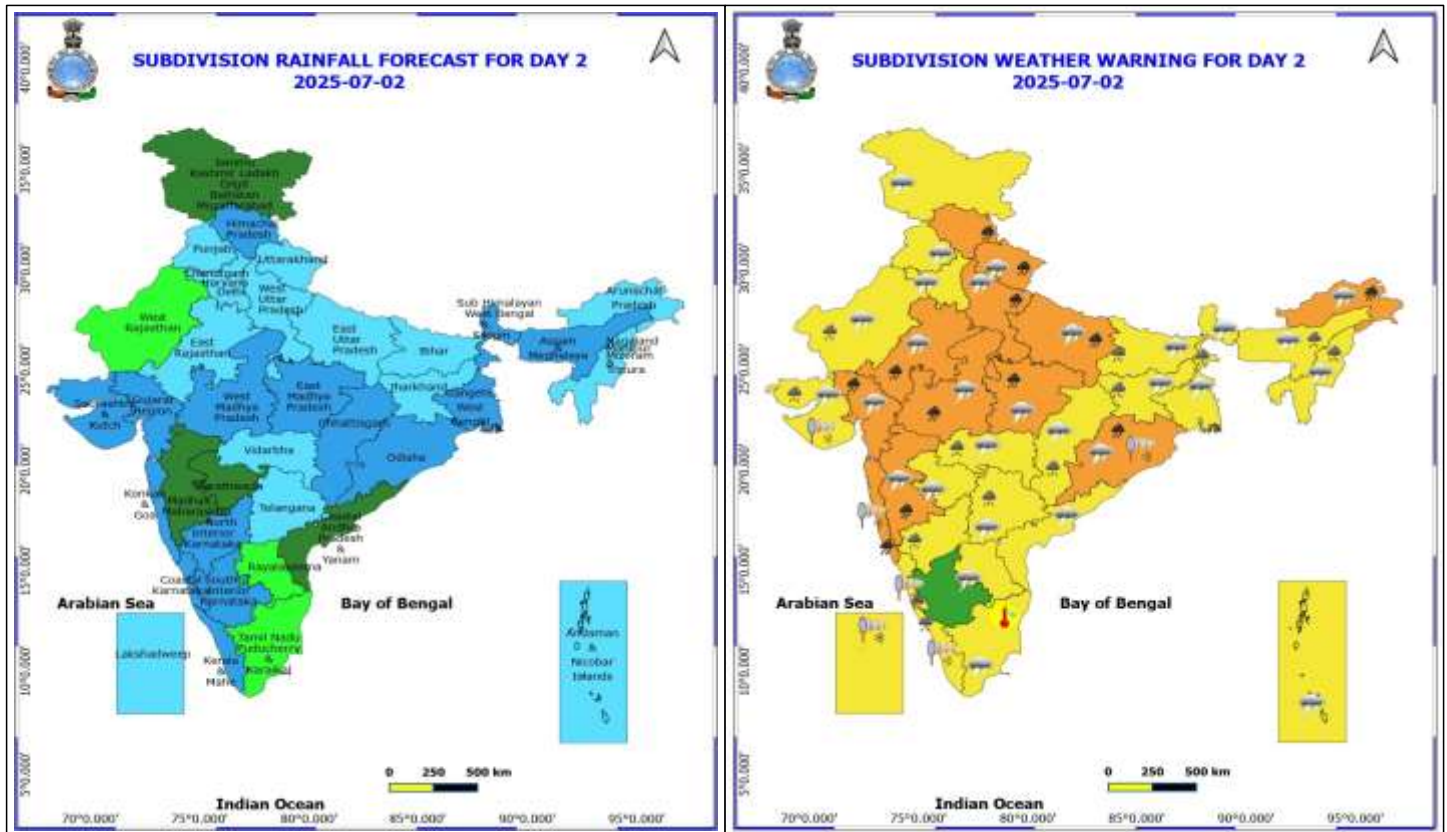
Forecast and warning for any day is valid from 0830 hours IST of day till 0830 hours IST of next day

For more details kindly visit <https://mausam.imd.gov.in> or contact 011-2434-4599

(Service to the nation since 1875)



❖ Squally wind speed reaching 45 kmph to 55 kmph gusting to 65 kmph is likely to prevail along and off Somalia, Oman & adjoining Yemen coasts, most parts of westcentral Arabian Sea & adjoining, most parts of eastcentral Arabian Sea, most parts of northeast Arabian Sea, many parts of northwest Arabian Sea, northern parts of southwest Arabian Sea over Gulf of Mannar; Squally weather with wind speed 40 - 50 kmph gusting to 60 kmph likely to prevail over most parts of central Bay of Bengal, along and off north Andhra Pradesh coast, over north Bay of Bengal, along and off Odisha, West Bengal, Bangladesh coasts, over Andaman Sea; Squally weather with wind speed reaching 45 kmph to 55 kmph gusting to 65 kmph likely to prevail over over most parts of eastcentral & adjoining areas of westcentral Arabian Sea, over most parts of northeast and adjoining northwest Arabian Sea, along and off Gujarat, Konkan, Goa coasts, some parts of westcentral Bay of Bengal, off north Andhra Pradesh coast.



## 2 July (Day 2)

- ❖ **Heavy to Very Heavy Rainfall** very likely at isolated places over Arunachal Pradesh, East Rajasthan, Gujarat Region, Himachal Pradesh, Konkan & Goa, Madhya Maharashtra, Madhya Pradesh, Odisha, Uttar Pradesh and Uttarakhand.
- ❖ **Heavy Rainfall** very likely at isolated places over Assam & Meghalaya, Bihar, Chhattisgarh, Coastal Karnataka, Jharkhand, Kerala & Mahe, Nagaland, Manipur, Mizoram and Tripura, North Interior Karnataka, Saurashtra & Kutch, Sub Himalayan West Bengal & Sikkim, Telangana, Vidarbha and West Rajasthan.
- ❖ **Thunderstorm accompanied with lightning & gusty winds(40-50kmph)** very likely at isolated places over Andaman & Nicobar Islands, Coastal Andhra Pradesh and Jammu-Kashmir-Ladakh-Gilgit-Baltistan-Muzaffarabad.
- ❖ **Thunderstorm accompanied with lightning & gusty winds(30-40kmph)** very likely at isolated places over Bihar, Gangetic West Bengal, Madhya Maharashtra, Marathwada, Odisha, Rajasthan and West Madhya Pradesh.
- ❖ **Thunderstorm accompanied with Lightning** very likely at isolated places over Arunachal Pradesh, Assam & Meghalaya, Chhattisgarh, East Madhya Pradesh, Gujarat State, Haryana, Chandigarh & Delhi, Jharkhand, Nagaland, Manipur, Mizoram and Tripura, Punjab, Rayalaseema, Sub Himalayan West Bengal & Sikkim, Tamil Nadu Puducherry & Karaikal, Telangana, Uttar Pradesh, Uttarakhand and Vidarbha.
- ❖ **Strong Surface Winds** very likely at isolated places over Coastal Karnataka, Kerala & Mahe, Konkan & Goa, Lakshadweep, Odisha and Saurashtra & Kutch.
- ❖ **Hot and Humid weather** very likely at isolated places over Tamil Nadu Puducherry & Karaikal.
- ❖ Squally wind speed reaching 45 kmph to 55 kmph gusting to 65 kmph is likely to prevail along and off Somalia, Oman & adjoining Yemen coasts, most parts of westcentral Arabian Sea & adjoining, many parts of eastcentral

**\*Red color warning does not mean "Red Alert" Red color warning means "Take Action"**

Forecast and warning for any day is valid from 0830 hours IST of day till 0830 hours IST of next day

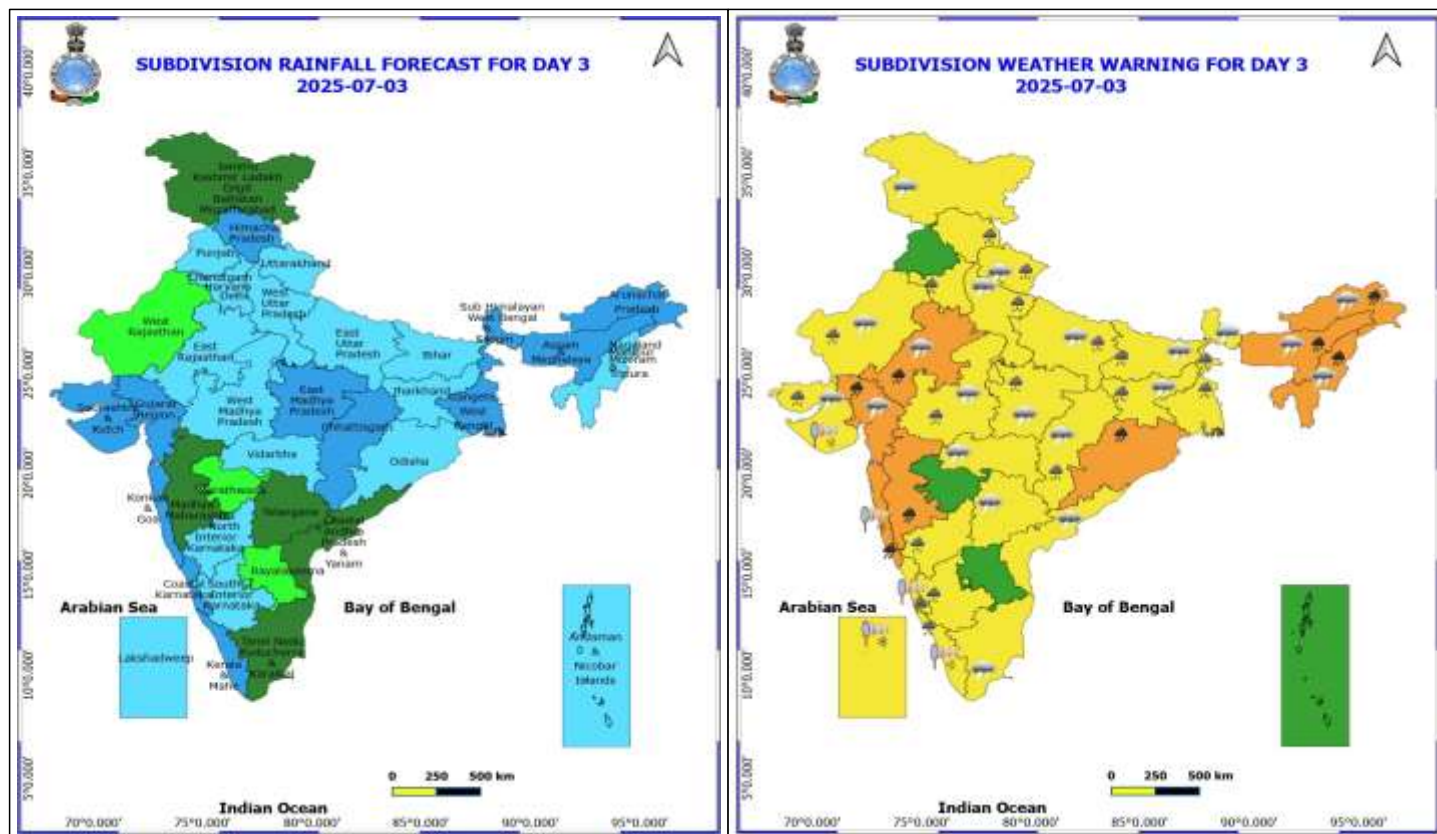
For more details kindly visit <https://mausam.imd.gov.in> or contact 011-2434-4599

(Service to the nation since 1875)



Arabian Sea, southern parts of northwest Arabian Sea, northern parts of southwest Arabian Sea, over Gulf of Mannar; Squally weather with wind speed 40 - 50 kmph gusting to 60 kmph likely to prevail along and off Gujarat, Konkan Goa coasts, adjoining sea areas, over most parts of northeast Arabian Sea, over most parts of central Bay of Bengal, along and off north Andhra Pradesh coast, along and off Odisha, West Bengal coasts, over northwest Bay of Bengal.





### 3 July (Day 3)

- ❖ **Heavy to Very Heavy Rainfall** very likely at isolated places over Arunachal Pradesh, Assam & Meghalaya, East Rajasthan, Gujarat Region, Konkan & Goa, Madhya Maharashtra, Nagaland, Manipur, Mizoram and Tripura and Odisha.
- ❖ **Heavy Rainfall** very likely at isolated places over Bihar, Chhattisgarh, Coastal Karnataka, Haryana, Chandigarh & Delhi, Himachal Pradesh, Interior Karnataka, Jharkhand, Kerala & Mahe, Madhya Pradesh, Saurashtra & Kutch, Uttar Pradesh, Uttarakhand, West Bengal & Sikkim and West Rajasthan.
- ❖ **Thunderstorm accompanied with lightning & gusty winds(40-50kmph)** very likely at isolated places over Coastal Andhra Pradesh and Jammu-Kashmir-Ladakh-Gilgit-Baltistan-Muzaffarabad.
- ❖ **Thunderstorm accompanied with lightning & gusty winds(30-40kmph)** very likely at isolated places over Bihar and Rajasthan.
- ❖ **Thunderstorm accompanied with Lightning** very likely at isolated places over Arunachal Pradesh, Assam & Meghalaya, Chhattisgarh, Gujarat State, Jharkhand, Madhya Pradesh, Nagaland, Manipur, Mizoram and Tripura, Sub Himalayan West Bengal & Sikkim, Tamil Nadu Puducherry & Karaikal, Telangana, Uttar Pradesh, Uttarakhand and Vidarbha.
- ❖ **Strong Surface Winds** very likely at isolated places over Coastal Karnataka, Kerala & Mahe, Konkan & Goa, Lakshadweep and Saurashtra & Kutch.
- ❖ Squally wind speed reaching 45 kmph to 55 kmph gusting to 65 kmph is likely to prevail along and off Somalia, Oman & adjoining Yemen coasts, most parts of westcentral Arabian Sea & adjoining, many parts of eastcentral Arabian Sea, southern parts of northwest Arabian Sea, northern parts of southwest Arabian Sea, over Gulf of Mannar; Squally weather with wind speed 40 - 50 kmph gusting to 60 kmph likely to prevail along and off Gujarat,

**\*Red color warning does not mean "Red Alert" Red color warning means "Take Action"**

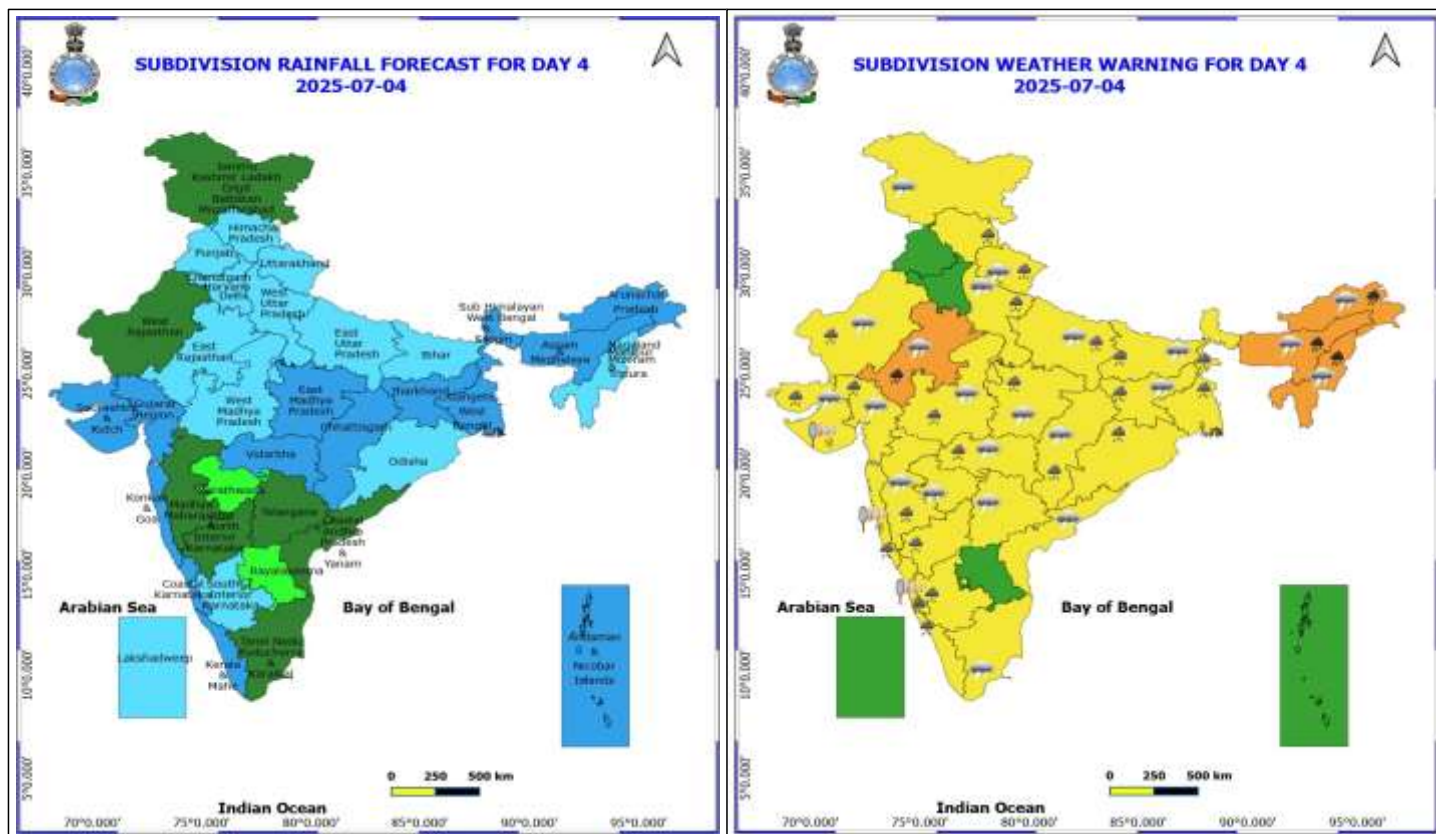
Forecast and warning for any day is valid from 0830 hours IST of day till 0830 hours IST of next day

For more details kindly visit <https://mausam.imd.gov.in> or contact 011-2434-4599

(Service to the nation since 1875)



Konkan Goa coasts, adjoining sea areas, over most parts of northeast Arabian Sea, over most parts of central Bay of Bengal & adjoining few parts of southwest Bay of Bengal, along and off north Andhra Pradesh coast.



#### 4 July (Day 4)

- ❖ **Heavy to Very Heavy Rainfall** likely at isolated places over Arunachal Pradesh, Assam & Meghalaya, East Rajasthan and Nagaland, Manipur, Mizoram and Tripura.
- ❖ **Heavy Rainfall** likely at isolated places over Bihar, Chhattisgarh, Costal Karnataka, Gujarat State, Himachal Pradesh, Interior Karnataka, Jharkhand, Kerala & Mahe, Konkan & Goa, Madhya Maharashtra, Madhya Pradesh, Odisha, Uttar Pradesh, Uttarakhand, Vidarbha, West Bengal & Sikkim and West Rajasthan.
- ❖ **Thunderstorm accompanied with lightning & gusty winds(40-50kmph)** likely at isolated places over Coastal Andhra Pradesh and Jammu-Kashmir-Ladakh-Gilgit-Baltistan-Muzaffarabad.
- ❖ **Thunderstorm accompanied with lightning & gusty winds(30-40kmph)** likely at isolated places over Bihar, Madhya Maharashtra, Marathwada and Rajasthan.
- ❖ **Thunderstorm accompanied with Lightning** likely at isolated places over Arunachal Pradesh, Assam & Meghalaya, Chhattisgarh, Gujarat State, Jharkhand, Madhya Pradesh, Nagaland, Manipur, Mizoram and Tripura, Tamil Nadu Puducherry & Karaikal, Telangana, Uttar Pradesh, Uttarakhand and Vidarbha.
- ❖ **Strong Surface Winds** likely at isolated places over Costal Karnataka, Konkan & Goa and Saurashtra & Kutch.
- ❖ Squally wind speed reaching 45 kmph to 55 kmph gusting to 65 kmph is likely to prevail along and off Somalia, Oman & adjoining Yemen coasts, most parts of westcentral Arabian Sea & adjoining, many parts of eastcentral Arabian Sea, southern parts of northwest Arabian Sea, northern parts of southwest Arabian Sea, over Gulf of Mannar; Squally weather with wind speed 40 - 50 kmph gusting to 60 kmph likely to prevail along and off Gujarat, Konkan Goa coasts, adjoining sea areas, over most parts of northeast Arabian Sea, over many parts of central Bay of Bengal & adjoining few parts of southeast Bay of Bengal, along and off north Andhra Pradesh coast.

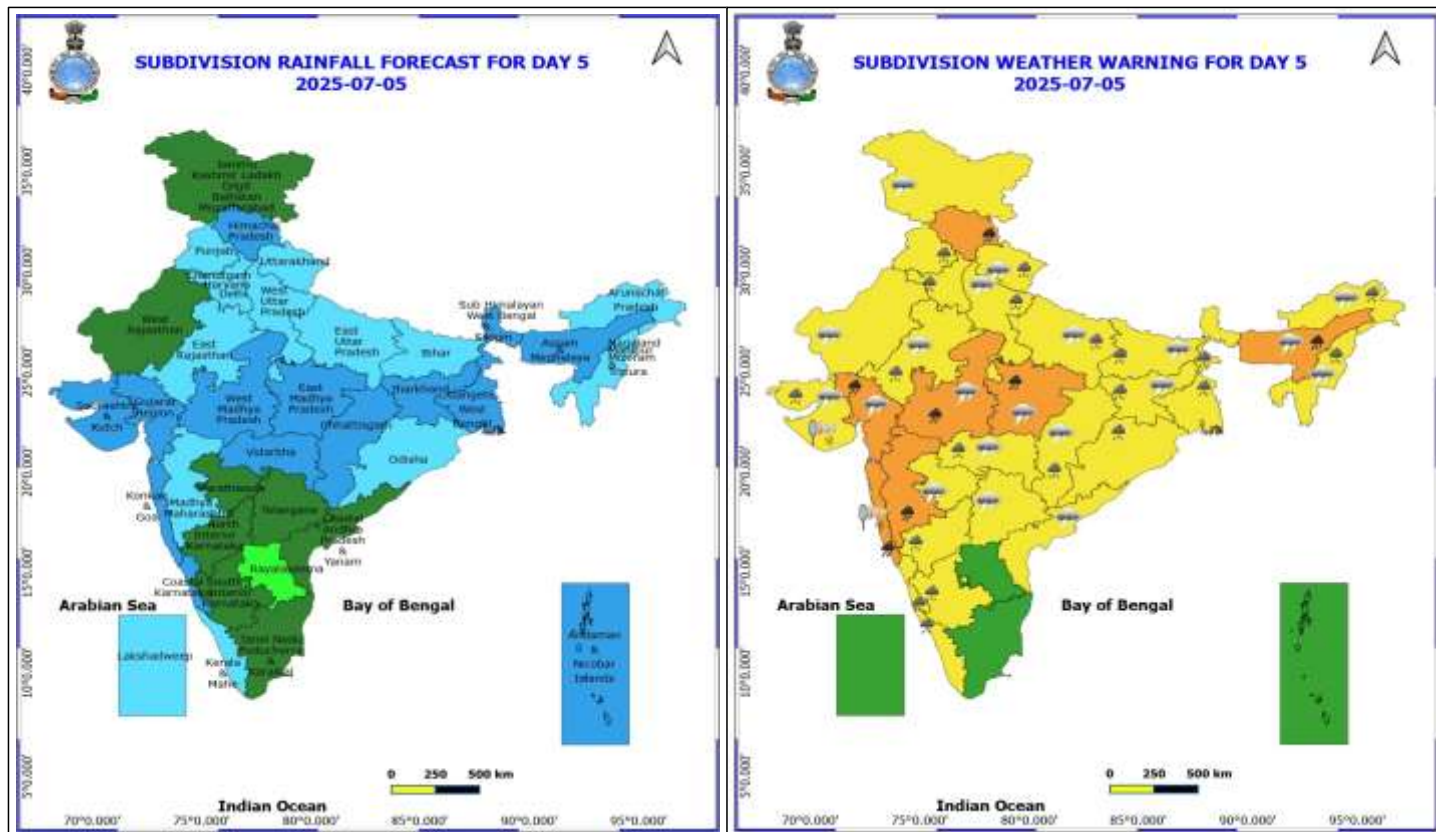
\*Red color warning does not mean "Red Alert" Red color warning means "Take Action"

Forecast and warning for any day is valid from 0830 hours IST of day till 0830 hours IST of next day

For more details kindly visit <https://mausam.imd.gov.in> or contact 011-2434-4599

(Service to the nation since 1875)





## 5 July (Day 5)

- ❖ **Heavy to Very Heavy Rainfall** likely at isolated places over Assam & Meghalaya, Gujarat Region, Himachal Pradesh, Konkan & Goa, Madhya Maharashtra and Madhya Pradesh.
- ❖ **Heavy Rainfall** likely at isolated places over Arunachal Pradesh, Bihar, Chhattisgarh, Coastal Karnataka, East Rajasthan, Haryana, Chandigarh & Delhi, Interior Karnataka, Jharkhand, Kerala & Mahe, Nagaland, Manipur, Mizoram and Tripura, Odisha, Punjab, Saurashtra & Kutch, Uttar Pradesh, Uttarakhand, Vidarbha and West Bengal & Sikkim.
- ❖ **Thunderstorm accompanied with lightning & gusty winds(40-50kmph)** likely at isolated places over Coastal Andhra Pradesh.
- ❖ **Thunderstorm accompanied with lightning & gusty winds(30-40kmph)** likely at isolated places over Bihar, Jammu-Kashmir-Ladakh-Gilgit-Baltistan-Muzaffarabad, Marathwada and Rajasthan.
- ❖ **Thunderstorm accompanied with Lightning** likely at isolated places over Arunachal Pradesh, Assam & Meghalaya, Chhattisgarh, Gujarat State, Jharkhand, Madhya Pradesh, Nagaland, Manipur, Mizoram and Tripura, Telangana, Uttar Pradesh, Uttarakhand and Vidarbha.
- ❖ **Strong Surface Winds** likely at isolated places over Konkan & Goa and Saurashtra & Kutch.
- ❖ Squally wind speed reaching 45 kmph to 55 kmph gusting to 65 kmph is likely to prevail along and off Somalia, Oman & adjoining Yemen coasts, most parts of westcentral Arabian Sea & adjoining, many parts of eastcentral Arabian Sea, southern parts of northwest Arabian Sea, northern parts of southwest Arabian Sea, over Gulf of Mannar; Squally weather with wind speed 40 - 50 kmph gusting to 60 kmph likely to prevail along and off Gujarat, Konkan Goa coasts, adjoining sea areas, over most parts of northeast Arabian Sea, over many parts of central Bay of Bengal, along and off north Andhra Pradesh coast.

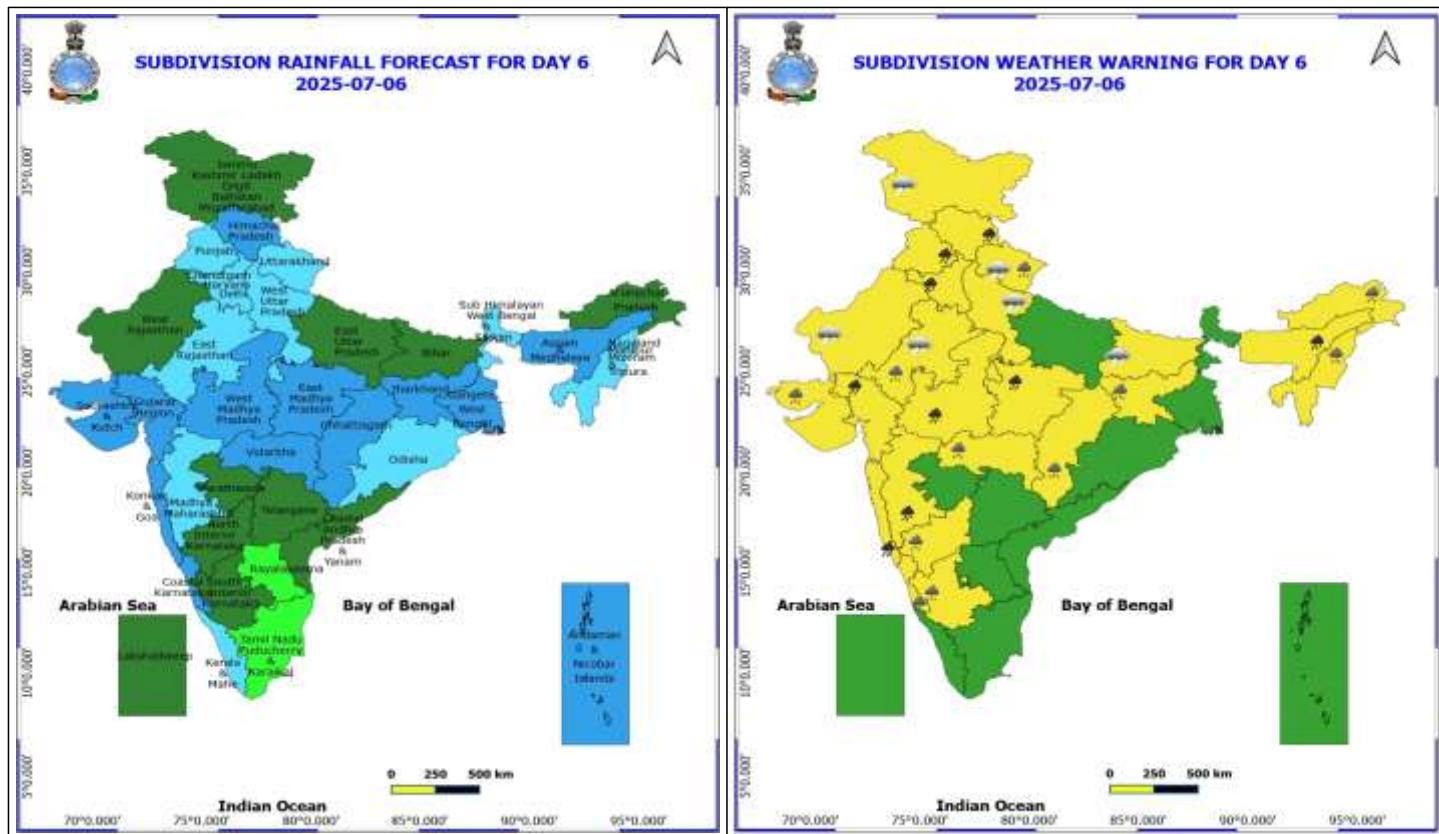
\*Red color warning does not mean "Red Alert" Red color warning means "Take Action"

Forecast and warning for any day is valid from 0830 hours IST of day till 0830 hours IST of next day

For more details kindly visit <https://mausam.imd.gov.in> or contact 011-2434-4599

(Service to the nation since 1875)





## 6 July (Day 6)

- ❖ **Heavy to Very Heavy Rainfall** likely at isolated places over Assam & Meghalaya, Gujarat Region, Haryana, Chandigarh & Delhi, Himachal Pradesh, Konkan & Goa, Madhya Maharashtra, Madhya Pradesh and Punjab.
- ❖ **Heavy Rainfall** likely at isolated places over Arunachal Pradesh, Chhattisgarh, Coastal Karnataka, East Rajasthan, Interior Karnataka, Jharkhand, Nagaland, Manipur, Mizoram and Tripura, Saurashtra & Kutch, Uttarakhand and Vidarbha.
- ❖ **Thunderstorm accompanied with lightning & gusty winds(30-40kmph)** likely at isolated places over Bihar, Jammu-Kashmir-Ladakh-Gilgit-Baltistan-Muzaffarabad and Rajasthan.
- ❖ **Thunderstorm accompanied with Lightning** likely at isolated places over Uttarakhand and West Uttar Pradesh.

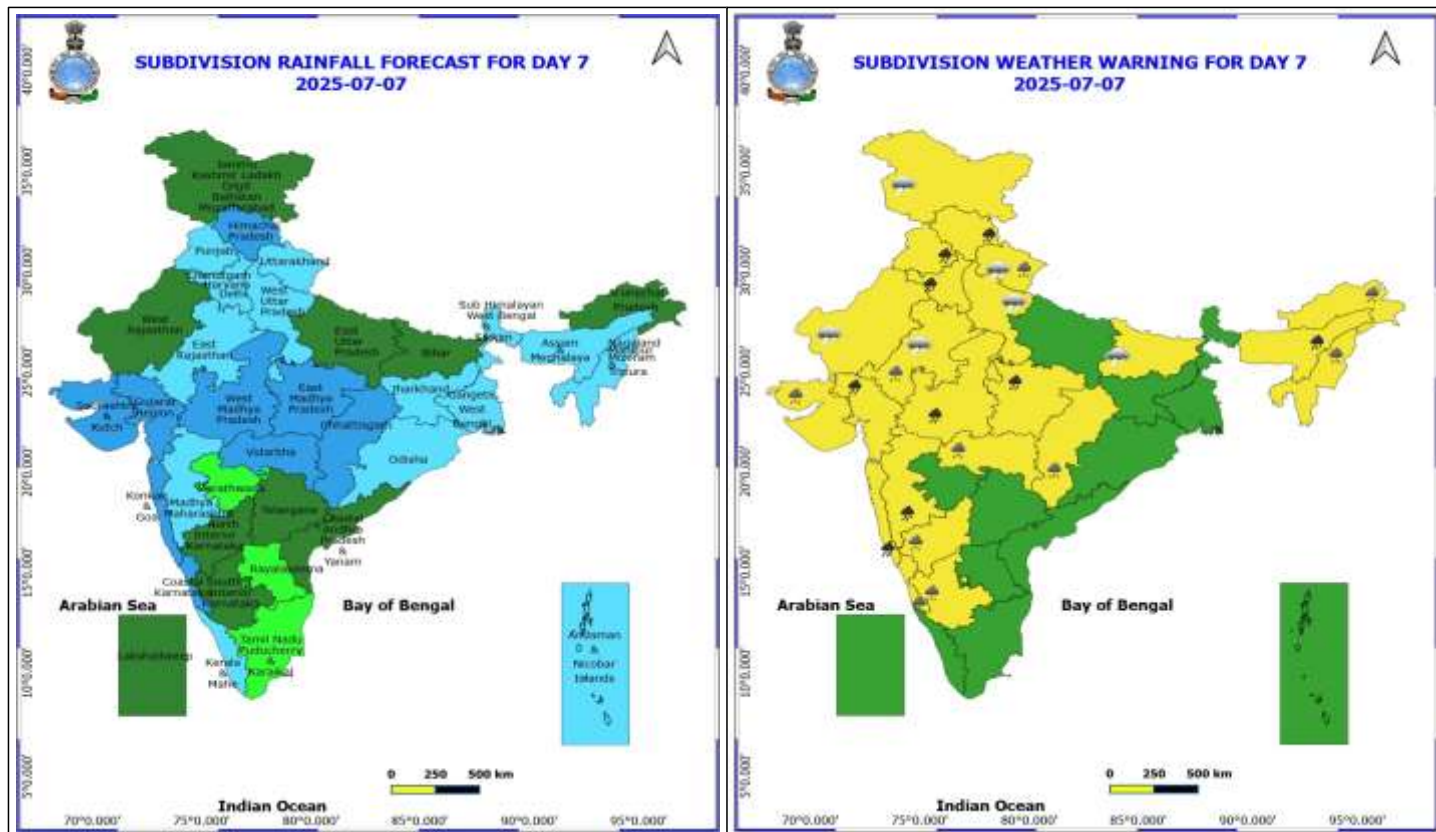
**No Fishermen Warning**

**\*Red color warning does not mean "Red Alert" Red color warning means "Take Action"**

Forecast and warning for any day is valid from 0830 hours IST of day till 0830 hours IST of next day

For more details kindly visit <https://mausam.imd.gov.in> or contact 011-2434-4599

(Service to the nation since 1875)



## 7 July (Day 7)

- ❖ **Heavy to Very Heavy Rainfall** likely at isolated places over Assam & Meghalaya, Gujarat Region, Himachal Pradesh, Konkan & Goa, Madhya Maharashtra and Madhya Pradesh.
- ❖ **Heavy Rainfall** likely at isolated places over Arunachal Pradesh, Bihar, Chhattisgarh, Coastal Karnataka, East Rajasthan, Haryana, Chandigarh & Delhi, Interior Karnataka, Jharkhand, Kerala & Mahe, Nagaland, Manipur, Mizoram and Tripura, Odisha, Punjab, Saurashtra & Kutch, Uttar Pradesh, Uttarakhand, Vidarbha and West Bengal & Sikkim.
- ❖ **Thunderstorm accompanied with lightning & gusty winds(40-50kmph)** likely at isolated places over Coastal Andhra Pradesh.
- ❖ **Thunderstorm accompanied with lightning & gusty winds(30-40kmph)** likely at isolated places over Bihar, Jammu-Kashmir-Ladakh-Gilgit-Baltistan-Muzaffarabad, Marathwada and Rajasthan.
- ❖ **Thunderstorm accompanied with Lightning** likely at isolated places over Arunachal Pradesh, Assam & Meghalaya, Chhattisgarh, Gujarat State, Jharkhand, Madhya Pradesh, Nagaland, Manipur, Mizoram and Tripura, Telangana, Uttar Pradesh, Uttarakhand and Vidarbha.
- ❖ **Strong Surface Winds** likely at isolated places over Konkan & Goa and Saurashtra & Kutch.

**No Fishermen Warning**





## Flash Flood Warnings

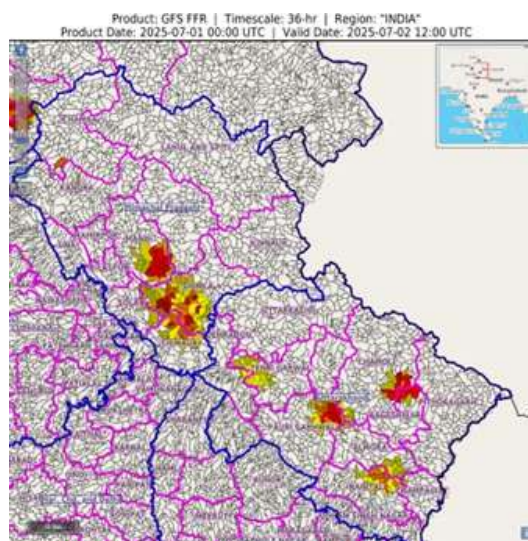
### 24 hours Outlook for the Flash Flood Risk (FFR) till 1130 IST of 02-07-2025 :

**Low to Moderate flash flood risk** likely over few watersheds & neighbourhoods of following Met Sub-divisions during next 24 hours.

**Himachal Pradesh** - Mandi, Kullu, Hamirpur, Shimla, Sirmaur and Solan districts.

**Uttarakhand** - Bageshwar, Chamoli, Dehradun, , Pauri Garhwal, Pithoragarh, Rudraprayag, Tehri Garwal, Udham Singh Nagar districts.

Surface runoff/ Inundation may occur at some fully saturated soils & low-lying areas over Area of Concern (AoC) as shown in map due to expected rainfall occurrence in next 24 hours.



### 24 hours Outlook for the Flash Flood Risk (FFR) till 1130 IST of 02-07-2025 :

Low to Moderate to High flash flood risk likely over few watersheds & neighbourhoods of following Met Sub- divisions during next 24 hours.

Odisha - Mayurbhanj, Sambalpur, districts.

Jharkhand - Chatra, East Singhbhum, Garhwa, Gumla, Hazaribagh, Latehar, Lohardaga, Palamu, Ranchi, Saraikela, Simdega, Ramgarh, Bokara, Dhanbad, , Khunti and West Singhbhum districts.

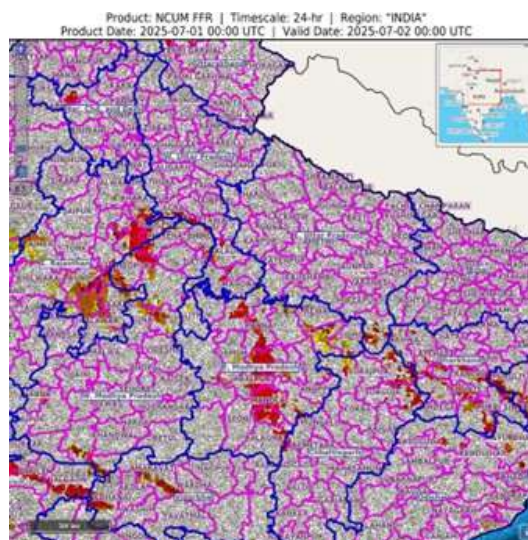
Chhattisgarh – Jashpur, Balrampur, Surajpur, Korea, Surguja, Korba, Raigarh, Mungeli & Bilaspur districts.

West Madhya Pradesh – Sheopur, Shivpuri, Guna, Ashoknagar, Videsha, Shajapur, Ujjain, Agar-Malwa, Dewas, Sehore, Ratlam, Mandsaur, Nimach, Jhabua and Hoshangabad districts.

East Madhya Pradesh – Sagar, Timakgar, Chhatarpur, Damoh, Panna, Satna, Katni, Narsimhapur, Jabalpur, Mandla, Seoni, Balaghat, Chhindwara, Dindori, Anuppur, Umaria, Shahdol and Sidhi districts.

**East Rajasthan** – Tonk, Sawaimadhopur, Ajmer, Bhilwara, Bundi, Kota, Baran, Halawar, Pratapgarh and Banswara districts.

Surface runoff/ Inundation may occur at some fully saturated soils & low-lying areas over Area of Concern (AoC) as shown in map due to expected rainfall occurrence in next 24 hours.



**\*Red color warning does not mean "Red Alert" Red color warning means "Take Action"**

**Forecast and warning for any day is valid from 0830 hours IST of day till 0830 hours IST of next day**

**For more details kindly visit <https://mausam.imd.gov.in> or contact 011-2434-4599**

**(Service to the nation since 1875)**



**Table-1**

## 7 Days Rainfall Forecast

S.No.	Subdivision	1- Jul	2- Jul	3- Jul	4- Jul	5- Jul	6- Jul	7- Jul
		Day 1	Day 2	Day 3	Day 4	Day 5	Day 6	Day 7
1	ANDAMAN & NICOBAR ISLANDS	WS	FWS	FWS	WS	WS	WS	FWS
2	ARUNACHAL PRADESH	FWS	FWS	WS	WS	FWS	SCT	SCT
3	ASSAM & MEHGHALAYA	FWS	WS	WS	WS	WS	WS	FWS
4	N. M. M. & T.	FWS	FWS	FWS	FWS	FWS	FWS	FWS
5	S.H. WEST BENGAL & SIKKIM	WS	WS	WS	WS	WS	FWS	FWS
6	GANGETIC WEST BENGAL	WS	WS	WS	WS	WS	WS	FWS
7	ODISHA	WS	WS	FWS	FWS	FWS	FWS	FWS
8	JHARKHAND	WS	FWS	FWS	WS	WS	WS	FWS
9	BIHAR	FWS	FWS	FWS	FWS	FWS	SCT	SCT
10	EAST UTTAR PRADESH	FWS	FWS	FWS	FWS	FWS	SCT	SCT
11	WEST UTTAR PRADESH	FWS	FWS	FWS	FWS	FWS	FWS	FWS
12	UTTARAKHAND	WS	FWS	FWS	FWS	FWS	FWS	FWS
13	HARYANA, CHD & DELHI	FWS	FWS	FWS	FWS	FWS	FWS	FWS
14	PUNJAB	FWS	FWS	FWS	FWS	FWS	FWS	FWS
15	HIMACHAL PRADESH	FWS	WS	WS	FWS	WS	WS	WS
16	JAMMU AND KASHMIR AND LADAKH	SCT	SCT	SCT	SCT	SCT	SCT	SCT
17	WEST RAJASTHAN	ISOL	ISOL	ISOL	SCT	SCT	SCT	SCT
18	EAST RAJASTHAN	FWS	FWS	FWS	FWS	FWS	FWS	FWS
19	WEST MADHYA PRADESH	WS	WS	FWS	FWS	WS	WS	WS
20	EAST MADHYA PRADESH	WS	WS	WS	WS	WS	WS	WS
21	GUJRAT REGION	WS	WS	WS	WS	WS	WS	WS
22	SAURASHTRA & KUTCH	WS	WS	WS	WS	WS	WS	WS
23	KONKAN & GOA	WS	WS	WS	WS	WS	WS	WS
24	MADHYA MAHARASHTRA	FWS	SCT	SCT	SCT	FWS	FWS	FWS
25	MARATHWADA	FWS	SCT	ISOL	ISOL	SCT	SCT	ISOL
26	VIDARBHA	WS	FWS	FWS	WS	WS	WS	WS
27	CHATTISGARH	WS	WS	WS	WS	WS	WS	WS
28	COASTAL ANDHRA PRADESH	FWS	SCT	SCT	SCT	SCT	SCT	SCT
29	TELANGANA	FWS	FWS	SCT	SCT	SCT	SCT	SCT
30	RAYALASEEMA	ISOL	ISOL	ISOL	ISOL	ISOL	ISOL	ISOL
31	TAMILNADU & PUDUCHERRY	ISOL	ISOL	SCT	SCT	SCT	ISOL	ISOL
32	COSTAL KARNATAKA	WS	WS	WS	WS	WS	WS	WS
33	NORTH INTERIOR KARNATAKA	WS	WS	FWS	SCT	SCT	SCT	SCT
34	SOUTH INTERIOR KARNATAKA	FWS	WS	FWS	FWS	SCT	SCT	SCT
35	KERALA	WS	WS	WS	WS	FWS	FWS	FWS
36	LAKSHDWEEP	FWS	FWS	FWS	FWS	FWS	SCT	SCT

Legend	Category	%Stations
WS	Widespread/Most Places	76-100
FWS	Fairly Widespread/Many Places	51-75
SCT	Scattered/ A Few Places	26-50
ISOL	Isolated Places	1-25
DRY	No Rain	0

\*Red color warning does not mean "Red Alert" Red color warning means "Take Action"

Forecast and warning for any day is valid from 0830 hours IST of day till 0830 hours IST of next day

For more details kindly visit <https://mausam.imd.gov.in> or contact 011-2434-4599

(Service to the nation since 1875)



Fig. 1: Maximum Temperatures Dated 2025-07-01

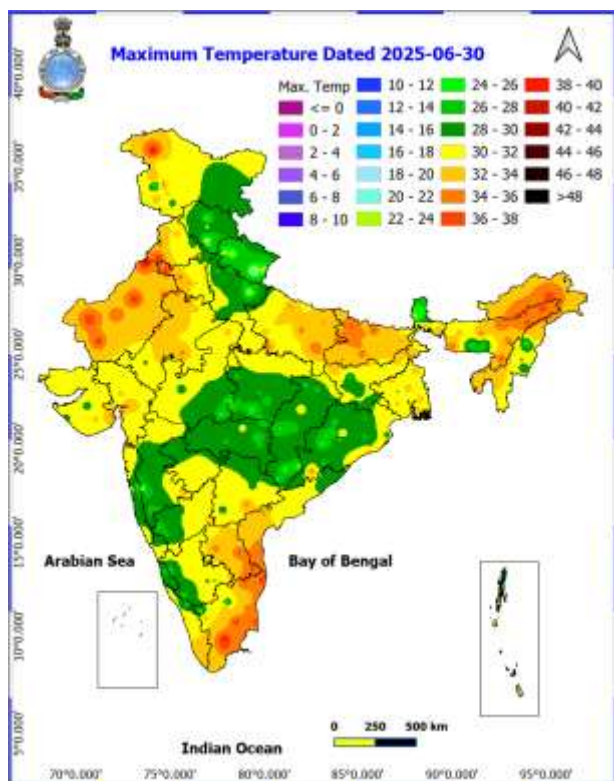


Fig. 2: Departure of Maximum Temp. Dated 2025-07-01

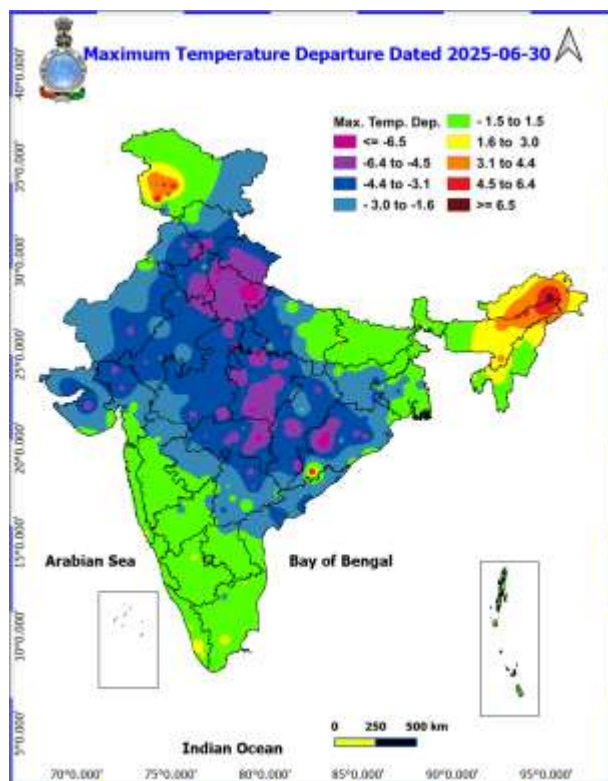


Fig. 3: Minimum Temperatures Dated 2025-07-01

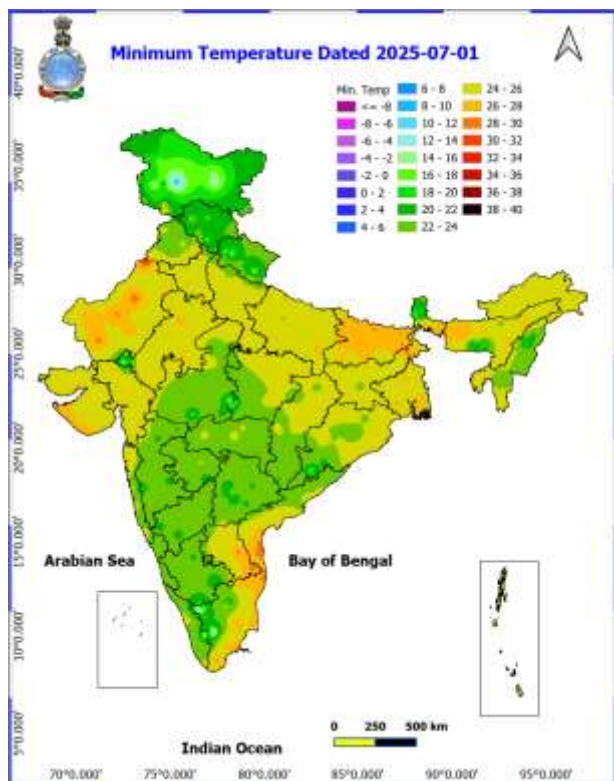
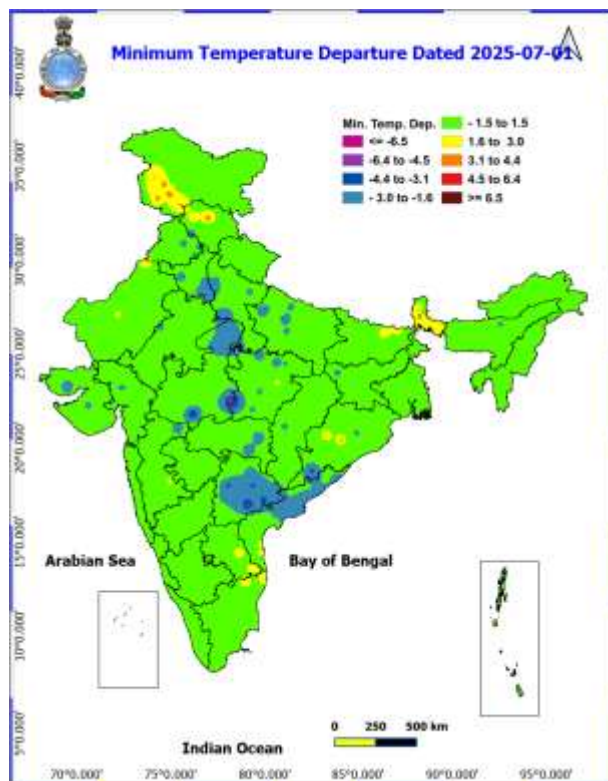
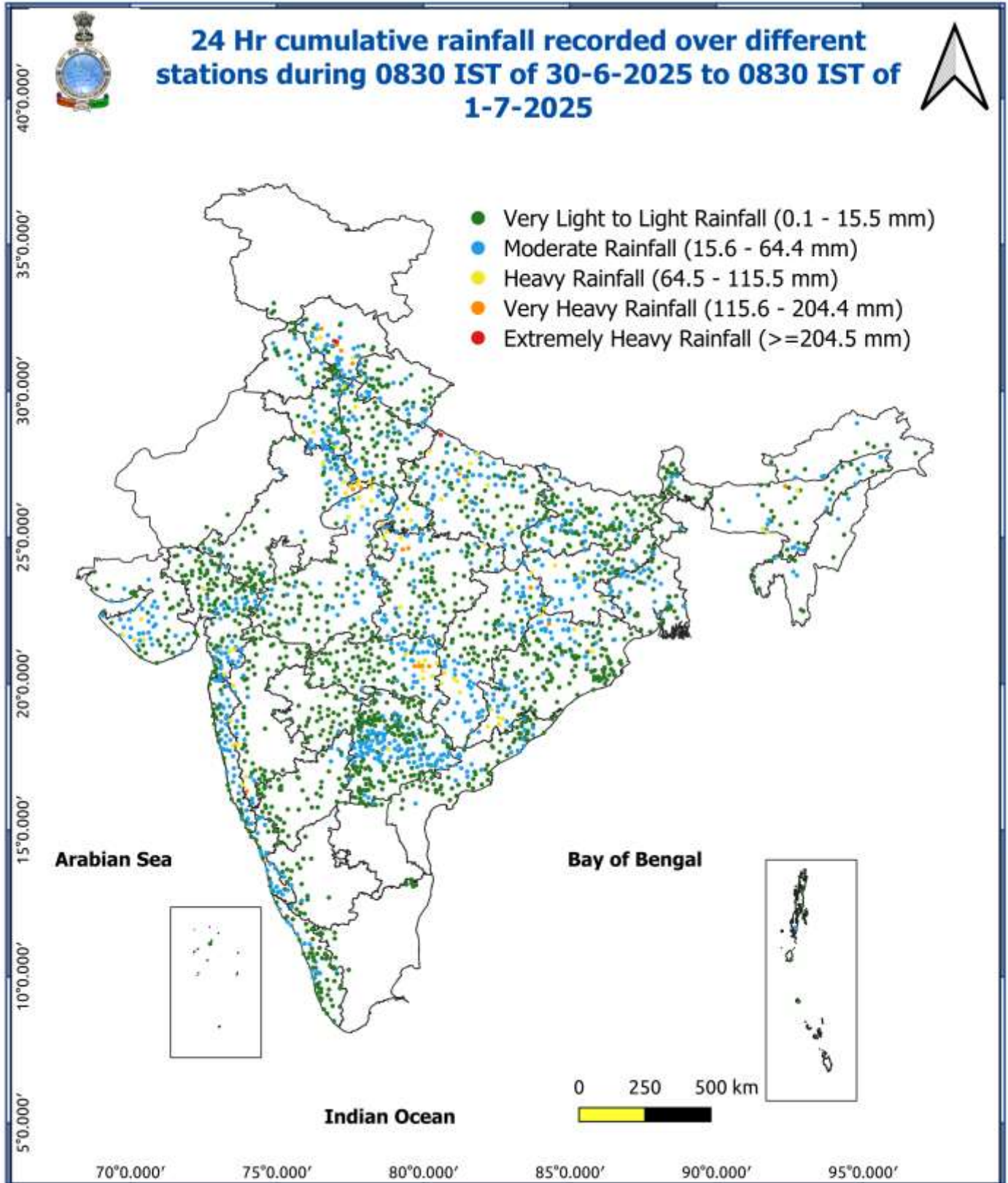


Fig. 4: Departure of Minimum Temp. Dated 2025-07-01





\*Red color warning does not mean "Red Alert" Red color warning means "Take Action"

Forecast and warning for any day is valid from 0830 hours IST of day till 0830 hours IST of next day

For more details kindly visit <https://mausam.imd.gov.in> or contact 011-2434-4599

(Service to the nation since 1875)





### Impact & Action Suggested due to very heavy/extremely heavy rainfall:

- ♦ **Extremely heavy rainfall ( $\geq 20$  cm)** very likely at isolated places over West Uttar Pradesh, East Rajasthan and Madhya Pradesh on 01<sup>st</sup> July.
- ♦ **Very heavy rainfall** over Himachal Pradesh on 01<sup>st</sup>, & 02<sup>nd</sup> and during 05<sup>th</sup>-07<sup>th</sup>; Uttarakhand on 02<sup>nd</sup>; Punjab on 06<sup>th</sup> & 07<sup>th</sup>; Haryana on 01<sup>st</sup>, 06<sup>th</sup> & 07<sup>th</sup>; Uttar Pradesh on 01<sup>st</sup> & 02<sup>nd</sup> July and East Rajasthan during 01<sup>st</sup>-04<sup>th</sup> July; Madhya Pradesh on 02<sup>nd</sup> and during 05<sup>th</sup>-07<sup>th</sup>; Jharkhand on 01<sup>st</sup>; Odisha during 01<sup>st</sup>-03<sup>rd</sup> July; Konkan & Goa, Madhya Maharashtra, Gujarat Region, Arunachal Pradesh, Assam & Meghalaya<sup>3</sup>, Nagaland, Manipur, Mizoram & Tripura during 01<sup>st</sup>-07<sup>th</sup> July.

### Impact Expected

- ♦ Localized Flooding of roads, water logging in low lying areas and closure of underpasses mainly in urban areas of the above region.
- ♦ Occasional reduction in visibility due to heavy rainfall.
- ♦ Disruption of traffic in major cities due to water logging in roads leading to increased travel time.
- ♦ Minor damage to kutch roads.
- ♦ Possibilities of damage to vulnerable structure.
- ♦ Localized Landslides/Mudslides/landslides/mudslips/landsinks/mudsinks.
- ♦ Damage to horticulture and standing crops in some areas due to inundation.
- ♦ It may lead to riverine flooding in some river catchments (for riverine flooding please visit Web page of CWC).

### Action Suggested

- ♦ Check for traffic congestion on your route before leaving for your destination.
- ♦ Follow any traffic advisories that are issued in this regard.
- ♦ Avoid going to areas that face the water logging problems often.
- ♦ Avoid staying in vulnerable structure.

### Agromet advisories for various parts of the country

#### Agromet advisories for likely impact of Heavy / Heavy to Very Heavy / Extremely Heavy Rainfall

- ♦ In **Odisha**, postpone sowing of maize, green gram, papaya, banana and vegetable crops. Ensure proper drainage from already sown rice nurseries, fields of maize and vegetables to prevent waterlogging. Cover rice and vegetable nurseries with plastic sheets to prevent the washing away of seeds. Provide strong wooden support for papaya and banana plants to avoid lodging due to strong winds.
- ♦ **Jharkhand** – Postpone sowing of pigeon pea, finger millet and paddy nurseries. Make necessary arrangements to drain out excess water from already sown maize fields, rice and vegetable nurseries. Cover the vegetable nurseries with polythene sheets.
- ♦ In **West Madhya Pradesh**, postpone harvesting of maize. Postpone sowing of pearl millet, soybean, pigeon pea and paddy nurseries. Make necessary arrangements to drain out excess water from vegetables and orchards to avoid waterlogging. In **East Madhya Pradesh**, keep the harvested produce of maize, green gram and black gram in safe places. Ensure proper drainage in already sown / transplanted fields.
- ♦ In **Chhattisgarh**, ensure proper drainage in rice nurseries.
- ♦ In **Himachal Pradesh**, provide drainage in the fields of vegetables and fruit orchards. Strengthen the support for creepers and tall vegetable crops (tomato, capsicum etc.). Harvest matured fruits of plum, pear, stone fruit and keep in safe places to minimize losses due to heavy rains. Postpone sowing of maize and transplanting of rice. Drain out excess water from rice nurseries and already sown maize fields.
- ♦ In **Uttarakhand**, ensure proper drainage facilities in pigeon pea, groundnut, maize, sugarcane, barnyard millet, finger millet, already sown rice nurseries, kidney beans, blackgram, green gram, vegetable and orchards. Harvest matured vegetables (pumpkin, tomato, okra, chilli, French bean etc.) and fruits and store in

**\*Red color warning does not mean "Red Alert" Red color warning means "Take Action"**

**Forecast and warning for any day is valid from 0830 hours IST of day till 0830 hours IST of next day**

**For more details kindly visit <https://mausam.imd.gov.in> or contact 011-2434-4599**

**(Service to the nation since 1875)**



safe place. Tie the sugarcane plants together to avoid lodging.

- ♦ **West Uttar Pradesh**, postpone sowing of maize. Drain out excess water from already sown maize, rice nurseries, vegetables, pigeon pea and sugarcane. Tie the sugarcane plants together to avoid lodging. In **East Uttar Pradesh**, drain out excess water from vegetables, late sown rice, nurseries groundnut, green gram and maize.
- ♦ In **East Rajasthan**, harvest the matured vegetables such as okra and cucurbits and store them in safe place. Make arrangement for draining out excess water from the fields of groundnut and green gram.
- ♦ In **Punjab**, drain out excess water from already sown cotton, rice, vegetables and fruit crops.
- ♦ In **Haryana** - Make necessary arrangements to drain out excess water from cotton and pearl millet fields.
- ♦
- ♦ In **Gujarat** make necessary arrangements to drain out excess water in already sown rice nurseries, sugarcane fields, banana and mango plantations to prevent waterlogging. Provide support to sugarcane and banana to prevent lodging. In **Saurashtra & Kutch**, drain out excess rain water from vegetable nurseries and horticultural plantations. Undertake propping in sugarcane with strong bamboo or tie the leaves together in a clump to protect against wind and heavy rain.
- ♦ In **Konkan & Goa**, make arrangements to drain out excess water from rice nurseries, fields of finger millet, groundnut and orchards to prevent waterlogging. In **ghat areas of Madhya Maharashtra**, drain out excess water from rice nurseries, vegetables and orchards to prevent waterlogging.
- ♦ In **Arunachal Pradesh**, to protect the maize crop from damage due to runoff and soil erosion, construct small bunds or contour barriers across the slope to reduce water flow and soil loss. Avoid fresh transplanting of rice in low-lying areas. Provide strong support to banana plants using bamboo or wooden stakes to prevent lodging or stem breakage.
- ♦ In **Assam**, keep the harvested produce of sesame, foxtail millet, *Boro* rice, banana and citrus at safer places. Ensure proper drainage in *Sali* rice nursery, maize and sugarcane fields, arecanut and coconut plantations to prevent waterlogging. In **Barak Valley Zone of Assam**, postpone nursery sowing of *Sali* rice.
- ♦ In **Meghalaya**, postpone nursery sowing of rice especially in valleys. Ensure proper drainage in the fields of maize, ginger, French bean, cowpea, vegetables and around rice nurseries to prevent waterlogging. Provide strong bamboo stakes or trellis support to cow pea, cucumber and bottle gourd to prevent vines from trailing on wet ground. Provide support to banana plant to prevent lodging.

### Livestock / Fishery

- ♦ Keep the animals inside the shed during heavy rainfall and provide them balanced feed.
- ♦ Store feed and fodder in a safe place to prevent spoilage.
- ♦ Construct an outlet with proper netting around the ponds to drain out excess water, thereby preventing fish from escaping in case of overflow.

### Agromet advisories for likely impact of Thunderstorm / Gusty Winds / Squally Winds

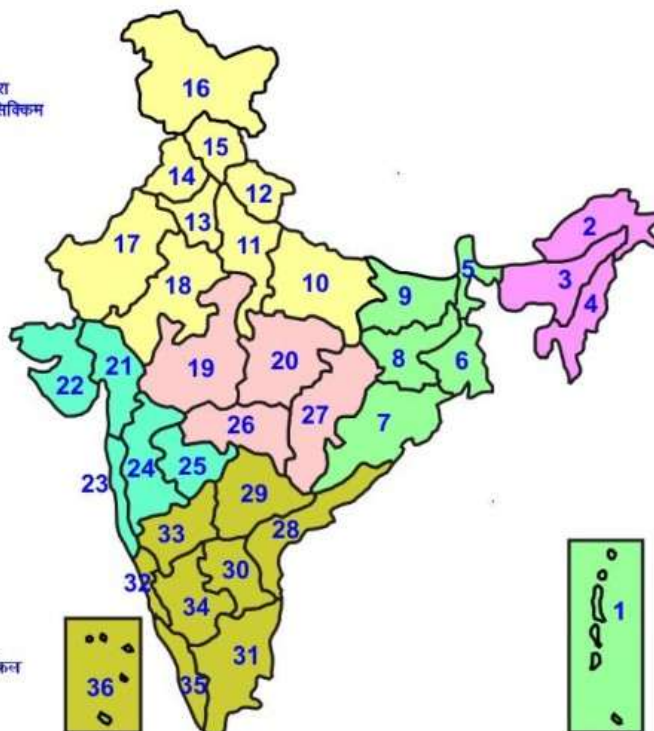
- ♦ Provide mechanical support to horticultural crops and staking or support to vegetables and young fruit plants / fruit-bearing plants to avoid lodging due to strong winds.





## LEGENDS

- 1 अंडमान और निकोबार द्वीप समुह
- 2 अरुणाचल प्रदेश
- 3 असम और मेघालय
- 4 नागालैंड मनीपुर मीजोरम और त्रिपुरा
- 5 उप हिमालय पश्चिम बंगाल एवं सिक्किम
- 6 पश्चिम बंगाल
- 7 ओडिसा
- 8 झारखंड
- 9 बिहार
- 10 पूर्वी उत्तर प्रदेश
- 11 पश्चिम उत्तर प्रदेश
- 12 उत्तराखंड
- 13 हरियाणा चंडीगढ़ एवं दिल्ली
- 14 पंजाब
- 15 हिमाचल प्रदेश
- 16 जम्मू एवं कश्मीर एवं लद्दाख
- 17 पश्चिम राजस्थान
- 18 पूर्वी राजस्थान
- 19 पश्चिम मध्य प्रदेश
- 20 पूर्वी मध्य प्रदेश
- 21 गुजरात क्षेत्र
- 22 सौराष्ट्र एवं कच्छ
- 23 कोंकण एवं गोवा
- 24 मध्य महाराष्ट्र
- 25 मराठावाड़ा
- 26 विदर्भ
- 27 छत्तीसगढ़
- 28 तटीय आंध्र प्रदेश एवं यनम
- 29 तेलंगाना
- 30 रायलसीमा
- 31 तमिलनाडु, पुदुचेरी एवं कराईकल
- 32 तटिय कर्नाटक
- 33 आंतरिक उत्तरी कर्नाटक
- 34 आंतरिक दक्षिणी कर्नाटक
- 35 केरल एवं माहे
- 36 लक्षद्वीप



1. Andaman & Nicobar Islands
2. Arunachal Pradesh
3. Assam & Meghalaya
4. Nagaland, Manipur, Mizoram & Tripura
5. Sub-Himalayan West Bengal & Sikkim
6. Gangetic West Bengal
7. Orissa
8. Jharkhand
9. Bihar
10. East Uttar Pradesh
11. West Uttar Pradesh
12. Uttarakhand
13. Haryana, Chd & Delhi
14. Punjab
15. Himachal Pradesh
16. Jammu & Kashmir and Ladakh
17. West Rajasthan
18. East Rajasthan
19. West Madhya Pradesh
20. East Madhya Pradesh
21. Gujarat
22. Saurashtra
23. Konkan & Goa
24. Madhya Maharashtra
25. Marathawada
26. Vidharbha
27. Chhattisgarh
28. Coastal Andhra Pradesh & Yanam
29. Telangana
30. Rayalaseema
31. Tamilnadu, Puducherry & Karaikal
32. Coastal Karnataka
33. North Interior Karnataka
34. South Interior Karnataka
35. Kerala & Mahe
36. Lakshadweep

## SPATIAL DISTRIBUTION (% of Stations reporting)

% Stations	Category	% Stations	Category
76-100	Widespread (WS/Most Places)	26-50	Scattered (SCT/ A Few Places)
51-75	Fairly Widespread (FWS/ Many Places)	1-25	Isolated (ISOL)

## Subdivision Colour

- NO WARNING
- WATCH (BE UPDATED)
- ALERT (BE PREPARED TO TAKE ACTION)
- WARNING (TAKE ACTION)

## Probabilistic Forecast

Terms	Probability of Occurrence (%)
Unlikely	< 25
Likely	25 - 50
Very Likely	50 - 75
Most Likely	> 75

- Heavy Rain

Thunderstorm & Lightning

Strong surface winds

Cold Wave

Hot & Humid

Very Heavy Rain

Hailstorm

Heat Wave

Cold Day

Extremely Heavy Rain

Dust Storm

Hot Day

Ground Frost

Heavy Snow

Dust Raising Winds

Warm Night

Fog

\*Red color warning does not mean "Red Alert" Red color warning means "Take Action"

Forecast and warning for any day is valid from 0830 hours IST of day till 0830 hours IST of next day

For more details kindly visit <https://mausam.imd.gov.in> or contact 011-2434-4599

(Service to the nation since 1875)



## LEGENDS

### WARNING

<b>WARNING (TAKE ACTION)</b>
<b>ALERT ( BE PREPARED)</b>
<b>WATCH (BE UPDATED)</b>
<b>NO WARNING ( NO ACTION)</b>

### Probabilistic Forecast

Terms	Probability of Occurrence (%)
Unlikely	< 25
Likely	25 - 50
Very Likely	50 - 75
Most Likely	> 75



Heavy: 64.5 to 115.5 mm/cm \*  
Very Heavy: 115.6 to 204.4 mm/cm \*  
Extremely Heavy: > 204.4 mm/cm \*



When maximum temperature of a station reaches  $\geq 40^{\circ}\text{C}$  for plains and  $\geq 30^{\circ}\text{C}$  for hilly regions  
(a) Based on Departure from normal

Heat Wave: Maximum Temperature Departure from normal  $4.5^{\circ}\text{C}$  to  $6.4^{\circ}\text{C}$ .  
Severe Heat Wave: Maximum Temperature Departure from normal  $\geq 6.5^{\circ}\text{C}$

(b). Based on Actual maximum temperature

Heat Wave: When actual maximum temperature  $\geq 45^{\circ}\text{C}$ .  
Severe Heat Wave: When actual maximum temperature  $\geq 47^{\circ}\text{C}$

(c). Criteria for heat wave for coastal stations

When maximum temperature departure is  $> 4.5^{\circ}\text{C}$  from normal. Heat Wave may be described provided maximum temperature  $\geq 37^{\circ}\text{C}$



When maximum temperature remains  $40^{\circ}\text{C}$

Warm Night: When minimum temperature departure  $4.5^{\circ}\text{C}$  to  $6.4^{\circ}\text{C}$ .  
Severe Warm Night: When minimum temperature departure  $> 6.4^{\circ}\text{C}$ .



When minimum temperature of a station  $\leq 10^{\circ}\text{C}$  for plains and  $\leq 0^{\circ}\text{C}$  for hilly regions.

(a). Based on departure

Cold Wave: Minimum Temperature Departure from normal  $-4.5^{\circ}\text{C}$  to  $-6.4^{\circ}\text{C}$ .  
Severe Cold Wave: Minimum Temperature Departure from normal  $\leq -6.5^{\circ}\text{C}$

(b) Based on actual Minimum Temperature (for Plains only)

Cold Wave : When Minimum Temperature is  $\leq 4.0^{\circ}\text{C}$   
Severe Cold Wave: When Minimum Temperature is  $\leq 2.0^{\circ}\text{C}$

(c) For Coastal Stations

When Minimum Temperature departure is  $\leq -4.5^{\circ}\text{C}$  & actual Minimum Temperature is  $\leq 15^{\circ}\text{C}$



When minimum temperature of a station  $\leq 10^{\circ}\text{C}$  for plains and  $\leq 0^{\circ}\text{C}$  for hilly regions  
Based on departure

Cold Day: Maximum Temperature Departure from normal  $-4.5^{\circ}\text{C}$  to  $-6.4^{\circ}\text{C}$ .  
Severe Cold Day: Maximum Temperature Departure from normal  $\leq -6.5^{\circ}\text{C}$



Phenomenon of small droplets suspended in air and the horizontal visibility  $< 1\text{km}$

Moderate Fog: When the visibility between 500-200 metres  
Dense Fog: when the visibility between 50- 200 metres  
Very Dense Fog: when the visibility  $< 50$  metres



Sudden electrical discharges manifested by a flash of light (Lightning) and a sharp rumbling sound (thunder)



An ensemble of particles of dust or sand energetically lifted to great heights by a strong and turbulent wind.



Ice deposits on ground

Air temperature  $\leq 4^{\circ}\text{C}$  ( over Plains)



A strong wind that rises suddenly, lasts for atleast 1 minute.

Moderate: Wind speed 52-61 kmph  
Severe: Wind speed 62-87 kmph  
Very Severe: Wind speed  $> 87$  kmph



Effect of various waves in the sea over specific area

Rough to very rough: Wind speed 41-62 kmph (22-33 knots) & Wave height 2.5-6 metre  
High to very high: Wind speed 63-117 kmph ( 34-63 knots) & Wave height 6-14 metre  
Phenomenal: Wind speed  $> 117$  kmph ( $> 63$  knots) & Wave height  $> 14$  metre



Cyclonic Storm: Wind speed 62-87 kmph (34-47 knots)

Severe Cyclonic Storm: Wind speed 88-117 kmph (48-63 knots)

Very Severe Cyclonic Storm: Wind speed 118-165 kmph (64 - 89 knots)

Extremely Severe Cyclonic Storm: Wind speed 166-220 kmph (90 -119 knots)

Super Cyclone Storm: Wind speed  $> 220$  kmph ( $> 119$  knots)

\*Red color warning does not mean "Red Alert" Red color warning means "Take Action"

Forecast and warning for any day is valid from 0830 hours IST of day till 0830 hours IST of next day

For more details kindly visit <https://mausam.imd.gov.in> or contact 011-2434-4599

(Service to the nation since 1875)