



2025-06-24

Time of Issue: 14:15:00 hours IST
(Mid-Day)

ALL INDIA WEATHER SUMMARY AND FORECAST BULLETIN

Significant Weather Features

Weather Systems, Forecast and Warnings:

West India:

- **Extremely heavy rainfall (>20 cm/24 hours) likely at isolated places over Konkan, Madhya Maharashtra, Gujarat Region on 24th June.**
- Isolated **very heavy rainfall** likely over Konkan & Goa, Madhya Maharashtra, Gujarat region and isolated heavy rainfall over Saurashtra & Kutch during 24th-30th June.
- Light/moderate rainfall at most/many places likely over Gujarat State, Konkan & Goa, Madhya Maharashtra, Marathwada during 24th-30th June.

Northwest India:

- Isolated **heavy rainfall** likely over Punjab, Haryana, Himachal Pradesh, Uttarakhand, West Uttar Pradesh, Rajasthan during 24th-30th; Jammu-Kashmir-Ladakh-Gilgit-Baltistan-Muzaffarabad during 25th-27th; East Uttar Pradesh during 27th-30th June with **very heavy rainfall** over Uttarakhand during 24th-27th, West Rajasthan on 27th; East Rajasthan on 24th & 27th; Haryana, Punjab on 25th & 26th, West Uttar Pradesh on 25th & 27th; Jammu-Kashmir-Ladakh-Gilgit-Baltistan-Muzaffarabad on 25th June.
- Light/moderate rainfall at most/many places accompanied with **thunderstorm, lightning** & **gusty winds speed reaching 30-40 kmph** likely over Northwest India during 24th-30th June.

East & Central India:

- Isolated **heavy rainfall** over Bihar, Jharkhand, Odisha, Chhattisgarh during 24th-28th, Vidarbha on 24th & 25th, Gangetic West Bengal during 25th-27th, Sub-Himalayan West Bengal & Sikkim on 24th, 25th, 28th & 29th June with **very heavy rainfall** over Madhya Pradesh, Sub-Himalayan West Bengal & Sikkim on 24th; Bihar on 28th; Jharkhand on 26th, Odisha on 25th & 26th June.
- Light/moderate rainfall at most/many places accompanied with **thunderstorm, lightning & gusty winds speed reaching 40-50 kmph** likely over Andaman & Nicobar Islands; Madhya Pradesh, Vidarbha, Chhattisgarh, Gangetic West Bengal, Bihar, Jharkhand, Odisha during 24th-30th June.

Northeast India:

Light/moderate rainfall at many/most places accompanied with **thunderstorm, lightning and isolated heavy to very heavy rainfall** likely to continue over Northeast India during next 7 days.

South Peninsular India:

- Isolated **heavy rainfall** likely over Kerala, Karnataka during 24th-28th; Coastal Andhra Pradesh & Yanam on 27th; Tamil Nadu on 27th & 28th June with very heavy rainfall Interior Karnataka on 24th; Coastal Karnataka during 24th-26th June.
- **Strong surface winds** (speed reaching 40-60 kmph) very likely over Karnataka, Coastal Andhra Pradesh & Yanam, Rayalaseema, Telangana during 24th-28th June.

*Red color warning does not mean "Red Alert" Red color warning means "Take Action"

Forecast and warning for any day is valid from 0830 hours IST of day till 0830 hours IST of next day

For more details kindly visit <https://mausam.imd.gov.in> or contact 011-2434-4599

(Service to the nation since 1875)



scattered rainfall accompanied with isolated **thunderstorm, lightning** over Coastal Andhra Pradesh & Yanam, Telangana, Interior Karnataka during 24th-30th June.

Heat wave warning:

- ♦ Heat wave conditions likely over Jammu division on 24th June.



Main Weather Observations:

❖ **Rainfall distribution** (from 0830 hours IST of yesterday to 0830 hours IST of today): **at most places** over Andaman & Nicobar Islands, Arunachal Pradesh, Assam & Meghalaya, Nagaland, Manipur, Mizoram & Tripura, Sub Himalayan West Bengal & Sikkim, Konkan & Goa, Vidarbha, Chhattisgarh, Coastal Karnataka and Kerala & Mahe; **at many places** over Gangetic West Bengal, Odisha, Jharkhand, Bihar, Uttarakhand, East Rajasthan, West Madhya Pradesh, East Madhya Pradesh, Gujarat Region, Saurashtra & Kutch, Madhya Maharashtra, Coastal Andhra Pradesh & Yanam, South Interior Karnataka and Lakshadweep; **at a few places** over West Uttar Pradesh, Haryana-Chandigarh-Delhi, Punjab, Himachal Pradesh, Telangana and North Interior Karnataka; **at isolated places** over East Uttar Pradesh, Jammu-Kashmir-Ladakh-Gilgit-Baltistan-Muzaffarabad, West Rajasthan, Marathwada, Rayalaseema and Tamil Nadu, Puducherry & Karaikal;

❖ **Significant rainfall recorded(in cm)** (from 0830 hours IST of yesterday to 0830 hours IST of today): **Sub Himalayan West Bengal & Sikkim:** Kumargram (dist Alipurduar) 28; Gajoldoba (dist Jalpaiguri) 25; Alipurduar PTO (dist Alipurduar) 23; Saraswatipur Tea Estate (dist Jalpaiguri) 21; Sevoke (dist Darjeeling), Patkapara Tea Estate (dist Alipurduar) 20 Each; Sankos Tea Estate (dist Alipurduar) 18; Sankosh (dist Cooch Behar), Leesh River Tea Garden (dist Jalpaiguri) 17 Each; Ghish (dist Jalpaiguri), Oodlabari Tea Estate (dist Jalpaiguri), Kumargram Tea Estate (dist Alipurduar) 16 Each; Barobhisha (dist Alipurduar), Siliguri PTO (dist Darjeeling), Newlands Tea Garden (dist Alipurduar) 15 Each; Suryasen Mahavidyalaya, (dist Darjeeling), Chel (dist Jalpaiguri), Kailashpur Tea Estate (dist Jalpaiguri), Washabari Tea Estate (dist Jalpaiguri) 14 Each; Chepan (dist Alipurduar) 13; Champasari (dist Darjeeling), Kumlai T.e. (dist Jalpaiguri) 12 Each; Cooch Behar (dist Cooch Behar), Anandpur Tea Estate (dist Jalpaiguri), Bhatkawa Tea Estate (dist Jalpaiguri), Aryaman Tea Estate (dist Alipurduar) 11 Each; Mathabhanga (dist Cooch Behar), Chengmari/Diana (dist Jalpaiguri), Ghughumari (dist Cooch Behar) 10 Each; Bagdogra IAF (dist Darjeeling), Falakata (dist Alipurduar), Noweranuddi Tea Garden (dist Jalpaiguri) 9 Each; Amfu Pundibari (dist Cooch Behar) 8; Amfu Kalimpong (dist Kalimpong), Baintgoorie T.e. (dist Jalpaiguri) 7 Each; Buxaduar (dist Alipurduar), Hasimara (dist Alipurduar), Diana Tea Estate (dist Jalpaiguri), Maynaguri College (dist Jalpaiguri), Dalgaon Tea Estate (dist Alipurduar) 6 Each; **Gujarat Region:** Kamrej (dist Surat) 27; Bardoli (dist Surat) 26; Palsana (dist Surat) 24; Khanvel (dist Dadara & Nagar Haveli) 18; Tilakwada (dist Narmada) 17; Vyara (dist Tapi) 16; Narmada Kvk AWS (dist Narmada) 15; Olpad (dist Surat), Ukai (dist Surat) 14 Each; Mahuva (dist Surat), Madhbun (dist Dadara & Nagar Haveli), Dolvan (dist Tapi), Borsad (dist Anand) 13 Each; Mandvi (dist Surat), Surat City (dist Surat) 12 Each; Choryasi (dist Surat) 11; Valod (dist Tapi), Songadh (dist Tapi) 10 Each; Daman (dist Daman), Mangrol (dist Surat) 9 Each; Navsari (dist Navsari), Silvassa (dist Dadara & Nagar Haveli), Khambhat (dist Anand), Umerpada (dist Surat), Halol (dist Panchmahal), Naswadi (dist Chhota Udepur), Daman Fmo (dist Daman) 8 Each; Vapi (dist Valsad), Bharuch (dist Bharuch), Dhandhuka (dist Ahmedabad), Gandevi (dist Navsari), Dediapada (dist Narmada) 7 Each; Chikhli (dist Navsari), Vyara AWS (dist Tapi), Pardi (dist Valsad), Nadiad (dist Kheda), Daman AWS (dist Daman), Umergam (dist Valsad), Jalalpor (dist Navsari), Jetpur Pavi (dist Chhota Udepur), Navasari AWS (dist Navsari), Garudeshwar (dist Narmada) 6 Each; **Konkan & Goa:** Jawhar (dist Palghar) 23; Vikramgad (dist Palghar) 20; Mokheda - Fmo (dist Palghar) 19; Khalapur (dist Raigad), Vasai (dist Palghar) 17 Each; Matheran (dist Raigad) 16; Roha (dist Raigad) 15; Sudhagad Pali (dist Raigad), Bhiwandi (dist Thane) 14 Each; Poladpur (dist Raigad) 13; Panvel ARG (dist Raigad), Mandangad (dist Ratnagiri), Pen (dist Raigad), Dahanu (dist Palghar) 10 Each; Wada (dist Palghar), Vaibhavwadi (dist Sindhudurg), Savarde-arg (dist Ratnagiri) 9 Each; Mangaon (dist Raigad), Karjat ARG (dist Raigad), Ambarnath (dist Thane), Mahad (dist Raigad), Tala (dist Raigad), Uran (dist Raigad), Palghar ARG (dist Palghar), Kankavli (dist Sindhudurg) 8 Each; Talasari (dist Palghar), Mhasla (dist Raigad), Lanja (dist Ratnagiri) 7 Each; Colaba (dist Mumbai City), Kalyan (dist Thane), Sangameshwar Devrukh (dist Ratnagiri), Rajapur (dist Ratnagiri) 6 Each; **Madhya Maharashtra:** Lonavala ARG (dist Pune) 18; Mahabaleshwar (dist Satara) 16; Radhanagari (dist Kolhapur), Igatpuri (dist Nashik) 14 Each; Gaganbawada (dist Kolhapur) 13; Ajra (dist Kolhapur), Ozharkheda - Fmo (dist Nashik) 12 Each; Chandgad (dist Kolhapur) 10; Trimbakshwar (dist Nashik), Harsul - Fmo (dist Nashik) 9 Each; Dhadgaon/Akrani-Hydro (dist Nandurbar), Shahuwadi (dist Kolhapur), Velhe (dist Pune) 8 Each; Gargoti/bhudargad (dist Kolhapur) 6; **East Rajasthan:** Mangrol (dist Baran) 18; Shahabad (dist Baran) 17; Kishanganj (dist Baran) 11; Baran (dist Baran), Khandar SR (dist Sawai Madhopur) 9 Each; Alwar SR (dist Alwar), Sapotra (dist Karauli) 6 Each; **Assam & Meghalaya:** Gossaigaon (dist Kokrajhar), Gossaigaon AWS (dist Kokrajhar) 17 Each; Tangla ARG (dist Udalguri) 12; Majbat (dist Udalguri), Mazbat ARG (dist Udalguri) 8 Each; Cherrapunji(rkm) (dist East Khasi Hills), N.lakhimpur/Lilabari (dist Lakhimpur), Kajolgaon AWS (dist Chirang), Neamatighat (dist Jorhat) 7 Each; Jia Bharali N T Xing (dist Shonitpur), Nalbari/Pagladia (dist Nalbari), Khetri ARG (dist Kamrup (rural)), Srijangram ARG (dist Bongaigaon) 6 Each; **Coastal Karnataka:** Siddapura (dist Udupi) 13; Castle Rock (dist Uttara Kannada) 10; Kadra (dist Uttara Kannada) 8; Banavasi (dist Uttara Kannada) 7; Yellapur (dist Uttara Kannada), Dharmasthala (dist Dakshina Kannada) 6 Each; **Punjab:** Lohand (dist Rupnagar) 12; Khanna (dist Ludhiana) 10; Ludhiana (dist Ludhiana)

*Red color warning does not mean "Red Alert" Red color warning means "Take Action"

Forecast and warning for any day is valid from 0830 hours IST of day till 0830 hours IST of next day

For more details kindly visit <https://mausam.imd.gov.in> or contact 011-2434-4599

(Service to the nation since 1875)

7; Bhadson Irr (dist Patiala) 6; **Arunachal Pradesh:** Bhalukpong (dist West Kameng) 12; Tuting (dist Upper Siang) 8; Basar AWS (dist West Siang), Basar (dist West Siang) 7 Each; Tuting AWS (dist Upper Siang), Jung ARG (dist Tawang) 6 Each; **West Madhya Pradesh:** Karhal (dist Sheopur) 12; Kolaras (dist Shivpuri) 11; Sheopur-aws (dist Sheopur) 9; Pohri (dist Shivpuri), Badoda (dist Sheopur) 8 Each; Gandhwani (dist Dhar), Budhni (dist Sehore) 6 Each; **Haryana-Chandigarh-Delhi:** Shahbad (dist Kurukshetra) 12; Nilokheri (dist Karnal), Babain REV (dist Kurukshetra) 10 Each; Rewari (dist Rewari), Kurukshetra (dist Kurukshetra), Thanesar (dist Kurukshetra) 9 Each; Indri (dist Karnal) 8; Bawal AWS (dist Rewari), Tajewala (dist Yamuna Nagar) 7 Each; Hathinkundberaj AWS (dist Yamuna Nagar), Dadupur (dist Yamuna Nagar), Bawal (dist Rewari) 6 Each; **Uttarakhand:** Sama (dist Bageshwar) 12; Haripur (dist Dehradun) 10; Rudraprayag (dist Rudraprayag) 8; Nainital (dist Nainital) 6; **Bihar:** Galgalia (dist Kishanganj) 12; Areraj (dist East Champaran) 9; Rosera (dist Samastipur) 8; Taibpur (dist Kishanganj), Chatia (dist East Champaran), Pothia (dist Kishanganj), Kargahar (dist Rohtas) 7 Each; Sherghati (dist Gaya) 6; **North Interior Karnataka:** Khanapur (dist Belagavi) 10; Londa (dist Belagavi) 7; **Odisha:** Tiring (dist Mayurbhanj) 10; Kashipur (dist Rayagada), Kaptipada (dist Mayurbhanj), Daringibadi (dist Kandhamal) 7 Each; K Nuagaon (dist Kandhamal), Th Rampur (dist Kalahandi), Rairangpur (dist Mayurbhanj) 6 Each; **South Interior Karnataka:** Agumbe Emo (dist Shivamogga) 9; Somwarpet (dist Kodagu), Kottigehara (dist Chikkamagaluru) 7 Each; Hunchadakatte (dist Shivamogga), Kalasa (dist Chikkamagaluru) 6 Each; **East Madhya Pradesh:** Chindwara-aws (dist Chindwara), Kumdam (dist Jabalpur), Bilaspur (dist Umariya) 8 Each; Malanjkhanda (dist Balaghat), Shahpura (dist Dindori), Bargi (dist Jabalpur) 7 Each; Bichhia (dist Mandla), Keolari (dist Seoni), Orchha (dist Niwari), Umariya-aws (dist Umariya), Birsa (dist Balaghat), Panagar (dist Jabalpur), Mohgaon (dist Mandla), Bijadandi (dist Mandla) 6 Each; **Telangana:** Dahegaon (dist Kumaram Bheem) 7; Bejjur (dist Kumaram Bheem) 6; **Vidarbha:** Bhamragad (dist Gadchiroli) 7; **Chhattisgarh:** Chando (dist Balrampur), Samari (dist Balrampur) 7 Each; Ramanujganj (dist Balrampur), Kutaru (dist Bijapur) 6 Each; **Kerala & Mahe:** Irikkur (dist Cannur) 6; **Himachal Pradesh:** Nadaun (dist Hamirpur), Hamirpur (dist Hamirpur) 6 Each; **West Uttar Pradesh:** Rath (dist Hamirpur) 6; **Jharkhand:** Jamshedpur (dist East Singhbhum), Padma Dvc (dist Hazaribag) 6 Each; **Nagaland, Manipur, Mizoram & Tripura:** Lamseng ARG (dist Imphal West) 6.

❖ **Heavy Rainfall observed** (from 0830 hours IST of yesterday to 0830 hours IST of today): **Extremely heavy rain** at isolated places over Sub Himalayan West Bengal & Sikkim, Gujarat Region and Konkan & Goa. **Heavy to very heavy rain** at isolated places over Arunachal Pradesh, Assam & Meghalaya, Sub Himalayan West Bengal & Sikkim, Bihar, Uttarakhand, Haryana-Chandigarh-Delhi, Punjab, East Rajasthan, West Madhya Pradesh, Gujarat Region, Konkan & Goa, Madhya Maharashtra and Coastal Karnataka. **Heavy rain** at a few places over Konkan & Goa and at isolated places over Nagaland, Manipur, Mizoram & Tripura, Odisha, East Madhya Pradesh, Vidarbha, Chhattisgarh, Telangana, North Interior Karnataka and South Interior Karnataka.

❖ **Minimum Temperature Departures (as on 24-06-2025): markedly above normal(> 5.1°C)** at many places over Himachal Pradesh and Jammu-Kashmir-Ladakh-Gilgit-Baltistan-Muzaffarabad; at isolated places over Assam & Meghalaya, Bihar, East Uttar Pradesh, West Uttar Pradesh, West Madhya Pradesh, East Madhya Pradesh and Saurashtra & Kutch. **appreciably above normal(3.1°C to 5.0°C)** at few places over Gujarat Region; at isolated places over Sub Himalayan West Bengal & Sikkim, Odisha, Punjab, West Rajasthan, Coastal Andhra Pradesh & Yanam and Tamil Nadu, Puducherry & Karaikal. **above normal(1.6°C to 3.0°C)** at many places over Lakshadweep; at few places over Uttarakhand and Kerala & Mahe; at isolated places over Nagaland, Manipur, Mizoram & Tripura, Gangetic West Bengal, Haryana-Chandigarh-Delhi, Madhya Maharashtra and Rayalaseema. **near normal(-1.5°C to 1.5°C)** at many places over Jharkhand, Konkan & Goa and Telangana; at most places over Arunachal Pradesh, Marathwada, Vidarbha, Chhattisgarh, Coastal Karnataka, North Interior Karnataka and South Interior Karnataka; at few places over Andaman & Nicobar Islands and East Rajasthan. **The lowest minimum temperature** of 19.4°C is reported at KHANDWA (MADHYA PRADESH), and NARSINGHPUR (MADHYA PRADESH) over the Plains of India.

❖ **Maximum Temperature Departures (as on 23-06-2025): markedly above normal(> 5.1°C)** at few places over Jammu-Kashmir-Ladakh-Gilgit-Baltistan-Muzaffarabad; at isolated places over Himachal Pradesh and Chhattisgarh. **appreciably above normal(3.1°C to 5.0°C)** at isolated places over Gangetic West Bengal. **above normal(1.6°C to 3.0°C)** at isolated places over Assam & Meghalaya, Sub Himalayan West Bengal & Sikkim, Odisha and Konkan & Goa. **near normal(-1.5°C to 1.5°C)** at many places over Nagaland, Manipur, Mizoram & Tripura, Jharkhand and Kerala & Mahe; at most places over Coastal Karnataka and Lakshadweep; at few places over Andaman & Nicobar Islands, Arunachal Pradesh, Bihar, Uttarakhand, Punjab, West Rajasthan, Saurashtra & Kutch, Madhya Maharashtra, Marathwada, Telangana, Tamil Nadu, Puducherry & Karaikal and South Interior Karnataka; at isolated places over East Uttar Pradesh, West Uttar Pradesh, Haryana-Chandigarh-Delhi and North Interior Karnataka. **The highest maximum temperature** of 42.6°C was reported at SRIGANGANAGAR (RAJASTHAN).

राष्ट्रीय मौसम पूर्वानुमान केन्द्र
भारत मौसम विज्ञान विभाग
पृथ्वी विज्ञान मंत्रालय



National Weather Forecasting Centre
Indian Meteorological Department
Ministry of Earth Sciences

*Red color warning does not mean "Red Alert" Red color warning means "Take Action"

Forecast and warning for any day is valid from 0830 hours IST of day till 0830 hours IST of next day

For more details kindly visit <https://mausam.imd.gov.in> or contact 011-2434-4599

(Service to the nation since 1875)

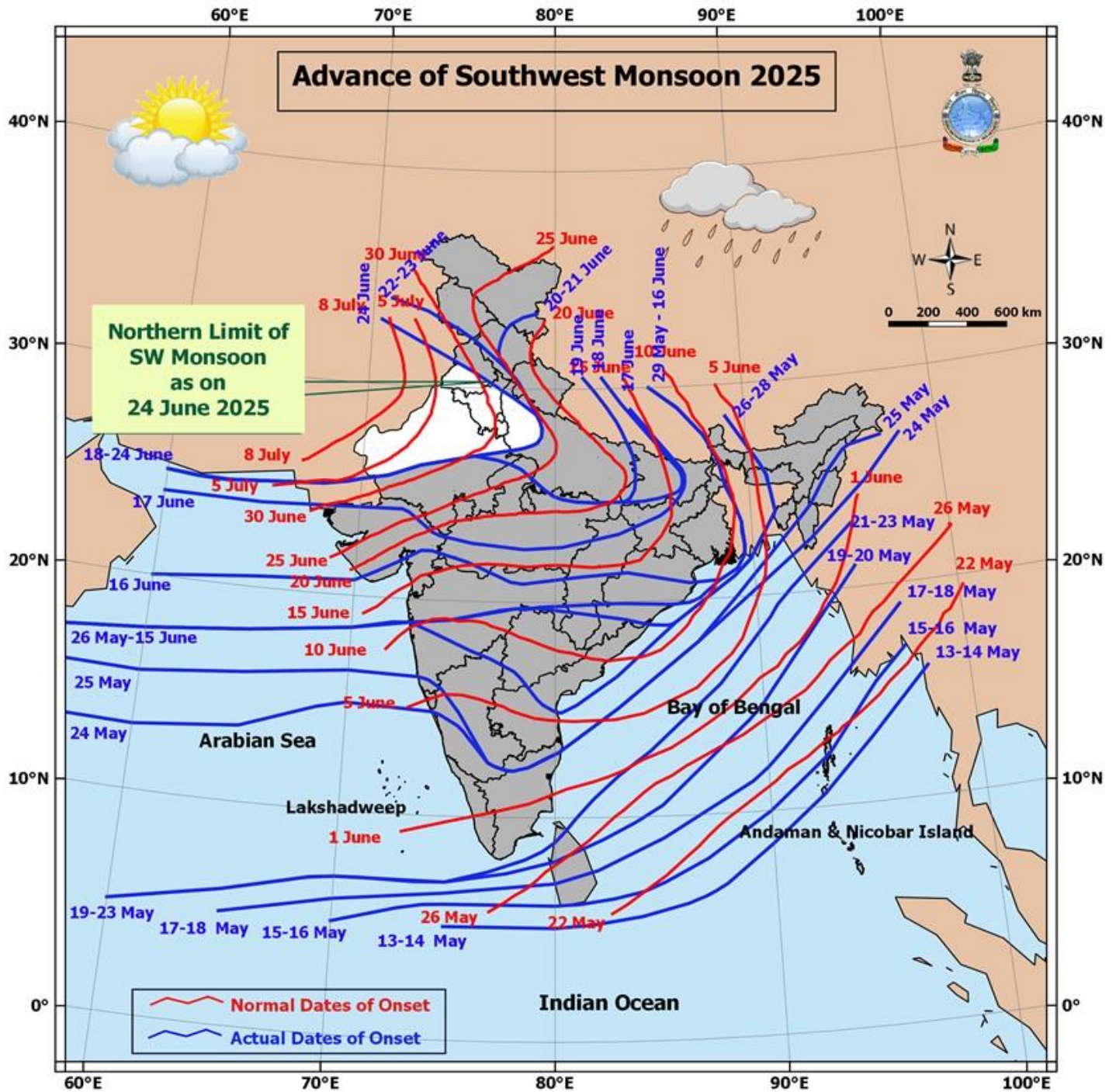


Meteorological Analysis (Based on 0830 hours IST)

- ♦ Southwest monsoon has further advanced over remaining parts of north Arabian Sea, some more parts of West Uttar Pradesh, some parts of Haryana; Chandigarh, remaining parts of Himachal Pradesh & Jammu and some more parts of Punjab.
- ♦ The Northern Limit of Monsoon continues to pass through 25.0°N/60.0°E, 25.0°N/65.0°E, 25.5°N/70.0°E, Barmer, Jodhpur, Jaipur, Agra, Rampur, Bijnor, Karnal, Halwara and 33.0°N/70.5°E.
- ♦ Conditions are favourable for further advance of Southwest monsoon over some more parts of Rajasthan, Punjab, Haryana; Delhi and remaining parts of West Uttar Pradesh during next 36 hours.
- ♦ The **upper air cyclonic circulation** over central parts of south Uttar Pradesh extending upto 5.8 km above mean sea level tilting southwards with height persists.
- ♦ The **trough** from the above cyclonic circulation over central parts of south Uttar Pradesh to northwest Bay of Bengal across northeast Madhya Pradesh, Jharkhand & north Odisha extending upto 1.5 km above mean sea level persists.
- ♦ A **trough** runs from Punjab to north Bangladesh across the above cyclonic circulation over central parts of south Uttar Pradesh at 0.9 km above mean sea level.
- ♦ An **upper air cyclonic circulation** lies over south Jharkhand & neighbourhood between 3.1 and 7.6 km above mean sea levels tilting southwards with height.
- ♦ A **trough** runs from northeast Arabian Sea to the above cyclonic circulation over south Jharkhand & neighbourhood at 3.1 km above mean sea level.
- ♦ The **upper air cyclonic circulation** over westcentral and adjoining northwest Bay of Bengal off north Coastal Andhra Pradesh & south Odisha coast between 5.8 & 7.6 km above mean sea level has merged with above cyclonic circulation.
- ♦ The **upper air cyclonic circulation** over northeast Assam now lies over central Assam & neighbourhood at 0.9 km above mean sea level.
- ♦ The **upper air cyclonic circulation** over Saurashtra & Kutch between 3.1 & 5.8 km above mean sea level has become less marked.

Weather Outlook for subsequent 3 days

- ♦ Scattered to fairly widespread rainfall very likely over central India, ghat area of western coast, eastern India & northwest India.
- ♦ Isolated to scattered rainfall very likely over the south peninsula India & western India.

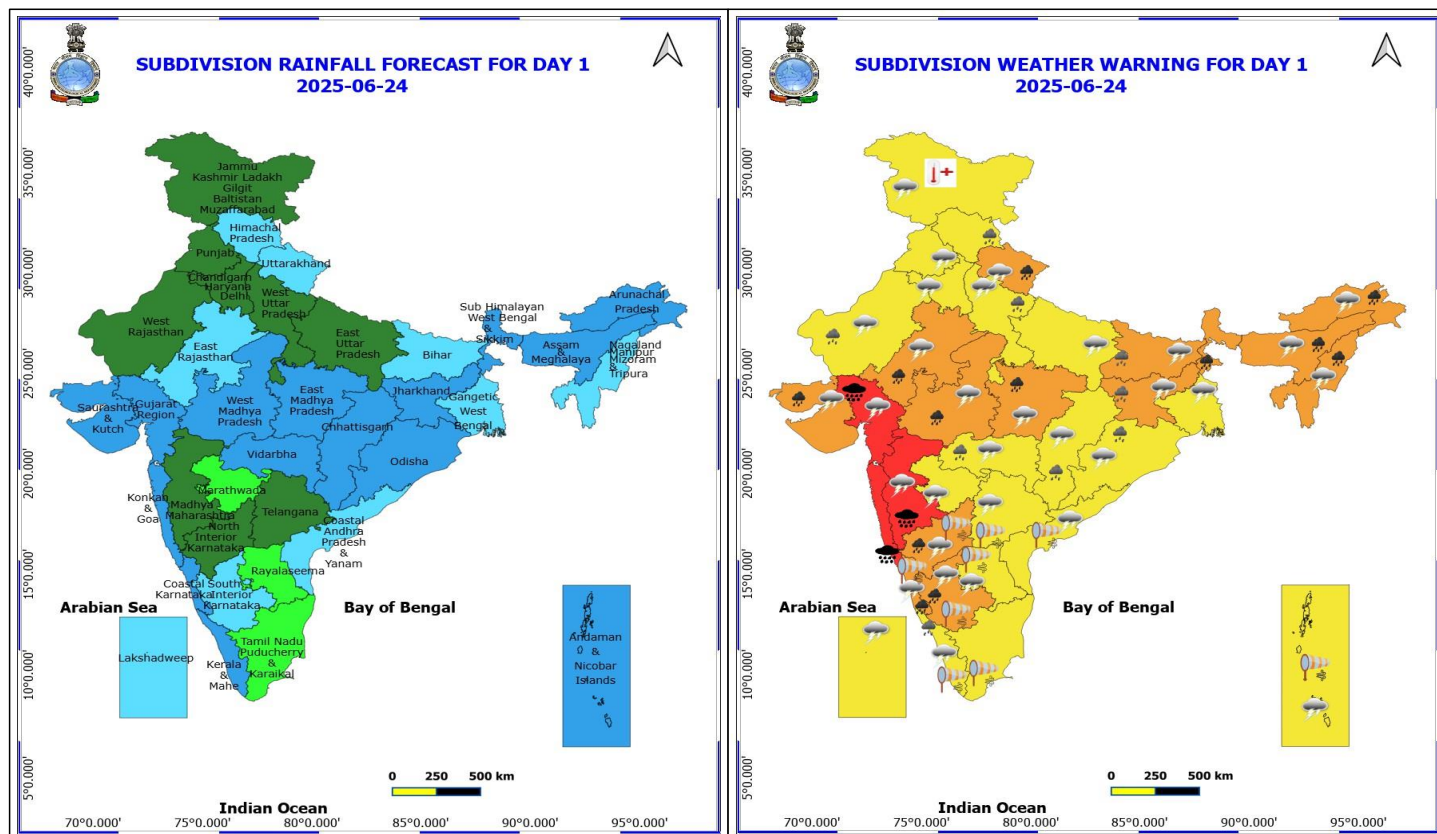


*Red color warning does not mean "Red Alert" Red color warning means "Take Action"

Forecast and warning for any day is valid from 0830 hours IST of day till 0830 hours IST of next day

For more details kindly visit <https://mausam.imd.gov.in> or contact 011-2434-4599

(Service to the nation since 1875)



24 June (Day 1)

- ❖ **Heavy to Very Heavy Rainfall with isolated Extremely Heavy Rainfall** very likely at isolated places over Gujarat Region, Konkan & Goa and Madhya Maharashtra.
- ❖ **Heavy to Very Heavy Rainfall** very likely at isolated places over Arunachal Pradesh, Assam & Meghalaya, Costal Karnataka, East Rajasthan, Interior Karnataka, Madhya Pradesh, Nagaland, Manipur, Mizoram and Tripura, Saurashtra & Kutch, Sub Himalayan West Bengal & Sikkim and Uttarakhand.
- ❖ **Heavy Rainfall** very likely at isolated places over Bihar, Chhattisgarh, Himachal Pradesh, Jharkhand, Kerala & Mahe, Odisha, Vidarbha, West Rajasthan and West Uttar Pradesh.
- ❖ **Thunderstorm accompanied with lightning & gusty winds(40-50kmph)** very likely at isolated places over Andaman & Nicobar Islands, Jharkhand, Kerala & Mahe, Lakshadweep and Uttarakhand.
- ❖ **Thunderstorm accompanied with lightning & gusty winds(30-40kmph)** very likely at isolated places over Bihar, Gangetic West Bengal, Gujarat State, Jammu-Kashmir-Ladakh-Gilgit-Baltistan-Muzaffarabad, Madhya Maharashtra, Madhya Pradesh, Marathwada, Odisha and Rajasthan.
- ❖ **Thunderstorm accompanied with Lightning** very likely at isolated places over Andhra Pradesh, Arunachal Pradesh, Assam & Meghalaya, Chhattisgarh, Costal Karnataka, Haryana, Chandigarh & Delhi, Interior Karnataka, Nagaland, Manipur, Mizoram and Tripura, Punjab, Telangana, Uttar Pradesh and Vidarbha.
- ❖ **Strong Surface Winds** very likely at isolated places over Andaman & Nicobar Islands, Costal Karnataka, Interior Karnataka and Kerala & Mahe.
- ❖ **Heat Wave conditions** very likely at isolated places over Jammu-Kashmir-Ladakh-Gilgit-Baltistan-Muzaffarabad.

***Red color warning does not mean "Red Alert" Red color warning means "Take Action"**

Forecast and warning for any day is valid from 0830 hours IST of day till 0830 hours IST of next day

For more details kindly visit <https://mausam.imd.gov.in> or contact 011-2434-4599

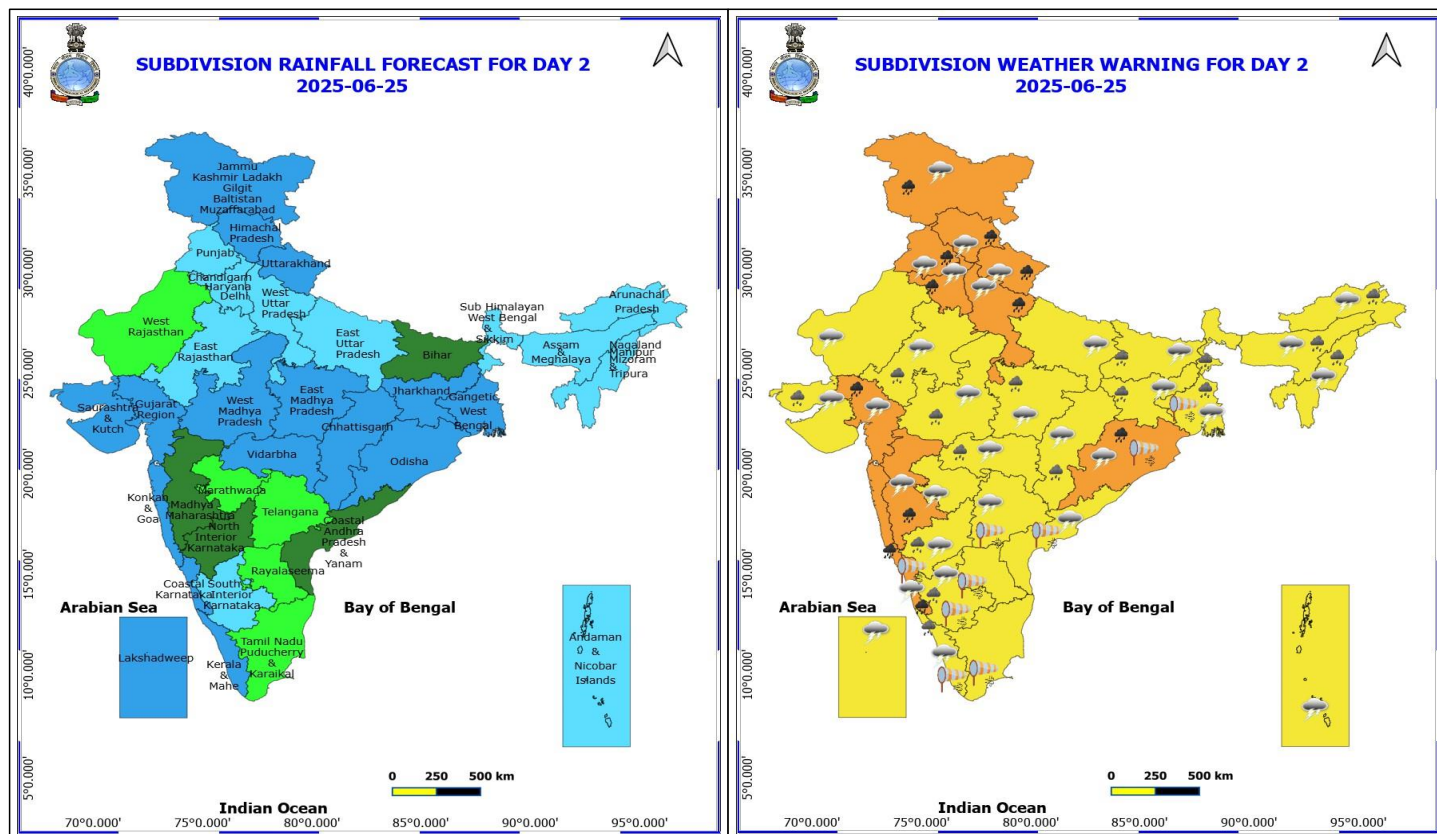
(Service to the nation since 1875)



Squally wind speed reaching 45 kmph to 55 kmph gusting to 65 kmph is likely to prevail along and off Somalia, Oman & adjoining Yemen coasts, most parts of westcentral Arabian Sea & adjoining, some parts of eastcentral, adjoining north Arabian Sea & adjoining southwest Arabian Sea.

Squally weather with wind speed 40 - 50 kmph gusting to 60 kmph likely to prevail over most parts of eastcentral & adjoining areas of westcentral, northeast, south Arabian Sea, along and off south Gujarat Konkan, Goa, Karnataka coasts, adjoining Odisha coast, southern parts of north Bay of Bengal, most parts of central Bay of Bengal & adjoining, some parts of south Bay of Bengal, over Andaman Sea.

Squally weather with wind speed reaching 45 kmph to 55 kmph gusting to 65 kmph likely to prevail over western parts of eastcentral & adjoining westcentral Arabian Sea, over some parts of westcentral Bay of Bengal.



25 June (Day 2)

- ❖ **Heavy to Very Heavy Rainfall** very likely at isolated places over Costal Karnataka, Gujarat Region, Haryana, Chandigarh & Delhi, Himachal Pradesh, Jammu-Kashmir-Ladakh-Gilgit-Baltistan-Muzaffarabad, Konkan & Goa, Madhya Maharashtra, Odisha, Punjab, Uttarakhand and West Uttar Pradesh.
- ❖ **Heavy Rainfall** very likely at isolated places over Arunachal Pradesh, Assam & Meghalaya, Bihar, Chhattisgarh, East Rajasthan, Interior Karnataka, Jharkhand, Kerala & Mahe, Madhya Pradesh, Nagaland, Manipur, Mizoram and Tripura, Saurashtra & Kutch, Vidarbha and West Bengal & Sikkim.
- ❖ **Thunderstorm accompanied with lightning & gusty winds(40-50kmph)** very likely at isolated places over Kerala & Mahe, Lakshadweep and Uttarakhand.
- ❖ **Thunderstorm accompanied with lightning & gusty winds(30-40kmph)** very likely at isolated places over Andaman & Nicobar Islands, Bihar, Gangetic West Bengal, Gujarat State, Jammu-Kashmir-Ladakh-Gilgit-Baltistan-Muzaffarabad, Jharkhand, Madhya Maharashtra, Marathwada, Odisha, Rajasthan and West Madhya Pradesh.
- ❖ **Thunderstorm accompanied with Lightning** very likely at isolated places over Arunachal Pradesh, Assam & Meghalaya, Chhattisgarh, Coastal Andhra Pradesh, Costal Karnataka, East Madhya Pradesh, Haryana, Chandigarh & Delhi, Himachal Pradesh, Interior Karnataka, Nagaland, Manipur, Mizoram and Tripura, Punjab, Telangana, Uttar Pradesh and Vidarbha.
- ❖ **Strong Surface Winds** very likely at isolated places over Andhra Pradesh, Costal Karnataka, Gangetic West Bengal, Kerala & Mahe, Odisha, South Interior Karnataka, Tamil Nadu Puducherry & Karaikal and Telangana.
- ❖ Squally wind speed reaching 45 kmph to 55 kmph gusting to 65 kmph is likely to prevail along and off Somalia, Oman & adjoining Yemen coasts, most parts of westcentral Arabian Sea & adjoining, some parts of eastcentral, adjoining north Arabian Sea & adjoining southwest Arabian Sea.

***Red color warning does not mean "Red Alert" Red color warning means "Take Action"**

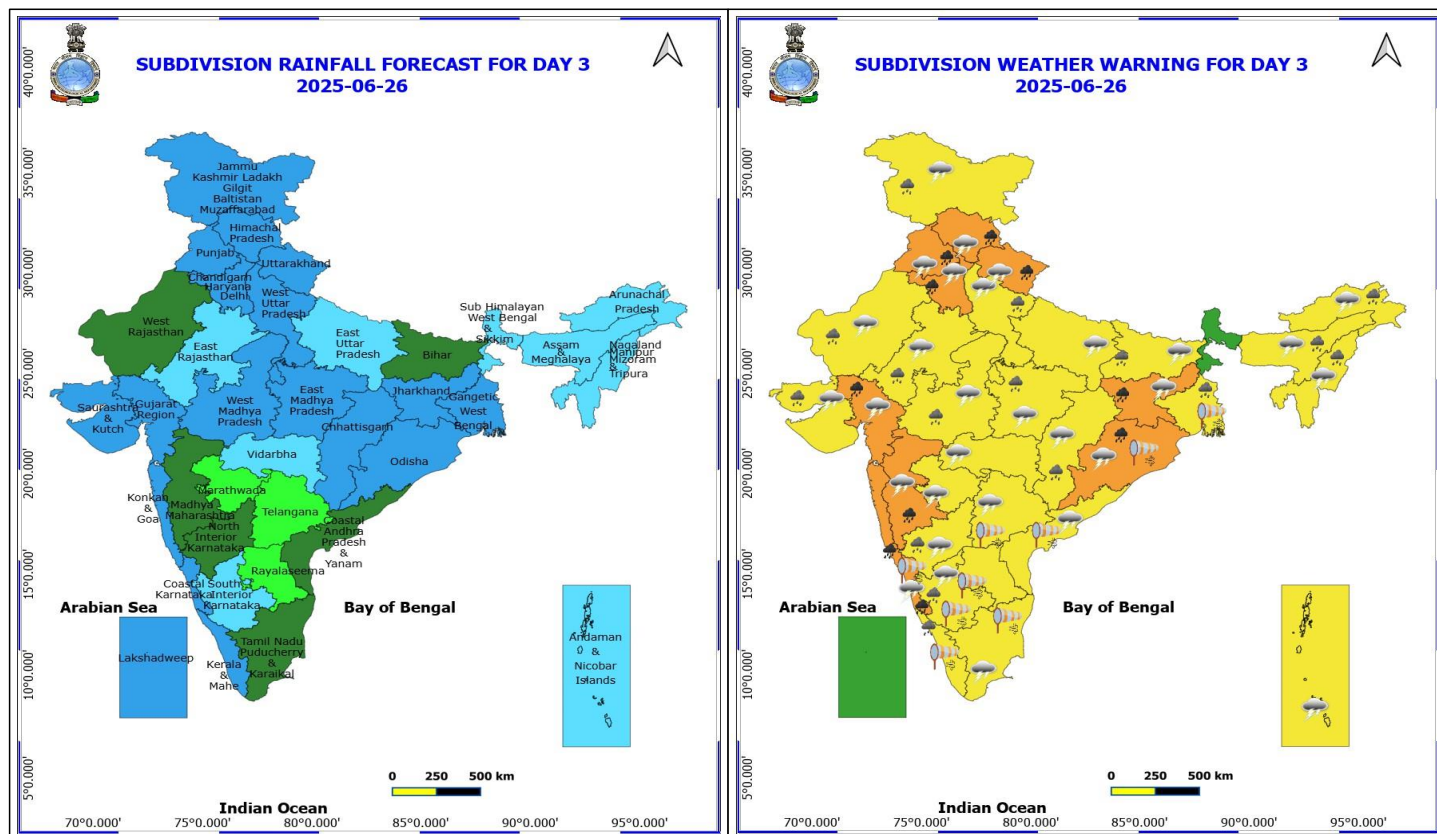
Forecast and warning for any day is valid from 0830 hours IST of day till 0830 hours IST of next day

For more details kindly visit <https://mausam.imd.gov.in> or contact 011-2434-4599

(Service to the nation since 1875)



- Squally weather with wind speed 40 - 50 kmph gusting to 60 kmph likely to prevail over most parts of eastcentral & adjoining areas of westcentral, northeast, south Arabian Sea, along and off Konkan, Goa, Karnataka coasts, along and off Odisha, West Bengal coasts, most parts of northwest and adjoining northeast Bay of Bengal, many parts of central Bay of Bengal.
- Squally weather with wind speed reaching 45 kmph to 55 kmph gusting to 65 kmph likely to prevail over western parts of eastcentral & adjoining westcentral Arabian Sea.



26 June (Day 3)

- ❖ **Heavy to Very Heavy Rainfall** very likely at isolated places over Costal Karnataka, Gujarat Region, Haryana, Chandigarh & Delhi, Himachal Pradesh, Jharkhand, Konkan & Goa, Madhya Maharashtra, Odisha, Punjab and Uttarakhand.
- ❖ **Heavy Rainfall** very likely at isolated places over Arunachal Pradesh, Assam & Meghalaya, Bihar, Chhattisgarh, Gangetic West Bengal, Interior Karnataka, Jammu-Kashmir-Ladakh-Gilgit-Baltistan-Muzaffarabad, Kerala & Mahe, Madhya Pradesh, Nagaland, Manipur, Mizoram and Tripura, Rajasthan, Saurashtra & Kutch and West Uttar Pradesh.
- ❖ **Thunderstorm accompanied with lightning & gusty winds(40-50kmph)** very likely at isolated places over Uttarakhand.
- ❖ **Thunderstorm accompanied with lightning & gusty winds(30-40kmph)** very likely at isolated places over Andaman & Nicobar Islands, Bihar, Gujarat State, Jammu-Kashmir-Ladakh-Gilgit-Baltistan-Muzaffarabad, Jharkhand, Madhya Maharashtra, Marathwada, Odisha, Rajasthan and West Madhya Pradesh.
- ❖ **Thunderstorm accompanied with Lightning** very likely at isolated places over Arunachal Pradesh, Assam & Meghalaya, Chhattisgarh, Coastal Andhra Pradesh, Costal Karnataka, East Madhya Pradesh, Haryana, Chandigarh & Delhi, Himachal Pradesh, Interior Karnataka, Nagaland, Manipur, Mizoram and Tripura, Punjab, Tamil Nadu Puducherry & Karaikal, Telangana, Uttar Pradesh and Vidarbha.
- ❖ **Strong Surface Winds** very likely at isolated places over Costal Karnataka, Gangetic West Bengal, Kerala & Mahe and Odisha.
- ❖ Squally wind speed reaching 45 kmph to 55 kmph gusting to 65 kmph is likely to prevail along and off Somalia, Oman & adjoining Yemen coasts, most parts of westcentral Arabian Sea & adjoining, some parts of eastcentral, adjoining north Arabian Sea & adjoining southwest Arabian Sea.

***Red color warning does not mean "Red Alert" Red color warning means "Take Action"**

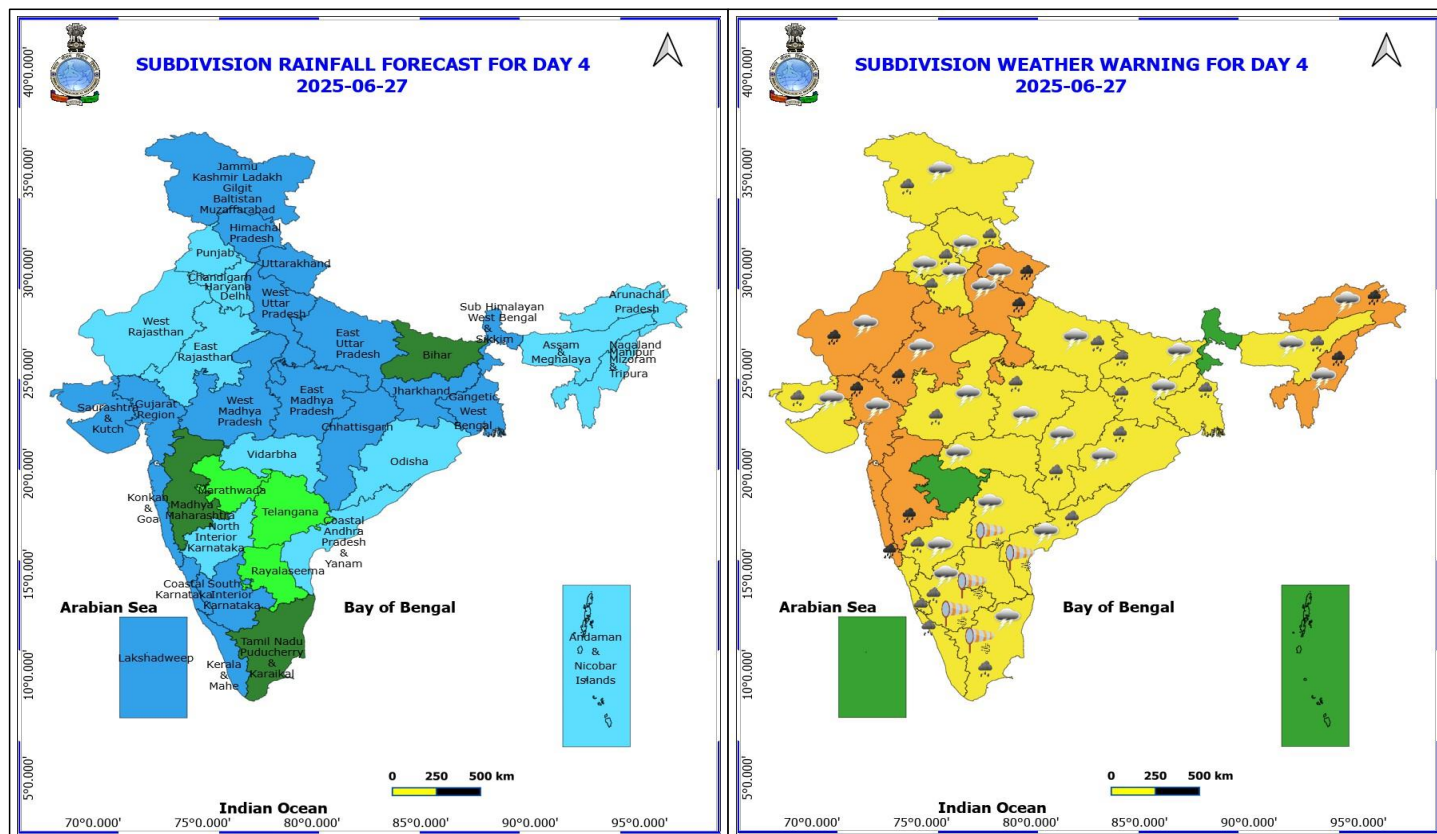
Forecast and warning for any day is valid from 0830 hours IST of day till 0830 hours IST of next day

For more details kindly visit <https://mausam.imd.gov.in> or contact 011-2434-4599

(Service to the nation since 1875)



- Squally weather with wind speed 40 - 50 kmph gusting to 60 kmph likely to prevail over most parts of eastcentral & adjoining areas of westcentral, northeast, south Arabian Sea, over Lakshadweep area, off south Gujarat, Konkan coasts, along and off Karnataka, Kerala, Odisha, West Bengal coasts, most parts of northwest and adjoining northeast Bay of Bengal, many parts of westcentral & adjoining eastcentral Bay of Bengal, some parts of southwest Bay of Bengal.
- Squally weather with wind speed reaching 45 kmph to 55 kmph gusting to 65 kmph likely to prevail over western parts of eastcentral & adjoining westcentral Arabian Sea.



27 June (Day 4)

❖ **Heavy to Very Heavy Rainfall** likely at isolated places over Arunachal Pradesh, Gujarat Region, Konkan & Goa, Madhya Maharashtra, Nagaland, Manipur, Mizoram and Tripura, Rajasthan, Uttarakhand and West Uttar Pradesh.

❖ **Heavy Rainfall** likely at isolated places over Assam & Meghalaya, Bihar, Chhattisgarh, Coastal Andhra Pradesh, Coastal Karnataka, East Uttar Pradesh, Gangetic West Bengal, Haryana, Chandigarh & Delhi, Himachal Pradesh, Interior Karnataka, Jammu-Kashmir-Ladakh-Gilgit-Baltistan-Muzaffarabad, Jharkhand, Kerala & Mahe, Madhya Pradesh, Odisha, Punjab, Saurashtra & Kutch and Tamil Nadu Puducherry & Karaikal.

❖ **Thunderstorm accompanied with lightning & gusty winds(40-50kmph)** likely at isolated places over Uttarakhand.

❖ **Thunderstorm accompanied with lightning & gusty winds(30-40kmph)** likely at isolated places over Bihar, Gujarat State, Jammu-Kashmir-Ladakh-Gilgit-Baltistan-Muzaffarabad, Jharkhand, Odisha, Rajasthan and West Madhya Pradesh.

❖ **Thunderstorm accompanied with Lightning** likely at isolated places over Arunachal Pradesh, Assam & Meghalaya, Chhattisgarh, Coastal Andhra Pradesh, East Madhya Pradesh, Haryana, Chandigarh & Delhi, Himachal Pradesh, Interior Karnataka, Nagaland, Manipur, Mizoram and Tripura, Punjab, Tamil Nadu Puducherry & Karaikal, Telangana, Uttar Pradesh and Vidarbha.

❖ **Strong Surface Winds** likely at isolated places over Andhra Pradesh, South Interior Karnataka, Tamil Nadu Puducherry & Karaikal and Telangana.

- Squally wind speed reaching 45 kmph to 55 kmph gusting to 65 kmph is likely to prevail along and off Somalia, Oman & adjoining Yemen coasts, most parts of westcentral Arabian Sea & adjoining, some parts of eastcentral, adjoining north Arabian Sea & adjoining southwest Arabian Sea.

***Red color warning does not mean "Red Alert" Red color warning means "Take Action"**

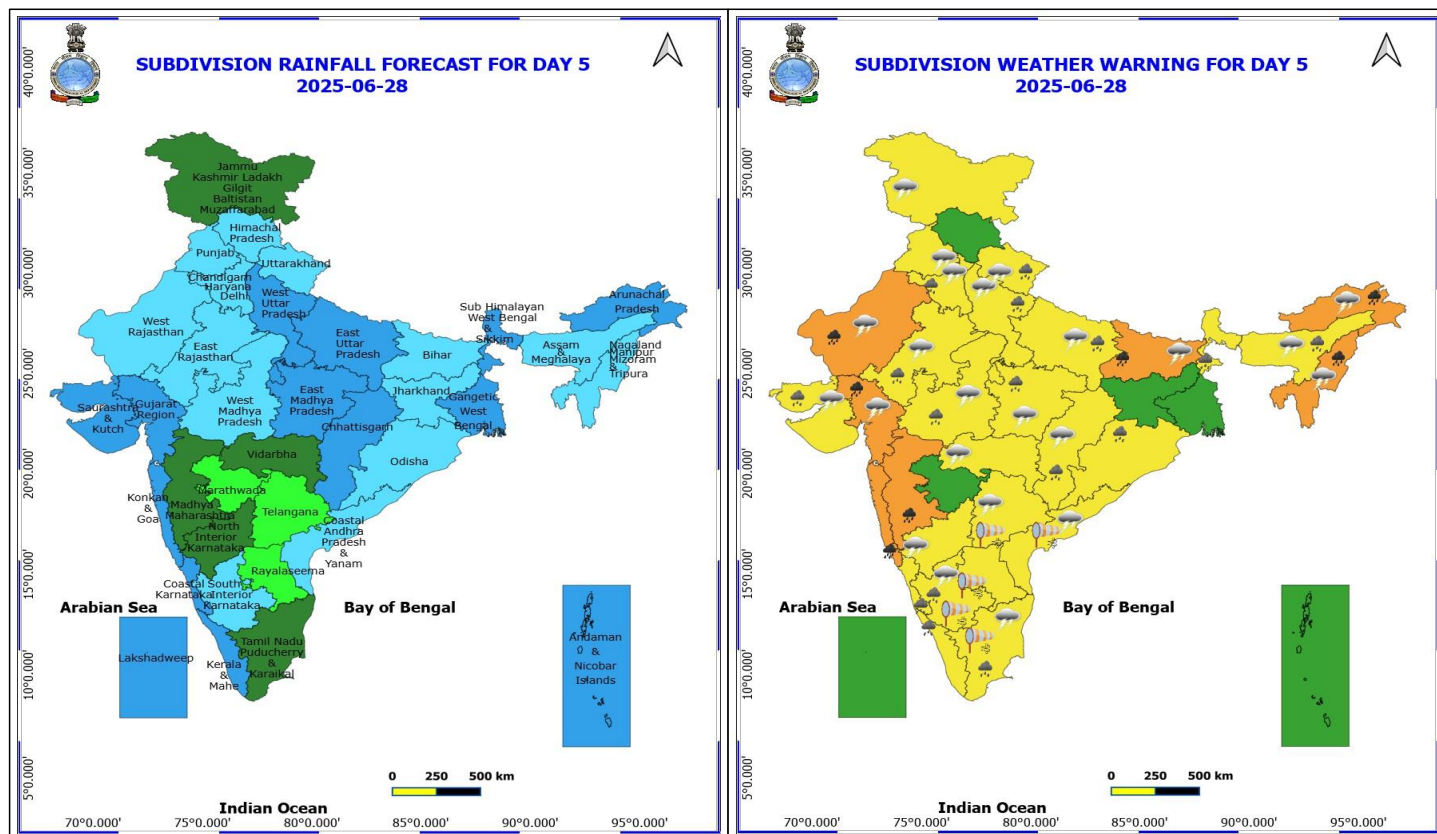
Forecast and warning for any day is valid from 0830 hours IST of day till 0830 hours IST of next day

For more details kindly visit <https://mausam.imd.gov.in> or contact 011-2434-4599

(Service to the nation since 1875)



- Squally weather with wind speed 40 - 50 kmph gusting to 60 kmph likely to prevail over most parts of eastcentral & adjoining areas of westcentral, northeast, south Arabian Sea, off south Gujarat, Konkan coasts, some parts of westcentral Bay of Bengal and adjoining southwest Bay of Bengal.
- Squally weather with wind speed reaching 45 kmph to 55 kmph gusting to 65 kmph likely to prevail over western parts of eastcentral & adjoining westcentral Arabian Sea, over Gulf of Mannar.



28 June (Day 5)

- ❖ **Heavy to Very Heavy Rainfall** likely at isolated places over Arunachal Pradesh, Bihar, Gujarat Region, Konkan & Goa, Madhya Maharashtra, Nagaland, Manipur, Mizoram and Tripura and West Rajasthan.
- ❖ **Heavy Rainfall** likely at isolated places over Assam & Meghalaya, Chhattisgarh, Coastal Karnataka, East Rajasthan, Haryana, Chandigarh & Delhi, Kerala & Mahe, Madhya Pradesh, Odisha, Saurashtra & Kutch, South Interior Karnataka, Sub Himalayan West Bengal & Sikkim, Tamil Nadu Puducherry & Karaikal, Uttar Pradesh and Uttarakhand.
- ❖ **Thunderstorm accompanied with lightning & gusty winds(40-50kmph)** likely at isolated places over Uttarakhand.
- ❖ **Thunderstorm accompanied with lightning & gusty winds(30-40kmph)** likely at isolated places over Bihar, Gujarat State, Jammu-Kashmir-Ladakh-Gilgit-Baltistan-Muzaffarabad, Rajasthan and West Madhya Pradesh.
- ❖ **Thunderstorm accompanied with Lightning** likely at isolated places over Arunachal Pradesh, Assam & Meghalaya, Chhattisgarh, Coastal Andhra Pradesh, East Madhya Pradesh, Haryana, Chandigarh & Delhi, Interior Karnataka, Nagaland, Manipur, Mizoram and Tripura, Punjab, Tamil Nadu Puducherry & Karaikal, Telangana, Uttar Pradesh and Vidarbha.
- ❖ **Strong Surface Winds** likely at isolated places over Andhra Pradesh, South Interior Karnataka, Tamil Nadu Puducherry & Karaikal and Telangana.
- Squally wind speed reaching 45 kmph to 55 kmph gusting to 65 kmph is likely to prevail along and off Somalia, Oman & adjoining Yemen coasts, most parts of westcentral Arabian Sea & adjoining, some parts of eastcentral, adjoining north Arabian Sea & adjoining southwest Arabian Sea.
- Squally weather with wind speed 40 - 50 kmph gusting to 60 kmph likely to prevail over most parts of

***Red color warning does not mean "Red Alert" Red color warning means "Take Action"**

Forecast and warning for any day is valid from 0830 hours IST of day till 0830 hours IST of next day

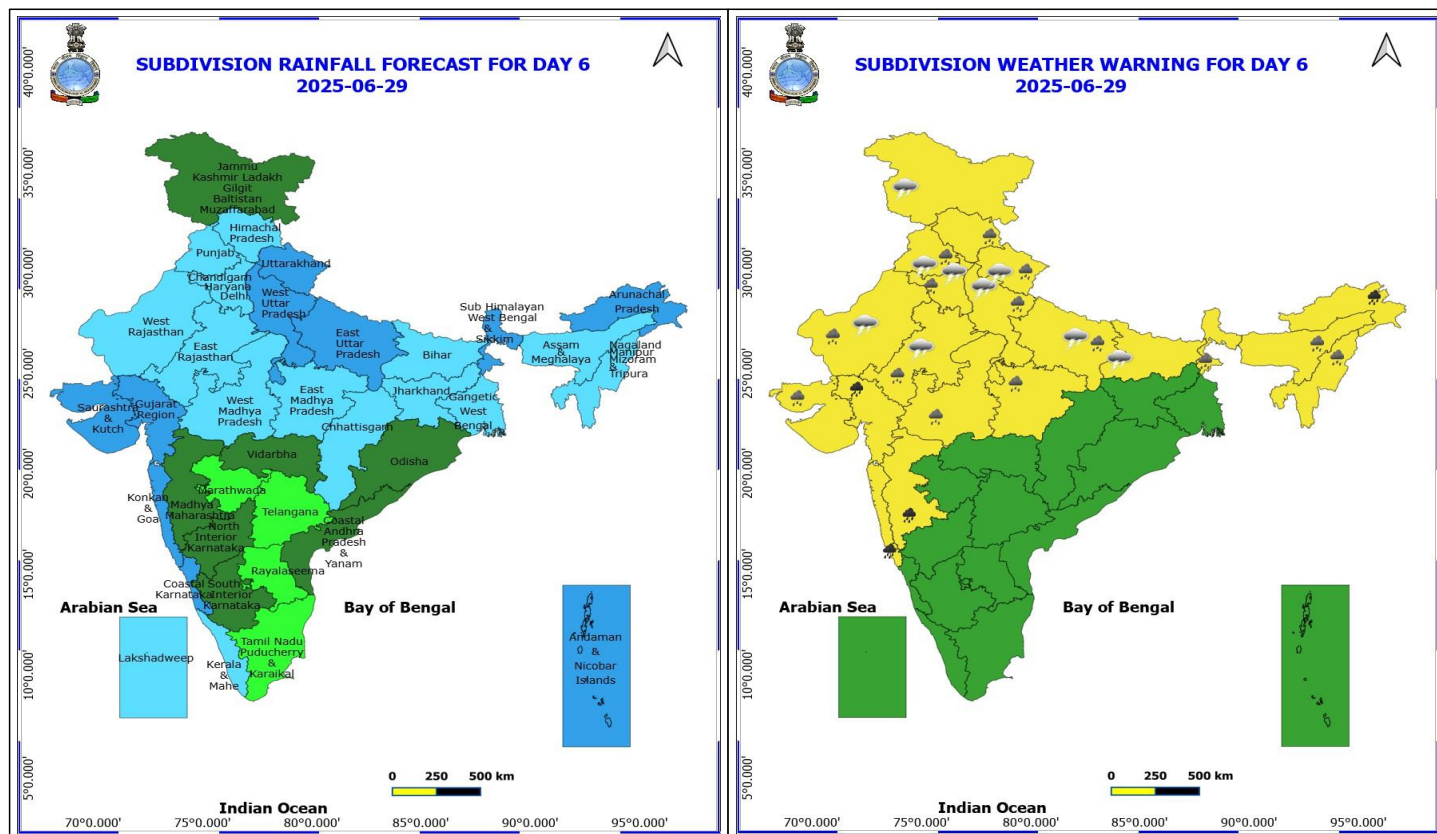
For more details kindly visit <https://mausam.imd.gov.in> or contact 011-2434-4599

(Service to the nation since 1875)



eastcentral & adjoining areas of westcentral, northeast, south Arabian Sea, off, Konkan coast, some parts of central Bay of Bengal.

- Squally weather with wind speed reaching 45 kmph to 55 kmph gusting to 65 kmph likely to prevail over western parts of eastcentral & adjoining westcentral Arabian Sea, over Gulf of Mannar.



29 June (Day 6)

- ❖ **Heavy to Very Heavy Rainfall** likely at isolated places over Arunachal Pradesh, Gujarat Region, Konkan & Goa and Madhya Maharashtra.
- ❖ **Heavy Rainfall** likely at isolated places over Assam & Meghalaya, Haryana, Chandigarh & Delhi, Himachal Pradesh, Madhya Pradesh, Nagaland, Manipur, Mizoram and Tripura, Punjab, Rajasthan, Saurashtra & Kutch, Sub Himalayan West Bengal & Sikkim, Uttar Pradesh and Uttarakhand.
- ❖ **Thunderstorm accompanied with lightning & gusty winds(40-50kmph)** likely at isolated places over Uttarakhand.
- ❖ **Thunderstorm accompanied with lightning & gusty winds(30-40kmph)** likely at isolated places over Bihar, East Rajasthan and Jammu-Kashmir-Ladakh-Gilgit-Baltistan-Muzaffarabad.
- ❖ **Thunderstorm accompanied with Lightning** likely at isolated places over Haryana, Chandigarh & Delhi, Punjab, Uttar Pradesh and West Rajasthan.

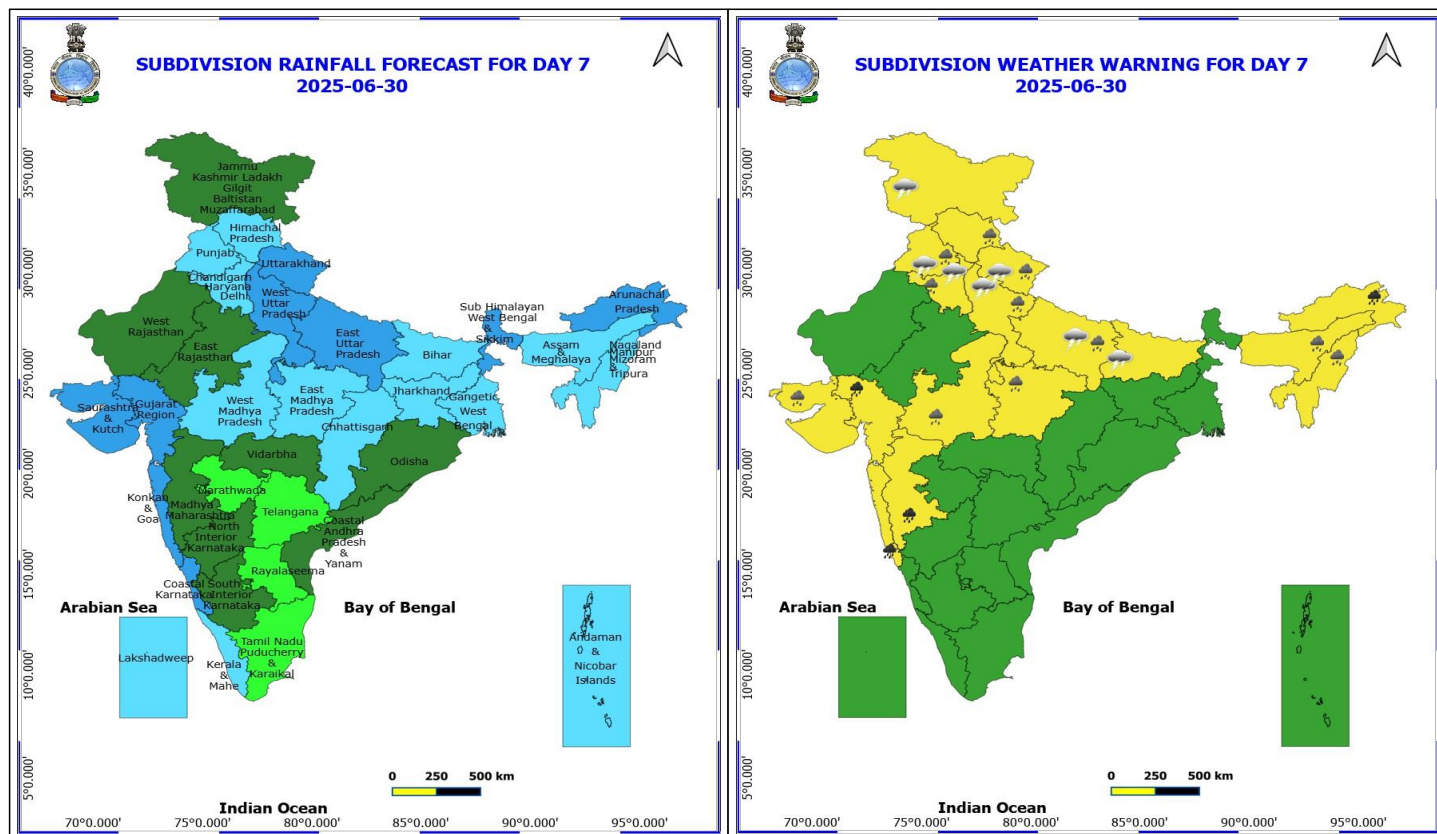
No Fishermen Warning

***Red color warning does not mean "Red Alert" Red color warning means "Take Action"**

Forecast and warning for any day is valid from 0830 hours IST of day till 0830 hours IST of next day

For more details kindly visit <https://mausam.imd.gov.in> or contact 011-2434-4599

(Service to the nation since 1875)



30 June (Day 7)

- ❖ **Heavy to Very Heavy Rainfall** likely at isolated places over Arunachal Pradesh, Gujarat Region, Konkan & Goa and Madhya Maharashtra.
- ❖ **Heavy Rainfall** likely at isolated places over Assam & Meghalaya, Haryana, Chandigarh & Delhi, Himachal Pradesh, Madhya Pradesh, Nagaland, Manipur, Mizoram and Tripura, Punjab, Saurashtra & Kutch, Uttar Pradesh and Uttarakhand.
- ❖ **Thunderstorm accompanied with lightning & gusty winds(40-50kmph)** likely at isolated places over Uttarakhand.
- ❖ **Thunderstorm accompanied with lightning & gusty winds(30-40kmph)** likely at isolated places over Bihar and Jammu-Kashmir-Ladakh-Gilgit-Baltistan-Muzaffarabad.
- ❖ **Thunderstorm accompanied with Lightning** likely at isolated places over Haryana, Chandigarh & Delhi, Punjab and Uttar Pradesh.

No Fishermen Warning

***Red color warning does not mean "Red Alert" Red color warning means "Take Action"**

Forecast and warning for any day is valid from 0830 hours IST of day till 0830 hours IST of next day

For more details kindly visit <https://mausam.imd.gov.in> or contact 011-2434-4599

(Service to the nation since 1875)

**24 hours Outlook for the Flash Flood Risk (FFR)
till 1130 IST of 25-06-2025 :**

Low to Moderate flash flood risk likely over few watersheds & neighbourhoods of following Met Sub-divisions during next 24 hours.

Arunachal Pradesh - Changlang, Dibang Valley, East Kameng, Lower Subansiri, Papum-Pare, Tirap, West Kameng, Anjaw and Kurung Kumey districts.

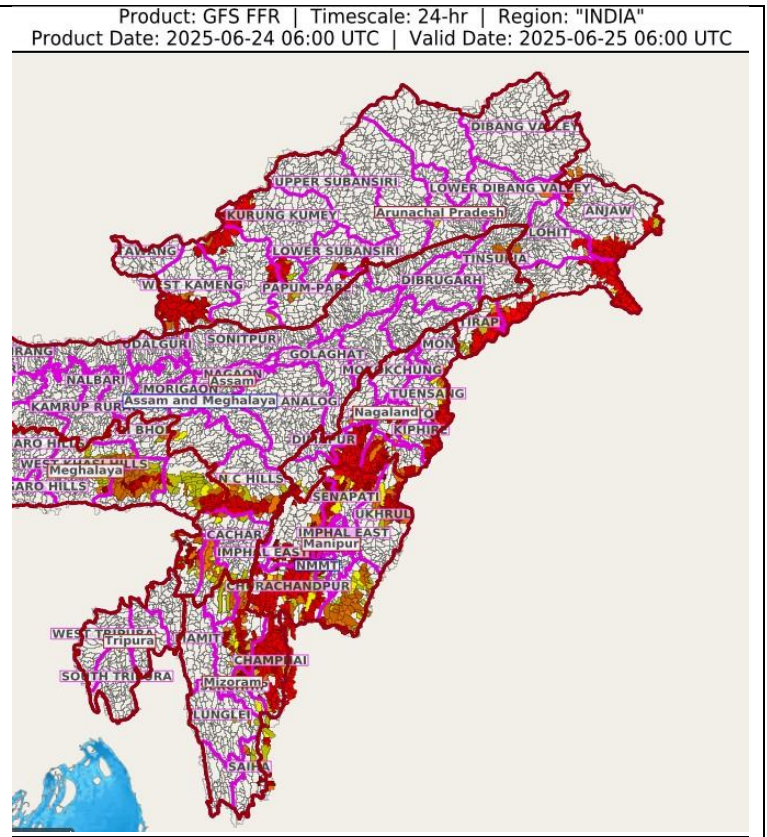
Nagaland Mizoram Manipur Tripura (NMMT) -

Manipur- Bishnupur, Chandel, Churachandpur, Imphal West, Senapati, Tamenglong, Ukhrul,

Mizoram- Aizawl, Champhai, Saiha, Serchhip,

Nagaland- Dimapur, Kiphire, Kohima, Mon, Peren, Phek, Tuensang and Zunheboto districts.

Surface runoff/ Inundation may occur at some fully saturated soils & low-lying areas over Area of Concern (AoC) as shown in map due to expected rainfall occurrence in next 24 hours.

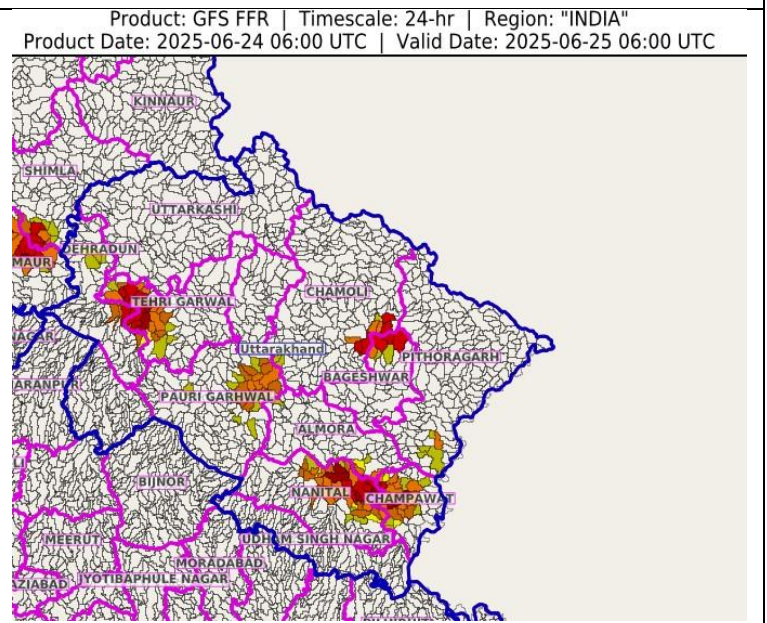


**24 hours Outlook for the Flash Flood Risk (FFR)
till 1130 IST of 25-06-2025 :**

Low to Moderate flash flood risk likely over few watersheds & neighbourhoods of following Met Sub-divisions during next 24 hours.

Uttarakhand - Bageshwar, Chamoli, Champawat, Dehradun, Nanital, Pauri Garhwal, Pithoragarh and Tehri Garwal districts.

Surface runoff/ Inundation may occur at some fully saturated soils & low-lying areas over Area of Concern (AoC) as shown in map due to expected rainfall occurrence in next 24 hours.



*Red color warning does not mean "Red Alert" Red color warning means "Take Action"

Forecast and warning for any day is valid from 0830 hours IST of day till 0830 hours IST of next day

For more details kindly visit <https://mausam.imd.gov.in> or contact 011-2434-4599

(Service to the nation since 1875)



7 Days Rainfall Forecast

S.No.	Subdivision	24-Jun	25-Jun	26-Jun	27-Jun	28-Jun	29-Jun	30-Jun
		Day 1	Day 2	Day 3	Day 4	Day 5	Day 6	Day 7
1	ANDAMAN & NICOBAR ISLANDS	WS	FWS	FWS	FWS	WS	WS	FWS
2	ARUNACHAL PRADESH	WS	FWS	FWS	FWS	WS	WS	WS
3	ASSAM & MEHGHALAYA	WS	FWS	FWS	FWS	FWS	FWS	FWS
4	N. M. M. & T.	FWS	FWS	FWS	FWS	FWS	FWS	FWS
5	S.H. WEST BENGAL & SIKKIM	WS	FWS	FWS	WS	WS	WS	WS
6	GANGETIC WEST BENGAL	FWS	WS	WS	WS	WS	FWS	FWS
7	ODISHA	WS	WS	WS	FWS	FWS	SCT	SCT
8	JHARKHAND	WS	WS	WS	WS	FWS	FWS	FWS
9	BIHAR	FWS	SCT	SCT	SCT	FWS	FWS	FWS
10	EAST UTTAR PRADESH	SCT	FWS	FWS	WS	WS	WS	WS
11	WEST UTTAR PRADESH	SCT	FWS	WS	WS	WS	WS	WS
12	UTTARAKHAND	FWS	WS	WS	WS	FWS	WS	WS
13	HARYANA, CHD & DELHI	SCT	FWS	WS	FWS	FWS	FWS	FWS
14	PUNJAB	SCT	FWS	WS	FWS	FWS	FWS	FWS
15	HIMACHAL PRADESH	FWS	WS	WS	WS	FWS	FWS	FWS
16	JAMMU AND KASHMIR AND LADAKH	SCT	WS	WS	WS	SCT	SCT	SCT
17	WEST RAJASTHAN	SCT	ISOL	SCT	FWS	FWS	FWS	SCT
18	EAST RAJASTHAN	FWS	FWS	FWS	FWS	FWS	FWS	SCT
19	WEST MADHYA PRADESH	WS	WS	WS	WS	FWS	FWS	FWS
20	EAST MADHYA PRADESH	WS	WS	WS	WS	WS	FWS	FWS
21	GUJRAT REGION	WS	WS	WS	WS	WS	WS	WS
22	SAURASHTRA & KUTCH	WS	WS	WS	WS	WS	WS	WS
23	KONKAN & GOA	WS	WS	WS	WS	WS	WS	WS
24	MADHYA MAHARASHTRA	SCT	SCT	SCT	SCT	SCT	SCT	SCT
25	MARATHWADA	ISOL	ISOL	ISOL	ISOL	ISOL	ISOL	ISOL
26	VIDARBHA	WS	WS	FWS	FWS	SCT	SCT	SCT
27	CHATTISGARH	WS	WS	WS	WS	WS	FWS	FWS
28	COASTAL ANDHRA PRADESH	FWS	SCT	SCT	FWS	FWS	SCT	SCT
29	TELANGANA	SCT	ISOL	ISOL	ISOL	ISOL	ISOL	ISOL
30	RAYALASEEMA	ISOL	ISOL	ISOL	ISOL	ISOL	ISOL	ISOL
31	TAMILNADU & PUDUCHERRY	ISOL	ISOL	SCT	SCT	SCT	ISOL	ISOL
32	COSTAL KARNATAKA	WS	WS	WS	WS	WS	WS	WS
33	NORTH INTERIOR KARNATAKA	SCT	SCT	SCT	FWS	SCT	SCT	SCT
34	SOUTH INTERIOR KARNATAKA	FWS	FWS	FWS	WS	FWS	SCT	SCT
35	KERALA	WS	WS	WS	WS	WS	FWS	FWS
36	LAKSHDWEAP	FWS	WS	WS	WS	WS	FWS	FWS

Legend	Category	%Stations
WS	Widespread/Most Places	76-100
FWS	Fairly Widespread/Many Places	51-75
SCT	Scattered/ A Few Places	26-50
ISOL	Isolated Places	1-25
DRY	No Rain	0

*Red color warning does not mean "Red Alert" Red color warning means "Take Action"

Forecast and warning for any day is valid from 0830 hours IST of day till 0830 hours IST of next day

For more details kindly visit <https://mausam.imd.gov.in> or contact 011-2434-4599

(Service to the nation since 1875)

Fig. 1: Maximum Temperatures Dated 2025-06-24

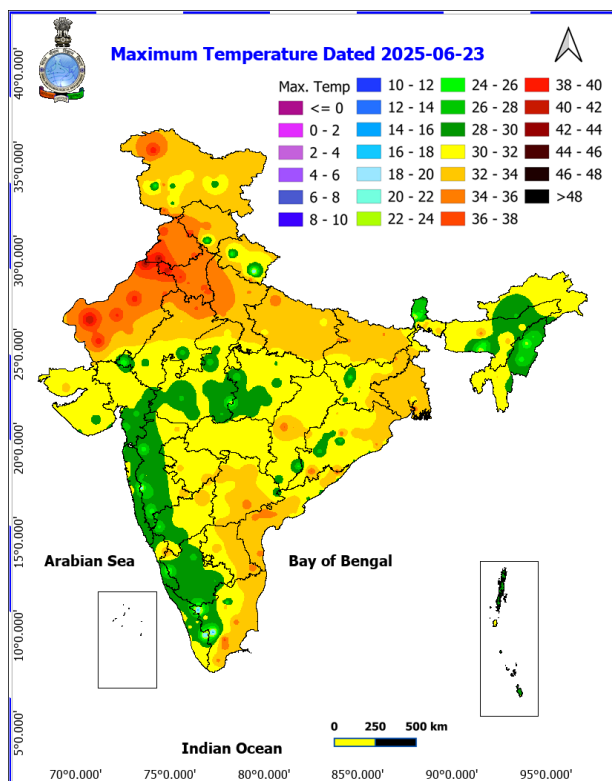


Fig. 2: Departure of Maximum Temp. Dated 2025-06-24

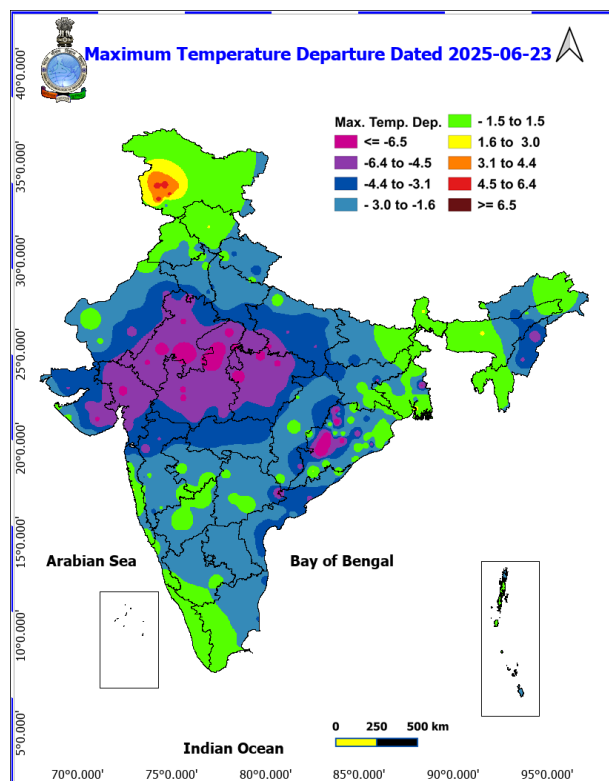


Fig. 3: Minimum Temperatures Dated 2025-06-24

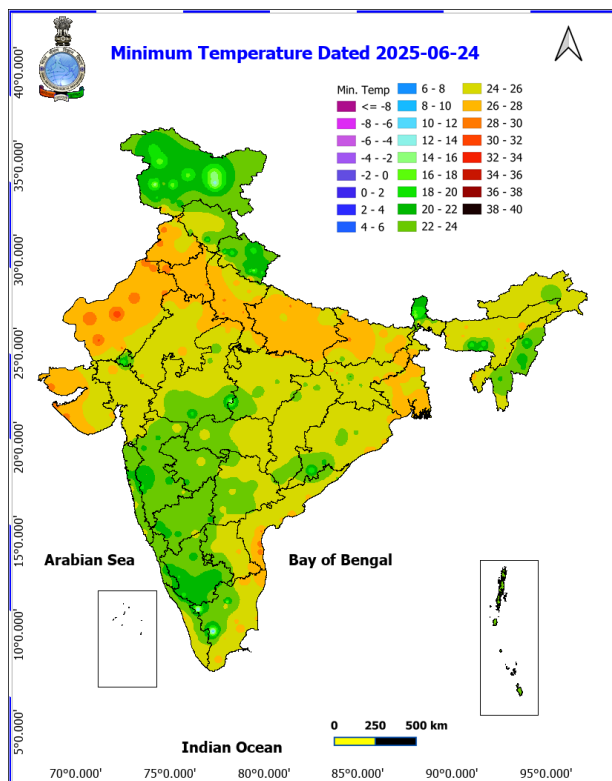
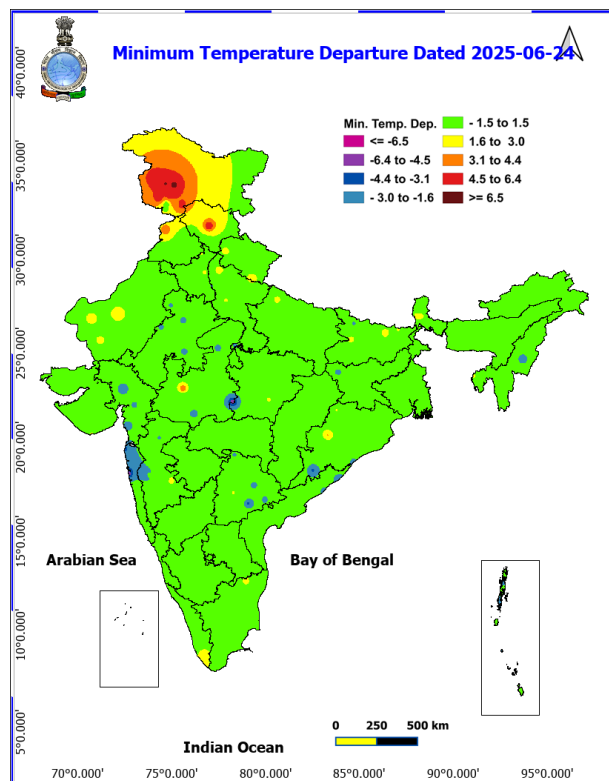
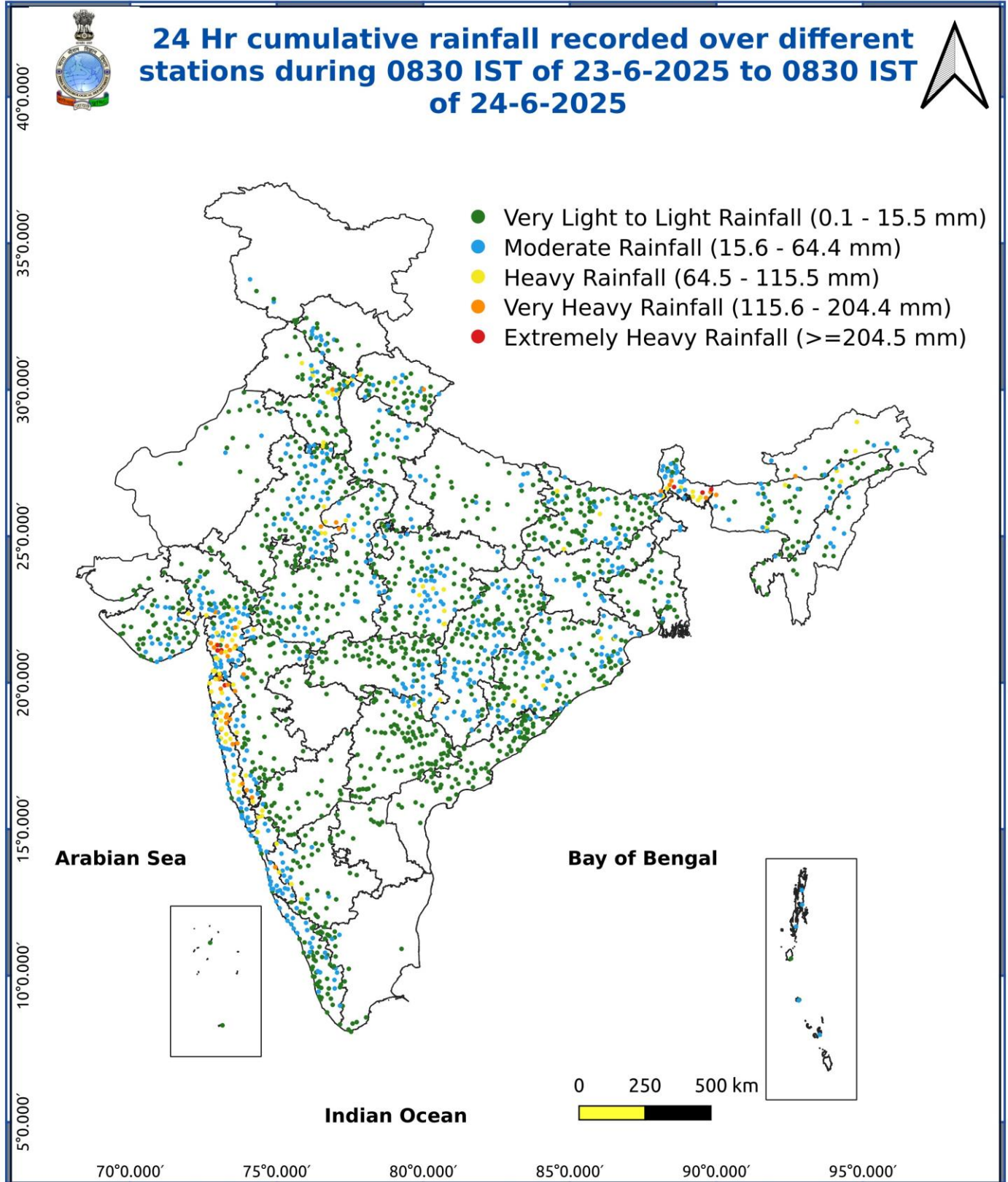


Fig. 4: Departure of Minimum Temp. Dated 2025-06-24





*Red color warning does not mean "Red Alert" Red color warning means "Take Action"

Forecast and warning for any day is valid from 0830 hours IST of day till 0830 hours IST of next day

For more details kindly visit <https://mausam.imd.gov.in> or contact 011-2434-4599

(Service to the nation since 1875)

Impact & Action Suggested due to extremely heavy falls/ very heavy rainfall:

- ♦ **Extremely heavy rainfall (>20 cm/24 hours) likely at isolated places over Konkan, Madhya Maharashtra, Gujarat Region on 24th June.**
- ♦ Very heavy rainfall over Konkan & Goa, Madhya Maharashtra, Gujarat region, Northeast India during 24th-30th June Uttarakhand during 24th-27th, West Rajasthan on 27th; East Rajasthan on 24th & 27th; Haryana, Punjab, Odisha on 25th & 26th, West Uttar Pradesh on 25th & 27th; Jammu-Kashmir-Ladakh-Gilgit-Baltistan-Muzaffarabad on 25th; Madhya Pradesh, Sub-Himalayan West Bengal & Sikkim on 24th; Bihar on 28th; Jharkhand on 26th, Interior Karnataka on 24th; Coastal Karnataka during 24th-26th June.

Impact Expected

- ♦ Localized Flooding of roads, water logging in low lying areas and closure of underpasses mainly in urban areas of the above region.
- ♦ Occasional reduction in visibility due to heavy rainfall.
- ♦ Disruption of traffic in major cities due to water logging in roads leading to increased travel time.
- ♦ Minor damage to kutcha roads.
- ♦ Possibilities of damage to vulnerable structure.
- ♦ Localized Landslides/Mudslides/landslips/mudslips/landsinks/mudsinks.
- ♦ Damage to horticulture and standing crops in some areas due to inundation.
- ♦ It may lead to riverine flooding in some river catchments (for riverine flooding please visit Web page of CWC)

Action Suggested

- ♦ Check for traffic congestion on your route before leaving for your destination.
- ♦ Follow any traffic advisories that are issued in this regard.
- ♦ Avoid going to areas that face the water logging problems often.
- ♦ Avoid staying in vulnerable structure.

- ♦ **Impact expected and action suggested due to isolated thunderstorm with lightning over Bihar, Jharkhand on 24th June.**
- ♦

Impact expected:

- ♦ Breaking of tree branches, uprooting of large avenue trees. Large dead limbs blown from trees. Damage to Standing crops.
- ♦ Minor to Major damage to banana and papaya trees.
- ♦ Minor to major damage to power and communication lines due to breaking of branches.
- ♦ Strong wind/hail may damage plantation, horticulture and standing crops.
- ♦ Partial damage to vulnerable structures due to strong winds.
- ♦ Minor damage to kutcha houses/walls and huts.
- ♦ Loose objects may fly.

Action suggested:

- ♦ People are advised to keep a watch on the weather for worsening conditions and be ready to move to safer places accordingly.
- ♦ Stay indoors, close windows & doors and avoid travel if possible.
- ♦ Take safe shelters; do not take shelter under trees.



- Do not lie on concrete floors and do not lean against concrete walls.
- Unplug electrical/ electronic appliances.
- Immediately get out of water bodies.
- Keep away from all the objects that conduct electricity.

Agromet advisories for various parts of the country

Agromet advisories for likely impact of Heavy / Heavy to Very Heavy / Extremely Heavy Rainfall

(Based on the IBF and advisories issued by different AMFUs)

- In **Gujarat**, postpone nursery sowing of rice. Ensure proper drainage facilities in already sown rice nurseries, sugarcane fields, banana and mango plantations to prevent waterlogging. Provide support to sugarcane and banana to prevent lodging. In **Saurashtra & Kutch**, postpone sowing of *kharif* groundnut, cotton, sesame, pearl millet, green gram, black gram, cowpea, pigeon pea, maize, sorghum and vegetables. Drain out excess rain water from vegetable nurseries and horticultural plantations.
- In **West Madhya Pradesh**, Postpone harvesting of maize. Postpone sowing of pearl millet, soybean, pigeon pea and paddy nurseries. Make necessary arrangements to drain out excess water from vegetables and orchards to avoid waterlogging. In **Kymore Plateau and Satpura Hill Zone** of **East Madhya Pradesh**, harvest matured green gram and black gram crop and store in a safe place. In **Gird Zone** of **West Madhya Pradesh**, harvest matured maize crop and keep it in safe place. Postpone sowing of soybean and transplanting of chilli, tomato, brinjal etc. and ensure proper drainage in already sown / transplanted fields.
- In **East Rajasthan**, harvest the matured vegetables such as okra and cucurbits and store them in safe place. Make arrangement for draining out excess water from the fields of groundnut and green gram.
- In **Uttarakhand**, make proper drainage channels in rice nurseries, pigeon pea, groundnut, maize, soybean, barnyard millet and finger millet to avoid waterlogging. In **Bhabar and Tarai Zone** of **Uttarakhand**, harvest matured spring maize crop and vegetables (pumpkin, tomato, okra, chilli, French bean etc.) and store in safe place during clear weather.
- In **Sub-Montane and Low Hills Sub-Tropical Zone** of **Himachal Pradesh**, provide drainage in maize and vegetable fields. Strengthen the support for creepers and tall vegetable crops (tomato, capsicum etc.). In **Mid Hills Sub-Humid Zone** of **Himachal Pradesh**, harvest matured fruits of plum, pear and stonefruit to minimize losses due to heavy rains. Make proper drainage channels in the fields of maize, apple, pear, pomegranate, kiwi, cucumber and tomato to avoid waterlogging. Provide support to cucumber vines and tomato plants to prevent lodging.
- In **Sub-Himalayan West Bengal**, maintain proper drainage channels in rice nurseries and fields of jute and ginger to avoid water stagnation.
- In **Jharkhand**, make necessary arrangements to drain out excess water from already sown maize fields, rice and vegetable nurseries.
- In **Odisha**, ensure proper drainage from already sown rice nurseries, fields of maize and vegetables to prevent waterlogging. Cover rice and vegetable nurseries with plastic sheets to prevent washing away of seeds.
- In **Chhattisgarh**, ensure proper drainage in rice nurseries.
- In **Konkan & Goa** make arrangement to drain out excess water from rice nurseries, fields of finger millet, groundnut and orchards to prevent waterlogging. In **ghat areas of Madhya Maharashtra**, drain out excess water from rice nurseries and banana plantations to prevent waterlogging.
- In **Coastal Karnataka**, ensure proper drainage facilities in rice nurseries, banana, coconut and arecanut plantations to prevent water logging. In **South Interior Karnataka**, cover young seedlings of rice with plastic sheets or agro-shade nets to protect them from heavy rains. Provide adequate drainage to remove excess water from rice nurseries, coffee, cardamom, coconut and arecanut plantations to prevent water logging. Provide support to sugarcane and banana to prevent lodging. In **North Interior Karnataka**, drain out excess water from the crops which are at seedling stage to prevent water logging.
- In **Kerala**, ensure proper drainage facilities in rice nurseries, transplanted rice fields, coconut and banana plantations to prevent water logging. Undertake propping in banana to protect the plants from heavy rains.

*Red color warning does not mean "Red Alert" Red color warning means "Take Action"

Forecast and warning for any day is valid from 0830 hours IST of day till 0830 hours IST of next day

For more details kindly visit <https://mausam.imd.gov.in> or contact 011-2434-4599

(Service to the nation since 1875)



- ♦ In **Assam**, keep the harvested produce of sesame, foxtail millet, *Boro* rice, banana and citrus at safer places. Ensure proper drainage in *Sali* rice nursery, maize and sugarcane fields, arecanut and coconut plantations to prevent waterlogging. In **Barak Valley Zone** of **Assam**, postpone nursery sowing of *Sali* rice.
- ♦ In **Meghalaya**, postpone nursery sowing of rice especially in valleys. Ensure proper drainage in the fields of maize, ginger, French bean, cowpea, vegetables and around rice nurseries to prevent waterlogging. Provide strong bamboo stakes or trellis support to cow pea, cucumber and bottle gourd to prevent vines from trailing on wet ground. Provide support to banana plant to prevent lodging.
- ♦ In **Arunachal Pradesh**, keep the harvested produce of soybean and vegetables such as chilli and okra at a safer place. Ensure proper drainage in rice nurseries, kiwi and apple orchards to avoid waterlogging.
- ♦ In **Nagaland**, avoid transplanting of TRC/WRC rice. Postpone sowing of soybean. Provide proper staking to vine type plants.

Livestock / Fishery

- ♦ Keep the animals inside the shed during heavy rainfall and provide them balanced feed.
- ♦ Store feed and fodder in a safe place to prevent spoilage.
- ♦ Construct an outlet with proper netting around the ponds to drain out excess water, thereby preventing fish from escaping in case of overflow.

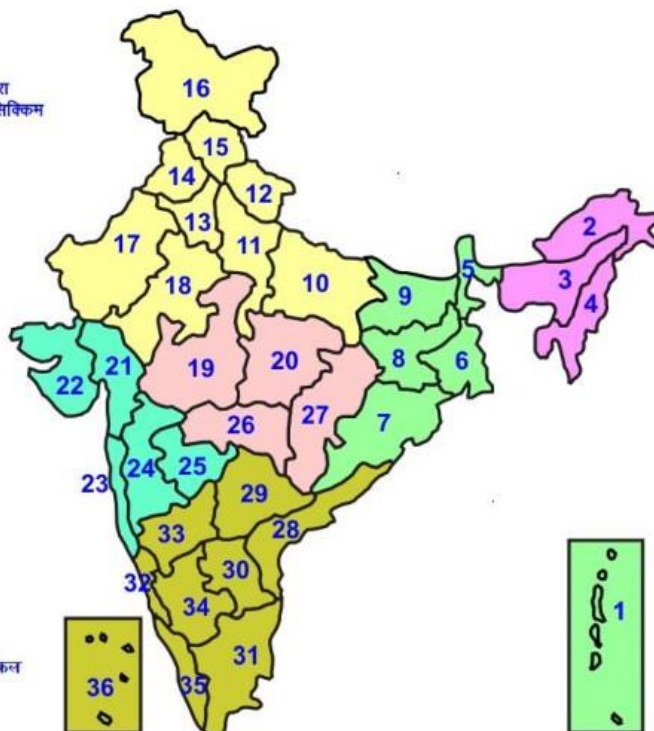
Agromet advisories for likely impact of Thunderstorm / Gusty Winds / Squally Winds

(Based on the IBF and advisories issued by different AMFUs)

- ♦ Provide mechanical support to horticultural crops and staking or support to vegetables and young fruit plants / fruit-bearing plants to avoid lodging due to strong winds.

LEGENDS

- 1 अंडमान और निकोबार द्वीप समुह
- 2 अरुणाचल प्रदेश
- 3 असम और मेघालय
- 4 नागालैंड मनीपुर मीजोरम और त्रिपुरा
- 5 उप हिमालय पश्चिम बंगाल एवं सिक्किम
- 6 पश्चिम बंगाल
- 7 ओडिसा
- 8 झारखंड
- 9 बिहार
- 10 पूर्वी उत्तर प्रदेश
- 11 पश्चिम उत्तर प्रदेश
- 12 उत्तराखंड
- 13 हरियाणा चंडीगढ़ एवं दिल्ली
- 14 पंजाब
- 15 हिमाचल प्रदेश
- 16 जम्मू एवं कश्मीर एवं लद्दाख
- 17 पश्चिम राजस्थान
- 18 पूर्वी राजस्थान
- 19 पश्चिम मध्य प्रदेश
- 20 पूर्वी मध्य प्रदेश
- 21 गुजरात क्षेत्र
- 22 सौराष्ट्र एवं कच्छ
- 23 कोंकण एवं गोवा
- 24 मध्य महाराष्ट्र
- 25 मराठावाड़ा
- 26 विदर्भ
- 27 छत्तीसगढ़
- 28 तटीय आंध्र प्रदेश एवं यनम
- 29 तेलंगाना
- 30 रायलसेमा
- 31 तमिलनाडु, पुदुचेरी एवं कराईकल
- 32 तटिय कर्नाटक
- 33 आंतरिक उत्तरी कर्नाटक
- 34 आंतरिक दक्षिणी कर्नाटक
- 35 केरल एवं माहे
- 36 लक्षद्वीप



1. Andaman & Nicobar Islands
2. Arunachal Pradesh
3. Assam & Meghalaya
4. Nagaland, Manipur, Mizoram & Tripura
5. Sub-Himalayan West Bengal & Sikkim
6. Gangetic West Bengal
7. Orissa
8. Jharkhand
9. Bihar
10. East Uttar Pradesh
11. West Uttar Pradesh
12. Uttarakhand
13. Haryana, Chd & Delhi
14. Punjab
15. Himachal Pradesh
16. Jammu & Kashmir and Ladakh
17. West Rajasthan
18. East Rajasthan
19. West Madhya Pradesh
20. East Madhya Pradesh
21. Gujarat
22. Saurashtra
23. Konkan & Goa
24. Madhya Maharashtra
25. Marathawada
26. Vidharbha
27. Chhattisgarh
28. Coastal Andhra Pradesh & Yanam
29. Telangana
30. Rayalaseema
31. Tamilnadu, Puducherry & Karaikal
32. Coastal Karnataka
33. North Interior Karnataka
34. South Interior Karnataka
35. Kerala & Mahe
36. Lakshadweep

SPATIAL DISTRIBUTION (% of Stations reporting)

% Stations	Category	% Stations	Category
76-100	Widespread (WS/Most Places)	26-50	Scattered (SCT/ A Few Places)
51-75	Fairly Widespread (FWS/ Many Places)	1-25	Isolated (ISOL)

Subdivision Colour

- NO WARNING
- WATCH (BE UPDATED)
- ALERT (BE PREPARED TO TAKE ACTION)
- WARNING (TAKE ACTION)

Probabilistic Forecast

Terms	Probability of Occurrence (%)
Unlikely	< 25
Likely	25 - 50
Very Likely	50 - 75
Most Likely	> 75

-  Heavy Rain

 Thunderstorm & Lightning


 Strong surface winds

 Cold Wave

 Hot & Humid

 Very Heavy Rain

 Hailstorm


 Heat Wave

 Cold Day

 Extremely Heavy Rain

 Dust Storm

 Hot Day

 Ground Frost

 Heavy Snow

 Dust Raising Winds

 Warm Night

 FOG Fog

*Red color warning does not mean "Red Alert" Red color warning means "Take Action"

Forecast and warning for any day is valid from 0830 hours IST of day till 0830 hours IST of next day

For more details kindly visit <https://mausam.imd.gov.in> or contact 011-2434-4599

(Service to the nation since 1875)

LEGENDS

WARNING

WARNING (TAKE ACTION)
ALERT (BE PREPARED)
WATCH (BE UPDATED)
NO WARNING (NO ACTION)

Probabilistic Forecast

Terms	Probability of Occurrence (%)
Unlikely	< 25
Likely	25 - 50
Very Likely	50 - 75
Most Likely	> 75



Heavy: 64.5 to 115.5 mm/cm *
Very Heavy: 115.6 to 204.4 mm/cm *
Extremely Heavy: > 204.4 mm/cm *



When maximum temperature of a station reaches $\geq 40^{\circ}\text{C}$ for plains and $\geq 30^{\circ}\text{C}$ for hilly regions
(a) Based on Departure from normal

Heat Wave: Maximum Temperature Departure from normal 4.5°C to 6.4°C .
Severe Heat Wave: Maximum Temperature Departure from normal $\geq 6.5^{\circ}\text{C}$

(b). Based on Actual maximum temperature

Heat Wave: When actual maximum temperature $\geq 45^{\circ}\text{C}$.
Severe Heat Wave: When actual maximum temperature $\geq 47^{\circ}\text{C}$

(c). Criteria for heat wave for coastal stations

When maximum temperature departure is $> 4.5^{\circ}\text{C}$ from normal. Heat Wave may be described provided maximum temperature $\geq 37^{\circ}\text{C}$



When maximum temperature remains 40°C

Warm Night: When minimum temperature departure 4.5°C to 6.4°C .
Severe Warm Night: When minimum temperature departure $> 6.4^{\circ}\text{C}$.



When minimum temperature of a station $\leq 10^{\circ}\text{C}$ for plains and $\leq 0^{\circ}\text{C}$ for hilly regions.

(a). Based on departure

Cold Wave: Minimum Temperature Departure from normal -4.5°C to -6.4°C .
Severe Cold Wave: Minimum Temperature Departure from normal $\leq -6.5^{\circ}\text{C}$

(b) Based on actual Minimum Temperature (for Plains only)

Cold Wave: When Minimum Temperature is $\leq 4.0^{\circ}\text{C}$
Severe Cold Wave: When Minimum Temperature is $\leq 2.0^{\circ}\text{C}$

(c) For Coastal Stations

When Minimum Temperature departure is $\leq -4.5^{\circ}\text{C}$ & actual Minimum Temperature is $\leq 15^{\circ}\text{C}$



When minimum temperature of a station $\leq 10^{\circ}\text{C}$ for plains and $\leq 0^{\circ}\text{C}$ for hilly regions
Based on departure

Cold Day: Maximum Temperature Departure from normal -4.5°C to -6.4°C .
Severe Cold Day: Maximum Temperature Departure from normal $\leq -6.5^{\circ}\text{C}$



Phenomenon of small droplets suspended in air and the horizontal visibility $< 1\text{km}$

Moderate Fog: When the visibility between 500-200 metres
Dense Fog: when the visibility between 50-200 metres
Very Dense Fog: when the visibility < 50 metres



Sudden electrical discharges manifested by a flash of light (Lightning) and a sharp rumbling sound (thunder)



An ensemble of particles of dust or sand energetically lifted to great heights by a strong and turbulent wind.



Ice deposits on ground

Air temperature $\leq 4^{\circ}\text{C}$ (over Plains)



A strong wind that rises suddenly, lasts for at least 1 minute.

Moderate: Wind speed 52-61 kmph
Severe: Wind speed 62-87 kmph
Very Severe: Wind speed > 87 kmph



Effect of various waves in the sea over specific area

Rough to very rough: Wind speed 41-62 kmph (22-33 knots) & Wave height 2.5-6 metre
High to very high: Wind speed 63-117 kmph (34-63 knots) & Wave height 6-14 metre
Phenomenal: Wind speed > 117 kmph (> 63 knots) & Wave height > 14 metre



Cyclonic Storm: Wind speed 62-87 kmph (34-47 knots)

Severe Cyclonic Storm: Wind speed 88-117 kmph (48-63 knots)

Very Severe Cyclonic Storm: Wind speed 118-165 kmph (64-89 knots)

Extremely Severe Cyclonic Storm: Wind speed 166-220 kmph (90-119 knots)

Super Cyclone Storm: Wind speed > 220 kmph (> 119 knots)

*Red color warning does not mean "Red Alert" Red color warning means "Take Action"

Forecast and warning for any day is valid from 0830 hours IST of day till 0830 hours IST of next day

For more details kindly visit <https://mausam.imd.gov.in> or contact 011-2434-4599

(Service to the nation since 1875)