

2026-05-28

Time of Issue: 19:48:00 hours IST
(Night)

ALL INDIA WEATHER SUMMARY AND FORECAST BULLETIN

Significant Weather Features

Advance of Southwest Monsoon 2026:

- The **Northern Limit of Monsoon** continues to pass through 9°N/60°E, 8.5°N/65°E, 8°N/70°E, 7.5°N/75°E, 8°N/80°E, 11°N/85°E, 15°N/90°E, 19°N/95°E and 21°N/97°E as on 28th May 2026.
- **Conditions are favourable for further advance of southwest monsoon** into some more parts of southwest & southeast Arabian Sea, Lakshadweep area, southwest, eastcentral & westcentral Bay of Bengal, remaining parts of southeast Bay of Bengal and some parts of northeast Bay of Bengal during next 2-3 days.

Weather Forecast and Warnings:

Northeast India:

- **Scattered to Fairly widespread** light to moderate rainfall with **thunderstorm, lightning & gusty winds (speed reaching 40-50 kmph)** likely over Nagaland, Manipur, Mizoram & Tripura on 28th May.
- **Isolated heavy rainfall** likely over Arunachal Pradesh, Assam & Meghalaya on 28th May and during 01st – 3rd June; Nagaland, Manipur, Mizoram & Tripura on 28th May and during 31st May- 3rd June.

South Peninsular India:

- **Isolated to scattered** light to moderate rainfall with **thunderstorm, lightning & gusty winds (speed reaching 40-50 kmph)** likely over Interior Karnataka 28th – 30th, Tamil Nadu, Puducherry & Karaikal, Kerala & Mahe, Lakshadweep and Telangana during 28th May-1st June; Coastal Andhra Pradesh & Yanam during 31st May-1st June; Rayalaseema during 30th -31st May.
- **Thundersquall (wind speed reaching 50-60 kmph gusting to 70 kmph)** likely over North Interior Karnataka on 28th & 29th May; Rayalaseema, Coastal Andhra Pradesh & Yanam during 28th -30th May.
- **Isolated heavy rainfall** likely over Tamil Nadu, Puducherry & Karaikal during 28th -31st May; Kerala & Mahe during 28th -29th May and during 1st -3rd June; Lakshadweep during 1st-3rd June; South Interior Karnataka on 28th May.

East India:

- **Fairly widespread to widespread** light to moderate rainfall with **thunderstorm, lightning & gusty winds (speed reaching 40-50 kmph)** likely over Andaman & Nicobar Islands during 28th May-03rd June; Sub-Himalayan West Bengal & Sikkim on 28th & 29th May
- **Isolated to scattered** light to moderate rainfall with **thunderstorm, lightning & gusty winds (speed reaching 40-50 kmph)** likely over Gangetic West Bengal on 30th May; Jharkhand, Odisha during 01st – 3rd June; Bihar on 31st May & 01st June;
- **Thundersquall (wind speed reaching 60-70 kmph gusting to 80 kmph)** likely over Gangetic West Bengal on 28th; Bihar on 29th May.
- **Thundersquall (wind speed reaching 50-60 kmph gusting to 70 kmph)** likely over Gangetic West Bengal on 29th May; Jharkhand, Odisha during 28th-31st May; Bihar on 28th & 30th May.
- **Isolated heavy rainfall likely over Andaman & Nicobar Islands during 29th-31st May; Gangetic West Bengal on 28th; Bihar on 29th; Odisha during 28th -30th May.**

Northwest India:

- **Scattered to fairly widespread** light to moderate rainfall with **thunderstorm, lightning & gusty winds (speed reaching 40-50 kmph)** likely over Jammu-Kashmir on 30th May; Himachal Pradesh on 28th & 29th May; Uttarakhand during 28th – 30th May.
- **Scattered to fairly widespread** light to moderate rainfall with **thunderstorm, lightning & gusty winds (speed reaching 40-50 kmph)** likely over East Uttar Pradesh on 31st May; West Rajasthan during 31st May- 02nd June;

*Red color warning does not mean "Red Alert" Red color warning means "Take Action"

Forecast and warning for any day is valid from 0830 hours IST of day till 0830 hours IST of next day

For more details kindly visit <https://mausam.imd.gov.in> or contact 011-2434-4599

(Service to the nation since 1875)

East Rajasthan during 31st May – 03rd June.

- **Thundersquall (wind speed reaching 80-90 kmph gusting to 100 kmph) likely** over West Uttar Pradesh on 29th May
- **Thundersquall (wind speed reaching 70-80 kmph gusting to 90 kmph) likely** over Punjab, Haryana Chandigarh & Delhi on 28th & 29th; West Uttar Pradesh on 28th; East Uttar Pradesh on 29th May.
- **Thundersquall (wind speed reaching 60-70 kmph gusting to 80 kmph) likely** East Uttar Pradesh on 28th; West Rajasthan on 29th; East Rajasthan on 29th & 30th May.
- **Thundersquall (wind speed reaching 50-60 kmph gusting to 70 kmph) likely** over Jammu-Kashmir on 28th & 29th; Punjab, Haryana Chandigarh & Delhi, Uttar Pradesh on 30th; Rajasthan on 28th May.
- **Isolated heavy rainfall** likely over Uttarakhand, West Uttar Pradesh on 29th; Punjab, Haryana, Chandigarh on 29th & 30th May.
- **Isolated Hailstorm activity** likely over Himachal Pradesh, Uttarakhand, Punjab, Haryana Chandigarh & Delhi, West Uttar Pradesh on 28th & 29th May and East Uttar Pradesh, Rajasthan on 29th May.
- **Dust storm** very likely at isolated places over Uttar Pradesh and Rajasthan on 28th & 29th May.

Central India:

- **Isolated** light to moderate rainfall with **thunderstorm, lightning & gusty winds (speed reaching 40-50 kmph)** likely over West Madhya Pradesh 28th May – 01st June; East Madhya Pradesh, Vidarbha 28th May, – 1st June; during Chhattisgarh 01st June;
- **Thundersquall (wind speed reaching 50-60 kmph gusting to 70 kmph) likely** over West Madhya Pradesh during 29th – 31st May; East Madhya Pradesh on 29th & 30th; Chhattisgarh during 28th – 31st May.
- **Isolated heavy rainfall** likely over West Madhya Pradesh on 31st May.
- **Isolated Hailstorm activity** likely over Madhya Pradesh on 29th & 30th May; Chhattisgarh on 28th May.

West India:

- **Isolated** light to moderate rainfall with **thunderstorm, lightning & gusty winds (speed reaching 40-50 kmph)** likely over Konkan & Goa during 31st May – 03rd June; Madhya Maharashtra ; Marathwada on 28th and during 31st May – 03rd June; Coastal areas of Gujarat state during 29th – 03rd June.
- **Isolated heavy rainfall** likely over Gujarat Region during 31st May – 2nd June.

Forecast of maximum/day temperatures:

- **Gradual fall** in maximum temperatures **by 6-8°C** likely over Northwest India **during 28th - 30th May and gradual rise by 4-6°C during 31st May-03rd June.**
- No significant change in maximum temperatures likely over Central India till 28th May and gradual fall by 3-5°C during 29th May-03rd June
- **Gradual fall** in maximum temperatures **by 2-3°C** likely over East India till 31st May and gradual rise by 2-3°C during 01st- 3rd June.
- No significant change in maximum temperatures likely over Madhya Maharashtra State till 29th May and gradual fall by 2-3°C during 30th May-03rd June.
- No significant change in maximum temperatures likely over south peninsular India till 28th May and gradual fall by 3-5°C during 29th May-03rd June.
- No significant change in maximum temperatures likely over the rest parts of country till 03rd June 2026.

Heat Wave, Hot & Humid weather and Warm Night conditions warning:

- **Heat wave conditions** very likely in isolated pockets over Chhattisgarh, Haryana Chandigarh & Delhi, Punjab, West Madhya Pradesh and West Uttar Pradesh on 28th May; West Rajasthan on 30th May; East Madhya Pradesh and Vidarbha on 29th May; Coastal Andhra Pradesh & Yanam during 28th-29th May; Telangana during 29th-30th May ;with **severe heat wave conditions** also likely in isolated pockets over West Rajasthan during 28th-29th May; East Madhya Pradesh, East Rajasthan and Vidarbha on 28th May.
- **Hot and humid** weather conditions likely to prevail over Odisha during 28th-31st May; Gujarat Region and Konkan & Goa on 28th May; Rayalaseema and Tamil Nadu, Puducherry & Karaikal during 28th-29th May; Coastal Andhra Pradesh & Yanam during 30th May-1st June.

*Red color warning does not mean "Red Alert" Red color warning means "Take Action"

Forecast and warning for any day is valid from 0830 hours IST of day till 0830 hours IST of next day

For more details kindly visit <https://mausam.imd.gov.in> or contact 011-2434-4599

(Service to the nation since 1875)

- **Warm Night conditions** very likely to prevail in isolated pockets over Vidarbha on 28th May.

Fisherman Warning:

Fishermen are advised not to venture into the following areas:

- **Bay of Bengal:** Over Gulf of Mannar, along and off Tamil Nadu & Sri Lanka Coasts, over many parts of south & adjoining central Bay of Bengal during 28th May to 02nd June, 2026. Along and off west Bengal adjoining north Odisha coasts during 28th to 30th May, over many parts of Andaman Sea during 28th May to 02nd June 2026.
- **Arabian Sea:** Over central parts of south Arabian Sea on 28th May, 2026; Over Comorin areas during 28th May to 02nd June, 2026, along & off north Gujarat coast and adjoining northeast Arabian Sea during 29th May to 31st May, 2026. Along and off Somalia coast, adjoining some parts of southwest Arabian Sea during on 28th May to 02nd June, 2026.

Main Weather Observations:

❖ **Rainfall distribution** (from 0830 hours IST to 1730 hours IST of today): **at most places** over Andaman & Nicobar Islands; **at many places** over Odisha, Gangetic West Bengal, Chhattisgarh, Himachal Pradesh, East Madhya Pradesh, Arunachal Pradesh, West Rajasthan, Jammu & Kashmir and Ladakh, Haryana Chandigarh & Delhi, Kerala & Mahe, Assam & Meghalaya, Tamilnadu Puducherry & Karaikal, Nagaland, Manipur, Mizoram & Tripura, Sub-himalayan West Bengal & Sikkim, Vidarbha and Coastal Karnataka; **Dry** over rest of the country.

❖ **Significant rainfall recorded(in cm)** (from 0830 hours IST to 1730 hours IST of today): **Chhattisgarh:** Jagdalpur (dist Bastar) 3; **Kerala & Mahe:** Thiruvananthapuram-city (dist Thiruvananthapuram) 2, Punalur (dist Kollam), Kottayam (dist Kottayam) 1 Each; **Assam & Meghalaya:** Cherrapunji (dist East Khasi Hills) 2, Lumding (dist Hojai) 1; **Tamilnadu Puducherry & Karaikal:** Kodaikanal (dist Dindigul) 2; **Andaman & Nicobar Islands:** Car Nicobar (dist Nicobar) 1; **Nagaland, Manipur, Mizoram & Tripura:** Kohima (dist Kohima) 1; Sub-himalayan West Bengal & Sikkim: Kalimpong (dist Kalimpong) 1; **Gangetic West Bengal:** Suri (dist Birbhum) 1; **Vidarbha:** Amraoti (dist Amravati) 1.

❖ **Minimum Temperature Departures (as on 28-05-2026):** **markedly above normal(> 5.1°C)** at few places over West Madhya Pradesh and East Madhya Pradesh; at isolated places over East Uttar Pradesh, West Uttar Pradesh, Uttarakhand, Himachal Pradesh, West Rajasthan, East Rajasthan, Gujarat Region and Saurashtra & Kutch. **appreciably above normal(3.1°C to 5.0°C)** at isolated places over Andaman & Nicobar Islands, Assam & Meghalaya, Nagaland, Manipur, Mizoram & Tripura, Odisha, Bihar, Haryana-Chandigarh-Delhi, Jammu-Kashmir-Ladakh-Gilgit-Baltistan-Muzaffarabad, East Madhya Pradesh, Konkan & Goa, Vidarbha, Chhattisgarh, Coastal Andhra Pradesh & Yanam and Tamil Nadu, Puducherry & Karaikal. **above normal(1.6°C to 3.0°C)** at many places over Punjab; at few places over Arunachal Pradesh, East Madhya Pradesh, Madhya Maharashtra and Vidarbha; at isolated places over Gujarat Region, Saurashtra & Kutch, Konkan & Goa, Coastal Andhra Pradesh & Yanam, Telangana, Tamil Nadu, Puducherry & Karaikal, South Interior Karnataka and Kerala & Mahe. **near normal(-1.5°C to 1.5°C)** at many places over Gangetic West Bengal, Jharkhand, Gujarat Region, Saurashtra & Kutch, Konkan & Goa, Madhya Maharashtra, Vidarbha, Chhattisgarh, Coastal Andhra Pradesh & Yanam, Telangana and Tamil Nadu, Puducherry & Karaikal; at most places over Sub Himalayan West Bengal & Sikkim, Marathwada, Rayalaseema, Coastal Karnataka, North Interior Karnataka, South Interior Karnataka, Kerala & Mahe and Lakshadweep; at isolated places over East Madhya Pradesh. **The lowest minimum temperature** of 20.4°C was reported at **KEONGJHARGHARH (ODISHA)** over the Plains of India.

❖ **Maximum Temperature Departures (as on 27-05-2026):** **markedly above normal(> 5.1°C)** at many places over Chhattisgarh; at most places over West Uttar Pradesh, Himachal Pradesh, West Madhya Pradesh and East Madhya Pradesh; at few places over East Uttar Pradesh and Vidarbha; at isolated places over Coastal Andhra Pradesh & Yanam and Telangana. **appreciably above normal(3.1°C to 5.0°C)** at many places over Gujarat Region; at most places over West Rajasthan; at few places over Konkan & Goa and Tamil Nadu, Puducherry & Karaikal; at isolated places over Saurashtra & Kutch and Madhya Maharashtra. **above normal(1.6°C to 3.0°C)** at isolated places over Nagaland, Manipur, Mizoram & Tripura, Marathwada and North Interior Karnataka. **near normal(-1.5°C to 1.5°C)** at most places over Coastal Karnataka and Lakshadweep; at few places over Rayalaseema and Kerala & Mahe. **The highest maximum temperature** of 47.4°C was reported at **BANDA (UTTAR PRADESH)**.

Meteorological Analysis (Based on 1730 hours IST)

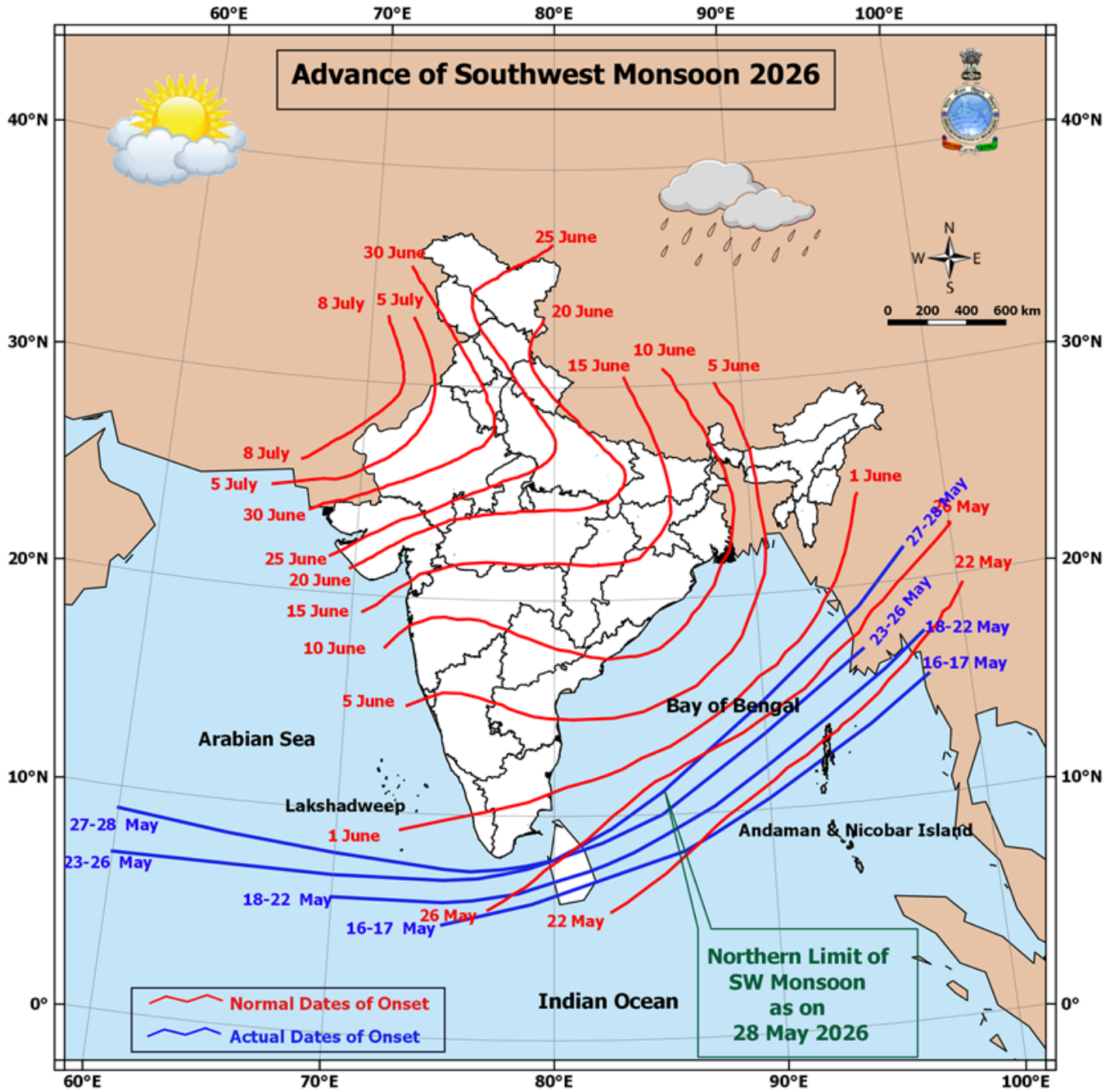
- The **Northern Limit of Monsoon** continue to pass through 9°N/60°E, 8.5°N/65°E, 8°N/70°E, 7.5°N/75°E, 8°N/80°E, 11°N/85°E, 15°N/90°E, 19°N/95°E and 21°N/97°E as on 28th May 2026.
- **Conditions are favourable for further advance of southwest monsoon** into some more parts of southwest & southeast Arabian Sea, Lakshadweep area, southwest, eastcentral & westcentral Bay of Bengal, remaining parts of southeast Bay of Bengal and some parts of northeast Bay of Bengal during next 2-3 days.
- The **Western Disturbance** as an **upper air cyclonic circulation** over north Pakistan & neighbourhood at 3.1 km above mean sea level persists.
- The **upper air cyclonic circulation** over northwest Uttar Pradesh & neighbourhood at 1.5 km above mean sea level persists.
- The **upper air cyclonic circulation** over north Jharkhand & neighbourhood at 0.9 km above mean sea level persists.
- The **trough** from northwest Uttar Pradesh to north Coastal Andhra Pradesh across the cyclonic circulation over northwest Uttar Pradesh & neighbourhood, the cyclonic circulation over north Jharkhand & neighbourhood and extending upto 1.5 km above mean sea level persists.
- The **trough** in westerlies with its axis at 5.8 km above mean sea level roughly along Long. 90°E to the north of Lat. 21°N persists.
- The **upper air cyclonic circulation** over central Assam & neighbourhood at 3.1 km above mean sea level persists.
- The **upper air cyclonic circulation** over Southeast Arabian Sea & neighbourhood extending upto 5.8 km above mean sea level persists.
- The **upper air cyclonic circulation** over Eastcentral & Southeast Bay of Bengal between 1.5 & 7.6 km above mean sea level persists.

*Red color warning does not mean "Red Alert" Red color warning means "Take Action"

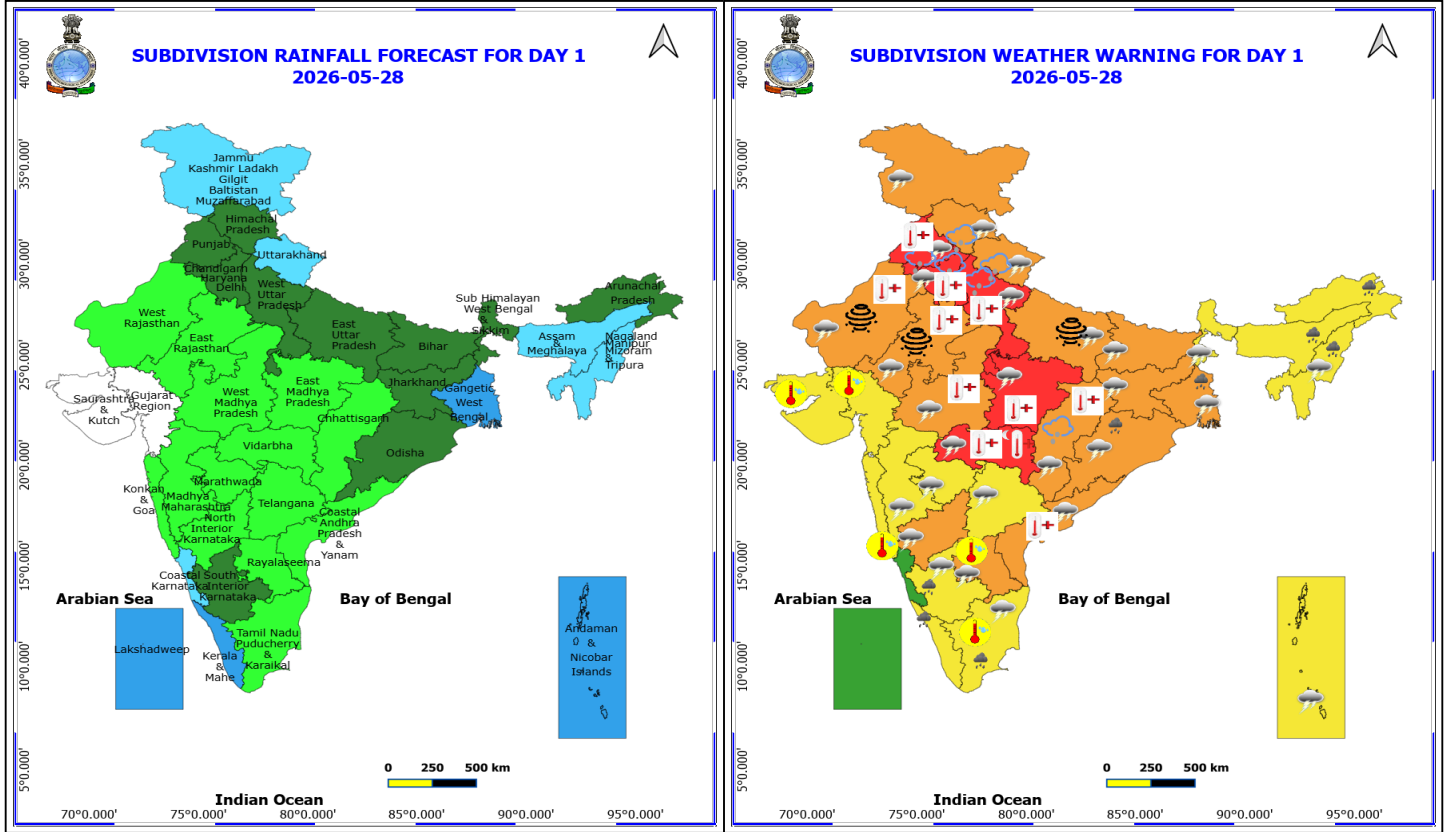
Forecast and warning for any day is valid from 0830 hours IST of day till 0830 hours IST of next day

For more details kindly visit <https://mausam.imd.gov.in> or contact 011-2434-4599

(Service to the nation since 1875)



*Red color warning does not mean "Red Alert" Red color warning means "Take Action"
Forecast and warning for any day is valid from 0830 hours IST of day till 0830 hours IST of next day
For more details kindly visit <https://mausam.imd.gov.in> or contact 011-2434-4599
(Service to the nation since 1875)



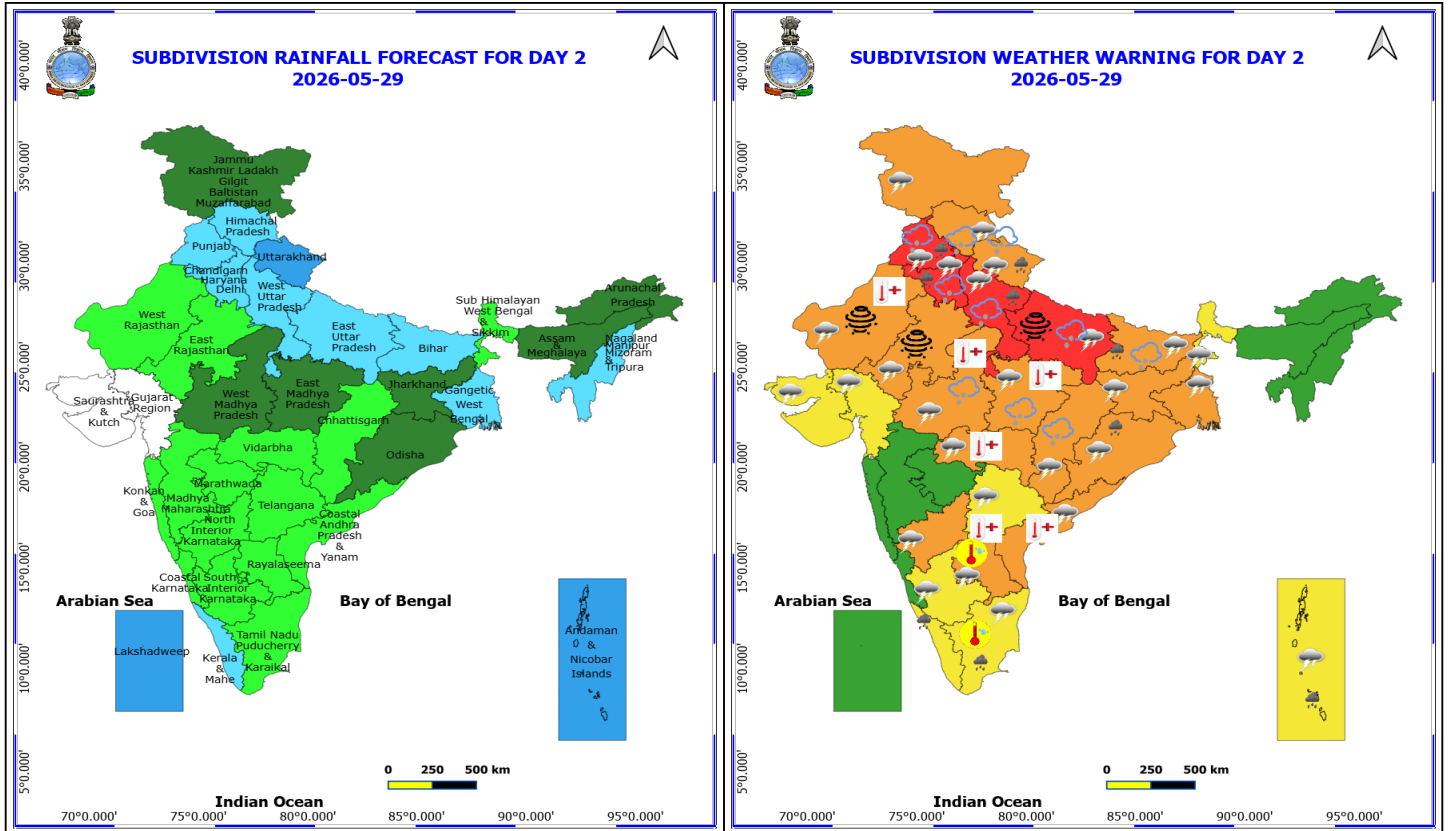
28 May (Day 1)

- ❖ **Heavy Rainfall** very likely at isolated places over Arunachal Pradesh, Assam & Meghalaya, Gangetic West Bengal, Kerala & Mahe, Nagaland, Manipur, Mizoram and Tripura, Odisha, South Interior Karnataka and Tamil Nadu Puducherry & Karaikal.
- ❖ **Thunderstorm accompanied with Hailstorm** very likely at isolated places over Chhattisgarh, Haryana, Chandigarh & Delhi, Himachal Pradesh, Punjab, Uttarakhand and West Uttar Pradesh.
- ❖ **Thundersquall with wind speed reaching(60-70kmph) gusting to 80 kmph** very likely at isolated places over Gangetic West Bengal, Haryana, Chandigarh & Delhi, Punjab and Uttar Pradesh.
- ❖ **Thundersquall with wind speed reaching(50-60kmph)** very likely at isolated places over Andhra Pradesh, Bihar, Chhattisgarh, Jammu-Kashmir-Ladakh-Gilgit-Baltistan-Muzaffarabad, Jharkhand, North Interior Karnataka, Odisha and Rajasthan.
- ❖ **Thunderstorm accompanied with lightning & gusty winds(40-50kmph)** very likely at isolated places over Andaman & Nicobar Islands, Himachal Pradesh, Madhya Pradesh, Maharashtra, Nagaland, Manipur, Mizoram and Tripura, South Interior Karnataka, Sub Himalayan West Bengal & Sikkim, Tamil Nadu Puducherry & Karaikal, Telangana and Uttarakhand.
- ❖ **Thunderstorm accompanied with lightning & gusty winds(30-40kmph)** very likely at isolated places over Kerala & Mahe and Lakshadweep.
- ❖ **Thunderstorm accompanied with Lightning** very likely at isolated places over Assam & Meghalaya and Coastal Karnataka.
- ❖ **Dust Storm** very likely at isolated places over East Uttar Pradesh and Rajasthan.

***Red color warning does not mean "Red Alert" Red color warning means "Take Action"**
Forecast and warning for any day is valid from 0830 hours IST of day till 0830 hours IST of next day
For more details kindly visit <https://mausam.imd.gov.in> or contact 011-2434-4599

(Service to the nation since 1875)

- ❖ **Heat Wave conditions** very likely at isolated places over Chhattisgarh, Coastal Andhra Pradesh, Haryana, Chandigarh & Delhi, Punjab, West Madhya Pradesh and West Uttar Pradesh.
 - ❖ **Heat Wave to Severe Heat Wave conditions** very likely at isolated places over East Madhya Pradesh, Rajasthan and Vidarbha.
 - ❖ **Hot and Humid weather** very likely at isolated places over Gujarat State, Konkan & Goa, Rayalaseema and Tamil Nadu Puducherry & Karaikal.
 - ❖ **Warm Night conditions** very likely at isolated places over Vidarbha.
-
- ❖ **Arabian Sea: Squally wind with speed 45-55 kmph gusting to 65 kmph** is likely to prevail along and off Somalia coast, adjoining parts of southwest Arabian Sea.
 - ❖ **Squally Weather with wind speed 40-50 kmph gusting to 60 kmph** is likely to prevail over Comorin area.
 - ❖ **Bay of Bengal: Squally Weather with wind speed 40-50 kmph gusting to 60 kmph** is likely to prevail over Gulf of Mannar, along and off Sri Lanka coasts, many parts of south & adjoining westcentral Bay of Bengal.



29 May (Day 2)

- ❖ **Heavy Rainfall** very likely at isolated places over Andaman & Nicobar Islands, Bihar, Haryana, Chandigarh & Delhi, Kerala & Mahe, Odisha, Punjab, Tamil Nadu Puducherry & Karaikal, Uttarakhand and West Uttar Pradesh.
- ❖ **Thunderstorm accompanied with Hailstorm** very likely at isolated places over Bihar, Chhattisgarh, Haryana, Chandigarh & Delhi, Himachal Pradesh, Madhya Pradesh, Punjab, Uttar Pradesh and Uttarakhand.
- ❖ **Thundersquall with wind speed reaching(60-70kmph) gusting to 80 kmph** very likely at isolated places over Bihar, Haryana, Chandigarh & Delhi, Punjab, Rajasthan and Uttar Pradesh.
- ❖ **Thundersquall with wind speed reaching(50-60kmph)** very likely at isolated places over Andhra Pradesh, Chhattisgarh, Gangetic West Bengal, Jammu-Kashmir-Ladakh-Gilgit-Baltistan-Muzaffarabad, Jharkhand, Madhya Pradesh, North Interior Karnataka and Odisha.
- ❖ **Thunderstorm accompanied with lightning & gusty winds(40-50kmph)** very likely at isolated places over Andaman & Nicobar Islands, Gujarat State, Himachal Pradesh, South Interior Karnataka, Sub Himalayan West Bengal & Sikkim, Tamil Nadu Puducherry & Karaikal, Telangana, Uttarakhand and Vidarbha.
- ❖ **Thunderstorm accompanied with lightning & gusty winds(30-40kmph)** very likely at isolated places over Kerala & Mahe and Lakshadweep.
- ❖ **Thunderstorm accompanied with Lightning** very likely at isolated places over Assam & Meghalaya and Coastal Karnataka.
- ❖ **Dust Storm** very likely at isolated places over East Uttar Pradesh and Rajasthan.
- ❖ **Heat Wave conditions** very likely at isolated places over Coastal Andhra Pradesh, Madhya Pradesh, Telangana

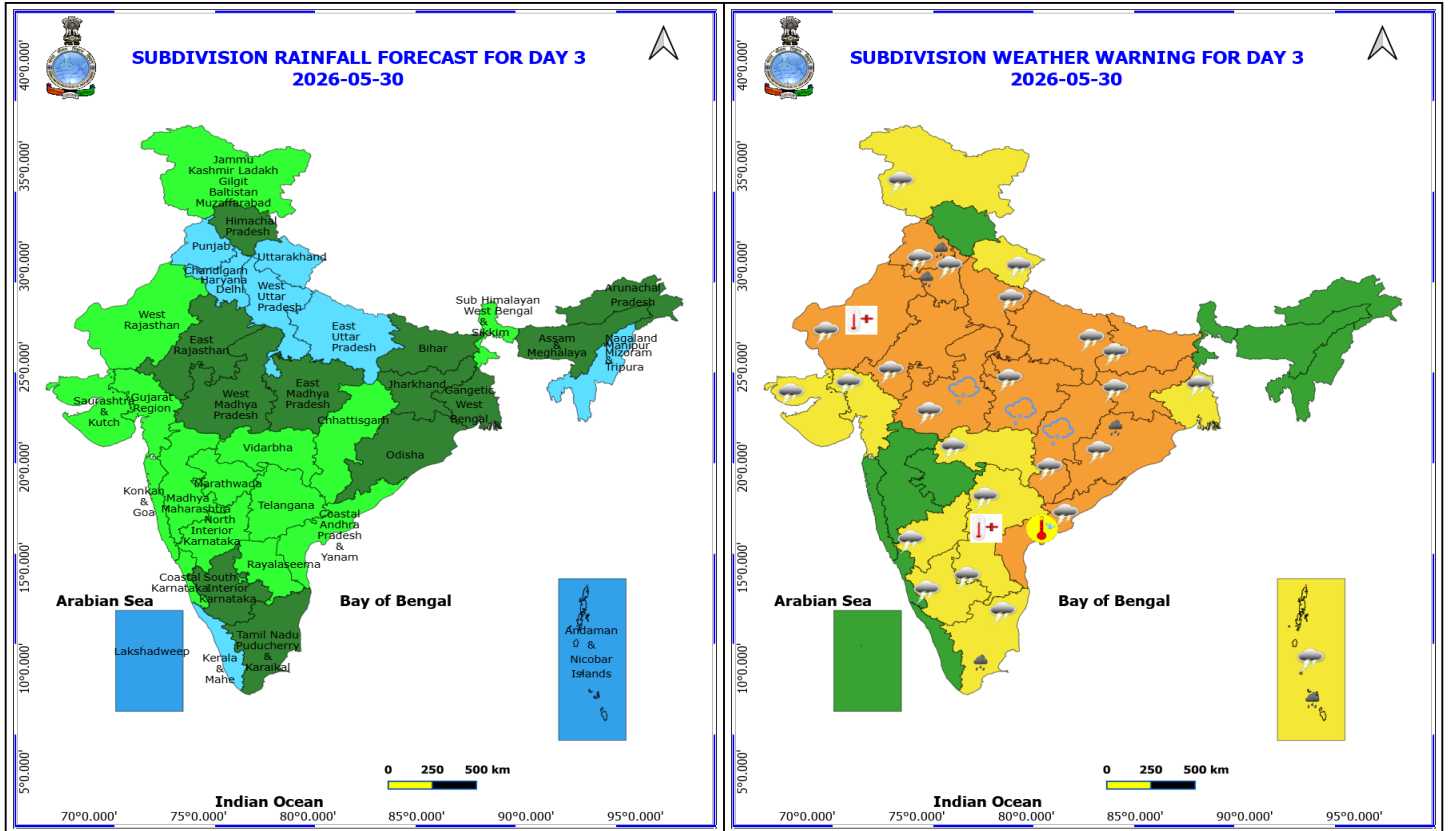
***Red color warning does not mean "Red Alert" Red color warning means "Take Action"**
Forecast and warning for any day is valid from 0830 hours IST of day till 0830 hours IST of next day
For more details kindly visit <https://mausam.imd.gov.in> or contact 011-2434-4599

(Service to the nation since 1875)

and Vidarbha.

- ❖ **Heat Wave to Severe Heat Wave conditions** very likely at isolated places over West Rajasthan.
- ❖ **Hot and Humid weather** very likely at isolated places over Rayalaseema and Tamil Nadu Puducherry & Karaikal.

- ❖ **Arabian Sea: Squally wind with speed 45-55 kmph gusting to 65 kmph** is likely to prevail along and off Somalia coast, adjoining parts of southwest Arabian Sea.
- ❖ **Squally Weather with wind speed 40-50 kmph gusting to 60 kmph** is likely to prevail over Comorin area.
- ❖ **Bay of Bengal: Squally Weather with wind speed 40-50 kmph gusting to 60 kmph** is likely to prevail over Gulf of Mannar, along and off Sri Lanka coasts, many parts of south & adjoining central Bay of Bengal, northwest Bay of Bengal, along & off Odisha & West Bengal coasts, south & adjoining north Andaman Sea.



30 May (Day 3)

- ❖ **Heavy Rainfall** very likely at isolated places over Andaman & Nicobar Islands, Haryana, Chandigarh & Delhi, Odisha, Punjab and Tamil Nadu Puducherry & Karaikal.
- ❖ **Thunderstorm accompanied with Hailstorm** very likely at isolated places over Chhattisgarh and Madhya Pradesh.
- ❖ **Thundersquall with wind speed reaching(60-70kmph) gusting to 80 kmph** very likely at isolated places over Rajasthan.
- ❖ **Thundersquall with wind speed reaching(50-60kmph)** very likely at isolated places over Bihar, Chhattisgarh, Coastal Andhra Pradesh, Haryana, Chandigarh & Delhi, Jharkhand, Madhya Pradesh, Odisha, Punjab and Uttar Pradesh.
- ❖ **Thunderstorm accompanied with lightning & gusty winds(40-50kmph)** very likely at isolated places over Andaman & Nicobar Islands, Gangetic West Bengal, Gujarat State, Interior Karnataka, Jammu-Kashmir-Ladakh-Gilgit-Baltistan-Muzaffarabad, Rayalaseema, Tamil Nadu Puducherry & Karaikal, Telangana, Uttarakhand and Vidarbha.
- ❖ **Thunderstorm accompanied with lightning & gusty winds(30-40kmph)** very likely at isolated places over Himachal Pradesh, Kerala & Mahe and Lakshadweep.
- ❖ **Thunderstorm accompanied with Lightning** very likely at isolated places over Assam & Meghalaya and Coastal Karnataka.
- ❖ **Heat Wave conditions** very likely at isolated places over Telangana and West Rajasthan.

***Red color warning does not mean "Red Alert" Red color warning means "Take Action"**

Forecast and warning for any day is valid from 0830 hours IST of day till 0830 hours IST of next day

For more details kindly visit <https://mausam.imd.gov.in> or contact 011-2434-4599

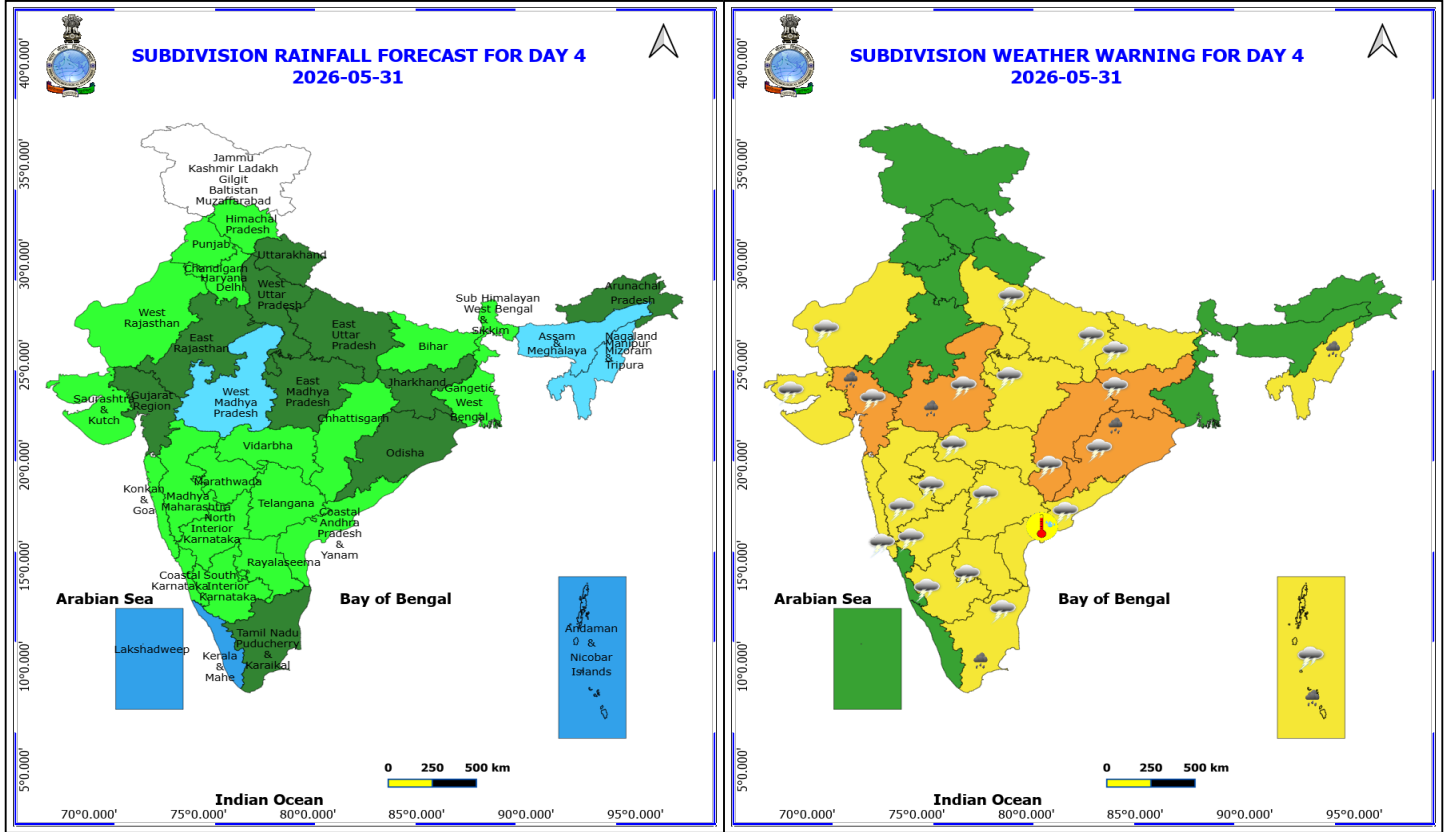
(Service to the nation since 1875)

❖ **Hot and Humid weather** very likely at isolated places over Coastal Andhra Pradesh.

❖ **Arabian Sea: Squally wind with speed 45-55 kmph gusting to 65 kmph** is likely to prevail along and off Somalia coast, adjoining parts of southwest Arabian Sea.

❖ **Squally Weather with wind speed 40-50 kmph gusting to 60 kmph** is likely to prevail over Comorin area, along & off north Gujarat coast and adjoining northeast Arabian Sea.

❖ **Bay of Bengal: Squally Weather with wind speed 40-50 kmph gusting to 60 kmph** is likely to prevail over Gulf of Mannar, along and off Sri Lanka coasts, many parts of south & adjoining central Bay of Bengal, northwest Bay of Bengal, along & off Odisha & West Bengal coasts, south & adjoining north Andaman Sea.



31 May (Day 4)

- ❖ **Heavy Rainfall** likely at isolated places over Andaman & Nicobar Islands, Gujarat Region, Nagaland, Manipur, Mizoram and Tripura, Odisha, Tamil Nadu Puducherry & Karaikal and West Madhya Pradesh.
 - ❖ **Thundersquall with wind speed reaching(50-60kmph)** likely at isolated places over Chhattisgarh, Jharkhand, Odisha and West Madhya Pradesh.
 - ❖ **Thunderstorm accompanied with lightning & gusty winds(40-50kmph)** likely at isolated places over Andaman & Nicobar Islands, Andhra Pradesh, Bihar, East Madhya Pradesh, Gujarat State, Interior Karnataka, Konkan & Goa, Maharashtra, Tamil Nadu Puducherry & Karaikal, Telangana, Uttar Pradesh and West Rajasthan.
 - ❖ **Thunderstorm accompanied with lightning & gusty winds(30-40kmph)** likely at isolated places over East Rajasthan, Kerala & Mahe, Lakshadweep and Uttarakhand.
 - ❖ **Thunderstorm accompanied with Lightning** likely at isolated places over Assam & Meghalaya and Coastal Karnataka.
 - ❖ **Hot and Humid weather** likely at isolated places over Coastal Andhra Pradesh.
-
- ❖ **Arabian Sea: Squally wind with speed 45-55 kmph gusting to 65 kmph** is likely to prevail along and off Somalia coast, adjoining parts of southwest Arabian Sea.
 - ❖ **Squally Weather with wind speed 40-50 kmph gusting to 60 kmph** is likely to prevail over Comorin area, along & off north Gujarat coast and adjoining northeast Arabian Sea.
 - ❖ **Bay of Bengal: Squally Weather with wind speed 40-50 kmph gusting to 60 kmph** is likely to prevail over Gulf of Mannar, along and off Sri Lanka coasts, many parts of south & adjoining central Bay of Bengal, south & adjoining

***Red color warning does not mean "Red Alert" Red color warning means "Take Action"**

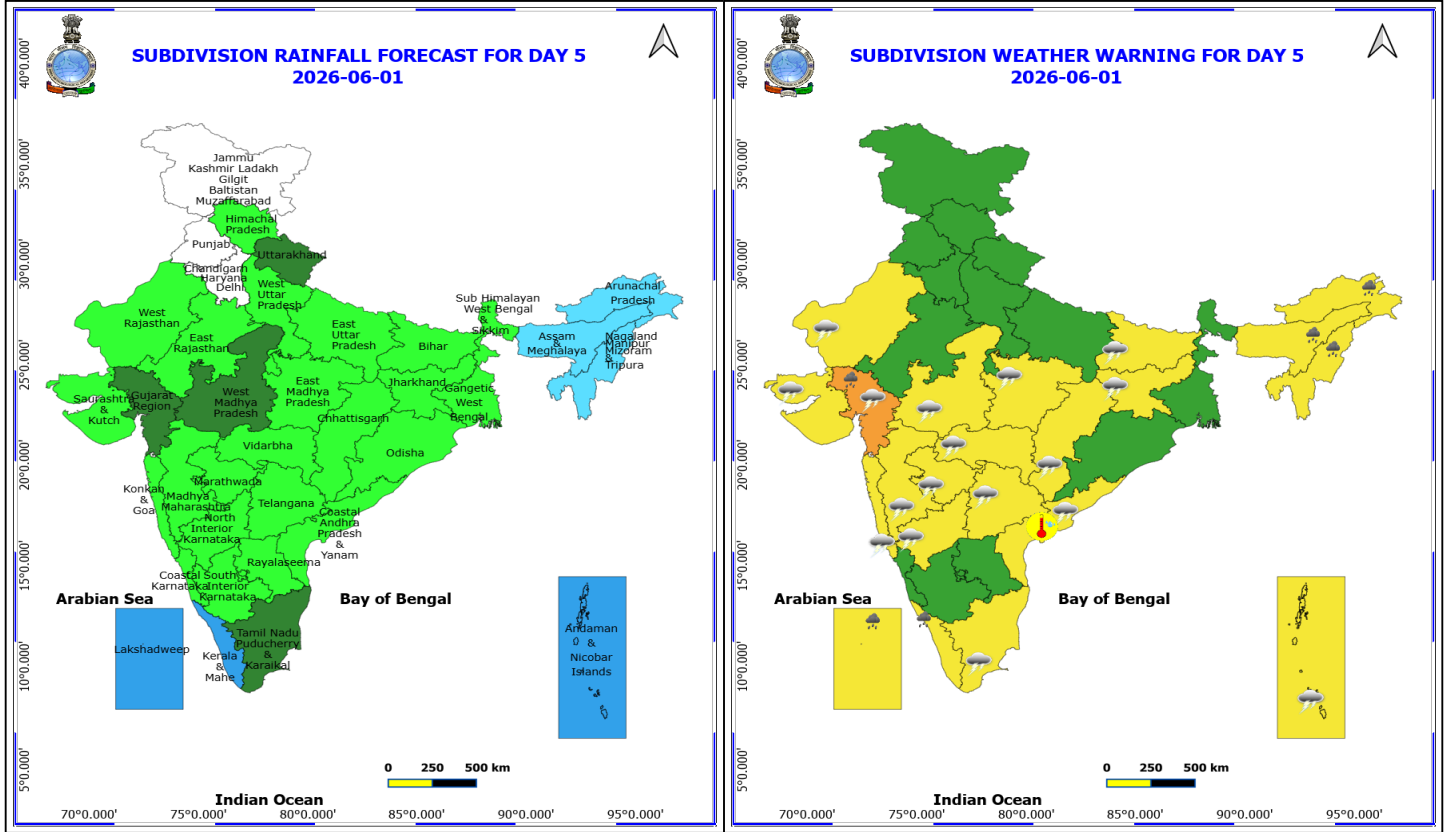
Forecast and warning for any day is valid from 0830 hours IST of day till 0830 hours IST of next day

For more details kindly visit <https://mausam.imd.gov.in> or contact 011-2434-4599

(Service to the nation since 1875)



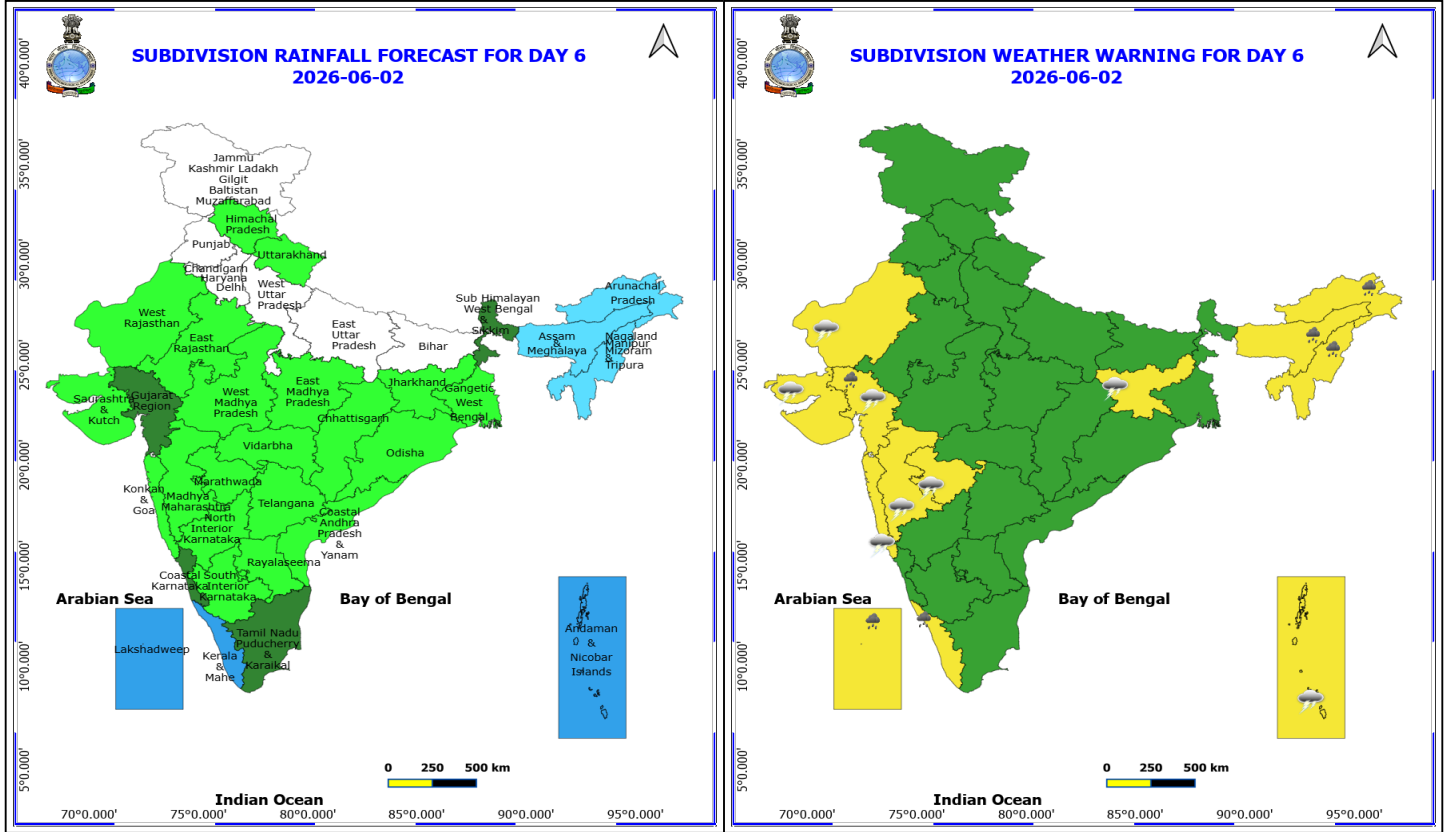
north Andaman Sea.



1 June (Day 5)

- ❖ **Heavy Rainfall** likely at isolated places over Arunachal Pradesh, Assam & Meghalaya, Gujarat Region, Kerala & Mahe, Lakshadweep and Nagaland, Manipur, Mizoram and Tripura.
- ❖ **Thunderstorm accompanied with lightning & gusty winds(40-50kmph)** likely at isolated places over Andaman & Nicobar Islands, Bihar, Chhattisgarh, Coastal Andhra Pradesh, Gujarat State, Jharkhand, Konkan & Goa, Madhya Pradesh, Maharashtra, North Interior Karnataka, Tamil Nadu Puducherry & Karaikal, Telangana and West Rajasthan.
- ❖ **Thunderstorm accompanied with lightning & gusty winds(30-40kmph)** likely at isolated places over East Rajasthan, Kerala & Mahe, Lakshadweep, Odisha, South Interior Karnataka and Uttarakhand.
- ❖ **Thunderstorm accompanied with Lightning** likely at isolated places over Assam & Meghalaya, Coastal Karnataka and Nagaland, Manipur, Mizoram and Tripura.
- ❖ **Hot and Humid weather** likely at isolated places over Coastal Andhra Pradesh.

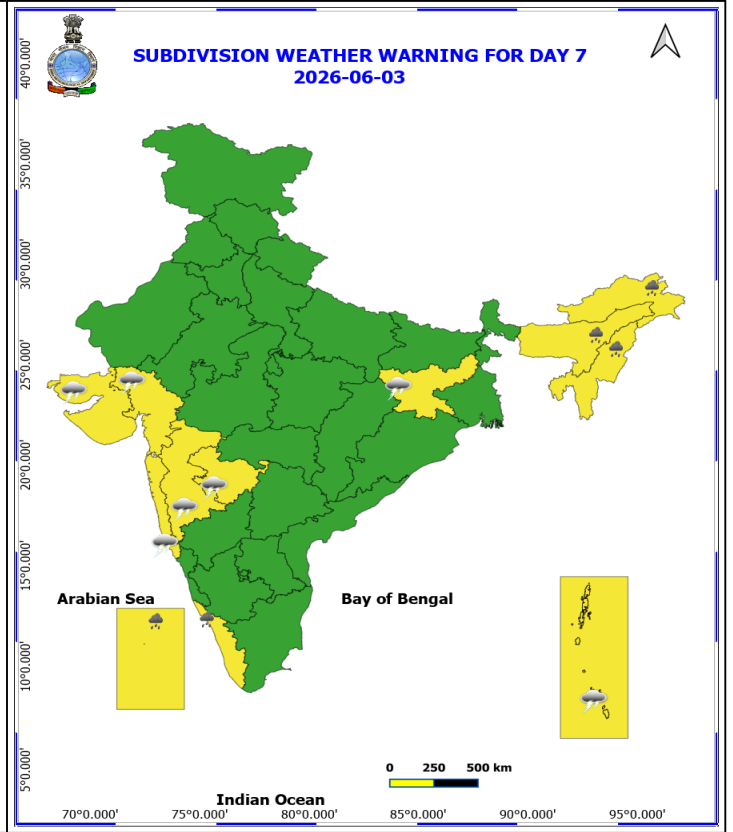
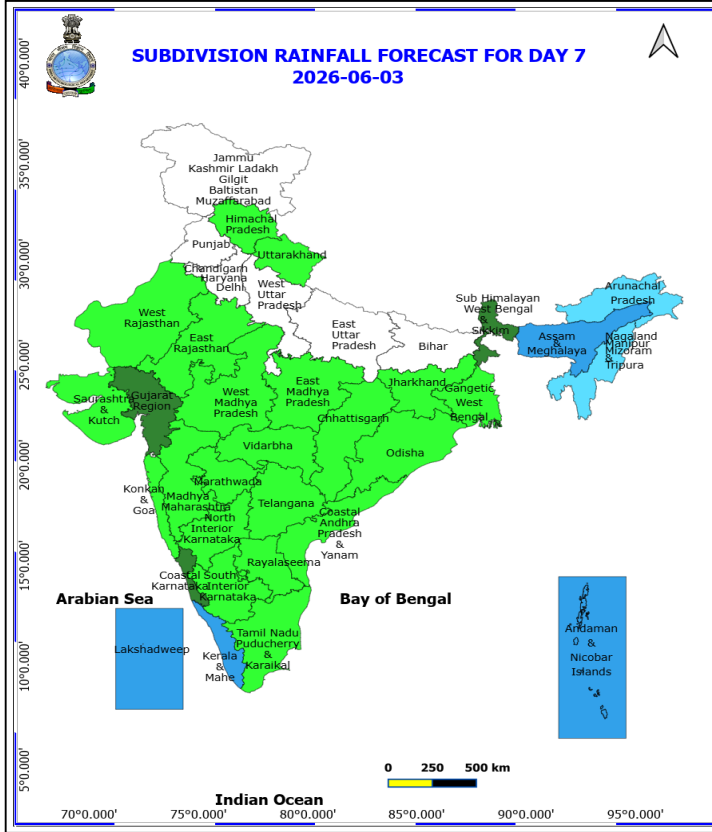
No Fishermen Warning



2 June (Day 6)

- ❖ **Heavy Rainfall** likely at isolated places over Arunachal Pradesh, Assam & Meghalaya, Gujarat Region, Kerala & Mahe, Lakshadweep and Nagaland, Manipur, Mizoram and Tripura.
- ❖ **Thunderstorm accompanied with lightning & gusty winds(40-50kmph)** likely at isolated places over Andaman & Nicobar Islands, Gujarat State, Jharkhand, Konkan & Goa, Madhya Maharashtra, Marathwada and West Rajasthan.
- ❖ **Thunderstorm accompanied with lightning & gusty winds(30-40kmph)** likely at isolated places over East Rajasthan and Odisha.

No Fishermen Warning



3 June (Day 7)

- ❖ **Heavy Rainfall** likely at isolated places over Arunachal Pradesh, Assam & Meghalaya, Kerala & Mahe, Lakshadweep and Nagaland, Manipur, Mizoram and Tripura.
- ❖ **Thunderstorm accompanied with lightning & gusty winds(40-50kmph)** likely at isolated places over Andaman & Nicobar Islands, Gujarat State, Jharkhand, Konkan & Goa, Madhya Maharashtra and Marathwada.
- ❖ **Thunderstorm accompanied with lightning & gusty winds(30-40kmph)** likely at isolated places over Odisha and Rajasthan.

No Fishermen Warning



Table-1

7 Days Rainfall Forecast

S.No.	Subdivision	28- May	29- May	30- May	31- May	1- Jun	2- Jun	3- Jun
		Day 1	Day 2	Day 3	Day 4	Day 5	Day 6	Day 7
1	ANDAMAN & NICOBAR ISLANDS	WS	WS	WS	WS	WS	WS	WS
2	ARUNACHAL PRADESH	SCT	SCT	SCT	SCT	FWS	FWS	FWS
3	ASSAM & MEHGHALAYA	FWS	SCT	SCT	FWS	FWS	FWS	WS
4	N. M. M. & T.	FWS	FWS	FWS	FWS	FWS	FWS	FWS
5	S.H. WEST BENGAL & SIKKIM	SCT	ISOL	ISOL	ISOL	ISOL	SCT	SCT
6	GANGETIC WEST BENGAL	WS	FWS	SCT	ISOL	ISOL	ISOL	ISOL
7	ODISHA	SCT	SCT	SCT	SCT	ISOL	ISOL	ISOL
8	JHARKHAND	SCT	SCT	SCT	SCT	ISOL	ISOL	ISOL
9	BIHAR	SCT	FWS	SCT	ISOL	ISOL	DRY	DRY
10	EAST UTTAR PRADESH	SCT	FWS	FWS	SCT	ISOL	DRY	DRY
11	WEST UTTAR PRADESH	SCT	FWS	FWS	SCT	ISOL	DRY	DRY
12	UTTARAKHAND	FWS	WS	FWS	SCT	SCT	ISOL	ISOL
13	HARYANA, CHD & DELHI	SCT	FWS	FWS	ISOL	DRY	DRY	DRY
14	PUNJAB	SCT	FWS	FWS	ISOL	DRY	DRY	DRY
15	HIMACHAL PRADESH	SCT	FWS	SCT	ISOL	ISOL	ISOL	ISOL
16	JAMMU AND KASHMIR AND LADAKH	FWS	SCT	ISOL	DRY	DRY	DRY	DRY
17	WEST RAJASTHAN	ISOL	ISOL	ISOL	ISOL	ISOL	ISOL	ISOL
18	EAST RAJASTHAN	ISOL	ISOL	SCT	SCT	ISOL	ISOL	ISOL
19	WEST MADHYA PRADESH	ISOL	SCT	SCT	FWS	SCT	ISOL	ISOL
20	EAST MADHYA PRADESH	ISOL	SCT	SCT	SCT	ISOL	ISOL	ISOL
21	GUJRAT REGION	DRY	DRY	ISOL	SCT	SCT	SCT	SCT
22	SAURASHTRA & KUTCH	DRY	DRY	ISOL	ISOL	ISOL	ISOL	ISOL
23	KONKAN & GOA	ISOL	ISOL	ISOL	ISOL	ISOL	ISOL	ISOL
24	MADHYA MAHARASHTRA	ISOL	ISOL	ISOL	ISOL	ISOL	ISOL	ISOL
25	MARATHWADA	ISOL	ISOL	ISOL	ISOL	ISOL	ISOL	ISOL
26	VIDARBHA	ISOL	ISOL	ISOL	ISOL	ISOL	ISOL	ISOL
27	CHATTISGARH	ISOL	ISOL	ISOL	ISOL	ISOL	ISOL	ISOL
28	COASTAL ANDHRA PRADESH	ISOL	ISOL	ISOL	ISOL	ISOL	ISOL	ISOL
29	TELANGANA	ISOL	ISOL	ISOL	ISOL	ISOL	ISOL	ISOL
30	RAYALASEEMA	ISOL	ISOL	ISOL	ISOL	ISOL	ISOL	ISOL
31	TAMILNADU & PUDUCHERRY	ISOL	ISOL	SCT	SCT	SCT	SCT	ISOL
32	COSTAL KARNATAKA	FWS	ISOL	ISOL	ISOL	ISOL	SCT	SCT
33	NORTH INTERIOR KARNATAKA	ISOL	ISOL	ISOL	ISOL	ISOL	ISOL	ISOL
34	SOUTH INTERIOR KARNATAKA	SCT	ISOL	SCT	ISOL	ISOL	ISOL	ISOL
35	KERALA	WS	FWS	FWS	WS	WS	WS	WS
36	LAKSHDWEEP	WS	WS	WS	WS	WS	WS	WS

Legend	Category	%Stations
WS	Widespread/Most Places	76-100
FWS	Fairly Widespread/Many Places	51-75
SCT	Scattered/ A Few Places	26-50
ISOL	Isolated Places	1-25
DRY	No Rain	0

*Red color warning does not mean "Red Alert" Red color warning means "Take Action"
Forecast and warning for any day is valid from 0830 hours IST of day till 0830 hours IST of next day
For more details kindly visit <https://mausam.imd.gov.in> or contact 011-2434-4599

(Service to the nation since 1875)

Fig. 1: Maximum Temperatures Dated 2026-05-28

Fig. 2: Departure of Maximum Temp. Dated 2026-05-28

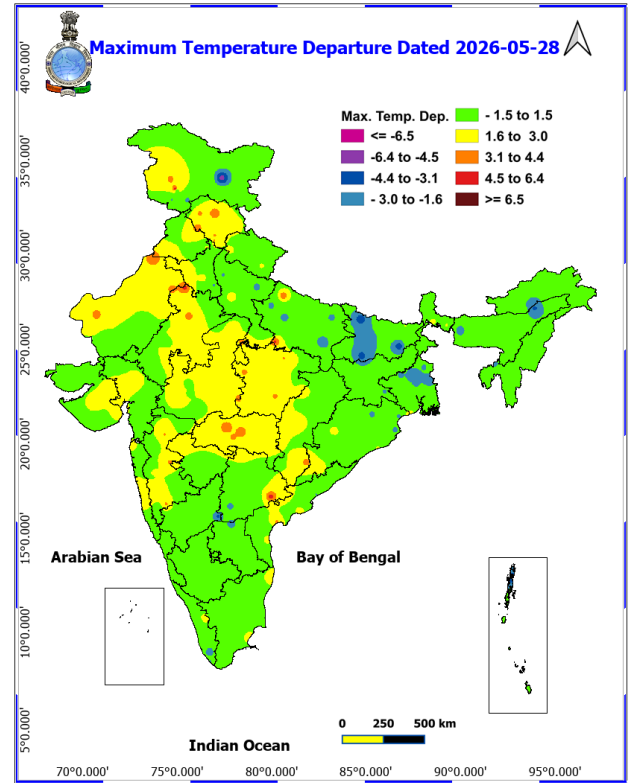
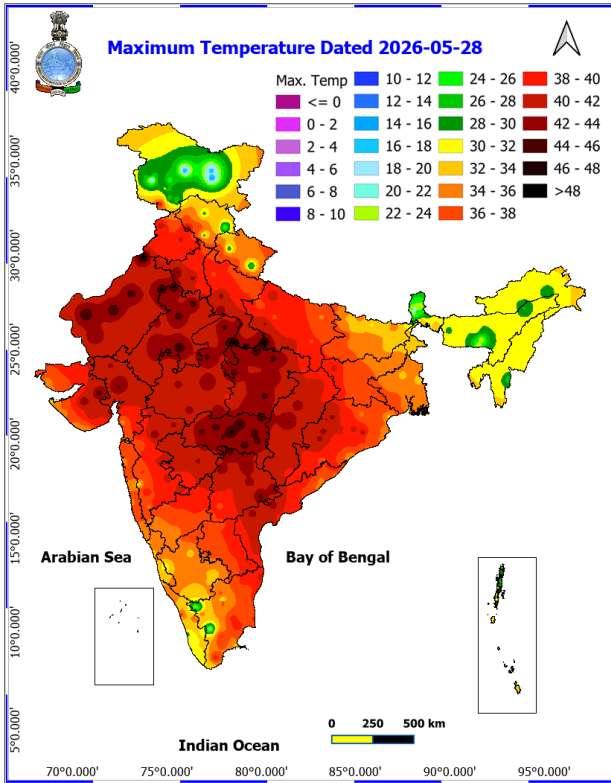
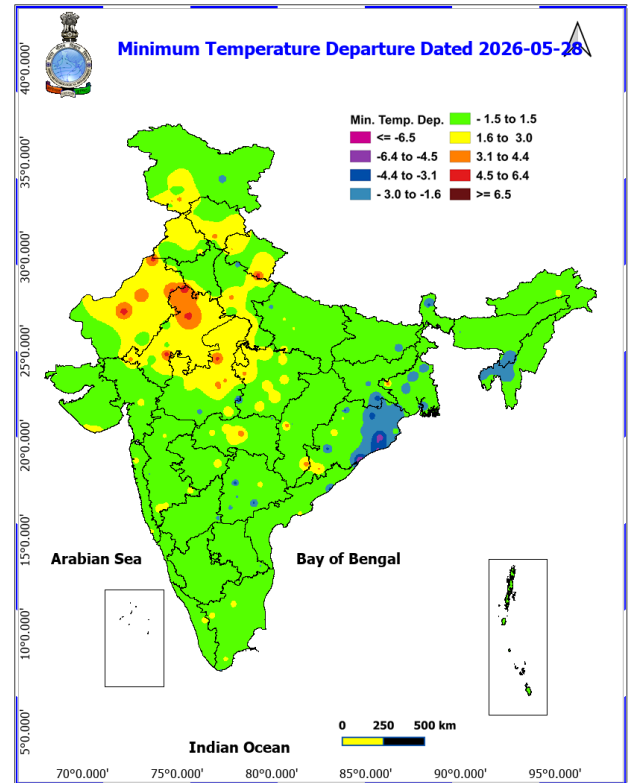
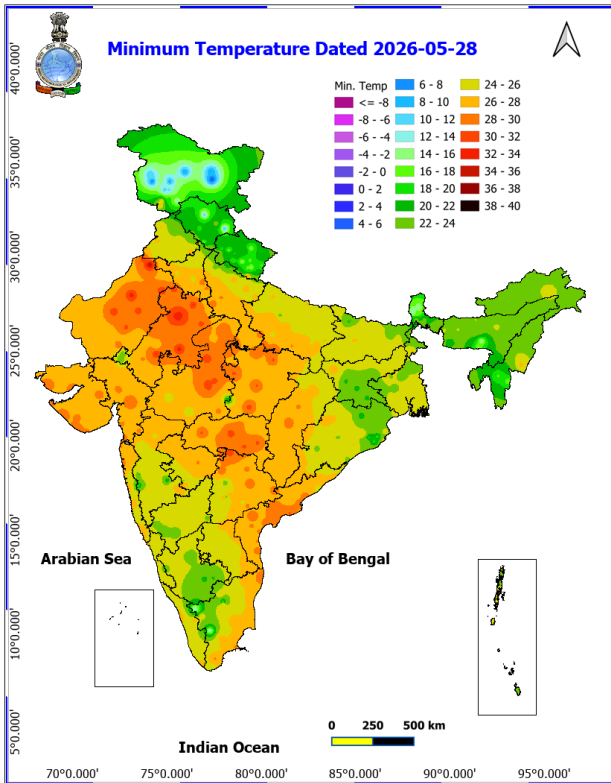
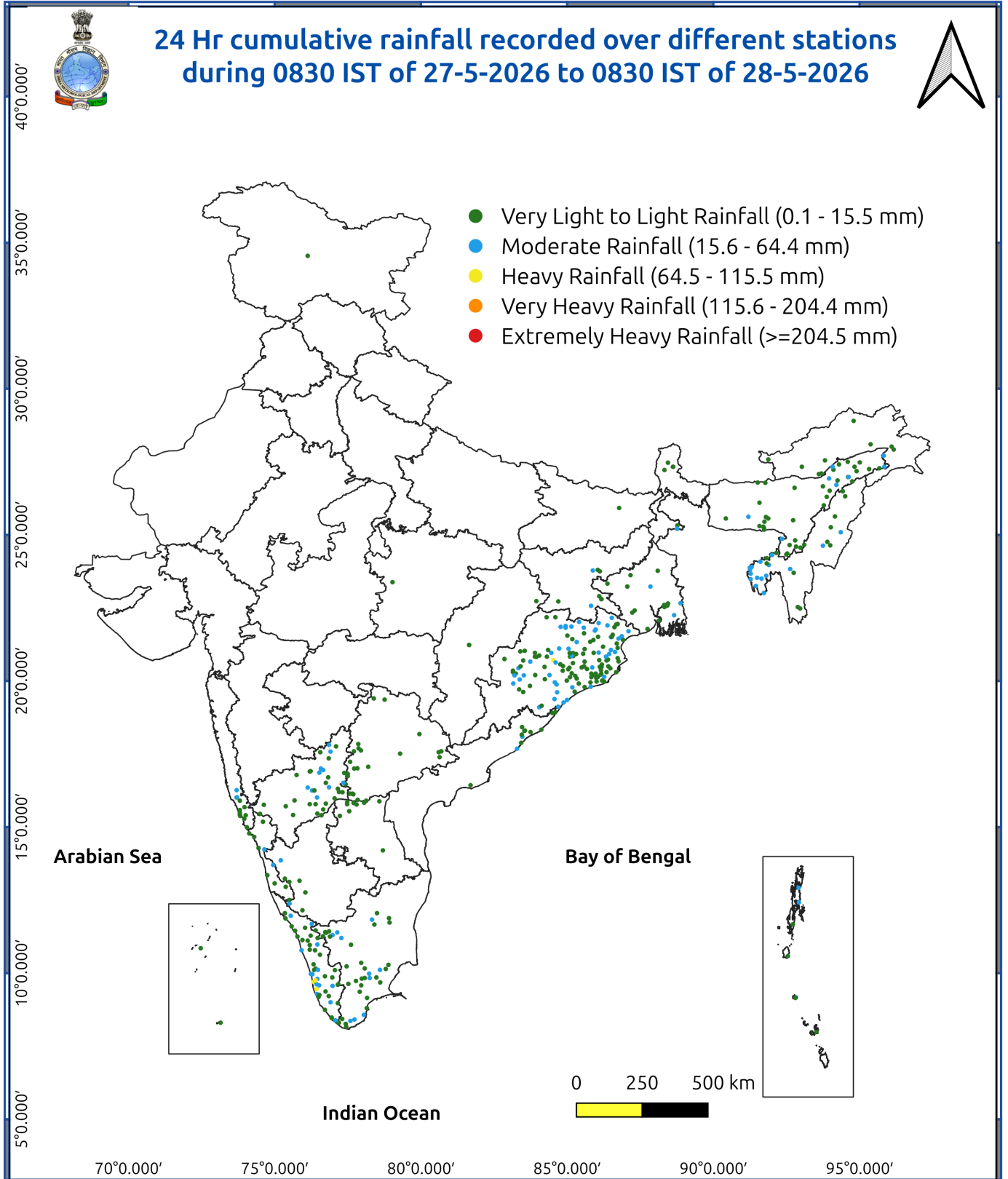


Fig. 3: Minimum Temperatures Dated 2026-05-28

Fig. 4: Departure of Minimum Temp. Dated 2026-05-28





Impact and Actions

Impact Expected & Action Suggested due to heavy/very heavy rainfall over

Isolated heavy rainfall likely over Arunachal Pradesh, Assam & Meghalaya on 28th May and during 01st – 3rd June; Nagaland, Manipur, Mizoram & Tripura on 28th May and during 31st May- 3rd June; Tamil Nadu, Puducherry & Karaikal during 28th -31st May; Kerala & Mahe during 28th -29th May and during 1st -3rd June; Lakshadweep during 1st-3rd June; South Interior Karnataka on 28th May; Andaman & Nicobar Islands during 29th-31st May; Gangetic West Bengal on 28th; Bihar on 29th; Odisha during 28th -30th May; Uttarakhand, West Uttar Pradesh on 29th; Punjab, Haryana, Chandigarh on 29th & 30th May; West Madhya Pradesh on 31st May; Gujarat Region during 31st May – 2nd June

Impact Expected

- Localized Flooding of roads, water logging in low lying areas and closure of underpasses mainly in urban areas.
- Occasional reduction in visibility due to heavy rainfall.
- Disruption of traffic in major cities due to water logging in roads leading to increased travel time.
- Minor damage to kutcha roads.
- Possibilities of damage to vulnerable structure.
- Localized Landslides/Mudslides/landslips/mudslips/landsinks/mudsinks.
- Damage to horticulture and standing crops in some areas due to inundation.
- It may lead to riverine flooding in some river catchments (for riverine flooding please visit Web page of CWC)

Action Suggested

- Check for traffic congestion on your route before leaving for your destination.
- Follow any traffic advisories that are issued in this regard.
- Avoid going to areas that face the water logging problems often.
- Avoid staying in vulnerable structure.

Impact expected and action suggested due to isolated thunderstorm with lightning/squally winds over

- Moderate to Severe Thunderstorm activity with squally wind speed likely over Northwest India, Central India and East India during 28th – 31st May.
- **Isolated Hailstorm activity** likely over Himachal Pradesh, Uttarakhand, Punjab, Haryana Chandigarh & Delhi, West Uttar Pradesh on 28th & 29th May and East Uttar Pradesh, Rajasthan Bihar on 29th; Madhya Pradesh on 29th & 30th May; Chhattisgarh on 28th May.

Impact expected:

- Breaking of tree branches, uprooting of large avenue trees. Large dead limbs blown from trees. Damage to Standing crops.
- Minor to Major damage to banana and papaya trees.
- Minor to major damage to power and communication lines due to breaking of branches.
- Strong wind/hail may damage plantation, horticulture and standing crops.
- Hail may injure people and cattle at open places.
- Partial damage to vulnerable structures due to strong winds.
- Minor damage to kutcha houses/walls and huts.
- Loose objects may fly.

Action suggested:

- People are advised to keep a watch on the weather for worsening conditions and be ready to move to safer places accordingly.
- Stay indoors, close windows & doors and avoid travel if possible.

***Red color warning does not mean "Red Alert" Red color warning means "Take Action"**

Forecast and warning for any day is valid from 0830 hours IST of day till 0830 hours IST of next day

For more details kindly visit <https://mausam.imd.gov.in> or contact 011-2434-4599

(Service to the nation since 1875)

- Take safe shelters; do not take shelter under trees.
- Do not lie on concrete floors and do not lean against concrete walls.
- Unplug electrical/ electronic appliances.
- Immediately get out of water bodies.
- Keep away from all the objects that conduct electricity.

Impact expected and action suggested due to Heat wave conditions:

- Heat wave to severe heat wave conditions likely to continue over parts of Central India during next 48 hours & over Northwest India during next 24 hours and abate thereafter.

Red alert Areas

- Very high likelihood of developing heat illness and heat stroke in all ages.
- Extreme care needed for vulnerable people.

Orange alert Areas

People who are either exposed to sun for a prolonged period or doing heavy work.

- High health concern for vulnerable people e.g. infants, elderly, people with chronic diseases.
- Avoid heat exposure– keep cool. Avoid dehydration.
- Drink sufficient water- even if not thirsty.
- Use ORS, homemade drinks like lassi, torani (rice water), lemon water, buttermilk, etc. to keep yourself hydrated.

Yellow alert Areas

- Moderate temperature & heat is tolerable for general public but moderate health concern likely for vulnerable people e.g. infants, elderly, people with chronic diseases.
- Avoid heat exposure.
- Wear lightweight, light colour, loose, cotton clothes.
- Cover your head, use a cloth, hat or umbrella.

Agromet advisories for various parts of the country

Agromet advisories for likely impact of Hailstorms

- In **North Interior Karnataka and Bihar** use hail nets or hail caps in fruit orchards and vegetable plants to protect them from mechanical damage.
- Ensure effective field drainage to prevent waterlogging. Undertake picking of matured fruits at the earliest. Keep the harvested produce in safe places.

Agromet advisories for likely impact of Heavy Rainfall

- In **Arunachal Pradesh**, ensure proper drainage in vegetable, maize, and nursery fields. InWRC paddy, keep drainage channels open to remove excess water from nursery beds. Cover newly sown nursery beds with polythene sheets or straw mulch.
- In **Assam**, undertake harvesting of *Boro* rice after current spells of heavy rain and store the already harvested produce in a safe place. Cover the rice nursery beds with thin polythene sheet. Ensure proper drainage arrangements for quick removal of excess water from rice nurseries, vegetables, banana, citrus and papaya fields.

***Red color warning does not mean "Red Alert" Red color warning means "Take Action"**

Forecast and warning for any day is valid from 0830 hours IST of day till 0830 hours IST of next day

For more details kindly visit <https://mausam.imd.gov.in> or contact 011-2434-4599

(Service to the nation since 1875)

- **Meghalaya**, harvest the mature banana fruits immediately during clear weather. Make necessary arrangements to remove excess rainwater from the maize, ginger, vegetable, banana and other orchard fields crop fields.
- In **Nagaland**, delay transplanting of brinjal in main field. For already transplanted seedlings, maintain proper drainage in and around the fields of maize, vegetables and orchard.
- In **Manipur**, ensure that ridges and bunds around rice fields are well constructed to maintain the required water level; provide adequate drainage to remove excess rain water from chilli, ginger, turmeric, banana and other crops.
- In **Mizoram**, create drainage channels surrounding the rice fields and utilize grass mulch to cover the seeds. Provide support to fruit-bearing or partially lodge plants/trees. Propping should be done to prevent maize plants from lodging.
- **Tripura** – undertake harvesting of mature Boro rice immediately and shift the harvested produce to a safe and dry place for storage.
- In **Sub-Himalayan West Bengal and Sikkim**, undertake harvesting of matured rice & maize after current spells of heavy rains and keep already harvested produce in a safe place. Ensure proper drainage in rice, maize, jute and vegetables. Postpone fresh sowing of okra.
- **Bihar**, withhold irrigation in standing crops. Prepare paddy nursery fields with proper drainage arrangements.
- In **Tamil Nadu**, maintain proper drainage to prevent water stagnation in cotton, rice nurseries, recently sown cumbu and vegetables,
- In **Kerala**, provide adequate drainage for banana, coconut, and other vegetables. Provide support to banana plants.
- **Lakshadweep**, provide adequate drainage in standing crop fields to prevent waterlogging.
- In **Interior Karnataka**, undertake harvesting of matured rice after current spells of rain, ensure proper drainage in paddy fields, arecanut and mango orchards. Provide staking to tomato plants.

Agromet advisories for likely impact of High temperatures/ Heat Waves

- In **Jammu & Kashmir** - apply light and frequent irrigation to the standing crops, use temporary shade nets to protect the fruit plants from high temperatures.
- **Himachal Pradesh**, apply irrigation to tomato and cucumber nursery as per requirement. Thatch the vegetable nursery plants with grass to conserve moisture.
- **Uttarakhand**, carry out hoeing and weeding in sugarcane; use trash mulch. Apply irrigation to maize, tomato and brinjal as per requirement and cover the soil with mulch.
- In **Punjab**, apply light and frequent irrigation to vegetable, moong fruit plants orchards and onion nurseries.
- In **Haryana**, maintain adequate irrigation in standing sugarcane, cotton and summer fodder crops. Complete paddy nursery preparation with assured irrigation facilities and adopt mulching/moisture conservation practices to reduce water stress in newly sown crops
- In **Uttar Pradesh**, provide frequent irrigation and mulching for standing crops such as maize, green gram, black gram, sugarcane, sunflower, vegetables, and fruit plants such as mango, banana, and papaya.
- In **Rajasthan**, apply need-based irrigation to green gram and summer cucurbit crops such as bottle gourd, pumpkin, ridge gourd, cucumber, bitter melon, and summer ladyfinger, as well as to young fruit plants such as mango, amla, pomegranate, wood apple, and plum. Undertake soil mulching/mulching with straw/polythene to reduce water loss by evaporation.
- In **Jharkhand**, provide light at frequent intervals for pulses and vegetables.
- In **Odisha** - Provide light irrigation to *Boro* paddy, summer maize, green gram, black gram, groundnut, and vegetable fields. Ensure adequate soil moisture is maintained in mango and cashew crops.
- In **Madhya Pradesh**, apply light irrigation to maize, *moong*, *urd*, groundnut, and vegetable crops as required.
- In **Chhattisgarh** - Apply light irrigation after weeding and hoeing in *rabi* maize, banana, and papaya plantations. Complete harvesting of wheat and chickpea, and ensure safe storage.
- In **Vidarbha**, provide light and frequent irrigation to sugarcane, vegetables and orchards during morning or evening hours, with increased frequency during critical growth stages; use organic or straw mulch in vegetables and orchards; cover banana bunches with leaves; and use shade nets in newly planted banana plantations.
- In **Telangana**, provide irrigation to mango orchards and vegetable crops, as required.
- In **Coastal Andhra Pradesh**, apply light irrigation to summer crops and vegetables to maintain soil moisture. Apply mulching to conserve soil moisture in the standing crops.

Agromet advisories for likely impact of Thunderstorm / Gusty Winds

*Red color warning does not mean "Red Alert" Red color warning means "Take Action"
Forecast and warning for any day is valid from 0830 hours IST of day till 0830 hours IST of next day
For more details kindly visit <https://mausam.imd.gov.in> or contact 011-2434-4599
(Service to the nation since 1875)



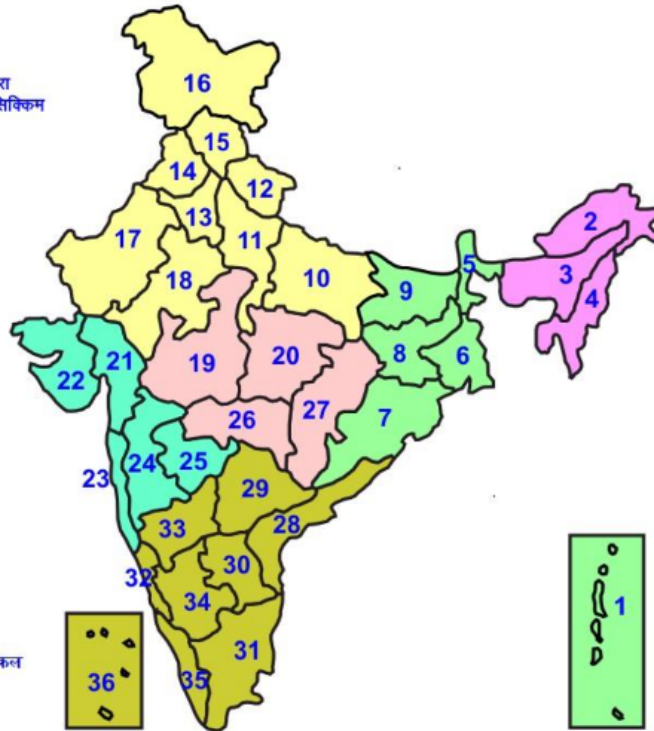
- Shift the harvested produce in safer places or cover the produce with tarpaulin sheets in the fields. Tie the harvested crops securely and cover them to minimize the risk of displacement from strong surface winds.
- Provide mechanical support to horticultural crops and staking or support to vegetables and young fruit plants / fruit-bearing plants to avoid lodging due to strong winds.

Livestock / Poultry / Fisheries

- Keep the animals inside the shed during hailstorms/ heavy rainfall and provide them with balanced feed.
- Store feed and fodder in a safe place to prevent spoilage.
- Construct an outlet with proper netting around the ponds to drain excess water, thereby preventing fish from escaping in the event of overflow.
- In regions with high temperatures and heat waves, provide clean, hygienic, and ample drinking water for animals, and cover the roofs of poultry sheds with grass to reduce the adverse effects.

LEGENDS

- 1 अंडमान और निकोबार द्वीप समुह
- 2 अरुणाचल प्रदेश
- 3 असम और मेघालय
- 4 नागालैंड मनीपुर मीजोरम और त्रिपुरा
- 5 उप हिमालय पश्चिम बंगाल एवं सिक्किम
- 6 पश्चिम बंगाल
- 7 ओडिसा
- 8 झारखंड
- 9 बिहार
- 10 पूर्वी उत्तर प्रदेश
- 11 पश्चिम उत्तर प्रदेश
- 12 उत्तराखंड
- 13 हरियाणा चंडिगढ़ एवं दिल्ली
- 14 पंजाब
- 15 हिमाचल प्रदेश
- 16 जम्मू एवं कश्मीर एवं लद्दाख
- 17 पश्चिम राजस्थान
- 18 पूर्वी राजस्थान
- 19 पश्चिम मध्य प्रदेश
- 20 पूर्वी मध्य प्रदेश
- 21 गुजरात क्षेत्र
- 22 सौराष्ट्र एवं कच्छ
- 23 कोंकण एवं गोवा
- 24 मध्य महाराष्ट्र
- 25 मराठावाडा
- 26 विदर्भ
- 27 छत्तीसगढ़
- 28 तटीय आंध्र प्रदेश एवं चन्नम
- 29 तेलंगाना
- 30 रायलसीमा
- 31 तमिलनाडु, पुदुचेरी एवं कराईकल
- 32 तटिय कर्नाटक
- 33 आंतरिक उत्तरी कर्नाटक
- 34 आंतरिक दक्षिणी कर्नाटक
- 35 केरल एवं माहे
- 36 लक्षद्वीप



1. Andaman & Nicobar Islands
2. Arunachal Pradesh
3. Assam & Meghalaya
4. Nagaland, Manipur, Mizoram & Tripura
5. Sub-Himalayan West Bengal & Sikkim
6. Gangetic West Bengal
7. Orissa
8. Jharkhand
9. Bihar
10. East Uttar Pradesh
11. West Uttar Pradesh
12. Uttarakhand
13. Haryana, Chd & Delhi
14. Punjab
15. Himachal Pradesh
16. Jammu & Kashmir and Ladakh
17. West Rajasthan
18. East Rajasthan
19. West Madhya Pradesh
20. East Madhya Pradesh
21. Gujarat
22. Saurashtra
23. Konkan & Goa
24. Madhya Maharashtra
25. Marathawada
26. Vidharbha
27. Chhattisgarh
28. Coastal Andhra Pradesh & Yanam
29. Telangana
30. Rayalaseema
31. Tamilnadu, Puducherry & Karaikal
32. Coastal Karnataka
33. North Interior Karnataka
34. South Interior Karnataka
35. Kerala & Mahe
36. Lakshadweep

SPATIAL DISTRIBUTION (% of Stations reporting)

% Stations	Category	% Stations	Category
76-100	Widespread (WS/ Most Places)	26-50	Scattered (SCT/ A Few Places)
51-75	Fairly Widespread (FWS/ Many Places)	1-25	Isolated (ISOL)

Subdivision Colour

- NO WARNING
- WATCH (BE UPDATED)
- ALERT (BE PREPARED TO TAKE ACTION)
- WARNING (TAKE ACTION)

Probabilistic Forecast

Terms	Probability of Occurrence (%)
Unlikely	< 25
Likely	25 - 50
Very Likely	50 - 75
Most Likely	> 75

- | | | | |
|--------------------------|-----------------|----------------------|--------------------|
| Heavy Rain | Very Heavy Rain | Extremely Heavy Rain | Heavy Snow |
| Thunderstorm & Lightning | Hailstorm | Dust Storm | Dust Raising Winds |
| Strong surface winds | Heat Wave | Hot Day | Warm Night |
| Cold Wave | Cold Day | Ground Frost | Fog |
| Hot & Humid | | | |

*Red color warning does not mean "Red Alert" Red color warning means "Take Action"

Forecast and warning for any day is valid from 0830 hours IST of day till 0830 hours IST of next day

For more details kindly visit <https://mausam.imd.gov.in> or contact 011-2434-4599

(Service to the nation since 1875)

LEGENDS

WARNING

WARNING (TAKE ACTION)
ALERT (BE PREPARED)
WATCH (BE UPDATED)
NO WARNING (NO ACTION)

Probabilistic Forecast

Terms	Probability of Occurrence (%)
Unlikely	< 25
Likely	25 - 50
Very Likely	50 - 75
Most Likely	> 75



Heavy: 64.5 to 115.5 mm/cm *
Very Heavy: 115.6 to 204.4 mm/cm*
Extremely Heavy: > 204.4 mm/cm *



When maximum temperature of a station reaches $\geq 40^{\circ}\text{C}$ for plains and $\geq 30^{\circ}\text{C}$ for hilly regions
(a) Based on Departure from normal

Heat Wave: Maximum Temperature Departure from normal 4.5°C to 6.4°C .
Severe Heat Wave: Maximum Temperature Departure from normal $\geq 6.5^{\circ}\text{C}$

(b). Based on Actual maximum temperature

Heat Wave: When actual maximum temperature $\geq 45^{\circ}\text{C}$.
Severe Heat Wave: When actual maximum temperature $\geq 47^{\circ}\text{C}$

(c). Criteria for heat wave for coastal stations

When maximum temperature departure is $> 4.5^{\circ}\text{C}$ from normal. Heat Wave may be described provided maximum temperature $\geq 37^{\circ}\text{C}$



When maximum temperature remains 40°C

Warm Night: When minimum temperature departure 4.5°C to 6.4°C .
Severe Warm Night: When minimum temperature departure $> 6.4^{\circ}\text{C}$.



When minimum temperature of a station $\leq 10^{\circ}\text{C}$ for plains and $\leq 0^{\circ}\text{C}$ for hilly regions.

(a). Based on departure

Cold Wave: Minimum Temperature Departure from normal -4.5°C to -6.4°C .
Severe Cold Wave: Minimum Temperature Departure from normal $\leq -6.5^{\circ}\text{C}$

(b) Based on actual Minimum Temperature (for Plains only)

Cold Wave : When Minimum Temperature is $\leq 4.0^{\circ}\text{C}$
Severe Cold Wave: When Minimum Temperature is $\leq 2.0^{\circ}\text{C}$

(c) For Coastal Stations

When Minimum Temperature departure is $\leq -4.5^{\circ}\text{C}$ & actual Minimum Temperature is $\leq 15^{\circ}\text{C}$



When minimum temperature of a station $\leq 10^{\circ}\text{C}$ for plains and $\leq 0^{\circ}\text{C}$ for hilly regions
Based on departure

Cold Day: Maximum Temperature Departure from normal -4.5°C to -6.4°C .
Severe Cold Day: Maximum Temperature Departure from normal $\leq -6.5^{\circ}\text{C}$



Phenomenon of small droplets suspended in air and the horizontal visibility $< 1\text{km}$

Moderate Fog: When the visibility between 500-200 metres
Dense Fog: when the visibility between 50- 200 metres
Very Dense Fog: when the visibility < 50 metres



Sudden electrical discharges manifested by a flash of light (Lightning) and a sharp rumbling sound (thunder)



An ensemble of particles of dust or sand energetically lifted to great heights by a strong and turbulent wind.



Ice deposits on ground

Air temperature $\leq 4^{\circ}\text{C}$ (over Plains)



A strong wind that rises suddenly, lasts for atleast 1 minute.

Moderate: Wind speed 52-61 kmph
Severe: Wind speed 62-87 kmph
Very Severe: Wind speed > 87 kmph



Effect of various waves in the sea over specific area

Rough to very rough: Wind speed 41-62 kmph (22-33 knots) & Wave height 2.5-6 metre
High to very high: Wind speed 63-117 kmph (34-63 knots) & Wave height 6-14 metre
Phenomenal: Wind speed > 117 kmph (> 63 knots) & Wave height > 14 metre



Cyclonic Storm: Wind speed 62-87 kmph (34-47 knots)
Severe Cyclonic Storm: Wind speed 88-117 kmph (48-63 knots)
Very Severe Cyclonic Storm: Wind speed 118-165 kmph (64 - 89 knots)
Extremely Severe Cyclonic Storm: Wind speed 166-220 kmph (90 -119 knots)
Super Cyclone Storm: Wind speed > 220 kmph (> 119 knots)

*Red color warning does not mean "Red Alert" Red color warning means "Take Action"

Forecast and warning for any day is valid from 0830 hours IST of day till 0830 hours IST of next day

For more details kindly visit <https://mausam.imd.gov.in> or contact 011-2434-4599

(Service to the nation since 1875)