

2026-03-14

Time of Issue: 14:28:00 hours IST
(Mid-Day)

ALL INDIA WEATHER SUMMARY AND FORECAST BULLETIN

Significant Weather Features

Northwest India:

- **Isolated light rainfall/snowfall** likely over Western Himalayan region on 14th March. Rainfall is likely to increase to **scattered to fairly widespread over the region during 15th-20th March. Thunderstorm, lightning & gusty winds speed reaching (30-50 kmph)** likely over Jammu-Kashmir-Ladakh on 15th, 16th, 18th & 19th; Himachal Pradesh during 15th-19th and Uttarakhand during 14th-16th & on 18th, 19th March.
- **Isolated light rainfall with thunderstorm, lightning & gusty winds speed reaching (30-50 kmph)** also likely over Punjab, Haryana Chandigarh during 15th-19th; Uttar Pradesh on 15th & 16th; West Rajasthan on 14th, 15th, 18th & 19th; East Rajasthan on 18th & 19th March.
- Isolated **hailstorm** activity likely over Jammu-Kashmir-Ladakh, Himachal Pradesh on 15th; Uttarakhand, Punjab, Haryana, Chandigarh & East Uttar Pradesh on 15th & 16th; West Uttar Pradesh on 16th March.

Northeast India:

- **Fairly widespread to widespread** light/moderate rainfall with **thunderstorm & lightning** likely over Arunachal Pradesh and Assam & Meghalaya during next 5-6 days and Nagaland, Manipur, Mizoram & Tripura on 14th & 15th; with **gusty winds speed reaching (30-50 kmph)** over Arunachal Pradesh, Assam & Meghalaya during 14th-16th and Nagaland, Manipur, Mizoram & Tripura on 14th March.
- Isolated **heavy rainfall/snowfall** very likely over Arunachal Pradesh during 14th-16th March.
- Isolated **heavy rainfall** very likely over Nagaland on 14th; Assam & Meghalaya on 15th March with **heavy to very heavy rainfall** over Assam on 14th & 16th March.

East & Central India:

- **Fairly widespread to widespread** light/moderate rainfall with **thunderstorm, lightning & gusty winds speed reaching (30-50 kmph)** likely over Sub-Himalayan West Bengal & Sikkim during 14th-18th March.
- **Isolated to Scattered** light/moderate rainfall with **thunderstorm, lightning & gusty winds speed reaching (30-50 kmph)** likely over West Madhya Pradesh on 15th & 18th; East Madhya Pradesh, Vidarbha & Chhattisgarh during 15th-18th; Jharkhand, Gangetic West Bengal & Bihar during 15th-17th and Odisha during 14th-18th March.
- **Thundersquall** (wind speed reaching 50-60 kmph gusting to 70 kmph) very likely at isolated places over Jharkhand on 16th; Chhattisgarh on 16th & 17th; Vidarbha on 17th & 18th March.
- Isolated **heavy rainfall** very likely over Sub-Himalayan West Bengal & Sikkim on 14th & 16th March.

South Peninsular India:

- **Isolated** light/moderate rainfall with **thunderstorm, lightning & gusty winds speed reaching (30-40 kmph)** likely over Telangana during 15th-18th; Coastal Andhra Pradesh & Yanam on 16th; South Interior Karnataka on 17th & 18th; with **thunderstorm & lightning** over Kerala & Mahe on 15th & 16th; Coastal Andhra Pradesh & Yanam, Rayalaseema, Tamil Nadu on 17th & 18th March.

West India:

- **Isolated** light/moderate rainfall with **thunderstorm & lightning** likely over Gujarat Region on 18th & 19th March.

Forecast of maximum/day temperatures:

- No significant change in maximum temperatures likely over Northwest India during next 24 hours and gradual fall by 2-4°C during subsequent 6 days.
- No significant change in maximum temperatures likely over Vidarbha, Chhattisgarh & East India during next 2 days and gradual fall by 2-4°C during subsequent 5 days.

*Red color warning does not mean "Red Alert" Red color warning means "Take Action"

Forecast and warning for any day is valid from 0830 hours IST of day till 0830 hours IST of next day

For more details kindly visit <https://mausam.imd.gov.in> or contact 011-2434-4599

(Service to the nation since 1875)



- Gradual fall in maximum temperature by 2-4°C likely over Gujarat State and Madhya Pradesh during next 5 days and no significant change during subsequent 2 days.
- No significant change in maximum temperatures likely over Maharashtra during next 24 hours; gradual fall by 2-4°C during subsequent 2 days and no significant change thereafter .
- No significant change in maximum temperatures likely over South Peninsular India during next 2 days and gradual fall by 3-4°C during subsequent 5 days .

Heat Wave, Hot & Humid weather and Warm Night Warnings:

- **Heat wave conditions** likely in isolated pockets over Vidarbha, Jharkhand and Odisha on 14th March.
- **Hot & humid conditions** very likely to prevail in isolated pockets over Konkan & Goa and Kerala & Mahe on 14th March.

Main Weather Observations:

❖ **Rainfall distribution** (from 0830 hours IST of yesterday to 0830 hours IST of today): **at most places** over Arunachal Pradesh, Assam & Meghalaya and Sub Himalayan West Bengal & Sikkim; **at many places** over Nagaland, Manipur, Mizoram & Tripura; **at isolated places** over Andaman & Nicobar Islands, Bihar, Jammu-Kashmir-Ladakh-Gilgit-Baltistan-Muzaffarabad and Kerala & Mahe; **Dry** over rest of the country.

❖ **Significant rainfall recorded(in cm)** (from 0830 hours IST of yesterday to 0830 hours IST of today): **Assam & Meghalaya**: Rangia (dist Kamrup (rural)), Tamulpur (dist Tamulpur), Tamulpur ARG (dist Baksa) 11 Each; Nalbari/Pagladia (dist Nalbari) 10; Melabazar/Matunga (dist Nalbari) 8; Puthimari (dist Kamrup (rural)), Goibargaon (dist Baksa) 7 Each; Majbat (dist Udalguri), Dhemaji (dist Dhemaji), Dalgaon ARG (dist Darrang), Hazo ARG (dist Kamrup (rural)) 6 Each; Manikpur ARG (dist Bongaigaon), Bajali AWS (dist Bajali) 5 Each; Drf (dist Baksa), Amraghat ARG (dist Cachar), Lakhipur ARG (dist Cachar), Laharighat ARG (dist Morigaon), Dhubri IMD (dist Dhubri), Dhekiajuli (dist Sonitpur), Tezpur (dist Sonitpur), Silchar (dist Cachar) 4 Each; D/Mohanbari AP (dist Dibrugarh), Jorhat (dist Jorhat), N.lakhimpur/Lilabari (dist Lakhimpur), Guwahati ARG (dist Kamrup Metropolitan), Sualkuchi ARG (dist Kamrup (rural)), Marigaon ARG (dist Morigaon) 3 Each; **Sub Himalayan West Bengal & Sikkim**: Mangan (dist Mangan) 8; Jayanti ARG (dist Alipurduar), Singhik (dist Mangan) 7 Each; Kumargram Tea Estate (dist Alipurduar), Newlands Tea Garden (dist Alipurduar), Sankos Tea Estate (dist Alipurduar) 6 Each; Maynaguri College (dist Jalpaiguri) 5; Falakata (dist Alipurduar) 4; Shipgyar (dist Mangan), Raidak Tea Estate (dist Alipurduar) 3 Each; **Nagaland, Manipur, Mizoram & Tripura**: Lembuchhera (dist West Tripura) 7; Udaipur (dist Gomati), Kailashahar AP (dist Unakoti) 6 Each; Dharmanagar/panisagar (dist North Tripura), Agartala AP (dist West Tripura), Amarpur (dist Gomati), Kanchanpur (dist North Tripura) 4 Each; Chhamonu (dist Dhalai), Khowai AWS (dist Khowai), Bagafa (dist South Tripura), Khowai (dist Khowai) 3 Each; **Arunachal Pradesh**: Naharlagun (dist Papumpara), Pasighat AP (dist East Siang) 6 Each; Itanagar (dist Papumpara), Oyan ARG (dist East Siang) 4 Each; Daparijo (dist Upper Subansiri), Deomali AWS (dist Tirap), Ziro (dist Lower Subansiri) 3 Each.

❖ **Heavy Rainfall observed** (from 0830 hours IST of yesterday to 0830 hours IST of today): **Heavy rain** at isolated places over Assam & Meghalaya, Nagaland, Manipur, Mizoram & Tripura and Sub Himalayan West Bengal & Sikkim.

❖ **Minimum Temperature Departures (as on 14-03-2026): markedly above normal(> 5.1°C)** at few places over Bihar and West Rajasthan; at isolated places over Gangetic West Bengal, Uttarakhand, Himachal Pradesh and Madhya Maharashtra. **appreciably above normal(3.1°C to 5.0°C)** at most places over West Uttar Pradesh; at few places over Andaman & Nicobar Islands, Sub Himalayan West Bengal & Sikkim, Odisha, East Uttar Pradesh, Jammu-Kashmir-Ladakh-Gilgit-Baltistan-Muzaffarabad, East Rajasthan, Gujarat Region and Marathwada; at isolated places over Haryana-Chandigarh-Delhi, Punjab, West Madhya Pradesh, Saurashtra & Kutch and Vidarbha. **above normal(1.6°C to 3.0°C)** at many places over Konkan & Goa and Lakshadweep; at few places over Nagaland, Manipur, Mizoram & Tripura, Chhattisgarh and Coastal Karnataka; at isolated places over Assam & Meghalaya, Coastal Andhra Pradesh & Yanam, Telangana, Tamil Nadu, Puducherry & Karaikal, North Interior Karnataka and Kerala & Mahe. **near normal(-1.5°C to 1.5°C)** at many places over East Madhya Pradesh; at most places over Arunachal Pradesh, Jharkhand and Kerala & Mahe; at few places over Rayalaseema, South Interior Karnataka and Lakshadweep. **The lowest minimum temperature** of 12.1°C was reported at PANTNAGAR (UTTARAKHAND) over the Plains of India.

❖ **Maximum Temperature Departures (as on 13-03-2026): markedly above normal(> 5.1°C)** at many places over Jharkhand, Himachal Pradesh and Jammu-Kashmir-Ladakh-Gilgit-Baltistan-Muzaffarabad; at few places over Uttarakhand, West Rajasthan, Vidarbha and Chhattisgarh; at isolated places over Odisha, East Uttar Pradesh, West Uttar Pradesh, East Rajasthan, West Madhya Pradesh and East Madhya Pradesh. **appreciably above normal(3.1°C to 5.0°C)** at many places over Punjab and Saurashtra & Kutch; at most places over Gujarat Region; at few places over Haryana-Chandigarh-Delhi, Konkan & Goa and Marathwada; at isolated places over Gangetic West Bengal, Bihar, Madhya Maharashtra and Telangana. **above normal(1.6°C to 3.0°C)** at few places over Coastal Karnataka and North Interior Karnataka; at isolated places over Coastal Andhra Pradesh & Yanam, Rayalaseema, Tamil Nadu, Puducherry & Karaikal and Kerala & Mahe. **near normal(-1.5°C to 1.5°C)** at many places over Nagaland, Manipur, Mizoram & Tripura; at most places over Andaman & Nicobar Islands, South Interior Karnataka and Lakshadweep; at few places over Sub Himalayan West Bengal & Sikkim; at isolated places over Assam & Meghalaya. **The highest maximum temperature** of 41.8°C was reported at AMRAOTI (MAHARASHTRA).

*Red color warning does not mean "Red Alert" Red color warning means "Take Action"

Forecast and warning for any day is valid from 0830 hours IST of day till 0830 hours IST of next day

For more details kindly visit <https://mausam.imd.gov.in> or contact 011-2434-4599

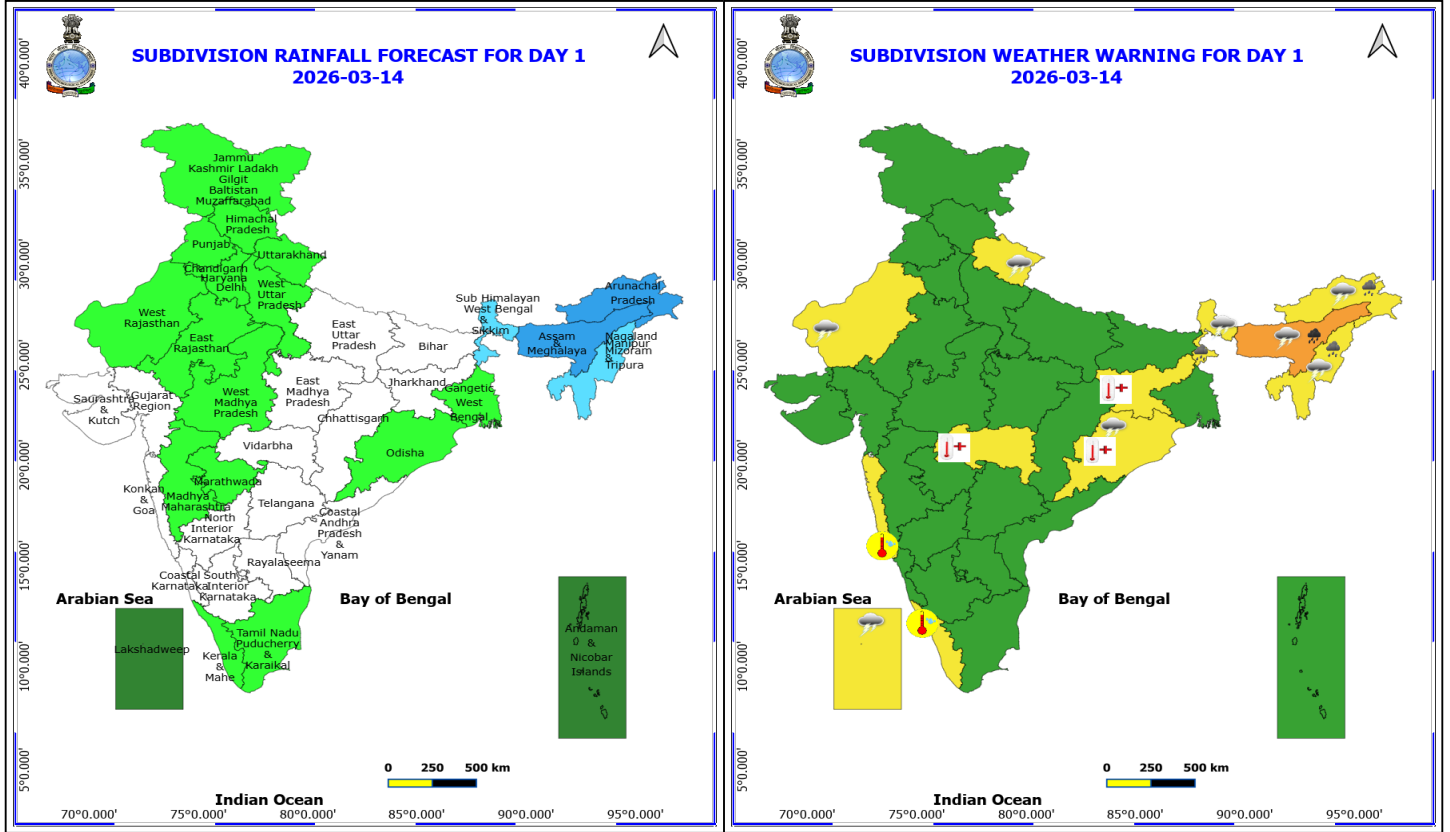
(Service to the nation since 1875)

Meteorological Analysis (Based on 0830 hours IST)

- The **upper air cyclonic circulation** over Northeast Assam & neighbourhood at 1.5 km above mean sea level persists.
- The **trough** in lower level westerlies with its axis at 5.8 km above mean sea level roughly along Long. 93°E to the north of Lat. 22°N persists.
- The **trough** from central parts of northeast Uttar Pradesh to South Interior Odisha across Chhattisgarh at 0.9 km above mean sea level persists.
- The **trough** from Marathwada to South Interior Karnataka across North Interior Karnataka at 0.9 km above mean sea level.
- **Subtropical westerly Jet Stream** with core winds of the order of 110 knots at 12.6 km above mean sea level prevails over North India.
- The **Western Disturbance** as a trough in middle tropospheric westerlies with its axis at 5.8 km above mean sea level now runs roughly along Long. 60°E to the north of Lat. 32°N.
- The **upper air cyclonic circulation** over Comorin area & neighbourhood and extends upto 1.5 km above mean sea level has become less marked.
- A **fresh Western Disturbance** is likely to affect northwest India from night of 17th March 2026

Weather Outlook for subsequent 3 days

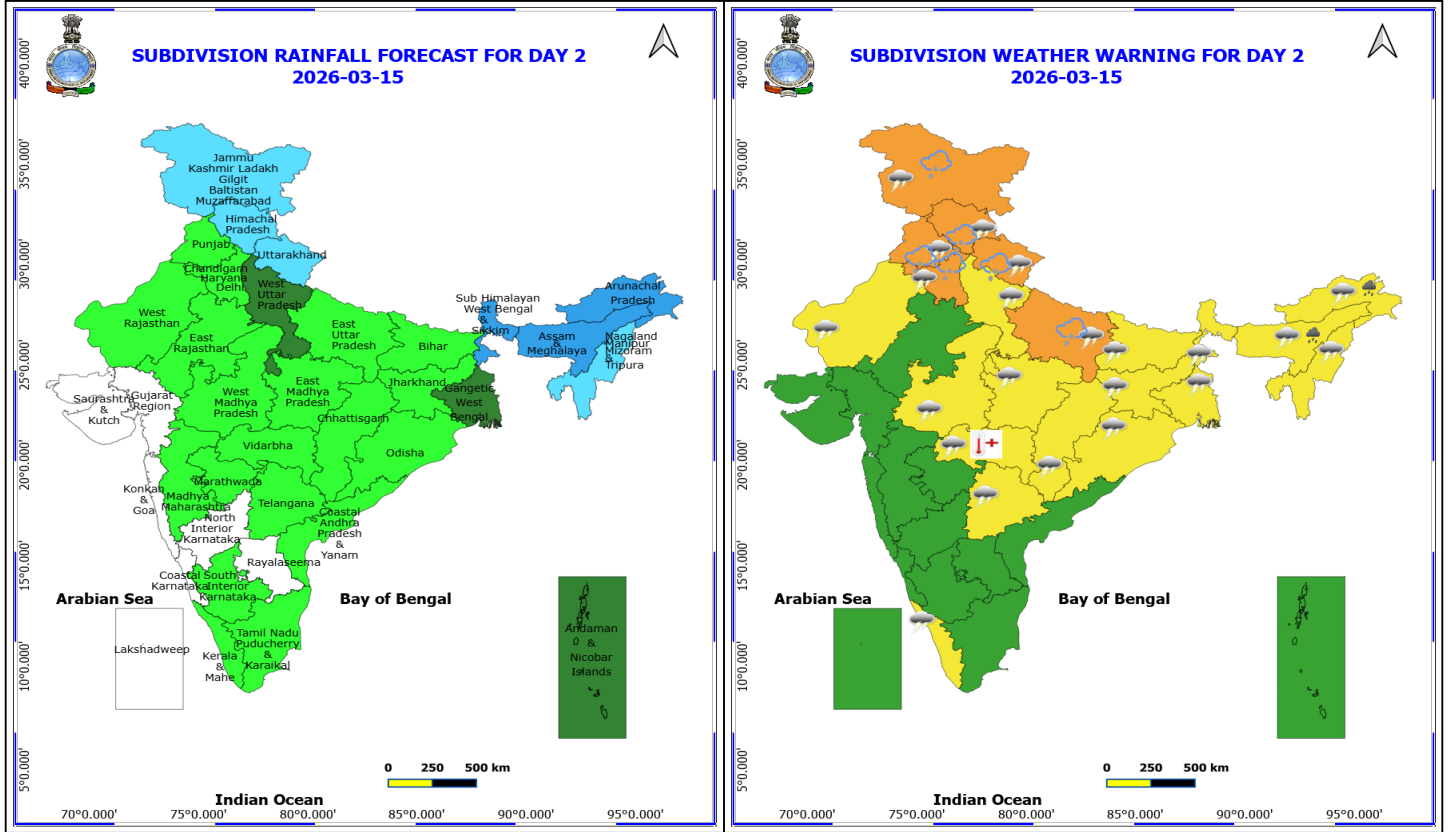
Scattered to fairly widespread rainfall activity likely over Northwest India, East India, Northeast India and eastern parts of South Peninsular India.



14 March (Day 1)

- ❖ **Heavy to Very Heavy Rainfall** very likely at isolated places over Assam & Meghalaya.
- ❖ **Heavy Rainfall** very likely at isolated places over Arunachal Pradesh, Nagaland, Manipur, Mizoram and Tripura and Sub Himalayan West Bengal & Sikkim.
- ❖ **Thunderstorm accompanied with lightning & gusty winds(40-50kmph)** very likely at isolated places over Assam & Meghalaya and Sub Himalayan West Bengal & Sikkim.
- ❖ **Thunderstorm accompanied with lightning & gusty winds(30-40kmph)** very likely at isolated places over Arunachal Pradesh, Nagaland, Manipur, Mizoram and Tripura, Odisha, Uttarakhand and West Rajasthan.
- ❖ **Thunderstorm accompanied with Lightning** very likely at isolated places over Lakshadweep and Nagaland, Manipur, Mizoram and Tripura.
- ❖ **Heat Wave conditions** very likely at isolated places over Jharkhand, Odisha and Vidarbha.
- ❖ **Hot and Humid weather** very likely at isolated places over Kerala & Mahe and Konkan & Goa.

No Fishermen Warning

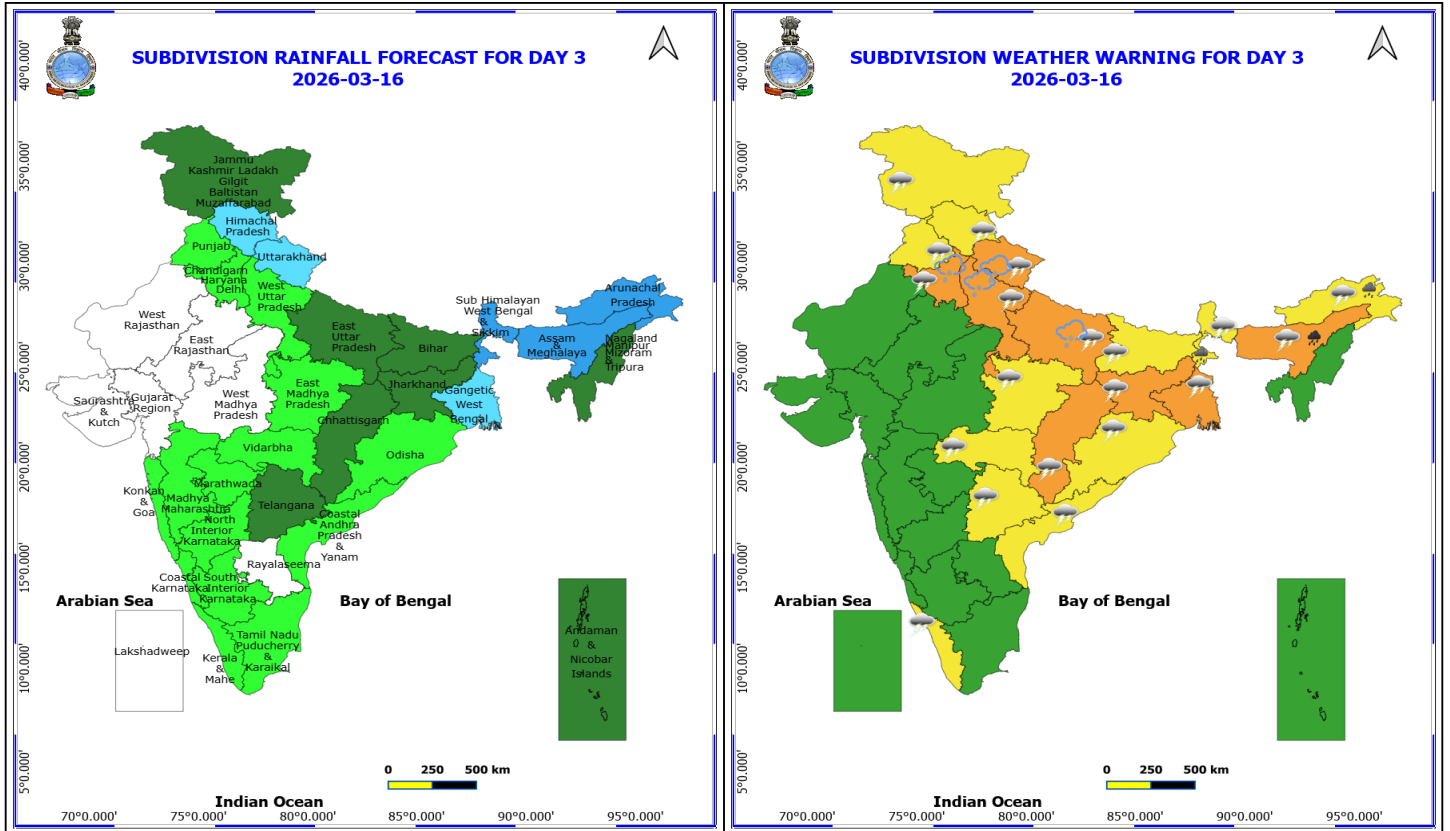


15 March (Day 2)

- ❖ **Heavy Rainfall** very likely at isolated places over Arunachal Pradesh and Assam & Meghalaya.
- ❖ **Thunderstorm accompanied with Hailstorm** very likely at isolated places over East Uttar Pradesh, Haryana, Chandigarh & Delhi, Himachal Pradesh, Jammu-Kashmir-Ladakh-Gilgit-Baltistan-Muzaffarabad, Punjab and Uttarakhand.
- ❖ **Thunderstorm accompanied with lightning & gusty winds(40-50kmph)** very likely at isolated places over Bihar, Chhattisgarh, East Madhya Pradesh, Haryana, Chandigarh & Delhi, Himachal Pradesh, Jammu-Kashmir-Ladakh-Gilgit-Baltistan-Muzaffarabad, Jharkhand, Punjab, Uttar Pradesh, Uttarakhand, West Bengal & Sikkim and West Rajasthan.
- ❖ **Thunderstorm accompanied with lightning & gusty winds(30-40kmph)** very likely at isolated places over Arunachal Pradesh, Assam & Meghalaya, Odisha, Telangana, Vidarbha and West Madhya Pradesh.
- ❖ **Thunderstorm accompanied with Lightning** very likely at isolated places over Kerala & Mahe and Nagaland, Manipur, Mizoram and Tripura.
- ❖ **Heat Wave conditions** very likely at isolated places over Vidarbha.

No Fishermen Warning

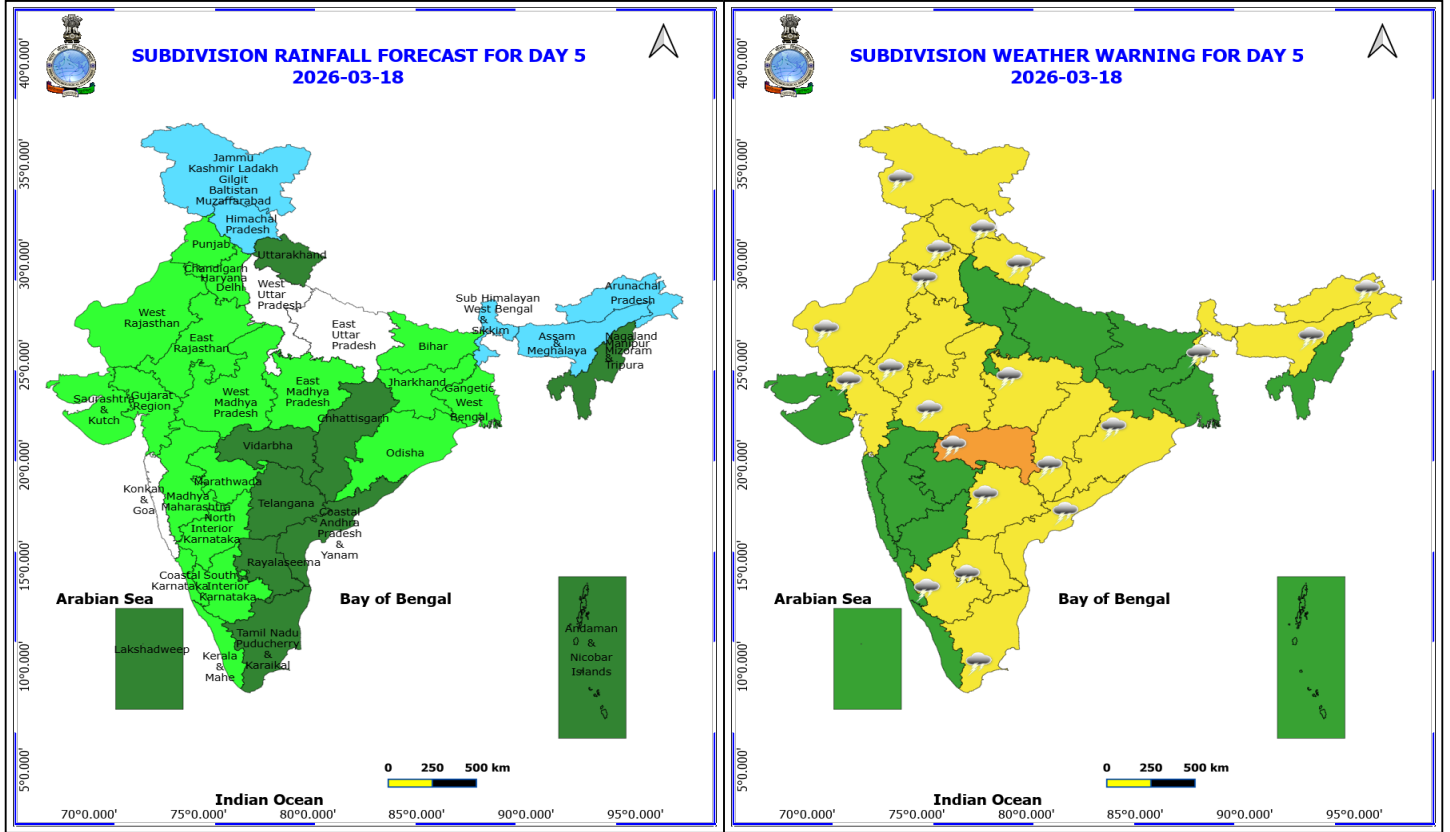
*Red color warning does not mean "Red Alert" Red color warning means "Take Action"
Forecast and warning for any day is valid from 0830 hours IST of day till 0830 hours IST of next day
For more details kindly visit <https://mausam.imd.gov.in> or contact 011-2434-4599
(Service to the nation since 1875)



16 March (Day 3)

- ❖ **Heavy to Very Heavy Rainfall** very likely at isolated places over Assam & Meghalaya.
- ❖ **Heavy Rainfall** very likely at isolated places over Arunachal Pradesh and Sub Himalayan West Bengal & Sikkim.
- ❖ **Thunderstorm accompanied with Hailstorm** very likely at isolated places over Haryana, Chandigarh & Delhi, Uttar Pradesh and Uttarakhand.
- ❖ **Thundersquall with wind speed reaching(50-60kmph)** very likely at isolated places over Chhattisgarh, Gangetic West Bengal and Jharkhand.
- ❖ **Thunderstorm accompanied with lightning & gusty winds(40-50kmph)** very likely at isolated places over Bihar, East Madhya Pradesh, Haryana, Chandigarh & Delhi, Himachal Pradesh, Jammu-Kashmir-Ladakh-Gilgit-Baltistan-Muzaffarabad, Punjab, Sub Himalayan West Bengal & Sikkim, Uttar Pradesh, Uttarakhand and Vidarbha.
- ❖ **Thunderstorm accompanied with lightning & gusty winds(30-40kmph)** very likely at isolated places over Arunachal Pradesh, Assam & Meghalaya, Coastal Andhra Pradesh, Odisha and Telangana.
- ❖ **Thunderstorm accompanied with Lightning** very likely at isolated places over Kerala & Mahe.

No Fishermen Warning

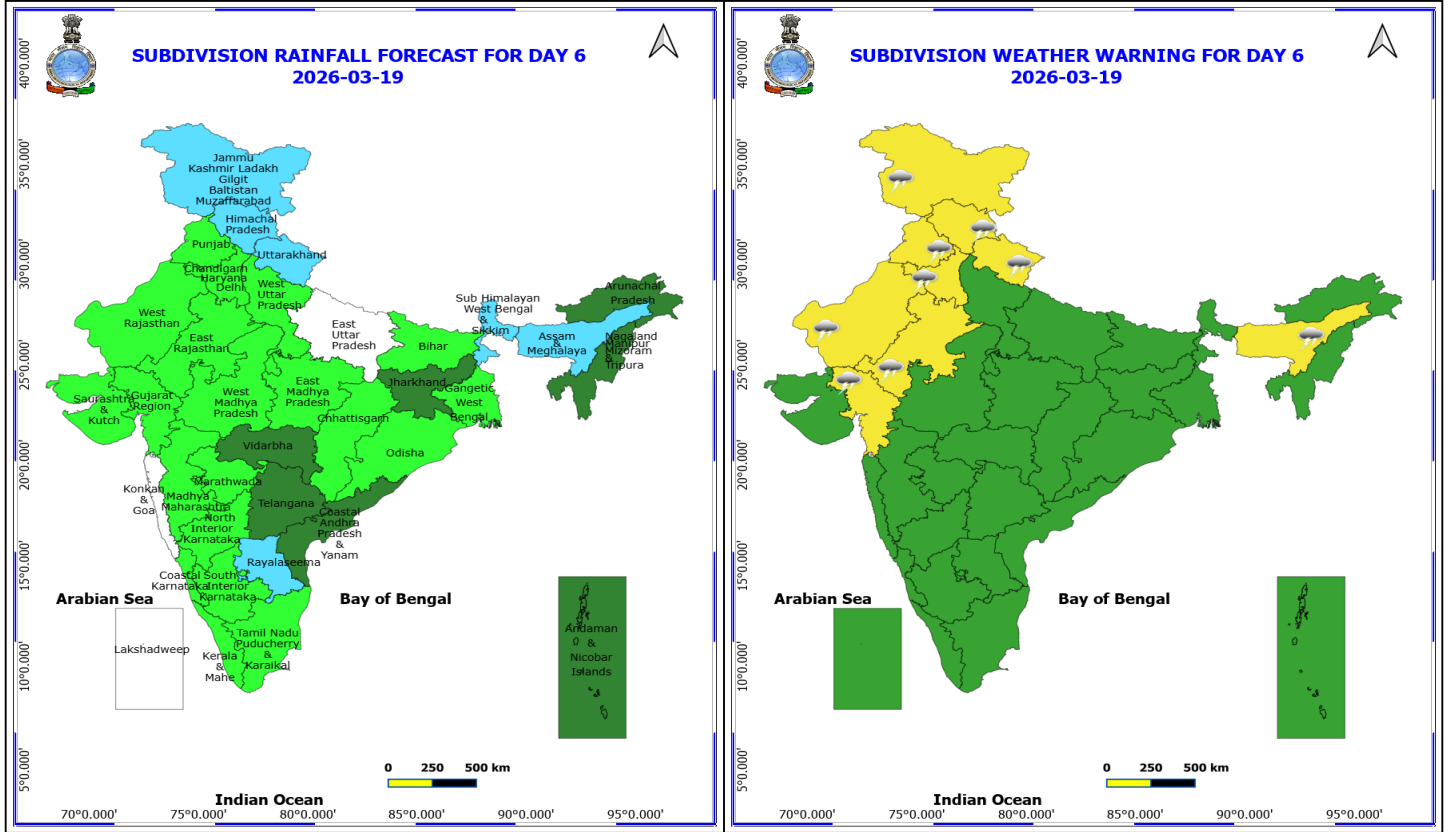


18 March (Day 5)

- ❖ **Thundersquall with wind speed reaching(50-60kmph)** likely at isolated places over Vidarbha.
- ❖ **Thunderstorm accompanied with lightning & gusty winds(40-50kmph)** likely at isolated places over Coastal Andhra Pradesh, Haryana, Chandigarh & Delhi, Himachal Pradesh, Jammu-Kashmir-Ladakh-Gilgit-Baltistan-Muzaffarabad, Madhya Pradesh, Punjab and Uttarakhand.
- ❖ **Thunderstorm accompanied with lightning & gusty winds(30-40kmph)** likely at isolated places over Chhattisgarh, Odisha, Rajasthan, South Interior Karnataka, Sub Himalayan West Bengal & Sikkim and Telangana.
- ❖ **Thunderstorm accompanied with Lightning** likely at isolated places over Arunachal Pradesh, Assam & Meghalaya, Gujarat Region, Rayalaseema and Tamil Nadu Puducherry & Karaikal.

No Fishermen Warning

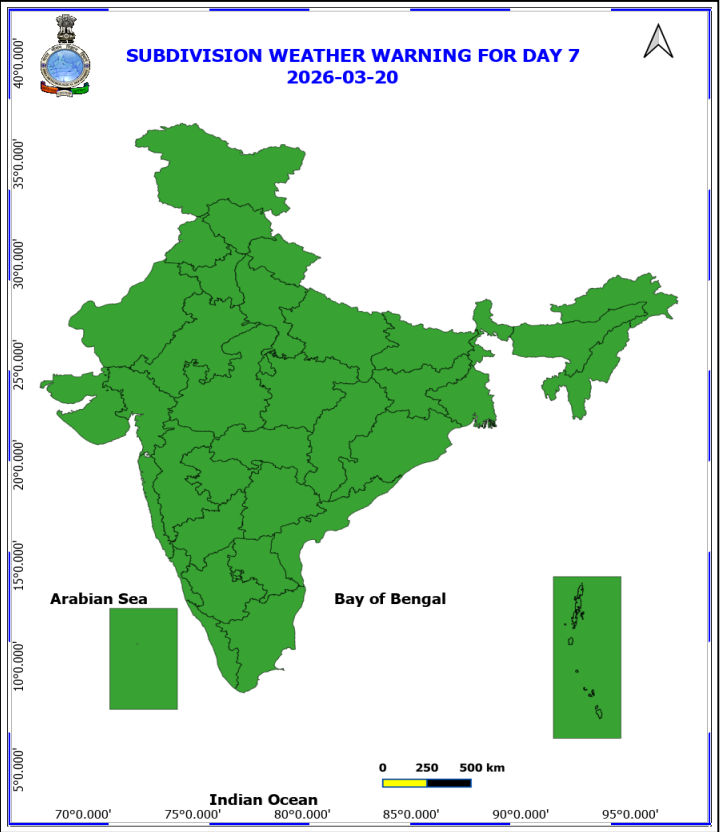
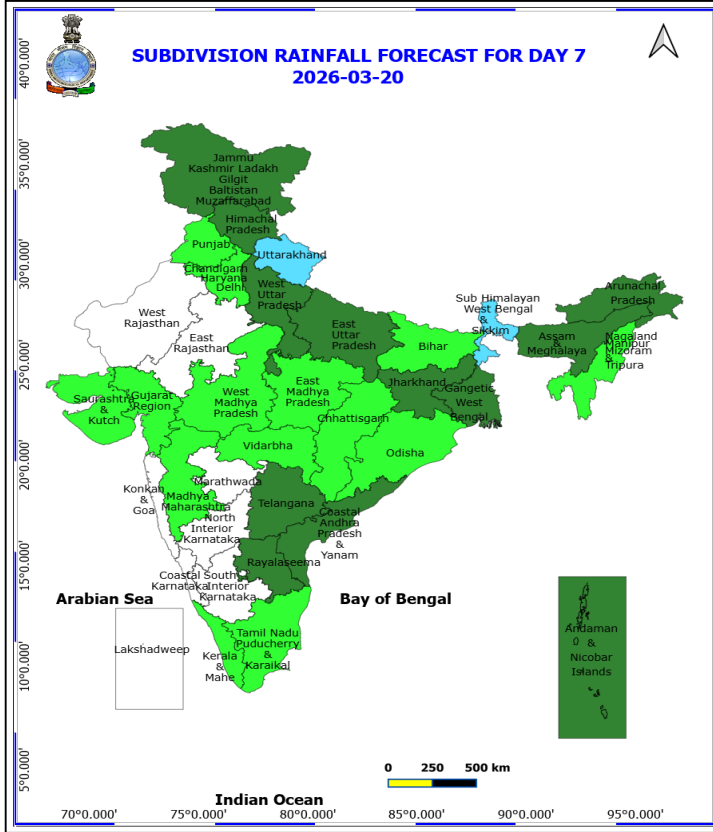
***Red color warning does not mean "Red Alert" Red color warning means "Take Action"**
Forecast and warning for any day is valid from 0830 hours IST of day till 0830 hours IST of next day
For more details kindly visit <https://mausam.imd.gov.in> or contact 011-2434-4599
(Service to the nation since 1875)



19 March (Day 6)

- ❖ **Thunderstorm accompanied with lightning & gusty winds(40-50kmph)** likely at isolated places over Haryana, Chandigarh & Delhi, Himachal Pradesh, Jammu-Kashmir-Ladakh-Gilgit-Baltistan-Muzaffarabad, Punjab and Uttarakhand.
- ❖ **Thunderstorm accompanied with lightning & gusty winds(30-40kmph)** likely at isolated places over Rajasthan.
- ❖ **Thunderstorm accompanied with Lightning** likely at isolated places over Assam & Meghalaya and Gujarat Region.

No Fishermen Warning



20 March (Day 7)

No Warning

No Fishermen Warning

***Red color warning does not mean "Red Alert" Red color warning means "Take Action"**

Forecast and warning for any day is valid from 0830 hours IST of day till 0830 hours IST of next day

For more details kindly visit <https://mausam.imd.gov.in> or contact 011-2434-4599

(Service to the nation since 1875)



Table-1

7 Days Rainfall Forecast

S.No.	Subdivision	14- Mar	15- Mar	16- Mar	17- Mar	18- Mar	19- Mar	20- Mar
		Day 1	Day 2	Day 3	Day 4	Day 5	Day 6	Day 7
1	ANDAMAN & NICOBAR ISLANDS	SCT	SCT	SCT	SCT	SCT	SCT	SCT
2	ARUNACHAL PRADESH	WS	WS	WS	FWS	FWS	SCT	SCT
3	ASSAM & MEHGHALAYA	WS	WS	WS	FWS	FWS	FWS	SCT
4	N. M. M. & T.	FWS	FWS	SCT	SCT	SCT	SCT	ISOL
5	S.H. WEST BENGAL & SIKKIM	FWS	WS	WS	FWS	FWS	FWS	FWS
6	GANGETIC WEST BENGAL	ISOL	SCT	FWS	SCT	ISOL	ISOL	SCT
7	ODISHA	ISOL	ISOL	ISOL	ISOL	ISOL	ISOL	ISOL
8	JHARKHAND	DRY	ISOL	SCT	SCT	ISOL	SCT	SCT
9	BIHAR	DRY	ISOL	SCT	ISOL	ISOL	ISOL	ISOL
10	EAST UTTAR PRADESH	DRY	ISOL	SCT	DRY	DRY	DRY	SCT
11	WEST UTTAR PRADESH	ISOL	SCT	ISOL	DRY	DRY	ISOL	SCT
12	UTTARAKHAND	ISOL	FWS	FWS	ISOL	SCT	FWS	FWS
13	HARYANA, CHD & DELHI	ISOL	ISOL	ISOL	ISOL	ISOL	ISOL	ISOL
14	PUNJAB	ISOL	ISOL	ISOL	ISOL	ISOL	ISOL	ISOL
15	HIMACHAL PRADESH	ISOL	FWS	FWS	ISOL	FWS	FWS	SCT
16	JAMMU AND KASHMIR AND LADAKH	ISOL	FWS	SCT	FWS	FWS	FWS	SCT
17	WEST RAJASTHAN	ISOL	ISOL	DRY	ISOL	ISOL	ISOL	DRY
18	EAST RAJASTHAN	ISOL	ISOL	DRY	DRY	ISOL	ISOL	DRY
19	WEST MADHYA PRADESH	ISOL	ISOL	DRY	DRY	ISOL	ISOL	ISOL
20	EAST MADHYA PRADESH	DRY	ISOL	ISOL	DRY	ISOL	ISOL	ISOL
21	GUJRAT REGION	DRY	DRY	DRY	DRY	ISOL	ISOL	ISOL
22	SAURASHTRA & KUTCH	DRY	DRY	DRY	DRY	ISOL	ISOL	ISOL
23	KONKAN & GOA	DRY	DRY	ISOL	DRY	DRY	DRY	DRY
24	MADHYA MAHARASHTRA	ISOL	ISOL	ISOL	ISOL	ISOL	ISOL	ISOL
25	MARATHWADA	ISOL	ISOL	ISOL	ISOL	ISOL	ISOL	DRY
26	VIDARBHA	DRY	ISOL	ISOL	ISOL	SCT	SCT	ISOL
27	CHATTISGARH	DRY	ISOL	SCT	SCT	SCT	ISOL	ISOL
28	COASTAL ANDHRA PRADESH	DRY	ISOL	ISOL	SCT	SCT	SCT	SCT
29	TELANGANA	DRY	ISOL	SCT	SCT	SCT	SCT	SCT
30	RAYALASEEMA	DRY	DRY	DRY	ISOL	SCT	FWS	SCT
31	TAMILNADU & PUDUCHERRY	ISOL	ISOL	ISOL	ISOL	SCT	ISOL	ISOL
32	COSTAL KARNATAKA	DRY	DRY	ISOL	ISOL	ISOL	ISOL	DRY
33	NORTH INTERIOR KARNATAKA	DRY	DRY	ISOL	ISOL	ISOL	ISOL	DRY
34	SOUTH INTERIOR KARNATAKA	DRY	ISOL	ISOL	ISOL	ISOL	ISOL	DRY
35	KERALA	ISOL	ISOL	ISOL	ISOL	ISOL	ISOL	ISOL
36	LAKSHDWEEP	SCT	DRY	DRY	DRY	SCT	DRY	DRY

Legend	Category	%Stations
WS	Widespread/Most Places	76-100
FWS	Fairly Widespread/Many Places	51-75
SCT	Scattered/ A Few Places	26-50
ISOL	Isolated Places	1-25
DRY	No Rain	0

*Red color warning does not mean "Red Alert" Red color warning means "Take Action"
Forecast and warning for any day is valid from 0830 hours IST of day till 0830 hours IST of next day
For more details kindly visit <https://mausam.imd.gov.in> or contact 011-2434-4599

(Service to the nation since 1875)

Fig. 1: Maximum Temperatures Dated 2026-03-13

Fig. 2: Departure of Maximum Temp. Dated 2026-03-13

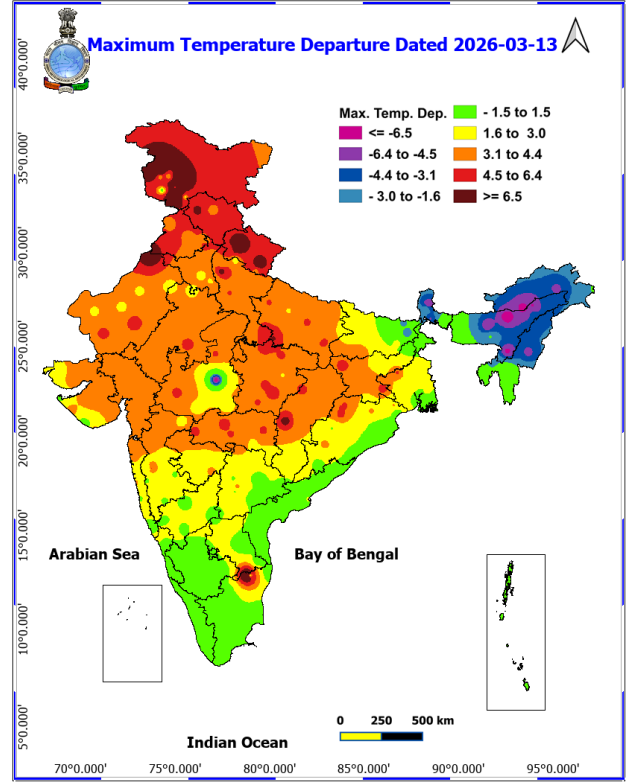
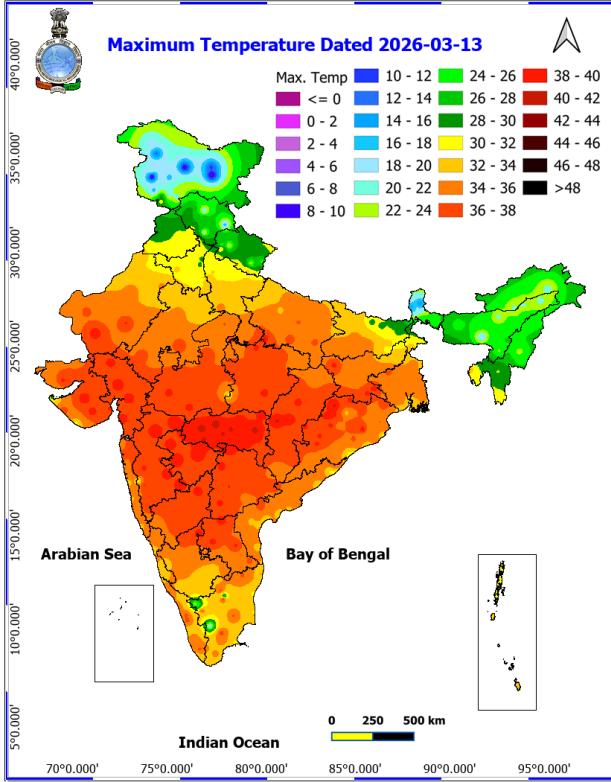
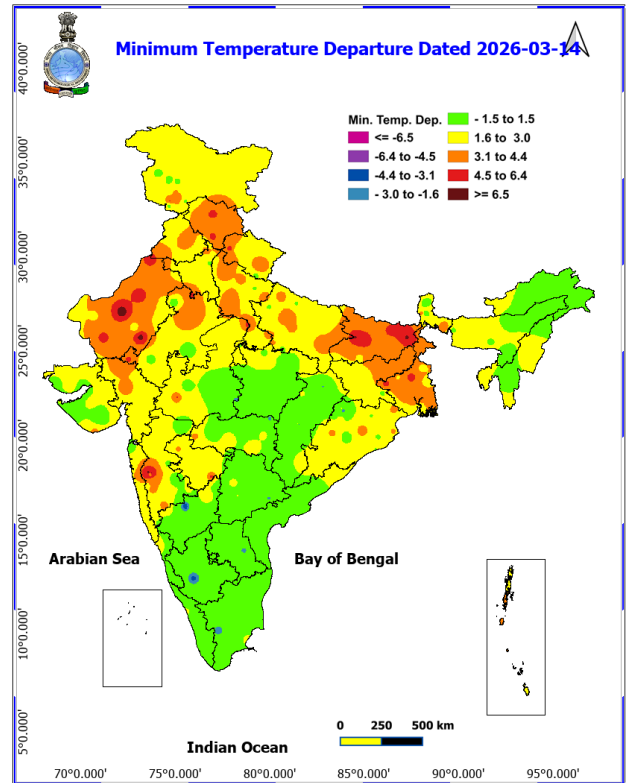
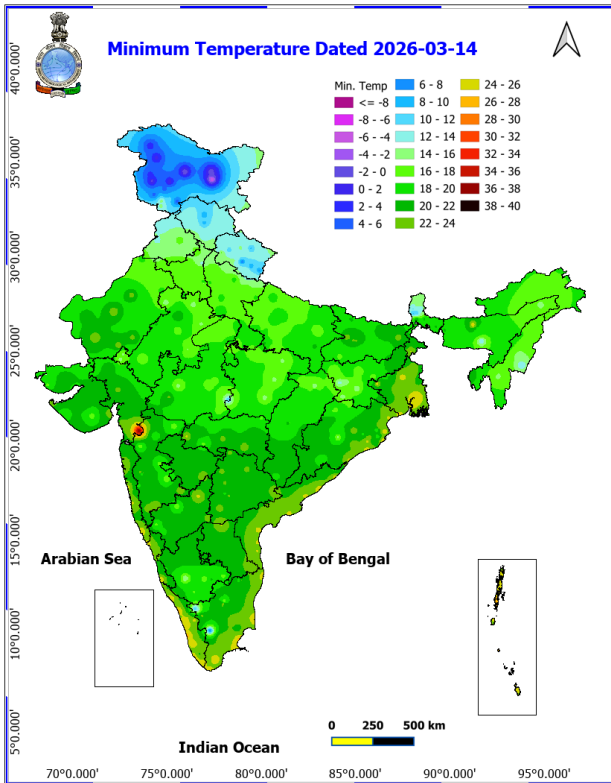


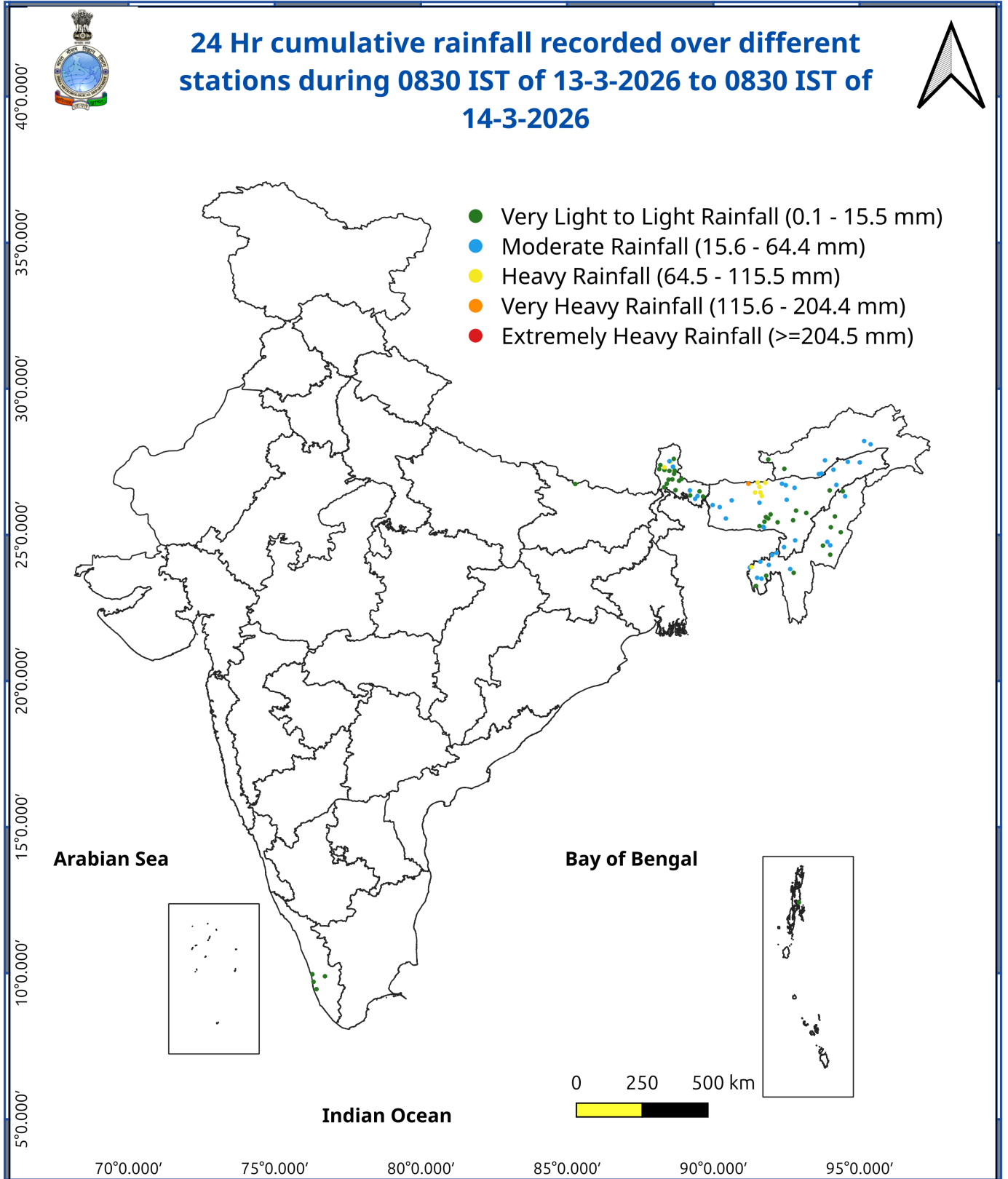
Fig. 3: Minimum Temperatures Dated 2026-03-14

Fig. 4: Departure of Minimum Temp. Dated 2026-03-14



***Red color warning does not mean "Red Alert" Red color warning means "Take Action"**
Forecast and warning for any day is valid from 0830 hours IST of day till 0830 hours IST of next day
For more details kindly visit <https://mausam.imd.gov.in> or contact 011-2434-4599

(Service to the nation since 1875)



Impact and Actions

Impact & Action Suggested due to heavy/very heavy rainfall:

- Isolated heavy rainfall/snowfall very likely over Arunachal Pradesh during 14th-16th March.
- Isolated heavyrainfall very likely over Sub-Himalayan West Bengal & Sikkim on 14th & 16th; Nagaland on 14th; Assam & Meghalaya on 15th March with heavy to very heavy rainfall over Assam on 14th & 16th March.

Impact Expected

- Localized Flooding of roads, water logging in low lying areas and closure of underpasses mainly in urban areas of the above region.
- Occasional reduction in visibility due to heavy rainfall.
- Disruption of traffic in major cities due to water logging in roads leading to increased travel time.
- Minor damage to kutcha roads.
- Possibilities of damage to vulnerable structure.
- Localized Landslides/Mudslides
- Damage to horticulture and standing crops in some areas due to inundation.
- It may lead to riverine flooding in some river catchments (for riverine flooding please visit Web page of CWC).

Action Suggested

- Check for traffic congestion on your route before leaving for your destination.
- Follow any traffic advisories that are issued in this regard.
- Avoid going to areas that face the water logging problems often.
- Avoid staying in vulnerable structure.

Impact expected and action suggested due to isolated thunderstorm with lightning/squally winds & Hailstorm over

- Isolated **hailstorm** likely over Jammu-Kashmir-Ladakh, Himachal Pradesh on 15th; Uttarakhand, Punjab, Haryana, Chandigarh & East Uttar Pradesh on 15th & 16th; West Uttar Pradesh on 16th March.
- **Thundersquall** (wind speed reaching 50-60 kmph gusting to 70 kmph) very likely at isolated places over Jharkhand on 16th; Chhattisgarh on 16th & 17th; Vidarbha on 17th & 18th March.
- **Thunderstorm, lightning & gusty winds speed reaching (30-50 kmph)** likely over Jammu-Kashmir-Ladakh on 15th, 16th, 18th & 19th; Himachal Pradesh during 15th-19th; Uttarakhand during 14th-16th & on 18th, 19th; Punjab, Haryana Chandigarh during 15th-19th; Uttar Pradesh on 15th & 16th; West Rajasthan on 15th, 18th & 19th; East Rajasthan on 18th & 19th; Arunachal Pradesh, Assam & Meghalaya during 14th-16th and Nagaland, Manipur, Mizoram & Tripura on 14th; Sub-Himalayan West Bengal & Sikkim during 14th-18th; West Madhya Pradesh on 15th & 18th; East Madhya Pradesh, Vidarbha, Chhattisgarh, Telangana during 15th-18th; Jharkhand, Gangetic West Bengal & Bihar during 15th-17th and Odisha during 14th-18th; Coastal Andhra Pradesh & Yanam on 16th; South Interior Karnataka on 17th & 18th March.

Impact expected:

- Breaking of tree branches, uprooting of large avenue trees. Large dead limbs blown from trees. Damage to Standing crops.
- Minor to Major damage to banana and papaya trees.
- Minor to major damage to power and communication lines due to breaking of branches.
- Strong wind/hail may damage plantation, horticulture and standing crops.
- Hail may injure people and cattle at open places.
- Partial damage to vulnerable structures due to strong winds.
- Minor damage to kutcha houses/walls and huts.
- Loose objects may fly.

*Red color warning does not mean "Red Alert" Red color warning means "Take Action"

Forecast and warning for any day is valid from 0830 hours IST of day till 0830 hours IST of next day

For more details kindly visit <https://mausam.imd.gov.in> or contact 011-2434-4599

(Service to the nation since 1875)

Action suggested:

- People are advised to keep a watch on the weather for worsening conditions and be ready to move to safer places accordingly.
- Stay indoors, close windows & doors and avoid travel if possible.
- Take safe shelters; do not take shelter under trees.
- Do not lie on concrete floors and do not lean against concrete walls.
- Unplug electrical/ electronic appliances.
- Immediately get out of water bodies.
- Keep away from all the objects that conduct electricity.

Impact & Action expected due to Heat wave to severe heat wave conditions

- **Heat wave conditions** likely in isolated pockets over Vidarbha, Jharkhand and Odisha on 14th March.

Action suggested: (Yellow alert Areas)

- Moderate temperature & heat is tolerable for general public but moderate health concern likely for vulnerable people e.g. infants, elderly, people with chronic diseases.
- Avoid heat exposure.
- Wear lightweight, light colour, loose, cotton clothes.
- Cover your head, use a cloth, hat or umbrella.

Agromet advisories for various parts of the country

Agromet advisories for likely impact of Heavy Rainfall

- In **Arunachal Pradesh**, postpone harvesting of cabbage, pea, mustard and late-maturing paddy varieties and digging of potatoes. Shift the harvested produce to safe places. Drain out excess rainwater from the standing crop fields. Nursery for chilli, tomato, and other vegetables may be prepared under covered shelters or poly houses to protect seedlings from rain. Open nurseries should be immediately covered with polythene sheets or sack cloths to protect seedlings from rain.
- In **Assam**, drain out excess rainwater from the standing crop fields.
- In **Meghalaya**, ensure proper drainage in summer vegetable crops. Carry out staking and propping of plantation crops and protect young seedlings from heavy rainfall. Keep the harvested pods of garden peas in safer place immediately.
- In **Nagaland**, ensure proper drainage to drain out excess water from vegetables and orchards.
- In **Sub-Himalayan West Bengal**, drain out excess rainwater from the standing crop fields. Cover the nursery of cucurbits and Dalle khorsani with polyethylene sheets or agro-net to protect the seedlings from adverse weather conditions.

Agromet advisories for likely impact of Thunderstorm / Gusty Winds

- Provide mechanical support to horticultural crops and staking or support to vegetables and young fruit plants / fruit-bearing plants to avoid lodging due to strong winds.

Likely Impact of Above normal Temperatures

- Increased evapotranspiration leading to soil moisture depletion and moisture stress, which may adversely affect crop growth, seed development and yield.
- Accelerated crop maturity, shortened grain filling duration and shrivelled grain formation, resulting in possible yield reduction in wheat crop.

***Red color warning does not mean "Red Alert" Red color warning means "Take Action"**

Forecast and warning for any day is valid from 0830 hours IST of day till 0830 hours IST of next day

For more details kindly visit <https://mausam.imd.gov.in> or contact 011-2434-4599

(Service to the nation since 1875)

- Increased moisture stress and reduced grain filling in cereals and other *rabi* crops such as *rabi* maize, sorghum and other late sown *rabi* crops (vegetative to reproductive stages).
- Flower drop, poor pod setting, premature pod drying and reduction in seed size and seed weight in oilseed and pulse crops.
- Reduced tuber bulking and early plant senescence in tuber crops such as potato.
- Flower drop, fruit sunscald and reduction in marketable yield in vegetable crops such as tomato, capsicum, cabbage and cauliflower.
- Flower drop, reduced fruit setting, premature fruit drop, fruit sunburn (or sunscald), reduction in fruit size, uneven ripening, deformities such as spongy tissue (especially in mango), along with an overall decrease in yield and quality in horticultural crops (such as mango, apple, orange, etc.),
- Increased crop water requirements and higher risk of water stress under limited irrigation conditions.
- Reduced feed intake, milk yield and egg production along with increased water requirement in livestock and poultry.
-
- **Agromet advisories for likely impact of Above normal Temperatures**
- In **Gujarat**, apply light irrigation in wheat (grain filling stage), chickpea, cumin and vegetable crops in the morning and evening hours. Apply mulching with crop residues in vegetable crops to prevent heat damage and conservation of soil moisture. Protect vegetable nurseries and orchards against hot winds by physical barrier like wet gunny bag barriers of hay or sorghum.
- In **Maharashtra**, provide light and frequent irrigation during the evening or early morning hours to sapota, chilli, brinjal and tomato. Apply irrigation at frequent intervals to reduce premature fruit drop and sun scorching in mango and undertake pre-harvest bagging of mango fruits using newspaper bags to prevent sun scalding in **Konkan**. Apply irrigation in late sown *rabi* crops like wheat, groundnut, sesame, safflower, sorghum, orchards and vegetables as per requirement and use straw mulch to reduce evaporation losses in **Vidarbha**.
- In **Madhya Pradesh**, apply light irrigation in wheat, chickpea and sugarcane to minimize the impact of high temperature. Complete harvesting of matured mustard during morning/evening hours and keep the produce in safe places.
- In **Chhattisgarh**, provide **light and frequent irrigation** in standing crops such as **wheat, chickpea, lentil and mustard** to minimize heat stress and maintain adequate soil moisture.
- In **Rajasthan**, provide protective irrigation in cumin, isabgol, mustard and gram during morning or evening hours to minimize heat stress.
- In **Uttar Pradesh**, provide light irrigation in wheat (grain filling stage), mustard and gram crops during morning or evening hours to reduce adverse impacts of heat.
- In **Punjab**, maintain optimum soil moisture through irrigation in mustard, gobhi sarson and potato.
- In **Haryana**, provide light irrigation to mustard and gram at flowering and pod formation stages. Maintain optimum soil moisture in wheat during grain filling stage.
- In **Himachal Pradesh**, apply irrigation to wheat during early morning or evening hours to protect the crop from heat stress conditions
- In **Uttarakhand**, apply irrigation to wheat, chickpea and lentil and French beans.
- In **Jharkhand**, provide irrigation in wheat at the grain-filling stage.
- In **Odisha**, apply light and frequent irrigation to *Boro* rice, green gram, black gram, vegetables, and horticultural crops at regular intervals in the early morning or late evening.
- Take appropriate action for conservation of soil moisture through mulching, proper field bunding, and avoiding unnecessary intercultivation.

Livestock / Poultry

Provide clean, hygienic and plenty of drinking water to animals.

To reduce the effect of heat wave/high temperature, cover the roof of poultry sheds with grass.

LEGENDS

- 1 अंडमान और निकोबार द्वीप समुह
- 2 अरुणाचल प्रदेश
- 3 असम और मेघालय
- 4 नागालैंड मनीपुर मीजोरम और त्रिपुरा
- 5 उप हिमालय पश्चिम बंगाल एवं सिक्किम
- 6 पश्चिम बंगाल
- 7 ओडिसा
- 8 झारखंड
- 9 बिहार
- 10 पूर्वी उत्तर प्रदेश
- 11 पश्चिम उत्तर प्रदेश
- 12 उत्तराखंड
- 13 हरियाणा चंडिगढ़ एवं दिल्ली
- 14 पंजाब
- 15 हिमाचल प्रदेश
- 16 जम्मू एवं कश्मीर एवं लद्दाख
- 17 पश्चिम राजस्थान
- 18 पूर्वी राजस्थान
- 19 पश्चिम मध्य प्रदेश
- 20 पूर्वी मध्य प्रदेश
- 21 गुजरात क्षेत्र
- 22 सौराष्ट्र एवं कच्छ
- 23 कोंकण एवं गोवा
- 24 मध्य महाराष्ट्र
- 25 मराठावाडा
- 26 विदर्भ
- 27 छत्तीसगढ़
- 28 तटीय आंध्र प्रदेश एवं यनम
- 29 तेलंगाना
- 30 रायलसीमा
- 31 तमिलनाडु, पुदुचेरी एवं कराईकल
- 32 तटिय कर्नाटक
- 33 आंतरिक उत्तरी कर्नाटक
- 34 आंतरिक दक्षिणी कर्नाटक
- 35 केरल एवं माहे
- 36 लक्षद्वीप



1. Andaman & Nicobar Islands
2. Arunachal Pradesh
3. Assam & Meghalaya
4. Nagaland, Manipur, Mizoram & Tripura
5. Sub-Himalayan West Bengal & Sikkim
6. Gangetic West Bengal
7. Orissa
8. Jharkhand
9. Bihar
10. East Uttar Pradesh
11. West Uttar Pradesh
12. Uttarakhand
13. Haryana, Chd & Delhi
14. Punjab
15. Himachal Pradesh
16. Jammu & Kashmir and Ladakh
17. West Rajasthan
18. East Rajasthan
19. West Madhya Pradesh
20. East Madhya Pradesh
21. Gujarat
22. Saurashtra
23. Konkan & Goa
24. Madhya Maharashtra
25. Marathawada
26. Vidharbha
27. Chhattisgarh
28. Coastal Andhra Pradesh & Yanam
29. Telangana
30. Rayalaseema
31. Tamilnadu, Puducherry & Karaikal
32. Coastal Karnataka
33. North Interior Karnataka
34. South Interior Karnataka
35. Kerala & Mahe
36. Lakshadweep

SPATIAL DISTRIBUTION (% of Stations reporting)

% Stations	Category	% Stations	Category
76-100	Widespread (WS/ Most Places)	26-50	Scattered (SCT/ A Few Places)
51-75	Fairly Widespread (FWS/ Many Places)	1-25	Isolated (ISOL)

Subdivision Colour

- NO WARNING
- WATCH (BE UPDATED)
- ALERT (BE PREPARED TO TAKE ACTION)
- WARNING (TAKE ACTION)

Probabilistic Forecast

Terms	Probability of Occurrence (%)
Unlikely	< 25
Likely	25 - 50
Very Likely	50 - 75
Most Likely	> 75

- | | | | |
|--------------------------|-----------------|----------------------|--------------------|
| Heavy Rain | Very Heavy Rain | Extremely Heavy Rain | Heavy Snow |
| Thunderstorm & Lightning | Hailstorm | Dust Storm | Dust Raising Winds |
| Strong surface winds | Heat Wave | Hot Day | Warm Night |
| Cold Wave | Cold Day | Ground Frost | Fog |
| Hot & Humid | | | |

*Red color warning does not mean "Red Alert" Red color warning means "Take Action"

Forecast and warning for any day is valid from 0830 hours IST of day till 0830 hours IST of next day

For more details kindly visit <https://mausam.imd.gov.in> or contact 011-2434-4599

(Service to the nation since 1875)

LEGENDS

WARNING

WARNING (TAKE ACTION)
ALERT (BE PREPARED)
WATCH (BE UPDATED)
NO WARNING (NO ACTION)

Probabilistic Forecast

Terms	Probability of Occurrence (%)
Unlikely	< 25
Likely	25 - 50
Very Likely	50 - 75
Most Likely	> 75



Heavy: 64.5 to 115.5 mm/cm *
Very Heavy: 115.6 to 204.4 mm/cm*
Extremely Heavy: > 204.4 mm/cm *



When maximum temperature of a station reaches $\geq 40^{\circ}\text{C}$ for plains and $\geq 30^{\circ}\text{C}$ for hilly regions
(a) Based on Departure from normal

Heat Wave: Maximum Temperature Departure from normal 4.5°C to 6.4°C .
Severe Heat Wave: Maximum Temperature Departure from normal $\geq 6.5^{\circ}\text{C}$

(b). Based on Actual maximum temperature

Heat Wave: When actual maximum temperature $\geq 45^{\circ}\text{C}$.
Severe Heat Wave: When actual maximum temperature $\geq 47^{\circ}\text{C}$

(c). Criteria for heat wave for coastal stations

When maximum temperature departure is $> 4.5^{\circ}\text{C}$ from normal. Heat Wave may be described provided maximum temperature $\geq 37^{\circ}\text{C}$



When maximum temperature remains 40°C

Warm Night: When minimum temperature departure 4.5°C to 6.4°C .
Severe Warm Night: When minimum temperature departure $> 6.4^{\circ}\text{C}$.



When minimum temperature of a station $\leq 10^{\circ}\text{C}$ for plains and $\leq 0^{\circ}\text{C}$ for hilly regions.

(a). Based on departure

Cold Wave: Minimum Temperature Departure from normal -4.5°C to -6.4°C .
Severe Cold Wave: Minimum Temperature Departure from normal $\leq -6.5^{\circ}\text{C}$

(b) Based on actual Minimum Temperature (for Plains only)

Cold Wave : When Minimum Temperature is $\leq 4.0^{\circ}\text{C}$
Severe Cold Wave: When Minimum Temperature is $\leq 2.0^{\circ}\text{C}$

(c) For Coastal Stations

When Minimum Temperature departure is $\leq -4.5^{\circ}\text{C}$ & actual Minimum Temperature is $\leq 15^{\circ}\text{C}$



When minimum temperature of a station $\leq 10^{\circ}\text{C}$ for plains and $\leq 0^{\circ}\text{C}$ for hilly regions
Based on departure

Cold Day: Maximum Temperature Departure from normal -4.5°C to -6.4°C .
Severe Cold Day: Maximum Temperature Departure from normal $\leq -6.5^{\circ}\text{C}$



Phenomenon of small droplets suspended in air and the horizontal visibility $< 1\text{km}$

Moderate Fog: When the visibility between 500-200 metres
Dense Fog: when the visibility between 50- 200 metres
Very Dense Fog: when the visibility < 50 metres



Sudden electrical discharges manifested by a flash of light (Lightning) and a sharp rumbling sound (thunder)



An ensemble of particles of dust or sand energetically lifted to great heights by a strong and turbulent wind.



Ice deposits on ground

Air temperature $\leq 4^{\circ}\text{C}$ (over Plains)



A strong wind that rises suddenly, lasts for atleast 1 minute.

Moderate: Wind speed 52-61 kmph
Severe: Wind speed 62-87 kmph
Very Severe: Wind speed > 87 kmph



Effect of various waves in the sea over specific area

Rough to very rough: Wind speed 41-62 kmph (22-33 knots) & Wave height 2.5-6 metre
High to very high: Wind speed 63-117 kmph (34-63 knots) & Wave height 6-14 metre
Phenomenal: Wind speed > 117 kmph (> 63 knots) & Wave height > 14 metre



Cyclonic Storm: Wind speed 62-87 kmph (34-47 knots)
Severe Cyclonic Storm: Wind speed 88-117 kmph (48-63 knots)
Very Severe Cyclonic Storm: Wind speed 118-165 kmph (64 - 89 knots)
Extremely Severe Cyclonic Storm: Wind speed 166-220 kmph (90 -119 knots)
Super Cyclone Storm: Wind speed > 220 kmph (> 119 knots)

*Red color warning does not mean "Red Alert" Red color warning means "Take Action"

Forecast and warning for any day is valid from 0830 hours IST of day till 0830 hours IST of next day

For more details kindly visit <https://mausam.imd.gov.in> or contact 011-2434-4599

(Service to the nation since 1875)