

2025-08-10

Time of Issue: 13:50:00 hours IST  
(Mid-Day)

## ALL INDIA WEATHER SUMMARY AND FORECAST BULLETIN

### Significant Weather Features

#### Weather, Forecast and Warnings :

##### Northwest India:

Isolated **heavy rainfall** likely over Jammu-Kashmir-Ladakh-Gilgit-Baltistan-Muzaffarabad on 10<sup>th</sup> & 16<sup>th</sup>; Himachal Pradesh on 10<sup>th</sup>, 15<sup>th</sup> & 16<sup>th</sup>; Punjab on 10<sup>th</sup>, 11<sup>th</sup>, 14<sup>th</sup> & 15<sup>th</sup>, Haryana, Chandigarh & Delhi on 10<sup>th</sup>, 11<sup>th</sup> & during 13<sup>th</sup>-15<sup>th</sup>; West Uttar Pradesh on 10<sup>th</sup> & 16<sup>th</sup>; East Uttar Pradesh on 12<sup>th</sup> & 15<sup>th</sup>; East Rajasthan on 15<sup>th</sup> & 16<sup>th</sup> August with **extremely heavy rainfall** likely over Uttarakhand on 13<sup>th</sup>; **very heavy rainfall** over Jammu-Kashmir during 13<sup>th</sup>-15<sup>th</sup>; Himachal Pradesh during 11<sup>th</sup>-14<sup>th</sup>; Uttarakhand on during 10<sup>th</sup>-12<sup>th</sup> & 14<sup>th</sup>-16<sup>th</sup>; West Uttar Pradesh on 13<sup>th</sup> & 15<sup>th</sup>; East Uttar Pradesh on 13<sup>th</sup> & 14<sup>th</sup> August.

Light/moderate rainfall at many places accompanied with thunderstorm & lightning likely over Himachal Pradesh on 10<sup>th</sup> August; Jammu-Kashmir-Ladakh-Gilgit-Baltistan-Muzaffarabad & Uttarakhand during next 7 days.

##### Northeast India:

Light/moderate rainfall at many places accompanied with thunderstorm, lightning and isolated **heavy rainfall** likely to continue over Arunachal Pradesh on 10<sup>th</sup>, 11<sup>th</sup> & 13<sup>th</sup>; Assam & Meghalaya during 10<sup>th</sup>, 11<sup>th</sup> & 14<sup>th</sup>; Nagaland, Manipur, Mizoram & Tripura on 10<sup>th</sup>, 13<sup>th</sup> & 14<sup>th</sup> with isolated **very heavy rainfall** over Arunachal Pradesh on 12<sup>th</sup> and Assam & Meghalaya on 12<sup>th</sup> & 13<sup>th</sup> August.

Light/moderate rainfall at many places accompanied with thunderstorm & lightning likely during next 3 days.

##### South Peninsular India:

Isolated **heavy rainfall** likely over Tamil Nadu, Rayalaseema on 10<sup>th</sup>; North Interior Karnataka during 14<sup>th</sup> - 16<sup>th</sup>; South Interior Karnataka on 15<sup>th</sup> & 16<sup>th</sup>; Coastal Andhra Pradesh & Yanam on 10<sup>th</sup>, 12<sup>th</sup>, 13<sup>th</sup> & 16<sup>th</sup>; Rayalaseema on 10<sup>th</sup>, 14<sup>th</sup> & 15<sup>th</sup>; Telangana during 10<sup>th</sup>-12<sup>th</sup>; Coastal Karnataka during 14<sup>th</sup> -16<sup>th</sup> August with isolated **very heavy rainfall** over Coastal Andhra Pradesh & Yanam on 14<sup>th</sup> & 15<sup>th</sup>; Telangana during 13<sup>th</sup>-16<sup>th</sup> August.

Strong surface winds (speed reaching 40-50 kmph) very likely over South Peninsular India during next 2 days.

Light to moderate rainfall at most/many places accompanied with thunderstorm & lightning likely over, Rayalaseema, Coastal Andhra Pradesh & Yanam and Telangana during next 5 days & Karnataka during 14<sup>th</sup> -16<sup>th</sup>.

##### East & Central India:

Isolated **heavy rainfall** likely over West Madhya Pradesh on 10<sup>th</sup>, 14<sup>th</sup> & 16<sup>th</sup>; East Madhya Pradesh during 10<sup>th</sup>-16<sup>th</sup>; Vidarbha on 12<sup>th</sup>, 15 & 16<sup>th</sup>; Chhattisgarh on 12<sup>th</sup>; Andaman & Nicobar Islands on 11<sup>th</sup>; Sub-Himalayan West Bengal & Sikkim on 10<sup>th</sup>, 13<sup>th</sup> & 14<sup>th</sup>; Bihar during 10<sup>th</sup>-13<sup>th</sup>; Odisha on 15<sup>th</sup> & 16<sup>th</sup> August with **isolated very heavy rainfall** over West Madhya Pradesh on 15<sup>th</sup>; Vidarbha on 13<sup>th</sup> & 14<sup>th</sup>; Chhattisgarh on during 13<sup>th</sup>-16<sup>th</sup>; Sub-Himalayan West Bengal & Sikkim on 11<sup>th</sup> & 12<sup>th</sup>; Odisha during 12<sup>th</sup> & 14<sup>th</sup> August.

Light to moderate rainfall at most/many places accompanied with thunderstorm & lightning likely over the region during next 5 days.

##### West India:

Isolated **heavy rainfall** likely over Madhya Maharashtra during 14<sup>th</sup> - 16<sup>th</sup>; Konkan & Goa during 12<sup>th</sup>-16<sup>th</sup> August with **isolated very heavy rainfall** over Gujarat Region on 10<sup>th</sup> August.

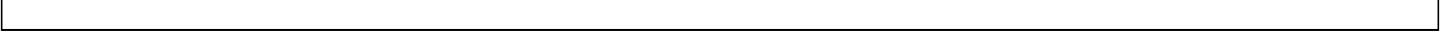
Light to moderate rainfall at many/some places very likely over the region during next 7 days.

**\*Red color warning does not mean "Red Alert" Red color warning means "Take Action"**

Forecast and warning for any day is valid from 0830 hours IST of day till 0830 hours IST of next day

For more details kindly visit <https://mausam.imd.gov.in> or contact 011-2434-4599

(Service to the nation since 1875)



### Main Weather Observations:

❖ **Rainfall distribution** (from 0830 hours IST of yesterday to 0830 hours IST of today): **at most places** over Konkan & Goa, Vidarbha, Rayalaseema, Coastal Karnataka, North Interior Karnataka and South Interior Karnataka; **at many places** over Arunachal Pradesh, Assam & Meghalaya, Sub Himalayan West Bengal & Sikkim, West Uttar Pradesh, Uttarakhand, Haryana-Chandigarh-Delhi, East Madhya Pradesh, Telangana and Kerala & Mahe; **at a few places** over Andaman & Nicobar Islands, Nagaland, Manipur, Mizoram & Tripura, Gangetic West Bengal, Jharkhand, Bihar, East Uttar Pradesh, Punjab, Himachal Pradesh, West Madhya Pradesh, Madhya Maharashtra, Marathwada, Chhattisgarh, Coastal Andhra Pradesh & Yanam, Tamil Nadu, Puducherry & Karaikal and Lakshadweep; **at isolated places** over Odisha, Jammu-Kashmir-Ladakh-Gilgit-Baltistan-Muzaffarabad, West Rajasthan, East Rajasthan, Gujarat Region and Saurashtra & Kutch;

❖ **Significant rainfall recorded(in cm)** (from 0830 hours IST of yesterday to 0830 hours IST of today): **Assam & Meghalaya**: Shella (dist East Khasi Hills) 19; Cherrapunji (dist East Khasi Hills) 14; Mawsynram (dist East Khasi Hills), Cherrapunji(rkm) (dist East Khasi Hills) 13 Each; Williamnagar (dist East Garo Hills) 7; **East Madhya Pradesh**: Bina (dist Sagar) 15; Damoh-aws (dist Damoh) 11; Umari-aws (dist Umari) 7; **Bihar**: Amdabad (dist Katihar) 14; Cherwa (dist Sheikhpura) 8; Sarmera (dist Nalanda) 7; **West Uttar Pradesh**: Lalitpur (dist Lalitpur), Atrauli (dist Aligarh) 12 Each; Gunnaur (dist Sambhal) 9; Mahroni (dist Lalitpur) 7; **Haryana-Chandigarh-Delhi**: Rai REV (dist Sonapat) 12; Sonapat (dist Sonapat) 9; Madluda REV (dist Panipat) 8; President House (dist New Delhi) 7; **South Interior Karnataka**: Gowribidanur (dist Chikaballapura) 12; Bargur (dist Tumakuru) 7; **Gujarat Region**: Valsad (dist Valsad) 10; Daman AWS (dist Daman) 9; **North Interior Karnataka**: Afzalpur HMS (dist Kalaburgi) 10; Tavaragera (dist Koppal) 9; Kembhavi (dist Yadgir), Bilgi (irri.) (dist Bagalkote), Kerur (dist Bagalkote) 7 Each; **Telangana**: Amberpet (dist Hyderabad), Himayatnagar (dist Hyderabad) 10 Each; Kosgi (dist Narayanpet), Gambhiraopet (dist Rajanna Sircilla) 9 Each; Machareddy (dist Kamareddy) 8; Bhadrachalam (dist B. Kothagudem), Burgampadu (dist B. Kothagudem), Hayathnagar (dist Rangareddy), Chegunta (dist Medak), Tekmal (dist Medak), Shekpet (dist Hyderabad) 7 Each; **Tamil Nadu, Puducherry & Karaikal**: Usilampatti (dist Madurai) 9; Peraiyur (dist Madurai) 8; Srivilliputhur (dist Virudhunagar) 7; **Sub Himalayan West Bengal & Sikkim**: Newlands Tea Garden (dist Alipurduar) 9; Kumargram Tea Estate (dist Alipurduar) 8; **Punjab**: Ludhiana Irr (dist Ludhiana) 8; **Rayalaseema**: Tadpatri (dist Anantapuramu) 7; **Coastal Andhra Pradesh & Yanam**: Balajipeta (dist Parvathipuram Manyam) 7; **Himachal Pradesh**: Kangra AP (dist Kangra) 7; **Nagaland, Manipur, Mizoram & Tripura**: Tamenglong (dist Tamenglong) 7.

❖ **Heavy Rainfall observed** (from 0830 hours IST of yesterday to 0830 hours IST of today): **Heavy to very heavy rain** at isolated places over Assam & Meghalaya, Bihar, West Uttar Pradesh, Haryana-Chandigarh-Delhi, East Madhya Pradesh and South Interior Karnataka. **Heavy rain** at isolated places over Nagaland, Manipur, Mizoram & Tripura, Sub Himalayan West Bengal & Sikkim, Punjab, Himachal Pradesh, Gujarat Region, Coastal Andhra Pradesh & Yanam, Telangana, Rayalaseema, Tamil Nadu, Puducherry & Karaikal and North Interior Karnataka.

❖ **Minimum Temperature Departures (as on 10-08-2025): markedly above normal(> 5.1°C)** at most places over Himachal Pradesh; at few places over West Madhya Pradesh; at isolated places over Assam & Meghalaya, Gangetic West Bengal and East Madhya Pradesh. **appreciably above normal(3.1°C to 5.0°C)** at isolated places over Sub Himalayan West Bengal & Sikkim, Odisha, Bihar, Gujarat Region, Saurashtra & Kutch and Tamil Nadu, Puducherry & Karaikal. **above normal(1.6°C to 3.0°C)** at most places over Andaman & Nicobar Islands; at few places over Jammu-Kashmir-Ladakh-Gilgit-Baltistan-Muzaffarabad, East Rajasthan and Kerala & Mahe; at isolated places over Haryana-Chandigarh-Delhi, West Rajasthan, Madhya Maharashtra, Vidarbha, Chhattisgarh, Coastal Andhra Pradesh & Yanam and South Interior Karnataka. **near normal(-1.5°C to 1.5°C)** at many places over Jharkhand, Marathwada and Rayalaseema; at most places over Nagaland, Manipur, Mizoram & Tripura, East Uttar Pradesh, West Uttar Pradesh, Punjab, Konkan & Goa, Telangana, Coastal Karnataka, North Interior Karnataka and Lakshadweep; at few places over Arunachal Pradesh. **The lowest minimum temperature** of 19.0°C is reported at HALFLONG (ASSAM) over the Plains of India.

❖ **Maximum Temperature Departures (as on 09-08-2025): markedly above normal(> 5.1°C)** at few places over Himachal Pradesh; at isolated places over Odisha, Jammu-Kashmir-Ladakh-Gilgit-Baltistan-Muzaffarabad and Chhattisgarh. **appreciably above normal(3.1°C to 5.0°C)** at few places over Gujarat Region; at isolated places over Assam & Meghalaya, West Madhya Pradesh, East Madhya Pradesh, Madhya Maharashtra, Coastal Andhra Pradesh & Yanam, Telangana and Kerala & Mahe. **above normal(1.6°C to 3.0°C)** at few places over Jharkhand, East Rajasthan, Saurashtra & Kutch, Konkan & Goa, Coastal Karnataka and North Interior Karnataka; at isolated places over Andaman & Nicobar Islands, Gangetic West Bengal, West Rajasthan and Vidarbha. **near normal(-1.5°C to 1.5°C)** at many places over Sub Himalayan West Bengal & Sikkim, Bihar, East Uttar Pradesh, Punjab, Marathwada and South Interior Karnataka; at most places over Uttarakhand and Lakshadweep; at few places over Nagaland, Manipur, Mizoram &

\*Red color warning does not mean "Red Alert" Red color warning means "Take Action"

Forecast and warning for any day is valid from 0830 hours IST of day till 0830 hours IST of next day

For more details kindly visit <https://mausam.imd.gov.in> or contact 011-2434-4599

(Service to the nation since 1875)



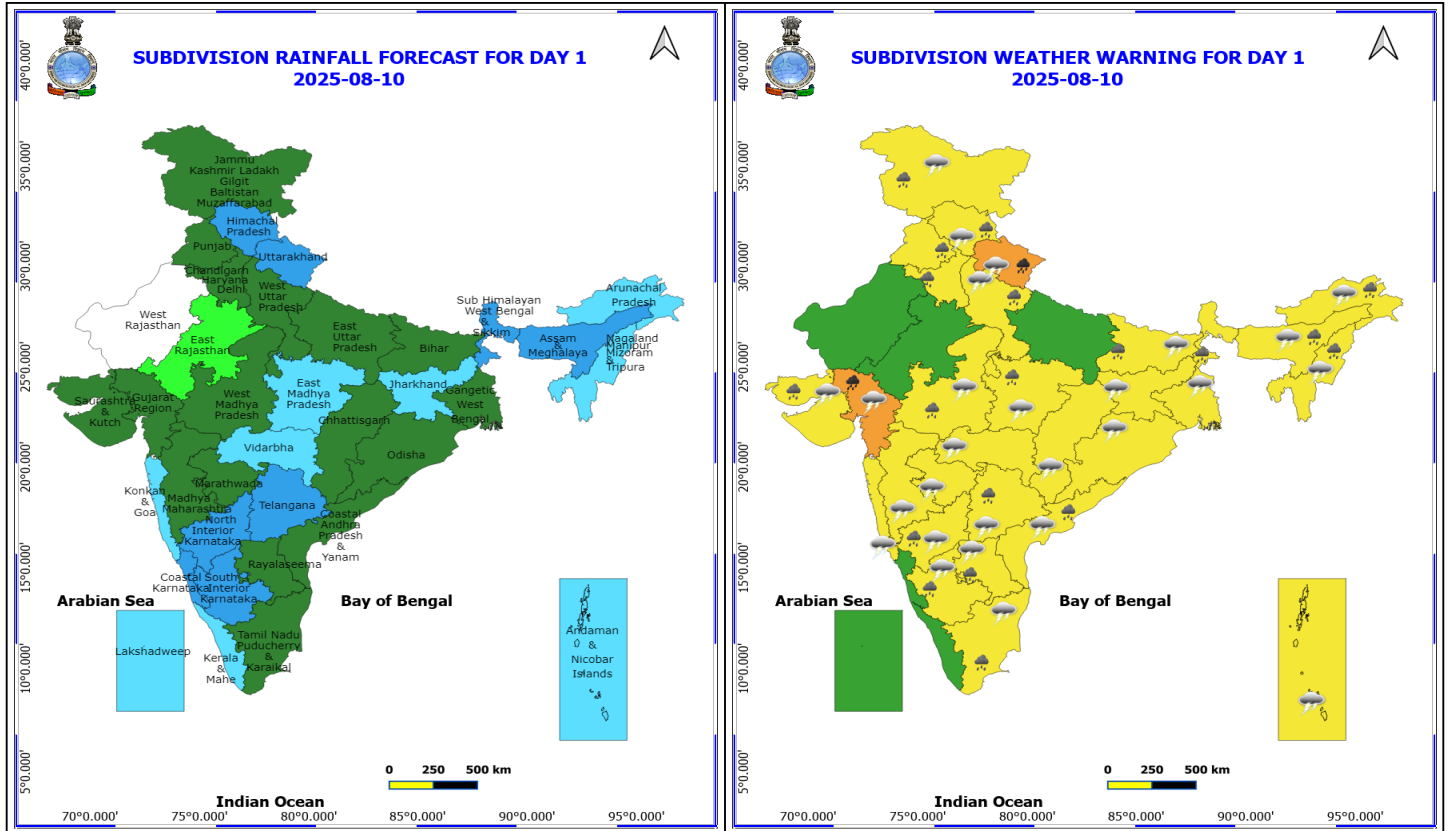
Tripura, West Uttar Pradesh, Haryana-Chandigarh-Delhi, Rayalaseema and Tamil Nadu, Puducherry & Karaikal. **The highest maximum temperature** of 39.0°C is reported at BAPATLA (ANDHRA PRADESH).

#### Meteorological Analysis (Based on 0830 hours IST)

- The **monsoon trough** at mean sea level now passes through Faridkot, Ludhiana, Najibabad, Shahjahanpur, Balia, Jalpaiguri and thence east-northeastwards to Arunachal Pradesh.
- The **upper air cyclonic circulation** over west Uttar Pradesh & neighbourhood now lies over central parts of Uttar Pradesh extends upto 4.5 km above mean sea level tilting southwards with height.
- The **upper air cyclonic circulation** over northeast Arabian sea and adjoining Gujarat at 3.1 km above mean sea level persists.
- The **upper air cyclonic circulation** over north interior Karnataka and neighbourhood between 4.5 & 5.8 km above mean sea level persists.
- The **upper air cyclonic circulation** over west Assam & neighbourhood now lies over northeast Assam and extends upto 1.5 km above mean sea level.
- The **Western Disturbance** a cyclonic circulation over north Pakistan & neighbourhood between 3.1 & 5.8 km above mean sea level persists.
- A **Low-Pressure area** is likely to form over northwest & adjoining westcentral Bay of Bengal around 13<sup>th</sup> August, 2025.

#### Weather Outlook for subsequent 3 days

- Fairly widespread to widespread rainfall likely over the most parts of the country.



## 10 August (Day 1)

- ❖ **Heavy to Very Heavy Rainfall** very likely at isolated places over Gujarat Region and Uttarakhand.
- ❖ **Heavy Rainfall** very likely at isolated places over Andhra Pradesh, Arunachal Pradesh, Assam & Meghalaya, Bihar, Haryana, Chandigarh & Delhi, Himachal Pradesh, Interior Karnataka, Jammu-Kashmir-Ladakh-Gilgit-Baltistan-Muzaffarabad, Madhya Pradesh, Nagaland, Manipur, Mizoram and Tripura, Punjab, Saurashtra & Kutch, Sub Himalayan West Bengal & Sikkim, Tamil Nadu Puducherry & Karaikal, Telangana and West Uttar Pradesh.
- ❖ **Thunderstorm accompanied with lightning & gusty winds(30-40kmph)** very likely at isolated places over Andaman & Nicobar Islands, Bihar, Gangetic West Bengal, Interior Karnataka, Jammu-Kashmir-Ladakh-Gilgit-Baltistan-Muzaffarabad and Jharkhand.
- ❖ **Thunderstorm accompanied with Lightning** very likely at isolated places over Andhra Pradesh, Arunachal Pradesh, Assam & Meghalaya, Chhattisgarh, Gujarat State, Himachal Pradesh, Konkan & Goa, Madhya Pradesh, Maharashtra, Nagaland, Manipur, Mizoram and Tripura, Odisha, Tamil Nadu Puducherry & Karaikal, Telangana, Uttarakhand and West Uttar Pradesh.
- Squally wind with speed reaching 45 kmph to 55 kmph gusting to 65 kmph is likely to prevail along and off Somalia, few parts of westcentral Arabian Sea and some parts of southwest Arabian Sea.
- Squally weather with wind speed reaching 40 - 50 kmph gusting to 60 kmph likely to prevail over Gulf of Mannar, along and off Sri-Lanka coast, some parts of southwest Bay of Bengal and south coastal Andhra Pradesh & adjoining westcentral Bay of Bengal.

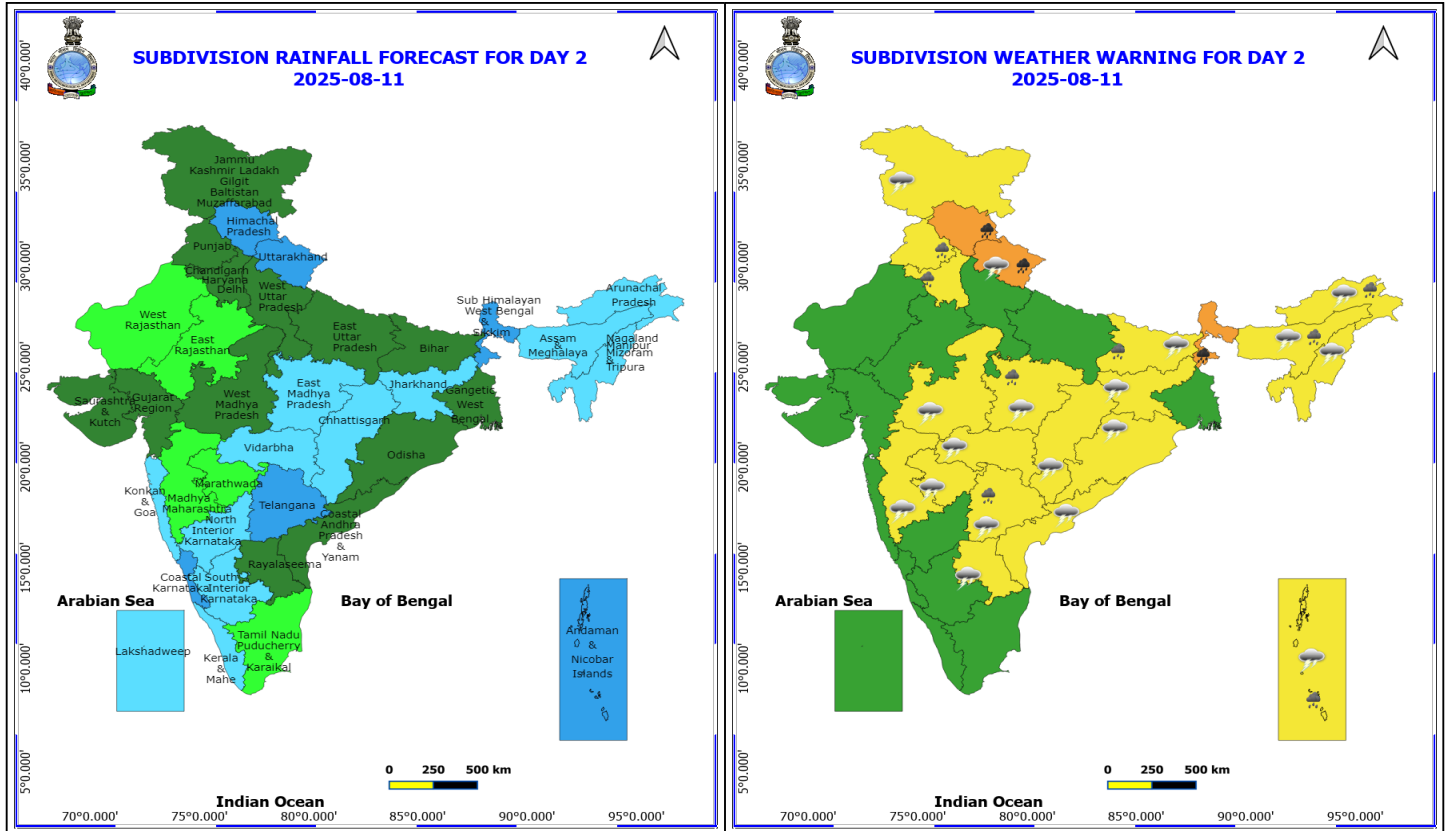
\*Red color warning does not mean "Red Alert" Red color warning means "Take Action"

Forecast and warning for any day is valid from 0830 hours IST of day till 0830 hours IST of next day

For more details kindly visit <https://mausam.imd.gov.in> or contact 011-2434-4599

(Service to the nation since 1875)





## 11 August (Day 2)

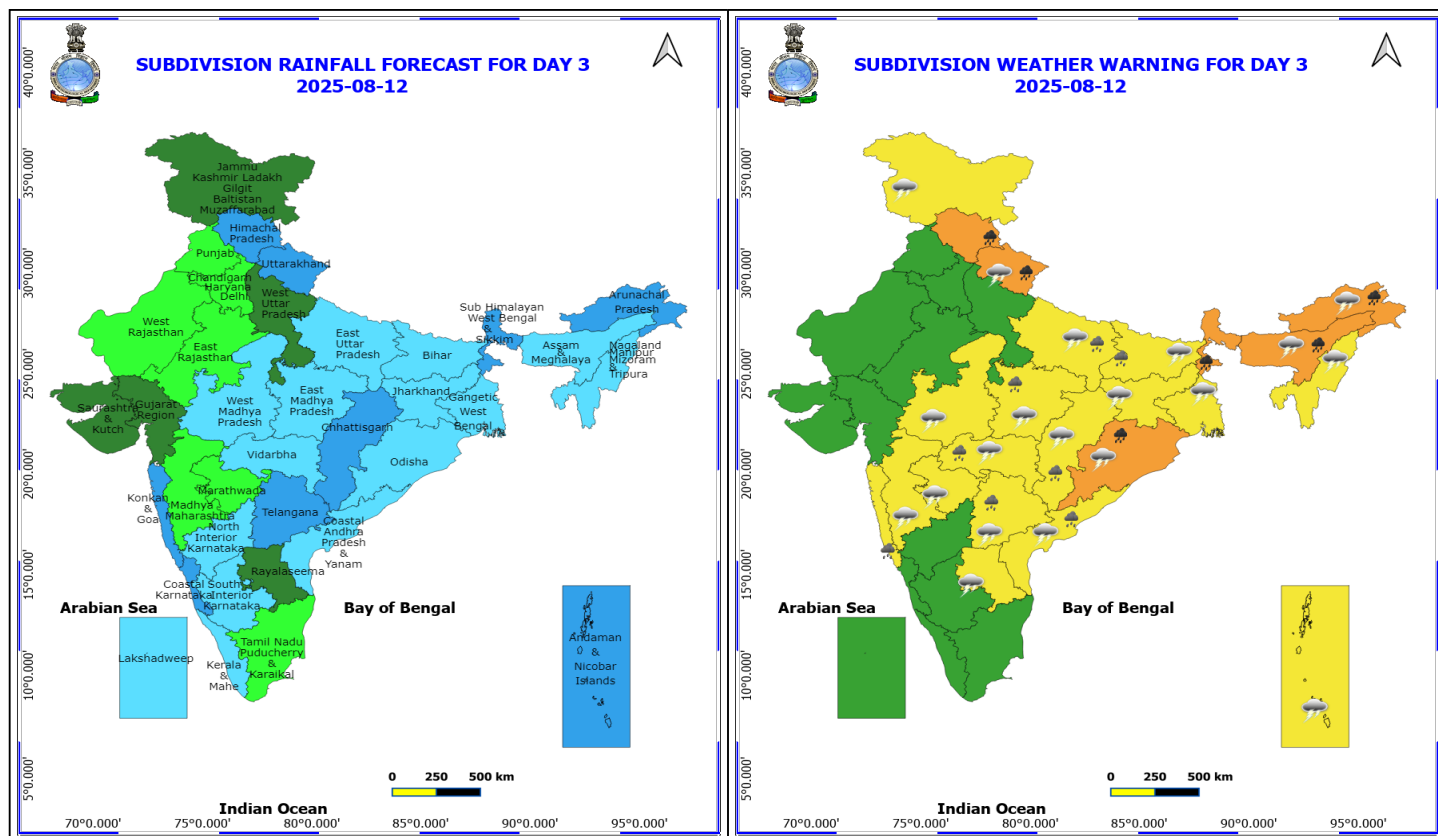
- ❖ **Heavy to Very Heavy Rainfall** very likely at isolated places over Himachal Pradesh, Sub Himalayan West Bengal & Sikkim and Uttarakhand.
  - ❖ **Heavy Rainfall** very likely at isolated places over Andaman & Nicobar Islands, Arunachal Pradesh, Assam & Meghalaya, Bihar, East Madhya Pradesh, Haryana, Chandigarh & Delhi, Punjab and Telangana.
  - ❖ **Thunderstorm accompanied with lightning & gusty winds(30-40kmph)** very likely at isolated places over Andaman & Nicobar Islands, Bihar, Jammu-Kashmir-Ladakh-Gilgit-Baltistan-Muzaffarabad and Jharkhand.
  - ❖ **Thunderstorm accompanied with Lightning** very likely at isolated places over Andhra Pradesh, Arunachal Pradesh, Assam & Meghalaya, Chhattisgarh, Madhya Pradesh, Maharashtra, Nagaland, Manipur, Mizoram and Tripura, Odisha, Telangana and Uttarakhand.
- Squally wind with speed reaching 45 kmph to 55 kmph gusting to 65 kmph is likely to prevail along and off Somalia & Oman coasts, some parts of southwest Arabian Sea and adjoining some parts of westcentral Arabian sea.
  - Squally weather with wind speed reaching 40 - 50 kmph gusting to 60 kmph likely to prevail over Gulf of Mannar, adjoining Comorin area, along and off Sri-Lanka coast, many parts of southwest Bay of Bengal, adjoining parts of southeast Bay of Bengal, over Andaman sea.

**\*Red color warning does not mean "Red Alert" Red color warning means "Take Action"**

Forecast and warning for any day is valid from 0830 hours IST of day till 0830 hours IST of next day

For more details kindly visit <https://mausam.imd.gov.in> or contact 011-2434-4599

(Service to the nation since 1875)



## 12 August (Day 3)

- ❖ **Heavy to Very Heavy Rainfall** very likely at isolated places over Arunachal Pradesh, Assam & Meghalaya, Himachal Pradesh, Odisha, Sub Himalayan West Bengal & Sikkim and Uttarakhand.
- ❖ **Heavy Rainfall** very likely at isolated places over Bihar, Chhattisgarh, Coastal Andhra Pradesh, East Madhya Pradesh, East Uttar Pradesh, Konkan & Goa, Telangana and Vidarbha.
- ❖ **Thunderstorm accompanied with lightning & gusty winds(30-40kmph)** very likely at isolated places over Andaman & Nicobar Islands, Bihar, Gangetic West Bengal, Jammu-Kashmir-Ladakh-Gilgit-Baltistan-Muzaffarabad and Jharkhand.
- ❖ **Thunderstorm accompanied with Lightning** very likely at isolated places over Andhra Pradesh, Arunachal Pradesh, Assam & Meghalaya, Chhattisgarh, East Uttar Pradesh, Madhya Pradesh, Maharashtra, Nagaland, Manipur, Mizoram and Tripura, Odisha, Telangana and Uttarakhand.
- Squally wind with speed reaching 45 kmph to 55 kmph gusting to 65 kmph is likely to prevail along and off Somalia, Yemen, Oman coasts, most parts of westcentral Arabian sea & adjoining, some parts of eastcentral Arabian sea, few parts of southwest Arabian Sea, southern parts of north Arabian sea east.
- Squally weather with wind speed reaching 40 - 50 kmph gusting to 60 kmph likely to prevail along and off north Gujarat coast & adjoining northeast Arabian Sea over Gulf of Mannar and adjoining Comorin area, along and off Sri-Lanka coast, over southwest Bay of Bengal & adjoining parts of southeast, westcentral Bay of Bengal and over Andaman sea.

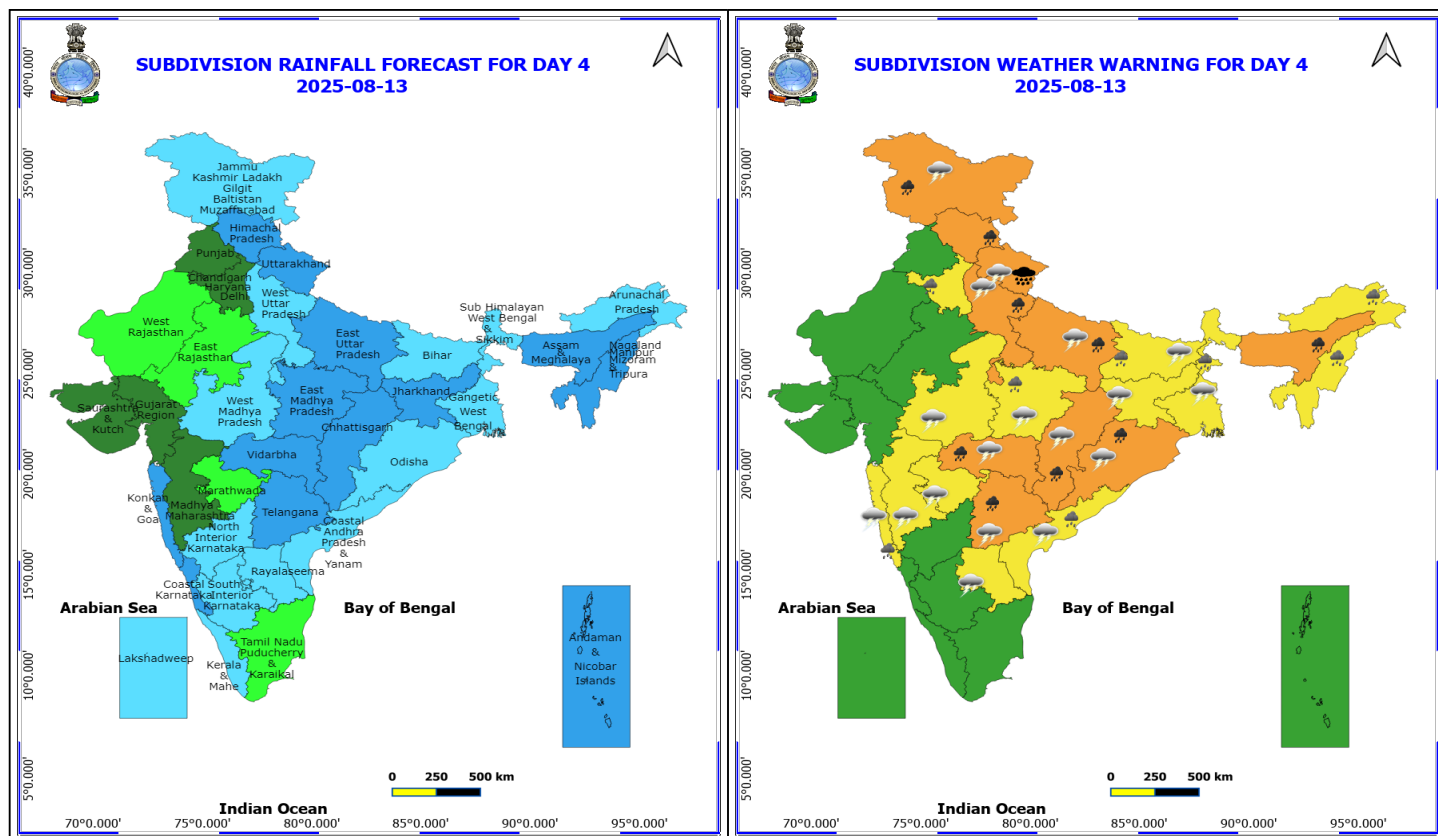
**\*Red color warning does not mean "Red Alert" Red color warning means "Take Action"**

Forecast and warning for any day is valid from 0830 hours IST of day till 0830 hours IST of next day

For more details kindly visit <https://mausam.imd.gov.in> or contact 011-2434-4599

(Service to the nation since 1875)





### 13 August (Day 4)

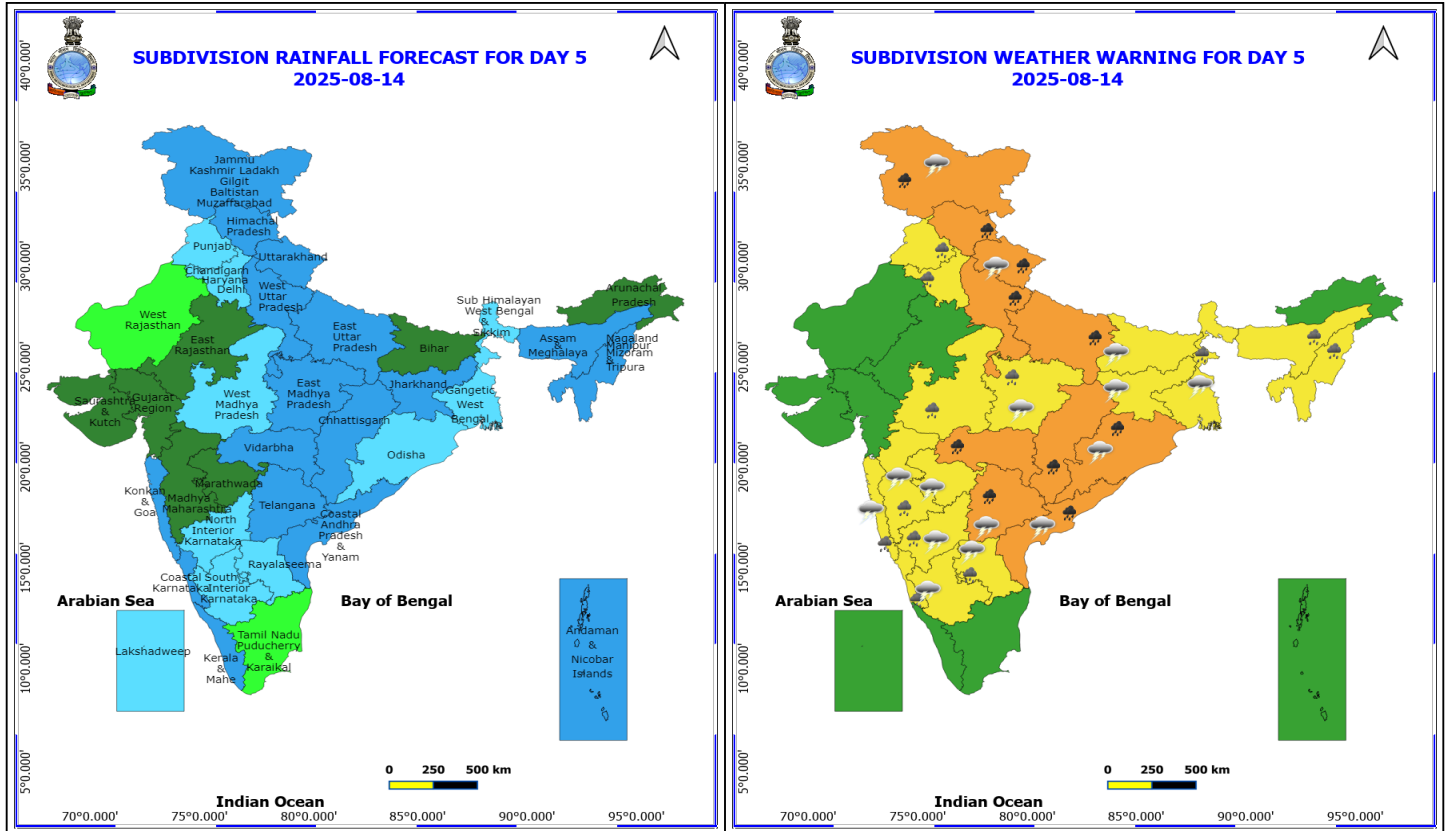
- ❖ **Heavy to Very Heavy Rainfall with isolated Extremely Heavy Rainfall** likely at isolated places over Uttarakhand.
- ❖ **Heavy to Very Heavy Rainfall** likely at isolated places over Assam & Meghalaya, Chhattisgarh, Himachal Pradesh, Jammu-Kashmir-Ladakh-Gilgit-Baltistan-Muzaffarabad, Odisha, Telangana, Uttar Pradesh and Vidarbha.
- ❖ **Heavy Rainfall** likely at isolated places over Arunachal Pradesh, Bihar, Coastal Andhra Pradesh, East Madhya Pradesh, Haryana, Chandigarh & Delhi, Konkan & Goa, Nagaland, Manipur, Mizoram and Tripura and Sub Himalayan West Bengal & Sikkim.
- ❖ **Thunderstorm accompanied with lightning & gusty winds(30-40kmph)** likely at isolated places over Bihar, Gangetic West Bengal, Jammu-Kashmir-Ladakh-Gilgit-Baltistan-Muzaffarabad and Jharkhand.
- ❖ **Thunderstorm accompanied with Lightning** likely at isolated places over Andhra Pradesh, Chhattisgarh, Konkan & Goa, Madhya Pradesh, Maharashtra, Odisha, Telangana, Uttar Pradesh and Uttarakhand.
- Squally wind with speed reaching 45 kmph to 55 kmph gusting to 65 kmph is likely to prevail along and off Somalia, Yemen, Oman coasts, most parts of westcentral Arabian sea & adjoining, some parts of eastcentral Arabian sea, few parts of southwest Arabian Sea, southern parts of north Arabian sea east.
- Squally weather with wind speed reaching 40 - 50 kmph gusting to 60 kmph likely to prevail along and off north Gujarat coast & adjoining northeast Arabian Sea, along and off Konkan & Goa coasts, over Gulf of Mannar and adjoining Comorin area, along and off Sri-Lanka coast, over southwest Bay of Bengal & adjoining, many parts of southeast, southern parts of central Bay of Bengal, over Andaman sea, along and off north Andhra Pradesh, south Odisha coast, adjoining sea areas.

**\*Red color warning does not mean "Red Alert" Red color warning means "Take Action"**

**Forecast and warning for any day is valid from 0830 hours IST of day till 0830 hours IST of next day**

**For more details kindly visit <https://mausam.imd.gov.in> or contact 011-2434-4599**

**(Service to the nation since 1875)**



#### 14 August (Day 5)

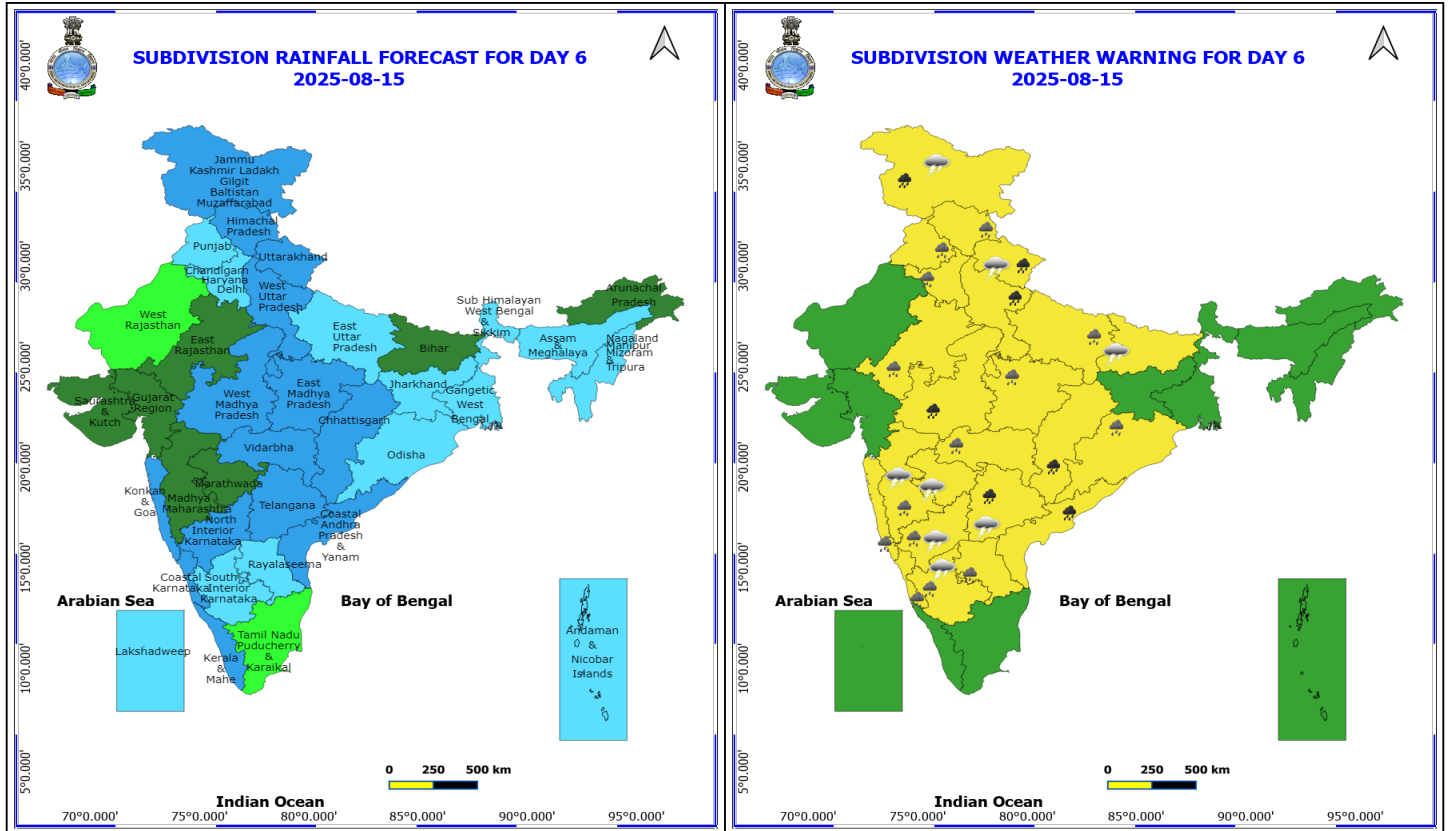
- ❖ **Heavy to Very Heavy Rainfall** likely at isolated places over Chhattisgarh, Coastal Andhra Pradesh, Himachal Pradesh, Jammu-Kashmir-Ladakh-Gilgit-Baltistan-Muzaffarabad, Odisha, Telangana, Uttar Pradesh, Uttarakhand and Vidarbha.
- ❖ **Heavy Rainfall** likely at isolated places over Assam & Meghalaya, Coastal Karnataka, Haryana, Chandigarh & Delhi, Konkan & Goa, Madhya Maharashtra, Madhya Pradesh, Nagaland, Manipur, Mizoram and Tripura, North Interior Karnataka, Punjab, Rayalaseema and Sub Himalayan West Bengal & Sikkim.
- ❖ **Thunderstorm accompanied with lightning & gusty winds(30-40kmph)** likely at isolated places over Bihar, Gangetic West Bengal, Jammu-Kashmir-Ladakh-Gilgit-Baltistan-Muzaffarabad and Jharkhand.
- ❖ **Thunderstorm accompanied with Lightning** likely at isolated places over Andhra Pradesh, East Madhya Pradesh, Interior Karnataka, Konkan & Goa, Madhya Maharashtra, Marathwada, Odisha, Telangana and Uttarakhand.
- Squally wind with speed reaching 45 kmph to 55 kmph gusting to 65 kmph is likely to prevail along and off Somalia, Yemen, Oman coasts, most parts of westcentral Arabian sea & adjoining, some parts of eastcentral Arabian sea, few parts of southwest Arabian Sea, southern parts of north Arabian sea east.
- Squally weather with wind speed reaching 40 - 50 kmph gusting to 60 kmph likely to prevail along and off north Gujarat coast & adjoining northeast Arabian Sea, along and off Konkan & Goa coasts, over Gulf of Mannar and adjoining Comorin area, along and off Sri-Lanka coast, over southwest Bay of Bengal & adjoining, many parts of southeast, southern parts of central Bay of Bengal, over Andaman sea, along and off north Andhra Pradesh, south Odisha coast, adjoining sea areas.

**\*Red color warning does not mean "Red Alert" Red color warning means "Take Action"**

Forecast and warning for any day is valid from 0830 hours IST of day till 0830 hours IST of next day

For more details kindly visit <https://mausam.imd.gov.in> or contact 011-2434-4599

(Service to the nation since 1875)



### 15 August (Day 6)

- ❖ **Heavy to Very Heavy Rainfall** likely at isolated places over Chhattisgarh, Coastal Andhra Pradesh, Jammu-Kashmir-Ladakh-Gilgit-Baltistan-Muzaffarabad, Telangana, Uttarakhand, West Madhya Pradesh and West Uttar Pradesh.
- ❖ **Heavy Rainfall** likely at isolated places over East Madhya Pradesh, East Rajasthan, East Uttar Pradesh, Haryana, Chandigarh & Delhi, Himachal Pradesh, Karnataka, Konkan & Goa, Madhya Maharashtra, Odisha, Punjab, Rayalaseema and Vidarbha.
- ❖ **Thunderstorm accompanied with lightning & gusty winds(40-50kmph)** likely at isolated places over Interior Karnataka.
- ❖ **Thunderstorm accompanied with lightning & gusty winds(30-40kmph)** likely at isolated places over Bihar and Jammu-Kashmir-Ladakh-Gilgit-Baltistan-Muzaffarabad.
- ❖ **Thunderstorm accompanied with Lightning** likely at isolated places over Madhya Maharashtra, Marathwada, Telangana and Uttarakhand.

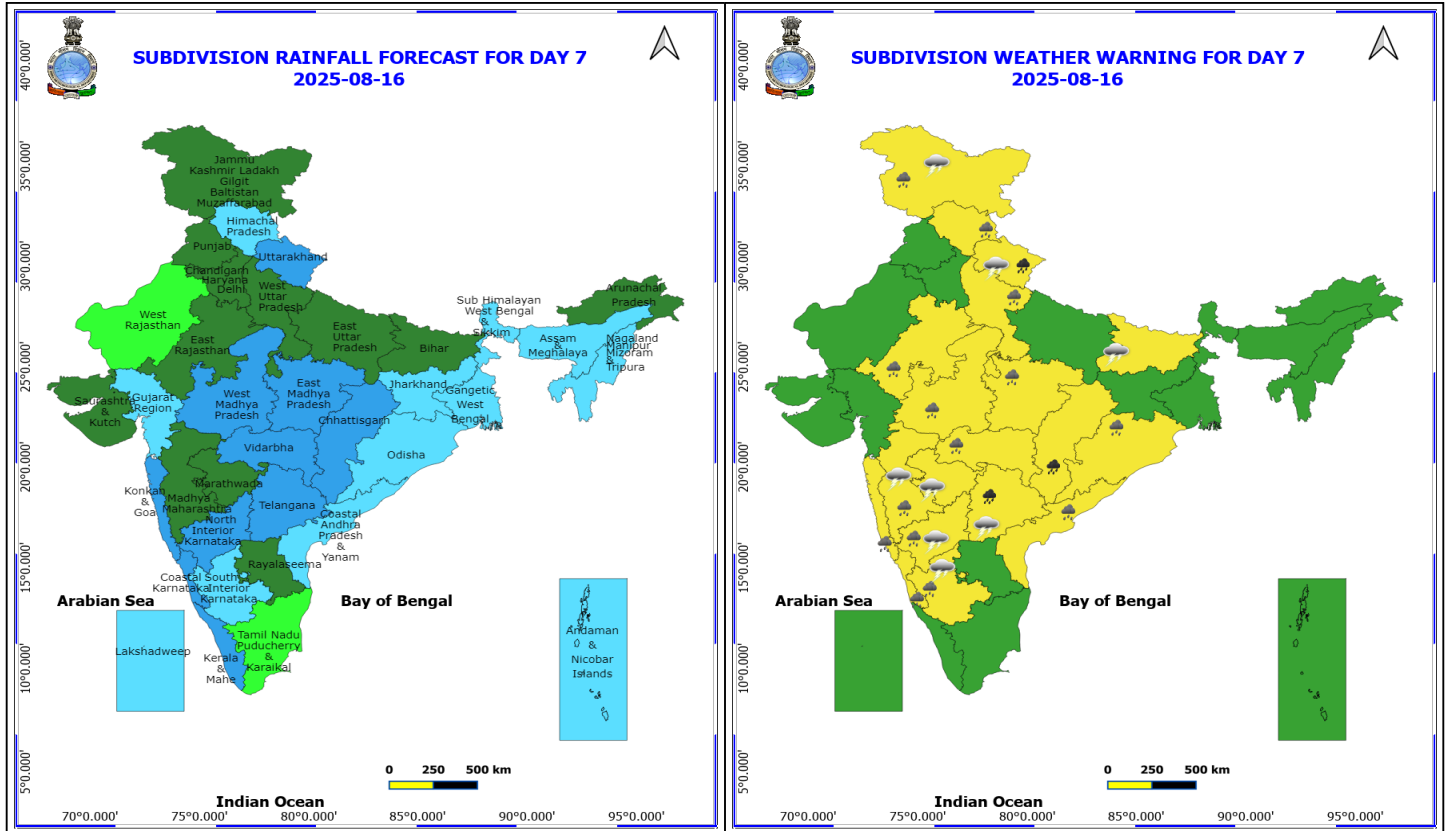
**No Fishermen Warning**

**\*Red color warning does not mean "Red Alert" Red color warning means "Take Action"**

**Forecast and warning for any day is valid from 0830 hours IST of day till 0830 hours IST of next day**

**For more details kindly visit <https://mausam.imd.gov.in> or contact 011-2434-4599**

**(Service to the nation since 1875)**



## 16 August (Day 7)

- ❖ **Heavy to Very Heavy Rainfall** likely at isolated places over Chhattisgarh, Coastal Andhra Pradesh, Himachal Pradesh, Jammu-Kashmir-Ladakh-Gilgit-Baltistan-Muzaffarabad, Odisha, Telangana, Uttar Pradesh, Uttarakhand and Vidarbha.
- ❖ **Heavy Rainfall** likely at isolated places over Assam & Meghalaya, Coastal Karnataka, Haryana, Chandigarh & Delhi, Konkan & Goa, Madhya Maharashtra, Madhya Pradesh, Nagaland, Manipur, Mizoram and Tripura, North Interior Karnataka, Punjab, Rayalaseema and Sub Himalayan West Bengal & Sikkim.
- ❖ **Thunderstorm accompanied with lightning & gusty winds(30-40kmph)** likely at isolated places over Bihar, Gangetic West Bengal, Jammu-Kashmir-Ladakh-Gilgit-Baltistan-Muzaffarabad and Jharkhand.
- ❖ **Thunderstorm accompanied with Lightning** likely at isolated places over Andhra Pradesh, East Madhya Pradesh, Interior Karnataka, Konkan & Goa, Madhya Maharashtra, Marathwada, Odisha, Telangana and Uttarakhand.

**No Fishermen Warning**



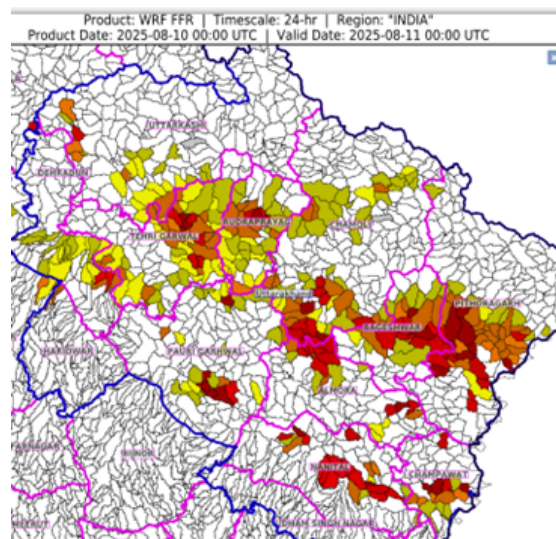
## Flash Flood Warnings

### 24 hours Outlook for the Flash Flood Risk (FFR) till 1130 IST of 11-08-2025 :

**Low to Moderate flash flood risk** likely over few watersheds & neighbourhoods of following Met Sub-divisions during next 24 hours.

**Uttarakhand** - Almora, Bageshwar, Chamoli, Champawat, Dehradun, Haridwar, Nanital, Pauri Garhwal, Pithoragarh, Rudraprayag, Tehri Garwal and Udham Singh Nagar districts.

Surface runoff/ Inundation may occur at some fully saturated soils & low-lying areas over Area of Concern (AoC) as shown in map due to expected rainfall occurrence in next 24 hours.

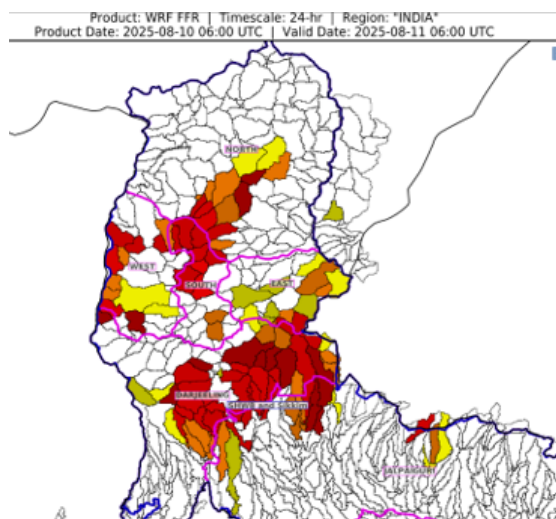


### 24 hours Outlook for the Flash Flood Risk (FFR) till 1130 IST of 11-08-2025 :

Low to Moderate flash flood risk likely over few watersheds & neighbourhoods of following Met Sub-divisions during next 24 hours.

**Sub-Himalayan West Bengal & Sikkim** - East Sikkim, North Sikkim, South Sikkim, West Sikkim, Darjeeling and Jalpaiguri districts.

Surface runoff/ Inundation may occur at some fully saturated soils & low-lying areas over Area of Concern (AoC) as shown in map due to expected rainfall occurrence in next 24 hours.



**\*Red color warning does not mean "Red Alert" Red color warning means "Take Action"**

Forecast and warning for any day is valid from 0830 hours IST of day till 0830 hours IST of next day

For more details kindly visit <https://mausam.imd.gov.in> or contact 011-2434-4599

(Service to the nation since 1875)





# Table-1

## 7 Days Rainfall Forecast

S.No.	Subdivision	10- Aug	11- Aug	12- Aug	13- Aug	14- Aug	15- Aug	16- Aug
		Day 1	Day 2	Day 3	Day 4	Day 5	Day 6	Day 7
1	ANDAMAN & NICOBAR ISLANDS	FWS	WS	WS	WS	WS	FWS	FWS
2	ARUNACHAL PRADESH	FWS	FWS	WS	FWS	SCT	SCT	SCT
3	ASSAM & MEHGHALAYA	WS	FWS	FWS	WS	WS	FWS	FWS
4	N. M. M. & T.	FWS	FWS	FWS	WS	WS	FWS	FWS
5	S.H. WEST BENGAL & SIKKIM	WS	WS	WS	FWS	FWS	FWS	FWS
6	GANGETIC WEST BENGAL	SCT	SCT	FWS	FWS	FWS	FWS	FWS
7	ODISHA	SCT	SCT	FWS	FWS	FWS	FWS	FWS
8	JHARKHAND	FWS	FWS	FWS	WS	WS	FWS	FWS
9	BIHAR	SCT	SCT	FWS	FWS	SCT	SCT	SCT
10	EAST UTTAR PRADESH	SCT	SCT	FWS	WS	WS	FWS	SCT
11	WEST UTTAR PRADESH	SCT	SCT	SCT	FWS	WS	WS	SCT
12	UTTARAKHAND	WS	WS	WS	WS	WS	WS	WS
13	HARYANA, CHD & DELHI	SCT	SCT	ISOL	SCT	FWS	FWS	SCT
14	PUNJAB	SCT	SCT	ISOL	SCT	FWS	FWS	SCT
15	HIMACHAL PRADESH	WS	WS	WS	WS	WS	WS	FWS
16	JAMMU AND KASHMIR AND LADAKH	SCT	SCT	SCT	FWS	WS	WS	SCT
17	WEST RAJASTHAN	DRY	ISOL	ISOL	ISOL	ISOL	ISOL	ISOL
18	EAST RAJASTHAN	ISOL	ISOL	ISOL	ISOL	SCT	SCT	SCT
19	WEST MADHYA PRADESH	SCT	SCT	FWS	FWS	FWS	WS	WS
20	EAST MADHYA PRADESH	FWS	FWS	FWS	WS	WS	WS	WS
21	GUJRAT REGION	SCT	SCT	SCT	SCT	SCT	SCT	FWS
22	SAURASHTRA & KUTCH	SCT	SCT	SCT	SCT	SCT	SCT	SCT
23	KONKAN & GOA	FWS	FWS	WS	WS	WS	WS	WS
24	MADHYA MAHARASHTRA	SCT	ISOL	ISOL	SCT	SCT	SCT	SCT
25	MARATHWADA	SCT	ISOL	ISOL	ISOL	SCT	SCT	SCT
26	VIDARBHA	FWS	FWS	FWS	WS	WS	WS	WS
27	CHATTISGARH	SCT	FWS	WS	WS	WS	WS	WS
28	COASTAL ANDHRA PRADESH	SCT	SCT	FWS	FWS	WS	WS	FWS
29	TELANGANA	WS	WS	WS	WS	WS	WS	WS
30	RAYALASEEMA	SCT	SCT	SCT	FWS	FWS	FWS	SCT
31	TAMILNADU & PUDUCHERRY	SCT	ISOL	ISOL	ISOL	ISOL	ISOL	ISOL
32	COSTAL KARNATAKA	WS	WS	WS	WS	WS	WS	WS
33	NORTH INTERIOR KARNATAKA	WS	FWS	FWS	FWS	FWS	WS	WS
34	SOUTH INTERIOR KARNATAKA	WS	FWS	FWS	FWS	FWS	FWS	FWS
35	KERALA	FWS	FWS	FWS	FWS	WS	WS	WS
36	LAKSHDWEAP	FWS	FWS	FWS	FWS	FWS	FWS	FWS

Legend	Category	%Stations
WS	Widespread/Most Places	76-100
FWS	Fairly Widespread/Many Places	51-75
SCT	Scattered/ A Few Places	26-50
ISOL	Isolated Places	1-25
DRY	No Rain	0

\*Red color warning does not mean "Red Alert" Red color warning means "Take Action"

Forecast and warning for any day is valid from 0830 hours IST of day till 0830 hours IST of next day

For more details kindly visit <https://mausam.imd.gov.in> or contact 011-2434-4599

(Service to the nation since 1875)

Fig. 1: Maximum Temperatures Dated 2025-08-10

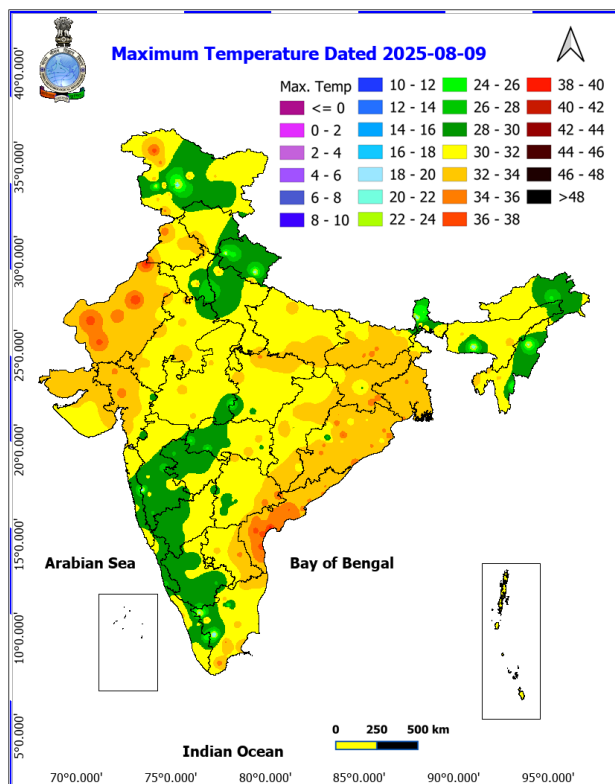


Fig. 2: Departure of Maximum Temp. Dated 2025-08-10

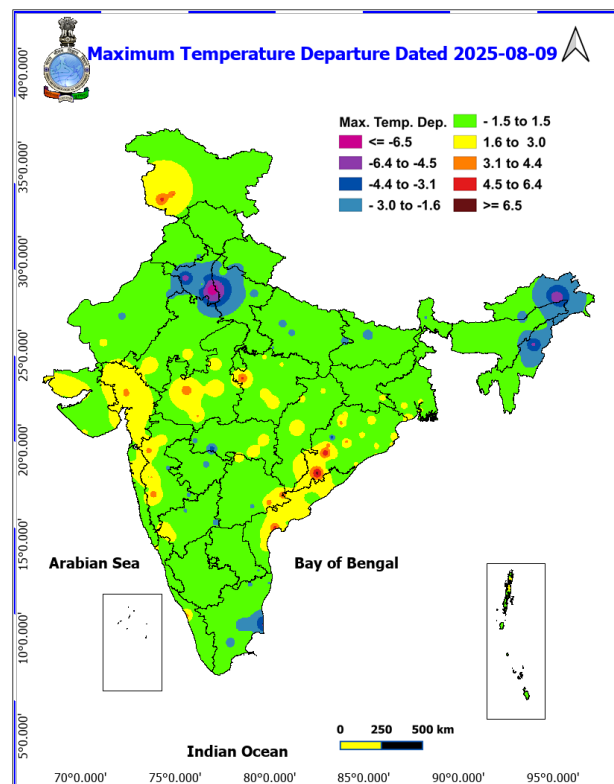


Fig. 3: Minimum Temperatures Dated 2025-08-10

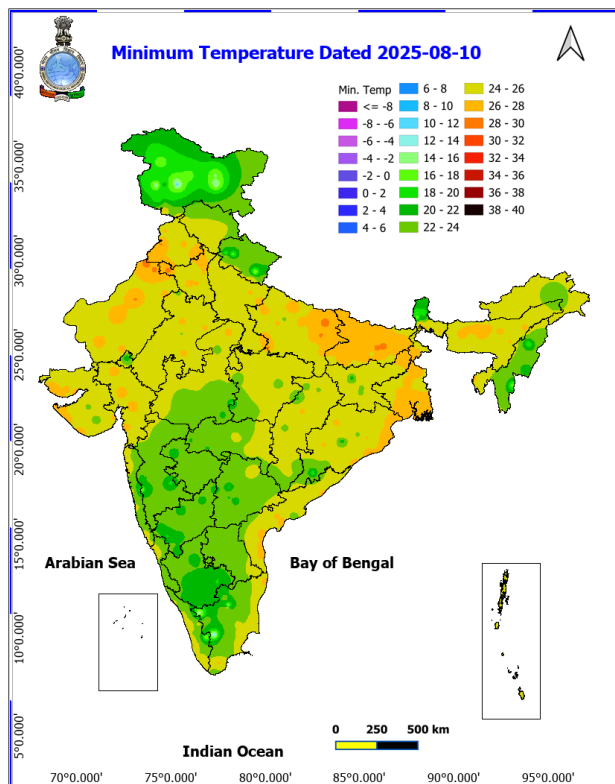
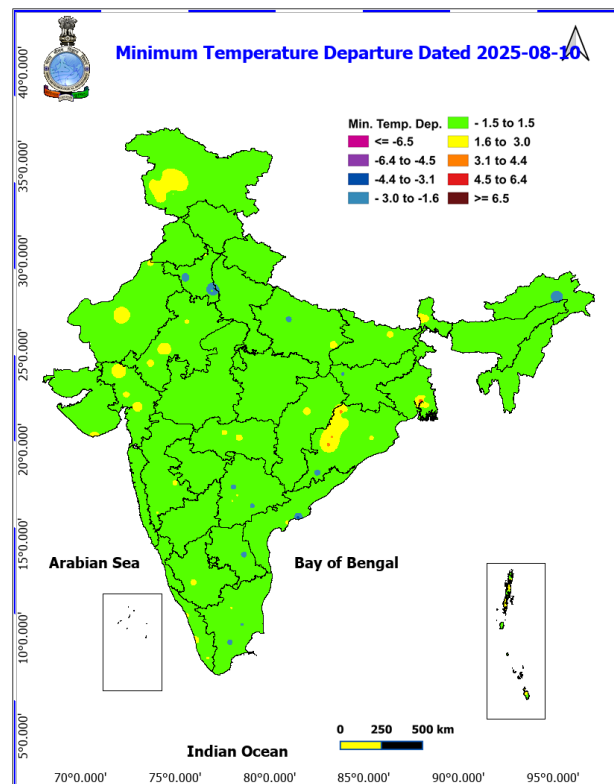
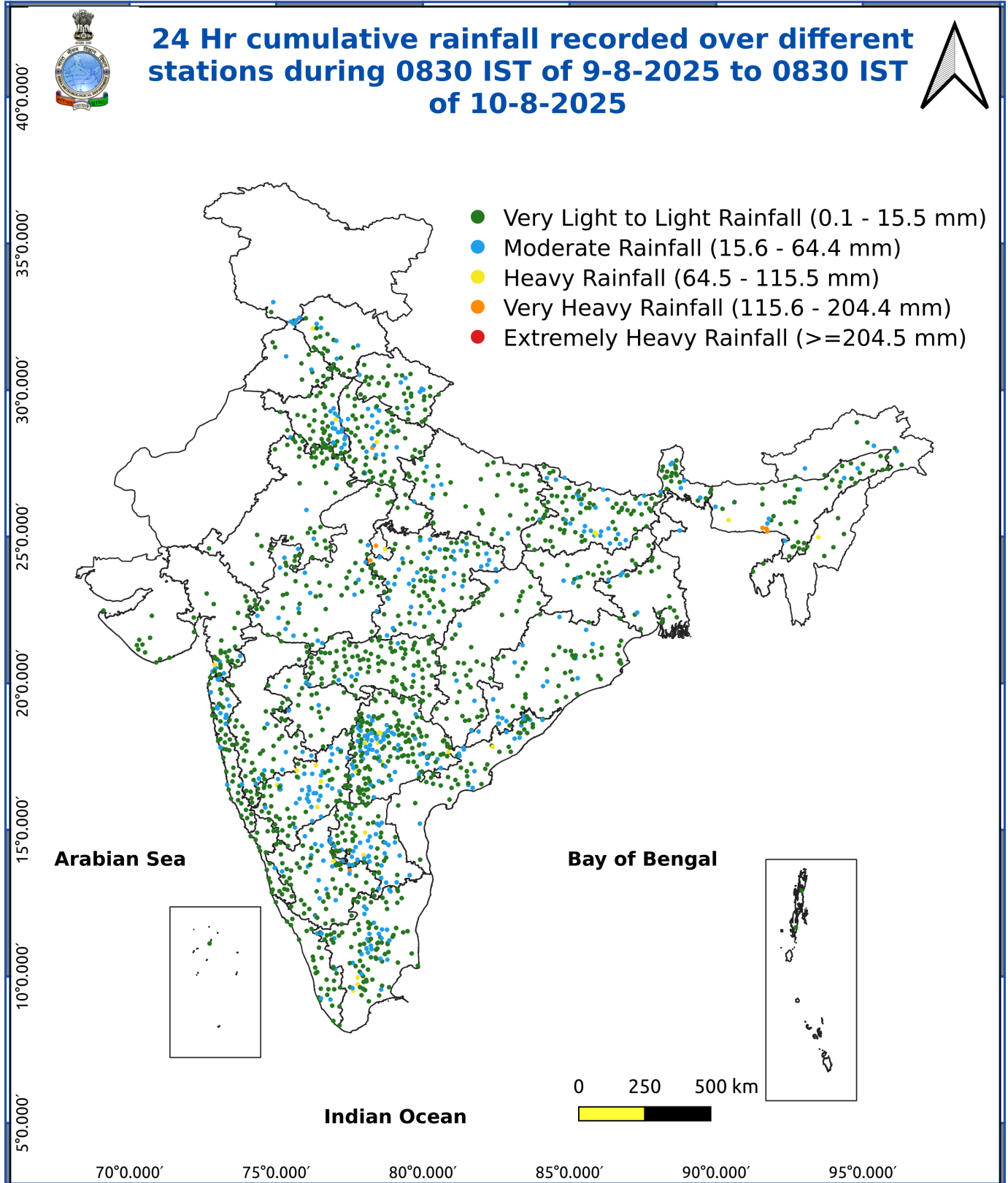


Fig. 4: Departure of Minimum Temp. Dated 2025-08-10





\*Red color warning does not mean "Red Alert" Red color warning means "Take Action"

Forecast and warning for any day is valid from 0830 hours IST of day till 0830 hours IST of next day

For more details kindly visit <https://mausam.imd.gov.in> or contact 011-2434-4599

(Service to the nation since 1875)

### Impact & Action Suggested due to

**Extremely heavy rainfall** likely over Uttarakhand on 13<sup>th</sup> August; **very heavy rainfall** over Gujarat Region on 10<sup>th</sup> August; Jammu-Kashmir during 13<sup>th</sup>-15<sup>th</sup>; Himachal Pradesh during 11<sup>th</sup>-14<sup>th</sup>; Uttarakhand on during 10<sup>th</sup>-12<sup>th</sup> & 14<sup>th</sup>-16<sup>th</sup>; West Uttar Pradesh on 13<sup>th</sup> & 15<sup>th</sup>; East Uttar Pradesh, Vidarbha on 13<sup>th</sup> & 14<sup>th</sup>; Arunachal Pradesh on 12<sup>th</sup>; Assam & Meghalaya on 12<sup>th</sup> & 13<sup>th</sup>; over Coastal Andhra Pradesh & Yanam on 14<sup>th</sup> & 15<sup>th</sup>; Telangana during 13<sup>th</sup>-16<sup>th</sup>; West Madhya Pradesh on 15<sup>th</sup>; Chhattisgarh on during 13<sup>th</sup>-16<sup>th</sup>; Sub-Himalayan West Bengal & Sikkim on 11<sup>th</sup> & 12<sup>th</sup>; Odisha during 12<sup>th</sup> & 14<sup>th</sup> August.

### Impact Expected

Localized Flooding of roads, water logging in low lying areas and closure of underpasses mainly in urban areas of the above region.

Occasional reduction in visibility due to heavy rainfall.

Disruption of traffic in major cities due to water logging in roads leading to increased travel time.

Minor damage to kutcha roads.

Possibilities of damage to vulnerable structure.

Localized Landslides/Mudslides/landslips/mudslips/landsinks/mudsinks.

Damage to horticulture and standing crops in some areas due to inundation.

It may lead to riverine flooding in some river catchments (for riverine flooding please visit Web page of CWC)

### Action Suggested

Check for traffic congestion on your route before leaving for your destination.

Follow any traffic advisories that are issued in this regard.

Avoid going to areas that face the water logging problems often.

Avoid staying in vulnerable structure.

### Agromet advisories for various parts of the country

#### Agromet advisories for likely impact of Heavy / Heavy to Very Heavy / Extremely Heavy Rainfall

In Uttarakhand, make necessary arrangements to drain out excess water from the fields of already sown / transplanted rice, sugarcane, maize, black gram, green gram, groundnut, pigeon pea, finger millet, soybean and vegetables in Bhabar and Tarai Zone; and from barnyard millet, finger millet, green gram and black gram in Sub Humid Sub Tropic Zone. In Hill Zone, strengthen the bunds to prevent surface runoff of water. Postpone sowing of vegetable pea till soil attains optimum moisture level. Maintain proper drainage channels in vegetable and crop fields. Undertake harvesting of matured capsicum fruits. Postpone sowing of vegetable pea until the soil attains optimum moisture, especially under

**\*Red color warning does not mean "Red Alert" Red color warning means "Take Action"**

**Forecast and warning for any day is valid from 0830 hours IST of day till 0830 hours IST of next day**

**For more details kindly visit <https://mausam.imd.gov.in> or contact 011-2434-4599**

**(Service to the nation since 1875)**

excessive wet soil conditions.

In Himachal Pradesh, provide proper drainage channels in maize, ginger, turmeric and vegetable fields in Mid Hills Sub Humid Zone; and rice, maize and vegetable fields in Sub Montane and Low Hills Sub Tropical Zone. In High Hills Sub Temperate Wet Zone, undertake harvesting of ripened tomato and cover the cauliflower nursery with plastic sheets to prevent damage from heavy rainfall.

In Madhya Pradesh, provide adequate drainage in the fields of maize, soybean, blackgram, cotton, and pigeon pea in Vindhyan Plateau Zone; maize, soybean, cotton, sugarcane and vegetables in Satpura Plateau Zone; rice, soybean, maize, sugarcane and vegetables in Central Narmada Valley Zone and soybean, pigeon pea, cotton and vegetables in Nimar Valley Zone.

In Bihar, make provisions to drain out excess water from standing crops such as maize, nurseries of onion, chilli, and cauliflower in North West Alluvial Plain Zone; maize, finger millet, ragi, kodo, sava, china etc. in North East Alluvial Zone.

In Sub-Himalayan West Bengal, make provision to drain out excess water from rice, ginger, vegetable fields and fruit orchards in Hill Zone and aman paddy and vegetable fields in Terai Zone. Cover the chilli seedlings with plastic to protect them from heavy rains in Terai Zone.

In Arunachal Pradesh, ensure proper drainage in rice, maize, finger millet, soybean, vegetables, and fruit orchards to avoid waterlogging. Provide strong support to fruit-bearing plants to prevent them from bending or breaking during heavy rains.

In Assam, to prevent waterlogging, ensure proper drainage in Sali rice, green gram and pigeon pea fields and banana orchards in Lower Brahmaputra Valley Zone; Sali rice and sugarcane fields in North Bank Plain Zone and Sali rice fields in Upper Brahmaputra Valley Zone.

In Meghalaya, ensure proper drainage in rice, maize, turmeric, chilli, okra and bitter gourd fields to prevent waterlogging. Provide staking/support to tall and fragile crops like banana, papaya, bottle gourd etc. to prevent lodging.

In Tamil Nadu, ensure proper drainage in sorghum fields to prevent waterlogging, especially in heavy soils and low-lying areas. Ensure proper drainage around the coconut plants to avoid root rot.

In West Uttar Pradesh, maintain proper drainage in fields of rice, pigeon pea, sugarcane and vegetable crops in South Western Semi-Arid Zone.

In Telangana, drain out excess water from rice nurseries and recently transplanted rice as well as from fields of cotton, maize, red gram, soybean, sugarcane, and vegetables.

### **Livestock / Fishery**

Keep the animals inside the shed during heavy rainfall and provide them balanced feed.

Store feed and fodder in a safe place to prevent spoilage.

Construct an outlet with proper netting around the ponds to drain out excess water, thereby preventing fish from escaping in case of overflow.

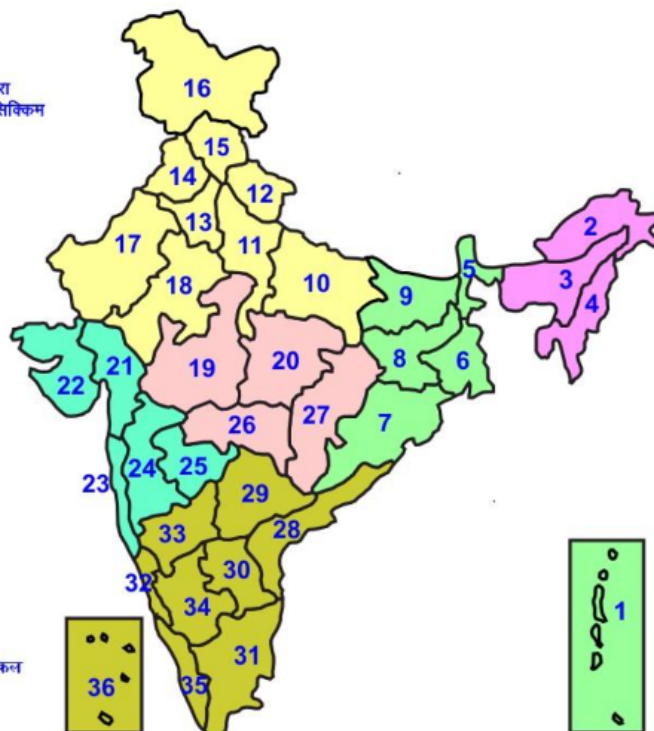
### **Agromet advisories for likely impact of Thunderstorm / Gusty Winds / Squally Winds)**

Provide mechanical support to horticultural crops and staking or support to vegetables and young fruit plants / fruit-bearing plants to avoid lodging due to strong winds.



## LEGENDS

- 1 अंडमान और निकोबार द्वीप समुह
- 2 अरुणाचल प्रदेश
- 3 असम और मेघालय
- 4 नागालैंड मनीपुर मीजोरम और त्रिपुरा
- 5 उप हिमालय पश्चिम बंगाल एवं सिक्किम
- 6 पश्चिम बंगाल
- 7 ओडिसा
- 8 झारखंड
- 9 बिहार
- 10 पूर्वी उत्तर प्रदेश
- 11 पश्चिम उत्तर प्रदेश
- 12 उत्तराखंड
- 13 हरियाणा चंडीगढ़ एवं दिल्ली
- 14 पंजाब
- 15 हिमाचल प्रदेश
- 16 जम्मू एवं कश्मीर एवं लद्दाख
- 17 पश्चिम राजस्थान
- 18 पूर्वी राजस्थान
- 19 पश्चिम मध्य प्रदेश
- 20 पूर्वी मध्य प्रदेश
- 21 गुजरात क्षेत्र
- 22 सौराष्ट्र एवं कच्छ
- 23 कोंकण एवं गोवा
- 24 मध्य महाराष्ट्र
- 25 मराठावाड़ा
- 26 विदर्भ
- 27 छत्तीसगढ़
- 28 तटीय आंध्र प्रदेश एवं यनम
- 29 तेलंगाना
- 30 रायलसीमा
- 31 तमिलनाडु, पुदुचेरी एवं कराईकल
- 32 तटिय कर्नाटक
- 33 आंतरिक उत्तरी कर्नाटक
- 34 आंतरिक दक्षिणी कर्नाटक
- 35 केरल एवं माहे
- 36 लक्षद्वीप



1. Andaman & Nicobar Islands
2. Arunachal Pradesh
3. Assam & Meghalaya
4. Nagaland, Manipur, Mizoram & Tripura
5. Sub-Himalayan West Bengal & Sikkim
6. Gangetic West Bengal
7. Orissa
8. Jharkhand
9. Bihar
10. East Uttar Pradesh
11. West Uttar Pradesh
12. Uttarakhand
13. Haryana, Chd & Delhi
14. Punjab
15. Himachal Pradesh
16. Jammu & Kashmir and Ladakh
17. West Rajasthan
18. East Rajasthan
19. West Madhya Pradesh
20. East Madhya Pradesh
21. Gujarat
22. Saurashtra
23. Konkan & Goa
24. Madhya Maharashtra
25. Marathawada
26. Vidharbha
27. Chhattisgarh
28. Coastal Andhra Pradesh & Yanam
29. Telangana
30. Rayalaseema
31. Tamilnadu, Puducherry & Karaikal
32. Coastal Karnataka
33. North Interior Karnataka
34. South Interior Karnataka
35. Kerala & Mahe
36. Lakshadweep

## SPATIAL DISTRIBUTION (% of Stations reporting)


% Stations	Category	% Stations	Category
76-100	Widespread (WS/Most Places)	26-50	Scattered (SCT/ A Few Places)
51-75	Fairly Widespread (FWS/ Many Places)	1-25	Isolated (ISOL)


## Subdivision Colour


- NO WARNING
- WATCH (BE UPDATED)
- ALERT (BE PREPARED TO TAKE ACTION)
- WARNING (TAKE ACTION)


## Probabilistic Forecast


Terms	Probability of Occurrence (%)
Unlikely	< 25
Likely	25 - 50
Very Likely	50 - 75
Most Likely	> 75


-  Heavy Rain


 Thunderstorm & Lightning


 Strong surface winds


 Cold Wave


 Hot & Humid


 Very Heavy Rain


 Hailstorm


 Heat Wave


 Cold Day


 Extremely Heavy Rain


 Dust Storm


 Hot Day

 Ground Frost

 Heavy Snow

 Dust Raising Winds

 Warm Night

 FOG Fog

\*Red color warning does not mean "Red Alert" Red color warning means "Take Action"

Forecast and warning for any day is valid from 0830 hours IST of day till 0830 hours IST of next day

For more details kindly visit <https://mausam.imd.gov.in> or contact 011-2434-4599

(Service to the nation since 1875)

## LEGENDS

### WARNING

<b>WARNING (TAKE ACTION)</b>
<b>ALERT (BE PREPARED)</b>
<b>WATCH (BE UPDATED)</b>
<b>NO WARNING (NO ACTION)</b>

### Probabilistic Forecast

Terms	Probability of Occurrence (%)
Unlikely	< 25
Likely	25 - 50
Very Likely	50 - 75
Most Likely	> 75



Heavy: 64.5 to 115.5 mm/cm \*  
Very Heavy: 115.6 to 204.4 mm/cm \*  
Extremely Heavy: > 204.4 mm/cm \*



When maximum temperature of a station reaches  $\geq 40^{\circ}\text{C}$  for plains and  $\geq 30^{\circ}\text{C}$  for hilly regions  
(a) Based on Departure from normal

Heat Wave: Maximum Temperature Departure from normal  $4.5^{\circ}\text{C}$  to  $6.4^{\circ}\text{C}$ .  
Severe Heat Wave: Maximum Temperature Departure from normal  $\geq 6.5^{\circ}\text{C}$

(b). Based on Actual maximum temperature

Heat Wave: When actual maximum temperature  $\geq 45^{\circ}\text{C}$ .  
Severe Heat Wave: When actual maximum temperature  $\geq 47^{\circ}\text{C}$

(c). Criteria for heat wave for coastal stations

When maximum temperature departure is  $> 4.5^{\circ}\text{C}$  from normal. Heat Wave may be described provided maximum temperature  $\geq 37^{\circ}\text{C}$



When maximum temperature remains  $40^{\circ}\text{C}$

Warm Night: When minimum temperature departure  $4.5^{\circ}\text{C}$  to  $6.4^{\circ}\text{C}$ .  
Severe Warm Night: When minimum temperature departure  $> 6.4^{\circ}\text{C}$ .



When minimum temperature of a station  $\leq 10^{\circ}\text{C}$  for plains and  $\leq 0^{\circ}\text{C}$  for hilly regions.

(a). Based on departure

Cold Wave: Minimum Temperature Departure from normal  $-4.5^{\circ}\text{C}$  to  $-6.4^{\circ}\text{C}$ .  
Severe Cold Wave: Minimum Temperature Departure from normal  $\leq -6.5^{\circ}\text{C}$

(b) Based on actual Minimum Temperature (for Plains only)

Cold Wave: When Minimum Temperature is  $\leq 4.0^{\circ}\text{C}$   
Severe Cold Wave: When Minimum Temperature is  $\leq 2.0^{\circ}\text{C}$

(c) For Coastal Stations

When Minimum Temperature departure is  $\leq -4.5^{\circ}\text{C}$  & actual Minimum Temperature is  $\leq 15^{\circ}\text{C}$



When minimum temperature of a station  $\leq 10^{\circ}\text{C}$  for plains and  $\leq 0^{\circ}\text{C}$  for hilly regions  
Based on departure

Cold Day: Maximum Temperature Departure from normal  $-4.5^{\circ}\text{C}$  to  $-6.4^{\circ}\text{C}$ .  
Severe Cold Day: Maximum Temperature Departure from normal  $\leq -6.5^{\circ}\text{C}$



Phenomenon of small droplets suspended in air and the horizontal visibility  $< 1\text{km}$

Moderate Fog: When the visibility between 500-200 metres  
Dense Fog: when the visibility between 50-200 metres  
Very Dense Fog: when the visibility  $< 50$  metres



Sudden electrical discharges manifested by a flash of light (Lightning) and a sharp rumbling sound (thunder)



An ensemble of particles of dust or sand energetically lifted to great heights by a strong and turbulent wind.



Ice deposits on ground

Air temperature  $\leq 4^{\circ}\text{C}$  (over Plains)



A strong wind that rises suddenly, lasts for at least 1 minute.

Moderate: Wind speed 52-61 kmph  
Severe: Wind speed 62-87 kmph  
Very Severe: Wind speed  $> 87$  kmph



Effect of various waves in the sea over specific area

Rough to very rough: Wind speed 41-62 kmph (22-33 knots) & Wave height 2.5-6 metre  
High to very high: Wind speed 63-117 kmph (34-63 knots) & Wave height 6-14 metre  
Phenomenal: Wind speed  $> 117$  kmph ( $> 63$  knots) & Wave height  $> 14$  metre



Cyclonic Storm: Wind speed 62-87 kmph (34-47 knots)

Severe Cyclonic Storm: Wind speed 88-117 kmph (48-63 knots)  
Very Severe Cyclonic Storm: Wind speed 118-165 kmph (64-89 knots)  
Extremely Severe Cyclonic Storm: Wind speed 166-220 kmph (90-119 knots)  
Super Cyclone Storm: Wind speed  $> 220$  kmph ( $> 119$  knots)

\*Red color warning does not mean "Red Alert" Red color warning means "Take Action"

Forecast and warning for any day is valid from 0830 hours IST of day till 0830 hours IST of next day

For more details kindly visit <https://mausam.imd.gov.in> or contact 011-2434-4599

(Service to the nation since 1875)