

2026-03-23

Time of Issue: 13:16:00 hours IST
(Mid-Day)

ALL INDIA WEATHER SUMMARY AND FORECAST BULLETIN

Significant Weather Features

Northwest India:

- **Isolated to scattered** light rainfall/snowfall with isolated thunderstorm, lightning & gusty winds speed reaching (30-50 kmph) likely over Jammu-Kashmir-Ladakh-Gilgit-Baltistan-Muzaffarabad on 26th & 28th; Himachal Pradesh on 23rd & 26th; Uttarakhand on 23rd & 27th March.
- **Isolated** thunderstorm, lightning & gusty winds speed reaching (30-50 kmph) likely over Punjab and Haryana Chandigarh & Delhi on 26th; Rajasthan on 28th March.
- Another fresh wet spell with scattered to **fairly widespread light to moderate** rainfall/snowfall likely with isolated thunderstorm, lightning & gusty winds speed reaching (30-50 kmph) over western Himalayan region on 29th with isolated to scattered light to moderate rainfall likely with isolated thunderstorm, lightning & gusty winds speed reaching (30-50 kmph) over Punjab, Haryana Chandigarh & Delhi and Rajasthan on 29th March.

Northeast India:

- **Scattered to fairly widespread** light to moderate rainfall with **thunderstorm, lightninggusty winds speed reaching (30-50 kmph)** likely over Arunachal Pradesh on 24th; Assam & Meghalaya on 24th & 27th March; **T hunderstorm & lightning** likely over Arunachal Pradesh during 23rd -25th; Assam & Meghalaya and Nagaland, Manipur, Mizoram & Tripura during 23rd -27th March.
- **Isolated heavy rainfall** likely over Assam & Meghalaya and Arunachal Pradesh on 24th, 27th & 28th and Nagaland, Manipur, Mizoram & Tripura on 28th March.

East India:

- **Isolated to Scattered** rainfall with **thunderstorm, lightning & gusty winds speed reaching (30-50 kmph)** likely over Sub-Himalayan West Bengal & Sikkim during 23rd -27th; Bihar on 26th & 27th; Gangetic West Bengal during 27th -29th; Jharkhand and Odisha on 27th & 28th March.
- **Thundersquall (wind speed reaching 50-60 kmph gusting to 70 kmph)** at isolated places over Sub-Himalayan West Bengal & Sikkim on 24th & 27th; Gangetic West Bengal on 27th March.
- Isolated **heavy rainfall with Hailstorm** activity likely over Sub-Himalayan West Bengal & Sikkim on 24th March.

Central India:

- **Isolated light rainfall with thunderstorm & lightning** over Central India on 26th & 27th March.

West India:

- **Isolated light rainfall with thunderstorm & lightning over** Marathawada, Madhya Maharashtra during 23rd – 25th March.

South Peninsular India:

- **Isolated light rainfall with thunderstorm, lightning& gusty winds speed reaching (30-40 kmph)** likely over North Interior Karnataka, Coastal Andhra Pradesh & Yanam and Rayalaseema during 23rd – 27th; South Interior Karnataka during 25th – 27th; Telangana on 26th & 27th with lightning over Coastal Karnataka during 25th -27th; South Interior Karnataka on 23rd & 24th March.

Hot & Humid weather Warnings:

- **Hot & humid conditions** very likely to prevail in isolated pockets over Kerala during 23rd-26th; Konkan on 23rd & 24th March.

Forecast of maximum/day temperatures:

*Red color warning does not mean "Red Alert" Red color warning means "Take Action"

Forecast and warning for any day is valid from 0830 hours IST of day till 0830 hours IST of next day

For more details kindly visit <https://mausam.imd.gov.in> or contact 011-2434-4599

(Service to the nation since 1875)



- Gradual rise in maximum temperatures by 3-5°C likely over Northwest India during next 4 days and no large change thereafter for subsequent 3 days.
- Gradual rise in maximum temperatures by 2-4°C likely over Central India during next 4 days and no large change thereafter for subsequent 3 days.
- Gradual rise in maximum temperatures by 4-6°C likely over East India during next 5 days and no large change thereafter for subsequent 2 days.
- Gradual rise in maximum temperatures by 2-3°C likely over West India during next 3 days and no large change thereafter for subsequent 4 days.
- Gradual rise in maximum temperatures by 2-3°C likely over southern peninsula during next 4 days and no large change thereafter for subsequent 3 days.
- No significant change in maximum temperatures likely over rest parts of the country.

Main Weather Observations:

❖ **Rainfall distribution** (from 0830 hours IST of yesterday to 0830 hours IST of today): **at most places** over Arunachal Pradesh; **at many places** over Assam & Meghalaya; **at a few places** over Nagaland, Manipur, Mizoram & Tripura and Sub Himalayan West Bengal & Sikkim; **at isolated places** over West Uttar Pradesh, Haryana-Chandigarh-Delhi, Himachal Pradesh, Jammu-Kashmir-Ladakh-Gilgit-Baltistan-Muzaffarabad, West Rajasthan, East Rajasthan, Coastal Andhra Pradesh & Yanam, Telangana, Tamil Nadu, Puducherry & Karaikal, North Interior Karnataka, South Interior Karnataka and Kerala & Mahe; **Dry** over rest of the country.

❖ **Significant rainfall recorded(in cm)** (from 0830 hours IST of yesterday to 0830 hours IST of today): **Nagaland, Manipur, Mizoram & Tripura:** Tizit Nsdma AWS (dist Mon) 4; **Arunachal Pradesh:** Hollongi 4; Itanagar (dist Papumpara), Naharlagun AWS (dist Papumpara) 3 Each; Naharlagun (dist Papumpara), Bomdila (dist West Kameng), Seppa AWS (dist East Kameng) 2 Each; **Telangana:** Aswaraopeta (dist B. Kothagudem) 2; **Coastal Andhra Pradesh & Yanam:** Koyalagudem (dist Eluru), Nuzvid (dist Eluru) 2 Each; **South Interior Karnataka:** Madhugiri (dist Tumakuru), Madhugiri ARG (dist Tumakuru) 2 Each; **Assam & Meghalaya:** Kokrajhar (AWS) 9; Lakhipur ARG (dist Cachar) 2; **Sub Himalayan West Bengal & Sikkim:** Gangtok (dist Gangtok), Mangan (dist Mangan) 2 Each; **Haryana-Chandigarh-Delhi:** Meham (dist Rohtak), Rohtak (dist Rohtak) 2 Each.

- **Heavy rainfall (7-11cm)** has been recorded at isolated places over Assam.
- **Thunderstorm accompanied with Squally/Gusty winds** with speed 30-50 kmph at isolated places over Arunachal Pradesh, Assam & Meghalaya, Imphal, Jammu-Kashmir-Ladakh-Gilgit-Baltistan-Muzaffarabad, Uttarakhand, Haryana, West Madhya Pradesh, Vidarbha, Chhattisgarh, Konkan & Goa, Madhya Maharashtra, Marathwada, Gujarat Region, Kutch

❖ **Minimum Temperature Departures (as on 23-03-2026):** were appreciably above normal (3.0? to 5.1?) over Rajasthan above normal (1.6? to 3.0?) over Jammu-Kashmir-Ladakh-Gilgit-Baltistan-Muzaffarabad, Himachal Pradesh, Punjab, West Uttar Pradesh, Gujarat State, Assam & Meghalaya below normal (-3.0? to -1.6?) over Madhya Pradesh, Jharkhand, Odisha, West Bengal & Sikkim, Chhattisgarh, Marathwada, Vidarbha and near normal over rest parts of the country. **The lowest minimum temperature** of 12.0°C was reported at BHIWANI (HARYANA) over the Plains of India.

❖ **Maximum Temperature Departures (as on 22-03-2026):** appreciably above normal(3.1°C to 5.0°C) at few places over Jammu-Kashmir-Ladakh-Gilgit-Baltistan-Muzaffarabad; at isolated places over Konkan & Goa and Kerala & Mahe. above normal(1.6°C to 3.0°C) at few places over Coastal Karnataka; at isolated places over Himachal Pradesh, Saurashtra & Kutch and Tamil Nadu, Puducherry & Karaikal. near normal(-1.5°C to 1.5°C) at many places over Uttarakhand and Gujarat Region; at most places over Andaman & Nicobar Islands, Coastal Andhra Pradesh & Yanam, South Interior Karnataka and Lakshadweep; at few places over Odisha, Punjab, West Rajasthan, Madhya Maharashtra and Telangana; at isolated places over Assam & Meghalaya, Sub Himalayan West Bengal & Sikkim, Gangetic West Bengal, East Uttar Pradesh, East Rajasthan, West Madhya Pradesh, Marathwada, Vidarbha, Rayalaseema and North Interior Karnataka. **The highest maximum temperature** of 38.5°C was reported at KURNOOL (ANDHRA PRADESH).

Meteorological Analysis (Based on 0830 hours IST)

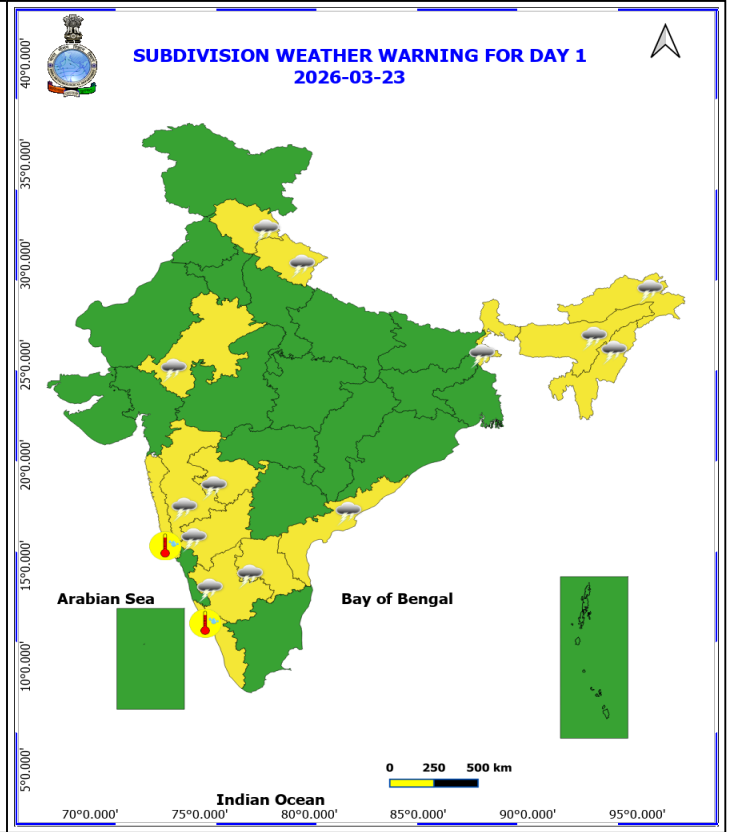
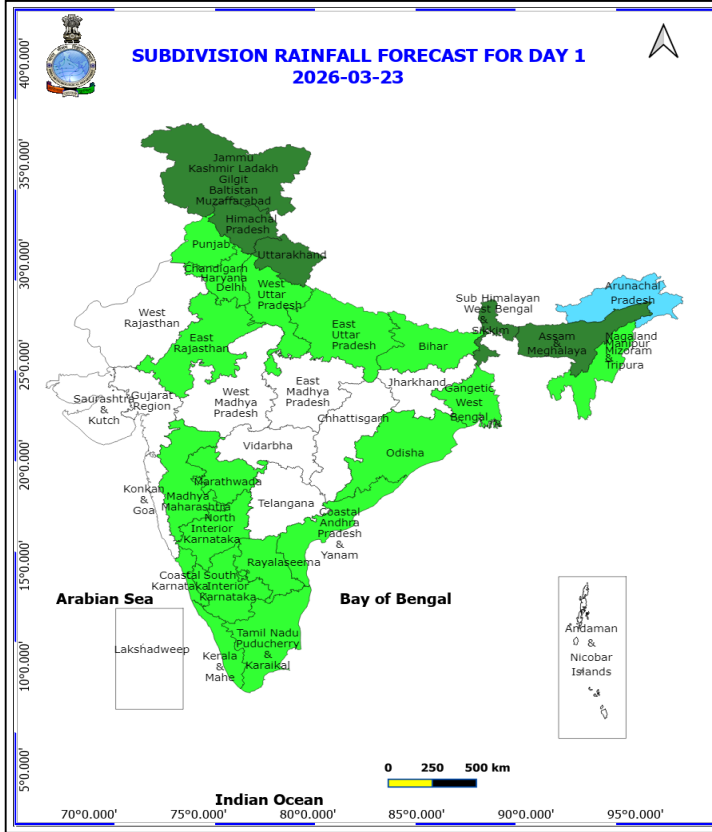
- The **Western Disturbance** as an **upper air cyclonic circulation** now lies over Jammu & neighbourhood at 3.1 km above mean sea level with the trough aloft in middle tropospheric westerlies with its axis at 5.8 km above mean sea level runs roughly along Long. 70°E to the north of Lat. 32°N.
- An **upper air cyclonic circulation** lies over central Pakistan & neighbourhood at 1.5 km above mean sea level.
- An **upper air cyclonic circulation** lies over northeast Rajasthan & neighbourhood at 0.9 km above mean sea level.
- The **upper air cyclonic circulation** over northeast Assam & neighbourhood persists and now extends upto 1.5 km above mean sea level.
- An **upper air cyclonic circulation** lies over north Coastal Andhra Pradesh & neighbourhood at 1.5km above mean sea level.
- The **trough/wind discontinuity** now runs from Gulf of Mannar to West Vidarbha across Tamil Nadu, interior Karnataka, Marathwada at 0.9 km above mean sea level.
- **Subtropical westerly Jet Stream** with core winds of the order of 80 knots at 12.6 km above mean sea level prevails over West India.
- Two Western **Disturbances** in quick succession are likely to affect northwest India, 1st from 26th and 2nd from night of 28th March 2026, respectively.
- The **upper air cyclonic circulation** over East Bangladesh & neighbourhood has become less marked and the **trough** aloft has moved away.
- The **upper air cyclonic circulation** over South Interior Karnataka & neighbourhood at 1.5 km above mean sea level has become less marked.
- The **upper air cyclonic circulation** over west Rajasthan & neighbourhood at 1.5 km above mean sea level has become less marked.

***Red color warning does not mean "Red Alert" Red color warning means "Take Action"**

Forecast and warning for any day is valid from 0830 hours IST of day till 0830 hours IST of next day

For more details kindly visit <https://mausam.imd.gov.in> or contact 011-2434-4599

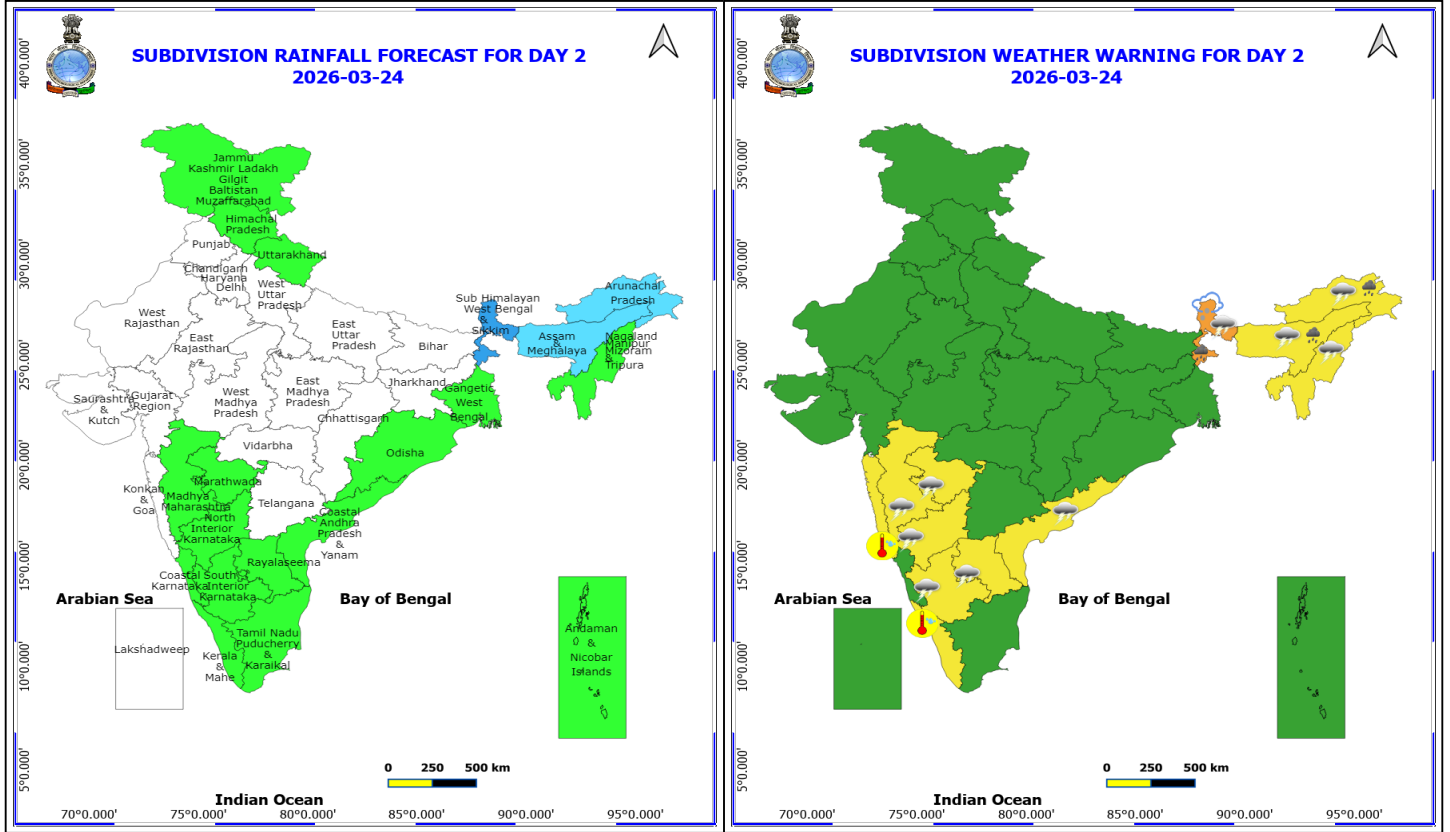
(Service to the nation since 1875)



23 March (Day 1)

- ❖ **Thunderstorm accompanied with lightning & gusty winds(40-50kmph)** very likely at isolated places over Marathwada and Uttarakhand.
- ❖ **Thunderstorm accompanied with lightning & gusty winds(30-40kmph)** very likely at isolated places over Andhra Pradesh, Himachal Pradesh, North Interior Karnataka and Sub Himalayan West Bengal & Sikkim.
- ❖ **Thunderstorm accompanied with Lightning** very likely at isolated places over Arunachal Pradesh, Assam & Meghalaya, East Rajasthan, Madhya Maharashtra, Nagaland, Manipur, Mizoram and Tripura and South Interior Karnataka.
- ❖ **Hot and Humid weather** very likely at isolated places over Kerala & Mahe and Konkan & Goa.

No Fishermen Warning



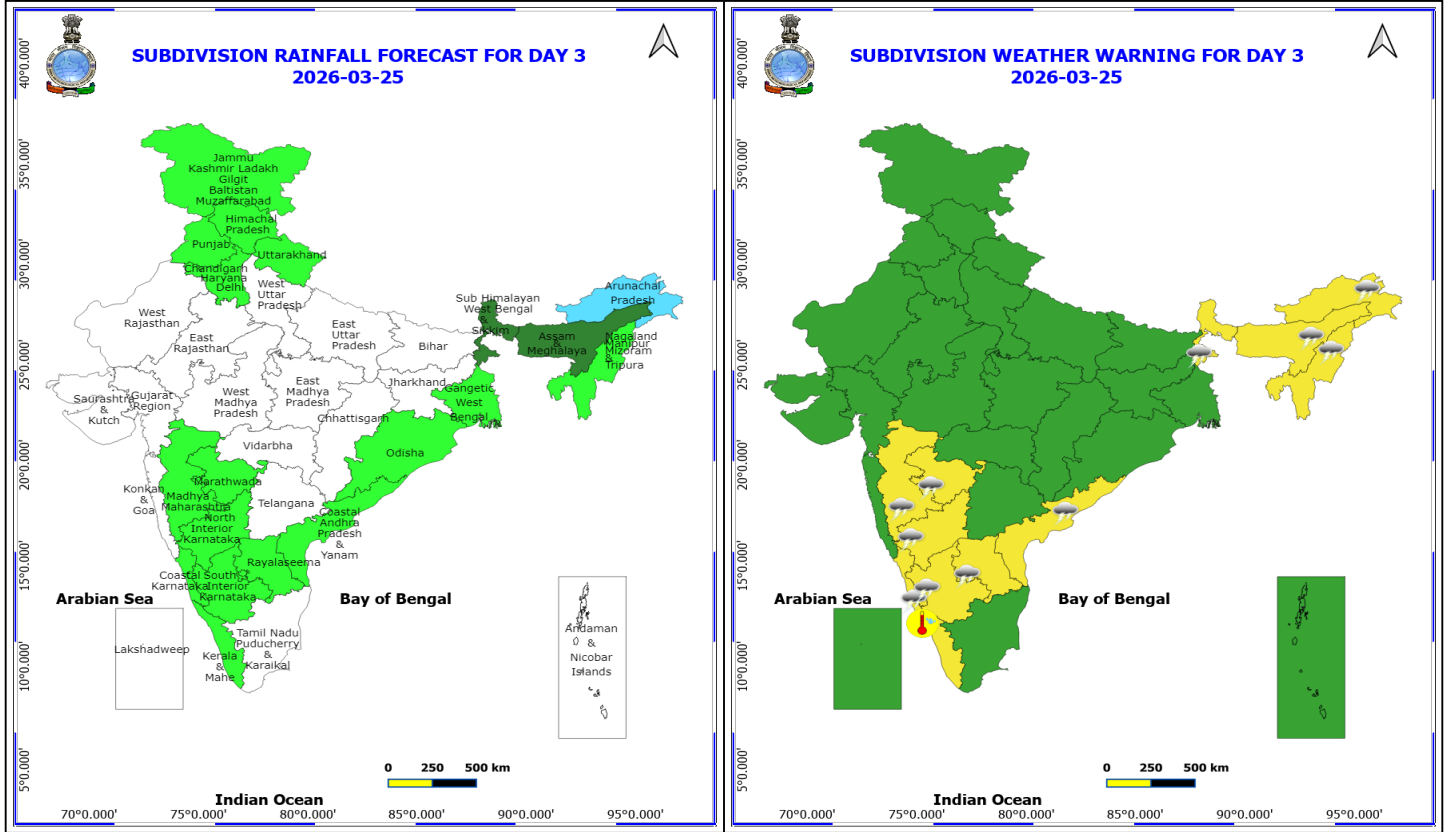
24 March (Day 2)

- ❖ **Heavy Rainfall** very likely at isolated places over Arunachal Pradesh, Assam & Meghalaya and Sub Himalayan West Bengal & Sikkim.
- ❖ **Thunderstorm accompanied with Hailstorm** very likely at isolated places over Sub Himalayan West Bengal & Sikkim.
- ❖ **Thundersquall with wind speed reaching(50-60kmph)** very likely at isolated places over Sub Himalayan West Bengal & Sikkim.
- ❖ **Thunderstorm accompanied with lightning & gusty winds(40-50kmph)** very likely at isolated places over Assam & Meghalaya and Marathwada.
- ❖ **Thunderstorm accompanied with lightning & gusty winds(30-40kmph)** very likely at isolated places over Andhra Pradesh, Arunachal Pradesh and North Interior Karnataka.
- ❖ **Thunderstorm accompanied with Lightning** very likely at isolated places over Madhya Maharashtra, Nagaland, Manipur, Mizoram and Tripura and South Interior Karnataka.
- ❖ **Hot and Humid weather** very likely at isolated places over Kerala & Mahe and Konkan & Goa.

No Fishermen Warning

***Red color warning does not mean "Red Alert" Red color warning means "Take Action"**
Forecast and warning for any day is valid from 0830 hours IST of day till 0830 hours IST of next day
For more details kindly visit <https://mausam.imd.gov.in> or contact 011-2434-4599

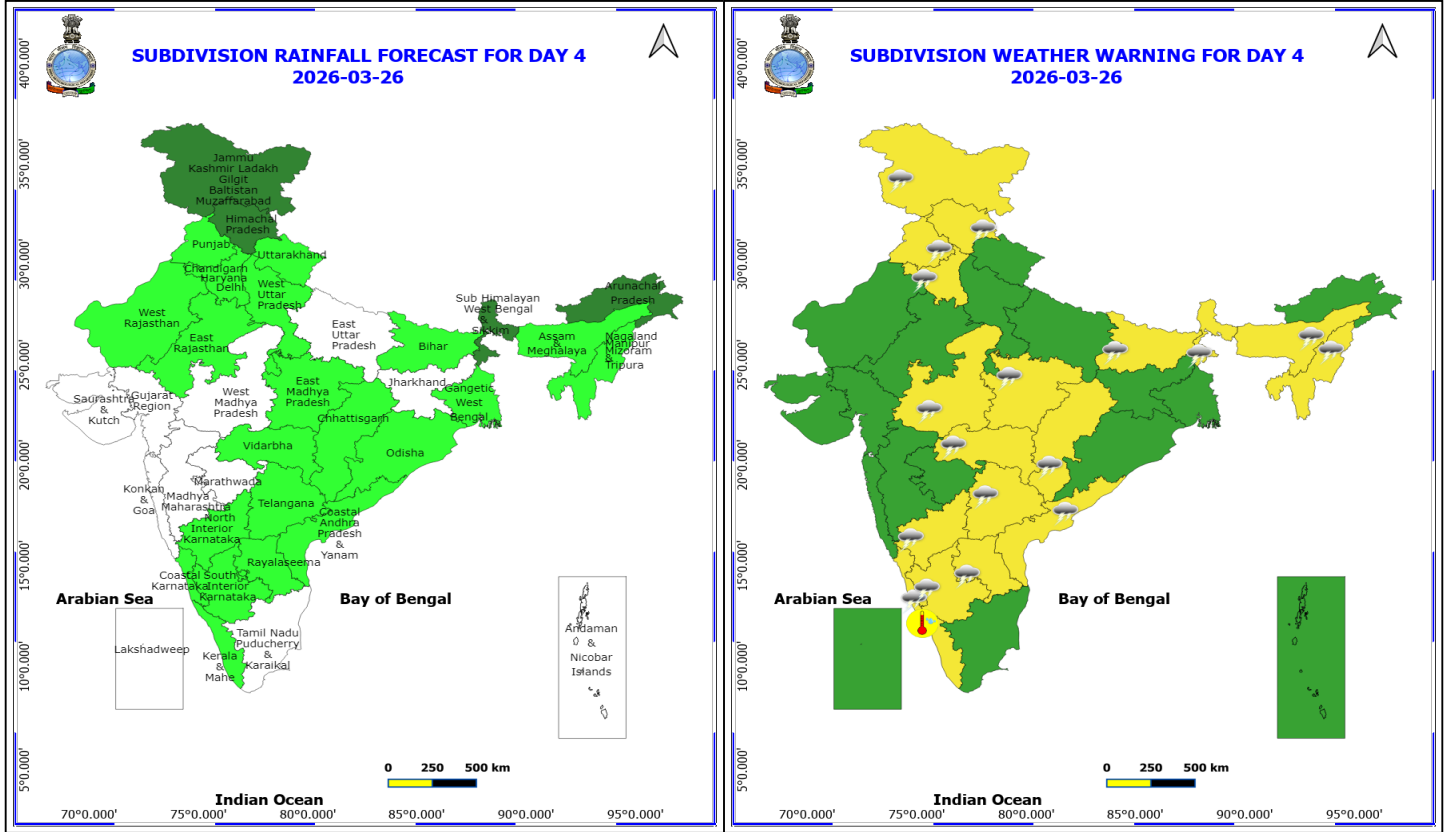
(Service to the nation since 1875)



25 March (Day 3)

- ❖ **Thunderstorm accompanied with lightning & gusty winds(40-50kmph)** very likely at isolated places over Marathwada.
- ❖ **Thunderstorm accompanied with lightning & gusty winds(30-40kmph)** very likely at isolated places over Andhra Pradesh and Interior Karnataka.
- ❖ **Thunderstorm accompanied with Lightning** very likely at isolated places over Arunachal Pradesh, Assam & Meghalaya, Coastal Karnataka, Madhya Maharashtra, Nagaland, Manipur, Mizoram and Tripura and Sub Himalayan West Bengal & Sikkim.
- ❖ **Hot and Humid weather** very likely at isolated places over Kerala & Mahe.

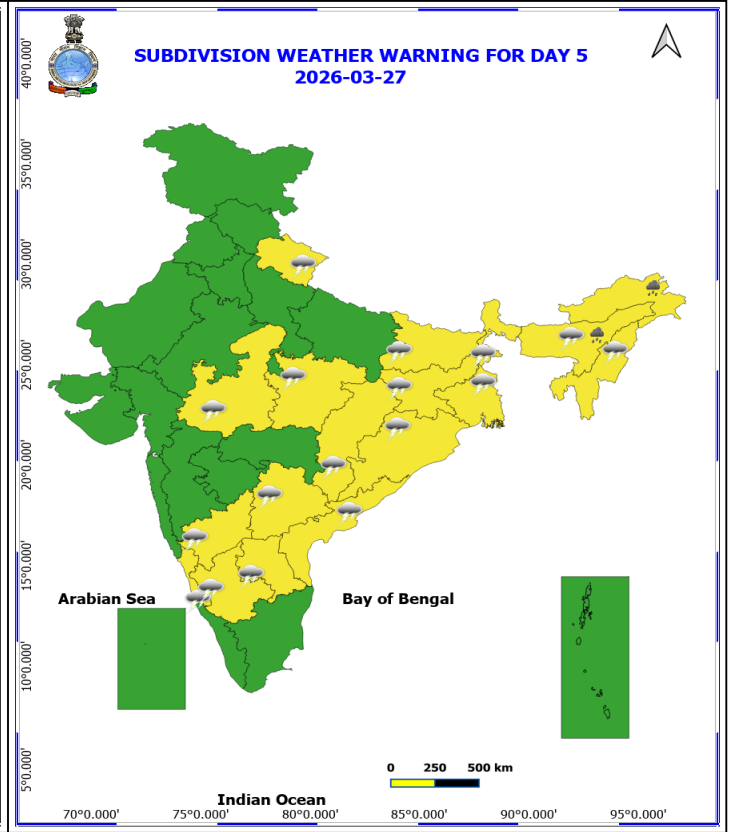
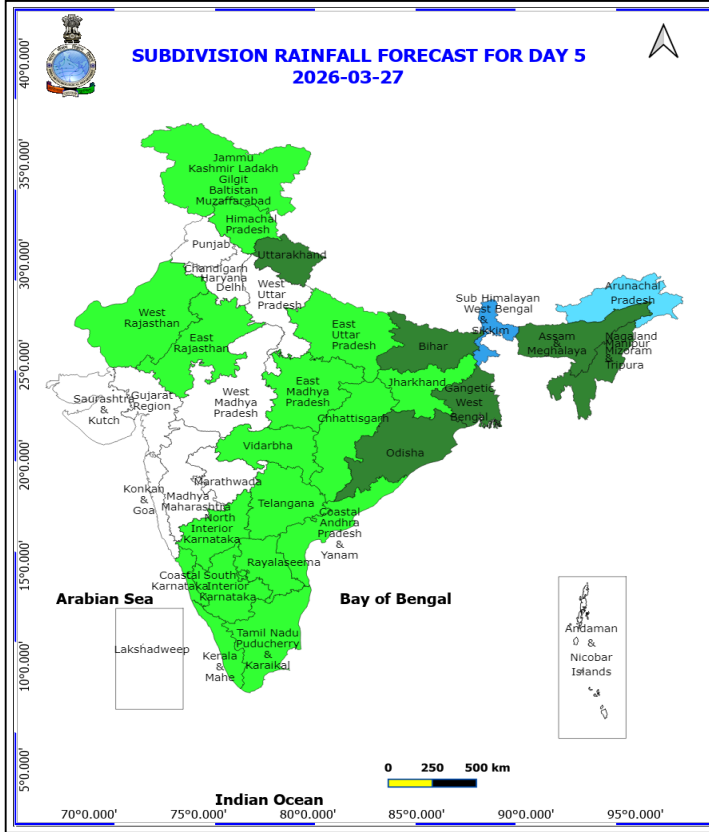
No Fishermen Warning



26 March (Day 4)

- ❖ **Thunderstorm accompanied with lightning & gusty winds(40-50kmph)** likely at isolated places over Bihar and Sub Himalayan West Bengal & Sikkim.
- ❖ **Thunderstorm accompanied with lightning & gusty winds(30-40kmph)** likely at isolated places over Andhra Pradesh, Haryana, Chandigarh & Delhi, Himachal Pradesh, Interior Karnataka, Jammu-Kashmir-Ladakh-Gilgit-Baltistan-Muzaffarabad, Punjab and Telangana.
- ❖ **Thunderstorm accompanied with Lightning** likely at isolated places over Assam & Meghalaya, Chhattisgarh, Coastal Karnataka, Madhya Pradesh, Nagaland, Manipur, Mizoram and Tripura and Vidarbha.
- ❖ **Hot and Humid weather** likely at isolated places over Kerala & Mahe.

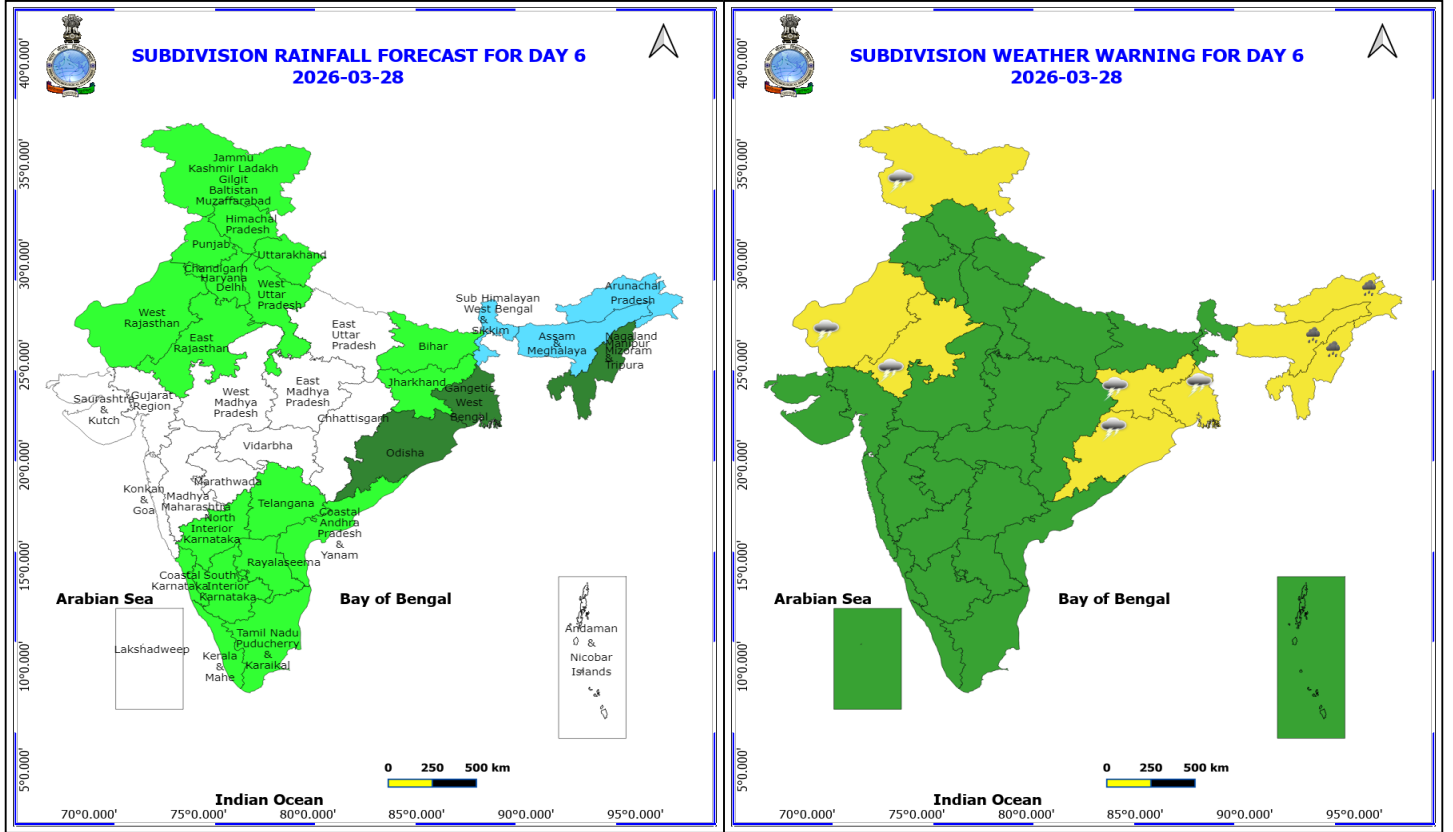
No Fishermen Warning



27 March (Day 5)

- ❖ **Heavy Rainfall** likely at isolated places over Arunachal Pradesh and Assam & Meghalaya.
- ❖ **Thundersquall with wind speed reaching(50-60kmph)** likely at isolated places over West Bengal & Sikkim.
- ❖ **Thunderstorm accompanied with lightning & gusty winds(40-50kmph)** likely at isolated places over Assam & Meghalaya, Bihar, Odisha and Uttarakhand.
- ❖ **Thunderstorm accompanied with lightning & gusty winds(30-40kmph)** likely at isolated places over Andhra Pradesh, Interior Karnataka, Jharkhand and Telangana.
- ❖ **Thunderstorm accompanied with Lightning** likely at isolated places over Chhattisgarh, Coastal Karnataka, Madhya Pradesh and Nagaland, Manipur, Mizoram and Tripura.

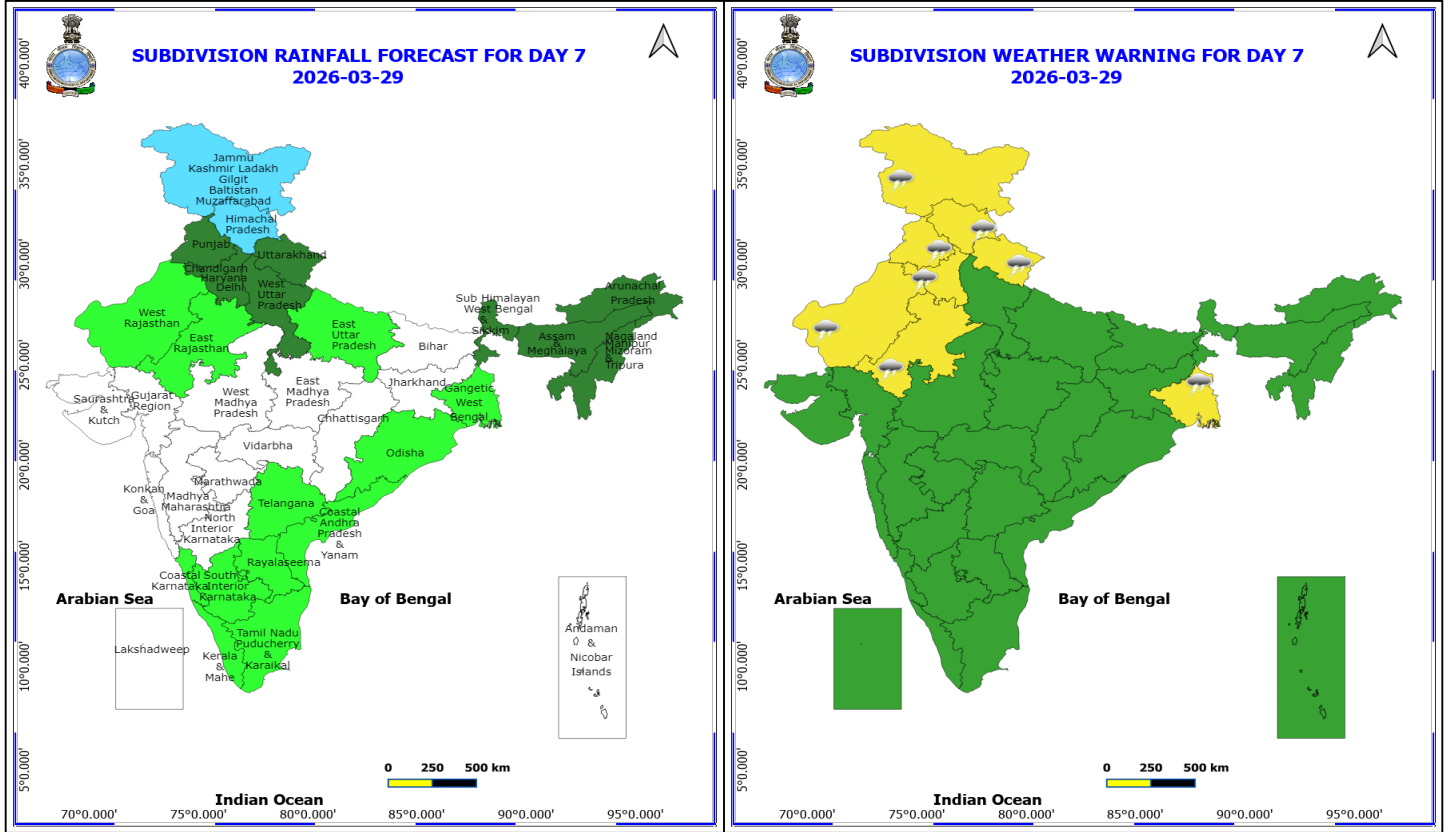
No Fishermen Warning



28 March (Day 6)

- ❖ **Heavy Rainfall** likely at isolated places over Arunachal Pradesh, Assam & Meghalaya and Nagaland, Manipur, Mizoram and Tripura.
- ❖ **Thunderstorm accompanied with lightning & gusty winds(40-50kmph)** likely at isolated places over Gangetic West Bengal, Odisha and Rajasthan.
- ❖ **Thunderstorm accompanied with lightning & gusty winds(30-40kmph)** likely at isolated places over Jammu-Kashmir-Ladakh-Gilgit-Baltistan-Muzaffarabad and Jharkhand.

No Fishermen Warning



29 March (Day 7)

- ❖ **Thunderstorm accompanied with lightning & gusty winds(40-50kmph)** likely at isolated places over Himachal Pradesh, Jammu-Kashmir-Ladakh-Gilgit-Baltistan-Muzaffarabad, Rajasthan and Uttarakhand.
- ❖ **Thunderstorm accompanied with lightning & gusty winds(30-40kmph)** likely at isolated places over Gangetic West Bengal, Haryana, Chandigarh & Delhi and Punjab.

No Fishermen Warning



Table-1

7 Days Rainfall Forecast

S.No.	Subdivision	23-Mar	24-Mar	25-Mar	26-Mar	27-Mar	28-Mar	29-Mar
		Day 1	Day 2	Day 3	Day 4	Day 5	Day 6	Day 7
1	ANDAMAN & NICOBAR ISLANDS	DRY	ISOL	DRY	DRY	DRY	DRY	DRY
2	ARUNACHAL PRADESH	FWS	FWS	FWS	SCT	FWS	FWS	SCT
3	ASSAM & MEHGHALAYA	SCT	FWS	SCT	ISOL	SCT	FWS	SCT
4	N. M. M. & T.	ISOL	ISOL	ISOL	ISOL	SCT	SCT	SCT
5	S.H. WEST BENGAL & SIKKIM	SCT	WS	SCT	SCT	WS	FWS	SCT
6	GANGETIC WEST BENGAL	ISOL	ISOL	ISOL	ISOL	SCT	SCT	ISOL
7	ODISHA	ISOL	ISOL	ISOL	ISOL	SCT	SCT	ISOL
8	JHARKHAND	DRY	DRY	DRY	DRY	ISOL	ISOL	DRY
9	BIHAR	ISOL	DRY	DRY	ISOL	SCT	ISOL	DRY
10	EAST UTTAR PRADESH	ISOL	DRY	DRY	DRY	ISOL	DRY	ISOL
11	WEST UTTAR PRADESH	ISOL	DRY	DRY	ISOL	DRY	ISOL	SCT
12	UTTARAKHAND	SCT	ISOL	ISOL	ISOL	SCT	ISOL	SCT
13	HARYANA, CHD & DELHI	ISOL	DRY	ISOL	ISOL	DRY	ISOL	SCT
14	PUNJAB	ISOL	DRY	ISOL	ISOL	DRY	ISOL	SCT
15	HIMACHAL PRADESH	SCT	ISOL	ISOL	SCT	ISOL	ISOL	FWS
16	JAMMU AND KASHMIR AND LADAKH	SCT	ISOL	ISOL	SCT	ISOL	ISOL	FWS
17	WEST RAJASTHAN	DRY	DRY	DRY	ISOL	ISOL	ISOL	ISOL
18	EAST RAJASTHAN	ISOL	DRY	DRY	ISOL	ISOL	ISOL	ISOL
19	WEST MADHYA PRADESH	DRY	DRY	DRY	DRY	DRY	DRY	DRY
20	EAST MADHYA PRADESH	DRY	DRY	DRY	ISOL	ISOL	DRY	DRY
21	GUJRAT REGION	DRY	DRY	DRY	DRY	DRY	DRY	DRY
22	SAURASHTRA & KUTCH	DRY	DRY	DRY	DRY	DRY	DRY	DRY
23	KONKAN & GOA	DRY	DRY	DRY	DRY	DRY	DRY	DRY
24	MADHYA MAHARASHTRA	ISOL	ISOL	ISOL	DRY	DRY	DRY	DRY
25	MARATHWADA	ISOL	ISOL	ISOL	DRY	DRY	DRY	DRY
26	VIDARBHA	DRY	DRY	DRY	ISOL	ISOL	DRY	DRY
27	CHATTISGARH	DRY	DRY	DRY	ISOL	ISOL	DRY	DRY
28	COASTAL ANDHRA PRADESH	ISOL	ISOL	ISOL	ISOL	ISOL	ISOL	ISOL
29	TELANGANA	DRY	DRY	DRY	ISOL	ISOL	ISOL	ISOL
30	RAYALASEEMA	ISOL	ISOL	ISOL	ISOL	ISOL	ISOL	ISOL
31	TAMILNADU & PUDUCHERRY	ISOL	ISOL	DRY	DRY	ISOL	ISOL	ISOL
32	COSTAL KARNATAKA	ISOL	ISOL	ISOL	ISOL	ISOL	ISOL	ISOL
33	NORTH INTERIOR KARNATAKA	ISOL	ISOL	ISOL	ISOL	ISOL	ISOL	DRY
34	SOUTH INTERIOR KARNATAKA	ISOL	ISOL	ISOL	ISOL	ISOL	ISOL	ISOL
35	KERALA	ISOL	ISOL	ISOL	ISOL	ISOL	ISOL	ISOL
36	LAKSHDWEEP	DRY	DRY	DRY	DRY	DRY	DRY	DRY

Legend	Category	%Stations
WS	Widespread/Most Places	76-100
FWS	Fairly Widespread/Many Places	51-75
SCT	Scattered/ A Few Places	26-50
ISOL	Isolated Places	1-25
DRY	No Rain	0

*Red color warning does not mean "Red Alert" Red color warning means "Take Action"
Forecast and warning for any day is valid from 0830 hours IST of day till 0830 hours IST of next day
For more details kindly visit <https://mausam.imd.gov.in> or contact 011-2434-4599

(Service to the nation since 1875)

Fig. 1: Maximum Temperatures Dated 2026-03-22

Fig. 2: Departure of Maximum Temp. Dated 2026-03-22

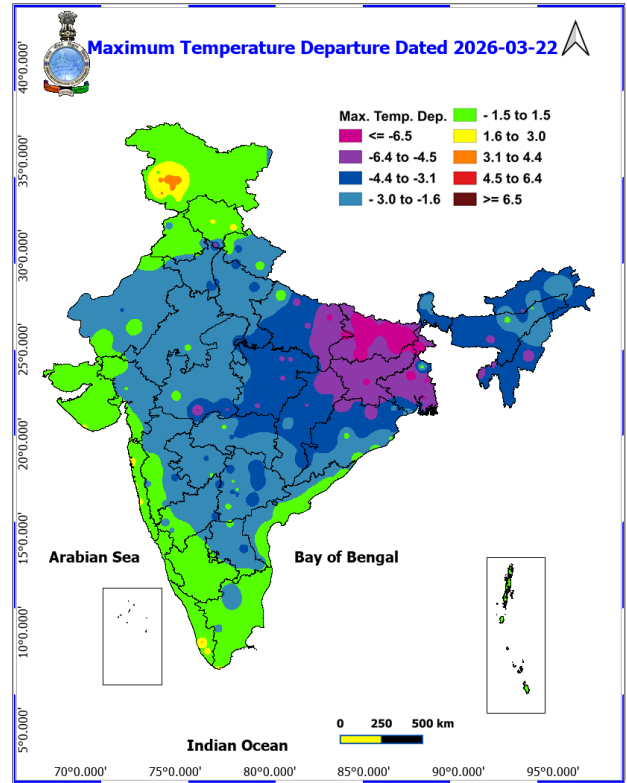
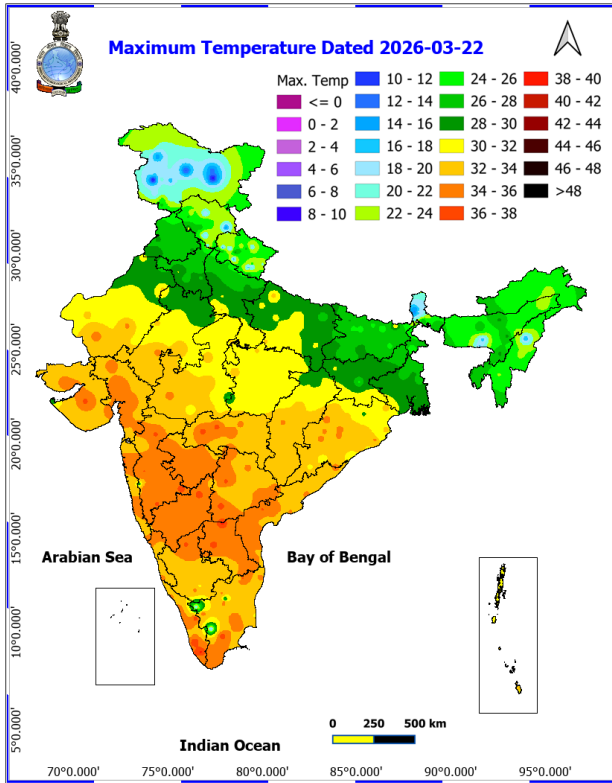
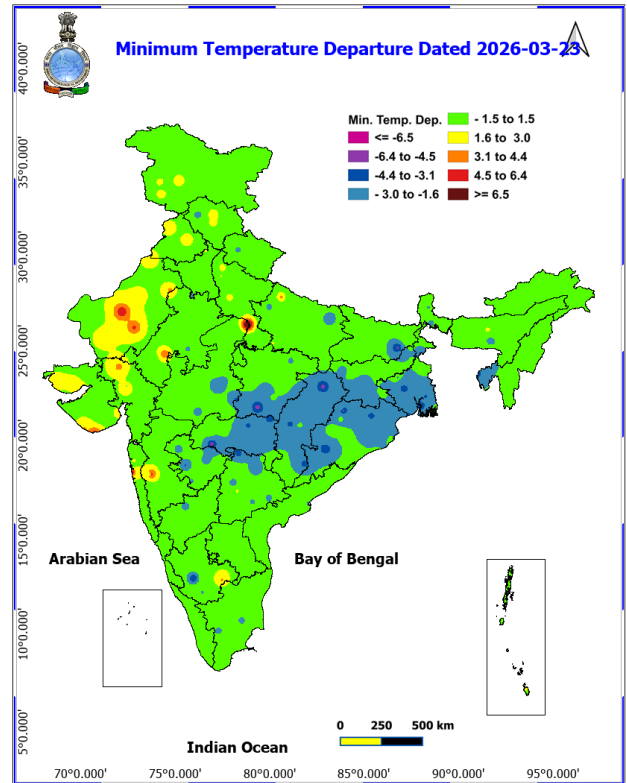
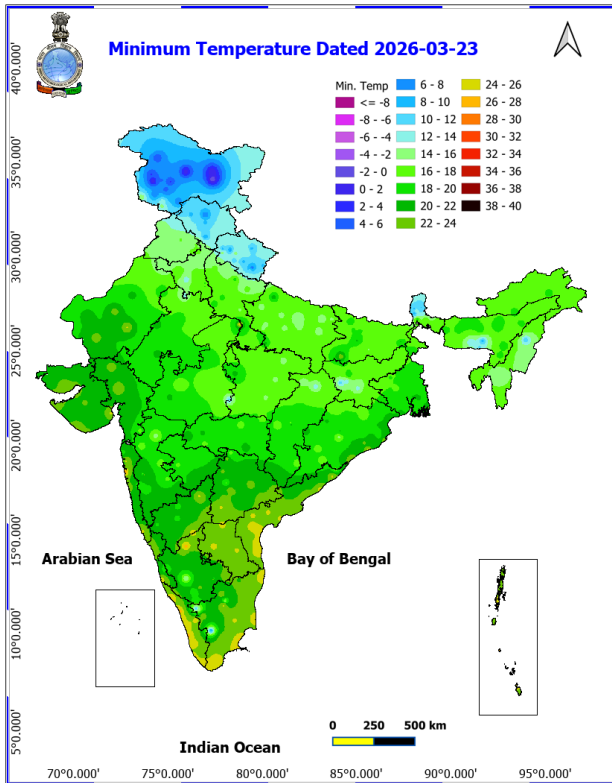
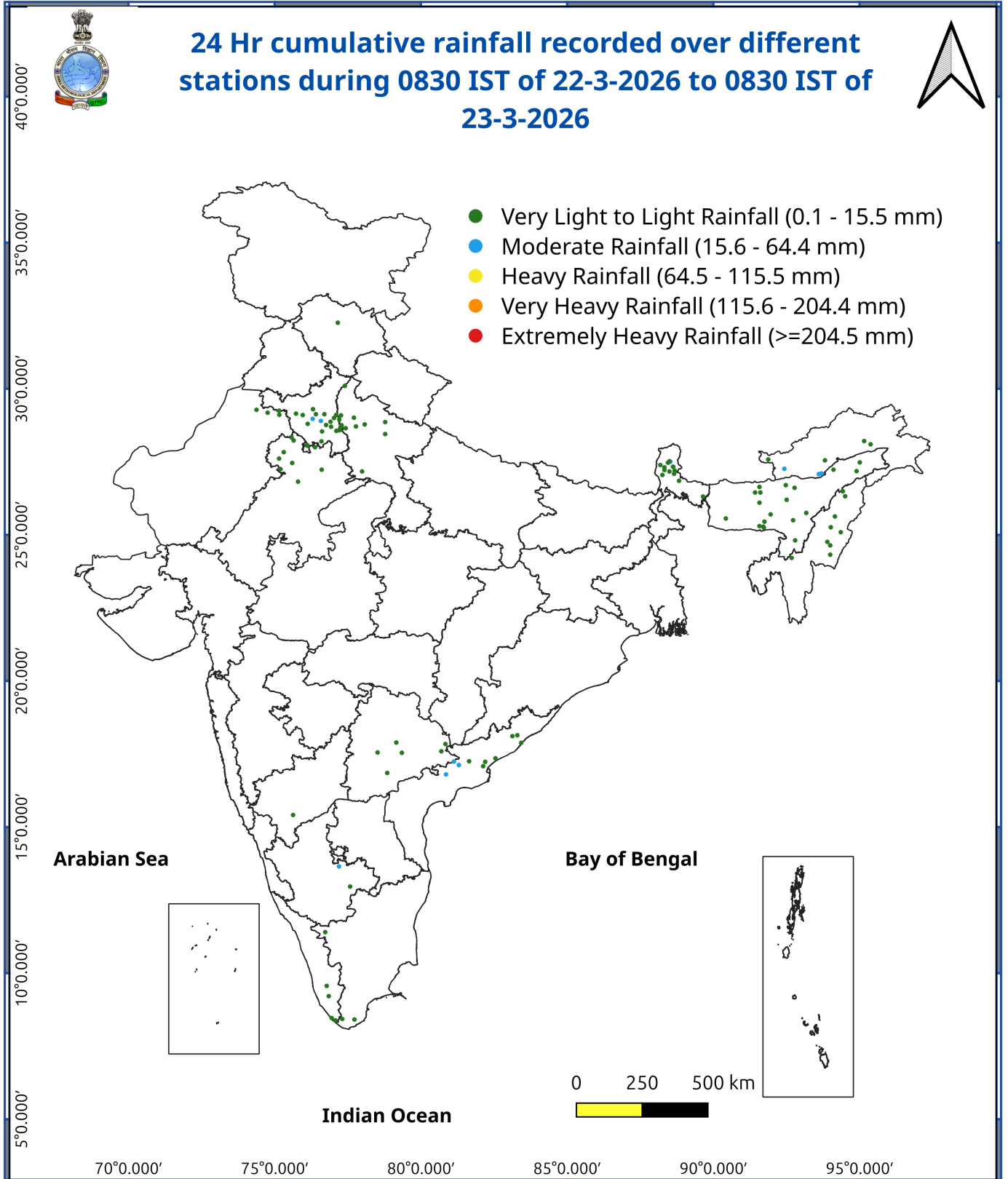


Fig. 3: Minimum Temperatures Dated 2026-03-23

Fig. 4: Departure of Minimum Temp. Dated 2026-03-23



***Red color warning does not mean "Red Alert" Red color warning means "Take Action"**
Forecast and warning for any day is valid from 0830 hours IST of day till 0830 hours IST of next day
For more details kindly visit <https://mausam.imd.gov.in> or contact 011-2434-4599
(Service to the nation since 1875)



Impact and Actions

Impact & Action Suggested due to heavy/very heavy rainfall:

- **Isolated heavy rainfall** likely over Assam & Meghalaya and Arunachal Pradesh on 24th, 27th & 28th and Nagaland, Manipur, Mizoram & Tripura and Sub-Himalayan West Bengal & Sikkim on 24th March 2026.

Impact Expected

- Localized Flooding of roads, water logging in low lying areas and closure of underpasses mainly in urban areas of the above region.
- Occasional reduction in visibility due to heavy rainfall.
- Disruption of traffic in major cities due to water logging in roads leading to increased travel time.
- Minor damage to kutcha roads.
- Possibilities of damage to vulnerable structure.
- Localized Landslides/Mudslides
- Damage to horticulture and standing crops in some areas due to inundation.
- It may lead to riverine flooding in some river catchments (for riverine flooding please visit Web page of CWC).

Action Suggested

- Check for traffic congestion on your route before leaving for your destination.
- Follow any traffic advisories that are issued in this regard.
- Avoid going to areas that face the water logging problems often.
- Avoid staying in vulnerable structure.

Impact expected and action suggested due to isolated Hailstorm over

- Isolated **Hailstorm** activity likely over Sub-Himalayan West Bengal & Sikkim on 24th March.

Impact expected:

- Breaking of tree branches, uprooting of large avenue trees. Large dead limbs blown from trees. Damage to Standing crops.
- Minor to Major damage to banana and papaya trees.
- Minor to major damage to power and communication lines due to breaking of branches.
- Strong wind/hail may damage plantation, horticulture and standing crops.
- Hail may injure people and cattle at open places.
- Partial damage to vulnerable structures due to strong winds.
- Minor damage to kutcha houses/walls and huts.
- Loose objects may fly.

Action suggested:

- People are advised to keep a watch on the weather for worsening conditions and be ready to move to safer places accordingly.
- Stay indoors, close windows & doors and avoid travel if possible.
- Take safe shelters; do not take shelter under trees.
- Do not lie on concrete floors and do not lean against concrete walls.
- Unplug electrical/ electronic appliances.
- Immediately get out of water bodies.
- Keep away from all the objects that conduct electricity.

Agromet advisories for various parts of the country

Agromet advisories for likely impact of Hailstorms

- Use hail nets or hail caps in fruit orchards and vegetable plants to protect them from mechanical damage in Sub-Himalayan West Bengal.

Agromet advisories for likely impact of Heavy Rainfall

- In **Arunachal Pradesh**, undertake harvesting of cabbage, pea, mustard and late-maturing paddy varieties and digging of potatoes. Shift the harvested produce to safe places. Maintain proper drainage channels in the fields of rice, maize, other standing crops, vegetables and orchards.
- In **Assam**, drain out excess rainwater from the standing crop fields.
- In **Meghalaya**, ensure proper drainage in summer vegetable crops. Carry out staking and propping of plantation crops and protect young seedlings from heavy rainfall. Keep the harvested pods of garden peas in safer place immediately.
- In **Sub Himalayan West Bengal**, maintain proper drainage channel, and drain out excess water from fields of rice, maize, other standing crops, vegetables and orchard. Cover the nursery of cucurbits and Dalle khorsani with polyethylene sheets or agro-nets.

Agromet advisories for likely impact of Thunderstorm / Gusty Winds

- Shift the harvested produce in safer places or cover the produce with tarpaulin sheets in the fields. Tie the harvested crops properly and cover them to minimise the risk of displacement due to strong surface winds.
- Provide mechanical support to horticultural crops and staking or support to vegetables and young fruit plants / fruit-bearing plants to avoid lodging due to strong winds.

Agromet advisories for likely impact of Hot and Humid Weather

- In Konkan Region of **Maharashtra**, provide 100 litre water/tree at weekly or 150 to 200 litre water/ tree at 15 days interval to minimize pre-mature fruit drop and sun scorching in mango and poor fruit set and reduced nut size in cashew orchards. Use straw mulch to prevent moisture loss from the soil. Undertake pre-harvest bagging of fruits with newspaper bags to protect the mango fruits from sunscald

Livestock / Poultry

- Keep the animals inside the shed during Heavy Rainfall/Hailstorm period and provide them balanced feed. Store feed and fodder in a safe place to prevent spoilage.

Legends & abbreviations:

- **Heavy Rain:**64.5-115.5mm; **Very Heavy Rain:**115.6-204.4mm; **Extremely Heavy Rain:** >204.4mm.
- **Obsy:** Observatory; Automatic Weather Station; **ARG:** Automatic Rain Gauge; **dist:** District; **NH:** National Highway; **KVK:** Krishi Vigyan Kendra; **DVC:** Damodar Valley Corporation; **PTO:** Part Time Office, **Aero:** Aerodrome, **IAF:** Indian Air Force.
- **Region wise classification of meteorological Sub-Divisions:**
- **Northwest India:** Western Himalayan Region (Jammu-Kashmir-Ladakh-Gilgit-Baltistan-Muzaffarabad, Himachal Pradesh and Uttarakhand); Punjab, Haryana-Chandigarh-Delhi; West Uttar Pradesh, East Uttar Pradesh, West Rajasthan and East Rajasthan.
- **Central India:**

*Red color warning does not mean "Red Alert" Red color warning means "Take Action"

Forecast and warning for any day is valid from 0830 hours IST of day till 0830 hours IST of next day

For more details kindly visit <https://mausam.imd.gov.in> or contact 011-2434-4599

(Service to the nation since 1875)



West Madhya Pradesh, East Madhya Pradesh, Vidarbha and Chhattisgarh.

- **East India:** Bihar, Jharkhand, Sub-Himalayan West Bengal & Sikkim; Gangetic West Bengal, Odisha and Andaman & Nicobar Islands.
- **Northeast India:** Arunachal Pradesh, Assam & Meghalaya and Nagaland, Manipur, Mizoram & Tripura.
- **West India:** Gujarat Region, Saurashtra & Kutch, Konkan & Goa, Madhya Maharashtra and Marathawada.
- **South India:** Coastal Andhra Pradesh & Yanam, Telangana, Rayalaseema, Coastal Karnataka, North Interior Karnataka, South Interior Karnataka, Kerala & Mahe, Tamil Nadu, Puducherry & Karaikal and Lakshadweep.

***Red color warning does not mean "Red Alert" Red color warning means "Take Action"**

Forecast and warning for any day is valid from 0830 hours IST of day till 0830 hours IST of next day

For more details kindly visit <https://mausam.imd.gov.in> or contact 011-2434-4599

(Service to the nation since 1875)

LEGENDS

- 1 अंडमान और निकोबार द्वीप समुह
- 2 अरुणाचल प्रदेश
- 3 असम और मेघालय
- 4 नागालैंड मनीपुर मीजोरम और त्रिपुरा
- 5 उप हिमालय पश्चिम बंगाल एवं सिक्किम
- 6 पश्चिम बंगाल
- 7 ओडिसा
- 8 झारखंड
- 9 बिहार
- 10 पूर्वी उत्तर प्रदेश
- 11 पश्चिम उत्तर प्रदेश
- 12 उत्तराखंड
- 13 हरियाणा चंडिगढ़ एवं दिल्ली
- 14 पंजाब
- 15 हिमाचल प्रदेश
- 16 जम्मू एवं कश्मीर एवं लद्दाख
- 17 पश्चिम राजस्थान
- 18 पूर्वी राजस्थान
- 19 पश्चिम मध्य प्रदेश
- 20 पूर्वी मध्य प्रदेश
- 21 गुजरात क्षेत्र
- 22 सौराष्ट्र एवं कच्छ
- 23 कोंकण एवं गोवा
- 24 मध्य महाराष्ट्र
- 25 मराठावाडा
- 26 विदर्भ
- 27 छत्तीसगढ़
- 28 तटीय आंध्र प्रदेश एवं चन्नम
- 29 तेलंगाना
- 30 रायलसीमा
- 31 तमिलनाडु, पुदुचेरी एवं कराईकल
- 32 तटिय कर्नाटक
- 33 आंतरिक उत्तरी कर्नाटक
- 34 आंतरिक दक्षिणी कर्नाटक
- 35 केरल एवं माहे
- 36 लक्षद्वीप



1. Andaman & Nicobar Islands
2. Arunachal Pradesh
3. Assam & Meghalaya
4. Nagaland, Manipur, Mizoram & Tripura
5. Sub-Himalayan West Bengal & Sikkim
6. Gangetic West Bengal
7. Orissa
8. Jharkhand
9. Bihar
10. East Uttar Pradesh
11. West Uttar Pradesh
12. Uttarakhand
13. Haryana, Chd & Delhi
14. Punjab
15. Himachal Pradesh
16. Jammu & Kashmir and Ladakh
17. West Rajasthan
18. East Rajasthan
19. West Madhya Pradesh
20. East Madhya Pradesh
21. Gujarat
22. Saurashtra
23. Konkan & Goa
24. Madhya Maharashtra
25. Marathawada
26. Vidharbha
27. Chhattisgarh
28. Coastal Andhra Pradesh & Yanam
29. Telangana
30. Rayalaseema
31. Tamilnadu, Puducherry & Karaikal
32. Coastal Karnataka
33. North Interior Karnataka
34. South Interior Karnataka
35. Kerala & Mahe
36. Lakshadweep

SPATIAL DISTRIBUTION (% of Stations reporting)

% Stations	Category	% Stations	Category
76-100	Widespread (WS/ Most Places)	26-50	Scattered (SCT/ A Few Places)
51-75	Fairly Widespread (FWS/ Many Places)	1-25	Isolated (ISOL)

Subdivision Colour

- NO WARNING
- WATCH (BE UPDATED)
- ALERT (BE PREPARED TO TAKE ACTION)
- WARNING (TAKE ACTION)

Probabilistic Forecast

Terms	Probability of Occurrence (%)
Unlikely	< 25
Likely	25 - 50
Very Likely	50 - 75
Most Likely	> 75

- | | | | |
|--------------------------|-----------------|----------------------|--------------------|
| Heavy Rain | Very Heavy Rain | Extremely Heavy Rain | Heavy Snow |
| Thunderstorm & Lightning | Hailstorm | Dust Storm | Dust Raising Winds |
| Strong surface winds | Heat Wave | Hot Day | Warm Night |
| Cold Wave | Cold Day | Ground Frost | Fog |
| Hot & Humid | | | |

*Red color warning does not mean "Red Alert" Red color warning means "Take Action"

Forecast and warning for any day is valid from 0830 hours IST of day till 0830 hours IST of next day

For more details kindly visit <https://mausam.imd.gov.in> or contact 011-2434-4599

(Service to the nation since 1875)

LEGENDS

WARNING

WARNING (TAKE ACTION)
ALERT (BE PREPARED)
WATCH (BE UPDATED)
NO WARNING (NO ACTION)

Probabilistic Forecast

Terms	Probability of Occurrence (%)
Unlikely	< 25
Likely	25 - 50
Very Likely	50 - 75
Most Likely	> 75



Heavy: 64.5 to 115.5 mm/cm *
Very Heavy: 115.6 to 204.4 mm/cm*
Extremely Heavy: > 204.4 mm/cm *



When maximum temperature of a station reaches $\geq 40^{\circ}\text{C}$ for plains and $\geq 30^{\circ}\text{C}$ for hilly regions
(a) Based on Departure from normal

Heat Wave: Maximum Temperature Departure from normal 4.5°C to 6.4°C .
Severe Heat Wave: Maximum Temperature Departure from normal $\geq 6.5^{\circ}\text{C}$

(b). Based on Actual maximum temperature

Heat Wave: When actual maximum temperature $\geq 45^{\circ}\text{C}$.
Severe Heat Wave: When actual maximum temperature $\geq 47^{\circ}\text{C}$

(c). Criteria for heat wave for coastal stations

When maximum temperature departure is $> 4.5^{\circ}\text{C}$ from normal. Heat Wave may be described provided maximum temperature $\geq 37^{\circ}\text{C}$



When maximum temperature remains 40°C

Warm Night: When minimum temperature departure 4.5°C to 6.4°C .
Severe Warm Night: When minimum temperature departure $> 6.4^{\circ}\text{C}$.



When minimum temperature of a station $\leq 10^{\circ}\text{C}$ for plains and $\leq 0^{\circ}\text{C}$ for hilly regions.

(a). Based on departure

Cold Wave: Minimum Temperature Departure from normal -4.5°C to -6.4°C .
Severe Cold Wave: Minimum Temperature Departure from normal $\leq -6.5^{\circ}\text{C}$

(b) Based on actual Minimum Temperature (for Plains only)

Cold Wave : When Minimum Temperature is $\leq 4.0^{\circ}\text{C}$
Severe Cold Wave: When Minimum Temperature is $\leq 2.0^{\circ}\text{C}$

(c) For Coastal Stations

When Minimum Temperature departure is $\leq -4.5^{\circ}\text{C}$ & actual Minimum Temperature is $\leq 15^{\circ}\text{C}$



When minimum temperature of a station $\leq 10^{\circ}\text{C}$ for plains and $\leq 0^{\circ}\text{C}$ for hilly regions
Based on departure

Cold Day: Maximum Temperature Departure from normal -4.5°C to -6.4°C .
Severe Cold Day: Maximum Temperature Departure from normal $\leq -6.5^{\circ}\text{C}$



Phenomenon of small droplets suspended in air and the horizontal visibility $< 1\text{km}$

Moderate Fog: When the visibility between 500-200 metres
Dense Fog: when the visibility between 50- 200 metres
Very Dense Fog: when the visibility < 50 metres



Sudden electrical discharges manifested by a flash of light (Lightning) and a sharp rumbling sound (thunder)



An ensemble of particles of dust or sand energetically lifted to great heights by a strong and turbulent wind.



Ice deposits on ground

Air temperature $\leq 4^{\circ}\text{C}$ (over Plains)



A strong wind that rises suddenly, lasts for atleast 1 minute.

Moderate: Wind speed 52-61 kmph
Severe: Wind speed 62-87 kmph
Very Severe: Wind speed > 87 kmph



Effect of various waves in the sea over specific area

Rough to very rough: Wind speed 41-62 kmph (22-33 knots) & Wave height 2.5-6 metre
High to very high: Wind speed 63-117 kmph (34-63 knots) & Wave height 6-14 metre
Phenomenal: Wind speed > 117 kmph (> 63 knots) & Wave height > 14 metre



Cyclonic Storm: Wind speed 62-87 kmph (34-47 knots)
Severe Cyclonic Storm: Wind speed 88-117 kmph (48-63 knots)
Very Severe Cyclonic Storm: Wind speed 118-165 kmph (64 - 89 knots)
Extremely Severe Cyclonic Storm: Wind speed 166-220 kmph (90 -119 knots)
Super Cyclone Storm: Wind speed > 220 kmph (> 119 knots)

*Red color warning does not mean "Red Alert" Red color warning means "Take Action"

Forecast and warning for any day is valid from 0830 hours IST of day till 0830 hours IST of next day

For more details kindly visit <https://mausam.imd.gov.in> or contact 011-2434-4599

(Service to the nation since 1875)