

2026-03-05

Time of Issue: 20:00:00 hours IST
(Night)

ALL INDIA WEATHER SUMMARY AND FORECAST BULLETIN

Significant Weather Features

Weather Systems, Forecast and Warnings

- **Isolated to scattered** light rainfall/snowfall likely over Jammu-Kashmir during 05th -11th; Himachal Pradesh during 07th -11th and **isolated light rainfall/snowfall** likely over Uttarakhand during 08-11th March, 2026.
- **Isolated to Scattered** light/moderate rainfall with **thunderstorm, lightning & gusty winds speed reaching (30-40 kmph)** likely over Sub-Himalayan West Bengal & Sikkim during 08th-11th; Odisha on 08th & 09th; Gangetic West Bengal & Jharkhand on 09th; Bihar on 11th March; with **thunderstorm & lightning** likely over Jammu-Kashmir during 07th-11th; Northeast India during 08th-11th March.

Heat Wave and Hot & Humid weather Warnings:

- **Heat wave conditions** very likely in isolated pockets over Konkan on 05th March.
- **Hot & humid conditions** very likely to prevail in isolated pockets over Coastal Andhra Pradesh & Yanam on 06th; coastal areas of Gujarat State on 05th & 06th and Konkan on 06th & 07th March.

Forecast of maximum temperatures:

- No significant change in maximum temperature likely over Western Himalayan region during next 2 days and gradual fall by 4-6°C during subsequent 5 days. Over the plains of Northwest India & adjoining Central India, maximum temperatures are likely to rise by 2-3° C during next 4 days and no significant change during subsequent 3 days. **Hence, Maximum temperatures are likely to continue to be above normal by 4-6°C over many parts of Northwest & 3-5°C over adjoining Central India during most days of the week.**
- No significant change in maximum temperature likely over interior Maharashtra during next 24 hours and gradual rise by 2-3°C during subsequent 5 days.
- No significant change in maximum temperature likely over Gujarat State during next 24 hours and gradual fall by 2-3°C during subsequent 2 days and gradual rise by 2-3°C thereafter.
- No significant change in maximum temperature likely over Konkan & Goa during next 24 hours; gradual fall by 2-3°C during subsequent 3 days and gradual rise by about 2°C thereafter.
- No significant change in maximum temperatures likely over rest parts of the country.

*Red color warning does not mean "Red Alert" Red color warning means "Take Action"

Forecast and warning for any day is valid from 0830 hours IST of day till 0830 hours IST of next day

For more details kindly visit <https://mausam.imd.gov.in> or contact 011-2434-4599

(Service to the nation since 1875)

Main Weather Observations:

❖ **Rainfall distribution** (from 0830 hours IST to 1730 hours IST of today): **Dry** over rest of the country.

❖ **Minimum Temperature Departures (as on 05-03-2026): markedly above normal(> 5.1°C)** at few places over Uttarakhand, Himachal Pradesh, Jammu-KashmirLadakh-Gilgit-Baltistan-Muzaffarabad, West Rajasthan and East Rajasthan; at isolated places over Sub Himalayan West Bengal & Sikkim, Bihar, East Uttar Pradesh, Haryana-Chandigarh-Delhi, Punjab, Gujarat Region, Konkan & Goa and Madhya Maharashtra. **appreciably above normal(3.1°C to 5.0°C)** at many places over West Uttar Pradesh and Uttarakhand; at most places over Haryana-Chandigarh-Delhi and Punjab; at few places over Bihar, Gujarat Region and Saurashtra & Kutch; at isolated places over Sub Himalayan West Bengal & Sikkim, East Uttar Pradesh, Himachal Pradesh, Jammu-KashmirLadakh-Gilgit-Baltistan-Muzaffarabad, West Rajasthan, East Rajasthan, Konkan & Goa and Madhya Maharashtra. **above normal(1.6°C to 3.0°C)** at most places over Arunachal Pradesh; at few places over East Uttar Pradesh, West Rajasthan, East Rajasthan, Konkan & Goa, Madhya Maharashtra and Marathwada; at isolated places over Assam & Meghalaya, Sub Himalayan West Bengal & Sikkim, Odisha, Bihar, West Uttar Pradesh, Himachal Pradesh, Jammu-KashmirLadakh-Gilgit-Baltistan-Muzaffarabad, West Madhya Pradesh, East Madhya Pradesh, Gujarat Region, Saurashtra & Kutch, Vidarbha, Chhattisgarh, Telangana and South Interior Karnataka. **near normal(-1.5°C to 1.5°C)** at many places over Assam & Meghalaya, Gangetic West Bengal, Odisha, Marathwada, Chhattisgarh and Tamil Nadu, Puducherry & Karaikal; at most places over Andaman & Nicobar Islands, Nagaland, Manipur, Mizoram & Tripura, Jharkhand, Coastal Andhra Pradesh & Yanam, Rayalaseema, Coastal Karnataka, Kerala & Mahe and Lakshadweep; at few places over Sub Himalayan West Bengal & Sikkim, West Madhya Pradesh, East Madhya Pradesh, Gujarat Region, Saurashtra & Kutch, Madhya Maharashtra, Vidarbha, Telangana and North Interior Karnataka; at isolated places over East Uttar Pradesh, West Uttar Pradesh, Himachal Pradesh, East Rajasthan, Konkan & Goa and South Interior Karnataka. **The lowest minimum temperature** of 11.9°C is reported at **Fatehpur AWS (Rajasthan)** over the Plains of India.

❖ **Maximum Temperature Departures (as on 05-03-2026): markedly above normal(> 5.1°C)** at most places over Arunachal Pradesh, Haryana-Chandigarh-Delhi, Punjab, Himachal Pradesh, Jammu-KashmirLadakh-Gilgit-Baltistan-Muzaffarabad, West Rajasthan and East Rajasthan; at few places over Assam & Meghalaya, Sub Himalayan West Bengal & Sikkim and Uttarakhand; at isolated places over Odisha, West Uttar Pradesh, West Madhya Pradesh, East Madhya Pradesh, Saurashtra & Kutch, Konkan & Goa and Coastal Andhra Pradesh & Yanam. **appreciably above normal(3.1°C to 5.0°C)** at most places over Chhattisgarh; at few places over Gujarat Region and Vidarbha; at isolated places over Nagaland, Manipur, Mizoram & Tripura, Bihar, East Uttar Pradesh, Madhya Maharashtra, Telangana and Tamil Nadu, Puducherry & Karaikal. **above normal(1.6°C to 3.0°C)** at many places over Marathwada and Rayalaseema; at few places over Gangetic West Bengal; at isolated places over North Interior Karnataka. **near normal(-1.5°C to 1.5°C)** at many places over Jharkhand; at most places over Andaman & Nicobar Islands, Coastal Karnataka, South Interior Karnataka, Kerala & Mahe and Lakshadweep. **The highest maximum temperature** of 39.6°C is reported at JHARSUGUDA (ORISSA).

***Red color warning does not mean "Red Alert" Red color warning means "Take Action"**

Forecast and warning for any day is valid from 0830 hours IST of day till 0830 hours IST of next day

For more details kindly visit <https://mausam.imd.gov.in> or contact 011-2434-4599

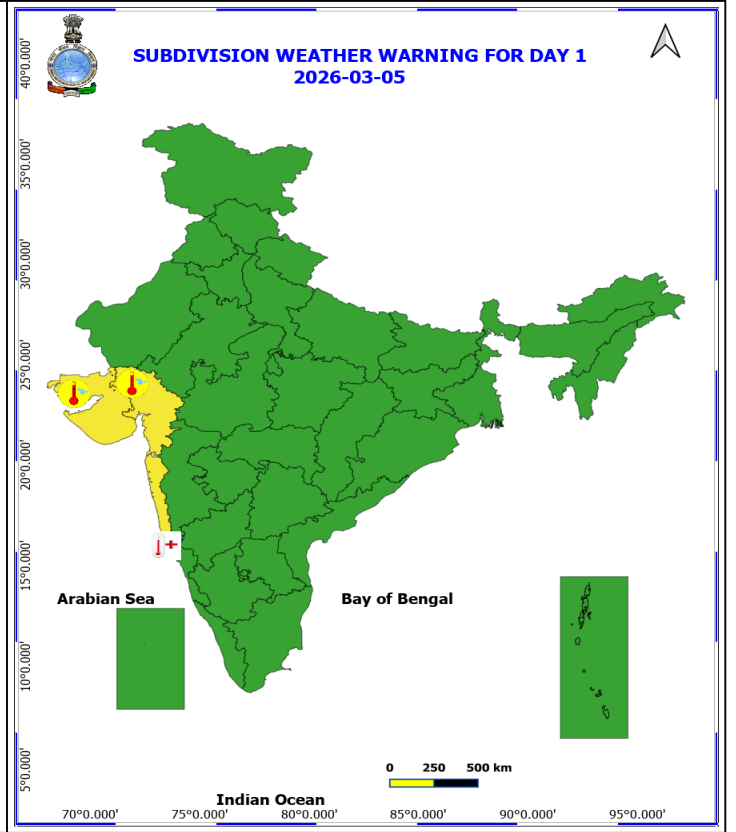
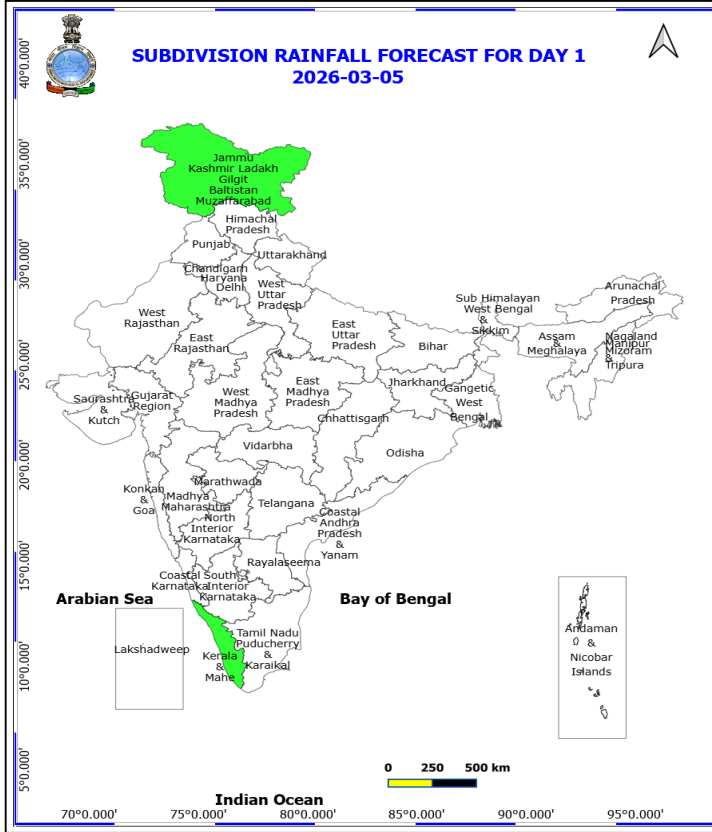
(Service to the nation since 1875)

Meteorological Analysis (Based on 1730 hours IST)

- The **upper air cyclonic circulation** over north Odisha and adjoining Gangetic West Bengal at 0.9 km above mean sea level persists.
- The **trough** from central parts of north Uttar Pradesh to the cyclonic circulation over north Odisha and adjoining Gangetic West Bengal across northeast Madhya Pradesh, north Chhattisgarh, south Jharkhand at 0.9 km above mean sea level persists.
- The **upper air cyclonic circulation** over Northeast Bangladesh & neighbourhood at 1.5 km above mean sea level persists.
- The **upper air cyclonic circulation** over south Assam & neighbourhood at 0.9 km above mean sea level persists.
- **Subtropical westerly Jet Stream** with core winds of the order of 85 knots at 12.6 km above mean sea level continues to prevail over Northwest India.
- The **trough** from Telangana to South Interior Karnataka across Rayalaseema at 0.9 km above mean sea level persists.
- An **upper air cyclonic circulation** lies over Jammu and adjoining Pakistan at 3.1 km above mean sea level.
- The **Western Disturbance** as a trough in middle level tropospheric westerlies with its axis at 5.8 km above mean sea level roughly along Long. 50°E to the north of Lat. 30°N persists.

Weather Outlook for subsequent 3 days

- Isolated to Scattered rainfall activity likely over Western Himalayan region, Kerala & Mahe and Sub-Himalayan West Bengal & Sikkim.
- Scattered to fairly widespread rainfall activity likely over Northeast India.

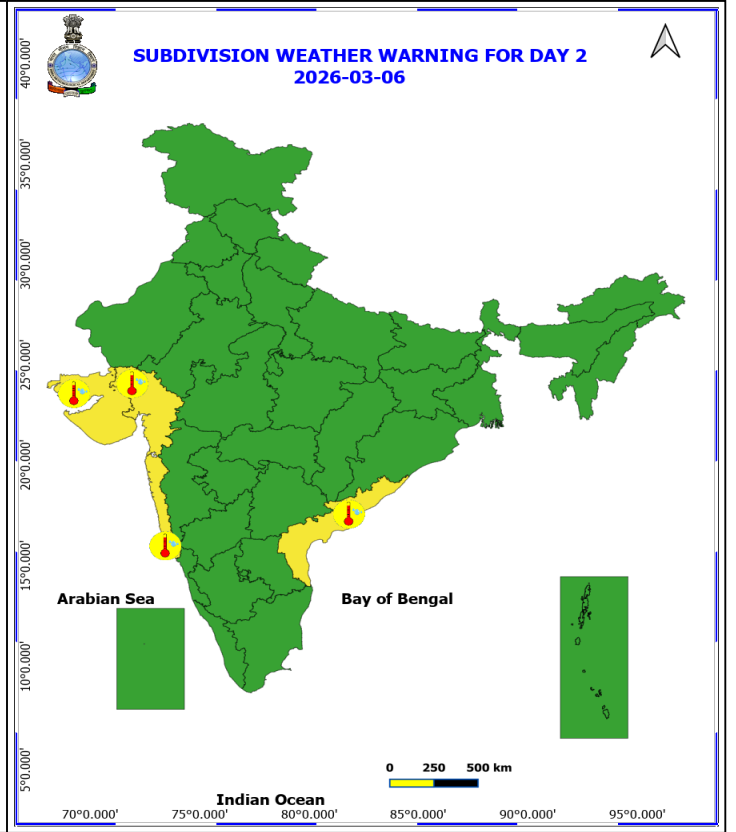
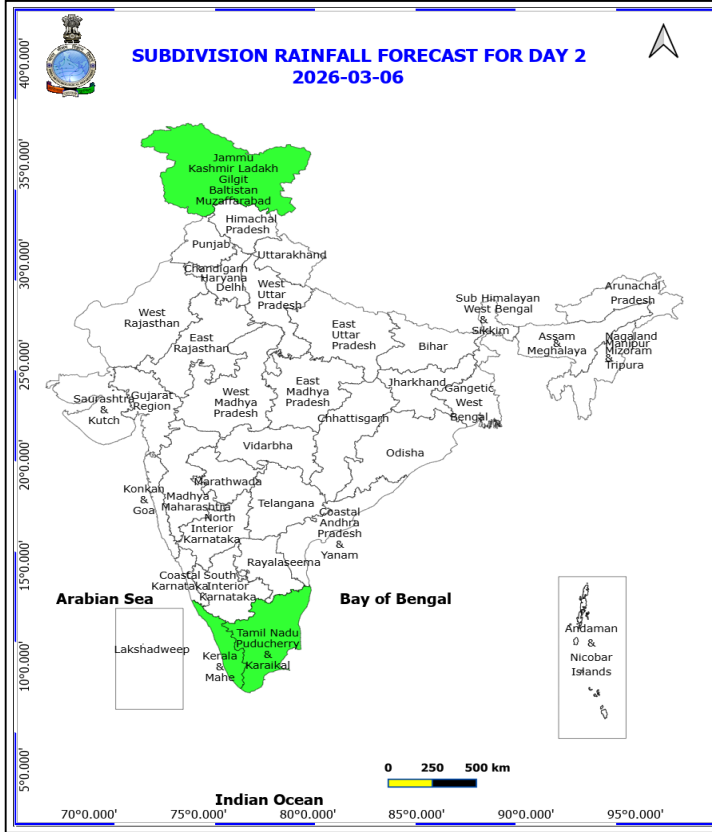


5 March (Day 1)

- ❖ Heat Wave conditions very likely at isolated places over Konkan & Goa.
- ❖ Hot and Humid weather very likely at isolated places over Gujarat State.

No Fishermen Warning

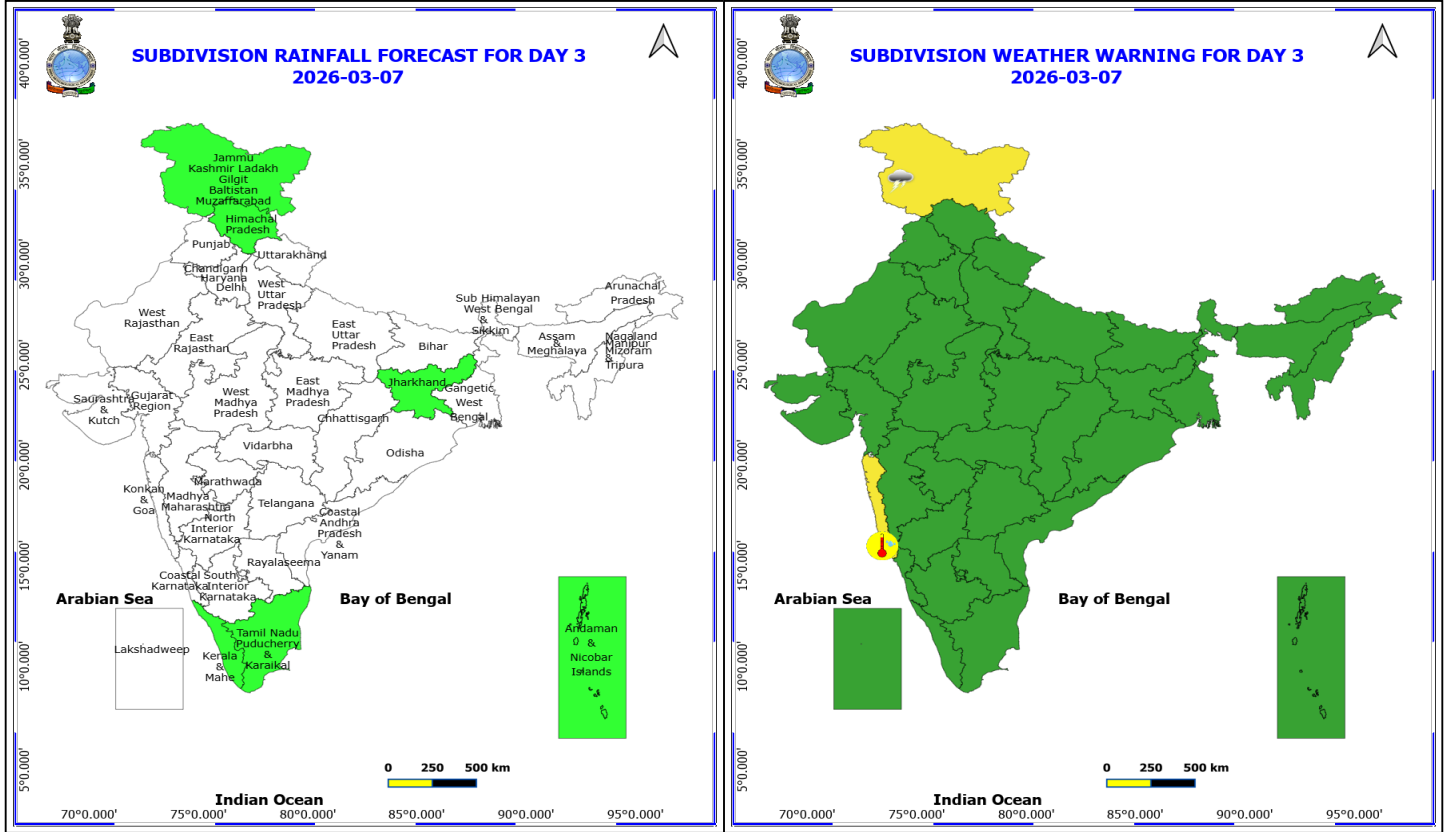
***Red color warning does not mean "Red Alert" Red color warning means "Take Action"**
Forecast and warning for any day is valid from 0830 hours IST of day till 0830 hours IST of next day
For more details kindly visit <https://mausam.imd.gov.in> or contact 011-2434-4599
(Service to the nation since 1875)



6 March (Day 2)

❖ **Hot and Humid weather** very likely at isolated places over Coastal Andhra Pradesh, Gujarat State and Konkan & Goa.

No Fishermen Warning

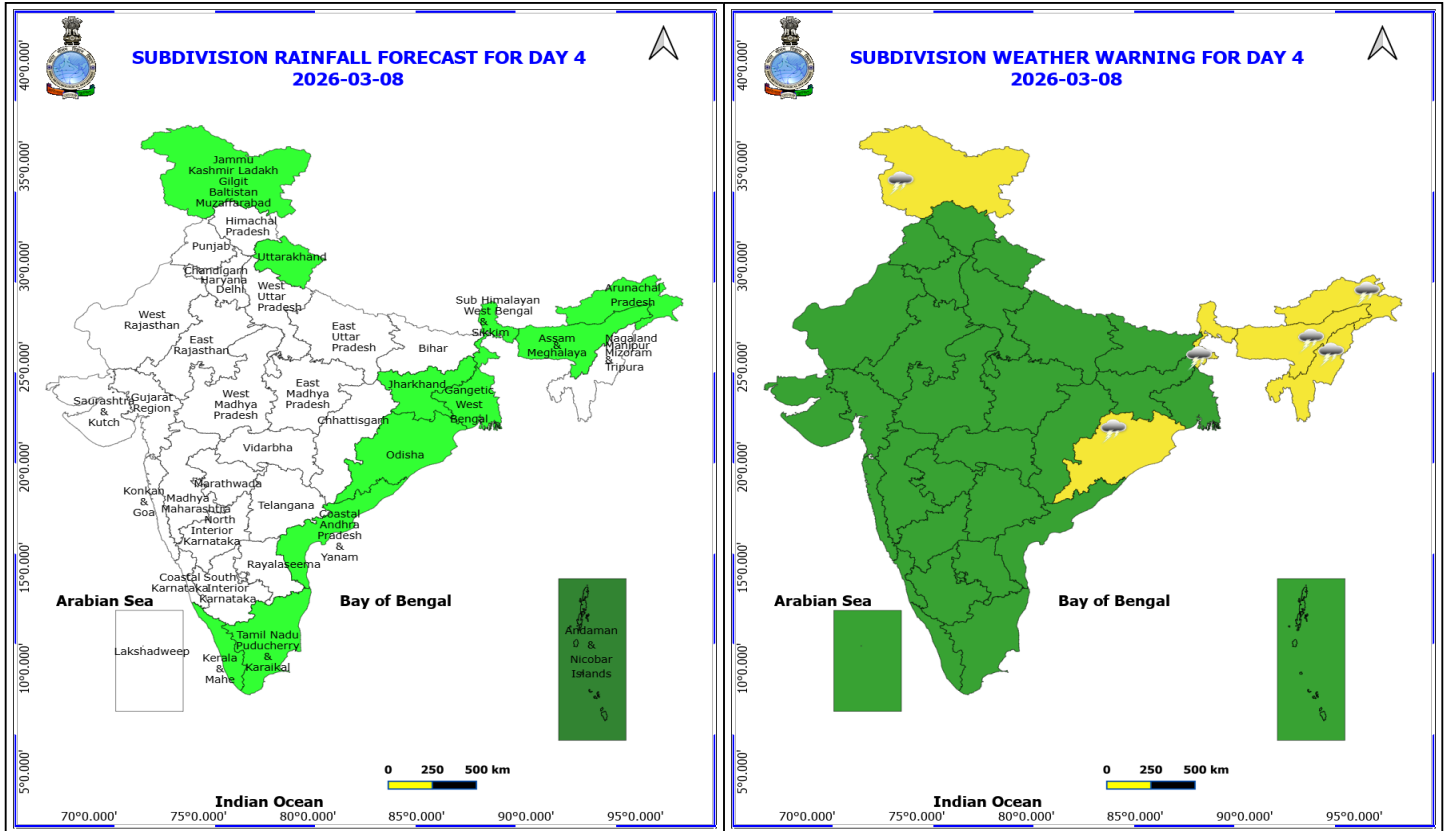


7 March (Day 3)

❖ **Thunderstorm accompanied with Lightning** very likely at isolated places over Jammu-Kashmir-Ladakh-Gilgit-Baltistan-Muzaffarabad.

❖ **Hot and Humid weather** very likely at isolated places over Konkan & Goa.

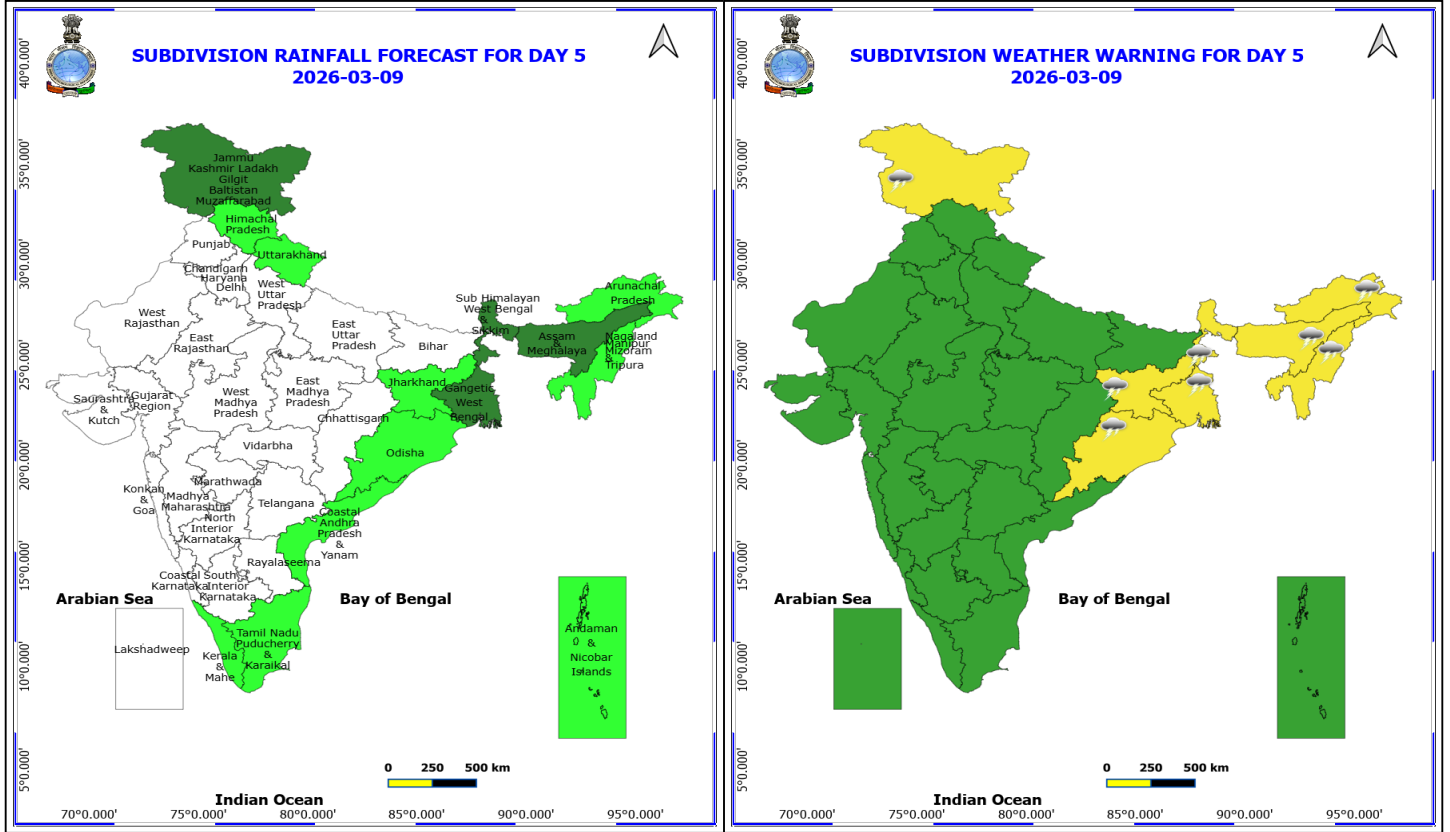
No Fishermen Warning



8 March (Day 4)

- ❖ **Thunderstorm accompanied with lightning & gusty winds(30-40kmph)** likely at isolated places over Odisha.
- ❖ **Thunderstorm accompanied with Lightning** likely at isolated places over Arunachal Pradesh, Assam & Meghalaya, Jammu-Kashmir-Ladakh-Gilgit-Baltistan-Muzaffarabad, Nagaland, Manipur, Mizoram and Tripura and Sub Himalayan West Bengal & Sikkim.

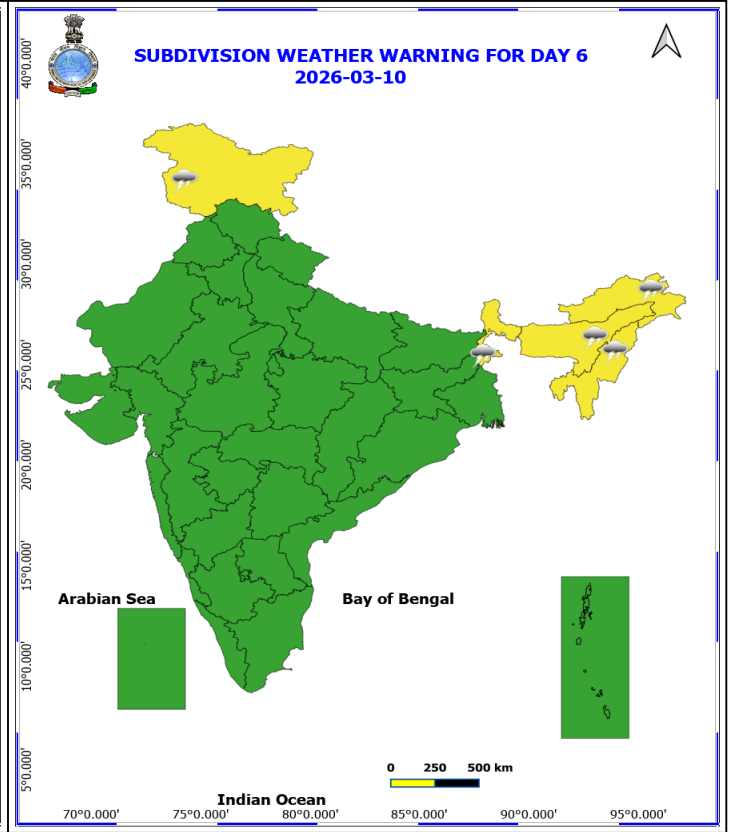
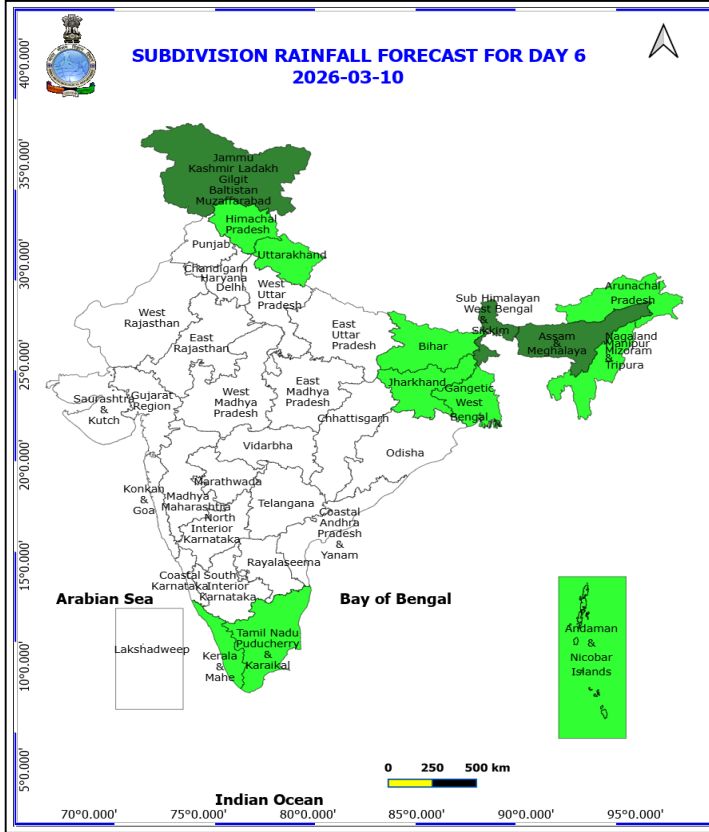
No Fishermen Warning



9 March (Day 5)

- ❖ **Thunderstorm accompanied with lightning & gusty winds(30-40kmph)** likely at isolated places over Gangetic West Bengal, Jharkhand and Odisha.
- ❖ **Thunderstorm accompanied with Lightning** likely at isolated places over Arunachal Pradesh, Assam & Meghalaya, Jammu-Kashmir-Ladakh-Gilgit-Baltistan-Muzaffarabad, Nagaland, Manipur, Mizoram and Tripura and Sub Himalayan West Bengal & Sikkim.

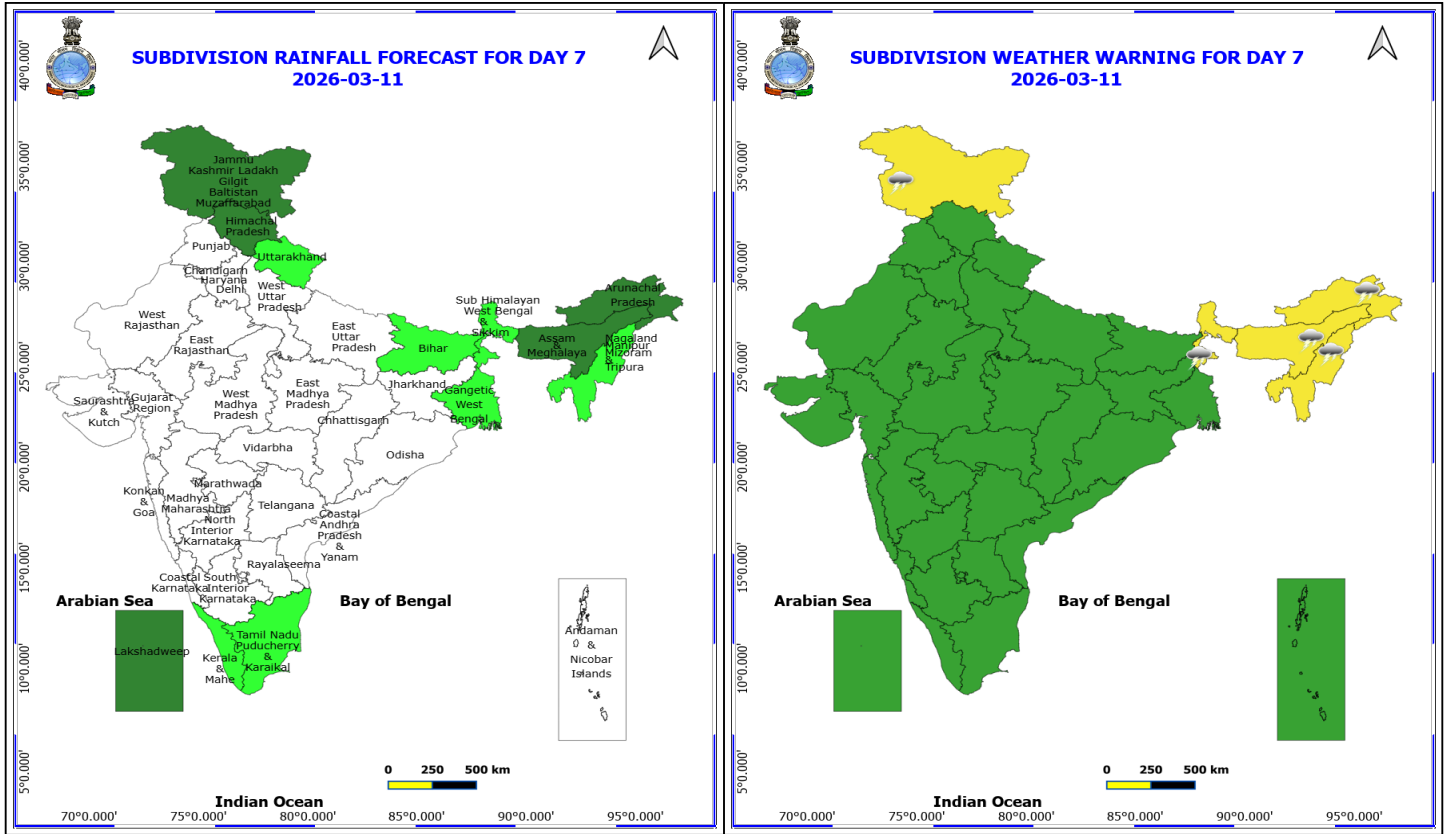
No Fishermen Warning



10 March (Day 6)

❖ **Thunderstorm accompanied with Lightning** likely at isolated places over Arunachal Pradesh, Assam & Meghalaya, Jammu-Kashmir-Ladakh-Gilgit-Baltistan-Muzaffarabad, Nagaland, Manipur, Mizoram and Tripura and Sub Himalayan West Bengal & Sikkim.

No Fishermen Warning



11 March (Day 7)

❖ **Thunderstorm accompanied with Lightning** likely at isolated places over Arunachal Pradesh, Assam & Meghalaya, Jammu-Kashmir-Ladakh-Gilgit-Baltistan-Muzaffarabad, Nagaland, Manipur, Mizoram and Tripura and Sub Himalayan West Bengal & Sikkim.

No Fishermen Warning



Table-1

7 Days Rainfall Forecast

S.No.	Subdivision	5- Mar	6- Mar	7- Mar	8- Mar	9- Mar	10- Mar	11- Mar
		Day 1	Day 2	Day 3	Day 4	Day 5	Day 6	Day 7
1	ANDAMAN & NICOBAR ISLANDS	DRY	DRY	ISOL	SCT	ISOL	ISOL	DRY
2	ARUNACHAL PRADESH	DRY	DRY	DRY	ISOL	ISOL	ISOL	SCT
3	ASSAM & MEHGHALAYA	DRY	DRY	DRY	ISOL	SCT	SCT	SCT
4	N. M. M. & T.	DRY	DRY	DRY	DRY	ISOL	ISOL	ISOL
5	S.H. WEST BENGAL & SIKKIM	DRY	DRY	DRY	ISOL	SCT	SCT	ISOL
6	GANGETIC WEST BENGAL	DRY	DRY	DRY	ISOL	SCT	ISOL	ISOL
7	ODISHA	DRY	DRY	DRY	ISOL	ISOL	DRY	DRY
8	JHARKHAND	DRY	DRY	ISOL	ISOL	ISOL	ISOL	DRY
9	BIHAR	DRY	DRY	DRY	DRY	DRY	ISOL	ISOL
10	EAST UTTAR PRADESH	DRY	DRY	DRY	DRY	DRY	DRY	DRY
11	WEST UTTAR PRADESH	DRY	DRY	DRY	DRY	DRY	DRY	DRY
12	UTTARAKHAND	DRY	DRY	DRY	ISOL	ISOL	ISOL	ISOL
13	HARYANA, CHD & DELHI	DRY	DRY	DRY	DRY	DRY	DRY	DRY
14	PUNJAB	DRY	DRY	DRY	DRY	DRY	DRY	DRY
15	HIMACHAL PRADESH	DRY	DRY	ISOL	DRY	ISOL	ISOL	SCT
16	JAMMU AND KASHMIR AND LADAKH	ISOL	ISOL	ISOL	ISOL	SCT	SCT	SCT
17	WEST RAJASTHAN	DRY	DRY	DRY	DRY	DRY	DRY	DRY
18	EAST RAJASTHAN	DRY	DRY	DRY	DRY	DRY	DRY	DRY
19	WEST MADHYA PRADESH	DRY	DRY	DRY	DRY	DRY	DRY	DRY
20	EAST MADHYA PRADESH	DRY	DRY	DRY	DRY	DRY	DRY	DRY
21	GUJRAT REGION	DRY	DRY	DRY	DRY	DRY	DRY	DRY
22	SAURASHTRA & KUTCH	DRY	DRY	DRY	DRY	DRY	DRY	DRY
23	KONKAN & GOA	DRY	DRY	DRY	DRY	DRY	DRY	DRY
24	MADHYA MAHARASHTRA	DRY	DRY	DRY	DRY	DRY	DRY	DRY
25	MARATHWADA	DRY	DRY	DRY	DRY	DRY	DRY	DRY
26	VIDARBHA	DRY	DRY	DRY	DRY	DRY	DRY	DRY
27	CHATTISGARH	DRY	DRY	DRY	DRY	DRY	DRY	DRY
28	COASTAL ANDHRA PRADESH	DRY	DRY	DRY	ISOL	ISOL	DRY	DRY
29	TELANGANA	DRY	DRY	DRY	DRY	DRY	DRY	DRY
30	RAYALASEEMA	DRY	DRY	DRY	DRY	DRY	DRY	DRY
31	TAMILNADU & PUDUCHERRY	DRY	ISOL	ISOL	ISOL	ISOL	ISOL	ISOL
32	COSTAL KARNATAKA	DRY	DRY	DRY	DRY	DRY	DRY	DRY
33	NORTH INTERIOR KARNATAKA	DRY	DRY	DRY	DRY	DRY	DRY	DRY
34	SOUTH INTERIOR KARNATAKA	DRY	DRY	DRY	DRY	DRY	DRY	DRY
35	KERALA	ISOL	ISOL	ISOL	ISOL	ISOL	ISOL	ISOL
36	LAKSHDWEEP	DRY	DRY	DRY	DRY	DRY	DRY	SCT

Legend	Category	%Stations
WS	Widespread/Most Places	76-100
FWS	Fairly Widespread/Many Places	51-75
SCT	Scattered/ A Few Places	26-50
ISOL	Isolated Places	1-25
DRY	No Rain	0

*Red color warning does not mean "Red Alert" Red color warning means "Take Action"
Forecast and warning for any day is valid from 0830 hours IST of day till 0830 hours IST of next day
For more details kindly visit <https://mausam.imd.gov.in> or contact 011-2434-4599

(Service to the nation since 1875)

Fig. 1: Maximum Temperatures Dated 2026-03-05

Fig. 2: Departure of Maximum Temp. Dated 2026-03-05

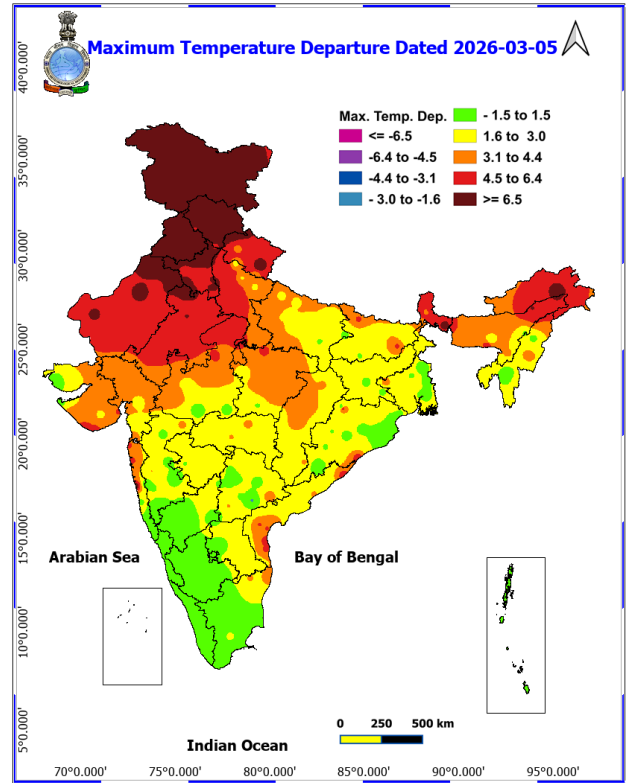
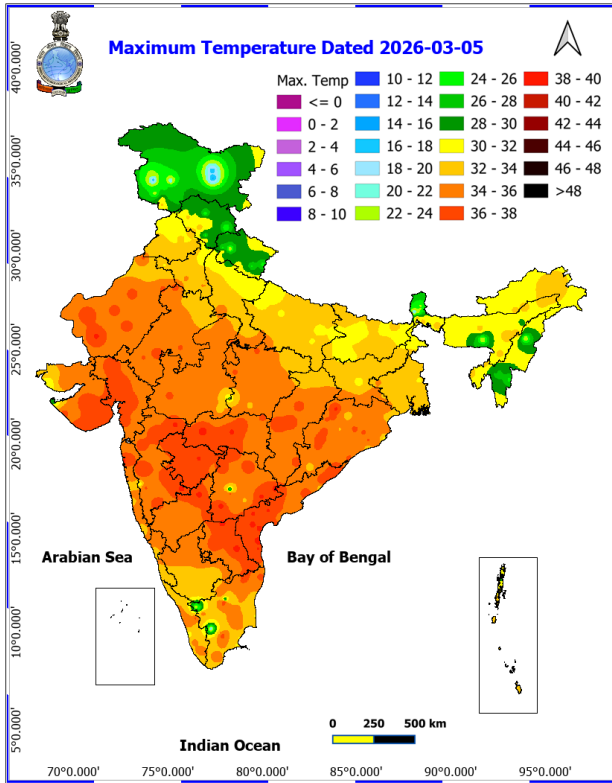
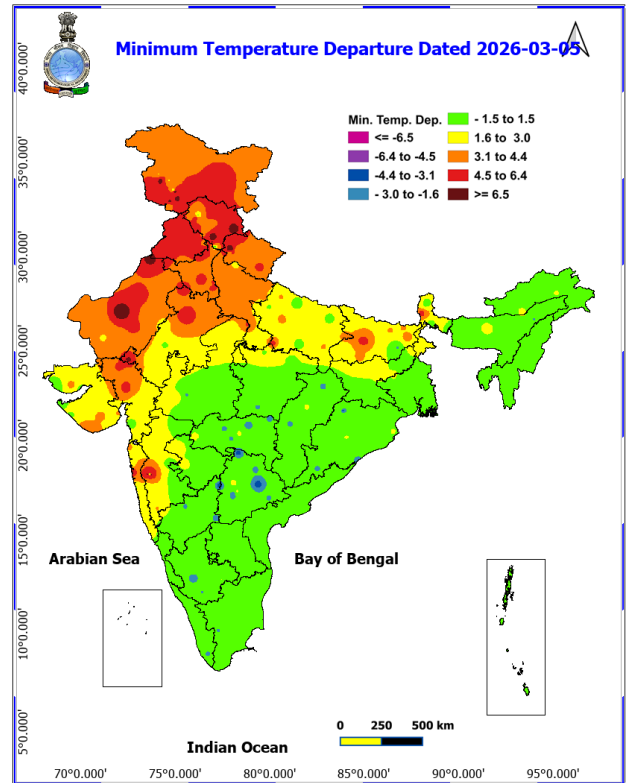
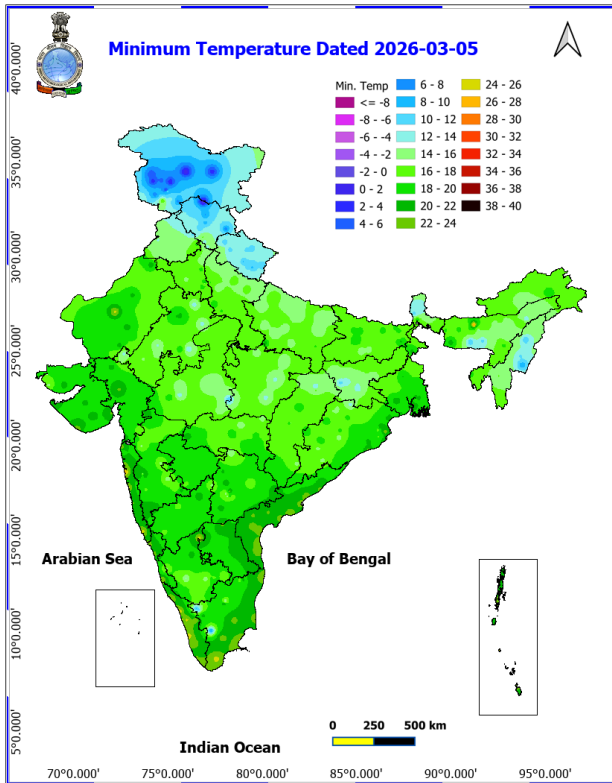
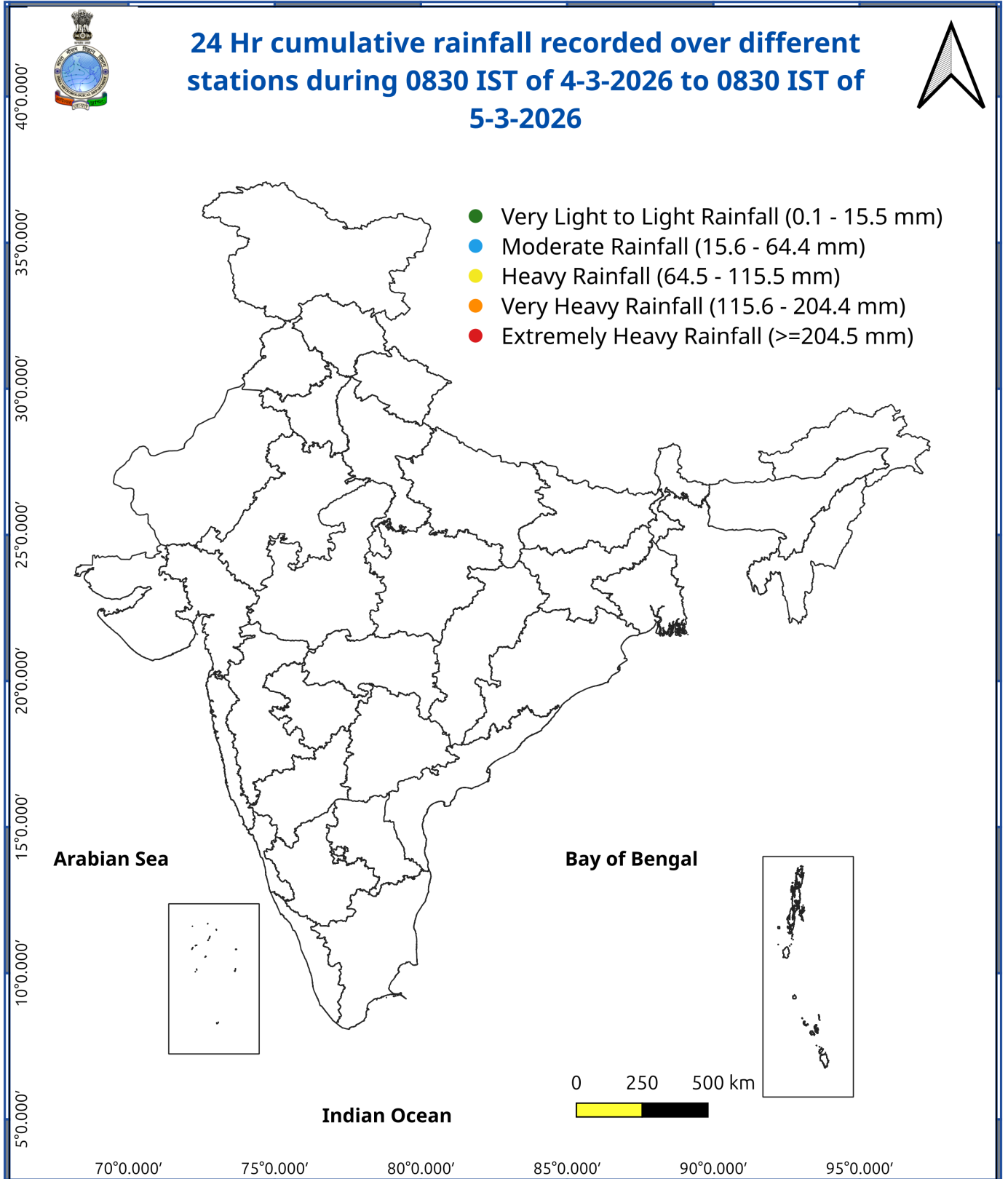


Fig. 3: Minimum Temperatures Dated 2026-03-05

Fig. 4: Departure of Minimum Temp. Dated 2026-03-05





Agromet advisories for various parts of the country

Agromet advisories for likely impact of Above normal Temperatures

- In **Jammu and Kashmir**, apply light irrigation to wheat, mustard and vegetables.
- In **Himachal Pradesh**, provide protective irrigation to wheat and early vegetables. Maintain ventilation in polyhouses for capsicum and tomato.
- In **Punjab**, maintain optimum soil moisture through irrigation in mustard, gobhi sarson and potato.
- In **Haryana**, provide light irrigation to mustard and gram at flowering and pod formation stages.
- In **Uttarakhand**, provide light and frequent irrigation in wheat, lentil, chickpea and mustard during critical growth stages (flowering and grain filling in wheat, pod formation in mustard and gram etc.).
- In **Western Uttar Pradesh**, provide light and frequent irrigation in wheat, mustard and chickpea, potato and early planted sugarcane.
- In **Rajasthan**, provide protective irrigation in cumin, isabgol, mustard and gram.
- In **Uttar Pradesh**, provide light irrigation in wheat (grain filling stage), mustard and gram crops during morning or evening hours to reduce adverse impacts of heat and prevention of forced maturity.
- In **Gujarat**, apply light irrigation in wheat (grain filling stage), chickpea and cumin.
- In **North Konkan region of Maharashtra**, to reduce premature fruit drop and sun scorching in mango, apply irrigation at frequent intervals. Undertake pre-harvest bagging of mango fruits using newspaper bags to prevent sun scalding.
- In **North Madhya Pradesh**, provide light and frequent irrigation in wheat and chickpea during critical stages. Complete harvesting of matured mustard during morning/evening hours and keep the produce in safe places.
- In **Arunachal Pradesh**, provide **regular irrigation to winter vegetables (cabbage, cauliflower, tomato)** during early morning or evening hours. Undertake **harvesting of matured mustard crops** and keep harvested produce in safe places.
- In **East Assam**, maintain **optimum water level (2–5 cm) in Boro rice fields**.
- Take appropriate action for conservation of soil moisture through mulching, proper field bunding, and avoiding unnecessary intercultivation.

Livestock / Poultry

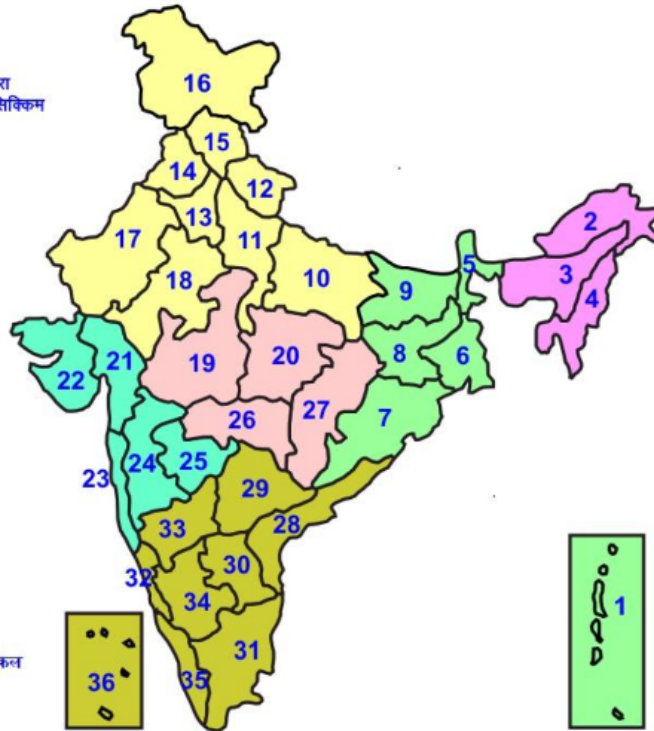
- Provide clean, hygienic and plenty of drinking water to animals.
- To reduce the effect of heat wave/high temperature, cover the roof of poultry sheds with grass.

Agromet advisories for likely impact of Thunderstorm / Gusty Winds

- Provide mechanical support to horticultural crops and staking or support to vegetables and young fruit plants / fruit-bearing plants to avoid lodging due to strong winds.

LEGENDS

- 1 अंडमान और निकोबार द्वीप समुह
- 2 अरुणाचल प्रदेश
- 3 असम और मेघालय
- 4 नागालैंड मनीपुर मीजोरम और त्रिपुरा
- 5 उप हिमालय पश्चिम बंगाल एवं सिक्किम
- 6 पश्चिम बंगाल
- 7 ओडिसा
- 8 झारखंड
- 9 बिहार
- 10 पूर्वी उत्तर प्रदेश
- 11 पश्चिम उत्तर प्रदेश
- 12 उत्तराखंड
- 13 हरियाणा चंडिगढ़ एवं दिल्ली
- 14 पंजाब
- 15 हिमाचल प्रदेश
- 16 जम्मू एवं कश्मीर एवं लद्दाख
- 17 पश्चिम राजस्थान
- 18 पूर्वी राजस्थान
- 19 पश्चिम मध्य प्रदेश
- 20 पूर्वी मध्य प्रदेश
- 21 गुजरात क्षेत्र
- 22 सौराष्ट्र एवं कच्छ
- 23 कोंकण एवं गोवा
- 24 मध्य महाराष्ट्र
- 25 मराठावाडा
- 26 विदर्भ
- 27 छत्तीसगढ़
- 28 तटीय आंध्र प्रदेश एवं यनम
- 29 तेलंगाना
- 30 रायलसीमा
- 31 तमिलनाडु, पुदुचेरी एवं कराईकल
- 32 तटिय कर्नाटक
- 33 आंतरिक उत्तरी कर्नाटक
- 34 आंतरिक दक्षिणी कर्नाटक
- 35 केरल एवं माहे
- 36 लक्षद्वीप



1. Andaman & Nicobar Islands
2. Arunachal Pradesh
3. Assam & Meghalaya
4. Nagaland, Manipur, Mizoram & Tripura
5. Sub-Himalayan West Bengal & Sikkim
6. Gangetic West Bengal
7. Orissa
8. Jharkhand
9. Bihar
10. East Uttar Pradesh
11. West Uttar Pradesh
12. Uttarakhand
13. Haryana, Chd & Delhi
14. Punjab
15. Himachal Pradesh
16. Jammu & Kashmir and Ladakh
17. West Rajasthan
18. East Rajasthan
19. West Madhya Pradesh
20. East Madhya Pradesh
21. Gujarat
22. Saurashtra
23. Konkan & Goa
24. Madhya Maharashtra
25. Marathawada
26. Vidharbha
27. Chhattisgarh
28. Coastal Andhra Pradesh & Yanam
29. Telangana
30. Rayalaseema
31. Tamilnadu, Puducherry & Karaikal
32. Coastal Karnataka
33. North Interior Karnataka
34. South Interior Karnataka
35. Kerala & Mahe
36. Lakshadweep

SPATIAL DISTRIBUTION (% of Stations reporting)

% Stations	Category	% Stations	Category
76-100	Widespread (WS/ Most Places)	26-50	Scattered (SCT/ A Few Places)
51-75	Fairly Widespread (FWS/ Many Places)	1-25	Isolated (ISOL)

Subdivision Colour

- NO WARNING
- WATCH (BE UPDATED)
- ALERT (BE PREPARED TO TAKE ACTION)
- WARNING (TAKE ACTION)

Probabilistic Forecast

Terms	Probability of Occurrence (%)
Unlikely	< 25
Likely	25 - 50
Very Likely	50 - 75
Most Likely	> 75

- | | | | |
|--------------------------|-----------------|----------------------|--------------------|
| Heavy Rain | Very Heavy Rain | Extremely Heavy Rain | Heavy Snow |
| Thunderstorm & Lightning | Hailstorm | Dust Storm | Dust Raising Winds |
| Strong surface winds | Heat Wave | Hot Day | Warm Night |
| Cold Wave | Cold Day | Ground Frost | Fog |
| Hot & Humid | | | |

*Red color warning does not mean "Red Alert" Red color warning means "Take Action"

Forecast and warning for any day is valid from 0830 hours IST of day till 0830 hours IST of next day

For more details kindly visit <https://mausam.imd.gov.in> or contact 011-2434-4599

(Service to the nation since 1875)

LEGENDS

WARNING

WARNING (TAKE ACTION)
ALERT (BE PREPARED)
WATCH (BE UPDATED)
NO WARNING (NO ACTION)

Probabilistic Forecast

Terms	Probability of Occurrence (%)
Unlikely	< 25
Likely	25 - 50
Very Likely	50 - 75
Most Likely	> 75



Heavy: 64.5 to 115.5 mm/cm *
Very Heavy: 115.6 to 204.4 mm/cm*
Extremely Heavy: > 204.4 mm/cm *



When maximum temperature of a station reaches $\geq 40^{\circ}\text{C}$ for plains and $\geq 30^{\circ}\text{C}$ for hilly regions
(a) Based on Departure from normal

Heat Wave: Maximum Temperature Departure from normal 4.5°C to 6.4°C .
Severe Heat Wave: Maximum Temperature Departure from normal $\geq 6.5^{\circ}\text{C}$

(b). Based on Actual maximum temperature

Heat Wave: When actual maximum temperature $\geq 45^{\circ}\text{C}$.
Severe Heat Wave: When actual maximum temperature $\geq 47^{\circ}\text{C}$

(c). Criteria for heat wave for coastal stations

When maximum temperature departure is $> 4.5^{\circ}\text{C}$ from normal. Heat Wave may be described provided maximum temperature $\geq 37^{\circ}\text{C}$



When maximum temperature remains 40°C

Warm Night: When minimum temperature departure 4.5°C to 6.4°C .
Severe Warm Night: When minimum temperature departure $> 6.4^{\circ}\text{C}$.



When minimum temperature of a station $\leq 10^{\circ}\text{C}$ for plains and $\leq 0^{\circ}\text{C}$ for hilly regions.

(a). Based on departure

Cold Wave: Minimum Temperature Departure from normal -4.5°C to -6.4°C .
Severe Cold Wave: Minimum Temperature Departure from normal $\leq -6.5^{\circ}\text{C}$

(b) Based on actual Minimum Temperature (for Plains only)

Cold Wave : When Minimum Temperature is $\leq 4.0^{\circ}\text{C}$
Severe Cold Wave: When Minimum Temperature is $\leq 2.0^{\circ}\text{C}$

(c) For Coastal Stations

When Minimum Temperature departure is $\leq -4.5^{\circ}\text{C}$ & actual Minimum Temperature is $\leq 15^{\circ}\text{C}$



When minimum temperature of a station $\leq 10^{\circ}\text{C}$ for plains and $\leq 0^{\circ}\text{C}$ for hilly regions
Based on departure

Cold Day: Maximum Temperature Departure from normal -4.5°C to -6.4°C .
Severe Cold Day: Maximum Temperature Departure from normal $\leq -6.5^{\circ}\text{C}$



Phenomenon of small droplets suspended in air and the horizontal visibility $< 1\text{km}$

Moderate Fog: When the visibility between 500-200 metres
Dense Fog: when the visibility between 50- 200 metres
Very Dense Fog: when the visibility < 50 metres



Sudden electrical discharges manifested by a flash of light (Lightning) and a sharp rumbling sound (thunder)



An ensemble of particles of dust or sand energetically lifted to great heights by a strong and turbulent wind.



Ice deposits on ground

Air temperature $\leq 4^{\circ}\text{C}$ (over Plains)



A strong wind that rises suddenly, lasts for atleast 1 minute.

Moderate: Wind speed 52-61 kmph
Severe: Wind speed 62-87 kmph
Very Severe: Wind speed > 87 kmph



Effect of various waves in the sea over specific area

Rough to very rough: Wind speed 41-62 kmph (22-33 knots) & Wave height 2.5-6 metre
High to very high: Wind speed 63-117 kmph (34-63 knots) & Wave height 6-14 metre
Phenomenal: Wind speed > 117 kmph (> 63 knots) & Wave height > 14 metre



Cyclonic Storm: Wind speed 62-87 kmph (34-47 knots)
Severe Cyclonic Storm: Wind speed 88-117 kmph (48-63 knots)
Very Severe Cyclonic Storm: Wind speed 118-165 kmph (64 - 89 knots)
Extremely Severe Cyclonic Storm: Wind speed 166-220 kmph (90 -119 knots)
Super Cyclone Storm: Wind speed > 220 kmph (> 119 knots)

*Red color warning does not mean "Red Alert" Red color warning means "Take Action"

Forecast and warning for any day is valid from 0830 hours IST of day till 0830 hours IST of next day

For more details kindly visit <https://mausam.imd.gov.in> or contact 011-2434-4599

(Service to the nation since 1875)