

2025-09-19

Time of Issue: 08:05:00 hours IST
(Morning)

ALL INDIA WEATHER SUMMARY AND FORECAST BULLETIN

Significant Weather Features

Weather Forecast and Warnings:

East & Central India:

- Light to moderate rain/thunderstorm at most/many places with isolated **heavy rainfall** likely over West Madhya Pradesh on 19th; Andaman & Nicobar Islands, Sub-Himalayan West Bengal & Sikkim, Bihar on 19th & 20th September with isolated **very heavy falls over Andaman & Nicobar Islands and Sub-Himalayan West Bengal & Sikkim on 19th September.**
- Thunderstorm & gusty winds (speed reaching 30-40 kmph) very likely over East India during next 4-5 days.

Northeast India:

- Light/moderate rain/thunderstorm at many/some places with isolated **heavy rainfall** likely over Arunachal Pradesh on 19th & 20th; Assam & Meghalaya during 19th-25th, Nagaland, Manipur, Mizoram & Tripura during 19th-25th September with isolated **very heavy falls over Assam & Meghalaya on 22nd September.**

Northwest India:

- Light to moderate rain/thunderstorm at some/isolated places with **isolated heavy rainfall** likely over Uttarakhand on 19th September.

South Peninsular India:

- Light to moderate rain/thunderstorm at many/some places with isolated **heavy rainfall** likely over Tamil Nadu on 19th & 21st September.
- Strong surface winds (speed reaching 30-40 kmph) very likely over Coastal Andhra Pradesh & Yanam and Rayalaseema during next 4 days.

West India:

- Light to moderate rain/thunderstorm at many/some places likely over the region during next 4 days with **isolated heavy rainfall** likely over Goa on 19th September.

*Red color warning does not mean "Red Alert" Red color warning means "Take Action"

Forecast and warning for any day is valid from 0830 hours IST of day till 0830 hours IST of next day

For more details kindly visit <https://mausam.imd.gov.in> or contact 011-2434-4599

(Service to the nation since 1875)

Main Weather Observations:

❖ **Significant rainfall recorded(in cm)** (from 0830 hours IST of yesterday to 0530 hours IST of today): **Andaman & Nicobar Islands:** Port Blair (dist South Andaman) 11; **Madhya Maharashtra:** Pune- Shivajinagar (dist Pune) 10, Nashik (dist Nashik) 4; **South Interior Karnataka:** Bengaluru (dist Bengaluru Urban) 6, Bengaluru HAL (dist) 2; **Tamilnadu, Puducherry & Karaikal:** Karaikal (dist Karaikal) 6, Salem (dist Salem) 5, Chennai (minambakkam) AP (dist Chennai) 4, Cuddalore (dist Cuddalore) 3, Chennai (nungambakkam) (dist Chennai), Nagapattinam (dist Nagapattinam) 2 Each; **North Interior Karnataka:** Gadag (dist Gadag) 5; **Jharkhand:** Daltonganj (dist Palamu) 4; **Coastal Andhra Pradesh & Yanam:** Nellore (dist Sri Potti Sriramulu Nellore), Ongole (dist Prakasam) 4 Each, Kavali (dist Sri Potti Sriramulu Nellore) 3; **Vidarbha:** Nagpur-sonegaon Airport (dist Nagpur) 4; **Assam & Meghalaya:** Dhubri (dist Dhubri) 4, North Lakhimpur (dist Lakhimpur) 2; **Nagaland, Manipur, Mizoram & Tripura:** Agartala AP (dist West Tripura) 2; **Coastal Karnataka:** Mangalore (bajpe) AP (dist Dakshina Kannada) 2; **Telangana:** Hyderabad (dist Hyderabad) 2; **Chhattisgarh:** Pendra Road (dist Gaurella-pendra-marwahi) 2; **Konkan & Goa:** Ratnagiri (dist Ratnagiri) 2.

❖ **Heavy Rainfall observed** (from 0830 hours IST of yesterday to 0530 hours IST of today): **Heavy rain** at most places over Andaman & Nicobar Islands, at a few places over Madhya Maharashtra and South Interior Karnataka.

❖ **Minimum Temperature Departures (as on 18-09-2025):** **markedly above normal(> 5.1°C)** at isolated places over Assam & Meghalaya, East Uttar Pradesh, West Uttar Pradesh and Himachal Pradesh. **appreciably above normal(3.1°C to 5.0°C)** at many places over East Madhya Pradesh; at few places over Jammu-KashmirLadakh-Gilgit-Baltistan-Muzaffarabad, West Rajasthan and Saurashtra & Kutch; at isolated places over Sub Himalayan West Bengal & Sikkim, Odisha, East Rajasthan, West Madhya Pradesh, Gujarat Region and Madhya Maharashtra. **above normal(1.6°C to 3.0°C)** at few places over Vidarbha; at isolated places over Gangetic West Bengal, Uttarakhand, Haryana-Chandigarh-Delhi, Punjab, Marathwada, Coastal Andhra Pradesh & Yanam, Tamil Nadu, Puducherry & Karaikal, North Interior Karnataka, South Interior Karnataka and Kerala & Mahe. **near normal(-1.5°C to 1.5°C)** at many places over Chhattisgarh; at most places over Andaman & Nicobar Islands, Nagaland, Manipur, Mizoram & Tripura, Jharkhand, Bihar, Konkan & Goa, Telangana, Rayalaseema, Coastal Karnataka and Lakshadweep; at few places over Arunachal Pradesh. **The lowest minimum temperature** of 15.5°C is reported at KALINGAPATANAM (ANDHRA PRADESH) over the Plains of India.

❖ **Maximum Temperature Departures (as on 18-09-2025):** **markedly above normal(> 5.1°C)** at isolated places over Odisha. **appreciably above normal(3.1°C to 5.0°C)** at isolated places over Assam & Meghalaya, Gangetic West Bengal, Himachal Pradesh, Coastal Andhra Pradesh & Yanam and Telangana. **above normal(1.6°C to 3.0°C)** at few places over East Rajasthan, Gujarat Region, Saurashtra & Kutch, Vidarbha and Chhattisgarh; at isolated places over Jharkhand, Uttarakhand, Jammu-KashmirLadakh-Gilgit-Baltistan-Muzaffarabad, Madhya Maharashtra, Marathwada, Tamil Nadu, Puducherry & Karaikal and Kerala & Mahe. **near normal(-1.5°C to 1.5°C)** at many places over Nagaland, Manipur, Mizoram & Tripura, West Uttar Pradesh, Rayalaseema, Coastal Karnataka and North Interior Karnataka; at most places over Sub Himalayan West Bengal & Sikkim, Haryana-Chandigarh-Delhi, Punjab, West Rajasthan, Konkan & Goa, South Interior Karnataka and Lakshadweep; at few places over Andaman & Nicobar Islands, Arunachal Pradesh, Bihar, East Uttar Pradesh, West Madhya Pradesh and East Madhya Pradesh. **The highest maximum temperature** of 38.5°C is reported at PALAYAMKOTTAI (TAMIL NADU).

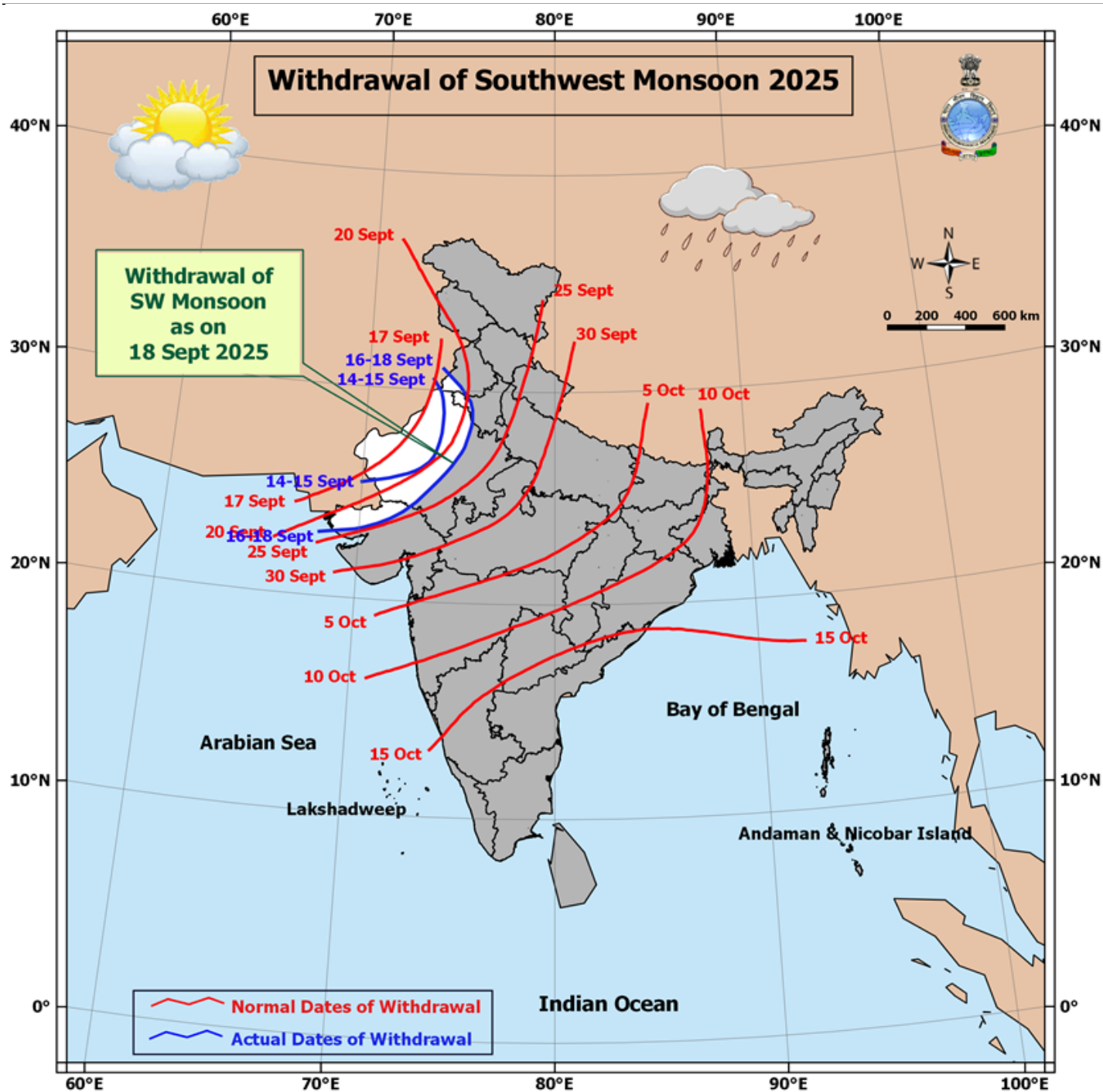
Meteorological Analysis (Based on 0530 hours IST)

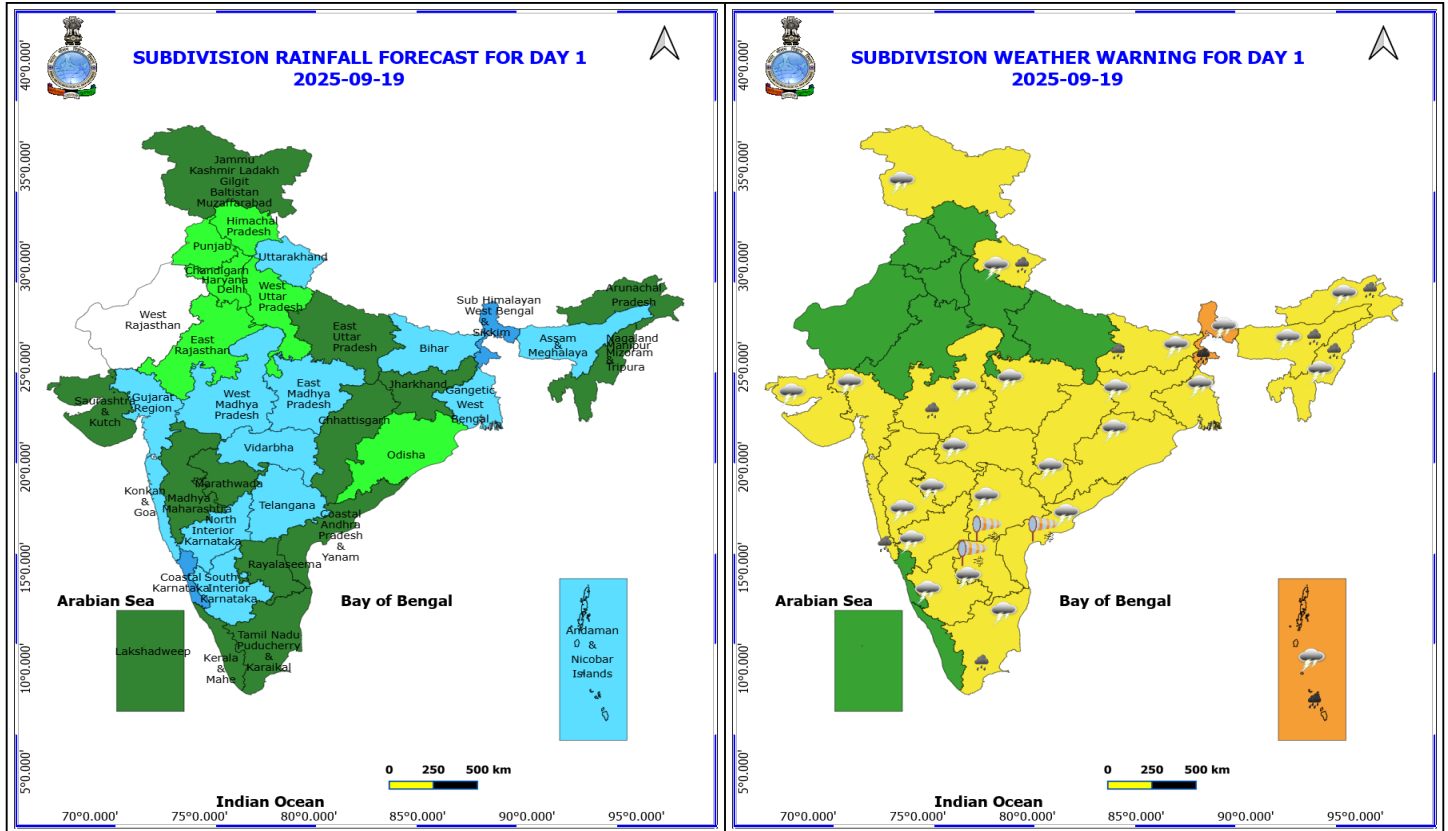
- The **line of withdrawal of southwest monsoon** continues to pass through 31°N/74°E, Bhatinda, Fatehabad, Pilani, Ajmer, Deesa, Bhuj and 23°N/68°E.
- The **upper air cyclonic circulation** over east Bihar & neighbourhood lay over northeast Bihar & neighbourhood and extends upto 3.1 km above mean sea level.
- The **upper air cyclonic circulation** over Marathwada between 1.5 & 3.1 km above mean sea level persists.
- The **north-south trough** from south Maharashtra to west central and southwest Bay of Bengal across **upper air cyclonic circulation** over Marathwada, Telangana and Rayalaseema at 3.1 km above mean sea level persists.
- The **upper air cyclonic circulation** over northeast Assam & neighbourhood at 0.9 km above mean sea level persists.
- The **trough** from central parts of South Uttar Pradesh to **upper air cyclonic circulation** over Marathwada at 3.1 Km above mean sea level persists.
- The **upper air cyclonic circulation** over south interior Karnataka at 5.8 km above mean sea level persists.
- The **upper air cyclonic circulation** over north Andaman & adjoining Myanmar coast extending upto 3.1 km above mean sea level persists.
- The **trough** from central parts of Madhya Pradesh to west central & adjoining southwest Bay of Bengal across east Vidarbha, Telangana & south Coastal Andhra Pradesh at 0.9 km above mean sea level persists.

Weather Outlook for subsequent 3 days

Fairly widespread to widespread rainfall likely over Islands, Northeast, East, West and Central India.

Isolated to scattered rainfall likely over the South penninsular India and Isolated rainfall over the Western Himalayan region.





19 September (Day 1)

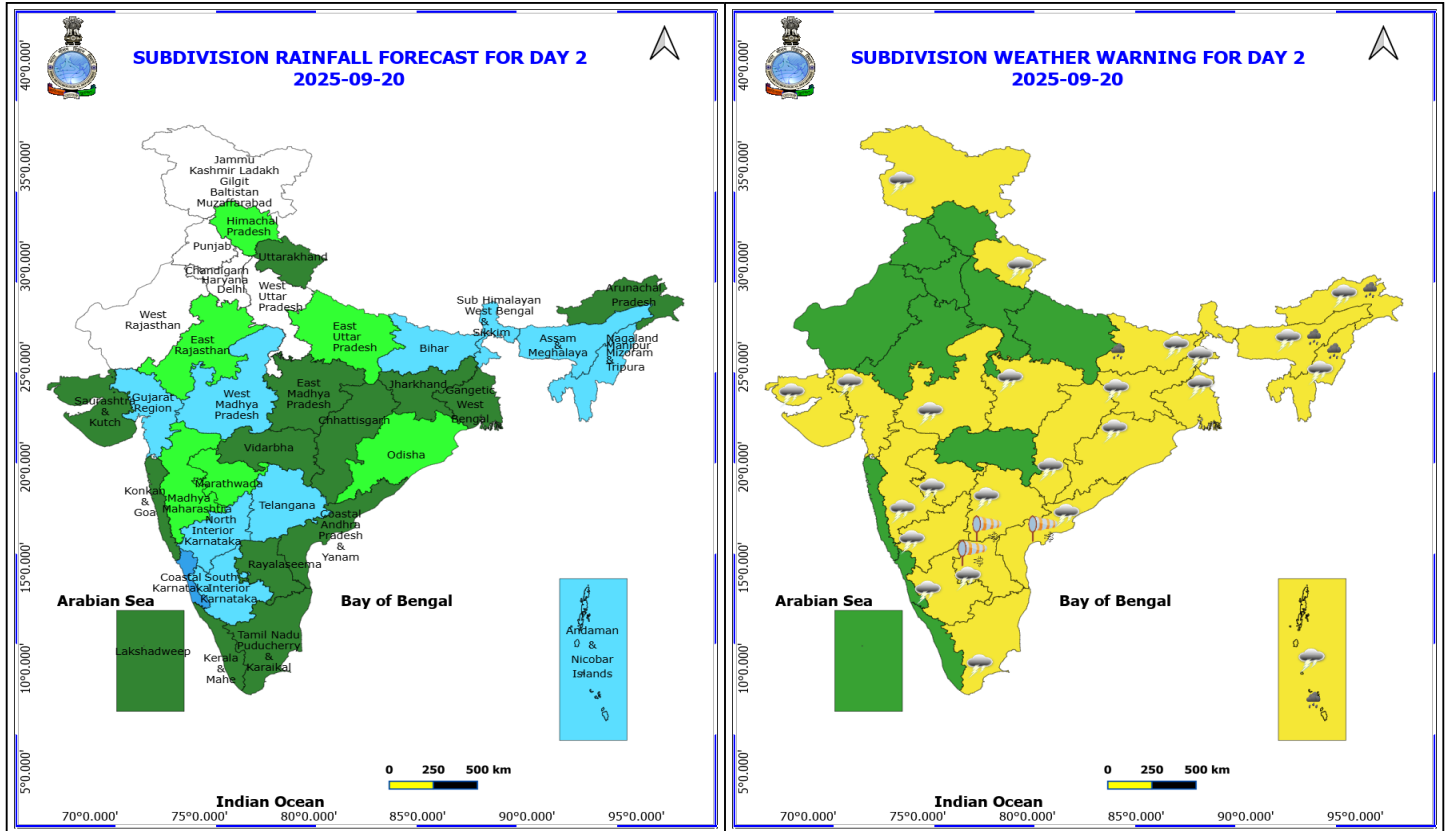
- ❖ **Heavy to Very Heavy Rainfall** very likely at isolated places over Andaman & Nicobar Islands and Sub Himalayan West Bengal & Sikkim.
- ❖ **Heavy Rainfall** very likely at isolated places over Arunachal Pradesh, Assam & Meghalaya, Bihar, Konkan & Goa, Nagaland, Manipur, Mizoram and Tripura, Tamil Nadu Puducherry & Karaikal, Uttarakhand and West Madhya Pradesh.
- ❖ **Thunderstorm accompanied with lightning & gusty winds(40-50kmph)** very likely at isolated places over Andaman & Nicobar Islands.
- ❖ **Thunderstorm accompanied with lightning & gusty winds(30-40kmph)** very likely at isolated places over Bihar, Jammu-Kashmir-Ladakh-Gilgit-Baltistan-Muzaffarabad, Jharkhand, Odisha, Rayalaseema, Tamil Nadu Puducherry & Karaikal and West Bengal & Sikkim.
- ❖ **Thunderstorm accompanied with Lightning** very likely at isolated places over Arunachal Pradesh, Assam & Meghalaya, Chhattisgarh, Coastal Andhra Pradesh, Gujarat State, Interior Karnataka, Madhya Pradesh, Maharashtra, Nagaland, Manipur, Mizoram and Tripura, Telangana and Uttarakhand.
- ❖ **Strong Surface Winds** very likely at isolated places over Andhra Pradesh and Telangana.
 - Squally wind with speed reaching 45 kmph to 55 kmph gusting to 65 kmph is likely to prevail over some parts of southwest & few parts of westcentral Arabian Sea, along and off Somalia coast, along and off north Oman coast & adjoining sea area.
 - Squally weather with wind speed reaching 35 - 45 kmph gusting to 55 kmph likely to prevail over Gulf of Mannar & adjoining Comorin area, over many parts of south Bay of Bengal, along and off south Sri Lanka coast and over Andaman Sea.

***Red color warning does not mean "Red Alert" Red color warning means "Take Action"**

Forecast and warning for any day is valid from 0830 hours IST of day till 0830 hours IST of next day

For more details kindly visit <https://mausam.imd.gov.in> or contact 011-2434-4599

(Service to the nation since 1875)



20 September (Day 2)

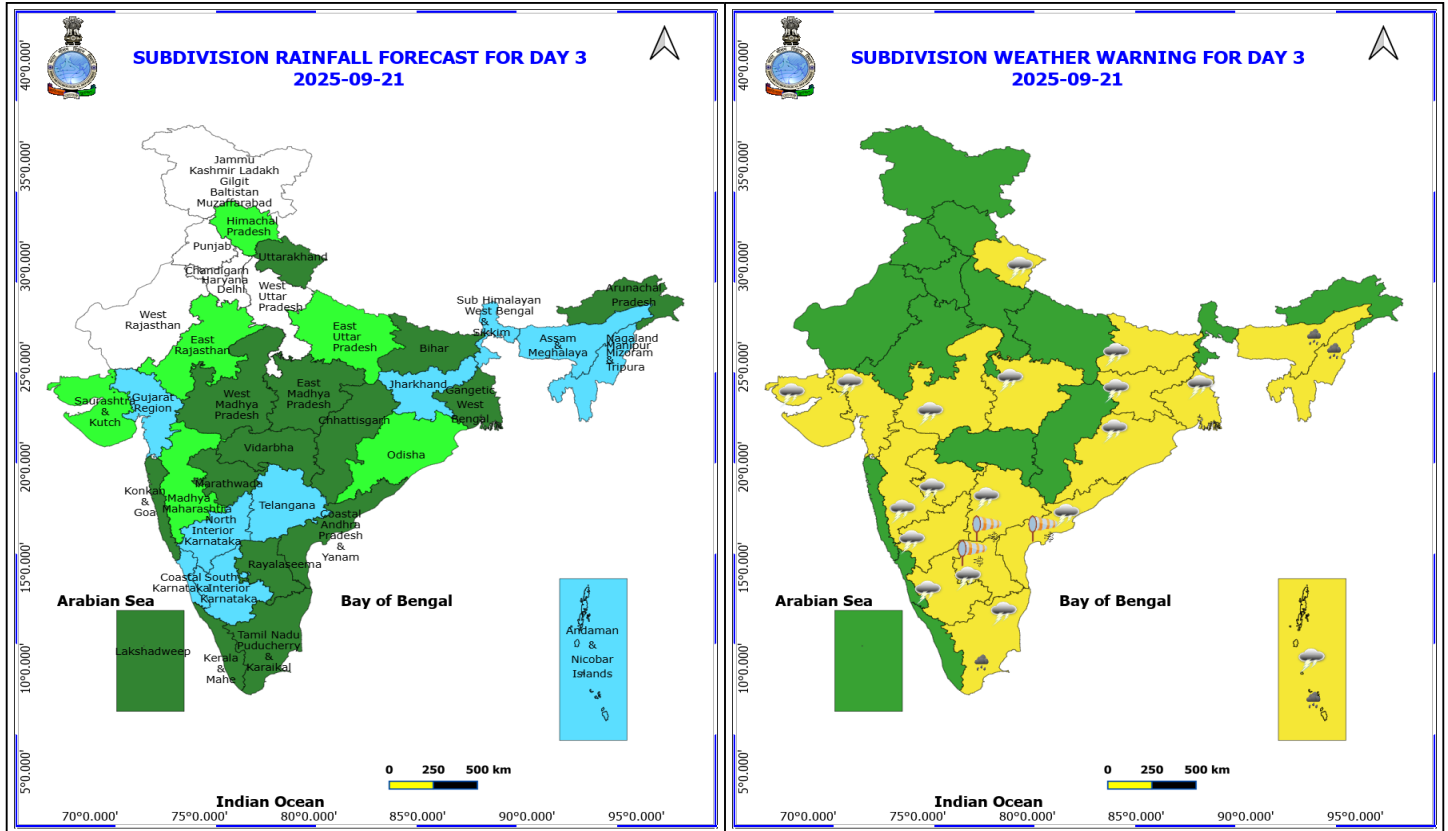
- ❖ **Heavy Rainfall** very likely at isolated places over Andaman & Nicobar Islands, Arunachal Pradesh, Assam & Meghalaya, Bihar and Nagaland, Manipur, Mizoram and Tripura.
- ❖ **Thunderstorm accompanied with lightning & gusty winds(40-50kmph)** very likely at isolated places over Andaman & Nicobar Islands.
- ❖ **Thunderstorm accompanied with lightning & gusty winds(30-40kmph)** very likely at isolated places over Bihar, Jammu-Kashmir-Ladakh-Gilgit-Baltistan-Muzaffarabad, Jharkhand, Odisha, Rayalaseema, Tamil Nadu Puducherry & Karaikal and West Bengal & Sikkim.
- ❖ **Thunderstorm accompanied with Lightning** very likely at isolated places over Arunachal Pradesh, Assam & Meghalaya, Chhattisgarh, Coastal Andhra Pradesh, Gujarat State, Interior Karnataka, Madhya Maharashtra, Madhya Pradesh, Marathwada, Nagaland, Manipur, Mizoram and Tripura, Telangana and Uttarakhand.
- ❖ **Strong Surface Winds** very likely at isolated places over Andhra Pradesh and Telangana.
- ❖ Squally wind with speed reaching 45 kmph to 55 kmph gusting to 65 kmph is likely to prevail over some parts of southwest & few parts of westcentral Arabian Sea, along and off Somalia coast, along and off north Oman coast & adjoining sea area.
- ❖ Squally weather with wind speed reaching 35 - 45 kmph gusting to 55 kmph likely to prevail over Gulf of Mannar & adjoining Comorin area, over many parts of south Bay of Bengal, along and off Sri Lanka coast and over Andaman Sea.

***Red color warning does not mean "Red Alert" Red color warning means "Take Action"**

Forecast and warning for any day is valid from 0830 hours IST of day till 0830 hours IST of next day

For more details kindly visit <https://mausam.imd.gov.in> or contact 011-2434-4599

(Service to the nation since 1875)



21 September (Day 3)

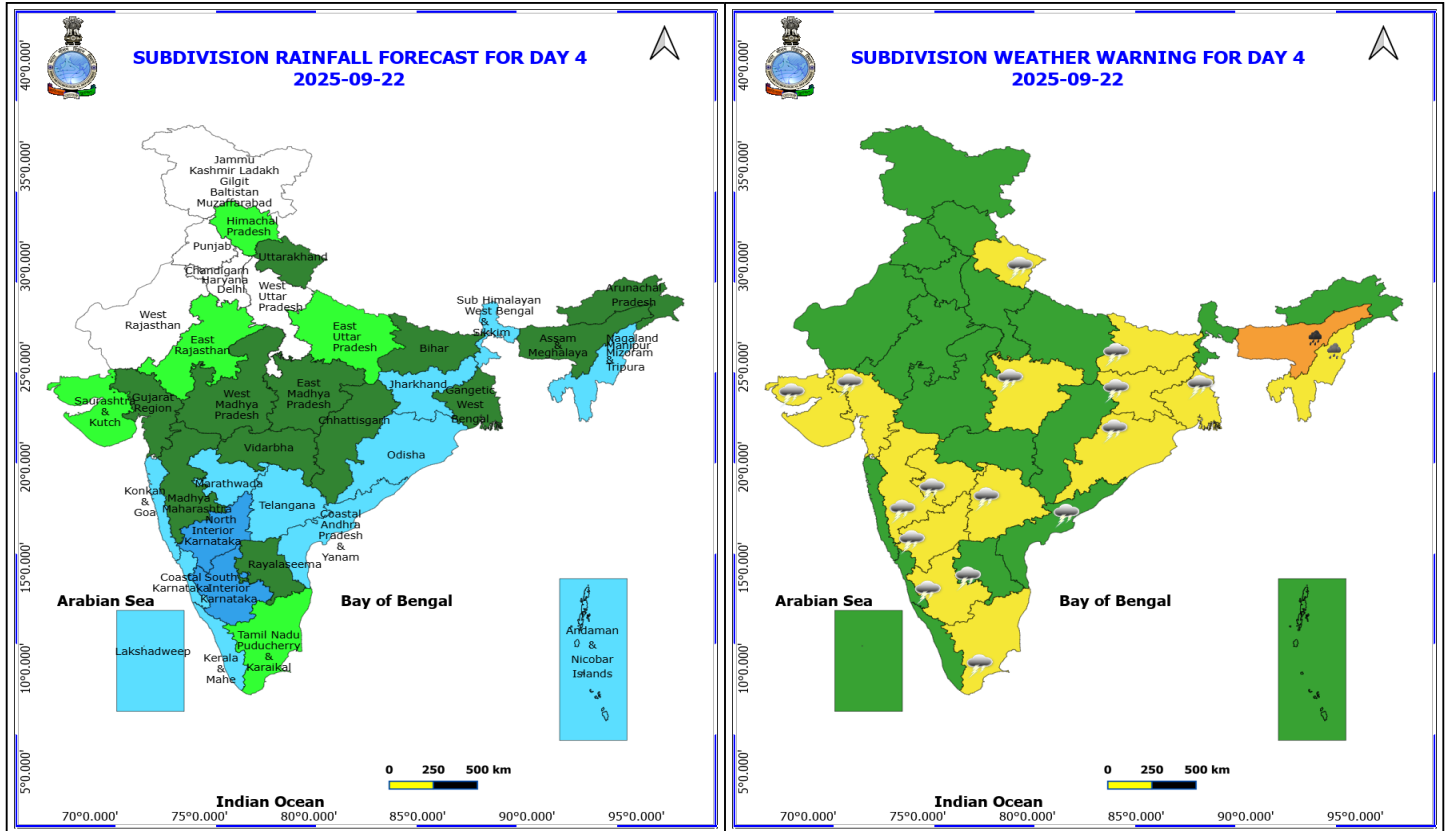
- ❖ **Heavy Rainfall** very likely at isolated places over Andaman & Nicobar Islands, Assam & Meghalaya, Nagaland, Manipur, Mizoram and Tripura and Tamil Nadu Puducherry & Karaikal.
- ❖ **Thunderstorm accompanied with lightning & gusty winds(40-50kmph)** very likely at isolated places over Andaman & Nicobar Islands.
- ❖ **Thunderstorm accompanied with lightning & gusty winds(30-40kmph)** very likely at isolated places over Bihar, Gangetic West Bengal, Jharkhand, Odisha, Rayalaseema and Tamil Nadu Puducherry & Karaikal.
- ❖ **Thunderstorm accompanied with Lightning** very likely at isolated places over Coastal Andhra Pradesh, Gujarat State, Interior Karnataka, Madhya Maharashtra, Madhya Pradesh, Marathwada, Telangana and Uttarakhand.
- ❖ **Strong Surface Winds** very likely at isolated places over Andhra Pradesh and Telangana.
- ❖ Squally wind with speed reaching 45 kmph to 55 kmph gusting to 65 kmph is likely to prevail over some parts of southwest & few parts of westcentral Arabian Sea, along and off Somalia coast.
- ❖ Squally weather with wind speed reaching 35 - 45 kmph gusting to 55 kmph likely to prevail over Gulf of Mannar & adjoining Comorin area, over many parts of south Bay of Bengal, along and off Sri Lanka coast and over Andaman Sea.

*Red color warning does not mean "Red Alert" Red color warning means "Take Action"

Forecast and warning for any day is valid from 0830 hours IST of day till 0830 hours IST of next day

For more details kindly visit <https://mausam.imd.gov.in> or contact 011-2434-4599

(Service to the nation since 1875)



22 September (Day 4)

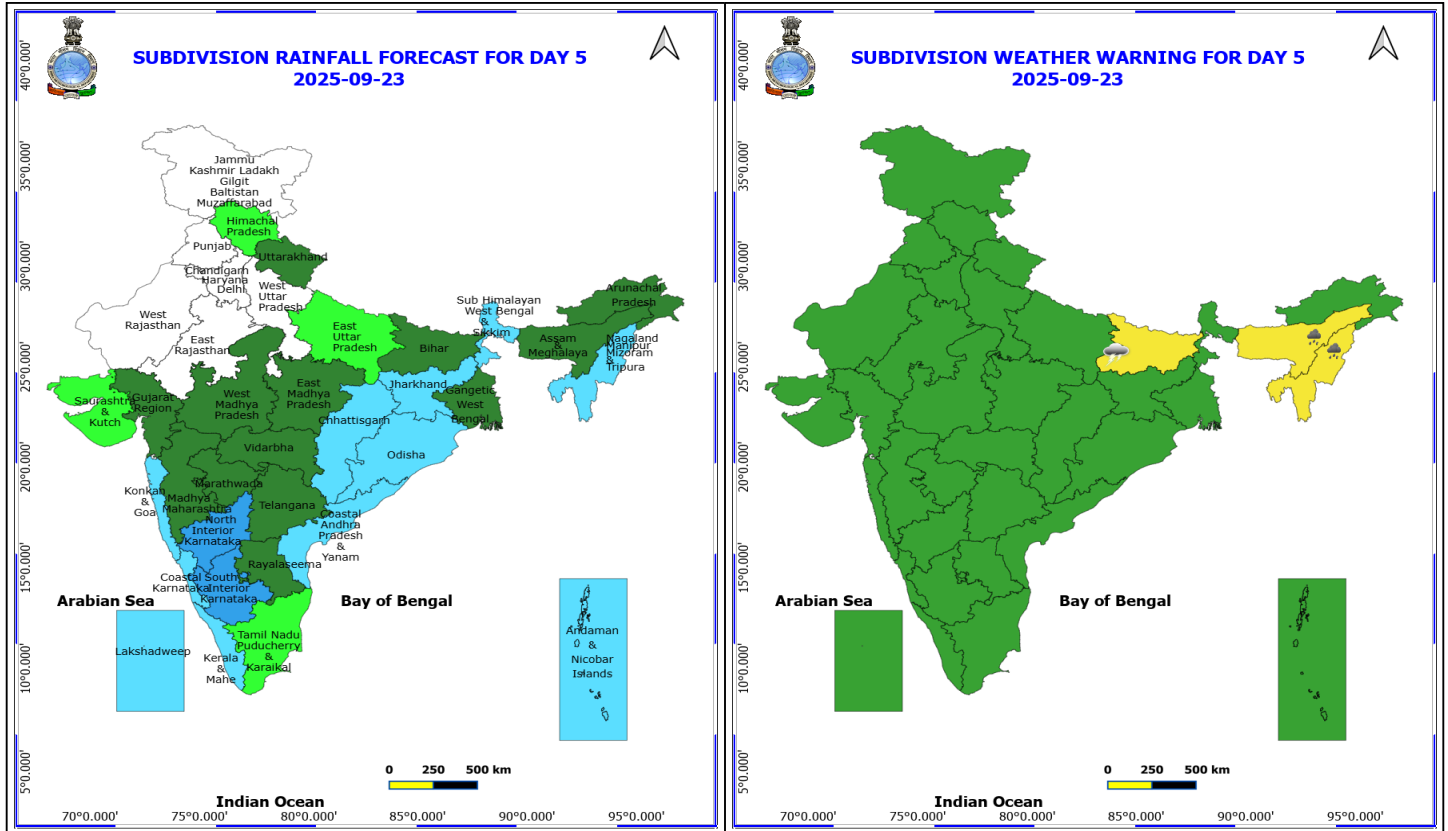
- ❖ **Heavy to Very Heavy Rainfall** likely at isolated places over Assam & Meghalaya.
- ❖ **Heavy Rainfall** likely at isolated places over Nagaland, Manipur, Mizoram and Tripura.
- ❖ **Thunderstorm accompanied with lightning & gusty winds(30-40kmph)** likely at isolated places over Bihar, Gangetic West Bengal, Jharkhand, Odisha, Rayalaseema and Tamil Nadu Puducherry & Karaikal.
- ❖ **Thunderstorm accompanied with Lightning** likely at isolated places over Coastal Andhra Pradesh, East Madhya Pradesh, Gujarat State, Interior Karnataka, Madhya Maharashtra, Marathwada, Telangana and Uttarakhand.
- ❖ Squally wind with speed reaching 45 kmph to 55 kmph gusting to 65 kmph is likely to prevail over some parts of southwest & westcentral Arabian Sea, along and off Somalia coast.
- ❖ Squally weather with wind speed reaching 35 - 45 kmph gusting to 55 kmph likely to prevail over Gulf of Mannar & adjoining Comorin area, over many parts of southwest Bay of Bengal and adjoining southeast Bay of Bengal, along and off Sri Lanka coast and over Andaman Sea.

***Red color warning does not mean "Red Alert" Red color warning means "Take Action"**

Forecast and warning for any day is valid from 0830 hours IST of day till 0830 hours IST of next day

For more details kindly visit <https://mausam.imd.gov.in> or contact 011-2434-4599

(Service to the nation since 1875)



23 September (Day 5)

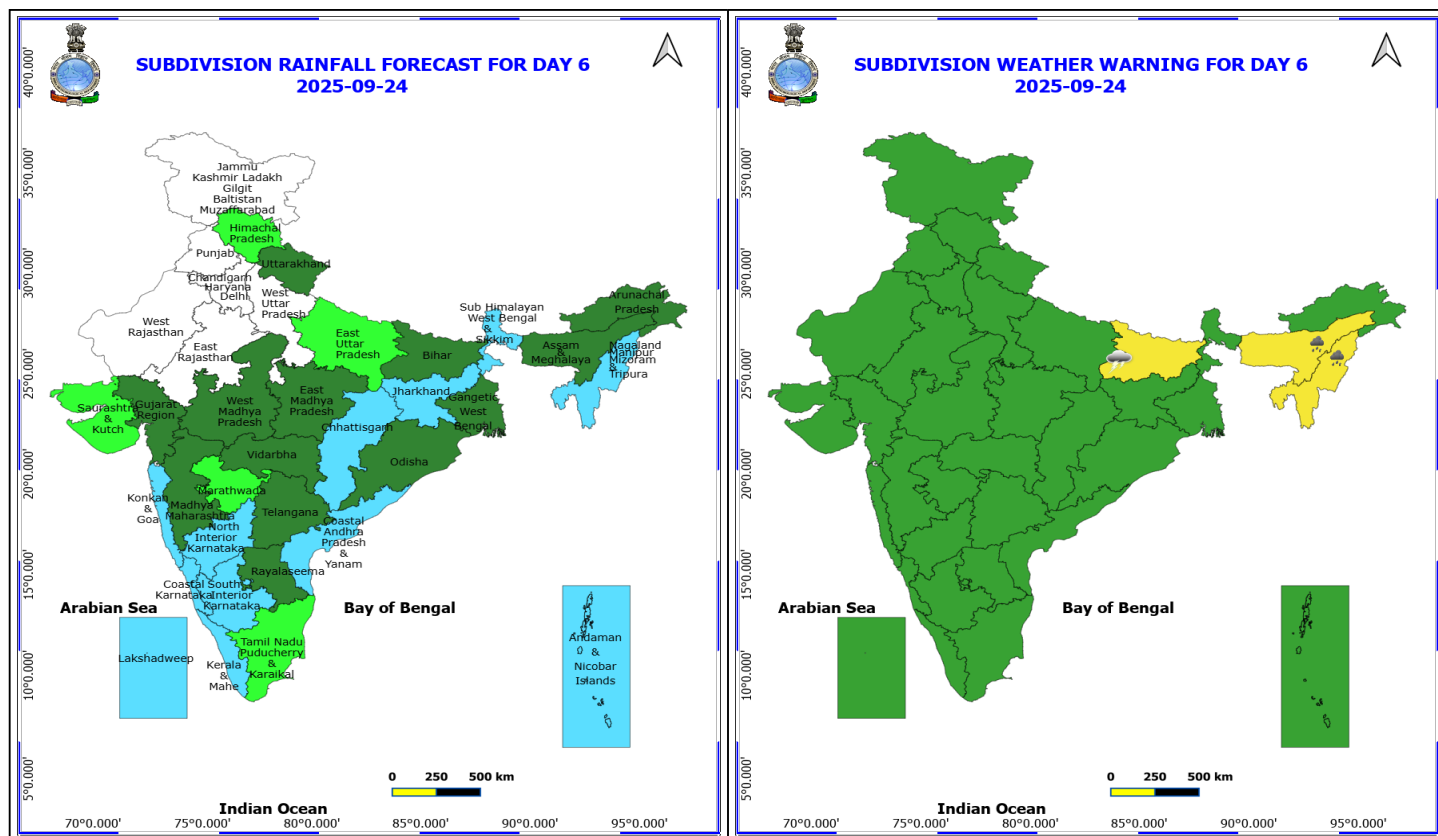
- ❖ **Heavy Rainfall** likely at isolated places over Assam & Meghalaya and Nagaland, Manipur, Mizoram and Tripura.
- ❖ **Thunderstorm accompanied with lightning & gusty winds(30-40kmph)** likely at isolated places over Bihar.
- ❖ Squally wind with speed reaching 45 kmph to 55 kmph gusting to 65 kmph is likely to prevail over some parts of southwest & westcentral Arabian Sea, along and off Somalia coast.
- ❖ Squally weather with wind speed reaching 35 - 45 kmph gusting to 55 kmph likely to prevail over Gulf of Mannar & adjoining Comorin area, over many parts of southwest Bay of Bengal and adjoining southeast Bay of Bengal, along and off Sri Lanka coast and over Andaman Sea.

***Red color warning does not mean "Red Alert" Red color warning means "Take Action"**

Forecast and warning for any day is valid from 0830 hours IST of day till 0830 hours IST of next day

For more details kindly visit <https://mausam.imd.gov.in> or contact 011-2434-4599

(Service to the nation since 1875)



24 September (Day 6)

- ❖ **Heavy Rainfall** likely at isolated places over Assam & Meghalaya and Nagaland, Manipur, Mizoram and Tripura.
- ❖ **Thunderstorm accompanied with lightning & gusty winds(30-40kmph)** likely at isolated places over Bihar.

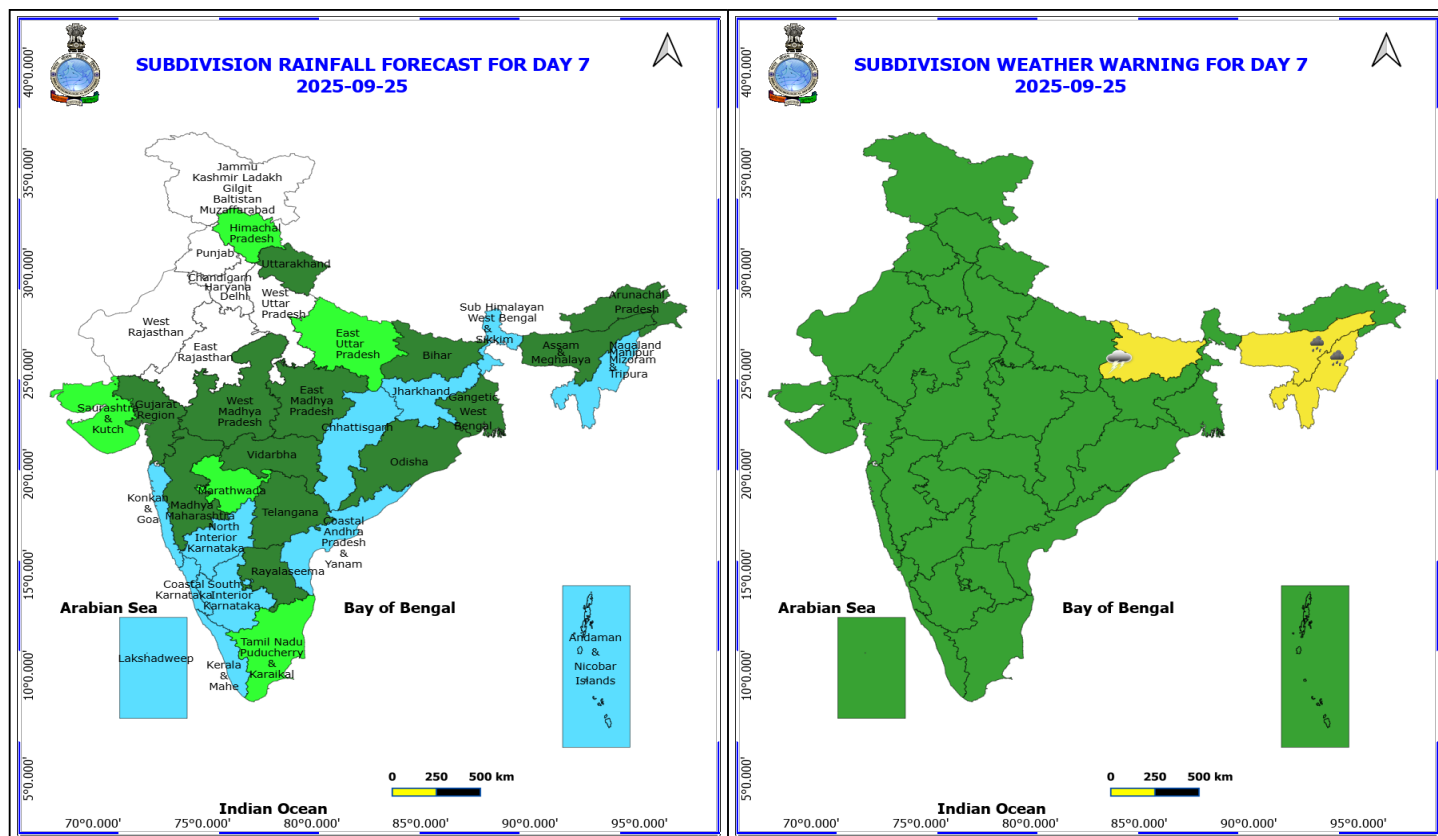
No Fishermen Warning

***Red color warning does not mean "Red Alert" Red color warning means "Take Action"**

Forecast and warning for any day is valid from 0830 hours IST of day till 0830 hours IST of next day

For more details kindly visit <https://mausam.imd.gov.in> or contact 011-2434-4599

(Service to the nation since 1875)



25 September (Day 7)

- ❖ **Heavy Rainfall** likely at isolated places over Assam & Meghalaya and Nagaland, Manipur, Mizoram and Tripura.
- ❖ **Thunderstorm accompanied with lightning & gusty winds(30-40kmph)** likely at isolated places over Bihar.

No Fishermen Warning

***Red color warning does not mean "Red Alert" Red color warning means "Take Action"**

Forecast and warning for any day is valid from 0830 hours IST of day till 0830 hours IST of next day

For more details kindly visit <https://mausam.imd.gov.in> or contact 011-2434-4599

(Service to the nation since 1875)



Table-1

7 Days Rainfall Forecast

S.No.	Subdivision	19-Sep	20-Sep	21-Sep	22-Sep	23-Sep	24-Sep	25-Sep
		Day 1	Day 2	Day 3	Day 4	Day 5	Day 6	Day 7
1	ANDAMAN & NICOBAR ISLANDS	FWS	FWS	FWS	FWS	FWS	FWS	FWS
2	ARUNACHAL PRADESH	SCT	SCT	SCT	SCT	SCT	SCT	SCT
3	ASSAM & MEHGHALAYA	FWS	FWS	FWS	SCT	SCT	SCT	SCT
4	N. M. M. & T.	SCT	FWS	FWS	FWS	FWS	FWS	FWS
5	S.H. WEST BENGAL & SIKKIM	WS	FWS	FWS	FWS	FWS	FWS	FWS
6	GANGETIC WEST BENGAL	FWS	SCT	SCT	SCT	SCT	SCT	SCT
7	ODISHA	ISOL	ISOL	ISOL	FWS	FWS	SCT	SCT
8	JHARKHAND	SCT	SCT	FWS	FWS	FWS	FWS	FWS
9	BIHAR	FWS	FWS	SCT	SCT	SCT	SCT	SCT
10	EAST UTTAR PRADESH	SCT	ISOL	ISOL	ISOL	ISOL	ISOL	ISOL
11	WEST UTTAR PRADESH	ISOL	DRY	DRY	DRY	DRY	DRY	DRY
12	UTTARAKHAND	FWS	SCT	SCT	SCT	SCT	SCT	SCT
13	HARYANA, CHD & DELHI	ISOL	DRY	DRY	DRY	DRY	DRY	DRY
14	PUNJAB	ISOL	DRY	DRY	DRY	DRY	DRY	DRY
15	HIMACHAL PRADESH	ISOL	ISOL	ISOL	ISOL	ISOL	ISOL	ISOL
16	JAMMU AND KASHMIR AND LADAKH	SCT	DRY	DRY	DRY	DRY	DRY	DRY
17	WEST RAJASTHAN	DRY	DRY	DRY	DRY	DRY	DRY	DRY
18	EAST RAJASTHAN	ISOL	ISOL	ISOL	ISOL	DRY	DRY	DRY
19	WEST MADHYA PRADESH	FWS	FWS	SCT	SCT	SCT	SCT	SCT
20	EAST MADHYA PRADESH	FWS	SCT	SCT	SCT	SCT	SCT	SCT
21	GUJRAT REGION	FWS	FWS	FWS	SCT	SCT	SCT	SCT
22	SAURASHTRA & KUTCH	SCT	SCT	ISOL	ISOL	ISOL	ISOL	ISOL
23	KONKAN & GOA	FWS	SCT	SCT	FWS	FWS	FWS	FWS
24	MADHYA MAHARASHTRA	SCT	ISOL	ISOL	SCT	SCT	SCT	SCT
25	MARATHWADA	SCT	ISOL	SCT	FWS	SCT	ISOL	ISOL
26	VIDARBHA	FWS	SCT	SCT	SCT	SCT	SCT	SCT
27	CHATTISGARH	SCT	SCT	SCT	SCT	FWS	FWS	FWS
28	COASTAL ANDHRA PRADESH	SCT	SCT	SCT	FWS	FWS	FWS	FWS
29	TELANGANA	FWS	FWS	FWS	FWS	SCT	SCT	SCT
30	RAYALASEEMA	SCT	SCT	SCT	SCT	SCT	SCT	SCT
31	TAMILNADU & PUDUCHERRY	SCT	SCT	SCT	ISOL	ISOL	ISOL	ISOL
32	COSTAL KARNATAKA	WS	WS	FWS	FWS	FWS	FWS	FWS
33	NORTH INTERIOR KARNATAKA	FWS	FWS	FWS	WS	WS	FWS	FWS
34	SOUTH INTERIOR KARNATAKA	FWS	FWS	FWS	WS	WS	FWS	FWS
35	KERALA	SCT	SCT	SCT	FWS	FWS	FWS	FWS
36	LAKSHDWEEP	SCT	SCT	SCT	FWS	FWS	FWS	FWS

Legend	Category	%Stations
WS	Widespread/Most Places	76-100
FWS	Fairly Widespread/Many Places	51-75
SCT	Scattered/ A Few Places	26-50
ISOL	Isolated Places	1-25
DRY	No Rain	0

*Red color warning does not mean "Red Alert" Red color warning means "Take Action"

Forecast and warning for any day is valid from 0830 hours IST of day till 0830 hours IST of next day

For more details kindly visit <https://mausam.imd.gov.in> or contact 011-2434-4599

(Service to the nation since 1875)

Fig. 1: Maximum Temperatures Dated 2025-09-19

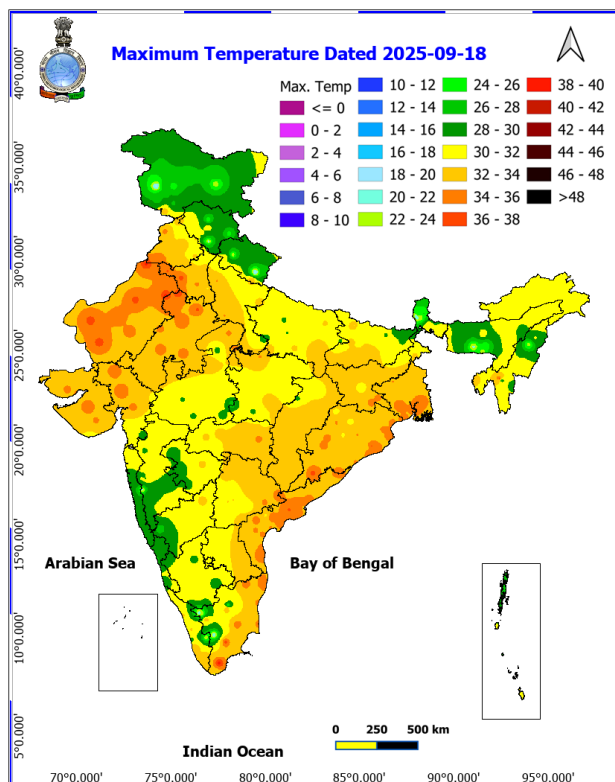


Fig. 2: Departure of Maximum Temp. Dated 2025-09-19

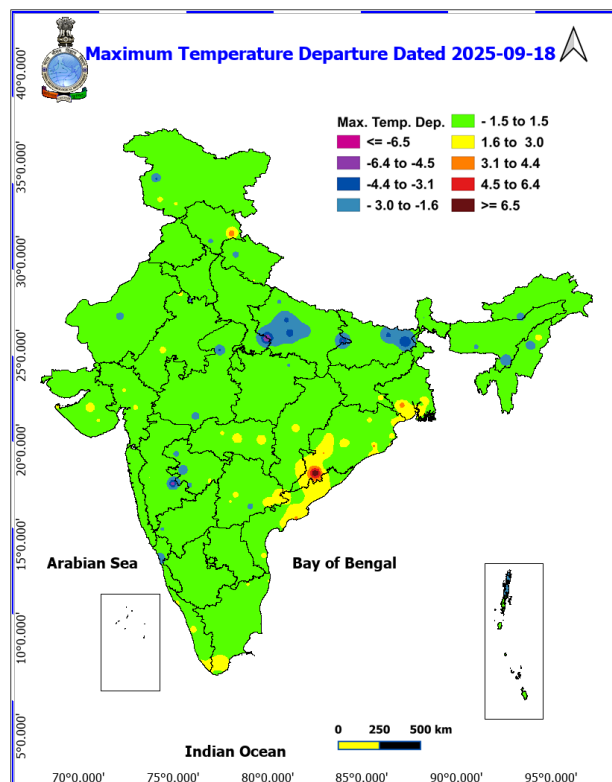


Fig. 3: Minimum Temperatures Dated 2025-09-19

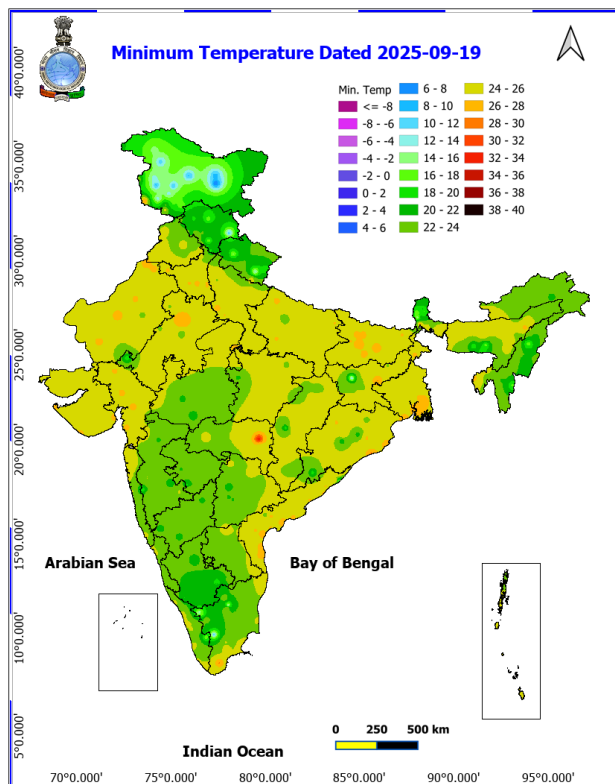
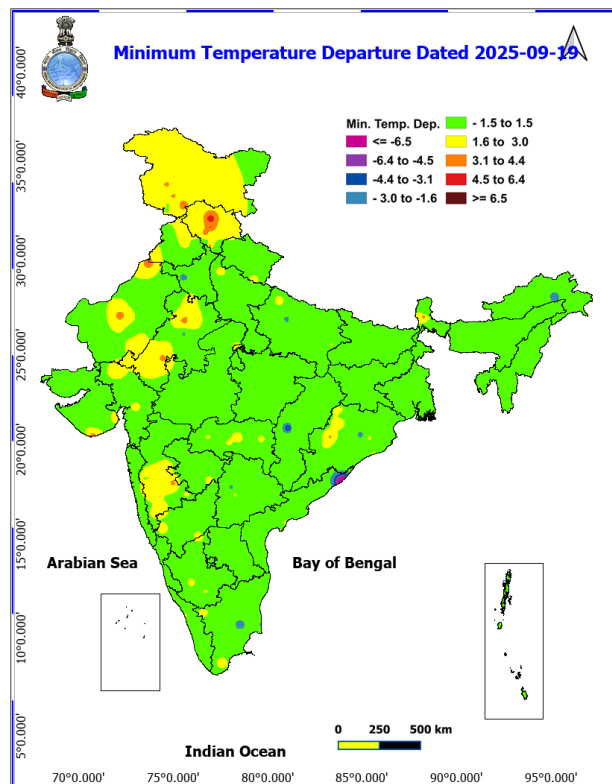
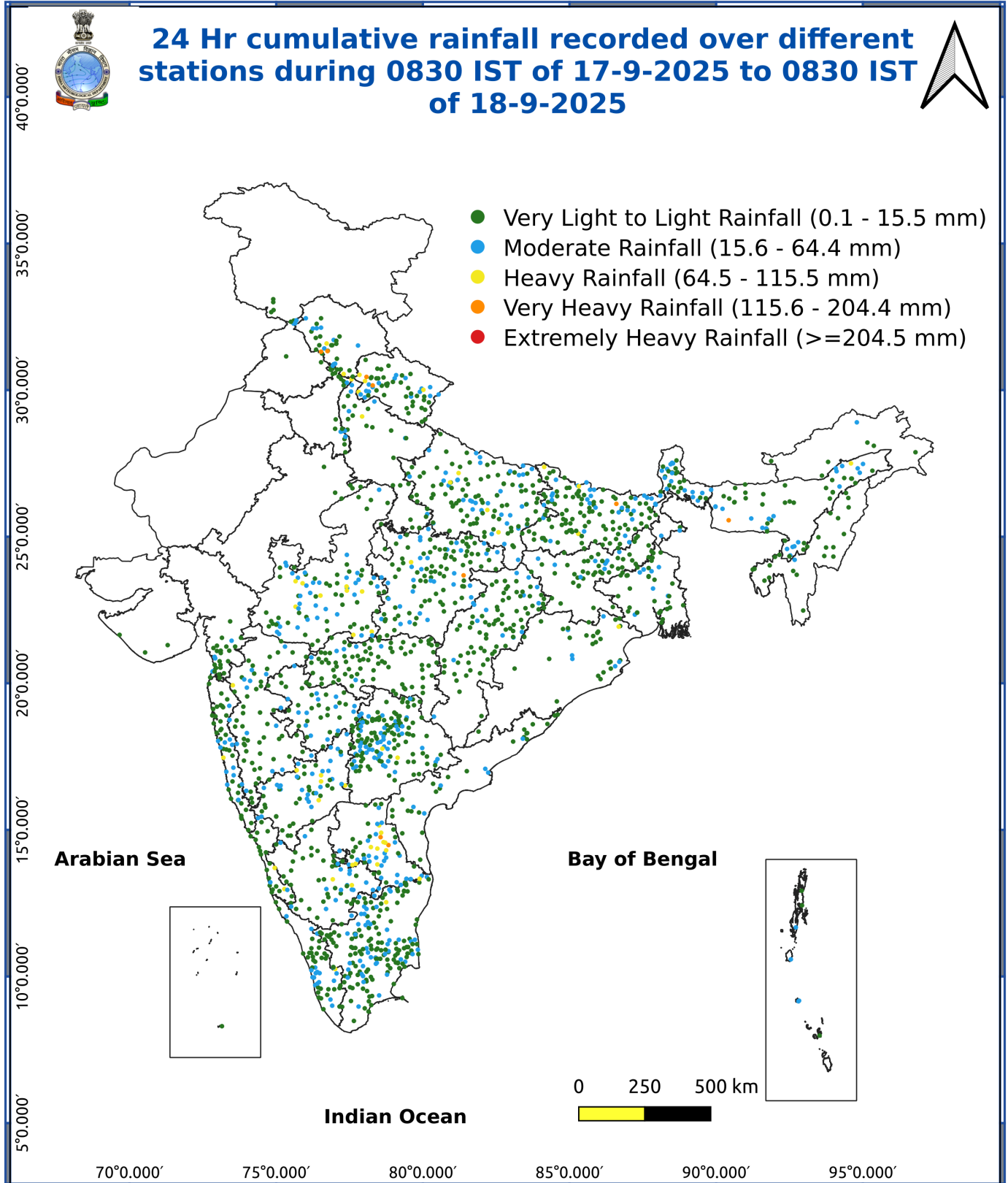


Fig. 4: Departure of Minimum Temp. Dated 2025-09-19





*Red color warning does not mean "Red Alert" Red color warning means "Take Action"

Forecast and warning for any day is valid from 0830 hours IST of day till 0830 hours IST of next day

For more details kindly visit <https://mausam.imd.gov.in> or contact 011-2434-4599

(Service to the nation since 1875)

Impact & Action Suggested due to:

- **Heavy to very heavy rainfall (12-20 cm)** at isolated places over Andaman & Nicobar Islands, Sub-Himalayan West Bengal & Sikkim on 19th and Assam & Meghalaya on 22nd September.

Impact Expected

- Localized Flooding of roads, water logging in low lying areas and closure of underpasses mainly in urban areas of the above region.
- Occasional reduction in visibility due to heavy rainfall.
- Disruption of traffic in major cities due to water logging in roads leading to increased travel time.
- Minor damage to kutcha roads.
- Possibilities of damage to vulnerable structure.
- Localized Landslides/Mudslides/landslips/mudslips/landsinks/mudsinks.
- Damage to horticulture and standing crops in some areas due to inundation.
- It may lead to riverine flooding in some river catchments (for riverine flooding please visit Web page of CWC)

Action Suggested

- Check for traffic congestion on your route before leaving for your destination.
- Follow any traffic advisories that are issued in this regard.
- Avoid going to areas that face the water logging problems often.
- Avoid staying in vulnerable structure.

Agromet advisories for various parts of the country

Agromet advisories for likely impact of Heavy / Heavy to Very Heavy Rainfall

- In **Uttarakhand**, drain out excess water from the fields of green gram, black gram, soybean, barnyard millet and finger millet in **Sub Humid Sub Tropic Zone**; and pigeon pea and vegetable crops in **Hill Zone**. Ensure proper drainage from the fields of rice, maize, finger millet, pigeon pea, soybean, green gram, black gram and vegetables in **Nainital** district.
- In **Himachal Pradesh**, drain out excess water from the fields of vegetable and fruit orchards in **Mid Hills Sub Humid Zone**. Keep the harvested produce in safer places.
- In **Sub-Himalayan West Bengal**, drain out excess water from the fields of rice and vegetable in **Terai Zone** and ensure proper drainage from the fields of green gram, black gram, finger millet, dalley khorsani, vegetables and fruit orchards in **Hill Zone**.
- In **Bihar**, ensure proper drainage of excess rainwater from the fields of rice and vegetables in **North West Alluvial Plain Zone**.
- In **West Madhya Pradesh**, drain out excess water from the fields of rice, soybean, maize, cotton, sugarcane and vegetables.
- In **Maharashtra**, drain out excess water from fields of rice, vegetables and fruit orchards in **Konkan** and rice, sugarcane, pigeon pea, soybean, maize, vegetables and fruit orchards in **Madhya Maharashtra**.
- In **Arunachal Pradesh**, maintain proper drainage in standing crops such as rice, soybean, finger millet, vegetables and fruit orchards to avoid water stagnation. Keep the harvested produce of upland paddy, maize, chillies and banana at safer places.
- In **Assam**, ensure proper drainage to drain out excess water from the fields of rice and already sown black gram in **Barak Valley Zone** and rice, sesame and vegetables in **North Bank Plain Zone**. In **Lower Brahmaputra Valley Zone**, ensure proper drainage system in *Sali* rice fields and nursery bed of vegetables. Cover the nursery bed with thin polythene to avoid the damages due to heavy rainfall. In **Upper Brahmaputra Valley Zone**, harvest the matured vegetables and fruits and transfer it to a safer location and make arrangements to drain out excess water from the standing crop fields.
- In **Meghalaya**, drain out excess water from rice, vegetable nurseries and ginger. Provide support to tall and

*Red color warning does not mean "Red Alert" Red color warning means "Take Action"

Forecast and warning for any day is valid from 0830 hours IST of day till 0830 hours IST of next day

For more details kindly visit <https://mausam.imd.gov.in> or contact 011-2434-4599

(Service to the nation since 1875)

fragile crops like banana, papaya, pumpkin, etc. to prevent lodging.

- In **Telangana**, ensure adequate drainage facilities to drain out excess rain water in fields of rice, maize, cotton, soybean, pigeon pea, turmeric and vegetables.

Livestock / Fishery

- Keep the animals inside the shed during heavy rainfall and provide them balanced feed.
- Store feed and fodder in a safe place to prevent spoilage.
- Construct an outlet with proper netting around the ponds to drain out excess water, thereby preventing fish from escaping in case of overflow.

Agromet advisories for likely impact of Thunderstorm / Gusty Winds / Squally Winds

(Based on the IBF and advisories issued by different AMFUs)

Provide mechanical support to horticultural crops and staking or support to vegetables and young fruit plants / fruit-bearing plants to avoid lodging due to strong winds.

Legends & abbreviations:

Region wise classification of meteorological Sub-Divisions:

Northwest India: Western Himalayan Region (Jammu-Kashmir-Ladakh-Gilgit-Baltistan-Muzaffarabad, Himachal Pradesh and Uttarakhand); Punjab, Haryana-Chandigarh-Delhi; West Uttar Pradesh, East Uttar Pradesh, West Rajasthan and East Rajasthan.

Central India: West Madhya Pradesh, East Madhya Pradesh, Vidarbha and Chhattisgarh.

East India: Bihar, Jharkhand, Sub-Himalayan West Bengal & Sikkim; Gangetic West Bengal, Odisha and Andaman & Nicobar Islands.

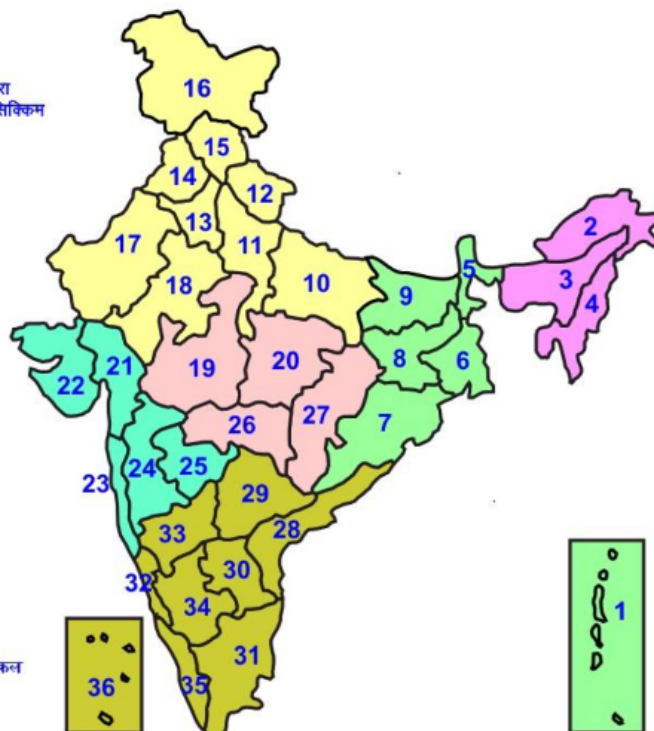
Northeast India: Arunachal Pradesh, Assam & Meghalaya and Nagaland, Manipur, Mizoram & Tripura.

West India: Gujarat Region, Saurashtra & Kutch, Konkan & Goa, Madhya Maharashtra and Marathwada.

South India: Coastal Andhra Pradesh & Yanam, Telangana, Rayalaseema, Coastal Karnataka, North Interior Karnataka, South Interior Karnataka, Kerala & Mahe, Tamil Nadu, Puducherry & Karaikal and Lakshadweep.

LEGENDS

- 1 अंडमान और निकोबार द्वीप समुह
- 2 अरुणाचल प्रदेश
- 3 असम और मेघालय
- 4 नागालैंड मनीपुर मीजोरम और त्रिपुरा
- 5 उप हिमालय पश्चिम बंगाल एवं सिक्किम
- 6 पश्चिम बंगाल
- 7 ओडिसा
- 8 झारखंड
- 9 बिहार
- 10 पूर्वी उत्तर प्रदेश
- 11 पश्चिम उत्तर प्रदेश
- 12 उत्तराखंड
- 13 हरियाणा चंडीगढ़ एवं दिल्ली
- 14 पंजाब
- 15 हिमाचल प्रदेश
- 16 जम्मू एवं कश्मीर एवं लद्दाख
- 17 पश्चिम राजस्थान
- 18 पूर्वी राजस्थान
- 19 पश्चिम मध्य प्रदेश
- 20 पूर्वी मध्य प्रदेश
- 21 गुजरात क्षेत्र
- 22 सौराष्ट्र एवं कच्छ
- 23 कोंकण एवं गोवा
- 24 मध्य महाराष्ट्र
- 25 मराठावाड़ा
- 26 विदर्भ
- 27 छत्तीसगढ़
- 28 तटीय आंध्र प्रदेश एवं यनम
- 29 तेलंगाना
- 30 रायलसीमा
- 31 तमिलनाडु, पुदुचेरी एवं कराईकल
- 32 तटिय कर्नाटक
- 33 आंतरिक उत्तरी कर्नाटक
- 34 आंतरिक दक्षिणी कर्नाटक
- 35 केरल एवं माहे
- 36 लक्षद्वीप



1. Andaman & Nicobar Islands
2. Arunachal Pradesh
3. Assam & Meghalaya
4. Nagaland, Manipur, Mizoram & Tripura
5. Sub-Himalayan West Bengal & Sikkim
6. Gangetic West Bengal
7. Orissa
8. Jharkhand
9. Bihar
10. East Uttar Pradesh
11. West Uttar Pradesh
12. Uttarakhand
13. Haryana, Chd & Delhi
14. Punjab
15. Himachal Pradesh
16. Jammu & Kashmir and Ladakh
17. West Rajasthan
18. East Rajasthan
19. West Madhya Pradesh
20. East Madhya Pradesh
21. Gujarat
22. Saurashtra
23. Konkan & Goa
24. Madhya Maharashtra
25. Marathwada
26. Vidharbha
27. Chhattisgarh
28. Coastal Andhra Pradesh & Yanam
29. Telangana
30. Rayalaseema
31. Tamilnadu, Puducherry & Karaikal
32. Coastal Karnataka
33. North Interior Karnataka
34. South Interior Karnataka
35. Kerala & Mahe
36. Lakshadweep

SPATIAL DISTRIBUTION (% of Stations reporting)













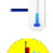




% Stations	Category	% Stations	Category
76-100	Widespread (WS/Most Places)	26-50	Scattered (SCT/ A Few Places)
51-75	Fairly Widespread (FWS/ Many Places)	1-25	Isolated (ISOL)

Subdivision Colour

- NO WARNING
- WATCH (BE UPDATED)
- ALERT (BE PREPARED TO TAKE ACTION)
- WARNING (TAKE ACTION)

Probabilistic Forecast

Terms	Probability of Occurrence (%)
Unlikely	< 25
Likely	25 - 50
Very Likely	50 - 75
Most Likely	> 75

-  Heavy Rain
-  Very Heavy Rain
-  Extremely Heavy Rain
-  Heavy Snow
-  Thunderstorm & Lightning
-  Hailstorm
-  Dust Storm
-  Dust Raising Winds
-  Strong surface winds
-  Heat Wave
-  Hot Day
-  Warm Night
-  Cold Wave
-  Cold Day
-  Ground Frost
-  FOG Fog
-  Hot & Humid

*Red color warning does not mean "Red Alert" Red color warning means "Take Action"

Forecast and warning for any day is valid from 0830 hours IST of day till 0830 hours IST of next day

For more details kindly visit <https://mausam.imd.gov.in> or contact 011-2434-4599

(Service to the nation since 1875)

LEGENDS

WARNING

WARNING (TAKE ACTION)
ALERT (BE PREPARED)
WATCH (BE UPDATED)
NO WARNING (NO ACTION)

Probabilistic Forecast

Terms	Probability of Occurrence (%)
Unlikely	< 25
Likely	25 - 50
Very Likely	50 - 75
Most Likely	> 75



Heavy: 64.5 to 115.5 mm/cm *
Very Heavy: 115.6 to 204.4 mm/cm *
Extremely Heavy: > 204.4 mm/cm *



When maximum temperature of a station reaches $\geq 40^{\circ}\text{C}$ for plains and $\geq 30^{\circ}\text{C}$ for hilly regions
(a) Based on Departure from normal

Heat Wave: Maximum Temperature Departure from normal 4.5°C to 6.4°C .
Severe Heat Wave: Maximum Temperature Departure from normal $\geq 6.5^{\circ}\text{C}$

(b). Based on Actual maximum temperature

Heat Wave: When actual maximum temperature $\geq 45^{\circ}\text{C}$.
Severe Heat Wave: When actual maximum temperature $\geq 47^{\circ}\text{C}$

(c). Criteria for heat wave for coastal stations

When maximum temperature departure is $> 4.5^{\circ}\text{C}$ from normal. Heat Wave may be described provided maximum temperature $\geq 37^{\circ}\text{C}$



When maximum temperature remains 40°C

Warm Night: When minimum temperature departure 4.5°C to 6.4°C .
Severe Warm Night: When minimum temperature departure $> 6.4^{\circ}\text{C}$.



When minimum temperature of a station $\leq 10^{\circ}\text{C}$ for plains and $\leq 0^{\circ}\text{C}$ for hilly regions.

(a). Based on departure

Cold Wave: Minimum Temperature Departure from normal -4.5°C to -6.4°C .
Severe Cold Wave: Minimum Temperature Departure from normal $\leq -6.5^{\circ}\text{C}$

(b) Based on actual Minimum Temperature (for Plains only)

Cold Wave: When Minimum Temperature is $\leq 4.0^{\circ}\text{C}$
Severe Cold Wave: When Minimum Temperature is $\leq 2.0^{\circ}\text{C}$

(c) For Coastal Stations

When Minimum Temperature departure is $\leq -4.5^{\circ}\text{C}$ & actual Minimum Temperature is $\leq 15^{\circ}\text{C}$



When minimum temperature of a station $\leq 10^{\circ}\text{C}$ for plains and $\leq 0^{\circ}\text{C}$ for hilly regions
Based on departure

Cold Day: Maximum Temperature Departure from normal -4.5°C to -6.4°C .
Severe Cold Day: Maximum Temperature Departure from normal $\leq -6.5^{\circ}\text{C}$



Phenomenon of small droplets suspended in air and the horizontal visibility $< 1\text{km}$

Moderate Fog: When the visibility between 500-200 metres
Dense Fog: when the visibility between 50-200 metres
Very Dense Fog: when the visibility < 50 metres



Sudden electrical discharges manifested by a flash of light (Lightning) and a sharp rumbling sound (thunder)



An ensemble of particles of dust or sand energetically lifted to great heights by a strong and turbulent wind.



Ice deposits on ground

Air temperature $\leq 4^{\circ}\text{C}$ (over Plains)



A strong wind that rises suddenly, lasts for at least 1 minute.

Moderate: Wind speed 52-61 kmph
Severe: Wind speed 62-87 kmph
Very Severe: Wind speed > 87 kmph



Effect of various waves in the sea over specific area

Rough to very rough: Wind speed 41-62 kmph (22-33 knots) & Wave height 2.5-6 metre
High to very high: Wind speed 63-117 kmph (34-63 knots) & Wave height 6-14 metre
Phenomenal: Wind speed > 117 kmph (> 63 knots) & Wave height > 14 metre



Cyclonic Storm: Wind speed 62-87 kmph (34-47 knots)

Severe Cyclonic Storm: Wind speed 88-117 kmph (48-63 knots)
Very Severe Cyclonic Storm: Wind speed 118-165 kmph (64-89 knots)
Extremely Severe Cyclonic Storm: Wind speed 166-220 kmph (90-119 knots)
Super Cyclone Storm: Wind speed > 220 kmph (> 119 knots)

*Red color warning does not mean "Red Alert" Red color warning means "Take Action"

Forecast and warning for any day is valid from 0830 hours IST of day till 0830 hours IST of next day

For more details kindly visit <https://mausam.imd.gov.in> or contact 011-2434-4599

(Service to the nation since 1875)