

Monday, May 26, 2025
Time of Issue: 1400 hours IST
(MID-DAY)

ALL INDIA WEATHER SUMMARY AND FORECAST BULLETIN

Significant Weather Features:

South peninsular India:

- ❖ Fairly widespread to widespread light/moderate rainfall accompanied with **thunderstorm, lightning & gusty winds speed reaching 40-50 kmph with heavy rainfall at a few places with very heavy & extremely rainfall at isolated places very likely** over Kerala & Mahe on 26th & 27th May and **heavy to very heavy rainfall** thereafter during 28th May-01st June; heavy to very heavy rainfall with **extremely heavy rainfall** at isolated places very likely over Coastal & South Interior Karnataka on 26th & 27th May and **heavy to very heavy rainfall** thereafter during 28th May-01st June and heavy to very heavy rainfall over North Interior Karnataka during 26th-30th May.
- ❖ Scattered to fairly widespread light/moderate rainfall accompanied with **thunderstorm, lightning & gusty winds speed reaching 40-50 kmph** likely over Coastal Andhra Pradesh & Yanam, Rayalaseema and Telangana during next 5 days with and **Isolated heavy rainfall** likely over Lakshadweep on 26th; Coastal Andhra Pradesh & Yanam, Telangana during 26th-29th; Rayalaseema on 26th & 27th May.
- ❖ Isolated to scattered light/moderate rainfall accompanied with **thunderstorm, lightning & gusty winds speed reaching 40-50 kmph with heavy rainfall at a few places with very heavy & extremely rainfall at isolated places very likely** over Tamilnadu Puducherry & Karaikal on 26th and **heavy to very heavy rainfall** thereafter during 27th-31st May.
- ❖ **Thundersquall wind speed reaching 50-60 kmph gusting to 70 kmph** likely over Coastal Andhra Pradesh & Yanam, Rayalaseema during 27th-29th May.

West India:

- ❖ Scattered to fairly widespread light/moderate rainfall accompanied with **thunderstorm, lightning & gusty winds speed reaching 40-50 kmph over Konkan & Goa, Madhya Maharashtra, Marathwada during 26th-31st; Gujarat State during 26th-29th May with Thundersquall wind speed reaching 50-60 kmph gusting to 70 kmph** likely over Gujarat State on 26th May.
- ❖ **Isolated heavy rainfall** likely over Marathwada during 26th-28th; Gujarat Region during 26th-29th with isolated **very heavy rainfall** at some places over Konkan & Goa, Madhya Maharashtra during 28th-30th and isolated places over Marathwada on 26th & 27th May.
- ❖ Isolated **extremely heavy rainfall** very likely over Konkan and ghat areas of Madhya Maharashtra on 26th & 27th May.

Northeast India:

- ❖ Fairly widespread to widespread light/moderate rainfall accompanied with **thunderstorm, lightning** over Northeast India during next 7 days. **Isolated heavy rainfall** likely over Arunachal Pradesh, Assam & Meghalaya, Nagaland, Manipur, Mizoram & Tripura during 26th May-01st June with isolated **very heavy rainfall** likely over Nagaland, Manipur, Mizoram & Tripura during 28th May-01st June and Assam & Meghalaya during 29th May-01st June.

East & Central India:

- ❖ Scattered to fairly widespread light/moderate rainfall accompanied with **thunderstorm, lightning & gusty winds speed reaching 40-50 kmph** likely over Vidarbha, Chhattisgarh, West Bengal & Sikkim, Jharkhand, Odisha during 26th-31st May. **Isolated to scattered** light/moderate rainfall accompanied with **thunderstorm, lightning & gusty winds speed reaching 40-50 kmph** likely over Madhya Pradesh, Bihar during 26th-31st May with **Thundersquall wind speed reaching 50-60 kmph gusting to 70 kmph** likely over Bihar on 26th May.
- ❖ **Isolated heavy rainfall** likely over Vidarbha on 27th, 29th & 30th; Chhattisgarh during 26th-30th; Andaman & Nicobar Islands during 26th-28th; Bihar on 26th, 30th & 31st May; West Bengal & Sikkim during 29th May-01st June; Odisha during 26th-30th with isolated **very heavy rainfall** over Andaman & Nicobar Islands on 26th, Sub-Himalayan West Bengal & Sikkim during 29th-31st; Odisha on 28th & 29th May.

Northwest India:

- ❖ Scattered to fairly widespread light/moderate rainfall accompanied with **thunderstorm, lightning & gusty winds speed reaching 40-50 kmph** likely over Jammu-Kashmir-Ladakh-Gilgit-Baltistan-Muzaffarabad, Himachal Pradesh, Uttarakhand, Punjab, Haryana, Uttar Pradesh, Rajasthan during 27th May-01st June with **Thundersquall wind speed reaching 50-60 kmph gusting to 70 kmph** likely over Himachal Pradesh on 27th, 28th, 30th & 31st May.
- ❖ **Isolated hailstorm** over Himachal Pradesh on 27th & 28th May.
- ❖ **Isolated heavy rainfall** also likely over Uttarakhand during 28th-30th; Himachal Pradesh on 30th & 31st May.

Maximum Temperature Forecast:

- ❖ Fall by about 4-6°C in maximum temperatures likely over Northwest India during next 24 hours and gradual rise by 3-4°C thereafter for subsequent 4-5 days.
- ❖ No significant change in maximum temperatures likely over Central India during next 2 days and gradual rise by 2-3°C thereafter for subsequent 5 days.
- ❖ No significant change in maximum temperatures likely over rest parts of the country.

Heat wave warnings:

- ❖ **Heat wave conditions** very likely in isolated pockets of West Rajasthan during 26th-28th May.

* Red colour warning does not mean "Red Alert", Red colour warning means "Take Action".

Forecast and Warning for any day is valid from 0830 hours IST of day till 0830 hours IST of next day.

For more details, kindly visit <https://mausam.imd.gov.in> or contact: 011-2434-4599

(Service to the Nation since 1875)

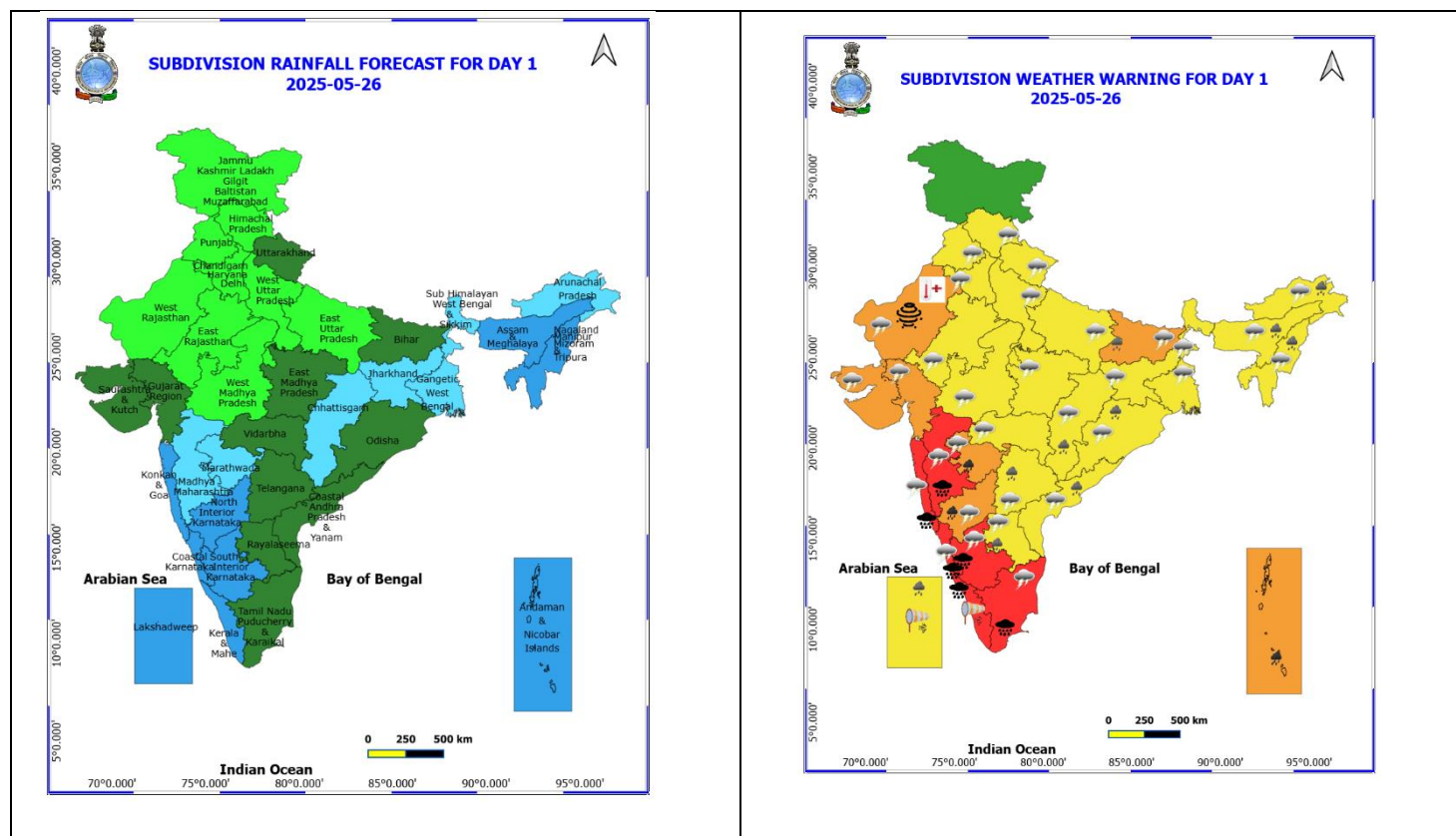
Main Weather Observations:

- ❖ **Rainfall** (from 0830 hours IST of yesterday to 0830 hours IST of today) observed at most places over Konkan & Goa, Andaman & Nicobar Islands, West Bengal & Sikkim, Assam & Meghalaya, Nagaland, Manipur, Mizoram & Tripura, Kerala & Mahe, Lakshadweep, Karnataka; at many places over Uttarakhand, Vidarbha, Coastal Andhra Pradesh & Yanam; at a few places over Odisha, Jharkhand, West Uttar Pradesh, Madhya Maharashtra, Jammu-Kashmir-Ladakh-Gilgit-Baltistan-Muzaffarabad, Himachal Pradesh, Uttarakhand, Haryana Chandigarh & Delhi, East Uttar Pradesh, Rajasthan, Chhattisgarh, Arunachal Pradesh, Telangana, Rayalaseema, Tamilnadu Puducherry & Karaikal; at isolated places over Marathwada, Gujarat, Bihar, Madhya Pradesh.
- ❖ **Significant rainfall recorded (in cm)**(from 0830 hours IST of yesterday to 0830 hours IST of today): **TAMILNADU, PUDUCHERRY & KARAİKAL:** Avalanche (dist The Nilgiris) 35, Upper Bhavani (dist The Nilgiris) 30, Chinnakalar (dist Coimbatore) 21, Emeraldad (dist The Nilgiris) 18, Gudalur Bazar (dist The Nilgiris) 15, Went Worth Estate (dist The Nilgiris), Taluk Office Pandalur (dist The Nilgiris) 14 each; **KERALA & MAHE:** Urumi(dist Kozhikode) 21, Ayyankunnu(dist Cannur) 20, Vytthiri (dist Wynad) 19, Vellathooval(dist Idukki) 19, Vadakara (dist Kozhikode) 17, Taliparamba (dist Cannur) 17, Nilambur (dist Malappuram) 15, Cheruvanchery(dist Cannur) 15, Quilandi (dist Kozhikode) 14, Peechi(dist Thrissur) 14, **COASTAL KARNATAKA:** Mulki (dist Dakshina Kannada) 20, Sulya (dist Dakshina Kannada) 13, Dharmasthala (dist Dakshina Kannada) 13, Gersoppa (dist Uttara Kannada) 12, Uppinangadi (dist Dakshina Kannada) 12, Mani (dist Dakshina Kannada) 10, **NORTH INTERIOR KARNATAKA:** Nippani (dist Belagavi) 9, Annigere Ars (dist Dharwad) 7, **SOUTH INTERIOR KARNATAKA:** Bhagamandala (dist Kodagu) 23, Kottigehara (dist Chikkamagaluru) 22, Napoklu (dist Kodagu) 16, Agumbe Emo (dist Shivamogga) 12, Somwarpet (dist Kodagu) 12, **COASTAL ANDHRA PRADESH:** Yerragondapalem (dist Prakasam) 8, **KONKAN & GOA:** Murud (dist Raigad) 37, Harnai Imd Obsy (dist Ratnagiri) 31, Shriwardhan (dist Raigad) 31, Mhasla (dist Raigad) 30, Mandangad (dist Ratnagiri) 21, Tala (dist Raigad) 18, Matheran (dist Raigad) 18, Roha (dist Raigad) 17, Alibag - Imd Part Time (dist Raigad) 15, Colaba - Imd Obsy (dist Mumbai City) 13, **MADHYA MAHARASHTRA:** Lonavala_agri (dist Pune) 24, Sinnar (dist Nashik) 15, Karjat (dist Ahilyanagar) 10, Chas_agri (dist Ahilyanagar) 10, Phaltan (dist Satara) 9, Mahabaleshwar- Imd Obsy (dist Satara) 9, Shahuwadi (dist Kolhapur) 9, **ASSAM & MEGHALAYA:** Hatsingimari Arg (dist South Salmara) 10, Karimganj_aws (dist Sribhumi) 8, Dhupdhara Arg (dist Goalpara) 7, Gharmura (dist Hailakandi) 7, Shella (dist East Khasi Hills) 7, **Nagaland, Manipur, Mizoram & Tripura:** Mokokchang (dist Mokokchung) 8, Saiha (dist Saiha) 7, Kolasib Agri (dist Kolasib) 7, Lawngtlai (dist Lawngtlai) 7, **East Madhya Pradesh:** Sausar (dist Chindwara) 8, **West Uttar Pradesh:** Baheri (dist Bareilly) 7, **Bihar:** Taibpur (dist Kishanganj) 14, Gaya Aero (dist Gaya) 7, **Sub-Himalayan West Bengal & Sikkim:** Barobhisha (dist Alipurduar) 9, Malda (dist Malda) 6, Banarhat High School (dist Jalpaiguri) 6.
- ❖ **Heavy to very heavy rainfall** has been recorded at a few places over Kerala & Mahe, Konkan & Goa, Coastal Karnataka, South Interior Karnataka, at isolated places over Bihar; **Heavy rainfall** at isolated places over Sub-Himalayan West Bengal, West Uttar Pradesh, East Madhya Pradesh, Coastal Andhra Pradesh, North Interior Karnataka, Assam and Nagaland.
- ❖ **Extremely heavy rainfall** has been recorded at isolated places over Konkan, Madhya Maharashtra, Kerala & Mahe, Tamil Nadu, South Interior Karnataka.
- ❖ **Thunderstorm accompanied with Squally/Gusty winds** with speed 40-80 kmph prevailed at isolated places over Gangetic West Bengal, Andaman & Nicobar Islands, Himachal Pradesh, Uttarakhand, Punjab, Uttar Pradesh, Konkan & Goa, Madhya Maharashtra and East Madhya Pradesh.
- ❖ **Heat wave conditions** prevailed in isolated pockets of West Rajasthan.
- ❖ **Warm night conditions** prevailed in isolated pockets of West Rajasthan.
- ❖ **Minimum Temperature Departures (as on 26-05-2025):** Minimum temperatures are **appreciably above normal (3.1°C to 5.0°C)** at Isolated places over Rajasthan and Jammu-Kashmir-Ladakh-Gilgit-Baltistan-Muzaffarabad. **above normal (1.6°C to 3.0°C)** at Isolated places over East Uttar Pradesh, Arunachal Pradesh, Assam & Meghalaya, Nagaland, Manipur, Mizoram & Tripura, Himachal Pradesh, Gujarat state. The are **markedly below normal (- 5.1°C or less)** at Few places over Chhattisgarh, Telangana, West Madhya Pradesh; **near below normal (-1.5°C to 1.5°C)** at most places over Vidarbha, North Interior Karnataka; at many places over Marathwada, Madhya Maharashtra, Konkan & Goa; at Few places over Coastal Karnataka; at Isolated places over Punjab, Haryana-Chandigarh-Delhi, East Madhya Pradesh, Coastal Andhra Pradesh & Yanam, Rayalaseema. **Today**, the lowest minimum temperature of **21.4°C** is reported at **Ludhiana & Khandwa (Punjab & West Madhya Pradesh)** over the Plains of India.
- ❖ **Maximum Temperature Departures (as on 25-05-2025):** Maximum temperatures were **markedly above normal (> 5.1°C)** at Few places over Arunachal Pradesh; at Isolated places over Assam & Meghalaya. **appreciably above normal (3.1°C to 5.0°C)** at Few places over Jammu-Kashmir-Ladakh-Gilgit-Baltistan-Muzaffarabad; at Isolated places over Himachal Pradesh and Saurashtra & Kutch. **above normal (1.6°C to 3.0°C)** at Many places over Nagaland, Manipur, Mizoram & Tripura; at Few places over Gujarat Region; at Isolated places over Sub Himalayan West Bengal & Sikkim, East Madhya Pradesh and Tamil Nadu, Puducherry & Karaikal. **near normal (-1.5°C to 1.5°C)** at Many places over West Rajasthan; at Few places over Andaman & Nicobar Islands and Odisha; at Isolated places over Gangetic West Bengal, Bihar, East Uttar Pradesh, East Rajasthan, West Madhya Pradesh, Coastal Andhra Pradesh & Yanam, South Interior Karnataka and Kerala & Mahe. **Yesterday, the highest maximum temperature of 45.4°C** was reported at **Phalodi (West Rajasthan)**.

Meteorological Analysis (Based on 0830 hours IST)

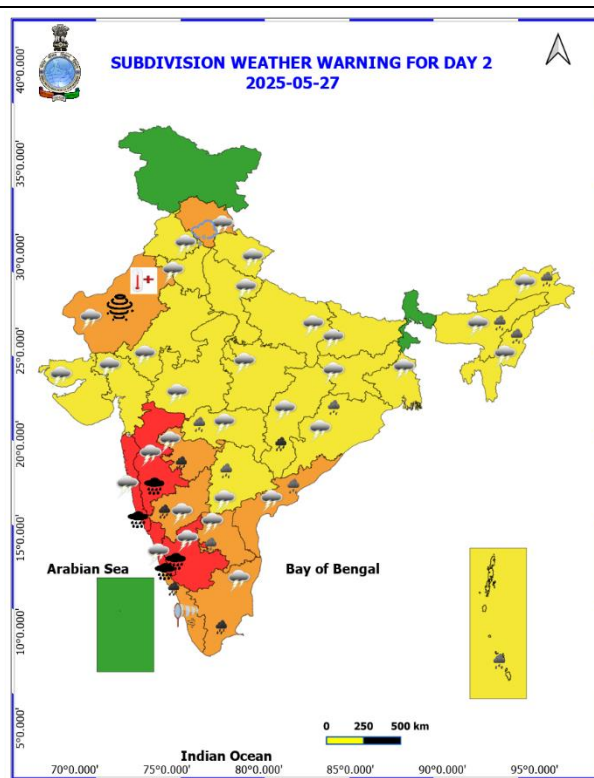
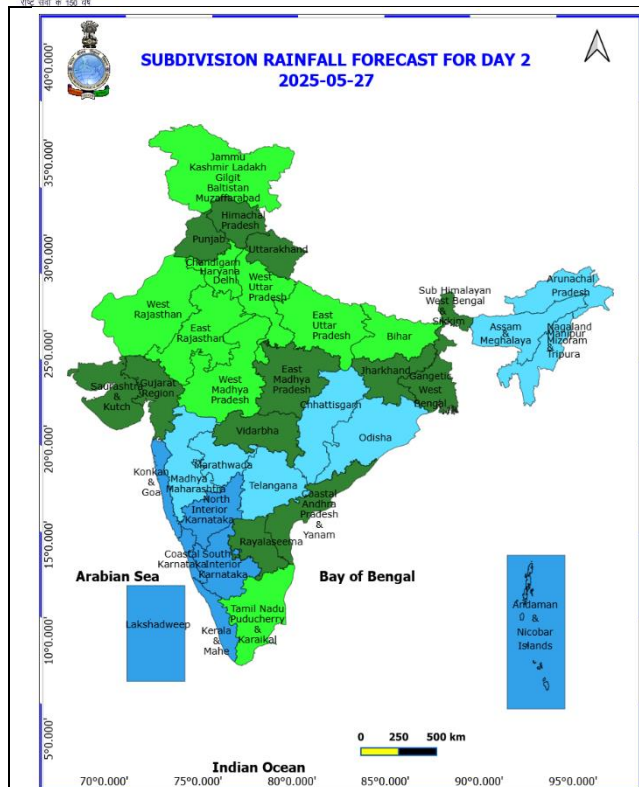
- ❖ Southwest Monsoon has further advanced into some more parts of central Arabian Sea, some more parts of Maharashtra including Mumbai, Karnataka including Bengaluru, remaining parts of Tamil Nadu, some parts of Telangana and Andhra Pradesh, some more parts of westcentral & North Bay of Bengal, Remaining parts of Mizoram, entire Tripura, Manipur, Nagaland, Arunachal Pradesh, some parts of Assam and Meghalaya, today the 26th May.
- ❖ The Northern Limit of Monsoon now passes through 17.0°N/55°E, 17.5°N/60°E, 18°N/65°E, 18.5°N/70°E, Mumbai, Pune, Sholapur, Kalaburagi, Mahbubnagar, Kavali, 16.5°N/83°E, 19°N/86°E, 21°N/89°E, Agartala, Goalpara and 28.5°N/89°E.
- ❖ Conditions are favourable for further advance of Southwest Monsoon into remaining parts of central Arabian Sea, some more parts of Maharashtra, remaining parts of Karnataka, some more parts of Telangana, Andhra Pradesh, remaining parts of westcentral & some more parts of North Bay of Bengal and remaining parts Northeastern states and some parts of Sub-Himalayan West Bengal and Sikkim during next 3 days.
- ❖ The **low-pressure area** over Marathwada & neighbourhood with the associated cyclonic circulation extending upto mid-tropospheric levels tilting southwestwards with height persists, at 0830 hours IST of today, the 26th May 2025.
- ❖ The upper air **trough** now runs from cyclonic circulation associated with above **low-pressure area** over Marathwada & neighbourhood to northwest Bay of Bengal across Chhattisgarh and Odisha between and extends upto 1.5 km above mean sea level.
- ❖ An upper air cyclonic circulation lies over east central Arabian sea between 3.1 and 5.8 km above mean sea level.
- ❖ A trough runs from above cyclonic circulation lies over east central Arabian sea to coastal Andhra Pradesh across south Konkan, cyclonic circulation associated with above low pressure area over Marathawada & its neighbourhood and Telangana between 3.1 and 5.8km above mean sea level.
- ❖ The **Western Disturbance** as an upper air cyclonic circulation over north Punjab and neighbourhood now lies over Haryana at 3.1 km above mean sea level with the trough aloft in middle tropospheric westerlies with its axis at 5.8 km above mean sea levels roughly along Long. 78°E to the north of Lat. 25°N.
- ❖ The **upper air cyclonic circulation** over Southwest Rajasthan & neighbourhood persists and now extends upto 1.5 km above mean sea level.
- ❖ An **upper air cyclonic circulation** lies over northeast Assam & neighbourhood at 3.1km above mean sea level.
- ❖ A **low-pressure area** is likely to form over westcentral and adjoining North Bay of Bengal around 27th May.
- ❖ The **upper air cyclonic circulation** over Haryana & neighbourhood extending upto 1.5 km above mean sea level has become less marked.

Weather Forecast & Warnings for next 7 days (Upto 0830 hours IST of 02nd June, 2025)



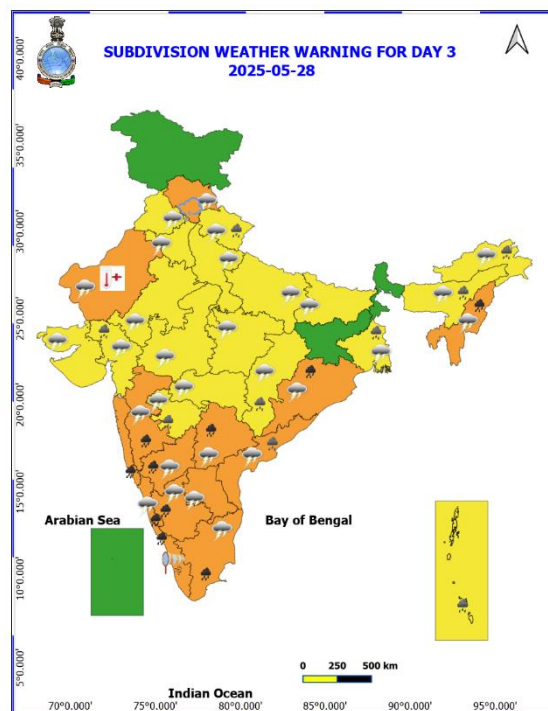
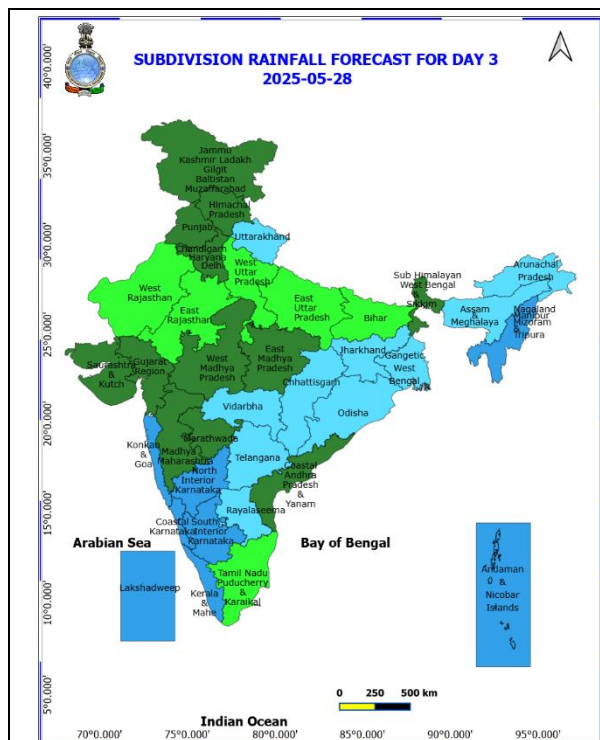
26th May (Day 1)

- ❖ **Heavy to Very Heavy Rainfall with isolated Extremely Heavy Rainfall** very likely at isolated places over Costal Karnataka, Kerala & Mahe, Konkan & Goa, Madhya Maharashtra, South Interior Karnataka and Tamil Nadu Puducherry & Karaikal.
- ❖ **Heavy to Very Heavy Rainfall** very likely at isolated places over Andaman & Nicobar Islands, Marathwada and North Interior Karnataka.
- ❖ **Heavy Rainfall** very likely at isolated places over Andhra Pradesh, Arunachal Pradesh, Assam & Meghalaya, Bihar, Chhattisgarh, Lakshadweep, Nagaland, Manipur, Mizoram and Tripura, Odisha and Telangana.
- ❖ **Thundersquall with wind speed reaching(50-60kmph)** very likely at isolated places over Bihar and Gujarat State.
- ❖ **Thunderstorm accompanied with lightning & gusty winds(40-50kmph)** very likely at isolated places over Andhra Pradesh, Costal Karnataka, Haryana, Chandigarh & Delhi, Interior Karnataka, Madhya Pradesh, Punjab, Rajasthan and Tamil Nadu Puducherry & Karaikal.
- ❖ **Thunderstorm accompanied with lightning & gusty winds(30-40kmph)** very likely at isolated places over Jharkhand, Odisha, Telangana, Uttar Pradesh, Uttarakhand, Vidarbha and West Bengal & Sikkim.
- ❖ **Thunderstorm accompanied with Lightning** very likely at isolated places over Arunachal Pradesh, Assam & Meghalaya, Chhattisgarh, Himachal Pradesh, Konkan & Goa, Madhya Maharashtra, Marathwada and Nagaland, Manipur, Mizoram and Tripura.
- ❖ **Dust Storm** very likely at isolated places over West Rajasthan.
- ❖ **Strong Surface Winds** very likely at isolated places over Kerala & Mahe and Lakshadweep.
- ❖ **Heat Wave conditions** very likely at isolated places over West Rajasthan.



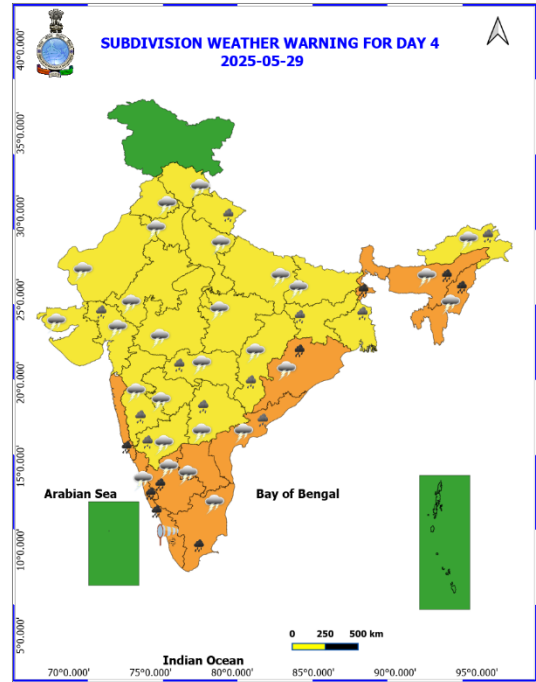
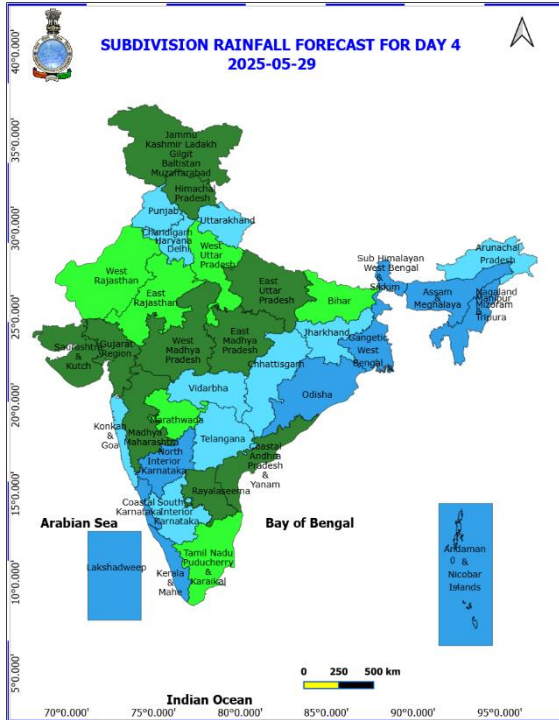
27th May (Day 2)

- ❖ **Heavy to Very Heavy Rainfall with isolated Extremely Heavy Rainfall** very likely at isolated places over Costal Karnataka, Konkan & Goa, Madhya Maharashtra and South Interior Karnataka.
- ❖ **Heavy to Very Heavy Rainfall** very likely at isolated places over Chhattisgarh, Kerala & Mahe, Marathwada, North Interior Karnataka and Tamil Nadu Puducherry & Karaikal.
- ❖ **Heavy Rainfall** very likely at isolated places over Andaman & Nicobar Islands, Andhra Pradesh, Arunachal Pradesh, Assam & Meghalaya, Nagaland, Manipur, Mizoram and Tripura, Odisha, Telangana and Vidarbha.
- ❖ **Thunderstorm accompanied with Hailstorm** very likely at isolated places over Himachal Pradesh.
- ❖ **Thundersquall with wind speed reaching(50-60kmph)** very likely at isolated places over Andhra Pradesh, Himachal Pradesh and West Rajasthan.
- ❖ **Thunderstorm accompanied with lightning & gusty winds(40-50kmph)** very likely at isolated places over Costal Karnataka, East Rajasthan, Gujarat State, Haryana, Chandigarh & Delhi, Interior Karnataka, Madhya Pradesh, Punjab and Tamil Nadu Puducherry & Karaikal.
- ❖ **Thunderstorm accompanied with lightning & gusty winds(30-40kmph)** very likely at isolated places over Bihar, Gangetic West Bengal, Jharkhand, Odisha, Telangana, Uttar Pradesh, Uttarakhand and Vidarbha.
- ❖ **Thunderstorm accompanied with Lightning** very likely at isolated places over Arunachal Pradesh, Assam & Meghalaya, Chhattisgarh, Konkan & Goa, Madhya Maharashtra, Marathwada and Nagaland, Manipur, Mizoram and Tripura.
- ❖ **Dust Storm** very likely at isolated places over West Rajasthan.
- ❖ **Strong Surface Winds** very likely at isolated places over Kerala & Mahe.
- ❖ **Heat Wave conditions** very likely at isolated places over West Rajasthan.



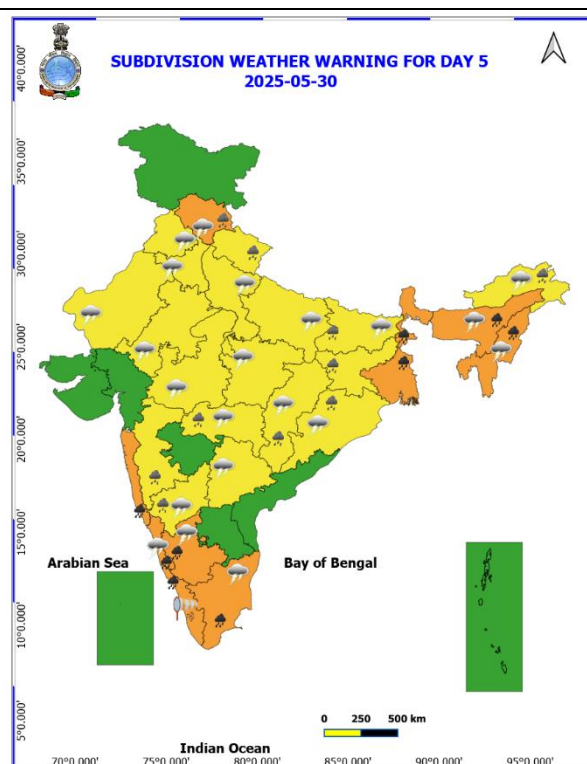
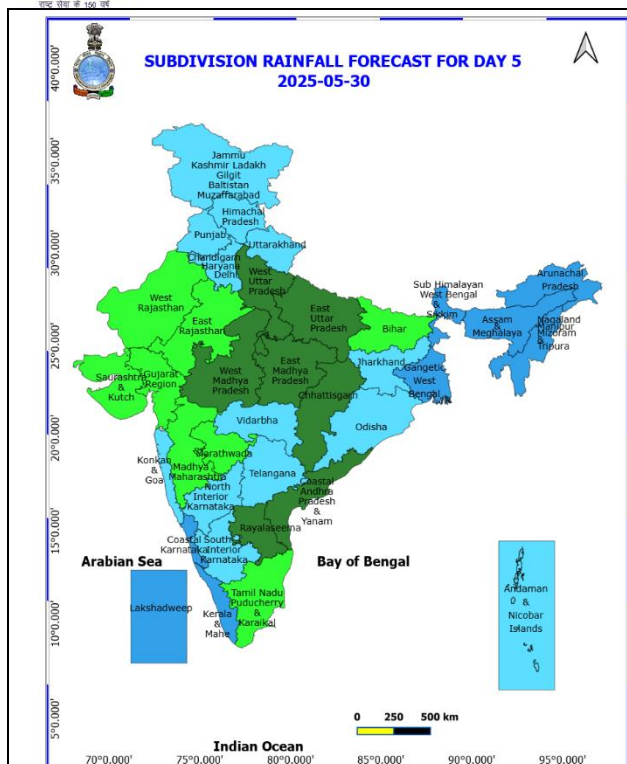
28th May (Day 3)

- ❖ **Heavy to Very Heavy Rainfall** very likely at isolated places over Costal Karnataka, Interior Karnataka, Kerala & Mahe, Konkan & Goa, Madhya Maharashtra, Nagaland, Manipur, Mizoram and Tripura, Odisha, Tamil Nadu Puducherry & Karaikal and Telangana.
- ❖ **Heavy Rainfall** very likely at isolated places over Andaman & Nicobar Islands, Arunachal Pradesh, Assam & Meghalaya, Chhattisgarh, Coastal Andhra Pradesh, Gangetic West Bengal, Gujarat Region, Marathwada and Uttarakhand.
- ❖ **Thunderstorm accompanied with Hailstorm** very likely at isolated places over Himachal Pradesh.
- ❖ **Thundersquall with wind speed reaching(50-60kmph)** very likely at isolated places over Andhra Pradesh, Himachal Pradesh and West Rajasthan.
- ❖ **Thunderstorm accompanied with lightning & gusty winds(40-50kmph)** very likely at isolated places over Costal Karnataka, East Rajasthan, Gujarat State, Haryana, Chandigarh & Delhi, Interior Karnataka, Madhya Pradesh, Punjab and Tamil Nadu Puducherry & Karaikal.
- ❖ **Thunderstorm accompanied with lightning & gusty winds(30-40kmph)** very likely at isolated places over Bihar, Gangetic West Bengal, Odisha, Telangana, Uttar Pradesh, Uttarakhand and Vidarbha.
- ❖ **Thunderstorm accompanied with Lightning** very likely at isolated places over Arunachal Pradesh, Assam & Meghalaya, Chhattisgarh, Madhya Maharashtra, Marathwada and Nagaland, Manipur, Mizoram and Tripura.
- ❖ **Strong Surface Winds** very likely at isolated places over Kerala & Mahe.
- ❖ **Heat Wave conditions** very likely at isolated places over West Rajasthan.



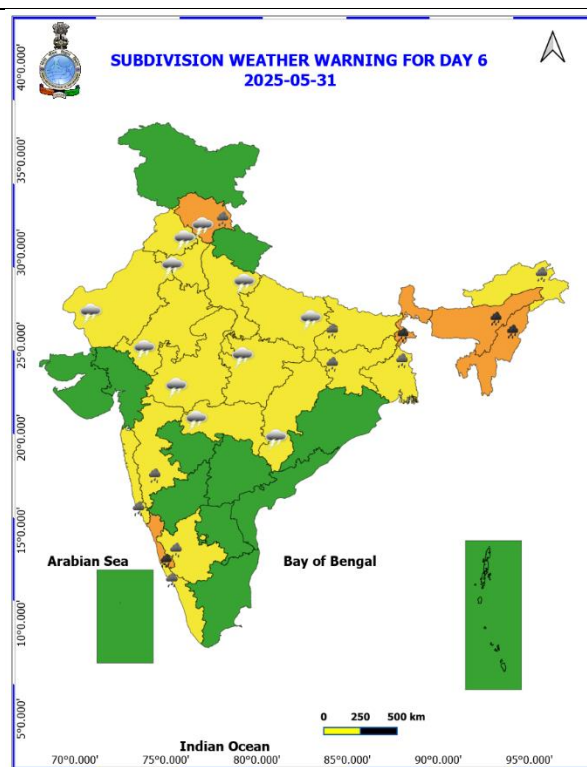
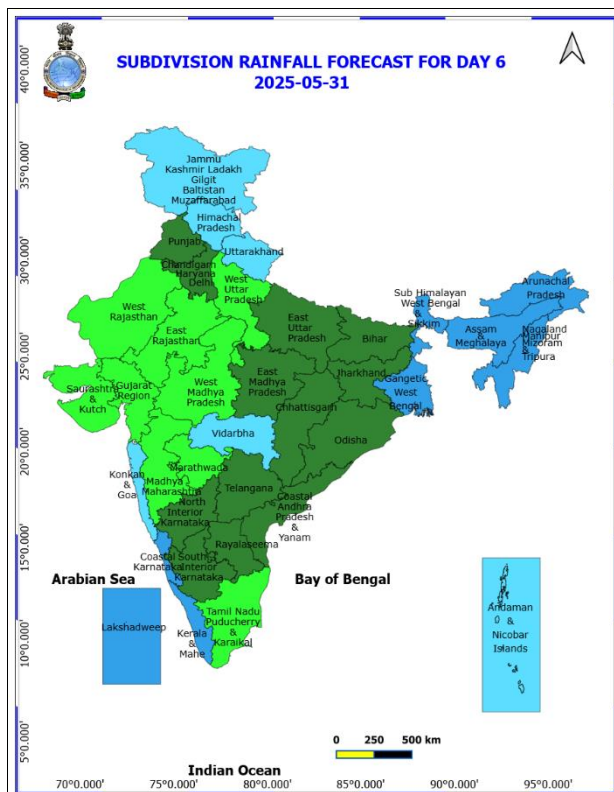
29th May (Day 4)

- ❖ **Heavy to Very Heavy Rainfall** likely at isolated places over Assam & Meghalaya, Coastal Karnataka, Kerala & Mahe, Konkan & Goa, Nagaland, Manipur, Mizoram and Tripura, Odisha, South Interior Karnataka, Sub Himalayan West Bengal & Sikkim and Tamil Nadu Puducherry & Karaikal.
- ❖ **Heavy Rainfall** likely at isolated places over Arunachal Pradesh, Chhattisgarh, Coastal Andhra Pradesh, Gangetic West Bengal, Gujarat Region, Jharkhand, Madhya Maharashtra, North Interior Karnataka, Telangana, Uttarakhand and Vidarbha.
- ❖ **Thundersquall with wind speed reaching(50-60kmph)** likely at isolated places over Andhra Pradesh.
- ❖ **Thunderstorm accompanied with lightning & gusty winds(40-50kmph)** likely at isolated places over Coastal Karnataka, Gujarat State, Haryana, Chandigarh & Delhi, Himachal Pradesh, Interior Karnataka, Madhya Pradesh, Punjab, Rajasthan and Tamil Nadu Puducherry & Karaikal.
- ❖ **Thunderstorm accompanied with lightning & gusty winds(30-40kmph)** likely at isolated places over Bihar, Odisha, Telangana, Uttar Pradesh and Vidarbha.
- ❖ **Thunderstorm accompanied with Lightning** likely at isolated places over Arunachal Pradesh, Assam & Meghalaya, Chhattisgarh, Madhya Maharashtra, Marathwada and Nagaland, Manipur, Mizoram and Tripura.
- ❖ **Strong Surface Winds** likely at isolated places over Kerala & Mahe.



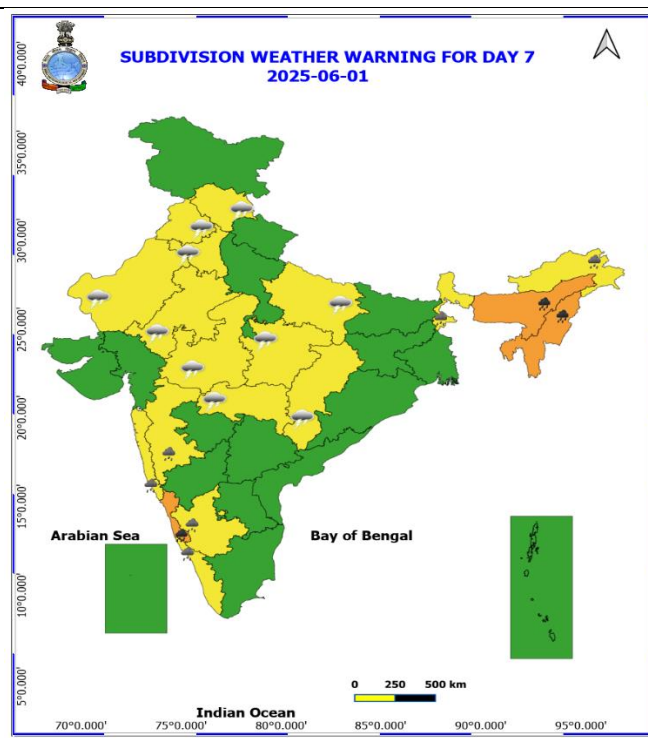
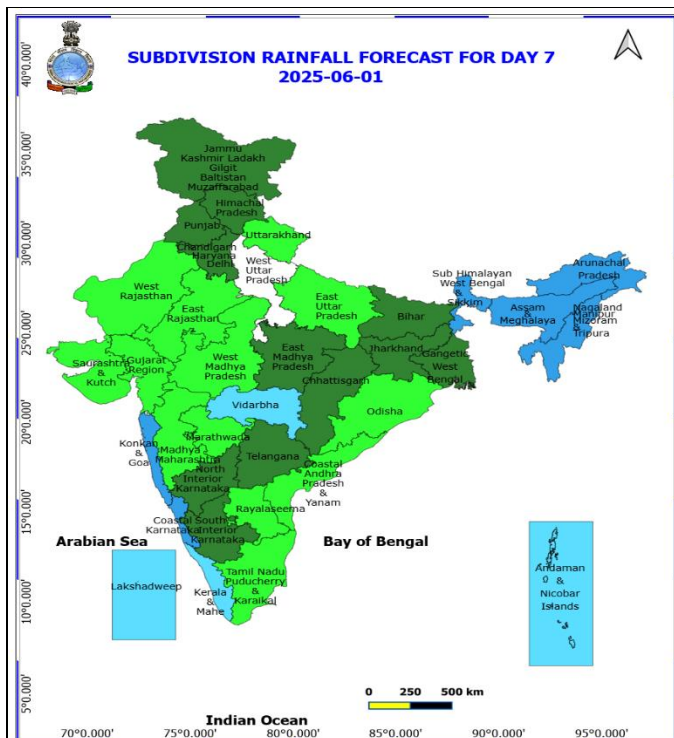
30th May (Day 5)

- ❖ **Heavy to Very Heavy Rainfall** likely at isolated places over Assam & Meghalaya, Costal Karnataka, Kerala & Mahe, Konkan & Goa, Nagaland, Manipur, Mizoram and Tripura, South Interior Karnataka, Tamil Nadu Puducherry & Karaikal and West Bengal & Sikkim.
- ❖ **Heavy Rainfall** likely at isolated places over Arunachal Pradesh, Bihar, Chhattisgarh, Himachal Pradesh, Jharkhand, Madhya Maharashtra, North Interior Karnataka, Odisha, Uttarakhand and Vidarbha.
- ❖ **Thundersquall with wind speed reaching(50-60kmph)** likely at isolated places over Himachal Pradesh.
- ❖ **Thunderstorm accompanied with lightning & gusty winds(40-50kmph)** likely at isolated places over Costal Karnataka, Haryana, Chandigarh & Delhi, Interior Karnataka, Madhya Pradesh, Punjab, Rajasthan, Tamil Nadu Puducherry & Karaikal and Uttar Pradesh.
- ❖ **Thunderstorm accompanied with lightning & gusty winds(30-40kmph)** likely at isolated places over Bihar, Odisha, Telangana and Vidarbha.
- ❖ **Thunderstorm accompanied with Lightning** likely at isolated places over Arunachal Pradesh, Assam & Meghalaya, Chhattisgarh and Nagaland, Manipur, Mizoram and Tripura.
- ❖ **Strong Surface Winds** likely at isolated places over Kerala & Mahe.



31st May (Day 6)

- ❖ **Heavy to Very Heavy Rainfall** likely at isolated places over Assam & Meghalaya, Costal Karnataka, Nagaland, Manipur, Mizoram and Tripura and Sub Himalayan West Bengal & Sikkim.
- ❖ **Heavy Rainfall** likely at isolated places over Arunachal Pradesh, Bihar, Gangetic West Bengal, Himachal Pradesh, Jharkhand, Kerala & Mahe, Konkan & Goa, Madhya Maharashtra and South Interior Karnataka.
- ❖ **Thundersquall with wind speed reaching(50-60kmph)** likely at isolated places over Himachal Pradesh.
- ❖ **Thunderstorm accompanied with lightning & gusty winds(40-50kmph)** likely at isolated places over East Uttar Pradesh, Madhya Pradesh and Rajasthan.
- ❖ **Thunderstorm accompanied with lightning & gusty winds(30-40kmph)** likely at isolated places over Vidarbha and West Uttar Pradesh.
- ❖ **Thunderstorm accompanied with Lightning** likely at isolated places over Chhattisgarh, Haryana, Chandigarh & Delhi and Punjab.



01st June (Day 7)

- ❖ **Heavy to Very Heavy Rainfall** likely at isolated places over Assam & Meghalaya, Coastal Karnataka and Nagaland, Manipur, Mizoram and Tripura.
- ❖ **Heavy Rainfall** likely at isolated places over Arunachal Pradesh, Kerala & Mahe, Konkan & Goa, Madhya Maharashtra, South Interior Karnataka and Sub Himalayan West Bengal & Sikkim.
- ❖ **Thunderstorm accompanied with lightning & gusty winds(40-50kmph)** likely at isolated places over East Uttar Pradesh, Himachal Pradesh, Madhya Pradesh and Rajasthan.
- ❖ **Thunderstorm accompanied with lightning & gusty winds(30-40kmph)** likely at isolated places over Vidarbha.
- ❖ **Thunderstorm accompanied with Lightning** likely at isolated places over Chhattisgarh, Haryana, Chandigarh & Delhi and Punjab.

Weather Outlook for subsequent 3 days (During 02nd June- 04th June, 2025)

- ❖ **Fairly widespread to widespread** rainfall activity likely over Northeast India, West Bengal & Sikkim, Andaman & Nicobar Islands, Lakshadweep, Konkan & Goa, Coastal Karnataka and Kerala & Mahe.
- ❖ **Isolated to scattered rainfall** likely over Jammu-Kashmir-Ladakh, Uttarakhand, Himachal Pradesh, Odisha, south Chhattisgarh adjoining Coastal Andhra Pradesh & Yanam.

Action may be taken based on **ORANGE AND RED** COLOUR warnings.

- Vulnerable regions likely urban and hilly areas action may be initiated for heavy rainfall warning.
- As the lead period increases forecast accuracy decreases.

Fig. 1: Maximum Temperatures

Fig. 2: Departure of Maximum Temperatures

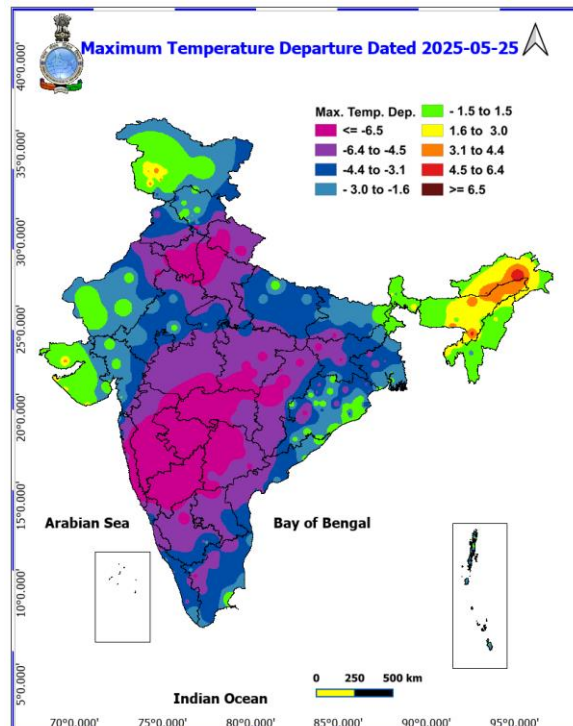
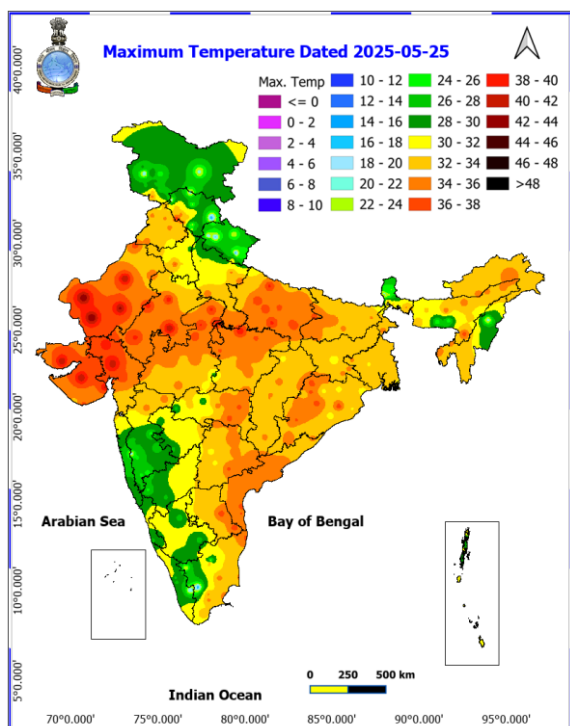


Fig. 3: Minimum Temperatures

Fig. 4: Departure of Minimum Temperatures

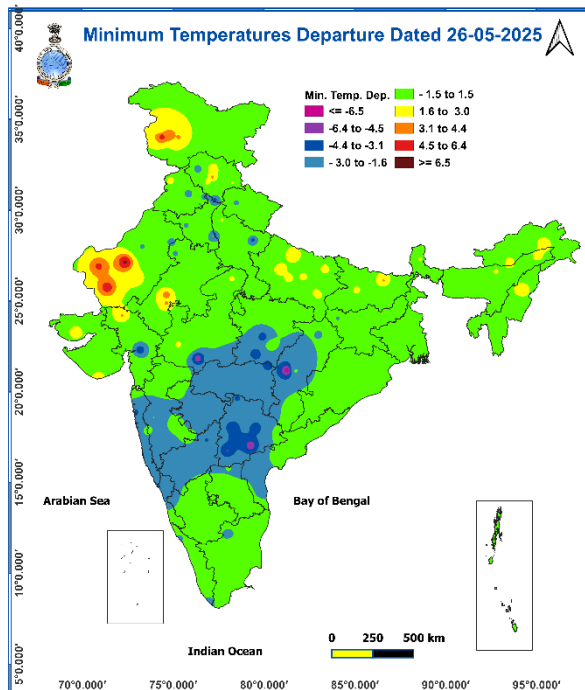
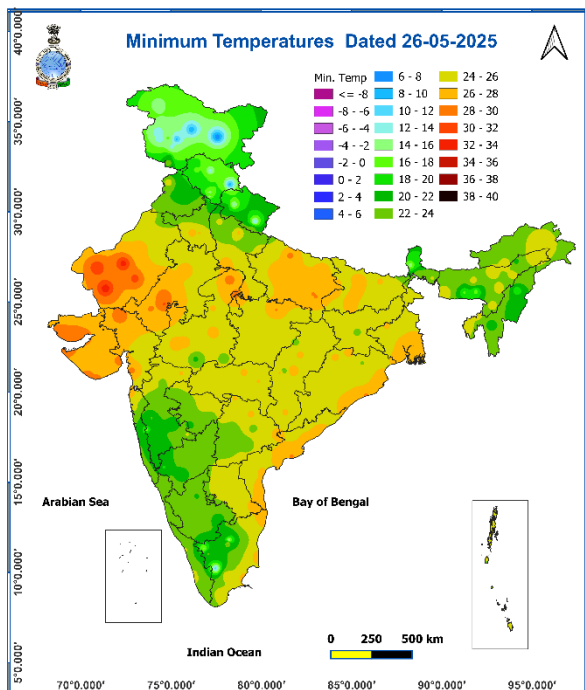


Fig. 5: Advance of Southwest Monsoon 2025

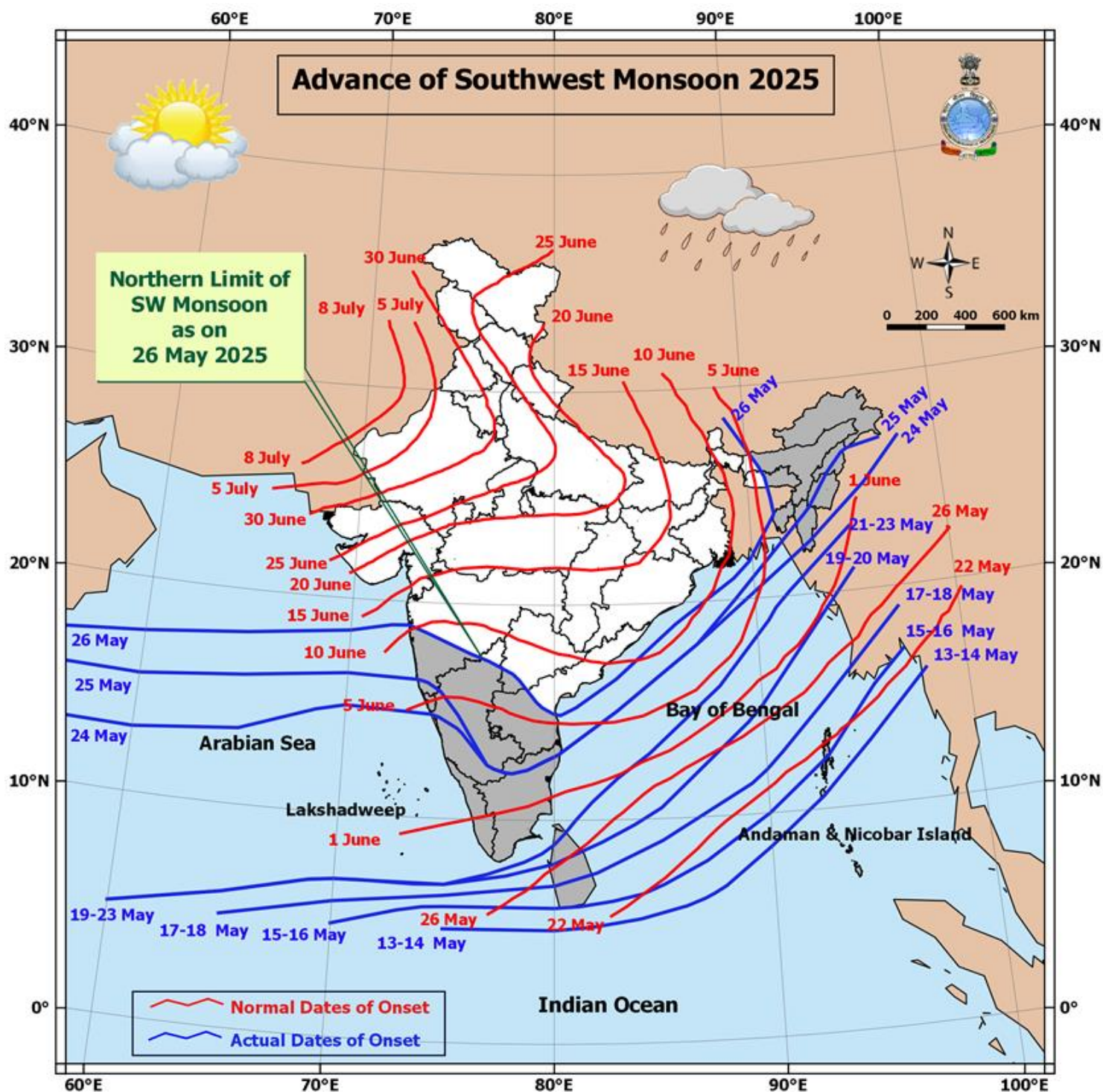
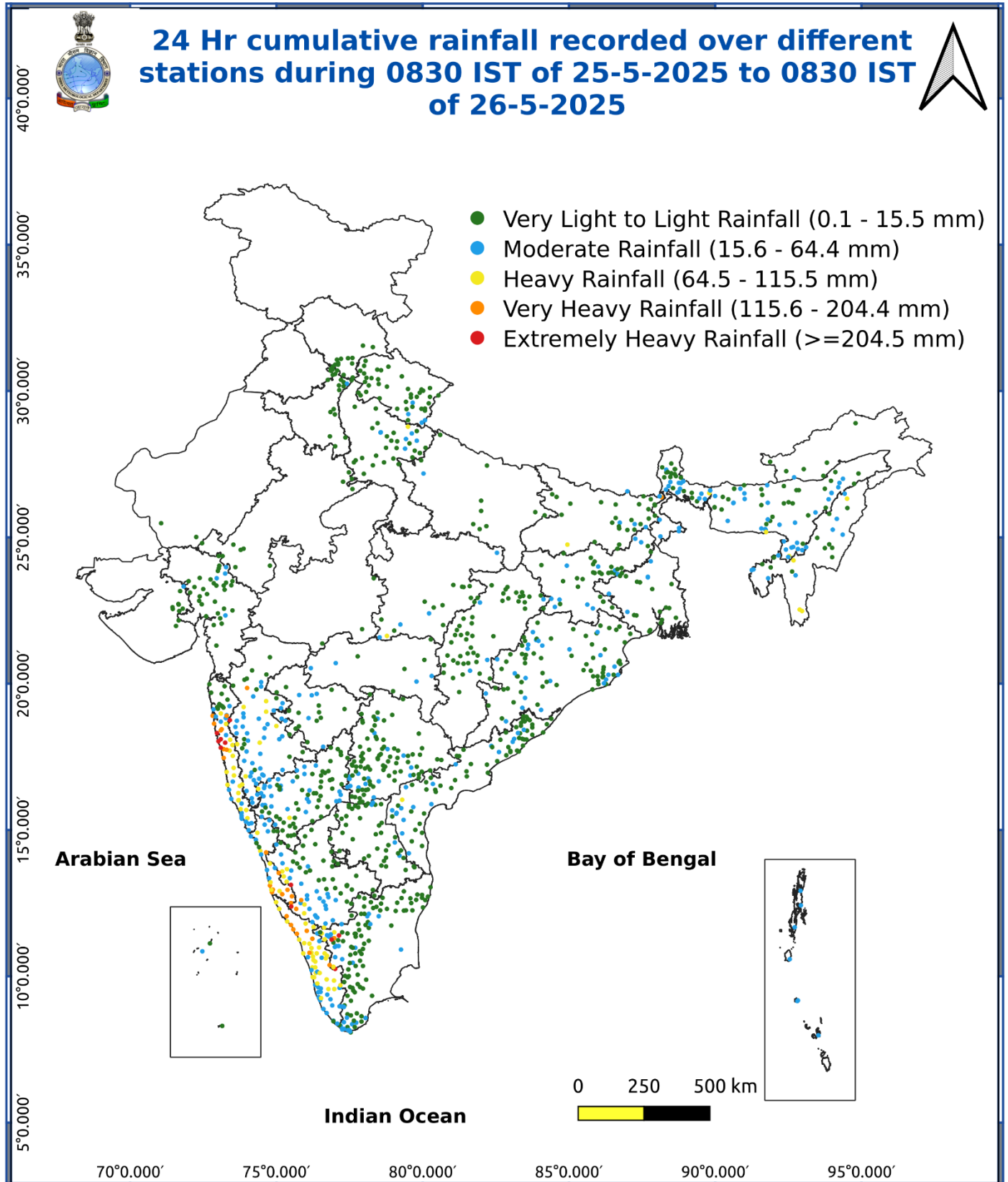


Fig. 6: Accumulated Rainfall (mm) during past 24 hours



Impact & Action Suggested due to Extremely and heavy to very heavy rainfall over (For Red & Orange colour warning areas of Peninsular India & Maharashtra)

- ❖ **Extremely heavy rainfall** at isolated places over Tamilnadu Puducherry & Karaikal, Kerala & Mahe on 26th; Coastal and South Interior Karnataka on 26th & 27th May.
- ❖ **Heavy to very heavy rainfall** very likely Andaman & Nicobar Islands on 26th; Tamilnadu Puducherry & Karaikal on 27th & 28th; Kerala & Mahe during 27th-29th; Coastal and South Interior Karnataka during 28th May-1st June; Konkan & Goa, Madhya Maharashtra during 26th-30th; Assam & Meghalaya during 30th May-1st June; Nagaland, Manipur, Mizoram & Tripura on 28th & 29th May.

Impact Expected

- ❖ Localized Flooding of roads, water logging in low lying areas and closure of underpasses mainly in urban areas of the above region.
- ❖ Occasional reduction in visibility due to heavy rainfall.
- ❖ Disruption of traffic in major cities due to water logging in roads leading to increased travel time.
- ❖ Minor damage to kutcha roads.
- ❖ Possibilities of damage to vulnerable structure.
- ❖ Localized Landslides/Mudslides
- ❖ Damage to horticulture and standing crops in some areas due to inundation.
- ❖ It may lead to riverine flooding in some river catchments (for riverine flooding please visit Web page of CWC).

Action Suggested

- ❖ Check for traffic congestion on your route before leaving for your destination.
- ❖ Follow any traffic advisories that are issued in this regard.
- ❖ Avoid going to areas that face the water logging problems often.
- ❖ Avoid staying in vulnerable structure.

Impact expected and action suggested due to isolated thunderstorm with lightning/gusty & Squally winds & Hailstorm over

- ✓ **Thundersquall wind speed reaching 50-60 kmph gusting to 70 kmph** over Bihar, East Madhya Pradesh on 26th; Himachal Pradesh on 27th & 28th; Coastal Andhra Pradesh & Yanam, Rayalaseema during 27th-29th May.
- ✓ **Isolated hailstorm** over Himachal Pradesh on 27th & 28th May.

Impact expected:

- Breaking of tree branches, uprooting of large avenue trees. Large dead limbs blown from trees. Damage to Standing crops.
- Minor to Major damage to banana and papaya trees.
- Minor to major damage to power and communication lines due to breaking of branches.
- Strong wind/hail may damage plantation, horticulture and standing crops.
- Hail may injure people and cattle at open places.
- Partial damage to vulnerable structures due to strong winds.
- Minor damage to kutcha houses/walls and huts.
- Loose objects may fly.

Action suggested:

- People are advised to keep a watch on the weather for worsening conditions and be ready to move to safer places accordingly.
- Stay indoors, close windows & doors and avoid travel if possible.
- Take safe shelters; do not take shelter under trees.
- Do not lie on concrete floors and do not lean against concrete walls.
- Unplug electrical/ electronic appliances.
- Immediately get out of water bodies.
- Keep away from all the objects that conduct electricity.

Impact expected and action suggested due to Heat wave to severe heat wave conditions in isolated pockets of West Rajasthan on 26th May. **Heat wave conditions** very likely in isolated pockets of East Rajasthan on 26th; West Rajasthan on 27th May.

Orange alert Areas

- High temperature & increased likelihood of heat illness symptoms in people who are either exposed to sun for a prolonged period or doing heavy work.
- High health concern for vulnerable people e.g. infants, elderly, people with chronic diseases.
- Avoid heat exposure– keep cool. Avoid dehydration.
- Drink sufficient water- even if not thirsty.
- Use ORS, homemade drinks like lassi, torani (rice water), lemon water, buttermilk, etc. to keep yourself hydrated.

Yellow alert Areas

- Moderate temperature & heat is tolerable for general public but moderate health concern likely for vulnerable people e.g. infants, elderly, people with chronic diseases.
- Avoid heat exposure.
- Wear lightweight, light colour, loose, cotton clothes.
- Cover your head, use a cloth, hat or umbrella.

Agromet advisories for likely impact of Heavy Rainfall / Hailstorms / Gusty Winds / Heat Wave

- In North Eastern States, Andaman & Nicobar Islands, Odisha, Jharkhand, Bihar, Uttarakhand, Maharashtra, Gujarat region, Tamil Nadu, Kerala, Karnataka, Coastal Andhra Pradesh and Telangana, drain out excess water and ensure proper drainage in fields with standing crops and vegetables.
- Shift the harvested produce in safer places or cover the produce with tarpaulin sheets in the fields. Tie the harvested crops properly and cover them to minimise the risk of displacement due to strong surface winds.
- Provide mechanical support to horticultural crops and staking to vegetables to avoid lodging.
- In **Rajasthan**, apply light and frequent irrigation in the evening to protect standing crops, vegetables and orchards from the adverse effects of heat waves and high temperatures.

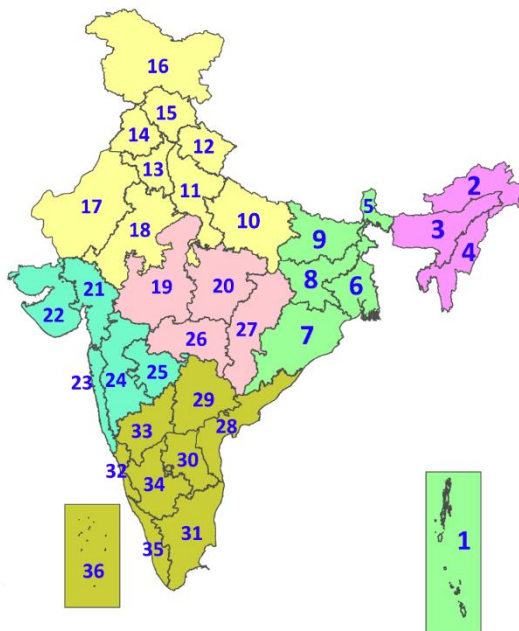
Livestock / Poultry / Fishery

- Keep the animals inside the shed during heavy rainfall and provide them balanced feed.
- Store feed and fodder in a safe place to prevent spoilage.
- Construct an outlet with proper netting around the ponds to drain out excess water, thereby preventing fish from escaping in case of overflow.

To reduce the effect of heat wave/high temperature, cover the roof of poultry sheds with grass. Also, provide clean, hygienic and plenty of drinking water to animals.

LEGENDS

1. अंडमान और निकोबार द्वीपसमूह
2. अरुणाचल प्रदेश
3. असम और मेघालय
4. नागालैंड, मणिपुर, मिजोरम और त्रिपुरा
5. उप-हिमालयी पश्चिम बंगाल और सिक्किम
6. गंगीय पश्चिम बंगाल
7. ओडिशा
8. झारखंड
9. बिहार
10. पूर्वी उत्तर प्रदेश
11. पश्चिम उत्तर प्रदेश
12. उत्तराखंड
13. हरियाणा, चंडीगढ़ और दिल्ली
14. पंजाब
15. हिमाचल प्रदेश
16. जम्मू और कश्मीर और लद्दाख
17. पश्चिम राजस्थान
18. पूर्वी राजस्थान
19. पश्चिम मध्य प्रदेश
20. पूर्वी मध्य प्रदेश
21. गुजरात
22. सौराष्ट्र
23. कोंकण और गोवा
24. मध्य महाराष्ट्र
25. मराठवाड़ा
26. विदर्भ
27. छत्तीसगढ़
28. तटीय आंध्र प्रदेश और यनम
29. तेलंगाना
30. रायलसीमा
31. तमिलनाडु, पुडुचेरी और कराईकल
32. तटीय कर्नाटक
33. आंतरिक उत्तरी कर्नाटक
34. आंतरिक दक्षिणी कर्नाटक
35. केरल और माहे
36. लक्षद्वीप



1. Andaman & Nicobar Islands
2. Arunachal Pradesh
3. Assam & Meghalaya
4. Nagaland, Manipur, Mizoram & Tripura
5. Sub-Himalayan West Bengal & Sikkim
6. Gangetic West Bengal
7. Odisha
8. Jharkhand
9. Bihar
10. East Uttar Pradesh
11. West Uttar Pradesh
12. Uttarakhand
13. Haryana, Chandigarh & Delhi
14. Punjab
15. Himachal Pradesh
16. Jammu & Kashmir and Ladakh
17. West Rajasthan
18. East Rajasthan
19. West Madhya Pradesh
20. East Madhya Pradesh
21. Gujarat
22. Saurashtra
23. Konkan & Goa
24. Madhya Maharashtra
25. Marathwada
26. Vidarbha
27. Chhattisgarh
28. Coastal Andhra Pradesh & Yanam
29. Telangana
30. Rayalaseema
31. Tamilnadu, Puducherry & Karaikal
32. Coastal Karnataka
33. North Interior Karnataka
34. South Interior Karnataka
35. Kerala & Mahe
36. Lakshadweep

SPATIAL DISTRIBUTION (% of Stations reporting)

% Stations	Category	% Stations	Category
76-100	Widespread (WS/Most Places)	26-50	Scattered (SCT/A Few Places)
51-75	Fairly Widespread (FWS/Many Places)	1-25	Isolated (ISOL)



COLOUR CODED WARNING

No Warning (No Action)

Watch (Be Aware)

Alert (Be Prepared To Take Action)

Warning (Take Action)

Probabilistic Forecast

Terms	Probability of Occurrence (%)
Unlikely	< 25
Likely	25 - 50
Very Likely	50 - 75
Most Likely	> 75

* Red colour warning does not mean "Red Alert", Red colour warning means "Take Action".

Forecast and Warning for any day is valid from 0830 hours IST of day till 0830 hours IST of next day.

For more details, kindly visit <https://mausam.imd.gov.in> or contact: 011-2434-4599

(Service to the Nation since 1875)

DEFINITION/CRITERIA

Rain/ Snow *

Heavy: 64.5 to 115.5 mm/cm *
Very Heavy: 115.6 to 204.4 mm/cm*
Extremely Heavy: > 204.4 mm/cm *

Heat Wave

When maximum temperature of a station reaches $\geq 40^\circ\text{C}$ for plains and $\geq 30^\circ\text{C}$ for hilly regions
(a) Based on Departure from normal

Heat Wave: Maximum Temperature Departure from normal 4.5°C to 6.4°C .

Severe Heat Wave: Maximum Temperature Departure from normal $\geq 6.5^\circ\text{C}$

(b). Based on Actual maximum temperature

Heat Wave: When actual maximum temperature $\geq 45^\circ\text{C}$.

Severe Heat Wave: When actual maximum temperature $\geq 47^\circ\text{C}$

(c). Criteria for heat wave for coastal stations

When maximum temperature departure is $> 4.5^\circ\text{C}$ from normal. Heat Wave may be described provided maximum temperature $\geq 37^\circ\text{C}$

Warm Night

When maximum temperature remains 40°C

Warm Night: When minimum temperature departure 4.5°C to 6.4°C .

Severe Warm Night: When minimum temperature departure $> 6.4^\circ\text{C}$.

Cold Wave

When minimum temperature of a station $\leq 10^\circ\text{C}$ for plains and $\leq 0^\circ\text{C}$ for hilly regions.
(a). Based on departure

Cold Wave: Minimum Temperature Departure from normal -4.5°C to -6.4°C .

Severe Cold Wave: Minimum Temperature Departure from normal $\leq -6.5^\circ\text{C}$

(b) Based on actual Minimum Temperature (for Plains only)

Cold Wave : When Minimum Temperature is $\leq 4.0^\circ\text{C}$

Severe Cold Wave: When Minimum Temperature is $\leq 2.0^\circ\text{C}$

(c) For Coastal Stations

When Minimum Temperature departure is $\leq -4.5^\circ\text{C}$ & actual Minimum Temperature is $\leq 15^\circ\text{C}$

Cold Day

When minimum temperature of a station $\leq 10^\circ\text{C}$ for plains and $\leq 0^\circ\text{C}$ for hilly regions
Based on departure

Cold Day: Maximum Temperature Departure from normal -4.5°C to -6.4°C .

Severe Cold Day: Maximum Temperature Departure from normal $\leq -6.5^\circ\text{C}$

Fog

Phenomenon of small droplets suspended in air and the horizontal visibility $< 1\text{km}$

Moderate Fog: When the visibility between 500-200 metres

Dense Fog: when the visibility between 50- 200 metres

Very Dense Fog: when the visibility < 50 metres

Thunderstorm

Sudden electrical discharges manifested by a flash of light (Lightning) and a sharp rumbling sound (thunder)

Dust/Sand Storm

An ensemble of particles of dust or sand energetically lifted to great heights by a strong and turbulent wind.

Frost

Ice deposits on ground

Air temperature $\leq 4^\circ\text{C}$ (over Plains)

Squall

A strong wind that rises suddenly, lasts for atleast 1 minute.

Moderate: Wind speed 52-61 kmph

Severe: Wind speed 62-87 kmph

Very Severe: Wind speed > 87 kmph

Sea State

Effect of various waves in the sea over specific area

Rough to very rough: Wind speed 41-62 kmph (22-33 knots) & Wave height 2.5-6 metre

High to very high: Wind speed 63-117 kmph (34-63 knots) & Wave height 6-14 metre

Phenomenal: Wind speed > 117 kmph (> 63 knots) & Wave height > 14 metre

Cyclone

Cyclonic Storm: Wind speed 62-87 kmph (34-47 knots)

Severe Cyclonic Storm: Wind speed 88-117 kmph (48-63 knots)

Very Severe Cyclonic Storm: Wind speed 118-165 kmph (64 - 89 knots)

Extremely Severe Cyclonic Storm: Wind speed 166-220 kmph (90 -119 knots)

Super Cyclone Strom: Wind speed > 220 kmph (> 119 knots)