

2025-06-28

Time of Issue: 14:00:00 hours IST
(Mid-Day)

ALL INDIA WEATHER SUMMARY AND FORECAST BULLETIN

Significant Weather Features

West India:

- **Heavy to very heavy rainfall** at isolated places likely over Konkan & Goa, Ghat areas of Madhya Maharashtra, Gujarat state during next 7 days.
- Light/moderate rainfall at most/many places likely over the region during next 7 days.

Northwest India:

- **Extremely heavy rainfall (>20 cm/24 hours)** likely at isolated places over Uttarakhand and Uttar Pradesh on 30th June.
- Isolated **heavy rainfall** likely over Himachal Pradesh, Uttarakhand, Uttar Pradesh during 28th June-04th July; Punjab, Haryana & Chandigarh during 28th June-02nd July; West Rajasthan on 28th June, 03rd & 04th July; East Rajasthan during 01st-04th July with **very heavy rainfall** over Himachal Pradesh on 29th & 30th June; Uttarakhand during 28th June-02nd July; Punjab on 29th June; Haryana, Chandigarh on 29th & 30th June; Uttar Pradesh on 29th June, 01st & 02nd July; East Rajasthan on 03rd & 04th July.
- Light/moderate rainfall at most/many places accompanied with **thunderstorm, lightning & gusty winds speed reaching 30-40 kmph** likely over Northwest India during next 7 days.

East & Central India:

- Isolated **heavy rainfall** over Madhya Pradesh, Chhattisgarh, Jharkhand & Odisha during 28th June-04th July; Vidarbha on 01st & 02nd July; Andaman & Nicobar Islands on 28th June; Sub-Himalayan West Bengal & Sikkim on 28th June & during 30th June-02nd July; Gangetic West Bengal during 28th June-01st July; Bihar during 29th June-04th July; with **very heavy rainfall** over West Madhya Pradesh on 28th June, 01st & 02nd July; East Madhya Pradesh on 28th June & during 01st-04th July; Chhattisgarh on 01st & 02nd July; Gangetic West Bengal on 29th & 30th June; Bihar during 29th June-02nd July; Jharkhand during 29th June-01st July; Odisha during 28th June-01st July.
- Light/moderate rainfall at most/many places accompanied with **thunderstorm, lightning & gusty winds speed reaching 30-40 kmph** likely over Madhya Pradesh, Chhattisgarh, Bihar, Jharkhand during next 7 days; Andaman & Nicobar Islands & Odisha on 28th & 29th; Gangetic West Bengal during 28th – 30th June; Vidarbha on 01st & 02nd July.

Northeast India:

- Light/moderate rainfall at most places accompanied with **thunderstorm, lightning and isolated heavy rainfall** likely to continue over Northeast India during next 7 days with **very heavy rainfall** over Arunachal Pradesh on 02nd & 03rd July; Assam & Meghalaya during 02nd-04th July; Nagaland on 01st & 02nd July.

South Peninsular India:

- Isolated **heavy rainfall** likely over Tamil Nadu on 28th; Kerala & Mahe on 28th & 29th June, 03th & 04th July; Coastal Karnataka, South Interior Karnataka during 02nd -04th July; with **very heavy rainfall** over Kerala on 28th June.
- **Strong surface winds** (speed reaching 40-50 kmph) very likely over Tamil Nadu on 28th & 29th June; Kerala & Mahe, Coastal Karnataka on 28th June; Interior Karnataka, Coastal Andhra Pradesh & Yanam, Rayalaseema & Telangana during 28th June-02nd July.

***Red color warning does not mean "Red Alert" Red color warning means "Take Action"**

Forecast and warning for any day is valid from 0830 hours IST of day till 0830 hours IST of next day

For more details kindly visit <https://mausam.imd.gov.in> or contact 011-2434-4599

(Service to the nation since 1875)



- ♦ Light/moderate rainfall at many/some places over Kerala & Mahe, Lakshadweep, Coastal Karnataka; isolated to scattered rainfall accompanied with isolated **thunderstorm, lightning** over Coastal Andhra Pradesh & Yanam, Telangana, Coastal Karnataka during next 5 days.

Hot & Humid Weather warning:

- ♦ **Hot & humid weather** is likely to prevail over plains of Assam & Tamil Nadu during 28th- 30th June.

Main Weather Observations:

❖ **Rainfall distribution** (from 0830 hours IST of yesterday to 0830 hours IST of today): **at most places** over Gangetic West Bengal, Uttarakhand, East Madhya Pradesh, Konkan & Goa, Vidarbha, Chhattisgarh, Coastal Karnataka, Kerala & Mahe and Lakshadweep; **at many places** over Andaman & Nicobar Islands, Arunachal Pradesh, Nagaland, Manipur, Mizoram & Tripura, Sub Himalayan West Bengal & Sikkim, Odisha, Jharkhand, Himachal Pradesh, East Rajasthan, West Madhya Pradesh, Gujarat Region, Saurashtra & Kutch and Madhya Maharashtra; **at a few places** over Assam & Meghalaya, Bihar, Jammu-Kashmir-Ladakh-Gilgit-Baltistan-Muzaffarabad, West Rajasthan, North Interior Karnataka and South Interior Karnataka; **at isolated places** over East Uttar Pradesh, West Uttar Pradesh, Haryana-Chandigarh-Delhi, Punjab, Marathwada, Coastal Andhra Pradesh & Yanam, Telangana, Rayalaseema and Tamil Nadu, Puducherry & Karaikal;

❖ **Significant rainfall recorded (in cm)** (from 0830 hours IST of yesterday to 0830 hours IST of today): **Uttarakhand**: Chamoli (dist Chamoli) 18; Jollygrant (dist Dehradun) 17; Sama (dist Bageshwar), Loharkhet (dist Bageshwar) 14 Each; Kapkot (dist Bageshwar) 12; Dehra Dun (dist Dehradun) 10; Rudraprayag (dist Rudraprayag), Narendranagar (dist Garhwal Tehri) 7 Each; Ukhimath (dist Rudraprayag) 6; **East Madhya Pradesh**: Devendranagar (dist Panna) 13; Gonour (dist Panna) 12; Nowgong (dist Chhatarpur), Panna-aws (dist Panna), Palera (dist Tikamgarh), Matiyari (dist Mandla) 10 Each; Satna (raghurajnagar) (dist Satna), Pawai (dist Panna), Bahoriband (dist Katni) 9 Each; Mohgaon (dist Mandla), Unchehra (dist Satna) 8 Each; Jabalpur-aws (dist Jabalpur), Katni(mudwara) (dist Katni), Nainpur (dist Mandla), Hanumana (dist Rewa), Malthone (dist Sagar), Ghughri (dist Mandla), Khargapur (dist Tikamgarh) 7 Each; Balaghat-aws (dist Balaghat), Mandla (dist Mandla), Garhakota (dist Sagar), Nagode (dist Satna), Jatara (dist Tikamgarh), Bijadandi (dist Mandla), Bahri (dist Sidhi) 6 Each; **Andaman & Nicobar Islands**: Maya Bandar (dist North & Middle Andaman) 12; **Odisha**: Banspal (dist Keonjhar) 11; Jaipur (dist Balasore), Hatadihi (dist Keonjhar) 9 Each; Remuna (dist Balasore), Bhadrak (dist Bhadrak), Kaptipada (dist Mayurbhanj) 8 Each; Balasore (dist Balasore), Tihidi (dist Bhadrak), Ghasipura (dist Keonjhar), Sarasakana (dist Mayurbhanj) 7 Each; Ghatagaon (dist Keonjhar), Anandpur (dist Keonjhar) 6 Each; **Punjab**: Lohand (dist Rupnagar) 11; Kotla (dist Rupnagar) 9; Bharatgarh (dist Rupnagar) 7; **Madhya Maharashtra**: Igatpuri (dist Nashik) 10; Shahuwadi (dist Kolhapur) 8; Gaganbawada (dist Kolhapur) 7; Mahabaleshwar (dist Satara), Radhanagari (dist Kolhapur), Lonavala ARG (dist Pune) 6 Each; **East Uttar Pradesh**: Ghorawal (dist Sonbhadra) 10; Robertsganj (dist Sonbhadra) 8; Churk (dist Sonbhadra) 7; **West Uttar Pradesh**: Saharanpur (dist Saharanpur) 9; **Chhattisgarh**: Baloda (dist Janjgir) 9; Sonakhan (dist Baloda Bazar) 8; **Haryana-Chandigarh-Delhi**: Tajewala (dist Yamuna Nagar) 9; Partapnagar REV (dist Yamuna Nagar) 8; **Coastal Karnataka**: Kadra (dist Uttara Kannada) 8; Castle Rock (dist Uttara Kannada) 7; **Kerala & Mahe**: Peermade To (dist Idukki) 8; Tellichery (dist Cannur) 7; **Jharkhand**: Tenughat (dist Bokaro) 8; Herhanj (dist Latehar) 7; Bau Kanke (dist Ranchi), Bariyatu (dist Latehar) 6 Each; **Saurashtra & Kutch**: Kalyanpur (dist Devbhoomi Dwarka) 8; Mandvi(k) (dist Kutch) 6; **Vidarbha**: Kuhi (dist Nagpur) 7; **Konkan & Goa**: Kankavli (dist Sindhudurg) 7; **West Rajasthan**: Jaisalmer (dist Jaisalmer) 7; **Himachal Pradesh**: Palampur (dist Kangra) 7; **Gangetic West Bengal**: Durgachack (dist East Midnapore), Amta (dist Howrah), Sagar Island PTO (dist South 24 Parganas) 7 Each; **East Rajasthan**: Ramganjmandi SR (dist Kota) 6; **Bihar**: Bodh Gaya (dist Gaya) 6; **West Madhya Pradesh**: Aron (dist Guna) 6.

❖ **Heavy Rainfall observed** (from 0830 hours IST of yesterday to 0830 hours IST of today): **Heavy to very heavy rain** at isolated places over Andaman & Nicobar Islands, Uttarakhand and East Madhya Pradesh. **Heavy rain** at isolated places over Gangetic West Bengal, Odisha, Jharkhand, East Uttar Pradesh, West Uttar Pradesh, Haryana-Chandigarh-Delhi, Punjab, Himachal Pradesh, West Rajasthan, West Madhya Pradesh, Saurashtra & Kutch, Konkan & Goa, Madhya Maharashtra, Vidarbha, Chhattisgarh, Coastal Karnataka and Kerala & Mahe.

❖ **Minimum Temperature Departures (as on 28-06-2025): markedly above normal(> 5.1°C)** at isolated places over Assam & Meghalaya, Sub Himalayan West Bengal & Sikkim, Bihar, East Uttar Pradesh, West Uttar Pradesh, Himachal Pradesh, Jammu-Kashmir-Ladakh-Gilgit-Baltistan-Muzaffarabad and West Madhya Pradesh. **appreciably above normal(3.1°C to 5.0°C)** at few places over East Madhya Pradesh; at isolated places over Andaman & Nicobar Islands, Odisha, Gujarat Region and Saurashtra & Kutch. **above normal(1.6°C to 3.0°C)** at few places over Punjab, Konkan & Goa, Rayalaseema and Tamil Nadu, Puducherry & Karaikal; at isolated places over Gangetic West Bengal, Haryana-Chandigarh-Delhi, Madhya Maharashtra, Vidarbha, Coastal Andhra Pradesh & Yanam and Kerala & Mahe. **near normal(-1.5°C to 1.5°C)** at many places over East Rajasthan and Chhattisgarh; at most places over Arunachal Pradesh, Nagaland, Manipur, Mizoram & Tripura, Jharkhand, Uttarakhand, West Rajasthan, Marathwada, Telangana, Coastal Karnataka, North Interior Karnataka, South Interior Karnataka and Lakshadweep. **The lowest minimum temperature** of 18.4°C is reported at MATHERAN (MAHARASHTRA) over the Plains of India.

❖ **Maximum Temperature Departures (as on 27-06-2025): markedly above normal(> 5.1°C)** at isolated places over

*Red color warning does not mean "Red Alert" Red color warning means "Take Action"

Forecast and warning for any day is valid from 0830 hours IST of day till 0830 hours IST of next day

For more details kindly visit <https://mausam.imd.gov.in> or contact 011-2434-4599

(Service to the nation since 1875)



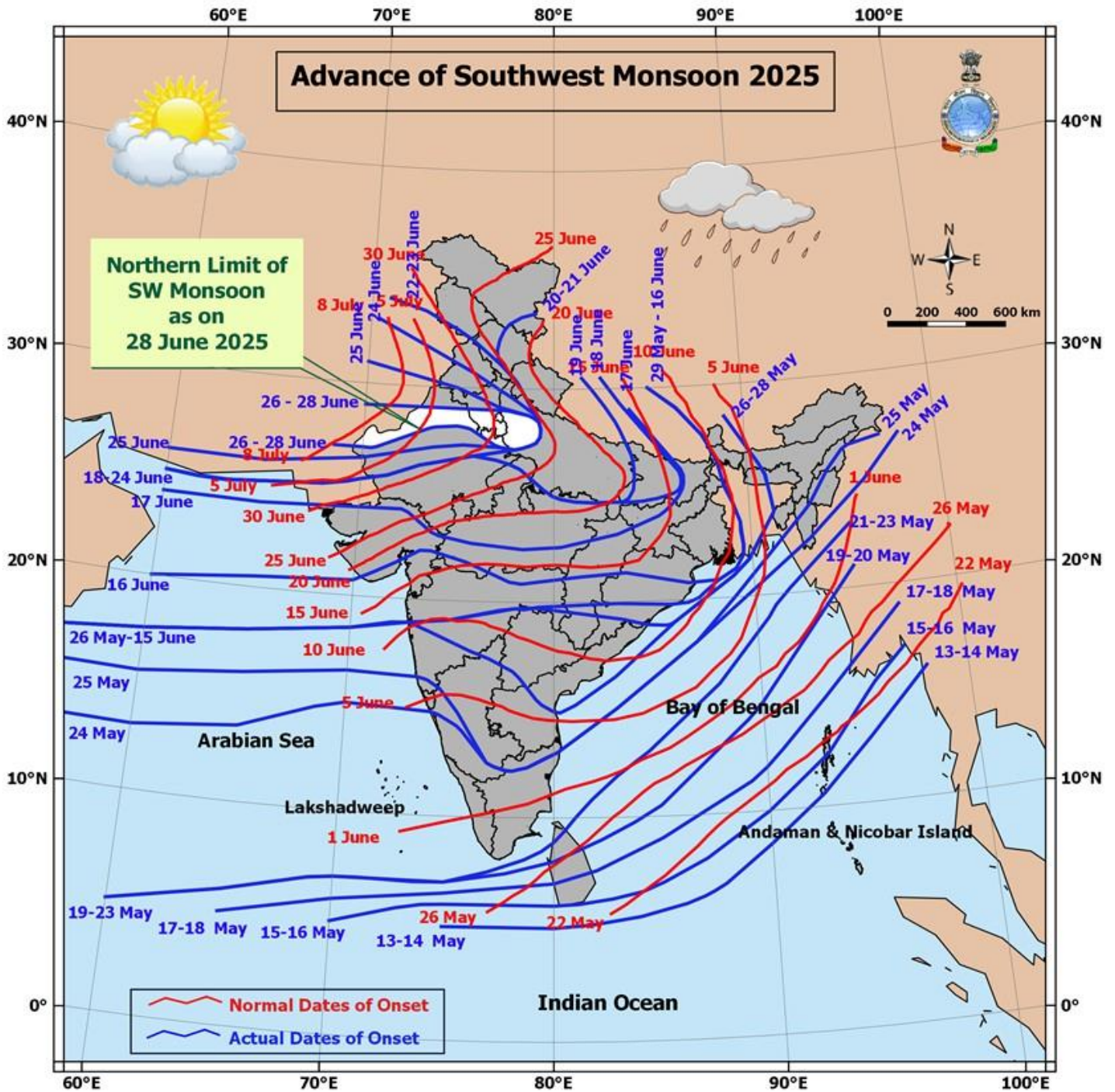
Assam & Meghalaya, Odisha and West Uttar Pradesh. **appreciably above normal(3.1°C to 5.0°C)** at few places over Arunachal Pradesh and Sub Himalayan West Bengal & Sikkim; at isolated places over Tamil Nadu, Puducherry & Karaikal. **above normal(1.6°C to 3.0°C)** at few places over East Uttar Pradesh and Coastal Karnataka; at isolated places over Nagaland, Manipur, Mizoram & Tripura, Haryana-Chandigarh-Delhi, Himachal Pradesh, Rayalaseema and Kerala & Mahe. **near normal(-1.5°C to 1.5°C)** at many places over Gangetic West Bengal, Punjab, Jammu-KashmirLadakh-Gilgit-Baltistan-Muzaffarabad and Madhya Maharashtra; at most places over Andaman & Nicobar Islands, Bihar, Konkan & Goa, Telangana, North Interior Karnataka, South Interior Karnataka and Lakshadweep; at few places over Uttarakhand, Marathwada, Vidarbha and Coastal Andhra Pradesh & Yanam; at isolated places over East Rajasthan and Saurashtra & Kutch. **The highest maximum temperature** of 41.2°C was reported at MORADABAD (UTTAR PRADESH).

Meteorological Analysis (Based on 0830 hours IST)

- ♦ The Northern Limit of Monsoon continue to pass through 27.0°N/68.5°E, 27.0°N/70.0°E, Jaisalmer, Bikaner, Jhunjhunu, Bharatpur, Rampur, Sonipat, Anup Nagar and 29.0°N/70.0°E.
- ♦ Conditions are becoming favourable for further advance of Southwest monsoon over remaining parts of the country during next 2 days.
- ♦ Under the influence of the **upper air cyclonic circulation** over Saurashtra & Kutch & adjoining northeast Arabian sea, a **low pressure area** has formed over Kutch & neighbourhood at 0830 hrs IST of today, the 28th June, 2025 & the associated **upper air cyclonic circulation** extending upto 7.6 km above mean sea level tilting southwards with height persists.
- ♦ The **upper air cyclonic circulation** over southwest Bangladesh & adjoining Gangetic West Bengal persisted over the same region and extended upto 7.6 km above mean sea level tilting southwestwards with height. Under its influence a low-pressure area is likely to form over the north Bay of Bengal and adjoining coastal Bangladesh and West Bengal by tomorrow. Subsequently it is likely to move slowly west-northwestwards across Gangetic West Bengal and north Odisha & Jharkhand.
- ♦ A **cyclonic circulation** lay over central parts of south Uttar Pradesh and extends upto 1.5 km above mean sea level.
- ♦ The east-west **trough** ran from the **upper air cyclonic circulation** over southwest Bangladesh & adjoining Gangetic West Bengal to northeast Madhya Pradesh across Jharkhand, north Chhattisgarh between 3.1 & 4.5 km above mean sea level.
- ♦ A **cyclonic circulation** lay over northeast Assam at 0.9 km above mean sea level.

Weather Outlook for subsequent 3 days

- ♦ Scattered to fairly widespread rainfall likely to occur at isolated places over northwest, northeast, western coast of southern India & West Rajasthan.
- ♦ Isolated to scattered rainfall likely over western Himalayas, central & eastern India.

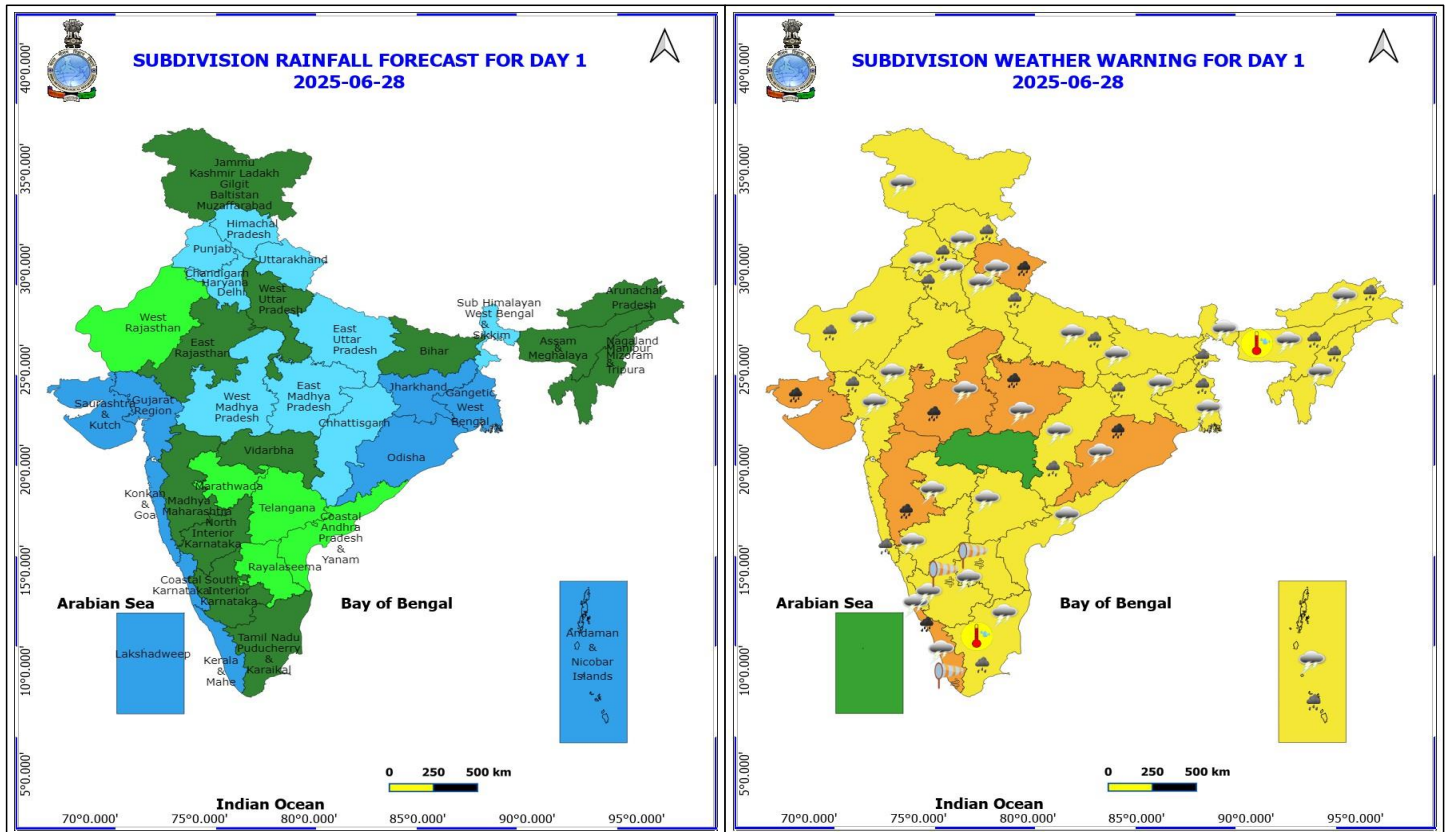


*Red color warning does not mean "Red Alert" Red color warning means "Take Action"

Forecast and warning for any day is valid from 0830 hours IST of day till 0830 hours IST of next day

For more details kindly visit <https://mausam.imd.gov.in> or contact 011-2434-4599

(Service to the nation since 1875)



28 June (Day 1)

- ❖ **Heavy to Very Heavy Rainfall** very likely at isolated places over Kerala & Mahe, Madhya Maharashtra, Madhya Pradesh, Odisha, Saurashtra & Kutch and Uttarakhand.
- ❖ **Heavy Rainfall** very likely at isolated places over Andaman & Nicobar Islands, Arunachal Pradesh, Assam & Meghalaya, Chhattisgarh, Gujarat Region, Haryana, Chandigarh & Delhi, Himachal Pradesh, Jharkhand, Konkan & Goa, Nagaland, Manipur, Mizoram and Tripura, Punjab, Tamil Nadu Puducherry & Karaikal, Uttar Pradesh, West Bengal & Sikkim and West Rajasthan.
- ❖ **Thunderstorm accompanied with lightning & gusty winds(40-50kmph)** very likely at isolated places over Andhra Pradesh, Interior Karnataka, Jammu-Kashmir-Ladakh-Gilgit-Baltistan-Muzaffarabad, Kerala & Mahe and Tamil Nadu Puducherry & Karaikal.
- ❖ **Thunderstorm accompanied with lightning & gusty winds(30-40kmph)** very likely at isolated places over Andaman & Nicobar Islands, Bihar, Coastal Karnataka, Gangetic West Bengal, Jharkhand, Marathwada, Odisha, Rajasthan and West Madhya Pradesh.
- ❖ **Thunderstorm accompanied with Lightning** very likely at isolated places over Arunachal Pradesh, Assam & Meghalaya, Chhattisgarh, East Madhya Pradesh, Gujarat Region, Haryana, Chandigarh & Delhi, Himachal Pradesh, Nagaland, Manipur, Mizoram and Tripura, Punjab, Sub Himalayan West Bengal & Sikkim, Telangana, Uttar Pradesh and Uttarakhand.
- ❖ **Strong Surface Winds** very likely at isolated places over Kerala & Mahe, Rayalaseema and South Interior Karnataka.
- ❖ **Hot and Humid weather** very likely at isolated places over Assam & Meghalaya and Tamil Nadu Puducherry & Karaikal.

***Red color warning does not mean "Red Alert" Red color warning means "Take Action"**

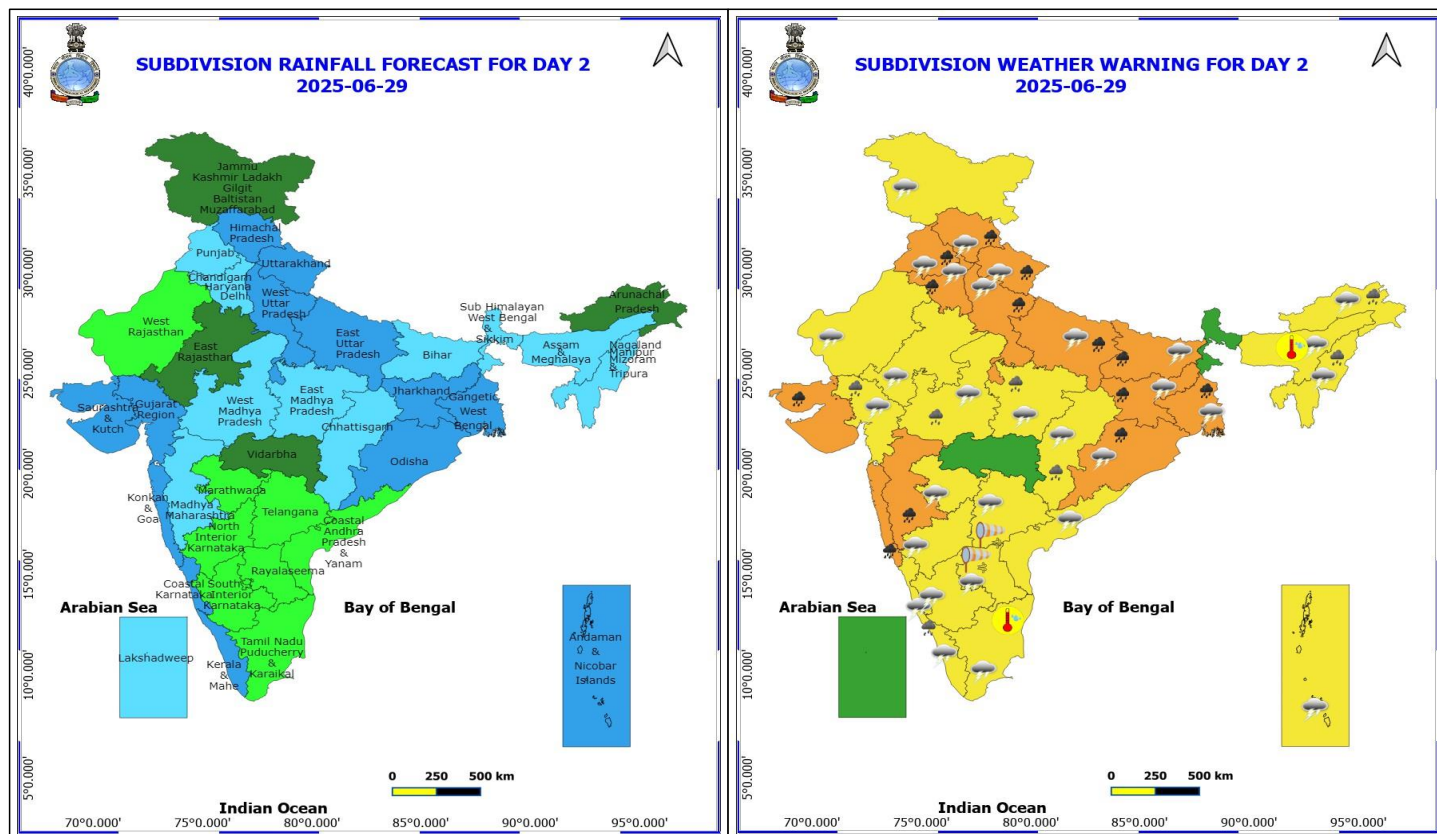
Forecast and warning for any day is valid from 0830 hours IST of day till 0830 hours IST of next day

For more details kindly visit <https://mausam.imd.gov.in> or contact 011-2434-4599

(Service to the nation since 1875)



- **Squally wind speed reaching 45 kmph to 55 kmph gusting to 65 kmph** is likely to prevail along and off Somalia, Oman & adjoining Yemen coasts, most parts of westcentral Arabian Sea & adjoining, most parts of eastcentral Arabian Sea, southern parts of northwest Arabian Sea, most parts of northeast Arabian Sea, over Gulf of Mannar.
- **Squally weather with wind speed 40 - 50 kmph gusting to 60 kmph** likely to prevail over most parts of eastcentral & adjoining areas of westcentral Arabian Sea, along and off Karnataka, Kerala coasts, over Lakshadweep area, along and off north Andhra Pradesh coast and adjoining Odisha coast, Bay of Bengal most parts of central Bay of Bengal and adjoining & most parts of west Bengal, Bangladesh coasts few parts of southeast Bay of Bengal, over Andaman Sea.
- **Squally weather with wind speed reaching 45 kmph to 55 kmph gusting to 65 kmph** likely to prevail over western parts of eastcentral & adjoining westcentral Arabian Sea, over most parts of northeast Arabian Sea, along and off Gujarat, Konkan, Goa coasts.



29 June (Day 2)

- ❖ **Heavy to Very Heavy Rainfall** very likely at isolated places over Bihar, Gangetic West Bengal, Haryana, Chandigarh & Delhi, Himachal Pradesh, Jharkhand, Konkan & Goa, Madhya Maharashtra, Odisha, Punjab, Saurashtra & Kutch, Uttar Pradesh and Uttarakhand.
- ❖ **Heavy Rainfall** very likely at isolated places over Arunachal Pradesh, Chhattisgarh, Gujarat Region, Kerala & Mahe, Madhya Pradesh and Nagaland, Manipur, Mizoram and Tripura.
- ❖ **Thunderstorm accompanied with lightning & gusty winds(40-50kmph)** very likely at isolated places over Andhra Pradesh, Interior Karnataka, Jammu-Kashmir-Ladakh-Gilgit-Baltistan-Muzaffarabad and Tamil Nadu Puducherry & Karaikal.
- ❖ **Thunderstorm accompanied with lightning & gusty winds(30-40kmph)** very likely at isolated places over Andaman & Nicobar Islands, Bihar, Costal Karnataka, Gangetic West Bengal, Jharkhand, Marathwada, Odisha, Rajasthan, Telangana and West Madhya Pradesh.
- ❖ **Thunderstorm accompanied with Lightning** very likely at isolated places over Arunachal Pradesh, Assam & Meghalaya, Chhattisgarh, East Madhya Pradesh, Gujarat Region, Haryana, Chandigarh & Delhi, Himachal Pradesh, Kerala & Mahe, Nagaland, Manipur, Mizoram and Tripura, Punjab, Uttar Pradesh and Uttarakhand.
- ❖ **Strong Surface Winds** very likely at isolated places over Rayalaseema and Telangana.
- ❖ **Hot and Humid weather** very likely at isolated places over Assam & Meghalaya and Tamil Nadu Puducherry & Karaikal.
- ❖ **Squally wind speed reaching 45 kmph to 55 kmph gusting to 65 kmph** is likely to prevail along and off Somalia, Oman & adjoining Yemen coasts, most parts of westcentral Arabian Sea & adjoining, most parts of

***Red color warning does not mean "Red Alert" Red color warning means "Take Action"**

Forecast and warning for any day is valid from 0830 hours IST of day till 0830 hours IST of next day

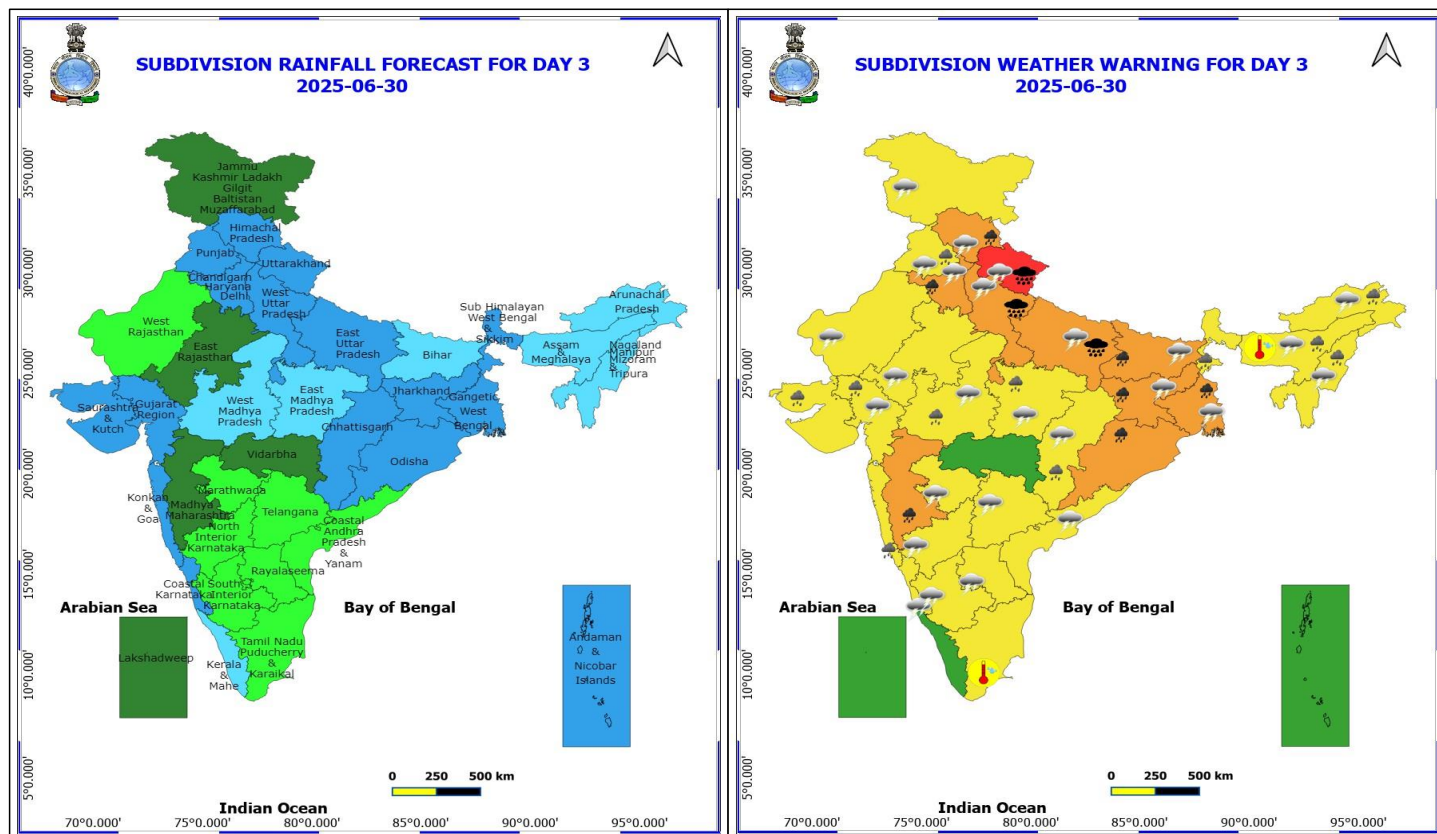
For more details kindly visit <https://mausam.imd.gov.in> or contact 011-2434-4599

(Service to the nation since 1875)



eastcentral Arabian Sea, most parts of northeast Arabian Sea, many parts of northwest Arabian Sea, northern parts of southwest Arabian Sea, over Gulf of Mannar.

- **Squally weather with wind speed 40 - 50 kmph gusting to 60 kmph** likely to prevail over most parts of central Bay, north Bay of Bengal, few parts of southeast Bay of Bengal, along and off north Andhra Pradesh, Odisha, West Bengal, Bangladesh coasts and over Andaman Sea.
- **Squally weather with wind speed reaching 45 kmph to 55 kmph gusting to 65 kmph** likely to prevail over over most parts of eastcentral & adjoining areas of westcentral Arabian Sea, over most parts of northeast Arabian Sea, along and off Gujarat, Konkan coasts.



30 June (Day 3)

- ❖ **Heavy to Very Heavy Rainfall with isolated Extremely Heavy Rainfall** very likely at isolated places over Uttar Pradesh and Uttarakhand.
- ❖ **Heavy to Very Heavy Rainfall** very likely at isolated places over Bihar, Gangetic West Bengal, Haryana, Chandigarh & Delhi, Himachal Pradesh, Jharkhand, Madhya Maharashtra and Odisha.
- ❖ **Heavy Rainfall** very likely at isolated places over Arunachal Pradesh, Assam & Meghalaya, Chhattisgarh, Gujarat State, Konkan & Goa, Madhya Pradesh, Nagaland, Manipur, Mizoram and Tripura, Punjab and Sub Himalayan West Bengal & Sikkim.
- ❖ **Thunderstorm accompanied with lightning & gusty winds(40-50kmph)** very likely at isolated places over Andhra Pradesh and Jammu-Kashmir-Ladakh-Gilgit-Baltistan-Muzaffarabad.
- ❖ **Thunderstorm accompanied with lightning & gusty winds(30-40kmph)** very likely at isolated places over Bihar, Coastal Karnataka, Gangetic West Bengal, Interior Karnataka, Jharkhand, Marathwada, Rajasthan and Telangana.
- ❖ **Thunderstorm accompanied with Lightning** very likely at isolated places over Arunachal Pradesh, Assam & Meghalaya, Chhattisgarh, Gujarat Region, Haryana, Chandigarh & Delhi, Himachal Pradesh, Madhya Pradesh, Nagaland, Manipur, Mizoram and Tripura, Punjab, Uttar Pradesh and Uttarakhand.
- ❖ **Hot and Humid weather** very likely at isolated places over Assam & Meghalaya and Tamil Nadu Puducherry & Karaikal.
- ❖ **Squally wind speed reaching 45 kmph to 55 kmph gusting to 65 kmph** is likely to prevail along and off Somalia, Oman & adjoining Yemen coasts, most parts of westcentral Arabian Sea & adjoining, most parts of

***Red color warning does not mean "Red Alert" Red color warning means "Take Action"**

Forecast and warning for any day is valid from 0830 hours IST of day till 0830 hours IST of next day

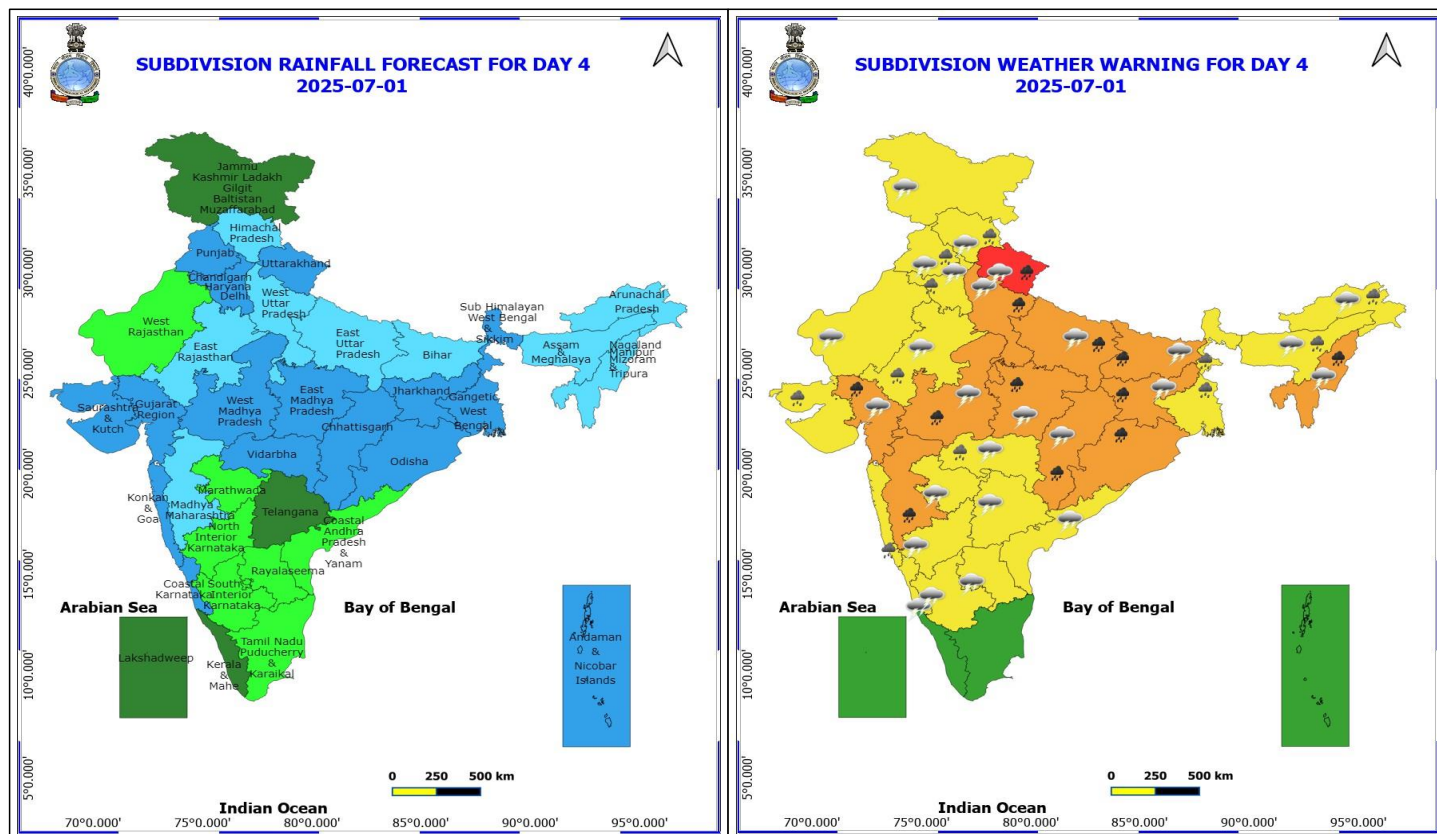
For more details kindly visit <https://mausam.imd.gov.in> or contact 011-2434-4599

(Service to the nation since 1875)



eastcentral Arabian Sea, most parts of northeast Arabian Sea, many parts of northwest Arabian Sea, northern parts of southwest Arabian Sea.

- ♦ **Squally weather with wind speed 40 - 50 kmph gusting to 60 kmph** likely to prevail over most parts of central Bay of Bengal, some northern parts of southeast Bay of Bengal, along and off Odisha, West Bengal, Bangladesh coasts, over north Bay of Bengal, over Andaman Sea.
- ♦ **Squally weather with wind speed reaching 45 kmph to 55 kmph gusting to 65 kmph** likely to prevail over most parts of eastcentral & adjoining areas of westcentral Arabian Sea, over most parts of northeast Arabian Sea, along and off Gujarat, north Konkan coasts, some parts of north Bay of Bengal, along and off north Odisha and west Bengal coasts.



1 July (Day 4)

- ❖ **Heavy to Very Heavy Rainfall** likely at isolated places over Bihar, Chhattisgarh, Gujarat Region, Jharkhand, Madhya Maharashtra, Madhya Pradesh, Nagaland, Manipur, Mizoram and Tripura, Odisha, Uttar Pradesh and Uttarakhand.
- ❖ **Heavy Rainfall** likely at isolated places over Arunachal Pradesh, Assam & Meghalaya, East Rajasthan, Haryana, Chandigarh & Delhi, Himachal Pradesh, Konkan & Goa, Punjab, Saurashtra & Kutch, Vidarbha and West Bengal & Sikkim.
- ❖ **Thunderstorm accompanied with lightning & gusty winds(40-50kmph)** likely at isolated places over Andhra Pradesh and Jammu-Kashmir-Ladakh-Gilgit-Baltistan-Muzaffarabad.
- ❖ **Thunderstorm accompanied with lightning & gusty winds(30-40kmph)** likely at isolated places over Bihar, Coastal Karnataka, Interior Karnataka, Jharkhand, Marathwada, Rajasthan and Telangana.
- ❖ **Thunderstorm accompanied with Lightning** likely at isolated places over Arunachal Pradesh, Assam & Meghalaya, Chhattisgarh, Gujarat Region, Haryana, Chandigarh & Delhi, Himachal Pradesh, Madhya Pradesh, Nagaland, Manipur, Mizoram and Tripura, Punjab, Uttar Pradesh, Uttarakhand and Vidarbha.
- **Squally wind speed reaching 45 kmph to 55 kmph gusting to 65 kmph** is likely to prevail along and off Somalia, Oman & adjoining Yemen coasts, most parts of westcentral Arabian Sea & adjoining, most parts of eastcentral Arabian Sea, most parts of northeast Arabian Sea, many parts of northwest Arabian Sea, northern parts of southwest Arabian Sea.
- **Squally weather with wind speed 40 - 50 kmph gusting to 60 kmph** likely to prevail over most parts of central Bay of Bengal, north Bay of Bengal, along and off Odisha, West Bengal, Bangladesh coasts, over north Bay of Bengal.
- **Squally weather with wind speed reaching 45 kmph to 55 kmph gusting to 65 kmph** likely to prevail over

***Red color warning does not mean "Red Alert" Red color warning means "Take Action"**

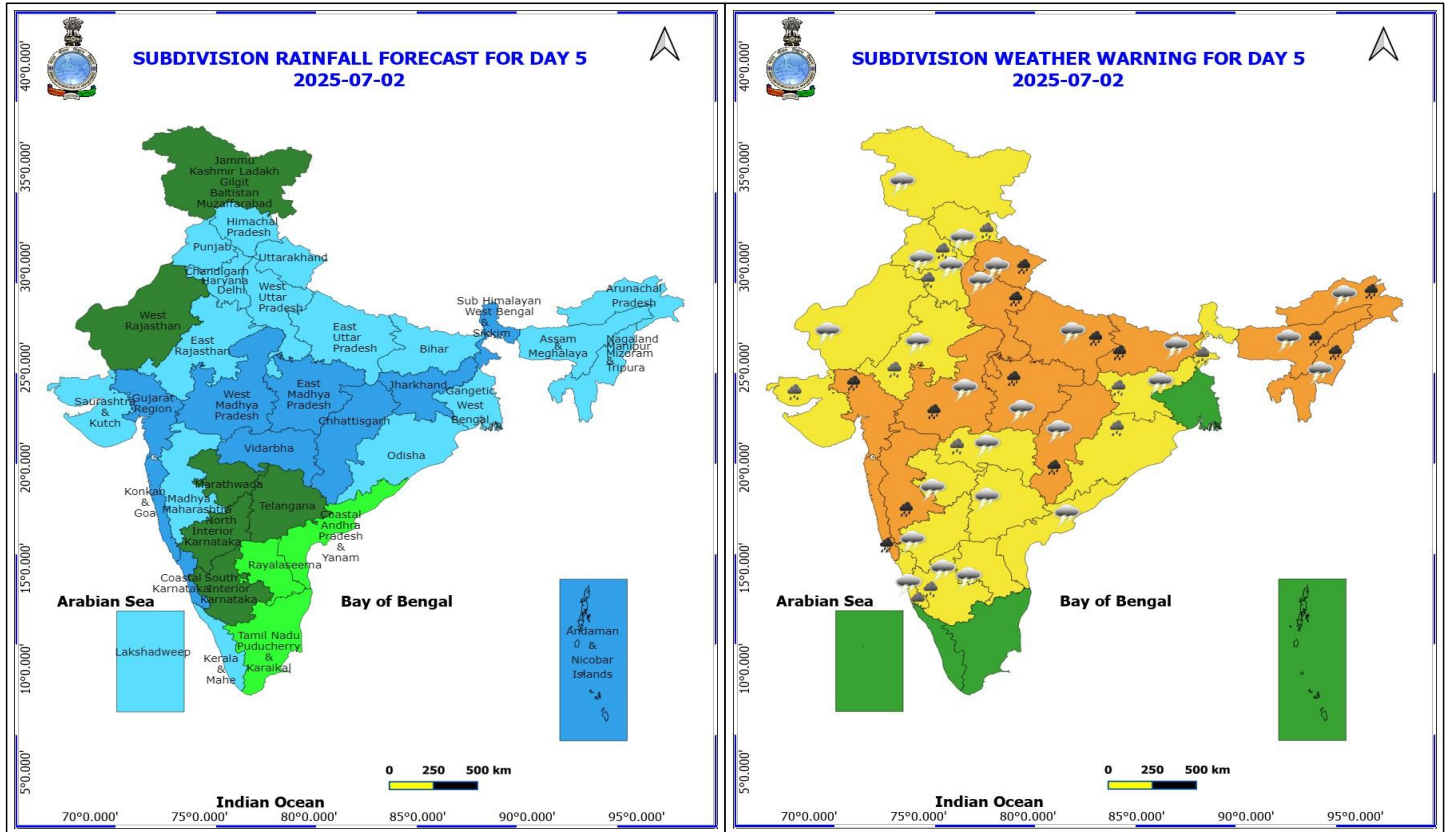
Forecast and warning for any day is valid from 0830 hours IST of day till 0830 hours IST of next day

For more details kindly visit <https://mausam.imd.gov.in> or contact 011-2434-4599

(Service to the nation since 1875)



over most parts of eastcentral & adjoining areas of westcentral Arabian Sea, over most parts of northeast Arabian Sea, along and off Gujarat, north Konkan coasts.



2 July (Day 5)

- ❖ **Heavy to Very Heavy Rainfall** likely at isolated places over Arunachal Pradesh, Assam & Meghalaya, Bihar, Chhattisgarh, Gujarat Region, Konkan & Goa, Madhya Maharashtra, Madhya Pradesh, Nagaland, Manipur, Mizoram and Tripura, Uttar Pradesh and Uttarakhand.
- ❖ **Heavy Rainfall** likely at isolated places over Costal Karnataka, East Rajasthan, Haryana, Chandigarh & Delhi, Himachal Pradesh, Jharkhand, Odisha, Punjab, Saurashtra & Kutch, South Interior Karnataka, Sub Himalayan West Bengal & Sikkim and Vidarbha.
- ❖ **Thunderstorm accompanied with lightning & gusty winds(40-50kmph)** likely at isolated places over Interior Karnataka and Jammu-Kashmir-Ladakh-Gilgit-Baltistan-Muzaffarabad.
- ❖ **Thunderstorm accompanied with lightning & gusty winds(30-40kmph)** likely at isolated places over Andhra Pradesh, Bihar, Costal Karnataka, Jharkhand, Marathwada, Rajasthan and Telangana.
- ❖ **Thunderstorm accompanied with Lightning** likely at isolated places over Arunachal Pradesh, Assam & Meghalaya, Chhattisgarh, Haryana, Chandigarh & Delhi, Himachal Pradesh, Madhya Pradesh, Nagaland, Manipur, Mizoram and Tripura, Punjab, Uttar Pradesh, Uttarakhand and Vidarbha.
- **Squally wind speed reaching 45 kmph to 55 kmph gusting to 65 kmph** is likely to prevail along and off Somalia, Oman & adjoining Yemen coasts, most parts of westcentral Arabian Sea & adjoining, most parts of eastcentral Arabian Sea, most parts of northeast Arabian Sea, many parts of northwest Arabian Sea, northern parts of southwest Arabian Sea.
- **Squally weather with wind speed 40 - 50 kmph gusting to 60 kmph** likely to prevail over few parts of central Bay of Bengal, north Bay of Bengal, along and off north Andhra Pradesh coast and south Odisha

*Red color warning does not mean "Red Alert" Red color warning means "Take Action"

Forecast and warning for any day is valid from 0830 hours IST of day till 0830 hours IST of next day

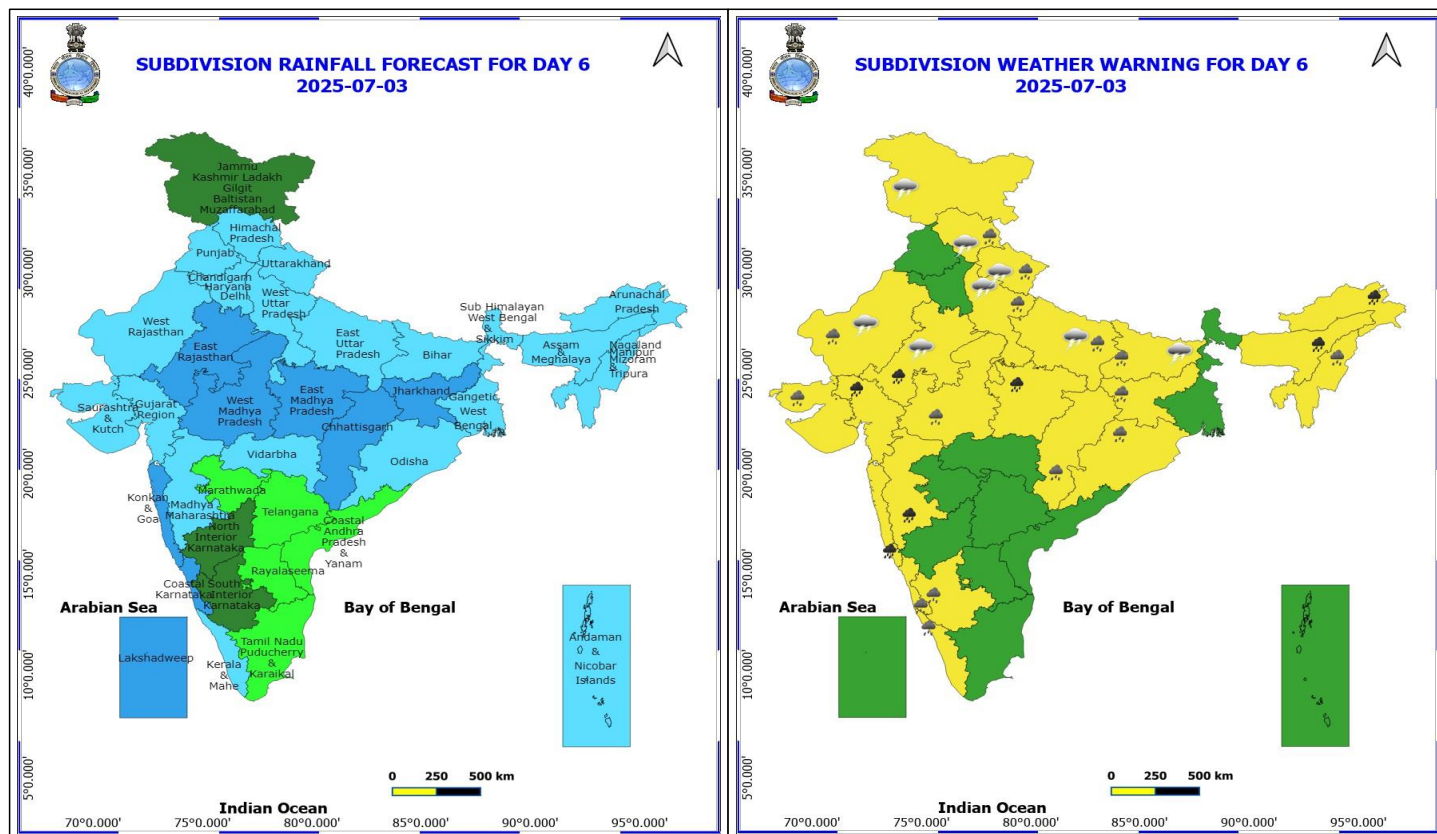
For more details kindly visit <https://mausam.imd.gov.in> or contact 011-2434-4599

(Service to the nation since 1875)



coast.

- ♦ **Squally weather with wind speed reaching 45 kmph to 55 kmph gusting to 65 kmph** likely to prevail over over most parts of eastcentral & adjoining areas of westcentral Arabian Sea, over most parts of northeast Arabian Sea, along and off Gujarat, north Konkan coasts.



3 July (Day 6)

- ❖ **Heavy to Very Heavy Rainfall** likely at isolated places over Arunachal Pradesh, Assam & Meghalaya, East Madhya Pradesh, East Rajasthan, Gujarat Region, Konkan & Goa and Madhya Maharashtra.
- ❖ **Heavy Rainfall** likely at isolated places over Bihar, Chhattisgarh, Coastal Karnataka, Himachal Pradesh, Jharkhand, Kerala & Mahe, Nagaland, Manipur, Mizoram and Tripura, Odisha, Saurashtra & Kutch, South Interior Karnataka, Uttar Pradesh, Uttarakhand, West Madhya Pradesh and West Rajasthan.
- ❖ **Thunderstorm accompanied with lightning & gusty winds(40-50kmph)** likely at isolated places over Jammu-Kashmir-Ladakh-Gilgit-Baltistan-Muzaffarabad.
- ❖ **Thunderstorm accompanied with lightning & gusty winds(30-40kmph)** likely at isolated places over Bihar and Rajasthan.
- ❖ **Thunderstorm accompanied with Lightning** likely at isolated places over Himachal Pradesh, Uttar Pradesh and Uttarakhand.

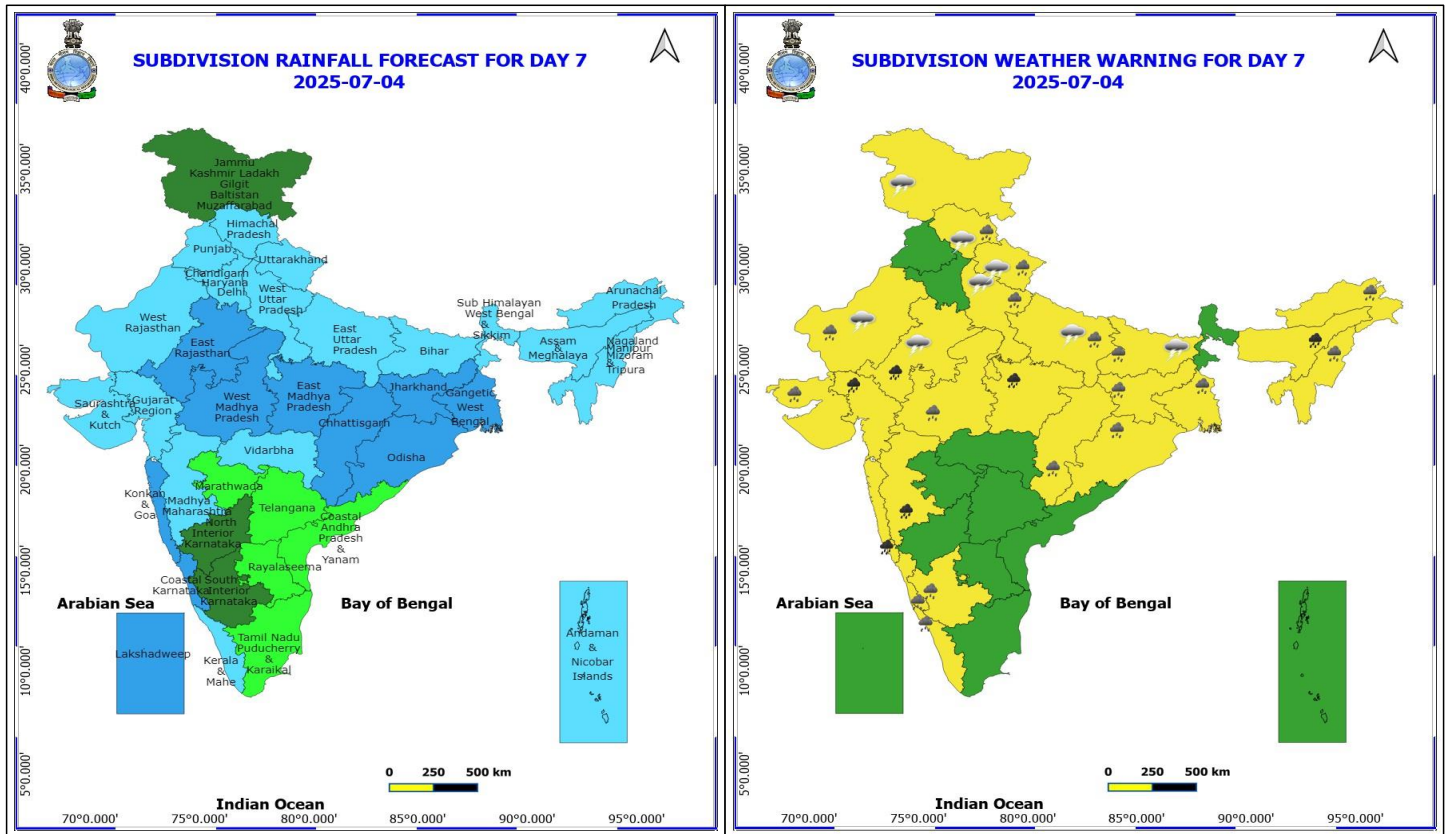
No Fishermen Warning

***Red color warning does not mean "Red Alert" Red color warning means "Take Action"**

Forecast and warning for any day is valid from 0830 hours IST of day till 0830 hours IST of next day

For more details kindly visit <https://mausam.imd.gov.in> or contact 011-2434-4599

(Service to the nation since 1875)



4 July (Day 7)

- ❖ **Heavy to Very Heavy Rainfall** likely at isolated places over Assam & Meghalaya, East Madhya Pradesh, East Rajasthan, Gujarat Region, Konkan & Goa and Madhya Maharashtra.
- ❖ **Heavy Rainfall** likely at isolated places over Arunachal Pradesh, Bihar, Chhattisgarh, Coastal Karnataka, Gangetic West Bengal, Himachal Pradesh, Jharkhand, Kerala & Mahe, Nagaland, Manipur, Mizoram and Tripura, Odisha, Saurashtra & Kutch, South Interior Karnataka, Uttar Pradesh, Uttarakhand, West Madhya Pradesh and West Rajasthan.
- ❖ **Thunderstorm accompanied with lightning & gusty winds(40-50kmph)** likely at isolated places over Jammu-Kashmir-Ladakh-Gilgit-Baltistan-Muzaffarabad.
- ❖ **Thunderstorm accompanied with lightning & gusty winds(30-40kmph)** likely at isolated places over Bihar and Rajasthan.
- ❖ **Thunderstorm accompanied with Lightning** likely at isolated places over Himachal Pradesh, Uttar Pradesh and Uttarakhand.

No Fishermen Warning

***Red color warning does not mean "Red Alert" Red color warning means "Take Action"**

Forecast and warning for any day is valid from 0830 hours IST of day till 0830 hours IST of next day

For more details kindly visit <https://mausam.imd.gov.in> or contact 011-2434-4599

(Service to the nation since 1875)

Flash Flood Warnings

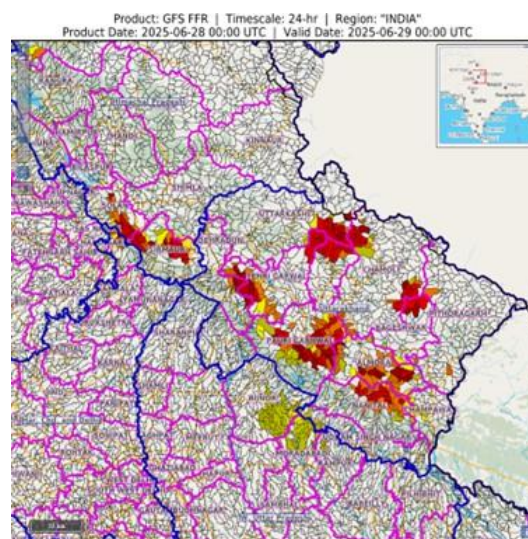
24 hours Outlook for the Flash Flood Risk (FFR) till 1130 IST of 29-06-2025 :

Moderate to High flash flood risk likely over few watersheds & neighbourhoods of following Met Sub-divisions during next 24 hours.

Himachal Pradesh – Solan, Kangra, Mnadi and Sirmaur districts.

Uttarakhand - Almora, Bageshwar, Chamoli, Champawat, Dehradun, Nanital, Pauri Garhwal, Pithoragarh, Rudraprayag, Tehri Garwal and Uttarkashi districts.

Surface runoff/ Inundation may occur at some fully saturated soils & low-lying areas over Area of Concern (AoC) as shown in map due to expected rainfall occurrence in next 24 hours.

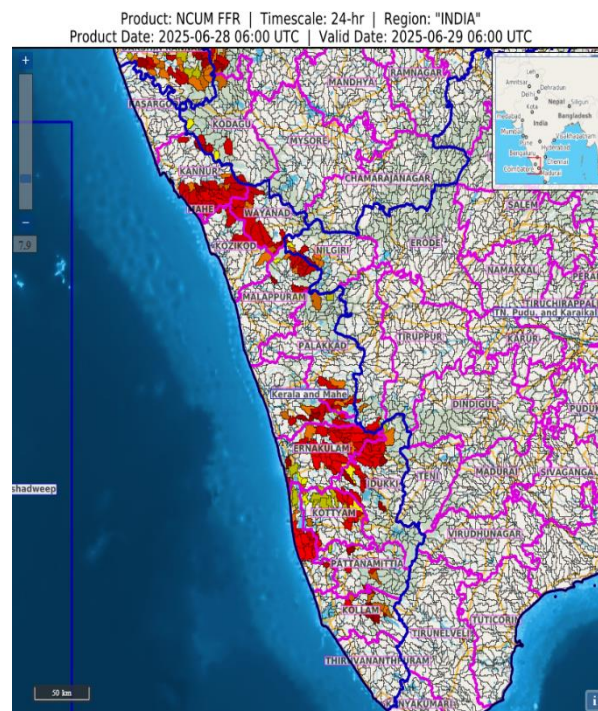


24 hours Outlook for the Flash Flood Risk (FFR) till 1130 IST of 29-06-2025 :

Moderate to High flash flood risk likely over few watersheds & neighbourhoods of following Met Sub-divisions during next 24 hours.

Kerala – Kannur, Waynad, Kozhikode, Malappuram, Palakkad, Eranakulam, Idukki, Kottayam, Alappuzha and Kollam districts.

Surface runoff/ Inundation may occur at some fully saturated soils & low-lying areas over Area of Concern (AoC) as shown in map due to expected rainfall occurrence in next 24 hours.



***Red color warning does not mean "Red Alert" Red color warning means "Take Action"**

Forecast and warning for any day is valid from 0830 hours IST of day till 0830 hours IST of next day

For more details kindly visit <https://mausam.imd.gov.in> or contact 011-2434-4599

(Service to the nation since 1875)



Table-1

7 Days Rainfall Forecast

S.No.	Subdivision	28- Jun	29- Jun	30- Jun	1- Jul	2- Jul	3- Jul	4- Jul
		Day 1	Day 2	Day 3	Day 4	Day 5	Day 6	Day 7
1	ANDAMAN & NICOBAR ISLANDS	WS	WS	WS	WS	WS	FWS	FWS
2	ARUNACHAL PRADESH	SCT	SCT	FWS	FWS	FWS	FWS	FWS
3	ASSAM & MEHGHALAYA	SCT	FWS	FWS	FWS	FWS	FWS	FWS
4	N. M. M. & T.	SCT	FWS	FWS	FWS	FWS	FWS	FWS
5	S.H. WEST BENGAL & SIKKIM	FWS	FWS	WS	WS	WS	FWS	FWS
6	GANGETIC WEST BENGAL	WS	WS	WS	WS	FWS	FWS	WS
7	ODISHA	WS	WS	WS	WS	FWS	FWS	WS
8	JHARKHAND	WS	WS	WS	WS	WS	WS	WS
9	BIHAR	SCT	FWS	FWS	FWS	FWS	FWS	FWS
10	EAST UTTAR PRADESH	FWS	WS	WS	FWS	FWS	FWS	FWS
11	WEST UTTAR PRADESH	SCT	WS	WS	FWS	FWS	FWS	FWS
12	UTTARAKHAND	FWS	WS	WS	WS	FWS	FWS	FWS
13	HARYANA, CHD & DELHI	FWS	FWS	WS	WS	FWS	FWS	FWS
14	PUNJAB	FWS	FWS	WS	WS	FWS	FWS	FWS
15	HIMACHAL PRADESH	FWS	WS	WS	FWS	FWS	FWS	FWS
16	JAMMU AND KASHMIR AND LADAKH	SCT	SCT	SCT	SCT	SCT	SCT	SCT
17	WEST RAJASTHAN	ISOL	ISOL	ISOL	ISOL	SCT	FWS	FWS
18	EAST RAJASTHAN	SCT	SCT	SCT	FWS	FWS	WS	WS
19	WEST MADHYA PRADESH	FWS	FWS	FWS	WS	WS	WS	WS
20	EAST MADHYA PRADESH	FWS	FWS	FWS	WS	WS	WS	WS
21	GUJRAT REGION	WS	WS	WS	WS	WS	FWS	FWS
22	SAURASHTRA & KUTCH	WS	WS	WS	WS	FWS	FWS	FWS
23	KONKAN & GOA	WS	WS	WS	WS	WS	WS	WS
24	MADHYA MAHARASHTRA	SCT	FWS	SCT	FWS	FWS	FWS	FWS
25	MARATHWADA	ISOL	ISOL	ISOL	ISOL	SCT	ISOL	ISOL
26	VIDARBHA	SCT	SCT	SCT	WS	WS	FWS	FWS
27	CHATTISGARH	FWS	FWS	WS	WS	WS	WS	WS
28	COASTAL ANDHRA PRADESH	ISOL	ISOL	ISOL	ISOL	ISOL	ISOL	ISOL
29	TELANGANA	ISOL	ISOL	ISOL	SCT	SCT	ISOL	ISOL
30	RAYALASEEMA	ISOL	ISOL	ISOL	ISOL	ISOL	ISOL	ISOL
31	TAMILNADU & PUDUCHERRY	SCT	ISOL	ISOL	ISOL	ISOL	ISOL	ISOL
32	COSTAL KARNATAKA	WS	WS	WS	WS	WS	WS	WS
33	NORTH INTERIOR KARNATAKA	SCT	ISOL	ISOL	ISOL	SCT	SCT	SCT
34	SOUTH INTERIOR KARNATAKA	SCT	ISOL	ISOL	ISOL	SCT	SCT	SCT
35	KERALA	WS	WS	FWS	SCT	FWS	FWS	FWS
36	LAKSHDWEAP	WS	FWS	SCT	SCT	FWS	WS	WS

Legend	Category	%Stations
WS	Widespread/Most Places	76-100
FWS	Fairly Widespread/Many Places	51-75
SCT	Scattered/ A Few Places	26-50
ISOL	Isolated Places	1-25
DRY	No Rain	0

*Red color warning does not mean "Red Alert" Red color warning means "Take Action"

Forecast and warning for any day is valid from 0830 hours IST of day till 0830 hours IST of next day

For more details kindly visit <https://mausam.imd.gov.in> or contact 011-2434-4599

(Service to the nation since 1875)

Fig. 1: Maximum Temperatures Dated 2025-06-28

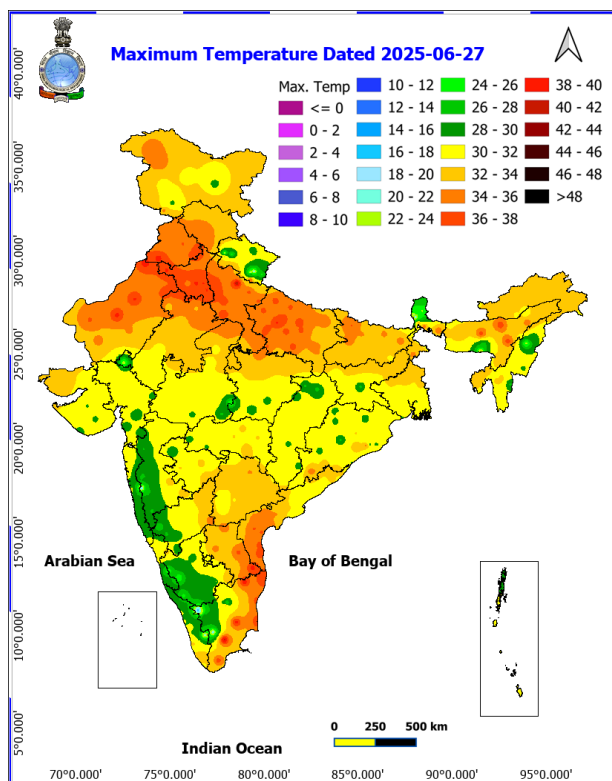


Fig. 2: Departure of Maximum Temp. Dated 2025-06-28

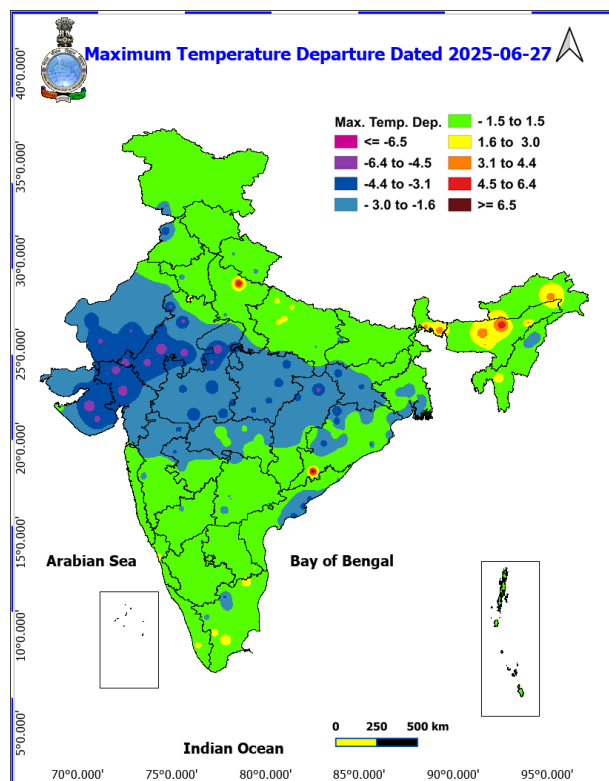


Fig. 3: Minimum Temperatures Dated 2025-06-28

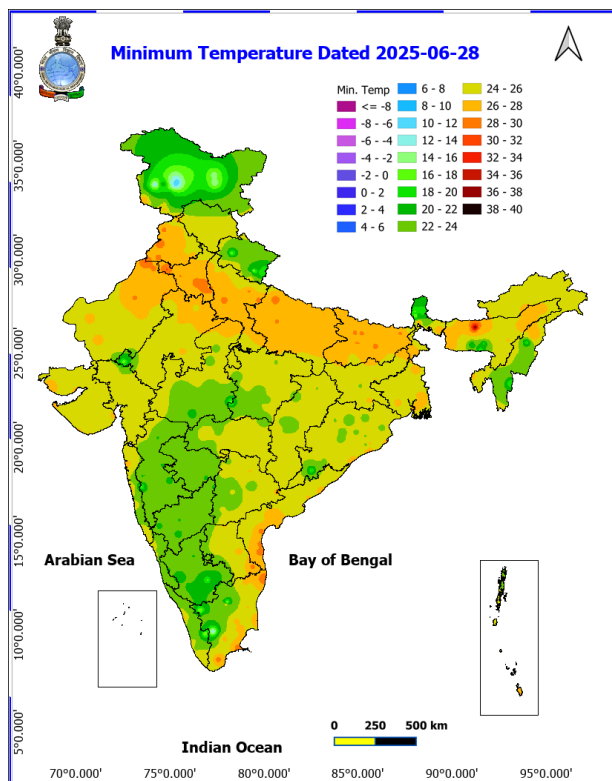
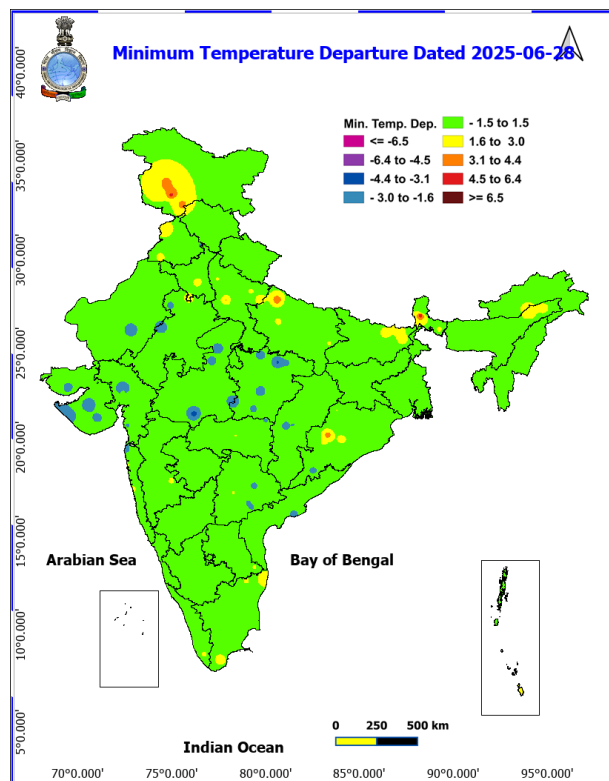
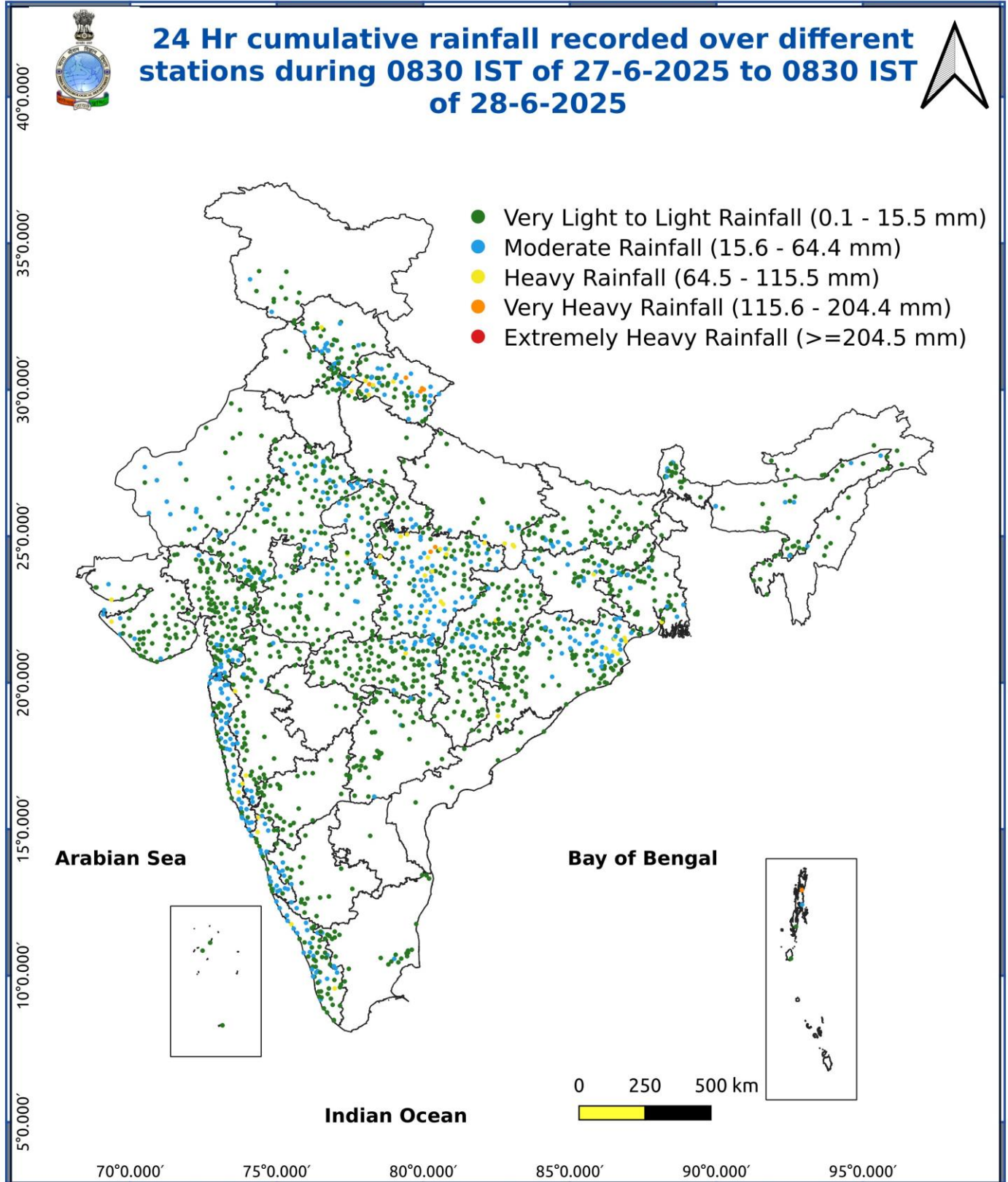


Fig. 4: Departure of Minimum Temp. Dated 2025-06-28





*Red color warning does not mean "Red Alert" Red color warning means "Take Action"

Forecast and warning for any day is valid from 0830 hours IST of day till 0830 hours IST of next day

For more details kindly visit <https://mausam.imd.gov.in> or contact 011-2434-4599

(Service to the nation since 1875)

- ♦ **Extremely heavy rainfall (>20 cm/24 hours) likely at isolated places over Uttarakhand and Uttar Pradesh on 30th June.**
- ♦ **Heavy to very heavy rainfall** at isolated places over Konkan & Goa, Ghat areas of Madhya Maharashtra, Gujarat state during next 7 days; Himachal Pradesh, Gangetic West Bengal on 29th & 30th June; Uttarakhand during 28th June-02nd July; Punjab on 29th June; Haryana, Chandigarh on 29th & 30th June; Uttar Pradesh on 29th June, 01st & 02nd July; East Rajasthan on 03rd & 04th July; West Madhya Pradesh on 28th June, 01st & 02nd July; East Madhya Pradesh on 28th June & during 01st-04th July; Nagaland & Chhattisgarh on 01st & 02nd July; Bihar during 29th June-02nd July; Jharkhand during 29th June-01st July; Odisha during 28th June-01st July; Arunachal Pradesh on 02nd & 03rd July; Assam & Meghalaya during 02nd-04th July; Kerala on 28th June.

Impact Expected

- ♦ Localized Flooding of roads, water logging in low lying areas and closure of underpasses mainly in urban areas of the above region.
- ♦ Occasional reduction in visibility due to heavy rainfall.
- ♦ Disruption of traffic in major cities due to water logging in roads leading to increased travel time.
- ♦ Minor damage to kutcha roads.
- ♦ Possibilities of damage to vulnerable structure.
- ♦ Localized Landslides/Mudslides/landslips/mudslips/landsinks/mudsinks.
- ♦ Damage to horticulture and standing crops in some areas due to inundation.
- ♦ It may lead to riverine flooding in some river catchments (for riverine flooding please visit Web page of CWC)

Action Suggested

- ♦ Check for traffic congestion on your route before leaving for your destination.
- ♦ Follow any traffic advisories that are issued in this regard.
- ♦ Avoid going to areas that face the water logging problems often.
- ♦ Avoid staying in vulnerable structure.

Agromet advisories for various parts of the country

Agromet advisories for likely impact of Heavy / Heavy to Very Heavy / Extremely Heavy Rainfall

(Based on the IBF and advisories issued by different AMFUs)

In **Uttarakhand**, postpone sowing of rice nursery. Ensure proper drainage facilities in pigeon pea, groundnut, maize, sugarcane, barnyard millet, finger millet, already sown rice nurseries, kidney beans, blackgram, green gram, vegetable and orchards. Harvest mature vegetables (pumpkin, tomato, okra, chilli, French bean etc.) and fruits and store in safe place. Tie the sugarcane plants together to avoid lodging. In **Bhabar and Tarai Zone of Uttarakhand**, postpone sowing of rice nurseries, soybean, kidney beans, blackgram and green gram. Keep the harvested produce of spring maize in safe place.

In **Himachal Pradesh**, provide drainage in the fields of vegetables and fruit orchards. Remove weeds and lower leaves from tomato plants to reduce the occurrence of soil-borne diseases. Strengthen the support for creepers and tall vegetable crops (tomato, capsicum etc.). Harvest matured fruits of plum, pear, stone fruit and keep in safe places to minimize losses due to heavy rains. In **mandi district** postpone sowing of maize and transplanting of rice. Drain out excess water from rice nurseries and already sown maize field.

West Uttar Pradesh, postpone sowing of maize. Drain out excess water from already sown maize, rice nurseries, vegetables, pigeon pea and sugarcane. Tie the sugarcane plants together to avoid lodging. **East Uttar Pradesh**,

***Red color warning does not mean "Red Alert" Red color warning means "Take Action"**

Forecast and warning for any day is valid from 0830 hours IST of day till 0830 hours IST of next day

For more details kindly visit <https://mausam.imd.gov.in> or contact 011-2434-4599

(Service to the nation since 1875)

postpone sowing of pigeon pea and black gram. Drain out excess water from vegetables, late sown rice nurseries ground nut green gram and maize.

Punjab - Drain out excess water from cotton, maize fields and orchards.

In **Chhattisgarh**, ensure proper drainage in rice nurseries.

In **Jharkhand**, make necessary arrangements to drain out excess water from already sown maize fields, rice and vegetable nurseries.

In **Gujarat** make necessary arrangements to drain out excess water in already sown rice nurseries, sugarcane fields, banana and mango plantations to prevent waterlogging. Provide support to sugarcane and banana to prevent lodging. In **Saurashtra & Kutch**, Drain out excess rain water from vegetable nurseries and horticultural plantations. Undertake propping in sugarcane with strong bamboo or tie the leaves together in a clump to protect against wind and heavy rain.

In **Konkan & Goa** make arrangements to drain out excess water from rice nurseries, fields of finger millet, groundnut and orchards to prevent waterlogging. In **ghat areas of Madhya Maharashtra**, drain out excess water from rice nurseries, vegetables and orchards to prevent waterlogging.

In **West Madhya Pradesh**, postpone harvesting of maize. Postpone sowing of pearl millet, soybean, pigeon pea and paddy nurseries. Make necessary arrangements to drain out excess water from vegetables and orchards to avoid waterlogging. In **East Madhya Pradesh**, keep the harvested produce of maize, green gram and black gram in safe places. Ensure proper drainage in already sown / transplanted fields.

In **Odisha**, ensure proper drainage from already sown rice nurseries, fields of maize and vegetables to prevent waterlogging. Cover rice and vegetable nurseries with plastic sheets to prevent washing away of seeds.

Gangetic West Bengal - Make necessary arrangements for draining out excess water from rice nursery and ginger avoid water stagnation.

In **Kerala**, ensure proper drainage facilities in rice nurseries, transplanted rice fields, coconut and banana plantations to prevent water logging. Undertake propping in banana to protect the plants from heavy rains.

Livestock / Fishery

Keep the animals inside the shed during heavy rainfall and provide them balanced feed.

Store feed and fodder in a safe place to prevent spoilage.

Construct an outlet with proper netting around the ponds to drain out excess water, thereby preventing fish from escaping in case of overflow.

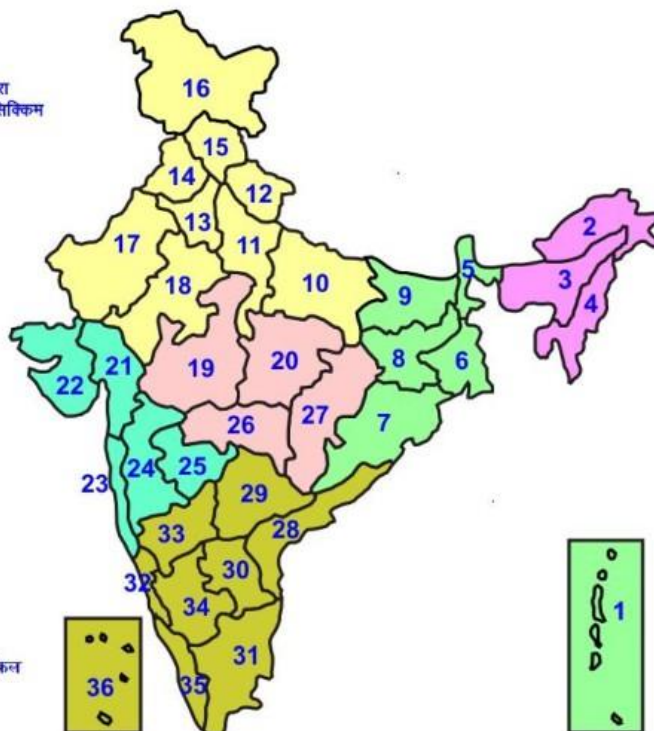
Agromet advisories for likely impact of Thunderstorm / Gusty Winds / Squally Winds

(Based on the IBF and advisories issued by different AMFUs)

Provide mechanical support to horticultural crops and staking or support to vegetables and young fruit plants / fruit-bearing plants to avoid lodging due to strong winds.

LEGENDS

- 1 अंडमान और निकोबार द्वीप समुह
- 2 अरुणाचल प्रदेश
- 3 असम और मेघालय
- 4 नागालैंड मनीपुर मीजोरम और त्रिपुरा
- 5 उप हिमालय पश्चिम बंगाल एवं सिक्किम
- 6 पश्चिम बंगाल
- 7 ओडिसा
- 8 झारखंड
- 9 बिहार
- 10 पूर्वी उत्तर प्रदेश
- 11 पश्चिम उत्तर प्रदेश
- 12 उत्तराखंड
- 13 हरियाणा चंडीगढ़ एवं दिल्ली
- 14 पंजाब
- 15 हिमाचल प्रदेश
- 16 जम्मू एवं कश्मीर एवं लद्दाख
- 17 पश्चिम राजस्थान
- 18 पूर्वी राजस्थान
- 19 पश्चिम मध्य प्रदेश
- 20 पूर्वी मध्य प्रदेश
- 21 गुजरात क्षेत्र
- 22 सौराष्ट्र एवं कच्छ
- 23 कोंकण एवं गोवा
- 24 मध्य महाराष्ट्र
- 25 मराठावाड़ा
- 26 विदर्भ
- 27 छत्तीसगढ़
- 28 तटीय आंध्र प्रदेश एवं यनम
- 29 तेलंगाना
- 30 रायलसेमा
- 31 तमिलनाडु, पुदुचेरी एवं कराईकल
- 32 तटिय कर्नाटक
- 33 आंतरिक उत्तरी कर्नाटक
- 34 आंतरिक दक्षिणी कर्नाटक
- 35 केरल एवं माहे
- 36 लक्षद्वीप



1. Andaman & Nicobar Islands
2. Arunachal Pradesh
3. Assam & Meghalaya
4. Nagaland, Manipur, Mizoram & Tripura
5. Sub-Himalayan West Bengal & Sikkim
6. Gangetic West Bengal
7. Orissa
8. Jharkhand
9. Bihar
10. East Uttar Pradesh
11. West Uttar Pradesh
12. Uttarakhand
13. Haryana, Chd & Delhi
14. Punjab
15. Himachal Pradesh
16. Jammu & Kashmir and Ladakh
17. West Rajasthan
18. East Rajasthan
19. West Madhya Pradesh
20. East Madhya Pradesh
21. Gujarat
22. Saurashtra
23. Konkan & Goa
24. Madhya Maharashtra
25. Marathawada
26. Vidharbha
27. Chhattisgarh
28. Coastal Andhra Pradesh & Yanam
29. Telangana
30. Rayalaseema
31. Tamilnadu, Puducherry & Karaikal
32. Coastal Karnataka
33. North Interior Karnataka
34. South Interior Karnataka
35. Kerala & Mahe
36. Lakshadweep

SPATIAL DISTRIBUTION (% of Stations reporting)

% Stations	Category	% Stations	Category
76-100	Widespread (WS/Most Places)	26-50	Scattered (SCT/ A Few Places)
51-75	Fairly Widespread (FWS/ Many Places)	1-25	Isolated (ISOL)

Subdivision Colour

- NO WARNING
- WATCH (BE UPDATED)
- ALERT (BE PREPARED TO TAKE ACTION)
- WARNING (TAKE ACTION)

Probabilistic Forecast

Terms	Probability of Occurrence (%)
Unlikely	< 25
Likely	25 - 50
Very Likely	50 - 75
Most Likely	> 75

-  Heavy Rain

 Thunderstorm & Lightning

 Strong surface winds

 Cold Wave

 Hot & Humid

 Very Heavy Rain

 Hailstorm

 Heat Wave


 Cold Day

 Extremely Heavy Rain

 Dust Storm

 Hot Day

 Ground Frost

 Heavy Snow

 Dust Raising Winds

 Warm Night

 Fog

*Red color warning does not mean "Red Alert" Red color warning means "Take Action"

Forecast and warning for any day is valid from 0830 hours IST of day till 0830 hours IST of next day

For more details kindly visit <https://mausam.imd.gov.in> or contact 011-2434-4599

(Service to the nation since 1875)

LEGENDS

WARNING

WARNING (TAKE ACTION)
ALERT (BE PREPARED)
WATCH (BE UPDATED)
NO WARNING (NO ACTION)

Probabilistic Forecast

Terms	Probability of Occurrence (%)
Unlikely	< 25
Likely	25 - 50
Very Likely	50 - 75
Most Likely	> 75



Heavy: 64.5 to 115.5 mm/cm *
Very Heavy: 115.6 to 204.4 mm/cm *
Extremely Heavy: > 204.4 mm/cm *



When maximum temperature of a station reaches $\geq 40^{\circ}\text{C}$ for plains and $\geq 30^{\circ}\text{C}$ for hilly regions
(a) Based on Departure from normal

Heat Wave: Maximum Temperature Departure from normal 4.5°C to 6.4°C .
Severe Heat Wave: Maximum Temperature Departure from normal $\geq 6.5^{\circ}\text{C}$

(b). Based on Actual maximum temperature

Heat Wave: When actual maximum temperature $\geq 45^{\circ}\text{C}$.
Severe Heat Wave: When actual maximum temperature $\geq 47^{\circ}\text{C}$

(c). Criteria for heat wave for coastal stations

When maximum temperature departure is $> 4.5^{\circ}\text{C}$ from normal. Heat Wave may be described provided maximum temperature $\geq 37^{\circ}\text{C}$



When maximum temperature remains 40°C

Warm Night: When minimum temperature departure 4.5°C to 6.4°C .
Severe Warm Night: When minimum temperature departure $> 6.4^{\circ}\text{C}$.



When minimum temperature of a station $\leq 10^{\circ}\text{C}$ for plains and $\leq 0^{\circ}\text{C}$ for hilly regions.

(a). Based on departure

Cold Wave: Minimum Temperature Departure from normal -4.5°C to -6.4°C .
Severe Cold Wave: Minimum Temperature Departure from normal $\leq -6.5^{\circ}\text{C}$

(b) Based on actual Minimum Temperature (for Plains only)

Cold Wave: When Minimum Temperature is $\leq 4.0^{\circ}\text{C}$
Severe Cold Wave: When Minimum Temperature is $\leq 2.0^{\circ}\text{C}$

(c) For Coastal Stations

When Minimum Temperature departure is $\leq -4.5^{\circ}\text{C}$ & actual Minimum Temperature is $\leq 15^{\circ}\text{C}$



When minimum temperature of a station $\leq 10^{\circ}\text{C}$ for plains and $\leq 0^{\circ}\text{C}$ for hilly regions
Based on departure

Cold Day: Maximum Temperature Departure from normal -4.5°C to -6.4°C .
Severe Cold Day: Maximum Temperature Departure from normal $\leq -6.5^{\circ}\text{C}$



Phenomenon of small droplets suspended in air and the horizontal visibility $< 1\text{km}$

Moderate Fog: When the visibility between 500-200 metres
Dense Fog: when the visibility between 50-200 metres
Very Dense Fog: when the visibility < 50 metres



Sudden electrical discharges manifested by a flash of light (Lightning) and a sharp rumbling sound (thunder)



An ensemble of particles of dust or sand energetically lifted to great heights by a strong and turbulent wind.



Ice deposits on ground

Air temperature $\leq 4^{\circ}\text{C}$ (over Plains)



A strong wind that rises suddenly, lasts for atleast 1 minute.

Moderate: Wind speed 52-61 kmph
Severe: Wind speed 62-87 kmph
Very Severe: Wind speed > 87 kmph



Effect of various waves in the sea over specific area

Rough to very rough: Wind speed 41-62 kmph (22-33 knots) & Wave height 2.5-6 metre
High to very high: Wind speed 63-117 kmph (34-63 knots) & Wave height 6-14 metre
Phenomenal: Wind speed > 117 kmph (> 63 knots) & Wave height > 14 metre



Cyclonic Storm: Wind speed 62-87 kmph (34-47 knots)

Severe Cyclonic Storm: Wind speed 88-117 kmph (48-63 knots)
Very Severe Cyclonic Storm: Wind speed 118-165 kmph (64-89 knots)
Extremely Severe Cyclonic Storm: Wind speed 166-220 kmph (90-119 knots)
Super Cyclone Storm: Wind speed > 220 kmph (> 119 knots)

*Red color warning does not mean "Red Alert" Red color warning means "Take Action"

Forecast and warning for any day is valid from 0830 hours IST of day till 0830 hours IST of next day

For more details kindly visit <https://mausam.imd.gov.in> or contact 011-2434-4599

(Service to the nation since 1875)