

Friday, May 30, 2025  
Time of Issue: 1315 hours IST  
(MID-DAY)

## ALL INDIA WEATHER SUMMARY AND FORECAST BULLETIN

### Significant Weather Features:

#### Northeast India:

- ❖ Fairly widespread to widespread light/moderate rainfall likely to continue over Northeast India during next 7 days.
- ❖ Isolated heavy to very heavy rainfall very likely over Sub-Himalayan West Bengal & Sikkim during 30th May- 01st June, Assam & Meghalaya, Arunachal Pradesh, Nagaland, Manipur, Mizoram & Tripura during next 7 days with **isolated extremely heavy rainfall** also likely over Assam & Meghalaya on 30th May & 01st June; Tripura and Arunachal Pradesh on 30th May.
- ❖ **Isolated exceptionally heavy rainfall (>30cm)** also likely over Meghalaya on 30th May.

#### South Peninsular India:

- ❖ Fairly widespread to widespread light/moderate rainfall accompanied with **thunderstorm, lightning & gusty winds speed reaching 40-50 kmph** over Kerala & Mahe, Karnataka during 30th May-01st June; **Isolated to scattered** light/moderate rainfall accompanied with **thunderstorm, lightning & gusty winds speed reaching 40-50 kmph** likely over Tamilnadu Puducherry & Karaikal, Coastal Andhra Pradesh & Yanam, Rayalaseema and Telangana on 30th & 31st May.
- ❖ **Isolated heavy rainfall** likely over Coastal Andhra Pradesh, Lakshadweep, South Interior Karnataka on 30th; Coastal Karnataka during 30th May-02nd June, Kerala & Mahe 31st May & 01st June and **isolated heavy to very heavy rainfall** over Tamilnadu Puducherry & Karaikal, Coastal Karnataka on 30th May.
- ❖ **Isolated extremely heavy rainfall** very likely over Kerala & Mahe on 30th May.

#### Northwest India:

- ❖ **Scattered to fairly widespread** light/moderate rainfall accompanied with **thunderstorm, lightning & gusty winds speed reaching 40-50 kmph** likely over Jammu-Kashmir-Ladakh-Gilgit-Baltistan-Muzaffarabad, Himachal Pradesh, Uttarakhand, Punjab, Haryana Chandigarh & Delhi; **isolated to scattered** rainfall over Uttar Pradesh, Rajasthan during 30th May-03rd June.
- ❖ **Thundersquall wind speed reaching 50-60 kmph gusting to 70 kmph** likely over Punjab, Haryana Chandigarh & Delhi, Uttar Pradesh on 30th, Himachal Pradesh on 31st May & 01st June.
- ❖ **Isolated heavy rainfall** also likely over Jammu-Kashmir-Ladakh-Gilgit-Baltistan-Muzaffarabad on 30th & 31st, Himachal Pradesh on 31st May & 01st June, Uttarakhand during 30th May -01st June.
- ❖ **Dust storm** also very likely at isolated places over West Rajasthan on 30th May and during 02nd-05th June.

#### West India:

- ❖ **Scattered to fairly widespread** light/moderate rainfall accompanied with **thunderstorm, lightning** over Konkan & Goa, Madhya Maharashtra, Gujarat State, Marathwada on 30th May.
- ❖ **Isolated heavy rainfall** likely over Konkan & Goa during 30th May-02nd June.

#### East & Central India:

- ❖ **Scattered to fairly widespread** light/moderate rainfall accompanied with **thunderstorm, lightning & gusty winds speed reaching 40-50 kmph** likely over Vidarbha, Chhattisgarh, Gangetic West Bengal, Jharkhand, Odisha, Madhya Pradesh, Bihar during 30th May-01st June with **Thundersquall wind speed reaching 50-60 kmph gusting to 70 kmph** likely over Madhya Pradesh, Chhattisgarh on 30th and Vidarbha on 02nd & 03rd June.

#### Maximum Temperature Forecast:

- ❖ Fall by about 2-3°C in maximum temperatures likely over Northwest India during next 24 hours and no large change thereafter.
- ❖ Gradual rise by 3-5°C in maximum temperatures likely over East India during next 4 days and no large change thereafter.
- ❖ Rise by about 2-4°C in maximum temperatures likely over Central India during next 2 days and no large change thereafter.
- ❖ No significant change in maximum temperatures likely over rest parts of the country.

#### FISHERMEN WARNINGS

- (A) **Fishermen are advised not to venture over** south Arabian Sea & southern parts of central Arabian Sea from 1130 IST of 30th to 0530 IST of 01st June; over southeast Arabian Sea, Lakshadweep, Maldives, Comorin areas from 0530 IST of 1st June to 0530 IST of 04th June; over Gulf of Mannar from 1130 IST of 30th to 0530 IST of 04th June; and along & off Kerala, Karnataka coasts from 1130 IST of 30th to 0530 IST of 02nd June; along and off south Konkan, Goa coasts on 29th May; along and off Somalia coasts and adjoining sea areas from 1130 IST of 29th to 0530 IST of 03rd June; along and off Gujarat coast from 0530 IST of 30th to 0530 IST of 02nd June; along and off Goa coast on 30th May; along and off north Gujarat coast from 1130 IST of 30th to 0530 IST of 02nd June; over northeast Arabian Sea on 0530 IST of 2nd June to 0530 IST of 4th June.
- (B) Fishermen are advised not to venture along & off Tamil Nadu coast on 30th May; off Andhra Pradesh, Odisha coasts from 1130 IST of 30th to 0530 IST of 02nd June; along and off West Bengal, Bangladesh, Myanmar coasts from 1130 IST of 30th to 0530 IST of 01st June, over entire Bay of Bengal from 1130 IST of 29th to 0530 IST of 31st May; off Tamil Nadu, Andhra Pradesh, Odisha, West Bengal, Bangladesh, Myanmar coasts from 0530 IST of 31st May to 0530 IST of 01st June; Most parts of Bay of Bengal from 1130 IST of 30th to 0530 IST of 04th June; over Andaman Sea on 30th May.

Total suspension of fishing operations over above-mentioned areas and dates.

## Main Weather Observations:

- ❖ **Significant rainfall recorded (in cm)** (from 0830 hours IST of yesterday to 0830 hours IST of today): **Assam & Meghalaya:** Cherrapunji(rkm) (dist East Khasi Hills) 38; Mawsynram (dist East Khasi Hills) 26; Mawphlang (dist East Khasi Hills) 25; Cherrapunji (dist East Khasi Hills) 22; Williamnagar (dist East Garo Hills) 17; Mawkyrwat (dist South West Khasi Hills), Resubelpara (dist North Garo Hills) 15 Each; Jowai (dist West Jaintia Hills), Bhaghmara (dist South Garo Hills), Umrangso (dist Dima Hasao) 14 Each; Shillong CSO (dist East Khasi Hills), Shillong AWS (dist East Khasi Hills) 13 Each; Williamnagar AWS (dist East Garo Hills), Khliehriat (dist East Jaintia Hills) 12 Each;; **Coastal Karnataka:** Mangaluru (dist Dakshina Kannada) 26; Mulki (dist Dakshina Kannada) 19; Panambur (dist Dakshina Kannada), Kota (dist Udupi) 18 Each; Udupi (dist Udupi) 17; Manki (dist Uttara Kannada), Kundapur (dist Udupi) 16 Each; Uppinangadi (dist Dakshina Kannada) 15; Honavar (dist Uttara Kannada) 13; Kumta (dist Uttara Kannada) 12; Karkala (dist Udupi) 11; ; **Kerala & Mahe:** Kudulu (dist Kasargod) 20; Vadakara (dist Kozhikode) 19; Hosdurg (dist Kasargod), Bayar AWS (dist Kasargod) 17 Each; Peringome AWS (dist Cannur), Padannakkad AWS (dist Kasargod), Muliya AWS (dist Kasargod) 15 Each; Taliparamba (dist Cannur), Kannur (dist Cannur) 14 Each; Peermade To (dist Idukki) 13; Vadakara AWS (dist Kozhikode), Lower Sholayar AWS (dist Thrissur), Ernakulam South (dist Ernakulam) 12 Each; Kochi IAF (dist Ernakulam), Munnar Kseb (dist Idukki), Pinarayi AWS (dist Cannur), Mattanchery AWS (dist Ernakulam), Kunnathanam AWS (dist Pathanamthitta) 11 Each; Kurudamannil (dist Pathanamthitta), Chalakudi (dist Thrissur), Piravam (dist Ernakulam), Angadipuram (dist Malappuram), Vaikom (dist Kottayam), Ayyankunnu AWS (dist Cannur), Choondy AWS (dist Ernakulam), Kalamassery AWS (dist Ernakulam), Vaikom AWS (dist Kottayam), Venkurinji AWS (dist Pathanamthitta) 10 Each; h; **Nagaland, Manipur, Mizoram & Tripura:** Sonamura (dist Sipahijala) 17; Jirania ARG (dist West Tripura) 16; Arundhutinagar (dist West Tripura), Sonamura ARG (dist Sipahijala) 14 Each; Teliamura ARG (dist Khowai), Agartala AP (dist West Tripura), Khowai AWS (dist Khowai), Met Agartala AWS (dist West Tripura), Khowai (dist Khowai) 12 Each; Sabroom (dist South Tripura), Budhjonnagar ARG (dist West Tripura) 11 Each; Bishalgarh (dist Sipahijala), Amarapur (dist Gomati), Belonia (dist South Tripura), Sabroom AWS (dist South Tripura), Gandachara AWS (dist Dhalai), Belonia ARG (dist South Tripura), Bagafa (dist South Tripura) 9 Each; **Tamil Nadu, Puducherry & Karaikal:** Chinnakalar (dist Coimbatore) 13; Valparai PTO (dist Coimbatore), Nalumukku (dist Tirunelveli), Oothu (dist Tirunelveli) 12 Each; Valparai Taluk Office (dist Coimbatore), Avalanche (dist Nilgiris), Valparai Pap (dist Coimbatore) 11 Each; Upper Bhavani (dist Nilgiris), Cincona (dist Coimbatore), Kakkachi (dist Tirunelveli) 10 Each; ; **Marathwada:** Lohara (dist Dharashiv) 12; **Konkan & Goa:** Quepem (dist South Goa) 10; Canacona (dist South Goa) 9; Sanguem (dist South Goa) 7; **Arunachal Pradesh:** Bomdila AWS (dist West Kameng) 10; Daparijo (dist Upper Subansiri), Daporizo AWS (dist Upper Subansiri), Hawaii (dist Anjaw) 8 Each; **Lakshadweep:** Amini (dist Lakshadweep) 8; Agathi (dist Lakshadweep) 7; **South Interior Karnataka:** Bhagamandala (dist Kodagu) 8; **Sub Himalayan West Bengal & Sikkim:** Amfu Kalimpong (dist Kalimpong) 8; **Himachal Pradesh:** Rajgarh (dist Sirmaur) 7.
- ❖ **Heavy Rainfall** (from 0830 hours IST of yesterday to 0830 hours IST of today): **Heavy to very heavy rainfall** at some places with **extremely heavy falls** recorded at isolated places over Assam & Meghalaya, Tripura; **Heavy to very heavy rainfall** at some places over Kerala & Mahe, Coastal Karnataka; at isolated places over Tamilnadu Puducherry & Karaikal, Marathawada; **Heavy rainfall** at isolated places over Lakshadweep, South Interior Karnataka, Telangana, Goa, Himachal Pradesh, Arunachal Pradesh and West Madhya Pradesh.
- ❖ **Thunderstorm accompanied with Squally/Gusty winds** with speed 70-95 kmph prevailed at isolated places over Assam & Meghalaya Gujarat Region, Nagaland, Manipur, Mizoram & Tripura; with speed 40-70 kmph at isolated places over West Bengal & Sikkim, Andaman Nicobar Islands, Bihar, Jharkhand, Odisha, Tamilnadu Puducherry & Karaikal, Kerala & Mahe, South Interior Karnataka, Telangana, Konkan Goa, Madhya Maharashtra, Saurashtra & Kutch, Marathawada and Northwest India.
- ❖ **Hailstorm** observed at isolated places over Jammu-Kashmir, Himachal Pradesh and Uttarakhand.
- ❖ **Minimum Temperature Departures (as on 30-05-2025):** Minimum Temperature Departures are **markedly above normal (> 5.1°C)** at many places over East Madhya Pradesh; at isolated places over Assam & Meghalaya, Bihar, East Uttar Pradesh, West Uttar Pradesh, Himachal Pradesh, Jammu-KashmirLadakh-Gilgit-Baltistan-Muzaffarabad, West Madhya Pradesh, Gujarat Region and Saurashtra & Kutch. **appreciably above normal (3.1°C to 5.0°C)** at few places over Andaman & Nicobar Islands and West Rajasthan; at isolated places over Sub Himalayan West Bengal & Sikkim, Haryana-Chandigarh-Delhi, Punjab, East Rajasthan, Konkan & Goa and Madhya Maharashtra. **above normal (1.6°C to 3.0°C)** at isolated places over Nagaland, Manipur, Mizoram & Tripura, Gangetic West Bengal, Odisha, Uttarakhand and Tamil Nadu, Puducherry & Karaikal. **near normal (-1.5°C to 1.5°C)** at many places over North Interior Karnataka; at most places over Arunachal Pradesh, Jharkhand, Coastal Andhra Pradesh & Yanam, Rayalaseema and South Interior Karnataka; at few places over Chhattisgarh and Kerala & Mahe; at isolated places over Marathwada, Vidarbha and Telangana. Today, **the lowest minimum temperature of 20.0°C is reported at Matheran (Maharashtra)** over the Plains of India.
- ❖ **Maximum Temperature Departures (as on 29-05-2025):** Maximum Temperature were **markedly above normal (> 5.1°C)** at isolated places over West Uttar Pradesh and Himachal Pradesh. **appreciably above normal (3.1°C to 5.0°C)** at isolated places over Jammu-KashmirLadakh-Gilgit-Baltistan-Muzaffarabad, East Madhya Pradesh and Tamil Nadu, Puducherry & Karaikal. **above normal (1.6°C to 3.0°C)** at few places over Punjab; at isolated places over Assam & Meghalaya, Sub Himalayan West Bengal & Sikkim, Bihar, East Uttar Pradesh, West Rajasthan and West Madhya Pradesh. **near normal (-1.5°C to 1.5°C)** at many places over Uttarakhand and Haryana-Chandigarh-Delhi; at most places over Arunachal Pradesh and Saurashtra & Kutch; at few places over Andaman & Nicobar Islands, Odisha, East Rajasthan, Gujarat Region, Konkan & Goa and Lakshadweep; at isolated places over Nagaland, Manipur, Mizoram & Tripura, Gangetic West Bengal, Coastal Andhra Pradesh & Yanam and Kerala & Mahe. Today, **the highest maximum temperature of 45.3°C was reported at Sri Ganganagar (West Rajasthan).**

\* Red colour warning does not mean "Red Alert", Red colour warning means "Take Action".

Forecast and Warning for any day is valid from 0830 hours IST of day till 0830 hours IST of next day.

For more details, kindly visit <https://mausam.imd.gov.in> or contact: 011-2434-4599

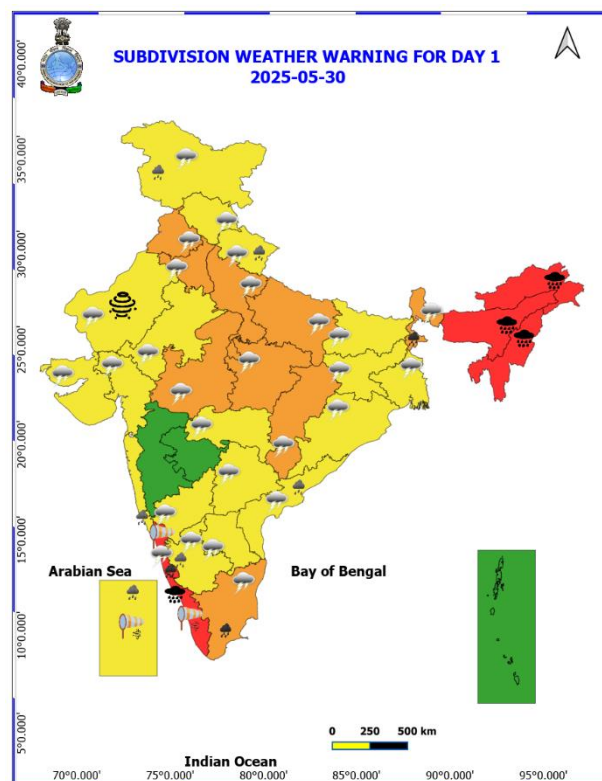
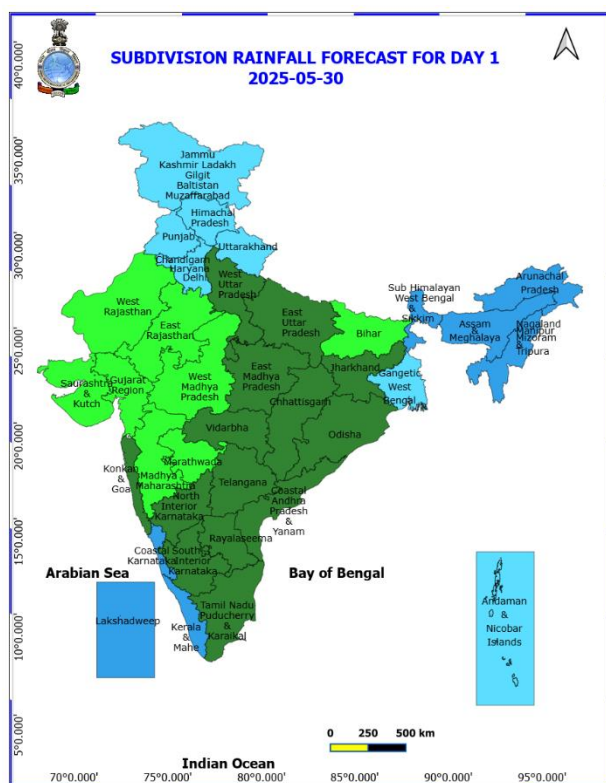
(Service to the Nation since 1875)

## Meteorological Analysis (Based on 0830 hours IST)

- ❖ The Northern Limit of Monsoon continues to pass through 17.0°N/55°E, 17.5°N/60°E, 18°N/65°E, 18.5°N/70°E, Mumbai, Ahilyanagar, Adilabad, Bhawanipatna, Puri, Sandhead Island, 23.5°N/89.5°E, Balurghat, 30°N/85°E.
- ❖ The **depression** over Bangladesh moved north-northeastwards with a speed of 18 kmph during past 6 hours and lay centred at 0830 hours IST of today, the 30th May 2025 over Bangladesh near latitude 24.4°N and longitude 89.6°E, about 40 km west-northwest of Tangail (Bangladesh), 110 km northwest of Dhaka (Bangladesh), 140 km north of Berhampore (India) and 260 km west-southwest of Shillong (India). It is very likely to continue to move nearly north-northeastwards and weaken into a **well-marked low pressure area** during next 12 hours.
- ❖ The **Western Disturbance** now seen as a trough in middle & upper troposphere with its axis at 5.8 km above mean sea level roughly along Long. 67°E to the north of Lat. 25°N.
- ❖ An **upper air cyclonic circulation** lies over central Pakistan at 1.5 km above mean sea level.
- ❖ The **upper air cyclonic circulation** over Punjab at 0.9 km above mean sea level persists.
- ❖ An **upper air cyclonic circulation** lies over west Rajasthan at 3.1 km above mean sea level.
- ❖ An **upper air cyclonic circulation** lies over northwest Uttar Pradesh at 1.5 km above mean sea level.
- ❖ The **upper air cyclonic circulation** over central parts of Uttar Pradesh at 0.9 km above mean sea level persists.
- ❖ The **trough** from the **cyclonic circulation** over Punjab to the centre of Depression over Bangladesh across Haryana, cyclonic circulation over central parts of Uttar Pradesh, north Jharkhand at 0.9 km above mean sea level has become less marked.
- ❖ The **Western Disturbance** as an upper air cyclonic circulation over Jammu-Kashmir at 3.1 km above mean sea level with a trough aloft in middle & upper troposphere with its axis at 5.8 km above mean sea level roughly along Long. 75°E to the north of Lat. 32°N has moved away northeastwards.

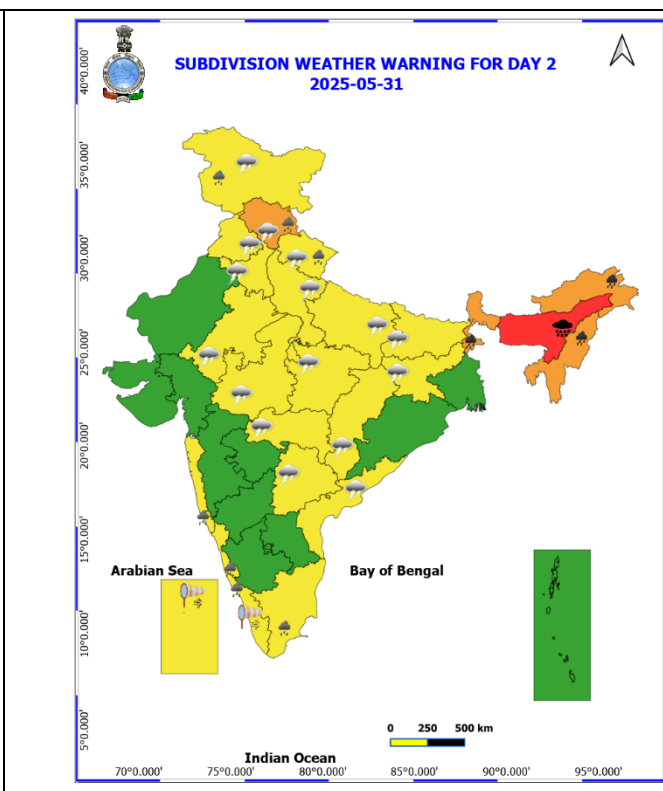
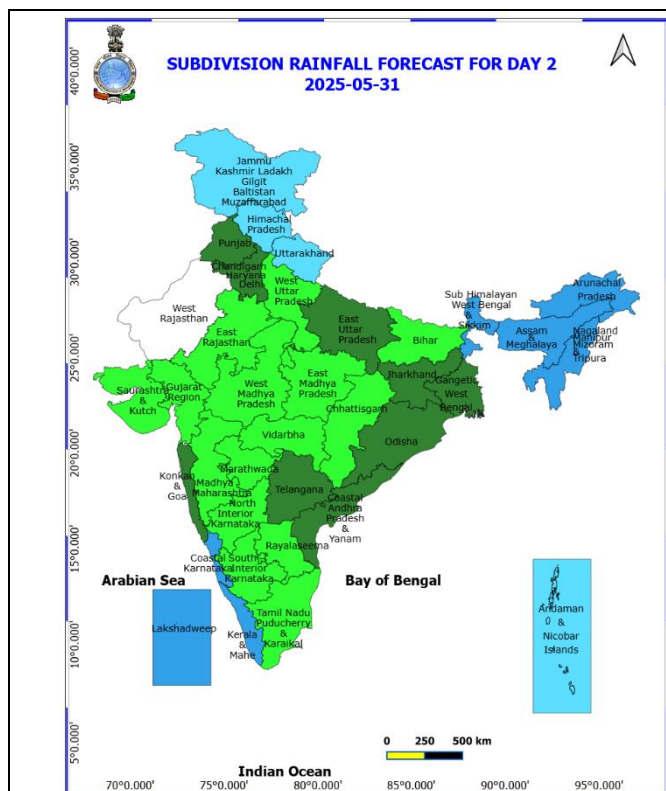


Weather Forecast & Warnings for next 7 days (Upto 0830 hours IST of 06<sup>th</sup> June, 2025)



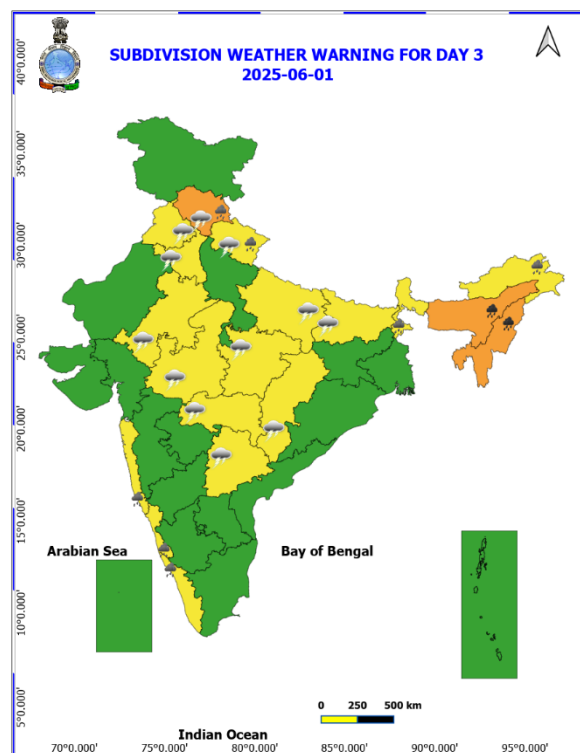
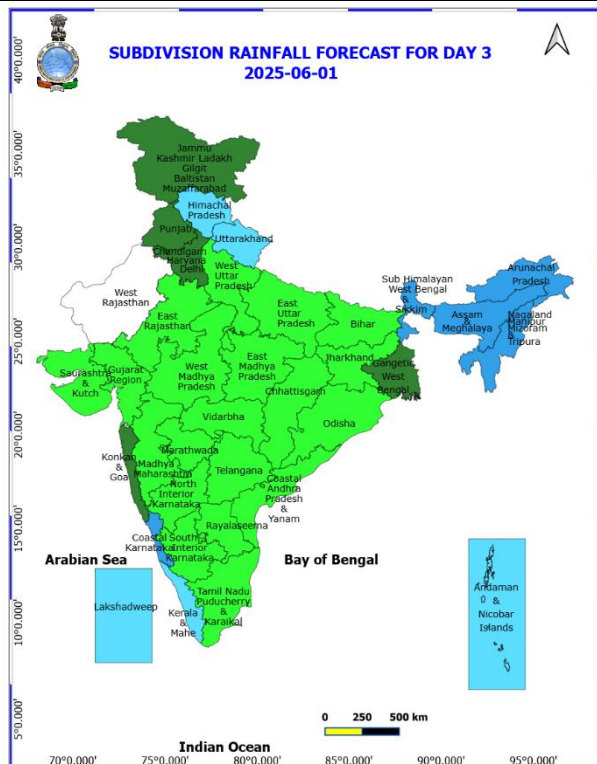
### 30<sup>th</sup> May (Day 1)

- ❖ **Exceptionally heavy rainfall (>30 cm)** very likely at isolated places over Meghalaya.
- ❖ **Heavy to Very Heavy Rainfall with isolated Extremely Heavy Rainfall** very likely at isolated places over Arunachal Pradesh, Assam & Meghalaya, Kerala & Mahe and Nagaland, Manipur, Mizoram and Tripura.
- ❖ **Heavy to Very Heavy Rainfall** very likely at isolated places over Coastal Karnataka, Sub Himalayan West Bengal & Sikkim and Tamil Nadu Puducherry & Karaikal.
- ❖ **Heavy Rainfall** very likely at isolated places over Coastal Andhra Pradesh, Jammu-Kashmir-Ladakh-Gilgit-Baltistan-Muzaffargarh, Konkani & Goa, Lakshadweep, South Interior Karnataka and Uttarakhand.
- ❖ **Thundersquall with wind speed reaching(50-60kmph)** very likely at isolated places over Chhattisgarh, Haryana, Chandigarh & Delhi, Madhya Pradesh, Punjab and Uttar Pradesh.
- ❖ **Thunderstorm accompanied with lightning & gusty winds(40-50kmph)** very likely at isolated places over Andhra Pradesh, Bihar, Gangetic West Bengal, Himachal Pradesh, Jammu-Kashmir-Ladakh-Gilgit-Baltistan-Muzaffargarh, Rajasthan, Tamil Nadu Puducherry & Karaikal, Uttarakhand and Vidarbha.
- ❖ **Thunderstorm accompanied with lightning & gusty winds(30-40kmph)** very likely at isolated places over Coastal Karnataka, Gujarat State, Interior Karnataka, Jharkhand, Odisha, Sub Himalayan West Bengal & Sikkim and Telangana.
- ❖ **Dust Storm** very likely at isolated places over West Rajasthan.
- ❖ **Strong Surface Winds** very likely at isolated places over Coastal Karnataka, Kerala & Mahe and Lakshadweep.
- ❖ **Squally wind with speed 45 kmph to 55 kmph gusting to 65 kmph** likely to prevail along and off Somalia coast, many parts of southwest Arabian Sea and adjoining parts of west central Arabian Sea, some parts of southeast Arabian Sea, Lakshadweep area, along and off Gujarat coast and adjoining northeast Arabian Sea. **Squally weather with wind speed 35 kmph to 45 kmph gusting to 55 kmph** prevailing over south Arabian Sea, southern parts of central Arabian Sea; along and off Kerala, Karnataka, Goa coasts, over Lakshadweep area, Maldives area, Comorin area, along and off Sri Lanka, Tamil Nadu coasts, off Andhra Pradesh, Odisha coasts, along and off Myanmar coast, over south and central Bay of Bengal, over Andaman Sea. **Squally weather with wind speed 40 kmph to 50 kmph gusting to 60 kmph** over some parts of northwest Bay of Bengal. **Squally weather with wind speed 45 kmph to 55 kmph gusting to 65 kmph** prevailing over Gulf of Mannar and adjoining Comorin area, many parts of northeast and adjoining northwest Bay of Bengal, along and off West Bengal, Bangladesh coasts, some parts of central and southwest Bay of Bengal. Fishermen are advised not to venture into these areas.



## 31<sup>st</sup> May (Day 2)

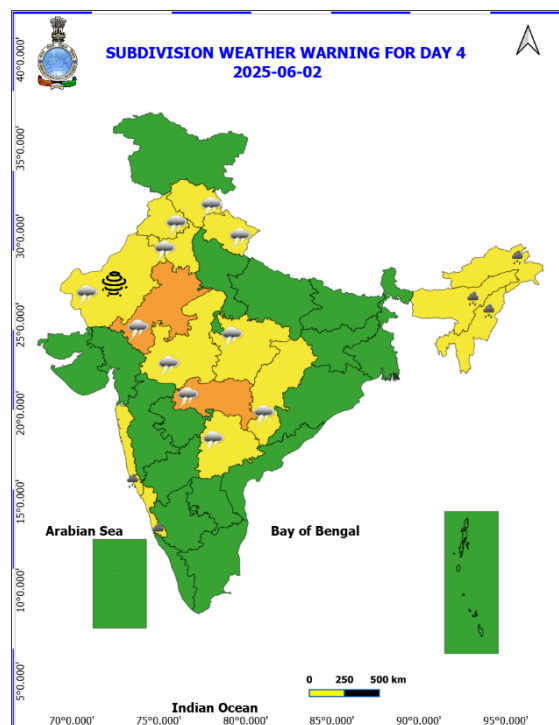
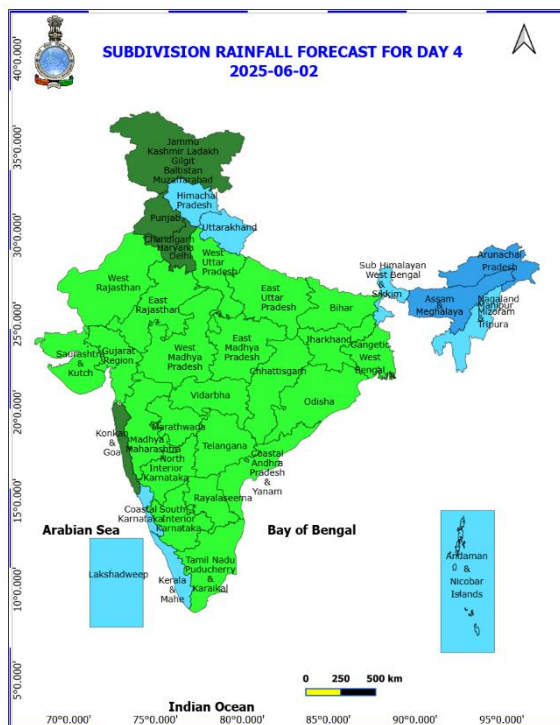
- ❖ **Heavy to Very Heavy Rainfall with isolated Extremely Heavy Rainfall** very likely at isolated places over Assam & Meghalaya.
- ❖ **Heavy to Very Heavy Rainfall** very likely at isolated places over Arunachal Pradesh, Nagaland, Manipur, Mizoram and Tripura and Sub Himalayan West Bengal & Sikkim.
- ❖ **Heavy Rainfall** very likely at isolated places over Coastal Karnataka, Himachal Pradesh, Jammu-Kashmir-Ladakh-Gilgit-Baltistan-Muzaffargarh, Kerala & Mahe, Konkan & Goa, Tamil Nadu Puducherry & Karaikal and Uttarakhand.
- ❖ **Thundersquall with wind speed reaching(50-60kmph)** very likely at isolated places over Himachal Pradesh.
- ❖ **Thunderstorm accompanied with lightning & gusty winds(40-50kmph)** very likely at isolated places over Bihar, Chhattisgarh, East Uttar Pradesh, Jammu-Kashmir-Ladakh-Gilgit-Baltistan-Muzaffargarh and Madhya Pradesh.
- ❖ **Thunderstorm accompanied with lightning & gusty winds(30-40kmph)** very likely at isolated places over East Rajasthan, Haryana, Chandigarh & Delhi, Jharkhand, Punjab, Telangana, Uttarakhand, Vidarbha and West Uttar Pradesh.
- ❖ **Thunderstorm accompanied with Lightning** very likely at isolated places over Coastal Andhra Pradesh.
- ❖ **Strong Surface Winds** very likely at isolated places over Kerala & Mahe and Lakshadweep.
- ❖ **Squally wind with speed 45 kmph to 55 kmph gusting to 65 kmph** likely to prevail along and off Somalia coast, many parts of southwest Arabian Sea and adjoining parts of west central Arabian Sea, some parts of southeast Arabian Sea, Lakshadweep area, along and off Gujarat coast and adjoining northeast Arabian Sea. **Squally weather with wind speed 35 kmph to 45 kmph gusting to 55 kmph** prevailing over south Arabian Sea, southern parts of central Arabian Sea; along and off Kerala, Karnataka coasts, over Lakshadweep area, Maldives area, Comorin area, along and off Sri Lanka coast, off Tamil Nadu, Andhra Pradesh, coasts, along and off West Bengal, Bangladesh, Myanmar coasts, over most parts of south, central & north Bay of Bengal. **Squally weather with wind speed 45 kmph to 55 kmph gusting to 65 kmph** prevailing over Gulf of Mannar and adjoining Comorin area, many parts of south and adjoining parts of central Bay of Bengal. Fishermen are advised not to venture into these areas.



## 01<sup>st</sup> May (Day 3)

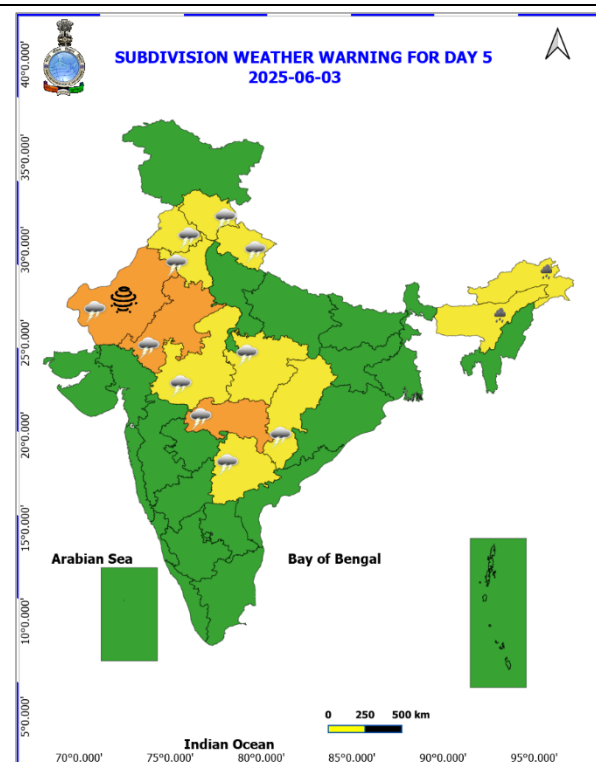
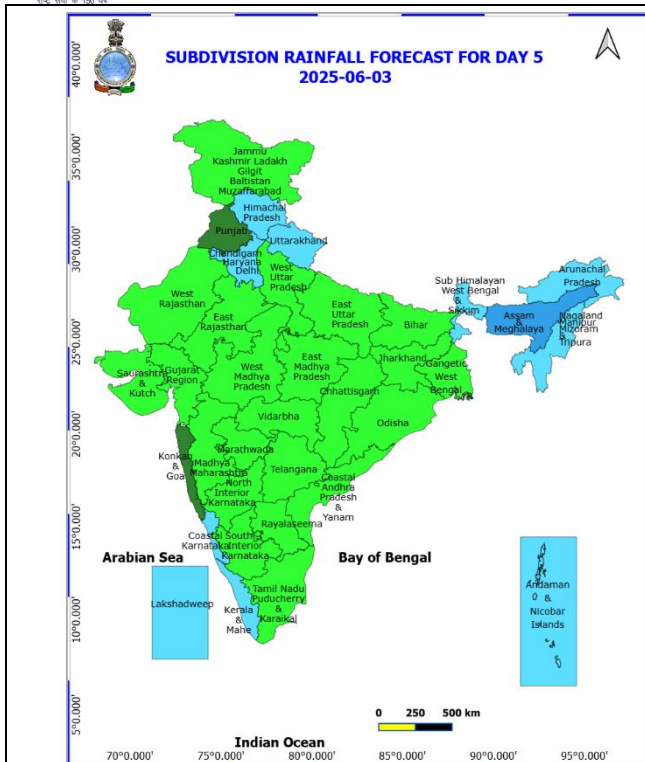
- ❖ **Heavy to Very Heavy Rainfall** very likely at isolated places over Assam & Meghalaya and Nagaland, Manipur, Mizoram and Tripura.
- ❖ **Heavy Rainfall** very likely at isolated places over Arunachal Pradesh, Costal Karnataka, Himachal Pradesh, Kerala & Mahe, Konkan & Goa, Sub Himalayan West Bengal & Sikkim and Uttarakhand.
- ❖ **Thundersquall with wind speed reaching(50-60kmph)** very likely at isolated places over Himachal Pradesh.
- ❖ **Thunderstorm accompanied with lightning & gusty winds(40-50kmph)** very likely at isolated places over Bihar, Chhattisgarh and Madhya Pradesh.
- ❖ **Thunderstorm accompanied with lightning & gusty winds(30-40kmph)** very likely at isolated places over East Rajasthan, East Uttar Pradesh, Haryana, Chandigarh & Delhi, Punjab, Telangana, Uttarakhand and Vidarbha.
- ❖ **Squally wind with speed 45 kmph to 55 kmph gusting to 65 kmph** likely to prevail along and off Somalia coast and adjoining parts of southwest Arabian Sea & westcentral Arabian Sea, along and off Gujarat coast and adjoining northeast Arabian Sea. **Squally weather with wind speed 35 kmph to 45 kmph gusting to 55 kmph** prevailing over southeast Arabian Sea & adjoining parts of eastcentral Arabian Sea; along and off Kerala, Karnataka coasts, over Lakshadweep area, Maldives area, Comorin area, off Sri Lanka, Tamil Nadu, Andhra Pradesh coasts, over most parts of south, central & north Bay of Bengal. **Squally weather with wind speed 45 kmph to 55 kmph gusting to 65 kmph** prevailing over Gulf of Mannar and adjoining Comorin area. Fishermen are advised not to venture into these areas.





## 02<sup>nd</sup> June (Day 4)

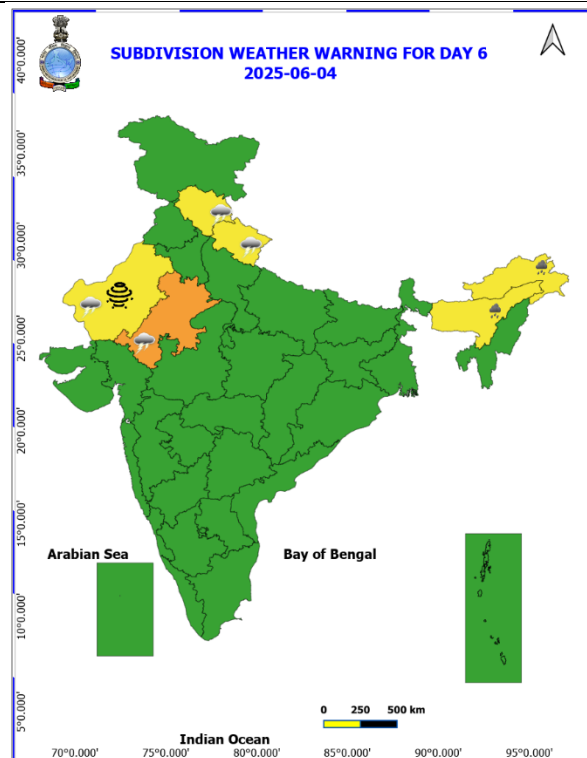
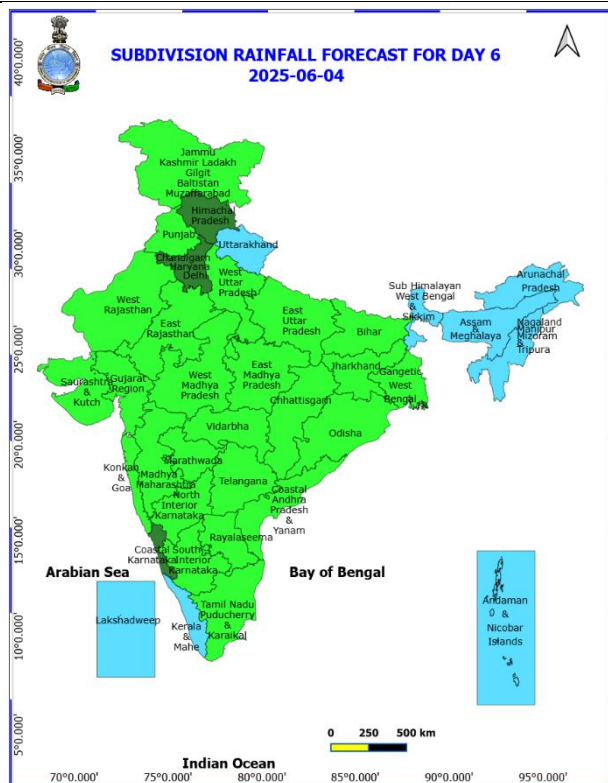
- ❖ **Heavy Rainfall** likely at isolated places over Arunachal Pradesh, Assam & Meghalaya, Coastal Karnataka, Konkan & Goa and Nagaland, Manipur, Mizoram and Tripura.
- ❖ **Thundersquall with wind speed reaching(50-60kmph)** likely at isolated places over East Rajasthan and Vidarbha.
- ❖ **Thunderstorm accompanied with lightning & gusty winds(40-50kmph)** likely at isolated places over Chhattisgarh, Himachal Pradesh, Madhya Pradesh and West Rajasthan.
- ❖ **Thunderstorm accompanied with lightning & gusty winds(30-40kmph)** likely at isolated places over Haryana, Chandigarh & Delhi, Punjab, Telangana and Uttarakhand.
- ❖ **Dust Storm** likely at isolated places over West Rajasthan.
- ❖ **Squally wind with speed 45 kmph to 55 kmph gusting to 65 kmph** likely to prevail along and off Somalia coast and adjoining sea area, off north Gujarat coast and some parts of northeast Arabian Sea. **Squally weather with wind speed 35 kmph to 45 kmph gusting to 55 kmph** prevailing over southeast Arabian Sea & adjoining parts of eastcentral Arabian Sea, Lakshadweep, Maldives and Comorin areas, most parts of south, central Bay of Bengal & some parts of north Bay of Bengal. **Squally weather with wind speed 45 kmph to 55 kmph gusting to 65 kmph** prevailing over Gulf of Mannar and adjoining Comorin area. Fishermen are advised not to venture into these areas.



## 03<sup>rd</sup> June (Day 5)

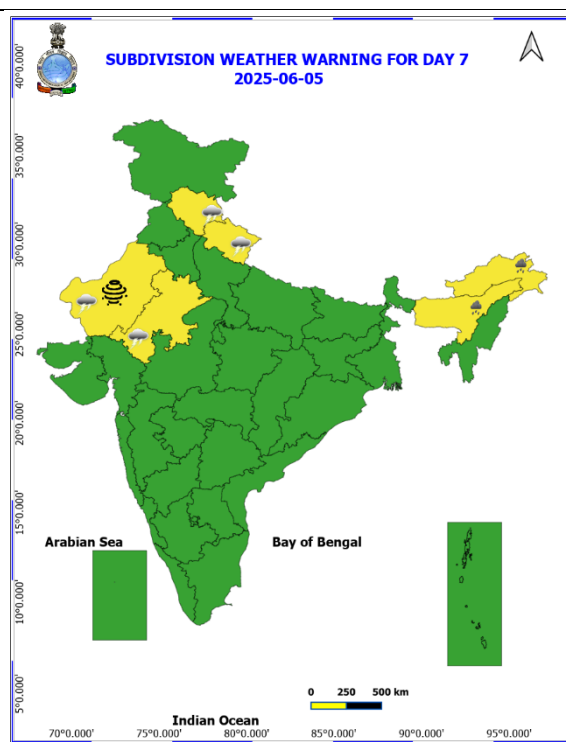
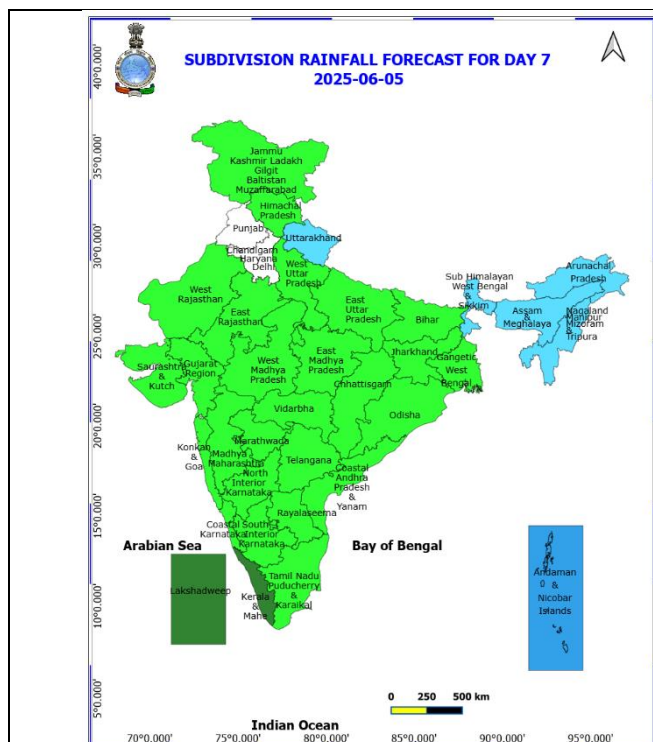
- ❖ **Heavy Rainfall** likely at isolated places over Arunachal Pradesh, Assam & Meghalaya, Coastal Karnataka, Konkan & Goa and Nagaland, Manipur, Mizoram and Tripura.
- ❖ **Thundersquall with wind speed reaching(50-60kmph)** likely at isolated places over East Rajasthan and Vidarbha.
- ❖ **Thunderstorm accompanied with lightning & gusty winds(40-50kmph)** likely at isolated places over Chhattisgarh, Himachal Pradesh, Madhya Pradesh and West Rajasthan.
- ❖ **Thunderstorm accompanied with lightning & gusty winds(30-40kmph)** likely at isolated places over Haryana, Chandigarh & Delhi, Punjab, Telangana and Uttarakhand.
- ❖ **Dust Storm** likely at isolated places over West Rajasthan.
- ❖ **Squally wind with speed 45 kmph to 55 kmph gusting to 65 kmph** likely to prevail along and off Somalia coast and adjoining sea area, off north Gujarat coast and some parts of northeast Arabian Sea. **Squally weather with wind speed 35 kmph to 45 kmph gusting to 55 kmph** prevailing over southeast Arabian Sea & adjoining parts of eastcentral Arabian Sea, Lakshadweep, Maldives and Comorin areas, most parts of south, central Bay of Bengal & some parts of north Bay of Bengal. **Squally weather with wind speed 45 kmph to 55 kmph gusting to 65 kmph** prevailing over Gulf of Mannar and adjoining Comorin area. Fishermen are advised not to venture into these areas.





## 04<sup>th</sup> June (Day 6)

- ❖ **Heavy Rainfall** likely at isolated places over Arunachal Pradesh and Assam & Meghalaya.
- ❖ **Thundersquall with wind speed reaching(50-60kmph)** likely at isolated places over East Rajasthan.
- ❖ **Thunderstorm accompanied with lightning & gusty winds(40-50kmph)** likely at isolated places over Himachal Pradesh and West Rajasthan.
- ❖ **Thunderstorm accompanied with lightning & gusty winds(30-40kmph)** likely at isolated places over Uttarakhand.
- ❖ **Dust Storm** likely at isolated places over West Rajasthan.



## 05<sup>th</sup> June (Day 7)

- ❖ **Heavy Rainfall** likely at isolated places over Arunachal Pradesh and Assam & Meghalaya.
- ❖ **Thunderstorm accompanied with lightning & gusty winds(40-50kmph)** likely at isolated places over Himachal Pradesh and Rajasthan.
- ❖ **Thunderstorm accompanied with lightning & gusty winds(30-40kmph)** likely at isolated places over Uttarakhand.
- ❖ **Dust Storm** likely at isolated places over West Rajasthan.

## Weather Outlook for subsequent 3 days (During 06<sup>th</sup> June- 08<sup>th</sup> June, 2025)

- ❖ **Fairly widespread to widespread** rainfall activity likely over Northeast India, West Bengal & Sikkim, Andaman & Nicobar Islands, Lakshadweep, Konkan & Goa, Coastal Karnataka and Kerala & Mahe.
- ❖ **Isolated to scattered rainfall** likely over Jammu-Kashmir-Ladakh, Uttarakhand, Himachal Pradesh, Odisha, south Chhattisgarh adjoining Coastal Andhra Pradesh & Yanam.

Action may be taken based on **ORANGE AND RED** COLOUR warnings.

- Vulnerable regions likely urban and hilly areas action may be initiated for heavy rainfall warning.
- As the lead period increases forecast accuracy decreases.

\* Red colour warning does not mean "Red Alert", Red colour warning means "Take Action".  
Forecast and Warning for any day is valid from 0830 hours IST of day till 0830 hours IST of next day.  
For more details, kindly visit <https://mausam.imd.gov.in> or contact: 011-2434-4599  
(Service to the Nation since 1875)

Fig. 1: Maximum Temperatures

Fig. 2: Departure of Maximum Temperatures

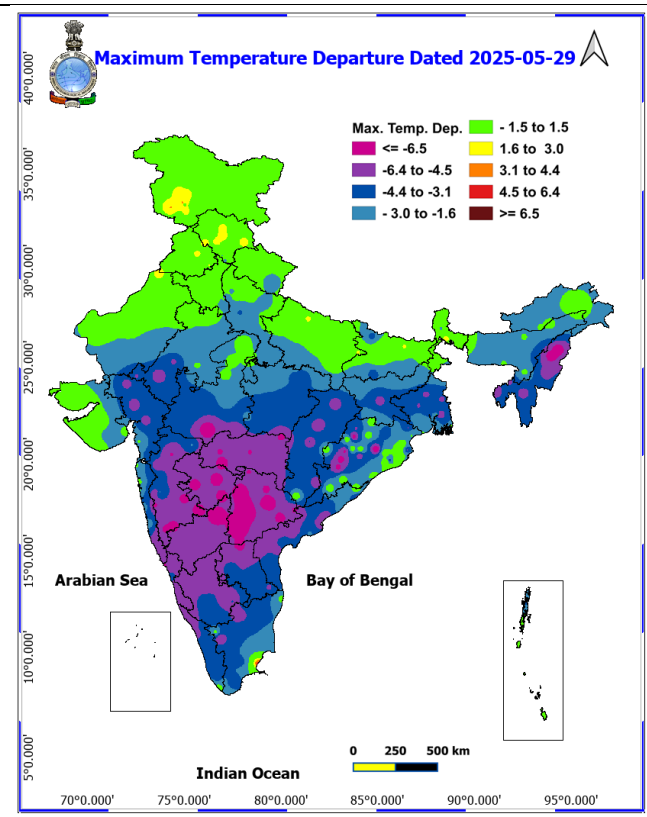
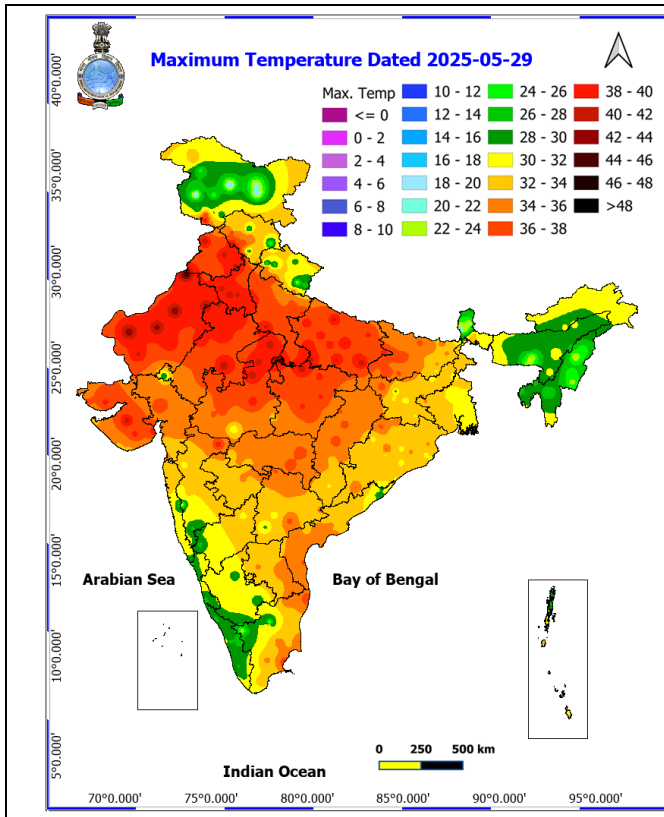
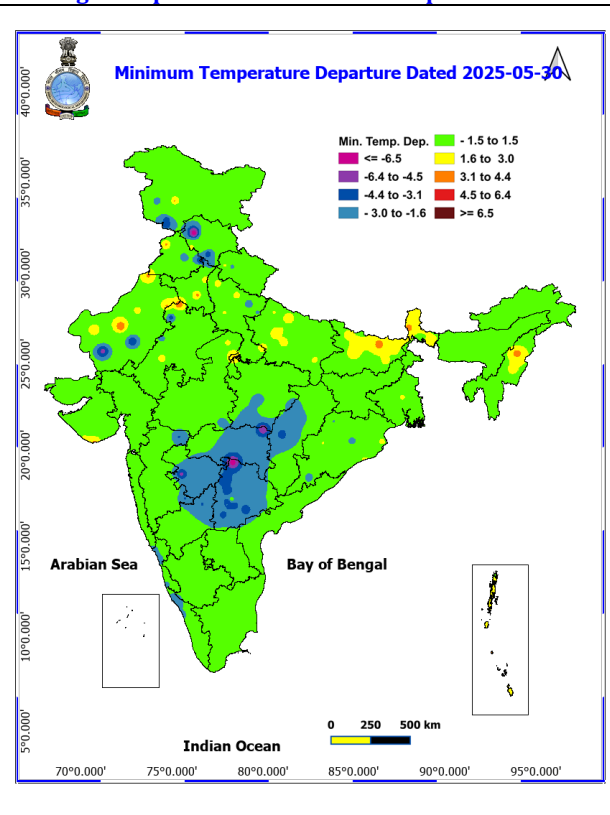
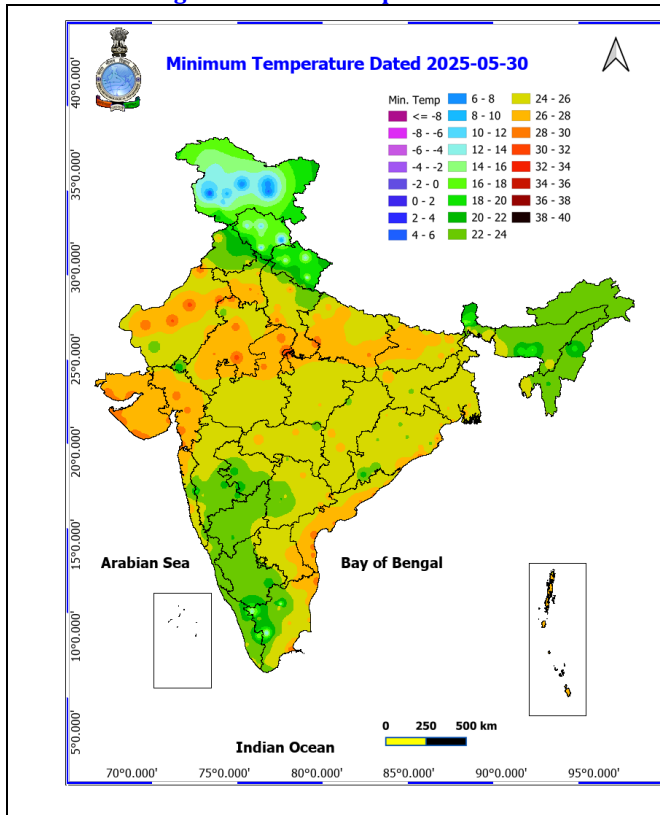


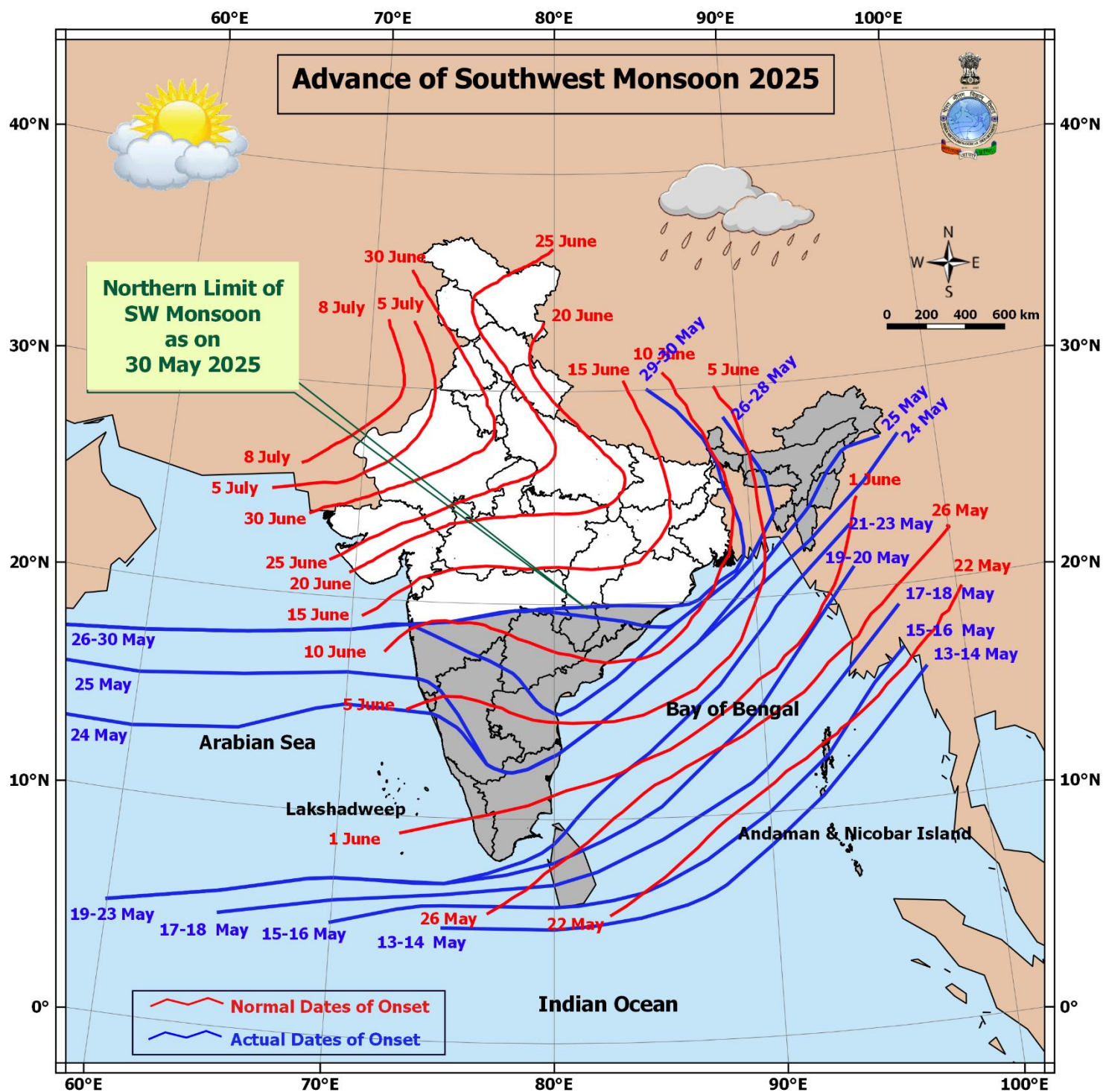
Fig. 3: Minimum Temperatures

Fig. 4: Departure of Minimum Temperatures



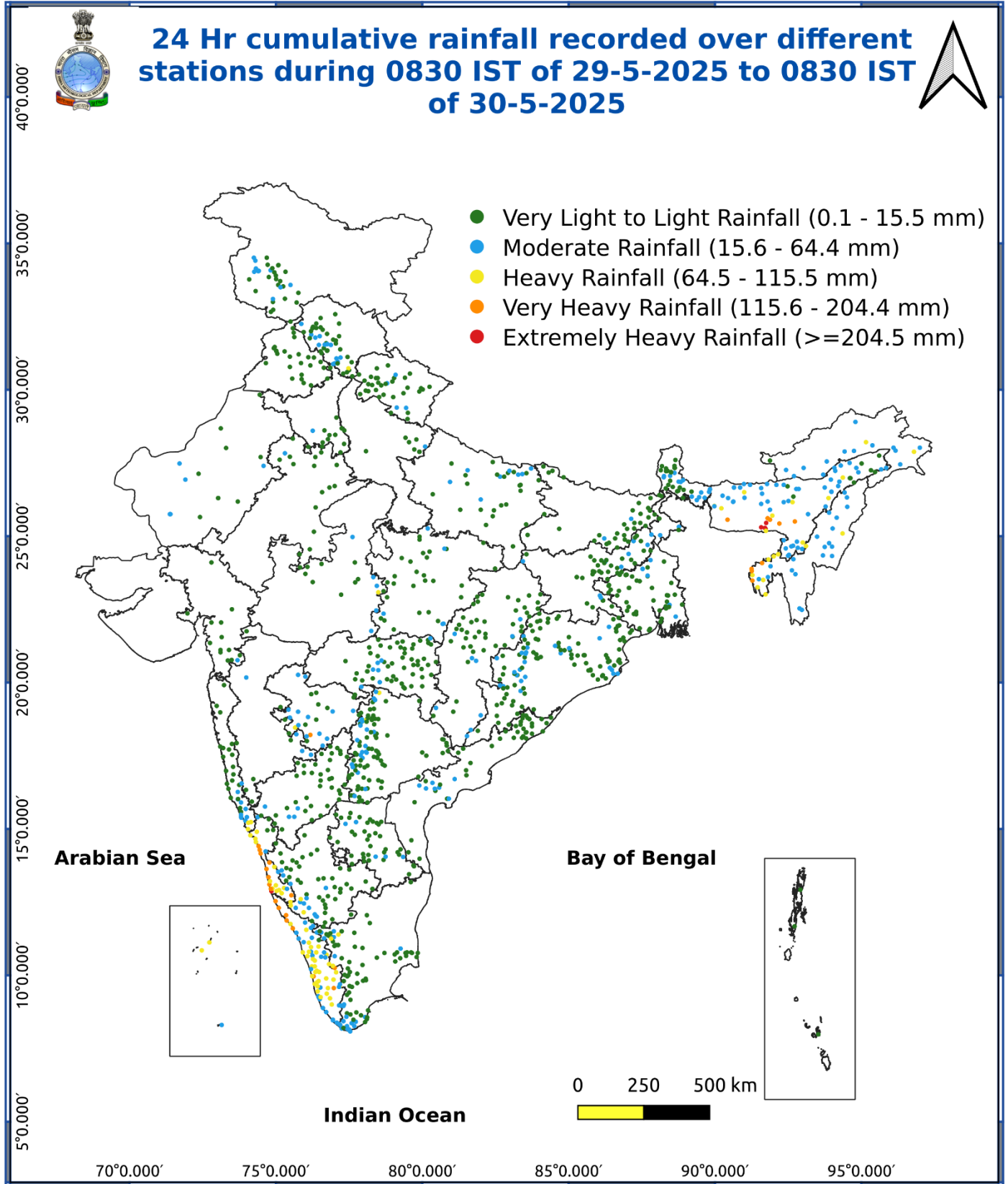


**Fig. 5: Advance of Southwest Monsoon 2025**



**\* Red colour warning does not mean "Red Alert", Red colour warning means "Take Action".**  
**Forecast and Warning for any day is valid from 0830 hours IST of day till 0830 hours IST of next day.**  
**For more details, kindly visit <https://mausam.imd.gov.in> or contact: 011-2434-4599**  
**(Service to the Nation since 1875)**

Fig. 6: Accumulated Rainfall (mm) during past 24 hours



## Impact expected and action suggested over Northeastern States, Sub-Himalayan West Bengal & Sikkim due to heavy rainfall and squally winds

### Impact expected:

- ❖ Breaking of tree branches, uprooting of small trees like banana, papaya, drum sticks. Strong wind and rain may damage plantation, horticulture and standing crops.
- ❖ Partial damage to vulnerable structures due to strong winds and rain.
- ❖ Minor damage to kutcha houses/walls, huts and roads due to heavy rain.
- ❖ Loose objects may fly.
- ❖ Onshore and offshore operations may get affected.
- ❖ Small ships, trawlers and boats may be affected.
- ❖ Road and rail traffic may be affected due to heavy rain and squally winds.
- ❖ There could be localised landslides, mudslides, landslips, water logging, inundation and flooding over low lying areas.
- ❖ Occasional reduction in visibility due to heavy rainfall.
- ❖ Helicopter services may get affected.

### Action suggested:

- ❖ People are advised to keep a watch on the weather for worsening conditions and be ready to move to safer places accordingly.
- ❖ Take safe shelters; do not take shelter under trees, as there could be lightning.
- ❖ In case of expected lightning, unplug electrical/ electronic appliances, immediately, get out of water bodies and keep away from all the objects that conduct electricity.
- ❖ Tourism and recreational activities to be regulated.
- ❖ Onshore and offshore activities to be judiciously regulated.
- ❖ Helicopter services to be regulated.

## Impact & Action Suggested due to Extremely and heavy to very heavy rainfall over west coast and other areas (For Red & Orange colour warning areas)

- ❖ **Isolated exceptionally heavy rainfall (>30cm)** also likely over Meghalaya on 30th May.
- ❖ **Isolated extremely heavy rainfall** also likely over Assam & Meghalaya on 30th May & 01st June; Tripura and Arunachal Pradesh on 30th May. Kerala & Mahe on 30th May
- ❖ **Isolated heavy to very heavy rainfall** over Tamilnadu Puducherry & Karaikal, Coastal Karnataka on 30th May.

### Impact Expected

- ❖ Localized Flooding of roads, water logging in low lying areas of the above region.
- ❖ Occasional reduction in visibility due to heavy rainfall.
- ❖ Minor damage to kutcha roads.
- ❖ Possibilities of damage to vulnerable structure.
- ❖ Localized Landslides/Mudslides
- ❖ Damage to horticulture and standing crops in some areas due to inundation.
- ❖ It may lead to riverine flooding in some river catchments (for riverine flooding please visit Web page of CWC).

### Action Suggested

**\* Red colour warning does not mean "Red Alert", Red colour warning means "Take Action".**  
Forecast and Warning for any day is valid from 0830 hours IST of day till 0830 hours IST of next day.  
For more details, kindly visit <https://mausam.imd.gov.in> or contact: 011-2434-4599  
(Service to the Nation since 1875)



- ❖ Check for traffic congestion on your route before leaving for your destination.
- ❖ Follow any traffic advisories that are issued in this regard.
- ❖ Avoid going to areas that face the water logging problems often.
- ❖ Avoid staying in vulnerable structure.

### Impact expected and action suggested due to isolated thunderstorm with lightning/gusty & Squally winds over

- ❖ **Thundersquall wind speed reaching 50-60 kmph gusting to 70 kmph** over likely over Punjab, Haryana Chandigarh & Delhi, Uttar Pradesh, Madhya Pradesh, Chhattisgarh on 30th May, Himachal Pradesh on 31st May & 01st June and Vidarbha on 02nd & 03rd June.

#### Impact expected:

- Minor to Major damage to banana and papaya trees.
- Strong wind/hail may damage plantation, horticulture and standing crops.
- Partial damage to vulnerable structures due to strong winds.
- Minor damage to kutcha houses/walls and huts.
- Loose objects may fly.

#### Action suggested:

- People are advised to keep a watch on the weather for worsening conditions and be ready to move to safer places accordingly.
- Stay indoors, close windows & doors and avoid travel if possible.
- Take safe shelters; do not take shelter under trees.
- Do not lie on concrete floors and do not lean against concrete walls.
- Unplug electrical/ electronic appliances.
- Immediately get out of water bodies.
- Keep away from all the objects that conduct electricity.

### Agromet advisories for likely impact of Heavy Rainfall / Hailstorms / Gusty Winds / Heat Wave

- In North Eastern States, Sub-Himalayan West Bengal & Sikkim, Jammu & Kashmir, Himachal Pradesh, Uttarakhand, Konkan & Goa, Tamil Nadu, Kerala, Lakshadweep, Coastal Karnataka, South Interior Karnataka and Coastal Andhra Pradesh, drain out excess water and ensure proper drainage in fields with standing crops and vegetables.
- Shift the harvested produce in safer places or cover the produce with tarpaulin sheets in the fields. Tie the harvested crops properly and cover them to minimise the risk of displacement due to strong surface winds.
- Provide mechanical support to horticultural crops and staking to vegetables to avoid lodging.

#### Livestock / Poultry / Fishery

- Keep the animals inside the shed during heavy rainfall and provide them balanced feed.
- Store feed and fodder in a safe place to prevent spoilage
- Construct an outlet with proper netting around the ponds to drain out excess water, thereby preventing fish from escaping in case of overflow.

### Flash Flood Guidance:

## 24 hours Outlook for the Flash Flood Risk (FFR) till 1130 IST of 31-05-2025 :

**Moderate to High flash flood risk likely over few watersheds & neighbourhoods of following Met Sub-divisions during next 24 hours.**

**Arunachal Pradesh - Changlang, Dibang Valley, East Kameng, East Siang, Lohit, Lower Dibang Valley, Lower Subansiri, Papum-Pare, Tawang, Tirap, West Kameng, West Siang, Anjaw, Upper Siang and Kurung Kumey districts.**  
**Assam & Meghalaya - Cachar, Dhemaji, Dibrugarh, Golaghat, Jorhat, Karbi Analog, Lakhimpur, N.C Hills, Nagaon, Sibsagar, Sonitpur, Tinsukia, Karimganj, Ri Bhoi, West Khasi Hills and Jaintia Hills districts.**

### NMMT

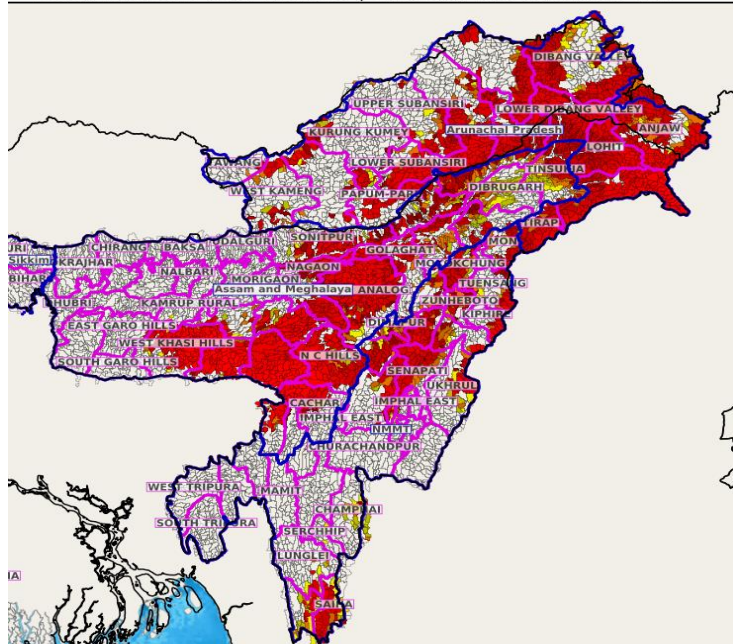
**Manipur - Bishnupur, Imphal West, Senapati, Tamenglong, Thoubal, Ukhrul,**

**Mizoram - Aizawl, Champhai, Kolasib, Lawngtlai, Saiha, Serchhip, Nagaland - Dimapur, Kiphire, Kohima, Longleng, Mokokchung, Mon, Peren, Phek, Tuensang, Wokha, Zunheboto,**

**Tripura - Dhalai, Gomati, Khowai, Sipahijala and Unakoti districts.**

**Surface runoff/ Inundation may occur at some fully saturated soils & low-lying areas over Area of Concern (AoC) as shown in map due to expected rainfall occurrence in next 24 hours.**

Product: GFS FFR | Timescale: 24-hr | Region: "INDIA"  
Product Date: 2025-05-30 06:00 UTC | Valid Date: 2025-05-31 06:00 UTC



\* Red colour warning does not mean "Red Alert", Red colour warning means "Take Action".

Forecast and Warning for any day is valid from 0830 hours IST of day till 0830 hours IST of next day.

For more details, kindly visit <https://mausam.imd.gov.in> or contact: 011-2434-4599

(Service to the Nation since 1875)

## 24 hours Outlook for the Flash Flood Risk (FFR) till 1130 IST of 31-05-2025 :

Low to Moderate flash flood risk **likely over few watersheds & neighbourhoods of following Met Sub-divisions during next 24 hours.**

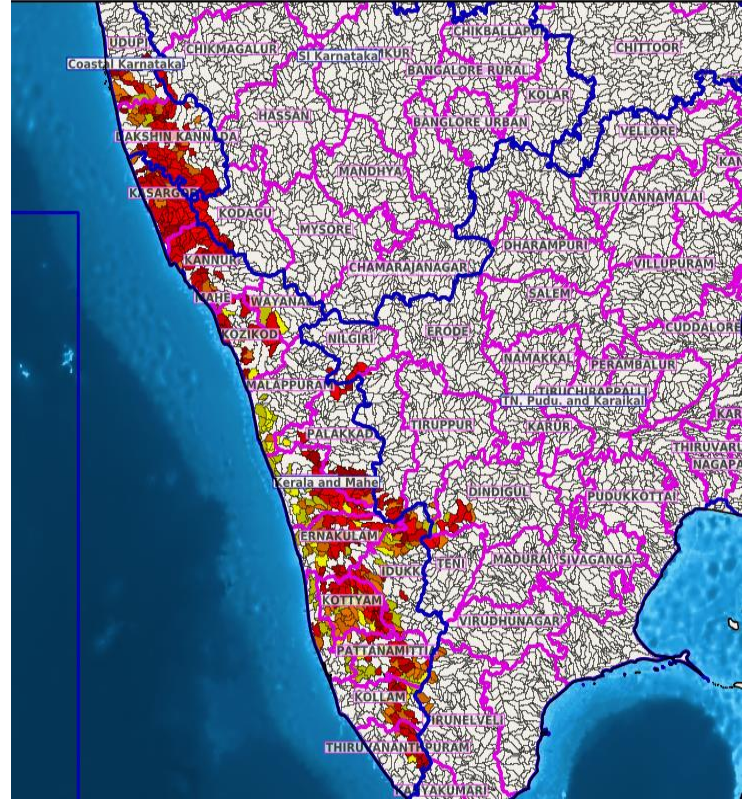
Coastal Karnataka - **Dakshin Kannada and Udupi districts.**  
Kerala & Mahe - **Alappuzha, Ernakulam, Idukki, Kannur, Kasargod, Kollam, Kottayam, Kozikod, Mahe, Malappuram, Palakkad, Pattanamittia, Thiruvananthpuram, Trishur and Wayanad districts.**

Adjoining Tamil Nadu - **Puducherry & Karaikal - Coimbatore, Dindigul and Nilgiri districts.**

Adjoining South Interior Karnataka - **Kodagu district.**

**Surface runoff/ Inundation may occur at some fully saturated soils & low-lying areas over Area of Concern (AoC) as shown in map due to expected rainfall occurrence in next 24 hours.**

Product: GFS FFR | Timescale: 24-hr | Region: "INDIA"  
Product Date: 2025-05-30 06:00 UTC | Valid Date: 2025-05-31 06:00 UTC



**\* Red colour warning does not mean "Red Alert", Red colour warning means "Take Action".**

Forecast and Warning for any day is valid from 0830 hours IST of day till 0830 hours IST of next day.

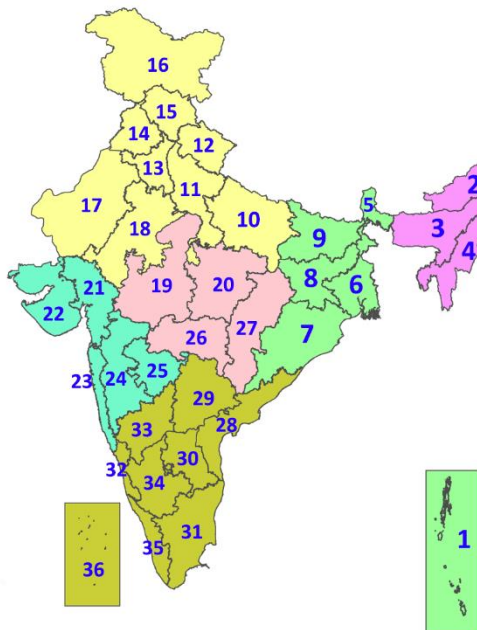
For more details, kindly visit <https://mausam.imd.gov.in> or contact: 011-2434-4599

(Service to the Nation since 1875)



## LEGENDS

1. अंडमान और निकोबार द्वीपसमूह
2. अरुणाचल प्रदेश
3. असम और मेघालय
4. नागालैंड, मणिपुर, मिजोरम और त्रिपुरा
5. उप-हिमालयी पश्चिम बंगाल और सिक्किम
6. गंगीय पश्चिम बंगाल
7. ओडिशा
8. झारखंड
9. बिहार
10. पूर्वी उत्तर प्रदेश
11. पश्चिम उत्तर प्रदेश
12. उत्तराखंड
13. हरियाणा, चंडीगढ़ और दिल्ली
14. पंजाब
15. हिमाचल प्रदेश
16. जम्मू और कश्मीर और लद्दाख
17. पश्चिम राजस्थान
18. पूर्वी राजस्थान
19. पश्चिम मध्य प्रदेश
20. पूर्वी मध्य प्रदेश
21. गुजरात
22. सौराष्ट्र
23. कोंकण और गोवा
24. मध्य महाराष्ट्र
25. मराठवाड़ा
26. विदर्भ
27. छत्तीसगढ़
28. तटीय आंध्र प्रदेश और यनम
29. तेलंगाना
30. रायलसीमा
31. तमिलनाडु, पुडुचेरी और कराईकल
32. तटीय कर्नाटक
33. आंतरिक उत्तरी कर्नाटक
34. आंतरिक दक्षिणी कर्नाटक
35. केरल और माहे
36. लक्षद्वीप



1. Andaman & Nicobar Islands
2. Arunachal Pradesh
3. Assam & Meghalaya
4. Nagaland, Manipur, Mizoram & Tripura
5. Sub-Himalayan West Bengal & Sikkim
6. Gangetic West Bengal
7. Odisha
8. Jharkhand
9. Bihar
10. East Uttar Pradesh
11. West Uttar Pradesh
12. Uttarakhand
13. Haryana, Chandigarh & Delhi
14. Punjab
15. Himachal Pradesh
16. Jammu & Kashmir and Ladakh
17. West Rajasthan
18. East Rajasthan
19. West Madhya Pradesh
20. East Madhya Pradesh
21. Gujarat
22. Saurashtra
23. Konkan & Goa
24. Madhya Maharashtra
25. Marathwada
26. Vidarbha
27. Chhattisgarh
28. Coastal Andhra Pradesh & Yanam
29. Telangana
30. Rayalaseema
31. Tamilnadu, Puducherry & Karaikal
32. Coastal Karnataka
33. North Interior Karnataka
34. South Interior Karnataka
35. Kerala & Mahe
36. Lakshadweep

## SPATIAL DISTRIBUTION (% of Stations reporting)

% Stations	Category	% Stations	Category
76-100	Widespread (WS/Most Places)	26-50	Scattered (SCT/A Few Places)
51-75	Fairly Widespread (FWS/Many Places)	1-25	Isolated (ISOL)



### COLOUR CODED WARNING

No Warning (No Action)

Watch (Be Aware)

Alert (Be Prepared To Take Action)

Warning (Take Action)

### Probabilistic Forecast

Terms	Probability of Occurrence (%)
Unlikely	< 25
Likely	25 - 50
Very Likely	50 - 75
Most Likely	> 75

\* Red colour warning does not mean "Red Alert", Red colour warning means "Take Action".

Forecast and Warning for any day is valid from 0830 hours IST of day till 0830 hours IST of next day.

For more details, kindly visit <https://mausam.imd.gov.in> or contact: 011-2434-4599

(Service to the Nation since 1875)

## DEFINITION/CRITERIA

### Rain/ Snow \*

Heavy: 64.5 to 115.5 mm/cm \*  
Very Heavy: 115.6 to 204.4 mm/cm\*  
Extremely Heavy: > 204.4 mm/cm \*

### Heat Wave

When maximum temperature of a station reaches  $\geq 40^{\circ}\text{C}$  for plains and  $\geq 30^{\circ}\text{C}$  for hilly regions  
(a) Based on Departure from normal

Heat Wave: Maximum Temperature Departure from normal  $4.5^{\circ}\text{C}$  to  $6.4^{\circ}\text{C}$ .

Severe Heat Wave: Maximum Temperature Departure from normal  $\geq 6.5^{\circ}\text{C}$

(b). Based on Actual maximum temperature

Heat Wave: When actual maximum temperature  $\geq 45^{\circ}\text{C}$ .

Severe Heat Wave: When actual maximum temperature  $\geq 47^{\circ}\text{C}$

(c). Criteria for heat wave for coastal stations

When maximum temperature departure is  $> 4.5^{\circ}\text{C}$  from normal. Heat Wave may be described provided maximum temperature  $\geq 37^{\circ}\text{C}$

### Warm Night

When maximum temperature remains  $40^{\circ}\text{C}$

Warm Night: When minimum temperature departure  $4.5^{\circ}\text{C}$  to  $6.4^{\circ}\text{C}$ .

Severe Warm Night: When minimum temperature departure  $> 6.4^{\circ}\text{C}$ .

### Cold Wave

When minimum temperature of a station  $\leq 10^{\circ}\text{C}$  for plains and  $\leq 0^{\circ}\text{C}$  for hilly regions.  
(a). Based on departure

Cold Wave: Minimum Temperature Departure from normal  $-4.5^{\circ}\text{C}$  to  $-6.4^{\circ}\text{C}$ .

Severe Cold Wave: Minimum Temperature Departure from normal  $\leq -6.5^{\circ}\text{C}$

(b) Based on actual Minimum Temperature (for Plains only)

Cold Wave : When Minimum Temperature is  $\leq 4.0^{\circ}\text{C}$

Severe Cold Wave: When Minimum Temperature is  $\leq 2.0^{\circ}\text{C}$

(c) For Coastal Stations

When Minimum Temperature departure is  $\leq -4.5^{\circ}\text{C}$  & actual Minimum Temperature is  $\leq 15^{\circ}\text{C}$

### Cold Day

When minimum temperature of a station  $\leq 10^{\circ}\text{C}$  for plains and  $\leq 0^{\circ}\text{C}$  for hilly regions  
Based on departure

Cold Day: Maximum Temperature Departure from normal  $-4.5^{\circ}\text{C}$  to  $-6.4^{\circ}\text{C}$ .

Severe Cold Day: Maximum Temperature Departure from normal  $\leq -6.5^{\circ}\text{C}$

### Fog

Phenomenon of small droplets suspended in air and the horizontal visibility  $< 1\text{km}$

Moderate Fog: When the visibility between 500-200 metres

Dense Fog: when the visibility between 50- 200 metres

Very Dense Fog: when the visibility  $< 50$  metres

### Thunderstorm

Sudden electrical discharges manifested by a flash of light (Lightning) and a sharp rumbling sound (thunder)

### Dust/Sand Storm

An ensemble of particles of dust or sand energetically lifted to great heights by a strong and turbulent wind.

### Frost

Ice deposits on ground

Air temperature  $\leq 4^{\circ}\text{C}$  ( over Plains)

### Squall

A strong wind that rises suddenly, lasts for atleast 1 minute.

Moderate: Wind speed 52-61 kmph

Severe: Wind speed 62-87 kmph

Very Severe: Wind speed  $> 87$  kmph

### Sea State

Effect of various waves in the sea over specific area

Rough to very rough: Wind speed 41-62 kmph (22-33 knots) & Wave height 2.5-6 metre

High to very high: Wind speed 63-117 kmph ( 34-63 knots) & Wave height 6-14 metre

Phenomenal: Wind speed  $> 117$  kmph ( $> 63$  knots) & Wave height  $> 14$  metre

### Cyclone

Cyclonic Storm: Wind speed 62-87 kmph (34-47 knots)

Severe Cyclonic Storm: Wind speed 88-117 kmph (48-63 knots)

Very Severe Cyclonic Storm: Wind speed 118-165 kmph (64 - 89 knots)

Extremely Severe Cyclonic Storm: Wind speed 166-220 kmph (90 -119 knots)

Super Cyclone Strom: Wind speed  $> 220$  kmph ( $> 119$  knots)