



2025-08-03

Time of Issue: 13:30:00 hours IST
(Mid-Day)

ALL INDIA WEATHER SUMMARY AND FORECAST BULLETIN

Significant Weather Features

Northeast India:

Extremely heavy rainfall very likely at isolated places over Meghalaya on 03rd August.

Light/moderate rainfall at many places accompanied with thunderstorm, lightning and isolated **heavy rainfall** likely to continue over Arunachal Pradesh, Assam & Meghalaya and Nagaland, Manipur, Mizoram & Tripura during 03rd-09th August with isolated **very heavy rainfall** over Arunachal Pradesh on 03rd, 04th & during 06th-09th August; Assam & Meghalaya on 04th & during 07th-09th August.

East & Central India:

Extremely heavy rainfall very likely at isolated places over Sub-Himalayan West Bengal & Sikkim on 03rd August.

Isolated **heavy rainfall** likely over Jharkhand on 03rd; Sub-Himalayan West Bengal & Sikkim, Bihar during 03rd-09th; West Madhya Pradesh during 03rd-05th; East Madhya Pradesh on 03rd & 04th; Chhattisgarh on 03rd, 08th & 09th; Odisha on 06th & 07th; Gangetic West Bengal on 07th August with isolated **very heavy rainfall** over East Madhya Pradesh on 03rd; Sub-Himalayan West Bengal & Sikkim on 04th; Bihar on 03rd & 04th August.

Light to moderate rainfall at most/many places accompanied with thunderstorm & lightning likely over the region during next 5 days.

Northwest India:

Extremely heavy rainfall very likely at isolated places over East Uttar Pradesh on 03rd August.

Isolated **heavy rainfall** likely over Jammu-Kashmir during 04th-06th August; Himachal Pradesh & Uttar Pradesh during 03rd-06th; Uttarakhand during 03rd-09th; Punjab on 05th & 09th; Haryana during 03rd-05th; East Rajasthan on 08th & 09th August with **very heavy rainfall** over Himachal Pradesh on 04th & 05th; Uttarakhand during 03rd-05th; Haryana on 05th; Uttar Pradesh on 03rd & 04th August.

Light/moderate rainfall at many places accompanied with thunderstorm & lightning likely over Western Himalayan region and many/some places over the plains during next 7 days

***Red color warning does not mean "Red Alert" Red color warning means "Take Action"**

Forecast and warning for any day is valid from 0830 hours IST of day till 0830 hours IST of next day

For more details kindly visit <https://mausam.imd.gov.in> or contact 011-2434-4599

(Service to the nation since 1875)



South Peninsular India:

Extremely heavy rainfall very likely at isolated places over Kerala and Tamil Nadu on 05th August.

Isolated **heavy rainfall** likely over Tamil Nadu during 03rd-07th; Kerala & Mahe, Coastal & South Interior Karnataka during 03rd-09th; Lakshadweep during 03rd-06th; North Interior Karnataka during 06th-08th; Coastal Andhra Pradesh & Yanam on 03rd & during 05th-07th; Rayalaseema during 03rd-08th August with **very heavy rainfall** over Tamil Nadu on 03rd & 04th; Kerala & Mahe during 03rd-07th; Coastal & South Interior Karnataka during 05th-07th; Rayalaseema on 05th August.

Strong surface winds (speed reaching 40-50 kmph) very likely over South Peninsular India during next 5 days.

Light to moderate rainfall at some/many places accompanied with thunderstorm & lightning likely over Tamil Nadu, Kerala & Mahe, Lakshadweep, Karnataka, Rayalaseema, Coastal Andhra Pradesh & Yanam and Telangana during next 5 days.

West India:

Isolated **heavy rainfall** likely over Gujarat Region on 03rd; Marathawada on 06th & 07th and Konkan & Goa during 07th-09th August.

Light to moderate rainfall at many/some places very likely over the region during next 5-6 days.



Main Weather Observations:

❖ **Rainfall distribution** (from 0830 hours IST of yesterday to 0830 hours IST of today): **at most places** over Andaman & Nicobar Islands, Arunachal Pradesh, Assam & Meghalaya, Sub Himalayan West Bengal & Sikkim, Gangetic West Bengal, Bihar, East Uttar Pradesh, Himachal Pradesh, Konkan & Goa, Coastal Karnataka, Kerala & Mahe and Lakshadweep; **at many places** over Nagaland, Manipur, Mizoram & Tripura, Jharkhand, West Uttar Pradesh, Uttarakhand, Haryana-Chandigarh-Delhi, East Madhya Pradesh and Gujarat Region; **at a few places** over Odisha, Punjab, Jammu-Kashmir-Ladakh-Gilgit-Baltistan-Muzaffarabad, Madhya Maharashtra, Chhattisgarh, Coastal Andhra Pradesh & Yanam, Tamil Nadu, Puducherry & Karaikal, North Interior Karnataka and South Interior Karnataka; **at isolated places** over West Rajasthan, East Rajasthan, West Madhya Pradesh, Saurashtra & Kutch, Marathwada, Vidarbha, Telangana and Rayalaseema;

❖ **Significant rainfall recorded(in cm)** (from 0830 hours IST of yesterday to 0830 hours IST of today): **Assam & Meghalaya**: Mawsynram (dist East Khasi Hills) 35; Cherrapunji(rkm) (dist East Khasi Hills) 19; Mawkyrat (dist South West Khasi Hills) 18; Gossaigaon AWS (dist Kokrajhar) 16; Cherrapunji (dist East Khasi Hills) 13; Tura AWS (dist West Garo Hills), Mawphlang (dist East Khasi Hills) 12 Each; Beki Mathungari (dist Barpeta), Khliehriat (dist East Jaintia Hills) 8 Each; Shella (dist East Khasi Hills), Williamnagar (dist East Garo Hills), Nongstein (dist West Khasi Hills) 7 Each; **Sub Himalayan West Bengal & Sikkim**: Domohani (dist Jalpaiguri), Falakata (dist Alipurduar), Maynaguri College (dist Jalpaiguri), Kumargram (dist Alipurduar) 19 Each; Denguajhar Tea Garden (dist Jalpaiguri) 18; Dalgaon Tea Estate (dist Alipurduar) 17; Jalpaiguri (dist Jalpaiguri), Mekhliganj (dist Cooch Behar) 16 Each; Alipurduar PTO (dist Alipurduar), Dharala Valley Tea Estate (dist Jalpaiguri) 15 Each; Nh31 Bridge (dist Jalpaiguri), Amfu Pundibari (dist Cooch Behar) 14 Each; Anandpur Tea Estate (dist Jalpaiguri), Kailashpur Tea Estate (dist Jalpaiguri), Mogulkata Tea Estate (dist Jalpaiguri), Majherdabri Tea Garden (dist Alipurduar) 13 Each; Gajoldoba (dist Jalpaiguri), Chepan (dist Alipurduar), Dhupguri (dist Jalpaiguri) 12 Each; Barobhisha (dist Alipurduar), Aryaman Tea Estate (dist Alipurduar) 11 Each; Buxaduar (dist Alipurduar), Bhatkawa Tea Estate (dist Jalpaiguri), Leesh River Tea Garden (dist Jalpaiguri), Noweranuddi Tea Garden (dist Jalpaiguri), Saraswatipur Tea Estate (dist Jalpaiguri), Washabari Tea Estate (dist Jalpaiguri), Jaybirpara Tea Estate (dist Alipurduar), Patkapara Tea Estate (dist Alipurduar), Raidak Tea Estate (dist Alipurduar), Sankos Tea Estate (dist Alipurduar) 10 Each; Champasari (dist Darjeeling), Sevoke (dist Darjeeling), Hasimara (dist Alipurduar), Cooch Behar (dist Cooch Behar), Suryasen Mahavidyalaya (dist Darjeeling), Damdim Tea Estate (dist Jalpaiguri), Gandrapara Tea Garden (dist Jalpaiguri), Moraghat Tea Estate (dist Jalpaiguri), Oodlabari Tea Estate (dist Jalpaiguri), Siliguri PTO (dist Darjeeling) 9 Each; Namthang (dist Namchi), Mathabhanga (dist Cooch Behar), Murti (dist Jalpaiguri), Sankosh (dist Cooch Behar), Baintgoorie T.e. (dist Jalpaiguri), Baradighi T.e. (dist Jalpaiguri), Karballa Tea Estate (dist Jalpaiguri), Gopalpur Tea Estate (dist Alipurduar) 8 Each; Bagdogra IAF (dist Darjeeling), Good Hope Tea Estate (dist Jalpaiguri), Kumlai T.e. (dist Jalpaiguri), Palashbari Tea Estate (dist Jalpaiguri), Beech Tea Garden (dist Alipurduar) 7 Each; Singimari (dist Cooch Behar), Ghish (dist Jalpaiguri), Kumargram Tea Estate (dist Alipurduar), Toorsa Tea Garden (dist Alipurduar) 6 Each; **Bihar**: Rajnagar (dist Madhubani) 17; Taibpur (dist Kishanganj) 15; Raghunathpur (dist Siwan) 14; Jhanjharpur (dist Madhubani), Bhawanipur (dist Purnea) 13 Each; Thakurganj (dist Kishanganj) 12; Kodawanpur/C.b li (dist Begusarai), Birpur (dist Supaul), Rupouli (dist Purnea), Rahghopur (dist Supaul) 10 Each; Saraiya (dist Muzaffarpur), Jainagar (dist Madhubani), Ekangersarai (dist Nalanda), Siwan (dist Siwan), Tajpur (dist Samastipur), Lalganj (dist Vaishali) 9 Each; Goraul/Doli (dist Vaishali), Parsa (dist Saran), Pothia (dist Kishanganj), Puraini (dist Madhepura), Andhratharhi (dist Madhubani), Danapur (dist Patna), Dhamdaha (dist Purnea), Bhagwanpur Hat (dist Siwan), Chehara Kala (dist Vaishali), Barhiya (dist Lakhisarai) 8 Each; Phulparas (dist Madhubani), Kako (dist Jahanabad), Tedhagach (dist Kishanganj), Dighalbank (dist Kishanganj), Kurhani (dist Muzaffarpur), Fatuha (dist Patna), Patepur (dist Vaishali), Ghoghardiha (dist Madhubani), Punpun (dist Patna), Khusrupur (dist Patna), Barharia (dist Siwan) 7 Each; Baltara (dist Khagaria), Tribeni/Balmikinagar (dist West Champaran), Muzaffarpur (dist Muzaffarpur), Cheria B.pur 1 (dist Begusarai), Jalalpur (dist Saran), Jahanabad (dist Jahanabad), Udai Kishanganj (dist Madhepura), Bikram (dist Patna), Barauni (dist Begusarai), Ghosi (dist Jahanabad), Nabinagar (dist Aurangabad), Chausa (dist Madhepura), Madhepur (dist Madhubani), Ghat Kushumba (dist Sheikhpura), Bhagwanpur (dist Begusarai), Kesath (dist Buxar), **Bihariganj** (dist Madhepura), Bathnaha (dist Sitamarhi), Andar (dist Siwan), Ziradei (dist Siwan), Maharajganj (dist Siwan) 6 Each; **Chhattisgarh**: Doura Kochali (dist Balrampur) 14; Ramchandrapur (dist Balrampur) 13; Chalgali (dist Balrampur) 9; Ambikapur (dist Surguja) 8; Surajpur (dist Surguja), Kusmi (dist Balrampur), Latori (dist Surguja) 7 Each; **Gangetic West Bengal**: Labpur (dist Birbhum), Debagram (dist Nadia) 14 Each; Kandi (dist Murshidabad) 12; Narayanpur (dist Birbhum) 11; Berhampore (dist Murshidabad) 10; Rampurhat (DRMS) (dist Birbhum), Barrackpur (laf) (dist North 24 Parganas) 7 Each; **Tamil Nadu, Puducherry & Karaikal**: Pudukottai (dist Pudukkottai) 14; Tirumayam (dist Pudukkottai) 12; Chinnakalar (dist Coimbatore), Karaiyur (dist Pudukkottai), Kudimyanmalai (dist Pudukkottai) 11 Each; Perungalur (dist Pudukkottai), Chengam (dist Tiruvannamalai), Thuvakudi Imti (dist Trichy), Annavasal (dist

*Red color warning does not mean "Red Alert" Red color warning means "Take Action"

Forecast and warning for any day is valid from 0830 hours IST of day till 0830 hours IST of next day

For more details kindly visit <https://mausam.imd.gov.in> or contact 011-2434-4599

(Service to the nation since 1875)



Pudukkottai) 8 Each; Arimalam (dist Pudukkottai), Valparai PTO (dist Coimbatore), Upasi Tea Research AWS (dist Coimbatore), Cincona (dist Coimbatore), Kilanilai (dist Pudukkottai), Jamunamarathur (dist Tiruvannamalai), Pwd Travellers Bungalow (dist Sivaganga) 7 Each; Alangudi (dist Pudukkottai), Arantangi (dist Pudukkottai), Arani (dist Tiruvannamalai), Tiruvannamalai AWS (dist Tiruvannamalai), Valparai Pap (dist Coimbatore), Singampunari (dist Sivaganga) 6 Each; **Kerala & Mahe:** Ayyankunnu AWS (dist Cannur) 13; Udumbannoor AWS (dist Idukki) 7; Chemberi AWS (dist Cannur) 6; **East Uttar Pradesh:** Gyanpur (dist Bhadohi) 12; Nighasan (dist Kheri), Pratapgarh (t) (dist Pratapgarh), Karwi (dist Chitrakoot) 11 Each; Ghorawal (dist Sonbhadra), Chunar (dist Mirzapur), Varanasi BHU (dist Varanasi) 9 Each; Koraon (dist Prayagraj), Karchhana (dist Prayagraj), Meja (dist Prayagraj), Ballia (dist Ballia), Chopan Fmo (dist Sonbhadra) 8 Each; Neemsar (dist Sitapur), Amethi (dist Amethi), Manikpur (dist Chitrakoot) 7 Each; Prayagraj Sadar (dist Prayagraj), Lalganj Aara (dist Pratapgarh), Chhatnag (dist Prayagraj), Jaunpur CWC (dist Jaunpur), Varanasi/Bab AP (dist Varanasi) 6 Each; **East Madhya Pradesh:** Hanumana (dist Rewa) 12; Teonthar (dist Rewa) 11; Manpur (dist Umaria) 9; Gudh (dist Rewa), Sihawal (dist Sidhi), Chitrangi (dist Singrauli), Naigarhi (dist Rewa), Amanganj (dist Panna) 8 Each; Tikamgarh-aws (dist Tikamgarh), Majhauri (dist Sidhi), Majhgaon (dist Satna), Bilaspur (dist Umaria) 7 Each; Amarpatan (dist Satna), Pawai (dist Panna), Mauganj (dist Rewa), Bilhari (dist Katni) 6 Each; **Himachal Pradesh:** Bharari (dist Hamirpur) 11; Naina Davi (dist Bilaspur) 7; **West Uttar Pradesh:** Gabhana (dist Aligarh) 10; Govardhan (dist Mathura) 8; Sasani (dist Hathras), Jasrana (dist Firozabad) 6 Each; **Arunachal Pradesh:** Tezu (dist Lohit) 10; Roing (dist Lower Dibang Valley), Deomali AWS (dist Tirap) 7 Each; **Odisha:** Banki (dist Cuttack) 10; **Coastal Karnataka:** Kota (dist Udupi) 9; Manki (dist Uttara Kannada) 8; Gersoppa (dist Uttara Kannada) 7; Udupi (dist Udupi) 6; **Uttarakhand:** Sama (dist Bageshwar) 8; **Jharkhand:** Hazaribagh Dvc (dist Hazaribagh) 8; Godda Kvk AWS (dist Godda) 7; Barkisuriya (dist Giridih), Sikatia (dist Deoghar), Latehar Balumat Kvk AWS (dist Latehar) 6 Each; **South Interior Karnataka:** Agumbe AWS (dist Shivamogga) 7; **Gujarat Region:** Balasinor (dist Mahisagar) 7; Kathalal (dist Kheda) 6; **East Rajasthan:** Mounntabu Tehsil SR (dist Sirohi) 7; **Haryana-Chandigarh-Delhi:** Shahbad (dist Kurukshetra), Ayanagar AWS (dist South Delhi), Aya Nagar (dist South Delhi) 6 Each.

❖ **Heavy Rainfall observed** (from 0830 hours IST of yesterday to 0830 hours IST of today): **Extremely heavy rain** at isolated places over Assam & Meghalaya. **Heavy to very heavy rain** at isolated places over Assam & Meghalaya, Sub Himalayan West Bengal & Sikkim, Gangetic West Bengal, Bihar, East Uttar Pradesh, East Madhya Pradesh, Chhattisgarh, Tamil Nadu, Puducherry & Karaikal and Kerala & Mahe. **Heavy rain** at a few places over Sub Himalayan West Bengal & Sikkim and at isolated places over Arunachal Pradesh, Odisha, Jharkhand, West Uttar Pradesh, Uttarakhand, Himachal Pradesh, East Rajasthan, Gujarat Region, Coastal Karnataka and South Interior Karnataka.

❖ **Minimum Temperature Departures (as on 03-08-2025): markedly above normal(> 5.1°C)** at many places over Jammu-KashmirLadakh-Gilgit-Baltistan-Muzaffarabad; at few places over Assam & Meghalaya; at isolated places over Odisha, West Uttar Pradesh, Himachal Pradesh, West Madhya Pradesh, East Madhya Pradesh and Saurashtra & Kutch. **appreciably above normal(3.1°C to 5.0°C)** at few places over Sub Himalayan West Bengal & Sikkim; at isolated places over Gangetic West Bengal and Gujarat Region. **above normal(1.6°C to 3.0°C)** at many places over Uttarakhand; at most places over Andaman & Nicobar Islands; at few places over Vidarbha, Coastal Andhra Pradesh & Yanam and Rayalaseema; at isolated places over Nagaland, Manipur, Mizoram & Tripura, East Uttar Pradesh, Haryana-Chandigarh-Delhi, Punjab, Madhya Maharashtra, Marathwada, Chhattisgarh and Tamil Nadu, Puducherry & Karaikal. **near normal(-1.5°C to 1.5°C)** at many places over Kerala & Mahe; at most places over Arunachal Pradesh, Jharkhand, Bihar, West Rajasthan, East Rajasthan, Konkan & Goa, Telangana, Coastal Karnataka, North Interior Karnataka, South Interior Karnataka and Lakshadweep. **The lowest minimum temperature** of 0.0°C is reported at NARNAUL (HARYANA) over the Plains of India.

❖ **Maximum Temperature Departures (as on 02-08-2025): markedly above normal(> 5.1°C)** at isolated places over Odisha. **appreciably above normal(3.1°C to 5.0°C)** at many places over Coastal Andhra Pradesh & Yanam; at isolated places over Assam & Meghalaya, Gangetic West Bengal, Uttarakhand, Madhya Maharashtra, Vidarbha, Chhattisgarh and Tamil Nadu, Puducherry & Karaikal. **above normal(1.6°C to 3.0°C)** at most places over Marathwada; at few places over Gujarat Region, Konkan & Goa, Telangana, Rayalaseema and North Interior Karnataka; at isolated places over Andaman & Nicobar Islands, Nagaland, Manipur, Mizoram & Tripura, Jharkhand, East Uttar Pradesh, Himachal Pradesh, West Madhya Pradesh, Saurashtra & Kutch and South Interior Karnataka. **near normal(-1.5°C to 1.5°C)** at many places over Jammu-KashmirLadakh-Gilgit-Baltistan-Muzaffarabad, West Rajasthan and East Rajasthan; at most places over Sub Himalayan West Bengal & Sikkim and Coastal Karnataka; at few places over Arunachal Pradesh, West Uttar Pradesh, Haryana-Chandigarh-Delhi, Punjab and East Madhya Pradesh; at isolated places over Bihar and Kerala & Mahe. **The highest maximum temperature** of 38.7°C is reported at NELLORE (ANDHRA PRADESH).

*Red color warning does not mean "Red Alert" Red color warning means "Take Action"

Forecast and warning for any day is valid from 0830 hours IST of day till 0830 hours IST of next day

For more details kindly visit <https://mausam.imd.gov.in> or contact 011-2434-4599

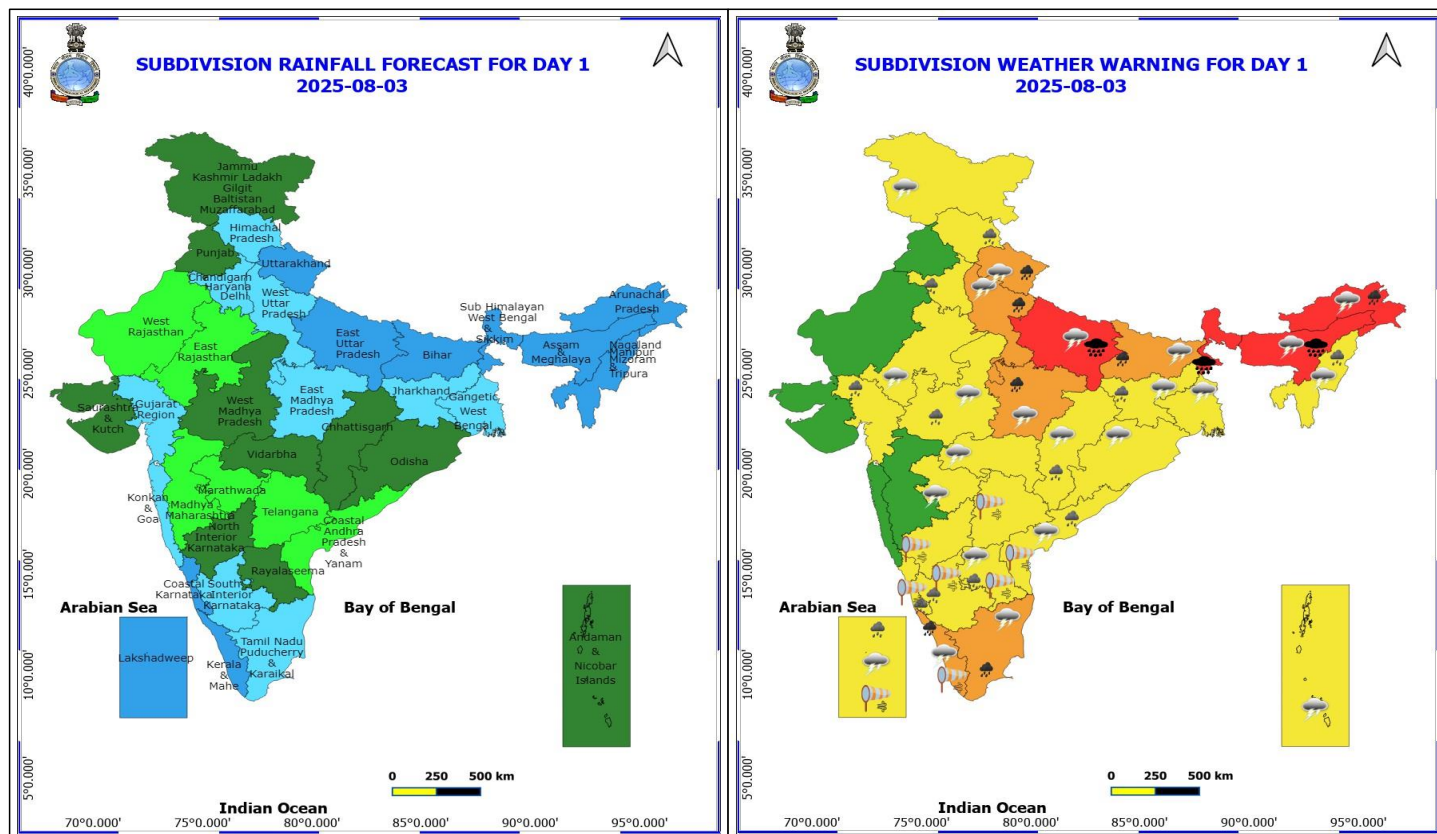
(Service to the nation since 1875)

Meteorological Analysis (Based on 0830 hours IST)

- ♦ The **monsoon trough** at mean sea level passed through Amritsar, Chandigarh, Shamli, Shahjahanpur, Lucknow, Chapra, Bankura, Canning and thence southeastwards to the northeast Bay of Bengal.
- ♦ The **upper air cyclonic circulation** over northeast Bihar & neighbourhood lay over northwest Bihar & adjoining northeast Uttar Pradesh and extended upto 4.5 km above mean sea level tilting southwestwards with height.
- ♦ The **upper air cyclonic circulation** over Punjab & neighbourhood persisted & extended upto 4.5 km above mean sea level.
- ♦ The **upper air cyclonic circulation** over south west Bay off North Tamil Nadu coast persisted and lay between 1.5 km & 4.5 km above mean sea level.
- ♦ An east-west **trough** ran roughly along Lat. 7°N from southeast Arabian sea to central parts of south Bay of Bengal at 5.8 km above mean sea level.
- ♦ The **upper air cyclonic circulation** over northeast Arabian sea & neighbourhood at 5.8 km above mean sea level persisted.
- ♦ An **upper air cyclonic circulation** lay over north Gujarat & adjoining south Rajasthan at 3.1 km above mean sea level.
- ♦ The **Western Disturbance** as a trough in middle & upper tropospheric levels with its axis at 5.8 km above mean sea level roughly along Long. 74°E to the north of Lat. 32°N persisted.

Weather Outlook for subsequent 3 days

- ♦ Fairly widespread to widespread rainfall likely over the most parts of the country except Madhya Maharashtra and Marathwada where Isolated rainfall is likely.



3 August (Day 1)

- ❖ **Heavy to Very Heavy Rainfall with isolated Extremely Heavy Rainfall** very likely at isolated places over Assam & Meghalaya, East Uttar Pradesh and Sub Himalayan West Bengal & Sikkim.
- ❖ **Heavy to Very Heavy Rainfall** very likely at isolated places over Arunachal Pradesh, Bihar, East Madhya Pradesh, Kerala & Mahe, Tamil Nadu Puducherry & Karaikal, Uttarakhand and West Uttar Pradesh.
- ❖ **Heavy Rainfall** very likely at isolated places over Andhra Pradesh, Chhattisgarh, Coastal Karnataka, Gujarat Region, Haryana, Chandigarh & Delhi, Himachal Pradesh, Jharkhand, Lakshadweep, Nagaland, Manipur, Mizoram and Tripura, South Interior Karnataka and West Madhya Pradesh.
- ❖ **Thunderstorm accompanied with lightning & gusty winds(40-50kmph)** very likely at isolated places over Kerala & Mahe, Lakshadweep and Rayalaseema.
- ❖ **Thunderstorm accompanied with lightning & gusty winds(30-40kmph)** very likely at isolated places over Andaman & Nicobar Islands, Bihar, Coastal Andhra Pradesh, Gangetic West Bengal, Jharkhand and West Madhya Pradesh.
- ❖ **Thunderstorm accompanied with Lightning** very likely at isolated places over Andaman & Nicobar Islands, Arunachal Pradesh, Assam & Meghalaya, Chhattisgarh, East Madhya Pradesh, East Rajasthan, Jammu-Kashmir-Ladakh-Gilgit-Baltistan-Muzaffarabad, Marathwada, Nagaland, Manipur, Mizoram and Tripura, Odisha, Tamil Nadu Puducherry & Karaikal, Uttar Pradesh, Uttarakhand and Vidarbha.
- ❖ **Strong Surface Winds** very likely at isolated places over Andhra Pradesh, Karnataka, Kerala & Mahe, Lakshadweep and Telangana.

***Red color warning does not mean "Red Alert" Red color warning means "Take Action"**

Forecast and warning for any day is valid from 0830 hours IST of day till 0830 hours IST of next day

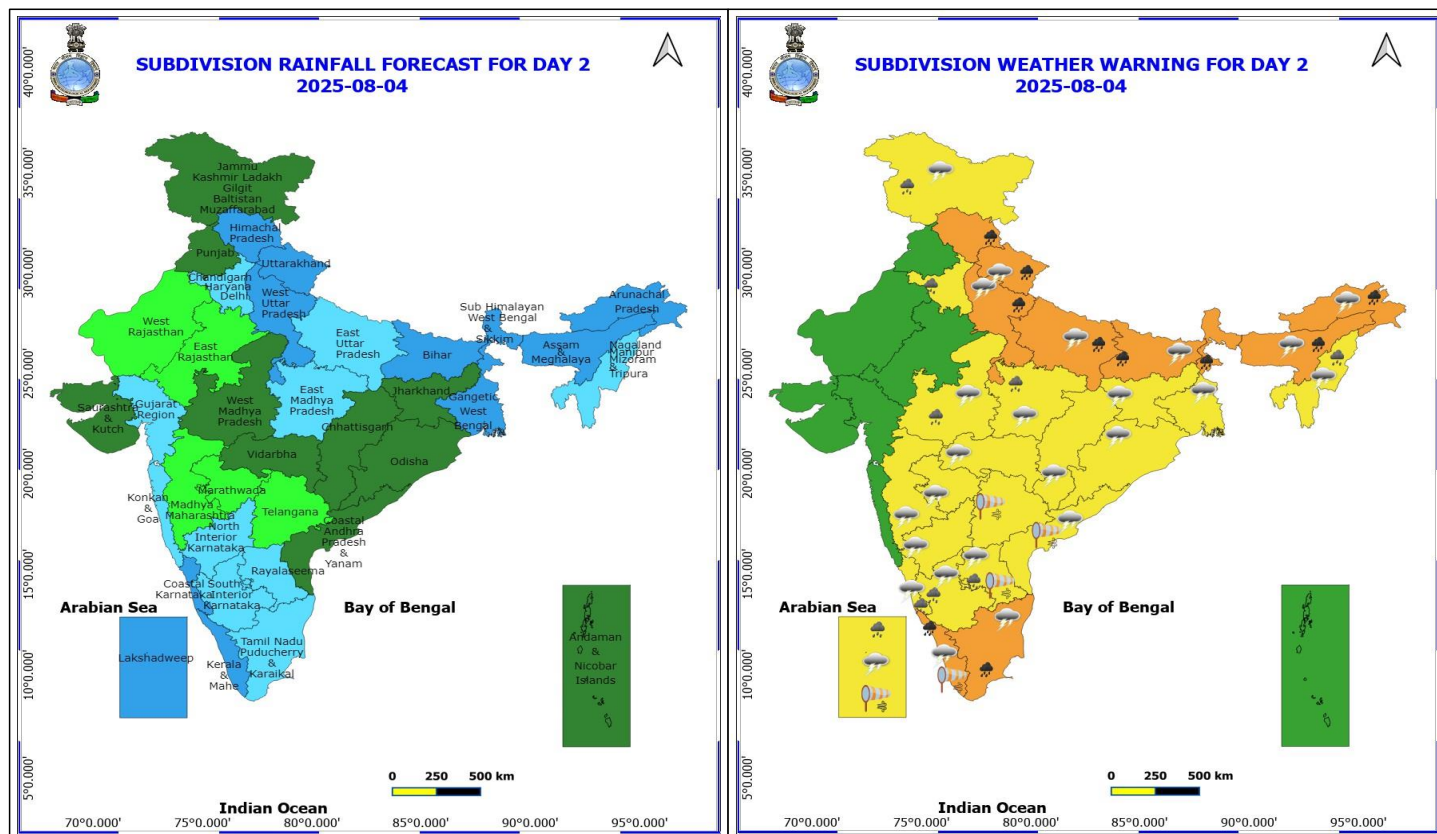
For more details kindly visit <https://mausam.imd.gov.in> or contact 011-2434-4599

(Service to the nation since 1875)



❖ Squally wind with speed reaching 45 kmph to 55 kmph gusting to 65 kmph is likely to prevail along and off Somalia, Yemen & south Oman coasts, most parts of westcentral Arabian Sea, many parts of southwest Arabian Sea.

❖ Squally weather with wind speed reaching 40 - 50 kmph gusting to 60 kmph likely to prevail over many parts of eastcentral Arabian Sea, some parts of southeast & southwest Arabian Sea, southern parts of north Arabian Sea, over Gulf of Mannar & adjoining Comorin area, most parts of southwest Bay of Bengal, few southern parts of southeast Bay of Bengal & adjoining few parts of south Andaman Sea.



4 August (Day 2)

- ❖ **Heavy to Very Heavy Rainfall** very likely at isolated places over Arunachal Pradesh, Assam & Meghalaya, Bihar, Himachal Pradesh, Kerala & Mahe, Sub Himalayan West Bengal & Sikkim, Tamil Nadu Puducherry & Karaikal, Uttar Pradesh and Uttarakhand.
- ❖ **Heavy Rainfall** very likely at isolated places over Coastal Karnataka, Haryana, Chandigarh & Delhi, Jammu-Kashmir-Ladakh-Gilgit-Baltistan-Muzaffarabad, Lakshadweep, Madhya Pradesh, Nagaland, Manipur, Mizoram and Tripura, Rayalaseema and South Interior Karnataka.
- ❖ **Thunderstorm accompanied with lightning & gusty winds(40-50kmph)** very likely at isolated places over Kerala & Mahe, Lakshadweep and Rayalaseema.
- ❖ **Thunderstorm accompanied with lightning & gusty winds(30-40kmph)** very likely at isolated places over Bihar, Coastal Andhra Pradesh, Gangetic West Bengal, Jammu-Kashmir-Ladakh-Gilgit-Baltistan-Muzaffarabad, Jharkhand, Karnataka and West Madhya Pradesh.
- ❖ **Thunderstorm accompanied with Lightning** very likely at isolated places over Arunachal Pradesh, Assam & Meghalaya, Chhattisgarh, East Madhya Pradesh, Maharashtra, Nagaland, Manipur, Mizoram and Tripura, Odisha, Tamil Nadu Puducherry & Karaikal, Uttar Pradesh and Uttarakhand.
- ❖ **Strong Surface Winds** very likely at isolated places over Andhra Pradesh, Kerala & Mahe, Lakshadweep and Telangana.
- ❖ Squally wind with speed reaching 45 kmph to 55 kmph gusting to 65 kmph is likely to prevail along and off Somalia, Yemen & Oman coasts, most parts of westcentral Arabian Sea & adjoining parts of eastcentral Arabian Sea, many parts of southwest Arabian Sea.

*Red color warning does not mean "Red Alert" Red color warning means "Take Action"

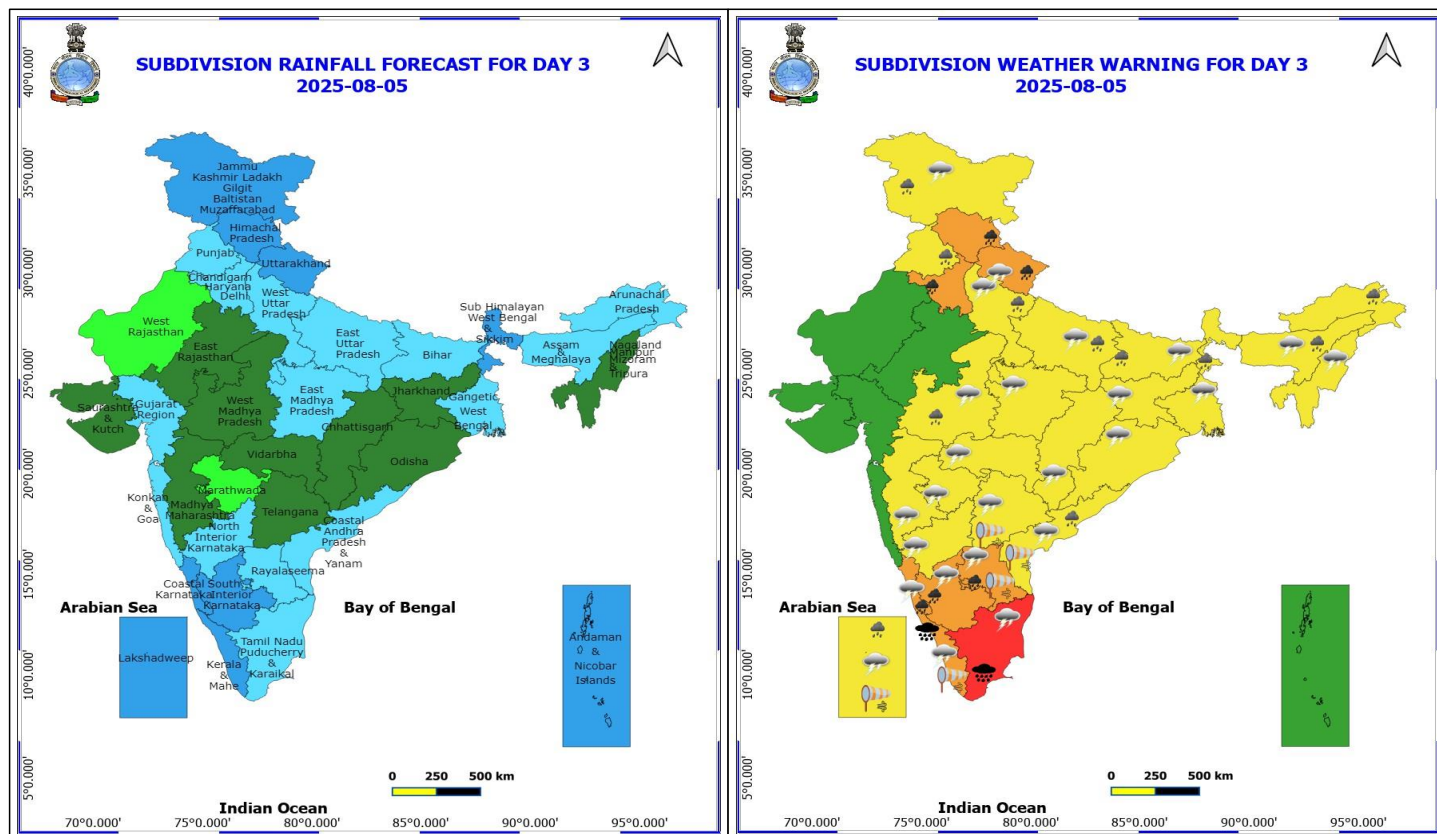
Forecast and warning for any day is valid from 0830 hours IST of day till 0830 hours IST of next day

For more details kindly visit <https://mausam.imd.gov.in> or contact 011-2434-4599

(Service to the nation since 1875)



- ❖ Squally weather with wind speed reaching 40 - 50 kmph gusting to 60 kmph likely to prevail over many parts of eastcentral Arabian Sea, many parts of southeast and southwest Arabian Sea, over northeast & adjoining northwest Arabian Sea, along and off north Gujarat, Kerala, Karnataka coasts, over Lakshadweep, Maldives, Comorin areas, over Gulf of Mannar, many parts of southwest Bay of Bengal, few parts of southeast Bay of Bengal.



5 August (Day 3)

- ❖ **Heavy to Very Heavy Rainfall with isolated Extremely Heavy Rainfall** very likely at isolated places over Kerala & Mahe and Tamil Nadu Puducherry & Karaikal.
- ❖ **Heavy to Very Heavy Rainfall** very likely at isolated places over Coastal Karnataka, Haryana, Chandigarh & Delhi, Himachal Pradesh, Rayalaseema, South Interior Karnataka and Uttarakhand.
- ❖ **Heavy Rainfall** very likely at isolated places over Arunachal Pradesh, Assam & Meghalaya, Bihar, Coastal Andhra Pradesh, Jammu-Kashmir-Ladakh-Gilgit-Baltistan-Muzaffarabad, Lakshadweep, Punjab, Sub Himalayan West Bengal & Sikkim, Uttar Pradesh and West Madhya Pradesh.
- ❖ **Thunderstorm accompanied with lightning & gusty winds(40-50kmph)** very likely at isolated places over Kerala & Mahe, Lakshadweep and Rayalaseema.
- ❖ **Thunderstorm accompanied with lightning & gusty winds(30-40kmph)** very likely at isolated places over Bihar, Coastal Andhra Pradesh, Gangetic West Bengal, Jammu-Kashmir-Ladakh-Gilgit-Baltistan-Muzaffarabad, Jharkhand, Karnataka and West Madhya Pradesh.
- ❖ **Thunderstorm accompanied with Lightning** very likely at isolated places over Assam & Meghalaya, Chhattisgarh, East Madhya Pradesh, Maharashtra, Nagaland, Manipur, Mizoram and Tripura, Odisha, Tamil Nadu Puducherry & Karaikal, Telangana, Uttar Pradesh and Uttarakhand.
- ❖ **Strong Surface Winds** very likely at isolated places over Andhra Pradesh, Kerala & Mahe, Lakshadweep and Telangana.
- ❖ Squally wind with speed reaching 45 kmph to 55 kmph gusting to 65 kmph is likely to prevail along and off Somalia, Yemen & Oman coasts, most parts of westcentral Arabian Sea & adjoining eastcentral Arabian Sea, southern parts

***Red color warning does not mean "Red Alert" Red color warning means "Take Action"**

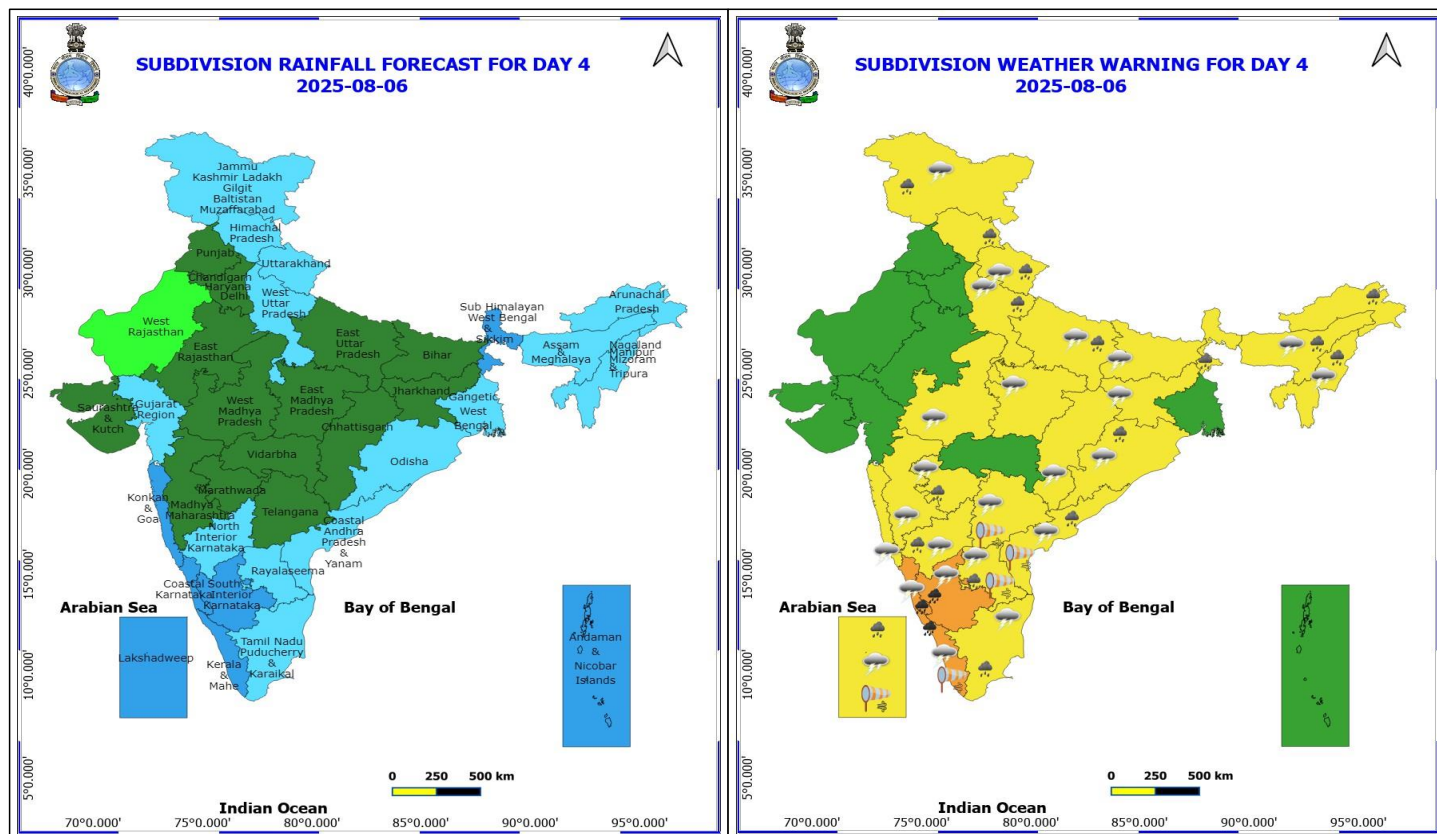
Forecast and warning for any day is valid from 0830 hours IST of day till 0830 hours IST of next day

For more details kindly visit <https://mausam.imd.gov.in> or contact 011-2434-4599

(Service to the nation since 1875)

of northwest Arabian Sea, many parts of southwest & southeast Arabian Sea.

- ❖ Squally weather with wind speed reaching 40 - 50 kmph gusting to 60 kmph likely to prevail over many parts of eastcentral Arabian Sea, many parts of southeast and southwest Arabian Sea, over northeast & adjoining northwest Arabian Sea, along and off north Gujarat, Kerala, Karnataka coasts, over Lakshadweep, Maldives, Comorin areas, over Gulf of Mannar, many parts of southwest and adjoining southeast Bay of Bengal.



6 August (Day 4)

- ❖ **Heavy to Very Heavy Rainfall** likely at isolated places over Coastal Karnataka, Kerala & Mahe and South Interior Karnataka.
- ❖ **Heavy Rainfall** likely at isolated places over Andhra Pradesh, Arunachal Pradesh, Assam & Meghalaya, Himachal Pradesh, Jammu-Kashmir-Ladakh-Gilgit-Baltistan-Muzaffarabad, Lakshadweep, Marathwada, Nagaland, Manipur, Mizoram and Tripura, North Interior Karnataka, Odisha, Sub Himalayan West Bengal & Sikkim, Tamil Nadu Puducherry & Karaikal, Uttar Pradesh and Uttarakhand.
- ❖ **Thunderstorm accompanied with lightning & gusty winds(40-50kmph)** likely at isolated places over Kerala & Mahe, Lakshadweep and Rayalaseema.
- ❖ **Thunderstorm accompanied with lightning & gusty winds(30-40kmph)** likely at isolated places over Bihar, Coastal Andhra Pradesh, Jharkhand, Karnataka and West Madhya Pradesh.
- ❖ **Thunderstorm accompanied with Lightning** likely at isolated places over Assam & Meghalaya, Chhattisgarh, East Madhya Pradesh, Jammu-Kashmir-Ladakh-Gilgit-Baltistan-Muzaffarabad, Konkan & Goa, Madhya Maharashtra, Marathwada, Nagaland, Manipur, Mizoram and Tripura, Odisha, Tamil Nadu Puducherry & Karaikal, Telangana, Uttar Pradesh and Uttarakhand.
- ❖ **Strong Surface Winds** likely at isolated places over Andhra Pradesh, Kerala & Mahe, Lakshadweep and Telangana.
- ❖ Squally wind with speed reaching 45 kmph to 55 kmph gusting to 65 kmph is likely to prevail along and off Somalia, Yemen & Oman coasts, many parts of westcentral Arabian Sea, southern parts of northwest Arabian Sea, many parts of southwest & southeast Arabian Sea.

*Red color warning does not mean "Red Alert" Red color warning means "Take Action"

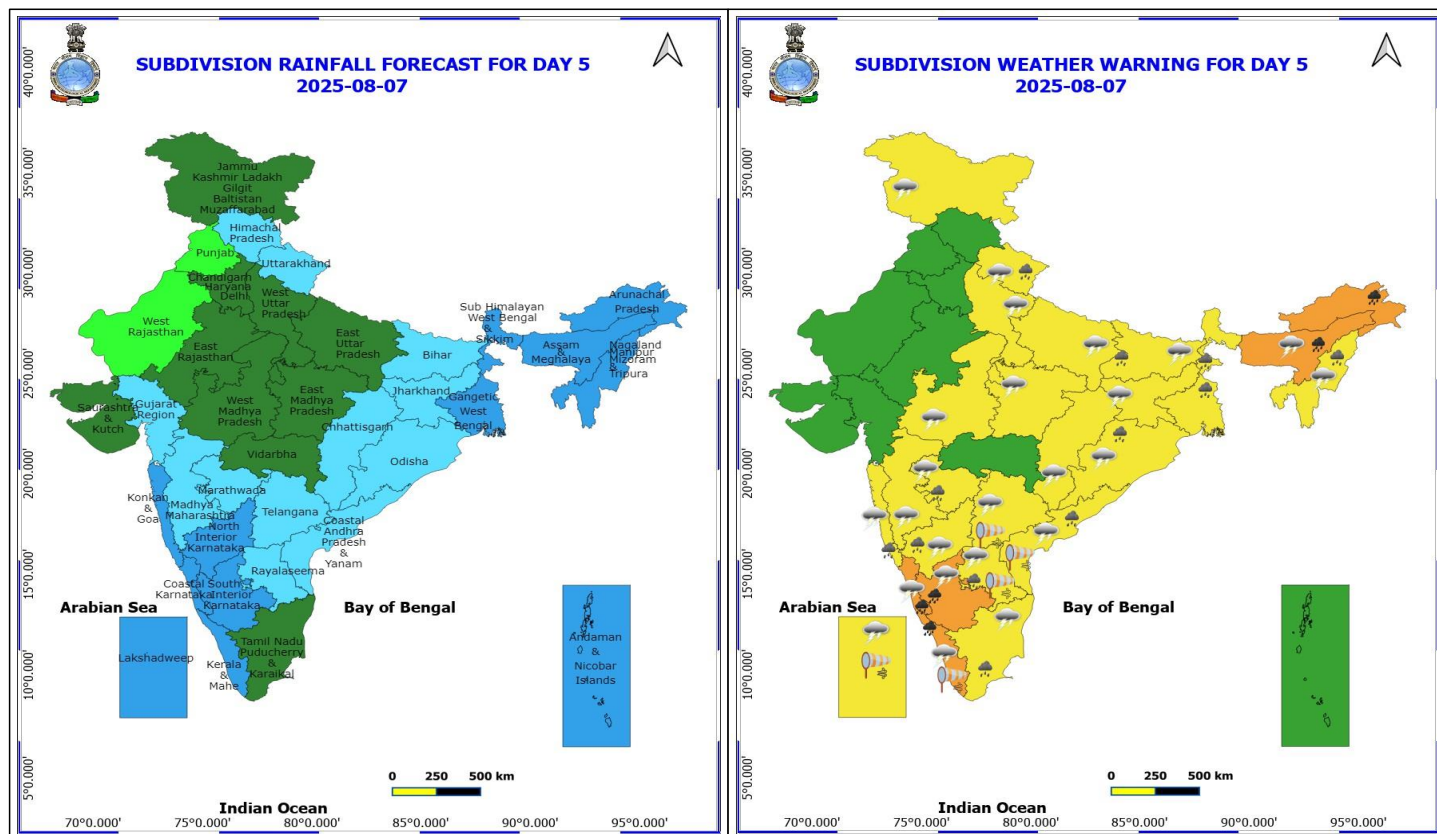
Forecast and warning for any day is valid from 0830 hours IST of day till 0830 hours IST of next day

For more details kindly visit <https://mausam.imd.gov.in> or contact 011-2434-4599

(Service to the nation since 1875)



- ❖ Squally weather with wind speed reaching 40 - 50 kmph gusting to 60 kmph likely to prevail over many parts of eastcentral Arabian Sea, many parts of southeast and southwest Arabian Sea, over northeast & adjoining northwest Arabian Sea, along and off north Gujarat, Kerala, Karnataka coasts, over Lakshadweep, Maldives, Comorin areas, over Gulf of Mannar, many parts of southwest and adjoining southeast Bay of Bengal.



7 August (Day 5)

- ❖ **Heavy to Very Heavy Rainfall** likely at isolated places over Arunachal Pradesh, Assam & Meghalaya, Coastal Karnataka, Kerala & Mahe and South Interior Karnataka.
- ❖ **Heavy Rainfall** likely at isolated places over Andhra Pradesh, Bihar, Konkan & Goa, Marathwada, Nagaland, Manipur, Mizoram and Tripura, North Interior Karnataka, Odisha, Tamil Nadu Puducherry & Karaikal, Uttarakhand and West Bengal & Sikkim.
- ❖ **Thunderstorm accompanied with lightning & gusty winds(40-50kmph)** likely at isolated places over Kerala & Mahe, Lakshadweep and Rayalaseema.
- ❖ **Thunderstorm accompanied with lightning & gusty winds(30-40kmph)** likely at isolated places over Bihar, Coastal Andhra Pradesh, Jharkhand, Karnataka and West Madhya Pradesh.
- ❖ **Thunderstorm accompanied with Lightning** likely at isolated places over Assam & Meghalaya, Chhattisgarh, East Madhya Pradesh, Jammu-Kashmir-Ladakh-Gilgit-Baltistan-Muzaffarabad, Konkan & Goa, Madhya Maharashtra, Marathwada, Nagaland, Manipur, Mizoram and Tripura, Odisha, Tamil Nadu Puducherry & Karaikal, Telangana, Uttar Pradesh and Uttarakhand.
- ❖ **Strong Surface Winds** likely at isolated places over Andhra Pradesh, Kerala & Mahe, Lakshadweep and Telangana.
- ❖ Squally wind with speed reaching 45 kmph to 55 kmph gusting to 65 kmph is likely to prevail along and off Somalia, Yemen & Oman coasts, many parts of westcentral Arabian Sea, southern parts of northwest Arabian Sea, many parts of southwest & southeast Arabian Sea.
- ❖ Squally weather with wind speed reaching 40 - 50 kmph gusting to 60 kmph likely to prevail over many parts of

***Red color warning does not mean "Red Alert" Red color warning means "Take Action"**

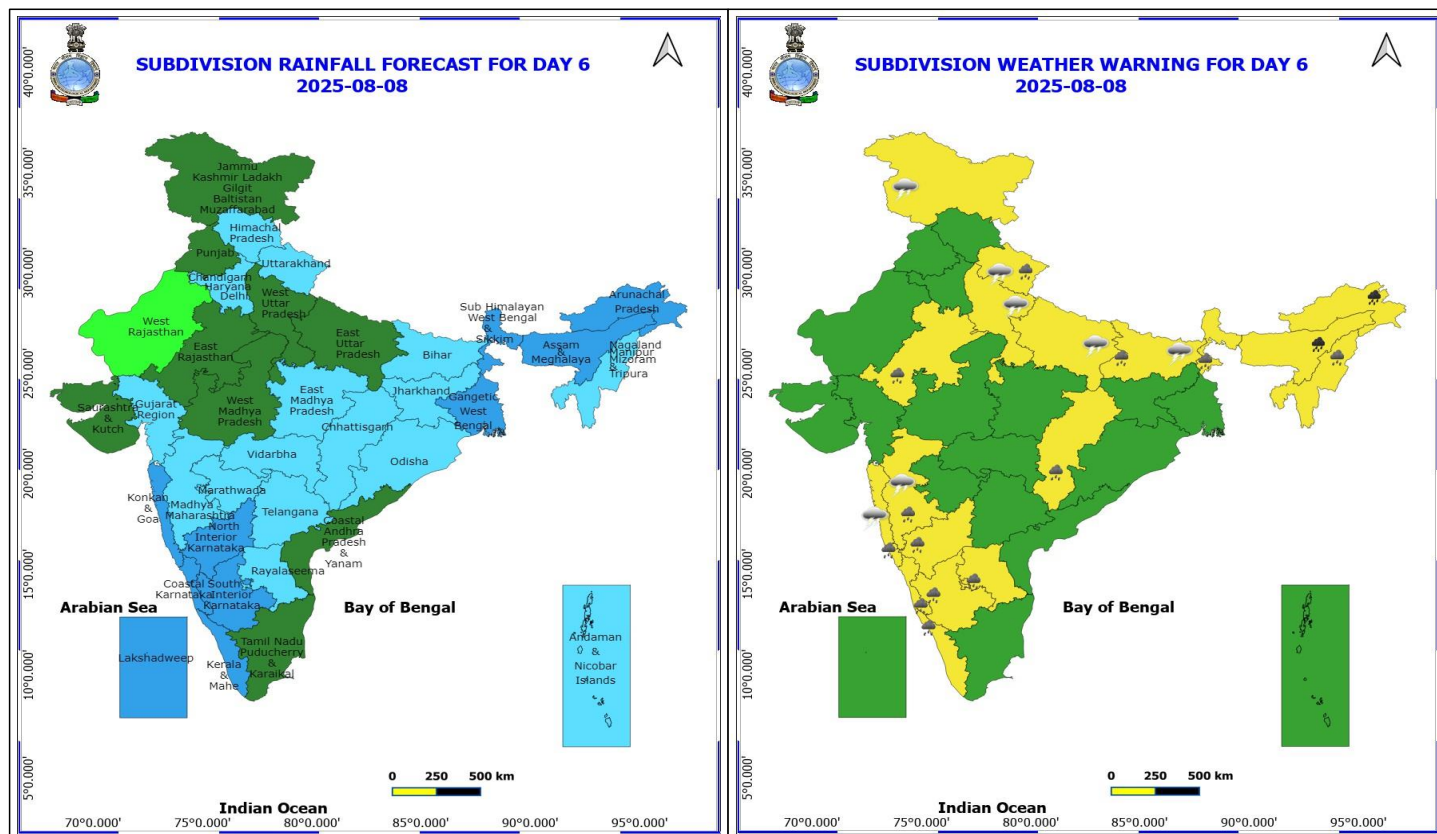
Forecast and warning for any day is valid from 0830 hours IST of day till 0830 hours IST of next day

For more details kindly visit <https://mausam.imd.gov.in> or contact 011-2434-4599

(Service to the nation since 1875)



eastcentral Arabian Sea, many parts of southeast and southwest Arabian Sea, over northeast & adjoining northwest Arabian Sea, along and off north Gujarat, Kerala, Karnataka coasts, along & off Tamil Nadu & south Andhra Pradesh coasts, over Lakshadweep, Maldives, Comorin areas, over Gulf of Mannar, many parts of southwest and adjoining southeast Bay of Bengal, southwestern parts of westcentral Bay of Bengal.



8 August (Day 6)

- ❖ **Heavy to Very Heavy Rainfall** likely at isolated places over Arunachal Pradesh and Assam & Meghalaya.
- ❖ **Heavy Rainfall** likely at isolated places over Bihar, Chhattisgarh, East Rajasthan, Karnataka, Kerala & Mahe, Konkan & Goa, Madhya Maharashtra, Nagaland, Manipur, Mizoram and Tripura, Rayalaseema, Sub Himalayan West Bengal & Sikkim and Uttarakhand.
- ❖ **Thunderstorm accompanied with lightning & gusty winds(30-40kmph)** likely at isolated places over Bihar.
- ❖ **Thunderstorm accompanied with Lightning** likely at isolated places over Jammu-Kashmir-Ladakh-Gilgit-Baltistan-Muzaffarabad, Konkan & Goa, Madhya Maharashtra, Uttar Pradesh and Uttarakhand.

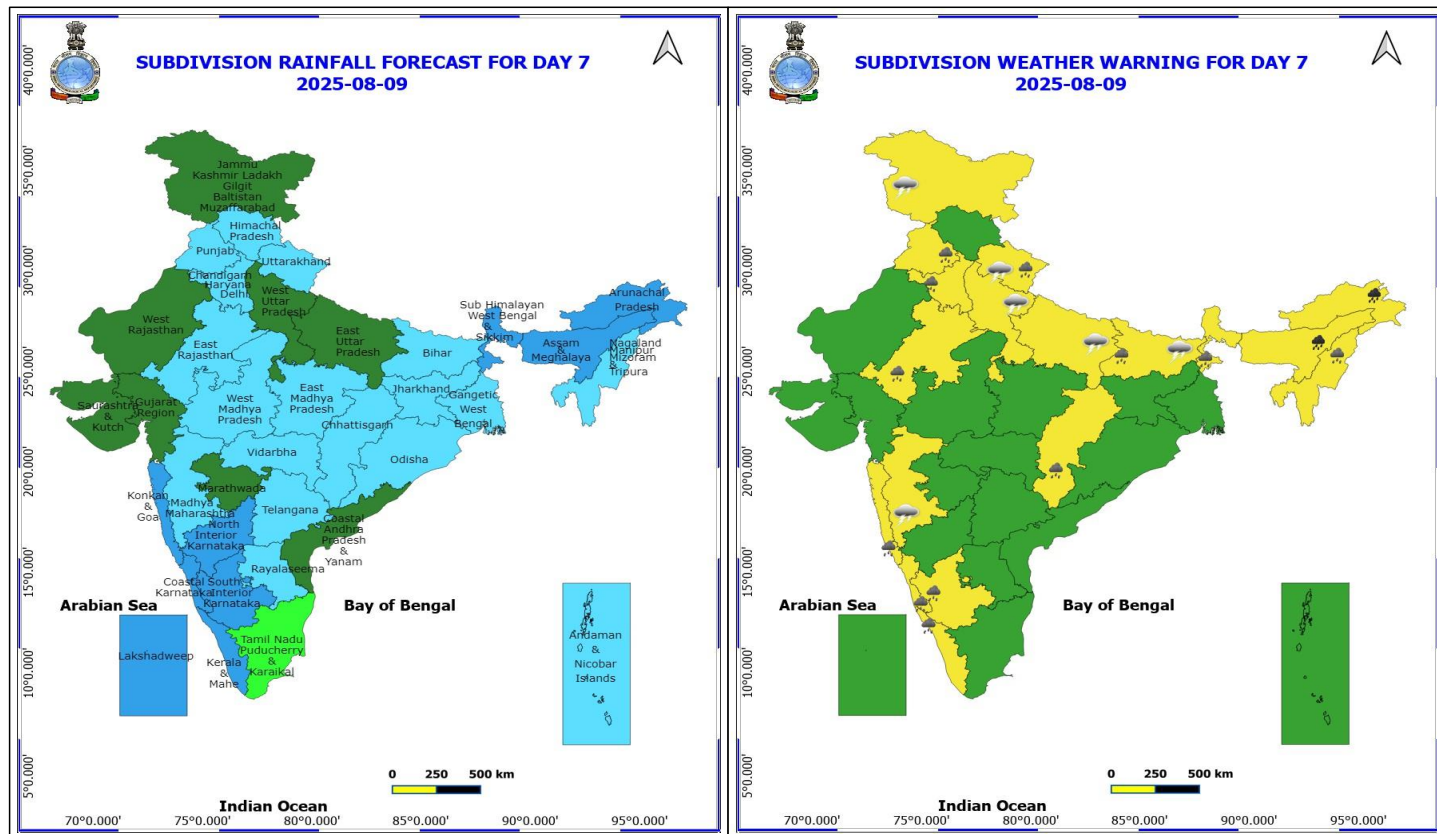
No Fishermen Warning

***Red color warning does not mean "Red Alert" Red color warning means "Take Action"**

Forecast and warning for any day is valid from 0830 hours IST of day till 0830 hours IST of next day

For more details kindly visit <https://mausam.imd.gov.in> or contact 011-2434-4599

(Service to the nation since 1875)



9 August (Day 7)

- ❖ **Heavy to Very Heavy Rainfall** likely at isolated places over Arunachal Pradesh and Assam & Meghalaya.
- ❖ **Heavy Rainfall** likely at isolated places over Bihar, Chhattisgarh, Coastal Karnataka, East Rajasthan, Haryana, Chandigarh & Delhi, Kerala & Mahe, Konkarn & Goa, Nagaland, Manipur, Mizoram and Tripura, Punjab, South Interior Karnataka, Sub Himalayan West Bengal & Sikkim and Uttarakhand.
- ❖ **Thunderstorm accompanied with lightning & gusty winds(30-40kmph)** likely at isolated places over Bihar and Jammu-Kashmir-Ladakh-Gilgit-Baltistan-Muzaffarabad.
- ❖ **Thunderstorm accompanied with Lightning** likely at isolated places over Madhya Maharashtra, Uttar Pradesh and Uttarakhand.

No Fishermen Warning

***Red color warning does not mean "Red Alert" Red color warning means "Take Action"**

Forecast and warning for any day is valid from 0830 hours IST of day till 0830 hours IST of next day

For more details kindly visit <https://mausam.imd.gov.in> or contact 011-2434-4599

(Service to the nation since 1875)

Flash Flood Warnings

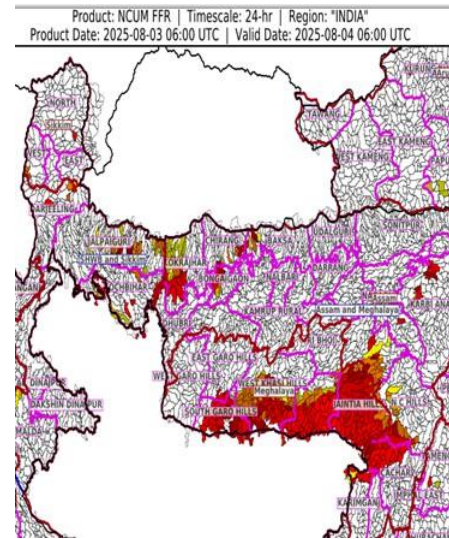
24 hours Outlook for the Flash Flood Risk (FFR) till 1130 IST of 04-08-2025 :

Low to Moderate flash flood risk likely over few watersheds & neighbourhoods of following Met Sub-divisions during next 24 hours.

Assam & Meghalaya - Baksa, Bongaigaon, Cachar, Chirang, Karbi Analog, Kokrajhar, N.C Hills, Nagaon, Karimganj, East Khasi Hills, Ri Bhoi, South Garo Hills, West Khasi Hills and Jaintia Hills districts.

Sub-Himalayan West Bengal & Sikkim - North Sikkim, West Sikkim, Darjeeling, Jalpaiguri and Kochbihar districts.

Surface runoff/ Inundation may occur at some fully saturated soils & low-lying areas over Area of Concern (AoC) as shown in map due to expected rainfall occurrence in next 24 hours



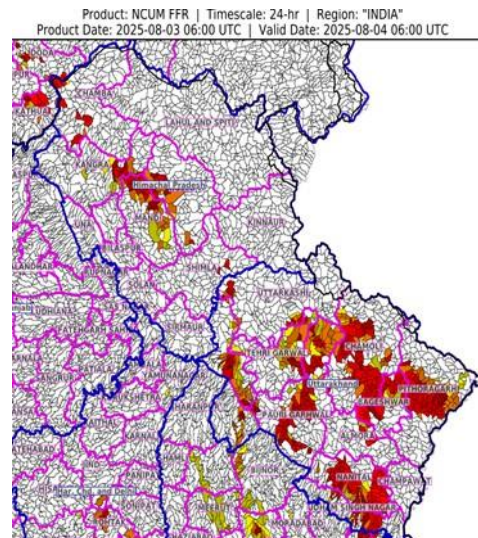
24 hours Outlook for the Flash Flood Risk (FFR) till 1130 IST of 04-08-2025 :

Low to Moderate flash flood risk likely over few watersheds & neighbourhoods of following Met Sub-divisions during next 24 hours.

Himachal Pradesh - Chamba, Kangra, Kullu, Mandi and Shimla districts.

Uttarakhand - Almora, Bageshwar, Chamoli, Champawat, Dehradun, Haridwar, Nanital, Pauri Garhwal, Pithoragarh, Rudraprayag, Tehri Garwal, Udham Singh Nagar and Uttarkashi districts.

Surface runoff/ Inundation may occur at some fully saturated soils & low-lying areas over Area of Concern (AoC) as shown in map due to expected rainfall occurrence in next 24 hours.



***Red color warning does not mean "Red Alert" Red color warning means "Take Action"**

Forecast and warning for any day is valid from 0830 hours IST of day till 0830 hours IST of next day

For more details kindly visit <https://mausam.imd.gov.in> or contact 011-2434-4599

(Service to the nation since 1875)



Table-1

7 Days Rainfall Forecast

S.No.	Subdivision	3- Aug	4- Aug	5- Aug	6- Aug	7- Aug	8- Aug	9- Aug
		Day 1	Day 2	Day 3	Day 4	Day 5	Day 6	Day 7
1	ANDAMAN & NICOBAR ISLANDS	SCT	SCT	WS	WS	WS	FWS	FWS
2	ARUNACHAL PRADESH	WS	WS	FWS	FWS	WS	WS	WS
3	ASSAM & MEHGHALAYA	WS	WS	FWS	FWS	WS	WS	WS
4	N. M. M. & T.	WS	FWS	SCT	FWS	WS	FWS	FWS
5	S.H. WEST BENGAL & SIKKIM	WS	WS	WS	WS	WS	WS	WS
6	GANGETIC WEST BENGAL	FWS	WS	FWS	FWS	WS	WS	FWS
7	ODISHA	SCT	SCT	SCT	FWS	FWS	FWS	FWS
8	JHARKHAND	FWS	SCT	SCT	SCT	FWS	FWS	FWS
9	BIHAR	WS	WS	FWS	SCT	FWS	FWS	FWS
10	EAST UTTAR PRADESH	WS	FWS	FWS	SCT	SCT	SCT	SCT
11	WEST UTTAR PRADESH	FWS	WS	FWS	FWS	SCT	SCT	SCT
12	UTTARAKHAND	WS	WS	WS	FWS	FWS	FWS	FWS
13	HARYANA, CHD & DELHI	FWS	FWS	FWS	SCT	SCT	FWS	FWS
14	PUNJAB	SCT	SCT	FWS	SCT	ISOL	SCT	FWS
15	HIMACHAL PRADESH	FWS	WS	WS	FWS	FWS	FWS	FWS
16	JAMMU AND KASHMIR AND LADAKH	SCT	SCT	WS	FWS	SCT	SCT	SCT
17	WEST RAJASTHAN	ISOL	ISOL	ISOL	ISOL	ISOL	ISOL	SCT
18	EAST RAJASTHAN	ISOL	ISOL	SCT	SCT	SCT	SCT	FWS
19	WEST MADHYA PRADESH	SCT	SCT	SCT	SCT	SCT	SCT	FWS
20	EAST MADHYA PRADESH	FWS	FWS	FWS	SCT	SCT	FWS	FWS
21	GUJRAT REGION	FWS	FWS	FWS	FWS	FWS	FWS	SCT
22	SAURASHTRA & KUTCH	SCT	SCT	SCT	SCT	SCT	SCT	SCT
23	KONKAN & GOA	FWS	FWS	FWS	WS	WS	WS	WS
24	MADHYA MAHARASHTRA	ISOL	ISOL	SCT	SCT	FWS	FWS	FWS
25	MARATHWADA	ISOL	ISOL	ISOL	SCT	FWS	FWS	SCT
26	VIDARBHA	SCT	SCT	SCT	SCT	SCT	FWS	FWS
27	CHATTISGARH	SCT	SCT	SCT	SCT	FWS	FWS	FWS
28	COASTAL ANDHRA PRADESH	ISOL	SCT	FWS	FWS	FWS	SCT	SCT
29	TELANGANA	ISOL	ISOL	SCT	SCT	FWS	FWS	FWS
30	RAYALASEEMA	SCT	FWS	FWS	FWS	FWS	FWS	FWS
31	TAMILNADU & PUDUCHERRY	FWS	FWS	FWS	FWS	SCT	SCT	ISOL
32	COSTAL KARNATAKA	WS	WS	WS	WS	WS	WS	WS
33	NORTH INTERIOR KARNATAKA	SCT	FWS	FWS	FWS	WS	WS	WS
34	SOUTH INTERIOR KARNATAKA	FWS	FWS	WS	WS	WS	WS	WS
35	KERALA	WS	WS	WS	WS	WS	WS	WS
36	LAKSHDWEEP	WS	WS	WS	WS	WS	WS	WS

Legend	Category	%Stations
WS	Widespread/Most Places	76-100
FWS	Fairly Widespread/Many Places	51-75
SCT	Scattered/ A Few Places	26-50
ISOL	Isolated Places	1-25
DRY	No Rain	0

*Red color warning does not mean "Red Alert" Red color warning means "Take Action"

Forecast and warning for any day is valid from 0830 hours IST of day till 0830 hours IST of next day

For more details kindly visit <https://mausam.imd.gov.in> or contact 011-2434-4599

(Service to the nation since 1875)

Fig. 1: Maximum Temperatures Dated 2025-08-03

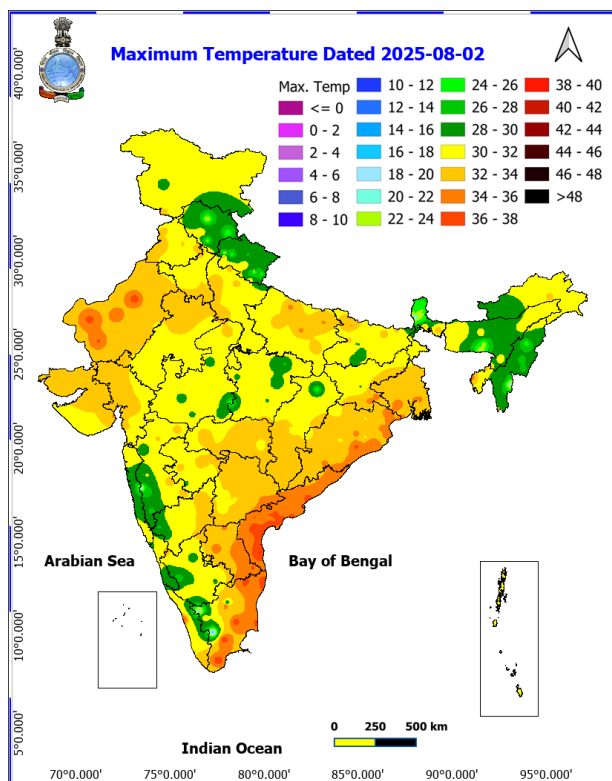


Fig. 2: Departure of Maximum Temp. Dated 2025-08-03

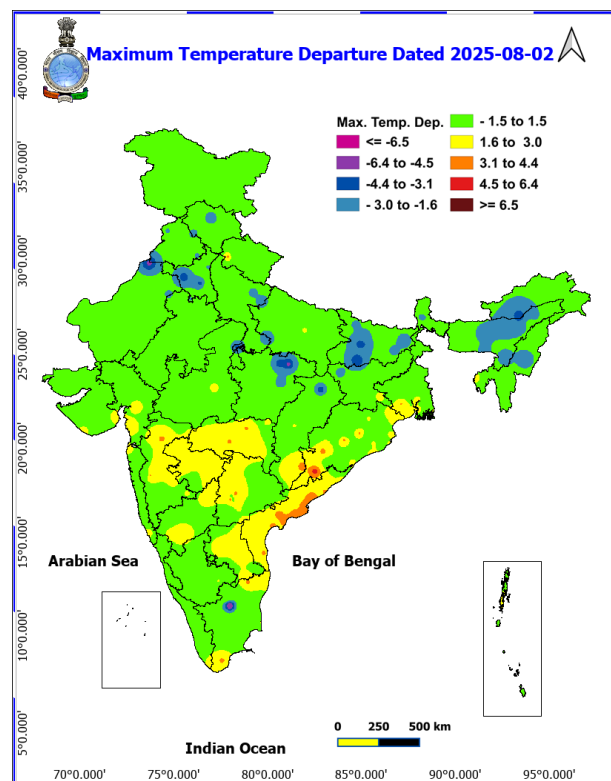


Fig. 3: Minimum Temperatures Dated 2025-08-03

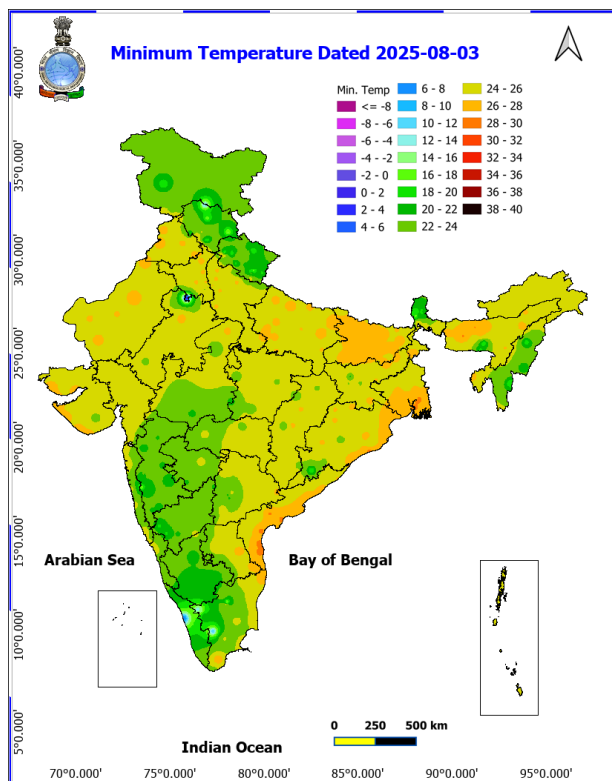
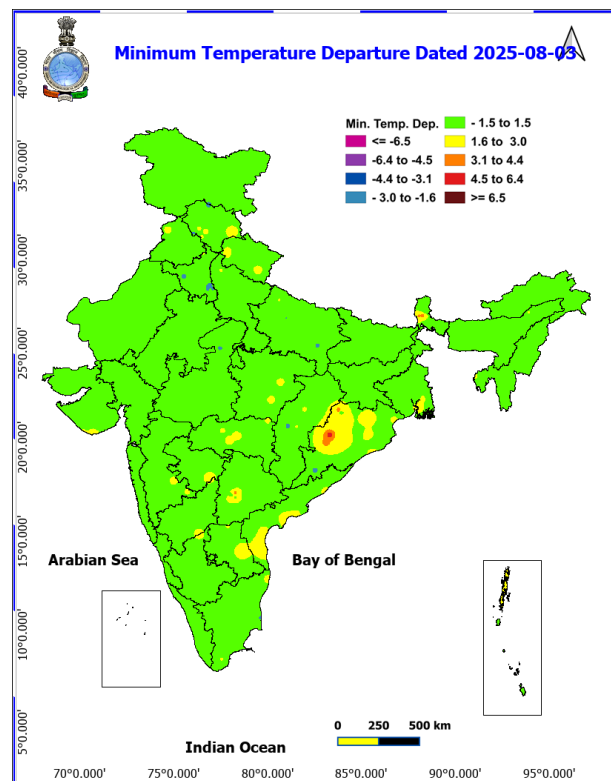
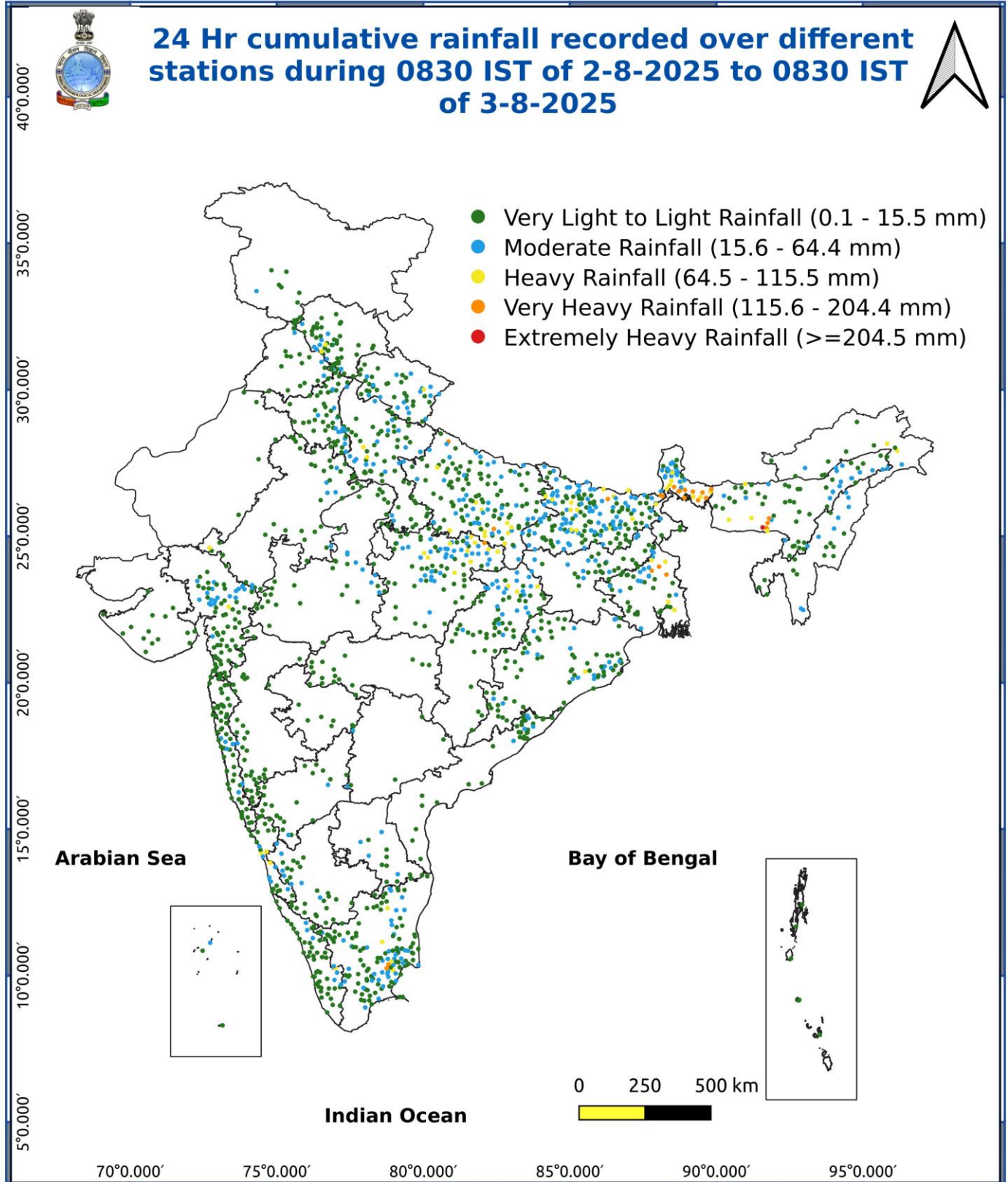


Fig. 4: Departure of Minimum Temp. Dated 2025-08-03







Impact & Action Suggested due to

- ✓ **Extremely heavy rainfall** at isolated places over East Uttar Pradesh, Meghalaya, Sub-Himalayan West Bengal & Sikkim on 03rd; Kerala and Tamil Nadu on 05th August.
- ✓ **Very heavy rainfall** over Arunachal Pradesh on 03rd, 04th & during 06th-09th August; Assam & Meghalaya on 04th & during 07th -09th; East Madhya Pradesh on 03rd; Uttarakhand during 03rd-05th; Sub-Himalayan West Bengal & Sikkim on 04th; Himachal Pradesh on 04th & 05th; Haryana, Rayalaseema on 05th; Uttar Pradesh, Bihar, Tamil Nadu on 03rd & 04th; Kerala & Mahe during 03rd-07th; Coastal & South Interior Karnataka during 05th-07th August.

Impact Expected

- Localized Flooding of roads, water logging in low lying areas and closure of underpasses mainly in urban areas of the above region.
- Occasional reduction in visibility due to heavy rainfall.
- Disruption of traffic in major cities due to water logging in roads leading to increased travel time.
- Minor damage to kutcha roads.
- Possibilities of damage to vulnerable structure.
- Localized Landslides/Mudslides/landslips/mudslips/landsinks/mudsinks.
- Damage to horticulture and standing crops in some areas due to inundation.
- It may lead to riverine flooding in some river catchments (for riverine flooding please visit Web page of CWC)

Action Suggested

- Check for traffic congestion on your route before leaving for your destination.
- Follow any traffic advisories that are issued in this regard.
- Avoid going to areas that face the water logging problems often.
- Avoid staying in vulnerable structure.

Agromet advisories for likely impact of Heavy / Heavy to Very Heavy / Extremely Heavy Rainfall

- In **Arunachal Pradesh**, postpone all fresh sowing operations till cessation of heavy rains. Avoid fresh transplanting of rice in lowlands during heavy rainfall. Cover rice fields with natural mulches like dry leaves or straw to avert the adverse impact of rain. Ensure proper drainage in rice, maize, finger millet, soybean and vegetables and fruit orchards to avoid waterlogging. Provide strong support to fruit-bearing plants to prevent them from bending or breaking during heavy rains.
- In **Assam**, postpone the sowing of sesame, green gram and pigeon pea till cessation of heavy rains in **Kokrajhar** and **Bongaigaon** districts. In **Central Brahmaputra Valley Zone**, harvest matured jute immediately and keep the bundles of harvested produce in high land or shed to avoid retting in contaminated water. Avoid sowing of sesame during heavy rainfall. To prevent waterlogging, ensure proper drainage in *Sali* rice, green gram and pigeon pea fields in **Lower Brahmaputra Valley Zone**; *Sali* rice, turmeric and already sown sesame fields in **Central Brahmaputra Valley Zone**; rice and sesame fields in **Hill Zone** and *Sali* rice fields in **North Bank Plain Zone**, **Upper Brahmaputra Valley Zone** and **Barak Valley Zone**.
- In **Meghalaya**, avoid transplanting of rice during heavy rainfall. Ensure proper drainage in rice, maize, turmeric, chilli, okra and bitter gourd fields to prevent waterlogging. Provide staking / support to tall and fragile crops like banana, papaya, bottle gourd etc. to prevent lodging.
- In **Sub-Himalayan West Bengal**, make provision to drain out excess water from rice, ginger, vegetable fields and fruit orchards in **Hill Zone** and *aman* paddy and vegetable fields in **Terai Zone**. Cover the chilli seedlings with plastic to protect them from heavy rains in **Terai Zone**.
- In **Bihar**, ensure proper drainage in maize, vegetables, ragi, kodo, sava, etc. in low-lying areas and strengthen field bunds in **South Bihar Alluvial Zone**. Maintain proper drainage in maize fields and do not allow rain water to accumulate in the fields of ragi, kodo, sava, china etc. in **North East Alluvial Zone**.

*Red color warning does not mean "Red Alert" Red color warning means "Take Action"

Forecast and warning for any day is valid from 0830 hours IST of day till 0830 hours IST of next day

For more details kindly visit <https://mausam.imd.gov.in> or contact 011-2434-4599

(Service to the nation since 1875)



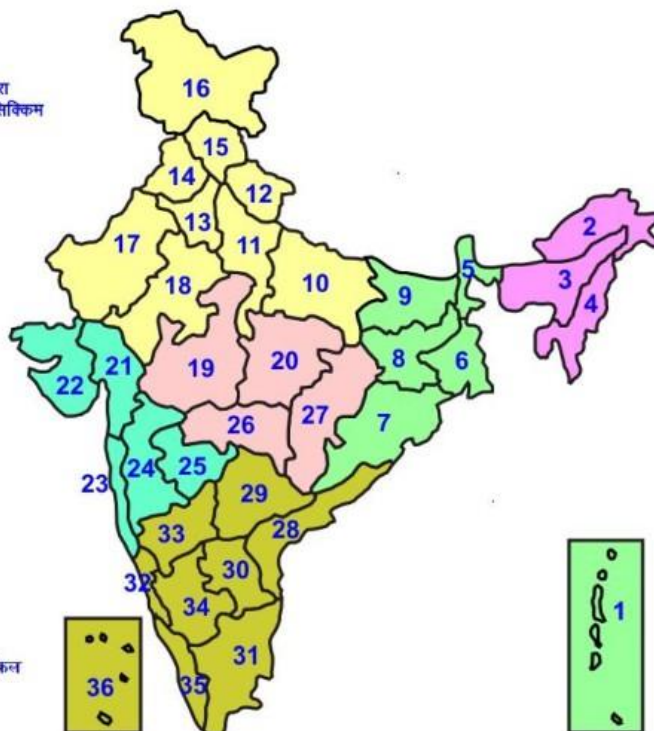
- In **Uttarakhand**, to avoid waterlogging, maintain proper drainage channels in fields of rice, sugarcane, maize, black gram, green gram, soybean, and vegetables in **Bhabar and Tarai Zone** and barnyard millet, finger millet, green gram and black gram in **Sub Humid Sub Tropic Zone**. Postpone sowing of green gram and soybean in **Nainital** district. In **Hill Zone**, strengthen the bunds to prevent surface runoff of water. Postpone sowing of vegetable pea in case of excessive wet soil conditions. Maintain proper drainage channels in the crop fields.
- In **Himachal Pradesh**, cover the cauliflower nursery with plastic sheets to prevent damage from heavy rainfall in **High Hills Sub Temperate Wet Zone**. Make proper drainage channels in vegetable fields in **Mid Hills Sub Humid Zone**; rice, maize and vegetable fields in **Sub Montane and Low Hills Sub Tropical Zone** and kidney beans, finger millet, cucurbits and vegetables in **High Hills Sub Temperate Wet Zone**.
- In **Kerala**, provide adequate drainage in fields of rice, coconut, banana and ginger. Provide support to banana plantations. Make the vegetable pandals stronger.
- In **Tamil Nadu**, provide support to sugarcane and banana plants to prevent lodging. Provide proper drainage facility in rice nursery in **North Eastern Zone** and standing crop fields in **Cauvery Delta Zone**.

Livestock / Fishery

- Keep the animals inside the shed during heavy rainfall and provide them balanced feed.
- Store feed and fodder in a safe place to prevent spoilage.
- Construct an outlet with proper netting around the ponds to drain out excess water, thereby preventing fish from escaping in case of overflow.

LEGENDS

- 1 अंडमान और निकोबार द्वीप समुह
- 2 अरुणाचल प्रदेश
- 3 असम और मेघालय
- 4 नागालैंड मनीपुर मीजोरम और त्रिपुरा
- 5 उप हिमालय पश्चिम बंगाल एवं सिक्किम
- 6 पश्चिम बंगाल
- 7 ओडिसा
- 8 झारखंड
- 9 बिहार
- 10 पूर्वी उत्तर प्रदेश
- 11 पश्चिम उत्तर प्रदेश
- 12 उत्तराखंड
- 13 हरियाणा चंडीगढ़ एवं दिल्ली
- 14 पंजाब
- 15 हिमाचल प्रदेश
- 16 जम्मू एवं कश्मीर एवं लद्दाख
- 17 पश्चिम राजस्थान
- 18 पूर्वी राजस्थान
- 19 पश्चिम मध्य प्रदेश
- 20 पूर्वी मध्य प्रदेश
- 21 गुजरात क्षेत्र
- 22 सौराष्ट्र एवं कच्छ
- 23 कोंकण एवं गोवा
- 24 मध्य महाराष्ट्र
- 25 मराठावाड़ा
- 26 विदर्भ
- 27 छत्तीसगढ़
- 28 तटीय आंध्र प्रदेश एवं यनम
- 29 तेलंगाना
- 30 रायलसेमा
- 31 तमिलनाडु, पुदुचेरी एवं कराईकल
- 32 तटिय कर्नाटक
- 33 आंतरिक उत्तरी कर्नाटक
- 34 आंतरिक दक्षिणी कर्नाटक
- 35 केरल एवं माहे
- 36 लक्षद्वीप



1. Andaman & Nicobar Islands
2. Arunachal Pradesh
3. Assam & Meghalaya
4. Nagaland, Manipur, Mizoram & Tripura
5. Sub-Himalayan West Bengal & Sikkim
6. Gangetic West Bengal
7. Orissa
8. Jharkhand
9. Bihar
10. East Uttar Pradesh
11. West Uttar Pradesh
12. Uttarakhand
13. Haryana, Chd & Delhi
14. Punjab
15. Himachal Pradesh
16. Jammu & Kashmir and Ladakh
17. West Rajasthan
18. East Rajasthan
19. West Madhya Pradesh
20. East Madhya Pradesh
21. Gujarat
22. Saurashtra
23. Konkan & Goa
24. Madhya Maharashtra
25. Marathawada
26. Vidharbha
27. Chhattisgarh
28. Coastal Andhra Pradesh & Yanam
29. Telangana
30. Rayalaseema
31. Tamilnadu, Puducherry & Karaikal
32. Coastal Karnataka
33. North Interior Karnataka
34. South Interior Karnataka
35. Kerala & Mahe
36. Lakshadweep

SPATIAL DISTRIBUTION (% of Stations reporting)

% Stations	Category	% Stations	Category
76-100	Widespread (WS/Most Places)	26-50	Scattered (SCT/ A Few Places)
51-75	Fairly Widespread (FWS/ Many Places)	1-25	Isolated (ISOL)

Subdivision Colour

- NO WARNING
- WATCH (BE UPDATED)
- ALERT (BE PREPARED TO TAKE ACTION)
- WARNING (TAKE ACTION)

Probabilistic Forecast

Terms	Probability of Occurrence (%)
Unlikely	< 25
Likely	25 - 50
Very Likely	50 - 75
Most Likely	> 75

-  Heavy Rain

 Thunderstorm & Lightning

 Strong surface winds

 Cold Wave

 Hot & Humid

 Very Heavy Rain

 Hailstorm

 Heat Wave


 Cold Day

 Extremely Heavy Rain

 Dust Storm

 Hot Day

 Ground Frost

 Heavy Snow

 Dust Raising Winds

 Warm Night

 Fog

*Red color warning does not mean "Red Alert" Red color warning means "Take Action"

Forecast and warning for any day is valid from 0830 hours IST of day till 0830 hours IST of next day

For more details kindly visit <https://mausam.imd.gov.in> or contact 011-2434-4599

(Service to the nation since 1875)

LEGENDS

WARNING

WARNING (TAKE ACTION)
ALERT (BE PREPARED)
WATCH (BE UPDATED)
NO WARNING (NO ACTION)

Probabilistic Forecast

Terms	Probability of Occurrence (%)
Unlikely	< 25
Likely	25 - 50
Very Likely	50 - 75
Most Likely	> 75



Heavy: 64.5 to 115.5 mm/cm *
Very Heavy: 115.6 to 204.4 mm/cm *
Extremely Heavy: > 204.4 mm/cm *



When maximum temperature of a station reaches $\geq 40^{\circ}\text{C}$ for plains and $\geq 30^{\circ}\text{C}$ for hilly regions
(a) Based on Departure from normal

Heat Wave: Maximum Temperature Departure from normal 4.5°C to 6.4°C .
Severe Heat Wave: Maximum Temperature Departure from normal $\geq 6.5^{\circ}\text{C}$

(b). Based on Actual maximum temperature

Heat Wave: When actual maximum temperature $\geq 45^{\circ}\text{C}$.
Severe Heat Wave: When actual maximum temperature $\geq 47^{\circ}\text{C}$

(c). Criteria for heat wave for coastal stations

When maximum temperature departure is $> 4.5^{\circ}\text{C}$ from normal. Heat Wave may be described provided maximum temperature $\geq 37^{\circ}\text{C}$



When maximum temperature remains 40°C

Warm Night: When minimum temperature departure 4.5°C to 6.4°C .
Severe Warm Night: When minimum temperature departure $> 6.4^{\circ}\text{C}$.



When minimum temperature of a station $\leq 10^{\circ}\text{C}$ for plains and $\leq 0^{\circ}\text{C}$ for hilly regions.

(a). Based on departure

Cold Wave: Minimum Temperature Departure from normal -4.5°C to -6.4°C .
Severe Cold Wave: Minimum Temperature Departure from normal $\leq -6.5^{\circ}\text{C}$

(b) Based on actual Minimum Temperature (for Plains only)

Cold Wave: When Minimum Temperature is $\leq 4.0^{\circ}\text{C}$
Severe Cold Wave: When Minimum Temperature is $\leq 2.0^{\circ}\text{C}$

(c) For Coastal Stations

When Minimum Temperature departure is $\leq -4.5^{\circ}\text{C}$ & actual Minimum Temperature is $\leq 15^{\circ}\text{C}$



When minimum temperature of a station $\leq 10^{\circ}\text{C}$ for plains and $\leq 0^{\circ}\text{C}$ for hilly regions
Based on departure

Cold Day: Maximum Temperature Departure from normal -4.5°C to -6.4°C .
Severe Cold Day: Maximum Temperature Departure from normal $\leq -6.5^{\circ}\text{C}$



Phenomenon of small droplets suspended in air and the horizontal visibility $< 1\text{km}$

Moderate Fog: When the visibility between 500-200 metres
Dense Fog: when the visibility between 50-200 metres
Very Dense Fog: when the visibility < 50 metres



Sudden electrical discharges manifested by a flash of light (Lightning) and a sharp rumbling sound (thunder)



An ensemble of particles of dust or sand energetically lifted to great heights by a strong and turbulent wind.



Ice deposits on ground

Air temperature $\leq 4^{\circ}\text{C}$ (over Plains)



A strong wind that rises suddenly, lasts for atleast 1 minute.

Moderate: Wind speed 52-61 kmph
Severe: Wind speed 62-87 kmph
Very Severe: Wind speed > 87 kmph



Effect of various waves in the sea over specific area

Rough to very rough: Wind speed 41-62 kmph (22-33 knots) & Wave height 2.5-6 metre
High to very high: Wind speed 63-117 kmph (34-63 knots) & Wave height 6-14 metre
Phenomenal: Wind speed > 117 kmph (> 63 knots) & Wave height > 14 metre



Cyclonic Storm: Wind speed 62-87 kmph (34-47 knots)

Severe Cyclonic Storm: Wind speed 88-117 kmph (48-63 knots)

Very Severe Cyclonic Storm: Wind speed 118-165 kmph (64-89 knots)

Extremely Severe Cyclonic Storm: Wind speed 166-220 kmph (90-119 knots)

Super Cyclone Storm: Wind speed > 220 kmph (> 119 knots)

*Red color warning does not mean "Red Alert" Red color warning means "Take Action"

Forecast and warning for any day is valid from 0830 hours IST of day till 0830 hours IST of next day

For more details kindly visit <https://mausam.imd.gov.in> or contact 011-2434-4599

(Service to the nation since 1875)