

2025-07-29

Time of Issue: 14:50:00 hours IST
(Mid-Day)

ALL INDIA WEATHER SUMMARY AND FORECAST BULLETIN

Significant Weather Features

Weather Forecast and Warnings

Northwest India:

Isolated very heavy rainfall over East Rajasthan during 29th-31st; Himachal Pradesh on 29th & 30th; West Uttar Pradesh, and Jammu & Kashmir on 29th July.

Isolated **heavy rainfall** likely over Uttarakhand, Himachal Pradesh during 29th July-04th August; Jammu and Kashmir during 29th-31st; Uttar Pradesh on 29th, 30th July, 03rd & 04th August; Punjab, Haryana & Chandigarh on 29th July, 03rd & 04th August; East Rajasthan on 01st & 02nd August and West Rajasthan on 30th & 31st July.

Light/moderate rainfall at many places accompanied with thunderstorm, lightning likely over Western Himalayan region and some places over the plains during next 7 days.

West India:

Isolated **heavy rainfall** likely over Gujarat region on 29th; Konkan, Ghat areas of Madhya Maharashtra on 29th & 30th July with isolated **very heavy rainfall** over Ghat areas of Madhya Maharashtra on 29th July.

Light to moderate rainfall at many places very likely over the region during next 6-7 days.

Northeast India:

Light/moderate rainfall at many places accompanied with **thunderstorm, lightning and isolated heavy rainfall** likely to continue over Arunachal Pradesh, Assam & Meghalaya and Nagaland, Manipur, Mizoram & Tripura during 29th July-04th August with increased activity from 01st August.

East & Central India:

Extremely heavy rainfall very likely at isolated places over West Madhya Pradesh on 29th July.

Isolated **heavy rainfall** likely over Madhya Pradesh during 29th-31st; Vidarbha, Odisha on 29th; Sub-Himalayan West Bengal & Sikkim, Bihar during 29th July-04th August; Jharkhand, Gangetic West Bengal, Chhattisgarh on 29th & 30th July with isolated **very heavy rainfall** over Gangetic West Bengal, East Madhya Pradesh on 29th; Bihar on 29th & 30th; West Madhya Pradesh on 30th; Sub-Himalayan West Bengal & Sikkim during 02nd-04th August. Light to moderate rainfall at most/many places accompanied with thunderstorm, lightning & gusty winds (speed reaching 30-40 Kmph) likely over the region during next 5 days.

South Peninsular India:

Strong surface winds (speed reaching 40-50 kmph) very likely over South Peninsular India during next 3 days.

Light to moderate rainfall at some/many places over Kerala & Mahe, Lakshadweep, Karnataka, Rayalaseema, Coastal Andhra Pradesh & Yanam and Telanganaduring next 7 days.

Fishermen warning:

Fishermen are advised to avoid venturing into the following from 29th July to 03rd August 2025 to the following Areas:

***Red color warning does not mean "Red Alert" Red color warning means "Take Action"**

Forecast and warning for any day is valid from 0830 hours IST of day till 0830 hours IST of next day

For more details kindly visit <https://mausam.imd.gov.in> or contact 011-2434-4599

(Service to the nation since 1875)



Arabian Sea: Along and off Gujarat, Konkan & Goa coasts and adjoining sea areas; ; Entire central Arabian Sea during 29th July to 02nd August; Karnataka coast and adjoining sea areas on 29th, 30th July & 02nd August; Kerala coast and adjoining sea area during 29th to 31st July; many parts of southeast & adjoining southwest Arabian Sea for 29th July, some parts of southeast and adjoining southwest Arabian Sea during 30th July to 03rd August; most parts of central Arabian Sea on 02nd August; southern parts of north Arabian Sea along and off the Somalia coast and adjoining sea areas, south Oman and adjoining Yemen coast & adjoining sea areas during 29th July to 03rd August.

Bay of Bengal: Along and off North Andhra Pradesh coast during 29th July; many parts of westcentral Bay of Bengal during & adjoining areas of southwest & eastcentral Bay of Bengal during 29th to 31st July; some northern parts of central and adjoining north Bay of Bengal for 31st July; some parts of southwest Bay of Bengal during 31st July to 03rd August; Over Gulf of Mannar during 29th July and 03rd August.



❖ **Rainfall distribution** (from 0830 hours IST of yesterday to 0830 hours IST of today): **at most places** over Nagaland, Manipur, Mizoram & Tripura, Sub Himalayan West Bengal & Sikkim, Gangetic West Bengal, Jharkhand, Bihar, Uttarakhand, Himachal Pradesh, West Madhya Pradesh, Konkan & Goa, Vidarbha, Chhattisgarh and Coastal Karnataka; **at many places** over Andaman & Nicobar Islands, Arunachal Pradesh, Assam & Meghalaya, Odisha, East Uttar Pradesh, West Uttar Pradesh, Haryana-Chandigarh-Delhi, Punjab, East Rajasthan, East Madhya Pradesh, Gujarat Region, Madhya Maharashtra, South Interior Karnataka and Lakshadweep; **at a few places** over Jammu-Kashmir-Ladakh-Gilgit-Baltistan-Muzaffarabad, Saurashtra & Kutch and Kerala & Mahe; **at isolated places** over West Rajasthan, Marathwada, Coastal Andhra Pradesh & Yanam, Telangana, Tamil Nadu, Puducherry & Karaikal and North Interior Karnataka; **Dry** over rest of the country.

❖ **Significant rainfall recorded(in cm)** (from 0830 hours IST of yesterday to 0830 hours IST of today): **West Madhya Pradesh:** Chachoda (dist Guna) 20; Bareli (dist Raisen) 16; Udaipura (dist Raisen), Biaora (dist Rajgarh), Maksudangarh (dist Guna) 15 Each; Badi (dist Raisen) 13; Raisen-aws (dist Raisen), Raghogarh (dist Guna) 12 Each; Begumganj (dist Raisen), Lateri (dist Vidisha), Karhal (dist Sheopur) 11 Each; Alirajpur (dist Alirajpur), Kathiwada (dist Alirajpur), Bankhed (dist Narmadapuram), Deori (dist Raisen) 10 Each; Pachmarhi (dist Narmadapuram), Goharganj (dist Raisen), Sultanpur (dist Raisen) 9 Each; **Himachal Pradesh:** Mandi (dist Mandi) 20; Pandoh (dist Mandi) 12; Kataula (dist Mandi) 9; **Bihar:** Danapur (dist Patna) 18; Patna Aerodrome (dist Patna) 17; Phulwari Sharif (dist Patna) 16; Sampatchak (dist Patna) 14; Daniawan (dist Patna) 13; Lalbegiaghat (dist East Champaran), Dhengbridge (dist Sitamarhi), Punpun (dist Patna), Bhagwanpur Hat (dist Siwan), Kamtaul (dist Darbhanga) 11 Each; Sripalpur (dist Patna), Karai Parsurai (dist Nalanda), Hilsa (dist Nalanda), Bidupur (dist Vaishali) 10 Each; Baigania (dist Sitamarhi), Shambhuganj (dist Banka), Chakai (dist Jamui), Giryak (dist Nalanda), Agiaon (dist Bhojpur), Garhani (dist Bhojpur), Parbalpur (dist Nalanda), Raghopur (dist Vaishali), **Bihar** Shrif (dist Nalanda) 9 Each; **Jharkhand:** Purvi Tundi (dist Dhanbad) 17; Karmatand (dist Jamtara) 15; Narayanpur (dist Jamtara), Tundi (dist Dhanbad) 14 Each; Giridih (dist Giridih) 12; Gobindpur Dvc (dist Dhanbad), Nala (dist Jamtara), Kundahit (dist Jamtara) 11 Each; Madhupur (dist Deoghar), Sikatia (dist Deoghar), Fatehpur (dist Jamtara) 10 Each; **Punjab:** Ropar (dist Rupnagar) 16; Gurudaspur (dist Gurdaspur) 14; Tibri (dist Gurdaspur), Gurdaspur AMFU (dist Gurdaspur) 10 Each; Phangota (dist Pathankot), Ballawal Saunkri (dist Sbs Nagar), Ghanauli (dist Rupnagar) 9 Each; **Sub Himalayan West Bengal & Sikkim:** Namthang (dist Namchi) 15; Rongli (dist Pakyong) 13; Tadong (dist Gangtok), Gangtok (dist Gangtok), Pakyong (dist Pakyong), Mangan (dist Mangan) 12 Each; Damthang (dist Namchi), Ravangla ARG (dist Namchi) 10 Each; Gyalsing PTO (dist Gyalshing) 9; **East Madhya Pradesh:** Kareli (dist Narsinghpur) 11; Narsinghpur-aws (dist Narsinghpur) 10; **East Rajasthan:** Atru SR (dist Baran) 11; Chipabarod SR (dist Baran) 10; Chabra (dist Baran) 9; **East Uttar Pradesh:** Mohammedabad (Y) (dist Ghazipur) 11; Chhibramau (dist Kannauj) 9; **Gangetic West Bengal:** Contai (dist East Midnapore), Barrackpur (Iaf) (dist North 24 Parganas) 10 Each; Rampurhat (DRMS) (dist Birbhum), Tilpara Barrage (dist Birbhum), Amta (dist Howrah) 9 Each; **Gujarat Region:** Umerpada (dist Surat) 9; **Assam & Meghalaya:** D/Mohanbari AP (dist Dibrugarh), Mohanbari AWS (dist Dibrugarh) 9 Each.

❖ **Heavy Rainfall observed** (from 0830 hours IST of yesterday to 0830 hours IST of today): **Extremely heavy rain** at isolated places over West Madhya Pradesh. **Heavy to very heavy rain** at isolated places over Sub Himalayan West Bengal & Sikkim, Jharkhand, Bihar, Punjab, Himachal Pradesh and West Madhya Pradesh. **Heavy rain** at isolated places over Assam & Meghalaya, Gangetic West Bengal, East Uttar Pradesh, West Uttar Pradesh, Uttarakhand, Haryana-Chandigarh-Delhi, East Rajasthan, East Madhya Pradesh, Gujarat Region and Madhya Maharashtra.

❖ **Minimum Temperature Departures (as on 29-07-2025):** **markedly above normal(> 5.1°C)** at few places over Jammu-Kashmir-Ladakh-Gilgit-Baltistan-Muzaffarabad; at isolated places over Assam & Meghalaya, East Uttar Pradesh, West Uttar Pradesh, Himachal Pradesh, West Madhya Pradesh, East Madhya Pradesh and Saurashtra & Kutch. **appreciably above normal(3.1°C to 5.0°C)** at isolated places over Andaman & Nicobar Islands, Sub Himalayan West Bengal & Sikkim, Odisha, Bihar and Gujarat Region. **above normal(1.6°C to 3.0°C)** at many places over Coastal Andhra Pradesh & Yanam; at few places over Coastal Karnataka and Lakshadweep; at isolated places over Gangetic West Bengal, Haryana-Chandigarh-Delhi, Punjab, West Rajasthan, East Rajasthan, Madhya Maharashtra, Telangana, Tamil Nadu, Puducherry & Karaikal and Kerala & Mahe. **near normal(-1.5°C to 1.5°C)** at many places over Jharkhand and Chhattisgarh; at most places over Nagaland, Manipur, Mizoram & Tripura, Uttarakhand, Konkan & Goa, Marathwada, Vidarbha, Rayalaseema, North Interior Karnataka and South Interior Karnataka. **The lowest minimum temperature** of 18.0°C is reported at KHANDWA (MADHYA PRADESH), and MATHERAN (MAHARASHTRA) over the Plains of India.

❖ **Maximum Temperature Departures (as on 28-07-2025):** **appreciably above normal(3.1°C to 5.0°C)** at few places over Arunachal Pradesh; at isolated places over Odisha, Jammu-Kashmir-Ladakh-Gilgit-Baltistan-Muzaffarabad, Saurashtra & Kutch, Coastal Andhra Pradesh & Yanam and Tamil Nadu, Puducherry & Karaikal. **above normal(1.6°C to 3.0°C)** at few places over Himachal Pradesh and Kerala & Mahe; at isolated places over Assam & Meghalaya, Nagaland, Manipur, Mizoram & Tripura, Gangetic West Bengal, West Uttar Pradesh, West Rajasthan and Telangana. **near normal(-1.5°C to 1.5°C)** at many places over Sub Himalayan West Bengal & Sikkim, Uttarakhand, East Rajasthan, Konkan & Goa, Madhya Maharashtra, Vidarbha, Chhattisgarh and Rayalaseema; at most places over Andaman & Nicobar Islands, Haryana-Chandigarh-Delhi, Punjab, Marathwada, Coastal Karnataka, North Interior Karnataka, South Interior Karnataka and Lakshadweep; at few places over Bihar and East Uttar Pradesh; at isolated places over West Madhya Pradesh and East Madhya Pradesh. **The highest maximum temperature** of 40.9°C is reported at MADURAI (A) (TAMIL NADU).

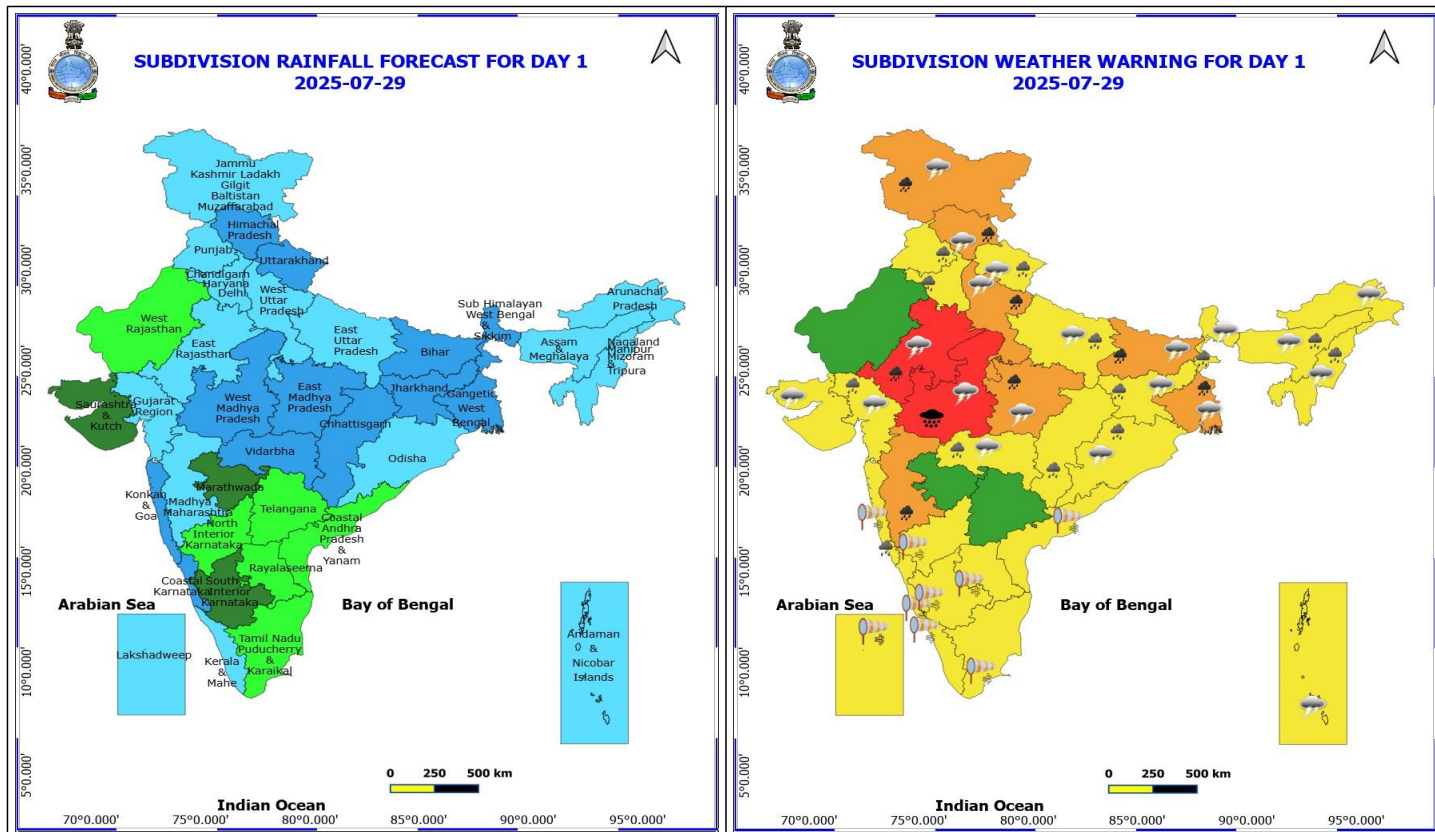


Meteorological Analysis (Based on 0830 hours IST)

- ❖ The **low-Pressure area** over northwest Madhya Pradesh & neighbourhood persists over the same region at 0830 hrs IST of today, the 29th July, 2025. The associated cyclonic circulation extended upto 5.8 km above mean sea level tilting southwestwards with height.
- ❖ The **trough** now runs from the northeast Arabian Sea to south Bangladesh across Gujarat, cyclonic circulation associated with the low-pressure area over northwest Madhya Pradesh & neighbourhood, north Chhattisgarh, Jharkhand & Gangetic West Bengal at 3.1 km above mean sea level.
- ❖ The **monsoon trough** at mean sea level now passes through Sri Ganganagar, Delhi, center of **low-pressure area** over northwest Madhya Pradesh, Satna, Daltonganj, Jamshedpur, Digha and thence east-southeastwards to the northeast Bay of Bengal.
- ❖ The **upper air cyclonic circulation** over south Punjab & neighbourhood now lies over south Punjab adjoining Pakistan upto 1.5 km above mean sea level.
- ❖ An **upper air cyclonic circulation** lies over northwest Uttar Pradesh & neighbourhood at 1.5 km above mean sea level.
- ❖ The **upper air cyclonic circulation** over south Bangladesh & neighbourhood now lies over south Gangetic west Bengal and neighbourhood between 5.8 & 7.6 km above mean sea level.
- ❖ The **Western Disturbance** as a trough in middle tropospheric level with its axis at 5.8 km above mean sea level now runs roughly along Long. 70°E to the north of Lat. 31°N.
- ❖ The **trough** from north Bihar to Manipur across north Bangladesh and south Assam between 0.9 & 3.1 km above mean sea level tilting southwestwards with height has become less marked.

Weather Outlook for subsequent 3 days:

- ❖ **Fairly widespread to widespread rainfall** likely over northwest, northeast, eastern India.
- ❖ **Scattered to fairly widespread rainfall** likely over central and peninsular India.



29 July (Day 1)

- ❖ **Heavy to Very Heavy Rainfall with isolated Extremely Heavy Rainfall** very likely at isolated places over West Madhya Pradesh.
- ❖ **Heavy to Very Heavy Rainfall** very likely at isolated places over Bihar, East Madhya Pradesh, East Rajasthan, Gangetic West Bengal, Himachal Pradesh, Jammu-Kashmir-Ladakh-Gilgit-Baltistan-Muzaffarabad, Madhya Maharashtra and West Uttar Pradesh.
- ❖ **Heavy Rainfall** very likely at isolated places over Assam & Meghalaya, Chhattisgarh, East Uttar Pradesh, Gujarat Region, Haryana, Chandigarh & Delhi, Jharkhand, Konkan & Goa, Nagaland, Manipur, Mizoram and Tripura, Odisha, Punjab, Sub Himalayan West Bengal & Sikkim, Uttarakhand and Vidarbha.
- ❖ **Thunderstorm accompanied with lightning & gusty winds(30-40kmph)** very likely at isolated places over Andaman & Nicobar Islands, Bihar, Jammu-Kashmir-Ladakh-Gilgit-Baltistan-Muzaffarabad, Jharkhand, Odisha and West Bengal & Sikkim.
- ❖ **Thunderstorm accompanied with Lightning** very likely at isolated places over Arunachal Pradesh, Assam & Meghalaya, East Rajasthan, Gujarat State, Himachal Pradesh, Madhya Pradesh, Nagaland, Manipur, Mizoram and Tripura, Uttar Pradesh, Uttarakhand and Vidarbha.
- ❖ **Strong Surface Winds** very likely at isolated places over Andhra Pradesh, Karnataka, Kerala & Mahe, Konkan & Goa, Lakshadweep and Tamil Nadu Puducherry & Karaikal.
- Squally wind with speed reaching 45 kmph to 55 kmph gusting to 65 kmph is likely to prevail along and off Somalia, Yemen & south Oman coasts, most parts of westcentral Arabian Sea & eastcentral Arabian Sea, many parts of southwest Arabian Sea, MANY parts of north Arabian Sea.
- Squally weather with wind speed reaching 40 - 50 kmph gusting to 60 kmph likely to prevail over, many parts

***Red color warning does not mean "Red Alert" Red color warning means "Take Action"**

Forecast and warning for any day is valid from 0830 hours IST of day till 0830 hours IST of next day

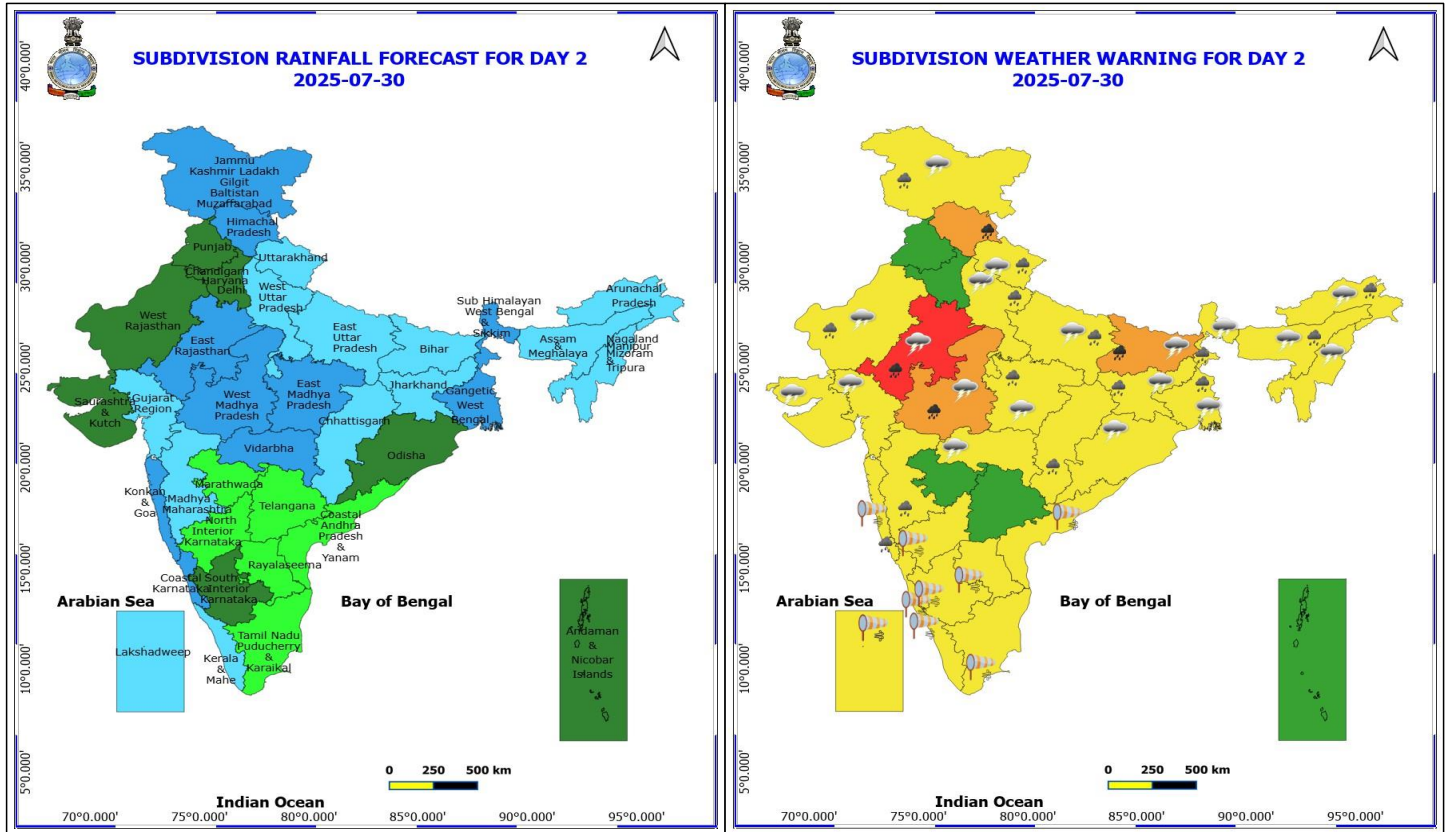
For more details kindly visit <https://mausam.imd.gov.in> or contact 011-2434-4599

(Service to the nation since 1875)



of southeast Arabian Sea, some parts of southeast Arabian Sea and adjoining parts of southwest Arabian Sea, over Maldives, Comorin areas, over, over Gulf of Mannar, over many parts of westcentral Bay of Bengal and adjoining areas of southwest & eastcentral Bay of Bengal.

- Squally weather with wind speed 45 - 55 kmph gusting to 65 kmph likely to prevail over many parts of northeast Arabian Sea, along and off Gujarat, Konkan, Goa, Kerala, Karnataka, north Andhra Pradesh coasts and adjoining sea areas, over Lakshadweep area.



30 July (Day 2)

- ❖ **Heavy to Very Heavy Rainfall** very likely at isolated places over Bihar, East Rajasthan, Himachal Pradesh and West Madhya Pradesh.
- ❖ **Heavy Rainfall** very likely at isolated places over Arunachal Pradesh, Assam & Meghalaya, Chhattisgarh, East Madhya Pradesh, Jammu-Kashmir-Ladakh-Gilgit-Baltistan-Muzaffarabad, Jharkhand, Konkan & Goa, Madhya Maharashtra, Uttar Pradesh, Uttarakhand, West Bengal & Sikkim and West Rajasthan.
- ❖ **Thunderstorm accompanied with lightning & gusty winds(30-40kmph)** very likely at isolated places over Bihar, Jammu-Kashmir-Ladakh-Gilgit-Baltistan-Muzaffarabad, Jharkhand, Odisha and West Bengal & Sikkim.
- ❖ **Thunderstorm accompanied with Lightning** very likely at isolated places over Arunachal Pradesh, Assam & Meghalaya, Gujarat State, Madhya Pradesh, Nagaland, Manipur, Mizoram and Tripura, Rajasthan, Uttar Pradesh, Uttarakhand and Vidarbha.
- ❖ **Strong Surface Winds** very likely at isolated places over Andhra Pradesh, Karnataka, Kerala & Mahe, Konkan & Goa, Lakshadweep and Tamil Nadu Puducherry & Karaikal.
- Squally wind with speed reaching 45 kmph to 55 kmph gusting to 65 kmph is likely to prevail along and off Somalia, Yemen & south Oman coasts, most parts of westcentral Arabian Sea & eastcentral Arabian Sea, many parts of southwest Arabian Sea, southern parts of north Arabian Sea.
- Squally weather with wind speed reaching 40 - 50 kmph gusting to 60 kmph likely to prevail over, many parts of southeast Arabian Sea, some parts of southeast Arabian Sea and adjoining parts of southwest Arabian Sea, over Maldives, Comorin areas, over, over Gulf of Mannar, over many parts of westcentral Bay of Bengal and adjoining, some parts of eastcentral Bay of Bengal, many parts of southwest Bay of Bengal.
- Squally weather with wind speed 45 - 55 kmph gusting to 65 kmph likely to prevail over many parts of northeast Arabian Sea, along and off Gujarat, Konkan, Goa, Kerala, Karnataka coasts and adjoining sea

***Red color warning does not mean "Red Alert" Red color warning means "Take Action"**

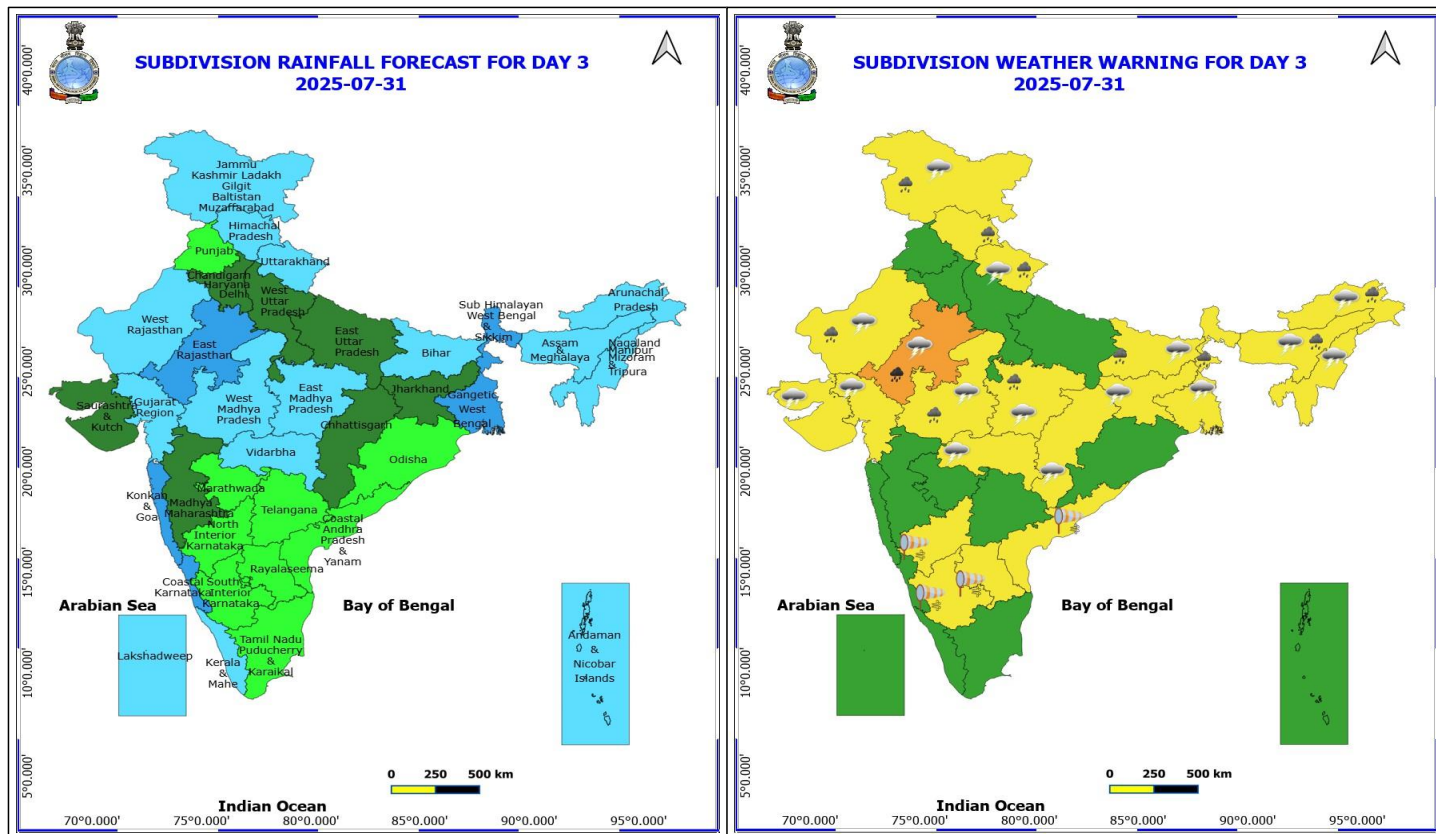
Forecast and warning for any day is valid from 0830 hours IST of day till 0830 hours IST of next day

For more details kindly visit <https://mausam.imd.gov.in> or contact 011-2434-4599

(Service to the nation since 1875)



areas, over Lakshadweep area.



31 July (Day 3)

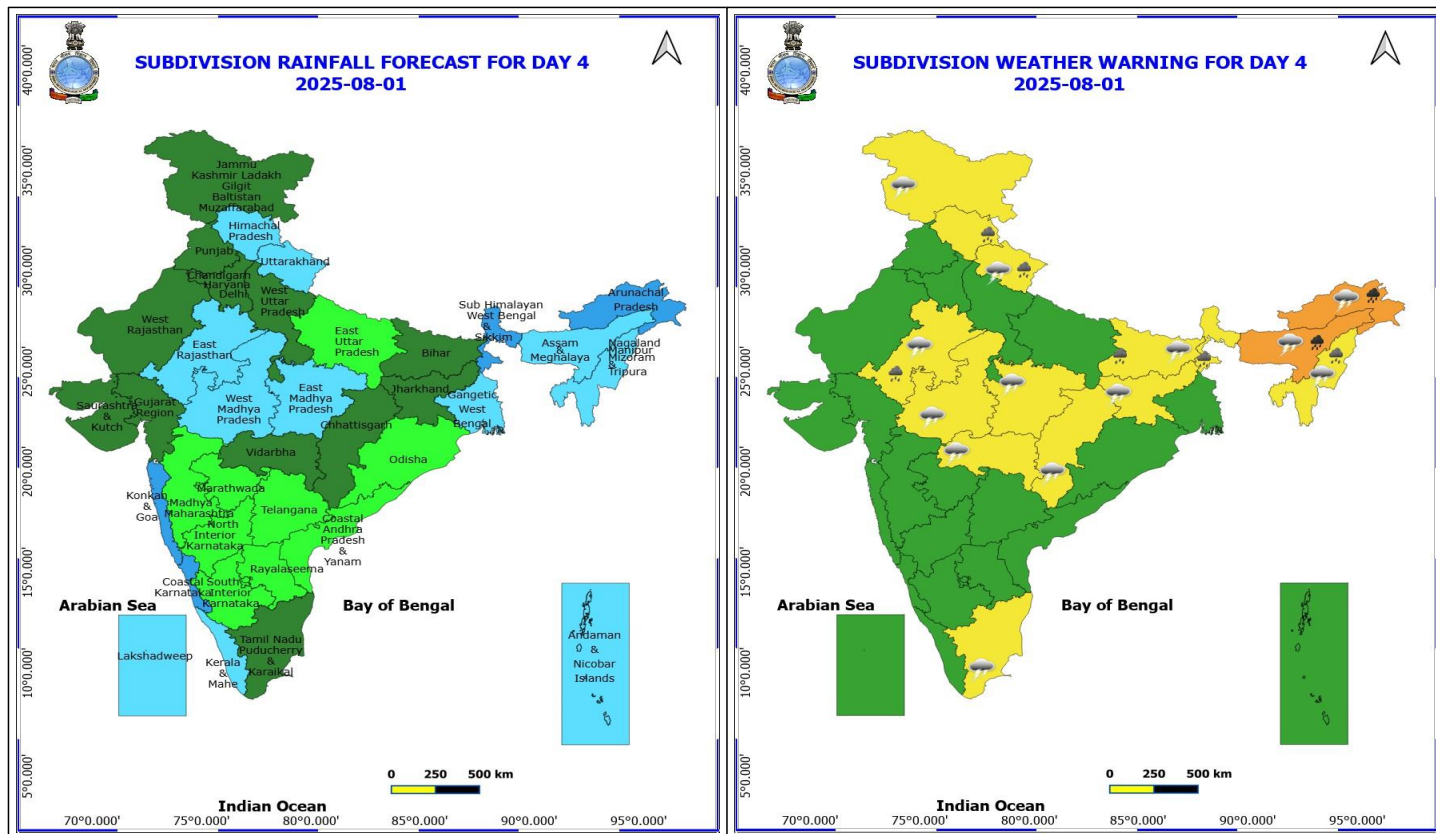
- ❖ **Heavy to Very Heavy Rainfall** very likely at isolated places over East Rajasthan.
- ❖ **Heavy Rainfall** very likely at isolated places over Arunachal Pradesh, Assam & Meghalaya, Bihar, Himachal Pradesh, Jammu-Kashmir-Ladakh-Gilgit-Baltistan-Muzaffarabad, Madhya Pradesh, Sub Himalayan West Bengal & Sikkim, Uttarakhand and West Rajasthan.
- ❖ **Thunderstorm accompanied with lightning & gusty winds(30-40kmph)** very likely at isolated places over Bihar, Gangetic West Bengal, Jammu-Kashmir-Ladakh-Gilgit-Baltistan-Muzaffarabad and Jharkhand.
- ❖ **Thunderstorm accompanied with Lightning** very likely at isolated places over Arunachal Pradesh, Assam & Meghalaya, Chhattisgarh, Gujarat State, Madhya Pradesh, Nagaland, Manipur, Mizoram and Tripura, Rajasthan, Uttarakhand and Vidarbha.
- ❖ **Strong Surface Winds** very likely at isolated places over Andhra Pradesh and Interior Karnataka.
-): Squally wind with speed reaching 45 kmph to 55 kmph gusting to 65 kmph is likely to prevail along and off Somalia, Yemen & south Oman coasts, most parts of westcentral Arabian Sea & eastcentral Arabian Sea, many parts of southwest Arabian Sea, southern parts of north Arabian Sea.
- Squally weather with wind speed reaching 40 - 50 kmph gusting to 60 kmph likely to prevail over, many parts of southeast Arabian Sea, some parts of southeast Arabian Sea and adjoining parts of southwest Arabian Sea, over Maldives, Comorin areas, over, over Gulf of Mannar, over some northern parts of eastcentral & westcentral Bay of Bengal, adjoining north Bay of Bengal, few parts of southwest Bay of Bengal.
- Squally weather with wind speed 45 - 55 kmph gusting to 65 kmph likely to prevail along and off Gujarat, Konkan, Goa coasts and adjoining sea areas.

*Red color warning does not mean "Red Alert" Red color warning means "Take Action"

Forecast and warning for any day is valid from 0830 hours IST of day till 0830 hours IST of next day

For more details kindly visit <https://mausam.imd.gov.in> or contact 011-2434-4599

(Service to the nation since 1875)



1 August (Day 4)

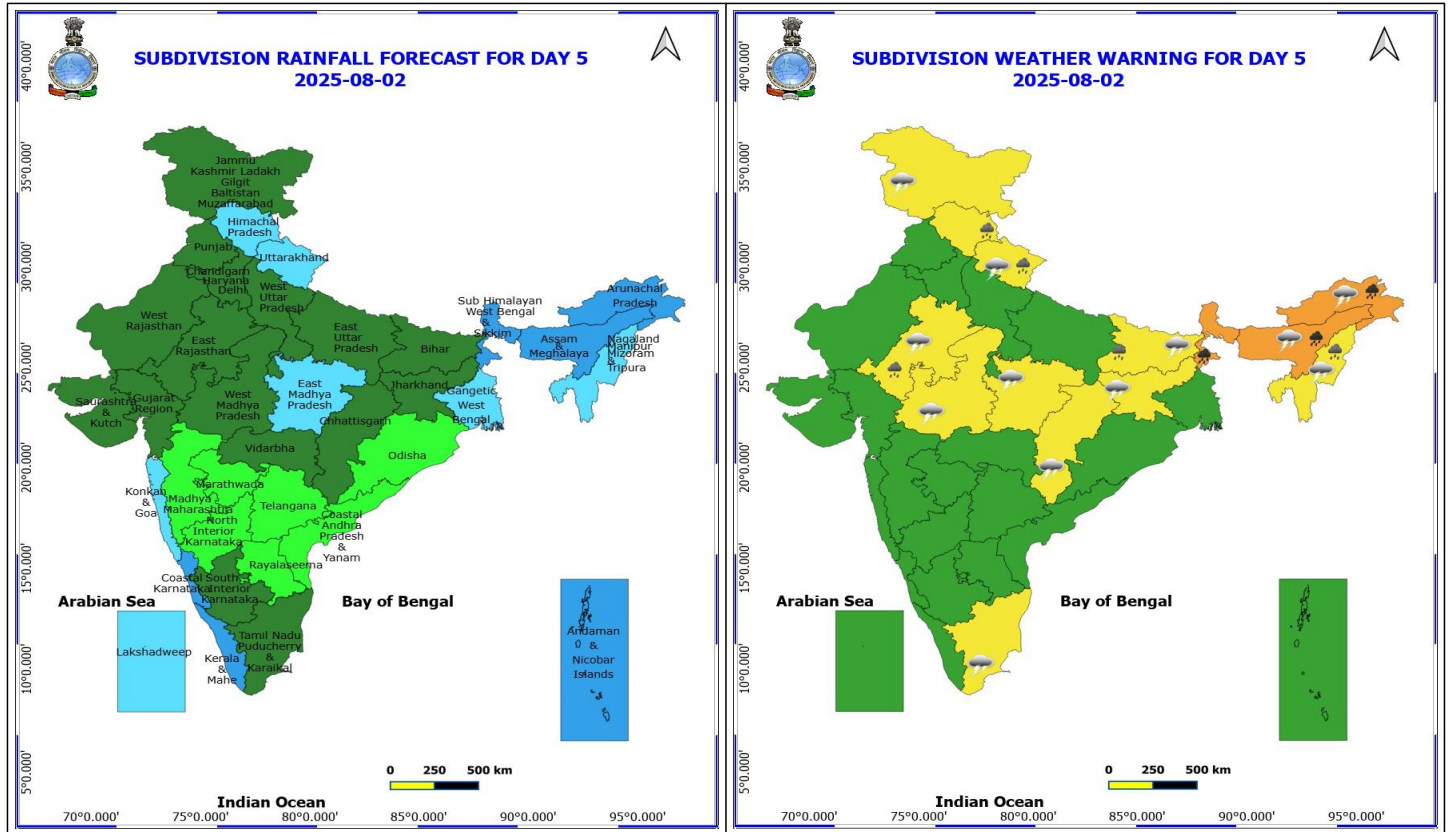
- ❖ **Heavy to Very Heavy Rainfall** likely at isolated places over Arunachal Pradesh and Assam & Meghalaya.
- ❖ **Heavy Rainfall** likely at isolated places over Bihar, East Rajasthan, Himachal Pradesh, Nagaland, Manipur, Mizoram and Tripura, Sub Himalayan West Bengal & Sikkim and Uttarakhand.
- ❖ **Thunderstorm accompanied with lightning & gusty winds(30-40kmph)** likely at isolated places over Bihar and Jharkhand.
- ❖ **Thunderstorm accompanied with Lightning** likely at isolated places over Arunachal Pradesh, Assam & Meghalaya, Chhattisgarh, East Rajasthan, Jammu-Kashmir-Ladakh-Gilgit-Baltistan-Muzaffarabad, Madhya Pradesh, Nagaland, Manipur, Mizoram and Tripura, Tamil Nadu Puducherry & Karaikal, Uttarakhand and Vidarbha.
- Squally wind with speed reaching 45 kmph to 55 kmph gusting to 65 kmph is likely to prevail along and off Somalia, Yemen & south Oman coasts, most parts of westcentral Arabian Sea & eastcentral Arabian Sea, many parts of southwest Arabian Sea, southern parts of north Arabian Sea.
- Squally weather with wind speed reaching 40 - 50 kmph gusting to 60 kmph likely to prevail along and off Gujarat, Konkan, Goa coasts and adjoining sea areas, few parts of southeast & southwest Arabian Sea, over Gulf of Mannar, some parts of southwest Bay of Bengal.

***Red color warning does not mean "Red Alert" Red color warning means "Take Action"**

Forecast and warning for any day is valid from 0830 hours IST of day till 0830 hours IST of next day

For more details kindly visit <https://mausam.imd.gov.in> or contact 011-2434-4599

(Service to the nation since 1875)



2 August (Day 5)

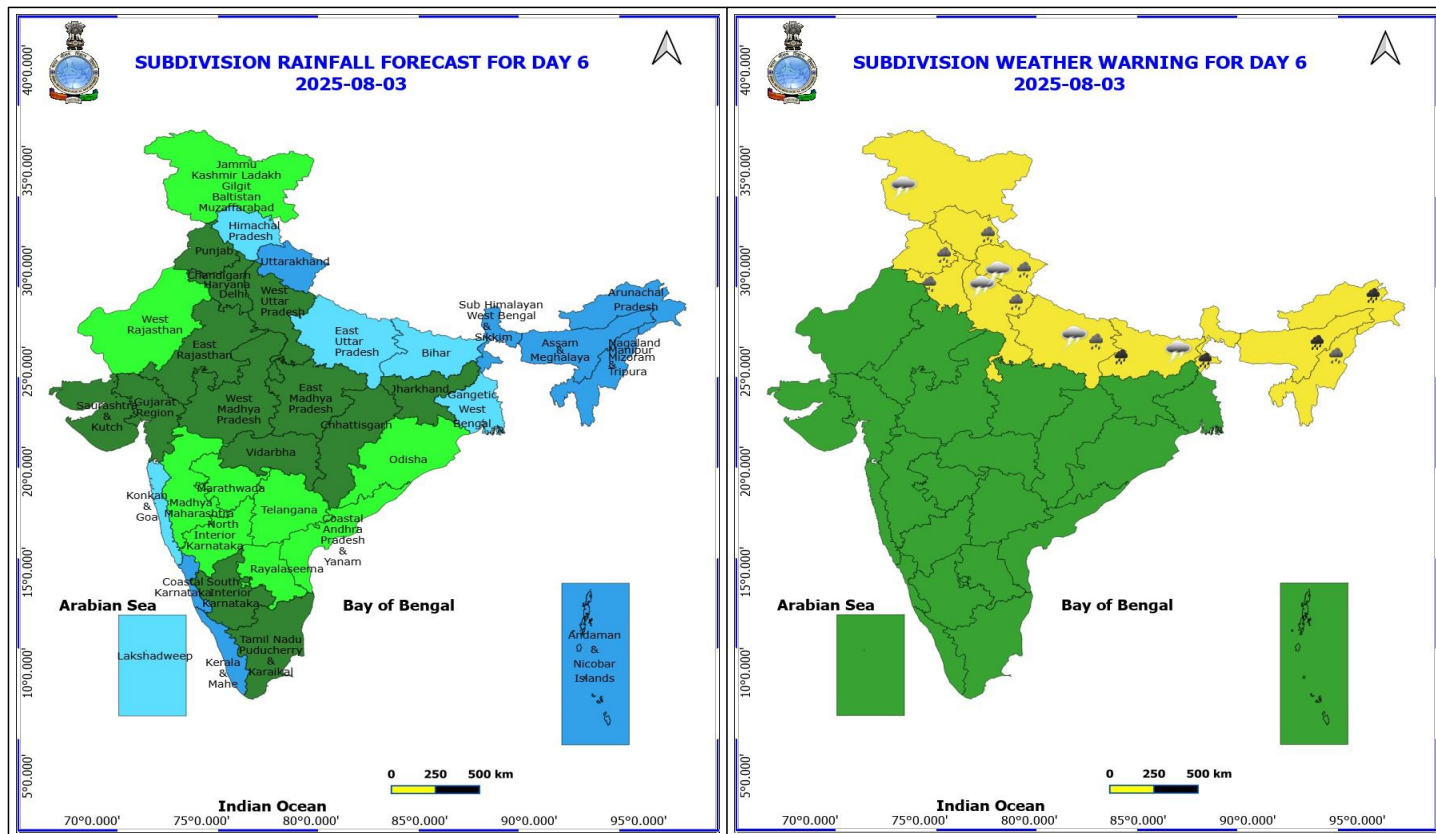
- ❖ **Heavy to Very Heavy Rainfall** likely at isolated places over Arunachal Pradesh, Assam & Meghalaya and Sub Himalayan West Bengal & Sikkim.
- ❖ **Heavy Rainfall** likely at isolated places over Bihar, East Rajasthan, Himachal Pradesh, Nagaland, Manipur, Mizoram and Tripura and Uttarakhand.
- ❖ **Thunderstorm accompanied with lightning & gusty winds(30-40kmph)** likely at isolated places over Bihar and Jharkhand.
- ❖ **Thunderstorm accompanied with Lightning** likely at isolated places over Arunachal Pradesh, Assam & Meghalaya, Chhattisgarh, East Rajasthan, Jammu-Kashmir-Ladakh-Gilgit-Baltistan-Muzaffarabad, Madhya Pradesh, Nagaland, Manipur, Mizoram and Tripura, Tamil Nadu Puducherry & Karaikal and Uttarakhand.
- Squally wind with speed reaching 45 kmph to 55 kmph gusting to 65 kmph is likely to prevail along and off Somalia, Yemen & south Oman coasts, most parts of westcentral Arabian Sea & eastcentral Arabian Sea, many parts of southwest Arabian Sea.
- Squally weather with wind speed reaching 40 - 50 kmph gusting to 60 kmph likely to prevail along and off Karnata coast and adjoining sea areas, some parts of southeast, eastcentral, northeast & northwest Arabian Sea, over Lakshadweep area, over Gulf of Mannar, some parts of southwest Bay of Bengal.

***Red color warning does not mean "Red Alert" Red color warning means "Take Action"**

Forecast and warning for any day is valid from 0830 hours IST of day till 0830 hours IST of next day

For more details kindly visit <https://mausam.imd.gov.in> or contact 011-2434-4599

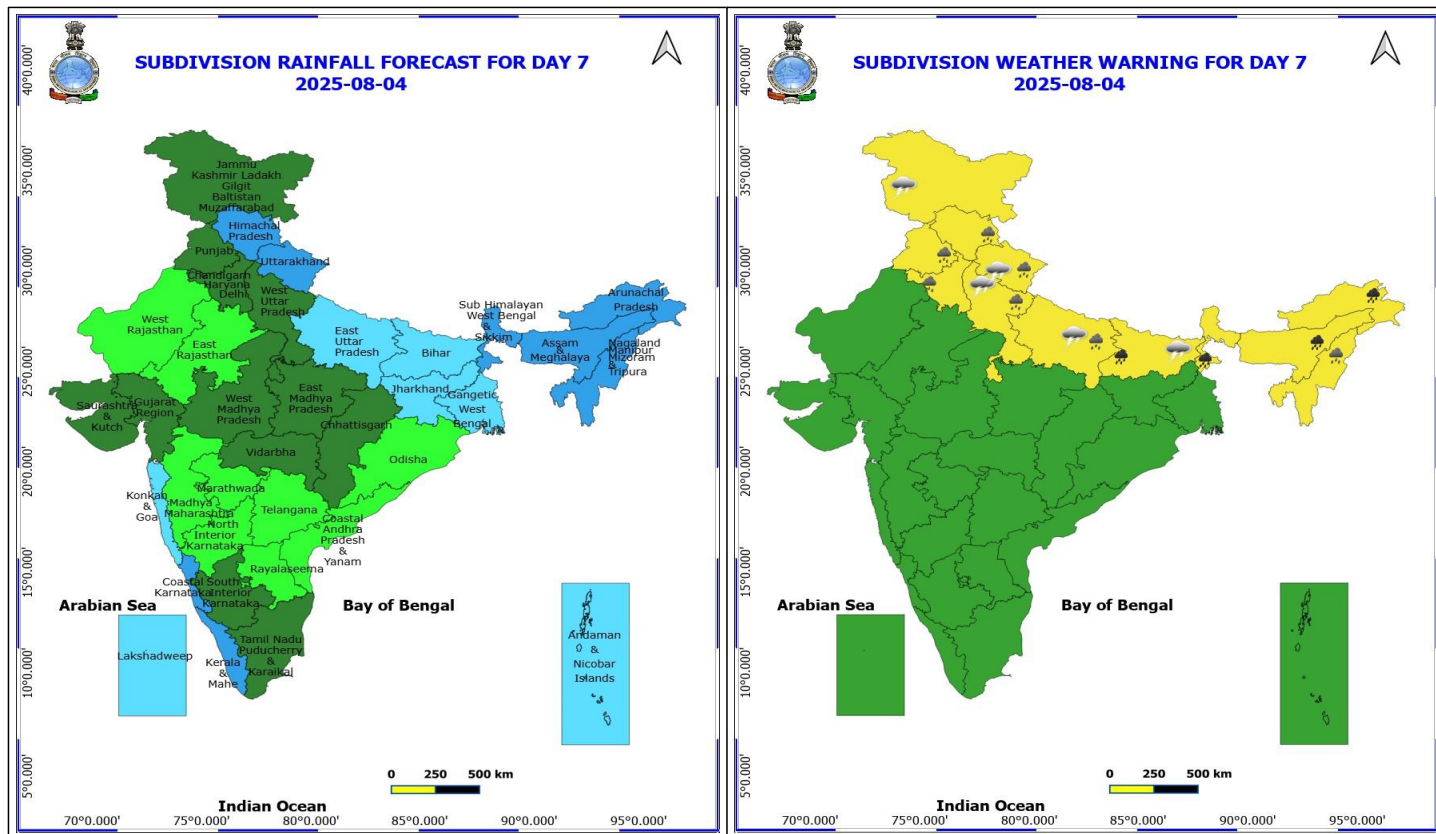
(Service to the nation since 1875)



3 August (Day 6)

- ❖ **Heavy to Very Heavy Rainfall** likely at isolated places over Arunachal Pradesh, Assam & Meghalaya, Bihar and Sub Himalayan West Bengal & Sikkim.
- ❖ **Heavy Rainfall** likely at isolated places over Haryana, Chandigarh & Delhi, Himachal Pradesh, Nagaland, Manipur, Mizoram and Tripura, Punjab, Uttar Pradesh and Uttarakhand.
- ❖ **Thunderstorm accompanied with lightning & gusty winds(30-40kmph)** likely at isolated places over Bihar.
- ❖ **Thunderstorm accompanied with Lightning** likely at isolated places over Jammu-Kashmir-Ladakh-Gilgit-Baltistan-Muzaffarabad, Uttar Pradesh and Uttarakhand.

No Fishermen Warning



4 August (Day 7)

- ❖ **Heavy to Very Heavy Rainfall** likely at isolated places over Arunachal Pradesh, Assam & Meghalaya, Bihar and Sub Himalayan West Bengal & Sikkim.
- ❖ **Heavy Rainfall** likely at isolated places over Haryana, Chandigarh & Delhi, Himachal Pradesh, Nagaland, Manipur, Mizoram and Tripura, Punjab, Uttar Pradesh and Uttarakhand.
- ❖ **Thunderstorm accompanied with lightning & gusty winds(30-40kmph)** likely at isolated places over Bihar.
- ❖ **Thunderstorm accompanied with Lightning** likely at isolated places over Jammu-Kashmir-Ladakh-Gilgit-Baltistan-Muzaffarabad, Uttar Pradesh and Uttarakhand.

No Fishermen Warning

***Red color warning does not mean "Red Alert" Red color warning means "Take Action"**

Forecast and warning for any day is valid from 0830 hours IST of day till 0830 hours IST of next day

For more details kindly visit <https://mausam.imd.gov.in> or contact 011-2434-4599

(Service to the nation since 1875)

Flash Flood Warning:

24 hours Outlook for the Flash Flood Risk (FFR) till 1130 IST of 30-07-2025 :

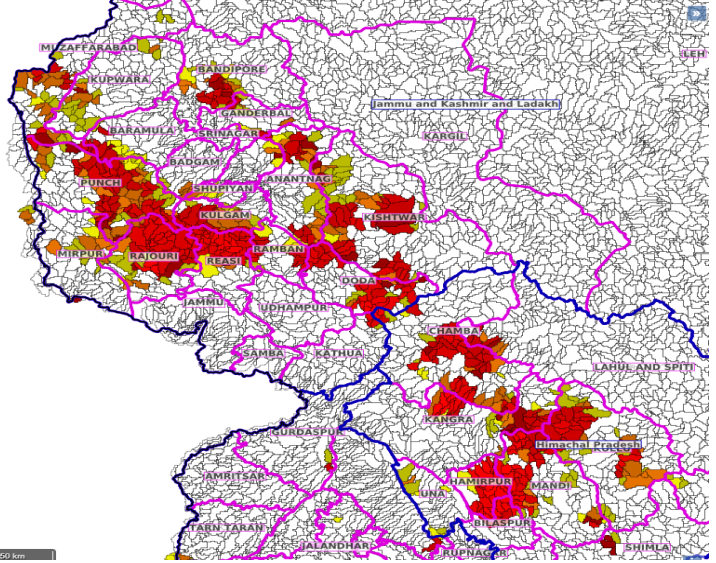
Low to Moderate flash flood risk likely over few watersheds & neighbourhoods of following Met Sub-divisions during next 24 hours.

Himachal Pradesh - Bilaspur, Chamba, Hamirpur, Kangra, Kinnaur, Kullu, Mandi, Shimla and Una districts.

Adjoining Jammu & Kashmir & Ladakh - Anantnag, Badgam, Bandipore, Baramula, Doda, Ganderwal, Kathua, Kistwar, Kulgam, Kupwara, Pulwama, Punch, Rajouri, Ramban, Riasi, Shopian, Mirpur and Muzaffarabad districts.

Surface runoff/ Inundation may occur at some fully saturated soils & low-lying areas over Area of Concern (AoC) as shown in map due to expected rainfall occurrence in next 24 hours.

Product: NCUM FFR | Timescale: 24-hr | Region: "INDIA"
Product Date: 2025-07-29 06:00 UTC | Valid Date: 2025-07-30 06:00 UTC



24 hours Outlook for the Flash Flood Risk (FFR) till 1130 IST of 30-07-2025 :

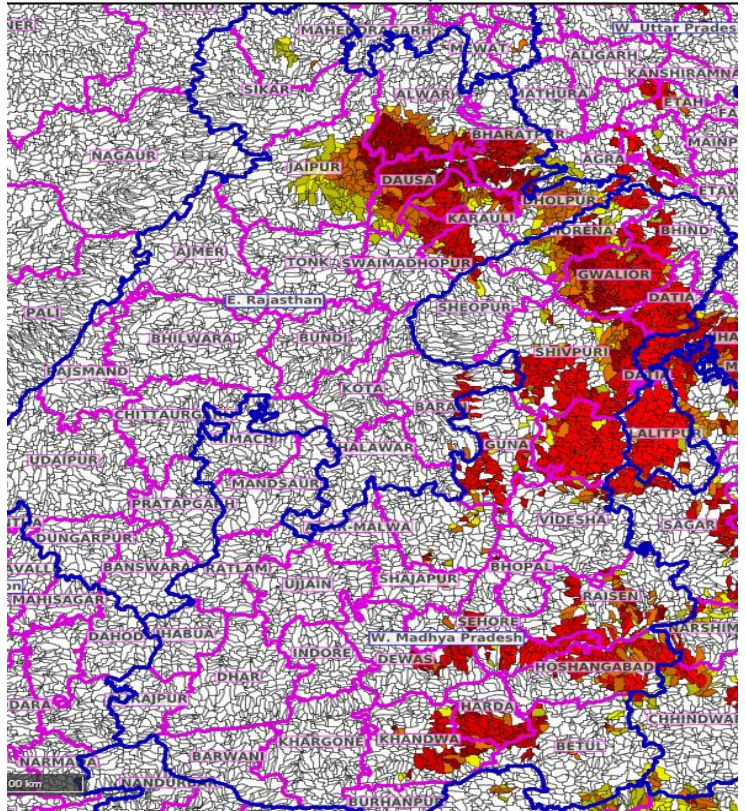
Moderate to High flash flood risk likely over few watersheds & neighbourhoods of following Met Sub-divisions during next 24 hours.

West Madhya Pradesh - Ashoknagar, Betul, Bhind, Datia, Dewas, Guna, Gwalior, Harda, Khandwa, Morena, Narmadapuram, Raisen, Rajgarh, Sehore, Shajapur, Sheopur, Shivpuri and Videsha districts.

Adjoining East Rajasthan - Alwar, Bharatpur, Dausa, Dholpur, Jaipur, Jhunjhunun, Karauli and Swaimadhampur districts.

Surface runoff/ Inundation may occur at some fully saturated soils & low-lying areas over Area of Concern (AoC) as shown in map due to expected rainfall occurrence in next 24 hours.

Product: NCUM FFR | Timescale: 24-hr | Region: "INDIA"
Product Date: 2025-07-29 06:00 UTC | Valid Date: 2025-07-30 06:00 UTC



*Red color warning does not mean "Red Alert" Red color warning means "Take Action"

Forecast and warning for any day is valid from 0830 hours IST of day till 0830 hours IST of next day

For more details kindly visit <https://mausam.imd.gov.in> or contact 011-2434-4599

(Service to the nation since 1875)



Table-1

7 Days Rainfall Forecast

S.No.	Subdivision	29- Jul	30- Jul	31- Jul	1- Aug	2- Aug	3- Aug	4- Aug
		Day 1	Day 2	Day 3	Day 4	Day 5	Day 6	Day 7
1	ANDAMAN & NICOBAR ISLANDS	FWS	SCT	FWS	FWS	WS	WS	FWS
2	ARUNACHAL PRADESH	FWS	FWS	FWS	WS	WS	WS	WS
3	ASSAM & MEHGHALAYA	FWS	FWS	FWS	FWS	WS	WS	WS
4	N. M. M. & T.	FWS	FWS	FWS	FWS	FWS	WS	WS
5	S.H. WEST BENGAL & SIKKIM	WS	WS	WS	WS	WS	WS	WS
6	GANGETIC WEST BENGAL	WS	WS	WS	FWS	FWS	FWS	FWS
7	ODISHA	FWS	SCT	ISOL	ISOL	ISOL	ISOL	ISOL
8	JHARKHAND	WS	FWS	SCT	SCT	SCT	SCT	FWS
9	BIHAR	WS	FWS	FWS	SCT	SCT	FWS	FWS
10	EAST UTTAR PRADESH	FWS	FWS	SCT	ISOL	SCT	FWS	FWS
11	WEST UTTAR PRADESH	FWS	FWS	SCT	SCT	SCT	SCT	SCT
12	UTTARAKHAND	WS	FWS	FWS	FWS	FWS	WS	WS
13	HARYANA, CHD & DELHI	FWS	SCT	SCT	SCT	SCT	SCT	SCT
14	PUNJAB	FWS	SCT	ISOL	SCT	SCT	SCT	SCT
15	HIMACHAL PRADESH	WS	WS	FWS	FWS	FWS	FWS	WS
16	JAMMU AND KASHMIR AND LADAKH	FWS	WS	FWS	SCT	SCT	ISOL	SCT
17	WEST RAJASTHAN	ISOL	SCT	FWS	SCT	SCT	ISOL	ISOL
18	EAST RAJASTHAN	FWS	WS	WS	FWS	SCT	SCT	ISOL
19	WEST MADHYA PRADESH	WS	WS	FWS	FWS	SCT	SCT	SCT
20	EAST MADHYA PRADESH	WS	WS	FWS	FWS	FWS	SCT	SCT
21	GUJRAT REGION	FWS	FWS	FWS	SCT	SCT	SCT	SCT
22	SAURASHTRA & KUTCH	SCT	SCT	SCT	SCT	SCT	SCT	SCT
23	KONKAN & GOA	WS	WS	WS	WS	FWS	FWS	FWS
24	MADHYA MAHARASHTRA	FWS	FWS	SCT	ISOL	ISOL	ISOL	ISOL
25	MARATHWADA	SCT	ISOL	ISOL	ISOL	ISOL	ISOL	ISOL
26	VIDARBHA	WS	WS	FWS	SCT	SCT	SCT	SCT
27	CHATTISGARH	WS	FWS	SCT	SCT	SCT	SCT	SCT
28	COASTAL ANDHRA PRADESH	ISOL	ISOL	ISOL	ISOL	ISOL	ISOL	ISOL
29	TELANGANA	ISOL	ISOL	ISOL	ISOL	ISOL	ISOL	ISOL
30	RAYALASEEMA	ISOL	ISOL	ISOL	ISOL	ISOL	ISOL	ISOL
31	TAMILNADU & PUDUCHERRY	ISOL	ISOL	ISOL	SCT	SCT	SCT	SCT
32	COSTAL KARNATAKA	WS	WS	WS	WS	WS	WS	WS
33	NORTH INTERIOR KARNATAKA	ISOL	ISOL	ISOL	ISOL	ISOL	ISOL	ISOL
34	SOUTH INTERIOR KARNATAKA	SCT	SCT	ISOL	ISOL	SCT	SCT	SCT
35	KERALA	FWS	FWS	FWS	FWS	WS	WS	WS
36	LAKSHDWEAP	FWS	FWS	FWS	FWS	FWS	FWS	FWS

Legend	Category	%Stations
WS	Widespread/Most Places	76-100
FWS	Fairly Widespread/Many Places	51-75
SCT	Scattered/ A Few Places	26-50
ISOL	Isolated Places	1-25
DRY	No Rain	0

*Red color warning does not mean "Red Alert" Red color warning means "Take Action"

Forecast and warning for any day is valid from 0830 hours IST of day till 0830 hours IST of next day

For more details kindly visit <https://mausam.imd.gov.in> or contact 011-2434-4599

(Service to the nation since 1875)

Fig. 1: Maximum Temperatures Dated 2025-07-29

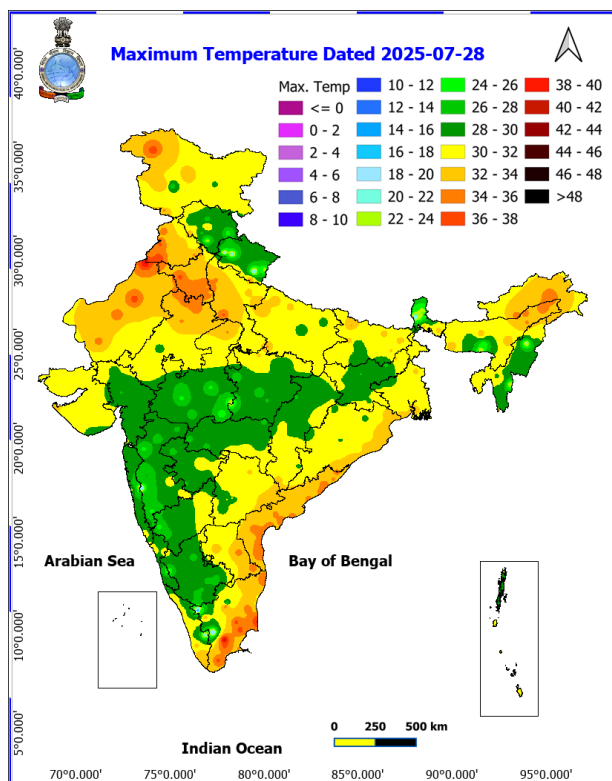


Fig. 2: Departure of Maximum Temp. Dated 2025-07-29

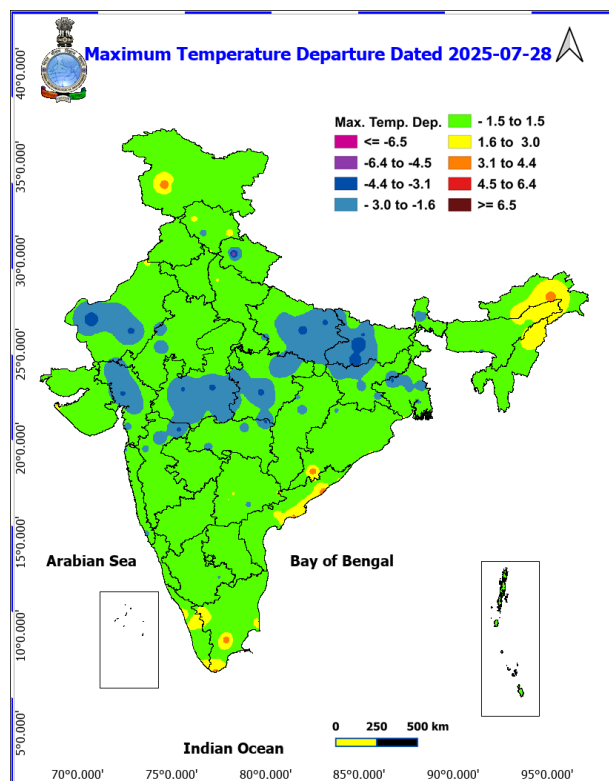


Fig. 3: Minimum Temperatures Dated 2025-07-29

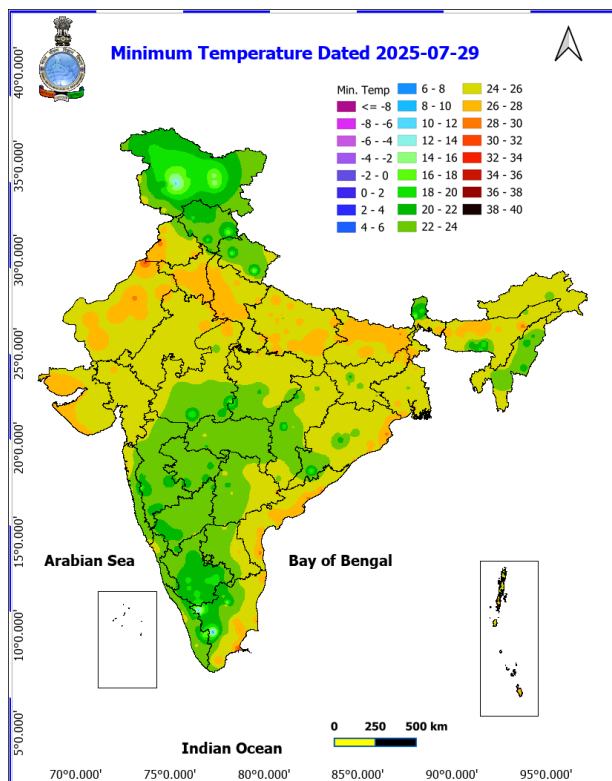
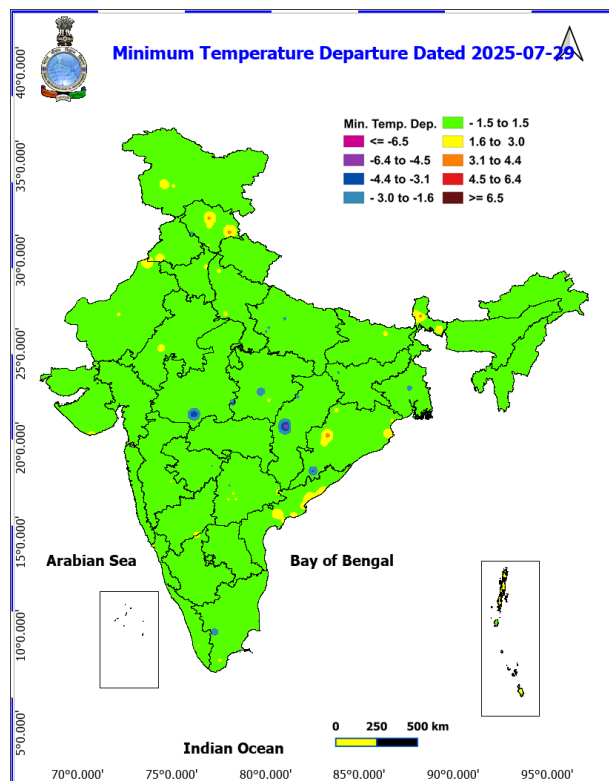
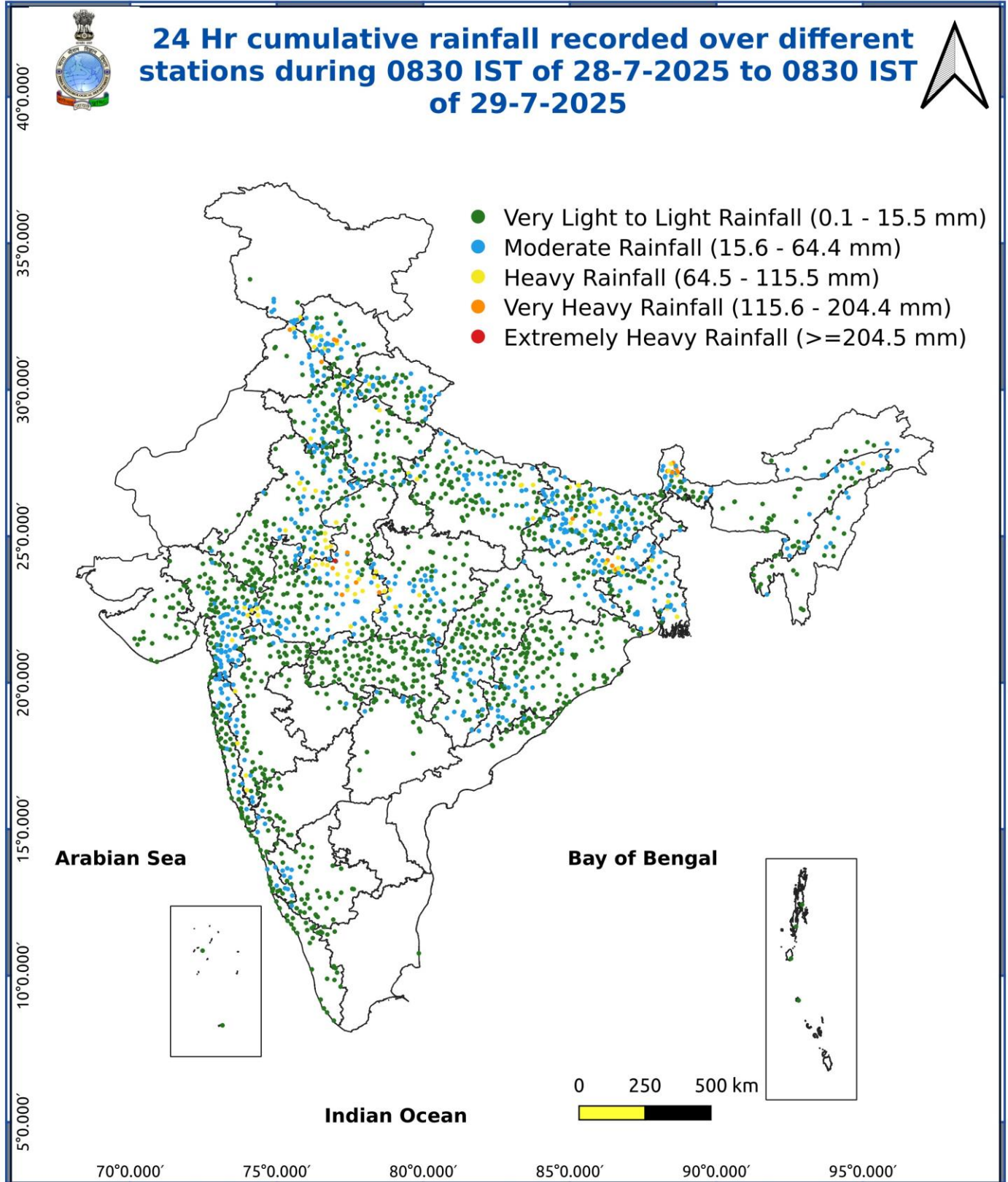


Fig. 4: Departure of Minimum Temp. Dated 2025-07-29





*Red color warning does not mean "Red Alert" Red color warning means "Take Action"

Forecast and warning for any day is valid from 0830 hours IST of day till 0830 hours IST of next day

For more details kindly visit <https://mausam.imd.gov.in> or contact 011-2434-4599

(Service to the nation since 1875)

Impact & Action Suggested due to

- ✓ **Extremely heavy rainfall** very likely at isolated places over West Madhya Pradesh on 29th July.
- ✓ **Isolated very heavy rainfall** over East Rajasthan during 29th-31st; Himachal Pradesh, Bihar on 29th & 30th; West Uttar Pradesh, and Jammu & Kashmir, Ghat areas of Madhya Maharashtra, Gangetic West Bengal, East Madhya Pradesh on 29th; West Madhya Pradesh on 30th; Arunachal Pradesh, Assam & Meghalaya during 01st-04th August; Sub-Himalayan West Bengal & Sikkim during 02nd-04th August.

Impact Expected

- Localized Flooding of roads, water logging in low lying areas and closure of underpasses mainly in urban areas of the above region.
- Occasional reduction in visibility due to heavy rainfall.
- Disruption of traffic in major cities due to water logging in roads leading to increased travel time.
- Minor damage to kutcha roads.
- Possibilities of damage to vulnerable structure.
- Localized Landslides/Mudslides/landslips/mudslips/landsinks/mudsinks.
- Damage to horticulture and standing crops in some areas due to inundation.
- It may lead to riverine flooding in some river catchments (for riverine flooding please visit Web page of CWC)

Action Suggested

- Check for traffic congestion on your route before leaving for your destination.
- Follow any traffic advisories that are issued in this regard.
- Avoid going to areas that face the water logging problems often.
- Avoid staying in vulnerable structure.

Agromet advisories for likely impact of Heavy / Heavy to Very Heavy / Extremely Heavy Rainfall

- In **East Rajasthan**, postpone sowing of green gram, pearl millet, cluster bean and sesame till cessation of heavy rains and make arrangement for removal of excess water from already sown fields in **Sub Humid Southern Plain and Aravali Hill Zone** and **Flood Prone Eastern Plain Zone**. In **Southern Humid Plain Zone**, postpone sowing of maize till cessation of heavy rains and ensure proper drainage in cotton and soybean fields to remove excess water. Make provision to drain out excess water from rice nurseries, fields of maize, soybean and black gram in **Southeastern Humid Plain zone** and fields of pearl millet and groundnut in **Semi Arid Eastern Plain Zone**.
- In **Madhya Pradesh**, provide adequate drainage in the fields of soybean and maize in **Malwa Plateau Zone**; rice, maize and soybean in **Kymore Plateau and Satpura Hill Zone**; soybean, rice, maize and pigeon pea in **Vindhyan Plateau Zone**; rice and vegetables in **Bundelkhand Zone**; maize, soybean, cotton, sugarcane and vegetables in **Satpura Plateau Zone**; soybean, maize, cotton and black gram in **Jhabua Hills Zone**; rice, soybean, maize, sugarcane and vegetables in **Central Narmada Valley Zone** and soybean, pigeon pea, cotton and vegetables in **Nimar Valley Zone**. In **Gird Zone**, postpone sowing of pearl millet and make arrangement to drain out excess water in fields of soybean, pigeon pea and transplanted rice.
- In **Gujarat**, make necessary arrangements to drain out excess water from fields of transplanted rice, cotton, pearl millet, pigeon pea, soybean and vegetables in **Middle Gujarat Zone**; sugarcane, rice and vegetables in **South Gujarat Heavy Rainfall Zone** and sugarcane, cotton, pigeon pea, transplanted rice and vegetables in **South Gujarat Zone**.
- In **Maharashtra**, make arrangement to drain out excess water from rice and finger millet fields in **ghat areas** of **Madhya Maharashtra**.
- In **Uttarakhand**, maintain proper drainage channels in fields of rice in **Bhabar and Tarai Zone**, black gram in **Hill Zone** and rice, barnyard millet, finger millet and cucumber in **Sub Humid SubTropic Zone**.
- In **Himachal Pradesh**, make proper drainage channels in the standing crops like maize, finger millet and vegetable fields. Provide staking to tall and leguminous crops and cucumber vines.
- In **Bihar**, provide adequate drainage in the fields of paddy, Pigeon pea, kharif maize, Okra and plantations in **South Bihar Alluvial Zone**.
- In **Arunachal Pradesh**, harvest matured soybean immediately and store in safer place.

***Red color warning does not mean "Red Alert" Red color warning means "Take Action"**

Forecast and warning for any day is valid from 0830 hours IST of day till 0830 hours IST of next day

For more details kindly visit <https://mausam.imd.gov.in> or contact 011-2434-4599

(Service to the nation since 1875)

- In **Meghalaya**, avoid sowing of rice in nurseries especially in valley lands. Maintain proper drainage channels around the nursery beds. Make provision for draining out excess water from vegetable fields and repair bunds in lowland paddy fields.
- In **Mizoram**, harvest matured cobs of maize. Create strong bunds around rice fields to retain rainwater and reduce runoff.

Livestock / Fishery

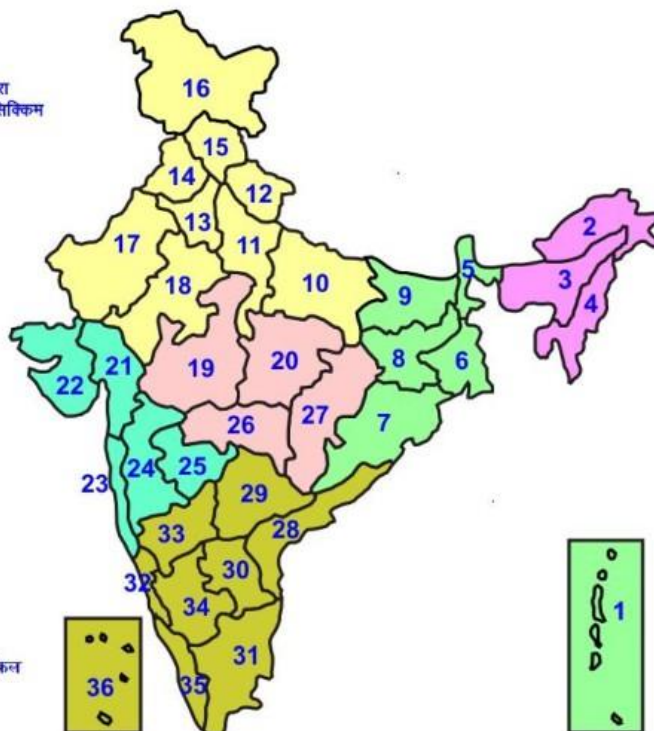
- Keep the animals inside the shed during heavy rainfall and provide them balanced feed.
- Store feed and fodder in a safe place to prevent spoilage.
- Construct an outlet with proper netting around the ponds to drain out excess water, thereby preventing fish from escaping in case of overflow.

Agromet advisories for likely impact of Thunderstorm / Gusty Winds / Squally Winds

- Provide mechanical support to horticultural crops and staking or support to vegetables and young fruit plants / fruit-bearing plants to avoid lodging due to strong winds.

LEGENDS

- 1 अंडमान और निकोबार द्वीप समुह
- 2 अरुणाचल प्रदेश
- 3 असम और मेघालय
- 4 नागालैंड मनीपुर मीजोरम और त्रिपुरा
- 5 उप हिमालय पश्चिम बंगाल एवं सिक्किम
- 6 पश्चिम बंगाल
- 7 ओडिसा
- 8 झारखंड
- 9 बिहार
- 10 पूर्वी उत्तर प्रदेश
- 11 पश्चिम उत्तर प्रदेश
- 12 उत्तराखंड
- 13 हरियाणा चंडीगढ़ एवं दिल्ली
- 14 पंजाब
- 15 हिमाचल प्रदेश
- 16 जम्मू एवं कश्मीर एवं लद्दाख
- 17 पश्चिम राजस्थान
- 18 पूर्वी राजस्थान
- 19 पश्चिम मध्य प्रदेश
- 20 पूर्वी मध्य प्रदेश
- 21 गुजरात क्षेत्र
- 22 सौराष्ट्र एवं कच्छ
- 23 कोंकण एवं गोवा
- 24 मध्य महाराष्ट्र
- 25 मराठावाड़ा
- 26 विदर्भ
- 27 छत्तीसगढ़
- 28 तटीय आंध्र प्रदेश एवं यनम
- 29 तेलंगाना
- 30 रायलसेमा
- 31 तमिलनाडु, पुदुचेरी एवं कराईकल
- 32 तटिय कर्नाटक
- 33 आंतरिक उत्तरी कर्नाटक
- 34 आंतरिक दक्षिणी कर्नाटक
- 35 केरल एवं माहे
- 36 लक्षद्वीप



1. Andaman & Nicobar Islands
2. Arunachal Pradesh
3. Assam & Meghalaya
4. Nagaland, Manipur, Mizoram & Tripura
5. Sub-Himalayan West Bengal & Sikkim
6. Gangetic West Bengal
7. Orissa
8. Jharkhand
9. Bihar
10. East Uttar Pradesh
11. West Uttar Pradesh
12. Uttarakhand
13. Haryana, Chd & Delhi
14. Punjab
15. Himachal Pradesh
16. Jammu & Kashmir and Ladakh
17. West Rajasthan
18. East Rajasthan
19. West Madhya Pradesh
20. East Madhya Pradesh
21. Gujarat
22. Saurashtra
23. Konkan & Goa
24. Madhya Maharashtra
25. Marathawada
26. Vidharbha
27. Chhattisgarh
28. Coastal Andhra Pradesh & Yanam
29. Telangana
30. Rayalaseema
31. Tamilnadu, Puducherry & Karaikal
32. Coastal Karnataka
33. North Interior Karnataka
34. South Interior Karnataka
35. Kerala & Mahe
36. Lakshadweep

SPATIAL DISTRIBUTION (% of Stations reporting)


% Stations	Category	% Stations	Category
76-100	Widespread (WS/Most Places)	26-50	Scattered (SCT/ A Few Places)
51-75	Fairly Widespread (FWS/ Many Places)	1-25	Isolated (ISOL)


Subdivision Colour

- NO WARNING
- WATCH (BE UPDATED)
- ALERT (BE PREPARED TO TAKE ACTION)
- WARNING (TAKE ACTION)

Probabilistic Forecast


Terms	Probability of Occurrence (%)
Unlikely	< 25
Likely	25 - 50
Very Likely	50 - 75
Most Likely	> 75


-  Heavy Rain


 Thunderstorm & Lightning


 Strong surface winds


 Cold Wave


 Hot & Humid


 Very Heavy Rain

 Hailstorm

 Heat Wave

 Cold Day

 Extremely Heavy Rain


 Dust Storm

 Hot Day

 Ground Frost

 Heavy Snow

 Dust Raising Winds

 Warm Night

 Fog

*Red color warning does not mean "Red Alert" Red color warning means "Take Action"

Forecast and warning for any day is valid from 0830 hours IST of day till 0830 hours IST of next day

For more details kindly visit <https://mausam.imd.gov.in> or contact 011-2434-4599

(Service to the nation since 1875)

LEGENDS

WARNING

WARNING (TAKE ACTION)
ALERT (BE PREPARED)
WATCH (BE UPDATED)
NO WARNING (NO ACTION)

Probabilistic Forecast

Terms	Probability of Occurrence (%)
Unlikely	< 25
Likely	25 - 50
Very Likely	50 - 75
Most Likely	> 75



Heavy: 64.5 to 115.5 mm/cm *
Very Heavy: 115.6 to 204.4 mm/cm *
Extremely Heavy: > 204.4 mm/cm *



When maximum temperature of a station reaches $\geq 40^{\circ}\text{C}$ for plains and $\geq 30^{\circ}\text{C}$ for hilly regions
(a) Based on Departure from normal

Heat Wave: Maximum Temperature Departure from normal 4.5°C to 6.4°C .
Severe Heat Wave: Maximum Temperature Departure from normal $\geq 6.5^{\circ}\text{C}$

(b). Based on Actual maximum temperature

Heat Wave: When actual maximum temperature $\geq 45^{\circ}\text{C}$.
Severe Heat Wave: When actual maximum temperature $\geq 47^{\circ}\text{C}$

(c). Criteria for heat wave for coastal stations

When maximum temperature departure is $> 4.5^{\circ}\text{C}$ from normal. Heat Wave may be described provided maximum temperature $\geq 37^{\circ}\text{C}$



When maximum temperature remains 40°C

Warm Night: When minimum temperature departure 4.5°C to 6.4°C .
Severe Warm Night: When minimum temperature departure $> 6.4^{\circ}\text{C}$.



When minimum temperature of a station $\leq 10^{\circ}\text{C}$ for plains and $\leq 0^{\circ}\text{C}$ for hilly regions.

(a). Based on departure

Cold Wave: Minimum Temperature Departure from normal -4.5°C to -6.4°C .
Severe Cold Wave: Minimum Temperature Departure from normal $\leq -6.5^{\circ}\text{C}$

(b) Based on actual Minimum Temperature (for Plains only)

Cold Wave: When Minimum Temperature is $\leq 4.0^{\circ}\text{C}$
Severe Cold Wave: When Minimum Temperature is $\leq 2.0^{\circ}\text{C}$

(c) For Coastal Stations

When Minimum Temperature departure is $\leq -4.5^{\circ}\text{C}$ & actual Minimum Temperature is $\leq 15^{\circ}\text{C}$



When minimum temperature of a station $\leq 10^{\circ}\text{C}$ for plains and $\leq 0^{\circ}\text{C}$ for hilly regions
Based on departure

Cold Day: Maximum Temperature Departure from normal -4.5°C to -6.4°C .
Severe Cold Day: Maximum Temperature Departure from normal $\leq -6.5^{\circ}\text{C}$



Phenomenon of small droplets suspended in air and the horizontal visibility $< 1\text{km}$

Moderate Fog: When the visibility between 500-200 metres
Dense Fog: when the visibility between 50-200 metres
Very Dense Fog: when the visibility < 50 metres



Sudden electrical discharges manifested by a flash of light (Lightning) and a sharp rumbling sound (thunder)



An ensemble of particles of dust or sand energetically lifted to great heights by a strong and turbulent wind.



Ice deposits on ground

Air temperature $\leq 4^{\circ}\text{C}$ (over Plains)



A strong wind that rises suddenly, lasts for at least 1 minute.

Moderate: Wind speed 52-61 kmph
Severe: Wind speed 62-87 kmph
Very Severe: Wind speed > 87 kmph



Effect of various waves in the sea over specific area

Rough to very rough: Wind speed 41-62 kmph (22-33 knots) & Wave height 2.5-6 metre
High to very high: Wind speed 63-117 kmph (34-63 knots) & Wave height 6-14 metre
Phenomenal: Wind speed > 117 kmph (> 63 knots) & Wave height > 14 metre



Cyclonic Storm: Wind speed 62-87 kmph (34-47 knots)

Severe Cyclonic Storm: Wind speed 88-117 kmph (48-63 knots)
Very Severe Cyclonic Storm: Wind speed 118-165 kmph (64-89 knots)
Extremely Severe Cyclonic Storm: Wind speed 166-220 kmph (90-119 knots)
Super Cyclone Storm: Wind speed > 220 kmph (> 119 knots)

*Red color warning does not mean "Red Alert" Red color warning means "Take Action"

Forecast and warning for any day is valid from 0830 hours IST of day till 0830 hours IST of next day

For more details kindly visit <https://mausam.imd.gov.in> or contact 011-2434-4599

(Service to the nation since 1875)