

2025-06-17

Time of Issue: 14:00:00 hours IST
(Mid-Day)

ALL INDIA WEATHER SUMMARY AND FORECAST BULLETIN

Significant Weather Features

Weather Forecast and Warnings

East & Central India:

- Light/moderate rainfall at most/many places accompanied with **thunderstorm, lightning & gusty winds speed reaching 40-50 kmph** likely over Andaman & Nicobar Islands on 17th & 18th; Madhya Pradesh, Vidarbha, Chhattisgarh, Gangetic West Bengal, Bihar, Jharkhand, Odisha during 17th-21st with **Thundersquall (wind speed reaching 50-60 kmph gusting to 70 kmph)** very likely at isolated places over Madhya Pradesh on 17th & 18th June.
- Isolated **heavy rainfall** also likely over West Bengal & Sikkim during 17th-19th; Bihar, Jharkhand, Odisha, Chhattisgarh, Madhya Pradesh during 17th-21st June with **very heavy rainfall** over East Madhya Pradesh on 20th & 21st; Chhattisgarh during 17th-20th; Bihar on 18th & 19th; Jharkhand on 17th; Odisha on 17th & 19th June.
- **Extremely heavy rainfall (>20 cm/24 hours)** likely at isolated places over Gangetic West Bengal on 17th & 18th; Odisha on 18th; Jharkhand on 18th & 19th June.

West India:

- Light/moderate rainfall at most/many places accompanied with **thunderstorm, lightning & gusty winds speed reaching 30-40 kmph** likely over Gujarat State, Konkan & Goa, Madhya Maharashtra, Marathwada during 17th -20th June.
- Isolated **heavy to very heavy rainfall** likely over Konkan & Goa, Madhya Maharashtra, Gujarat Region during 17th-23rd; Saurashtra & Kutch during 17th-19th and 22nd & 23rd with **Extremely heavy rainfall (>20 cm/24 hours)** likely at isolated places over Gujarat state on 17th June.

South Peninsular India:

- Light/moderate rainfall at many/some places accompanied with isolated **thunderstorm, lightning & gusty winds speed reaching 40-50 kmph** over Tamil Nadu, Puducherry & Karaikal, Kerala & Mahe, Lakshadweep, Karnataka during 17th-19th; Coastal Andhra Pradesh & Yanam, Rayalaseema, Telangana during 17th-20th June.
- Isolated **heavy rainfall** likely over Tamil Nadu on 17th & 18th; Kerala, Coastal Karnataka, South Interior Karnataka during 17th-19th; north Interior Karnataka on 17th; with **very heavy rainfall** likely at isolated places over ghat areas of Tamil Nadu and North Kerala on 17th June.
- **Extremely heavy rainfall (>20 cm/24 hours)** likely at isolated places over Coastal & South Interior Karnataka on 17th June.
- **Strong surface winds** (speed reaching 40-60 kmph) very likely over Kerala & Mahe, Lakshadweep, Karnataka on 17th & 18th; Rayalaseema, Telangana and Coastal Andhra Pradesh & Yanam during 17th-20th June.

Northeast India:

- Light/moderate rainfall at many/most places accompanied with **thunderstorm, lightning and isolated heavy to very heavy rainfall** likely to continue over Northeast India during next 7 days with **extremely heavy rainfall** over Meghalaya on 18th & 19th June.

Northwest India:

- Light/moderate rainfall at some/many places accompanied with **thunderstorm, lightning & gusty winds speed reaching 40-50 kmph** likely over Northwest India during 17th-23rd June.
- Isolated **heavy rainfall** likely over Uttarakhand, East Uttar Pradesh, East Rajasthan during 17th-23rd; Jammu-Kashmir-Ladakh-Gilgit-Baltistan-Muzaffarabad on 17th & 22nd; Himachal Pradesh during 20th-22nd; Punjab, Haryana on 17th & during 20th-22nd; West Uttar Pradesh during 19th-22nd with **very heavy rainfall** on East Uttar Pradesh on 19th & 20th; West Uttar Pradesh on 20th & 21st June.

***Red color warning does not mean "Red Alert" Red color warning means "Take Action"**

Forecast and warning for any day is valid from 0830 hours IST of day till 0830 hours IST of next day

For more details kindly visit <https://mausam.imd.gov.in> or contact 011-2434-4599

(Service to the nation since 1875)



Maximum Temperature Forecast:

- ♦ No significant change in maximum temperatures likely over most parts of the country.



Main Weather Observations:

- ♦ **Rainfall distribution** (from 0830 hours IST of yesterday to 0830 hours IST of today): **at most places** over Andaman & Nicobar Islands, Assam & Meghalaya, Nagaland, Manipur, Mizoram & Tripura, Sub Himalayan West Bengal & Sikkim, Gangetic West Bengal, Odisha, Himachal Pradesh, Gujarat Region, Saurashtra & Kutch, Konkan & Goa, Vidarbha, Coastal Karnataka and Kerala & Mahe; **at many places** over Arunachal Pradesh, Punjab, East Rajasthan, Madhya Maharashtra, Chhattisgarh, South Interior Karnataka and Lakshadweep; **at a few places** over Bihar, East Uttar Pradesh, Uttarakhand, Haryana-Chandigarh-Delhi, Jammu-Kashmir-Ladakh-Gilgit-Baltistan-Muzaffarabad, West Rajasthan, Coastal Andhra Pradesh & Yanam, Telangana and North Interior Karnataka; **at isolated places** over West Uttar Pradesh, Marathwada and Tamil Nadu, Puducherry & Karaikal; **Dry** over rest of the country.
- ♦ **Significant rainfall recorded(in cm)** (from 0830 hours IST of yesterday to 0830 hours IST of today):
Saurashtra & Kutch: Gadhda (dist Botad) 36; Palitana (dist Bhavnagar) 29; Botad (dist Botad) 28; Shihor (dist Bhavnagar), Umralla (dist Bhavnagar), Jesar (dist Bhavnagar) 27 Each; Savarkundla (dist Amreli) 25; Mahuva(b) (dist Bhavnagar) 22; Chotila (dist Surendranagar), Rajula (dist Amreli), Lilia (dist Amreli) 17 Each; Vallabhipur (dist Bhavnagar) 16; Amreli (dist Amreli), Gariadhar (dist Bhavnagar), Vichhiya (dist Rajkot) 15 Each; Rajula ARG (dist Amreli) 14; Talaja (dist Bhavnagar) 13; Babra (dist Amreli), Morbi (dist Morbi) 12 Each; Jasdan (dist Rajkot), Sayla (dist Surendranagar), Lathi (dist Amreli), Khambha (dist Amreli), Barvala (dist Botad), Chuda (dist Surendranagar), Tankara (dist Morbi), Thangadh (dist Surendranagar) 10 Each; Jetpur (dist Rajkot), Junagarh AWS (dist Junagadh), Halvad (dist Morbi), Okha (dist Devbhoomi Dwarka), Junagadh (dist Junagadh), Muli (dist Surendranagar) 9 Each; Lodhika (dist Rajkot), Rajkot (dist Rajkot), Bhesan (dist Junagadh), Ranpur (dist Botad), Porbandar (dist Porbandar), Vadia (dist Amreli), Targhadia AWS (dist Rajkot), Kalyanpur (dist Devbhoomi Dwarka) 7 Each; Wankaner (dist Morbi), Surendranagar (dist Surendranagar), Bagasra (dist Amreli), Upleta (dist Rajkot) 6 Each; Jodia (dist Jamnagar), Dwarka (dist Devbhoomi Dwarka), Mendarda (dist Junagadh), Vanthali (dist Junagadh), Malia Miana (dist Morbi), Dhari (dist Amreli), Gondal (dist Rajkot), Ghogha (dist Bhavnagar), Bhavnagar (dist Bhavnagar), Surendranagar AWS (dist Surendranagar), Kotdasangani (dist Rajkot), Ghoga ARG (dist Bhavnagar) 5 Each; **Tamil Nadu, Puducherry & Karaikal:** Avalanche (dist Nilgiris) 21; Upper Bhavani (dist Nilgiris) 10; Valparai PTO (dist Coimbatore) 9; Chinnakalar (dist Coimbatore), Sholayar (dist Coimbatore) 8 Each; Periyar (dist Theni), Emeraldad (dist Nilgiris), Worth Estate Cher (dist Nilgiris) 7 Each; Devala (dist Nilgiris), Upasi Tea Research AWS (dist Coimbatore), Cincona (dist Coimbatore), Upper Gudalur (dist Nilgiris) 6 Each; Valparai Taluk Office (dist Coimbatore), G Bazar (dist Nilgiris), Valparai Pap (dist Coimbatore), Taluk Office Pandalur (dist Nilgiris), Siruvani Adivaram (dist Coimbatore) 5 Each; **South Interior Karnataka:** Bhagamandala (dist Kodagu) 19; Agumbe Emo (dist Shivamogga) 14; Kammardi (dist Chikkamagaluru), Napoklu (dist Kodagu) 9 Each; Sringeri HMS (dist Chikkamagaluru), Virajpet (dist Kodagu), Ponnampet PWD (dist Kodagu), Kottigehara (dist Chikkamagaluru), Jayapura (dist Chikkamagaluru) 8 Each; Somwarpet (dist Kodagu) 7; Hunchadakatte (dist Shivamogga), Kalasa (dist Chikkamagaluru), Koppa (dist Chikkamagaluru) 6 Each; Tyagarthi (dist Shivamogga) 5; **Coastal Karnataka:** Gersoppa (dist Uttara Kannada) 17; Siddapura (dist Udupi) 13; Karkala (dist Udupi), Sulya (dist Dakshina Kannada) 11 Each; Dharmasthala (dist Dakshina Kannada), Kota (dist Udupi) 10 Each; Mani (dist Dakshina Kannada), Udupi (dist Udupi), Castle Rock (dist Uttara Kannada), Honavar (dist Uttara Kannada), Uppinangadi (dist Dakshina Kannada), Kundapur (dist Udupi), Siddapur (dist Uttara Kannada), Belthangadi (dist Dakshina Kannada) 9 Each; Manki (dist Uttara Kannada), Puttur HMS (dist Dakshina Kannada) 8 Each; Kumta (dist Uttara Kannada), Mangaluru (dist Dakshina Kannada) 7 Each; Karwar (dist Uttara Kannada), Panambur (dist Dakshina Kannada) 6 Each; Mangaluru AP (dist Dakshina Kannada), Bantwal (dist Dakshina Kannada), Yellapur (dist Uttara Kannada), Ankola (dist Uttara Kannada), Banavasi (dist Uttara Kannada) 5 Each; **Kerala & Mahe:** Panathur AWS (dist Kasargod) 14; Hosdurg (dist Kasargod), Muliya AWS (dist Kasargod) 13 Each; Taliparamba (dist Cannur), Cheruvanchery AWS (dist Cannur), Chemberi AWS (dist Cannur), Peringome AWS (dist Cannur) 12 Each; Irikkur (dist Cannur), Peermade To (dist Idukki), Idamalayar Dam AWS (dist Ernakulam), Vadakara AWS (dist Kozhikode) 11 Each; Kudulu (dist Kasargod), Ayyankunnu AWS (dist Cannur) 10 Each; Quilandi (dist Kozhikode), Vyttili (dist Wynad), Mahe (dist Mahe), Pinarayi AWS (dist Cannur), Bayar AWS (dist Kasargod) 9 Each; Munnar Kseb (dist Idukki), Kannur (dist Cannur) 8 Each; Tellichery (dist Cannur), Nilambur (dist Malappuram), Angadipuram (dist Malappuram), Vellanikkara (dist Thrissur), Kunnamkulam (dist Thrissur), Kannur Airport AWS (dist Cannur), Kannur Icar AWS (dist Cannur), Kalamassery AWS (dist Ernakulam), Lower Sholayar AWS (dist Thrissur), Peechi AWS (dist Thrissur), Ams Kannur (dist Cannur), Manantoddy (dist Wynad) 7 Each; Kumarakam (dist Kottayam), Vadakkancherry (dist Thrissur), Palakkad (dist Palakkad), Idukki (dist Idukki), Vannamada AWS (dist Palakkad), Malampuzha Dam

*Red color warning does not mean "Red Alert" Red color warning means "Take Action"

Forecast and warning for any day is valid from 0830 hours IST of day till 0830 hours IST of next day

For more details kindly visit <https://mausam.imd.gov.in> or contact 011-2434-4599

(Service to the nation since 1875)



AWS (dist Palakkad), Alwaye PWD (dist Ernakulam) 6 Each; Ottapalam (dist Palakkad), Kochi IAF (dist Ernakulam), Piravam (dist Ernakulam), Parumbikulam (dist Palakkad), Thrithla (dist Palakkad), Vaikom (dist Kottayam), Mannarkkad (dist Palakkad), Pattermbi (dist Palakkad), Kollamkode (dist Palakkad), Alathur (dist Palakkad), Chittur (dist Palakkad), Aluva AWS (dist Ernakulam), Udumbannoor AWS (dist Idukki), Vaikkom AWS (dist Kottayam), Vilangad AWS (dist Kozhikode), Thennala AWS (dist Malappuram), Kollengode AWS (dist Palakkad), Mannarkkad AWS (dist Palakkad), Kuppadi AWS (dist Wynad), Kozhikode (dist Kozhikode) 5 Each; **Gangetic West Bengal**: PTO Tarakeswar (dist Hooghly) 14; Sagar Island PTO (dist South 24 Parganas) 12; Burnpur (dist Paschim Bardhaman) 7; Basirhat(pt) (dist North 24 Parganas), Uluberia (dist Howrah), Amfu Kakdwip (dist South 24 Parganas) 6 Each; Bankura (dist Bankura), Harinkhola (dist Hooghly), Lalgurh (dist Jhargram) 5 Each; **Madhya Maharashtra**: Radhanagari (dist Kolhapur) 13; Igatpuri (dist Nashik) 11; Lonavala ARG (dist Pune) 10; Mahabaleshwar (dist Satara) 8; Ajra (dist Kolhapur), Shahuwadi (dist Kolhapur) 7 Each; Gaganbawada (dist Kolhapur) 6; Chandgad (dist Kolhapur), Velhe (dist Pune) 5 Each; **Konkan & Goa**: Bhiwandi (dist Thane) 13; Matheran (dist Raigad), Thane (dist Thane), Rajapur (dist Ratnagiri) 11 Each; Murbad (dist Thane), Pen (dist Raigad), Uran (dist Raigad), Vasai (dist Palghar), Savarde-arg (dist Ratnagiri) 10 Each; Tbia IMD Part Time (dist Thane), Panvel ARG (dist Raigad), Talasari (dist Palghar), Chiplun (dist Ratnagiri) 9 Each; Santacruz (dist Mumbai Suburban), Sudhagad Pali (dist Raigad), Ambernath (dist Thane), Ulhasnagar (dist Thane) 8 Each; Alibag - IMD Part Time (dist Raigad), Vikramgad (dist Palghar), Wada (dist Palghar), Khalapur (dist Raigad), Palghar ARG (dist Palghar), Dapoli ARG (dist Ratnagiri), Wakwali ARG (dist Ratnagiri) 7 Each; Mokheda - Fmo (dist Palghar), Murud (dist Raigad), Colaba (dist Mumbai City), Jawhar (dist Palghar), Tala (dist Raigad), Kalyan (dist Thane) 6 Each; Shahapur (dist Thane), Guhagarh (dist Ratnagiri), Karjat ARG (dist Raigad), Sangameshwar Devrukh (dist Ratnagiri), Dahanu (dist Palghar) 5 Each; **Odisha**: Deogarh (dist Deogarh) 13; Kuchinda (dist Sambalpur), Jenapur (dist Jajpur), Rairangpur (dist Mayurbhanj) 9 Each; Gurundia (dist Sundargarh), Jajpur (dist Jajpur), Oupada (dist Balasore) 8 Each; Sukinda (dist Jajpur), Khaira (dist Balasore), Jamda (dist Mayurbhanj), Jharsuguda (dist Jharsuguda), Balisankara (dist Sundargarh) 7 Each; Korei (dist Jajpur), Soro (dist Balasore), Udala (dist Mayurbhanj), Barkote (dist Deogarh), Lahunipara (dist Sundargarh), Akhuapada (dist Bhadrak), Chandbali (dist Bhadrak), Bijatala (dist Mayurbhanj), Hemgiri (dist Sundargarh) 6 Each; Atabira (dist Bargarh), Reamal (dist Deogarh), Naktideul (dist Sambalpur), Sambalpur (dist Sambalpur), Rajnagar (dist Kendrapara), Bissem-cuttack (dist Rayagada), Rajgangpur (dist Sundargarh) 5 Each; **Punjab**: Ludhiana (dist Ludhiana) 11; Halwara IAF (dist Ludhiana) 8; Ropar Kvk AWS (dist Rupnagar) 6; Ropar (dist Rupnagar), Pau Ludhiana (dist Ludhiana), Ballawal Saunkri (dist Sbs Nagar), Ludhiana Irr (dist Ludhiana), Barnala (dist Barnala) 5 Each; **Gujarat Region**: Hansot (dist Bharuch) 11; Vagra (dist Bharuch), Dhandhuka (dist Ahmedabad) 9 Each; Olpad (dist Surat) 8; Ankleshwer (dist Bharuch), Balasinor (dist Mahisagar), Bharuch (dist Bharuch), Umergam (dist Valsad), Vadodara (dist Vadodara), Bodeli (dist Chhota Udepur) 7 Each; V.vidyanagar SR (dist Anand), Kapadvanj (dist Kheda), Petlad (dist Anand), Padra (dist Vadodara), Dolvan (dist Tapi) 6 Each; Maktampur AWS (dist Bharuch), Silvassa (dist Dadara & Nagar Haveli), Amirgadh (dist Banaskantha), Dholera (dist Ahmedabad), Khanvel (dist Dadara & Nagar Haveli), Jambuser (dist Bharuch) 5 Each; **Assam & Meghalaya**: Neamatighat (dist Jorhat) 11; Jorhat (dist Jorhat) 7; Mawsynram (dist East Khasi Hills), Cherrapunji(rkm) (dist East Khasi Hills) 6 Each; Badatighat (dist Lakhimpur), Lakhimpur (dist Cachar) 5 Each; **Himachal Pradesh**: Mehre (barsar) (dist Hamirpur) 9; Baldwara (dist Mandi) 6; Kasauli (dist Solan), Una (dist Una), R L Bmb (dist Bilaspur) 5 Each; **Arunachal Pradesh**: Naharlagun AWS (dist Papumpara) 9; Itanagar (dist Papumpara) 8; **Sub Himalayan West Bengal & Sikkim**: Karballa Tea Estate (dist Jalpaiguri) 9; Singimari (dist Cooch Behar) 7; Maynaguri College (dist Jalpaiguri), Aryaman Tea Estate (dist Alipurduar) 5 Each; **Bihar**: Andar (dist Siwan) 8; Hussainganj (dist Siwan) 6; Tribeni/Balmikinagar (dist West Champaran), Bhagalpur (dist Bhagalpur) 5 Each; **Chhattisgarh**: Kusmi (dist Balrampur), Gidam (dist Dantewada) 7 Each; Bhatapara (dist Baloda Bazar), Gobra Nawapara (dist Raipur) 5 Each; **East Rajasthan**: Sikar (dist Sikar) 7; Srimadhapur (dist Sikar), Ajmer Tehsil SR (dist Ajmer) 6 Each; Mangrol (dist Baran), Gangrar (dist Chittorgarh), Malakhera SR (dist Alwar), Alwar SR (dist Alwar), Badesar SR (dist Chittorgarh), Ajmer (dist Ajmer) 5 Each; **East Uttar Pradesh**: Shardanagar (dist Kheri) 7; Balrampur (dist Balrampur), Uska Bazar Fmo (dist Siddharth Nagar), Bansgaon (dist Gorakhpur), Birdghat (dist Gorakhpur), Bansi CWC (dist Siddharth Nagar) 5 Each; **Nagaland, Manipur, Mizoram & Tripura**: Thoubal (dist Thoubal) 7; Kohima (dist Kohima) 6; Belonia (dist South Tripura), Sechu AWS (dist Kohima), Belonia ARG (dist South Tripura) 5 Each; **West Rajasthan**: Parbatsar (dist Nagaur) 6; Nawa (dist Nagaur), Merta City (dist Nagaur), Bhadra (dist Hanumangarh) 5 Each; **Haryana-Chandigarh-Delhi**: Hissar (dist Hisar), Balasmand AWS (dist Hisar) 6 Each; Narnound REV (dist Hisar) 5; **North Interior Karnataka**: Londa (dist Belagavi) 5.

- **Heavy to very heavy rainfall at most places with Extremely heavy rainfall** has been recorded at isolated places over Saurashtra & Kutch; **Heavy to very heavy rainfall with isolated Extremely heavy rainfall** over

*Red color warning does not mean "Red Alert" Red color warning means "Take Action"

Forecast and warning for any day is valid from 0830 hours IST of day till 0830 hours IST of next day

For more details kindly visit <https://mausam.imd.gov.in> or contact 011-2434-4599

(Service to the nation since 1875)

Ghat areas of Tamil Nadu.

- **Heavy to very heavy rainfall** has been recorded at isolated places over Coastal & south Interior Karnataka, Kerala, Himachal Pradesh, Gangetic West Bengal, north interior Odisha, Mizoram; **Heavy rainfall** at isolated places over Sub-Himalayan West Bengal & Sikkim, Gujarat Region, Bihar, Chhattisgarh, Jharkhand, Punjab, East Rajasthan, West Madhya Pradesh, Konkan & Goa, Madhya Maharashtra, Arunachal Pradesh, Nagaland, Manipur and Assam & Meghalaya.
- **Thunderstorm accompanied with Squally/Gusty** winds with speed 60-70 kmph at isolated places over Gujarat Region, Konkan and Madhya Maharashtra; with speed 30-59 kmph at isolated places over Andaman & Nicobar Islands, Marathwada, Saurashtra & Kutch, Punjab, West Madhya Pradesh, Jharkhand, East Madhya Pradesh, East Uttar Pradesh, Chhattisgarh, Gangetic West Bengal, Odisha, Bihar, Himachal Pradesh and Vidarbha.
- **Minimum Temperature Departures (as on 17-06-2025): markedly above normal(> 5.1°C)** at few places over Assam & Meghalaya and East Madhya Pradesh; at isolated places over Sub Himalayan West Bengal & Sikkim, Bihar, East Uttar Pradesh, Himachal Pradesh, Jammu-Kashmir, Ladakh-Gilgit-Baltistan-Muzaffarabad and West Madhya Pradesh. **appreciably above normal(3.1°C to 5.0°C)** at isolated places over Andaman & Nicobar Islands, Jharkhand, Haryana-Chandigarh-Delhi, West Rajasthan and Saurashtra & Kutch. **above normal(1.6°C to 3.0°C)** at few places over Vidarbha; at isolated places over Gangetic West Bengal, Odisha, West Uttar Pradesh, Uttarakhand, Punjab, Gujarat Region, Konkan & Goa, Madhya Maharashtra, Telangana, Rayalaseema and Tamil Nadu, Puducherry & Karaikal. **near normal(-1.5°C to 1.5°C)** at many places over Chhattisgarh, Kerala & Mahe and Lakshadweep; at most places over Arunachal Pradesh, Nagaland, Manipur, Mizoram & Tripura, Marathwada, Coastal Andhra Pradesh & Yanam, Coastal Karnataka, North Interior Karnataka and South Interior Karnataka; at isolated places over East Rajasthan. **The lowest minimum temperature** of 18.0°C is reported at KORAPUT (ODISHA) over the Plains of India.
- **Maximum Temperature Departures (as on 16-06-2025): markedly above normal(> 5.1°C)** at isolated places over Odisha, Bihar, West Uttar Pradesh and Konkan & Goa. **appreciably above normal(3.1°C to 5.0°C)** at isolated places over Sub Himalayan West Bengal & Sikkim, Himachal Pradesh and Tamil Nadu, Puducherry & Karaikal. **above normal(1.6°C to 3.0°C)** at few places over Arunachal Pradesh; at isolated places over Nagaland, Manipur, Mizoram & Tripura, Gangetic West Bengal, East Uttar Pradesh, East Rajasthan, East Madhya Pradesh and Chhattisgarh. **near normal(-1.5°C to 1.5°C)** at many places over Andaman & Nicobar Islands, Uttarakhand, Punjab, West Madhya Pradesh and Lakshadweep; at most places over Jharkhand, Gujarat Region and Vidarbha; at few places over Assam & Meghalaya, Saurashtra & Kutch, Marathwada, Coastal Andhra Pradesh & Yanam, Coastal Karnataka and Kerala & Mahe; at isolated places over Haryana-Chandigarh-Delhi, West Rajasthan, Madhya Maharashtra, Telangana, Rayalaseema and North Interior Karnataka. **The highest maximum temperature** of 41.1°C was reported at CHAPRA (BIHAR).

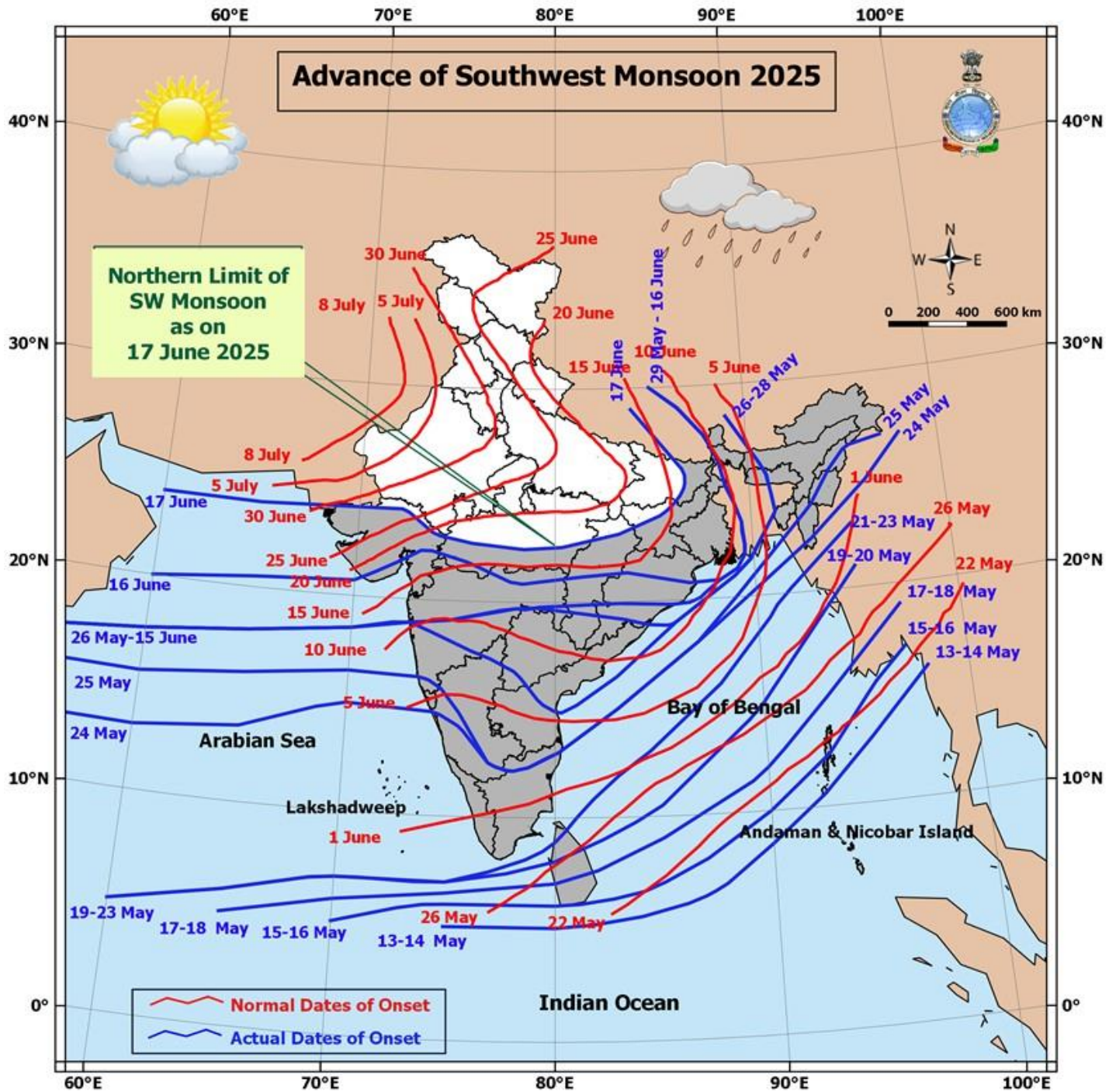
Meteorological Analysis (Based on 0830 hours IST)

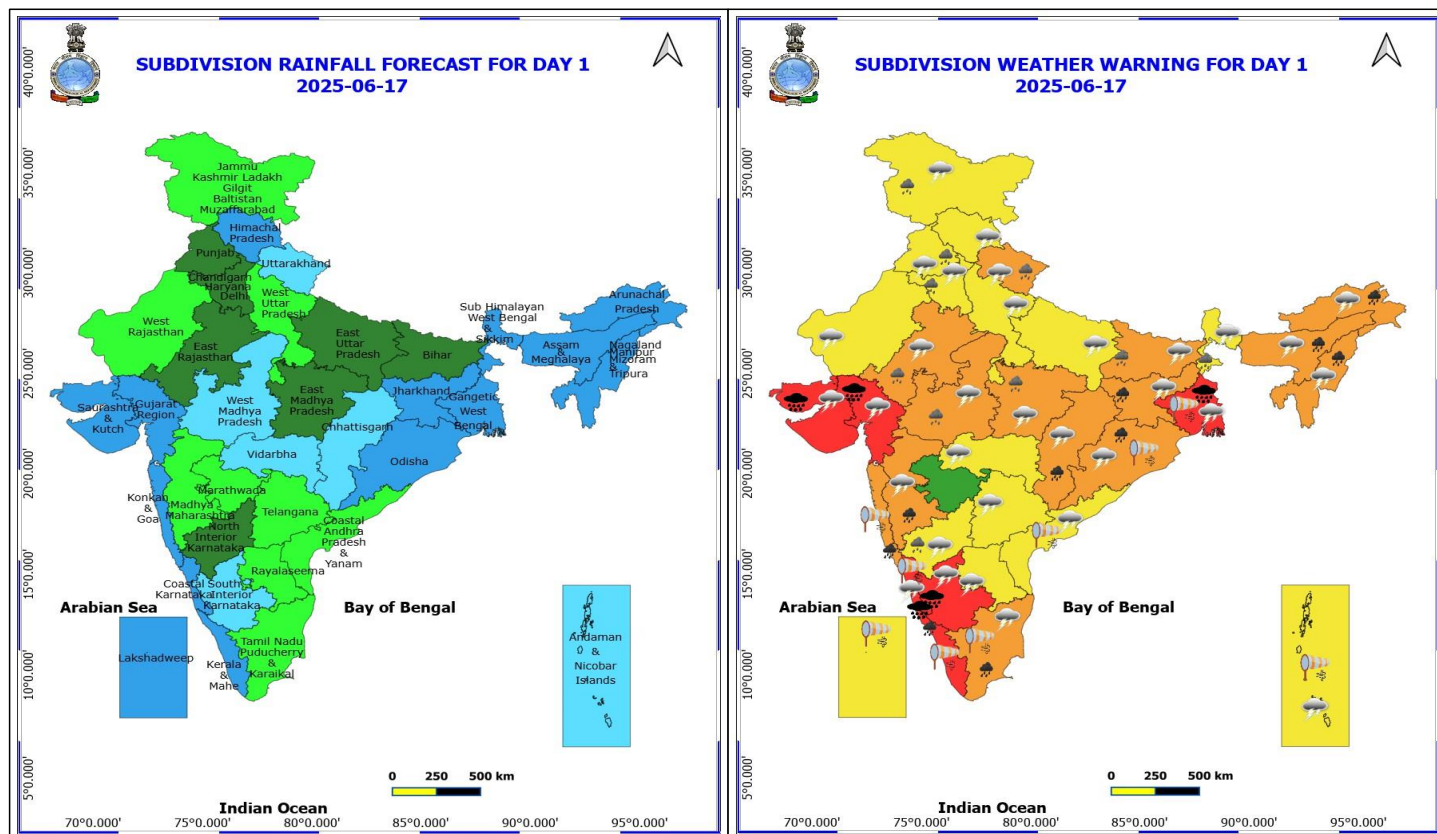
On further advance of Southwest Monsoon and on two Low pressure systems (based on 0830 hrs IST of 17th June 2025)

- Southwest Monsoon has further advanced over some more parts of North Arabian Sea and Gujarat and remaining parts of Vidarbha, more parts of Madhya Pradesh; most parts of Chhattisgarh; remaining parts of Odisha; some parts of Jharkhand; entire Gangetic West Bengal and remaining parts of Sub-Himalayan West Bengal and some parts of Bihar.
- The Northern Limit of Monsoon passes through 24.0°N/60°E, 24.0°N/65°E, Deesa, Indore, Panchmarhi, Mandla, Ambikapur, Hazaribagh, Supaul and 29.0°N/84.0°E.
- Conditions are favourable for further advance of Southwest monsoon over remaining parts of North Arabian Sea & Gujarat; some parts of Rajasthan; some more parts of Madhya Pradesh; remaining parts of Chhattisgarh, Jharkhand & Bihar and some parts of East Uttar Pradesh during next 2 days.
- The **low pressure area** over Southwest Bangladesh and adjoining Gangetic West Bengal persists over the same region at 0830 hrs IST of today, 17th June 2025. The associated upper air cyclonic circulation extending upto 7.6 km above mean sea level tilting southwards with height. It is likely to move slowly west-northwestwards and become more marked over Gangetic West Bengal & neighbourhood during next 24 hours.
- The **low pressure area** over Gujarat region & neighbourhood persists over the same region at 0830 hrs IST of today, the 17th June 2025. The associated upper air cyclonic circulation extending upto 5.8 km above mean sea level tilting southwards with height. It is likely to move nearly northwards during next 24 hours.
- A **trough** runs form cyclonic circulation associated with low pressure area over Gujarat region & neighbourhood to Jharkhand across Madhya Pradesh & north Chhattisgarh at 0.9 km above mean sea level.
- The **Western Disturbance** as a trough in middle tropospheric westerlies with its axis at 5.8 km above mean sea level now runs roughly along Long. 72°E to the north of Lat. 30°N.
- The **upper air cyclonic circulation** over northeast Assam & neighbourhood extending upto 1.5 km above mean sea level persists.
- The **upper air cyclonic circulation** over south Punjab & neighbourhood at 0.9 km above mean sea level has become less marked.
- The **upper air cyclonic circulation** over northeast Punjab & neighbourhood at 3.1 km above mean sea level has become less marked.

Weather Outlook for subsequent 3 days

- Fairly widespread to widespread rainfall activity likely over Northeast India, Sub-Himalayan West Bengal & Sikkim, Andaman & Nicobar Islands, Lakshadweep, Konkan & Goa, Marathwada, Madhya Maharashtra Coastal and Interior Karnataka, Telangana, & Rayalaseema and Kerala & Mahe.
- Isolated to scattered rainfall likely over Jammu-Kashmir-Ladakh-Gilgit-Baltistan Muzaffarabad, Uttarakhand, Odisha, south Chhattisgarh, Vidarbha, Madhya Pradesh, Uttar Pradesh, Bihar and Jharkhand.





17 June (Day 1)

- ❖ **Heavy to Very Heavy Rainfall with isolated Extremely Heavy Rainfall** very likely at isolated places over Gangetic West Bengal, Gujarat State and Coastal & South Interior Karnataka.
- ❖ **Heavy to Very Heavy Rainfall** very likely at isolated places over Chhattisgarh, Jharkhand, Odisha Kerala & Mahe, north Konkan & Goa, ghat areas of Madhya Maharashtra, Arunachal Pradesh, Assam & Meghalaya, Nagaland, Manipur, Mizoram and Tripura, and ghat areas of Tamil Nadu.
- ❖ **Heavy Rainfall** very likely at isolated places over Jammu-Kashmir-Ladakh-Gilgit-Baltistan-Muzaffarabad, Haryana, Chandigarh & Delhi, East Rajasthan, Madhya Pradesh, Bihar, North Interior Karnataka, Punjab, Sub Himalayan West Bengal & Sikkim and Uttarakhand.
- ❖ **Thundersquall with wind speed reaching(50-60kmph)** very likely at isolated places over Madhya Pradesh.
- ❖ **Thunderstorm accompanied with lightning & gusty winds(40-50kmph)** very likely at isolated places over Andaman & Nicobar Islands, Andhra Pradesh, Bihar, Chhattisgarh, Costal Karnataka, Interior Karnataka, Jharkhand, Nagaland, Manipur, Mizoram and Tripura, Rajasthan, Uttar Pradesh and Uttarakhand.
- ❖ **Thunderstorm accompanied with lightning & gusty winds(30-40kmph)** very likely at isolated places over Assam & Meghalaya, Haryana, Chandigarh & Delhi, Jammu-Kashmir-Ladakh-Gilgit-Baltistan-Muzaffarabad, Madhya Maharashtra, Odisha, Punjab, Telangana, Vidarbha and West Bengal & Sikkim.
- ❖ **Thunderstorm accompanied with Lightning** very likely at isolated places over Arunachal Pradesh, Gujarat State, Himachal Pradesh and Tamil Nadu Puducherry & Karaikal.
- ❖ **Strong Surface Winds** very likely at isolated places over Andaman & Nicobar Islands, Coastal Andhra Pradesh, Costal Karnataka, Gangetic West Bengal, Kerala & Mahe, Konkan & Goa, Lakshadweep, Odisha and Tamil Nadu

*Red color warning does not mean "Red Alert" Red color warning means "Take Action"

Forecast and warning for any day is valid from 0830 hours IST of day till 0830 hours IST of next day

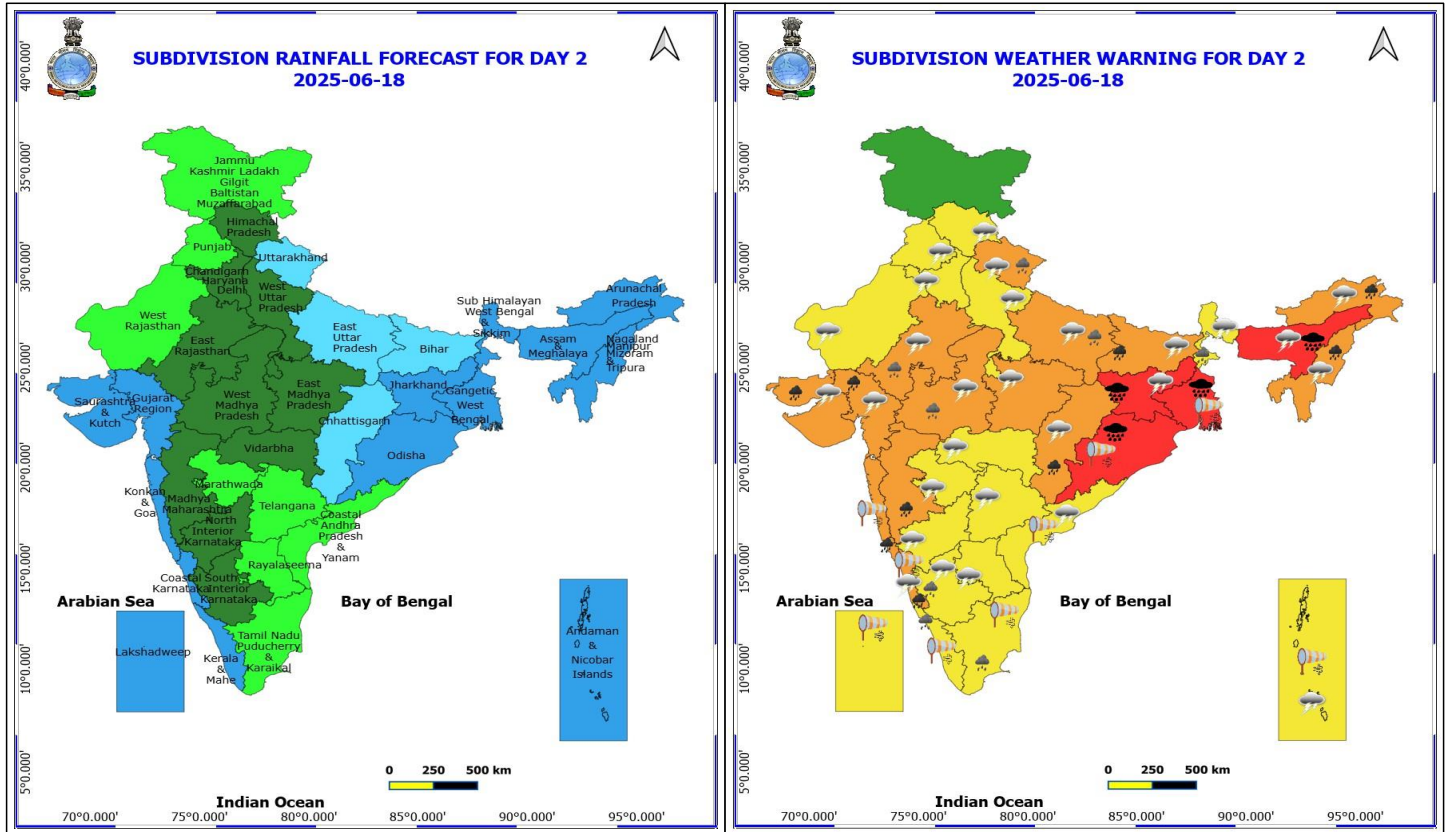
For more details kindly visit <https://mausam.imd.gov.in> or contact 011-2434-4599

(Service to the nation since 1875)



Puducherry & Karaikal.

❖ Squally wind with speed 45 kmph to 55 kmph gusting to 65 kmph likely to prevail along and off Somalia, Oman & adjoining Yemen coasts, along and off Gujarat, Konkan, coasts, most parts of central Arabian Sea & adjoining south Arabian Sea. **Squally weather with wind speed 40 - 50 kmph gusting to 60 kmph** likely to prevail along and off north Gujarat, Goa, Karnataka, Kerala, Sri Lanka, Tamil Nadu, Andhra Pradesh, Odisha, West Bengal coasts, over southeast Arabian Sea, most parts of southwest Arabian sea, over most parts of northeast Arabian Sea, over Lakshadweep, Maldives, Comorin areas, over many parts of southwest & adjoining southeast Bay of Bengal, over central Bay of Bengal, over north Bay of Bengal, and over north Andaman Sea. **Squally weather with wind speed 45 - 55 kmph gusting to 65 kmph** likely to prevail along and off south Gujarat, Konkan coasts, many parts of eastcentral & westcentral Arabian Sea, many parts of westcentral Bay of Bengal & adjoining parts of southwest Bay of Bengal, Gulf of Mannar.



18 June (Day 2)

- ❖ **Heavy to Very Heavy Rainfall with isolated Extremely Heavy Rainfall** very likely at isolated places over Meghalaya, Gangetic West Bengal, Jharkhand and Odisha.
- ❖ **Heavy to Very Heavy Rainfall** very likely at isolated places over Arunachal Pradesh, Bihar, Chhattisgarh, Coastal Karnataka, Gujarat State, Konkan & Goa, Madhya Maharashtra, Assam & Nagaland, Manipur, Mizoram and Tripura.
- ❖ **Heavy Rainfall** very likely at isolated places over East Rajasthan, East Uttar Pradesh, Kerala & Mahe, South Interior Karnataka, Sub Himalayan West Bengal & Sikkim, Tamil Nadu Puducherry & Karaikal, Uttarakhand and West Madhya Pradesh.
- ❖ **Thundersquall with wind speed reaching(50-60kmph)** very likely at isolated places over Madhya Pradesh.
- ❖ **Thunderstorm accompanied with lightning & gusty winds(40-50kmph)** very likely at isolated places over Andaman & Nicobar Islands, Andhra Pradesh, Bihar, Jharkhand, Nagaland, Manipur, Mizoram and Tripura, North Interior Karnataka, Rajasthan, Uttar Pradesh and Uttarakhand.
- ❖ **Thunderstorm accompanied with lightning & gusty winds(30-40kmph)** very likely at isolated places over Coastal Karnataka, Haryana, Chandigarh & Delhi, Himachal Pradesh, Marathwada, Punjab, South Interior Karnataka, Sub Himalayan West Bengal & Sikkim and Telangana.
- ❖ **Thunderstorm accompanied with Lightning** very likely at isolated places over Arunachal Pradesh, Assam & Meghalaya, Chhattisgarh, Gujarat State and Vidarbha.
- ❖ **Strong Surface Winds** very likely at isolated places over Andaman & Nicobar Islands, Coastal Andhra Pradesh, Coastal Karnataka, Gangetic West Bengal, Kerala & Mahe, Konkan & Goa, Lakshadweep, Odisha and Tamil Nadu

*Red color warning does not mean "Red Alert" Red color warning means "Take Action"

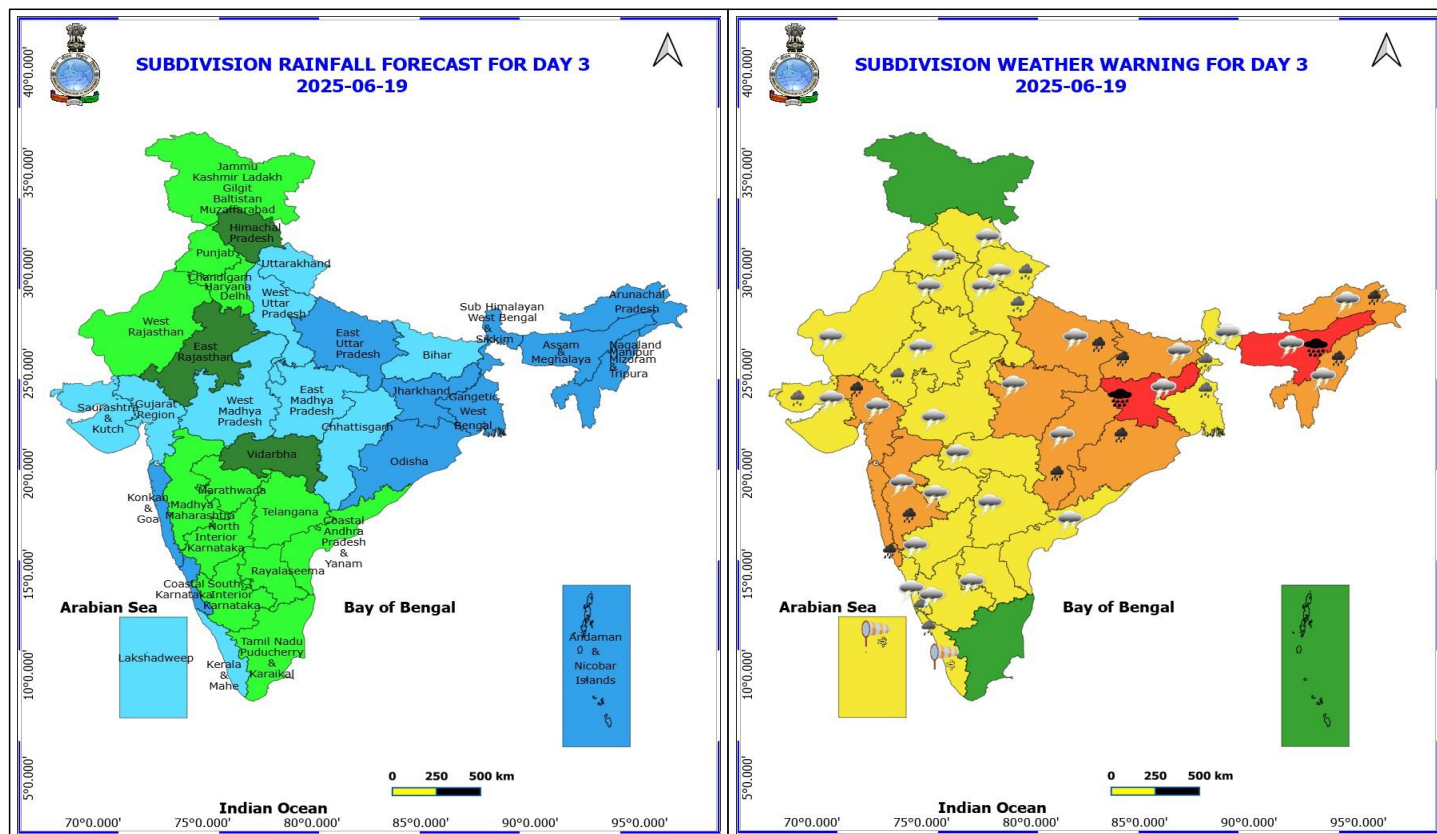
Forecast and warning for any day is valid from 0830 hours IST of day till 0830 hours IST of next day

For more details kindly visit <https://mausam.imd.gov.in> or contact 011-2434-4599

(Service to the nation since 1875)

Puducherry & Karaikal.

❖ **Squally wind with speed 45 kmph to 55 kmph gusting to 65 kmph** likely to prevail along and off Somalia, Oman & adjoining Yemen coasts, along and off Gujarat coast, most parts of westcentral Arabian Sea & adjoining southwest Arabian Sea, many parts of eastcentral Arabian Sea. **Squally weather with wind speed 40 - 50 kmph gusting to 60 kmph** likely to prevail along and off Konkan, Goa, Karnataka, Kerala, north Tamil Nadu, Andhra Pradesh, Odisha, West Bengal coasts, over southeast Arabian Sea, most parts of southwest Arabian sea, over many parts of northeast Arabian Sea, over Lakshadweep, Maldives, Comorin areas, over central Bay of Bengal, over north Bay of Bengal, and over north Andaman Sea. **Squally weather with wind speed 45 - 55 kmph** gusting to 65 kmph likely to prevail along and off Gujarat coast, southern parts of northeast Arabian Sea, many parts of eastcentral & westcentral Arabian Sea, many parts of central Bay of Bengal, Gulf of Mannar.



19 June (Day 3)

- ❖ **Heavy to Very Heavy Rainfall with isolated Extremely Heavy Rainfall** very likely at isolated places over Meghalaya and Jharkhand.
- ❖ **Heavy to Very Heavy Rainfall** very likely at isolated places over Arunachal Pradesh, Bihar, Chhattisgarh, East Uttar Pradesh, Gujarat Region, Konkan & Goa, Madhya Maharashtra, Assam, Nagaland, Manipur, Mizoram and Tripura and Odisha.
- ❖ **Heavy Rainfall** very likely at isolated places over Coastal Karnataka, East Rajasthan, Kerala & Mahe, Saurashtra & Kutch, Uttarakhand, West Bengal & Sikkim and West Uttar Pradesh.
- ❖ **Thundersquall with wind speed reaching(50-60kmph)** very likely at isolated places over East Madhya Pradesh.
- ❖ **Thunderstorm accompanied with lightning & gusty winds(40-50kmph)** very likely at isolated places over Andhra Pradesh, Bihar, Jharkhand, Nagaland, Manipur, Mizoram and Tripura, Rajasthan, Uttar Pradesh, Uttarakhand and West Madhya Pradesh.
- ❖ **Thunderstorm accompanied with lightning & gusty winds(30-40kmph)** very likely at isolated places over Coastal Karnataka, Haryana, Chandigarh & Delhi, Himachal Pradesh, Interior Karnataka, Madhya Maharashtra, Marathwada, Punjab, Sub Himalayan West Bengal & Sikkim and Telangana.
- ❖ **Thunderstorm accompanied with Lightning** very likely at isolated places over Arunachal Pradesh, Assam & Meghalaya, Chhattisgarh, Gujarat State and Vidarbha.
- ❖ **Strong Surface Winds** very likely at isolated places over Kerala & Mahe and Lakshadweep.
- ❖ **Squally wind with speed 45 kmph to 55 kmph gusting to 65 kmph** likely to prevail along and off Somalia coast,

*Red color warning does not mean "Red Alert" Red color warning means "Take Action"

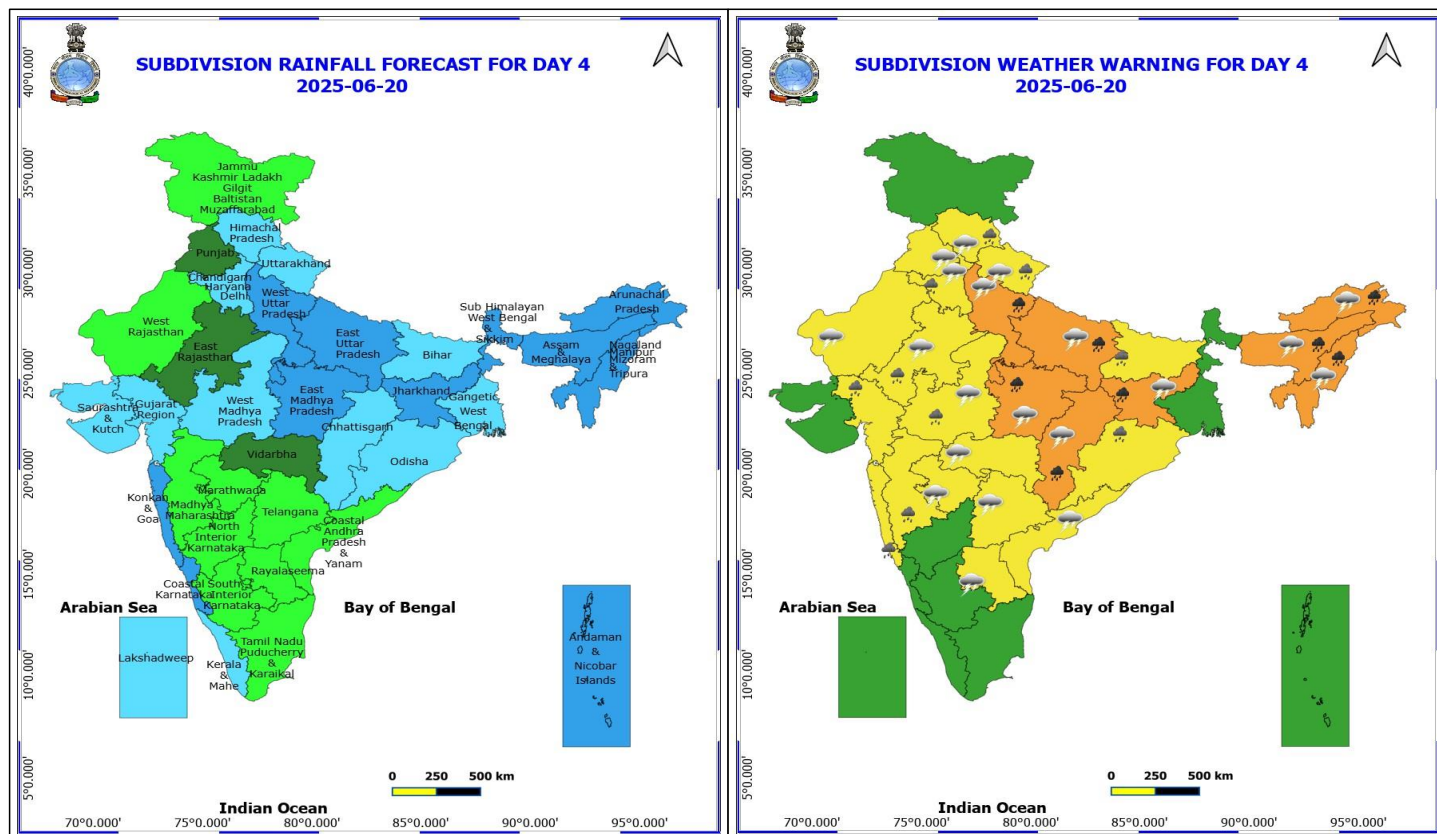
Forecast and warning for any day is valid from 0830 hours IST of day till 0830 hours IST of next day

For more details kindly visit <https://mausam.imd.gov.in> or contact 011-2434-4599

(Service to the nation since 1875)



along and off Oman & adjoining Yemen coasts, most parts of westcentral Arabian Sea & adjoining, some parts of eastcentral Arabian Sea, northern parts of southwest Arabian Sea. **Squally weather with wind speed 40 - 50 kmph gusting to 60 kmph** likely to prevail along and off north Gujarat, Konkan, Goa, Karnataka coasts, over northern parts of southwest Arabian Sea and adjoining parts of southeast Arabian Sea, most parts of central and northeast Arabian Sea, over most parts of central Bay of Bengal. **Squally weather with wind speed 45 - 55 kmph gusting to 65 kmph** likely to prevail over many parts of eastcentral Arabian Sea & adjoining, some parts of westcentral Arabian Sea, some northern parts of central Bay of Bengal.



20 June (Day 4)

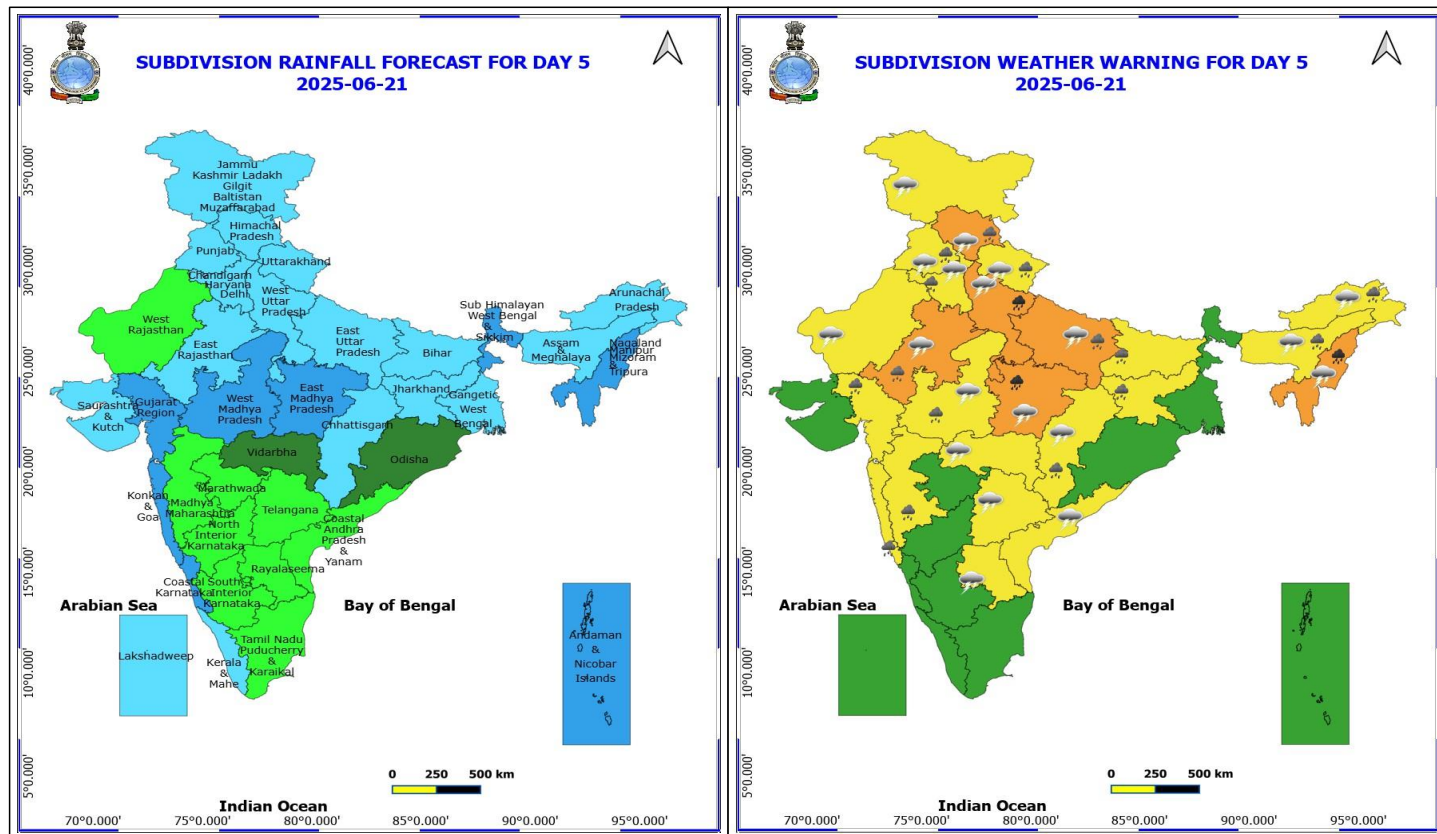
- ❖ **Heavy to Very Heavy Rainfall** likely at isolated places over Arunachal Pradesh, Assam & Meghalaya, Chhattisgarh, East Madhya Pradesh, Jharkhand, Nagaland, Manipur, Mizoram and Tripura and Uttar Pradesh.
- ❖ **Heavy Rainfall** likely at isolated places over Bihar, East Rajasthan, Gujarat Region, Haryana, Chandigarh & Delhi, Himachal Pradesh, Konkan & Goa, Madhya Maharashtra, Odisha, Uttarakhand and West Madhya Pradesh.
- ❖ **Thunderstorm accompanied with lightning & gusty winds(40-50kmph)** likely at isolated places over Andhra Pradesh, Jharkhand, Madhya Pradesh, Rajasthan, Uttar Pradesh and Uttarakhand.
- ❖ **Thunderstorm accompanied with lightning & gusty winds(30-40kmph)** likely at isolated places over Haryana, Chandigarh & Delhi, Marathwada, Punjab and Telangana.
- ❖ **Thunderstorm accompanied with Lightning** likely at isolated places over Arunachal Pradesh, Assam & Meghalaya, Chhattisgarh, Himachal Pradesh, Nagaland, Manipur, Mizoram and Tripura and Vidarbha.
- ❖ **Squally wind with speed 45 kmph to 55 kmph gusting to 65 kmph** likely to prevail along and off Somalia coast, along and off Oman & adjoining Yemen coasts, most parts of westcentral Arabian Sea & adjoining, some parts of eastcentral Arabian Sea. **Squally weather with wind speed 40 - 50 kmph gusting to 60 kmph** likely to prevail along and off Gujarat, Konkan coasts, over most parts of central Arabian Sea, over most parts of northeast Arabian Sea, over many parts of central Bay of Bengal and adjoining north Bay of Bengal. **Squally weather with wind speed 45 - 55 kmph gusting to 65 kmph** likely to prevail over western parts of eastcentral Arabian Sea & adjoining, some parts of westcentral Arabian Sea, some parts of central Bay of Bengal.

*Red color warning does not mean "Red Alert" Red color warning means "Take Action"

Forecast and warning for any day is valid from 0830 hours IST of day till 0830 hours IST of next day

For more details kindly visit <https://mausam.imd.gov.in> or contact 011-2434-4599

(Service to the nation since 1875)



21 June (Day 5)

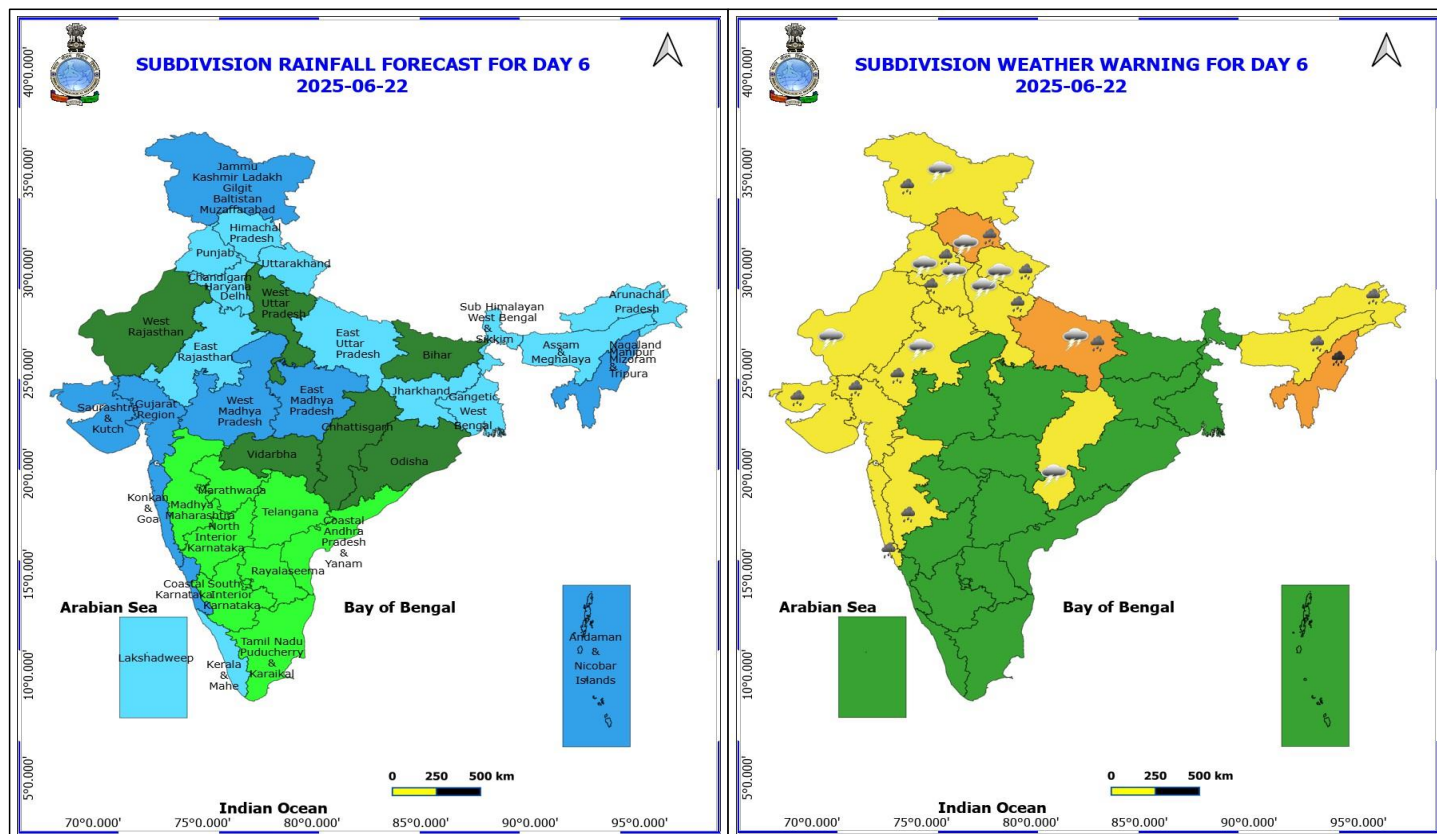
- ❖ **Heavy to Very Heavy Rainfall** likely at isolated places over East Madhya Pradesh, Nagaland, Manipur, Mizoram and Tripura and West Uttar Pradesh.
- ❖ **Heavy Rainfall** likely at isolated places over Arunachal Pradesh, Assam & Meghalaya, Bihar, Chhattisgarh, East Rajasthan, East Uttar Pradesh, Gujarat Region, Haryana, Chandigarh & Delhi, Himachal Pradesh, Jharkhand, Konkarn & Goa, Madhya Maharashtra, Punjab, Uttarakhand and West Madhya Pradesh.
- ❖ **Thunderstorm accompanied with lightning & gusty winds(40-50kmph)** likely at isolated places over Andhra Pradesh, Jammu-Kashmir-Ladakh-Gilgit-Baltistan-Muzaffarabad, Madhya Pradesh, Rajasthan, Uttar Pradesh and Uttarakhand.
- ❖ **Thunderstorm accompanied with lightning & gusty winds(30-40kmph)** likely at isolated places over Haryana, Chandigarh & Delhi, Punjab and Telangana.
- ❖ **Thunderstorm accompanied with Lightning** likely at isolated places over Arunachal Pradesh, Assam & Meghalaya, Chhattisgarh, Himachal Pradesh, Nagaland, Manipur, Mizoram and Tripura and Vidarbha.
- ❖ **Squally wind with speed 45 kmph to 55 kmph gusting to 65 kmph** likely to prevail along and off Somalia coast, along and off Oman & adjoining Yemen coasts, most parts of westcentral Arabian Sea & adjoining, some parts of eastcentral Arabian Sea. **Squally weather with wind speed 40 - 50 kmph gusting to 60 kmph** likely to prevail along and off Gujarat, north Konkarn coasts, over most parts of central Arabian Sea, over most parts of northeast Arabian Sea, over some parts of central Bay of Bengal. **Squally weather with wind speed 45 - 55 kmph gusting to 65 kmph** likely to prevail over westcentral and some parts of east central Arabian Sea.

*Red color warning does not mean "Red Alert" Red color warning means "Take Action"

Forecast and warning for any day is valid from 0830 hours IST of day till 0830 hours IST of next day

For more details kindly visit <https://mausam.imd.gov.in> or contact 011-2434-4599

(Service to the nation since 1875)



22 June (Day 6)

- ❖ **Heavy to Very Heavy Rainfall** likely at isolated places over Nagaland, Manipur, Mizoram and Tripura.
- ❖ **Heavy Rainfall** likely at isolated places over Arunachal Pradesh, Assam & Meghalaya, East Rajasthan, Gujarat State, Haryana, Chandigarh & Delhi, Himachal Pradesh, Jammu-Kashmir-Ladakh-Gilgit-Baltistan-Muzaffarabad, Konkan & Goa, Madhya Maharashtra, Punjab, Uttar Pradesh and Uttarakhand.
- ❖ **Thunderstorm accompanied with lightning & gusty winds(40-50kmph)** likely at isolated places over Rajasthan, Uttar Pradesh and Uttarakhand.
- ❖ **Thunderstorm accompanied with lightning & gusty winds(30-40kmph)** likely at isolated places over Haryana, Chandigarh & Delhi, Jammu-Kashmir-Ladakh-Gilgit-Baltistan-Muzaffarabad and Punjab.
- ❖ **Thunderstorm accompanied with Lightning** likely at isolated places over Chhattisgarh and Himachal Pradesh.

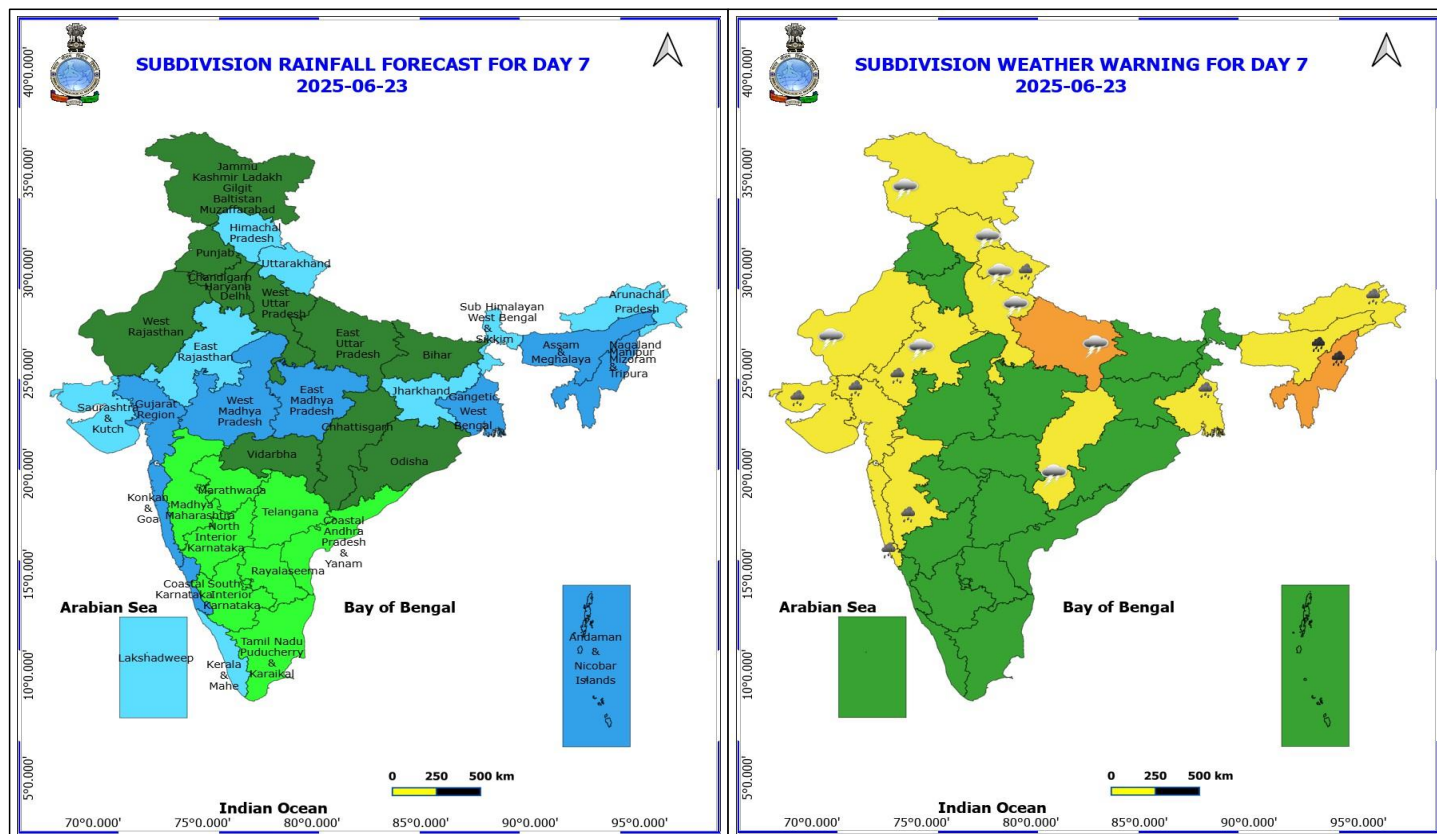
No Fishermen Warning

***Red color warning does not mean "Red Alert" Red color warning means "Take Action"**

Forecast and warning for any day is valid from 0830 hours IST of day till 0830 hours IST of next day

For more details kindly visit <https://mausam.imd.gov.in> or contact 011-2434-4599

(Service to the nation since 1875)



23 June (Day 7)

- ❖ **Heavy to Very Heavy Rainfall** likely at isolated places over East Madhya Pradesh, Nagaland, Manipur, Mizoram and Tripura and West Uttar Pradesh.
- ❖ **Heavy Rainfall** likely at isolated places over Arunachal Pradesh, Assam & Meghalaya, Bihar, Chhattisgarh, East Rajasthan, East Uttar Pradesh, Gujarat Region, Haryana, Chandigarh & Delhi, Himachal Pradesh, Jharkhand, Konkan & Goa, Madhya Maharashtra, Punjab, Uttarakhand and West Madhya Pradesh.
- ❖ **Thunderstorm accompanied with lightning & gusty winds(40-50kmph)** likely at isolated places over Andhra Pradesh, Jammu-Kashmir-Ladakh-Gilgit-Baltistan-Muzaffarabad, Madhya Pradesh, Rajasthan, Uttar Pradesh and Uttarakhand.
- ❖ **Thunderstorm accompanied with lightning & gusty winds(30-40kmph)** likely at isolated places over Haryana, Chandigarh & Delhi, Punjab and Telangana.
- ❖ **Thunderstorm accompanied with Lightning** likely at isolated places over Arunachal Pradesh, Assam & Meghalaya, Chhattisgarh, Himachal Pradesh, Nagaland, Manipur, Mizoram and Tripura and Vidarbha.

No Fishermen Warning

***Red color warning does not mean "Red Alert" Red color warning means "Take Action"**

Forecast and warning for any day is valid from 0830 hours IST of day till 0830 hours IST of next day

For more details kindly visit <https://mausam.imd.gov.in> or contact 011-2434-4599

(Service to the nation since 1875)



Table-1

7 Days Rainfall Forecast

S.No.	Subdivision	17-Jun	18-Jun	19-Jun	20-Jun	21-Jun	22-Jun	23-Jun
		Day 1	Day 2	Day 3	Day 4	Day 5	Day 6	Day 7
1	ANDAMAN & NICOBAR ISLANDS	FWS	WS	WS	WS	WS	WS	WS
2	ARUNACHAL PRADESH	WS	WS	WS	WS	FWS	FWS	FWS
3	ASSAM & MEHGHALAYA	WS	WS	WS	WS	FWS	FWS	WS
4	N. M. M. & T.	WS	WS	WS	WS	WS	WS	WS
5	S.H. WEST BENGAL & SIKKIM	WS	WS	WS	WS	WS	FWS	FWS
6	GANGETIC WEST BENGAL	WS	WS	WS	FWS	FWS	FWS	WS
7	ODISHA	WS	WS	WS	FWS	SCT	SCT	SCT
8	JHARKHAND	WS	WS	WS	WS	FWS	FWS	FWS
9	BIHAR	SCT	FWS	FWS	FWS	FWS	SCT	SCT
10	EAST UTTAR PRADESH	SCT	FWS	WS	WS	FWS	FWS	SCT
11	WEST UTTAR PRADESH	ISOL	SCT	FWS	WS	FWS	SCT	SCT
12	UTTARAKHAND	FWS	FWS	FWS	FWS	FWS	FWS	FWS
13	HARYANA, CHD & DELHI	SCT	SCT	ISOL	FWS	FWS	FWS	SCT
14	PUNJAB	SCT	ISOL	ISOL	SCT	FWS	FWS	SCT
15	HIMACHAL PRADESH	WS	SCT	SCT	FWS	FWS	FWS	FWS
16	JAMMU AND KASHMIR AND LADAKH	ISOL	ISOL	ISOL	ISOL	FWS	WS	SCT
17	WEST RAJASTHAN	ISOL	ISOL	ISOL	ISOL	ISOL	SCT	SCT
18	EAST RAJASTHAN	SCT	SCT	SCT	SCT	FWS	FWS	FWS
19	WEST MADHYA PRADESH	FWS	SCT	FWS	FWS	WS	WS	WS
20	EAST MADHYA PRADESH	SCT	SCT	FWS	WS	WS	WS	WS
21	GUJRAT REGION	WS	WS	FWS	FWS	WS	WS	WS
22	SAURASHTRA & KUTCH	WS	WS	FWS	FWS	FWS	WS	FWS
23	KONKAN & GOA	WS	WS	WS	WS	WS	WS	WS
24	MADHYA MAHARASHTRA	ISOL	SCT	ISOL	ISOL	ISOL	ISOL	ISOL
25	MARATHWADA	ISOL	ISOL	ISOL	ISOL	ISOL	ISOL	ISOL
26	VIDARBHA	FWS	SCT	SCT	SCT	SCT	SCT	SCT
27	CHATTISGARH	FWS	FWS	FWS	FWS	FWS	SCT	SCT
28	COASTAL ANDHRA PRADESH	ISOL	ISOL	ISOL	ISOL	ISOL	ISOL	ISOL
29	TELANGANA	ISOL	ISOL	ISOL	ISOL	ISOL	ISOL	ISOL
30	RAYALASEEMA	ISOL	ISOL	ISOL	ISOL	ISOL	ISOL	ISOL
31	TAMILNADU & PUDUCHERRY	ISOL	ISOL	ISOL	ISOL	ISOL	ISOL	ISOL
32	COSTAL KARNATAKA	WS	WS	WS	WS	WS	WS	WS
33	NORTH INTERIOR KARNATAKA	SCT	SCT	ISOL	ISOL	ISOL	ISOL	ISOL
34	SOUTH INTERIOR KARNATAKA	FWS	SCT	ISOL	ISOL	ISOL	ISOL	ISOL
35	KERALA	WS	WS	FWS	FWS	FWS	FWS	FWS
36	LAKSHDWEAP	WS	WS	FWS	FWS	FWS	FWS	FWS

Legend	Category	%Stations
WS	Widespread/Most Places	76-100
FWS	Fairly Widespread/Many Places	51-75
SCT	Scattered/ A Few Places	26-50
ISOL	Isolated Places	1-25
DRY	No Rain	0

*Red color warning does not mean "Red Alert" Red color warning means "Take Action"

Forecast and warning for any day is valid from 0830 hours IST of day till 0830 hours IST of next day

For more details kindly visit <https://mausam.imd.gov.in> or contact 011-2434-4599

(Service to the nation since 1875)

Fig. 1: Maximum Temperatures Dated 2025-06-17

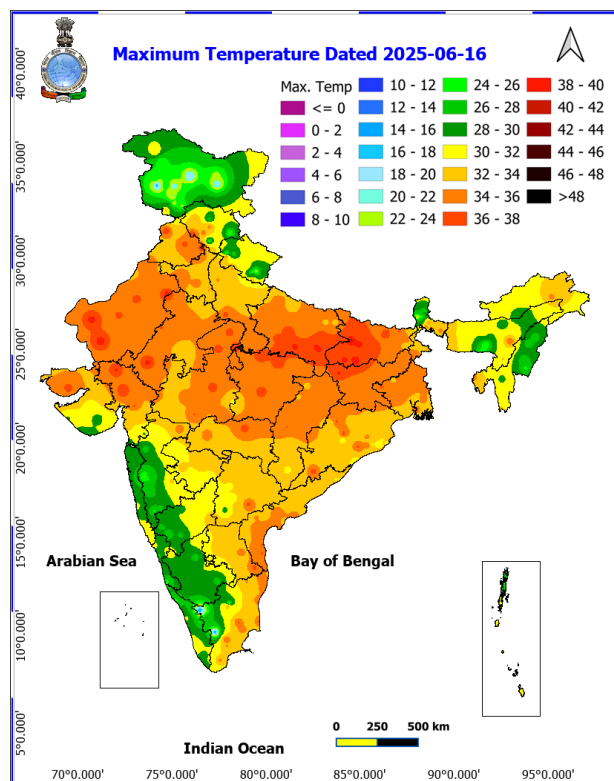


Fig. 2: Departure of Maximum Temp. Dated 2025-06-17

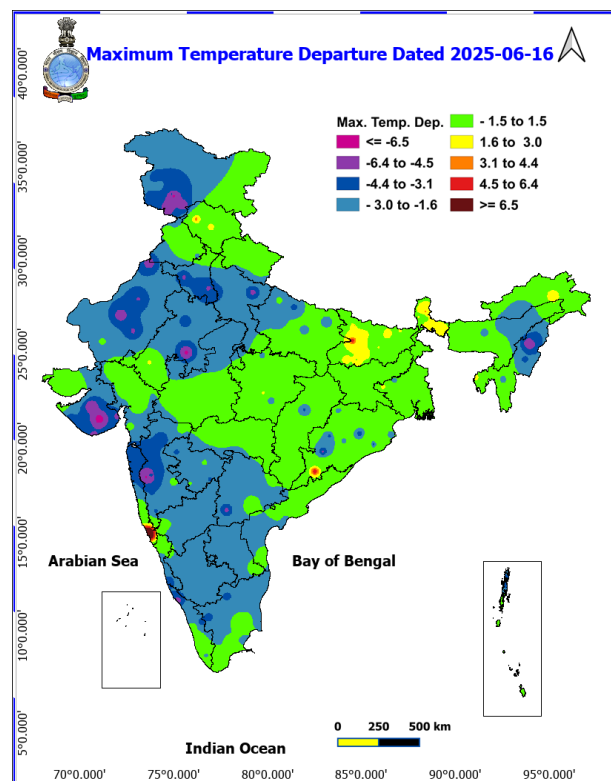


Fig. 3: Minimum Temperatures Dated 2025-06-17

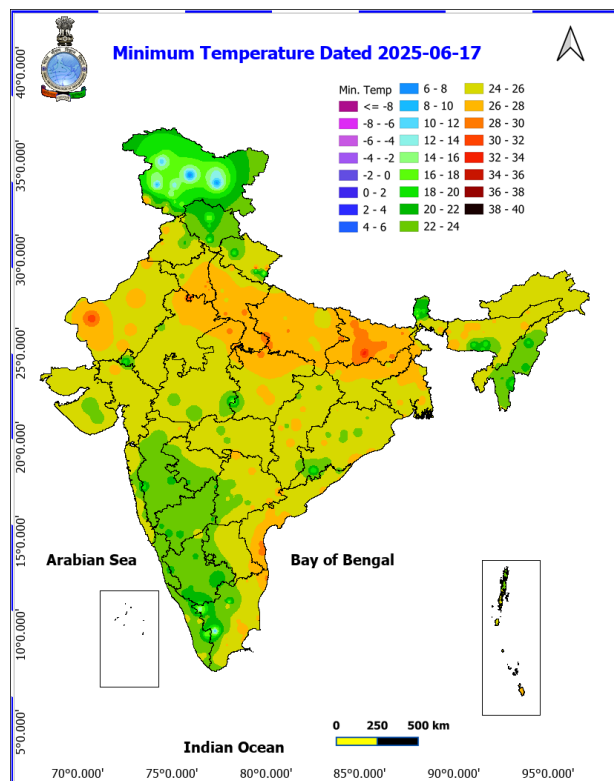
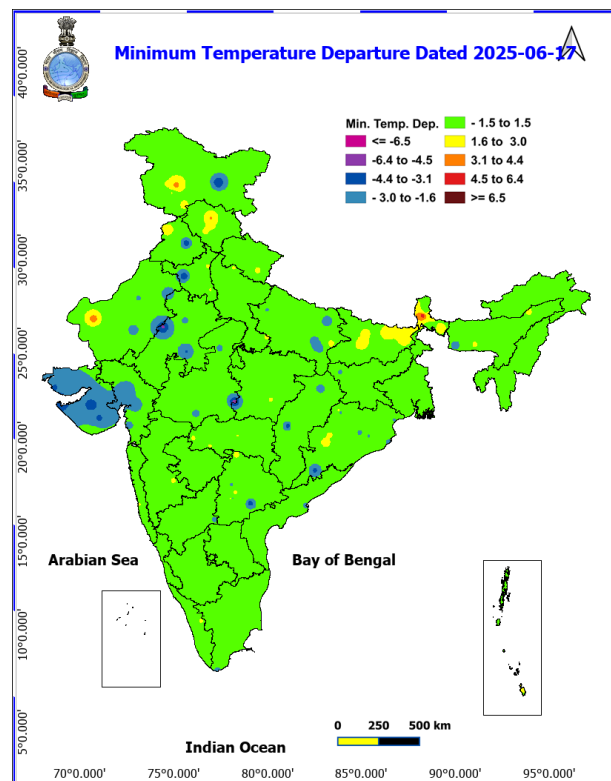
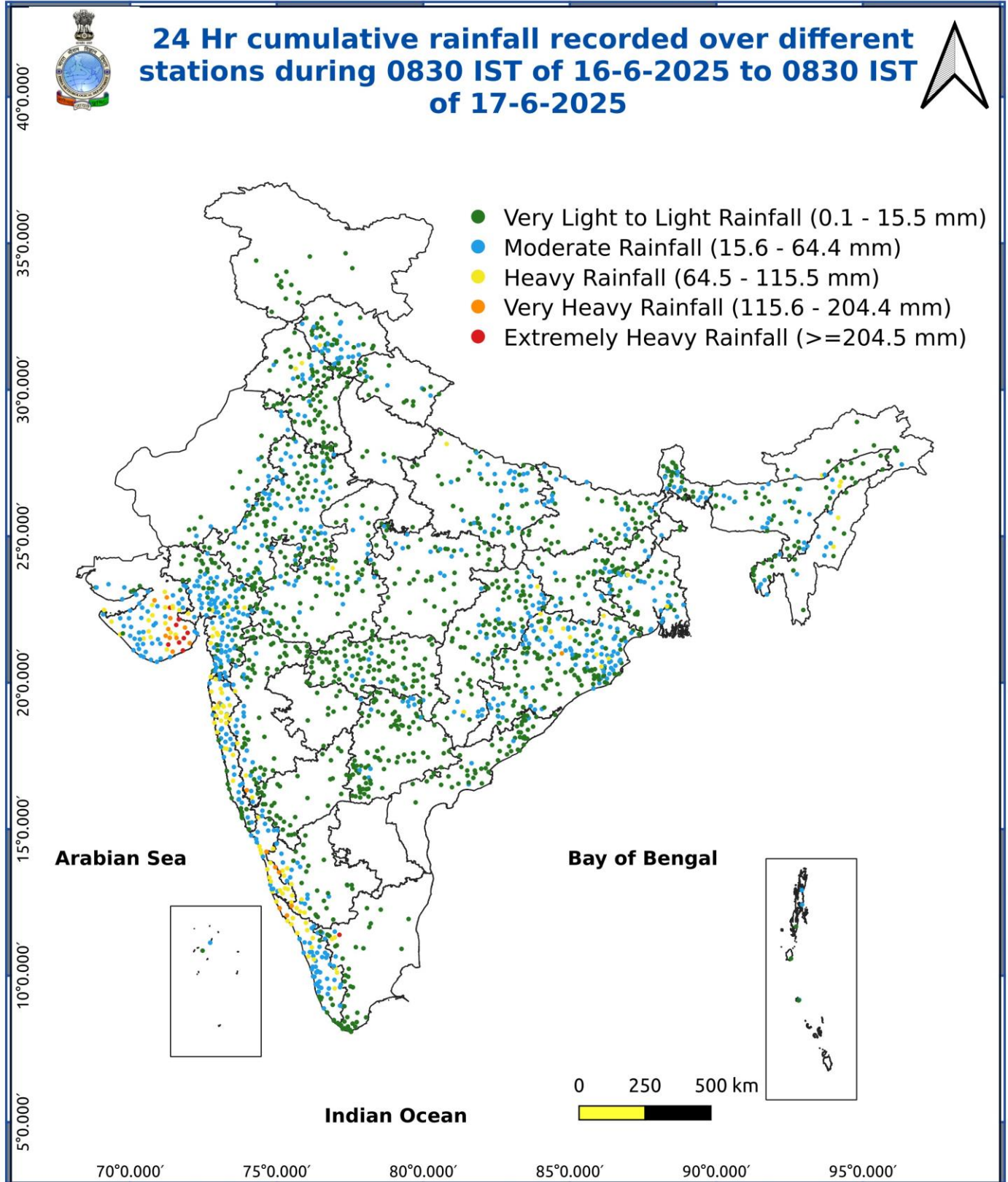


Fig. 4: Departure of Minimum Temp. Dated 2025-06-17





*Red color warning does not mean "Red Alert" Red color warning means "Take Action"

Forecast and warning for any day is valid from 0830 hours IST of day till 0830 hours IST of next day

For more details kindly visit <https://mausam.imd.gov.in> or contact 011-2434-4599

(Service to the nation since 1875)

- ♦ **Extremely heavy rainfall (>20 cm/24 hours) likely at isolated places over Coastal Karnataka, South Interior Karnataka, Gujarat state on 17th; Gangetic West Bengal on 17th & 18th; Odisha on 18th; Jharkhand on 18th & 19th June.**
- ♦ **Heavy to very heavy rainfall** likely to continue over Northeast India during 17th-23rd; ghat areas of Tamil Nadu, Kerala & Mahe on 17th; Konkan, Konkan & Goa, Madhya Maharashtra during 17th-19th June.

Impact Expected

- ♦ Localized Flooding of roads, water logging in low lying areas and closure of underpasses mainly in urban areas of the above region.
- ♦ Occasional reduction in visibility due to heavy rainfall.
- ♦ Disruption of traffic in major cities due to water logging in roads leading to increased travel time.
- ♦ Minor damage to kutcha roads.
- ♦ Possibilities of damage to vulnerable structure.
- ♦ Localized Landslides/Mudslides/landslides/mudslides/landsinks/mudsinks.
- ♦ Damage to horticulture and standing crops in some areas due to inundation.
- ♦ It may lead to riverine flooding in some river catchments (for riverine flooding please visit Web page of CWC)

Action Suggested

- ♦ Check for traffic congestion on your route before leaving for your destination.
- ♦ Follow any traffic advisories that are issued in this regard.
- ♦ Avoid going to areas that face the water logging problems often.
- ♦ Avoid staying in vulnerable structure.

Thundersquall (wind speed reaching 50-60 kmph gusting to 70 kmph) at isolated places over Madhya Pradesh on 17th & 18th June.

Impact expected:

- ♦ Breaking of tree branches, uprooting of large avenue trees. Large dead limbs blown from trees. Damage to Standing crops.
- ♦ Minor to Major damage to banana and papaya trees.
- ♦ Minor to major damage to power and communication lines due to breaking of branches.
- ♦ Strong wind/hail may damage plantation, horticulture and standing crops.
- ♦ Partial damage to vulnerable structures due to strong winds.
- ♦ Minor damage to kutcha houses/walls and huts.
- ♦ Loose objects may fly.

Action suggested:

- ♦ People are advised to keep a watch on the weather for worsening conditions and be ready to move to safer places accordingly.
- ♦ Stay indoors, close windows & doors and avoid travel if possible.
- ♦ Take safe shelters; do not take shelter under trees.
- ♦ Do not lie on concrete floors and do not lean against concrete walls.
- ♦ Unplug electrical/ electronic appliances.
- ♦ Immediately get out of water bodies.
- ♦ Keep away from all the objects that conduct electricity.

***Red color warning does not mean "Red Alert" Red color warning means "Take Action"**

Forecast and warning for any day is valid from 0830 hours IST of day till 0830 hours IST of next day

For more details kindly visit <https://mausam.imd.gov.in> or contact 011-2434-4599

(Service to the nation since 1875)



Agromet advisories for various parts of the country

- In **Jharkhand**, make necessary arrangements to drain out excess water from rice nursery, moong, vegetables and fruit orchards. Postpone harvesting of summer maize and keep the already harvested produce in safe place.
- In **South Gujrat**, postpone sowing of soybean and rice nursery. Ensure proper drainage facilities in already sown rice nurseries, soybean and also in banana plantations to prevent water logging. Provide support to sugarcane and banana to prevent lodging.
- In **Gangetic West Bengal**, ensure proper drainage in already sown rice nurseries, sesame and jute. Cover the young seedlings of *kharif* rice with plastic sheets or agro-shade nets to protect them from heavy rains.
- In **Sub-Himalayan West Bengal**, maintain proper drainage channels in rice nurseries and fields of jute and ginger to avoid water stagnation.
- In **North Odisha**, postpone sowing of rice nursery and ensure proper drainage to drain out excess water from already sown rice nurseries, maize and vegetables to prevent water logging. Postpone sowing of millets, maize, pulses and vegetables during heavy rain. Cover rice and vegetable nursery with plastic sheets to prevent washing away seeds.
- In **Kerala**, ensure proper drainage facilities in rice nurseries, transplanted rice fields, coconut and banana plantations to prevent water logging. Undertake propping in banana to protect the plants from heavy rains.
- In **Tamil Nadu**, postpone nursery sowing / transplanting of rice and sowing of sorghum and cumbu. Ensure proper drainage facilities in rice nurseries, cotton, sugarcane, groundnut and transplanted rice fields, coconut and banana plantations to prevent water logging. Provide staking or support to tender plants of cotton, young plants of sugarcane and fruit-bearing plants of banana to avoid lodging.
- In **Coastal Karnataka**, postpone nursery sowing of rice. Ensure proper drainage facilities in rice nurseries, banana, coconut and arecanut plantations to prevent water logging. In **South Interior Karnataka**, postpone nursery sowing of rice and sowing of pigeon pea, maize and onion. Cover young seedlings of rice with plastic sheets or agro-shade nets to protect them from heavy rains. Provide adequate drainage to remove excess water from rice nurseries, coffee, cardamom, coconut and arecanut plantations to prevent water logging. Provide support to sugarcane and banana to prevent lodging. In **North Interior Karnataka**, drain out excess water from the crops which are at seedling stage to prevent water logging.
- In **Konkan & Goa**, postpone nursery sowing of rice. In **Konkan & Goa** and **ghat areas of Madhya Maharashtra**, make arrangement to drain out excess water from rice nurseries to prevent water logging.
- In **Bhabar and Tarai Zone of Uttarakhand**, harvest vegetables (tomato, French beans etc.) and fruits and keep them in safer place. Ensure proper drainage in already sown crops of pigeon pea, millets and soybean.
- In **Assam**, keep the harvested produce of sesame, foxtail millet, *Boro* rice, banana and citrus at safer places. Ensure proper drainage in *Sali* rice nursery, maize and sugarcane fields, arecanut and coconut plantations to prevent water logging.
- In **Meghalaya**, ensure proper drainage in the fields of maize, ginger, French bean, cowpea, vegetables and around rice nurseries to prevent water logging. Provide strong bamboo stakes or trellis support to cow pea, cucumber and bottle gourd to prevent vines from trailing on wet ground. Provide support to banana plant to prevent lodging.
- In **Mizoram**, ensure proper drainage facilities in maize and low land pre-*kharif* rice to avoid water stagnation. Undertake propping in five-month-old sugarcane crop to avoid lodging.
- In **Arunachal Pradesh**, keep the harvested produce of soybean and vegetables such as chilli and okra at a safer place. Ensure proper drainage in rice nurseries, kiwi and apple orchards to avoid water logging.

Livestock / Fishery

- Keep the animals inside the shed during heavy rainfall and provide them balanced feed.
- Store feed and fodder in a safe place to prevent spoilage.
- Construct an outlet with proper netting around the ponds to drain out excess water, thereby preventing fish from escaping in case of overflow.

Agromet advisories for likely impact of Thunderstorm / Gusty Winds / Squally Winds

- Provide mechanical support to horticultural crops and staking or support to vegetables and young fruit plants / fruit-bearing plants to avoid lodging due to strong winds.

*Red color warning does not mean "Red Alert" Red color warning means "Take Action"

Forecast and warning for any day is valid from 0830 hours IST of day till 0830 hours IST of next day

For more details kindly visit <https://mausam.imd.gov.in> or contact 011-2434-4599

(Service to the nation since 1875)

FLASH FLOOD GUIDANCE:

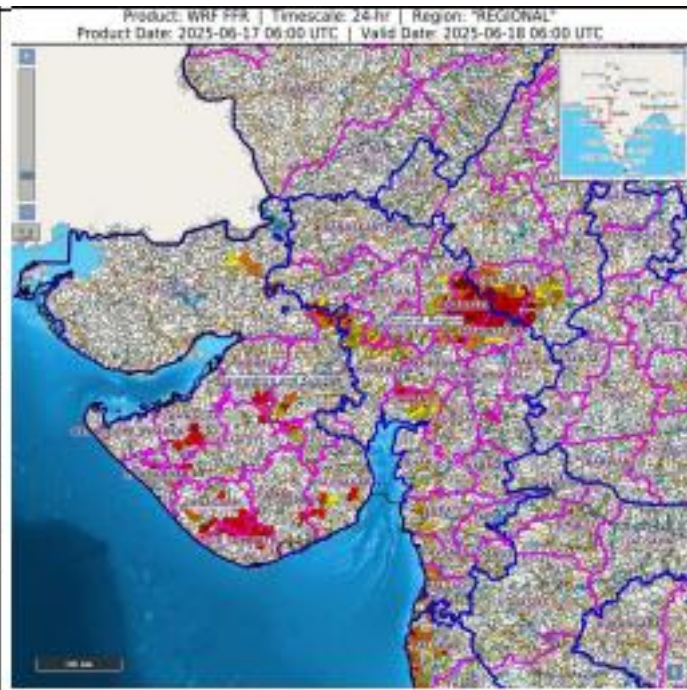
24 hours Outlook for the Flash Flood Risk (FFR) till 1130 IST of 18-06-2025 :

Moderate to High flash flood risk likely over few watersheds & neighbourhoods of following Met Sub-divisions during next 24 hours.

Saurashtra & Kutch - Amreli, Bhavnagar, Devbhoomi Dwarka, Gir Somnath, Jamnagar, Morbi, surendranagar, Junagarh, Porbandar, Rajkot, districts.

Gujarat Region – Patan, Ahmedabad, Mehsana, Aravali, Mahisagar, Anand, surat, Bharuch, Navsari, Valsad districts.

Surface runoff/ Inundation may occur at some fully saturated soils & low-lying areas over Area of Concern (AoC) as shown in map due



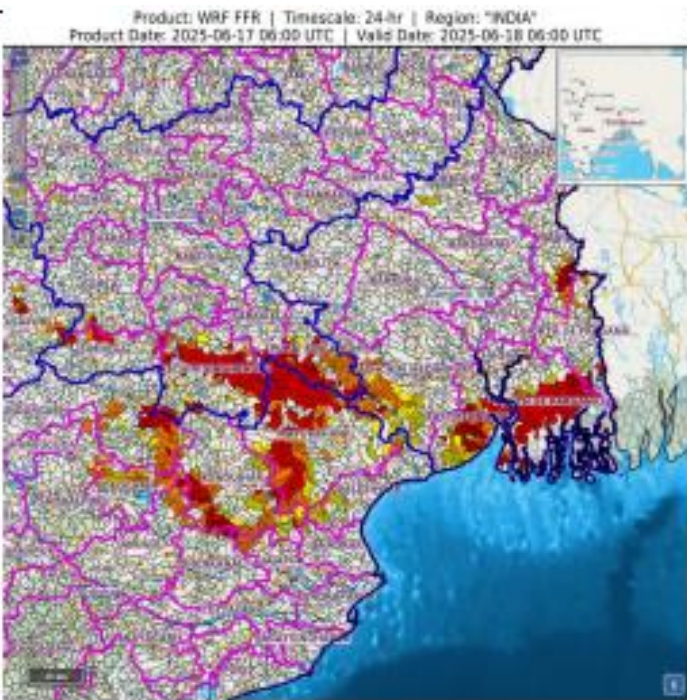
24 hours Outlook for the Flash Flood Risk (FFR) till 1130 IST of 18-06-2025 :

Low to Moderate flash flood risk likely over few watersheds & neighbourhoods of following Met Sub-divisions during next 24 hours.

Gangetic West Bengal - South 24 Parganas, North, Nadia, 24 Parganas East Mednipur, West Mednipur,

Odisha – Mayurbhanj, Jharsuguda, Kendujhar, Baleshwar, Bhadrak districts

Surface runoff/ Inundation may occur at some fully saturated soils & low-lying areas over Area of Concern (AoC) as shown in map due to expected rainfall occurrence in next 24 hours.



***Red color warning does not mean "Red Alert" Red color warning means "Take Action"**

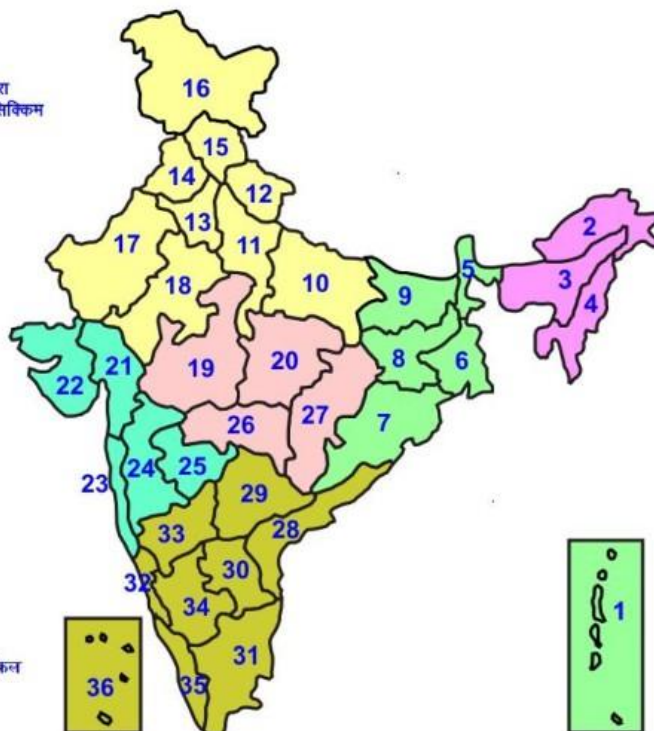
Forecast and warning for any day is valid from 0830 hours IST of day till 0830 hours IST of next day

For more details kindly visit <https://mausam.imd.gov.in> or contact 011-2434-4599

(Service to the nation since 1875)

LEGENDS

- 1 अंडमान और निकोबार द्वीप समुह
- 2 अरुणाचल प्रदेश
- 3 असम और मेघालय
- 4 नागालैंड मनीपुर मीजोरम और त्रिपुरा
- 5 उप हिमालय पश्चिम बंगाल एवं सिक्किम
- 6 पश्चिम बंगाल
- 7 ओडिसा
- 8 झारखंड
- 9 बिहार
- 10 पूर्वी उत्तर प्रदेश
- 11 पश्चिम उत्तर प्रदेश
- 12 उत्तराखंड
- 13 हरियाणा चंडीगढ़ एवं दिल्ली
- 14 पंजाब
- 15 हिमाचल प्रदेश
- 16 जम्मू एवं कश्मीर एवं लद्दाख
- 17 पश्चिम राजस्थान
- 18 पूर्वी राजस्थान
- 19 पश्चिम मध्य प्रदेश
- 20 पूर्वी मध्य प्रदेश
- 21 गुजरात क्षेत्र
- 22 सौराष्ट्र एवं कच्छ
- 23 कोंकण एवं गोवा
- 24 मध्य महाराष्ट्र
- 25 मराठावाड़ा
- 26 विदर्भ
- 27 छत्तीसगढ़
- 28 तटीय आंध्र प्रदेश एवं यनम
- 29 तेलंगाना
- 30 रायलसेमा
- 31 तमिलनाडु, पुदुचेरी एवं कराईकल
- 32 तटिय कर्नाटक
- 33 आंतरिक उत्तरी कर्नाटक
- 34 आंतरिक दक्षिणी कर्नाटक
- 35 केरल एवं माहे
- 36 लक्षद्वीप



1. Andaman & Nicobar Islands
2. Arunachal Pradesh
3. Assam & Meghalaya
4. Nagaland, Manipur, Mizoram & Tripura
5. Sub-Himalayan West Bengal & Sikkim
6. Gangetic West Bengal
7. Orissa
8. Jharkhand
9. Bihar
10. East Uttar Pradesh
11. West Uttar Pradesh
12. Uttarakhand
13. Haryana, Chd & Delhi
14. Punjab
15. Himachal Pradesh
16. Jammu & Kashmir and Ladakh
17. West Rajasthan
18. East Rajasthan
19. West Madhya Pradesh
20. East Madhya Pradesh
21. Gujarat
22. Saurashtra
23. Konkan & Goa
24. Madhya Maharashtra
25. Marathawada
26. Vidharbha
27. Chhattisgarh
28. Coastal Andhra Pradesh & Yanam
29. Telangana
30. Rayalaseema
31. Tamilnadu, Puducherry & Karaikal
32. Coastal Karnataka
33. North Interior Karnataka
34. South Interior Karnataka
35. Kerala & Mahe
36. Lakshadweep

SPATIAL DISTRIBUTION (% of Stations reporting)

% Stations	Category	% Stations	Category
76-100	Widespread (WS/Most Places)	26-50	Scattered (SCT/ A Few Places)
51-75	Fairly Widespread (FWS/ Many Places)	1-25	Isolated (ISOL)

Subdivision Colour

- NO WARNING
- WATCH (BE UPDATED)
- ALERT (BE PREPARED TO TAKE ACTION)
- WARNING (TAKE ACTION)

Probabilistic Forecast

Terms	Probability of Occurrence (%)
Unlikely	< 25
Likely	25 - 50
Very Likely	50 - 75
Most Likely	> 75

-  Heavy Rain

 Thunderstorm & Lightning

 Strong surface winds

 Cold Wave

 Hot & Humid

 Very Heavy Rain

 Hailstorm

 Heat Wave


 Cold Day

 Extremely Heavy Rain

 Dust Storm

 Hot Day

 Ground Frost

 Heavy Snow

 Dust Raising Winds

 Warm Night

 Fog

*Red color warning does not mean "Red Alert" Red color warning means "Take Action"

Forecast and warning for any day is valid from 0830 hours IST of day till 0830 hours IST of next day

For more details kindly visit <https://mausam.imd.gov.in> or contact 011-2434-4599

(Service to the nation since 1875)

LEGENDS

WARNING

WARNING (TAKE ACTION)
ALERT (BE PREPARED)
WATCH (BE UPDATED)
NO WARNING (NO ACTION)

Probabilistic Forecast

Terms	Probability of Occurrence (%)
Unlikely	< 25
Likely	25 - 50
Very Likely	50 - 75
Most Likely	> 75



Heavy: 64.5 to 115.5 mm/cm *
Very Heavy: 115.6 to 204.4 mm/cm *
Extremely Heavy: > 204.4 mm/cm *



When maximum temperature of a station reaches $\geq 40^{\circ}\text{C}$ for plains and $\geq 30^{\circ}\text{C}$ for hilly regions
(a) Based on Departure from normal

Heat Wave: Maximum Temperature Departure from normal 4.5°C to 6.4°C .
Severe Heat Wave: Maximum Temperature Departure from normal $\geq 6.5^{\circ}\text{C}$

(b). Based on Actual maximum temperature

Heat Wave: When actual maximum temperature $\geq 45^{\circ}\text{C}$.
Severe Heat Wave: When actual maximum temperature $\geq 47^{\circ}\text{C}$

(c). Criteria for heat wave for coastal stations

When maximum temperature departure is $> 4.5^{\circ}\text{C}$ from normal. Heat Wave may be described provided maximum temperature $\geq 37^{\circ}\text{C}$



When maximum temperature remains 40°C

Warm Night: When minimum temperature departure 4.5°C to 6.4°C .
Severe Warm Night: When minimum temperature departure $> 6.4^{\circ}\text{C}$.



When minimum temperature of a station $\leq 10^{\circ}\text{C}$ for plains and $\leq 0^{\circ}\text{C}$ for hilly regions.

(a). Based on departure

Cold Wave: Minimum Temperature Departure from normal -4.5°C to -6.4°C .
Severe Cold Wave: Minimum Temperature Departure from normal $\leq -6.5^{\circ}\text{C}$

(b) Based on actual Minimum Temperature (for Plains only)

Cold Wave : When Minimum Temperature is $\leq 4.0^{\circ}\text{C}$
Severe Cold Wave: When Minimum Temperature is $\leq 2.0^{\circ}\text{C}$

(c) For Coastal Stations

When Minimum Temperature departure is $\leq -4.5^{\circ}\text{C}$ & actual Minimum Temperature is $\leq 15^{\circ}\text{C}$



When minimum temperature of a station $\leq 10^{\circ}\text{C}$ for plains and $\leq 0^{\circ}\text{C}$ for hilly regions
Based on departure

Cold Day: Maximum Temperature Departure from normal -4.5°C to -6.4°C .
Severe Cold Day: Maximum Temperature Departure from normal $\leq -6.5^{\circ}\text{C}$



Phenomenon of small droplets suspended in air and the horizontal visibility $< 1\text{km}$

Moderate Fog: When the visibility between 500-200 metres
Dense Fog: when the visibility between 50- 200 metres
Very Dense Fog: when the visibility < 50 metres



Sudden electrical discharges manifested by a flash of light (Lightning) and a sharp rumbling sound (thunder)



An ensemble of particles of dust or sand energetically lifted to great heights by a strong and turbulent wind.



Ice deposits on ground

Air temperature $\leq 4^{\circ}\text{C}$ (over Plains)



A strong wind that rises suddenly, lasts for atleast 1 minute.

Moderate: Wind speed 52-61 kmph
Severe: Wind speed 62-87 kmph
Very Severe: Wind speed > 87 kmph



Effect of various waves in the sea over specific area

Rough to very rough: Wind speed 41-62 kmph (22-33 knots) & Wave height 2.5-6 metre
High to very high: Wind speed 63-117 kmph (34-63 knots) & Wave height 6-14 metre
Phenomenal: Wind speed > 117 kmph (> 63 knots) & Wave height > 14 metre



Cyclonic Storm: Wind speed 62-87 kmph (34-47 knots)

Severe Cyclonic Storm: Wind speed 88-117 kmph (48-63 knots)

Very Severe Cyclonic Storm: Wind speed 118-165 kmph (64 - 89 knots)

Extremely Severe Cyclonic Storm: Wind speed 166-220 kmph (90 -119 knots)

Super Cyclone Storm: Wind speed > 220 kmph (> 119 knots)

*Red color warning does not mean "Red Alert" Red color warning means "Take Action"

Forecast and warning for any day is valid from 0830 hours IST of day till 0830 hours IST of next day

For more details kindly visit <https://mausam.imd.gov.in> or contact 011-2434-4599

(Service to the nation since 1875)