

2025-09-08

Time of Issue: 12:42:00 hours IST  
(Mid-Day)

## ALL INDIA WEATHER SUMMARY AND FORECAST BULLETIN

### Significant Weather Features

#### West and Northwest India:

- Heavy to very heavy rainfall with extremely heavy falls ( $\geq 21\text{cm}$ ) very likely at isolated places over Saurashtra & Kutch on 08<sup>th</sup> and isolated heavy to very heavy rainfall over north Gujarat on today, the 08<sup>th</sup> September with isolated heavy rainfall over Saurashtra & Kutch on 09<sup>th</sup> September, 2025.
- Light to moderate rain/thunderstorm at many places with isolated **Heavy to very heavy rainfall** (12-20 cm) very likely over south Rajasthan on 08<sup>th</sup> September with isolated heavy rainfall over West Rajasthan on 09<sup>th</sup> September.
- Light to moderate rain/thunderstorm at many/some places with **isolated heavy rainfall** is very likely over Uttarakhand on 08<sup>th</sup>, 12<sup>th</sup> & 13<sup>th</sup>; West Uttar Pradesh on 12<sup>th</sup> & 13<sup>th</sup>; East Uttar Pradesh on 11<sup>th</sup> & 12<sup>th</sup> September.

#### East & Central India:

- Light to moderate rain/thunderstorm at most/many places with isolated **heavy rainfall** likely over West Madhya Pradesh on 14<sup>th</sup>; East Madhya Pradesh on 10<sup>th</sup>, 11<sup>th</sup> & 13<sup>th</sup>; Vidarbha during 11<sup>th</sup>-13<sup>th</sup>; Chhattisgarh, Sub-Himalayan West Bengal & Sikkim during 08<sup>th</sup>-14<sup>th</sup>; Andaman & Nicobar Islands on 10<sup>th</sup> & 11<sup>th</sup>; Bihar during 08<sup>th</sup>-13<sup>th</sup>; Odisha during 10<sup>th</sup>-13<sup>th</sup> September and **heavy to very heavy falls over Sub-Himalayan West Bengal & Sikkim during 08<sup>th</sup>-10<sup>th</sup> and Odisha on 11<sup>th</sup> & 12<sup>th</sup> September.**

#### Northeast India:

- Light/moderate rain/thunderstorm at many/some places with isolated **heavy rainfall** likely over Nagaland, Manipur, Mizoram & Tripura on 08<sup>th</sup>, 09<sup>th</sup> & during 11<sup>th</sup>-14<sup>th</sup>; Arunachal Pradesh during 09<sup>th</sup>-14<sup>th</sup>; Assam & Meghalaya during 08<sup>th</sup>-14<sup>th</sup> September and **heavy to very heavy falls over Arunachal Pradesh, Assam & Meghalaya during 12<sup>th</sup>-14<sup>th</sup> and Nagaland & Manipur on 11<sup>th</sup> & 12<sup>th</sup> September.**

#### South Peninsular India

- Light to moderate rain/thunderstorm & gusty wind (speed 30-40 kmph) with isolated **heavy rainfall** likely over Tamil Nadu during 08<sup>th</sup> -10<sup>th</sup>; Kerala & Mahe on 09<sup>th</sup> & 10<sup>th</sup>; Coastal Andhra Pradesh & Yanam during 08<sup>th</sup> - 12<sup>th</sup>; Interior Karnataka on 10<sup>th</sup>; Rayalaseema on 11<sup>th</sup> & 12<sup>th</sup> and Telangana during 10<sup>th</sup>-14<sup>th</sup> September.
- Strong surface winds (speed reaching 30-40 kmph) very likely over Coastal Andhra Pradesh & Yanam and Rayalaseema during next 5 days.

\*Red color warning does not mean "Red Alert" Red color warning means "Take Action"

Forecast and warning for any day is valid from 0830 hours IST of day till 0830 hours IST of next day

For more details kindly visit <https://mausam.imd.gov.in> or contact 011-2434-4599

(Service to the nation since 1875)

### Main Weather Observations:

❖ **Rainfall distribution** (from 0830 hours IST of yesterday to 0830 hours IST of today): **at most places** over Sub Himalayan West Bengal & Sikkim, Jammu-Kashmir-Ladakh-Gilgit-Baltistan-Muzaffarabad, Gujarat Region, Konkan & Goa and Coastal Karnataka; **at many places** over Andaman & Nicobar Islands, Assam & Meghalaya, Punjab, Himachal Pradesh, West Rajasthan, East Rajasthan, Saurashtra & Kutch, Vidarbha and Lakshadweep; **at a few places** over Arunachal Pradesh, Nagaland, Manipur, Mizoram & Tripura, Odisha, Bihar, West Uttar Pradesh, Uttarakhand, Haryana-Chandigarh-Delhi, West Madhya Pradesh, East Madhya Pradesh, Madhya Maharashtra, Chhattisgarh, Coastal Andhra Pradesh & Yanam, Tamil Nadu, Puducherry & Karaikal and South Interior Karnataka; **at isolated places** over Gangetic West Bengal, Jharkhand, East Uttar Pradesh, Marathwada, Telangana, Rayalaseema, North Interior Karnataka and Kerala & Mahe;

❖ **Significant rainfall recorded (in cm)** (from 0830 hours IST of yesterday to 0830 hours IST of today): **Gujarat Region:** Suigam (dist Banaskantha) 40; Bhabhar (dist Banaskantha) 35; Wav (dist Banaskantha) 30; Tharad (dist Banaskantha) 29; Santalpur (dist Patan) 20; Radhanpur (dist Patan) 19; Deodar (dist Banaskantha) 14; Dahegam (dist Gandhinagar), Kaprada (dist Valsad) 10 Each; Valsad (dist Valsad), Valod (dist Tapi) 9 Each; Dharampur (dist Valsad), Silvassa (dist Dadara & Nagar Haveli), Madhbun (dist Dadara & Nagar Haveli), Khergam (dist Navsari), Idar (dist Sabarkantha) 8 Each; Vyara AWS (dist Tapi), Vapi (dist Valsad), Vyara (dist Tapi), Lakhani (dist Banaskantha), Talod (dist Sabarkantha) 7 Each; **Saurashtra & Kutch:** Rapar (dist Kutch) 36; Bachau AWS (dist Kutch) 14; Malia Miana (dist Morbi) 12; Kandla Airport (dist Kutch), Gandhidham (dist Kutch) 10 Each; Anjar (dist Kutch), Bhuj (dist Kutch) 9 Each; Lakhpat (dist Kutch), Kandla New (dist Kutch), Bhachau (dist Kutch), Nakhatrana (dist Kutch) 8 Each; **East Rajasthan:** Mounntabu Tehsil SR (dist Sirohi) 25; **Sub Himalayan West Bengal & Sikkim:** Chepan (dist Alipurduar), Alipurduar PTO (dist Alipurduar) 14 Each; Gajoldoba (dist Jalpaiguri), Barobhisha (dist Alipurduar), Damdim Tea Estate (dist Jalpaiguri), Kailashpur Tea Estate (dist Jalpaiguri) 9 Each; Bagdogra IAF (dist Darjeeling), Suryasen Mahavidyalaya (dist Darjeeling), Aryaman Tea Estate (dist Alipurduar), Majherdabri Tea Garden (dist Alipurduar) 8 Each; Namthang (dist Namchi), Tadong (dist Gangtok), Chengmari/Diana (dist Jalpaiguri), Gangtok (dist Gangtok), Neora (dist Jalpaiguri), Falakata (dist Alipurduar), Baintgoorie T.e. (dist Jalpaiguri), Diana Tea Estate (dist Jalpaiguri), Gandrapara Tea Garden (dist Jalpaiguri), Leesh River Tea Garden (dist Jalpaiguri), Siliguri PTO (dist Darjeeling), Dalgaon Tea Estate (dist Alipurduar), Gopalpur Tea Estate (dist Alipurduar) 7 Each; **West Rajasthan:** Sanchores (dist Jalore) 12; Gudamalani SR (dist Barmer) 10; **Odisha:** Laikera (dist Jharsuguda) 12; Jharbandh (dist Bargarh) 8; **Konkan & Goa:** Mangaon (dist Raigad) 10; Mandangad (dist Ratnagiri) 8; Karjat ARG (dist Raigad) 7; **Madhya Maharashtra:** Ozarkheda - Fmo (dist Nashik) 10; **Chhattisgarh:** Mainpur (dist Gariaband) 9; Ambikapur (dist Surguja), Bhilai (dist Durg) 7 Each; **Coastal Andhra Pradesh & Yanam:** Mandasa (dist Srikakulam) 8; **Assam & Meghalaya:** Chauldhowaghat (dist Lakhimpur) 8; Umrangso (dist Dima Hasao) 7; **Tamil Nadu, Puducherry & Karaikal:** Arimalam (dist Pudukkottai), Keeranur (dist Pudukkottai), Manamelkudi (dist Pudukkottai), Nagudi (dist Pudukkottai), Kovilankulam (dist Virudhunagar), Aruppukottai Kvk AWS (dist Virudhunagar) 7 Each; **Punjab:** Athwal Irr (dist Gurdaspur) 7; **Bihar:** Hajipur (dist Vaishali) 7; **Nagaland, Manipur, Mizoram & Tripura:** Jharnapani (dist Dimapur), Mokochang (dist Mokochung) 7 Each.

❖ **Heavy Rainfall observed** (from 0830 hours IST of yesterday to 0830 hours IST of today): **Extremely heavy rain** at isolated places over East Rajasthan, Gujarat Region and Saurashtra & Kutch. **Heavy to very heavy rain** at isolated places over Sub Himalayan West Bengal & Sikkim, Odisha, West Rajasthan, Gujarat Region and Saurashtra & Kutch. **Heavy rain** at isolated places over Assam & Meghalaya, Nagaland, Manipur, Mizoram & Tripura, Bihar, Punjab, Konkan & Goa, Madhya Maharashtra, Chhattisgarh, Coastal Andhra Pradesh & Yanam and Tamil Nadu, Puducherry & Karaikal.

❖ **Minimum Temperature Departures (as on 08-09-2025):** **markedly above normal (> 5.1°C)** at many places over Jammu-Kashmir-Ladakh-Gilgit-Baltistan-Muzaffarabad; at isolated places over Assam & Meghalaya, Sub Himalayan West Bengal & Sikkim, East Uttar Pradesh, West Uttar Pradesh, Himachal Pradesh, West Madhya Pradesh and East Madhya Pradesh. **appreciably above normal (3.1°C to 5.0°C)** at isolated places over Gangetic West Bengal, Odisha, Bihar, Uttarakhand, Saurashtra & Kutch and Tamil Nadu, Puducherry & Karaikal. **above normal (1.6°C to 3.0°C)** at few places over Nagaland, Manipur, Mizoram & Tripura and Lakshadweep; at isolated places over Jharkhand, Haryana-Chandigarh-Delhi, West Rajasthan, Gujarat Region, Vidarbha and Coastal Andhra Pradesh & Yanam. **near normal (-1.5°C to 1.5°C)** at many places over East Rajasthan, Chhattisgarh and South Interior Karnataka; at most places over Andaman & Nicobar Islands, Arunachal Pradesh, Punjab, Konkan & Goa, Madhya Maharashtra, Marathwada, Telangana, Rayalaseema, Coastal Karnataka and Kerala & Mahe; at few places over North Interior Karnataka. **The lowest minimum temperature** of 18.0°C is reported at JEUR (MAHARASHTRA), and MYSORE (KARNATAKA) over the Plains of India.

\*Red color warning does not mean "Red Alert" Red color warning means "Take Action"

Forecast and warning for any day is valid from 0830 hours IST of day till 0830 hours IST of next day

For more details kindly visit <https://mausam.imd.gov.in> or contact 011-2434-4599

(Service to the nation since 1875)



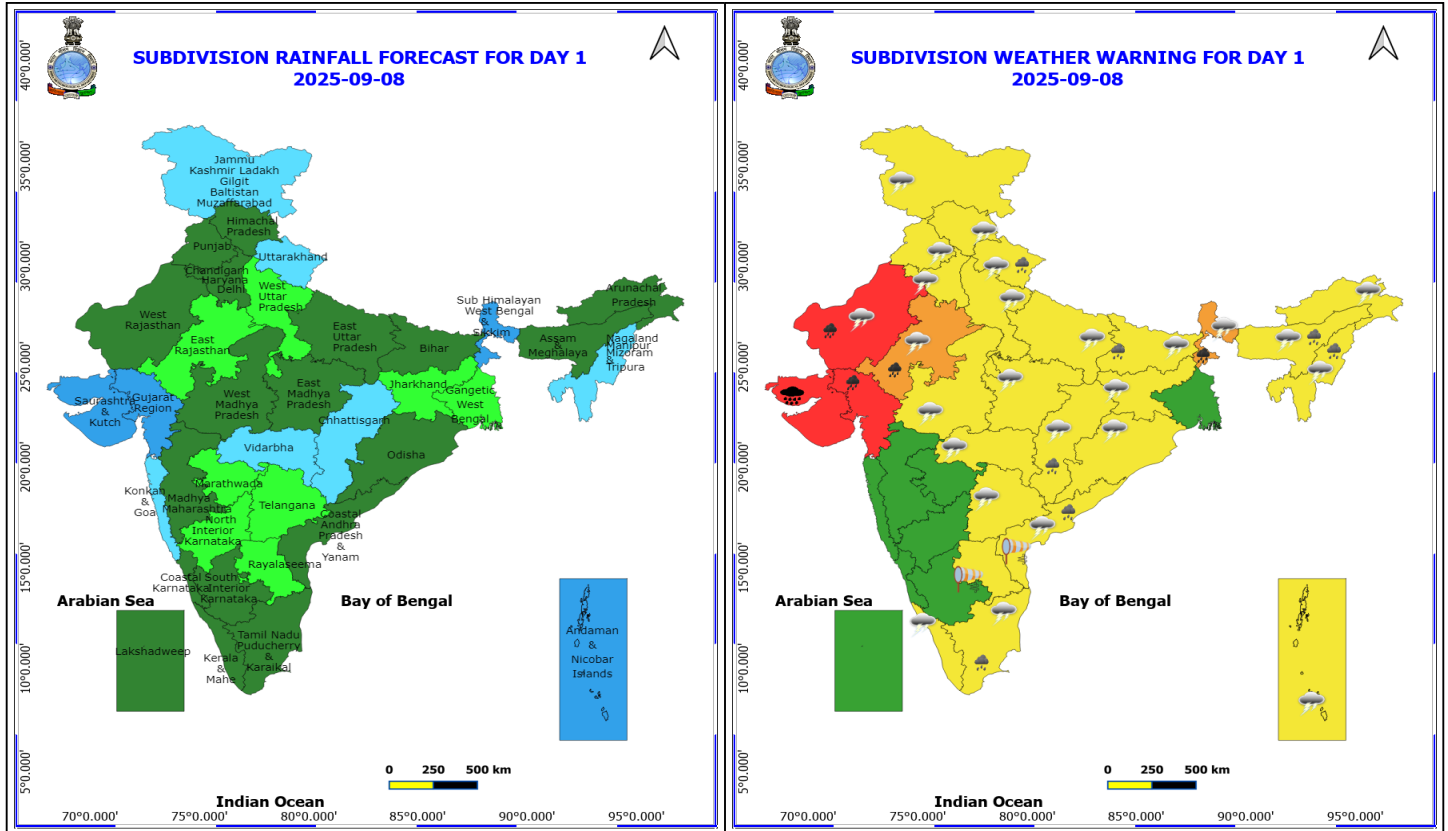
❖ **Maximum Temperature Departures (as on 07-09-2025):** **markedly above normal(> 5.1°C)** at isolated places over Chhattisgarh. **appreciably above normal(3.1°C to 5.0°C)** at few places over Nagaland, Manipur, Mizoram & Tripura; at isolated places over Assam & Meghalaya, Gangetic West Bengal, Odisha, Jharkhand, Bihar, East Uttar Pradesh, Coastal Andhra Pradesh & Yanam and Tamil Nadu, Puducherry & Karaikal. **above normal(1.6°C to 3.0°C)** at many places over Uttarakhand; at few places over Arunachal Pradesh, East Madhya Pradesh, Vidarbha and Kerala & Mahe; at isolated places over Sub Himalayan West Bengal & Sikkim, West Uttar Pradesh, Telangana, Rayalaseema and North Interior Karnataka. **near normal(-1.5°C to 1.5°C)** at many places over Konkan & Goa and Madhya Maharashtra; at most places over Andaman & Nicobar Islands, Haryana-Chandigarh-Delhi, Himachal Pradesh, Marathwada, Coastal Karnataka and Lakshadweep; at few places over Punjab, Jammu-Kashmir-Ladakh-Gilgit-Baltistan-Muzaffarabad, East Rajasthan, West Madhya Pradesh and South Interior Karnataka. **The highest maximum temperature** of 38.8°C is reported at KAVALI (ANDHRA PRADESH).

#### Meteorological Analysis (Based on 0830 hours IST)

- The **deep depression** over Southeast Pakistan and adjoining Rajasthan & Kutch moved slowly northwestwards with the speed of 8 kmph during past 6 hours and lay centred at 0830 hrs IST of today, the 08<sup>th</sup> September, 2025, over the same region, near latitude 25.0°N and longitude 70.5°E, about 90 km southeast of Chhor (Pakistan), 120 km southwest of Barmer (Rajasthan), 170 Km northwest of Radhanpur (Gujarat), 190 km west-northwest of Jaisalmer (Rajasthan), and 210 km north-northeast of Bhuj (Gujarat). It is very likely to move nearly northwestwards as a deep depression across southeast Pakistan and adjoining Rajasthan till 8<sup>th</sup> afternoon. Thereafter, it is likely to move nearly westwards and weaken gradually into a **depression**.
- The **monsoon trough** at mean sea level now passes through centre of **deep depression** over the Southeast Pakistan and adjoining Rajasthan & Kutch, Kota, Orai, Siddhi, Ranchi, Digha and thence eastwards to northeast Bay of Bengal.
- The **upper air cyclonic circulation** over south Punjab and neighbourhood at 0.9 km above mean sea level persists.
- The **trough** from cyclonic circulation associated with **deep depression** over the Southeast Pakistan and adjoining Rajasthan & Kutch to south Punjab across west Rajasthan persists and now seen at 1.5 km above mean sea level.
- The **upper air cyclonic circulation** over northwest Bay of Bengal & adjoining west central Bay of Bengal off south Odisha & north Andhra Pradesh coasts between 1.5 & 5.8 km above mean sea level tilting southwards with height persists.
- The **Western Disturbance** as a trough in middle & upper tropospheric westerlies with its axis at 5.8 km above mean sea level roughly along Long. 72°E to the north of Lat. 33°N has moved away.

#### Weather Outlook for subsequent 3 days

- Isolated to scattered rainfall likely over the entire country.



## 8 September (Day 1)

- ❖ **Heavy to Very Heavy Rainfall with isolated Extremely Heavy Rainfall** very likely at isolated places over Saurashtra & Kutch.
- ❖ **Heavy to Very Heavy Rainfall** very likely at isolated places over Gujarat Region, Rajasthan and Sub Himalayan West Bengal & Sikkim.
- ❖ **Heavy Rainfall** very likely at isolated places over Assam & Meghalaya, Bihar, Chhattisgarh, Coastal Andhra Pradesh, Nagaland, Manipur, Mizoram and Tripura, Tamil Nadu Puducherry & Karaikal and Uttarakhand.
- ❖ **Thunderstorm accompanied with lightning & gusty winds(30-40kmph)** very likely at isolated places over Andaman & Nicobar Islands, Bihar, Jammu-Kashmir-Ladakh-Gilgit-Baltistan-Muzaffarabad, Jharkhand, Kerala & Mahe, Odisha, Tamil Nadu Puducherry & Karaikal and Telangana.
- ❖ **Thunderstorm accompanied with Lightning** very likely at isolated places over Arunachal Pradesh, Assam & Meghalaya, Chhattisgarh, Coastal Andhra Pradesh, Haryana, Chandigarh & Delhi, Himachal Pradesh, Madhya Pradesh, Nagaland, Manipur, Mizoram and Tripura, Punjab, Rajasthan, Sub Himalayan West Bengal & Sikkim, Uttar Pradesh, Uttarakhand and Vidarbha.
- ❖ **Strong Surface Winds** very likely at isolated places over Andhra Pradesh.

Squally wind with speed reaching 45 kmph to 55 kmph gusting to 65 kmph is likely to prevail along and off Somalia and Oman coasts, most parts of westcentral adjoining northwest Arabian Sea; many parts of southwest Arabian Sea.

Squally weather with wind speed reaching 40 - 50 kmph gusting to 60 kmph likely to prevail some parts of eastcentral and few parts of north Arabian sea, few parts of Comorin area & southwest Bay of Bengal.

**\*Red color warning does not mean "Red Alert" Red color warning means "Take Action"**

Forecast and warning for any day is valid from 0830 hours IST of day till 0830 hours IST of next day

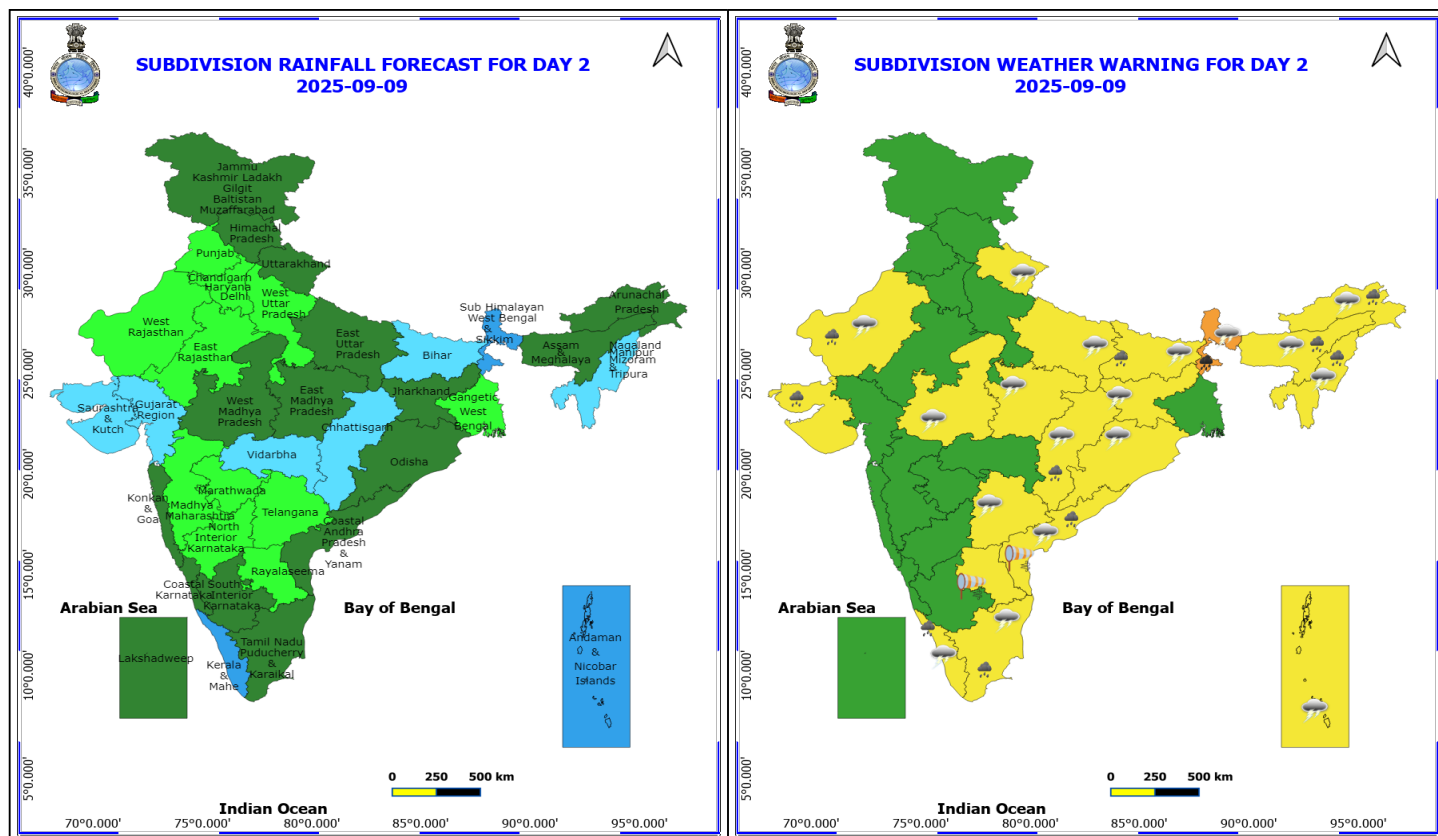
For more details kindly visit <https://mausam.imd.gov.in> or contact 011-2434-4599

(Service to the nation since 1875)





Squally weather with wind speed reaching 50 - 60 kmph gusting to 70 kmph likely to prevail along and off Gujarat, north Konkan coasts and many parts of northeast & eastcentral Arabian Sea.



## 9 September (Day 2)

- ❖ **Heavy to Very Heavy Rainfall** very likely at isolated places over Sub Himalayan West Bengal & Sikkim.
- ❖ **Heavy Rainfall** very likely at isolated places over Arunachal Pradesh, Assam & Meghalaya, Bihar, Chhattisgarh, Coastal Andhra Pradesh, Kerala & Mahe, Nagaland, Manipur, Mizoram and Tripura, Saurashtra & Kutch, Tamil Nadu Puducherry & Karaikal and West Rajasthan.
- ❖ **Thunderstorm accompanied with lightning & gusty winds(30-40kmph)** very likely at isolated places over Andaman & Nicobar Islands, Bihar, Jharkhand, Kerala & Mahe, Odisha, Tamil Nadu Puducherry & Karaikal and Telangana.
- ❖ **Thunderstorm accompanied with Lightning** very likely at isolated places over Arunachal Pradesh, Assam & Meghalaya, Chhattisgarh, Coastal Andhra Pradesh, East Uttar Pradesh, Madhya Pradesh, Nagaland, Manipur, Mizoram and Tripura, Sub Himalayan West Bengal & Sikkim, Uttarakhand and West Rajasthan.
- ❖ **Strong Surface Winds** very likely at isolated places over Andhra Pradesh.

Squally wind with speed reaching 45 kmph to 55 kmph gusting to 65 kmph is likely to prevail along and off Somalia and Oman coasts, some parts of westcentral & southwest Arabian sea.

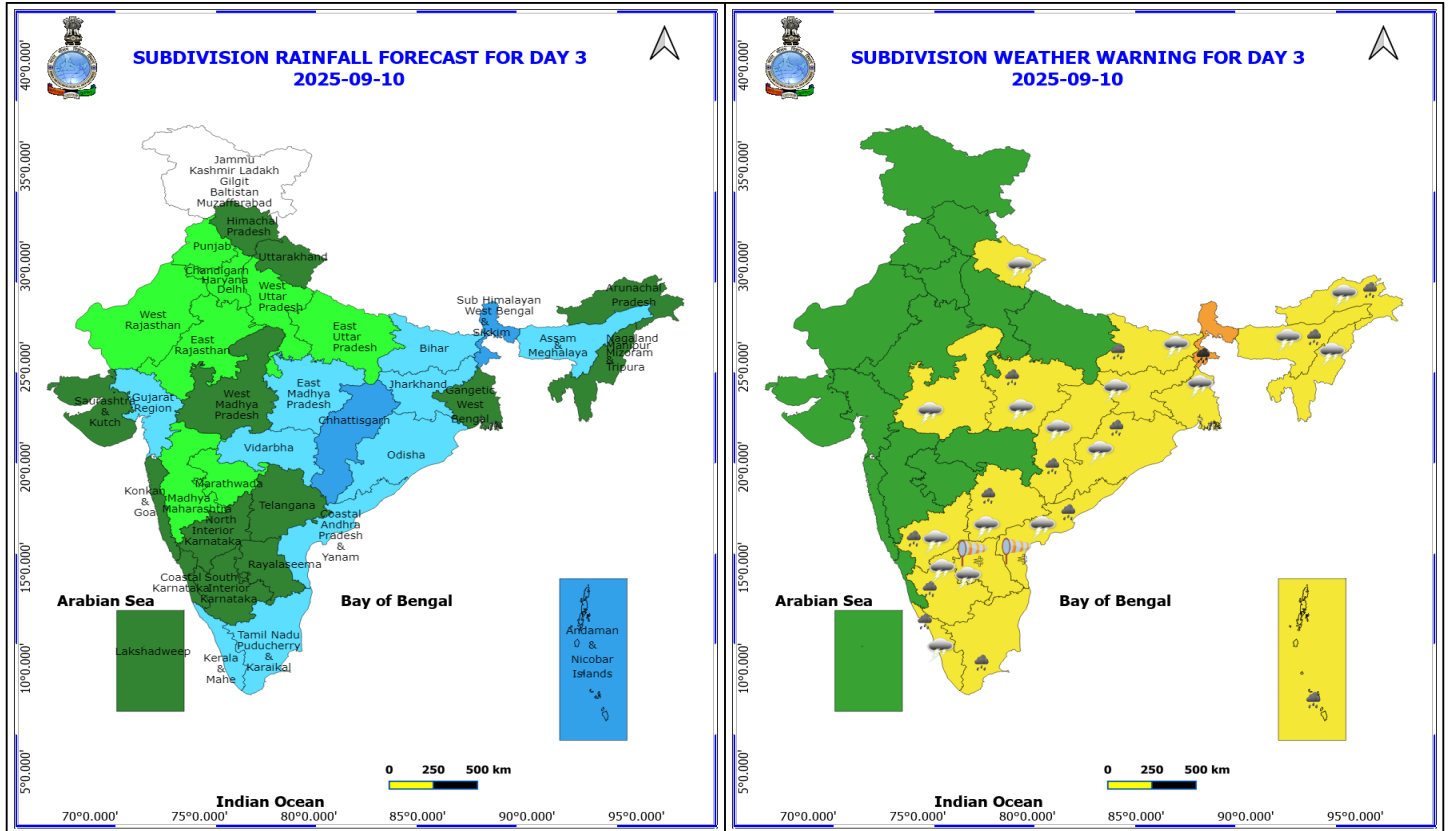
Squally weather with wind speed reaching 40 - 50 kmph gusting to 60 kmph likely to prevail along and off north Gujarat adjoining Pakistan coasts; few parts of northeast Arabian sea and Comorin area.

**\*Red color warning does not mean "Red Alert" Red color warning means "Take Action"**

Forecast and warning for any day is valid from 0830 hours IST of day till 0830 hours IST of next day

For more details kindly visit <https://mausam.imd.gov.in> or contact 011-2434-4599

(Service to the nation since 1875)



## 10 September (Day 3)

- ❖ **Heavy to Very Heavy Rainfall** very likely at isolated places over Sub Himalayan West Bengal & Sikkim.
- ❖ **Heavy Rainfall** very likely at isolated places over Andaman & Nicobar Islands, Arunachal Pradesh, Assam & Meghalaya, Bihar, Chhattisgarh, Coastal Andhra Pradesh, East Madhya Pradesh, Interior Karnataka, Kerala & Mahe, Odisha, Tamil Nadu Puducherry & Karaikal and Telangana.
- ❖ **Thunderstorm accompanied with lightning & gusty winds(30-40kmph)** very likely at isolated places over Bihar, Gangetic West Bengal, Jharkhand, Kerala & Mahe, Odisha and Telangana.
- ❖ **Thunderstorm accompanied with Lightning** very likely at isolated places over Andhra Pradesh, Arunachal Pradesh, Assam & Meghalaya, Chhattisgarh, Interior Karnataka, Madhya Pradesh, Nagaland, Manipur, Mizoram and Tripura and Uttarakhand.
- ❖ **Strong Surface Winds** very likely at isolated places over Andhra Pradesh.

Squally wind with speed reaching 45 kmph to 55 kmph gusting to 65 kmph is likely to prevail along and off Somalia and Oman coasts, some parts of westcentral & southwest Arabian sea.

Squally weather with wind speed reaching 40 - 50 kmph gusting to 60 kmph likely to prevail along and off Pakistan coasts adjoining north Arabian sea.

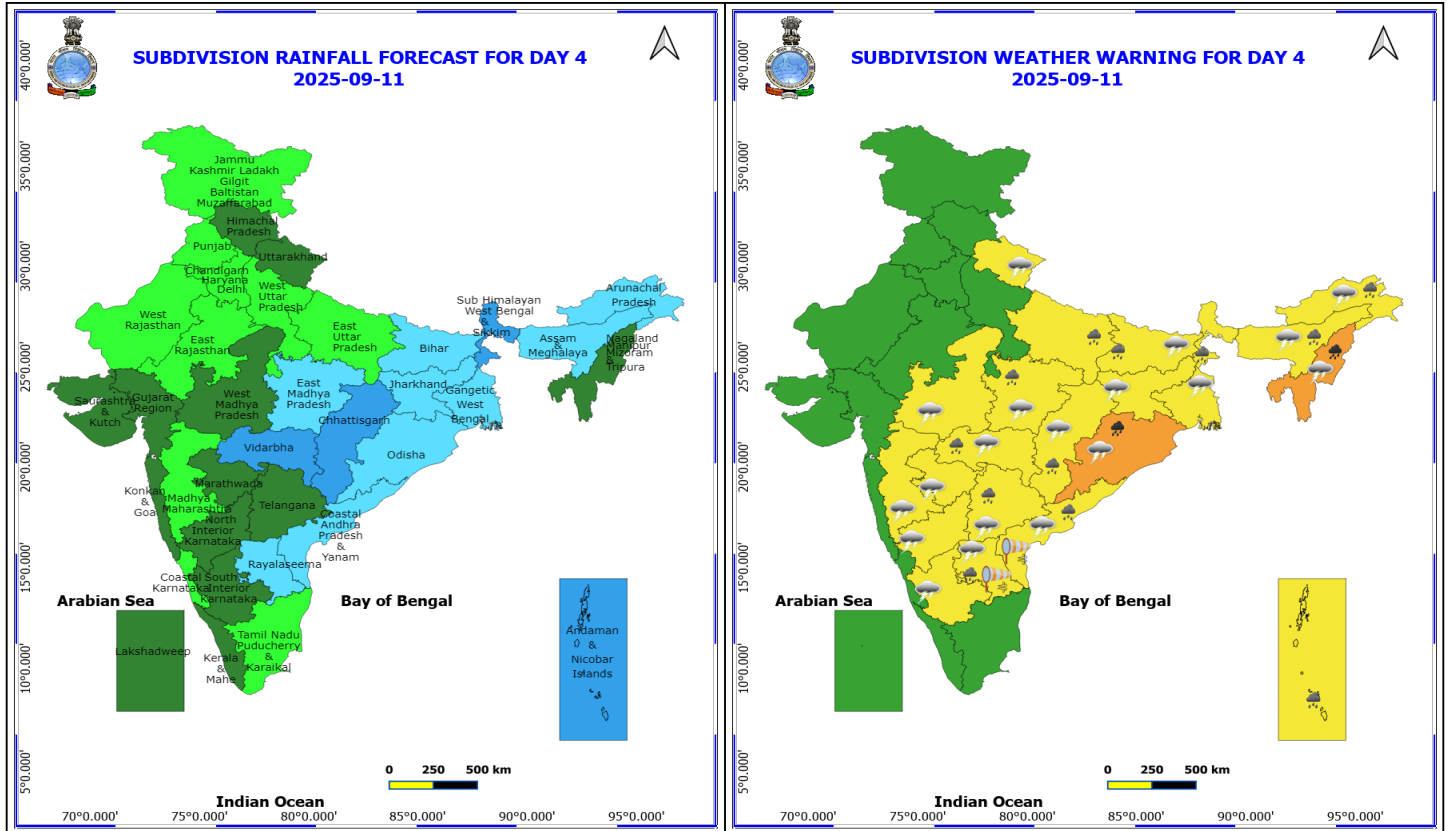
**\*Red color warning does not mean "Red Alert" Red color warning means "Take Action"**

Forecast and warning for any day is valid from 0830 hours IST of day till 0830 hours IST of next day

For more details kindly visit <https://mausam.imd.gov.in> or contact 011-2434-4599

(Service to the nation since 1875)





## 11 September (Day 4)

- ❖ **Heavy to Very Heavy Rainfall** likely at isolated places over Nagaland, Manipur, Mizoram and Tripura and Odisha.
- ❖ **Heavy Rainfall** likely at isolated places over Andaman & Nicobar Islands, Andhra Pradesh, Arunachal Pradesh, Assam & Meghalaya, Bihar, Chhattisgarh, East Madhya Pradesh, East Uttar Pradesh, Sub Himalayan West Bengal & Sikkim, Telangana and Vidarbha.
- ❖ **Thunderstorm accompanied with lightning & gusty winds(30-40kmph)** likely at isolated places over Bihar, Gangetic West Bengal, Jharkhand, Odisha and Telangana.
- ❖ **Thunderstorm accompanied with Lightning** likely at isolated places over Andhra Pradesh, Arunachal Pradesh, Assam & Meghalaya, Chhattisgarh, Interior Karnataka, Madhya Pradesh, Maharashtra, Nagaland, Manipur, Mizoram and Tripura and Uttarakhand.
- ❖ **Strong Surface Winds** likely at isolated places over Andhra Pradesh.

Squally wind with speed reaching 45 kmph to 55 kmph gusting to 65 kmph is likely to prevail along and off Somalia coasts, some parts of southwest & westcentral Arabian Sea.

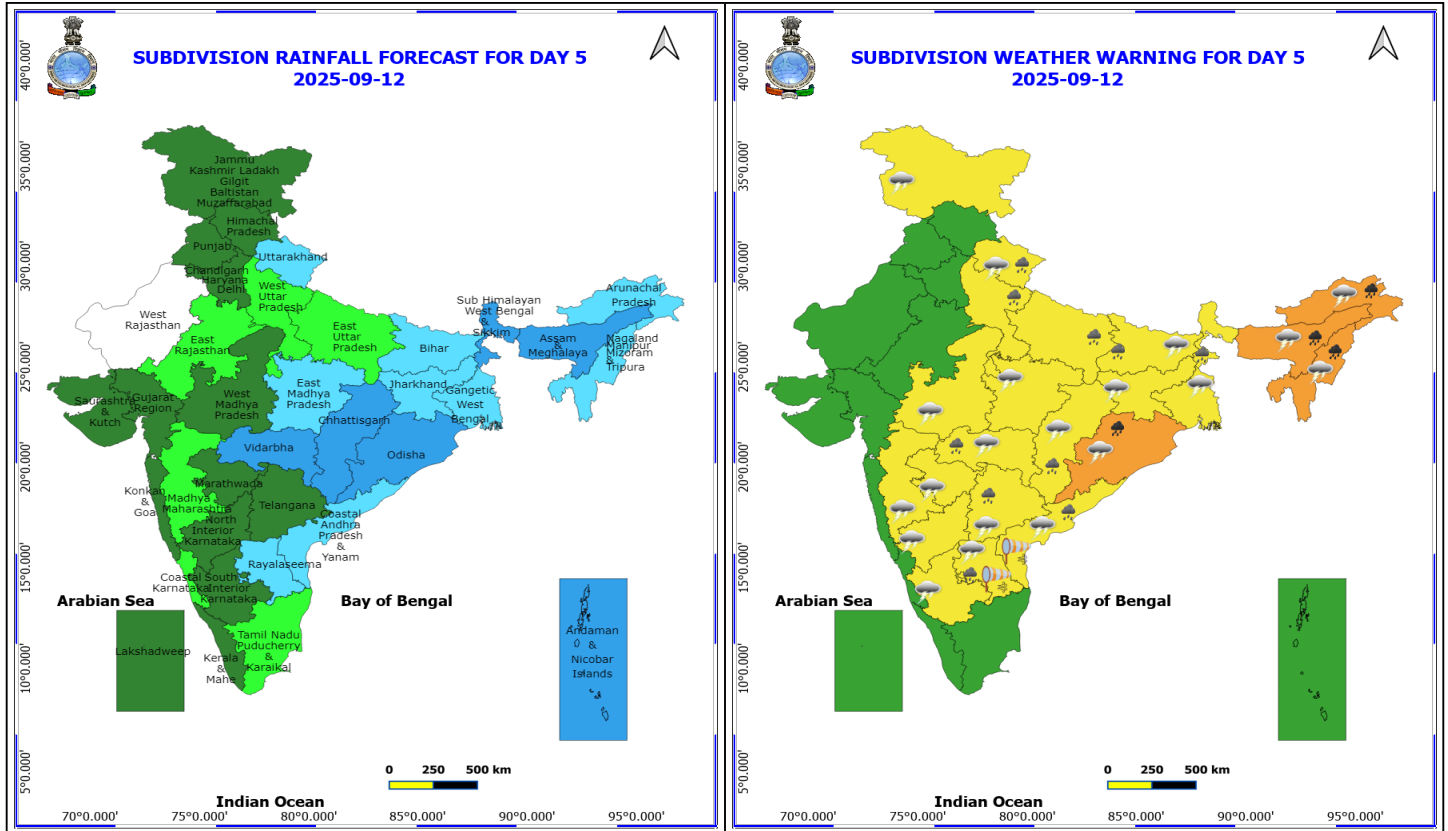
Squally weather with wind speed reaching 40 - 50 kmph gusting to 60 kmph likely to prevail over Gulf of Mannar; Tamil Nadu coasts off south Andhra Pradesh coasts and many parts of southwest; adjoining some parts of westcentral & southeast Bay of Bengal.

**\*Red color warning does not mean "Red Alert" Red color warning means "Take Action"**

Forecast and warning for any day is valid from 0830 hours IST of day till 0830 hours IST of next day

For more details kindly visit <https://mausam.imd.gov.in> or contact 011-2434-4599

(Service to the nation since 1875)



## 12 September (Day 5)

- ❖ **Heavy to Very Heavy Rainfall** likely at isolated places over Arunachal Pradesh, Assam & Meghalaya, Nagaland, Manipur, Mizoram and Tripura and Odisha.
- ❖ **Heavy Rainfall** likely at isolated places over Andhra Pradesh, Bihar, Chhattisgarh, Sub Himalayan West Bengal & Sikkim, Telangana, Uttar Pradesh, Uttarakhand and Vidarbha.
- ❖ **Thunderstorm accompanied with lightning & gusty winds(30-40kmph)** likely at isolated places over Bihar, Gangetic West Bengal, Jammu-Kashmir-Ladakh-Gilgit-Baltistan-Muzaffarabad, Jharkhand, Odisha and Telangana.
- ❖ **Thunderstorm accompanied with Lightning** likely at isolated places over Andhra Pradesh, Arunachal Pradesh, Assam & Meghalaya, Chhattisgarh, Interior Karnataka, Madhya Pradesh, Maharashtra, Nagaland, Manipur, Mizoram and Tripura and Uttarakhand.
- ❖ **Strong Surface Winds** likely at isolated places over Andhra Pradesh.

Squally wind with speed reaching 45 kmph to 55 kmph gusting to 65 kmph is likely to prevail along and off Somalia and Oman coasts, some parts of southwest & westcentral Arabian Sea.

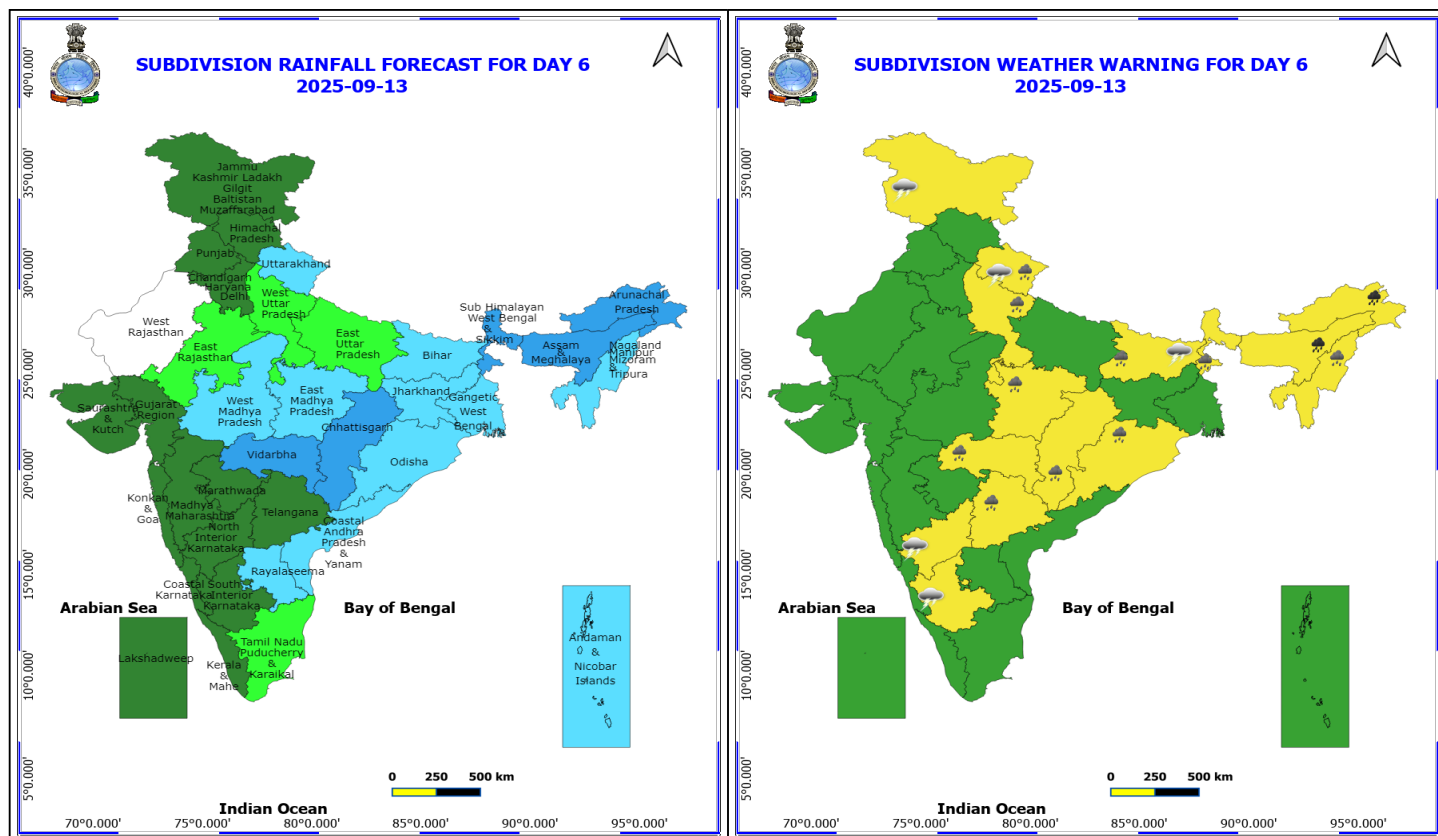
Squally weather with wind speed reaching 40 - 50 kmph gusting to 60 kmph likely to prevail over Gulf of Mannar; Tamil Nadu coasts, many parts of southwest Bay of Bengal; adjoining few parts of southeast Bay of Bengal, some parts of central Bay of Bengal.

**\*Red color warning does not mean "Red Alert" Red color warning means "Take Action"**

Forecast and warning for any day is valid from 0830 hours IST of day till 0830 hours IST of next day

For more details kindly visit <https://mausam.imd.gov.in> or contact 011-2434-4599

(Service to the nation since 1875)



### 13 September (Day 6)

- ❖ **Heavy to Very Heavy Rainfall** likely at isolated places over Arunachal Pradesh and Assam & Meghalaya.
- ❖ **Heavy Rainfall** likely at isolated places over Bihar, Chhattisgarh, East Madhya Pradesh, Nagaland, Manipur, Mizoram and Tripura, Odisha, Sub Himalayan West Bengal & Sikkim, Telangana, Uttarakhand, Vidarbha and West Uttar Pradesh.
- ❖ **Thunderstorm accompanied with lightning & gusty winds(30-40kmph)** likely at isolated places over Bihar and Jammu-Kashmir-Ladakh-Gilgit-Baltistan-Muzaffarabad.
- ❖ **Thunderstorm accompanied with Lightning** likely at isolated places over Interior Karnataka and Uttarakhand.

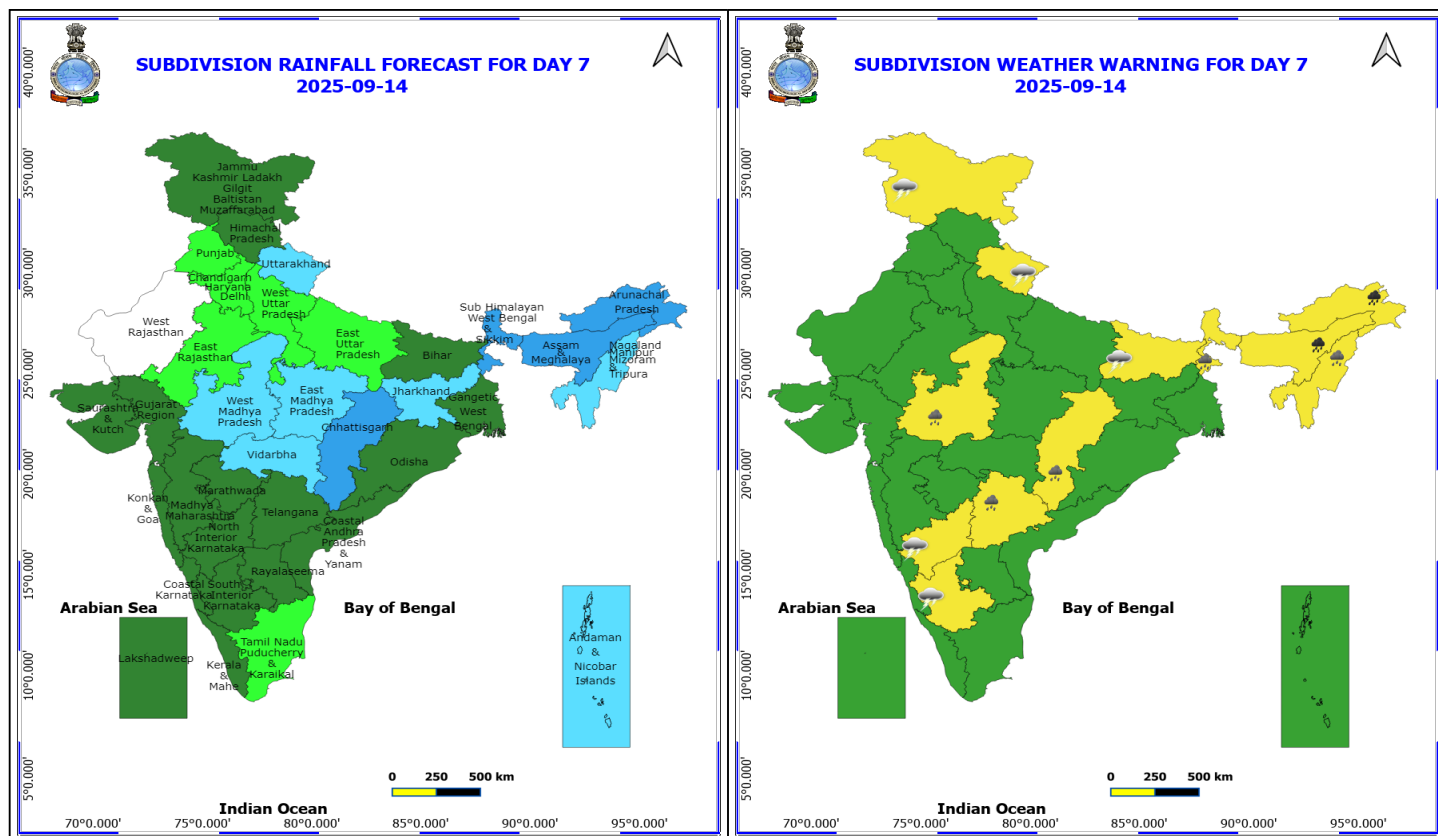
**No Fishermen Warning**

\*Red color warning does not mean "Red Alert" Red color warning means "Take Action"

Forecast and warning for any day is valid from 0830 hours IST of day till 0830 hours IST of next day

For more details kindly visit <https://mausam.imd.gov.in> or contact 011-2434-4599

(Service to the nation since 1875)



#### 14 September (Day 7)

- ❖ **Heavy to Very Heavy Rainfall** likely at isolated places over Arunachal Pradesh and Assam & Meghalaya.
- ❖ **Heavy Rainfall** likely at isolated places over Chhattisgarh, Nagaland, Manipur, Mizoram and Tripura, Sub Himalayan West Bengal & Sikkim, Telangana and West Madhya Pradesh.
- ❖ **Thunderstorm accompanied with lightning & gusty winds(30-40kmph)** likely at isolated places over Bihar and Jammu-Kashmir-Ladakh-Gilgit-Baltistan-Muzaffarabad.
- ❖ **Thunderstorm accompanied with Lightning** likely at isolated places over Interior Karnataka and Uttarakhand.

**No Fishermen Warning**

**\*Red color warning does not mean "Red Alert" Red color warning means "Take Action"**

Forecast and warning for any day is valid from 0830 hours IST of day till 0830 hours IST of next day

For more details kindly visit <https://mausam.imd.gov.in> or contact 011-2434-4599

(Service to the nation since 1875)

## Flash Flood Warnings

### 24 hours Outlook for the Flash Flood Risk (FFR) till 1130 IST of 09-09-2025 :

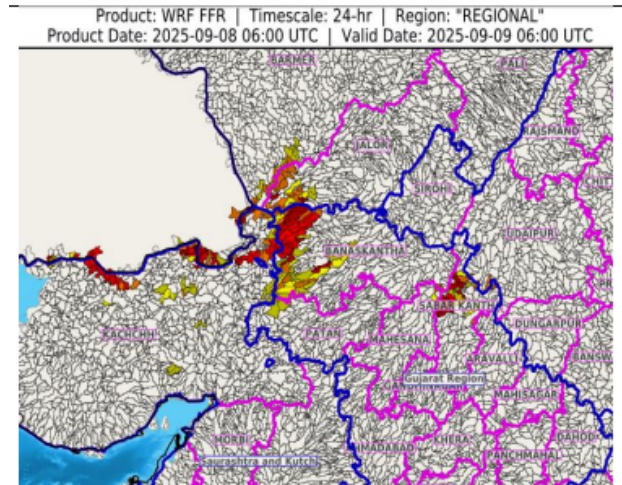
**Low to Moderate flash flood risk** likely over few watersheds & neighbourhoods of following Met Sub-divisions during next 24 hours.

**West Rajasthan** - Barmer and Jalor districts.

**Gujarat Region** - Banaskantha, Mahesana, Patan and Sabar Kantha districts.

**Saurashtra & Kutch** - Kachchh district.

Surface runoff/ Inundation may occur at some fully saturated soils & low-lying areas over Area of Concern (AoC) as shown in map due to expected rainfall occurrence in next 24 hours.



**\*Red color warning does not mean "Red Alert" Red color warning means "Take Action"**

Forecast and warning for any day is valid from 0830 hours IST of day till 0830 hours IST of next day

For more details kindly visit <https://mausam.imd.gov.in> or contact 011-2434-4599

(Service to the nation since 1875)





# Table-1

## 7 Days Rainfall Forecast

S.No.	Subdivision	8- Sep	9- Sep	10- Sep	11- Sep	12- Sep	13- Sep	14- Sep
		Day 1	Day 2	Day 3	Day 4	Day 5	Day 6	Day 7
1	ANDAMAN & NICOBAR ISLANDS	WS	WS	WS	WS	WS	FWS	FWS
2	ARUNACHAL PRADESH	SCT	SCT	SCT	FWS	FWS	WS	WS
3	ASSAM & MEHGHALAYA	SCT	SCT	FWS	FWS	WS	WS	WS
4	N. M. M. & T.	FWS	FWS	SCT	SCT	FWS	FWS	FWS
5	S.H. WEST BENGAL & SIKKIM	WS	WS	WS	WS	WS	WS	WS
6	GANGETIC WEST BENGAL	ISOL	ISOL	SCT	FWS	FWS	FWS	SCT
7	ODISHA	SCT	SCT	FWS	FWS	WS	FWS	SCT
8	JHARKHAND	ISOL	SCT	FWS	FWS	FWS	FWS	FWS
9	BIHAR	SCT	FWS	FWS	FWS	FWS	FWS	SCT
10	EAST UTTAR PRADESH	SCT	SCT	ISOL	ISOL	ISOL	ISOL	ISOL
11	WEST UTTAR PRADESH	ISOL	ISOL	ISOL	ISOL	ISOL	ISOL	ISOL
12	UTTARAKHAND	FWS	SCT	SCT	SCT	FWS	FWS	FWS
13	HARYANA, CHD & DELHI	SCT	ISOL	ISOL	ISOL	SCT	SCT	ISOL
14	PUNJAB	SCT	ISOL	ISOL	ISOL	SCT	SCT	ISOL
15	HIMACHAL PRADESH	SCT	SCT	SCT	SCT	SCT	SCT	SCT
16	JAMMU AND KASHMIR AND LADAKH	FWS	SCT	DRY	ISOL	SCT	SCT	SCT
17	WEST RAJASTHAN	SCT	ISOL	ISOL	ISOL	DRY	DRY	DRY
18	EAST RAJASTHAN	SCT	ISOL	ISOL	ISOL	ISOL	ISOL	ISOL
19	WEST MADHYA PRADESH	SCT	SCT	SCT	SCT	SCT	FWS	FWS
20	EAST MADHYA PRADESH	SCT	SCT	FWS	FWS	FWS	FWS	FWS
21	GUJRAT REGION	WS	FWS	FWS	SCT	SCT	SCT	SCT
22	SAURASHTRA & KUTCH	WS	FWS	FWS	SCT	SCT	SCT	SCT
23	KONKAN & GOA	FWS	SCT	SCT	SCT	SCT	SCT	SCT
24	MADHYA MAHARASHTRA	SCT	ISOL	ISOL	ISOL	ISOL	SCT	SCT
25	MARATHWADA	ISOL	ISOL	ISOL	SCT	SCT	SCT	SCT
26	VIDARBHA	FWS	FWS	FWS	WS	WS	WS	FWS
27	CHATTISGARH	FWS	FWS	WS	WS	WS	WS	WS
28	COASTAL ANDHRA PRADESH	SCT	SCT	FWS	FWS	FWS	FWS	SCT
29	TELANGANA	ISOL	ISOL	SCT	SCT	SCT	SCT	SCT
30	RAYALASEEMA	ISOL	ISOL	SCT	FWS	FWS	FWS	SCT
31	TAMILNADU & PUDUCHERRY	SCT	SCT	FWS	ISOL	ISOL	ISOL	ISOL
32	COSTAL KARNATAKA	SCT	SCT	SCT	ISOL	ISOL	SCT	SCT
33	NORTH INTERIOR KARNATAKA	ISOL	ISOL	SCT	SCT	SCT	SCT	SCT
34	SOUTH INTERIOR KARNATAKA	SCT	SCT	SCT	SCT	SCT	SCT	SCT
35	KERALA	SCT	WS	FWS	SCT	SCT	SCT	SCT
36	LAKSHDWEEP	SCT	SCT	SCT	SCT	SCT	SCT	SCT

Legend	Category	%Stations
WS	Widespread/Most Places	76-100
FWS	Fairly Widespread/Many Places	51-75
SCT	Scattered/ A Few Places	26-50
ISOL	Isolated Places	1-25
DRY	No Rain	0

\*Red color warning does not mean "Red Alert" Red color warning means "Take Action"

Forecast and warning for any day is valid from 0830 hours IST of day till 0830 hours IST of next day

For more details kindly visit <https://mausam.imd.gov.in> or contact 011-2434-4599

(Service to the nation since 1875)

Fig. 1: Maximum Temperatures Dated 2025-09-08

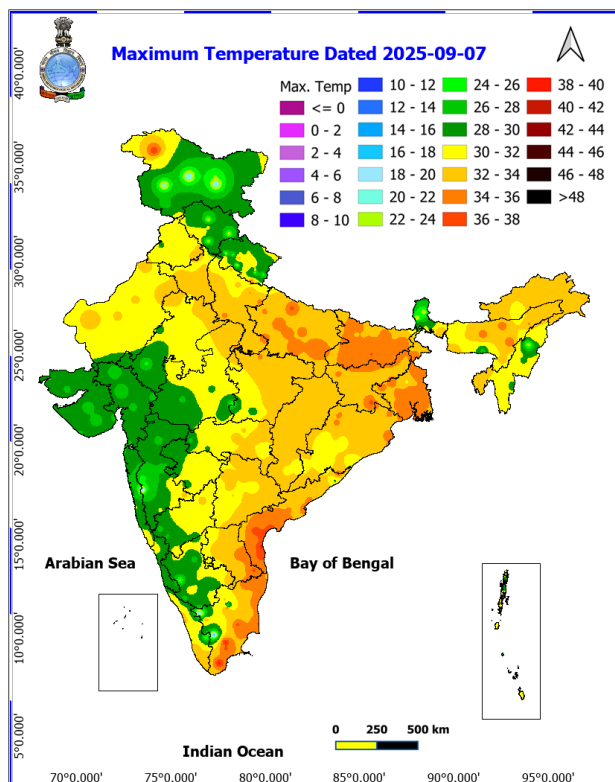


Fig. 2: Departure of Maximum Temp. Dated 2025-09-08

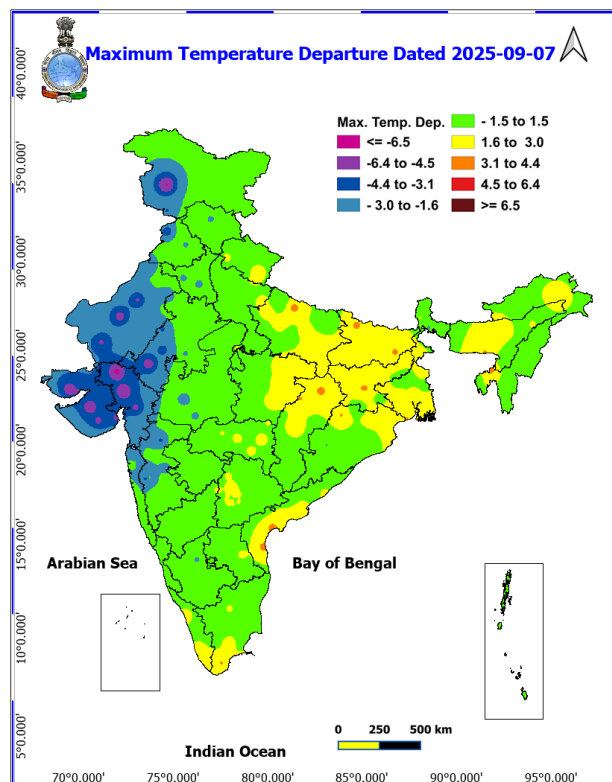


Fig. 3: Minimum Temperatures Dated 2025-09-08

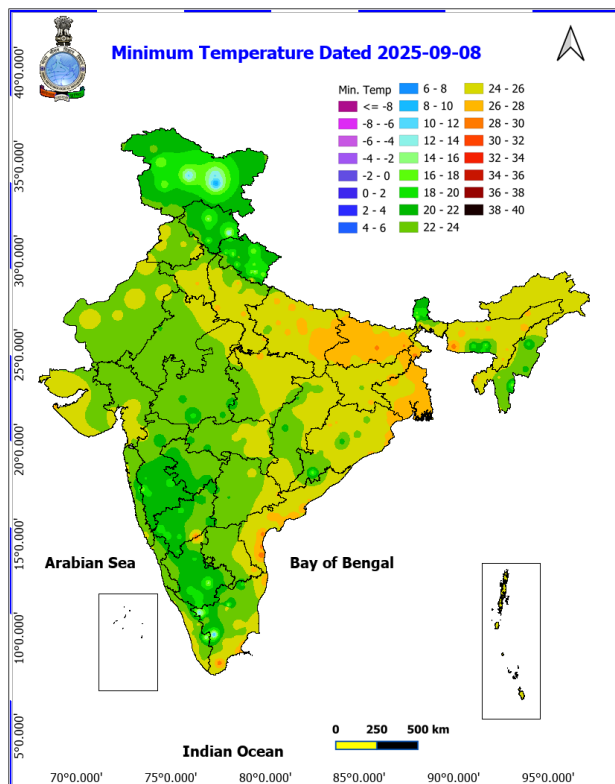
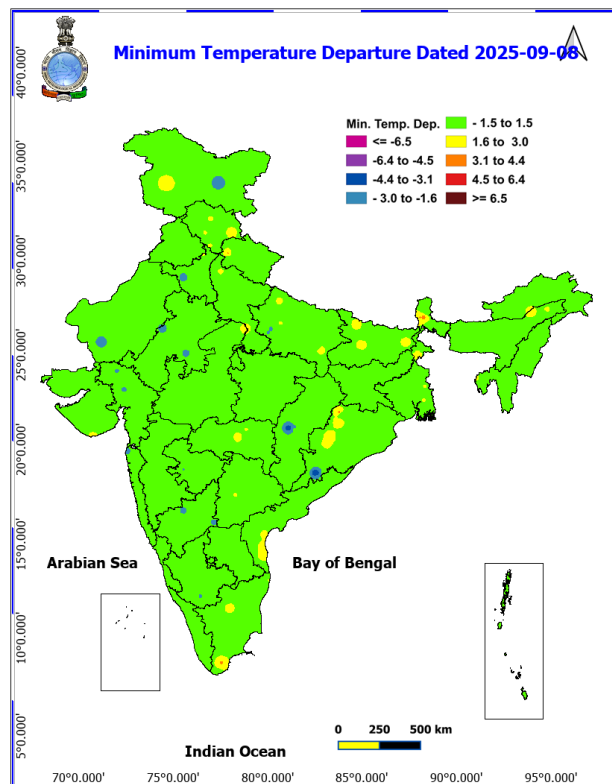
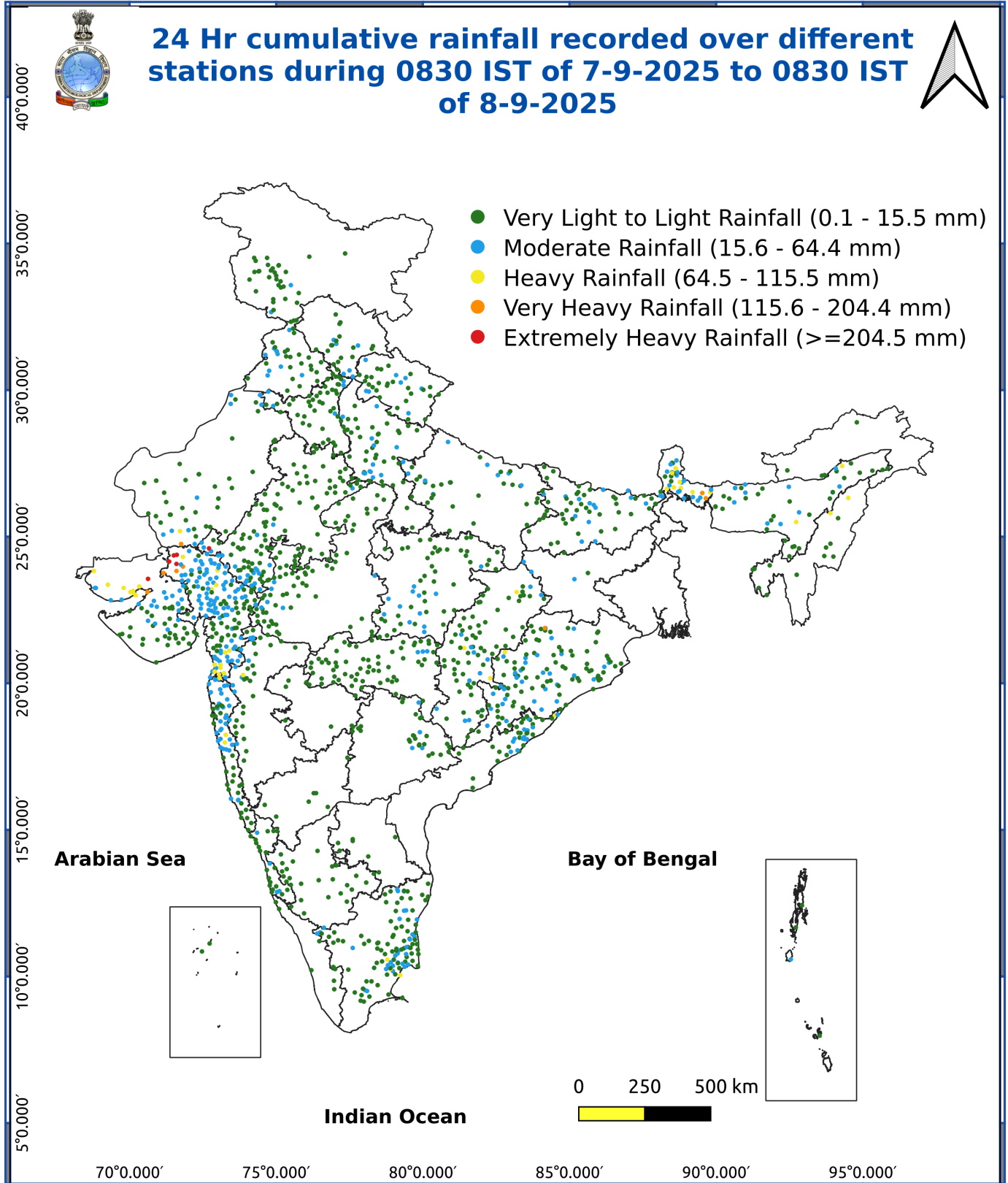


Fig. 4: Departure of Minimum Temp. Dated 2025-09-08





\*Red color warning does not mean "Red Alert" Red color warning means "Take Action"

Forecast and warning for any day is valid from 0830 hours IST of day till 0830 hours IST of next day

For more details kindly visit <https://mausam.imd.gov.in> or contact 011-2434-4599

(Service to the nation since 1875)

### Impact & Action Suggested due to

**Heavy to very heavy rainfall with extremely heavy falls ( $\geq 21$  cm)** at isolated places over Saurashtra & Kutch on 08<sup>th</sup> and isolated **heavy to very heavy rainfall** over north Gujarat on today, the 08<sup>th</sup> September.

**Heavy to very heavy rainfall (12-20 cm)** at isolated places over south Rajasthan on 08<sup>th</sup>; Sub-Himalayan West Bengal & Sikkim during 08<sup>th</sup>-10<sup>th</sup>; Nagaland, Manipur, Odisha on 11<sup>th</sup> & 12<sup>th</sup>; Arunachal Pradesh, Assam & Meghalaya during 12<sup>th</sup>-14<sup>th</sup> September.

### Impact Expected

Localized Flooding of roads, water logging in low lying areas and closure of underpasses mainly in urban areas of the above region.

Occasional reduction in visibility due to heavy rainfall.

Disruption of traffic in major cities due to water logging in roads leading to increased travel time.

Minor damage to kutcha roads.

Possibilities of damage to vulnerable structure.

Localized Landslides/Mudslides/landslips/mudslips/landsinks/mudsinks.

Damage to horticulture and standing crops in some areas due to inundation.

It may lead to riverine flooding in some river catchments (for riverine flooding please visit Web page of CWC)

### Action Suggested

Check for traffic congestion on your route before leaving for your destination.

Follow any traffic advisories that are issued in this regard.

Avoid going to areas that face the water logging problems often.

Avoid staying in vulnerable structure.

### Agromet advisories for various parts of the country

In **Gujarat**, drain out excess rain water from fields of castor, cotton, groundnut, pearl millet, sesame, maize and vegetables in **North Gujarat Zone**; *kharif* groundnut, cotton, soybean, black gram and sesame in **North West Zone**; groundnut, cotton and soybean in **North Saurashtra Zone**; groundnut, cotton, soybean, black gram, green gram, sesame and pigeon pea in **South Saurashtra Zone**; rice, sugarcane, okra, tuber crops and vegetables in **South Gujarat Heavy Rainfall Zone** and rice, cotton, pigeon pea and fruit orchards (banana and mango) in **South Gujarat Zone**.

In **Rajasthan**, drain out excess water from fields of green gram, cluster bean, moth bean and castor in **Arid Western Plain Zone** and cotton, maize, soybean, groundnut and pulses in **Sub Humid Southern Plain and Aravali Hill Zone**.

**\*Red color warning does not mean "Red Alert" Red color warning means "Take Action"**

**Forecast and warning for any day is valid from 0830 hours IST of day till 0830 hours IST of next day**

**For more details kindly visit <https://mausam.imd.gov.in> or contact 011-2434-4599**

**(Service to the nation since 1875)**

In **Sub-Himalayan West Bengal**, make provision to drain out excess water from *aman* paddy and vegetable fields (chilli, bitter gourd, pointed gourd, okra, brinjal etc.) in **Terai Zone**.

#### **Livestock / Fishery**

Keep the animals inside the shed during heavy rainfall and provide them balanced feed.

Store feed and fodder in a safe place to prevent spoilage.

Construct an outlet with proper netting around the ponds to drain out excess water, thereby preventing fish from escaping in case of overflow.

#### **Agromet advisories for likely impact of Thunderstorm / Gusty Winds / Squally Winds**

Provide mechanical support to horticultural crops and staking or support to vegetables and young fruit plants / fruit-bearing plants to avoid lodging due to strong winds.



## LEGENDS

- 1 अंडमान और निकोबार द्वीप समुह
- 2 अरुणाचल प्रदेश
- 3 असम और मेघालय
- 4 नागालैंड मनीपुर मीजोरम और त्रिपुरा
- 5 उप हिमालय पश्चिम बंगाल एवं सिक्किम
- 6 पश्चिम बंगाल
- 7 ओडिसा
- 8 झारखंड
- 9 बिहार
- 10 पूर्वी उत्तर प्रदेश
- 11 पश्चिम उत्तर प्रदेश
- 12 उत्तराखंड
- 13 हरियाणा चंडीगढ़ एवं दिल्ली
- 14 पंजाब
- 15 हिमाचल प्रदेश
- 16 जम्मू एवं कश्मीर एवं लद्दाख
- 17 पश्चिम राजस्थान
- 18 पूर्वी राजस्थान
- 19 पश्चिम मध्य प्रदेश
- 20 पूर्वी मध्य प्रदेश
- 21 गुजरात क्षेत्र
- 22 सौराष्ट्र एवं कच्छ
- 23 कोंकण एवं गोवा
- 24 मध्य महाराष्ट्र
- 25 मराठावाड़ा
- 26 विदर्भ
- 27 छत्तीसगढ़
- 28 तटीय आंध्र प्रदेश एवं यनम
- 29 तेलंगाना
- 30 रायलसीमा
- 31 तमिलनाडु, पुदुचेरी एवं कराईकल
- 32 तटिय कर्नाटक
- 33 आंतरिक उत्तरी कर्नाटक
- 34 आंतरिक दक्षिणी कर्नाटक
- 35 केरल एवं माहे
- 36 लक्षद्वीप



1. Andaman & Nicobar Islands
2. Arunachal Pradesh
3. Assam & Meghalaya
4. Nagaland, Manipur, Mizoram & Tripura
5. Sub-Himalayan West Bengal & Sikkim
6. Gangetic West Bengal
7. Orissa
8. Jharkhand
9. Bihar
10. East Uttar Pradesh
11. West Uttar Pradesh
12. Uttarakhand
13. Haryana, Chd & Delhi
14. Punjab
15. Himachal Pradesh
16. Jammu & Kashmir and Ladakh
17. West Rajasthan
18. East Rajasthan
19. West Madhya Pradesh
20. East Madhya Pradesh
21. Gujarat
22. Saurashtra
23. Konkan & Goa
24. Madhya Maharashtra
25. Marathawada
26. Vidharbha
27. Chhattisgarh
28. Coastal Andhra Pradesh & Yanam
29. Telangana
30. Rayalaseema
31. Tamilnadu, Puducherry & Karaikal
32. Coastal Karnataka
33. North Interior Karnataka
34. South Interior Karnataka
35. Kerala & Mahe
36. Lakshadweep

## SPATIAL DISTRIBUTION (% of Stations reporting)


% Stations	Category	% Stations	Category
76-100	Widespread (WS/Most Places)	26-50	Scattered (SCT/ A Few Places)
51-75	Fairly Widespread (FWS/ Many Places)	1-25	Isolated (ISOL)


### Subdivision Colour


- NO WARNING
- WATCH (BE UPDATED)
- ALERT (BE PREPARED TO TAKE ACTION)
- WARNING (TAKE ACTION)


### Probabilistic Forecast


Terms	Probability of Occurrence (%)
Unlikely	< 25
Likely	25 - 50
Very Likely	50 - 75
Most Likely	> 75


-  Heavy Rain


 Thunderstorm & Lightning


 Strong surface winds


 Cold Wave


 Hot & Humid


 Very Heavy Rain


 Hailstorm

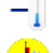
 Heat Wave


 Cold Day


 Extremely Heavy Rain


 Dust Storm


 Hot Day

 Ground Frost

 Heavy Snow

 Dust Raising Winds

 Warm Night

 Fog

\*Red color warning does not mean "Red Alert" Red color warning means "Take Action"

Forecast and warning for any day is valid from 0830 hours IST of day till 0830 hours IST of next day

For more details kindly visit <https://mausam.imd.gov.in> or contact 011-2434-4599

(Service to the nation since 1875)

## LEGENDS

### WARNING

<b>WARNING (TAKE ACTION)</b>
<b>ALERT (BE PREPARED)</b>
<b>WATCH (BE UPDATED)</b>
<b>NO WARNING (NO ACTION)</b>

### Probabilistic Forecast

Terms	Probability of Occurrence (%)
Unlikely	< 25
Likely	25 - 50
Very Likely	50 - 75
Most Likely	> 75



Heavy: 64.5 to 115.5 mm/cm \*  
Very Heavy: 115.6 to 204.4 mm/cm \*  
Extremely Heavy: > 204.4 mm/cm \*



When maximum temperature of a station reaches  $\geq 40^{\circ}\text{C}$  for plains and  $\geq 30^{\circ}\text{C}$  for hilly regions  
(a) Based on Departure from normal

Heat Wave: Maximum Temperature Departure from normal  $4.5^{\circ}\text{C}$  to  $6.4^{\circ}\text{C}$ .  
Severe Heat Wave: Maximum Temperature Departure from normal  $\geq 6.5^{\circ}\text{C}$

(b). Based on Actual maximum temperature

Heat Wave: When actual maximum temperature  $\geq 45^{\circ}\text{C}$ .  
Severe Heat Wave: When actual maximum temperature  $\geq 47^{\circ}\text{C}$

(c). Criteria for heat wave for coastal stations

When maximum temperature departure is  $> 4.5^{\circ}\text{C}$  from normal. Heat Wave may be described provided maximum temperature  $\geq 37^{\circ}\text{C}$



When maximum temperature remains  $40^{\circ}\text{C}$

Warm Night: When minimum temperature departure  $4.5^{\circ}\text{C}$  to  $6.4^{\circ}\text{C}$ .  
Severe Warm Night: When minimum temperature departure  $> 6.4^{\circ}\text{C}$ .



When minimum temperature of a station  $\leq 10^{\circ}\text{C}$  for plains and  $\leq 0^{\circ}\text{C}$  for hilly regions.

(a). Based on departure

Cold Wave: Minimum Temperature Departure from normal  $-4.5^{\circ}\text{C}$  to  $-6.4^{\circ}\text{C}$ .  
Severe Cold Wave: Minimum Temperature Departure from normal  $\leq -6.5^{\circ}\text{C}$

(b) Based on actual Minimum Temperature (for Plains only)

Cold Wave: When Minimum Temperature is  $\leq 4.0^{\circ}\text{C}$   
Severe Cold Wave: When Minimum Temperature is  $\leq 2.0^{\circ}\text{C}$

(c) For Coastal Stations

When Minimum Temperature departure is  $\leq -4.5^{\circ}\text{C}$  & actual Minimum Temperature is  $\leq 15^{\circ}\text{C}$



When minimum temperature of a station  $\leq 10^{\circ}\text{C}$  for plains and  $\leq 0^{\circ}\text{C}$  for hilly regions  
Based on departure

Cold Day: Maximum Temperature Departure from normal  $-4.5^{\circ}\text{C}$  to  $-6.4^{\circ}\text{C}$ .  
Severe Cold Day: Maximum Temperature Departure from normal  $\leq -6.5^{\circ}\text{C}$



Phenomenon of small droplets suspended in air and the horizontal visibility  $< 1\text{km}$

Moderate Fog: When the visibility between 500-200 metres  
Dense Fog: when the visibility between 50-200 metres  
Very Dense Fog: when the visibility  $< 50$  metres



Sudden electrical discharges manifested by a flash of light (Lightning) and a sharp rumbling sound (thunder)



An ensemble of particles of dust or sand energetically lifted to great heights by a strong and turbulent wind.



Ice deposits on ground

Air temperature  $\leq 4^{\circ}\text{C}$  (over Plains)



A strong wind that rises suddenly, lasts for at least 1 minute.

Moderate: Wind speed 52-61 kmph  
Severe: Wind speed 62-87 kmph  
Very Severe: Wind speed  $> 87$  kmph



Effect of various waves in the sea over specific area

Rough to very rough: Wind speed 41-62 kmph (22-33 knots) & Wave height 2.5-6 metre  
High to very high: Wind speed 63-117 kmph (34-63 knots) & Wave height 6-14 metre  
Phenomenal: Wind speed  $> 117$  kmph ( $> 63$  knots) & Wave height  $> 14$  metre



Cyclonic Storm: Wind speed 62-87 kmph (34-47 knots)

Severe Cyclonic Storm: Wind speed 88-117 kmph (48-63 knots)  
Very Severe Cyclonic Storm: Wind speed 118-165 kmph (64-89 knots)  
Extremely Severe Cyclonic Storm: Wind speed 166-220 kmph (90-119 knots)  
Super Cyclone Storm: Wind speed  $> 220$  kmph ( $> 119$  knots)

\*Red color warning does not mean "Red Alert" Red color warning means "Take Action"

Forecast and warning for any day is valid from 0830 hours IST of day till 0830 hours IST of next day

For more details kindly visit <https://mausam.imd.gov.in> or contact 011-2434-4599

(Service to the nation since 1875)