

2025-08-24

Time of Issue: 14:13:00 hours IST  
(Mid-Day)

## ALL INDIA WEATHER SUMMARY AND FORECAST BULLETIN

### Significant Weather Features

#### Northwest India:

- **Extremely heavy rainfall very likely over East Rajasthan on 24<sup>th</sup> August.**
- Isolated **heavy rainfall** likely over Uttarakhand & Himachal Pradesh during next 7 days; Jammu & Kashmir, Haryana during 24<sup>th</sup>-26<sup>th</sup>; Rajasthan during 24<sup>th</sup>-27<sup>th</sup>; Punjab during 24<sup>th</sup>-26<sup>th</sup> & on 29<sup>th</sup>, 30<sup>th</sup>; Uttar Pradesh on 24<sup>th</sup>, 25<sup>th</sup>, 29<sup>th</sup> & 30<sup>th</sup> August with **isolated very heavy rainfall over Jammu & Kashmir, Himachal Pradesh, Punjab, Haryana, Chandigarh on 24<sup>th</sup>; Uttarakhand during 24<sup>th</sup>-25<sup>th</sup>; Rajasthan during 24<sup>th</sup>-26<sup>th</sup> August.**
- Light/moderate rainfall at most/many places accompanied with thunderstorm & lightning likely over the western Himalayan region during next 7 days and adjoining plains during next 3 days and scattered rainfall during subsequent 4 days.

#### East & Central India:

- Isolated **heavy rainfall** likely over Madhya Pradesh, Chhattisgarh, Odisha during next 6-7 days; Sub-Himalayan West Bengal & Sikkim on 24<sup>th</sup>, 25<sup>th</sup>, 29<sup>th</sup> & 30<sup>th</sup>; Gangetic West Bengal on 24<sup>th</sup>; Bihar on 24<sup>th</sup>, 25<sup>th</sup> & 30<sup>th</sup>; Jharkhand on 24<sup>th</sup>, 25<sup>th</sup>, 28<sup>th</sup> & 29<sup>th</sup>; Vidarbha during 28<sup>th</sup>-30<sup>th</sup> August with isolated **very heavy rainfall over Madhya Pradesh, Chhattisgarh on 24<sup>th</sup>; Odisha on 25<sup>th</sup> & 26<sup>th</sup> August.**
- Light to moderate rainfall at most/many places accompanied with thunderstorm & lightning likely over the region during next 7 days.

#### West India:

- **Spell of heavy to very heavy rainfall is very likely to continue over Gujarat state during next 7 days.**
- **Heavy rainfall** is very likely over Konkan & Goa during 25<sup>th</sup>-30<sup>th</sup>; Madhya Maharashtra on 24<sup>th</sup> & during 27<sup>th</sup>-30<sup>th</sup> August with very heavy over Konkan & Goa on 28<sup>th</sup> August.
- Light to moderate rainfall at most/many places very likely over the region during next 7 days.

#### Northeast India:

- Isolated **heavy rainfall** likely to continue over Assam & Meghalaya during next 7 days; Arunachal Pradesh on 24<sup>th</sup>, 25<sup>th</sup> & during 28<sup>th</sup>-30<sup>th</sup>; Nagaland, Manipur, Mizoram & Tripura during 24<sup>th</sup>-29<sup>th</sup> August.
- Light/moderate rainfall at many places accompanied with thunderstorm & lightning likely during next 2 days.

#### South Peninsular India:

- Isolated **heavy rainfall** likely over Kerala & Mahe during 26<sup>th</sup>-29<sup>th</sup>; Coastal Karnataka during 26<sup>th</sup>-30<sup>th</sup>; Interior Karnataka during 27<sup>th</sup>-29<sup>th</sup>; Telangana on 27<sup>th</sup> & 28<sup>th</sup>; Coastal Andhra Pradesh & Yanam on 25<sup>th</sup> & 26<sup>th</sup> August with **very heavy over Coastal Karnataka during 27<sup>th</sup>-29<sup>th</sup> August.**
- Strong surface winds (speed reaching 40-50 kmph) very likely over the region during next 3 days.
- Light to moderate rainfall at some places accompanied with thunderstorm & lightning likely over the region during next 3 days and many places during subsequent 4 days.

\*Red color warning does not mean "Red Alert" Red color warning means "Take Action"

Forecast and warning for any day is valid from 0830 hours IST of day till 0830 hours IST of next day

For more details kindly visit <https://mausam.imd.gov.in> or contact 011-2434-4599

(Service to the nation since 1875)

### Main Weather Observations:

❖ **Rainfall distribution** (from 0830 hours IST of yesterday to 0830 hours IST of today): at **most places** over Andaman & Nicobar Islands, Gangetic West Bengal, Sub-Himalayan West Bengal & Sikkim, Odisha, Jharkhand, Jammu-Kashmir-Ladakh-Gilgit-Baltistan-Muzaffarabad, Himachal Pradesh, Nagaland, Manipur, Mizoram & Tripura, East Rajasthan, Madhya Pradesh, Vidarbha, Chhattisgarh, Konkan & Goa, Gujarat state; at **many places** over Bihar, Uttarakhand, Haryana-Chandigarh-Delhi, East Uttar Pradesh, West Rajasthan, Madhya Maharashtra, Karnataka; at **a few places** over Arunachal Pradesh, Assam & Meghalaya, Punjab, West Uttar Pradesh, Tamil Nadu, Puducherry & Karaikal; at **isolated places** over Marathwada, Telangana, Coastal Andhra Pradesh & Yanam, Rayalaseema, Kerala & Mahe and Lakshadweep..

❖ **Significant rainfall recorded (in cm)** (from 0830 hours IST of yesterday to 0830 hours IST of today): East Rajasthan: Dausa (Dausa) 29, Sapotra (Karauli) 17, Chomu (Jaipur) 17, Kotputli (Jaipur) 13, Gangapur (Sawai Madhopur) 13, Jamwa ramgarh (Jaipur) 13, Alwar (Alwar) 12, Malpura (Tonk) 11, Sanganer (Jaipur) 11, Sawai madhopur Tesil (Sawai Madhopur) 11, Pratapgarh (Pratapgarh) 11, Sawar (Ajmer) 11, Baunli (Sawai Madhopur) 11, Sambhar (Jaipur) 10, Choth ka barwara (Sawai Madhopur) 10, Pawta (Jaipur) 10, Nadoti (Karauli) 10, Naraina (Jaipur) 10, Chaksu (Jaipur) 10, Sikrai (Dausa) 10, Mozamabad (Jaipur) 9, Malarna dungar (Sawai Madhopur) 9, Jaipur Hava adda (Jaipur) 9, Shahpura (Jaipur) 9, Hindaun (Karauli) 8, Srimadhpor (Sikar) 8, Karauli (Karauli) 8, Behror (Alwar) 8, Lalsot (Dausa) 8, Ajmer (Ajmer) 8, Khandar (Sawai Madhopur) 7, Bansur (Alwar) 7, Danta Ramgarh (Sikar) 7, Kapasan (Chittorgarh) 7, Mandrayal (Karauli) 7, Neem ka thana (Sikar) 7, Sikar (Sikar) 7, Kekri (Ajmer) 7, Mount abu Tehsil (Sirohi) 7, Bassi (Jaipur) 7; **Jammu, Kashmir & Ladakh:** Jammu (dist Jammu) 19, Jammu AERO (dist Jammu) 17, Udhampur (IAF) (dist Udhampur) 14, Katra (dist Reasi) 11, Samba AWS (dist Samba) 11, Chatha Aws (dist Jammu) 10, Kathua (dist Kathua) 9; **East Madhya Pradesh:** Sidhi (gopadbanas) (dist Sidhi) 17, Devser (dist Singrauli) 14, Benibari (dist Anuppur) 11, Dindori-aws (dist Dindori) 11, Mohgaon (dist Mandla) 11, Bahri (dist Sidhi) 11, Sarai (dist Singrauli) 10, Amarpur (dist Dindori) 10, Unchehra (dist Satna) 10, Satna (raghurajnagar) (dist Satna) 9, Singrauli-aws (dist Singrauli) 9, Bijuri (dist Anuppur) 8, Rajnagar (dist Chhatarpur) 7, Sihawal (dist Sidhi) 7, Maihar (dist Satna) 7, Bilaspur (dist Umaria) 7, Gonour (dist Panna) 7; **Punjab:** Ranjit Sagar Dam Site (dist Pathankot) 16, Madhopur (dist Pathankot) 16, Shahpur Kandi (dist Pathankot) 13, Phangota (dist Pathankot) 13, Thein Dam Aws (dist Pathankot) 7; **Saurashtra & Kutch:** Bhanvad (dist Devbhoomi Dwarka) 16, Jamjodhpur (dist Jamnagar) 13, Bhesan (dist Junagadh) 11, Kotdasangani (dist Rajkot) 10, Jamkandorna (dist Rajkot) 7, Lodhika (dist Rajkot) 7, Kutiana (dist Porbandar) 7; **East Uttar Pradesh:** Robertsganj (dist Sonbhadra) 13, Mirzapur Cwc (dist Mirzapur) 11, Chunar (dist Mirzapur) 10, Churk (dist Sonbhadra) 9; **Chhattisgarh:** Kapu (dist Raigarh) 13, Kusmi (dist Balrampur) 12, Doura Kochali (dist Balrampur) 9, Chando (dist Balrampur) 8, Ambikapur (dist Surguja) 8, Manendragarh (dist Manendragarh Bharatpur) 7, Poudi Uparora (dist Korba) 7, Pendra Road (dist Gaurela Pendra Marwahi) 7, Mukdega (dist Raigarh) 7, Balrampur (dist Balrampur) 7, Bhatgaon (dist Surajpur) 7, Samari (dist Balrampur) 7; **West Madhya Pradesh:** Bhitwarwar (dist Gwalior) 12, Dabra (dist Gwalior) 12, Chinor (dist Gwalior) 11, Badi (dist Raisen) 10, Sabalgarh (dist Morena) 9, Bareli (dist Raisen) 9, Kumbhraj (dist Guna) 8, Vijaypur (dist Sheopur) 8, Udaipura (dist Raisen) 7, Narwar (dist Shivpuri) 7; **Himachal Pradesh:** Pandoh (dist Mandi) 12, Kasauli (dist Solan) 11, Mandi (dist Mandi) 7, Karsog (dist Mandi) 7; Gujarat Region: Danta (dist Banaskantha) 11, Nandod (dist Narmada) 10, Palanpur (dist Banaskantha) 9, Vyara (dist Tapi) 9, Rajpipala (dist Narmada) 9, Vijaynagar (dist Sabarkantha) 8, Garudeshwar (dist Narmada) 8, Ukai (dist Surat) 8, Khedbrahma (dist Sabarkantha) 8, Songadh (dist Tapi) 7, Sinor (dist Vadodara) 7, Dharampur (dist Valsad) 7, Visnagar (dist Mehsana) 7, Poshina (dist Sabarkantha) 7, Quant (dist Chhota Udepur) 7, Tilakwada (dist Narmada) 7; **West Rajasthan:** Makrana (Nagaur) 11, Nawa (Nagaur) 11, Merta City (Nagaur) 8; **Odisha:** Tensa (dist Sundargarh) 11, Banspal (dist Keonjhar) 11, Keonjhar (dist Keonjhar) 9, Derabis (dist Kendrapara) 9, Telkoi (dist Keonjhar) 7; **Jharkhand:** Anandpur (dist West Singhbhum) 9, Jagannathpur (dist West Singhbhum) 7, Kurdeg (dist Simdega) 7; **Uttarakhand:** Loharkhet (dist Bageshwar) 9, Uttar Kashi (cwc) (dist Uttarkashi) 9, Uttar Kashi (dist Uttarkashi) 7; **Haryana:** Kanina (dist Mahendragarh) 9, Manethi Rev (dist Rewari) 7, Rewari (dist Rewari) 7; **Bihar:** Rohtas (dist Rohtas) 8, Fatehpur (dist Gaya) 8; **Assam:** Dhupdhara Arg (dist Goalpara) 7;

❖ **Heavy Rainfall observed** (from 0830 hours IST of yesterday to 0830 hours IST of today): **Heavy to very heavy rainfall at some places with Extremely heavy rainfall ( $\geq 21$  cm)** has been recorded at isolated places over East Rajasthan; **Very heavy rainfall (12-20 cm)** has been recorded at isolated places over Jammu & Kashmir, East Madhya Pradesh, Punjab, Saurashtra & Kutch, East Uttar Pradesh and Chhattisgarh; **Heavy rainfall (7-11 cm)** has been recorded at isolated places over West Madhya Pradesh, Himachal Pradesh, Gujarat Region, West Rajasthan, Odisha, Jharkhand, Uttarakhand, Haryana, Bihar and Assam.

\*Red color warning does not mean "Red Alert" Red color warning means "Take Action"

Forecast and warning for any day is valid from 0830 hours IST of day till 0830 hours IST of next day

For more details kindly visit <https://mausam.imd.gov.in> or contact 011-2434-4599

(Service to the nation since 1875)

❖ **Minimum Temperature Departures (as on 24-08-2025):** markedly above normal(> 5.1°C) at isolated places over Assam & Meghalaya, East Uttar Pradesh, Himachal Pradesh, West Madhya Pradesh and Marathwada. **appreciably above normal(3.1°C to 5.0°C)** at few places over East Madhya Pradesh; at isolated places over Sub Himalayan West Bengal & Sikkim, Saurashtra & Kutch and Coastal Andhra Pradesh & Yanam. **above normal(1.6°C to 3.0°C)** at few places over Gujarat Region, Coastal Karnataka and Lakshadweep; at isolated places over Nagaland, Manipur, Mizoram & Tripura, Gangetic West Bengal, Odisha, West Uttar Pradesh, Haryana-Chandigarh-Delhi, Punjab, Madhya Maharashtra, Telangana, Rayalaseema, Tamil Nadu, Puducherry & Karaikal and Kerala & Mahe. **near normal(-1.5°C to 1.5°C)** at many places over Jharkhand, Uttarakhand, East Rajasthan and Chhattisgarh; at most places over Andaman & Nicobar Islands, Arunachal Pradesh, Bihar, Jammu-KashmirLadakh-Gilgit-Baltistan-Muzaffarabad, West Rajasthan, Konkan & Goa, Vidarbha, North Interior Karnataka and South Interior Karnataka. **The lowest minimum temperature** of 18.4°C is reported at KHANDWA (MADHYA PRADESH) over the Plains of India.

❖ **Maximum Temperature Departures (as on 23-08-2025):** markedly above normal(> 5.1°C) at isolated places over Assam & Meghalaya and Odisha. **above normal(1.6°C to 3.0°C)** at few places over Jammu-KashmirLadakh-Gilgit-Baltistan-Muzaffarabad, Coastal Andhra Pradesh & Yanam and Kerala & Mahe; at isolated places over West Uttar Pradesh, Haryana-Chandigarh-Delhi, Vidarbha, Chhattisgarh, Telangana and Tamil Nadu, Puducherry & Karaikal. **near normal(-1.5°C to 1.5°C)** at many places over Andaman & Nicobar Islands, Nagaland, Manipur, Mizoram & Tripura, Sub Himalayan West Bengal & Sikkim, Bihar, East Uttar Pradesh, Uttarakhand, Himachal Pradesh, West Rajasthan, Madhya Maharashtra, Marathwada and North Interior Karnataka; at most places over Arunachal Pradesh, Punjab, Konkan & Goa, Coastal Karnataka and Lakshadweep; at few places over West Madhya Pradesh, Gujarat Region, Saurashtra & Kutch, Rayalaseema and South Interior Karnataka; at isolated places over Gangetic West Bengal, East Rajasthan and East Madhya Pradesh. **The highest maximum temperature** of 38.2°C is reported at PALAYAMKOTTAI (TAMIL NADU).

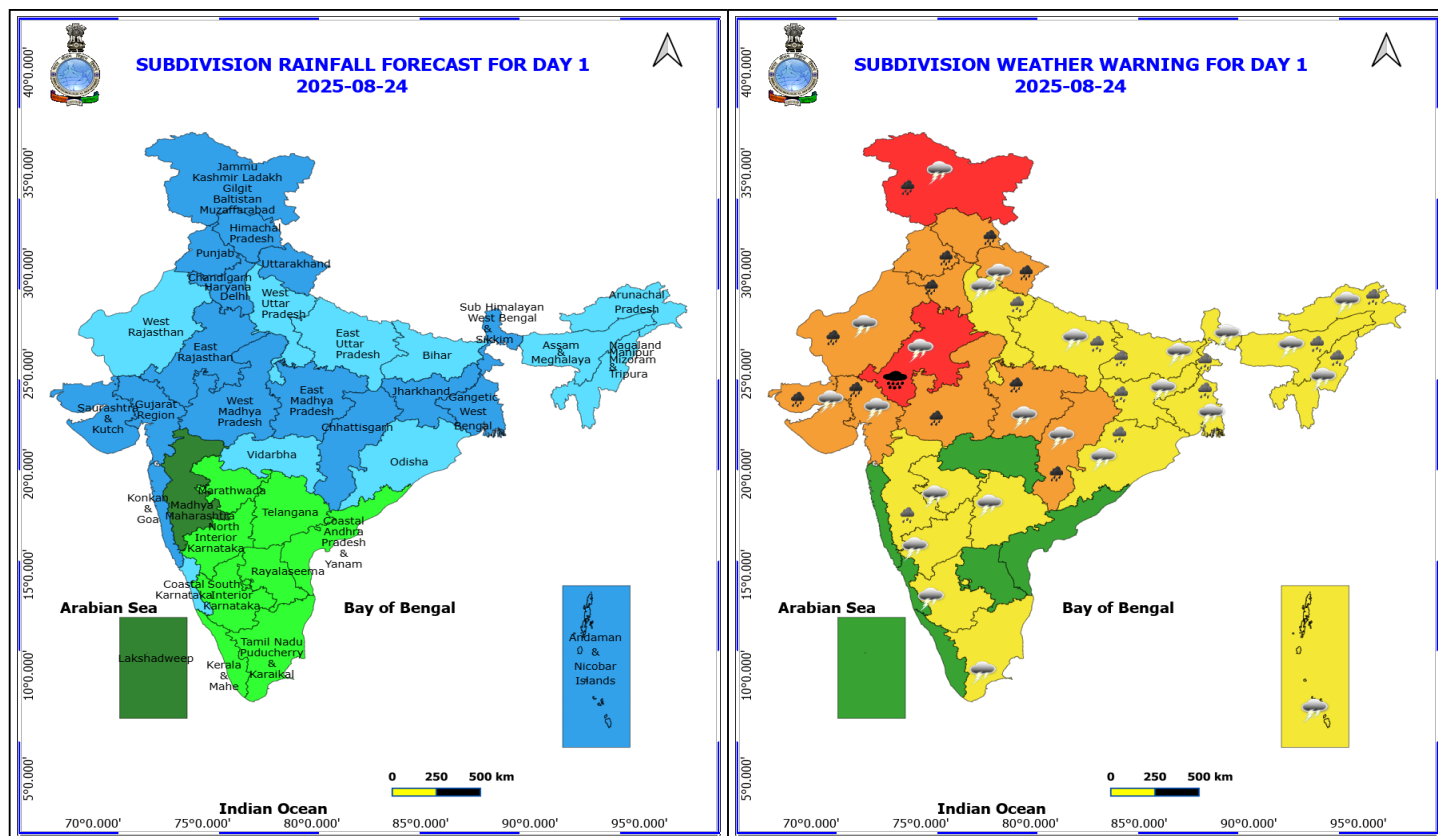
#### Meteorological Analysis (Based on 0830 hours IST)

- The **Low Pressure area** over west Jharkhand & neighbourhood lay over northeast Madhya Pradesh & neighbourhood at 0830 hrs IST of today, the 24<sup>th</sup> August, 2025. The associated **upper air cyclonic circulation** extends upto 7.6 km above mean sea level tilting southwards with height. It is likely to move west-northwestwards during next 24 hours and weaken gradually thereafter.
- The **monsoon trough** at mean sea level now passes through Bikaner, Jaipur, Gwalior, Prayagraj, centre of low-pressure area over northeast Madhya Pradesh & neighbourhood, Purulia, Digha and thence southeastwards to northeast Bay of Bengal.
- The **Western Disturbance** as a trough between 3.1 & 9.6 km above mean sea level with its axis at 3.1 km above mean sea level roughly along Long. 70°E to north of Lat. 28°N persists.
- The **upper air cyclonic circulation** over central parts of north Madhya Pradesh & adjoining areas of south Uttar Pradesh lay over northwest Madhya Pradesh & neighbourhood and extends upto 5.8 km above mean sea level tilting southwestwards with height.
- The **upper air cyclonic circulation** over Punjab & neighbourhood extending upto 1.5 km above mean sea level persists.
- A fresh **Low Pressure area** is likely to form over northwest Bay of Bengal off Odisha-West Bengal coasts during next 48 hours.
- The **upper air cyclonic circulation** over northeast Assam & neighbourhood at 3.1 km above mean sea level has become less marked.

#### Weather Outlook for subsequent 3 days

- Scattered to Fairly widespread rainfall likely over northern, western India, western peninsular and eastern India.





## 24 August (Day 1)

❖ **Heavy to Very Heavy Rainfall with isolated Extremely Heavy Rainfall** very likely at isolated places over East Rajasthan.

❖ **Heavy to Very Heavy Rainfall** very likely at isolated places over Chhattisgarh, Gujarat State, Haryana, Chandigarh & Delhi, Himachal Pradesh, Jammu-Kashmir-Ladakh-Gilgit-Baltistan-Muzaffarabad, Madhya Pradesh, Punjab, Uttarakhand and West Rajasthan.

❖ **Heavy Rainfall** very likely at isolated places over Arunachal Pradesh, Assam & Meghalaya, Bihar, Jharkhand, Madhya Maharashtra, Nagaland, Manipur, Mizoram and Tripura, Odisha, Uttar Pradesh and West Bengal & Sikkim.

❖ **Thunderstorm accompanied with lightning & gusty winds(30-40kmph)** very likely at isolated places over Andaman & Nicobar Islands, Bihar, Gujarat State, Jammu-Kashmir-Ladakh-Gilgit-Baltistan-Muzaffarabad, Jharkhand, Nagaland, Manipur, Mizoram and Tripura, South Interior Karnataka, Telangana and West Bengal & Sikkim.

❖ **Thunderstorm accompanied with Lightning** very likely at isolated places over Arunachal Pradesh, Assam & Meghalaya, Chhattisgarh, East Madhya Pradesh, Marathwada, North Interior Karnataka, Odisha, Rajasthan, Tamil Nadu Puducherry & Karaikal, Uttar Pradesh and Uttarakhand.

Squally wind with speed reaching 45 kmph to 55 kmph gusting to 65 kmph is likely to prevail along and off Somalia, Oman coasts, some parts of westcentral Arabian sea, adjoining & few parts of southwest and northwest Arabian Sea.

Squally weather with wind speed reaching 40 - 50 kmph gusting to 60 kmph likely to prevail along and off Gujarat & north konkan coasts and adjoining sea area, along and off north Odisha, West Bengal and Bangladesh coasts adjoining north Bay of Bengal.

**\*Red color warning does not mean "Red Alert" Red color warning means "Take Action"**

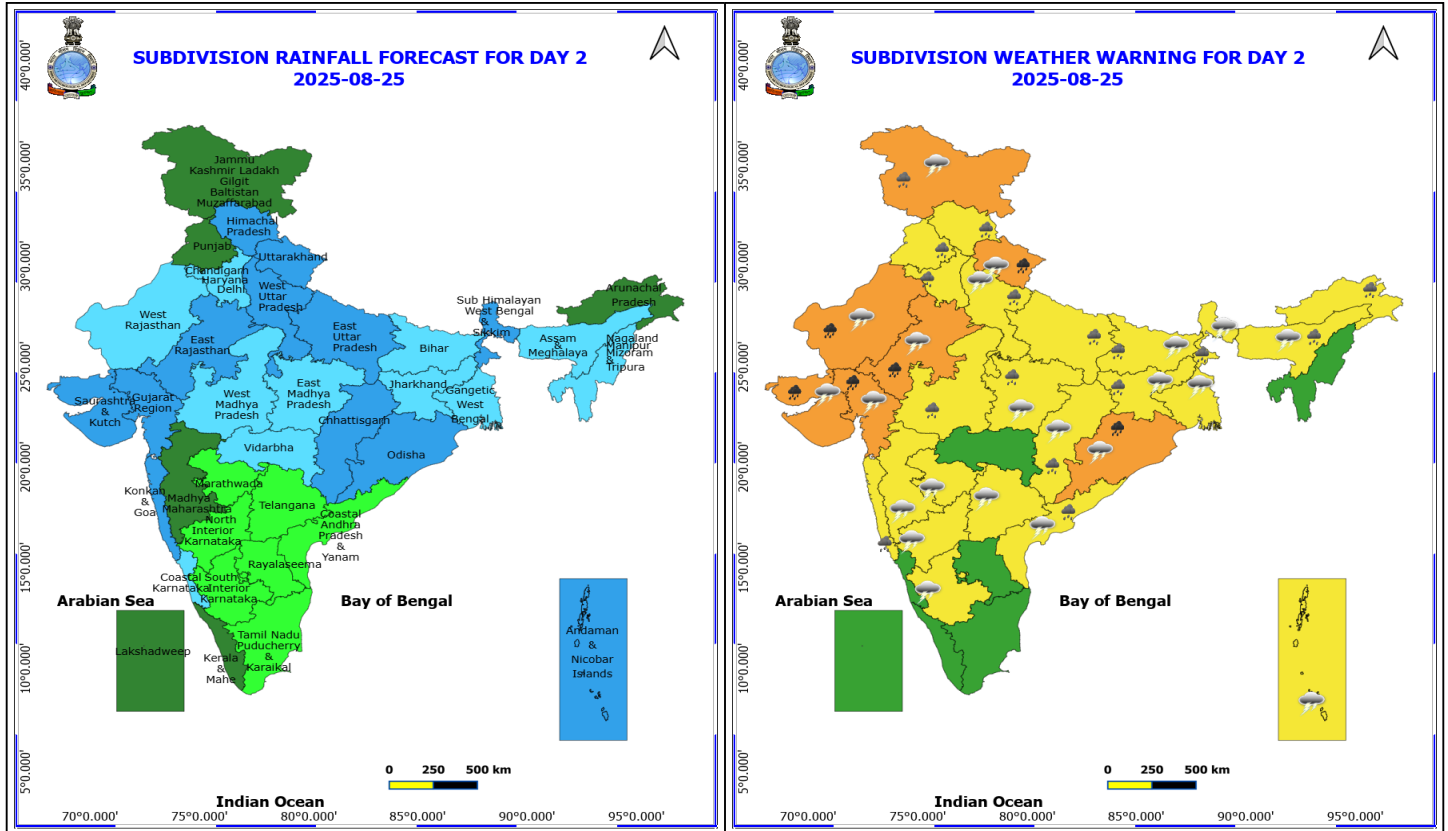
**Forecast and warning for any day is valid from 0830 hours IST of day till 0830 hours IST of next day**

**For more details kindly visit <https://mausam.imd.gov.in> or contact 011-2434-4599**

**(Service to the nation since 1875)**



Squally weather with wind speed reaching 45 - 55 kmph gusting to 65 kmph likely to prevail over some parts of northeast Arabian sea and adjoining sea areas.



## 25 August (Day 2)

- ❖ **Heavy to Very Heavy Rainfall** very likely at isolated places over Gujarat State, Odisha, Rajasthan and Uttarakhand.
- ❖ **Heavy Rainfall** very likely at isolated places over Arunachal Pradesh, Assam & Meghalaya, Bihar, Chhattisgarh, Coastal Andhra Pradesh, Haryana, Chandigarh & Delhi, Himachal Pradesh, Jammu-Kashmir-Ladakh-Gilgit-Baltistan-Muzaffarabad, Jharkhand, Konkan & Goa, Madhya Pradesh, Punjab, Sub Himalayan West Bengal & Sikkim and Uttar Pradesh.
- ❖ **Thunderstorm accompanied with lightning & gusty winds(30-40kmph)** very likely at isolated places over Andaman & Nicobar Islands, Bihar, Gujarat State, Interior Karnataka, Jammu-Kashmir-Ladakh-Gilgit-Baltistan-Muzaffarabad, Jharkhand, Telangana and West Bengal & Sikkim.
- ❖ **Thunderstorm accompanied with Lightning** very likely at isolated places over Assam & Meghalaya, Chhattisgarh, Coastal Andhra Pradesh, East Madhya Pradesh, Madhya Maharashtra, Marathwada, Odisha, Rajasthan, Uttarakhand and West Uttar Pradesh.

Squally wind with speed reaching 45 kmph to 55 kmph gusting to 65 kmph is likely to prevail along and off Somalia, Oman coasts, many parts of westcentral Arabian sea, adjoining & some parts of southwest, eastcentral Arabian Sea, adjoining parts of north Arabian Sea.

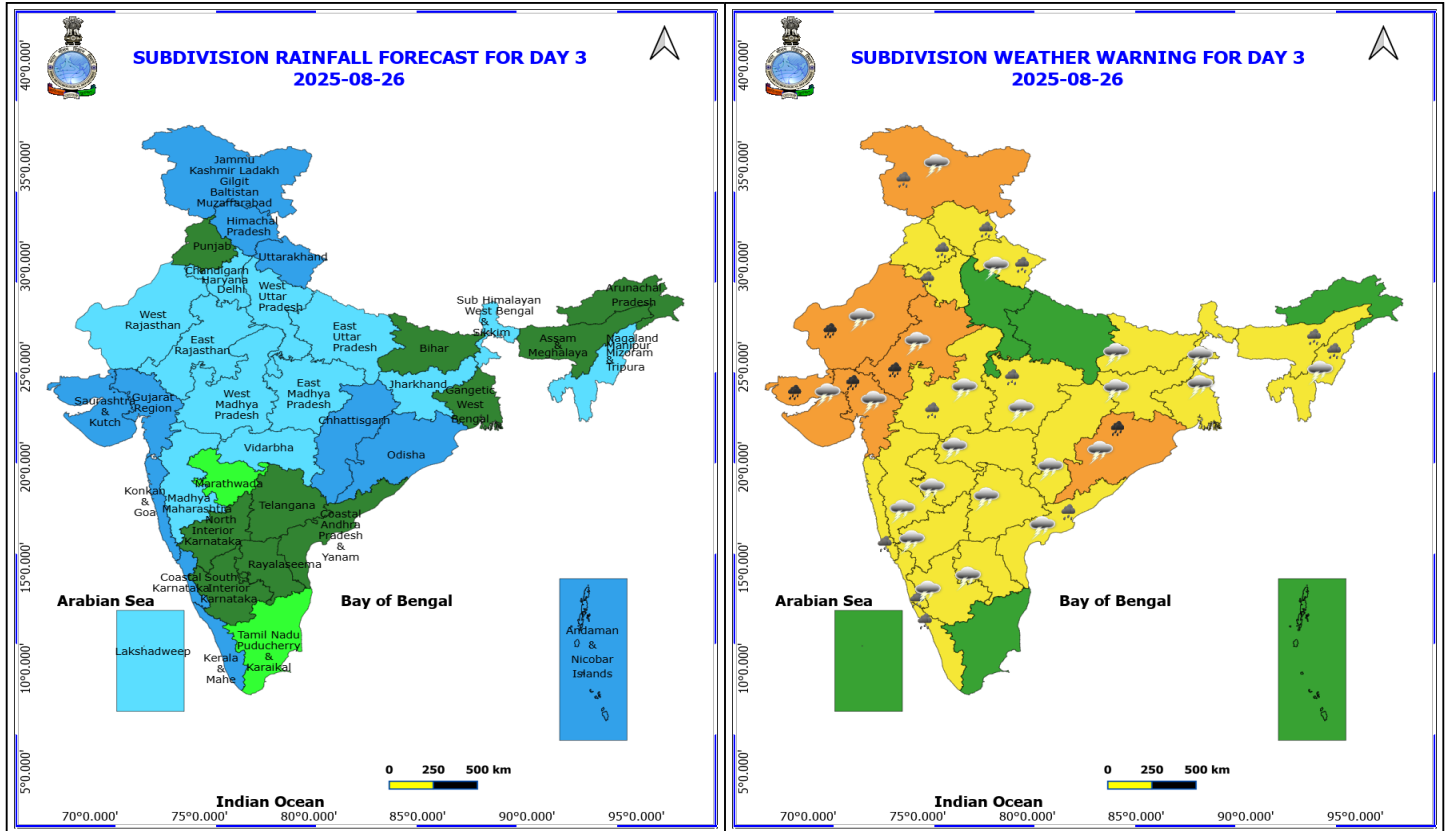
Squally weather with wind speed reaching 40 - 50 kmph gusting to 60 kmph likely to prevail along and off south Gujarat & north konkan coasts and adjoining northeast Arabian sea

\*Red color warning does not mean "Red Alert" Red color warning means "Take Action"

Forecast and warning for any day is valid from 0830 hours IST of day till 0830 hours IST of next day

For more details kindly visit <https://mausam.imd.gov.in> or contact 011-2434-4599

(Service to the nation since 1875)



## 26 August (Day 3)

- ❖ **Heavy to Very Heavy Rainfall** very likely at isolated places over Gujarat State, Odisha and Rajasthan.
- ❖ **Heavy Rainfall** very likely at isolated places over Assam & Meghalaya, Coastal Andhra Pradesh, Coastal Karnataka, Haryana, Chandigarh & Delhi, Himachal Pradesh, Jammu-Kashmir-Ladakh-Gilgit-Baltistan-Muzaffarabad, Kerala & Mahe, Konkan & Goa, Madhya Pradesh, Nagaland, Manipur, Mizoram and Tripura, Punjab and Uttarakhand.
- ❖ **Thunderstorm accompanied with lightning & gusty winds(30-40kmph)** very likely at isolated places over Bihar, Gujarat State, Interior Karnataka, Jammu-Kashmir-Ladakh-Gilgit-Baltistan-Muzaffarabad, Jharkhand, Nagaland, Manipur, Mizoram and Tripura, Telangana and West Bengal & Sikkim.
- ❖ **Thunderstorm accompanied with Lightning** very likely at isolated places over Andhra Pradesh, Chhattisgarh, Madhya Pradesh, Maharashtra, Odisha, Rajasthan and Uttarakhand.

Squally wind with speed reaching 45 kmph to 55 kmph gusting to 65 kmph is likely to prevail along and off Somalia, Oman coasts, most parts of westcentral Arabian sea, adjoining & some parts of southwest, over few parts of Comorin area.

Squally weather with wind speed reaching 40 - 50 kmph gusting to 60 kmph likely to prevail along and off south Gujarat, Konkan & Goa, Karnataka, Kerala coasts, Lakshadweep area, and some parts of eastcentral Arabian Sea; along and off West Bengal, Odisha coasts, over north & adjoining central Bay of Bengal, over few parts of south west Bay of Bengal off south Sri Lanka coasts.

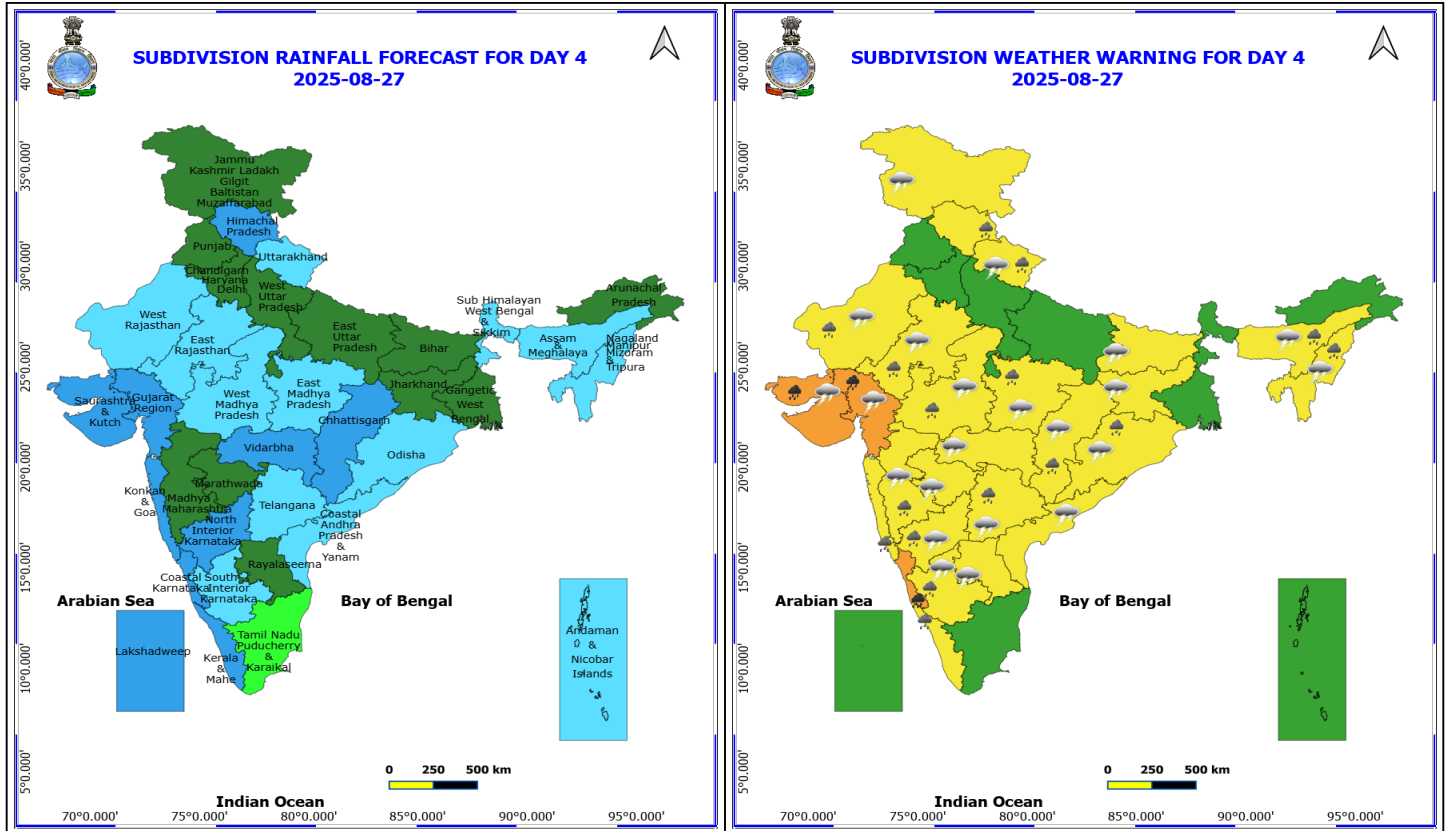
**\*Red color warning does not mean "Red Alert" Red color warning means "Take Action"**

Forecast and warning for any day is valid from 0830 hours IST of day till 0830 hours IST of next day

For more details kindly visit <https://mausam.imd.gov.in> or contact 011-2434-4599

(Service to the nation since 1875)





## 27 August (Day 4)

- ❖ **Heavy to Very Heavy Rainfall** likely at isolated places over Coastal Karnataka and Gujarat State.
- ❖ **Heavy Rainfall** likely at isolated places over Assam & Meghalaya, Chhattisgarh, Himachal Pradesh, Interior Karnataka, Kerala & Mahe, Konkan & Goa, Madhya Maharashtra, Madhya Pradesh, Nagaland, Manipur, Mizoram and Tripura, Odisha, Rajasthan, Telangana and Uttarakhand.
- ❖ **Thunderstorm accompanied with lightning & gusty winds(30-40kmph)** likely at isolated places over Bihar, Gujarat State, Interior Karnataka, Jammu-Kashmir-Ladakh-Gilgit-Baltistan-Muzaffarabad, Jharkhand, Nagaland, Manipur, Mizoram and Tripura and Telangana.
- ❖ **Thunderstorm accompanied with Lightning** likely at isolated places over Andhra Pradesh, Assam & Meghalaya, Chhattisgarh, Madhya Pradesh, Maharashtra, Odisha, Rajasthan and Uttarakhand.

Squally wind with speed reaching 45 kmph to 55 kmph gusting to 65 kmph is likely to prevail along and off Somalia, Oman coasts, most parts of westcentral Arabian sea, adjoining & some parts of southwest, eastcentral Arabian Sea Arabian Sea.

Squally weather with wind speed reaching 40 - 50 kmph gusting to 60 kmph likely to prevail along and off south Gujarat, Konkan & Goa, Karnataka, Kerala coasts, Lakshadweep area, and many parts of eastcentral Arabian Sea, ; along and off West Bengal, Odisha, North Andra Pradesh coasts, over north & central Bay of Bengal

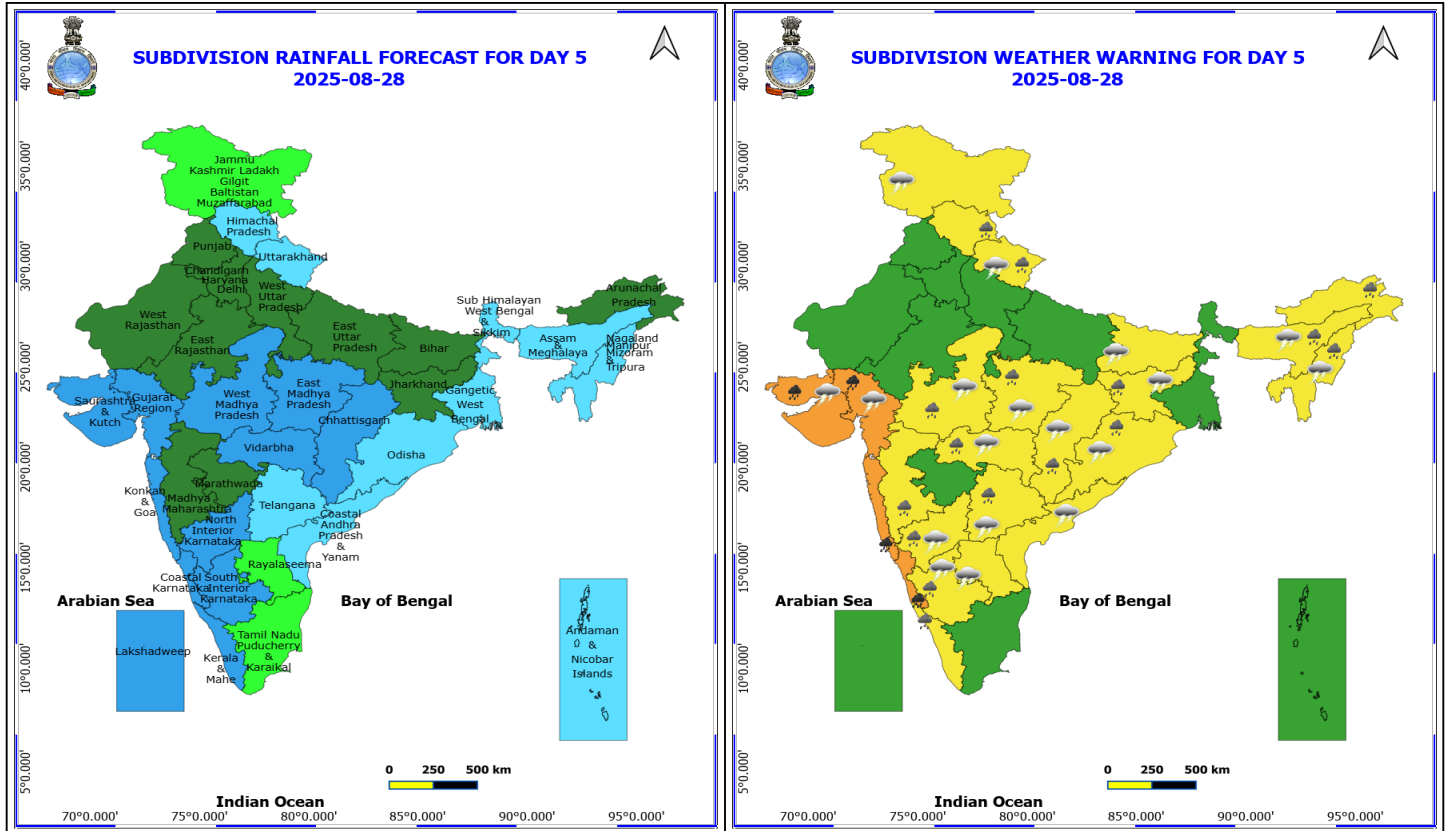
Squally weather with wind speed reaching 45 - 55 kmph gusting to 65 kmph likely to prevail over few parts of south west Bay of Bengal off south Sri Lanka coasts.

**\*Red color warning does not mean "Red Alert" Red color warning means "Take Action"**

Forecast and warning for any day is valid from 0830 hours IST of day till 0830 hours IST of next day

For more details kindly visit <https://mausam.imd.gov.in> or contact 011-2434-4599

(Service to the nation since 1875)



## 28 August (Day 5)

- ❖ **Heavy to Very Heavy Rainfall** likely at isolated places over Coastal Karnataka, Gujarat State and Konkan & Goa.
- ❖ **Heavy Rainfall** likely at isolated places over Arunachal Pradesh, Assam & Meghalaya, Chhattisgarh, Himachal Pradesh, Interior Karnataka, Jharkhand, Kerala & Mahe, Madhya Maharashtra, Madhya Pradesh, Nagaland, Manipur, Mizoram and Tripura, Odisha, Telangana, Uttarakhand and Vidarbha.
- ❖ **Thunderstorm accompanied with lightning & gusty winds(30-40kmph)** likely at isolated places over Bihar, Gujarat State, Interior Karnataka, Jammu-Kashmir-Ladakh-Gilgit-Baltistan-Muzaffarabad, Jharkhand, Nagaland, Manipur, Mizoram and Tripura and Telangana.
- ❖ **Thunderstorm accompanied with Lightning** likely at isolated places over Andhra Pradesh, Assam & Meghalaya, Chhattisgarh, Madhya Pradesh, Odisha, Uttarakhand and Vidarbha.

Squally wind with speed reaching 45 kmph to 55 kmph gusting to 65 kmph is likely to prevail along and off Somalia, Oman coasts, most parts of westcentral Arabian sea, adjoining & some parts of southwest, eastcentral Arabian Sea Arabian Sea.

Squally weather with wind speed reaching 40 - 50 kmph gusting to 60 kmph likely to prevail along and off south Gujarat, Konkan & Goa, Karnataka, Kerala coasts, Lakshadweep area, and many parts of eastcentral Arabian Sea, along and off Odisha, North Andhra Pradesh coasts, over many parts of north, central & southwest Bay of Bengal

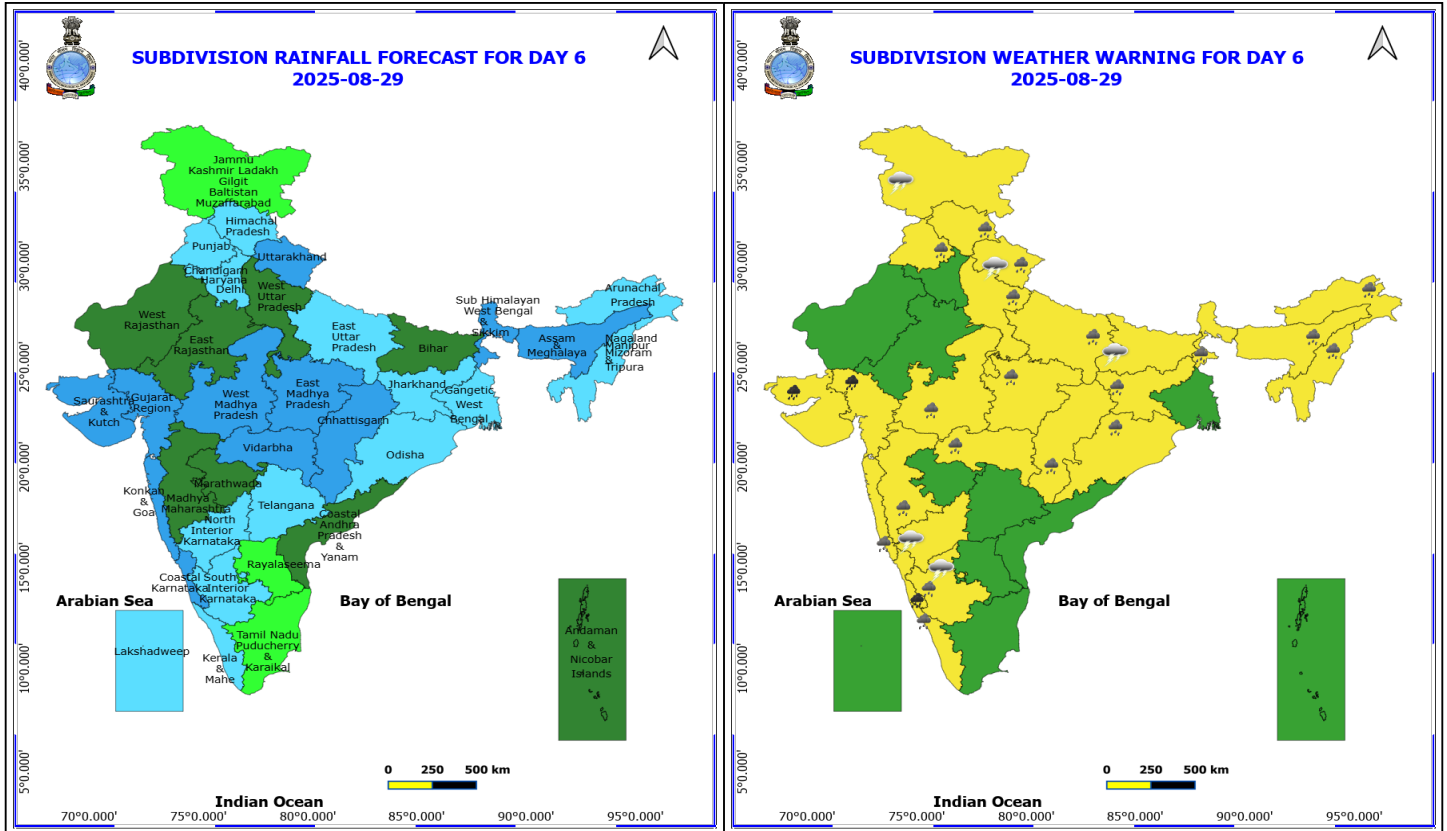
Squally weather with wind speed reaching 45 - 55 kmph gusting to 65 kmph likely to prevail over few parts of south west Bay of Bengal off south Sri Lanka coasts; many parts of westcentral & adjoining eastcentral Bay of Bengal.

**\*Red color warning does not mean "Red Alert" Red color warning means "Take Action"**

Forecast and warning for any day is valid from 0830 hours IST of day till 0830 hours IST of next day

For more details kindly visit <https://mausam.imd.gov.in> or contact 011-2434-4599

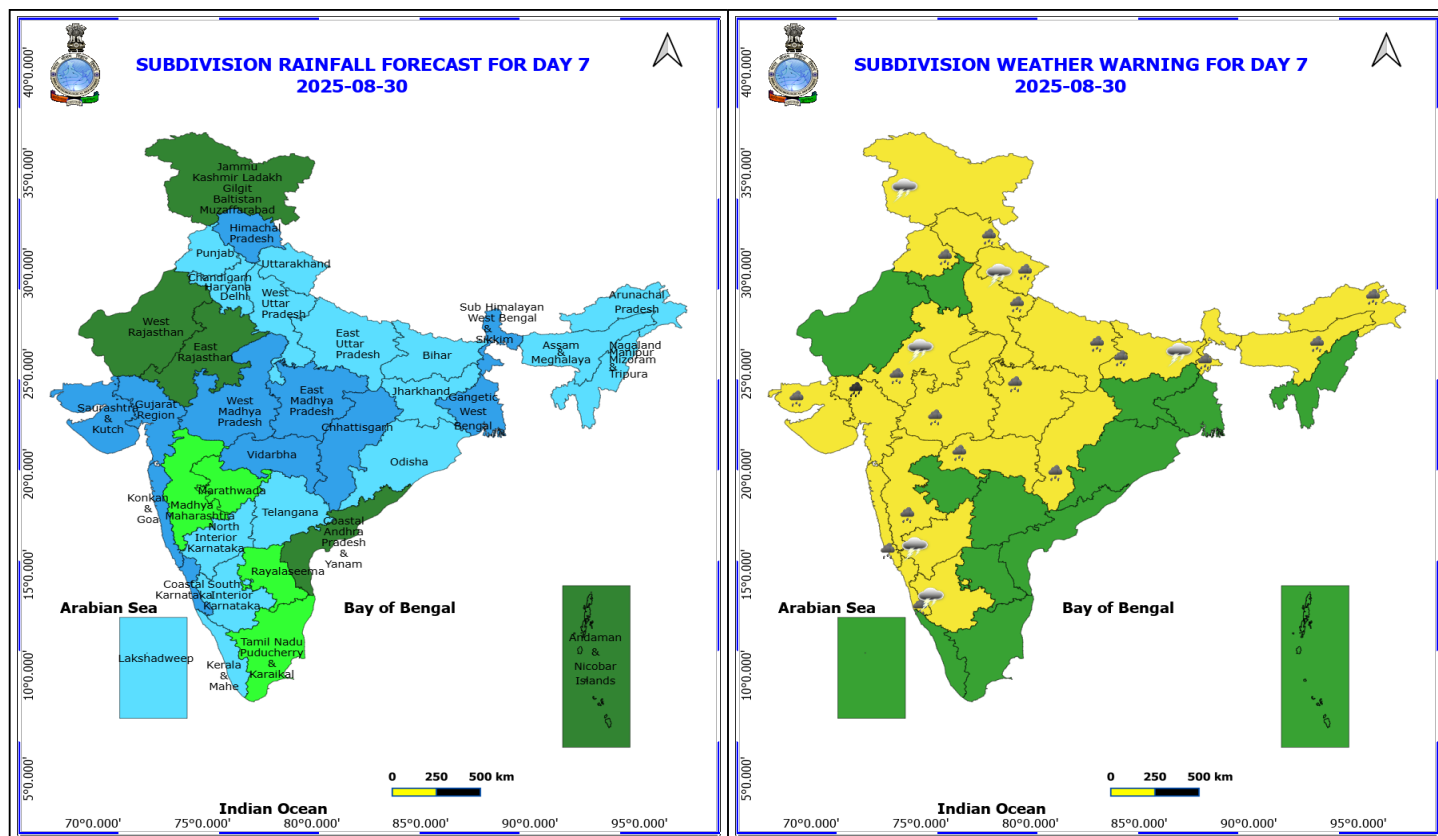
(Service to the nation since 1875)



## 29 August (Day 6)

- ❖ **Heavy to Very Heavy Rainfall** likely at isolated places over Coastal Karnataka and Gujarat State.
- ❖ **Heavy Rainfall** likely at isolated places over Arunachal Pradesh, Assam & Meghalaya, Chhattisgarh, Himachal Pradesh, Jharkhand, Kerala & Mahe, Konkan & Goa, Madhya Maharashtra, Madhya Pradesh, Nagaland, Manipur, Mizoram and Tripura, Odisha, Punjab, South Interior Karnataka, Sub Himalayan West Bengal & Sikkim, Uttar Pradesh, Uttarakhand and Vidarbha.
- ❖ **Thunderstorm accompanied with lightning & gusty winds(30-40kmph)** likely at isolated places over Bihar, Interior Karnataka and Jammu-Kashmir-Ladakh-Gilgit-Baltistan-Muzaffarabad.
- ❖ **Thunderstorm accompanied with Lightning** likely at isolated places over Uttarakhand.

**No Fishermen Warning**



### 30 August (Day 7)

- ❖ **Heavy to Very Heavy Rainfall** likely at isolated places over Gujarat Region.
- ❖ **Heavy Rainfall** likely at isolated places over Arunachal Pradesh, Assam & Meghalaya, Bihar, Chhattisgarh, Coastal Karnataka, East Rajasthan, Himachal Pradesh, Konkan & Goa, Madhya Maharashtra, Madhya Pradesh, Punjab, Saurashtra & Kutch, Sub Himalayan West Bengal & Sikkim, Uttar Pradesh, Uttarakhand and Vidarbha.
- ❖ **Thunderstorm accompanied with lightning & gusty winds(30-40kmph)** likely at isolated places over Bihar, Interior Karnataka and Jammu-Kashmir-Ladakh-Gilgit-Baltistan-Muzaffarabad.
- ❖ **Thunderstorm accompanied with Lightning** likely at isolated places over East Rajasthan and Uttarakhand.

**No Fishermen Warning**

**\*Red color warning does not mean "Red Alert" Red color warning means "Take Action"**

Forecast and warning for any day is valid from 0830 hours IST of day till 0830 hours IST of next day

For more details kindly visit <https://mausam.imd.gov.in> or contact 011-2434-4599

(Service to the nation since 1875)



## Flash Flood Warnings

### 24 hours Outlook for the Flash Flood Risk (FFR) till 1130 IST of 25-08-2025 :

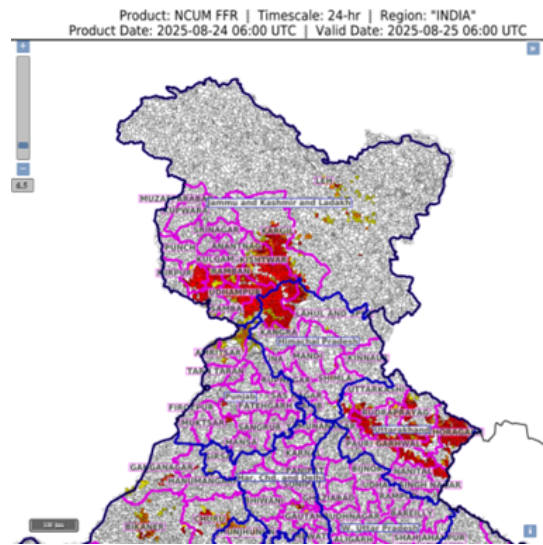
Moderate flash flood risk likely over few watersheds & neighbourhoods of following Met Sub-divisions during next 24 hours.

**Jammu & Kashmir and Ladakh** – Doda, Jammu Kathua, Kargil, Leh, Kishtwar, Mirpur, Ramban, Reasi, Rajouri, Samba and Udhampur districts.

**Himachal Pradesh** - Chamba, Kangra, Lahul & Spiti, Mandi, Kullu, Shimla and Sirmaur districts.

**Uttarakhand** – Almora, Bageshwar, Chamoli, Champawat, Nainital, Pauri Garhwal, Pithoragarh, Rudraprayag, Tehri Garwal and Uttarkashi districts.

Surface runoff/ Inundation may occur at some fully saturated soils & low-lying areas over Area of Concern (AoC) as shown in map due to expected rainfall occurrence in next 24 hours.



### 24 hours Outlook for the Flash Flood Risk (FFR) till 1130 IST of 25-08-2025:

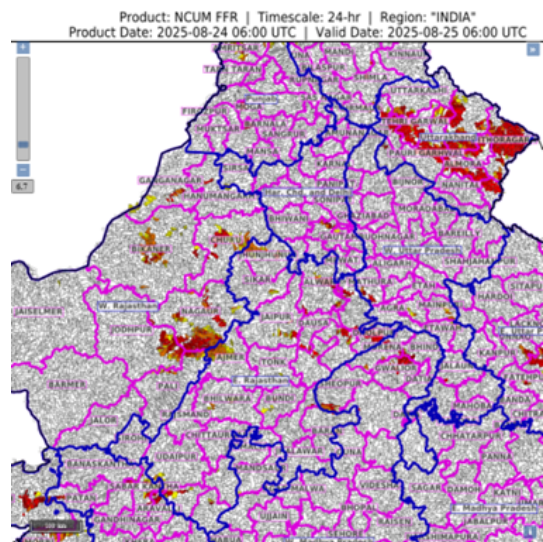
Low to Moderate flash flood risk likely over few watersheds & neighbourhoods of following Met Sub-divisions during next 24 hours.

**West Madhya Pradesh** – Bhind, Gwalior, Morena, Shivpuri and Sheopur districts.

**East Rajasthan** – Ajmer, Alwar, Bundi, Bhilwara, Dholpur, Dausa, Ungarpur, Udaipur Karauli, Tonk and Sawai Madhopur districts.

**West Rajasthan** – Bikaner, Churu, Pali, Nagaur, Jodhpur, Sri Ganganagar, Hanumangarh districts.

Surface runoff/ Inundation may occur at some fully saturated soils & low-lying areas over Area of Concern (AoC) as shown in map due to expected rainfall occurrence in next 24 hours.



\*Red color warning does not mean "Red Alert" Red color warning means "Take Action"

Forecast and warning for any day is valid from 0830 hours IST of day till 0830 hours IST of next day

For more details kindly visit <https://mausam.imd.gov.in> or contact 011-2434-4599

(Service to the nation since 1875)





# Table-1

## 7 Days Rainfall Forecast

S.No.	Subdivision	24-Aug	25-Aug	26-Aug	27-Aug	28-Aug	29-Aug	30-Aug
		Day 1	Day 2	Day 3	Day 4	Day 5	Day 6	Day 7
1	ANDAMAN & NICOBAR ISLANDS	WS	WS	WS	FWS	FWS	SCT	SCT
2	ARUNACHAL PRADESH	FWS	SCT	SCT	SCT	SCT	FWS	FWS
3	ASSAM & MEHGHALAYA	FWS	FWS	SCT	FWS	FWS	WS	FWS
4	N. M. M. & T.	FWS	FWS	FWS	FWS	FWS	FWS	FWS
5	S.H. WEST BENGAL & SIKKIM	WS	WS	FWS	FWS	FWS	WS	WS
6	GANGETIC WEST BENGAL	WS	FWS	SCT	SCT	FWS	FWS	WS
7	ODISHA	FWS	WS	WS	FWS	FWS	FWS	FWS
8	JHARKHAND	WS	FWS	FWS	SCT	SCT	FWS	FWS
9	BIHAR	FWS	FWS	SCT	SCT	SCT	SCT	FWS
10	EAST UTTAR PRADESH	FWS	WS	FWS	SCT	SCT	FWS	FWS
11	WEST UTTAR PRADESH	FWS	WS	FWS	SCT	SCT	SCT	FWS
12	UTTARAKHAND	WS	WS	WS	FWS	FWS	WS	FWS
13	HARYANA, CHD & DELHI	WS	FWS	FWS	SCT	SCT	FWS	FWS
14	PUNJAB	WS	SCT	SCT	SCT	SCT	FWS	FWS
15	HIMACHAL PRADESH	WS	WS	WS	WS	FWS	FWS	WS
16	JAMMU AND KASHMIR AND LADAKH	WS	SCT	WS	SCT	ISOL	ISOL	SCT
17	WEST RAJASTHAN	FWS	FWS	FWS	FWS	SCT	SCT	SCT
18	EAST RAJASTHAN	WS	WS	FWS	FWS	SCT	SCT	SCT
19	WEST MADHYA PRADESH	WS	FWS	FWS	FWS	WS	WS	WS
20	EAST MADHYA PRADESH	WS	FWS	FWS	FWS	WS	WS	WS
21	GUJRAT REGION	WS	WS	WS	WS	WS	WS	WS
22	SAURASHTRA & KUTCH	WS	WS	WS	WS	WS	WS	WS
23	KONKAN & GOA	WS	WS	WS	WS	WS	WS	WS
24	MADHYA MAHARASHTRA	SCT	SCT	FWS	SCT	SCT	SCT	ISOL
25	MARATHWADA	ISOL	ISOL	ISOL	SCT	SCT	SCT	ISOL
26	VIDARBHA	FWS	FWS	FWS	WS	WS	WS	WS
27	CHATTISGARH	WS	WS	WS	WS	WS	WS	WS
28	COASTAL ANDHRA PRADESH	ISOL	ISOL	SCT	FWS	FWS	SCT	SCT
29	TELANGANA	ISOL	ISOL	SCT	FWS	FWS	FWS	FWS
30	RAYALASEEMA	ISOL	ISOL	SCT	SCT	ISOL	ISOL	ISOL
31	TAMILNADU & PUDUCHERRY	ISOL	ISOL	ISOL	ISOL	ISOL	ISOL	ISOL
32	COSTAL KARNATAKA	FWS	FWS	WS	WS	WS	WS	WS
33	NORTH INTERIOR KARNATAKA	ISOL	ISOL	SCT	WS	WS	FWS	FWS
34	SOUTH INTERIOR KARNATAKA	ISOL	ISOL	SCT	FWS	WS	FWS	FWS
35	KERALA	ISOL	SCT	WS	WS	WS	FWS	FWS
36	LAKSHDWEEP	SCT	SCT	FWS	WS	WS	FWS	FWS

Legend	Category	%Stations
WS	Widespread/Most Places	76-100
FWS	Fairly Widespread/Many Places	51-75
SCT	Scattered/ A Few Places	26-50
ISOL	Isolated Places	1-25
DRY	No Rain	0

\*Red color warning does not mean "Red Alert" Red color warning means "Take Action"

Forecast and warning for any day is valid from 0830 hours IST of day till 0830 hours IST of next day

For more details kindly visit <https://mausam.imd.gov.in> or contact 011-2434-4599

(Service to the nation since 1875)

Fig. 1: Maximum Temperatures Dated 2025-08-24

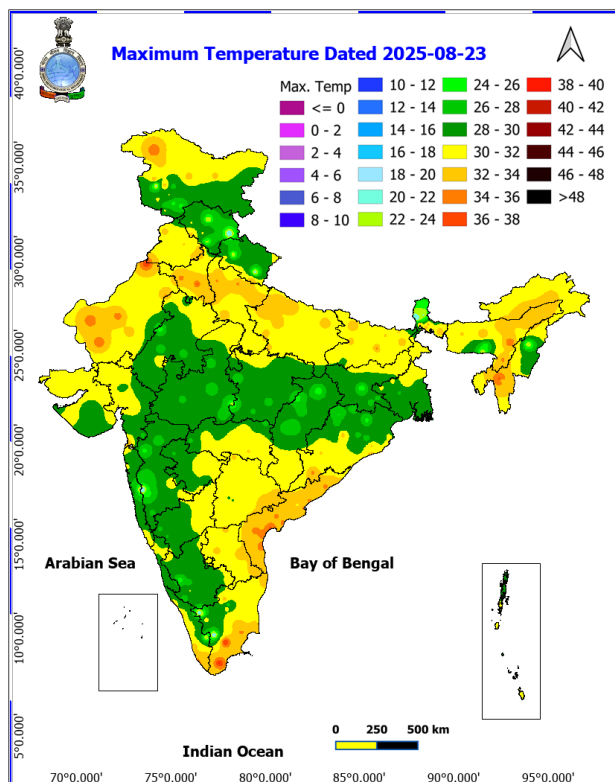


Fig. 2: Departure of Maximum Temp. Dated 2025-08-24

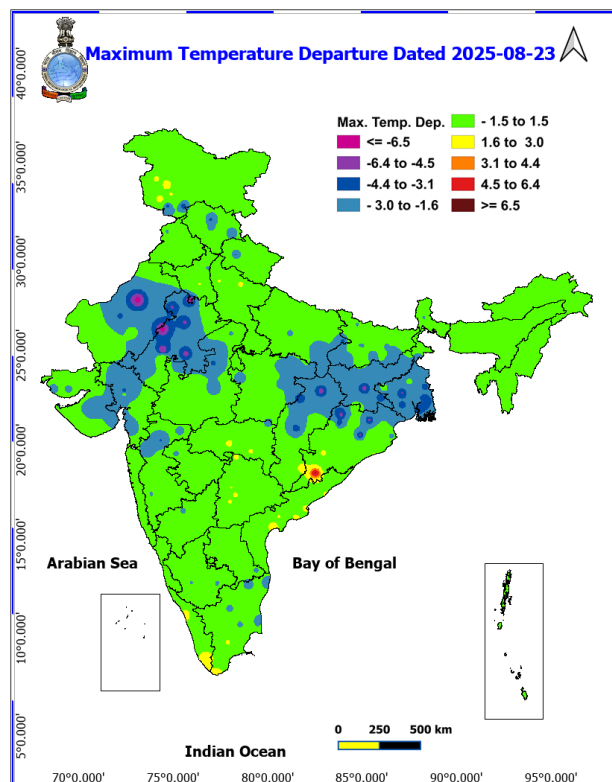


Fig. 3: Minimum Temperatures Dated 2025-08-24

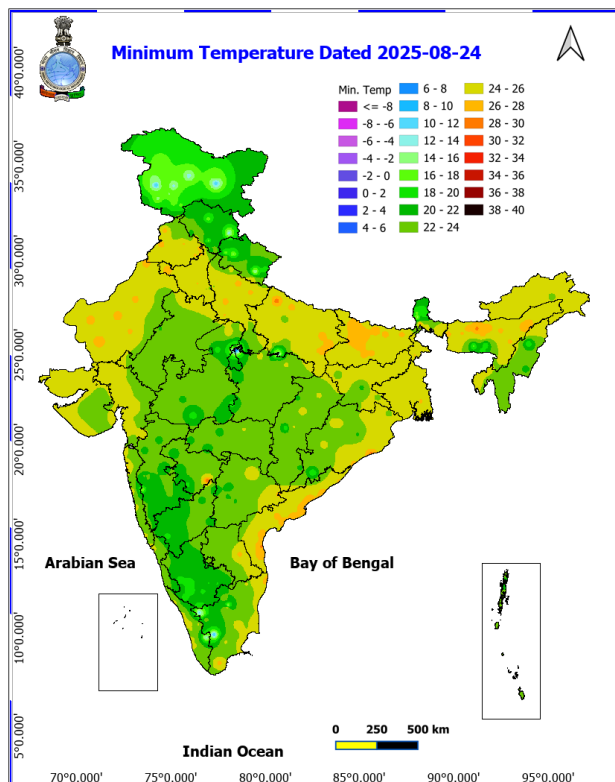
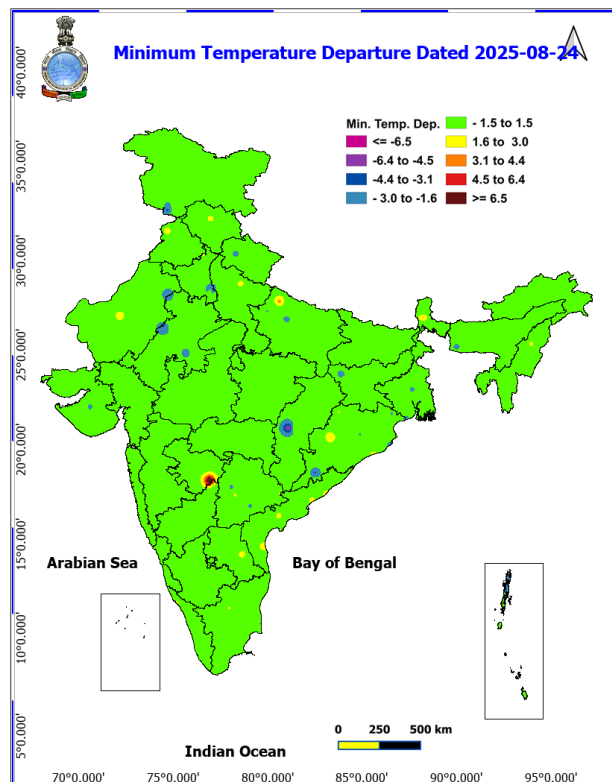
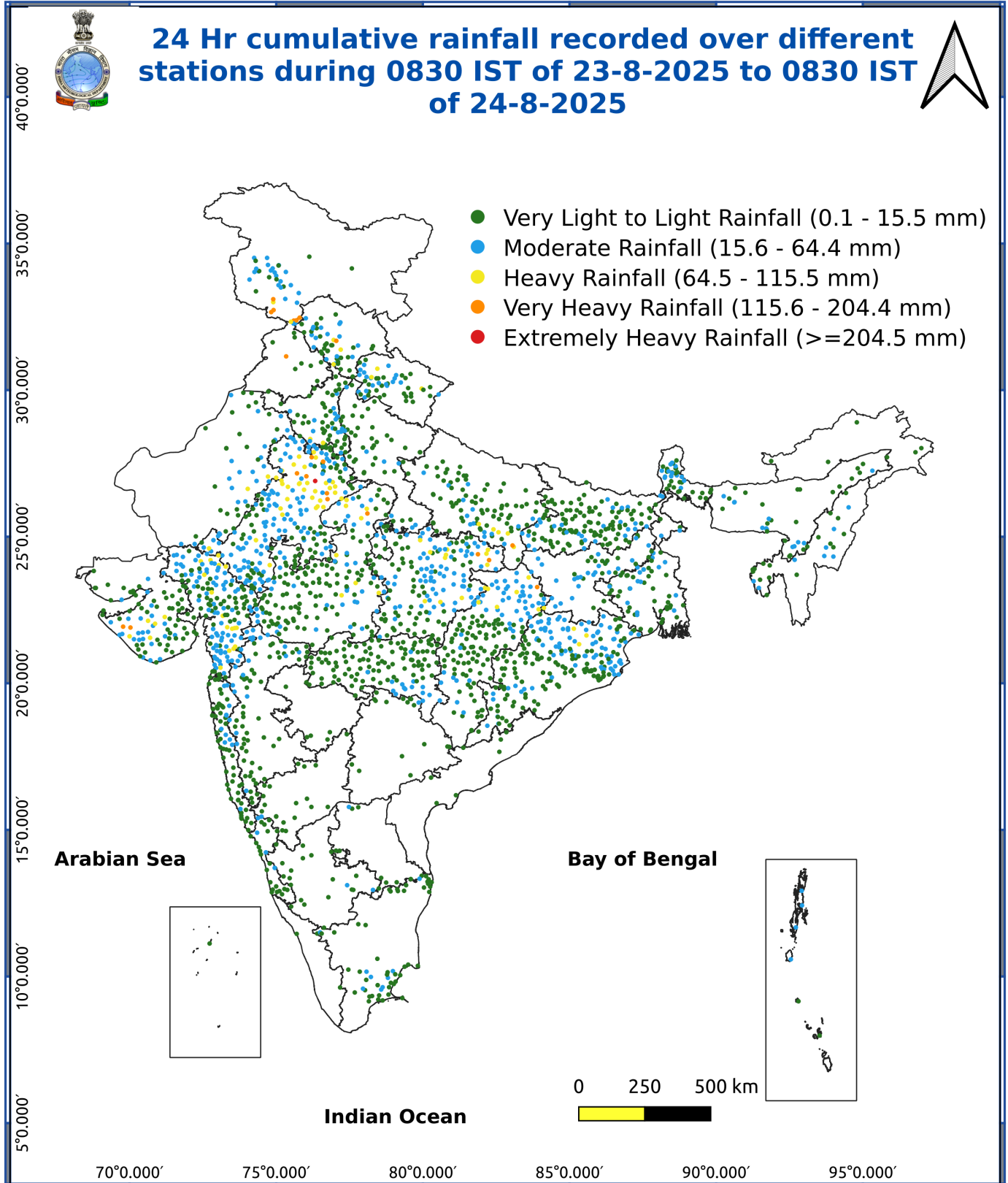


Fig. 4: Departure of Minimum Temp. Dated 2025-08-24





\*Red color warning does not mean "Red Alert" Red color warning means "Take Action"

Forecast and warning for any day is valid from 0830 hours IST of day till 0830 hours IST of next day

For more details kindly visit <https://mausam.imd.gov.in> or contact 011-2434-4599

(Service to the nation since 1875)

#### Impact & Action Suggested due to

- **Extremely heavy rainfall** over East Rajasthan on 24<sup>th</sup> August.
- **Very heavy rainfall over** Jammu & Kashmir, Himachal Pradesh, Punjab, Haryana, Chandigarh, Madhya Pradesh, Chhattisgarh on 24<sup>th</sup>; Uttarakhand during 24<sup>th</sup>-25<sup>th</sup>; Rajasthan during 24<sup>th</sup>-26<sup>th</sup>; Odisha on 25<sup>th</sup> & 26<sup>th</sup>, Gujarat state during 24<sup>th</sup>-30<sup>th</sup>, Coastal Karnataka during 27<sup>th</sup>-29<sup>th</sup> August.

#### Impact Expected

- Localized Flooding of roads, water logging in low lying areas and closure of underpasses mainly in urban areas of the above region.
- Occasional reduction in visibility due to heavy rainfall.
- Disruption of traffic in major cities due to water logging in roads leading to increased travel time.
- Minor damage to kutcha roads.
- Possibilities of damage to vulnerable structure.
- Localized Landslides/Mudslides/landslips/mudslips/landsinks/mudsinks.
- Damage to horticulture and standing crops in some areas due to inundation.
- It may lead to riverine flooding in some river catchments (for riverine flooding please visit Web page of CWC)

#### Action Suggested

- Check for traffic congestion on your route before leaving for your destination.
- Follow any traffic advisories that are issued in this regard.
- Avoid going to areas that face the water logging problems often.
- Avoid staying in vulnerable structure.

#### Agromet advisories for various parts of the country

##### Agromet advisories for likely impact of Heavy / Heavy to Very Heavy / Extremely Heavy Rainfall

(Based on the IBF and advisories issued by different AMFUs)

- In **East Rajasthan**, make arrangements to drain out excess water from fields of rice, maize, soybean, black gram and groundnut in **Southeastern Humid Plain Zone**; pearl millet, sorghum, maize, green gram, black gram, moth bean, sesame and cluster bean in **Flood Prone Eastern Plain Zone**; groundnut, green gram, moth bean, cowpea, pearl millet, maize, sorghum and vegetables in **Semi-Arid Eastern Plain Zone**; vegetable nurseries, maize, soybean and groundnut in **Sub Humid Southern Plain and Aravali Hill Zone** and soybean, maize and cotton in **Southern Humid Plain Zone**. In **West Rajasthan**, make provision to drain out excess rain water from fields of pearl millet, green gram and cluster bean in **Arid Western Plain Zone**.
- In **Gujarat**, provide mechanical support to horticultural crops and staking or support to vegetables and young fruit plants to avoid lodging due to heavy rains and strong winds. Make arrangements to drain out excess water from fields of rice, sugarcane, vegetables and tuber crops in **South Gujarat Heavy Rainfall Zone**; groundnut, cotton, soybean, black gram, green gram, sesame and pigeon pea in **South Saurashtra Zone**; rice, cotton, green gram, black gram, pigeon pea, pearl millet and vegetables in **Bhal and Coastal Zone**; castor, cotton, groundnut, pearl millet and sesame in **North Gujarat Zone**; rice, pearl millet, pigeon pea, green gram, black gram, cotton, soybean, maize, castor and vegetables in **Middle Gujarat Zone**; rice, cotton, sugarcane and pigeon pea in **South Gujarat Zone**; groundnut, cotton, sesame, black gram, green gram, pigeon pea and castor in **North Saurashtra Zone** and *khariif* groundnut, cotton, soybean, black gram, green gram, sesame, pigeon pea and castor in **North West Zone**.
- In **Madhya Pradesh**, provide adequate drainage in fields of soybean, maize and vegetables in **Malwa Plateau Zone**; maize, soybean, green gram, black gram, pigeon pea and vegetables in **Gird Zone**; soybean, maize and vegetables in **Kymore Plateau and Satpura Hill Zone**; soybean, green gram, black gram and maize in **Bundelkhand Zone** and soybean and vegetables in **Vindhyan Plateau Zone**.

\*Red color warning does not mean "Red Alert" Red color warning means "Take Action"

Forecast and warning for any day is valid from 0830 hours IST of day till 0830 hours IST of next day

For more details kindly visit <https://mausam.imd.gov.in> or contact 011-2434-4599

(Service to the nation since 1875)





- In **Chhattisgarh**, ensure proper drainage in fields of rice and vegetables in **North Hill Zone** and maize, groundnut, soybean, pigeon pea and vegetables in **Chhattisgarh Plain Zone**. Postpone fresh transplanting of rice in low land areas in **North Hill Zone**.
- In **Jammu and Kashmir**, do not allow water to stagnate in fields of maize, pulses, cowpea, bajra and vegetables in **Sub Tropical Zone**. Proper drainage should be ensured in the fields of paddy, maize, Pulses, horticultural and vegetable crops in **Intermediate Zone**.
- In **Himachal Pradesh**, maintain proper drainage channels in ginger, turmeric and maize fields in **Mid Hills Sub Humid Zone** and rice, maize and vegetable fields in **Sub Montane and Low Hills Sub Tropical Zone**. In **High Hills Sub Temperate Wet Zone**, harvest ripened tomatoes and ensure proper drainage in maize, kidney bean, vegetable fields and fruit orchards.
- In **Uttarakhand**, maintain proper drainage channels in fields of soybean, maize, pulses, finger millet, ginger, vegetable and fruit orchards in **Hill Zone**; barnyard millet, finger millet and green gram in **Sub Humid Sub Tropic Zone** and rice, green gram, black gram, sugarcane, maize, soybean, groundnut and vegetables in **Bhabar and Tarai Zone**.
- In **Punjab**, maintain proper drainage in chilli fields and remove stagnant rainwater immediately after rainfall in **Undulating Plain Zone**. Ensure proper drainage in fields of sugarcane, maize, soybean and green gram in **Sub-Montane Undulating Zone** and sugarcane, maize and cotton in **Central Plain Zone**.
- In **Haryana**, make arrangements to drain out excess water from fields of sugarcane, cotton, maize, pearl millet and vegetables in **Eastern Zone**.
- In **Gangetic West Bengal**, ensure proper drainage in fields of rice and groundnut in **Laterite and Red Soil Zone**; rice, jute and vegetables in **New Alluvial Zone** and betel gardens and newly transplanted winter vegetables in **Coastal Saline Zone**. In **Sub-Himalayan West Bengal**, make provision to drain out excess water from *aman* rice and vegetable fields (chilli, bitter gourd, pointed gourd, okra, brinjal etc.) and cover the chilli seedlings with plastic to protect them from heavy rains in **Terai Zone**.
- In **Odisha**, make provision for draining out excess rain water from fields of rice, maize, black gram and vegetables in **North Central Plateau Zone**; finger millet, pulses, maize, groundnut and vegetables in **North Eastern Plateau Zone**; rice, vegetables and fruit orchards in **North Eastern Coastal Plain Zone**; rice, maize and vegetables in **West Central Table Land Zone** and green gram, black gram, sugarcane, vegetables and fruit orchards in **East and South Eastern Coastal Plain Zone**. In **Keonjhar district**, postpone the sowing of green gram and black gram and nursery sowing and transplanting of tomato.
- In **Bihar**, ensure proper drainage to drain out excess rainwater from standing crops such as pigeon pea, turmeric, yam, sunflower and maize as well as from vegetable nurseries in **South Bihar Alluvial Zone**.
- In **Jharkhand**, ensure adequate drainage facilities in fields of rice, maize, black gram, green gram, tuber crops and vegetables and cover the vegetable seedlings with polythene to protect them from heavy rains in **Western Plateau Zone**.

#### Livestock / Fishery

- Keep the animals inside the shed during heavy rainfall and provide them balanced feed.
- Store feed and fodder in a safe place to prevent spoilage.
- Construct an outlet with proper netting around the ponds to drain out excess water, thereby preventing fish from escaping in case of overflow.

#### Agromet advisories for likely impact of Thunderstorm / Gusty Winds / Squally Winds

- Provide mechanical support to horticultural crops and staking or support to vegetables and young fruit plants / fruit-bearing plants to avoid lodging due to strong winds.



## LEGENDS

- 1 अंडमान और निकोबार द्वीप समुह
- 2 अरुणाचल प्रदेश
- 3 असम और मेघालय
- 4 नागालैंड मनीपुर मीजोरम और त्रिपुरा
- 5 उप हिमालय पश्चिम बंगाल एवं सिक्किम
- 6 पश्चिम बंगाल
- 7 ओडिसा
- 8 झारखंड
- 9 बिहार
- 10 पूर्वी उत्तर प्रदेश
- 11 पश्चिम उत्तर प्रदेश
- 12 उत्तराखंड
- 13 हरियाणा चंडीगढ़ एवं दिल्ली
- 14 पंजाब
- 15 हिमाचल प्रदेश
- 16 जम्मू एवं कश्मीर एवं लद्दाख
- 17 पश्चिम राजस्थान
- 18 पूर्वी राजस्थान
- 19 पश्चिम मध्य प्रदेश
- 20 पूर्वी मध्य प्रदेश
- 21 गुजरात क्षेत्र
- 22 सौराष्ट्र एवं कच्छ
- 23 कोंकण एवं गोवा
- 24 मध्य महाराष्ट्र
- 25 मराठावाड़ा
- 26 विदर्भ
- 27 छत्तीसगढ़
- 28 तटीय आंध्र प्रदेश एवं यनम
- 29 तेलंगाना
- 30 रायलसीमा
- 31 तमिलनाडु, पुदुचेरी एवं कराईकल
- 32 तटिय कर्नाटक
- 33 आंतरिक उत्तरी कर्नाटक
- 34 आंतरिक दक्षिणी कर्नाटक
- 35 केरल एवं माहे
- 36 लक्षद्वीप



1. Andaman & Nicobar Islands
2. Arunachal Pradesh
3. Assam & Meghalaya
4. Nagaland, Manipur, Mizoram & Tripura
5. Sub-Himalayan West Bengal & Sikkim
6. Gangetic West Bengal
7. Orissa
8. Jharkhand
9. Bihar
10. East Uttar Pradesh
11. West Uttar Pradesh
12. Uttarakhand
13. Haryana, Chd & Delhi
14. Punjab
15. Himachal Pradesh
16. Jammu & Kashmir and Ladakh
17. West Rajasthan
18. East Rajasthan
19. West Madhya Pradesh
20. East Madhya Pradesh
21. Gujarat
22. Saurashtra
23. Konkan & Goa
24. Madhya Maharashtra
25. Marathwada
26. Vidharbha
27. Chhattisgarh
28. Coastal Andhra Pradesh & Yanam
29. Telangana
30. Rayalaseema
31. Tamilnadu, Puducherry & Karaikal
32. Coastal Karnataka
33. North Interior Karnataka
34. South Interior Karnataka
35. Kerala & Mahe
36. Lakshadweep

## SPATIAL DISTRIBUTION (% of Stations reporting)


% Stations	Category	% Stations	Category
76-100	Widespread (WS/Most Places)	26-50	Scattered (SCT/ A Few Places)
51-75	Fairly Widespread (FWS/ Many Places)	1-25	Isolated (ISOL)


### Subdivision Colour


- NO WARNING
- WATCH (BE UPDATED)
- ALERT (BE PREPARED TO TAKE ACTION)
- WARNING (TAKE ACTION)


### Probabilistic Forecast


Terms	Probability of Occurrence (%)
Unlikely	< 25
Likely	25 - 50
Very Likely	50 - 75
Most Likely	> 75


-  Heavy Rain


 Thunderstorm & Lightning


 Strong surface winds


 Cold Wave


 Hot & Humid


 Very Heavy Rain


 Hailstorm

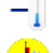
 Heat Wave


 Cold Day


 Extremely Heavy Rain


 Dust Storm


 Hot Day

 Ground Frost

 Heavy Snow

 Dust Raising Winds

 Warm Night

 FOG Fog

\*Red color warning does not mean "Red Alert" Red color warning means "Take Action"

Forecast and warning for any day is valid from 0830 hours IST of day till 0830 hours IST of next day

For more details kindly visit <https://mausam.imd.gov.in> or contact 011-2434-4599

(Service to the nation since 1875)

## LEGENDS

### WARNING

<b>WARNING (TAKE ACTION)</b>
<b>ALERT (BE PREPARED)</b>
<b>WATCH (BE UPDATED)</b>
<b>NO WARNING (NO ACTION)</b>

### Probabilistic Forecast

Terms	Probability of Occurrence (%)
Unlikely	< 25
Likely	25 - 50
Very Likely	50 - 75
Most Likely	> 75



Heavy: 64.5 to 115.5 mm/cm \*  
Very Heavy: 115.6 to 204.4 mm/cm \*  
Extremely Heavy: > 204.4 mm/cm \*



When maximum temperature of a station reaches  $\geq 40^{\circ}\text{C}$  for plains and  $\geq 30^{\circ}\text{C}$  for hilly regions  
(a) Based on Departure from normal

Heat Wave: Maximum Temperature Departure from normal  $4.5^{\circ}\text{C}$  to  $6.4^{\circ}\text{C}$ .  
Severe Heat Wave: Maximum Temperature Departure from normal  $\geq 6.5^{\circ}\text{C}$

(b). Based on Actual maximum temperature

Heat Wave: When actual maximum temperature  $\geq 45^{\circ}\text{C}$ .  
Severe Heat Wave: When actual maximum temperature  $\geq 47^{\circ}\text{C}$

(c). Criteria for heat wave for coastal stations

When maximum temperature departure is  $> 4.5^{\circ}\text{C}$  from normal. Heat Wave may be described provided maximum temperature  $\geq 37^{\circ}\text{C}$



When maximum temperature remains  $40^{\circ}\text{C}$

Warm Night: When minimum temperature departure  $4.5^{\circ}\text{C}$  to  $6.4^{\circ}\text{C}$ .  
Severe Warm Night: When minimum temperature departure  $> 6.4^{\circ}\text{C}$ .



When minimum temperature of a station  $\leq 10^{\circ}\text{C}$  for plains and  $\leq 0^{\circ}\text{C}$  for hilly regions.

(a). Based on departure

Cold Wave: Minimum Temperature Departure from normal  $-4.5^{\circ}\text{C}$  to  $-6.4^{\circ}\text{C}$ .  
Severe Cold Wave: Minimum Temperature Departure from normal  $\leq -6.5^{\circ}\text{C}$

(b) Based on actual Minimum Temperature (for Plains only)

Cold Wave: When Minimum Temperature is  $\leq 4.0^{\circ}\text{C}$   
Severe Cold Wave: When Minimum Temperature is  $\leq 2.0^{\circ}\text{C}$

(c) For Coastal Stations

When Minimum Temperature departure is  $\leq -4.5^{\circ}\text{C}$  & actual Minimum Temperature is  $\leq 15^{\circ}\text{C}$



When minimum temperature of a station  $\leq 10^{\circ}\text{C}$  for plains and  $\leq 0^{\circ}\text{C}$  for hilly regions  
Based on departure

Cold Day: Maximum Temperature Departure from normal  $-4.5^{\circ}\text{C}$  to  $-6.4^{\circ}\text{C}$ .  
Severe Cold Day: Maximum Temperature Departure from normal  $\leq -6.5^{\circ}\text{C}$



Phenomenon of small droplets suspended in air and the horizontal visibility  $< 1\text{km}$

Moderate Fog: When the visibility between 500-200 metres  
Dense Fog: when the visibility between 50-200 metres  
Very Dense Fog: when the visibility  $< 50$  metres



Sudden electrical discharges manifested by a flash of light (Lightning) and a sharp rumbling sound (thunder)



An ensemble of particles of dust or sand energetically lifted to great heights by a strong and turbulent wind.



Ice deposits on ground

Air temperature  $\leq 4^{\circ}\text{C}$  (over Plains)



A strong wind that rises suddenly, lasts for at least 1 minute.

Moderate: Wind speed 52-61 kmph  
Severe: Wind speed 62-87 kmph  
Very Severe: Wind speed  $> 87$  kmph



Effect of various waves in the sea over specific area

Rough to very rough: Wind speed 41-62 kmph (22-33 knots) & Wave height 2.5-6 metre  
High to very high: Wind speed 63-117 kmph (34-63 knots) & Wave height 6-14 metre  
Phenomenal: Wind speed  $> 117$  kmph ( $> 63$  knots) & Wave height  $> 14$  metre



Cyclonic Storm: Wind speed 62-87 kmph (34-47 knots)

Severe Cyclonic Storm: Wind speed 88-117 kmph (48-63 knots)  
Very Severe Cyclonic Storm: Wind speed 118-165 kmph (64-89 knots)  
Extremely Severe Cyclonic Storm: Wind speed 166-220 kmph (90-119 knots)  
Super Cyclone Storm: Wind speed  $> 220$  kmph ( $> 119$  knots)

\*Red color warning does not mean "Red Alert" Red color warning means "Take Action"

Forecast and warning for any day is valid from 0830 hours IST of day till 0830 hours IST of next day

For more details kindly visit <https://mausam.imd.gov.in> or contact 011-2434-4599

(Service to the nation since 1875)