

2025-12-15

Time of Issue: 13:29:00 hours IST
(Mid-Day)

ALL INDIA WEATHER SUMMARY AND FORECAST BULLETIN

Significant Weather Features

Weather Systems, Forecast and Warnings

Light rainfall/snowfall at few/isolated places over Jammu-Kashmir-Ladakh-Gilgit-Baltistan-Muzaffarabad on 15th & during 18th -21st and over Himachal Pradesh on 15th & during 20th &21st and Uttarakhand on 15th and 21st December.

Thunderstorm and lightning very likely at isolated places over Tamil Nadu, Puducherry & Karaikal on 16th & 17th with gusty winds with speed reaching upto 30-40 kmph very likely at isolated places over Andaman & Nicobar Islands during 15th - 18th December.

Forecast of minimum temperatures:

Gradual fall in minimum temperature likely by about 2°C over Northwest India during next 2 days and thereafter gradual rise by about 2-3°C during subsequent 4 days.

No significant change in minimum temperature very likely over Gujarat state during next 42 days and thereafter rise by 2-3°C during subsequent 3 days.

No significant change in minimum temperature over Maharashtra as well as Central, East and North east part of India during next 7 days.

Dense Fog & Cold wave Warnings:

Dense fog conditions very likely to prevail during early hours/morning hours in isolated pockets of Northeast India during 16th-20th, Himachal Pradesh during 16th-18th, Punjab, Haryana Chandigarh & Delhi on 16th & 17th December. Dense fog conditions very likely to prevail during early hours/morning hours in isolated pockets of Uttar Pradesh on 16th & 17th and Madhya Pradesh during 16th -18th with very dense fog over Under the influence of these systems, the following weather is likely:

Light rainfall/snowfall at few/isolated places over Jammu-Kashmir-Ladakh-Gilgit-Baltistan-Muzaffarabad on 15th & during 18th -21st and over Himachal Pradesh on 15th & during 20th &21st and Uttarakhand on 15th and 21st December.

Thunderstorm and lightning very likely at isolated places over Tamil Nadu, Puducherry & Karaikal on 16th & 17th with gusty winds with speed reaching upto 30-40 kmph very likely at isolated places over Andaman & Nicobar Islands during 15th - 18th December.

Forecast of minimum temperatures:

Gradual fall in minimum temperature likely by about 2°C over Northwest India during next 2 days and thereafter gradual rise by about 2-3°C during subsequent 4 days.

No significant change in minimum temperature very likely over Gujarat state during next 2 days and thereafter rise by 2-3°C during subsequent 3 days.

No significant change in minimum temperature over Maharashtra as well as Central, East and North east part of India during next 7 days.

Dense Fog & Cold wave Warnings:

Dense fog conditions very likely to prevail during early hours/morning hours in isolated pockets of Northeast India during 16th-20th, Himachal Pradesh during 16th-18th, Punjab, Haryana Chandigarh & Delhi on 16th & 17th December. Dense fog conditions very likely to prevail during early hours/morning hours in isolated pockets of Uttar Pradesh on 16th & 17th and Madhya Pradesh during 16th -18th with very dense fog over Uttar Pradesh on 16th and Madhya Pradesh on 16th & 17th December.

***Red color warning does not mean "Red Alert" Red color warning means "Take Action"**

Forecast and warning for any day is valid from 0830 hours IST of day till 0830 hours IST of next day

For more details kindly visit <https://mausam.imd.gov.in> or contact 011-2434-4599

(Service to the nation since 1875)

Main Weather Observations:

❖ **Rainfall distribution** (from 0830 hours IST of yesterday to 0830 hours IST of today): at many places over **Andaman & Nicobar Islands**. **Dry** over rest of the country.

Rainfall recorded (from 0830 hours IST of yesterday to 0830 hours IST of today): **Andaman & Nicobar Islands:** Hut Bay (dist South Andaman) 4, Nancowry (dist Nicobar) 1, Long Island (dist North & Middle Andaman) 1

❖ **Fog Condition Observed (at 0830 hours of today): Dense to very dense fog conditions:** at a few places over West Uttar Pradesh and Haryana Chandigarh & Delhi, at isolated places over Odisha, East Uttar Pradesh, West Rajasthan and East Madhya Pradesh **Moderate fog conditions:** at a few places over East Uttar Pradesh, at isolated places over Assam & Meghalaya, Jharkhand, Haryana Chandigarh & Delhi, East Rajasthan and Rayalaseema **Shallow fog conditions:** at a few places over West Uttar Pradesh and Punjab, at isolated places over Jharkhand, East Uttar Pradesh, Himachal Pradesh, West Rajasthan, West Madhya Pradesh, East Madhya Pradesh, Chhattisgarh, Telangana and South Interior Karnataka

❖ **Visibility reported (at 0830 hours of today): West Uttar Pradesh:** Bulandshahr (dist Bulandshahr), Bareilly (dist Bareilly), Aligarh (dist Aligarh), Agra (dist Agra) 50.0 Each, Jhansi (dist Jhansi), Orai (dist Jalaun), Shahajahanpur (dist Shahajahanpur) 500.0 Each; **Odisha:** Sundargarh (dist Sundargarh), Bolangir, Titlagarh (dist Balangir), Koraput (dist Koraput), Chhatrapur (dist Ganjam), Rayagada-obs (dist Rayagada), Boudh (dist Boudh), Malkangiri-obs (dist Malkangiri), Paralakhemundi-obs (dist Gajapati) Each, Rourkela (dist Sundargarh) 50.0; **East Madhya Pradesh:** Satna (dist Satna), Khajuraho (dist Chhatrapur), Rewa (dist Rewa) 50.0 Each, Sidhi (dist Sidhi) 500.0; **West Rajasthan:** Sriganganagar (dist Sri Ganganagar) 50.0, Jaisalmer (dist Jaisalmer) 500.0; **East Uttar Pradesh:** Varanasi (babatpur) AP (dist Varanasi), Gazipur (dist Ghazipur), Allahabad (dist Prayagraj) 50.0 Each, Fursatganj (dist Amethi), Varanasi (dist Varanasi), Kanpur/Chakeri, Kanpur Airforce (dist Kanpur Nagar), Churk (dist Sonbhadra) 200.0 Each, Lucknow (amausi) AP (dist Lucknow), Ballia-obs2 (dist Ballia) 500.0 Each; **Haryana Chandigarh & Delhi:** New Delhi-ayanagar, New Delhi (palam) AP (dist South West Delhi), Hissar (dist Hisar) 50.0 Each, New Delhi (safdarjung) (dist South West Delhi) 200.0; **Assam & Meghalaya:** Barapani/shillong (dist East Khasi Hills) 200.0; **Jharkhand:** Daltonganj (dist Palamu) 200.0, Ranchi AP (dist Ranchi) 500.0; **East Rajasthan:** Alwar (dist Alwar) 200.0; **Rayalaseema:** Anantapur (dist Anantapuramu) 200.0; **Telangana:** Kothagudem (bhadrachalam) (dist Bhadradi Kothagudem) 500.0; **Chhattisgarh:** Ambikapur (dist Surguja) 500.0; **South Interior Karnataka:** Chintamani (dist Kolar), Bengaluru (kia) (dist Bengaluru Urban) 500.0 Each; **Punjab:** Amritsar (rajasansi) AP (dist Amritsar), Ludhiana (dist Ludhiana) 500.0 Each; **Himachal Pradesh:** Mandi (dist Mandi) 500.0; **West Madhya Pradesh:** Bhopal-arera Hills (dist Bhopal), Gwalior (dist Gwalior), Datia-obs (dist Datia) 500.0 Each;.

❖ **Minimum Temperature Departures (as on 15-12-2025): below normal(-1.6°C to -3.0°C)** at few places over Konkan & Goa, Madhya Maharashtra, Marathwada, Vidarbha, Chhattisgarh, Telangana, Tamil Nadu, Puducherry & Karaikal and Coastal Karnataka; at isolated places over Assam & Meghalaya, Sub Himalayan West Bengal & Sikkim, Gangetic West Bengal, Odisha, Bihar, East Uttar Pradesh, West Uttar Pradesh, Haryana-Chandigarh-Delhi, East Rajasthan, West Madhya Pradesh, East Madhya Pradesh, Coastal Andhra Pradesh & Yanam, Rayalaseema, South Interior Karnataka and Kerala & Mahe. **appreciably below normal(-5.0°C to -3.1°C)** at few places over Odisha, Vidarbha, Chhattisgarh, Rayalaseema, Coastal Karnataka, North Interior Karnataka, South Interior Karnataka and Kerala & Mahe; at isolated places over Assam & Meghalaya, West Madhya Pradesh, East Madhya Pradesh, Konkan & Goa, Madhya Maharashtra, Marathwada, Telangana and Tamil Nadu, Puducherry & Karaikal. **markedly below normal(< -5.0°C)** at few places over Gangetic West Bengal, Odisha, West Madhya Pradesh, East Madhya Pradesh, Gujarat Region, Rayalaseema, Tamil Nadu, Puducherry & Karaikal, North Interior Karnataka and South Interior Karnataka; at isolated places over Assam & Meghalaya, Sub Himalayan West Bengal & Sikkim, Jharkhand, Bihar, East Uttar Pradesh, Himachal Pradesh, Saurashtra & Kutch, Konkan & Goa, Madhya Maharashtra, Coastal Andhra Pradesh & Yanam, Telangana and Kerala & Mahe. **The lowest minimum temperature** of 5.4°C is reported at RAJGARH-OBS (MADHYA PRADESH) over the Plains of India.

❖ **Maximum Temperature Departures (as on 14-12-2025):** The highest maximum temperature of 35.4°C is reported at CANNANORE (KANNUR) (KERALA).

***Red color warning does not mean "Red Alert" Red color warning means "Take Action"**

Forecast and warning for any day is valid from 0830 hours IST of day till 0830 hours IST of next day

For more details kindly visit <https://mausam.imd.gov.in> or contact 011-2434-4599

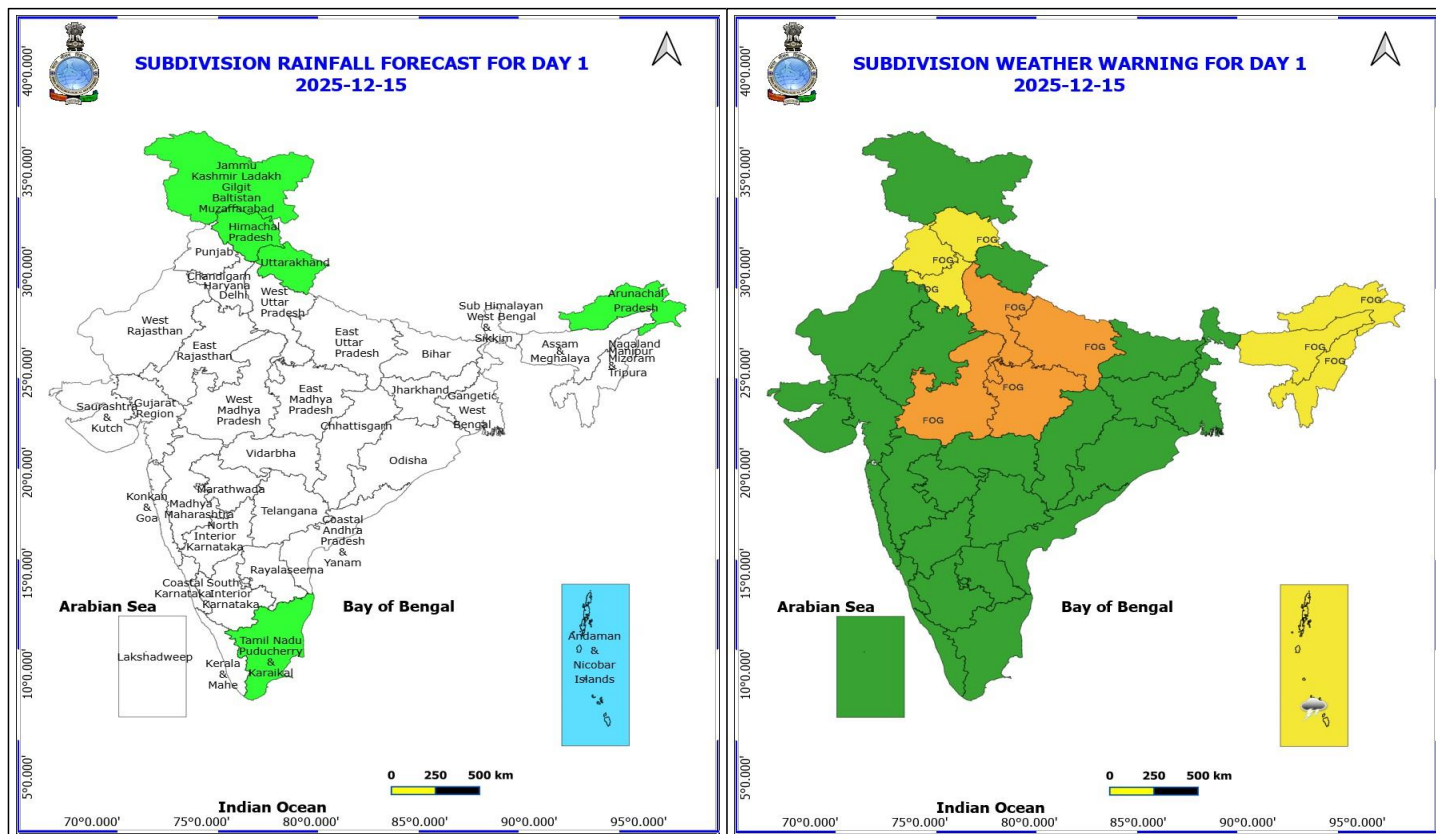
(Service to the nation since 1875)

Meteorological Analysis (Based on 0830 hours IST)

- ♦ The **Western Disturbance** as an upper air cyclonic circulation over north Pakistan & neighbourhood at 3.1 km above mean sea level persists.
- ♦ Another **Western Disturbance** as a **trough** in middle tropospheric westerlies with its axis at 5.8 km above mean sea level roughly along Long. 60°E to the north of Lat. 30°N persists.
- ♦ **Subtropical westerly Jet Stream** with core winds of the order upto 120 knots at 12.6 km above mean sea level prevails over Northwest India.
- ♦ An **upper air cyclonic circulation** lies over south Tamil Nadu and neighbourhood at 3.1 km above mean sea level.
- ♦ A fresh feeble **Western Disturbance** is likely to affect western Himalayan region from the night of 17th December 2025.
- ♦ The **upper air cyclonic circulation** over southeast Arabian sea and adjoining Lakshadweep at 0.9 km above mean sea level has become less marked.

Weather Outlook for subsequent 3 days

- ♦ Isolated to Scattered rainfall activity over Jammu-Kashmir-Ladakh-Gilgit-Baltistan-Muzaffarabad, Hiamchal Pradesh, Kerala, Tamil Nadu and Islands.



15 December (Day 1)

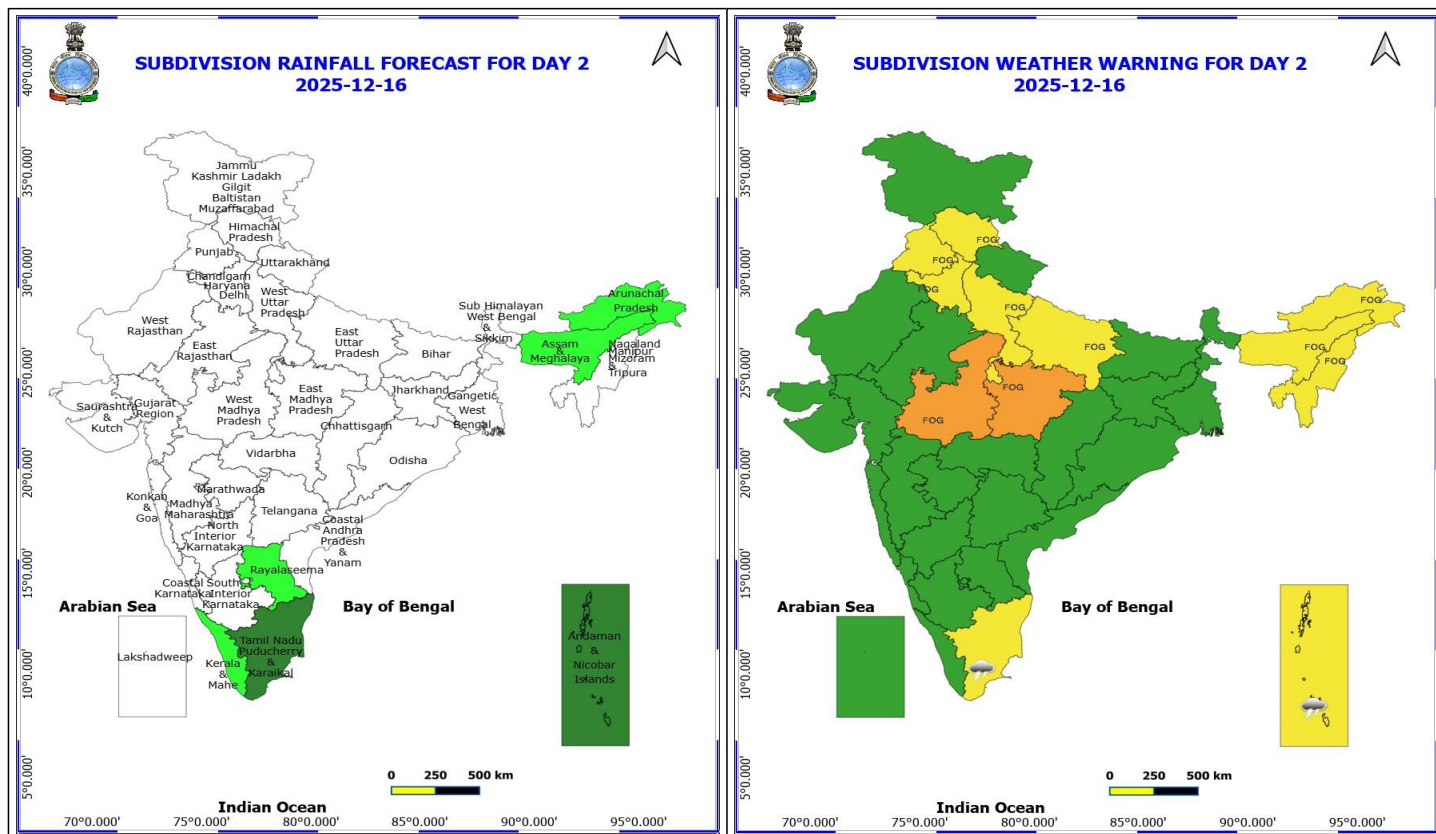
- ❖ **Thunderstorm accompanied with lightning & gusty winds(30-40kmph)** very likely at isolated places over Andaman & Nicobar Islands.
- ❖ **Dense Fog** very likely at isolated pockets over Arunachal Pradesh, Assam & Meghalaya, Haryana, Chandigarh & Delhi, Himachal Pradesh, Nagaland, Manipur, Mizoram and Tripura, Punjab and
- Dense to very dense fog** very likely at isolated places over Madhya Pradesh and Uttar Pradesh.
- Squally weather with wind speeds reaching 35 kmph to 45 kmph gusting to 55 kmph** is likely to prevail over Gulf of Mannar & adjoining Comorin area.

*Red color warning does not mean "Red Alert" Red color warning means "Take Action"

Forecast and warning for any day is valid from 0830 hours IST of day till 0830 hours IST of next day

For more details kindly visit <https://mausam.imd.gov.in> or contact 011-2434-4599

(Service to the nation since 1875)



16 December (Day 2)

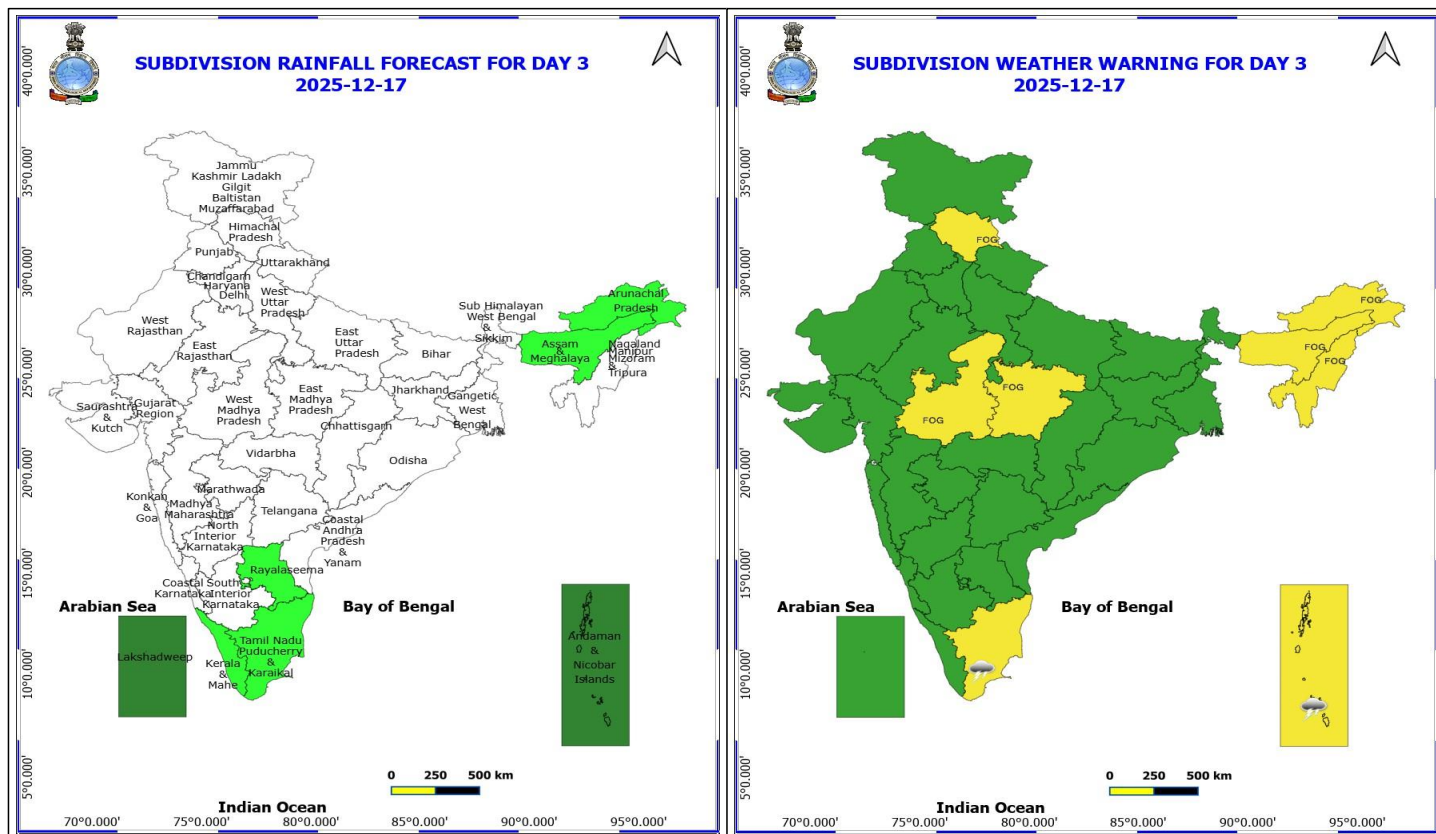
- ❖ **Thunderstorm accompanied with lightning & gusty winds(30-40kmph)** very likely at isolated places over Andaman & Nicobar Islands.
 - ❖ **Thunderstorm accompanied with Lightning** very likely at isolated places over Tamil Nadu Puducherry & Karaikal.
 - ❖ **Dense fog** very likely at isolated pockets over Arunachal Pradesh, Assam & Meghalaya, Haryana, Chandigarh & Delhi, Himachal Pradesh, Nagaland, Manipur, Mizoram and Tripura, Punjab and Uttar Pradesh.
- Dense to very dense fog** very likely at isolated places over Madhya Pradesh.
- Squally weather with wind speeds reaching 35 kmph to 45 kmph gusting to 55 kmph** is likely to prevail over Gulf of Mannar & adjoining Comorin area.

*Red color warning does not mean "Red Alert" Red color warning means "Take Action"

Forecast and warning for any day is valid from 0830 hours IST of day till 0830 hours IST of next day

For more details kindly visit <https://mausam.imd.gov.in> or contact 011-2434-4599

(Service to the nation since 1875)



17 December (Day 3)

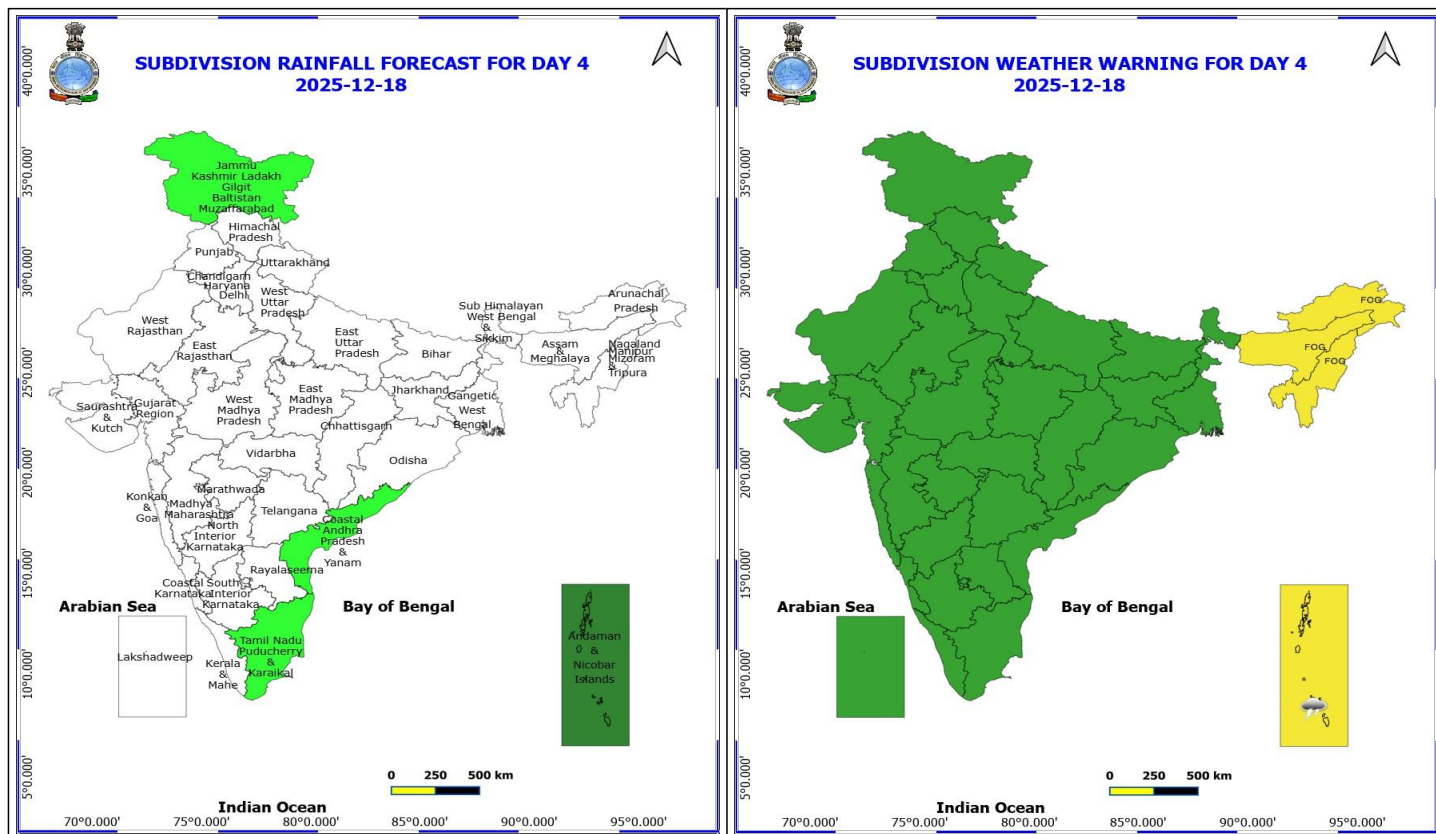
- ❖ **Thunderstorm accompanied with lightning & gusty winds(30-40kmph)** very likely at isolated places over Andaman & Nicobar Islands.
 - ❖ **Thunderstorm accompanied with Lightning** very likely at isolated places over Tamil Nadu Puducherry & Karaikal.
 - ❖ **Dense fog** very likely at isolated pockets over Arunachal Pradesh, Assam & Meghalaya, Himachal Pradesh, Madhya Pradesh and Nagaland, Manipur, Mizoram and Tripura.
- Squally weather with wind speeds reaching 35 kmph to 45 kmph gusting to 55 kmph** is likely to prevail over Gulf of Mannar & adjoining Comorin area.

***Red color warning does not mean "Red Alert" Red color warning means "Take Action"**

Forecast and warning for any day is valid from 0830 hours IST of day till 0830 hours IST of next day

For more details kindly visit <https://mausam.imd.gov.in> or contact 011-2434-4599

(Service to the nation since 1875)



18 December (Day 4)

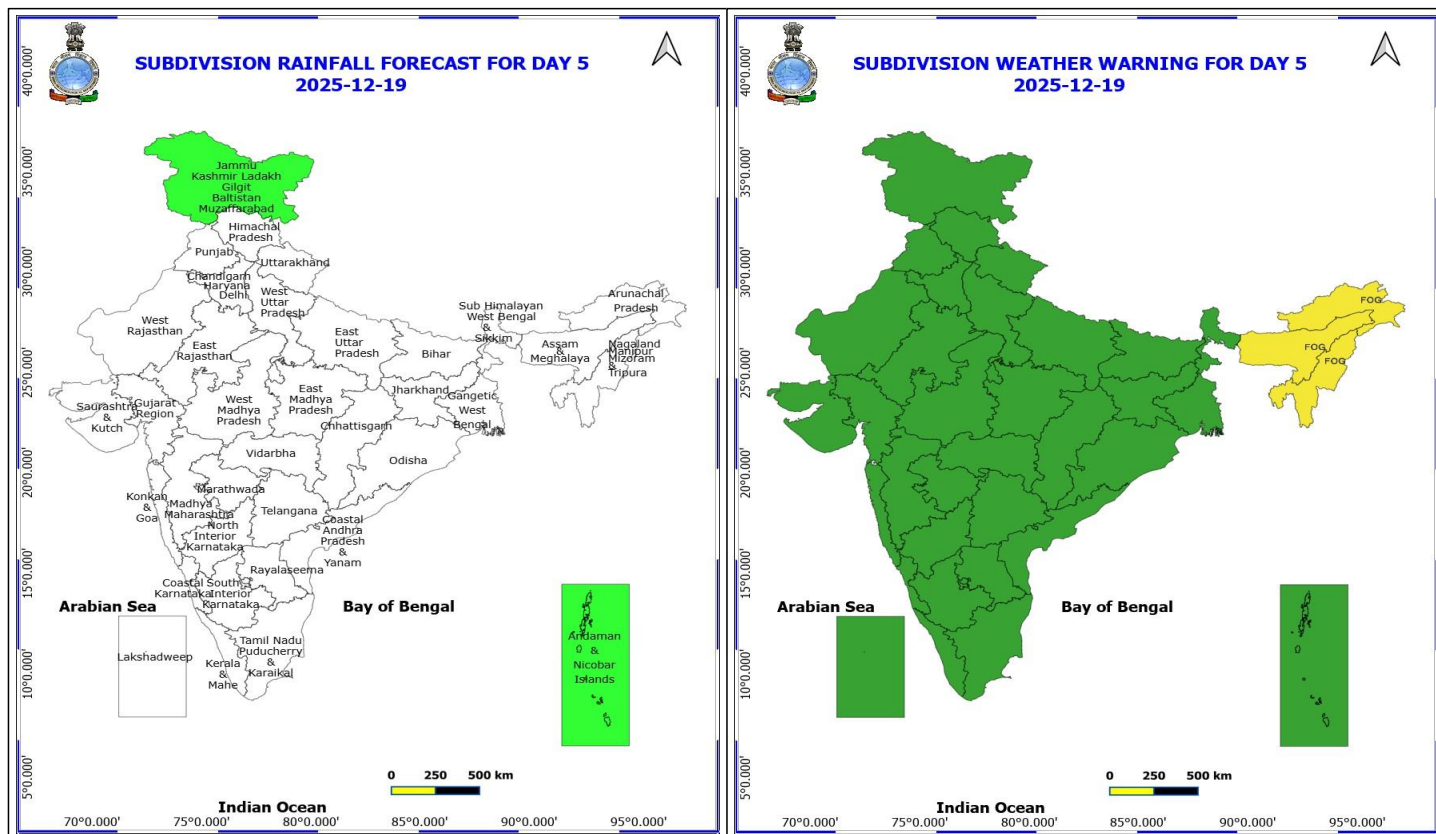
- ❖ **Thunderstorm accompanied with lightning & gusty winds(30-40kmph)** likely at isolated places over Andaman & Nicobar Islands.
 - ❖ **Dense fog** likely at isolated pockets over Arunachal Pradesh, Assam & Meghalaya and Nagaland, Manipur, Mizoram and Tripura.
- Squally weather with wind speeds reaching 35 kmph to 45 kmph gusting to 55 kmph** is likely to prevail over Gulf of Mannar & adjoining Comorin area.

***Red color warning does not mean "Red Alert" Red color warning means "Take Action"**

Forecast and warning for any day is valid from 0830 hours IST of day till 0830 hours IST of next day

For more details kindly visit <https://mausam.imd.gov.in> or contact 011-2434-4599

(Service to the nation since 1875)



19 December (Day 5)

❖ **Dense fog** likely at isolated pockets over Arunachal Pradesh, Assam & Meghalaya and Nagaland, Manipur, Mizoram and Tripura.

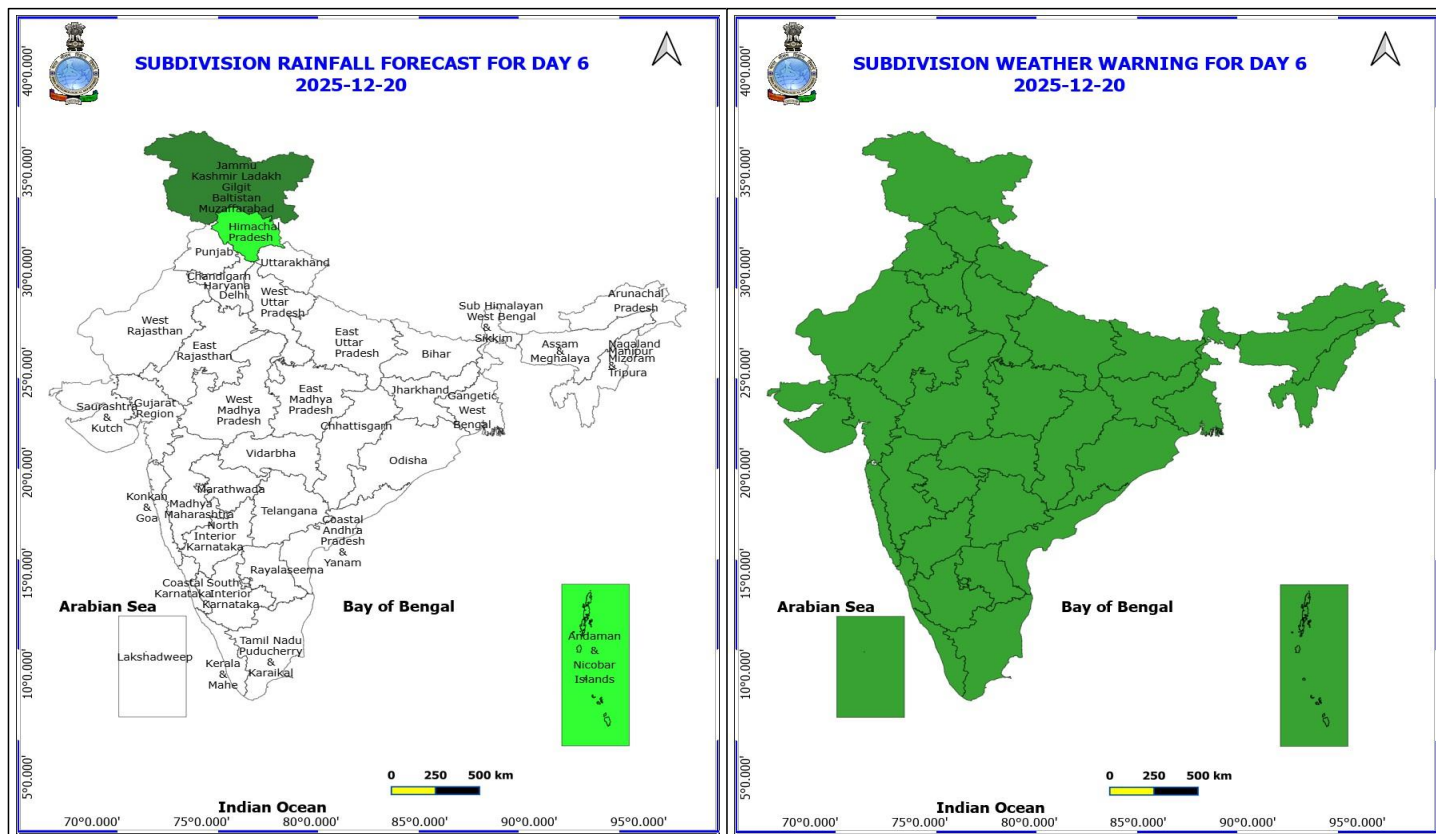
No Warning

*Red color warning does not mean "Red Alert" Red color warning means "Take Action"

Forecast and warning for any day is valid from 0830 hours IST of day till 0830 hours IST of next day

For more details kindly visit <https://mausam.imd.gov.in> or contact 011-2434-4599

(Service to the nation since 1875)



20 December (Day 6)

No Warning

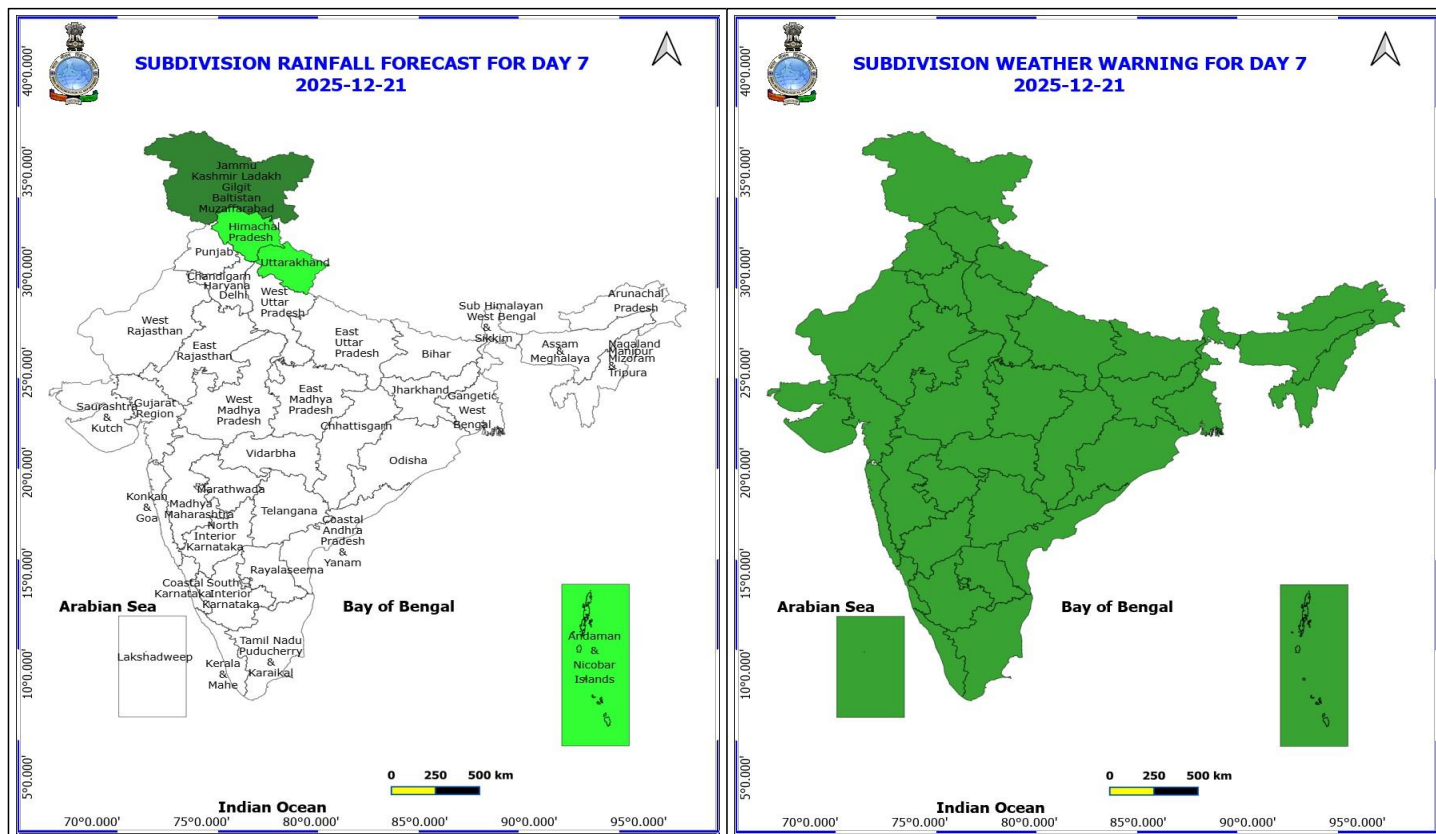
No Fishermen Warning

*Red color warning does not mean "Red Alert" Red color warning means "Take Action"

Forecast and warning for any day is valid from 0830 hours IST of day till 0830 hours IST of next day

For more details kindly visit <https://mausam.imd.gov.in> or contact 011-2434-4599

(Service to the nation since 1875)



21 December (Day 7)

No Warning



Table-1

7 Days Rainfall Forecast

S.No.	Subdivision	15- Dec	16- Dec	17- Dec	18- Dec	19- Dec	20- Dec	21- Dec
		Day 1	Day 2	Day 3	Day 4	Day 5	Day 6	Day 7
1	ANDAMAN & NICOBAR ISLANDS	FWS	SCT	SCT	SCT	ISOL	ISOL	ISOL
2	ARUNACHAL PRADESH	ISOL	ISOL	ISOL	DRY	DRY	DRY	DRY
3	ASSAM & MEHGHALAYA	DRY	ISOL	ISOL	DRY	DRY	DRY	DRY
4	N. M. M. & T.	DRY	DRY	DRY	DRY	DRY	DRY	DRY
5	S.H. WEST BENGAL & SIKKIM	DRY	DRY	DRY	DRY	DRY	DRY	DRY
6	GANGETIC WEST BENGAL	DRY	DRY	DRY	DRY	DRY	DRY	DRY
7	ODISHA	DRY	DRY	DRY	DRY	DRY	DRY	DRY
8	JHARKHAND	DRY	DRY	DRY	DRY	DRY	DRY	DRY
9	BIHAR	DRY	DRY	DRY	DRY	DRY	DRY	DRY
10	EAST UTTAR PRADESH	DRY	DRY	DRY	DRY	DRY	DRY	DRY
11	WEST UTTAR PRADESH	DRY	DRY	DRY	DRY	DRY	DRY	DRY
12	UTTARAKHAND	ISOL	DRY	DRY	DRY	DRY	DRY	ISOL
13	HARYANA, CHD & DELHI	DRY	DRY	DRY	DRY	DRY	DRY	DRY
14	PUNJAB	DRY	DRY	DRY	DRY	DRY	DRY	DRY
15	HIMACHAL PRADESH	ISOL	DRY	DRY	DRY	DRY	ISOL	ISOL
16	JAMMU AND KASHMIR AND LADAKH	ISOL	DRY	DRY	ISOL	ISOL	SCT	SCT
17	WEST RAJASTHAN	DRY	DRY	DRY	DRY	DRY	DRY	DRY
18	EAST RAJASTHAN	DRY	DRY	DRY	DRY	DRY	DRY	DRY
19	WEST MADHYA PRADESH	DRY	DRY	DRY	DRY	DRY	DRY	DRY
20	EAST MADHYA PRADESH	DRY	DRY	DRY	DRY	DRY	DRY	DRY
21	GUJRAT REGION	DRY	DRY	DRY	DRY	DRY	DRY	DRY
22	SAURASHTRA & KUTCH	DRY	DRY	DRY	DRY	DRY	DRY	DRY
23	KONKAN & GOA	DRY	DRY	DRY	DRY	DRY	DRY	DRY
24	MADHYA MAHARASHTRA	DRY	DRY	DRY	DRY	DRY	DRY	DRY
25	MARATHWADA	DRY	DRY	DRY	DRY	DRY	DRY	DRY
26	VIDARBHA	DRY	DRY	DRY	DRY	DRY	DRY	DRY
27	CHATTISGARH	DRY	DRY	DRY	DRY	DRY	DRY	DRY
28	COASTAL ANDHRA PRADESH	DRY	DRY	DRY	ISOL	DRY	DRY	DRY
29	TELANGANA	DRY	DRY	DRY	DRY	DRY	DRY	DRY
30	RAYALASEEMA	DRY	ISOL	ISOL	DRY	DRY	DRY	DRY
31	TAMILNADU & PUDUCHERRY	ISOL	SCT	ISOL	ISOL	DRY	DRY	DRY
32	COSTAL KARNATAKA	DRY	DRY	DRY	DRY	DRY	DRY	DRY
33	NORTH INTERIOR KARNATAKA	DRY	DRY	DRY	DRY	DRY	DRY	DRY
34	SOUTH INTERIOR KARNATAKA	DRY	DRY	DRY	DRY	DRY	DRY	DRY
35	KERALA	DRY	ISOL	ISOL	DRY	DRY	DRY	DRY
36	LAKSHDWEAP	DRY	DRY	SCT	DRY	DRY	DRY	DRY

Legend	Category	%Stations
WS	Widespread/Most Places	76-100
FWS	Fairly Widespread/Many Places	51-75
SCT	Scattered/ A Few Places	26-50
ISOL	Isolated Places	1-25
DRY	No Rain	0

*Red color warning does not mean "Red Alert" Red color warning means "Take Action"

Forecast and warning for any day is valid from 0830 hours IST of day till 0830 hours IST of next day

For more details kindly visit <https://mausam.imd.gov.in> or contact 011-2434-4599

(Service to the nation since 1875)

Fig. 1: Maximum Temperatures Dated 2025-12-14

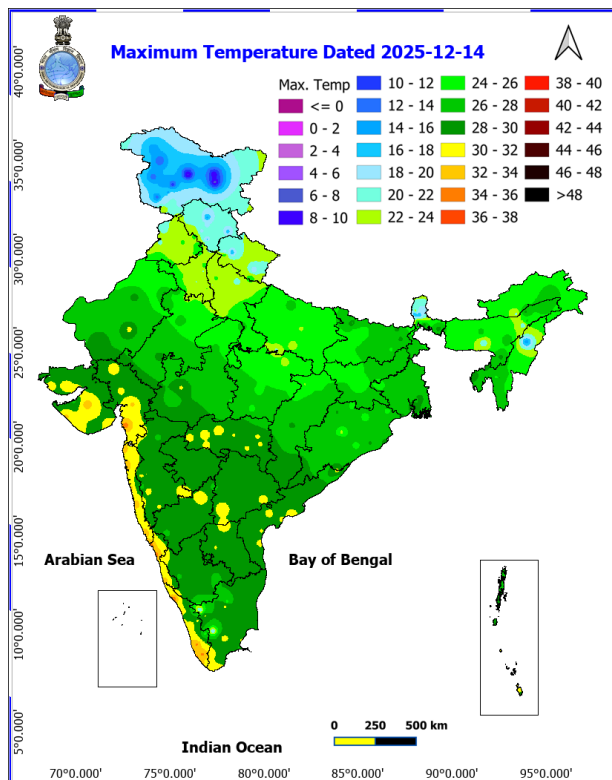


Fig. 2: Departure of Maximum Temp. Dated 2025-12-14

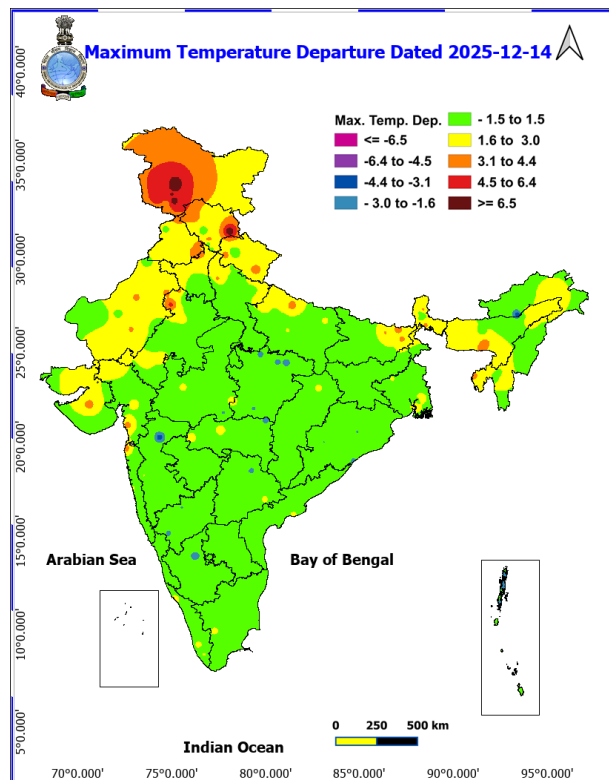


Fig. 3: Minimum Temperatures Dated 2025-12-15

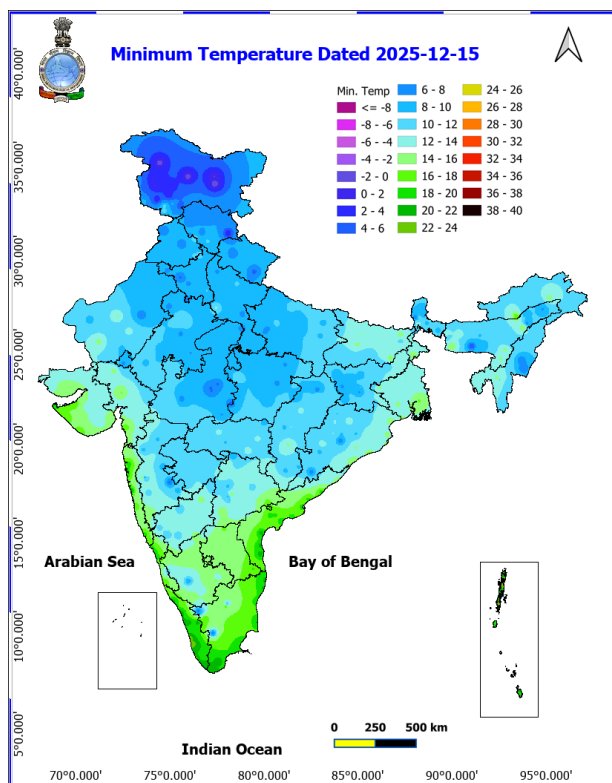
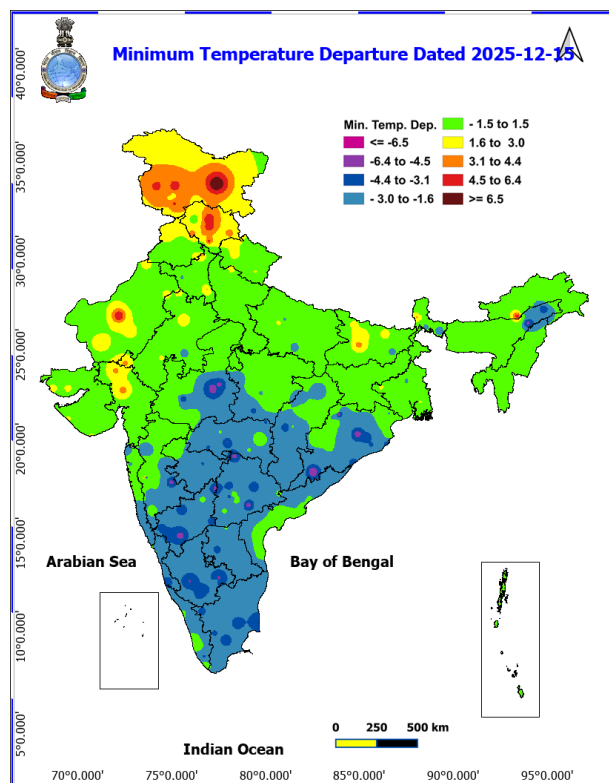
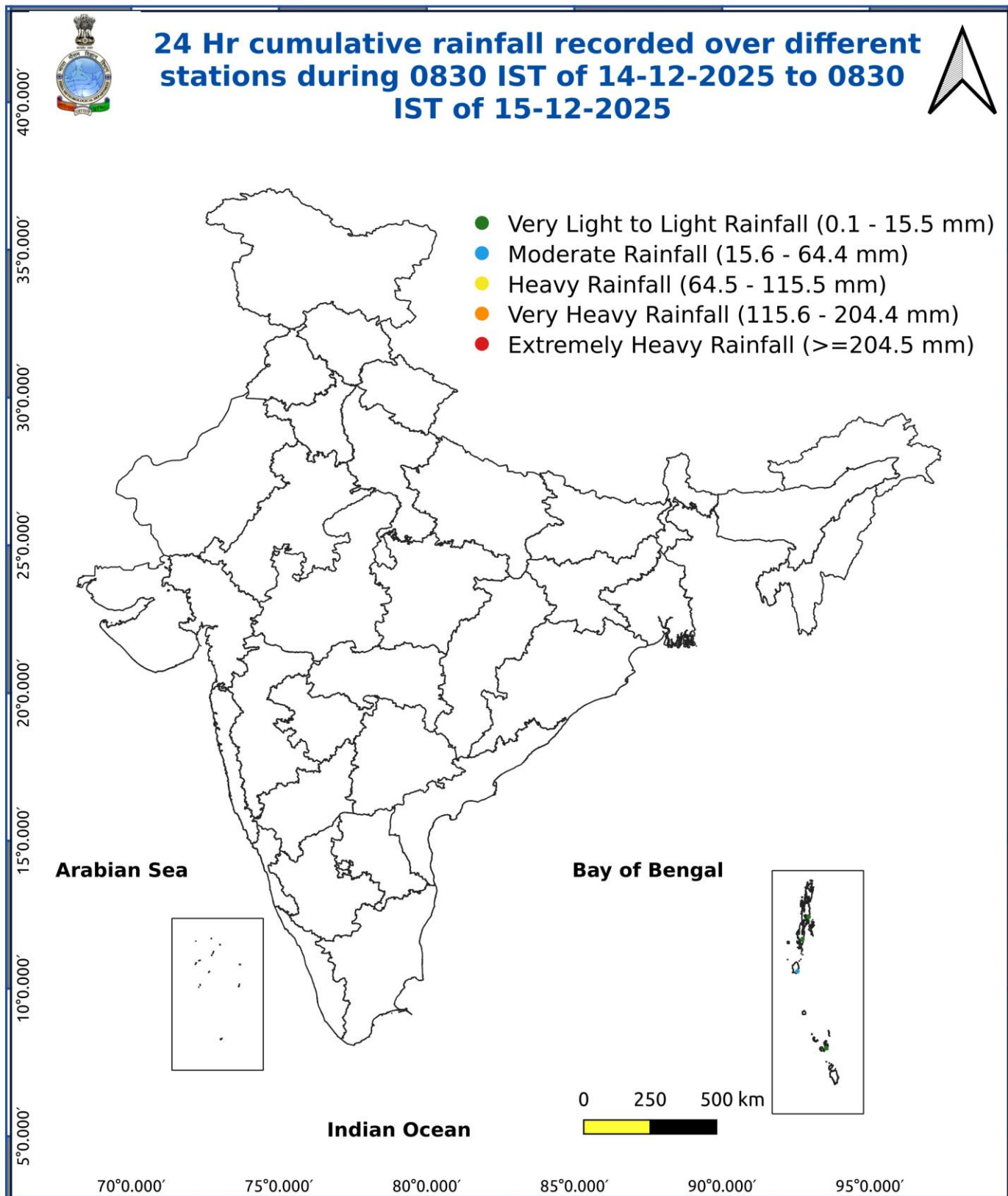


Fig. 4: Departure of Minimum Temp. Dated 2025-12-15





***Red color warning does not mean "Red Alert" Red color warning means "Take Action"**

Forecast and warning for any day is valid from 0830 hours IST of day till 0830 hours IST of next day

For more details kindly visit <https://mausam.imd.gov.in> or contact 011-2434-4599

(Service to the nation since 1875)

Impact expected due to dense/very dense fog in the early hours/morning hours: likely to prevail during early hours/morning hours in isolated pockets of Uttar Pradesh on 16th & 17th and Madhya Pradesh during 16th -18th, Northeast India during 16th-20th, Himachal Pradesh during 16th-18th, Punjab, Haryana Chandigarh & Delhi on 16th & 17th December.

❖ **Transport and Aviation:**

- May affect some airports, highways and railway routes in the areas of met- sub-division.
- Difficult driving conditions with slower journey times.
- Unless taken precautionary measures, it may lead to some road traffic collisions.

Power Sector:

- Chances of Tripping of Power lines in the very dense fog routes.

Human Health:

- Lung related health impacts: Dense fog contains particulate matter and other pollutants and in case exposed it gets lodged in the lungs, clogging them and decreasing their functional capacity which increases episodes of wheezing, coughing and shortness of breath.
- Impact on people having asthma bronchitis: Long time exposure to dense fog may cause respiratory problem for people having asthma bronchitis and other lung related health problems.
- Eye Irritation: Dense fog contains pollutions of various types and these Pollutants in the air if exposed may tend to irritate the membranes of the eye causing various infections leading to redness or swelling of the eye.

Action suggested:

❖ **Transport and Aviation:**

- Be careful while driving or outing through any transport.
- Use fog lights during driving.
- Be in touch with airlines, railways and state transport for schedule of your journey.

❖ **Power Sector:**

- To keep ready Maintenance Team.
- Human Health: To avoid outing until unless emergency and to cover the face.

Agromet advisories for likely impact of Thunderstorm / Gusty Winds Over Andaman & Nicobar Islands

Provide mechanical support to horticultural crops and staking or support to vegetables and young fruit plants / fruit-bearing plants to avoid lodging due to strong winds.

LEGENDS

1 अंडमान और निकोबार द्वीप समुह

2 अरुणाचल प्रदेश

3 असम और मेघालय

4 नागालैंड मनीपुर मीजोरम और त्रिपुरा

5 उप हिमालय पश्चिम बंगाल एवं सिक्किम

6 पश्चिम गंगेय बंगाल

7 ओडिसा

8 झारखंड

9 बिहार

10 पूर्वी उत्तर प्रदेश

11 पश्चिम उत्तर प्रदेश

12 उत्तराखंड

13 हरियाणा चंडीगढ़ एवं दिल्ली

14 पंजाब

15 हिमाचल प्रदेश

16 जम्मू एवं कश्मीर एवं लद्दाख

17 पश्चिम राजस्थान

18 पूर्वी राजस्थान

19 पश्चिम मध्य प्रदेश

20 पूर्वी मध्य प्रदेश

21 गुजरात क्षेत्र

22 सौराष्ट्र एवं कच्छ

23 कोंकण एवं गोवा

24 मध्य महाराष्ट्र

25 मराठावाड़ा

26 विदर्भ

27 छत्तीसगढ़

28 तटीय आंध्र प्रदेश एवं यनम

29 तेलंगाना

30 रायलसीमा

31 तमिलनाडु, पुदुचेरी एवं कराईकल

32 तटिय कर्नाटक

33 आंतरिक उत्तरी कर्नाटक

34 आंतरिक दक्षिणी कर्नाटक

35 केरल एवं माहे

36 लक्षद्वीप

1. Andaman & Nicobar Islands

2. Arunachal Pradesh

3. Assam & Meghalaya

4. Nagaland, Manipur, Mizoram & Tripura

5. Sub-Himalayan West Bengal & Sikkim

6. Gangetic West Bengal

7. Orissa

8. Jharkhand

9. Bihar

10. East Uttar Pradesh

11. West Uttar Pradesh

12. Uttarakhand

13. Haryana, Chd & Delhi

14. Punjab

15. Himachal Pradesh

16. Jammu & Kashmir and Ladakh

17. West Rajasthan

18. East Rajasthan

19. West Madhya Pradesh

20. East Madhya Pradesh

21. Gujarat

22. Saurashtra

23. Konkan & Goa

24. Madhya Maharashtra

25. Marathwada

26. Vidharbha

27. Chhattisgarh

28. Coastal Andhra Pradesh & Yanam

29. Telangana

30. Rayalaseema

31. Tamilnadu, Puducherry & Karaikal

32. Coastal Karnataka

33. North Interior Karnataka

34. South Interior Karnataka





35. Kerala & Mahe

36. Lakshadweep

SPATIAL DISTRIBUTION (% of Stations reporting)

% Stations	Category	% Stations	Category
76-100	Widespread (WS/Most Places)	26-50	Scattered (SCT/ A Few Places)
51-75	Fairly Widespread (FWS/ Many Places)	1-25	Isolated (ISOL)

Subdivision Colour

	NO WARNING
	WATCH (BE UPDATED)
	ALERT (BE PREPARED TO TAKE ACTION)
	WARNING (TAKE ACTION)

Probabilistic Forecast


Terms	Probability of Occurrence (%)
Unlikely	< 25
Likely	25 - 50
Very Likely	50 - 75
Most Likely	> 75

 Heavy Rain

 Thunderstorm & Lightning

 Strong surface winds

 Cold Wave

 Hot & Humid

 Very Heavy Rain

 Hailstorm


 Heat Wave

 Cold Day

 Extremely Heavy Rain

 Dust Storm

 Hot Day

 Ground Frost

 Heavy Snow

 Dust Raising Winds

 Warm Night

 FOG

*Red color warning does not mean "Red Alert" Red color warning means "Take Action"

Forecast and warning for any day is valid from 0830 hours IST of day till 0830 hours IST of next day

For more details kindly visit <https://mausam.imd.gov.in> or contact 011-2434-4599

(Service to the nation since 1875)

LEGENDS

WARNING

WARNING (TAKE ACTION)
ALERT (BE PREPARED)
WATCH (BE UPDATED)
NO WARNING (NO ACTION)

Probabilistic Forecast

Terms	Probability of Occurrence (%)
Unlikely	< 25
Likely	25 - 50
Very Likely	50 - 75
Most Likely	> 75



Heavy: 64.5 to 115.5 mm/cm *
Very Heavy: 115.6 to 204.4 mm/cm*
Extremely Heavy: > 204.4 mm/cm *



When maximum temperature of a station reaches $\geq 40^{\circ}\text{C}$ for plains and $\geq 30^{\circ}\text{C}$ for hilly regions
(a) Based on Departure from normal

Heat Wave: Maximum Temperature Departure from normal 4.5°C to 6.4°C .
Severe Heat Wave: Maximum Temperature Departure from normal $\geq 6.5^{\circ}\text{C}$

(b). Based on Actual maximum temperature

Heat Wave: When actual maximum temperature $\geq 45^{\circ}\text{C}$.
Severe Heat Wave: When actual maximum temperature $\geq 47^{\circ}\text{C}$

(c). Criteria for heat wave for coastal stations

When maximum temperature departure is $> 4.5^{\circ}\text{C}$ from normal. Heat Wave may be described provided maximum temperature $\geq 37^{\circ}\text{C}$



When maximum temperature remains 40°C

Warm Night: When minimum temperature departure 4.5°C to 6.4°C .
Severe Warm Night: When minimum temperature departure $> 6.4^{\circ}\text{C}$.



When minimum temperature of a station $\leq 10^{\circ}\text{C}$ for plains and $\leq 0^{\circ}\text{C}$ for hilly regions.
(a). Based on departure

Cold Wave: Minimum Temperature Departure from normal -4.5°C to -6.4°C .
Severe Cold Wave: Minimum Temperature Departure from normal $\leq -6.5^{\circ}\text{C}$

(b) Based on actual Minimum Temperature (for Plains only)

Cold Wave: When Minimum Temperature is $\leq 4.0^{\circ}\text{C}$
Severe Cold Wave: When Minimum Temperature is $\leq 2.0^{\circ}\text{C}$

(c) For Coastal Stations

When Minimum Temperature departure is $\leq -4.5^{\circ}\text{C}$ & actual Minimum Temperature is $\leq 15^{\circ}\text{C}$



When minimum temperature of a station $\leq 10^{\circ}\text{C}$ for plains and $\leq 0^{\circ}\text{C}$ for hilly regions
Based on departure

Cold Day: Maximum Temperature Departure from normal -4.5°C to -6.4°C .
Severe Cold Day: Maximum Temperature Departure from normal $\leq -6.5^{\circ}\text{C}$



Phenomenon of small droplets suspended in air and the horizontal visibility $< 1\text{km}$

Moderate Fog: When the visibility between 500-200 metres
Dense Fog: when the visibility between 50-200 metres
Very Dense Fog: when the visibility < 50 metres



Sudden electrical discharges manifested by a flash of light (Lightning) and a sharp rumbling sound (thunder)



An ensemble of particles of dust or sand energetically lifted to great heights by a strong and turbulent wind.



Ice deposits on ground

Air temperature $\leq 4^{\circ}\text{C}$ (over Plains)



A strong wind that rises suddenly, lasts for atleast 1 minute.

Moderate: Wind speed 52-61 kmph
Severe: Wind speed 62-87 kmph
Very Severe: Wind speed > 87 kmph



Effect of various waves in the sea over specific area

Rough to very rough: Wind speed 41-62 kmph (22-33 knots) & Wave height 2.5-6 metre
High to very high: Wind speed 63-117 kmph (34-63 knots) & Wave height 6-14 metre
Phenomenal: Wind speed > 117 kmph (> 63 knots) & Wave height > 14 metre



Cyclonic Storm: Wind speed 62-87 kmph (34-47 knots)

Severe Cyclonic Storm: Wind speed 88-117 kmph (48-63 knots)

Very Severe Cyclonic Storm: Wind speed 118-165 kmph (64 - 89 knots)

Extremely Severe Cyclonic Storm: Wind speed 166-220 kmph (90 -119 knots)

Super Cyclone Storm: Wind speed > 220 kmph (> 119 knots)

*Red color warning does not mean "Red Alert" Red color warning means "Take Action"

Forecast and warning for any day is valid from 0830 hours IST of day till 0830 hours IST of next day

For more details kindly visit <https://mausam.imd.gov.in> or contact 011-2434-4599

(Service to the nation since 1875)