

2025-08-21

Time of Issue: 13:51:00 hours IST
(Mid-Day)

ALL INDIA WEATHER SUMMARY AND FORECAST BULLETIN

Significant Weather Features

Weather Forecast and Warnings:

West India:

- Heavy to very heavy rainfall is very likely to continue over north Gujarat till 23 rd August. A fresh spell of Heavy to Very Heavy Rainfall over Gujarat state from 25 th August onwards..
- Heavy rainfall is very likely to continue over Konkan & Goa, Madhya Maharashtra during next 7 days with very heavy rainfall over Konkan on 25th & 26th and ghat areas of Madhya Maharashtra on 21st August.
- Strong surface winds (speed reaching 40-50 kmph) very likely over Gujarat coast during next 5 days and over Maharashtra coast on 21st & 22nd August.
- Light to moderate rainfall at most/many places very likely over the region during next 7 days.

East & Central India:

- Isolated heavy rainfall likely over Madhya Pradesh, Chhattisgarh, Sub-Himalayan West Bengal & Sikkim, Bihar during next 7 days; Vidarbha on 26th & 27th; Odisha, Jharkhand, Gangetic West Bengal during 21st-26th August with isolated very heavy rainfall over west Madhya Pradesh, Gangetic West Bengal on 21st & 22nd; Sub-Himalayan West Bengal on 21st; Jharkhand, Bihar on 22nd & 23rd; Odisha on 22nd, 25th & 26th and Chhattisgarh during 25th-27th August.
- Light to moderate rainfall at most/many places accompanied with thunderstorm & lightning likely over the region during next 5 days.

Northwest India:

- Isolated heavy rainfall likely over Jammu-Kashmir, Punjab, Haryana during 22nd-26th; Himachal Pradesh, Uttarakhand, Rajasthan during next 6-7 days; Uttar Pradesh during 21st-25th August with isolated very heavy rainfall over East Rajasthan during 21st-24th; Punjab, Haryana on 23rd; Uttarakhand during 22nd-25th; Himachal Pradesh during 23rd-26th; West Rajasthan on 23rd & 24th August.
- Light/moderate rainfall at most/many places accompanied with thunderstorm & lightning likely over Jammu-Kashmir-Ladakh-Gilgit-Baltistan-Muzaffarabad, Uttarakhand & Rajasthan during next 7 days.

Northeast India:

- Isolated heavy rainfall likely to continue over Assam & Meghalaya, Nagaland, Manipur, Mizoram & Tripura, Arunachal Pradesh during 5 days with very heavy rainfall over Arunachal Pradesh, Tripura, Mizoram, Assam & Meghalaya on 21st & 22nd August.
- Light/moderate rainfall at many places accompanied with thunderstorm & lightning likely during next 3 days.

South Peninsular India:

*Red color warning does not mean "Red Alert" Red color warning means "Take Action"

Forecast and warning for any day is valid from 0830 hours IST of day till 0830 hours IST of next day

For more details kindly visit <https://mausam.imd.gov.in> or contact 011-2434-4599

(Service to the nation since 1875)



- Isolated **heavy rainfall** likely over Coastal & North Interior Karnataka, Kerala on 26th & 27th and Coastal Andhra Pradesh on 25th & 26th August.
- Light to moderate rainfall at most/many places accompanied with thunderstorm & lightning likely over Tamil Nadu, Coastal Andhra Pradesh & Yanam and Telangana during next 5 days.

Main Weather Observations:

❖ **Rainfall distribution** (from 0830 hours IST of yesterday to 0830 hours IST of today): **at most places** over Assam & Meghalaya, Sub Himalayan West Bengal & Sikkim, Uttarakhand, West Madhya Pradesh, East Madhya Pradesh, Gujarat Region, Saurashtra & Kutch, Konkan & Goa, Madhya Maharashtra, Vidarbha, Chhattisgarh and Coastal Karnataka; **at many places** over Arunachal Pradesh, Nagaland, Manipur, Mizoram & Tripura, Gangetic West Bengal, Odisha, Jharkhand, Bihar, Punjab, Himachal Pradesh, East Rajasthan and North Interior Karnataka; **at a few places** over Andaman & Nicobar Islands, Telangana, Rayalaseema, South Interior Karnataka, Kerala & Mahe and Lakshadweep; **at isolated places** over East Uttar Pradesh, West Uttar Pradesh, Haryana-Chandigarh-Delhi, Jammu-KashmirLadakh-Gilgit-Baltistan-Muzaffarabad, West Rajasthan, Marathwada, Coastal Andhra Pradesh & Yanam and Tamil Nadu, Puducherry & Karaikal;

❖ **Significant rainfall recorded(in cm)** (from 0830 hours IST of yesterday to 0830 hours IST of today): **Saurashtra & Kutch:** Mendarda (dist Junagadh) 28; Keshod (dist Junagadh) 26; Porbandar (dist Porbandar), Okha (dist Devbhoomi Dwarka) 22 Each; Manavadar (dist Junagadh) 21; Vanthali (dist Junagadh) 20; Kutiana (dist Porbandar) 18; Ranavav (dist Porbandar) 17; Dwarka (dist Devbhoomi Dwarka) 14; Mangrol(j) (dist Junagadh), Kalavad (dist Jamnagar) 12 Each; **Gujarat Region:** Gandevi (dist Navsari) 24; Kaprada (dist Valsad) 21; Chikhli (dist Navsari) 20; Dolvan (dist Tapi) 17; Navsari (dist Navsari) 16; Jalalpor (dist Navsari) 15; Vapi (dist Valsad), Silvassa (dist Dadara & Nagar Haveli), Navasari AWS (dist Navsari), Khergam (dist Navsari) 14 Each; Pardi (dist Valsad) 13; **Sub Himalayan West Bengal & Sikkim:** Buxaduar (dist Alipurduar) 19; Subhasini Tea Estate (dist Alipurduar) 13; Dhupguri (dist Jalpaiguri), Dalgaon Tea Estate (dist Alipurduar) 12 Each; Chengmari/Diana (dist Jalpaiguri), Kumlai T.e. (dist Jalpaiguri) 11 Each; **Madhya Maharashtra:** Igatpuri (dist Nashik) 18; Ozarkheda - Fmo (dist Nashik) 16; Lonavala ARG (dist Pune), Trimbakshwar (dist Nashik) 14 Each; Peth (dist Nashik) 13; Radhanagari (dist Kolhapur) 12; Mahabaleshwar (dist Satara) 11; **East Madhya Pradesh:** Khurai (dist Sagar) 14; **West Madhya Pradesh:** Mungaoli (dist Ashoknagar) 13; Chanderi (dist Ashoknagar) 11; **Himachal Pradesh:** Una (dist Una) 13; **Konkan & Goa:** Jawhar (dist Palghar) 12; Mokheda - Fmo (dist Palghar), Wada (dist Palghar) 11 Each; **Uttarakhand:** Banbasa (dist Champawat) 12; **Assam & Meghalaya:** Mawsynram (dist East Khasi Hills) 12.

❖ **Heavy Rainfall observed** (from 0830 hours IST of yesterday to 0830 hours IST of today):**Extremely heavy rain** at isolated places over Gujarat state. **Heavy to very heavy rain** at isolated places over Assam & Meghalaya, Sub Himalayan West Bengal & Sikkim, Uttarakhand, Himachal Pradesh, West Madhya Pradesh, East Madhya Pradesh, Gujarat Region, Saurashtra & Kutch, Konkan & Goa and Madhya Maharashtra. **Heavy rain** at isolated places over Arunachal Pradesh, Odisha, Jharkhand, Bihar, East Uttar Pradesh, Haryana-Chandigarh-Delhi, Punjab, East Rajasthan and Coastal Karnataka.

❖ **Minimum Temperature Departures (as on 21-08-2025):** **markedly above normal(> 5.1°C)** at isolated places over Assam & Meghalaya, Odisha, Bihar, East Uttar Pradesh, West Uttar Pradesh, Himachal Pradesh, Jammu-KashmirLadakh-Gilgit-Baltistan-Muzaffarabad, West Rajasthan and East Madhya Pradesh. **appreciably above normal(3.1°C to 5.0°C)** at few places over Sub Himalayan West Bengal & Sikkim and West Madhya Pradesh; at isolated places over Gujarat Region and Saurashtra & Kutch. **above normal(1.6°C to 3.0°C)** at isolated places over Nagaland, Manipur, Mizoram & Tripura, Gangetic West Bengal, Jharkhand, Haryana-Chandigarh-Delhi, Punjab, East Rajasthan, Madhya Maharashtra and Tamil Nadu, Puducherry & Karaikal. **near normal(-1.5°C to 1.5°C)** at many places over Uttarakhand, Chhattisgarh, South Interior Karnataka, Kerala & Mahe and Lakshadweep; at most places over Andaman & Nicobar Islands, Konkan & Goa, Marathwada, Vidarbha, Coastal Andhra Pradesh & Yanam, Telangana, Rayalaseema, Coastal Karnataka and North Interior Karnataka; at few places over Arunachal Pradesh. **The lowest minimum temperature** of 18.0°C is reported at MYSORE (KARNATAKA) over the Plains of India.

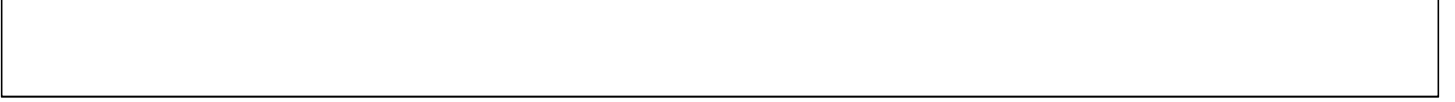
❖ **Maximum Temperature Departures (as on 20-08-2025):** **markedly above normal(> 5.1°C)** at isolated places over Odisha. **appreciably above normal(3.1°C to 5.0°C)** at few places over West Rajasthan; at isolated places over Uttarakhand, East Rajasthan and Tamil Nadu, Puducherry & Karaikal. **above normal(1.6°C to 3.0°C)** at few places over Jharkhand, East Madhya Pradesh, Kerala & Mahe and Lakshadweep; at isolated places over Assam & Meghalaya, Bihar, East Uttar Pradesh, West Uttar Pradesh, Haryana-Chandigarh-Delhi and West Madhya Pradesh. **near normal(-1.5°C to 1.5°C)** at many places over Gangetic West Bengal, Jammu-KashmirLadakh-Gilgit-Baltistan-Muzaffarabad, Gujarat Region, Chhattisgarh, Coastal Andhra Pradesh & Yanam and Telangana; at most places over Andaman & Nicobar Islands, Nagaland, Manipur, Mizoram & Tripura, Sub Himalayan West Bengal & Sikkim, Rayalaseema and Coastal Karnataka; at few places over Arunachal Pradesh, Punjab, Himachal Pradesh, Saurashtra & Kutch, Konkan & Goa and Vidarbha; at isolated places over Madhya Maharashtra and South Interior Karnataka. **The highest maximum temperature** of 40.1°C is reported at BARMER (RAJASTHAN).

*Red color warning does not mean "Red Alert" Red color warning means "Take Action"

Forecast and warning for any day is valid from 0830 hours IST of day till 0830 hours IST of next day

For more details kindly visit <https://mausam.imd.gov.in> or contact 011-2434-4599

(Service to the nation since 1875)

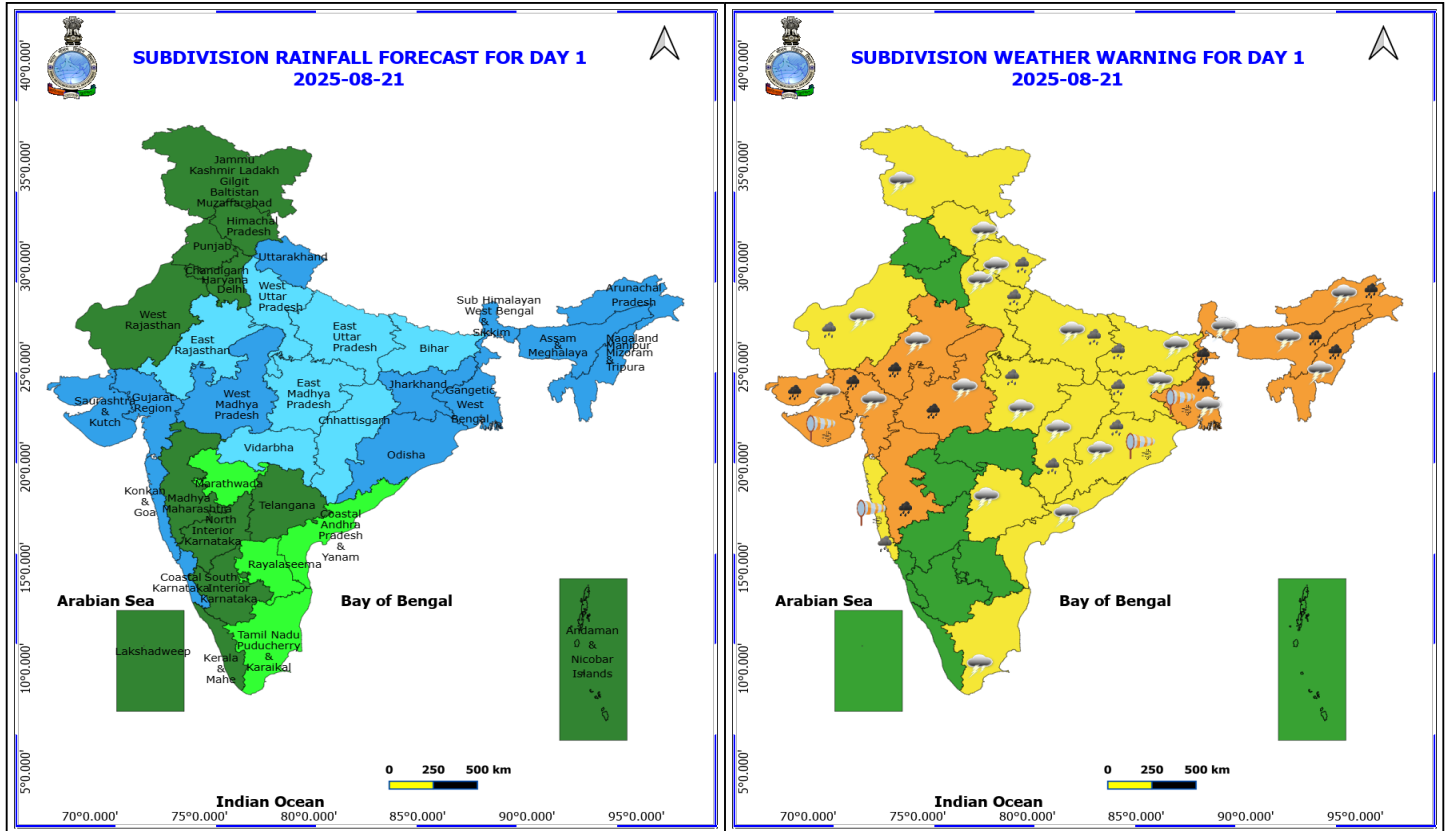


Meteorological Analysis (Based on 0830 hours IST)

- The **monsoon trough** now passes through Jaisalmer, Kota, Datia, Sidhi, Ranchi, Bankura, Digha and thence southeastwards to eastcentral Bay of Bengal and extends upto 1.5 km above mean sea level.
- The **off shore trough** at mean sea level along Gujarat -Maharashtra coasts persists.
- The **upper air cyclonic circulation** over northwest Madhya Pradesh & neighbourhood extending upto 7.6 km above mean sea level persists.
- The **upper air cyclonic circulation** over northwest Bay of Bengal & adjoining areas of north Odisha and adjoining Gangetic West Bengal at 5.8 km above mean sea level persists. Under its influence a low pressure area is likely to form over the same area around 25th august 2025.
- The **upper air cyclonic circulation** over Kutch & neighbourhood at 5.8 km above mean sea level persists.
- The **shear zone** roughly along Lat. 24°N over the Indian region between 3.1 & 5.8 km above mean sea level Persists.
- The **Western Disturbance** as a trough in the lower tropospheric westerlies with its axis at 3.1 km above mean sea level now runs roughly along Long. 78°E to the north of Lat. 32°N.
- The **upper air cyclonic circulation** over northeast Assam & neighbourhood persists and now seen between 0.9 & 1.5 km above mean sea level.

Weather Outlook for subsequent 3 days

- Scattered to Fairly widespread rainfall likely over northern, western India, western peninsular and eastern India.



21 August (Day 1)

- ❖ **Heavy to Very Heavy Rainfall** very likely at isolated places over Arunachal Pradesh, Assam & Meghalaya, East Rajasthan, Gujarat State, Madhya Maharashtra, Nagaland, Manipur, Mizoram and Tripura, West Bengal & Sikkim and West Madhya Pradesh.
- ❖ **Heavy Rainfall** very likely at isolated places over Bihar, Chhattisgarh, East Madhya Pradesh, Jharkhand, Konkan & Goa, Odisha, Uttar Pradesh, Uttarakhand and West Rajasthan.
- ❖ **Thunderstorm accompanied with lightning & gusty winds(30-40kmph)** very likely at isolated places over Bihar, Jammu-Kashmir-Ladakh-Gilgit-Baltistan-Muzaffarabad, Jharkhand, Odisha, Telangana and West Bengal & Sikkim.
- ❖ **Thunderstorm accompanied with Lightning** very likely at isolated places over Arunachal Pradesh, Assam & Meghalaya, Chhattisgarh, Coastal Andhra Pradesh, Gujarat State, Himachal Pradesh, Madhya Pradesh, Nagaland, Manipur, Mizoram and Tripura, Rajasthan, Tamil Nadu Puducherry & Karaikal, Uttar Pradesh and Uttarakhand.
- ❖ **Strong Surface Winds** very likely at isolated places over Gangetic West Bengal, Konkan & Goa, Odisha and Saurashtra & Kutch.

Squally wind with speed reaching 45 kmph to 55 kmph gusting to 65 kmph is likely to prevail along and off Somalia, Oman coasts, most parts of westcentral Arabian sea, adjoining & some parts of southwest, eastcentral Arabian Sea.

Squally weather with wind speed reaching 40 - 50 kmph gusting to 60 kmph likely to prevail over few parts of westcentral, along and off Gujarat, Maharashtra, Odisha, west Bengal and north Bay of Bengal, and few parts of Comorin area.

Squally weather with wind speed reaching 45 - 55 kmph gusting to 65 kmph likely to prevail over most parts of

***Red color warning does not mean "Red Alert" Red color warning means "Take Action"**

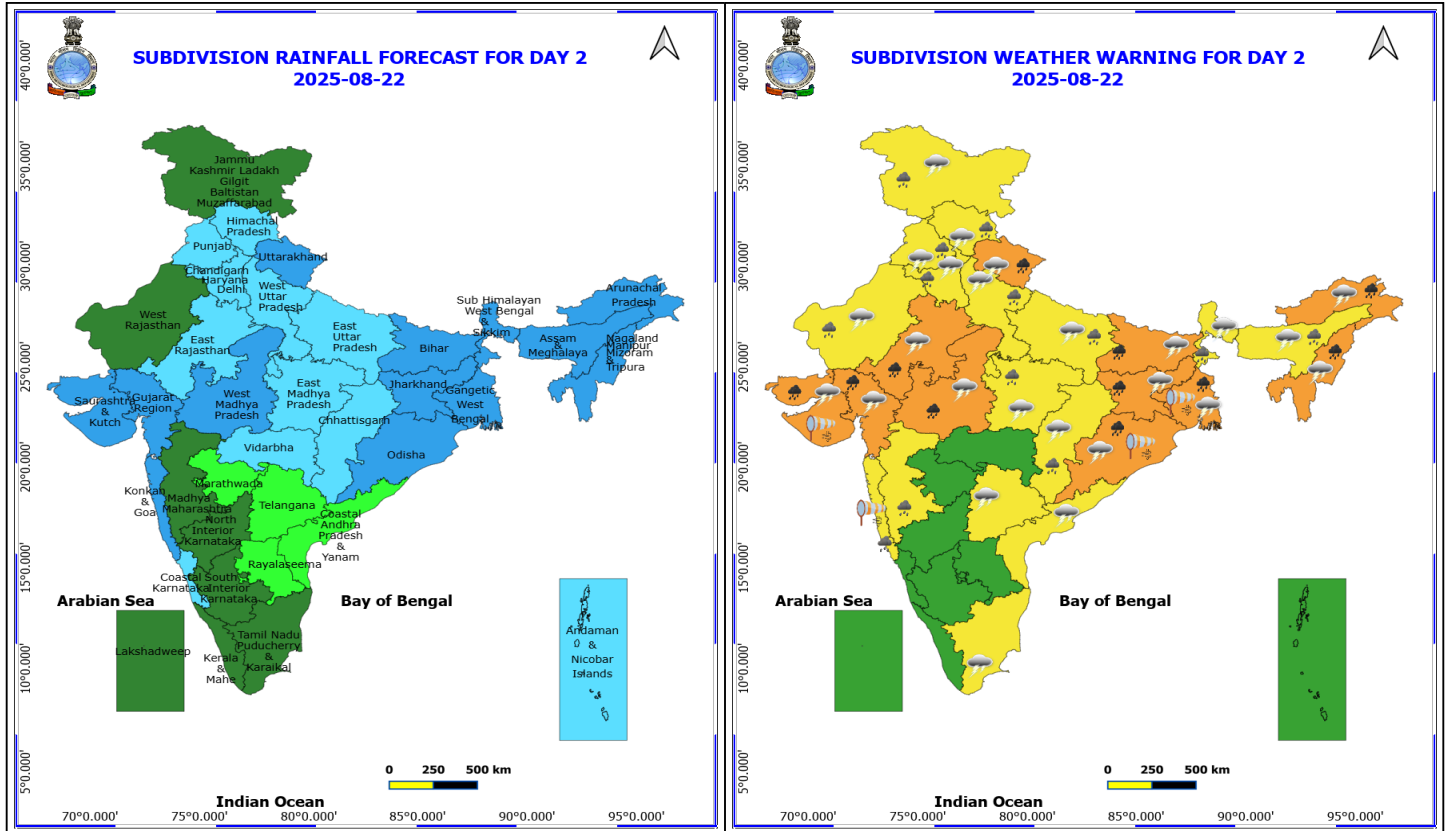
Forecast and warning for any day is valid from 0830 hours IST of day till 0830 hours IST of next day

For more details kindly visit <https://mausam.imd.gov.in> or contact 011-2434-4599

(Service to the nation since 1875)



eastcentral Arabian Sea.



22 August (Day 2)

- ❖ **Heavy to Very Heavy Rainfall** very likely at isolated places over Arunachal Pradesh, Bihar, East Rajasthan, Gangetic West Bengal, Gujarat State, Jharkhand, Nagaland, Manipur, Mizoram and Tripura, Odisha, Uttarakhand and West Madhya Pradesh.
- ❖ **Heavy Rainfall** very likely at isolated places over Assam & Meghalaya, Chhattisgarh, East Madhya Pradesh, Haryana, Chandigarh & Delhi, Himachal Pradesh, Jammu-Kashmir-Ladakh-Gilgit-Baltistan-Muzaffarabad, Konkan & Goa, Madhya Maharashtra, Punjab, Sub Himalayan West Bengal & Sikkim, Uttar Pradesh and West Rajasthan.
- ❖ **Thunderstorm accompanied with lightning & gusty winds(30-40kmph)** very likely at isolated places over Bihar, Jammu-Kashmir-Ladakh-Gilgit-Baltistan-Muzaffarabad, Jharkhand, Odisha, Telangana and West Bengal & Sikkim.
- ❖ **Thunderstorm accompanied with Lightning** very likely at isolated places over Arunachal Pradesh, Assam & Meghalaya, Chhattisgarh, Coastal Andhra Pradesh, Gujarat State, Haryana, Chandigarh & Delhi, Himachal Pradesh, Madhya Pradesh, Nagaland, Manipur, Mizoram and Tripura, Punjab, Rajasthan, Tamil Nadu Puducherry & Karaikal, Uttar Pradesh and Uttarakhand.
- ❖ **Strong Surface Winds** very likely at isolated places over Gangetic West Bengal, Konkan & Goa, Odisha and Saurashtra & Kutch.

Squally wind with speed reaching 45 kmph to 55 kmph gusting to 65 kmph is likely to prevail along and off Somalia, Oman coasts, most parts of westcentral Arabian sea, adjoining & some parts of southwest Arabian Sea.

Squally weather with wind speed reaching 40 - 50 kmph gusting to 60 kmph likely to prevail along and off Gujarat, Maharashtra coasts, over most parts of eastcentral and northeast Arabian sea, along and off north Odisha, West Bengal adjoining north Bay of Bengal and few parts of Comorin area.

***Red color warning does not mean "Red Alert" Red color warning means "Take Action"**

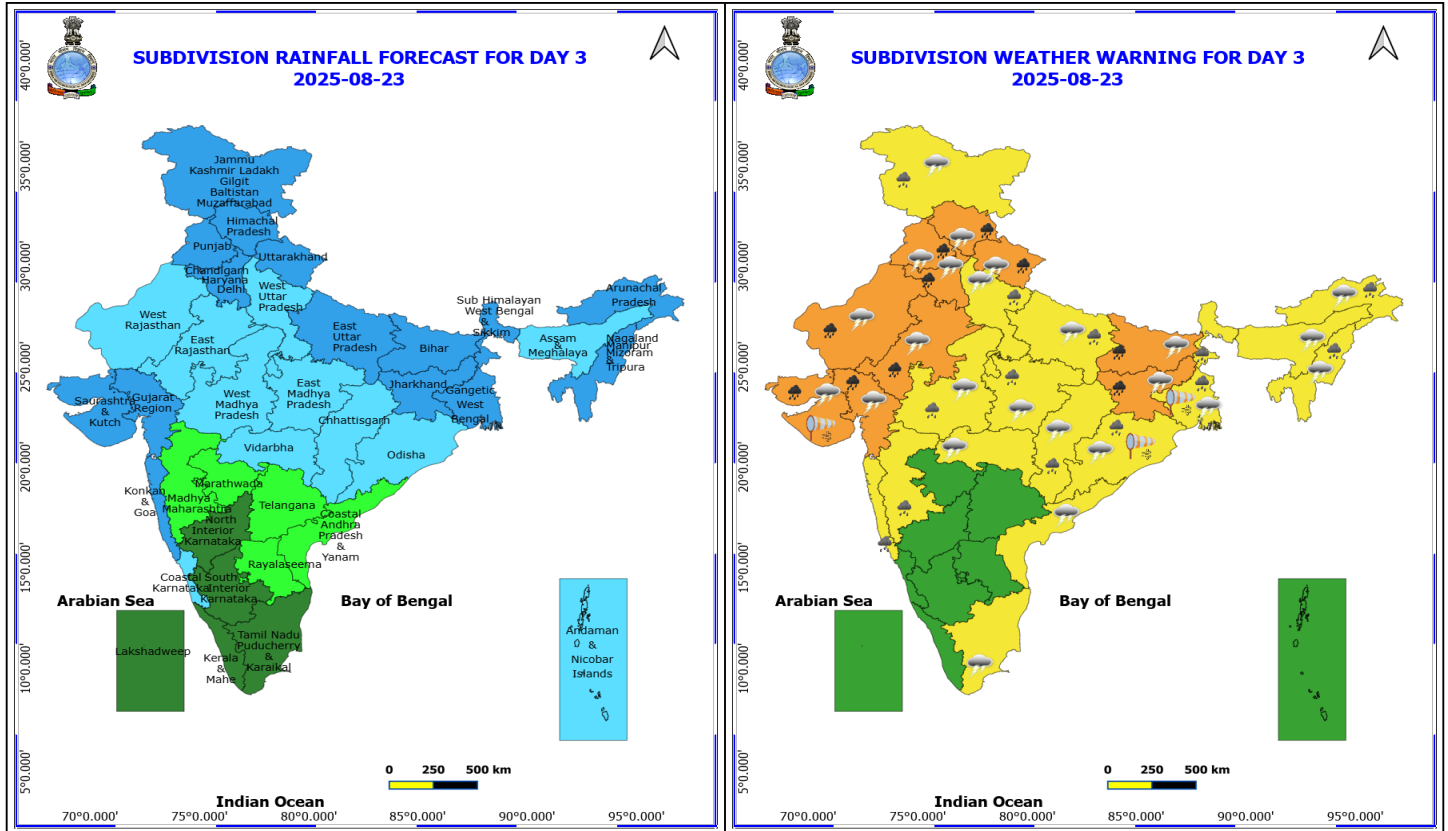
Forecast and warning for any day is valid from 0830 hours IST of day till 0830 hours IST of next day

For more details kindly visit <https://mausam.imd.gov.in> or contact 011-2434-4599

(Service to the nation since 1875)



Squally weather with wind speed reaching 45 - 55 kmph gusting to 65 kmph likely to prevail over some parts of eastcentral and adjoining sea.



23 August (Day 3)

- ❖ **Heavy to Very Heavy Rainfall** very likely at isolated places over Bihar, Gujarat State, Haryana, Chandigarh & Delhi, Himachal Pradesh, Jharkhand, Punjab, Rajasthan and Uttarakhand.
- ❖ **Heavy Rainfall** very likely at isolated places over Arunachal Pradesh, Chhattisgarh, Jammu-Kashmir-Ladakh-Gilgit-Baltistan-Muzaffarabad, Konkan & Goa, Madhya Maharashtra, Madhya Pradesh, Nagaland, Manipur, Mizoram and Tripura, Odisha, Uttar Pradesh and West Bengal & Sikkim.
- ❖ **Thunderstorm accompanied with lightning & gusty winds(30-40kmph)** very likely at isolated places over Bihar, Gangetic West Bengal, Jammu-Kashmir-Ladakh-Gilgit-Baltistan-Muzaffarabad, Jharkhand and Odisha.
- ❖ **Thunderstorm accompanied with Lightning** very likely at isolated places over Arunachal Pradesh, Assam & Meghalaya, Chhattisgarh, Coastal Andhra Pradesh, Gujarat State, Haryana, Chandigarh & Delhi, Himachal Pradesh, Madhya Pradesh, Nagaland, Manipur, Mizoram and Tripura, Punjab, Rajasthan, Tamil Nadu Puducherry & Karaikal, Uttar Pradesh, Uttarakhand and Vidarbha.
- ❖ **Strong Surface Winds** very likely at isolated places over Gangetic West Bengal, Odisha and Saurashtra & Kutch.

Squally wind with speed reaching 45 kmph to 55 kmph gusting to 65 kmph is likely to prevail along and off Somalia, Oman coasts, most parts of westcentral Arabian sea, adjoining & some parts of southwest, eastcentral Arabian Sea.

Squally weather with wind speed reaching 40 - 50 kmph gusting to 60 kmph likely to prevail over few parts of westcentral, North Maharashtra, North Odisha, west Bengal and north Bay of Bengal.

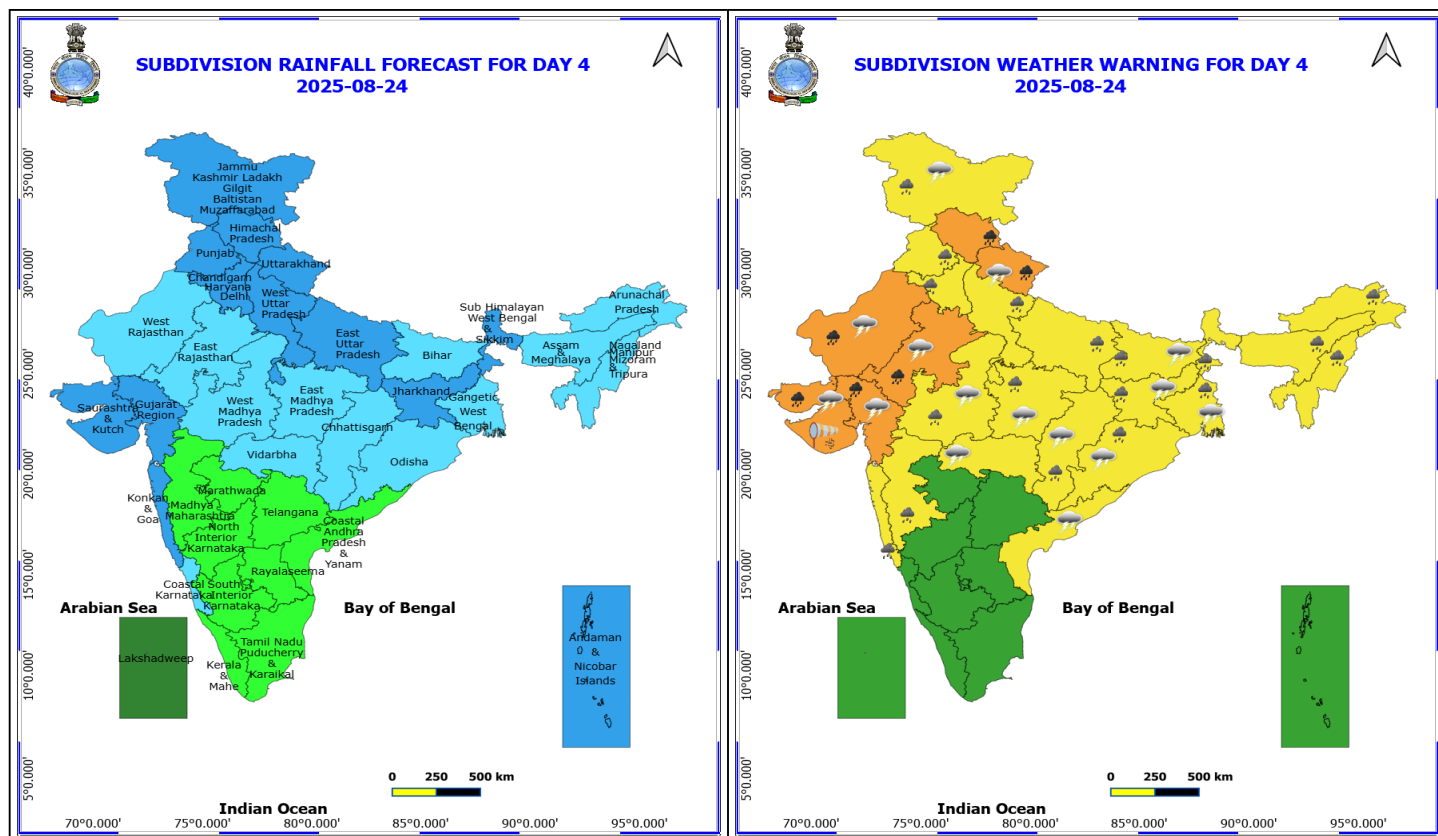
Squally weather with wind speed reaching 45 - 55 kmph gusting to 65 kmph likely to prevail over some parts of eastcentral and northeast Arabian Sea along and off south Gujarat coasts.

***Red color warning does not mean "Red Alert" Red color warning means "Take Action"**

Forecast and warning for any day is valid from 0830 hours IST of day till 0830 hours IST of next day

For more details kindly visit <https://mausam.imd.gov.in> or contact 011-2434-4599

(Service to the nation since 1875)



24 August (Day 4)

- ❖ **Heavy to Very Heavy Rainfall** likely at isolated places over Gujarat State, Himachal Pradesh, Rajasthan and Uttarakhand.
- ❖ **Heavy Rainfall** likely at isolated places over Arunachal Pradesh, Assam & Meghalaya, Bihar, Chhattisgarh, Haryana, Chandigarh & Delhi, Jammu-Kashmir-Ladakh-Gilgit-Baltistan-Muzaffarabad, Jharkhand, Konkan & Goa, Madhya Maharashtra, Madhya Pradesh, Nagaland, Manipur, Mizoram and Tripura, Odisha, Punjab, Uttar Pradesh and West Bengal & Sikkim.
- ❖ **Thunderstorm accompanied with lightning & gusty winds(30-40kmph)** likely at isolated places over Bihar, Gangetic West Bengal, Jammu-Kashmir-Ladakh-Gilgit-Baltistan-Muzaffarabad, Jharkhand and Odisha.
- ❖ **Thunderstorm accompanied with Lightning** likely at isolated places over Chhattisgarh, Coastal Andhra Pradesh, Gujarat State, Madhya Pradesh, Rajasthan, Uttarakhand and Vidarbha.
- ❖ **Strong Surface Winds** likely at isolated places over Saurashtra & Kutch.

Squally wind with speed reaching 45 kmph to 55 kmph gusting to 65 kmph is likely to prevail along and off Somalia, Oman coasts, few parts of northwest Arabian Sea, most parts of westcentral Arabian sea, adjoining southwest & eastcentral Arabian Sea.

Squally weather with wind speed reaching 40 - 50 kmph gusting to 60 kmph likely to prevail along and off north Maharashtra coasts, over some parts eastcentral and northeast Arabian Sea, few parts of westcentral and northwest Bay and adjoining Bay of Bengal

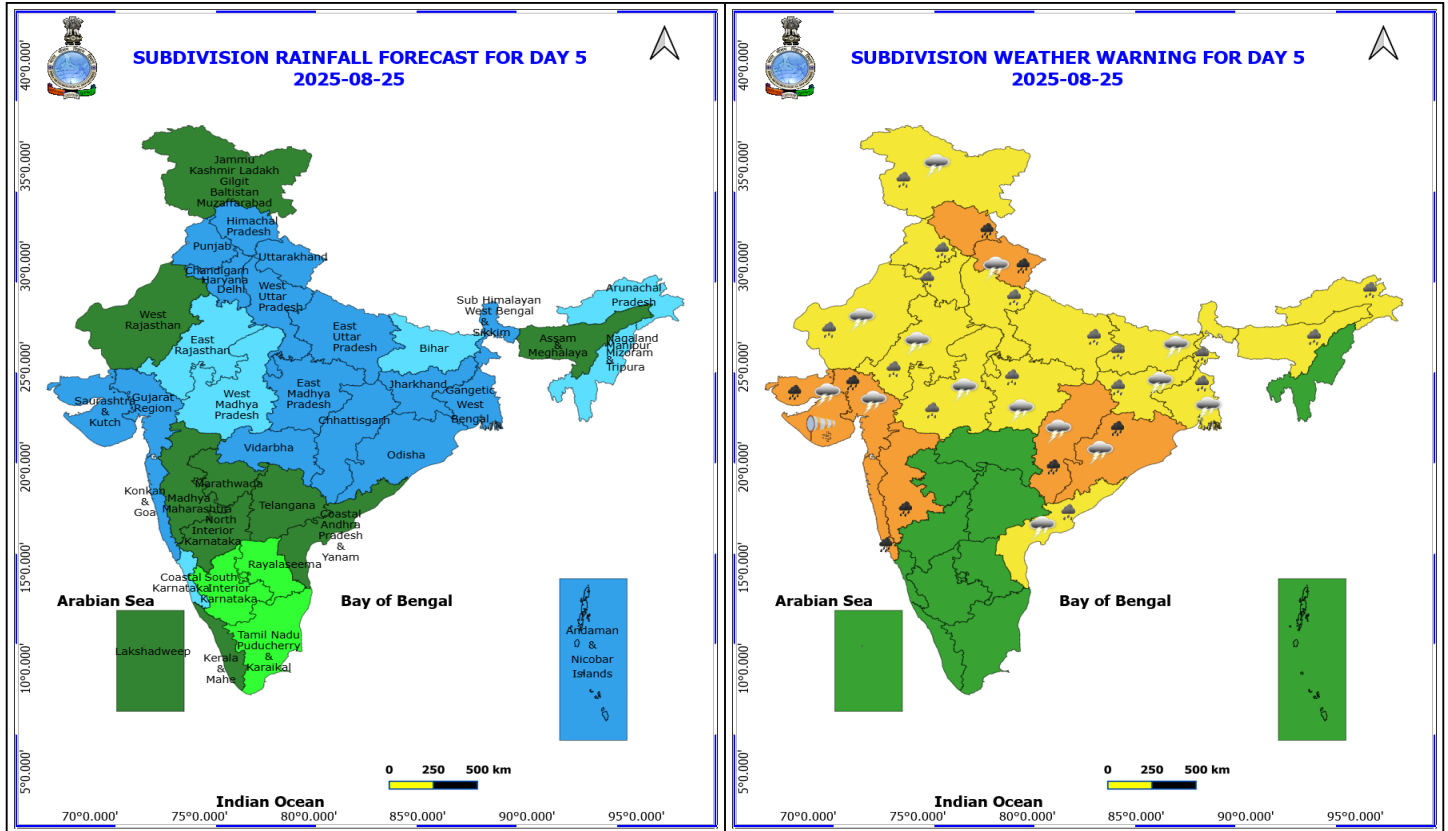
Squally weather with wind speed reaching 45 - 55 kmph gusting to 65 kmph likely to prevail over south Gujarat and some parts of eastcentral, & northeast Arabian Sea.

***Red color warning does not mean "Red Alert" Red color warning means "Take Action"**

Forecast and warning for any day is valid from 0830 hours IST of day till 0830 hours IST of next day

For more details kindly visit <https://mausam.imd.gov.in> or contact 011-2434-4599

(Service to the nation since 1875)



25 August (Day 5)

- ❖ **Heavy to Very Heavy Rainfall** likely at isolated places over Chhattisgarh, Gujarat State, Himachal Pradesh, Konkan & Goa, Madhya Maharashtra, Odisha and Uttarakhand.
- ❖ **Heavy Rainfall** likely at isolated places over Arunachal Pradesh, Assam & Meghalaya, Bihar, Coastal Andhra Pradesh, Haryana, Chandigarh & Delhi, Jammu-Kashmir-Ladakh-Gilgit-Baltistan-Muzaffarabad, Jharkhand, Madhya Pradesh, Punjab, Rajasthan, Uttar Pradesh and West Bengal & Sikkim.
- ❖ **Thunderstorm accompanied with lightning & gusty winds(30-40kmph)** likely at isolated places over Bihar, Gangetic West Bengal, Jammu-Kashmir-Ladakh-Gilgit-Baltistan-Muzaffarabad, Jharkhand and Odisha.
- ❖ **Thunderstorm accompanied with Lightning** likely at isolated places over Chhattisgarh, Coastal Andhra Pradesh, Gujarat State, Madhya Pradesh, Rajasthan and Uttarakhand.
- ❖ **Strong Surface Winds** likely at isolated places over Saurashtra & Kutch.

Squally wind with speed reaching 45 kmph to 55 kmph gusting to 65 kmph is likely to prevail along and off Somalia, Oman coasts, most parts of westcentral Arabian sea, adjoining & some parts of southwest, eastcentral Arabian Sea.

Squally weather with wind speed reaching 40 - 50 kmph gusting to 60 kmph likely to prevail over some parts of north Arabian Sea along and off Gujarat, North Maharashtra, off Odisha coasts, most parts of northwest and adjoining sea areas.

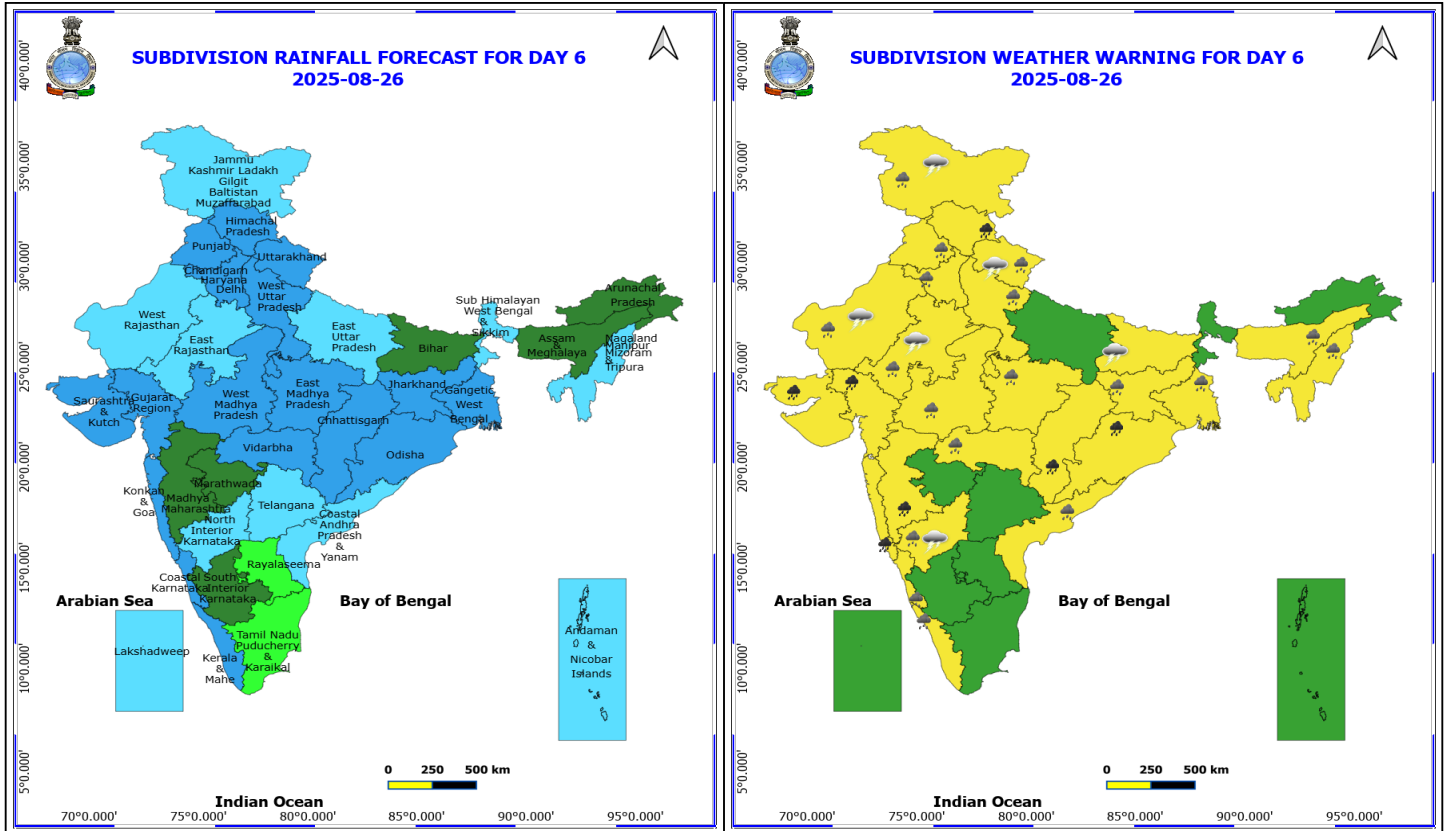
Squally weather with wind speed reaching 45 - 55 kmph gusting to 65 kmph likely to prevail over some parts of eastcentral and north Arabian Sea, off south Gujarat coasts.

***Red color warning does not mean "Red Alert" Red color warning means "Take Action"**

Forecast and warning for any day is valid from 0830 hours IST of day till 0830 hours IST of next day

For more details kindly visit <https://mausam.imd.gov.in> or contact 011-2434-4599

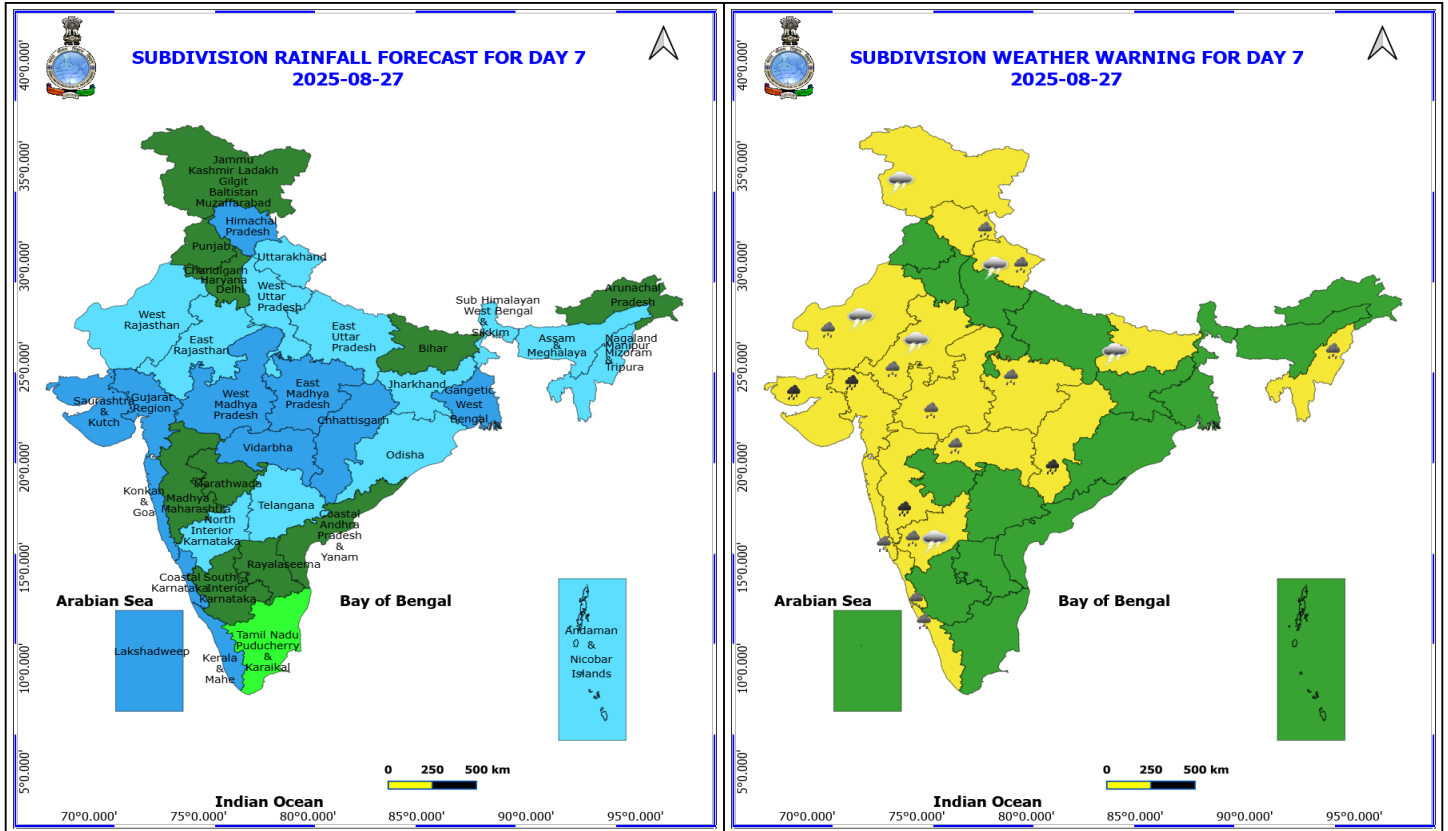
(Service to the nation since 1875)



26 August (Day 6)

- ❖ **Heavy to Very Heavy Rainfall** likely at isolated places over Chhattisgarh, Gujarat State, Himachal Pradesh, Konkan & Goa, Madhya Maharashtra and Odisha.
- ❖ **Heavy Rainfall** likely at isolated places over Assam & Meghalaya, Coastal Andhra Pradesh, Coastal Karnataka, Gangetic West Bengal, Haryana, Chandigarh & Delhi, Jammu-Kashmir-Ladakh-Gilgit-Baltistan-Muzaffarabad, Jharkhand, Kerala & Mahe, Madhya Pradesh, Nagaland, Manipur, Mizoram and Tripura, North Interior Karnataka, Punjab, Rajasthan, Uttarakhand, Vidarbha and West Uttar Pradesh.
- ❖ **Thunderstorm accompanied with lightning & gusty winds(30-40kmph)** likely at isolated places over Bihar and Jammu-Kashmir-Ladakh-Gilgit-Baltistan-Muzaffarabad.
- ❖ **Thunderstorm accompanied with Lightning** likely at isolated places over North Interior Karnataka, Rajasthan and Uttarakhand.

No Fishermen Warning



27 August (Day 7)

- ❖ **Heavy to Very Heavy Rainfall** likely at isolated places over Chhattisgarh, Gujarat State and Madhya Maharashtra.
- ❖ **Heavy Rainfall** likely at isolated places over Coastal Karnataka, Himachal Pradesh, Kerala & Mahe, Konkan & Goa, Madhya Pradesh, Nagaland, Manipur, Mizoram and Tripura, North Interior Karnataka, Rajasthan, Uttarakhand and Vidarbha.
- ❖ **Thunderstorm accompanied with lightning & gusty winds(30-40kmph)** likely at isolated places over Bihar and Jammu-Kashmir-Ladakh-Gilgit-Baltistan-Muzaffarabad.
- ❖ **Thunderstorm accompanied with Lightning** likely at isolated places over North Interior Karnataka, Rajasthan and Uttarakhand.

No Fishermen Warning

***Red color warning does not mean "Red Alert" Red color warning means "Take Action"**

Forecast and warning for any day is valid from 0830 hours IST of day till 0830 hours IST of next day

For more details kindly visit <https://mausam.imd.gov.in> or contact 011-2434-4599

(Service to the nation since 1875)

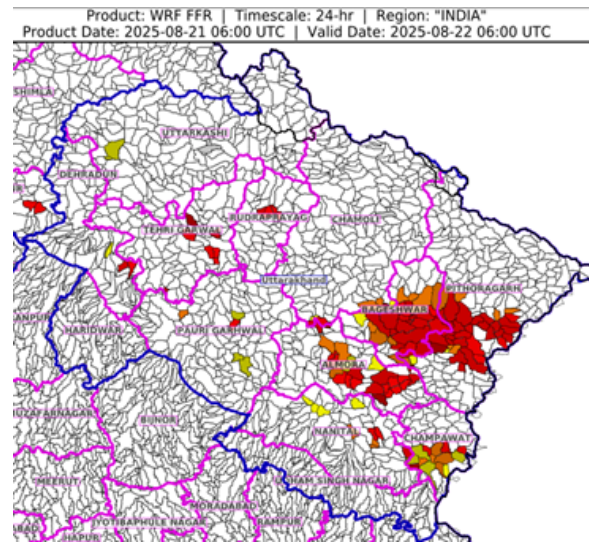
Flash Flood Warnings

24 hours Outlook for the Flash Flood Risk (FFR) till 1130 IST of 22-08-2025 :

Low to Moderate flash flood risk likely over few watersheds & neighbourhoods of following Met Sub-divisions during next 24 hours.

Uttarakhand - Almora, Bageshwar, Chamoli, Champawat, Dehradun, Nanital, Pauri Garhwal, Pithoragarh, Rudraprayag, Tehri Garwal and Uttarkashi districts.

Surface runoff/ Inundation may occur at some fully saturated soils & low-lying areas over Area of Concern (AoC) as shown in map due to expected rainfall occurrence in next 24 hours.



24 hours Outlook for the Flash Flood Risk (FFR) till 1130 IST of 22-08-2025 :

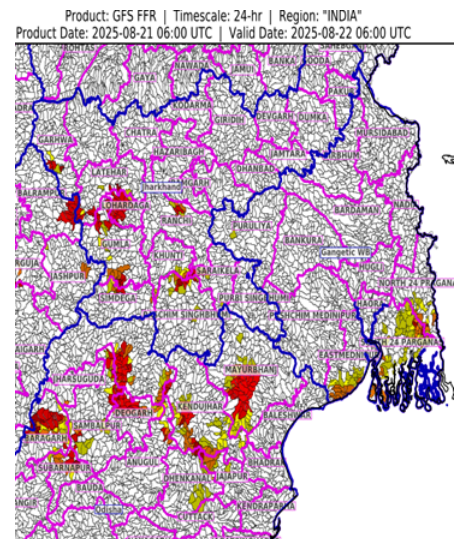
Low to Moderate flash flood risk likely over few watersheds & neighbourhoods of following Met Sub-divisions during next 24 hours.

Odisha - Baragarh, Deogarh, Dhenkanal, Jajapur, Kendujhar, Mayurbhanj, Sambalpur, Subarnapur and Sundargarh districts.

Gangetic West Bengal - Eastmednipur, North 24 Pragana, Puruliya and South 24 Parganas districts.

Jharkhand - Garhwa, Gumla, Khunti, Latehar, Lohardaga, Ranchi, Saraikela, Simdega and West Singhbhum districts.

Surface runoff/ Inundation may occur at some fully saturated soils & low-lying areas over Area of Concern (AoC) as shown in map due to expected rainfall occurrence in next 24 hours.



*Red color warning does not mean "Red Alert" Red color warning means "Take Action"

Forecast and warning for any day is valid from 0830 hours IST of day till 0830 hours IST of next day

For more details kindly visit <https://mausam.imd.gov.in> or contact 011-2434-4599

(Service to the nation since 1875)



Table-1

7 Days Rainfall Forecast

S.No.	Subdivision	21- Aug	22- Aug	23- Aug	24- Aug	25- Aug	26- Aug	27- Aug
		Day 1	Day 2	Day 3	Day 4	Day 5	Day 6	Day 7
1	ANDAMAN & NICOBAR ISLANDS	SCT	FWS	FWS	WS	WS	FWS	FWS
2	ARUNACHAL PRADESH	WS	WS	WS	FWS	FWS	SCT	SCT
3	ASSAM & MEHGHALAYA	WS	WS	FWS	FWS	SCT	SCT	FWS
4	N. M. M. & T.	WS	WS	WS	FWS	FWS	FWS	FWS
5	S.H. WEST BENGAL & SIKKIM	WS	WS	WS	WS	WS	FWS	FWS
6	GANGETIC WEST BENGAL	WS	WS	WS	FWS	WS	WS	WS
7	ODISHA	WS	WS	FWS	FWS	WS	WS	FWS
8	JHARKHAND	WS	WS	WS	WS	WS	WS	FWS
9	BIHAR	FWS	WS	WS	FWS	FWS	SCT	SCT
10	EAST UTTAR PRADESH	FWS	FWS	WS	WS	WS	FWS	FWS
11	WEST UTTAR PRADESH	FWS	FWS	FWS	WS	WS	WS	FWS
12	UTTARAKHAND	WS	WS	WS	WS	WS	WS	FWS
13	HARYANA, CHD & DELHI	SCT	FWS	WS	WS	WS	WS	SCT
14	PUNJAB	SCT	FWS	WS	WS	WS	WS	SCT
15	HIMACHAL PRADESH	SCT	FWS	WS	WS	WS	WS	WS
16	JAMMU AND KASHMIR AND LADAKH	SCT	SCT	WS	WS	SCT	FWS	SCT
17	WEST RAJASTHAN	SCT	SCT	FWS	FWS	SCT	FWS	FWS
18	EAST RAJASTHAN	FWS	FWS	FWS	FWS	FWS	FWS	FWS
19	WEST MADHYA PRADESH	WS	WS	FWS	FWS	FWS	WS	WS
20	EAST MADHYA PRADESH	FWS	FWS	FWS	FWS	WS	WS	WS
21	GUJRAT REGION	WS	WS	WS	WS	WS	WS	WS
22	SAURASHTRA & KUTCH	WS	WS	WS	WS	WS	WS	WS
23	KONKAN & GOA	WS	WS	WS	WS	WS	WS	WS
24	MADHYA MAHARASHTRA	SCT	SCT	ISOL	ISOL	SCT	SCT	SCT
25	MARATHWADA	ISOL	ISOL	ISOL	ISOL	SCT	SCT	SCT
26	VIDARBHA	FWS	FWS	FWS	FWS	WS	WS	WS
27	CHATTISGARH	FWS	FWS	FWS	FWS	WS	WS	WS
28	COASTAL ANDHRA PRADESH	ISOL	ISOL	ISOL	ISOL	SCT	FWS	SCT
29	TELANGANA	SCT	ISOL	ISOL	ISOL	SCT	FWS	FWS
30	RAYALASEEMA	ISOL	ISOL	ISOL	ISOL	ISOL	ISOL	SCT
31	TAMILNADU & PUDUCHERRY	ISOL	SCT	SCT	ISOL	ISOL	ISOL	ISOL
32	COSTAL KARNATAKA	WS	FWS	FWS	FWS	FWS	WS	WS
33	NORTH INTERIOR KARNATAKA	SCT	SCT	SCT	ISOL	SCT	FWS	FWS
34	SOUTH INTERIOR KARNATAKA	SCT	SCT	SCT	ISOL	ISOL	SCT	SCT
35	KERALA	SCT	SCT	SCT	ISOL	SCT	WS	WS
36	LAKSHDWEEP	SCT	SCT	SCT	SCT	SCT	FWS	WS

Legend	Category	%Stations
WS	Widespread/Most Places	76-100
FWS	Fairly Widespread/Many Places	51-75
SCT	Scattered/ A Few Places	26-50
ISOL	Isolated Places	1-25
DRY	No Rain	0

*Red color warning does not mean "Red Alert" Red color warning means "Take Action"

Forecast and warning for any day is valid from 0830 hours IST of day till 0830 hours IST of next day

For more details kindly visit <https://mausam.imd.gov.in> or contact 011-2434-4599

(Service to the nation since 1875)

Fig. 1: Maximum Temperatures Dated 2025-08-21

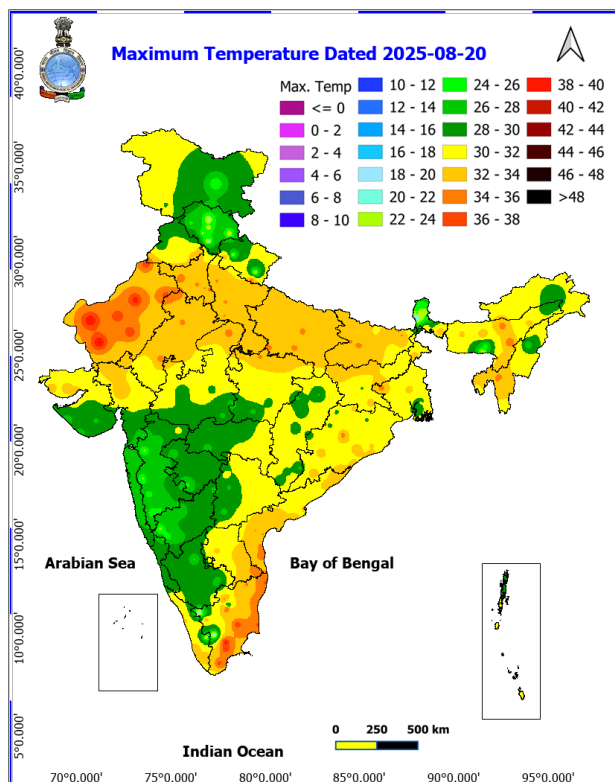


Fig. 2: Departure of Maximum Temp. Dated 2025-08-21

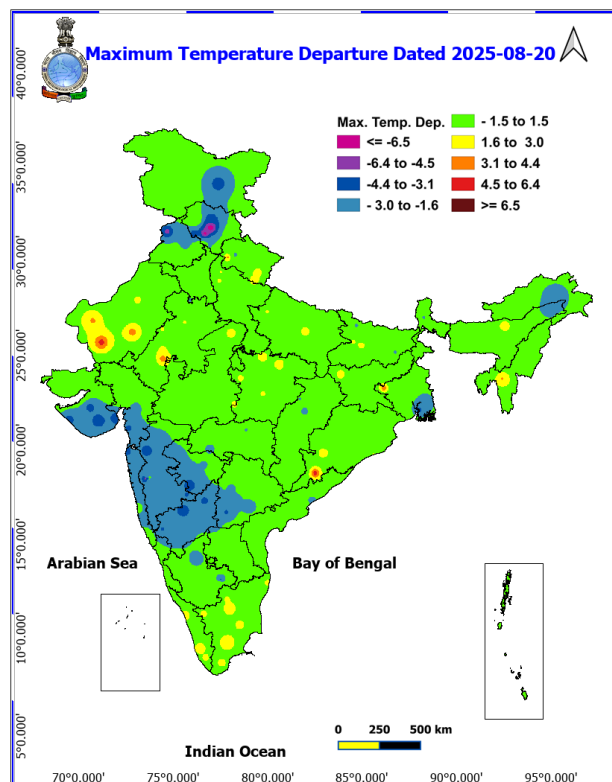


Fig. 3: Minimum Temperatures Dated 2025-08-21

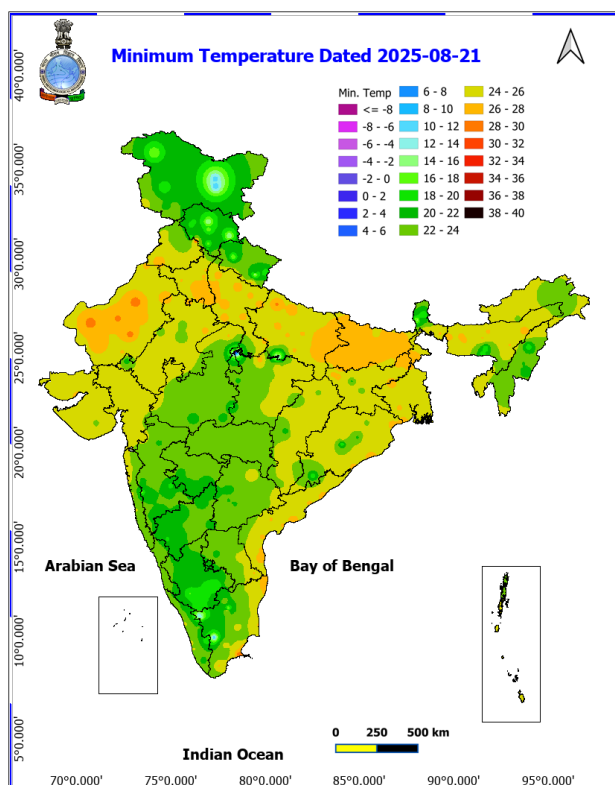
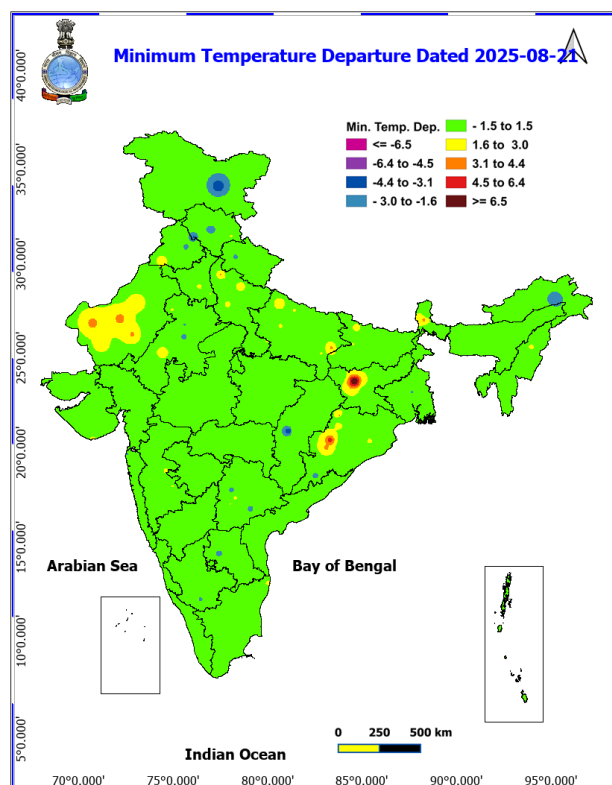
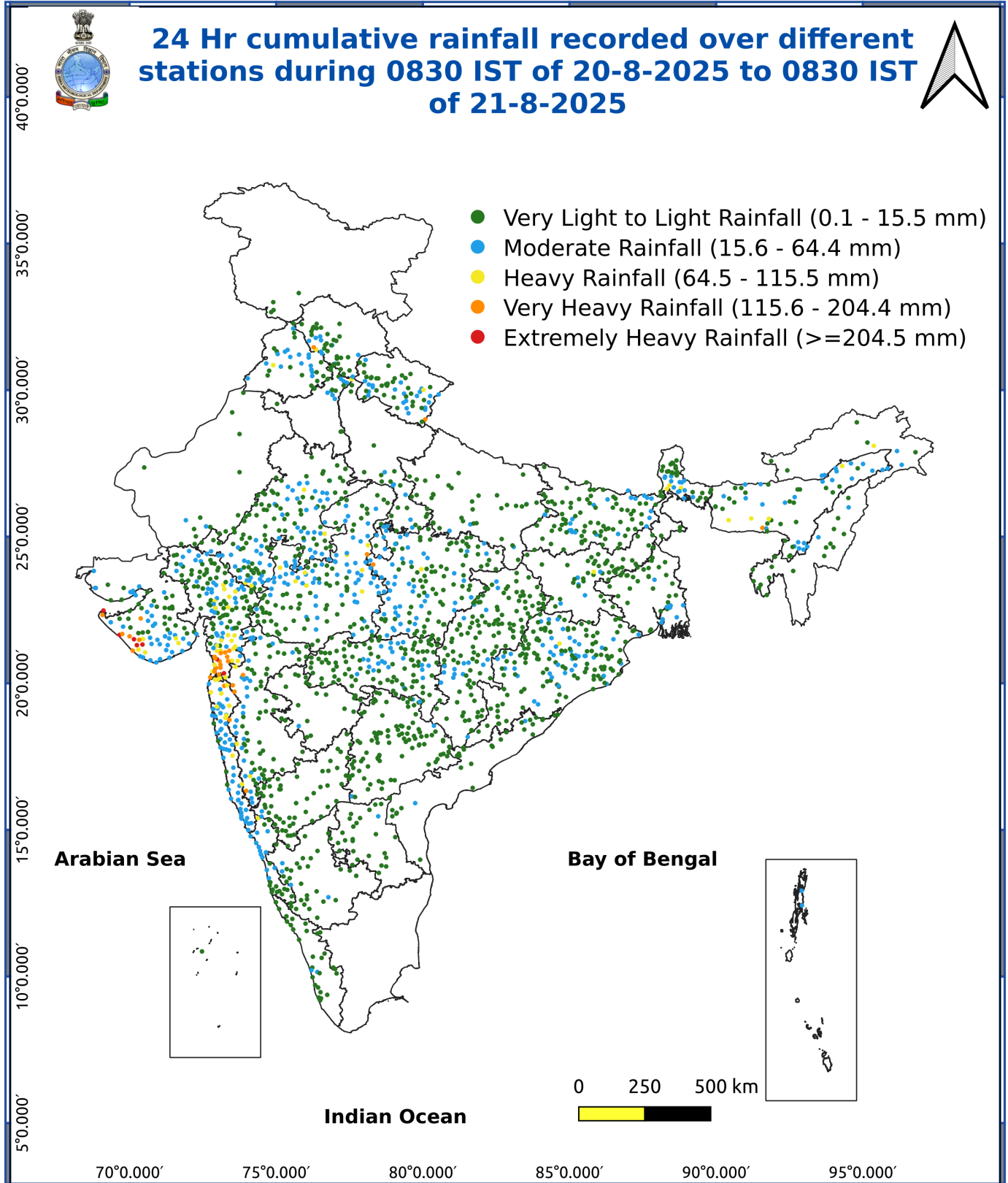


Fig. 4: Departure of Minimum Temp. Dated 2025-08-21





*Red color warning does not mean "Red Alert" Red color warning means "Take Action"

Forecast and warning for any day is valid from 0830 hours IST of day till 0830 hours IST of next day

For more details kindly visit <https://mausam.imd.gov.in> or contact 011-2434-4599

(Service to the nation since 1875)

Impact & Action Suggested due to

Isolated very heavy rainfall is very likely to continue over Gujarat state during next 7 days; Konkan on 25th & 26th and ghat areas of Madhya Maharashtra on 21st, during 25th-27th; west Madhya Pradesh, Gangetic West Bengal, Arunachal Pradesh, Tripura, Mizoram, Assam & Meghalaya on 21st & 22nd; Sub-Himalayan West Bengal on 21st; Jharkhand, Bihar on 22nd & 23rd; Odisha on 22nd, 25th & 26th and Chhattisgarh during 25th-27th; East Rajasthan during 21st-24th; Punjab, Haryana on 23rd; Uttarakhand during 22nd-25th; Himachal Pradesh during 23rd-26th; West Rajasthan on 23rd & 24th August.

Impact Expected

Localized Flooding of roads, water logging in low lying areas and closure of underpasses mainly in urban areas of the above region.

Occasional reduction in visibility due to heavy rainfall.

Disruption of traffic in major cities due to water logging in roads leading to increased travel time.

Minor damage to kutcha roads.

Possibilities of damage to vulnerable structure.

Localized Landslides/Mudslides/landslips/mudslips/landsinks/mudsinks.

Damage to horticulture and standing crops in some areas due to inundation.

It may lead to riverine flooding in some river catchments (for riverine flooding please visit Web page of CWC)

Action Suggested

Check for traffic congestion on your route before leaving for your destination.

Follow any traffic advisories that are issued in this regard.

Avoid going to areas that face the water logging problems often.

Avoid staying in vulnerable structure.

Agromet advisories for various parts of the country

Agromet advisories for likely impact of Heavy / Heavy to Very Heavy Rainfall

In **Gujarat**, provide mechanical support to horticultural crops and staking or support to vegetables and young fruit plants to avoid lodging due to heavy rains and strong winds. Make arrangements to drain out excess water from fields of rice, sugarcane, vegetables and tuber crops in **South Gujarat Heavy Rainfall Zone**; rice, cotton, sugarcane and pigeon pea in **South Gujarat Zone**; groundnut, cotton, soybean, black gram, green gram, sesame and pigeon pea in **South Saurashtra Zone**; groundnut, cotton, sesame, black gram and green gram in **North Saurashtra Zone**; rice, cotton, green gram, black gram, pigeon pea, pearl millet and vegetables in **Bhal and Coastal Zone**; rice, pearl millet, pigeon pea and cotton in **Middle Gujarat Zone** and castor, cotton, groundnut, pearl millet and sesame in **North Gujarat Zone** and **North West Zone**.

In **Maharashtra**, make arrangements to drain out excess water from rice fields maintaining 2.5 to 5 cm water level in **Konkan** and **ghat areas** of **Madhya Maharashtra**. To prevent waterlogging, make provision for draining out excess water from fields of finger millet, turmeric, groundnut, vegetables and fruit orchards in **Konkan** and maize, groundnut,

***Red color warning does not mean "Red Alert" Red color warning means "Take Action"**

Forecast and warning for any day is valid from 0830 hours IST of day till 0830 hours IST of next day

For more details kindly visit <https://mausam.imd.gov.in> or contact 011-2434-4599

(Service to the nation since 1875)

soybean, vegetables and fruit orchards in **ghat areas** of **Madhya Maharashtra**.

In **Madhya Pradesh**, provide adequate drainage in fields of maize, soybean, cotton and vegetables in **Satpura Plateau Zone**; soybean, maize and vegetables in **Malwa Plateau Zone**; rice, soybean, maize, sugarcane and vegetables in **Central Narmada Valley Zone**; soybean, pigeon pea, cotton and vegetables in **Nimar Valley Zone**; maize, soybean, black gram, cotton, and pigeon pea in **Vindhyan Plateau Zone**; soybean, black gram, maize, cotton and vegetables in **Jhabua Hills Zone**; rice, soybean, maize and vegetables in **Kymore Plateau and Satpura Hill Zone** and rice, maize, soybean, green gram, pigeon pea and vegetables in **Gird Zone**.

In **Himachal Pradesh**, maintain proper drainage channels in ginger, turmeric and maize fields in **Mid Hills Sub Humid Zone** and rice, maize and vegetable fields in **Sub Montane and Low Hills Sub Tropical Zone**. In **High Hills Sub Temperate Wet Zone**, harvest ripened tomatoes and ensure proper drainage in maize, kidney bean, vegetable fields and fruit orchards.

In **Uttarakhand**, maintain proper drainage channels in fields of soybean, maize, pulses, finger millet, ginger, vegetable and fruit orchards in **Hill Zone**; barnyard millet, finger millet and green gram in **Sub Humid Sub Tropic Zone** and rice, green gram, black gram, sugarcane, maize, soybean, groundnut and vegetables in **Bhabar and Tarai Zone**.

In **Punjab**, maintain proper drainage in chilli fields and remove stagnant rainwater immediately after rainfall in **Undulating Plain Zone**. Ensure proper drainage in fields of sugarcane, maize, soybean and green gram in **Sub-Montane Undulating Zone** and sugarcane, maize and cotton in **Central Plain Zone**.

In **Haryana**, make arrangements to drain out excess water from fields of sugarcane, cotton, maize, pearl millet and vegetables in **Eastern Zone**.

In **East Rajasthan**, make arrangements to drain out excess water from fields of pearl millet, sesame, black gram and vegetables in **Flood Prone Eastern Plain Zone** and groundnut, green gram, moth bean, cowpea and pearl millet in **Semi-Arid Eastern Plain Zone**.

In **Sub-Himalayan West Bengal**, make provision to drain out excess water from rice, ginger, vegetable fields and fruit orchards in **Hill Zone** and *aman* paddy and vegetable fields (chilli, bitter gourd, pointed gourd, okra, brinjal etc.) in **Terai Zone**. Cover the chilli seedlings with plastic to protect them from heavy rains in **Terai Zone**.

In **Bihar**, ensure proper drainage from standing crops such as pigeon pea, turmeric, yam, sunflower and maize as well as from vegetable nurseries in **South Bihar Alluvial Zone**.

In **Jharkhand**, ensure adequate drainage facilities in fields of rice, maize, black gram, green gram, tuber crops and vegetables in **Western Plateau Zone**.

In **Assam**, provide mechanical support to orchards and staking in vegetables. Harvest all the matured vegetables (tomato, cucumber, brinjal etc.) at the earliest in **Hill Zone**

In **Meghalaya**, maintain proper drainage in ginger and vegetable fields and fruit orchards. Provide support to banana plants to prevent lodging. Maintain a thin 2-3 cm layer of stagnant water in rice fields after transplanting.

In **Arunachal Pradesh**, ensure proper drainage in rice fields and maintain 5-7 cm water level. Maintain drainage channels in finger millet, banana and vegetable fields. Strengthen the bunds in millet fields to prevent erosion and seedling washout.

LEGENDS

- 1 अंडमान और निकोबार द्वीप समुह
- 2 अरुणाचल प्रदेश
- 3 असम और मेघालय
- 4 नागालैंड मनीपुर मीजोरम और त्रिपुरा
- 5 उप हिमालय पश्चिम बंगाल एवं सिक्किम
- 6 पश्चिम बंगाल
- 7 ओडिसा
- 8 झारखंड
- 9 बिहार
- 10 पूर्वी उत्तर प्रदेश
- 11 पश्चिम उत्तर प्रदेश
- 12 उत्तराखंड
- 13 हरियाणा चंडीगढ़ एवं दिल्ली
- 14 पंजाब
- 15 हिमाचल प्रदेश
- 16 जम्मू एवं कश्मीर एवं लद्दाख
- 17 पश्चिम राजस्थान
- 18 पूर्वी राजस्थान
- 19 पश्चिम मध्य प्रदेश
- 20 पूर्वी मध्य प्रदेश
- 21 गुजरात क्षेत्र
- 22 सौराष्ट्र एवं कच्छ
- 23 कोंकण एवं गोवा
- 24 मध्य महाराष्ट्र
- 25 मराठावाड़ा
- 26 विदर्भ
- 27 छत्तीसगढ़
- 28 तटीय आंध्र प्रदेश एवं यनम
- 29 तेलंगाना
- 30 रायलसीमा
- 31 तमिलनाडु, पुदुचेरी एवं कराईकल
- 32 तटिय कर्नाटक
- 33 आंतरिक उत्तरी कर्नाटक
- 34 आंतरिक दक्षिणी कर्नाटक
- 35 केरल एवं माहे
- 36 लक्षद्वीप



1. Andaman & Nicobar Islands
2. Arunachal Pradesh
3. Assam & Meghalaya
4. Nagaland, Manipur, Mizoram & Tripura
5. Sub-Himalayan West Bengal & Sikkim
6. Gangetic West Bengal
7. Orissa
8. Jharkhand
9. Bihar
10. East Uttar Pradesh
11. West Uttar Pradesh
12. Uttarakhand
13. Haryana, Chd & Delhi
14. Punjab
15. Himachal Pradesh
16. Jammu & Kashmir and Ladakh
17. West Rajasthan
18. East Rajasthan
19. West Madhya Pradesh
20. East Madhya Pradesh
21. Gujarat
22. Saurashtra
23. Konkan & Goa
24. Madhya Maharashtra
25. Marathawada
26. Vidharbha
27. Chhattisgarh
28. Coastal Andhra Pradesh & Yanam
29. Telangana
30. Rayalaseema
31. Tamilnadu, Puducherry & Karaikal
32. Coastal Karnataka
33. North Interior Karnataka
34. South Interior Karnataka
35. Kerala & Mahe
36. Lakshadweep

SPATIAL DISTRIBUTION (% of Stations reporting)

% Stations	Category	% Stations	Category
76-100	Widespread (WS/Most Places)	26-50	Scattered (SCT/ A Few Places)
51-75	Fairly Widespread (FWS/ Many Places)	1-25	Isolated (ISOL)

Subdivision Colour

- NO WARNING
- WATCH (BE UPDATED)
- ALERT (BE PREPARED TO TAKE ACTION)
- WARNING (TAKE ACTION)

Probabilistic Forecast

Terms	Probability of Occurrence (%)
Unlikely	< 25
Likely	25 - 50
Very Likely	50 - 75
Most Likely	> 75

- | | | | |
|--|---|--|--|
|  Heavy Rain |  Very Heavy Rain |  Extremely Heavy Rain |  Heavy Snow |
|  Thunderstorm & Lightning |  Hailstorm |  Dust Storm |  Dust Raising Winds |
|  Strong surface winds |  Heat Wave |  Hot Day |  Warm Night |
|  Cold Wave |  Cold Day |  Ground Frost |  Fog |
|  Hot & Humid | | | |

*Red color warning does not mean "Red Alert" Red color warning means "Take Action"

Forecast and warning for any day is valid from 0830 hours IST of day till 0830 hours IST of next day

For more details kindly visit <https://mausam.imd.gov.in> or contact 011-2434-4599

(Service to the nation since 1875)

LEGENDS

WARNING

WARNING (TAKE ACTION)
ALERT (BE PREPARED)
WATCH (BE UPDATED)
NO WARNING (NO ACTION)

Probabilistic Forecast

Terms	Probability of Occurrence (%)
Unlikely	< 25
Likely	25 - 50
Very Likely	50 - 75
Most Likely	> 75



Heavy: 64.5 to 115.5 mm/cm *
Very Heavy: 115.6 to 204.4 mm/cm *
Extremely Heavy: > 204.4 mm/cm *



When maximum temperature of a station reaches $\geq 40^{\circ}\text{C}$ for plains and $\geq 30^{\circ}\text{C}$ for hilly regions
(a) Based on Departure from normal

Heat Wave: Maximum Temperature Departure from normal 4.5°C to 6.4°C .
Severe Heat Wave: Maximum Temperature Departure from normal $\geq 6.5^{\circ}\text{C}$

(b). Based on Actual maximum temperature

Heat Wave: When actual maximum temperature $\geq 45^{\circ}\text{C}$.
Severe Heat Wave: When actual maximum temperature $\geq 47^{\circ}\text{C}$

(c). Criteria for heat wave for coastal stations

When maximum temperature departure is $> 4.5^{\circ}\text{C}$ from normal. Heat Wave may be described provided maximum temperature $\geq 37^{\circ}\text{C}$



When maximum temperature remains 40°C

Warm Night: When minimum temperature departure 4.5°C to 6.4°C .
Severe Warm Night: When minimum temperature departure $> 6.4^{\circ}\text{C}$.



When minimum temperature of a station $\leq 10^{\circ}\text{C}$ for plains and $\leq 0^{\circ}\text{C}$ for hilly regions.

(a). Based on departure

Cold Wave: Minimum Temperature Departure from normal -4.5°C to -6.4°C .
Severe Cold Wave: Minimum Temperature Departure from normal $\leq -6.5^{\circ}\text{C}$

(b) Based on actual Minimum Temperature (for Plains only)

Cold Wave: When Minimum Temperature is $\leq 4.0^{\circ}\text{C}$
Severe Cold Wave: When Minimum Temperature is $\leq 2.0^{\circ}\text{C}$

(c) For Coastal Stations

When Minimum Temperature departure is $\leq -4.5^{\circ}\text{C}$ & actual Minimum Temperature is $\leq 15^{\circ}\text{C}$



When minimum temperature of a station $\leq 10^{\circ}\text{C}$ for plains and $\leq 0^{\circ}\text{C}$ for hilly regions
Based on departure

Cold Day: Maximum Temperature Departure from normal -4.5°C to -6.4°C .
Severe Cold Day: Maximum Temperature Departure from normal $\leq -6.5^{\circ}\text{C}$



Phenomenon of small droplets suspended in air and the horizontal visibility $< 1\text{km}$

Moderate Fog: When the visibility between 500-200 metres
Dense Fog: when the visibility between 50-200 metres
Very Dense Fog: when the visibility < 50 metres



Sudden electrical discharges manifested by a flash of light (Lightning) and a sharp rumbling sound (thunder)



An ensemble of particles of dust or sand energetically lifted to great heights by a strong and turbulent wind.



Ice deposits on ground

Air temperature $\leq 4^{\circ}\text{C}$ (over Plains)



A strong wind that rises suddenly, lasts for at least 1 minute.

Moderate: Wind speed 52-61 kmph
Severe: Wind speed 62-87 kmph
Very Severe: Wind speed > 87 kmph



Effect of various waves in the sea over specific area

Rough to very rough: Wind speed 41-62 kmph (22-33 knots) & Wave height 2.5-6 metre
High to very high: Wind speed 63-117 kmph (34-63 knots) & Wave height 6-14 metre
Phenomenal: Wind speed > 117 kmph (> 63 knots) & Wave height > 14 metre



Cyclonic Storm: Wind speed 62-87 kmph (34-47 knots)

Severe Cyclonic Storm: Wind speed 88-117 kmph (48-63 knots)
Very Severe Cyclonic Storm: Wind speed 118-165 kmph (64-89 knots)
Extremely Severe Cyclonic Storm: Wind speed 166-220 kmph (90-119 knots)
Super Cyclone Storm: Wind speed > 220 kmph (> 119 knots)

*Red color warning does not mean "Red Alert" Red color warning means "Take Action"

Forecast and warning for any day is valid from 0830 hours IST of day till 0830 hours IST of next day

For more details kindly visit <https://mausam.imd.gov.in> or contact 011-2434-4599

(Service to the nation since 1875)