

2025-06-13

Time of Issue: 14:35:00 hours IST  
(Mid-Day)

## ALL INDIA WEATHER SUMMARY AND FORECAST BULLETIN

### Significant Weather Features

#### Weather Forecast and Warnings

##### South Peninsular India:

- Light/moderate rainfall at most/many places very likely over Kerala & Mahe, Karnataka and Lakshadweep during next 7 days and Light/moderate rainfall at many/some places accompanied with isolated **thunderstorm, lightning & gusty winds speed reaching 40-50 kmph** over Coastal Andhra Pradesh & Yanam, Rayalaseema, Telangana, Karnataka during 13<sup>th</sup>-17<sup>th</sup>; Kerala & Mahe, Tamil Nadu, Puducherry & Karaikal on 13<sup>th</sup> & 17<sup>th</sup> June.
- Isolated **heavy rainfall** likely over Tamil Nadu, Puducherry & Karaikal during 13<sup>th</sup>-18<sup>th</sup>; Kerala & Mahe during 13<sup>th</sup>-19<sup>th</sup>; Coastal Andhra Pradesh & Yanam during 13<sup>th</sup>-16<sup>th</sup>; Rayalaseema on 13<sup>th</sup>; Telangana, Coastal Karnataka during 13<sup>th</sup>-18<sup>th</sup>; Interior Karnataka during 13<sup>th</sup>-17<sup>th</sup>; with **very heavy rainfall** over Tamil Nadu, Puducherry & Karaikal on 13<sup>th</sup>, 16<sup>th</sup>, 17<sup>th</sup>; Kerala & Mahe on 13<sup>th</sup>, 17<sup>th</sup> & 18<sup>th</sup>; Coastal Karnataka on 16<sup>th</sup> & 17<sup>th</sup>; South Interior Karnataka during 15<sup>th</sup>-17<sup>th</sup>; North Interior Karnataka on 13<sup>th</sup> & 14<sup>th</sup> with **Extremely heavy rainfall (>20 cm/24 hours)** likely at isolated places over Coastal Karnataka during 13<sup>th</sup>-15<sup>th</sup>; South Interior Karnataka on 13<sup>th</sup> June; Kerala & Mahe during 14<sup>th</sup>-16<sup>th</sup>; Tamil Nadu, Puducherry & Karaikal on 14<sup>th</sup> & 15<sup>th</sup> June.
- **Strong surface winds** (speed reaching 50-60 kmph) very likely over Kerala & Mahe during 14<sup>th</sup>-16<sup>th</sup> and Interior Karnataka on 13<sup>th</sup> June.

##### West India:

- Light/moderate rainfall at most/many places accompanied with **thunderstorm & lightning** likely over Madhya Maharashtra & Gujarat Region during 13<sup>th</sup>-15<sup>th</sup>; Marathwada during 13<sup>th</sup>-17<sup>th</sup>; Konkan & Goa on 13<sup>th</sup>; Saurashtra & Kutch during 13<sup>th</sup>-16<sup>th</sup> June.
- Isolated **heavy rainfall** likely over Marathwada on 13<sup>th</sup> & 14<sup>th</sup>; Konkan & Goa, Madhya Maharashtra, Gujarat Region during 13<sup>th</sup>-19<sup>th</sup>; Saurashtra & Kutch during 14<sup>th</sup>-19<sup>th</sup> June with **very heavy rainfall** at a few places over Konkan & Goa on 17<sup>th</sup>; Madhya Maharashtra on 13<sup>th</sup> & during 15<sup>th</sup>-17<sup>th</sup>; Saurashtra & Kutch on 15<sup>th</sup> & 16<sup>th</sup> June with **Extremely heavy rainfall (>20 cm/24 hours)** likely at isolated places over Konkan & Goa during 13<sup>th</sup>-16<sup>th</sup> June.

##### East & Central India:

- Light/moderate rainfall at some/many places likely to continue over Sub-Himalayan West Bengal & Sikkim during next 7 days and Light/moderate rainfall at isolated/some places accompanied with **thunderstorm, lightning & gusty winds speed reaching 40-50 kmph** likely over Madhya Pradesh during 14<sup>th</sup>-17<sup>th</sup>; Vidarbha, Chhattisgarh during 15<sup>th</sup>-17<sup>th</sup>; Andaman & Nicobar Islands, West Bengal & Sikkim during 13<sup>th</sup>-15<sup>th</sup>; Bihar, Jharkhand, Odisha during 13<sup>th</sup>-17<sup>th</sup> June with **Thundersquall (wind speed reaching 50-60 kmph gusting to 70 kmph)** very likely at isolated places over West Madhya Pradesh during 13<sup>th</sup>-15<sup>th</sup>; Vidarbha on 13<sup>th</sup> & 14<sup>th</sup>; Chhattisgarh on 14<sup>th</sup>; Bihar on 15<sup>th</sup> June.
- Isolated **heavy rainfall** also likely over East Madhya Pradesh on 16<sup>th</sup> & 17<sup>th</sup>; Vidarbha, Chhattisgarh during 15<sup>th</sup>-19<sup>th</sup>; Andaman & Nicobar Islands on 13<sup>th</sup>; Sub-Himalayan West Bengal & Sikkim during 13<sup>th</sup>-15<sup>th</sup>; Gangetic West Bengal during 16<sup>th</sup>-18<sup>th</sup>; Bihar on 19<sup>th</sup>; Jharkhand during 17<sup>th</sup>-19<sup>th</sup>; Odisha during 14<sup>th</sup>-18<sup>th</sup> June with **very heavy rainfall** over Sub-Himalayan West Bengal & Sikkim on 14<sup>th</sup> and Odisha on 16<sup>th</sup> & 17<sup>th</sup> June.

##### Northwest India:

- Light/moderate rainfall at some/isolated places accompanied with **thunderstorm, lightning & gusty winds speed reaching 40-50 kmph** likely Jammu-Kashmir-Ladakh-Gilgit-Baltistan-Muzaffarabad, Himachal Pradesh, Haryana Chandigarh & Delhi, West Uttar Pradesh during 13<sup>th</sup>-19<sup>th</sup>; East Uttar Pradesh during 14<sup>th</sup>-19<sup>th</sup>; Rajasthan on 18<sup>th</sup> & 19<sup>th</sup> June.

**\*Red color warning does not mean "Red Alert" Red color warning means "Take Action"**

Forecast and warning for any day is valid from 0830 hours IST of day till 0830 hours IST of next day

For more details kindly visit <https://mausam.imd.gov.in> or contact 011-2434-4599

(Service to the nation since 1875)

- ♦ Isolated **heavy rainfall** likely over Uttarakhand during 13<sup>th</sup>-19<sup>th</sup>; East Uttar Pradesh during 17<sup>th</sup>-19<sup>th</sup> and West Uttar Pradesh on 19<sup>th</sup> June.
- ♦ **Dust storm/Thundersquall (wind speed reaching 50-60 kmph gusting to 70 kmph)** very likely at isolated places over Rajasthan during 13<sup>th</sup>-17<sup>th</sup> June.

#### Northeast India:

- ♦ Light/moderate rainfall at many/most places accompanied with **thunderstorm, lightning & gusty winds speed reaching 30-40 kmph** likely to continue over Northeast India during next 7 days with **isolated heavy rainfall** over Arunachal Pradesh during 14<sup>th</sup>-19<sup>th</sup>, Assam & Meghalaya and Nagaland, Manipur, Mizoram & Tripura during 13<sup>th</sup>-19<sup>th</sup> with **very heavy rainfall** on Arunachal Pradesh, Nagaland, Manipur, Mizoram & Tripura during 17<sup>th</sup>-19<sup>th</sup>; Assam & Meghalaya during 16<sup>th</sup>-19<sup>th</sup> June.

#### Maximum Temperature Forecast:

- ♦ No significant change in maximum temperatures likely over Northwest, Central & East India during next 2 days and gradual fall by 2-4°C thereafter during subsequent 5 days.
- ♦ No significant change in maximum temperatures likely over rest parts of the country.

#### Heat wave, Hot & Humid weather and Warn Night warnings:

- ♦ **Heat wave condition** very likely at many/some places over Rajasthan on 13<sup>th</sup>-15<sup>th</sup> with **severe heat wave conditions** at some parts over West Rajasthan on 13<sup>th</sup> & 14<sup>th</sup> June.
- ♦ **Heat wave condition** very likely at many/some places over Punjab during 13<sup>th</sup>-15<sup>th</sup> with **severe heat wave conditions** at isolated/some parts on 13<sup>th</sup> June.
- ♦ **Heat wave condition** very likely at many/some places over Haryana during 13<sup>th</sup>-15<sup>th</sup> with **severe heat wave conditions** at isolated/some parts on 13<sup>th</sup> & 14<sup>th</sup> June.
- ♦ **Heat wave condition** very likely at isolated places over Jammu-Kashmir, Himachal Pradesh on 13<sup>th</sup> & 14<sup>th</sup> with **severe heat wave conditions** at some parts over Jammu-Kashmir on 13<sup>th</sup> June.
- ♦ **Heat wave conditions** very likely in some/many places over Uttar Pradesh & Madhya Pradesh on 13<sup>th</sup> & 14<sup>th</sup> June.
- ♦ **Hot & humid weather** is likely to prevail over Arunachal Pradesh, Assam & Meghalaya on 13<sup>th</sup>; Bihar on 13<sup>th</sup> & 14<sup>th</sup> June.
- ♦ **Warm night conditions** very likely in isolated pockets over Punjab, Haryana during 13<sup>th</sup> & 15<sup>th</sup>; West Rajasthan on 13<sup>th</sup> & 14<sup>th</sup>; East Rajasthan on 13<sup>th</sup> June.

### Main Weather Observations:

❖ **Rainfall distribution** (from 0830 hours IST of yesterday to 0830 hours IST of today): **at most places** over Andaman & Nicobar Islands, Konkan & Goa, Madhya Maharashtra, Coastal Karnataka, North Interior Karnataka, Kerala & Mahe and Lakshadweep; **at many places** over Marathwada, Vidarbha, Coastal Andhra Pradesh & Yanam, Telangana and South Interior Karnataka; **at a few places** over Nagaland, Manipur, Mizoram & Tripura, Sub Himalayan West Bengal & Sikkim, Odisha, Uttarakhand, Rayalaseema and Tamil Nadu, Puducherry & Karaikal; **at isolated places** over Arunachal Pradesh, Assam & Meghalaya, Gangetic West Bengal, Jharkhand, Bihar, East Uttar Pradesh, West Uttar Pradesh, Himachal Pradesh, Jammu-Kashmir-Ladakh-Gilgit-Baltistan-Muzaffarabad, East Rajasthan, West Madhya Pradesh, East Madhya Pradesh, Gujarat Region and Chhattisgarh; **Dry** over rest of the country.

❖ **Significant rainfall recorded(in cm)** (from 0830 hours IST of yesterday to 0830 hours IST of today): **Konkan & Goa**: Rameshwar ARG (dist Sindhudurg) 30; Ponda (dist North Goa), Devgad (dist Sindhudurg) 22 Each; Sanguem (dist South Goa), Canacona (dist South Goa) 14 Each; Vaibhavwadi (dist Sindhudurg) 11; Mapusa (dist North Goa), Quepem (dist South Goa) 10 Each; Pernem (dist North Goa), Panjim (dist North Goa) 9 Each; Pawarwadi - ARG (dist Ratnagiri), Margao (dist South Goa), Dabolim N.a.s.- Navy (dist South Goa), Lanja (dist Ratnagiri) 8 Each; Murbad (dist Thane), Malvan (dist Sindhudurg), Guhagarh (dist Ratnagiri), Kankavli (dist Sindhudurg) 7 Each; Mormugao - Pmo IMD (dist South Goa), Rajapur (dist Ratnagiri) 6 Each; **Coastal Karnataka**: Karwar (dist Uttara Kannada) 24; Kundapur (dist Udupi) 16; Kota (dist Udupi) 15; Udupi (dist Udupi), Honavar (dist Uttara Kannada) 12 Each; Mulki (dist Dakshina Kannada), Kumta (dist Uttara Kannada) 10 Each; Mudubidre (dist Dakshina Kannada), Gersoppa (dist Uttara Kannada) 9 Each; Siddapura (dist Udupi), Gokarna (dist Uttara Kannada), Kadra (dist Uttara Kannada) 8 Each; Karkala (dist Udupi), Sulya (dist Dakshina Kannada) 6 Each; **Telangana**: Jadcherla (dist Mahabubnagar) 11; Ibrahimpatnam (dist Rangareddy), Manchal (dist Rangareddy), Jakranpalle (dist Nizamabad), Kerameri (dist Kumaram Bheem) 6 Each; **Tamil Nadu, Puducherry & Karaikal**: Arakonam (dist Ranipet) 10; Uthukottai (dist Tiruvallur) 9; Poondi (dist Tiruvallur), Gummidipoondi (dist Tiruvallur) 8 Each; Ponneri (dist Tiruvallur), Tiruttani (dist Tiruvallur), Minnal (dist Ranipet) 7 Each; Puzhal ARG (dist Tiruvallur), Poonamalle ARG (dist Tiruvallur), Ambathur (dist Chennai), Avadi (dist Tiruvallur) 6 Each; **Coastal Andhra Pradesh & Yanam**: Macherla (dist Palnadu) 10; **North Interior Karnataka**: Bailhongal (dist Belagavi), Zalki Cross (dist Vijayapura) 9 Each; Sedbal (dist Belagavi), Dharwad HOS (dist Dharwad) 8 Each; Hungund (dist Bagalkote), Kudalasangama (dist Bagalkote), Kittur (dist Belagavi) 6 Each; **Kerala & Mahe**: Hosdurg (dist Kasargod) 8; Peringome AWS (dist Cannur) 7; **Rayalaseema**: Tada (dist Tirupati) 8; Sullurpeta (dist Tirupati) 6; **Madhya Maharashtra**: Kolhapur/Karvir IMD (dist Kolhapur) 7; Gaganbawada (dist Kolhapur), Kokrud (dist Sangli) 6 Each; **South Interior Karnataka**: Bhadravathi (dist Shivamogga) 7; **Andaman & Nicobar Islands**: Port Blair (dist South Andaman) 6; **Marathwada**: Lohara (dist Dharashiv) 6; **Lakshadweep**: Minicoy (dist Lakshadweep) 6.

❖ **Heavy Rainfall observed** (from 0830 hours IST of yesterday to 0830 hours IST of today): **Extremely heavy rain** at isolated places over Konkan & Goa and Coastal Karnataka. **Heavy to very heavy rain** at isolated places over Konkan & Goa and Coastal Karnataka. **Heavy rain** at isolated places over Madhya Maharashtra, Coastal Andhra Pradesh & Yanam, Telangana, Rayalaseema, Tamil Nadu, Puducherry & Karaikal, North Interior Karnataka, South Interior Karnataka and Kerala & Mahe.

❖ **Minimum Temperature Departures (as on 13-06-2025): markedly above normal(> 5.1°C)** at few places over Nagaland, Manipur, Mizoram & Tripura, Haryana-Chandigarh-Delhi, Punjab, Himachal Pradesh, West Rajasthan, East Madhya Pradesh and Gujarat Region; at isolated places over Assam & Meghalaya, Sub Himalayan West Bengal & Sikkim, Bihar, East Uttar Pradesh, West Uttar Pradesh, Uttarakhand, East Rajasthan, West Madhya Pradesh and Saurashtra & Kutch. **appreciably above normal(3.1°C to 5.0°C)** at many places over Jammu-Kashmir-Ladakh-Gilgit-Baltistan-Muzaffarabad; at isolated places over Gangetic West Bengal and Odisha. **above normal(1.6°C to 3.0°C)** at most places over Arunachal Pradesh; at few places over Lakshadweep; at isolated places over Andaman & Nicobar Islands, Jharkhand, Rayalaseema and Tamil Nadu, Puducherry & Karaikal. **near normal(-1.5°C to 1.5°C)** at many places over Konkan & Goa, Madhya Maharashtra, Telangana and Coastal Karnataka; at most places over Vidarbha, Chhattisgarh, Coastal Andhra Pradesh & Yanam, North Interior Karnataka, South Interior Karnataka and Kerala & Mahe; at few places over Marathwada. **The lowest minimum temperature** of 19.2°C was reported at MATHERAN (MAHARASHTRA) over the Plains of India.

❖ **Maximum Temperature Departures (as on 12-06-2025): markedly above normal(> 5.1°C)** at many places over Assam & Meghalaya and Jammu-Kashmir-Ladakh-Gilgit-Baltistan-Muzaffarabad; at most places over Arunachal

\*Red color warning does not mean "Red Alert" Red color warning means "Take Action"

Forecast and warning for any day is valid from 0830 hours IST of day till 0830 hours IST of next day

For more details kindly visit <https://mausam.imd.gov.in> or contact 011-2434-4599

(Service to the nation since 1875)



Pradesh; at few places over East Rajasthan; at isolated places over Sub Himalayan West Bengal & Sikkim, West Uttar Pradesh, Haryana-Chandigarh-Delhi, Himachal Pradesh, West Rajasthan, West Madhya Pradesh and East Madhya Pradesh. **appreciably above normal(3.1°C to 5.0°C)** at many places over Nagaland, Manipur, Mizoram & Tripura and Punjab; at few places over Bihar, East Uttar Pradesh and Saurashtra & Kutch; at isolated places over Gujarat Region. **above normal(1.6°C to 3.0°C)** at few places over Gangetic West Bengal, Uttarakhand and Coastal Karnataka; at isolated places over Odisha, Vidarbha, Tamil Nadu, Puducherry & Karaikal and Kerala & Mahe. **near normal(-1.5°C to 1.5°C)** at many places over Konkan & Goa, Madhya Maharashtra, Chhattisgarh, Coastal Andhra Pradesh & Yanam and South Interior Karnataka; at most places over Lakshadweep; at few places over Andaman & Nicobar Islands, Jharkhand, Telangana and North Interior Karnataka; at isolated places over Marathwada and Rayalaseema. **The highest maximum temperature** of 47.8°C was reported at SRIGANGANAGAR (RAJASTHAN).



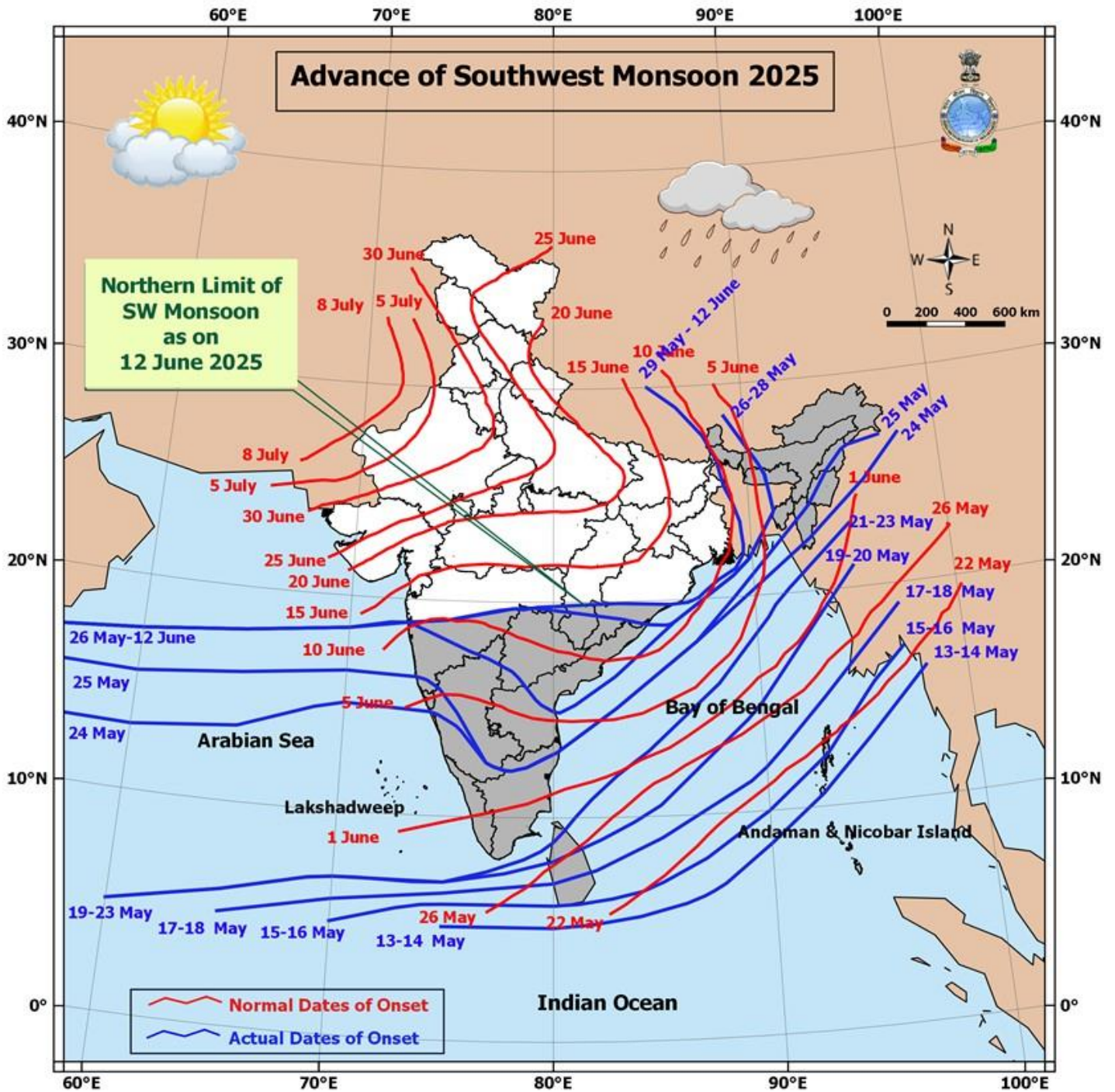
#### Meteorological Analysis (Based on 0830 hours IST)

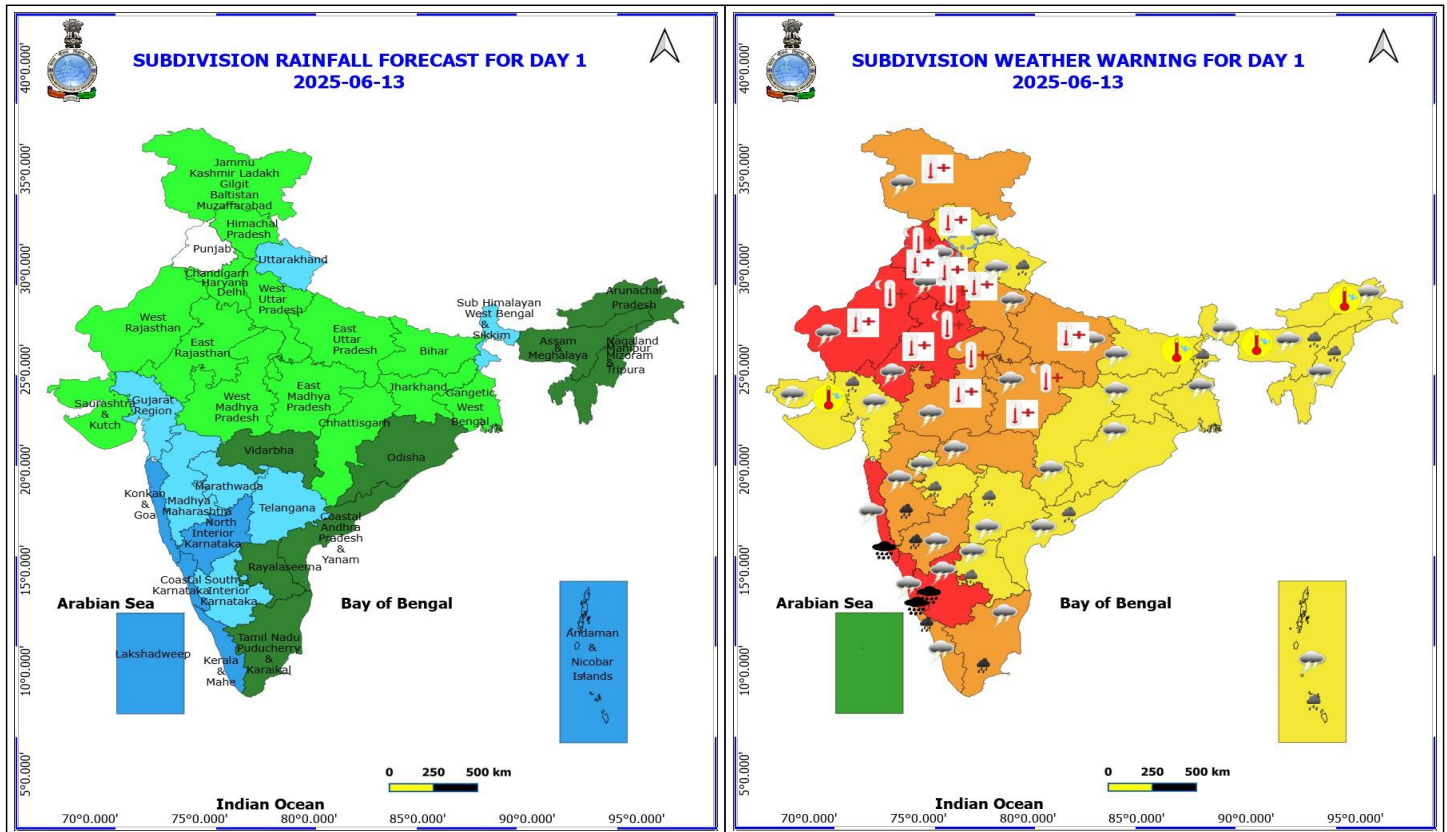
- ♦ The Northern Limit of Monsoon continues to pass through 17.0°N/55°E, 17.5°N/60°E, 18°N/65°E, 18.5°N/70°E, Mumbai, Ahilyanagar, Adilabad, Bhawanipatna, Puri, Sandhead Island, 23.5°N/89.5°E, Balurghat, 30°N/85°E.
- ♦ Conditions are favourable for further advancement of Southwest monsoon over some more parts of Vidarbha, Chhattisgarh & Odisha during next 2 days; over some parts of Gujarat, West Bengal, Jharkhand and Bihar during subsequent 3 days.
- ♦ An **upper air cyclonic circulation** lies over Northwest Rajasthan at 0.9 km above mean sea level.
- ♦ The **trough** now runs from above **upper air cyclonic circulation** over Northwest Rajasthan to Marathwada across Madhya Pradesh & Vidarbha at 0.9 km above mean sea level.
- ♦ The **upper air cyclonic circulation** over Southwest Telangana & neighbourhood now lies over North Interior Karnataka and adjoining Telangana & Rayalaseema extending upto 5.8 km above mean sea level titling southwestwards with height.
- ♦ The **trough** now runs from westcentral Arabian Sea to South Coastal Odisha across an **upper air cyclonic circulation** over North Interior Karnataka adjoining Telangana & Rayalaseema and neighbourhood at 3.1 km above mean sea level.
- ♦ The **Western Disturbance** as a trough in middle tropospheric westerlies with its axis at 5.8 km above mean sea level now runs roughly along Long. 66°E to the north of Lat. 28°N.
- ♦ The **upper air cyclonic circulation** over West Uttar Pradesh & neighbourhood at 1.5 km above mean sea level has become less marked.
- ♦ The **upper air cyclonic circulation** over West Rajasthan & neighbourhood between 1.5 & 3.1 km above mean sea level has become less marked.

#### Weather Forecast for next 7 days (Upto 0830 hours IST of 19 June)

- ♦ Fairly widespread to widespread rainfall activity likely over Northeast India, Sub-Himalayan West Bengal & Sikkim, Andaman & Nicobar Islands, Lakshadweep, Konkan & Goa, Marathwada, Madhya Maharashtra Coastal and Interior Karnataka, Telangana, & Rayalaseema and Kerala & Mahe.
- ♦ Isolated to scattered rainfall likely over Jammu-Kashmir-Ladakh-Gilgit-Baltistan Muzaffarabad, Uttarakhand, Odisha, south Chhattisgarh, Vidarbha, Madhya Pradesh, Uttar Pradesh, Bihar and Jharkhand.







### 13 June (Day 1)

- ❖ **Heavy to Very Heavy Rainfall with isolated Extremely Heavy Rainfall** very likely at isolated places over Costal Karnataka, Konkan & Goa and South Interior Karnataka.
- ❖ **Heavy to Very Heavy Rainfall** very likely at isolated places over Kerala & Mahe, Madhya Maharashtra, North Interior Karnataka and Tamil Nadu Puducherry & Karaikal.
- ❖ **Heavy Rainfall** very likely at isolated places over Andaman & Nicobar Islands, Andhra Pradesh, Assam & Meghalaya, Gujarat Region, Marathwada, Nagaland, Manipur, Mizoram and Tripura, Sub Himalayan West Bengal & Sikkim, Telangana and Uttarakhand.
- ❖ **Thunderstorm accompanied with Hailstorm** very likely at isolated places over Himachal Pradesh.
- ❖ **Thundersquall with wind speed reaching(50-60kmph)** very likely at isolated places over East Rajasthan, Interior Karnataka, Madhya Pradesh and Vidarbha.
- ❖ **Thunderstorm accompanied with lightning & gusty winds(40-50kmph)** very likely at isolated places over Andaman & Nicobar Islands, Haryana, Chandigarh & Delhi, Himachal Pradesh, Jammu-Kashmir-Ladakh-Gilgit-Baltistan-Muzaffarabad, Kerala & Mahe, north Punjab, Tamil Nadu Puducherry & Karaikal, Telangana, Uttarakhand and West Rajasthan.
- ❖ **Thunderstorm accompanied with lightning & gusty winds(30-40kmph)** very likely at isolated places over Andhra Pradesh, Assam & Meghalaya, Bihar, Chhattisgarh, Costal Karnataka, Jharkhand, Nagaland, Manipur, Mizoram and Tripura, Odisha, Uttar Pradesh and West Bengal & Sikkim.
- ❖ **Thunderstorm accompanied with Lightning** very likely at isolated places over Arunachal Pradesh, Gujarat State, Konkan & Goa, Madhya Maharashtra and Marathwada.

**\*Red color warning does not mean "Red Alert" Red color warning means "Take Action"**

Forecast and warning for any day is valid from 0830 hours IST of day till 0830 hours IST of next day

For more details kindly visit <https://mausam.imd.gov.in> or contact 011-2434-4599

(Service to the nation since 1875)



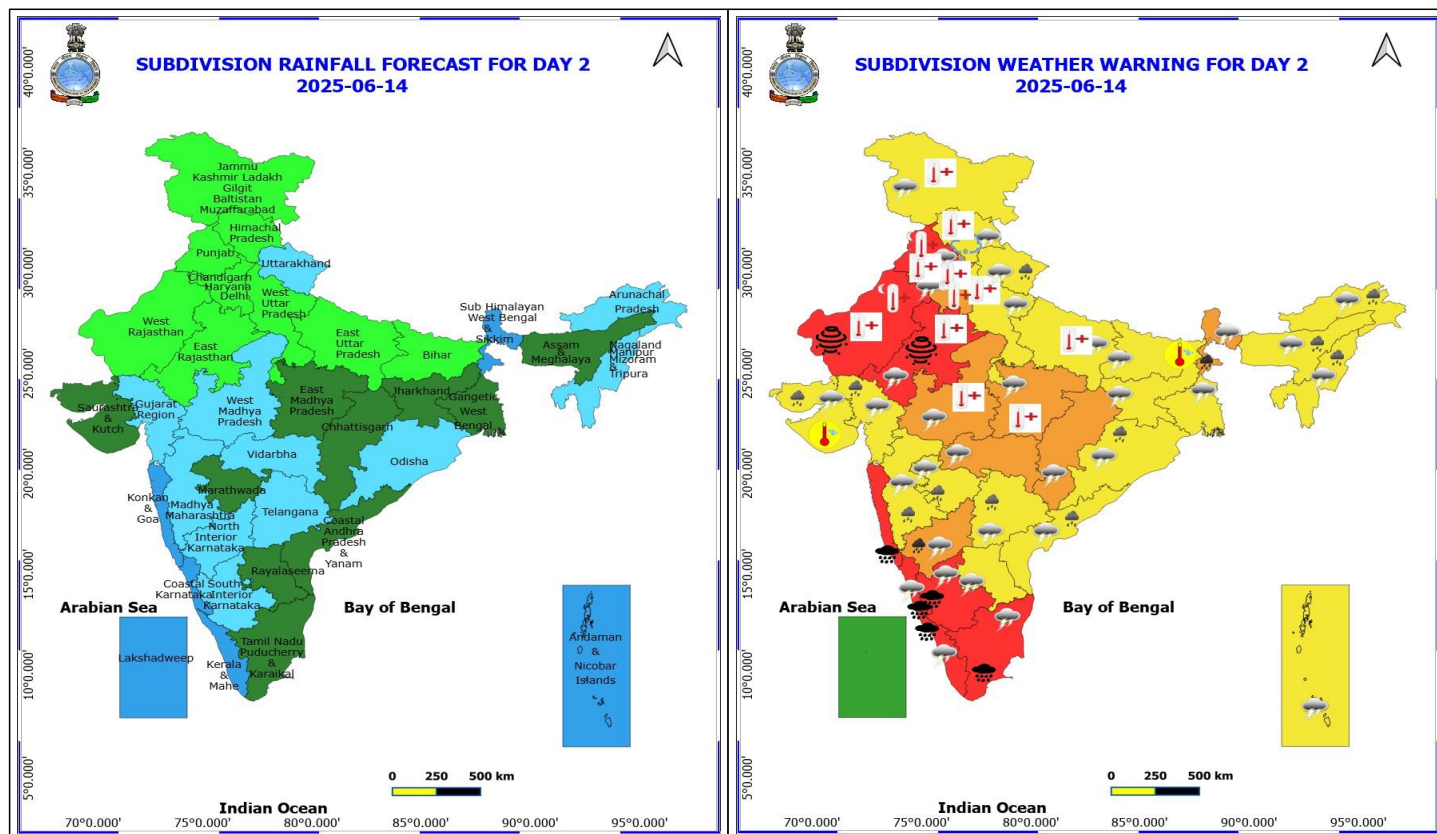
❖ **Severe Heat wave conditions** over West Rajasthan at a few places over Jammu-Kashmir-Ladakh-Gilgit-Baltistan-Muzaffarabad, Haryana, Chandigarh & Delhi and Punjab; **Heat Wave conditions** very likely at isolated places over , Himachal Pradesh, Madhya Pradesh, East Rajasthan and Uttar Pradesh.

❖ **Hot and Humid weather** very likely at isolated places over Arunachal Pradesh, Assam & Meghalaya, Bihar and Saurashtra & Kutch.

❖ **Warm Night conditions** very likely at isolated places over Haryana, Chandigarh & Delhi, Madhya Pradesh, Punjab and Rajasthan.

- ❖ **Squally wind with speed 45 kmph to 55 kmph gusting to 65 kmph** likely to prevail along and off Somalia coast and adjoining parts of southwest and westcentral Arabian Sea, over some western parts of southwest Arabian Sea, and over Gulf of Mannar. **Squally weather with wind speed 40 - 50 kmph gusting to 60 kmph** likely to prevail along and off Konkan, Goa, Karnataka, Kerala, Sri Lanka, Tamil Nadu coasts, over most parts of southeast Arabian Sea, northern parts of southwest & adjoining westcentral Arabian Sea, over Lakshadweep, Maldives, Comorin areas, over most parts of south Bay of Bengal and over Andaman Sea.





#### 14 June (Day 2)

- ❖ **Heavy to Very Heavy Rainfall with isolated Extremely Heavy Rainfall** very likely at isolated places over Costal Karnataka, Kerala & Mahe, Konkan & Goa, South Interior Karnataka and Tamil Nadu Puducherry & Karaikal.
- ❖ **Heavy to Very Heavy Rainfall** very likely at isolated places over North Interior Karnataka and Sub Himalayan West Bengal & Sikkim.
- ❖ **Heavy Rainfall** very likely at isolated places over Arunachal Pradesh, Assam & Meghalaya, Coastal Andhra Pradesh, Gujarat State, Madhya Maharashtra, Marathwada, Nagaland, Manipur, Mizoram and Tripura, Odisha, Telangana and Uttarakhand.
- ❖ **Thunderstorm accompanied with Hailstorm** very likely at isolated places over Himachal Pradesh.
- ❖ **Thundersquall with wind speed reaching(50-60kmph)** very likely at isolated places over Chhattisgarh, East Rajasthan, Kerala & Mahe, Vidarbha and West Madhya Pradesh.
- ❖ **Thunderstorm accompanied with lightning & gusty winds(40-50kmph)** very likely at isolated places over Andaman & Nicobar Islands, East Madhya Pradesh, East Uttar Pradesh, Haryana, Chandigarh & Delhi, Himachal Pradesh, Interior Karnataka, Punjab, Tamil Nadu Puducherry & Karaikal, Telangana and Uttarakhand.
- ❖ **Thunderstorm accompanied with lightning & gusty winds(30-40kmph)** very likely at isolated places over Andhra Pradesh, Assam & Meghalaya, Bihar, Costal Karnataka, Jammu-Kashmir-Ladakh-Gilgit-Baltistan-Muzaffarabad, Jharkhand, Nagaland, Manipur, Mizoram and Tripura, Odisha, West Bengal & Sikkim and West Uttar Pradesh.
- ❖ **Thunderstorm accompanied with Lightning** very likely at isolated places over Arunachal Pradesh, Gujarat State, Madhya Maharashtra and Marathwada.

**\*Red color warning does not mean "Red Alert" Red color warning means "Take Action"**

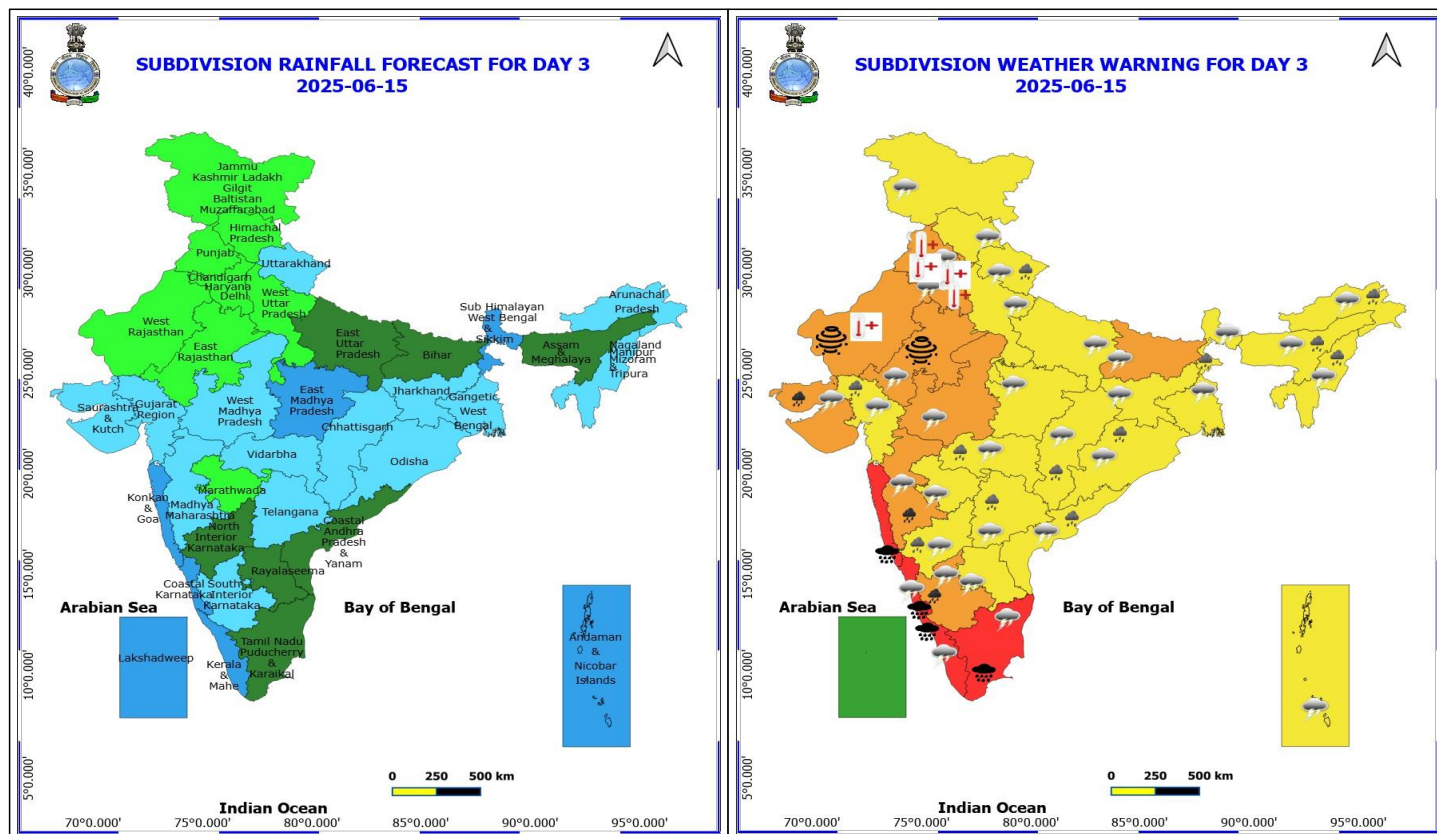
Forecast and warning for any day is valid from 0830 hours IST of day till 0830 hours IST of next day

For more details kindly visit <https://mausam.imd.gov.in> or contact 011-2434-4599

(Service to the nation since 1875)



- ❖ **Dust Storm** very likely at isolated places over Rajasthan.
- ❖ **Sever Heat Wave conditions** at many places over West Rajasthan with few places over Haryana, Chandigarh & Delhi; **Heat Wave conditions** very likely at isolated places over Himachal Pradesh, Jammu-Kashmir-Ladakh-Gilgit-Baltistan-Muzaffarabad, Madhya Pradesh, Punjab, Rajasthan and Uttar Pradesh.
- ❖ **Hot and Humid weather** very likely at isolated places over Bihar and Saurashtra & Kutch.
- ❖ **Warm Night conditions** very likely at isolated places over Haryana, Chandigarh & Delhi, Punjab and West Rajasthan.
- **Squally wind with speed 45 kmph to 55 kmph gusting to 65 kmph** likely to prevail along and off Somalia coast and adjoining parts of southwest and westcentral Arabian Sea, some western parts of southwest Arabian Sea, and over Gulf of Mannar. **Squally weather with wind speed 40 - 50 kmph gusting to 60 kmph** likely to prevail along and off Konkan, Goa, Karnataka, Kerala, Sri Lanka, Tamil Nadu, Andhra Pradesh coasts, over many parts of southeast Arabian Sea, northern parts of southwest & many parts of westcentral Arabian Sea, over Lakshadweep, Maldives, Comorin areas, over most parts of south and central Bay of Bengal, and over Andaman Sea. **Squally weather with wind speed 45 - 55 kmph gusting to 65 kmph** likely to prevail many parts of southwest Bay of Bengal.



### 15 June (Day 3)

- ❖ **Heavy to Very Heavy Rainfall with isolated Extremely Heavy Rainfall** very likely at isolated places over Costal Karnataka, Kerala & Mahe, Konkan & Goa and Tamil Nadu Puducherry & Karaikal.
- ❖ **Heavy to Very Heavy Rainfall** very likely at isolated places over Madhya Maharashtra, Saurashtra & Kutch and South Interior Karnataka.
- ❖ **Heavy Rainfall** very likely at isolated places over Arunachal Pradesh, Assam & Meghalaya, Chhattisgarh, Coastal Andhra Pradesh, Gujarat Region, Nagaland, Manipur, Mizoram and Tripura, North Interior Karnataka, Odisha, Sub Himalayan West Bengal & Sikkim, Telangana, Uttarakhand and Vidarbha.
- ❖ **Thundersquall with wind speed reaching(50-60kmph)** very likely at isolated places over Bihar, East Rajasthan, Kerala & Mahe and West Madhya Pradesh.
- ❖ **Thunderstorm accompanied with lightning & gusty winds(40-50kmph)** very likely at isolated places over Andaman & Nicobar Islands, Chhattisgarh, East Madhya Pradesh, East Uttar Pradesh, Gangetic West Bengal, Haryana, Chandigarh & Delhi, Himachal Pradesh, Interior Karnataka, Jharkhand, Punjab, Tamil Nadu Puducherry & Karaikal, Telangana, Uttarakhand and Vidarbha.
- ❖ **Thunderstorm accompanied with lightning & gusty winds(30-40kmph)** very likely at isolated places over Andhra Pradesh, Assam & Meghalaya, Costal Karnataka, Jammu-Kashmir-Ladakh-Gilgit-Baltistan-Muzaffarabad, Nagaland, Manipur, Mizoram and Tripura, Odisha, Sub Himalayan West Bengal & Sikkim and West Uttar Pradesh.
- ❖ **Thunderstorm accompanied with Lightning** very likely at isolated places over Arunachal Pradesh, Gujarat State, Madhya Maharashtra and Marathwada.
- ❖ **Dust Storm** very likely at isolated places over Rajasthan.

\*Red color warning does not mean "Red Alert" Red color warning means "Take Action"

Forecast and warning for any day is valid from 0830 hours IST of day till 0830 hours IST of next day

For more details kindly visit <https://mausam.imd.gov.in> or contact 011-2434-4599

(Service to the nation since 1875)

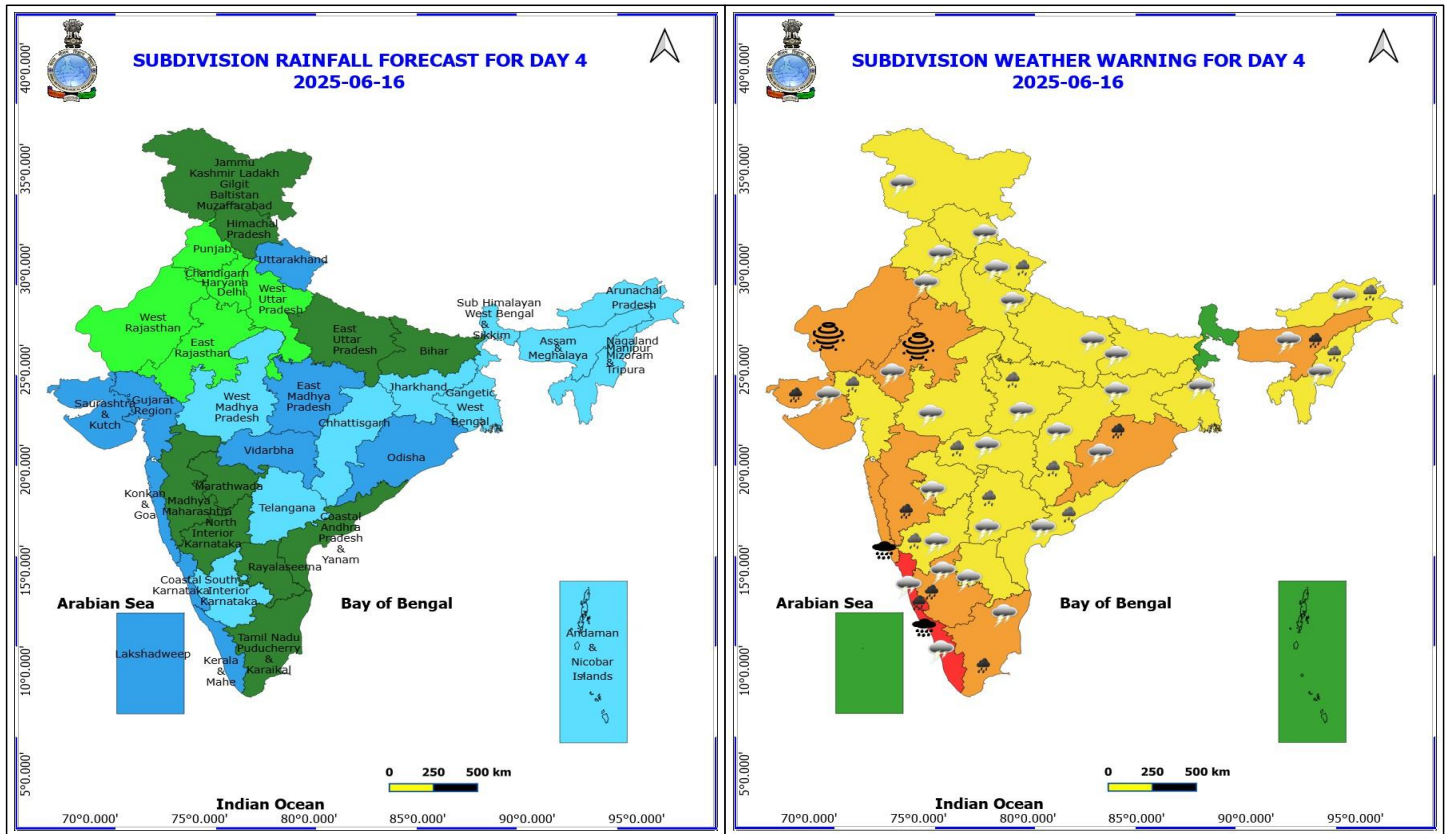


❖ **Heat Wave conditions** very likely at isolated places over Haryana, Chandigarh & Delhi, Punjab and West Rajasthan.

❖ **Warm Night conditions** very likely at isolated places over Haryana, Chandigarh & Delhi and Punjab.

- **Squally wind with speed 45 kmph to 55 kmph gusting to 65 kmph** likely to prevail along and off Somalia coast and adjoining parts of southwest and westcentral Arabian Sea, some western parts of southwest Arabian Sea, and over Gulf of Mannar. **Squally weather with wind speed 40 - 50 kmph gusting to 60 kmph** likely to prevail along and off Konkan, Goa, Karnataka, Kerala, Sri Lanka, Tamil Nadu, Andhra Pradesh coasts, over southeast Arabian Sea, most parts of eastcentral Arabian Sea, many parts of southwest Arabian sea & westcentral Arabian Sea, over Lakshadweep, Maldives, Comorin areas, over most parts of south Bay of Bengal, over central Bay of Bengal, and over Andaman Sea. **Squally weather with wind speed 45 - 55 kmph gusting to 65 kmph** likely to prevail many parts of southwest Bay of Bengal, southern parts of central Bay of Bengal, and over some parts of north Andaman Sea.





#### 16 June (Day 4)

- ❖ **Heavy to Very Heavy Rainfall with isolated Extremely Heavy Rainfall** likely at isolated places over Kerala & Mahe and Konkan & Goa.
- ❖ **Heavy to Very Heavy Rainfall** likely at isolated places over Assam & Meghalaya, Costal Karnataka, Madhya Maharashtra, Odisha, Saurashtra & Kutch, South Interior Karnataka and Tamil Nadu Puducherry & Karaikal.
- ❖ **Heavy Rainfall** likely at isolated places over Arunachal Pradesh, Chhattisgarh, Coastal Andhra Pradesh, East Madhya Pradesh, Gujarat Region, Nagaland, Manipur, Mizoram and Tripura, North Interior Karnataka, Telangana, Uttarakhand and Vidarbha.
- ❖ **Thundersquall with wind speed reaching(50-60kmph)** likely at isolated places over East Rajasthan and Kerala & Mahe.
- ❖ **Thunderstorm accompanied with lightning & gusty winds(40-50kmph)** likely at isolated places over Assam & Meghalaya, Chhattisgarh, East Uttar Pradesh, Haryana, Chandigarh & Delhi, Himachal Pradesh, Jharkhand, Madhya Pradesh, Punjab, South Interior Karnataka, Tamil Nadu Puducherry & Karaikal, Telangana, Uttarakhand and Vidarbha.
- ❖ **Thunderstorm accompanied with lightning & gusty winds(30-40kmph)** likely at isolated places over Andhra Pradesh, Bihar, Costal Karnataka, Gangetic West Bengal, Jammu-Kashmir-Ladakh-Gilgit-Baltistan-Muzaffarabad, North Interior Karnataka, Odisha and West Uttar Pradesh.
- ❖ **Thunderstorm accompanied with Lightning** likely at isolated places over Arunachal Pradesh, Marathwada, Nagaland, Manipur, Mizoram and Tripura and Saurashtra & Kutch.
- ❖ **Dust Storm** likely at isolated places over Rajasthan.

**\*Red color warning does not mean "Red Alert" Red color warning means "Take Action"**

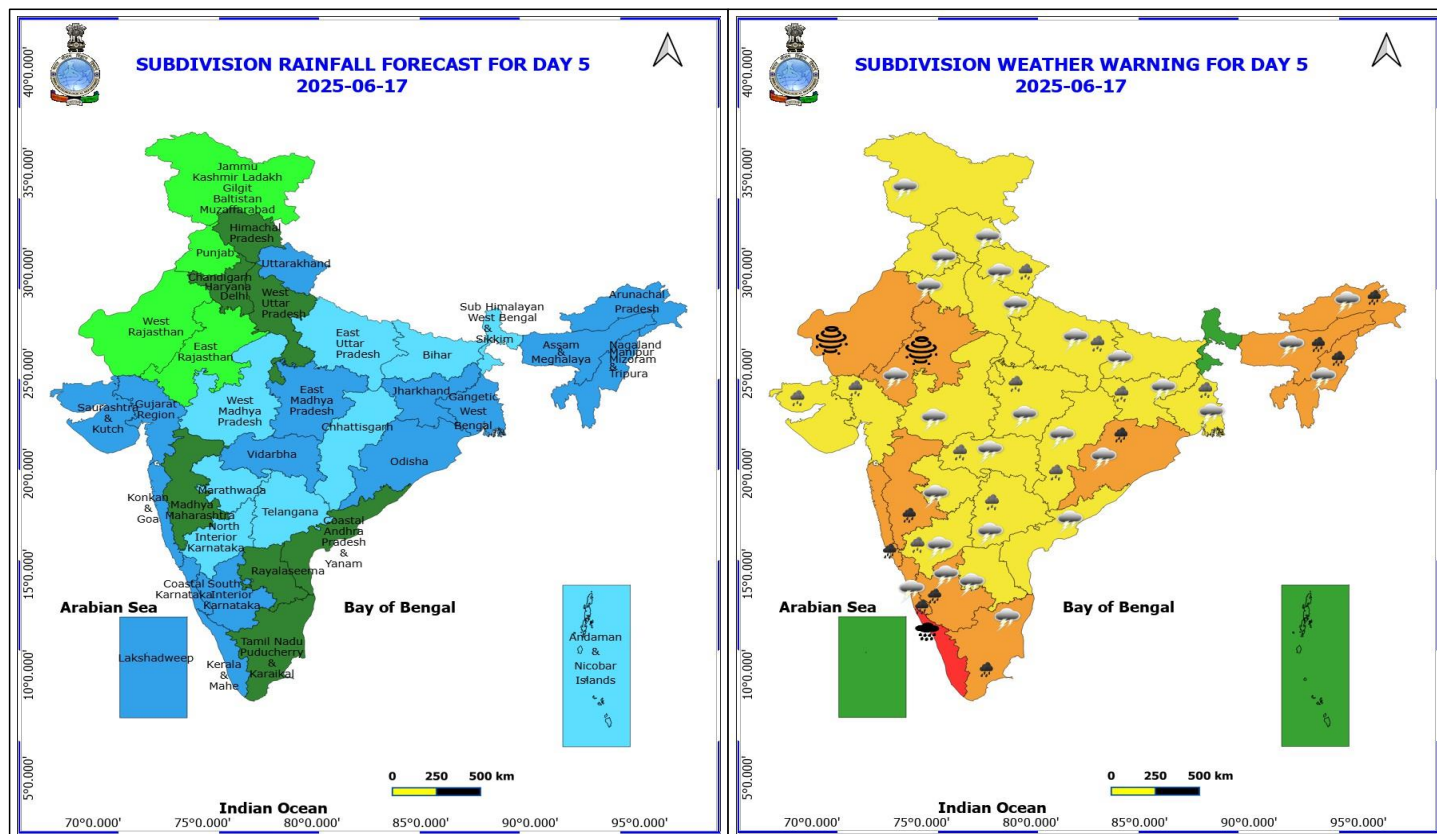
**Forecast and warning for any day is valid from 0830 hours IST of day till 0830 hours IST of next day**

**For more details kindly visit <https://mausam.imd.gov.in> or contact 011-2434-4599**

**(Service to the nation since 1875)**



- **Squally wind with speed 45 kmph to 55 kmph gusting to 65 kmph** likely to prevail along and off Somalia coast, northern parts of southwest Arabian Sea & adjoining parts of westcentral Arabian Sea, and over Gulf of Mannar. **Squally weather with wind speed 40 - 50 kmph gusting to 60 kmph** likely to prevail along and off Gujarat, Konkan, Goa, Karnataka, Kerala, Sri Lanka, Tamil Nadu, Andhra Pradesh coasts, over southeast Arabian Sea, eastcentral Arabian Sea, many parts of southwest Arabian sea & many parts of westcentral Arabian Sea, over some parts of northeast Arabian Sea, over Lakshadweep, Maldives, Comorin areas, over many parts of south Bay of Bengal, over central Bay of Bengal, and over north Andaman Sea. **Squally weather with wind speed 45 - 55 kmph gusting to 65 kmph** likely to prevail over many parts of southwest, central Bay of Bengal and few parts of north Andaman Sea.



## 17 June (Day 5)

- ❖ **Heavy to Very Heavy Rainfall with isolated Extremely Heavy Rainfall** likely at isolated places over Kerala & Mahe.
- ❖ **Heavy to Very Heavy Rainfall** likely at isolated places over Arunachal Pradesh, Assam & Meghalaya, Coastal Karnataka, Konkan & Goa, Madhya Maharashtra, Nagaland, Manipur, Mizoram and Tripura, Odisha, South Interior Karnataka and Tamil Nadu Puducherry & Karaikal.
- ❖ **Heavy Rainfall** likely at isolated places over Chhattisgarh, East Madhya Pradesh, East Uttar Pradesh, Gangetic West Bengal, Gujarat State, Jharkhand, North Interior Karnataka, Telangana, Uttarakhand and Vidarbha.
- ❖ **Thundersquall with wind speed reaching(50-60kmph)** likely at isolated places over East Rajasthan.
- ❖ **Thunderstorm accompanied with lightning & gusty winds(40-50kmph)** likely at isolated places over Assam & Meghalaya, Chhattisgarh, Haryana, Chandigarh & Delhi, Himachal Pradesh, Jharkhand, Madhya Pradesh, Punjab, Tamil Nadu Puducherry & Karaikal, Telangana, Uttar Pradesh, Uttarakhand and Vidarbha.
- ❖ **Thunderstorm accompanied with lightning & gusty winds(30-40kmph)** likely at isolated places over Andhra Pradesh, Bihar, Coastal Karnataka, Gangetic West Bengal, Interior Karnataka, Jammu-Kashmir-Ladakh-Gilgit-Baltistan-Muzaffarabad and Odisha.
- ❖ **Thunderstorm accompanied with Lightning** likely at isolated places over Arunachal Pradesh, Marathwada and Nagaland, Manipur, Mizoram and Tripura.
- ❖ **Dust Storm** likely at isolated places over Rajasthan.
- ❖ **Squally wind with speed 45 kmph to 55 kmph gusting to 65 kmph** likely to prevail along and off Somalia

**\*Red color warning does not mean "Red Alert" Red color warning means "Take Action"**

**Forecast and warning for any day is valid from 0830 hours IST of day till 0830 hours IST of next day**

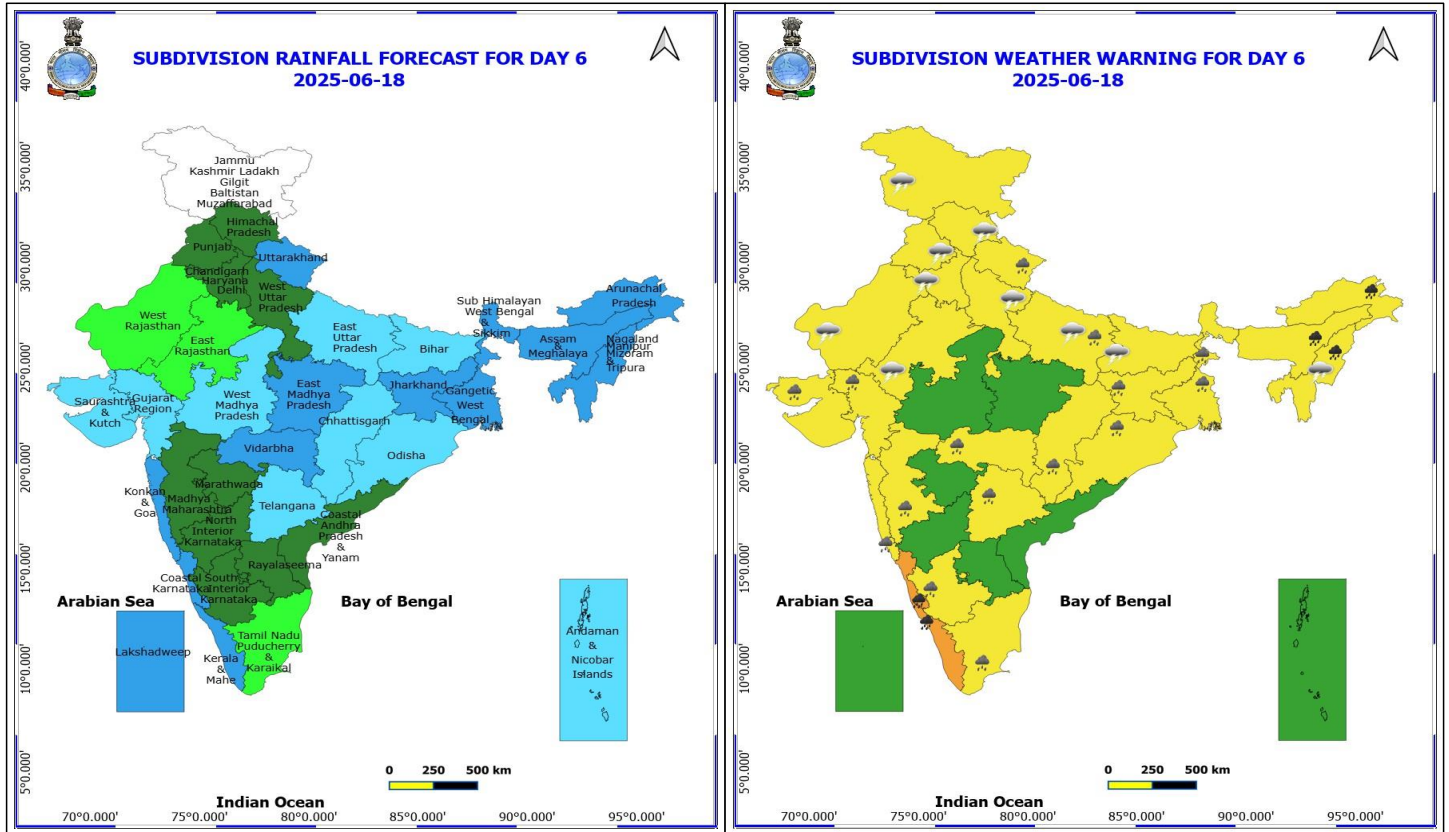
**For more details kindly visit <https://mausam.imd.gov.in> or contact 011-2434-4599**

**(Service to the nation since 1875)**



coast, northern parts of southwest Arabian Sea & many parts of westcentral Arabian Sea & adjoining parts of eastcentral Arabian Sea, and over Gulf of Mannar. **Squally weather with wind speed 40 - 50 kmph gusting to 60 kmph** likely to prevail along and off Gujarat, Konkan, Goa, Karnataka, Kerala, Sri Lanka, Tamil Nadu, Andhra Pradesh, Odisha, West Bengal coasts, over southeast Arabian Sea, eastcentral Arabian Sea, many parts of southwest Arabian sea & many parts of westcentral Arabian Sea, over some parts of northeast Arabian Sea, over Lakshadweep, Maldives, Comorin areas, over many parts of southwest Bay of Bengal and adjoining





## 18 June (Day 6)

- ❖ **Heavy to Very Heavy Rainfall** likely at isolated places over Arunachal Pradesh, Assam & Meghalaya, Coastal Karnataka, Kerala & Mahe and Nagaland, Manipur, Mizoram and Tripura.
- ❖ **Heavy Rainfall** likely at isolated places over Chhattisgarh, East Uttar Pradesh, Gujarat State, Jharkhand, Konkan & Goa, Madhya Maharashtra, Odisha, South Interior Karnataka, Tamil Nadu Pudukcherry & Karaikal, Telangana, Uttarakhand, Vidarbha and West Bengal & Sikkim.
- ❖ **Thunderstorm accompanied with lightning & gusty winds(40-50kmph)** likely at isolated places over Haryana, Chandigarh & Delhi, Himachal Pradesh, Punjab, Rajasthan and Uttar Pradesh.
- ❖ **Thunderstorm accompanied with lightning & gusty winds(30-40kmph)** likely at isolated places over Bihar.
- ❖ **Thunderstorm accompanied with Lightning** likely at isolated places over Jammu-Kashmir-Ladakh-Gilgit-Baltistan-Muzaffarabad and Nagaland, Manipur, Mizoram and Tripura.

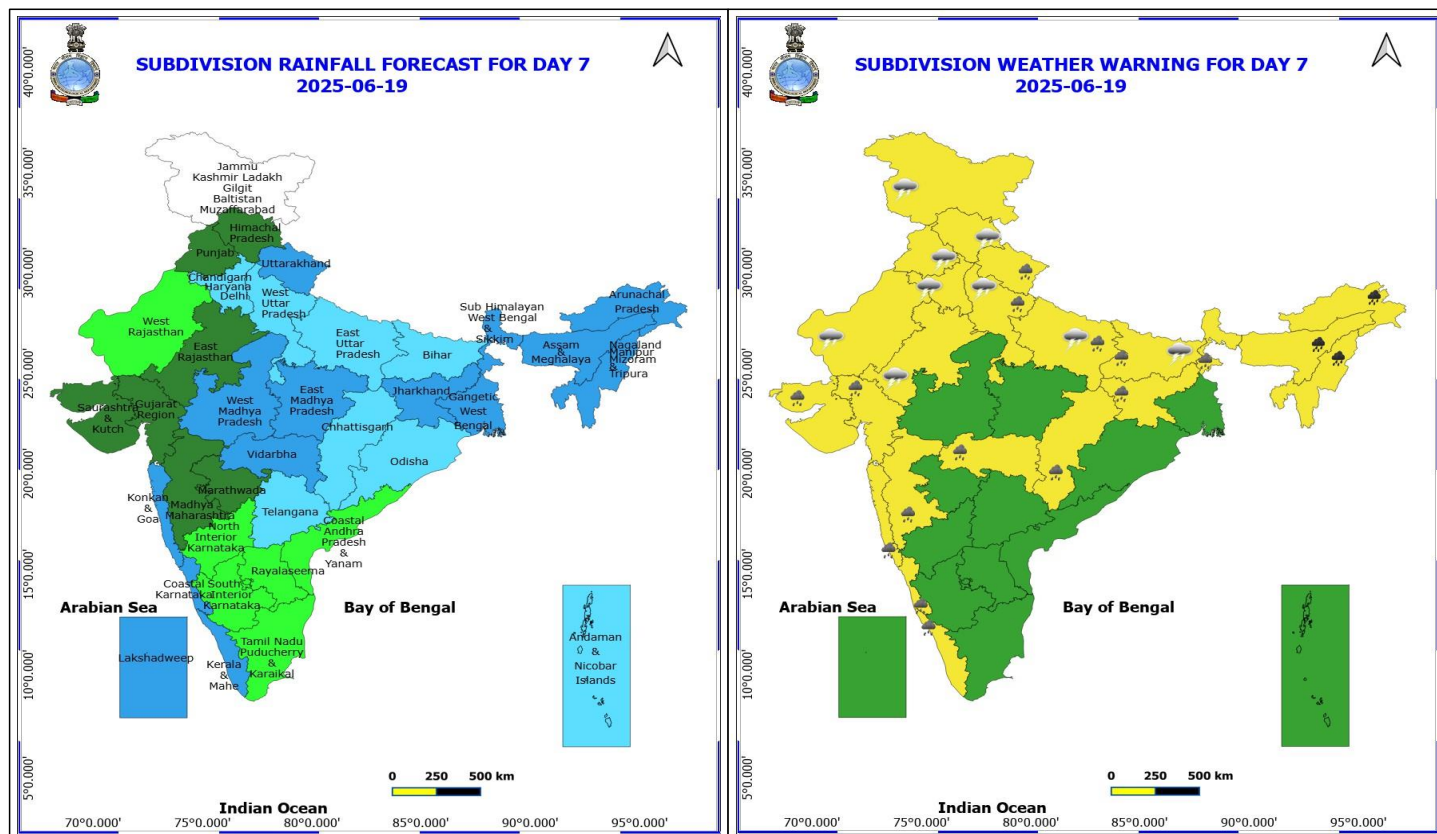
**No Fishermen Warning**

**\*Red color warning does not mean "Red Alert" Red color warning means "Take Action"**

Forecast and warning for any day is valid from 0830 hours IST of day till 0830 hours IST of next day

For more details kindly visit <https://mausam.imd.gov.in> or contact 011-2434-4599

(Service to the nation since 1875)



## 19 June (Day 7)

- ❖ **Heavy to Very Heavy Rainfall with isolated Extremely Heavy Rainfall** likely at isolated places over Kerala & Mahe.
- ❖ **Heavy to Very Heavy Rainfall** likely at isolated places over Arunachal Pradesh, Assam & Meghalaya, Costal Karnataka, Konkan & Goa, Madhya Maharashtra, Nagaland, Manipur, Mizoram and Tripura, Odisha, South Interior Karnataka and Tamil Nadu Puducherry & Karaikal.
- ❖ **Heavy Rainfall** likely at isolated places over Chhattisgarh, East Madhya Pradesh, East Uttar Pradesh, Gangetic West Bengal, Gujarat State, Jharkhand, North Interior Karnataka, Telangana, Uttarakhand and Vidarbha.
- ❖ **Thundersquall with wind speed reaching(50-60kmph)** likely at isolated places over East Rajasthan.
- ❖ **Thunderstorm accompanied with lightning & gusty winds(40-50kmph)** likely at isolated places over Assam & Meghalaya, Chhattisgarh, Haryana, Chandigarh & Delhi, Himachal Pradesh, Jharkhand, Madhya Pradesh, Punjab, Tamil Nadu Puducherry & Karaikal, Telangana, Uttar Pradesh, Uttarakhand and Vidarbha.
- ❖ **Thunderstorm accompanied with lightning & gusty winds(30-40kmph)** likely at isolated places over Andhra Pradesh, Bihar, Costal Karnataka, Gangetic West Bengal, Interior Karnataka, Jammu-Kashmir-Ladakh-Gilgit-Baltistan-Muzaffarabad and Odisha.
- ❖ **Thunderstorm accompanied with Lightning** likely at isolated places over Arunachal Pradesh, Marathwada and Nagaland, Manipur, Mizoram and Tripura.
- ❖ **Dust Storm** likely at isolated places over Rajasthan.

## No Fishermen Warning

**\*Red color warning does not mean "Red Alert" Red color warning means "Take Action"**

Forecast and warning for any day is valid from 0830 hours IST of day till 0830 hours IST of next day

For more details kindly visit <https://mausam.imd.gov.in> or contact 011-2434-4599

(Service to the nation since 1875)



**Table-1**

## 7 Days Rainfall Forecast

S.No.	Subdivision	13-Jun	14-Jun	15-Jun	16-Jun	17-Jun	18-Jun	19-Jun
		Day 1	Day 2	Day 3	Day 4	Day 5	Day 6	Day 7
1	ANDAMAN & NICOBAR ISLANDS	WS	WS	WS	FWS	FWS	FWS	FWS
2	ARUNACHAL PRADESH	SCT	FWS	FWS	FWS	WS	WS	WS
3	ASSAM & MEHGHALAYA	SCT	SCT	SCT	FWS	WS	WS	WS
4	N. M. M. & T.	SCT	FWS	FWS	FWS	WS	WS	WS
5	S.H. WEST BENGAL & SIKKIM	FWS	WS	WS	FWS	FWS	WS	WS
6	GANGETIC WEST BENGAL	ISOL	SCT	FWS	FWS	WS	WS	WS
7	ODISHA	SCT	FWS	FWS	WS	WS	FWS	FWS
8	JHARKHAND	ISOL	SCT	FWS	FWS	WS	WS	WS
9	BIHAR	ISOL	ISOL	SCT	SCT	FWS	FWS	FWS
10	EAST UTTAR PRADESH	ISOL	ISOL	SCT	SCT	FWS	FWS	FWS
11	WEST UTTAR PRADESH	ISOL	ISOL	ISOL	ISOL	SCT	SCT	FWS
12	UTTARAKHAND	FWS	FWS	FWS	WS	WS	WS	WS
13	HARYANA, CHD & DELHI	ISOL	ISOL	ISOL	ISOL	SCT	SCT	FWS
14	PUNJAB	DRY	ISOL	ISOL	ISOL	ISOL	SCT	SCT
15	HIMACHAL PRADESH	ISOL	ISOL	ISOL	SCT	SCT	SCT	SCT
16	JAMMU AND KASHMIR AND LADAKH	ISOL	ISOL	ISOL	SCT	ISOL	DRY	DRY
17	WEST RAJASTHAN	ISOL	ISOL	ISOL	ISOL	ISOL	ISOL	ISOL
18	EAST RAJASTHAN	ISOL	ISOL	ISOL	ISOL	ISOL	ISOL	SCT
19	WEST MADHYA PRADESH	ISOL	FWS	FWS	FWS	FWS	FWS	WS
20	EAST MADHYA PRADESH	ISOL	SCT	WS	WS	WS	WS	WS
21	GUJRAT REGION	FWS	FWS	FWS	WS	WS	FWS	SCT
22	SAURASHTRA & KUTCH	ISOL	SCT	FWS	WS	WS	FWS	SCT
23	KONKAN & GOA	WS	WS	WS	WS	WS	WS	WS
24	MADHYA MAHARASHTRA	FWS	FWS	FWS	SCT	SCT	SCT	SCT
25	MARATHWADA	FWS	SCT	ISOL	SCT	FWS	SCT	SCT
26	VIDARBHA	SCT	FWS	FWS	WS	WS	WS	WS
27	CHATTISGARH	ISOL	SCT	FWS	FWS	FWS	FWS	FWS
28	COASTAL ANDHRA PRADESH	SCT	SCT	SCT	SCT	SCT	SCT	ISOL
29	TELANGANA	FWS	FWS	FWS	FWS	FWS	FWS	FWS
30	RAYALASEEMA	SCT	SCT	SCT	SCT	SCT	SCT	ISOL
31	TAMILNADU & PUDUCHERRY	SCT	SCT	SCT	SCT	SCT	ISOL	ISOL
32	COSTAL KARNATAKA	WS	WS	WS	WS	WS	WS	WS
33	NORTH INTERIOR KARNATAKA	WS	FWS	SCT	SCT	FWS	SCT	ISOL
34	SOUTH INTERIOR KARNATAKA	FWS	FWS	FWS	FWS	WS	SCT	ISOL
35	KERALA	WS	WS	WS	WS	WS	WS	WS
36	LAKSHDWEAP	WS	WS	WS	WS	WS	WS	WS

Legend	Category	%Stations
WS	Widespread/Most Places	76-100
FWS	Fairly Widespread/Many Places	51-75
SCT	Scattered/ A Few Places	26-50
ISOL	Isolated Places	1-25
DRY	No Rain	0

\*Red color warning does not mean "Red Alert" Red color warning means "Take Action"

Forecast and warning for any day is valid from 0830 hours IST of day till 0830 hours IST of next day

For more details kindly visit <https://mausam.imd.gov.in> or contact 011-2434-4599

(Service to the nation since 1875)

Fig. 1: Maximum Temperatures Dated 2025-06-13

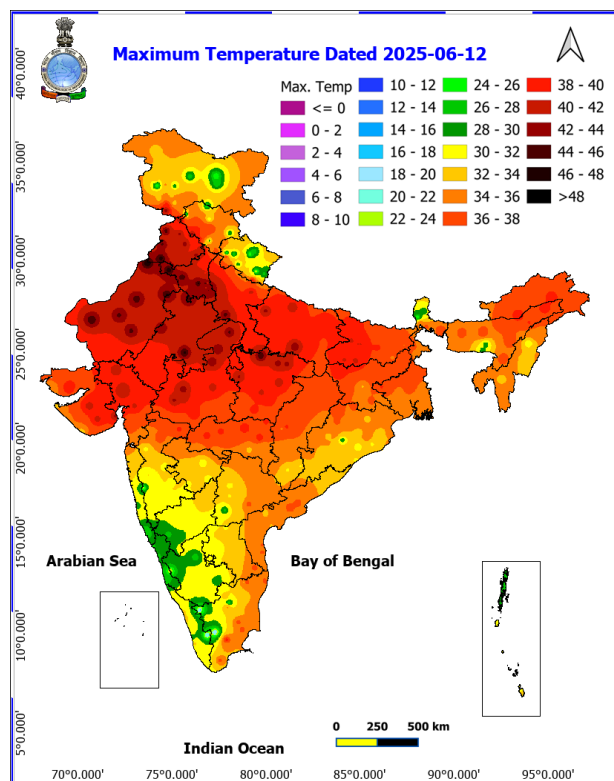


Fig. 2: Departure of Maximum Temp. Dated 2025-06-13

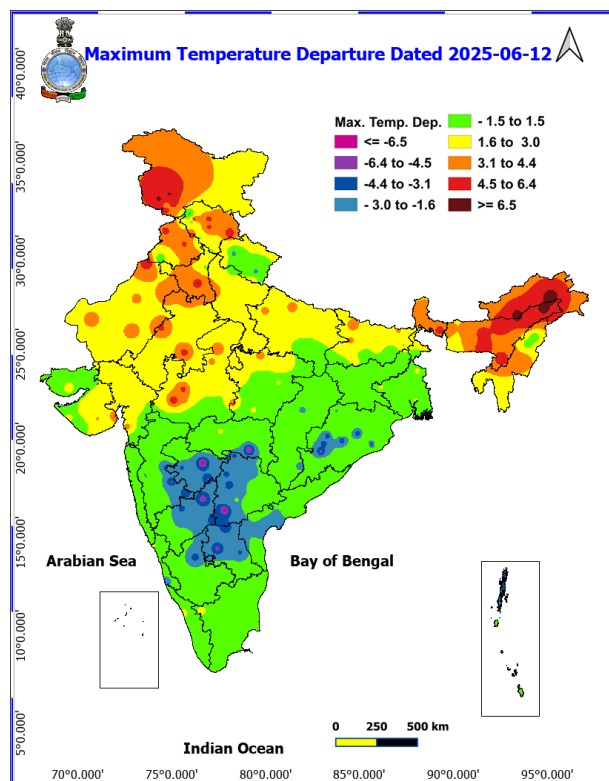


Fig. 3: Minimum Temperatures Dated 2025-06-13

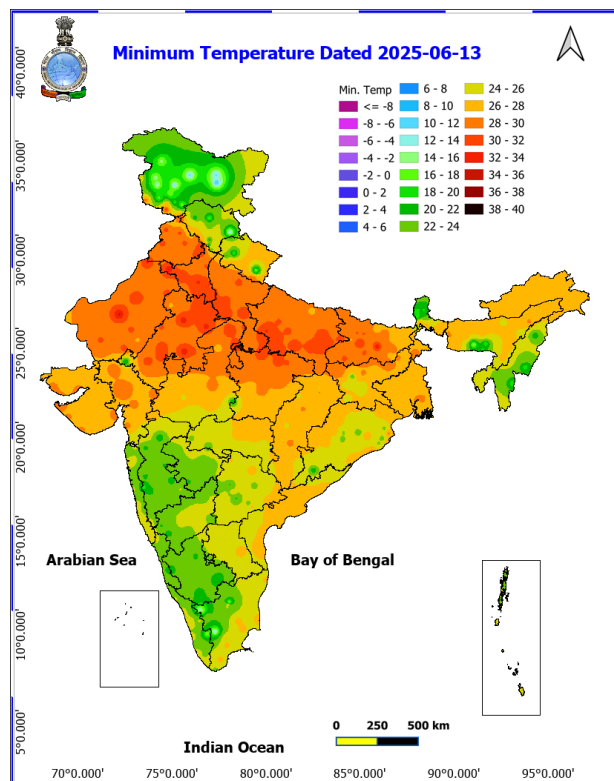
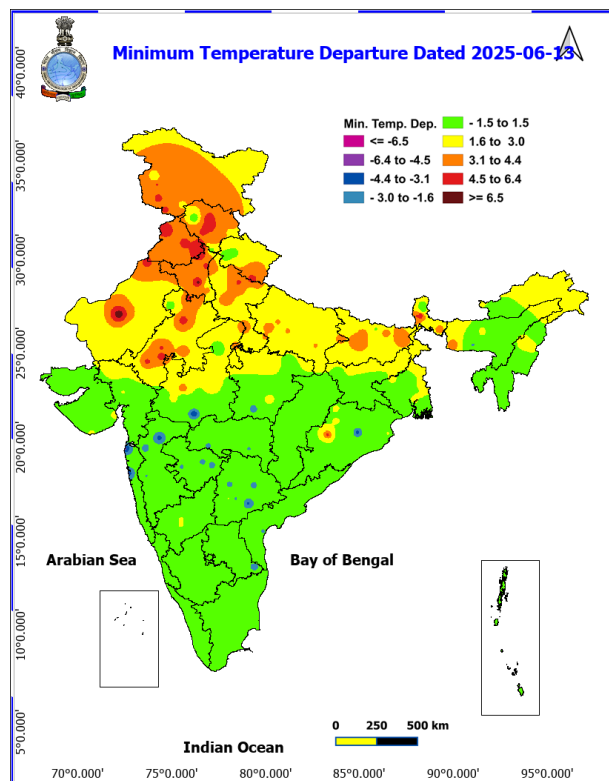
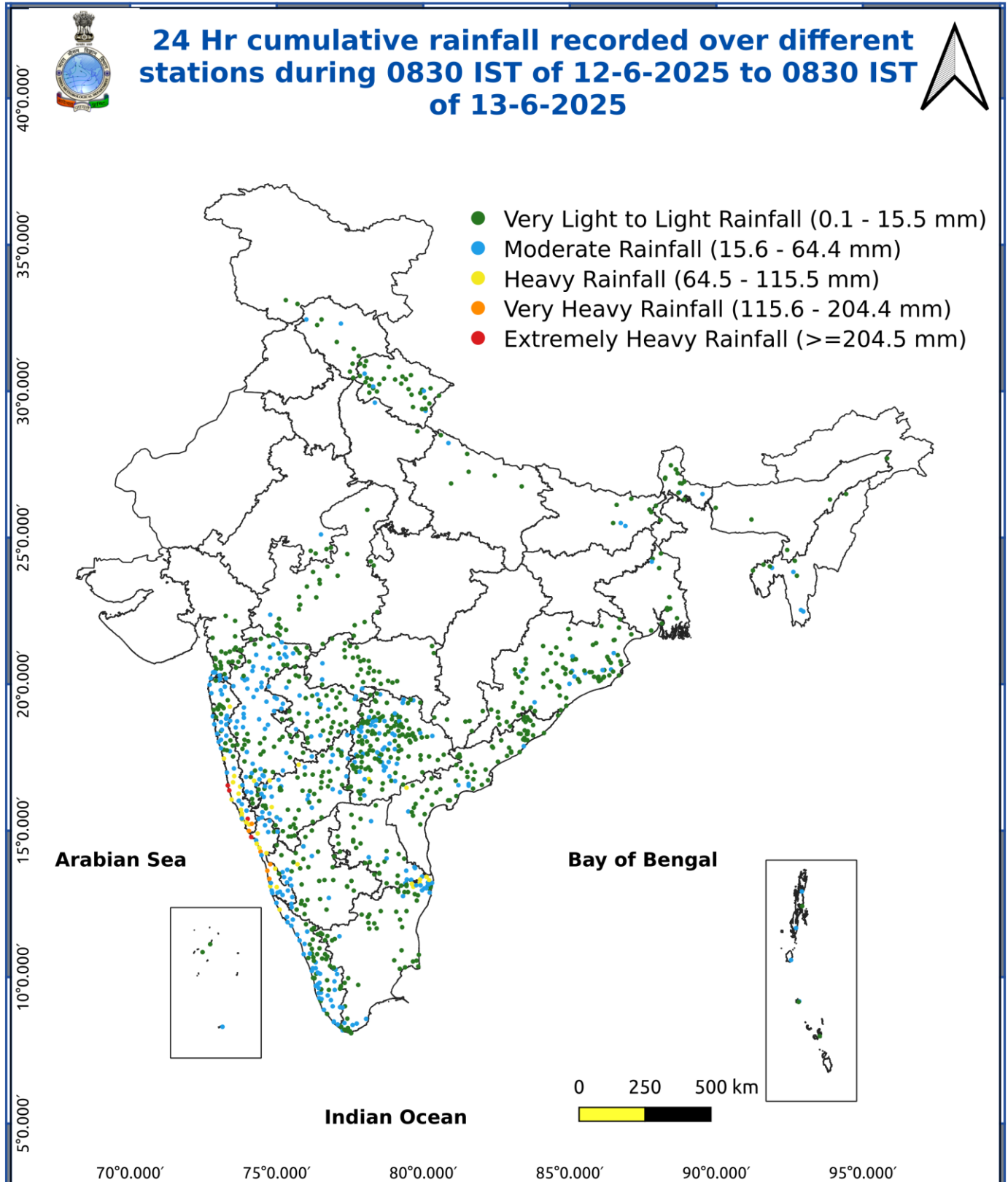


Fig. 4: Departure of Minimum Temp. Dated 2025-06-13







\*Red color warning does not mean "Red Alert" Red color warning means "Take Action"

Forecast and warning for any day is valid from 0830 hours IST of day till 0830 hours IST of next day

For more details kindly visit <https://mausam.imd.gov.in> or contact 011-2434-4599

(Service to the nation since 1875)



**Impact & Action Suggested due to extremely heavy falls/ very heavy rainfall:**

- ♦ **Extremely heavy rainfall (>20 cm/24 hours) at isolated places over Konkan & Goa during 13<sup>th</sup>-16<sup>th</sup>; Coastal Karnataka during 13<sup>th</sup>-15<sup>th</sup>; South Interior Karnataka on 13<sup>th</sup> June; Kerala & Mahe during 14<sup>th</sup>-16<sup>th</sup>; Tamil Nadu, Puducherry & Karaikal on 14<sup>th</sup> & 15<sup>th</sup> June.**

- ♦ **Very heavy rainfall** at isolated places overon Arunachal Pradesh, Nagaland, Manipur, Mizoram & Tripura during 17<sup>th</sup>-19<sup>th</sup>; Assam & Meghalaya during 16<sup>th</sup>-19<sup>th</sup>; Sub-Himalayan West Bengal & Sikkim on 14<sup>th</sup> and Odisha on 16<sup>th</sup> & 17<sup>th</sup>; Konkan & Goa on 17<sup>th</sup>; Madhya Maharashtra on 13<sup>th</sup> & during 15<sup>th</sup>-17<sup>th</sup>; Saurashtra & Kutch on 15<sup>th</sup> & 16<sup>th</sup>; Tamil Nadu, Puducherry & Karaikal on 13<sup>th</sup>, 16<sup>th</sup>, 17<sup>th</sup>; Kerala & Mahe on 13<sup>th</sup>, 17<sup>th</sup> & 18<sup>th</sup>; Coastal Karnataka on 16<sup>th</sup> & 17<sup>th</sup>; South Interior Karnataka during 15<sup>th</sup>-17<sup>th</sup>; North Interior Karnataka on 13<sup>th</sup> & 14<sup>th</sup> June.

**Impact Expected**

- ♦ Localized Flooding of roads, water logging in low lying areas and closure of underpasses mainly in urban areas of the above region.
- ♦ Occasional reduction in visibility due to heavy rainfall.
- ♦ Disruption of traffic in major cities due to water logging in roads leading to increased travel time.
- ♦ Minor damage to kutch roads.
- ♦ Possibilities of damage to vulnerable structure.
- ♦ Localized Landslides/Mudslides/landslips/mudslips/landsinks/mudsinks.
- ♦ Damage to horticulture and standing crops in some areas due to inundation.
- ♦ It may lead to riverine flooding in some river catchments (for riverine flooding please visit Web page of CWC)
- ♦

**Action Suggested**

- ♦ Check for traffic congestion on your route before leaving for your destination.
- ♦ Follow any traffic advisories that are issued in this regard.
- ♦ Avoid going to areas that face the water logging problems often.
- ♦ Avoid staying in vulnerable structure.
- ♦

**Impact expected and action suggested due to isolated thunderstorm with lightning/gusty & Squally winds over**

- ♦ **Thundersquall (wind speed reaching 50-60 kmph gusting to 70 kmph)** at isolated places over West Madhya Pradesh during 13<sup>th</sup>-15<sup>th</sup>; Vidarbha on 13<sup>th</sup> & 14<sup>th</sup>; Chhattisgarh on 14<sup>th</sup>; Bihar on 15<sup>th</sup> June.
- ♦ **Dust storm/Thundersquall (wind speed reaching 50-60 kmph gusting to 70 kmph)** at isolated places over Rajasthan during 13<sup>th</sup>-17<sup>th</sup> June.
- ♦ **Strong surface winds** (speed reaching 50-60 kmph) over Kerala & Mahe during 14<sup>th</sup>-16<sup>th</sup> and Interior Karnataka on 13<sup>th</sup> June.

**Impact expected:**

- ♦ Breaking of tree branches, uprooting of large avenue trees. Large dead limbs blown from trees. Damage to Standing crops.
- ♦ Minor to Major damage to banana and papaya trees.
- ♦ Minor to major damage to power and communication lines due to breaking of branches.
- ♦ Strong wind/hail may damage plantation, horticulture and standing crops.
- ♦ Partial damage to vulnerable structures due to strong winds.
- ♦ Minor damage to kutch houses/walls and huts.
- ♦ Loose objects may fly.

**Action suggested:**

- ♦ **\*Red color warning does not mean "Red Alert" Red color warning means "Take Action"**  
**Forecast and warning for any day is valid from 0830 hours IST of day till 0830 hours IST of next day**  
**For more details kindly visit <https://mausam.imd.gov.in> or contact 011-2434-4599**

(Service to the nation since 1875)

People are advised to keep a watch on the weather for worsening conditions and be ready to move to safer places accordingly.

Stay indoors, close windows & doors and avoid travel if possible.

Take safe shelters; do not take shelter under trees.

#### Impact expected and action suggested due to Severe heat wave/ Heat wave condition:

- ❖ **Heat wave condition** at many/some places over Rajasthan on 13<sup>th</sup>-15<sup>th</sup> with **severe heat wave conditions** at some parts over West Rajasthan on 13<sup>th</sup> & 14<sup>th</sup> June.
- ❖ **Heat wave condition** at many/some places over Punjab during 13<sup>th</sup>-15<sup>th</sup> with **severe heat wave conditions** at isolated/some parts on 13<sup>th</sup> June.
- ❖ **Heat wave condition** at many/some places over Haryana during 13<sup>th</sup>-15<sup>th</sup> with **severe heat wave conditions** at isolated/some parts on 13<sup>th</sup> & 14<sup>th</sup> June.
- ❖ **Heat wave condition** at isolated places over Jammu-Kashmir, Himachal Pradesh on 13<sup>th</sup> & 14<sup>th</sup> with **severe heat wave conditions** at some parts over Jammu-Kashmir on 13<sup>th</sup> June.
- ❖ **Heat wave conditions** in some/many places over Uttar Pradesh & Madhya Pradesh on 13<sup>th</sup> & 14<sup>th</sup> June.

#### Red alert Areas

- Very high likelihood of developing heat illness and heat stroke in all ages.
- Extreme care needed for vulnerable people.

#### Orange alert Areas:

- High temperature & increased likelihood of heat illness symptoms in people who are either exposed to sun for a prolonged period or doing heavy work.
- High health concern for vulnerable people e.g. infants, elderly, people with chronic diseases.
- Avoid heat exposure– keep cool. Avoid dehydration.
- Drink sufficient water- even if not thirsty.
- Use ORS, homemade drinks like lassi, torani (rice water), lemon water, buttermilk, etc. to keep yourself hydrated.

#### Yellow alert Areas:

- Moderate temperature & heat is tolerable for general public but moderate health concern likely for vulnerable people e.g. infants, elderly, people with chronic diseases.
- Avoid heat exposure.
- Wear lightweight, light colour, loose, cotton clothes.
- Cover your head, use a cloth, hat or umbrella.

**\*Red color warning does not mean "Red Alert" Red color warning means "Take Action"**

**Forecast and warning for any day is valid from 0830 hours IST of day till 0830 hours IST of next day**

**For more details kindly visit <https://mausam.imd.gov.in> or contact 011-2434-4599**

**(Service to the nation since 1875)**

- Do not lie on concrete floors and do not lean against concrete walls.
- Unplug electrical/ electronic appliances.
- Immediately get out of water bodies.
- Keep away from all the objects that conduct electricity.

## Flash Flood Guidance:

### **24 hours Outlook for the Flash Flood Risk (FFR) till 1130 IST of 14-06-2025 :**

**Low to Moderate flash flood risk** likely over few watersheds & neighbourhoods of following Met Sub-divisions during next 24 hours.

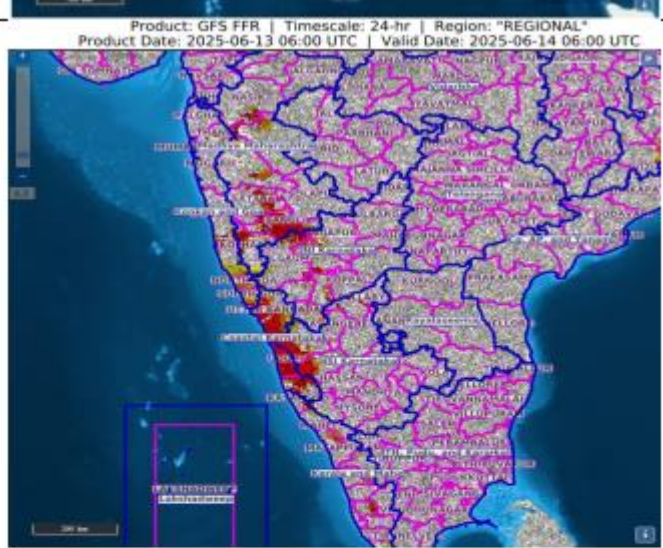
**Coastal Karnataka** - Dakshin Kannada, Udupi and Uttar Kannada districts.

**Kerala & Mahe** - Kannur, Kasargod, Kottayam and Wayanad districts.

**South Interior Karnataka** - Chikmagalur and Shimoga districts.

**Konkan & Goa** - North Goa, South Goa, Ratnagiri and Sindhudurg districts.

Surface runoff/ Inundation may occur at some fully saturated soils & low-lying areas over Area of Concern (AoC) as shown in map due to expected rainfall occurrence in next 24 hours.



**\*Red color warning does not mean "Red Alert" Red color warning means "Take Action"**

Forecast and warning for any day is valid from 0830 hours IST of day till 0830 hours IST of next day

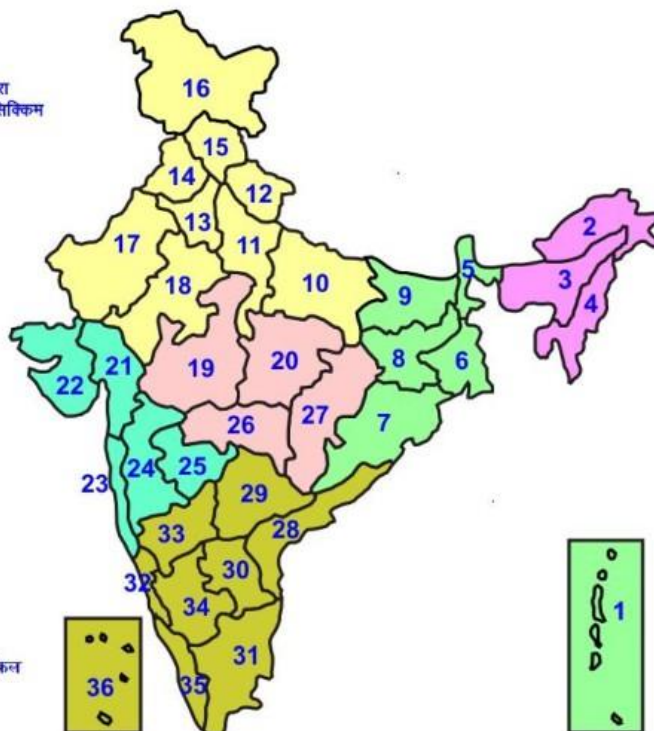
For more details kindly visit <https://mausam.imd.gov.in> or contact 011-2434-4599

(Service to the nation since 1875)



## LEGENDS

- 1 अंडमान और निकोबार द्वीप समुह
- 2 अरुणाचल प्रदेश
- 3 असम और मेघालय
- 4 नागालैंड मनीपुर मीजोरम और त्रिपुरा
- 5 उप हिमालय पश्चिम बंगाल एवं सिक्किम
- 6 पश्चिम बंगाल
- 7 ओडिसा
- 8 झारखंड
- 9 बिहार
- 10 पूर्वी उत्तर प्रदेश
- 11 पश्चिम उत्तर प्रदेश
- 12 उत्तराखंड
- 13 हरियाणा चंडीगढ़ एवं दिल्ली
- 14 पंजाब
- 15 हिमाचल प्रदेश
- 16 जम्मू एवं कश्मीर एवं लद्दाख
- 17 पश्चिम राजस्थान
- 18 पूर्वी राजस्थान
- 19 पश्चिम मध्य प्रदेश
- 20 पूर्वी मध्य प्रदेश
- 21 गुजरात क्षेत्र
- 22 सौराष्ट्र एवं कच्छ
- 23 कोंकण एवं गोवा
- 24 मध्य महाराष्ट्र
- 25 मराठावाड़ा
- 26 विदर्भ
- 27 छत्तीसगढ़
- 28 तटीय आंध्र प्रदेश एवं यनम
- 29 तेलंगाना
- 30 रायलसीमा
- 31 तमिलनाडु, पुदुचेरी एवं कराईकल
- 32 तटिय कर्नाटक
- 33 आंतरिक उत्तरी कर्नाटक
- 34 आंतरिक दक्षिणी कर्नाटक
- 35 केरल एवं माहे
- 36 लक्षद्वीप



1. Andaman & Nicobar Islands
2. Arunachal Pradesh
3. Assam & Meghalaya
4. Nagaland, Manipur, Mizoram & Tripura
5. Sub-Himalayan West Bengal & Sikkim
6. Gangetic West Bengal
7. Orissa
8. Jharkhand
9. Bihar
10. East Uttar Pradesh
11. West Uttar Pradesh
12. Uttarakhand
13. Haryana, Chd & Delhi
14. Punjab
15. Himachal Pradesh
16. Jammu & Kashmir and Ladakh
17. West Rajasthan
18. East Rajasthan
19. West Madhya Pradesh
20. East Madhya Pradesh
21. Gujarat
22. Saurashtra
23. Konkan & Goa
24. Madhya Maharashtra
25. Marathawada
26. Vidharbha
27. Chhattisgarh
28. Coastal Andhra Pradesh & Yanam
29. Telangana
30. Rayalaseema
31. Tamilnadu, Puducherry & Karaikal
32. Coastal Karnataka
33. North Interior Karnataka
34. South Interior Karnataka
35. Kerala & Mahe
36. Lakshadweep

## SPATIAL DISTRIBUTION (% of Stations reporting)

% Stations	Category	% Stations	Category
76-100	Widespread (WS/Most Places)	26-50	Scattered (SCT/ A Few Places)
51-75	Fairly Widespread (FWS/ Many Places)	1-25	Isolated (ISOL)

### Subdivision Colour

- NO WARNING
- WATCH (BE UPDATED)
- ALERT (BE PREPARED TO TAKE ACTION)
- WARNING (TAKE ACTION)

### Probabilistic Forecast

Terms	Probability of Occurrence (%)
Unlikely	< 25
Likely	25 - 50
Very Likely	50 - 75
Most Likely	> 75

- Heavy Rain

Thunderstorm & Lightning

Strong surface winds

Cold Wave

Hot & Humid

Very Heavy Rain

Hailstorm

Heat Wave

Cold Day

Extremely Heavy Rain

Dust Storm

Hot Day

Ground Frost

Heavy Snow

Dust Raising Winds

Warm Night

Fog

\*Red color warning does not mean "Red Alert" Red color warning means "Take Action"

Forecast and warning for any day is valid from 0830 hours IST of day till 0830 hours IST of next day

For more details kindly visit <https://mausam.imd.gov.in> or contact 011-2434-4599

(Service to the nation since 1875)

## LEGENDS

### WARNING

WARNING (TAKE ACTION)
ALERT (BE PREPARED)
WATCH (BE UPDATED)
NO WARNING (NO ACTION)

### Probabilistic Forecast

Terms	Probability of Occurrence (%)
Unlikely	< 25
Likely	25 - 50
Very Likely	50 - 75
Most Likely	> 75



Heavy: 64.5 to 115.5 mm/cm \*  
Very Heavy: 115.6 to 204.4 mm/cm \*  
Extremely Heavy: > 204.4 mm/cm \*



When maximum temperature of a station reaches  $\geq 40^{\circ}\text{C}$  for plains and  $\geq 30^{\circ}\text{C}$  for hilly regions  
(a) Based on Departure from normal

Heat Wave: Maximum Temperature Departure from normal  $4.5^{\circ}\text{C}$  to  $6.4^{\circ}\text{C}$ .  
Severe Heat Wave: Maximum Temperature Departure from normal  $\geq 6.5^{\circ}\text{C}$

(b). Based on Actual maximum temperature

Heat Wave: When actual maximum temperature  $\geq 45^{\circ}\text{C}$ .  
Severe Heat Wave: When actual maximum temperature  $\geq 47^{\circ}\text{C}$

(c). Criteria for heat wave for coastal stations

When maximum temperature departure is  $> 4.5^{\circ}\text{C}$  from normal. Heat Wave may be described provided maximum temperature  $\geq 37^{\circ}\text{C}$



When maximum temperature remains  $40^{\circ}\text{C}$

Warm Night: When minimum temperature departure  $4.5^{\circ}\text{C}$  to  $6.4^{\circ}\text{C}$ .  
Severe Warm Night: When minimum temperature departure  $> 6.4^{\circ}\text{C}$ .



When minimum temperature of a station  $\leq 10^{\circ}\text{C}$  for plains and  $\leq 0^{\circ}\text{C}$  for hilly regions.

(a). Based on departure

Cold Wave: Minimum Temperature Departure from normal  $-4.5^{\circ}\text{C}$  to  $-6.4^{\circ}\text{C}$ .  
Severe Cold Wave: Minimum Temperature Departure from normal  $\leq -6.5^{\circ}\text{C}$

(b) Based on actual Minimum Temperature (for Plains only)

Cold Wave: When Minimum Temperature is  $\leq 4.0^{\circ}\text{C}$   
Severe Cold Wave: When Minimum Temperature is  $\leq 2.0^{\circ}\text{C}$

(c) For Coastal Stations

When Minimum Temperature departure is  $\leq -4.5^{\circ}\text{C}$  & actual Minimum Temperature is  $\leq 15^{\circ}\text{C}$



When minimum temperature of a station  $\leq 10^{\circ}\text{C}$  for plains and  $\leq 0^{\circ}\text{C}$  for hilly regions  
Based on departure

Cold Day: Maximum Temperature Departure from normal  $-4.5^{\circ}\text{C}$  to  $-6.4^{\circ}\text{C}$ .  
Severe Cold Day: Maximum Temperature Departure from normal  $\leq -6.5^{\circ}\text{C}$



Phenomenon of small droplets suspended in air and the horizontal visibility  $< 1\text{km}$

Moderate Fog: When the visibility between 500-200 metres  
Dense Fog: when the visibility between 50-200 metres  
Very Dense Fog: when the visibility  $< 50$  metres



Sudden electrical discharges manifested by a flash of light (Lightning) and a sharp rumbling sound (thunder)



An ensemble of particles of dust or sand energetically lifted to great heights by a strong and turbulent wind.



Ice deposits on ground

Air temperature  $\leq 4^{\circ}\text{C}$  (over Plains)



A strong wind that rises suddenly, lasts for atleast 1 minute.

Moderate: Wind speed 52-61 kmph  
Severe: Wind speed 62-87 kmph  
Very Severe: Wind speed  $> 87$  kmph



Effect of various waves in the sea over specific area

Rough to very rough: Wind speed 41-62 kmph (22-33 knots) & Wave height 2.5-6 metre  
High to very high: Wind speed 63-117 kmph (34-63 knots) & Wave height 6-14 metre  
Phenomenal: Wind speed  $> 117$  kmph ( $> 63$  knots) & Wave height  $> 14$  metre



Cyclonic Storm: Wind speed 62-87 kmph (34-47 knots)

Severe Cyclonic Storm: Wind speed 88-117 kmph (48-63 knots)

Very Severe Cyclonic Storm: Wind speed 118-165 kmph (64-89 knots)

Extremely Severe Cyclonic Storm: Wind speed 166-220 kmph (90-119 knots)

Super Cyclone Storm: Wind speed  $> 220$  kmph ( $> 119$  knots)

\*Red color warning does not mean "Red Alert" Red color warning means "Take Action"

Forecast and warning for any day is valid from 0830 hours IST of day till 0830 hours IST of next day

For more details kindly visit <https://mausam.imd.gov.in> or contact 011-2434-4599

(Service to the nation since 1875)