

Tuesday, March 18, 2025  
Time of Issue: 1400 hours IST  
(MID-DAY)

## ALL INDIA WEATHER SUMMARY AND FORECAST BULLETIN

### Significant Weather Features:

#### Weather Systems, Forecast and Warnings:

- ❖ **Due to wind confluence from the Bay of Bengal over Central and East India** in lower tropospheric levels:
  - ✓ **Isolated to Scattered** light/moderate rainfall accompanied with **thunderstorm, lightning & gusty winds (speed 30-50 kmph)** likely over Sub-Himalayan West Bengal & Sikkim during 20<sup>th</sup>-22<sup>nd</sup> and over Bihar on 21<sup>st</sup> & 22<sup>nd</sup>; East Madhya Pradesh and Chhattisgarh during 19<sup>th</sup>-22<sup>nd</sup>; West Madhya Pradesh on 20<sup>th</sup> & 21<sup>st</sup> and Vidarbha on 21<sup>st</sup> & 22<sup>nd</sup> March.
  - ✓ **Scattered to Fairly widespread** light/moderate rainfall accompanied with thunderstorm, lightning & gusty winds (speed 40-60 kmph) likely over Gangetic West Bengal, Jharkhand and Odisha during 20<sup>th</sup>-22<sup>nd</sup> March.
  - ✓ **Isolated hailstorms also likely over Jharkhand on 20<sup>th</sup>; Gangetic West Bengal on 20<sup>th</sup> & 21<sup>st</sup>; Bihar on 21<sup>st</sup> & 22<sup>nd</sup>; Odisha during 20<sup>th</sup> -22<sup>nd</sup> March.**
- ❖ A **Cyclonic Circulation** lies over northeast Assam and neighbourhood in lower tropospheric levels. Under its influence;
  - ✓ **Scattered to Fairly widespread light/moderate rainfall/snowfall** accompanied with **thunderstorm, lightning & gusty winds (speed 30-40 kmph)** likely over Arunachal Pradesh during next 5 days.
  - ✓ **Isolated to Scattered** light/moderate rainfall accompanied with **thunderstorm, lightning & gusty winds (speed 30-40 kmph)** likely over Assam & Meghalaya and Nagaland, Manipur, Mizoram & Tripura during next 5 days.

#### Temperature Forecast:

##### Maximum temperature:

- ❖ Gradual rise in maximum temperatures by about 2-3°C likely over Northwest India during next 3 days and no significant change thereafter.
- ❖ No significant change in maximum temperatures likely over Central India and Interior Maharashtra during next 24 hours and fall by 2-4°C during subsequent 2-5 days.
- ❖ No significant change in maximum temperatures likely over East India during next 3 days and fall by 3-5°C during subsequent 2 days.
- ❖ No significant change in maximum temperatures likely over Gujarat State during next 4 days and rise by 2-3°C thereafter.

##### Heat wave and Hot & Humid weather warning:

- ❖ **Heat wave conditions** likely to continue at isolated pockets over interior Odisha on 18<sup>th</sup> March.
- ❖ **Hot & humid conditions** very likely to prevail in isolated pockets over coastal areas of Gujarat State during next 2 days and over interior Karnataka during 18<sup>th</sup>-20<sup>th</sup> March.

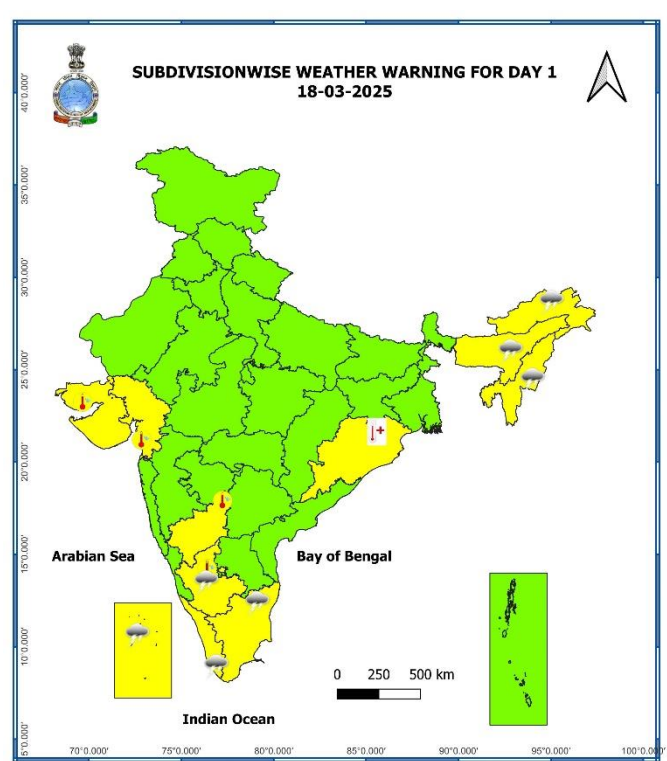
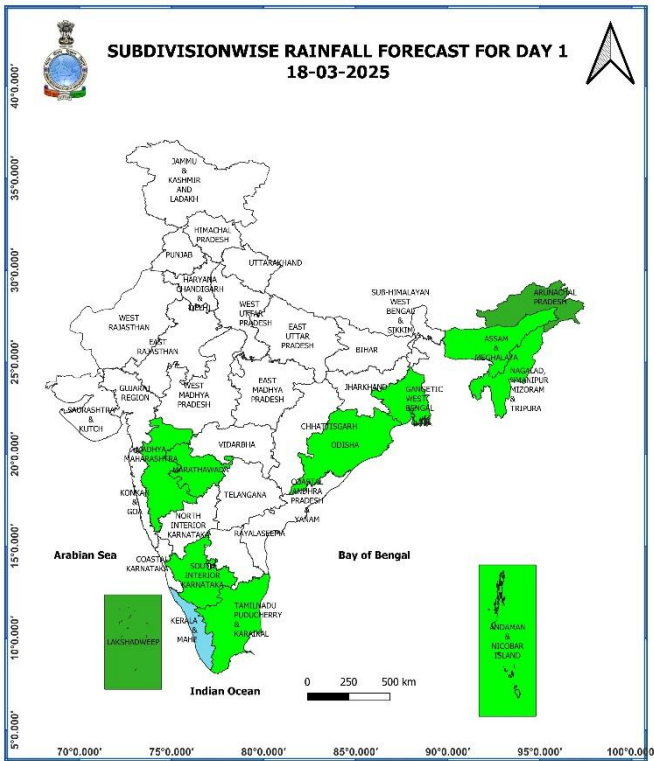
## Main Weather Observations:

- ❖ **Rainfall/snowfall distribution** (from 0830 hours IST of yesterday to 0830 hours IST of today): Light to moderate **Rainfall/Snowfall** occurred at many places Uttarakhand, Arunachal Pradesh; at isolated places over Himachal Pradesh. **Light to moderate rainfall** at many places over Kerala & Mahe, Lakshadweep; at a few places over Sub-Himalayan West Bengal & Sikkim; at isolated places over East Uttar Pradesh, Gangetic West Bengal, Bihar, Jharkhand, Odisha, Assam & Meghalaya, Nagaland, Manipur, Mizoram & Tripura, Tamilnadu Puducherry & Karaikal, South Interior Karnataka.
- ❖ **Significant amount of rainfall** (from 0830 hours IST of yesterday to 0830 hours IST of today) (in cm): **Tamilnadu:** Chamraj Estate (dist The Nilgiris) 5, Cincona (dist Coimbatore), Taluk Office Pandalur (dist The Nilgiris) 4 each; **Kerala & Mahe:** Nilambur (dist Malappuram) 5, Mangalam Dam Aws (dist Palakkad) 5, Angadipuram (dist Malappuram) 4, Vellathooval Aws (dist Idukki) 4, Munnar Kseb (dist Idukki) 4; **Arunachal Pradesh:** Tuting\_ Aws (dist Upper Siang) 5, Tenali AWS (dist Upper Siang) 5, Kibithoo Circle AWS (dist Anjaw) 4; **Nagaland, Manipur, Mizoram & Tripura:** Tamenglong (dist Tamenglong) 3, Kadamtala CWC (dist North Tripura) 2.
- ❖ **Yesterday, Heat wave to severe heat wave realised in north interior Odisha.**
- ❖ **Minimum Temperature Departures (as on 18-03-2025):** Minimum temperatures are **markedly above normal (5.1°C or more)** at isolated places over Odisha, Nagaland, Manipur, Mizoram & Tripura; **above normal (1.6°C to 3.0°C)** at a few places over Gangetic West Bengal, Jharkhand, Assam & Meghalaya, Tamil Nadu, Puducherry & Karaikal; at isolated places over Chhattisgarh, Saurashtra & Kutch, Konkan & Goa, North Interior Karnataka, Rayalaseema, Coastal Andhra Pradesh & Yanam. These are **appreciably below normal (-5.0°C to -3.1°C)** at isolated places over Haryana-Chandigarh-Delhi, East Rajasthan; **below normal (-3.0°C to -1.6°C)** at a few places over Jammu-Kashmir-Ladakh-Gilgit-Baltistan-Muzaffarabad, Himachal Pradesh, Uttarakhand; at isolated places over Punjab, West Rajasthan, Uttar Pradesh and near normal over rest parts of the country (**Fig. 4**). Today, the **lowest minimum temperature of 11.2°C** is reported at **Karnal (Haryana)** over the plains of the country.
- ❖ **Maximum Temperature Departures (as on 17-03-2025):** Maximum temperatures were **markedly above normal (5.1°C or more)** at isolated places over Sub-Himalayan West Bengal & Sikkim; **appreciably above normal (3.1°C to 5.0°C)** at isolated places over Bihar, Odisha; **above normal (1.6°C to 3.0°C)** at a few places Assam & Meghalaya, Chhattisgarh, Telangana, Vidarbha, Konkan & Goa, North Interior Karnataka, Rayalaseema; at isolated places over Saurashtra & Kutch, East Uttar Pradesh, Jharkhand, Nagaland, Manipur, Mizoram & Tripura, Madhya Maharashtra. These were **markedly below normal (-5.1°C or less)** at isolated places over Jammu-Kashmir-Ladakh-Gilgit-Baltistan-Muzaffarabad, Uttarakhand; **below normal (-3.0°C to -1.6°C)** at many places over Rajasthan; at isolated places over Himachal Pradesh, Haryana-Chandigarh-Delhi, West Uttar Pradesh, Madhya Pradesh and near normal over rest parts of the country. (**Fig. 2**). Yesterday, the highest **maximum temperature of 43.5°C** was reported at **Boudh (Odisha)** over the country.

## Meteorological Analysis (Based on 0830 hours IST)

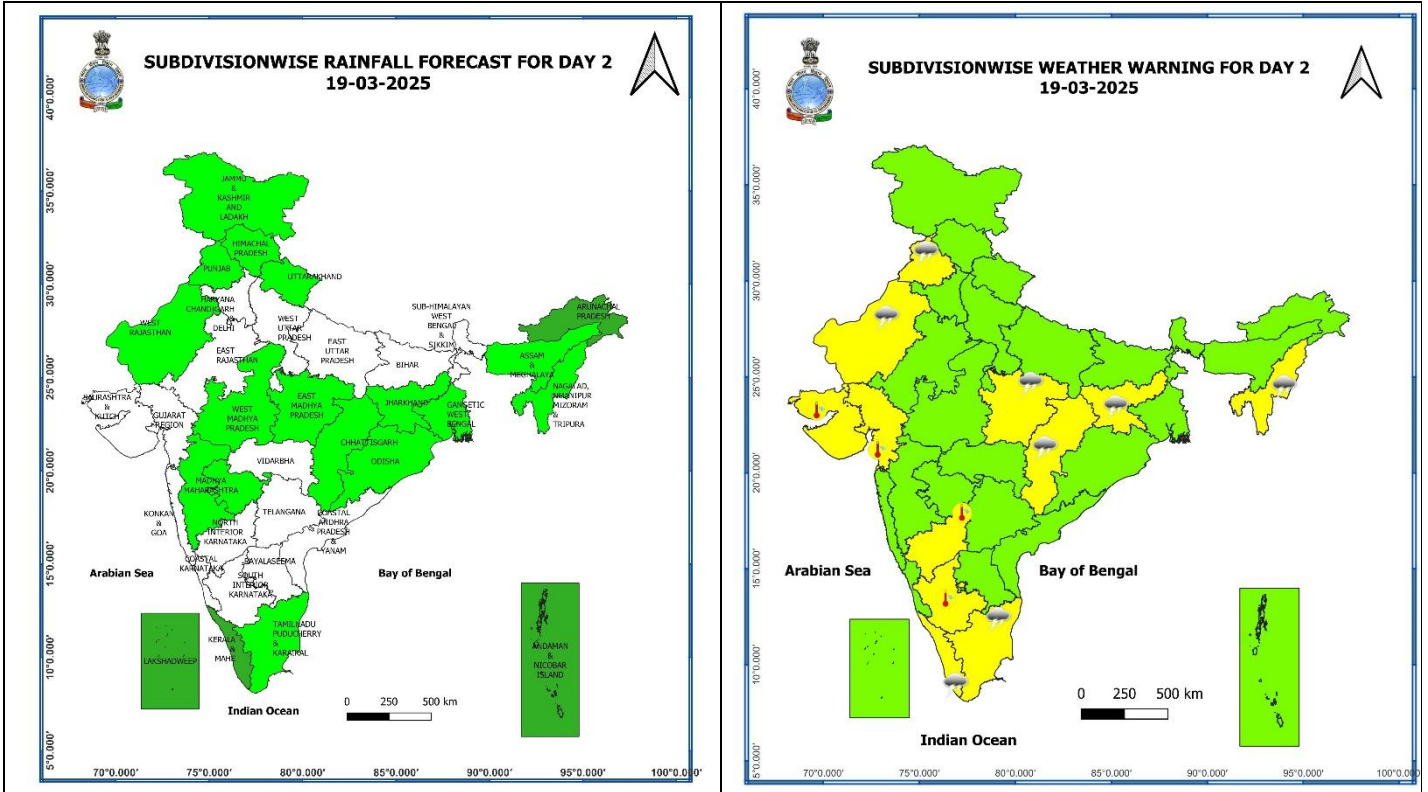
- ❖ The **trough** from north Chhattisgarh to Vidarbha now runs from Central Chhattisgarh to north Interior Karnataka at 0.9km above mean sea level.
- ❖ The **trough** in westerlies from North Interior Karnataka to Gulf of Mannar now runs from north Interior Karnataka to Interior Kerala across Interior Karnataka at 0.9 km above mean sea level.
- ❖ The upper air **Cyclonic Circulation** over northeast Assam & neighbourhood at 0.9 km above mean sea level persists.
- ❖ A **Western Disturbance is seen** as a Cyclonic Circulation over southeast Iran and neighbourhood between 3.1 & 9.6 km above means sea level.

**Weather Forecast & Warnings for next 7 days (Upto 0830 hours IST of 25<sup>th</sup> March, 2025)**



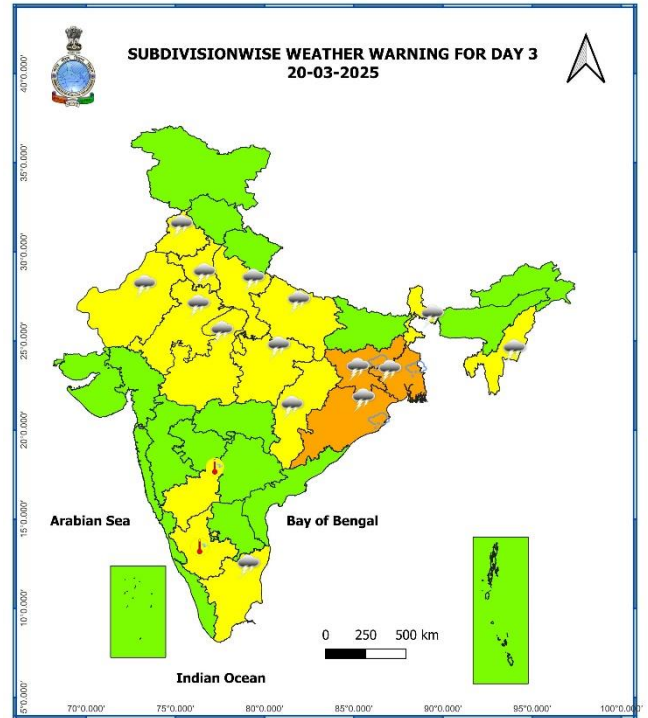
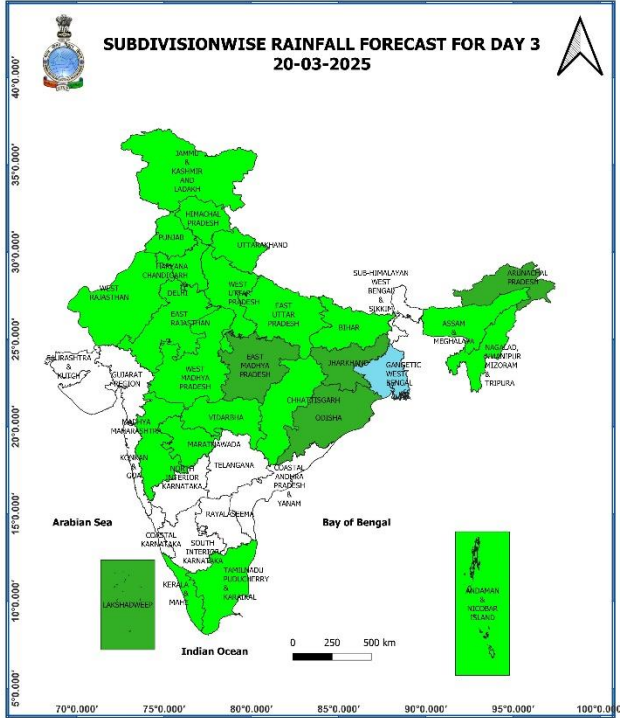
**18<sup>th</sup> March (Day 1):**

- ❖ **Thunderstorm accompanied with gusty winds (speed reaching 30-40 kmph) & lightning** at isolated places over Arunachal Pradesh, Assam & Meghalaya, South Interior Karnataka, Kerala & Mahe; **with lightning** at isolated places over Nagaland, Manipur, Mizoram & Tripura, Tamil Nadu, Puducherry & Karaikal, Lakshadweep.
- ❖ **Heat Wave Conditions** likely at isolated places over Odisha.
- ❖ **Hot and Humid Conditions** likely at isolated places over Gujarat State and Interior Karnataka.



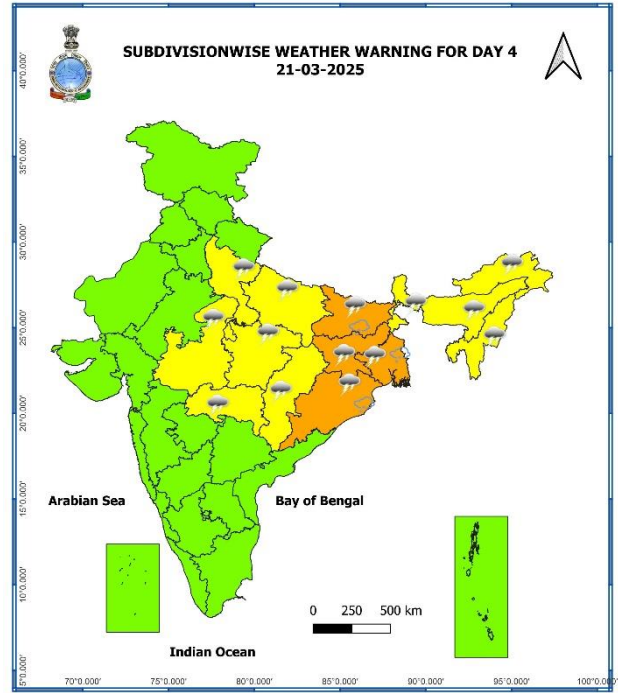
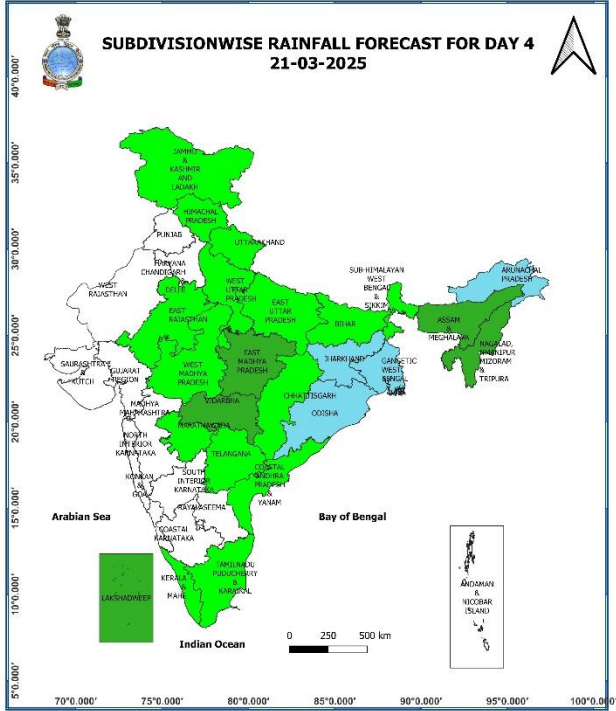
**19<sup>th</sup> March (Day 2):**

- ❖ **Thunderstorm accompanied with gusty winds (speed reaching 30-40 kmph) & lightning** very likely at West Rajasthan, East Madhya Pradesh, Chhattisgarh, Jharkhand; **with lightning** at isolated places over Punjab, Nagaland, Manipur, Mizoram & Tripura, Tamil Nadu, Puducherry & Karaikal, Kerala & Mahe.
- ❖ **Hot and Humid Conditions** likely at isolated places over Gujarat State and Interior Karnataka.



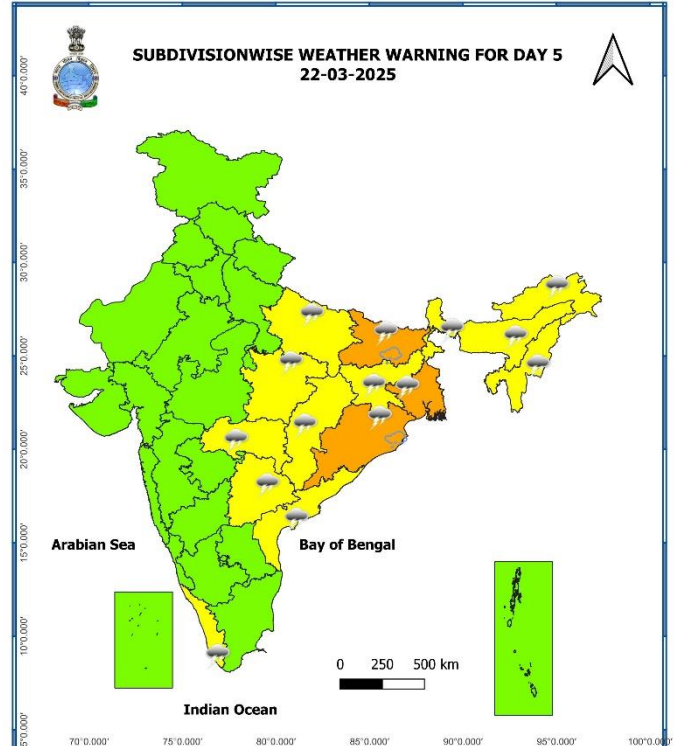
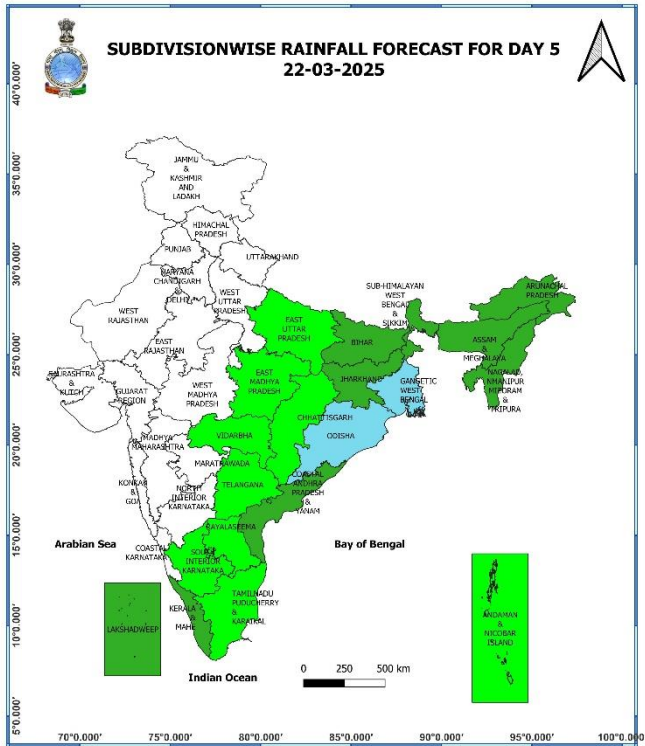
### 20<sup>th</sup> March (Day 3):

- ❖ **Thunderstorm accompanied with squally winds (speed reaching 50-60 kmph) Hailstorm & lightning** likely at isolated places over Gangetic West Bengal; **with gusty winds (speed reaching 40-50 kmph) Hailstorm & lightning** likely at isolated places over Odisha, Jharkhand; **with gusty winds (speed reaching 40 - 50 kmph) lightning** likely at isolated places over Madhya Pradesh, Chhattisgarh; **with gusty winds (speed reaching 30 - 40 kmph) lightning** likely at isolated places over East Uttar Pradesh, East Rajasthan, Sub-Himalayan West Bengal & Sikkim, Nagaland, Manipur, Mizoram & Tripura; **with lightning** at isolated places over Punjab, Haryana-Chandigarh-Delhi, West Uttar Pradesh, West Rajasthan, Tamil Nadu, Puducherry & Karaikal.
- ❖ **Hot and Humid Conditions** likely at isolated places over Interior Karnataka.



## 21<sup>th</sup> March (Day 4):

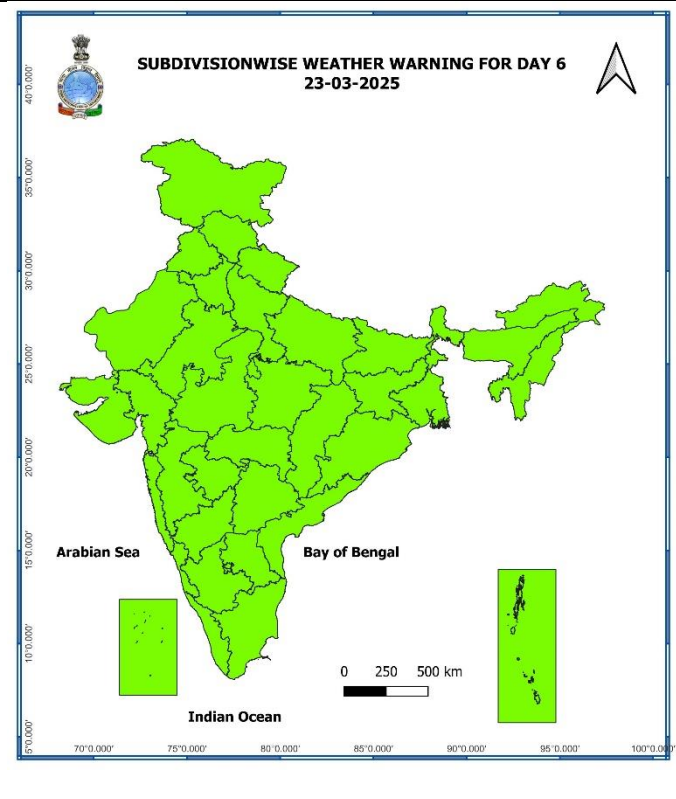
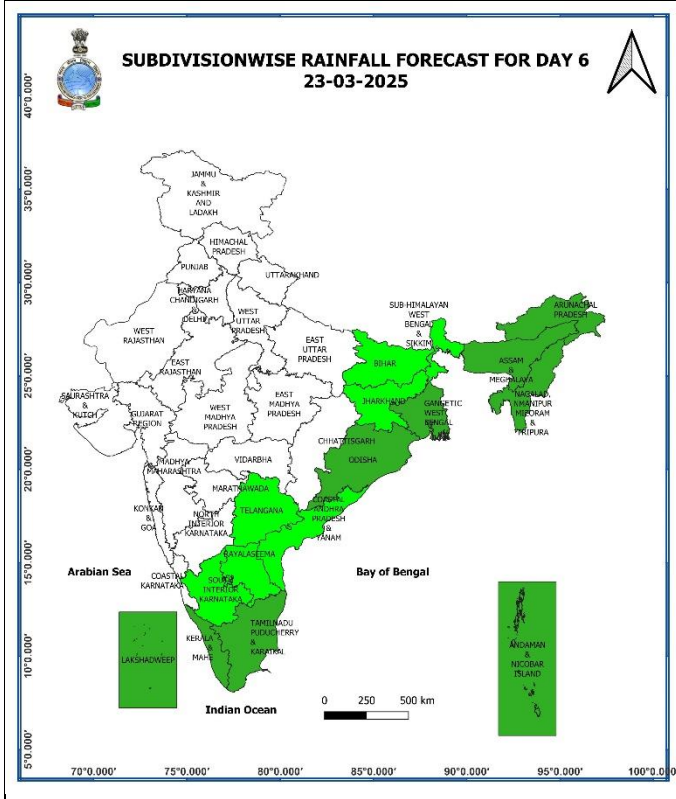
- ❖ **Thunderstorm accompanied with squally winds (speed reaching 50-60 kmph) Hailstorm & lightning** likely at isolated places over Gangetic West Bengal, Odisha; **with gusty winds (speed reaching 30 - 40 kmph) Hailstorm & lightning** likely at isolated places over Bihar; **with squally winds (speed reaching 50-60 kmph) lightning** likely at isolated places over Jharkhand; **with gusty winds (speed reaching 40 - 50 kmph) lightning** likely at isolated places over East Uttar Pradesh, Madhya Pradesh, Vidarbha, Chhattisgarh; **with gusty winds (speed reaching 30 - 40 kmph) lightning** likely at isolated places over Sub-Himalayan West Bengal & Sikkim, Assam & Meghalaya, Nagaland, Manipur, Mizoram & Tripura; **with lightning** at isolated places over West Uttar Pradesh, Arunachal Pradesh.



## 22<sup>nd</sup> March (Day 5):

- ❖ **Thunderstorm accompanied with squally winds (speed reaching 50-60 kmph) Hailstorm & lightning** likely at isolated places over Odisha; **with gusty winds (speed reaching 30 - 40 kmph) Hailstorm & lightning** likely at isolated places over Bihar; **with gusty winds (speed reaching 40 - 50 kmph) lightning** likely at isolated places over Vidarbha, West Bengal & Sikkim; **with gusty winds (speed reaching 30 - 40 kmph) lightning** likely at isolated places over Jharkhand, Assam & Meghalaya, Nagaland, Manipur, Mizoram & Tripura, Kerala & Mahe; **with lightning** at isolated places over East Madhya Pradesh, Chhattisgarh, Arunachal Pradesh, Telangana, Coastal Andhra Pradesh & Yanam.

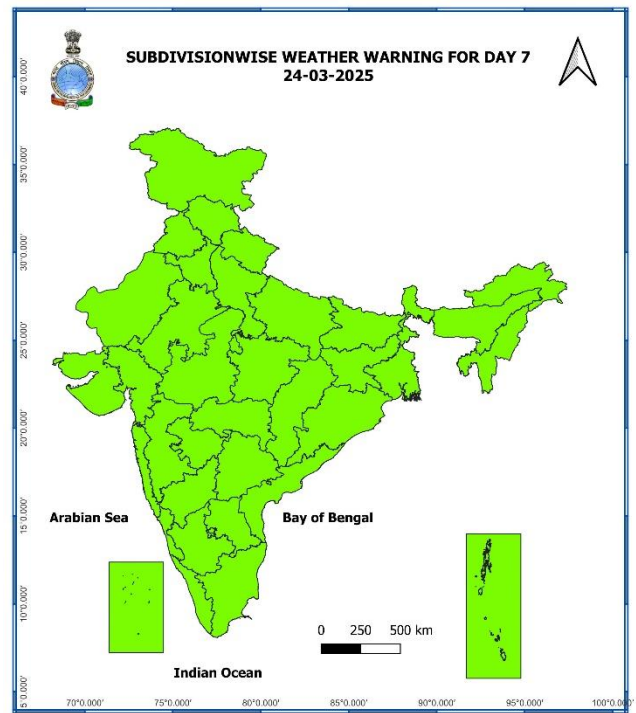
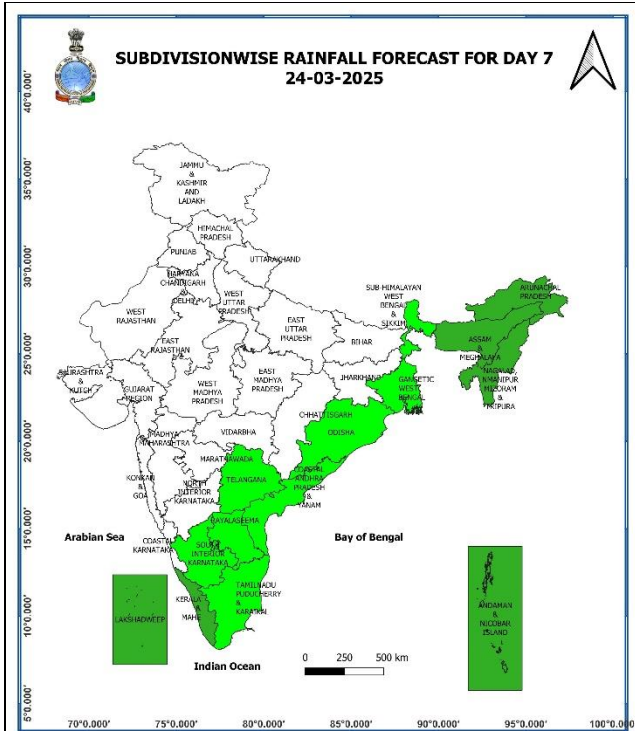




**23<sup>rd</sup> March (Day 6):**

❖ **No Weather Warning.**

\* Red colour warning does not mean "Red Alert", Red colour warning means "Take Action".  
Forecast and Warning for any day is valid from 0830 hours IST of day till 0830 hours IST of next day.  
For more details, kindly visit <https://mausam.imd.gov.in> or contact: 011-2434-4599  
(Service to the Nation since 1875)



**24<sup>th</sup> March (Day 7):**

❖ **No Weather Warning.**

**Weather Outlook for subsequent 3 days (During 25<sup>th</sup> March- 27<sup>th</sup> March, 2025)**

❖ **Isolated to scattered rainfall** likely over Jammu & Kashmir, Northeast, East & adjoining Central India, south Peninsular India.

Action may be taken based on **ORANGE AND RED COLOUR** warnings.

- Vulnerable regions likely urban and hilly areas action may be initiated for heavy rainfall warning.
- As the lead period increases forecast accuracy decreases.

Fig. 1: Maximum Temperatures

Fig. 2: Departure of Maximum Temperatures

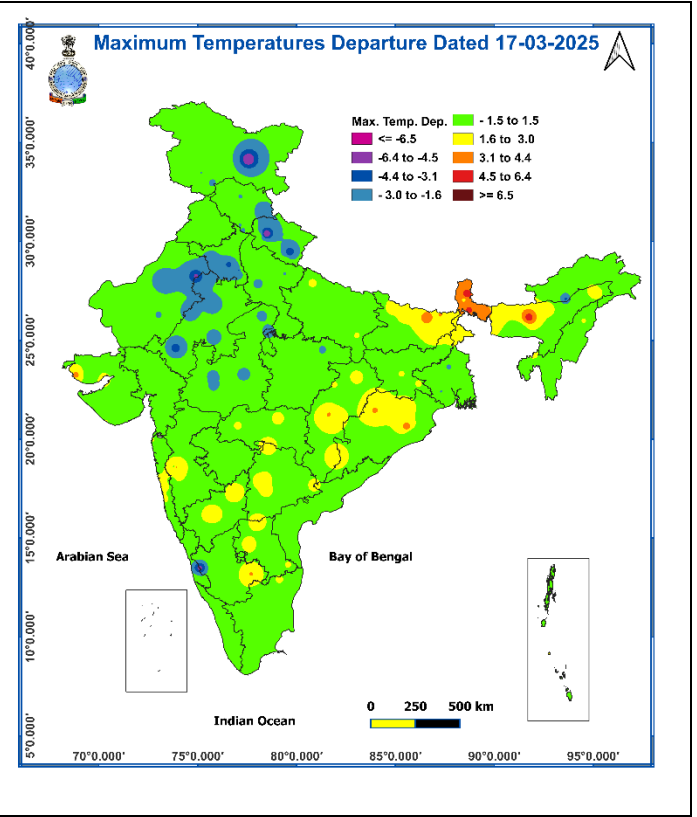
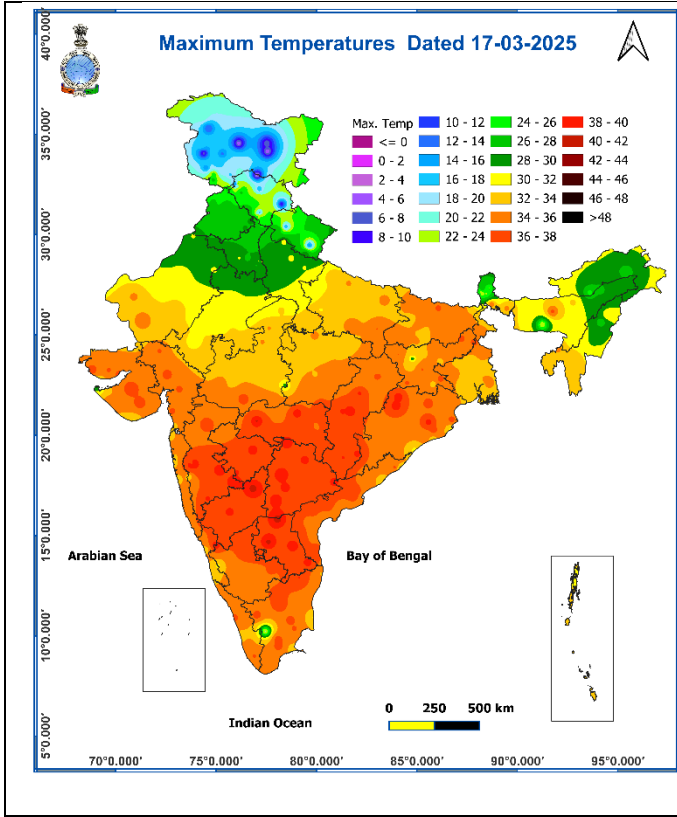
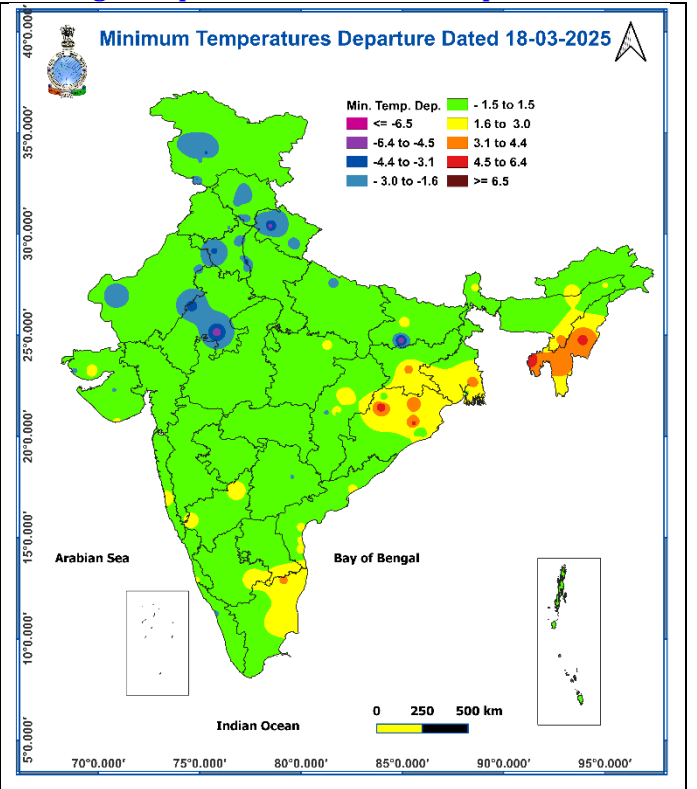
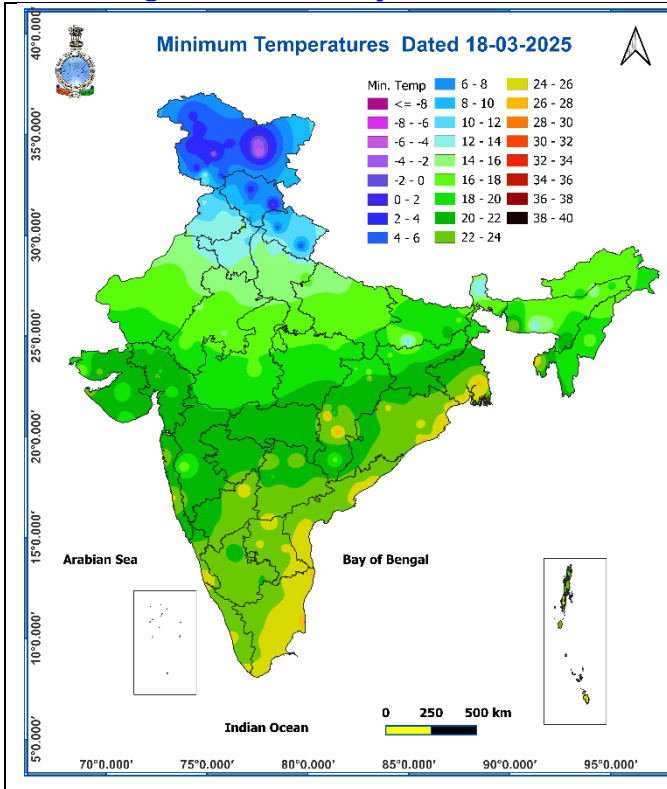


Fig. 3: Minimum Temperatures

Fig. 4: Departure of Minimum Temperatures



\* Red colour warning does not mean "Red Alert", Red colour warning means "Take Action".  
Forecast and Warning for any day is valid from 0830 hours IST of day till 0830 hours IST of next day.  
For more details, kindly visit <https://mausam.imd.gov.in> or contact: 011-2434-4599  
(Service to the Nation since 1875)

**Impact expected and action suggested due to thunderstorm accompanied with lightning/gusty winds over Northeast India during next 5 days and over east & central India during 20<sup>th</sup> -22<sup>th</sup> March 2025.**

❖ **Impact expected:**

- ❖ Strong wind may damage plantation, horticulture and standing crops.
- ❖ Partial damage to vulnerable structures due to strong winds.
- ❖ Minor damage to kutcha houses/walls and huts.
- ❖ Loose objects may fly.

❖ **Action suggested:**

- ❖ Stay indoors, close windows & doors and avoid travel if possible.
- ❖ Take safe shelters; do not take shelter under trees.
- ❖ Do not lie on concrete floors and do not lean against concrete walls.
- ❖ Unplug electrical/ electronic appliances.
- ❖ Immediately get out of water bodies.
- ❖ Keep away from all the objects that conduct electricity.

**Impact expected and action suggested due to**

**(i) Heat wave conditions in isolated pockets over interior Odisha on 18<sup>th</sup> March.**

**Yellow alert Areas**

- ✓ Moderate temperature & heat is tolerable for general public but moderate health concern likely for vulnerable people e.g. infants, elderly, people with chronic diseases.
- ✓ Avoid heat exposure.
- ✓ Wear lightweight, light colour, loose, cotton clothes.
- ✓ Cover your head, use a cloth, hat or umbrella.

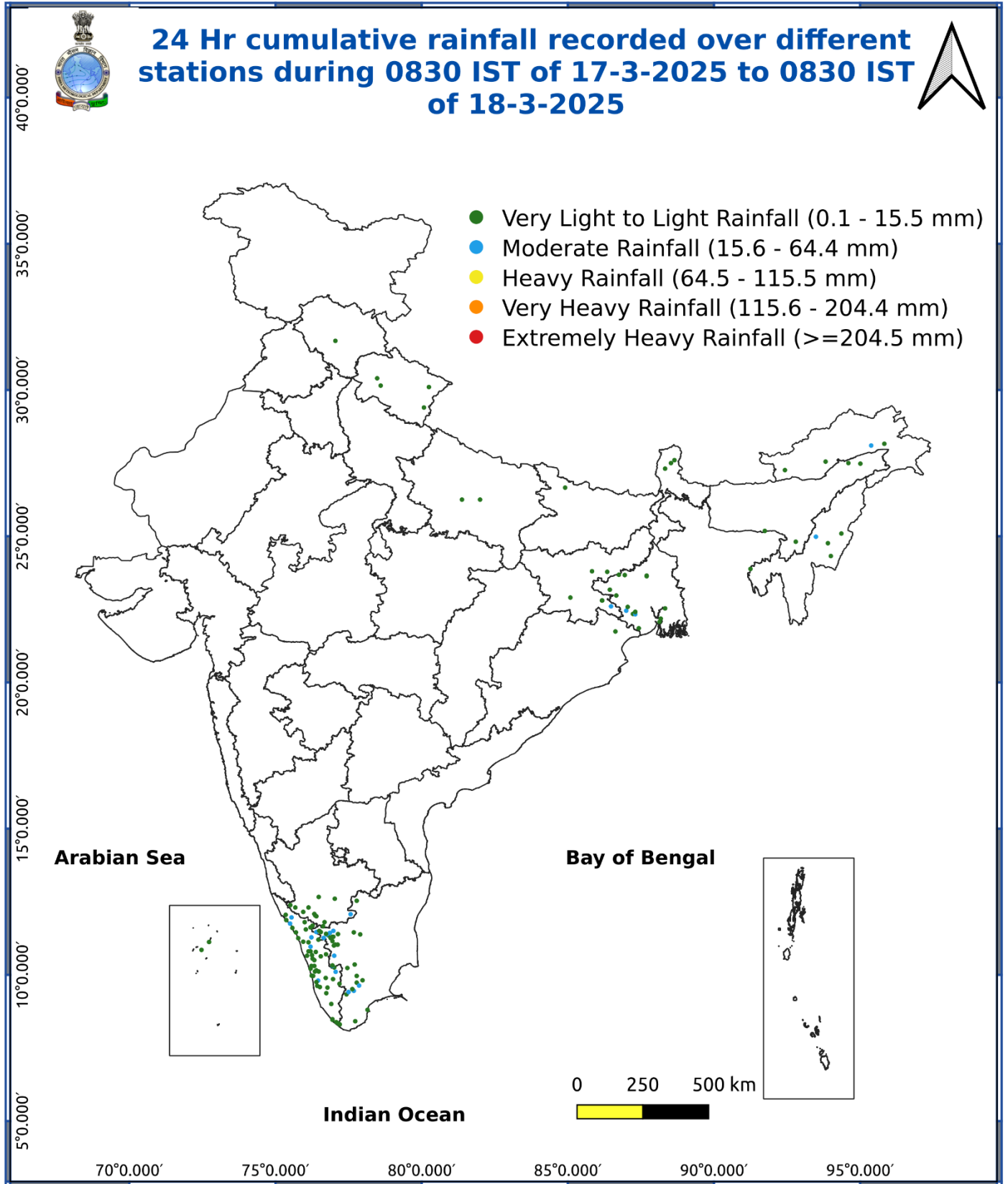
**Agromet advisories for likely impact of Heavy Rainfall / Hailstorm / Heat Wave**

- ✓ In **Odisha**, apply light and frequent irrigation to the standing crops, vegetables and orchards in the evening to protect them from adverse impacts of high temperatures.
- ✓ To avoid the adverse impact of likely hailstorm, harvest the matured standing crops, vegetables and fruits and shift the harvested produce in safer places or cover the produce with tarpaulin sheets in the fields.
- ✓ Provide mechanical support to horticultural crops and staking to vegetables to avoid lodging.

**Livestock**

- ✓ Store feed and fodder in a safe place to prevent spoilage.
- ✓ To reduce the effect of heat wave/high temperature, cover the roof of poultry sheds with grass. Also provide clean, hygienic and plenty of drinking water to animals.

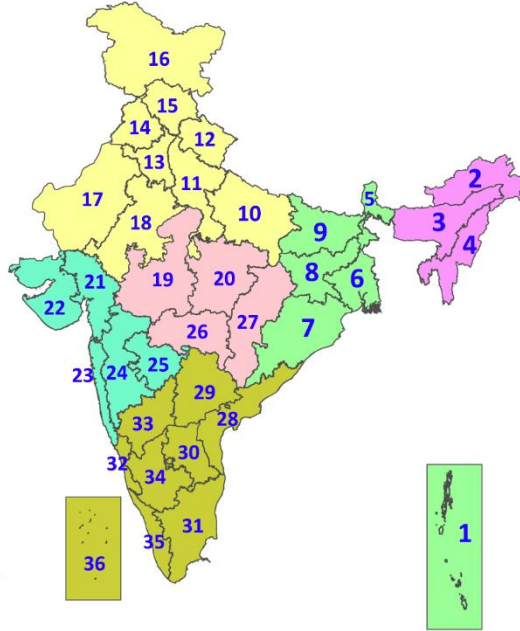
Fig. 5: Accumulated Rainfall (mm) during past 24 hours



\* Red colour warning does not mean "Red Alert", Red colour warning means "Take Action".  
Forecast and Warning for any day is valid from 0830 hours IST of day till 0830 hours IST of next day.  
For more details, kindly visit <https://mausam.imd.gov.in> or contact: 011-2434-4599  
(Service to the Nation since 1875)

## LEGENDS

1. अंडमान और निकोबार द्वीपसमूह
2. अरुणाचल प्रदेश
3. असम और मेघालय
4. नागालैंड, मणिपुर, मिजोरम और त्रिपुरा
5. उप-हिमालयी पश्चिम बंगाल और सिक्किम
6. गंगीय पश्चिम बंगाल
7. ओडिशा
8. झारखंड
9. बिहार
10. पूर्वी उत्तर प्रदेश
11. पश्चिम उत्तर प्रदेश
12. उत्तराखंड
13. हरियाणा, चंडीगढ़ और दिल्ली
14. पंजाब
15. हिमाचल प्रदेश
16. जम्मू और कश्मीर और लद्दाख
17. पश्चिम राजस्थान
18. पूर्वी राजस्थान
19. पश्चिम मध्य प्रदेश
20. पूर्वी मध्य प्रदेश
21. गुजरात
22. सौराष्ट्र
23. कोंकण और गोवा
24. मध्य महाराष्ट्र
25. मराठवाड़ा
26. विदर्भ
27. छत्तीसगढ़
28. तटीय आंध्र प्रदेश और यनम
29. तेलंगाना
30. रायलसीमा
31. तमिलनाडु, पुडुचेरी और कराईकल
32. तटीय कर्नाटक
33. आंतरिक उत्तरी कर्नाटक
34. आंतरिक दक्षिणी कर्नाटक
35. केरल और माहे
36. लक्षद्वीप



1. Andaman & Nicobar Islands
2. Arunachal Pradesh
3. Assam & Meghalaya
4. Nagaland, Manipur, Mizoram & Tripura
5. Sub-Himalayan West Bengal & Sikkim
6. Gangetic West Bengal
7. Odisha
8. Jharkhand
9. Bihar
10. East Uttar Pradesh
11. West Uttar Pradesh
12. Uttarakhand
13. Haryana, Chandigarh & Delhi
14. Punjab
15. Himachal Pradesh
16. Jammu & Kashmir and Ladakh
17. West Rajasthan
18. East Rajasthan
19. West Madhya Pradesh
20. East Madhya Pradesh
21. Gujarat
22. Saurashtra
23. Konkan & Goa
24. Madhya Maharashtra
25. Marathwada
26. Vidarbha
27. Chhattisgarh
28. Coastal Andhra Pradesh & Yanam
29. Telangana
30. Rayalaseema
31. Tamilnadu, Puducherry & Karaikal
32. Coastal Karnataka
33. North Interior Karnataka
34. South Interior Karnataka
35. Kerala & Mahe
36. Lakshadweep

## SPATIAL DISTRIBUTION (% of Stations reporting)

% Stations	Category	% Stations	Category
76-100	Widespread (WS/Most Places)	26-50	Scattered (SCT/A Few Places)
51-75	Fairly Widespread (FWS/Many Places)	1-25	Isolated (ISOL)

- |                      |                      |              |
|----------------------|----------------------|--------------|
| Fog                  | Heavy Snow           | Cold Wave    |
| Heavy Rain           | Dust Storm           | Cold Day     |
| Very Heavy Rain      | Heat Wave            | Ground Frost |
| Extremely Heavy Rain | Warm Night           |              |
| Thunder & Lightning  | Hot Day              |              |
| Hailstorm            | Hot & Humid          |              |
| Dust Raising Winds   | Strong Surface Winds |              |

### COLOUR CODED WARNING

No Warning (No Action)
Watch (Be Aware)
Alert (Be Prepared To Take Action)
Warning (Take Action)

### Probabilistic Forecast

Terms	Probability of Occurrence (%)
Unlikely	< 25
Likely	25 - 50
Very Likely	50 - 75
Most Likely	> 75

## DEFINITION/CRITERIA

<b>Rain/ Snow *</b>	<p><b>Heavy:</b> 64.5 to 115.5 mm/cm *</p> <p><b>Very Heavy:</b> 115.6 to 204.4 mm/cm*</p> <p><b>Extremely Heavy:</b> &gt; 204.4 mm/cm *</p>
<b>Heat Wave</b>	<p><b>When maximum temperature of a station reaches <math>\geq 40^\circ\text{C}</math> for plains and <math>\geq 30^\circ\text{C}</math> for hilly regions</b></p> <p><b>(a) Based on Departure from normal</b></p> <p><b>Heat Wave:</b> Maximum Temperature Departure from normal <math>4.5^\circ\text{C}</math> to <math>6.4^\circ\text{C}</math>.</p> <p><b>Severe Heat Wave:</b> Maximum Temperature Departure from normal <math>\geq 6.5^\circ\text{C}</math></p> <p><b>(b). Based on Actual maximum temperature</b></p> <p><b>Heat Wave:</b> When actual maximum temperature <math>\geq 45^\circ\text{C}</math>.</p> <p><b>Severe Heat Wave:</b> When actual maximum temperature <math>\geq 47^\circ\text{C}</math></p> <p><b>(c) Criteria for heat wave for coastal stations</b></p> <p>When maximum temperature departure is <math>&gt; 4.5^\circ\text{C}</math> from normal. Heat Wave may be described provided maximum temperature <math>\geq 37^\circ\text{C}</math></p>
<b>Warm Night</b>	<p><b>When maximum temperature remains <math>40^\circ\text{C}</math></b></p> <p><b>Warm Night:</b> When minimum temperature departure <math>4.5^\circ\text{C}</math> to <math>6.4^\circ\text{C}</math>.</p> <p><b>Severe Warm Night:</b> When minimum temperature departure <math>&gt; 6.4^\circ\text{C}</math>.</p>
<b>Cold Wave</b>	<p><b>When minimum temperature of a station <math>\leq 10^\circ\text{C}</math> for plains and <math>\leq 0^\circ\text{C}</math> for hilly regions.</b></p> <p><b>(a). Based on departure</b></p> <p><b>Cold Wave:</b> Minimum Temperature Departure from normal <math>-4.5^\circ\text{C}</math> to <math>-6.4^\circ\text{C}</math>.</p> <p><b>Severe Cold Wave:</b> Minimum Temperature Departure from normal <math>\leq -6.5^\circ\text{C}</math></p> <p><b>(b) Based on actual Minimum Temperature (for Plains only)</b></p> <p><b>Cold Wave :</b> When Minimum Temperature is <math>\leq 4.0^\circ\text{C}</math></p> <p><b>Severe Cold Wave:</b> When Minimum Temperature is <math>\leq 2.0^\circ\text{C}</math></p> <p><b>(c) For Coastal Stations</b></p> <p>When Minimum Temperature departure is <math>\leq -4.5^\circ\text{C}</math> &amp; actual Minimum Temperature is <math>\leq 15^\circ\text{C}</math></p>
<b>Cold Day</b>	<p><b>When minimum temperature of a station <math>\leq 10^\circ\text{C}</math> for plains and <math>\leq 0^\circ\text{C}</math> for hilly regions</b></p> <p><b>Based on departure</b></p> <p><b>Cold Day:</b> Maximum Temperature Departure from normal <math>-4.5^\circ\text{C}</math> to <math>-6.4^\circ\text{C}</math>.</p> <p><b>Severe Cold Day:</b> Maximum Temperature Departure from normal <math>\leq -6.5^\circ\text{C}</math></p>
<b>Fog</b>	<p><b>Phenomenon of small droplets suspended in air and the horizontal visibility <math>&lt; 1\text{km}</math></b></p> <p><b>Moderate Fog:</b> When the visibility between 500-200 metres</p> <p><b>Dense Fog:</b> when the visibility between 50- 200 metres</p> <p><b>Very Dense Fog:</b> when the visibility <math>&lt; 50</math> metres</p>
<b>Thunderstorm</b>	<p><b>Sudden electrical discharges manifested by a flash of light (Lightning) and a sharp rumbling sound (thunder)</b></p>
<b>Dust/Sand Storm</b>	<p><b>An ensemble of particles of dust or sand energetically lifted to great heights by a strong and turbulent wind.</b></p>
<b>Frost</b>	<p><b>Ice deposits on ground</b></p> <p>Air temperature <math>\leq 4^\circ\text{C}</math> ( over Plains)</p>
<b>Squall</b>	<p><b>A strong wind that rises suddenly, lasts for atleast 1 minute.</b></p> <p><b>Moderate:</b> Wind speed 52-61 kmph</p> <p><b>Severe:</b> Wind speed 62-87 kmph</p> <p><b>Very Severe:</b> Wind speed <math>&gt; 87</math> kmph</p>
<b>Sea State</b>	<p><b>Effect of various waves in the sea over specific area</b></p> <p><b>Rough to very rough:</b> Wind speed 41-62 kmph (22-33 knots) &amp; Wave height 2.5-6 metre</p> <p><b>High to very high:</b> Wind speed 63-117 kmph ( 34-63 knots) &amp; Wave height 6-14 metre</p> <p><b>Phenomenal:</b> Wind speed <math>&gt; 117</math> kmph (<math>&gt; 63</math> knots) &amp; Wave height <math>&gt; 14</math> metre</p>
<b>Cyclone</b>	<p><b>Cyclonic Storm:</b> Wind speed 62-87 kmph (34-47 knots)</p> <p><b>Severe Cyclonic Storm:</b> Wind speed 88-117 kmph (48-63 knots)</p> <p><b>Very Severe Cyclonic Storm:</b> Wind speed 118-165 kmph (64 - 89 knots)</p> <p><b>Extremely Severe Cyclonic Storm:</b> Wind speed 166-220 kmph (90 -119 knots)</p> <p><b>Super Cyclone Strom:</b> Wind speed <math>&gt; 220</math> kmph (<math>&gt; 119</math> knots)</p>