

2025-08-06

Time of Issue: 13:45:00 hours IST
(Mid-Day)

ALL INDIA WEATHER SUMMARY AND FORECAST BULLETIN

Significant Weather Features

Weather Forecast and Warnings:

Northwest India:

- Isolated **heavy rainfall** likely over Uttarakhand, Himachal Pradesh during 06th-12th; Jammu-Kashmir on 06th; Punjab on 06th & 12th; Haryana on 06th, 11th & 12th; West Uttar Pradesh on 06th, 08th, 11th & 12th; East Uttar Pradesh on 08th, 11th & 12th August with **very heavy rainfall** over Uttarakhand on 06th and East Uttar Pradesh on 12th August.
- Light/moderate rainfall at many places accompanied with thunderstorm & lightning likely over Western Himalayan region and many/some places over the plains during next 7 days.

South Peninsular India:

- Isolated **heavy rainfall** likely over Tamil Nadu, Kerala & Mahe, Karnataka, Coastal Andhra Pradesh & Yanam, Telangana, Rayalaseema during 06th-09th August with **very heavy rainfall** over Tamil Nadu, Kerala, North Interior Karnataka on 06th; Coastal & South Interior Karnataka on 06th & 07th August.
- Strong surface winds (speed reaching 40-50 kmph) very likely over South Peninsular India during next 2 days.
- Light to moderate rainfall at some/many places accompanied with thunderstorm & lightning likely over Tamil Nadu, Kerala & Mahe, Lakshadweep, Karnataka, Rayalaseema, Coastal Andhra Pradesh & Yanam and Telangana during next 5 days.

Northeast India:

- Extremely heavy rainfall (≥ 21 cm)** very likely at isolated places over Arunachal Pradesh on 08th August.
- Light/moderate rainfall at many places accompanied with thunderstorm, lightning and isolated **heavy rainfall** likely to continue over Arunachal Pradesh, Assam & Meghalaya, Nagaland, Manipur, Mizoram & Tripura during 06th-12th August with isolated **very heavy rainfall over Arunachal Pradesh during 07th-11th and Assam & Meghalaya, Nagaland, Manipur, Mizoram & Tripura on 07th & 08th August.**

East & Central India:

- Isolated **heavy rainfall** likely over Sub-Himalayan West Bengal & Sikkim, Bihar during 06th-12th; Odisha, Gangetic West Bengal during 06th-08th; Jharkhand on 07th & 08th; Chhattisgarh on 11th & 12th August **with isolated very heavy rainfall over Bihar on 07th & 08th; Jharkhand on 07th; Sub-Himalayan West Bengal & Sikkim on 07th & 11th August.**
- Light to moderate rainfall at most/many places accompanied with thunderstorm & lightning likely over the region during next 5 days.

West India:

- Isolated **heavy rainfall** likely over Marathwada, Konkan & Goa during 06th-08th and Madhya Maharashtra on 07th August.
- Light to moderate rainfall at many/some places very likely over the region during next 5-6 days.

Fishermen warning:

- Fishermen are advised to avoid venturing into the following from 06th August to 11th August 2025 to the following Areas:**

***Red color warning does not mean "Red Alert" Red color warning means "Take Action"**

Forecast and warning for any day is valid from 0830 hours IST of day till 0830 hours IST of next day

For more details kindly visit <https://mausam.imd.gov.in> or contact 011-2434-4599

(Service to the nation since 1875)



- **Arabian Sea:** Along and off Kerala, Karnataka coast Lakshadweep area, off Maharashtra, Goa coasts for 06th August, few parts of Northwest Arabian Sea adjoining Oman coasts during 08th to 10th August, some parts of southwest and westcentral Arabian Sea; along and off the Somalia coast and adjoining sea areas during 06th to 11th August.
- **Bay of Bengal:** Over some parts of Gulf of Mannar adjoining Comorin area and over Sri Lanka coasts, few parts of southwest Bay of Bengal during 06th to 11th August.

Main Weather Observations:

❖ **Rainfall distribution** (from 0830 hours IST of yesterday to 0830 hours IST of today): **at most places** over Nagaland, Manipur, Mizoram & Tripura, Sub Himalayan West Bengal & Sikkim, Gangetic West Bengal, Uttarakhand, Himachal Pradesh, Konkan & Goa, Coastal Karnataka, North Interior Karnataka, South Interior Karnataka, Kerala & Mahe and Lakshadweep; **at many places** over Arunachal Pradesh, Assam & Meghalaya, Jharkhand, East Uttar Pradesh, West Uttar Pradesh and Rayalaseema; **at a few places** over Andaman & Nicobar Islands, Bihar, Haryana-Chandigarh-Delhi, Punjab, Jammu-Kashmir-Ladakh-Gilgit-Baltistan-Muzaffarabad, Saurashtra & Kutch, Madhya Maharashtra, Marathwada, Telangana and Tamil Nadu, Puducherry & Karaikal; **at isolated places** over Odisha, East Rajasthan, West Madhya Pradesh, East Madhya Pradesh, Gujarat Region, Vidarbha, Chhattisgarh and Coastal Andhra Pradesh & Yanam; **Dry** over rest of the country.

❖ **Significant rainfall recorded(in cm)** (from 0830 hours IST of yesterday to 0830 hours IST of today): **Uttarakhand:** Hardwar (dist Hardwar) 22; Narendranagar (dist Garhwal Tehri) 20; Rishikesh (dist Dehradun) 19; Kashipur (dist Udham Singh Nagar) 18; Jollygrant (dist Dehradun) 17; Roshnabad (dist Hardwar), Bageshwar (thmo) (dist Bageshwar) 16 Each; Pantnagar (dist Udham Singh Nagar), Jaspur (dist Udham Singh Nagar) 15 Each; Haldwani (dist Nainital), Someshwar (dist Almora) 14 Each; Nainital (dist Nainital), Laksar (dist Hardwar) 13 Each; Kotdwara (dist Garhwal Pauri), Mukteshwar (dist Nainital), Pauri (dist Garhwal Pauri), Loharkhet (dist Bageshwar) 11 Each; Betalghat (dist Nainital), Sama (dist Bageshwar), Dhanaulti (dist Garhwal Tehri), Kapkot (dist Bageshwar), Gairsain (dist Chamoli) 10 Each; Tehri (CWC) (dist Garhwal Tehri), Rudraprayag (dist Rudraprayag), Deoprayag (dist Garhwal Tehri), Khatima (dist Udham Singh Nagar), Roorkee (dist Hardwar), Srinagar (dist Garhwal Pauri) 9 Each; Landsdown (dist Garhwal Pauri), Dehra Dun (dist Dehradun), Berinag (dist Pithoragarh) 8 Each; Banbasa (dist Champawat), Keertinagar (dist Garhwal Tehri), Lohaghat (dist Champawat), Bhagwanpur (dist Hardwar), Champawat (dist Champawat), Chaukhutia (dist Almora) 7 Each; Yamkeshwar (dist Garhwal Pauri), Gangolihat (dist Pithoragarh) 6 Each; **West Uttar Pradesh:** Nagina (dist Bijnor) 19; Baheri (dist Bareilly), Bijnor (dist Bijnor) 16 Each; Thakurdwara (dist Moradabad) 15; Najibabad (t) (dist Bijnor) 14; Kanth (dist Moradabad), Dhampur (dist Bijnor) 11 Each; Chandpur (dist Bijnor) 9; Bilaspur (dist Rampur) 8; Moradabad (dist Moradabad), Bareilly CWC (dist Bareilly) 7 Each; Moradabad CWC (dist Moradabad) 6; **North Interior Karnataka:** Vijayapura PTO (dist Vijayapura) 15; Lakshmeswar (dist Gadag) 13; Shirahatti (dist Gadag), Tavaragera (dist Koppal) 9 Each; Guledgud (dist Bagalkote), Devarhippargi (dist Vijayapura), Bellatti (dist Gadag), Lokapur (dist Bagalkote), Hungund (dist Bagalkote), Bidar PTO (dist Bidar) 7 Each; Zalki Cross (dist Vijayapura), Indi (dist Vijayapura) 6 Each; **Himachal Pradesh:** Kasauli (dist Solan) 14; Dharampur (dist Solan), Gohar (dist Mandi) 12 Each; Chuari (dist Chamba) 10; Naina Davi (dist Bilaspur), Nagrota Surian (dist Kangra) 9 Each; Sundarnagar (dist Mandi) 8; Guler (dist Kangra), Karsog (dist Mandi), Banjar (dist Kullu), Bilaspur Sadar (dist Bilaspur), Kangra AP (dist Kangra) 7 Each; Pandoh (dist Mandi), Kahu (dist Bilaspur), Mandi (dist Mandi), Kandaghat (dist Solan), Simla (dist Shimla), Dharmasala (dist Kangra) 6 Each; **Coastal Karnataka:** Manki (dist Uttara Kannada) 13; Belthangadi (dist Dakshina Kannada) 11; Gersoppa (dist Uttara Kannada) 10; Ankola (dist Uttara Kannada), Siddapura (dist Udupi), Kadra (dist Uttara Kannada) 7 Each; Karkala (dist Udupi), Kumta (dist Uttara Kannada) 6 Each; **Punjab:** Ghanauli (dist Rupnagar) 12; Ballawal Saunkri (dist Sbs Nagar) 8; Tibri (dist Gurdaspur), Balachaur AWS (dist Sbs Nagar), Gurdaspur AMFU (dist Gurdaspur) 7 Each; Shahpur Kandi (dist Pathankot), Ranjit Sagar Dam Site (dist Pathankot), Kotla (dist Rupnagar) 6 Each; **Sub Himalayan West Bengal & Sikkim:** Gairkata Tea Estate (dist Jalpaiguri) 12; Buxaduar (dist Alipurduar), Baintgoorie T.e. (dist Jalpaiguri), Dalgaon Tea Estate (dist Alipurduar) 8 Each; Mekhliganj (dist Cooch Behar), Sankosh (dist Cooch Behar), Anandpur Tea Estate (dist Jalpaiguri) 7 Each; Gopalpur Tea Estate (dist Alipurduar), Majherdabri Tea Garden (dist Alipurduar), Patkapara Tea Estate (dist Alipurduar), Kumargram (dist Alipurduar) 6 Each; **Konkan & Goa:** Mapusa (dist North Goa) 12; Mormugao - Pmo IMD (dist South Goa), Quepem (dist South Goa) 6 Each; **Tamil Nadu, Puducherry & Karaikal:** R.k.pet (dist Tiruvallur) 12; Singampunari (dist Sivaganga) 10; Kodumudi (dist Erode), Tirupuvanam (dist Sivaganga) 8 Each; Idayapatti (dist Madurai) 7; Budalur (dist Thanjavur), Minnal (dist Ranipet) 6 Each; **Madhya Maharashtra:** Sholapur (dist Sholapur) 11; **South Interior Karnataka:** Rampura (dist Chitradurga) 11; Balehonnur (dist Chikkamagaluru) 9; Kalasa (dist Chikkamagaluru) 8; Bellur (dist Mandya), Hiriya HMS (dist Chitradurga), Jayapura (dist Chikkamagaluru), Hagaribommanahalli (dist Vijayanagara) 7 Each; **Kerala & Mahe:** Vellanikkara (dist Thrissur), Thennala AWS (dist Malappuram) 11 Each; Vadakkancherry (dist Thrissur), Ayyankunnu AWS (dist Cannur) 10 Each; Vyttili (dist Wynad), Thodupuzha (dist Idukki) 6 Each; **East Uttar Pradesh:** Bhinga (dist Shrawasti) 10; Deogaon Lalganj (dist Azamgarh) 9; Ayodhya (ag) (dist Ayodhya) 6; **Nagaland, Manipur, Mizoram & Tripura:** Jirania ARG (dist West Tripura) 10; Hrc Nagicherra ARG (dist West Tripura) 9; Sabroom (dist South Tripura), Sabroom AWS (dist South Tripura) 8 Each; Arundhutinagar (dist West Tripura), Bishalgarh (dist Sipahijala), A D Nagar AWS (dist West Tripura), Kvk South (dist

*Red color warning does not mean "Red Alert" Red color warning means "Take Action"

Forecast and warning for any day is valid from 0830 hours IST of day till 0830 hours IST of next day

For more details kindly visit <https://mausam.imd.gov.in> or contact 011-2434-4599

(Service to the nation since 1875)



South Tripura), Budhjongnagar ARG (dist West Tripura) 6 Each; **Assam & Meghalaya:** Kampur (dist Nagaon) 10; Bijni ARG (dist Chirang) 9; **Bihar:** Taibpur (dist Kishanganj) 9; Galgalia (dist Kishanganj) 7; Thakurganj (dist Kishanganj), Pothia (dist Kishanganj) 6 Each; **Royalaseema:** Nandavaram (dist Kurnool) 9; Alur (dist Kurnool), Chittoor (dist Chittoor) 8 Each; Gooty (dist Anantapuramu), Guntakal (dist Anantapuramu) 7 Each; Rayadurg (dist Anantapuramu), Pulivendla (dist Ysr District), Tadimarri (dist Sri Sathyasai District), Palasamudram (dist Chittoor), Peapally (dist Nandyal) 6 Each; **Telangana:** Bhuvanagiri (dist Y. Bhuvanagiri) 9; Pochampalle (dist Y. Bhuvanagiri) 8; Wargal (dist Siddipet) 6; **Odisha:** Kotpad (dist Koraput) 9; **Haryana-Chandigarh-Delhi:** Dadupur (dist Yamuna Nagar) 8; Morni (dist Panchkula) 7; **Jammu-KashmirLadakh-Gilgit-Baltistan-Muzaffarabad:** Udampur(IAF) (dist Udampur) 7; **Arunachal Pradesh:** Tezu (dist Lohit) 6; **Gangetic West Bengal:** Diamond Harbour (dist South 24 Parganas), Mohanpur (dist West Midnapore), Amta (dist Howrah) 6 Each.

❖ **Heavy Rainfall observed** (from 0830 hours IST of yesterday to 0830 hours IST of today): **Extremely heavy rain** at isolated places over Uttarakhand. **Heavy to very heavy rain** at isolated places over Sub Himalayan West Bengal & Sikkim, West Uttar Pradesh, Uttarakhand, Punjab, Himachal Pradesh, Konkan & Goa, Tamil Nadu, Puducherry & Karaikal, Coastal Karnataka and North Interior Karnataka. **Heavy rain** at a few places over Uttarakhand and at isolated places over Assam & Meghalaya, Nagaland, Manipur, Mizoram & Tripura, Gangetic West Bengal, Odisha, Bihar, East Uttar Pradesh, Haryana-Chandigarh-Delhi, Jammu-KashmirLadakh-Gilgit-Baltistan-Muzaffarabad, Madhya Maharashtra, Telangana, Rayalaseema, South Interior Karnataka and Kerala & Mahe.

❖ **Minimum Temperature Departures (as on 06-08-2025):** **markedly above normal(> 5.1°C)** at isolated places over Assam & Meghalaya, Odisha, East Uttar Pradesh, West Uttar Pradesh, Himachal Pradesh, West Madhya Pradesh and East Madhya Pradesh. **appreciably above normal(3.1°C to 5.0°C)** at isolated places over Bihar, West Rajasthan, Gujarat Region, Saurashtra & Kutch and Vidarbha. **above normal(1.6°C to 3.0°C)** at many places over Andaman & Nicobar Islands, Marathwada and Coastal Andhra Pradesh & Yanam; at few places over Sub Himalayan West Bengal & Sikkim, Madhya Maharashtra, Chhattisgarh and Telangana; at isolated places over Jammu-KashmirLadakh-Gilgit-Baltistan-Muzaffarabad, Konkan & Goa, Tamil Nadu, Puducherry & Karaikal, North Interior Karnataka and South Interior Karnataka. **near normal(-1.5°C to 1.5°C)** at many places over Kerala & Mahe and Lakshadweep; at most places over Arunachal Pradesh, Nagaland, Manipur, Mizoram & Tripura, Jharkhand, Haryana-Chandigarh-Delhi, Punjab, East Rajasthan, Rayalaseema and Coastal Karnataka; at few places over Gangetic West Bengal and Uttarakhand. **The lowest minimum temperature** of 18.6°C is reported at SHIMOGA (KARNATAKA) over the Plains of India.

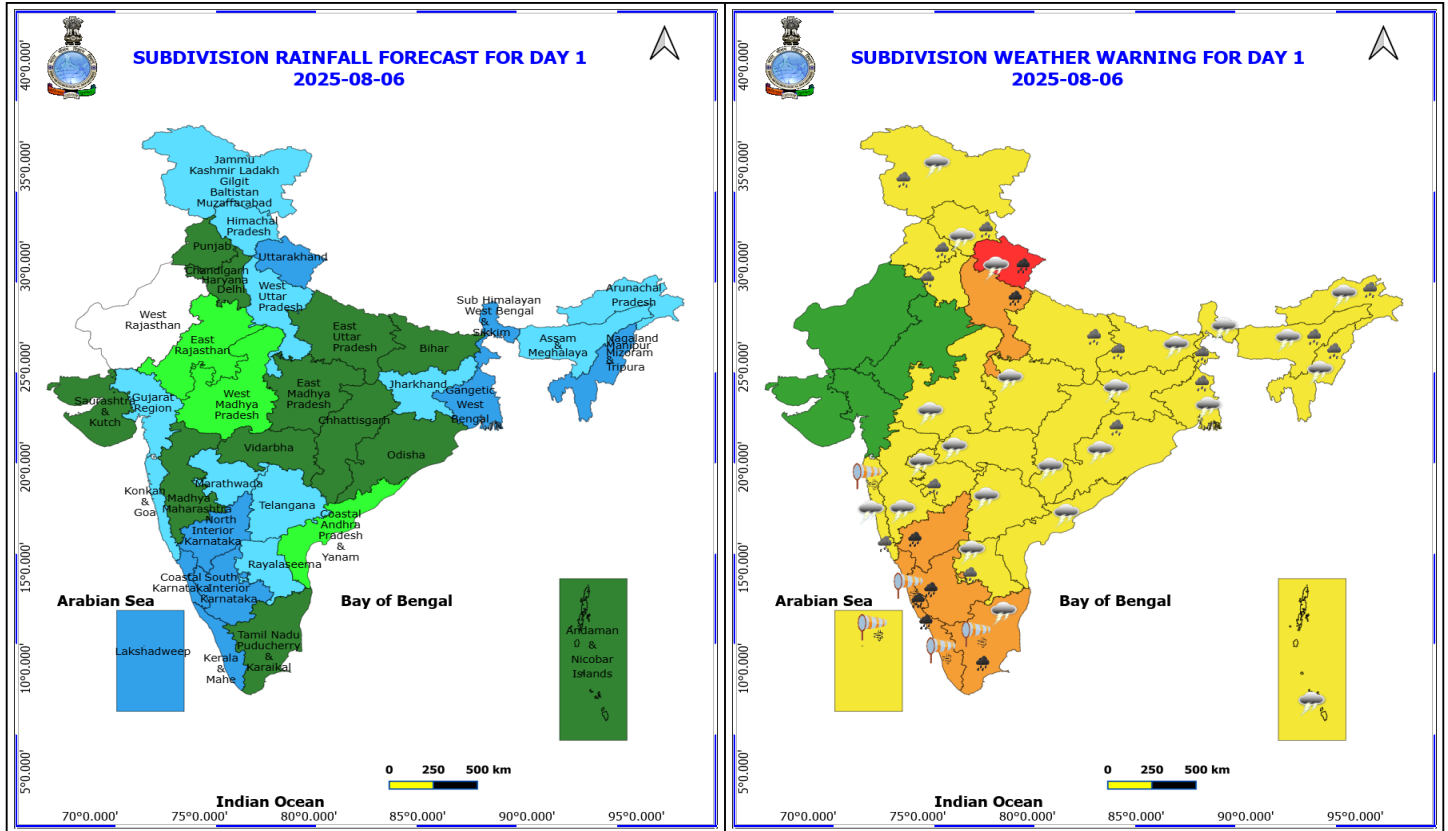
❖ **Maximum Temperature Departures (as on 05-08-2025):** **markedly above normal(> 5.1°C)** at many places over Vidarbha; at isolated places over Odisha, Madhya Maharashtra, Chhattisgarh and Telangana. **appreciably above normal(3.1°C to 5.0°C)** at many places over Marathwada; at few places over Jammu-KashmirLadakh-Gilgit-Baltistan-Muzaffarabad, West Madhya Pradesh, East Madhya Pradesh and Coastal Andhra Pradesh & Yanam; at isolated places over Gangetic West Bengal, Rayalaseema, North Interior Karnataka and South Interior Karnataka. **above normal(1.6°C to 3.0°C)** at many places over Jharkhand and Gujarat Region; at few places over Saurashtra & Kutch and Konkan & Goa; at isolated places over Andaman & Nicobar Islands, Assam & Meghalaya, East Rajasthan and Tamil Nadu, Puducherry & Karaikal. **near normal(-1.5°C to 1.5°C)** at many places over Bihar; at most places over Arunachal Pradesh, West Rajasthan and Coastal Karnataka; at few places over Nagaland, Manipur, Mizoram & Tripura, Sub Himalayan West Bengal & Sikkim, East Uttar Pradesh, Haryana-Chandigarh-Delhi and Punjab; at isolated places over West Uttar Pradesh, Himachal Pradesh and Kerala & Mahe. **The highest maximum temperature** of 39.0°C was reported at MADURAI (A) (TAMIL NADU).

Meteorological Analysis (Based on 0830 hours IST)

- The **monsoon trough** at mean sea level now passes through Ferozepur, Karnal, Moradabad, Kheri, Jalpaiguri and thence northeastwards to the Arunachal Pradesh close to foothills of Himalayas.
- The **upper air cyclonic circulation** over central parts of Bangladesh persists and now seen between 5.8 & 7.6 km above mean sea level tilting southwestward with height.
- A **trough** runs from northwest Bihar to southeast Bangladesh across northern parts of Gangetic West Bengal between 3.1 & 4.5 km above mean sea level.
- The **upper air cyclonic circulation** over north Bihar & neighbourhood at 3.1 km above mean sea level has merged with above system.
- The **upper air cyclonic circulation** over South Madhya Maharashtra & neighbourhood at 1.5 km above mean sea level persists.
- The **upper air cyclonic circulation** over Rayalaseema & neighbourhood at 1.5 km above mean sea level persists.
- The **upper air cyclonic circulation** over southwest Bay off North Tamil Nadu coasts at 3.1 km above mean sea level persists.
- The **upper air cyclonic circulation** over north Kerala & neighbourhood now lies over South Interior Karnataka & neighbourhood at 3.1 km above mean sea level.
- The east-west **trough** roughly along Lat. 12°N from southern parts of eastcentral Arabian Sea to central parts of south Bay of Bengal across north Kerala, South Interior Karnataka & north interior Tamil Nadu and the cyclonic circulation over southwest Bay off North Tamil Nadu coasts persists and now seen at 3.1 km above mean sea level.
- The **upper air cyclonic circulation** over northeast Assam & adjoining Arunachal Pradesh and extended upto 3.1 km above mean sea level persists.
- The **trough** from central parts of north Uttar Pradesh to northern parts of Kutch across East Rajasthan & north Gujarat persists and now seen between 3.1 & 4.5 km above mean sea level.
- The **upper air cyclonic circulation** over Himachal Pradesh & adjoining Uttarakhand at 1.5 km above mean sea level persists.
- The **Western Disturbance** as a cyclonic circulation over Punjab & neighbourhood at 5.8 km with a trough aloft in middle tropospheric level with its axis at 7.6 km above mean sea level runs roughly along Long. 73°E to north of 32°N persists.
- An **upper air cyclonic circulation** likely to form over south Bangladesh & neighbourhood around 08th August, 2025.

Weather Outlook for subsequent 3 days

- Fairly widespread to widespread rainfall likely over the most parts of the country except Madhya Maharashtra and Marathwada where Isolated rainfall is likely.



6 August (Day 1)

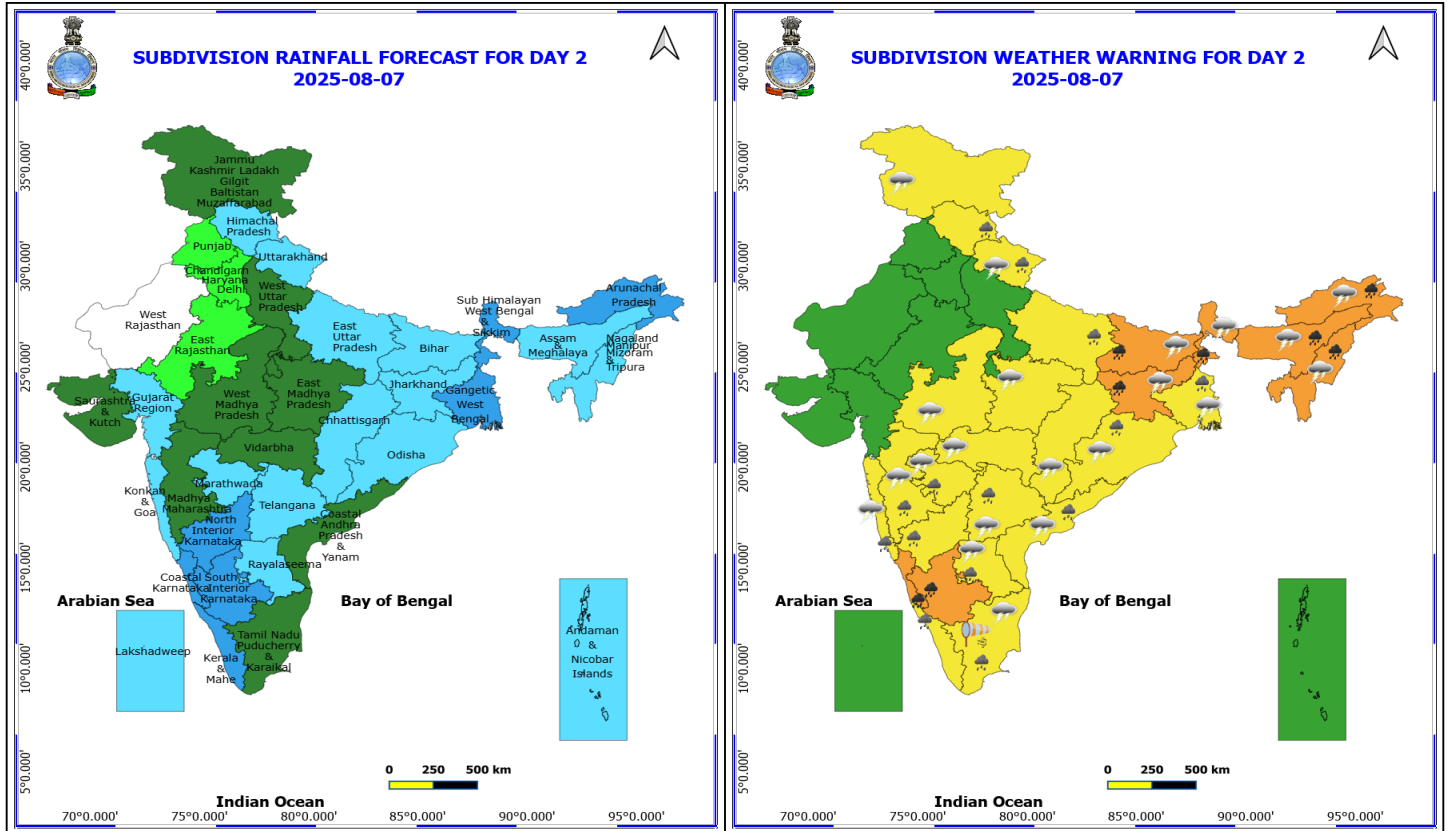
- ❖ **Heavy to Very Heavy Rainfall** very likely at isolated places over Karnataka, Kerala & Mahe, Tamil Nadu Puducherry & Karaikal, Uttarakhand and West Uttar Pradesh.
- ❖ **Heavy Rainfall** very likely at isolated places over Arunachal Pradesh, Assam & Meghalaya, Bihar, East Uttar Pradesh, Haryana, Chandigarh & Delhi, Himachal Pradesh, Jammu-Kashmir-Ladakh-Gilgit-Baltistan-Muzaffarabad, Konkan & Goa, Marathwada, Nagaland, Manipur, Mizoram and Tripura, Odisha, Punjab, Rayalaseema and West Bengal & Sikkim.
- ❖ **Thunderstorm accompanied with lightning & gusty winds(30-40kmph)** very likely at isolated places over Andaman & Nicobar Islands, Bihar, Himachal Pradesh, Jammu-Kashmir-Ladakh-Gilgit-Baltistan-Muzaffarabad, Jharkhand, Odisha, West Bengal & Sikkim and West Madhya Pradesh.
- ❖ **Thunderstorm accompanied with Lightning** very likely at isolated places over Andhra Pradesh, Arunachal Pradesh, Assam & Meghalaya, Chhattisgarh, East Madhya Pradesh, Konkan & Goa, Maharashtra, Nagaland, Manipur, Mizoram and Tripura, Tamil Nadu Puducherry & Karaikal, Telangana and Uttarakhand.
- ❖ **Strong Surface Winds** very likely at isolated places over Coastal Karnataka, Kerala & Mahe, Konkan & Goa, Lakshadweep and Tamil Nadu Puducherry & Karaikal.
- ❖ **Squally wind with speed reaching 45 kmph to 55 kmph gusting to 65 kmph** is likely to prevail along and off Somalia & Oman coasts, many parts of west central Arabian Sea, some parts of southwest Arabian Sea.
- ❖ **Squally weather with wind speed reaching 40 - 50 kmph gusting to 60 kmph** likely to prevail along and off Karnataka, Kerala coasts, off south Maharashtra Goa coasts, over Lakshadweep, Comorin area, over few parts of eastcentral Arabian sea, over Gulf of Mannar, south Sri Lanka coasts, few parts of south and east central Bay of Bengal.

***Red color warning does not mean "Red Alert" Red color warning means "Take Action"**

Forecast and warning for any day is valid from 0830 hours IST of day till 0830 hours IST of next day

For more details kindly visit <https://mausam.imd.gov.in> or contact 011-2434-4599

(Service to the nation since 1875)



7 August (Day 2)

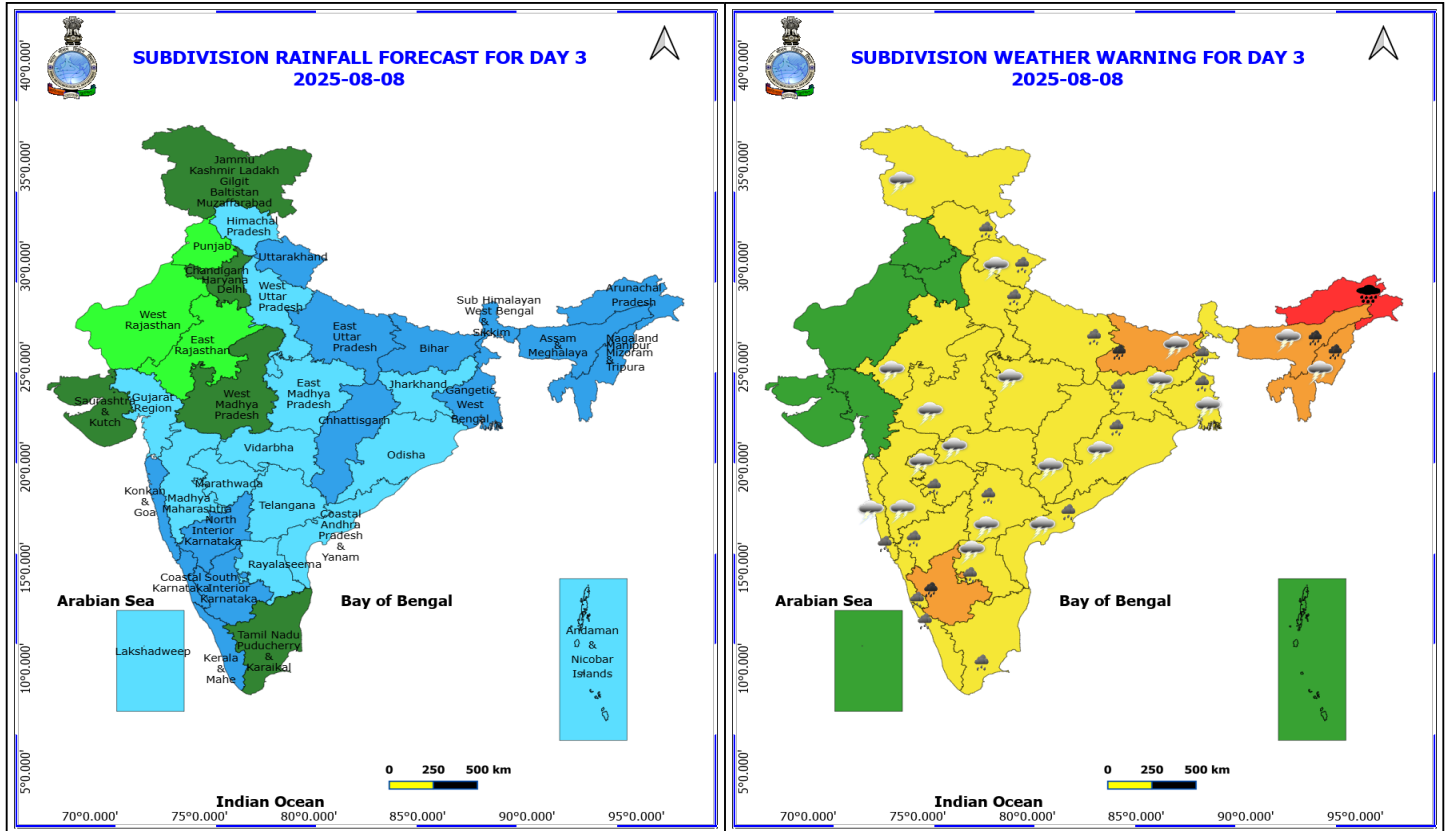
- ❖ **Heavy to Very Heavy Rainfall** very likely at isolated places over Arunachal Pradesh, Assam & Meghalaya, Bihar, Coastal Karnataka, Jharkhand, Nagaland, Manipur, Mizoram and Tripura, South Interior Karnataka and Sub Himalayan West Bengal & Sikkim.
- ❖ **Heavy Rainfall** very likely at isolated places over Andhra Pradesh, East Uttar Pradesh, Gangetic West Bengal, Himachal Pradesh, Kerala & Mahe, Konkan & Goa, Madhya Maharashtra, Marathwada, North Interior Karnataka, Odisha, Tamil Nadu Puducherry & Karaikal, Telangana and Uttarakhand.
- ❖ **Thunderstorm accompanied with lightning & gusty winds(30-40kmph)** very likely at isolated places over Bihar, Jharkhand, Odisha, West Bengal & Sikkim and West Madhya Pradesh.
- ❖ **Thunderstorm accompanied with Lightning** very likely at isolated places over Andhra Pradesh, Arunachal Pradesh, Assam & Meghalaya, Chhattisgarh, East Madhya Pradesh, Jammu-Kashmir-Ladakh-Gilgit-Baltistan-Muzaffarabad, Konkan & Goa, Maharashtra, Nagaland, Manipur, Mizoram and Tripura, Tamil Nadu Puducherry & Karaikal, Telangana and Uttarakhand.
- ❖ **Strong Surface Winds** very likely at isolated places over Tamil Nadu Puducherry & Karaikal.
- ❖ **Squally wind with speed reaching 45 kmph to 55 kmph gusting to 65 kmph** is likely to prevail along and off Somalia, off Oman coasts, many parts of west central Arabian Sea, some parts of southwest Arabian Sea.
- ❖ **Squally weather with wind speed reaching 35 - 45 kmph gusting to 55 kmph** likely to prevail over south Sri Lanka coast, few parts of southwest Bay of Bengal, over Comorin area.

*Red color warning does not mean "Red Alert" Red color warning means "Take Action"

Forecast and warning for any day is valid from 0830 hours IST of day till 0830 hours IST of next day

For more details kindly visit <https://mausam.imd.gov.in> or contact 011-2434-4599

(Service to the nation since 1875)



8 August (Day 3)

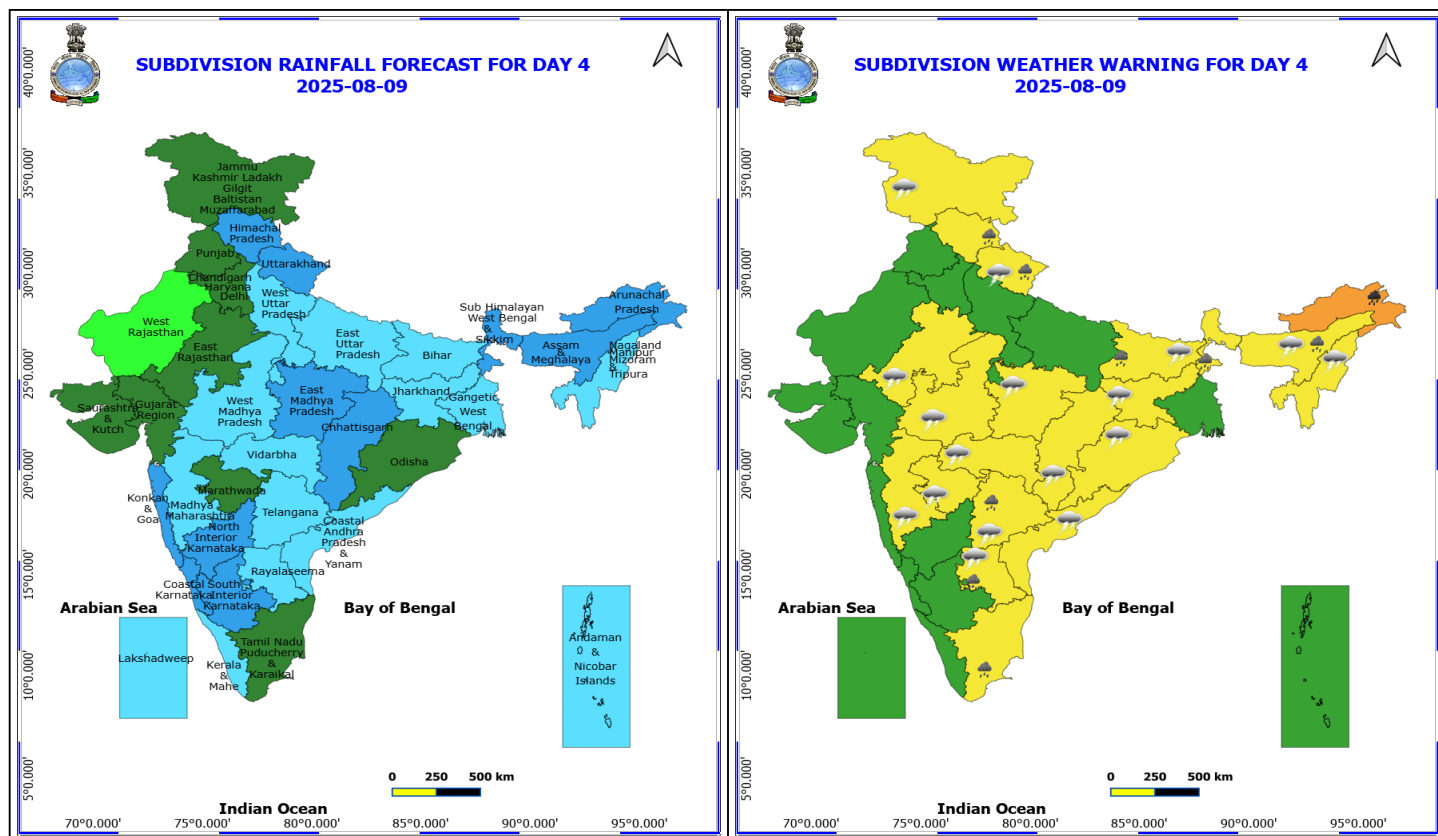
- ❖ **Heavy to Very Heavy Rainfall with isolated Extremely Heavy Rainfall** very likely at isolated places over Arunachal Pradesh.
- ❖ **Heavy to Very Heavy Rainfall** very likely at isolated places over Assam & Meghalaya, Bihar, Nagaland, Manipur, Mizoram and Tripura and South Interior Karnataka.
- ❖ **Heavy Rainfall** very likely at isolated places over Andhra Pradesh, Coastal Karnataka, Himachal Pradesh, Jharkhand, Kerala & Mahe, Konkan & Goa, Marathwada, North Interior Karnataka, Odisha, Tamil Nadu Puducherry & Karaikal, Telangana, Uttar Pradesh, Uttarakhand and West Bengal & Sikkim.
- ❖ **Thunderstorm accompanied with lightning & gusty winds(30-40kmph)** very likely at isolated places over Bihar, Gangetic West Bengal, Jharkhand, Odisha and West Madhya Pradesh.
- ❖ **Thunderstorm accompanied with Lightning** very likely at isolated places over Andhra Pradesh, Assam & Meghalaya, Chhattisgarh, East Madhya Pradesh, East Rajasthan, Jammu-Kashmir-Ladakh-Gilgit-Baltistan-Muzaffarabad, Konkan & Goa, Maharashtra, Nagaland, Manipur, Mizoram and Tripura, Telangana and Uttarakhand.
- ❖ **Squally wind with speed reaching 45 kmph to 55 kmph gusting to 65 kmph** is likely to prevail along and off Somalia, few parts of westcentral Arabian Sea, some parts of southwest Arabian Sea, many parts of northwest Arabian sea.
- ❖ **Squally weather with wind speed reaching 35 - 45 kmph gusting to 55 kmph** likely to prevail over south Sri Lanka coast, few parts of southwest Bay of Bengal, over Comorin area.

***Red color warning does not mean "Red Alert" Red color warning means "Take Action"**

Forecast and warning for any day is valid from 0830 hours IST of day till 0830 hours IST of next day

For more details kindly visit <https://mausam.imd.gov.in> or contact 011-2434-4599

(Service to the nation since 1875)



9 August (Day 4)

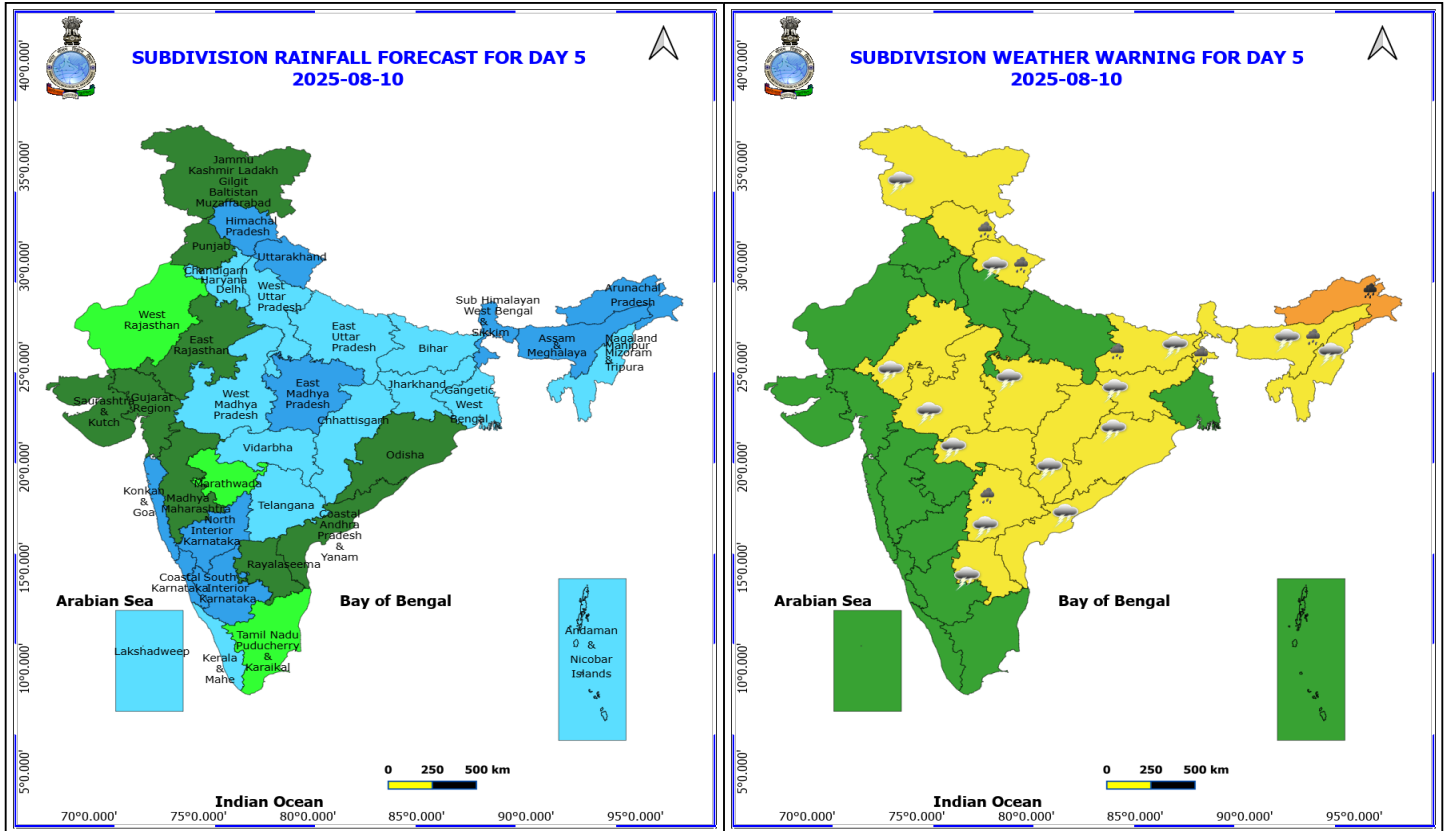
- ❖ **Heavy to Very Heavy Rainfall** likely at isolated places over Arunachal Pradesh.
- ❖ **Heavy Rainfall** likely at isolated places over Assam & Meghalaya, Bihar, Himachal Pradesh, Rayalaseema, Sub Himalayan West Bengal & Sikkim, Tamil Nadu Puducherry & Karaikal, Telangana and Uttarakhand.
- ❖ **Thunderstorm accompanied with lightning & gusty winds(30-40kmph)** likely at isolated places over Bihar, Jharkhand, Odisha and West Madhya Pradesh.
- ❖ **Thunderstorm accompanied with Lightning** likely at isolated places over Andhra Pradesh, Assam & Meghalaya, Chhattisgarh, East Madhya Pradesh, East Rajasthan, Jammu-Kashmir-Ladakh-Gilgit-Baltistan-Muzaffarabad, Maharashtra, Nagaland, Manipur, Mizoram and Tripura, Telangana and Uttarakhand.
- ❖ **Squally wind with speed reaching 45 kmph to 55 kmph gusting to 65 kmph** is likely to prevail along and off Somalia, few parts of westcentral Arabian Sea, some parts of southwest Arabian Sea, some parts of northwest Arabian sea.
- ❖ **Squally weather with wind speed reaching 35 - 45 kmph gusting to 55 kmph** likely to prevail over south Sri Lanka coast, some parts of southwest Bay of Bengal, over Comorin area & Gulf of Mannar.

***Red color warning does not mean "Red Alert" Red color warning means "Take Action"**

Forecast and warning for any day is valid from 0830 hours IST of day till 0830 hours IST of next day

For more details kindly visit <https://mausam.imd.gov.in> or contact 011-2434-4599

(Service to the nation since 1875)



10 August (Day 5)

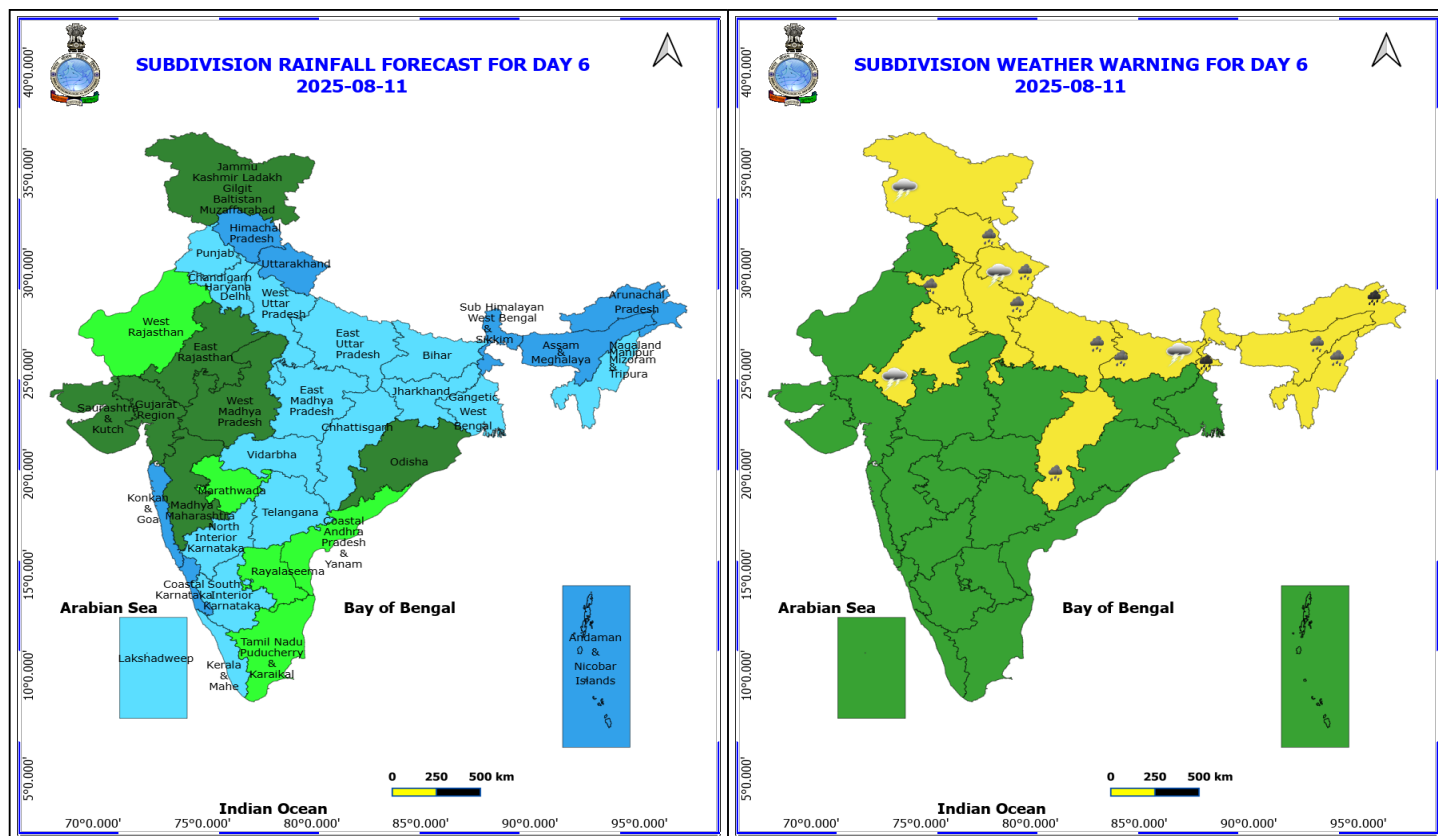
- ❖ **Heavy to Very Heavy Rainfall** likely at isolated places over Arunachal Pradesh.
- ❖ **Heavy Rainfall** likely at isolated places over Assam & Meghalaya, Bihar, Himachal Pradesh, Sub Himalayan West Bengal & Sikkim, Telangana and Uttarakhand.
- ❖ **Thunderstorm accompanied with lightning & gusty winds(30-40kmph)** likely at isolated places over Bihar, Jharkhand, Odisha and West Madhya Pradesh.
- ❖ **Thunderstorm accompanied with Lightning** likely at isolated places over Andhra Pradesh, Assam & Meghalaya, Chhattisgarh, East Madhya Pradesh, East Rajasthan, Jammu-Kashmir-Ladakh-Gilgit-Baltistan-Muzaffarabad, Nagaland, Manipur, Mizoram and Tripura, Telangana, Uttarakhand and Vidarbha.
- ❖ **Squally wind with speed reaching 45 kmph to 55 kmph gusting to 65 kmph** is likely to prevail along and off Somalia & Oman coasts, some parts of westcentral Arabian Sea, some parts of southwest Arabian Sea.
- ❖ **Squally weather with wind speed reaching 35 - 45 kmph gusting to 55 kmph** likely to prevail over some parts of southwest Bay of Bengal, over Comorin area & Gulf of Mannar.

*Red color warning does not mean "Red Alert" Red color warning means "Take Action"

Forecast and warning for any day is valid from 0830 hours IST of day till 0830 hours IST of next day

For more details kindly visit <https://mausam.imd.gov.in> or contact 011-2434-4599

(Service to the nation since 1875)



11 August (Day 6)

- ❖ **Heavy to Very Heavy Rainfall** likely at isolated places over Arunachal Pradesh and Sub Himalayan West Bengal & Sikkim.
- ❖ **Heavy Rainfall** likely at isolated places over Assam & Meghalaya, Bihar, Chhattisgarh, Haryana, Chandigarh & Delhi, Himachal Pradesh, Nagaland, Manipur, Mizoram and Tripura, Uttar Pradesh and Uttarakhand.
- ❖ **Thunderstorm accompanied with lightning & gusty winds(30-40kmph)** likely at isolated places over Bihar and Jammu-Kashmir-Ladakh-Gilgit-Baltistan-Muzaffarabad.
- ❖ **Thunderstorm accompanied with Lightning** likely at isolated places over East Rajasthan and Uttarakhand.

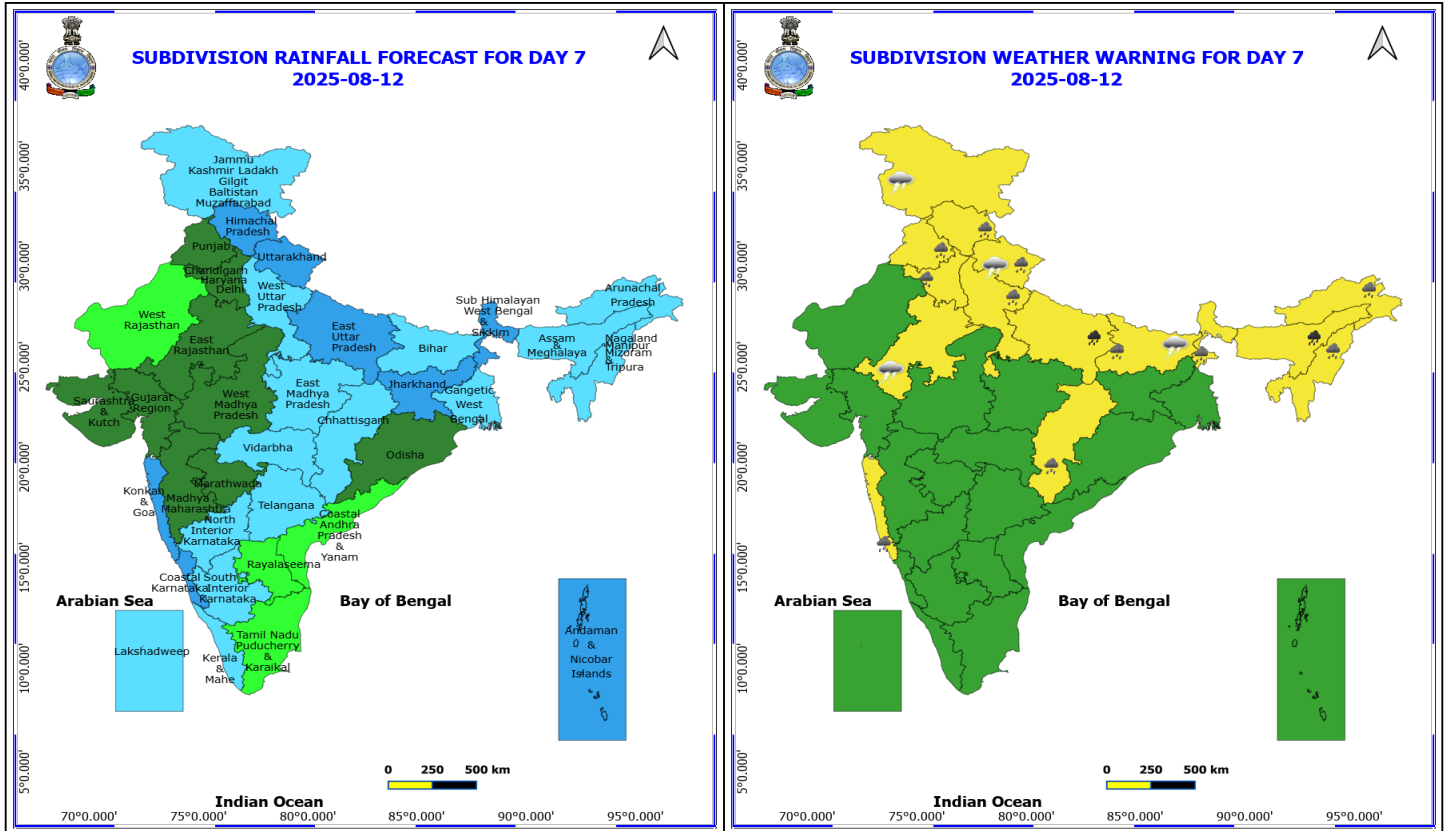
No Fishermen Warning

***Red color warning does not mean "Red Alert" Red color warning means "Take Action"**

Forecast and warning for any day is valid from 0830 hours IST of day till 0830 hours IST of next day

For more details kindly visit <https://mausam.imd.gov.in> or contact 011-2434-4599

(Service to the nation since 1875)



12 August (Day 7)

- ❖ **Heavy to Very Heavy Rainfall** likely at isolated places over Arunachal Pradesh.
- ❖ **Heavy Rainfall** likely at isolated places over Assam & Meghalaya, Bihar, Himachal Pradesh, Sub Himalayan West Bengal & Sikkim, Telangana and Uttarakhand.
- ❖ **Thunderstorm accompanied with lightning & gusty winds(30-40kmph)** likely at isolated places over Bihar, Jharkhand, Odisha and West Madhya Pradesh.
- ❖ **Thunderstorm accompanied with Lightning** likely at isolated places over Andhra Pradesh, Assam & Meghalaya, Chhattisgarh, East Madhya Pradesh, East Rajasthan, Jammu-Kashmir-Ladakh-Gilgit-Baltistan-Muzaffarabad, Nagaland, Manipur, Mizoram and Tripura, Telangana, Uttarakhand and Vidarbha.

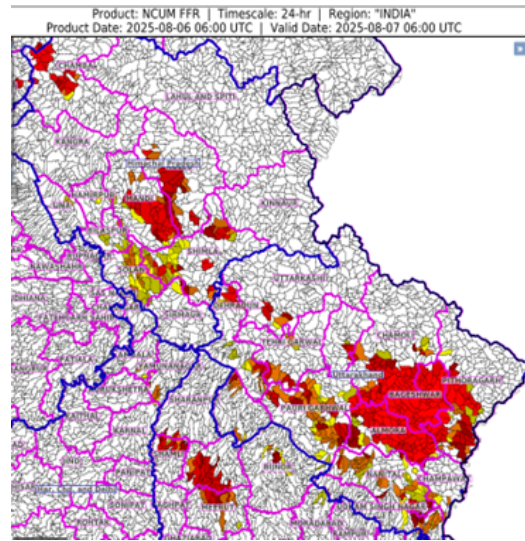
No Fishermen Warning

Flash Flood Warnings

24 hours Outlook for the Flash Flood Risk (FFR) till 1130 IST of 07-08-2025 :

- **Low to Moderate flash flood risk** likely over few watersheds & neighbourhoods of following Met Sub-divisions during next 24 hours.
Himachal Pradesh - Bilaspur, Chamba, Hamirpur, Kullu, Mandi, Shimla, Solan and Una districts.
- **Uttarakhand** - Almora, Bageshwar, Chamoli, Champawat, Dehradun, Haridwar, Nanital, Pauri Garhwal, Pithoragarh, Rudraprayag, Tehri Garwal, Udham Singh Nagar and Uttarkashi districts.
- **West Uttar Pradesh** - Bijnor, Meerut, Muzafarnagar, Shamli and Sharanpur districts.

Surface runoff/ Inundation may occur at some fully saturated soils & low-lying areas over Area of Concern (AoC) as shown in map due to expected rainfall occurrence in next 24 hours.



24 hours Outlook for the Flash Flood Risk (FFR) till 1130 IST of 07-08-2025 :

- **Low to Moderate flash flood risk** likely over few watersheds & neighbourhoods of following Met Sub-divisions during next 24 hours.
- **Coastal Karnataka** - Dakshin Kannada, Udupi and Uttara Kannada districts.
- **Kerala & Mahe** - Alappuzha, Ernakulam, Idukki, Kannur, Kasargod, Kollam, Kottayam, Kozikod, Malappuram, Palakkad, Pattanamittia, Thiruvananthapuram, Trishur and Wayanad districts.

Surface runoff/ Inundation may occur at some fully saturated soils & low-lying areas over Area of Concern (AoC) as shown in map due to expected rainfall occurrence in next 24 hours.

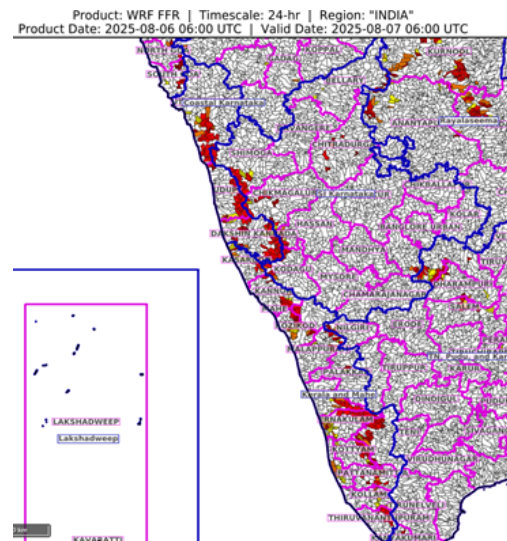




Table-1

7 Days Rainfall Forecast

S.No.	Subdivision	6- Aug	7- Aug	8- Aug	9- Aug	10- Aug	11- Aug	12- Aug
		Day 1	Day 2	Day 3	Day 4	Day 5	Day 6	Day 7
1	ANDAMAN & NICOBAR ISLANDS	SCT	FWS	FWS	FWS	FWS	WS	WS
2	ARUNACHAL PRADESH	FWS	WS	WS	WS	WS	WS	FWS
3	ASSAM & MEHGHALAYA	FWS	FWS	WS	WS	WS	WS	FWS
4	N. M. M. & T.	WS	FWS	WS	FWS	FWS	FWS	FWS
5	S.H. WEST BENGAL & SIKKIM	WS	WS	WS	WS	WS	WS	WS
6	GANGETIC WEST BENGAL	WS	WS	WS	FWS	FWS	FWS	FWS
7	ODISHA	SCT	FWS	FWS	SCT	SCT	SCT	SCT
8	JHARKHAND	FWS	FWS	FWS	FWS	FWS	FWS	WS
9	BIHAR	SCT	FWS	WS	FWS	FWS	FWS	FWS
10	EAST UTTAR PRADESH	SCT	FWS	WS	FWS	FWS	FWS	WS
11	WEST UTTAR PRADESH	FWS	SCT	FWS	FWS	FWS	FWS	FWS
12	UTTARAKHAND	WS	FWS	WS	WS	WS	WS	WS
13	HARYANA, CHD & DELHI	SCT	ISOL	SCT	SCT	FWS	FWS	SCT
14	PUNJAB	SCT	ISOL	ISOL	SCT	SCT	FWS	SCT
15	HIMACHAL PRADESH	FWS	FWS	FWS	WS	WS	WS	WS
16	JAMMU AND KASHMIR AND LADAKH	FWS	SCT	SCT	SCT	SCT	SCT	FWS
17	WEST RAJASTHAN	DRY	DRY	ISOL	ISOL	ISOL	ISOL	ISOL
18	EAST RAJASTHAN	ISOL	ISOL	ISOL	SCT	SCT	SCT	SCT
19	WEST MADHYA PRADESH	ISOL	SCT	SCT	FWS	FWS	SCT	SCT
20	EAST MADHYA PRADESH	SCT	SCT	FWS	WS	WS	FWS	FWS
21	GUJRAT REGION	FWS	FWS	FWS	SCT	SCT	SCT	SCT
22	SAURASHTRA & KUTCH	SCT	SCT	SCT	SCT	SCT	SCT	SCT
23	KONKAN & GOA	FWS	FWS	WS	WS	WS	WS	WS
24	MADHYA MAHARASHTRA	SCT	SCT	FWS	FWS	SCT	SCT	SCT
25	MARATHWADA	FWS	FWS	FWS	SCT	ISOL	ISOL	SCT
26	VIDARBHA	SCT	SCT	FWS	FWS	FWS	FWS	FWS
27	CHATTISGARH	SCT	FWS	WS	WS	FWS	FWS	FWS
28	COASTAL ANDHRA PRADESH	ISOL	SCT	FWS	FWS	SCT	ISOL	ISOL
29	TELANGANA	FWS	FWS	FWS	FWS	FWS	FWS	FWS
30	RAYALASEEMA	FWS	FWS	FWS	FWS	SCT	ISOL	ISOL
31	TAMILNADU & PUDUCHERRY	SCT	SCT	SCT	SCT	ISOL	ISOL	ISOL
32	COSTAL KARNATAKA	WS	WS	WS	WS	WS	WS	WS
33	NORTH INTERIOR KARNATAKA	WS	WS	WS	WS	WS	FWS	FWS
34	SOUTH INTERIOR KARNATAKA	WS	WS	WS	WS	WS	FWS	FWS
35	KERALA	WS	WS	WS	FWS	FWS	FWS	FWS
36	LAKSHDWEAP	WS	FWS	FWS	FWS	FWS	FWS	FWS

Legend	Category	%Stations
WS	Widespread/Most Places	76-100
FWS	Fairly Widespread/Many Places	51-75
SCT	Scattered/ A Few Places	26-50
ISOL	Isolated Places	1-25
DRY	No Rain	0

*Red color warning does not mean "Red Alert" Red color warning means "Take Action"

Forecast and warning for any day is valid from 0830 hours IST of day till 0830 hours IST of next day

For more details kindly visit <https://mausam.imd.gov.in> or contact 011-2434-4599

(Service to the nation since 1875)

Fig. 1: Maximum Temperatures Dated 2025-08-06

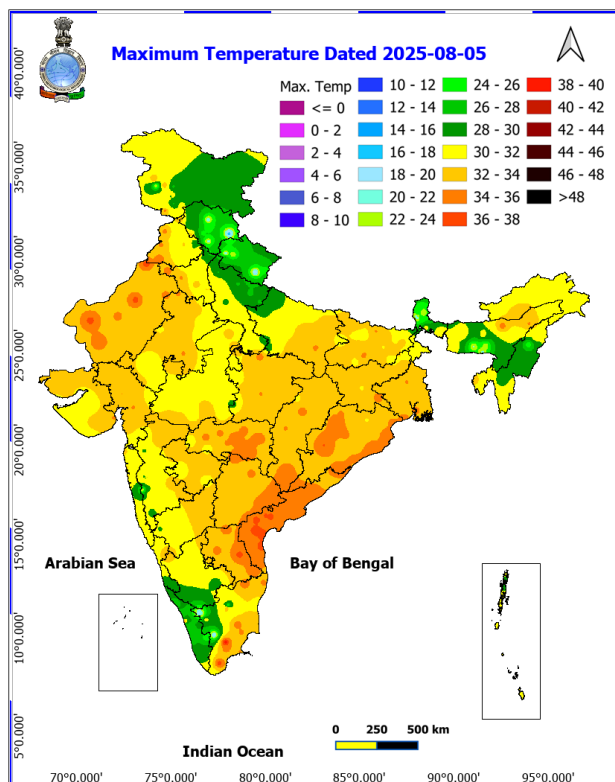


Fig. 2: Departure of Maximum Temp. Dated 2025-08-06

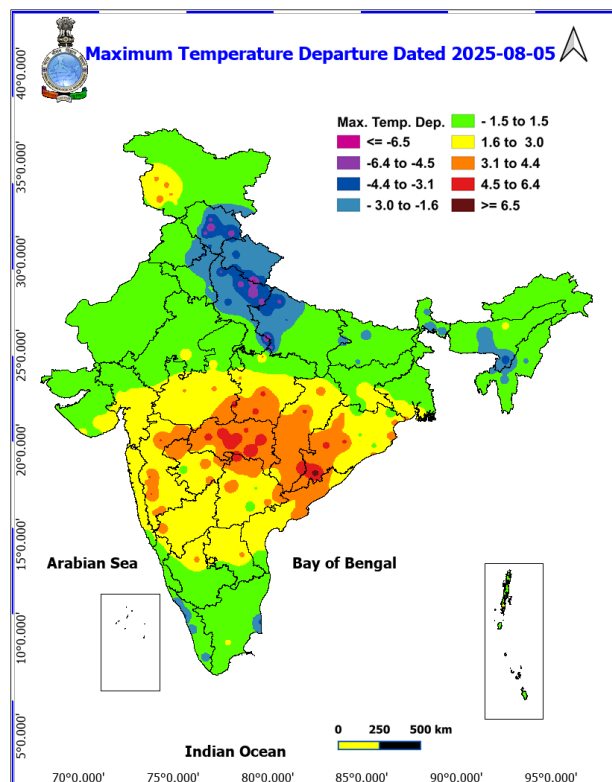


Fig. 3: Minimum Temperatures Dated 2025-08-06

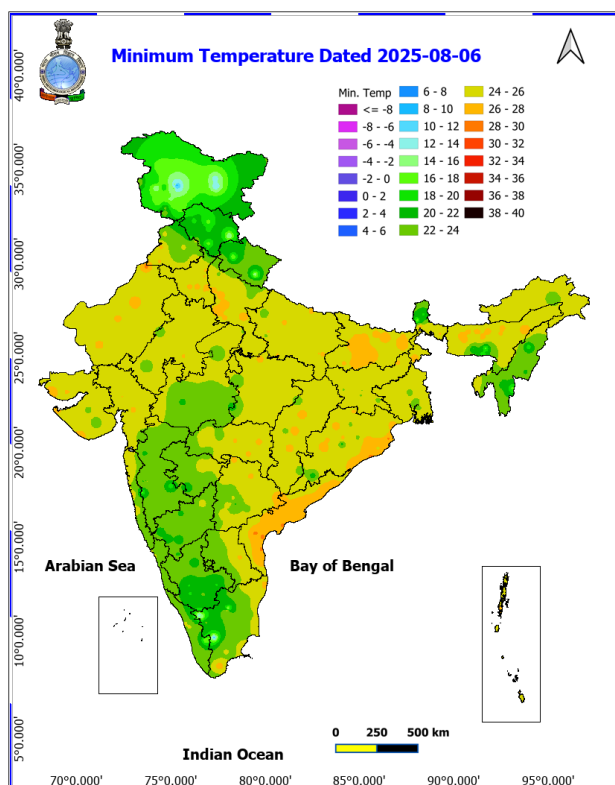
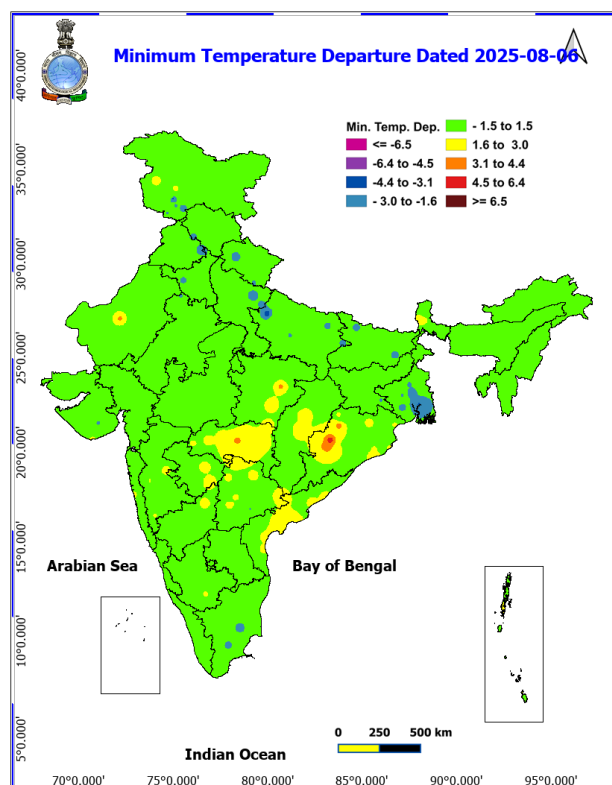
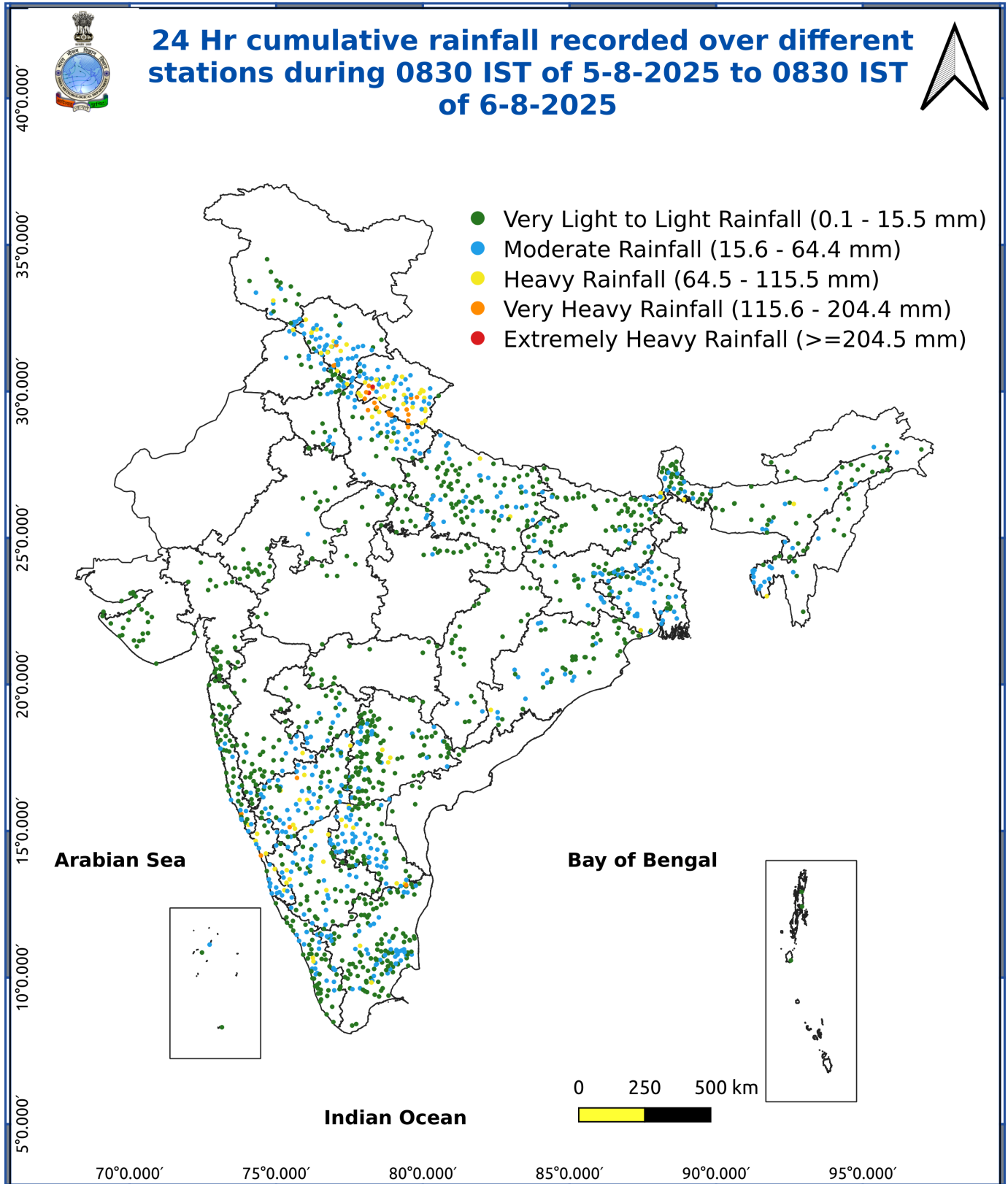


Fig. 4: Departure of Minimum Temp. Dated 2025-08-06





*Red color warning does not mean "Red Alert" Red color warning means "Take Action"

Forecast and warning for any day is valid from 0830 hours IST of day till 0830 hours IST of next day

For more details kindly visit <https://mausam.imd.gov.in> or contact 011-2434-4599

(Service to the nation since 1875)

Impact & Action Suggested due to

- **Very heavy rainfall** over Uttarakhand, Tamil Nadu, Kerala, North Interior Karnataka on 06th; Coastal & South Interior Karnataka on 06th & 07th; Arunachal Pradesh during 07th-11th; Assam & Meghalaya, Nagaland, Manipur, Mizoram & Tripura, Bihar on 07th & 08th; Jharkhand on 07th; Sub-Himalayan West Bengal & Sikkim on 07th & 11th and East Uttar Pradesh on 12th August.

Impact Expected

- Localized Flooding of roads, water logging in low lying areas and closure of underpasses mainly in urban areas of the above region.
- Occasional reduction in visibility due to heavy rainfall.
- Disruption of traffic in major cities due to water logging in roads leading to increased travel time.
- Minor damage to kutcha roads.
- Possibilities of damage to vulnerable structure.
- Localized Landslides/Mudslides/landslides/mudslips/landsinks/mudsinks.
- Damage to horticulture and standing crops in some areas due to inundation.
- It may lead to riverine flooding in some river catchments (for riverine flooding please visit Web page of CWC)

Action Suggested

- Check for traffic congestion on your route before leaving for your destination.
- Follow any traffic advisories that are issued in this regard.
- Avoid going to areas that face the water logging problems often.
- Avoid staying in vulnerable structure.

Agromet advisories for various parts of the country

Agromet advisories for likely impact of Heavy / Heavy to Very Heavy / Extremely Heavy Rainfall

- In **Uttarakhand**, postpone sowing of black gram, green gram and soybean till cessation of heavy rains and drain out excess water from already sown / transplanted fields of rice, sugarcane, maize, black gram, green gram, groundnut, pigeon pea, finger millet, soybean and vegetables to avoid waterlogging in **Bhabar and Tarai Zone**. In **Sub Humid Sub Tropic Zone**, avoid transplanting of rice till receding of excess water from the fields. If there is damage to rice seedlings in transplanted rice fields, undertake late or staggered planting with old seedlings. If the rice crop is totally damaged, carry out direct seeding using short-duration varieties under optimum soil moisture conditions. Drain out excess water from fields of rice, green gram, black gram, barnyard millet and finger millet. In **Hill Zone**, strengthen the bunds to prevent surface runoff of water. Postpone sowing of vegetable pea in case of excessive wet soil conditions. Maintain proper drainage channels in the crop fields.
- In **Himachal Pradesh**, cover the cauliflower nursery with plastic sheets to prevent damage from heavy rainfall in **High Hills Sub Temperate Wet Zone**. Make proper drainage channels in maize, ginger and vegetable fields in **Mid Hills Sub Humid Zone**; rice, maize, pulses and vegetable fields in **Sub Montane and Low Hills Sub Tropical Zone** and kidney beans, finger millet, cucurbits and vegetables in **High Hills Sub Temperate Wet Zone**.
- In **Uttar Pradesh**, postpone sowing of pigeon pea and provide proper drainage in fields of rice, maize, black gram, green gram and vegetables in **Western Plain Zone**. In **Central Plain Zone**, drain out excess water from fields of rice, maize, groundnut, sesame, black gram, green gram and vegetables.
- In **Arunachal Pradesh**, postpone all fresh sowing and transplanting operations till cessation of heavy rains. Harvest nearly mature banana bunches and keep them in a dry and safe place for ripening. Ensure proper drainage in rice, maize, finger millet, soybean and vegetables and fruit orchards to avoid waterlogging. In rice fields, strengthen bunds to prevent field erosion and seedling washout. Provide strong support to fruit-bearing plants to prevent them from bending or breaking during heavy rains.
- In **Assam**, to prevent waterlogging, ensure proper drainage in *Sali* rice, green gram and pigeon pea fields and banana orchards in **Lower Brahmaputra Valley Zone**; *Sali* rice and sugarcane fields in **North Bank Plain**

*Red color warning does not mean "Red Alert" Red color warning means "Take Action"

Forecast and warning for any day is valid from 0830 hours IST of day till 0830 hours IST of next day

For more details kindly visit <https://mausam.imd.gov.in> or contact 011-2434-4599

(Service to the nation since 1875)

Zone; *Sali* rice fields in **Upper Brahmaputra Valley Zone** and **Barak Valley Zone** and rice and sesame fields in **Hill Zone**. In **Barak Valley Zone**, postpone sowing of cauliflower.

- In **Meghalaya**, ensure proper drainage in rice, maize, turmeric, chilli, okra and bitter gourd fields to prevent waterlogging. Provide staking / support to tall and fragile crops like banana, papaya, bottle gourd etc. to prevent lodging.
- In **Nagaland**, provide proper drainage channels in maize fields to manage surface water runoff. Clean the drainage channels in rice fields to drain out excess water.
- In **Tripura**, maintain proper drainage in rice, chilli and ginger fields.
- In **Sub-Himalayan West Bengal**, make provision to drain out excess water from rice, ginger, vegetable fields and fruit orchards in **Hill Zone** and *aman* paddy and vegetable fields in **Terai Zone**. Cover the chilli seedlings with plastic to protect them from heavy rains in **Terai Zone**.
- In **Bihar**, make provisions to drain out excess water from standing crops such as maize, nurseries of onion, chilli, and cauliflower in **North West Alluvial Plain Zone** and maize, finger millet, ragi, kodo, sava, china etc. in **North East Alluvial Zone**.
- In **Kerala**, provide adequate drainage in fields of rice, coconut, banana and ginger. Provide support to banana plantations. Make the vegetable pandals stronger.
- In **Tamil Nadu**, ensure proper drainage in the fields of sorghum to prevent waterlogging, especially in heavy soils and low-lying areas. Ensure proper drainage around the coconut plants to avoid root rot.
- In **Karnataka**, provide adequate drainage facilities in arecanut and banana plantations in **Coastal Zone**. In **Southern Transition Zone**, avoid paddy transplanting till cessation of heavy rains and ensure proper drainage in ginger, maize, finger millet and transplanted rice fields and arecanut and coconut plantations. In **Southern Dry Zone**, clear and maintain drainage channels especially in paddy, sugarcane, and vegetable fields. Provide support to tall crops like banana, maize and sunflower to prevent breakage or lodging.

Livestock / Fishery

- Keep the animals inside the shed during heavy rainfall and provide them balanced feed.
- Store feed and fodder in a safe place to prevent spoilage.
- Construct an outlet with proper netting around the ponds to drain out excess water, thereby preventing fish from escaping in case of overflow.

Agromet advisories for likely impact of Thunderstorm / Gusty Winds / Squally Winds

- Provide mechanical support to horticultural crops and staking or support to vegetables and young fruit plants / fruit-bearing plants to avoid lodging due to strong winds.

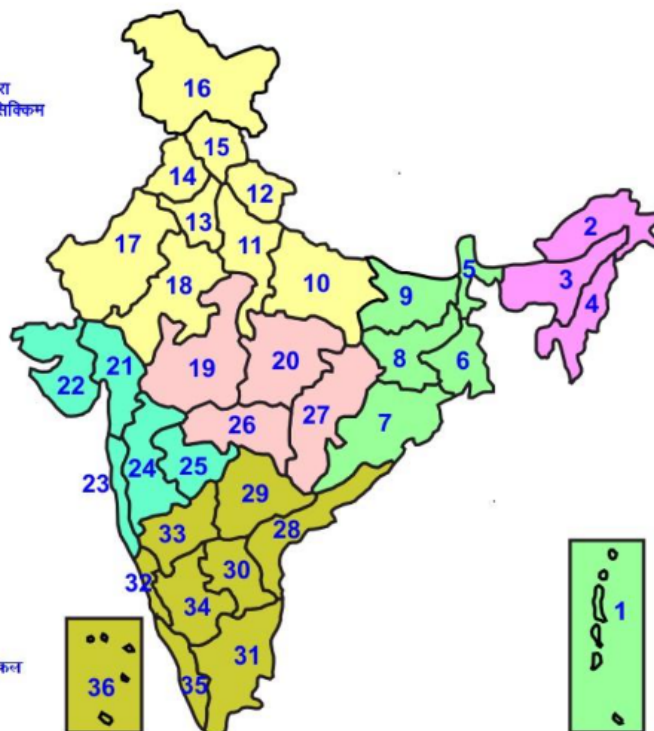
Legends & abbreviations:

Region wise classification of meteorological Sub-Divisions:

- **Northwest India:** Western Himalayan Region (Jammu-Kashmir-Ladakh-Gilgit-Baltistan-Muzaffarabad, Himachal Pradesh and Uttarakhand); Punjab, Haryana-Chandigarh-Delhi; West Uttar Pradesh, East Uttar Pradesh, West Rajasthan and East Rajasthan.
- **Central India:** West Madhya Pradesh, East Madhya Pradesh, Vidarbha and Chhattisgarh.
- **East India:** Bihar, Jharkhand, Sub-Himalayan West Bengal & Sikkim; Gangetic West Bengal, Odisha and Andaman & Nicobar Islands.
- **Northeast India:** Arunachal Pradesh, Assam & Meghalaya and Nagaland, Manipur, Mizoram & Tripura.
- **West India:** Gujarat Region, Saurashtra & Kutch, Konkan & Goa, Madhya Maharashtra and Marathawada.
- **South India:** Coastal Andhra Pradesh & Yanam, Telangana, Rayalaseema, Coastal Karnataka, North Interior Karnataka, South Interior Karnataka, Kerala & Mahe, Tamil Nadu, Puducherry & Karaikal and Lakshadweep.

LEGENDS

- 1 अंडमान और निकोबार द्वीप समुह
- 2 अरुणाचल प्रदेश
- 3 असम और मेघालय
- 4 नागालैंड मनीपुर मीजोरम और त्रिपुरा
- 5 उप हिमालय पश्चिम बंगाल एवं सिक्किम
- 6 पश्चिम बंगाल
- 7 ओडिसा
- 8 झारखंड
- 9 बिहार
- 10 पूर्वी उत्तर प्रदेश
- 11 पश्चिम उत्तर प्रदेश
- 12 उत्तराखंड
- 13 हरियाणा चंडीगढ़ एवं दिल्ली
- 14 पंजाब
- 15 हिमाचल प्रदेश
- 16 जम्मू एवं कश्मीर एवं लद्दाख
- 17 पश्चिम राजस्थान
- 18 पूर्वी राजस्थान
- 19 पश्चिम मध्य प्रदेश
- 20 पूर्वी मध्य प्रदेश
- 21 गुजरात क्षेत्र
- 22 सौराष्ट्र एवं कच्छ
- 23 कोंकण एवं गोवा
- 24 मध्य महाराष्ट्र
- 25 मराठावाड़ा
- 26 विदर्भ
- 27 छत्तीसगढ़
- 28 तटीय आंध्र प्रदेश एवं यनम
- 29 तेलंगाना
- 30 रायलसीमा
- 31 तमिलनाडु, पुदुचेरी एवं कराईकल
- 32 तटिय कर्नाटक
- 33 आंतरिक उत्तरी कर्नाटक
- 34 आंतरिक दक्षिणी कर्नाटक
- 35 केरल एवं माहे
- 36 लक्षद्वीप



1. Andaman & Nicobar Islands
2. Arunachal Pradesh
3. Assam & Meghalaya
4. Nagaland, Manipur, Mizoram & Tripura
5. Sub-Himalayan West Bengal & Sikkim
6. Gangetic West Bengal
7. Orissa
8. Jharkhand
9. Bihar
10. East Uttar Pradesh
11. West Uttar Pradesh
12. Uttarakhand
13. Haryana, Chd & Delhi
14. Punjab
15. Himachal Pradesh
16. Jammu & Kashmir and Ladakh
17. West Rajasthan
18. East Rajasthan
19. West Madhya Pradesh
20. East Madhya Pradesh
21. Gujarat
22. Saurashtra
23. Konkan & Goa
24. Madhya Maharashtra
25. Marathwada
26. Vidharbha
27. Chhattisgarh
28. Coastal Andhra Pradesh & Yanam
29. Telangana
30. Rayalaseema
31. Tamilnadu, Puducherry & Karaikal
32. Coastal Karnataka
33. North Interior Karnataka
34. South Interior Karnataka
35. Kerala & Mahe
36. Lakshadweep

SPATIAL DISTRIBUTION (% of Stations reporting)


% Stations	Category	% Stations	Category
76-100	Widespread (WS/Most Places)	26-50	Scattered (SCT/ A Few Places)
51-75	Fairly Widespread (FWS/ Many Places)	1-25	Isolated (ISOL)


Subdivision Colour


- NO WARNING
- WATCH (BE UPDATED)
- ALERT (BE PREPARED TO TAKE ACTION)
- WARNING (TAKE ACTION)

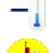
Probabilistic Forecast


Terms	Probability of Occurrence (%)
Unlikely	< 25
Likely	25 - 50
Very Likely	50 - 75
Most Likely	> 75


-  Heavy Rain


 Thunderstorm & Lightning


 Strong surface winds


 Cold Wave


 Hot & Humid


 Very Heavy Rain


 Hailstorm


 Heat Wave


 Cold Day


 Extremely Heavy Rain


 Dust Storm


 Hot Day

 Ground Frost

 Heavy Snow

 Dust Raising Winds

 Warm Night

 Fog

*Red color warning does not mean "Red Alert" Red color warning means "Take Action"

Forecast and warning for any day is valid from 0830 hours IST of day till 0830 hours IST of next day

For more details kindly visit <https://mausam.imd.gov.in> or contact 011-2434-4599

(Service to the nation since 1875)

LEGENDS

WARNING

WARNING (TAKE ACTION)
ALERT (BE PREPARED)
WATCH (BE UPDATED)
NO WARNING (NO ACTION)

Probabilistic Forecast

Terms	Probability of Occurrence (%)
Unlikely	< 25
Likely	25 - 50
Very Likely	50 - 75
Most Likely	> 75



Heavy: 64.5 to 115.5 mm/cm *
Very Heavy: 115.6 to 204.4 mm/cm *
Extremely Heavy: > 204.4 mm/cm *



When maximum temperature of a station reaches $\geq 40^{\circ}\text{C}$ for plains and $\geq 30^{\circ}\text{C}$ for hilly regions
(a) Based on Departure from normal

Heat Wave: Maximum Temperature Departure from normal 4.5°C to 6.4°C .
Severe Heat Wave: Maximum Temperature Departure from normal $\geq 6.5^{\circ}\text{C}$

(b). Based on Actual maximum temperature

Heat Wave: When actual maximum temperature $\geq 45^{\circ}\text{C}$.
Severe Heat Wave: When actual maximum temperature $\geq 47^{\circ}\text{C}$

(c). Criteria for heat wave for coastal stations

When maximum temperature departure is $> 4.5^{\circ}\text{C}$ from normal. Heat Wave may be described provided maximum temperature $\geq 37^{\circ}\text{C}$



When maximum temperature remains 40°C

Warm Night: When minimum temperature departure 4.5°C to 6.4°C .
Severe Warm Night: When minimum temperature departure $> 6.4^{\circ}\text{C}$.



When minimum temperature of a station $\leq 10^{\circ}\text{C}$ for plains and $\leq 0^{\circ}\text{C}$ for hilly regions.

(a). Based on departure

Cold Wave: Minimum Temperature Departure from normal -4.5°C to -6.4°C .
Severe Cold Wave: Minimum Temperature Departure from normal $\leq -6.5^{\circ}\text{C}$

(b) Based on actual Minimum Temperature (for Plains only)

Cold Wave: When Minimum Temperature is $\leq 4.0^{\circ}\text{C}$
Severe Cold Wave: When Minimum Temperature is $\leq 2.0^{\circ}\text{C}$

(c) For Coastal Stations

When Minimum Temperature departure is $\leq -4.5^{\circ}\text{C}$ & actual Minimum Temperature is $\leq 15^{\circ}\text{C}$



When minimum temperature of a station $\leq 10^{\circ}\text{C}$ for plains and $\leq 0^{\circ}\text{C}$ for hilly regions
Based on departure

Cold Day: Maximum Temperature Departure from normal -4.5°C to -6.4°C .
Severe Cold Day: Maximum Temperature Departure from normal $\leq -6.5^{\circ}\text{C}$



Phenomenon of small droplets suspended in air and the horizontal visibility $< 1\text{km}$

Moderate Fog: When the visibility between 500-200 metres
Dense Fog: when the visibility between 50-200 metres
Very Dense Fog: when the visibility < 50 metres



Sudden electrical discharges manifested by a flash of light (Lightning) and a sharp rumbling sound (thunder)



An ensemble of particles of dust or sand energetically lifted to great heights by a strong and turbulent wind.



Ice deposits on ground

Air temperature $\leq 4^{\circ}\text{C}$ (over Plains)



A strong wind that rises suddenly, lasts for at least 1 minute.

Moderate: Wind speed 52-61 kmph
Severe: Wind speed 62-87 kmph
Very Severe: Wind speed > 87 kmph



Effect of various waves in the sea over specific area

Rough to very rough: Wind speed 41-62 kmph (22-33 knots) & Wave height 2.5-6 metre
High to very high: Wind speed 63-117 kmph (34-63 knots) & Wave height 6-14 metre
Phenomenal: Wind speed > 117 kmph (> 63 knots) & Wave height > 14 metre



Cyclonic Storm: Wind speed 62-87 kmph (34-47 knots)

Severe Cyclonic Storm: Wind speed 88-117 kmph (48-63 knots)
Very Severe Cyclonic Storm: Wind speed 118-165 kmph (64-89 knots)
Extremely Severe Cyclonic Storm: Wind speed 166-220 kmph (90-119 knots)
Super Cyclone Storm: Wind speed > 220 kmph (> 119 knots)

*Red color warning does not mean "Red Alert" Red color warning means "Take Action"

Forecast and warning for any day is valid from 0830 hours IST of day till 0830 hours IST of next day

For more details kindly visit <https://mausam.imd.gov.in> or contact 011-2434-4599

(Service to the nation since 1875)