

Wednesday, May 28, 2025
Time of Issue: 1345 hours IST
(MID-DAY)

ALL INDIA WEATHER SUMMARY AND FORECAST BULLETIN

Significant Weather Features:

South peninsular India:

- ❖ Fairly widespread to widespread light/moderate rainfall accompanied with **thunderstorm, lightning & gusty winds speed reaching 40-50 kmph over Kerala & Mahe, Karnataka during 27th May-01st June; Isolated to scattered** light/moderate rainfall accompanied with **thunderstorm, lightning & gusty winds speed reaching 40-50 kmph** likely over **Tamilnadu Puducherry & Karaikal**, Coastal Andhra Pradesh & Yanam, Rayalaseema and Telangana during 28th-31st May.
- ❖ **Isolated heavy rainfall** likely over North Interior Karnataka on 28th & 29th, Coastal Andhra Pradesh & Yanam on 29th & 30th and **isolated heavy to very heavy rainfall** over Coastal Andhra Pradesh & Yanam on 28th, Coastal Karnataka, Kerala & Mahe during 28th May -02nd June; South Interior Karnataka, Telangana, Tamilnadu Puducherry & Karaikal during 28th -30th May.
- ❖ Isolated **extremely heavy rainfall** very likely over Kerala & Mahe during 28th-30th, Coastal & South Interior Karnataka on 28th & 29th, Tamilnadu Puducherry & Karaikal on 29th & 30th May.
- ❖ **Thundersquall wind speed reaching 50-60 kmph gusting to 70 kmph** likely over Karnataka, Coastal Andhra Pradesh & Yanam, Rayalaseema on 28th & 29th May.

West India:

- ❖ **Scattered to fairly widespread** light/moderate rainfall accompanied with **thunderstorm, lightning over Konkan & Goa during 28th Ma-02nd June**, Madhya Maharashtra, Gujarat State, Marathwada on 28th & 29th May.
- ❖ **Isolated heavy rainfall** likely over Marathwada, Gujarat State on 28th; Madhya Maharashtra on 28th & 29th, Konkan & Goa during 28th May - 02nd June and **isolated heavy to very heavy rainfall** at some places over Konkan & Goa, Madhya Maharashtra on 28th May.

Northeast India:

- ❖ **Fairly widespread to widespread** light/moderate rainfall accompanied with **thunderstorm, lightning over Northeast India during next 7 days**.
- ❖ **Isolated heavy to very heavy rainfall** very likely over Sub-Himalayan West Bengal & Sikkim during 29th May- 01st June, Assam & Meghalaya, Arunachal Pradesh, Nagaland, Manipur, Mizoram & Tripura during next 7 days with **isolated extremely heavy rainfall** also likely over Assam & Meghalaya on 29th & 30th, Nagaland, Manipur, Mizoram & Tripura on 29th, Arunachal Pradesh, Sub-Himalayan West Bengal & Sikkim on 30th May.

East & Central India:

- ❖ **Scattered to fairly widespread** light/moderate rainfall accompanied with **thunderstorm, lightning & gusty winds speed reaching 40-50 kmph** likely over Vidarbha, Chhattisgarh, Gangetic West Bengal, Jharkhand, Odisha, Madhya Pradesh, Bihar during 28th May- 01st June with **Thundersquall wind speed reaching 50-60 kmph gusting to 70 kmph** likely over East Madhya Pradesh on 29th, Bihar on 30th May.
- ❖ **Isolated heavy rainfall** likely over Vidarbha on 28th & 29th, Chhattisgarh, Gangetic West Bengal, Odisha during 28th-30th, Bihar during 29th - 31st, with **isolated very heavy rainfall** over Vidarbha, Chhattisgarh on 28th, Odisha on 28th & 29th, Bihar on 30th May.

Northwest India:

- ❖ **Scattered to fairly widespread** light/moderate rainfall accompanied with **thunderstorm, lightning & gusty winds speed reaching 40-50 kmph** likely over Jammu-Kashmir-Ladakh-Gilgit-Baltistan-Muzaffarabad, Himachal Pradesh, Uttarakhand, Punjab, Haryana Chandigarh & Delhi; **isolated to scattered** rainfall over Uttar Pradesh, Rajasthan during 28th May-02nd June with **Thundersquall wind speed reaching 50-60 kmph gusting to 70 kmph** likely over Rajasthan during 28th-30th, Jammu-Kashmir-Ladakh-Gilgit-Baltistan-Muzaffarabad during 29th-31st, Punjab on 29th & 30th, Haryana Chandigarh & Delhi on 30th May.
- ❖ **Isolated heavy rainfall** also likely over Uttarakhand during 28th May-01st June.
- ❖ **Dust storm** also very likely at isolated places over West Rajasthan during 28th -30th May.

Maximum Temperature Forecast:

- ❖ Rise by about 2-3°C in maximum temperatures likely over Northwest India during next 2 days; gradual fall by 2-4°C thereafter for subsequent 3 days and no large change thereafter.
- ❖ No significant change in maximum temperatures likely over Central India during next 2 days; gradual rise by 2-3°C thereafter for subsequent 3 days and no large change thereafter.
- ❖ No significant change in maximum temperatures likely over rest parts of the country.

Heat wave warnings:

- ❖ **Heat wave conditions** very likely in isolated pockets of West Rajasthan on 28th & 29th May.

Main Weather Observations:

- ❖ **Significant rainfall recorded (in cm)** (from 0830 hours IST of yesterday to 0830 hours IST of today): **Tamil Nadu, Puducherry & Karaikal**: Chinnakalar (dist Coimbatore) 15; Avalanche (dist Nilgiris) 14; Upper Bhavani (dist Nilgiris), Chamraj Estate (dist Nilgiris), Nalumukku (dist Tirunelveli) 13 Each; Kakkachi (dist Tirunelveli), Oothu (dist Tirunelveli) 12 Each; K Bridge (dist Nilgiris), Sholayar (dist Coimbatore), Manjolai (dist Tirunelveli) 10 Each; Papanasam (dist Tirunelveli) 8; Naduvattam (dist Nilgiris), Periyar (dist Theni), Glenmorgan (dist Nilgiris), Siruvani Adivaram (dist Coimbatore), Servalar Dam (dist Tirunelveli) 7 Each; Pollachi (dist Coimbatore), Valparai Taluk Office (dist Coimbatore), Devala (dist Nilgiris), Emerald (dist Nilgiris), Valparai Pap (dist Coimbatore), Upper Gudalur (dist Nilgiris), Pwd Makkinampatti (dist Coimbatore) 6 Each; **South Interior Karnataka**: Agumbe Emo (dist Shivamogga) 15; Somwarpet (dist Kodagu) 12; Sringeri HMS (dist Chikkamagaluru) 11; Bhagamandala (dist Kodagu) 10; Jayapura (dist Chikkamagaluru) 8; Napoklu (dist Kodagu), Koppa (dist Chikkamagaluru) 7 Each; Kammardi (dist Chikkamagaluru), Balehonnur (dist Chikkamagaluru) 6 Each; **West Madhya Pradesh**: Harda (dist Harda), Hatpiplaya (dist Dewas) 14 Each; Khatagaon (dist Dewas) 11; Bagli (dist Dewas), Sonkatch (dist Dewas), Satwas (dist Dewas) 9 Each; Khaknar (dist Burhanpur), Khalwa (dist Khandwa) 7 Each; Multai (dist Betul), Khirkiya-arg (dist Harda), New Harsud (dist Khandwa), Barwaha (dist Khargone), Ichhawar (dist Sehore), Sanawad (dist Khargone) 6 Each; **Coastal Andhra Pradesh & Yanam**: Tekkali (dist Srikakulam) 14; Kalingsapatnam (dist Srikakulam) 13; Velairpad (dist Eluru) 9; Therlam (dist Vizianagaram) 8; Koyyalagudem (dist Eluru) 7; Gantyada (dist Vizianagaram) 6; **Telangana**: Gundala (dist B. Kothagudem) 13; Jajireddigudem (dist Suryapet) 11; Chandurthi (dist Rajanna Sircilla) 10; Ranjal (dist Nizamabad), Konijerla (dist Khammam) 9 Each; Julurpad (dist B. Kothagudem), Pinapaka (dist B. Kothagudem), Utnur (dist Adilabad), Makloor (dist Nizamabad), Mahabubabad (dist Mahabubabad), Mudhole (dist Nirmal), Kothaguda (dist Mahabubabad) 8 Each; **Madhya Maharashtra**: Chas ARG (dist Ahilyanagar) 13; Gaganbawada (dist Kolhapur) 11; Ahilyanagar - IMD Pt (dist Ahilyanagar) 7; Radhanagari (dist Kolhapur), Jat (dist Sangli) 6 Each; **Kerala & Mahe**: Lower Sholayar AWS (dist Thrissur) 12; Vytteri (dist Wynad) 11; Vadakara (dist Kozhikode), Parumbikulam (dist Palakkad), Angadipuram (dist Malappuram), Munnar Kseb (dist Idukki) 10 Each; Karipur Ap. (dist Malappuram), Manantoddy (dist Wynad) 9 Each; Quilandi (dist Kozhikode), Manjeri (dist Malappuram), Palakkad (dist Palakkad), Vellathooval AWS (dist Idukki), Malampuzha Dam AWS (dist Palakkad) 8 Each; **Coastal Karnataka**: Siddapura (dist Udupi) 12; Kundapur (dist Udupi) 9; Manki (dist Uttara Kannada) 8; Mudubidre (dist Dakshina Kannada), Belthangadi (dist Dakshina Kannada), Kota (dist Udupi) 7 Each; Honavar (dist Uttara Kannada), Uppinangadi (dist Dakshina Kannada), Dharmasthala (dist Dakshina Kannada) 6 Each; Vidarbha: Amgaon (dist Gondia) 12; Akot (dist Akola), Balapur (dist Akola) 6 Each; **Marathwada**: Latur (dist Latur) 12; Degloor - Fmo (dist Nanded) 7; Manvat (dist Parbhani), Mukhed (dist Nanded) 6 Each; **Konkan & Goa**: Lanja (dist Ratnagiri) 11; Vaibhavwadi (dist Sindhudurg) 10; Devgad (dist Sindhudurg) 7; East Uttar Pradesh: Katarniaghat (dist Bahraich) 11; Shardanagar (dist Kheri) 7; **Odisha**: Pattamundai (dist Kendrapara), Kotagarh (dist Kandhamal) 10 Each; Binjharapur (dist Jajpur), K Nuagaon (dist Kandhamal), Aul (dist Kendrapara), Basudevapur (dist Bhadrak) 9 Each; **Uttarakhand**: Loharkhet (dist Bageshwar) 9; Dunda (dist Uttarkashi), Didihat (dist Pithoragarh) 6 Each; Chhattisgarh: Rajpur (dist Balrampur) 8; Malkharoda (dist Sakti) 7.
- ❖ **Heavy Rainfall observed** (from 0830 hours IST of yesterday to 0830 hours IST of today): **Heavy to very heavy rainfall** at isolated places over West Madhya Pradesh, Madhya Maharashtra, Marathwada, Vidarbha, Coastal Andhra Pradesh & Yanam, Telangana, Tamil Nadu, Puducherry & Karaikal, Coastal Karnataka, South Interior Karnataka and Kerala & Mahe. **Heavy rainfall** at isolated places over Odisha, East Uttar Pradesh, Uttarakhand, Konkan & Goa and Chhattisgarh.
- ❖ **Minimum Temperature Departures (as on 28-05-2025)**: Minimum Temperature Departures are **markedly above normal (> 5.1°C)** at few places over Himachal Pradesh, West Rajasthan and East Madhya Pradesh; at isolated places over Assam & Meghalaya, Bihar, East Uttar Pradesh, West Uttar Pradesh and Saurashtra & Kutch. **appreciably above normal (3.1°C to 5.0°C)** at few places over Andaman & Nicobar Islands, Haryana-Chandigarh-Delhi and Punjab; at isolated places over Sub Himalayan West Bengal & Sikkim, Odisha, Uttarakhand, Jammu-Kashmir-Ladakh-Gilgit-Baltistan-Muzaffarabad, East Rajasthan, West Madhya Pradesh, Madhya Maharashtra, Tamil Nadu, Puducherry & Karaikal and Kerala & Mahe. **above normal (1.6°C to 3.0°C)** at most places over Arunachal Pradesh; at few places over Nagaland, Manipur, Mizoram & Tripura; at isolated places over Gangetic West Bengal, Jharkhand, Gujarat Region and Rayalaseema. **near normal (-1.5°C to 1.5°C)** at many places over Coastal Andhra Pradesh & Yanam; at most places over South Interior Karnataka and Lakshadweep; at few places over Konkan & Goa; at isolated places over Chhattisgarh. **The lowest minimum temperature** of 18.6°C is reported at Matheran (Maharashtra) over the Plains of India.
- ❖ **Maximum Temperature Departures (as on 27-05-2025)**: Maximum Temperature were **markedly above normal (> 5.1°C)** at few places over Jammu-Kashmir-Ladakh-Gilgit-Baltistan-Muzaffarabad; at isolated places over Assam & Meghalaya. **appreciably above normal (3.1°C to 5.0°C)** at few places over Arunachal Pradesh, Sub Himalayan West Bengal & Sikkim and Himachal Pradesh; at isolated places over Nagaland, Manipur, Mizoram & Tripura, West Uttar Pradesh, West Rajasthan, East Madhya Pradesh and Tamil Nadu, Puducherry & Karaikal. **above normal (1.6°C to 3.0°C)** at isolated places over Bihar and Saurashtra & Kutch. **near normal (-1.5°C to 1.5°C)** at many places over East Rajasthan; at most places over Lakshadweep; at few places over Andaman & Nicobar Islands, Odisha, East Uttar Pradesh, Uttarakhand, Punjab, Gujarat Region and Coastal Andhra Pradesh & Yanam; at isolated places over Gangetic West Bengal, Haryana-Chandigarh-Delhi, West Madhya Pradesh, South Interior Karnataka and Kerala & Mahe. **The highest maximum temperature of 46.6°C was reported at Barmer (West Rajasthan).**

* Red colour warning does not mean "Red Alert", Red colour warning means "Take Action".

Forecast and Warning for any day is valid from 0830 hours IST of day till 0830 hours IST of next day.

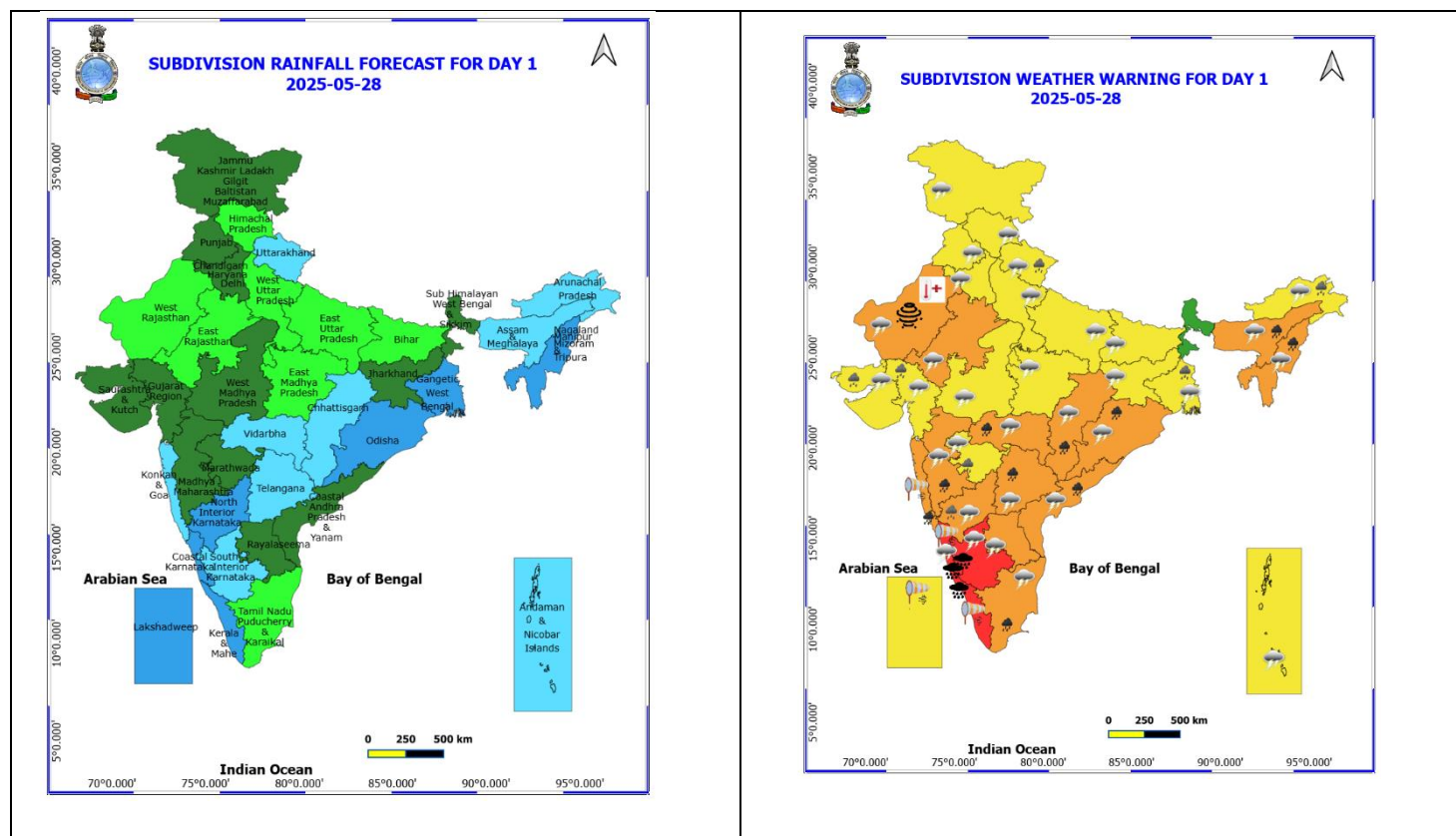
For more details, kindly visit <https://mausam.imd.gov.in> or contact: 011-2434-4599

(Service to the Nation since 1875)

Meteorological Analysis (Based on 0830 hours IST)

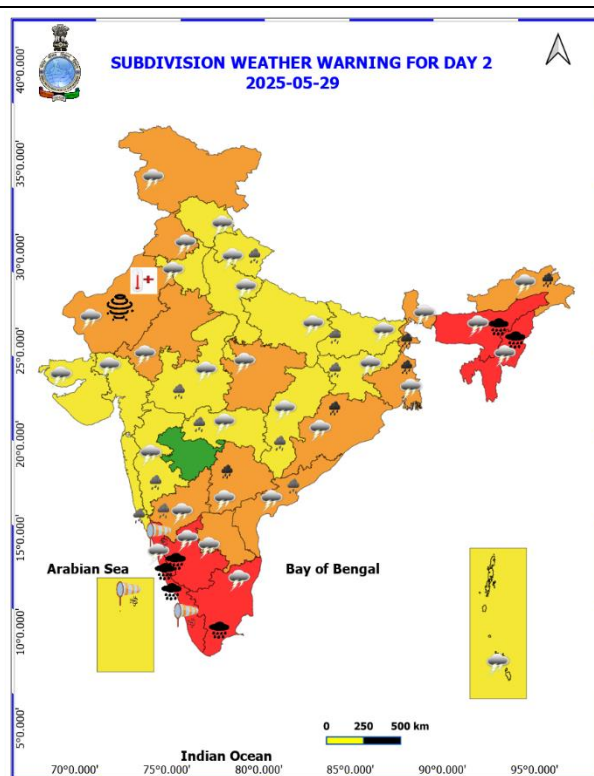
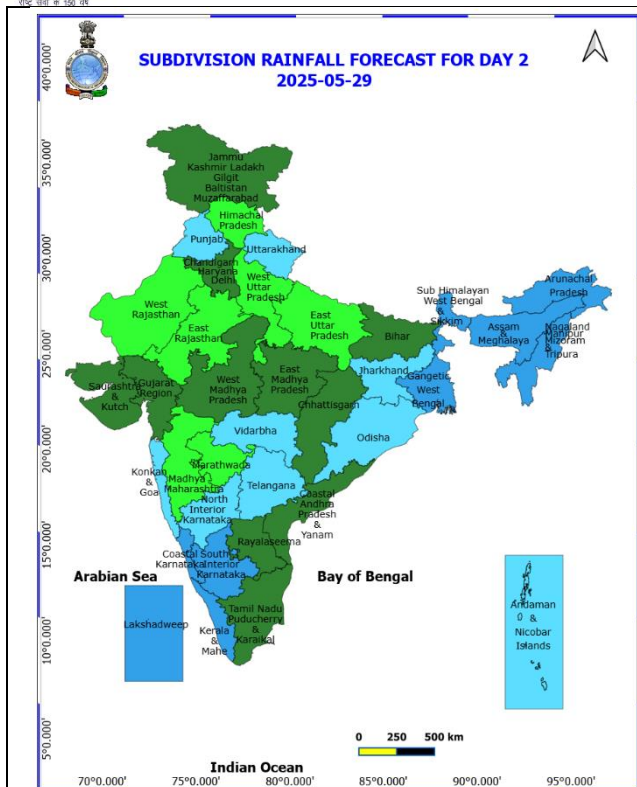
- ❖ Southwest Monsoon has further advanced into some more parts of Maharashtra, remaining parts of Karnataka, most parts of Telangana, remaining parts of Andhra Pradesh, some parts of Chhattisgarh & Odisha, remaining parts of westcentral Bay of Bengal today, the 28th May 2025.
- ❖ The Northern Limit of Monsoon passes through 17.0°N/55°E, 17.5°N/60°E, 18°N/65°E, 18.5°N/70°E, Mumbai, Ahilyanagar, Adilabad, Dantewada, Rayagada, 19°N/86°E, 21°N/89°E, Agartala, Goalpara and 28.5°N/89°E.
- ❖ Conditions are favourable for further advance of south west monsoon over remaining parts Northeastern states, some more parts of Chhattisgarh and Odisha, some parts of West Bengal and Sikkim during next 2 days.
- ❖ The **Well marked low Pressure area** over Northwest Bay of Bengal off Odisha coast persists over the same region at 0830 hrs IST of today, the 28th May 2025. Associated cyclonic circulation extends upto 7.6 km above mean sea level tilting southwards with height. It is likely to move slowly northwards and concentrate into a Depression over north Bay of Bengal during next 24 hours.
- ❖ The **Western Disturbance** in middle tropospheric westerlies with its axis at 5.8 km above mean sea level roughly along Long. 70°E to north of Lat. 30°N persists.
- ❖ The **upper air cyclonic circulation** lies over south Punjab & neighbourhood extending upto 1.5 km above mean sea level persists.
- ❖ The **upper air cyclonic circulation** over central parts of Rajasthan now lies over west Rajasthan at 0.9 km above mean sea level.
- ❖ The **trough** now runs from above cyclonic circulation over west Rajasthan to north Chhattisgarh across east Rajasthan and Madhya Pradesh at 0.9 km above mean sea level.
- ❖ The **upper air cyclonic circulation** over northeast Madhya Pradesh at 1.5km above mean sea level persists.
- ❖ The **shear zone** roughly along Lat. 17°N over the Indian Region persists and now seen between 3.1 and 4.5 km above mean sea level tilting southwards with height.
- ❖ A fresh **Western Disturbance** seen as a trough in middle tropospheric westerlies with its axis at 5.8 km above mean sea level runs roughly along Long. 55°E to the north of Lat. 32°N.
- ❖ The **upper air cyclonic circulation** over North Konkan & adjoining Eastcentral Arabian Sea at 1.5 km above mean sea level has become less marked.

Weather Forecast & Warnings for next 7 days (Upto 0830 hours IST of 04th June, 2025)



28th May (Day 1)

- ❖ **Heavy to Very Heavy Rainfall with isolated Extremely Heavy Rainfall** very likely at isolated places over Costal Karnataka, Kerala & Mahe and South Interior Karnataka.
- ❖ **Heavy to Very Heavy Rainfall** very likely at isolated places over Assam & Meghalaya, Chhattisgarh, Coastal Andhra Pradesh, Konkan & Goa, Madhya Maharashtra, Nagaland, Manipur, Mizoram and Tripura, Odisha, Tamil Nadu Puducherry & Karaikal, Telangana and Vidarbha.
- ❖ **Heavy Rainfall** very likely at isolated places over Uttarakhand, Arunachal Pradesh, Gangetic West Bengal, Gujarat State, Marathwada, North Interior Karnataka and Uttarakhand.
- ❖ **Thundersquall with wind speed reaching(50-60kmph)** very likely at isolated places over Andhra Pradesh, Interior Karnataka and Rajasthan.
- ❖ **Thunderstorm accompanied with lightning & gusty winds(40-50kmph)** very likely at isolated places over Andaman & Nicobar Islands, Chhattisgarh, Costal Karnataka, Gangetic West Bengal, Haryana, Chandigarh & Delhi, Madhya Pradesh, Nagaland, Manipur, Mizoram and Tripura, Odisha, Punjab, Tamil Nadu Puducherry & Karaikal, Telangana, Uttarakhand and Vidarbha.
- ❖ **Thunderstorm accompanied with lightning & gusty winds(30-40kmph)** very likely at isolated places over Assam & Meghalaya, Bihar, Himachal Pradesh, Jammu-Kashmir-Ladakh-Gilgit-Baltistan-Muzaffarabad, Jharkhand and Uttar Pradesh.
- ❖ **Thunderstorm accompanied with Lightning** very likely at isolated places over Arunachal Pradesh, Gujarat State, Madhya Maharashtra and Marathwada.
- ❖ **Dust Storm** very likely at isolated places over West Rajasthan.
- ❖ **Strong Surface Winds** very likely at isolated places over Costal Karnataka, Kerala & Mahe, Konkan & Goa and Lakshadweep.
- ❖ **Heat Wave conditions** very likely at isolated places over West Rajasthan.
- ❖ **Squally wind with speed 45 kmph to 55 kmph gusting to 65 kmph** likely to prevail along and off Somalia coast and northern parts of southwest Arabian Sea and adjoining west central Arabian Sea. **Squally weather with wind speed 35 kmph to 45 kmph gusting to 55 kmph** prevailing over south Arabian Sea, eastcentral Arabian Sea, many parts of westcentral Arabian Sea; along and off Konkan, Goa, Kerala, Karnataka coasts, over Lakshadweep area, Maldives area, Comorin area, over Gulf of Mannar, along and off Sri Lanka, Tamil Nadu, Andhra Pradesh, Myanmar coasts, over south and central Bay of Bengal, over Andaman Sea. **Squally weather with wind speed 40 kmph to 50 kmph gusting to 60 kmph** along and off Odisha and West Bengal, Bangladesh coasts, over north Bay of Bengal. **Squally weather with wind speed 45 kmph to 55 kmph gusting to 65 kmph** prevailing over many parts of central and adjoining parts of south and northeast Bay of Bengal. Fishermen are advised not to venture into these areas.



29th May (Day 2)

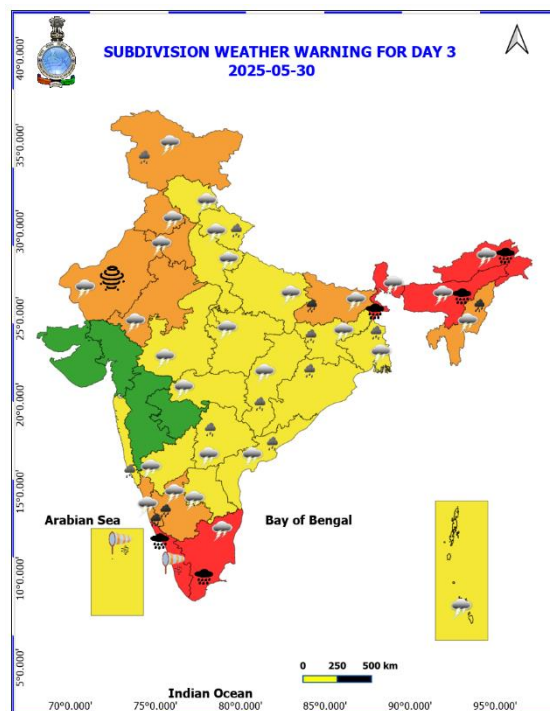
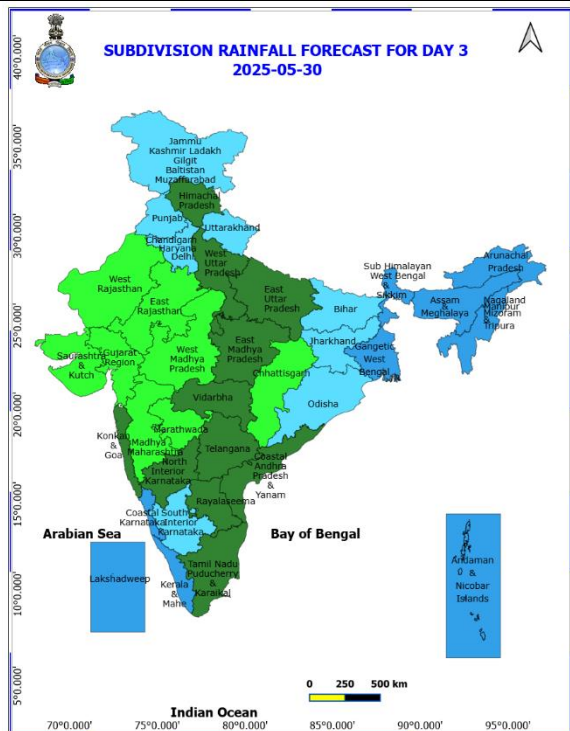
- ❖ **Heavy to Very Heavy Rainfall with isolated Extremely Heavy Rainfall** very likely at isolated places over Assam & Meghalaya, Coastal Karnataka, Kerala & Mahe, Nagaland, Manipur, Mizoram and Tripura, South Interior Karnataka and Tamil Nadu Puducherry & Karaikal.
- ❖ **Heavy to Very Heavy Rainfall** very likely at isolated places over Arunachal Pradesh, Odisha, Telangana and West Bengal & Sikkim.
- ❖ **Heavy Rainfall** very likely at isolated places over Uttarakhand, Bihar, Chhattisgarh, Coastal Andhra Pradesh, Jharkhand, Konkan & Goa, Madhya Maharashtra, North Interior Karnataka, Vidarbha and West Madhya Pradesh.
- ❖ **Thundersquall with wind speed reaching(50-60kmph)** very likely at isolated places over Andhra Pradesh, East Madhya Pradesh, Interior Karnataka, Jammu-Kashmir-Ladakh-Gilgit-Baltistan-Muzaffarabad, Punjab and Rajasthan.
- ❖ **Thunderstorm accompanied with lightning & gusty winds(40-50kmph)** very likely at isolated places over Andaman & Nicobar Islands, Assam & Meghalaya, Bihar, Chhattisgarh, Coastal Karnataka, Haryana, Chandigarh & Delhi, Jharkhand, Nagaland, Manipur, Mizoram and Tripura, Odisha, Tamil Nadu Puducherry & Karaikal, Telangana, Uttarakhand, West Bengal & Sikkim and West Madhya Pradesh.
- ❖ **Thunderstorm accompanied with lightning & gusty winds(30-40kmph)** very likely at isolated places over Arunachal Pradesh, Himachal Pradesh, Uttar Pradesh and Vidarbha.
- ❖ **Thunderstorm accompanied with Lightning** very likely at isolated places over Gujarat State and Madhya Maharashtra.
- ❖ **Dust Storm** very likely at isolated places over West Rajasthan.
- ❖ **Strong Surface Winds** very likely at isolated places over Coastal Karnataka, Kerala & Mahe and Lakshadweep.
- ❖ **Heat Wave conditions** very likely at isolated places over West Rajasthan.
- ❖ **Squally wind with speed 45 kmph to 55 kmph gusting to 65 kmph** likely to prevail along and off Somalia coast and northern parts of southwest Arabian Sea and adjoining west central Arabian Sea. **Squally weather with wind speed 35 kmph to 45 kmph gusting to 55 kmph** prevailing over south Arabian Sea, eastcentral Arabian Sea, many parts of westcentral Arabian Sea; along and off Konkan, Goa, Kerala, Karnataka coasts, over Lakshadweep area, Maldives area, Comorin area, over Gulf of Mannar, along and off Sri Lanka, Tamil Nadu, Andhra Pradesh, Myanmar coasts, over south and central Bay of Bengal, over Andaman Sea. **Squally weather with wind speed 40 kmph to 50 kmph gusting to 60 kmph** over northern parts of central Bay of Bengal, along and off north Andhra Pradesh coast adjoining to Odisha coast, along and off north Myanmar coast. **Squally weather with wind speed 45 kmph to 55 kmph gusting to 65 kmph** prevailing over along and off Odisha and West Bengal, Bangladesh coasts, over north Bay of Bengal, many parts of central Bay of Bengal. Fishermen are advised not to venture into these areas.

* Red colour warning does not mean "Red Alert", Red colour warning means "Take Action".

Forecast and Warning for any day is valid from 0830 hours IST of day till 0830 hours IST of next day.

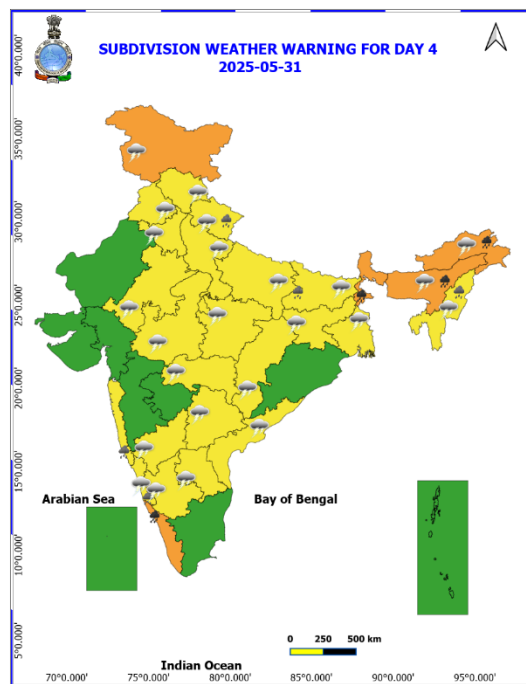
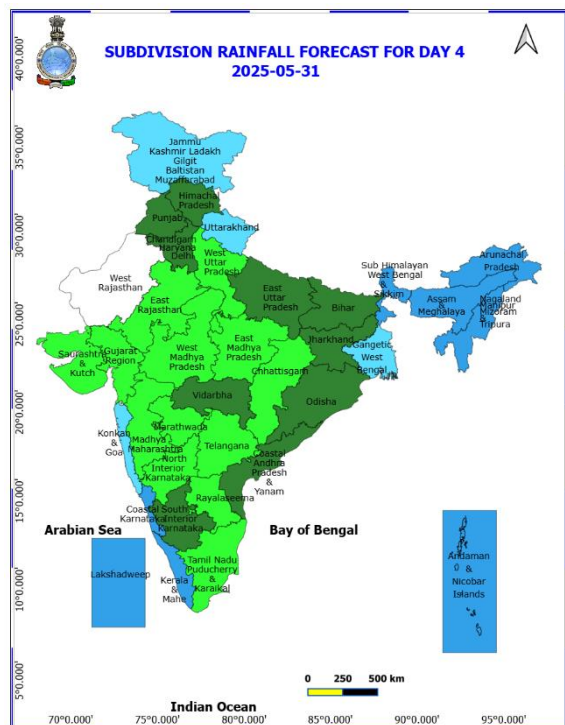
For more details, kindly visit <https://mausam.imd.gov.in> or contact: 011-2434-4599

(Service to the Nation since 1875)



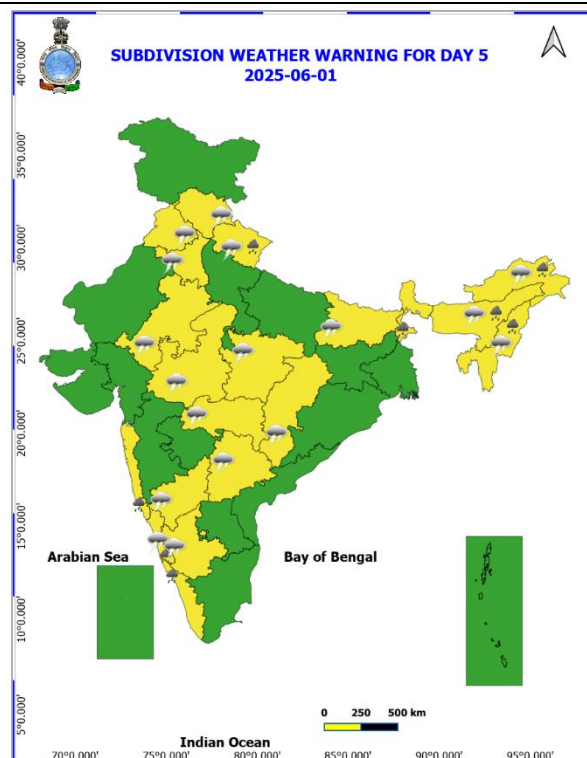
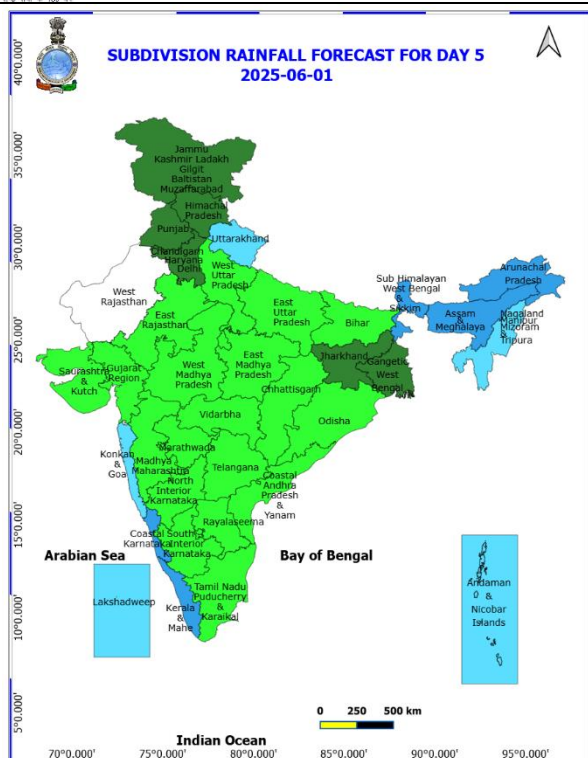
30th May (Day 3)

- ❖ **Heavy to Very Heavy Rainfall with isolated Extremely Heavy Rainfall** very likely at isolated places over Arunachal Pradesh, Assam & Meghalaya, Kerala & Mahe, Sub Himalayan West Bengal & Sikkim and Tamil Nadu Puducherry & Karaikal.
- ❖ **Heavy to Very Heavy Rainfall** very likely at isolated places over Bihar, Coastal Karnataka, Nagaland, Manipur, Mizoram and Tripura and South Interior Karnataka.
- ❖ **Heavy Rainfall** very likely at isolated places over Uttarakhand, Chhattisgarh, Coastal Andhra Pradesh, Gangetic West Bengal, Jammu-Kashmir-Ladakh-Gilgit-Baltistan-Muzaffarabad, Jharkhand, Konkan & Goa, Odisha and Telangana.
- ❖ **Thundersquall with wind speed reaching(50-60kmph)** very likely at isolated places over Haryana, Chandigarh & Delhi, Jammu-Kashmir-Ladakh-Gilgit-Baltistan-Muzaffarabad, Punjab and Rajasthan.
- ❖ **Thunderstorm accompanied with lightning & gusty winds(40-50kmph)** very likely at isolated places over Andaman & Nicobar Islands, Assam & Meghalaya, Bihar, Coastal Karnataka, East Uttar Pradesh, Himachal Pradesh, Interior Karnataka, Madhya Pradesh, Nagaland, Manipur, Mizoram and Tripura and West Bengal & Sikkim.
- ❖ **Thunderstorm accompanied with lightning & gusty winds(30-40kmph)** very likely at isolated places over Andhra Pradesh, Arunachal Pradesh, Chhattisgarh, Jharkhand, Telangana, Uttarakhand, Vidarbha and West Uttar Pradesh.
- ❖ **Thunderstorm accompanied with Lightning** very likely at isolated places over Tamil Nadu Puducherry & Karaikal.
- ❖ **Dust Storm** very likely at isolated places over West Rajasthan.
- ❖ **Strong Surface Winds** very likely at isolated places over Kerala & Mahe and Lakshadweep.
- ❖ **Squally wind with speed 45 kmph to 55 kmph gusting to 65 kmph** likely to prevail along and off Somalia coast and northern parts of southwest Arabian Sea and adjoining west central Arabian Sea, along and off Gujarat coast and adjoining northeast Arabian Sea. **Squally weather with wind speed 35 kmph to 45 kmph gusting to 55 kmph** prevailing over south Arabian Sea, eastcentral Arabian Sea, many parts of westcentral Arabian Sea; along and off Konkan, Goa, Kerala, Karnataka coasts, over Lakshadweep area, Maldives area, Comorin area, over Gulf of Mannar, along and off Sri Lanka, Tamil Nadu, Andhra Pradesh, Myanmar coasts, over south and central Bay of Bengal, over Andaman Sea. **Squally weather with wind speed 40 kmph to 50 kmph gusting to 60 kmph** along and off Odisha and West Bengal, Bangladesh coasts, over north Bay of Bengal. **Squally weather with wind speed 45 kmph to 55 kmph gusting to 65 kmph** prevailing over many parts of central and adjoining parts of south and northeast Bay of Bengal. Fishermen are advised not to venture into these areas.



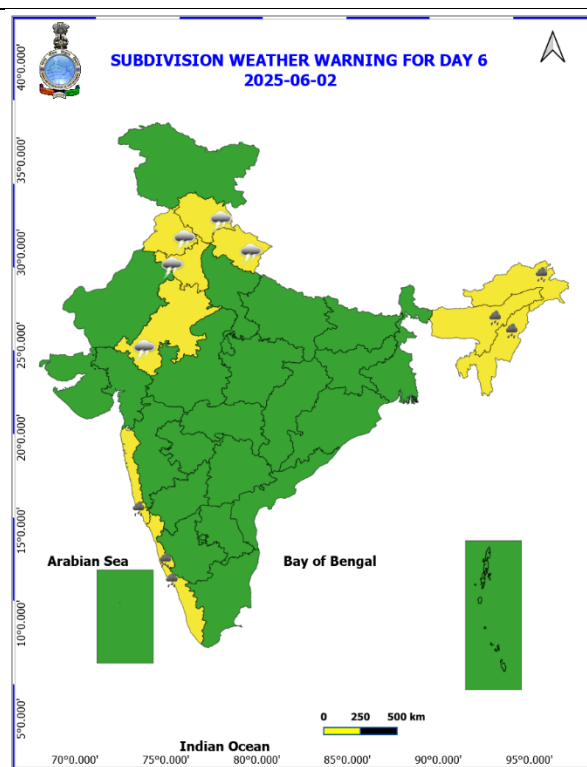
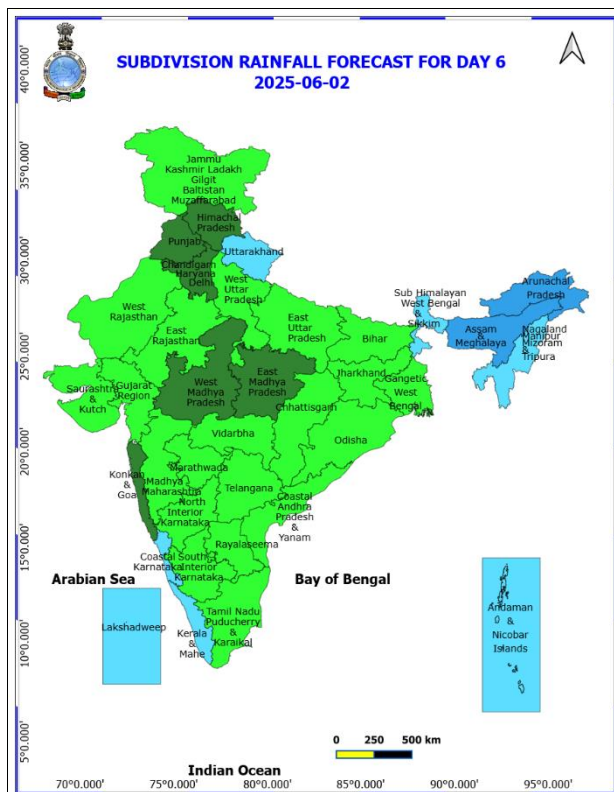
31th May (Day 4)

- ❖ **Heavy to Very Heavy Rainfall** likely at isolated places over Arunachal Pradesh, Assam & Meghalaya, Kerala & Mahe and Sub Himalayan West Bengal & Sikkim.
- ❖ **Heavy Rainfall** likely at isolated places over Uttarakhand, Bihar, Costal Karnataka, Konkan & Goa and Nagaland, Manipur, Mizoram and Tripura.
- ❖ **Thundersquall with wind speed reaching(50-60kmph)** likely at isolated places over Jammu-Kashmir-Ladakh-Gilgit-Baltistan-Muzaffarabad.
- ❖ **Thunderstorm accompanied with lightning & gusty winds(40-50kmph)** likely at isolated places over Costal Karnataka, East Rajasthan, East Uttar Pradesh, Himachal Pradesh, Interior Karnataka, Madhya Pradesh and Vidarbha.
- ❖ **Thunderstorm accompanied with lightning & gusty winds(30-40kmph)** likely at isolated places over Andhra Pradesh, Arunachal Pradesh, Assam & Meghalaya, Bihar, Chhattisgarh, Gangetic West Bengal, Haryana, Chandigarh & Delhi, Jharkhand, Nagaland, Manipur, Mizoram and Tripura, Punjab, Telangana, Uttarakhand and West Uttar Pradesh.
- ❖ **Squally wind with speed 45 kmph to 55 kmph gusting to 65 kmph** likely to prevail along and off Somalia coast and northern parts of southwest Arabian Sea and adjoining parts of west central, eastcentral, along and off Gujarat coast and adjoining northeast Arabian Sea. **Squally weather with wind speed 35 kmph to 45 kmph gusting to 55 kmph** prevailing over entire south Arabian Sea, eastcentral Arabian Sea, many parts of westcentral Arabian Sea; along and off Konkan, Goa, Kerala, Karnataka coasts, over Lakshadweep area, Maldives area, Comorin area, over Gulf of Mannar, along and off Sri Lanka, north Andhra Pradesh, off Bangladesh coast, over most parts of south central Bay of Bengal, many parts of north Bay of Bengal. **Squally weather with wind speed 45 kmph to 55 kmph gusting to 65 kmph** prevailing over many parts of central Bay of Bengal & adjoining parts of south Bay of Bengal.



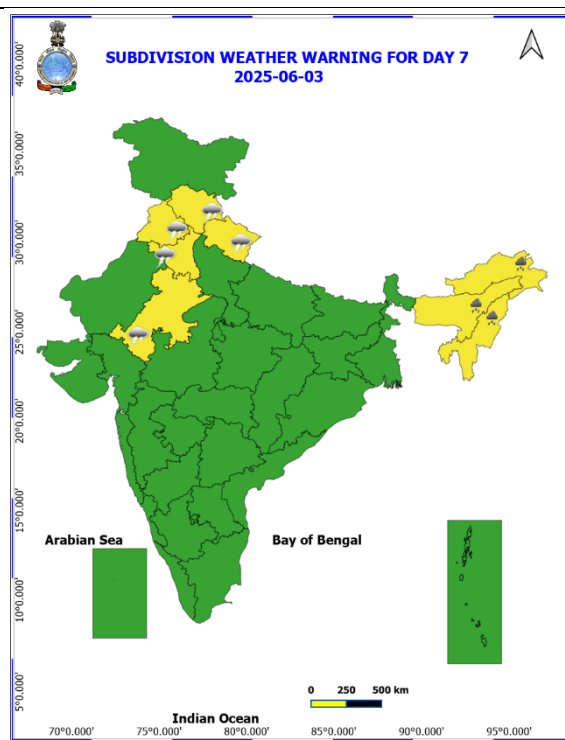
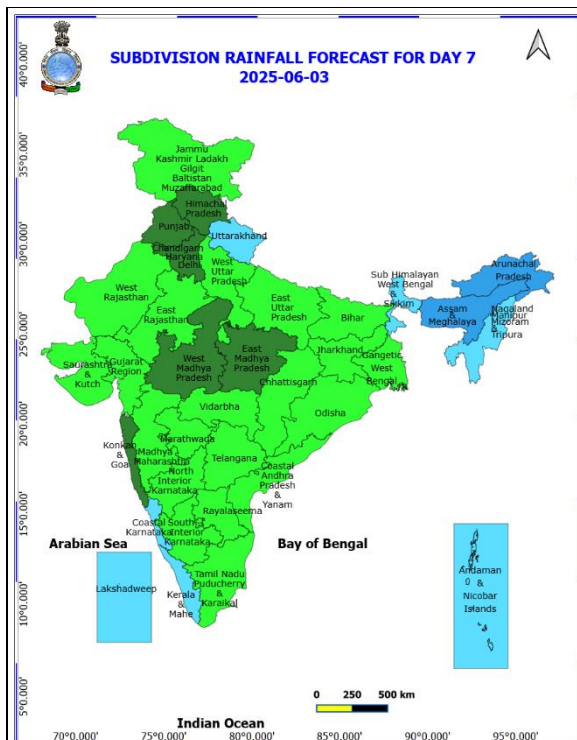
01st June (Day 5)

- ❖ **Heavy to Very Heavy Rainfall** likely at isolated places over Arunachal Pradesh, Assam & Meghalaya, Kerala & Mahe and Sub Himalayan West Bengal & Sikkim.
- ❖ **Heavy Rainfall** likely at isolated places over Uttarakhand, Bihar, Costal Karnataka, Konkan & Goa and Nagaland, Manipur, Mizoram and Tripura.
- ❖ **Thundersquall with wind speed reaching(50-60kmph)** likely at isolated places over Jammu-Kashmir-Ladakh-Gilgit-Baltistan-Muzaffarabad.
- ❖ **Thunderstorm accompanied with lightning & gusty winds(40-50kmph)** likely at isolated places over Costal Karnataka, East Rajasthan, East Uttar Pradesh, Himachal Pradesh, Interior Karnataka, Madhya Pradesh and Vidarbha.
- ❖ **Thunderstorm accompanied with lightning & gusty winds(30-40kmph)** likely at isolated places over Andhra Pradesh, Arunachal Pradesh, Assam & Meghalaya, Bihar, Chhattisgarh, Gangetic West Bengal, Haryana, Chandigarh & Delhi, Jharkhand, Nagaland, Manipur, Mizoram and Tripura, Punjab, Telangana, Uttarakhand and West Uttar Pradesh.
- ❖ **Squally wind with speed 45 kmph to 55 kmph gusting to 65 kmph** likely to prevail along and off Somalia coast and northern parts of southwest Arabian Sea and adjoining parts of west central, eastcentral, along and off Gujarat coast and adjoining northeast Arabian Sea. **Squally weather with wind speed 35 kmph to 45 kmph gusting to 55 kmph** prevailing over entire south Arabian Sea, eastcentral Arabian Sea, many parts of westcentral Arabian Sea; along and off Konkan, Goa, Kerala, Karnataka coasts, over Lakshadweep area, Maldives area, Comorin area, over Gulf of Mannar, along and off Sri Lanka, north Andhra Pradesh, off Bangladesh coast, over most parts of south central Bay of Bengal, many parts of north Bay of Bengal. **Squally weather with wind speed 45 kmph to 55 kmph gusting to 65 kmph** prevailing over many parts of central Bay of Bengal & adjoining parts of south Bay of Bengal.



02nd June (Day 6)

- ❖ **Heavy to Very Heavy Rainfall** likely at isolated places over Assam & Meghalaya.
- ❖ **Heavy Rainfall** likely at isolated places over Arunachal Pradesh, Bihar, Costal Karnataka, Kerala & Mahe, Konkan & Goa, Nagaland, Manipur, Mizoram and Tripura, South Interior Karnataka, Sub Himalayan West Bengal & Sikkim, Tamil Nadu Puducherry & Karaikal and Uttarakhand.
- ❖ **Thunderstorm accompanied with lightning & gusty winds(40-50kmph)** likely at isolated places over East Rajasthan, East Uttar Pradesh, Himachal Pradesh and Jammu-Kashmir-Ladakh-Gilgit-Baltistan-Muzaffarabad.
- ❖ **Thunderstorm accompanied with lightning & gusty winds(30-40kmph)** likely at isolated places over Bihar and Uttarakhand.
- ❖ **Thunderstorm accompanied with Lightning** likely at isolated places over Haryana, Chandigarh & Delhi and Punjab



03rd June (Day 7)

- ❖ **Heavy Rainfall** likely at isolated places over Arunachal Pradesh, Assam & Meghalaya and Nagaland, Manipur, Mizoram and Tripura.
- ❖ **Thunderstorm accompanied with lightning & gusty winds(40-50kmph)** likely at isolated places over East Rajasthan and Himachal Pradesh.
- ❖ **Thunderstorm accompanied with lightning & gusty winds(30-40kmph)** likely at isolated places over Haryana, Chandigarh & Delhi, Punjab and Uttarakhand.

Weather Outlook for subsequent 3 days (During 04th June- 06th June, 2025)

- ❖ **Fairly widespread to widespread** rainfall activity likely over Northeast India, West Bengal & Sikkim, Andaman & Nicobar Islands, Lakshadweep, Konkan & Goa, Coastal Karnataka and Kerala & Mahe.
- ❖ **Isolated to scattered rainfall** likely over Jammu-Kashmir-Ladakh, Uttarakhand, Himachal Pradesh, Odisha, south Chhattisgarh adjoining Coastal Andhra Pradesh & Yanam.

Action may be taken based on **ORANGE** AND **RED** COLOUR warnings.

- Vulnerable regions likely urban and hilly areas action may be initiated for heavy rainfall warning.
- As the lead period increases forecast accuracy decreases.

Fig. 1: Maximum Temperatures

Fig. 2: Departure of Maximum Temperatures

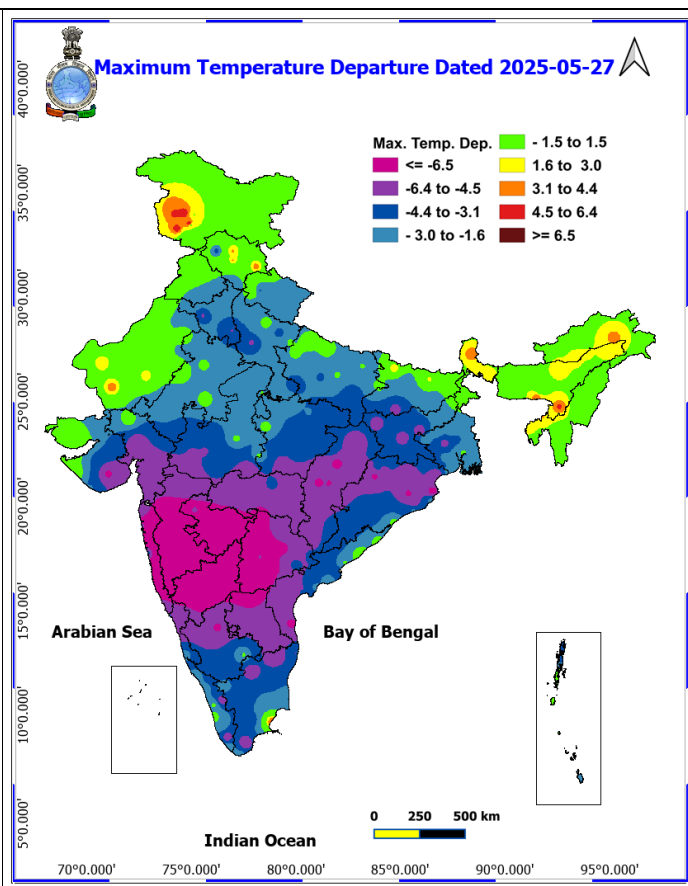
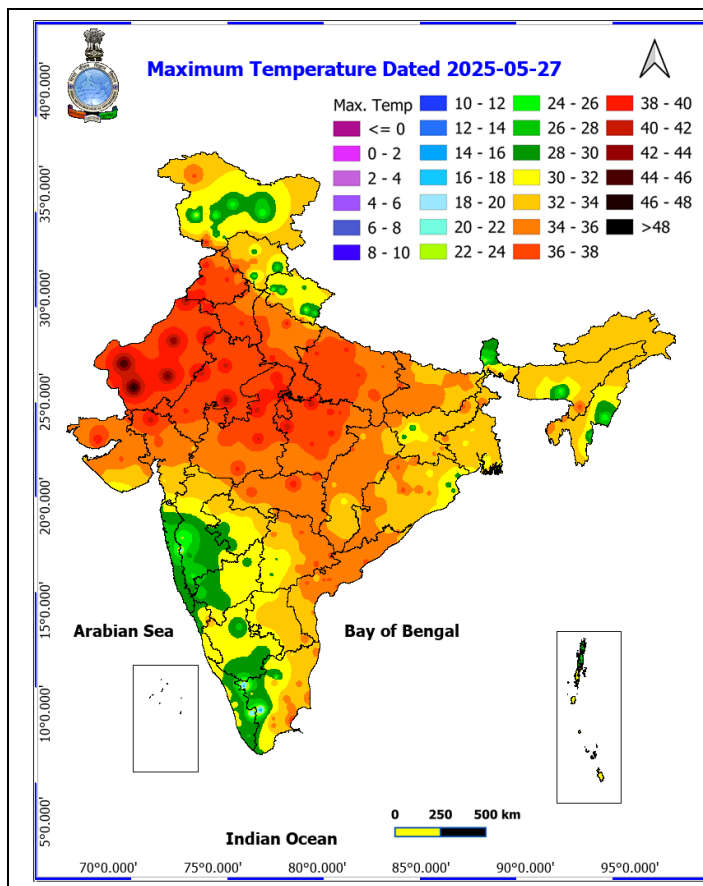


Fig. 3: Minimum Temperatures

Fig. 4: Departure of Minimum Temperatures

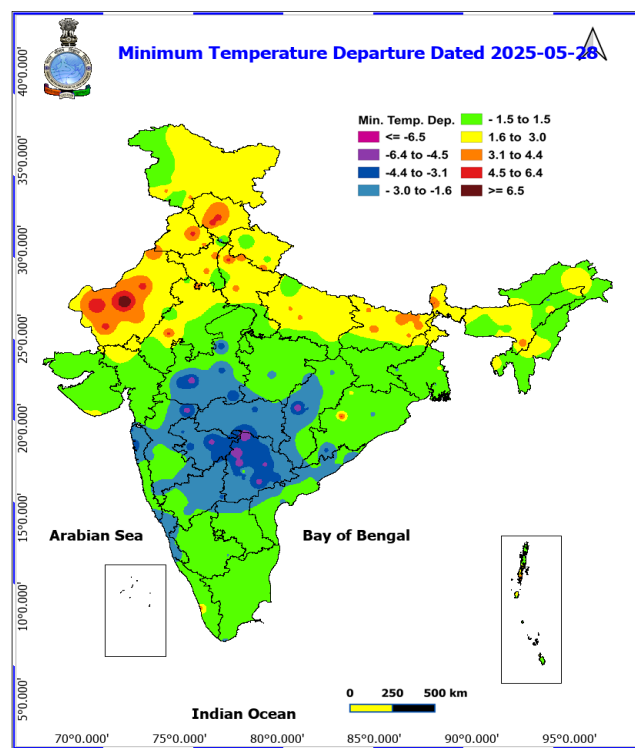
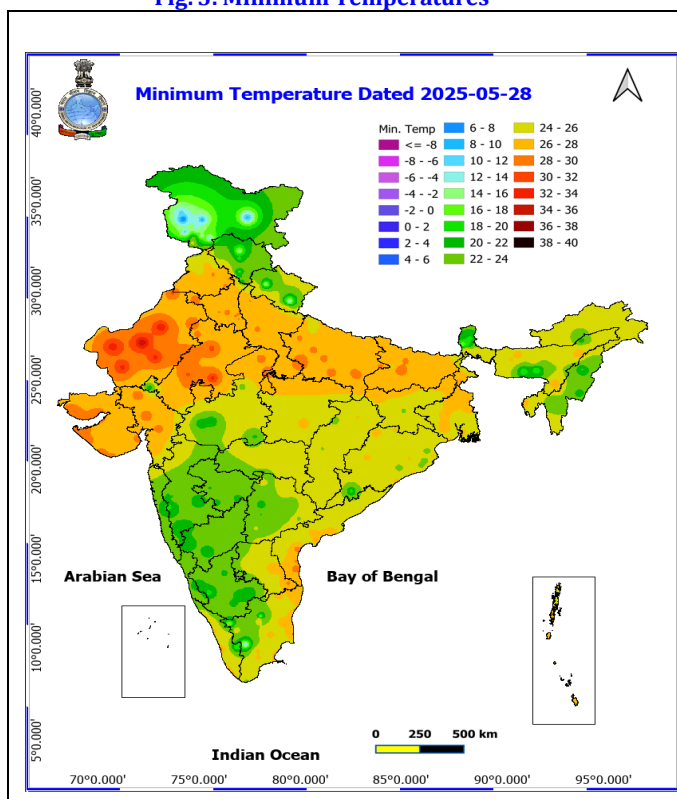


Fig. 5: Advance of Southwest Monsoon 2025

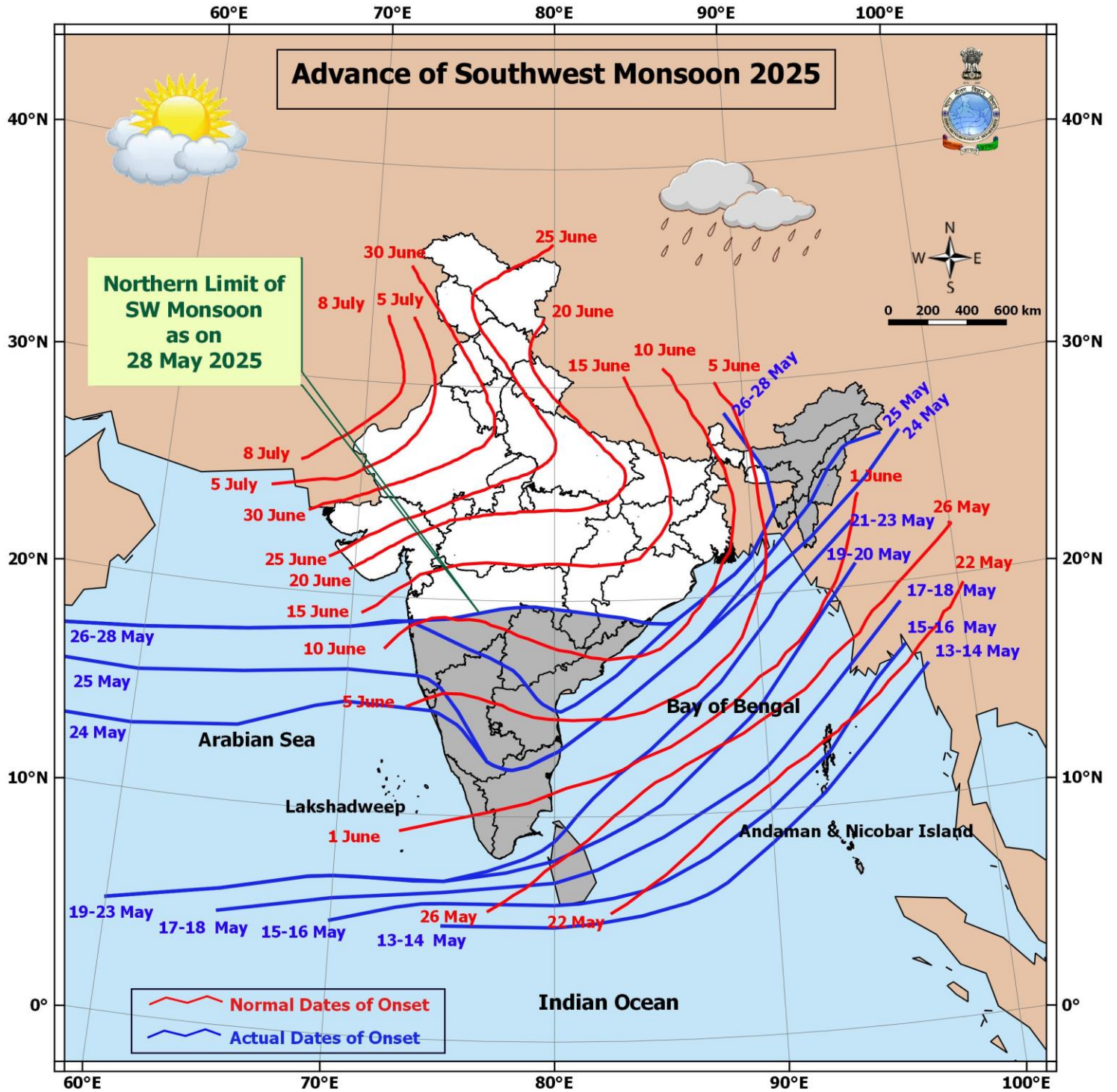
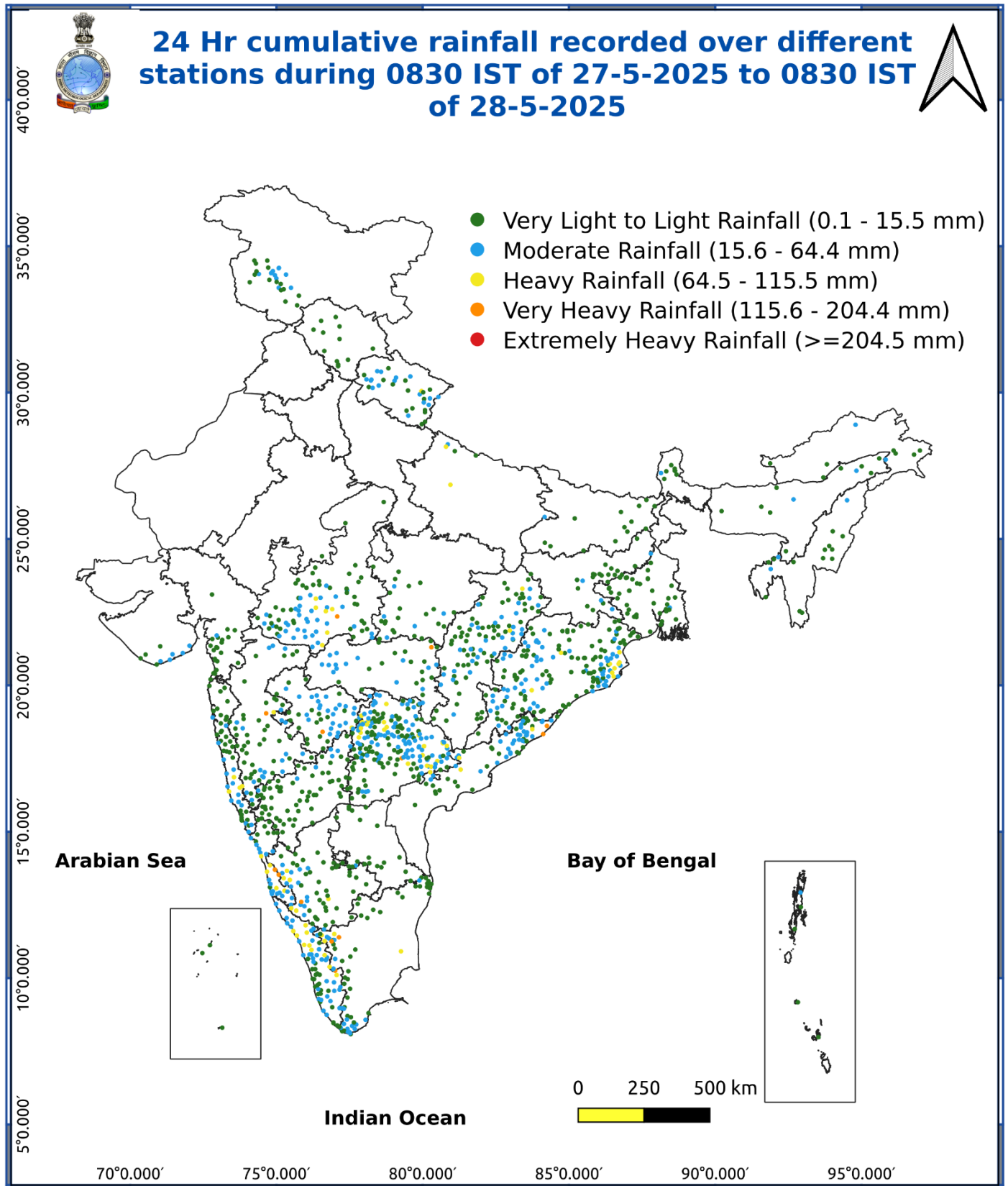


Fig. 6: Accumulated Rainfall (mm) during past 24 hours



Impact expected and action suggested over Northeastern States, Sub-Himalayan West Bengal & Sikkim due to heavy rainfall (orange and red areas) and squally winds

Impact expected:

- ❖ Breaking of tree branches, uprooting of small trees like banana, papaya, drum sticks. Strong wind and rain may damage plantation, horticulture and standing crops.
- ❖ Partial damage to vulnerable structures due to strong winds and rain.
- ❖ Minor damage to kutcha houses/walls, huts and roads due to heavy rain.
- ❖ Loose objects may fly.
- ❖ Onshore and offshore operations may get affected.
- ❖ Small ships, trawlers and boats may be affected.
- ❖ Road and rail traffic may be affected due to heavy rain and squally winds.
- ❖ There could be localised landslides, mudslides, landslips, water logging, inundation and flooding over low lying areas.
- ❖ Occasional reduction in visibility due to heavy rainfall.
- ❖ Helicopter services may get affected.

Action suggested:

- ❖ People are advised to keep a watch on the weather for worsening conditions and be ready to move to safer places accordingly.
- ❖ Take safe shelters; do not take shelter under trees, as there could be lightning.
- ❖ In case of expected lightning, unplug electrical/ electronic appliances, immediately, get out of water bodies and keep away from all the objects that conduct electricity.
- ❖ Tourism and recreational activities to be regulated.
- ❖ Onshore and offshore activities to be judiciously regulated.
- ❖ Helicopter services to be regulated.

Impact & Action Suggested due to Extremely and heavy to very heavy rainfall over west coast and other areas (For Red & Orange colour warning areas)

- ❖ **Extremely heavy rainfall** at isolated places over Tamilnadu Puducherry & Karaikal on 29th & 30th, Kerala & Mahe during 28th-30th, Coastal & South Interior Karnataka on 28th & 29th May.
- ❖ **Very heavy rainfall** very likely Coastal Andhra Pradesh & Yanam, Konkan & Goa, Madhya Maharashtra, Vidarbha, Chhattisgarh on 28th, Coastal Karnataka, Kerala & Mahe during 28th May -02nd June; South Interior Karnataka, Telangana, Tamilnadu Puducherry & Karaikal during 28th - 30th, Odisha on 28th & 29th, Bihar on 30th May.

Impact Expected

- ❖ Localized Flooding of roads, water logging in low lying areas of the above region.
- ❖ Occasional reduction in visibility due to heavy rainfall.
- ❖ Minor damage to kutcha roads.
- ❖ Possibilities of damage to vulnerable structure.
- ❖ Localized Landslides/Mudslides
- ❖ Damage to horticulture and standing crops in some areas due to inundation.
- ❖ It may lead to riverine flooding in some river catchments (for riverine flooding please visit Web page of CWC).

Action Suggested

- ❖ Check for traffic congestion on your route before leaving for your destination.
- ❖ Follow any traffic advisories that are issued in this regard.
- ❖ Avoid going to areas that face the water logging problems often.
- ❖ Avoid staying in vulnerable structure.

Impact expected and action suggested due to isolated thunderstorm with lightning/gusty & Squally winds over

- ✓ **Thundersquall wind speed reaching 50-60 kmph gusting to 70 kmph** over likely over Karnataka, Coastal Andhra Pradesh & Yanam, Rayalaseema on 28th & 29th May. East Madhya Pradesh on 29th, Bihar on 30th May. Rajasthan during 28th-30th, Jammu-Kashmir-Ladakh-Gilgit-Baltistan-Muzaffarabad during 29th-31st, Punjab on 29th & 30th, Haryana Chandigarh & Delhi on 30th May.

Impact expected:

- Minor to Major damage to banana and papaya trees.
- Strong wind/hail may damage plantation, horticulture and standing crops.
- Partial damage to vulnerable structures due to strong winds.
- Minor damage to kutcha houses/walls and huts.
- Loose objects may fly.

Action suggested:

*** Red colour warning does not mean "Red Alert", Red colour warning means "Take Action".**
Forecast and Warning for any day is valid from 0830 hours IST of day till 0830 hours IST of next day.
For more details, kindly visit <https://mausam.imd.gov.in> or contact: 011-2434-4599
(Service to the Nation since 1875)

- People are advised to keep a watch on the weather for worsening conditions and be ready to move to safer places accordingly.
- Stay indoors, close windows & doors and avoid travel if possible.
- Take safe shelters; do not take shelter under trees.
- Do not lie on concrete floors and do not lean against concrete walls.
- Unplug electrical/ electronic appliances.
- Immediately get out of water bodies.
- Keep away from all the objects that conduct electricity.

Agromet advisories for likely impact of Heavy Rainfall / Hailstorms / Gusty Winds / Heat Wave

- In North Eastern States, Andaman & Nicobar Islands, Gangetic West Bengal, Odisha, Uttarakhand, West Madhya Pradesh, Chhattisgarh, Maharashtra, Gujarat, Tamil Nadu, Kerala, Karnataka, Coastal Andhra Pradesh and Telangana, drain out excess water and ensure proper drainage in fields with standing crops and vegetables.
- In Himachal Pradesh, use hail nets and hail caps to prevent mechanical damage in vegetables and orchards due to the possibility of hailstorms.
- Shift the harvested produce in safer places or cover the produce with tarpaulin sheets in the fields. Tie the harvested crops properly and cover them to minimise the risk of displacement due to strong surface winds.
- Provide mechanical support to horticultural crops and staking to vegetables to avoid lodging.
- In West Rajasthan, apply light and frequent irrigation in the evening to protect standing crops, vegetables and orchards from the adverse effects of heat waves and high temperatures.

Livestock / Poultry / Fishery

- Keep the animals inside the shed during heavy rainfall / hailstorm and provide them balanced feed.
- Store feed and fodder in a safe place to prevent spoilage.
- Construct an outlet with proper netting around the ponds to drain out excess water, thereby preventing fish from escaping in case of overflow.
- To reduce the effect of heat wave/high temperature, cover the roof of poultry sheds with grass. Also, provide clean, hygienic and plenty of drinking water to animals.

Flash Flood Guidance:

24 hours Outlook for the Flash Flood Risk (FFR) till 1130 IST of 29-05-2025 :

Low flash flood risk likely over few watersheds & neighbourhoods of following Met Sub-divisions during next 24 hours.

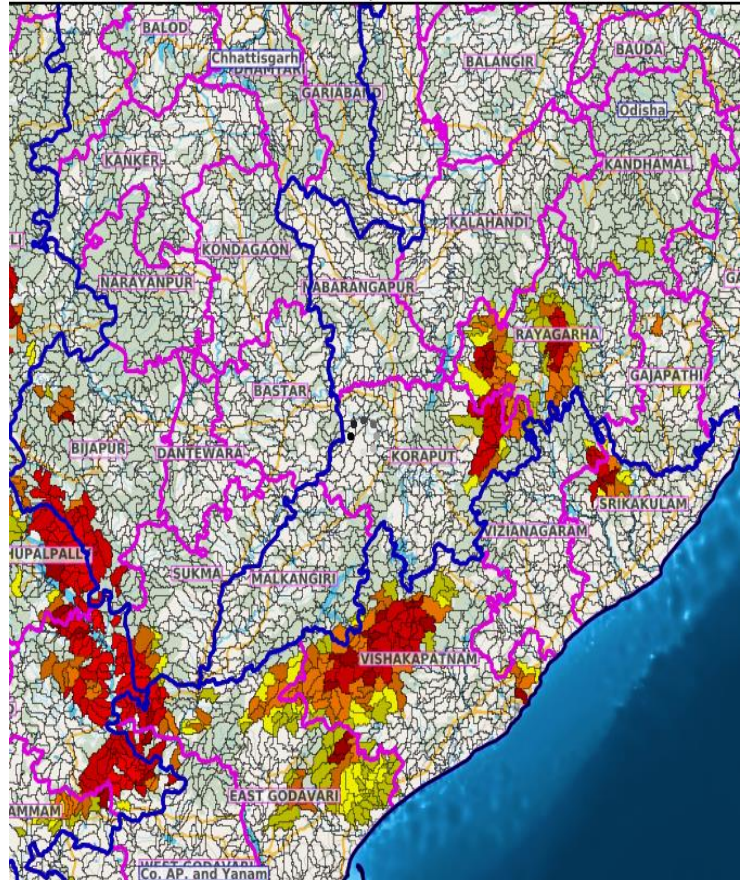
Coastal Andhra Pradesh & Yanam - East Godavari, Srikakulam, Vishakhapatnam, Vizianagaram and West Godavari districts.
Adjoining Telangana - Bhadradi Kothagudem, Jayashankar Bhupalpally and Khammam districts.

Adjoining Chhattisgarh - Bijapur and Sukma districts.

Odisha - Gajapathi, Kandhamal, Koraput, Malkangiri and Rayagarha districts.

Surface runoff/ Inundation may occur at some fully saturated soils & low-lying areas over Area of Concern (AoC) as shown in map due to expected rainfall occurrence in next 24 hours.

Product: GFS FFR | Timescale: 24-hr | Region: "INDIA"
Product Date: 2025-05-28 06:00 UTC | Valid Date: 2025-05-29 06:00 UTC



24 hours Outlook for the Flash Flood Risk (FFR) till 1130 IST of 29-05-2025 :

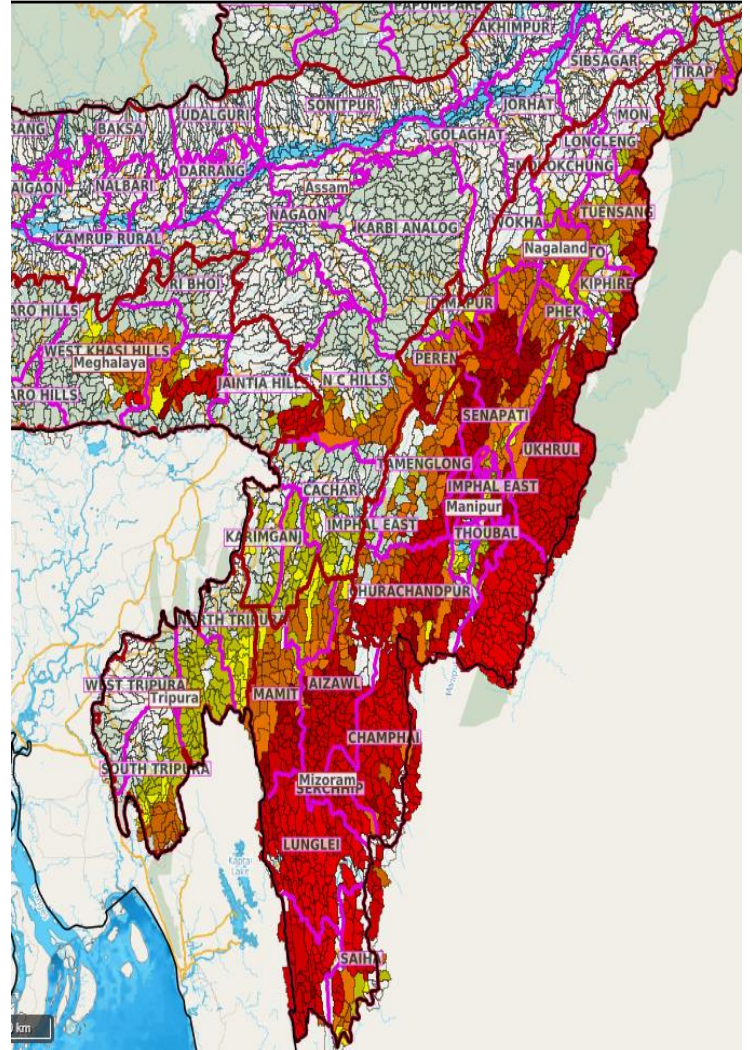
Low to Moderate flash flood risk likely over few watersheds & neighbourhoods of following Met Sub-divisions during next 24 hours.

Assam & Meghalaya - Cachar, Hailakandi, N.C Hills, Karimganj, East Khasi Hills, West Khasi Hills and Jaintia Hills districts.

Nagaland Mizoram Manipur Tripura (NMMT) - Bishnupur, Chandel, Churachandpur, Imphal East, Imphal West, Senapati, Tamenglong, Thoubal, Ukhrul, Aizawl, Champhai, Kolasib, Lawngtlai, Lunglei, Mamit, Saiha, Serchhip, Dimapur, Kiphire, Kohima, Mokokchung, Mon, Peren, Phek, Tuensang, Wokha, Zunheboto, Dhalai, Gomati, Khowai, North Tripura, Sipahijala, South Tripura and Unakoti districts.

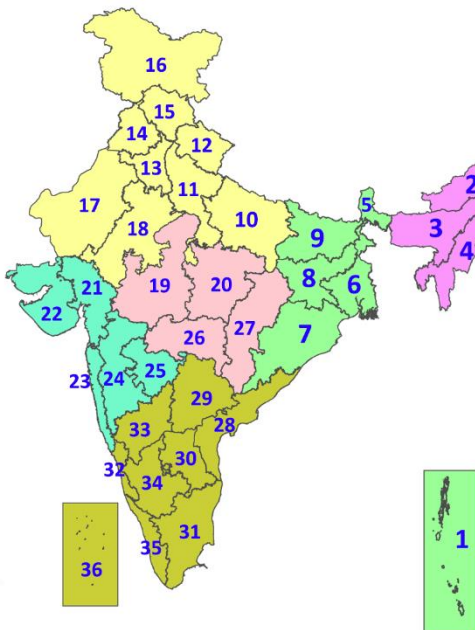
Surface runoff/ Inundation may occur at some fully saturated soils & low-lying areas over Area of Concern (AoC) as shown in map due to expected rainfall occurrence in next 24 hours.

Product: GFS FFR | Timescale: 24-hr | Region: "INDIA"
Product Date: 2025-05-28 06:00 UTC | Valid Date: 2025-05-29 06:00 UTC



LEGENDS

1. अंडमान और निकोबार द्वीपसमूह
2. अरुणाचल प्रदेश
3. असम और मेघालय
4. नागालैंड, मणिपुर, मिजोरम और त्रिपुरा
5. उप-हिमालयी पश्चिम बंगाल और सिक्किम
6. गंगीय पश्चिम बंगाल
7. ओडिशा
8. झारखंड
9. बिहार
10. पूर्वी उत्तर प्रदेश
11. पश्चिम उत्तर प्रदेश
12. उत्तराखंड
13. हरियाणा, चंडीगढ़ और दिल्ली
14. पंजाब
15. हिमाचल प्रदेश
16. जम्मू और कश्मीर और लद्दाख
17. पश्चिम राजस्थान
18. पूर्वी राजस्थान
19. पश्चिम मध्य प्रदेश
20. पूर्वी मध्य प्रदेश
21. गुजरात
22. सौराष्ट्र
23. कोंकण और गोवा
24. मध्य महाराष्ट्र
25. मराठवाड़ा
26. विदर्भ
27. छत्तीसगढ़
28. तटीय आंध्र प्रदेश और यनम
29. तेलंगाना
30. रायलसीमा
31. तमिलनाडु, पुडुचेरी और कराईकल
32. तटीय कर्नाटक
33. आंतरिक उत्तरी कर्नाटक
34. आंतरिक दक्षिणी कर्नाटक
35. केरल और माहे
36. लक्षद्वीप



1. Andaman & Nicobar Islands
2. Arunachal Pradesh
3. Assam & Meghalaya
4. Nagaland, Manipur, Mizoram & Tripura
5. Sub-Himalayan West Bengal & Sikkim
6. Gangetic West Bengal
7. Odisha
8. Jharkhand
9. Bihar
10. East Uttar Pradesh
11. West Uttar Pradesh
12. Uttarakhand
13. Haryana, Chandigarh & Delhi
14. Punjab
15. Himachal Pradesh
16. Jammu & Kashmir and Ladakh
17. West Rajasthan
18. East Rajasthan
19. West Madhya Pradesh
20. East Madhya Pradesh
21. Gujarat
22. Saurashtra
23. Konkan & Goa
24. Madhya Maharashtra
25. Marathwada
26. Vidarbha
27. Chhattisgarh
28. Coastal Andhra Pradesh & Yanam
29. Telangana
30. Rayalaseema
31. Tamilnadu, Puducherry & Karaikal
32. Coastal Karnataka
33. North Interior Karnataka
34. South Interior Karnataka
35. Kerala & Mahe
36. Lakshadweep

SPATIAL DISTRIBUTION (% of Stations reporting)

% Stations	Category	% Stations	Category
76-100	Widespread (WS/Most Places)	26-50	Scattered (SCT/A Few Places)
51-75	Fairly Widespread (FWS/Many Places)	1-25	Isolated (ISOL)



Fog



Heavy Rain



Very Heavy Rain



Extremely Heavy Rain



Thunder & Lightning



Hailstorm



Dust Raising Winds



Heavy Snow



Dust Storm



Heat Wave



Warm Night



Hot Day



Hot & Humid



Strong Surface Winds



Cold Wave



Cold Day



Ground Frost

COLOUR CODED WARNING

No Warning (No Action)

Watch (Be Aware)

Alert (Be Prepared To Take Action)

Warning (Take Action)

Probabilistic Forecast

Terms	Probability of Occurrence (%)
Unlikely	< 25
Likely	25 - 50
Very Likely	50 - 75
Most Likely	> 75

* Red colour warning does not mean "Red Alert", Red colour warning means "Take Action".

Forecast and Warning for any day is valid from 0830 hours IST of day till 0830 hours IST of next day.

For more details, kindly visit <https://mausam.imd.gov.in> or contact: 011-2434-4599

(Service to the Nation since 1875)

DEFINITION/CRITERIA

Rain/ Snow *

Heavy: 64.5 to 115.5 mm/cm *
Very Heavy: 115.6 to 204.4 mm/cm*
Extremely Heavy: > 204.4 mm/cm *

Heat Wave

When maximum temperature of a station reaches $\geq 40^\circ\text{C}$ for plains and $\geq 30^\circ\text{C}$ for hilly regions
(a) Based on Departure from normal

Heat Wave: Maximum Temperature Departure from normal 4.5°C to 6.4°C .

Severe Heat Wave: Maximum Temperature Departure from normal $\geq 6.5^\circ\text{C}$

(b). Based on Actual maximum temperature

Heat Wave: When actual maximum temperature $\geq 45^\circ\text{C}$.

Severe Heat Wave: When actual maximum temperature $\geq 47^\circ\text{C}$

(c). Criteria for heat wave for coastal stations

When maximum temperature departure is $> 4.5^\circ\text{C}$ from normal. Heat Wave may be described provided maximum temperature $\geq 37^\circ\text{C}$

Warm Night

When maximum temperature remains 40°C

Warm Night: When minimum temperature departure 4.5°C to 6.4°C .

Severe Warm Night: When minimum temperature departure $> 6.4^\circ\text{C}$.

Cold Wave

When minimum temperature of a station $\leq 10^\circ\text{C}$ for plains and $\leq 0^\circ\text{C}$ for hilly regions.
(a). Based on departure

Cold Wave: Minimum Temperature Departure from normal -4.5°C to -6.4°C .

Severe Cold Wave: Minimum Temperature Departure from normal $\leq -6.5^\circ\text{C}$

(b) Based on actual Minimum Temperature (for Plains only)

Cold Wave : When Minimum Temperature is $\leq 4.0^\circ\text{C}$

Severe Cold Wave: When Minimum Temperature is $\leq 2.0^\circ\text{C}$

(c) For Coastal Stations

When Minimum Temperature departure is $\leq -4.5^\circ\text{C}$ & actual Minimum Temperature is $\leq 15^\circ\text{C}$

Cold Day

When minimum temperature of a station $\leq 10^\circ\text{C}$ for plains and $\leq 0^\circ\text{C}$ for hilly regions
Based on departure

Cold Day: Maximum Temperature Departure from normal -4.5°C to -6.4°C .

Severe Cold Day: Maximum Temperature Departure from normal $\leq -6.5^\circ\text{C}$

Fog

Phenomenon of small droplets suspended in air and the horizontal visibility $< 1\text{km}$

Moderate Fog: When the visibility between 500-200 metres

Dense Fog: when the visibility between 50- 200 metres

Very Dense Fog: when the visibility < 50 metres

Thunderstorm

Sudden electrical discharges manifested by a flash of light (Lightning) and a sharp rumbling sound (thunder)

Dust/Sand Storm

An ensemble of particles of dust or sand energetically lifted to great heights by a strong and turbulent wind.

Frost

Ice deposits on ground

Air temperature $\leq 4^\circ\text{C}$ (over Plains)

Squall

A strong wind that rises suddenly, lasts for atleast 1 minute.

Moderate: Wind speed 52-61 kmph

Severe: Wind speed 62-87 kmph

Very Severe: Wind speed > 87 kmph

Sea State

Effect of various waves in the sea over specific area

Rough to very rough: Wind speed 41-62 kmph (22-33 knots) & Wave height 2.5-6 metre

High to very high: Wind speed 63-117 kmph (34-63 knots) & Wave height 6-14 metre

Phenomenal: Wind speed > 117 kmph (> 63 knots) & Wave height > 14 metre

Cyclone

Cyclonic Storm: Wind speed 62-87 kmph (34-47 knots)

Severe Cyclonic Storm: Wind speed 88-117 kmph (48-63 knots)

Very Severe Cyclonic Storm: Wind speed 118-165 kmph (64 - 89 knots)

Extremely Severe Cyclonic Storm: Wind speed 166-220 kmph (90 -119 knots)

Super Cyclone Strom: Wind speed > 220 kmph (> 119 knots)