

2026-02-24

Time of Issue: 16:30:00 hours IST
(Evening)

ALL INDIA WEATHER SUMMARY AND FORECAST BULLETIN

Significant Weather Features

Weather Systems, Forecast and Warnings

- ❖ Fairly wide spread to wide spread light/moderate rainfall with **thunderstorm, lightning & gusty winds speed reaching (30-40 kmph)** likely over Andaman & Nicobar Islands on 24th & 25th February.
- ❖ Isolated to scattered light/moderate rainfall with **thunderstorm, lightning & gusty winds speed reaching (30-40 kmph)** likely over Gangetic West Bengal, Jharkhand, Odisha on 24th; with **thunderstorm &**
- ❖ **lightning** likely over East Madhya Pradesh, Sikkim, Arunachal Pradesh, Assam & Meghalaya, Coastal Andhra Pradesh & Yanam, Telangana, Lakshadweep on 24th; Chhattisgarh during 24th-26th; Vidarbha, Kerala & Mahe, Interior Karnataka and Tamil Nadu on 24th & 25th February.
- ❖ Isolated **light** rainfall/snowfall likely over Jammu-Kashmir, Himachal Pradesh and Uttarakhand on 27th & 28th February.

Dense Fog Warnings:

- ❖ **Dense fog conditions** likely during morning hours in isolated pockets over Punjab and Odisha till 25th February.

Forecast of maximum temperatures:

- ❖ Gradual rise in maximum temperature by 2-3°C likely over plains of Northwest India during next 7 days. Hence, **maximum temperatures are likely to be above normal by 3-5°C over many parts of Northwest India during the week.**
- ❖ Gradual rise in maximum temperature by 2-3°C likely over Central & East India during next 4 days and no significant change during subsequent 3 days.
- ❖ No significant change in maximum temperature likely over Maharashtra during next 2 days and gradual rise by 2-3°C during subsequent 5 days.
- ❖ No significant change in maximum temperatures likely over rest parts of the country.

***Red color warning does not mean "Red Alert" Red color warning means "Take Action"**

Forecast and warning for any day is valid from 0830 hours IST of day till 0830 hours IST of next day

For more details kindly visit <https://mausam.imd.gov.in> or contact 011-2434-4599

(Service to the nation since 1875)

Main Weather Observations:

- ❖ **Rainfall distribution** (from 0830 hours IST of yesterday to 0830 hours IST of today): **at many places** over Andaman & Nicobar Islands, Gangetic West Bengal and Telangana; **at a few places** over Jharkhand and North Interior Karnataka; **at isolated places** over Sub Himalayan West Bengal & Sikkim, Odisha, East Uttar Pradesh, Uttarakhand, East Rajasthan, West Madhya Pradesh, East Madhya Pradesh, Gujarat Region, Marathwada, Vidarbha, Chhattisgarh, Coastal Andhra Pradesh & Yanam, Tamil Nadu, Puducherry & Karaikal and Kerala & Mahe; **Dry** over rest of the country.
- ❖ **Significant rainfall recorded(in cm)** (from 0830 hours IST of yesterday to 0830 hours IST of today): **Telangana:** Wyra Kvk(agro) (dist Khammam) 6; Chandrugonda (dist B. Kothagudem) 5; Wanaparthy (dist Wanaparthy) 4; Bonakal (dist Khammam), Devarakonda (dist Nalgonda), Konijerla (dist Khammam), Sathupalle (dist Khammam), Dubbak (dist Siddipet), Laxmanchanda (dist Nirmal), Doultabad (dist Siddipet) 3 Each; **Coastal Andhra Pradesh & Yanam:** Komarada (dist Parvathipuram Manyam) 5; Nandigama (dist Ntr District), Chintur (dist Alluri Sitharamaraju) 4 Each; Velairpad (dist Eluru) 3; **Kerala & Mahe:** Neryamangalam ARG (dist Ernakulam) 5; Venkurinji AWS (dist Pathanamthitta) 4; **Odisha:** Joshipur (dist Mayurbhanj) 4; R.udaigiri (dist Gajapati), Champua (dist Keonjhar) 3 Each; **Chhattisgarh:** Orcha (dist Narayanpur), Bade Bachel (dist Dantewada) 4 Each; **Marathwada:** Renapur (dist Latur) 4; **North Interior Karnataka:** Hungund (dist Bagalkote) 3; **Tamil Nadu, Puducherry & Karaikal:** Cincona (dist Coimbatore) 3; **Jharkhand:** Dhalbhumgarh (dist East Singhbhum) 3.
- ❖ **Dense to very Dense fog (visibility <50 m)** conditions prevailed in isolated pockets over Punjab, West Uttar Pradesh; **Dense fog (visibility 50-199 m)** conditions in isolated pockets over Himachal Pradesh.
- ❖ **Visibility Reported (In Meters <200 m):** **Punjab:** Amritsar & Patiala 0m; **West Uttar Pradesh:** Bareilly 0m, Sarsawa 100m; **Himachal Pradesh:** Bilaspur 100m.
- ❖ **Hailstorm** activity has been recorded at isolated places over East Madhya Pradesh, Chhattisgarh, Vidarbha, Odisha, Telangana.
- ❖ **Minimum Temperature Departures (as on 24-02-2026):** were **appreciably above normal** by **3-5°C** over Jammu-Kashmir, Himachal Pradesh, Rajasthan, Gujarat State, Madhya Pradesh, Bihar; **above normal (1.6°C to 3.1°C)** over Punjab, Haryana, Chandigarh & Delhi, Uttar Pradesh, Maharashtra, Odisha, Assam & Meghalaya; some parts of South peninsular India and **near normal** over rest parts of the country. **The lowest minimum temperature of 9.5°C** was observed at **Bhatinda (Punjab)** over the Plains of India.
- ❖ **Maximum Temperature Departures (as on 23-02-2026):** were markedly **above normal (> 6.5 °C)** over Jammu-Kashmir; appreciably above normal by **3-5°C** over Himachal Pradesh, Punjab, Haryana, Chandigarh & Delhi, Rajasthan, West Uttar Pradesh, Gujarat State, Vidarbha, Gangetic West Bengal; by **2-3°C** over Madhya Pradesh, Jharkhand, Konkan, Odisha, Sub-Himalayan West Bengal & Sikkim, Assam & Meghalaya and **near normal** over rest parts of the country. These were in the range of **34-37°C** over West Rajasthan, Odisha, West & South Peninsular India; **30-34°C** over Delhi, Uttar Pradesh, remaining parts of Rajasthan, many parts of Central & East India, Assam & Meghalaya, Tripura; **25-30°C** over Himachal Pradesh, Uttarakhand, Punjab, Haryana, Chandigarh, Manipur, Mizoram. The **highest maximum temperature of 37.8°C** was observed at **Erode (Tamil Nadu)** over the plains of India.

*Red color warning does not mean "Red Alert" Red color warning means "Take Action"

Forecast and warning for any day is valid from 0830 hours IST of day till 0830 hours IST of next day

For more details kindly visit <https://mausam.imd.gov.in> or contact 011-2434-4599

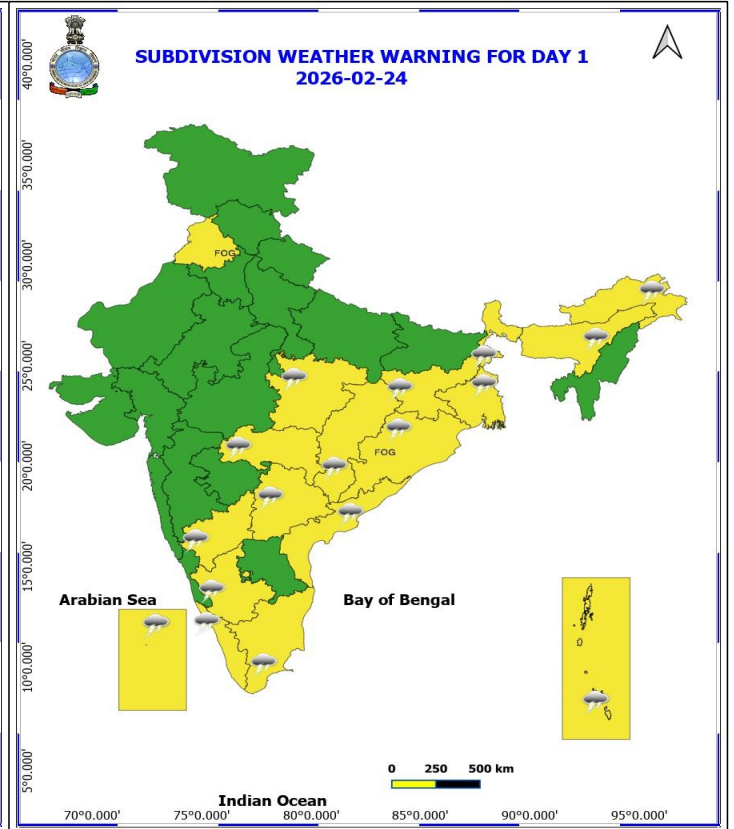
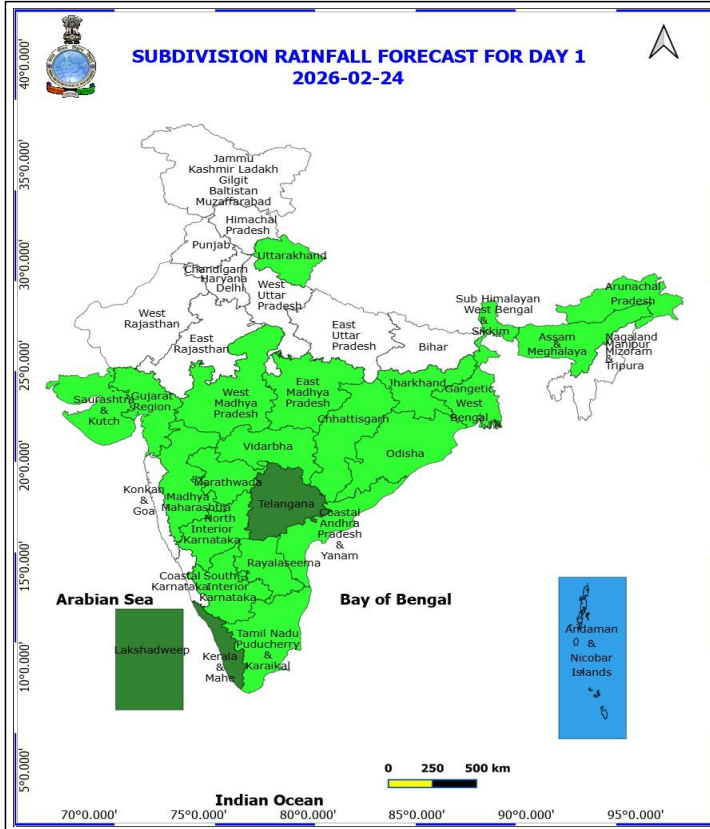
(Service to the nation since 1875)

Meteorological Analysis (Based on 1430 hours IST)

- ❖ The **Low-Pressure Area** over southeast Bay of Bengal persisted over the same region at 1430 hrs IST of today, the 24th February, 2026. The associated cyclonic circulation extends upto 3.1 km above mean sea level. It is very likely to continue to move eastwards and weaken gradually during next 24 hrs.
- ❖ The **upper air cyclonic circulation** over northeast Assam & neighbourhood at 3.1 km above mean sea level persists.
- ❖ The **trough** in middle and upper tropospheric westerlies with its axis at 5.8 km above mean sea level roughly along Long. 87°E to the north of Lat. 21°N persists.
- ❖ The **upper air cyclonic circulation** over Gangetic West Bengal adjoining north coastal Odisha at 1.5 km above mean sea level persists.
- ❖ The **upper air cyclonic circulation** over Northeast Arabian sea adjoining Saurashtra & kutch between 1.5 & 3.1 km above mean sea level persists.
- ❖ **Subtropical westerly Jet Stream** with core winds of the order of 105 knots at 12.6 km above mean sea level continues to prevail over Northeast India.
- ❖ The **upper air cyclonic circulation** over southeast Arabian sea off south Kerala coast at 0.9 km above mean sea level persists.
- ❖ The **trough** from South Interior Karnataka to Marathwada at 0.9 km above mean sea level persists.
- ❖ A fresh feeble **Western Disturbance** is likely to affect western Himalayan region from 27th February, 2026.
- ❖ Another fresh **Western Disturbance** is likely to affect western Himalayan region from 2nd March, 2026.

Weather Outlook for subsequent 3 days

- ♦ Isolated to Scattered rainfall activity likely over Western Himalayan region, Kerala & Mahe, Arunachal Pradesh and Lakshadweep.



24 February (Day 1)

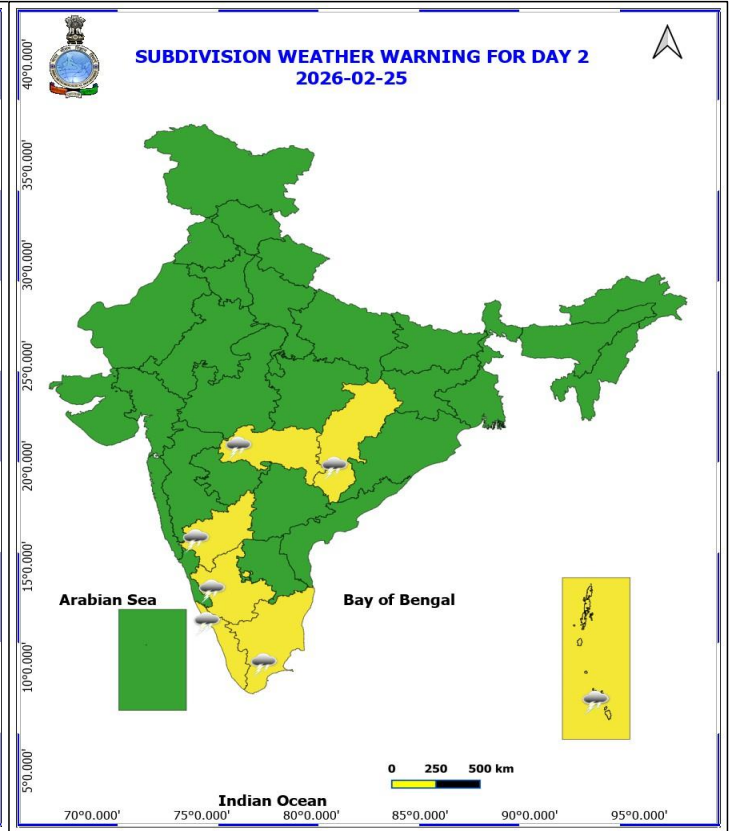
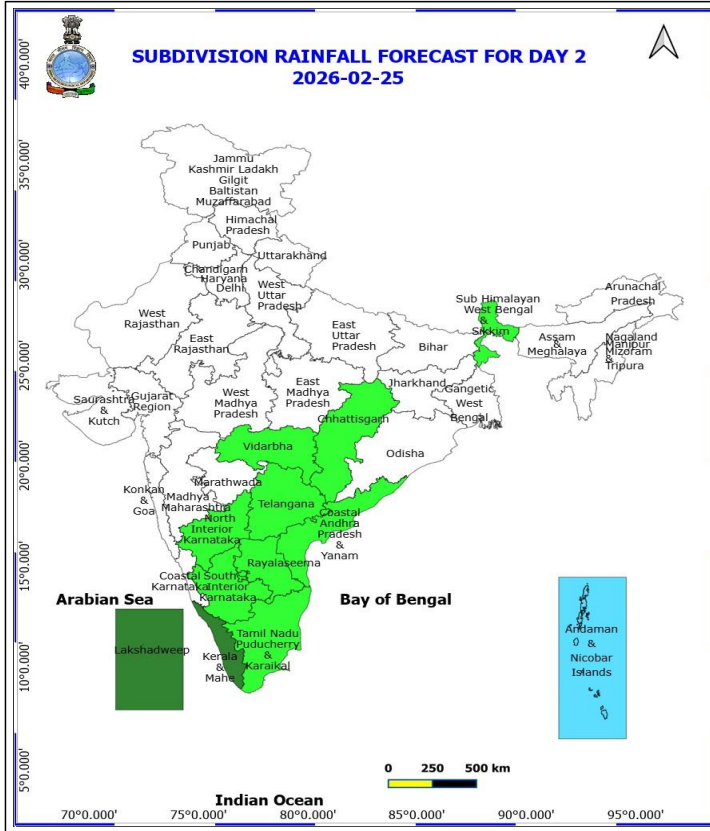
- ❖ **Thunderstorm accompanied with lightning & gusty winds(30-40kmph)** very likely at isolated places over Andaman & Nicobar Islands, Gangetic West Bengal, Jharkhand and Odisha.
- ❖ **Thunderstorm accompanied with Lightning** very likely at isolated places over Arunachal Pradesh, Assam & Meghalaya, Chhattisgarh, Coastal Andhra Pradesh, East Madhya Pradesh, Interior Karnataka, Kerala & Mahe, Lakshadweep, Sub Himalayan West Bengal & Sikkim, Tamil Nadu Puducherry & Karaikal, Telangana and Vidarbha.
- ❖ **Dense Fog** very likely at isolated places over Odisha and Punjab.
- ❖ **Squally weather with wind speed 40 to 50 kmph gusting to 60 kmph** likely to prevail over central parts of south adjoining central Bay of Bengal.

***Red color warning does not mean "Red Alert" Red color warning means "Take Action"**

Forecast and warning for any day is valid from 0830 hours IST of day till 0830 hours IST of next day

For more details kindly visit <https://mausam.imd.gov.in> or contact 011-2434-4599

(Service to the nation since 1875)



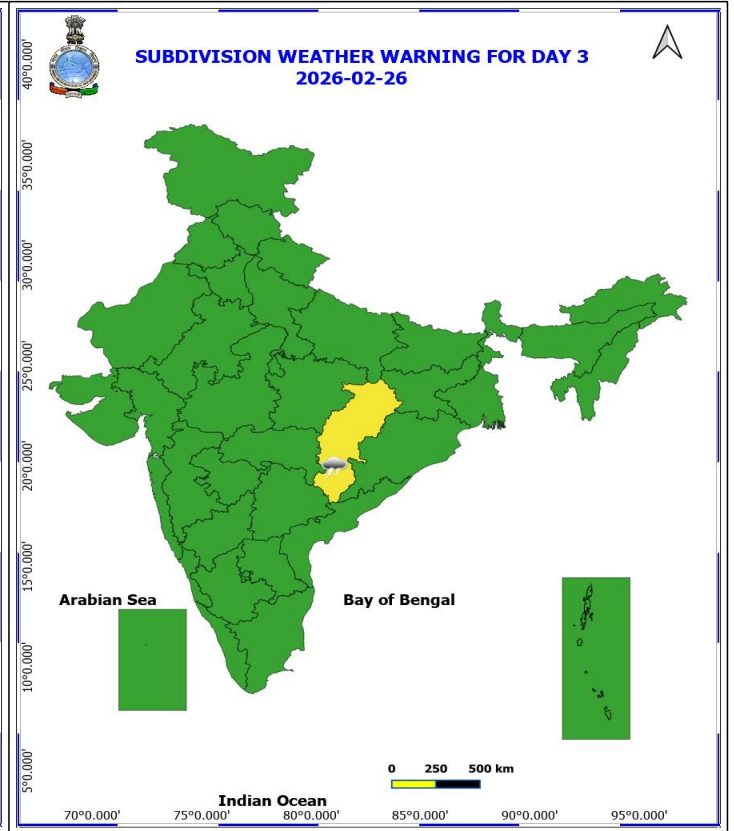
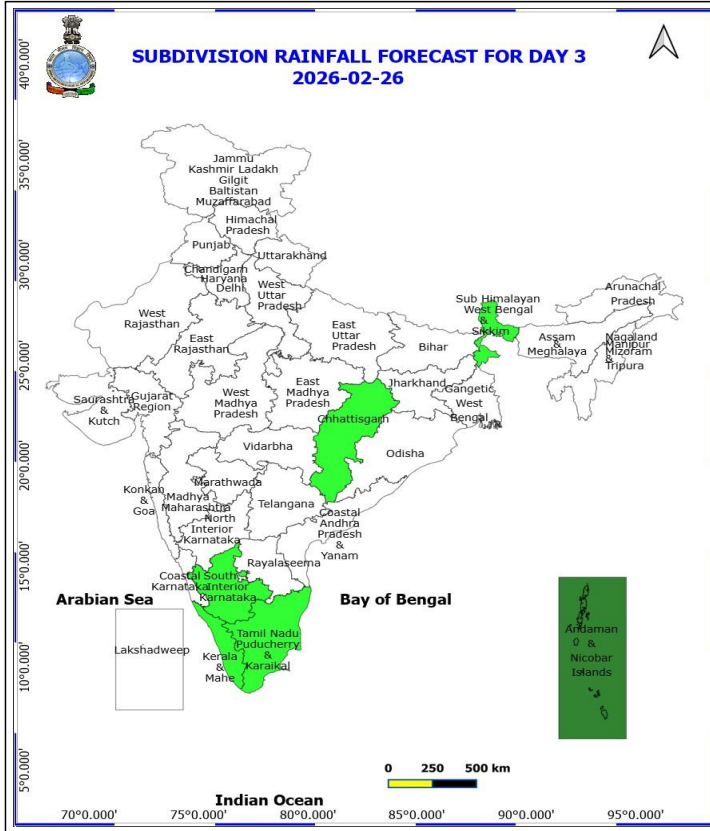
25 February (Day 2)

- ❖ **Thunderstorm accompanied with lightning & gusty winds(30-40kmph)** very likely at isolated places over Andaman & Nicobar Islands.
- ❖ **Thunderstorm accompanied with Lightning** very likely at isolated places over Chhattisgarh, Interior Karnataka, Kerala & Mahe, Tamil Nadu Puducherry & Karaikal and Vidarbha.

No Fishermen Warning

***Red color warning does not mean "Red Alert" Red color warning means "Take Action"**
Forecast and warning for any day is valid from 0830 hours IST of day till 0830 hours IST of next day
For more details kindly visit <https://mausam.imd.gov.in> or contact 011-2434-4599

(Service to the nation since 1875)

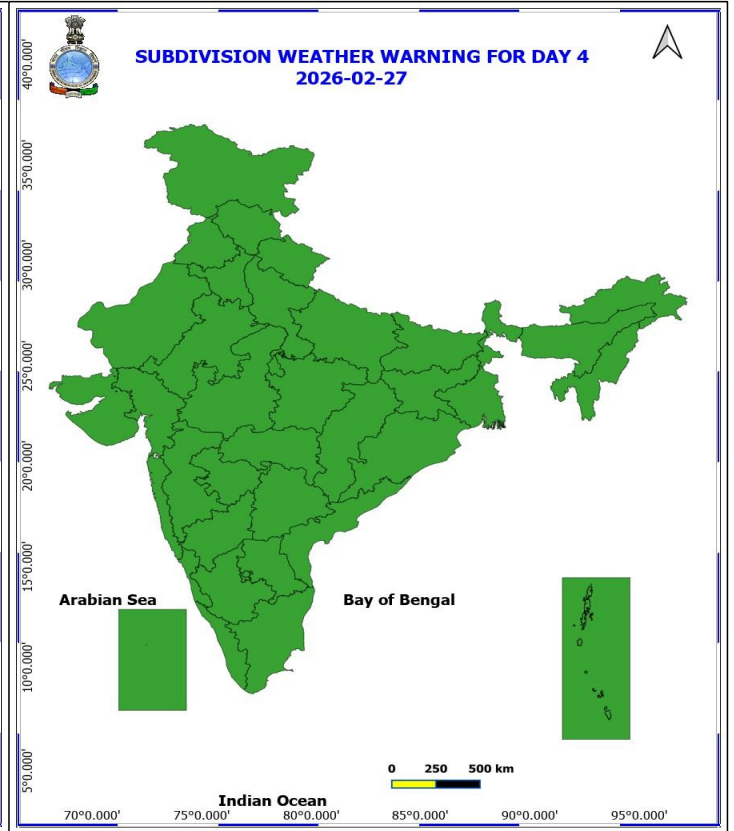
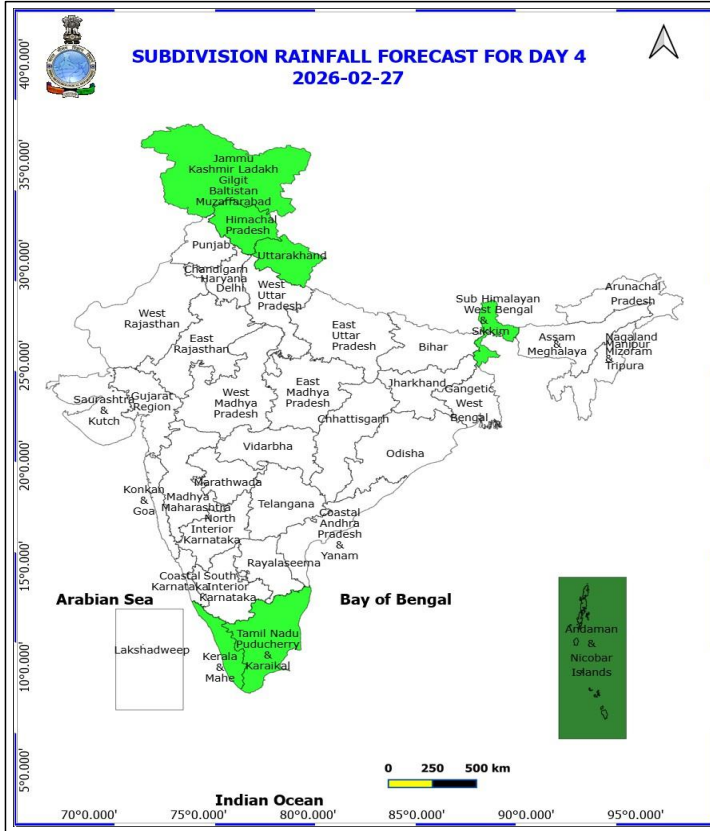


26 February (Day 3)

❖ **Thunderstorm accompanied with Lightning** very likely at isolated places over Chhattisgarh.

No Fishermen Warning

***Red color warning does not mean "Red Alert" Red color warning means "Take Action"**
Forecast and warning for any day is valid from 0830 hours IST of day till 0830 hours IST of next day
For more details kindly visit <https://mausam.imd.gov.in> or contact 011-2434-4599



27 February (Day 4)

No Warning

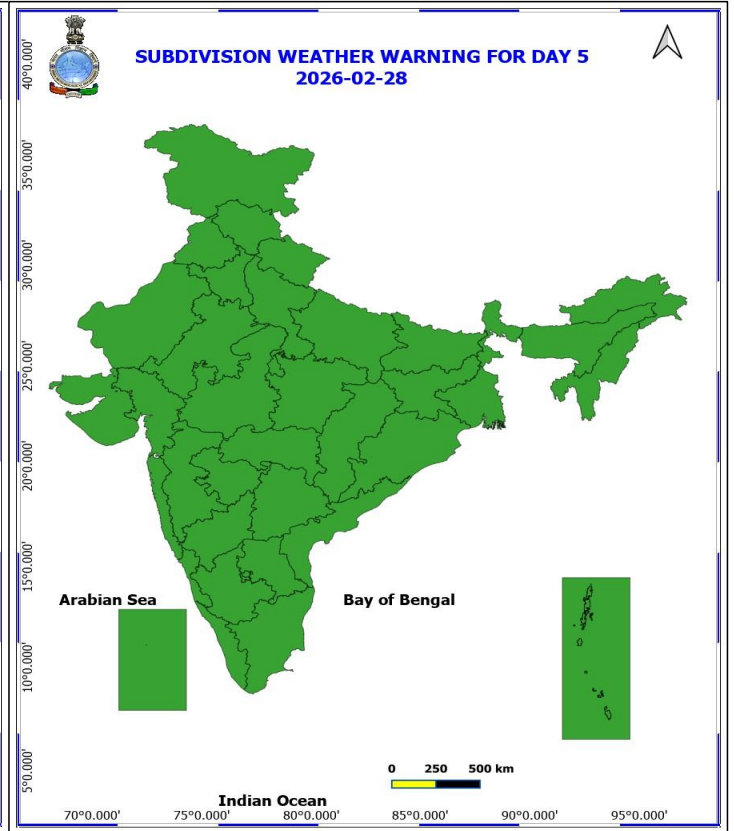
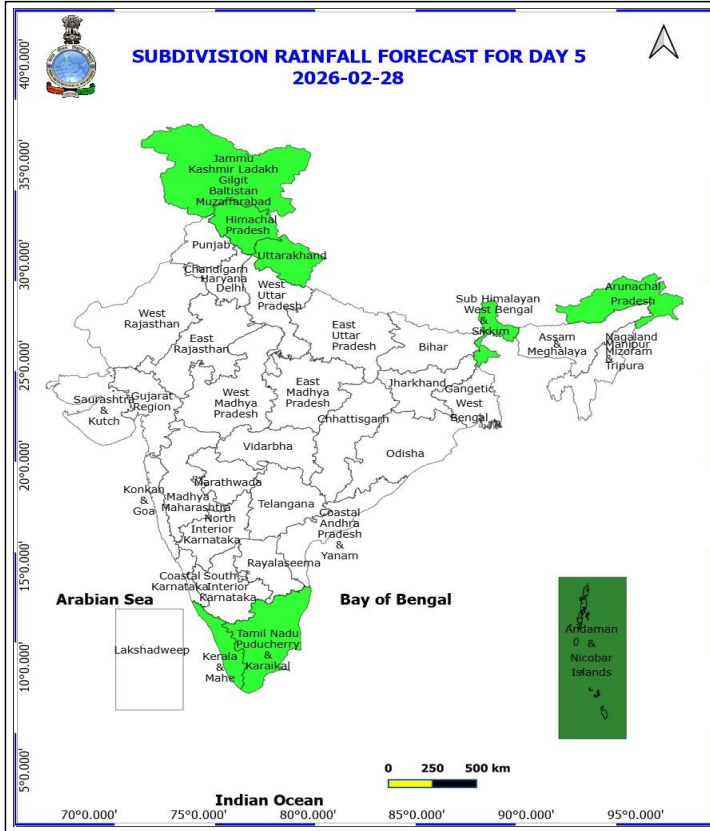
No Fishermen Warning

*Red color warning does not mean "Red Alert" Red color warning means "Take Action"

Forecast and warning for any day is valid from 0830 hours IST of day till 0830 hours IST of next day

For more details kindly visit <https://mausam.imd.gov.in> or contact 011-2434-4599

(Service to the nation since 1875)



28 February (Day 5)

No Warning

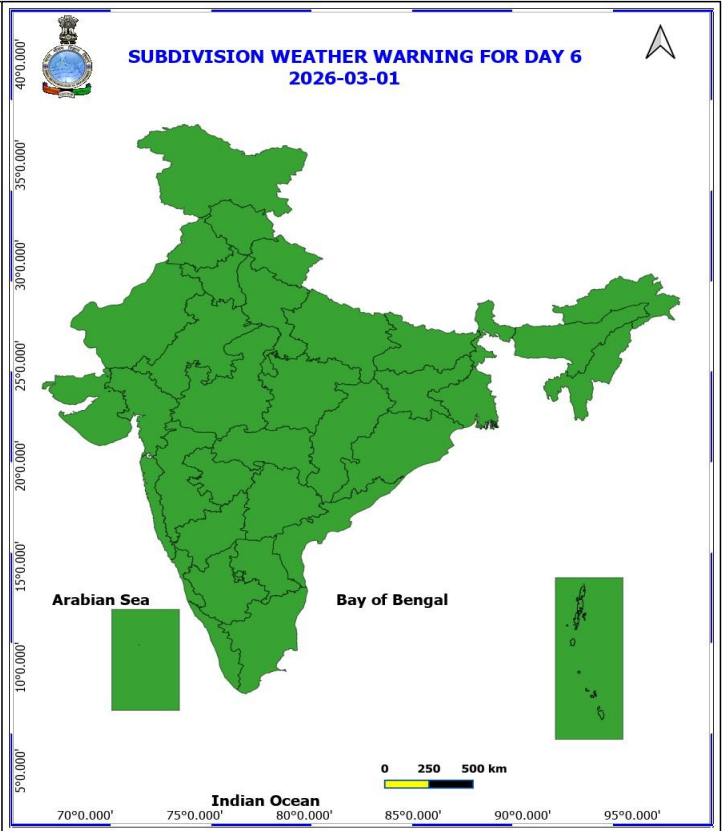
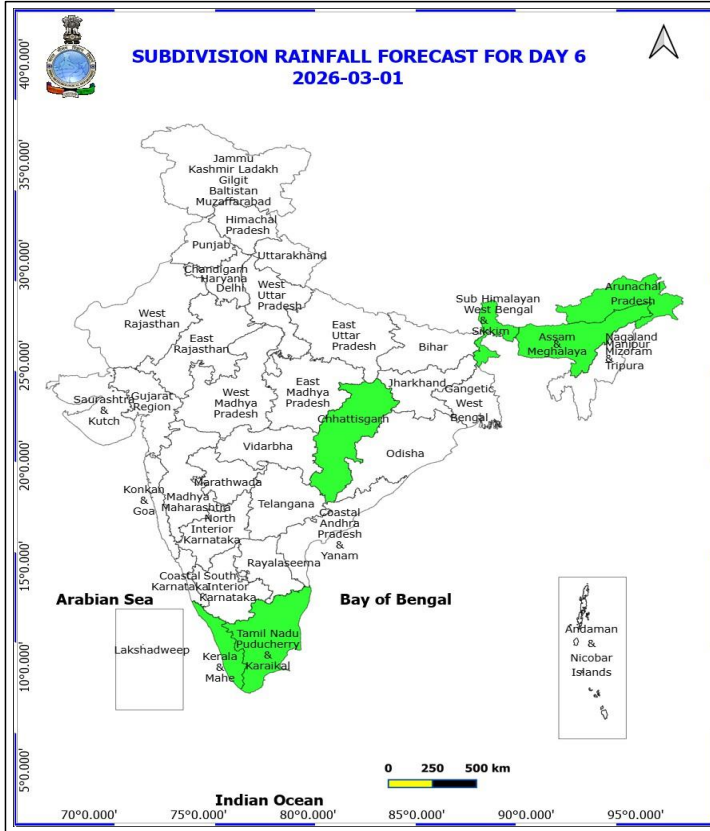
No Fishermen Warning

*Red color warning does not mean "Red Alert" Red color warning means "Take Action"

Forecast and warning for any day is valid from 0830 hours IST of day till 0830 hours IST of next day

For more details kindly visit <https://mausam.imd.gov.in> or contact 011-2434-4599

(Service to the nation since 1875)



1 March (Day 6)

No Warning

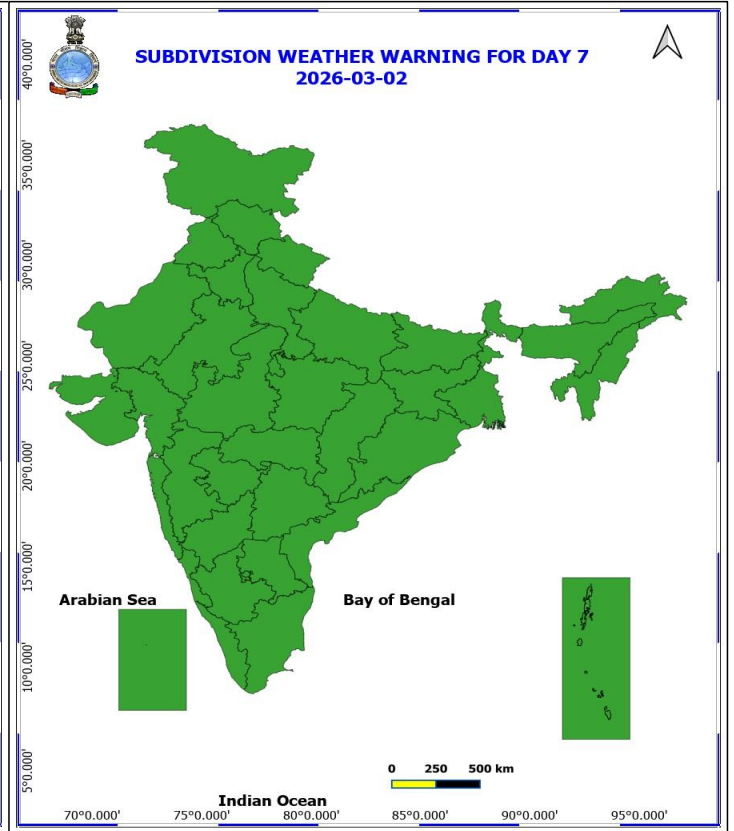
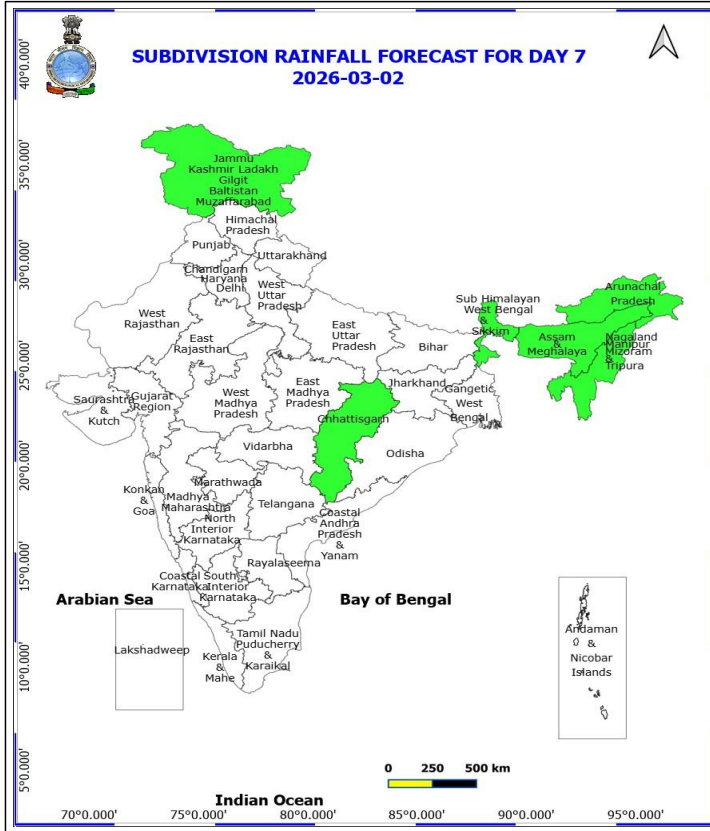
No Fishermen Warning

*Red color warning does not mean "Red Alert" Red color warning means "Take Action"

Forecast and warning for any day is valid from 0830 hours IST of day till 0830 hours IST of next day

For more details kindly visit <https://mausam.imd.gov.in> or contact 011-2434-4599

(Service to the nation since 1875)



2 March (Day 7)

No Warning

No Fishermen Warning

*Red color warning does not mean "Red Alert" Red color warning means "Take Action"

Forecast and warning for any day is valid from 0830 hours IST of day till 0830 hours IST of next day

For more details kindly visit <https://mausam.imd.gov.in> or contact 011-2434-4599

(Service to the nation since 1875)



Table-1

7 Days Rainfall Forecast

S.No.	Subdivision	24- Feb	25- Feb	26- Feb	27- Feb	28- Feb	1- Mar	2- Mar
		Day 1	Day 2	Day 3	Day 4	Day 5	Day 6	Day 7
1	ANDAMAN & NICOBAR ISLANDS	WS	FWS	SCT	SCT	SCT	DRY	DRY
2	ARUNACHAL PRADESH	ISOL	DRY	DRY	DRY	ISOL	ISOL	ISOL
3	ASSAM & MEHGHALAYA	ISOL	DRY	DRY	DRY	DRY	ISOL	ISOL
4	N. M. M. & T.	DRY	DRY	DRY	DRY	DRY	DRY	ISOL
5	S.H. WEST BENGAL & SIKKIM	ISOL	ISOL	ISOL	ISOL	ISOL	ISOL	ISOL
6	GANGETIC WEST BENGAL	ISOL	DRY	DRY	DRY	DRY	DRY	DRY
7	ODISHA	ISOL	DRY	DRY	DRY	DRY	DRY	DRY
8	JHARKHAND	ISOL	DRY	DRY	DRY	DRY	DRY	DRY
9	BIHAR	DRY	DRY	DRY	DRY	DRY	DRY	DRY
10	EAST UTTAR PRADESH	DRY	DRY	DRY	DRY	DRY	DRY	DRY
11	WEST UTTAR PRADESH	DRY	DRY	DRY	DRY	DRY	DRY	DRY
12	UTTARAKHAND	ISOL	DRY	DRY	ISOL	ISOL	DRY	DRY
13	HARYANA, CHD & DELHI	DRY	DRY	DRY	DRY	DRY	DRY	DRY
14	PUNJAB	DRY	DRY	DRY	DRY	DRY	DRY	DRY
15	HIMACHAL PRADESH	DRY	DRY	DRY	ISOL	ISOL	DRY	DRY
16	JAMMU AND KASHMIR AND LADAKH	DRY	DRY	DRY	ISOL	ISOL	DRY	ISOL
17	WEST RAJASTHAN	DRY	DRY	DRY	DRY	DRY	DRY	DRY
18	EAST RAJASTHAN	DRY	DRY	DRY	DRY	DRY	DRY	DRY
19	WEST MADHYA PRADESH	ISOL	DRY	DRY	DRY	DRY	DRY	DRY
20	EAST MADHYA PRADESH	ISOL	DRY	DRY	DRY	DRY	DRY	DRY
21	GUJRAT REGION	ISOL	DRY	DRY	DRY	DRY	DRY	DRY
22	SAURASHTRA & KUTCH	ISOL	DRY	DRY	DRY	DRY	DRY	DRY
23	KONKAN & GOA	DRY	DRY	DRY	DRY	DRY	DRY	DRY
24	MADHYA MAHARASHTRA	ISOL	DRY	DRY	DRY	DRY	DRY	DRY
25	MARATHWADA	ISOL	DRY	DRY	DRY	DRY	DRY	DRY
26	VIDARBHA	ISOL	ISOL	DRY	DRY	DRY	DRY	DRY
27	CHATTISGARH	ISOL	ISOL	ISOL	DRY	DRY	ISOL	ISOL
28	COASTAL ANDHRA PRADESH	ISOL	ISOL	DRY	DRY	DRY	DRY	DRY
29	TELANGANA	SCT	ISOL	DRY	DRY	DRY	DRY	DRY
30	RAYALASEEMA	ISOL	ISOL	DRY	DRY	DRY	DRY	DRY
31	TAMILNADU & PUDUCHERRY	ISOL	ISOL	ISOL	ISOL	ISOL	ISOL	DRY
32	COSTAL KARNATAKA	DRY	DRY	DRY	DRY	DRY	DRY	DRY
33	NORTH INTERIOR KARNATAKA	ISOL	ISOL	DRY	DRY	DRY	DRY	DRY
34	SOUTH INTERIOR KARNATAKA	ISOL	ISOL	ISOL	DRY	DRY	DRY	DRY
35	KERALA	SCT	SCT	ISOL	ISOL	ISOL	ISOL	DRY
36	LAKSHDWEEP	SCT	SCT	DRY	DRY	DRY	DRY	DRY

Legend	Category	%Stations
WS	Widespread/Most Places	76-100
FWS	Fairly Widespread/Many Places	51-75
SCT	Scattered/ A Few Places	26-50
ISOL	Isolated Places	1-25
DRY	No Rain	0

***Red color warning does not mean "Red Alert" Red color warning means "Take Action"**
Forecast and warning for any day is valid from 0830 hours IST of day till 0830 hours IST of next day
For more details kindly visit <https://mausam.imd.gov.in> or contact 011-2434-4599

(Service to the nation since 1875)

Fig. 1: Maximum Temperatures Dated 2026-02-23

Fig. 2: Departure of Maximum Temp. Dated 2026-02-23

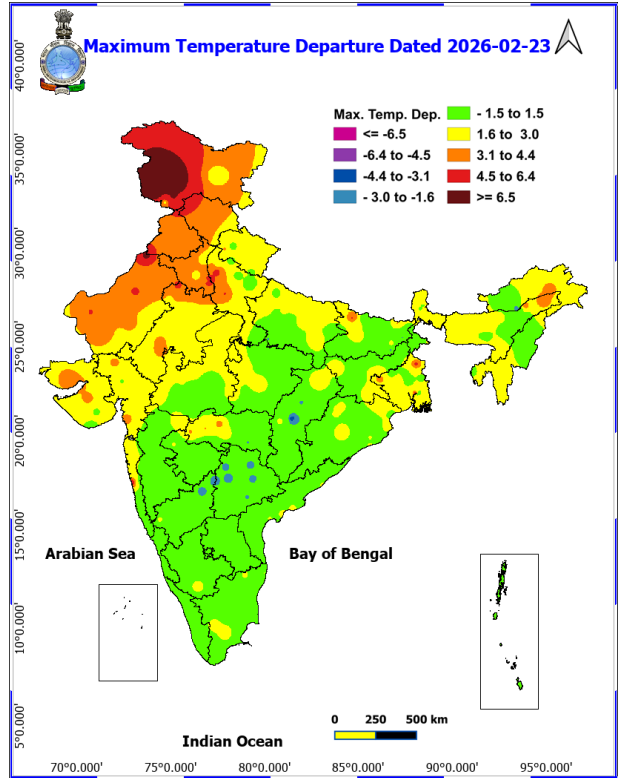
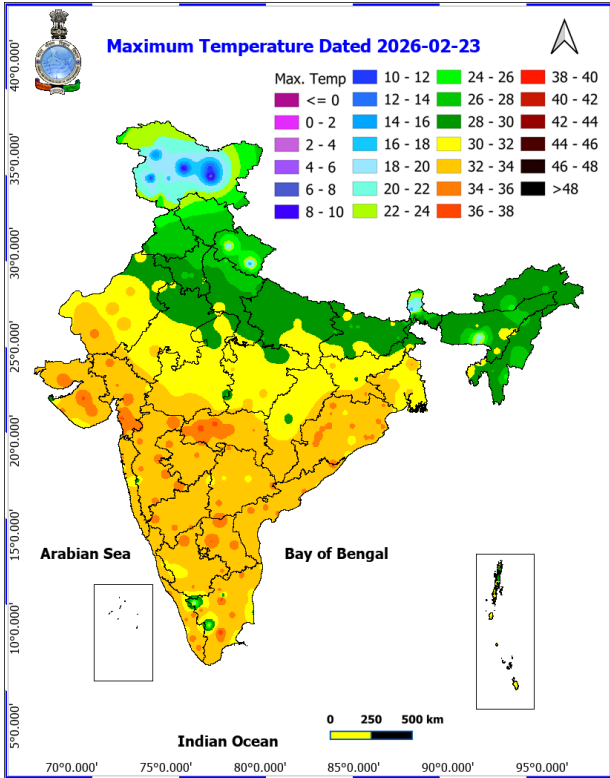
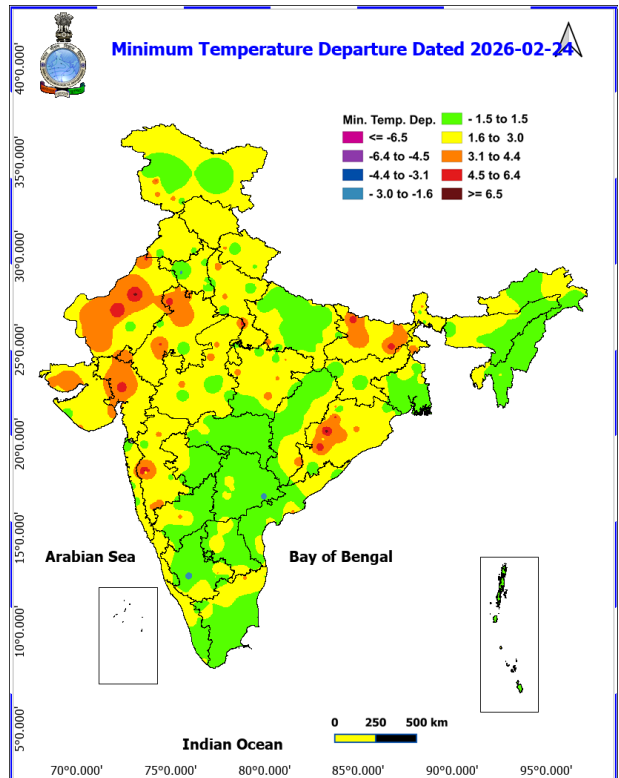
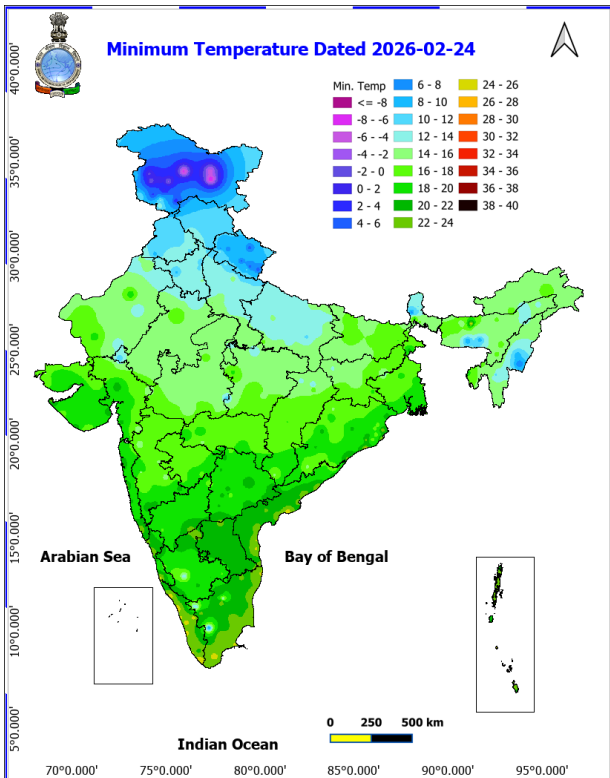


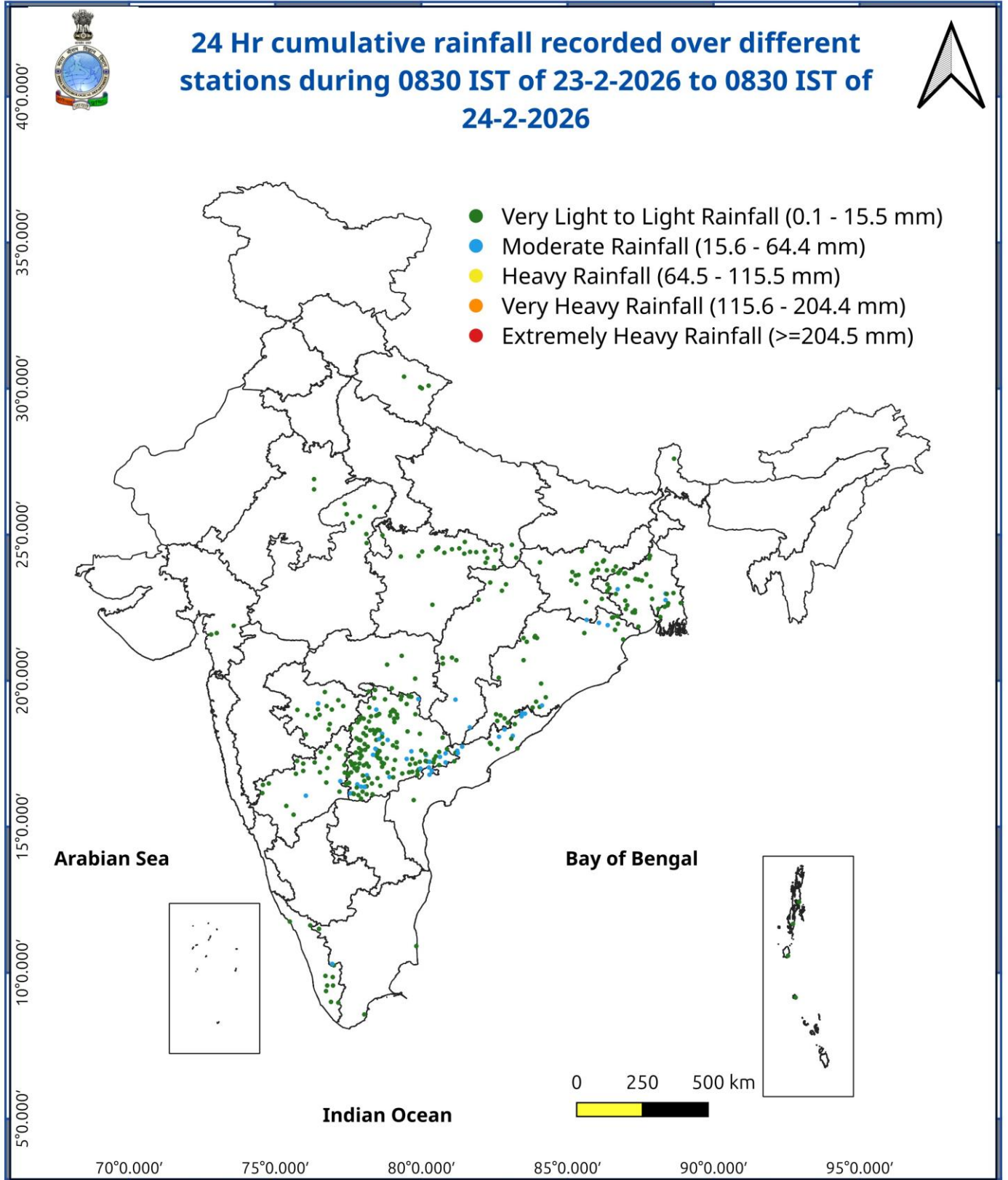
Fig. 3: Minimum Temperatures Dated 2026-02-24

Fig. 4: Departure of Minimum Temp. Dated 2026-02-24



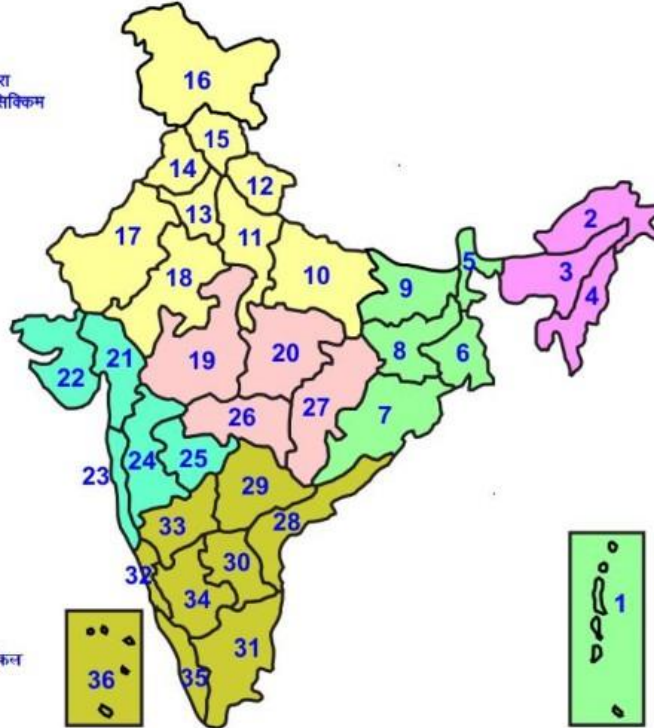
***Red color warning does not mean "Red Alert" Red color warning means "Take Action"**
Forecast and warning for any day is valid from 0830 hours IST of day till 0830 hours IST of next day
For more details kindly visit <https://mausam.imd.gov.in> or contact 011-2434-4599

(Service to the nation since 1875)



LEGENDS

- 1 अंडमान और निकोबार द्वीप समुद्र
- 2 अरुणाचल प्रदेश
- 3 असम और मेघालय
- 4 नागालैंड मनीपुर मीजोरम और त्रिपुरा
- 5 उप हिमालय पश्चिम बंगाल एवं सिक्किम
- 6 पश्चिम गंगेय बंगाल
- 7 ओडिसा
- 8 झारखंड
- 9 बिहार
- 10 पूर्वी उत्तर प्रदेश
- 11 पश्चिम उत्तर प्रदेश
- 12 उत्तराखंड
- 13 हरियाणा चंडिगढ़ एवं दिल्ली
- 14 पंजाब
- 15 हिमाचल प्रदेश
- 16 जम्मू एवं कश्मीर एवं लद्दाख
- 17 पश्चिम राजस्थान
- 18 पूर्वी राजस्थान
- 19 पश्चिम मध्य प्रदेश
- 20 पूर्वी मध्य प्रदेश
- 21 गुजरात
- 22 सौराष्ट्र
- 23 कोंकण एवं कच्छ
- 24 मध्य महाराष्ट्र
- 25 मराठावाडा
- 26 विदर्भ
- 27 छत्तीसगढ़
- 28 तटीय आंध्र प्रदेश एवं यनम
- 29 तेलंगाना
- 30 रायलसीमा
- 31 तमिलनाडु, पुदुचेरी एवं कराईकल
- 32 तटिय कर्नाटक
- 33 आंतरिक उत्तरी कर्नाटक
- 34 आंतरिक दक्षिणी कर्नाटक
- 35 केरल एवं माहे
- 36 लक्षद्वीप



1. Andaman & Nicobar Islands
2. Arunachal Pradesh
3. Assam & Meghalaya
4. Nagaland, Manipur, Mizoram & Tripura
5. Sub-Himalayan West Bengal & Sikkim
6. Gangetic West Bengal
7. Orissa
8. Jharkhand
9. Bihar
10. East Uttar Pradesh
11. West Uttar Pradesh
12. Uttarakhand
13. Haryana, Chd & Delhi
14. Punjab
15. Himachal Pradesh
16. Jammu & Kashmir and Ladakh
17. West Rajasthan
18. East Rajasthan
19. West Madhya Pradesh
20. East Madhya Pradesh
21. Gujarat
22. Saurashtra
23. Konkan & Goa
24. Madhya Maharashtra
25. Marathawada
26. Vidharbha
27. Chhattisgarh
28. Coastal Andhra Pradesh & Yanam
29. Telangana
30. Rayalaseema
31. Tamilnadu, Puducherry & Karaikal
32. Coastal Karnataka
33. North Interior Karnataka
34. South Interior Karnataka
35. Kerala & Mahe
36. Lakshadweep

SPATIAL DISTRIBUTION (% of Stations reporting)

% Stations	Category	% Stations	Category
76-100	Widespread (WS/ Most Places)	26-50	Scattered (SCT/ A Few Places)
51-75	Fairly Widespread (FWS/ Many Places)	1-25	Isolated (ISOL)

Subdivision Colour

- NO WARNING
- WATCH (BE UPDATED)
- ALERT (BE PREPARED TO TAKE ACTION)
- WARNING (TAKE ACTION)

Probabilistic Forecast

Terms	Probability of Occurrence (%)
Unlikely	< 25
Likely	25 - 50
Very Likely	50 - 75
Most Likely	> 75

- | | | | |
|--------------------------|-----------------|----------------------|--------------------|
| Heavy Rain | Very Heavy Rain | Extremely Heavy Rain | Heavy Snow |
| Thunderstorm & Lightning | Hailstrom | Dust Storm | Dust Raising Winds |
| Strong surface winds | Heat Wave | Hot Day | Warm Night |
| Cold Wave | Cold Day | Ground Frost | FOG |
| Hot & Humid | | | |

*Red color warning does not mean "Red Alert" Red color warning means "Take Action"

Forecast and warning for any day is valid from 0830 hours IST of day till 0830 hours IST of next day

For more details kindly visit <https://mausam.imd.gov.in> or contact 011-2434-4599

(Service to the nation since 1875)

LEGENDS

WARNING

WARNING (TAKE ACTION)
ALERT (BE PREPARED)
WATCH (BE UPDATED)
NO WARNING (NO ACTION)

Probabilistic Forecast

Terms	Probability of Occurrence (%)
Unlikely	< 25
Likely	25 - 50
Very Likely	50 - 75
Most Likely	> 75



Heavy: 64.5 to 115.5 mm/cm *
Very Heavy: 115.6 to 204.4 mm/cm*
Extremely Heavy: > 204.4 mm/cm *



When maximum temperature of a station reaches $\geq 40^\circ\text{C}$ for plains and $\geq 30^\circ\text{C}$ for hilly regions
(a) Based on Departure from normal

Heat Wave: Maximum Temperature Departure from normal 4.5°C to 6.4°C .
Severe Heat Wave: Maximum Temperature Departure from normal $\geq 6.5^\circ\text{C}$

(b). Based on Actual maximum temperature

Heat Wave: When actual maximum temperature $\geq 45^\circ\text{C}$.
Severe Heat Wave: When actual maximum temperature $\geq 47^\circ\text{C}$

(c). Criteria for heat wave for coastal stations

When maximum temperature departure is $> 4.5^\circ\text{C}$ from normal. Heat Wave may be described provided maximum temperature $\geq 37^\circ\text{C}$



When maximum temperature remains 40°C

Warm Night: When minimum temperature departure 4.5°C to 6.4°C .
Severe Warm Night: When minimum temperature departure $> 6.4^\circ\text{C}$.



When minimum temperature of a station $\leq 10^\circ\text{C}$ for plains and $\leq 0^\circ\text{C}$ for hilly regions.
(a). Based on departure

Cold Wave: Minimum Temperature Departure from normal -4.5°C to -6.4°C .
Severe Cold Wave: Minimum Temperature Departure from normal $\leq -6.5^\circ\text{C}$

(b) Based on actual Minimum Temperature (for Plains only)

Cold Wave : When Minimum Temperature is $\leq 4.0^\circ\text{C}$
Severe Cold Wave: When Minimum Temperature is $\leq 2.0^\circ\text{C}$

(c) For Coastal Stations

When Minimum Temperature departure is $\leq -4.5^\circ\text{C}$ & actual Minimum Temperature is $\leq 15^\circ\text{C}$



When minimum temperature of a station $\leq 10^\circ\text{C}$ for plains and $\leq 0^\circ\text{C}$ for hilly regions
Based on departure

Cold Day: Maximum Temperature Departure from normal -4.5°C to -6.4°C .
Severe Cold Day: Maximum Temperature Departure from normal $\leq -6.5^\circ\text{C}$



Phenomenon of small droplets suspended in air and the horizontal visibility $< 1\text{km}$

Moderate Fog: When the visibility between 500-200 metres
Dense Fog: when the visibility between 50- 200 metres
Very Dense Fog: when the visibility < 50 metres



Sudden electrical discharges manifested by a flash of light (Lightning) and a sharp rumbling sound (thunder)



An ensemble of particles of dust or sand energetically lifted to great heights by a strong and turbulent wind.



Ice deposits on ground

Air temperature $\leq 4^\circ\text{C}$ (over Plains)



A strong wind that rises suddenly, lasts for atleast 1 minute.

Moderate: Wind speed 52-61 kmph
Severe: Wind speed 62-87 kmph
Very Severe: Wind speed > 87 kmph



Effect of various waves in the sea over specific area

Rough to very rough: Wind speed 41-62 kmph (22-33 knots) & Wave height 2.5-6 metre
High to very high: Wind speed 63-117 kmph (34-63 knots) & Wave height 6-14 metre
Phenomenal: Wind speed > 117 kmph (> 63 knots) & Wave height > 14 metre



Cyclonic Storm: Wind speed 62-87 kmph (34-47 knots)

Severe Cyclonic Storm: Wind speed 88-117 kmph (48-63 knots)

Very Severe Cyclonic Storm: Wind speed 118-165 kmph (64 - 89 knots)

Extremely Severe Cyclonic Storm: Wind speed 166-220 kmph (90 -119 knots)

Super Cyclone Storm: Wind speed > 220 kmph (> 119 knots)