

2025-08-23

Time of Issue: 13:40:00 hours IST
(Mid-Day)

ALL INDIA WEATHER SUMMARY AND FORECAST BULLETIN

Significant Weather Features

East & Central India:

- ❖ **Extremely heavy rainfall** very likely over Jharkhand on 23rd August.
- ❖ Isolated **heavy rainfall** likely over West Madhya Pradesh on 28th; East Madhya Pradesh & Chhattisgarh during 23rd-27th; Vidarbha on 27th & 28th; Sub-Himalayan West Bengal & Sikkim, Jharkhand during 23rd-25th; Gangetic West Bengal on 23rd & 24th; Bihar during 23rd-26th; Odisha during 23rd-29th August with isolated **very heavy rainfall over West Madhya Pradesh, Chhattisgarh, Bihar & Odisha on 23rd; East Madhya Pradesh on 23rd & 24th August.**
- ❖ Light to moderate rainfall at most/many places accompanied with thunderstorm & lightning likely over the region during next 5 days.

Northwest India:

- ❖ **Extremely heavy rainfall** very likely over East Rajasthan on 23rd & 24th August.
- ❖ Isolated **heavy rainfall** likely over Uttarakhand & Rajasthan during next 7 days; Jammu & Kashmir, Himachal Pradesh, Punjab, Haryana, Chandigarh & Delhi during 23rd - 26th; Uttar Pradesh during 23rd-25th & 29th August with **isolated very heavy rainfall over Himachal Pradesh, Punjab on 23rd; Uttarakhand during 23rd-25th; Haryana Chandigarh & Delhi on 23rd & 24th; West Rajasthan during 23rd-26th; East Rajasthan on 25th & 26th August.**
- ❖ Light/moderate rainfall at most/many places accompanied with thunderstorm & lightning likely over Jammu-Kashmir-Ladakh-Gilgit-Baltistan-Muzaffarabad, Uttarakhand & Rajasthan during next 7 days.

West India:

- ❖ **Spell of very heavy rainfall is very likely to continue over Gujarat state till 29th August.**
- ❖ **Extremely heavy rainfall** very likely over north Gujarat Region on 23rd August.
- ❖ **Heavy rainfall** is very likely to continue over Konkan & Madhya Maharashtra during 23rd-29th **August.**
- ❖ Strong surface winds (speed reaching 40-50 kmph) very likely over Gujarat coast during next 5 days.
- ❖ Light to moderate rainfall at most/many places very likely over the region during next 7 days.

Northeast India:

- ❖ Isolated **heavy rainfall** likely to continue over Arunachal Pradesh on 23rd & 24th; Assam & Meghalaya during 23rd-29th; Nagaland, Manipur, Mizoram & Tripura during 23rd-27th August.
- ❖ Light/moderate rainfall at many places accompanied with thunderstorm & lightning likely during next 2 days.

South Peninsular India:

- ❖ Isolated **heavy rainfall** likely over Tamil Nadu on 23rd; Kerala & Mahe during 26th-28th; Coastal Karnataka during 26th-29th; Coastal Andhra Pradesh & Yanam on 26th August.
- ❖ Strong surface winds (speed reaching 40-50 kmph) very likely over the region during next 3 days.
- ❖ Light to moderate rainfall at many/some places accompanied with thunderstorm & lightning likely over Tamil Nadu on 23rd; Telangana on 23rd & 24th; Coastal Andhra Pradesh & Yanam and interior Karnataka during next 6-7 days.

***Red color warning does not mean "Red Alert" Red color warning means "Take Action"**

Forecast and warning for any day is valid from 0830 hours IST of day till 0830 hours IST of next day

For more details kindly visit <https://mausam.imd.gov.in> or contact 011-2434-4599

(Service to the nation since 1875)



Main Weather Observations:

❖ **Rainfall distribution** (from 0830 hours IST of yesterday to 0830 hours IST of today): **at most places over:** Andaman & Nicobar Islands, Gangetic West Bengal, Odisha, Jharkhand, Bihar, Uttarakhand, Madhya Pradesh, Chhattisgarh, Konkan & Goa, Gujarat state; **at a many places over:** **Arunachal Pradesh, Assam & Meghalaya, Nagaland, Manipur, Mizoram & Tripura, Sub-Himalayan West Bengal & Sikkim, East Uttar Pradesh, Vidarbha, Coastal Karnataka;** **at a few places** over Himachal Pradesh, Haryana-Chandigarh-Delhi, Punjab, Madhya Maharashtra, Lakshadweep; **at isolated places** over Jammu-Kashmir-Ladakh-Gilgit-Baltistan-Muzaffarabad, West Uttar Pradesh, Marathwada, Tamil Nadu, Puducherry & Karaikal, Kerala & Mahe, Interior Karnataka, Coastal Andhra Pradesh & Yanam, Rayalaseema, Telangana; **Dry** over rest of the country.

❖ **Significant rainfall recorded(in cm)** (from 0830 hours IST of yesterday to 0830 hours IST of today): v **East Rajasthan:** Nainwa (dist Bundi) 50, Patan (dist Bundi) 31, Degod Sr (dist Kota) 27, Anta Sr (dist Baran) 24, Baran (dist Baran) 24, Kishanganj (dist Baran) 23, Uniara / Aligarh (dist Tonk) 22, Niwai (dist Tonk) 21, Mangrol (dist Baran) 20, Nagrarfort Sr (dist Tonk) 19, Indergarh Sr (dist Bundi) 18, Tonk Tehsil Sr (dist Tonk) 17, Hindoli (dist Bundi) 16, Shahabad (dist Baran) 16, Bundi (dist Bundi) 15, Sapotra (dist Karauli) 14, Bhungra Sr (dist Banswara) 12, Deoli (dist Tonk) 11, Sarmathura Sr (dist Dholpur) 10, Phagi (dist Jaipur) 10, Chomu (dist Jaipur) 10, Pipalda Sr (dist Kota) 10, Malerainadungar Sr (dist Sawai Madhopur) 10, Mahwa (dist Dausa) 9, Jahazpur (dist Bhilwara) 9, Chothkabarwara Sr (dist Sawai Madhopur) 9, Ladpura Sr (dist Kota) 9, Kota-aero (dist Kota) 9, Todaraisingh Sr (dist Tonk) 9, Mandrayal Sr (dist Karauli) 8, Atru Sr (dist Baran) 8, Nagar Sr (dist Bharatpur) 8, Sawaimadhopur Tesil Sr (dist Sawai Madhopur) 7, Todabhim (dist Karauli) 7, Talera Sr (dist Bundi) 7, Piplu Sr (dist Tonk) 7, Sawar Sr (dist Ajmer) 7, Bonli (dist Sawai Madhopur) 7; **Tamil Nadu:** Sholinganallur (dist Chennai), Zone 05 Parrys (dist Chennai) 17 each, Zone 14 Madipakkam (dist Chennai) 15, Ennore AWS (dist Tiruvallur), Arcot (dist Ranipet), Zone 07 Korattur (dist Chennai), Zone 11 Nerkundram (dist Chennai) 14 each, Cholavaram (dist Tiruvallur), Tiruttani (dist Tiruvallur) 13 each, Zone 14 Narayanapuram Lake (dist Chennai) 12, Tiruvallur (dist Tiruvallur), Zone 07 Ambattur (dist Chennai), Chembarambakkam ARG (dist Tiruvallur), Zone 11 Valasaravakkam (dist Chennai), Chembarambakkam_REV (dist Tiruvallur), Zone 15 Okkiyam Thoraipakkam (dist Chennai) 11 each, Poondi (dist Tiruvallur), Jaya Engg College AWS (dist Tiruvallur), Kaveripakkam (dist Ranipet), Tiruttani AWS (dist Tiruvallur), Tiruttani PTO (dist Tiruvallur), Kalavai PWD (dist Ranipet), Zone 07 Ayapakkam (dist Chennai), Thiruvallangadu (dist Tiruvallur), Zone 14 Pallikaranai (dist Chennai), Zone 14 Medavakkam (dist Chennai) 10 each, Zone 06 Kolathur (dist Chennai), Koratur (dist Tiruvallur), Good Will School Villivakkam ARG (dist Tiruvallur), Poonamalle ARG (dist Tiruvallur), R.K.Pet ARG (dist Tiruvallur), Zone 13 Adyar (dist Chennai) 9 each, Chennai Collector Office (dist Chennai), Thamaraiyapakkam (dist Tiruvallur), Ponnai Dam (dist Vellore), R.K.Pet (dist Tiruvallur), Zone 02 D15 Manali (dist Chennai), Vellore (dist Vellore), ACS Medical College ARG (dist Kancheepuram), Zone 02 Manali New Town (dist Chennai), Vaniyambadi (dist Tirupathur), Ranipet AWS (dist Ranipet), Palar Anicut (dist Ranipet), Panapakkam (dist Ranipet), Zone 15 Sholinganallur (dist Chennai), Zone 01 Wimco Nagar (dist Chennai), Zone 15 Kannagi Nagar (dist Chennai) 8 each, Zone 08 Anna Nagar West (dist Chennai), Chetpet (dist Tiruvannamalai), Arani (dist Tiruvannamalai), Katpadi (dist Vellore), Mettur AWS (dist Salem), Tirur KVK AWS (dist Tiruvallur), Minnal (dist Ranipet), Ambathur Rev (dist Chennai), Zone 15 Injambakkam (dist Chennai) 7 each; **Jharkhand:** Chandwa (dist Latehar) 21, Ghatsila (dist East Singbhum) 20, Manoharpur Phc (dist West Singbhum) 19, Manoharpur (dist West Singbhum) 18, Sisai (dist Gumla) 16, Mayurhand (dist Chatra) 14, Kanhachatti (dist Chatra) 13, Ranchi Aero (dist Ranchi) 12, Chaibasa (dist West Singbhum) 12, Kuru (dist Lohardaga) 12, Dhalbhumgarh (dist East Singbhum) 11, Chandil (dist Seraikela-kharsawan) 11, Burmu (dist Ranchi) 11, Musabani (dist East Singbhum) 11, Barkatha (dist Hazaribag) 11, Khalaria (dist Ranchi) 10, Kumardungi (dist West Singbhum) 10, Boram (dist East Singbhum) 10, Pathalgada (dist Chatra) 10, Lohardaga Kvk Aws (dist Lohardaga) 9, Icar Namkum (dist Ranchi) 9, Gudri (dist West Singbhum) 9, Hunterganj (dist Chatra) 9, Potka (dist East Singbhum) 9, Sonua (dist West Singbhum) 9, Jamshedpur Aero (dist East Singbhum) 9, Latehar Balumat Kvk Aws (dist Latehar) 9, Chakulia (dist East Singbhum) 8, Kharsema (dist Seraikela-kharsawan) 8, Majhgaon (dist West Singbhum) 8, Arki (dist Khunti) 8, Chainpur (dist Palamu) 8, Nimdih (dist Seraikela-kharsawan) 8, Ramgarh (dist Palamu) 7, Dhurki (dist Garhwa) 7, Manjhari (dist West Singbhum) 7; **Uttarakhand:** Sama (dist Bageswar) 19, Loharkhet (dist Bageswar) 18, Bhagwanpur (dist Hardwar) 11, Jollygrant (dist Dehradun) 11, Roorkee (dist Hardwar) 9, Kapkot (dist Bageswar) 8; **Gujarat Region:** Vadali (dist Sabarkantha) 19, Khedbrahma (dist Sabarkantha) 18, Dharoi Colony (dist Mehsana) 14, Satlasana (dist Mehsana) 11, Idar (dist Sabarkantha) 8, Umerpada (dist Surat) 8, Dharampur (dist Valsad) 7; **West Madhya Pradesh:** Badoda (dist Sheopur) 17, Kolaras (dist Shivpuri) 16, Sheopur-aws (dist Sheopur) 13, Badarwas (dist Shivpuri) 11, Kathiwada (dist Alirajpur) 9, Chanderi (dist Ashoknagar) 7; **East Uttar Pradesh:** Varanasi/bab Aero (dist Varanasi) 16, Rajghat (Vns Cwc) (dist Varanasi) 14, Varanasi-b.h.u. (dist Varanasi) 11, Chunar (dist Mirzapur) 10, Churk (dist Sonbhadra) 8; **Odisha:** Naktideul (dist Sambalpur) 13, Bijatala (dist Mayurbhanj) 12, Tiring (dist Mayurbhanj) 12, Banspal (dist Keonjhar) 11, Jamda (dist Mayurbhanj) 11, Telkoi (dist Keonjhar) 10, Kusumi (dist Mayurbhanj) 9, Ghatagaon (dist Keonjhar) 9, Dhankauda (dist Sambalpur) 9, Kankadahad (dist Dhenkanal) 9, Chendipada (dist Angul) 9, Harichandanpur (dist Keonjhar) 9, Binika (dist Sonepur) 9, Ghasipura (dist Keonjhar) 9, Atabira (dist Bargarh) 9, Jujumura (dist Sambalpur) 8, Pallahara (dist Angul) 8, Tensa (dist Sundargarh) 7, Anandpur (dist Keonjhar) 7, Ambabhona (dist Bargarh) 7, Bargarh (dist Bargarh) 7, Rajkishorenagar (dist Angul) 7; **Haryana:** Jagadhari (dist Yamuna Nagar) 12, Nilokheri (dist Karnal) 10, Ladwa (dist Kurukshetra) 8, Tajewala (dist Yamuna Nagar) 7;

*Red color warning does not mean "Red Alert" Red color warning means "Take Action"

Forecast and warning for any day is valid from 0830 hours IST of day till 0830 hours IST of next day

For more details kindly visit <https://mausam.imd.gov.in> or contact 011-2434-4599

(Service to the nation since 1875)

Assam & Meghalaya: Sarupathar Arg (dist Golaghat) 11, Hazo Arg (dist Kamrup (rural)) 8, Mawkyrwat (dist South West Khasi Hills) 7; **West Rajasthan:** Nokha (dist Bikaner) 10, Sujangarh (dist Churu) 8; **Punjab:** Phangota (dist Pathankot) 9; **Rayalaseema:** Palasamudram (dist Chittoor) 9; **Chhattisgarh:** Pusaur (dist Raigarh) 9, Raigarh (dist Raigarh) 8, Marri Bangla Deori (dist Balod) 7, Ratanpur (dist Bilaspur) 7; **Gangetic West Bengal:** Burdwan (pto) (dist Purba Bardhaman) 9, Bankura(cwc) (dist Bankura) 8, Burnpur (dist Paschim Bardhaman) 8, Phulberia (dist Purulia) 8; **Bihar:** Raghunathpur (dist Siwan) 9, Obra (dist Aurangabad) 9, Atri (dist Gaya) 8, Mohra (dist Gaya) 8, Tribeni/balmikinagar (dist West Champaran) 8, Sahar (dist Bhojpur) 8, Kauwakol (dist Nawada) 8, Imamganj (dist Gaya) 7, Bagaha (dist West Champaran) 7, Rafiganj (dist Aurangabad) 7, Akorhi Gola (dist Rohtas) 7; **East Madhya Pradesh:** Pandhurna (dist Chindwara) 8, Bargi (dist Jabalpur) 7, Jabalpur-aws (dist Jabalpur) 7; **Nagaland:** Mangkolemba (dist Mokokchung) 7, Mokokchang (dist Mokokchung) 7.

❖ **Heavy Rainfall observed** (from 0830 hours IST of yesterday to 0830 hours IST of today): **Heavy to very heavy rainfall at some places with exceptionally heavy falls (≥ 40 cm)** has been recorded at isolated places over East Rajasthan and **Extremely heavy rainfall (≥ 21 cm)** at isolated places over Jharkhand. **Very heavy rainfall (12-20 cm)** has been recorded at isolated places over Uttarakhand, Haryana, East Uttar Pradesh, West Madhya Pradesh, Odisha, Gujarat Region and Tamil Nadu. **Heavy rainfall (7-11 cm)** has been recorded at isolated places over Punjab, West Rajasthan, East Madhya Pradesh, Assam & Meghalaya, Nagaland, Chhattisgarh, Gangetic West Bengal, Bihar and Rayalaseema.

❖ **Minimum Temperature Departures (as on 23-08-2025):** **markedly above normal ($> 5.1^{\circ}\text{C}$)** at isolated places over Assam & Meghalaya, East Uttar Pradesh, West Uttar Pradesh, Himachal Pradesh, West Rajasthan and West Madhya Pradesh. **appreciably above normal (3.1°C to 5.0°C)** at many places over East Madhya Pradesh; at isolated places over Sub Himalayan West Bengal & Sikkim, Odisha, Bihar, Jammu-Kashmir Ladakh-Gilgit-Baltistan-Muzaffarabad and Saurashtra & Kutch. **above normal (1.6°C to 3.0°C)** at few places over Punjab and Coastal Andhra Pradesh & Yanam; at isolated places over Andaman & Nicobar Islands, Haryana-Chandigarh-Delhi, Gujarat Region, Madhya Maharashtra, Vidarbha, Telangana and Tamil Nadu, Puducherry & Karaikal. **near normal (-1.5°C to 1.5°C)** at many places over Jharkhand, Uttarakhand and Chhattisgarh; at most places over Nagaland, Manipur, Mizoram & Tripura, Gangetic West Bengal, East Rajasthan, Konkan & Goa, Marathwada, Rayalaseema, Coastal Karnataka, North Interior Karnataka, South Interior Karnataka, Kerala & Mahe and Lakshadweep. **The lowest minimum temperature** of 18.0°C is reported at DURG (CHHATTISGARH) over the Plains of India.

❖ **Maximum Temperature Departures (as on 22-08-2025):** **markedly above normal ($> 5.1^{\circ}\text{C}$)** at isolated places over Jammu-Kashmir Ladakh-Gilgit-Baltistan-Muzaffarabad. **appreciably above normal (3.1°C to 5.0°C)** at isolated places over Assam & Meghalaya, Haryana-Chandigarh-Delhi, Punjab and Tamil Nadu, Puducherry & Karaikal. **above normal (1.6°C to 3.0°C)** at many places over Himachal Pradesh; at few places over Vidarbha, Telangana, Kerala & Mahe and Lakshadweep; at isolated places over Bihar, West Uttar Pradesh, Uttarakhand, West Rajasthan, East Rajasthan, Chhattisgarh, Coastal Andhra Pradesh & Yanam and South Interior Karnataka. **near normal (-1.5°C to 1.5°C)** at many places over Sub Himalayan West Bengal & Sikkim, East Uttar Pradesh, East Madhya Pradesh, Rayalaseema and North Interior Karnataka; at most places over Arunachal Pradesh, Nagaland, Manipur, Mizoram & Tripura, Konkan & Goa, Madhya Maharashtra, Marathwada and Coastal Karnataka; at few places over Andaman & Nicobar Islands, West Madhya Pradesh, Gujarat Region and Saurashtra & Kutch; at isolated places over Gangetic West Bengal and Odisha. **The highest maximum temperature** of 38.9°C is reported at SRIGANGANAGAR (RAJASTHAN).

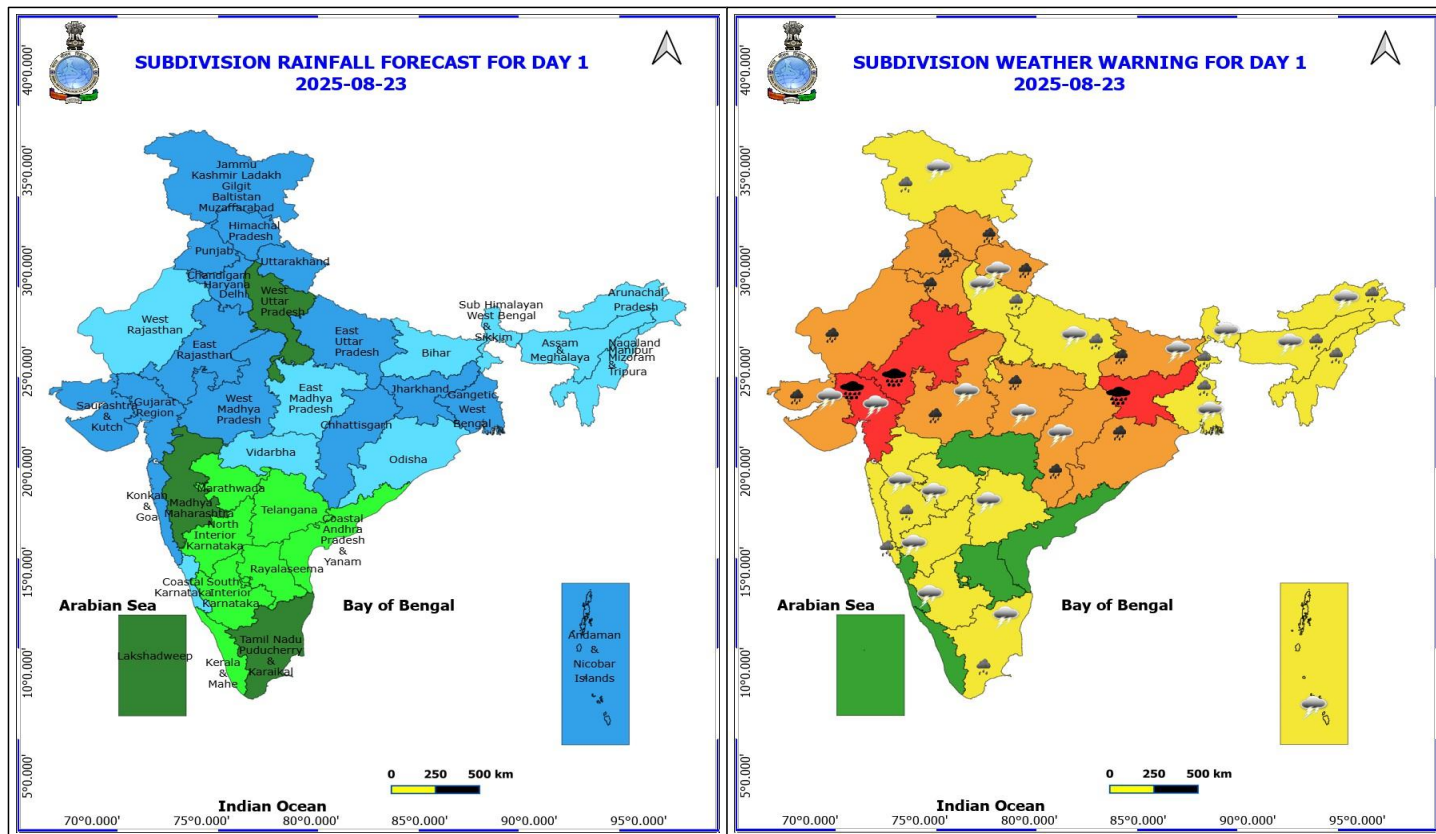


Meteorological Analysis (Based on 0830 hours IST)

- ❖ **The Low Pressure area** over Gangetic West Bengal & neighbourhood persists over the same region at 0830 hrs IST of today, the 23rd August, 2025. The associated **upper air cyclonic circulation** extends upto 7.6 km above mean sea level tilting southwestwards with height. It is likely to move west northwestwards across Jharkhand during next 24 hours and weaken gradually thereafter.
- ❖ The **monsoon trough** at mean sea level now passes through Ganganagar, Gwalior, Banda, Dehri, centre of low-pressure area over Gangetic West Bengal & neighbourhood and thence east southeastwards to northeast Bay of Bengal.
- ❖ The **upper air cyclonic circulation** over central parts of north Madhya Pradesh & adjoining areas of south Uttar Pradesh persists and now extends upto 5.8 km above mean sea level tilting southwestwards with height.
- ❖ The **upper air cyclonic circulation** over Punjab & neighbourhood extending upto 1.5 km above mean sea level persists.
- ❖ An **upper air cyclonic circulation** lies over northeast Assam & neighbourhood at 3.1 km above mean sea level.
- ❖ A fresh **low-pressure area** is likely to form over northwest Bay of Bengal off Odisha-West Bengal coasts around 25th August 2025.

Weather Outlook for subsequent 3 days

- ❖ Scattered to Fairly widespread rainfall likely over northern, western India, western peninsular and eastern India.



23 August (Day 1)

- ❖ **Heavy to Very Heavy Rainfall with isolated Extremely Heavy Rainfall** very likely at isolated places over East Rajasthan, Gujarat Region and Jharkhand.
- ❖ **Heavy to Very Heavy Rainfall** very likely at isolated places over Bihar, Chhattisgarh, Haryana, Chandigarh & Delhi, Himachal Pradesh, Madhya Pradesh, Odisha, Punjab, Saurashtra & Kutch, Uttarakhand and West Rajasthan.
- ❖ **Heavy Rainfall** very likely at isolated places over Arunachal Pradesh, Assam & Meghalaya, Jammu-Kashmir-Ladakh-Gilgit-Baltistan-Muzaffarabad, Konkan & Goa, Madhya Maharashtra, Nagaland, Manipur, Mizoram and Tripura, Tamil Nadu Puducherry & Karaikal, Uttar Pradesh and West Bengal & Sikkim.
- ❖ **Thunderstorm accompanied with lightning & gusty winds(30-40kmph)** very likely at isolated places over Andaman & Nicobar Islands, Bihar, Gangetic West Bengal, Jammu-Kashmir-Ladakh-Gilgit-Baltistan-Muzaffarabad, South Interior Karnataka, Telangana and West Madhya Pradesh.
- ❖ **Thunderstorm accompanied with Lightning** very likely at isolated places over Arunachal Pradesh, Assam & Meghalaya, Chhattisgarh, East Madhya Pradesh, Gujarat State, Madhya Maharashtra, Marathwada, North Interior Karnataka, Sub Himalayan West Bengal & Sikkim, Tamil Nadu Puducherry & Karaikal, Uttar Pradesh and Uttarakhand.

Squally wind with speed reaching 45 kmph to 55 kmph gusting to 65 kmph is likely to prevail along and off Somalia, Oman coasts, most parts of westcentral Arabian sea, adjoining & some parts of southwest, eastcentral Arabian Sea, adjoining parts of north Arabian Sea, Gulf of Mannar.

Squally weather with wind speed reaching 40 - 50 kmph gusting to 60 kmph likely to prevail over north Bay of Bengal and adjoining parts central Bay of Bengal, along and off Odisha, Bangladesh coasts.

***Red color warning does not mean "Red Alert" Red color warning means "Take Action"**

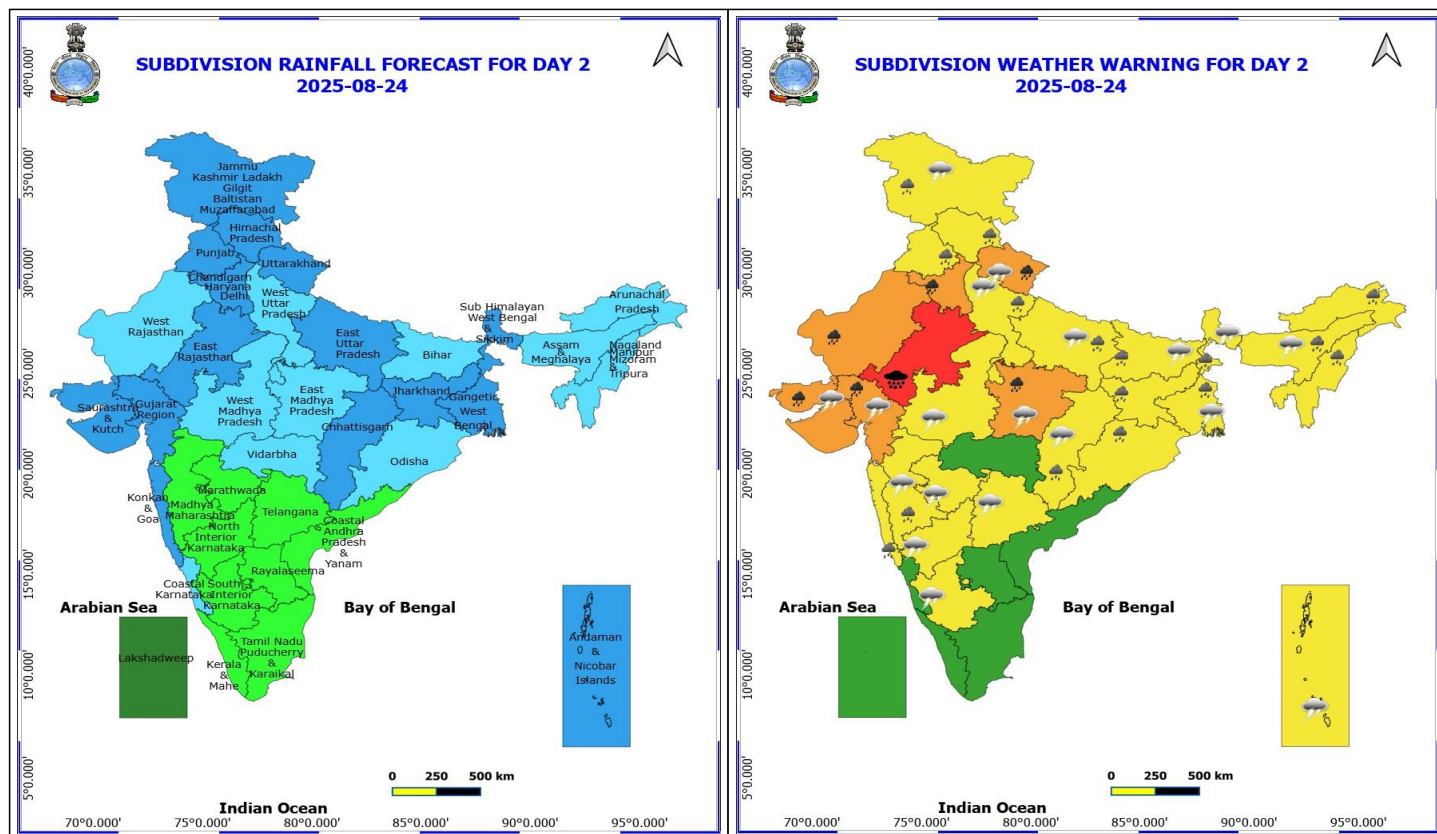
Forecast and warning for any day is valid from 0830 hours IST of day till 0830 hours IST of next day

For more details kindly visit <https://mausam.imd.gov.in> or contact 011-2434-4599

(Service to the nation since 1875)



Squally weather with wind speed reaching 45 - 55 kmph gusting to 65 kmph likely to prevail along and off Gujarat, north Konkan coasts and adjoining sea areas, along and off north Odisha, West Bengal coasts.



24 August (Day 2)

- ❖ **Heavy to Very Heavy Rainfall with isolated Extremely Heavy Rainfall** very likely at isolated places over East Rajasthan.
- ❖ **Heavy to Very Heavy Rainfall** very likely at isolated places over East Madhya Pradesh, Gujarat State, Haryana, Chandigarh & Delhi, Uttarakhand and West Rajasthan.
- ❖ **Heavy Rainfall** very likely at isolated places over Arunachal Pradesh, Assam & Meghalaya, Bihar, Chhattisgarh, Himachal Pradesh, Jammu-Kashmir-Ladakh-Gilgit-Baltistan-Muzaffarabad, Jharkhand, Konkan & Goa, Madhya Maharashtra, Nagaland, Manipur, Mizoram and Tripura, Odisha, Punjab, Uttar Pradesh and West Bengal & Sikkim.
- ❖ **Thunderstorm accompanied with lightning & gusty winds(30-40kmph)** very likely at isolated places over Andaman & Nicobar Islands, Bihar, Gangetic West Bengal, Jammu-Kashmir-Ladakh-Gilgit-Baltistan-Muzaffarabad, South Interior Karnataka, Telangana and West Madhya Pradesh.
- ❖ **Thunderstorm accompanied with Lightning** very likely at isolated places over Assam & Meghalaya, Chhattisgarh, East Madhya Pradesh, Gujarat State, Madhya Maharashtra, Marathwada, North Interior Karnataka, Sub Himalayan West Bengal & Sikkim, Uttar Pradesh and Uttarakhand.

Squally wind with speed reaching 45 kmph to 55 kmph gusting to 65 kmph is likely to prevail along and off Somalia, Oman coasts, most parts of westcentral Arabian sea, adjoining & some parts of southwest, eastcentral Arabian Sea, adjoining parts of north Arabian Sea, Gulf of Mannar.

Squally weather with wind speed reaching 40 - 50 kmph gusting to 60 kmph likely to prevail along and off north Odisha, West Bengal coasts and adjoining sea areas.

Squally weather with wind speed reaching 45 - 55 kmph gusting to 65 kmph likely to prevail along and off Gujarat,

***Red color warning does not mean "Red Alert" Red color warning means "Take Action"**

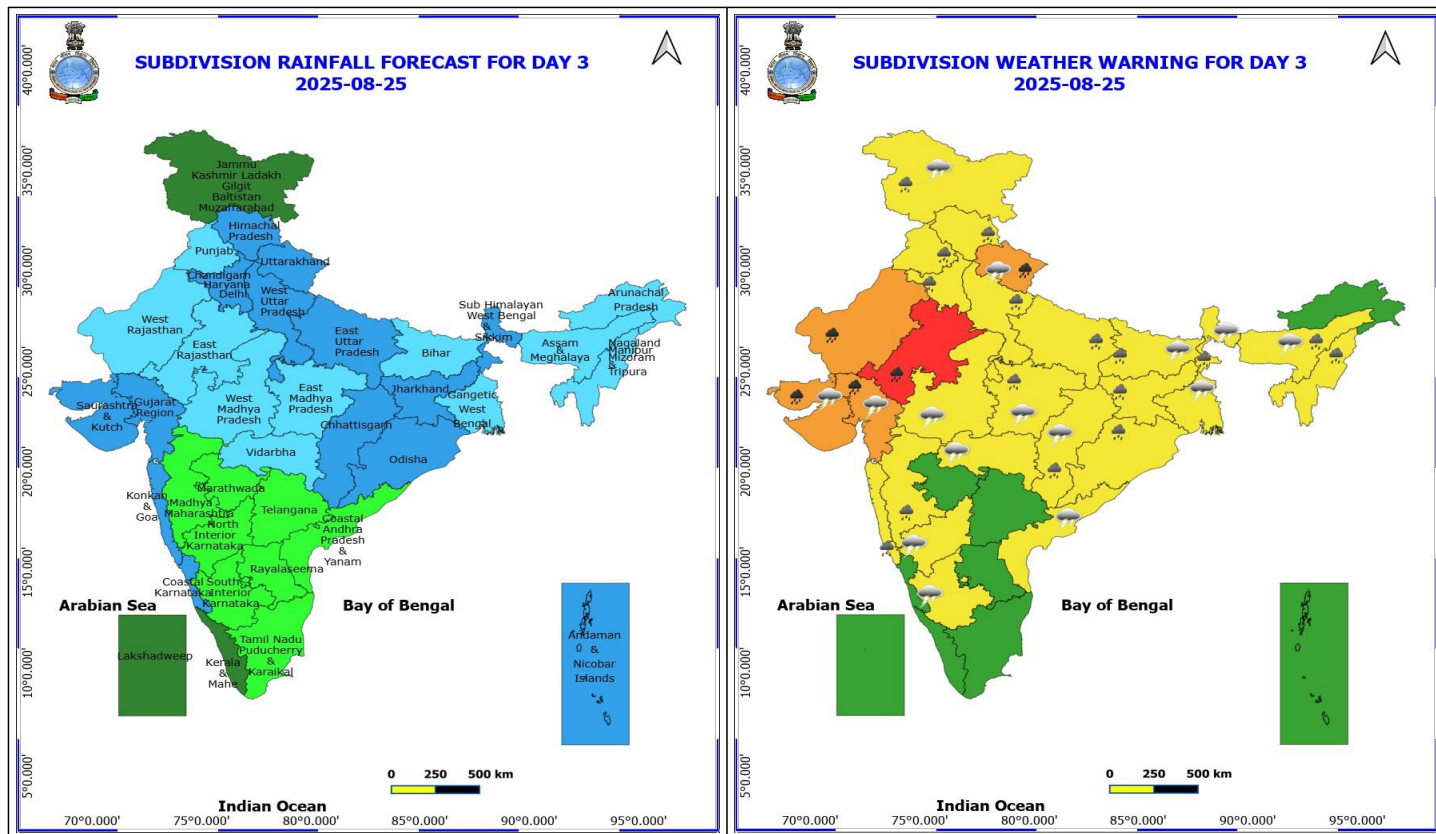
Forecast and warning for any day is valid from 0830 hours IST of day till 0830 hours IST of next day

For more details kindly visit <https://mausam.imd.gov.in> or contact 011-2434-4599

(Service to the nation since 1875)



north Konkan coasts and adjoining sea areas.



25 August (Day 3)

- ❖ **Heavy to Very Heavy Rainfall** very likely at isolated places over Gujarat State, Rajasthan and Uttarakhand.
- ❖ **Heavy Rainfall** very likely at isolated places over Assam & Meghalaya, Bihar, Chhattisgarh, East Madhya Pradesh, Haryana, Chandigarh & Delhi, Himachal Pradesh, Jammu-Kashmir-Ladakh-Gilgit-Baltistan-Muzaffarabad, Jharkhand, Konkan & Goa, Madhya Maharashtra, Nagaland, Manipur, Mizoram and Tripura, Odisha, Punjab, Sub Himalayan West Bengal & Sikkim and Uttar Pradesh.
- ❖ **Thunderstorm accompanied with lightning & gusty winds(30-40kmph)** very likely at isolated places over Bihar, Gangetic West Bengal, Interior Karnataka and Jammu-Kashmir-Ladakh-Gilgit-Baltistan-Muzaffarabad.
- ❖ **Thunderstorm accompanied with Lightning** very likely at isolated places over Assam & Meghalaya, Chhattisgarh, Coastal Andhra Pradesh, Gujarat State, Madhya Pradesh, Sub Himalayan West Bengal & Sikkim, Uttarakhand and Vidarbha.

Squally wind with speed reaching 45 kmph to 55 kmph gusting to 65 kmph is likely to prevail along and off Somalia, Oman coasts, most parts of westcentral Arabian sea, adjoining & some parts of southwest, eastcentral Arabian Sea, adjoining parts of north Arabian Sea.

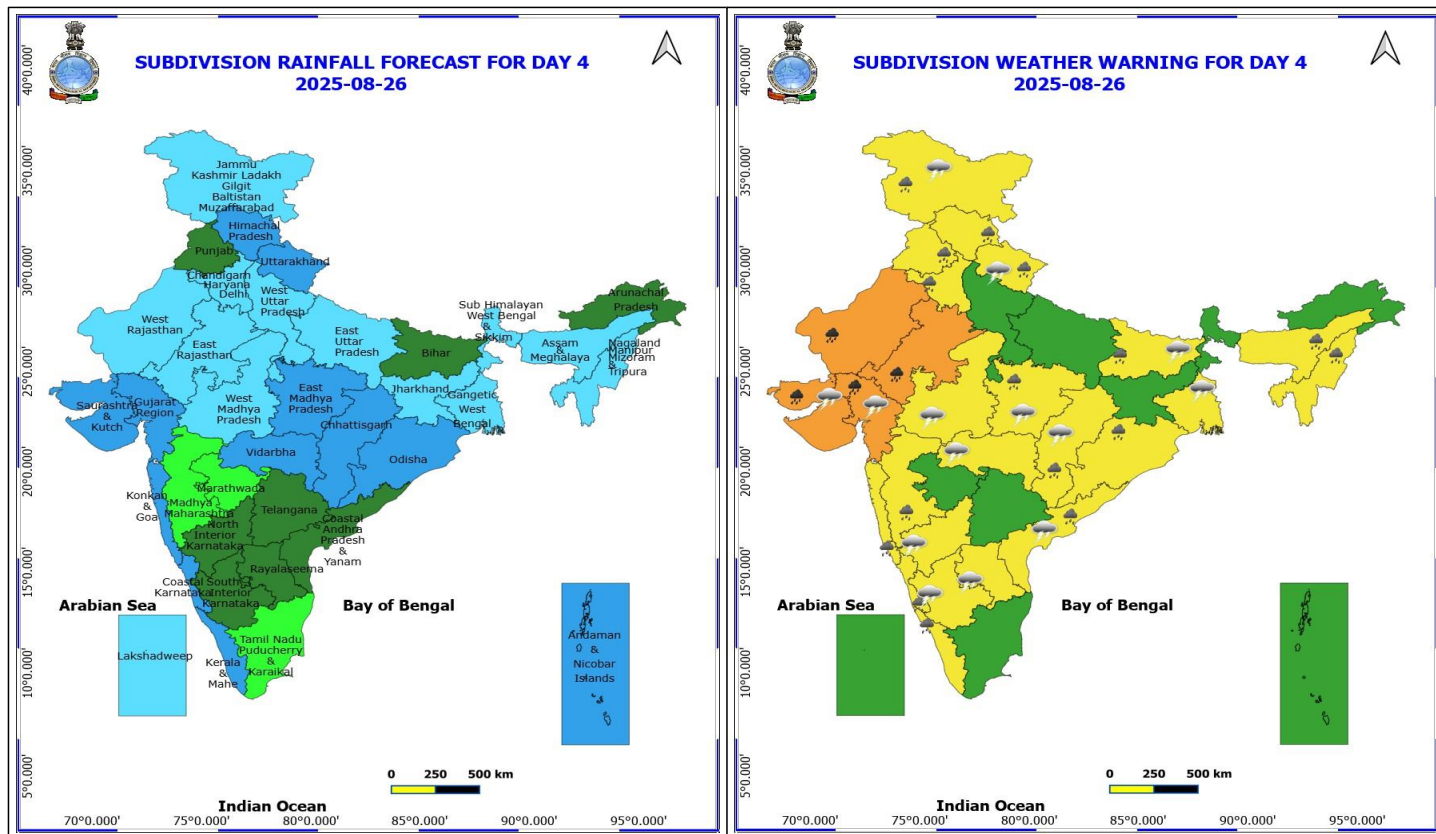
Squally weather with wind speed reaching 45 - 55 kmph gusting to 65 kmph likely to prevail along and off Gujarat, north Konkan coasts and adjoining sea areas.

***Red color warning does not mean "Red Alert" Red color warning means "Take Action"**

Forecast and warning for any day is valid from 0830 hours IST of day till 0830 hours IST of next day

For more details kindly visit <https://mausam.imd.gov.in> or contact 011-2434-4599

(Service to the nation since 1875)



26 August (Day 4)

- ❖ **Heavy to Very Heavy Rainfall** likely at isolated places over Gujarat State and Rajasthan.
- ❖ **Heavy Rainfall** likely at isolated places over Assam & Meghalaya, Bihar, Chhattisgarh, Coastal Andhra Pradesh, Coastal Karnataka, East Madhya Pradesh, Haryana, Chandigarh & Delhi, Himachal Pradesh, Jammu-Kashmir-Ladakh-Gilgit-Baltistan-Muzaffarabad, Kerala & Mahe, Konkan & Goa, Madhya Maharashtra, Nagaland, Manipur, Mizoram and Tripura, Odisha, Punjab and Uttarakhand.
- ❖ **Thunderstorm accompanied with lightning & gusty winds(30-40kmph)** likely at isolated places over Bihar, Gangetic West Bengal, Interior Karnataka and Jammu-Kashmir-Ladakh-Gilgit-Baltistan-Muzaffarabad.
- ❖ **Thunderstorm accompanied with Lightning** likely at isolated places over Andhra Pradesh, Chhattisgarh, Gujarat State, Madhya Pradesh, Uttarakhand and Vidarbha.

Squally wind with speed reaching 45 kmph to 55 kmph gusting to 65 kmph is likely to prevail along and off Somalia, Oman coasts, most parts of westcentral Arabian sea, adjoining & some parts of southwest, eastcentral Arabian Sea, adjoining parts of north Arabian Sea.

Squally weather with wind speed reaching 40 - 50 kmph gusting to 60 kmph likely to prevail along and off Karnataka, Kerala coasts, Lakshadweep area, and some parts of eastcentral Arabian Sea.

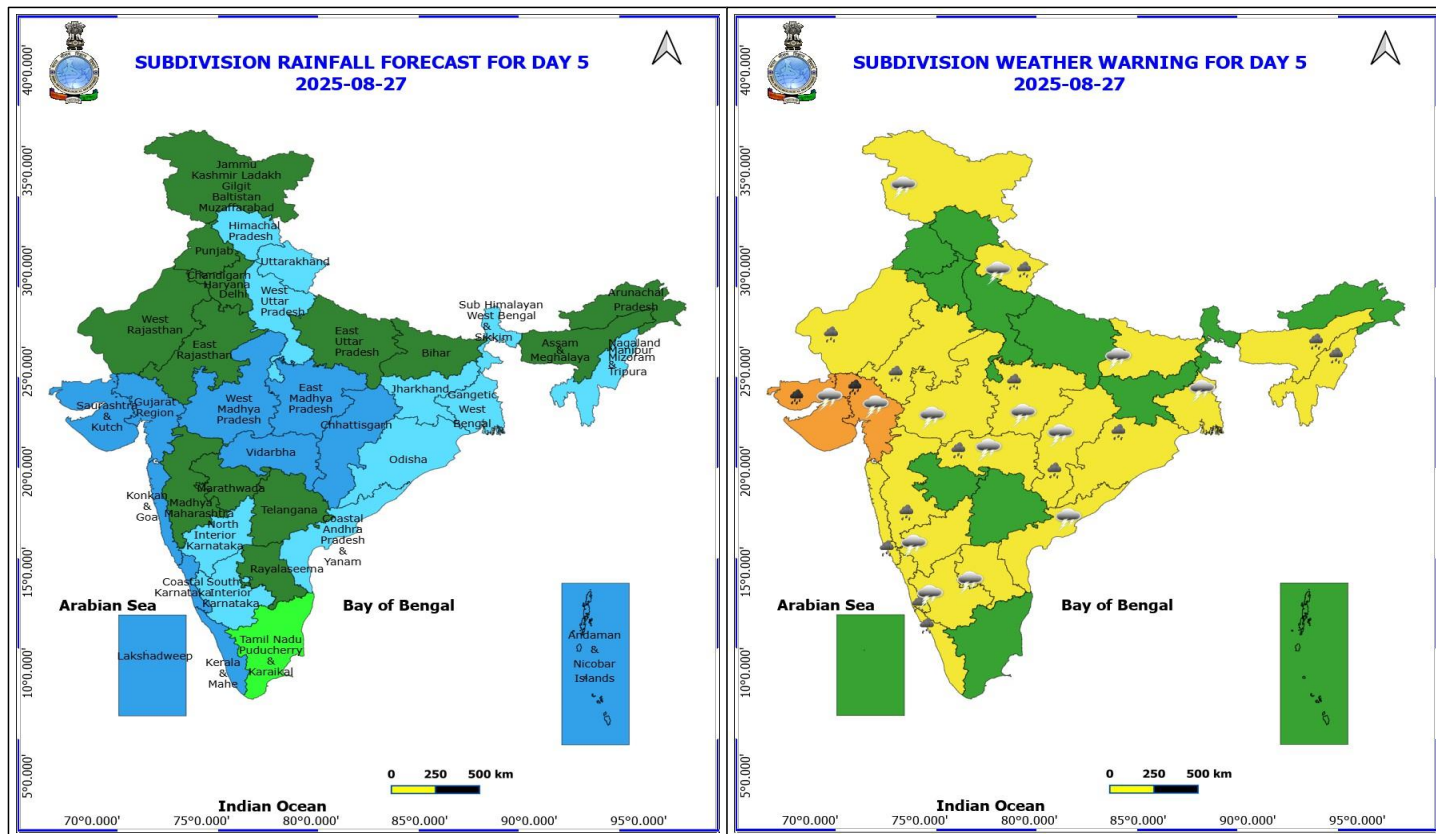
Squally weather with wind speed reaching 45 - 55 kmph gusting to 65 kmph likely to prevail along and off Gujarat, north Konkan coasts and adjoining sea areas.

***Red color warning does not mean "Red Alert" Red color warning means "Take Action"**

Forecast and warning for any day is valid from 0830 hours IST of day till 0830 hours IST of next day

For more details kindly visit <https://mausam.imd.gov.in> or contact 011-2434-4599

(Service to the nation since 1875)



27 August (Day 5)

- ❖ **Heavy to Very Heavy Rainfall** likely at isolated places over Gujarat State.
- ❖ **Heavy Rainfall** likely at isolated places over Assam & Meghalaya, Chhattisgarh, Coastal Karnataka, East Madhya Pradesh, Kerala & Mahe, Konkan & Goa, Madhya Maharashtra, Nagaland, Manipur, Mizoram and Tripura, Odisha, Rajasthan, Uttarakhand and Vidarbha.
- ❖ **Thunderstorm accompanied with lightning & gusty winds(30-40kmph)** likely at isolated places over Bihar, Gangetic West Bengal and Interior Karnataka.
- ❖ **Thunderstorm accompanied with Lightning** likely at isolated places over Andhra Pradesh, Chhattisgarh, Gujarat State, Jammu-Kashmir-Ladakh-Gilgit-Baltistan-Muzaffarabad, Madhya Pradesh, Uttarakhand and Vidarbha.

Squally wind with speed reaching 45 kmph to 55 kmph gusting to 65 kmph is likely to prevail along and off Somalia, Oman coasts, most parts of westcentral Arabian sea, adjoining & some parts of southwest, eastcentral Arabian Sea, adjoining parts of north Arabian Sea.

Squally weather with wind speed reaching 40 - 50 kmph gusting to 60 kmph likely to prevail along and off Karnataka, Kerala coasts, Lakshadweep area, and some parts of eastcentral Arabian Sea, some parts of westcentral and eastcentral Bay of Bengal.

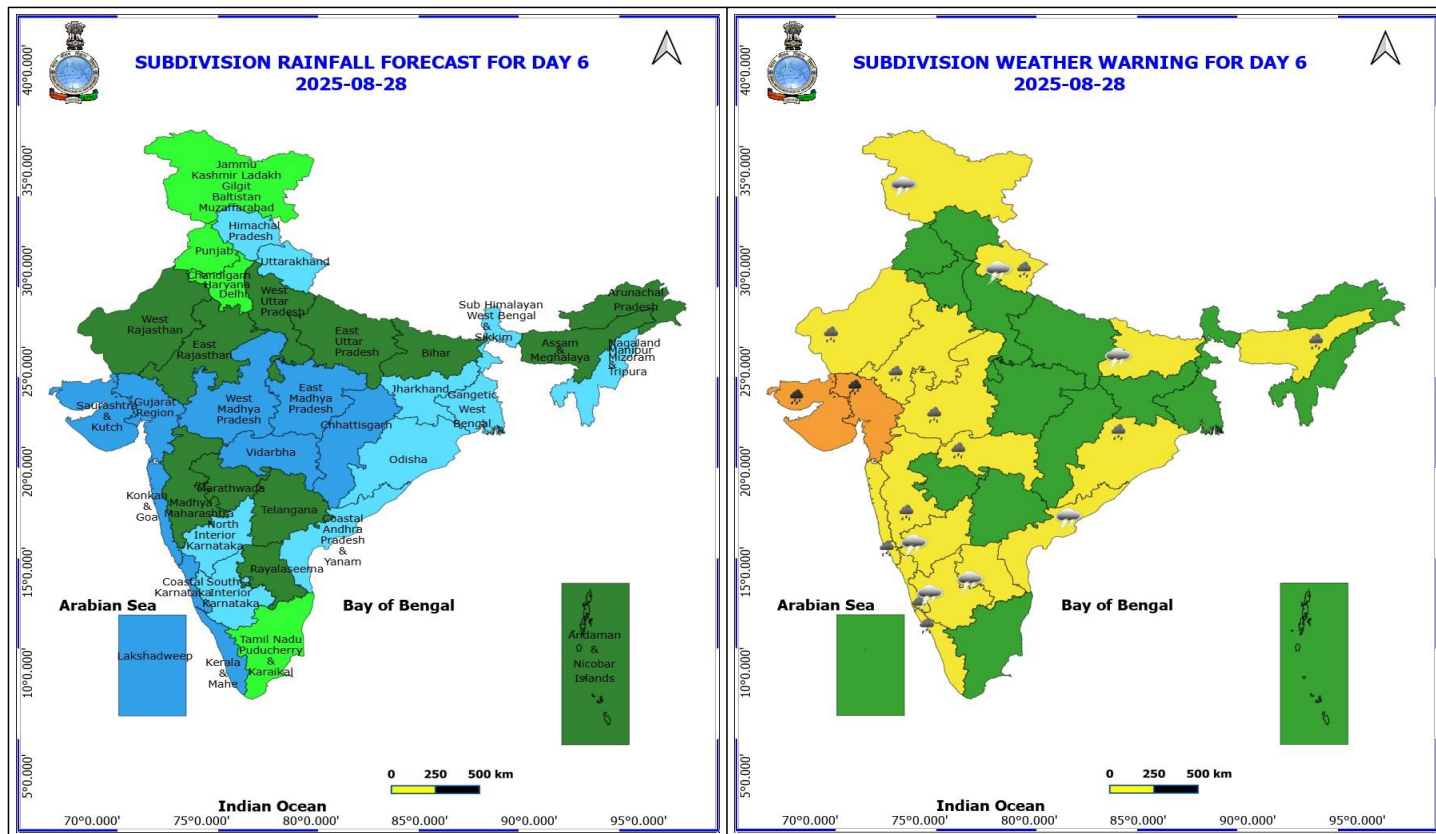
Squally weather with wind speed reaching 45 - 55 kmph gusting to 65 kmph likely to prevail along and off Gujarat, Konkan, Goa coasts and adjoining sea areas.

***Red color warning does not mean "Red Alert" Red color warning means "Take Action"**

Forecast and warning for any day is valid from 0830 hours IST of day till 0830 hours IST of next day

For more details kindly visit <https://mausam.imd.gov.in> or contact 011-2434-4599

(Service to the nation since 1875)



28 August (Day 6)

- ❖ **Heavy to Very Heavy Rainfall** likely at isolated places over Gujarat State.
- ❖ **Heavy Rainfall** likely at isolated places over Assam & Meghalaya, Coastal Karnataka, Kerala & Mahe, Konkan & Goa, Madhya Maharashtra, Odisha, Rajasthan, Uttarakhand, Vidarbha and West Madhya Pradesh.
- ❖ **Thunderstorm accompanied with lightning & gusty winds(30-40kmph)** likely at isolated places over Bihar and Interior Karnataka.
- ❖ **Thunderstorm accompanied with Lightning** likely at isolated places over Andhra Pradesh, Jammu-Kashmir-Ladakh-Gilgit-Baltistan-Muzaffarabad and Uttarakhand.

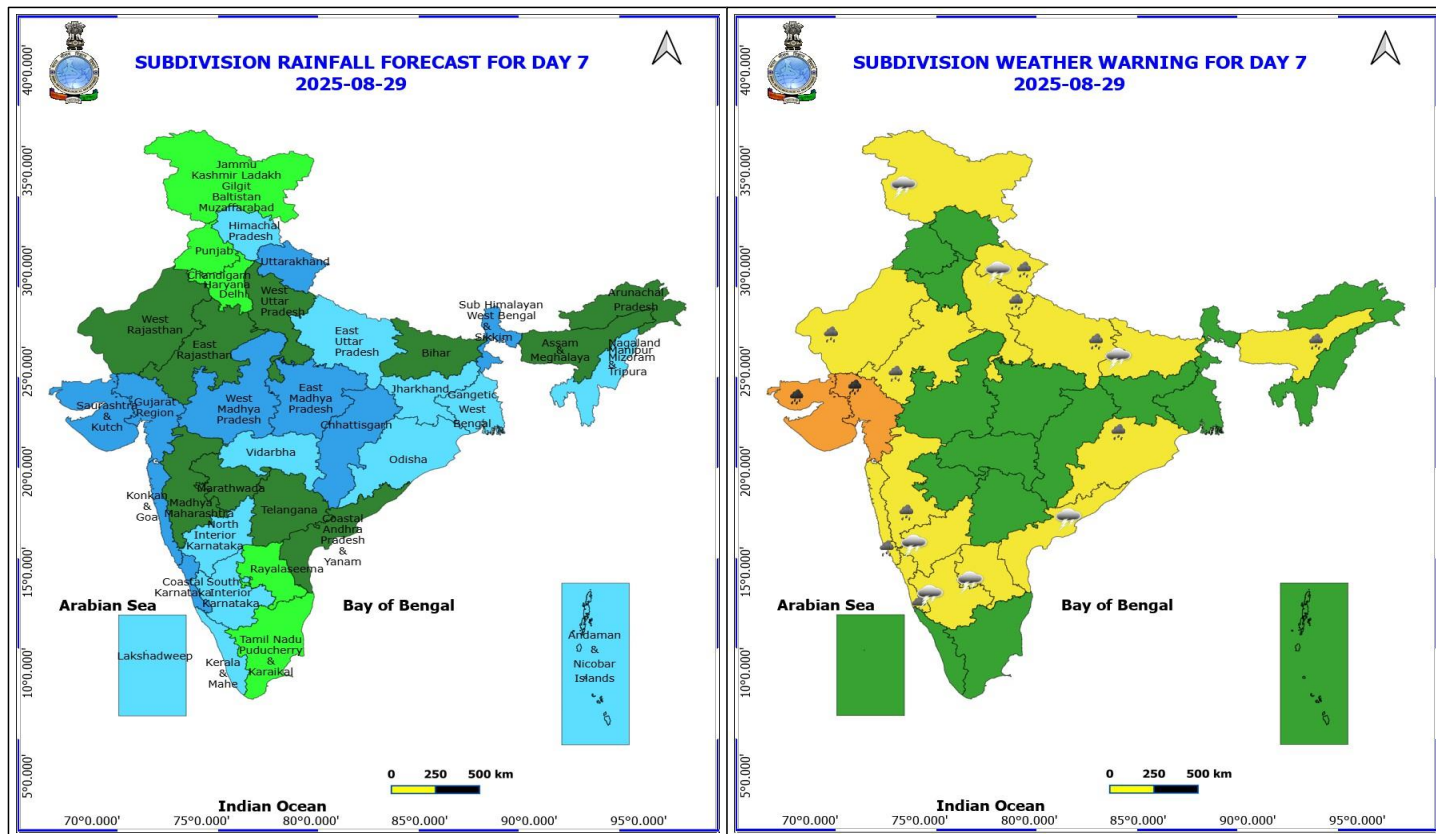
No Fishermen Warning

***Red color warning does not mean "Red Alert" Red color warning means "Take Action"**

Forecast and warning for any day is valid from 0830 hours IST of day till 0830 hours IST of next day

For more details kindly visit <https://mausam.imd.gov.in> or contact 011-2434-4599

(Service to the nation since 1875)



29 August (Day 7)

- ❖ **Heavy to Very Heavy Rainfall** likely at isolated places over Gujarat State.
- ❖ **Heavy Rainfall** likely at isolated places over Assam & Meghalaya, Coastal Karnataka, Konkan & Goa, Madhya Maharashtra, Odisha, Rajasthan, Uttar Pradesh and Uttarakhand.
- ❖ **Thunderstorm accompanied with lightning & gusty winds(30-40kmph)** likely at isolated places over Bihar and Interior Karnataka.
- ❖ **Thunderstorm accompanied with Lightning** likely at isolated places over Andhra Pradesh, Jammu-Kashmir-Ladakh-Gilgit-Baltistan-Muzaffarabad and Uttarakhand.

No Fishermen Warning

***Red color warning does not mean "Red Alert" Red color warning means "Take Action"**

Forecast and warning for any day is valid from 0830 hours IST of day till 0830 hours IST of next day

For more details kindly visit <https://mausam.imd.gov.in> or contact 011-2434-4599

(Service to the nation since 1875)

Flash Flood Warnings

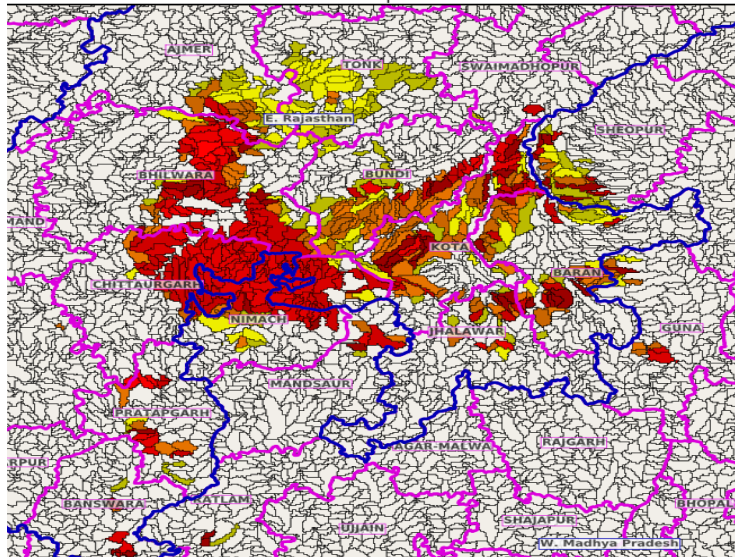
24 hours Outlook for the Flash Flood Risk (FFR) till 1130 IST of 24-08-2025 :

Low to Moderate flash flood risk likely over few watersheds & neighbourhoods of following Met Sub-divisions during next 24 hours.

East Rajasthan - Ajmer, Banswara, Baran, Bhilwara, Bundi, Chittaurgarh, Jhalawar, Kota, Pratapgarh, Swaimadhampur and Tonk districts.

Surface runoff/ Inundation may occur at some fully saturated soils & low-lying areas over Area of Concern (AoC) as shown in map due to expected rainfall occurrence in next 24 hours.

Product: WRF FFR | Timescale: 24-hr | Region: "REGIONAL"
Product Date: 2025-08-23 06:00 UTC | Valid Date: 2025-08-24 06:00 UTC



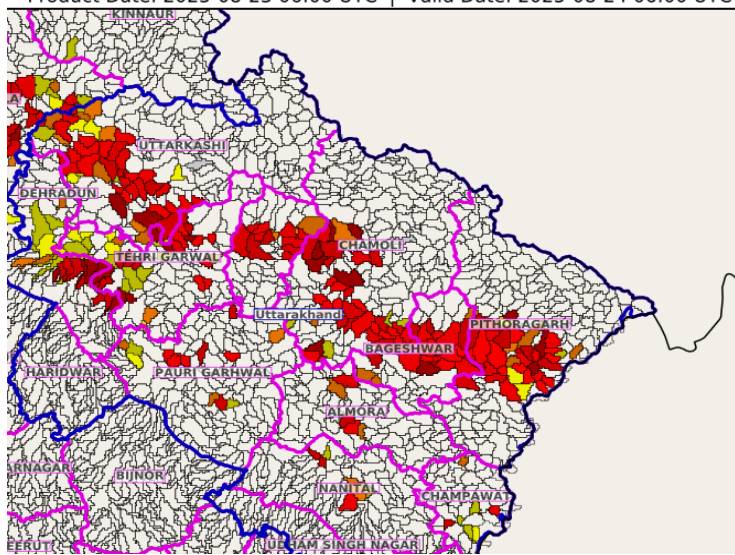
24 hours Outlook for the Flash Flood Risk (FFR) till 1130 IST of 24-08-2025 :

Low to Moderate flash flood risk likely over few watersheds & neighbourhoods of following Met Sub-divisions during next 24 hours.

Uttarakhand - Almora, Bageshwar, Chamoli, Champawat, Dehradun, Nanital, Pauri Garhwal, Pithoragarh, Rudraprayag, Tehri Garwal and Uttarkashi districts.

Surface runoff/ Inundation may occur at some fully saturated soils & low-lying areas over Area of Concern (AoC) as shown in map due to expected rainfall occurrence in next 24 hours.

Product: WRF FFR | Timescale: 24-hr | Region: "INDIA"
Product Date: 2025-08-23 06:00 UTC | Valid Date: 2025-08-24 06:00 UTC



*Red color warning does not mean "Red Alert" Red color warning means "Take Action"

Forecast and warning for any day is valid from 0830 hours IST of day till 0830 hours IST of next day

For more details kindly visit <https://mausam.imd.gov.in> or contact 011-2434-4599

(Service to the nation since 1875)

24 hours Outlook for the Flash Flood Risk (FFR) till 1130 IST of 24-08-2025 :

Moderate flash flood risk likely over few watersheds & neighbourhoods of following Met Sub-divisions during next 24 hours.

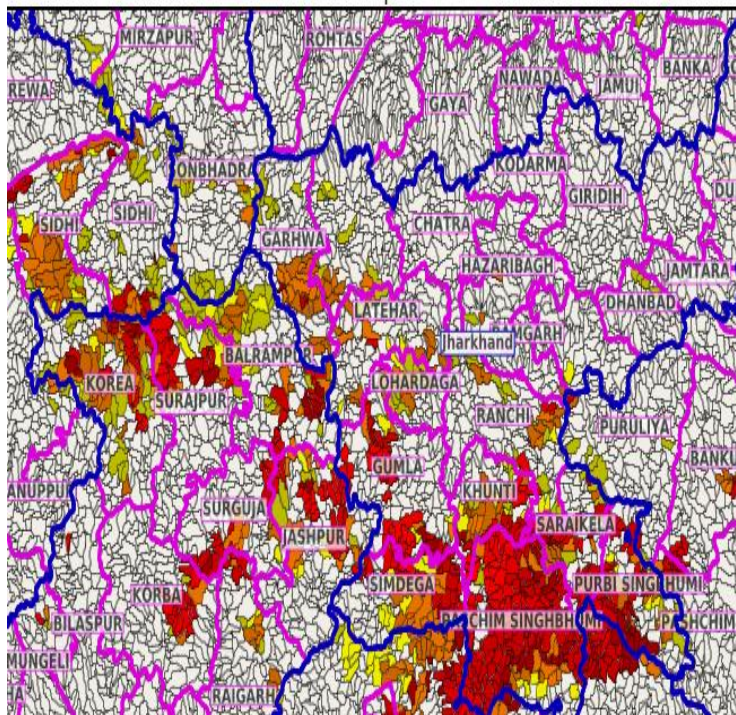
Jharkhand - Bokaro, Dhanbad, East Singhbhum, Garhwa, Gumla, Hazaribagh, Khunti, Latehar, Lohardaga, Palamu, Ramgarh, Ranchi, Saraikela, Simdega and West Singhbhum districts.

Low to Moderate flash flood risk likely over few watersheds & neighbourhoods of following Met Sub-divisions during next 24 hours.

Chhattisgarh - Balarampur, Bilaspur, Jashpur, Korba, Korea, Mungeli, Raigarh, Surajpur and Surguja districts.

Surface runoff/ Inundation may occur at some fully saturated soils & low-lying areas over Area of Concern (AoC) as shown in map due to expected rainfall occurrence in next 24 hours.

Product: WRF FFR | Timescale: 24-hr | Region: "INDIA"
Product Date: 2025-08-23 06:00 UTC | Valid Date: 2025-08-24 06:00 UTC



*Red color warning does not mean "Red Alert" Red color warning means "Take Action"

Forecast and warning for any day is valid from 0830 hours IST of day till 0830 hours IST of next day

For more details kindly visit <https://mausam.imd.gov.in> or contact 011-2434-4599

(Service to the nation since 1875)



Table-1

7 Days Rainfall Forecast

S.No.	Subdivision	23-Aug	24-Aug	25-Aug	26-Aug	27-Aug	28-Aug	29-Aug
		Day 1	Day 2	Day 3	Day 4	Day 5	Day 6	Day 7
1	ANDAMAN & NICOBAR ISLANDS	WS	WS	WS	WS	WS	SCT	FWS
2	ARUNACHAL PRADESH	FWS	FWS	FWS	SCT	SCT	SCT	SCT
3	ASSAM & MEHGHALAYA	FWS	FWS	FWS	FWS	SCT	SCT	SCT
4	N. M. M. & T.	FWS	FWS	FWS	FWS	FWS	FWS	FWS
5	S.H. WEST BENGAL & SIKKIM	FWS	WS	WS	FWS	FWS	FWS	WS
6	GANGETIC WEST BENGAL	WS	WS	FWS	FWS	FWS	FWS	FWS
7	ODISHA	FWS	FWS	WS	WS	FWS	FWS	FWS
8	JHARKHAND	WS	WS	WS	FWS	FWS	FWS	FWS
9	BIHAR	FWS	FWS	FWS	SCT	SCT	SCT	SCT
10	EAST UTTAR PRADESH	WS	WS	WS	FWS	SCT	SCT	FWS
11	WEST UTTAR PRADESH	SCT	FWS	WS	FWS	FWS	SCT	SCT
12	UTTARAKHAND	WS	WS	WS	WS	FWS	FWS	WS
13	HARYANA, CHD & DELHI	WS	WS	WS	FWS	SCT	ISOL	ISOL
14	PUNJAB	WS	WS	FWS	SCT	SCT	ISOL	ISOL
15	HIMACHAL PRADESH	WS	WS	WS	WS	FWS	FWS	FWS
16	JAMMU AND KASHMIR AND LADAKH	WS	WS	SCT	FWS	SCT	ISOL	ISOL
17	WEST RAJASTHAN	FWS	FWS	FWS	FWS	SCT	SCT	SCT
18	EAST RAJASTHAN	WS	WS	FWS	FWS	SCT	SCT	SCT
19	WEST MADHYA PRADESH	WS	FWS	FWS	FWS	WS	WS	WS
20	EAST MADHYA PRADESH	FWS	FWS	FWS	WS	WS	WS	WS
21	GUJRAT REGION	WS	WS	WS	WS	WS	WS	WS
22	SAURASHTRA & KUTCH	WS	WS	WS	WS	WS	WS	WS
23	KONKAN & GOA	WS	WS	WS	WS	WS	WS	WS
24	MADHYA MAHARASHTRA	SCT	ISOL	ISOL	ISOL	SCT	SCT	SCT
25	MARATHWADA	ISOL	ISOL	ISOL	ISOL	SCT	SCT	SCT
26	VIDARBHA	FWS	FWS	FWS	WS	WS	WS	FWS
27	CHATTISGARH	WS	WS	WS	WS	WS	WS	WS
28	COASTAL ANDHRA PRADESH	ISOL	ISOL	ISOL	SCT	FWS	FWS	SCT
29	TELANGANA	ISOL	ISOL	ISOL	SCT	SCT	SCT	SCT
30	RAYALASEEMA	ISOL	ISOL	ISOL	SCT	SCT	SCT	ISOL
31	TAMILNADU & PUDUCHERRY	SCT	ISOL	ISOL	ISOL	ISOL	ISOL	ISOL
32	COSTAL KARNATAKA	FWS	FWS	WS	WS	WS	WS	WS
33	NORTH INTERIOR KARNATAKA	ISOL	ISOL	ISOL	SCT	FWS	FWS	FWS
34	SOUTH INTERIOR KARNATAKA	ISOL	ISOL	ISOL	SCT	FWS	FWS	FWS
35	KERALA	ISOL	ISOL	SCT	WS	WS	WS	FWS
36	LAKSHDWEAP	SCT	SCT	SCT	FWS	WS	WS	FWS

Legend	Category	%Stations
WS	Widespread/Most Places	76-100
FWS	Fairly Widespread/Many Places	51-75
SCT	Scattered/ A Few Places	26-50
ISOL	Isolated Places	1-25
DRY	No Rain	0

*Red color warning does not mean "Red Alert" Red color warning means "Take Action"

Forecast and warning for any day is valid from 0830 hours IST of day till 0830 hours IST of next day

For more details kindly visit <https://mausam.imd.gov.in> or contact 011-2434-4599

(Service to the nation since 1875)

Fig. 1: Maximum Temperatures Dated 2025-08-22

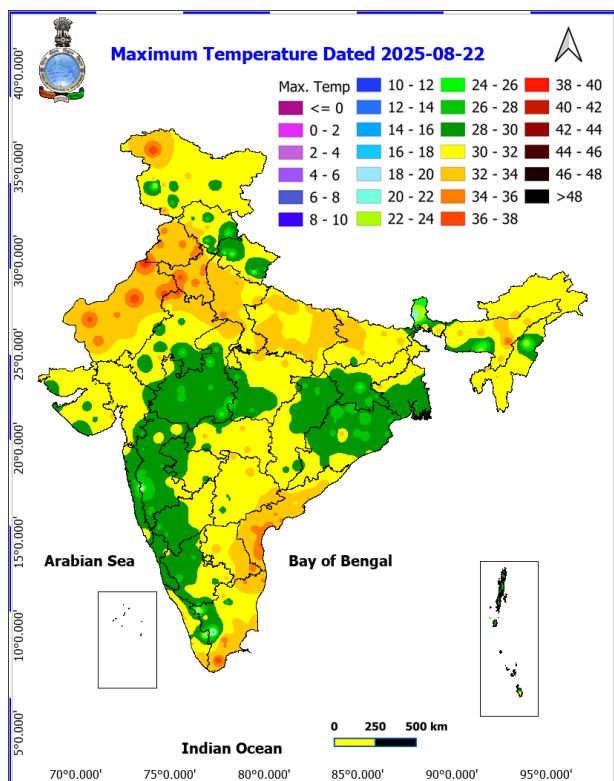


Fig. 2: Departure of Maximum Temp. Dated 2025-08-22

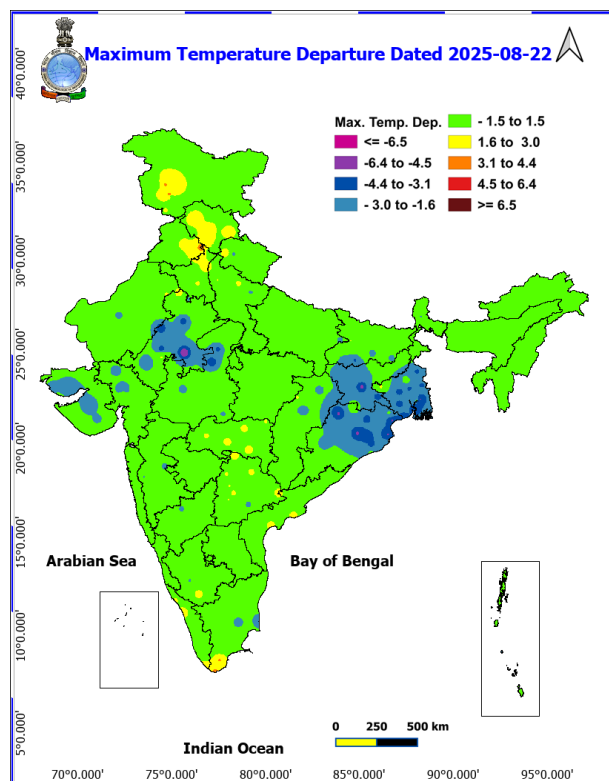


Fig. 3: Minimum Temperatures Dated 2025-08-23

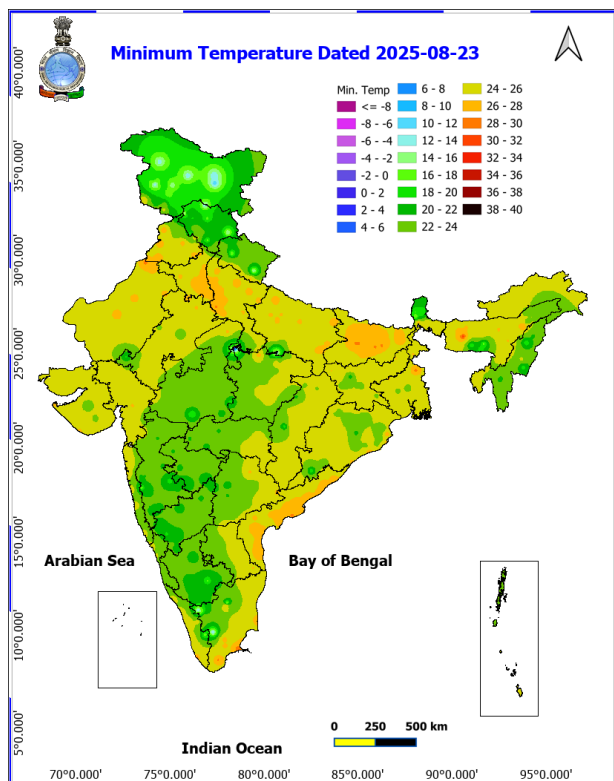
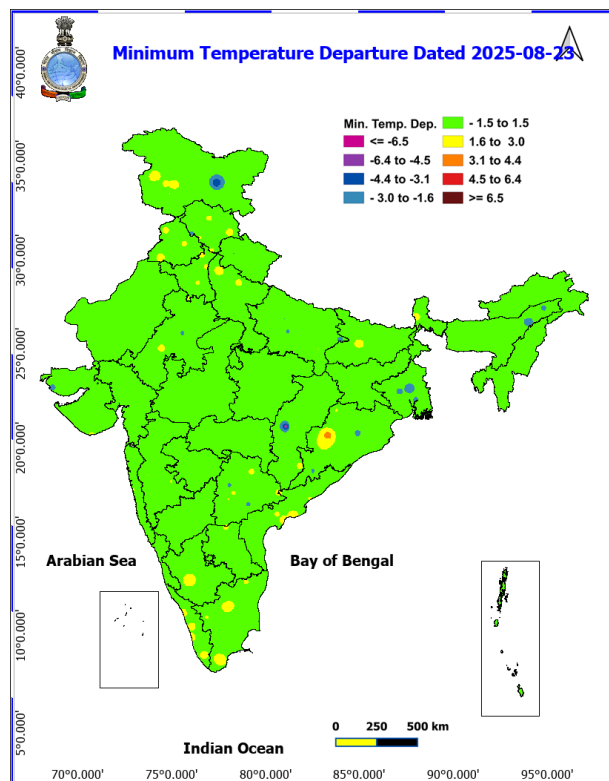
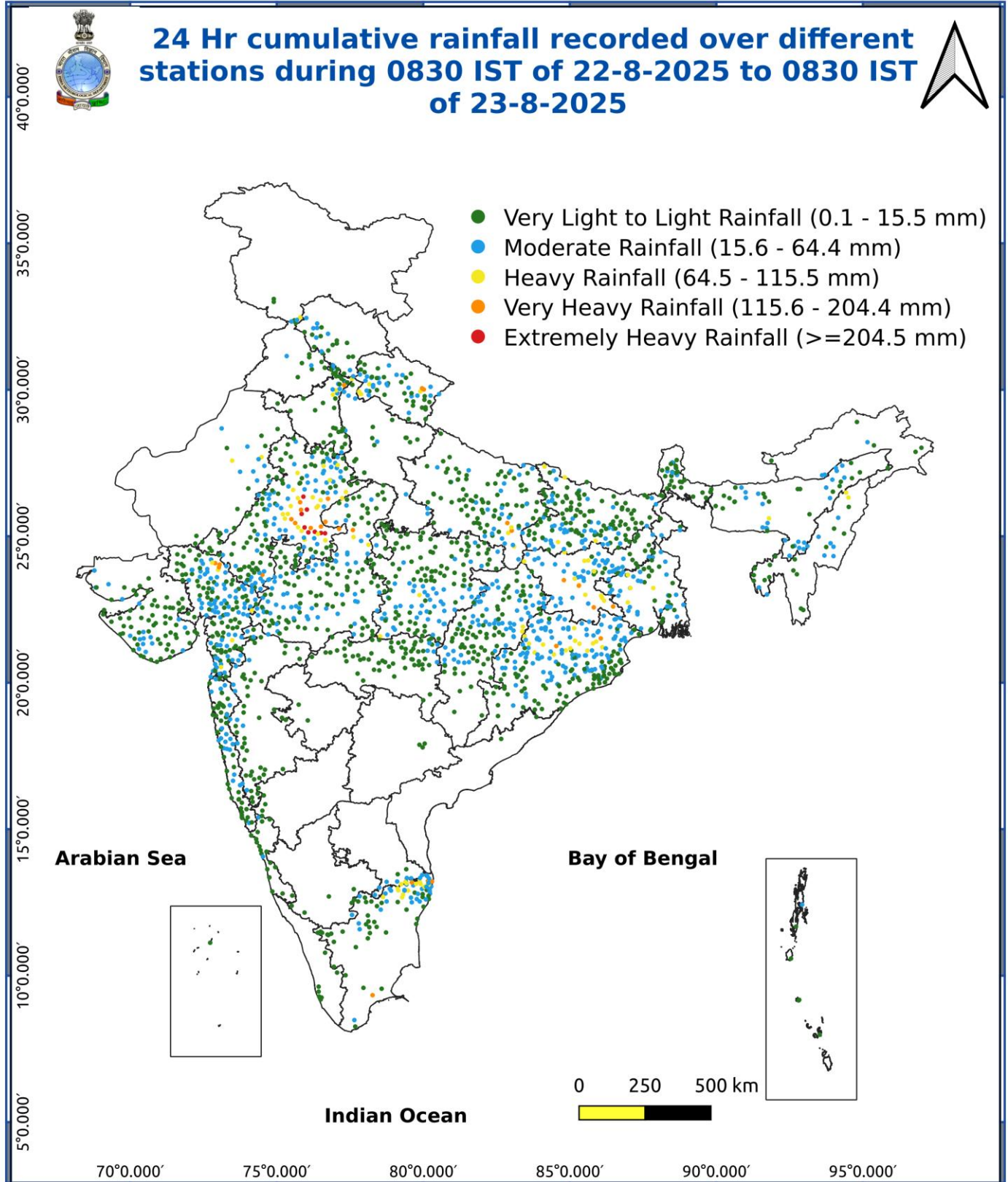


Fig. 4: Departure of Minimum Temp. Dated 2025-08-23





*Red color warning does not mean "Red Alert" Red color warning means "Take Action"

Forecast and warning for any day is valid from 0830 hours IST of day till 0830 hours IST of next day

For more details kindly visit <https://mausam.imd.gov.in> or contact 011-2434-4599

(Service to the nation since 1875)

Impact & Action Suggested due to

- ❖ **Extremely heavy rainfall** over Jharkhand, Gujarat Region on 23rd; East Rajasthan on 23rd & 24th August.
- ❖ **Very heavy rainfall** over Himachal Pradesh, Punjab, West Madhya Pradesh, Chhattisgarh, Bihar & Odisha on 23rd; Uttarakhand during 23rd-25th; Haryana, Chandigarh, East Madhya Pradesh on 23rd & 24th; West Rajasthan during 23rd-26th; East Rajasthan on 25th & 26th; Gujarat State during 23rd-29th August.

Impact Expected

- Localized Flooding of roads, water logging in low lying areas and closure of underpasses mainly in urban areas of the above region.
- Occasional reduction in visibility due to heavy rainfall.
- Disruption of traffic in major cities due to water logging in roads leading to increased travel time.
- Minor damage to kutcha roads.
- Possibilities of damage to vulnerable structure.
- Localized Landslides/Mudslides/landslips/mudsinks/mudsinks.
- Damage to horticulture and standing crops in some areas due to inundation.
- It may lead to riverine flooding in some river catchments (for riverine flooding please visit Web page of CWC)

Action Suggested

- Check for traffic congestion on your route before leaving for your destination.
- Follow any traffic advisories that are issued in this regard.
- Avoid going to areas that face the water logging problems often.
- Avoid staying in vulnerable structure.

Agromet advisories for various parts of the country

Agromet advisories for likely impact of Heavy / Heavy to Very Heavy / Extremely Heavy Rainfall (Based on the IBF and advisories issued by different AMFUs)

- In **East Rajasthan**, make arrangements to drain out excess water from fields of rice, maize, soybean, black gram and groundnut in **Southeastern Humid Plain Zone**; pearl millet, sorghum, maize, green gram, black gram, moth bean, sesame and cluster bean in **Flood Prone Eastern Plain Zone**; groundnut, green gram, moth bean, cowpea, pearl millet, maize, sorghum and vegetables in **Semi-Arid Eastern Plain Zone**; vegetable nurseries, maize, soybean and groundnut in **Sub Humid Southern Plain and Aravali Hill Zone** and soybean, maize and cotton in **Southern Humid Plain Zone**. In **West Rajasthan**, make provision to drain out excess rain water from fields of pearl millet, green gram and cluster bean in **Arid Western Plain Zone**.
- In **Gujarat**, provide mechanical support to horticultural crops and staking or support to vegetables and young fruit plants to avoid lodging due to heavy rains and strong winds. Make arrangements to drain out excess water from fields of rice, sugarcane, vegetables and tuber crops in **South Gujarat Heavy Rainfall Zone**; groundnut, cotton, soybean, black gram, green gram, sesame and pigeon pea in **South Saurashtra Zone**; rice, cotton, green gram, black gram, pigeon pea, pearl millet and vegetables in **Bhal and Coastal Zone**; castor, cotton, groundnut, pearl millet and sesame in **North Gujarat Zone**; rice, pearl millet, pigeon pea, green gram, black gram, cotton, soybean, maize, castor and vegetables in **Middle Gujarat Zone**; rice, cotton, sugarcane and pigeon pea in **South Gujarat Zone**; groundnut, cotton, sesame, black gram, green gram, pigeon pea and castor in **North Saurashtra Zone** and *kharif* groundnut, cotton, soybean, black gram, green gram, sesame, pigeon pea and castor in **North West Zone**.
- In **Gangetic West Bengal**, ensure proper drainage in fields of rice and groundnut in **Laterite and Red Soil Zone**; rice, jute and vegetables in **New Alluvial Zone** and betel gardens and newly transplanted winter vegetables in **Coastal Saline Zone**. In **Sub-Himalayan West Bengal**, make provision to drain out excess water from *aman* rice and vegetable fields (chilli, bitter gourd, pointed gourd, okra, brinjal etc.) and cover the chilli seedlings with plastic to protect them from heavy rains in **Terai Zone**.
- In **Odisha**, make provision for draining out excess rain water from fields of rice, maize, black gram and vegetables in **North Central Plateau Zone**; finger millet, pulses, maize, groundnut and vegetables in **North Eastern Plateau**

*Red color warning does not mean "Red Alert" Red color warning means "Take Action"

Forecast and warning for any day is valid from 0830 hours IST of day till 0830 hours IST of next day

For more details kindly visit <https://mausam.imd.gov.in> or contact 011-2434-4599

(Service to the nation since 1875)

- Zone;** rice, vegetables and fruit orchards in **North Eastern Coastal Plain Zone;** rice, maize and vegetables in **West Central Table Land Zone** and maize, groundnut, sesame, pigeon pea and vegetables in **Mid Central Table Land Zone.** In **Keonjhar** district, postpone the sowing of green gram and black gram and nursery sowing and transplanting of tomato.
- In **Bihar**, ensure proper drainage to drain out excess rainwater from standing crops such as pigeon pea, turmeric, yam, sunflower and maize as well as from vegetable nurseries in **South Bihar Alluvial Zone.**
 - In **Jharkhand**, ensure adequate drainage facilities in fields of rice, maize, black gram, green gram, tuber crops and vegetables and cover the vegetable seedlings with polythene to protect them from heavy rains in **Western Plateau Zone.**
 - In **Madhya Pradesh**, provide adequate drainage in fields of soybean, maize and vegetables in **Malwa Plateau Zone;** maize, soybean, green gram, black gram, pigeon pea and vegetables in **Gird Zone;** soybean, maize and vegetables in **Kymore Plateau and Satpura Hill Zone;** soybean, green gram, black gram and maize in **Bundelkhand Zone** and soybean and vegetables in **Vindhyan Plateau Zone.**
 - In **Chhattisgarh**, ensure proper drainage in fields of rice and vegetables and postpone fresh transplanting of rice in low land areas in **North Hill Zone.**
 - In **Himachal Pradesh**, maintain proper drainage channels in ginger, turmeric and maize fields in **Mid Hills Sub Humid Zone** and rice, maize and vegetable fields in **Sub Montane and Low Hills Sub Tropical Zone.** In **High Hills Sub Temperate Wet Zone**, harvest ripened tomatoes and ensure proper drainage in maize, kidney bean, vegetable fields and fruit orchards.
 - In **Uttarakhand**, maintain proper drainage channels in fields of soybean, maize, pulses, finger millet, ginger, vegetable and fruit orchards in **Hill Zone;** barnyard millet, finger millet and green gram in **Sub Humid Sub Tropic Zone** and rice, green gram, black gram, sugarcane, maize, soybean, groundnut and vegetables in **Bhabar and Tarai Zone.**
 - In **Punjab**, maintain proper drainage in chilli fields and remove stagnant rainwater immediately after rainfall in **Undulating Plain Zone.** Ensure proper drainage in fields of sugarcane, maize, soybean and green gram in **Sub-Montane Undulating Zone** and sugarcane, maize and cotton in **Central Plain Zone.**
 - In **Haryana**, make arrangements to drain out excess water from fields of sugarcane, cotton, maize, pearl millet and vegetables in **Eastern Zone.**
 - In **Meghalaya**, maintain proper drainage in ginger and vegetable fields and fruit orchards. Provide support to banana plants to prevent lodging. Maintain a thin 2-3 cm layer of stagnant water in rice fields after transplanting.
 - In **Arunachal Pradesh**, ensure proper drainage in rice fields and maintain 5-7 cm water level. Maintain drainage channels in finger millet, banana and vegetable fields. Strengthen the bunds in millet fields to prevent erosion and seedling washout.

Livestock / Fishery

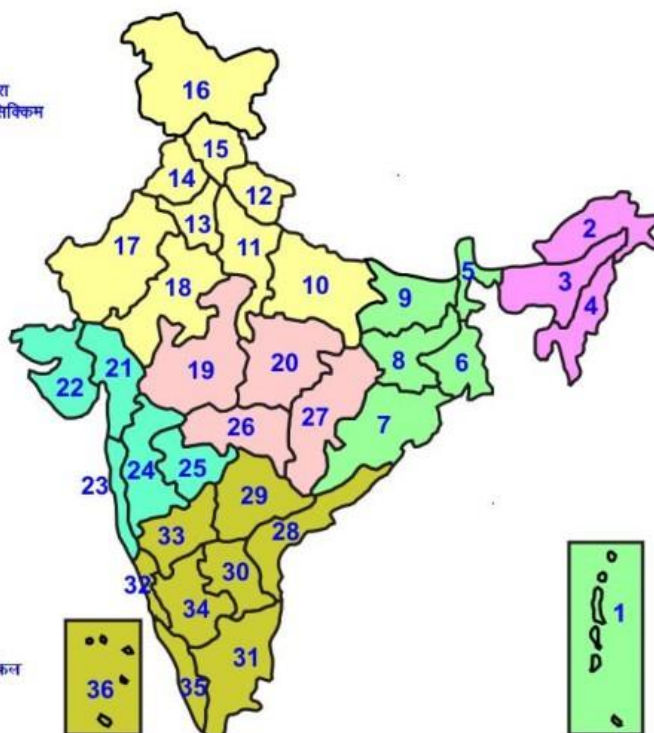
- Keep the animals inside the shed during heavy rainfall and provide them balanced feed.
- Store feed and fodder in a safe place to prevent spoilage.
- Construct an outlet with proper netting around the ponds to drain out excess water, thereby preventing fish from escaping in case of overflow.

Agromet advisories for likely impact of Thunderstorm / Gusty Winds / Squally Winds (Based on the IBF and advisories issued by different AMFUs)

- Provide mechanical support to horticultural crops and staking or support to vegetables and young fruit plants / fruit-bearing plants to avoid lodging due to strong winds.

LEGENDS

- 1 अंडमान और निकोबार द्वीप समुह
- 2 अरुणाचल प्रदेश
- 3 असम और मेघालय
- 4 नागालैंड मनीपुर मीजोरम और त्रिपुरा
- 5 उप हिमालय पश्चिम बंगाल एवं सिक्किम
- 6 पश्चिम बंगाल
- 7 ओडिसा
- 8 झारखंड
- 9 बिहार
- 10 पूर्वी उत्तर प्रदेश
- 11 पश्चिम उत्तर प्रदेश
- 12 उत्तराखंड
- 13 हरियाणा चंडीगढ़ एवं दिल्ली
- 14 पंजाब
- 15 हिमाचल प्रदेश
- 16 जम्मू एवं कश्मीर एवं लद्दाख
- 17 पश्चिम राजस्थान
- 18 पूर्वी राजस्थान
- 19 पश्चिम मध्य प्रदेश
- 20 पूर्वी मध्य प्रदेश
- 21 गुजरात क्षेत्र
- 22 सौराष्ट्र एवं कच्छ
- 23 कोंकण एवं गोवा
- 24 मध्य महाराष्ट्र
- 25 मराठावाड़ा
- 26 विदर्भ
- 27 छत्तीसगढ़
- 28 तटीय आंध्र प्रदेश एवं यनम
- 29 तेलंगाना
- 30 रायलसेमा
- 31 तमिलनाडु, पुदुचेरी एवं कराईकल
- 32 तटिय कर्नाटक
- 33 आंतरिक उत्तरी कर्नाटक
- 34 आंतरिक दक्षिणी कर्नाटक
- 35 केरल एवं माहे
- 36 लक्षद्वीप



1. Andaman & Nicobar Islands
2. Arunachal Pradesh
3. Assam & Meghalaya
4. Nagaland, Manipur, Mizoram & Tripura
5. Sub-Himalayan West Bengal & Sikkim
6. Gangetic West Bengal
7. Orissa
8. Jharkhand
9. Bihar
10. East Uttar Pradesh
11. West Uttar Pradesh
12. Uttarakhand
13. Haryana, Chd & Delhi
14. Punjab
15. Himachal Pradesh
16. Jammu & Kashmir and Ladakh
17. West Rajasthan
18. East Rajasthan
19. West Madhya Pradesh
20. East Madhya Pradesh
21. Gujarat
22. Saurashtra
23. Konkan & Goa
24. Madhya Maharashtra
25. Marathwada
26. Vidharbha
27. Chhattisgarh
28. Coastal Andhra Pradesh & Yanam
29. Telangana
30. Rayalaseema
31. Tamilnadu, Puducherry & Karaikal
32. Coastal Karnataka
33. North Interior Karnataka
34. South Interior Karnataka
35. Kerala & Mahe
36. Lakshadweep

SPATIAL DISTRIBUTION (% of Stations reporting)

% Stations	Category	% Stations	Category
76-100	Widespread (WS/Most Places)	26-50	Scattered (SCT/ A Few Places)
51-75	Fairly Widespread (FWS/ Many Places)	1-25	Isolated (ISOL)

Subdivision Colour

- NO WARNING
- WATCH (BE UPDATED)
- ALERT (BE PREPARED TO TAKE ACTION)
- WARNING (TAKE ACTION)

Probabilistic Forecast

Terms	Probability of Occurrence (%)
Unlikely	< 25
Likely	25 - 50
Very Likely	50 - 75
Most Likely	> 75

-  Heavy Rain


 Thunderstorm & Lightning

 Strong surface winds

 Cold Wave

 Hot & Humid

 Very Heavy Rain

 Hailstorm

 Heat Wave

 Cold Day

 Extremely Heavy Rain

 Dust Storm

 Hot Day

 Ground Frost

 Heavy Snow

 Dust Raising Winds

 Warm Night

 Fog

*Red color warning does not mean "Red Alert" Red color warning means "Take Action"

Forecast and warning for any day is valid from 0830 hours IST of day till 0830 hours IST of next day

For more details kindly visit <https://mausam.imd.gov.in> or contact 011-2434-4599

(Service to the nation since 1875)

LEGENDS

WARNING

WARNING (TAKE ACTION)
ALERT (BE PREPARED)
WATCH (BE UPDATED)
NO WARNING (NO ACTION)

Probabilistic Forecast

Terms	Probability of Occurrence (%)
Unlikely	< 25
Likely	25 - 50
Very Likely	50 - 75
Most Likely	> 75



Heavy: 64.5 to 115.5 mm/cm *
Very Heavy: 115.6 to 204.4 mm/cm *
Extremely Heavy: > 204.4 mm/cm *



When maximum temperature of a station reaches $\geq 40^{\circ}\text{C}$ for plains and $\geq 30^{\circ}\text{C}$ for hilly regions
(a) Based on Departure from normal

Heat Wave: Maximum Temperature Departure from normal 4.5°C to 6.4°C .
Severe Heat Wave: Maximum Temperature Departure from normal $\geq 6.5^{\circ}\text{C}$

(b). Based on Actual maximum temperature

Heat Wave: When actual maximum temperature $\geq 45^{\circ}\text{C}$.
Severe Heat Wave: When actual maximum temperature $\geq 47^{\circ}\text{C}$

(c). Criteria for heat wave for coastal stations

When maximum temperature departure is $> 4.5^{\circ}\text{C}$ from normal. Heat Wave may be described provided maximum temperature $\geq 37^{\circ}\text{C}$



When maximum temperature remains 40°C

Warm Night: When minimum temperature departure 4.5°C to 6.4°C .
Severe Warm Night: When minimum temperature departure $> 6.4^{\circ}\text{C}$.



When minimum temperature of a station $\leq 10^{\circ}\text{C}$ for plains and $\leq 0^{\circ}\text{C}$ for hilly regions.

(a). Based on departure

Cold Wave: Minimum Temperature Departure from normal -4.5°C to -6.4°C .
Severe Cold Wave: Minimum Temperature Departure from normal $\leq -6.5^{\circ}\text{C}$

(b) Based on actual Minimum Temperature (for Plains only)

Cold Wave: When Minimum Temperature is $\leq 4.0^{\circ}\text{C}$
Severe Cold Wave: When Minimum Temperature is $\leq 2.0^{\circ}\text{C}$

(c) For Coastal Stations

When Minimum Temperature departure is $\leq -4.5^{\circ}\text{C}$ & actual Minimum Temperature is $\leq 15^{\circ}\text{C}$



When minimum temperature of a station $\leq 10^{\circ}\text{C}$ for plains and $\leq 0^{\circ}\text{C}$ for hilly regions
Based on departure

Cold Day: Maximum Temperature Departure from normal -4.5°C to -6.4°C .
Severe Cold Day: Maximum Temperature Departure from normal $\leq -6.5^{\circ}\text{C}$



Phenomenon of small droplets suspended in air and the horizontal visibility $< 1\text{km}$

Moderate Fog: When the visibility between 500-200 metres
Dense Fog: when the visibility between 50-200 metres
Very Dense Fog: when the visibility < 50 metres



Sudden electrical discharges manifested by a flash of light (Lightning) and a sharp rumbling sound (thunder)



An ensemble of particles of dust or sand energetically lifted to great heights by a strong and turbulent wind.



Ice deposits on ground

Air temperature $\leq 4^{\circ}\text{C}$ (over Plains)



A strong wind that rises suddenly, lasts for at least 1 minute.

Moderate: Wind speed 52-61 kmph
Severe: Wind speed 62-87 kmph
Very Severe: Wind speed > 87 kmph



Effect of various waves in the sea over specific area

Rough to very rough: Wind speed 41-62 kmph (22-33 knots) & Wave height 2.5-6 metre
High to very high: Wind speed 63-117 kmph (34-63 knots) & Wave height 6-14 metre
Phenomenal: Wind speed > 117 kmph (> 63 knots) & Wave height > 14 metre



Cyclonic Storm: Wind speed 62-87 kmph (34-47 knots)

Severe Cyclonic Storm: Wind speed 88-117 kmph (48-63 knots)

Very Severe Cyclonic Storm: Wind speed 118-165 kmph (64-89 knots)

Extremely Severe Cyclonic Storm: Wind speed 166-220 kmph (90-119 knots)

Super Cyclone Storm: Wind speed > 220 kmph (> 119 knots)

*Red color warning does not mean "Red Alert" Red color warning means "Take Action"

Forecast and warning for any day is valid from 0830 hours IST of day till 0830 hours IST of next day

For more details kindly visit <https://mausam.imd.gov.in> or contact 011-2434-4599

(Service to the nation since 1875)