

2025-07-19

Time of Issue: 13:30:00 hours IST
(Mid-Day)

ALL INDIA WEATHER SUMMARY AND FORECAST BULLETIN

Significant Weather Features

Northwest India:

- **Extremely heavy rainfall (≥ 21 cm)** very likely at isolated places over southwest Rajasthan on 19th July.
- Isolated **heavy rainfall** likely over Jammu & Kashmir, Himachal Pradesh, Uttarakhand during 20th-24th; West Uttar Pradesh on 20th & 21st; Punjab, Haryana during 20th-22nd & 24th; southeast Rajasthan on 19th July with **very heavy rainfall over Uttarakhand during 20th-22nd; Punjab, Haryana, West Uttar Pradesh on 21st and Himachal Pradesh on 21st & 22nd and Jammu & Kashmir on 22nd July.**
- Light/moderate rainfall at most/many places accompanied with thunderstorm, lightning likely over western Himalayan region and some/many places over the plains during next 7 days.

West India:

- **Heavy to very heavy rainfall** likely at isolated places over Konkan & Goa, Ghat areas of Madhya Maharashtra during 19th-25th; north Gujarat on 19th July and **heavy rainfall** over Saurashtra & Kutch on 20th July.
- Light/moderate rainfall at many/some places very likely over the region during next 5 days.

South Peninsular India:

- **Extremely heavy rainfall (≥ 21 cm)** very likely at isolated places over Kerala and Coastal Karnataka on 19th & 20th July.
- Isolated **heavy to very heavy rainfall** likely over Kerala & Mahe, Coastal and South Interior Karnataka during 19th-25th; Tamil Nadu during 19th-22nd July; Coastal Andhra Pradesh & Yanam, Telangana on 21st July; isolated **heavy rainfall** over Coastal Andhra Pradesh & Yanam, north Interior Karnataka, Telangana during 19th-25th; Lakshadweep and Rayalaseema on 19th & 20th July.
- **Strong surface winds** (speed reaching 40-50 kmph) very likely over South Peninsular India during next 5 days.
- Light/moderate rainfall at many/some places over Kerala & Mahe, Lakshadweep, Karnataka, Rayalaseema; isolated to scattered rainfall over Coastal Andhra Pradesh & Yanam, Telangana during next 7 days.

East & Central India:

- Isolated heavy rainfall very likely to continue over Madhya Pradesh, Gangetic West Bengal, Jharkhand during 23rd-25th; Odisha, Chhattisgarh during 19th -25th; Vidarbha during 21st-25th; Bihar on 20th & 21st; Sub-Himalayan West Bengal & Sikkim during 19th-22nd July with very heavy rainfall over Sub-Himalayan West Bengal & Sikkim on 19th & 20th; Gangetic West Bengal on 24th and Odisha during 23rd-25th July..
- Light/moderate rainfall at most/many places accompanied with thunderstorm & lightning likely over the region during next 7 days with **moderate cloud to ground lightning over Bihar on 20th July.**

Northeast India:

- Light/moderate rainfall at many places accompanied with **thunderstorm, lightning** likely to continue over Northeast India during next 7 days.
- Isolated **heavy rainfall** very likely over Arunachal Pradesh, Assam & Meghalaya, Nagaland & Tripura during 19th-21st and on 24th & 25th with **very heavy rainfall** over Arunachal Pradesh on 19th July.

*Red color warning does not mean "Red Alert" Red color warning means "Take Action"

Forecast and warning for any day is valid from 0830 hours IST of day till 0830 hours IST of next day

For more details kindly visit <https://mausam.imd.gov.in> or contact 011-2434-4599

(Service to the nation since 1875)

Main Weather Observations:

❖ **Rainfall distribution** (from 0830 hours IST of yesterday to 0830 hours IST of today): **at most places** over Andaman & Nicobar Islands, Sub Himalayan West Bengal & Sikkim, West Rajasthan, East Rajasthan, Konkan & Goa, Coastal Karnataka, North Interior Karnataka, Kerala & Mahe and Lakshadweep; **at many places** over Arunachal Pradesh, Vidarbha, Telangana and South Interior Karnataka; **at a few places** over Assam & Meghalaya, Nagaland, Manipur, Mizoram & Tripura, Gangetic West Bengal, Odisha, West Uttar Pradesh, Haryana-Chandigarh-Delhi, Himachal Pradesh, West Madhya Pradesh, East Madhya Pradesh, Gujarat Region, Marathwada, Chhattisgarh, Coastal Andhra Pradesh & Yanam, Rayalaseema and Tamil Nadu, Puducherry & Karaikal; **at isolated places** over Bihar, East Uttar Pradesh, Uttarakhand, Punjab, Jammu-Kashmir-Ladakh-Gilgit-Baltistan-Muzaffarabad, Saurashtra & Kutch and Madhya Maharashtra; **Dry** over rest of the country.

❖ **Significant rainfall recorded(in cm)** (from 0830 hours IST of yesterday to 0830 hours IST of today): **East Rajasthan:** Nainwa (dist Bundi) 23; Mangliawas SR (dist Ajmer), Nasirabad (dist Ajmer) 18 Each; Pratapgarh (dist Pratapgarh) 16; Pisagan SR (dist Ajmer) 15; Kishangarh (dist Ajmer), Sarmathura SR (dist Dholpur), Ajmer (dist Ajmer) 14 Each; Pushkar SR (dist Ajmer), Sarwar (dist Ajmer) 13 Each; Deogarh (dist Rajsamand), Ajmer Tehsil SR (dist Ajmer) 12 Each; Nagrarfort SR (dist Tonk), Masuda SR (dist Ajmer), Geola SR (dist Ajmer), Indergarh SR (dist Bundi) 11 Each; Lalsot (dist Dausa), Bhinay SR (dist Ajmer), Arai SR (dist Ajmer), Kekri SR (dist Ajmer), Malerainadunger SR (dist Sawai Madhopur) 10 Each; Tonk Vanasthali (dist Tonk), Tatgarh SR (dist Ajmer), Kumbhalgarh SR (dist Rajsamand), Gegal SR (dist Ajmer), Khandar SR (dist Sawai Madhopur), Pipalda SR (dist Kota), Bamanwas SR (dist Sawai Madhopur) 9 Each; Nayanagar/Beawar (dist Ajmer), Hurda SR (dist Bhilwara), Todaraisingh SR (dist Tonk), Jawaja (dist Ajmer), Raipur (dist Bhilwara), Dausa (dist Dausa), Sawaimadhopur Tesil SR (dist Sawai Madhopur) 8 Each; Chothkabarwara SR (dist Sawai Madhopur), Uniara/aligarh (dist Tonk), Vijaynagar SR (dist Ajmer), Sallopat SR (dist Banswara), Mandana SR (dist Kota), Sapotra (dist Karauli), Jhadol SR (dist Udaipur), Mandrayal SR (dist Karauli), Gangapur (dist Sawai Madhopur), Bhim (dist Rajsamand), Nimbahera (dist Chittorgarh), Piplu SR (dist Tonk) 7 Each; **West Rajasthan:** Merta City (dist Nagaur) 23; Raipur SR (dist Pali) 14; Khivensar SR (dist Nagaur) 13; Degana (dist Nagaur) 11; Bhopalgarh SR (dist Jodhpur) 10; Bilara (dist Jodhpur), Sojat (dist Pali), Marwar Junction (dist Pali), Luni SR (dist Jodhpur) 9 Each; Pali (dist Pali) 8; Shergarh (dist Jodhpur), Jodhpur Tehsil SR (dist Jodhpur), Pachpadra (dist Barmer), Jaitran (dist Pali), Rohat SR (dist Pali) 7 Each; **Sub Himalayan West Bengal & Sikkim:** Buxaduar (dist Alipurduar) 19; Chengmari/Diana (dist Jalpaiguri), Diana Tea Estate (dist Jalpaiguri) 16 Each; Fagu Tea Estate (dist Jalpaiguri) 15; Palashbari Tea Estate (dist Jalpaiguri) 14; Banarhat High School (dist Jalpaiguri), Chalouni Tea Estate (dist Jalpaiguri), Karballa Tea Estate (dist Jalpaiguri) 11 Each; Gandrapara Tea Garden (dist Jalpaiguri) 10; Indong T.e. (dist Jalpaiguri), Zurrantee T.e (dist Jalpaiguri) 9 Each; Bhagatpur Tea Estate (dist Jalpaiguri), Ghatia T.e. (dist Jalpaiguri), Ghish (dist Jalpaiguri), Tra Nagrakata (dist Jalpaiguri), Washabari Tea Estate (dist Jalpaiguri), Nagarkata (dist Jalpaiguri), Toorsa Tea Garden (dist Alipurduar) 8 Each; Chel (dist Jalpaiguri), Kurti T.e. (dist Jalpaiguri), Maynaguri College (dist Jalpaiguri), Beech Tea Garden (dist Alipurduar) 7 Each; **Konkan & Goa:** Malvan (dist Sindhudurg) 14; Sanguem (dist South Goa) 9; **Coastal Karnataka:** Shirali PTO (dist Uttara Kannada) 12; Kumta (dist Uttara Kannada) 11; Manki (dist Uttara Kannada), Gersoppa (dist Uttara Kannada) 10 Each; Mangaluru AP (dist Dakshina Kannada), Shakti Nagar (dist Dakshina Kannada), Honavar (dist Uttara Kannada) 8 Each; **Gujarat Region:** Danta (dist Banaskantha) 12; Palanpur (dist Banaskantha) 9; **West Madhya Pradesh:** Bairad (dist Shivpuri) 11; Karhal (dist Sheopur) 10; Badoda (dist Sheopur) 9; Narwar (dist Shivpuri), Kumbhraj (dist Guna) 8 Each; Mandsaur-aws (dist Mandsaur), Alipur(jaura) (dist Morena), Jawad (dist Neemuch), Veerpur (dist Sheopur) 7 Each; **Arunachal Pradesh:** Oyan ARG (dist East Siang) 11; Miao (dist Changlang) 8; **Madhya Maharashtra:** Gaganbawada (dist Kolhapur) 11; **Telangana:** Nawabpet (dist Vikarabad), Chevella (dist Rangareddy), Husnabad(ARG) (dist Siddipet), Yadagirigutta (dist Y. Bhuvanagiri) 10 Each; Nanganur (dist Siddipet), Yadagirigutta(ARG) (dist Y. Bhuvanagiri) 9 Each; Medak (dist Medak), Himayatnagar (dist Hyderabad), Ramayampet (dist Medak) 8 Each; Shekpet (dist Hyderabad) 7; **North Interior Karnataka:** Chincholi (dist Kalaburgi), Kurdi (dist Raichur), Gadag PBO (dist Gadag) 8 Each; Vijayapura PTO (dist Vijayapura) 7; **Kerala & Mahe:** Kollam Rly (dist Kollam), Chavara AWS (dist Kollam) 8 Each; Thodupuzha (dist Idukki), Udumbannoor AWS (dist Idukki) 7 Each; **Bihar:** Birpur (dist Supaul) 7; **Rayalaseema:** Royachoti (dist Annamayya District) 7; **Tamil Nadu, Puducherry & Karaikal:** Tiruvallur (dist Tiruvallur), Arakonam (dist Ranipet) 7 Each; **Odisha:** Bargarh (dist Bargarh) 7; **South Interior Karnataka:** Agumbe AWS (dist Shivamogga) 7; **Gangetic West Bengal:** Rajnagar (dist Birbhum) 7.

❖ **Heavy Rainfall observed** (from 0830 hours IST of yesterday to 0830 hours IST of today): **Extremely heavy rain** at isolated places over West Rajasthan and East Rajasthan. **Heavy to very heavy rain** at isolated places over Sub

*Red color warning does not mean "Red Alert" Red color warning means "Take Action"

Forecast and warning for any day is valid from 0830 hours IST of day till 0830 hours IST of next day

For more details kindly visit <https://mausam.ind.gov.in> or contact 011-2434-4599

(Service to the nation since 1875)

Himalayan West Bengal & Sikkim, West Rajasthan, East Rajasthan, Gujarat Region, Konkan & Goa and Coastal Karnataka. **Heavy rain** at isolated places over Arunachal Pradesh, Gangetic West Bengal, Odisha, Bihar, West Madhya Pradesh, Madhya Maharashtra, Telangana, Rayalaseema, Tamil Nadu, Puducherry & Karaikal, North Interior Karnataka, South Interior Karnataka and Kerala & Mahe.

❖ **Minimum Temperature Departures (as on 19-07-2025): markedly above normal(> 5.1°C)** at few places over Assam & Meghalaya; at isolated places over East Uttar Pradesh, West Uttar Pradesh, Himachal Pradesh, West Madhya Pradesh, Gujarat Region and Saurashtra & Kutch. **appreciably above normal(3.1°C to 5.0°C)** at few places over Sub Himalayan West Bengal & Sikkim and East Madhya Pradesh; at isolated places over Odisha, Bihar, Jammu-KashmirLadakh-Gilgit-Baltistan-Muzaffarabad and West Rajasthan. **above normal(1.6°C to 3.0°C)** at many places over Chhattisgarh; at few places over Arunachal Pradesh, Gangetic West Bengal and Konkan & Goa; at isolated places over Andaman & Nicobar Islands, Nagaland, Manipur, Mizoram & Tripura, Jharkhand, Uttarakhand, Marathwada, Vidarbha, Coastal Andhra Pradesh & Yanam, Rayalaseema and Tamil Nadu, Puducherry & Karaikal. **near normal(-1.5°C to 1.5°C)** at many places over Haryana-Chandigarh-Delhi and Kerala & Mahe; at most places over Punjab, Madhya Maharashtra, Telangana, Coastal Karnataka, North Interior Karnataka, South Interior Karnataka and Lakshadweep; at few places over East Rajasthan. **The lowest minimum temperature** of 19.0°C is reported at SHIMOGA (KARNATAKA) over the Plains of India.

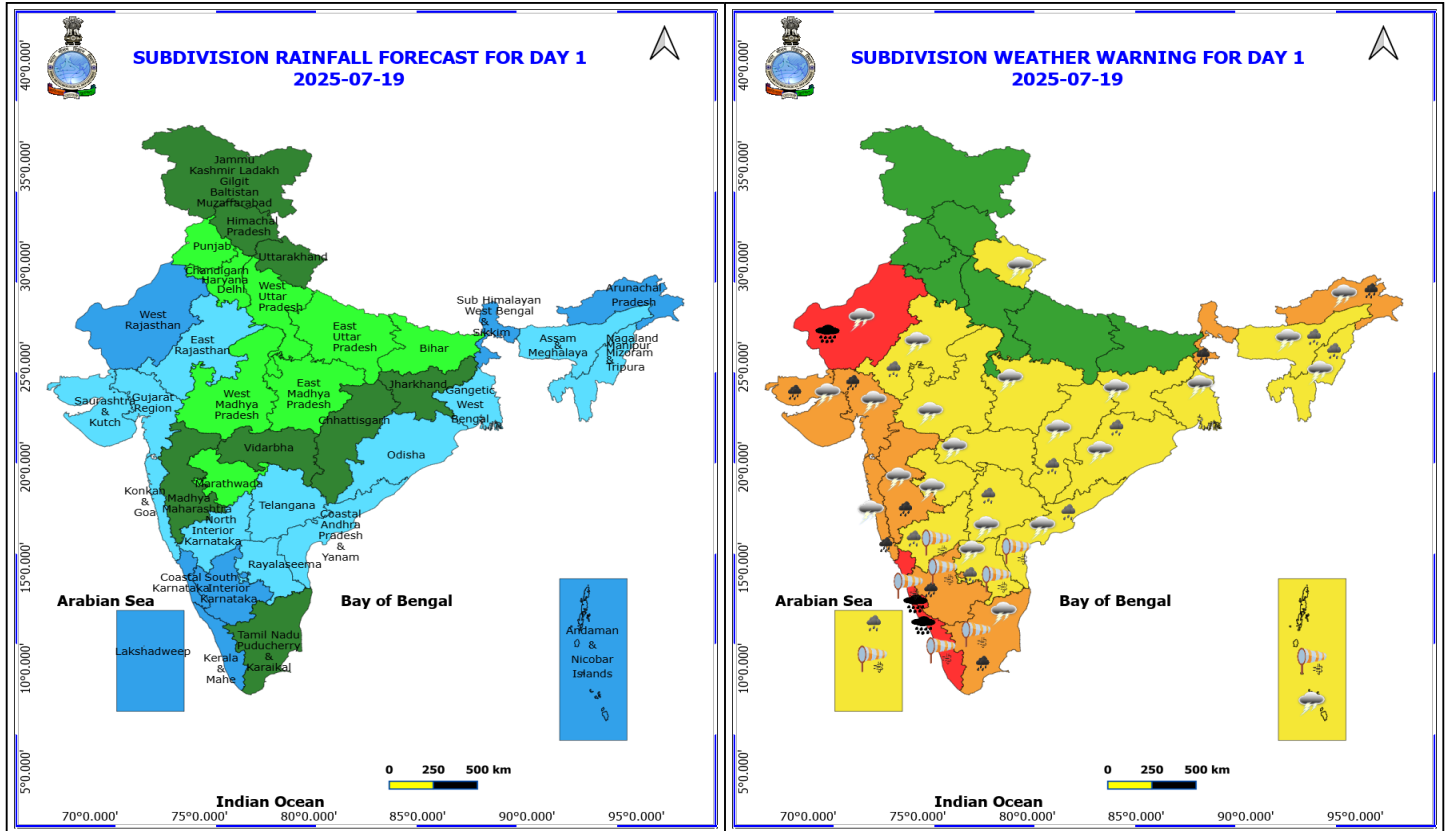
❖ **Maximum Temperature Departures (as on 18-07-2025): markedly above normal(> 5.1°C)** at isolated places over Chhattisgarh. **appreciably above normal(3.1°C to 5.0°C)** at few places over Sub Himalayan West Bengal & Sikkim; at isolated places over Assam & Meghalaya, Odisha, Bihar, East Uttar Pradesh, Uttarakhand, Konkan & Goa and Madhya Maharashtra. **above normal(1.6°C to 3.0°C)** at many places over Jharkhand; at most places over Arunachal Pradesh; at few places over Nagaland, Manipur, Mizoram & Tripura, Gujarat Region, Saurashtra & Kutch, Coastal Andhra Pradesh & Yanam and Telangana; at isolated places over Gangetic West Bengal, West Uttar Pradesh, Jammu-KashmirLadakh-Gilgit-Baltistan-Muzaffarabad, West Madhya Pradesh, Vidarbha, Rayalaseema, Tamil Nadu, Puducherry & Karaikal and North Interior Karnataka. **near normal(-1.5°C to 1.5°C)** at many places over East Madhya Pradesh; at most places over Andaman & Nicobar Islands, Himachal Pradesh, Marathwada and Lakshadweep; at few places over Haryana-Chandigarh-Delhi, South Interior Karnataka and Kerala & Mahe; at isolated places over Punjab. **The highest maximum temperature** of 39.8°C is reported at RENTACHINTALA (ANDHRA PRADESH).

Meteorological Analysis (Based on 0830 hours IST)

- The **Depression** over northeast & adjoining areas of northwest Rajasthan moved west-northwestwards with a speed of 20 kmph during past 6 hours and lay centred at 0830 hrs IST of today, the 19th July, 2025, over northwest & adjoining areas of northeast Rajasthan, near latitude 27.5°N and longitude 74.6°E, 50 km west-southwest of Sikar, 90 km south-southwest of Churu, 100 km east-northwest of Nagaur and 140km east-southeast of Bikaner. It is likely to move west-northwestwards across northwest Rajasthan and weaken gradually into a well-marked low-pressure area during next 12 hours.
- The **monsoon trough** at mean sea level now passes through center of **Depression** over northwest & adjoining areas of northeast Rajasthan, Fatehgarh, Muzaffarpur, Bankura, Contai and thence east southeastwards to northeast Bay of Bengal.
- The **Western Disturbance** as a trough in middle tropospheric levels with its axis at 5.8 km above mean sea level roughly along Long. 70°E to the north of Lat. 32°N persists.
- A **trough** runs from central parts of north Bihar to Odisha across Jharkhand at 0.9 km above mean sea level.
- The **east-west trough** roughly along Lat. 13°N now runs from south Karnataka to south Coastal Andhra Pradesh at 5.8 km above mean sea level.
- A fresh **Low Pressure area** is likely to form over north Bay of Bengal around 24th July, 2025.
- The **upper air cyclonic circulation** over south Coastal Andhra Pradesh and neighbourhood extending upto 5.8 km above mean sea level tilting southwestwards with height has become less marked.
- The **upper air cyclonic circulation** over Madhya Maharashtra and neighbourhood at 3.1 km above mean sea level has become less marked.

Weather Outlook for subsequent 3 days

- **Fairly widespread to widespread rainfall** very likely over most parts of the country except Tamil Nadu where isolated to scattered rainfall is likely.



19 July (Day 1)

❖ **Heavy to Very Heavy Rainfall with isolated Extremely Heavy Rainfall** very likely at isolated places over Coastal Karnataka, Kerala & Mahe and West Rajasthan.

❖ **Heavy to Very Heavy Rainfall** very likely at isolated places over Arunachal Pradesh, Gujarat State, Konkan & Goa, Madhya Maharashtra, South Interior Karnataka, Sub Himalayan West Bengal & Sikkim and Tamil Nadu Puducherry & Karaikal.

❖ **Heavy Rainfall** very likely at isolated places over Andhra Pradesh, Assam & Meghalaya, Chhattisgarh, East Rajasthan, Lakshadweep, Nagaland, Manipur, Mizoram and Tripura, North Interior Karnataka, Odisha and Telangana.

❖ **Thunderstorm accompanied with lightning & gusty winds(30-40kmph)** very likely at isolated places over Andaman & Nicobar Islands, Gangetic West Bengal, Jharkhand, Odisha, Rajasthan, Uttarakhand and West Madhya Pradesh.

❖ **Thunderstorm accompanied with Lightning** very likely at isolated places over Andhra Pradesh, Arunachal Pradesh, Assam & Meghalaya, Chhattisgarh, East Madhya Pradesh, Gujarat State, Konkan & Goa, Maharashtra, Nagaland, Manipur, Mizoram and Tripura, Tamil Nadu Puducherry & Karaikal and Telangana.

❖ **Strong Surface Winds** very likely at isolated places over Andaman & Nicobar Islands, Andhra Pradesh, Karnataka, Kerala & Mahe, Lakshadweep and Tamil Nadu Puducherry & Karaikal.

Squally wind speed reaching 45 kmph to 55 kmph gusting to 65 kmph is likely to prevail along and off Somalia, Yemen & south Oman coasts, most parts of westcentral Arabian Sea & adjoining parts of eastcentral Arabian Sea, some parts of southwest Arabian Sea.

***Red color warning does not mean "Red Alert" Red color warning means "Take Action"**

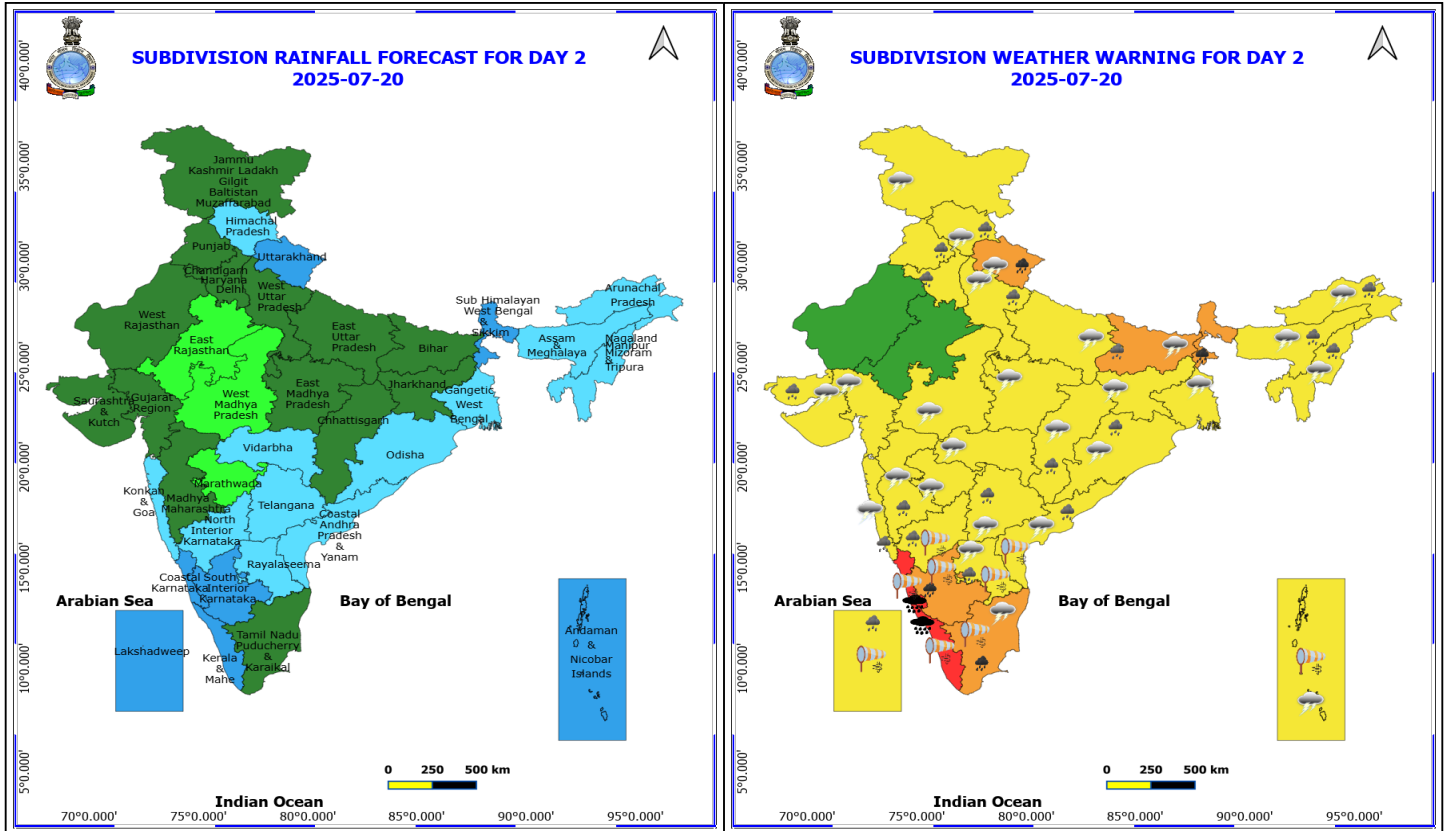
Forecast and warning for any day is valid from 0830 hours IST of day till 0830 hours IST of next day

For more details kindly visit <https://mausam.imd.gov.in> or contact 011-2434-4599

(Service to the nation since 1875)



Squally weather with wind speed 40 - 50 kmph gusting to 60 kmph likely to prevail over many parts of eastcentral Arabian Sea & adjoining, some parts of westcentral Arabian Sea, northern parts of southeast Arabian Sea and adjoining southwest Arabian Sea, along and off Kerala, Karnataka, south Tamil Nadu coasts, over Lakshadweep, Maldives, Comorin areas, most parts of south Bay of Bengal, over Gulf of Mannar, along and off Sri Lanka coast, over Andaman Sea.



20 July (Day 2)

- ❖ **Heavy to Very Heavy Rainfall with isolated Extremely Heavy Rainfall** very likely at isolated places over Coastal Karnataka and Kerala & Mahe.
- ❖ **Heavy to Very Heavy Rainfall** very likely at isolated places over South Interior Karnataka, Sub Himalayan West Bengal & Sikkim, Tamil Nadu Puducherry & Karaikal and Uttarakhand.
- ❖ **Heavy Rainfall** very likely at isolated places over Andhra Pradesh, Arunachal Pradesh, Assam & Meghalaya, Bihar, Chhattisgarh, Haryana, Chandigarh & Delhi, Himachal Pradesh, Konkan & Goa, Lakshadweep, Madhya Maharashtra, Nagaland, Manipur, Mizoram and Tripura, North Interior Karnataka, Odisha, Punjab, Saurashtra & Kutch, Telangana and West Uttar Pradesh.
- ❖ **Thunderstorm accompanied with lightning & gusty winds(30-40kmph)** very likely at isolated places over Andaman & Nicobar Islands, Bihar, Gangetic West Bengal, Jammu-Kashmir-Ladakh-Gilgit-Baltistan-Muzaffarabad, Jharkhand, Odisha, Uttarakhand and West Madhya Pradesh.
- ❖ **Thunderstorm accompanied with Lightning** very likely at isolated places over Andhra Pradesh, Arunachal Pradesh, Assam & Meghalaya, Chhattisgarh, East Madhya Pradesh, Gujarat State, Himachal Pradesh, Konkan & Goa, Maharashtra, Nagaland, Manipur, Mizoram and Tripura, Tamil Nadu Puducherry & Karaikal, Telangana and Uttar Pradesh.
- ❖ **Strong Surface Winds** very likely at isolated places over Andaman & Nicobar Islands, Andhra Pradesh, Karnataka, Kerala & Mahe, Lakshadweep and Tamil Nadu Puducherry & Karaikal.

Squally wind speed reaching 45 kmph to 55 kmph gusting to 65 kmph is likely to prevail along and off Somalia, Yemen & south Oman coasts, most parts of westcentral Arabian Sea & adjoining parts of eastcentral Arabian Sea, some parts of southwest Arabian Sea.

***Red color warning does not mean "Red Alert" Red color warning means "Take Action"**

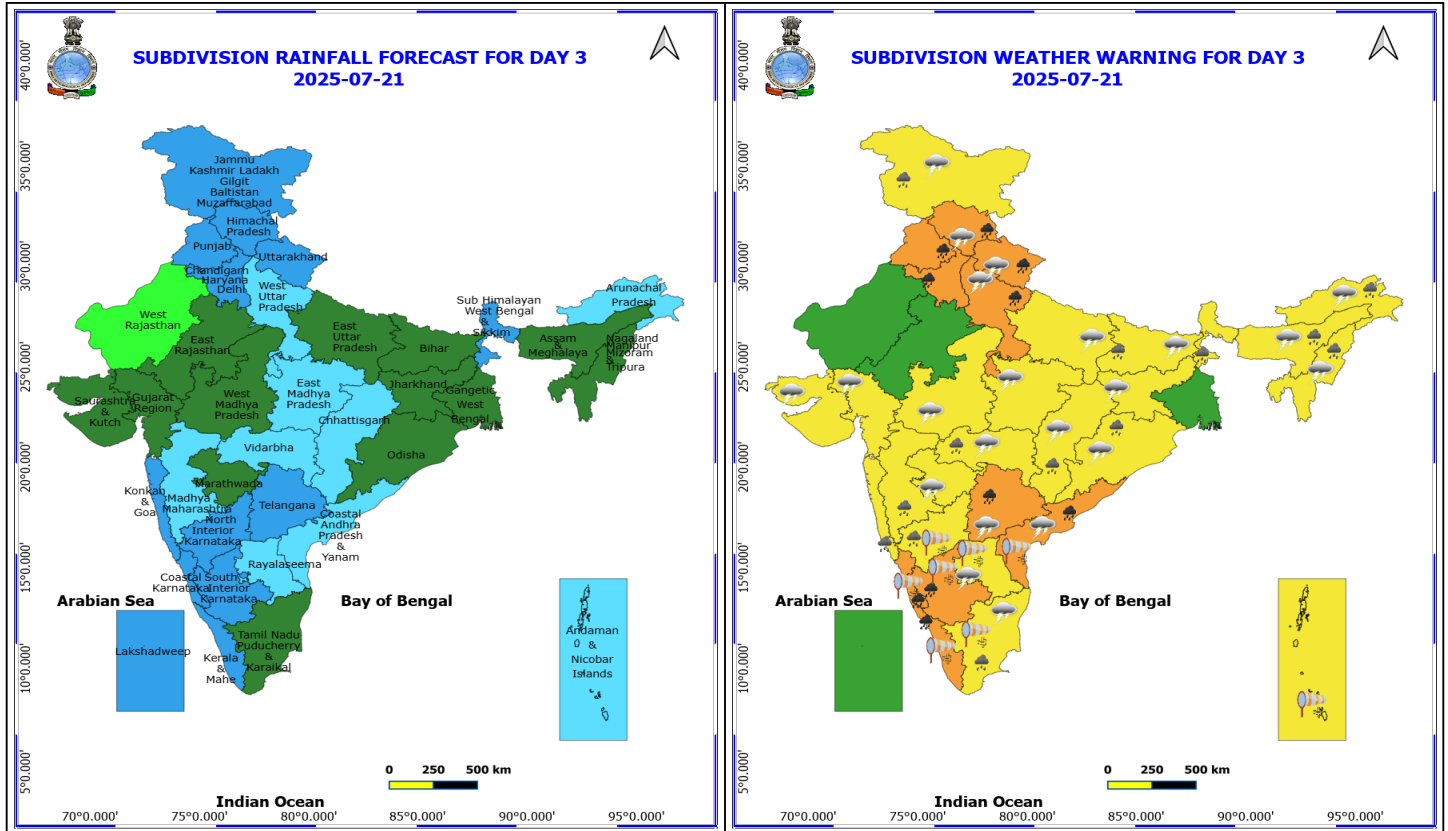
Forecast and warning for any day is valid from 0830 hours IST of day till 0830 hours IST of next day

For more details kindly visit <https://mausam.imd.gov.in> or contact 011-2434-4599

(Service to the nation since 1875)

Squally weather with wind speed 40 - 50 kmph gusting to 60 kmph likely to prevail over many parts of eastcentral Arabian Sea & adjoining, some parts of westcentral Arabian Sea, northern parts of southeast Arabian Sea and adjoining southwest Arabian Sea, along and off Kerala, Karnataka, Tamil Nadu coasts, over Lakshadweep, Maldives, Comorin areas, most parts of south Bay of Bengal & adjoining central Bay of Bengal, over Gulf of Mannar, along and off Sri Lanka coast, over Andaman Sea.

Squally weather with wind speed 45 - 55 kmph gusting to 65 kmph likely to prevail over many parts of southwest, some parts of southeast Bay of Bengal, some parts of Andaman Sea.



21 July (Day 3)

- ❖ **Heavy to Very Heavy Rainfall** very likely at isolated places over Coastal Andhra Pradesh, Coastal Karnataka, Haryana, Chandigarh & Delhi, Himachal Pradesh, Kerala & Mahe, Punjab, South Interior Karnataka, Telangana, Uttarakhand and West Uttar Pradesh.
- ❖ **Heavy Rainfall** very likely at isolated places over Arunachal Pradesh, Assam & Meghalaya, Bihar, Chhattisgarh, Jammu-Kashmir-Ladakh-Gilgit-Baltistan-Muzaffarabad, Konkan & Goa, Madhya Maharashtra, Nagaland, Manipur, Mizoram and Tripura, North Interior Karnataka, Odisha, Sub Himalayan West Bengal & Sikkim, Tamil Nadu Puducherry & Karaikal and Vidarbha.
- ❖ **Thunderstorm accompanied with lightning & gusty winds(30-40kmph)** very likely at isolated places over Bihar, Jammu-Kashmir-Ladakh-Gilgit-Baltistan-Muzaffarabad, Jharkhand, Odisha and Uttarakhand.
- ❖ **Thunderstorm accompanied with Lightning** very likely at isolated places over Andhra Pradesh, Arunachal Pradesh, Assam & Meghalaya, Chhattisgarh, Gujarat State, Himachal Pradesh, Madhya Pradesh, Marathwada, Nagaland, Manipur, Mizoram and Tripura, Tamil Nadu Puducherry & Karaikal, Telangana, Uttar Pradesh and Vidarbha.
- ❖ **Strong Surface Winds** very likely at isolated places over Andaman & Nicobar Islands, Andhra Pradesh, Karnataka, Kerala & Mahe and Tamil Nadu Puducherry & Karaikal.

Squally wind speed reaching 45 kmph to 55 kmph gusting to 65 kmph is likely to prevail along and off Somalia, Yemen & south Oman coasts, most parts of westcentral Arabian Sea & adjoining parts of eastcentral Arabian Sea, some parts of southwest Arabian Sea.

Squally weather with wind speed 40 - 50 kmph gusting to 60 kmph likely to prevail over many parts of eastcentral Arabian Sea & adjoining, some parts of westcentral Arabian Sea, northern parts of southeast Arabian

***Red color warning does not mean "Red Alert" Red color warning means "Take Action"**

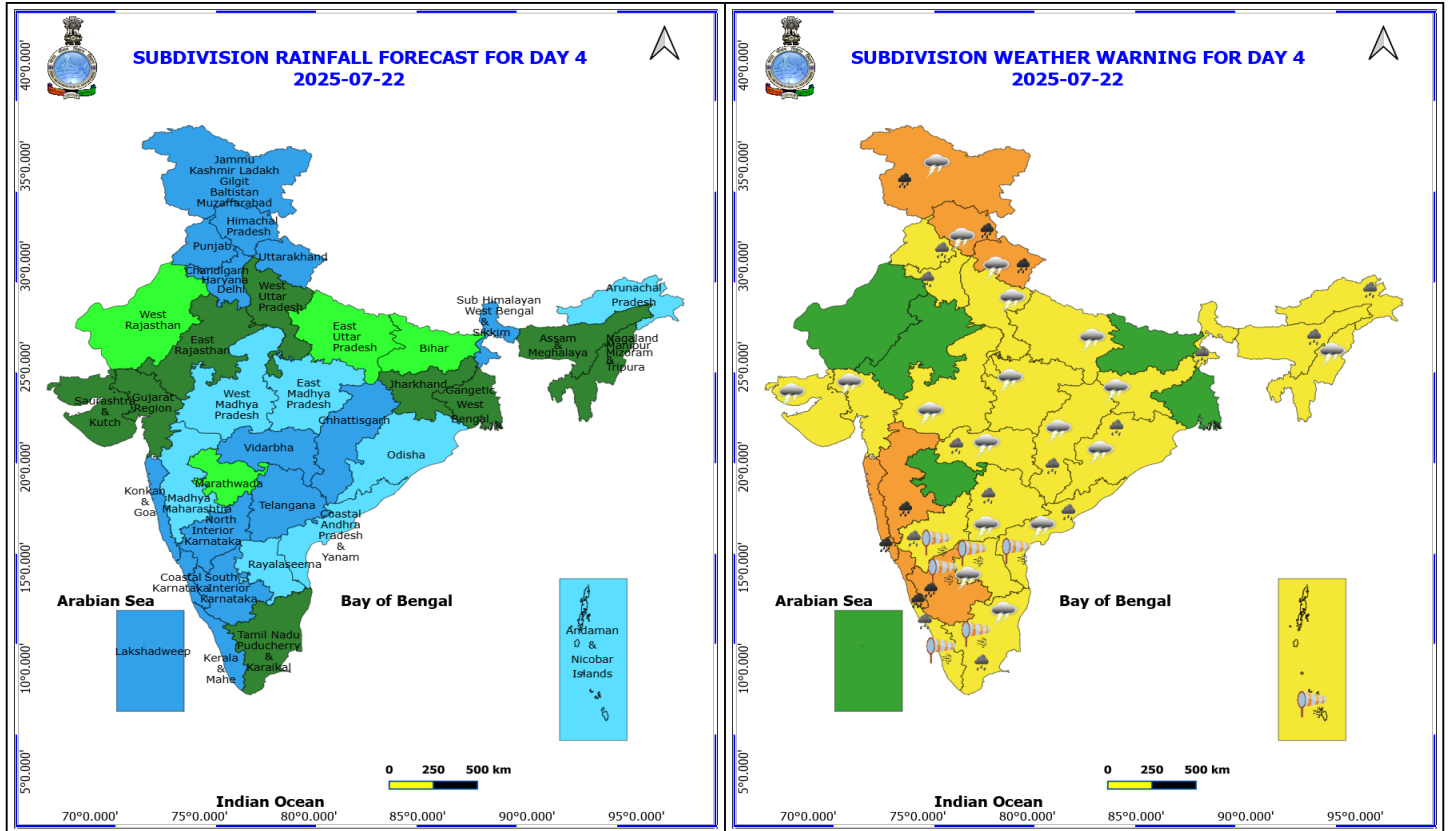
Forecast and warning for any day is valid from 0830 hours IST of day till 0830 hours IST of next day

For more details kindly visit <https://mausam.imd.gov.in> or contact 011-2434-4599

(Service to the nation since 1875)

Sea and adjoining southwest Arabian Sea, along and off Kerala, Karnataka, Tamil Nadu, South Andhra Pradesh coasts, over Lakshadweep, Maldives, Comorin areas, south Bay of Bengal & many parts of central Bay of Bengal, over Gulf of Mannar, along and off Sri Lanka coast, over Andaman Sea.

Squally weather with wind speed 45 - 55 kmph gusting to 65 kmph likely to prevail over many parts of southwest, some parts of southeast Bay of Bengal, some parts of north Andaman Sea.



22 July (Day 4)

- ❖ **Heavy to Very Heavy Rainfall** likely at isolated places over Coastal Karnataka, Himachal Pradesh, Jammu-Kashmir-Ladakh-Gilgit-Baltistan-Muzaffarabad, Konkan & Goa, Madhya Maharashtra, South Interior Karnataka and Uttarakhand.
- ❖ **Heavy Rainfall** likely at isolated places over Arunachal Pradesh, Assam & Meghalaya, Chhattisgarh, Coastal Andhra Pradesh, Haryana, Chandigarh & Delhi, Kerala & Mahe, North Interior Karnataka, Odisha, Punjab, Sub Himalayan West Bengal & Sikkim, Tamil Nadu Puducherry & Karaikal, Telangana and Vidarbha.
- ❖ **Thunderstorm accompanied with lightning & gusty winds(30-40kmph)** likely at isolated places over Jammu-Kashmir-Ladakh-Gilgit-Baltistan-Muzaffarabad, Jharkhand, Odisha and Uttarakhand.
- ❖ **Thunderstorm accompanied with Lightning** likely at isolated places over Andhra Pradesh, Chhattisgarh, Gujarat State, Himachal Pradesh, Madhya Pradesh, Nagaland, Manipur, Mizoram and Tripura, Tamil Nadu Puducherry & Karaikal, Telangana, Uttar Pradesh and Vidarbha.
- ❖ **Strong Surface Winds** likely at isolated places over Andaman & Nicobar Islands, Andhra Pradesh, Interior Karnataka, Kerala & Mahe and Tamil Nadu Puducherry & Karaikal.

Squally wind speed reaching 45 kmph to 55 kmph gusting to 65 kmph is likely to prevail along and off Somalia, Yemen & south Oman coasts, most parts of westcentral Arabian Sea & adjoining parts of eastcentral Arabian Sea, some parts of southwest Arabian Sea.

Squally weather with wind speed 40 - 50 kmph gusting to 60 kmph likely to prevail over many parts of eastcentral Arabian Sea & adjoining, some parts of westcentral Arabian Sea, northern parts of southeast Arabian Sea and adjoining southwest Arabian Sea, along and off Kerala, Karnataka, Tamil Nadu, South Andhra Pradesh coasts, over Lakshadweep, Maldives, Comorin areas, south Bay of Bengal & many parts of central Bay of Bengal,

***Red color warning does not mean "Red Alert" Red color warning means "Take Action"**

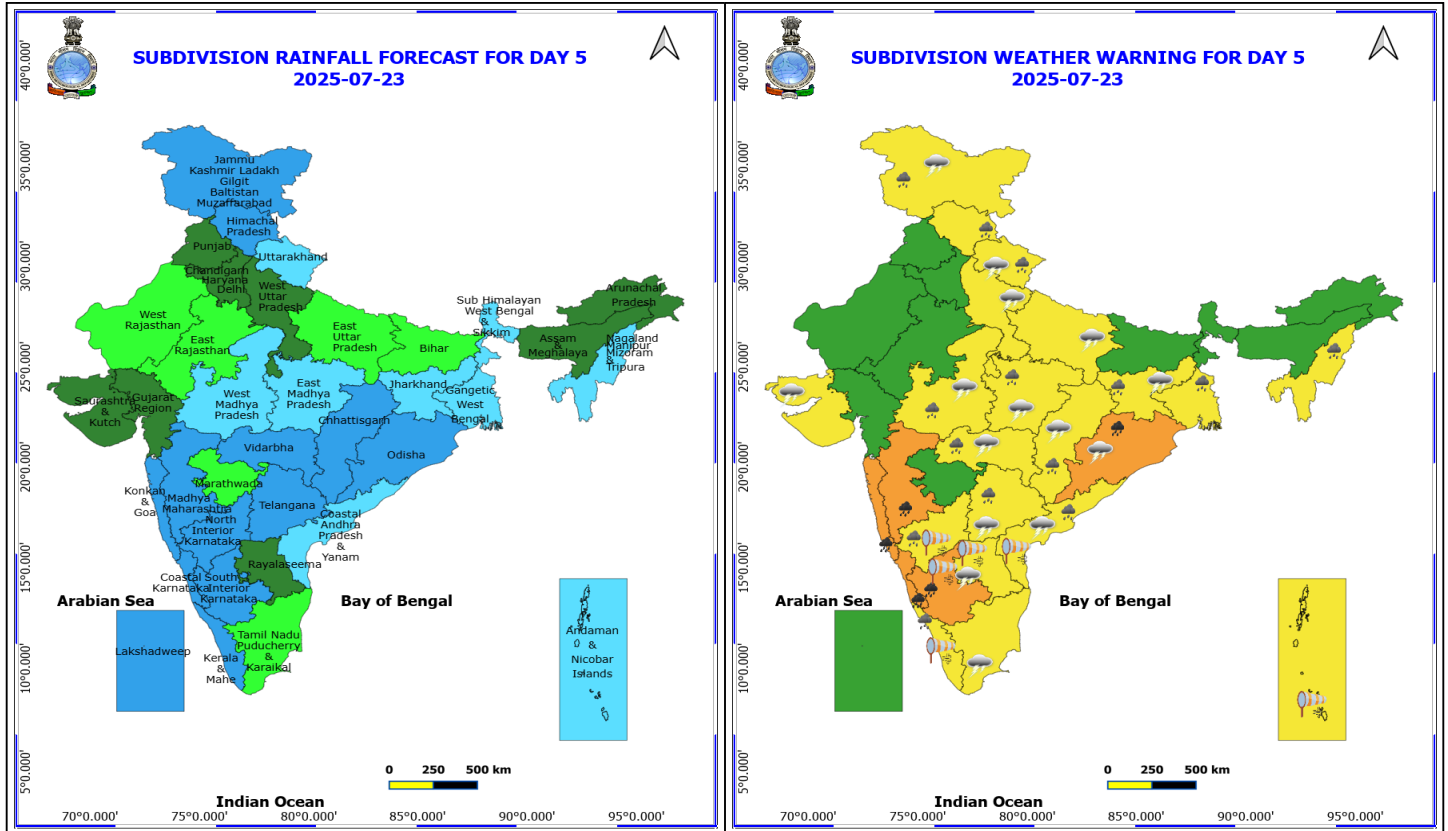
Forecast and warning for any day is valid from 0830 hours IST of day till 0830 hours IST of next day

For more details kindly visit <https://mausam.imd.gov.in> or contact 011-2434-4599

(Service to the nation since 1875)

over Gulf of Mannar, along and off Sri Lanka coast, over Andaman Sea.

Squally weather with wind speed 45 - 55 kmph gusting to 65 kmph likely to prevail over many parts of central and adjoining south Bay of Bengal, many parts of north Andaman Sea.



23 July (Day 5)

- ❖ **Heavy to Very Heavy Rainfall** likely at isolated places over Coastal Karnataka, Konkan & Goa, Madhya Maharashtra, Odisha and South Interior Karnataka.
- ❖ **Heavy Rainfall** likely at isolated places over Chhattisgarh, Coastal Andhra Pradesh, Gangetic West Bengal, Himachal Pradesh, Jammu-Kashmir-Ladakh-Gilgit-Baltistan-Muzaffarabad, Jharkhand, Kerala & Mahe, Madhya Pradesh, Nagaland, Manipur, Mizoram and Tripura, North Interior Karnataka, Telangana, Uttarakhand and Vidarbha.
- ❖ **Thunderstorm accompanied with lightning & gusty winds(30-40kmph)** likely at isolated places over Jammu-Kashmir-Ladakh-Gilgit-Baltistan-Muzaffarabad, Jharkhand, Odisha and Uttarakhand.
- ❖ **Thunderstorm accompanied with Lightning** likely at isolated places over Andhra Pradesh, Chhattisgarh, Madhya Pradesh, Saurashtra & Kutch, Tamil Nadu Puducherry & Karaikal, Telangana, Uttar Pradesh and Vidarbha.
- ❖ **Strong Surface Winds** likely at isolated places over Andaman & Nicobar Islands, Andhra Pradesh, Interior Karnataka and Kerala & Mahe.

Squally wind speed reaching 45 kmph to 55 kmph gusting to 65 kmph is likely to prevail along and off Somalia, Yemen & south Oman coasts, most parts of westcentral Arabian Sea & adjoining parts of eastcentral Arabian Sea, some parts of southwest Arabian Sea.

Squally weather with wind speed 40 - 50 kmph gusting to 60 kmph likely to prevail over many parts of eastcentral Arabian Sea & adjoining, some parts of westcentral Arabian Sea, northern parts of southeast Arabian Sea and adjoining southwest Arabian Sea, along and off Gujarat, Tamil Nadu, South Andhra Pradesh coasts, over Lakshadweep, Maldives, Comorin areas, south Bay of Bengal & most parts of central Bay of Bengal, over Gulf of Mannar, along and off Sri Lanka coast, over Andaman Sea.

***Red color warning does not mean "Red Alert" Red color warning means "Take Action"**

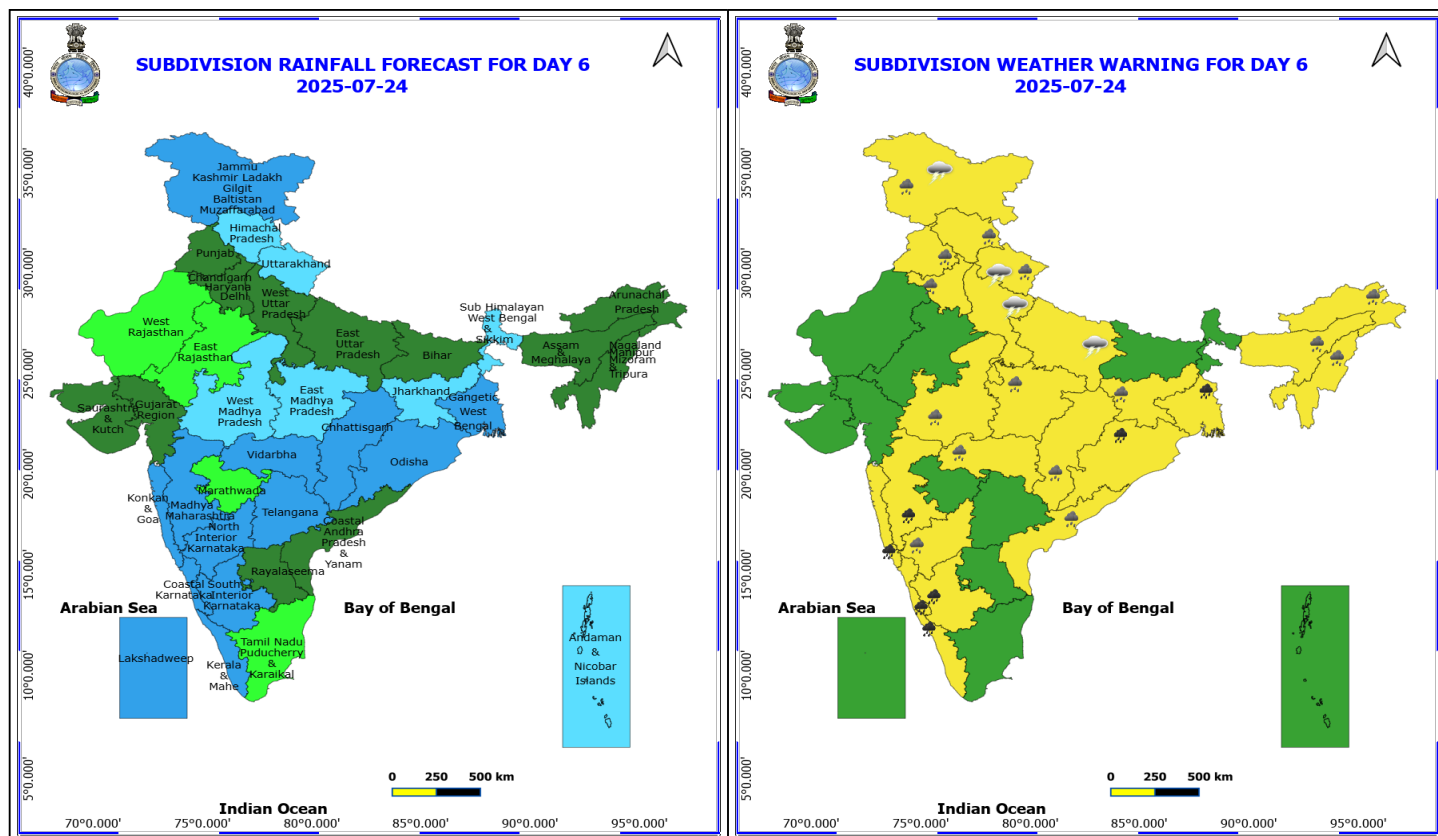
Forecast and warning for any day is valid from 0830 hours IST of day till 0830 hours IST of next day

For more details kindly visit <https://mausam.imd.gov.in> or contact 011-2434-4599

(Service to the nation since 1875)



Squally weather with wind speed 45 - 55 kmph gusting to 65 kmph likely to prevail over many parts of central and south Bay of Bengal, many parts of north Andaman Sea.



24 July (Day 6)

- ❖ **Heavy to Very Heavy Rainfall** likely at isolated places over Coastal Karnataka, Gangetic West Bengal, Kerala & Mahe, Konkan & Goa, Madhya Maharashtra, Odisha and South Interior Karnataka.
- ❖ **Heavy Rainfall** likely at isolated places over Arunachal Pradesh, Assam & Meghalaya, Chhattisgarh, Coastal Andhra Pradesh, Haryana, Chandigarh & Delhi, Himachal Pradesh, Jammu-Kashmir-Ladakh-Gilgit-Baltistan-Muzaffarabad, Jharkhand, Madhya Pradesh, Nagaland, Manipur, Mizoram and Tripura, North Interior Karnataka, Punjab, Uttarakhand and Vidarbha.
- ❖ **Thunderstorm accompanied with lightning & gusty winds(30-40kmph)** likely at isolated places over Jammu-Kashmir-Ladakh-Gilgit-Baltistan-Muzaffarabad and Uttarakhand.
- ❖ **Thunderstorm accompanied with Lightning** likely at isolated places over Uttar Pradesh.

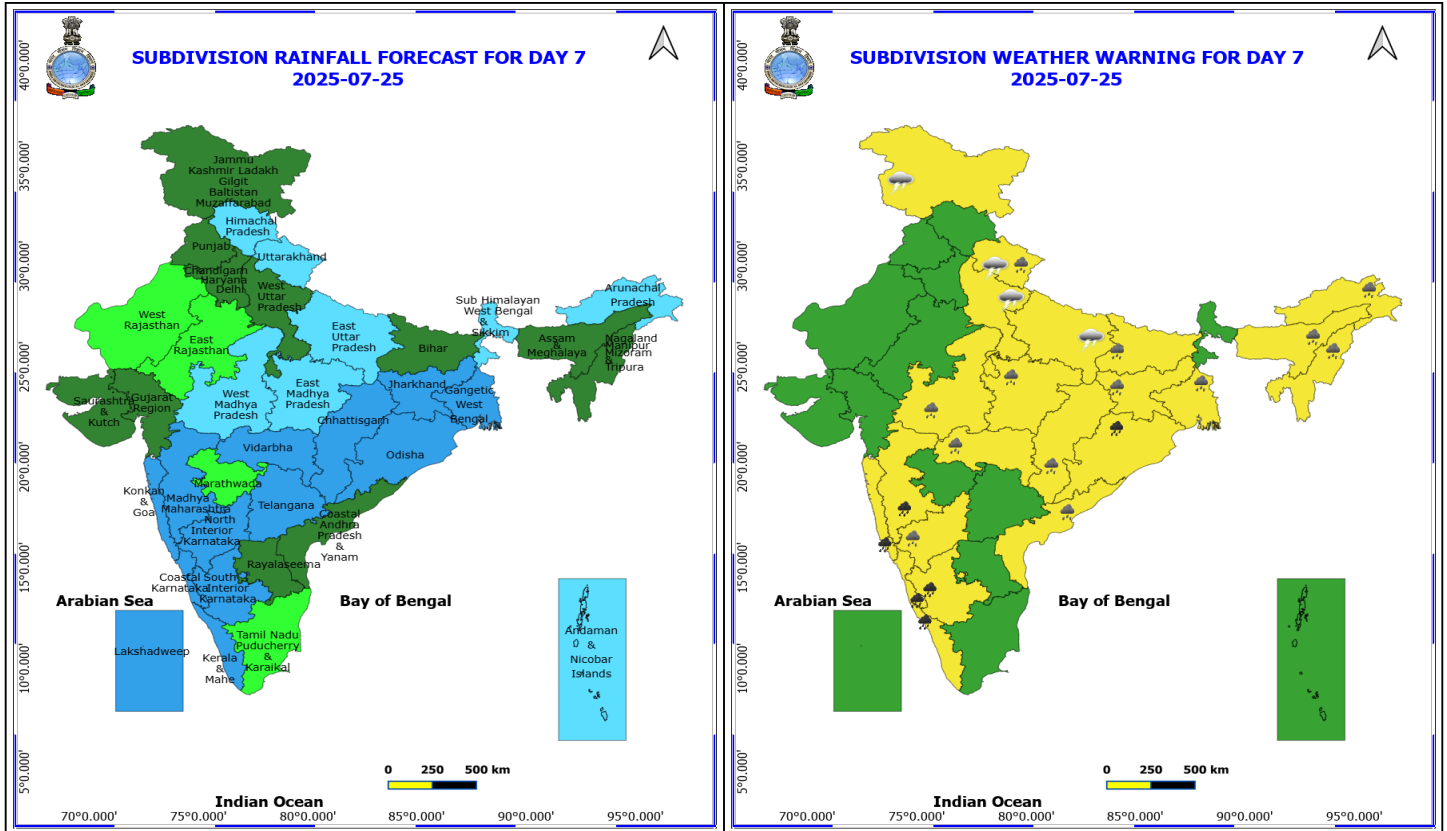
No Fishermen Warning

***Red color warning does not mean "Red Alert" Red color warning means "Take Action"**

Forecast and warning for any day is valid from 0830 hours IST of day till 0830 hours IST of next day

For more details kindly visit <https://mausam.imd.gov.in> or contact 011-2434-4599

(Service to the nation since 1875)



25 July (Day 7)

- ❖ **Heavy to Very Heavy Rainfall** likely at isolated places over Coastal Karnataka, Konkan & Goa, Madhya Maharashtra, Odisha and South Interior Karnataka.
- ❖ **Heavy Rainfall** likely at isolated places over Chhattisgarh, Coastal Andhra Pradesh, Gangetic West Bengal, Himachal Pradesh, Jammu-Kashmir-Ladakh-Gilgit-Baltistan-Muzaffarabad, Jharkhand, Kerala & Mahe, Madhya Pradesh, Nagaland, Manipur, Mizoram and Tripura, North Interior Karnataka, Telangana, Uttarakhand and Vidarbha.
- ❖ **Thunderstorm accompanied with lightning & gusty winds(30-40kmph)** likely at isolated places over Jammu-Kashmir-Ladakh-Gilgit-Baltistan-Muzaffarabad, Jharkhand, Odisha and Uttarakhand.
- ❖ **Thunderstorm accompanied with Lightning** likely at isolated places over Andhra Pradesh, Chhattisgarh, Madhya Pradesh, Saurashtra & Kutch, Tamil Nadu Puducherry & Karaikal, Telangana, Uttar Pradesh and Vidarbha.
- ❖ **Strong Surface Winds** likely at isolated places over Andaman & Nicobar Islands, Andhra Pradesh, Interior Karnataka and Kerala & Mahe.

No Fishermen Warning

***Red color warning does not mean "Red Alert" Red color warning means "Take Action"**

Forecast and warning for any day is valid from 0830 hours IST of day till 0830 hours IST of next day

For more details kindly visit <https://mausam.imd.gov.in> or contact 011-2434-4599

(Service to the nation since 1875)

Flash Flood Warnings

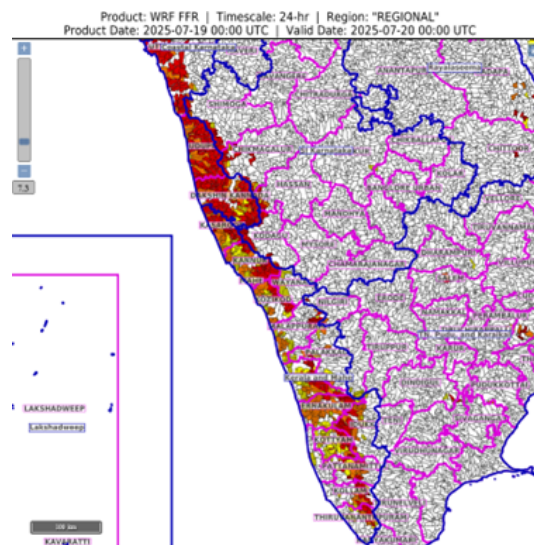
24 hours Outlook for the Flash Flood Risk (FFR) till 1130 IST of 20-07-2025:

Low to Moderate flash flood risk likely over few watersheds & neighbourhoods of following Met Sub-divisions during next 24 hours.

Coastal Karnataka - Dakshin Kannada, Udupi and Uttar Kannada districts.

Kerala & Mahe – Alappuzha, Ernakulam, Idukki, Kannur, Kasargod, Kottayam, Kozikod, Mahe, Malappuram, Palakkad, Pattanamitta, Trishur, Thiruvananthapuram and Wayanad districts.

Surface runoff/ Inundation may occur at some fully saturated soils & low-lying areas over Area of Concern (AoC) as shown in map due to expected rainfall occurrence in next 24 hours.



24 hours Outlook for the Flash Flood Risk (FFR) till 1130 IST of 20-07-2025 :

Low to Moderate flash flood risk likely over few watersheds & neighbourhoods of following Met Sub-divisions during next 24 hours.

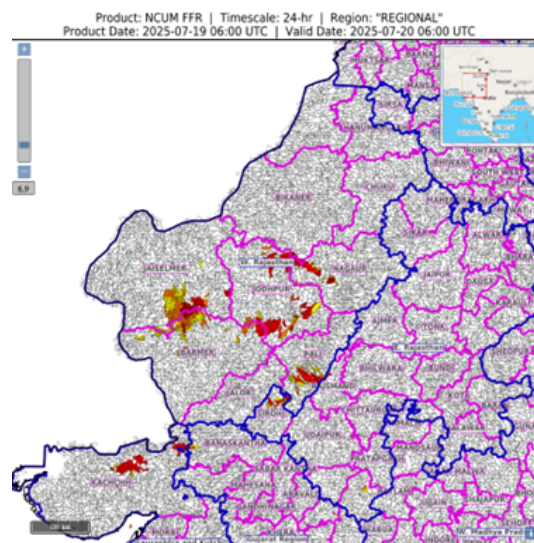
East Rajasthan – Sirohi and Rajsamand districts.

West Rajasthan – Barmer, Pali, Nagaur, Jodhpur and Jaisalmer districts.

Gujarat Region – Banaskantha district,

Saurashtra & Kutch - Kutch district .

Surface runoff/ Inundation may occur at some fully saturated soils & low-lying areas over Area of Concern (AoC) as shown in map due to expected rainfall occurrence in next 24 hours.



*Red color warning does not mean "Red Alert" Red color warning means "Take Action"

Forecast and warning for any day is valid from 0830 hours IST of day till 0830 hours IST of next day

For more details kindly visit <https://mausam.imd.gov.in> or contact 011-2434-4599

(Service to the nation since 1875)



Table-1

7 Days Rainfall Forecast

S.No.	Subdivision	19- Jul	20- Jul	21- Jul	22- Jul	23- Jul	24- Jul	25- Jul
		Day 1	Day 2	Day 3	Day 4	Day 5	Day 6	Day 7
1	ANDAMAN & NICOBAR ISLANDS	WS	WS	FWS	FWS	FWS	FWS	FWS
2	ARUNACHAL PRADESH	WS	FWS	FWS	FWS	SCT	SCT	FWS
3	ASSAM & MEHGHALAYA	FWS	FWS	SCT	SCT	SCT	SCT	SCT
4	N. M. M. & T.	FWS	FWS	SCT	SCT	FWS	SCT	SCT
5	S.H. WEST BENGAL & SIKKIM	WS	WS	WS	WS	FWS	FWS	FWS
6	GANGETIC WEST BENGAL	FWS	FWS	SCT	SCT	FWS	WS	WS
7	ODISHA	FWS	FWS	SCT	FWS	WS	WS	WS
8	JHARKHAND	SCT	SCT	SCT	SCT	FWS	FWS	WS
9	BIHAR	ISOL	SCT	SCT	ISOL	ISOL	SCT	SCT
10	EAST UTTAR PRADESH	ISOL	SCT	SCT	ISOL	ISOL	SCT	FWS
11	WEST UTTAR PRADESH	ISOL	SCT	FWS	SCT	SCT	SCT	SCT
12	UTTARAKHAND	SCT	WS	WS	WS	FWS	FWS	FWS
13	HARYANA, CHD & DELHI	ISOL	SCT	WS	WS	SCT	SCT	SCT
14	PUNJAB	ISOL	SCT	WS	WS	SCT	SCT	SCT
15	HIMACHAL PRADESH	SCT	FWS	WS	WS	WS	FWS	FWS
16	JAMMU AND KASHMIR AND LADAKH	SCT	SCT	WS	WS	WS	WS	SCT
17	WEST RAJASTHAN	WS	SCT	ISOL	ISOL	ISOL	ISOL	ISOL
18	EAST RAJASTHAN	FWS	ISOL	SCT	SCT	ISOL	ISOL	ISOL
19	WEST MADHYA PRADESH	ISOL	ISOL	SCT	FWS	FWS	FWS	FWS
20	EAST MADHYA PRADESH	ISOL	SCT	FWS	FWS	FWS	FWS	FWS
21	GUJRAT REGION	FWS	SCT	SCT	SCT	SCT	SCT	SCT
22	SAURASHTRA & KUTCH	FWS	SCT	SCT	SCT	SCT	SCT	SCT
23	KONKAN & GOA	FWS	FWS	WS	WS	WS	WS	WS
24	MADHYA MAHARASHTRA	SCT	SCT	FWS	FWS	WS	WS	WS
25	MARATHWADA	ISOL	ISOL	SCT	ISOL	ISOL	ISOL	ISOL
26	VIDARBHA	SCT	FWS	FWS	WS	WS	WS	WS
27	CHATTISGARH	SCT	SCT	FWS	WS	WS	WS	WS
28	COASTAL ANDHRA PRADESH	FWS	FWS	FWS	FWS	FWS	SCT	SCT
29	TELANGANA	FWS	FWS	WS	WS	WS	WS	WS
30	RAYALASEEMA	FWS	FWS	FWS	FWS	SCT	SCT	SCT
31	TAMILNADU & PUDUCHERRY	SCT	SCT	SCT	SCT	ISOL	ISOL	ISOL
32	COSTAL KARNATAKA	WS	WS	WS	WS	WS	WS	WS
33	NORTH INTERIOR KARNATAKA	FWS	FWS	WS	WS	WS	WS	WS
34	SOUTH INTERIOR KARNATAKA	WS	WS	WS	WS	WS	WS	WS
35	KERALA	WS	WS	WS	WS	WS	WS	WS
36	LAKSHDWEEP	WS	WS	WS	WS	WS	WS	WS

Legend	Category	%Stations
WS	Widespread/Most Places	76-100
FWS	Fairly Widespread/Many Places	51-75
SCT	Scattered/ A Few Places	26-50
ISOL	Isolated Places	1-25
DRY	No Rain	0

*Red color warning does not mean "Red Alert" Red color warning means "Take Action"

Forecast and warning for any day is valid from 0830 hours IST of day till 0830 hours IST of next day

For more details kindly visit <https://mausam.imd.gov.in> or contact 011-2434-4599

(Service to the nation since 1875)

Fig. 1: Maximum Temperatures Dated 2025-07-19

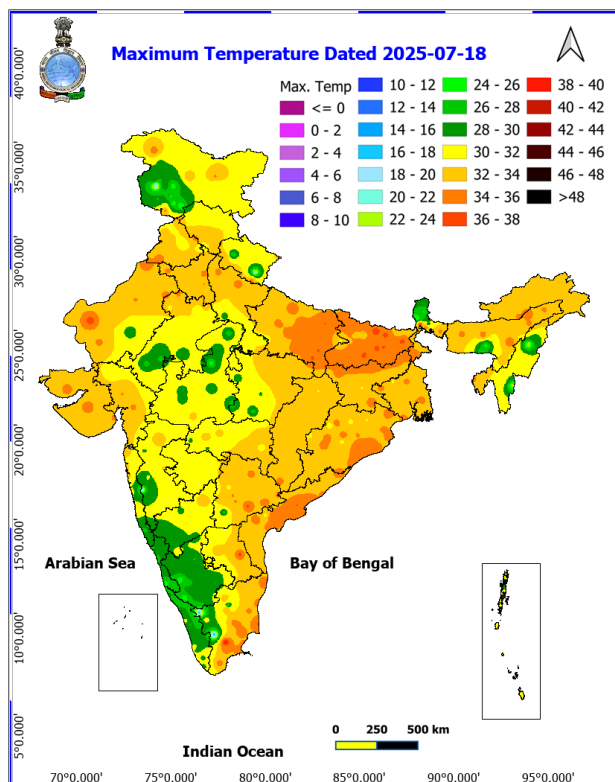


Fig. 2: Departure of Maximum Temp. Dated 2025-07-19

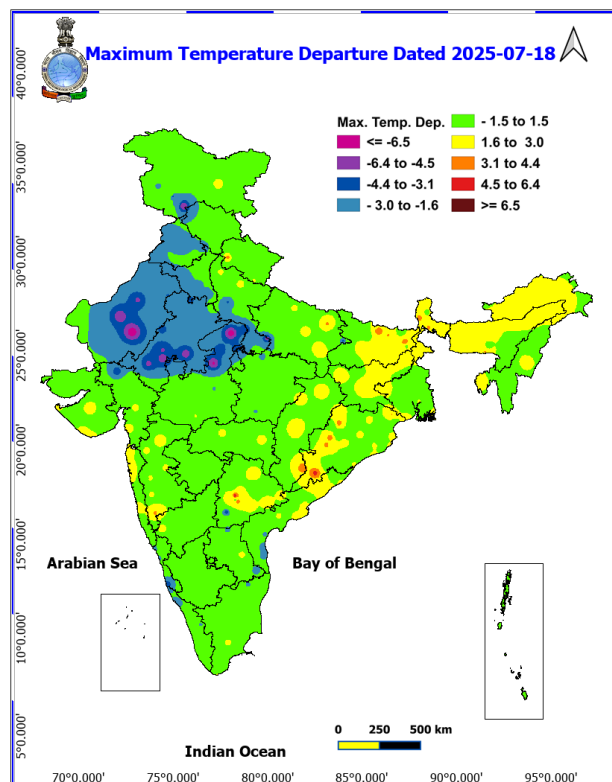


Fig. 3: Minimum Temperatures Dated 2025-07-19

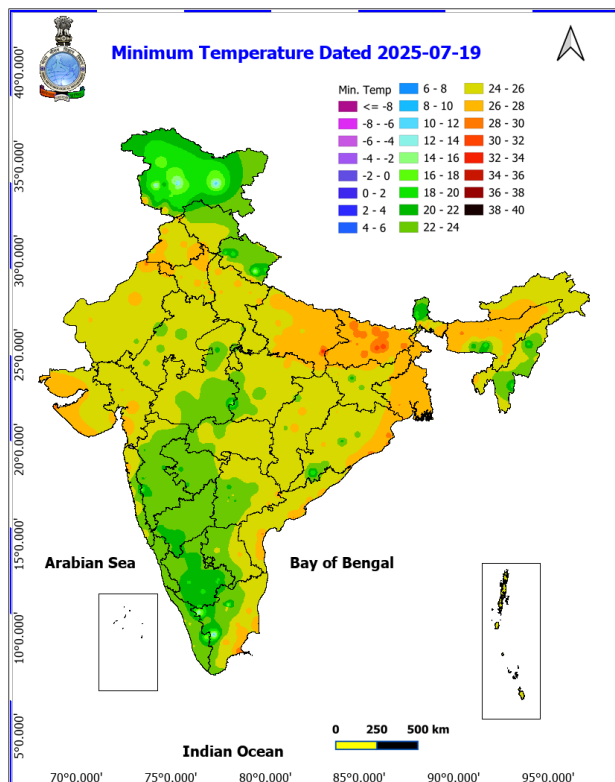
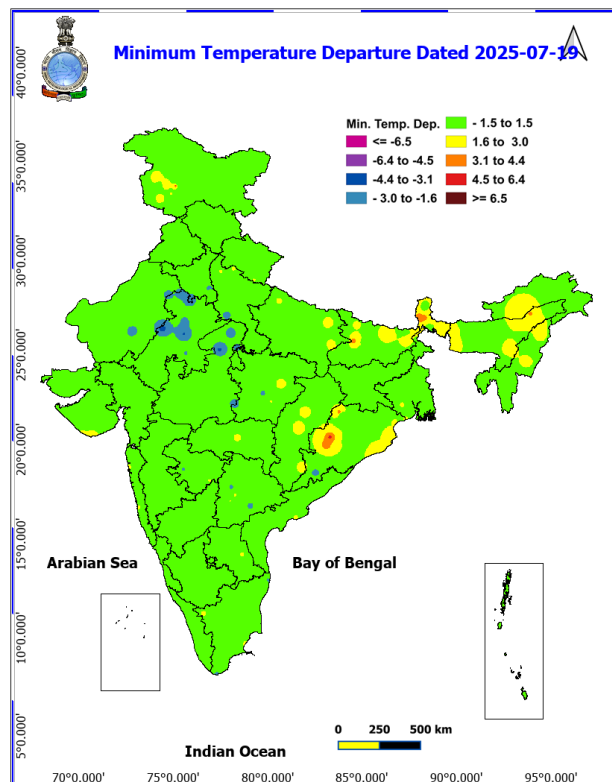
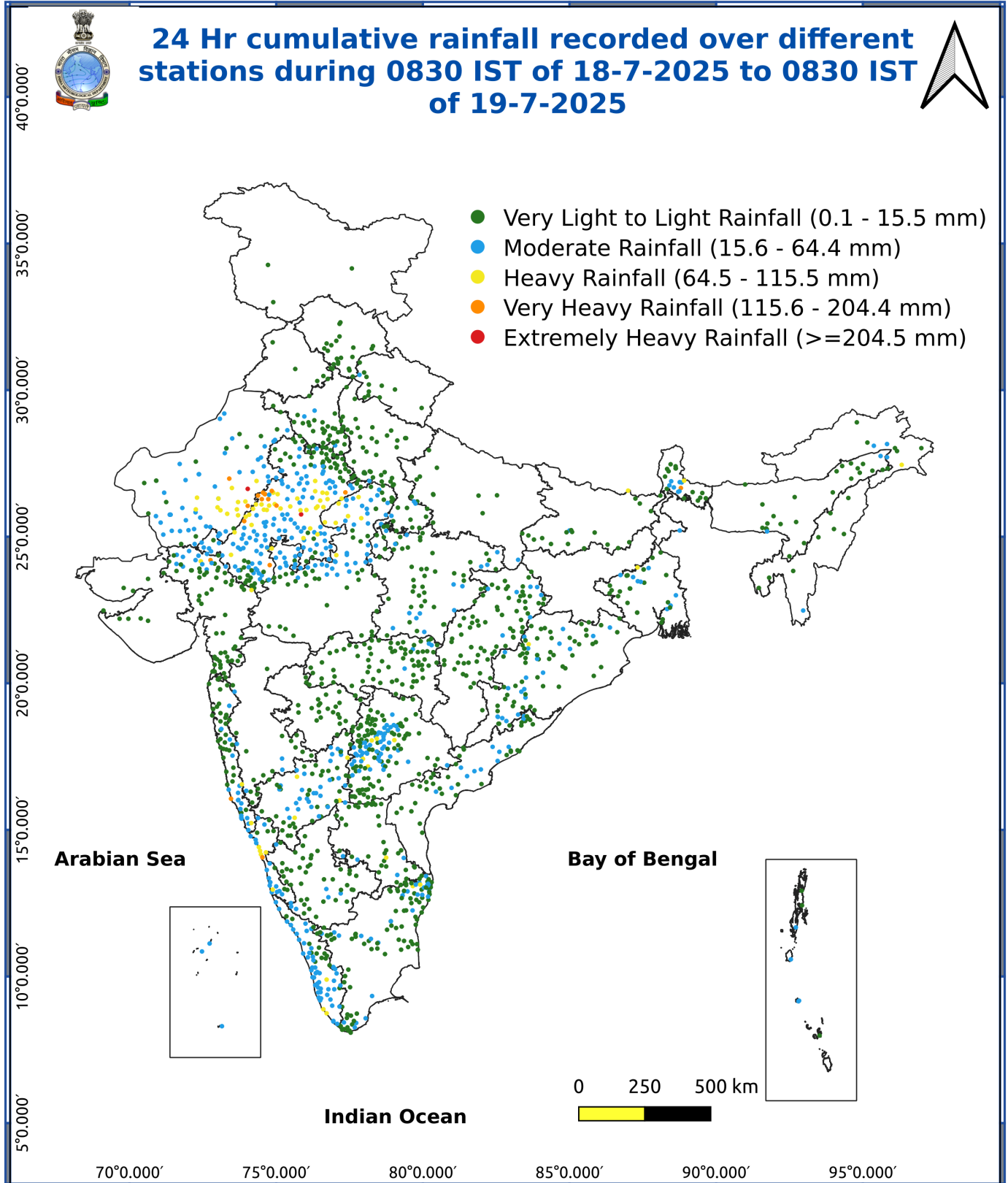


Fig. 4: Departure of Minimum Temp. Dated 2025-07-19





*Red color warning does not mean "Red Alert" Red color warning means "Take Action"

Forecast and warning for any day is valid from 0830 hours IST of day till 0830 hours IST of next day

For more details kindly visit <https://mausam.imd.gov.in> or contact 011-2434-4599

(Service to the nation since 1875)

Impact & Action Suggested

- **Extremely heavy rainfall (≥ 21 cm)** very likely at isolated places over southwest Rajasthan on 19th; Kerala and Coastal Karnataka on 19th & 20th July.
- **very heavy rainfall over** Kerala & Mahe, Coastal and South Interior Karnataka, Konkan & Goa, Ghat areas of Madhya Maharashtra during 19th-25th; Tamil Nadu during 19th-22nd; Uttarakhand during 20th-22nd; Punjab, Haryana, West Uttar Pradesh, Coastal Andhra Pradesh & Yanam, Telangana on 21st; Himachal Pradesh on 21st & 22nd; Jammu & Kashmir on 22nd; Sub-Himalayan West Bengal & Sikkim on 19th & 20th; Gangetic West Bengal on 24th and Odisha during 23rd-25th July.

Impact Expected

- Localized Flooding of roads, water logging in low lying areas and closure of underpasses mainly in urban areas of (**Rajasthan and West Madhya Pradesh**) the above region.
- Occasional reduction in visibility due to heavy rainfall.
- Disruption of traffic in major cities due to water logging in roads leading to increased travel time.
- Minor damage to kutcha roads.
- Possibilities of damage to vulnerable structure.
- Localized Landslides/Mudslides/landslips/mudslips/landsinks/mudsinks.
- Damage to horticulture and standing crops in some areas due to inundation.
- It may lead to riverine flooding in some river catchments (for riverine flooding please visit Web page of CWC)

Action Suggested

- Check for traffic congestion on your route before leaving for your destination.
- Follow any traffic advisories that are issued in this regard.
- Avoid going to areas that face the water logging problems often.
- Avoid staying in vulnerable structure.

Agromet advisories for various parts of the country

Agromet advisories for likely impact of Heavy / Heavy to Very Heavy / Extremely Heavy Rainfall

(Based on the IBF and advisories issued by different AMFUs)

In **Rajasthan**, postpone sowing of *kharif* crops and make arrangement for drainage in already sown green gram, sesame, moth bean, cluster bean and pearl millet crops in **Arid Western Plain Zone**. Make arrangement to drain out excess water from the fields of already sown sugarcane, banana, rice, maize, cotton, soybean, and groundnut fields in **Sub Humid Southern Plain and Aravali Hill Zone**. Ensure proper drainage facilities to remove excess water from fields of already sown crops of sorghum, maize, mung bean, cluster bean, cowpea, moth bean, and pearl millet in **Semi Arid Eastern Plain Zone**.

In **Uttarakhand**, maintain proper drainage channels in rice field in **Bhabar and Tarai Zone**. Maintain proper drainage channels in black gram in **Hill Zone**. Make necessary arrangements to drain out excess water from barnyard millet, finger millet, cucumber and rice fields in **Sub Humid SubTropic Zone**.

In **Himachal Pradesh**, make proper drainage channels in the standing crops like maize, finger millet and vegetable fields. Provide staking to tall and leguminous crops and cucumber vines. In **Mid Hills Sub Humid Zone**, undertake harvesting of matured tomato, brinjal, capsicum and fruits and keep the harvested produce at safer places.

In **Arunachal Pradesh**, keep the harvested soybean crop at safer places. Postpone sowing / transplanting of millet and transplanting of rice during heavy rainfall. Maintain drainage in already sown / transplanted finger millet, orchards, vegetables and transplanted rice. Cover the nursery bed of millet with plastic sheet or shed, and cover the surface of already sown seed with light layer of natural mulches like leaves.

*Red color warning does not mean "Red Alert" Red color warning means "Take Action"

Forecast and warning for any day is valid from 0830 hours IST of day till 0830 hours IST of next day

For more details kindly visit <https://mausam.imd.gov.in> or contact 011-2434-4599

(Service to the nation since 1875)

In **Meghalaya**, maintain proper drainage channels around the nursery beds of rice. Ensure adequate drainage in maize, cow pea, okra, brinjal and pumpkin crop fields to prevent waterlogging. Provide support to banana plant to prevent lodging.

In **Sub-Himalayan West Bengal**, maintain proper drainage in *kharif* rice, jute and vegetables in **Terai Zone**. Maintain proper drainage channels to remove excess water from the rice fields, ginger, vegetables and fruit orchards in **Hill Zone**.

In **Tamilnadu**, provide drainage in rice nursery and recently transplanted rice fields in **Western Zone**; sorghum, sugarcane, maize, rice, banana and coconut fields in **Southern Zone** and standing crops in **High altitude Hilly Zone**. Provide support to banana plants in **Cauvery Delta Zone**.

In **Kerala**, provide mechanical support to protect banana plants. Ensure proper drainage facilities in banana, coconut and rice in **Central Zone**; banana, coconut, ginger and vegetable fields in **Southern Zone** and rice nursery in **High Altitude Zone**. In **Northern Zone**, postpone sowing / nursery preparation for transplanting of rice.

Karnataka - In **Coastal Zone**, postpone nursery sowing of rice and provide drainage in arecanut fields and banana orchards. In **Hill Zone**, make arrangements to drain out excess water from rice nurseries, fields of maize, cotton, ginger and plantations of arecanut. In **Southern Transition Zone**, provide proper drainage in arecanut and coconut fields. Cover young seedlings in rice nursery and vegetables with coverings like plastic sheets or agro-shade nets. Postpone transplanting of rice. In **Southern Dry Zone**, provide staking / support to maize, tomato and banana crop. Ensure proper drainage to prevent waterlogging especially in rice, vegetables and spice crops. Cover young rice seedlings with plastic sheets or agro-shade nets and postpone transplanting.

In **Konkan**, make arrangement to drain out excess water from rice and finger millet nurseries, groundnut, vegetables and orchards. In **ghat areas** of **Madhya Maharashtra** drain out excess water from rice and finger millet nurseries.

In **Chhattisgarh**, make arrangements for drainage of excess water from fields of rice, maize, pigeon pea, minor millets and vegetables. Provide mechanical support to tall/weak crops with stakes or bamboo to prevent lodging or breakage.

Livestock / Fishery

Keep the animals inside the shed during heavy rainfall and provide them balanced feed.

Store feed and fodder in a safe place to prevent spoilage.

Construct an outlet with proper netting around the ponds to drain out excess water, thereby preventing fish from escaping in case of overflow.

Agromet advisories for likely impact of Thunderstorm / Gusty Winds / Squally Winds

(Based on the IBF and advisories issued by different AMFUs)

Provide mechanical support to horticultural crops and staking or support to vegetables and young fruit plants / fruit-bearing plants to avoid lodging due to strong winds.

LEGENDS

- 1 अंडमान और निकोबार द्वीप समुह
- 2 अरुणाचल प्रदेश
- 3 असम और मेघालय
- 4 नागालैंड मनीपुर मीजोरम और त्रिपुरा
- 5 उप हिमालय पश्चिम बंगाल एवं सिक्किम
- 6 पश्चिम बंगाल
- 7 ओडिसा
- 8 झारखंड
- 9 बिहार
- 10 पूर्वी उत्तर प्रदेश
- 11 पश्चिम उत्तर प्रदेश
- 12 उत्तराखंड
- 13 हरियाणा चंडीगढ़ एवं दिल्ली
- 14 पंजाब
- 15 हिमाचल प्रदेश
- 16 जम्मू एवं कश्मीर एवं लद्दाख
- 17 पश्चिम राजस्थान
- 18 पूर्वी राजस्थान
- 19 पश्चिम मध्य प्रदेश
- 20 पूर्वी मध्य प्रदेश
- 21 गुजरात क्षेत्र
- 22 सौराष्ट्र एवं कच्छ
- 23 कोंकण एवं गोवा
- 24 मध्य महाराष्ट्र
- 25 मराठावाड़ा
- 26 विदर्भ
- 27 छत्तीसगढ़
- 28 तटीय आंध्र प्रदेश एवं यनम
- 29 तेलंगाना
- 30 रायलसीमा
- 31 तमिलनाडु, पुदुचेरी एवं कराईकल
- 32 तटिय कर्नाटक
- 33 आंतरिक उत्तरी कर्नाटक
- 34 आंतरिक दक्षिणी कर्नाटक
- 35 केरल एवं माहे
- 36 लक्षद्वीप



1. Andaman & Nicobar Islands
2. Arunachal Pradesh
3. Assam & Meghalaya
4. Nagaland, Manipur, Mizoram & Tripura
5. Sub-Himalayan West Bengal & Sikkim
6. Gangetic West Bengal
7. Orissa
8. Jharkhand
9. Bihar
10. East Uttar Pradesh
11. West Uttar Pradesh
12. Uttarakhand
13. Haryana, Chd & Delhi
14. Punjab
15. Himachal Pradesh
16. Jammu & Kashmir and Ladakh
17. West Rajasthan
18. East Rajasthan
19. West Madhya Pradesh
20. East Madhya Pradesh
21. Gujarat
22. Saurashtra
23. Konkan & Goa
24. Madhya Maharashtra
25. Marathawada
26. Vidharbha
27. Chhattisgarh
28. Coastal Andhra Pradesh & Yanam
29. Telangana
30. Rayalaseema
31. Tamilnadu, Puducherry & Karaikal
32. Coastal Karnataka
33. North Interior Karnataka
34. South Interior Karnataka
35. Kerala & Mahe
36. Lakshadweep

SPATIAL DISTRIBUTION (% of Stations reporting)

% Stations	Category	% Stations	Category
76-100	Widespread (WS/Most Places)	26-50	Scattered (SCT/ A Few Places)
51-75	Fairly Widespread (FWS/ Many Places)	1-25	Isolated (ISOL)

Subdivision Colour

- NO WARNING
- WATCH (BE UPDATED)
- ALERT (BE PREPARED TO TAKE ACTION)
- WARNING (TAKE ACTION)

Probabilistic Forecast

Terms	Probability of Occurrence (%)
Unlikely	< 25
Likely	25 - 50
Very Likely	50 - 75
Most Likely	> 75

- | | | | |
|--|---|--|--|
|  Heavy Rain |  Very Heavy Rain |  Extremely Heavy Rain |  Heavy Snow |
|  Thunderstorm & Lightning |  Hailstorm |  Dust Storm |  Dust Raising Winds |
|  Strong surface winds |  Heat Wave |  Hot Day |  Warm Night |
|  Cold Wave |  Cold Day |  Ground Frost |  Fog |
|  Hot & Humid | | | |

*Red color warning does not mean "Red Alert" Red color warning means "Take Action"

Forecast and warning for any day is valid from 0830 hours IST of day till 0830 hours IST of next day

For more details kindly visit <https://mausam.imd.gov.in> or contact 011-2434-4599

(Service to the nation since 1875)

LEGENDS

WARNING

WARNING (TAKE ACTION)
ALERT (BE PREPARED)
WATCH (BE UPDATED)
NO WARNING (NO ACTION)

Probabilistic Forecast

Terms	Probability of Occurrence (%)
Unlikely	< 25
Likely	25 - 50
Very Likely	50 - 75
Most Likely	> 75



Heavy: 64.5 to 115.5 mm/cm *
Very Heavy: 115.6 to 204.4 mm/cm *
Extremely Heavy: > 204.4 mm/cm *



When maximum temperature of a station reaches $\geq 40^{\circ}\text{C}$ for plains and $\geq 30^{\circ}\text{C}$ for hilly regions
(a) Based on Departure from normal

Heat Wave: Maximum Temperature Departure from normal 4.5°C to 6.4°C .
Severe Heat Wave: Maximum Temperature Departure from normal $\geq 6.5^{\circ}\text{C}$

(b). Based on Actual maximum temperature

Heat Wave: When actual maximum temperature $\geq 45^{\circ}\text{C}$.
Severe Heat Wave: When actual maximum temperature $\geq 47^{\circ}\text{C}$

(c). Criteria for heat wave for coastal stations

When maximum temperature departure is $> 4.5^{\circ}\text{C}$ from normal. Heat Wave may be described provided maximum temperature $\geq 37^{\circ}\text{C}$



When maximum temperature remains 40°C

Warm Night: When minimum temperature departure 4.5°C to 6.4°C .
Severe Warm Night: When minimum temperature departure $> 6.4^{\circ}\text{C}$.



When minimum temperature of a station $\leq 10^{\circ}\text{C}$ for plains and $\leq 0^{\circ}\text{C}$ for hilly regions.

(a). Based on departure

Cold Wave: Minimum Temperature Departure from normal -4.5°C to -6.4°C .
Severe Cold Wave: Minimum Temperature Departure from normal $\leq -6.5^{\circ}\text{C}$

(b) Based on actual Minimum Temperature (for Plains only)

Cold Wave: When Minimum Temperature is $\leq 4.0^{\circ}\text{C}$
Severe Cold Wave: When Minimum Temperature is $\leq 2.0^{\circ}\text{C}$

(c) For Coastal Stations

When Minimum Temperature departure is $\leq -4.5^{\circ}\text{C}$ & actual Minimum Temperature is $\leq 15^{\circ}\text{C}$



When minimum temperature of a station $\leq 10^{\circ}\text{C}$ for plains and $\leq 0^{\circ}\text{C}$ for hilly regions
Based on departure

Cold Day: Maximum Temperature Departure from normal -4.5°C to -6.4°C .
Severe Cold Day: Maximum Temperature Departure from normal $\leq -6.5^{\circ}\text{C}$



Phenomenon of small droplets suspended in air and the horizontal visibility $< 1\text{km}$

Moderate Fog: When the visibility between 500-200 metres
Dense Fog: when the visibility between 50-200 metres
Very Dense Fog: when the visibility < 50 metres



Sudden electrical discharges manifested by a flash of light (Lightning) and a sharp rumbling sound (thunder)



An ensemble of particles of dust or sand energetically lifted to great heights by a strong and turbulent wind.



Ice deposits on ground

Air temperature $\leq 4^{\circ}\text{C}$ (over Plains)



A strong wind that rises suddenly, lasts for at least 1 minute.

Moderate: Wind speed 52-61 kmph
Severe: Wind speed 62-87 kmph
Very Severe: Wind speed > 87 kmph



Effect of various waves in the sea over specific area

Rough to very rough: Wind speed 41-62 kmph (22-33 knots) & Wave height 2.5-6 metre
High to very high: Wind speed 63-117 kmph (34-63 knots) & Wave height 6-14 metre
Phenomenal: Wind speed > 117 kmph (> 63 knots) & Wave height > 14 metre



Cyclonic Storm: Wind speed 62-87 kmph (34-47 knots)

Severe Cyclonic Storm: Wind speed 88-117 kmph (48-63 knots)
Very Severe Cyclonic Storm: Wind speed 118-165 kmph (64-89 knots)
Extremely Severe Cyclonic Storm: Wind speed 166-220 kmph (90-119 knots)
Super Cyclone Storm: Wind speed > 220 kmph (> 119 knots)

*Red color warning does not mean "Red Alert" Red color warning means "Take Action"

Forecast and warning for any day is valid from 0830 hours IST of day till 0830 hours IST of next day

For more details kindly visit <https://mausam.imd.gov.in> or contact 011-2434-4599

(Service to the nation since 1875)