



**India Meteorological Department
(Ministry of Earth Sciences)**

NATIONAL BULLETIN NO. 4 (BOB/07/2024)

TIME OF ISSUE: 0230 HOURS IST

DATED: 26.11.2024

FROM: INDIA METEOROLOGICAL DEPARTMENT (FAX NO. 24643965/24699216/24623220)

TO: CONTROL ROOM, NDM, MINISTRY OF HOME AFFAIRS (FAX.NO. 23093750)

CONTROL ROOM NDMA (FAX.NO. 26701729)

CABINET SECRETARIAT (FAX.NO.23012284, 23018638)

PS TO HON'BLE MINISTER FOR S & T AND EARTH SCIENCES (FAX NO.23316745)

SECRETARY, MOES (FAX NO. 24629777)

H.Q. (INTEGRATED DEFENCE STAFF AND CDS) (FAX NO. 23005137/23005147)

DIRECTOR GENERAL, DOORDARSHAN (23385843)

DIRECTOR GENERAL, AIR (23421105, 23421219)

PIB MOES (FAX NO. 23389042)

UNI (FAX NO. 23355841)

D.G. NATIONAL DISASTER RESPONSE FORCE (NDRF) (FAX NO. 26105912, 2436 3260)

DIRECTOR, PUNCTUALITY, INDIAN RAILWAYS (FAX NO. 23388503)

CHIEF SECRETARY, ANDAMAN & NICOBAR ISLANDS (FAX NO. 03192-232656)

CHIEF SECRETARY, TAMIL NADU (FAX NO. 044-25672304)

CHIEF SECRETARY, ANDHRA PRADESH (FAX NO. 0863-2441029)

CHIEF SECRETARY, PUDUCHERRY (FAX NO. 0413-2334145)

CHIEF SECRETARY, ODISHA (FAX NO. 0674-2536660)

Sub: Depression over Southwest Bay of Bengal and adjoining East Equatorial Indian Ocean

The Depression over Southwest Bay of Bengal and adjoining East Equatorial Indian Ocean moved northwestwards with a speed of 8 kmph during past 6 hours and lay centred at 2330 hours IST of yesterday, the 25th November 2024 over the same region near latitude 5.5°N and longitude 83.2°E, about 410 km south-southeast of Trincomalee, 690 km south-southeast of Nagapattinam, 810 km south-southeast of Puducherry and 900 km south-southeast of Chennai.

It is likely to move nearly northwestwards and intensify into a deep depression during next 12 hours. Thereafter, it is likely to move north-northwestwards towards Sri Lanka - Tamil Nadu coasts during subsequent 2 days.

Forecast track and intensity are given in the following table:

Date/ Time (IST)	Position (Lat. °N/ long. °E)	Maximum sustained surface wind speed (Kmph)	Category of cyclonic disturbance
25.11.24/2330	5.5/83.2	45-55 gusting to 65	Depression
26.11.24/1130	6.5/82.5	50-60 gusting to 70	Deep Depression
26.11.24/2330	7.7/82.0	50-60 gusting to 70	Deep Depression
27.11.24/1130	8.8/81.6	55-65 gusting to 75	Deep Depression
27.11.24/2330	9.8/81.2	55-65 gusting to 75	Deep Depression
28.11.24/1130	10.6/80.9	55-65 gusting to 75	Deep Depression
28.11.24/2330	11.4/80.6	55-65 gusting to 75	Deep Depression

Warnings:

(i) Rainfall Warning:

Tamil Nadu & Puducherry: Light to moderate rainfall at most places with heavy rainfall at a few places is very likely over coastal Tamil Nadu & Puducherry on 25th, heavy to very heavy rainfall at a few places with extremely heavy rainfall at isolated places over Tamil Nadu & Puducherry on 26th & 27th and heavy to very heavy rainfall at isolated places is likely on 28th November.

South Coastal Andhra Pradesh: Light to moderate rainfall at many places with heavy rainfall at isolated places is likely during 26th to 28th November.

(ii) Wind warning:

- Squally wind speed reaching 45-55 kmph gusting to 65 kmph is likely to prevail over southwest Bay of Bengal, adjoining southeast Bay of Bengal and along & off Sri Lanka coast till morning of 26 November.
- Squally wind speed reaching 50-60 kmph gusting to 70 kmph is very likely to prevail over southwest Bay of Bengal and adjoining westcentral Bay of Bengal and along & off Sri Lanka, Tamil Nadu - Puducherry and south Andhra Pradesh coasts from 26th morning and likely to increase becoming 55-65 kmph gusting to 75 kmph during 27th to 29th November over the same region.

(iii) Sea condition:

- Rough to very Rough Sea condition is very likely to prevail over southwest Bay of Bengal, adjoining southeast Bay of Bengal and along & off Sri Lanka coast till morning of 26 November. Rough Sea condition is very likely to prevail along & off Tamil Nadu - Puducherry coasts till mid-night of 26th November.
- Rough to very Rough Sea condition is very likely to prevail over southwest Bay of Bengal, adjoining southeast Bay of Bengal and along & off Sri Lanka, Tamil Nadu – Puducherry coasts till 29th November and along & off south Andhra Pradesh coast during 26th to 29th November.

(iv) Fisherman warning:

- Fishermen are advised not venture into
 - southeast Bay of Bengal & east Equatorial Indian Ocean on 26th November, 2024.
 - southwest Bay of Bengal and along & off Sri Lanka coast till 29th November, 2024.
 - Westcentral Bay of Bengal during 26th to 29th November 2024
 - and along & off Tamil Nadu – Puducherry coasts till 29th November and along & off south Andhra Pradesh coast during 26th to 29th November 2024.
- Fishermen out at sea are advised to return to coasts immediately.

(v) Impact Expected [over Tamil Nadu – Puducherry and south Andhra Pradesh]

- Localized Flooding of roads, water logging in low lying areas and closure of underpasses mainly in urban areas of the above region.
- Occasional reduction in visibility due to heavy rainfall.
- Disruption of traffic in major cities due to water logging in roads leading to increased travel time.
- Minor damage to kutcha roads.

- Damage to horticulture and standing crops in some areas due to inundation.

(vi) Action Suggested

- Fishermen are advised not venture into
 - southeast Bay of Bengal & east Equatorial Indian Ocean on 25th November, 2024.
 - southwest Bay of Bengal and along & off Sri Lanka coast till 29th November, 2024.
 - Westcentral Bay of Bengal during 26-29th November 2024
 - and along & off Tamil Nadu – Puducherry coasts till 29th November and along & off south Andhra Pradesh coast during 26th to 29th November 2024.
- Fishermen out at sea are advised to return to coasts immediately
- Check for traffic congestion on your route before leaving for your destination.
- Follow any traffic advisories that are issued in this regard.
- Avoid going to areas that face the water logging problems often.
- Special care may be taken for fishing ponds and poultries over coastal areas.
- Avoid staying in vulnerable structure.

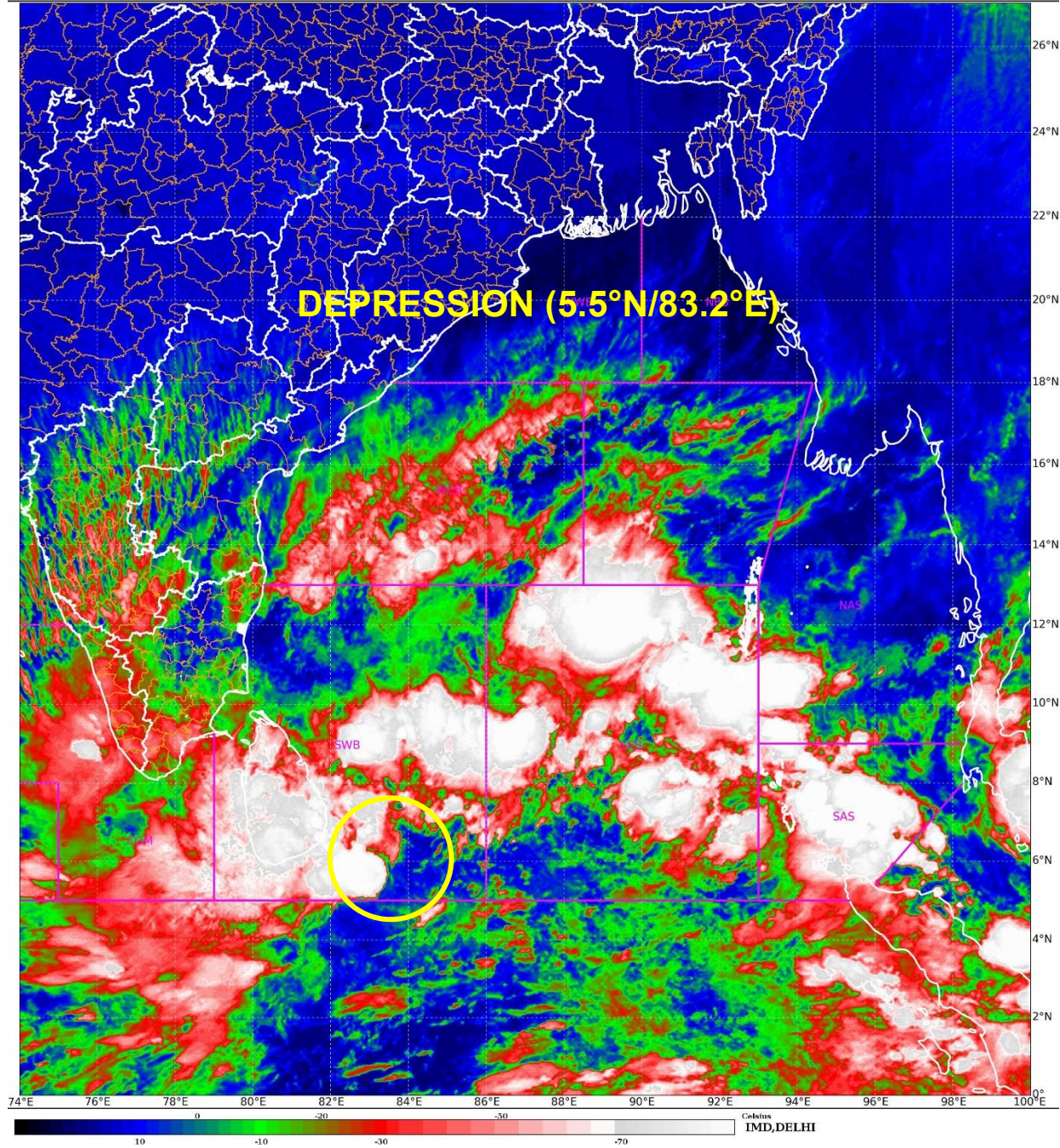
(vii) Agromet advisories [over Tamil Nadu – Puducherry and Andhra Pradesh]

- Provide adequate drainage facilities for the removal of excess water from rice, cotton, sugarcane, turmeric and vegetable fields, coconut and banana orchards. Undertake propping in sugarcane. Provide mechanical support to banana plants to prevent lodging.
- Make arrangements to drain out excess water from the standing crop fields and fruit orchards in Kerala and Coastal Andhra Pradesh.
- Harvest the matured crops and keep it in safe place.
- Provide mechanical support to horticultural crops and staking to vegetables.

Next bulletin will be issued at 0830 hours IST of today, the 26th November, 2024.

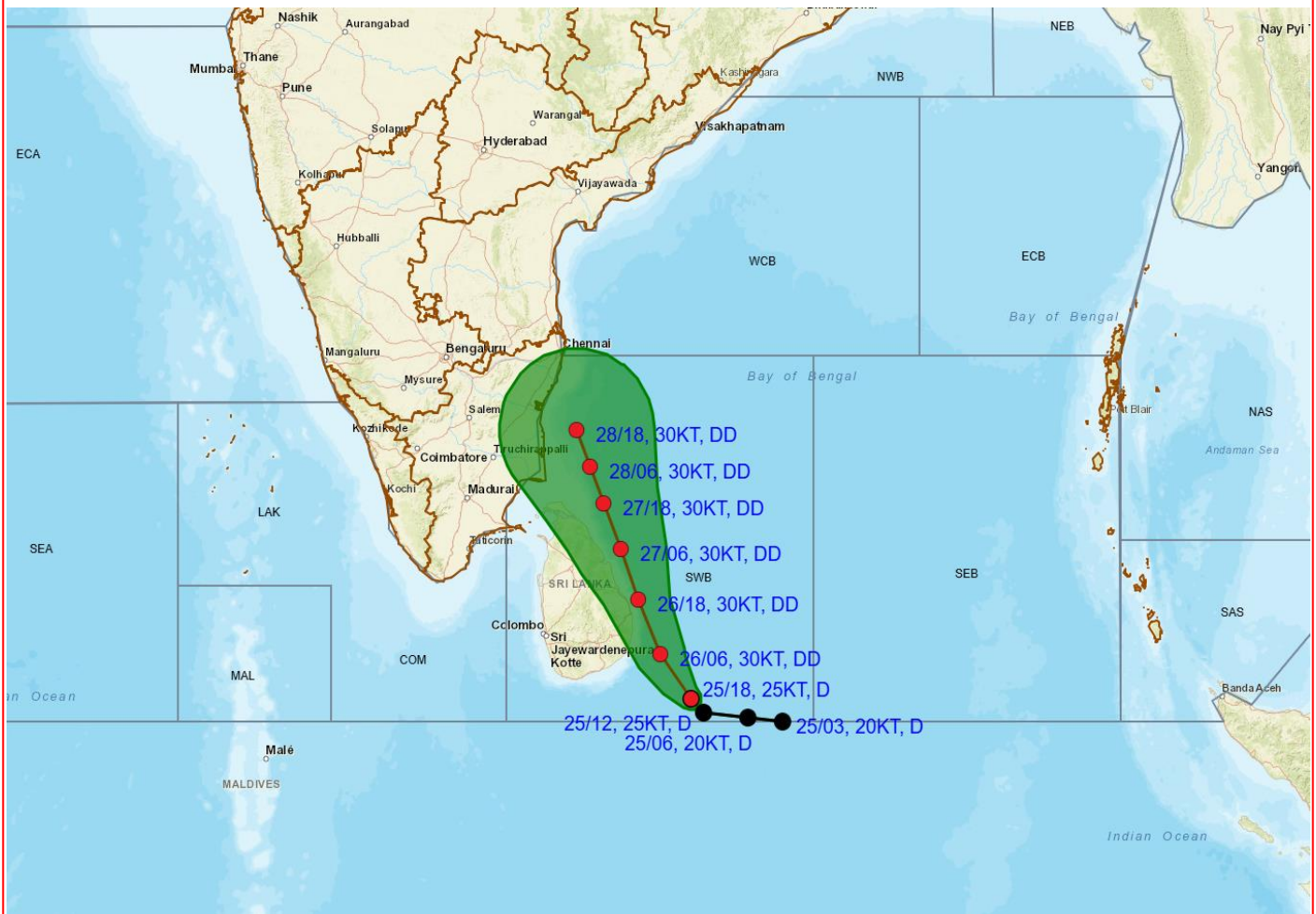
**(Dr. Suprit Kumar)
Scientist E, RSMC, New Delhi**

Copy to: ACWC Kolkata/ACWC Chennai/CWC Bhubaneswar/MC, Amaravati/MC, Thiruvananthapuram/CWC, Vishakhapatnam





OBSERVED AND FORCAST TRACK ALONG WITH CONE OF UNCERTAINTY OF DEPRESSION OVER SOUTHWEST BAY OF BENGAL AND ADJOINING EAST EQUATORIAL INDIAN OCEAN BASED ON 1800 UTC (2330 HRS. IST) OF 25TH NOVEMBER, 2024



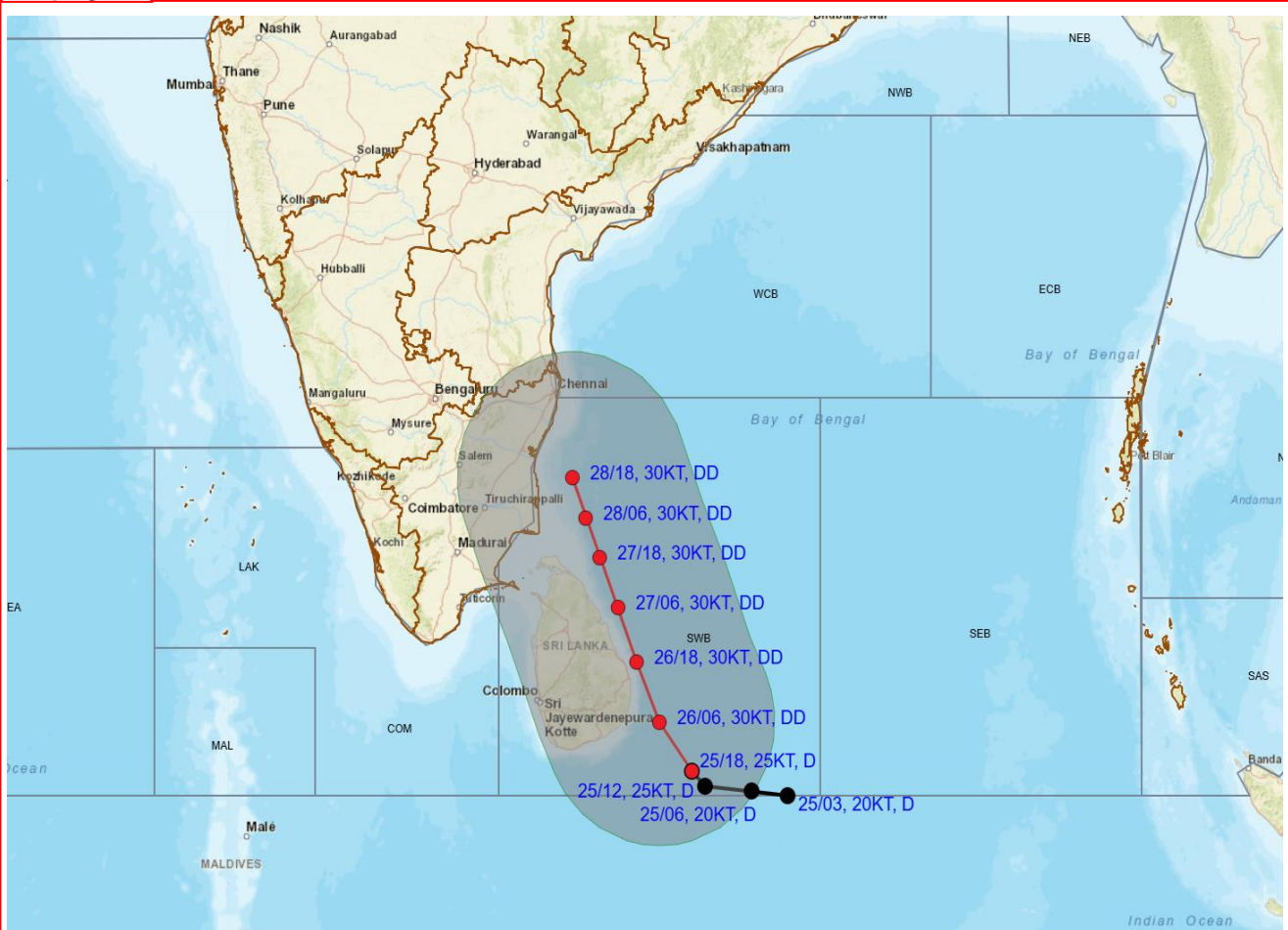
DATE/TIME : IN UTC
IST : UTC + 0530
KT : NAUTICAL MILE S/HOUR = 1.85 KM/HOUR
LPA : LOW PRESSURE AREA
WML : WELL MARKED LOW PRESSURE AREA
D : DEPRESSION (17-27 KT)
DD : DEEP DEPRESSION (28-33 KT)
CS : CYCLONIC STORM (34-47 KT)
SCS : SEVERE CYCLONIC STORM (48-63 KT)
VSCS : VERY SEVERE CYCLONIC STORM (64-89 KT)
ESCS : EXTREMELY SEVERE CYCLONIC STORM (90-119 KT)
SuCS : SUPER CYCLONIC STORM (≥ 120 KT)

LESS THAN 34 KT
 34-47 KT
 ≥ 48 KT
 OBSERVED TRACK
 FORECAST TRACK
 CONE OF UNCERTAINTY

Forecast	DISTANCE (KM) AND DIRECTION FROM STATIONS				
	BATTICALOA	TRINCOMALEE	NAGAPPATTINAM	PUDUCHERRY	CHENNAI/MINAMBAKKAM
25.11.24/1800	290, SE	410, SSE	690, SSE	810, SSE	900, SSE
26.11.24/1800	40, E	130, SE	410, SE	530, SSE	620, SSE
27.11.24/1800	240, NNW	140, N	180, SE	280, SSE	370, SSE
28.11.24/1800	430, NNW	330, NNW	110, NE	110, SE	190, SSE



OBSERVED AND FORECAST TRACK ALONGWITH QUADRANT WIND DISTRIBUTION OF DEPRESSION OVER SOUTHWEST BAY OF BENGAL AND ADJOINING EAST EQUATORIAL INDIAN OCEAN BASED ON 1800 UTC (2330 HRS. IST) OF 25TH NOVEMBER, 2024



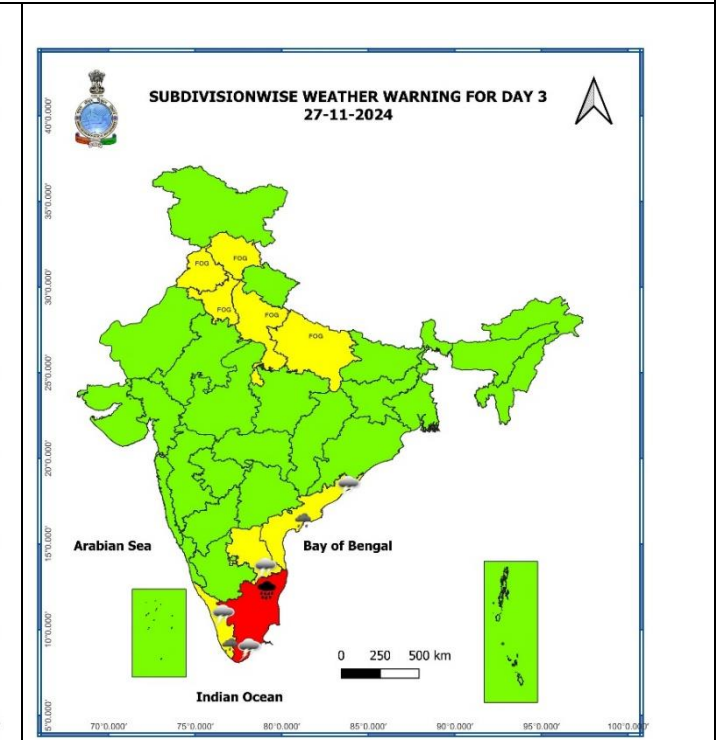
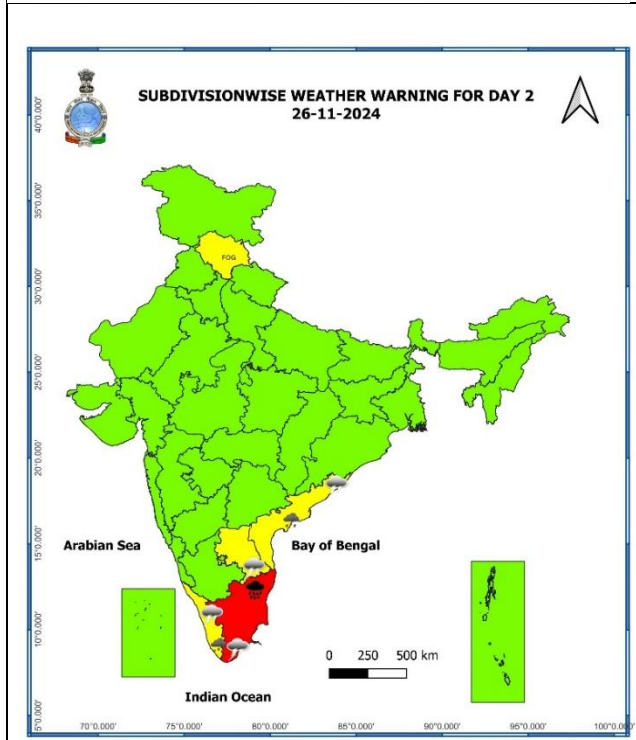
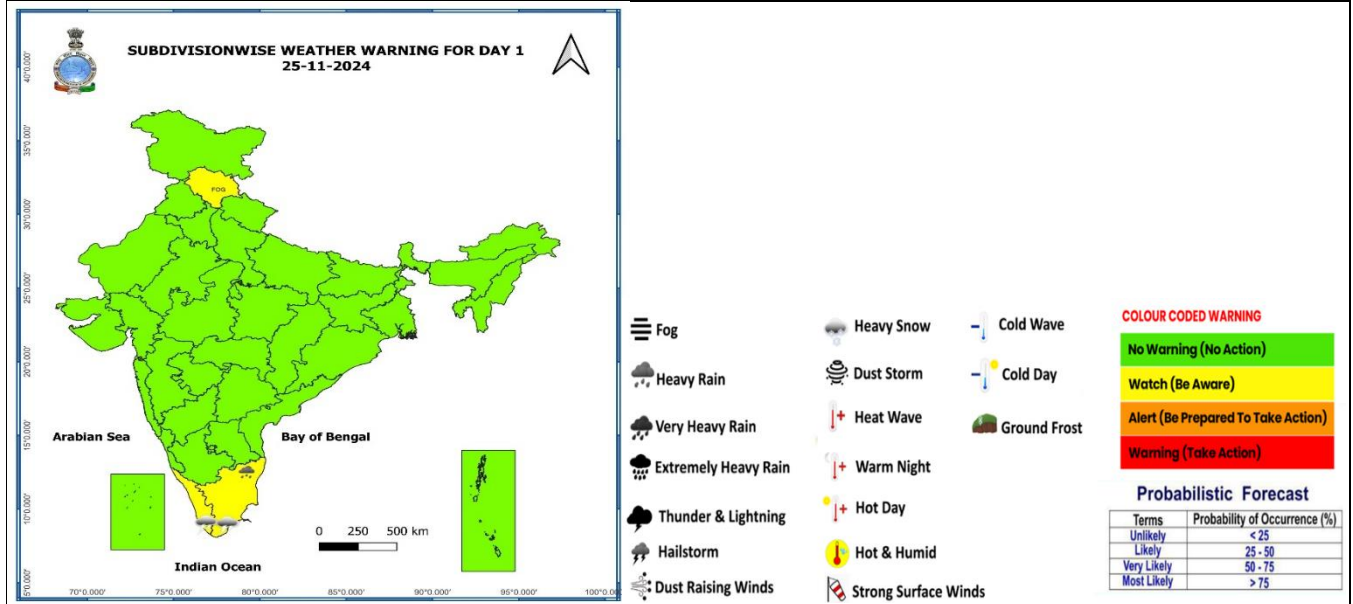
DATE/TIME : IN UTC
 IST : UTC + 0530
 KT : NAUTICAL MILE S/HOUR = 1.85 KM/HOUR
 LPA : LOW PRESSURE AREA
 WML : WELL MARKED LOW PRESSURE AREA
 D : DEPRESSION (17-27 KT)
 DD : DEEP DEPRESSION (28-33 KT)
 CS : CYCLONIC STORM (34-47 KT)
 SCS : SEVERE CYCLONIC STORM (48-63 KT)
 VSCS : VERY SEVERE CYCLONIC STORM (64-89 KT)
 ESCS : EXTREMELY SEVERE CYCLONIC STORM (90-119 KT)
 SuCS : SUPER CYCLONIC STORM (≥120 KT)

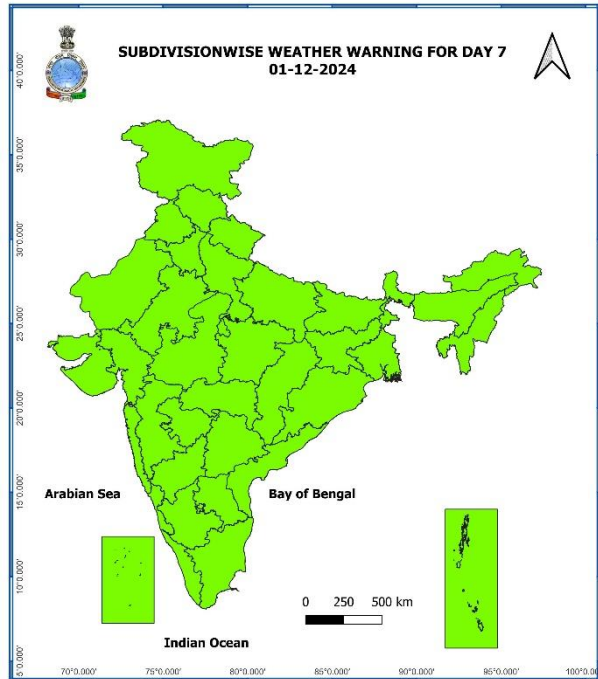
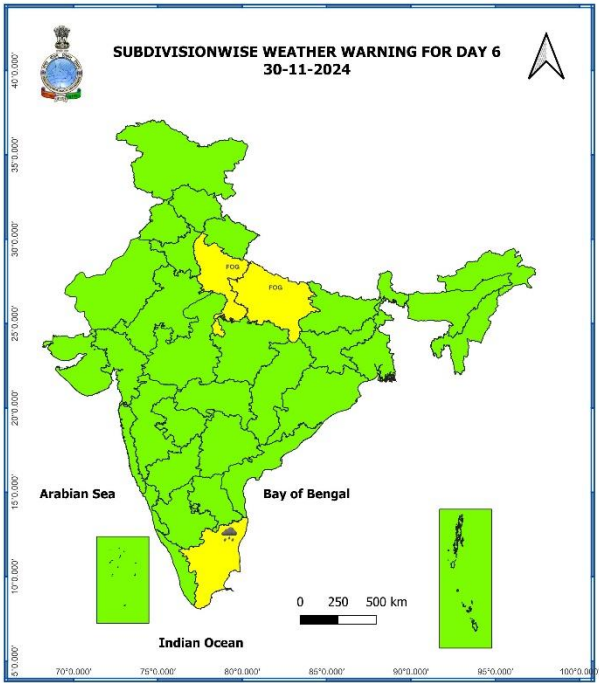
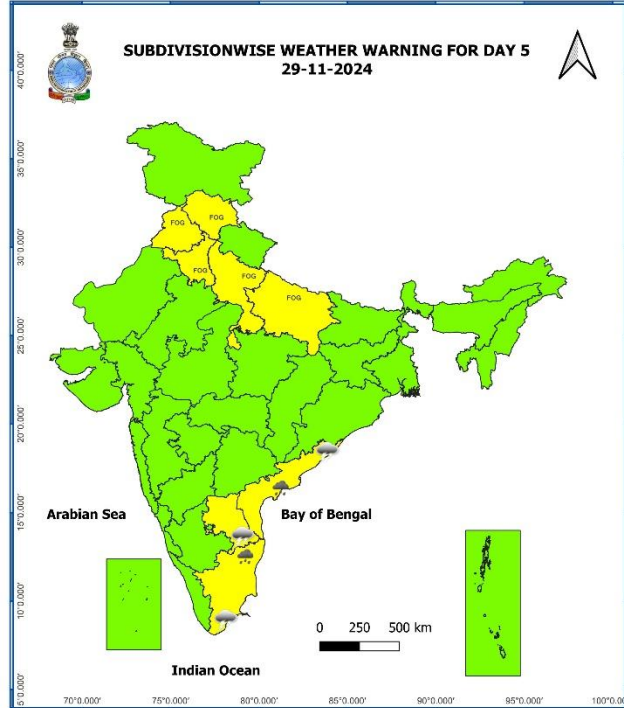
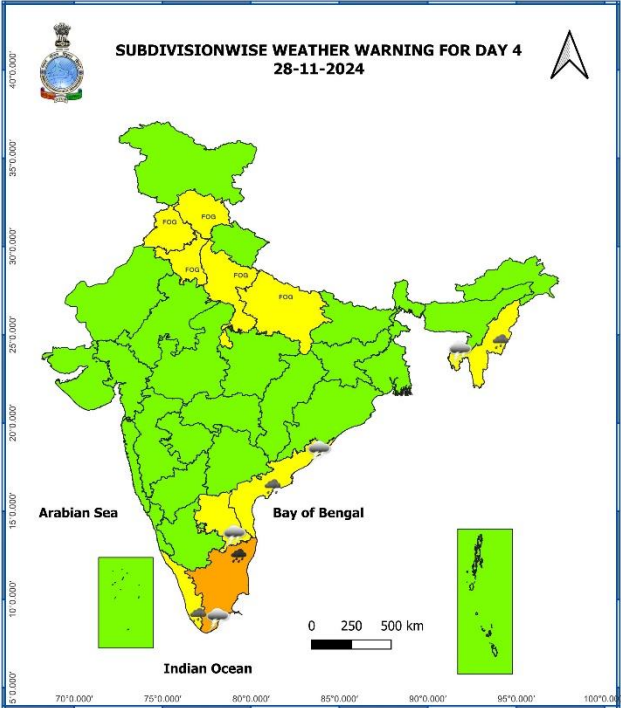
● LESS THAN 34 KT
 ○ 34-47 KT
 ○ ≥ 48 KT
 — OBSERVED TRACK
 — FORECAST TRACK
 ○ CONE OF UNCERTAINTY
AREA OF MAXIMUM SUSTAINED WIND SPEED:
 ■ 28-33 KT (52-61 KMPH)
 ■ 34-49 KT (62-91 KMPH)
 ■ 50-63 KT (92-117 KMPH)
 ■ ≥ 64 KT (≥118 KMPH)

IMPACT OVER THE SEA

MSW (knot/kmph)	Impact	Action
28-33 (52-61)	Very rough seas	Total suspension of fishing operations
34-49 (62-91)	High to very high seas	Total suspension of fishing operations
50-63 (92-117)	Very high seas	Total suspension of fishing operations
≥ 64 (≥118)	Phenomenal	Total suspension of fishing operations

Weather Warning Graphics





Fishermen Warning Graphics

